

Data Path : Z:\voasrv\HPCHEM1\MSVOA_N\Data\VN060521\
 Data File : VN067226.D
 Acq On : 5 Jun 2021 13:41
 Operator : JC/MD
 Sample : M2589-29
 Misc : 5.00mL/MSVOA_N/WATER
 ALS Vial : 6 Sample Multiplier: 1

Instrument :
 MSVOA_N
 ClientSampleId :
 18-B9(4-6)

Quant Time: Jun 07 01:14:20 2021
 Quant Method : Z:\voasrv\HPCHEM1\MSVOA_N\methods\82N060421W.M
 Quant Title : SW846 8260
 QLast Update : Fri Jun 04 19:00:20 2021
 Response via : Initial Calibration

Compound	R.T.	QIon	Response	Conc	Units	Dev(Min)

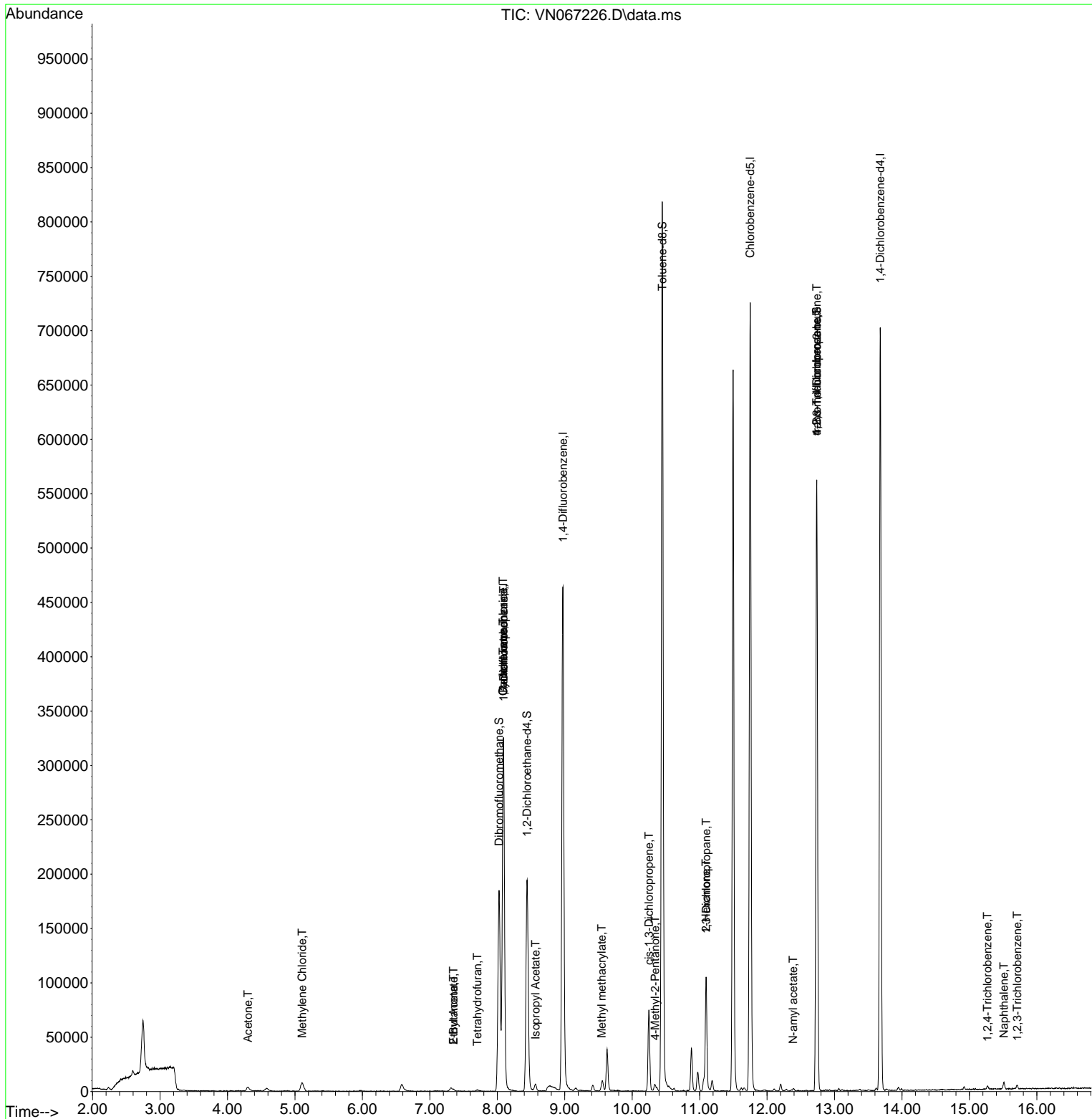
Internal Standards						
1) Pentafluorobenzene	8.091	168	264705	50.000	ug/l	0.00
34) 1,4-Difluorobenzene	8.973	114	440421	50.000	ug/l	0.00
63) Chlorobenzene-d5	11.749	117	422069	50.000	ug/l	0.00
72) 1,4-Dichlorobenzene-d4	13.677	152	184987	50.000	ug/l	0.00
System Monitoring Compounds						
33) 1,2-Dichloroethane-d4	8.440	65	156310	43.320	ug/l	0.00
Spiked Amount	50.000	Range 61 - 141	Recovery	=	86.640%	
35) Dibromofluoromethane	8.027	113	132494	48.527	ug/l	0.00
Spiked Amount	50.000	Range 69 - 133	Recovery	=	97.060%	
50) Toluene-d8	10.446	98	572969	51.527	ug/l	0.00
Spiked Amount	50.000	Range 65 - 126	Recovery	=	103.060%	
62) 4-Bromofluorobenzene	12.736	95	181129	42.293	ug/l	0.00
Spiked Amount	50.000	Range 58 - 135	Recovery	=	84.580%	
Target Compounds						
					Qvalue	
13) Acrolein	4.047	56	77	Below Cal	#	58
16) Acetone	4.304	43	7522	6.042	ug/l	96
20) Methylene Chloride	5.106	84	6471	2.064	ug/l #	97
25) 2-Butanone	7.351	43	3119	1.564	ug/l	92
29) Tetrahydrofuran	7.702	42	922	0.778	ug/l #	46
31) Cyclohexane	8.088	56	5903	1.218	ug/l #	35
36) 1,1-Dichloropropene	8.094	75	19461	4.784	ug/l #	49
37) Ethyl Acetate	7.351	43	3119	0.795	ug/l #	65
38) Carbon Tetrachloride	8.088	117	24772	5.576	ug/l #	15
43) Isopropyl Acetate	8.568	43	7495	1.005	ug/l #	82
48) Methyl methacrylate	9.547	41	4391	1.359	ug/l #	15
51) 4-Methyl-2-Pentanone	10.341	43	4359	0.998	ug/l	88
54) cis-1,3-Dichloropropene	10.247	75	13955	2.591	ug/l #	68
57) 1,3-Dichloropropane	11.097	76	1044	0.200	ug/l #	42
59) 2-Hexanone	11.095	43	17166	5.406	ug/l #	51
74) N-amyl acetate	12.387	43	1671	0.295	ug/l #	66
76) 1,2,3-Trichloropropane	12.736	75	98242	27.616	ug/l #	100
81) trans-1,4-Dichloro-2-b...	12.736	75	98242	67.569	ug/l #	15
93) 1,2,4-Trichlorobenzene	15.268	180	1378	0.498	ug/l	94
95) Naphthalene	15.509	128	6472	5.142	ug/l #	96
96) 1,2,3-Trichlorobenzene	15.710	180	1401	0.570	ug/l	92

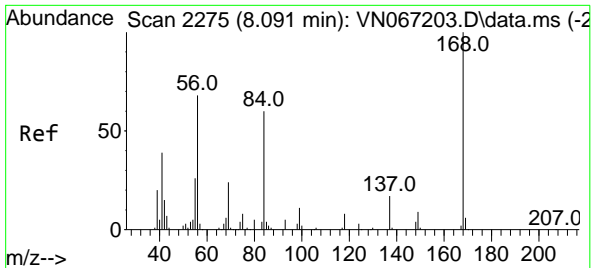
(#) = qualifier out of range (m) = manual integration (+) = signals summed

Data Path : Z:\voasrv\HPCHEM1\MSVOA_N\Data\VN060521\
 Data File : VN067226.D
 Acq On : 5 Jun 2021 13:41
 Operator : JC/MD
 Sample : M2589-29
 Misc : 5.00mL/MSVOA_N/WATER
 ALS Vial : 6 Sample Multiplier: 1

Instrument :
 MSVOA_N
 Client Sampled :
 18-B9(4-6)

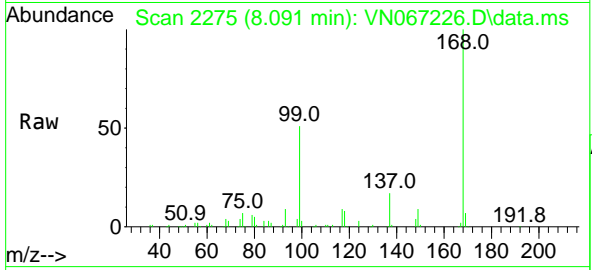
Quant Time: Jun 07 01:14:20 2021
 Quant Method : Z:\voasrv\HPCHEM1\MSVOA_N\methods\82N060421W.M
 Quant Title : SW846 8260
 QLast Update : Fri Jun 04 19:00:20 2021
 Response via : Initial Calibration



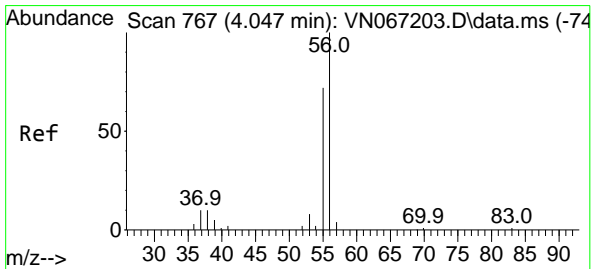
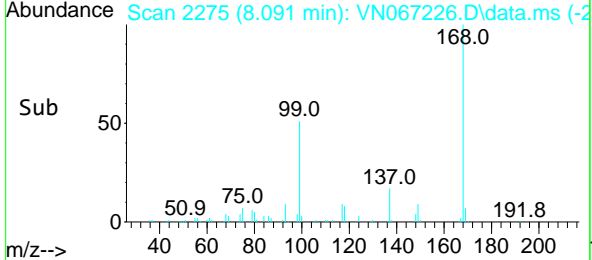
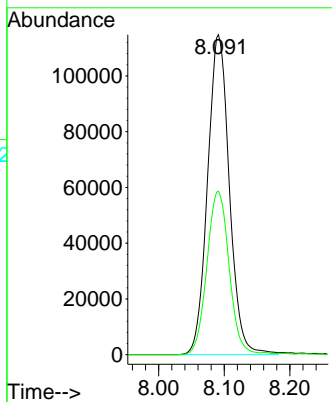


#1
 Pentafluorobenzene
 Concen: 50.000 ug/l
 RT: 8.091 min Scan# 2275
 Delta R.T. -0.000 min
 Lab File: VN067226.D
 Acq: 5 Jun 2021 13:41

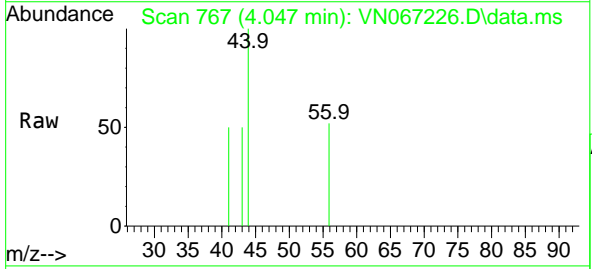
Instrument :
 MSVOA_N
ClientSampled :
 18-B9(4-6)



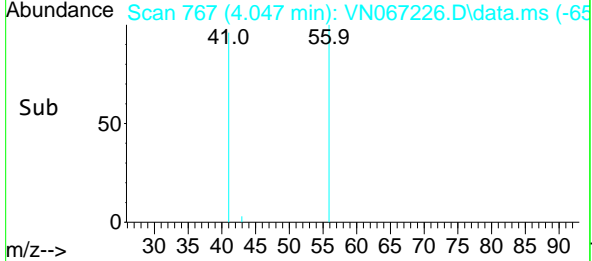
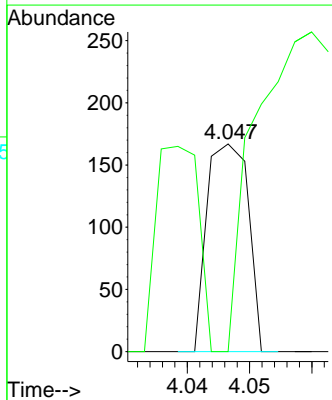
Tgt Ion:168 Resp: 264705
 Ion Ratio Lower Upper
 168 100
 99 51.1 38.5 57.7

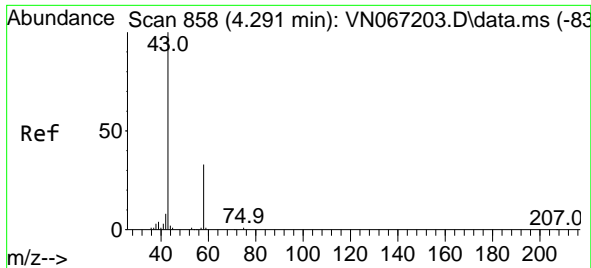


#13
 Acrolein
 Concen: Below Cal
 RT: 4.047 min Scan# 767
 Delta R.T. -0.000 min
 Lab File: VN067226.D
 Acq: 5 Jun 2021 13:41



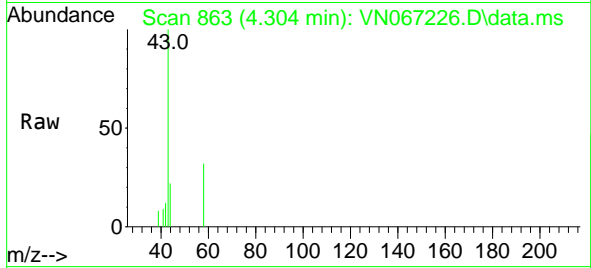
Tgt Ion: 56 Resp: 77
 Ion Ratio Lower Upper
 56 100
 55 101.3 53.8 80.6#



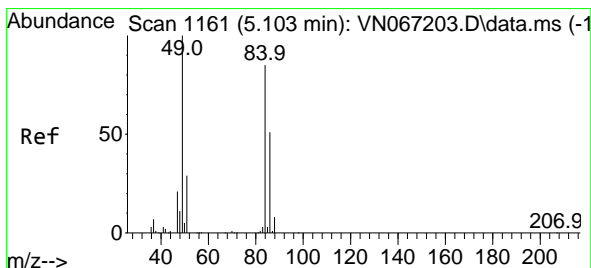
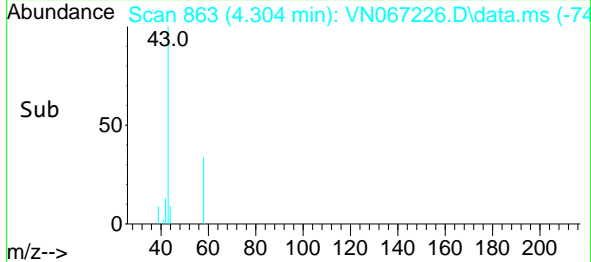
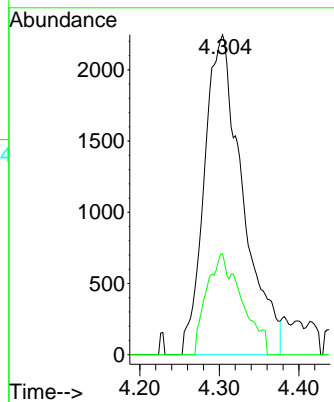


#16
 Acetone
 Concen: 6.042 ug/l
 RT: 4.304 min Scan# 863
 Delta R.T. 0.013 min
 Lab File: VN067226.D
 Acq: 5 Jun 2021 13:41

Instrument :
 MSVOA_N
 ClientSampled :
 18-B9(4-6)

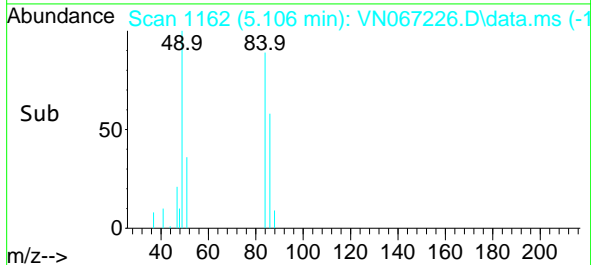
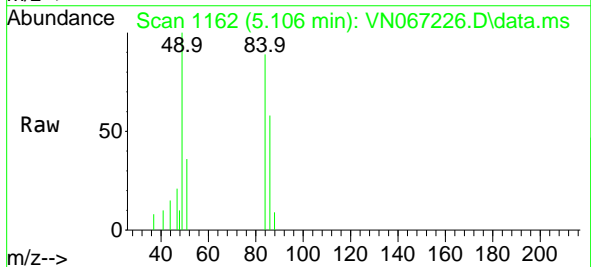
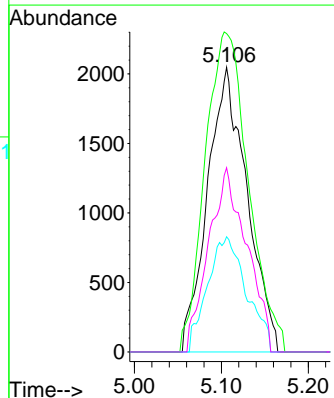


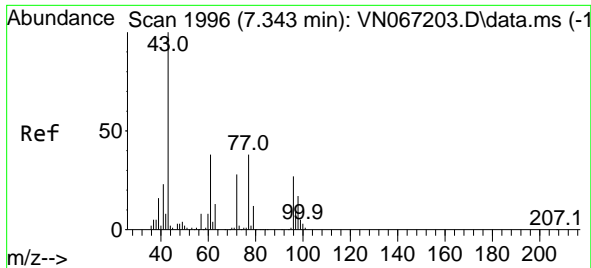
Tgt Ion: 43 Resp: 7522
 Ion Ratio Lower Upper
 43 100
 58 31.5 27.2 40.8



#20
 Methylene Chloride
 Concen: 2.064 ug/l
 RT: 5.106 min Scan# 1162
 Delta R.T. 0.003 min
 Lab File: VN067226.D
 Acq: 5 Jun 2021 13:41

Tgt Ion: 84 Resp: 6471
 Ion Ratio Lower Upper
 84 100
 49 111.8 88.3 132.5
 51 40.5 26.7 40.1#
 86 64.7 51.1 76.7

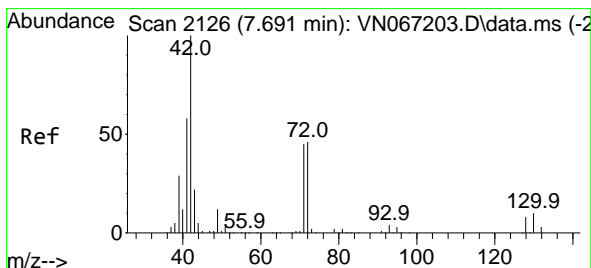
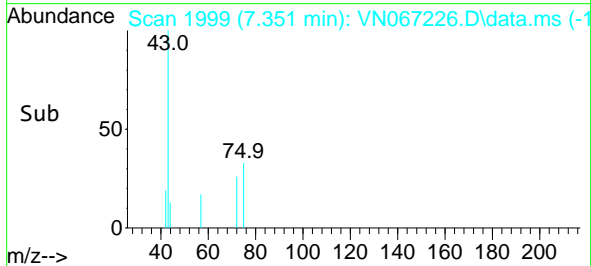
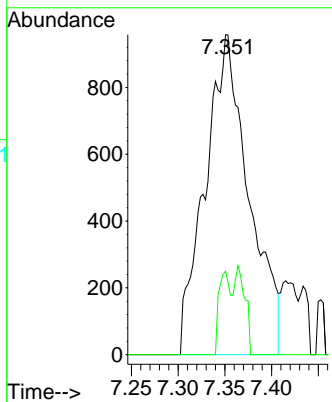
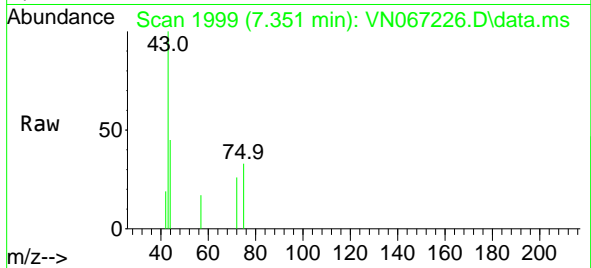




#25
 2-Butanone
 Concen: 1.564 ug/l
 RT: 7.351 min Scan# 1999
 Delta R.T. 0.008 min
 Lab File: VN067226.D
 Acq: 5 Jun 2021 13:41

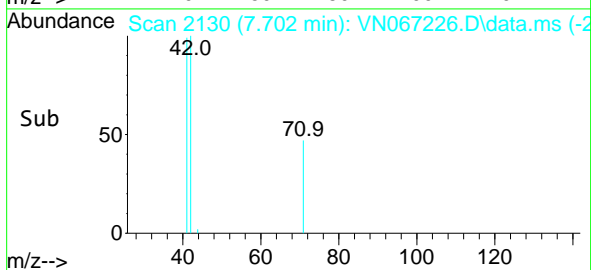
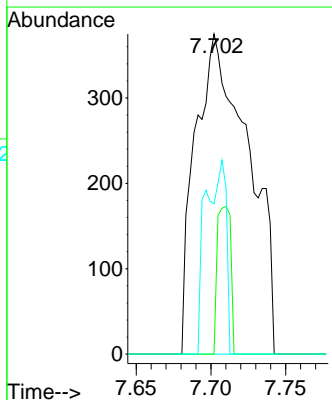
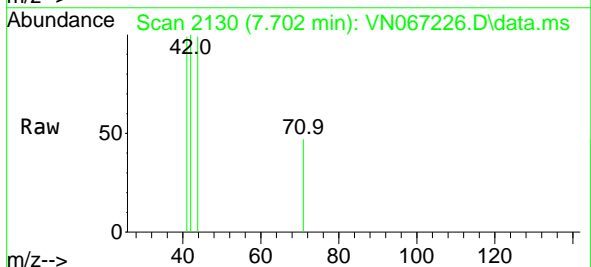
Instrument :
 MSVOA_N
ClientSampled :
 18-B9(4-6)

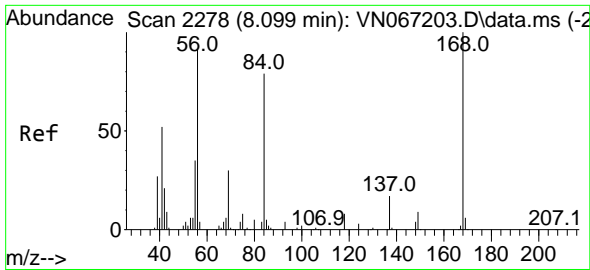
Tgt Ion: 43 Resp: 3119
 Ion Ratio Lower Upper
 43 100
 72 26.1 24.4 36.6



#29
 Tetrahydrofuran
 Concen: 0.778 ug/l
 RT: 7.702 min Scan# 2130
 Delta R.T. 0.011 min
 Lab File: VN067226.D
 Acq: 5 Jun 2021 13:41

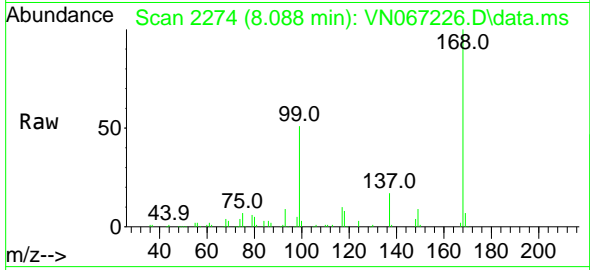
Tgt Ion: 42 Resp: 922
 Ion Ratio Lower Upper
 42 100
 72 11.7 40.1 60.1#
 71 12.7 37.9 56.9#



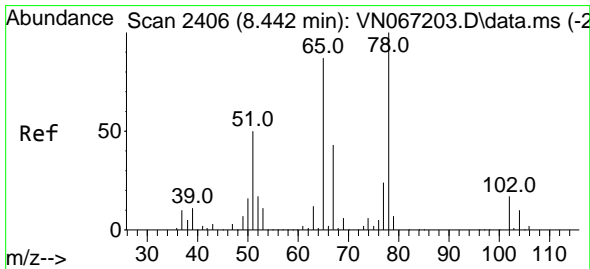
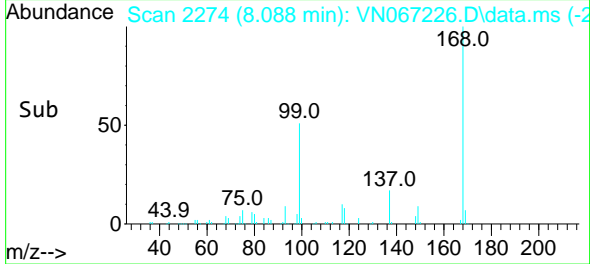
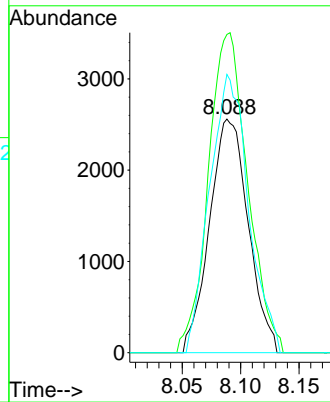


#31
 Cyclohexane
 Concen: 1.218 ug/l
 RT: 8.088 min Scan# 2274
 Delta R.T. -0.011 min
 Lab File: VN067226.D
 Acq: 5 Jun 2021 13:41

Instrument :
 MSVOA_N
ClientSampled :
 18-B9(4-6)

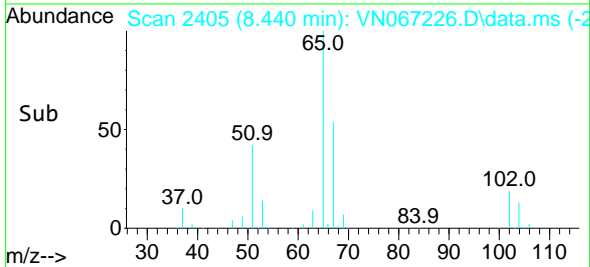
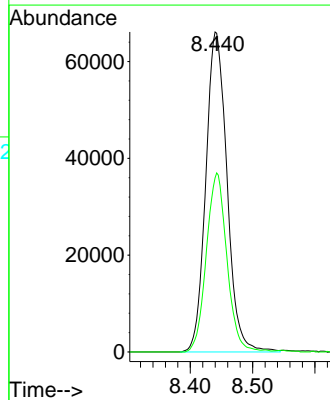
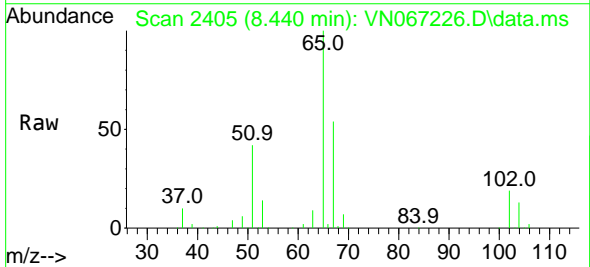


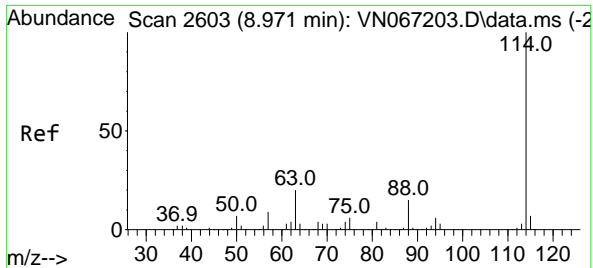
Tgt Ion: 56 Resp: 5903
 Ion Ratio Lower Upper
 56 100
 69 130.3 28.0 42.0#
 84 119.1 74.2 111.2#



#33
 1,2-Dichloroethane-d4
 Concen: 43.320 ug/l
 RT: 8.440 min Scan# 2405
 Delta R.T. -0.003 min
 Lab File: VN067226.D
 Acq: 5 Jun 2021 13:41

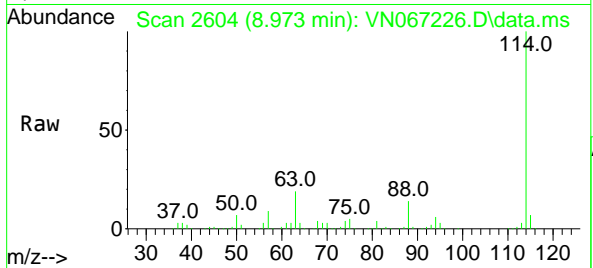
Tgt Ion: 65 Resp: 156310
 Ion Ratio Lower Upper
 65 100
 67 54.2 0.0 110.4





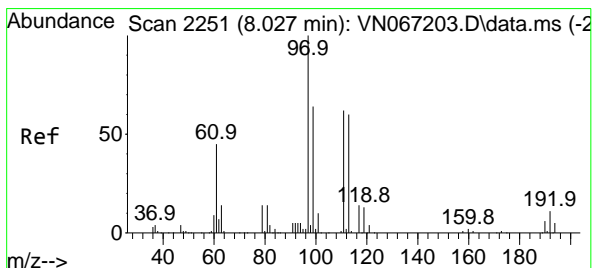
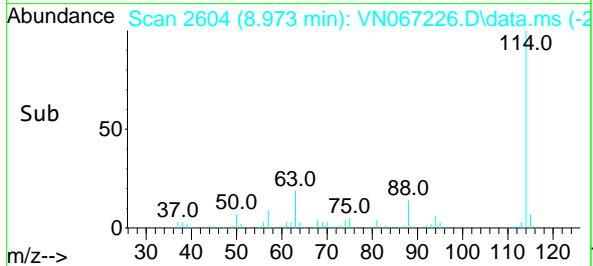
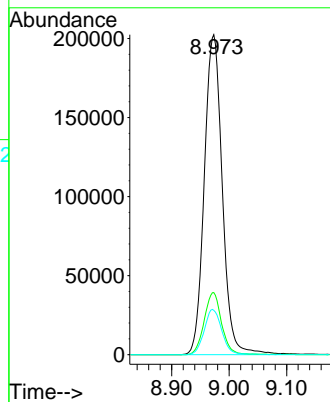
#34
 1,4-Difluorobenzene
 Concen: 50.000 ug/l
 RT: 8.973 min Scan# 2604
 Delta R.T. 0.003 min
 Lab File: VN067226.D
 Acq: 5 Jun 2021 13:41

Instrument :
 MSVOA_N
 ClientSampled :
 18-B9(4-6)

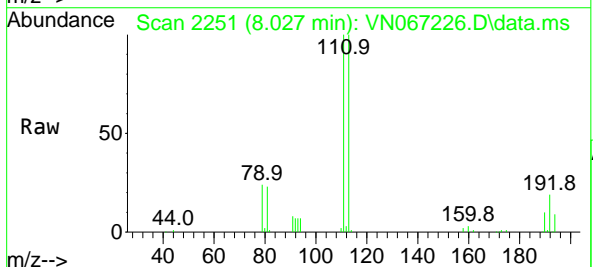


Tgt Ion:114 Resp: 440421

Ion	Ratio	Lower	Upper
114	100		
63	19.4	0.0	35.8
88	13.9	0.0	30.4

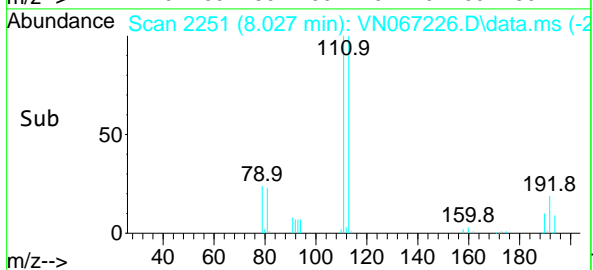
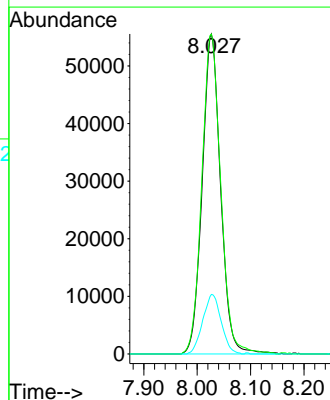


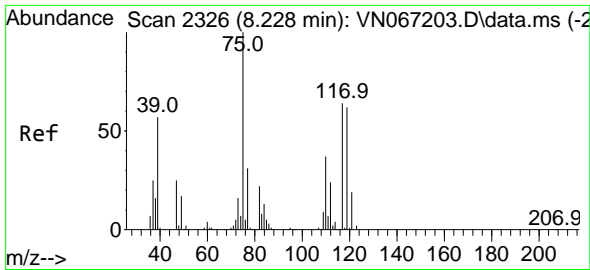
#35
 Dibromofluoromethane
 Concen: 48.527 ug/l
 RT: 8.027 min Scan# 2251
 Delta R.T. -0.000 min
 Lab File: VN067226.D
 Acq: 5 Jun 2021 13:41



Tgt Ion:113 Resp: 132494

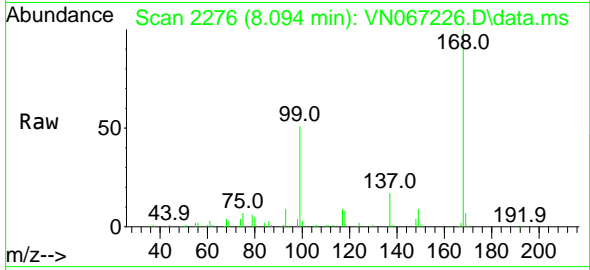
Ion	Ratio	Lower	Upper
113	100		
111	102.6	82.6	124.0
192	18.7	18.2	27.4



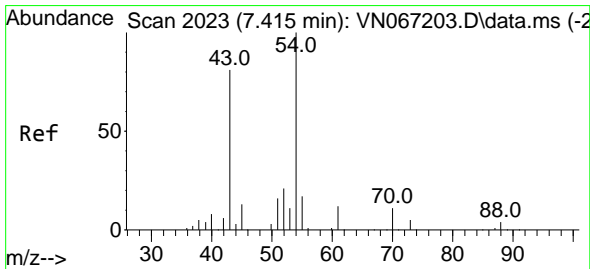
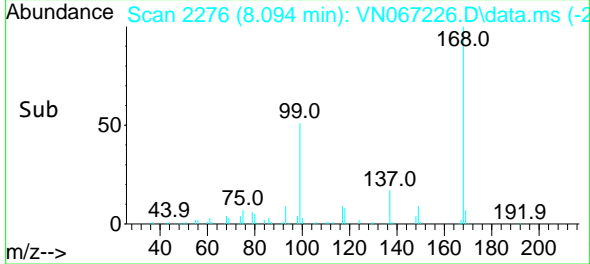
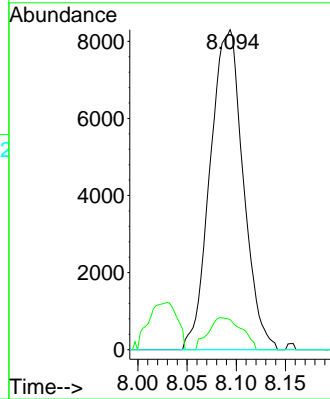


#36
 1,1-Dichloropropene
 Concen: 4.784 ug/l
 RT: 8.094 min Scan# 2276
 Delta R.T. -0.134 min
 Lab File: VN067226.D
 Acq: 5 Jun 2021 13:41

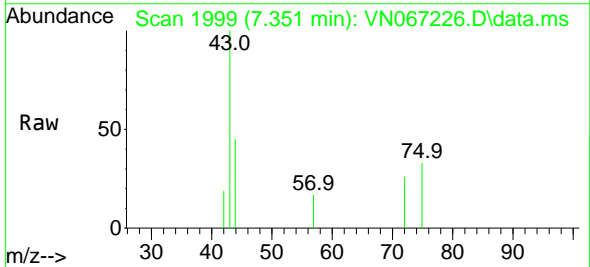
Instrument :
 MSVOA_N
 ClientSampled :
 18-B9(4-6)



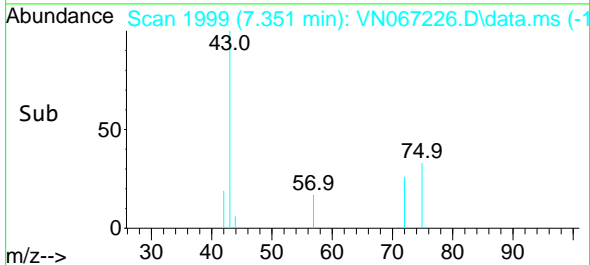
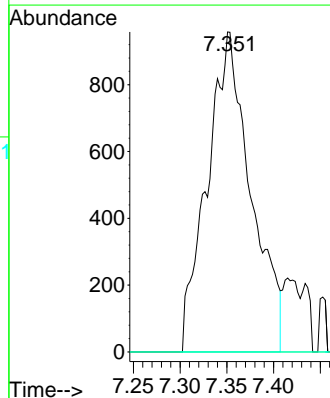
Tgt Ion: 75 Resp: 19461
 Ion Ratio Lower Upper
 75 100
 110 10.1 19.1 57.3#
 77 0.0 24.8 37.2#

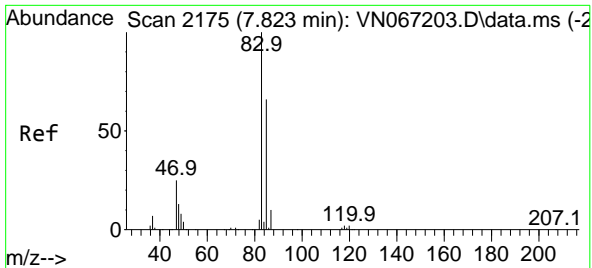


#37
 Ethyl Acetate
 Concen: 0.795 ug/l
 RT: 7.351 min Scan# 1999
 Delta R.T. -0.064 min
 Lab File: VN067226.D
 Acq: 5 Jun 2021 13:41



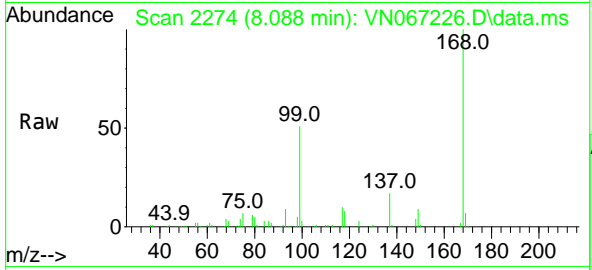
Tgt Ion: 43 Resp: 3119
 Ion Ratio Lower Upper
 43 100
 61 0.0 13.0 19.4#
 70 0.0 9.2 13.8#





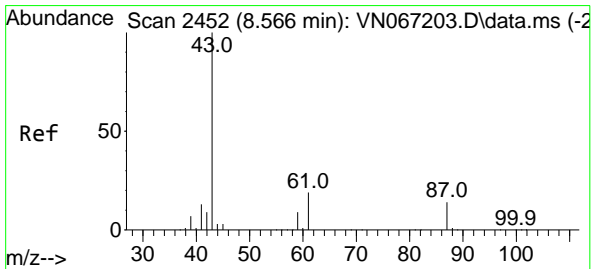
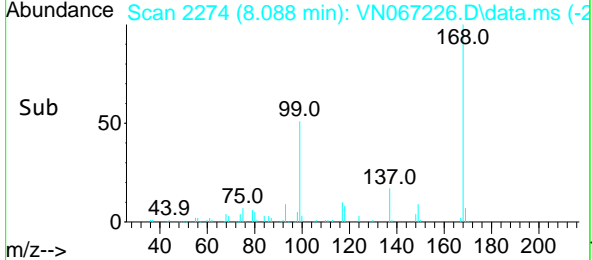
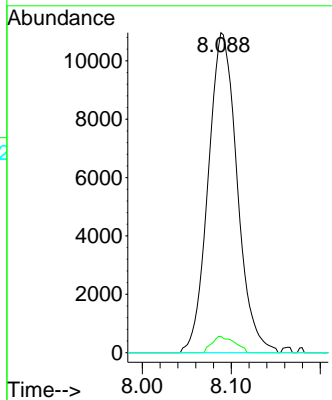
#38
 Carbon Tetrachloride
 Concen: 5.576 ug/l
 RT: 8.088 min Scan# 2274
 Delta R.T. -0.123 min
 Lab File: VN067226.D
 Acq: 5 Jun 2021 13:41

Instrument :
 MSVOA_N
ClientSampled :
 18-B9(4-6)

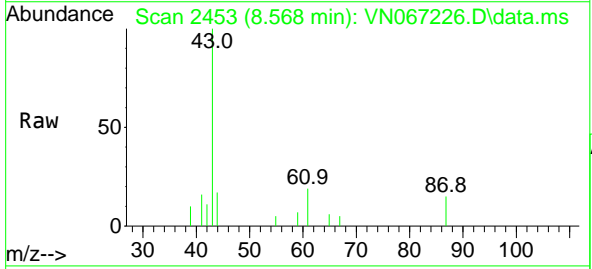


Tgt Ion: 117 Resp: 24772

Ion	Ratio	Lower	Upper
117	100		
119	5.0	78.2	117.2#
121	0.0	24.7	37.1#

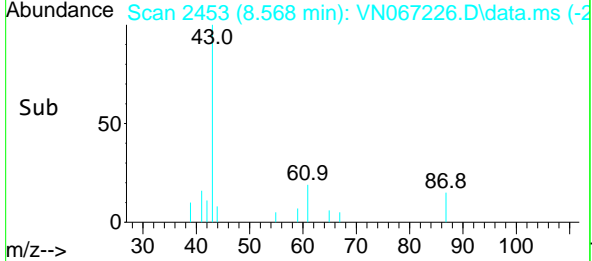
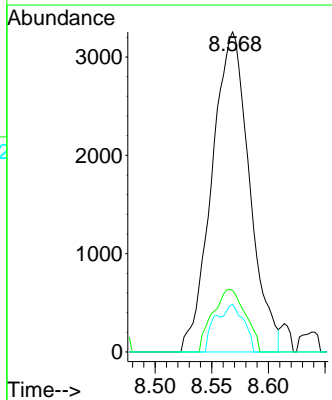


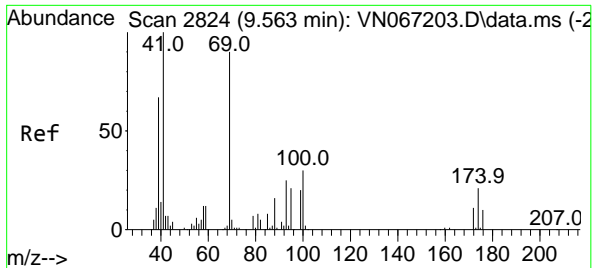
#43
 Isopropyl Acetate
 Concen: 1.005 ug/l
 RT: 8.568 min Scan# 2453
 Delta R.T. 0.003 min
 Lab File: VN067226.D
 Acq: 5 Jun 2021 13:41



Tgt Ion: 43 Resp: 7495

Ion	Ratio	Lower	Upper
43	100		
61	17.0	23.4	35.0#
87	11.1	12.2	18.2#



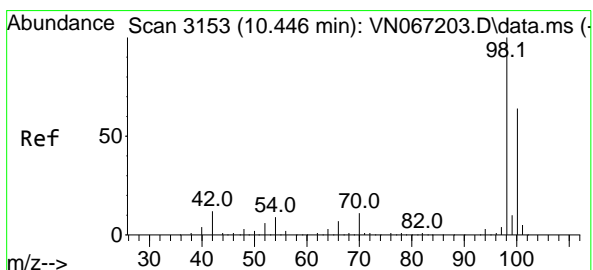
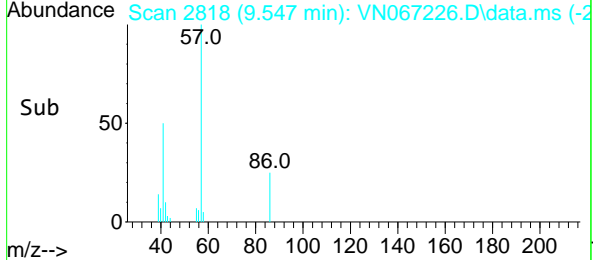
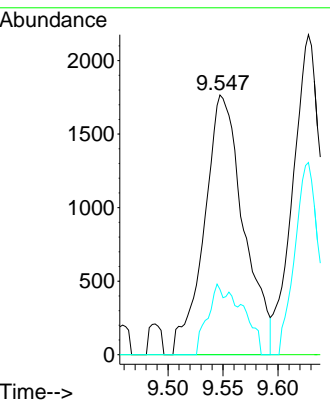
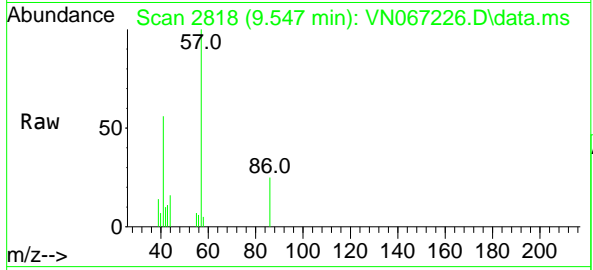


#48
 Methyl methacrylate
 Concen: 1.359 ug/l
 RT: 9.547 min Scan# 2818
 Delta R.T. -0.016 min
 Lab File: VN067226.D
 Acq: 5 Jun 2021 13:41

Instrument :
 MSVOA_N
 ClientSampled :
 18-B9(4-6)

Tgt Ion: 41 Resp: 4391

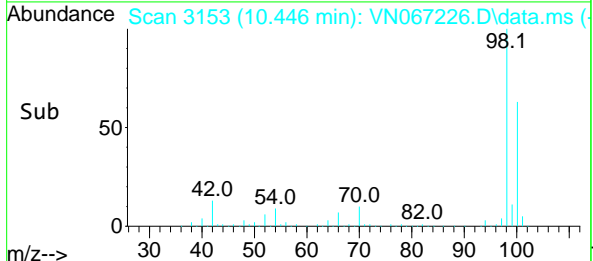
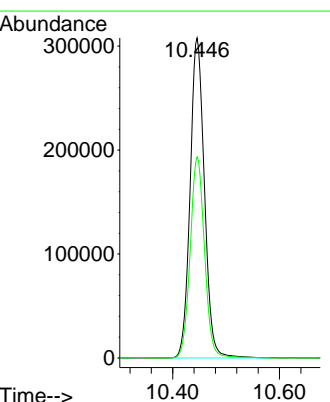
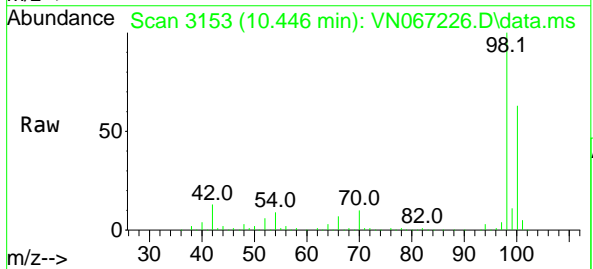
Ion	Ratio	Lower	Upper
41	100		
69	0.0	80.5	120.7#
39	12.0	41.4	62.0#

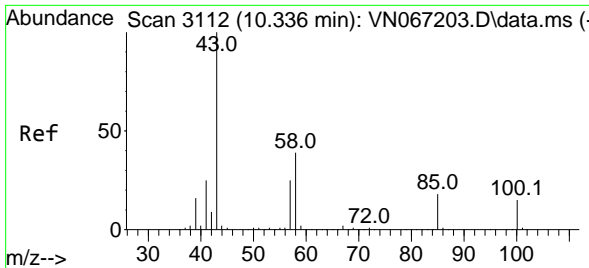


#50
 Toluene-d8
 Concen: 51.527 ug/l
 RT: 10.446 min Scan# 3153
 Delta R.T. -0.000 min
 Lab File: VN067226.D
 Acq: 5 Jun 2021 13:41

Tgt Ion: 98 Resp: 572969

Ion	Ratio	Lower	Upper
98	100		
100	63.2	51.8	77.8

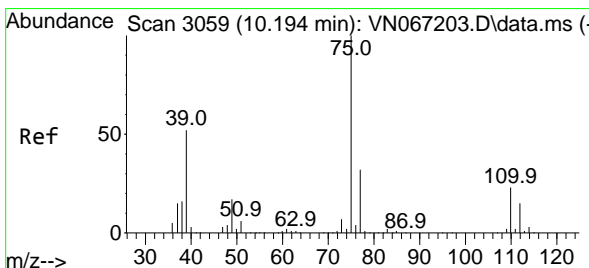
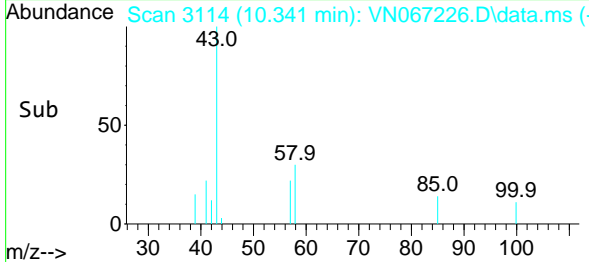
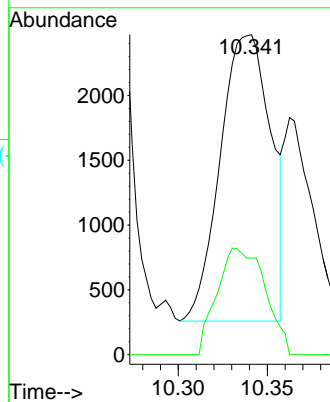
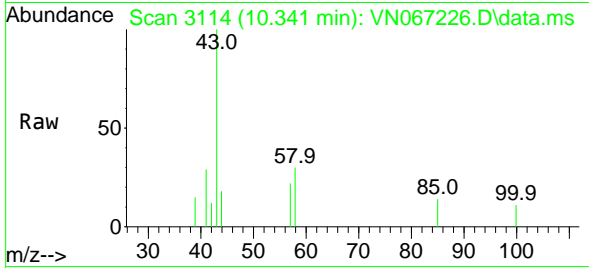




#51
 4-Methyl-2-Pentanone
 Concen: 0.998 ug/l
 RT: 10.341 min Scan# 3114
 Delta R.T. 0.005 min
 Lab File: VN067226.D
 Acq: 5 Jun 2021 13:41

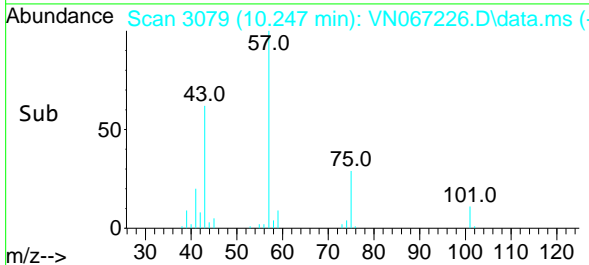
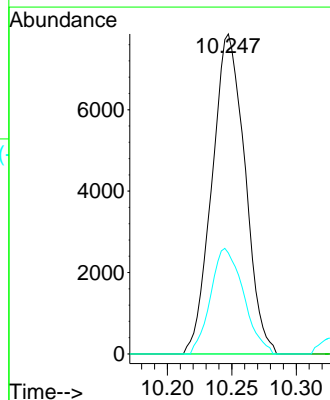
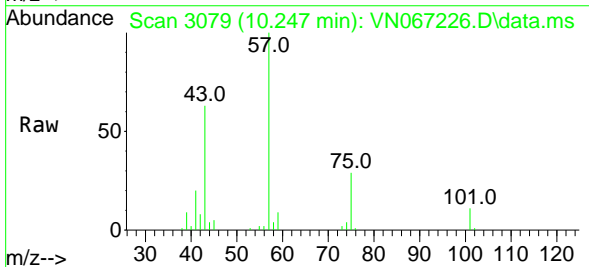
Instrument :
 MSVOA_N
 ClientSampled :
 18-B9(4-6)

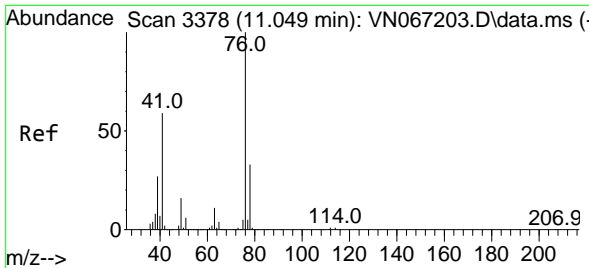
Tgt Ion: 43 Resp: 4359
 Ion Ratio Lower Upper
 43 100
 58 35.5 34.5 51.7



#54
 cis-1,3-Dichloropropene
 Concen: 2.591 ug/l
 RT: 10.247 min Scan# 3079
 Delta R.T. 0.054 min
 Lab File: VN067226.D
 Acq: 5 Jun 2021 13:41

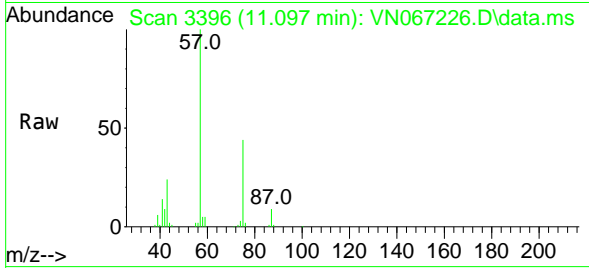
Tgt Ion: 75 Resp: 13955
 Ion Ratio Lower Upper
 75 100
 77 0.0 25.1 37.7#
 39 31.5 30.9 46.3



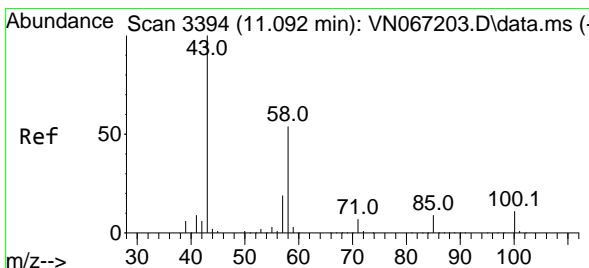
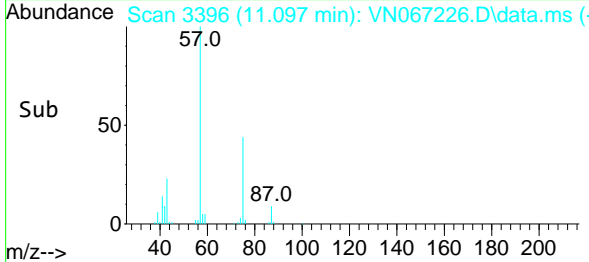
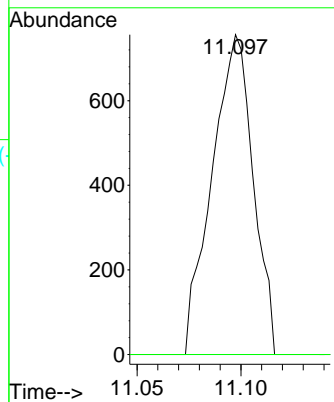


#57
 1,3-Dichloropropane
 Concen: 0.200 ug/l
 RT: 11.097 min Scan# 3396
 Delta R.T. 0.048 min
 Lab File: VN067226.D
 Acq: 5 Jun 2021 13:41

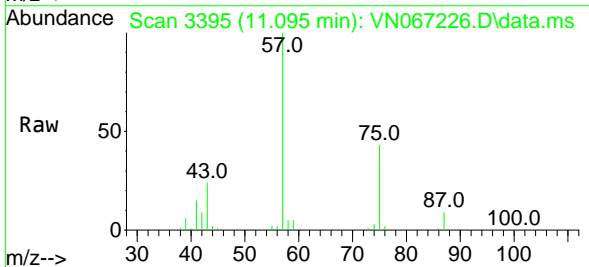
Instrument :
 MSVOA_N
 ClientSampled :
 18-B9(4-6)



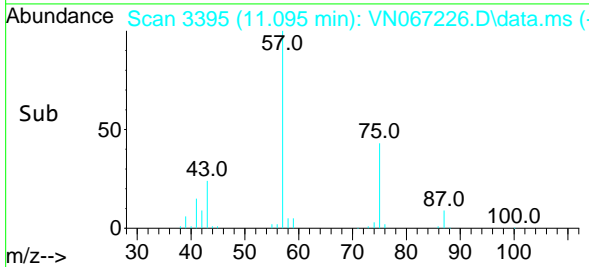
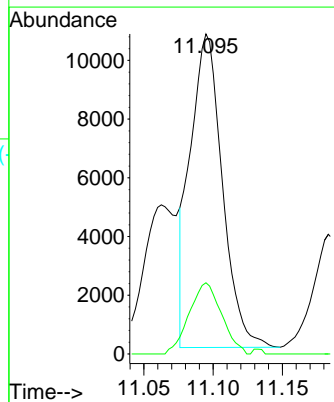
Tgt Ion: 76 Resp: 1044
 Ion Ratio Lower Upper
 76 100
 78 0.0 26.3 39.5#

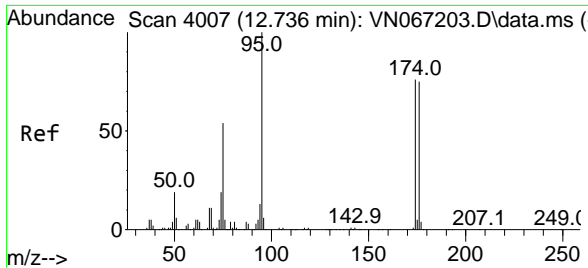


#59
 2-Hexanone
 Concen: 5.406 ug/l
 RT: 11.095 min Scan# 3395
 Delta R.T. 0.003 min
 Lab File: VN067226.D
 Acq: 5 Jun 2021 13:41



Tgt Ion: 43 Resp: 17166
 Ion Ratio Lower Upper
 43 100
 58 23.0 29.8 89.5#

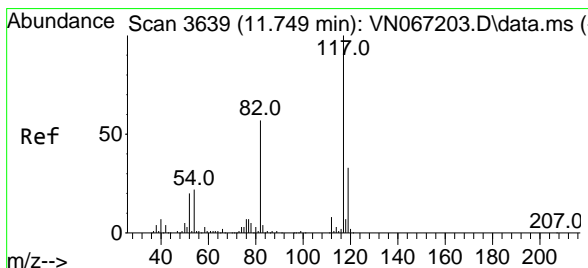
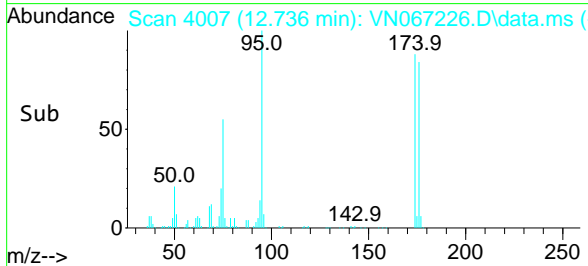
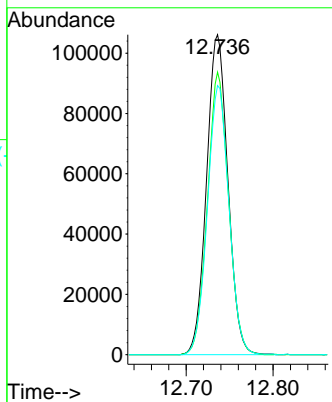
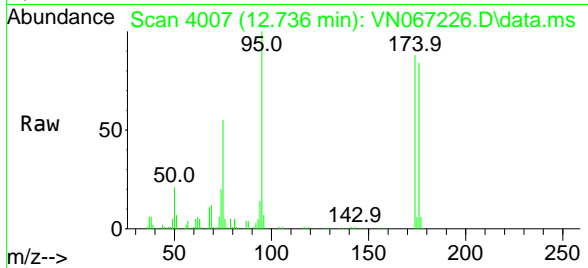




#62
 4-Bromofluorobenzene
 Concen: 42.293 ug/l
 RT: 12.736 min Scan# 4007
 Delta R.T. -0.000 min
 Lab File: VN067226.D
 Acq: 5 Jun 2021 13:41

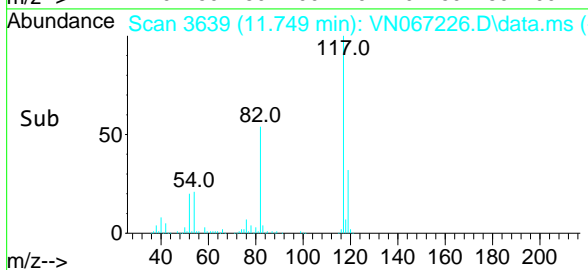
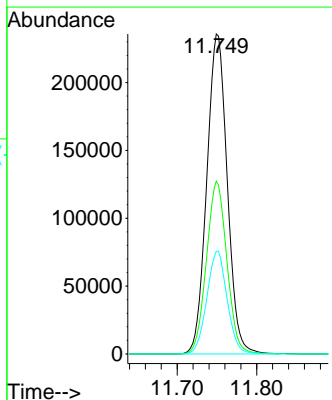
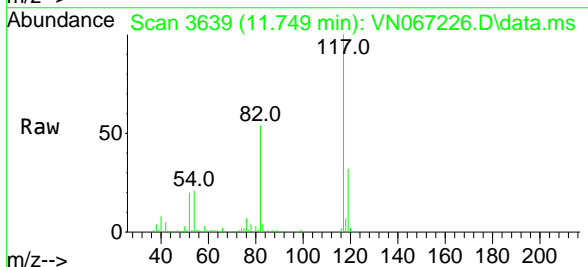
Instrument :
 MSVOA_N
ClientSampled :
 18-B9(4-6)

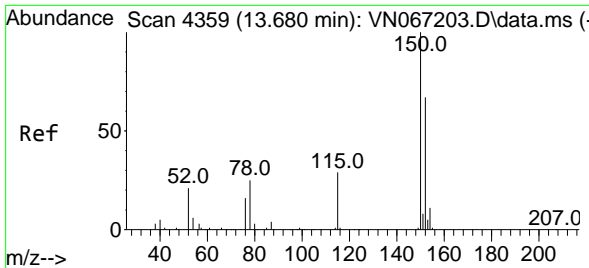
Tgt Ion	Resp	Lower	Upper
95	181129		
174	87.3	0.0	182.8
176	84.9	0.0	176.6



#63
 Chlorobenzene-d5
 Concen: 50.000 ug/l
 RT: 11.749 min Scan# 3639
 Delta R.T. -0.000 min
 Lab File: VN067226.D
 Acq: 5 Jun 2021 13:41

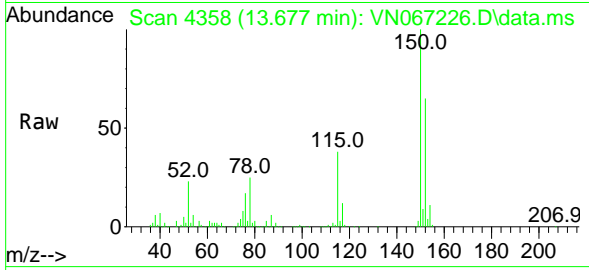
Tgt Ion	Resp	Lower	Upper
117	422069		
82	54.0	42.2	63.2
119	32.1	25.8	38.6





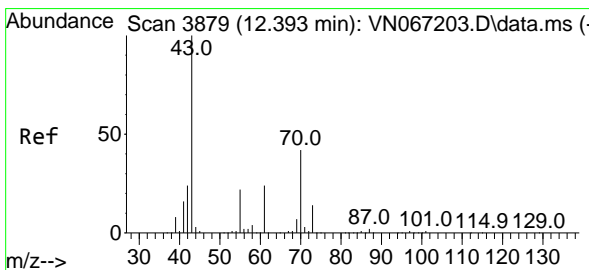
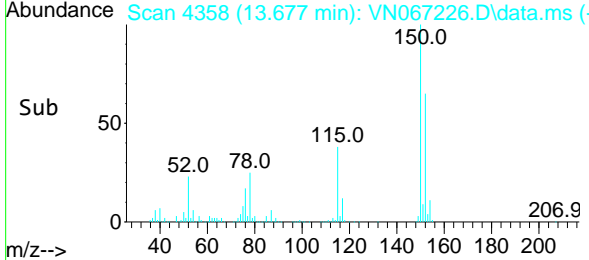
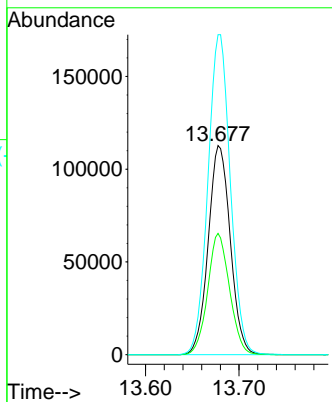
#72
 1,4-Dichlorobenzene-d4
 Concen: 50.000 ug/l
 RT: 13.677 min Scan# 4358
 Delta R.T. -0.003 min
 Lab File: VN067226.D
 Acq: 5 Jun 2021 13:41

Instrument :
 MSVOA_N
ClientSampled :
 18-B9(4-6)



Tgt Ion:152 Resp: 184987

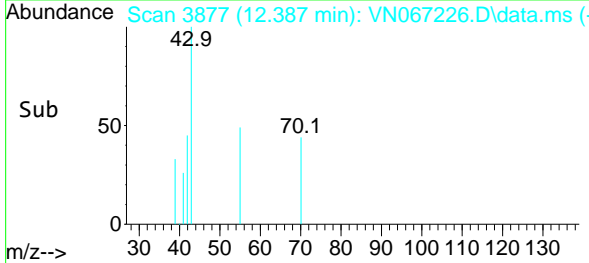
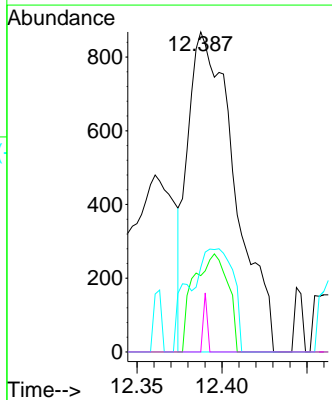
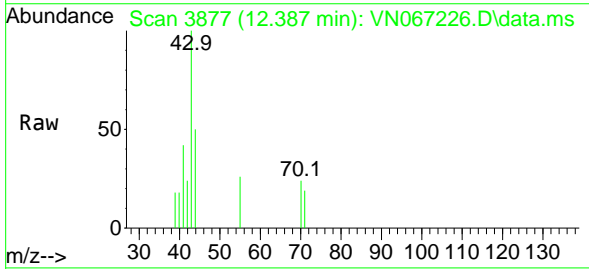
Ion	Ratio	Lower	Upper
152	100		
115	57.4	27.0	80.8
150	155.6	0.0	350.2

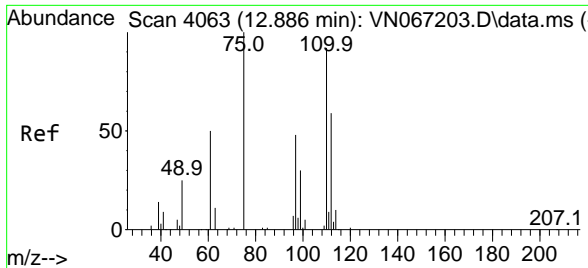


#74
 N-amy1 acetate
 Concen: 0.295 ug/l
 RT: 12.387 min Scan# 3877
 Delta R.T. -0.005 min
 Lab File: VN067226.D
 Acq: 5 Jun 2021 13:41

Tgt Ion: 43 Resp: 1671

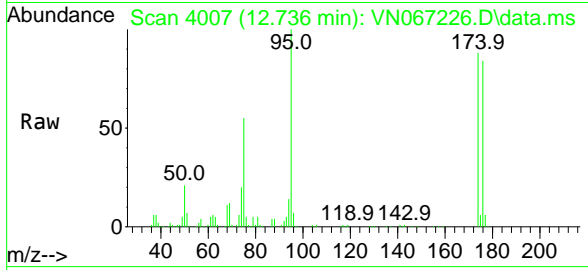
Ion	Ratio	Lower	Upper
43	100		
70	22.3	36.7	55.1#
55	30.0	17.6	26.4#
61	1.6	18.9	28.3#



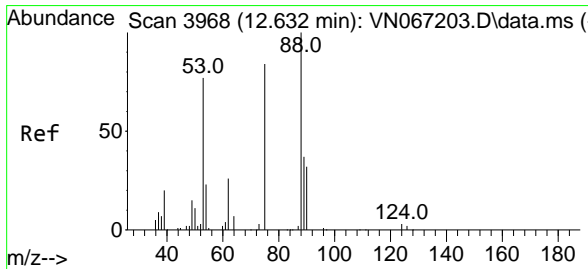
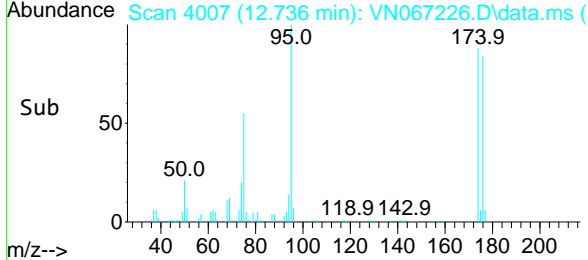
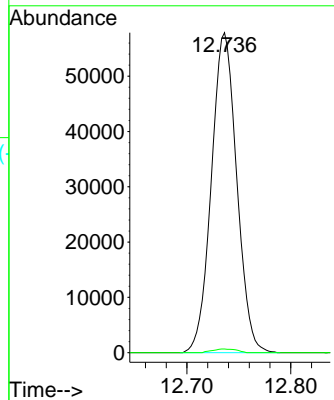


#76
 1,2,3-Trichloropropane
 Concen: 27.616 ug/l
 RT: 12.736 min Scan# 4007
 Delta R.T. -0.150 min
 Lab File: VN067226.D
 Acq: 5 Jun 2021 13:41

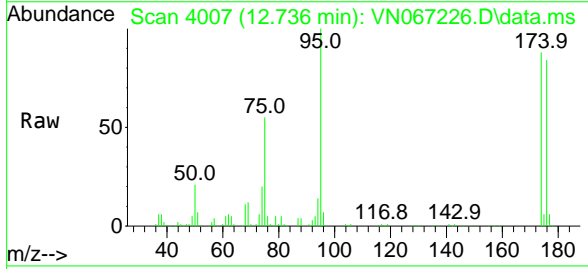
Instrument :
 MSVOA_N
 ClientSampled :
 18-B9(4-6)



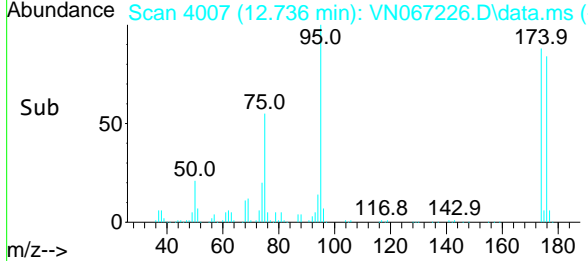
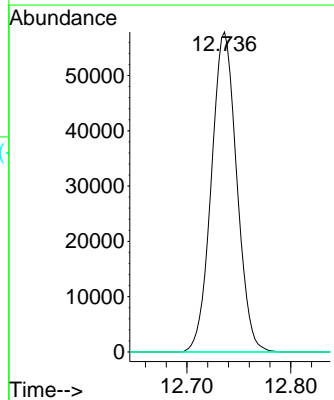
Tgt Ion: 75 Resp: 98242
 Ion Ratio Lower Upper
 75 100
 77 1.1 0.0 0.0#

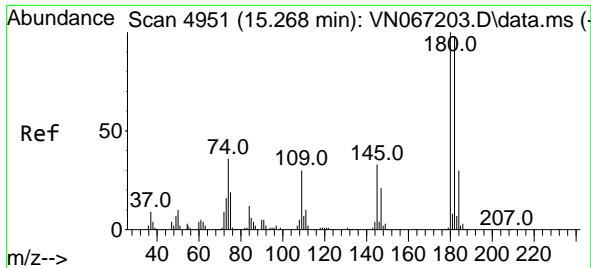


#81
 trans-1,4-Dichloro-2-butene
 Concen: 67.569 ug/l
 RT: 12.736 min Scan# 4007
 Delta R.T. 0.105 min
 Lab File: VN067226.D
 Acq: 5 Jun 2021 13:41



Tgt Ion: 75 Resp: 98242
 Ion Ratio Lower Upper
 75 100
 53 0.0 66.3 99.5#
 89 0.0 39.5 59.3#

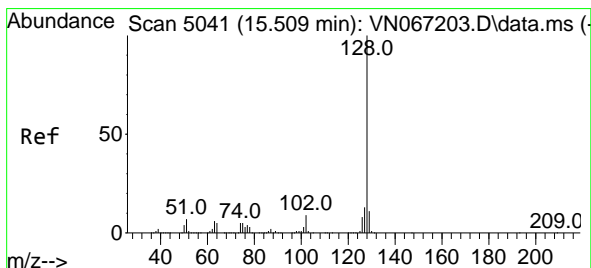
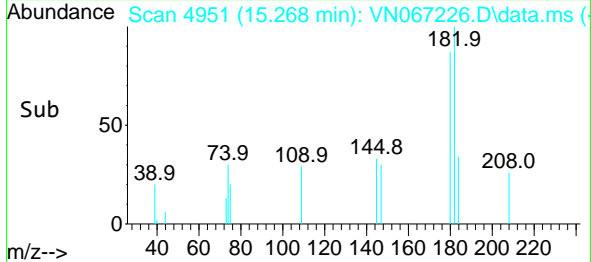
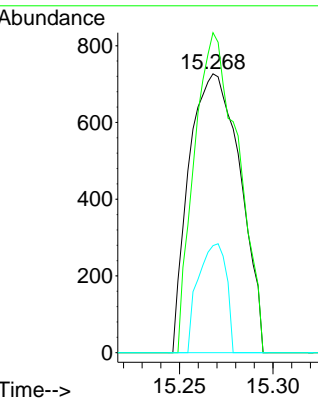
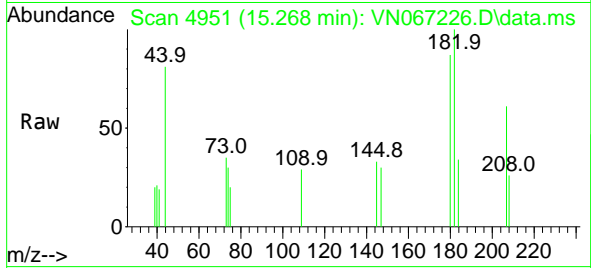




#93
 1,2,4-Trichlorobenzene
 Concen: 0.498 ug/l
 RT: 15.268 min Scan# 4951
 Delta R.T. -0.000 min
 Lab File: VN067226.D
 Acq: 5 Jun 2021 13:41

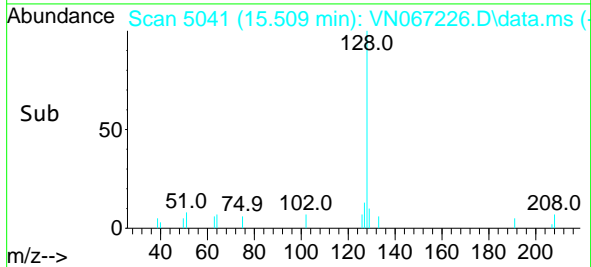
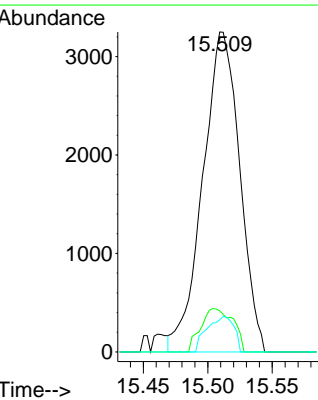
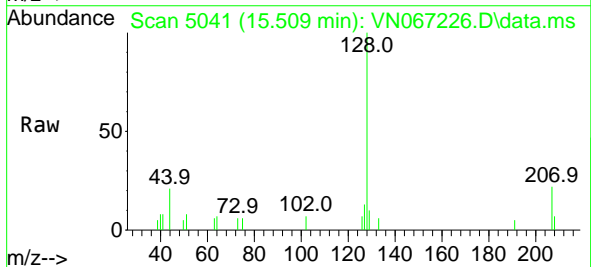
Instrument :
 MSVOA_N
 ClientSampled :
 18-B9(4-6)

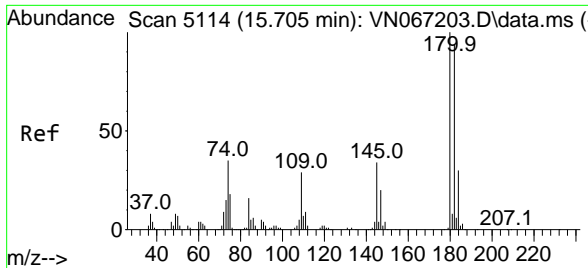
Tgt Ion	Resp	Ion Ratio	Lower	Upper
180	1378	100		
182	98.5	47.3	141.8	
145	21.5	14.0	42.0	



#95
 Naphthalene
 Concen: 5.142 ug/l
 RT: 15.509 min Scan# 5041
 Delta R.T. 0.000 min
 Lab File: VN067226.D
 Acq: 5 Jun 2021 13:41

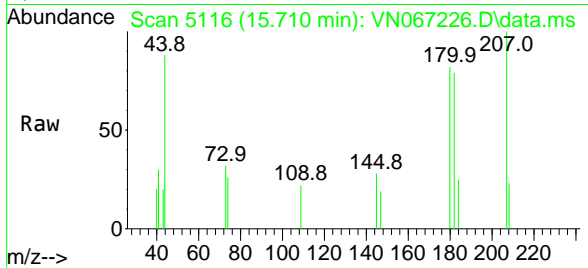
Tgt Ion	Resp	Ion Ratio	Lower	Upper
128	6472	100		
127	11.8	10.2	15.2	
129	8.1	8.6	13.0	





#96
 1,2,3-Trichlorobenzene
 Concen: 0.570 ug/l
 RT: 15.710 min Scan# 5116
 Delta R.T. 0.005 min
 Lab File: VN067226.D
 Acq: 5 Jun 2021 13:41

Instrument :
 MSVOA_N
 ClientSampled :
 18-B9(4-6)



Tgt Ion:180 Resp: 1401

Ion	Ratio	Lower	Upper
180	100		
182	104.9	48.5	145.6
145	26.5	15.4	46.2

