

Data Path : Z:\voasrv\HPCHEM1\MSVOA_N\Data\VN060521\
 Data File : VN067223.D
 Acq On : 5 Jun 2021 11:22
 Operator : JC/MD
 Sample : VN0605WBL01
 Misc : 5.00mL/MSVOA_N/WATER
 ALS Vial : 3 Sample Multiplier: 1

Instrument :
 MSVOA_N
 ClientSampleId :
 VN0605WBL01

Integration Parameters: RTEINT.P

Integrator: RTE
 Smoothing : ON Filtering: 5
 Sampling : 1 Min Area: 3 % of largest Peak
 Start Thrs: 0.2 Max Peaks: 100
 Stop Thrs : 0 Peak Location: TOP

If leading or trailing edge < 100 prefer < Baseline drop else tangent >
 Peak separation: 5

Method : Z:\voasrv\HPCHEM1\MSVOA_N\methods\82N060421W.M
 Title : SW846 8260

Signal : TIC: VN067223.D\data.ms

peak #	R.T. min	first scan	max scan	last scan	PK TY	peak height	corr. area	corr. % max.	% of total
1	2.754	267	285	304	rVB	53957	153966	9.46%	1.922%
2	8.027	2230	2251	2262	rBV	183769	449869	27.63%	5.617%
3	8.088	2263	2274	2300	rVB	334374	754866	46.37%	9.425%
4	8.442	2386	2406	2434	rBV	208373	483356	29.69%	6.035%
5	8.971	2584	2603	2631	rBV2	490758	1040393	63.91%	12.991%
6	10.446	3133	3153	3185	rBV	885367	1627918	100.00%	20.327%
7	11.749	3621	3639	3666	rBV	753677	1338628	82.23%	16.714%
8	12.736	3989	4007	4025	rBV	573533	979010	60.14%	12.224%
9	13.678	4343	4358	4376	rBV	700312	1180810	72.53%	14.744%

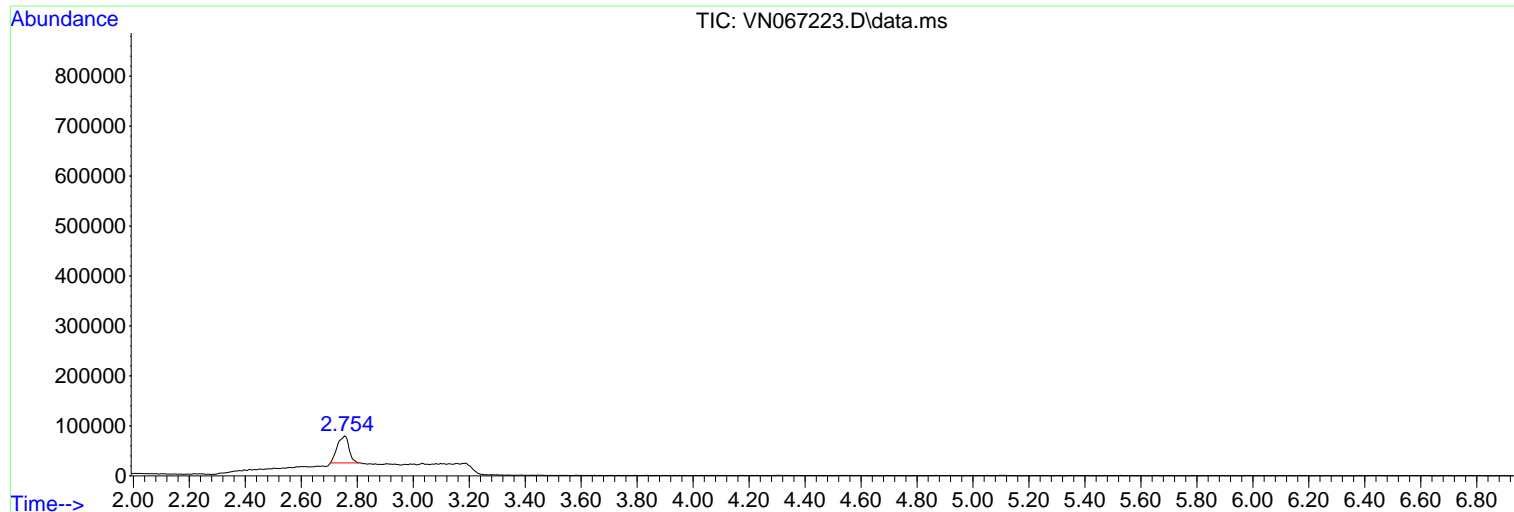
Sum of corrected areas: 8008816

Data Path : Z:\voasrv\HPCHEM1\MSVOA_N\Data\VN060521\
Data File : VN067223.D
Acq On : 5 Jun 2021 11:22
Operator : JC/MD
Sample : VN0605WBL01
Misc : 5.00mL/MSVOA_N/WATER
ALS Vial : 3 Sample Multiplier: 1

Instrument :
MSVOA_N
ClientSampleId :
VN0605WBL01

Quant Method : Z:\voasrv\HPCHEM1\MSVOA_N\methods\82N060421W.M
Quant Title : SW846 8260

TIC Library : C:\DATABASE\NIST11.L
TIC Integration Parameters: LSCINT.P



Data Path : Z:\voasrv\HPCHEM1\MSVOA_N\Data\VN060521\
 Data File : VN067223.D
 Acq On : 5 Jun 2021 11:22
 Operator : JC/MD
 Sample : VN0605WBL01
 Misc : 5.00mL/MSVOA_N/WATER
 ALS Vial : 3 Sample Multiplier: 1

Instrument :
 MSVOA_N
 ClientSampleId :
 VN0605WBL01

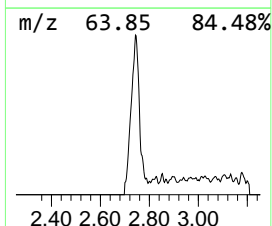
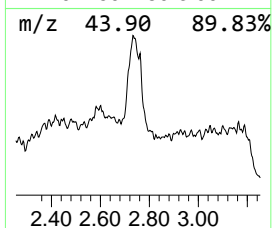
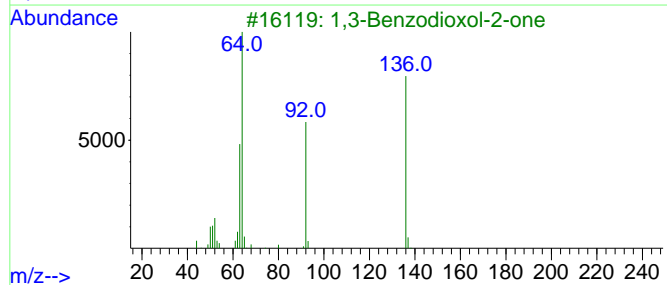
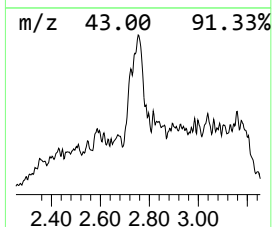
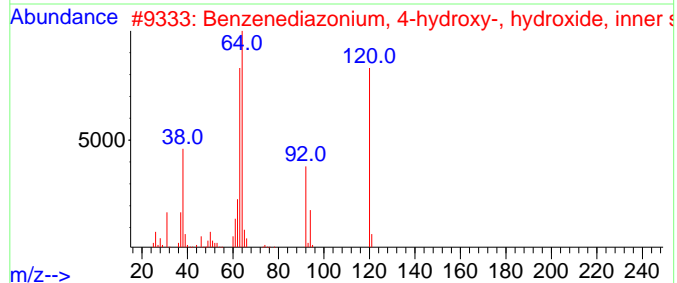
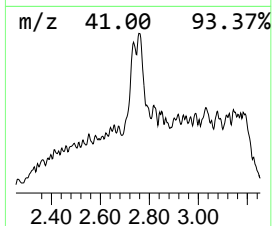
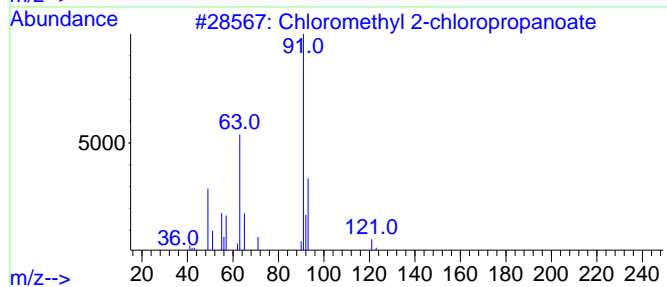
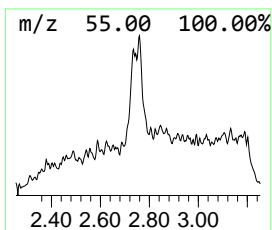
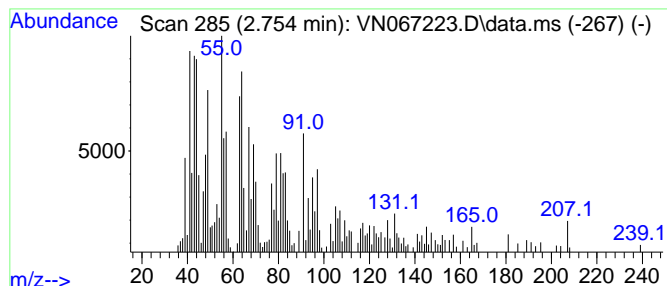
Quant Method : Z:\voasrv\HPCHEM1\MSVOA_N\methods\82N060421W.M
 Quant Title : SW846 8260

TIC Library : C:\DATABASE\NIST11.L
 TIC Integration Parameters: LSCINT.P

 Peak Number 1 unknown2.754 Concentration Rank 1

R.T.	EstConc	Area	Relative to ISTD	R.T.
2.754	10.20 ug/l	153966	Pentafluorobenzene	8.088

Hit#	of 5	Tentative ID	MW	MolForm	CAS#	Qual
1		Chloromethyl 2-chloropropanoate	156	C4H6Cl2O2	013398-02-2	43
2		Benzenediazonium, 4-hydroxy-, hy...	120	C6H4N2O	006925-01-5	38
3		1,3-Benzodioxol-2-one	136	C7H4O3	002171-74-6	35
4		1,3-Bis(2-chloroethyl)urea	184	C5H10Cl2N2O	002214-72-4	22
5		Benzenemethanesulfonyl chloride	190	C7H7ClO2S	001939-99-7	14



Data Path : Z:\voasrv\HPCHEM1\MSVOA_N\Data\VN060521\
Data File : VN067223.D
Acq On : 5 Jun 2021 11:22
Operator : JC/MD
Sample : VN0605WBL01
Misc : 5.00mL/MSVOA_N/WATER
ALS Vial : 3 Sample Multiplier: 1

Instrument :
MSVOA_N
ClientSampleId :
VN0605WBL01

Quant Method : Z:\voasrv\HPCHEM1\MSVOA_N\methods\82N060421W.M
Quant Title : SW846 8260

TIC Library : C:\DATABASE\NIST11.L
TIC Integration Parameters: LSCINT.P

TIC Top Hit name	RT	EstConc	Units	Response	--Internal Standard--			
					#	RT	Resp	Conc
unknown2.754	2.754	10.2	ug/l	153966	1	8.088	754866	50.0