

Data Path : Z:\voasrv\HPCHEM1\MSVOA_N\Data\VN060622\
 Data File : VN072660.D
 Acq On : 06 Jun 2022 12:29
 Operator : JC\MD
 Sample : VSTDIC150
 Misc : 5.0mL/MSVOA_N/WATER
 ALS Vial : 6 Sample Multiplier: 1

Instrument :
 MSVOA_N
 ClientSampleId :
 VSTDIC150

Quant Time: Jun 06 13:13:53 2022
 Quant Method : Z:\voasrv\HPCHEM1\MSVOA_N\methods\624N060622W.M
 Quant Title : METHOD 624 VOLATILE ORGANIC ANALYSIS
 QLast Update : Mon Jun 06 13:10:13 2022
 Response via : Initial Calibration

Compound	R.T.	QIon	Response	Conc	Units	Dev(Min)
Internal Standards						
1) Bromochloromethane	7.651	128	44709	30.000	ug/l	0.00
28) 1,4-Difluorobenzene	8.963	114	259607	30.000	ug/l	0.00
57) Chlorobenzene-d5	11.739	117	246319	30.000	ug/l	0.00
System Monitoring Compounds						
27) 1,2-Dichloroethane-d4	8.433	65	147511	32.746	ug/l	0.00
Spiked Amount	30.000	Range 91 - 110	Recovery	=	109.167%	
60) 4-Bromofluorobenzene	12.727	95	153565	34.617	ug/l	0.00
Spiked Amount	30.000	Range 63 - 112	Recovery	=	115.400%#	
63) Toluene-d8	10.439	98	400201	28.657	ug/l	0.00
Spiked Amount	30.000	Range 91 - 112	Recovery	=	95.533%	
Target Compounds						
						Qvalue
2) Dichlorodifluoromethane	2.063	85	477699	156.624	ug/l	97
3) Chloromethane	2.293	50	519329	129.168	ug/l	95
4) Vinyl Chloride	2.434	62	466611	137.371	ug/l	99
5) Bromomethane	2.810	94	206510	122.342	ug/l	98
6) Chloroethane	2.981	64	294331	136.279	ug/l	97
7) Trichlorofluoromethane	3.351	101	835009	166.896	ug/l	98
8) Diethyl Ether	3.816	74	330703	161.752	ug/l	92
9) 1,1,2-Trichlorotrifluo...	4.193	101	440122	160.976	ug/l	76
10) 1,1-Dichloroethene	4.169	96	414185	156.694	ug/l	84
11) Methyl Iodide	4.410	142	480066	184.075	ug/l	98
12) Methyl Acetate	4.840	43	850072	159.627	ug/l	96
13) Acrolein	4.034	56	378159	648.601	ug/l	99
14) Acrylonitrile	5.545	53	1802290	794.019	ug/l	100
15) Acetone	4.275	58	473953	805.673	ug/l	78
16) Carbon Disulfide	4.522	76	1022277	143.212	ug/l	98
17) Allyl chloride	4.828	41	929054	165.274	ug/l	96
18) Methylene Chloride	5.087	84	527092	152.769	ug/l	89
19) trans-1,2-Dichloroethene	5.587	96	443217	153.271	ug/l #	82
20) Diisopropyl ether	6.487	45	1850038	145.535	ug/l	96
21) 1,1-Dichloroethane	6.375	63	997829	152.820	ug/l	100
22) cis-1,2-Dichloroethene	7.316	96	570572	153.380	ug/l	90
23) tert-Butyl Alcohol	5.363	59	828653	980.258	ug/l #	100
24) Methyl tert-Butyl Ether	5.610	73	1895197	177.214	ug/l	96
25) Chloroform	7.810	83	1032564	153.958	ug/l	99
26) Cyclohexane	8.092	56	825721	135.713	ug/l #	93
29) 1,1-Dichloropropene	8.216	75	733665	153.488	ug/l	95
30) 2-Butanone	7.328	43	2637471	811.106	ug/l	95
31) 2,2-Dichloropropane	7.316	77	987617	191.851	ug/l	94
32) 1,1,1-Trichloroethane	8.010	97	953077	173.297	ug/l	96
33) Carbon Tetrachloride	8.204	117	819316	168.559	ug/l	97
34) Benzene	8.457	78	2157726	145.091	ug/l	99
35) Methacrylonitrile	7.628	41	522676	156.294	ug/l	93
36) 1,2-Dichloroethane	8.522	62	903282	175.754	ug/l	99
37) Trichloroethene	9.210	130	528036	148.703	ug/l	91
38) Methylcyclohexane	9.457	83	865054	146.564	ug/l	92
39) 1,2-Dichloropropane	9.486	63	592557	148.443	ug/l	98
40) Dibromomethane	9.569	93	410483	159.582	ug/l	94
41) Bromodichloromethane	9.757	83	891951	169.690	ug/l	95
42) Vinyl Acetate	6.422	43	8662688	812.005	ug/l	99

Data Path : Z:\voasrv\HPCHEM1\MSVOA_N\Data\VN060622\
 Data File : VN072660.D
 Acq On : 06 Jun 2022 12:29
 Operator : JC\MD
 Sample : VSTDIC150
 Misc : 5.0mL/MSVOA_N/WATER
 ALS Vial : 6 Sample Multiplier: 1

Instrument :
 MSVOA_N
 ClientSampleId :
 VSTDIC150

Quant Time: Jun 06 13:13:53 2022
 Quant Method : Z:\voasrv\HPCHEM1\MSVOA_N\methods\624N060622W.M
 Quant Title : METHOD 624 VOLATILE ORGANIC ANALYSIS
 QLast Update : Mon Jun 06 13:10:13 2022
 Response via : Initial Calibration

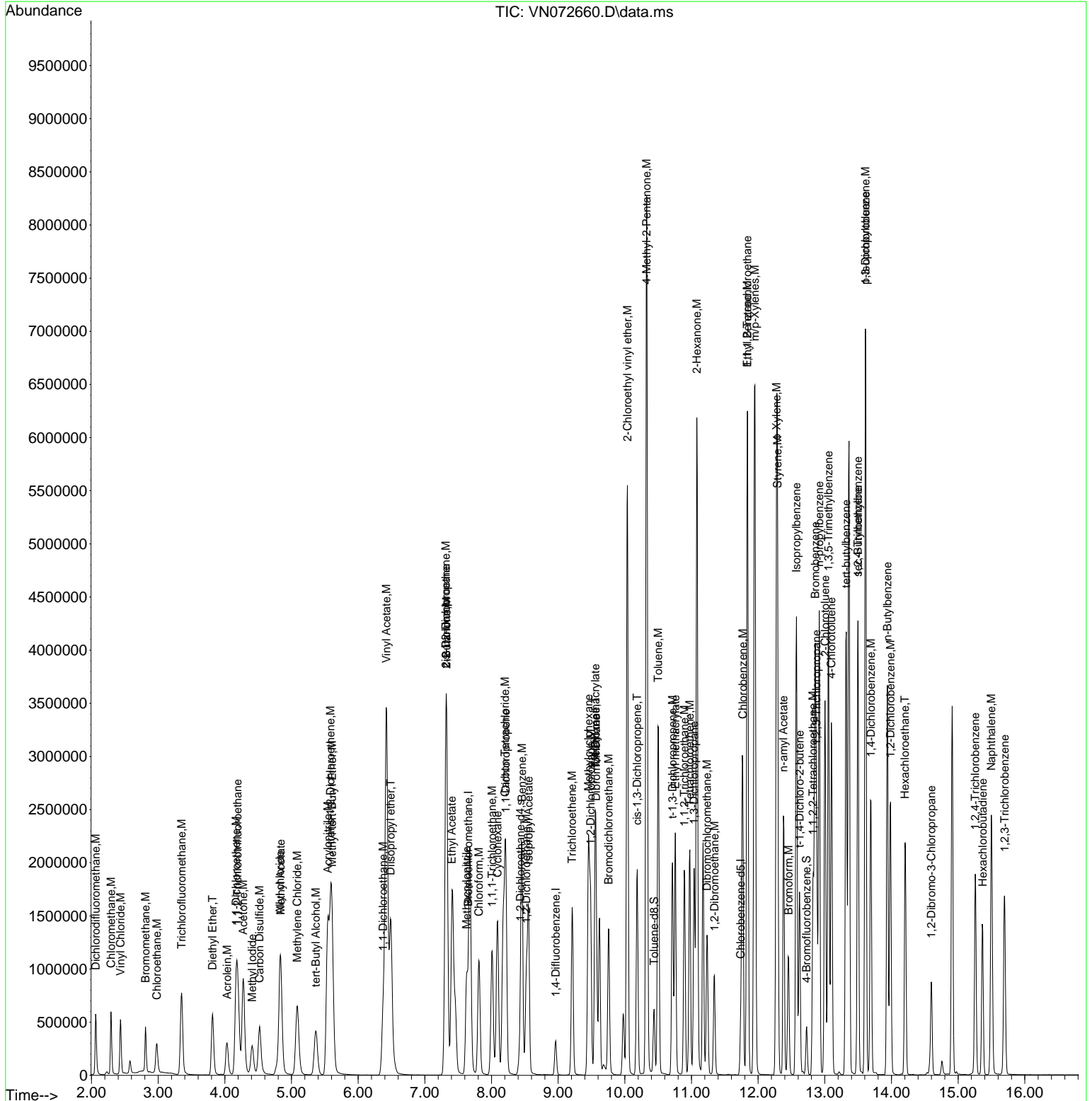
Compound	R.T.	QIon	Response	Conc	Units	Dev(Min)
43) Ethyl Acetate	7.404	43	1037830	163.740	ug/l	97
44) Isopropyl Acetate	8.557	43	1695959	170.267	ug/l	99
45) 1,4-Dioxane	9.563	88	276331	3312.472	ug/l	89
46) Methyl methacrylate	9.557	41	785569	168.208	ug/l	88
47) n-amyl Acetate	12.380	43	1342415	184.861	ug/l	97
48) t-1,3-Dichloropropene	10.716	75	1060018	184.752	ug/l	99
49) cis-1,3-Dichloropropene	10.186	75	1050589	170.206	ug/l	97
50) 1,1,2-Trichloroethane	10.892	97	583374	155.260	ug/l	97
51) Ethyl methacrylate	10.757	69	1092690	169.725	ug/l	94
52) 1,3-Dichloropropane	11.039	76	1050660	157.857	ug/l	100
53) Dibromochloromethane	11.233	129	670797	171.486	ug/l	100
54) 1,2-Dibromoethane	11.345	107	627481	162.396	ug/l	97
55) 2-Chloroethyl vinyl ether	10.039	63	2385597	861.412	ug/l	98
56) Bromoform	12.457	173	468209	168.596	ug/l #	100
58) 4-Methyl-2-Pentanone	10.327	43	5421190	764.235	ug/l	98
59) 2-Hexanone	11.080	43	4010758	785.106	ug/l	99
61) Tetrachloroethene	10.975	164	422883	134.196	ug/l	96
62) Toluene	10.498	91	2419805	144.057	ug/l	97
64) Chlorobenzene	11.769	112	1512512	153.094	ug/l	99
65) 1,1,1,2-Tetrachloroethane	11.839	131	600917	153.038	ug/l	99
66) Ethyl Benzene	11.839	91	2849034	150.867	ug/l	100
67) m/p-Xylenes	11.951	106	2079962	306.107	ug/l	93
68) o-Xylene	12.274	106	1056886	155.057	ug/l	95
69) Styrene	12.292	104	1733674	161.106	ug/l	94
70) Isopropylbenzene	12.574	105	2793146	160.129	ug/l	99
71) 1,1,2,2-Tetrachloroethane	12.821	83	876736	146.653	ug/l	98
72) 1,2,3-Trichloropropane	12.874	75	1288204	227.570	ug/l	50
73) Bromobenzene	12.857	156	568240	151.095	ug/l	76
74) n-propylbenzene	12.916	91	3268530	165.249	ug/l	99
75) 2-Chlorotoluene	13.004	91	1967987	162.996	ug/l	93
76) 1,3,5-Trimethylbenzene	13.057	105	2305145	165.908	ug/l	100
77) t-1,4-Dichloro-2-butene	12.621	75	360748	178.546	ug/l	99
78) 4-Chlorotoluene	13.098	91	1929243	175.067	ug/l	92
79) tert-butylbenzene	13.321	119	2019692	166.158	ug/l	97
80) 1,2,4-Trimethylbenzene	13.498	105	2850332	203.799	ug/l	100
81) sec-Butylbenzene	13.498	105	2850332	163.233	ug/l	99
82) p-Isopropyltoluene	13.610	119	2308805	170.467	ug/l	98
83) 1,3-Dichlorobenzene	13.610	146	1000640	152.616	ug/l	97
84) 1,4-Dichlorobenzene	13.692	146	994679	155.933	ug/l	97
85) n-Butylbenzene	13.939	91	2041763	180.872	ug/l	96
86) Hexachloroethane	14.204	117	495958	177.931	ug/l	90
87) 1,2-Dichlorobenzene	13.986	146	966294	149.980	ug/l	96
88) 1,2-Dibromo-3-Chloropr...	14.598	75	238919	192.105	ug/l	87
89) 1,2,4-Trichlorobenzene	15.257	180	528686	164.748	ug/l	97
90) Hexachlorobutadiene	15.368	225	222151	141.185	ug/l	99
91) Naphthalene	15.498	128	2110254	181.257	ug/l	99
92) 1,2,3-Trichlorobenzene	15.698	180	525930	161.560	ug/l	98

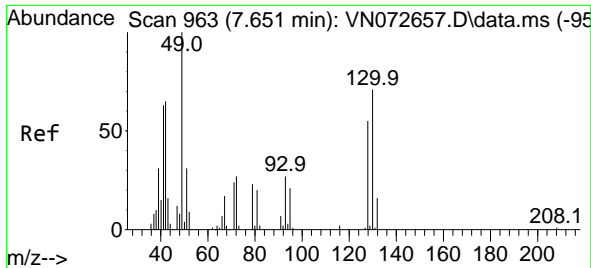
(#) = qualifier out of range (m) = manual integration (+) = signals summed

Data Path : Z:\voasrv\HPCHEM1\MSVOA_N\Data\VN060622\
 Data File : VN072660.D
 Acq On : 06 Jun 2022 12:29
 Operator : JC\MD
 Sample : VSTDIC150
 Misc : 5.0mL/MSVOA_N/WATER
 ALS Vial : 6 Sample Multiplier: 1

Instrument :
 MSVOA_N
 Client Sample Id :
 VSTDIC150

Quant Time: Jun 06 13:13:53 2022
 Quant Method : Z:\voasrv\HPCHEM1\MSVOA_N\methods\624N060622W.M
 Quant Title : METHOD 624 VOLATILE ORGANIC ANALYSIS
 QLast Update : Mon Jun 06 13:10:13 2022
 Response via : Initial Calibration

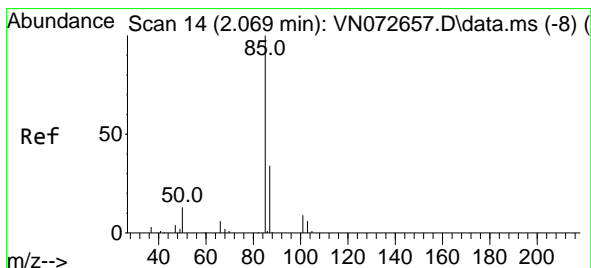
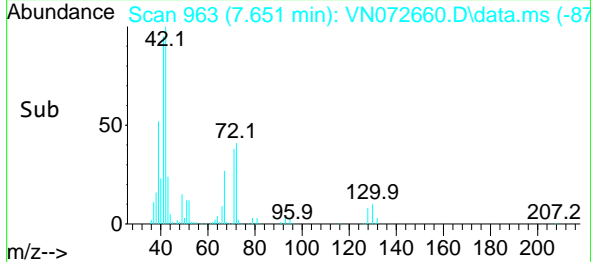
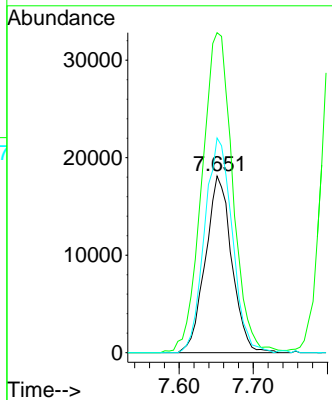
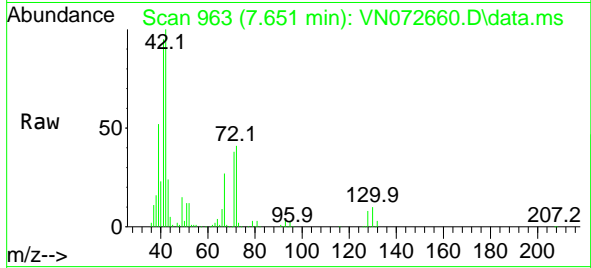




#1
 Bromochloromethane
 Concen: 30.000 ug/l
 RT: 7.651 min Scan# 9
 Delta R.T. 0.000 min
 Lab File: VN072660.D
 Acq: 06 Jun 2022 12:29

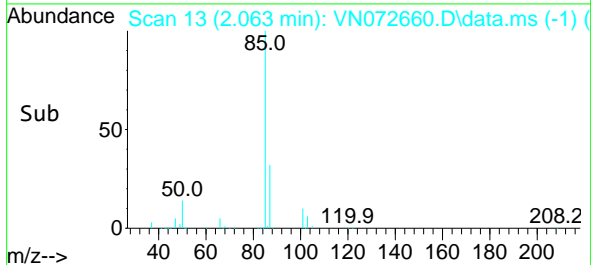
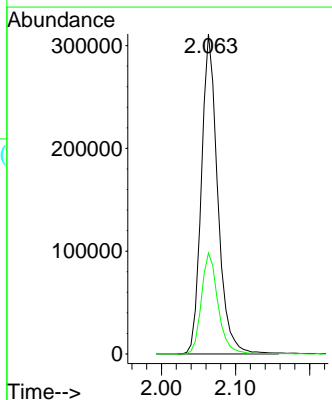
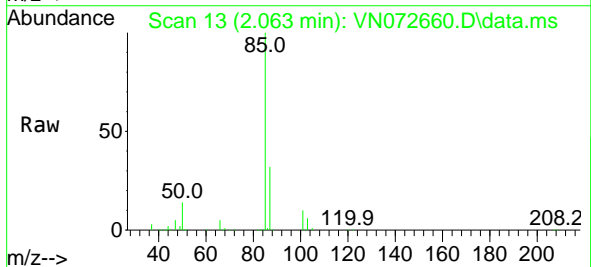
Instrument : MSVOA_N
 ClientSampleId : VSTDIC150

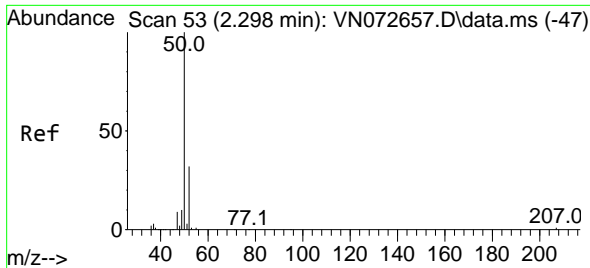
Tgt Ion	Resp	Lower	Upper
128	100		
49	208.9	0.0	392.3
130	127.9	0.0	320.2



#2
 Dichlorodifluoromethane
 Concen: 156.624 ug/l
 RT: 2.063 min Scan# 13
 Delta R.T. -0.006 min
 Lab File: VN072660.D
 Acq: 06 Jun 2022 12:29

Tgt Ion	Resp	Lower	Upper
85	100		
87	31.5	16.6	49.7

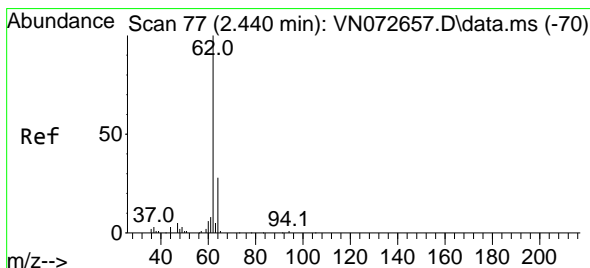
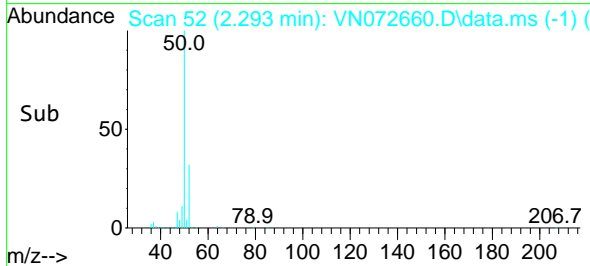
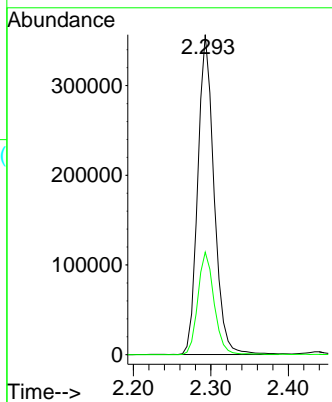
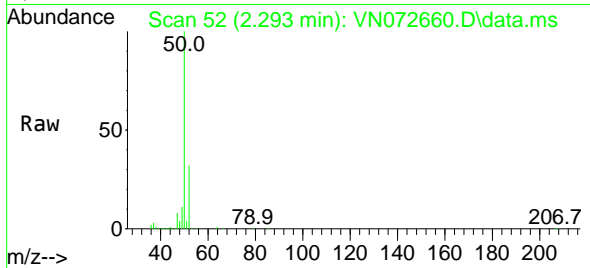




#3
 Chloromethane
 Concen: 129.168 ug/l
 RT: 2.293 min Scan# 51
 Delta R.T. -0.006 min
 Lab File: VN072660.D
 Acq: 06 Jun 2022 12:29

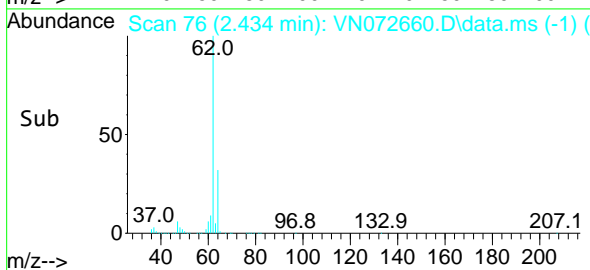
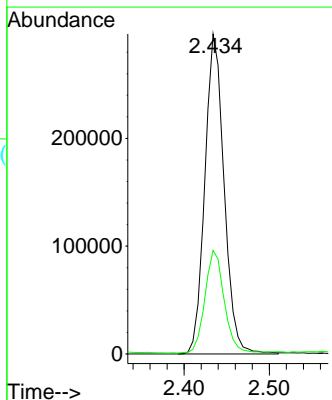
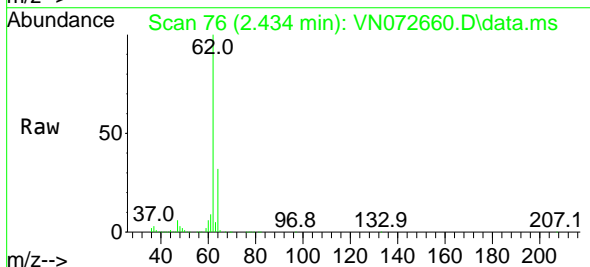
Instrument :
 MSVOA_N
 ClientSampleId :
 VSTDIC150

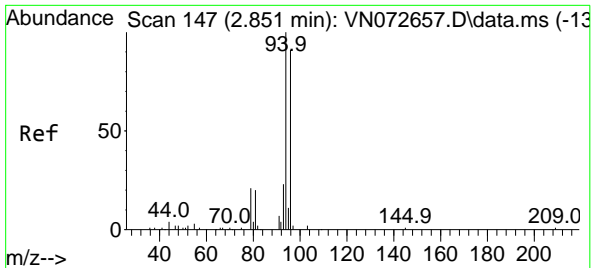
Tgt Ion: 50 Resp: 519329
 Ion Ratio Lower Upper
 50 100
 52 32.1 27.8 41.6



#4
 Vinyl Chloride
 Concen: 137.371 ug/l
 RT: 2.434 min Scan# 76
 Delta R.T. -0.006 min
 Lab File: VN072660.D
 Acq: 06 Jun 2022 12:29

Tgt Ion: 62 Resp: 466611
 Ion Ratio Lower Upper
 62 100
 64 32.0 25.1 37.7

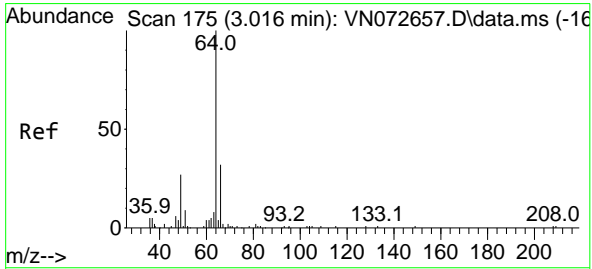
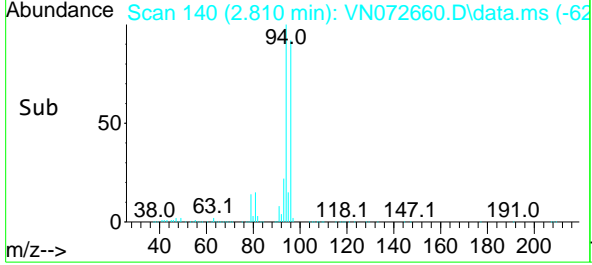
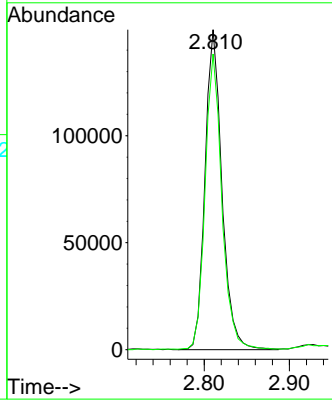
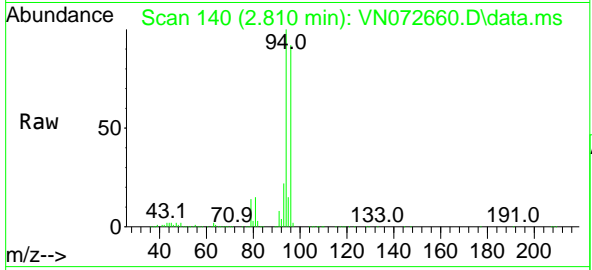




#5
 Bromomethane
 Concen: 122.342 ug/l
 RT: 2.810 min Scan# 14
 Delta R.T. -0.041 min
 Lab File: VN072660.D
 Acq: 06 Jun 2022 12:29

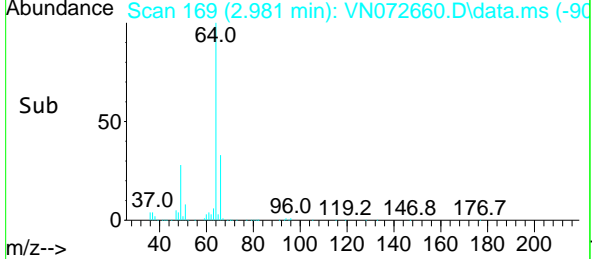
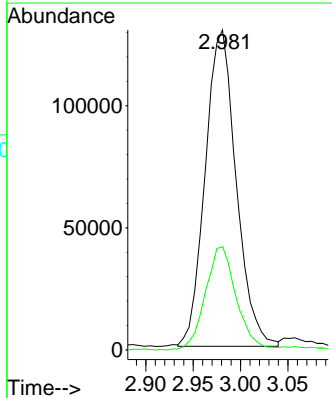
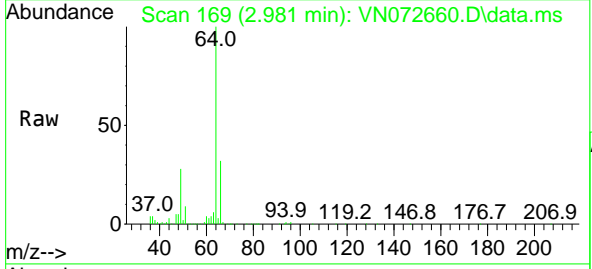
Instrument : MSVOA_N
 ClientSampleId : VSTDICC150

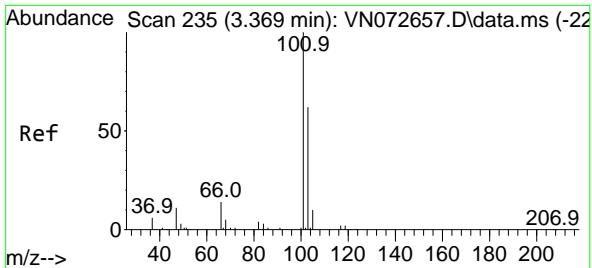
Tgt Ion: 94 Resp: 206510
 Ion Ratio Lower Upper
 94 100
 96 92.2 75.2 112.8



#6
 Chloroethane
 Concen: 136.279 ug/l
 RT: 2.981 min Scan# 169
 Delta R.T. -0.035 min
 Lab File: VN072660.D
 Acq: 06 Jun 2022 12:29

Tgt Ion: 64 Resp: 294331
 Ion Ratio Lower Upper
 64 100
 66 32.4 24.6 36.8

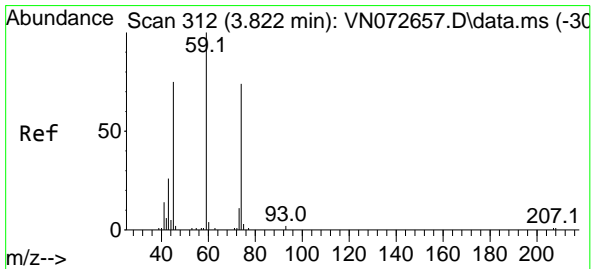
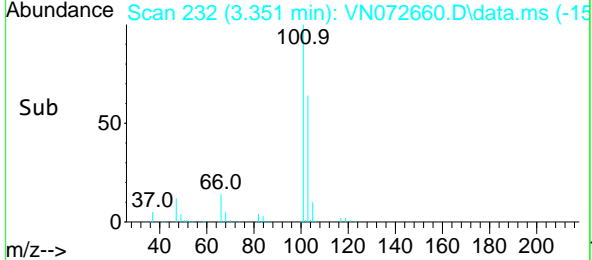
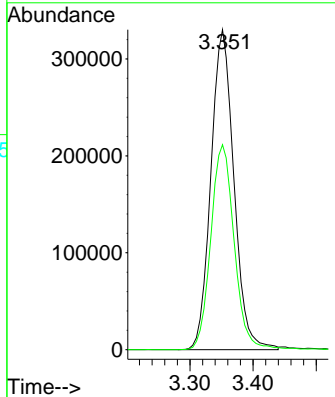
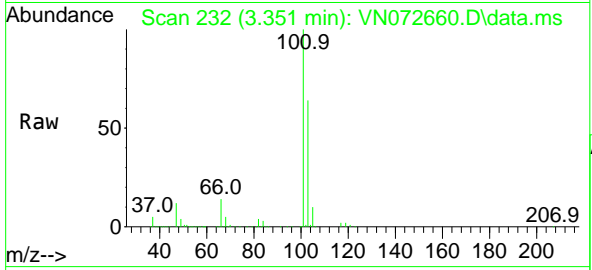




#7
 Trichlorofluoromethane
 Concen: 166.896 ug/l
 RT: 3.351 min Scan# 21
 Delta R.T. -0.018 min
 Lab File: VN072660.D
 Acq: 06 Jun 2022 12:29

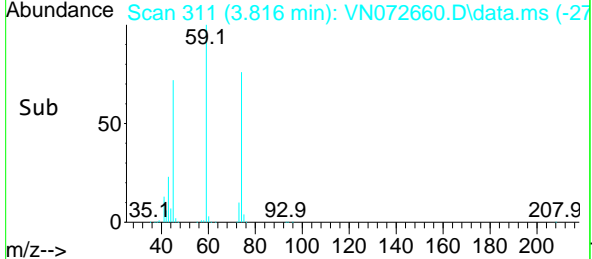
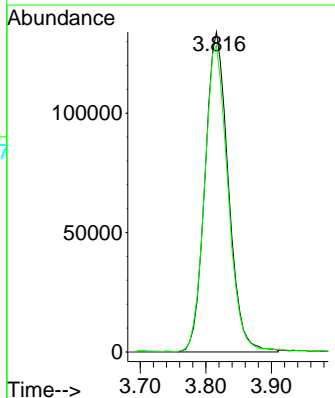
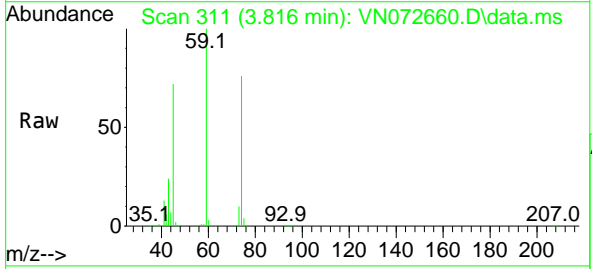
Instrument : MSVOA_N
 ClientSampleId : VSTDIC150

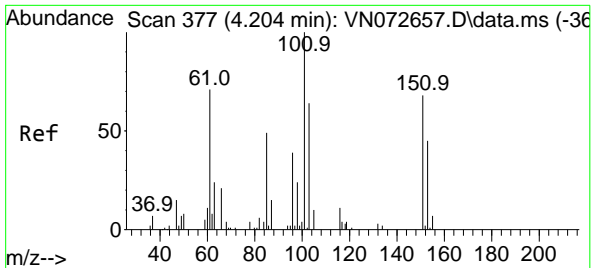
Tgt Ion:101 Resp: 835009
 Ion Ratio Lower Upper
 101 100
 103 64.1 50.1 75.1



#8
 Diethyl Ether
 Concen: 161.752 ug/l
 RT: 3.816 min Scan# 311
 Delta R.T. -0.006 min
 Lab File: VN072660.D
 Acq: 06 Jun 2022 12:29

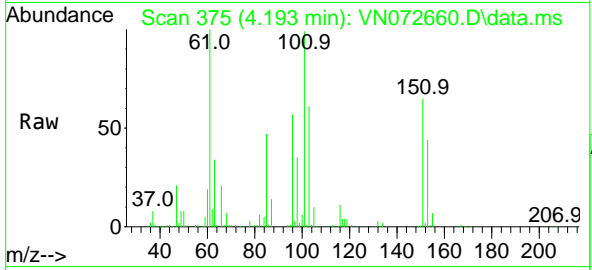
Tgt Ion: 74 Resp: 330703
 Ion Ratio Lower Upper
 74 100
 45 95.6 17.6 158.8





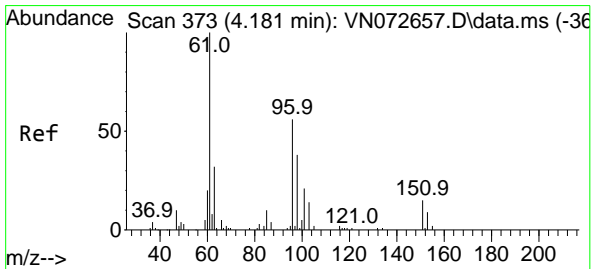
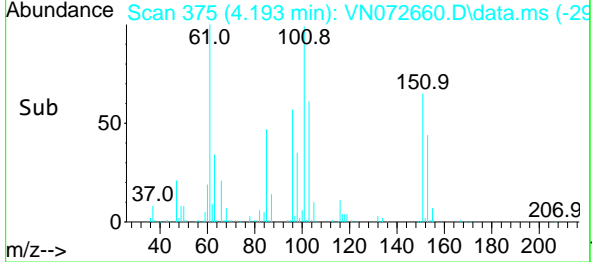
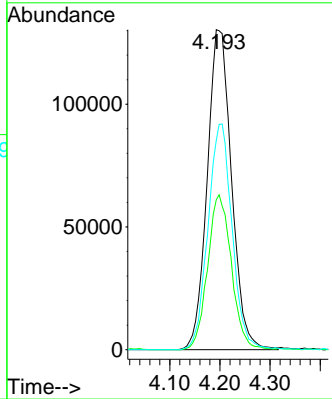
#9
 1,1,2-Trichlorotrifluoroethane
 Concen: 160.976 ug/l
 RT: 4.193 min Scan# 311
 Delta R.T. -0.012 min
 Lab File: VN072660.D
 Acq: 06 Jun 2022 12:29

Instrument : MSVOA_N
 ClientSampleId : VSTDICC150



Tgt Ion: 101 Resp: 440122

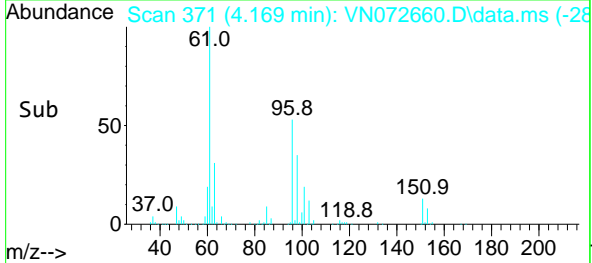
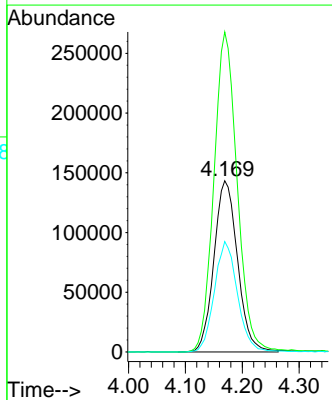
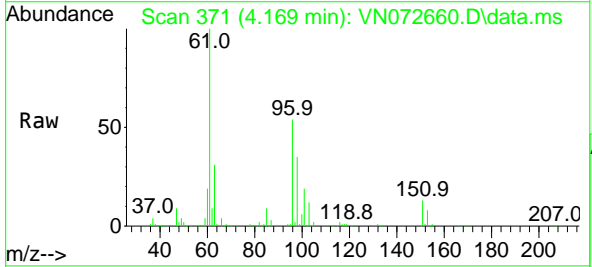
Ion	Ratio	Lower	Upper
101	100		
85	47.1	0.0	94.0
151	69.9	0.0	74.6

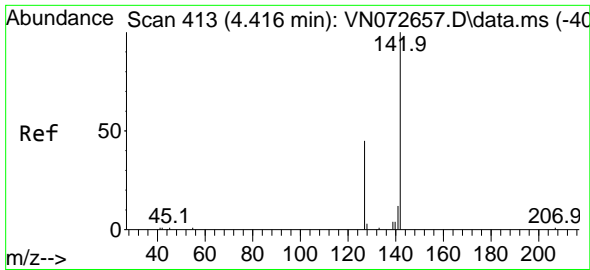


#10
 1,1-Dichloroethene
 Concen: 156.694 ug/l
 RT: 4.169 min Scan# 371
 Delta R.T. -0.012 min
 Lab File: VN072660.D
 Acq: 06 Jun 2022 12:29

Tgt Ion: 96 Resp: 414185

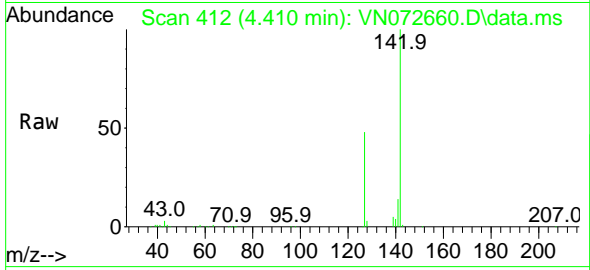
Ion	Ratio	Lower	Upper
96	100		
61	186.9	126.2	189.4
98	64.5	50.9	76.3



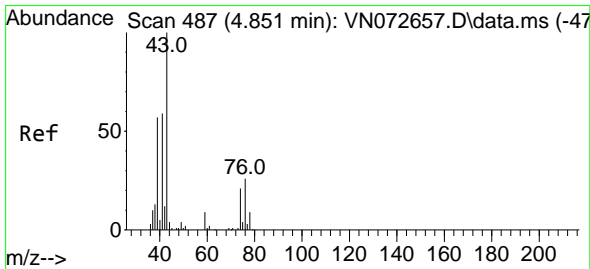
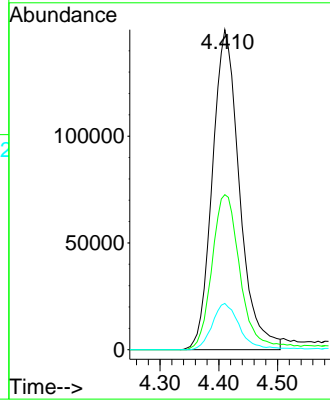
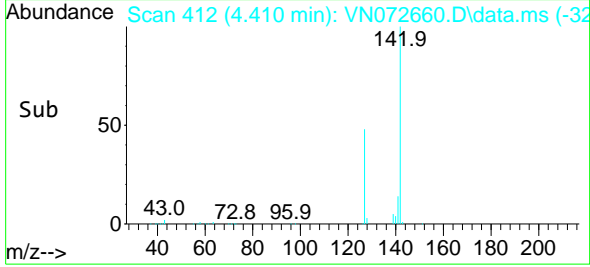


#11
Methyl Iodide
Concen: 184.075 ug/l
RT: 4.410 min Scan# 411
Delta R.T. -0.006 min
Lab File: VN072660.D
Acq: 06 Jun 2022 12:29

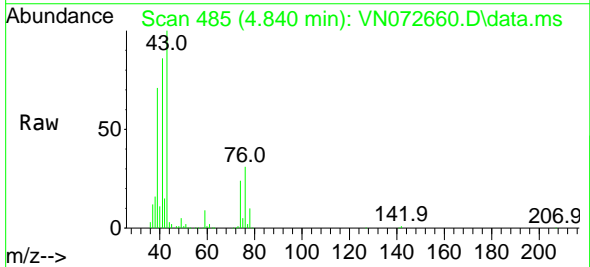
Instrument : MSVOA_N
ClientSampleId : VSTDIC150



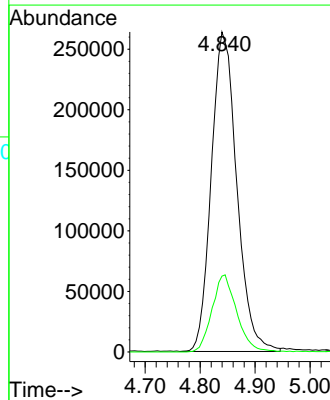
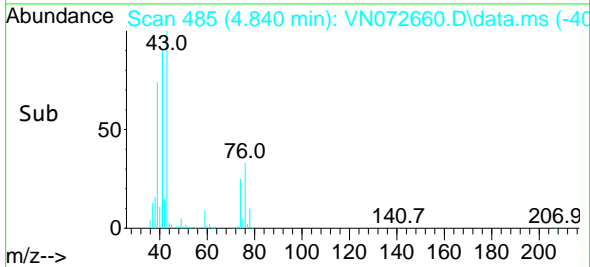
Tgt Ion:142 Resp: 480066
Ion Ratio Lower Upper
142 100
127 48.4 24.0 72.0
141 14.5 8.4 25.2

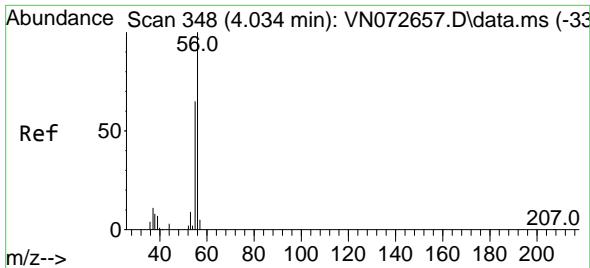


#12
Methyl Acetate
Concen: 159.627 ug/l
RT: 4.840 min Scan# 485
Delta R.T. -0.012 min
Lab File: VN072660.D
Acq: 06 Jun 2022 12:29



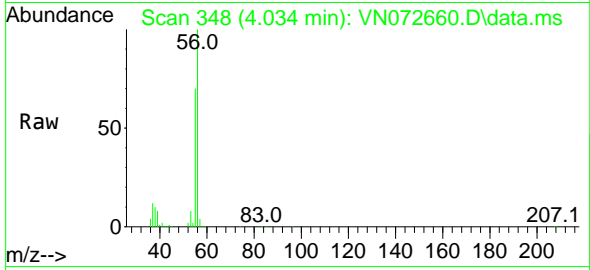
Tgt Ion: 43 Resp: 850072
Ion Ratio Lower Upper
43 100
74 23.7 20.8 31.2



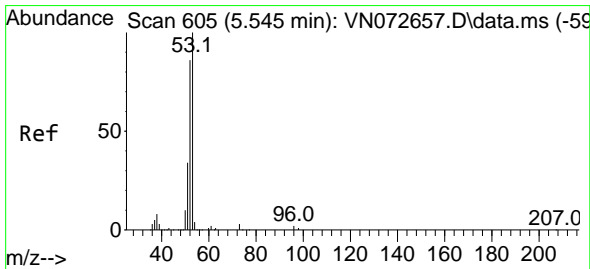
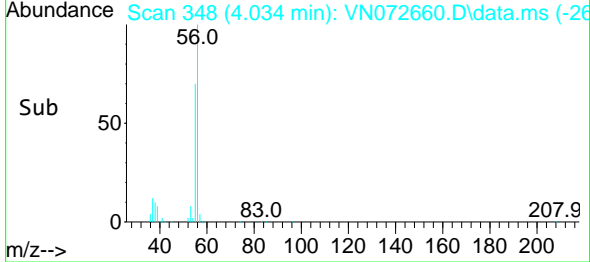
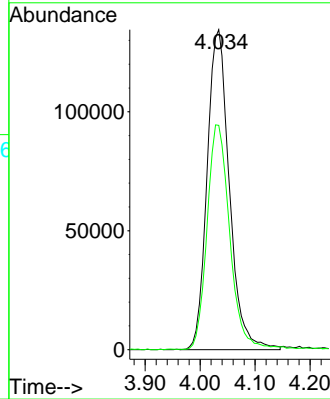


#13
 Acrolein
 Concen: 648.601 ug/l
 RT: 4.034 min Scan# 348
 Delta R.T. 0.000 min
 Lab File: VN072660.D
 Acq: 06 Jun 2022 12:29

Instrument :
 MSVOA_N
 ClientSampleId :
 VSTDIC150

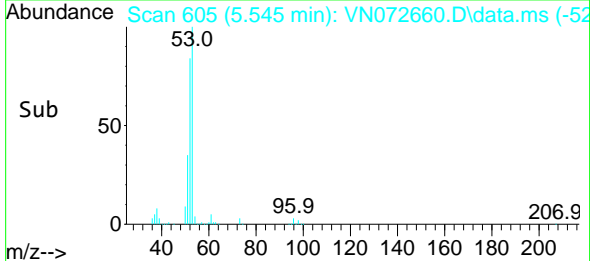
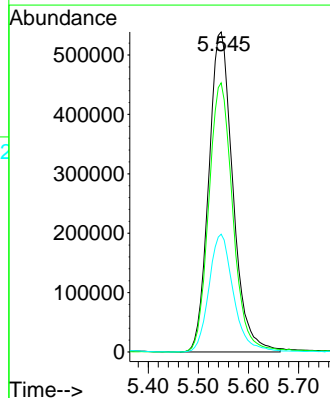
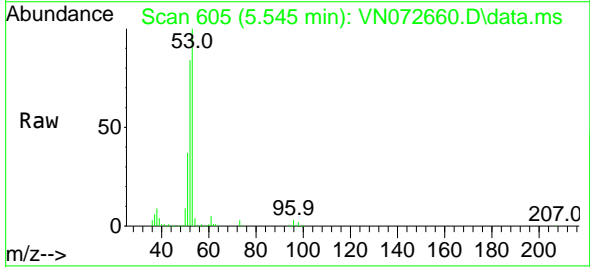


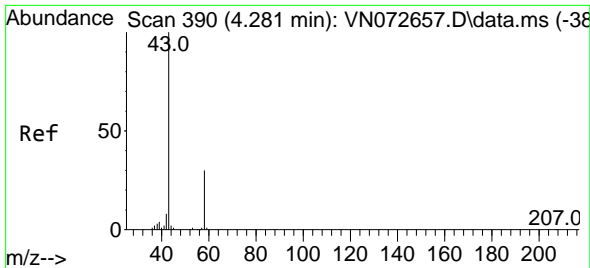
Tgt Ion: 56 Resp: 378159
 Ion Ratio Lower Upper
 56 100
 55 70.9 57.6 86.4



#14
 Acrylonitrile
 Concen: 794.019 ug/l
 RT: 5.545 min Scan# 605
 Delta R.T. 0.000 min
 Lab File: VN072660.D
 Acq: 06 Jun 2022 12:29

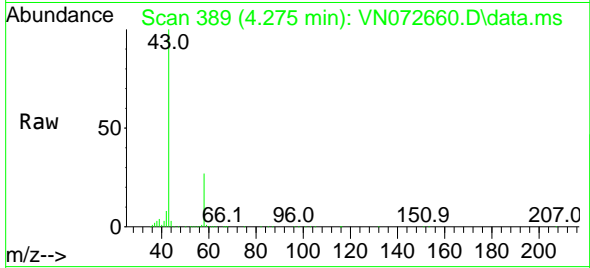
Tgt Ion: 53 Resp: 1802290
 Ion Ratio Lower Upper
 53 100
 52 83.6 41.8 125.4
 51 37.4 19.0 57.0



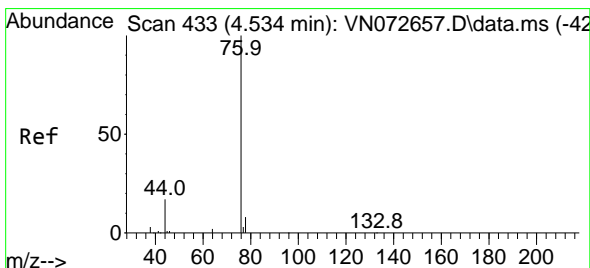
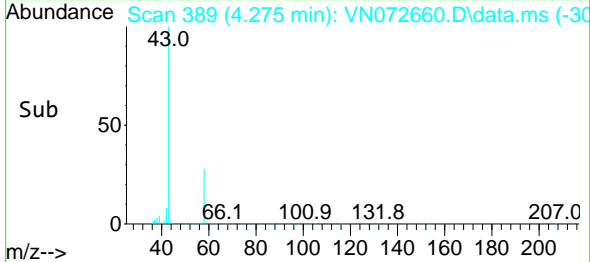
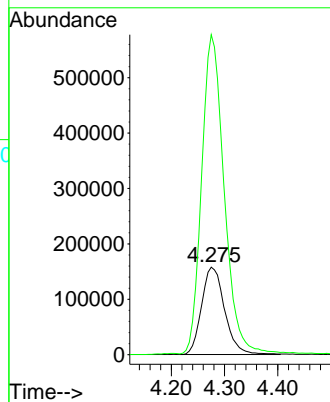


#15
 Acetone
 Concen: 805.673 ug/l
 RT: 4.275 min Scan# 389
 Delta R.T. -0.006 min
 Lab File: VN072660.D
 Acq: 06 Jun 2022 12:29

Instrument : MSVOA_N
 ClientSampleId : VSTDICC150

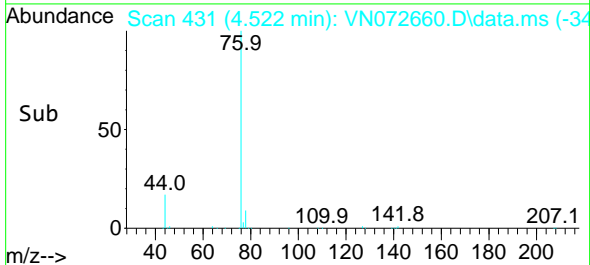
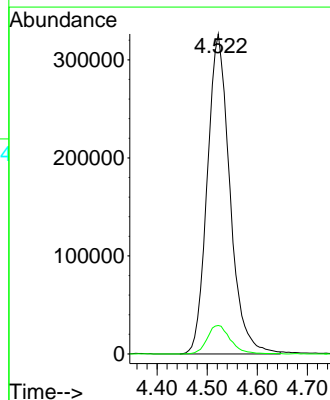
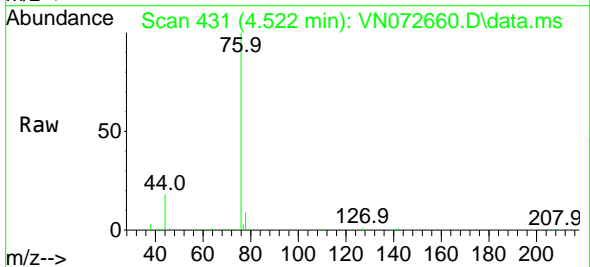


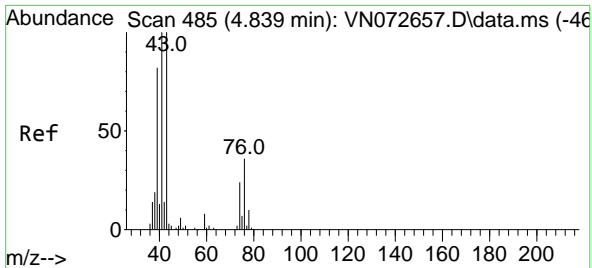
Tgt Ion: 58 Resp: 473953
 Ion Ratio Lower Upper
 58 100
 43 365.0 256.6 384.8



#16
 Carbon Disulfide
 Concen: 143.212 ug/l
 RT: 4.522 min Scan# 431
 Delta R.T. -0.012 min
 Lab File: VN072660.D
 Acq: 06 Jun 2022 12:29

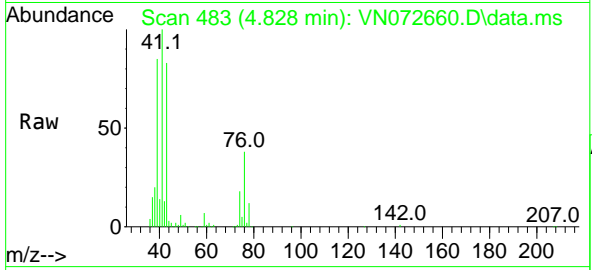
Tgt Ion: 76 Resp: 1022277
 Ion Ratio Lower Upper
 76 100
 78 8.9 7.8 11.8





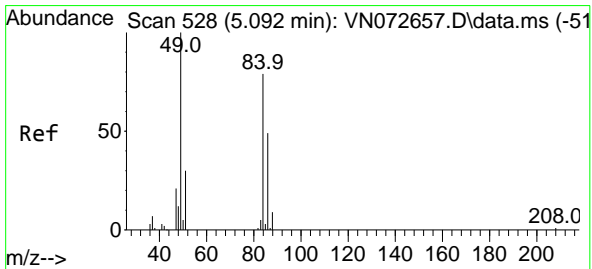
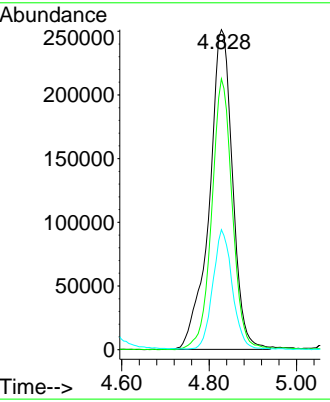
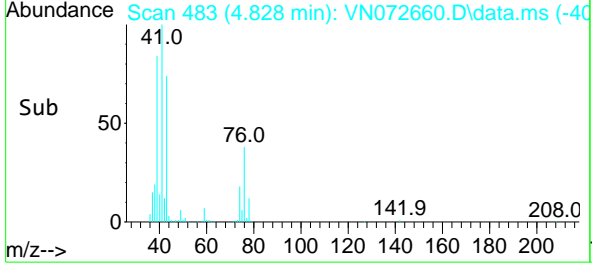
#17
 Allyl chloride
 Concen: 165.274 ug/l
 RT: 4.828 min Scan# 41
 Delta R.T. -0.012 min
 Lab File: VN072660.D
 Acq: 06 Jun 2022 12:29

Instrument : MSVOA_N
 ClientSampleId : VSTDIC150

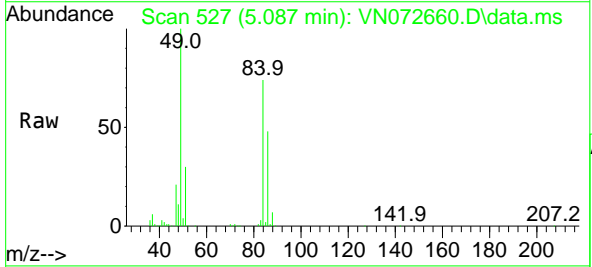


Tgt Ion: 41 Resp: 929054

Ion	Ratio	Lower	Upper
41	100		
39	84.7	44.6	134.0
76	37.3	19.6	58.7

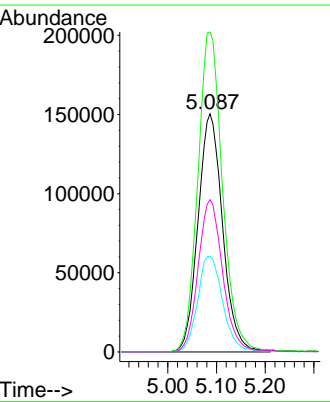
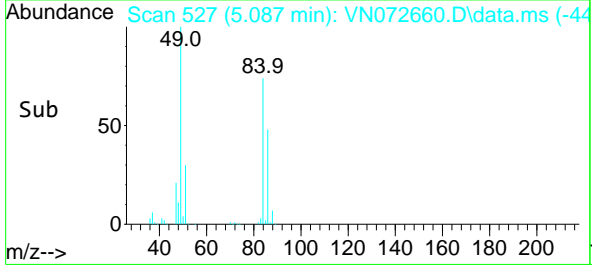


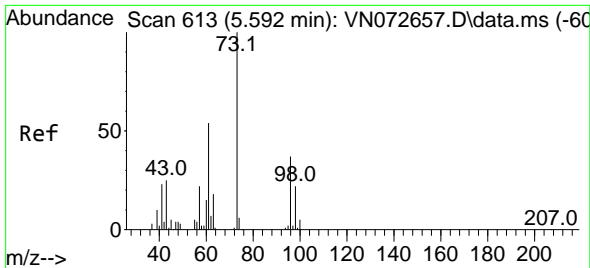
#18
 Methylene Chloride
 Concen: 152.769 ug/l
 RT: 5.087 min Scan# 527
 Delta R.T. -0.006 min
 Lab File: VN072660.D
 Acq: 06 Jun 2022 12:29



Tgt Ion: 84 Resp: 527092

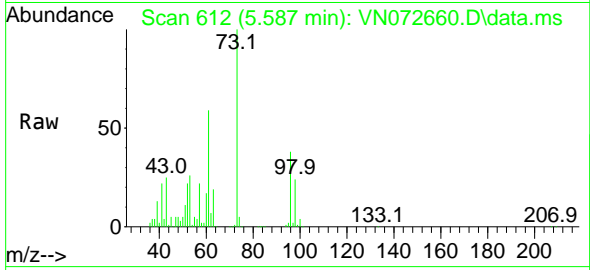
Ion	Ratio	Lower	Upper
84	100		
49	134.2	91.4	137.0
51	40.2	29.4	44.0
86	64.0	51.1	76.7



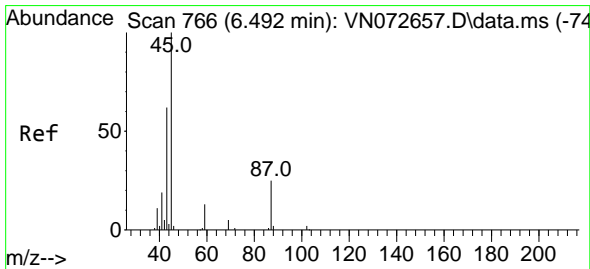
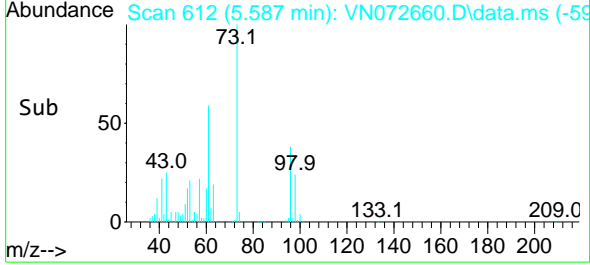
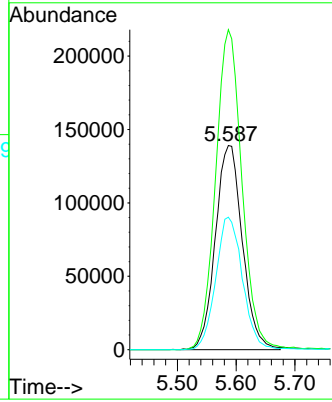


#19
 trans-1,2-Dichloroethene
 Concen: 153.271 ug/l
 RT: 5.587 min Scan# 613
 Delta R.T. -0.006 min
 Lab File: VN072660.D
 Acq: 06 Jun 2022 12:29

Instrument : MSVOA_N
 ClientSampleId : VSTDIC150

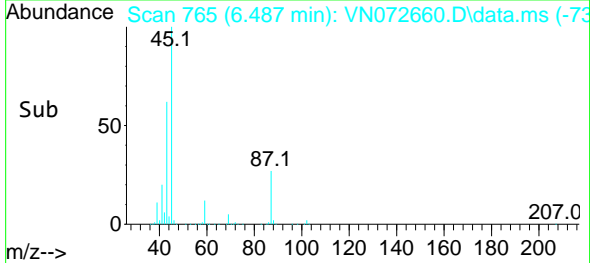
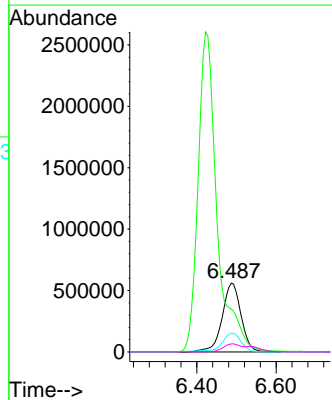
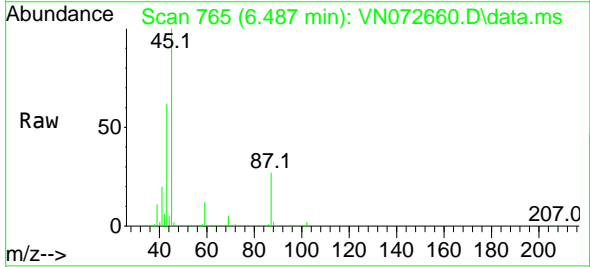


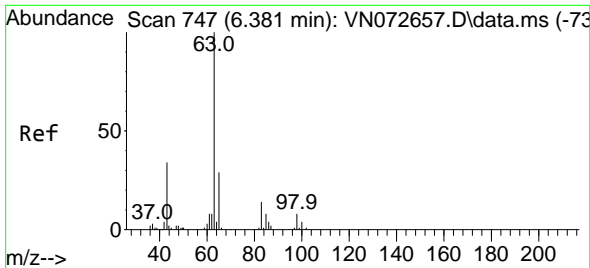
Tgt Ion: 96 Resp: 443217
 Ion Ratio Lower Upper
 96 100
 61 156.7 102.8 154.2#
 98 64.9 49.3 73.9



#20
 Diisopropyl ether
 Concen: 145.535 ug/l
 RT: 6.487 min Scan# 765
 Delta R.T. -0.006 min
 Lab File: VN072660.D
 Acq: 06 Jun 2022 12:29

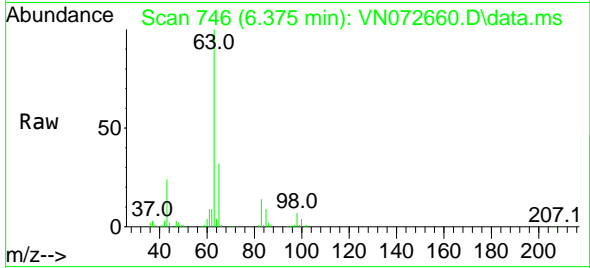
Tgt Ion: 45 Resp: 1850038
 Ion Ratio Lower Upper
 45 100
 43 61.5 51.0 76.4
 87 27.1 25.0 37.4
 59 11.5 8.7 13.1





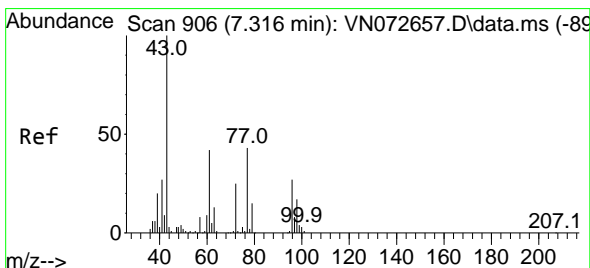
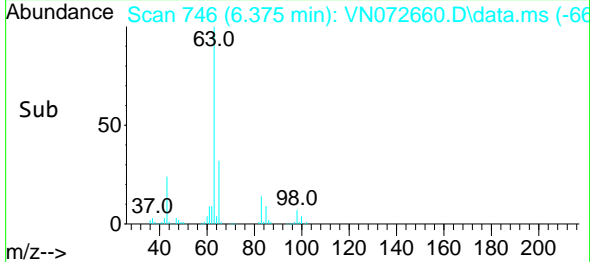
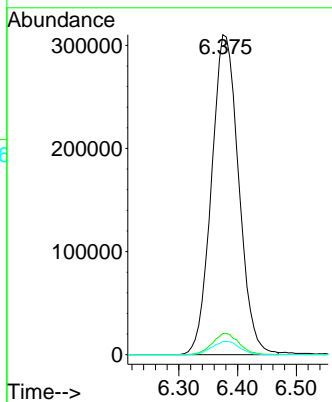
#21
 1,1-Dichloroethane
 Concen: 152.820 ug/l
 RT: 6.375 min Scan# 747
 Delta R.T. -0.006 min
 Lab File: VN072660.D
 Acq: 06 Jun 2022 12:29

Instrument :
 MSVOA_N
 ClientSampleId :
 VSTDICC150



Tgt Ion: 63 Resp: 997829

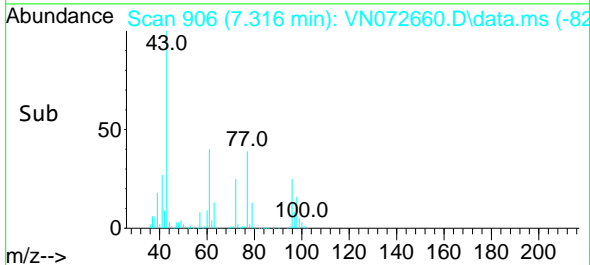
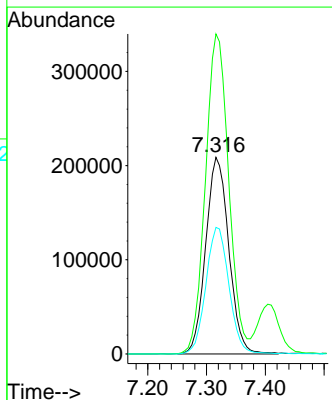
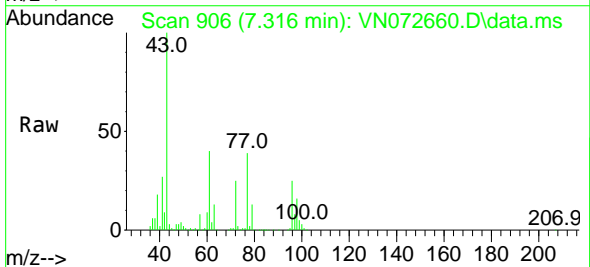
Ion	Ratio	Lower	Upper
63	100		
98	6.6	3.2	9.6
100	4.1	2.1	6.2

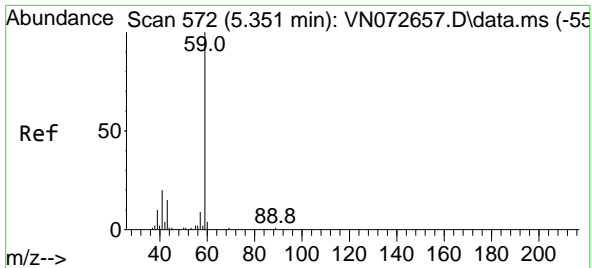


#22
 cis-1,2-Dichloroethene
 Concen: 153.380 ug/l
 RT: 7.316 min Scan# 906
 Delta R.T. 0.000 min
 Lab File: VN072660.D
 Acq: 06 Jun 2022 12:29

Tgt Ion: 96 Resp: 570572

Ion	Ratio	Lower	Upper
96	100		
61	163.3	115.7	173.5
98	64.4	51.6	77.4

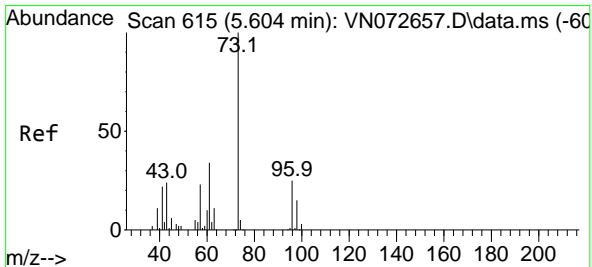
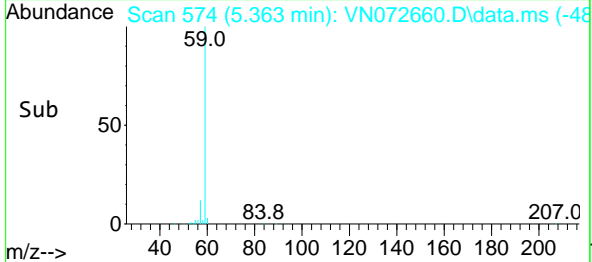
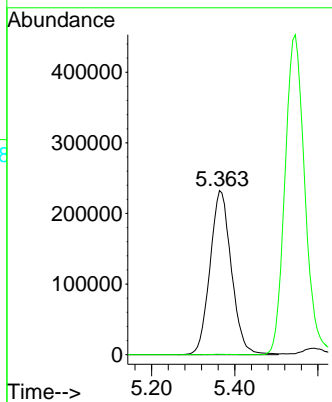
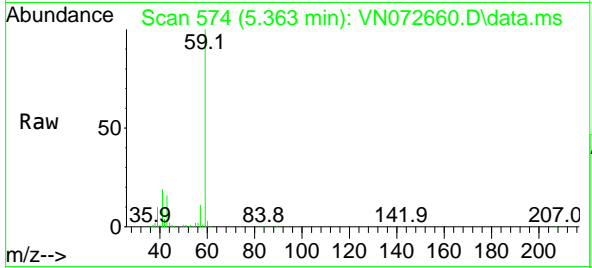




#23
 tert-Butyl Alcohol
 Concen: 980.258 ug/l
 RT: 5.363 min Scan# 51
 Delta R.T. 0.012 min
 Lab File: VN072660.D
 Acq: 06 Jun 2022 12:29

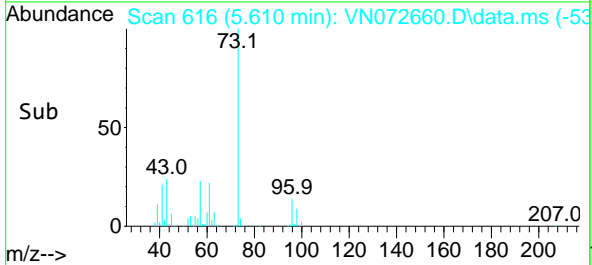
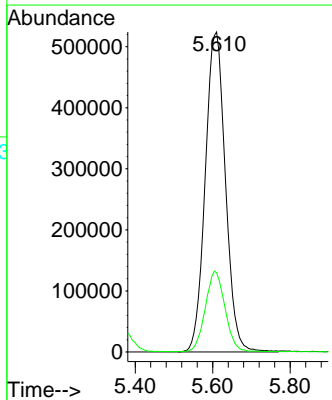
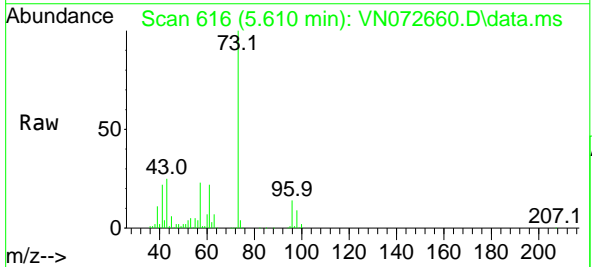
Instrument :
 MSVOA_N
 ClientSampleId :
 VSTDICC150

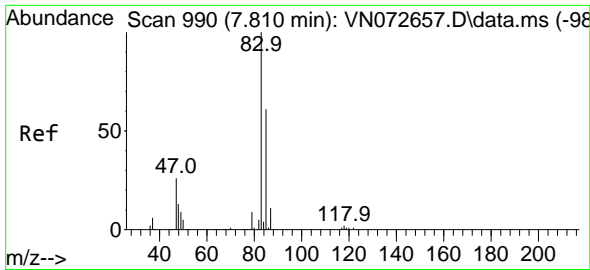
Tgt Ion: 59 Resp: 828653
 Ion Ratio Lower Upper
 59 100
 52 0.1 0.0 0.0#



#24
 Methyl tert-Butyl Ether
 Concen: 177.214 ug/l
 RT: 5.610 min Scan# 616
 Delta R.T. 0.006 min
 Lab File: VN072660.D
 Acq: 06 Jun 2022 12:29

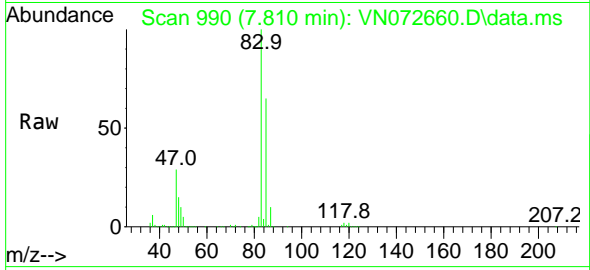
Tgt Ion: 73 Resp: 1895197
 Ion Ratio Lower Upper
 73 100
 43 24.4 18.1 27.1



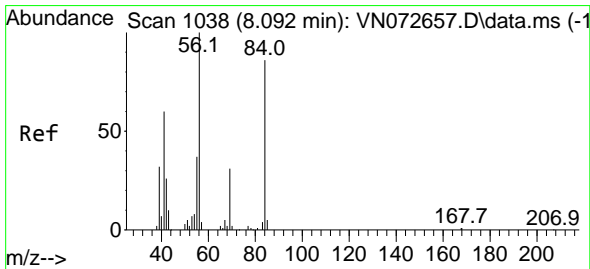
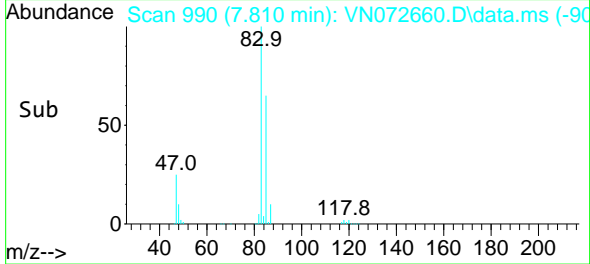
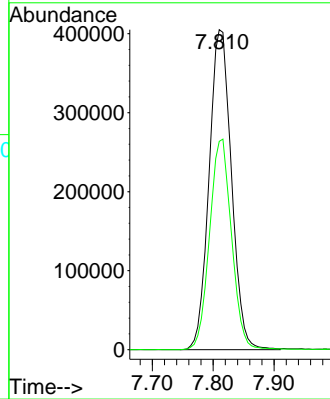


#25
 Chloroform
 Concen: 153.958 ug/l
 RT: 7.810 min Scan# 990
 Delta R.T. 0.000 min
 Lab File: VN072660.D
 Acq: 06 Jun 2022 12:29

Instrument :
 MSVOA_N
 ClientSampleId :
 VSTDIC150

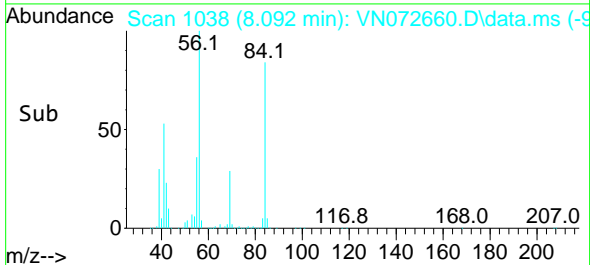
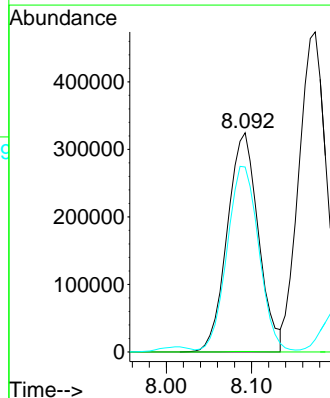
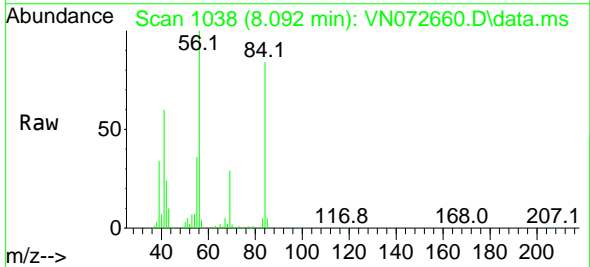


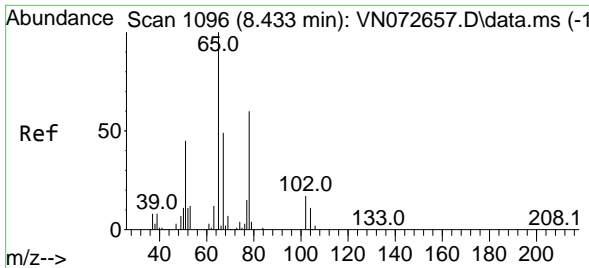
Tgt Ion: 83 Resp: 1032564
 Ion Ratio Lower Upper
 83 100
 85 65.1 51.3 76.9



#26
 Cyclohexane
 Concen: 135.713 ug/l
 RT: 8.092 min Scan# 1038
 Delta R.T. 0.000 min
 Lab File: VN072660.D
 Acq: 06 Jun 2022 12:29

Tgt Ion: 56 Resp: 825721
 Ion Ratio Lower Upper
 56 100
 89 0.2 0.1 0.1#
 84 86.7 74.6 111.8

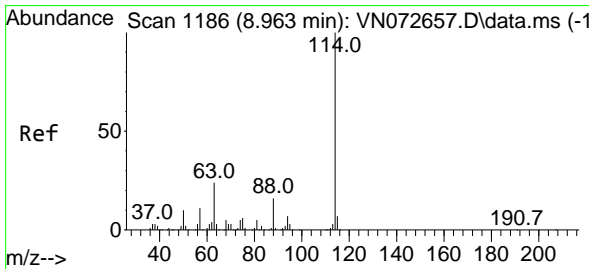
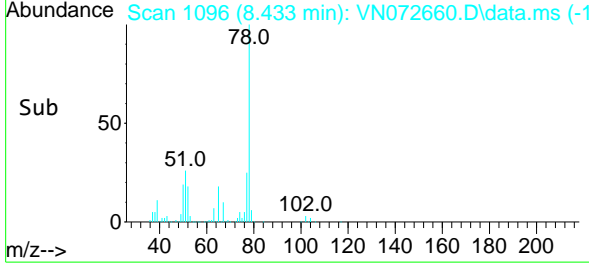
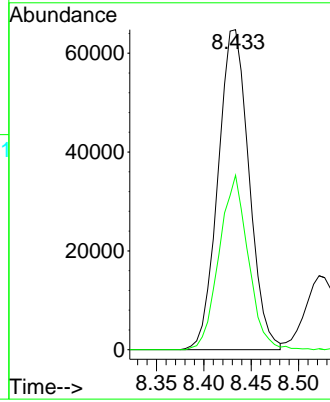
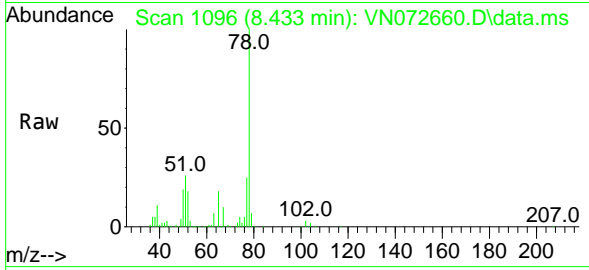




#27
 1,2-Dichloroethane-d4
 Concen: 32.746 ug/l
 RT: 8.433 min Scan# 1096
 Delta R.T. 0.000 min
 Lab File: VN072660.D
 Acq: 06 Jun 2022 12:29

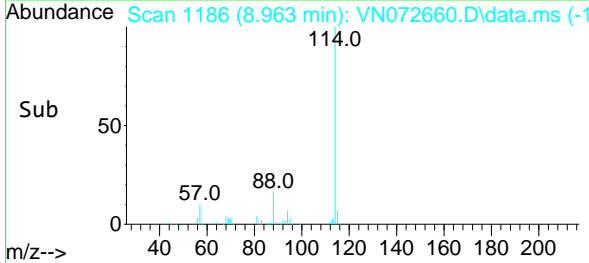
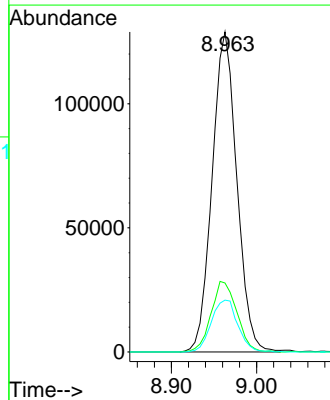
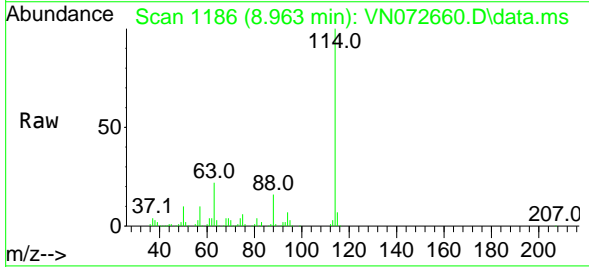
Instrument : MSVOA_N
 ClientSampleId : VSTDIC150

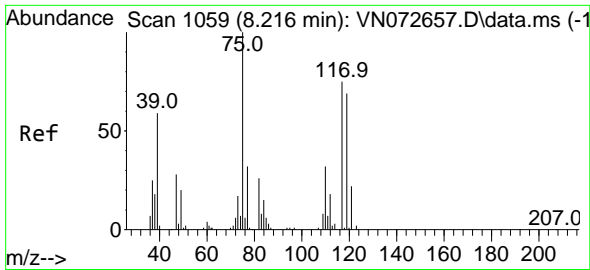
Tgt Ion: 65 Resp: 147511
 Ion Ratio Lower Upper
 65 100
 67 51.1 40.2 60.2



#28
 1,4-Difluorobenzene
 Concen: 30.000 ug/l
 RT: 8.963 min Scan# 1186
 Delta R.T. 0.000 min
 Lab File: VN072660.D
 Acq: 06 Jun 2022 12:29

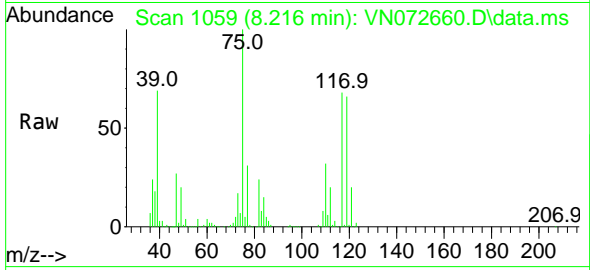
Tgt Ion:114 Resp: 259607
 Ion Ratio Lower Upper
 114 100
 63 23.0 15.8 23.6
 88 17.3 11.6 17.4



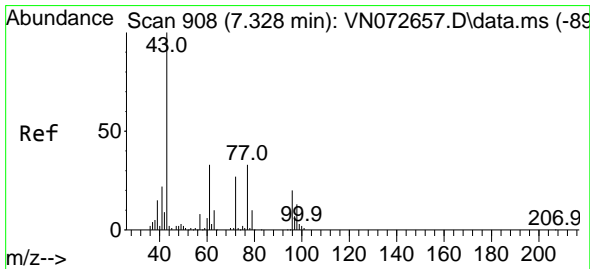
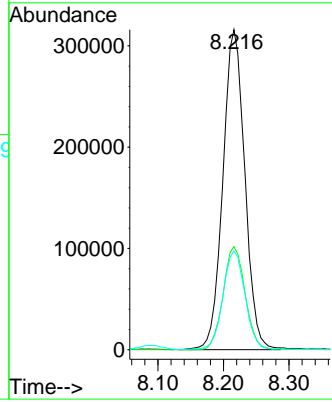
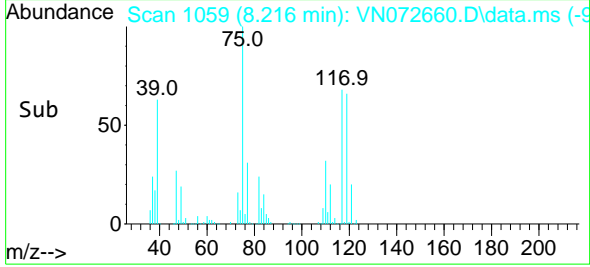


#29
 1,1-Dichloropropene
 Concen: 153.488 ug/l
 RT: 8.216 min Scan# 1059
 Delta R.T. 0.000 min
 Lab File: VN072660.D
 Acq: 06 Jun 2022 12:29

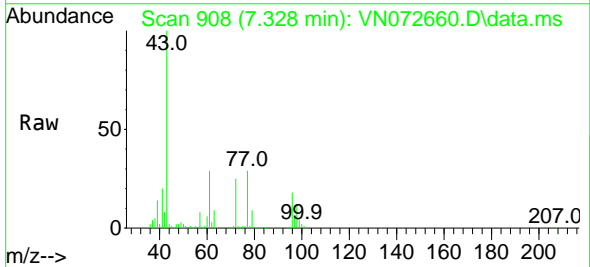
Instrument : MSVOA_N
 ClientSampleId : VSTDIC150



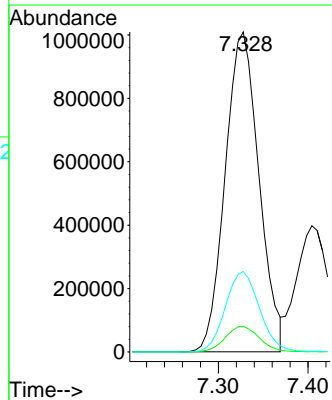
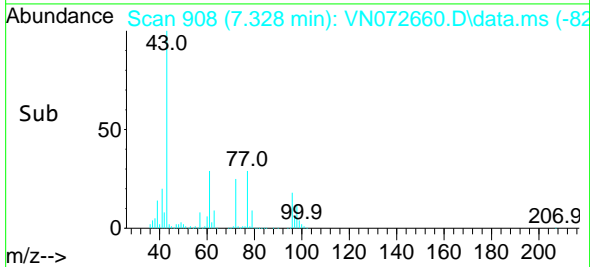
Tgt Ion: 75 Resp: 733665
 Ion Ratio Lower Upper
 75 100
 110 32.2 0.0 74.2
 77 31.0 0.0 63.2

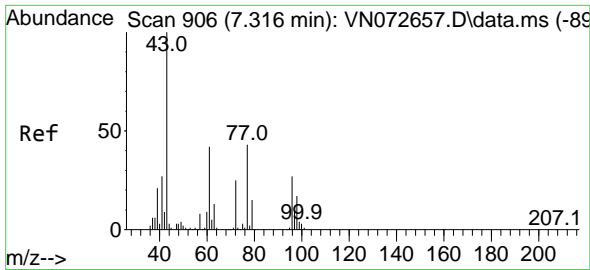


#30
 2-Butanone
 Concen: 811.106 ug/l
 RT: 7.328 min Scan# 908
 Delta R.T. 0.000 min
 Lab File: VN072660.D
 Acq: 06 Jun 2022 12:29



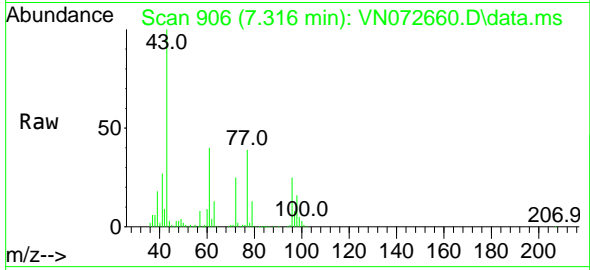
Tgt Ion: 43 Resp: 2637471
 Ion Ratio Lower Upper
 43 100
 57 8.2 6.7 10.1
 72 25.5 23.2 34.8



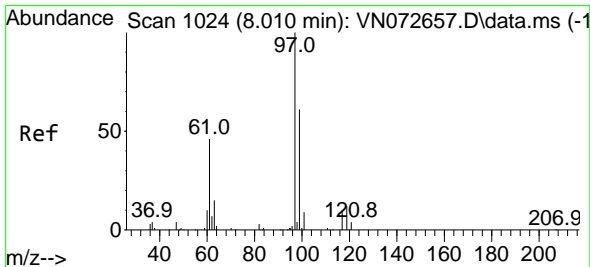
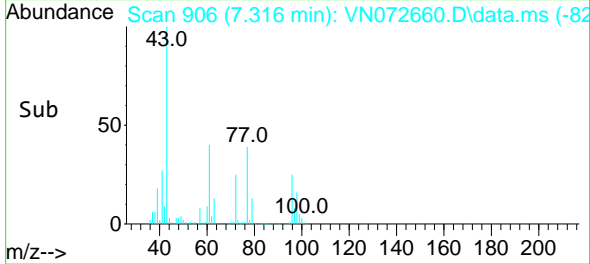
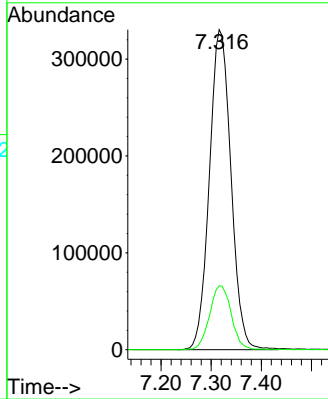


#31
 2,2-Dichloropropane
 Concen: 191.851 ug/l
 RT: 7.316 min Scan# 906
 Delta R.T. 0.000 min
 Lab File: VN072660.D
 Acq: 06 Jun 2022 12:29

Instrument :
 MSVOA_N
 ClientSampleId :
 VSTDIC150

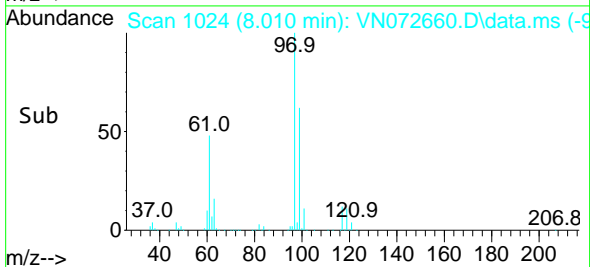
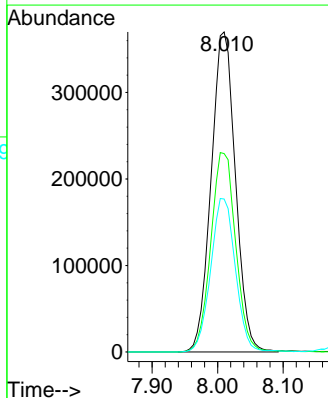
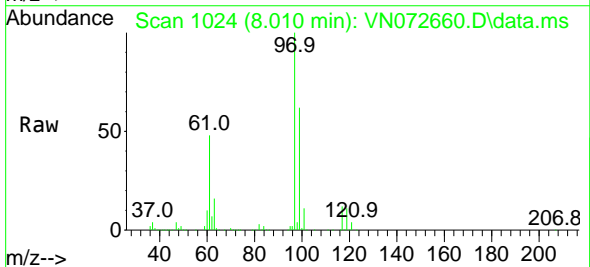


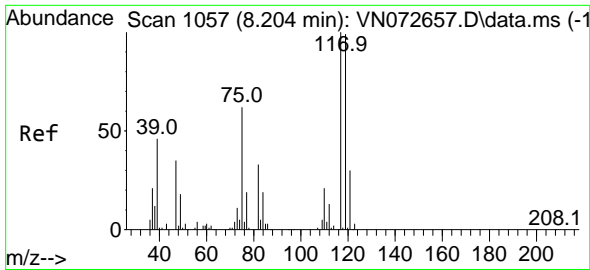
Tgt Ion: 77 Resp: 987617
 Ion Ratio Lower Upper
 77 100
 97 20.0 18.3 27.5



#32
 1,1,1-Trichloroethane
 Concen: 173.297 ug/l
 RT: 8.010 min Scan# 1024
 Delta R.T. 0.000 min
 Lab File: VN072660.D
 Acq: 06 Jun 2022 12:29

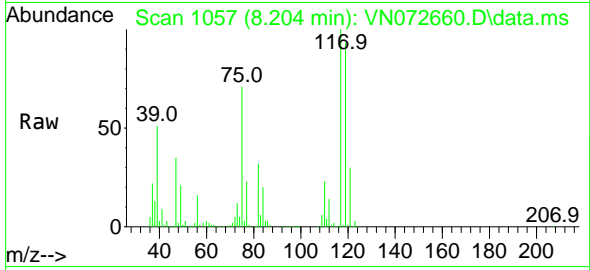
Tgt Ion: 97 Resp: 953077
 Ion Ratio Lower Upper
 97 100
 99 63.8 50.4 75.6
 61 48.5 34.6 51.8



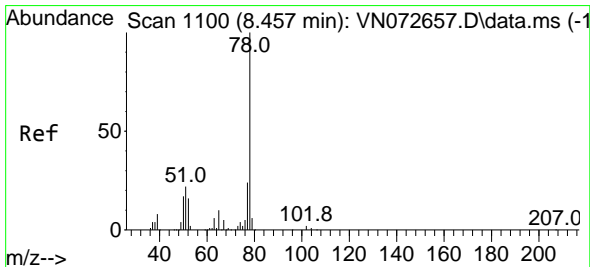
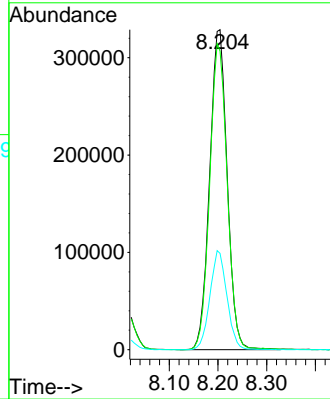
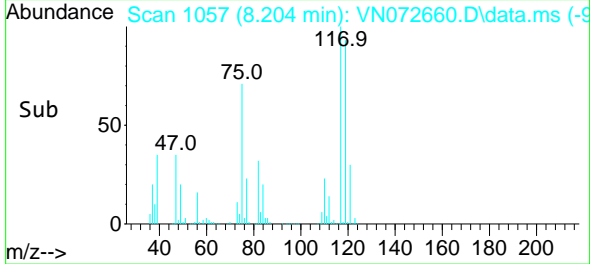


#33
 Carbon Tetrachloride
 Concen: 168.559 ug/l
 RT: 8.204 min Scan# 1100
 Delta R.T. 0.000 min
 Lab File: VN072660.D
 Acq: 06 Jun 2022 12:29

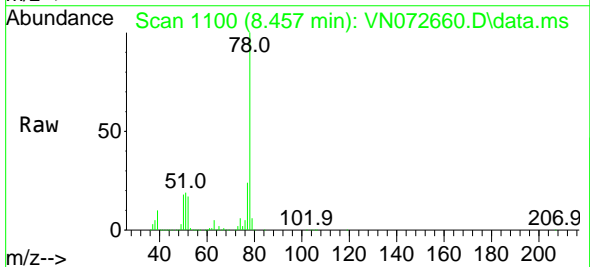
Instrument : MSVOA_N
 ClientSampleId : VSTDIC150



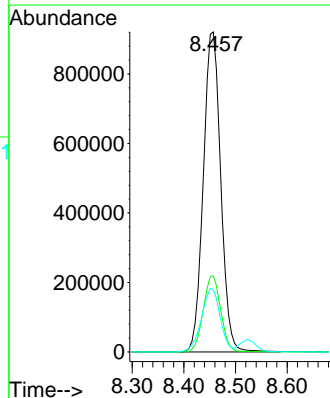
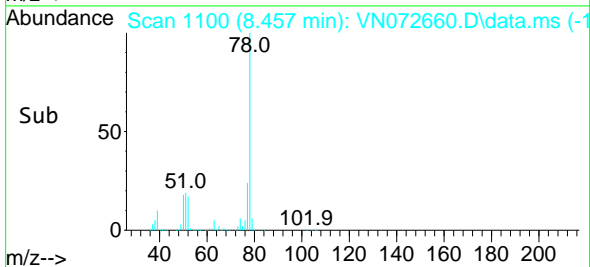
Tgt Ion:117 Resp: 819316
 Ion Ratio Lower Upper
 117 100
 119 93.3 77.5 116.3
 121 30.1 23.5 35.3

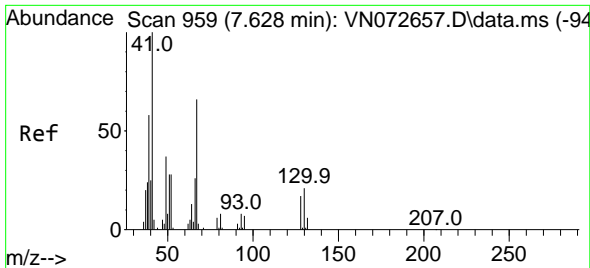


#34
 Benzene
 Concen: 145.091 ug/l
 RT: 8.457 min Scan# 1100
 Delta R.T. 0.000 min
 Lab File: VN072660.D
 Acq: 06 Jun 2022 12:29



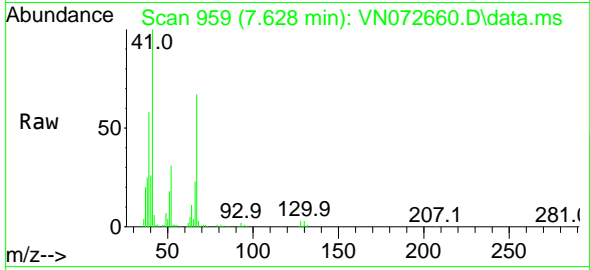
Tgt Ion: 78 Resp: 2157726
 Ion Ratio Lower Upper
 78 100
 77 23.7 19.1 28.7
 51 19.4 16.0 24.0





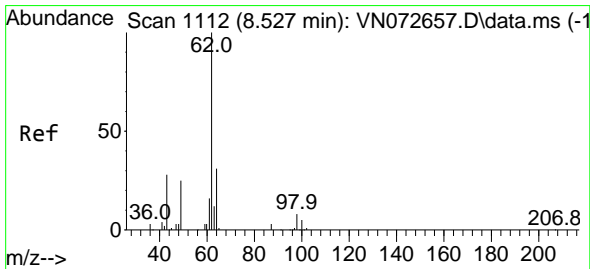
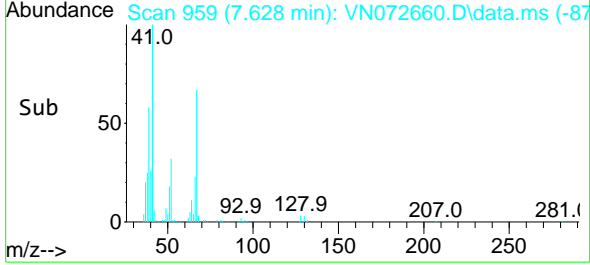
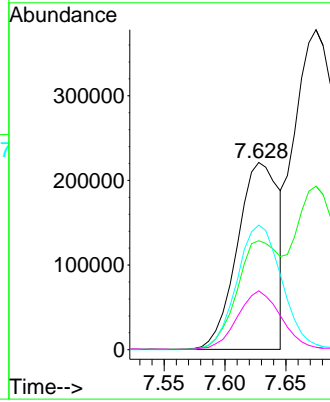
#35
 Methacrylonitrile
 Concen: 156.294 ug/l
 RT: 7.628 min Scan# 91
 Delta R.T. 0.000 min
 Lab File: VN072660.D
 Acq: 06 Jun 2022 12:29

Instrument :
 MSVOA_N
 ClientSampleId :
 VSTDIC150



Tgt Ion: 41 Resp: 522676

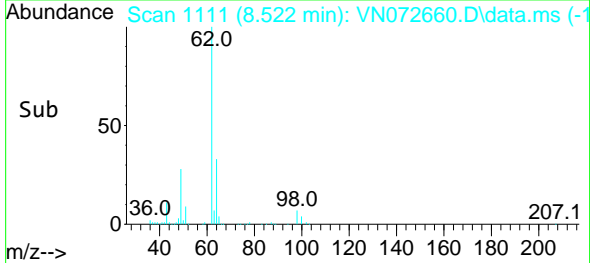
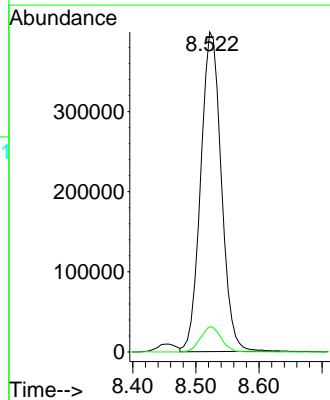
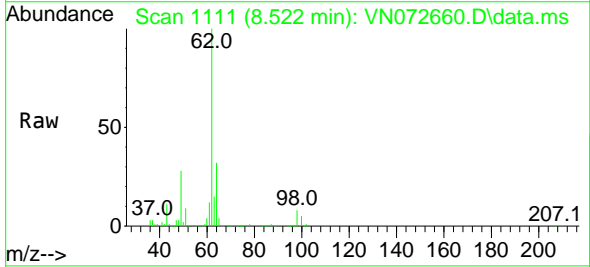
Ion	Ratio	Lower	Upper
41	100		
39	58.1	28.0	83.9
67	66.7	37.7	113.1
52	31.3	17.1	51.2

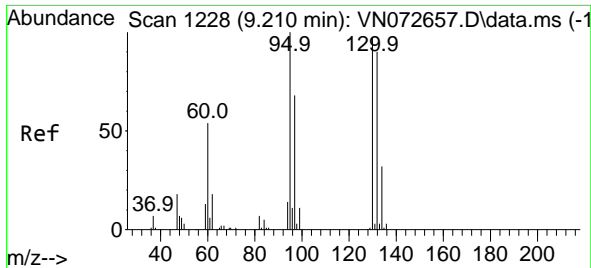


#36
 1,2-Dichloroethane
 Concen: 175.754 ug/l
 RT: 8.522 min Scan# 1111
 Delta R.T. -0.006 min
 Lab File: VN072660.D
 Acq: 06 Jun 2022 12:29

Tgt Ion: 62 Resp: 903282

Ion	Ratio	Lower	Upper
62	100		
98	7.9	6.6	10.0





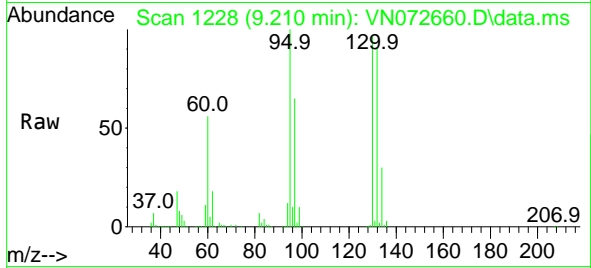
#37
 Trichloroethene
 Concen: 148.703 ug/l
 RT: 9.210 min Scan# 11
 Delta R.T. 0.000 min
 Lab File: VN072660.D
 Acq: 06 Jun 2022 12:29

Instrument :

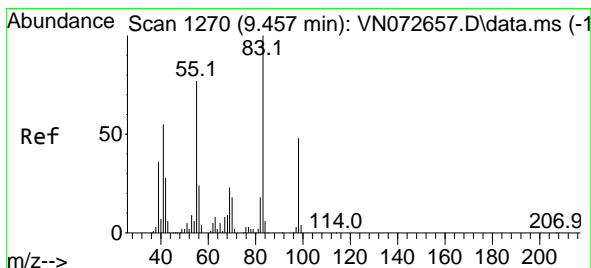
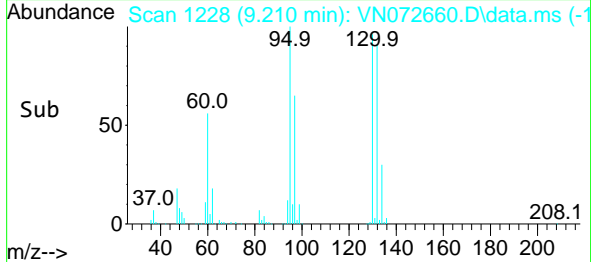
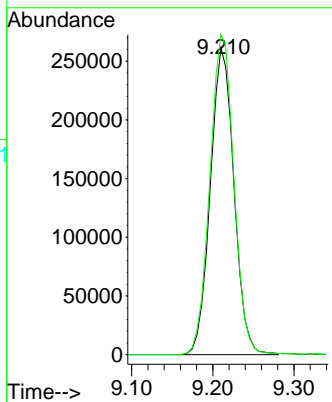
MSVOA_N

ClientSampleId :

VSTDICC150

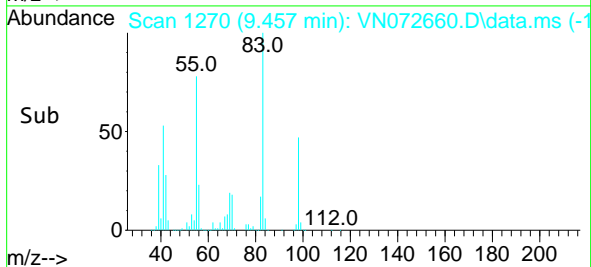
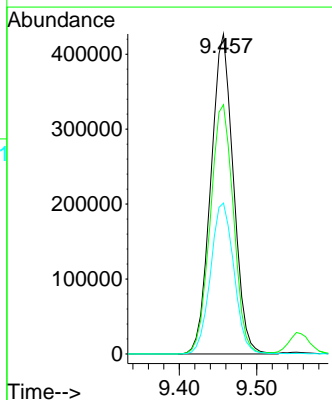
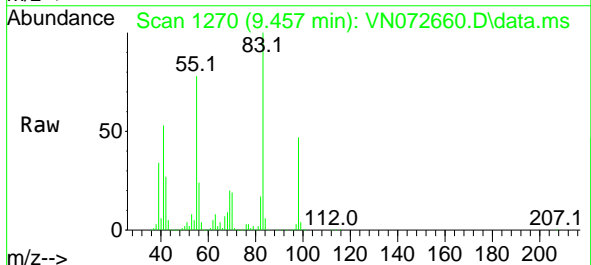


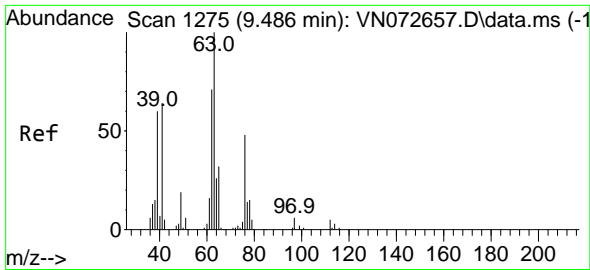
Tgt Ion:130 Resp: 528036
 Ion Ratio Lower Upper
 130 100
 95 104.3 76.6 115.0



#38
 Methylcyclohexane
 Concen: 146.564 ug/l
 RT: 9.457 min Scan# 1270
 Delta R.T. 0.000 min
 Lab File: VN072660.D
 Acq: 06 Jun 2022 12:29

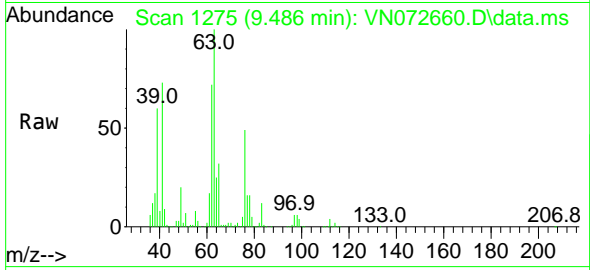
Tgt Ion: 83 Resp: 865054
 Ion Ratio Lower Upper
 83 100
 55 79.9 35.1 105.3
 98 48.8 23.4 70.2



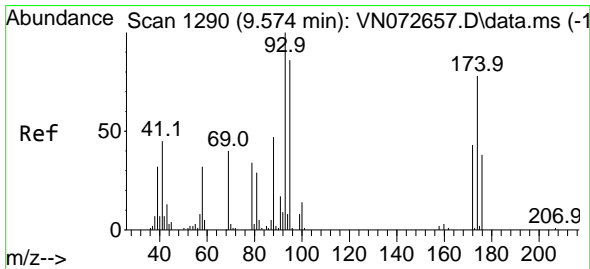
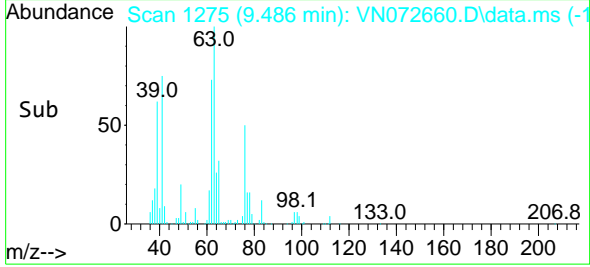
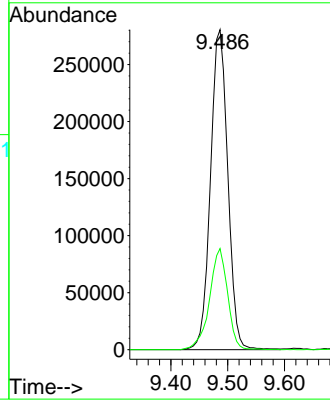


#39
 1,2-Dichloropropane
 Concen: 148.443 ug/l
 RT: 9.486 min Scan# 11
 Delta R.T. 0.000 min
 Lab File: VN072660.D
 Acq: 06 Jun 2022 12:29

Instrument :
 MSVOA_N
 ClientSampleId :
 VSTDIC150

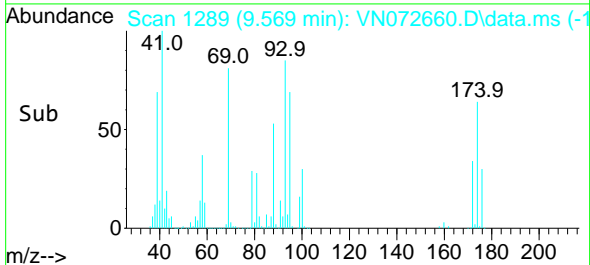
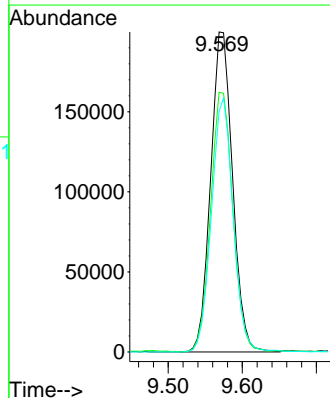
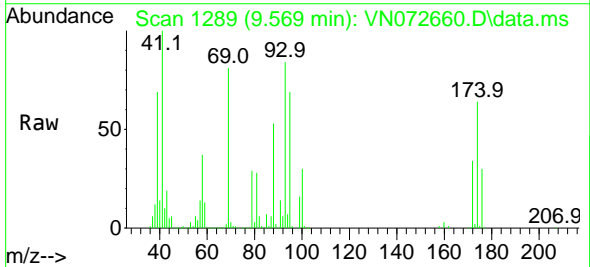


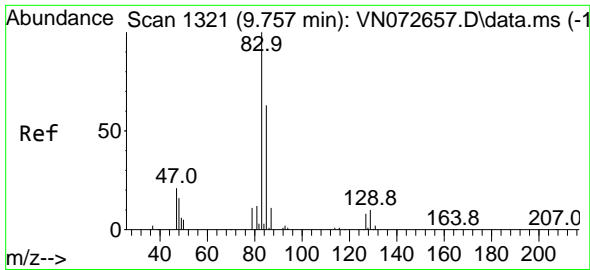
Tgt Ion: 63 Resp: 592557
 Ion Ratio Lower Upper
 63 100
 65 31.6 24.2 36.4



#40
 Dibromomethane
 Concen: 159.582 ug/l
 RT: 9.569 min Scan# 1289
 Delta R.T. -0.006 min
 Lab File: VN072660.D
 Acq: 06 Jun 2022 12:29

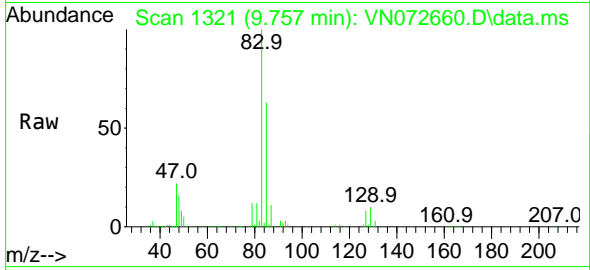
Tgt Ion: 93 Resp: 410483
 Ion Ratio Lower Upper
 93 100
 95 82.5 0.0 168.8
 174 78.6 0.0 173.6



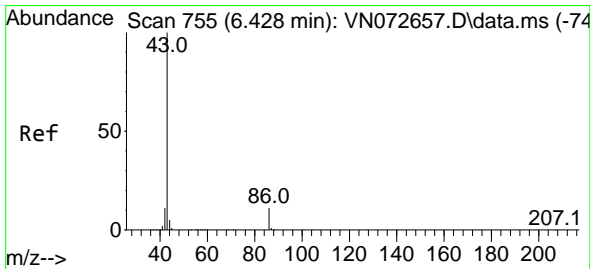
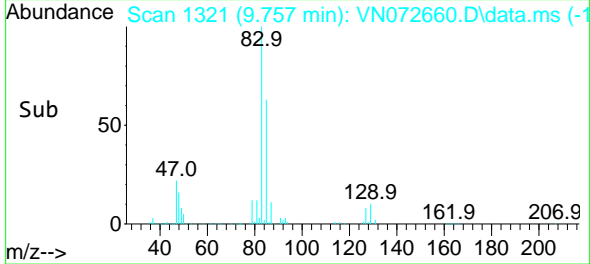
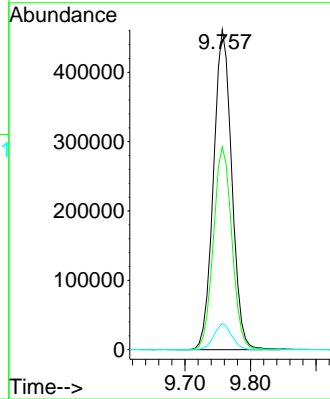


#41
 Bromodichloromethane
 Concen: 169.690 ug/l
 RT: 9.757 min Scan# 11
 Delta R.T. 0.000 min
 Lab File: VN072660.D
 Acq: 06 Jun 2022 12:29

Instrument :
 MSVOA_N
 ClientSampleId :
 VSTDIC150

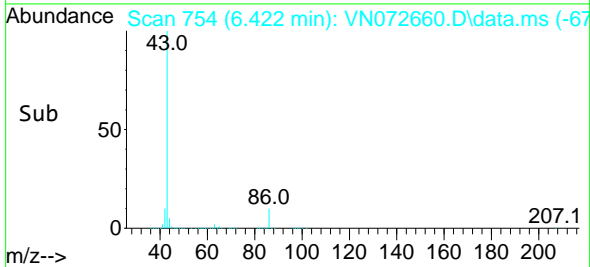
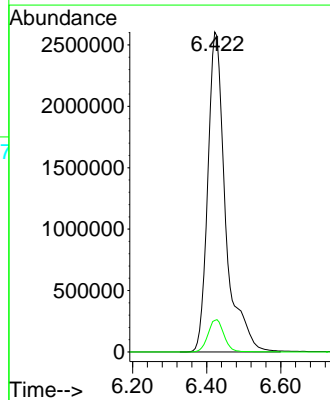
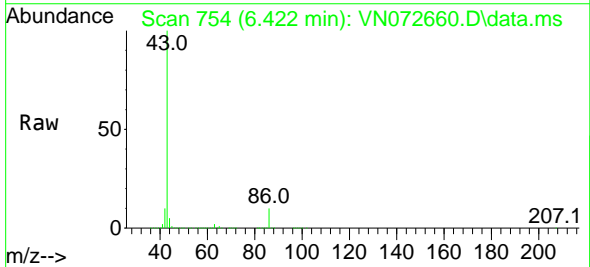


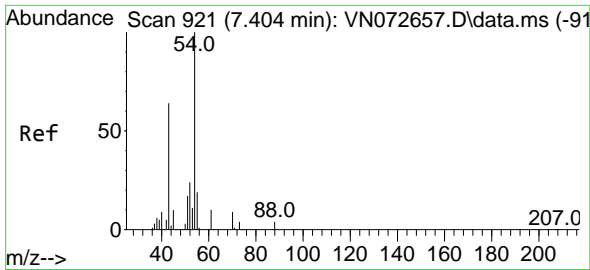
Tgt Ion: 83 Resp: 891951
 Ion Ratio Lower Upper
 83 100
 85 63.4 54.1 81.1
 127 8.1 7.6 11.4



#42
 Vinyl Acetate
 Concen: 812.005 ug/l
 RT: 6.422 min Scan# 754
 Delta R.T. -0.006 min
 Lab File: VN072660.D
 Acq: 06 Jun 2022 12:29

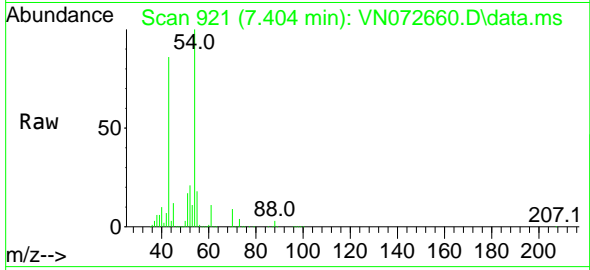
Tgt Ion: 43 Resp: 8662688
 Ion Ratio Lower Upper
 43 100
 86 9.1 7.5 11.3



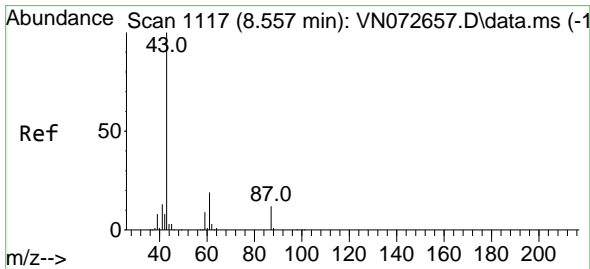
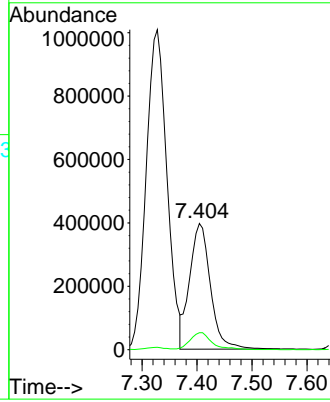
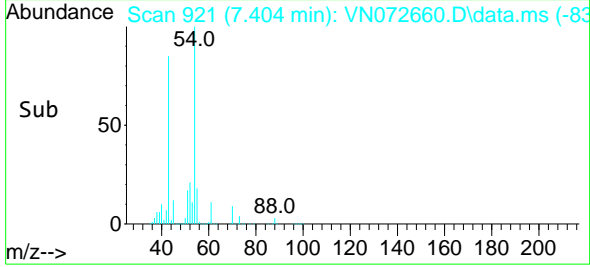


#43
 Ethyl Acetate
 Concen: 163.740 ug/l
 RT: 7.404 min Scan# 911
 Delta R.T. 0.000 min
 Lab File: VN072660.D
 Acq: 06 Jun 2022 12:29

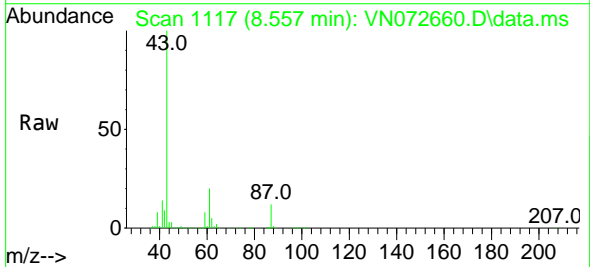
Instrument :
 MSVOA_N
 ClientSampleId :
 VSTDIC150



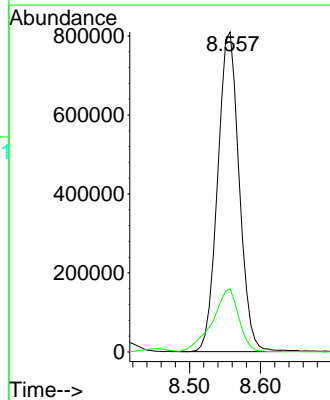
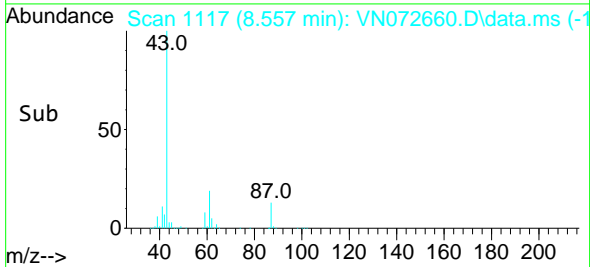
Tgt Ion: 43 Resp: 1037830
 Ion Ratio Lower Upper
 43 100
 45 14.4 10.6 16.0

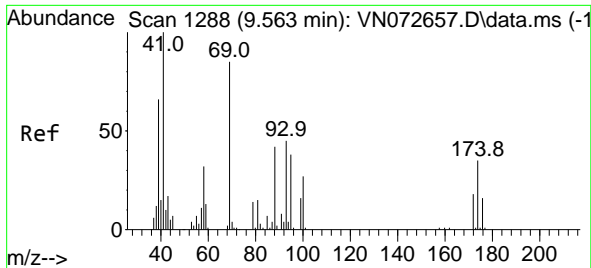


#44
 Isopropyl Acetate
 Concen: 170.267 ug/l
 RT: 8.557 min Scan# 1117
 Delta R.T. 0.000 min
 Lab File: VN072660.D
 Acq: 06 Jun 2022 12:29



Tgt Ion: 43 Resp: 1695959
 Ion Ratio Lower Upper
 43 100
 61 24.4 20.1 30.1



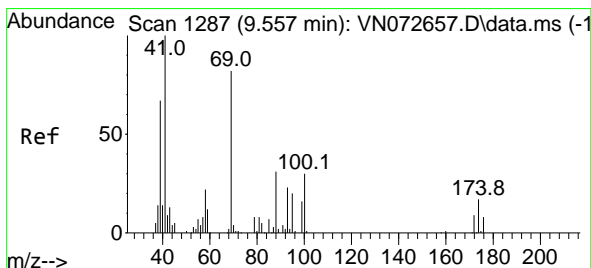
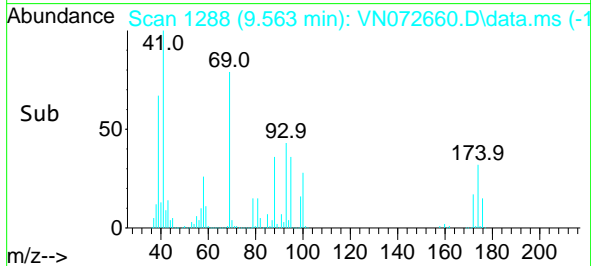
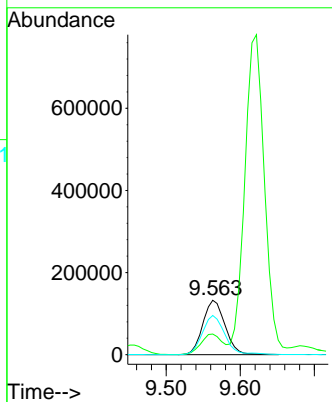
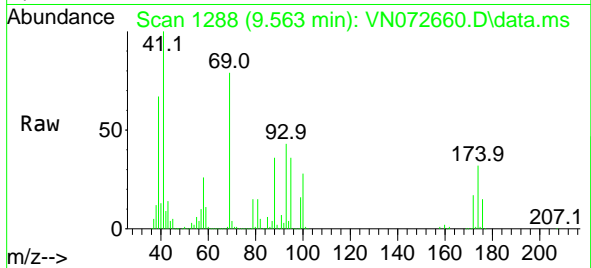


#45
 1,4-Dioxane
 Concen: 3312.472 ug/l
 RT: 9.563 min Scan# 1288
 Delta R.T. 0.000 min
 Lab File: VN072660.D
 Acq: 06 Jun 2022 12:29

Instrument : MSVOA_N
 ClientSampleId : VSTDIC150

Tgt Ion: 88 Resp: 276331

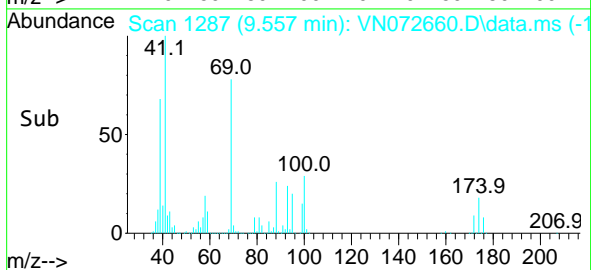
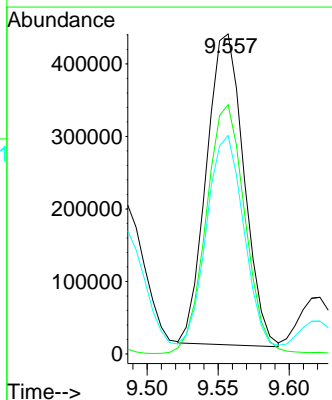
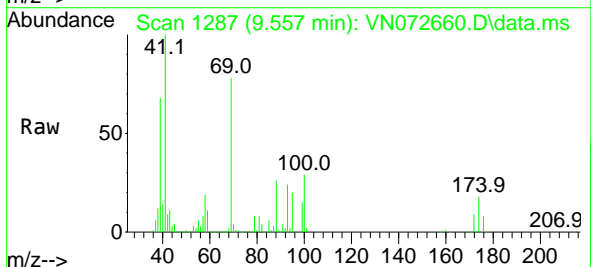
Ion	Ratio	Lower	Upper
88	100		
43	35.4	25.0	37.6
58	71.3	49.4	74.2

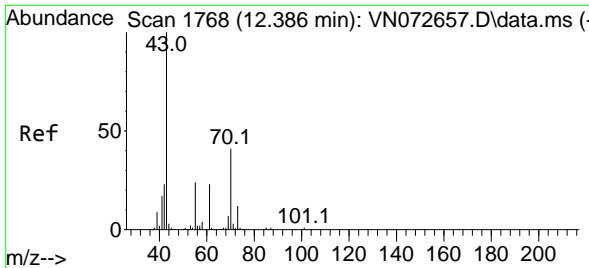


#46
 Methyl methacrylate
 Concen: 168.208 ug/l
 RT: 9.557 min Scan# 1287
 Delta R.T. 0.000 min
 Lab File: VN072660.D
 Acq: 06 Jun 2022 12:29

Tgt Ion: 41 Resp: 785569

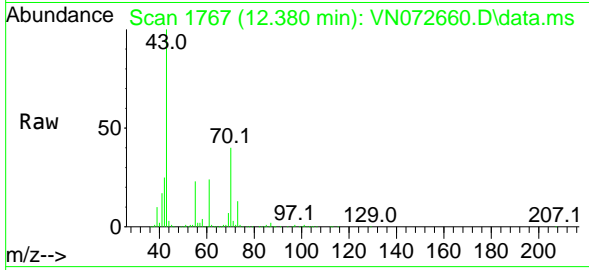
Ion	Ratio	Lower	Upper
41	100		
69	78.9	44.4	133.2
39	67.9	39.9	119.6



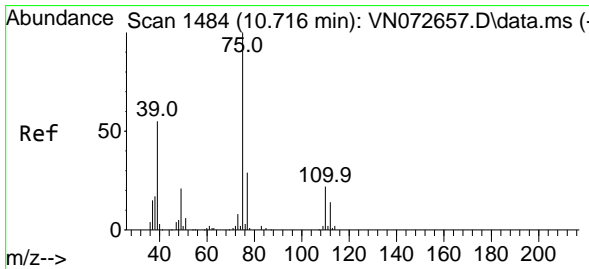
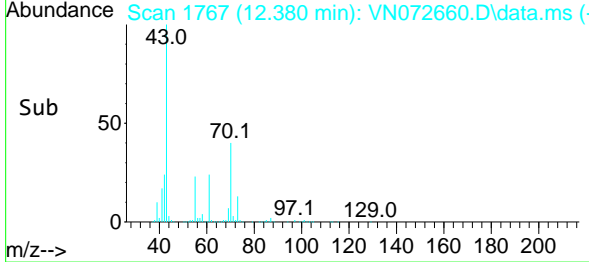
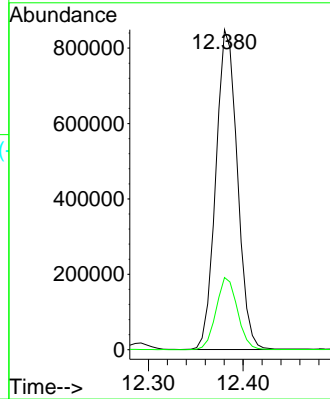


#47
 n-amy1 Acetate
 Concen: 184.861 ug/l
 RT: 12.380 min Scan# 11
 Delta R.T. -0.006 min
 Lab File: VN072660.D
 Acq: 06 Jun 2022 12:29

Instrument :
 MSVOA_N
 ClientSampleId :
 VSTDIC150

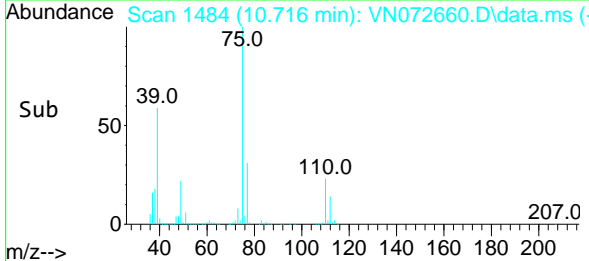
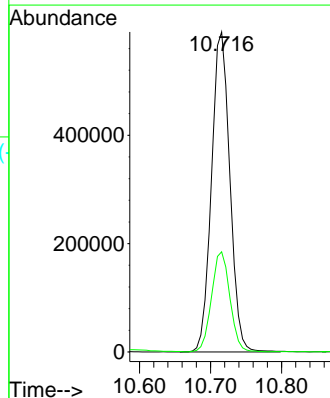
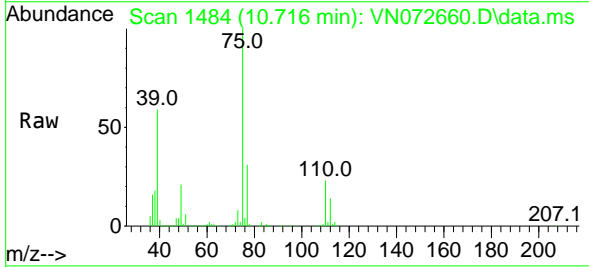


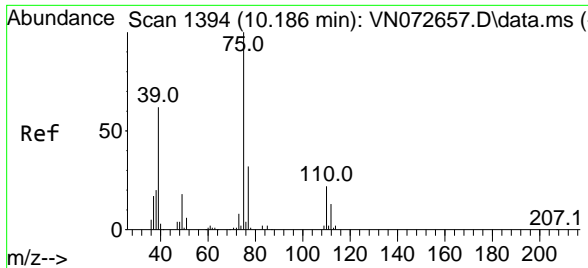
Tgt Ion: 43 Resp: 1342415
 Ion Ratio Lower Upper
 43 100
 55 22.3 19.0 28.6



#48
 t-1,3-Dichloropropene
 Concen: 184.752 ug/l
 RT: 10.716 min Scan# 1484
 Delta R.T. 0.000 min
 Lab File: VN072660.D
 Acq: 06 Jun 2022 12:29

Tgt Ion: 75 Resp: 1060018
 Ion Ratio Lower Upper
 75 100
 77 31.2 25.3 37.9





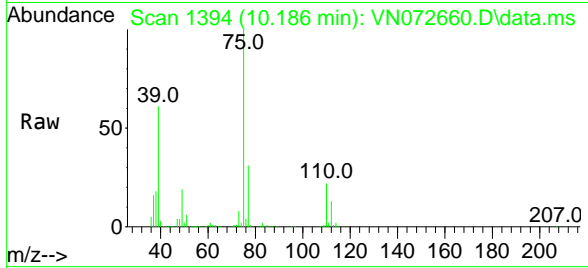
#49
 cis-1,3-Dichloropropene
 Concen: 170.206 ug/l
 RT: 10.186 min Scan# 111
 Delta R.T. 0.000 min
 Lab File: VN072660.D
 Acq: 06 Jun 2022 12:29

Instrument :

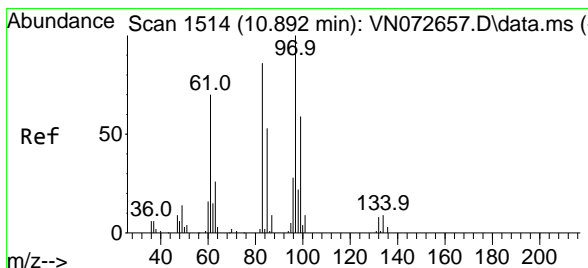
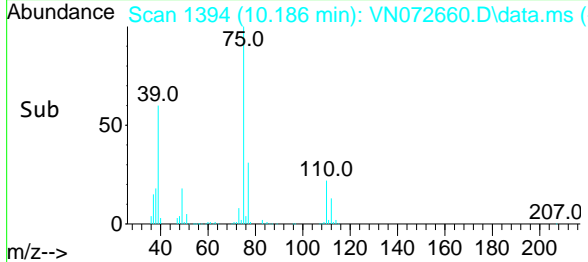
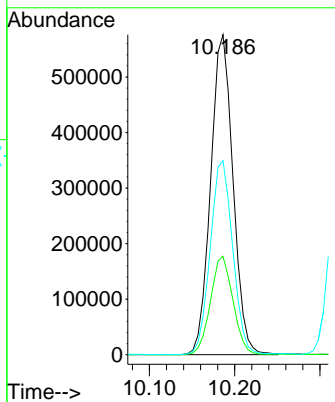
MSVOA_N

ClientSampleId :

VSTDIC150

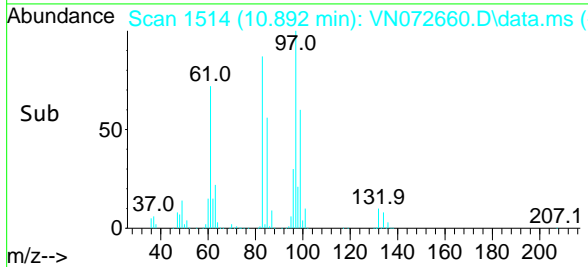
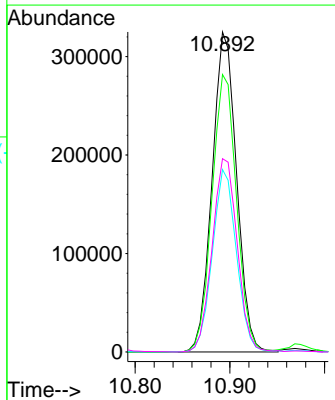
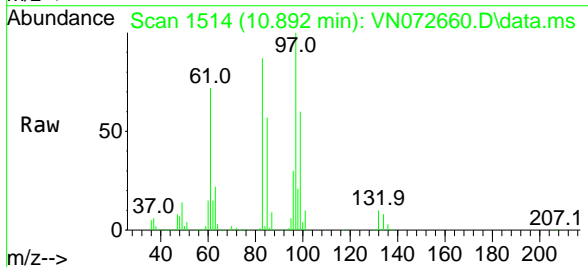


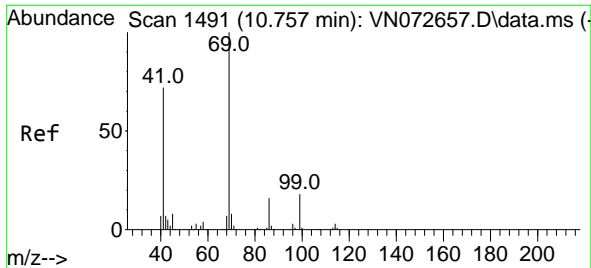
Tgt Ion: 75 Resp: 1050589
 Ion Ratio Lower Upper
 75 100
 77 30.8 25.3 37.9
 39 60.6 46.2 69.4



#50
 1,1,2-Trichloroethane
 Concen: 155.260 ug/l
 RT: 10.892 min Scan# 1514
 Delta R.T. 0.000 min
 Lab File: VN072660.D
 Acq: 06 Jun 2022 12:29

Tgt Ion: 97 Resp: 583374
 Ion Ratio Lower Upper
 97 100
 83 86.6 67.2 100.8
 85 56.9 43.0 64.4
 99 60.4 49.0 73.4



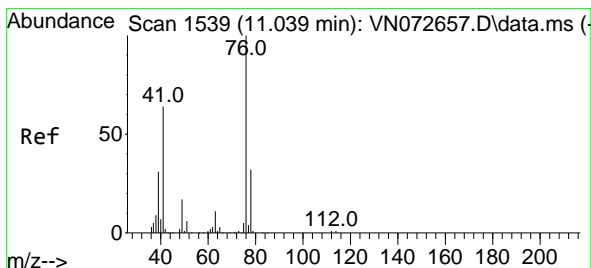
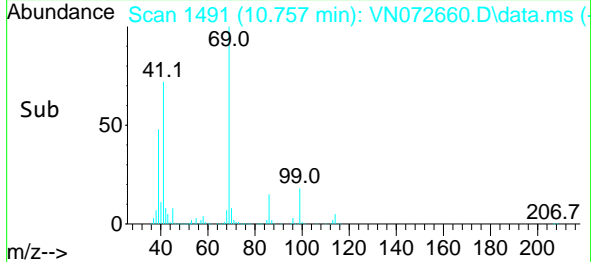
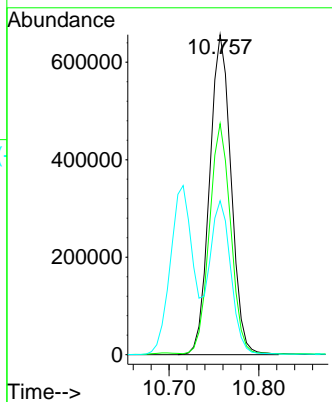
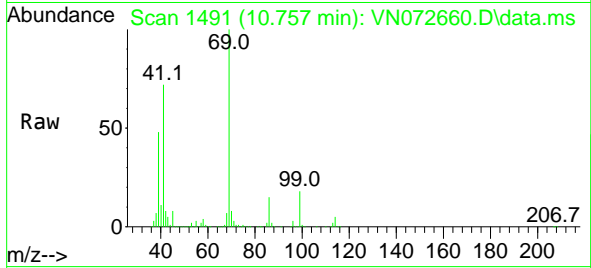


#51
 Ethyl methacrylate
 Concen: 169.725 ug/l
 RT: 10.757 min Scan# 1491
 Delta R.T. 0.000 min
 Lab File: VN072660.D
 Acq: 06 Jun 2022 12:29

Instrument : MSVOA_N
 ClientSampleId : VSTDICC150

Tgt Ion: 69 Resp: 1092690

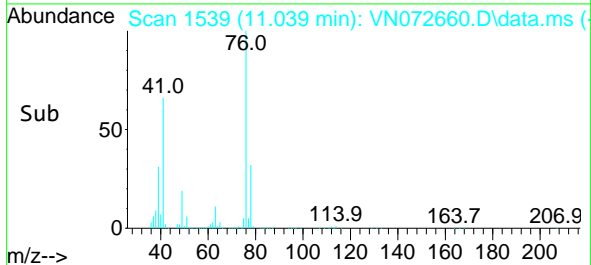
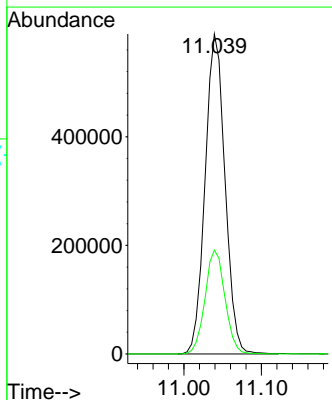
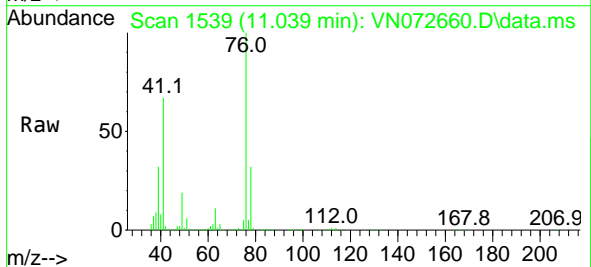
Ion	Ratio	Lower	Upper
69	100		
41	71.9	33.0	98.9
39	47.9	25.4	76.4

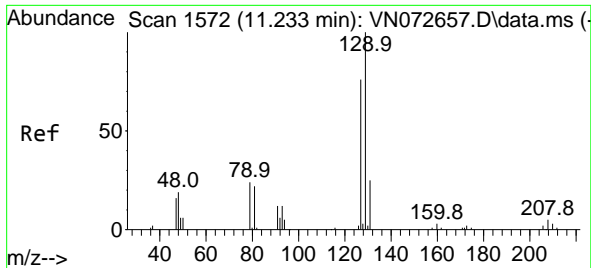


#52
 1,3-Dichloropropane
 Concen: 157.857 ug/l
 RT: 11.039 min Scan# 1539
 Delta R.T. 0.000 min
 Lab File: VN072660.D
 Acq: 06 Jun 2022 12:29

Tgt Ion: 76 Resp: 1050660

Ion	Ratio	Lower	Upper
76	100		
78	32.6	0.0	65.4





#53
 Dibromochloromethane
 Concen: 171.486 ug/l
 RT: 11.233 min Scan# 1572
 Delta R.T. 0.000 min
 Lab File: VN072660.D
 Acq: 06 Jun 2022 12:29

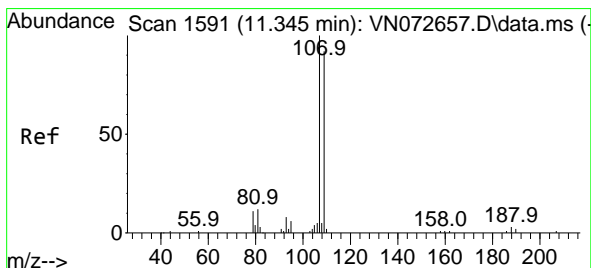
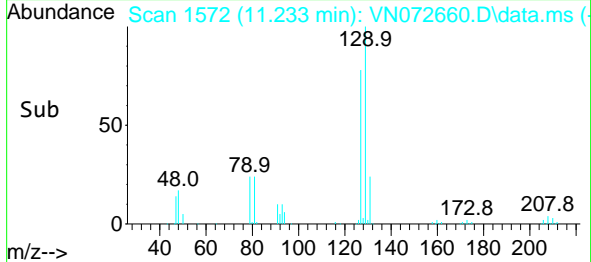
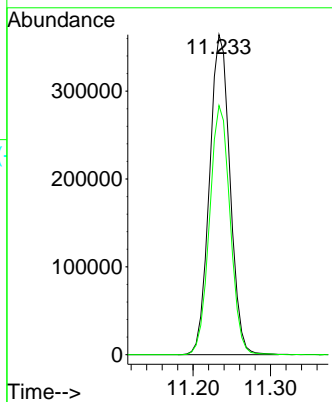
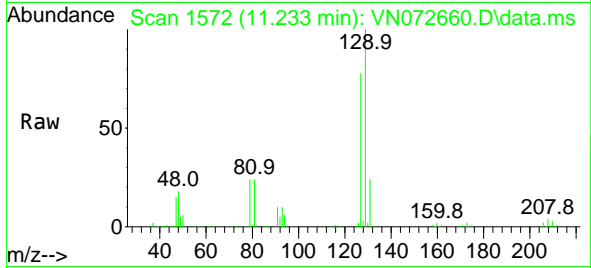
Instrument :

MSVOA_N

ClientSampleId :

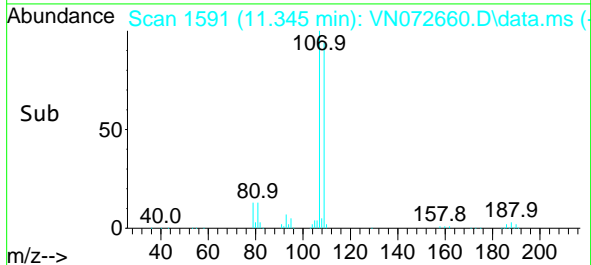
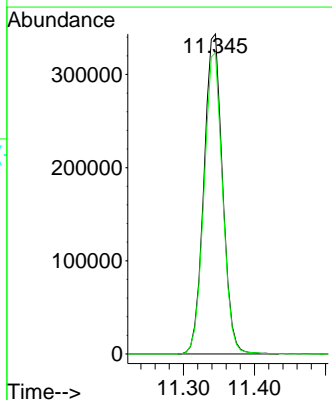
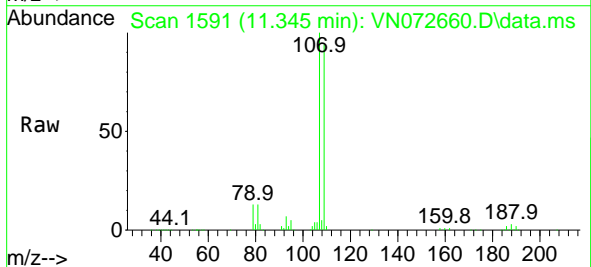
VSTDIC150

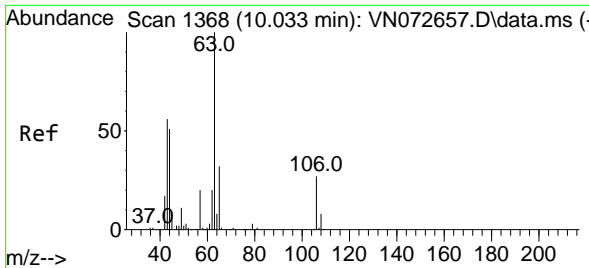
Tgt Ion:129 Resp: 670797
 Ion Ratio Lower Upper
 129 100
 127 77.7 39.0 117.0



#54
 1,2-Dibromoethane
 Concen: 162.396 ug/l
 RT: 11.345 min Scan# 1591
 Delta R.T. 0.000 min
 Lab File: VN072660.D
 Acq: 06 Jun 2022 12:29

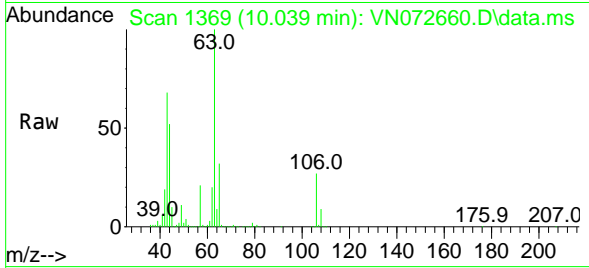
Tgt Ion:107 Resp: 627481
 Ion Ratio Lower Upper
 107 100
 109 93.8 72.8 109.2



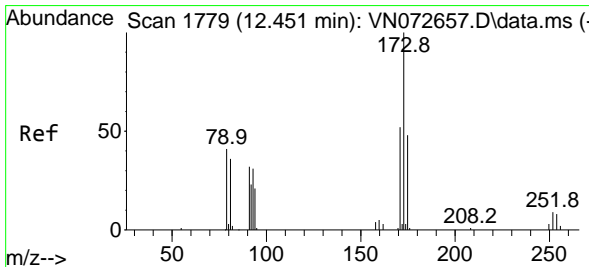
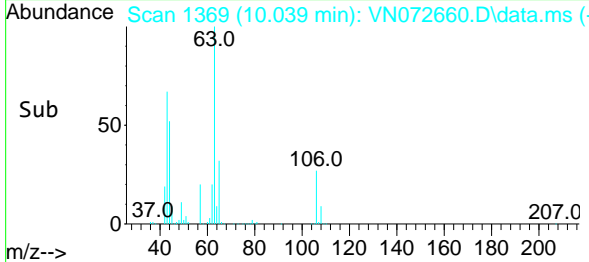
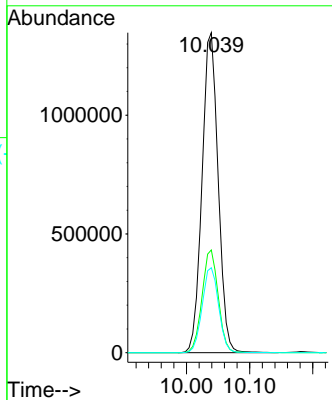


#55
 2-Chloroethyl vinyl ether
 Concen: 861.412 ug/l
 RT: 10.039 min Scan# 11
 Delta R.T. 0.006 min
 Lab File: VN072660.D
 Acq: 06 Jun 2022 12:29

Instrument : MSVOA_N
 ClientSampleId : VSTDIC150

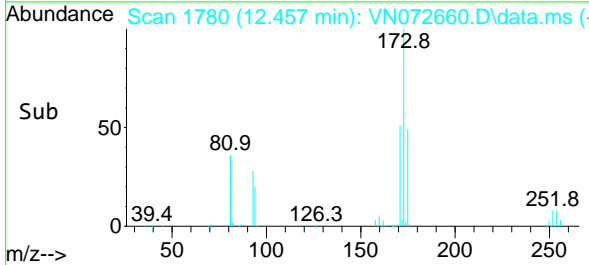
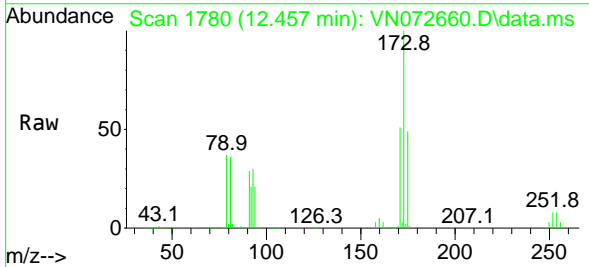
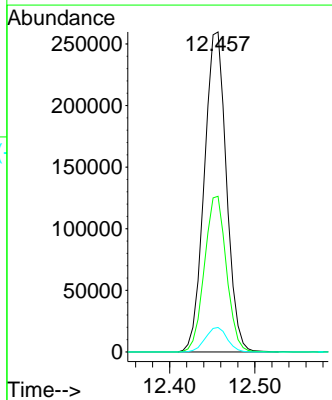


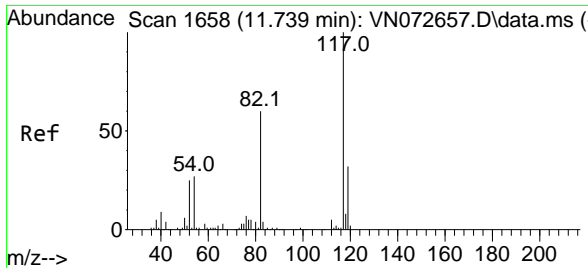
Tgt Ion: 63 Resp: 2385597
 Ion Ratio Lower Upper
 63 100
 65 32.1 25.4 38.0
 106 27.1 23.2 34.8



#56
 Bromoform
 Concen: 168.596 ug/l
 RT: 12.457 min Scan# 1780
 Delta R.T. 0.006 min
 Lab File: VN072660.D
 Acq: 06 Jun 2022 12:29

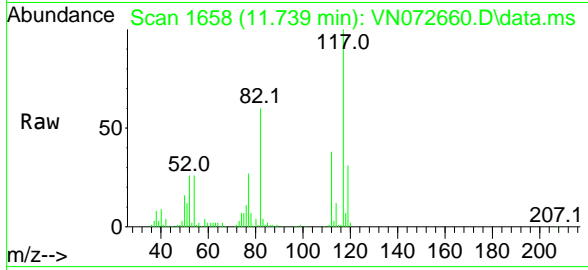
Tgt Ion: 173 Resp: 468209
 Ion Ratio Lower Upper
 173 100
 175 48.3 38.6 58.0
 254 7.6 0.0 0.0#





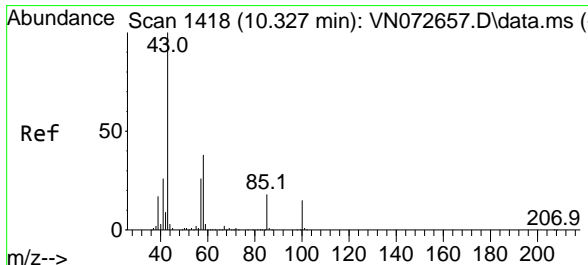
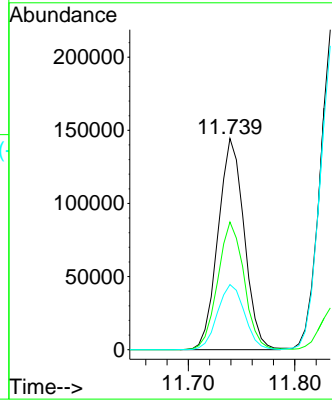
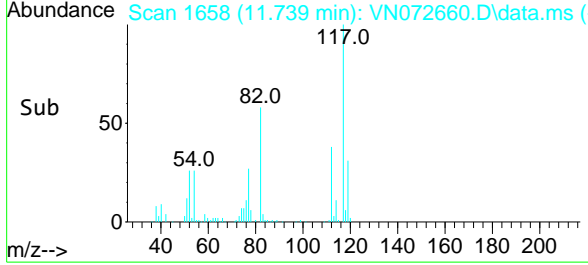
#57
 Chlorobenzene-d5
 Concen: 30.000 ug/l
 RT: 11.739 min Scan# 117
 Delta R.T. 0.000 min
 Lab File: VN072660.D
 Acq: 06 Jun 2022 12:29

Instrument : MSVOA_N
 ClientSampleId : VSTDIC150

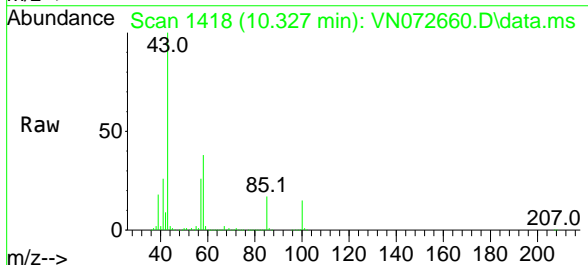


Tgt Ion:117 Resp: 246319

Ion	Ratio	Lower	Upper
117	100		
82	60.9	43.6	65.4
119	31.8	25.8	38.6

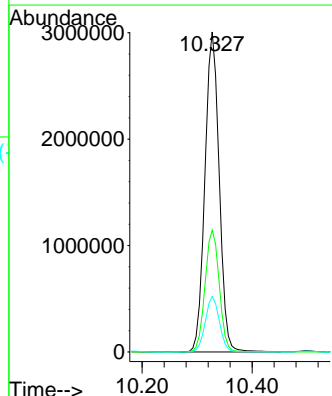
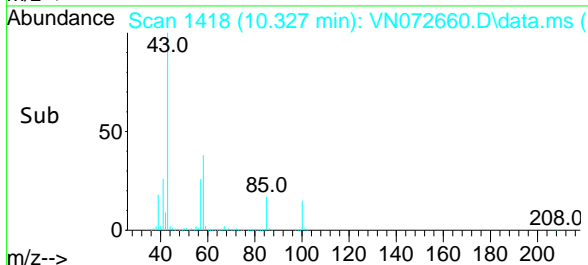


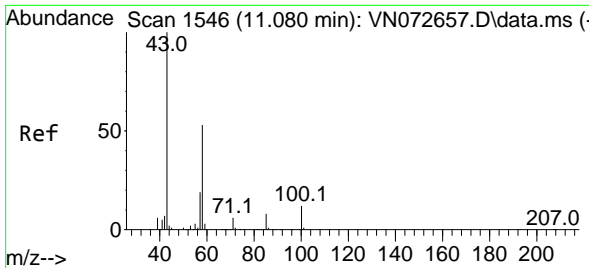
#58
 4-Methyl-2-Pentanone
 Concen: 764.235 ug/l
 RT: 10.327 min Scan# 1418
 Delta R.T. 0.000 min
 Lab File: VN072660.D
 Acq: 06 Jun 2022 12:29



Tgt Ion: 43 Resp: 5421190

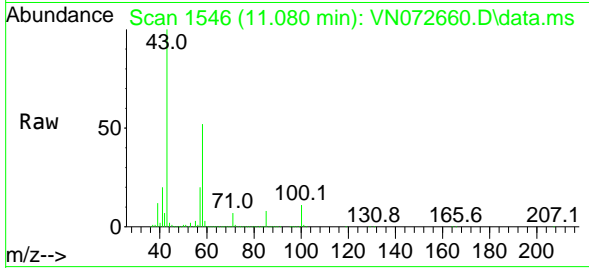
Ion	Ratio	Lower	Upper
43	100		
58	38.0	30.0	45.0
85	17.1	15.0	22.6



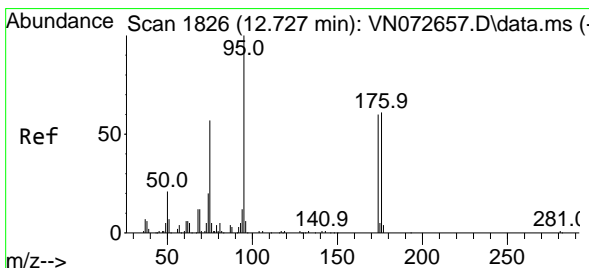
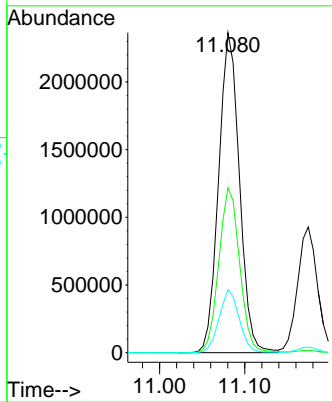
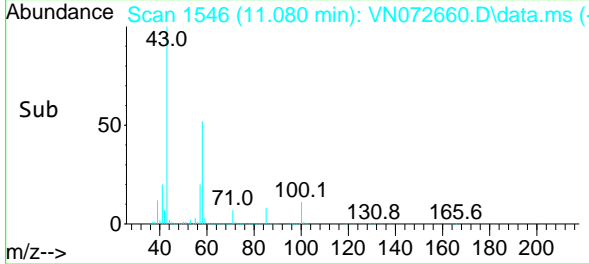


#59
 2-Hexanone
 Concen: 785.106 ug/l
 RT: 11.080 min Scan# 1100
 Delta R.T. 0.000 min
 Lab File: VN072660.D
 Acq: 06 Jun 2022 12:29

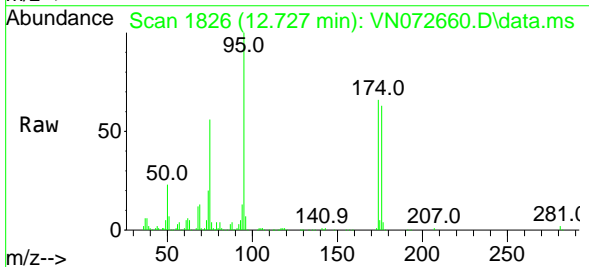
Instrument : MSVOA_N
 ClientSampleId : VSTDIC150



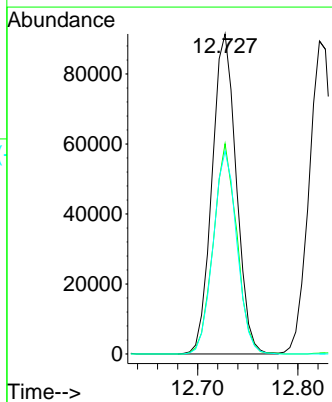
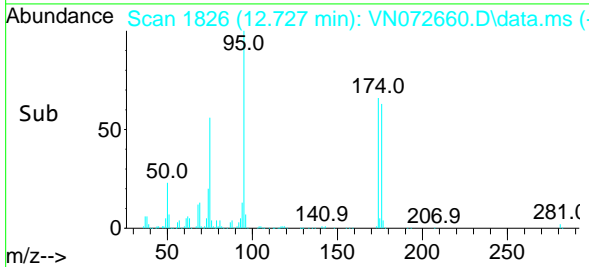
Tgt Ion: 43 Resp: 4010758
 Ion Ratio Lower Upper
 43 100
 58 51.7 42.2 63.2
 57 19.2 15.0 22.4

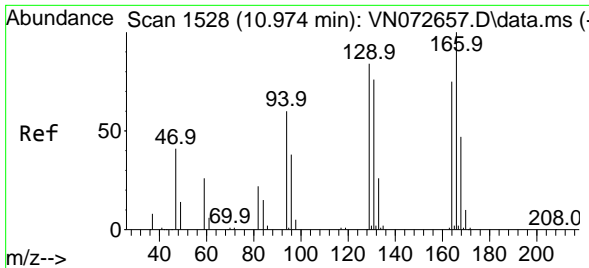


#60
 4-Bromofluorobenzene
 Concen: 34.617 ug/l
 RT: 12.727 min Scan# 1826
 Delta R.T. 0.000 min
 Lab File: VN072660.D
 Acq: 06 Jun 2022 12:29



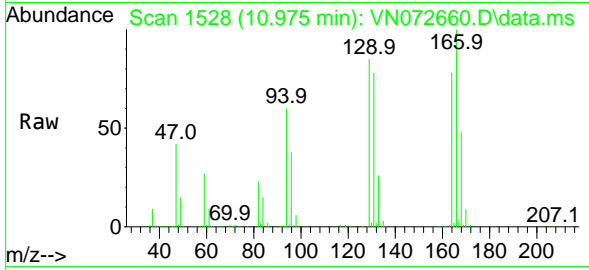
Tgt Ion: 95 Resp: 153565
 Ion Ratio Lower Upper
 95 100
 174 63.6 62.9 94.3
 176 62.3 61.0 91.4



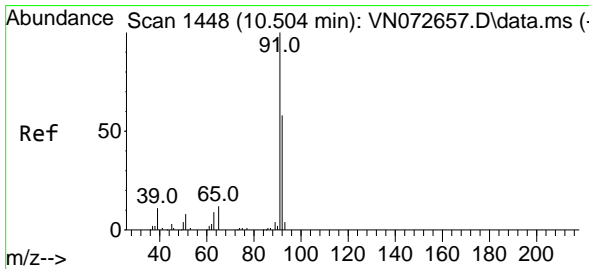
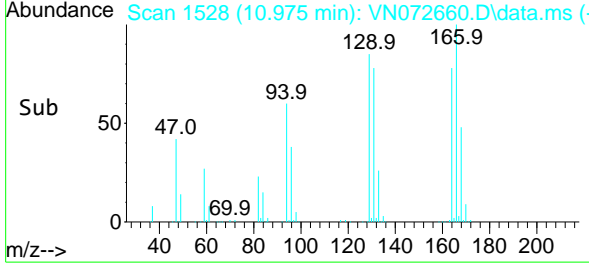
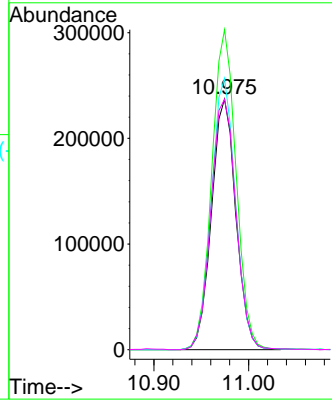


#61
 Tetrachloroethene
 Concen: 134.196 ug/l
 RT: 10.975 min Scan# 11
 Delta R.T. 0.000 min
 Lab File: VN072660.D
 Acq: 06 Jun 2022 12:29

Instrument :
 MSVOA_N
 ClientSampleId :
 VSTDIC150

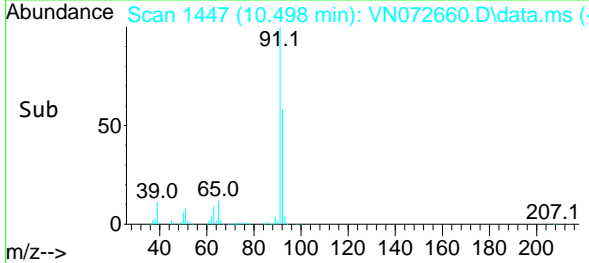
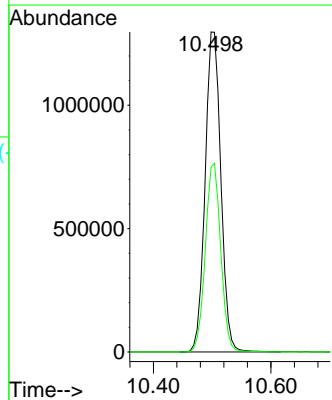
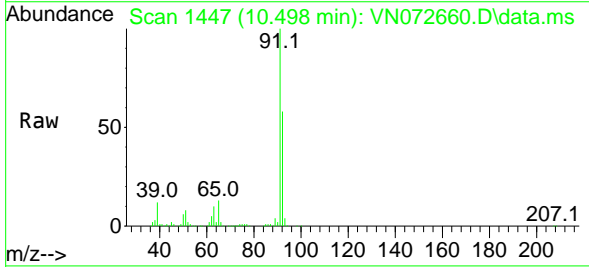


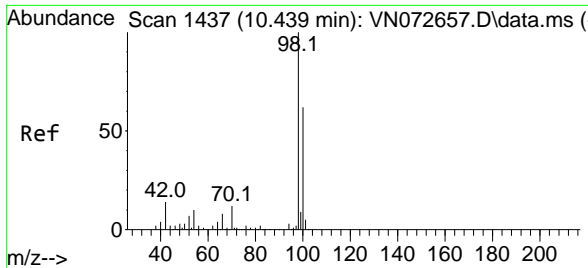
Tgt Ion:164 Resp: 422883
 Ion Ratio Lower Upper
 164 100
 166 127.7 105.8 158.8
 129 108.2 82.5 123.7
 131 99.9 81.2 121.8



#62
 Toluene
 Concen: 144.057 ug/l
 RT: 10.498 min Scan# 1447
 Delta R.T. -0.006 min
 Lab File: VN072660.D
 Acq: 06 Jun 2022 12:29

Tgt Ion: 91 Resp: 2419805
 Ion Ratio Lower Upper
 91 100
 92 57.8 44.6 67.0

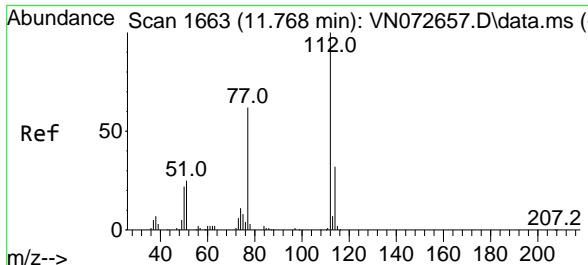
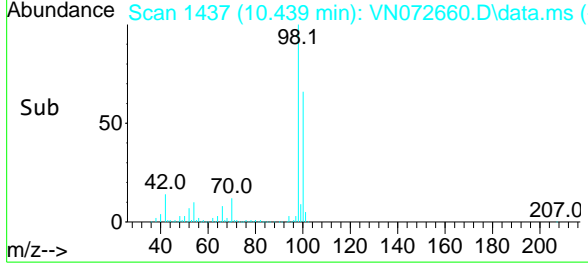
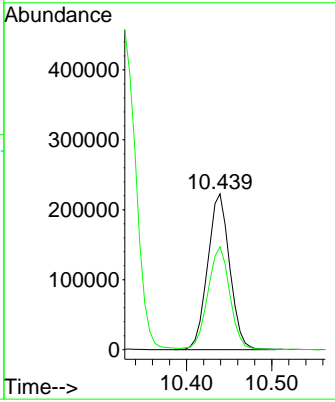
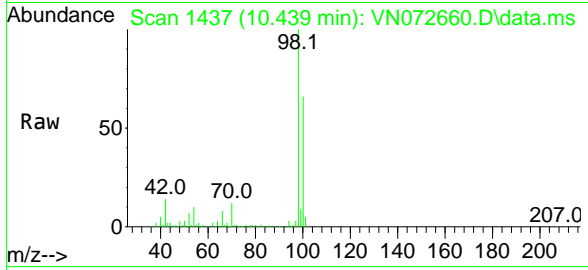




#63
 Toluene-d8
 Concen: 28.657 ug/l
 RT: 10.439 min Scan# 1437
 Delta R.T. 0.000 min
 Lab File: VN072660.D
 Acq: 06 Jun 2022 12:29

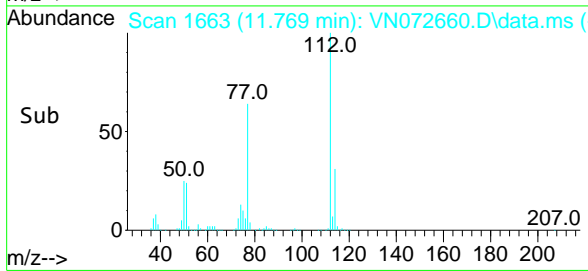
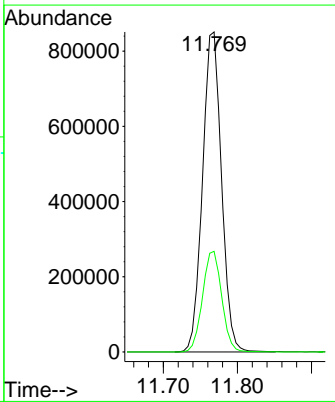
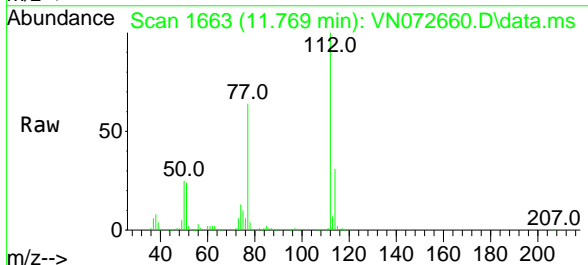
Instrument : MSVOA_N
 ClientSampleId : VSTDIC150

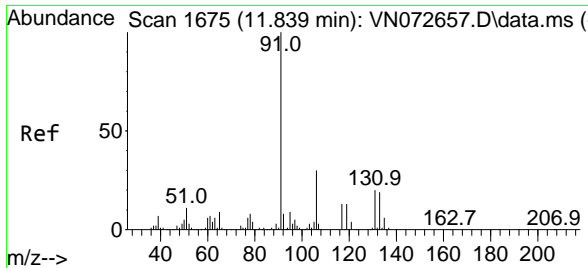
Tgt Ion: 98 Resp: 400201
 Ion Ratio Lower Upper
 98 100
 100 66.0 50.6 76.0



#64
 Chlorobenzene
 Concen: 153.094 ug/l
 RT: 11.769 min Scan# 1663
 Delta R.T. 0.000 min
 Lab File: VN072660.D
 Acq: 06 Jun 2022 12:29

Tgt Ion:112 Resp: 1512512
 Ion Ratio Lower Upper
 112 100
 114 31.5 25.8 38.6

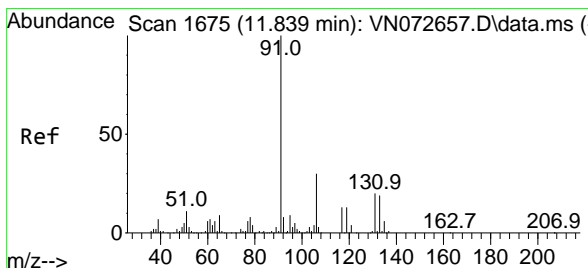
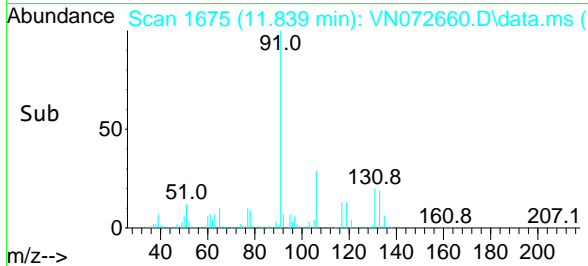
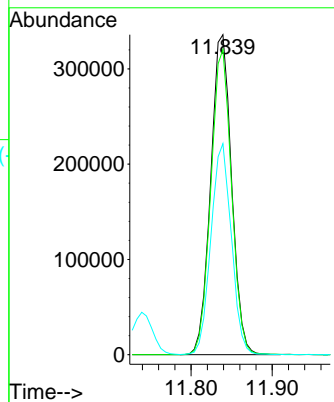
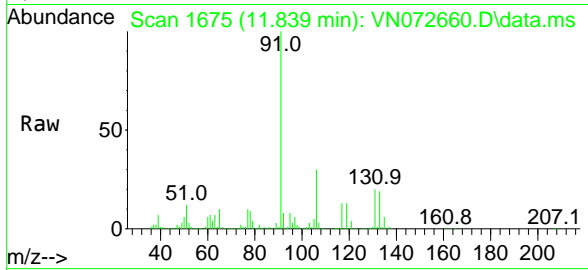




#65
 1,1,1,2-Tetrachloroethane
 Concen: 153.038 ug/l
 RT: 11.839 min Scan# 1675
 Delta R.T. 0.000 min
 Lab File: VN072660.D
 Acq: 06 Jun 2022 12:29

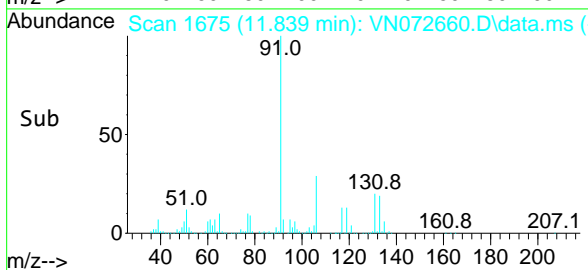
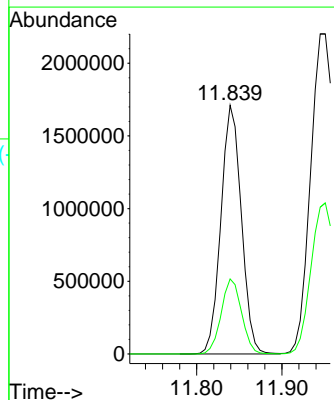
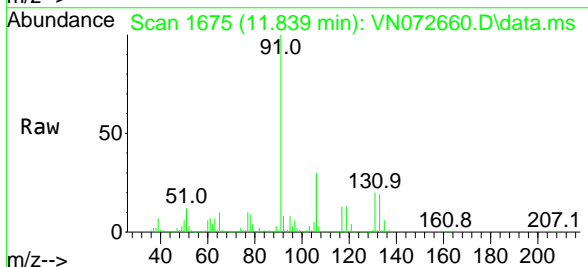
Instrument : MSVOA_N
 ClientSampleId : VSTDIC150

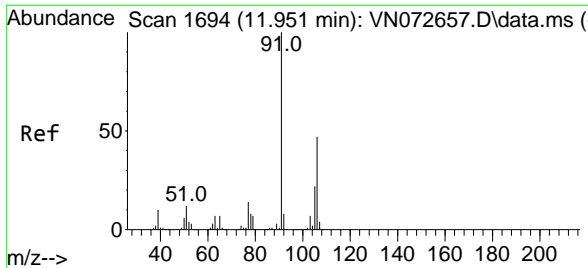
Tgt Ion:131 Resp: 600917
 Ion Ratio Lower Upper
 131 100
 133 94.1 0.0 191.2
 119 64.2 0.0 128.8



#66
 Ethyl Benzene
 Concen: 150.867 ug/l
 RT: 11.839 min Scan# 1675
 Delta R.T. 0.000 min
 Lab File: VN072660.D
 Acq: 06 Jun 2022 12:29

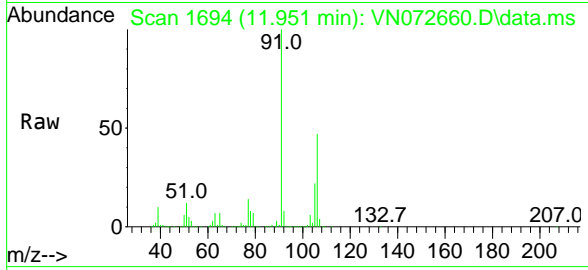
Tgt Ion: 91 Resp: 2849034
 Ion Ratio Lower Upper
 91 100
 106 30.2 24.0 36.0



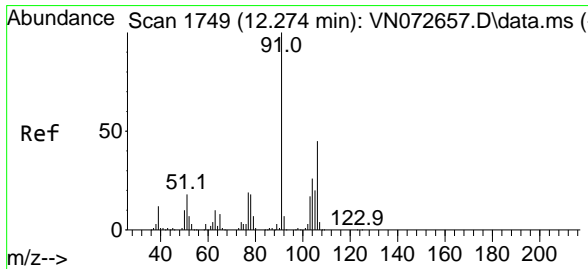
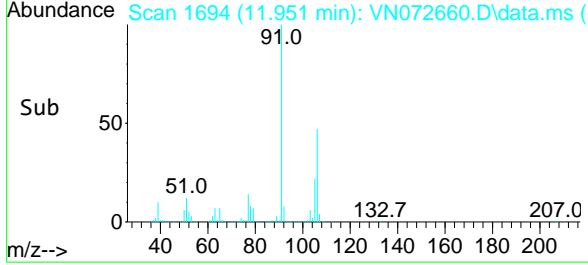
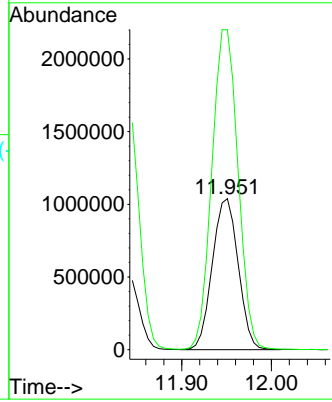


#67
 m/p-Xylenes
 Concen: 306.107 ug/l
 RT: 11.951 min Scan# 1694
 Delta R.T. 0.000 min
 Lab File: VN072660.D
 Acq: 06 Jun 2022 12:29

Instrument : MSVOA_N
 ClientSampleId : VSTDIC150

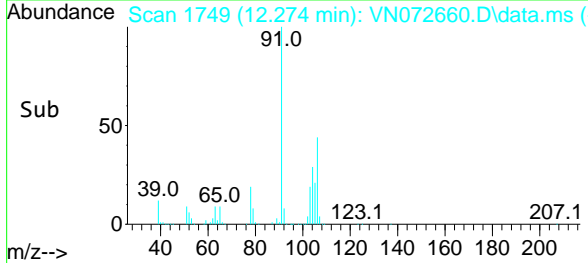
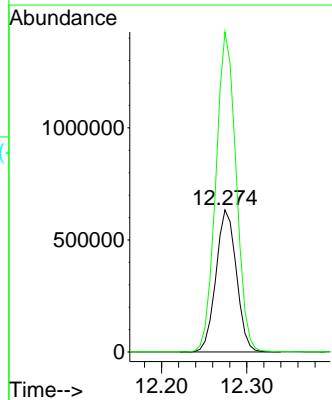
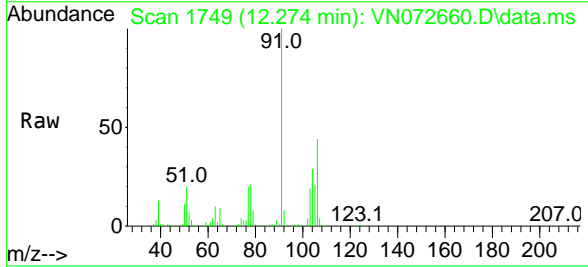


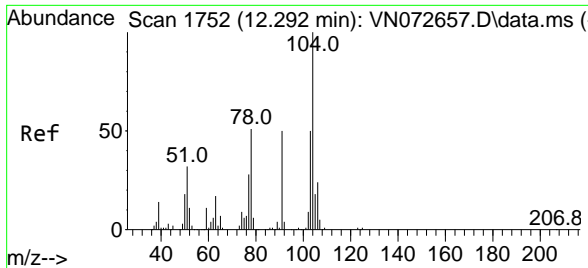
Tgt Ion:106 Resp: 2079962
 Ion Ratio Lower Upper
 106 100
 91 214.5 162.9 244.3



#68
 o-Xylene
 Concen: 155.057 ug/l
 RT: 12.274 min Scan# 1749
 Delta R.T. 0.000 min
 Lab File: VN072660.D
 Acq: 06 Jun 2022 12:29

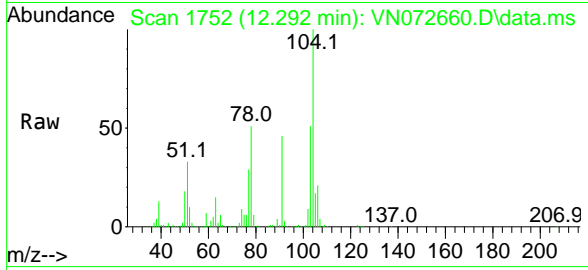
Tgt Ion:106 Resp: 1056886
 Ion Ratio Lower Upper
 106 100
 91 223.4 107.7 323.1





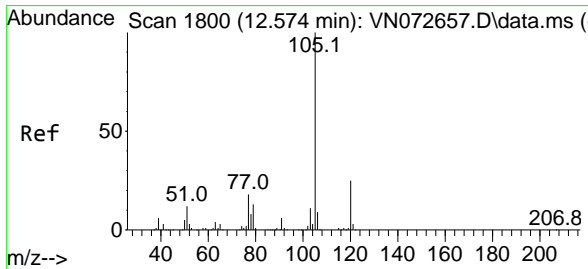
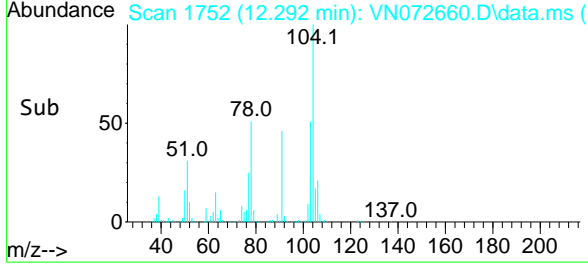
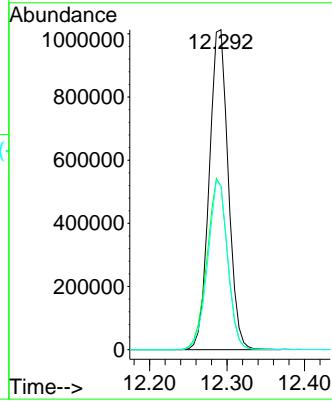
#69
 Styrene
 Concen: 161.106 ug/l
 RT: 12.292 min Scan# 1752
 Delta R.T. 0.000 min
 Lab File: VN072660.D
 Acq: 06 Jun 2022 12:29

Instrument : MSVOA_N
 ClientSampleId : VSTDIC150



Tgt Ion:104 Resp: 1733674

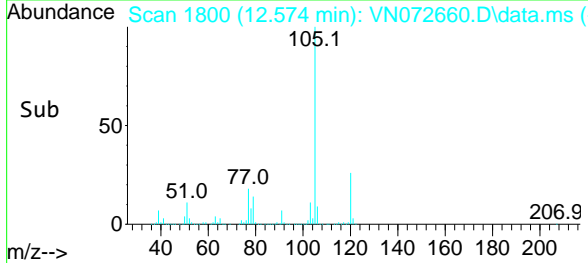
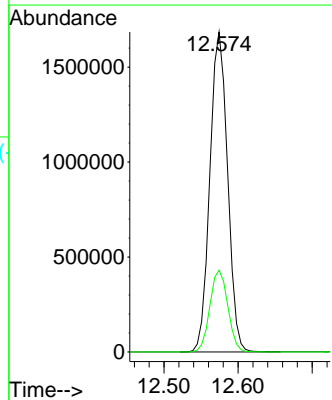
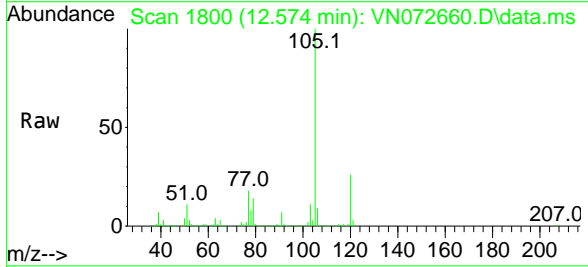
Ion	Ratio	Lower	Upper
104	100		
78	57.3	40.7	61.1
103	55.3	45.8	68.8

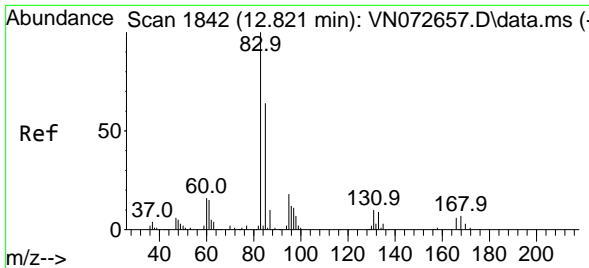


#70
 Isopropylbenzene
 Concen: 160.129 ug/l
 RT: 12.574 min Scan# 1800
 Delta R.T. 0.000 min
 Lab File: VN072660.D
 Acq: 06 Jun 2022 12:29

Tgt Ion:105 Resp: 2793146

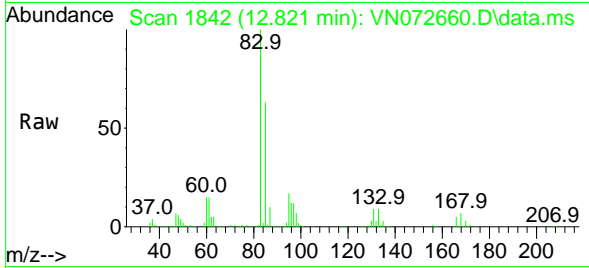
Ion	Ratio	Lower	Upper
105	100		
120	25.9	18.3	34.1



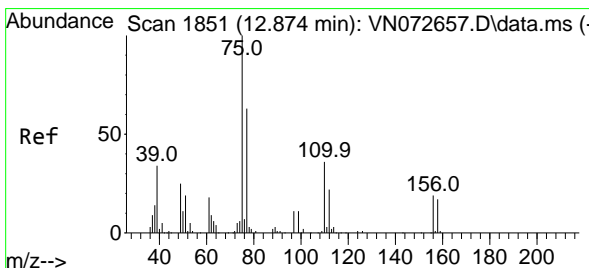
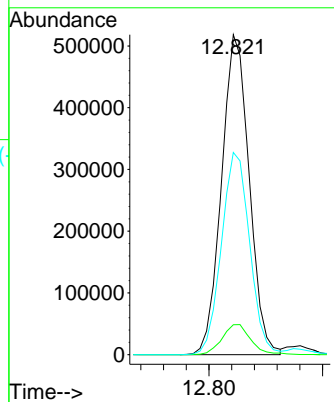
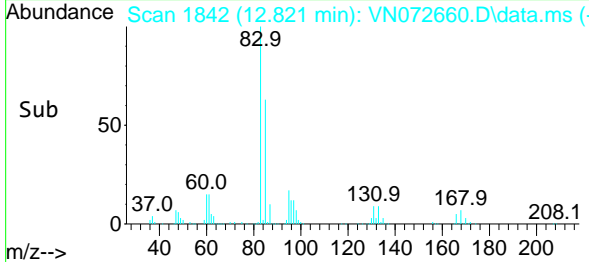


#71
 1,1,2-Tetrachloroethane
 Concen: 146.653 ug/l
 RT: 12.821 min Scan# 1842
 Delta R.T. 0.000 min
 Lab File: VN072660.D
 Acq: 06 Jun 2022 12:29

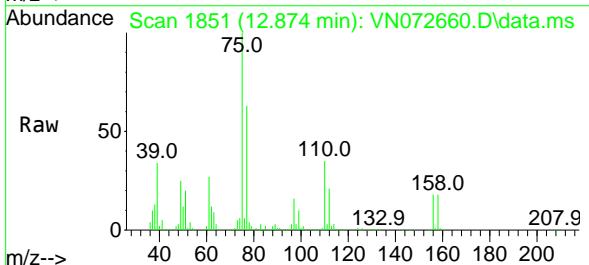
Instrument : MSVOA_N
 ClientSampleId : VSTDIC150



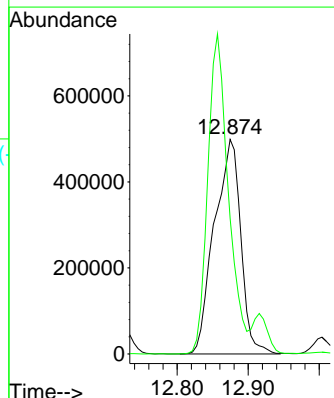
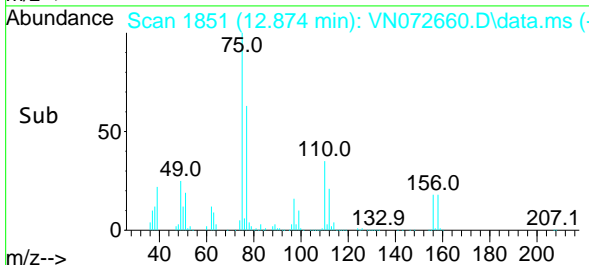
Tgt Ion: 83 Resp: 876736
 Ion Ratio Lower Upper
 83 100
 131 9.9 5.1 15.3
 85 64.5 33.1 99.2

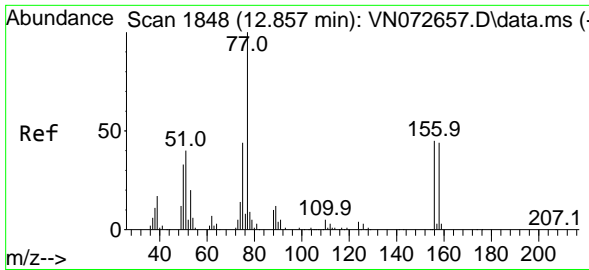


#72
 1,2,3-Trichloropropane
 Concen: 227.570 ug/l
 RT: 12.874 min Scan# 1851
 Delta R.T. 0.000 min
 Lab File: VN072660.D
 Acq: 06 Jun 2022 12:29



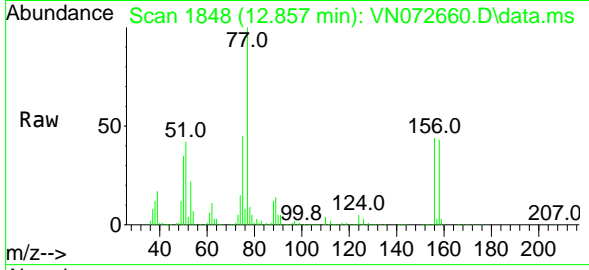
Tgt Ion: 75 Resp: 1288204
 Ion Ratio Lower Upper
 75 100
 77 115.9 0.0 378.0



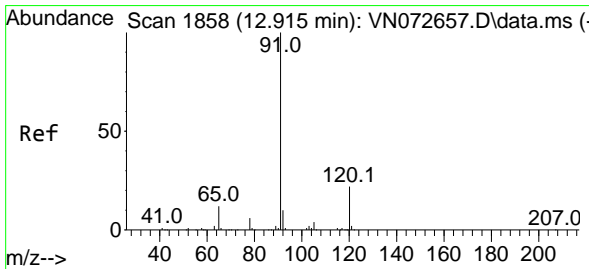
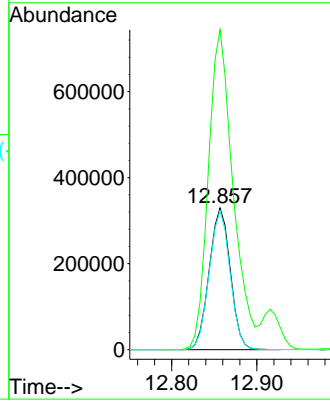
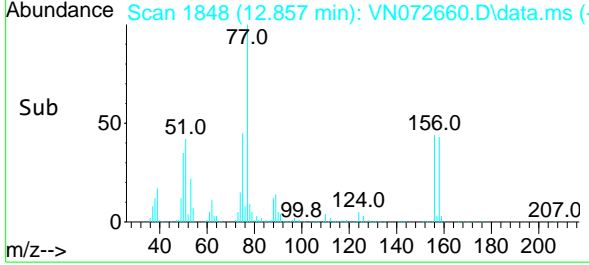


#73
 Bromobenzene
 Concen: 151.095 ug/l
 RT: 12.857 min Scan# 1848
 Delta R.T. 0.000 min
 Lab File: VN072660.D
 Acq: 06 Jun 2022 12:29

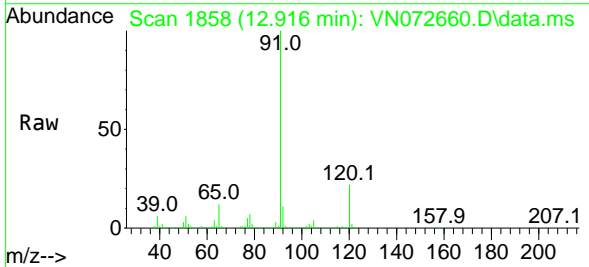
Instrument :
 MSVOA_N
 ClientSampleId :
 VSTDICC150



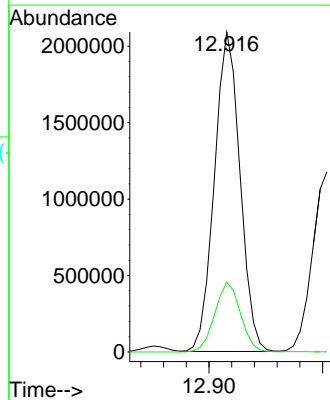
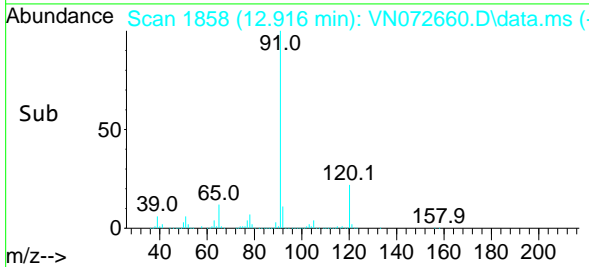
Tgt Ion:156 Resp: 568240
 Ion Ratio Lower Upper
 156 100
 77 262.7 0.0 416.0
 158 96.9 0.0 195.4

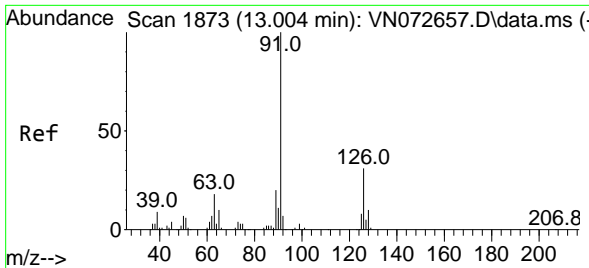


#74
 n-propylbenzene
 Concen: 165.249 ug/l
 RT: 12.916 min Scan# 1858
 Delta R.T. 0.000 min
 Lab File: VN072660.D
 Acq: 06 Jun 2022 12:29



Tgt Ion: 91 Resp: 3268530
 Ion Ratio Lower Upper
 91 100
 120 21.9 0.0 45.0

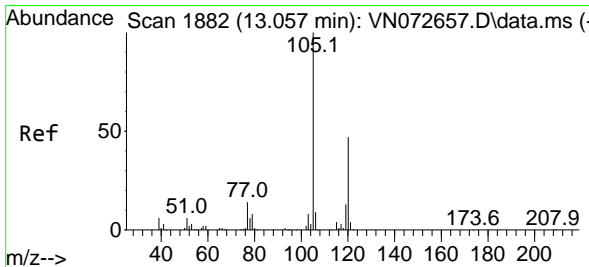
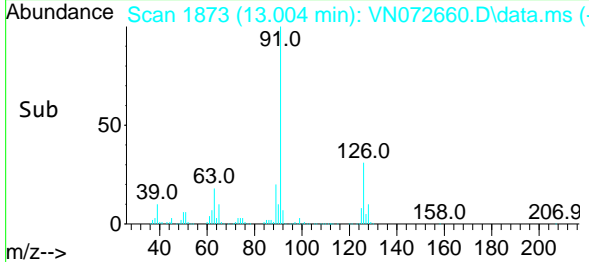
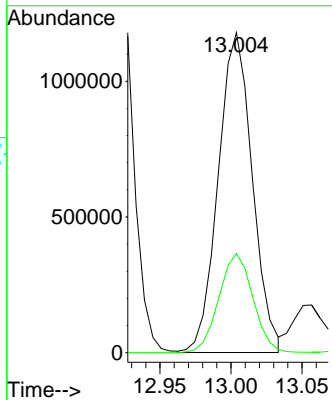
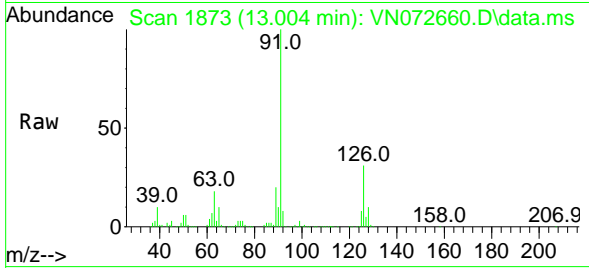




#75
 2-Chlorotoluene
 Concen: 162.996 ug/l
 RT: 13.004 min Scan# 1873
 Delta R.T. 0.000 min
 Lab File: VN072660.D
 Acq: 06 Jun 2022 12:29

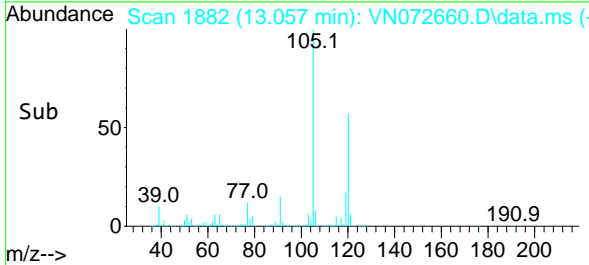
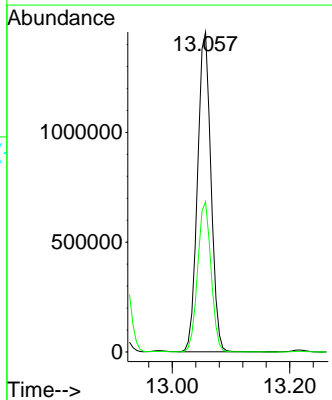
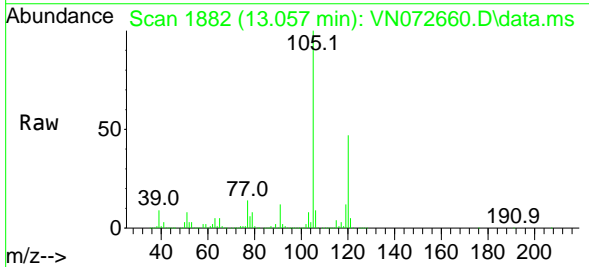
Instrument : MSVOA_N
 ClientSampleId : VSTDIC150

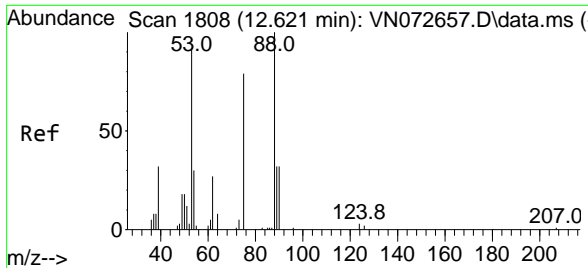
Tgt Ion: 91 Resp: 1967987
 Ion Ratio Lower Upper
 91 100
 126 31.0 0.0 69.8



#76
 1,3,5-Trimethylbenzene
 Concen: 165.908 ug/l
 RT: 13.057 min Scan# 1882
 Delta R.T. 0.000 min
 Lab File: VN072660.D
 Acq: 06 Jun 2022 12:29

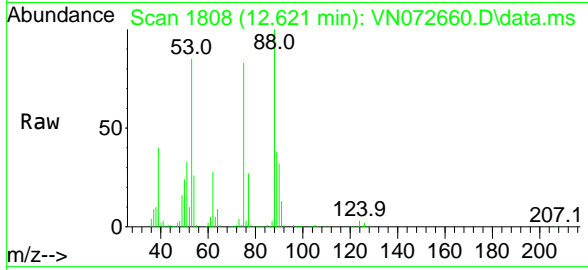
Tgt Ion: 105 Resp: 2305145
 Ion Ratio Lower Upper
 105 100
 120 46.9 0.0 93.8



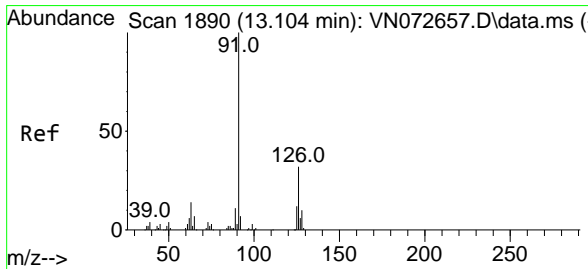
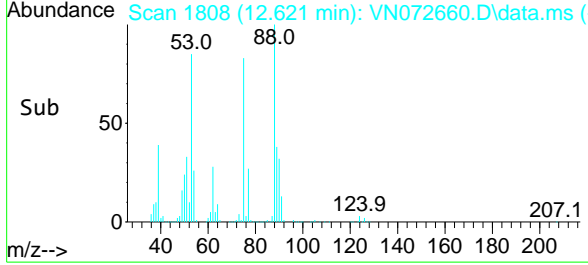
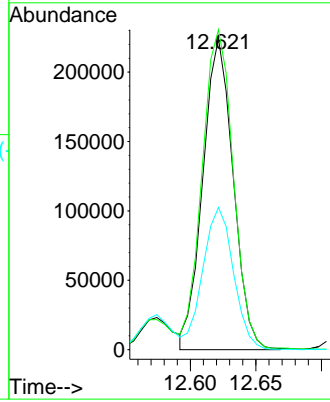


#77
 t-1,4-Dichloro-2-butene
 Concen: 178.546 ug/l
 RT: 12.621 min Scan# 1808
 Delta R.T. 0.000 min
 Lab File: VN072660.D
 Acq: 06 Jun 2022 12:29

Instrument : MSVOA_N
 ClientSampleId : VSTDIC150

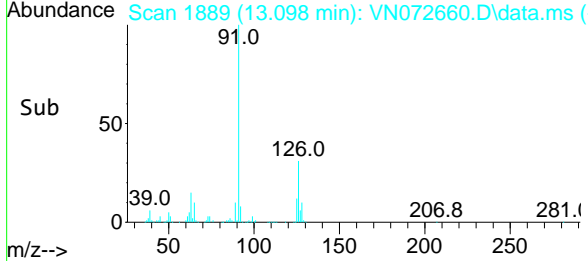
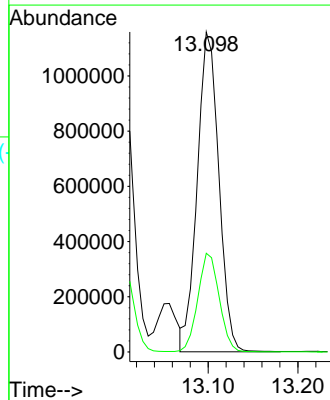
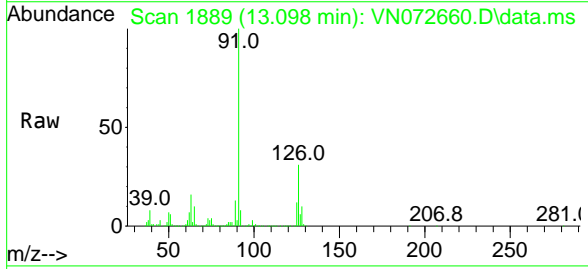


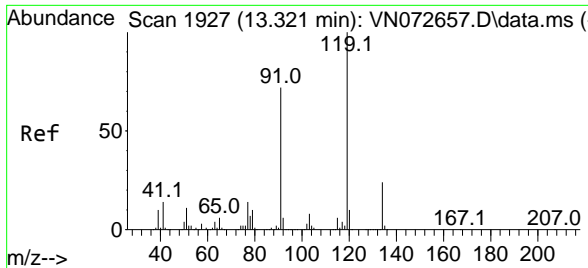
Tgt Ion: 75 Resp: 360748
 Ion Ratio Lower Upper
 75 100
 53 102.5 51.8 155.5
 89 45.7 22.9 68.7



#78
 4-Chlorotoluene
 Concen: 175.067 ug/l
 RT: 13.098 min Scan# 1889
 Delta R.T. -0.006 min
 Lab File: VN072660.D
 Acq: 06 Jun 2022 12:29

Tgt Ion: 91 Resp: 1929243
 Ion Ratio Lower Upper
 91 100
 126 30.7 0.0 70.6



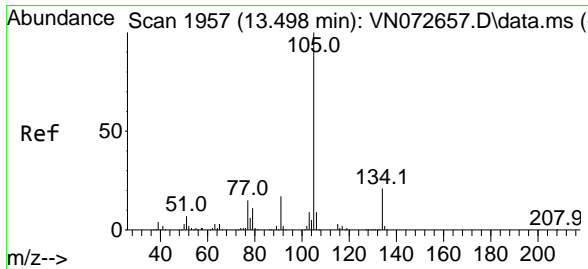
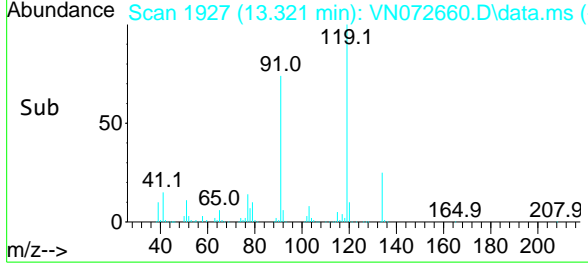
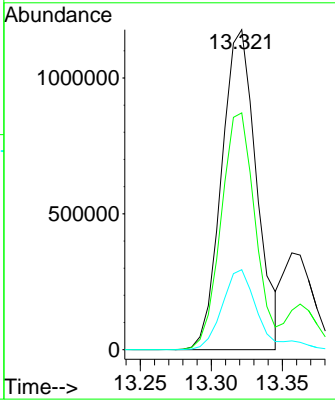
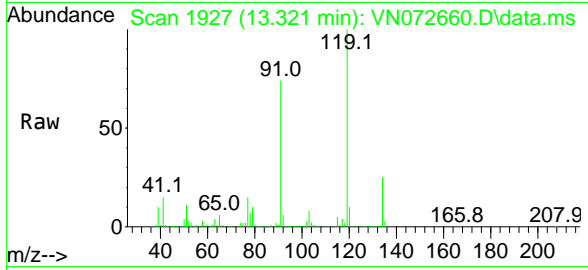


#79
 tert-butylbenzene
 Concen: 166.158 ug/l
 RT: 13.321 min Scan# 1927
 Delta R.T. 0.000 min
 Lab File: VN072660.D
 Acq: 06 Jun 2022 12:29

Instrument : MSVOA_N
 ClientSampleId : VSTDIC150

Tgt Ion:119 Resp: 2019692

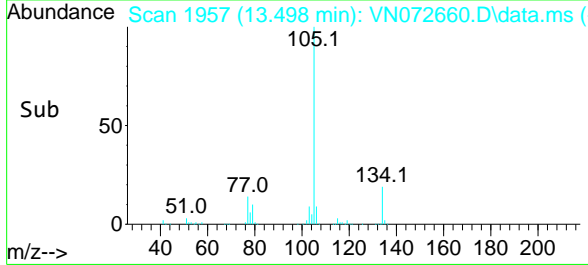
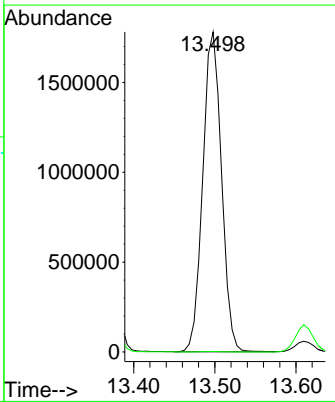
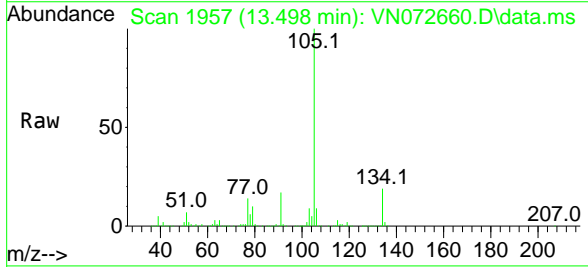
Ion	Ratio	Lower	Upper
119	100		
91	71.8	0.0	137.0
134	24.3	0.0	47.6

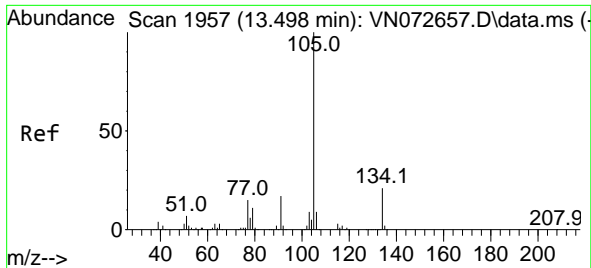


#80
 1,2,4-Trimethylbenzene
 Concen: 203.799 ug/l
 RT: 13.498 min Scan# 1957
 Delta R.T. 0.000 min
 Lab File: VN072660.D
 Acq: 06 Jun 2022 12:29

Tgt Ion:105 Resp: 2850332

Ion	Ratio	Lower	Upper
105	100		
120	0.2	0.0	0.2

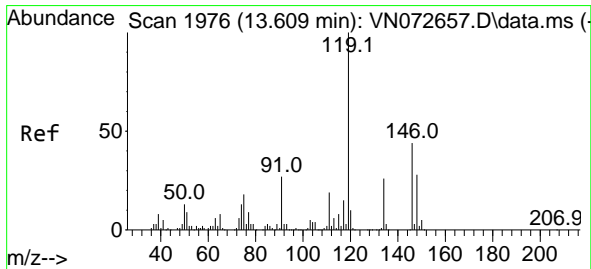
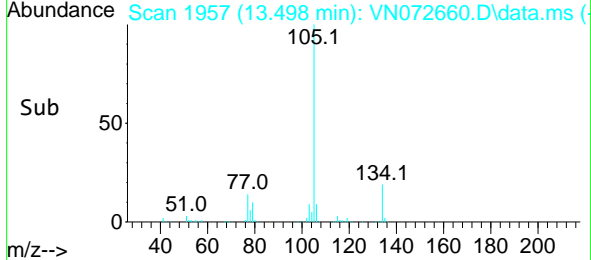
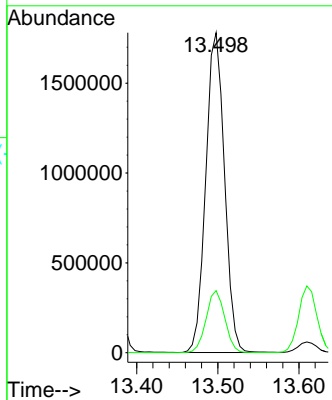
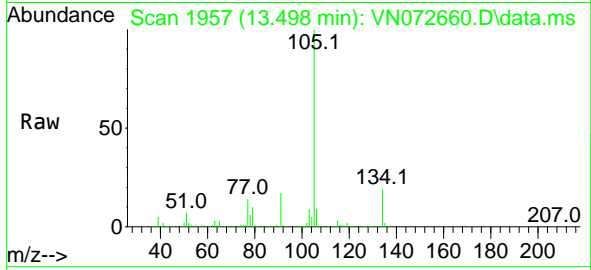




#81
 sec-Butylbenzene
 Concen: 163.233 ug/l
 RT: 13.498 min Scan# 1957
 Delta R.T. 0.000 min
 Lab File: VN072660.D
 Acq: 06 Jun 2022 12:29

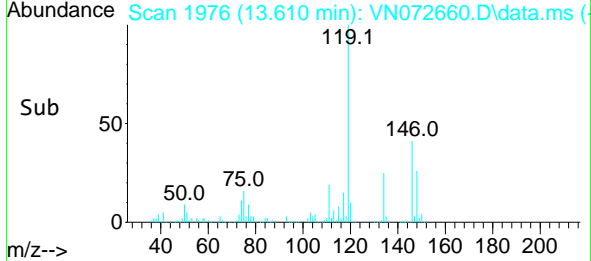
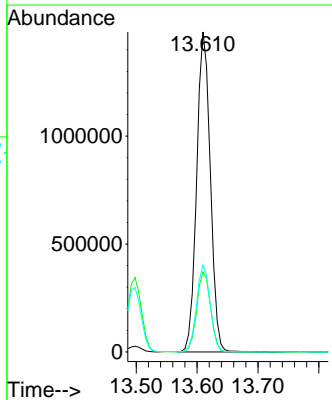
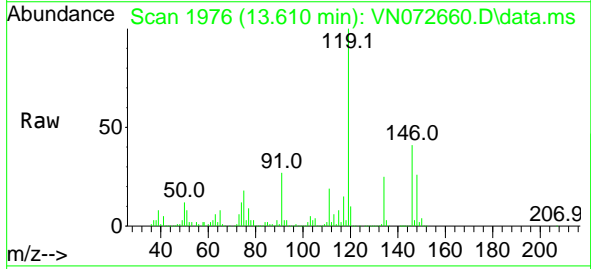
Instrument : MSVOA_N
 ClientSampleId : VSTDIC150

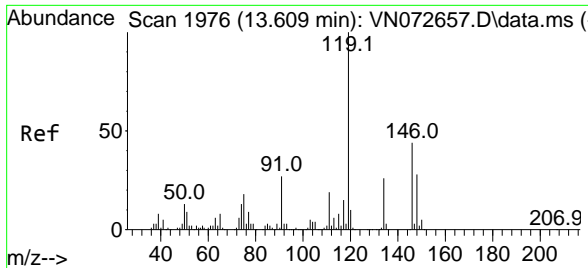
Tgt Ion:105 Resp: 2850332
 Ion Ratio Lower Upper
 105 100
 134 19.4 0.0 39.4



#82
 p-Isopropyltoluene
 Concen: 170.467 ug/l
 RT: 13.610 min Scan# 1976
 Delta R.T. 0.000 min
 Lab File: VN072660.D
 Acq: 06 Jun 2022 12:29

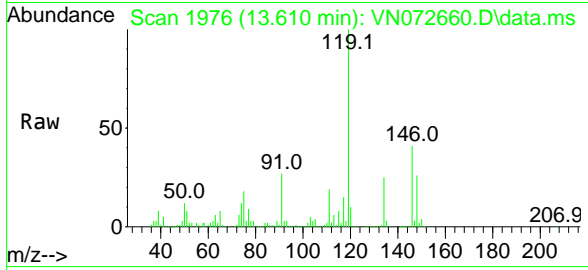
Tgt Ion:119 Resp: 2308805
 Ion Ratio Lower Upper
 119 100
 134 25.2 0.0 51.8
 91 26.8 0.0 50.4





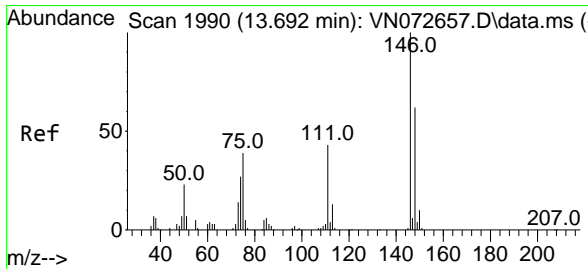
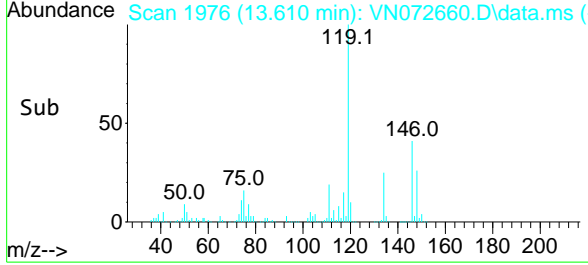
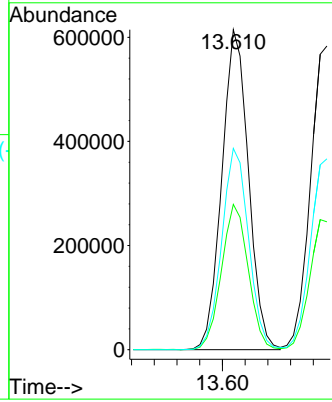
#83
 1,3-Dichlorobenzene
 Concen: 152.616 ug/l
 RT: 13.610 min Scan# 1976
 Delta R.T. 0.000 min
 Lab File: VN072660.D
 Acq: 06 Jun 2022 12:29

Instrument : MSVOA_N
 ClientSampleId : VSTDICC150



Tgt Ion:146 Resp: 1000640

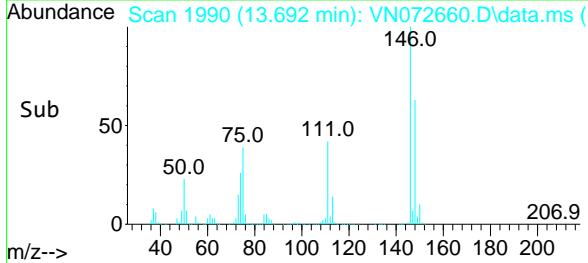
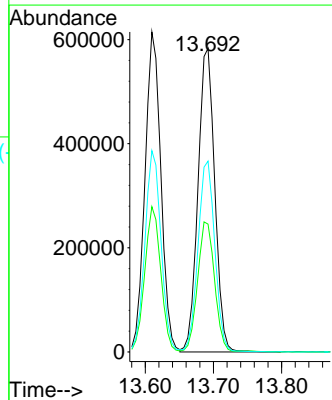
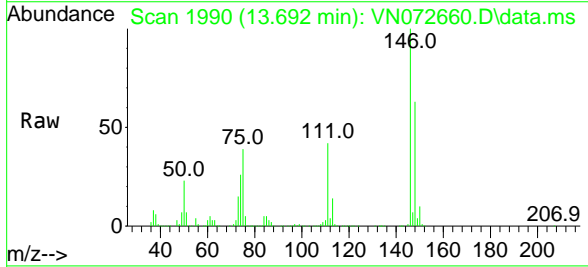
Ion	Ratio	Lower	Upper
146	100		
111	45.6	20.8	62.2
148	63.4	31.4	94.3

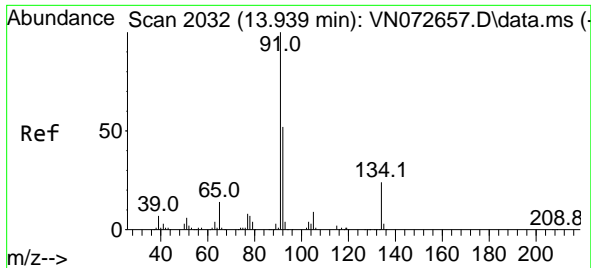


#84
 1,4-Dichlorobenzene
 Concen: 155.933 ug/l
 RT: 13.692 min Scan# 1990
 Delta R.T. 0.000 min
 Lab File: VN072660.D
 Acq: 06 Jun 2022 12:29

Tgt Ion:146 Resp: 994679

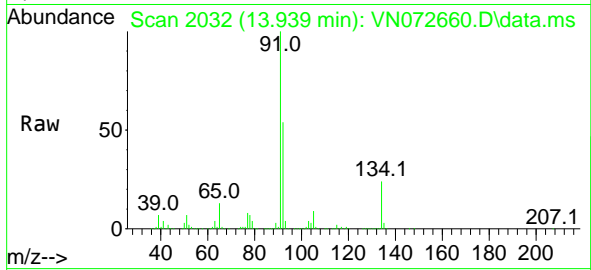
Ion	Ratio	Lower	Upper
146	100		
111	42.7	19.5	58.5
148	63.1	31.1	93.5



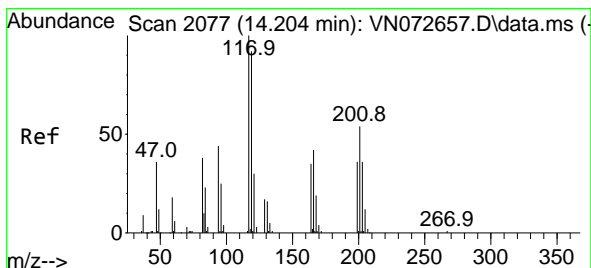
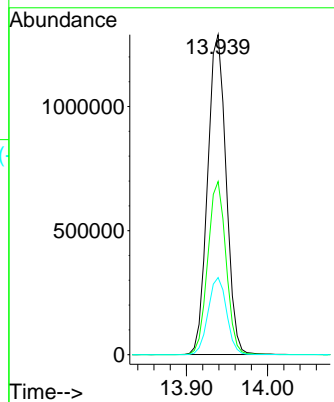
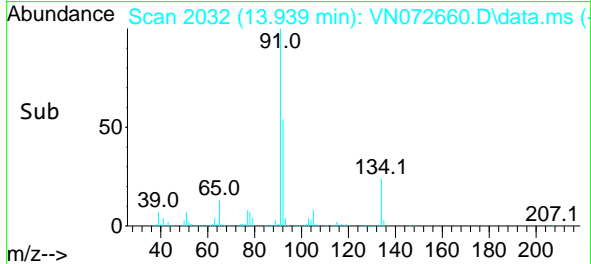


#85
 n-Butylbenzene
 Concen: 180.872 ug/l
 RT: 13.939 min Scan# 2032
 Delta R.T. 0.000 min
 Lab File: VN072660.D
 Acq: 06 Jun 2022 12:29

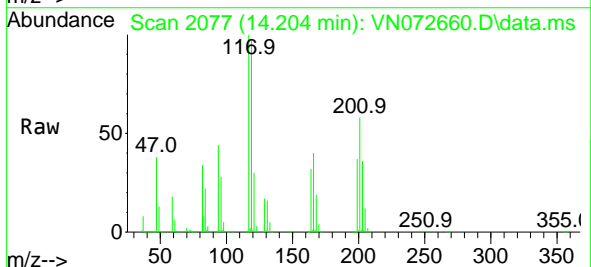
Instrument : MSVOA_N
 ClientSampleId : VSTDIC150



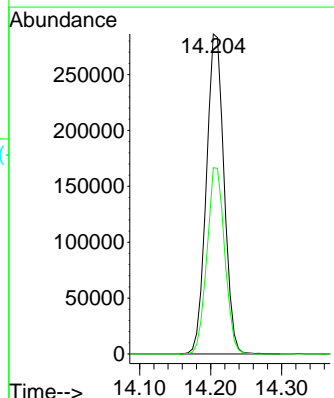
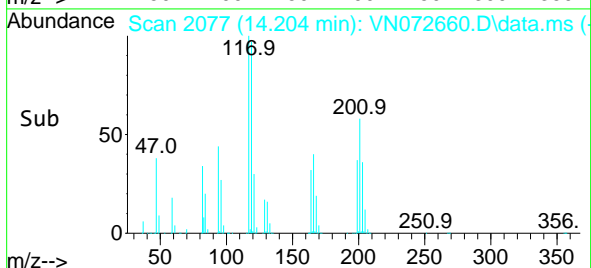
Tgt Ion: 91 Resp: 2041763
 Ion Ratio Lower Upper
 91 100
 92 53.4 0.0 100.6
 134 24.1 0.0 50.2

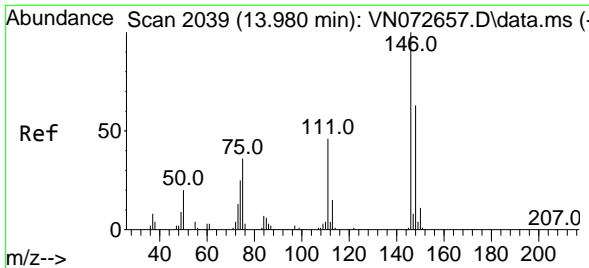


#86
 Hexachloroethane
 Concen: 177.931 ug/l
 RT: 14.204 min Scan# 2077
 Delta R.T. 0.000 min
 Lab File: VN072660.D
 Acq: 06 Jun 2022 12:29



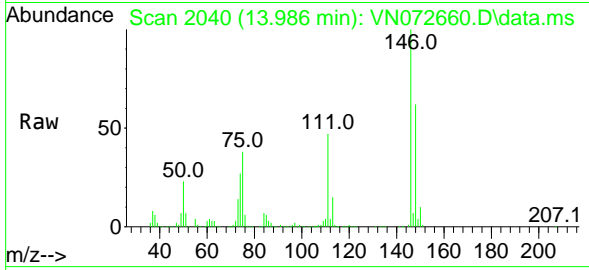
Tgt Ion: 117 Resp: 495958
 Ion Ratio Lower Upper
 117 100
 201 58.3 33.3 99.8



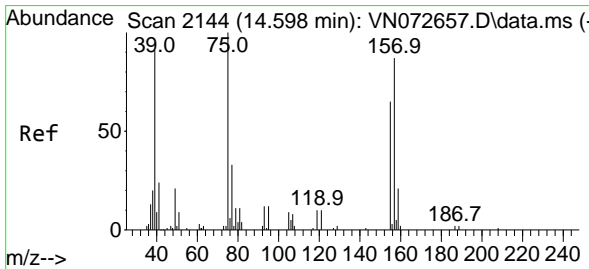
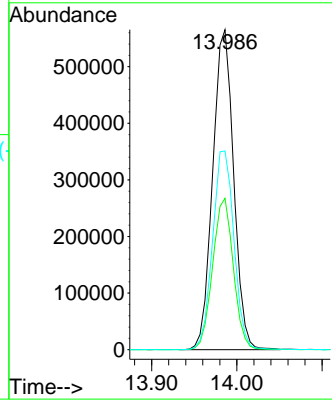
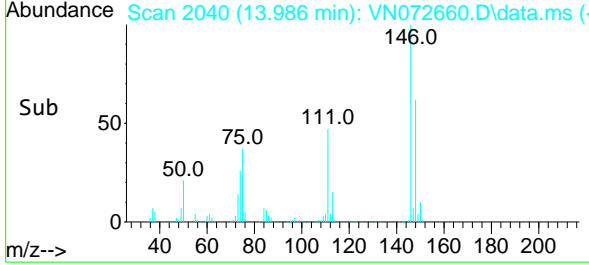


#87
 1,2-Dichlorobenzene
 Concen: 149.980 ug/l
 RT: 13.986 min Scan# 2039
 Delta R.T. 0.006 min
 Lab File: VN072660.D
 Acq: 06 Jun 2022 12:29

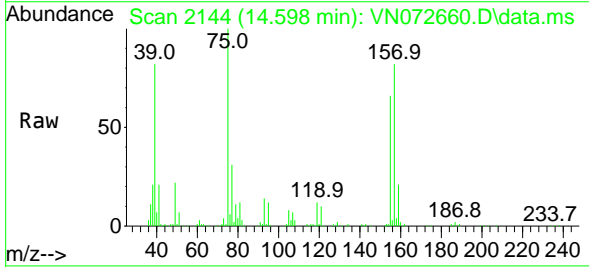
Instrument :
 MSVOA_N
 ClientSampleId :
 VSTDIC150



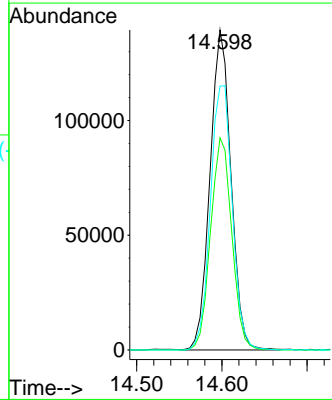
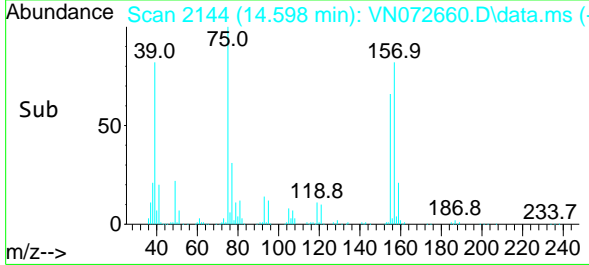
Tgt Ion:146 Resp: 966294
 Ion Ratio Lower Upper
 146 100
 111 46.8 21.4 64.2
 148 63.5 32.5 97.4

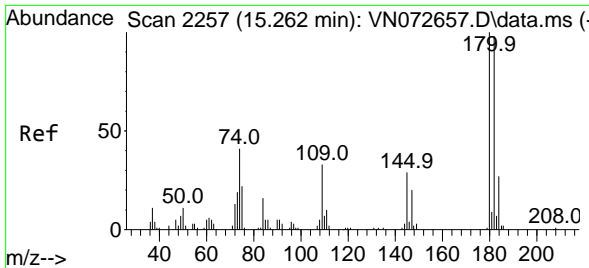


#88
 1,2-Dibromo-3-Chloropropane
 Concen: 192.105 ug/l
 RT: 14.598 min Scan# 2144
 Delta R.T. 0.000 min
 Lab File: VN072660.D
 Acq: 06 Jun 2022 12:29



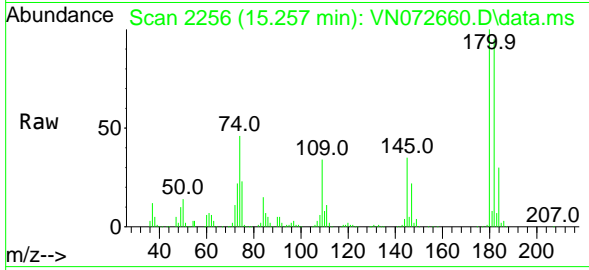
Tgt Ion: 75 Resp: 238919
 Ion Ratio Lower Upper
 75 100
 155 67.0 63.8 95.8
 157 86.3 77.9 116.9



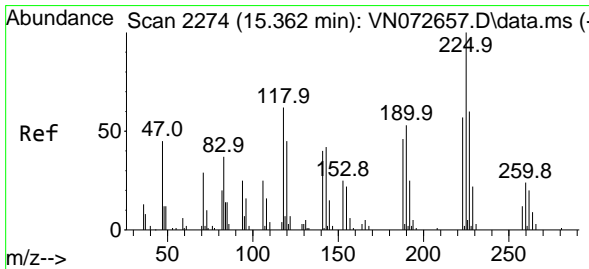
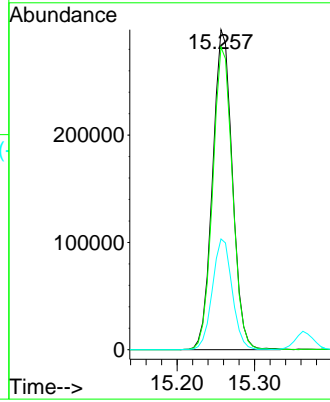
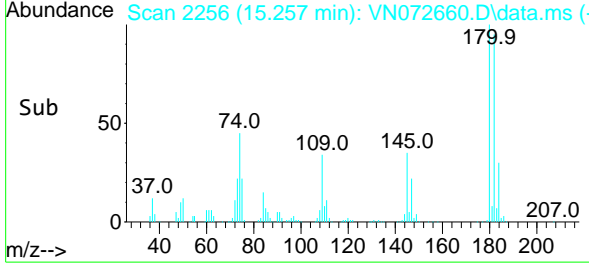


#89
 1,2,4-Trichlorobenzene
 Concen: 164.748 ug/l
 RT: 15.257 min Scan# 21
 Delta R.T. -0.006 min
 Lab File: VN072660.D
 Acq: 06 Jun 2022 12:29

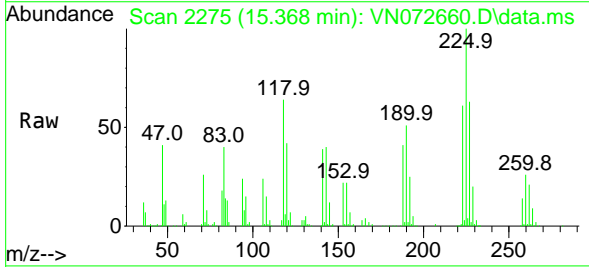
Instrument :
 MSVOA_N
 ClientSampleId :
 VSTDIC150



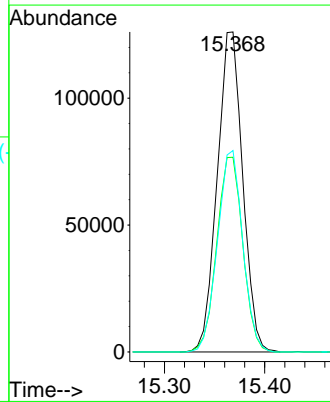
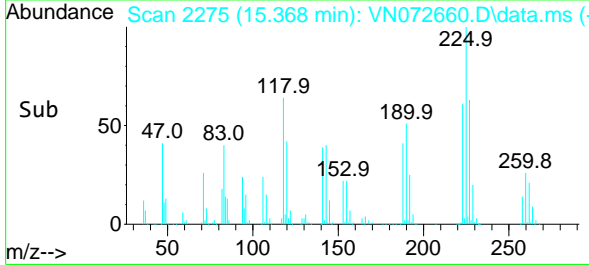
Tgt Ion:180 Resp: 528686
 Ion Ratio Lower Upper
 180 100
 182 94.4 77.7 116.5
 145 34.6 26.6 39.8

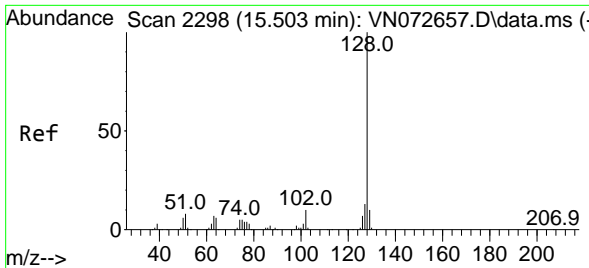


#90
 Hexachlorobutadiene
 Concen: 141.185 ug/l
 RT: 15.368 min Scan# 2275
 Delta R.T. 0.006 min
 Lab File: VN072660.D
 Acq: 06 Jun 2022 12:29



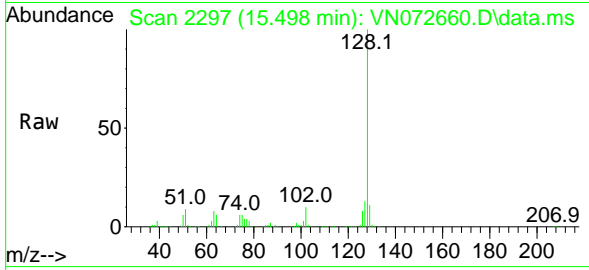
Tgt Ion:225 Resp: 222151
 Ion Ratio Lower Upper
 225 100
 223 62.2 0.0 126.8
 227 62.4 0.0 123.0





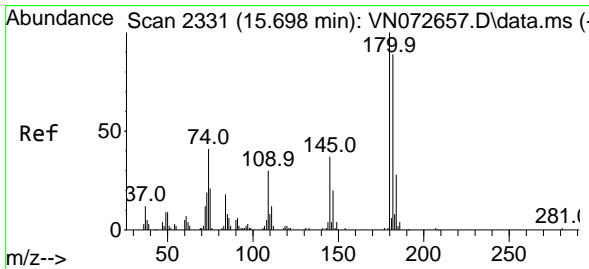
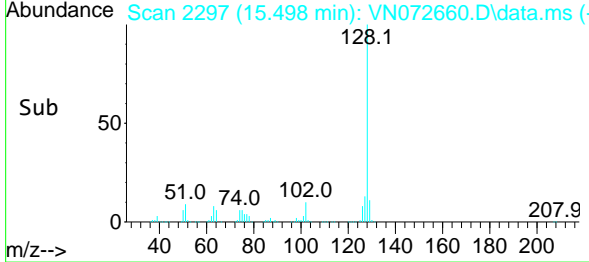
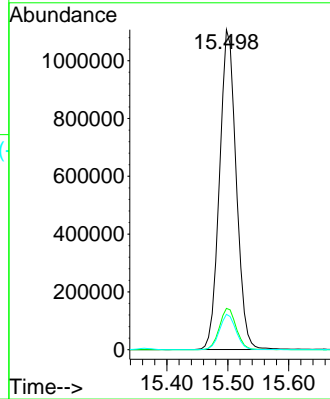
#91
 Naphthalene
 Concen: 181.257 ug/l
 RT: 15.498 min Scan# 2110254
 Delta R.T. -0.006 min
 Lab File: VN072660.D
 Acq: 06 Jun 2022 12:29

Instrument : MSVOA_N
 ClientSampleId : VSTDIC150



Tgt Ion:128 Resp: 2110254

Ion	Ratio	Lower	Upper
128	100		
127	13.0	10.7	16.1
129	10.9	9.0	13.6



#92
 1,2,3-Trichlorobenzene
 Concen: 161.560 ug/l
 RT: 15.698 min Scan# 2331
 Delta R.T. 0.000 min
 Lab File: VN072660.D
 Acq: 06 Jun 2022 12:29

Tgt Ion:180 Resp: 525930

Ion	Ratio	Lower	Upper
180	100		
182	93.8	0.0	190.0
145	36.7	0.0	67.8

