

Data Path : Z:\voasrv\HPCHEM1\MSVOA_N\Data\VN060622\
 Data File : VN072662.D
 Acq On : 06 Jun 2022 13:49
 Operator : JC\MD
 Sample : VSTDIC005
 Misc : 5.0mL/MSVOA_N/WATER
 ALS Vial : 8 Sample Multiplier: 1

Instrument :
 MSVOA_N
 ClientSampleId :
 VSTDIC005

Quant Time: Jun 06 14:06:21 2022
 Quant Method : Z:\voasrv\HPCHEM1\MSVOA_N\methods\624N060622W.M
 Quant Title : METHOD 624 VOLATILE ORGANIC ANALYSIS
 QLast Update : Mon Jun 06 13:24:30 2022
 Response via : Initial Calibration

Compound	R.T.	QIon	Response	Conc	Units	Dev(Min)
Internal Standards						
1) Bromochloromethane	7.651	128	42668	30.000	ug/l	0.00
28) 1,4-Difluorobenzene	8.963	114	254156	30.000	ug/l	# 0.00
57) Chlorobenzene-d5	11.739	117	230506	30.000	ug/l	0.00
System Monitoring Compounds						
27) 1,2-Dichloroethane-d4	8.434	65	147063	29.973	ug/l	0.00
Spiked Amount	30.000	Range 91 - 110	Recovery	=	99.900%	
60) 4-Bromofluorobenzene	12.727	95	132613	27.839	ug/l	0.00
Spiked Amount	30.000	Range 63 - 112	Recovery	=	92.800%	
63) Toluene-d8	10.439	98	385846	30.216	ug/l	0.00
Spiked Amount	30.000	Range 91 - 112	Recovery	=	100.733%	
Target Compounds						
						Qvalue
2) Dichlorodifluoromethane	2.069	85	18222	5.419	ug/l	96
3) Chloromethane	2.293	50	20945	5.852	ug/l	95
4) Vinyl Chloride	2.440	62	17919	5.616	ug/l	96
7) Trichlorofluoromethane	3.363	101	32012	5.498	ug/l	98
8) Diethyl Ether	3.822	74	11931	5.207	ug/l	83
9) 1,1,2-Trichlorotrifluo...	4.204	101	16885	5.397	ug/l	62
10) 1,1-Dichloroethene	4.187	96	16667	5.752	ug/l	91
11) Methyl Iodide	4.410	142	5520	1.826	ug/l	99
12) Methyl Acetate	4.851	43	16825	2.876	ug/l	91
13) Acrolein	4.034	56	15608	30.172	ug/l	98
14) Acrylonitrile	5.540	53	63076	26.324	ug/l	96
15) Acetone	4.281	58	18174	28.132	ug/l	99
16) Carbon Disulfide	4.528	76	46745	6.551	ug/l	98
17) Allyl chloride	4.840	41	32764	5.199	ug/l	87
18) Methylene Chloride	5.099	84	20187	5.599	ug/l	93
19) trans-1,2-Dichloroethene	5.593	96	17685	5.600	ug/l	96
20) Diisopropyl ether	6.487	45	61165	4.821	ug/l	98
21) 1,1-Dichloroethane	6.375	63	37367	5.501	ug/l	98
22) cis-1,2-Dichloroethene	7.316	96	21314	5.441	ug/l	89
23) tert-Butyl Alcohol	5.357	59	30772	28.365	ug/l	# 100
24) Methyl tert-Butyl Ether	5.610	73	66892	5.180	ug/l	95
25) Chloroform	7.816	83	37528	5.301	ug/l	92
26) Cyclohexane	8.087	56	32317	5.563	ug/l	# 93
29) 1,1-Dichloropropene	8.216	75	26950	5.517	ug/l	86
30) 2-Butanone	7.328	43	94323	26.737	ug/l	95
31) 2,2-Dichloropropane	7.316	77	36038	5.421	ug/l	# 73
32) 1,1,1-Trichloroethane	8.004	97	34488	5.345	ug/l	98
33) Carbon Tetrachloride	8.204	117	30071	5.419	ug/l	93
34) Benzene	8.451	78	78439	5.384	ug/l	# 78
35) Methacrylonitrile	7.634	41	19216	5.532	ug/l	88
36) 1,2-Dichloroethane	8.522	62	32839	5.328	ug/l	# 90
37) Trichloroethene	9.216	130	18953	5.474	ug/l	100
38) Methylcyclohexane	9.457	83	33052	5.579	ug/l	90
39) 1,2-Dichloropropane	9.486	63	21540	5.409	ug/l	# 88
40) Dibromomethane	9.569	93	14718	5.408	ug/l	91
41) Bromodichloromethane	9.757	83	29852	5.026	ug/l	97
42) Vinyl Acetate	6.428	43	265293	22.861	ug/l	98
43) Ethyl Acetate	7.410	43	34750	5.037	ug/l	99
44) Isopropyl Acetate	8.551	43	60617	5.427	ug/l	98

Data Path : Z:\voasrv\HPCHEM1\MSVOA_N\Data\VN060622\
 Data File : VN072662.D
 Acq On : 06 Jun 2022 13:49
 Operator : JC\MD
 Sample : VSTDIC005
 Misc : 5.0mL/MSVOA_N/WATER
 ALS Vial : 8 Sample Multiplier: 1

Instrument :
 MSVOA_N
 ClientSampleId :
 VSTDIC005

Quant Time: Jun 06 14:06:21 2022
 Quant Method : Z:\voasrv\HPCHEM1\MSVOA_N\methods\624N060622W.M
 Quant Title : METHOD 624 VOLATILE ORGANIC ANALYSIS
 QLast Update : Mon Jun 06 13:24:30 2022
 Response via : Initial Calibration

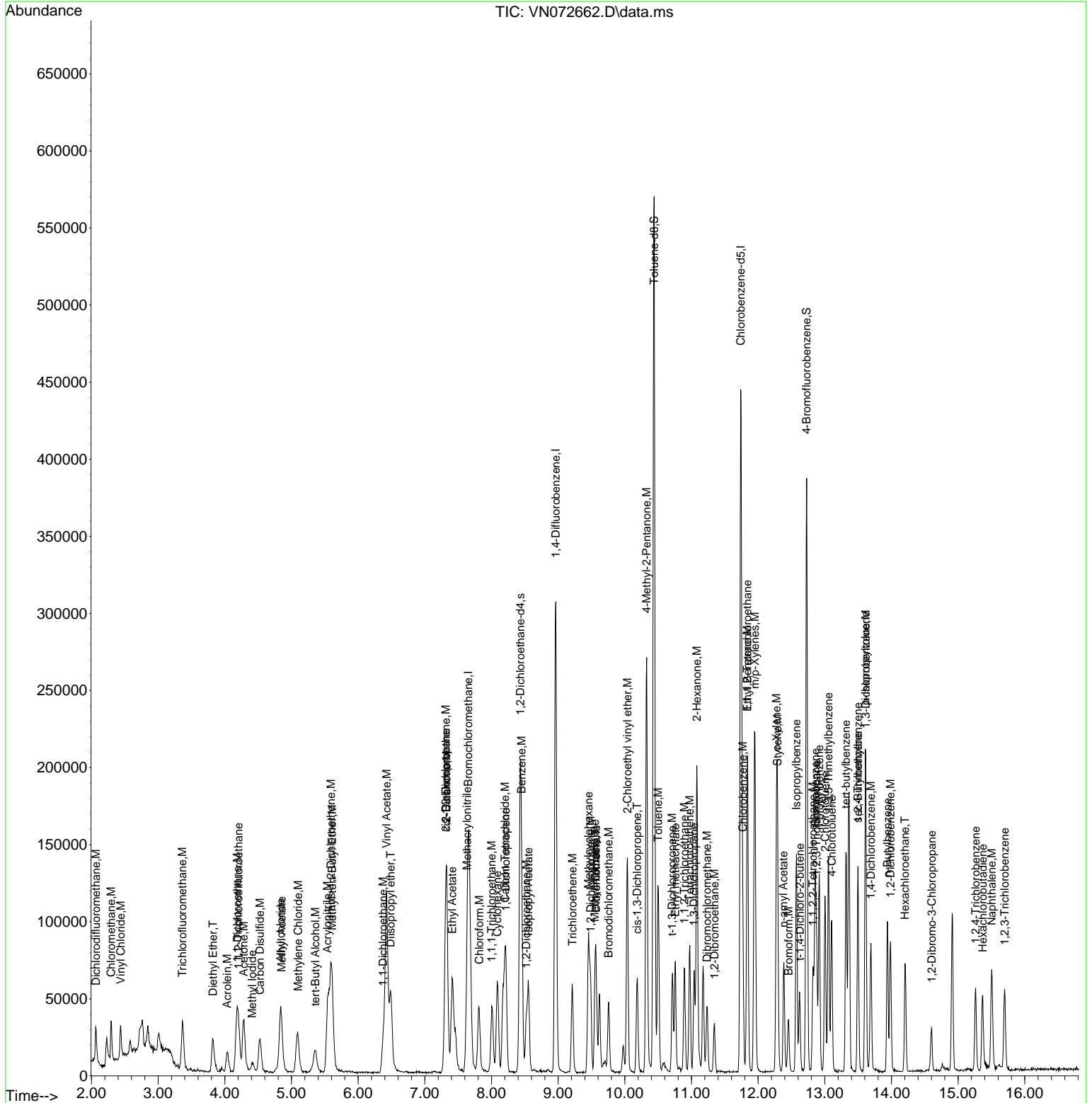
Compound	R.T.	QIon	Response	Conc	Units	Dev(Min)
45) 1,4-Dioxane	9.563	88	9592	106.700	ug/l #	87
46) Methyl methacrylate	9.551	41	27180	5.488	ug/l	91
47) n-amyl Acetate	12.380	43	41405	4.838	ug/l	99
48) t-1,3-Dichloropropene	10.710	75	33580	5.022	ug/l	90
49) cis-1,3-Dichloropropene	10.186	75	34767	5.097	ug/l	97
50) 1,1,2-Trichloroethane	10.892	97	20382	5.282	ug/l	97
51) Ethyl methacrylate	10.757	69	35267	5.037	ug/l	94
52) 1,3-Dichloropropane	11.039	76	35375	5.084	ug/l	98
53) Dibromochloromethane	11.233	129	21187	4.920	ug/l	100
54) 1,2-Dibromoethane	11.345	107	21183	5.249	ug/l	98
55) 2-Chloroethyl vinyl ether	10.039	63	60570	21.580	ug/l	97
56) Bromoform	12.457	173	14413	4.811	ug/l #	99
58) 4-Methyl-2-Pentanone	10.328	43	184006	26.333	ug/l	98
59) 2-Hexanone	11.080	43	139447	26.506	ug/l	99
61) Tetrachloroethene	10.975	164	16662	5.730	ug/l	91
62) Toluene	10.498	91	87295	5.510	ug/l	99
64) Chlorobenzene	11.769	112	50821	5.289	ug/l	96
65) 1,1,1,2-Tetrachloroethane	11.839	131	19056	4.976	ug/l	92
66) Ethyl Benzene	11.839	91	95771	5.258	ug/l	95
67) m/p-Xylenes	11.951	106	69812	10.523	ug/l	95
68) o-Xylene	12.275	106	36055	5.342	ug/l	95
69) Styrene	12.292	104	53985	5.041	ug/l	94
70) Isopropylbenzene	12.575	105	91620	5.172	ug/l	98
71) 1,1,2,2-Tetrachloroethane	12.822	83	31882	5.346	ug/l	98
72) 1,2,3-Trichloropropane	12.874	75	43000	8.237	ug/l	49
73) Bromobenzene	12.857	156	18260	5.067	ug/l	73
74) n-propylbenzene	12.916	91	102104	5.060	ug/l	99
75) 2-Chlorotoluene	13.004	91	65883	5.254	ug/l	92
76) 1,3,5-Trimethylbenzene	13.057	105	73787	5.065	ug/l	97
77) t-1,4-Dichloro-2-butene	12.627	75	10171	4.547	ug/l	93
78) 4-Chlorotoluene	13.104	91	58871	4.952	ug/l	92
79) tert-butylbenzene	13.316	119	67371	5.244	ug/l	96
80) 1,2,4-Trimethylbenzene	13.498	105	86450	4.902	ug/l #	100
81) sec-Butylbenzene	13.498	105	86450	4.902	ug/l	99
82) p-Isopropyltoluene	13.610	119	66947	4.744	ug/l	97
83) 1,3-Dichlorobenzene	13.616	146	32668	5.247	ug/l	99
84) 1,4-Dichlorobenzene	13.692	146	30184	4.987	ug/l	95
85) n-Butylbenzene	13.939	91	54614	4.580	ug/l	96
86) Hexachloroethane	14.204	117	15048	4.828	ug/l	90
87) 1,2-Dichlorobenzene	13.986	146	32622	5.281	ug/l	94
88) 1,2-Dibromo-3-Chloropr...	14.604	75	7570	5.161	ug/l	87
89) 1,2,4-Trichlorobenzene	15.263	180	15442	5.025	ug/l	98
90) Hexachlorobutadiene	15.368	225	7058	4.919	ug/l	97
91) Naphthalene	15.504	128	62734	5.303	ug/l	97
92) 1,2,3-Trichlorobenzene	15.698	180	16354	5.353	ug/l	99

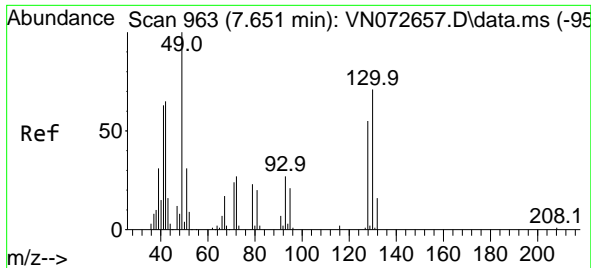
(#) = qualifier out of range (m) = manual integration (+) = signals summed

Data Path : Z:\voasrv\HPCHEM1\MSVOA_N\Data\VN060622\
 Data File : VN072662.D
 Acq On : 06 Jun 2022 13:49
 Operator : JC\MD
 Sample : VSTDIC005
 Misc : 5.0mL/MSVOA_N/WATER
 ALS Vial : 8 Sample Multiplier: 1

Instrument :
 MSVOA_N
 ClientSampleId :
 VSTDIC005

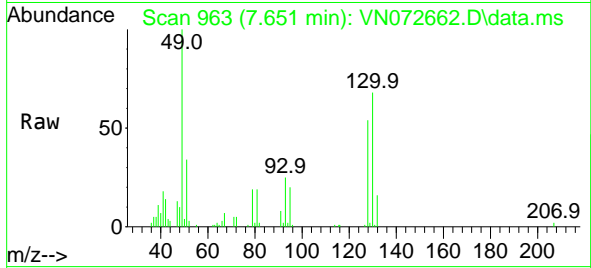
Quant Time: Jun 06 14:06:21 2022
 Quant Method : Z:\voasrv\HPCHEM1\MSVOA_N\methods\624N060622W.M
 Quant Title : METHOD 624 VOLATILE ORGANIC ANALYSIS
 QLast Update : Mon Jun 06 13:24:30 2022
 Response via : Initial Calibration



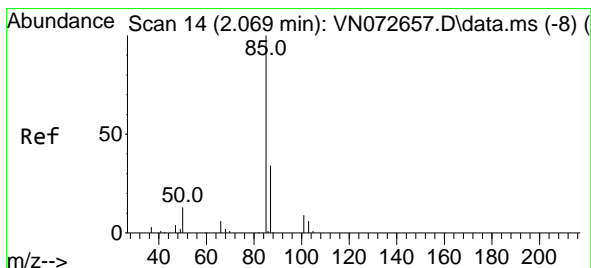
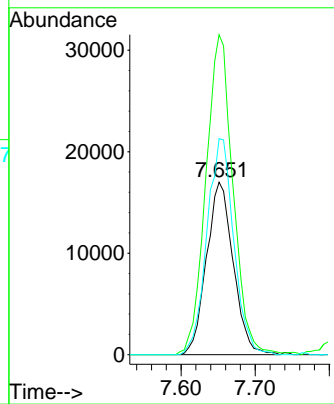
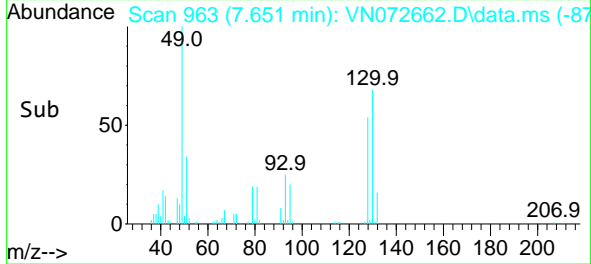


#1
 Bromochloromethane
 Concen: 30.000 ug/l
 RT: 7.651 min Scan# 9
 Delta R.T. 0.000 min
 Lab File: VN072662.D
 Acq: 06 Jun 2022 13:49

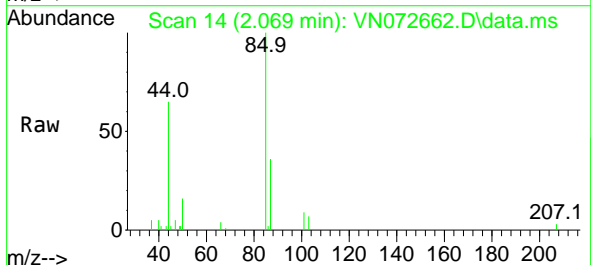
Instrument :
 MSVOA_N
 ClientSampleId :
 VSTDIC005



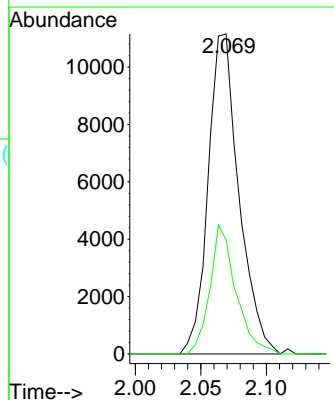
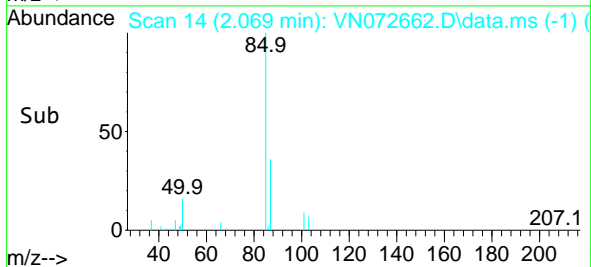
Tgt Ion:128 Resp: 42668
 Ion Ratio Lower Upper
 128 100
 49 187.4 0.0 392.3
 130 125.6 0.0 320.2

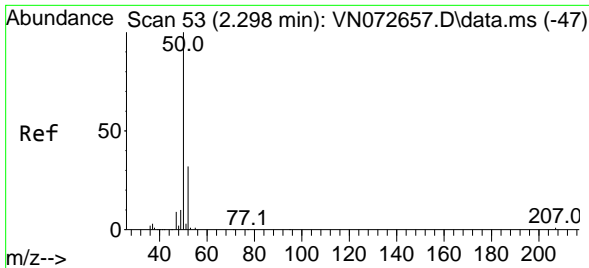


#2
 Dichlorodifluoromethane
 Concen: 5.419 ug/l
 RT: 2.069 min Scan# 14
 Delta R.T. 0.000 min
 Lab File: VN072662.D
 Acq: 06 Jun 2022 13:49



Tgt Ion: 85 Resp: 18222
 Ion Ratio Lower Upper
 85 100
 87 35.6 16.6 49.7

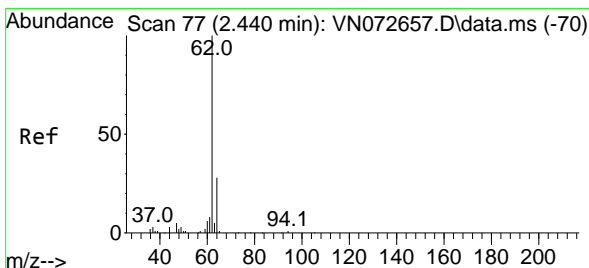
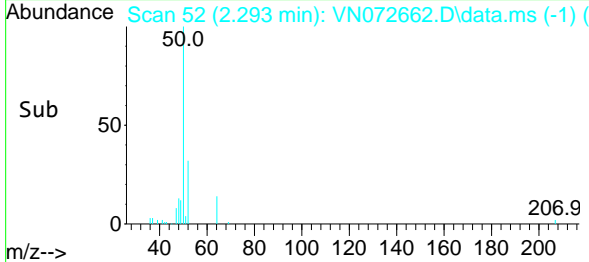
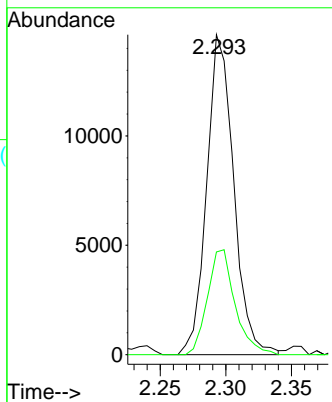
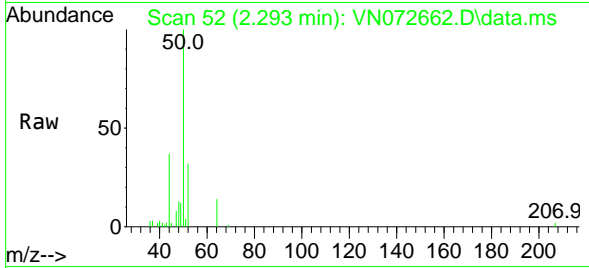




#3
 Chloromethane
 Concen: 5.852 ug/l
 RT: 2.293 min Scan# 51
 Delta R.T. -0.006 min
 Lab File: VN072662.D
 Acq: 06 Jun 2022 13:49

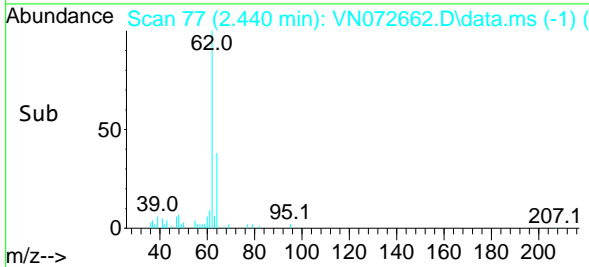
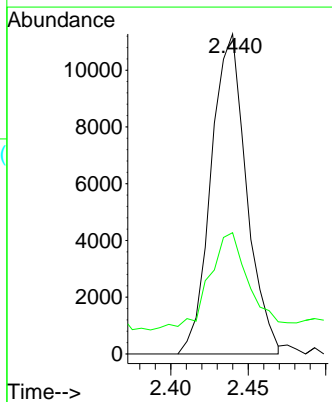
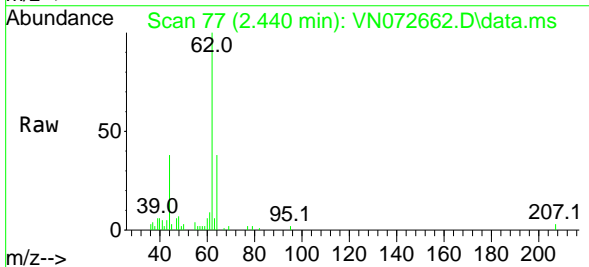
Instrument :
 MSVOA_N
 ClientSampleId :
 VSTDIC005

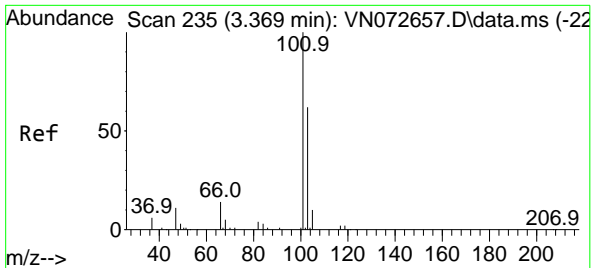
Tgt Ion: 50 Resp: 20945
 Ion Ratio Lower Upper
 50 100
 52 32.1 27.8 41.6



#4
 Vinyl Chloride
 Concen: 5.616 ug/l
 RT: 2.440 min Scan# 77
 Delta R.T. 0.000 min
 Lab File: VN072662.D
 Acq: 06 Jun 2022 13:49

Tgt Ion: 62 Resp: 17919
 Ion Ratio Lower Upper
 62 100
 64 29.3 25.1 37.7





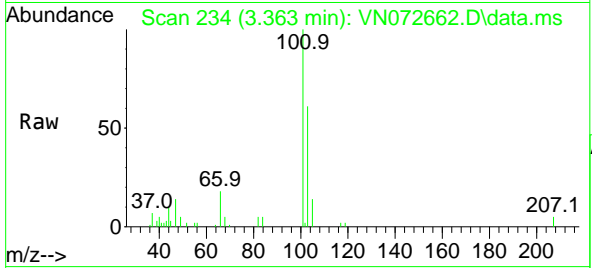
#7
 Trichlorofluoromethane
 Concen: 5.498 ug/l
 RT: 3.363 min Scan# 21
 Delta R.T. -0.006 min
 Lab File: VN072662.D
 Acq: 06 Jun 2022 13:49

Instrument :

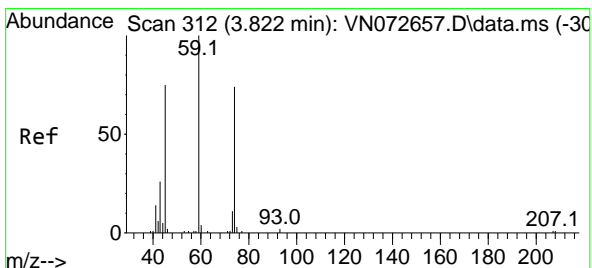
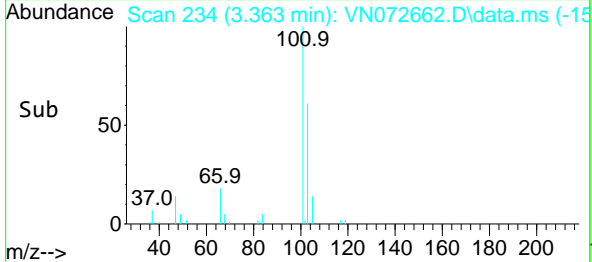
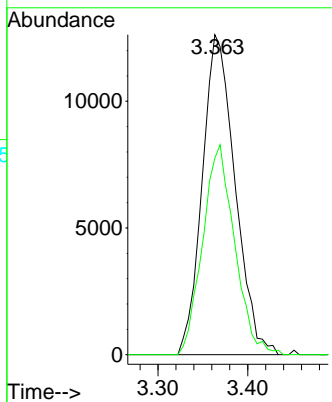
MSVOA_N

ClientSampleId :

VSTDIC005

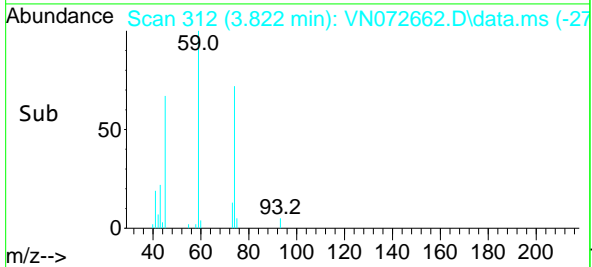
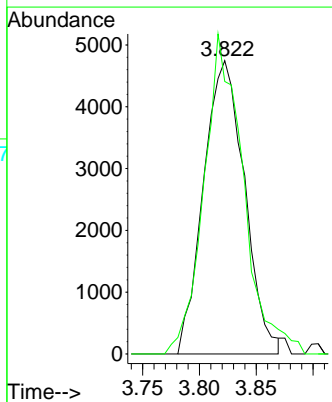
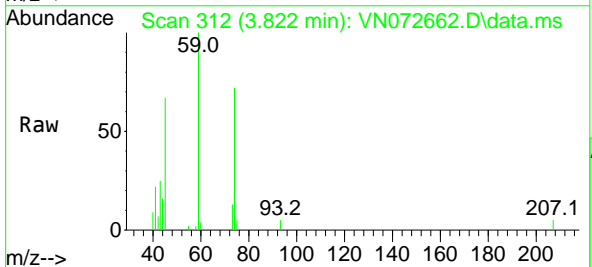


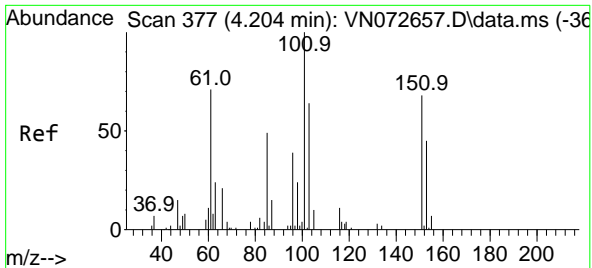
Tgt Ion:101 Resp: 32012
 Ion Ratio Lower Upper
 101 100
 103 61.4 50.1 75.1



#8
 Diethyl Ether
 Concen: 5.207 ug/l
 RT: 3.822 min Scan# 312
 Delta R.T. 0.000 min
 Lab File: VN072662.D
 Acq: 06 Jun 2022 13:49

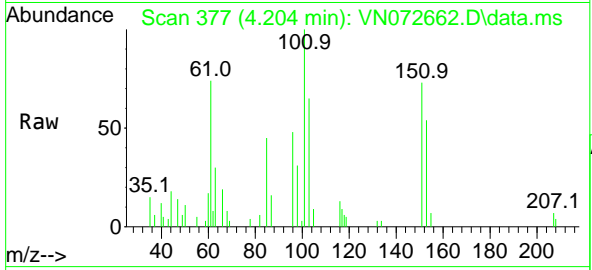
Tgt Ion: 74 Resp: 11931
 Ion Ratio Lower Upper
 74 100
 45 104.3 17.6 158.8





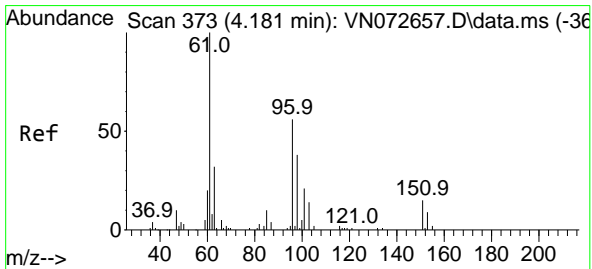
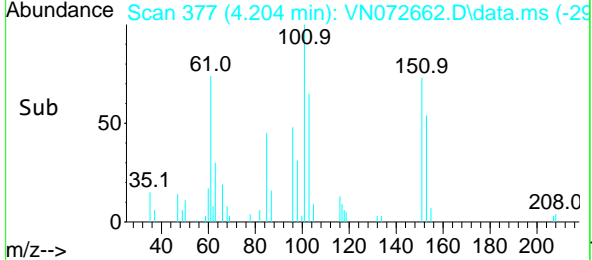
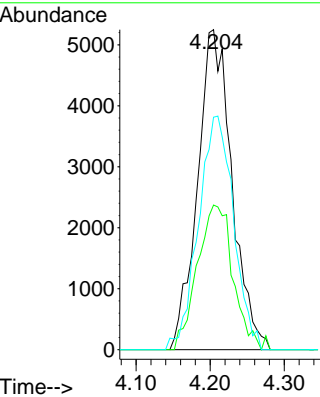
#9
 1,1,2-Trichlorotrifluoroethane
 Concen: 5.397 ug/l
 RT: 4.204 min Scan# 31
 Delta R.T. 0.000 min
 Lab File: VN072662.D
 Acq: 06 Jun 2022 13:49

Instrument : MSVOA_N
 ClientSampleId : VSTDIC005

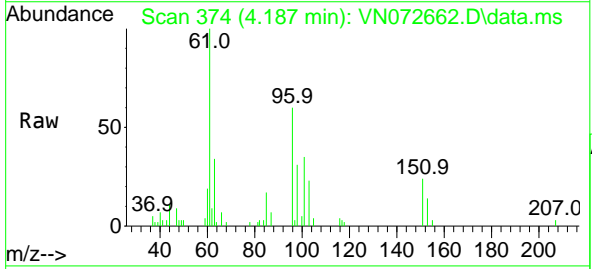


Tgt Ion: 101 Resp: 16885

Ion	Ratio	Lower	Upper
101	100		
85	33.4	0.0	94.0
151	73.9	0.0	74.6

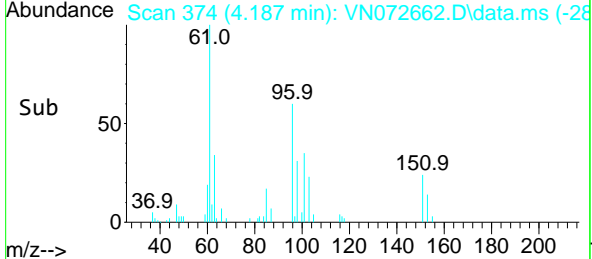
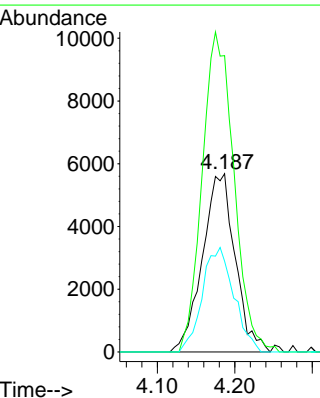


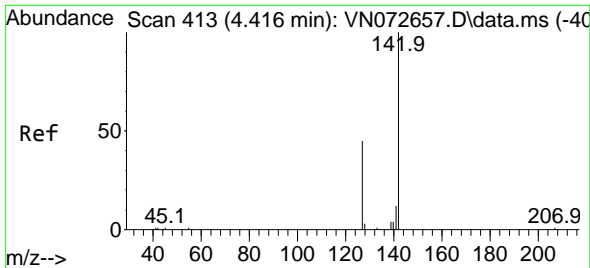
#10
 1,1-Dichloroethene
 Concen: 5.752 ug/l
 RT: 4.187 min Scan# 374
 Delta R.T. 0.006 min
 Lab File: VN072662.D
 Acq: 06 Jun 2022 13:49



Tgt Ion: 96 Resp: 16667

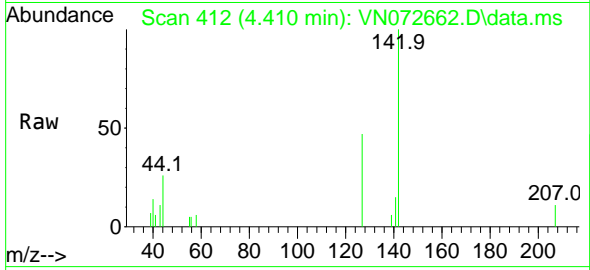
Ion	Ratio	Lower	Upper
96	100		
61	166.3	126.2	189.4
98	50.9	50.9	76.3



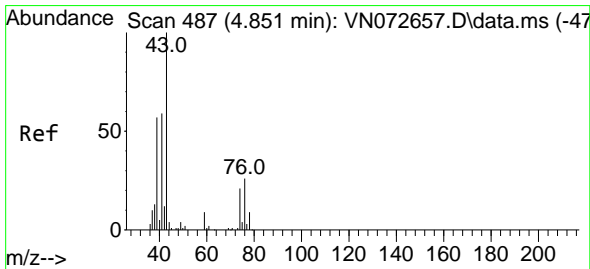
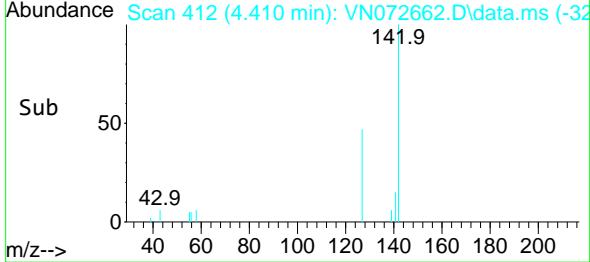
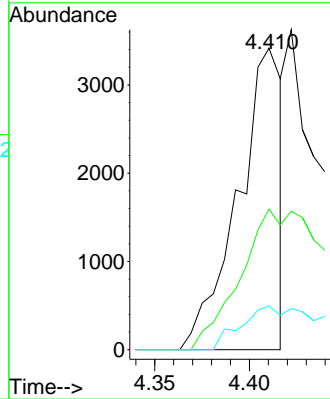


#11
 Methyl Iodide
 Concen: 1.826 ug/l
 RT: 4.410 min Scan# 411
 Delta R.T. -0.006 min
 Lab File: VN072662.D
 Acq: 06 Jun 2022 13:49

Instrument : MSVOA_N
 ClientSampleId : VSTDIC005

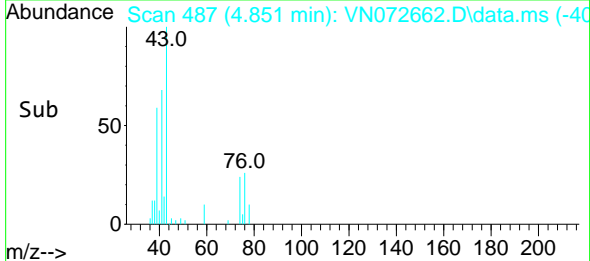
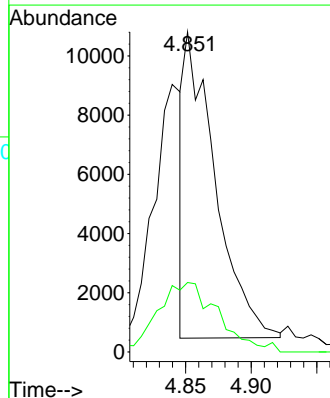
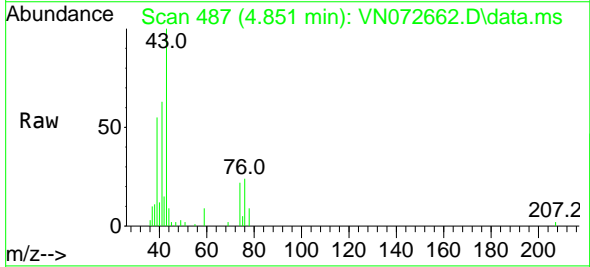


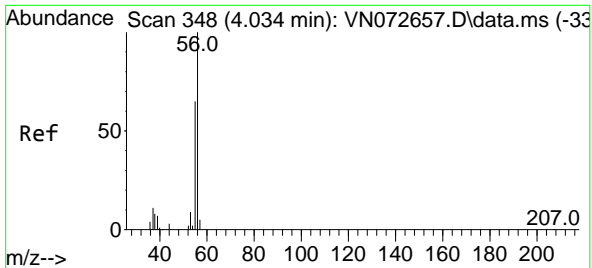
Tgt Ion:142 Resp: 5520
 Ion Ratio Lower Upper
 142 100
 127 47.2 24.0 72.0
 141 16.0 8.4 25.2



#12
 Methyl Acetate
 Concen: 2.876 ug/l
 RT: 4.851 min Scan# 487
 Delta R.T. 0.000 min
 Lab File: VN072662.D
 Acq: 06 Jun 2022 13:49

Tgt Ion: 43 Resp: 16825
 Ion Ratio Lower Upper
 43 100
 74 21.4 20.8 31.2



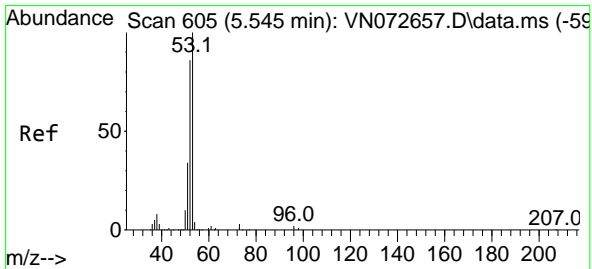
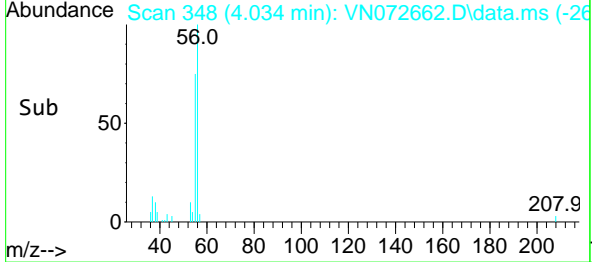
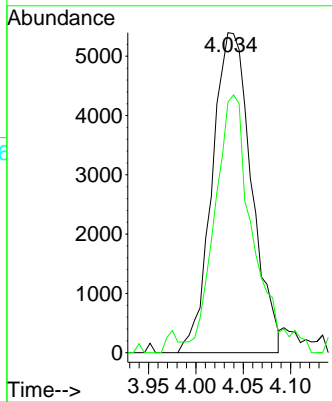
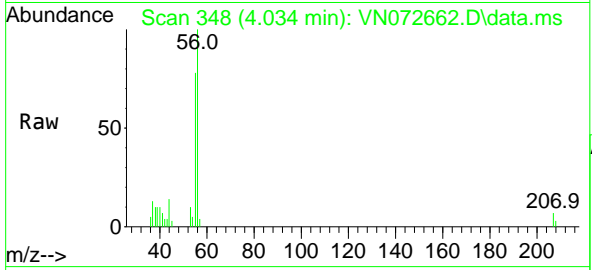


#13
 Acrolein
 Concen: 30.172 ug/l
 RT: 4.034 min Scan# 348
 Delta R.T. 0.000 min
 Lab File: VN072662.D
 Acq: 06 Jun 2022 13:49

Instrument : MSVOA_N
 ClientSampleId : VSTDIC005

Tgt Ion: 56 Resp: 15608

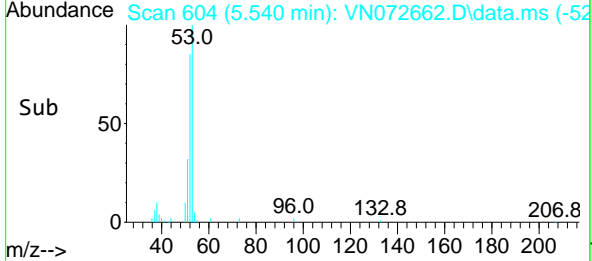
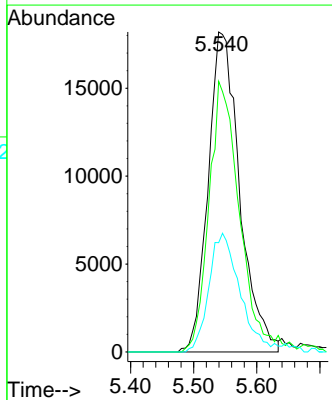
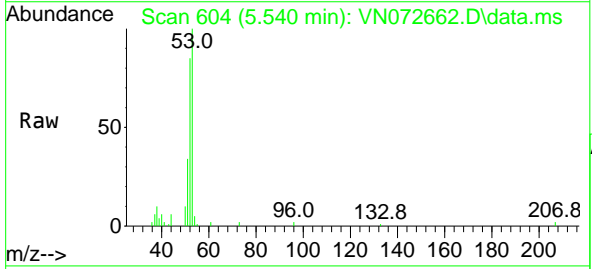
Ion	Ratio	Lower	Upper
56	100		
55	70.6	57.6	86.4

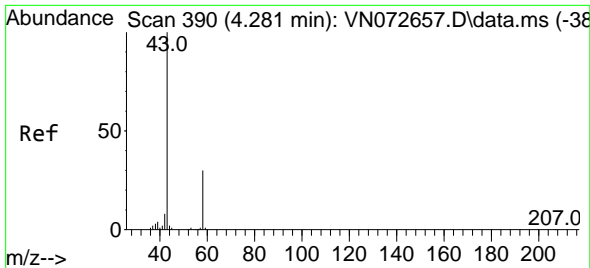


#14
 Acrylonitrile
 Concen: 26.324 ug/l
 RT: 5.540 min Scan# 604
 Delta R.T. -0.006 min
 Lab File: VN072662.D
 Acq: 06 Jun 2022 13:49

Tgt Ion: 53 Resp: 63076

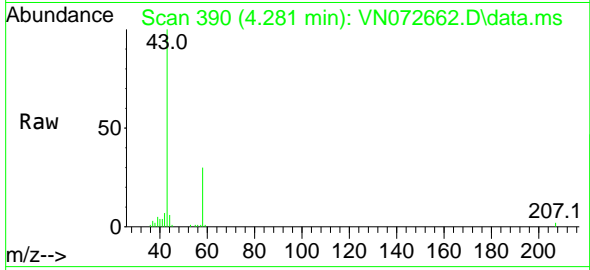
Ion	Ratio	Lower	Upper
53	100		
52	80.0	41.8	125.4
51	36.2	19.0	57.0



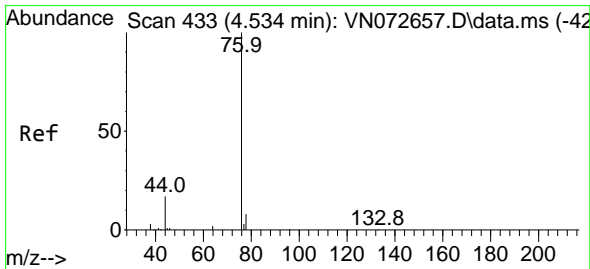
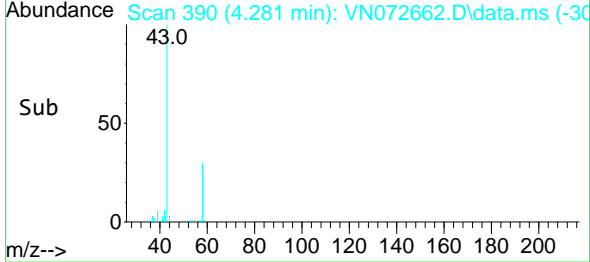
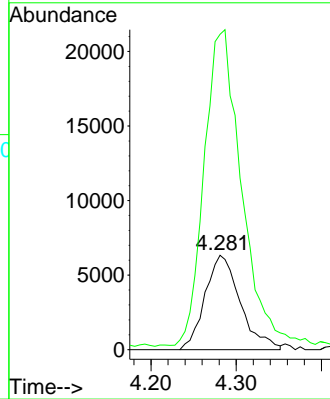


#15
 Acetone
 Concen: 28.132 ug/l
 RT: 4.281 min Scan# 390
 Delta R.T. 0.000 min
 Lab File: VN072662.D
 Acq: 06 Jun 2022 13:49

Instrument :
 MSVOA_N
 ClientSampleId :
 VSTDIC005

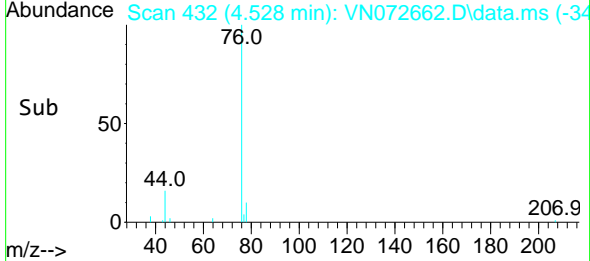
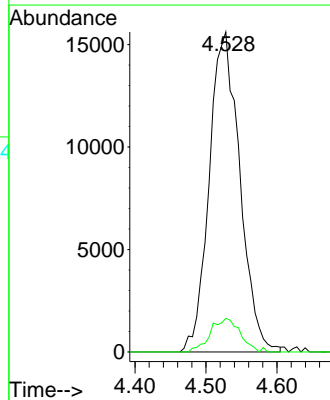
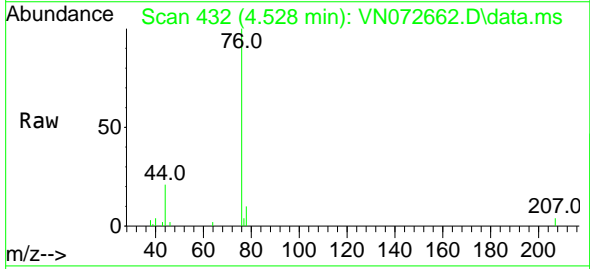


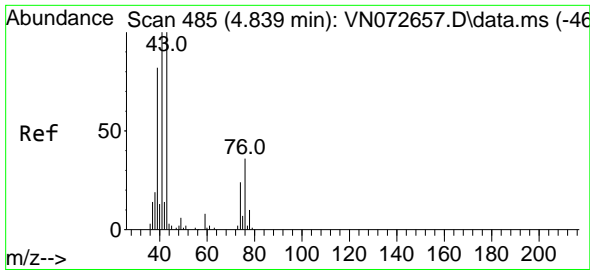
Tgt Ion: 58 Resp: 18174
 Ion Ratio Lower Upper
 58 100
 43 323.7 256.6 384.8



#16
 Carbon Disulfide
 Concen: 6.551 ug/l
 RT: 4.528 min Scan# 432
 Delta R.T. -0.006 min
 Lab File: VN072662.D
 Acq: 06 Jun 2022 13:49

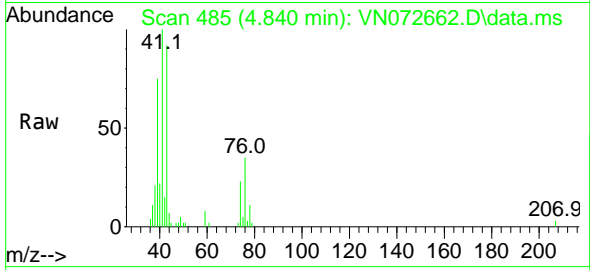
Tgt Ion: 76 Resp: 46745
 Ion Ratio Lower Upper
 76 100
 78 10.5 7.8 11.8



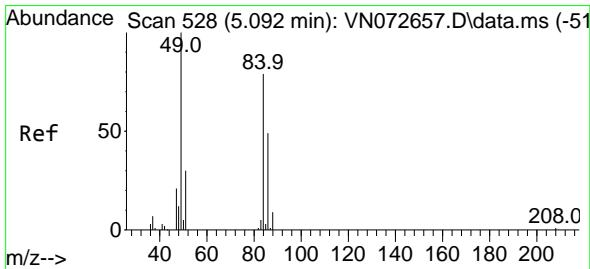
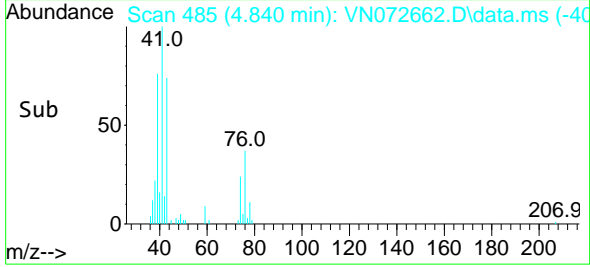
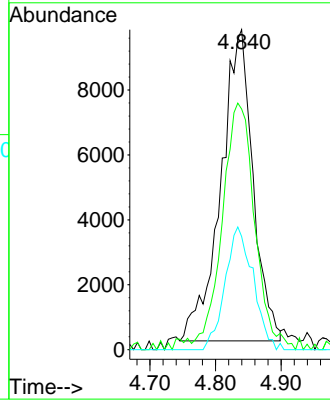


#17
 Allyl chloride
 Concen: 5.199 ug/l
 RT: 4.840 min Scan# 485
 Delta R.T. 0.000 min
 Lab File: VN072662.D
 Acq: 06 Jun 2022 13:49

Instrument :
 MSVOA_N
 ClientSampleId :
 VSTDIC005

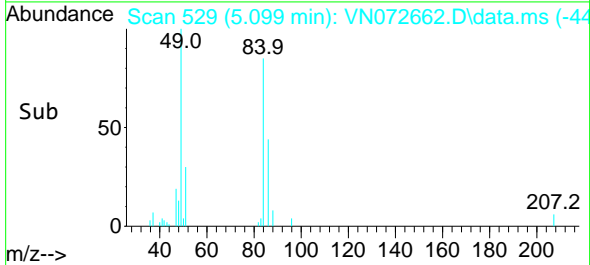
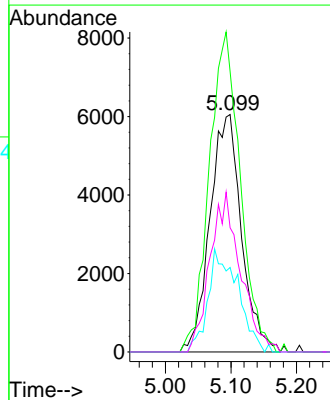
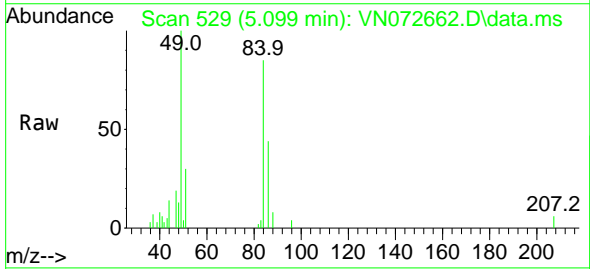


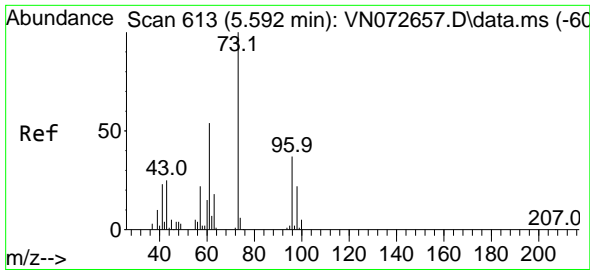
Tgt Ion: 41 Resp: 32764
 Ion Ratio Lower Upper
 41 100
 39 74.0 44.6 134.0
 76 36.4 19.6 58.7



#18
 Methylene Chloride
 Concen: 5.599 ug/l
 RT: 5.099 min Scan# 529
 Delta R.T. 0.006 min
 Lab File: VN072662.D
 Acq: 06 Jun 2022 13:49

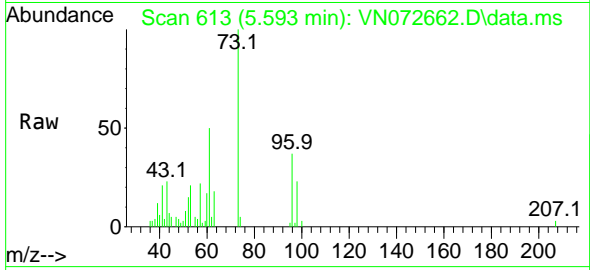
Tgt Ion: 84 Resp: 20187
 Ion Ratio Lower Upper
 84 100
 49 118.1 91.4 137.0
 51 35.6 29.4 44.0
 86 52.3 51.1 76.7



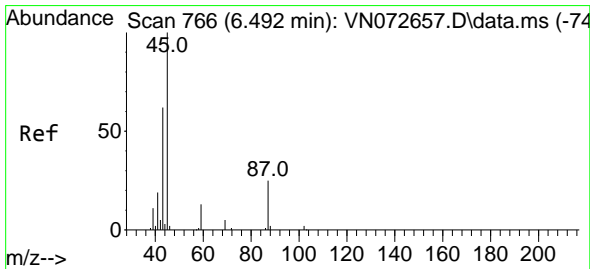
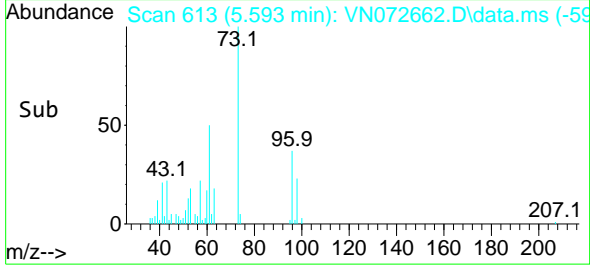
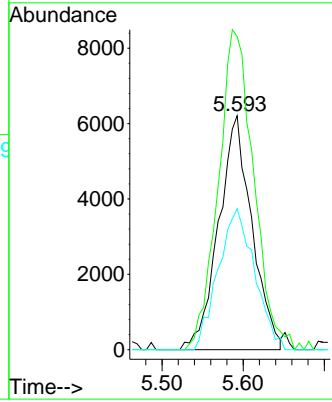


#19
 trans-1,2-Dichloroethene
 Concen: 5.600 ug/l
 RT: 5.593 min Scan# 613
 Delta R.T. 0.000 min
 Lab File: VN072662.D
 Acq: 06 Jun 2022 13:49

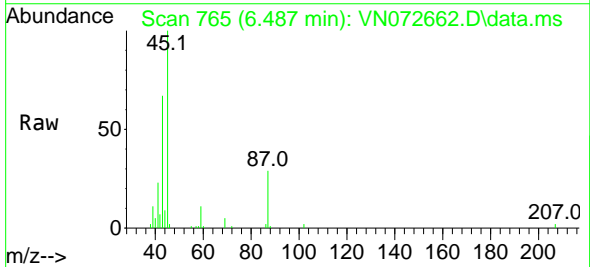
Instrument : MSVOA_N
 ClientSampleId : VSTDIC005



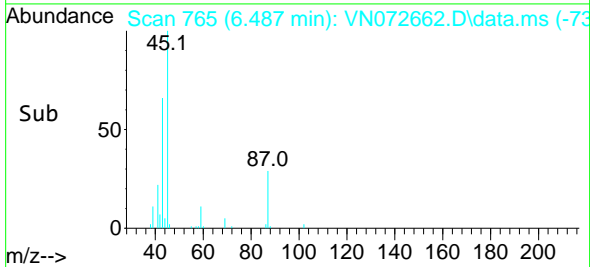
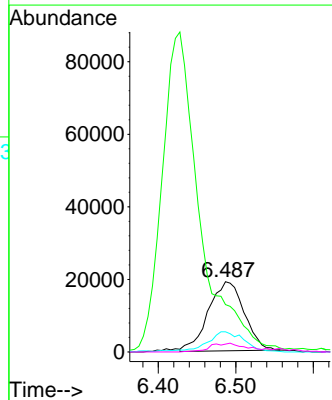
Tgt Ion: 96 Resp: 17685
 Ion Ratio Lower Upper
 96 100
 61 133.9 102.8 154.2
 98 60.3 49.3 73.9

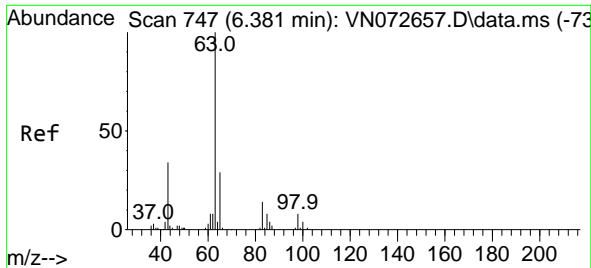


#20
 Diisopropyl ether
 Concen: 4.821 ug/l
 RT: 6.487 min Scan# 765
 Delta R.T. -0.006 min
 Lab File: VN072662.D
 Acq: 06 Jun 2022 13:49



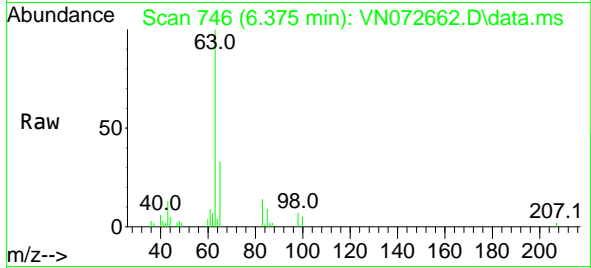
Tgt Ion: 45 Resp: 61165
 Ion Ratio Lower Upper
 45 100
 43 63.5 51.0 76.4
 87 28.6 25.0 37.4
 59 11.4 8.7 13.1





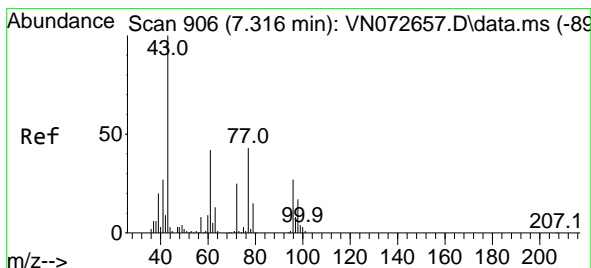
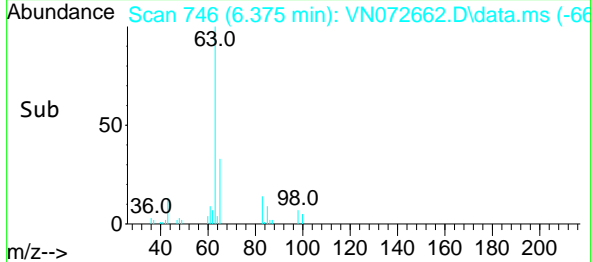
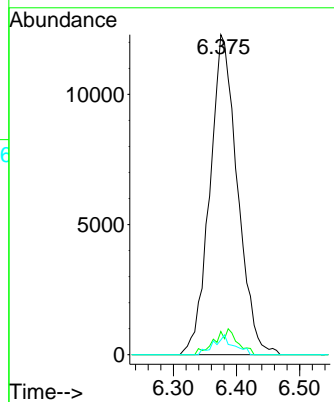
#21
 1,1-Dichloroethane
 Concen: 5.501 ug/l
 RT: 6.375 min Scan# 746
 Delta R.T. -0.006 min
 Lab File: VN072662.D
 Acq: 06 Jun 2022 13:49

Instrument : MSVOA_N
 ClientSampleId : VSTDIC005



Tgt Ion: 63 Resp: 37367

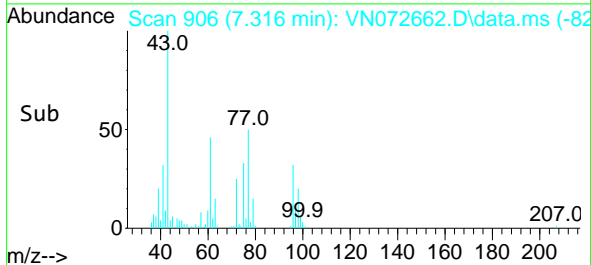
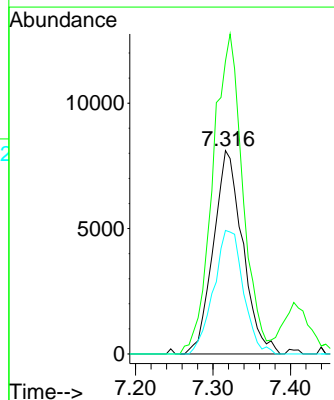
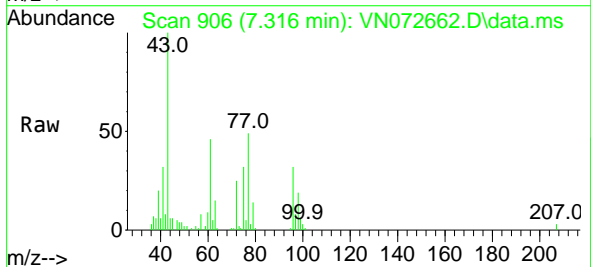
Ion	Ratio	Lower	Upper
63	100		
98	7.3	3.2	9.6
100	4.6	2.1	6.2

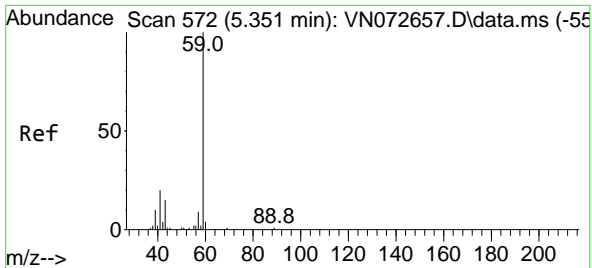


#22
 cis-1,2-Dichloroethene
 Concen: 5.441 ug/l
 RT: 7.316 min Scan# 906
 Delta R.T. 0.000 min
 Lab File: VN072662.D
 Acq: 06 Jun 2022 13:49

Tgt Ion: 96 Resp: 21314

Ion	Ratio	Lower	Upper
96	100		
61	161.2	115.7	173.5
98	60.7	51.6	77.4

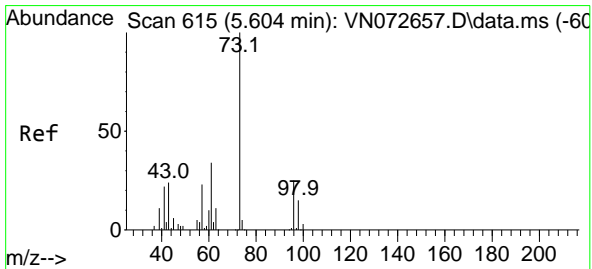
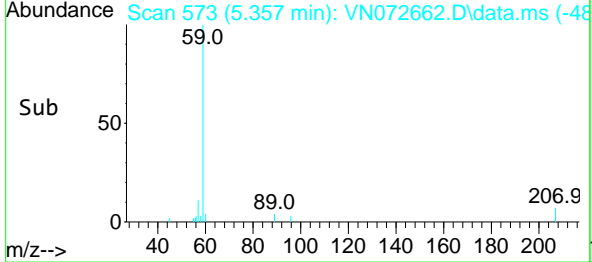
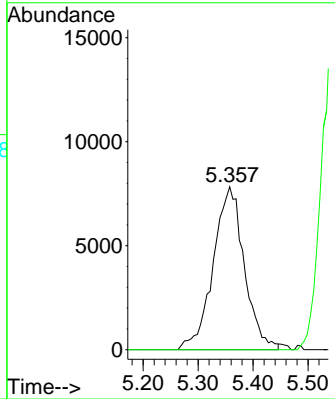
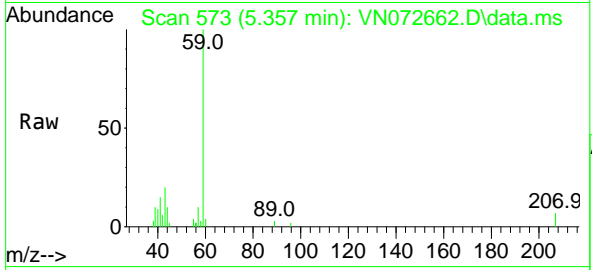




#23
 tert-Butyl Alcohol
 Concen: 28.365 ug/l
 RT: 5.357 min Scan# 51
 Delta R.T. 0.006 min
 Lab File: VN072662.D
 Acq: 06 Jun 2022 13:49

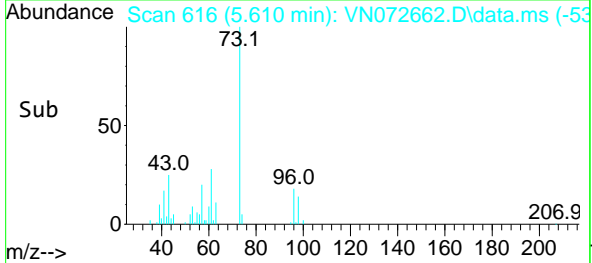
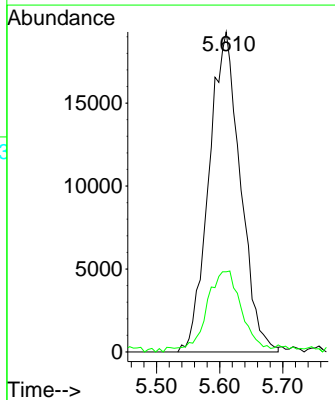
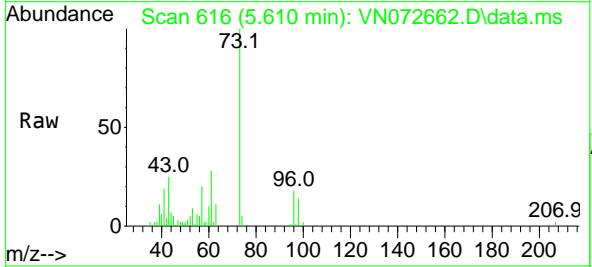
Instrument : MSVOA_N
 ClientSampleId : VSTDIC005

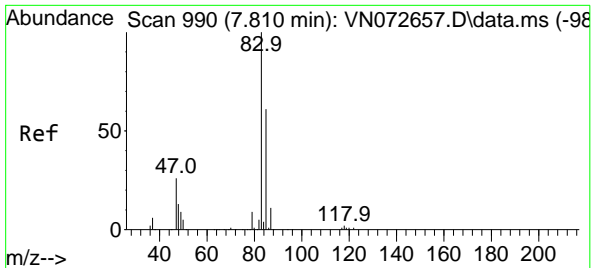
Tgt Ion: 59 Resp: 30772
 Ion Ratio Lower Upper
 59 100
 52 0.0 0.0 0.0



#24
 Methyl tert-Butyl Ether
 Concen: 5.180 ug/l
 RT: 5.610 min Scan# 616
 Delta R.T. 0.006 min
 Lab File: VN072662.D
 Acq: 06 Jun 2022 13:49

Tgt Ion: 73 Resp: 66892
 Ion Ratio Lower Upper
 73 100
 43 24.9 18.1 27.1

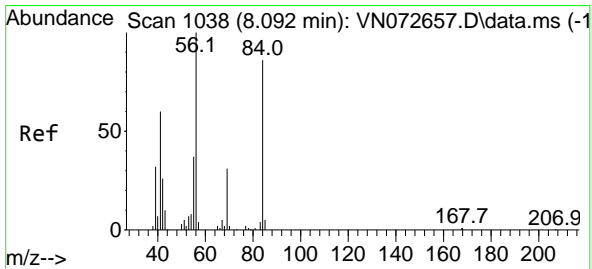
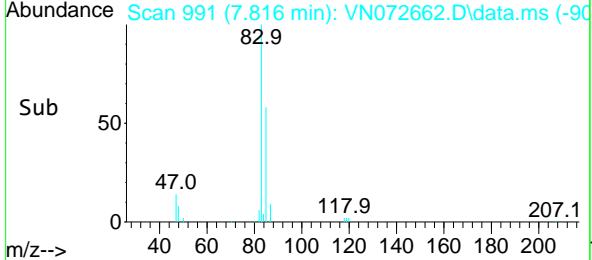
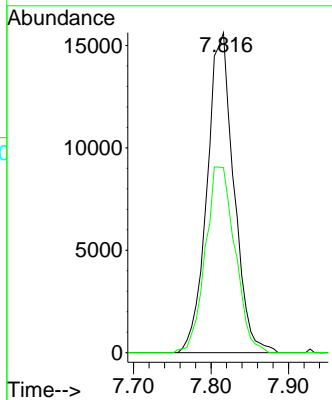
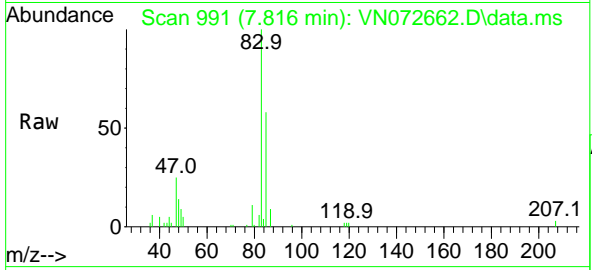




#25
 Chloroform
 Concen: 5.301 ug/l
 RT: 7.816 min Scan# 991
 Delta R.T. 0.006 min
 Lab File: VN072662.D
 Acq: 06 Jun 2022 13:49

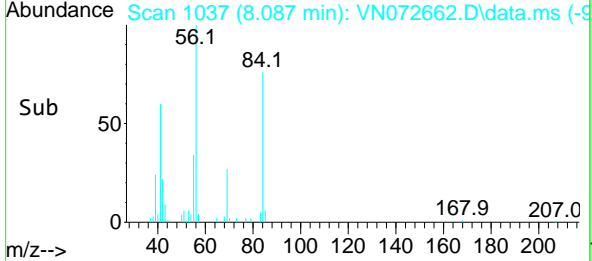
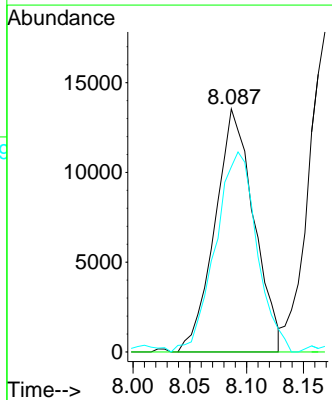
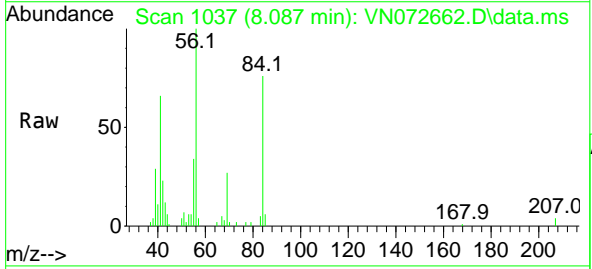
Instrument : MSVOA_N
 ClientSampleId : VSTDIC005

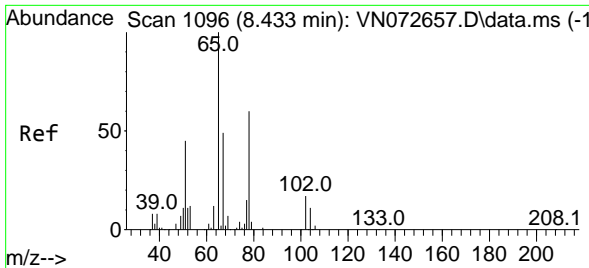
Tgt Ion: 83 Resp: 37528
 Ion Ratio Lower Upper
 83 100
 85 57.9 51.3 76.9



#26
 Cyclohexane
 Concen: 5.563 ug/l
 RT: 8.087 min Scan# 1037
 Delta R.T. -0.006 min
 Lab File: VN072662.D
 Acq: 06 Jun 2022 13:49

Tgt Ion: 56 Resp: 32317
 Ion Ratio Lower Upper
 56 100
 89 0.0 0.1 0.1#
 84 86.5 74.6 111.8





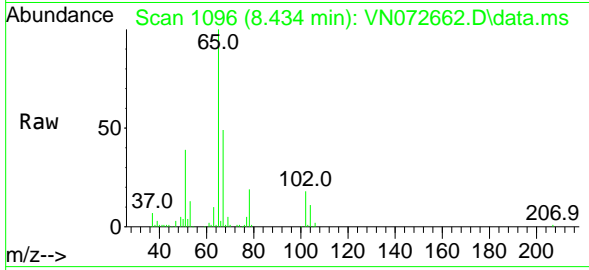
#27
 1,2-Dichloroethane-d4
 Concen: 29.973 ug/l
 RT: 8.434 min Scan# 1096
 Delta R.T. 0.000 min
 Lab File: VN072662.D
 Acq: 06 Jun 2022 13:49

Instrument :

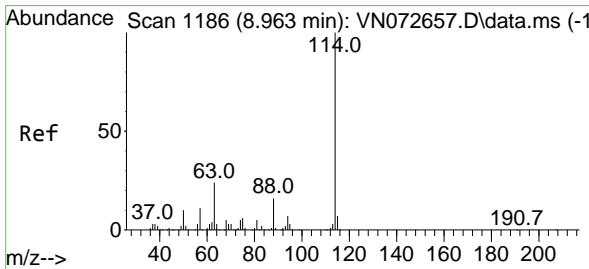
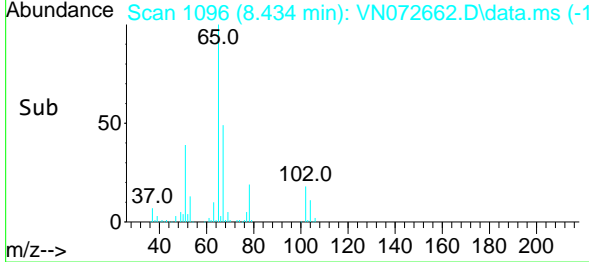
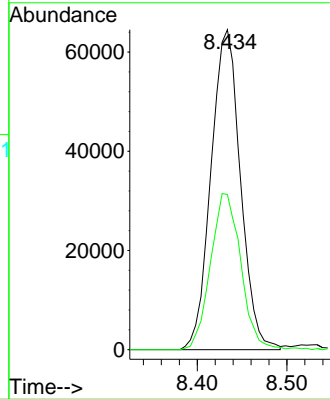
MSVOA_N

ClientSampleId :

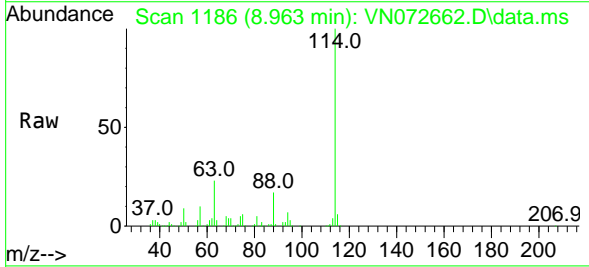
VSTDIC005



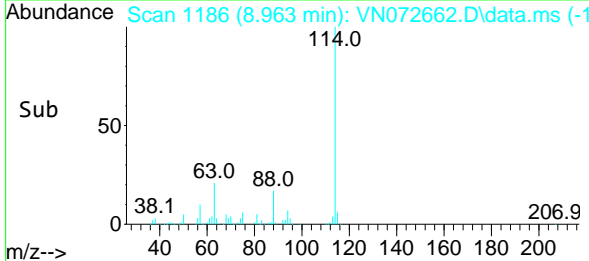
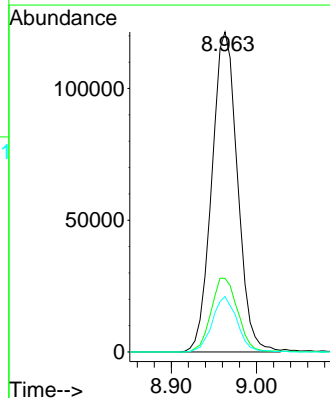
Tgt Ion: 65 Resp: 147063
 Ion Ratio Lower Upper
 65 100
 67 50.1 40.2 60.2

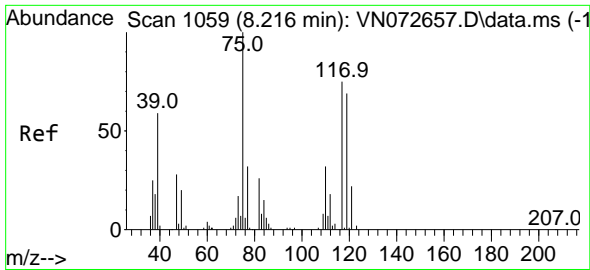


#28
 1,4-Difluorobenzene
 Concen: 30.000 ug/l
 RT: 8.963 min Scan# 1186
 Delta R.T. 0.000 min
 Lab File: VN072662.D
 Acq: 06 Jun 2022 13:49



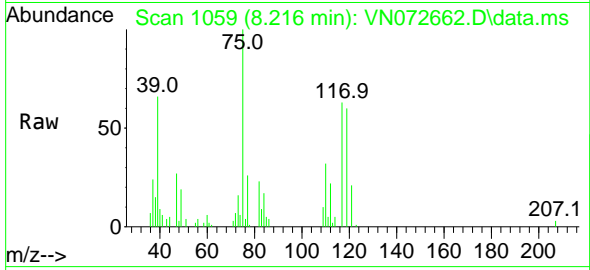
Tgt Ion: 114 Resp: 254156
 Ion Ratio Lower Upper
 114 100
 63 23.9 15.8 23.6#
 88 16.6 11.6 17.4



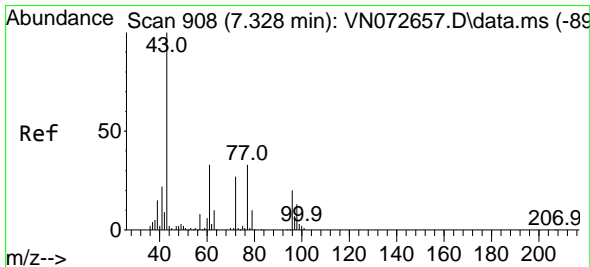
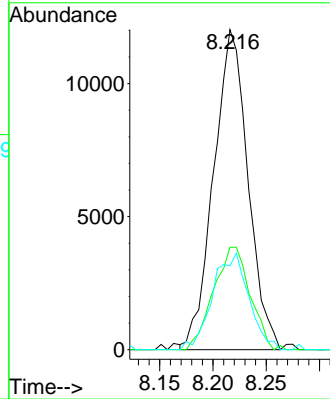
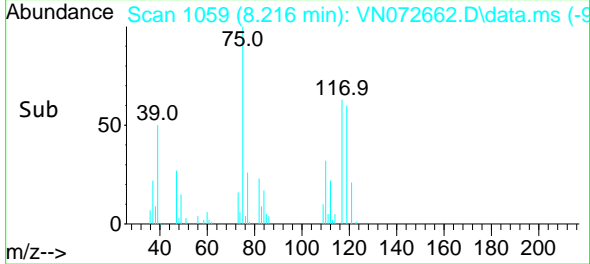


#29
 1,1-Dichloropropene
 Concen: 5.517 ug/l
 RT: 8.216 min Scan# 1059
 Delta R.T. 0.000 min
 Lab File: VN072662.D
 Acq: 06 Jun 2022 13:49

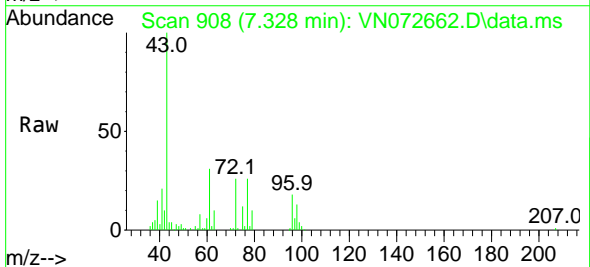
Instrument : MSVOA_N
 ClientSampleId : VSTDIC005



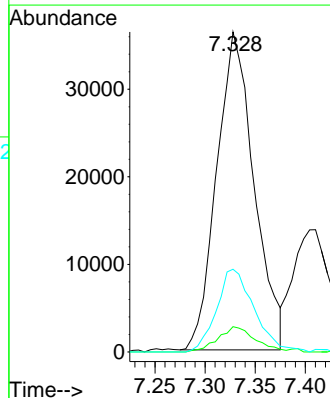
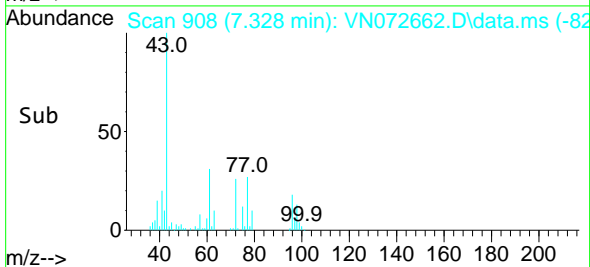
Tgt Ion: 75 Resp: 26950
 Ion Ratio Lower Upper
 75 100
 110 34.0 0.0 74.2
 77 17.6 0.0 63.2

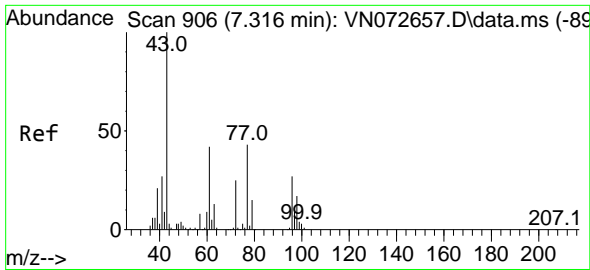


#30
 2-Butanone
 Concen: 26.737 ug/l
 RT: 7.328 min Scan# 908
 Delta R.T. 0.000 min
 Lab File: VN072662.D
 Acq: 06 Jun 2022 13:49



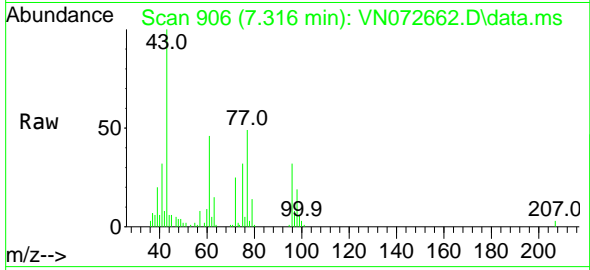
Tgt Ion: 43 Resp: 94323
 Ion Ratio Lower Upper
 43 100
 57 7.9 6.7 10.1
 72 26.1 23.2 34.8



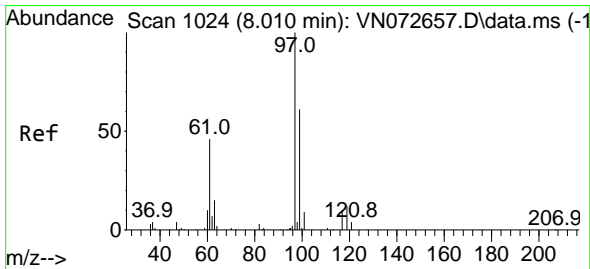
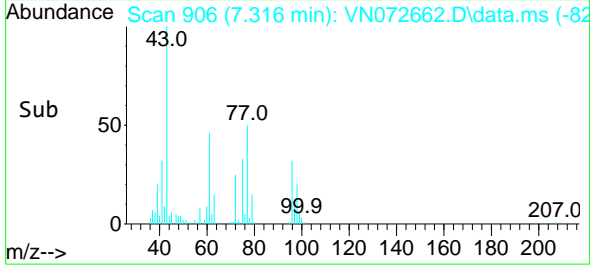
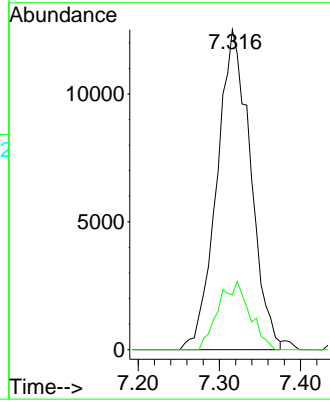


#31
 2,2-Dichloropropane
 Concen: 5.421 ug/l
 RT: 7.316 min Scan# 906
 Delta R.T. 0.000 min
 Lab File: VN072662.D
 Acq: 06 Jun 2022 13:49

Instrument : MSVOA_N
 ClientSampleId : VSTDIC005

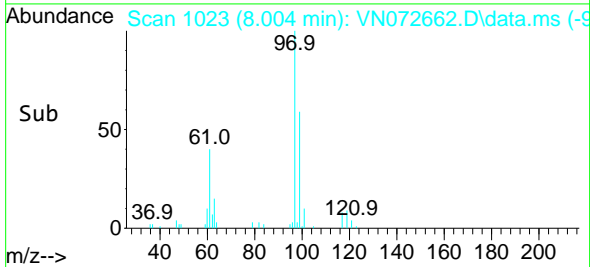
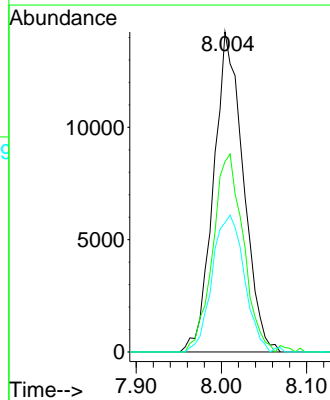
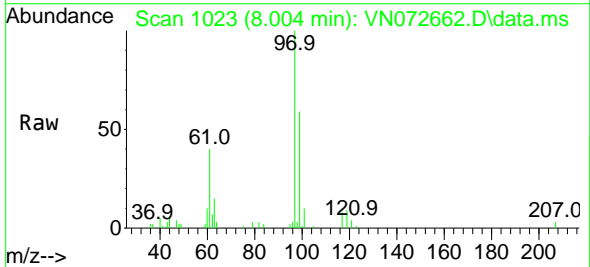


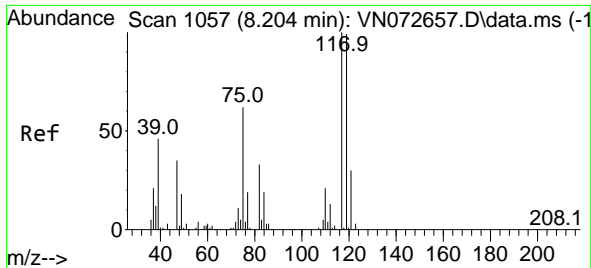
Tgt Ion: 77 Resp: 36038
 Ion Ratio Lower Upper
 77 100
 97 9.7 18.3 27.5#



#32
 1,1,1-Trichloroethane
 Concen: 5.345 ug/l
 RT: 8.004 min Scan# 1023
 Delta R.T. -0.006 min
 Lab File: VN072662.D
 Acq: 06 Jun 2022 13:49

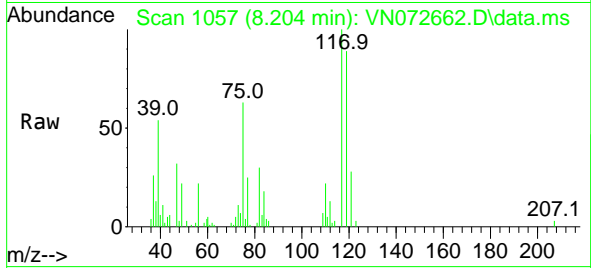
Tgt Ion: 97 Resp: 34488
 Ion Ratio Lower Upper
 97 100
 99 63.3 50.4 75.6
 61 46.0 34.6 51.8



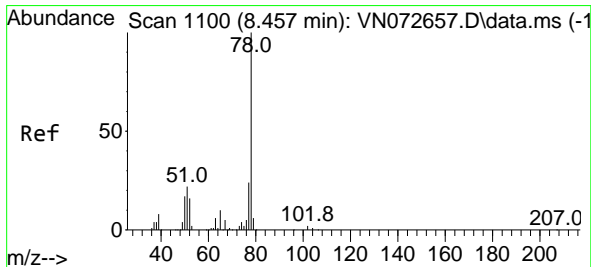
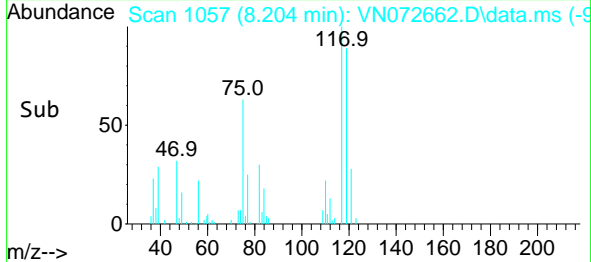
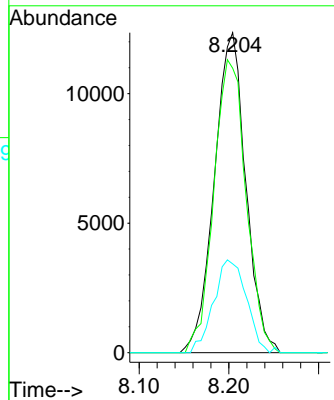


#33
 Carbon Tetrachloride
 Concen: 5.419 ug/l
 RT: 8.204 min Scan# 1099
 Delta R.T. 0.000 min
 Lab File: VN072662.D
 Acq: 06 Jun 2022 13:49

Instrument : MSVOA_N
 ClientSampleId : VSTDIC005

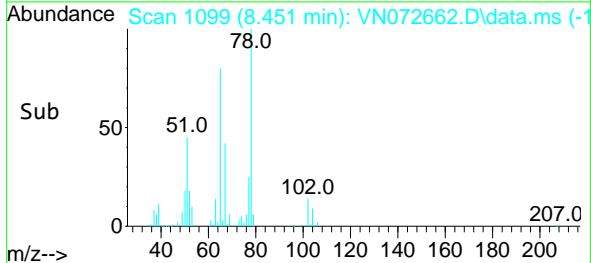
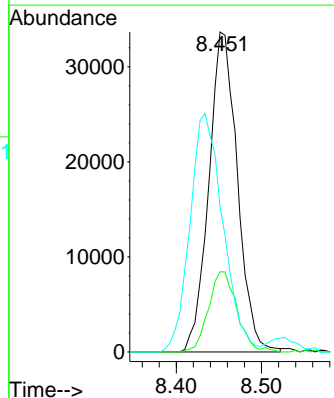
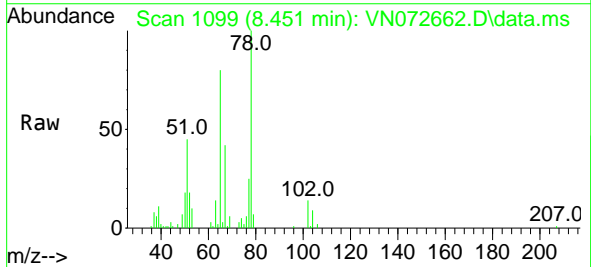


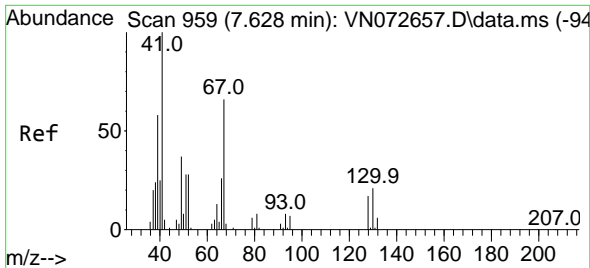
Tgt Ion:117 Resp: 30071
 Ion Ratio Lower Upper
 117 100
 119 88.9 77.5 116.3
 121 27.8 23.5 35.3



#34
 Benzene
 Concen: 5.384 ug/l
 RT: 8.451 min Scan# 1099
 Delta R.T. -0.006 min
 Lab File: VN072662.D
 Acq: 06 Jun 2022 13:49

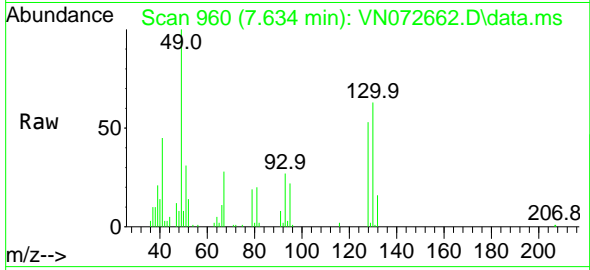
Tgt Ion: 78 Resp: 78439
 Ion Ratio Lower Upper
 78 100
 77 25.0 19.1 28.7
 51 41.0 16.0 24.0#



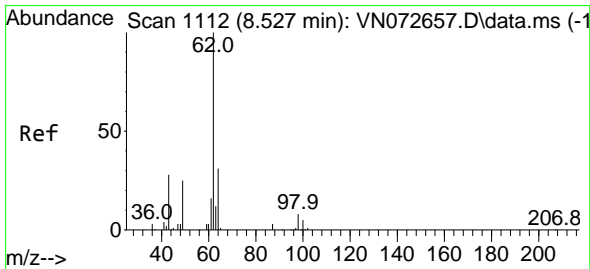
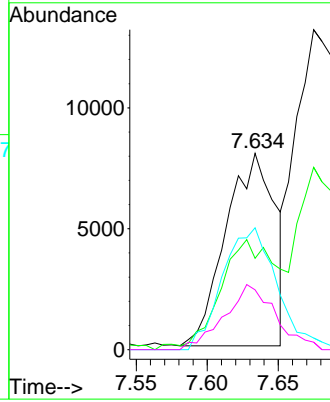
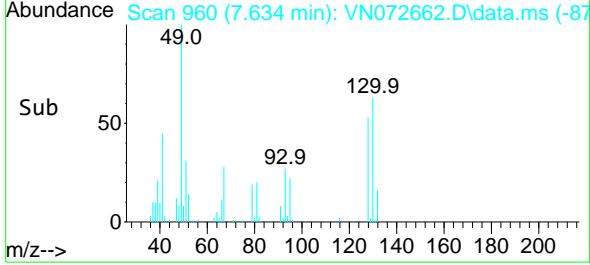


#35
 Methacrylonitrile
 Concen: 5.532 ug/l
 RT: 7.634 min Scan# 91
 Delta R.T. 0.006 min
 Lab File: VN072662.D
 Acq: 06 Jun 2022 13:49

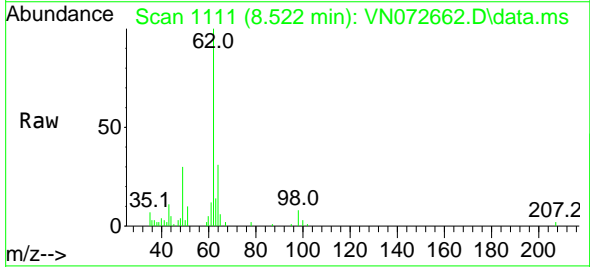
Instrument :
 MSVOA_N
 ClientSampleId :
 VSTDIC005



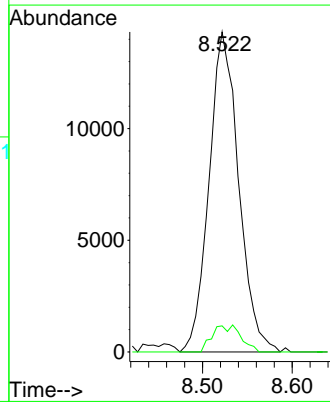
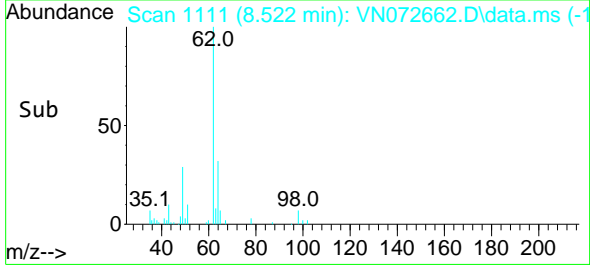
Tgt Ion: 41 Resp: 19216
 Ion Ratio Lower Upper
 41 100
 39 45.3 28.0 83.9
 67 63.3 37.7 113.1
 52 31.1 17.1 51.2

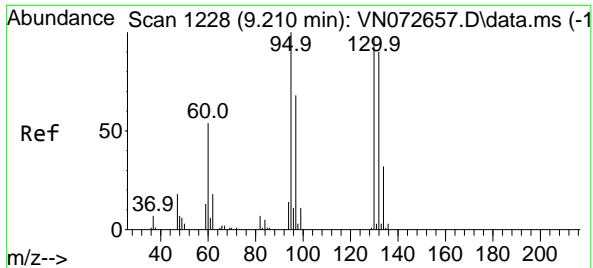


#36
 1,2-Dichloroethane
 Concen: 5.328 ug/l
 RT: 8.522 min Scan# 1111
 Delta R.T. -0.006 min
 Lab File: VN072662.D
 Acq: 06 Jun 2022 13:49



Tgt Ion: 62 Resp: 32839
 Ion Ratio Lower Upper
 62 100
 98 4.7 6.6 10.0#

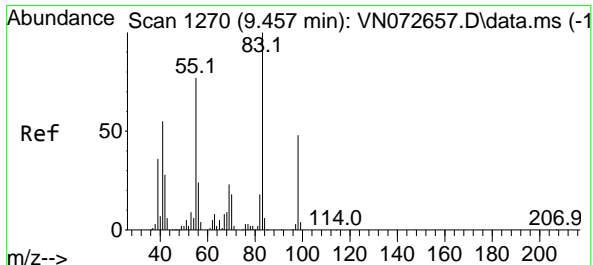
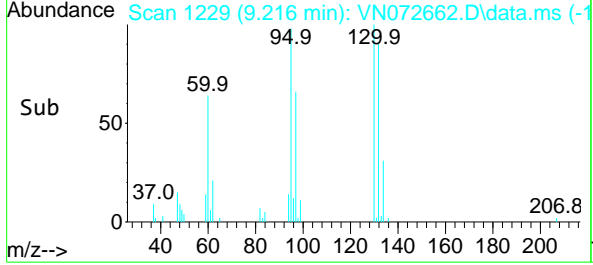
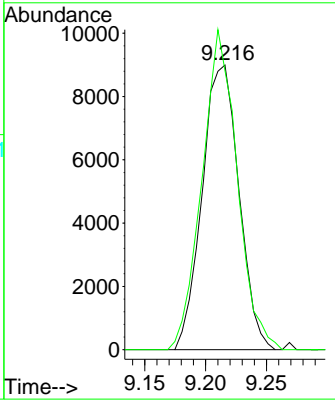
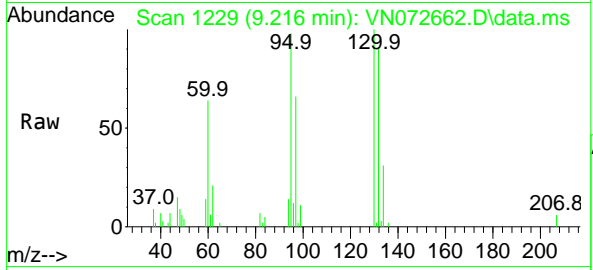




#37
 Trichloroethene
 Concen: 5.474 ug/l
 RT: 9.216 min Scan# 111
 Delta R.T. 0.006 min
 Lab File: VN072662.D
 Acq: 06 Jun 2022 13:49

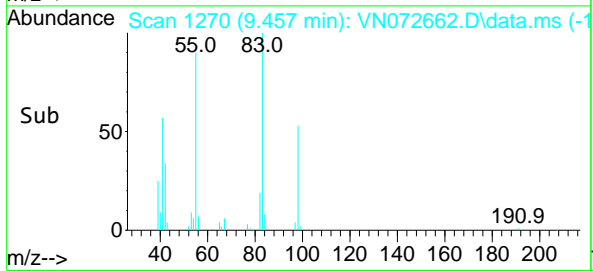
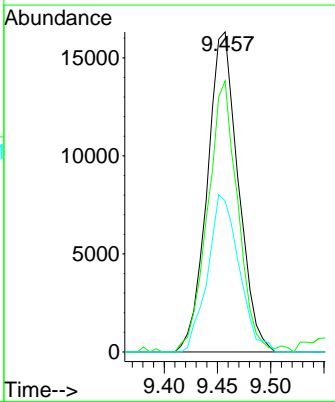
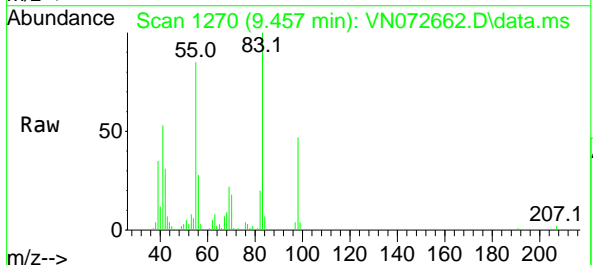
Instrument : MSVOA_N
 ClientSampleId : VSTDIC005

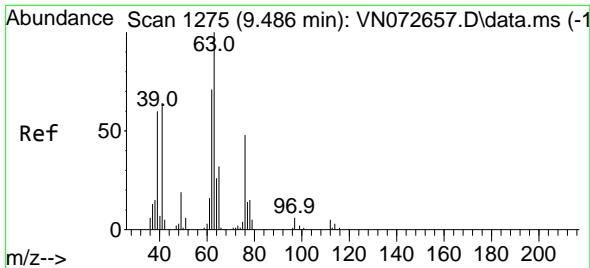
Tgt Ion:130 Resp: 18953
 Ion Ratio Lower Upper
 130 100
 95 95.5 76.6 115.0



#38
 Methylcyclohexane
 Concen: 5.579 ug/l
 RT: 9.457 min Scan# 1270
 Delta R.T. 0.000 min
 Lab File: VN072662.D
 Acq: 06 Jun 2022 13:49

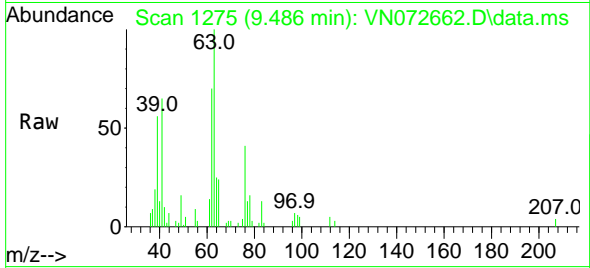
Tgt Ion: 83 Resp: 33052
 Ion Ratio Lower Upper
 83 100
 55 81.8 35.1 105.3
 98 49.2 23.4 70.2



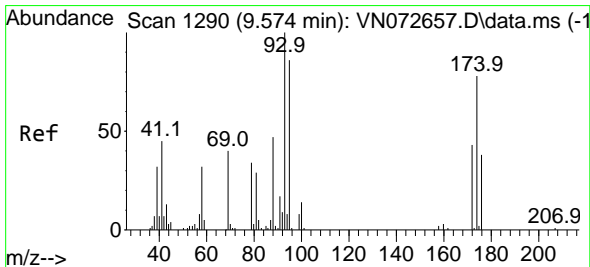
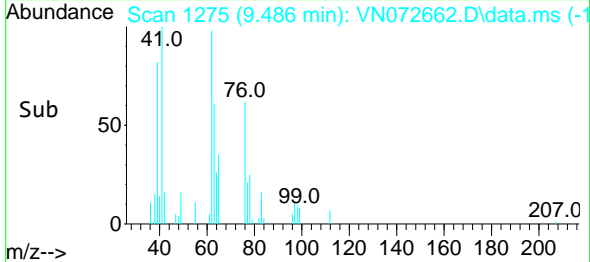
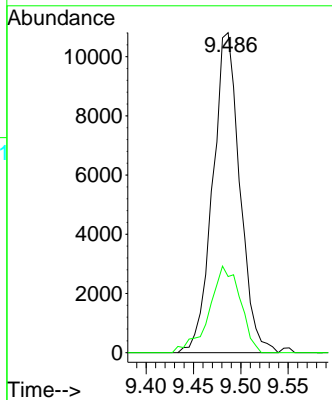


#39
 1,2-Dichloropropane
 Concen: 5.409 ug/l
 RT: 9.486 min Scan# 11
 Delta R.T. 0.000 min
 Lab File: VN072662.D
 Acq: 06 Jun 2022 13:49

Instrument :
 MSVOA_N
 ClientSampleId :
 VSTDIC005

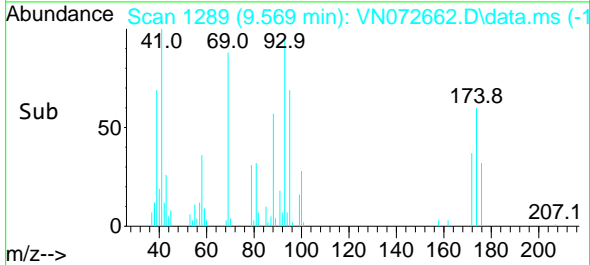
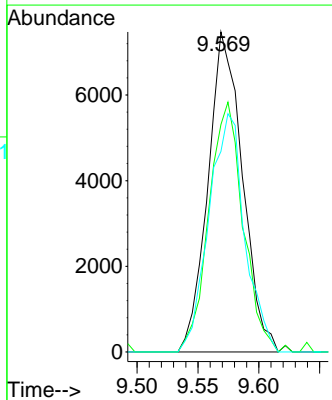
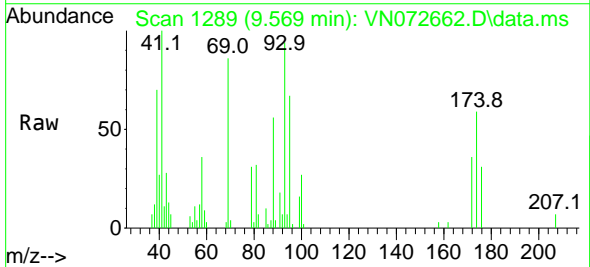


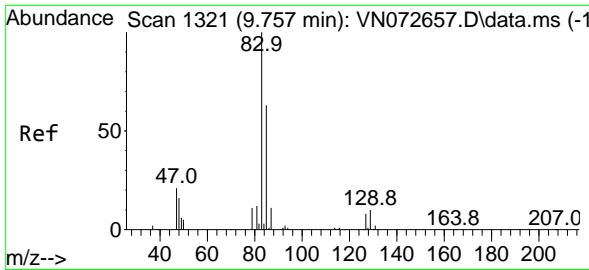
Tgt Ion: 63 Resp: 21540
 Ion Ratio Lower Upper
 63 100
 65 23.8 24.2 36.4#



#40
 Dibromomethane
 Concen: 5.408 ug/l
 RT: 9.569 min Scan# 1289
 Delta R.T. -0.006 min
 Lab File: VN072662.D
 Acq: 06 Jun 2022 13:49

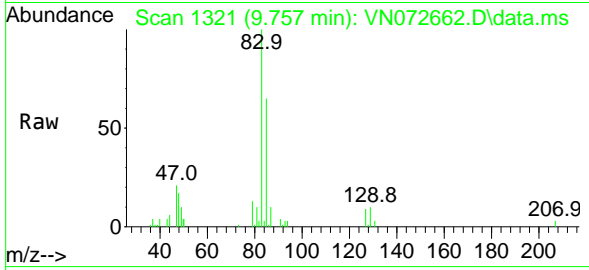
Tgt Ion: 93 Resp: 14718
 Ion Ratio Lower Upper
 93 100
 95 77.6 0.0 168.8
 174 77.2 0.0 173.6



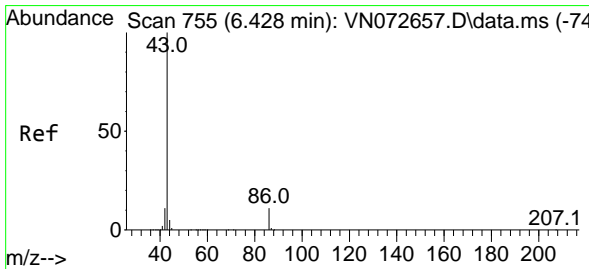
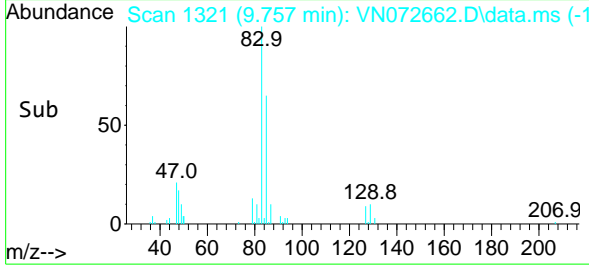
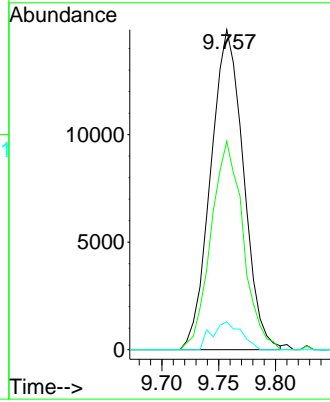


#41
 Bromodichloromethane
 Concen: 5.026 ug/l
 RT: 9.757 min Scan# 11
 Delta R.T. 0.000 min
 Lab File: VN072662.D
 Acq: 06 Jun 2022 13:49

Instrument :
 MSVOA_N
 ClientSampleId :
 VSTDIC005

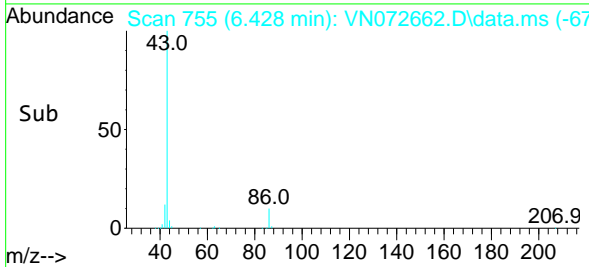
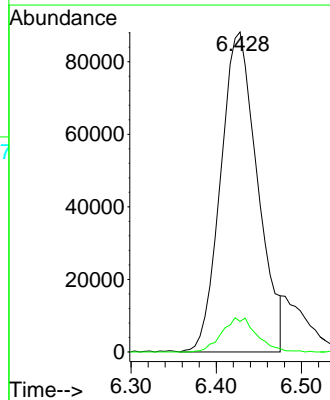
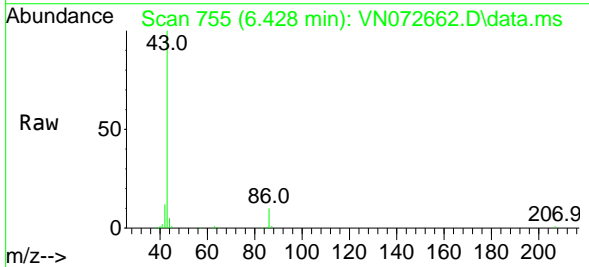


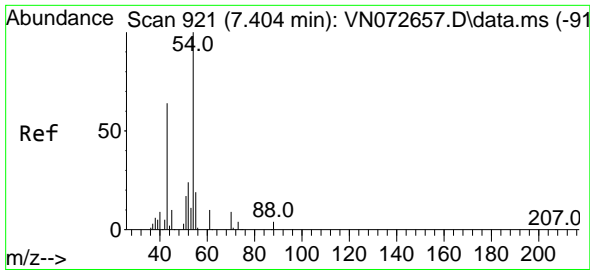
Tgt Ion: 83 Resp: 29852
 Ion Ratio Lower Upper
 83 100
 85 65.1 54.1 81.1
 127 8.7 7.6 11.4



#42
 Vinyl Acetate
 Concen: 22.861 ug/l
 RT: 6.428 min Scan# 755
 Delta R.T. 0.000 min
 Lab File: VN072662.D
 Acq: 06 Jun 2022 13:49

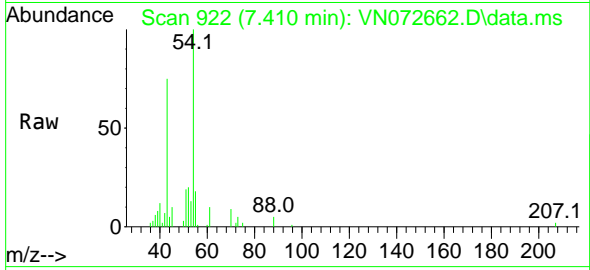
Tgt Ion: 43 Resp: 265293
 Ion Ratio Lower Upper
 43 100
 86 10.0 7.5 11.3



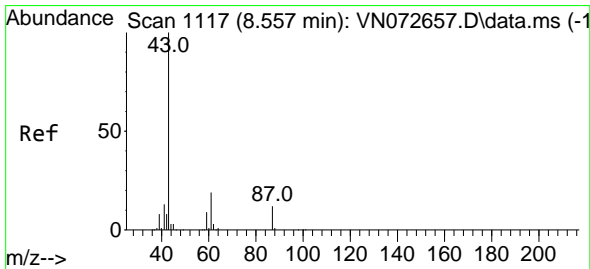
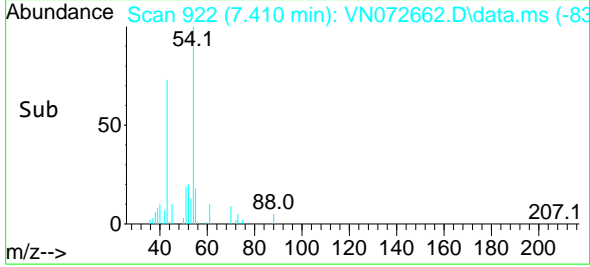
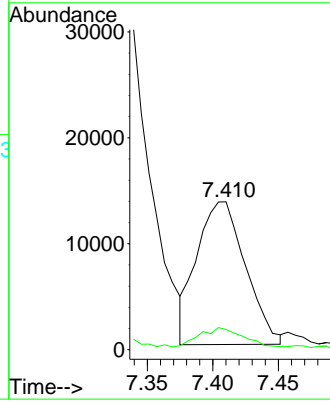


#43
 Ethyl Acetate
 Concen: 5.037 ug/l
 RT: 7.410 min Scan# 911
 Delta R.T. 0.006 min
 Lab File: VN072662.D
 Acq: 06 Jun 2022 13:49

Instrument :
 MSVOA_N
 ClientSampleId :
 VSTDIC005

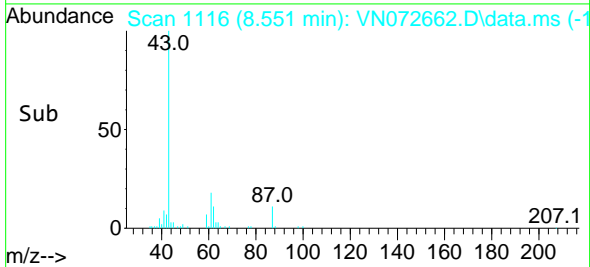
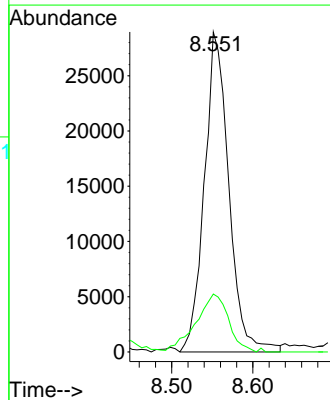
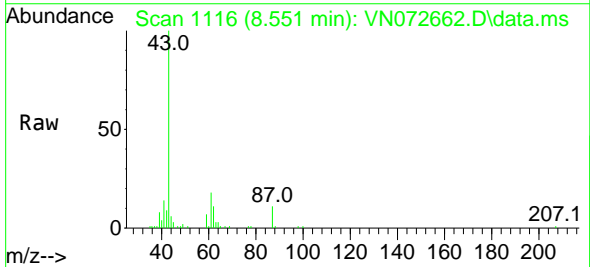


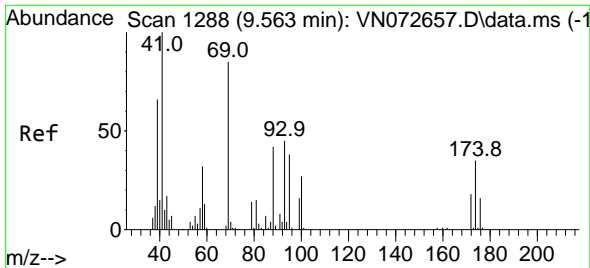
Tgt Ion: 43 Resp: 34750
 Ion Ratio Lower Upper
 43 100
 45 12.8 10.6 16.0



#44
 Isopropyl Acetate
 Concen: 5.427 ug/l
 RT: 8.551 min Scan# 1116
 Delta R.T. -0.006 min
 Lab File: VN072662.D
 Acq: 06 Jun 2022 13:49

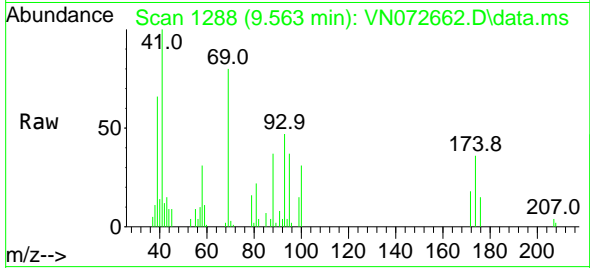
Tgt Ion: 43 Resp: 60617
 Ion Ratio Lower Upper
 43 100
 61 24.1 20.1 30.1



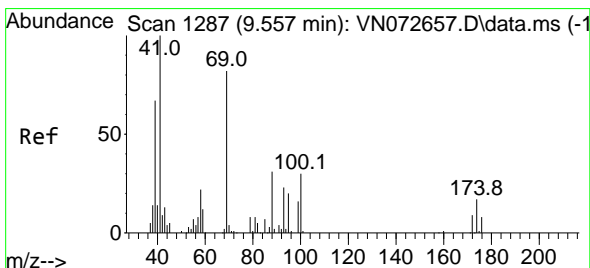
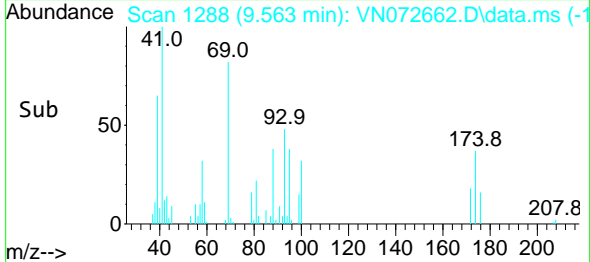
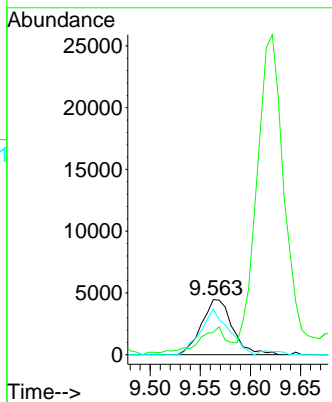


#45
 1,4-Dioxane
 Concen: 106.700 ug/l
 RT: 9.563 min Scan# 1288
 Delta R.T. 0.000 min
 Lab File: VN072662.D
 Acq: 06 Jun 2022 13:49

Instrument : MSVOA_N
 ClientSampleId : VSTDIC005

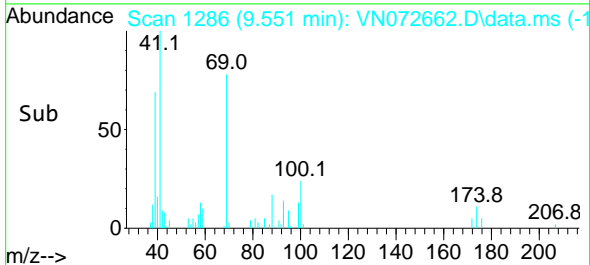
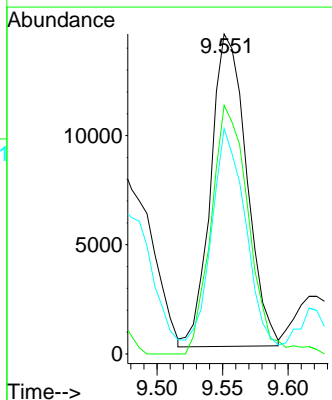
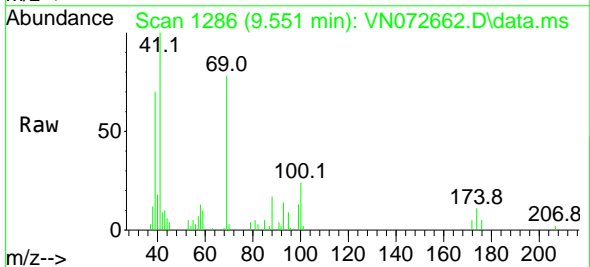


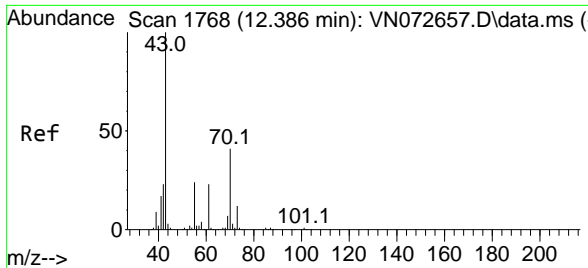
Tgt Ion: 88 Resp: 9592
 Ion Ratio Lower Upper
 88 100
 43 34.1 25.0 37.6
 58 74.7 49.4 74.2#



#46
 Methyl methacrylate
 Concen: 5.488 ug/l
 RT: 9.551 min Scan# 1286
 Delta R.T. -0.006 min
 Lab File: VN072662.D
 Acq: 06 Jun 2022 13:49

Tgt Ion: 41 Resp: 27180
 Ion Ratio Lower Upper
 41 100
 69 81.1 44.4 133.2
 39 70.6 39.9 119.6

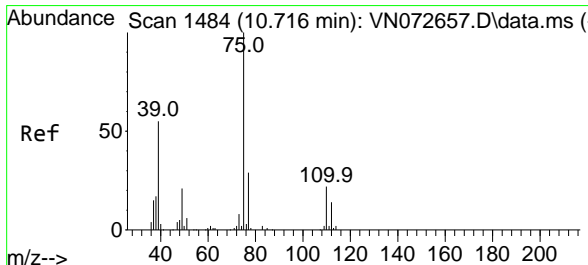
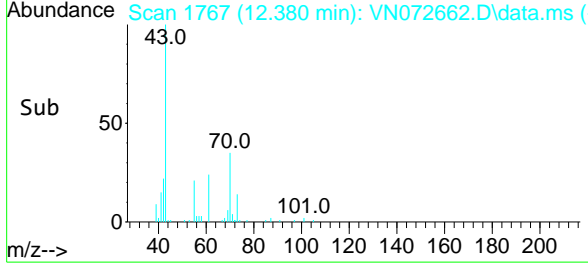
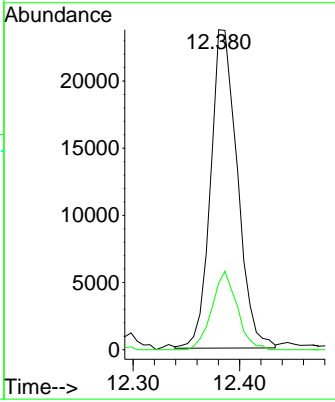
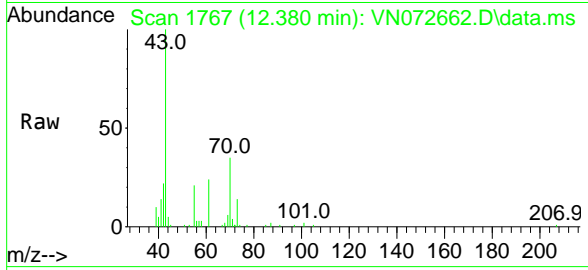




#47
 n-amy1 Acetate
 Concen: 4.838 ug/l
 RT: 12.380 min Scan# 11
 Delta R.T. -0.006 min
 Lab File: VN072662.D
 Acq: 06 Jun 2022 13:49

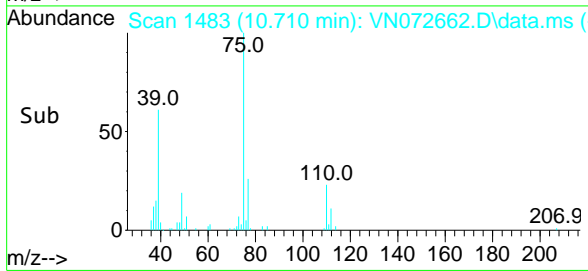
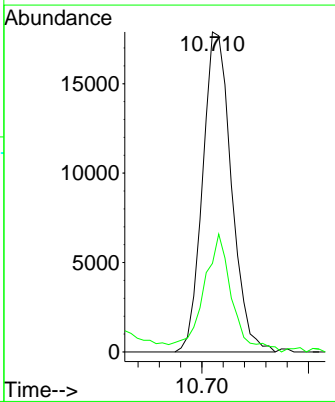
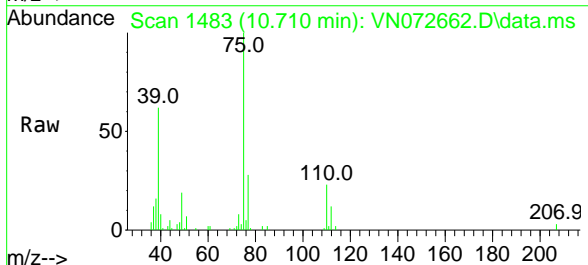
Instrument : MSVOA_N
 ClientSampleId : VSTDIC005

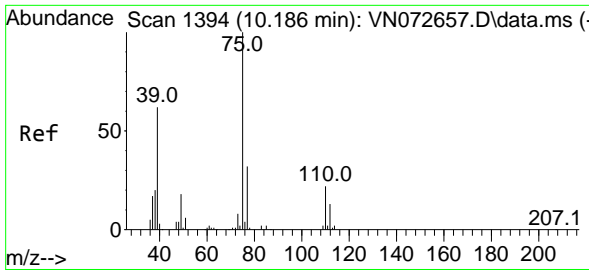
Tgt Ion: 43 Resp: 41405
 Ion Ratio Lower Upper
 43 100
 55 23.1 19.0 28.6



#48
 t-1,3-Dichloropropene
 Concen: 5.022 ug/l
 RT: 10.710 min Scan# 1483
 Delta R.T. -0.006 min
 Lab File: VN072662.D
 Acq: 06 Jun 2022 13:49

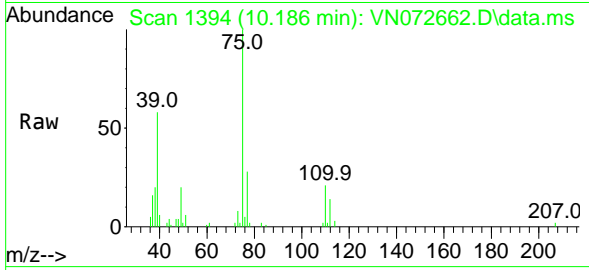
Tgt Ion: 75 Resp: 33580
 Ion Ratio Lower Upper
 75 100
 77 26.1 25.3 37.9





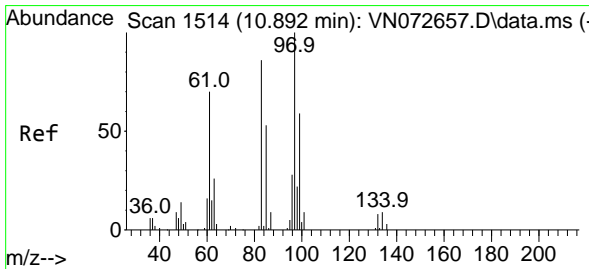
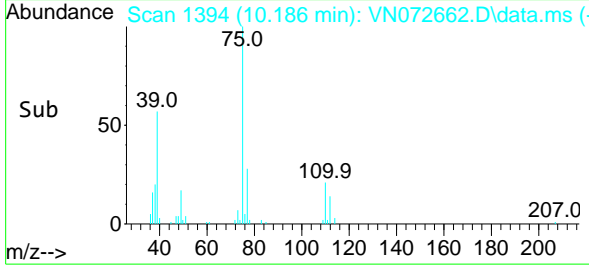
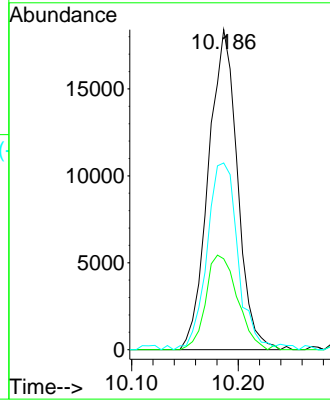
#49
 cis-1,3-Dichloropropene
 Concen: 5.097 ug/l
 RT: 10.186 min Scan# 111
 Delta R.T. 0.000 min
 Lab File: VN072662.D
 Acq: 06 Jun 2022 13:49

Instrument : MSVOA_N
 ClientSampleId : VSTDIC005



Tgt Ion: 75 Resp: 34767

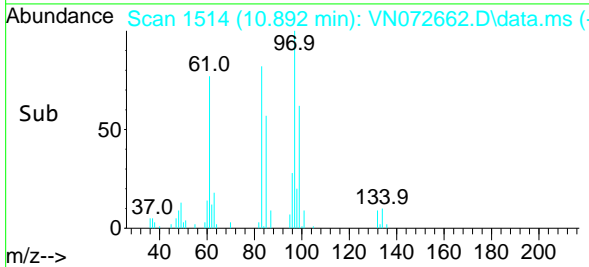
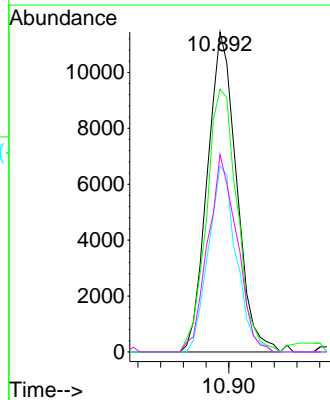
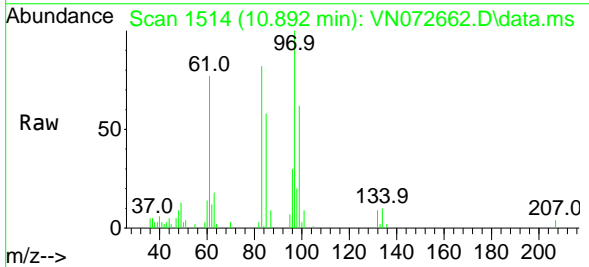
Ion	Ratio	Lower	Upper
75	100		
77	28.4	25.3	37.9
39	57.1	46.2	69.4

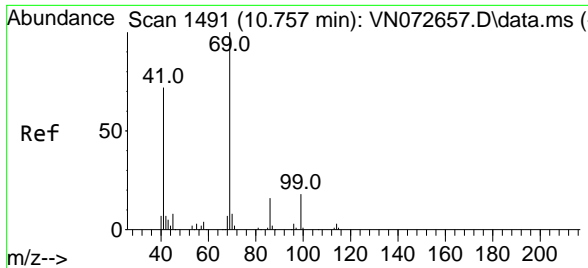


#50
 1,1,2-Trichloroethane
 Concen: 5.282 ug/l
 RT: 10.892 min Scan# 1514
 Delta R.T. 0.000 min
 Lab File: VN072662.D
 Acq: 06 Jun 2022 13:49

Tgt Ion: 97 Resp: 20382

Ion	Ratio	Lower	Upper
97	100		
83	82.1	67.2	100.8
85	58.1	43.0	64.4
99	61.7	49.0	73.4



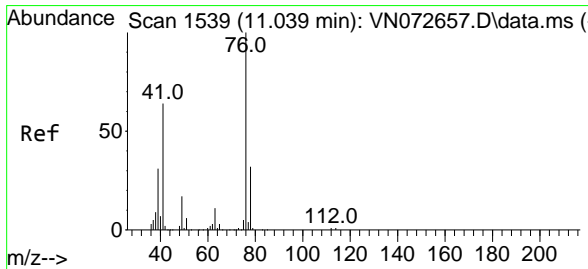
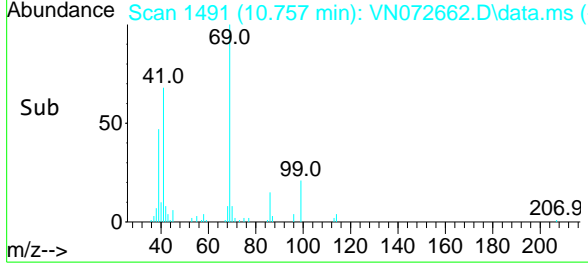
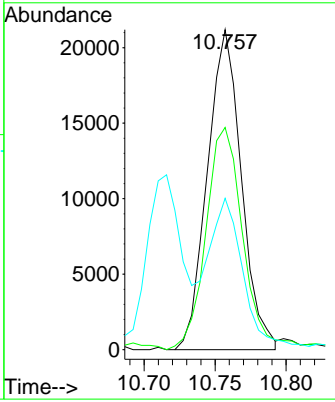
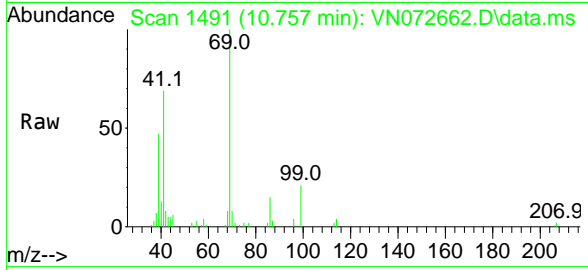


#51
 Ethyl methacrylate
 Concen: 5.037 ug/l
 RT: 10.757 min Scan# 1491
 Delta R.T. 0.000 min
 Lab File: VN072662.D
 Acq: 06 Jun 2022 13:49

Instrument : MSVOA_N
 ClientSampleId : VSTDIC005

Tgt Ion: 69 Resp: 35267

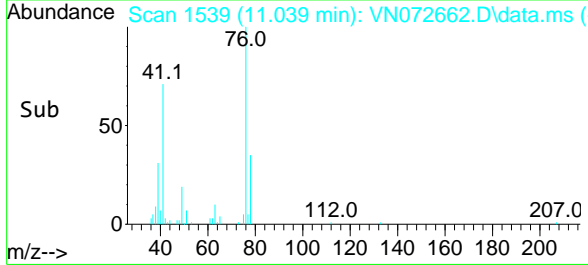
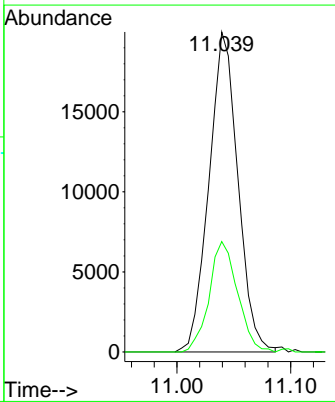
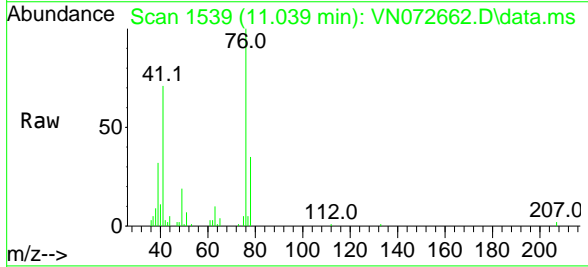
Ion	Ratio	Lower	Upper
69	100		
41	68.3	33.0	98.9
39	44.2	25.4	76.4

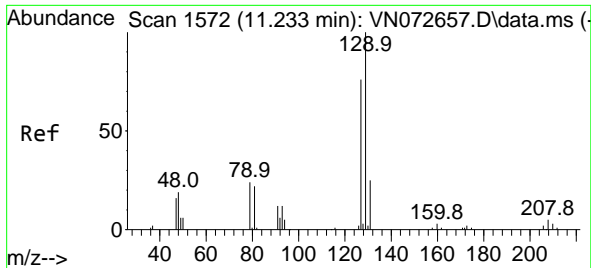


#52
 1,3-Dichloropropane
 Concen: 5.084 ug/l
 RT: 11.039 min Scan# 1539
 Delta R.T. 0.000 min
 Lab File: VN072662.D
 Acq: 06 Jun 2022 13:49

Tgt Ion: 76 Resp: 35375

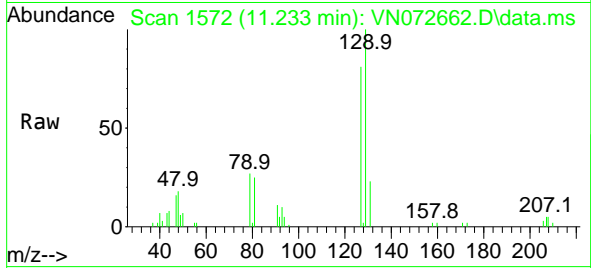
Ion	Ratio	Lower	Upper
76	100		
78	33.8	0.0	65.4



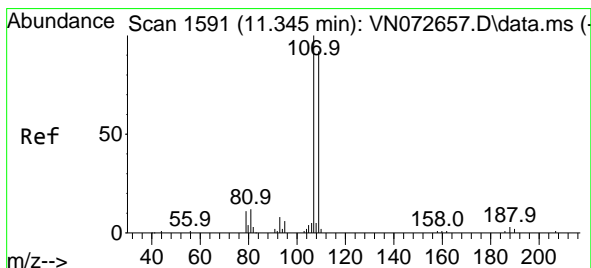
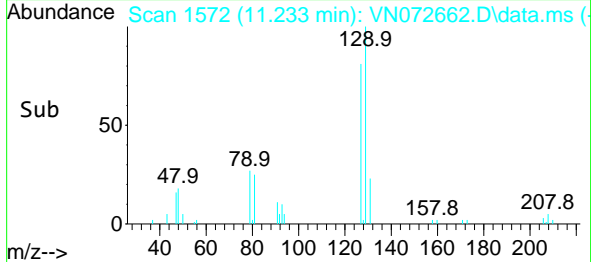
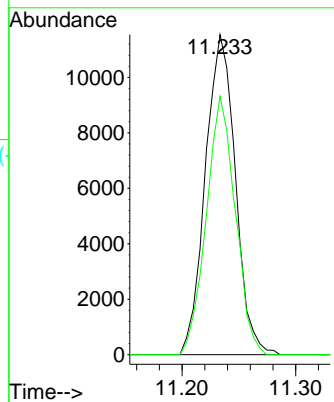


#53
 Dibromochloromethane
 Concen: 4.920 ug/l
 RT: 11.233 min Scan# 1572
 Delta R.T. 0.000 min
 Lab File: VN072662.D
 Acq: 06 Jun 2022 13:49

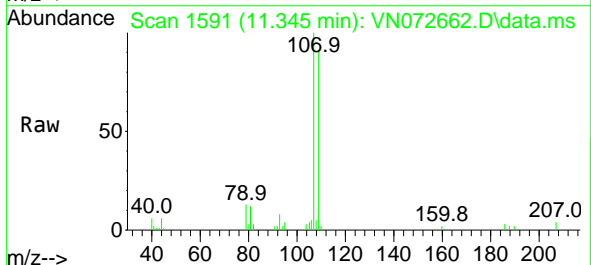
Instrument : MSVOA_N
 ClientSampleId : VSTDIC005



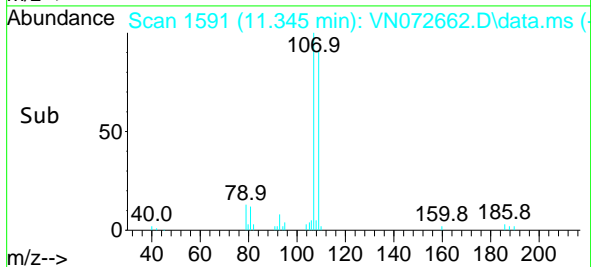
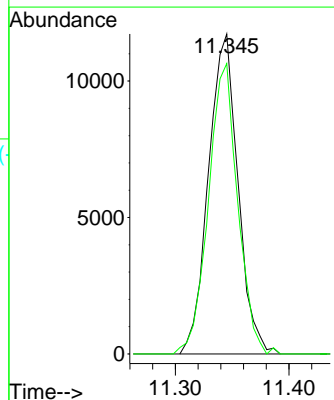
Tgt Ion:129 Resp: 21187
 Ion Ratio Lower Upper
 129 100
 127 78.1 39.0 117.0

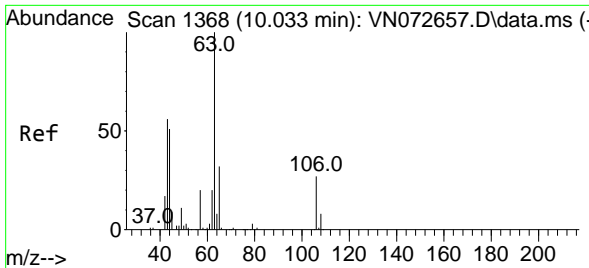


#54
 1,2-Dibromoethane
 Concen: 5.249 ug/l
 RT: 11.345 min Scan# 1591
 Delta R.T. 0.000 min
 Lab File: VN072662.D
 Acq: 06 Jun 2022 13:49



Tgt Ion:107 Resp: 21183
 Ion Ratio Lower Upper
 107 100
 109 89.5 72.8 109.2



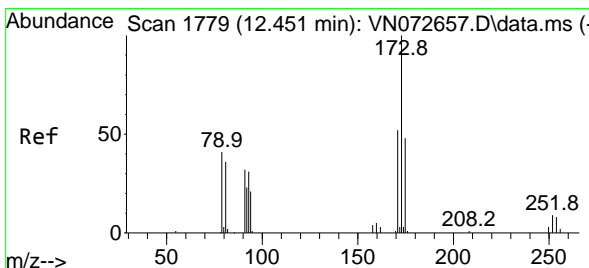
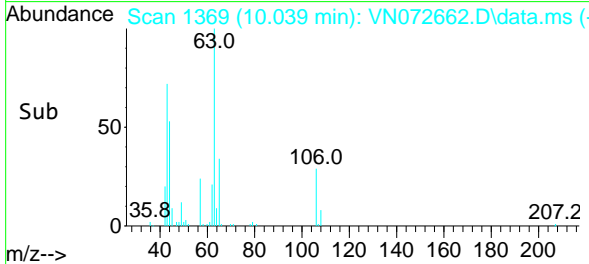
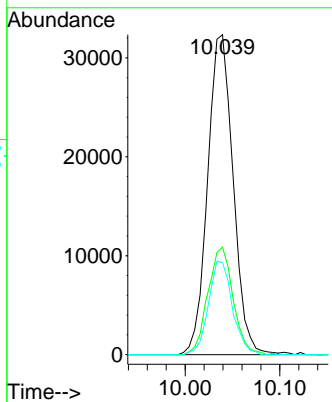
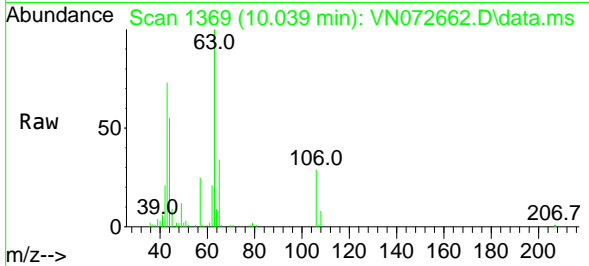


#55
 2-Chloroethyl vinyl ether
 Concen: 21.580 ug/l
 RT: 10.039 min Scan# 11
 Delta R.T. 0.006 min
 Lab File: VN072662.D
 Acq: 06 Jun 2022 13:49

Instrument :
 MSVOA_N
 ClientSampleId :
 VSTDIC005

Tgt Ion: 63 Resp: 60570

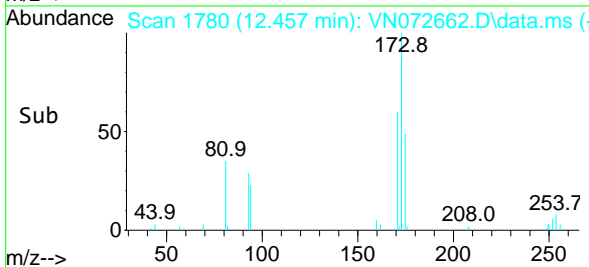
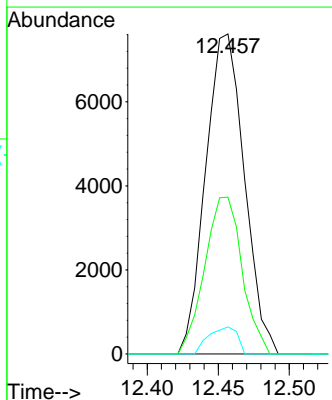
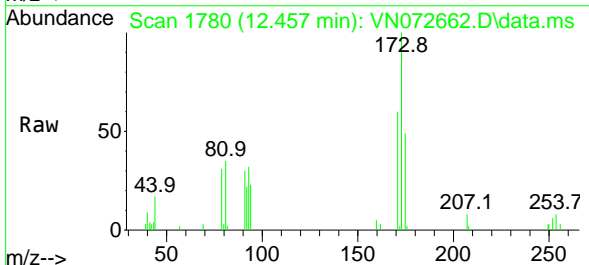
Ion	Ratio	Lower	Upper
63	100		
65	33.1	25.4	38.0
106	27.3	23.2	34.8

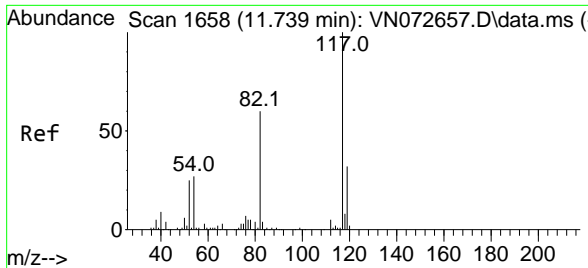


#56
 Bromoform
 Concen: 4.811 ug/l
 RT: 12.457 min Scan# 1780
 Delta R.T. 0.006 min
 Lab File: VN072662.D
 Acq: 06 Jun 2022 13:49

Tgt Ion: 173 Resp: 14413

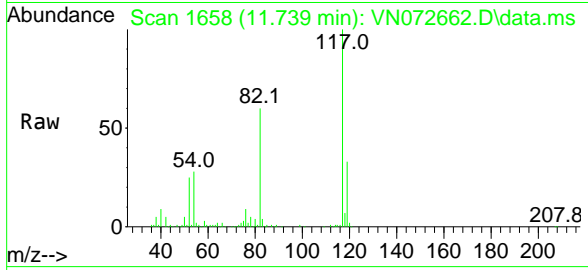
Ion	Ratio	Lower	Upper
173	100		
175	47.4	38.6	58.0
254	6.3	0.0	0.0#





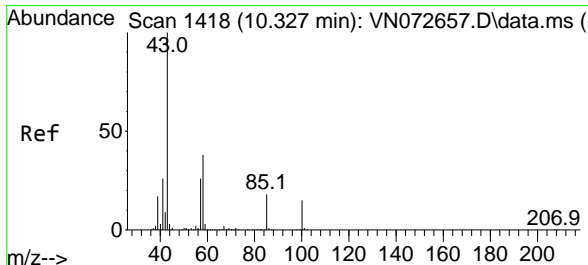
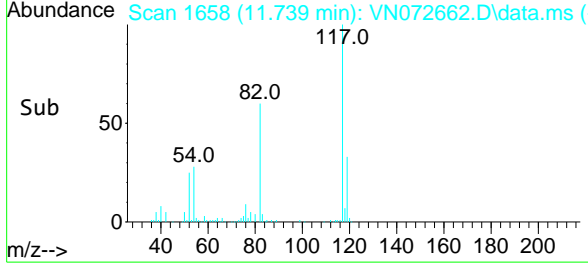
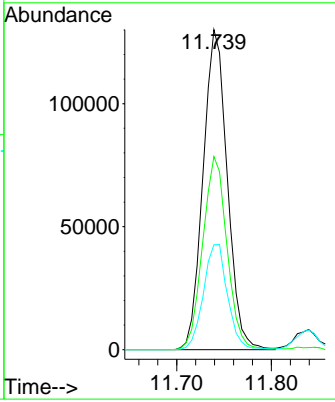
#57
 Chlorobenzene-d5
 Concen: 30.000 ug/l
 RT: 11.739 min Scan# 117
 Delta R.T. 0.000 min
 Lab File: VN072662.D
 Acq: 06 Jun 2022 13:49

Instrument : MSVOA_N
 ClientSampleId : VSTDIC005

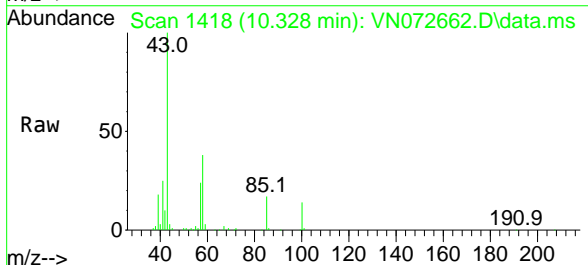


Tgt Ion: 117 Resp: 230506

Ion	Ratio	Lower	Upper
117	100		
82	60.5	43.6	65.4
119	32.9	25.8	38.6

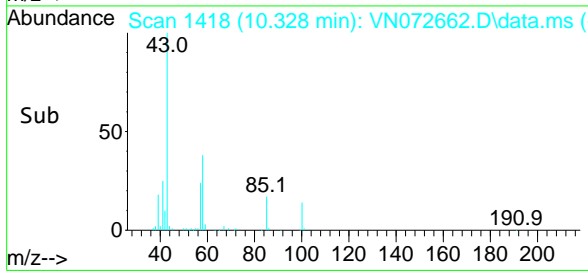
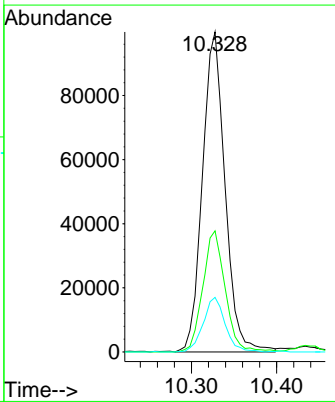


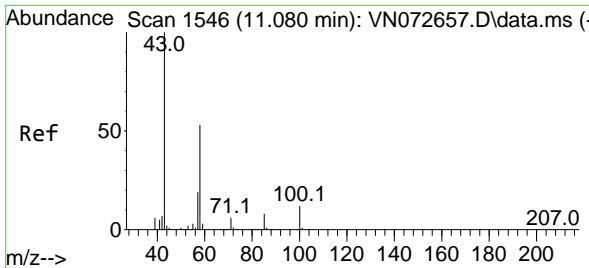
#58
 4-Methyl-2-Pentanone
 Concen: 26.333 ug/l
 RT: 10.328 min Scan# 1418
 Delta R.T. 0.000 min
 Lab File: VN072662.D
 Acq: 06 Jun 2022 13:49



Tgt Ion: 43 Resp: 184006

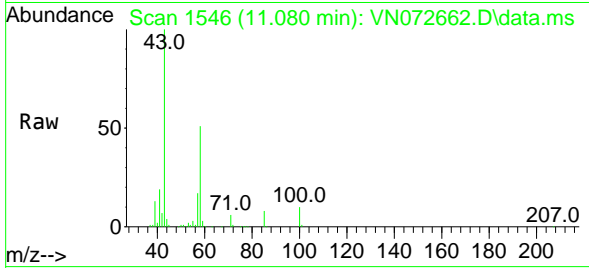
Ion	Ratio	Lower	Upper
43	100		
58	37.4	30.0	45.0
85	16.6	15.0	22.6



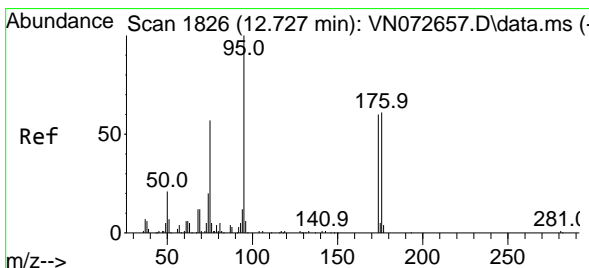
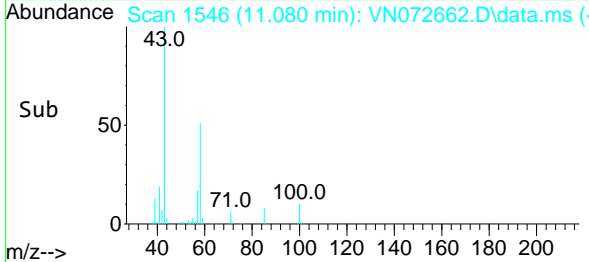
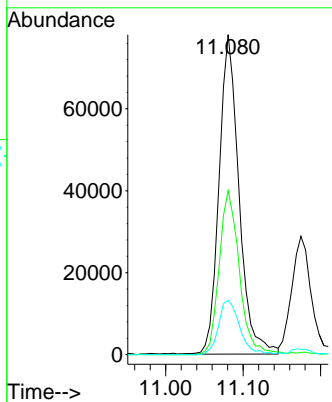


#59
 2-Hexanone
 Concen: 26.506 ug/l
 RT: 11.080 min Scan# 11080
 Delta R.T. 0.000 min
 Lab File: VN072662.D
 Acq: 06 Jun 2022 13:49

Instrument : MSVOA_N
 ClientSampleId : VSTDIC005

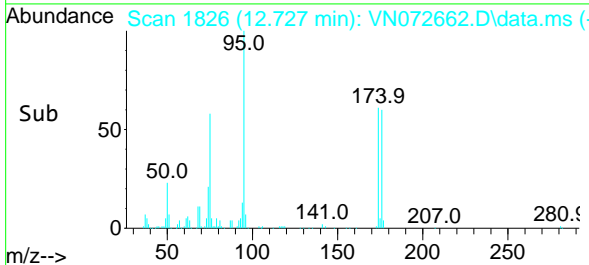
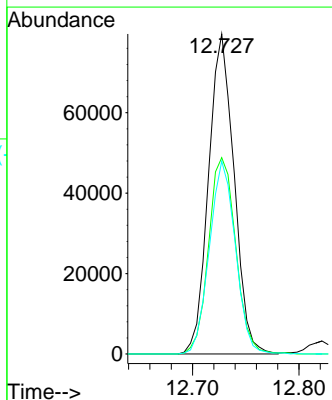
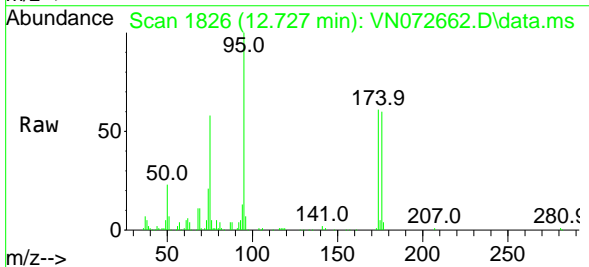


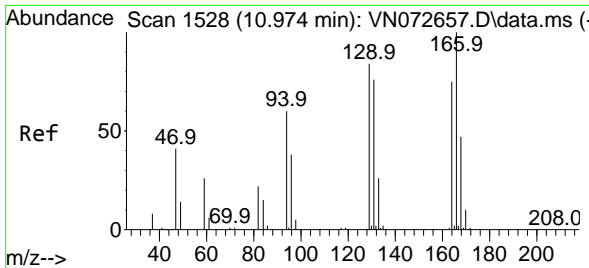
Tgt Ion: 43 Resp: 139447
 Ion Ratio Lower Upper
 43 100
 58 52.0 42.2 63.2
 57 18.1 15.0 22.4



#60
 4-Bromofluorobenzene
 Concen: 27.839 ug/l
 RT: 12.727 min Scan# 1826
 Delta R.T. 0.000 min
 Lab File: VN072662.D
 Acq: 06 Jun 2022 13:49

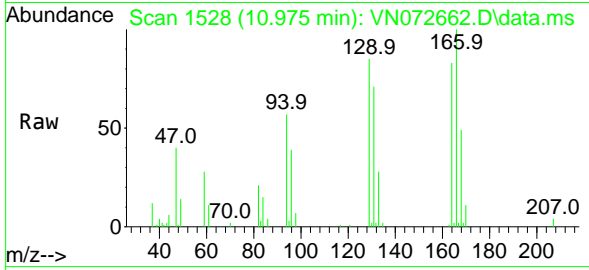
Tgt Ion: 95 Resp: 132613
 Ion Ratio Lower Upper
 95 100
 174 65.1 62.9 94.3
 176 61.2 61.0 91.4



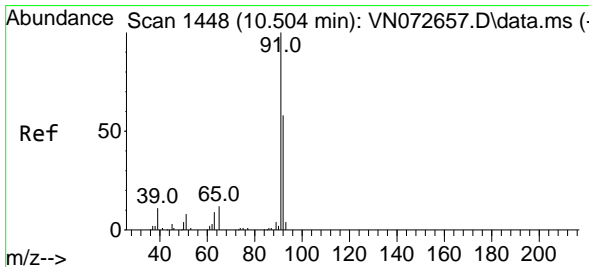
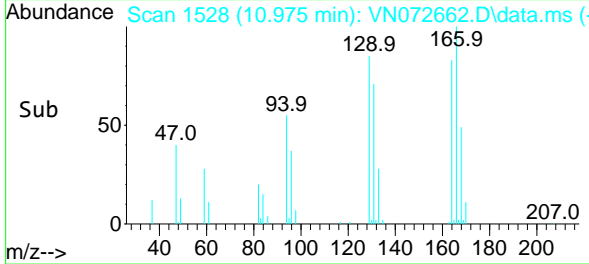
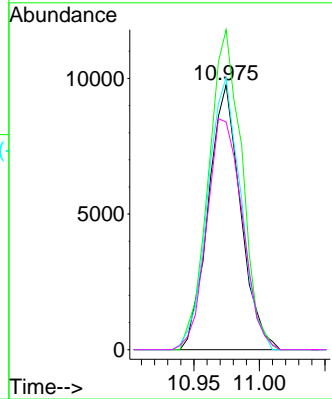


#61
 Tetrachloroethene
 Concen: 5.730 ug/l
 RT: 10.975 min Scan# 11
 Delta R.T. 0.000 min
 Lab File: VN072662.D
 Acq: 06 Jun 2022 13:49

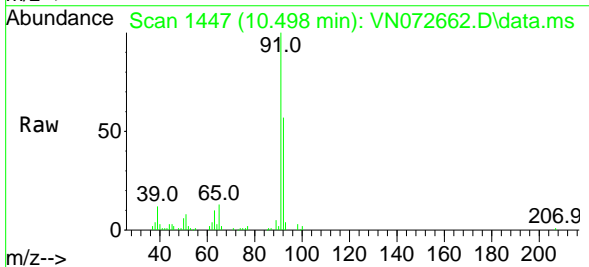
Instrument :
 MSVOA_N
 ClientSampleId :
 VSTDIC005



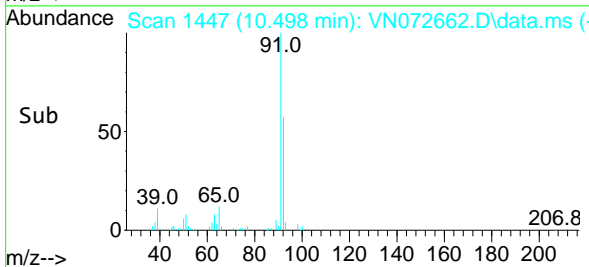
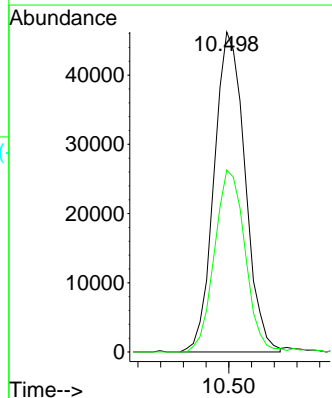
Tgt Ion:164 Resp: 16662
 Ion Ratio Lower Upper
 164 100
 166 120.8 105.8 158.8
 129 102.7 82.5 123.7
 131 85.9 81.2 121.8

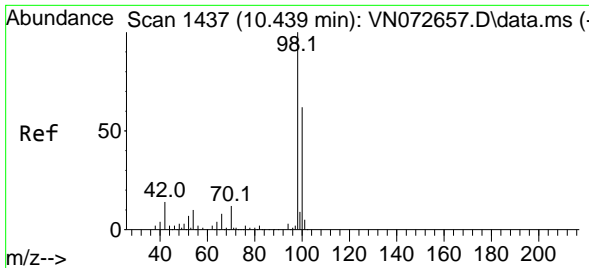


#62
 Toluene
 Concen: 5.510 ug/l
 RT: 10.498 min Scan# 1447
 Delta R.T. -0.006 min
 Lab File: VN072662.D
 Acq: 06 Jun 2022 13:49



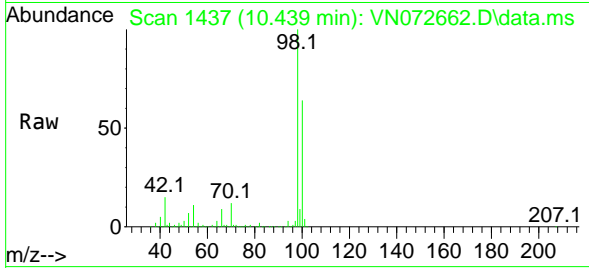
Tgt Ion: 91 Resp: 87295
 Ion Ratio Lower Upper
 91 100
 92 56.2 44.6 67.0



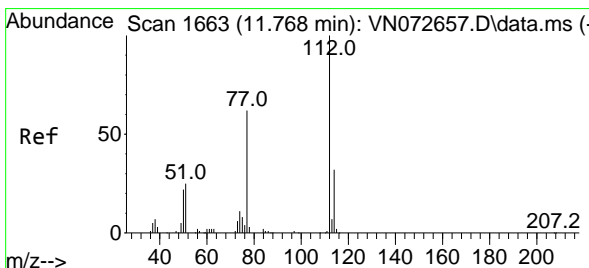
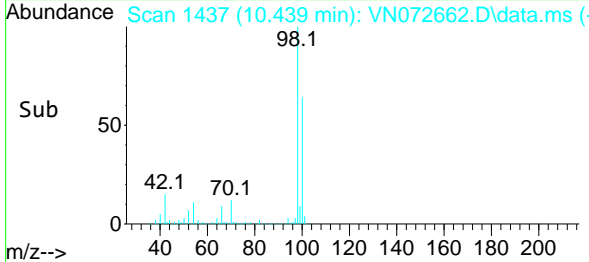
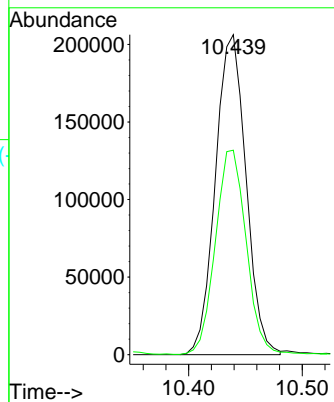


#63
 Toluene-d8
 Concen: 30.216 ug/l
 RT: 10.439 min Scan# 1437
 Delta R.T. 0.000 min
 Lab File: VN072662.D
 Acq: 06 Jun 2022 13:49

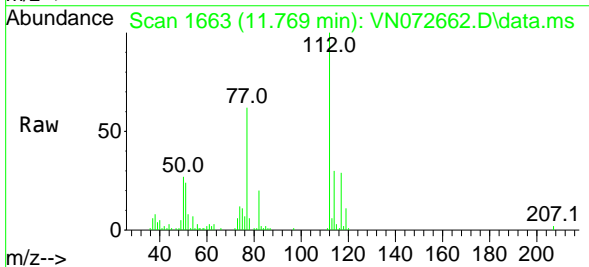
Instrument : MSVOA_N
 ClientSampleId : VSTDIC005



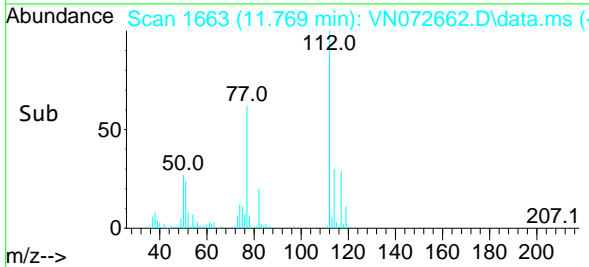
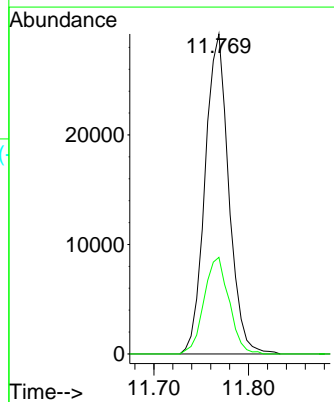
Tgt Ion: 98 Resp: 385846
 Ion Ratio Lower Upper
 98 100
 100 64.9 50.6 76.0

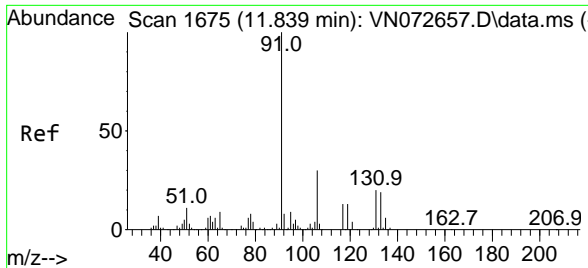


#64
 Chlorobenzene
 Concen: 5.289 ug/l
 RT: 11.769 min Scan# 1663
 Delta R.T. 0.000 min
 Lab File: VN072662.D
 Acq: 06 Jun 2022 13:49



Tgt Ion: 112 Resp: 50821
 Ion Ratio Lower Upper
 112 100
 114 30.2 25.8 38.6



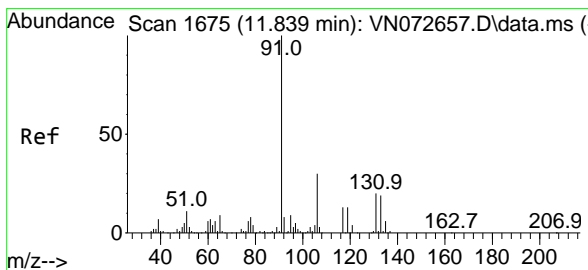
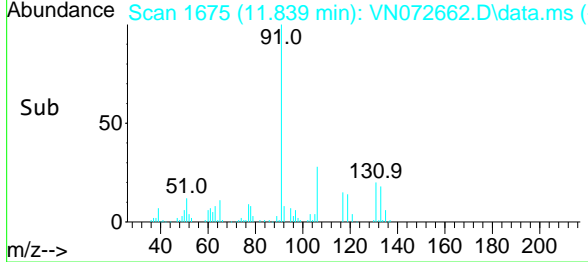
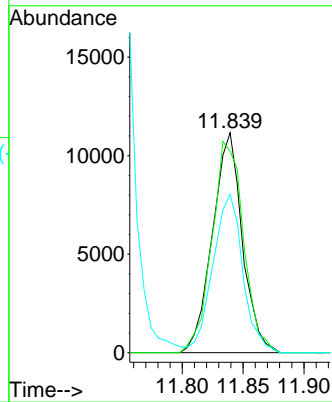
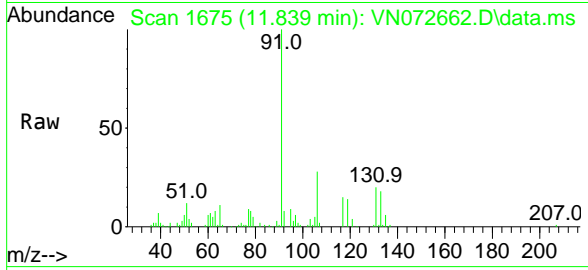


#65
 1,1,1,2-Tetrachloroethane
 Concen: 4.976 ug/l
 RT: 11.839 min Scan# 1675
 Delta R.T. 0.000 min
 Lab File: VN072662.D
 Acq: 06 Jun 2022 13:49

Instrument : MSVOA_N
 ClientSampleId : VSTDIC005

Tgt Ion:131 Resp: 19056

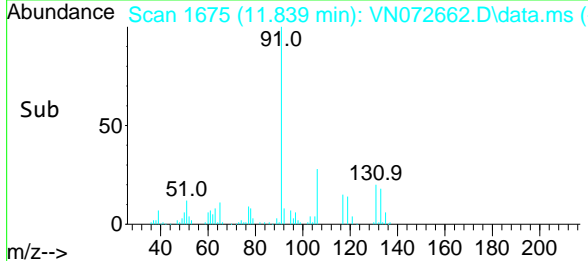
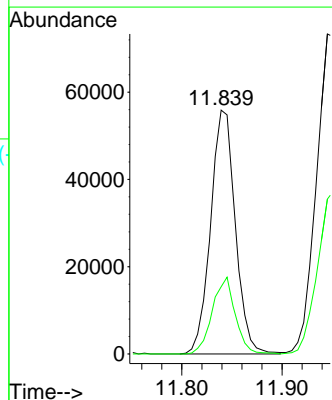
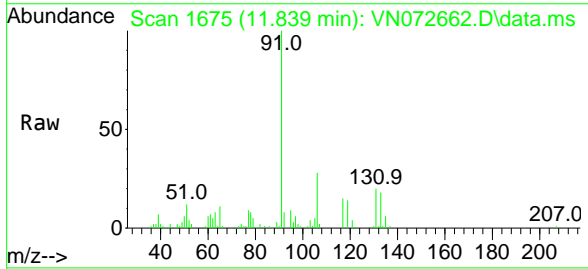
Ion	Ratio	Lower	Upper
131	100		
133	101.6	0.0	191.2
119	71.9	0.0	128.8

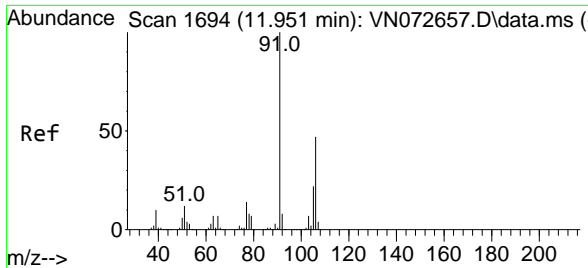


#66
 Ethyl Benzene
 Concen: 5.258 ug/l
 RT: 11.839 min Scan# 1675
 Delta R.T. 0.000 min
 Lab File: VN072662.D
 Acq: 06 Jun 2022 13:49

Tgt Ion: 91 Resp: 95771

Ion	Ratio	Lower	Upper
91	100		
106	27.6	24.0	36.0

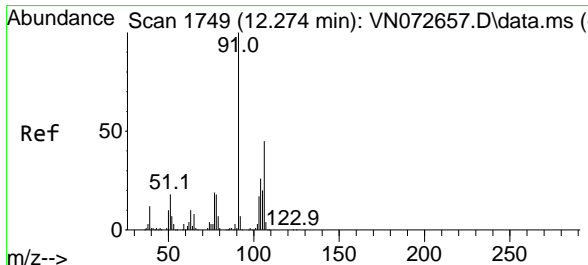
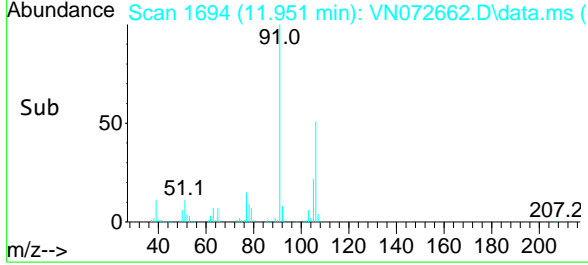
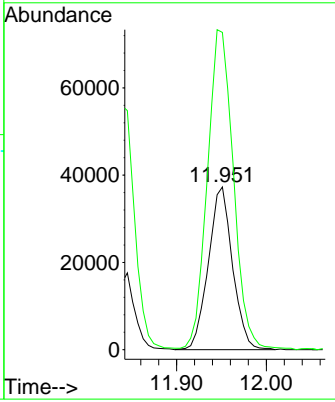
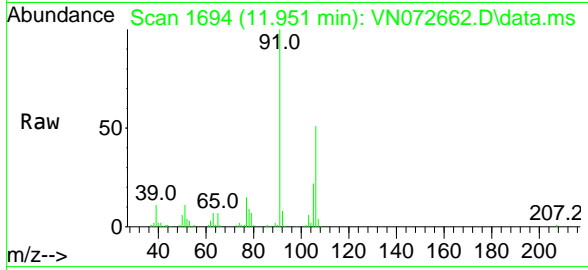




#67
 m/p-Xylenes
 Concen: 10.523 ug/l
 RT: 11.951 min Scan# 1694
 Delta R.T. 0.000 min
 Lab File: VN072662.D
 Acq: 06 Jun 2022 13:49

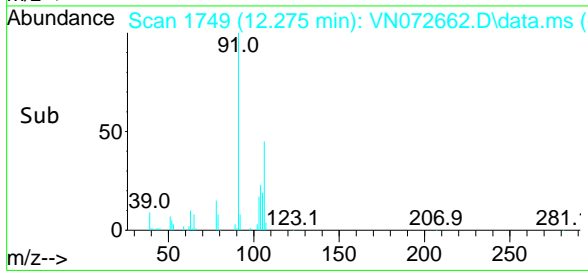
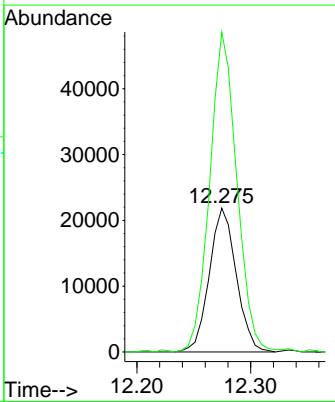
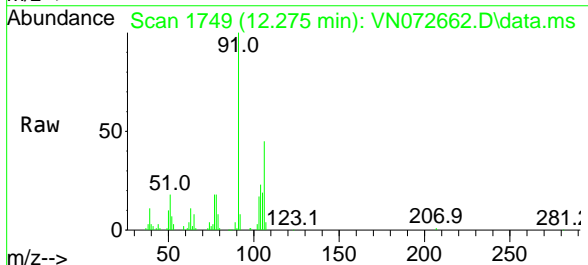
Instrument : MSVOA_N
 ClientSampleId : VSTDIC005

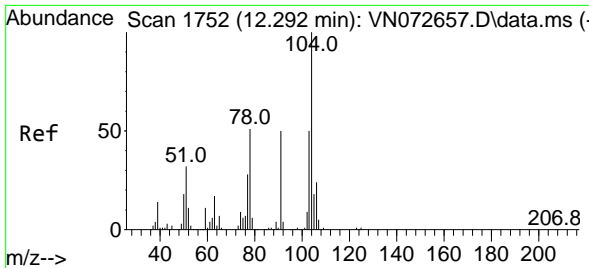
Tgt Ion:106 Resp: 69812
 Ion Ratio Lower Upper
 106 100
 91 212.0 162.9 244.3



#68
 o-Xylene
 Concen: 5.342 ug/l
 RT: 12.275 min Scan# 1749
 Delta R.T. 0.000 min
 Lab File: VN072662.D
 Acq: 06 Jun 2022 13:49

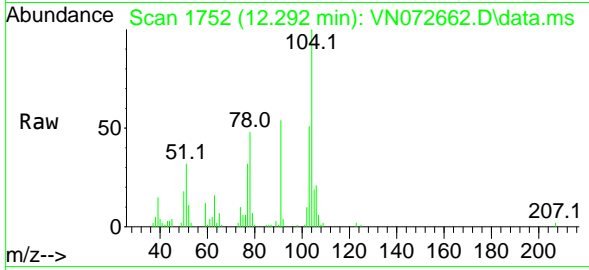
Tgt Ion:106 Resp: 36055
 Ion Ratio Lower Upper
 106 100
 91 223.1 107.7 323.1



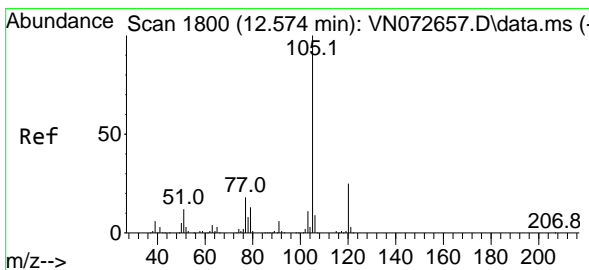
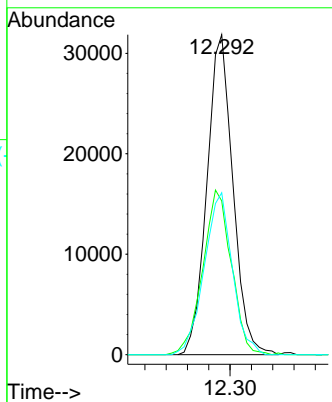
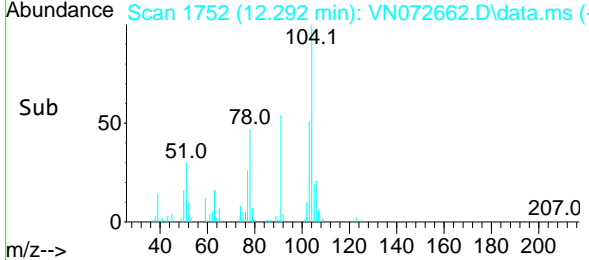


#69
 Styrene
 Concen: 5.041 ug/l
 RT: 12.292 min Scan# 11
 Delta R.T. 0.000 min
 Lab File: VN072662.D
 Acq: 06 Jun 2022 13:49

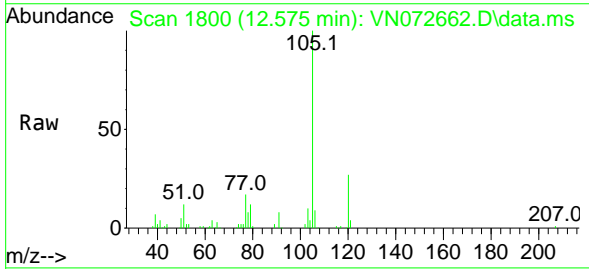
Instrument : MSVOA_N
 ClientSampleId : VSTDIC005



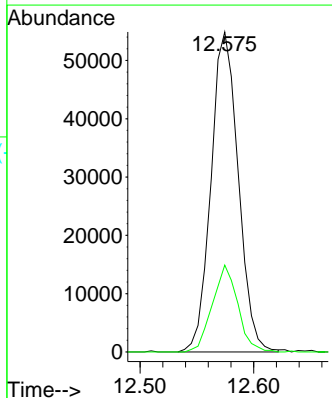
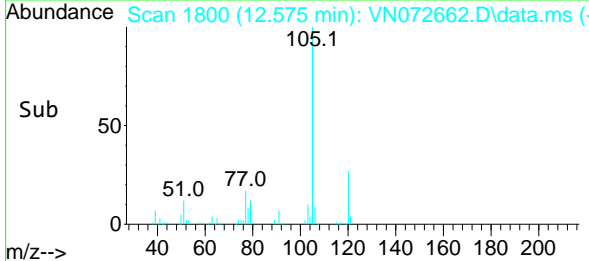
Tgt Ion	Resp	Lower	Upper
104	100		
78	56.5	40.7	61.1
103	54.9	45.8	68.8

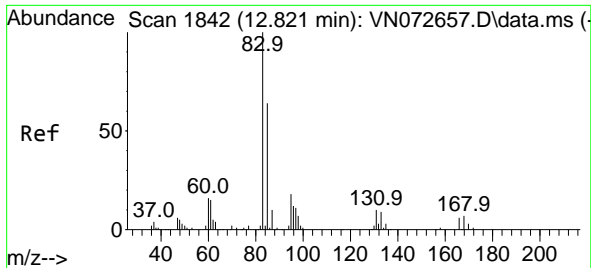


#70
 Isopropylbenzene
 Concen: 5.172 ug/l
 RT: 12.575 min Scan# 1800
 Delta R.T. 0.000 min
 Lab File: VN072662.D
 Acq: 06 Jun 2022 13:49



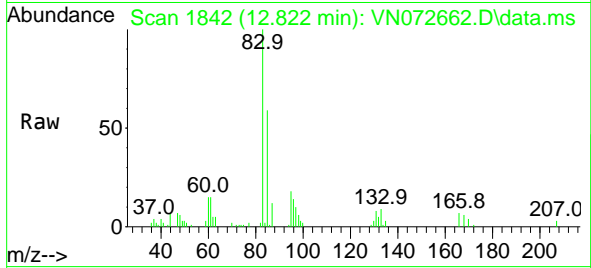
Tgt Ion	Resp	Lower	Upper
105	100		
120	25.3	18.3	34.1



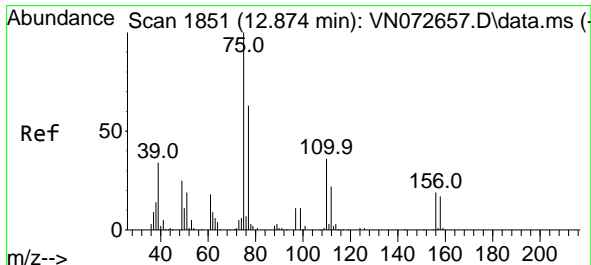
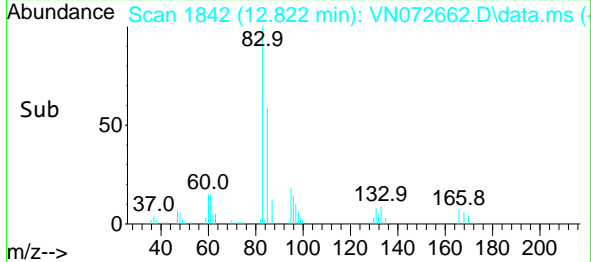
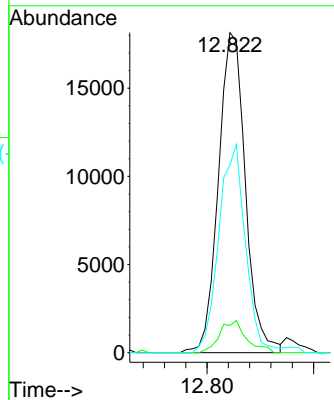


#71
 1,1,2,2-Tetrachloroethane
 Concen: 5.346 ug/l
 RT: 12.822 min Scan# 1842
 Delta R.T. 0.000 min
 Lab File: VN072662.D
 Acq: 06 Jun 2022 13:49

Instrument : MSVOA_N
 ClientSampleId : VSTDIC005

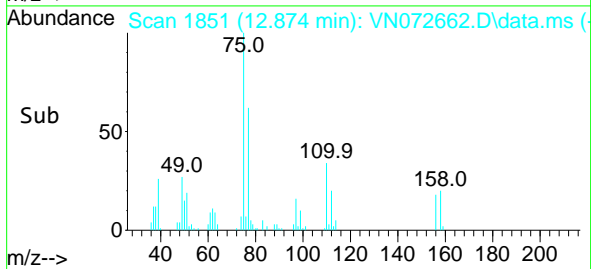
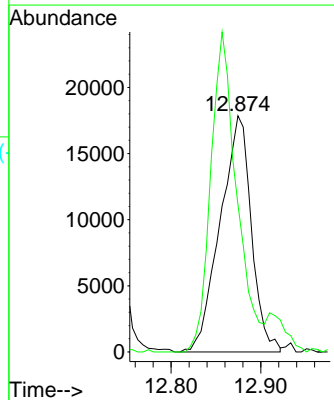
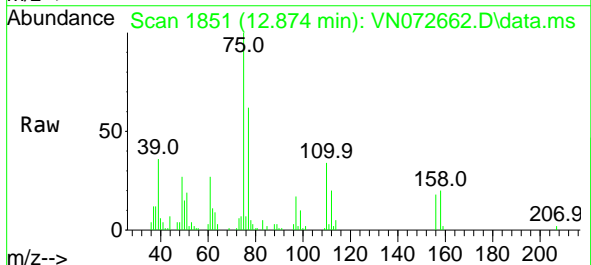


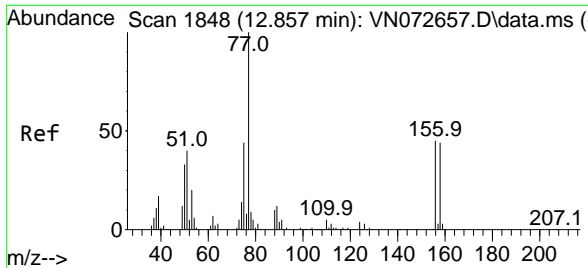
Tgt Ion: 83 Resp: 31882
 Ion Ratio Lower Upper
 83 100
 131 9.6 5.1 15.3
 85 64.1 33.1 99.2



#72
 1,2,3-Trichloropropane
 Concen: 8.237 ug/l
 RT: 12.874 min Scan# 1851
 Delta R.T. 0.000 min
 Lab File: VN072662.D
 Acq: 06 Jun 2022 13:49

Tgt Ion: 75 Resp: 43000
 Ion Ratio Lower Upper
 75 100
 77 113.8 0.0 378.0

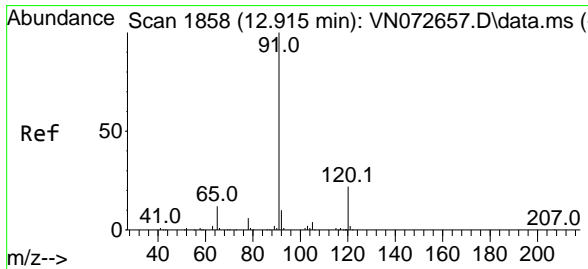
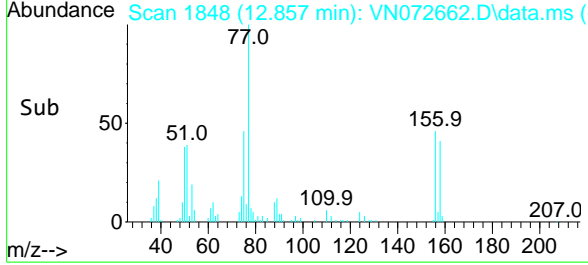
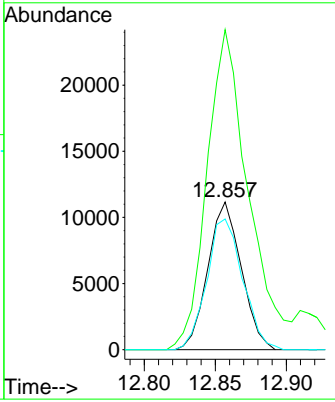
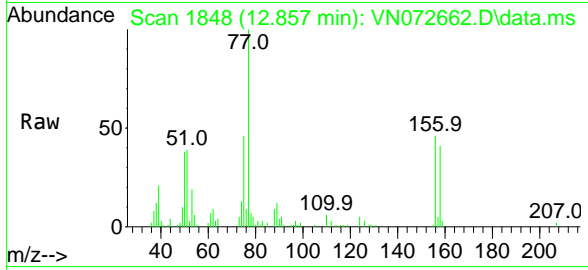




#73
 Bromobenzene
 Concen: 5.067 ug/l
 RT: 12.857 min Scan# 1848
 Delta R.T. 0.000 min
 Lab File: VN072662.D
 Acq: 06 Jun 2022 13:49

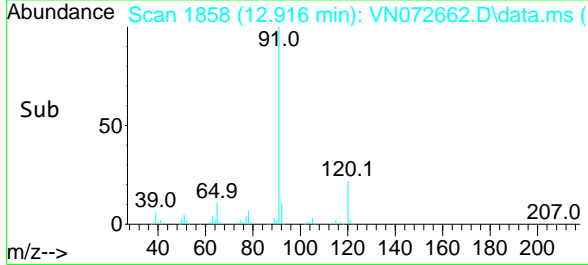
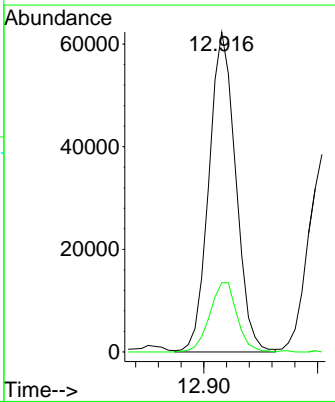
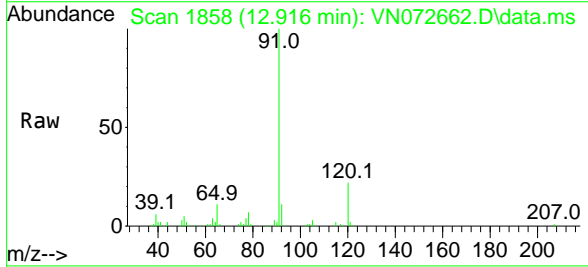
Instrument : MSVOA_N
 ClientSampleId : VSTDIC005

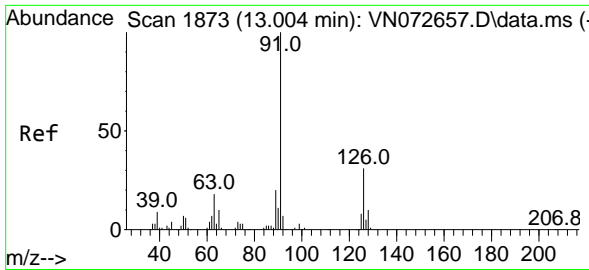
Tgt Ion	Resp	Lower	Upper
156	18260		
156	100		
77	268.0	0.0	416.0
158	95.5	0.0	195.4



#74
 n-propylbenzene
 Concen: 5.060 ug/l
 RT: 12.916 min Scan# 1858
 Delta R.T. 0.000 min
 Lab File: VN072662.D
 Acq: 06 Jun 2022 13:49

Tgt Ion	Resp	Lower	Upper
91	102104		
91	100		
120	22.1	0.0	45.0

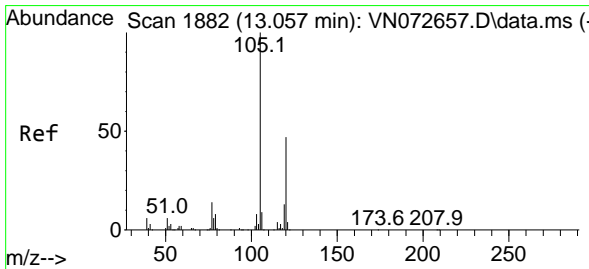
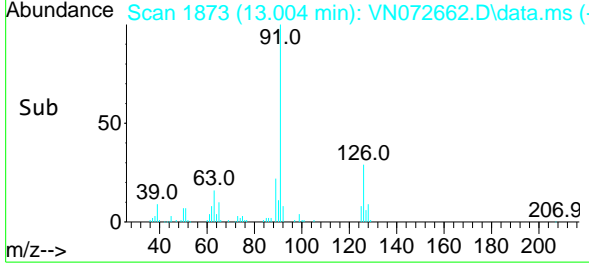
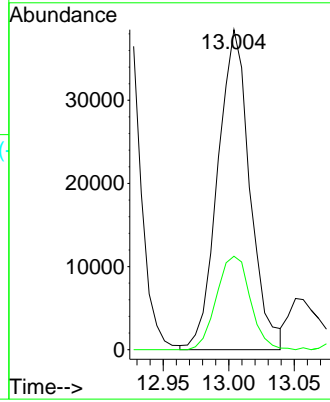
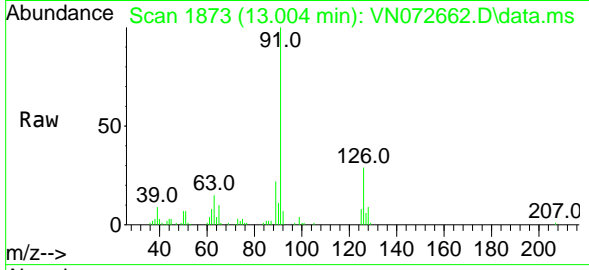




#75
 2-Chlorotoluene
 Concen: 5.254 ug/l
 RT: 13.004 min Scan# 1873
 Delta R.T. 0.000 min
 Lab File: VN072662.D
 Acq: 06 Jun 2022 13:49

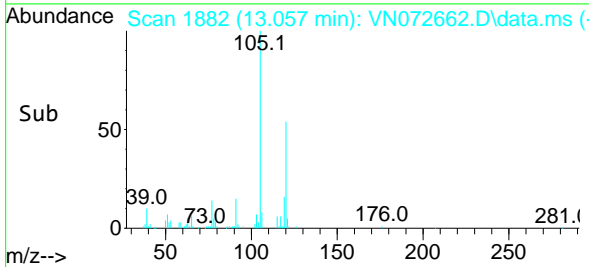
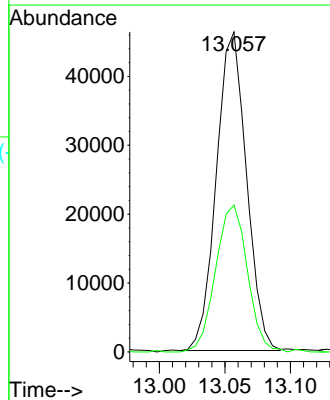
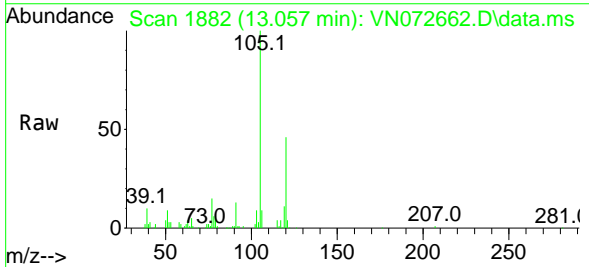
Instrument : MSVOA_N
 ClientSampleId : VSTDIC005

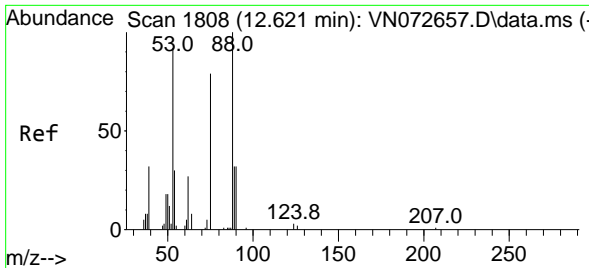
Tgt Ion: 91 Resp: 65883
 Ion Ratio Lower Upper
 91 100
 126 30.5 0.0 69.8



#76
 1,3,5-Trimethylbenzene
 Concen: 5.065 ug/l
 RT: 13.057 min Scan# 1882
 Delta R.T. 0.000 min
 Lab File: VN072662.D
 Acq: 06 Jun 2022 13:49

Tgt Ion: 105 Resp: 73787
 Ion Ratio Lower Upper
 105 100
 120 48.6 0.0 93.8





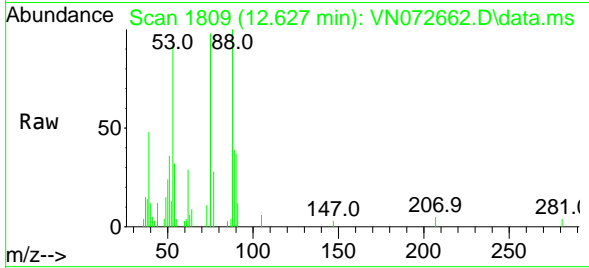
#77
 t-1,4-Dichloro-2-butene
 Concen: 4.547 ug/l
 RT: 12.627 min Scan# 1809
 Delta R.T. 0.006 min
 Lab File: VN072662.D
 Acq: 06 Jun 2022 13:49

Instrument :

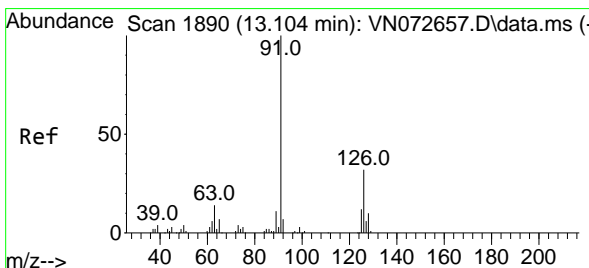
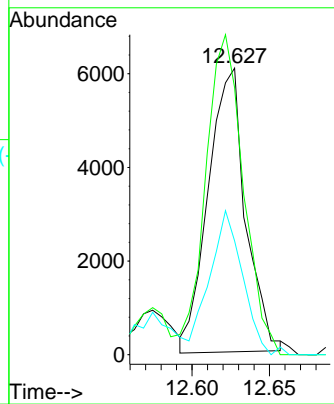
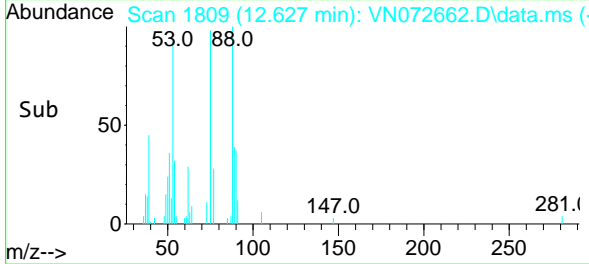
MSVOA_N

ClientSampleId :

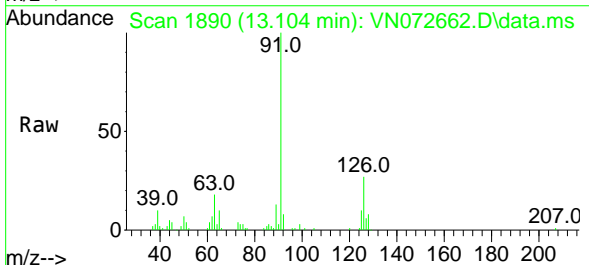
VSTDIC005



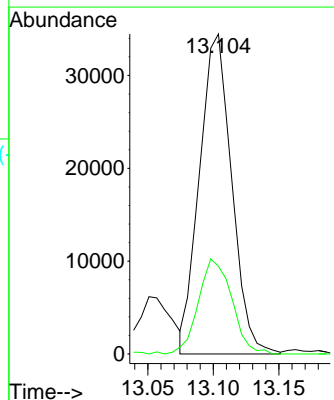
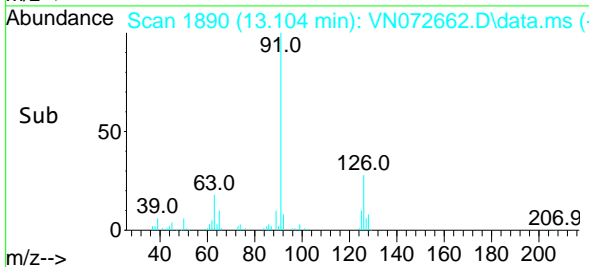
Tgt Ion: 75 Resp: 10171
 Ion Ratio Lower Upper
 75 100
 53 97.9 51.8 155.5
 89 38.9 22.9 68.7

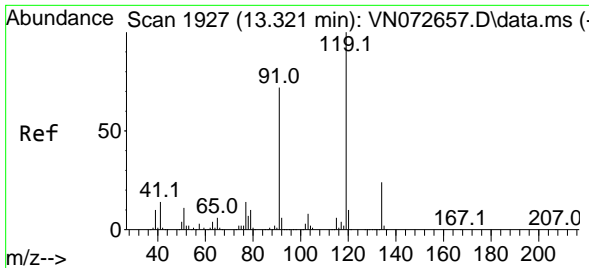


#78
 4-Chlorotoluene
 Concen: 4.952 ug/l
 RT: 13.104 min Scan# 1890
 Delta R.T. 0.000 min
 Lab File: VN072662.D
 Acq: 06 Jun 2022 13:49



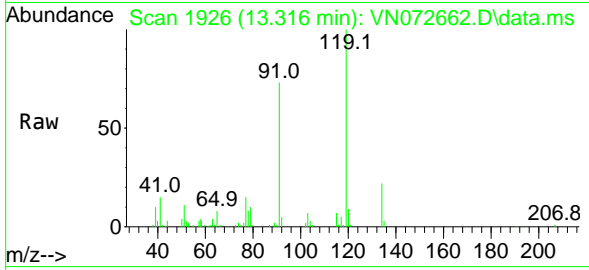
Tgt Ion: 91 Resp: 58871
 Ion Ratio Lower Upper
 91 100
 126 30.8 0.0 70.6





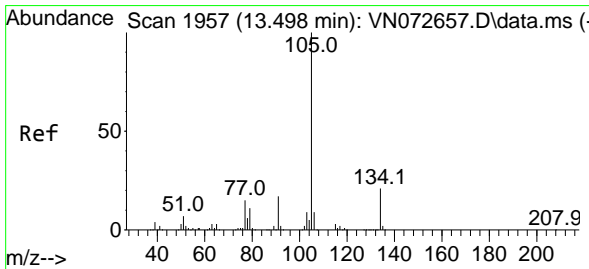
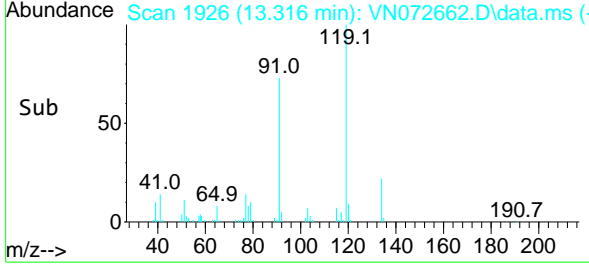
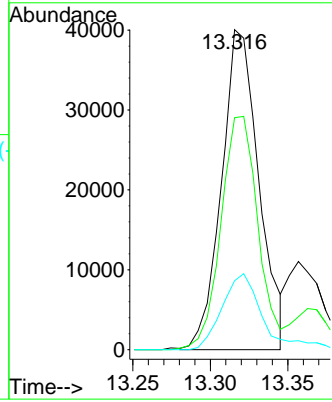
#79
 tert-butylbenzene
 Concen: 5.244 ug/l
 RT: 13.316 min Scan# 1926
 Delta R.T. -0.006 min
 Lab File: VN072662.D
 Acq: 06 Jun 2022 13:49

Instrument : MSVOA_N
 ClientSampleId : VSTDIC005



Tgt Ion:119 Resp: 67371

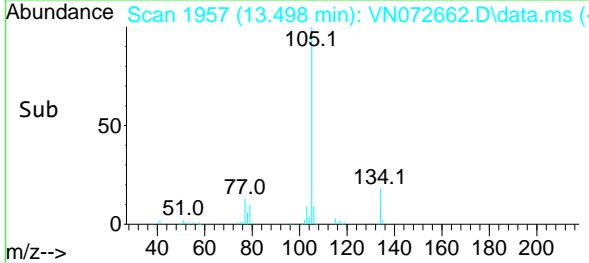
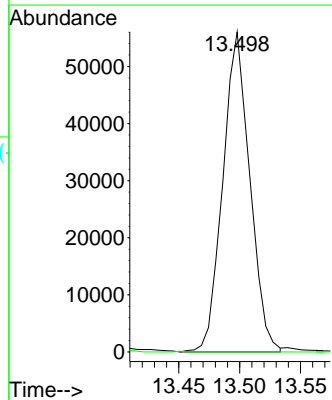
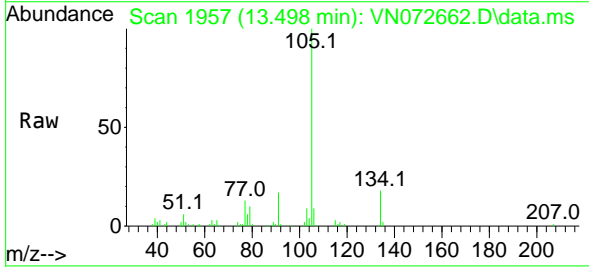
Ion	Ratio	Lower	Upper
119	100		
91	71.7	0.0	137.0
134	25.6	0.0	47.6

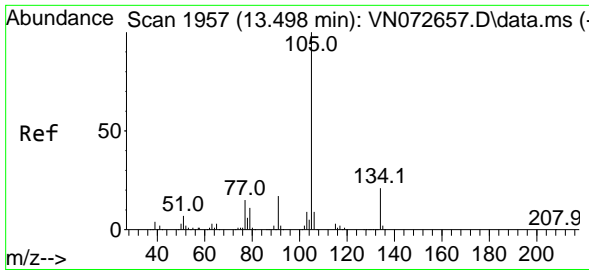


#80
 1,2,4-Trimethylbenzene
 Concen: 4.902 ug/l
 RT: 13.498 min Scan# 1957
 Delta R.T. 0.000 min
 Lab File: VN072662.D
 Acq: 06 Jun 2022 13:49

Tgt Ion:105 Resp: 86450

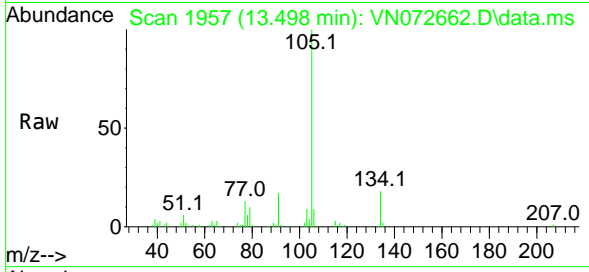
Ion	Ratio	Lower	Upper
105	100		
120	0.0	0.0	0.2



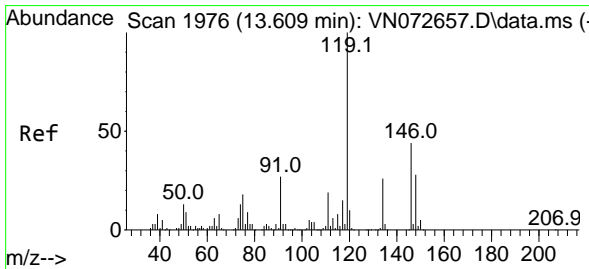
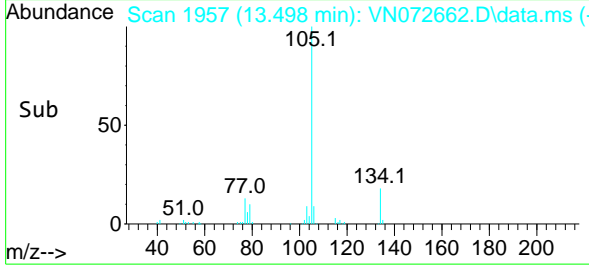
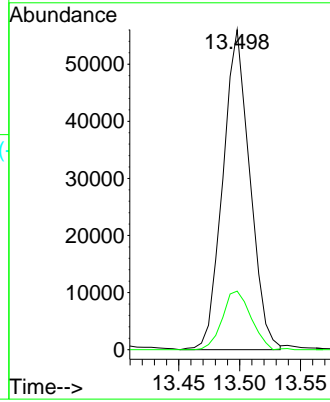


#81
 sec-Butylbenzene
 Concen: 4.902 ug/l
 RT: 13.498 min Scan# 1957
 Delta R.T. 0.000 min
 Lab File: VN072662.D
 Acq: 06 Jun 2022 13:49

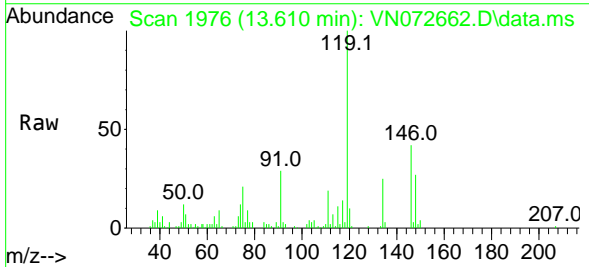
Instrument : MSVOA_N
 ClientSampleId : VSTDIC005



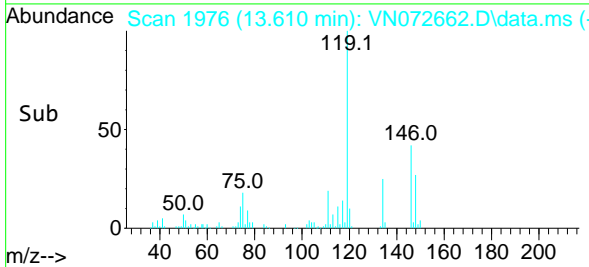
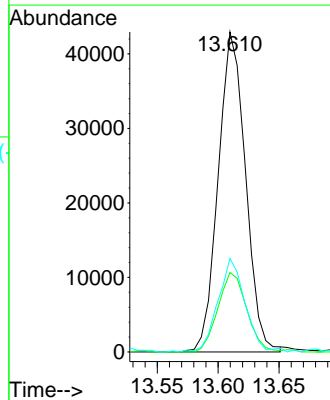
Tgt Ion:105 Resp: 86450
 Ion Ratio Lower Upper
 105 100
 134 19.3 0.0 39.4

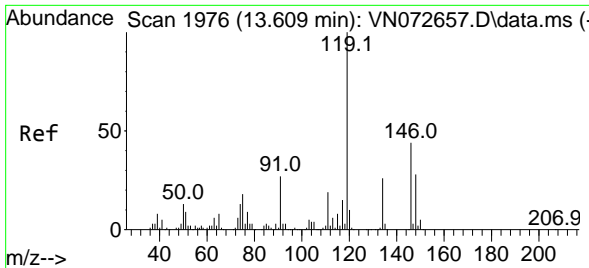


#82
 p-Isopropyltoluene
 Concen: 4.744 ug/l
 RT: 13.610 min Scan# 1976
 Delta R.T. 0.000 min
 Lab File: VN072662.D
 Acq: 06 Jun 2022 13:49



Tgt Ion:119 Resp: 66947
 Ion Ratio Lower Upper
 119 100
 134 26.1 0.0 51.8
 91 28.5 0.0 50.4





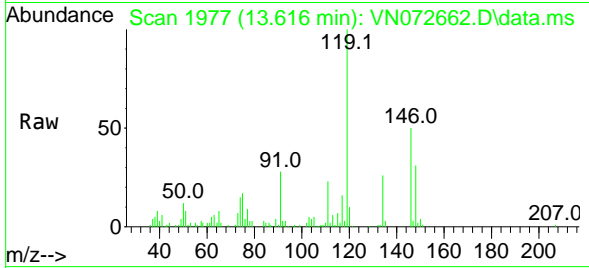
#83
 1,3-Dichlorobenzene
 Concen: 5.247 ug/l
 RT: 13.616 min Scan# 1977
 Delta R.T. 0.006 min
 Lab File: VN072662.D
 Acq: 06 Jun 2022 13:49

Instrument :

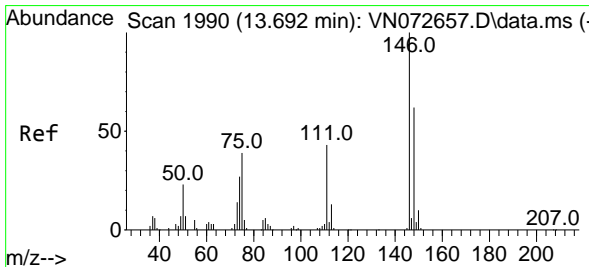
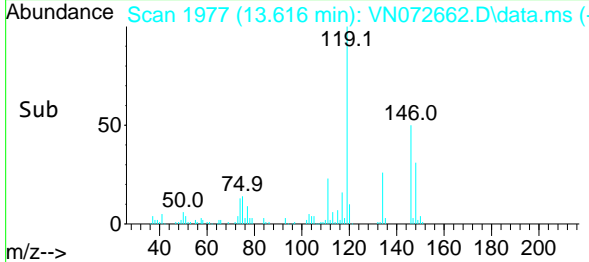
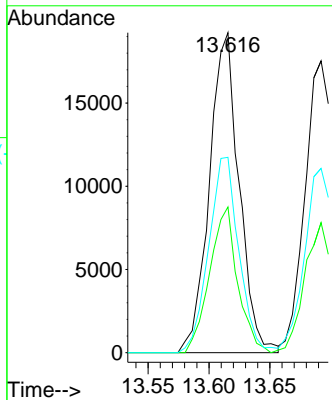
MSVOA_N

ClientSampleId :

VSTDIC005

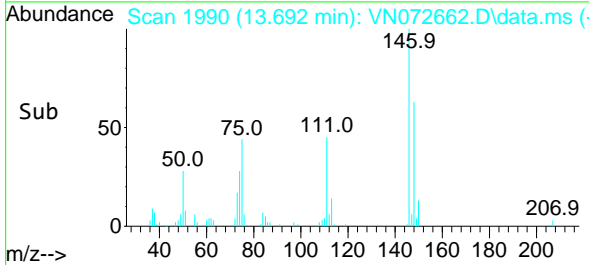
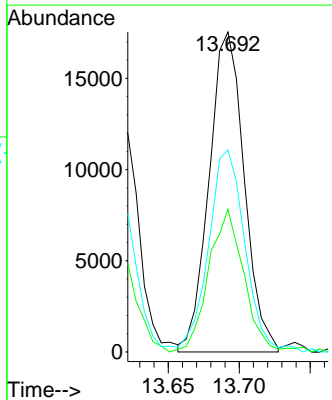
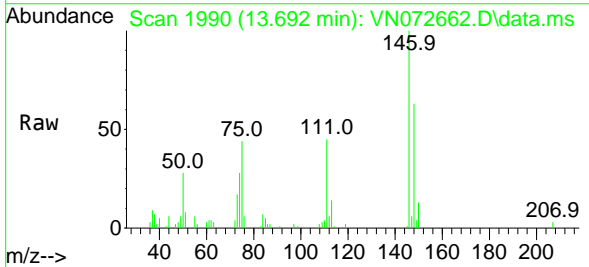


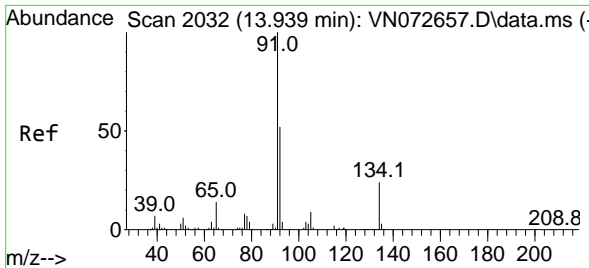
Tgt Ion:146 Resp: 32668
 Ion Ratio Lower Upper
 146 100
 111 42.9 20.8 62.2
 148 62.1 31.4 94.3



#84
 1,4-Dichlorobenzene
 Concen: 4.987 ug/l
 RT: 13.692 min Scan# 1990
 Delta R.T. 0.000 min
 Lab File: VN072662.D
 Acq: 06 Jun 2022 13:49

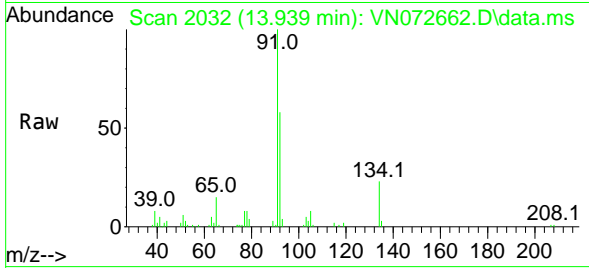
Tgt Ion:146 Resp: 30184
 Ion Ratio Lower Upper
 146 100
 111 44.1 19.5 58.5
 148 64.6 31.1 93.5





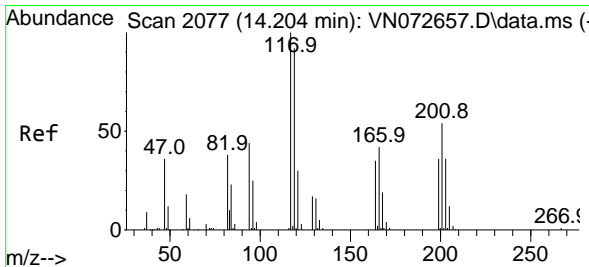
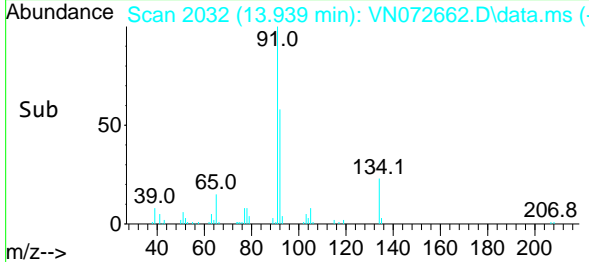
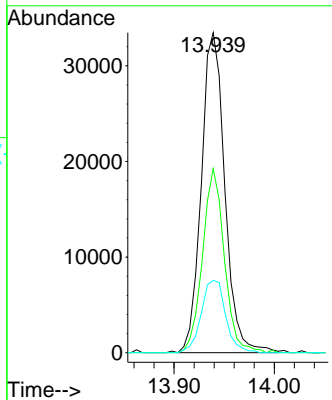
#85
 n-Butylbenzene
 Concen: 4.580 ug/l
 RT: 13.939 min Scan# 2032
 Delta R.T. 0.000 min
 Lab File: VN072662.D
 Acq: 06 Jun 2022 13:49

Instrument : MSVOA_N
 ClientSampleId : VSTDIC005



Tgt Ion: 91 Resp: 54614

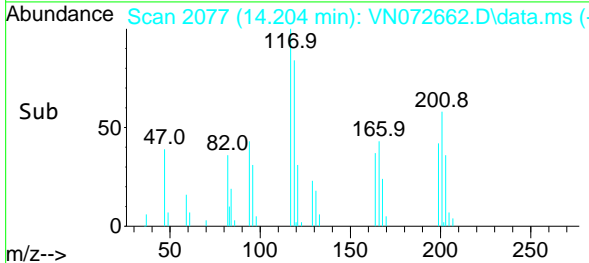
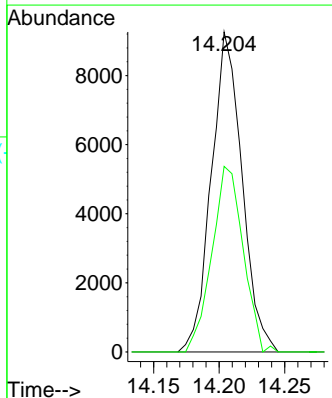
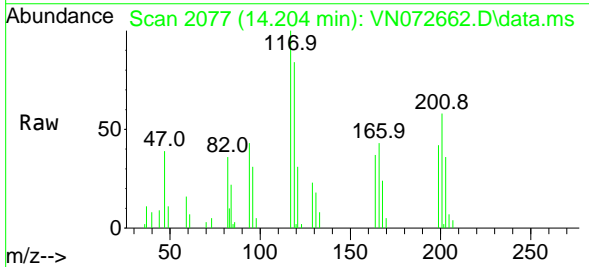
Ion	Ratio	Lower	Upper
91	100		
92	53.4	0.0	100.6
134	23.6	0.0	50.2

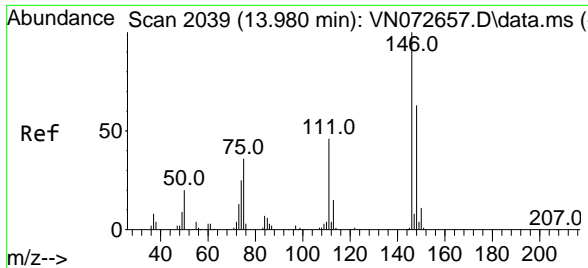


#86
 Hexachloroethane
 Concen: 4.828 ug/l
 RT: 14.204 min Scan# 2077
 Delta R.T. 0.000 min
 Lab File: VN072662.D
 Acq: 06 Jun 2022 13:49

Tgt Ion: 117 Resp: 15048

Ion	Ratio	Lower	Upper
117	100		
201	58.7	33.3	99.8

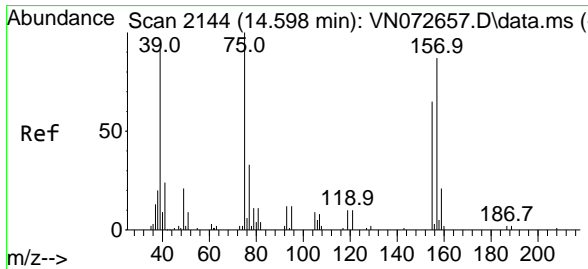
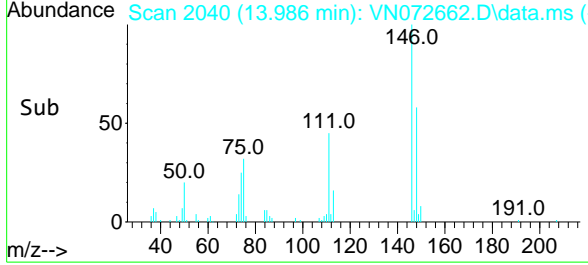
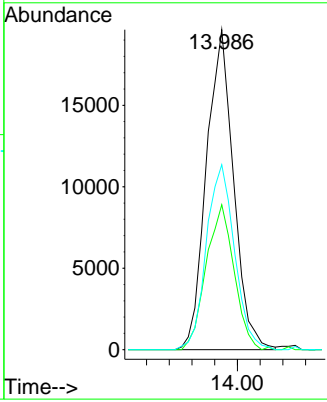
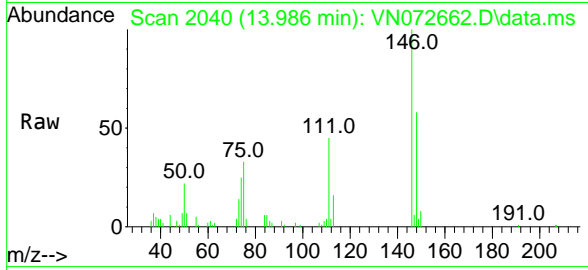




#87
 1,2-Dichlorobenzene
 Concen: 5.281 ug/l
 RT: 13.986 min Scan# 2039
 Delta R.T. 0.006 min
 Lab File: VN072662.D
 Acq: 06 Jun 2022 13:49

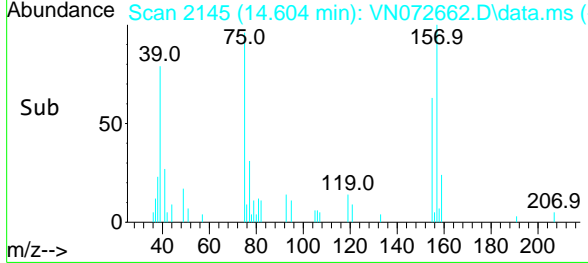
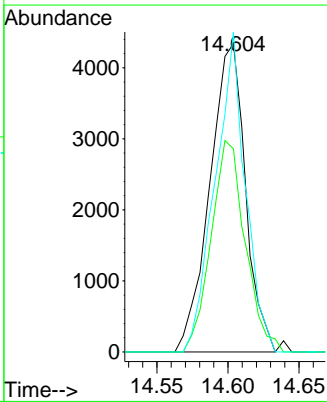
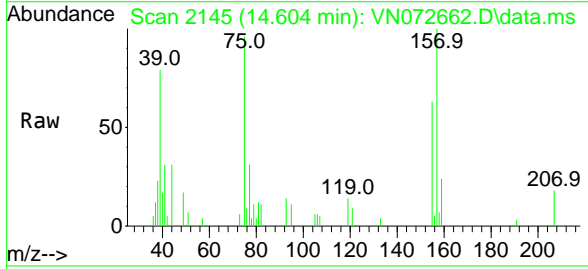
Instrument : MSVOA_N
 ClientSampleId : VSTDIC005

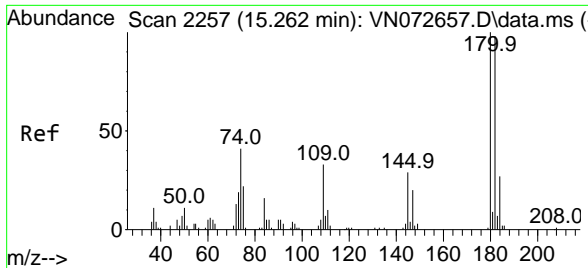
Tgt Ion	Resp	Lower	Upper
146	32622		
111	46.4	21.4	64.2
148	59.9	32.5	97.4



#88
 1,2-Dibromo-3-Chloropropane
 Concen: 5.161 ug/l
 RT: 14.604 min Scan# 2145
 Delta R.T. 0.006 min
 Lab File: VN072662.D
 Acq: 06 Jun 2022 13:49

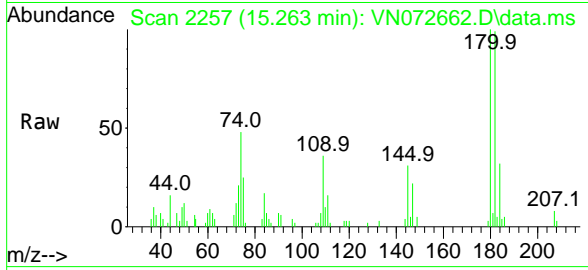
Tgt Ion	Resp	Lower	Upper
75	7570		
155	65.7	63.8	95.8
157	87.9	77.9	116.9



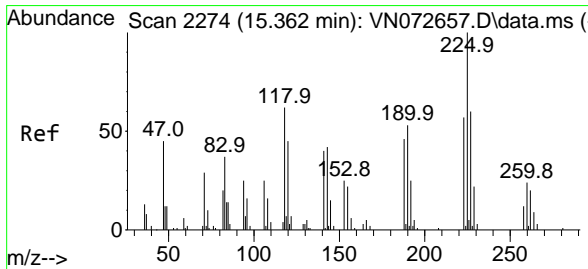
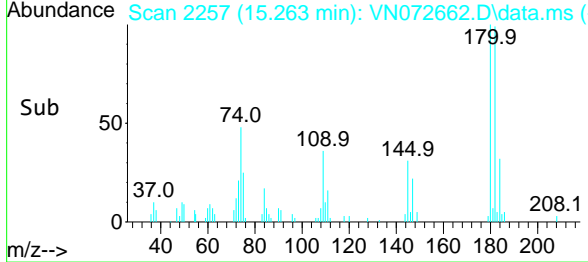
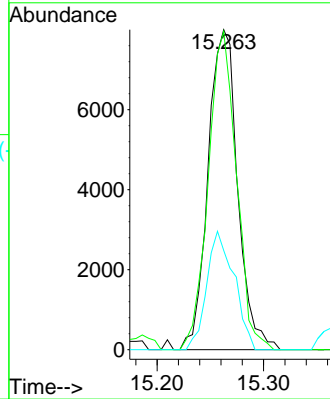


#89
 1,2,4-Trichlorobenzene
 Concen: 5.025 ug/l
 RT: 15.263 min Scan# 21
 Delta R.T. 0.000 min
 Lab File: VN072662.D
 Acq: 06 Jun 2022 13:49

Instrument :
 MSVOA_N
 ClientSampleId :
 VSTDIC005

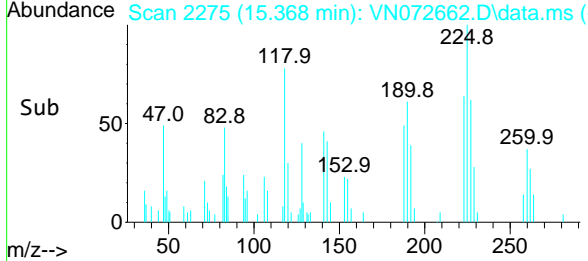
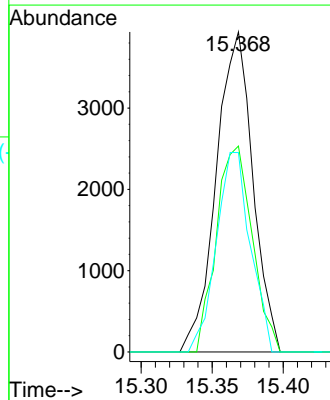
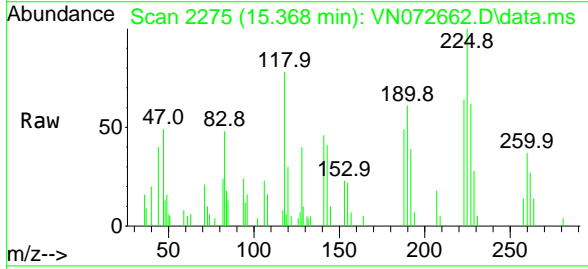


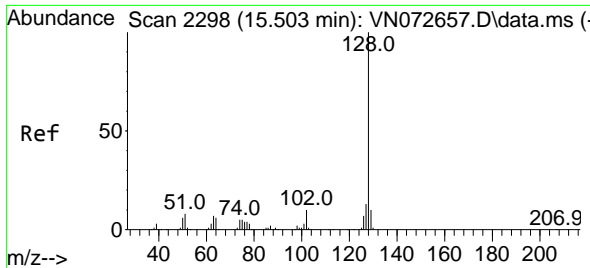
Tgt Ion:180 Resp: 15442
 Ion Ratio Lower Upper
 180 100
 182 94.9 77.7 116.5
 145 34.2 26.6 39.8



#90
 Hexachlorobutadiene
 Concen: 4.919 ug/l
 RT: 15.368 min Scan# 2275
 Delta R.T. 0.006 min
 Lab File: VN072662.D
 Acq: 06 Jun 2022 13:49

Tgt Ion:225 Resp: 7058
 Ion Ratio Lower Upper
 225 100
 223 63.0 0.0 126.8
 227 57.9 0.0 123.0



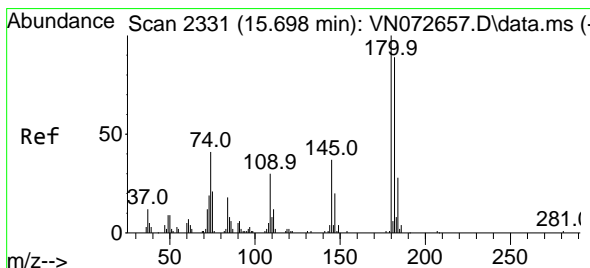
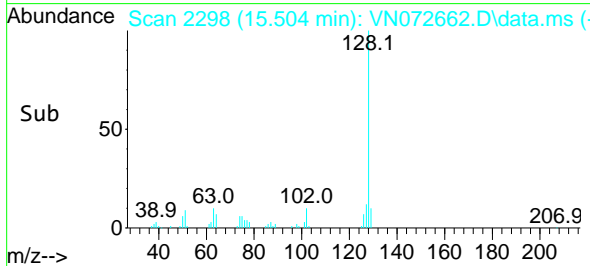
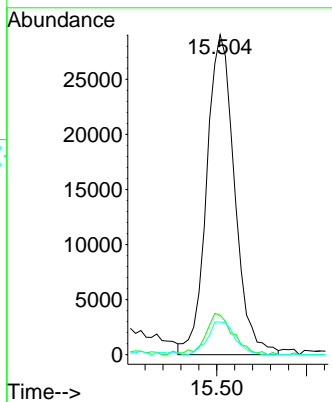
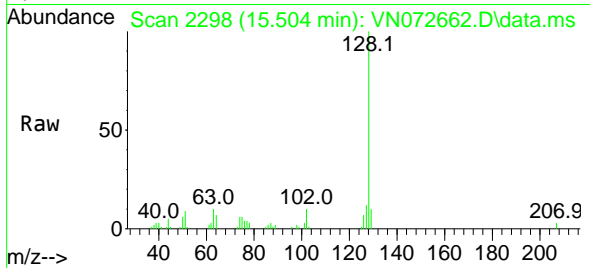


#91
 Naphthalene
 Concen: 5.303 ug/l
 RT: 15.504 min Scan# 2298
 Delta R.T. 0.000 min
 Lab File: VN072662.D
 Acq: 06 Jun 2022 13:49

Instrument :
 MSVOA_N
 ClientSampleId :
 VSTDIC005

Tgt Ion:128 Resp: 62734

Ion	Ratio	Lower	Upper
128	100		
127	12.3	10.7	16.1
129	10.2	9.0	13.6



#92
 1,2,3-Trichlorobenzene
 Concen: 5.353 ug/l
 RT: 15.698 min Scan# 2331
 Delta R.T. 0.000 min
 Lab File: VN072662.D
 Acq: 06 Jun 2022 13:49

Tgt Ion:180 Resp: 16354

Ion	Ratio	Lower	Upper
180	100		
182	94.5	0.0	190.0
145	34.6	0.0	67.8

