

Data Path : Z:\voasrv\HPCHEM1\MSVOA_N\Data\VN060625\
 Data File : VN086880.D
 Acq On : 06 Jun 2025 20:36
 Operator : JC\MD
 Sample : Q2216-06
 Misc : 5.0mL/MSVOA_N/WATER
 ALS Vial : 20 Sample Multiplier: 1

Instrument :
 MSVOA_N
 ClientSampleId :
 3851

Quant Time: Jun 07 02:31:07 2025
 Quant Method : Z:\voasrv\HPCHEM1\MSVOA_N\methods\82N060625W.M
 Quant Title : SW846 8260
 QLast Update : Sat Jun 07 02:12:50 2025
 Response via : Initial Calibration

Compound	R.T.	QIon	Response	Conc	Units	Dev(Min)

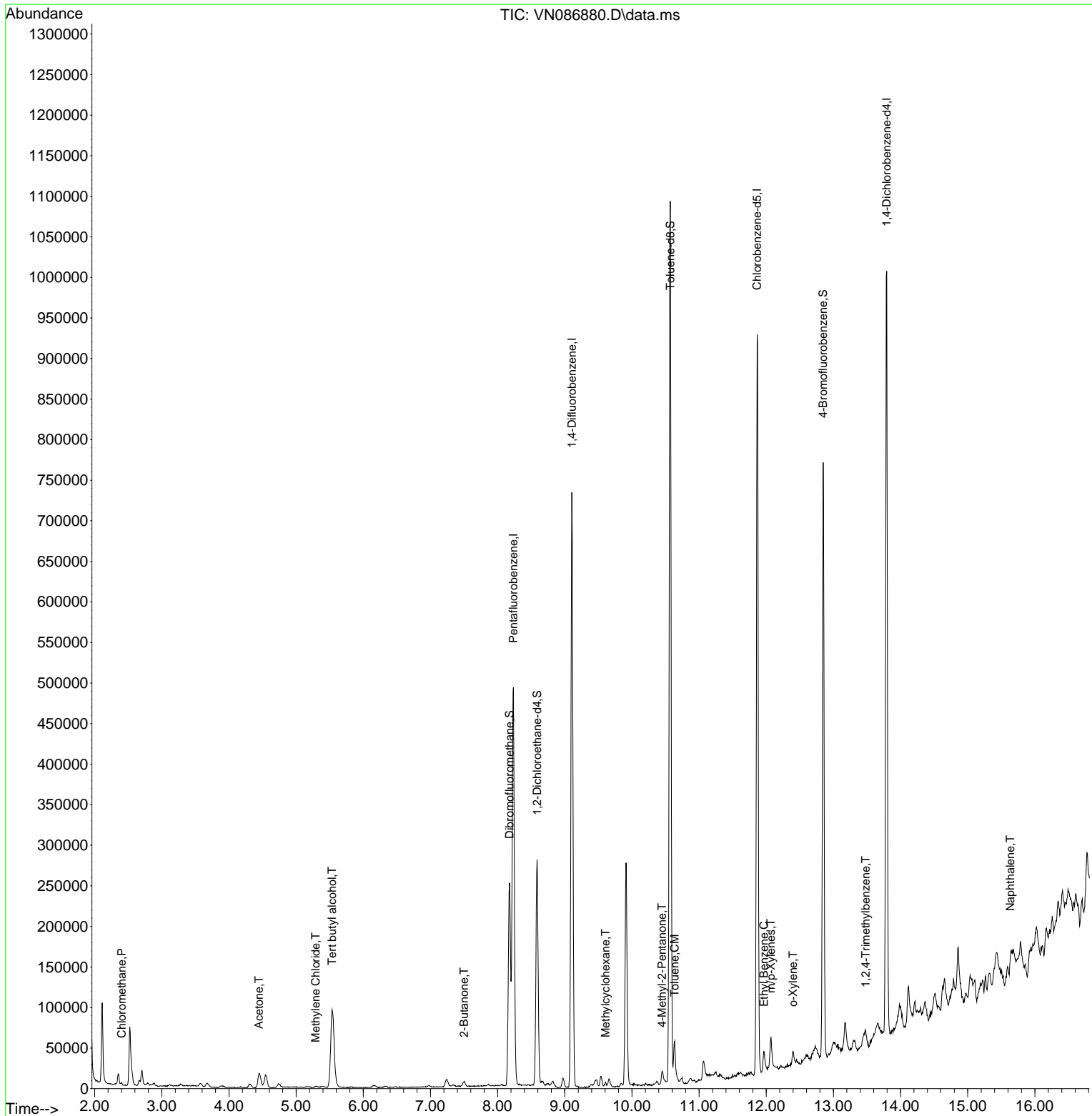
Internal Standards						
1) Pentafluorobenzene	8.236	168	389939	50.000	ug/l	0.00
34) 1,4-Difluorobenzene	9.106	114	683310	50.000	ug/l	0.00
63) Chlorobenzene-d5	11.865	117	586008	50.000	ug/l	0.00
72) 1,4-Dichlorobenzene-d4	13.794	152	285893	50.000	ug/l	0.00
System Monitoring Compounds						
33) 1,2-Dichloroethane-d4	8.588	65	224320	42.966	ug/l	0.00
Spiked Amount	50.000	Range 74 - 125	Recovery =	85.940%		
35) Dibromofluoromethane	8.177	113	193542	47.795	ug/l	0.00
Spiked Amount	50.000	Range 75 - 124	Recovery =	95.580%		
50) Toluene-d8	10.571	98	807110	50.348	ug/l	0.00
Spiked Amount	50.000	Range 86 - 113	Recovery =	100.700%		
62) 4-Bromofluorobenzene	12.847	95	288404	48.423	ug/l	0.00
Spiked Amount	50.000	Range 77 - 121	Recovery =	96.840%		
Target Compounds						
						Qvalue
3) Chloromethane	2.401	50	2421	0.482	ug/l	97
11) Tert butyl alcohol	5.536	59	216795	153.036	ug/l	99
16) Acetone	4.448	43	36348	13.128	ug/l	100
20) Methylene Chloride	5.289	84	1513	0.292	ug/l #	73
25) 2-Butanone	7.500	43	11003	2.445	ug/l	92
39) Methylcyclohexane	9.606	83	2227	0.269	ug/l	89
51) 4-Methyl-2-Pentanone	10.447	43	13335	1.797	ug/l	95
52) Toluene	10.635	92	23173	1.922	ug/l	97
67) Ethyl Benzene	11.965	91	17136	0.770	ug/l	96
68) m/p-Xylenes	12.071	106	12444	1.460	ug/l	100
69) o-Xylene	12.400	106	5077	0.622	ug/l	95
84) 1,2,4-Trimethylbenzene	13.482	105	4482	0.260	ug/l	84
95) Naphthalene	15.635	128	39317	1.832	ug/l #	88

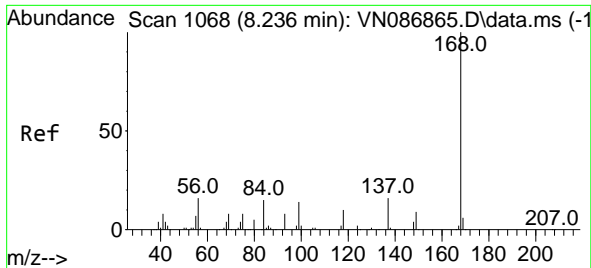
(#) = qualifier out of range (m) = manual integration (+) = signals summed

Data Path : Z:\voasrv\HPCHEM1\MSVOA_N\Data\VN060625\
 Data File : VN086880.D
 Acq On : 06 Jun 2025 20:36
 Operator : JC\MD
 Sample : Q2216-06
 Misc : 5.0mL/MSVOA_N/WATER
 ALS Vial : 20 Sample Multiplier: 1

Instrument :
 MSVOA_N
 ClientSampleId :
 3851

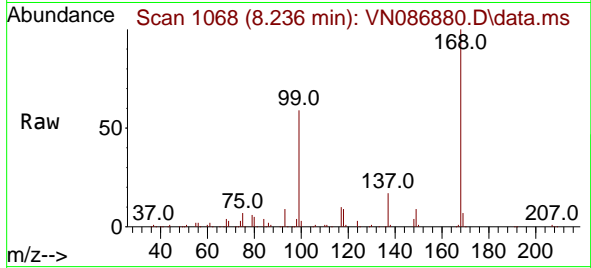
Quant Time: Jun 07 02:31:07 2025
 Quant Method : Z:\voasrv\HPCHEM1\MSVOA_N\methods\82N060625W.M
 Quant Title : SW846 8260
 QLast Update : Sat Jun 07 02:12:50 2025
 Response via : Initial Calibration



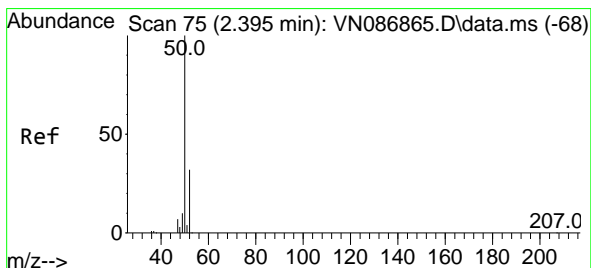
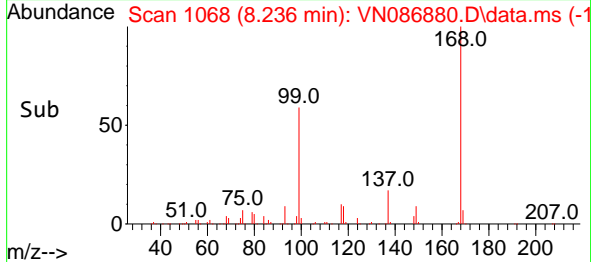
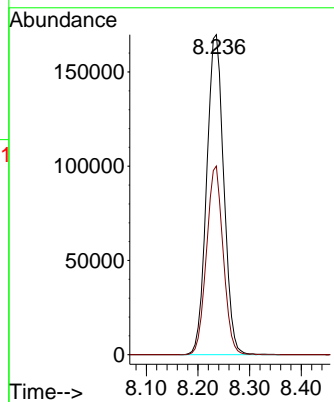


#1
 Pentafluorobenzene
 Concen: 50.000 ug/l
 RT: 8.236 min Scan# 1068
 Delta R.T. -0.000 min
 Lab File: VN086880.D
 Acq: 06 Jun 2025 20:36

Instrument : MSVOA_N
 ClientSampleId : 3851

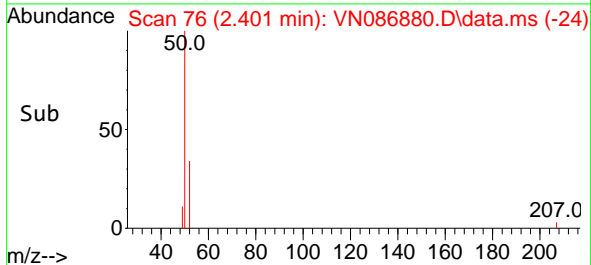
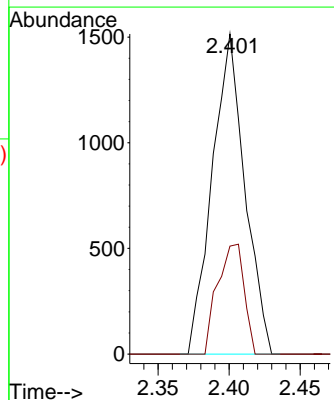
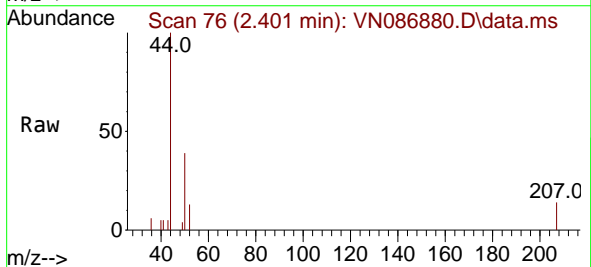


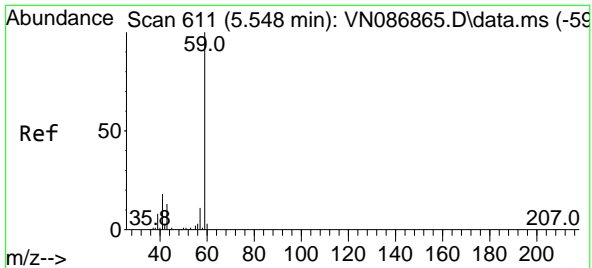
Tgt Ion:168 Resp: 389939
 Ion Ratio Lower Upper
 168 100
 99 58.9 49.1 73.7



#3
 Chloromethane
 Concen: 0.482 ug/l
 RT: 2.401 min Scan# 76
 Delta R.T. 0.006 min
 Lab File: VN086880.D
 Acq: 06 Jun 2025 20:36

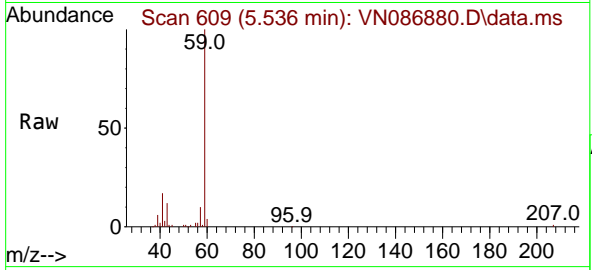
Tgt Ion: 50 Resp: 2421
 Ion Ratio Lower Upper
 50 100
 52 33.7 25.7 38.5



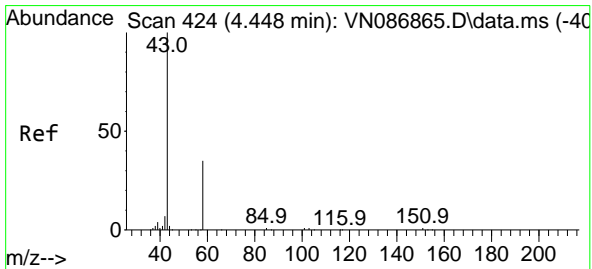
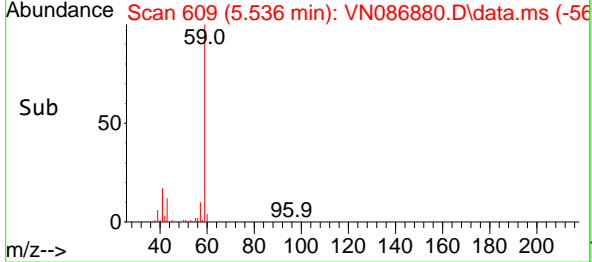
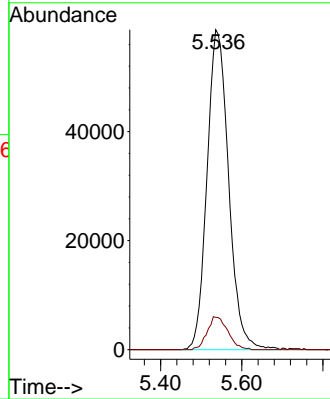


#11
 Tert butyl alcohol
 Concen: 153.036 ug/l
 RT: 5.536 min Scan# 609
 Delta R.T. -0.012 min
 Lab File: VN086880.D
 Acq: 06 Jun 2025 20:36

Instrument : MSVOA_N
 ClientSampleId : 3851

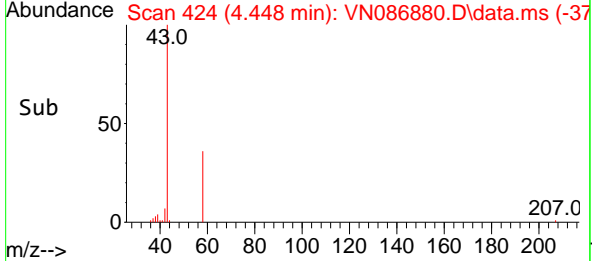
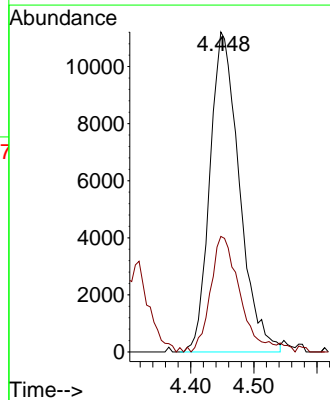
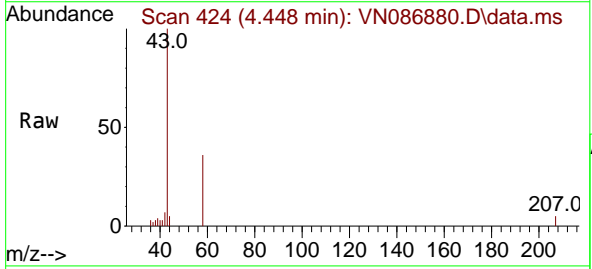


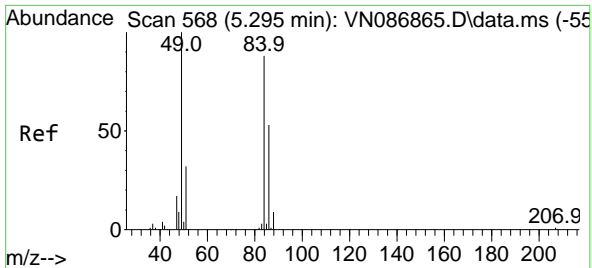
Tgt Ion: 59 Resp: 216795
 Ion Ratio Lower Upper
 59 100
 57 9.8 8.1 12.1



#16
 Acetone
 Concen: 13.128 ug/l
 RT: 4.448 min Scan# 424
 Delta R.T. -0.000 min
 Lab File: VN086880.D
 Acq: 06 Jun 2025 20:36

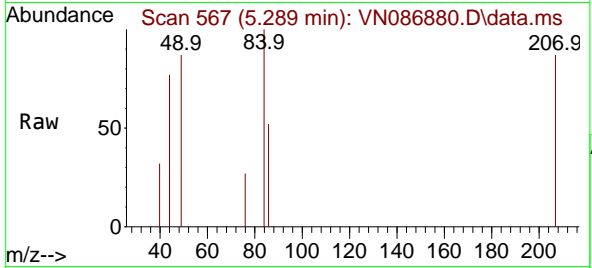
Tgt Ion: 43 Resp: 36348
 Ion Ratio Lower Upper
 43 100
 58 34.8 28.0 42.0





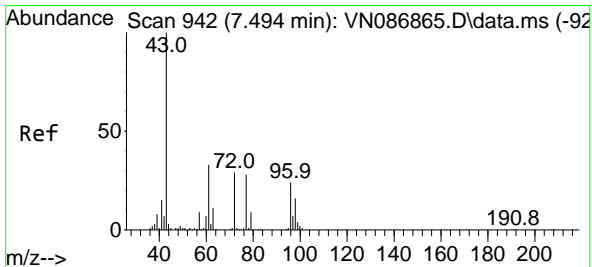
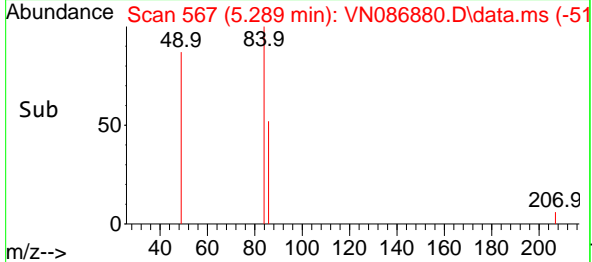
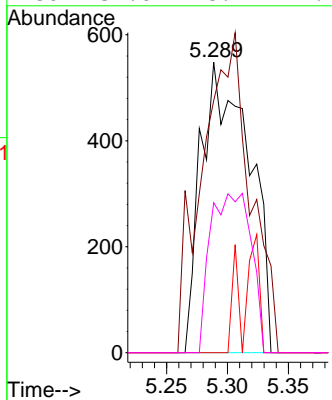
#20
 Methylene Chloride
 Concen: 0.292 ug/l
 RT: 5.289 min Scan# 51
 Delta R.T. -0.006 min
 Lab File: VN086880.D
 Acq: 06 Jun 2025 20:36

Instrument :
 MSVOA_N
 ClientSampleId :
 3851



Tgt Ion: 84 Resp: 1513

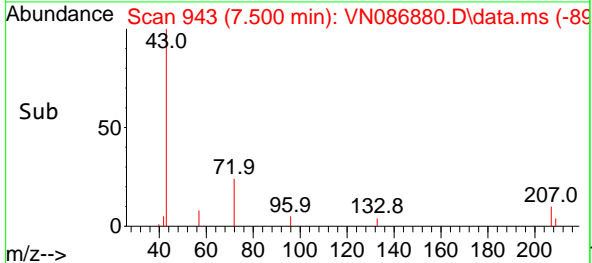
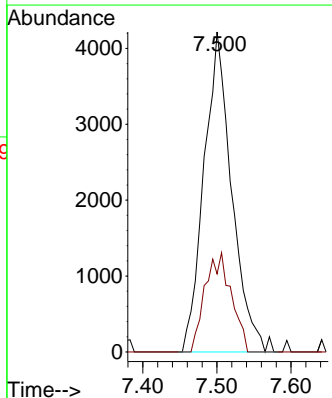
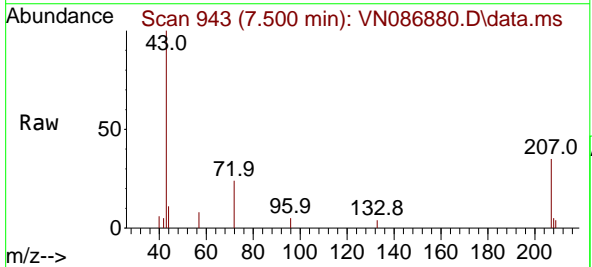
Ion	Ratio	Lower	Upper
84	100		
49	86.9	90.5	135.7#
51	0.0	28.5	42.7#
86	51.6	48.1	72.1

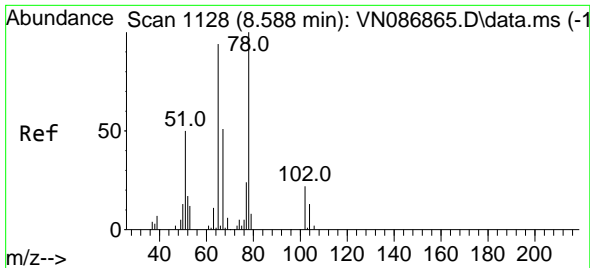


#25
 2-Butanone
 Concen: 2.445 ug/l
 RT: 7.500 min Scan# 943
 Delta R.T. 0.006 min
 Lab File: VN086880.D
 Acq: 06 Jun 2025 20:36

Tgt Ion: 43 Resp: 11003

Ion	Ratio	Lower	Upper
43	100		
72	24.4	23.0	34.6

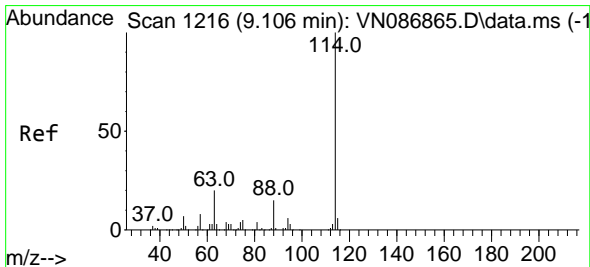
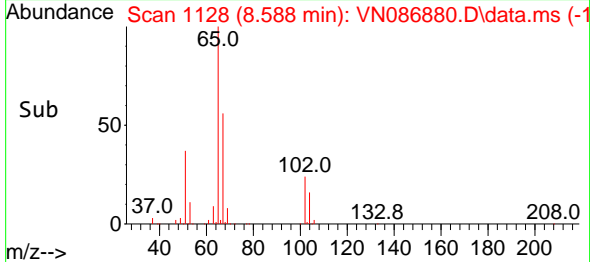
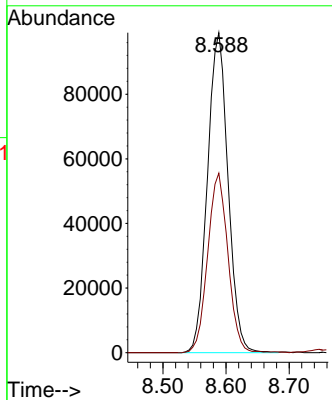
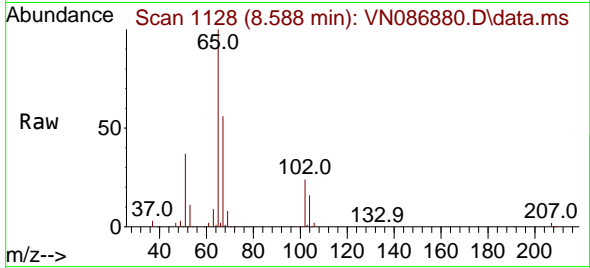




#33
 1,2-Dichloroethane-d4
 Concen: 42.966 ug/l
 RT: 8.588 min Scan# 1128
 Delta R.T. -0.000 min
 Lab File: VN086880.D
 Acq: 06 Jun 2025 20:36

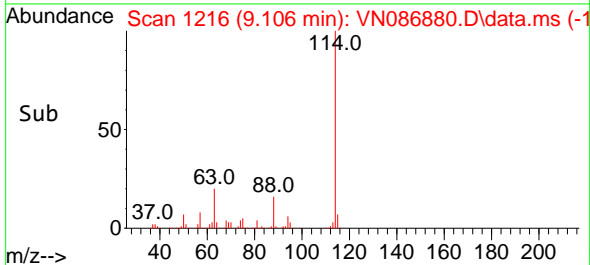
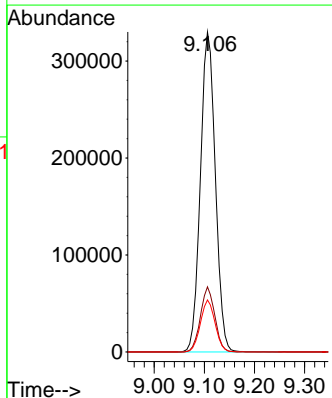
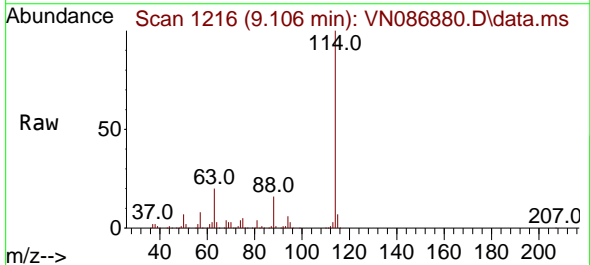
Instrument : MSVOA_N
 ClientSampleId : 3851

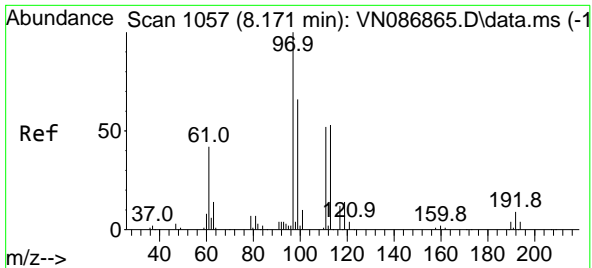
Tgt Ion: 65 Resp: 224320
 Ion Ratio Lower Upper
 65 100
 67 55.3 0.0 105.6



#34
 1,4-Difluorobenzene
 Concen: 50.000 ug/l
 RT: 9.106 min Scan# 1216
 Delta R.T. -0.000 min
 Lab File: VN086880.D
 Acq: 06 Jun 2025 20:36

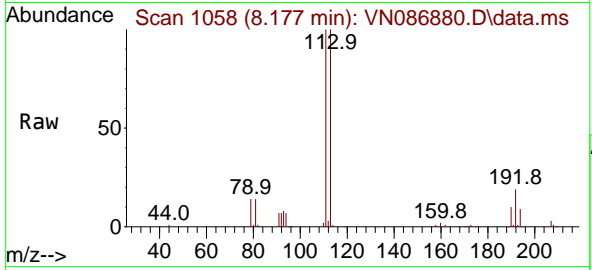
Tgt Ion: 114 Resp: 683310
 Ion Ratio Lower Upper
 114 100
 63 20.4 0.0 39.6
 88 16.3 0.0 30.2





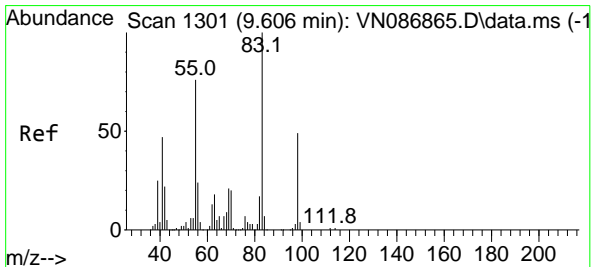
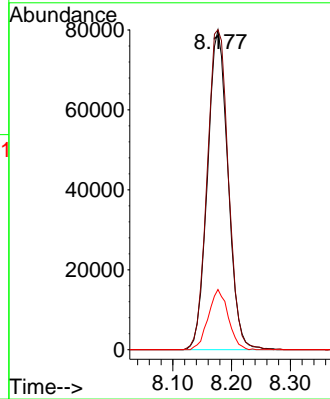
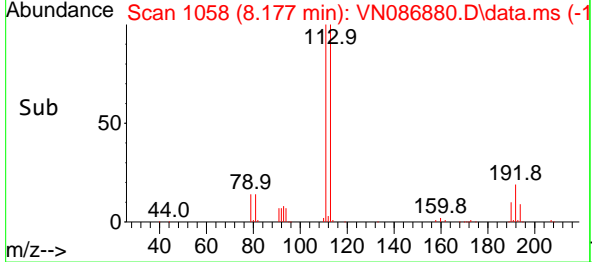
#35
 Dibromofluoromethane
 Concen: 47.795 ug/l
 RT: 8.177 min Scan# 1058
 Delta R.T. 0.006 min
 Lab File: VN086880.D
 Acq: 06 Jun 2025 20:36

Instrument : MSVOA_N
 ClientSampleId : 3851

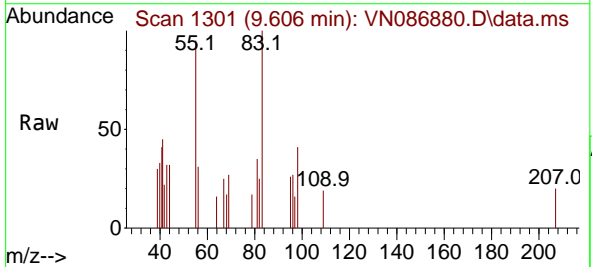


Tgt Ion: 113 Resp: 193542

Ion	Ratio	Lower	Upper
113	100		
111	103.6	84.2	126.2
192	18.3	14.2	21.4

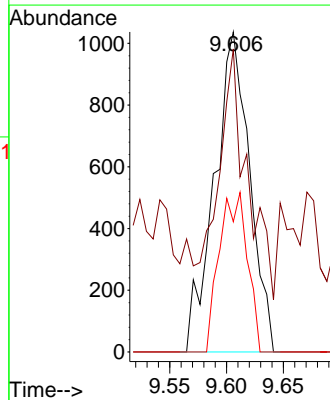
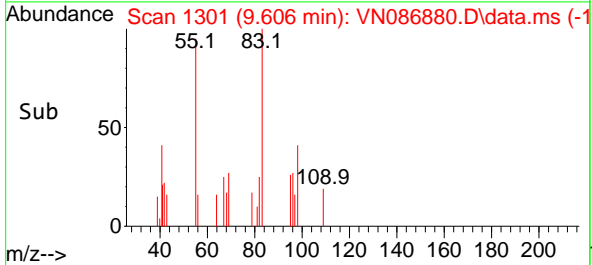


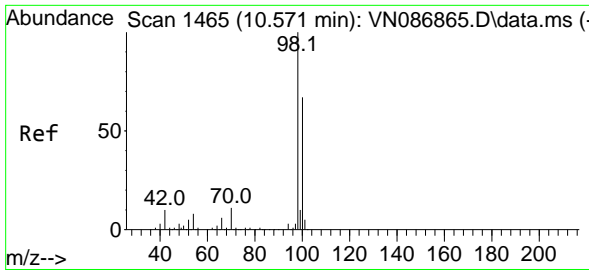
#39
 Methylcyclohexane
 Concen: 0.269 ug/l
 RT: 9.606 min Scan# 1301
 Delta R.T. -0.000 min
 Lab File: VN086880.D
 Acq: 06 Jun 2025 20:36



Tgt Ion: 83 Resp: 2227

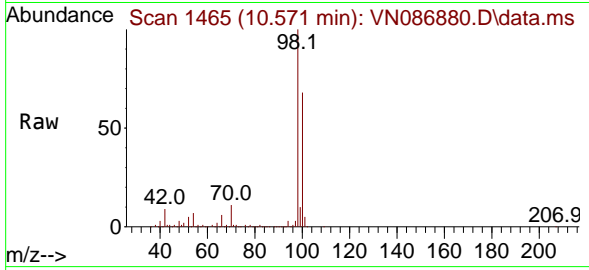
Ion	Ratio	Lower	Upper
83	100		
55	67.1	61.0	91.6
98	40.7	38.9	58.3



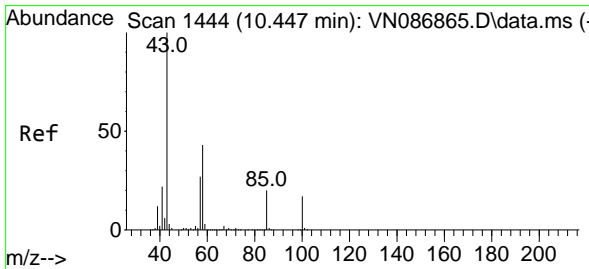
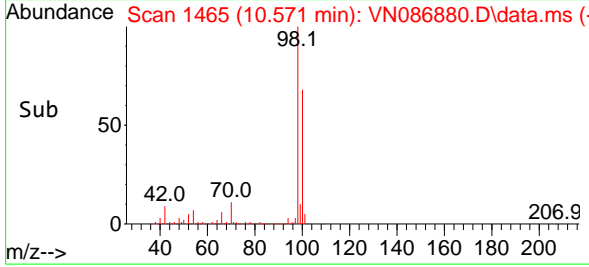
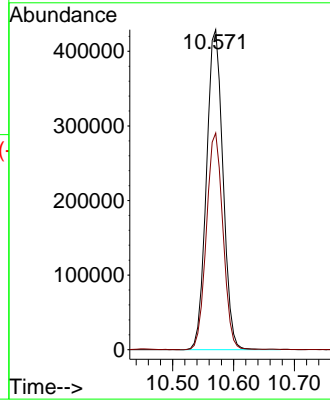


#50
 Toluene-d8
 Concen: 50.348 ug/l
 RT: 10.571 min Scan# 1465
 Delta R.T. -0.000 min
 Lab File: VN086880.D
 Acq: 06 Jun 2025 20:36

Instrument : MSVOA_N
 ClientSampleId : 3851

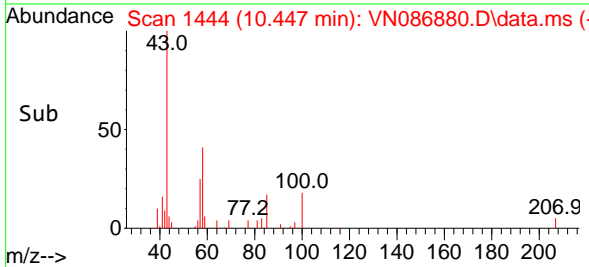
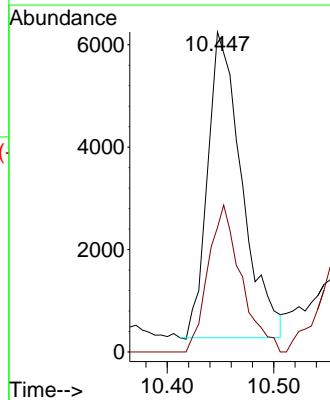
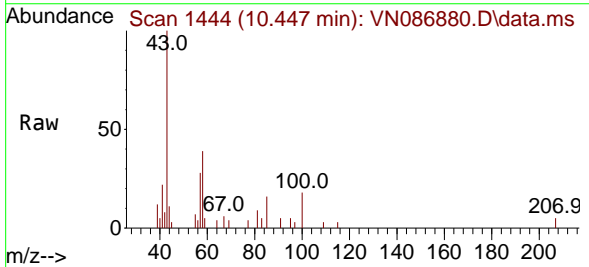


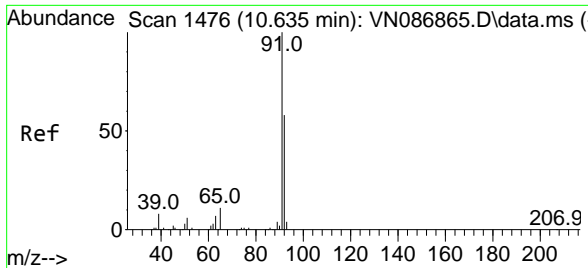
Tgt Ion: 98 Resp: 807110
 Ion Ratio Lower Upper
 98 100
 100 67.8 53.4 80.0



#51
 4-Methyl-2-Pentanone
 Concen: 1.797 ug/l
 RT: 10.447 min Scan# 1444
 Delta R.T. -0.000 min
 Lab File: VN086880.D
 Acq: 06 Jun 2025 20:36

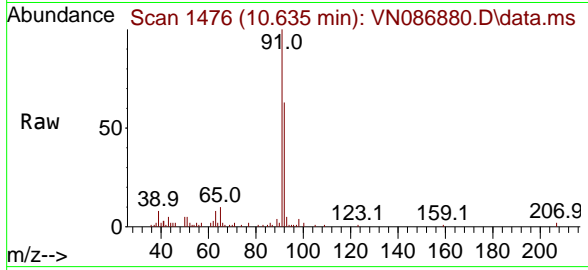
Tgt Ion: 43 Resp: 13335
 Ion Ratio Lower Upper
 43 100
 58 46.3 34.2 51.4



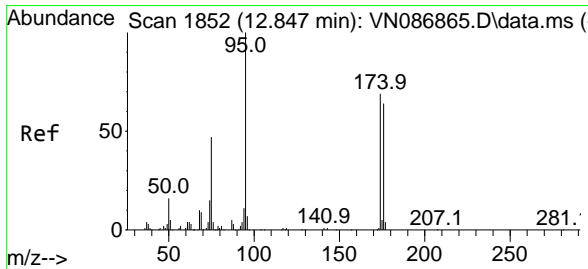
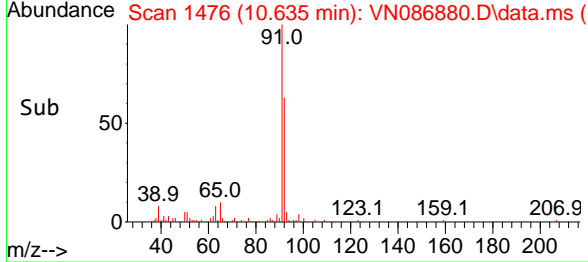
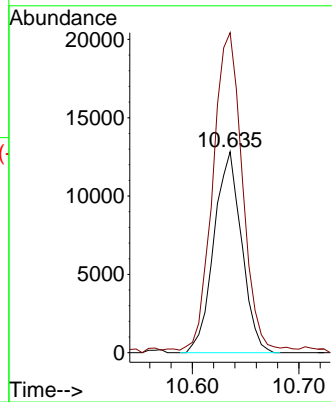


#52
 Toluene
 Concen: 1.922 ug/l
 RT: 10.635 min Scan# 1476
 Delta R.T. -0.000 min
 Lab File: VN086880.D
 Acq: 06 Jun 2025 20:36

Instrument : MSVOA_N
 ClientSampleId : 3851

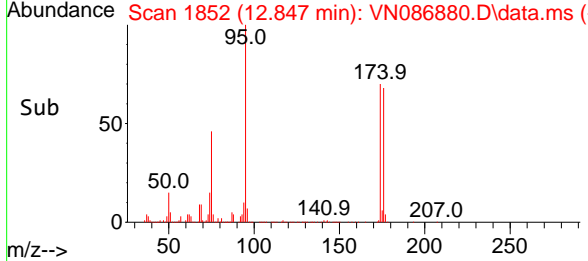
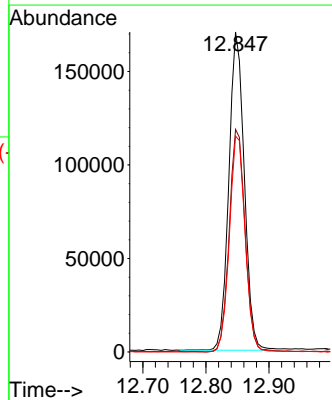
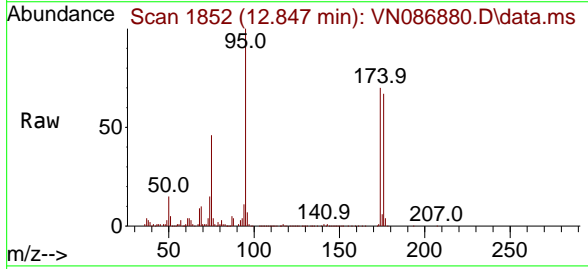


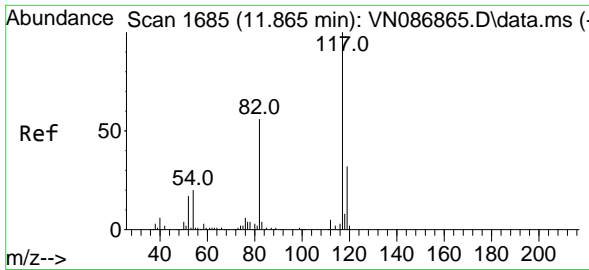
Tgt Ion: 92 Resp: 23173
 Ion Ratio Lower Upper
 92 100
 91 167.0 136.5 204.7



#62
 4-Bromofluorobenzene
 Concen: 48.423 ug/l
 RT: 12.847 min Scan# 1852
 Delta R.T. -0.000 min
 Lab File: VN086880.D
 Acq: 06 Jun 2025 20:36

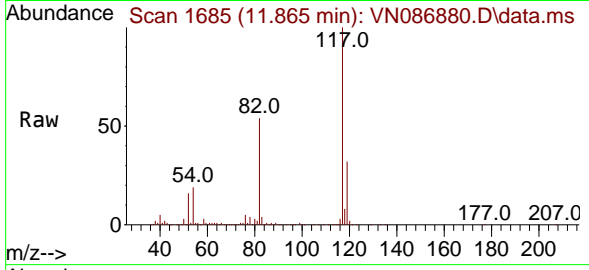
Tgt Ion: 95 Resp: 288404
 Ion Ratio Lower Upper
 95 100
 174 72.2 0.0 141.8
 176 69.5 0.0 132.6



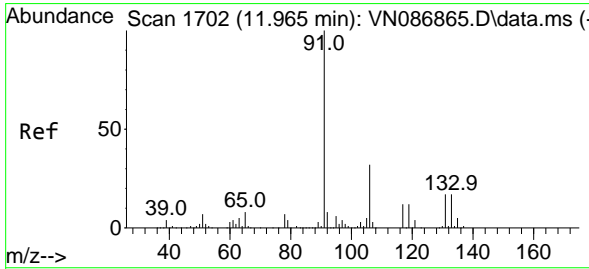
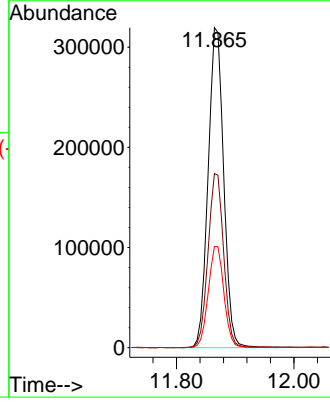
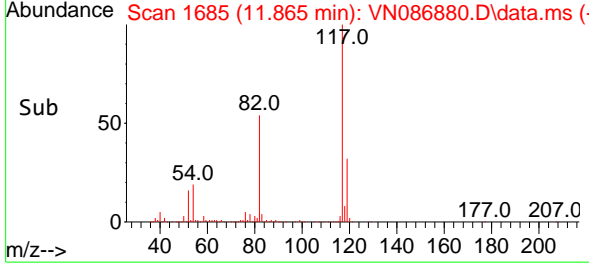


#63
 Chlorobenzene-d5
 Concen: 50.000 ug/l
 RT: 11.865 min Scan# 11
 Delta R.T. -0.000 min
 Lab File: VN086880.D
 Acq: 06 Jun 2025 20:36

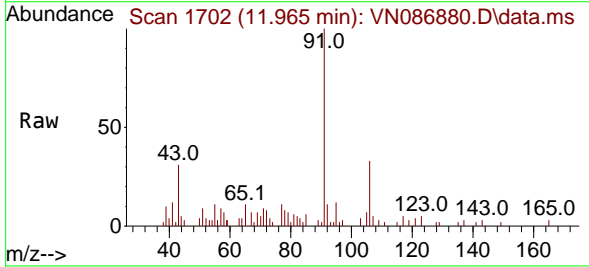
Instrument :
 MSVOA_N
 ClientSampleId :
 3851



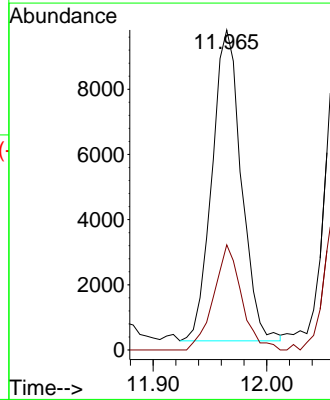
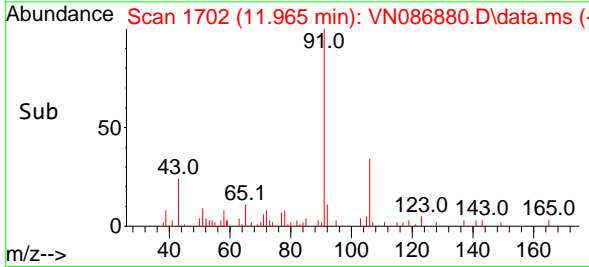
Tgt Ion:117 Resp: 586008
 Ion Ratio Lower Upper
 117 100
 82 54.3 44.6 67.0
 119 31.6 25.5 38.3

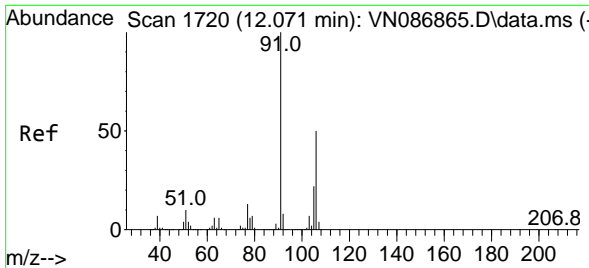


#67
 Ethyl Benzene
 Concen: 0.770 ug/l
 RT: 11.965 min Scan# 1702
 Delta R.T. -0.000 min
 Lab File: VN086880.D
 Acq: 06 Jun 2025 20:36



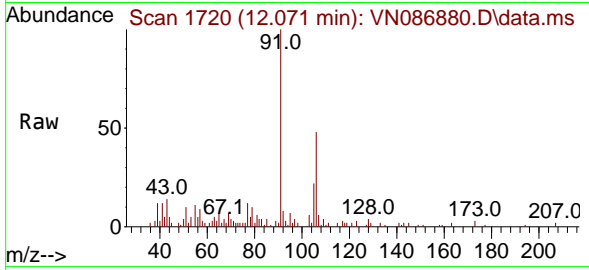
Tgt Ion: 91 Resp: 17136
 Ion Ratio Lower Upper
 91 100
 106 33.8 25.4 38.2



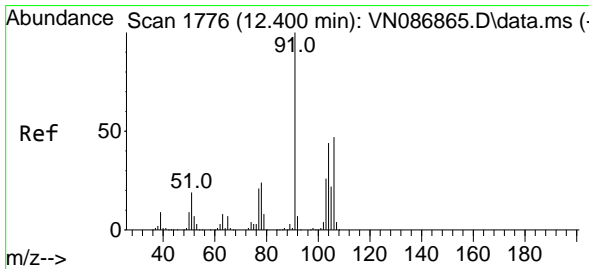
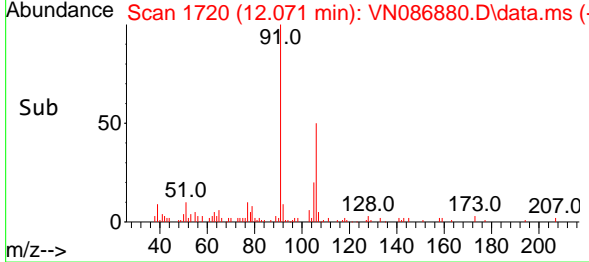
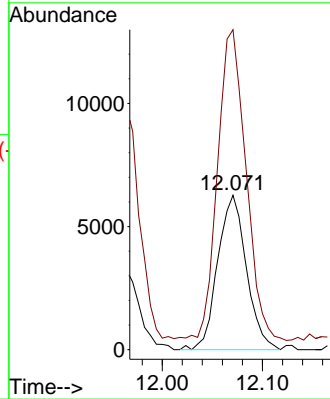


#68
 m/p-Xylenes
 Concen: 1.460 ug/l
 RT: 12.071 min Scan# 1720
 Delta R.T. -0.000 min
 Lab File: VN086880.D
 Acq: 06 Jun 2025 20:36

Instrument : MSVOA_N
 ClientSampleId : 3851

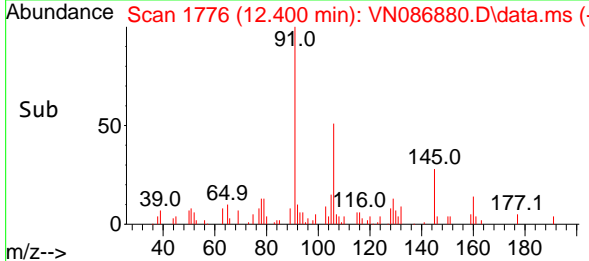
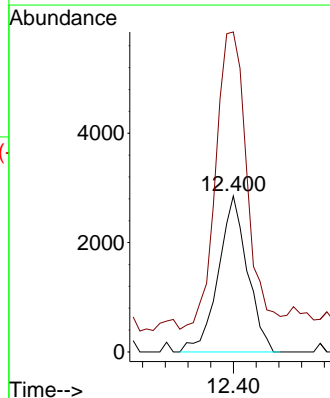
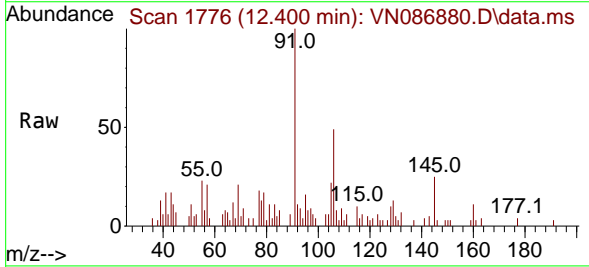


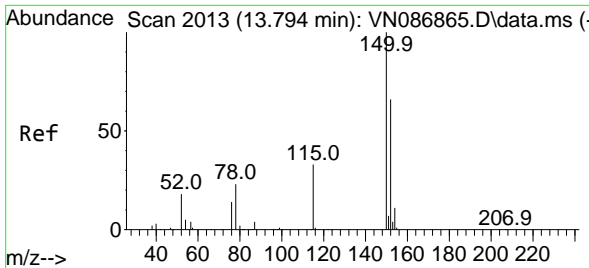
Tgt Ion:106 Resp: 12444
 Ion Ratio Lower Upper
 106 100
 91 199.6 159.4 239.0



#69
 o-Xylene
 Concen: 0.622 ug/l
 RT: 12.400 min Scan# 1776
 Delta R.T. -0.000 min
 Lab File: VN086880.D
 Acq: 06 Jun 2025 20:36

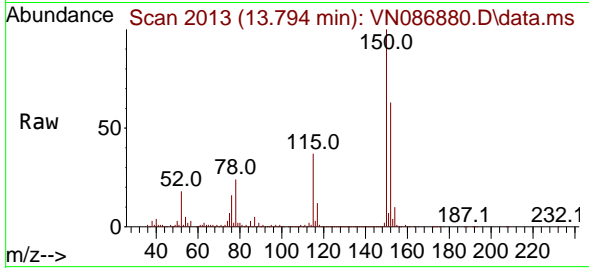
Tgt Ion:106 Resp: 5077
 Ion Ratio Lower Upper
 106 100
 91 204.5 106.1 318.1



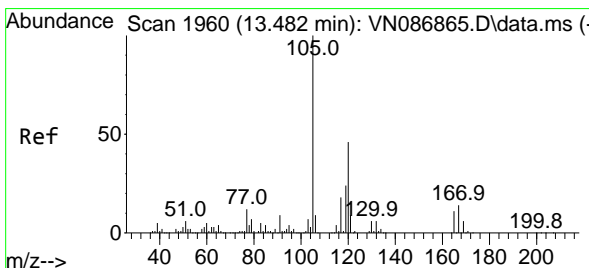
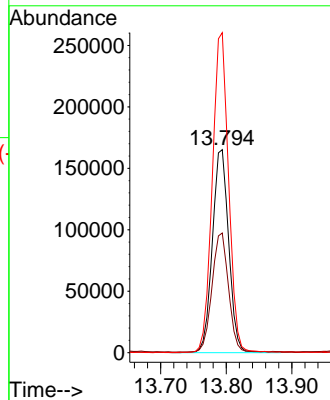
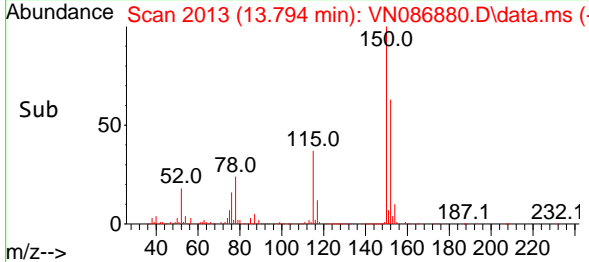


#72
 1,4-Dichlorobenzene-d4
 Concen: 50.000 ug/l
 RT: 13.794 min Scan# 2013
 Delta R.T. -0.000 min
 Lab File: VN086880.D
 Acq: 06 Jun 2025 20:36

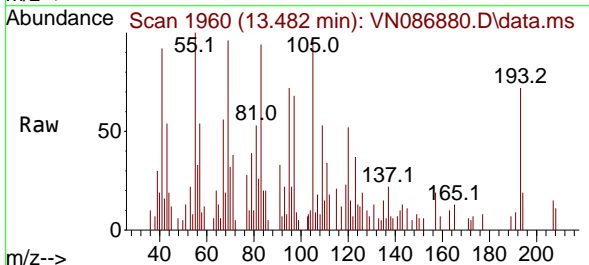
Instrument : MSVOA_N
 ClientSampleId : 3851



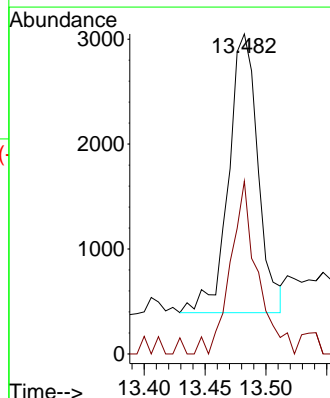
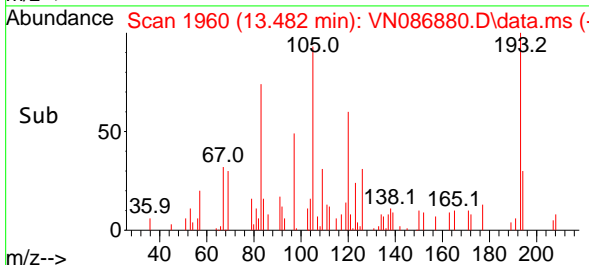
Tgt Ion:152 Resp: 285893
 Ion Ratio Lower Upper
 152 100
 115 59.0 30.1 90.5
 150 156.3 0.0 345.0

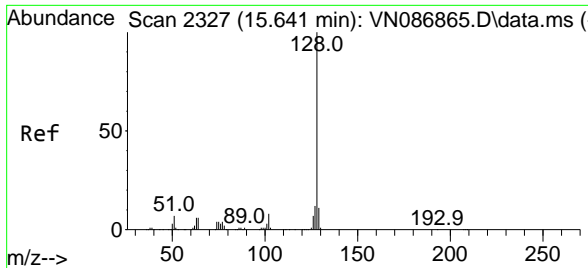


#84
 1,2,4-Trimethylbenzene
 Concen: 0.260 ug/l
 RT: 13.482 min Scan# 1960
 Delta R.T. -0.000 min
 Lab File: VN086880.D
 Acq: 06 Jun 2025 20:36



Tgt Ion:105 Resp: 4482
 Ion Ratio Lower Upper
 105 100
 120 56.8 23.2 69.6





#95
 Naphthalene
 Concen: 1.832 ug/l
 RT: 15.635 min Scan# 21
 Delta R.T. -0.006 min
 Lab File: VN086880.D
 Acq: 06 Jun 2025 20:36

Instrument : MSVOA_N
 ClientSampleId : 3851

Tgt Ion:128 Resp: 39317

Ion	Ratio	Lower	Upper
128	100		
127	17.3	10.2	15.2#
129	15.3	8.8	13.2#

