

Data Path : Z:\voasrv\HPCHEM1\MSVOA\_N\Data\VN060724\  
 Data File : VN082484.D  
 Acq On : 07 Jun 2024 11:46  
 Operator : JC\MD  
 Sample : P2772-03  
 Misc : 5.0mL/MSVOA\_N/WATER  
 ALS Vial : 7 Sample Multiplier: 1

Instrument :  
 MSVOA\_N  
 ClientSampleId :

Quant Time: Jun 08 00:55:31 2024  
 Quant Method : Z:\voasrv\HPCHEM1\MSVOA\_N\methods\82N051524W.M  
 Quant Title : SW846 8260  
 QLast Update : Thu May 16 05:21:06 2024  
 Response via : Initial Calibration

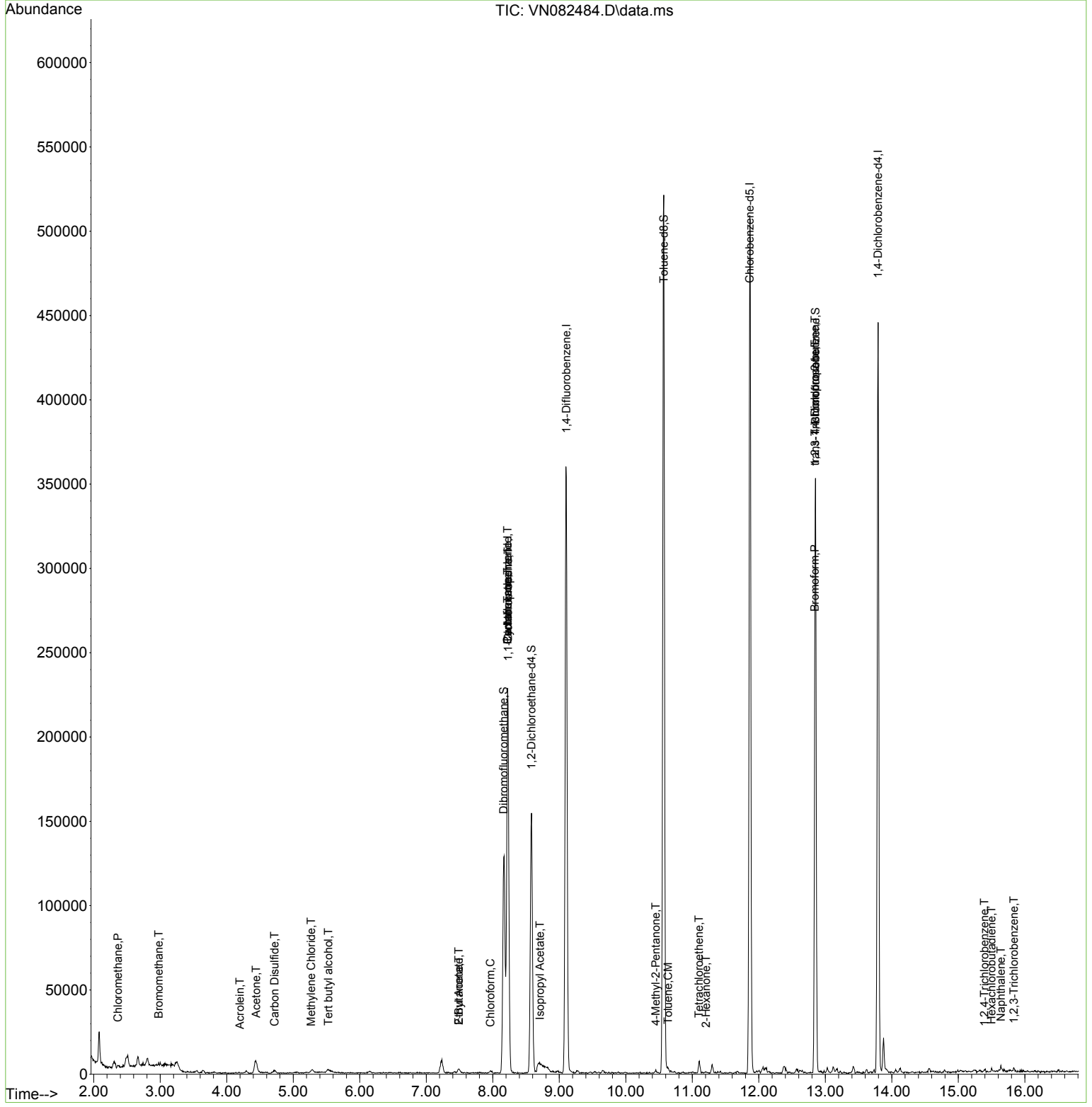
Compound	R.T.	QIon	Response	Conc	Units	Dev(Min)
-----						
Internal Standards						
1) Pentafluorobenzene	8.224	168	155528	50.000	ug/l	0.00
34) 1,4-Difluorobenzene	9.106	114	283889	50.000	ug/l	0.00
63) Chlorobenzene-d5	11.865	117	271355	50.000	ug/l	0.00
72) 1,4-Dichlorobenzene-d4	13.794	152	110243	50.000	ug/l	0.00
System Monitoring Compounds						
33) 1,2-Dichloroethane-d4	8.583	65	126148	51.367	ug/l	0.00
Spiked Amount	50.000	Range 74 - 125	Recovery	=	102.740%	
35) Dibromofluoromethane	8.165	113	92302	52.854	ug/l	0.00
Spiked Amount	50.000	Range 75 - 124	Recovery	=	105.700%	
50) Toluene-d8	10.571	98	342316	51.127	ug/l	0.00
Spiked Amount	50.000	Range 86 - 113	Recovery	=	102.260%	
62) 4-Bromofluorobenzene	12.853	95	112605	47.120	ug/l	0.00
Spiked Amount	50.000	Range 64 - 133	Recovery	=	94.240%	
Target Compounds						
						Qvalue
3) Chloromethane	2.365	50	1061	0.418	ug/l #	85
5) Bromomethane	2.977	94	851	0.620	ug/l	91
11) Tert butyl alcohol	5.530	59	2490	6.316	ug/l #	71
13) Acrolein	4.200	56	64	0.219	ug/l #	1
16) Acetone	4.442	43	14298	14.193	ug/l	92
17) Carbon Disulfide	4.718	76	1817	0.331	ug/l #	74
20) Methylene Chloride	5.271	84	1302	0.641	ug/l #	73
25) 2-Butanone	7.488	43	5199	3.404	ug/l #	70
28) Bromochloromethane	7.800	49	54	Below Cal	#	10
30) Chloroform	7.965	83	1380	0.369	ug/l	99
31) Cyclohexane	8.224	56	4816	1.228	ug/l #	28
36) 1,1-Dichloropropene	8.230	75	14781	5.047	ug/l #	49
37) Ethyl Acetate	7.488	43	5199	1.586	ug/l #	68
38) Carbon Tetrachloride	8.224	117	17105	5.761	ug/l #	17
43) Isopropyl Acetate	8.712	43	8923	1.536	ug/l #	52
51) 4-Methyl-2-Pentanone	10.453	43	1486	0.450	ug/l #	60
52) Toluene	10.635	92	1344	0.256	ug/l #	73
59) 2-Hexanone	11.206	43	661	0.274	ug/l #	35
64) Tetrachloroethene	11.100	164	1640	0.815	ug/l #	76
71) Bromoform	12.841	173	370	0.933	ug/l #	1
76) 1,2,3-Trichloropropane	12.847	75	65916	28.408	ug/l #	1
81) trans-1,4-Dichloro-2-b...	12.847	75	65916	66.445	ug/l #	13
93) 1,2,4-Trichlorobenzene	15.394	180	598	0.298	ug/l #	87
94) Hexachlorobutadiene	15.500	225	495	0.562	ug/l #	65
95) Naphthalene	15.641	128	3297	0.524	ug/l	95
96) 1,2,3-Trichlorobenzene	15.835	180	719	0.358	ug/l #	76

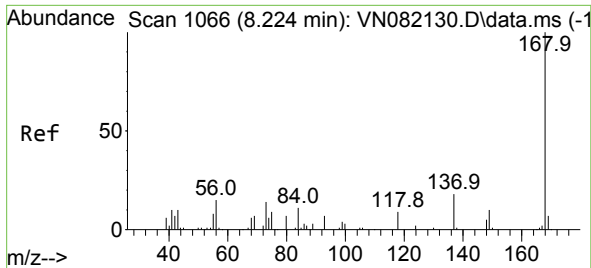
(#) = qualifier out of range (m) = manual integration (+) = signals summed

Data Path : Z:\voasrv\HPCHEM1\MSVOA\_N\Data\VN060724\  
 Data File : VN082484.D  
 Acq On : 07 Jun 2024 11:46  
 Operator : JC\MD  
 Sample : P2772-03  
 Misc : 5.0mL/MSVOA\_N/WATER  
 ALS Vial : 7 Sample Multiplier: 1

Instrument :  
 MSVOA\_N  
 ClientSampleId :

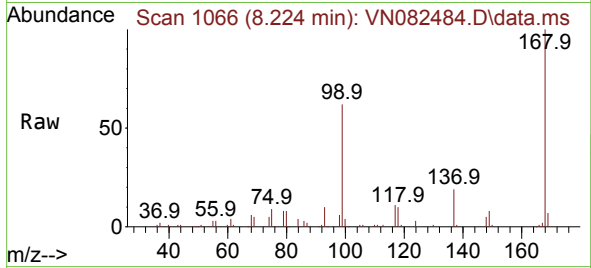
Quant Time: Jun 08 00:55:31 2024  
 Quant Method : Z:\voasrv\HPCHEM1\MSVOA\_N\methods\82N051524W.M  
 Quant Title : SW846 8260  
 QLast Update : Thu May 16 05:21:06 2024  
 Response via : Initial Calibration



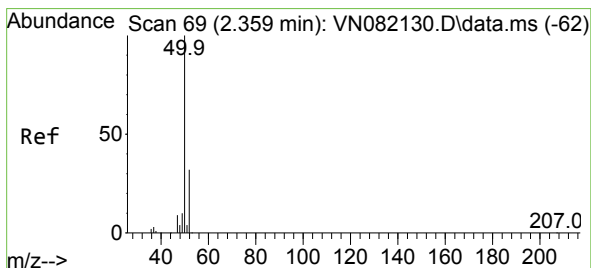
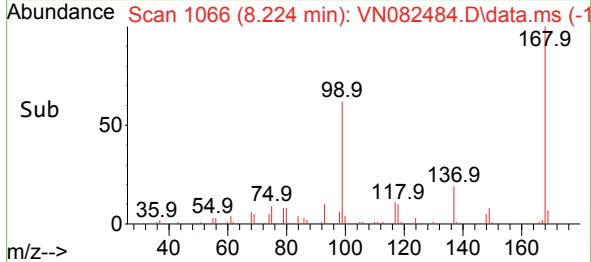
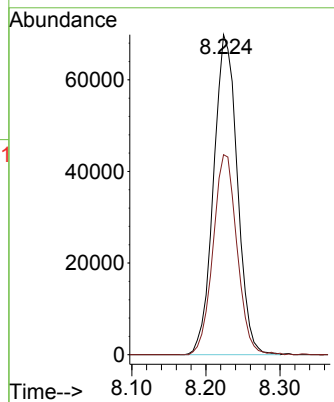


#1  
 Pentafluorobenzene  
 Concen: 50.000 ug/l  
 RT: 8.224 min Scan# 10  
 Delta R.T. -0.000 min  
 Lab File: VN082484.D  
 Acq: 07 Jun 2024 11:46

Instrument :  
 MSVOA\_N  
 ClientSampleId :

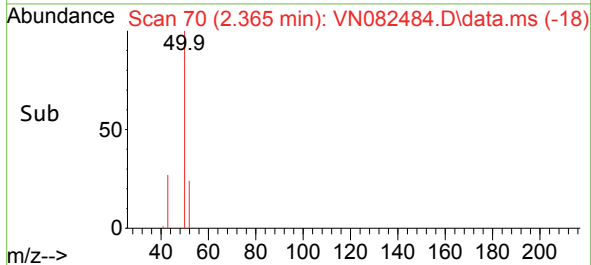
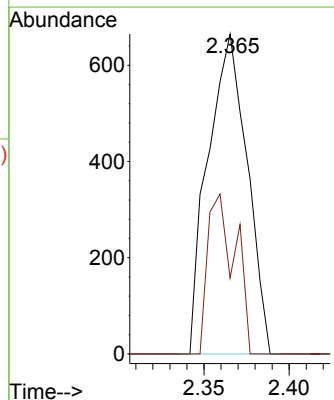
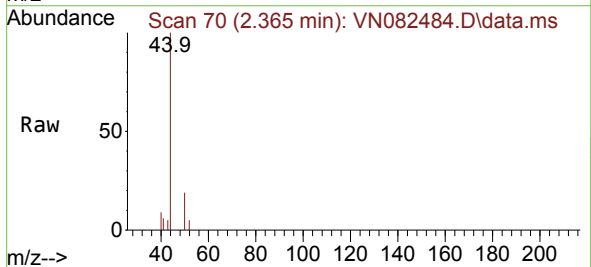


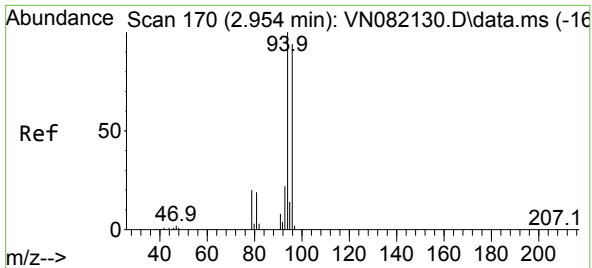
Tgt Ion:168 Resp: 155528  
 Ion Ratio Lower Upper  
 168 100  
 99 62.5 48.2 72.4



#3  
 Chloromethane  
 Concen: 0.418 ug/l  
 RT: 2.365 min Scan# 70  
 Delta R.T. 0.006 min  
 Lab File: VN082484.D  
 Acq: 07 Jun 2024 11:46

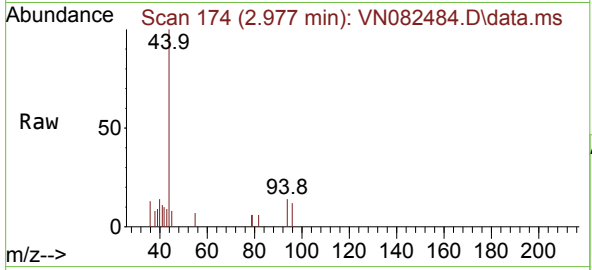
Tgt Ion: 50 Resp: 1061  
 Ion Ratio Lower Upper  
 50 100  
 52 23.8 25.5 38.3#



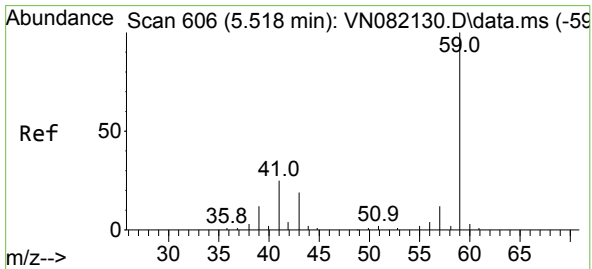
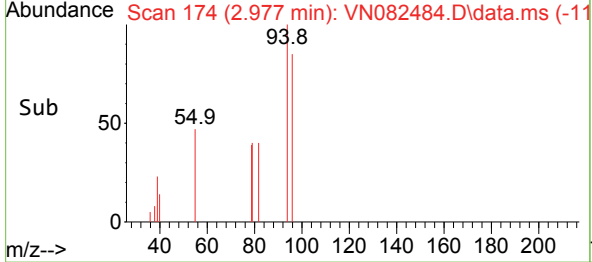
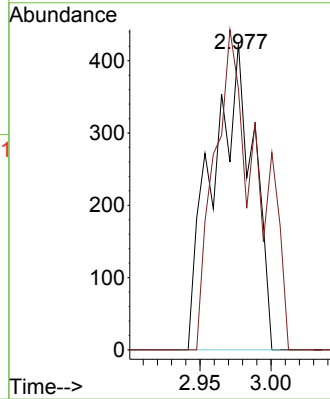


#5  
 Bromomethane  
 Concen: 0.620 ug/l  
 RT: 2.977 min Scan# 11  
 Delta R.T. 0.023 min  
 Lab File: VN082484.D  
 Acq: 07 Jun 2024 11:46

Instrument :  
 MSVOA\_N  
 ClientSampleId :

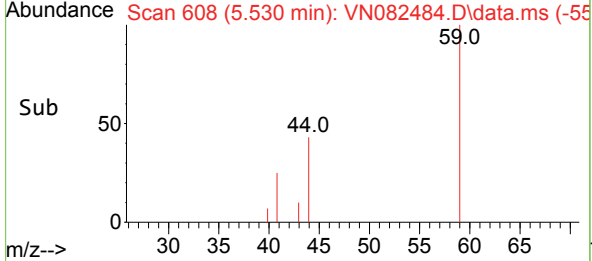
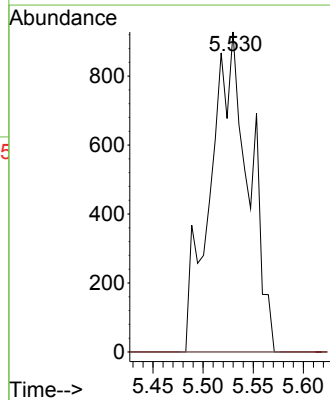
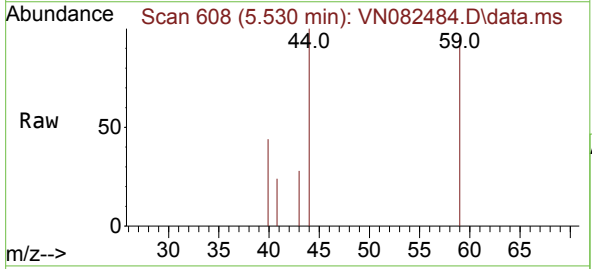


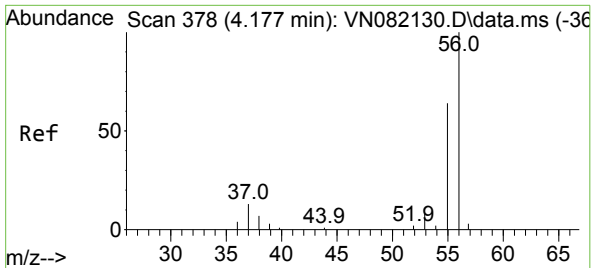
Tgt Ion: 94 Resp: 851  
 Ion Ratio Lower Upper  
 94 100  
 96 84.9 74.8 112.2



#11  
 Tert butyl alcohol  
 Concen: 6.316 ug/l  
 RT: 5.530 min Scan# 608  
 Delta R.T. 0.012 min  
 Lab File: VN082484.D  
 Acq: 07 Jun 2024 11:46

Tgt Ion: 59 Resp: 2490  
 Ion Ratio Lower Upper  
 59 100  
 57 0.0 8.9 13.3#

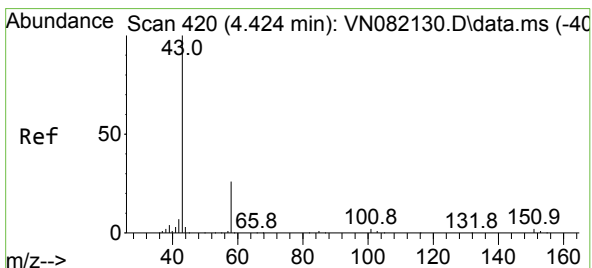
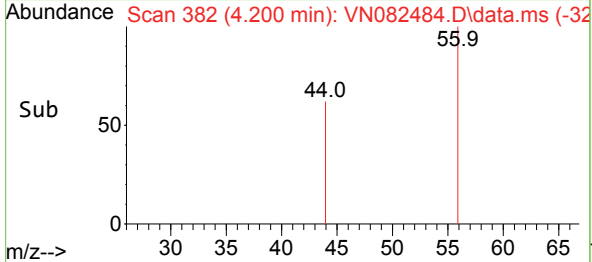
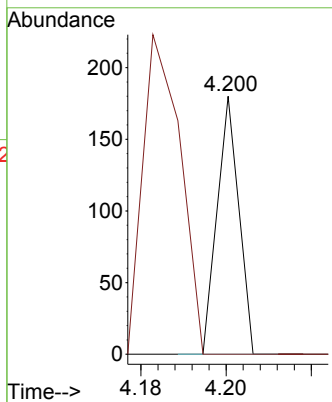
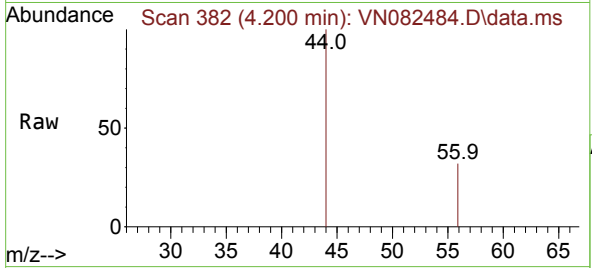




#13  
 Acrolein  
 Concen: 0.219 ug/l  
 RT: 4.200 min Scan# 31  
 Delta R.T. 0.023 min  
 Lab File: VN082484.D  
 Acq: 07 Jun 2024 11:46

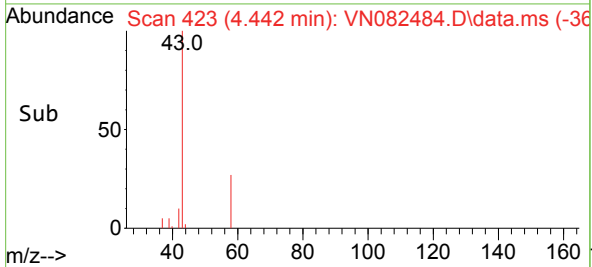
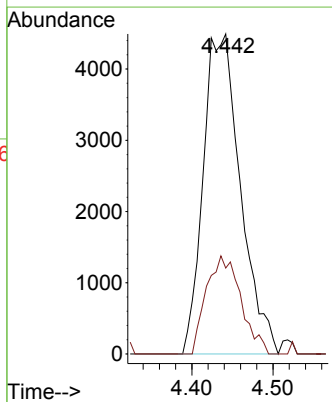
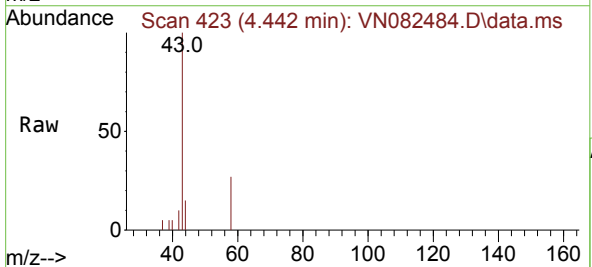
Instrument :  
 MSVOA\_N  
 ClientSampleId :

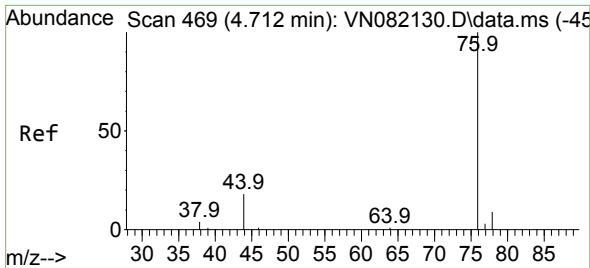
Tgt Ion: 56 Resp: 64  
 Ion Ratio Lower Upper  
 56 100  
 55 212.5 55.8 83.8#



#16  
 Acetone  
 Concen: 14.193 ug/l  
 RT: 4.442 min Scan# 423  
 Delta R.T. 0.018 min  
 Lab File: VN082484.D  
 Acq: 07 Jun 2024 11:46

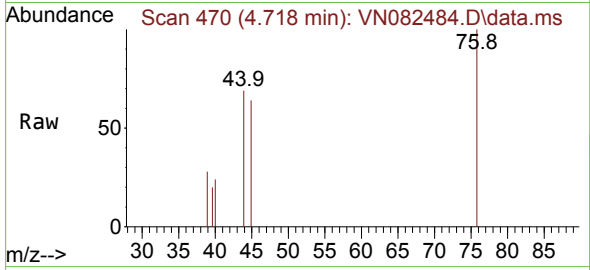
Tgt Ion: 43 Resp: 14298  
 Ion Ratio Lower Upper  
 43 100  
 58 26.9 25.2 37.8



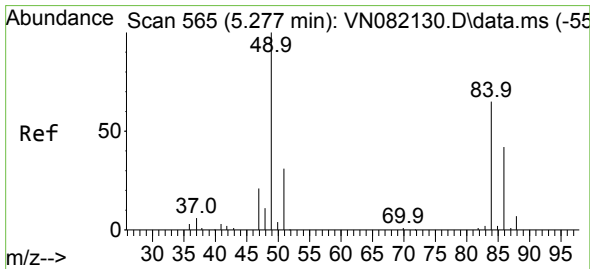
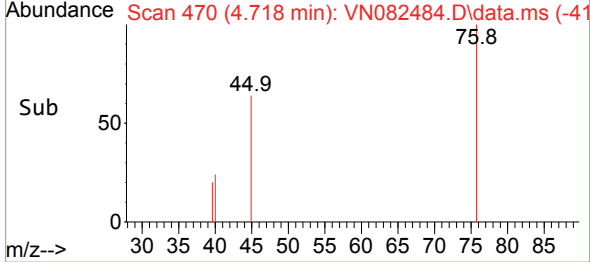
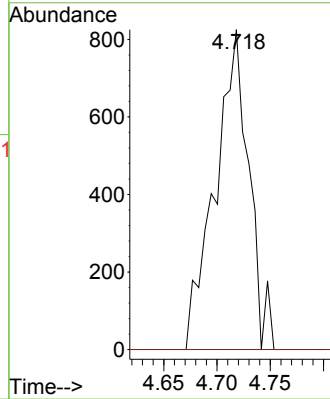


#17  
 Carbon Disulfide  
 Concen: 0.331 ug/l  
 RT: 4.718 min Scan# 41  
 Delta R.T. 0.006 min  
 Lab File: VN082484.D  
 Acq: 07 Jun 2024 11:46

Instrument :  
 MSVOA\_N  
 ClientSampleId :

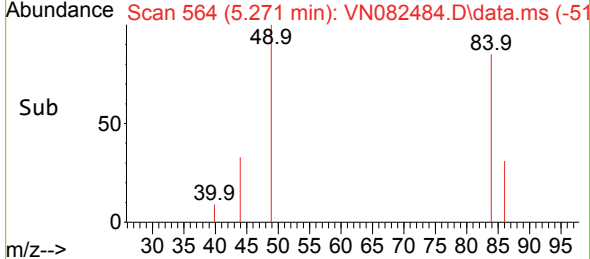
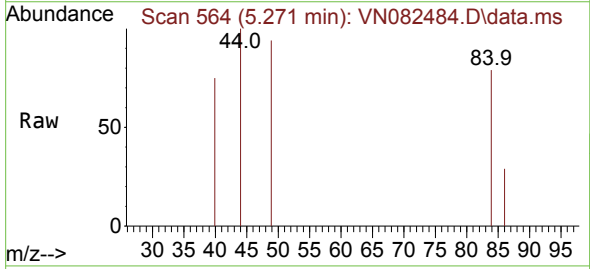
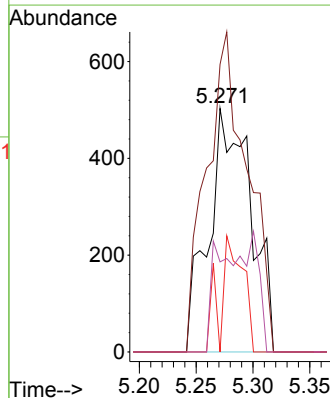


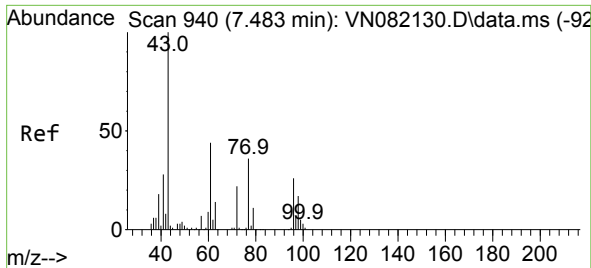
Tgt Ion: 76 Resp: 1817  
 Ion Ratio Lower Upper  
 76 100  
 78 0.0 7.5 11.3#



#20  
 Methylene Chloride  
 Concen: 0.641 ug/l  
 RT: 5.271 min Scan# 564  
 Delta R.T. -0.006 min  
 Lab File: VN082484.D  
 Acq: 07 Jun 2024 11:46

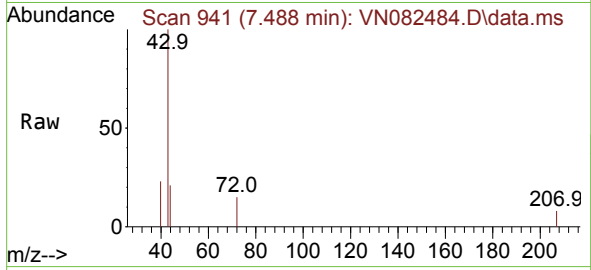
Tgt Ion: 84 Resp: 1302  
 Ion Ratio Lower Upper  
 84 100  
 49 118.1 84.9 127.3  
 51 0.0 27.0 40.6#  
 86 37.0 52.3 78.5#



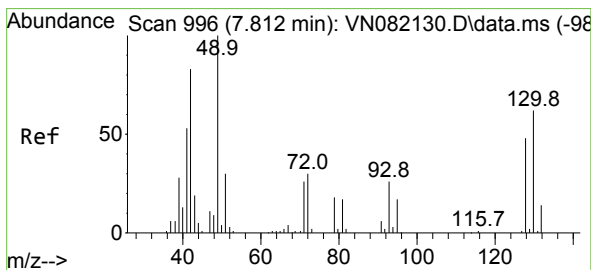
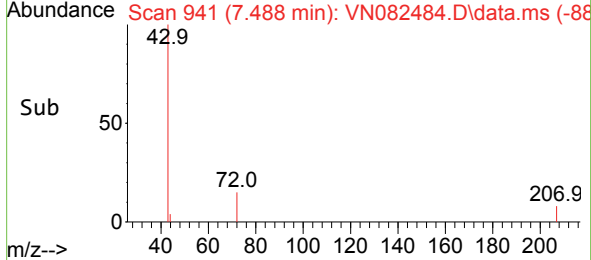
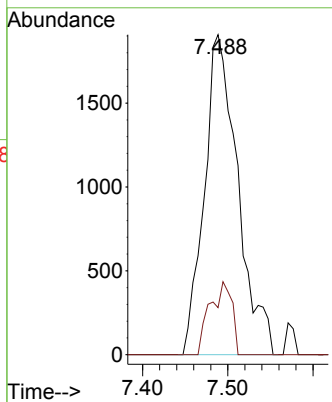


#25  
 2-Butanone  
 Concen: 3.404 ug/l  
 RT: 7.488 min Scan# 941  
 Delta R.T. 0.006 min  
 Lab File: VN082484.D  
 Acq: 07 Jun 2024 11:46

Instrument : MSVOA\_N  
 ClientSampleId :

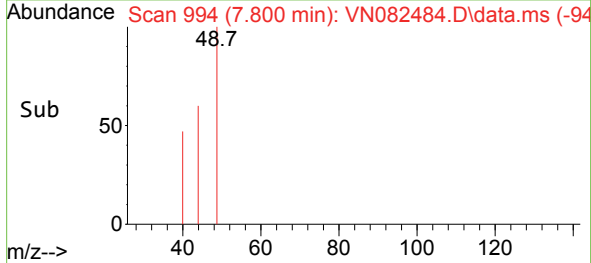
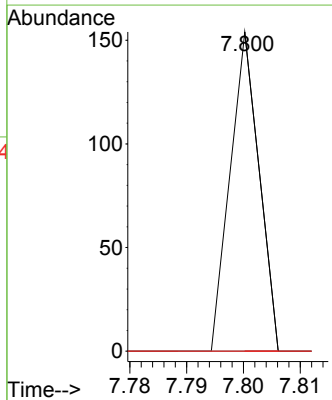
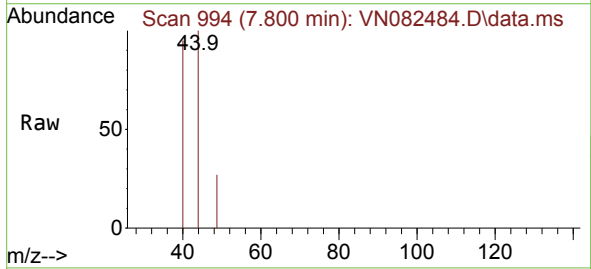


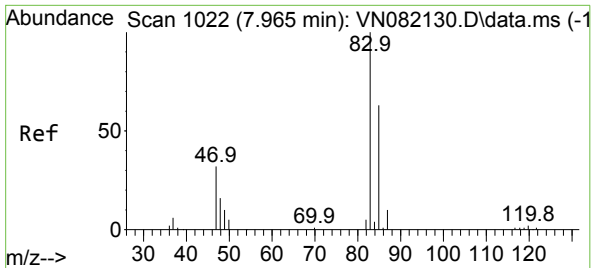
Tgt Ion: 43 Resp: 5199  
 Ion Ratio Lower Upper  
 43 100  
 72 14.7 25.3 37.9#



#28  
 Bromochloromethane  
 Concen: Below Cal  
 RT: 7.800 min Scan# 994  
 Delta R.T. -0.012 min  
 Lab File: VN082484.D  
 Acq: 07 Jun 2024 11:46

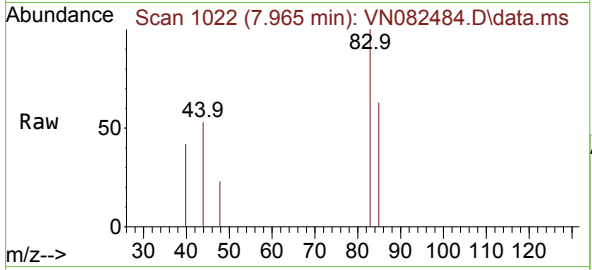
Tgt Ion: 49 Resp: 54  
 Ion Ratio Lower Upper  
 49 100  
 129 0.0 0.0 4.6  
 130 0.0 66.7 100.1#



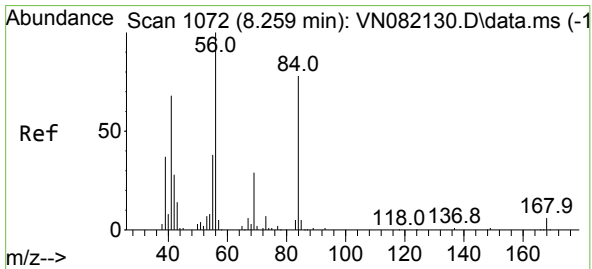
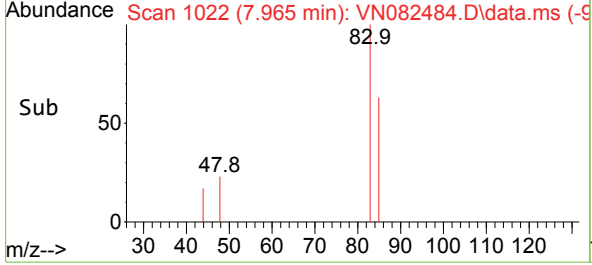
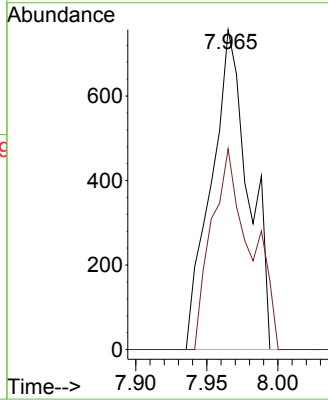


#30  
 Chloroform  
 Concen: 0.369 ug/l  
 RT: 7.965 min Scan# 1066  
 Delta R.T. -0.000 min  
 Lab File: VN082484.D  
 Acq: 07 Jun 2024 11:46

Instrument : MSVOA\_N  
 ClientSampleId :

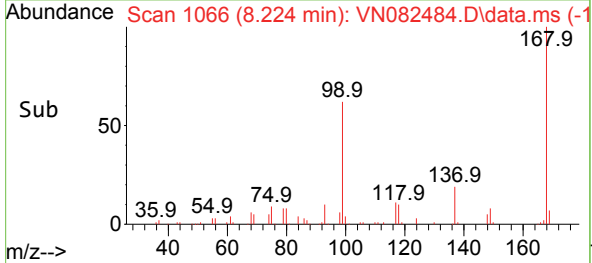
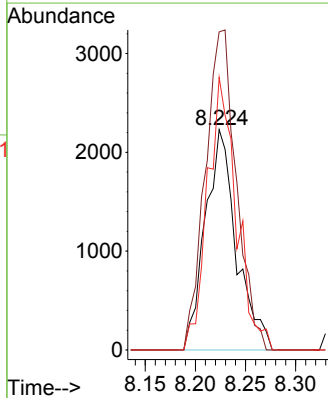
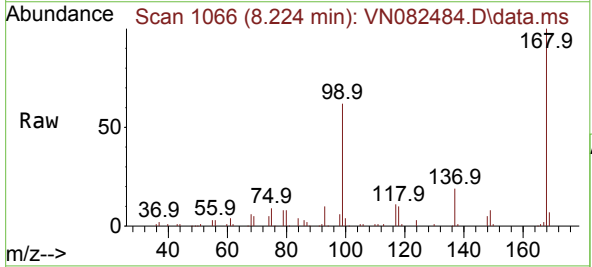


Tgt Ion: 83 Resp: 1380  
 Ion Ratio Lower Upper  
 83 100  
 85 62.7 50.7 76.1

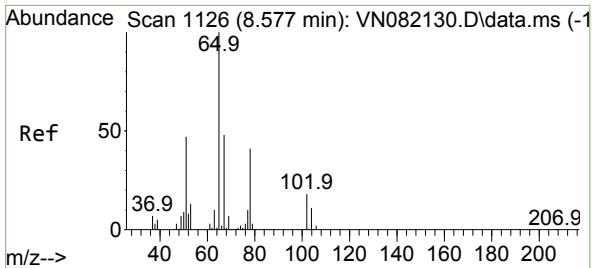


#31  
 Cyclohexane  
 Concen: 1.228 ug/l  
 RT: 8.224 min Scan# 1066  
 Delta R.T. -0.035 min  
 Lab File: VN082484.D  
 Acq: 07 Jun 2024 11:46

Tgt Ion: 56 Resp: 4816  
 Ion Ratio Lower Upper  
 56 100  
 69 144.3 24.4 36.6#  
 84 123.7 77.0 115.4#

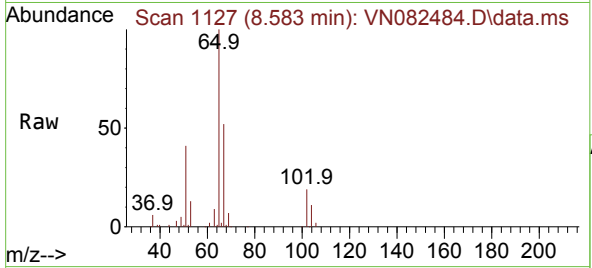




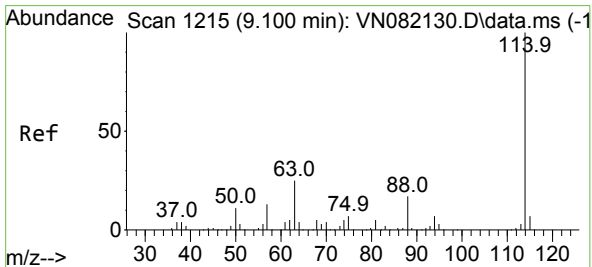
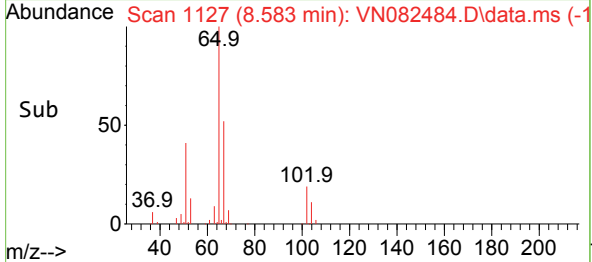
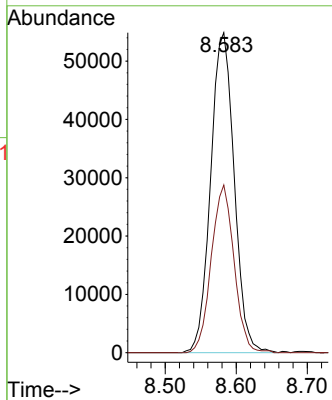


#33  
 1,2-Dichloroethane-d4  
 Concen: 51.367 ug/l  
 RT: 8.583 min Scan# 1127  
 Delta R.T. 0.006 min  
 Lab File: VN082484.D  
 Acq: 07 Jun 2024 11:46

Instrument :  
 MSVOA\_N  
 ClientSampleId :

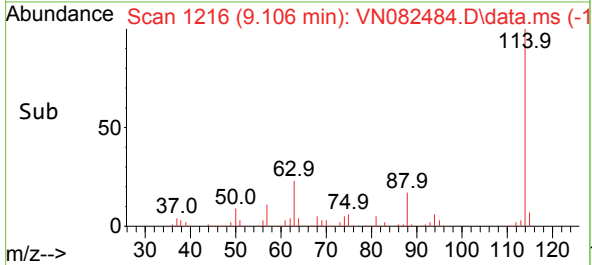
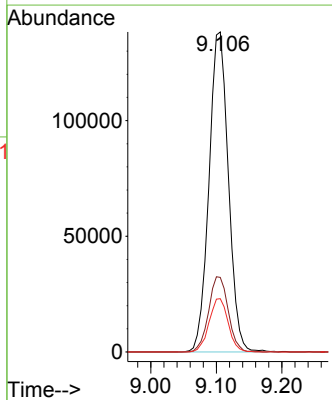
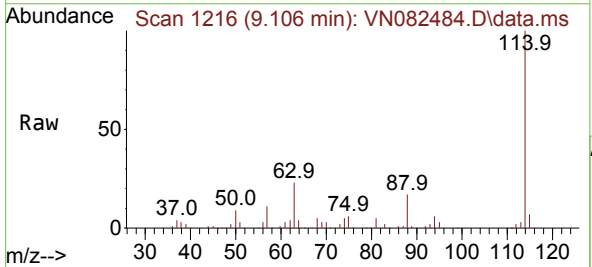


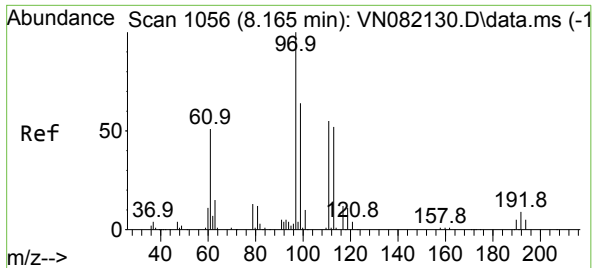
Tgt Ion: 65 Resp: 126148  
 Ion Ratio Lower Upper  
 65 100  
 67 50.7 0.0 103.0



#34  
 1,4-Difluorobenzene  
 Concen: 50.000 ug/l  
 RT: 9.106 min Scan# 1216  
 Delta R.T. 0.006 min  
 Lab File: VN082484.D  
 Acq: 07 Jun 2024 11:46

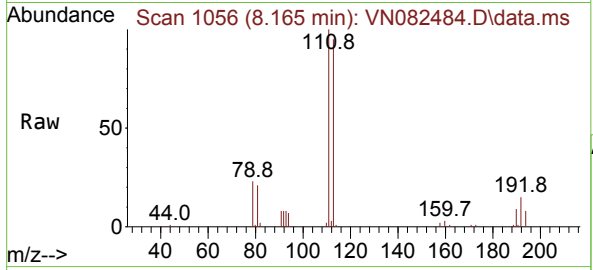
Tgt Ion: 114 Resp: 283889  
 Ion Ratio Lower Upper  
 114 100  
 63 23.3 0.0 41.0  
 88 16.6 0.0 31.4



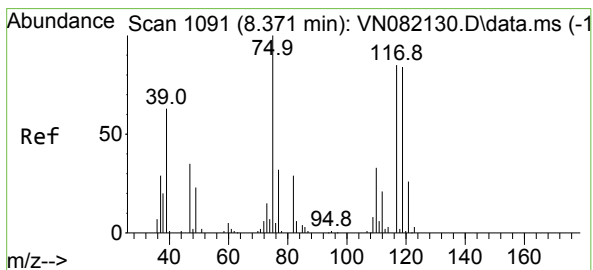
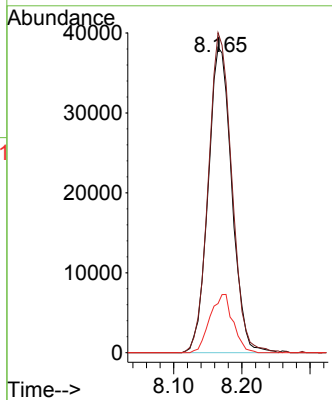
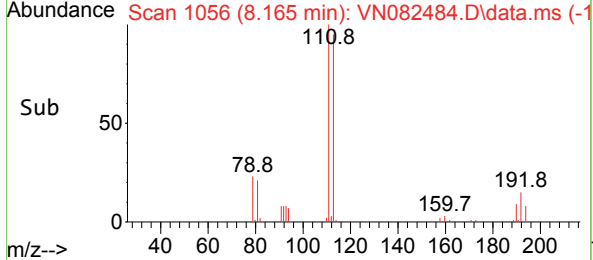


#35  
 Dibromofluoromethane  
 Concen: 52.854 ug/l  
 RT: 8.165 min Scan# 1056  
 Delta R.T. -0.000 min  
 Lab File: VN082484.D  
 Acq: 07 Jun 2024 11:46

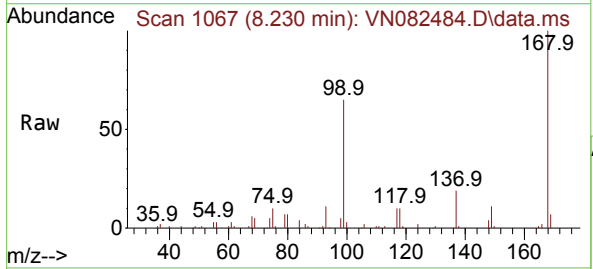
Instrument : MSVOA\_N  
 ClientSampleId :



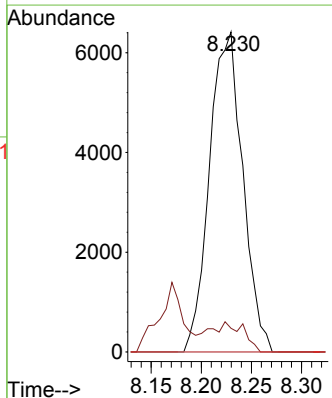
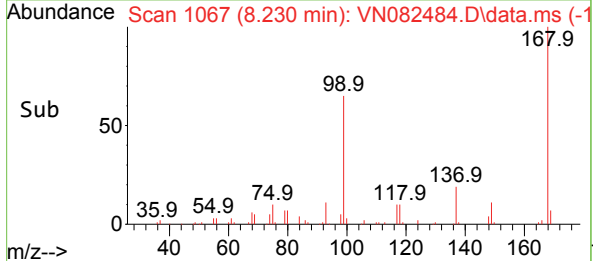
Tgt Ion:113 Resp: 92302  
 Ion Ratio Lower Upper  
 113 100  
 111 103.8 83.4 125.2  
 192 18.6 14.0 21.0

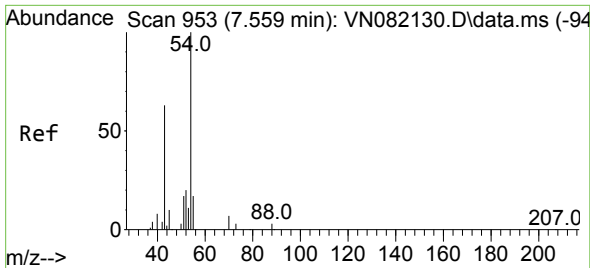


#36  
 1,1-Dichloropropene  
 Concen: 5.047 ug/l  
 RT: 8.230 min Scan# 1067  
 Delta R.T. -0.141 min  
 Lab File: VN082484.D  
 Acq: 07 Jun 2024 11:46



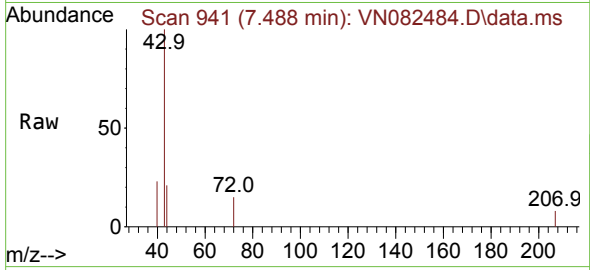
Tgt Ion: 75 Resp: 14781  
 Ion Ratio Lower Upper  
 75 100  
 110 9.0 17.8 53.5#  
 77 0.0 25.0 37.4#





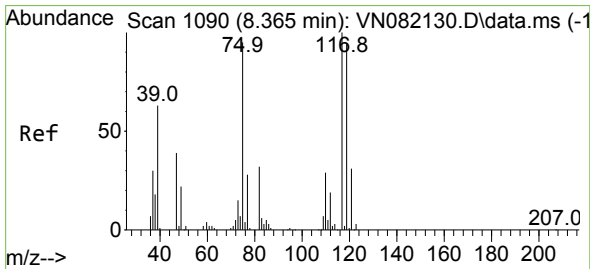
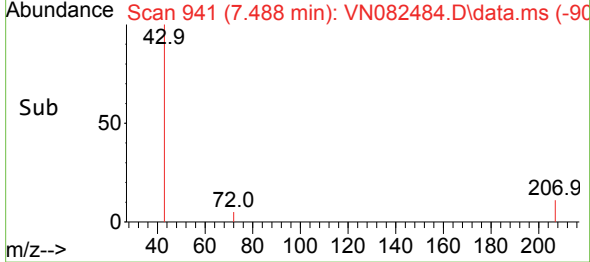
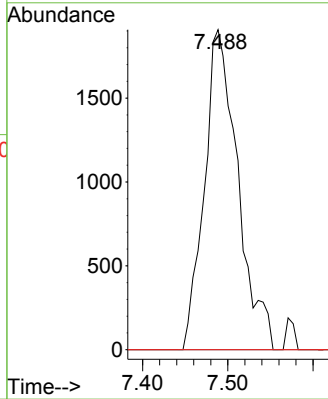
#37  
 Ethyl Acetate  
 Concen: 1.586 ug/l  
 RT: 7.488 min Scan# 941  
 Delta R.T. -0.071 min  
 Lab File: VN082484.D  
 Acq: 07 Jun 2024 11:46

Instrument :  
 MSVOA\_N  
 ClientSampleId :



Tgt Ion: 43 Resp: 5199

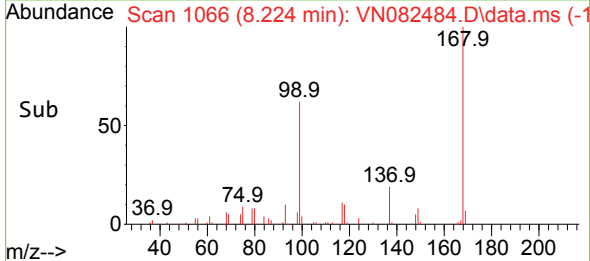
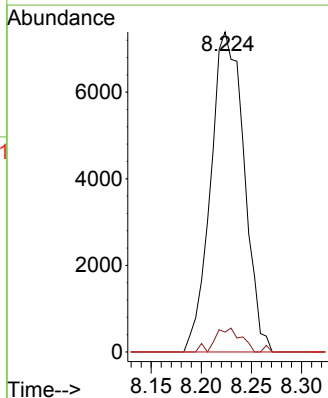
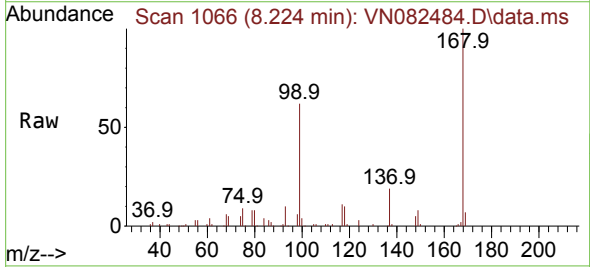
Ion	Ratio	Lower	Upper
43	100		
61	0.0	11.3	16.9#
70	0.0	8.7	13.1#

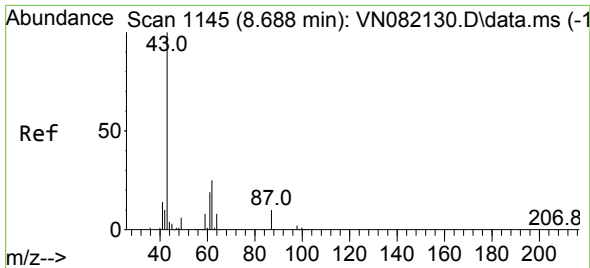


#38  
 Carbon Tetrachloride  
 Concen: 5.761 ug/l  
 RT: 8.224 min Scan# 1066  
 Delta R.T. -0.141 min  
 Lab File: VN082484.D  
 Acq: 07 Jun 2024 11:46

Tgt Ion: 117 Resp: 17105

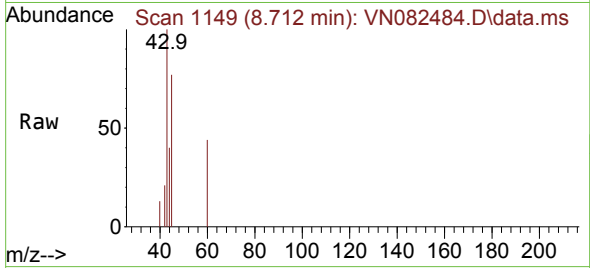
Ion	Ratio	Lower	Upper
117	100		
119	6.2	76.5	114.7#
121	0.0	23.9	35.9#



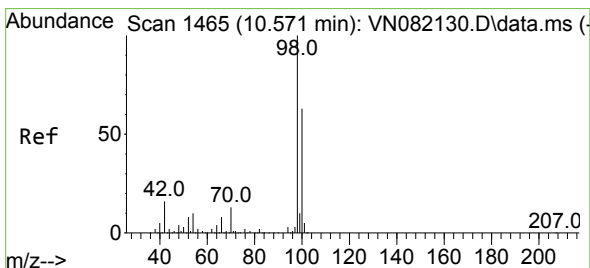
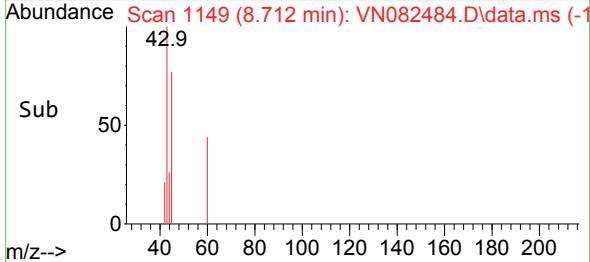
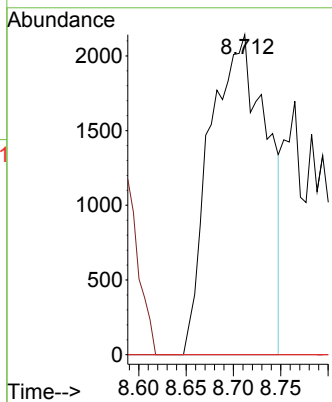


#43  
 Isopropyl Acetate  
 Concen: 1.536 ug/l  
 RT: 8.712 min Scan# 1145  
 Delta R.T. 0.024 min  
 Lab File: VN082484.D  
 Acq: 07 Jun 2024 11:46

Instrument : MSVOA\_N  
 ClientSampleId :

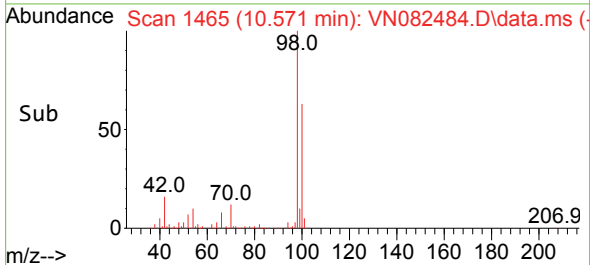
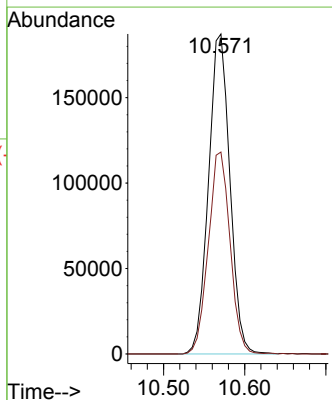
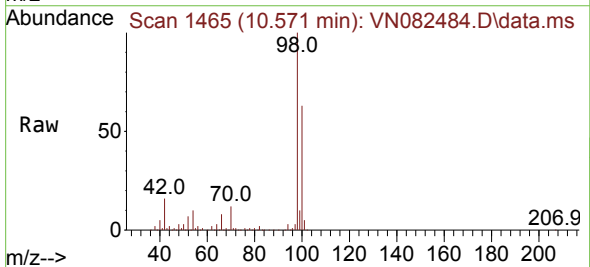


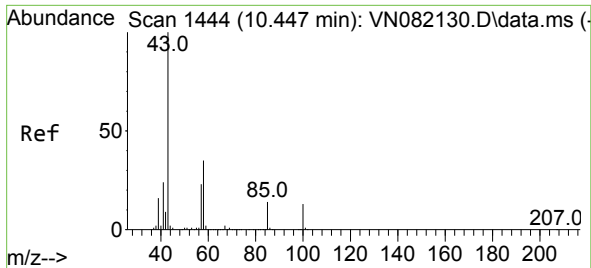
Tgt Ion: 43 Resp: 8923  
 Ion Ratio Lower Upper  
 43 100  
 61 0.0 22.8 34.2#  
 87 0.0 12.0 18.0#



#50  
 Toluene-d8  
 Concen: 51.127 ug/l  
 RT: 10.571 min Scan# 1465  
 Delta R.T. -0.000 min  
 Lab File: VN082484.D  
 Acq: 07 Jun 2024 11:46

Tgt Ion: 98 Resp: 342316  
 Ion Ratio Lower Upper  
 98 100  
 100 64.2 51.8 77.6

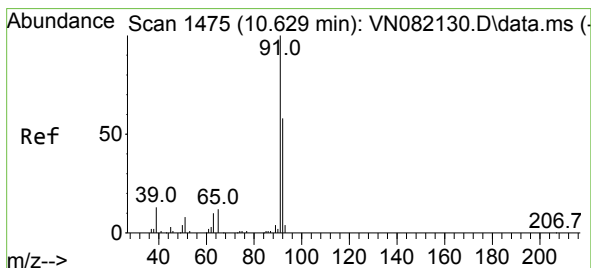
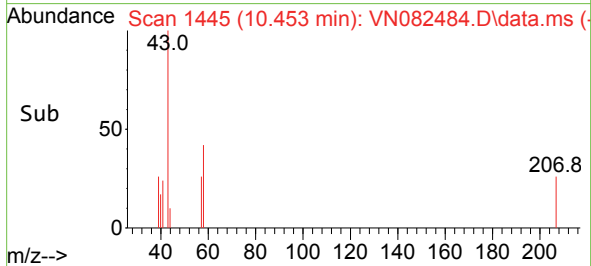
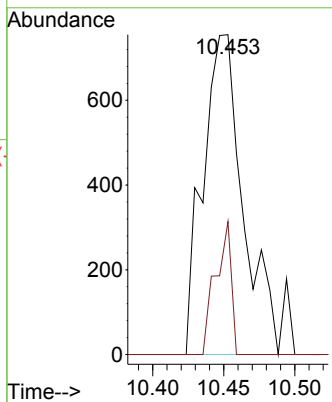
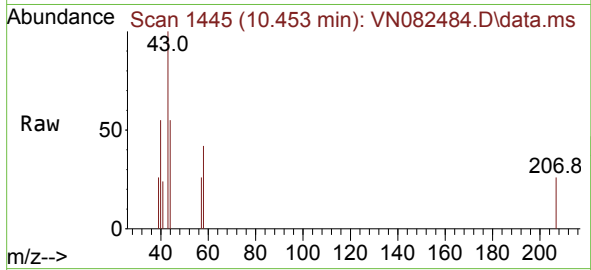




#51  
 4-Methyl-2-Pentanone  
 Concen: 0.450 ug/l  
 RT: 10.453 min Scan# 1445  
 Delta R.T. 0.006 min  
 Lab File: VN082484.D  
 Acq: 07 Jun 2024 11:46

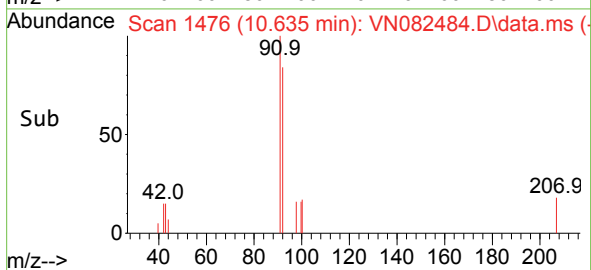
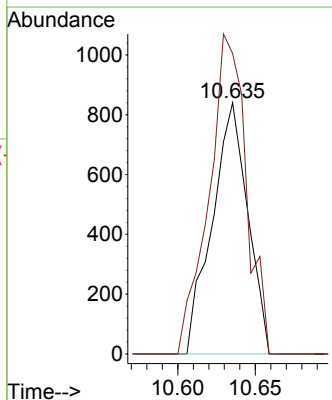
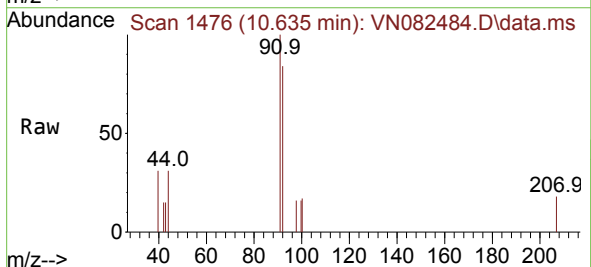
Instrument : MSVOA\_N  
 ClientSampleId :

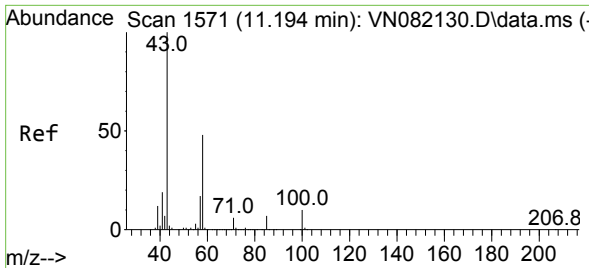
Tgt Ion: 43 Resp: 1486  
 Ion Ratio Lower Upper  
 43 100  
 58 16.3 33.2 49.8#



#52  
 Toluene  
 Concen: 0.256 ug/l  
 RT: 10.635 min Scan# 1476  
 Delta R.T. 0.006 min  
 Lab File: VN082484.D  
 Acq: 07 Jun 2024 11:46

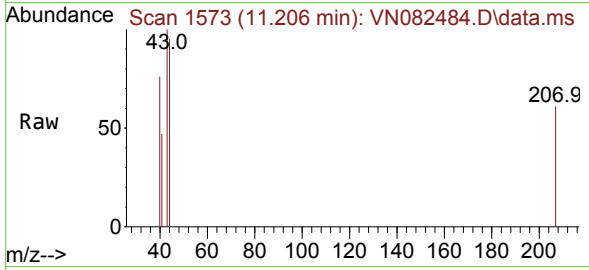
Tgt Ion: 92 Resp: 1344  
 Ion Ratio Lower Upper  
 92 100  
 91 133.2 136.7 205.1#



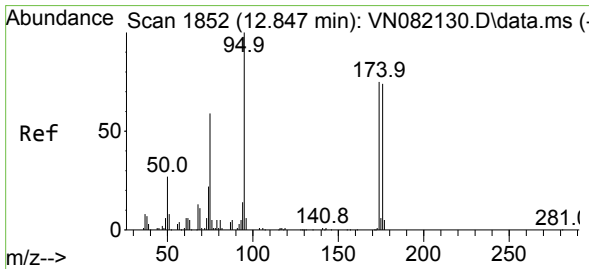
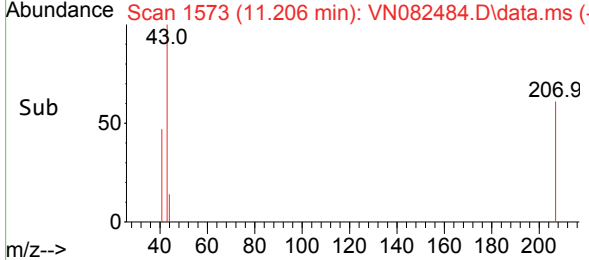
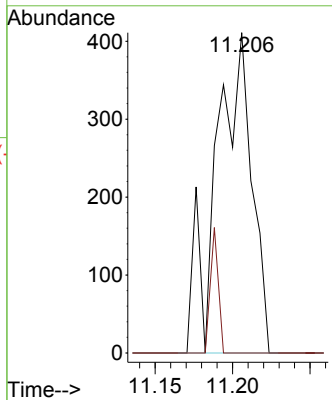


#59  
 2-Hexanone  
 Concen: 0.274 ug/l  
 RT: 11.206 min Scan# 111  
 Delta R.T. 0.012 min  
 Lab File: VN082484.D  
 Acq: 07 Jun 2024 11:46

Instrument :  
 MSVOA\_N  
 ClientSampleId :

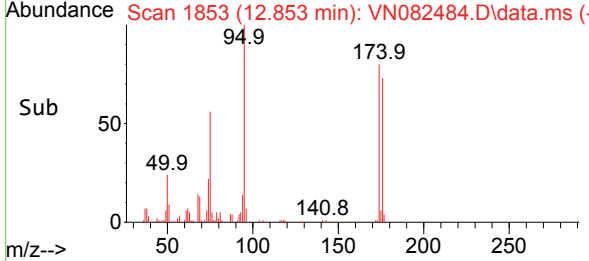
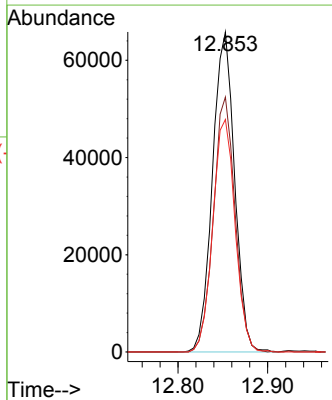
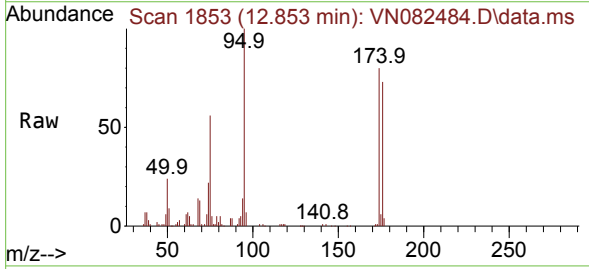


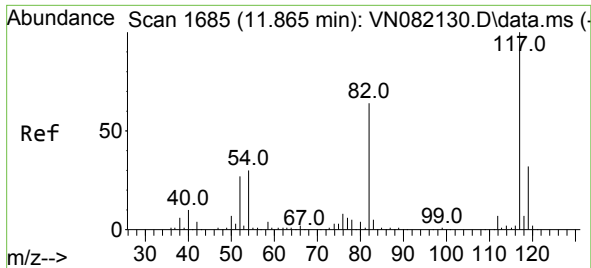
Tgt Ion: 43 Resp: 661  
 Ion Ratio Lower Upper  
 43 100  
 58 8.6 28.3 84.9#



#62  
 4-Bromofluorobenzene  
 Concen: 47.120 ug/l  
 RT: 12.853 min Scan# 1853  
 Delta R.T. 0.006 min  
 Lab File: VN082484.D  
 Acq: 07 Jun 2024 11:46

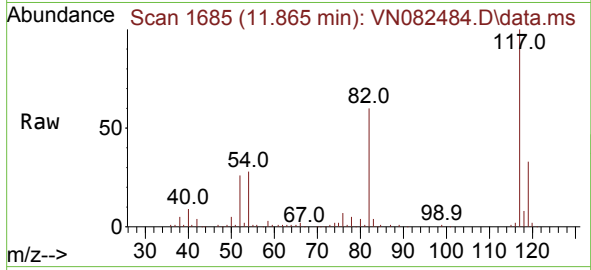
Tgt Ion: 95 Resp: 112605  
 Ion Ratio Lower Upper  
 95 100  
 174 77.9 0.0 160.6  
 176 73.6 0.0 152.8





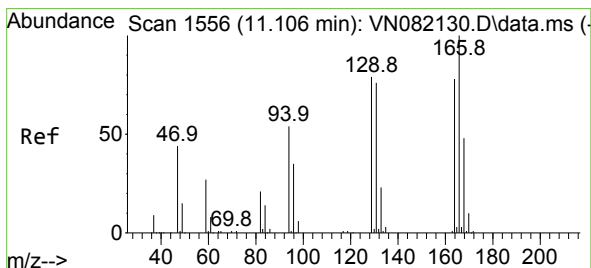
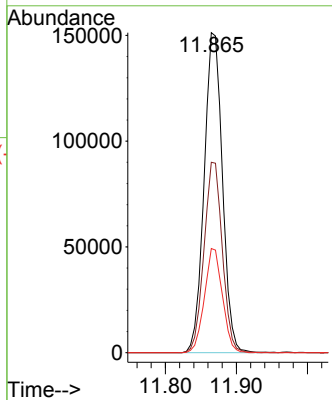
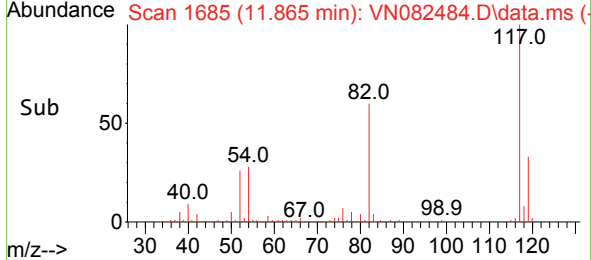
#63  
 Chlorobenzene-d5  
 Concen: 50.000 ug/l  
 RT: 11.865 min Scan# 117  
 Delta R.T. -0.000 min  
 Lab File: VN082484.D  
 Acq: 07 Jun 2024 11:46

Instrument :  
 MSVOA\_N  
 ClientSampleId :

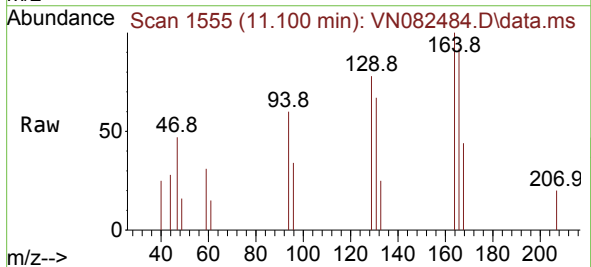


Tgt Ion:117 Resp: 271355

Ion	Ratio	Lower	Upper
117	100		
82	59.5	44.6	66.8
119	32.6	25.9	38.9

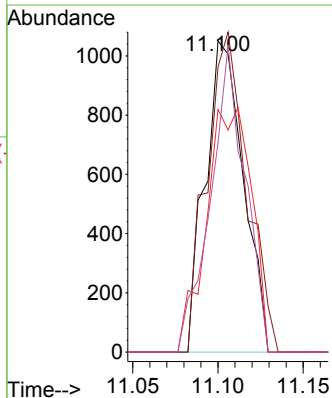
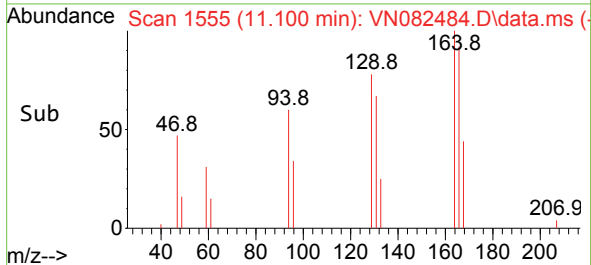


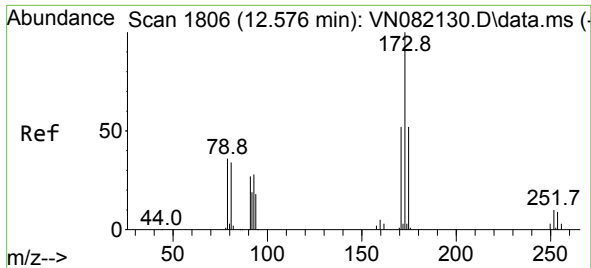
#64  
 Tetrachloroethene  
 Concen: 0.815 ug/l  
 RT: 11.100 min Scan# 1555  
 Delta R.T. -0.006 min  
 Lab File: VN082484.D  
 Acq: 07 Jun 2024 11:46



Tgt Ion:164 Resp: 1640

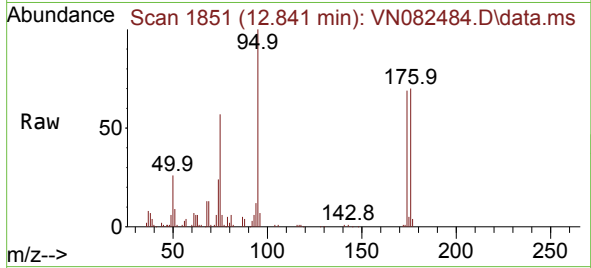
Ion	Ratio	Lower	Upper
164	100		
166	91.6	97.6	146.4#
129	77.9	73.7	110.5
131	67.3	75.8	113.6#



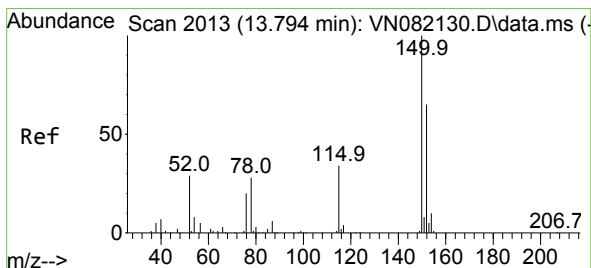
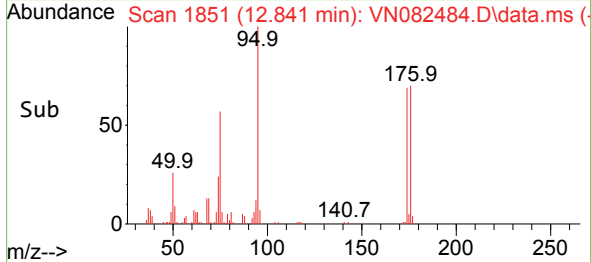
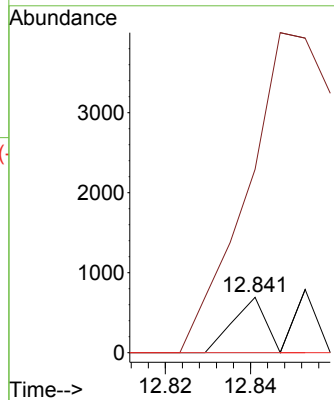


#71  
 Bromoform  
 Concen: 0.933 ug/l  
 RT: 12.841 min Scan# 1806  
 Delta R.T. 0.265 min  
 Lab File: VN082484.D  
 Acq: 07 Jun 2024 11:46

Instrument :  
 MSVOA\_N  
 ClientSampleId :

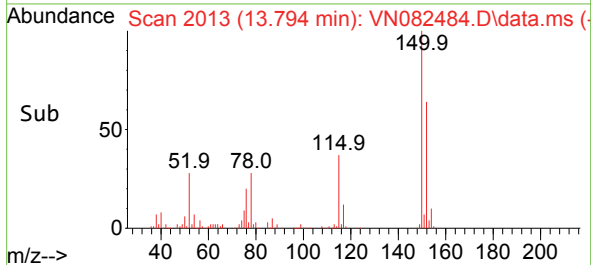
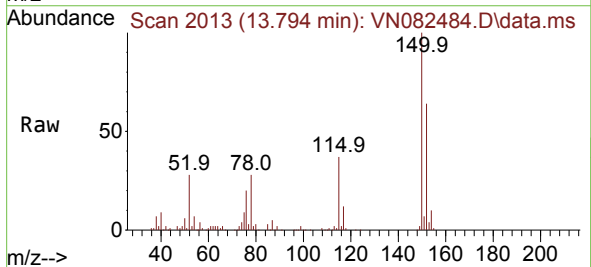
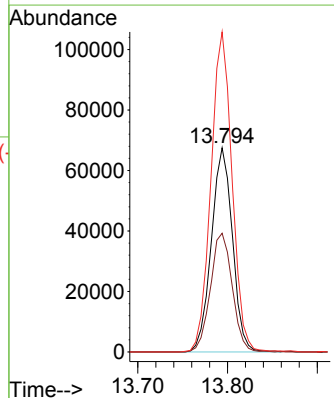


Tgt Ion:173 Resp: 370  
 Ion Ratio Lower Upper  
 173 100  
 175 1172.4 24.6 74.0#  
 254 0.0 0.0 0.0

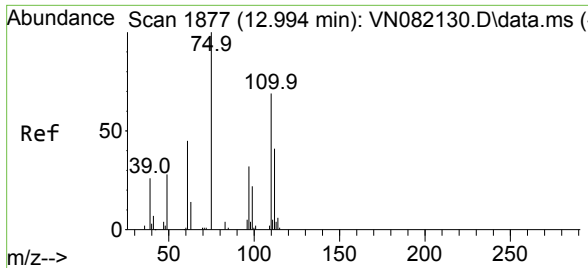


#72  
 1,4-Dichlorobenzene-d4  
 Concen: 50.000 ug/l  
 RT: 13.794 min Scan# 2013  
 Delta R.T. -0.000 min  
 Lab File: VN082484.D  
 Acq: 07 Jun 2024 11:46

Tgt Ion:152 Resp: 110243  
 Ion Ratio Lower Upper  
 152 100  
 115 60.2 30.4 91.3  
 150 157.2 0.0 353.2

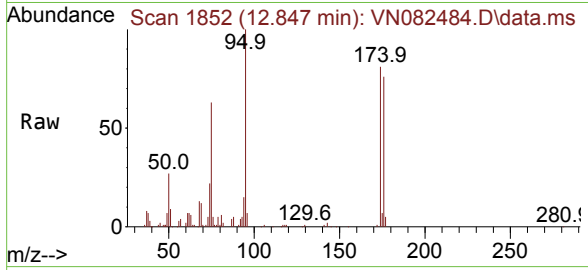




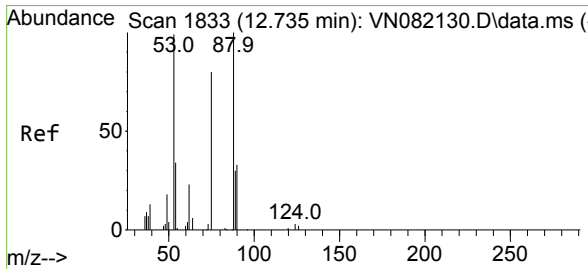
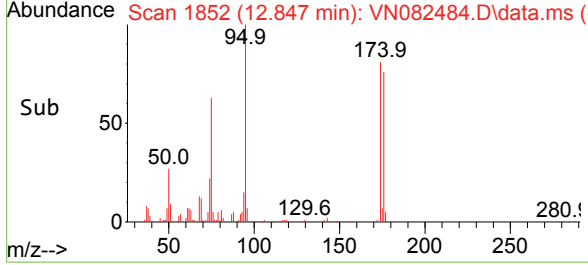
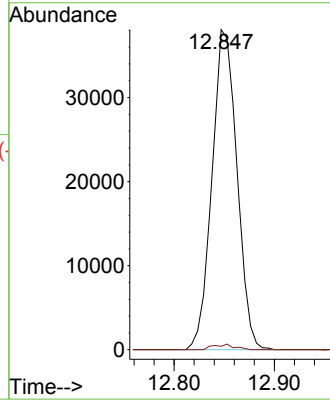


#76  
 1,2,3-Trichloropropane  
 Concen: 28.408 ug/l  
 RT: 12.847 min Scan# 1852  
 Delta R.T. -0.147 min  
 Lab File: VN082484.D  
 Acq: 07 Jun 2024 11:46

Instrument : MSVOA\_N  
 ClientSampleId :

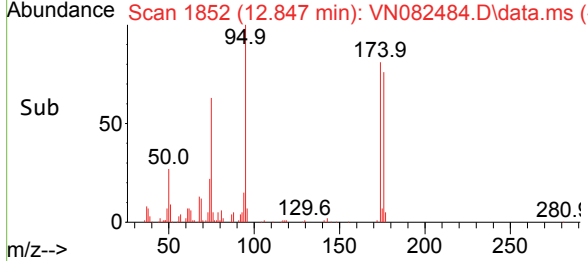
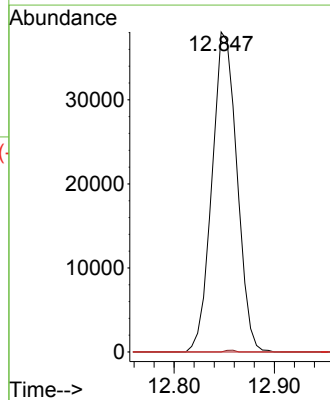
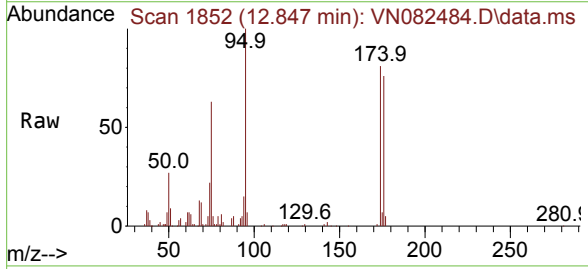


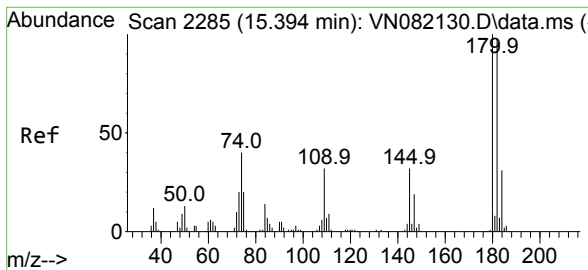
Tgt Ion: 75 Resp: 65916  
 Ion Ratio Lower Upper  
 75 100  
 77 1.4 90.5 271.3#



#81  
 trans-1,4-Dichloro-2-butene  
 Concen: 66.445 ug/l  
 RT: 12.847 min Scan# 1852  
 Delta R.T. 0.112 min  
 Lab File: VN082484.D  
 Acq: 07 Jun 2024 11:46

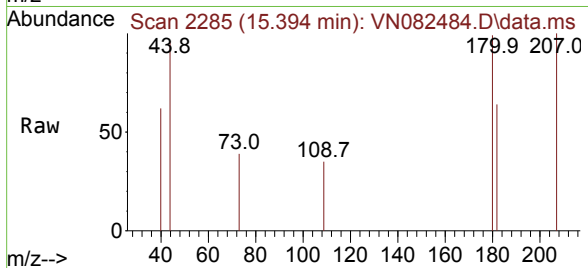
Tgt Ion: 75 Resp: 65916  
 Ion Ratio Lower Upper  
 75 100  
 53 0.2 72.9 109.3#  
 89 0.0 39.1 58.7#



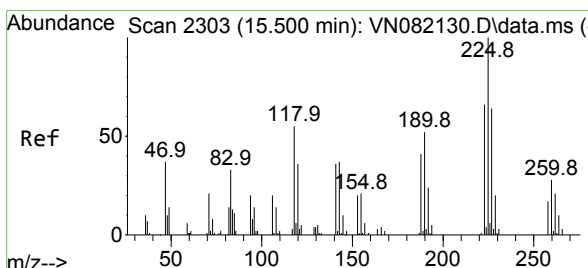
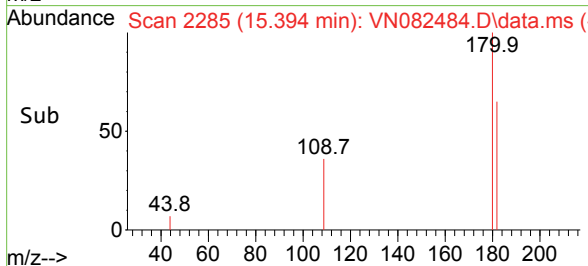
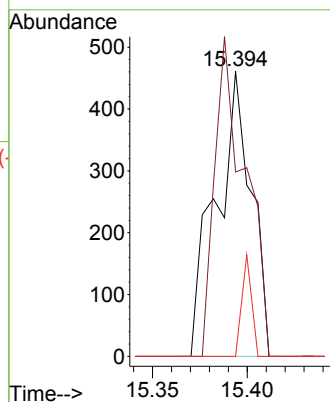


#93  
 1,2,4-Trichlorobenzene  
 Concen: 0.298 ug/l  
 RT: 15.394 min Scan# 21  
 Delta R.T. -0.000 min  
 Lab File: VN082484.D  
 Acq: 07 Jun 2024 11:46

Instrument :  
 MSVOA\_N  
 ClientSampleId :

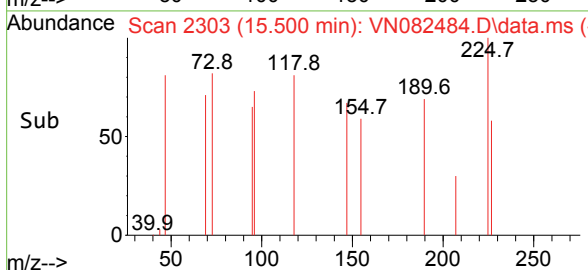
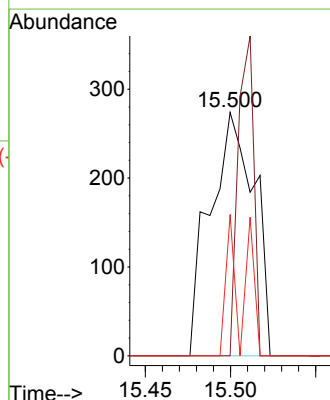
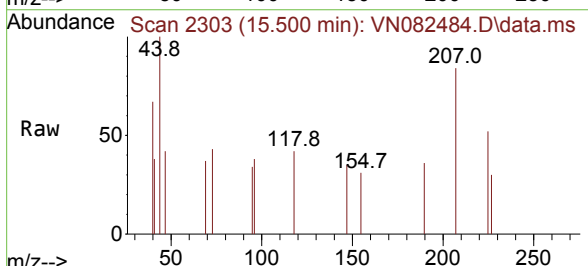


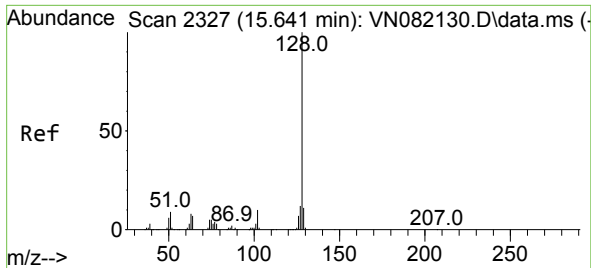
Tgt Ion:180 Resp: 598  
 Ion Ratio Lower Upper  
 180 100  
 182 96.7 46.7 140.0  
 145 9.7 16.2 48.6#



#94  
 Hexachlorobutadiene  
 Concen: 0.562 ug/l  
 RT: 15.500 min Scan# 2303  
 Delta R.T. -0.000 min  
 Lab File: VN082484.D  
 Acq: 07 Jun 2024 11:46

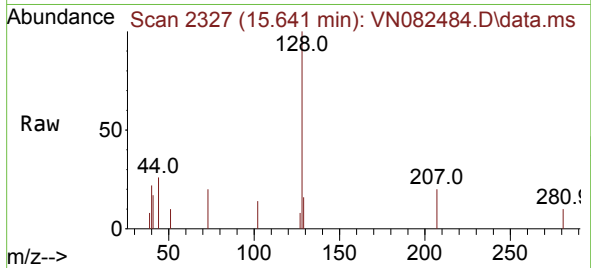
Tgt Ion:225 Resp: 495  
 Ion Ratio Lower Upper  
 225 100  
 223 46.5 31.1 93.2  
 227 22.4 30.6 91.6#





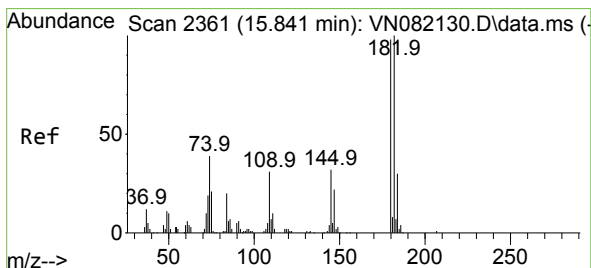
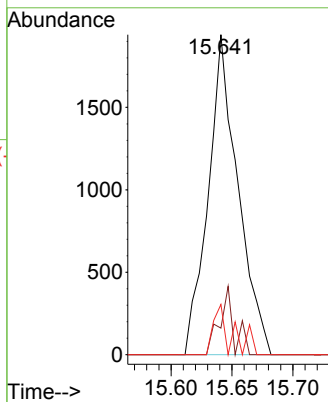
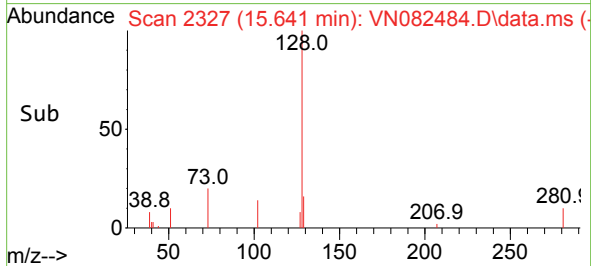
#95  
 Naphthalene  
 Concen: 0.524 ug/l  
 RT: 15.641 min Scan# 2327  
 Delta R.T. -0.000 min  
 Lab File: VN082484.D  
 Acq: 07 Jun 2024 11:46

Instrument :  
 MSVOA\_N  
 ClientSampleId :

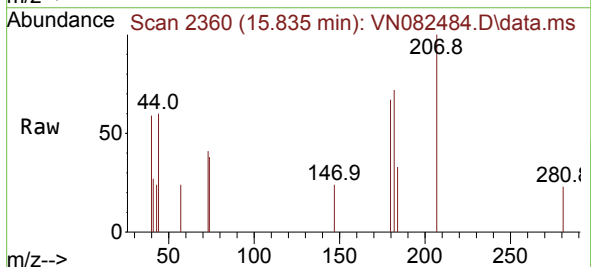


Tgt Ion:128 Resp: 3297

Ion	Ratio	Lower	Upper
128	100		
127	10.4	10.1	15.1
129	9.6	8.9	13.3



#96  
 1,2,3-Trichlorobenzene  
 Concen: 0.358 ug/l  
 RT: 15.835 min Scan# 2360  
 Delta R.T. -0.006 min  
 Lab File: VN082484.D  
 Acq: 07 Jun 2024 11:46



Tgt Ion:180 Resp: 719

Ion	Ratio	Lower	Upper
180	100		
182	101.8	46.0	137.8
145	0.0	17.1	51.3

