

Data Path : Z:\voasrv\HPCHEM1\MSVOA_N\Data\VN060724\
 Data File : VN082490.D
 Acq On : 07 Jun 2024 14:12
 Operator : JC\MD
 Sample : P2772-08
 Misc : 5.0mL/MSVOA_N/WATER
 ALS Vial : 13 Sample Multiplier: 1

Instrument :
 MSVOA_N
 ClientSampleId :

Quant Time: Jun 08 00:57:50 2024
 Quant Method : Z:\voasrv\HPCHEM1\MSVOA_N\methods\82N051524W.M
 Quant Title : SW846 8260
 QLast Update : Thu May 16 05:21:06 2024
 Response via : Initial Calibration

Compound	R.T.	QIon	Response	Conc	Units	Dev(Min)

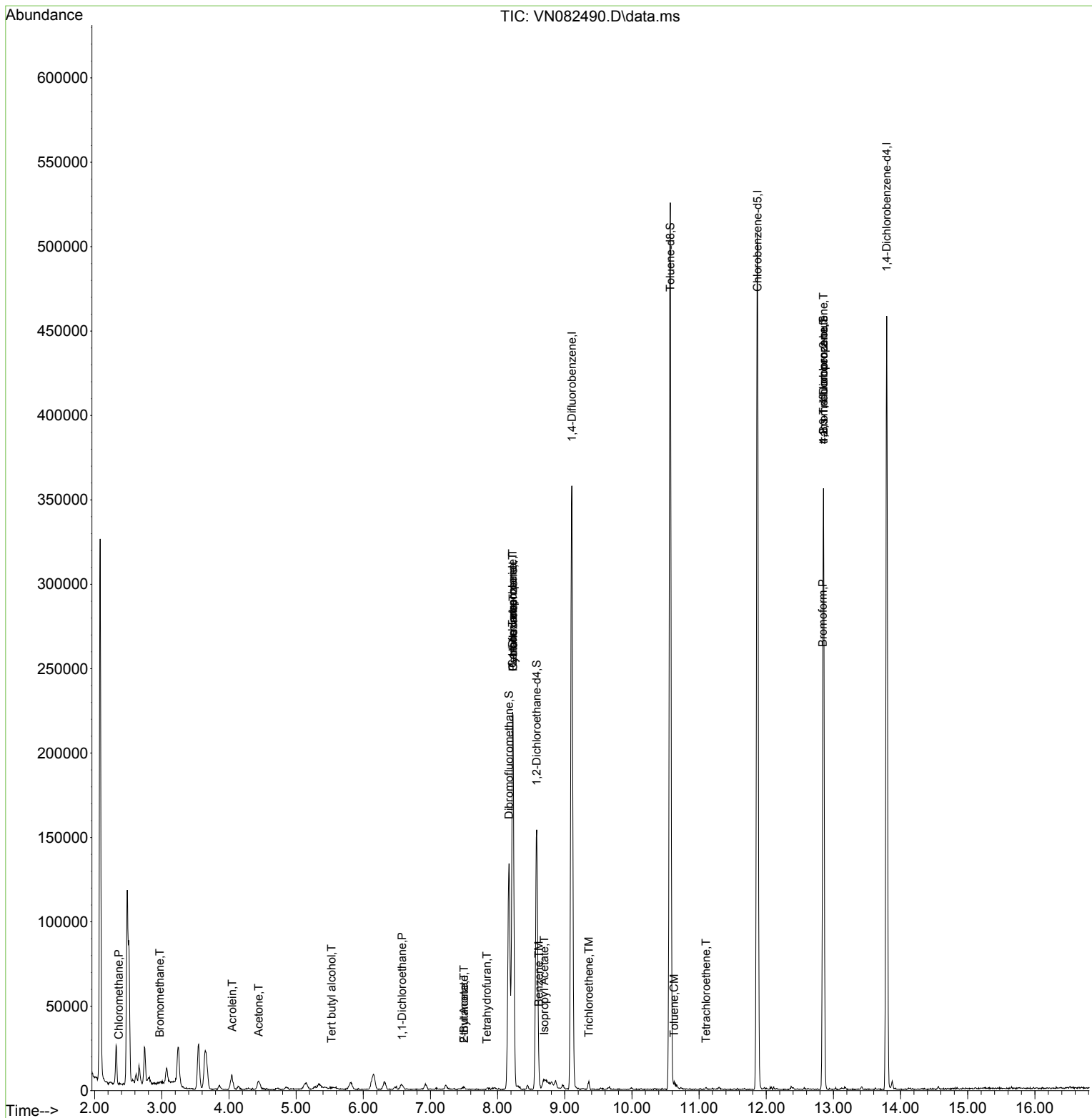
Internal Standards						
1) Pentafluorobenzene	8.229	168	156188	50.000	ug/l	0.00
34) 1,4-Difluorobenzene	9.106	114	284034	50.000	ug/l	0.00
63) Chlorobenzene-d5	11.870	117	274301	50.000	ug/l	0.00
72) 1,4-Dichlorobenzene-d4	13.794	152	113337	50.000	ug/l	0.00
System Monitoring Compounds						
33) 1,2-Dichloroethane-d4	8.582	65	127457	51.681	ug/l	0.00
Spiked Amount	50.000	Range 74 - 125	Recovery	=	103.360%	
35) Dibromofluoromethane	8.171	113	93653	53.600	ug/l	0.00
Spiked Amount	50.000	Range 75 - 124	Recovery	=	107.200%	
50) Toluene-d8	10.570	98	343294	51.247	ug/l	0.00
Spiked Amount	50.000	Range 86 - 113	Recovery	=	102.500%	
62) 4-Bromofluorobenzene	12.853	95	112869	47.207	ug/l	0.00
Spiked Amount	50.000	Range 64 - 133	Recovery	=	94.420%	
Target Compounds						
						Qvalue
3) Chloromethane	2.359	50	787	0.308	ug/l #	43
5) Bromomethane	2.971	94	339	0.246	ug/l #	71
11) Tert butyl alcohol	5.530	59	908	2.294	ug/l #	71
13) Acrolein	4.047	56	213	0.726	ug/l #	1
16) Acetone	4.441	43	9979	9.864	ug/l	99
24) 1,1-Dichloroethane	6.577	63	3164	0.805	ug/l #	81
25) 2-Butanone	7.500	43	3123	2.036	ug/l #	43
29) Tetrahydrofuran	7.841	42	404	0.410	ug/l #	29
31) Cyclohexane	8.229	56	4625	1.174	ug/l #	34
36) 1,1-Dichloropropene	8.223	75	15032	5.130	ug/l #	48
37) Ethyl Acetate	7.500	43	3123	0.952	ug/l #	68
38) Carbon Tetrachloride	8.223	117	16676	5.614	ug/l #	15
40) Benzene	8.612	78	1864	0.213	ug/l #	87
43) Isopropyl Acetate	8.694	43	8890	1.530	ug/l #	52
44) Trichloroethene	9.359	130	825	0.416	ug/l	98
52) Toluene	10.629	92	1142	0.218	ug/l	94
64) Tetrachloroethene	11.106	164	465	0.229	ug/l #	19
71) Bromoform	12.841	173	742	1.162	ug/l #	28
76) 1,2,3-Trichloropropane	12.853	75	67231	28.183	ug/l #	1
81) trans-1,4-Dichloro-2-b...	12.853	75	67231	65.920	ug/l #	13

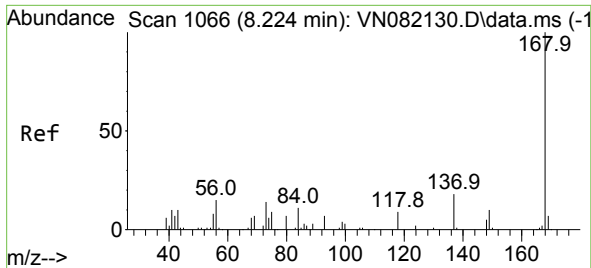
(#) = qualifier out of range (m) = manual integration (+) = signals summed

Data Path : Z:\voasrv\HPCHEM1\MSVOA_N\Data\VN060724\
 Data File : VN082490.D
 Acq On : 07 Jun 2024 14:12
 Operator : JC\MD
 Sample : P2772-08
 Misc : 5.0mL/MSVOA_N/WATER
 ALS Vial : 13 Sample Multiplier: 1

Instrument :
 MSVOA_N
 ClientSampleId :

Quant Time: Jun 08 00:57:50 2024
 Quant Method : Z:\voasrv\HPCHEM1\MSVOA_N\methods\82N051524W.M
 Quant Title : SW846 8260
 QLast Update : Thu May 16 05:21:06 2024
 Response via : Initial Calibration

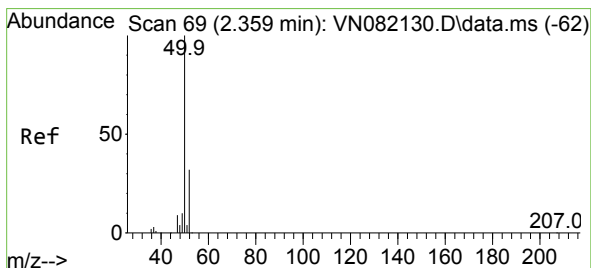
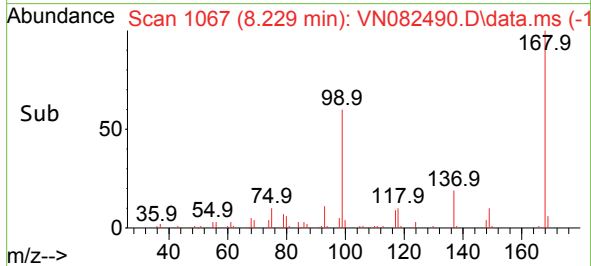
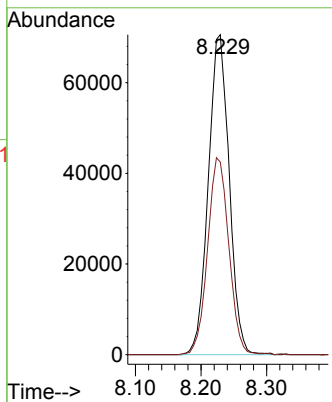
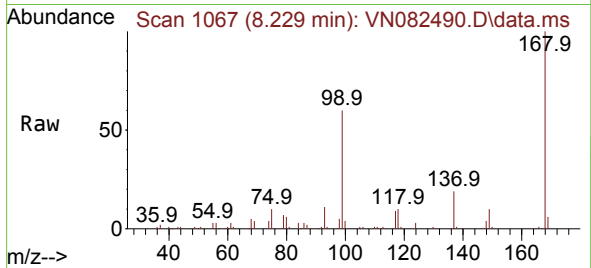




#1
 Pentafluorobenzene
 Concen: 50.000 ug/l
 RT: 8.229 min Scan# 1067
 Delta R.T. 0.005 min
 Lab File: VN082490.D
 Acq: 07 Jun 2024 14:12

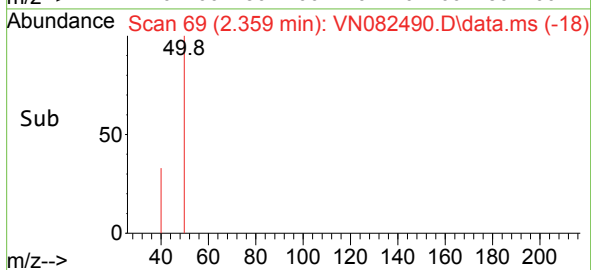
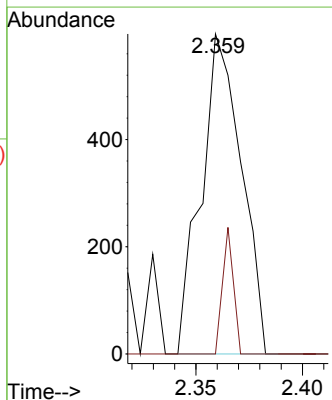
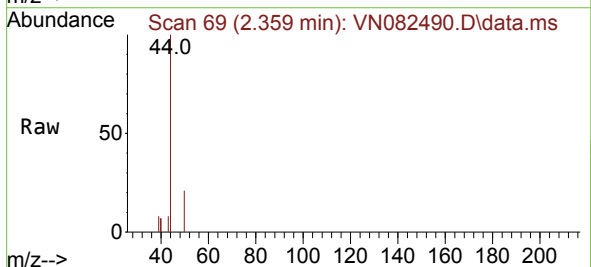
Instrument : MSVOA_N
 ClientSampleId :

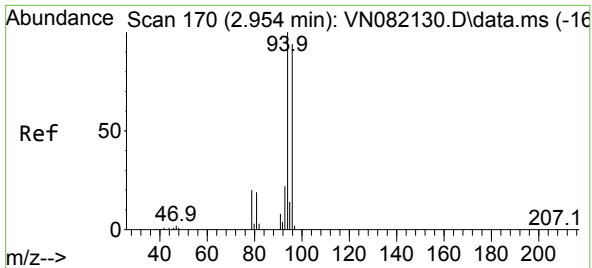
Tgt Ion:168 Resp: 156188
 Ion Ratio Lower Upper
 168 100
 99 60.2 48.2 72.4



#3
 Chloromethane
 Concen: 0.308 ug/l
 RT: 2.359 min Scan# 69
 Delta R.T. -0.000 min
 Lab File: VN082490.D
 Acq: 07 Jun 2024 14:12

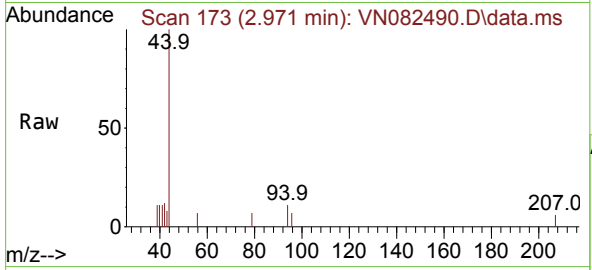
Tgt Ion: 50 Resp: 787
 Ion Ratio Lower Upper
 50 100
 52 0.0 25.5 38.3#



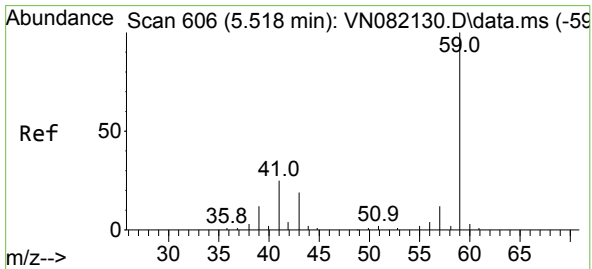
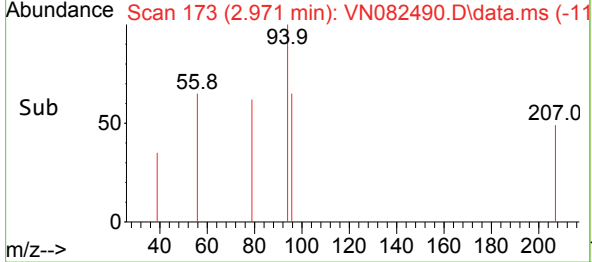
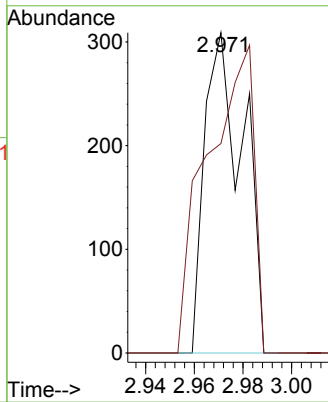


#5
 Bromomethane
 Concen: 0.246 ug/l
 RT: 2.971 min Scan# 11
 Delta R.T. 0.017 min
 Lab File: VN082490.D
 Acq: 07 Jun 2024 14:12

Instrument :
 MSVOA_N
 ClientSampleId :

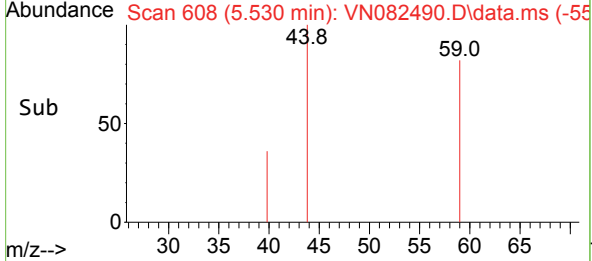
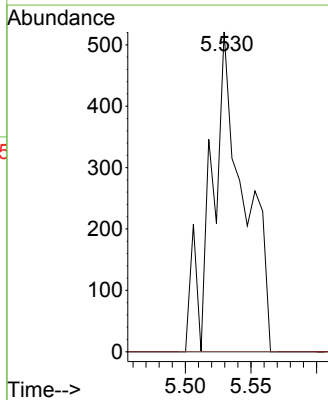
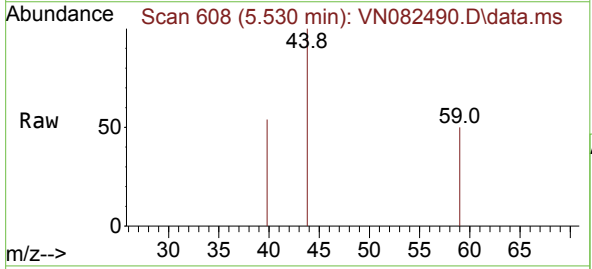


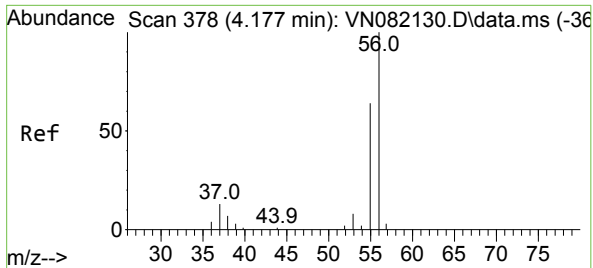
Tgt Ion: 94 Resp: 339
 Ion Ratio Lower Upper
 94 100
 96 65.4 74.8 112.2#



#11
 Tert butyl alcohol
 Concen: 2.294 ug/l
 RT: 5.530 min Scan# 608
 Delta R.T. 0.012 min
 Lab File: VN082490.D
 Acq: 07 Jun 2024 14:12

Tgt Ion: 59 Resp: 908
 Ion Ratio Lower Upper
 59 100
 57 0.0 8.9 13.3#

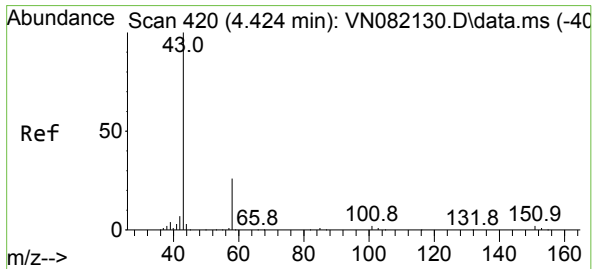
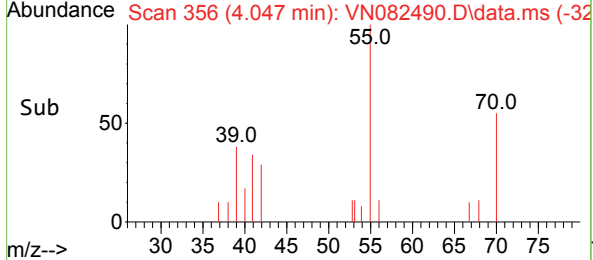
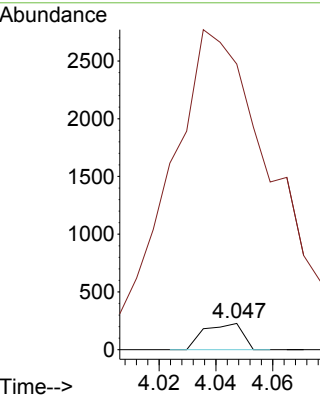
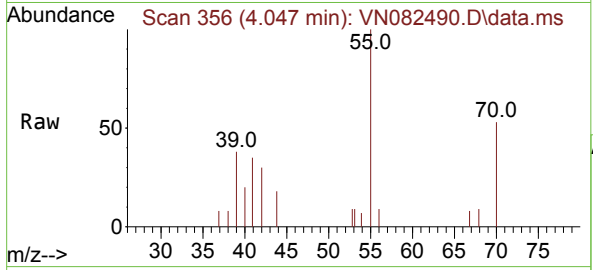




#13
 Acrolein
 Concen: 0.726 ug/l
 RT: 4.047 min Scan# 31
 Delta R.T. -0.130 min
 Lab File: VN082490.D
 Acq: 07 Jun 2024 14:12

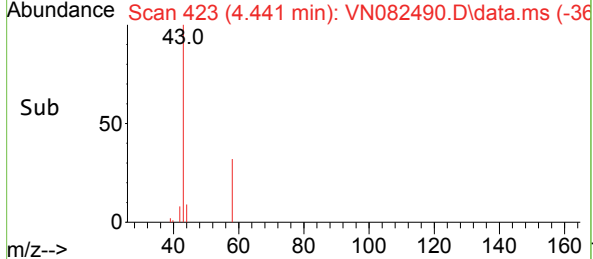
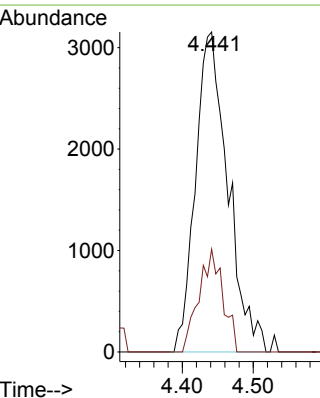
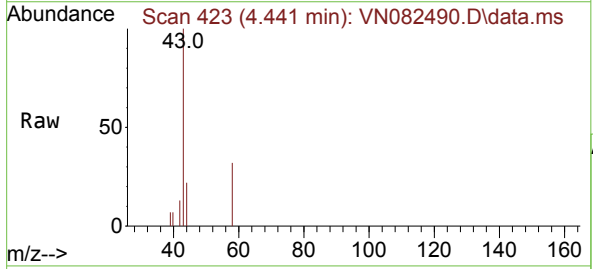
Instrument : MSVOA_N
 ClientSampleId :

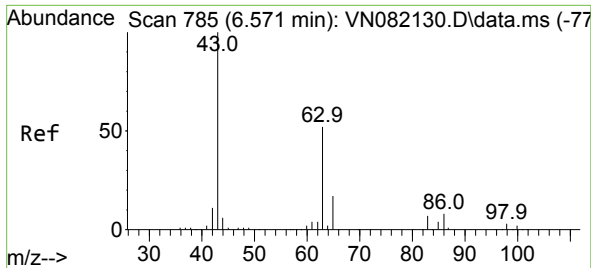
Tgt Ion: 56 Resp: 213
 Ion Ratio Lower Upper
 56 100
 55 3341.3 55.8 83.8#



#16
 Acetone
 Concen: 9.864 ug/l
 RT: 4.441 min Scan# 423
 Delta R.T. 0.017 min
 Lab File: VN082490.D
 Acq: 07 Jun 2024 14:12

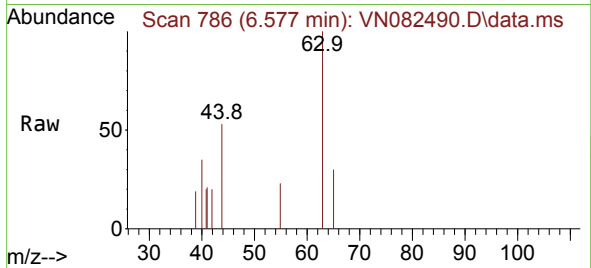
Tgt Ion: 43 Resp: 9979
 Ion Ratio Lower Upper
 43 100
 58 32.1 25.2 37.8



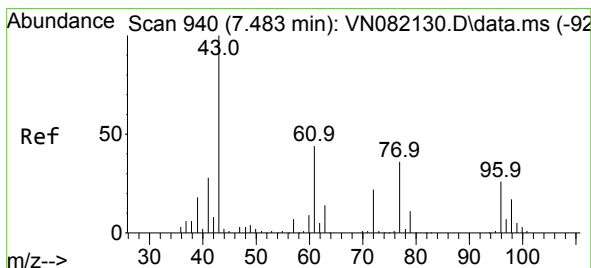
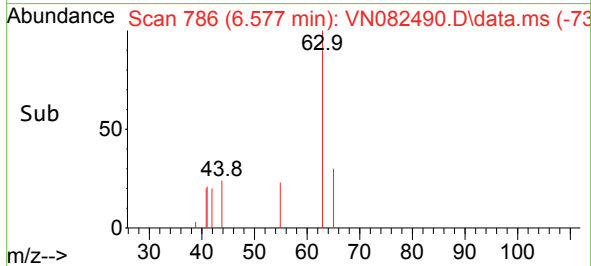
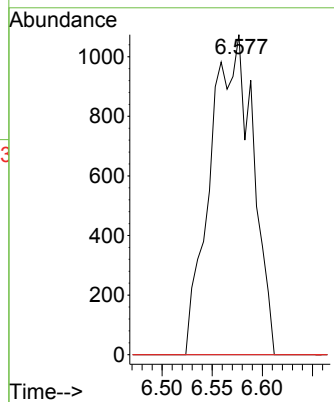


#24
 1,1-Dichloroethane
 Concen: 0.805 ug/l
 RT: 6.577 min Scan# 71
 Delta R.T. 0.006 min
 Lab File: VN082490.D
 Acq: 07 Jun 2024 14:12

Instrument :
 MSVOA_N
 ClientSampleId :

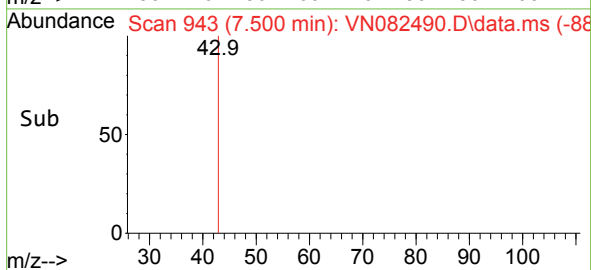
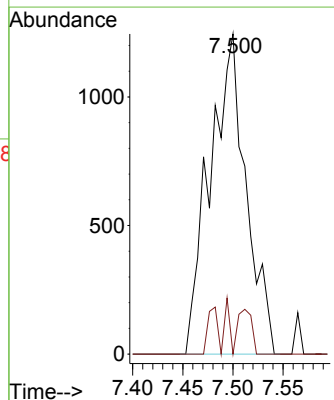
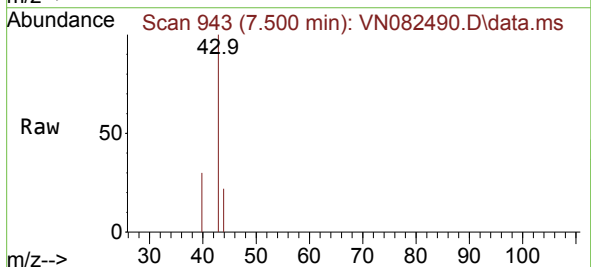


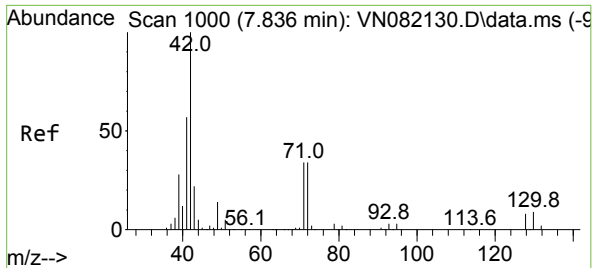
Tgt Ion: 63 Resp: 3164
 Ion Ratio Lower Upper
 63 100
 98 0.0 3.6 10.9#
 100 0.0 2.6 7.8#



#25
 2-Butanone
 Concen: 2.036 ug/l
 RT: 7.500 min Scan# 943
 Delta R.T. 0.017 min
 Lab File: VN082490.D
 Acq: 07 Jun 2024 14:12

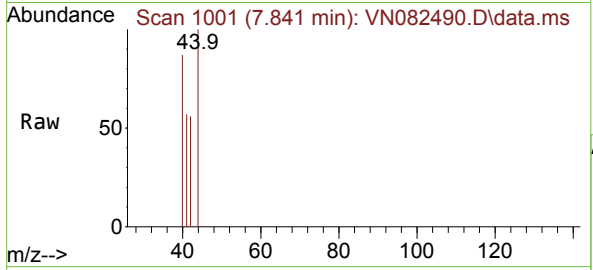
Tgt Ion: 43 Resp: 3123
 Ion Ratio Lower Upper
 43 100
 72 0.0 25.3 37.9#





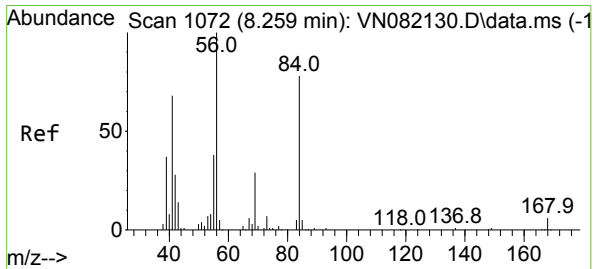
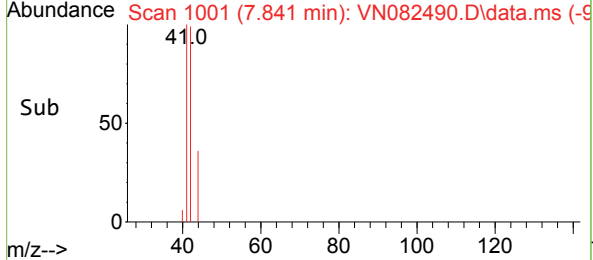
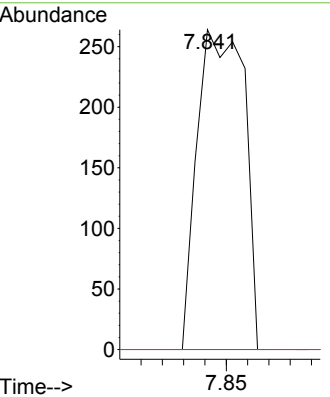
#29
 Tetrahydrofuran
 Concen: 0.410 ug/l
 RT: 7.841 min Scan# 1001
 Delta R.T. 0.005 min
 Lab File: VN082490.D
 Acq: 07 Jun 2024 14:12

Instrument : MSVOA_N
 ClientSampleId :

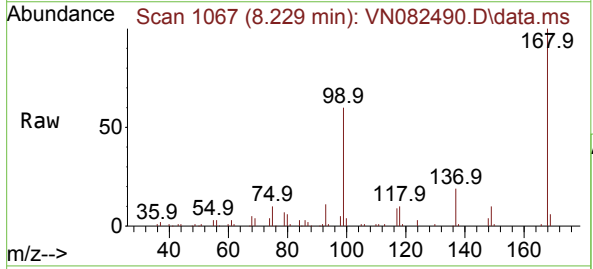


Tgt Ion: 42 Resp: 404

Ion	Ratio	Lower	Upper
42	100		
72	0.0	39.3	58.9#
71	0.0	37.4	56.0#

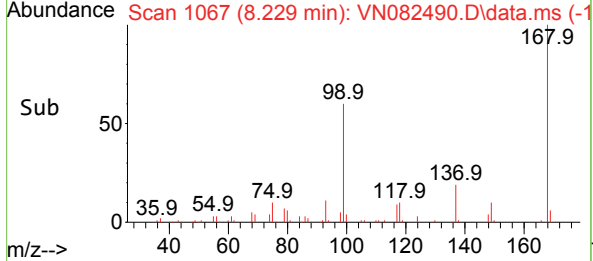
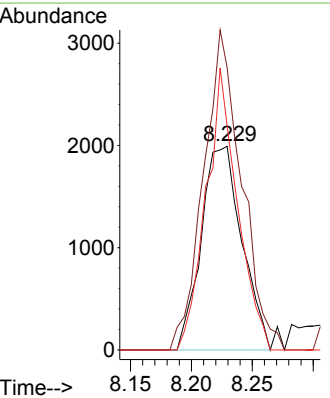


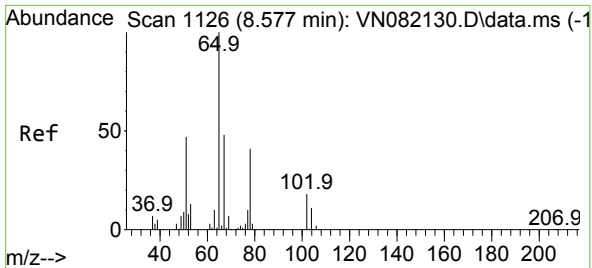
#31
 Cyclohexane
 Concen: 1.174 ug/l
 RT: 8.229 min Scan# 1067
 Delta R.T. -0.030 min
 Lab File: VN082490.D
 Acq: 07 Jun 2024 14:12



Tgt Ion: 56 Resp: 4625

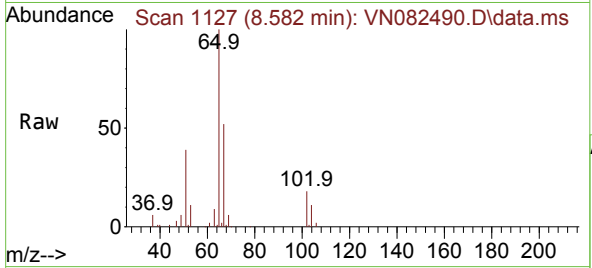
Ion	Ratio	Lower	Upper
56	100		
69	138.4	24.4	36.6#
84	119.4	77.0	115.4#



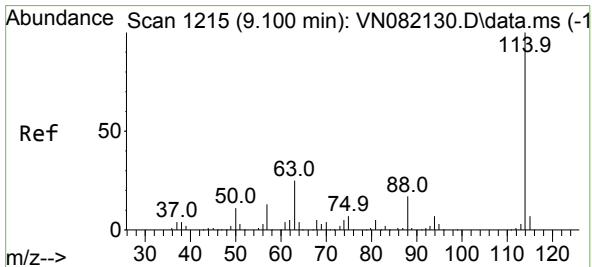
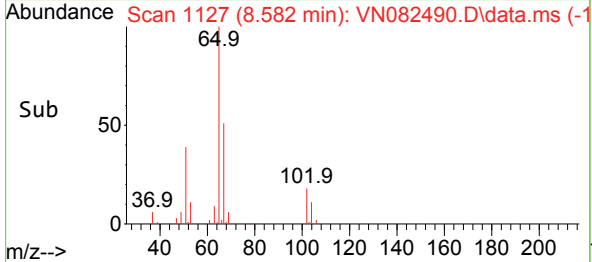
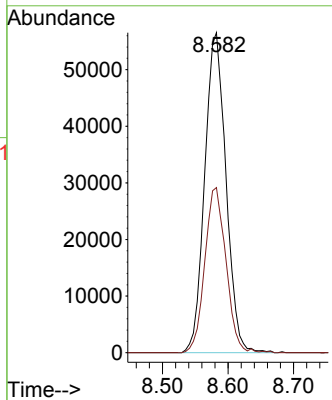


#33
 1,2-Dichloroethane-d4
 Concen: 51.681 ug/l
 RT: 8.582 min Scan# 1127
 Delta R.T. 0.006 min
 Lab File: VN082490.D
 Acq: 07 Jun 2024 14:12

Instrument :
 MSVOA_N
 ClientSampleId :

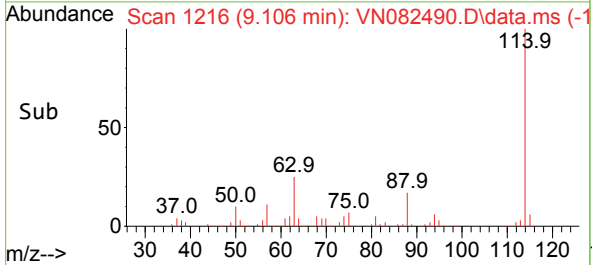
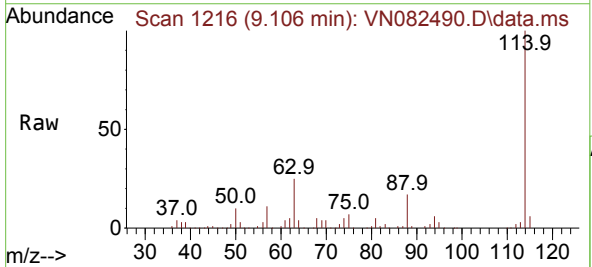
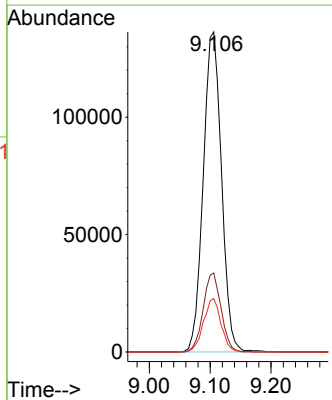


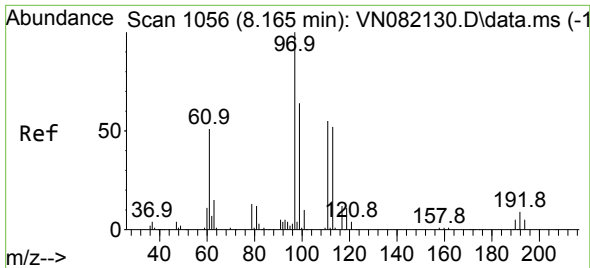
Tgt Ion: 65 Resp: 127457
 Ion Ratio Lower Upper
 65 100
 67 51.4 0.0 103.0



#34
 1,4-Difluorobenzene
 Concen: 50.000 ug/l
 RT: 9.106 min Scan# 1216
 Delta R.T. 0.006 min
 Lab File: VN082490.D
 Acq: 07 Jun 2024 14:12

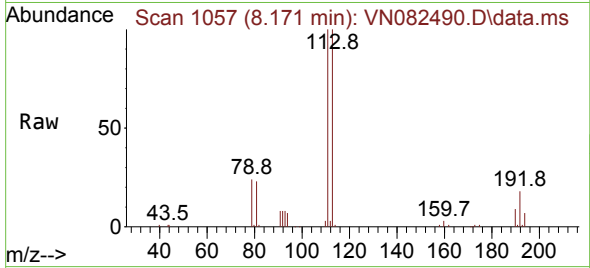
Tgt Ion: 114 Resp: 284034
 Ion Ratio Lower Upper
 114 100
 63 24.7 0.0 41.0
 88 16.7 0.0 31.4



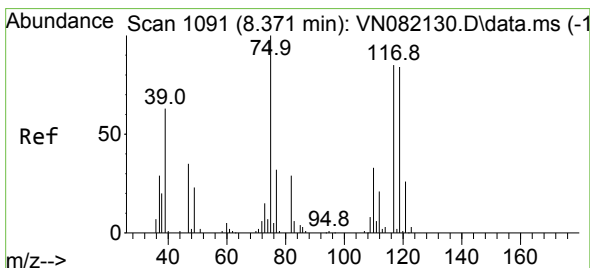
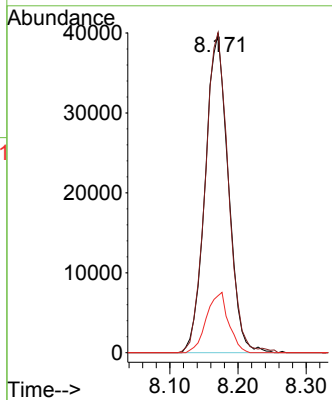
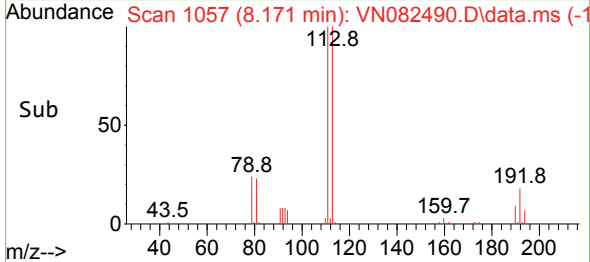


#35
 Dibromofluoromethane
 Concen: 53.600 ug/l
 RT: 8.171 min Scan# 1066
 Delta R.T. 0.006 min
 Lab File: VN082490.D
 Acq: 07 Jun 2024 14:12

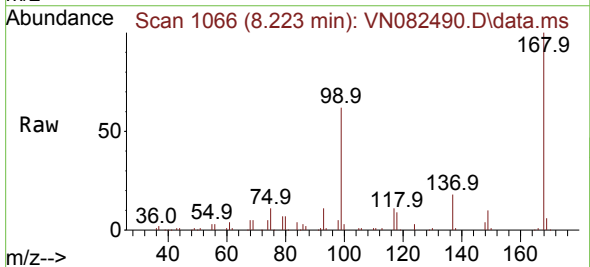
Instrument : MSVOA_N
 ClientSampleId :



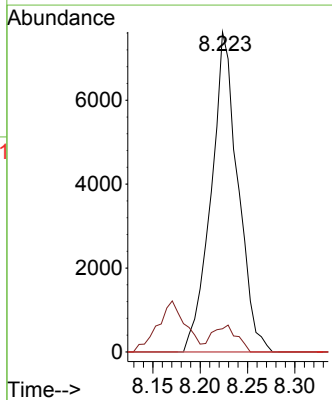
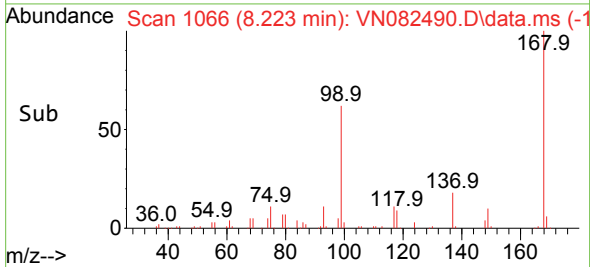
Tgt Ion:113 Resp: 93653
 Ion Ratio Lower Upper
 113 100
 111 100.8 83.4 125.2
 192 18.1 14.0 21.0

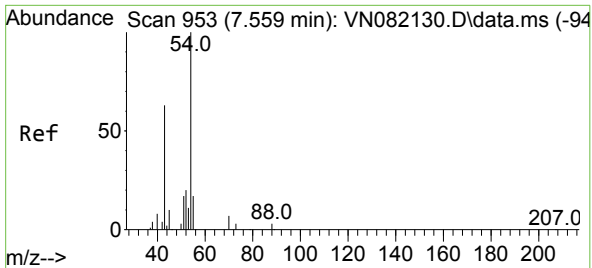


#36
 1,1-Dichloropropene
 Concen: 5.130 ug/l
 RT: 8.223 min Scan# 1066
 Delta R.T. -0.147 min
 Lab File: VN082490.D
 Acq: 07 Jun 2024 14:12



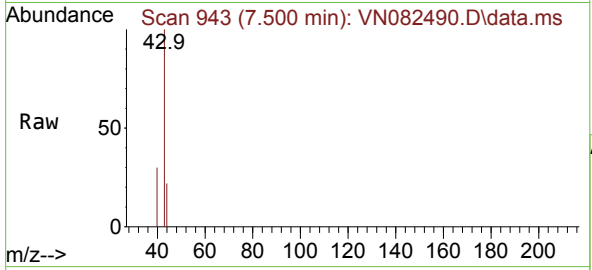
Tgt Ion: 75 Resp: 15032
 Ion Ratio Lower Upper
 75 100
 110 7.8 17.8 53.5#
 77 0.0 25.0 37.4#



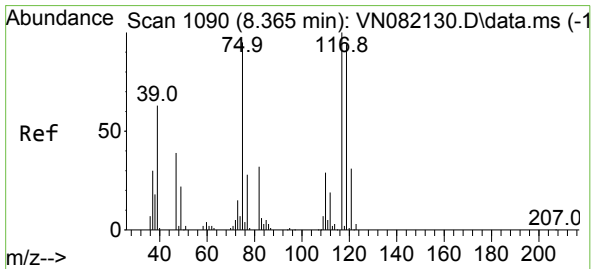
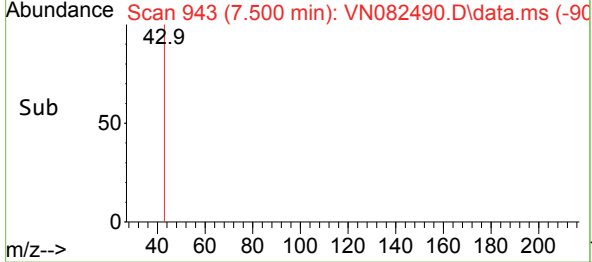
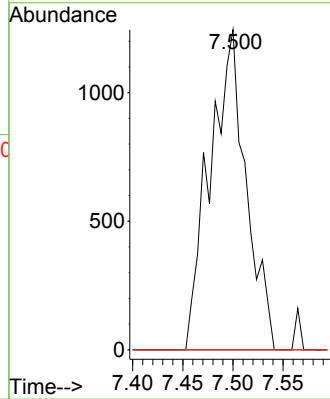


#37
 Ethyl Acetate
 Concen: 0.952 ug/l
 RT: 7.500 min Scan# 94
 Delta R.T. -0.059 min
 Lab File: VN082490.D
 Acq: 07 Jun 2024 14:12

Instrument :
 MSVOA_N
 ClientSampleId :

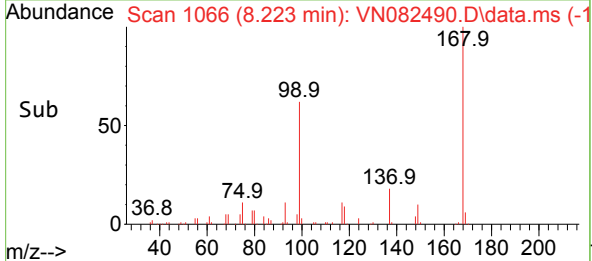
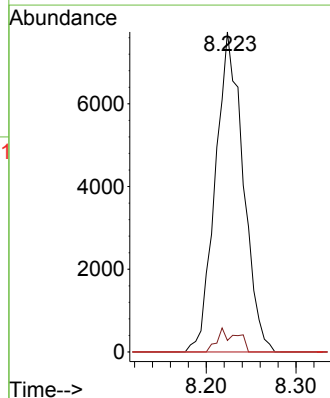
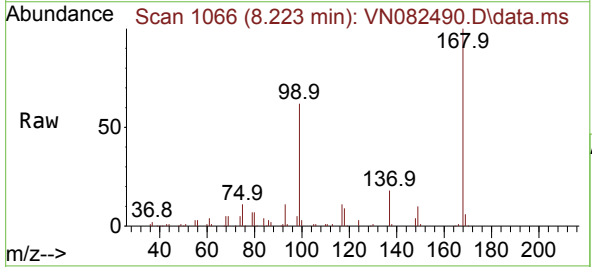


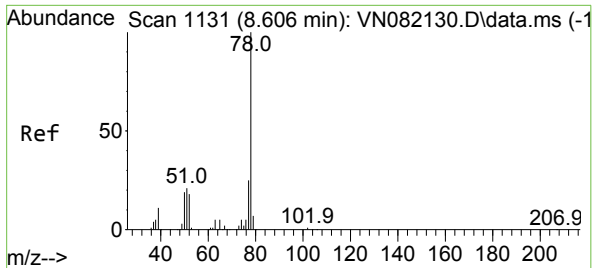
Tgt Ion	Resp	Lower	Upper
43	100		
61	0.0	11.3	16.9#
70	0.0	8.7	13.1#



#38
 Carbon Tetrachloride
 Concen: 5.614 ug/l
 RT: 8.223 min Scan# 1066
 Delta R.T. -0.141 min
 Lab File: VN082490.D
 Acq: 07 Jun 2024 14:12

Tgt Ion	Resp	Lower	Upper
117	100		
119	3.6	76.5	114.7#
121	0.0	23.9	35.9#

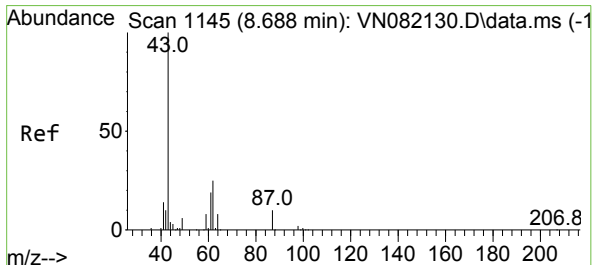
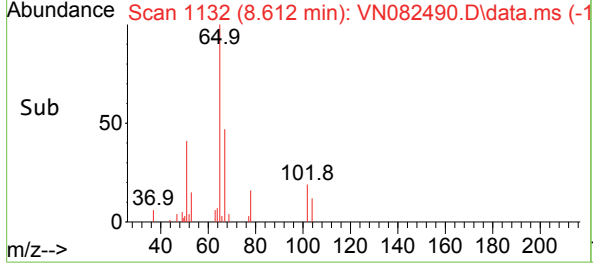
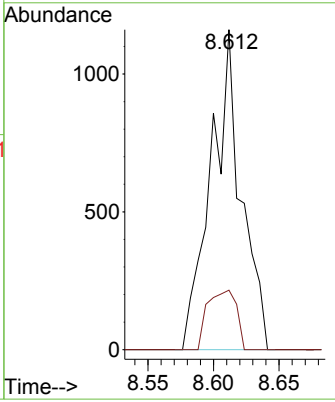
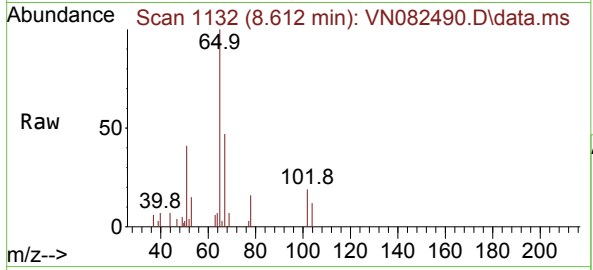




#40
Benzene
Concen: 0.213 ug/l
RT: 8.612 min Scan# 1132
Delta R.T. 0.006 min
Lab File: VN082490.D
Acq: 07 Jun 2024 14:12

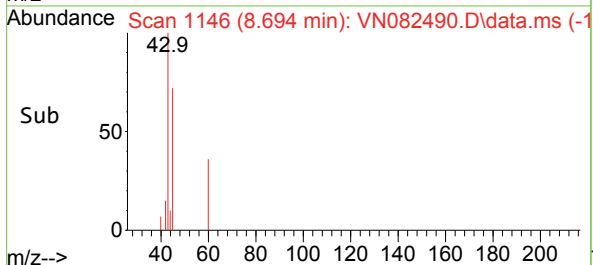
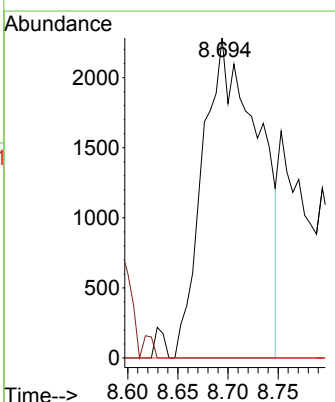
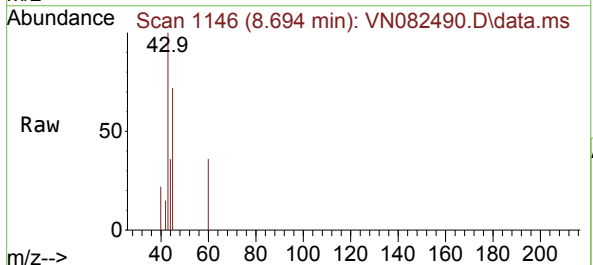
Instrument : MSVOA_N
ClientSampleId :

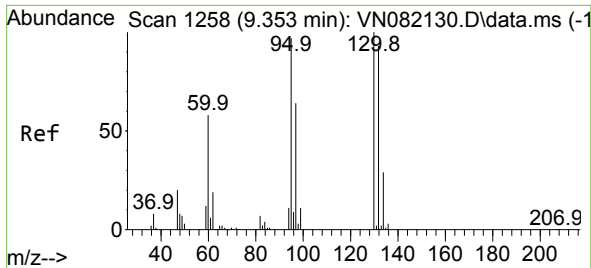
Tgt Ion:	78	Resp:	1864
Ion Ratio	100	Lower	Upper
77	18.6	20.0	30.0#



#43
Isopropyl Acetate
Concen: 1.530 ug/l
RT: 8.694 min Scan# 1146
Delta R.T. 0.006 min
Lab File: VN082490.D
Acq: 07 Jun 2024 14:12

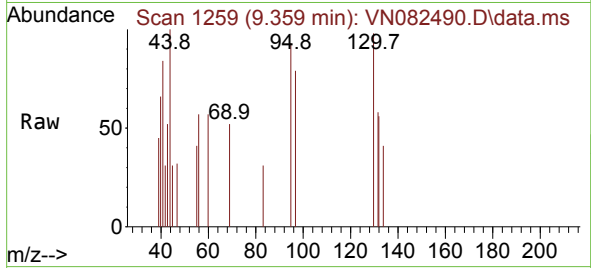
Tgt Ion:	43	Resp:	8890
Ion Ratio	100	Lower	Upper
61	0.0	22.8	34.2#
87	0.0	12.0	18.0#



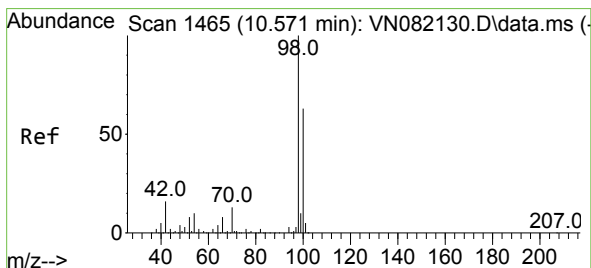
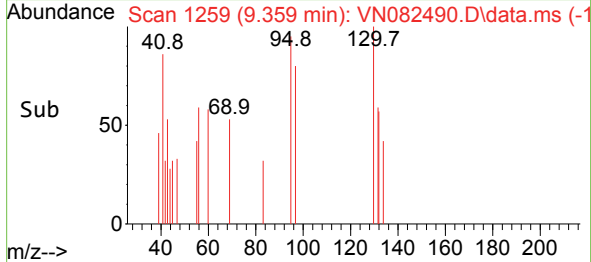
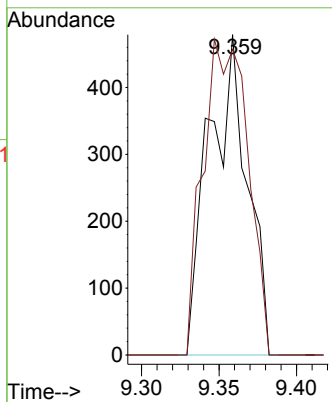


#44
 Trichloroethene
 Concen: 0.416 ug/l
 RT: 9.359 min Scan# 11
 Delta R.T. 0.006 min
 Lab File: VN082490.D
 Acq: 07 Jun 2024 14:12

Instrument :
 MSVOA_N
 ClientSampleId :

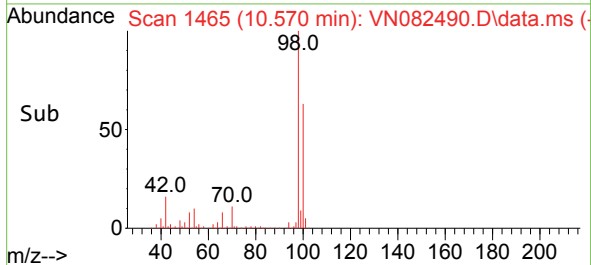
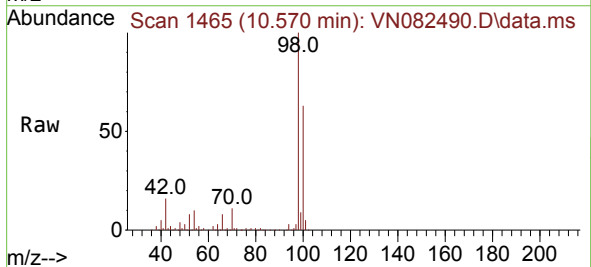
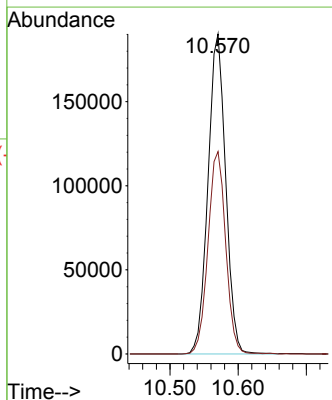


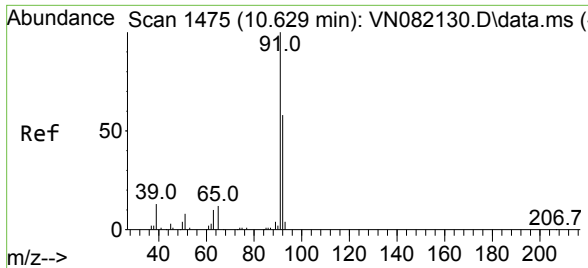
Tgt Ion:130 Resp: 825
 Ion Ratio Lower Upper
 130 100
 95 95.4 0.0 195.4



#50
 Toluene-d8
 Concen: 51.247 ug/l
 RT: 10.570 min Scan# 1465
 Delta R.T. -0.000 min
 Lab File: VN082490.D
 Acq: 07 Jun 2024 14:12

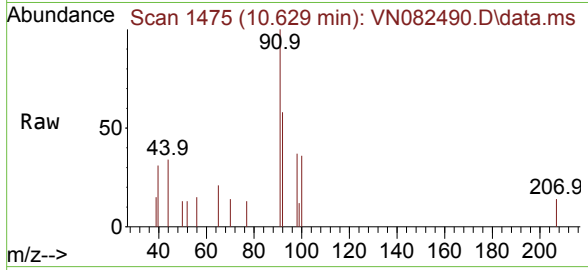
Tgt Ion: 98 Resp: 343294
 Ion Ratio Lower Upper
 98 100
 100 63.4 51.8 77.6



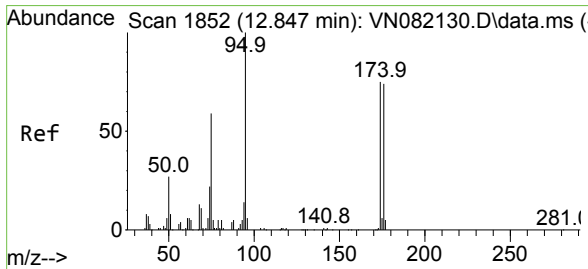
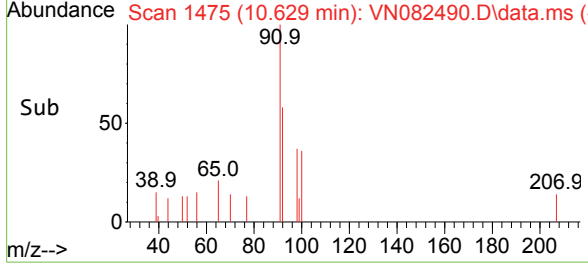
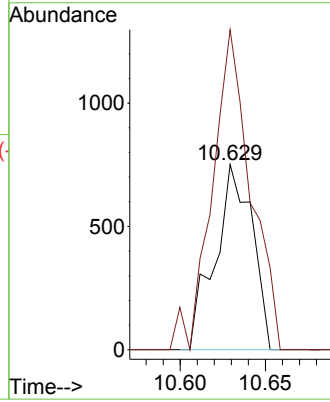


#52
 Toluene
 Concen: 0.218 ug/l
 RT: 10.629 min Scan# 1475
 Delta R.T. -0.000 min
 Lab File: VN082490.D
 Acq: 07 Jun 2024 14:12

Instrument :
 MSVOA_N
 ClientSampleId :

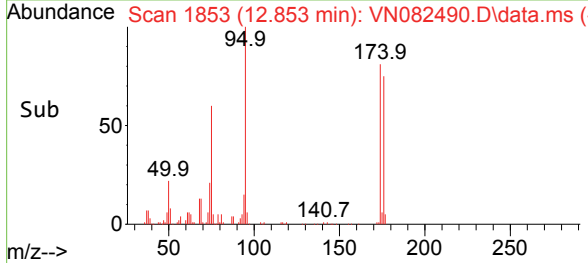
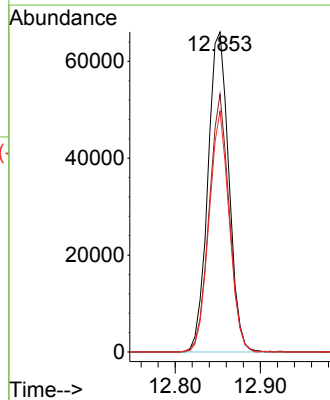
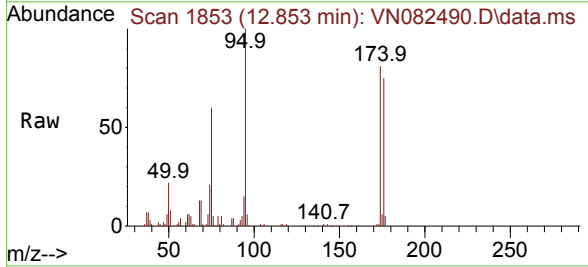


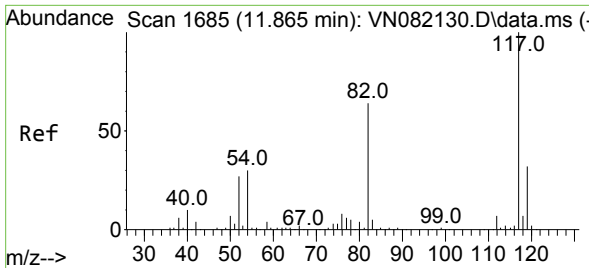
Tgt Ion: 92 Resp: 1142
 Ion Ratio Lower Upper
 92 100
 91 179.2 136.7 205.1



#62
 4-Bromofluorobenzene
 Concen: 47.207 ug/l
 RT: 12.853 min Scan# 1853
 Delta R.T. 0.006 min
 Lab File: VN082490.D
 Acq: 07 Jun 2024 14:12

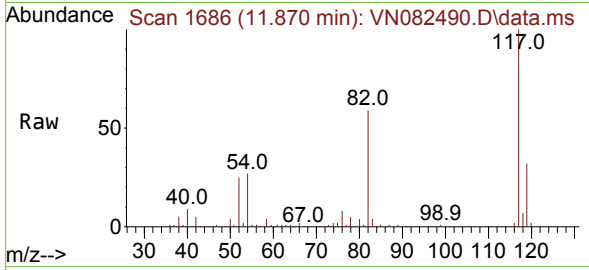
Tgt Ion: 95 Resp: 112869
 Ion Ratio Lower Upper
 95 100
 174 77.4 0.0 160.6
 176 72.6 0.0 152.8





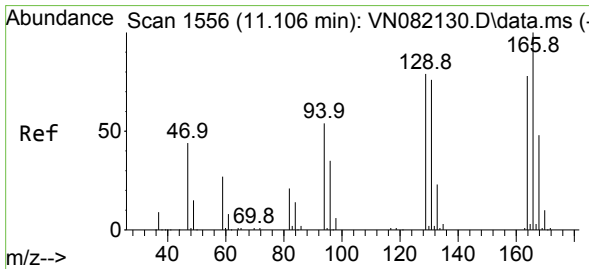
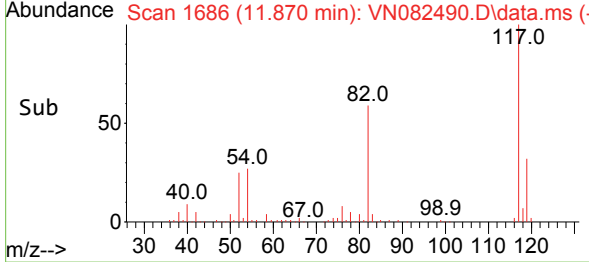
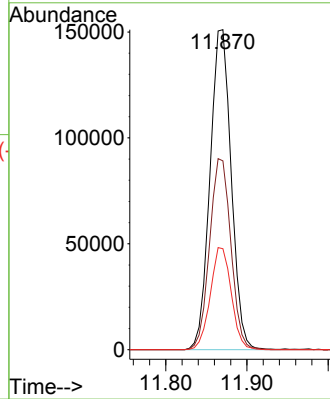
#63
 Chlorobenzene-d5
 Concen: 50.000 ug/l
 RT: 11.870 min Scan# 11
 Delta R.T. 0.006 min
 Lab File: VN082490.D
 Acq: 07 Jun 2024 14:12

Instrument :
 MSVOA_N
 ClientSampleId :

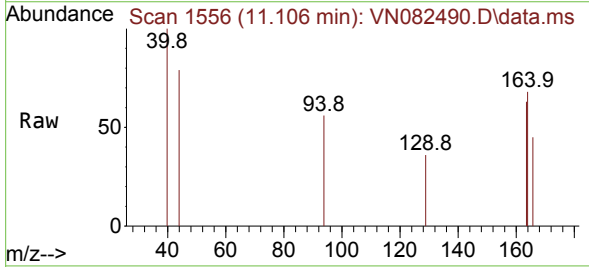


Tgt Ion:117 Resp: 274301

Ion	Ratio	Lower	Upper
117	100		
82	59.0	44.6	66.8
119	31.6	25.9	38.9

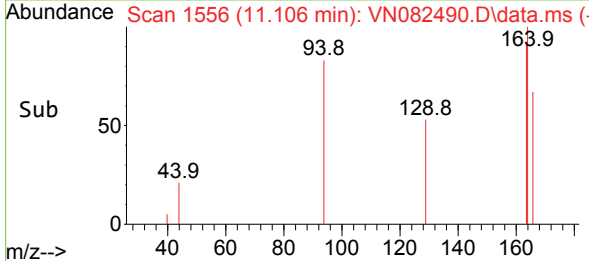
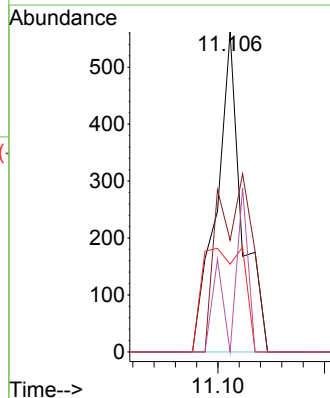


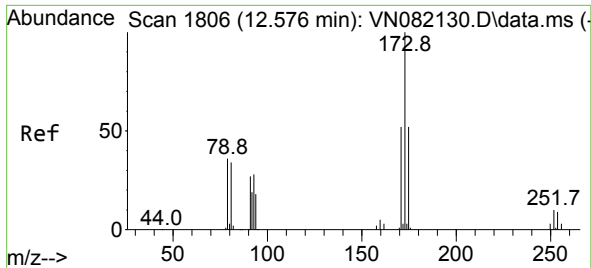
#64
 Tetrachloroethene
 Concen: 0.229 ug/l
 RT: 11.106 min Scan# 1556
 Delta R.T. -0.000 min
 Lab File: VN082490.D
 Acq: 07 Jun 2024 14:12



Tgt Ion:164 Resp: 465

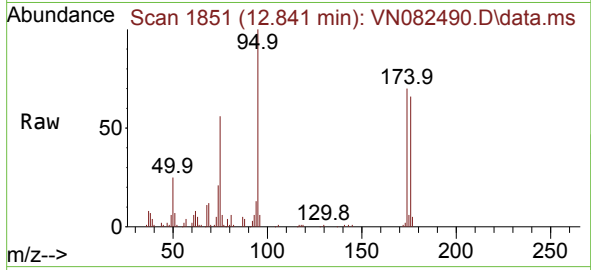
Ion	Ratio	Lower	Upper
164	100		
166	34.9	97.6	146.4#
129	27.4	73.7	110.5#
131	0.0	75.8	113.6#





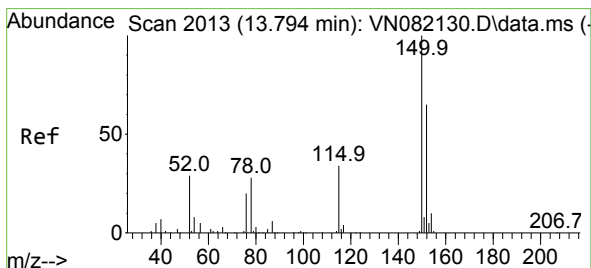
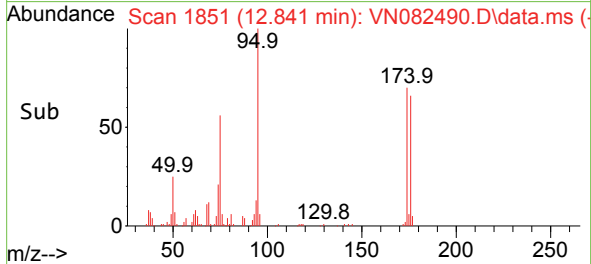
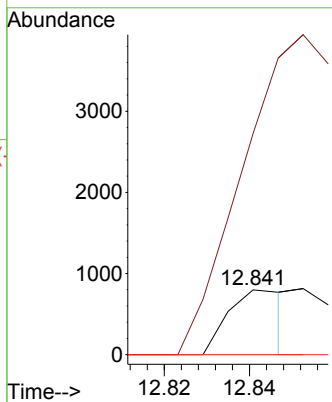
#71
 Bromoform
 Concen: 1.162 ug/l
 RT: 12.841 min Scan# 1806
 Delta R.T. 0.265 min
 Lab File: VN082490.D
 Acq: 07 Jun 2024 14:12

Instrument : MSVOA_N
 ClientSampleId :



Tgt Ion:173 Resp: 742

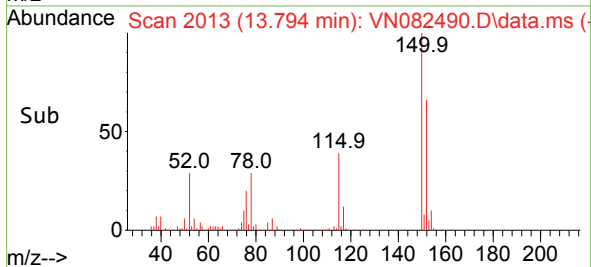
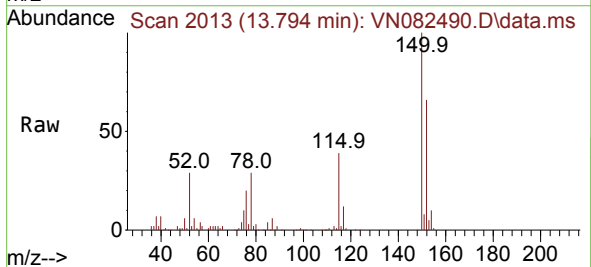
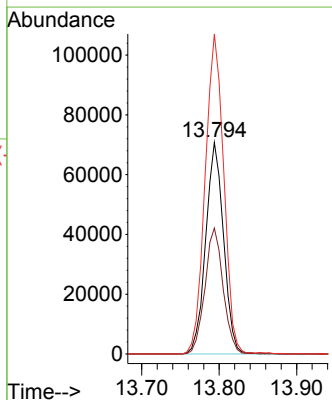
Ion	Ratio	Lower	Upper
173	100		
175	0.0	24.6	74.0#
254	0.0	0.0	0.0

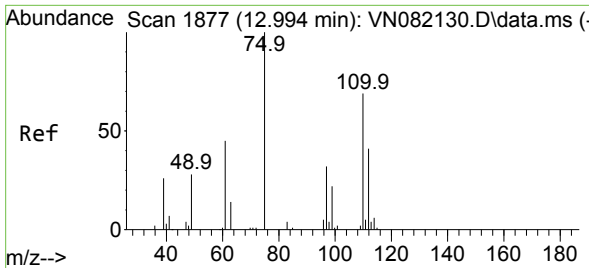


#72
 1,4-Dichlorobenzene-d4
 Concen: 50.000 ug/l
 RT: 13.794 min Scan# 2013
 Delta R.T. -0.000 min
 Lab File: VN082490.D
 Acq: 07 Jun 2024 14:12

Tgt Ion:152 Resp: 113337

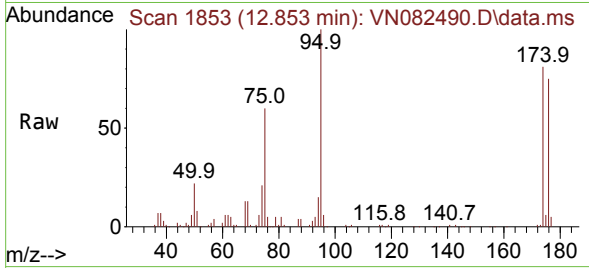
Ion	Ratio	Lower	Upper
152	100		
115	60.6	30.4	91.3
150	157.1	0.0	353.2



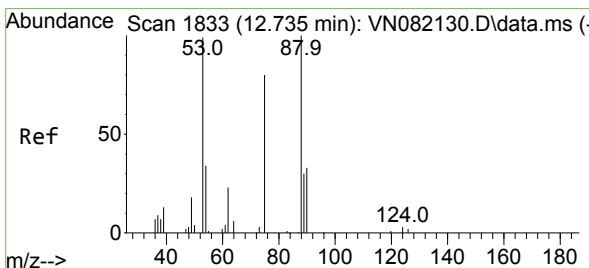
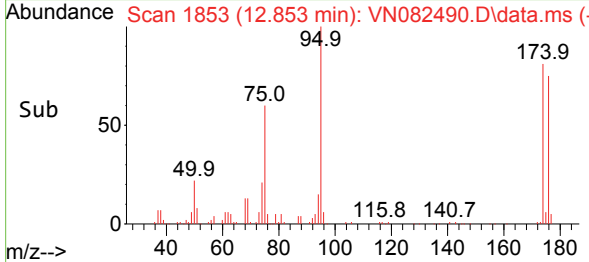
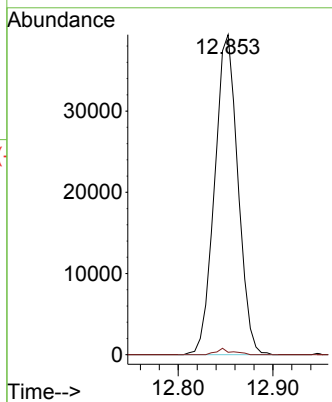


#76
 1,2,3-Trichloropropane
 Concen: 28.183 ug/l
 RT: 12.853 min Scan# 1853
 Delta R.T. -0.141 min
 Lab File: VN082490.D
 Acq: 07 Jun 2024 14:12

Instrument : MSVOA_N
 ClientSampleId :



Tgt Ion: 75 Resp: 67231
 Ion Ratio Lower Upper
 75 100
 77 1.3 90.5 271.3#



#81
 trans-1,4-Dichloro-2-butene
 Concen: 65.920 ug/l
 RT: 12.853 min Scan# 1853
 Delta R.T. 0.117 min
 Lab File: VN082490.D
 Acq: 07 Jun 2024 14:12

Tgt Ion: 75 Resp: 67231
 Ion Ratio Lower Upper
 75 100
 53 0.1 72.9 109.3#
 89 0.0 39.1 58.7#

