

Data Path : Z:\voasrv\HPCHEM1\MSVOA\_N\Data\VN060724\  
 Data File : VN082492.D  
 Acq On : 07 Jun 2024 15:00  
 Operator : JC\MD  
 Sample : P2771-03  
 Misc : 5.0mL/MSVOA\_N/WATER  
 ALS Vial : 15 Sample Multiplier: 1

Instrument :  
 MSVOA\_N  
 ClientSampleId :

Quant Time: Jun 08 00:58:40 2024  
 Quant Method : Z:\voasrv\HPCHEM1\MSVOA\_N\methods\82N051524W.M  
 Quant Title : SW846 8260  
 QLast Update : Thu May 16 05:21:06 2024  
 Response via : Initial Calibration

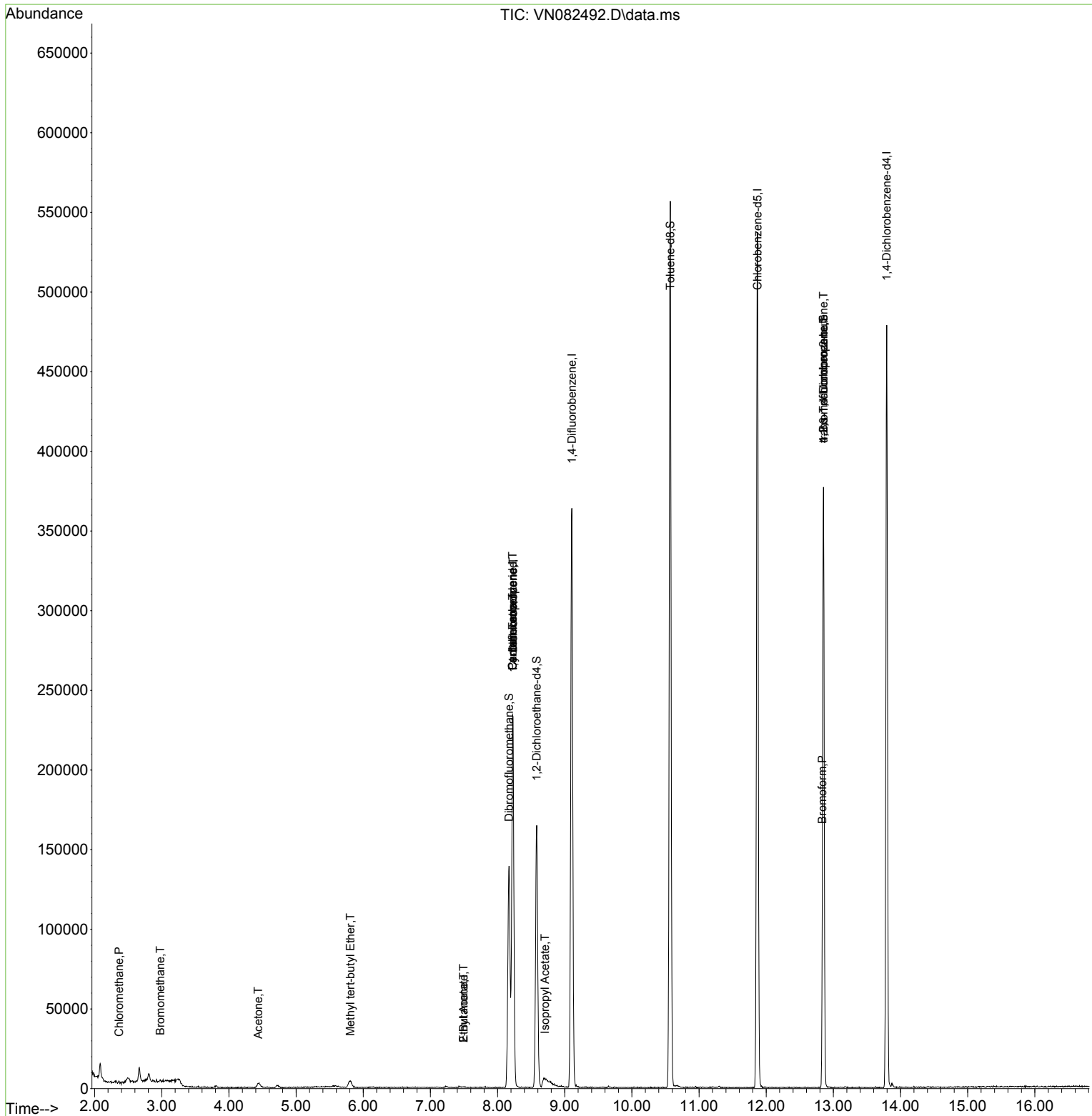
Compound	R.T.	QIon	Response	Conc	Units	Dev(Min)
-----						
Internal Standards						
1) Pentafluorobenzene	8.224	168	161172	50.000	ug/l	0.00
34) 1,4-Difluorobenzene	9.106	114	290120	50.000	ug/l	0.00
63) Chlorobenzene-d5	11.871	117	284649	50.000	ug/l	0.00
72) 1,4-Dichlorobenzene-d4	13.794	152	118031	50.000	ug/l	0.00
System Monitoring Compounds						
33) 1,2-Dichloroethane-d4	8.583	65	133586	52.491	ug/l	0.00
Spiked Amount	50.000	Range 74 - 125	Recovery	=	104.980%	
35) Dibromofluoromethane	8.171	113	99256	55.615	ug/l	0.00
Spiked Amount	50.000	Range 75 - 124	Recovery	=	111.240%	
50) Toluene-d8	10.571	98	361444	52.825	ug/l	0.00
Spiked Amount	50.000	Range 86 - 113	Recovery	=	105.640%	
62) 4-Bromofluorobenzene	12.853	95	118801	48.645	ug/l	0.00
Spiked Amount	50.000	Range 64 - 133	Recovery	=	97.300%	
Target Compounds						
					Qvalue	
3) Chloromethane	2.365	50	1142	0.434	ug/l #	88
5) Bromomethane	2.977	94	433	0.304	ug/l	96
16) Acetone	4.436	43	5940	5.690	ug/l #	84
19) Methyl tert-butyl Ether	5.806	73	6523	1.014	ug/l	95
25) 2-Butanone	7.494	43	822	0.519	ug/l #	43
31) Cyclohexane	8.224	56	4851	1.193	ug/l #	46
36) 1,1-Dichloropropene	8.230	75	14706	4.913	ug/l #	50
37) Ethyl Acetate	7.494	43	822	0.245	ug/l #	68
38) Carbon Tetrachloride	8.224	117	17245	5.683	ug/l #	17
43) Isopropyl Acetate	8.706	43	7418	1.250	ug/l #	52
71) Bromoform	12.835	173	232	0.840	ug/l #	1
76) 1,2,3-Trichloropropane	12.853	75	71005	28.582	ug/l #	1
81) trans-1,4-Dichloro-2-b...	12.853	75	71005	66.852	ug/l #	12
-----						

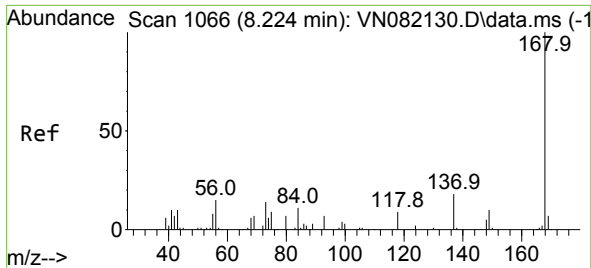
(#) = qualifier out of range (m) = manual integration (+) = signals summed

Data Path : Z:\voasrv\HPCHEM1\MSVOA\_N\Data\VN060724\  
 Data File : VN082492.D  
 Acq On : 07 Jun 2024 15:00  
 Operator : JC\MD  
 Sample : P2771-03  
 Misc : 5.0mL/MSVOA\_N/WATER  
 ALS Vial : 15 Sample Multiplier: 1

Instrument :  
 MSVOA\_N  
 ClientSampleId :

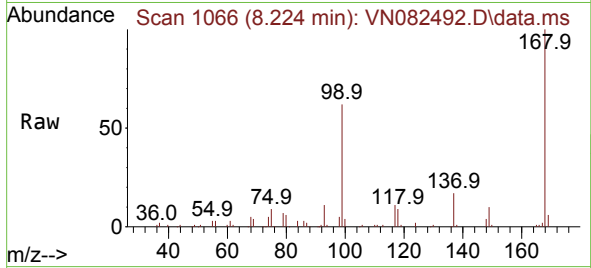
Quant Time: Jun 08 00:58:40 2024  
 Quant Method : Z:\voasrv\HPCHEM1\MSVOA\_N\methods\82N051524W.M  
 Quant Title : SW846 8260  
 QLast Update : Thu May 16 05:21:06 2024  
 Response via : Initial Calibration



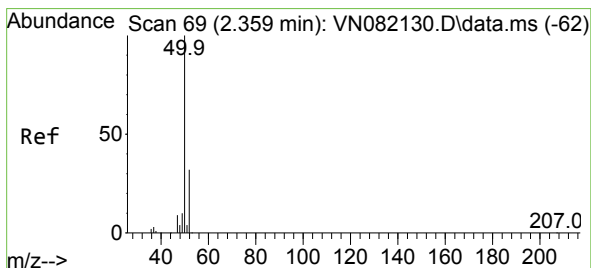
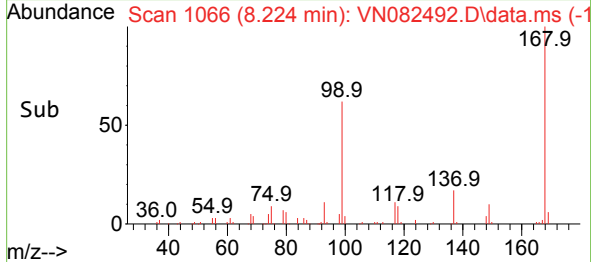
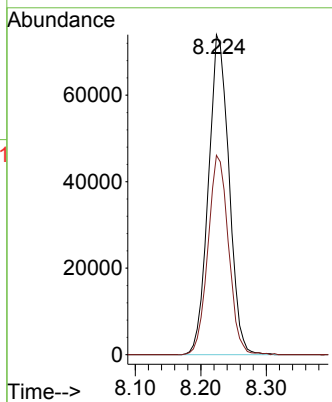


#1  
 Pentafluorobenzene  
 Concen: 50.000 ug/l  
 RT: 8.224 min Scan# 10  
 Delta R.T. -0.000 min  
 Lab File: VN082492.D  
 Acq: 07 Jun 2024 15:00

Instrument :  
 MSVOA\_N  
 ClientSampleId :

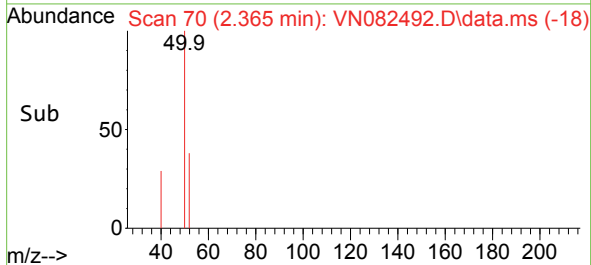
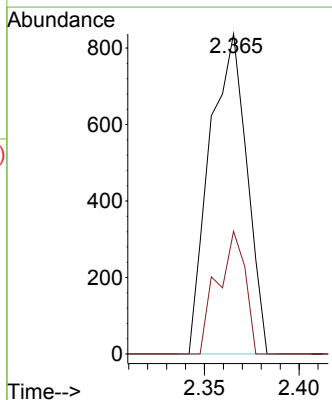
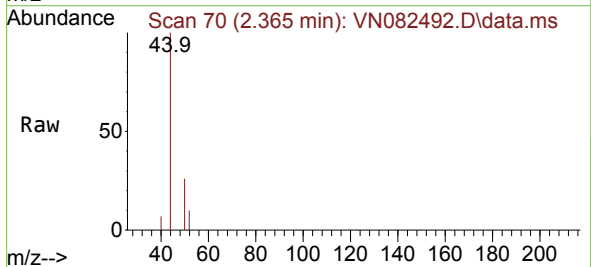


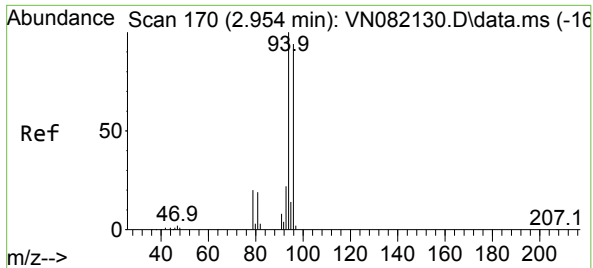
Tgt Ion:168 Resp: 161172  
 Ion Ratio Lower Upper  
 168 100  
 99 62.3 48.2 72.4



#3  
 Chloromethane  
 Concen: 0.434 ug/l  
 RT: 2.365 min Scan# 70  
 Delta R.T. 0.006 min  
 Lab File: VN082492.D  
 Acq: 07 Jun 2024 15:00

Tgt Ion: 50 Resp: 1142  
 Ion Ratio Lower Upper  
 50 100  
 52 38.4 25.5 38.3#

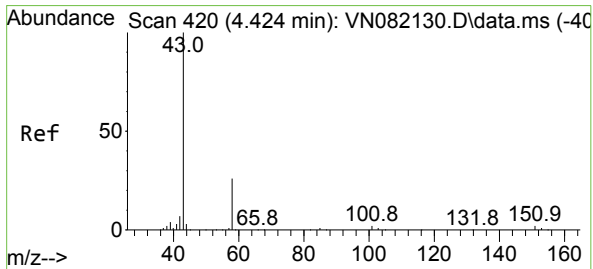
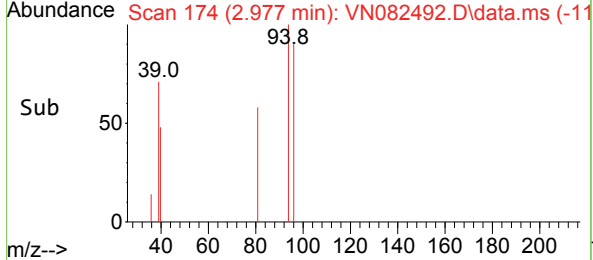
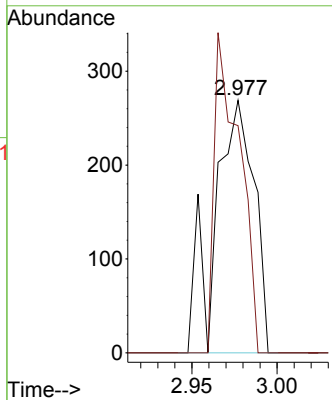
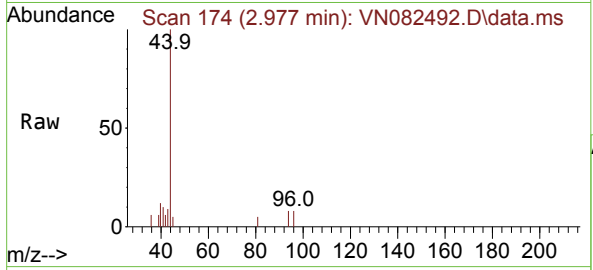




#5  
 Bromomethane  
 Concen: 0.304 ug/l  
 RT: 2.977 min Scan# 11  
 Delta R.T. 0.024 min  
 Lab File: VN082492.D  
 Acq: 07 Jun 2024 15:00

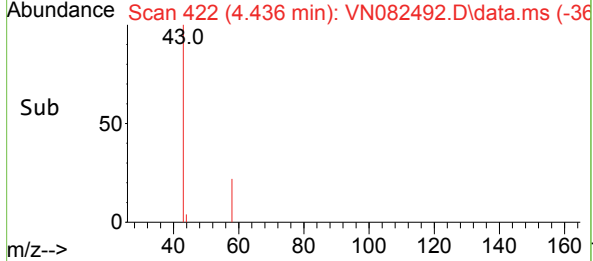
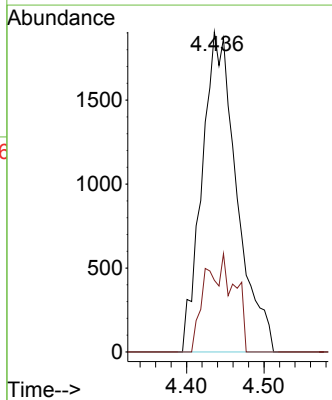
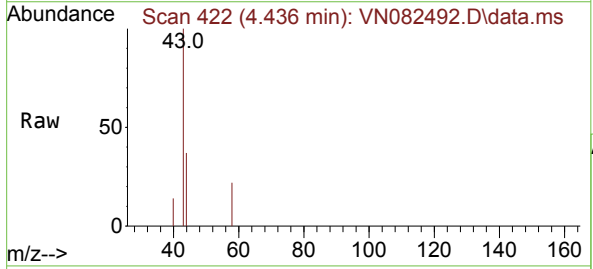
Instrument : MSVOA\_N  
 ClientSampleId :

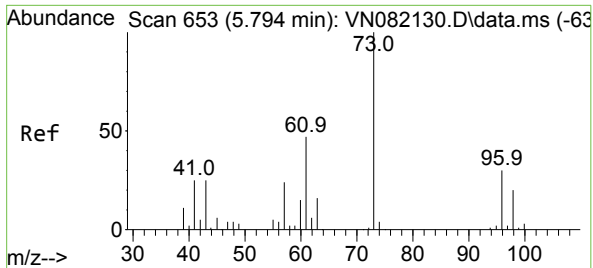
Tgt Ion: 94 Resp: 433  
 Ion Ratio Lower Upper  
 94 100  
 96 90.0 74.8 112.2



#16  
 Acetone  
 Concen: 5.690 ug/l  
 RT: 4.436 min Scan# 422  
 Delta R.T. 0.012 min  
 Lab File: VN082492.D  
 Acq: 07 Jun 2024 15:00

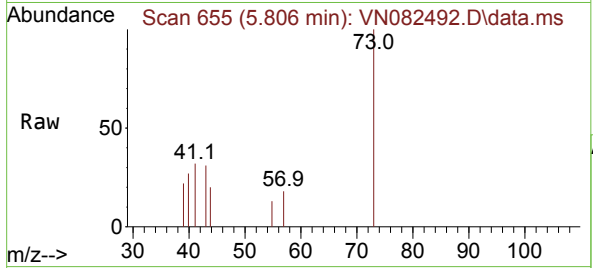
Tgt Ion: 43 Resp: 5940  
 Ion Ratio Lower Upper  
 43 100  
 58 22.4 25.2 37.8#



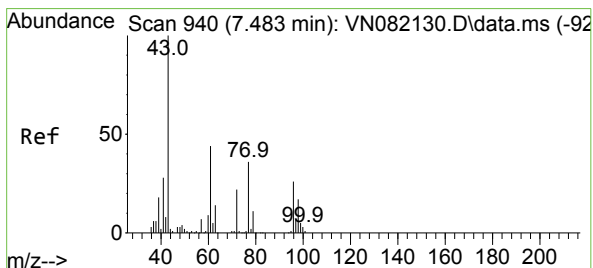
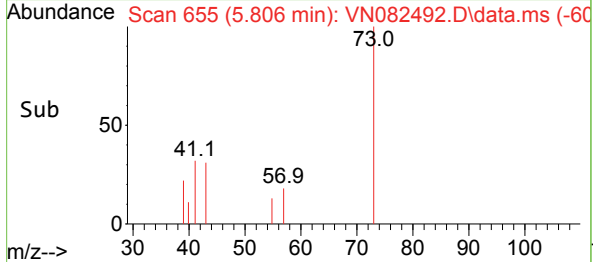
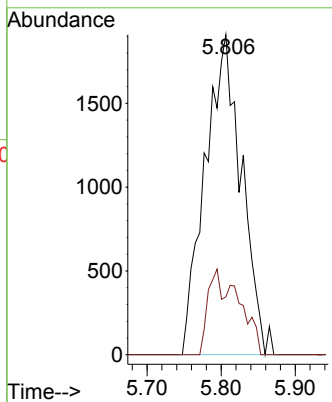


#19  
 Methyl tert-butyl Ether  
 Concen: 1.014 ug/l  
 RT: 5.806 min Scan# 61  
 Delta R.T. 0.012 min  
 Lab File: VN082492.D  
 Acq: 07 Jun 2024 15:00

Instrument : MSVOA\_N  
 ClientSampleId :

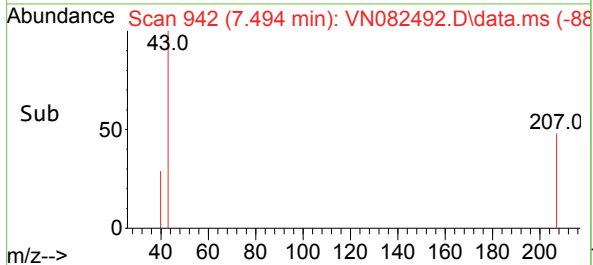
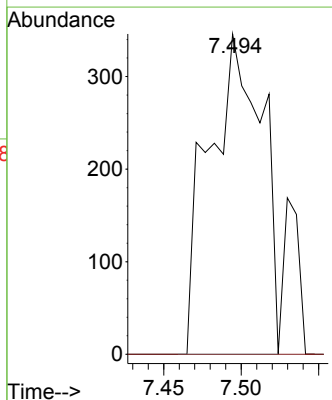
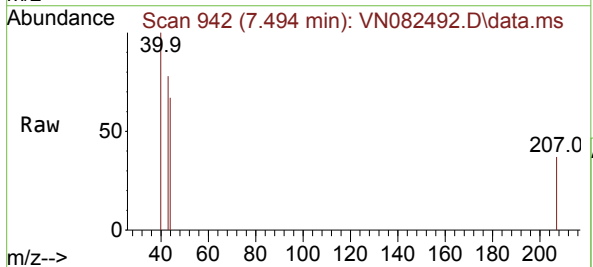


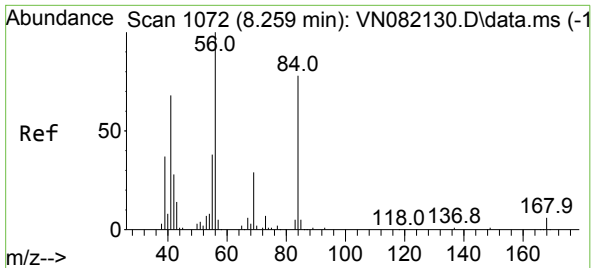
Tgt Ion: 73 Resp: 6523  
 Ion Ratio Lower Upper  
 73 100  
 57 18.1 16.5 24.7



#25  
 2-Butanone  
 Concen: 0.519 ug/l  
 RT: 7.494 min Scan# 942  
 Delta R.T. 0.012 min  
 Lab File: VN082492.D  
 Acq: 07 Jun 2024 15:00

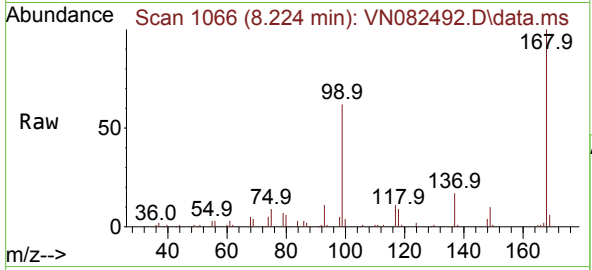
Tgt Ion: 43 Resp: 822  
 Ion Ratio Lower Upper  
 43 100  
 72 0.0 25.3 37.9#





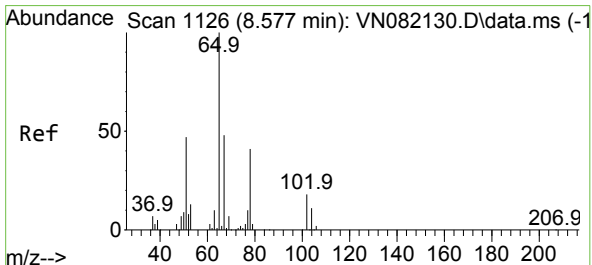
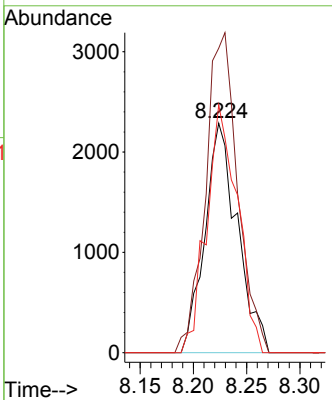
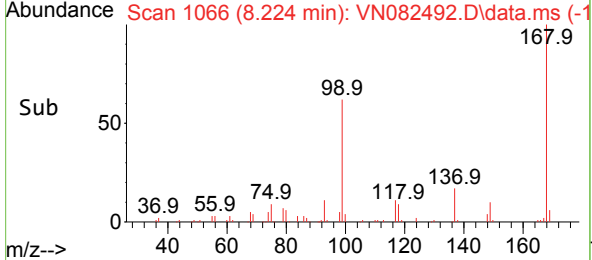
#31  
 Cyclohexane  
 Concen: 1.193 ug/l  
 RT: 8.224 min Scan# 1066  
 Delta R.T. -0.035 min  
 Lab File: VN082492.D  
 Acq: 07 Jun 2024 15:00

Instrument : MSVOA\_N  
 ClientSampleId :

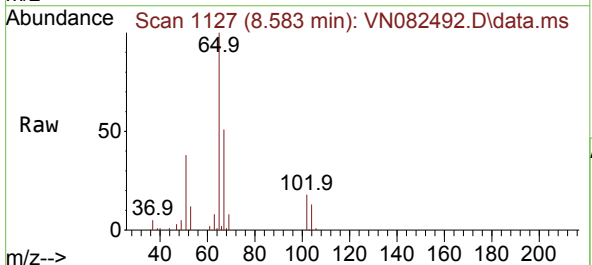


Tgt Ion: 56 Resp: 4851

Ion	Ratio	Lower	Upper
56	100		
69	132.7	24.4	36.6#
84	108.0	77.0	115.4

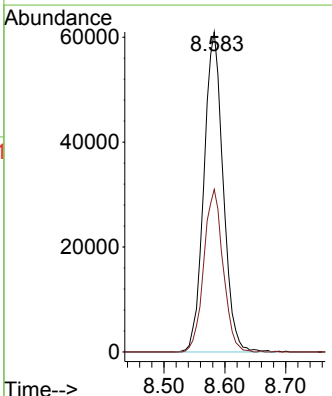
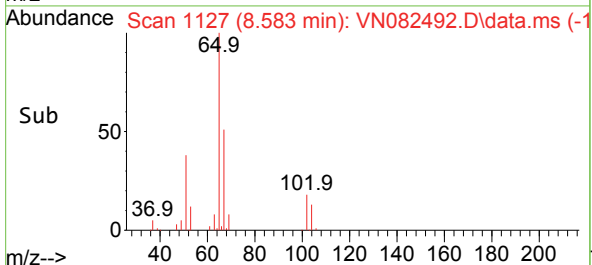


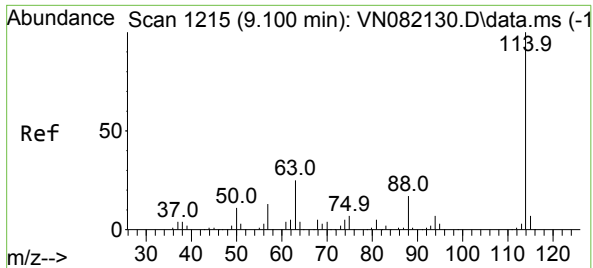
#33  
 1,2-Dichloroethane-d4  
 Concen: 52.491 ug/l  
 RT: 8.583 min Scan# 1127  
 Delta R.T. 0.006 min  
 Lab File: VN082492.D  
 Acq: 07 Jun 2024 15:00



Tgt Ion: 65 Resp: 133586

Ion	Ratio	Lower	Upper
65	100		
67	51.0	0.0	103.0



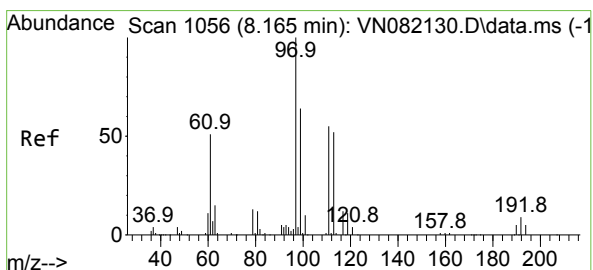
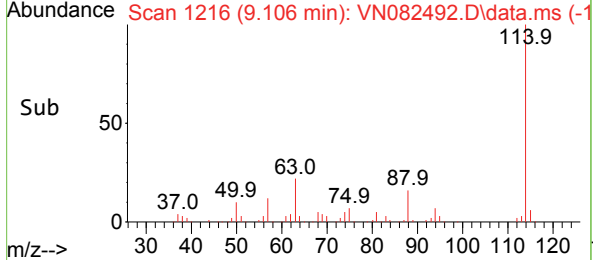
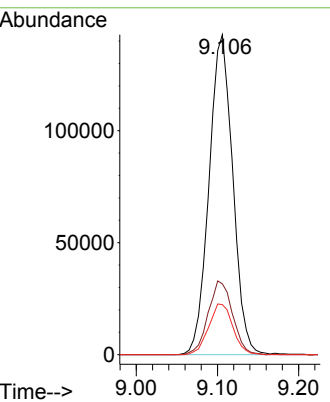
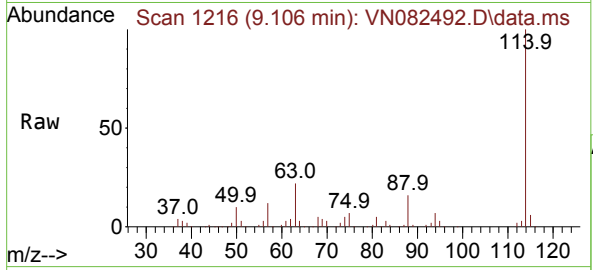


#34  
 1,4-Difluorobenzene  
 Concen: 50.000 ug/l  
 RT: 9.106 min Scan# 11  
 Delta R.T. 0.006 min  
 Lab File: VN082492.D  
 Acq: 07 Jun 2024 15:00

Instrument : MSVOA\_N  
 ClientSampleId :

Tgt Ion:114 Resp: 290120

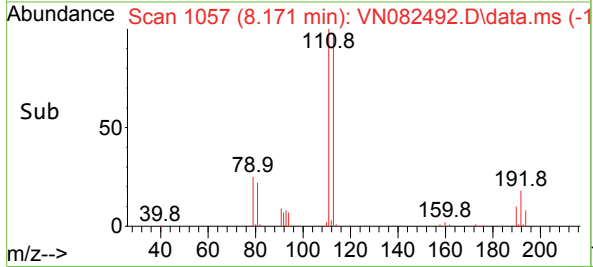
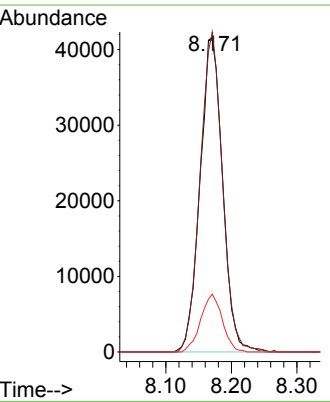
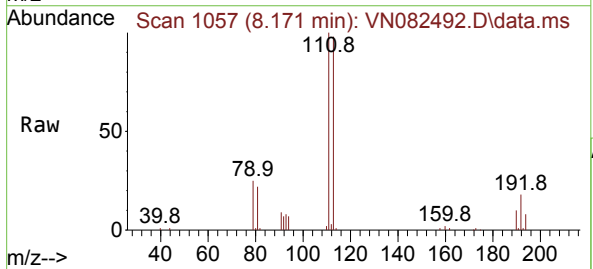
Ion	Ratio	Lower	Upper
114	100		
63	22.1	0.0	41.0
88	15.7	0.0	31.4

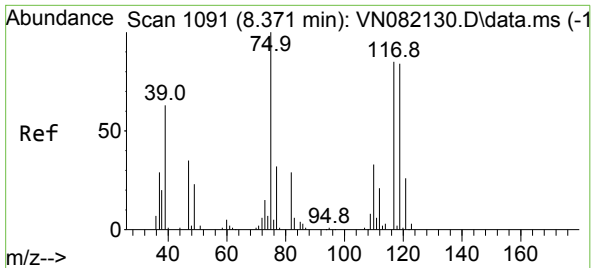


#35  
 Dibromofluoromethane  
 Concen: 55.615 ug/l  
 RT: 8.171 min Scan# 1057  
 Delta R.T. 0.006 min  
 Lab File: VN082492.D  
 Acq: 07 Jun 2024 15:00

Tgt Ion:113 Resp: 99256

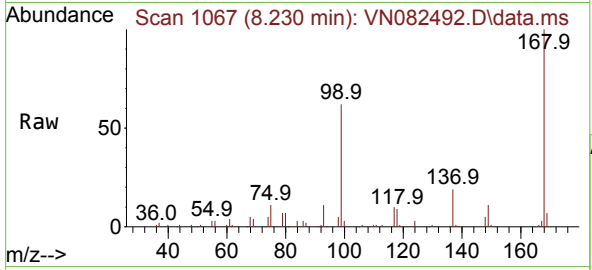
Ion	Ratio	Lower	Upper
113	100		
111	100.6	83.4	125.2
192	17.6	14.0	21.0





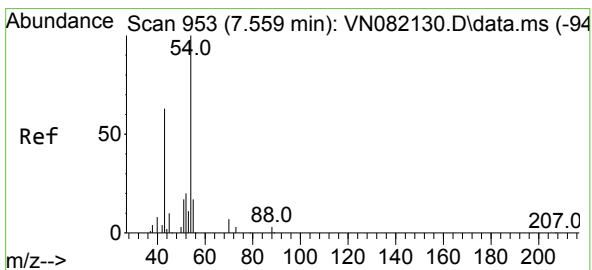
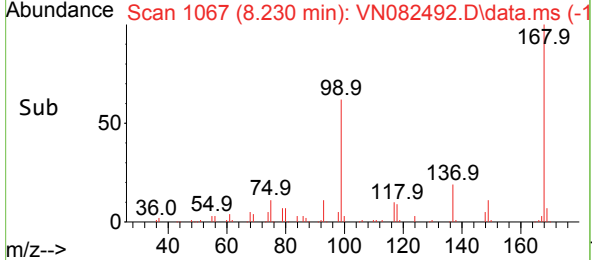
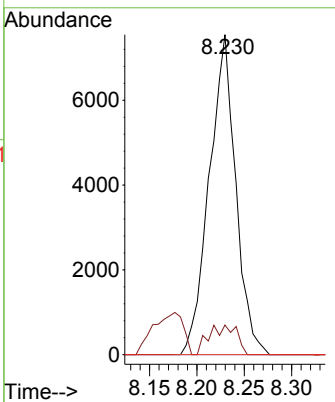
#36  
 1,1-Dichloropropene  
 Concen: 4.913 ug/l  
 RT: 8.230 min Scan# 1067  
 Delta R.T. -0.141 min  
 Lab File: VN082492.D  
 Acq: 07 Jun 2024 15:00

Instrument : MSVOA\_N  
 ClientSampleId :



Tgt Ion: 75 Resp: 14706

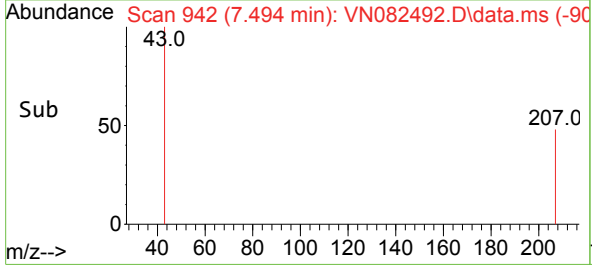
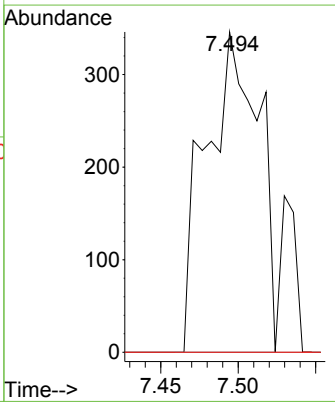
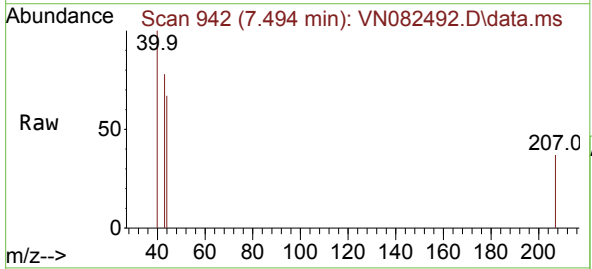
Ion	Ratio	Lower	Upper
75	100		
110	9.7	17.8	53.5#
77	0.0	25.0	37.4#



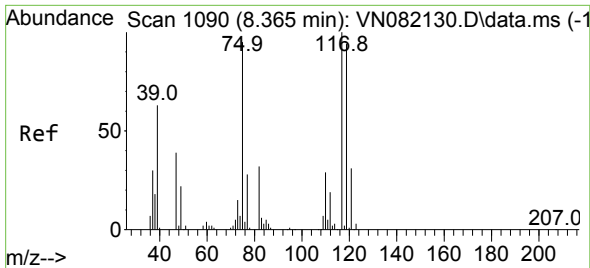
#37  
 Ethyl Acetate  
 Concen: 0.245 ug/l  
 RT: 7.494 min Scan# 942  
 Delta R.T. -0.065 min  
 Lab File: VN082492.D  
 Acq: 07 Jun 2024 15:00

Tgt Ion: 43 Resp: 822

Ion	Ratio	Lower	Upper
43	100		
61	0.0	11.3	16.9#
70	0.0	8.7	13.1#

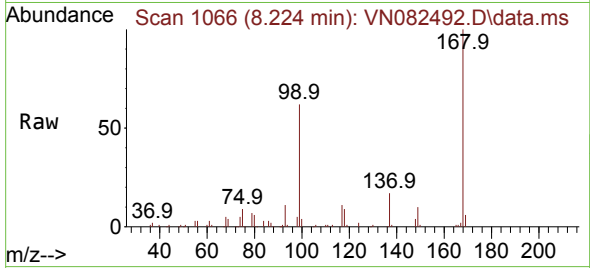




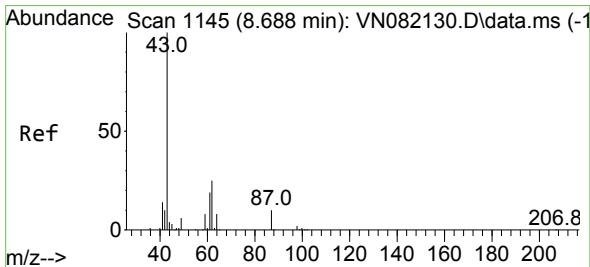
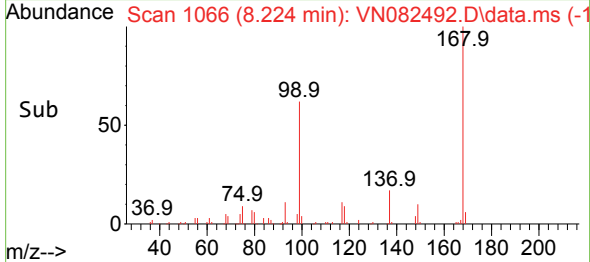
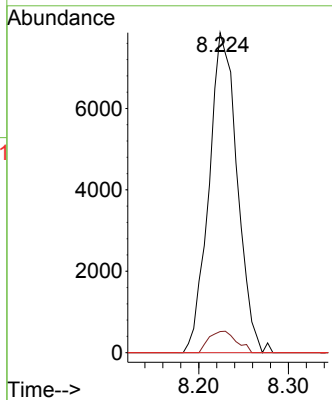


#38  
 Carbon Tetrachloride  
 Concen: 5.683 ug/l  
 RT: 8.224 min Scan# 1090  
 Delta R.T. -0.141 min  
 Lab File: VN082492.D  
 Acq: 07 Jun 2024 15:00

Instrument : MSVOA\_N  
 ClientSampleId :

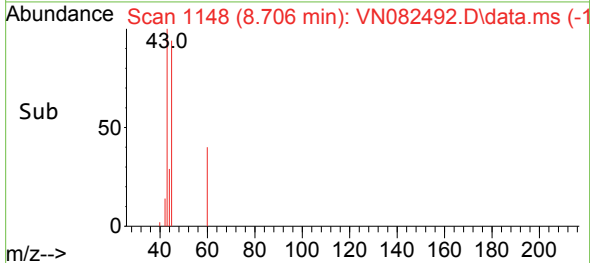
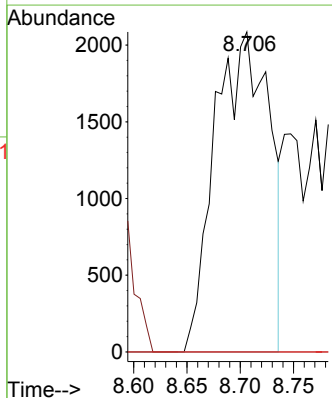
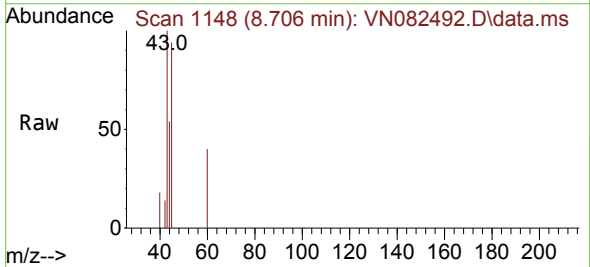


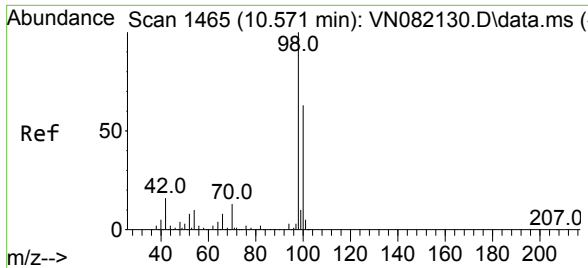
Tgt Ion:117 Resp: 17245  
 Ion Ratio Lower Upper  
 117 100  
 119 6.6 76.5 114.7#  
 121 0.0 23.9 35.9#



#43  
 Isopropyl Acetate  
 Concen: 1.250 ug/l  
 RT: 8.706 min Scan# 1148  
 Delta R.T. 0.018 min  
 Lab File: VN082492.D  
 Acq: 07 Jun 2024 15:00

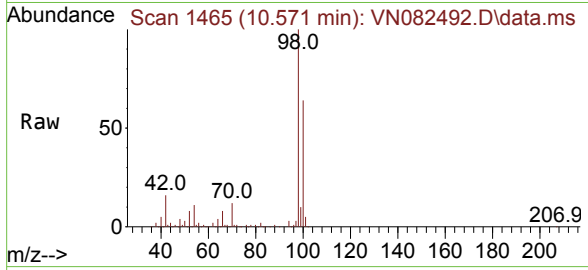
Tgt Ion: 43 Resp: 7418  
 Ion Ratio Lower Upper  
 43 100  
 61 0.0 22.8 34.2#  
 87 0.0 12.0 18.0#



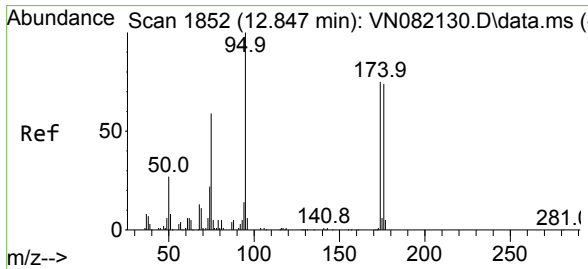
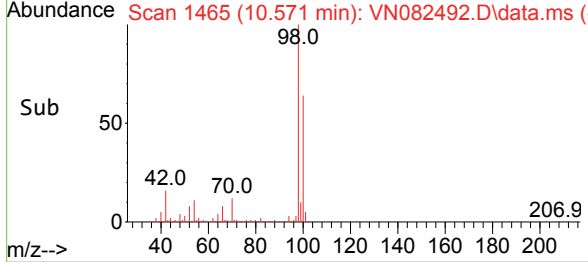
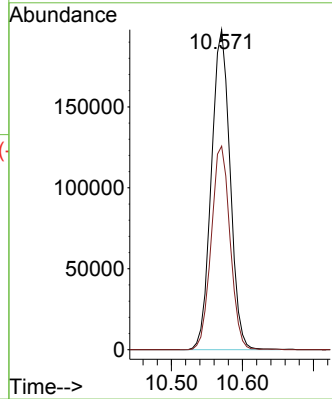


#50  
 Toluene-d8  
 Concen: 52.825 ug/l  
 RT: 10.571 min Scan# 1465  
 Delta R.T. 0.000 min  
 Lab File: VN082492.D  
 Acq: 07 Jun 2024 15:00

Instrument : MSVOA\_N  
 ClientSampleId :

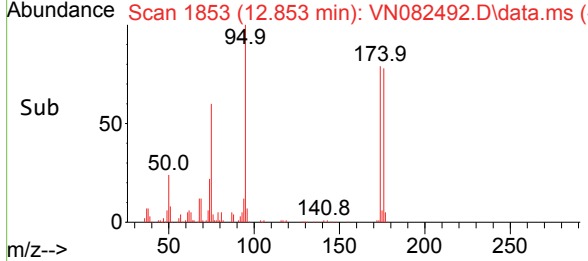
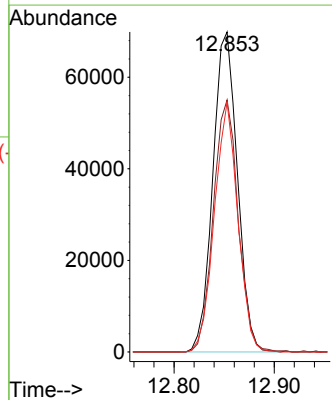
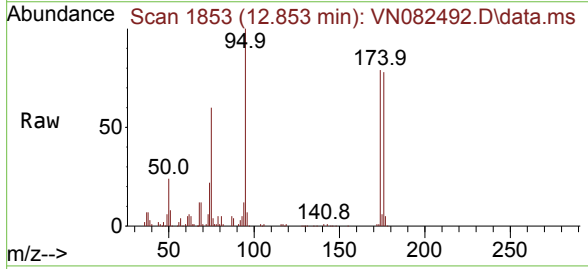


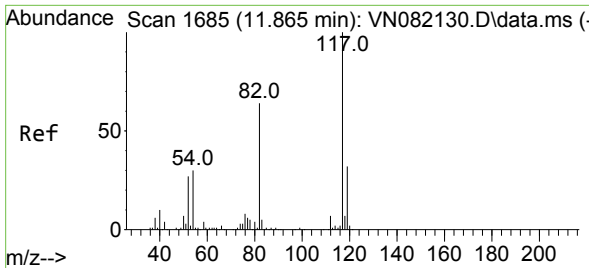
Tgt Ion: 98 Resp: 361444  
 Ion Ratio Lower Upper  
 98 100  
 100 64.0 51.8 77.6



#62  
 4-Bromofluorobenzene  
 Concen: 48.645 ug/l  
 RT: 12.853 min Scan# 1853  
 Delta R.T. 0.006 min  
 Lab File: VN082492.D  
 Acq: 07 Jun 2024 15:00

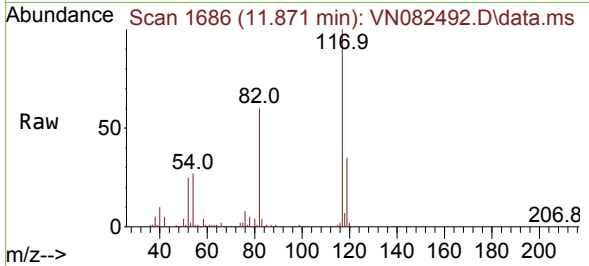
Tgt Ion: 95 Resp: 118801  
 Ion Ratio Lower Upper  
 95 100  
 174 79.7 0.0 160.6  
 176 74.6 0.0 152.8





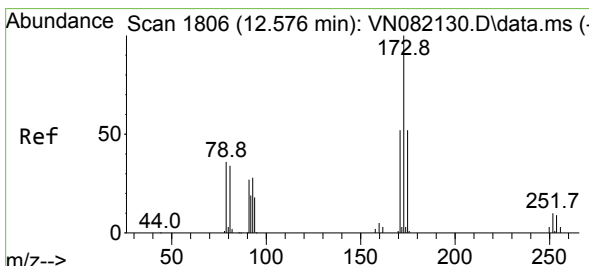
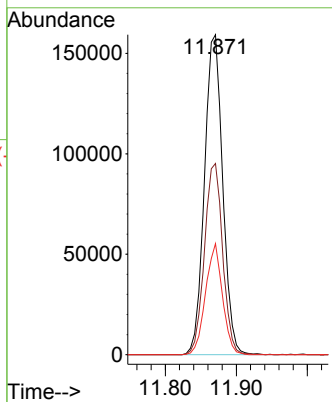
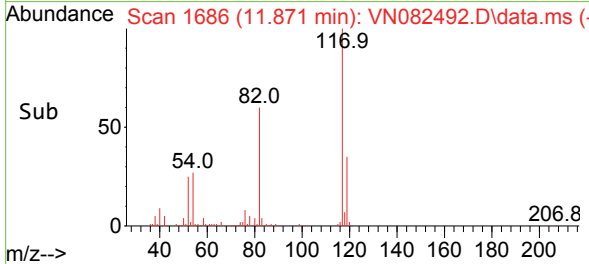
#63  
 Chlorobenzene-d5  
 Concen: 50.000 ug/l  
 RT: 11.871 min Scan# 1  
 Delta R.T. 0.006 min  
 Lab File: VN082492.D  
 Acq: 07 Jun 2024 15:00

Instrument :  
 MSVOA\_N  
 ClientSampleId :

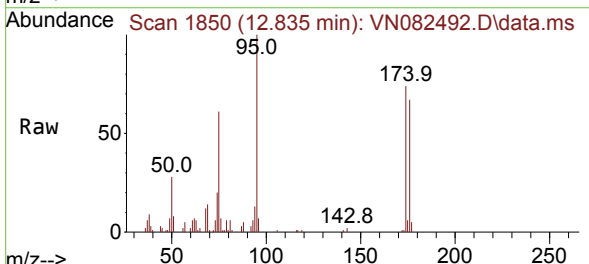


Tgt Ion:117 Resp: 284649

Ion	Ratio	Lower	Upper
117	100		
82	59.8	44.6	66.8
119	34.7	25.9	38.9

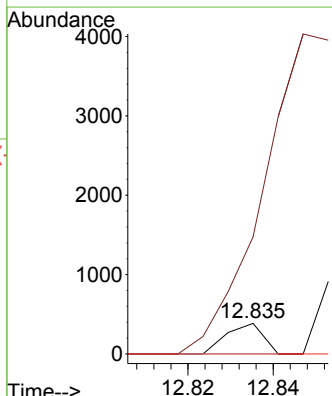
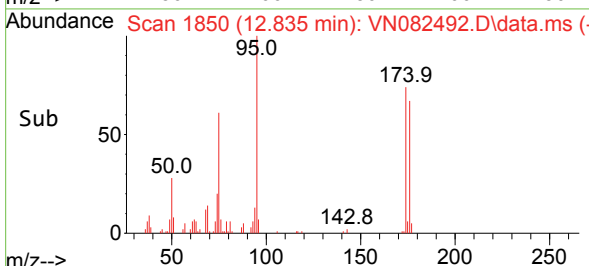


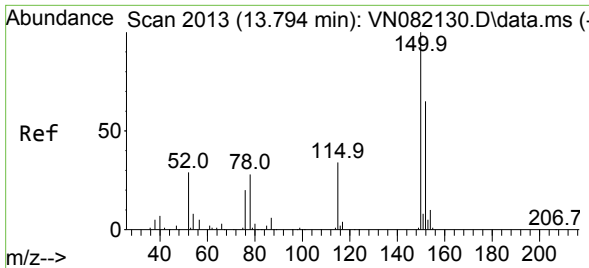
#71  
 Bromoform  
 Concen: 0.840 ug/l  
 RT: 12.835 min Scan# 1850  
 Delta R.T. 0.259 min  
 Lab File: VN082492.D  
 Acq: 07 Jun 2024 15:00



Tgt Ion:173 Resp: 232

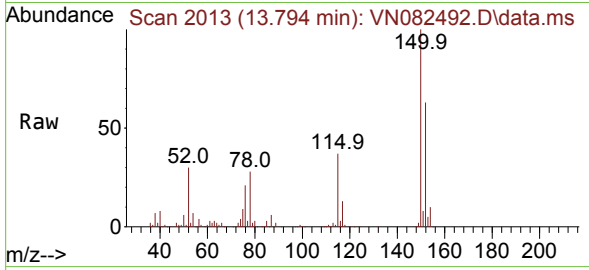
Ion	Ratio	Lower	Upper
173	100		
175	2046.6	24.6	74.0#
254	0.0	0.0	0.0



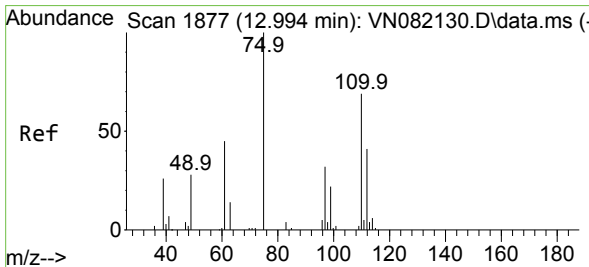
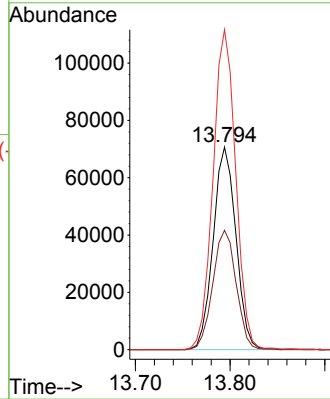
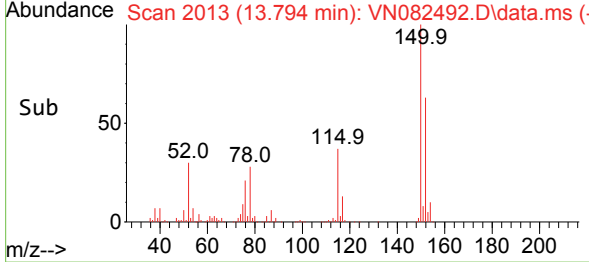


#72  
 1,4-Dichlorobenzene-d4  
 Concen: 50.000 ug/l  
 RT: 13.794 min Scan# 2013  
 Delta R.T. 0.000 min  
 Lab File: VN082492.D  
 Acq: 07 Jun 2024 15:00

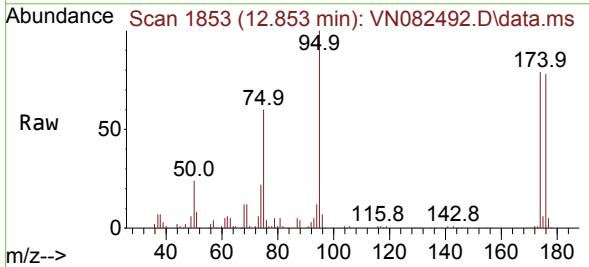
Instrument : MSVOA\_N  
 ClientSampleId :



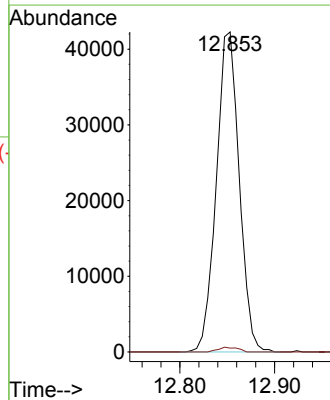
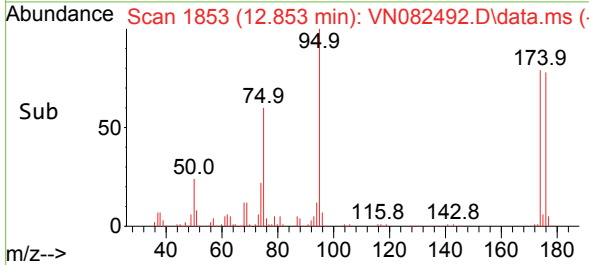
Tgt Ion:152 Resp: 118031  
 Ion Ratio Lower Upper  
 152 100  
 115 60.5 30.4 91.3  
 150 157.6 0.0 353.2

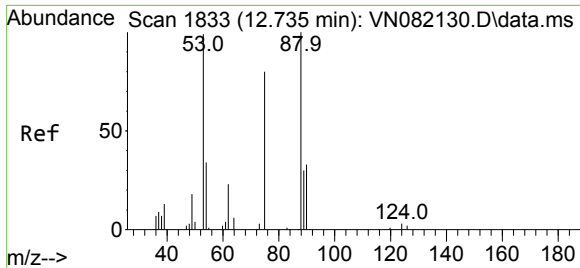


#76  
 1,2,3-Trichloropropane  
 Concen: 28.582 ug/l  
 RT: 12.853 min Scan# 1853  
 Delta R.T. -0.141 min  
 Lab File: VN082492.D  
 Acq: 07 Jun 2024 15:00



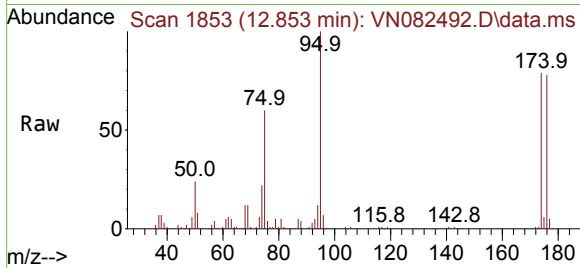
Tgt Ion: 75 Resp: 71005  
 Ion Ratio Lower Upper  
 75 100  
 77 1.3 90.5 271.3#





#81  
 trans-1,4-Dichloro-2-butene  
 Concen: 66.852 ug/l  
 RT: 12.853 min Scan# 11  
 Delta R.T. 0.118 min  
 Lab File: VN082492.D  
 Acq: 07 Jun 2024 15:00

Instrument :  
 MSVOA\_N  
 ClientSampleId :



Tgt Ion: 75 Resp: 71005

Ion	Ratio	Lower	Upper
75	100		
53	0.1	72.9	109.3#
89	0.0	39.1	58.7#

