

Data Path : Z:\VOASRV\HPCHEM1\MSVOA N\DATA\VN060819\
 Data File : VN056133.D
 Acq On : 8 Jun 2019 6:37
 Operator : JC/SP
 Sample : K3214-04
 Misc : 5.00mL/MSVOA N/WATER
 ALS Vial : 52 Sample Multiplier: 1

Instrument :
 MSVOA_N
 ClientSampled :
 MW-5A

Quant Time: Jun 10 01:21:07 2019
 Quant Method : Z:\VOASRV\HPCHEM1\MSVOA_N\METHODS\82N060419W.M
 Quant Title : SW846 8260
 QLast Update : Tue Jun 04 11:02:09 2019
 Response via : Initial Calibration

Internal Standards	R.T.	QIon	Response	Conc	Units	Dev(Min)
1) Pentafluorobenzene	7.66	168	319181	50.00	ug/l	0.00
34) 1,4-Difluorobenzene	8.58	114	475396	50.00	ug/l	0.00
63) Chlorobenzene-d5	11.41	117	438703	50.00	ug/l	0.00
72) 1,4-Dichlorobenzene-d4	13.34	152	126457	50.00	ug/l	0.00

System Monitoring Compounds

33) 1,2-Dichloroethane-d4	8.03	65	154447	48.73	ug/l	0.00
Spiked Amount	50.000		Recovery	=	97.46%	
35) Dibromofluoromethane	7.59	113	139301	47.76	ug/l	0.00
Spiked Amount	50.000		Recovery	=	95.52%	
50) Toluene-d8	10.09	98	570616	50.84	ug/l	0.00
Spiked Amount	50.000		Recovery	=	101.68%	
62) 4-Bromofluorobenzene	12.40	95	166490	43.62	ug/l	0.00
Spiked Amount	50.000		Recovery	=	87.24%	

Target Compounds

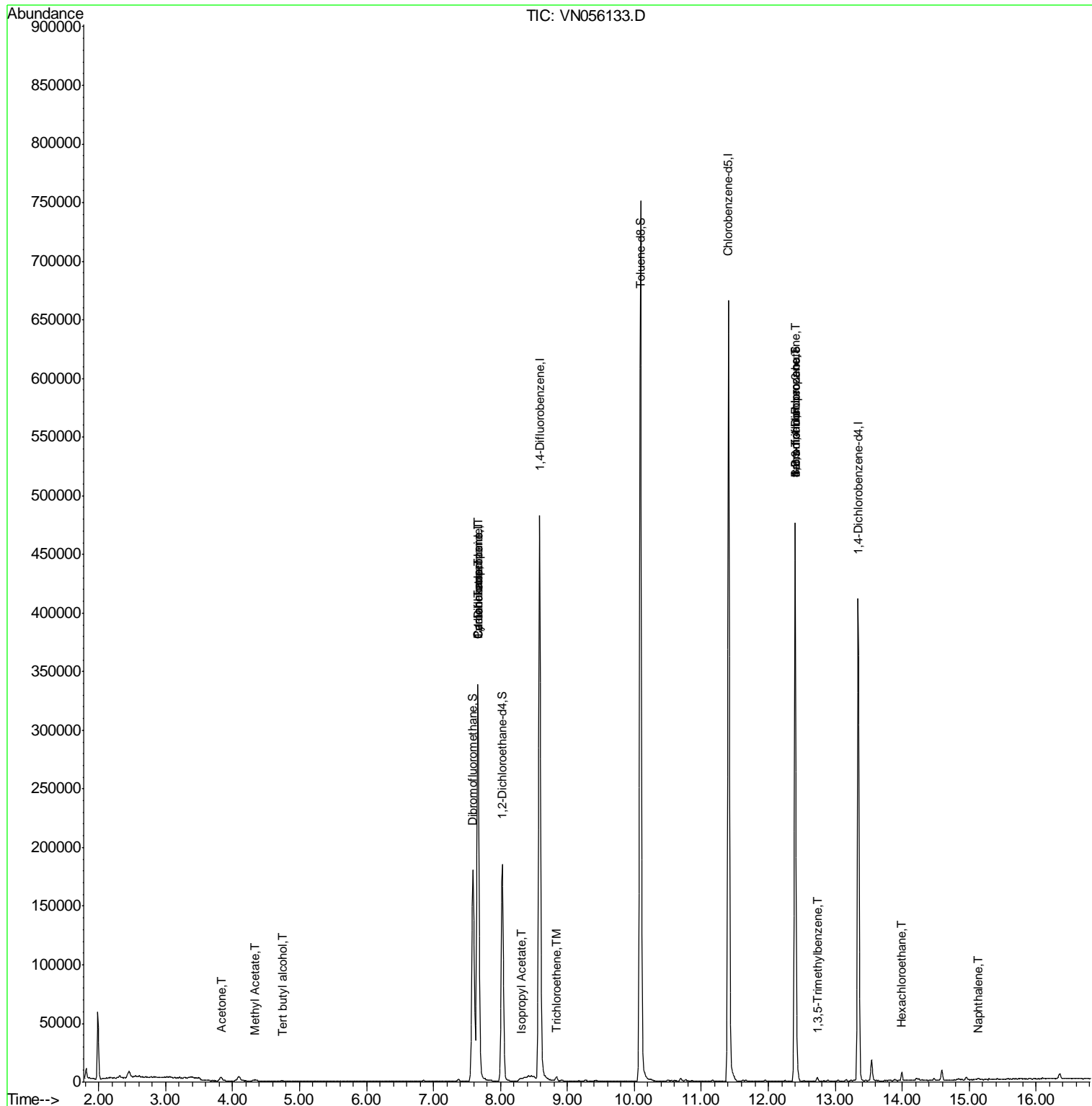
						Qvalue
11) Tert butyl alcohol	4.75	59	138	0.250	ug/l #	74
16) Acetone	3.83	43	6131	4.045	ug/l	96
18) Methyl Acetate	4.34	43	2583	0.293	ug/l #	69
31) Cyclohexane	7.66	56	4510	0.897	ug/l #	1
36) 1,1-Dichloropropene	7.66	75	18502	4.526	ug/l #	48
38) Carbon Tetrachloride	7.66	117	25397	6.739	ug/l #	14
43) Isopropyl Acetate	8.30	43	2072	0.352	ug/l #	53
44) Trichloroethene	8.83	130	1399	0.392	ug/l	97
71) Bromoform	12.40	173	1198	3.189	ug/l #	1
73) Isopropylbenzene	12.25	105	524	Below Cal	#	48
76) 1,2,3-Trichloropropane	12.40	75	76018	32.670	ug/l #	100
79) 2-Chlorotoluene	12.68	91	29	Below Cal	#	39
80) 1,3,5-Trimethylbenzene	12.73	105	2218	0.261	ug/l	91
81) trans-1,4-Dichloro-2-buten	12.40	75	76018	108.796	ug/l #	15
83) tert-Butylbenzene	13.23	119	582	Below Cal	#	28
90) Hexachloroethane	13.99	117	4526	3.539	ug/l #	1
95) Naphthalene	15.13	128	2088	4.170	ug/l #	75

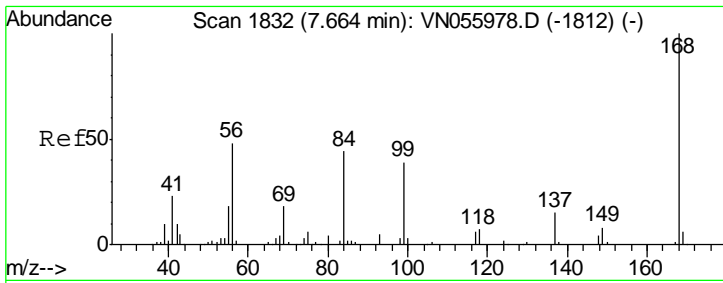
(#) = qualifier out of range (m) = manual integration (+) = signals summed

Data Path : Z:\VOASRV\HPCHEM1\MSVOA N\DATA\VN060819\
 Data File : VN056133.D
 Acq On : 8 Jun 2019 6:37
 Operator : JC/SP
 Sample : K3214-04
 Misc : 5.00mL/MSVOA N/WATER
 ALS Vial : 52 Sample Multiplier: 1

Instrument :
 MSVOA_N
 Client Sampled :
 MW-5A

Quant Time: Jun 10 01:21:07 2019
 Quant Method : Z:\VOASRV\HPCHEM1\MSVOA_N\METHODS\82N060419W.M
 Quant Title : SW846 8260
 QLast Update : Tue Jun 04 11:02:09 2019
 Response via : Initial Calibration

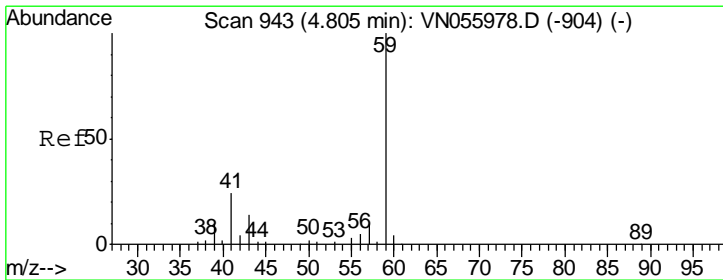
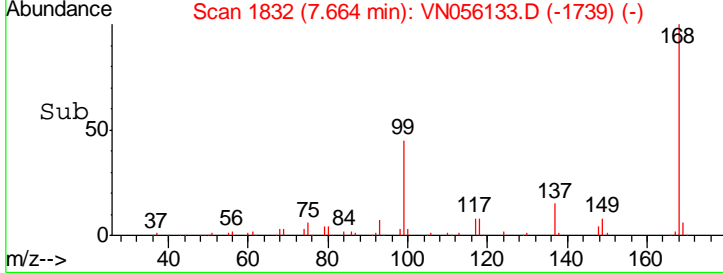
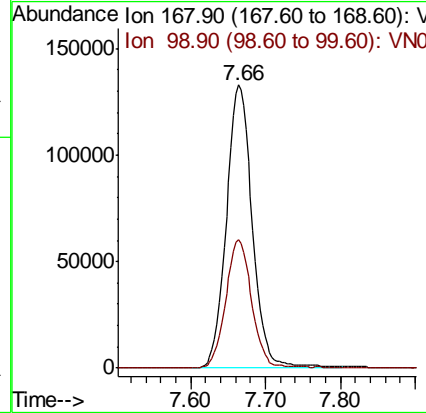
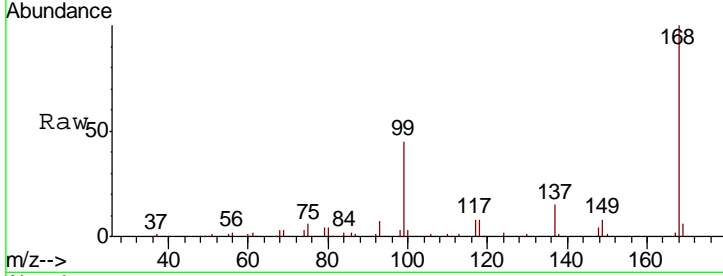




#1
 Pentafluorobenzene
 Concen: 50.000 ug/l
 RT: 7.66 min Scan# 1832
 Delta R.T. 0.00 min
 Lab File: VN056133.D
 Acq: 8 Jun 2019 6:37

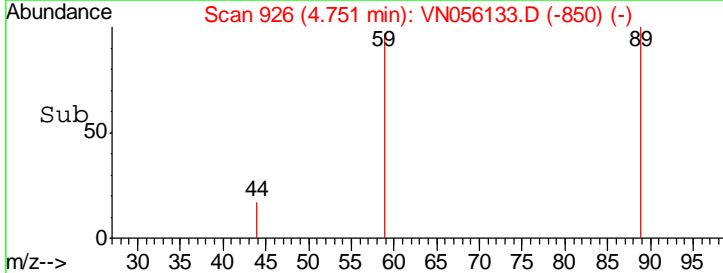
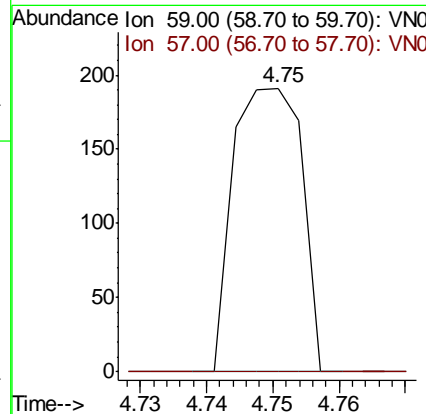
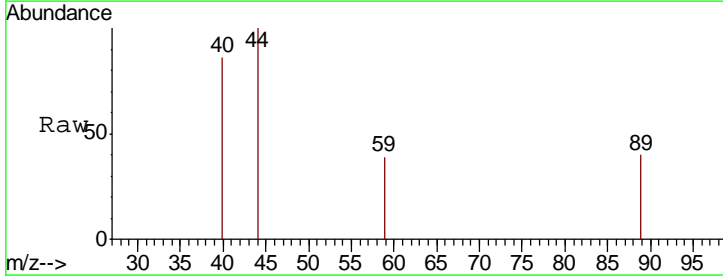
Instrument :
 MSVOA_N
 ClientSampled :
 MW-5A

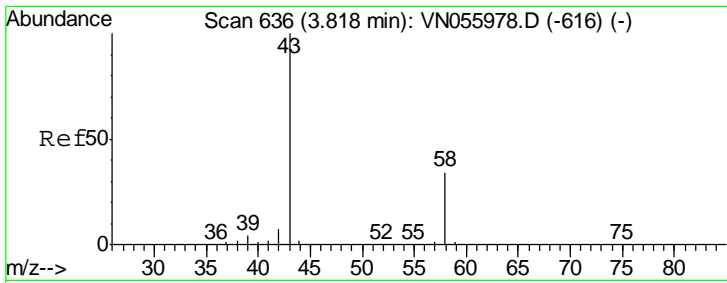
Tgt Ion	Resp	Lower	Upper
168	100		
99	45.4	37.2	55.8



#11
 Tert butyl alcohol
 Concen: 0.250 ug/l
 RT: 4.75 min Scan# 926
 Delta R.T. -0.05 min
 Lab File: VN056133.D
 Acq: 8 Jun 2019 6:37

Tgt Ion	Resp	Lower	Upper
59	100		
57	0.0	7.8	11.6#

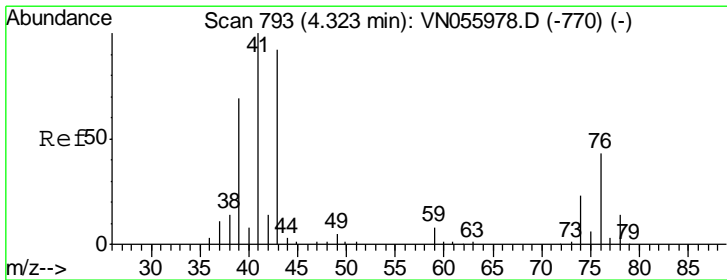
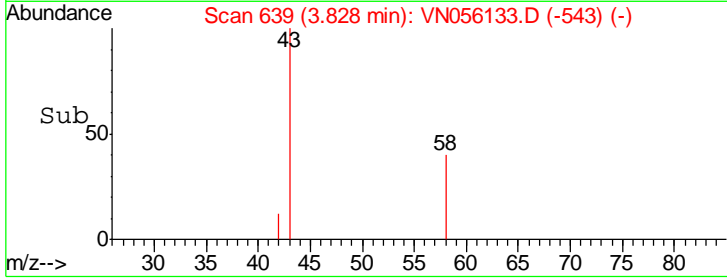
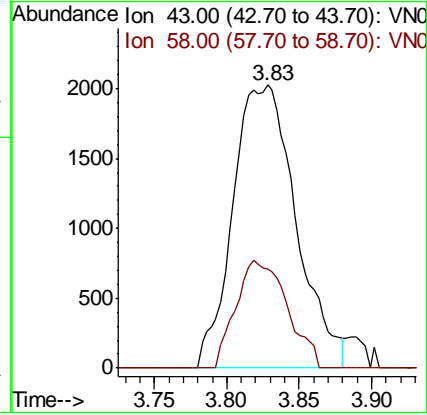
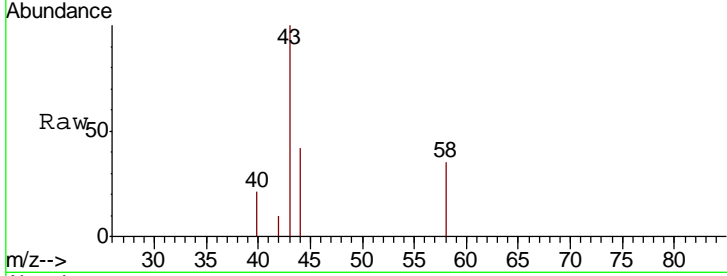




#16
 Acetone
 Concen: 4.045 ug/l
 RT: 3.83 min Scan# 639
 Delta R.T. 0.01 min
 Lab File: VN056133.D
 Acq: 8 Jun 2019 6:37

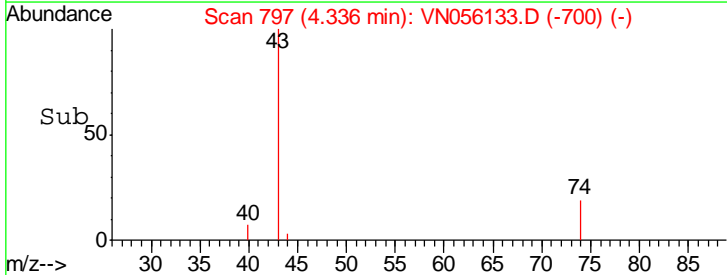
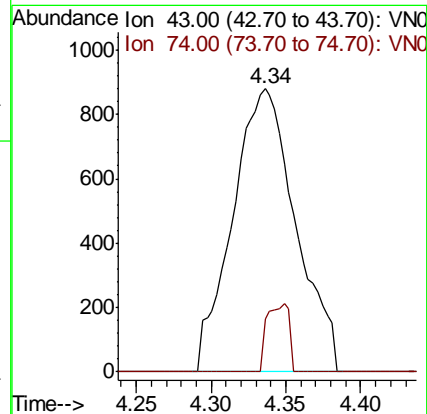
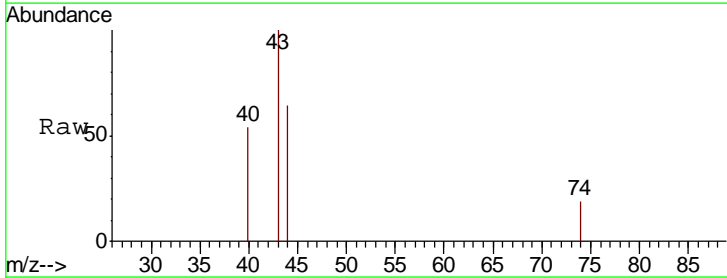
Instrument :
 MSVOA_N
 ClientSampled :
 MW-5A

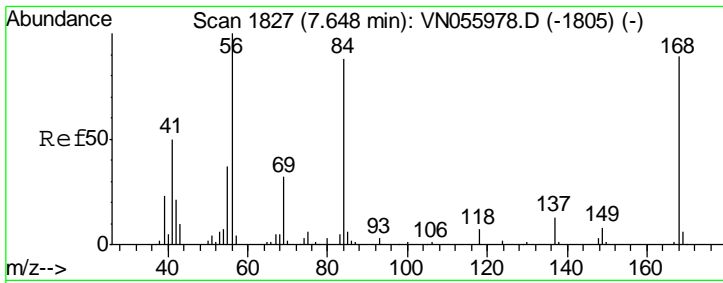
Tgt Ion: 43 Resp: 6131
 Ion Ratio Lower Upper
 43 100
 58 35.2 26.6 39.8



#18
 Methyl Acetate
 Concen: 0.293 ug/l
 RT: 4.34 min Scan# 797
 Delta R.T. 0.01 min
 Lab File: VN056133.D
 Acq: 8 Jun 2019 6:37

Tgt Ion: 43 Resp: 2583
 Ion Ratio Lower Upper
 43 100
 74 8.6 19.3 28.9#

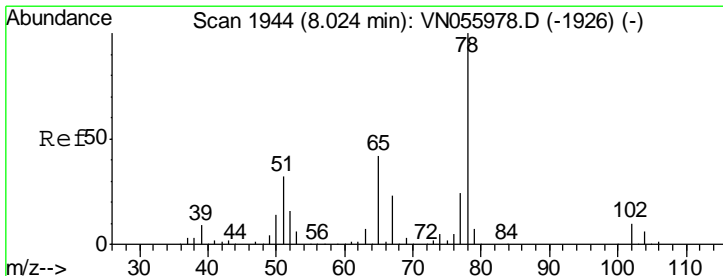
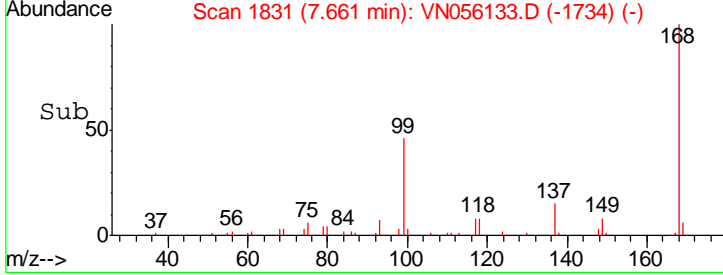
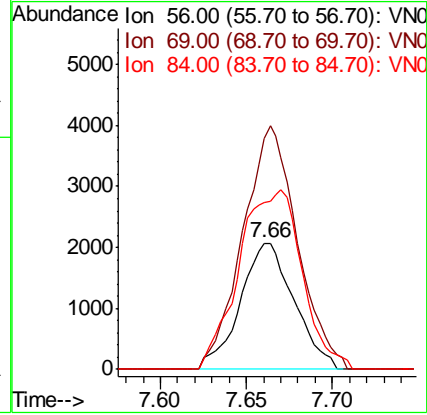
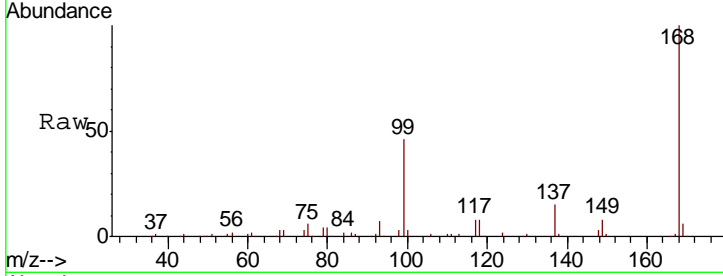




#31
 Cyclohexane
 Concen: 0.897 ug/l
 RT: 7.66 min Scan# 1831
 Delta R.T. 0.01 min
 Lab File: VN056133.D
 Acq: 8 Jun 2019 6:37

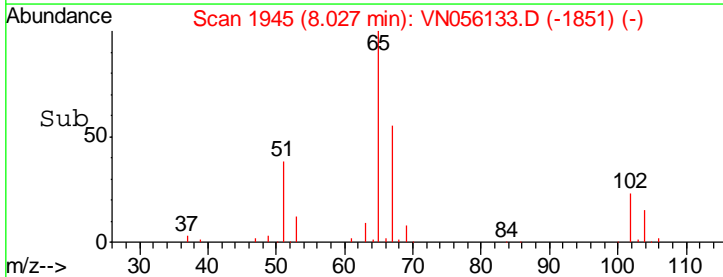
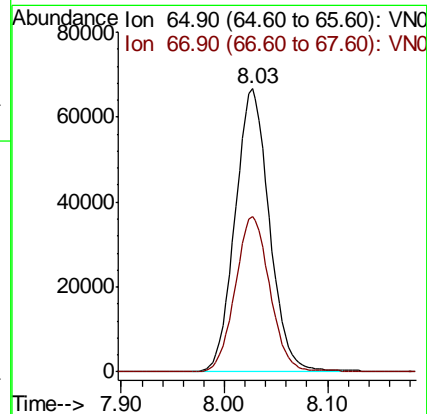
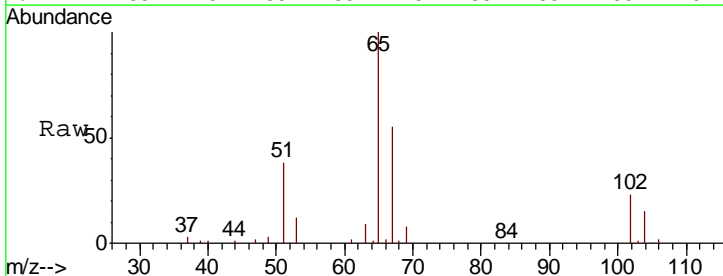
Instrument :
 MSVOA_N
 ClientSampled :
 MW-5A

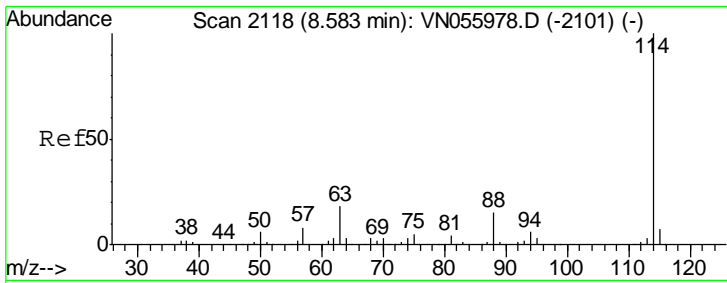
Tgt Ion	Resp	Lower	Upper
56	100		
69	183.1	25.6	38.4#
84	132.1	67.4	101.0#



#33
 1,2-Dichloroethane-d4
 Concen: 48.734 ug/l
 RT: 8.03 min Scan# 1945
 Delta R.T. 0.00 min
 Lab File: VN056133.D
 Acq: 8 Jun 2019 6:37

Tgt Ion	Resp	Lower	Upper
65	100		
67	55.5	0.0	109.2

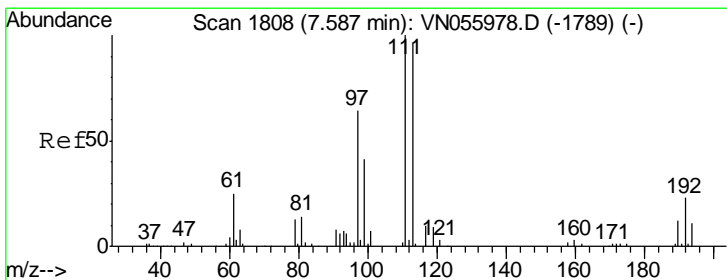
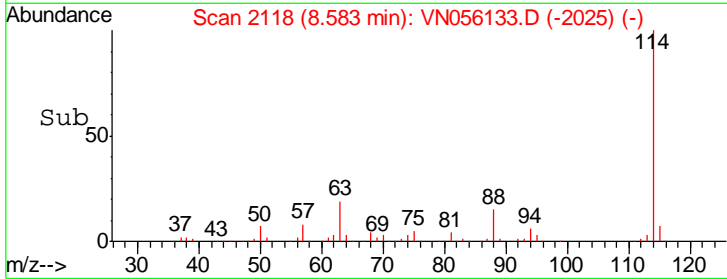
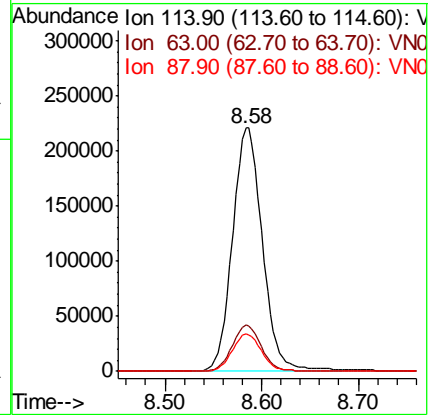
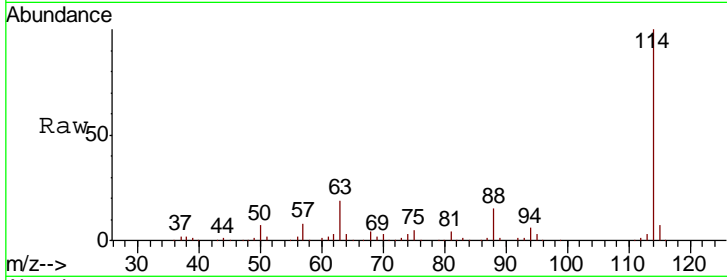




#34
 1,4-Difluorobenzene
 Concen: 50.000 ug/l
 RT: 8.58 min Scan# 2118
 Delta R.T. 0.00 min
 Lab File: VN056133.D
 Acq: 8 Jun 2019 6:37

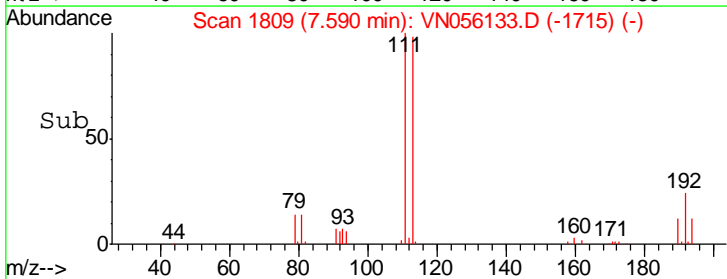
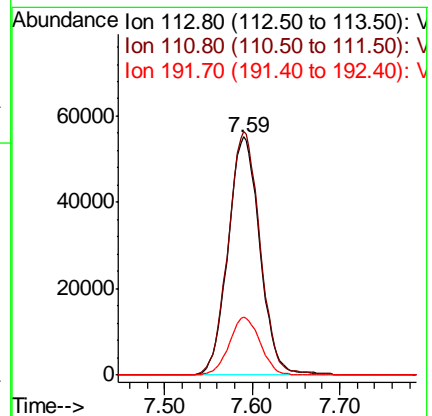
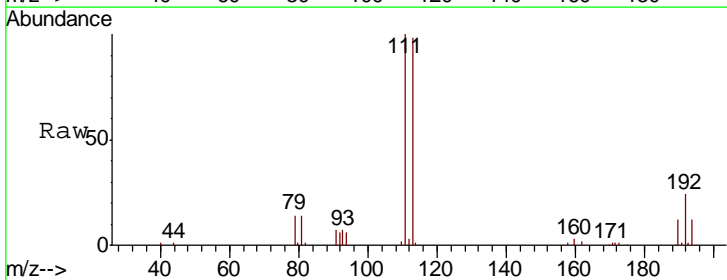
Instrument :
 MSVOA_N
 ClientSampleId :
 MW-5A

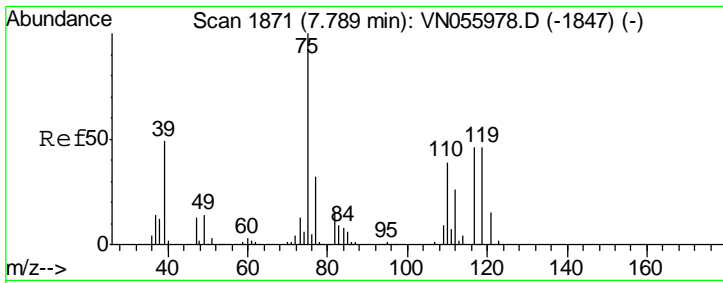
Tgt Ion	Resp	Lower	Upper
114	475396		
63	18.9	0.0	39.2
88	15.2	0.0	31.0



#35
 Dibromofluoromethane
 Concen: 47.760 ug/l
 RT: 7.59 min Scan# 1809
 Delta R.T. 0.00 min
 Lab File: VN056133.D
 Acq: 8 Jun 2019 6:37

Tgt Ion	Resp	Lower	Upper
113	139301		
111	102.4	81.9	122.9
192	23.6	19.5	29.3

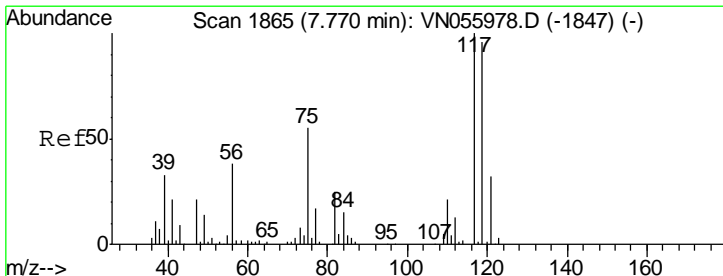
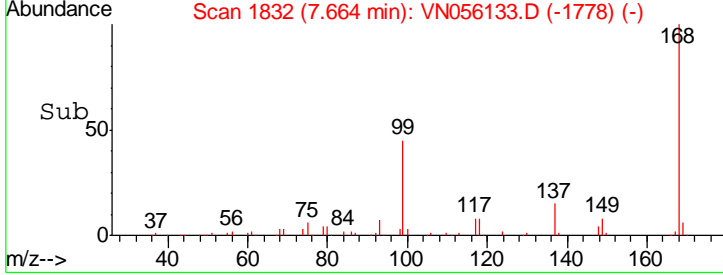
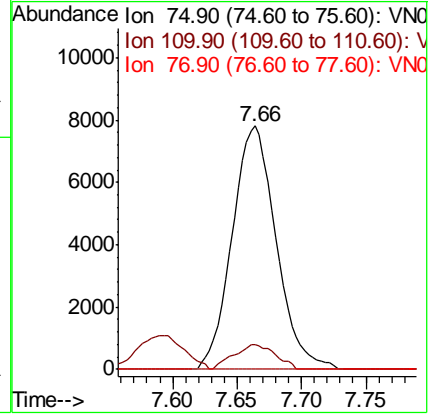
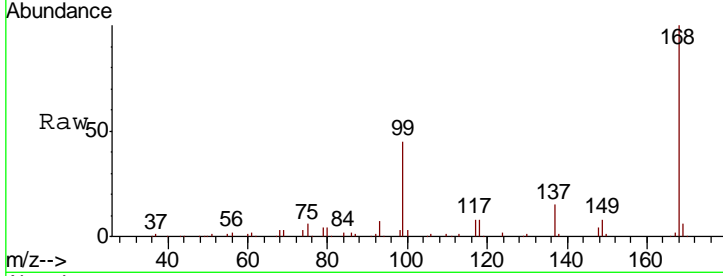




#36
 1,1-Dichloropropene
 Concen: 4.526 ug/l
 RT: 7.66 min Scan# 1832
 Delta R.T. -0.13 min
 Lab File: VN056133.D
 Acq: 8 Jun 2019 6:37

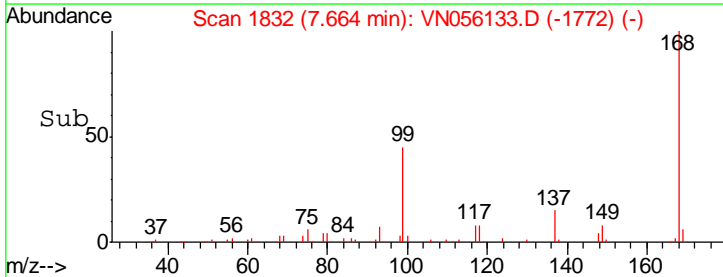
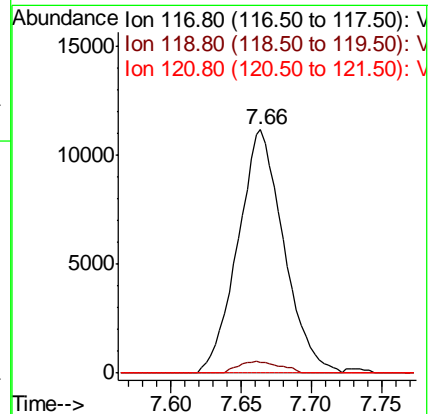
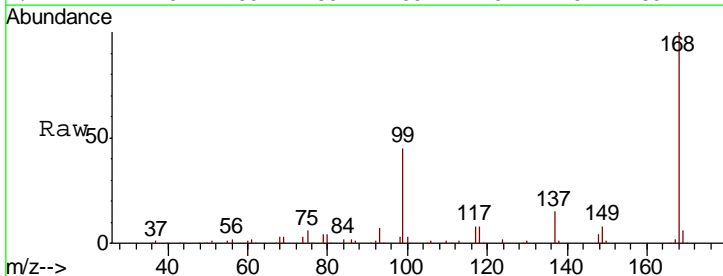
Instrument :
 MSVOA_N
 ClientSampled :
 MW-5A

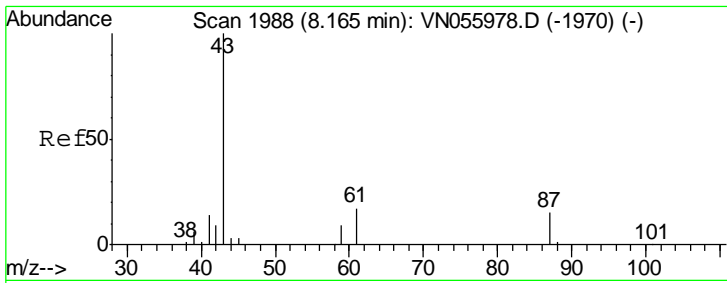
Tgt Ion	Resp	Lower	Upper
75	18502		
110	9.6	19.0	57.0#
77	0.0	25.1	37.7#



#38
 Carbon Tetrachloride
 Concen: 6.739 ug/l
 RT: 7.66 min Scan# 1832
 Delta R.T. -0.11 min
 Lab File: VN056133.D
 Acq: 8 Jun 2019 6:37

Tgt Ion	Resp	Lower	Upper
117	25397		
119	4.6	79.0	118.6#
121	0.0	24.7	37.1#

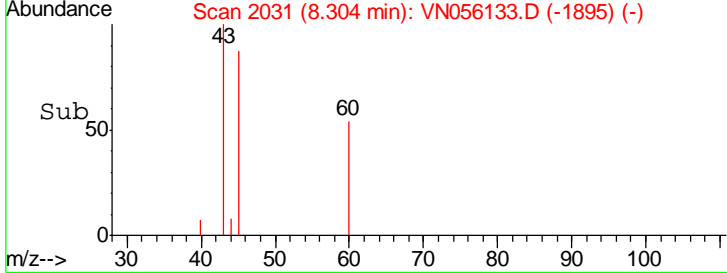
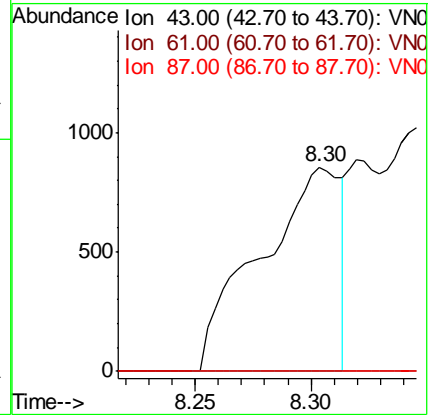
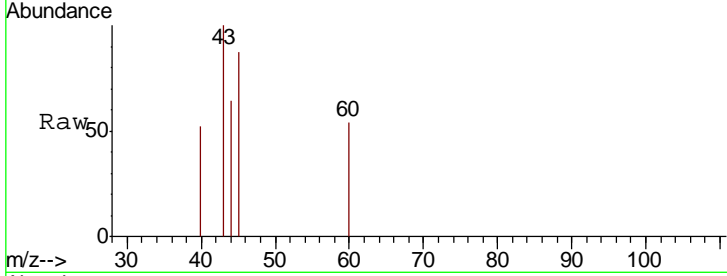




#43
 Isopropyl Acetate
 Concen: 0.352 ug/l
 RT: 8.30 min Scan# 2031
 Delta R.T. 0.14 min
 Lab File: VN056133.D
 Acq: 8 Jun 2019 6:37

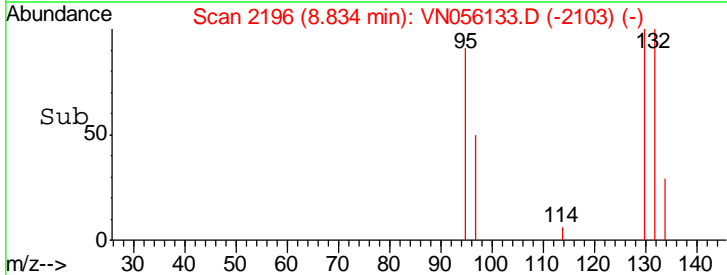
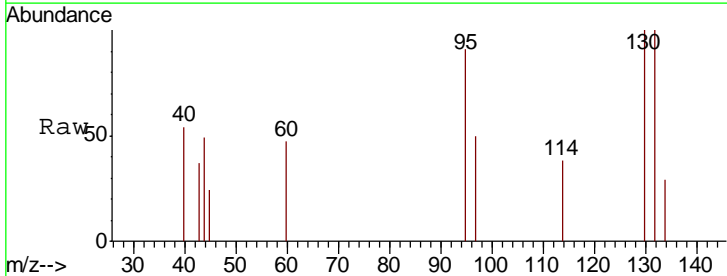
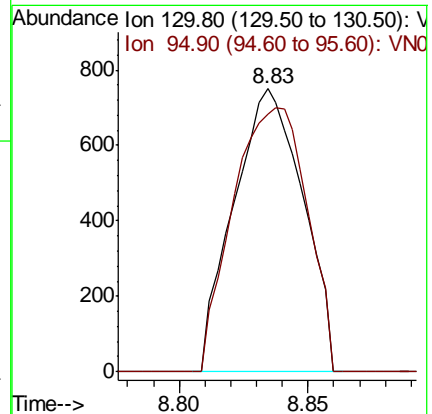
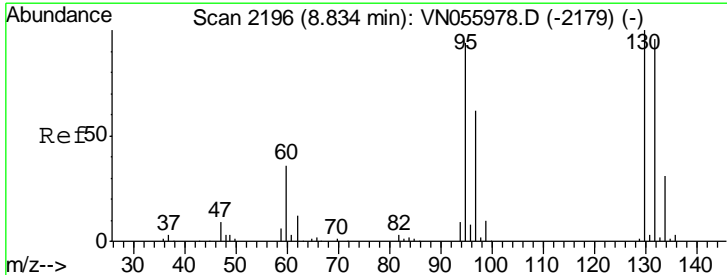
Instrument :
 MSVOA_N
 ClientSampled :
 MW-5A

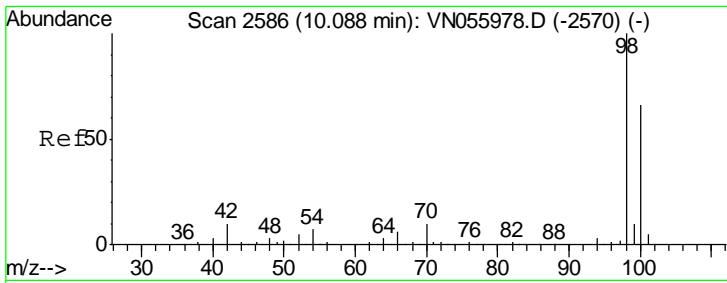
Tgt Ion	Resp	Lower	Upper
43	100		
61	0.0	22.2	33.4#
87	0.0	11.4	17.2#



#44
 Trichloroethene
 Concen: 0.392 ug/l
 RT: 8.83 min Scan# 2196
 Delta R.T. 0.00 min
 Lab File: VN056133.D
 Acq: 8 Jun 2019 6:37

Tgt Ion	Resp	Lower	Upper
130	100		
95	91.1	0.0	188.0

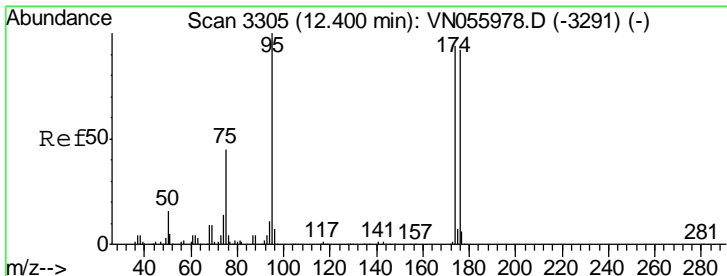
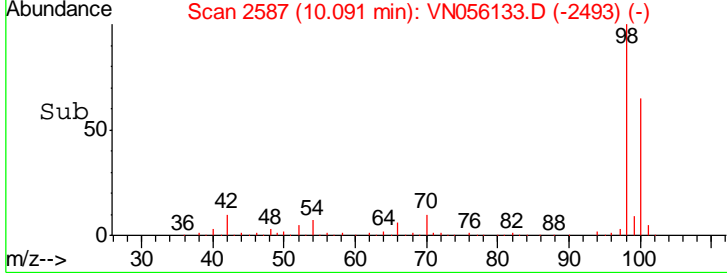
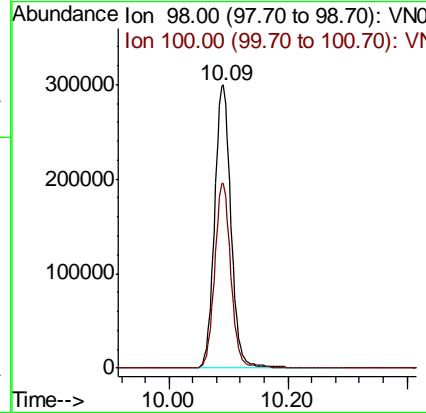
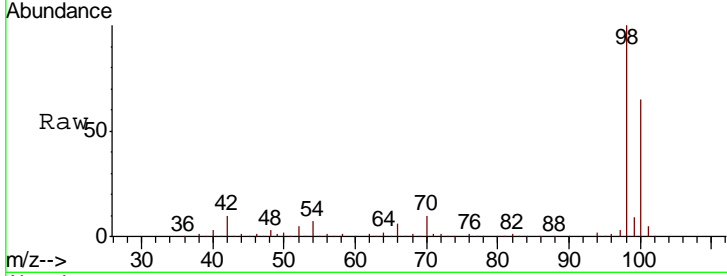




#50
 Toluene-d8
 Concen: 50.841 ug/l
 RT: 10.09 min Scan# 2587
 Delta R.T. 0.00 min
 Lab File: VN056133.D
 Acq: 8 Jun 2019 6:37

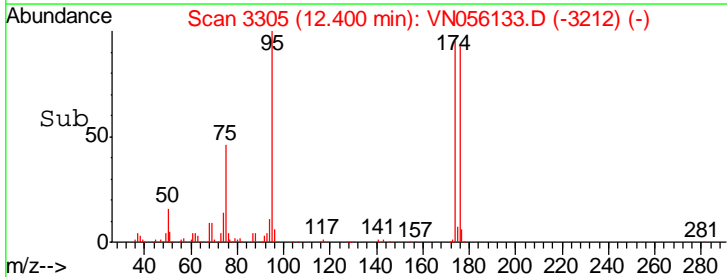
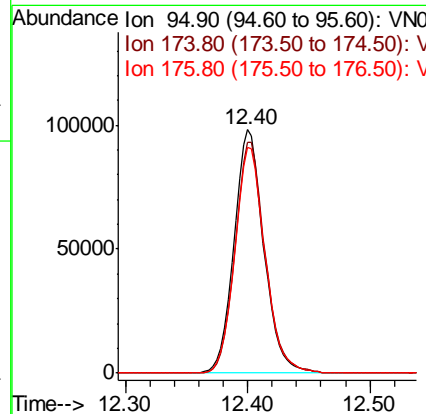
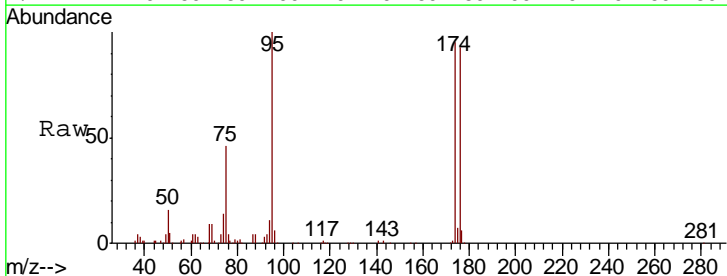
Instrument :
 MSVOA_N
 ClientSampled :
 MW-5A

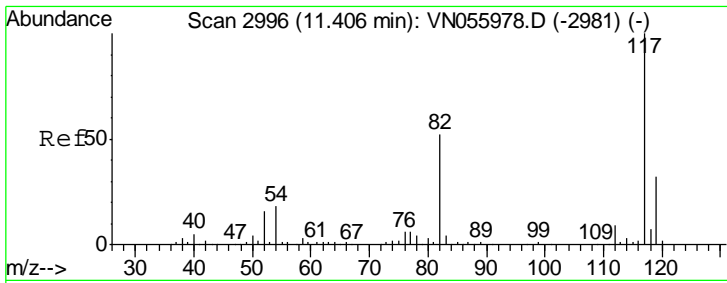
Tgt Ion: 98 Resp: 570616
 Ion Ratio Lower Upper
 98 100
 100 64.1 51.9 77.9



#62
 4-Bromofluorobenzene
 Concen: 43.620 ug/l
 RT: 12.40 min Scan# 3305
 Delta R.T. 0.00 min
 Lab File: VN056133.D
 Acq: 8 Jun 2019 6:37

Tgt Ion: 95 Resp: 166490
 Ion Ratio Lower Upper
 95 100
 174 96.3 0.0 191.0
 176 93.9 0.0 185.2

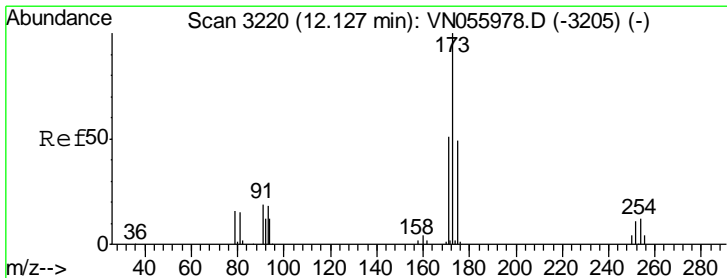
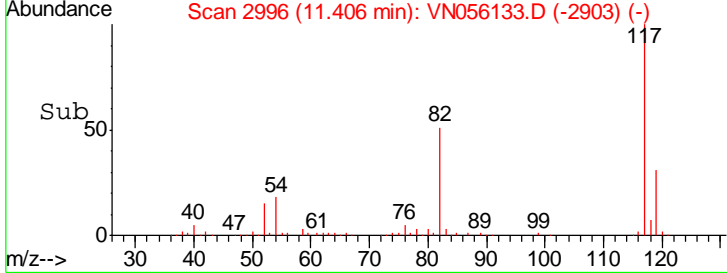
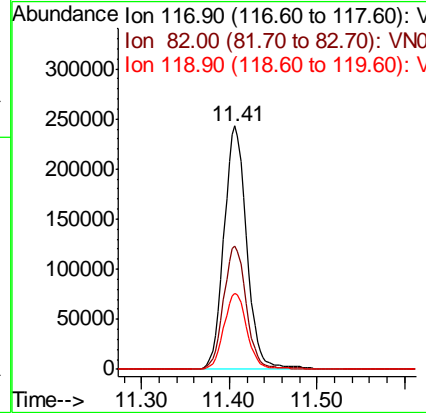
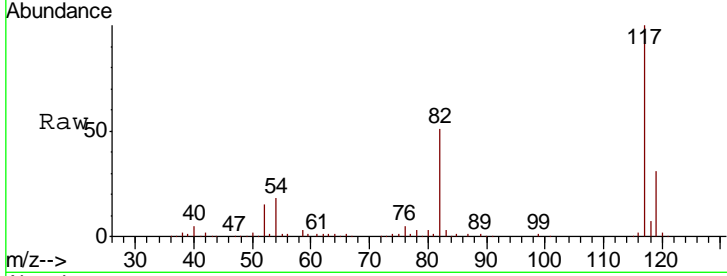




#63
 Chlorobenzene-d5
 Concen: 50.000 ug/l
 RT: 11.41 min Scan# 2996
 Delta R.T. 0.00 min
 Lab File: VN056133.D
 Acq: 8 Jun 2019 6:37

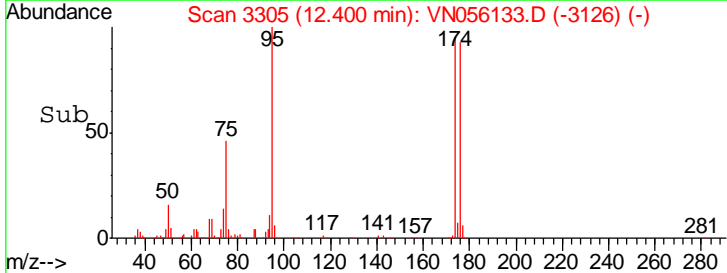
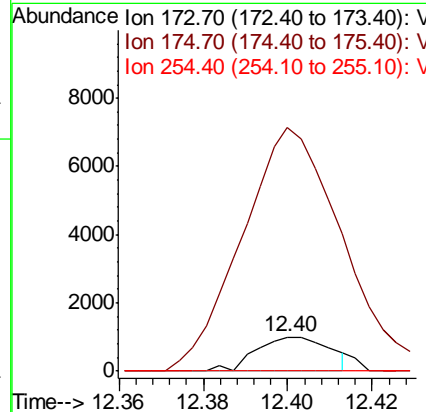
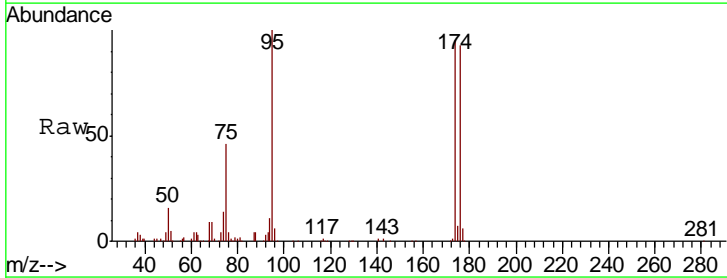
Instrument :
 MSVOA_N
 ClientSampled :
 MW-5A

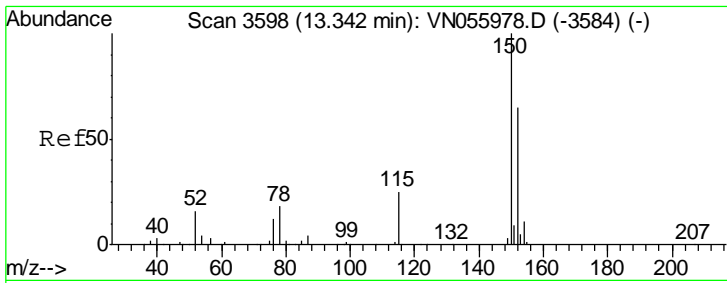
Tgt Ion	Resp	Lower	Upper
117	438703		
82	50.7	41.8	62.8
119	31.4	25.4	38.0



#71
 Bromoform
 Concen: 3.189 ug/l
 RT: 12.40 min Scan# 3305
 Delta R.T. 0.27 min
 Lab File: VN056133.D
 Acq: 8 Jun 2019 6:37

Tgt Ion	Resp	Lower	Upper
173	1198		
175	856.7	24.3	72.8#
254	0.0	0.0	0.0

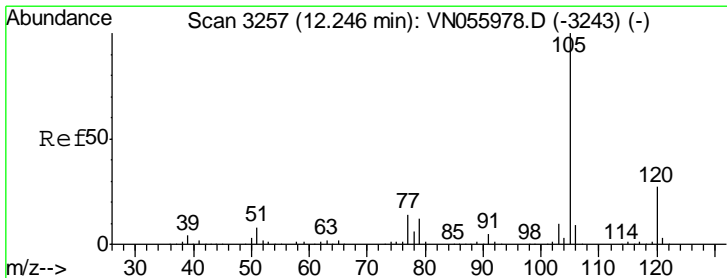
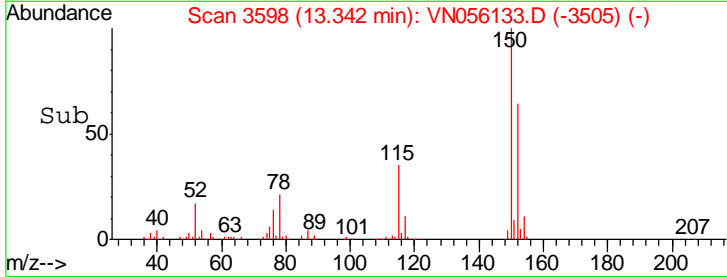
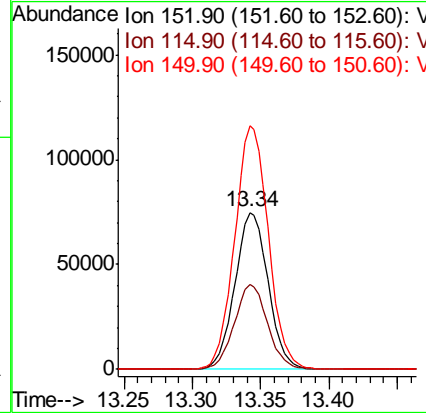
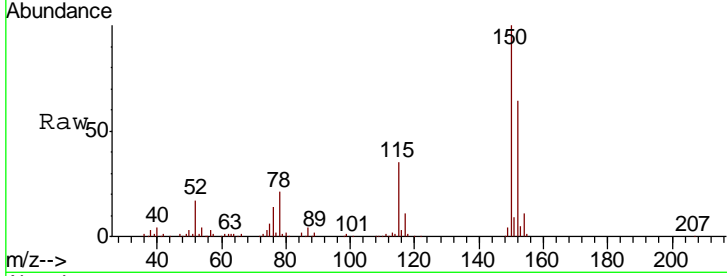




#72
 1,4-Dichlorobenzene-d4
 Concen: 50.000 ug/l
 RT: 13.34 min Scan# 3598
 Delta R.T. 0.00 min
 Lab File: VN056133.D
 Acq: 8 Jun 2019 6:37

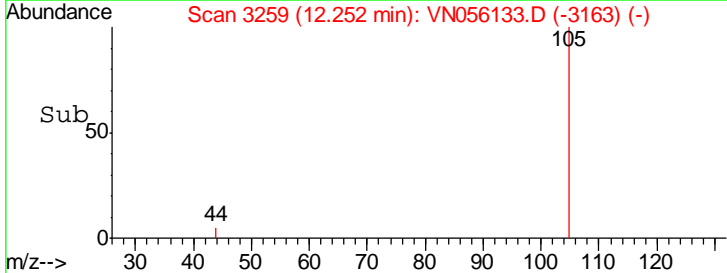
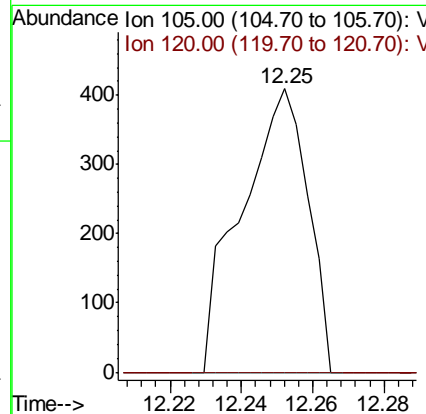
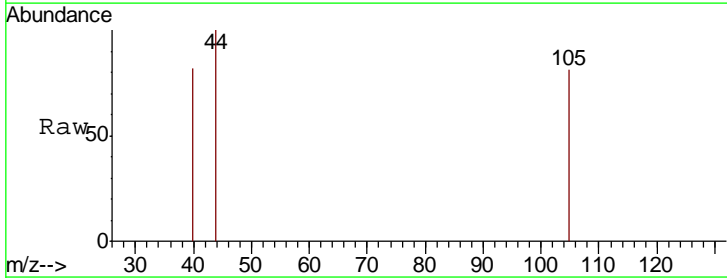
Instrument :
 MSVOA_N
 ClientSampled :
 MW-5A

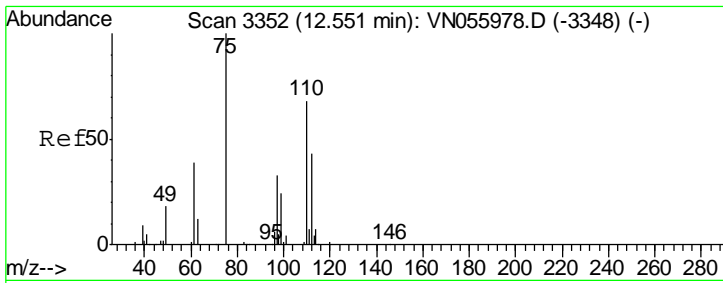
Tgt Ion	Resp	Lower	Upper
152	100		
115	54.0	27.0	81.0
150	156.9	0.0	343.2



#73
 Isopropylbenzene
 Concen: Below Cal
 RT: 12.25 min Scan# 3259
 Delta R.T. 0.01 min
 Lab File: VN056133.D
 Acq: 8 Jun 2019 6:37

Tgt Ion	Resp	Lower	Upper
105	100		
120	0.0	13.6	40.7#

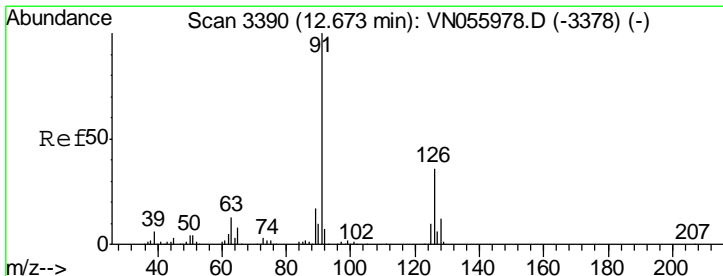
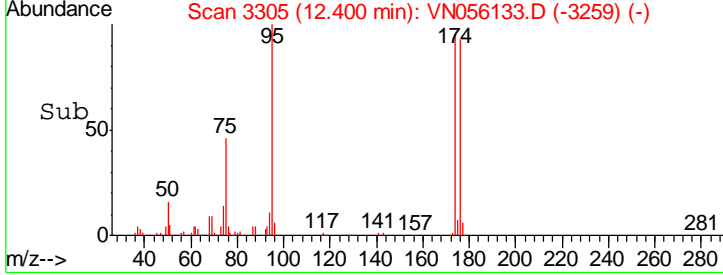
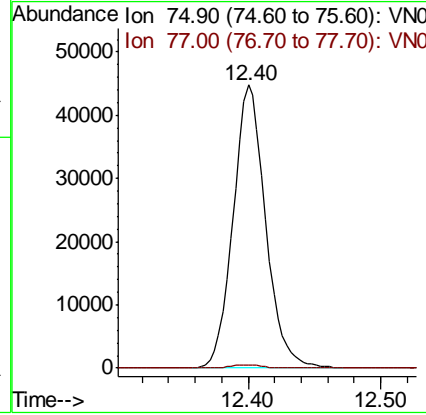
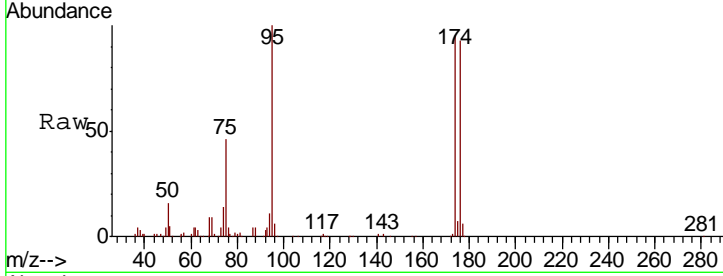




#76
 1,2,3-Trichloropropane
 Concen: 32.670 ug/l
 RT: 12.40 min Scan# 3305
 Delta R.T. -0.15 min
 Lab File: VN056133.D
 Acq: 8 Jun 2019 6:37

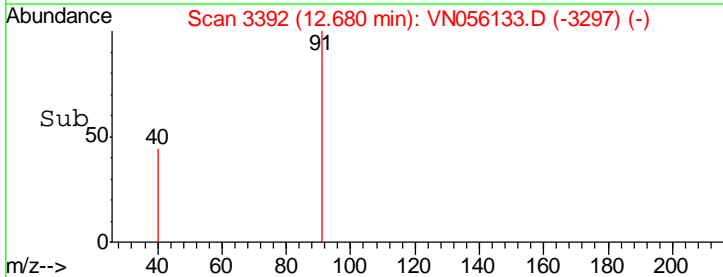
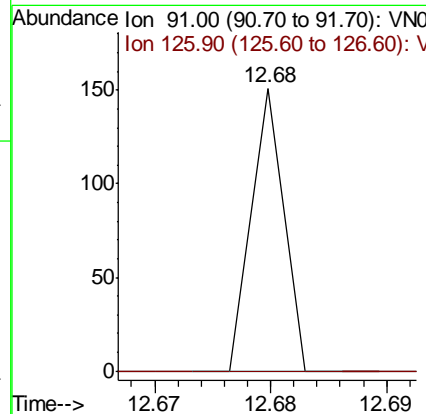
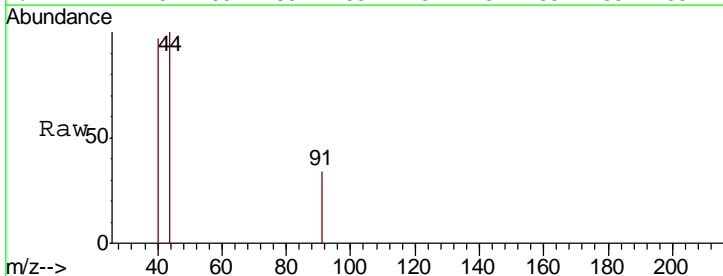
Instrument :
 MSVOA_N
 ClientSampled :
 MW-5A

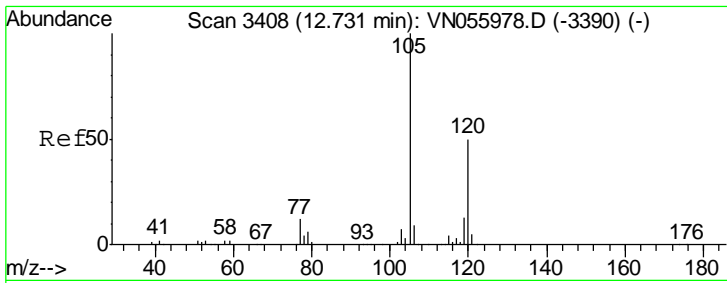
Tgt Ion: 75 Resp: 76018
 Ion Ratio Lower Upper
 75 100
 77 1.1 0.0 0.0#



#79
 2-Chlorotoluene
 Concen: Below Cal
 RT: 12.68 min Scan# 3392
 Delta R.T. 0.01 min
 Lab File: VN056133.D
 Acq: 8 Jun 2019 6:37

Tgt Ion: 91 Resp: 29
 Ion Ratio Lower Upper
 91 100
 126 0.0 18.1 54.4#

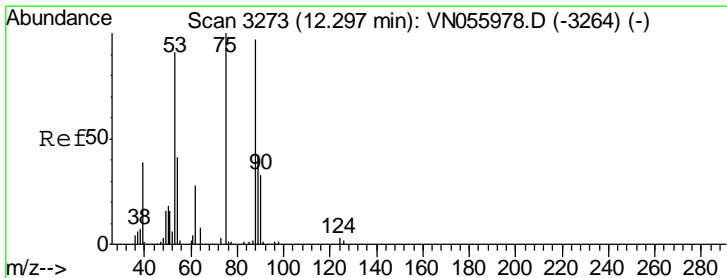
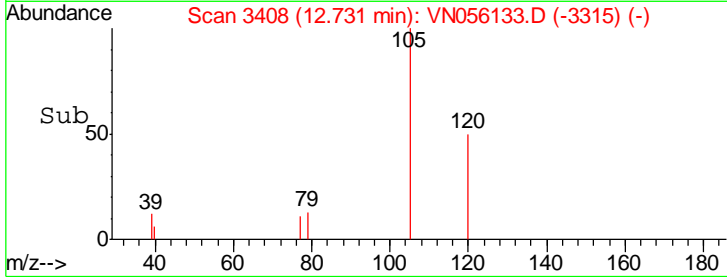
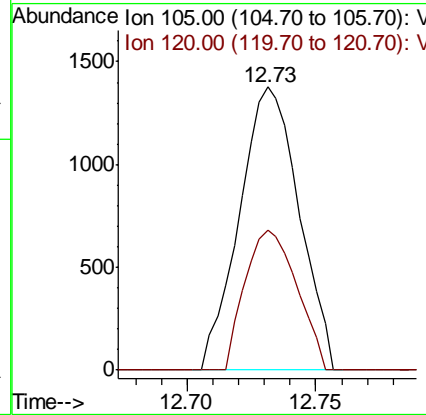
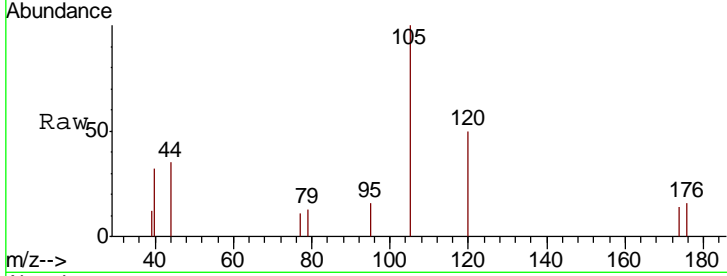




#80
 1,3,5-Trimethylbenzene
 Concen: 0.261 ug/l
 RT: 12.73 min Scan# 3408
 Delta R.T. 0.00 min
 Lab File: VN056133.D
 Acq: 8 Jun 2019 6:37

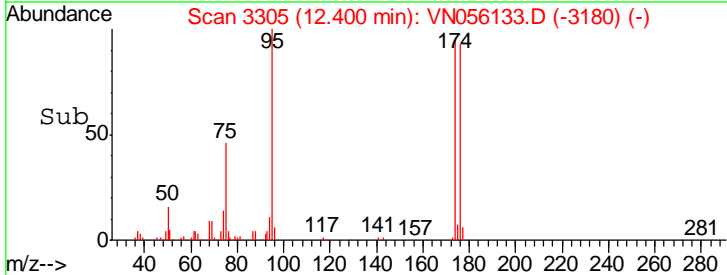
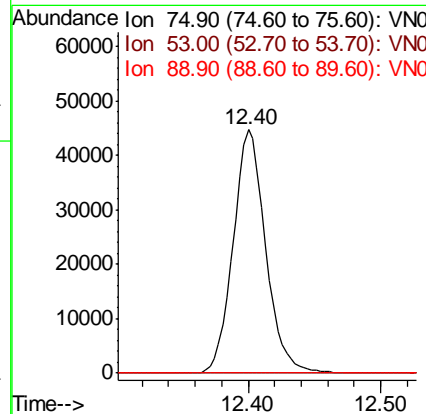
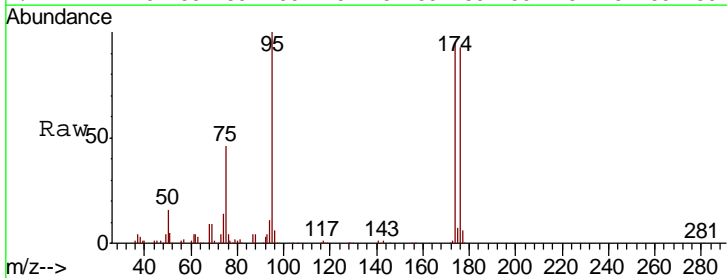
Instrument : MSVOA_N
 ClientSampled : MW-5A

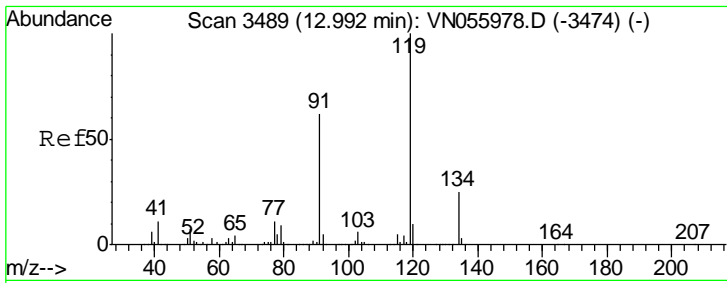
Tgt Ion	Resp	Lower	Upper
105	100		
120	43.0	24.7	74.1



#81
 trans-1,4-Dichloro-2-butene
 Concen: 108.796 ug/l
 RT: 12.40 min Scan# 3305
 Delta R.T. 0.10 min
 Lab File: VN056133.D
 Acq: 8 Jun 2019 6:37

Tgt Ion	Resp	Lower	Upper
75	100		
53	0.0	68.1	102.1#
89	0.0	36.9	55.3#

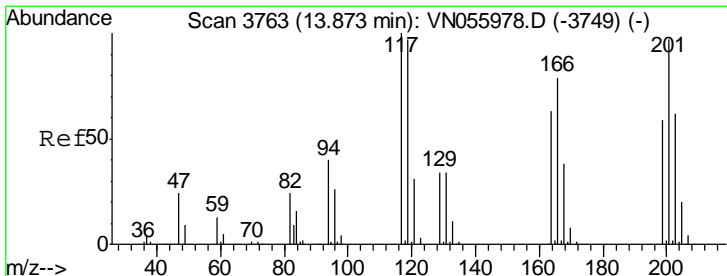
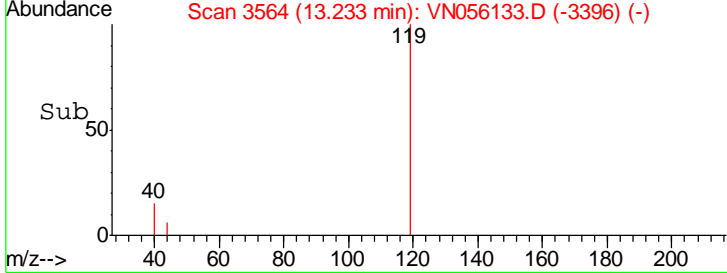
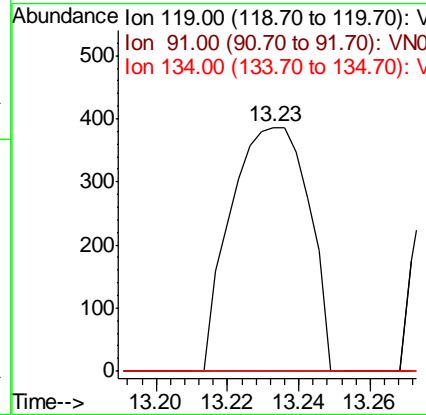
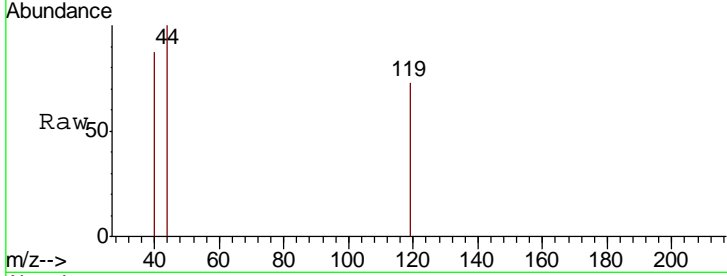




#83
 tert-Butylbenzene
 Concen: Below Cal
 RT: 13.23 min Scan# 3564
 Delta R.T. 0.24 min
 Lab File: VN056133.D
 Acq: 8 Jun 2019 6:37

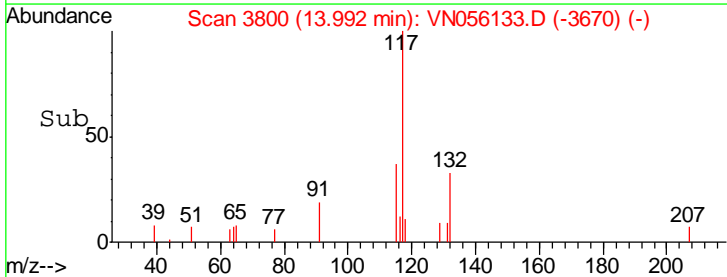
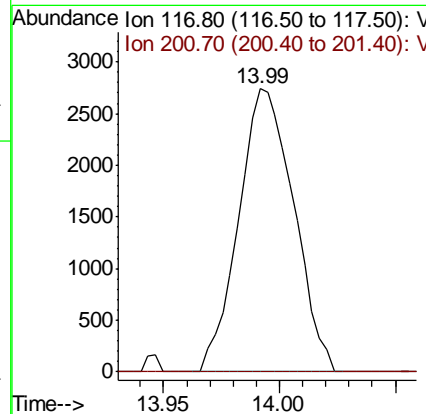
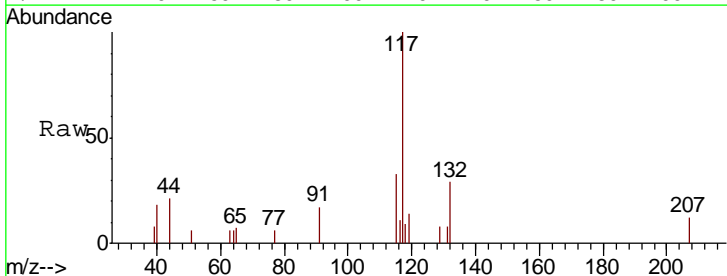
Instrument :
 MSVOA_N
 ClientSampled :
 MW-5A

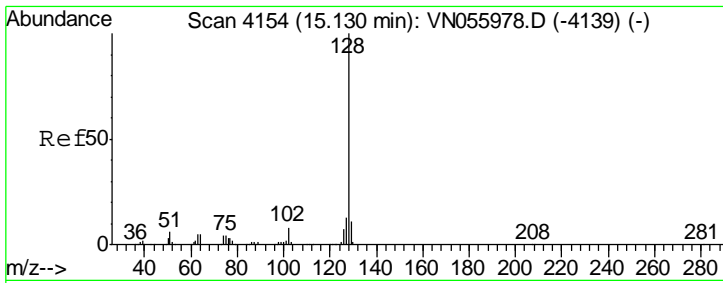
Tgt Ion	Resp	Lower	Upper
119	582		
91	0.0	30.9	92.8#
134	0.0	13.3	39.8#



#90
 Hexachloroethane
 Concen: 3.539 ug/l
 RT: 13.99 min Scan# 3800
 Delta R.T. 0.12 min
 Lab File: VN056133.D
 Acq: 8 Jun 2019 6:37

Tgt Ion	Resp	Lower	Upper
117	4526		
201	0.0	50.0	150.0#





#95
 Naphthalene
 Concen: 4.170 ug/l
 RT: 15.13 min Scan# 4155
 Delta R.T. 0.00 min
 Lab File: VN056133.D
 Acq: 8 Jun 2019 6:37

Instrument : MSVOA_N
 ClientSampled : MW-5A

Tot Ion	128	127	129
Resp:	2088		
Ion Ratio	100	3.3	1.4
Lower		10.3	8.7
Upper		15.5#	13.1#

