

Data Path : Z:\VOASRV\HPCHEM1\MSVOA N\DATA\VN060819\  
 Data File : VN056123.D  
 Acq On : 8 Jun 2019 1:36  
 Operator : JC/SP  
 Sample : K3223-02DL 10X  
 Misc : 5.00mL/MSVOA N/WATER  
 ALS Vial : 40 Sample Multiplier: 1

Instrument :  
 MSVOA\_N  
 ClientSampleID :  
 SS043MW014-190605DL

Quant Time: Jun 08 07:18:56 2019  
 Quant Method : Z:\VOASRV\HPCHEM1\MSVOA\_N\METHODS\82N060419W.M  
 Quant Title : SW846 8260  
 QLast Update : Tue Jun 04 11:02:09 2019  
 Response via : Initial Calibration

Internal Standards	R.T.	QIon	Response	Conc	Units	Dev(Min)
1) Pentafluorobenzene	7.66	168	316865	50.00	ug/l	0.00
34) 1,4-Difluorobenzene	8.59	114	485005	50.00	ug/l	0.00
63) Chlorobenzene-d5	11.41	117	449815	50.00	ug/l	0.00
72) 1,4-Dichlorobenzene-d4	13.34	152	133677	50.00	ug/l	0.00

## System Monitoring Compounds

33) 1,2-Dichloroethane-d4	8.03	65	168960	53.70	ug/l	0.00
Spiked Amount				50.000		
			Recovery	=	107.40%	
35) Dibromofluoromethane	7.59	113	150292	50.51	ug/l	0.00
Spiked Amount				50.000		
			Recovery	=	101.02%	
50) Toluene-d8	10.09	98	616035	53.80	ug/l	0.00
Spiked Amount				50.000		
			Recovery	=	107.60%	
62) 4-Bromofluorobenzene	12.40	95	185442	47.62	ug/l	0.00
Spiked Amount				50.000		
			Recovery	=	95.24%	

## Target Compounds

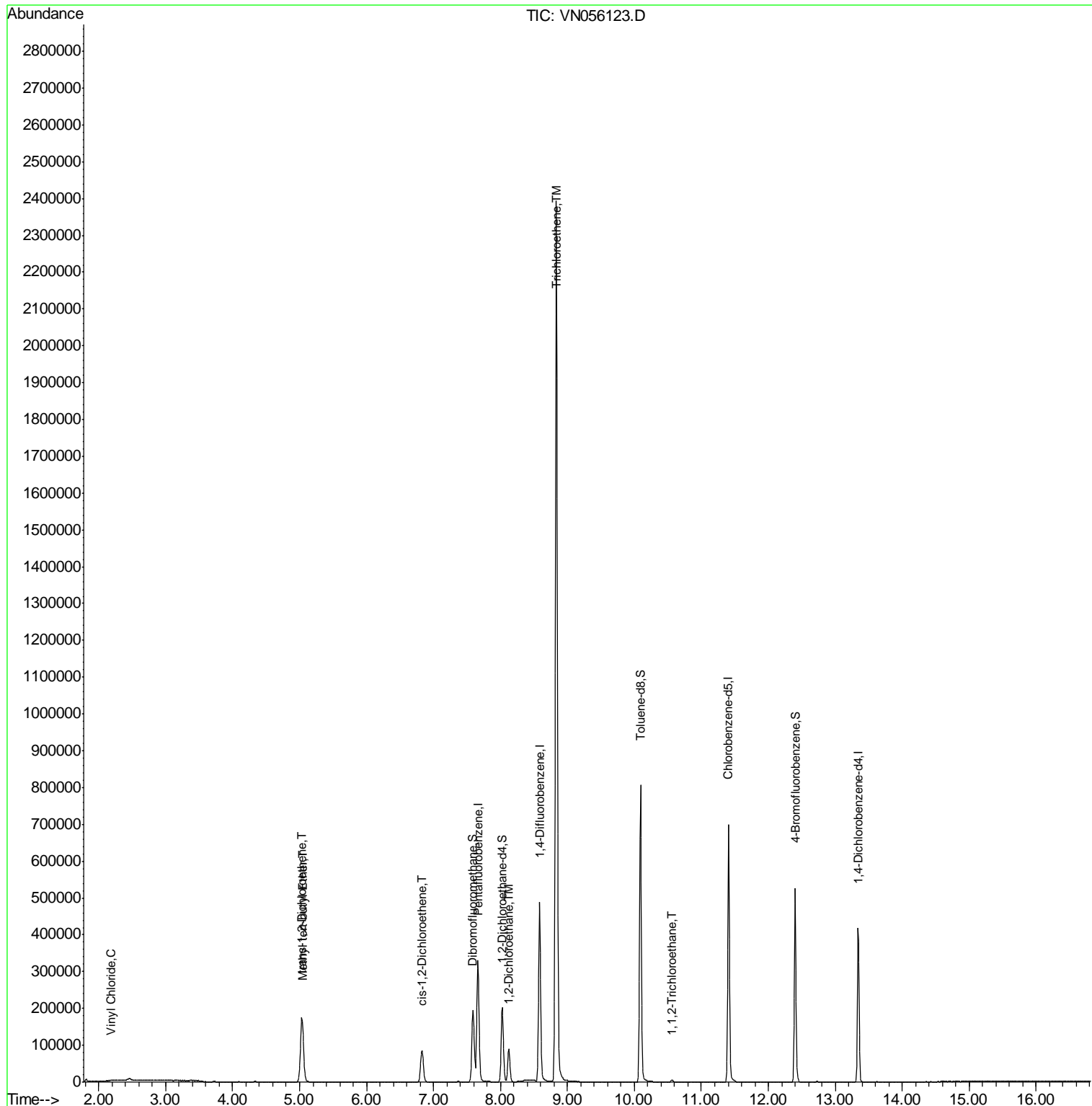
					Qvalue
4) Vinyl Chloride	2.18	62	2049	0.595	ug/l 96
19) Methyl tert-butyl Ether	5.06	73	26583	3.135	ug/l 92
21) trans-1,2-Dichloroethene	5.03	96	116880	41.009	ug/l 98
27) cis-1,2-Dichloroethene	6.83	96	61296	18.296	ug/l 90
42) 1,2-Dichloroethane	8.12	62	86459	21.220	ug/l 100
44) Trichloroethene	8.83	130	975248	267.951	ug/l 100
55) 1,1,2-Trichloroethane	10.56	97	2090	0.669	ug/l 92

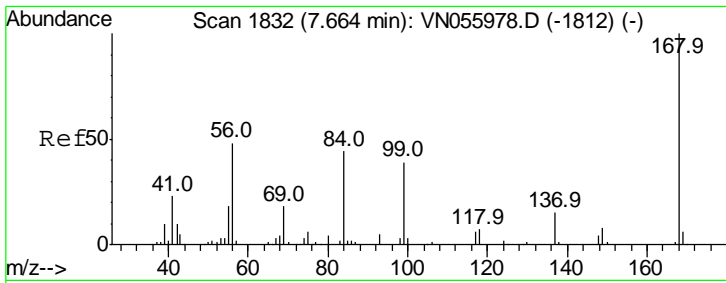
(#) = qualifier out of range (m) = manual integration (+) = signals summed

Data Path : Z:\VOASRV\HPCHEM1\MSVOA N\DATA\VN060819\  
 Data File : VN056123.D  
 Acq On : 8 Jun 2019 1:36  
 Operator : JC/SP  
 Sample : K3223-02DL 10X  
 Misc : 5.00mL/MSVOA N/WATER  
 ALS Vial : 40 Sample Multiplier: 1

Instrument :  
 MSVOA\_N  
 ClientSampleID :  
 SS043MW014-190605DL

Quant Time: Jun 08 07:18:56 2019  
 Quant Method : Z:\VOASRV\HPCHEM1\MSVOA\_N\METHODS\82N060419W.M  
 Quant Title : SW846 8260  
 QLast Update : Tue Jun 04 11:02:09 2019  
 Response via : Initial Calibration

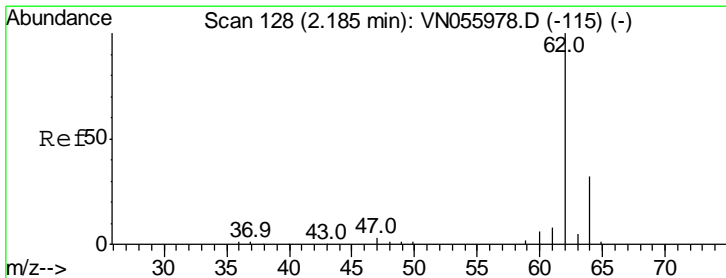
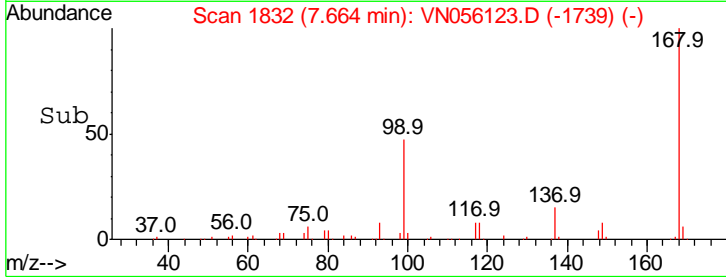
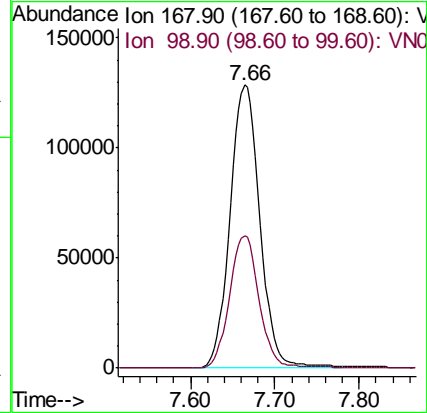
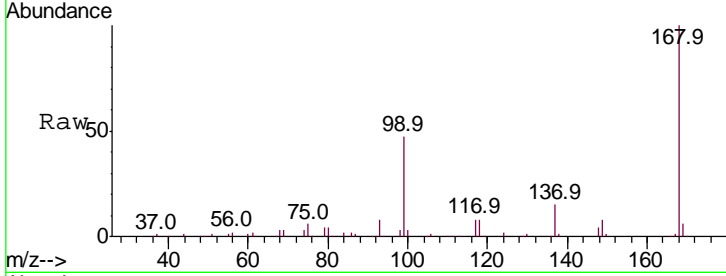




#1  
 Pentafluorobenzene  
 Concen: 50.000 ug/l  
 RT: 7.66 min Scan# 1832  
 Delta R.T. -0.00 min  
 Lab File: VN056123.D  
 Acq: 8 Jun 2019 1:36

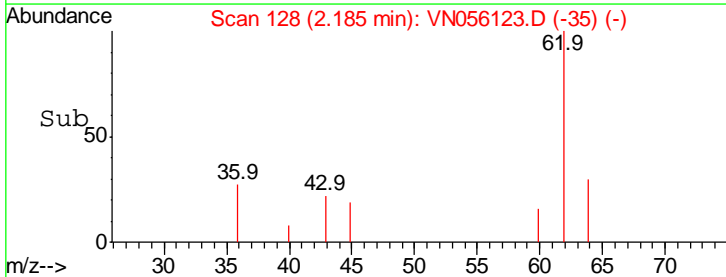
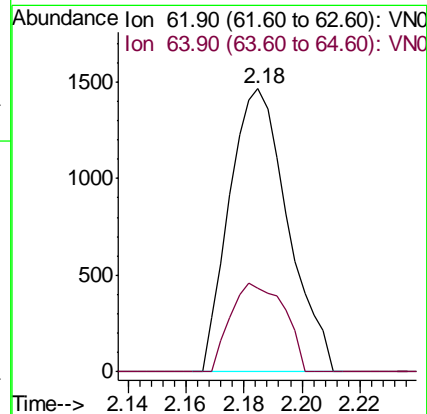
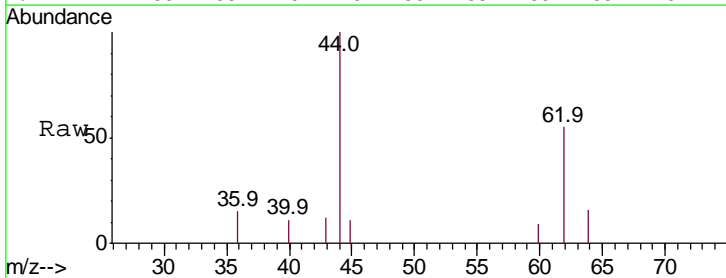
Instrument :  
 MSVOA\_N  
 ClientSampled :  
 SS043MW014-190605DL

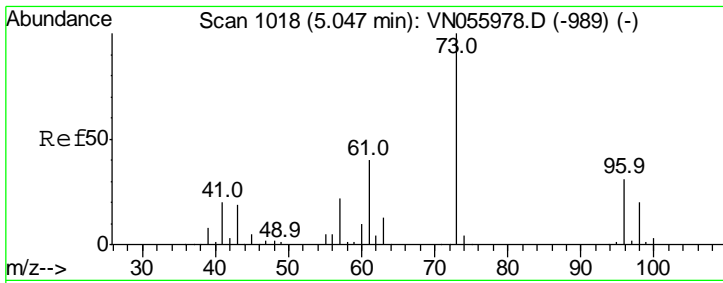
Tgt Ion: 168 Resp: 316865  
 Ion Ratio Lower Upper  
 168 100  
 99 46.9 37.2 55.8



#4  
 Vinyl Chloride  
 Concen: 0.595 ug/l  
 RT: 2.18 min Scan# 128  
 Delta R.T. -0.00 min  
 Lab File: VN056123.D  
 Acq: 8 Jun 2019 1:36

Tgt Ion: 62 Resp: 2049  
 Ion Ratio Lower Upper  
 62 100  
 64 29.6 25.6 38.4

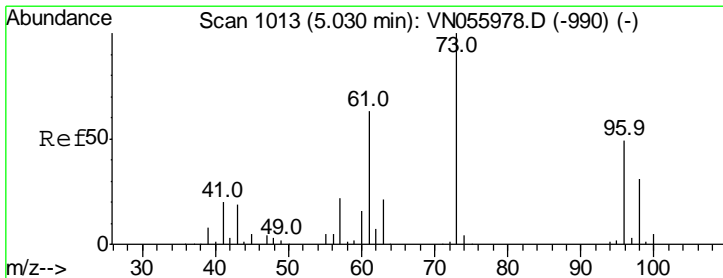
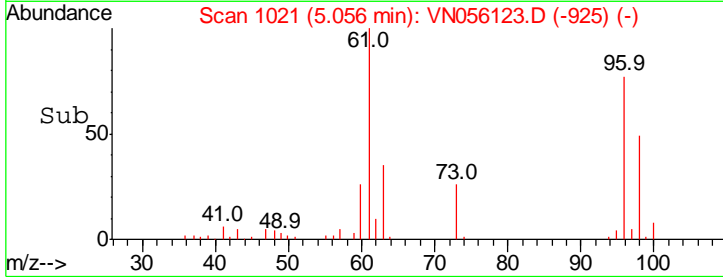
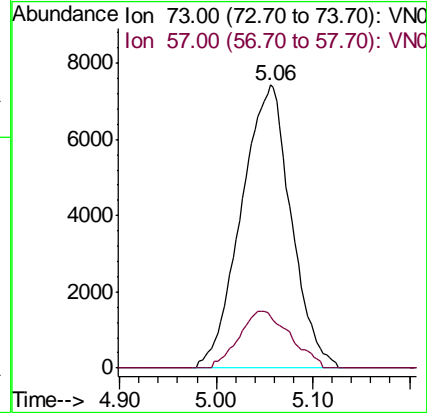
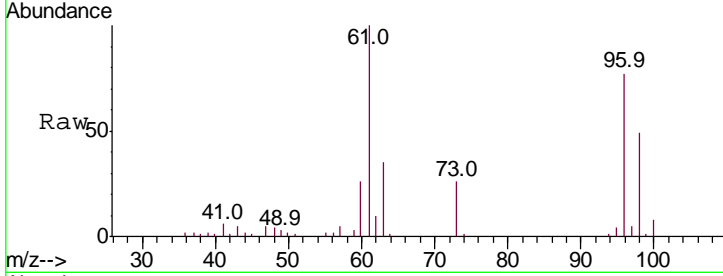




#19  
 Methyl tert-butyl Ether  
 Concen: 3.135 ug/l  
 RT: 5.06 min Scan# 1021  
 Delta R.T. 0.01 min  
 Lab File: VN056123.D  
 Acq: 8 Jun 2019 1:36

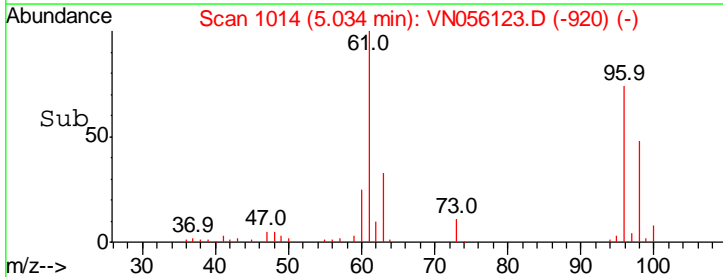
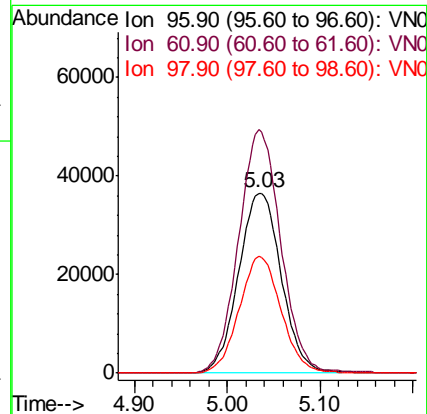
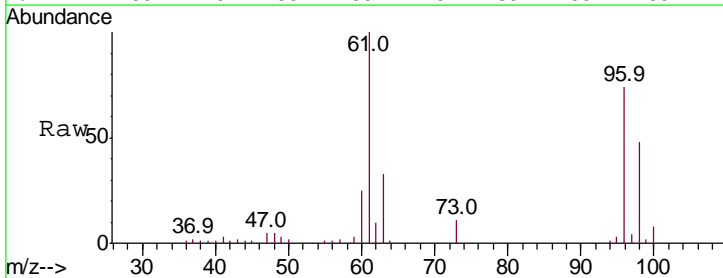
Instrument :  
 MSVOA\_N  
 ClientSampled :  
 SS043MW014-190605DL

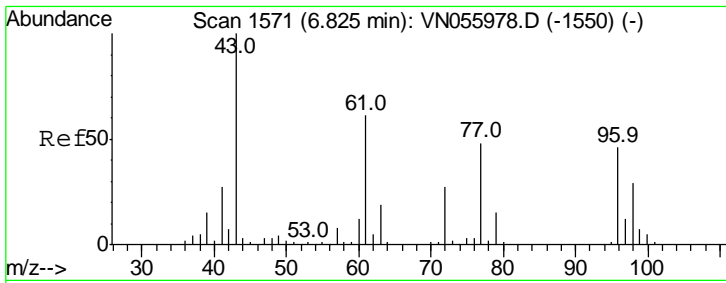
Tgt Ion: 73 Resp: 26583  
 Ion Ratio Lower Upper  
 73 100  
 57 18.3 17.8 26.8



#21  
 trans-1,2-Dichloroethene  
 Concen: 41.009 ug/l  
 RT: 5.03 min Scan# 1014  
 Delta R.T. 0.00 min  
 Lab File: VN056123.D  
 Acq: 8 Jun 2019 1:36

Tgt Ion: 96 Resp: 116880  
 Ion Ratio Lower Upper  
 96 100  
 61 135.5 107.8 161.8  
 98 65.0 49.8 74.8

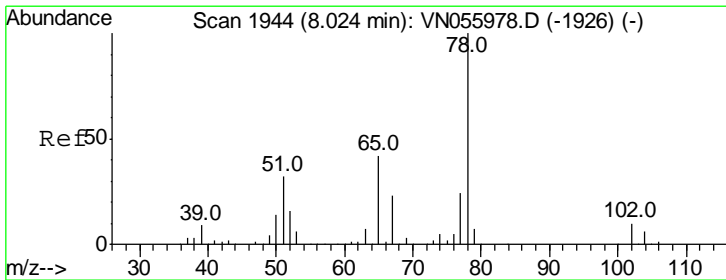
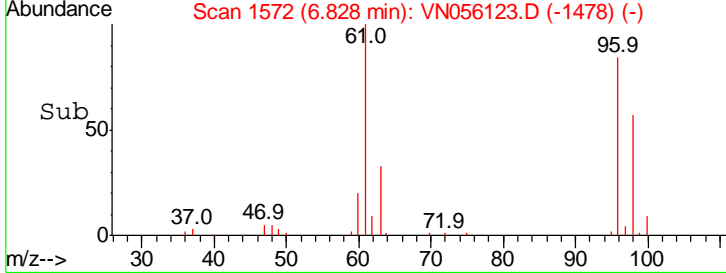
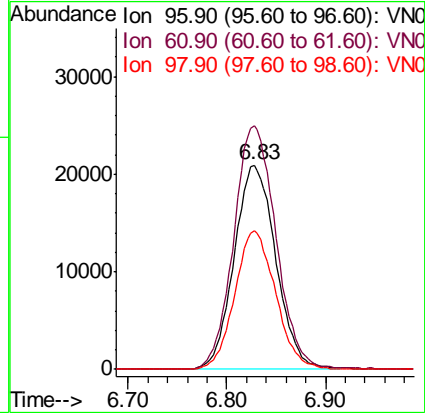
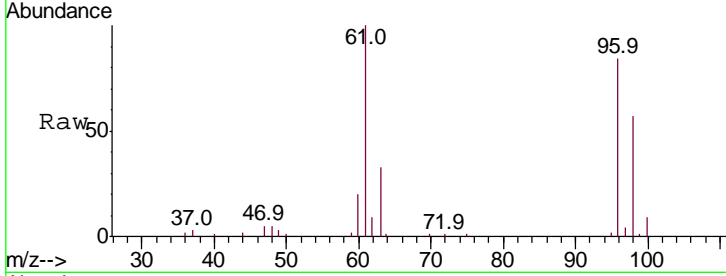




#27  
 cis-1,2-Dichloroethene  
 Concen: 18.296 ug/l  
 RT: 6.83 min Scan# 1572  
 Delta R.T. 0.00 min  
 Lab File: VN056123.D  
 Acq: 8 Jun 2019 1:36

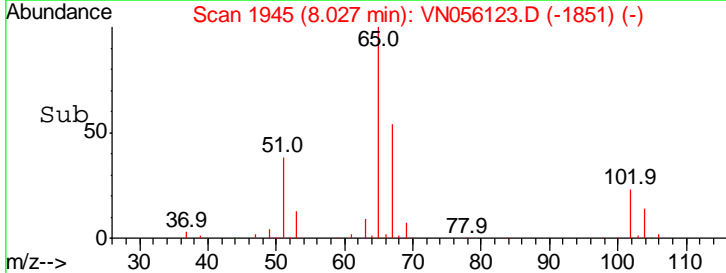
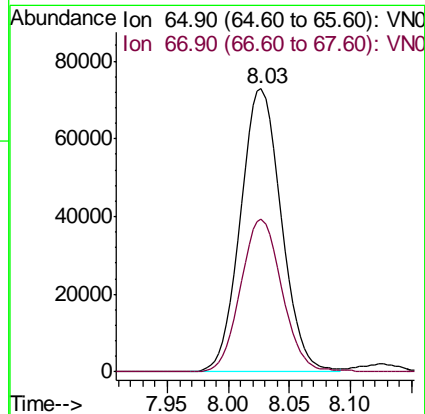
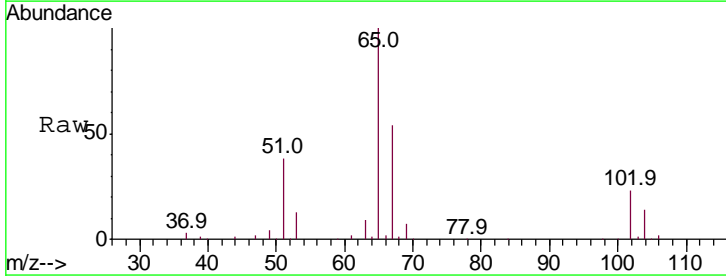
**Instrument :**  
 MSVOA\_N  
**ClientSampled :**  
 SS043MW014-190605DL

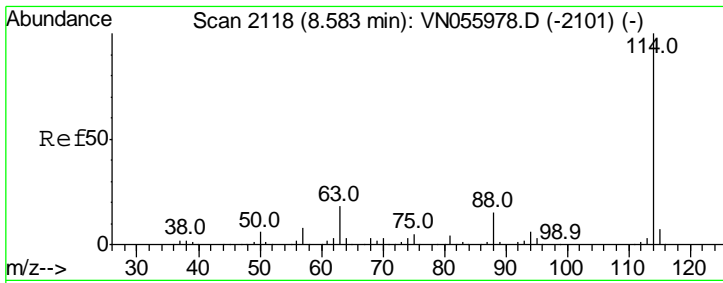
Tgt Ion	Resp	Lower	Upper
96	61296		
96	100		
61	121.0	0.0	275.8
98	66.3	0.0	128.4



#33  
 1,2-Dichloroethane-d4  
 Concen: 53.703 ug/l  
 RT: 8.03 min Scan# 1945  
 Delta R.T. 0.00 min  
 Lab File: VN056123.D  
 Acq: 8 Jun 2019 1:36

Tgt Ion	Resp	Lower	Upper
65	168960		
65	100		
67	54.7	0.0	109.2

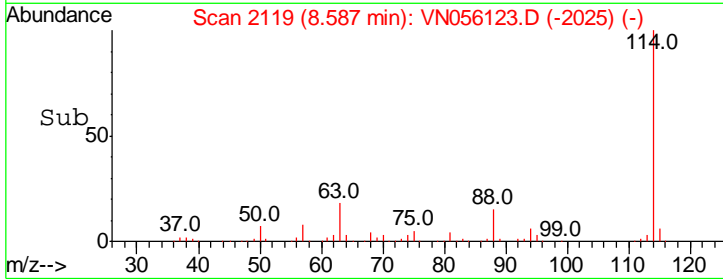
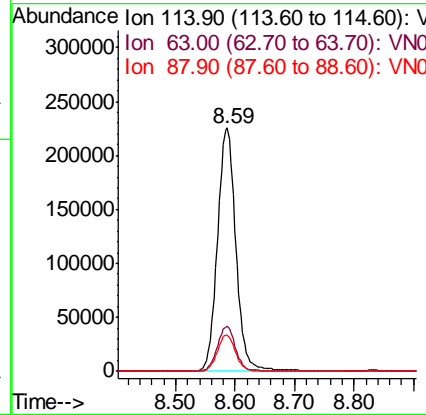
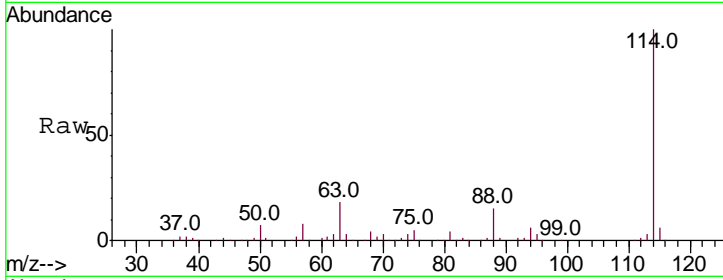




#34  
 1,4-Difluorobenzene  
 Concen: 50.000 ug/l  
 RT: 8.59 min Scan# 2119  
 Delta R.T. 0.00 min  
 Lab File: VN056123.D  
 Acq: 8 Jun 2019 1:36

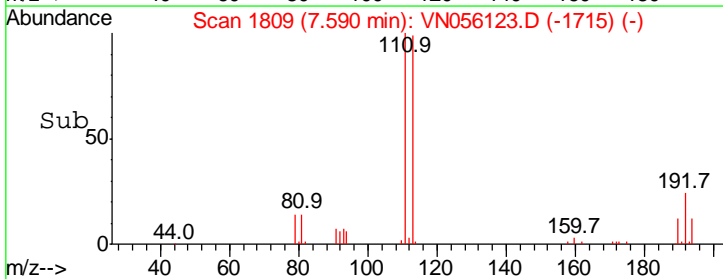
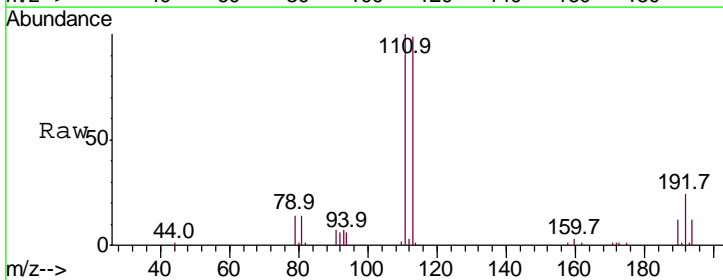
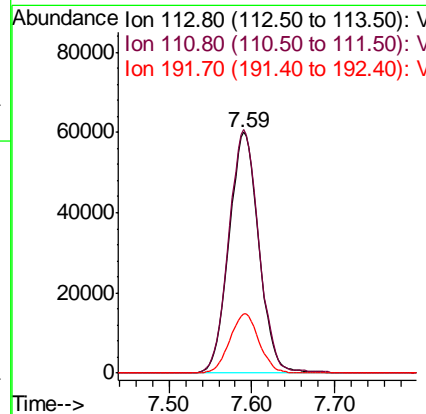
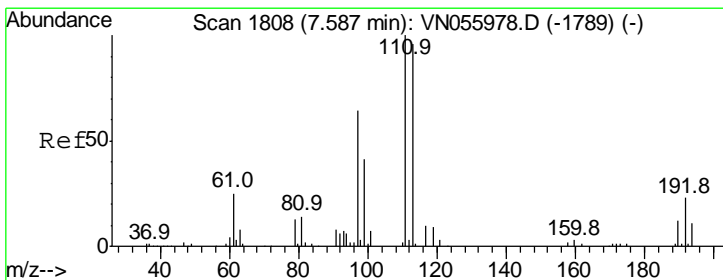
**Instrument :**  
 MSVOA\_N  
**ClientSampleId :**  
 SS043MW014-190605DL

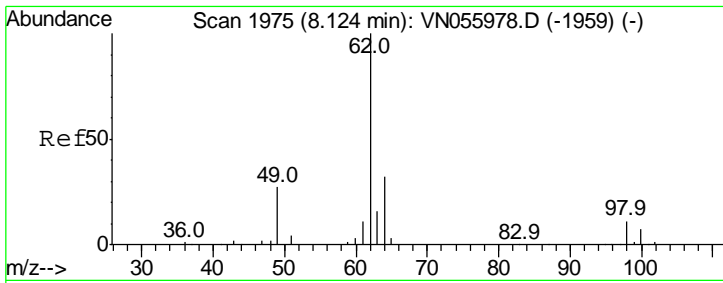
Tgt Ion	Resp	Lower	Upper
114	100		
63	18.4	0.0	39.2
88	15.0	0.0	31.0



#35  
 Dibromofluoromethane  
 Concen: 50.507 ug/l  
 RT: 7.59 min Scan# 1809  
 Delta R.T. 0.00 min  
 Lab File: VN056123.D  
 Acq: 8 Jun 2019 1:36

Tgt Ion	Resp	Lower	Upper
113	100		
111	102.1	81.9	122.9
192	24.2	19.5	29.3

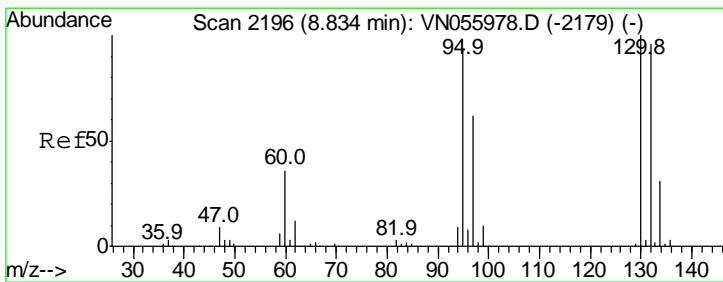
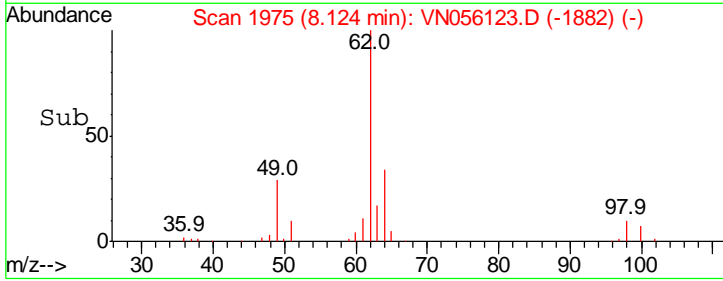
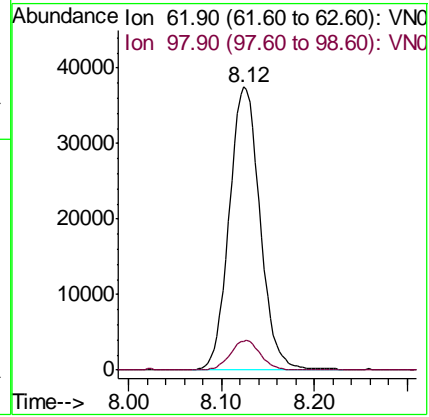
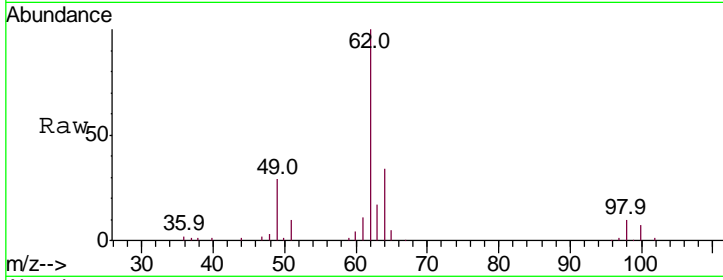




#42  
 1,2-Dichloroethane  
 Concen: 21.220 ug/l  
 RT: 8.12 min Scan# 1975  
 Delta R.T. -0.00 min  
 Lab File: VN056123.D  
 Acq: 8 Jun 2019 1:36

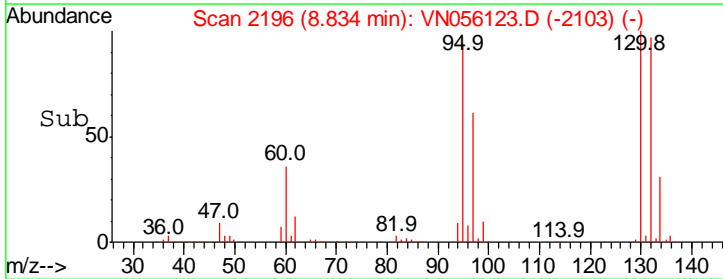
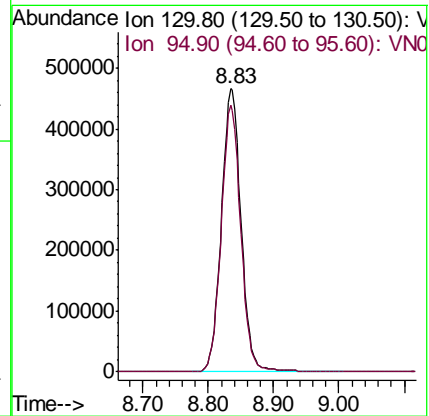
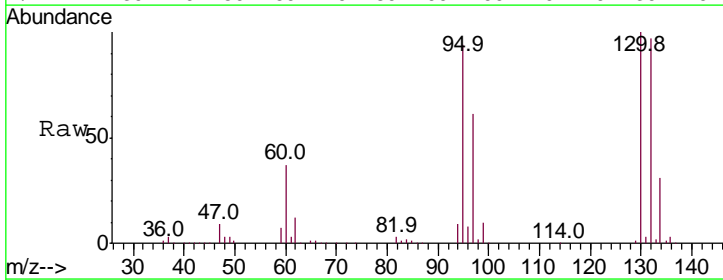
Instrument : MSVOA\_N  
 ClientSampleID : SS043MW014-190605DL

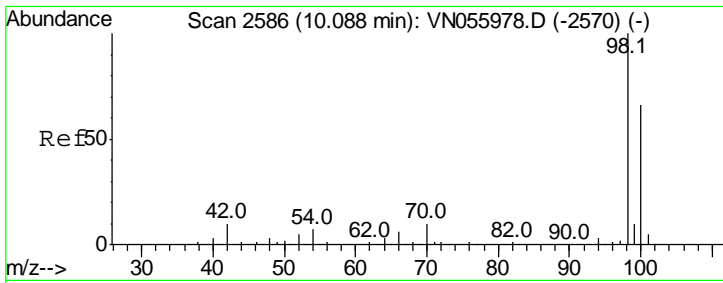
Tgt Ion	Resp	Lower	Upper
62	100	0.0	20.2
98	10.1	0.0	20.2



#44  
 Trichloroethene  
 Concen: 267.951 ug/l  
 RT: 8.83 min Scan# 2196  
 Delta R.T. -0.00 min  
 Lab File: VN056123.D  
 Acq: 8 Jun 2019 1:36

Tgt Ion	Resp	Lower	Upper
130	100	0.0	188.0
95	94.4	0.0	188.0

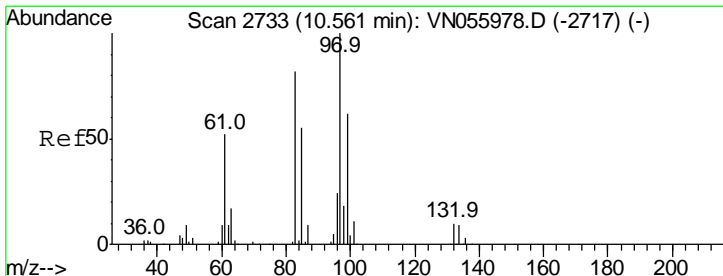
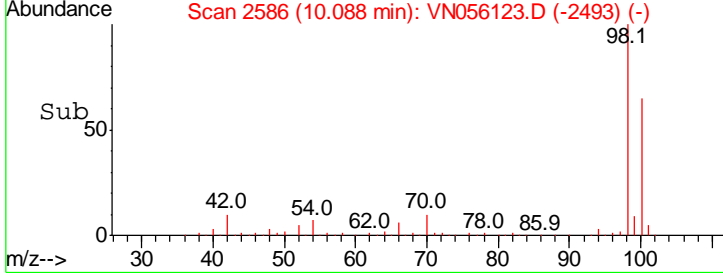
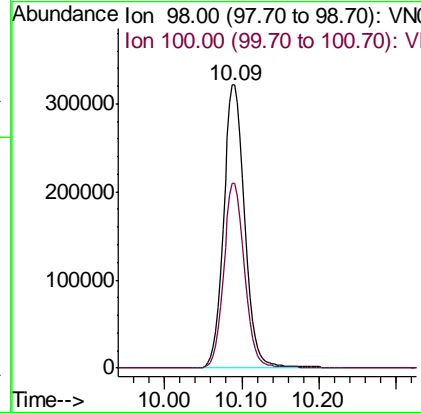
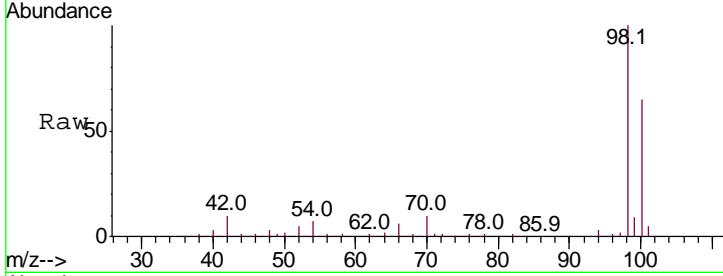




#50  
 Toluene-d8  
 Concen: 53.800 ug/l  
 RT: 10.09 min Scan# 2586  
 Delta R.T. -0.00 min  
 Lab File: VN056123.D  
 Acq: 8 Jun 2019 1:36

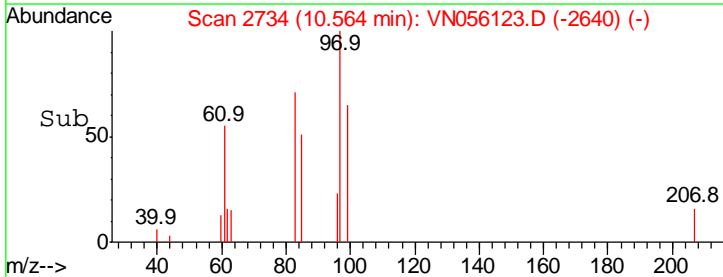
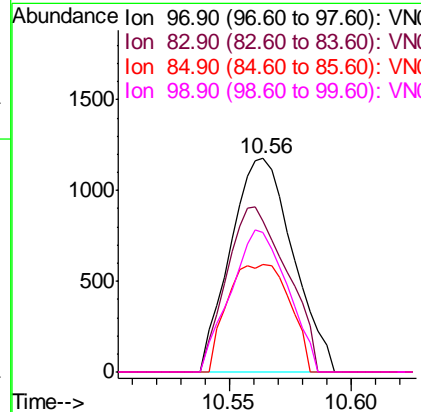
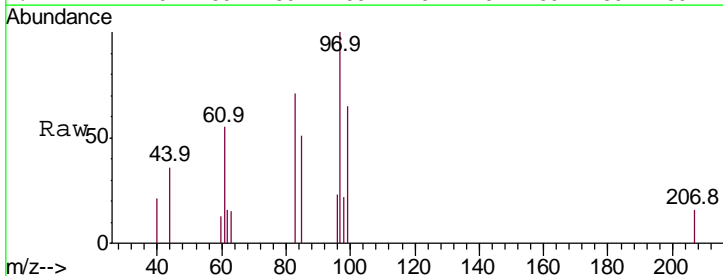
Instrument :  
 MSVOA\_N  
 ClientSampled :  
 SS043MW014-190605DL

Tgt Ion: 98 Resp: 616035  
 Ion Ratio Lower Upper  
 98 100  
 100 64.9 51.9 77.9

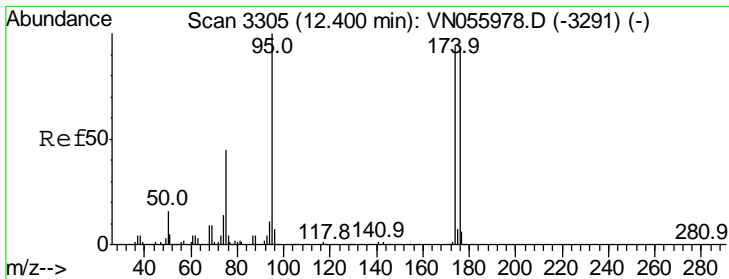


#55  
 1,1,2-Trichloroethane  
 Concen: 0.669 ug/l  
 RT: 10.56 min Scan# 2734  
 Delta R.T. 0.00 min  
 Lab File: VN056123.D  
 Acq: 8 Jun 2019 1:36

Tgt Ion: 97 Resp: 2090  
 Ion Ratio Lower Upper  
 97 100  
 83 70.8 67.0 100.6  
 85 50.6 44.0 66.0  
 99 65.2 50.6 75.8



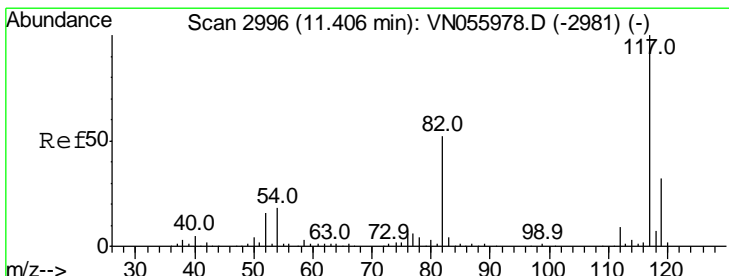
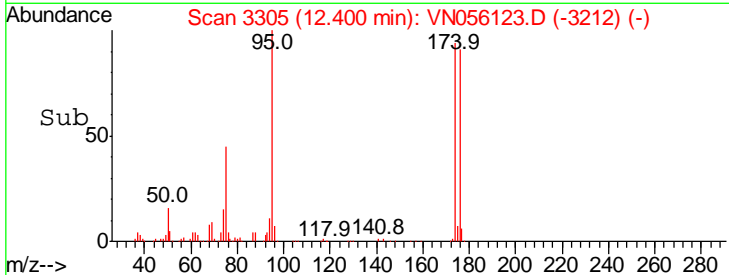
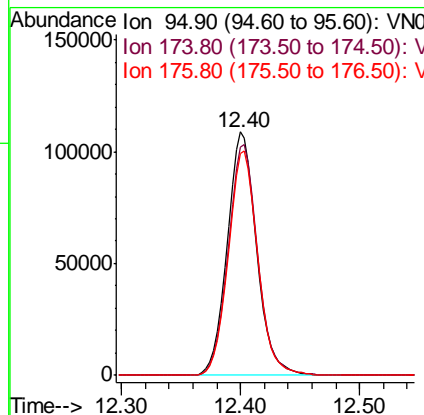
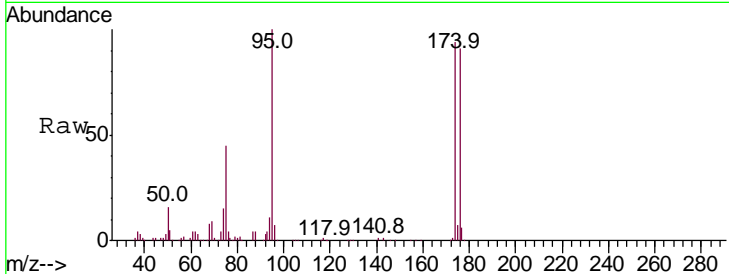




#62  
 4-Bromofluorobenzene  
 Concen: 47.623 ug/l  
 RT: 12.40 min Scan# 3305  
 Delta R.T. -0.00 min  
 Lab File: VN056123.D  
 Acq: 8 Jun 2019 1:36

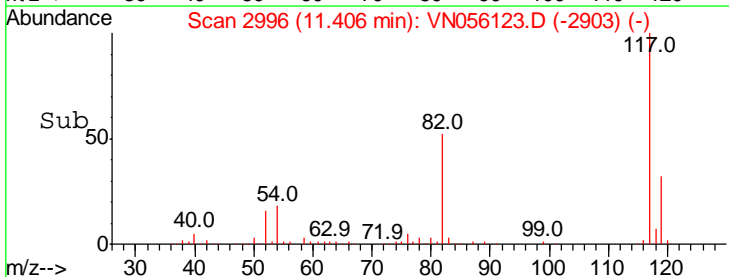
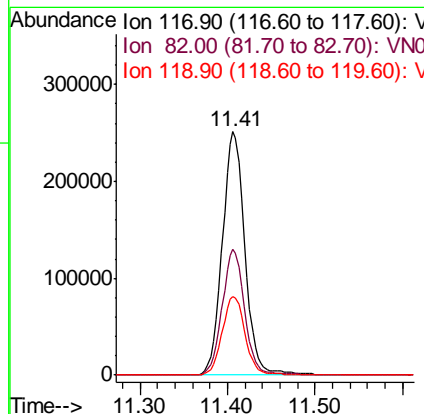
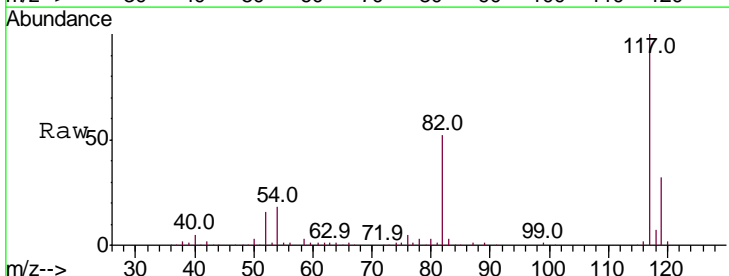
Instrument :  
 MSVOA\_N  
 ClientSampled :  
 SS043MW014-190605DL

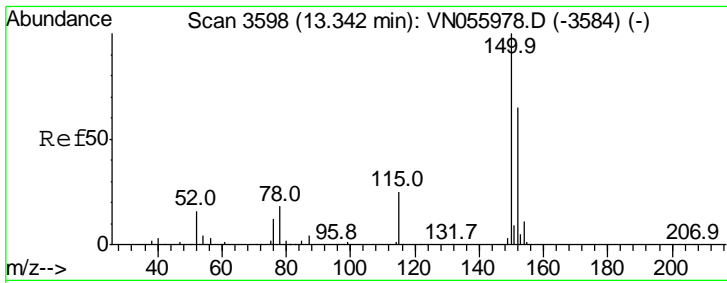
Tgt Ion	Resp	Lower	Upper
95	185442		
174	95.6	0.0	191.0
176	92.6	0.0	185.2



#63  
 Chlorobenzene-d5  
 Concen: 50.000 ug/l  
 RT: 11.41 min Scan# 2996  
 Delta R.T. -0.00 min  
 Lab File: VN056123.D  
 Acq: 8 Jun 2019 1:36

Tgt Ion	Resp	Lower	Upper
117	449815		
82	51.8	41.8	62.8
119	32.5	25.4	38.0





#72  
 1,4-Dichlorobenzene-d4  
 Concen: 50.000 ug/l  
 RT: 13.34 min Scan# 3598  
 Delta R.T. -0.00 min  
 Lab File: VN056123.D  
 Acq: 8 Jun 2019 1:36

Instrument : MSVOA\_N  
 ClientSampled : SS043MW014-190605DL

Tot Ion:152 Resp: 133677

Ion	Ratio	Lower	Upper
152	100		
115	52.9	27.0	81.0
150	156.0	0.0	343.2

