

Data Path : Z:\VOASRV\HPCHEM1\MSVOA_N\DATA\VN060820\
 Data File : VN061690.D
 Acq On : 8 Jun 2020 13:01
 Operator : JC/MD
 Sample : L2921-07
 Misc : 5.00mL/MSVOA_N/WATER
 ALS Vial : 6 Sample Multiplier: 1

Instrument :
 MSVOA_N
 ClientSampleId :
 LF012OW009-200604

Quant Time: Jun 09 03:10:56 2020
 Quant Method : Z:\VOASRV\HPCHEM1\MSVOA_N\METHODS\82N052820W.M
 Quant Title : SW846 8260
 QLast Update : Fri May 29 02:14:10 2020
 Response via : Initial Calibration

Internal Standards	R.T.	QIon	Response	Conc	Units	Dev(Min)
1) Pentafluorobenzene	7.63	168	284737	50.00	ug/l	0.00
34) 1,4-Difluorobenzene	8.55	114	469268	50.00	ug/l	0.00
63) Chlorobenzene-d5	11.38	117	449058	50.00	ug/l	0.00
72) 1,4-Dichlorobenzene-d4	13.32	152	199654	50.00	ug/l	0.00

System Monitoring Compounds

33) 1,2-Dichloroethane-d4	7.99	65	150978	44.50	ug/l	0.00
Spiked Amount	50.000		Recovery	=	89.00%	
35) Dibromofluoromethane	7.55	113	137595	57.80	ug/l	0.00
Spiked Amount	50.000		Recovery	=	115.60%	
50) Toluene-d8	10.06	98	554404	50.26	ug/l	0.00
Spiked Amount	50.000		Recovery	=	100.52%	
62) 4-Bromofluorobenzene	12.38	95	194411	48.30	ug/l	0.00
Spiked Amount	50.000		Recovery	=	96.60%	

Target Compounds

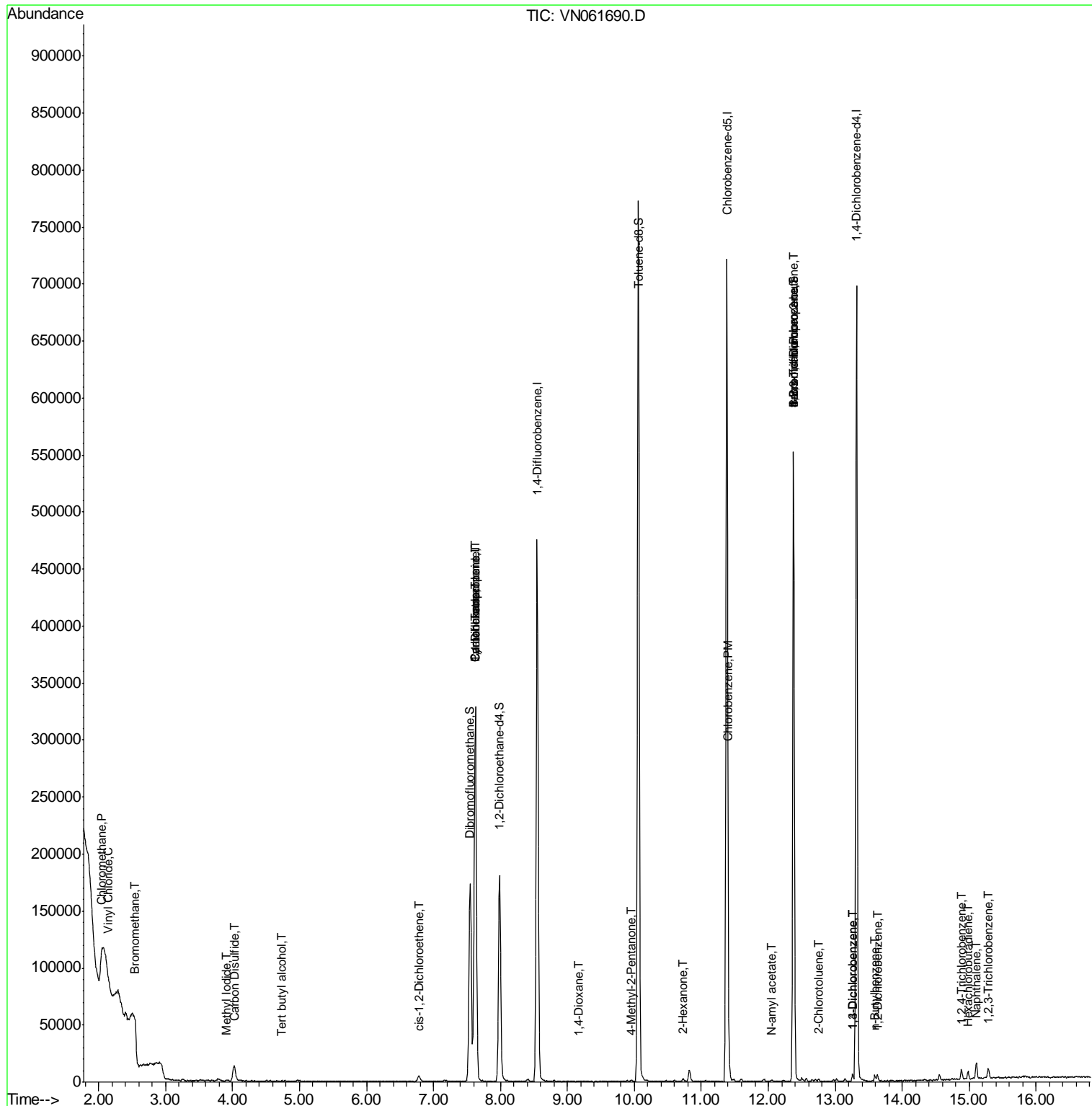
						Qvalue
3) Chloromethane	2.03	50	2453	0.71	ug/l	# 83
4) Vinyl Chloride	2.16	62	1085	0.23	ug/l	98
5) Bromomethane	2.55	94	1194	0.44	ug/l	82
10) Methyl Iodide	3.92	142	1411	0.37	ug/l	# 72
11) Tert butyl alcohol	4.74	59	219	0.49	ug/l	# 72
16) Acetone	3.78	43	3428	Below	Cal	96
17) Carbon Disulfide	4.02	76	2097	0.33	ug/l	# 74
20) Methylene Chloride	4.51	84	175	Below	Cal	# 39
27) cis-1,2-Dichloroethene	6.78	96	2588	0.70	ug/l	52
31) Cyclohexane	7.63	56	5418	1.13	ug/l	# 25
36) 1,1-Dichloropropene	7.62	75	19412	4.67	ug/l	# 48
38) Carbon Tetrachloride	7.63	117	27546	6.87	ug/l	# 17
49) 1,4-Dioxane	9.17	88	98	2.34	ug/l	# 44
51) 4-Methyl-2-Pentanone	9.95	43	897	0.26	ug/l	# 61
59) 2-Hexanone	10.73	43	1810	0.74	ug/l	85
65) Chlorobenzene	11.41	112	11264	1.21	ug/l	94
71) Bromoform	12.37	173	1645	0.61	ug/l	# 1
74) N-amyl acetate	12.05	43	1223	0.27	ug/l	# 48
76) 1,2,3-Trichloropropane	12.38	75	92908	25.59	ug/l	# 100
79) 2-Chlorotoluene	12.75	91	1980	0.20	ug/l	96
81) trans-1,4-Dichloro-2-buten	12.38	75	92908	65.44	ug/l	# 15
87) 1,3-Dichlorobenzene	13.26	146	2053	0.31	ug/l	93
88) 1,4-Dichlorobenzene	13.26	146	2053	0.31	ug/l	93
89) n-Butylbenzene	13.59	91	3208	0.30	ug/l	97
91) 1,2-Dichlorobenzene	13.63	146	2755	0.44	ug/l	97
93) 1,2,4-Trichlorobenzene	14.89	180	3584	0.97	ug/l	99
94) Hexachlorobutadiene	14.99	225	1298	0.83	ug/l	97
95) Naphthalene	15.11	128	13363	1.19	ug/l	97
96) 1,2,3-Trichlorobenzene	15.28	180	3454	0.95	ug/l	93

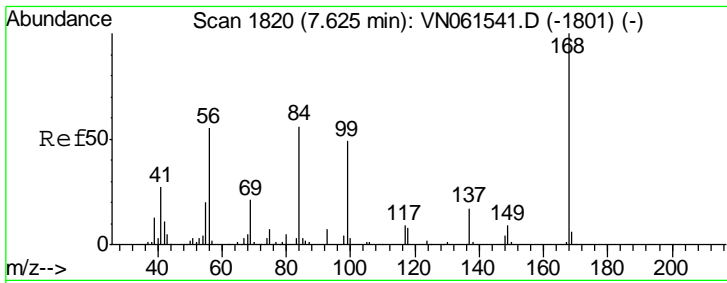
(#) = qualifier out of range (m) = manual integration (+) = signals summed

Data Path : Z:\VOASRV\HPCHEM1\MSVOA_N\DATA\VN060820\
 Data File : VN061690.D
 Acq On : 8 Jun 2020 13:01
 Operator : JC/MD
 Sample : L2921-07
 Misc : 5.00mL/MSVOA_N/WATER
 ALS Vial : 6 Sample Multiplier: 1

Instrument :
 MSVOA_N
 ClientSampleId :
 LF012OW009-200604

Quant Time: Jun 09 03:10:56 2020
 Quant Method : Z:\VOASRV\HPCHEM1\MSVOA_N\METHODS\82N052820W.M
 Quant Title : SW846 8260
 QLast Update : Fri May 29 02:14:10 2020
 Response via : Initial Calibration

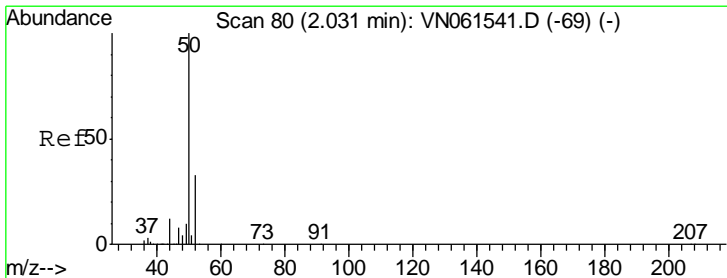
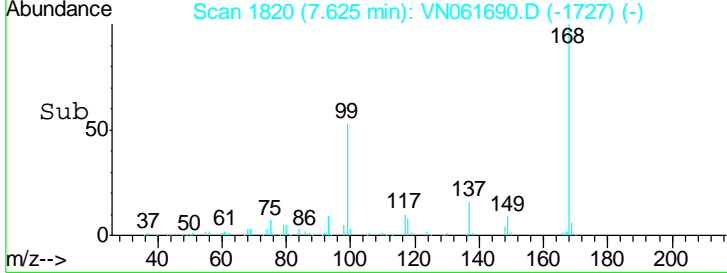
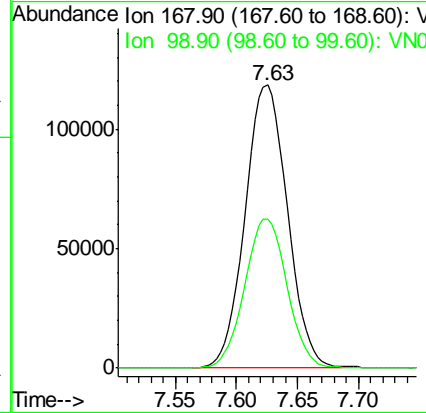
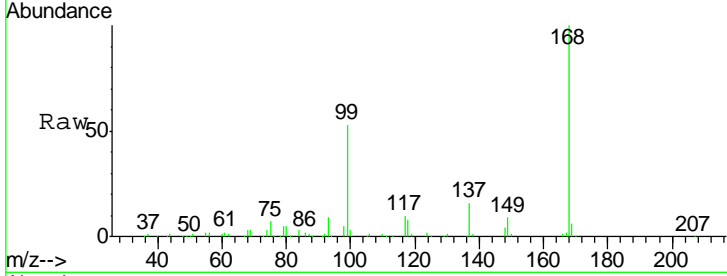




#1
 Pentafluorobenzene
 Concen: 50.00 ug/l
 RT: 7.63 min Scan# 1820
 Delta R.T. 0.00 min
 Lab File: VN061690.D
 Acq: 8 Jun 2020 13:01

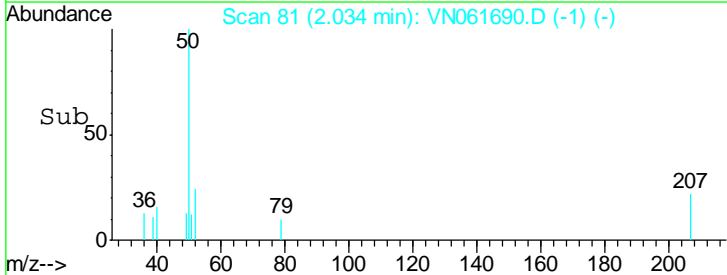
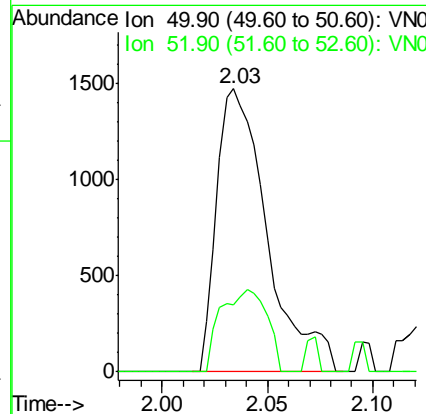
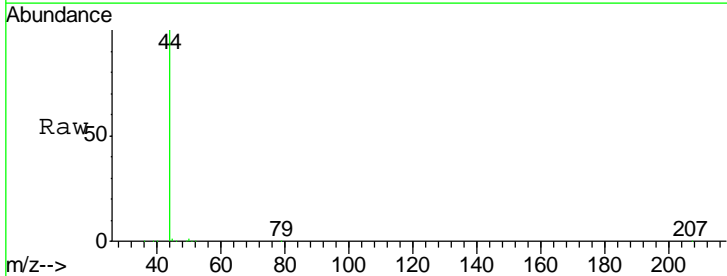
Instrument :
 MSVOA_N
 ClientSampled :
 LF012OW009-200604

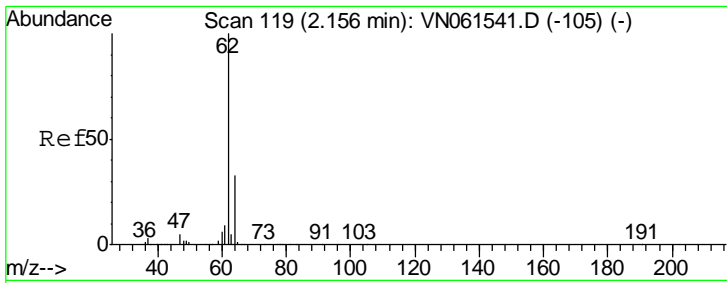
Tgt Ion: 168 Resp: 284737
 Ion Ratio Lower Upper
 168 100
 99 52.7 45.0 67.4



#3
 Chloromethane
 Concen: 0.71 ug/l
 RT: 2.03 min Scan# 81
 Delta R.T. 0.00 min
 Lab File: VN061690.D
 Acq: 8 Jun 2020 13:01

Tgt Ion: 50 Resp: 2453
 Ion Ratio Lower Upper
 50 100
 52 23.7 26.7 40.1#

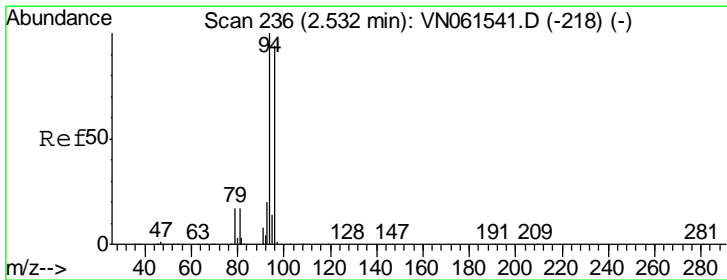
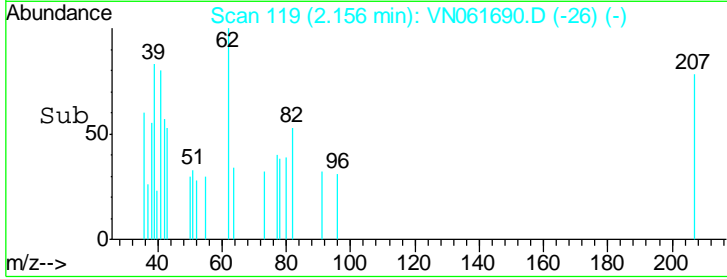
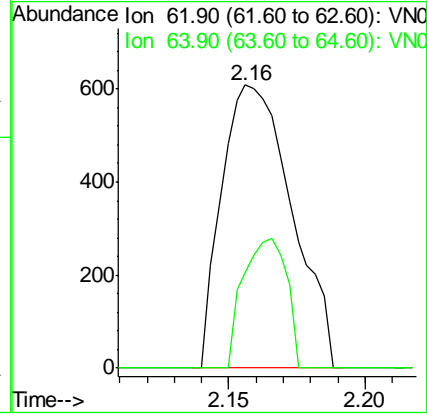
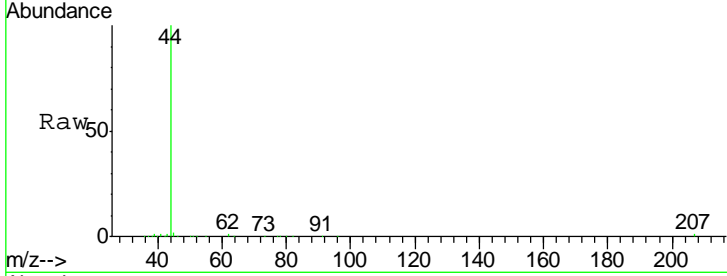




#4
 Vinyl Chloride
 Concen: 0.23 ug/l
 RT: 2.16 min Scan# 119
 Delta R.T. 0.00 min
 Lab File: VN061690.D
 Acq: 8 Jun 2020 13:01

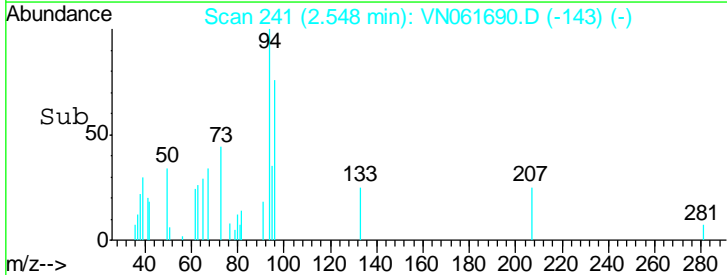
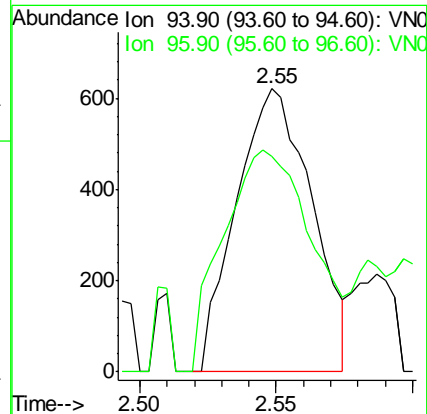
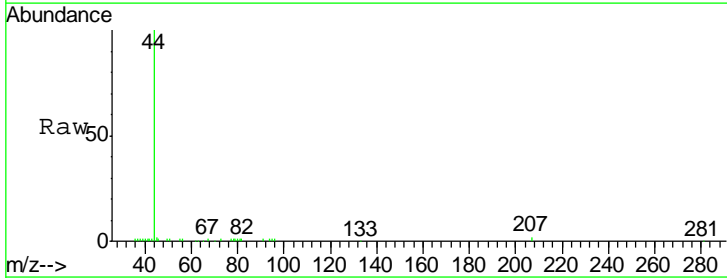
Instrument :
 MSVOA_N
 ClientSampled :
 LF012OW009-200604

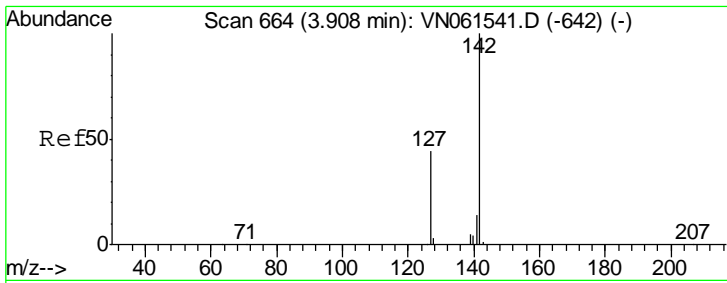
Tgt Ion: 62 Resp: 1085
 Ion Ratio Lower Upper
 62 100
 64 33.9 26.2 39.2



#5
 Bromomethane
 Concen: 0.44 ug/l
 RT: 2.55 min Scan# 241
 Delta R.T. 0.02 min
 Lab File: VN061690.D
 Acq: 8 Jun 2020 13:01

Tgt Ion: 94 Resp: 1194
 Ion Ratio Lower Upper
 94 100
 96 76.0 74.8 112.2

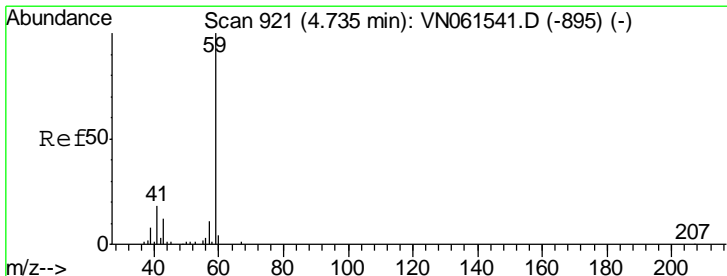
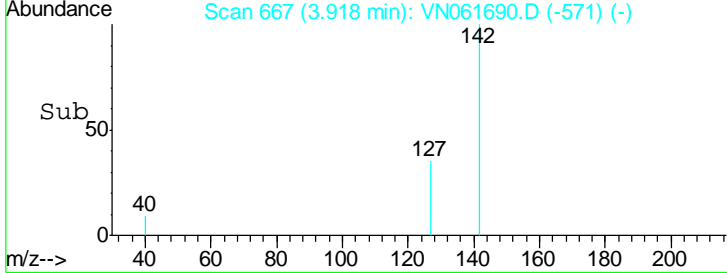
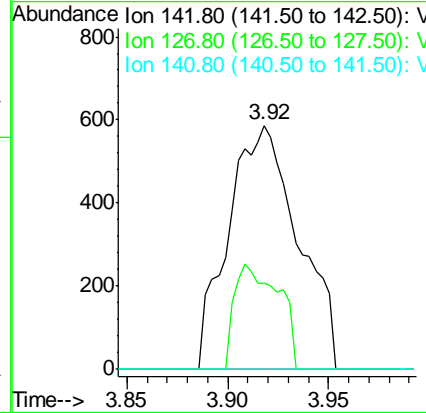
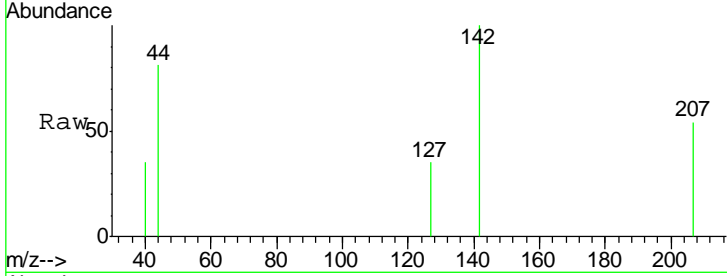




#10
 Methyl Iodide
 Concen: 0.37 ug/l
 RT: 3.92 min Scan# 667
 Delta R.T. 0.01 min
 Lab File: VN061690.D
 Acq: 8 Jun 2020 13:01

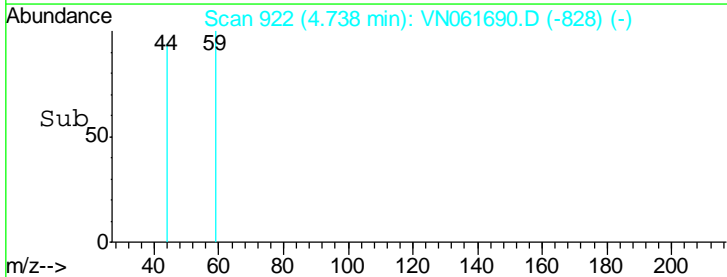
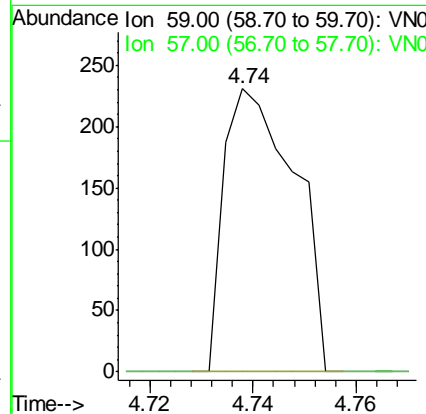
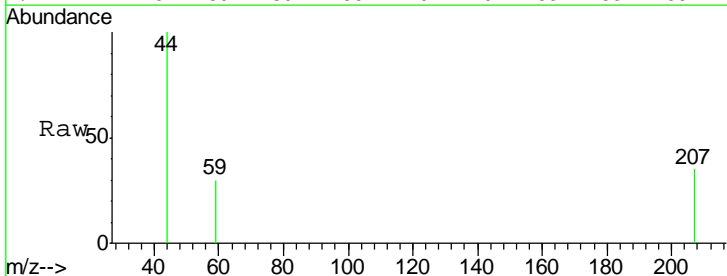
Instrument :
 MSVOA_N
ClientSampled :
 LF012OW009-200604

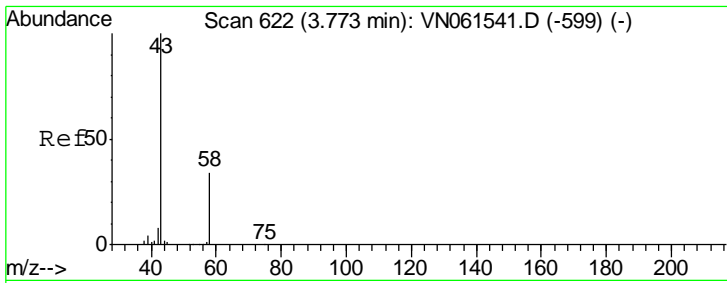
Tgt Ion	Resp	Lower	Upper
142	1411		
127	27.6	35.5	53.3#
141	0.0	11.5	17.3#



#11
 Tert butyl alcohol
 Concen: 0.49 ug/l
 RT: 4.74 min Scan# 922
 Delta R.T. 0.00 min
 Lab File: VN061690.D
 Acq: 8 Jun 2020 13:01

Tgt Ion	Resp	Lower	Upper
59	219		
57	0.0	8.4	12.6#

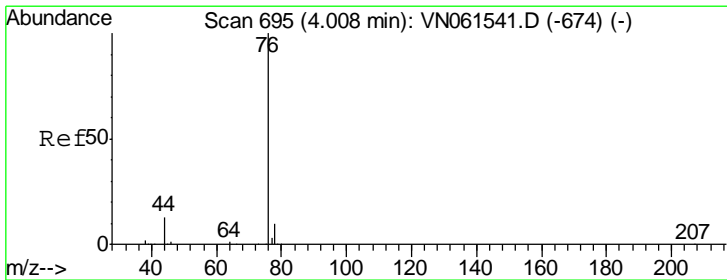
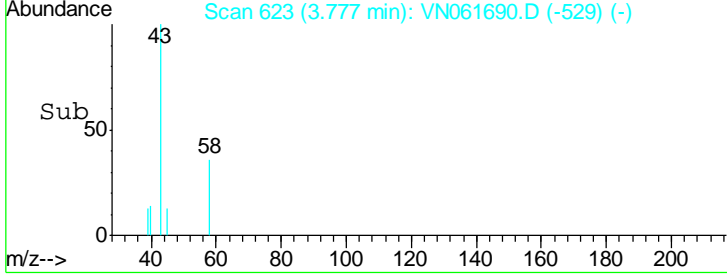
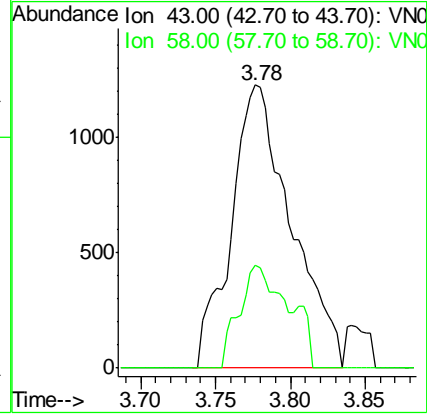
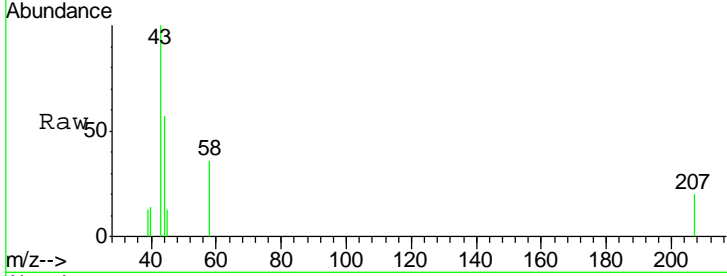




#16
 Acetone
 Concen: Below Cal
 RT: 3.78 min Scan# 623
 Delta R.T. 0.00 min
 Lab File: VN061690.D
 Acq: 8 Jun 2020 13:01

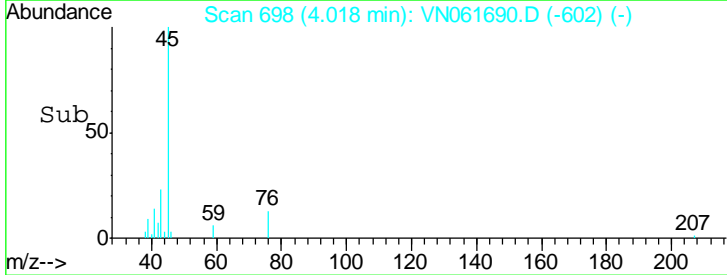
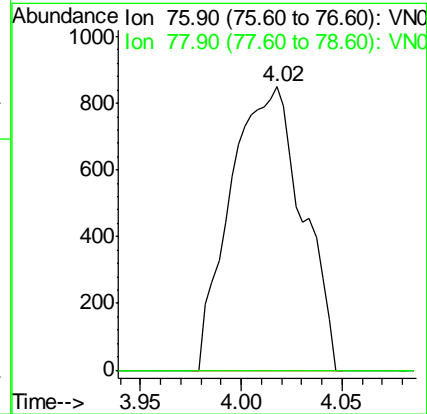
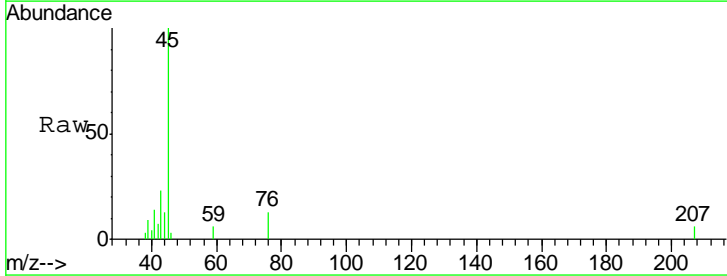
Instrument : MSVOA_N
 ClientSampled : LF012OW009-200604

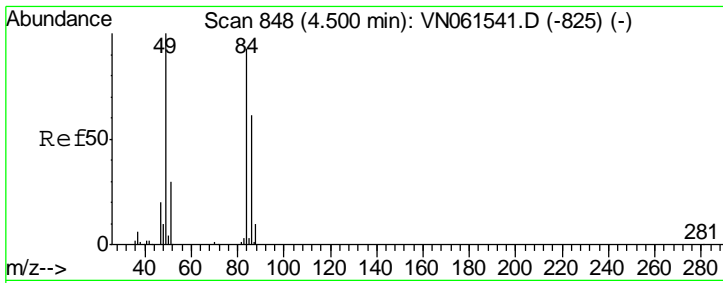
Tgt Ion: 43 Resp: 3428
 Ion Ratio Lower Upper
 43 100
 58 36.3 27.2 40.8



#17
 Carbon Disulfide
 Concen: 0.33 ug/l
 RT: 4.02 min Scan# 698
 Delta R.T. 0.01 min
 Lab File: VN061690.D
 Acq: 8 Jun 2020 13:01

Tgt Ion: 76 Resp: 2097
 Ion Ratio Lower Upper
 76 100
 78 0.0 7.8 11.6#

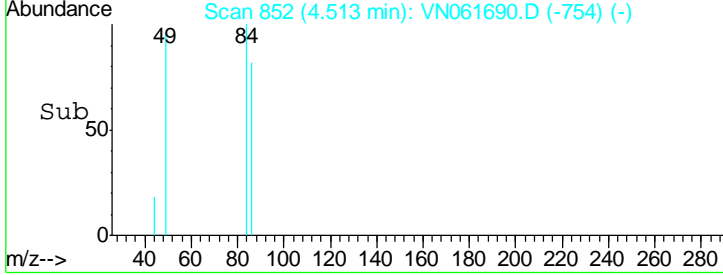
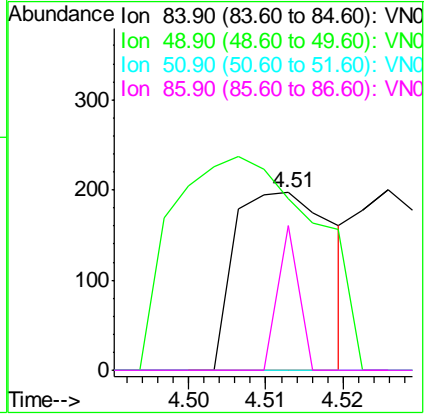
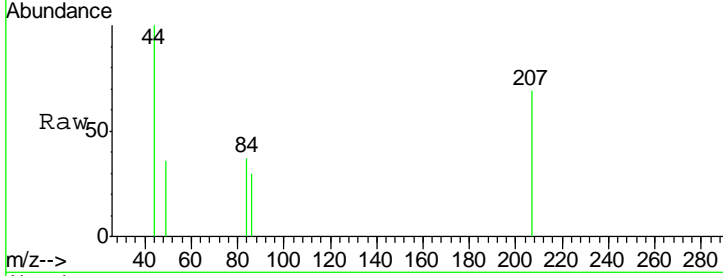




#20
 Methylene Chloride
 Concen: Below Cal
 RT: 4.51 min Scan# 852
 Delta R.T. 0.01 min
 Lab File: VN061690.D
 Acq: 8 Jun 2020 13:01

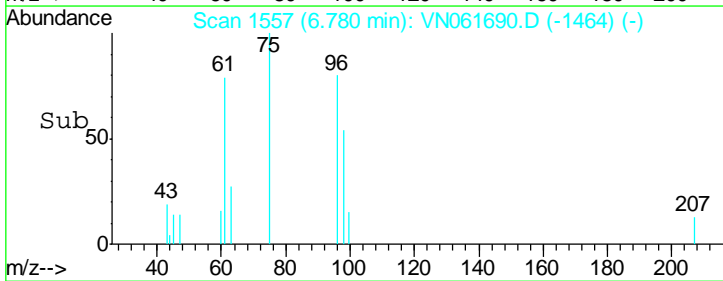
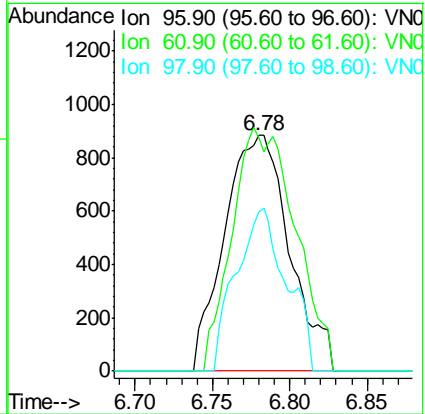
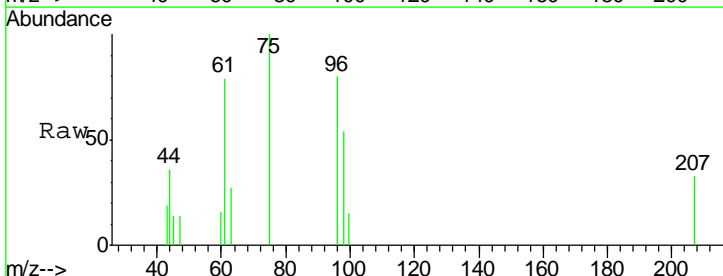
Instrument : MSVOA_N
 ClientSampled : LF012OW009-200604

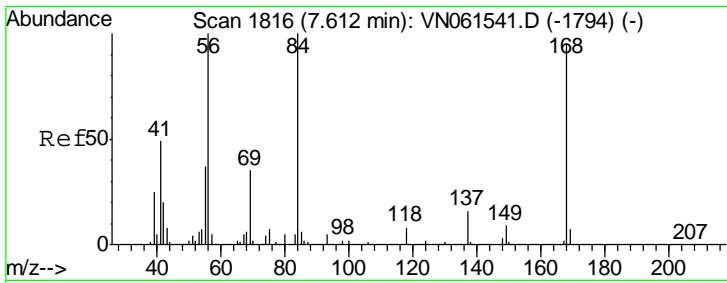
Tgt Ion	Resp	Lower	Upper
84	100		
49	17.3	85.8	128.8#
51	0.0	26.2	39.2#
86	81.7	52.6	78.8#



#27
 cis-1,2-Dichloroethene
 Concen: 0.70 ug/l
 RT: 6.78 min Scan# 1557
 Delta R.T. 0.00 min
 Lab File: VN061690.D
 Acq: 8 Jun 2020 13:01

Tgt Ion	Resp	Lower	Upper
96	100		
61	51.1	0.0	252.2
98	54.1	0.0	129.2

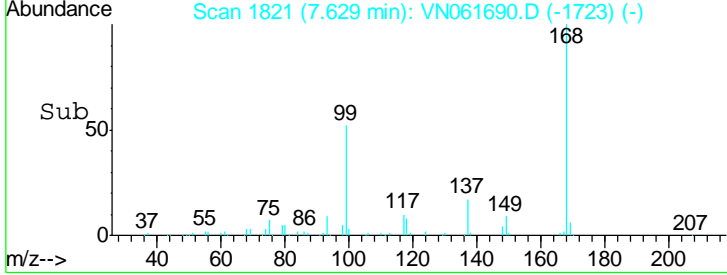
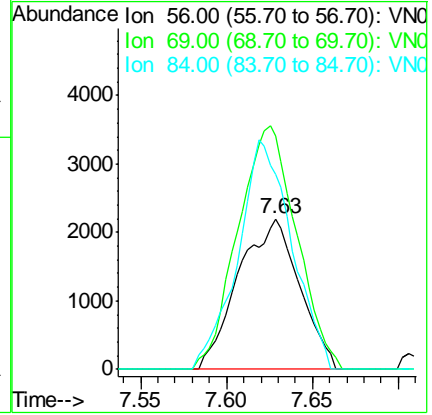
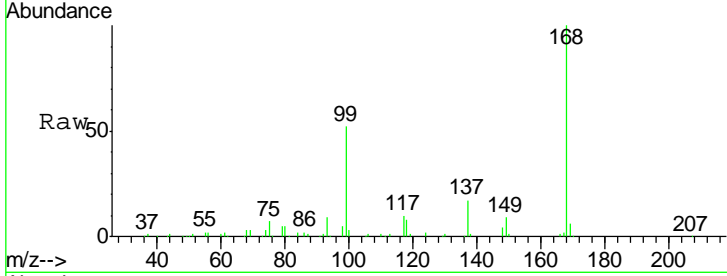




#31
 Cyclohexane
 Concen: 1.13 ug/l
 RT: 7.63 min Scan# 1821
 Delta R.T. 0.02 min
 Lab File: VN061690.D
 Acq: 8 Jun 2020 13:01

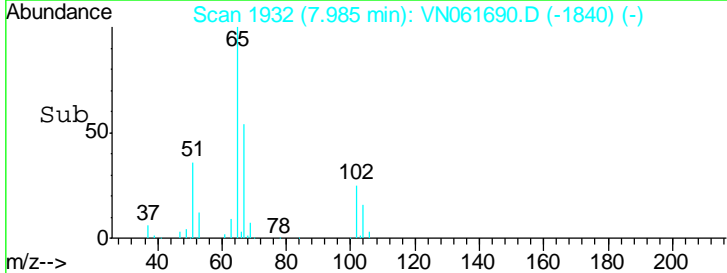
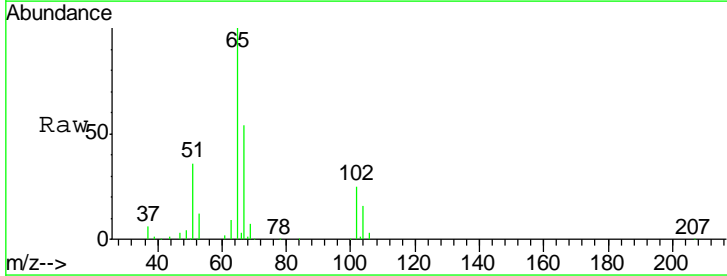
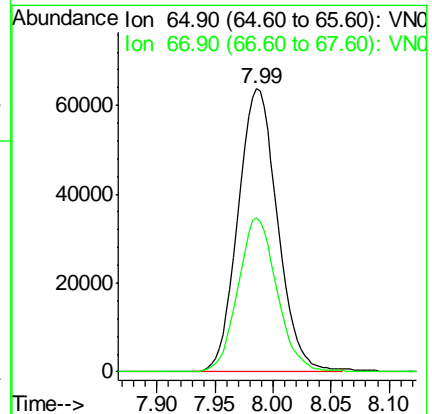
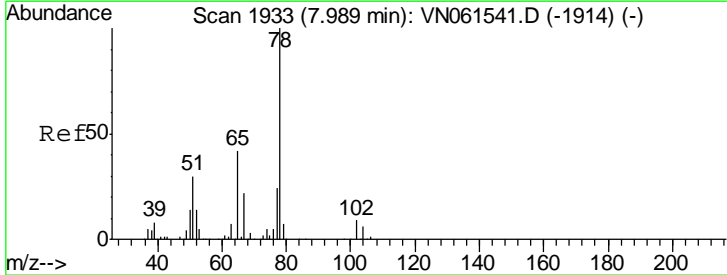
Instrument :
 MSVOA_N
 ClientSampleId :
 LF012OW009-200604

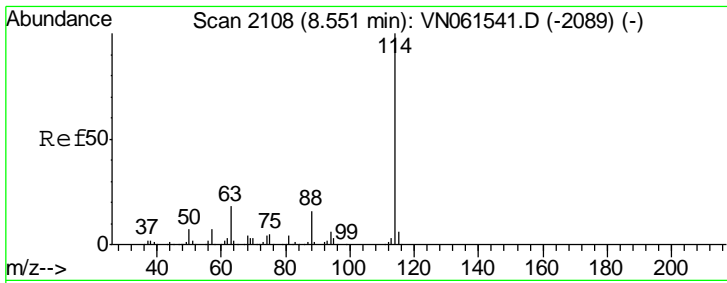
Tgt Ion	Resp	Lower	Upper
56	100		
69	154.6	27.8	41.8#
84	129.4	79.9	119.9#



#33
 1,2-Dichloroethane-d4
 Concen: 44.50 ug/l
 RT: 7.99 min Scan# 1932
 Delta R.T. -0.00 min
 Lab File: VN061690.D
 Acq: 8 Jun 2020 13:01

Tgt Ion	Resp	Lower	Upper
65	100		
67	53.5	0.0	104.8

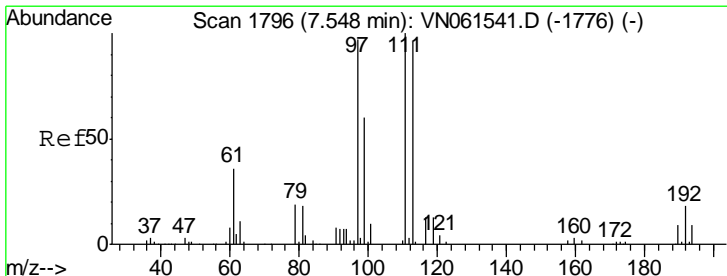
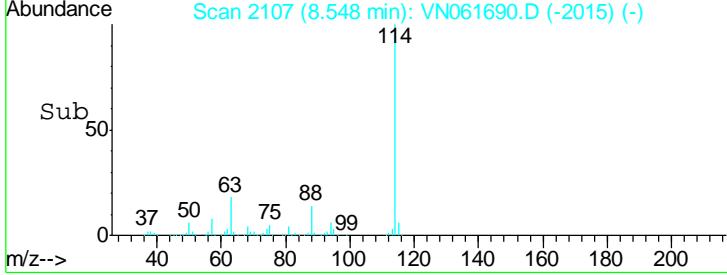
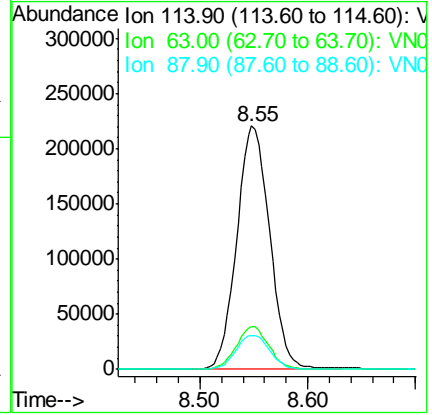
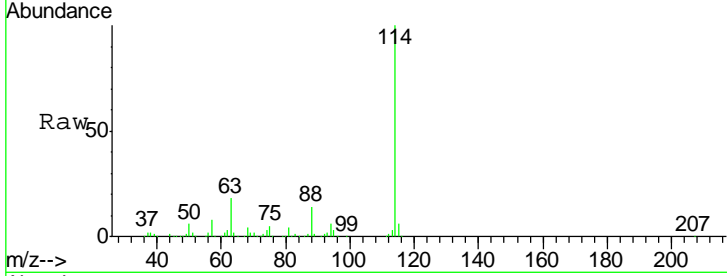




#34
 1,4-Difluorobenzene
 Concen: 50.00 ug/l
 RT: 8.55 min Scan# 2107
 Delta R.T. -0.00 min
 Lab File: VN061690.D
 Acq: 8 Jun 2020 13:01

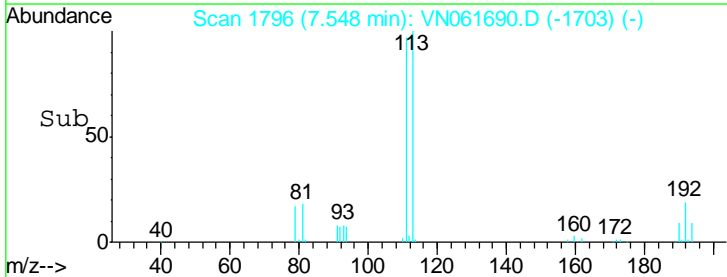
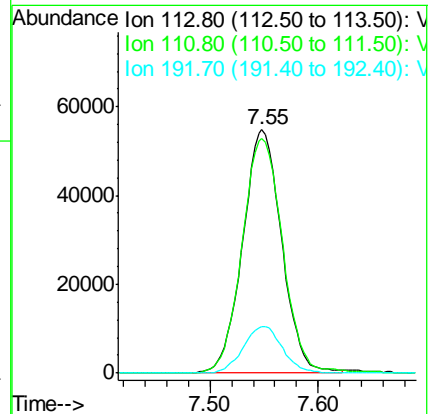
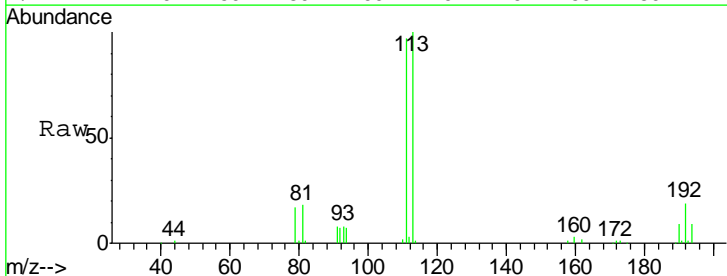
Instrument :
 MSVOA_N
 ClientSampleId :
 LF012OW009-200604

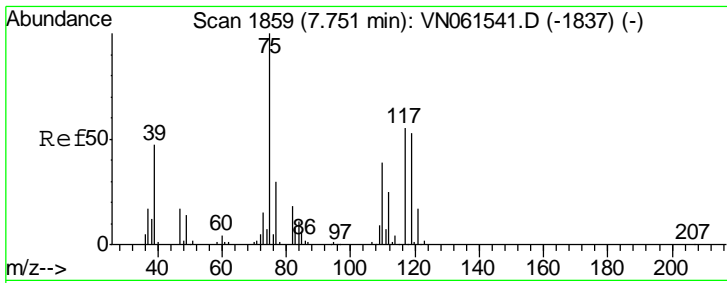
Tgt Ion	Resp	Lower	Upper
114	469268		
63	17.7	0.0	35.8
88	14.1	0.0	31.0



#35
 Dibromofluoromethane
 Concen: 57.80 ug/l
 RT: 7.55 min Scan# 1796
 Delta R.T. 0.00 min
 Lab File: VN061690.D
 Acq: 8 Jun 2020 13:01

Tgt Ion	Resp	Lower	Upper
113	137595		
111	100.2	83.4	125.0
192	19.3	15.4	23.2

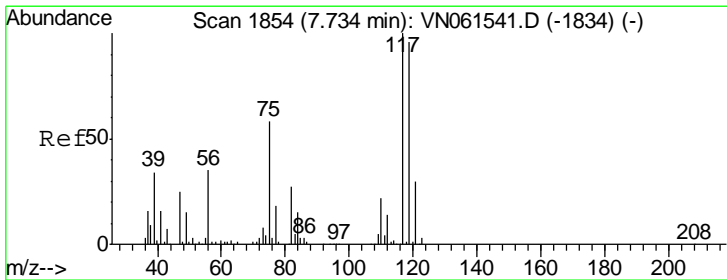
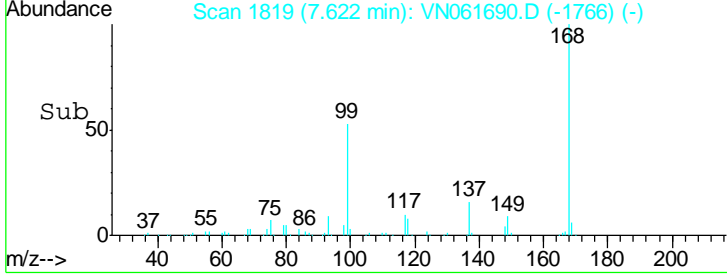
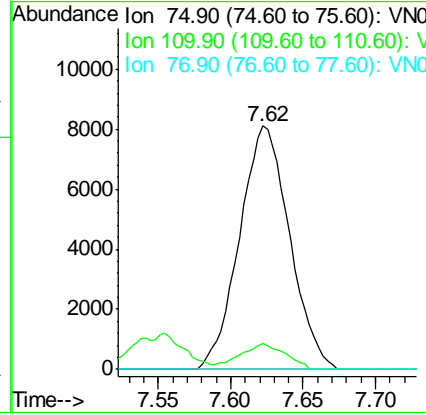
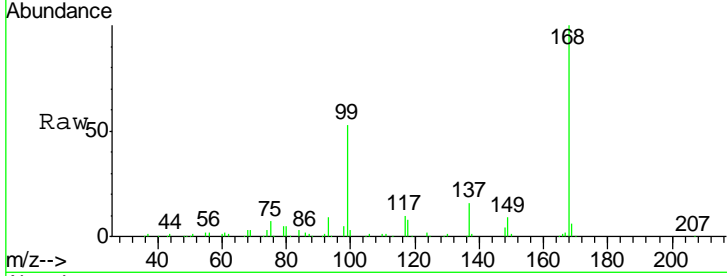




#36
 1,1-Dichloropropene
 Concen: 4.67 ug/l
 RT: 7.62 min Scan# 1819
 Delta R.T. -0.13 min
 Lab File: VN061690.D
 Acq: 8 Jun 2020 13:01

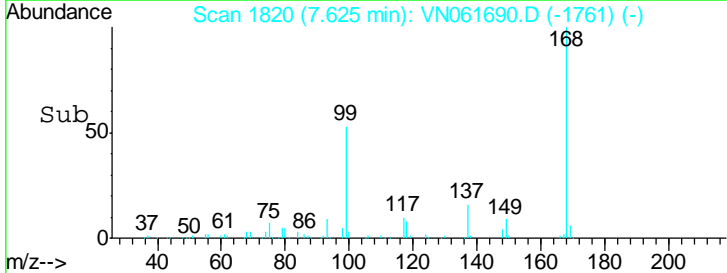
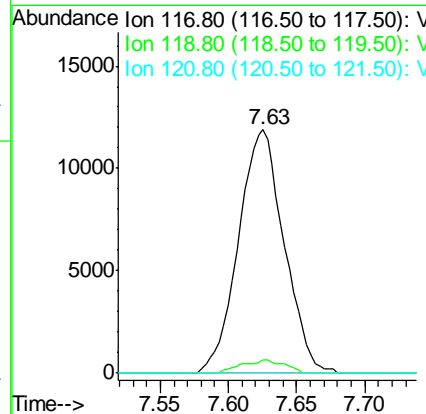
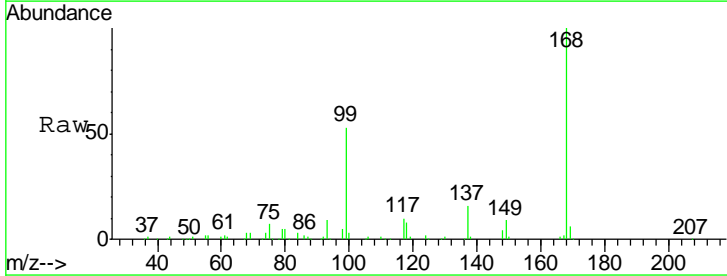
Instrument :
 MSVOA_N
 ClientSampled :
 LF012OW009-200604

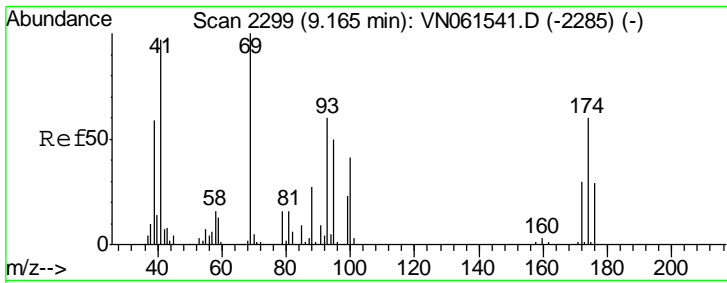
Tgt Ion	Resp	Lower	Upper
75	19412		
110	9.7	19.5	58.5#
77	0.0	24.7	37.1#



#38
 Carbon Tetrachloride
 Concen: 6.87 ug/l
 RT: 7.63 min Scan# 1820
 Delta R.T. -0.11 min
 Lab File: VN061690.D
 Acq: 8 Jun 2020 13:01

Tgt Ion	Resp	Lower	Upper
117	27546		
119	5.7	76.5	114.7#
121	0.0	24.1	36.1#

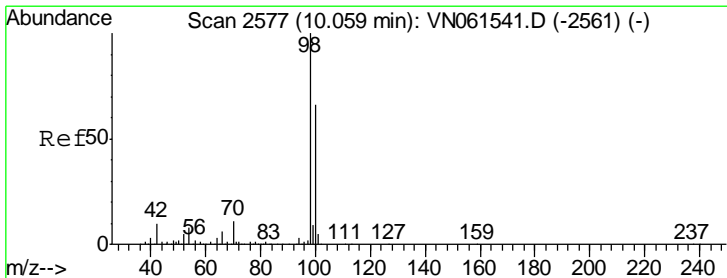
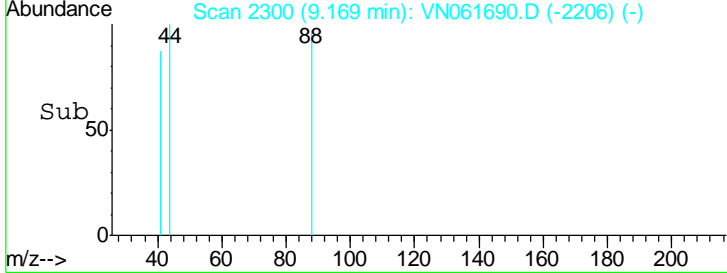
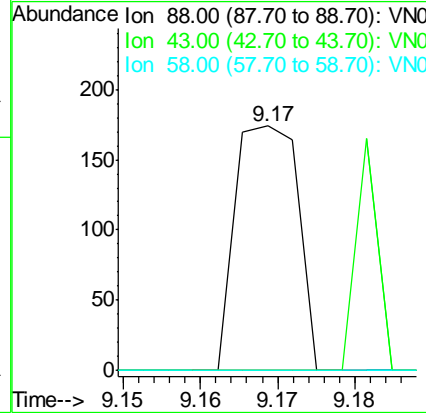
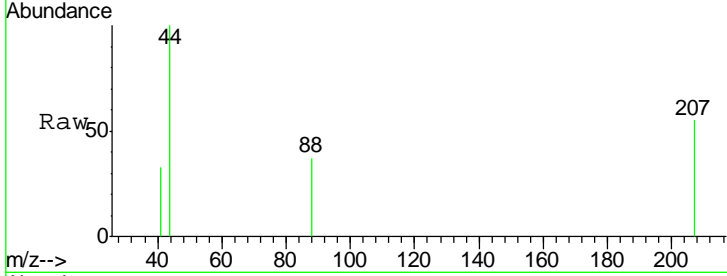




#49
 1,4-Dioxane
 Concen: 2.34 ug/l
 RT: 9.17 min Scan# 2300
 Delta R.T. 0.00 min
 Lab File: VN061690.D
 Acq: 8 Jun 2020 13:01

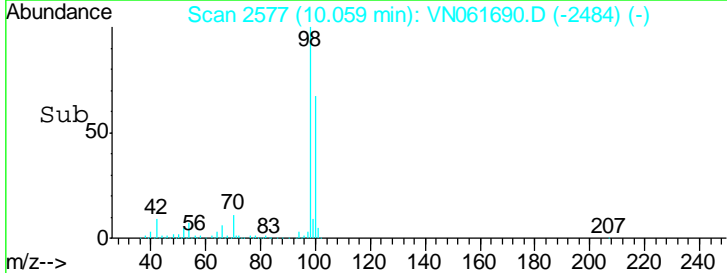
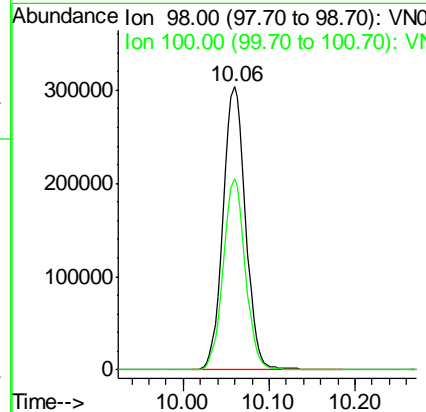
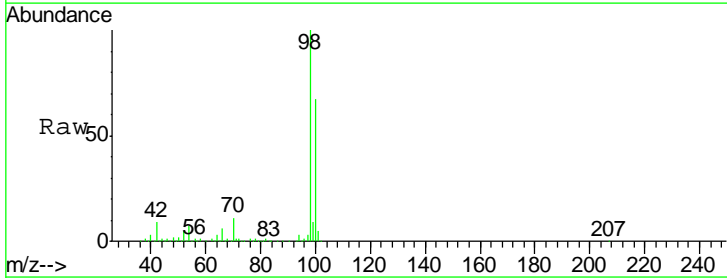
Instrument : MSVOA_N
 ClientSampled : LF012OW009-200604

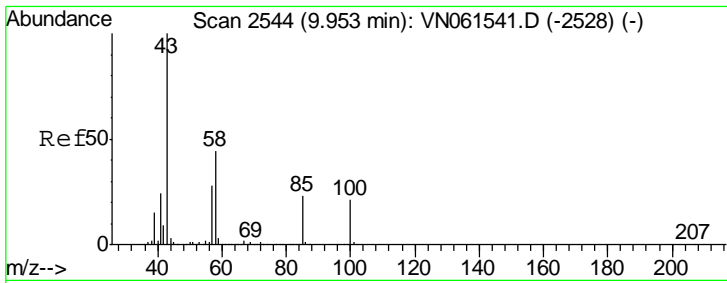
Tgt Ion	Resp	Lower	Upper
88	100		
43	32.7	23.1	34.7
58	0.0	48.3	72.5#



#50
 Toluene-d8
 Concen: 50.26 ug/l
 RT: 10.06 min Scan# 2577
 Delta R.T. 0.00 min
 Lab File: VN061690.D
 Acq: 8 Jun 2020 13:01

Tgt Ion	Resp	Lower	Upper
98	100		
100	66.1	52.8	79.2

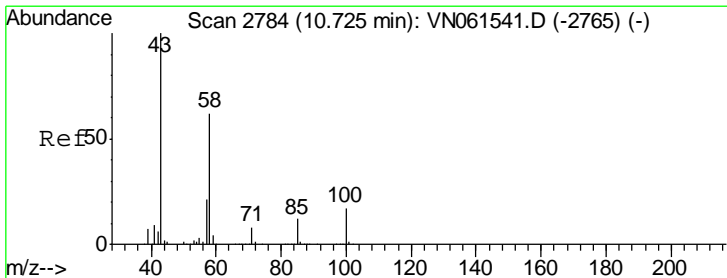
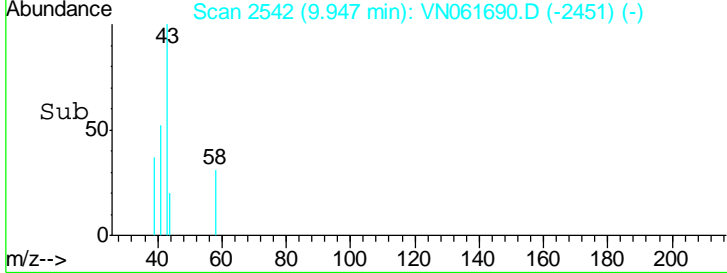
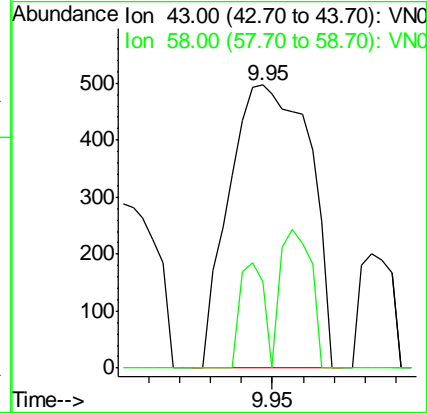
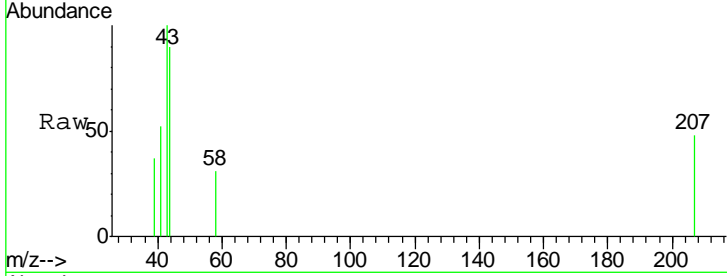




#51
 4-Methyl-2-Pentanone
 Concen: 0.26 ug/l
 RT: 9.95 min Scan# 2542
 Delta R.T. -0.01 min
 Lab File: VN061690.D
 Acq: 8 Jun 2020 13:01

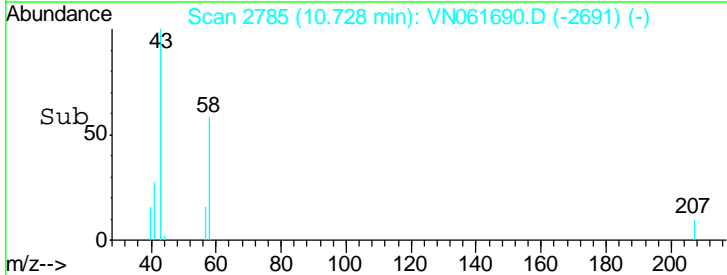
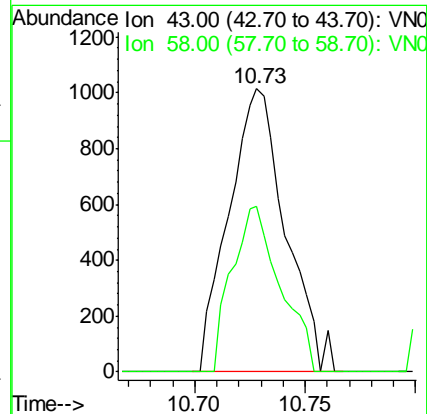
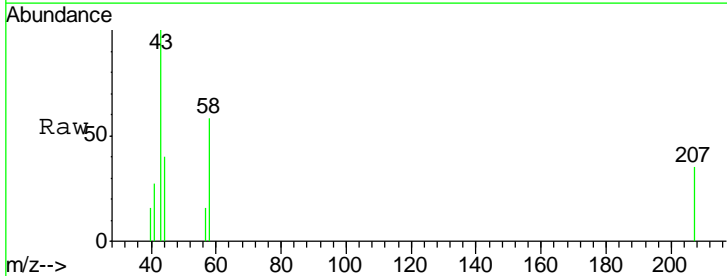
Instrument : MSVOA_N
 ClientSampled : LF012OW009-200604

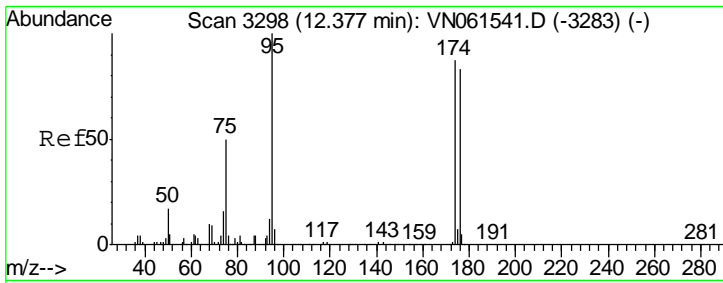
Tgt Ion: 43 Resp: 897
 Ion Ratio Lower Upper
 43 100
 58 18.4 35.0 52.6#



#59
 2-Hexanone
 Concen: 0.74 ug/l
 RT: 10.73 min Scan# 2785
 Delta R.T. 0.00 min
 Lab File: VN061690.D
 Acq: 8 Jun 2020 13:01

Tgt Ion: 43 Resp: 1810
 Ion Ratio Lower Upper
 43 100
 58 49.7 30.7 92.1

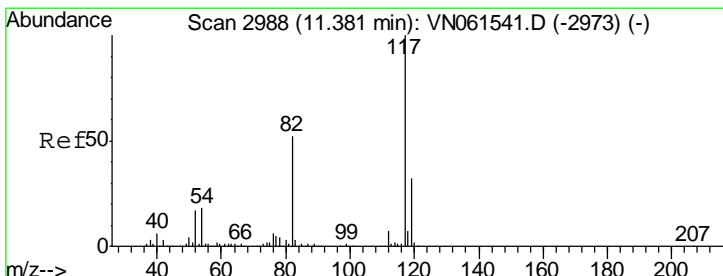
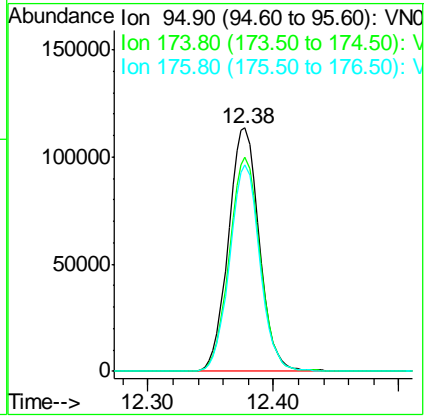
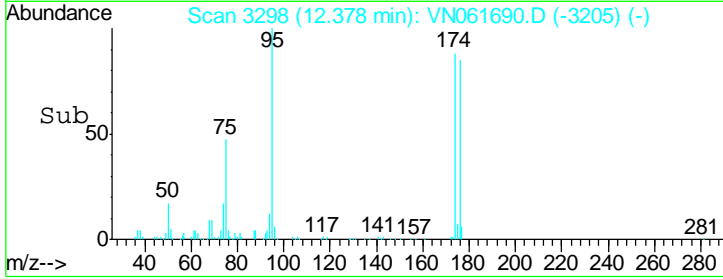
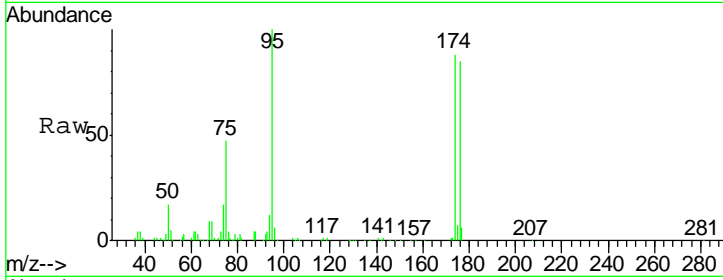




#62
 4-Bromofluorobenzene
 Concen: 48.30 ug/l
 RT: 12.38 min Scan# 3298
 Delta R.T. 0.00 min
 Lab File: VN061690.D
 Acq: 8 Jun 2020 13:01

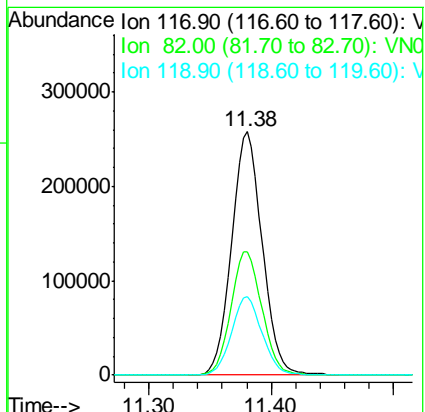
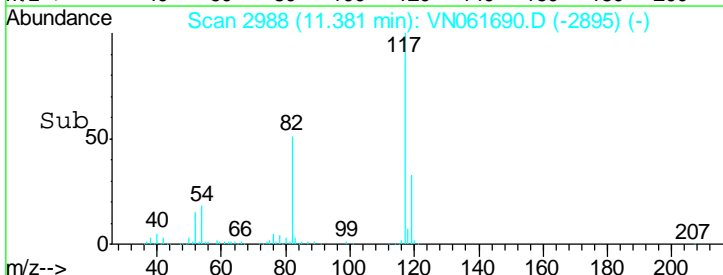
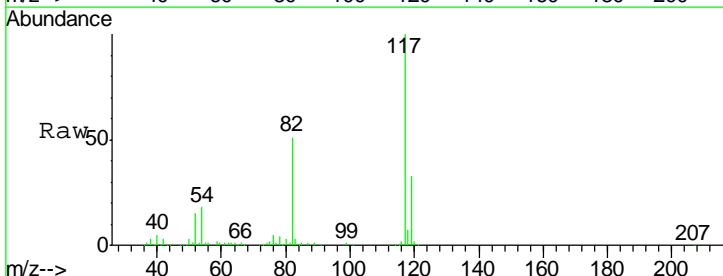
Instrument : MSVOA_N
 ClientSampled : LF012OW009-200604

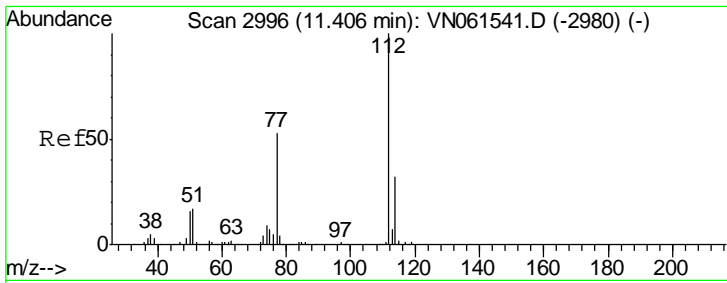
Tgt Ion	Resp	Lower	Upper
95	194411		
174	87.7	0.0	172.8
176	82.9	0.0	164.8



#63
 Chlorobenzene-d5
 Concen: 50.00 ug/l
 RT: 11.38 min Scan# 2988
 Delta R.T. 0.00 min
 Lab File: VN061690.D
 Acq: 8 Jun 2020 13:01

Tgt Ion	Resp	Lower	Upper
117	449058		
82	50.5	41.5	62.3
119	32.5	25.6	38.4

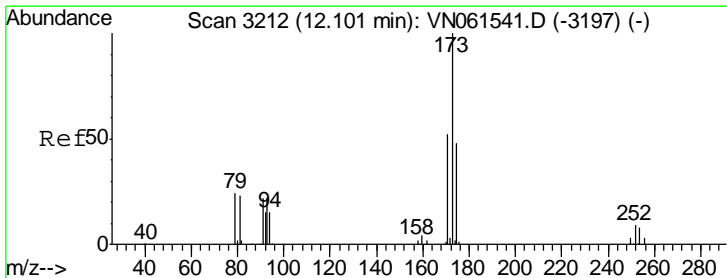
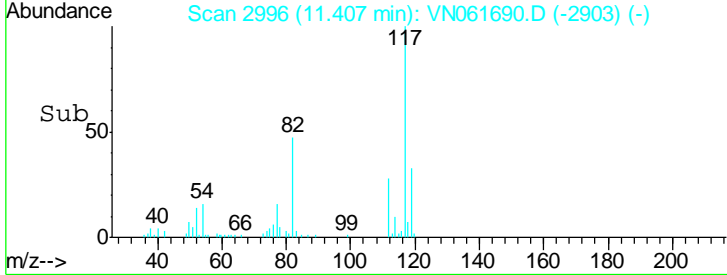
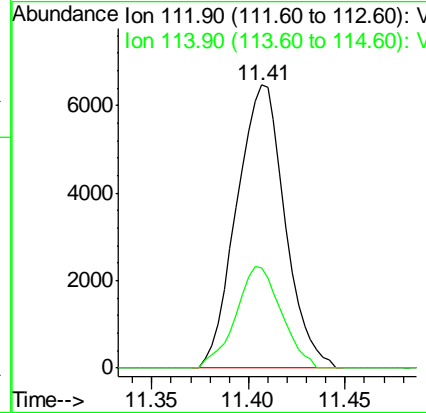
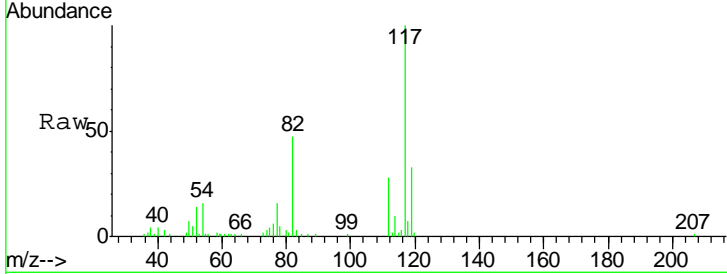




#65
 Chlorobenzene
 Concen: 1.21 ug/l
 RT: 11.41 min Scan# 2996
 Delta R.T. 0.00 min
 Lab File: VN061690.D
 Acq: 8 Jun 2020 13:01

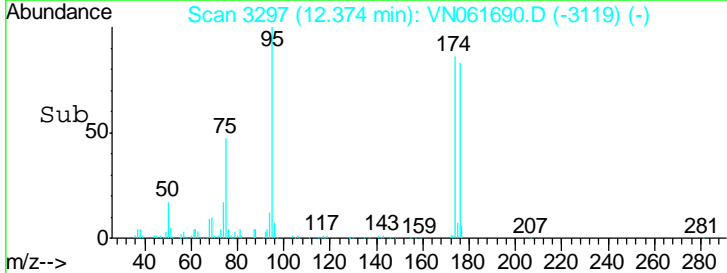
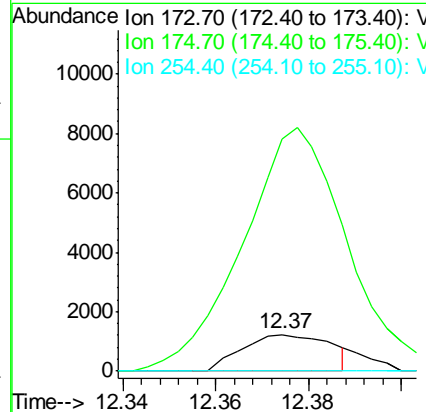
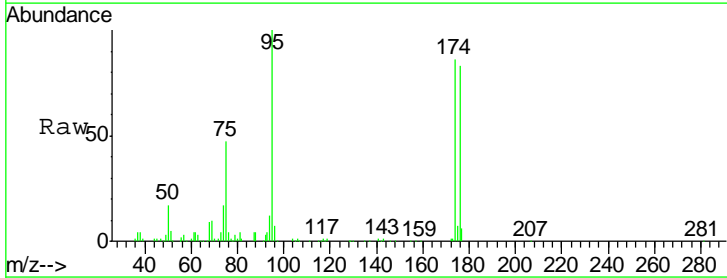
Instrument :
 MSVOA_N
 ClientSampled :
 LF012OW009-200604

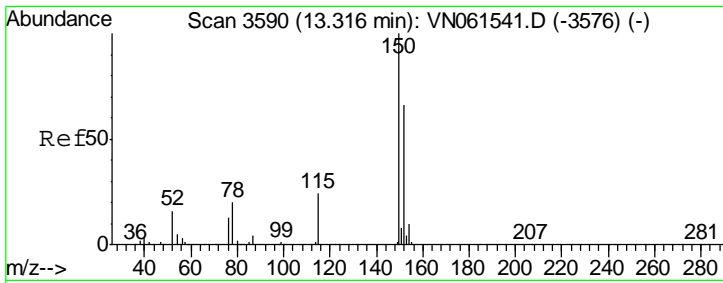
Tgt Ion: 112 Resp: 11264
 Ion Ratio Lower Upper
 112 100
 114 35.6 25.7 38.5



#71
 Bromoform
 Concen: 0.61 ug/l
 RT: 12.37 min Scan# 3297
 Delta R.T. 0.27 min
 Lab File: VN061690.D
 Acq: 8 Jun 2020 13:01

Tgt Ion: 173 Resp: 1645
 Ion Ratio Lower Upper
 173 100
 175 672.3 24.4 73.2#
 254 0.0 0.0 0.0

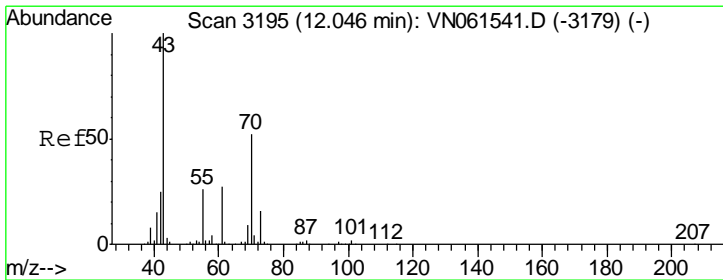
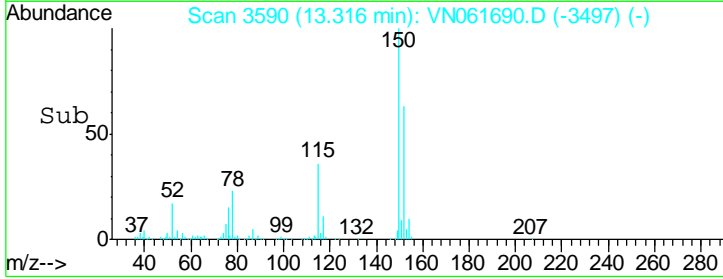
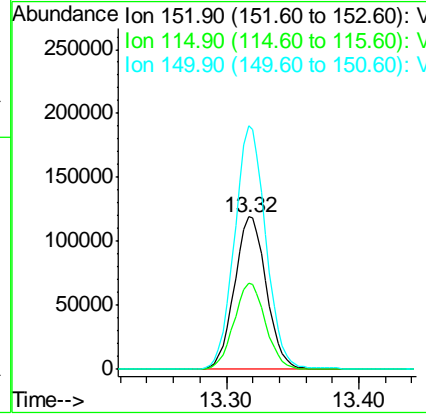
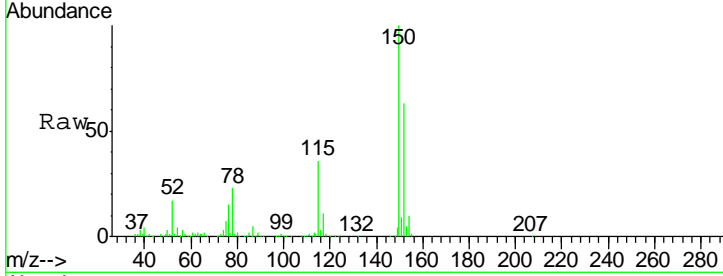




#72
 1,4-Dichlorobenzene-d4
 Concen: 50.00 ug/l
 RT: 13.32 min Scan# 3590
 Delta R.T. 0.00 min
 Lab File: VN061690.D
 Acq: 8 Jun 2020 13:01

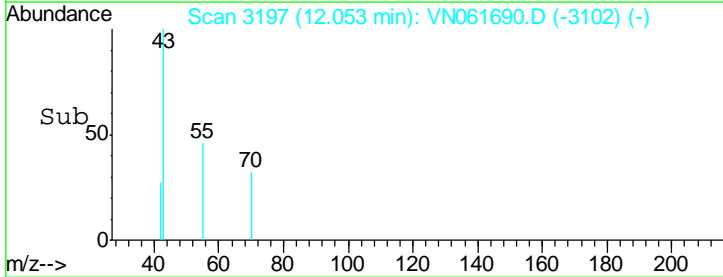
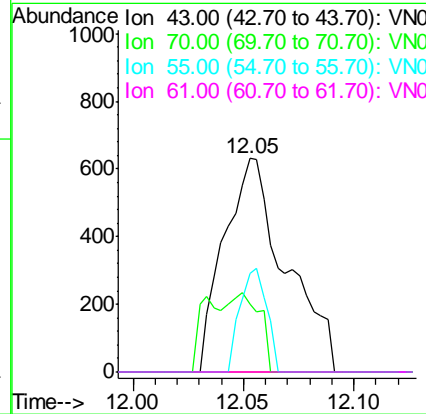
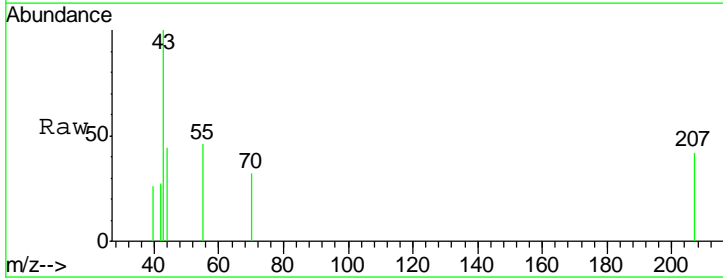
Instrument :
 MSVOA_N
 ClientSampled :
 LF012OW009-200604

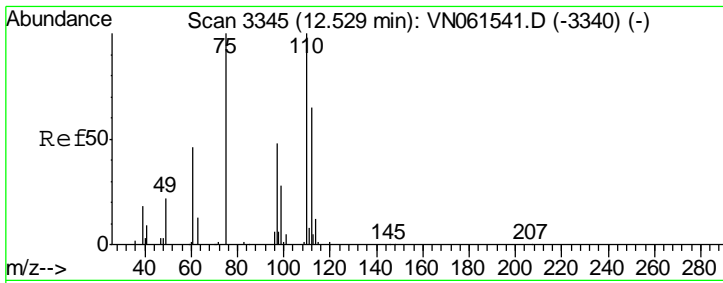
Tgt Ion	Resp	Lower	Upper
152	199654		
115	55.8	28.0	84.0
150	157.3	0.0	344.0



#74
 N-amyl acetate
 Concen: 0.27 ug/l
 RT: 12.05 min Scan# 3197
 Delta R.T. 0.01 min
 Lab File: VN061690.D
 Acq: 8 Jun 2020 13:01

Tgt Ion	Resp	Lower	Upper
43	1223		
43	100		
70	0.0	40.5	60.7#
55	21.1	20.6	31.0
61	0.0	21.8	32.6#

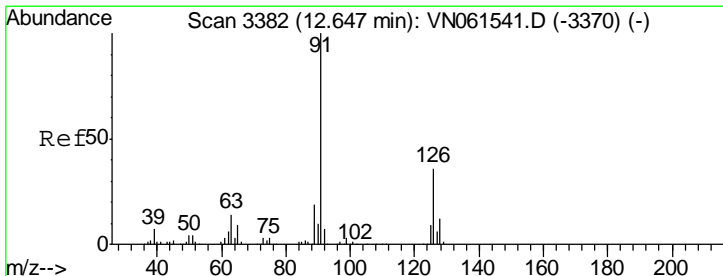
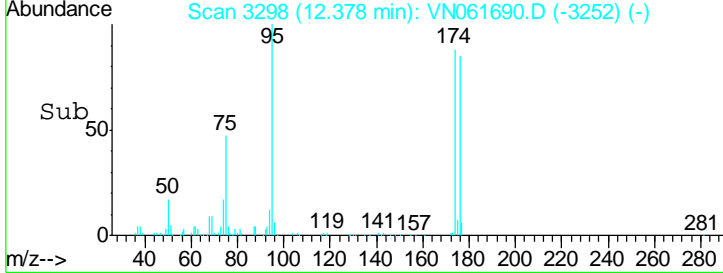
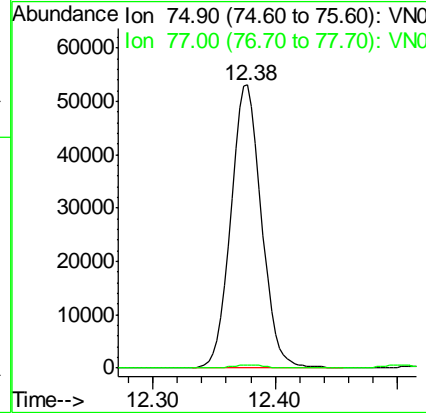
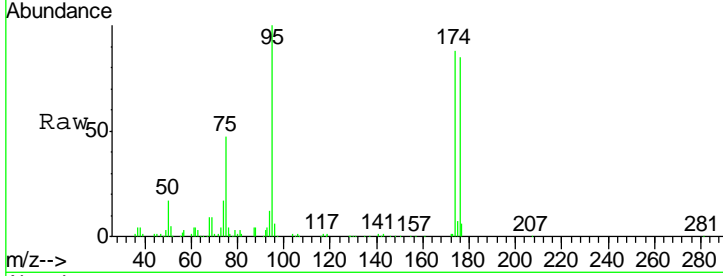




#76
 1,2,3-Trichloropropane
 Concen: 25.59 ug/l
 RT: 12.38 min Scan# 3298
 Delta R.T. -0.15 min
 Lab File: VN061690.D
 Acq: 8 Jun 2020 13:01

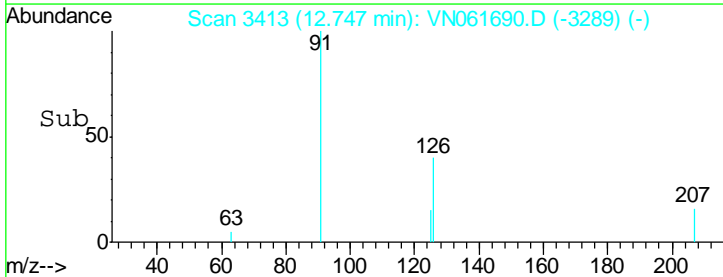
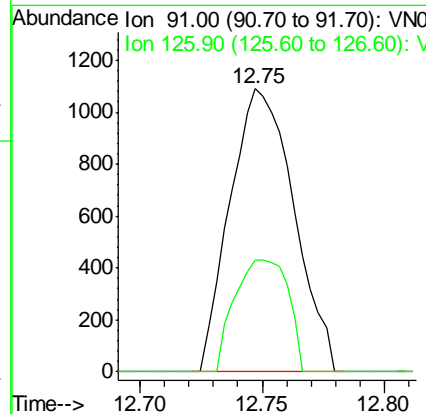
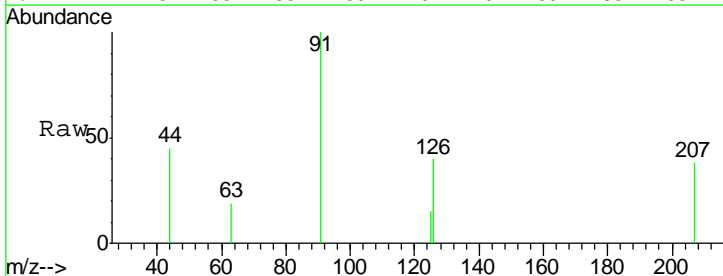
Instrument : MSVOA_N
 ClientSampled : LF012OW009-200604

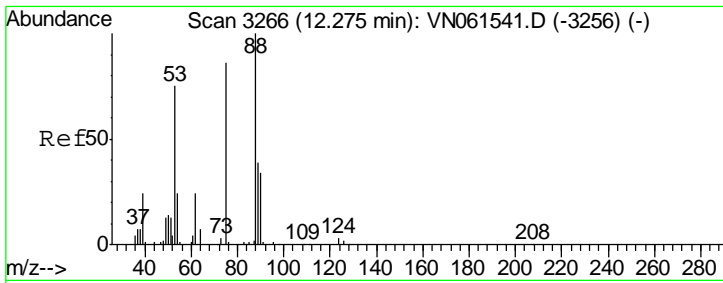
Tgt Ion: 75 Resp: 92908
 Ion Ratio Lower Upper
 75 100
 77 1.1 0.0 0.0#



#79
 2-Chlorotoluene
 Concen: 0.20 ug/l
 RT: 12.75 min Scan# 3413
 Delta R.T. 0.10 min
 Lab File: VN061690.D
 Acq: 8 Jun 2020 13:01

Tgt Ion: 91 Resp: 1980
 Ion Ratio Lower Upper
 91 100
 126 33.2 17.9 53.7

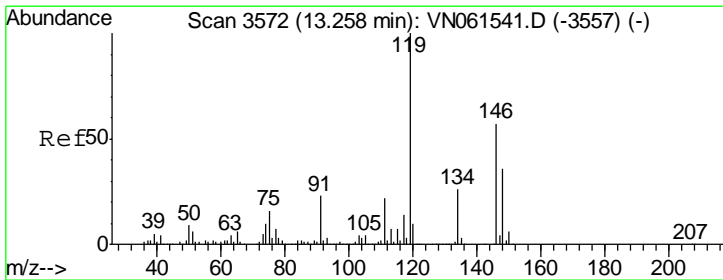
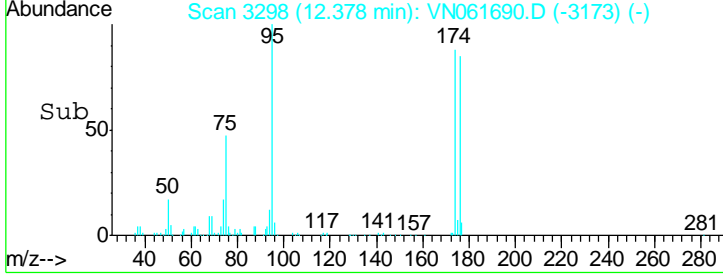
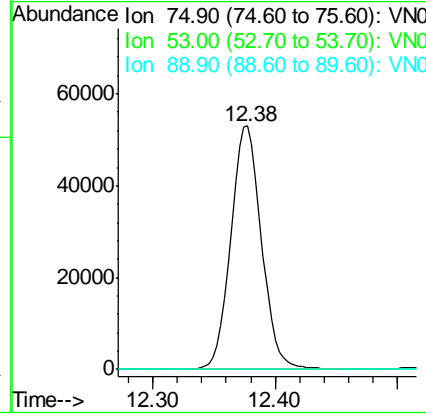
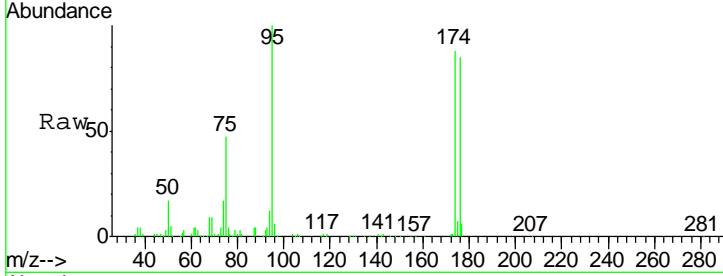




#81
 trans-1,4-Dichloro-2-butene
 Concen: 65.44 ug/l
 RT: 12.38 min Scan# 3298
 Delta R.T. 0.10 min
 Lab File: VN061690.D
 Acq: 8 Jun 2020 13:01

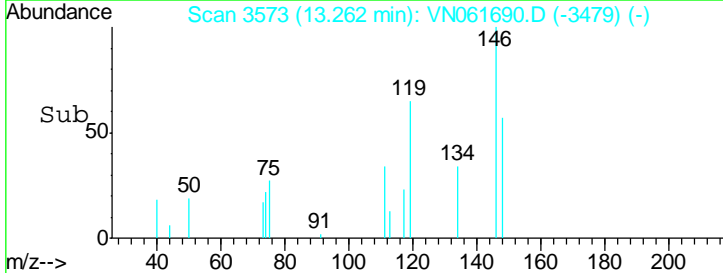
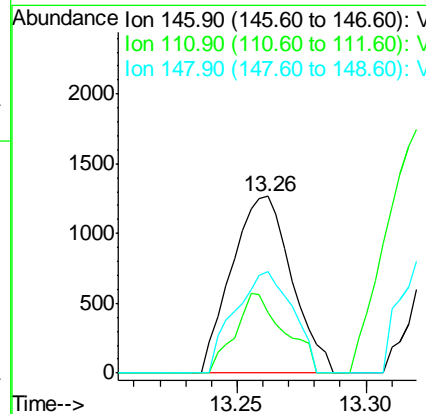
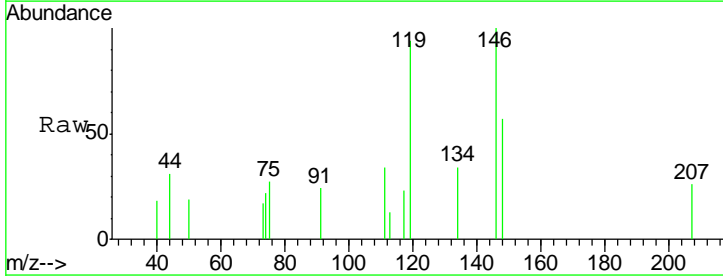
Instrument : MSVOA_N
 ClientSampled : LF012OW009-200604

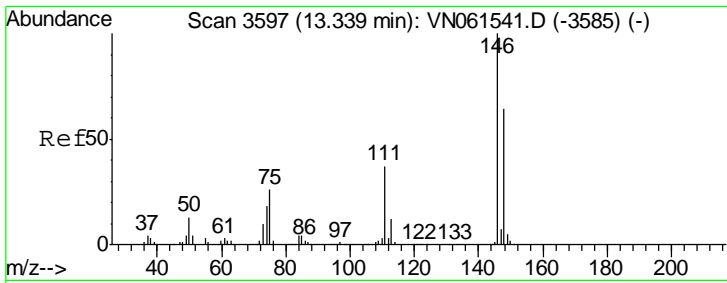
Tgt Ion	Resp	Lower	Upper
75	100		
53	0.0	67.8	101.8#
89	0.0	37.1	55.7#



#87
 1,3-Dichlorobenzene
 Concen: 0.31 ug/l
 RT: 13.26 min Scan# 3573
 Delta R.T. 0.00 min
 Lab File: VN061690.D
 Acq: 8 Jun 2020 13:01

Tgt Ion	Resp	Lower	Upper
146	100		
111	37.0	19.2	57.6
148	55.1	31.7	95.1

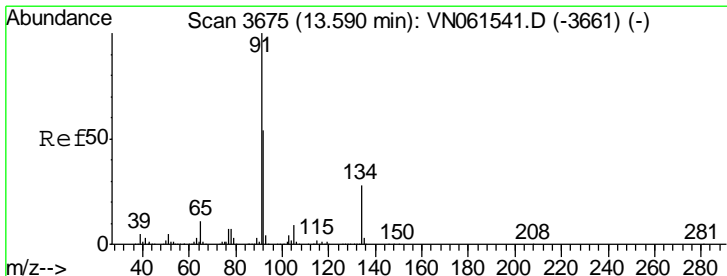
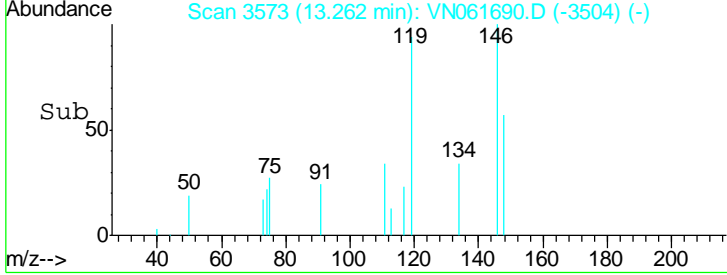
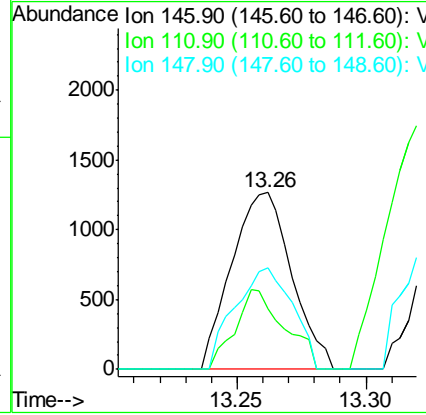
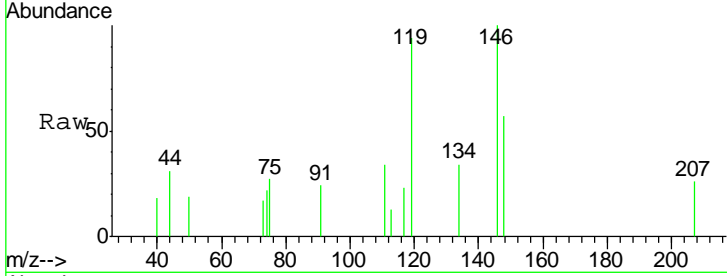




#88
 1,4-Dichlorobenzene
 Concen: 0.31 ug/l
 RT: 13.26 min Scan# 3573
 Delta R.T. -0.08 min
 Lab File: VN061690.D
 Acq: 8 Jun 2020 13:01

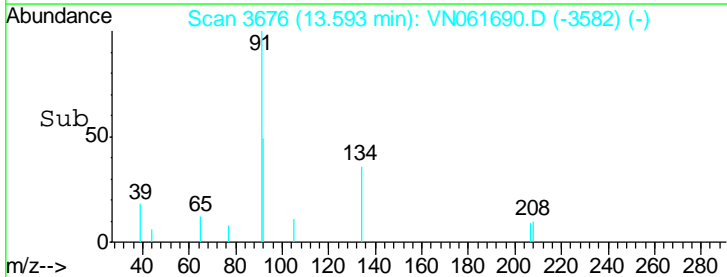
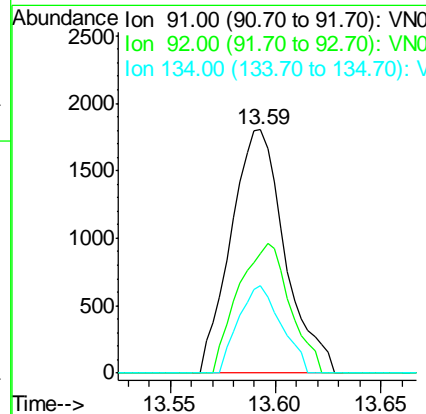
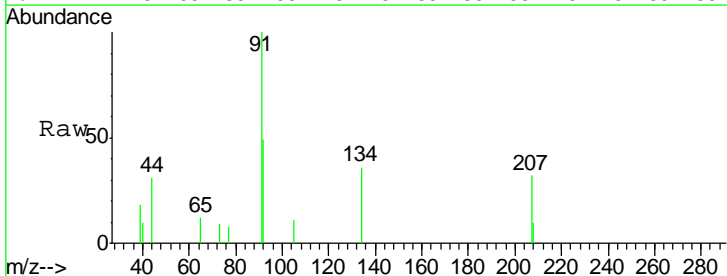
Instrument : MSVOA_N
 ClientSampled : LF012OW009-200604

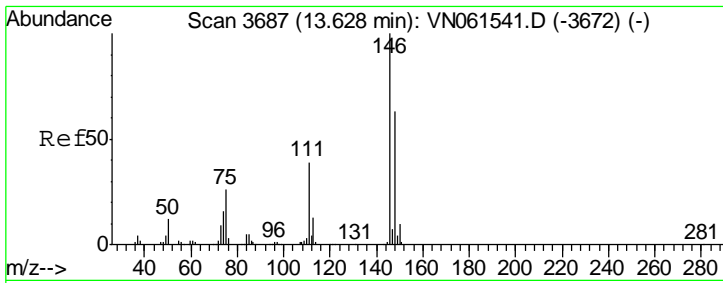
Tgt Ion	Resp	Lower	Upper
146	2053		
111	37.0	18.9	56.9
148	55.1	31.8	95.3



#89
 n-Butylbenzene
 Concen: 0.30 ug/l
 RT: 13.59 min Scan# 3676
 Delta R.T. 0.00 min
 Lab File: VN061690.D
 Acq: 8 Jun 2020 13:01

Tgt Ion	Resp	Lower	Upper
91	3208		
92	51.1	27.2	81.6
134	28.6	14.0	42.0

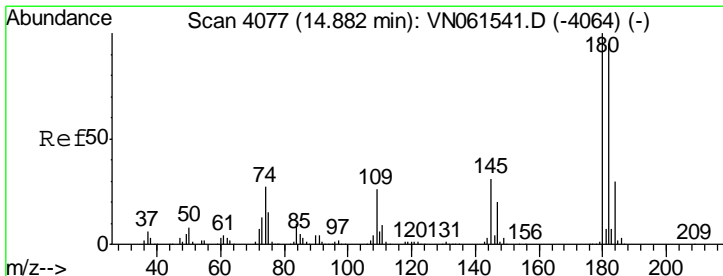
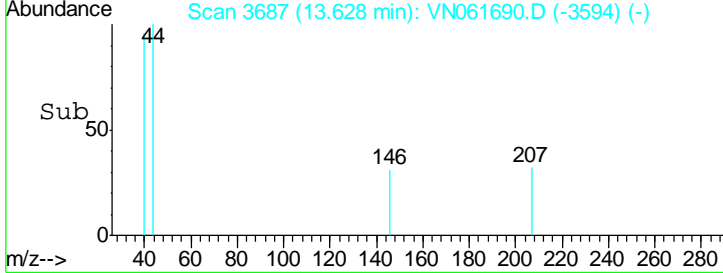
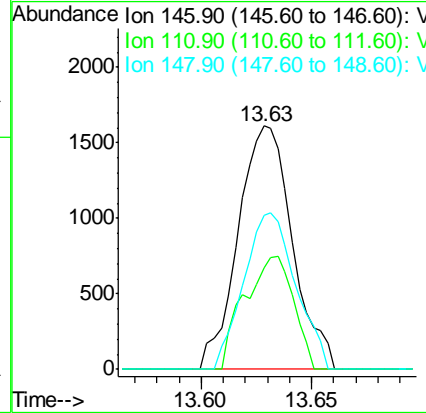
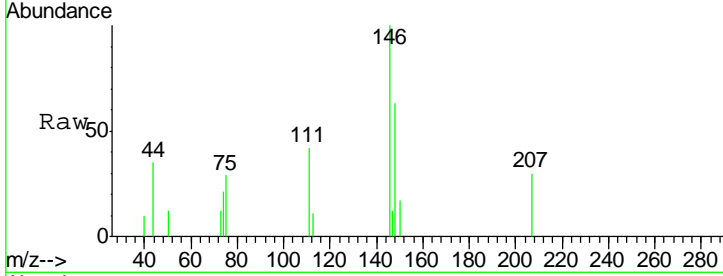




#91
 1,2-Dichlorobenzene
 Concen: 0.44 ug/l
 RT: 13.63 min Scan# 3687
 Delta R.T. 0.00 min
 Lab File: VN061690.D
 Acq: 8 Jun 2020 13:01

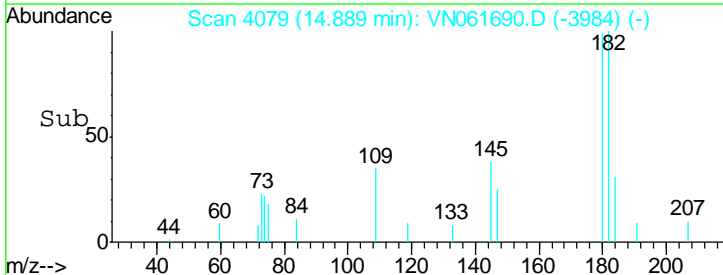
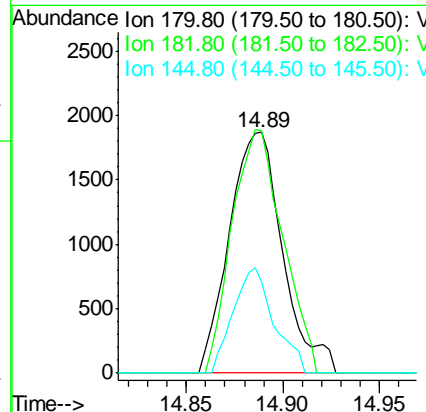
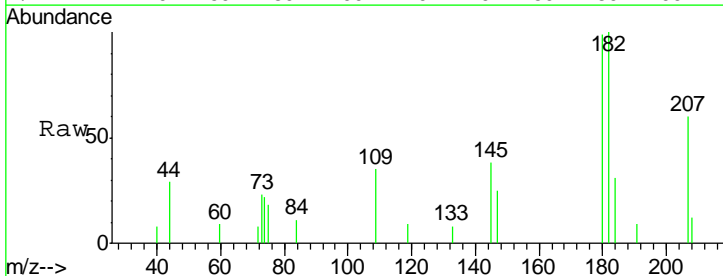
Instrument : MSVOA_N
 ClientSampled : LF012OW009-200604

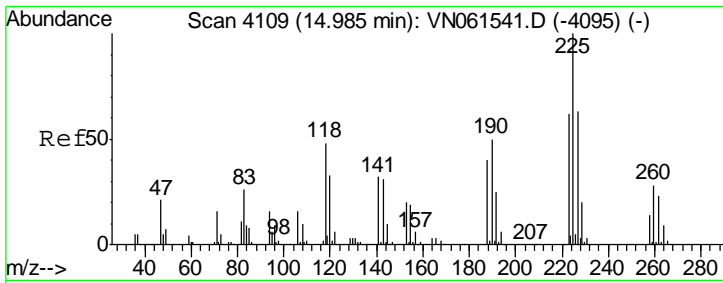
Tgt Ion	Resp	Lower	Upper
146	100		
111	42.0	20.1	60.2
148	61.5	31.9	95.5



#93
 1,2,4-Trichlorobenzene
 Concen: 0.97 ug/l
 RT: 14.89 min Scan# 4079
 Delta R.T. 0.01 min
 Lab File: VN061690.D
 Acq: 8 Jun 2020 13:01

Tgt Ion	Resp	Lower	Upper
180	100		
182	96.0	47.8	143.3
145	33.3	15.5	46.5

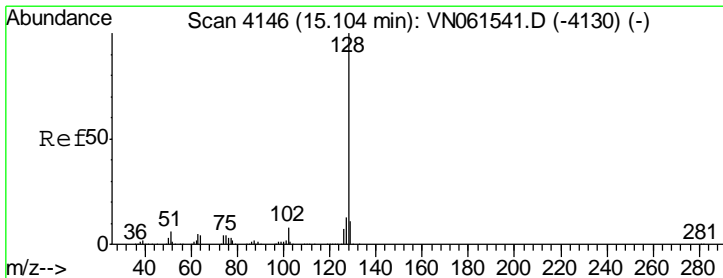
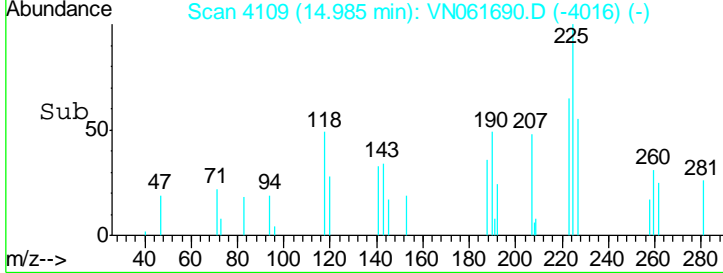
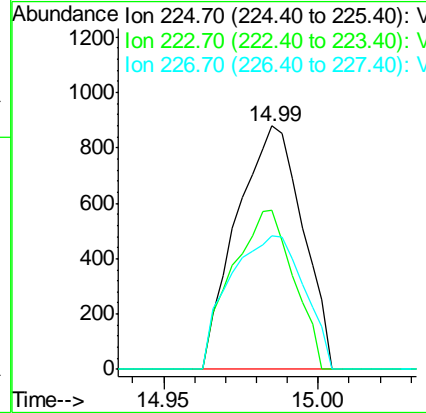
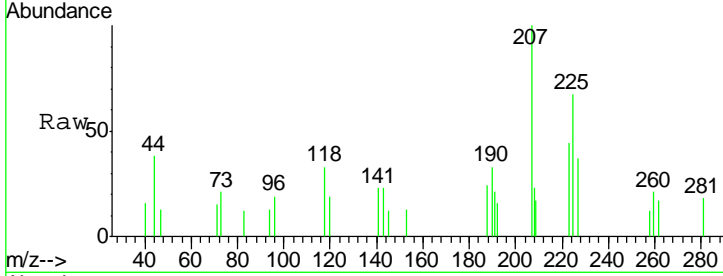




#94
 Hexachlorobutadiene
 Concen: 0.83 ug/l
 RT: 14.99 min Scan# 4109
 Delta R.T. 0.00 min
 Lab File: VN061690.D
 Acq: 8 Jun 2020 13:01

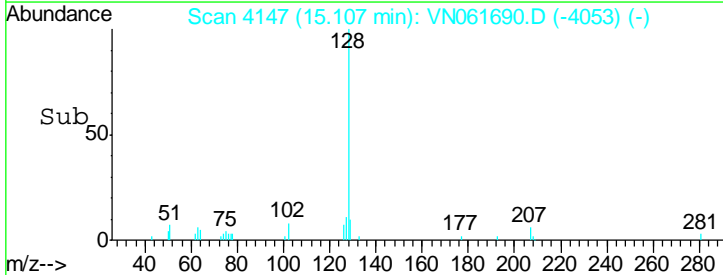
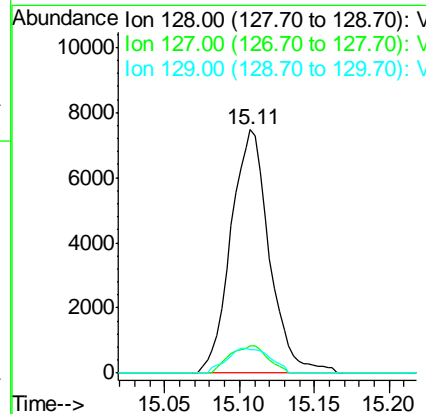
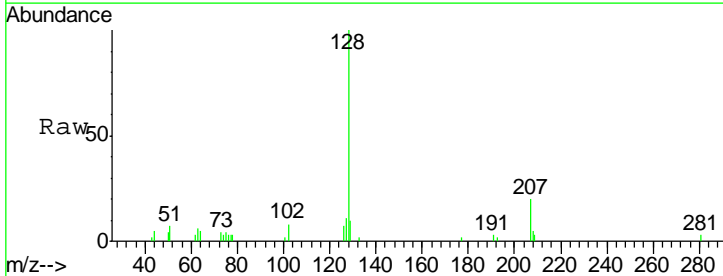
Instrument : MSVOA_N
 ClientSampled : LF012OW009-200604

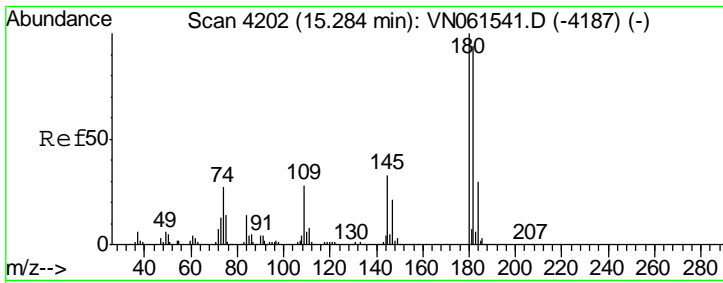
Tgt Ion	Resp	Lower	Upper
225	100		
223	61.4	31.9	95.5
227	62.0	31.9	95.9



#95
 Naphthalene
 Concen: 1.19 ug/l
 RT: 15.11 min Scan# 4147
 Delta R.T. 0.00 min
 Lab File: VN061690.D
 Acq: 8 Jun 2020 13:01

Tgt Ion	Resp	Lower	Upper
128	100		
127	11.2	10.0	15.0
129	11.4	8.5	12.7





#96
 1,2,3-Trichlorobenzene
 Concen: 0.95 ug/l
 RT: 15.28 min Scan# 4202
 Delta R.T. 0.00 min
 Lab File: VN061690.D
 Acq: 8 Jun 2020 13:01

Instrument : MSVOA_N
 ClientSampleId : LF012OW009-200604

Tgt Ion	Resp	Lower	Upper
180	3454		
180	100		
182	100.5	47.1	141.3
145	37.8	16.3	48.9

