

Data Path : Z:\voasrv\HPCHEM1\MSVOA_N\Data\VN060823\
 Data File : VN078130.D
 Acq On : 08 Jun 2023 15:36
 Operator : JC\MD
 Sample : 03072-04 50X
 Misc : 5.0mL/MSVOA_N/WATER
 ALS Vial : 16 Sample Multiplier: 1

Instrument :
 MSVOA_N
 ClientSampleId :
 30998

Quant Time: Jun 09 01:27:47 2023
 Quant Method : Z:\voasrv\HPCHEM1\MSVOA_N\methods\82N060623W.M
 Quant Title : SW846 8260
 QLast Update : Wed Jun 07 05:05:00 2023
 Response via : Initial Calibration

Compound	R.T.	QIon	Response	Conc	Units	Dev(Min)

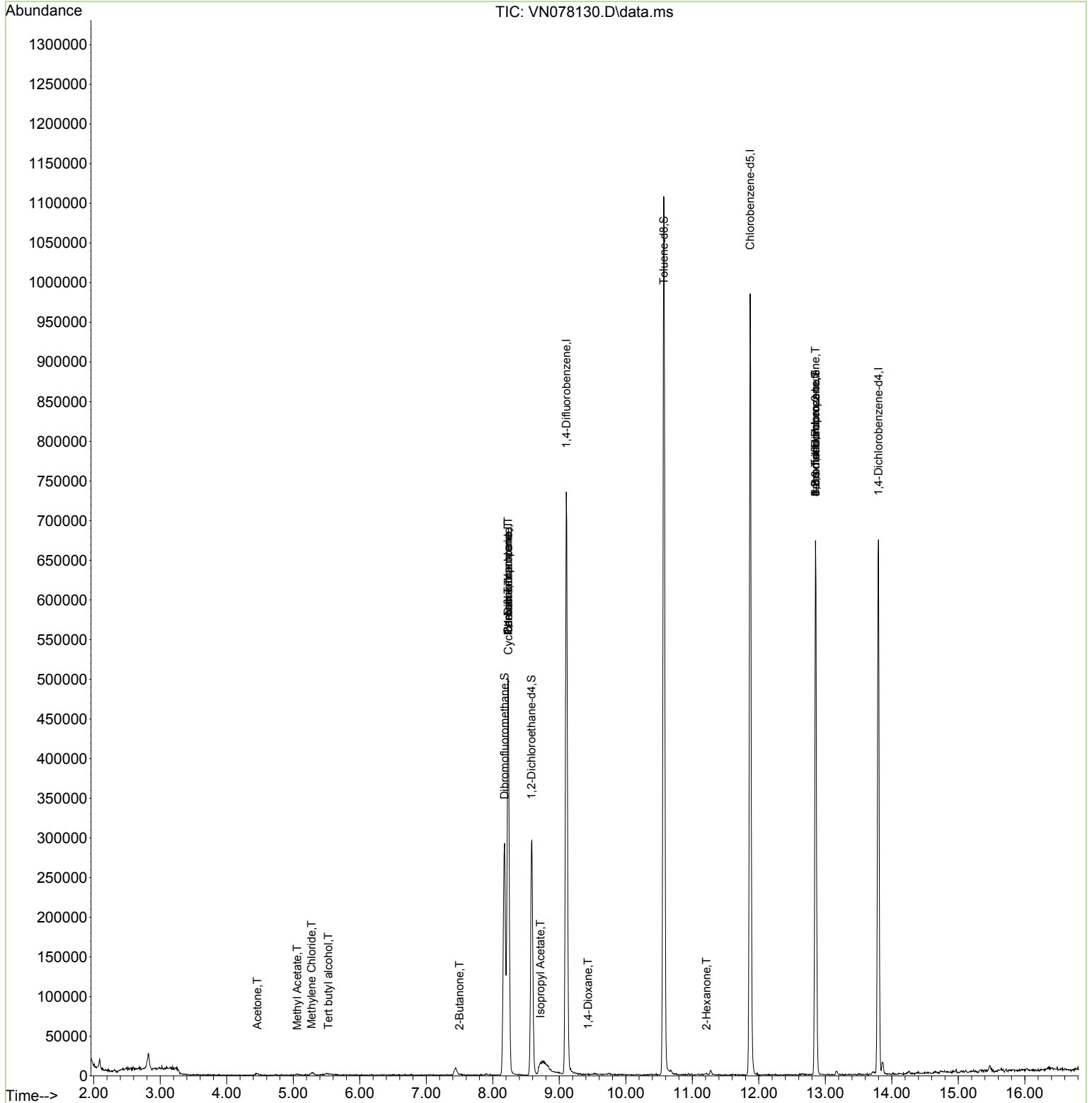
Internal Standards						
1) Pentafluorobenzene	8.229	168	350931	50.000	ug/l	0.00
34) 1,4-Difluorobenzene	9.106	114	653748	50.000	ug/l	0.00
63) Chlorobenzene-d5	11.870	117	582854	50.000	ug/l	0.00
72) 1,4-Dichlorobenzene-d4	13.800	152	183571	50.000	ug/l	0.00
System Monitoring Compounds						
33) 1,2-Dichloroethane-d4	8.582	65	244930	52.347	ug/l	0.00
Spiked Amount	50.000	Range 74 - 125	Recovery	=	104.700%	
35) Dibromofluoromethane	8.177	113	213143	51.564	ug/l	0.00
Spiked Amount	50.000	Range 75 - 124	Recovery	=	103.120%	
50) Toluene-d8	10.571	98	807395	50.667	ug/l	0.00
Spiked Amount	50.000	Range 86 - 113	Recovery	=	101.340%	
62) 4-Bromofluorobenzene	12.853	95	238952	48.235	ug/l	0.00
Spiked Amount	50.000	Range 83 - 123	Recovery	=	96.480%	
Target Compounds						
						Qvalue
3) Chloromethane	2.371	50	705	Below Cal		89
11) Tert butyl alcohol	5.530	59	976	1.511	ug/l #	72
16) Acetone	4.459	43	3461	2.570	ug/l	92
18) Methyl Acetate	5.059	43	2042	0.329	ug/l #	42
20) Methylene Chloride	5.277	84	995	0.224	ug/l #	33
25) 2-Butanone	7.500	43	1469	0.709	ug/l #	82
31) Cyclohexane	8.235	56	8057	1.342	ug/l #	29
36) 1,1-Dichloropropene	8.229	75	28247	4.764	ug/l #	49
38) Carbon Tetrachloride	8.229	117	37641	6.012	ug/l #	15
43) Isopropyl Acetate	8.718	43	9593	1.083	ug/l #	49
49) 1,4-Dioxane	9.435	88	63	0.806	ug/l #	30
59) 2-Hexanone	11.212	43	1032	0.318	ug/l #	26
71) Bromoform	12.853	173	1964	0.663	ug/l #	1
75) 1,1,2,2-Tetrachloroethane	12.864	83	156	Below Cal	#	1
76) 1,2,3-Trichloropropane	12.853	75	128333	29.572	ug/l #	1
81) trans-1,4-Dichloro-2-b...	12.853	75	128333	90.854	ug/l #	15

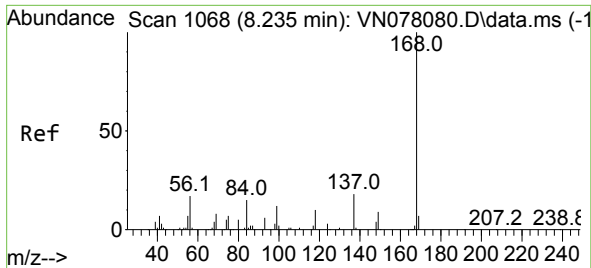
(#) = qualifier out of range (m) = manual integration (+) = signals summed

Data Path : Z:\voasrv\HPCHEM1\MSVOA_N\Data\VN060823\
 Data File : VN078130.D
 Acq On : 08 Jun 2023 15:36
 Operator : JC\MD
 Sample : 03072-04 50X
 Misc : 5.0mL/MSVOA_N/WATER
 ALS Vial : 16 Sample Multiplier: 1

Instrument :
 MSVOA_N
 ClientSampleId :
 30998

Quant Time: Jun 09 01:27:47 2023
 Quant Method : Z:\voasrv\HPCHEM1\MSVOA_N\methods\82N060623W.M
 Quant Title : SW846 8260
 QLast Update : Wed Jun 07 05:05:00 2023
 Response via : Initial Calibration

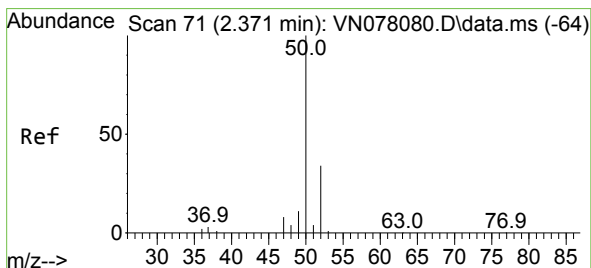
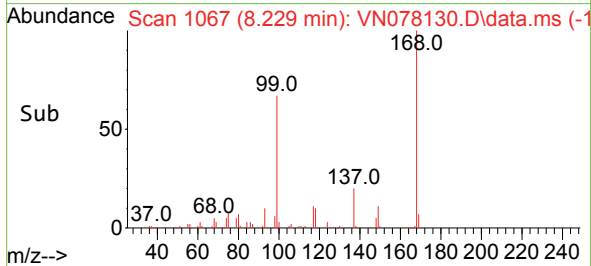
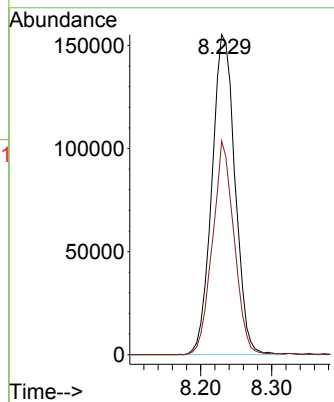
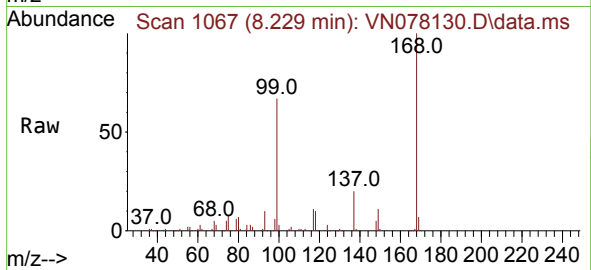




#1
 Pentafluorobenzene
 Concen: 50.000 ug/l
 RT: 8.229 min Scan# 1067
 Delta R.T. -0.006 min
 Lab File: VN078130.D
 Acq: 08 Jun 2023 15:36

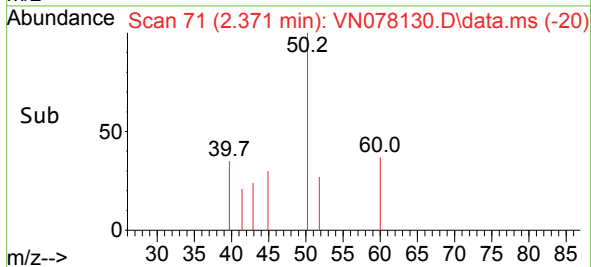
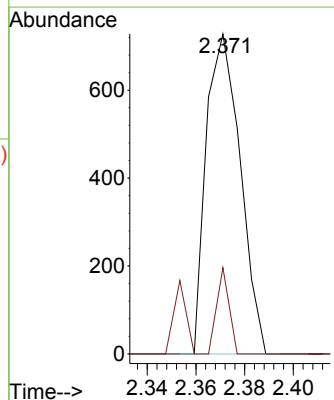
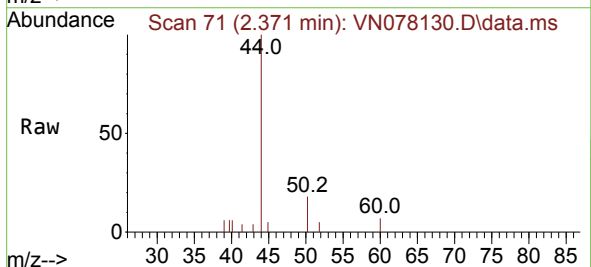
Instrument : MSVOA_N
 ClientSampleId : 30998

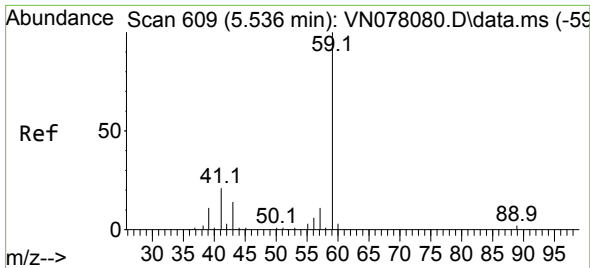
Tgt Ion:168 Resp: 350931
 Ion Ratio Lower Upper
 168 100
 99 66.6 53.0 79.6



#3
 Chloromethane
 Concen: Below Cal
 RT: 2.371 min Scan# 71
 Delta R.T. 0.000 min
 Lab File: VN078130.D
 Acq: 08 Jun 2023 15:36

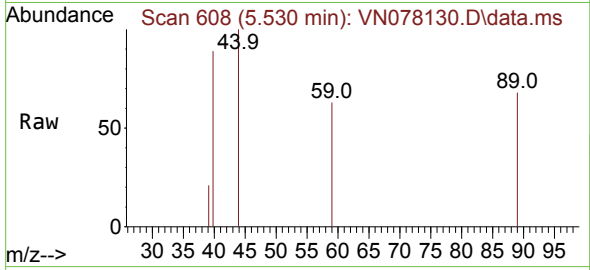
Tgt Ion: 50 Resp: 705
 Ion Ratio Lower Upper
 50 100
 52 26.9 26.5 39.7



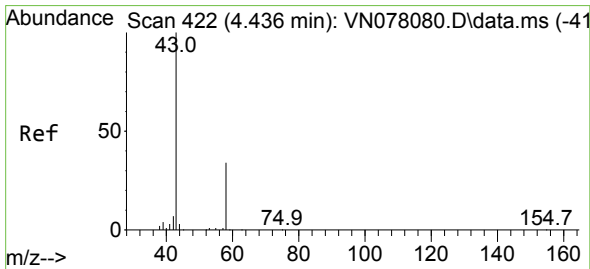
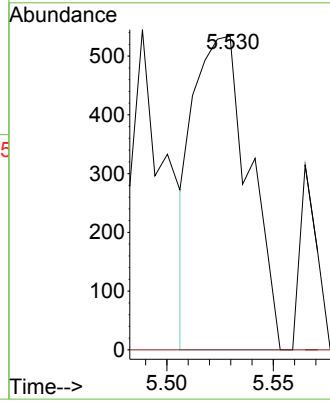
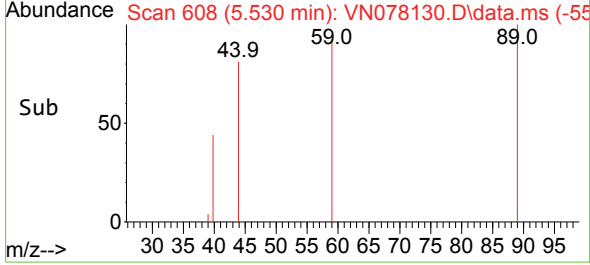


#11
 Tert butyl alcohol
 Concen: 1.511 ug/l
 RT: 5.530 min Scan# 609
 Delta R.T. -0.006 min
 Lab File: VN078130.D
 Acq: 08 Jun 2023 15:36

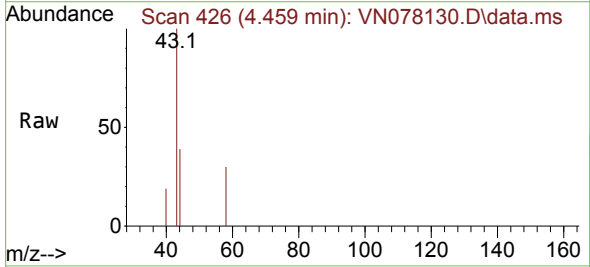
Instrument : MSVOA_N
 ClientSampleId : 30998



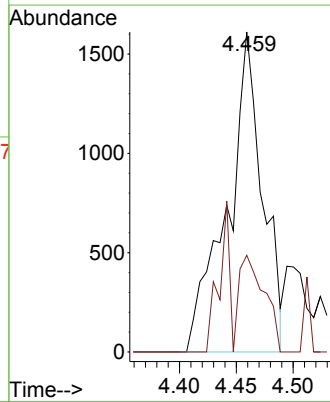
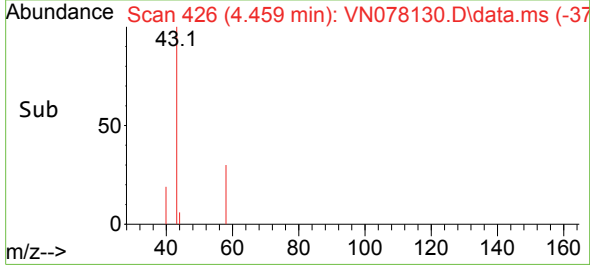
Tgt Ion: 59 Resp: 976
 Ion Ratio Lower Upper
 59 100
 57 0.0 8.2 12.4#

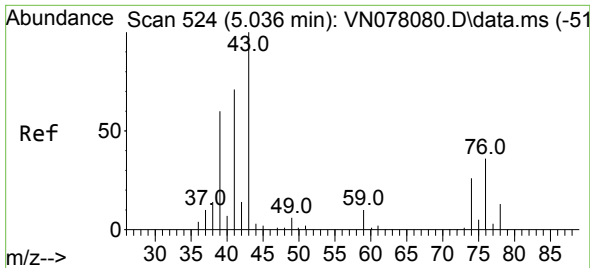


#16
 Acetone
 Concen: 2.570 ug/l
 RT: 4.459 min Scan# 426
 Delta R.T. 0.023 min
 Lab File: VN078130.D
 Acq: 08 Jun 2023 15:36



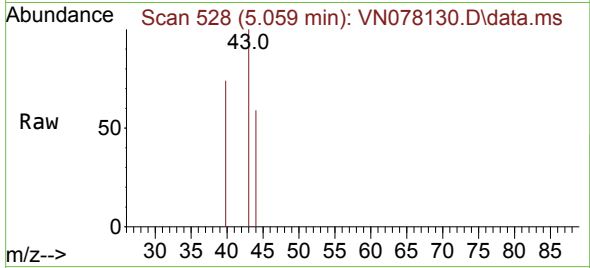
Tgt Ion: 43 Resp: 3461
 Ion Ratio Lower Upper
 43 100
 58 30.2 28.0 42.0



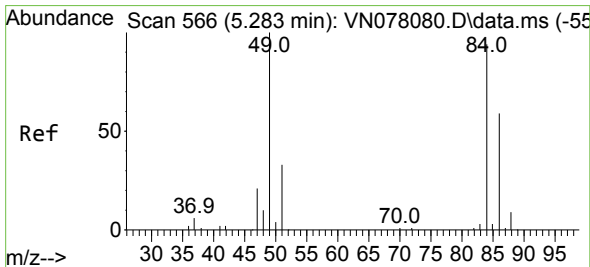
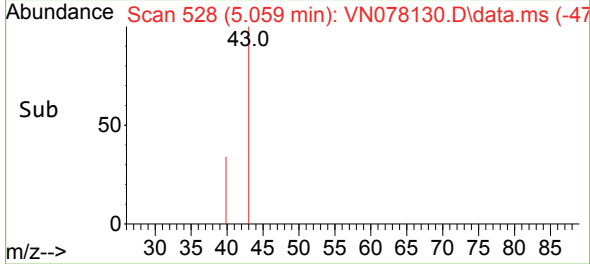
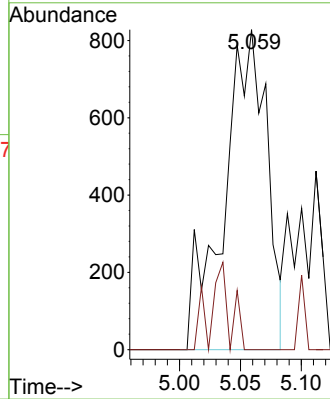


#18
 Methyl Acetate
 Concen: 0.329 ug/l
 RT: 5.059 min Scan# 51
 Delta R.T. 0.023 min
 Lab File: VN078130.D
 Acq: 08 Jun 2023 15:36

Instrument :
 MSVOA_N
 ClientSampleId :
 30998

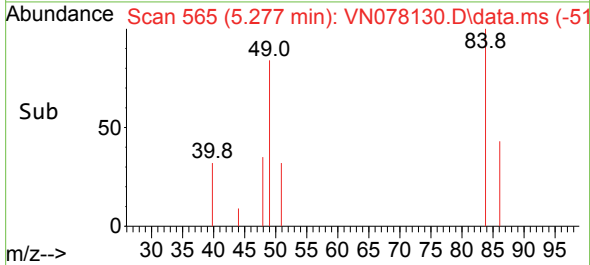
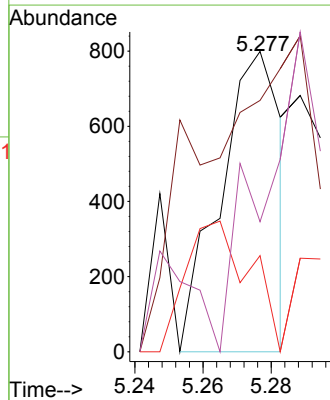
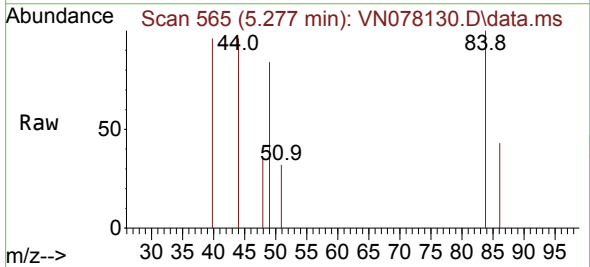


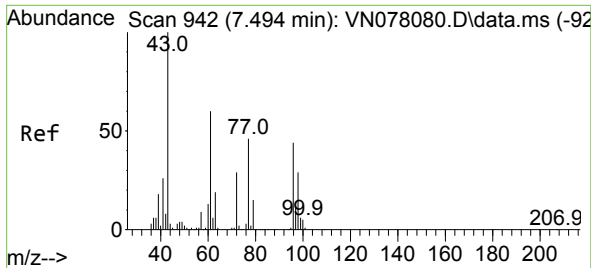
Tgt Ion: 43 Resp: 2042
 Ion Ratio Lower Upper
 43 100
 74 0.0 26.2 39.4#



#20
 Methylene Chloride
 Concen: 0.224 ug/l
 RT: 5.277 min Scan# 565
 Delta R.T. -0.006 min
 Lab File: VN078130.D
 Acq: 08 Jun 2023 15:36

Tgt Ion: 84 Resp: 995
 Ion Ratio Lower Upper
 84 100
 49 6.5 79.7 119.5#
 51 32.0 25.2 37.8
 86 19.9 53.3 79.9#

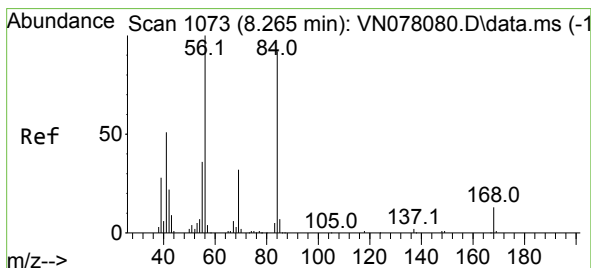
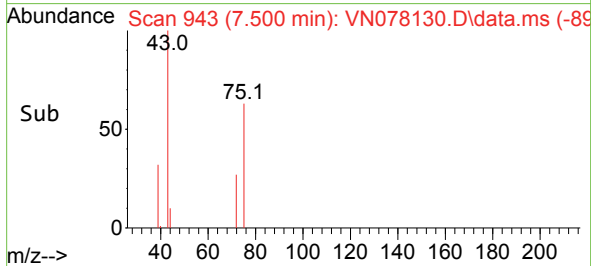
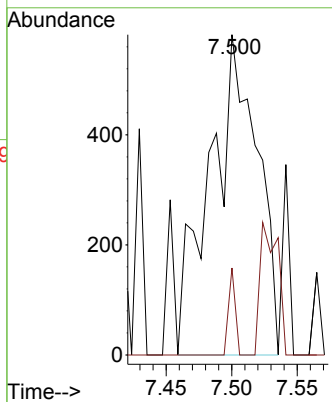
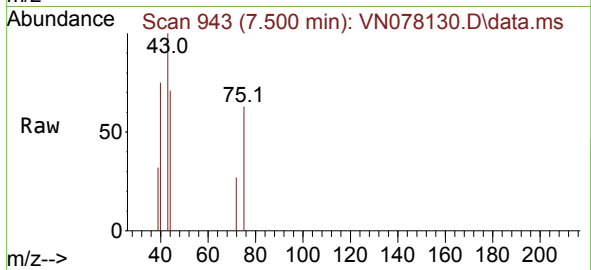




#25
 2-Butanone
 Concen: 0.709 ug/l
 RT: 7.500 min Scan# 94
 Delta R.T. 0.006 min
 Lab File: VN078130.D
 Acq: 08 Jun 2023 15:36

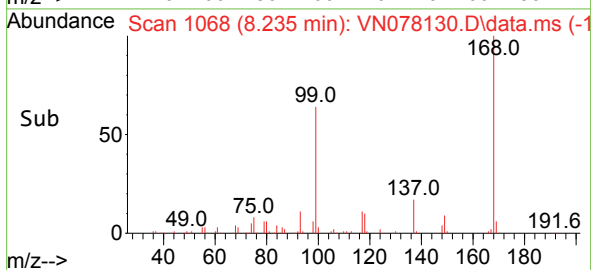
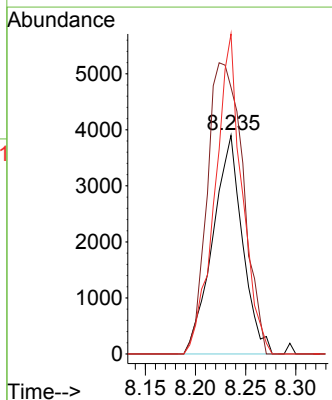
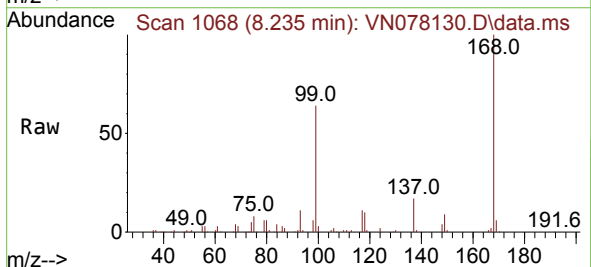
Instrument :
 MSVOA_N
 ClientSampleId :
 30998

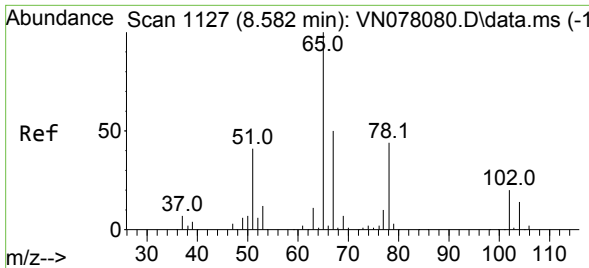
Tgt Ion: 43 Resp: 1469
 Ion Ratio Lower Upper
 43 100
 72 27.1 30.2 45.2#



#31
 Cyclohexane
 Concen: 1.342 ug/l
 RT: 8.235 min Scan# 1068
 Delta R.T. -0.029 min
 Lab File: VN078130.D
 Acq: 08 Jun 2023 15:36

Tgt Ion: 56 Resp: 8057
 Ion Ratio Lower Upper
 56 100
 69 121.9 26.8 40.2#
 84 146.4 81.8 122.6#

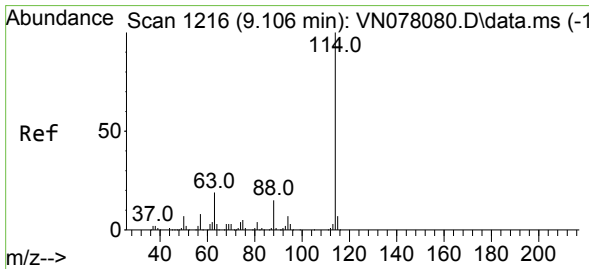
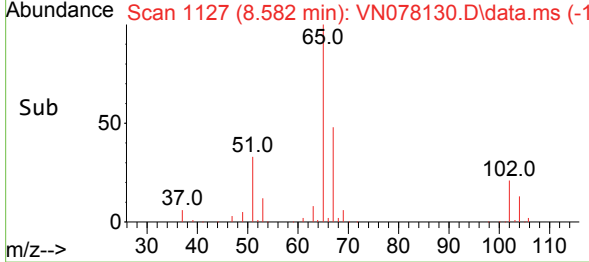
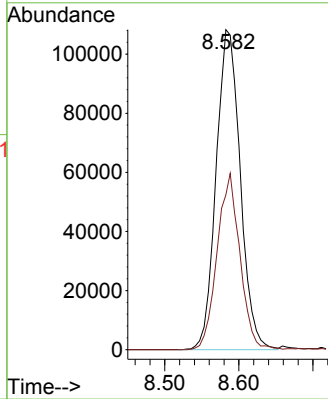
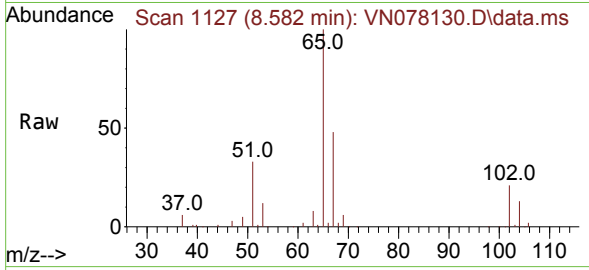




#33
 1,2-Dichloroethane-d4
 Concen: 52.347 ug/l
 RT: 8.582 min Scan# 1127
 Delta R.T. -0.000 min
 Lab File: VN078130.D
 Acq: 08 Jun 2023 15:36

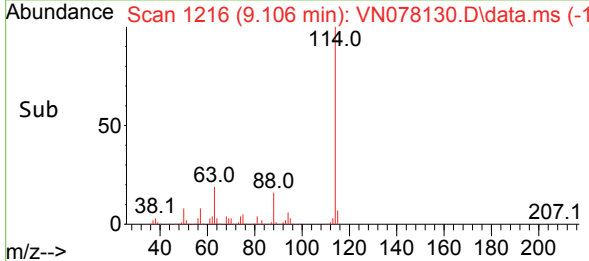
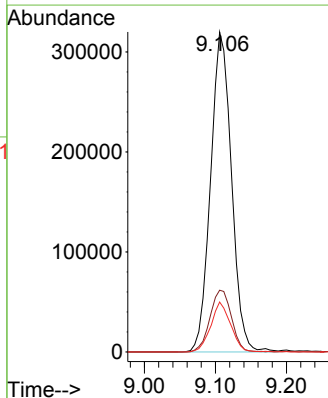
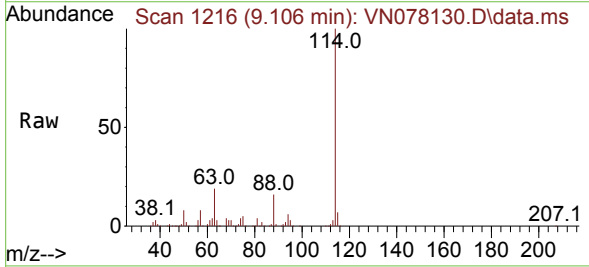
Instrument : MSVOA_N
 ClientSampleId : 30998

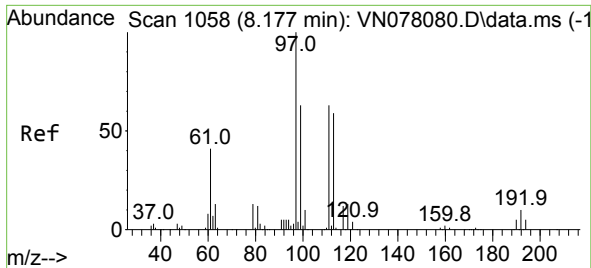
Tgt Ion: 65 Resp: 244930
 Ion Ratio Lower Upper
 65 100
 67 52.1 0.0 106.6



#34
 1,4-Difluorobenzene
 Concen: 50.000 ug/l
 RT: 9.106 min Scan# 1216
 Delta R.T. -0.000 min
 Lab File: VN078130.D
 Acq: 08 Jun 2023 15:36

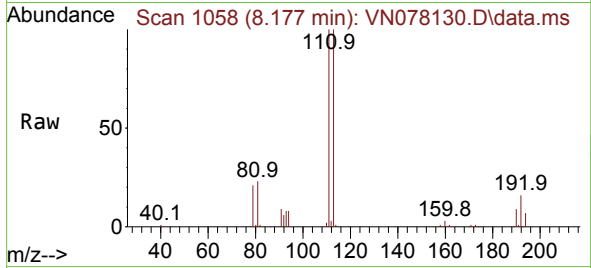
Tgt Ion: 114 Resp: 653748
 Ion Ratio Lower Upper
 114 100
 63 19.3 0.0 36.4
 88 15.6 0.0 30.6



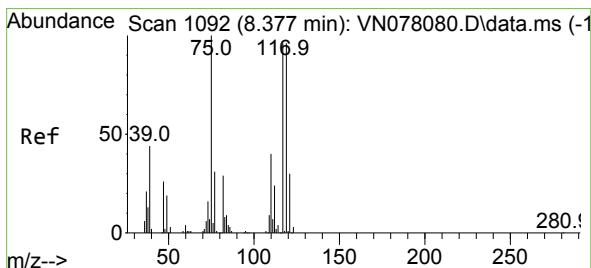
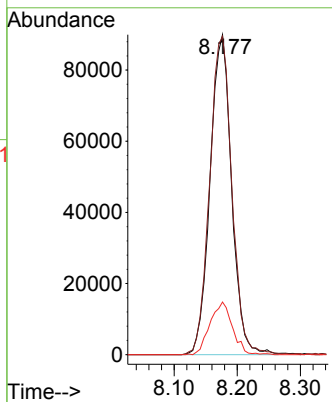
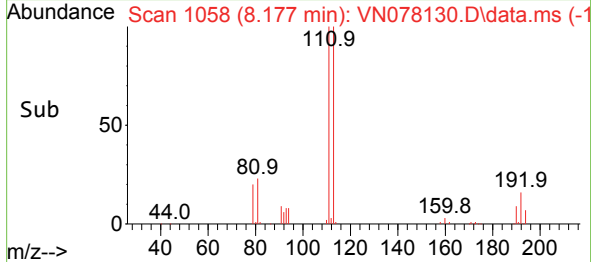


#35
 Dibromofluoromethane
 Concen: 51.564 ug/l
 RT: 8.177 min Scan# 1067
 Delta R.T. -0.000 min
 Lab File: VN078130.D
 Acq: 08 Jun 2023 15:36

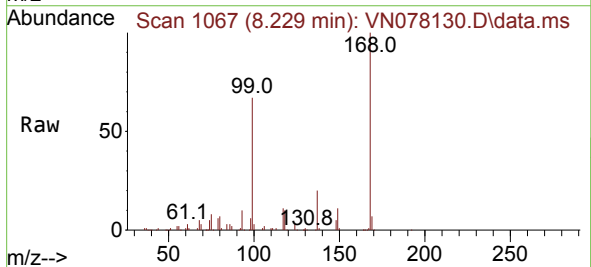
Instrument : MSVOA_N
 ClientSampleId : 30998



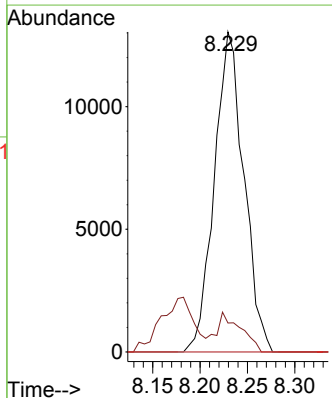
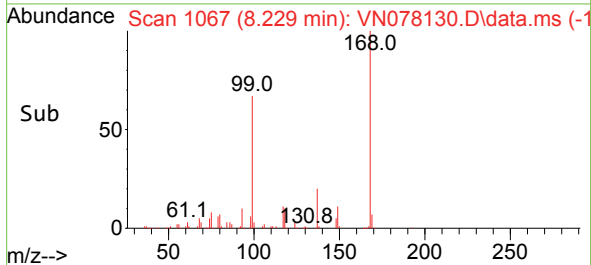
Tgt Ion:113 Resp: 213143
 Ion Ratio Lower Upper
 113 100
 111 102.8 82.6 123.8
 192 17.2 12.7 19.1

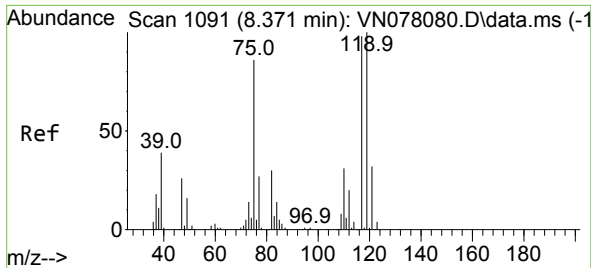


#36
 1,1-Dichloropropene
 Concen: 4.764 ug/l
 RT: 8.229 min Scan# 1067
 Delta R.T. -0.147 min
 Lab File: VN078130.D
 Acq: 08 Jun 2023 15:36



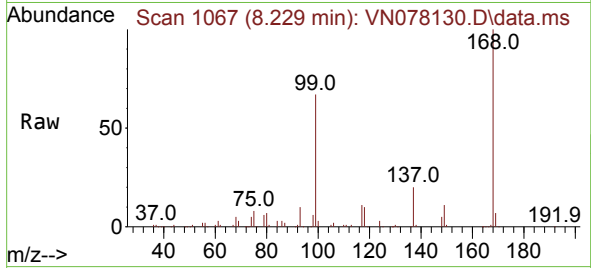
Tgt Ion: 75 Resp: 28247
 Ion Ratio Lower Upper
 75 100
 110 10.3 19.1 57.3#
 77 0.0 25.0 37.4#



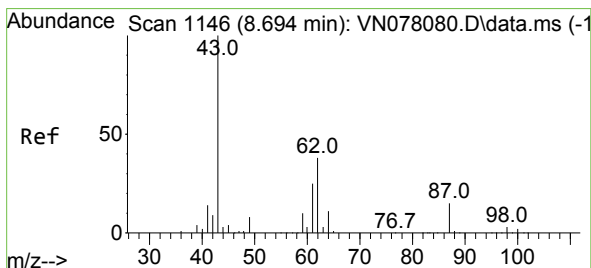
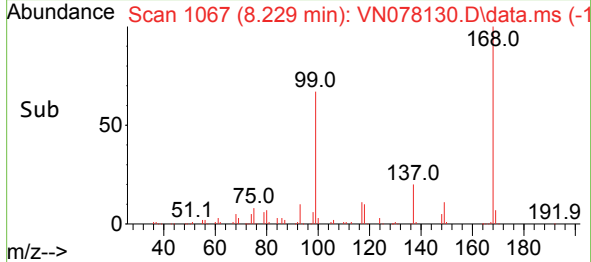
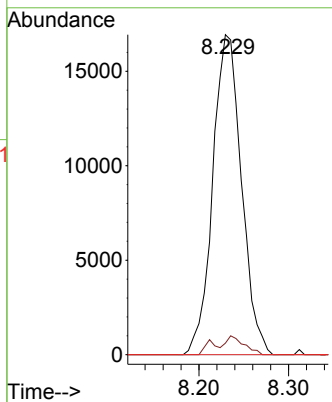


#38
 Carbon Tetrachloride
 Concen: 6.012 ug/l
 RT: 8.229 min Scan# 1100
 Delta R.T. -0.141 min
 Lab File: VN078130.D
 Acq: 08 Jun 2023 15:36

Instrument : MSVOA_N
 ClientSampleId : 30998

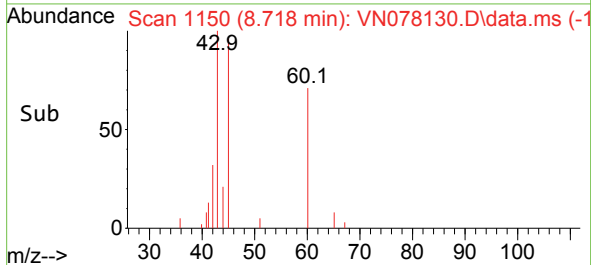
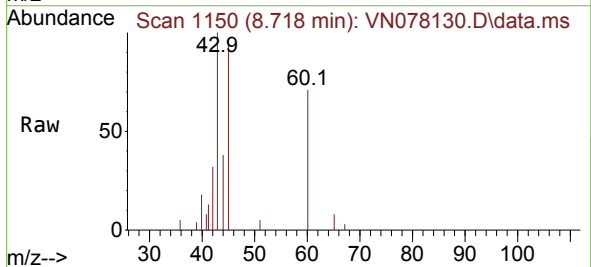
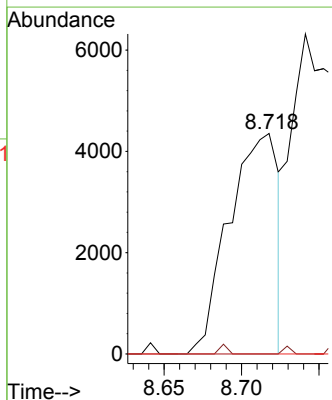


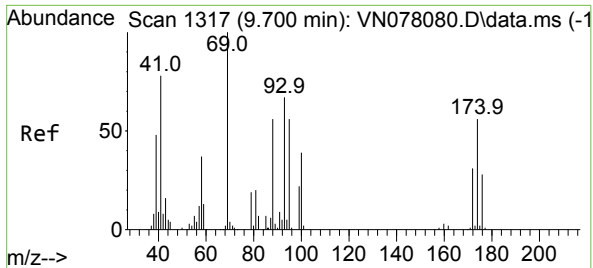
Tgt Ion:117 Resp: 37641
 Ion Ratio Lower Upper
 117 100
 119 3.6 77.3 115.9#
 121 0.0 23.3 34.9#



#43
 Isopropyl Acetate
 Concen: 1.083 ug/l
 RT: 8.718 min Scan# 1150
 Delta R.T. 0.023 min
 Lab File: VN078130.D
 Acq: 08 Jun 2023 15:36

Tgt Ion: 43 Resp: 9593
 Ion Ratio Lower Upper
 43 100
 61 0.0 24.7 37.1#
 87 0.0 14.6 21.8#

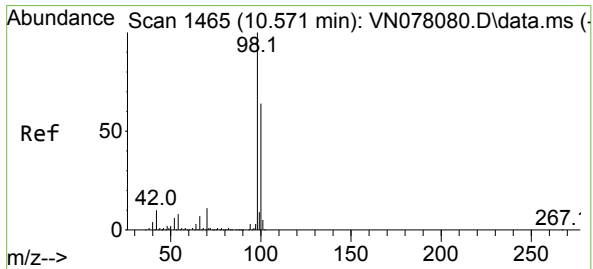
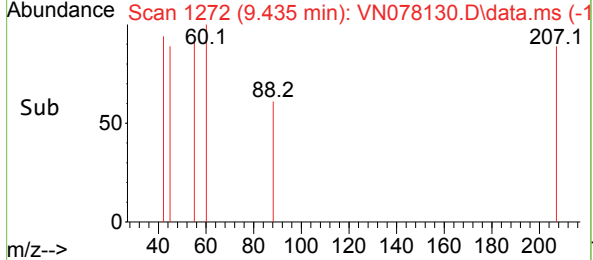
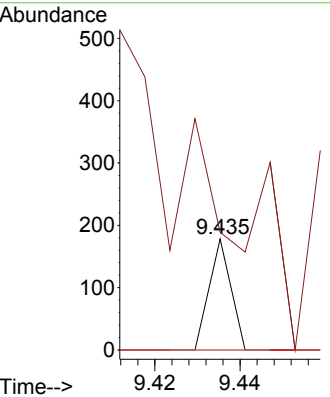
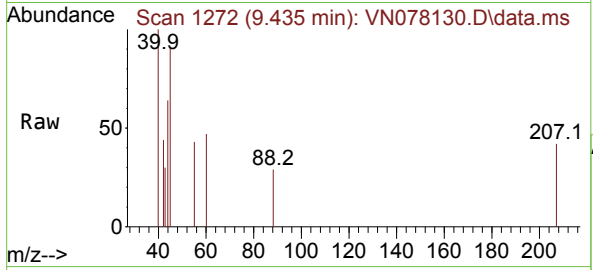




#49
 1,4-Dioxane
 Concen: 0.806 ug/l
 RT: 9.435 min Scan# 11
 Delta R.T. -0.265 min
 Lab File: VN078130.D
 Acq: 08 Jun 2023 15:36

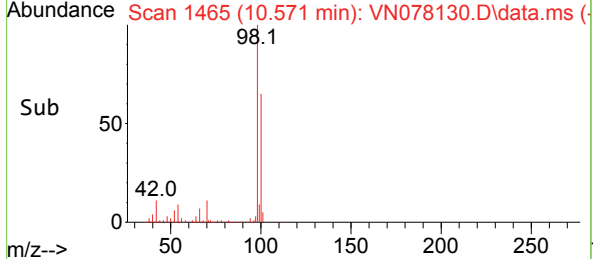
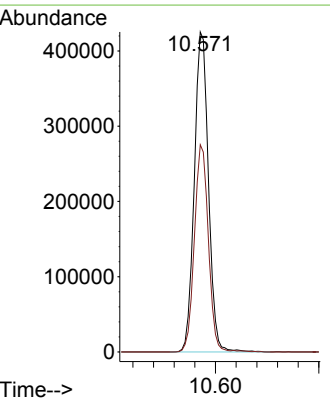
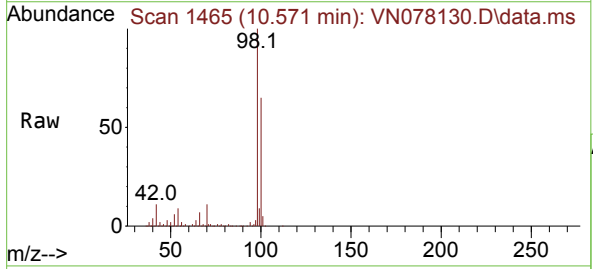
Instrument : MSVOA_N
 ClientSampled : 30998

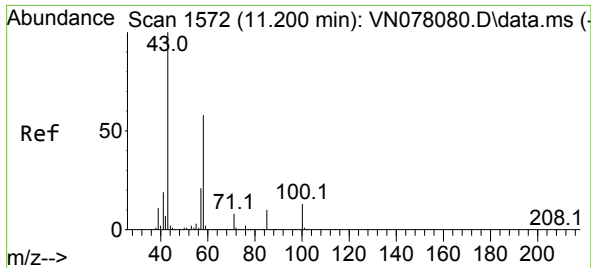
Tgt Ion	Resp	Lower	Upper
88	100		
43	0.0	17.0	25.6#
58	0.0	47.0	70.4#



#50
 Toluene-d8
 Concen: 50.667 ug/l
 RT: 10.571 min Scan# 1465
 Delta R.T. -0.000 min
 Lab File: VN078130.D
 Acq: 08 Jun 2023 15:36

Tgt Ion	Resp	Lower	Upper
98	100		
100	64.1	52.0	78.0

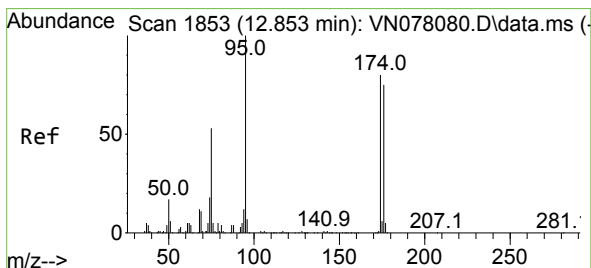
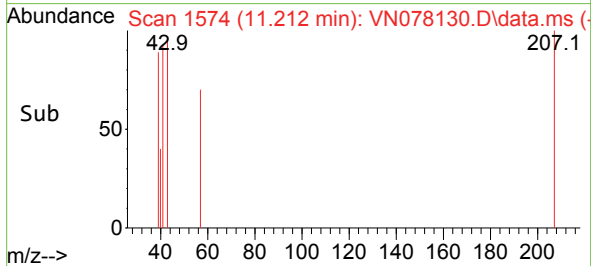
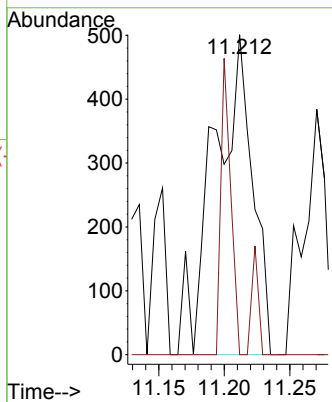
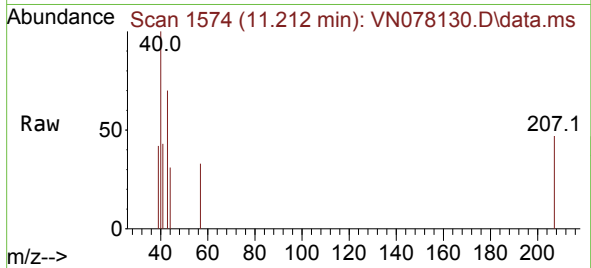




#59
 2-Hexanone
 Concen: 0.318 ug/l
 RT: 11.212 min Scan# 1111
 Delta R.T. 0.012 min
 Lab File: VN078130.D
 Acq: 08 Jun 2023 15:36

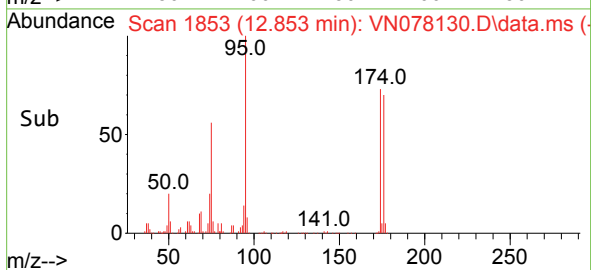
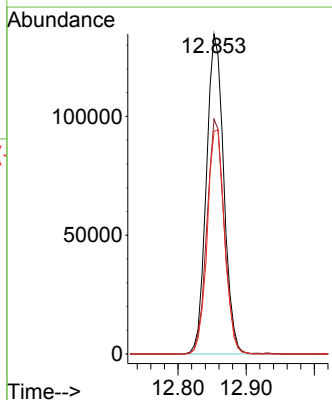
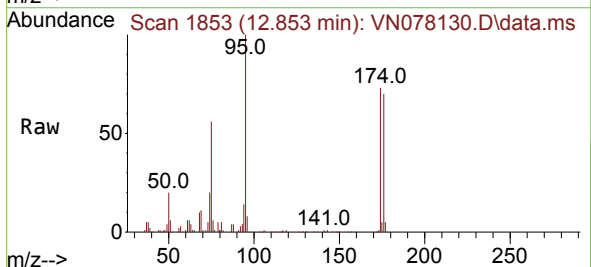
Instrument : MSVOA_N
 ClientSampleId : 30998

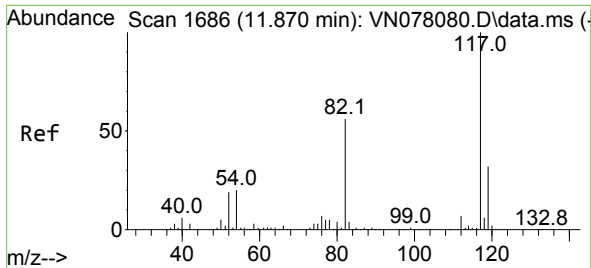
Tgt Ion: 43 Resp: 1032
 Ion Ratio Lower Upper
 43 100
 58 5.8 31.7 95.1#



#62
 4-Bromofluorobenzene
 Concen: 48.235 ug/l
 RT: 12.853 min Scan# 1853
 Delta R.T. -0.000 min
 Lab File: VN078130.D
 Acq: 08 Jun 2023 15:36

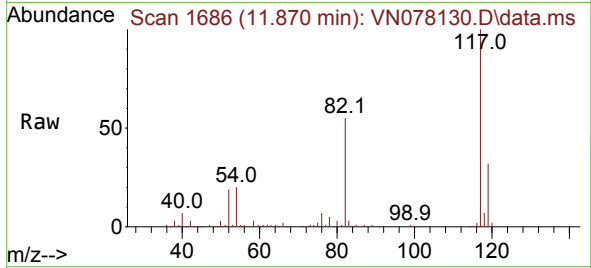
Tgt Ion: 95 Resp: 238952
 Ion Ratio Lower Upper
 95 100
 174 73.0 0.0 143.8
 176 69.7 0.0 135.8





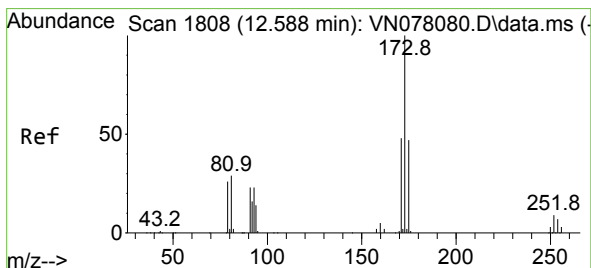
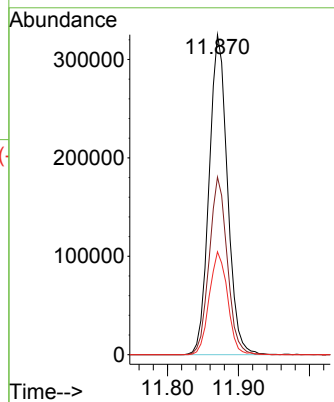
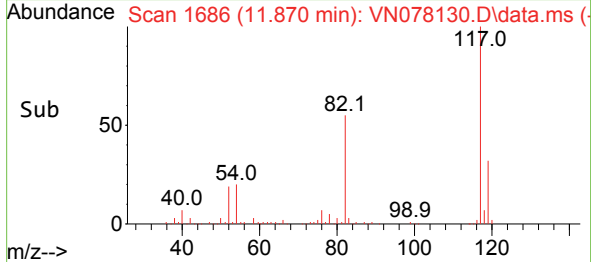
#63
 Chlorobenzene-d5
 Concen: 50.000 ug/l
 RT: 11.870 min Scan# 111
 Delta R.T. -0.000 min
 Lab File: VN078130.D
 Acq: 08 Jun 2023 15:36

Instrument : MSVOA_N
 ClientSampleId : 30998

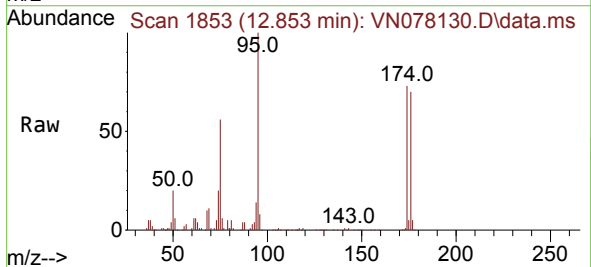


Tgt Ion:117 Resp: 582854

Ion	Ratio	Lower	Upper
117	100		
82	55.5	44.0	66.0
119	32.1	25.6	38.4

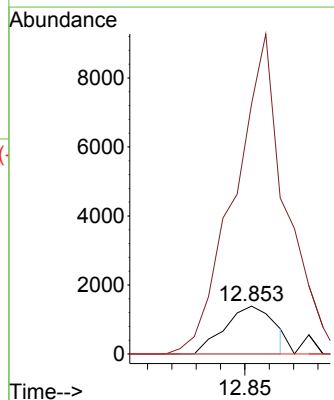
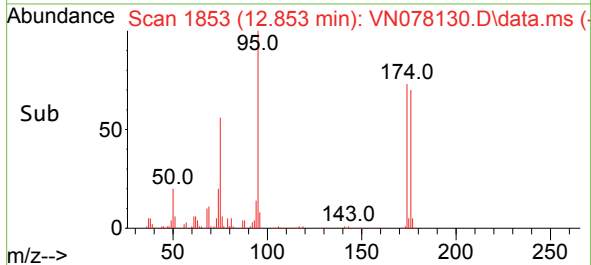


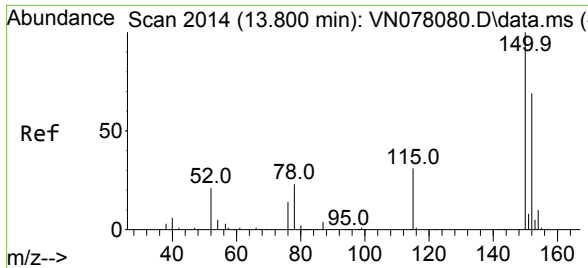
#71
 Bromoform
 Concen: 0.663 ug/l
 RT: 12.853 min Scan# 1853
 Delta R.T. 0.265 min
 Lab File: VN078130.D
 Acq: 08 Jun 2023 15:36



Tgt Ion:173 Resp: 1964

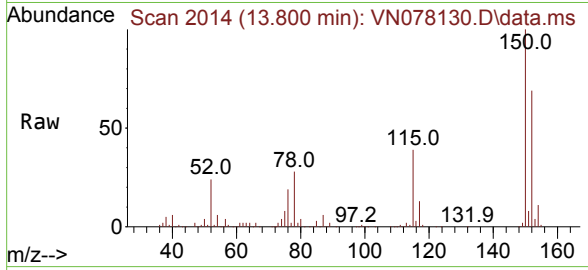
Ion	Ratio	Lower	Upper
173	100		
175	573.6	24.3	73.0#
254	0.0	0.0	0.0



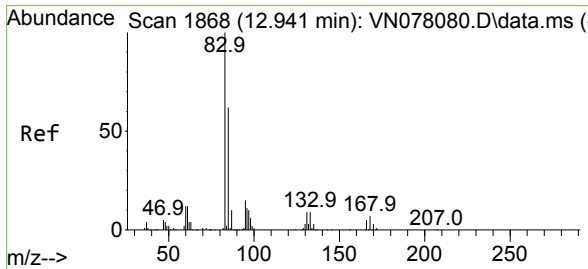
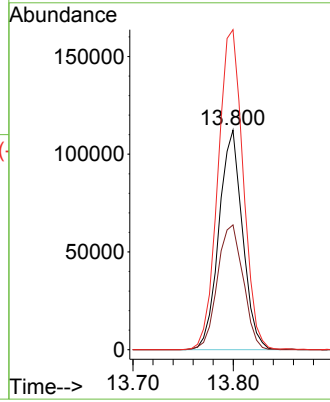
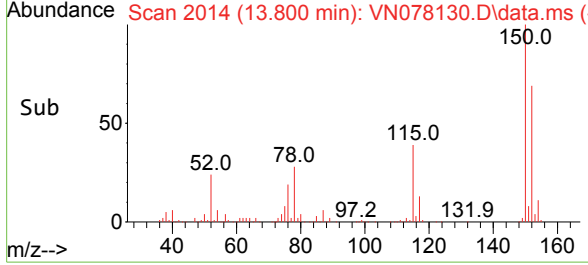


#72
 1,4-Dichlorobenzene-d4
 Concen: 50.000 ug/l
 RT: 13.800 min Scan# 20
 Delta R.T. -0.000 min
 Lab File: VN078130.D
 Acq: 08 Jun 2023 15:36

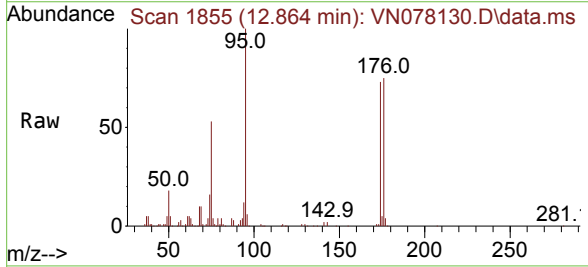
Instrument :
 MSVOA_N
 ClientSampleId :
 30998



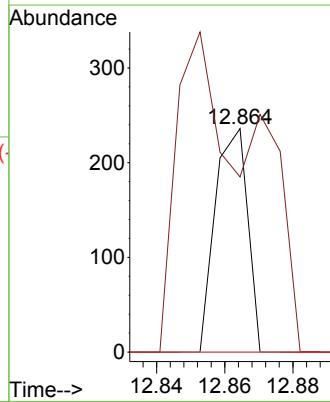
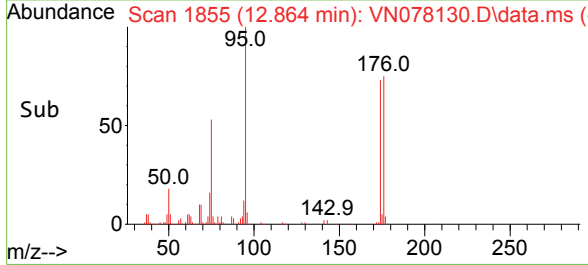
Tgt Ion:152 Resp: 183571
 Ion Ratio Lower Upper
 152 100
 115 62.0 32.3 96.8
 150 155.6 0.0 355.8

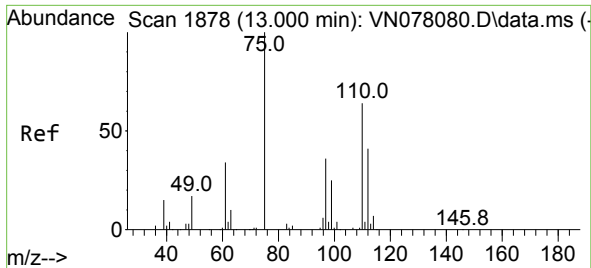


#75
 1,1,2,2-Tetrachloroethane
 Concen: Below Cal
 RT: 12.864 min Scan# 1855
 Delta R.T. -0.077 min
 Lab File: VN078130.D
 Acq: 08 Jun 2023 15:36



Tgt Ion: 83 Resp: 156
 Ion Ratio Lower Upper
 83 100
 131 334.6 5.0 15.0#
 85 0.0 31.9 95.7#

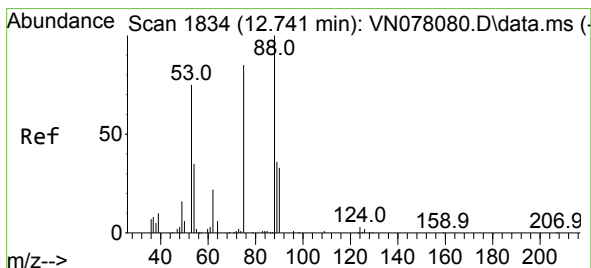
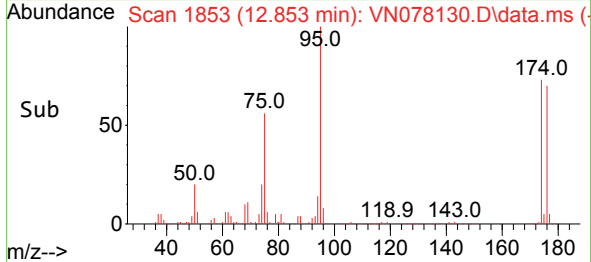
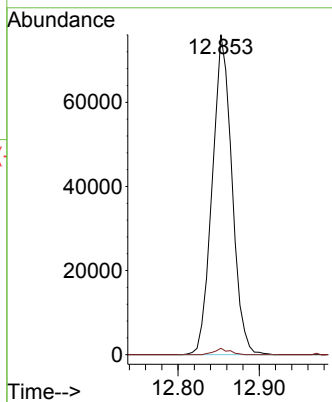
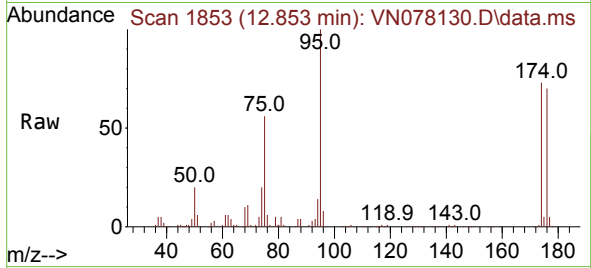




#76
 1,2,3-Trichloropropane
 Concen: 29.572 ug/l
 RT: 12.853 min Scan# 1853
 Delta R.T. -0.147 min
 Lab File: VN078130.D
 Acq: 08 Jun 2023 15:36

Instrument : MSVOA_N
 ClientSampleId : 30998

Tgt Ion: 75 Resp: 128333
 Ion Ratio Lower Upper
 75 100
 77 1.5 84.5 253.5#



#81
 trans-1,4-Dichloro-2-butene
 Concen: 90.854 ug/l
 RT: 12.853 min Scan# 1853
 Delta R.T. 0.112 min
 Lab File: VN078130.D
 Acq: 08 Jun 2023 15:36

Tgt Ion: 75 Resp: 128333
 Ion Ratio Lower Upper
 75 100
 53 0.0 67.4 101.2#
 89 0.0 38.8 58.2#

