

Data Path : Z:\voasrv\HPCHEM1\MSVOA\_N\Data\VN060823\  
 Data File : VN078117.D  
 Acq On : 08 Jun 2023 09:47  
 Operator : JC\MD  
 Sample : VN0608MBL01  
 Misc : 5.00g/10mL/100uL/5.00mL/MSVOA\_N/MEOH  
 ALS Vial : 3 Sample Multiplier: 1

Instrument :  
 MSVOA\_N  
 ClientSampleId :  
 VN0608MBL01

Integration Parameters: RTEINT.P

Integrator: RTE  
 Smoothing : ON Filtering: 5  
 Sampling : 1 Min Area: 3 % of largest Peak  
 Start Thrs: 0.2 Max Peaks: 100  
 Stop Thrs : 0 Peak Location: TOP

If leading or trailing edge < 100 prefer < Baseline drop else tangent >  
 Peak separation: 5

Method : Z:\voasrv\HPCHEM1\MSVOA\_N\methods\82N060623W.M  
 Title : SW846 8260

Signal : TIC: VN078117.D\data.ms

peak #	R.T. min	first scan	max scan	last scan	PK TY	peak height	corr. area	corr. % max.	% of total
1	2.818	142	147	155	rVB3	27726	55093	2.73%	0.557%
2	7.442	923	933	940	rBV3	12089	31442	1.56%	0.318%
3	8.171	1046	1057	1062	rBV	290765	694194	34.46%	7.013%
4	8.230	1062	1067	1081	rVB	485694	1080551	53.64%	10.916%
5	8.583	1116	1127	1139	rBV	280955	657351	32.63%	6.640%
6	9.106	1207	1216	1231	rBV	711249	1467921	72.87%	14.829%
7	10.571	1453	1465	1481	rBV	1099217	2014521	100.00%	20.350%
8	11.871	1675	1686	1699	rBV	911172	1680053	83.40%	16.972%
9	12.853	1846	1853	1864	rBV	616116	1078465	53.53%	10.895%
10	13.800	2007	2014	2023	rVB	584762	1044413	51.84%	10.551%
11	14.059	2051	2058	2063	rBV3	12989	21625	1.07%	0.218%
12	15.506	2294	2304	2309	rBV6	15495	27645	1.37%	0.279%
13	15.647	2321	2328	2334	rBV	11418	21365	1.06%	0.216%
14	15.841	2353	2361	2368	rBV9	11901	24493	1.22%	0.247%

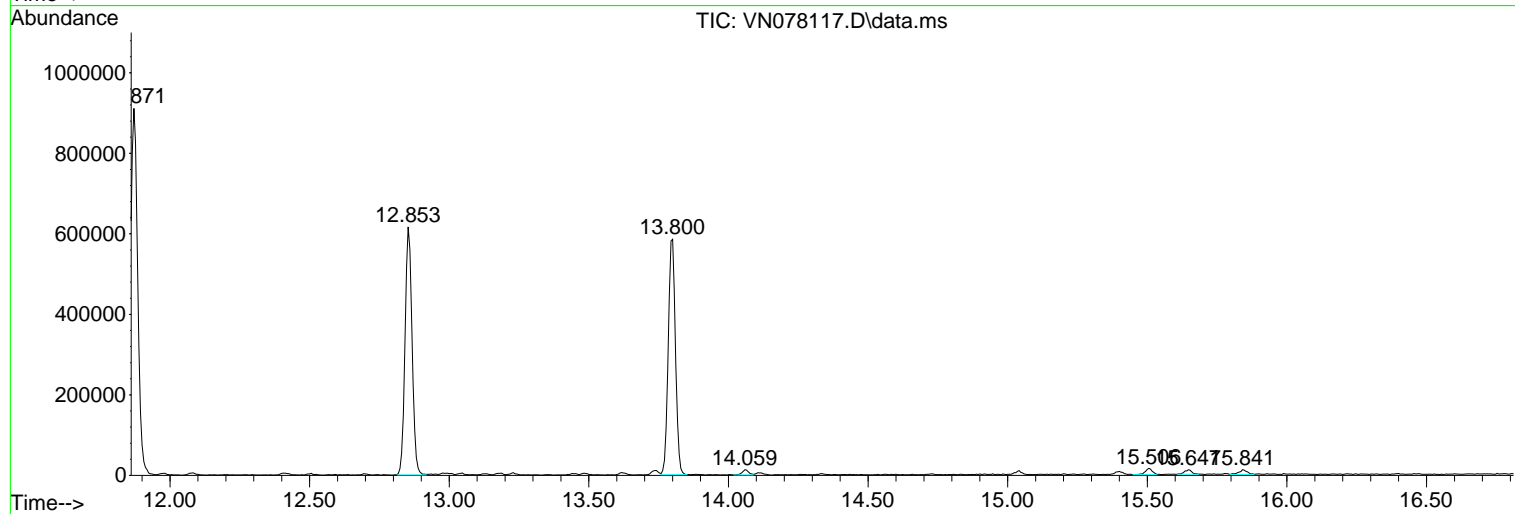
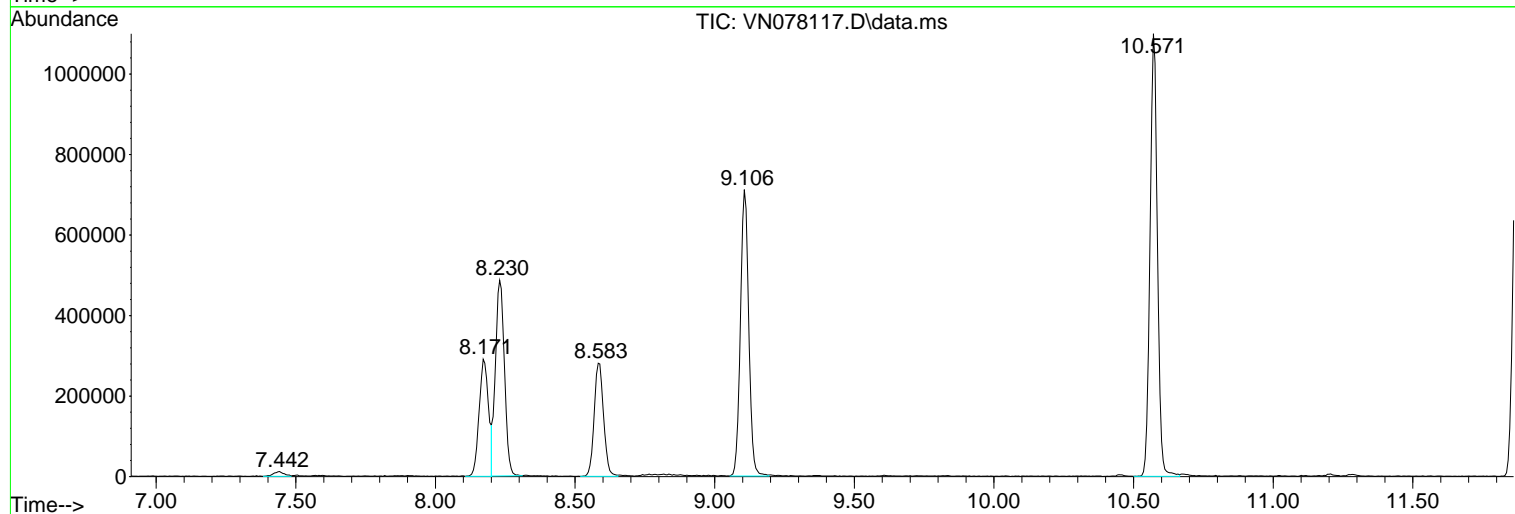
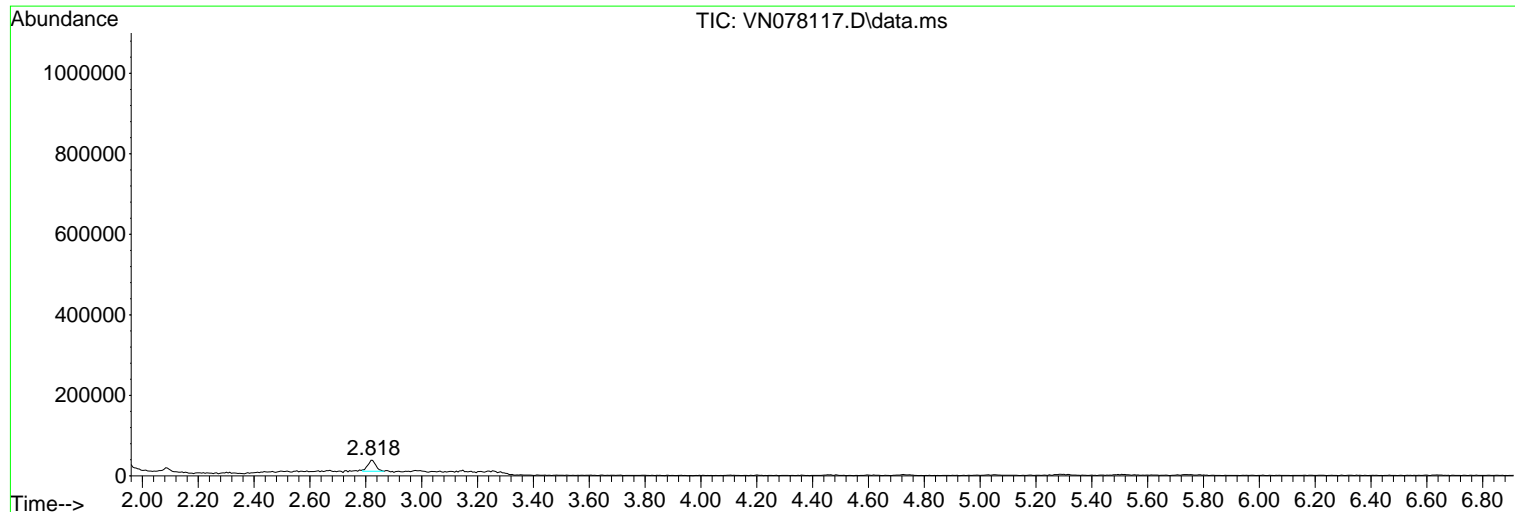
Sum of corrected areas: 9899132

Data Path : Z:\voasrv\HPCHEM1\MSVOA\_N\Data\VN060823\  
 Data File : VN078117.D  
 Acq On : 08 Jun 2023 09:47  
 Operator : JC\MD  
 Sample : VN0608MBL01  
 Misc : 5.00g/10mL/100uL/5.00mL/MSVOA\_N/MEOH  
 ALS Vial : 3 Sample Multiplier: 1

Instrument :  
 MSVOA\_N  
 ClientSampleId :  
 VN0608MBL01

Quant Method : Z:\voasrv\HPCHEM1\MSVOA\_N\methods\82N060623W.M  
 Quant Title : SW846 8260

TIC Library : C:\Database\NIST20.L  
 TIC Integration Parameters: LSCINT.P



Data Path : Z:\voasrv\HPCHEM1\MSVOA\_N\Data\VN060823\  
Data File : VN078117.D  
Acq On : 08 Jun 2023 09:47  
Operator : JC\MD  
Sample : VN0608MBL01  
Misc : 5.00g/10mL/100uL/5.00mL/MSVOA\_N/MEOH  
ALS Vial : 3 Sample Multiplier: 1

**Instrument :**  
MSVOA\_N  
**ClientSampleId :**  
VN0608MBL01

Quant Method : Z:\voasrv\HPCHEM1\MSVOA\_N\methods\82N060623W.M  
Quant Title : SW846 8260

TIC Library : C:\Database\NIST20.L  
TIC Integration Parameters: LSCINT.P

No Library Search Compounds Detected

\*\*\*\*\*

Data Path : Z:\voasrv\HPCHEM1\MSVOA\_N\Data\VN060823\  
Data File : VN078117.D  
Acq On : 08 Jun 2023 09:47  
Operator : JC\MD  
Sample : VN0608MBL01  
Misc : 5.00g/10mL/100uL/5.00mL/MSVOA\_N/MEOH  
ALS Vial : 3 Sample Multiplier: 1

Instrument :  
MSVOA\_N  
ClientSampleId :  
VN0608MBL01

Quant Method : Z:\voasrv\HPCHEM1\MSVOA\_N\methods\82N060623W.M  
Quant Title : SW846 8260

TIC Library : C:\Database\NIST20.L  
TIC Integration Parameters: LSCINT.P

TIC Top Hit name	RT	EstConc	Units	Response	--Internal Standard--		
					#	RT	Resp Conc

---