

Data Path : Z:\voasrv\HPCHEM1\MSVOA_N\Data\VN060923\
 Data File : VN078144.D
 Acq On : 09 Jun 2023 14:34
 Operator : JC\MD
 Sample : 03123-08
 Misc : 5.0mL/MSVOA_N/WATER
 ALS Vial : 13 Sample Multiplier: 1

Instrument :
 MSVOA_N
 ClientSampleId :

Quant Time: Jun 09 23:08:20 2023
 Quant Method : Z:\voasrv\HPCHEM1\MSVOA_N\methods\82N060623W.M
 Quant Title : SW846 8260
 QLast Update : Wed Jun 07 05:05:00 2023
 Response via : Initial Calibration

Compound	R.T.	QIon	Response	Conc	Units	Dev(Min)

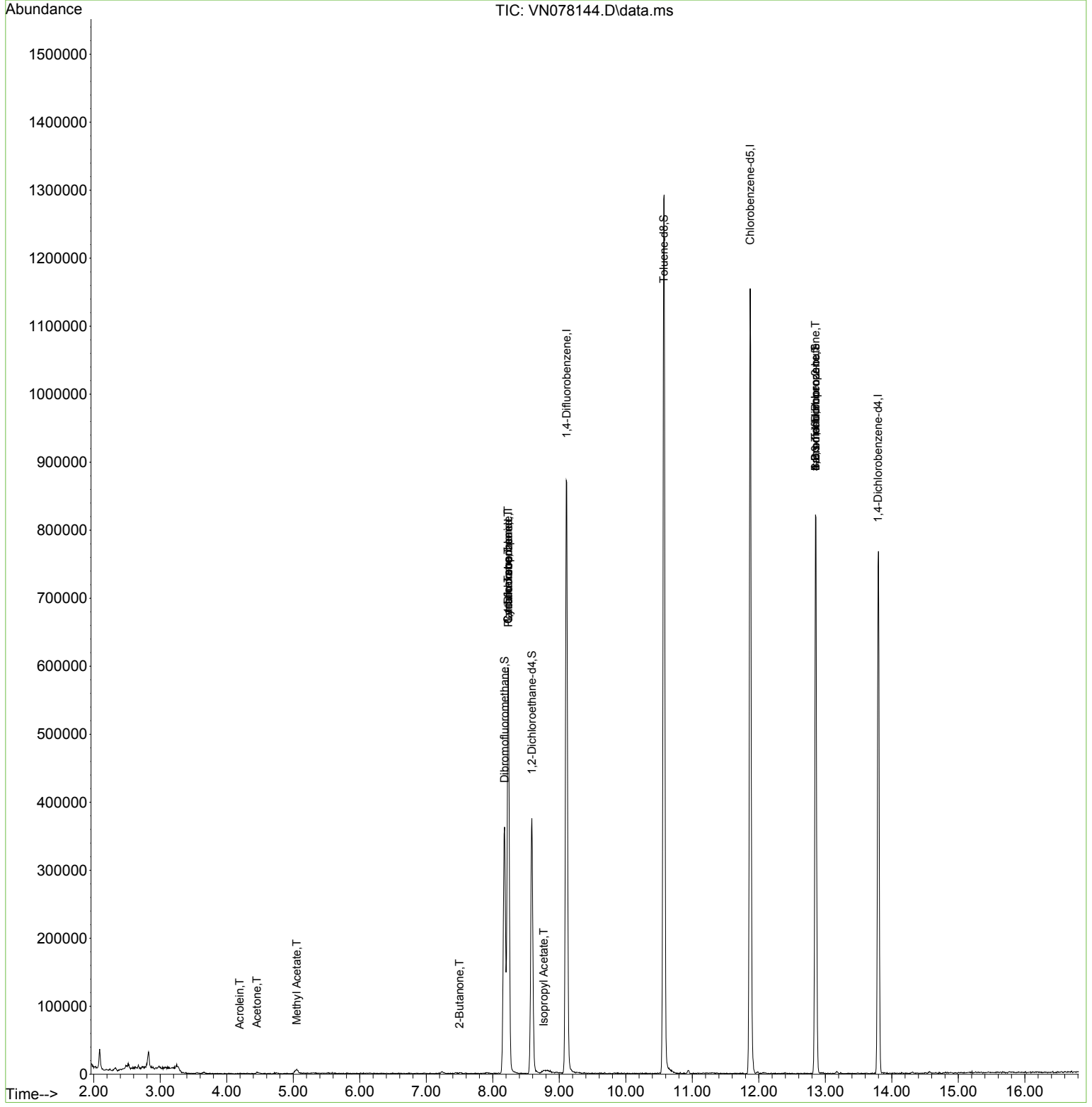
Internal Standards						
1) Pentafluorobenzene	8.235	168	430799	50.000	ug/l	0.00
34) 1,4-Difluorobenzene	9.112	114	801900	50.000	ug/l	0.00
63) Chlorobenzene-d5	11.870	117	699540	50.000	ug/l	0.00
72) 1,4-Dichlorobenzene-d4	13.794	152	209519	50.000	ug/l	0.00
System Monitoring Compounds						
33) 1,2-Dichloroethane-d4	8.588	65	301565	52.502	ug/l	0.00
Spiked Amount	50.000	Range 74 - 125	Recovery	=	105.000%	
35) Dibromofluoromethane	8.177	113	265017	52.268	ug/l	0.00
Spiked Amount	50.000	Range 75 - 124	Recovery	=	104.540%	
50) Toluene-d8	10.571	98	947743	48.486	ug/l	0.00
Spiked Amount	50.000	Range 86 - 113	Recovery	=	96.980%	
62) 4-Bromofluorobenzene	12.853	95	300330	49.424	ug/l	0.00
Spiked Amount	50.000	Range 83 - 123	Recovery	=	98.840%	
Target Compounds						
						Qvalue
3) Chloromethane	2.377	50	934	Below Cal		99
13) Acrolein	4.194	56	203	0.232	ug/l #	16
16) Acetone	4.453	43	1708	1.033	ug/l #	79
18) Methyl Acetate	5.053	43	11097	1.458	ug/l #	42
25) 2-Butanone	7.500	43	912	0.359	ug/l #	81
31) Cyclohexane	8.229	56	10080	1.368	ug/l #	20
36) 1,1-Dichloropropene	8.229	75	37709	5.185	ug/l #	49
38) Carbon Tetrachloride	8.229	117	47018	6.123	ug/l #	17
43) Isopropyl Acetate	8.765	43	3865	0.356	ug/l #	49
71) Bromoform	12.853	173	2342	0.659	ug/l #	1
75) 1,1,2,2-Tetrachloroethane	12.847	83	563	Below Cal	#	1
76) 1,2,3-Trichloropropane	12.853	75	161493	32.604	ug/l #	1
81) trans-1,4-Dichloro-2-b...	12.853	75	161493	100.171	ug/l #	15

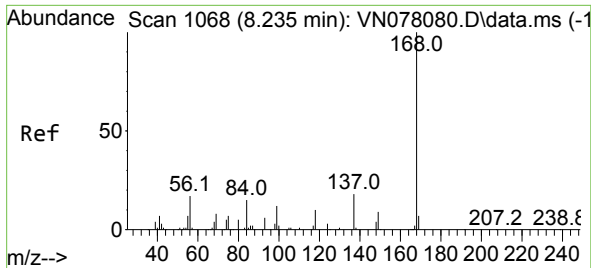
(#) = qualifier out of range (m) = manual integration (+) = signals summed

Data Path : Z:\voasrv\HPCHEM1\MSVOA_N\Data\VN060923\
 Data File : VN078144.D
 Acq On : 09 Jun 2023 14:34
 Operator : JC\MD
 Sample : 03123-08
 Misc : 5.0mL/MSVOA_N/WATER
 ALS Vial : 13 Sample Multiplier: 1

Instrument :
 MSVOA_N
 ClientSampleId :

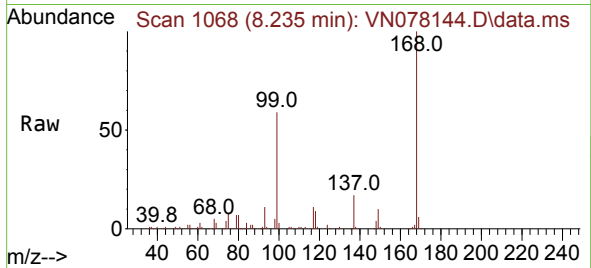
Quant Time: Jun 09 23:08:20 2023
 Quant Method : Z:\voasrv\HPCHEM1\MSVOA_N\methods\82N060623W.M
 Quant Title : SW846 8260
 QLast Update : Wed Jun 07 05:05:00 2023
 Response via : Initial Calibration



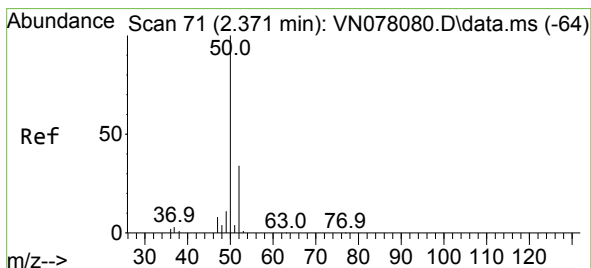
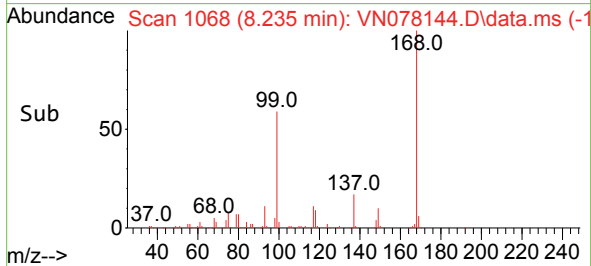
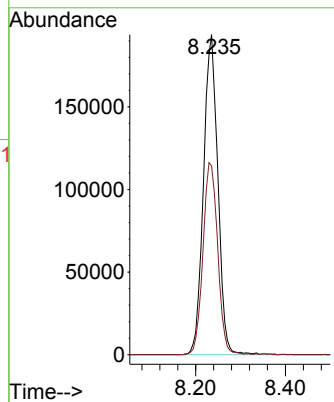


#1
 Pentafluorobenzene
 Concen: 50.000 ug/l
 RT: 8.235 min Scan# 1068
 Delta R.T. 0.000 min
 Lab File: VN078144.D
 Acq: 09 Jun 2023 14:34

Instrument :
 MSVOA_N
 ClientSampleId :

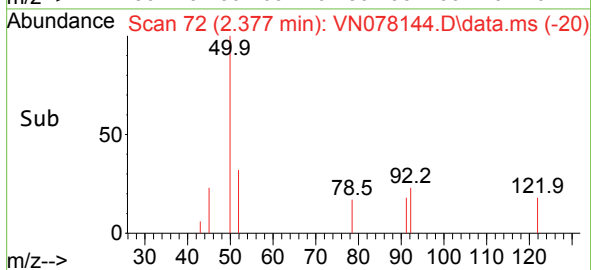
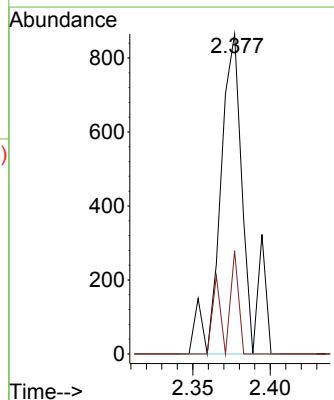
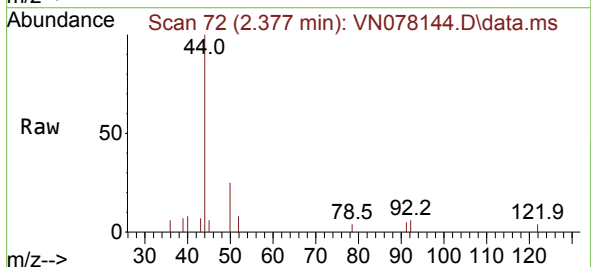


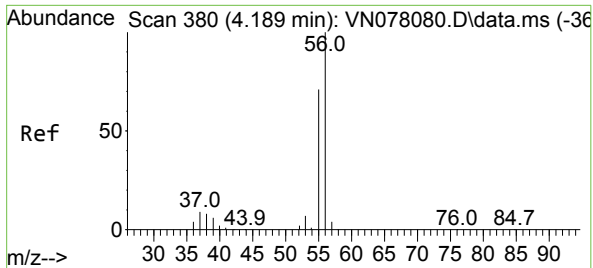
Tgt Ion:168 Resp: 430799
 Ion Ratio Lower Upper
 168 100
 99 59.1 53.0 79.6



#3
 Chloromethane
 Concen: Below Cal
 RT: 2.377 min Scan# 72
 Delta R.T. 0.006 min
 Lab File: VN078144.D
 Acq: 09 Jun 2023 14:34

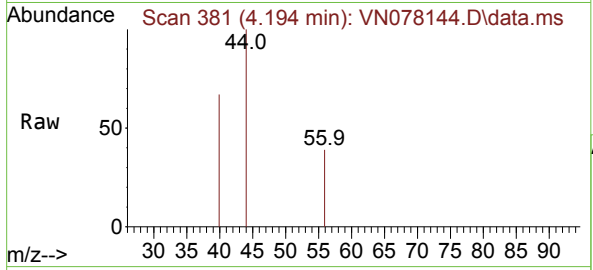
Tgt Ion: 50 Resp: 934
 Ion Ratio Lower Upper
 50 100
 52 32.3 26.5 39.7



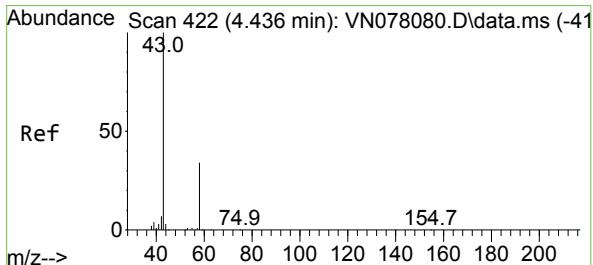
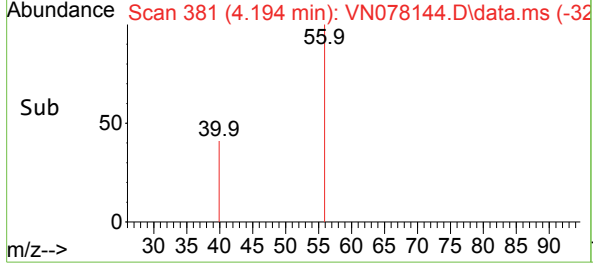
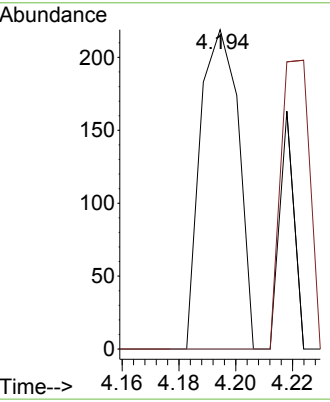


#13
 Acrolein
 Concen: 0.232 ug/l
 RT: 4.194 min Scan# 381
 Delta R.T. 0.006 min
 Lab File: VN078144.D
 Acq: 09 Jun 2023 14:34

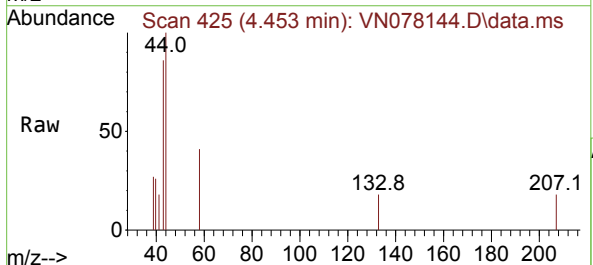
Instrument : MSVOA_N
 ClientSampleId :



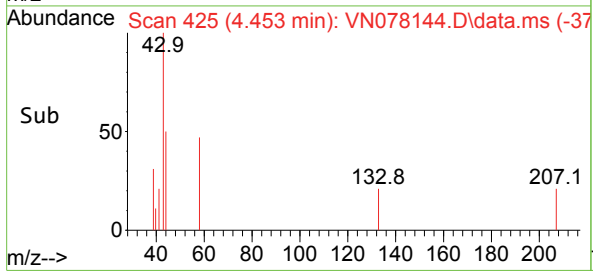
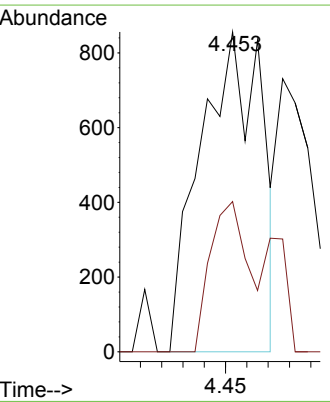
Tgt Ion: 56 Resp: 203
 Ion Ratio Lower Upper
 56 100
 55 0.0 54.5 81.7#

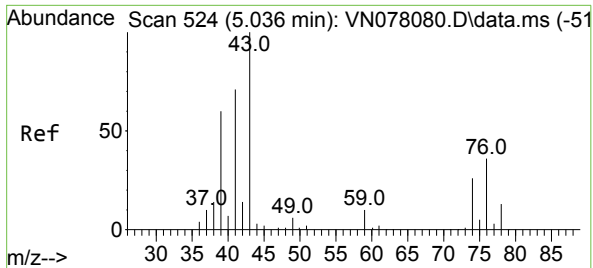


#16
 Acetone
 Concen: 1.033 ug/l
 RT: 4.453 min Scan# 425
 Delta R.T. 0.018 min
 Lab File: VN078144.D
 Acq: 09 Jun 2023 14:34



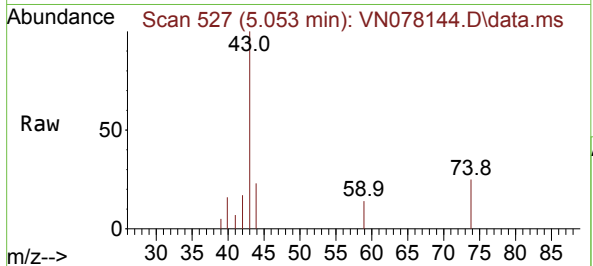
Tgt Ion: 43 Resp: 1708
 Ion Ratio Lower Upper
 43 100
 58 47.0 28.0 42.0#



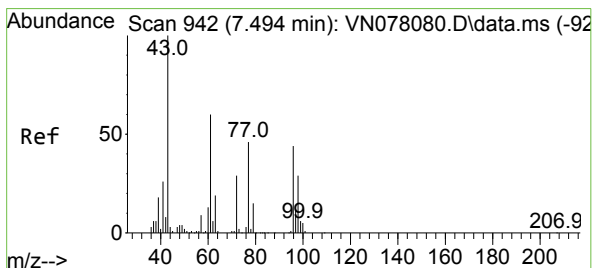
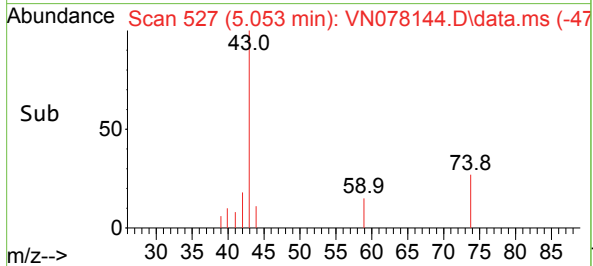
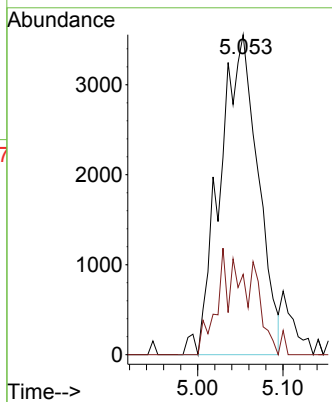


#18
 Methyl Acetate
 Concen: 1.458 ug/l
 RT: 5.053 min Scan# 51
 Delta R.T. 0.018 min
 Lab File: VN078144.D
 Acq: 09 Jun 2023 14:34

Instrument :
 MSVOA_N
 ClientSampleId :

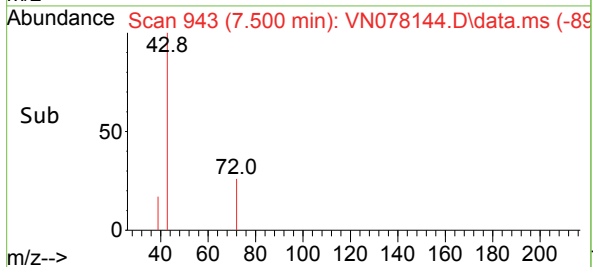
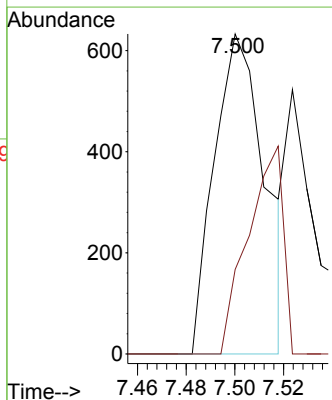
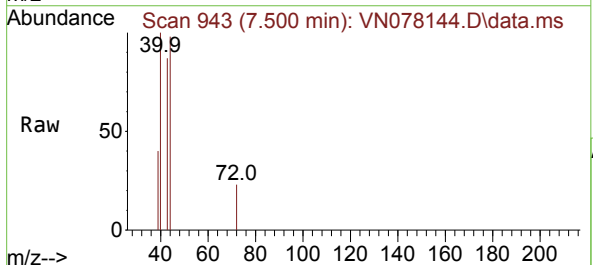


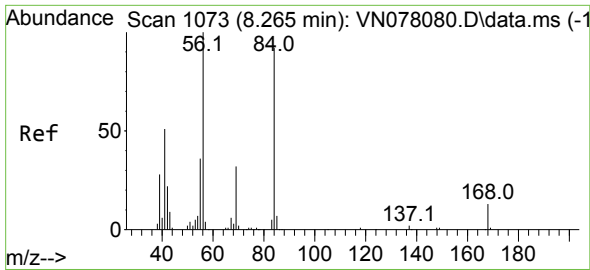
Tgt Ion: 43 Resp: 11097
 Ion Ratio Lower Upper
 43 100
 74 0.0 26.2 39.4#



#25
 2-Butanone
 Concen: 0.359 ug/l
 RT: 7.500 min Scan# 943
 Delta R.T. 0.006 min
 Lab File: VN078144.D
 Acq: 09 Jun 2023 14:34

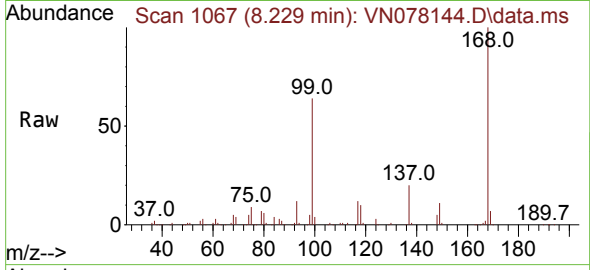
Tgt Ion: 43 Resp: 912
 Ion Ratio Lower Upper
 43 100
 72 26.4 30.2 45.2#



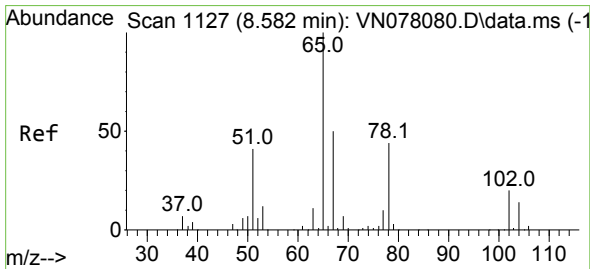
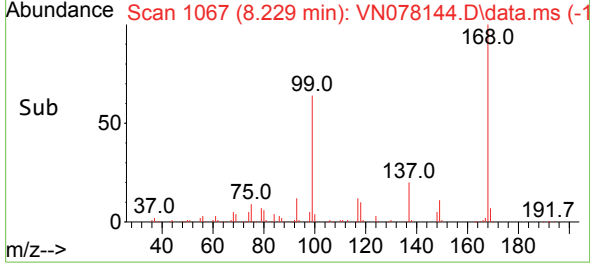
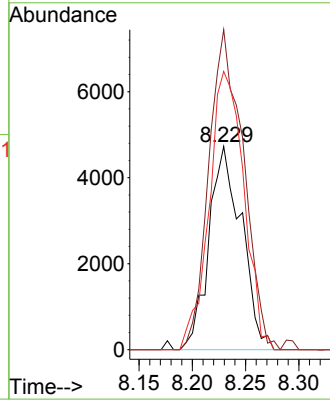


#31
 Cyclohexane
 Concen: 1.368 ug/l
 RT: 8.229 min Scan# 1073
 Delta R.T. -0.035 min
 Lab File: VN078144.D
 Acq: 09 Jun 2023 14:34

Instrument :
 MSVOA_N
 ClientSampleId :

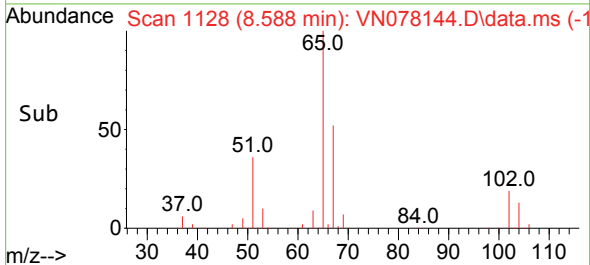
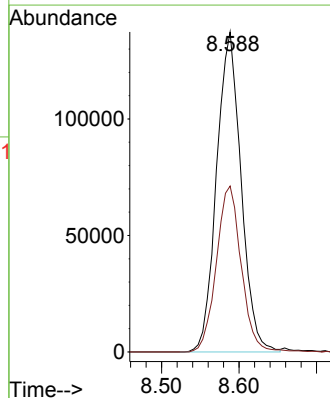
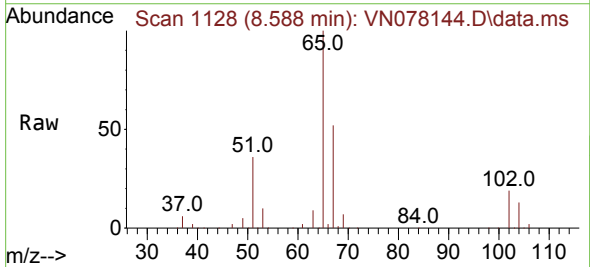


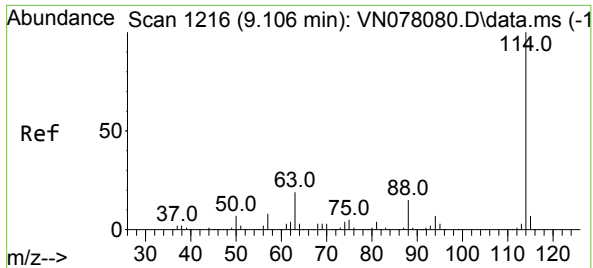
Tgt Ion: 56 Resp: 10080
 Ion Ratio Lower Upper
 56 100
 69 157.5 26.8 40.2#
 84 137.0 81.8 122.6#



#33
 1,2-Dichloroethane-d4
 Concen: 52.502 ug/l
 RT: 8.588 min Scan# 1128
 Delta R.T. 0.006 min
 Lab File: VN078144.D
 Acq: 09 Jun 2023 14:34

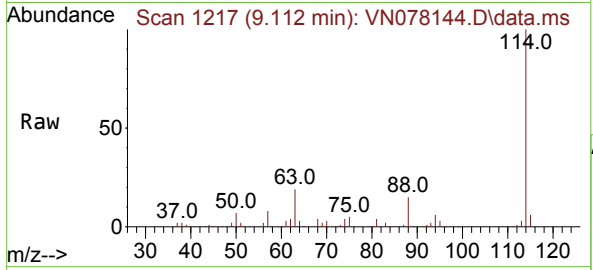
Tgt Ion: 65 Resp: 301565
 Ion Ratio Lower Upper
 65 100
 67 52.8 0.0 106.6





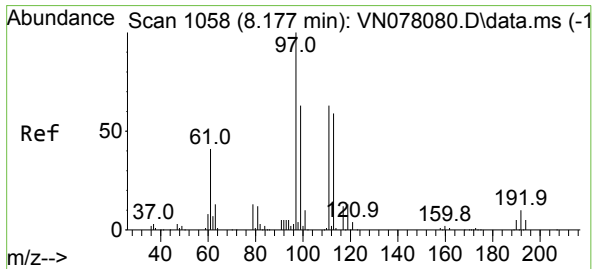
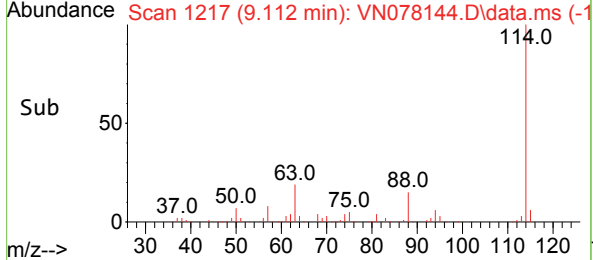
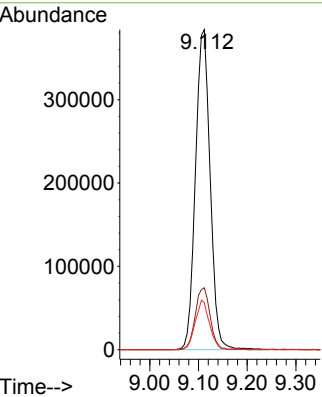
#34
 1,4-Difluorobenzene
 Concen: 50.000 ug/l
 RT: 9.112 min Scan# 11
 Delta R.T. 0.006 min
 Lab File: VN078144.D
 Acq: 09 Jun 2023 14:34

Instrument : MSVOA_N
 ClientSampleId :

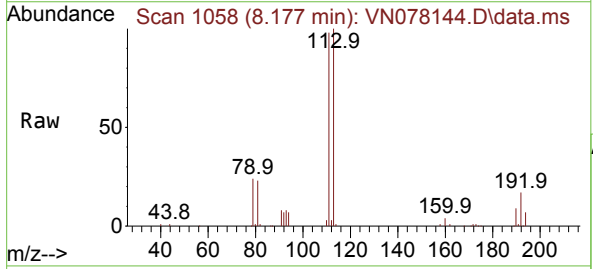


Tgt Ion:114 Resp: 801900

Ion	Ratio	Lower	Upper
114	100		
63	19.4	0.0	36.4
88	14.7	0.0	30.6

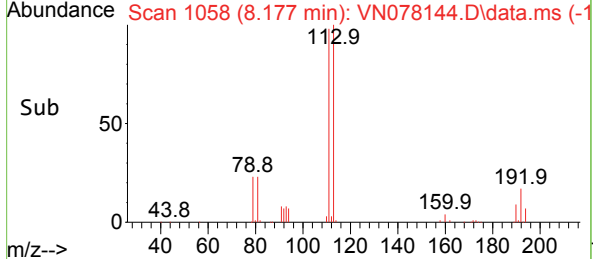
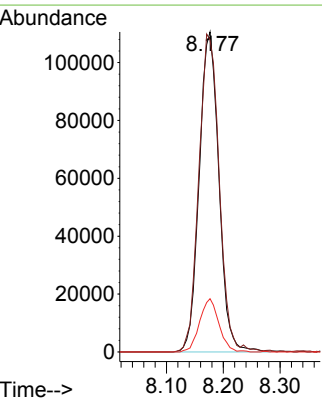


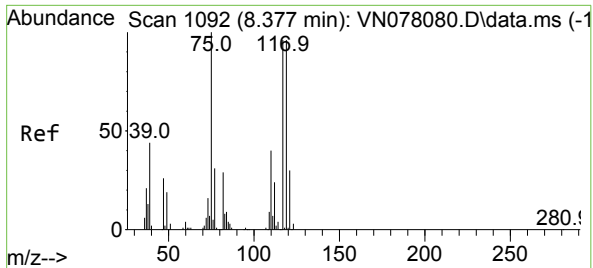
#35
 Dibromofluoromethane
 Concen: 52.268 ug/l
 RT: 8.177 min Scan# 1058
 Delta R.T. -0.000 min
 Lab File: VN078144.D
 Acq: 09 Jun 2023 14:34



Tgt Ion:113 Resp: 265017

Ion	Ratio	Lower	Upper
113	100		
111	103.4	82.6	123.8
192	16.4	12.7	19.1



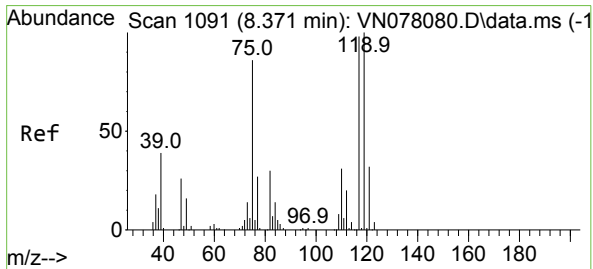
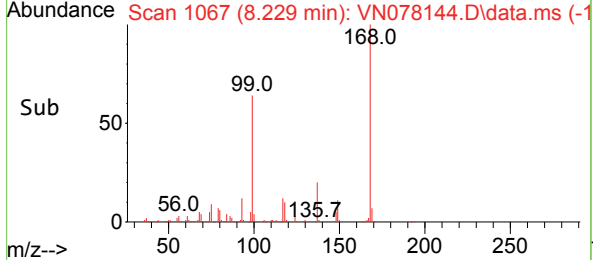
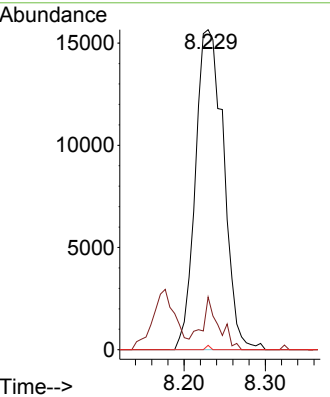
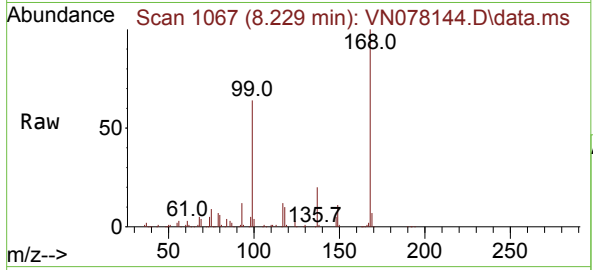


#36
 1,1-Dichloropropene
 Concen: 5.185 ug/l
 RT: 8.229 min Scan# 1067
 Delta R.T. -0.147 min
 Lab File: VN078144.D
 Acq: 09 Jun 2023 14:34

Instrument : MSVOA_N
 ClientSampleId :

Tgt Ion: 75 Resp: 37709

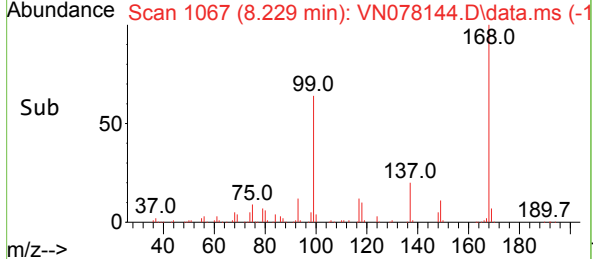
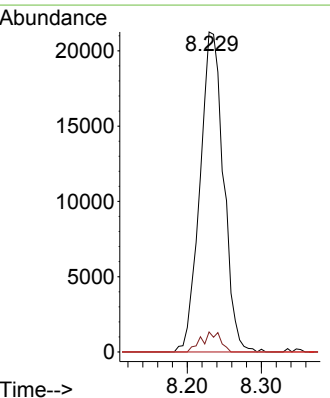
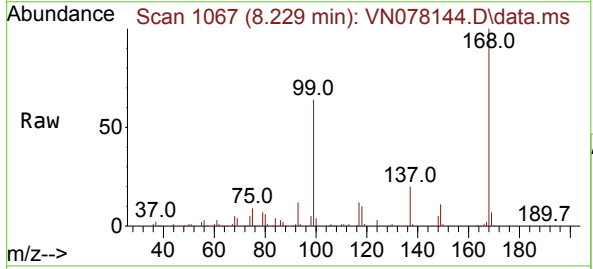
Ion	Ratio	Lower	Upper
75	100		
110	10.0	19.1	57.3#
77	0.2	25.0	37.4#

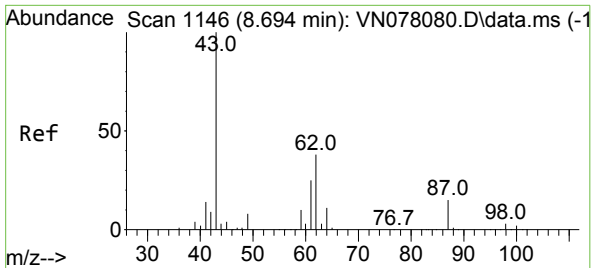


#38
 Carbon Tetrachloride
 Concen: 6.123 ug/l
 RT: 8.229 min Scan# 1067
 Delta R.T. -0.141 min
 Lab File: VN078144.D
 Acq: 09 Jun 2023 14:34

Tgt Ion: 117 Resp: 47018

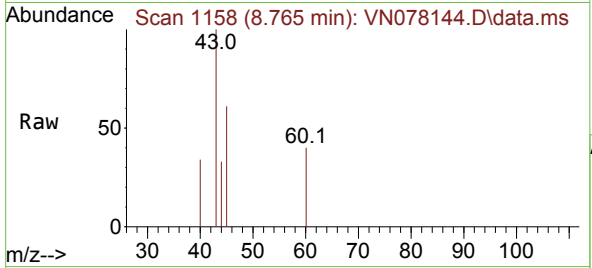
Ion	Ratio	Lower	Upper
117	100		
119	6.2	77.3	115.9#
121	0.0	23.3	34.9#





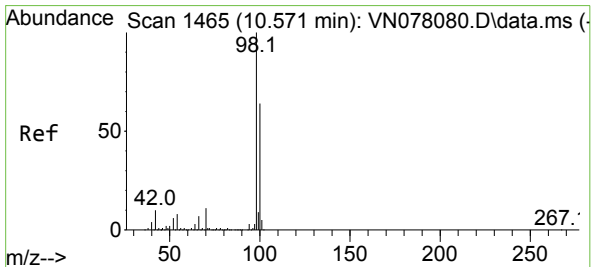
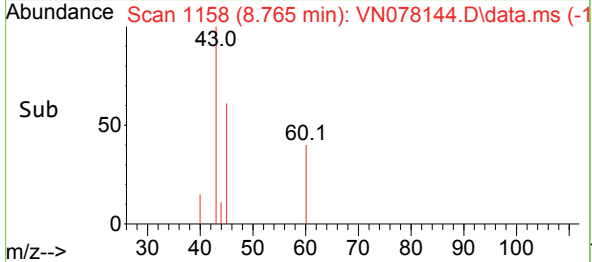
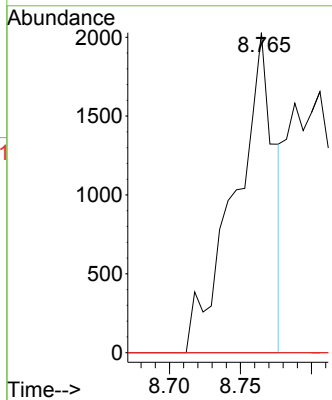
#43
 Isopropyl Acetate
 Concen: 0.356 ug/l
 RT: 8.765 min Scan# 1146
 Delta R.T. 0.071 min
 Lab File: VN078144.D
 Acq: 09 Jun 2023 14:34

Instrument :
 MSVOA_N
 ClientSampled :



Tgt Ion: 43 Resp: 3865

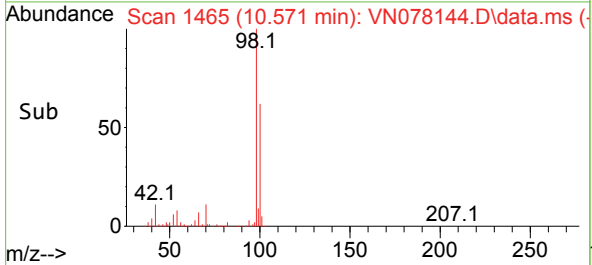
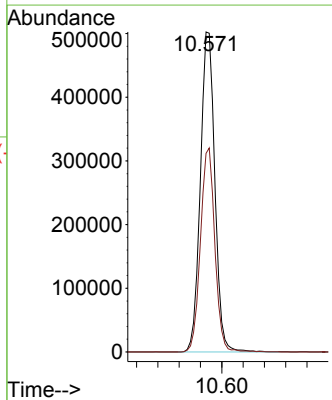
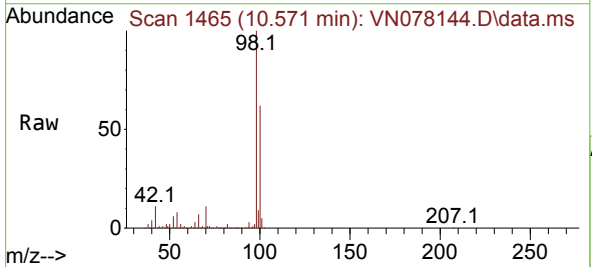
Ion	Ratio	Lower	Upper
43	100		
61	0.0	24.7	37.1#
87	0.0	14.6	21.8#

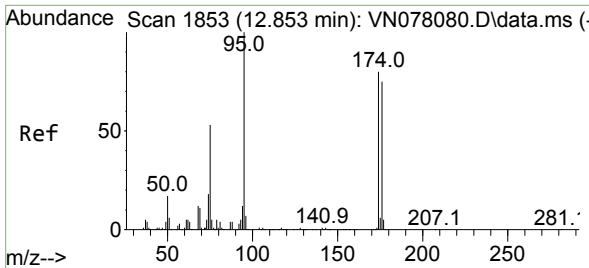


#50
 Toluene-d8
 Concen: 48.486 ug/l
 RT: 10.571 min Scan# 1465
 Delta R.T. -0.000 min
 Lab File: VN078144.D
 Acq: 09 Jun 2023 14:34

Tgt Ion: 98 Resp: 947743

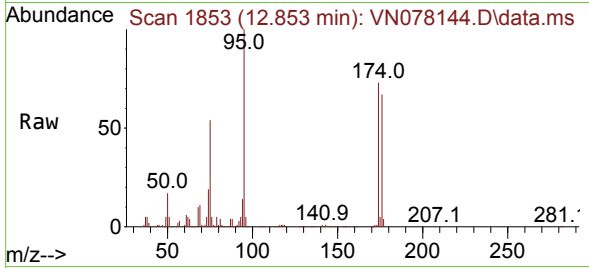
Ion	Ratio	Lower	Upper
98	100		
100	63.3	52.0	78.0



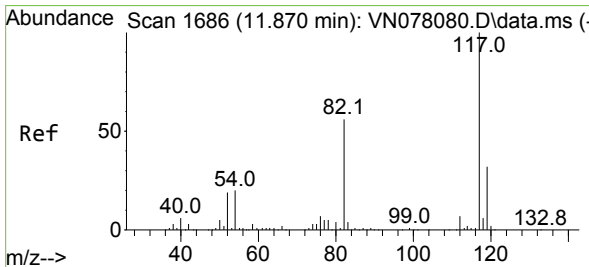
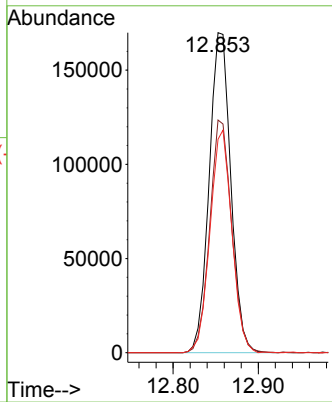
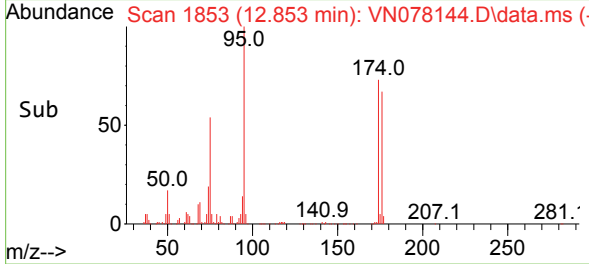


#62
 4-Bromofluorobenzene
 Concen: 49.424 ug/l
 RT: 12.853 min Scan# 1853
 Delta R.T. -0.000 min
 Lab File: VN078144.D
 Acq: 09 Jun 2023 14:34

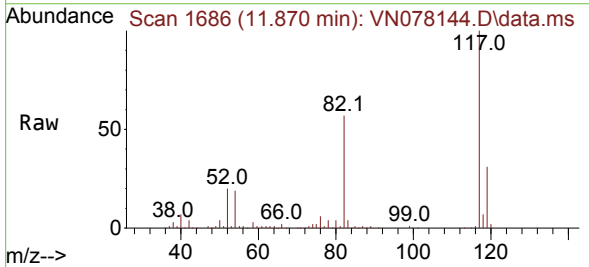
Instrument : MSVOA_N
 ClientSampleId :



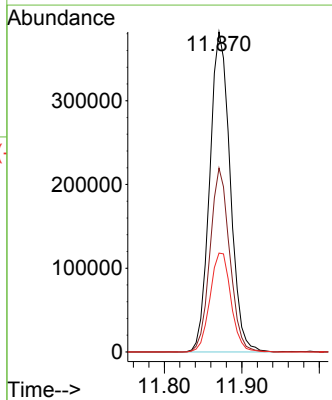
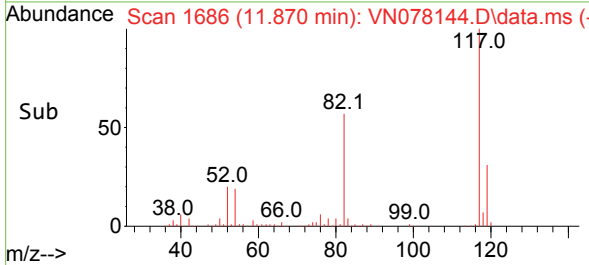
Tgt Ion: 95 Resp: 300330
 Ion Ratio Lower Upper
 95 100
 174 73.9 0.0 143.8
 176 70.1 0.0 135.8

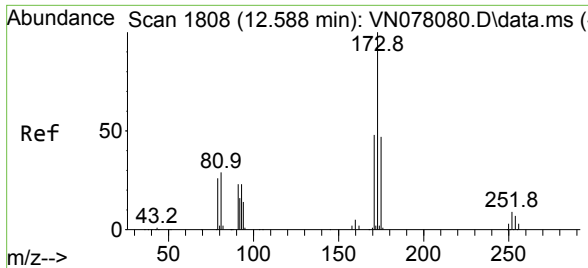


#63
 Chlorobenzene-d5
 Concen: 50.000 ug/l
 RT: 11.870 min Scan# 1686
 Delta R.T. -0.000 min
 Lab File: VN078144.D
 Acq: 09 Jun 2023 14:34



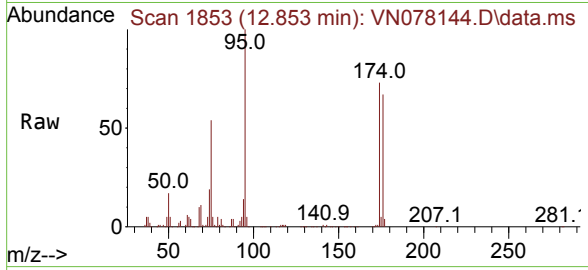
Tgt Ion: 117 Resp: 699540
 Ion Ratio Lower Upper
 117 100
 82 57.4 44.0 66.0
 119 30.9 25.6 38.4



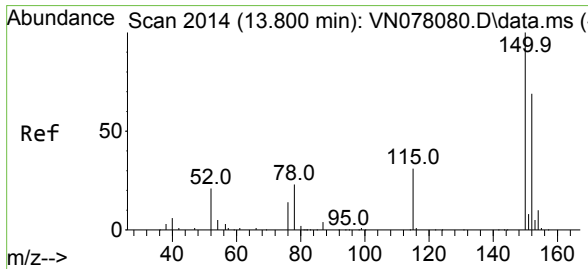
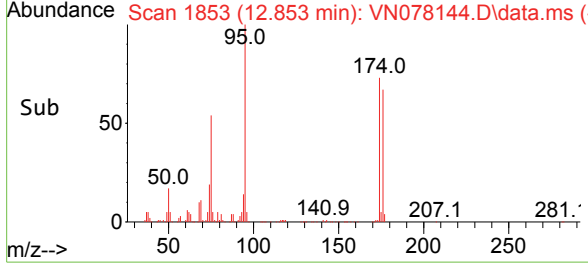
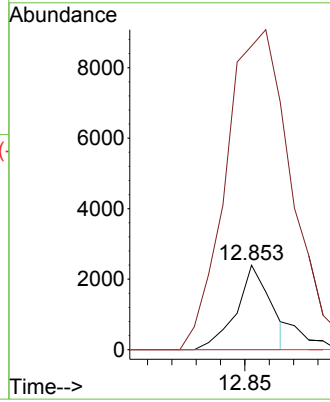


#71
 Bromoform
 Concen: 0.659 ug/l
 RT: 12.853 min Scan# 11
 Delta R.T. 0.265 min
 Lab File: VN078144.D
 Acq: 09 Jun 2023 14:34

Instrument :
 MSVOA_N
 ClientSampleId :

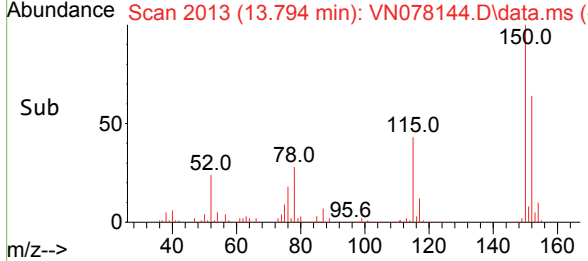
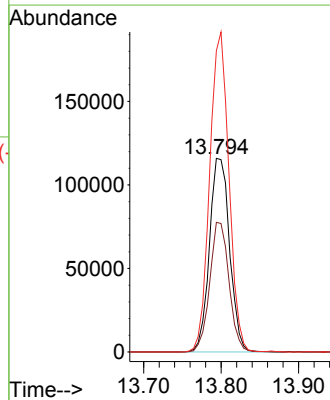
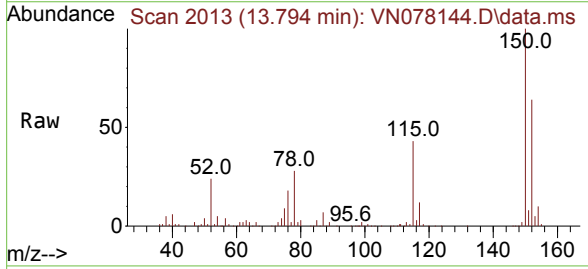


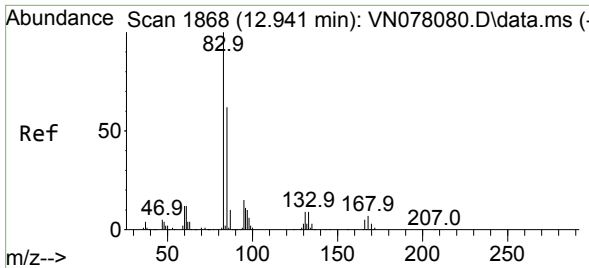
Tgt Ion:173 Resp: 2342
 Ion Ratio Lower Upper
 173 100
 175 598.9 24.3 73.0#
 254 0.0 0.0 0.0



#72
 1,4-Dichlorobenzene-d4
 Concen: 50.000 ug/l
 RT: 13.794 min Scan# 2013
 Delta R.T. -0.006 min
 Lab File: VN078144.D
 Acq: 09 Jun 2023 14:34

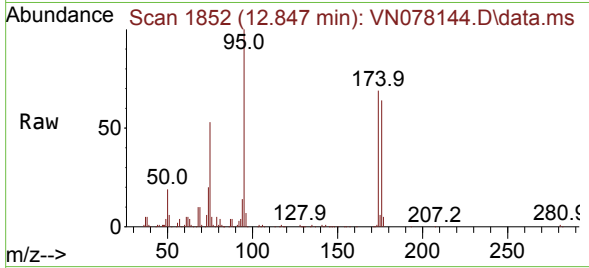
Tgt Ion:152 Resp: 209519
 Ion Ratio Lower Upper
 152 100
 115 64.1 32.3 96.8
 150 157.4 0.0 355.8



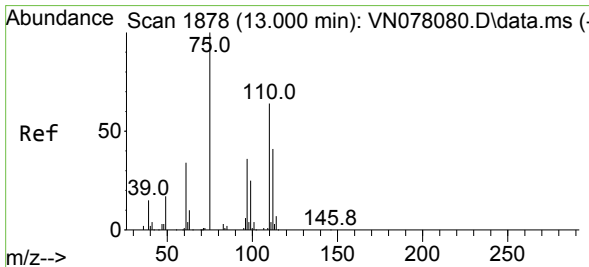
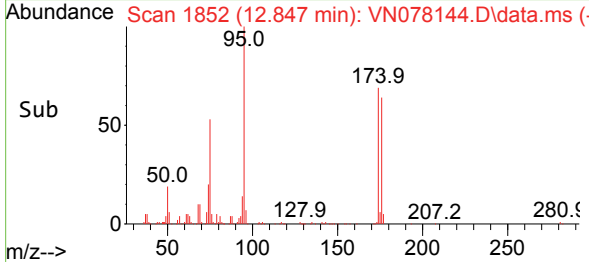
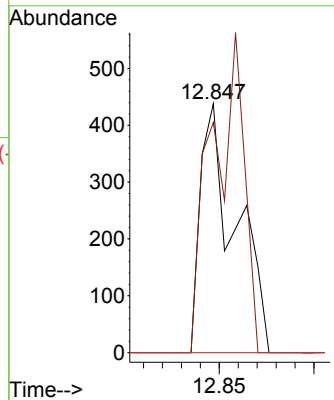


#75
 1,1,2,2-Tetrachloroethane
 Concen: Below Cal
 RT: 12.847 min Scan# 1852
 Delta R.T. -0.094 min
 Lab File: VN078144.D
 Acq: 09 Jun 2023 14:34

Instrument : MSVOA_N
 ClientSampleId :

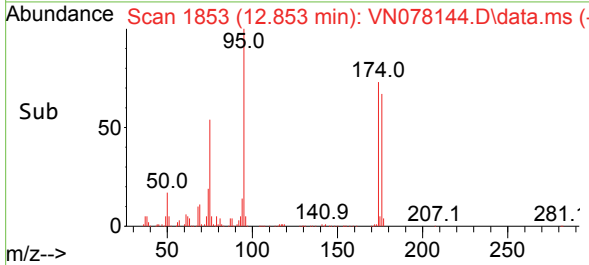
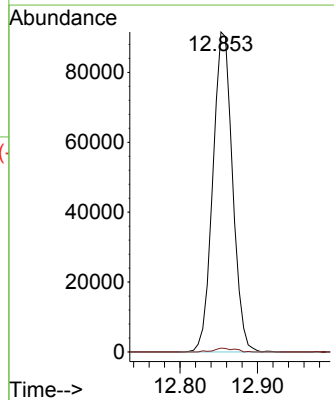
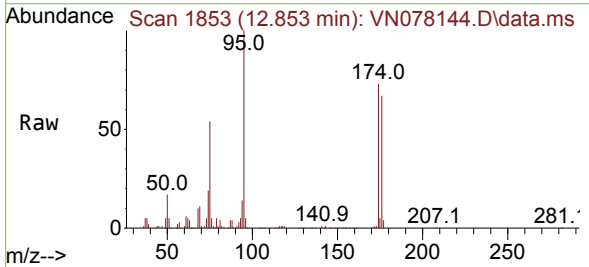


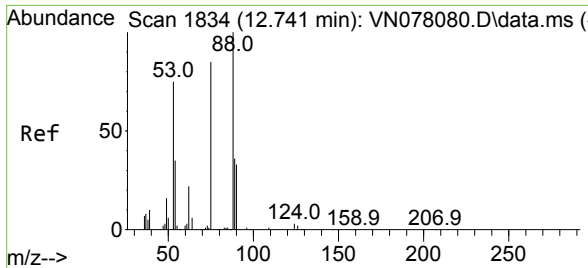
Tgt Ion: 83 Resp: 563
 Ion Ratio Lower Upper
 83 100
 131 117.1 5.0 15.0#
 85 0.0 31.9 95.7#



#76
 1,2,3-Trichloropropane
 Concen: 32.604 ug/l
 RT: 12.853 min Scan# 1853
 Delta R.T. -0.147 min
 Lab File: VN078144.D
 Acq: 09 Jun 2023 14:34

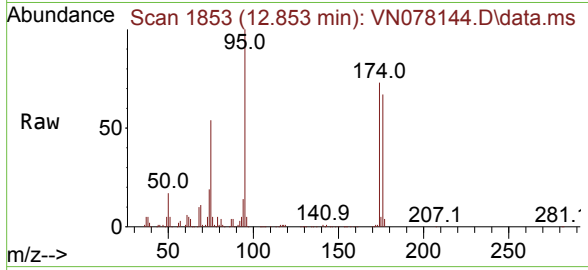
Tgt Ion: 75 Resp: 161493
 Ion Ratio Lower Upper
 75 100
 77 1.3 84.5 253.5#





#81
 trans-1,4-Dichloro-2-butene
 Concen: 100.171 ug/l
 RT: 12.853 min Scan# 11
 Delta R.T. 0.112 min
 Lab File: VN078144.D
 Acq: 09 Jun 2023 14:34

Instrument :
 MSVOA_N
 ClientSampleId :



Tgt Ion: 75 Resp: 161493
 Ion Ratio Lower Upper
 75 100
 53 0.0 67.4 101.2#
 89 0.1 38.8 58.2#

