

Data Path : Z:\voasrv\HPCHEM1\MSVOA_N\Data\VN060925\
 Data File : VN086899.D
 Acq On : 09 Jun 2025 12:59
 Operator : JC\MD
 Sample : Q2236-09RE
 Misc : 5.0mL/MSVOA_N/WATER
 ALS Vial : 13 Sample Multiplier: 1

Instrument :
 MSVOA_N
 ClientSampleId :

Quant Time: Jun 10 03:31:09 2025
 Quant Method : Z:\voasrv\HPCHEM1\MSVOA_N\methods\82N060625W.M
 Quant Title : SW846 8260
 QLast Update : Sat Jun 07 02:12:50 2025
 Response via : Initial Calibration

Compound	R.T.	QIon	Response	Conc	Units	Dev(Min)
Internal Standards						
1) Pentafluorobenzene	8.230	168	396308	50.000	ug/l	0.00
34) 1,4-Difluorobenzene	9.106	114	680731	50.000	ug/l	0.00
63) Chlorobenzene-d5	11.865	117	597431	50.000	ug/l	0.00
72) 1,4-Dichlorobenzene-d4	13.788	152	290954	50.000	ug/l	0.00
System Monitoring Compounds						
33) 1,2-Dichloroethane-d4	8.588	65	220244	41.508	ug/l	0.00
Spiked Amount	50.000	Range 74 - 125	Recovery	=	83.020%	
35) Dibromofluoromethane	8.177	113	162269	40.224	ug/l	0.00
Spiked Amount	50.000	Range 75 - 124	Recovery	=	80.440%	
50) Toluene-d8	10.565	98	808270	50.611	ug/l	0.00
Spiked Amount	50.000	Range 86 - 113	Recovery	=	101.220%	
62) 4-Bromofluorobenzene	12.847	95	292203	49.247	ug/l	0.00
Spiked Amount	50.000	Range 77 - 121	Recovery	=	98.500%	
Target Compounds						
						Qvalue
4) Vinyl Chloride	2.554	62	12417	2.359	ug/l	98
8) Diethyl Ether	3.989	74	85698	28.601	ug/l	90
11) Tert butyl alcohol	5.536	59	1703	1.183	ug/l #	73
16) Acetone	4.447	43	157911	56.119	ug/l	96
17) Carbon Disulfide	4.736	76	4089	0.335	ug/l #	75
20) Methylene Chloride	5.295	84	7539	1.431	ug/l	84
21) trans-1,2-Dichloroethene	5.818	96	2216	0.452	ug/l #	46
25) 2-Butanone	7.494	43	21371	4.672	ug/l #	88
27) cis-1,2-Dichloroethene	7.500	96	86333	14.709	ug/l	84
29) Tetrahydrofuran	7.853	42	1254	0.421	ug/l #	74
31) Cyclohexane	8.230	56	6678	0.776	ug/l #	1
36) 1,1-Dichloropropene	8.230	75	27436	4.564	ug/l #	49
37) Ethyl Acetate	7.494	43	21371	2.793	ug/l #	1
38) Carbon Tetrachloride	8.230	117	37883	6.419	ug/l #	17
40) Benzene	8.612	78	441489	22.459	ug/l	100
42) 1,2-Dichloroethane	8.612	62	3580	0.600	ug/l	85
44) Trichloroethene	9.359	130	2480	0.532	ug/l	94
48) Methyl methacrylate	9.665	41	2423	0.429	ug/l #	26
51) 4-Methyl-2-Pentanone	10.459	43	4647	0.628	ug/l	95
52) Toluene	10.629	92	30536	2.542	ug/l	100
59) 2-Hexanone	11.176	43	14493	3.043	ug/l #	20
67) Ethyl Benzene	11.965	91	345726	15.233	ug/l	98
68) m/p-Xylenes	12.071	106	35869	4.128	ug/l	97
69) o-Xylene	12.394	106	49970	6.005	ug/l	96
70) Styrene	12.400	104	3842	0.270	ug/l #	1
73) Isopropylbenzene	12.694	105	64903	3.062	ug/l	97
76) 1,2,3-Trichloropropane	12.847	75	131525	19.017	ug/l #	1
78) n-propylbenzene	13.035	91	31390	1.219	ug/l	98
79) 2-Chlorotoluene	13.129	91	7133	0.462	ug/l #	42
80) 1,3,5-Trimethylbenzene	13.170	105	20865	1.192	ug/l	97
81) trans-1,4-Dichloro-2-b...	12.847	75	131525	43.777	ug/l #	16
84) 1,2,4-Trimethylbenzene	13.476	105	103145	5.878	ug/l	97
86) p-Isopropyltoluene	13.670	119	14561	0.757	ug/l	88
90) Hexachloroethane	14.317	117	4895	1.502	ug/l #	17
92) 1,2-Dibromo-3-Chloropr...	14.623	75	548	0.319	ug/l	66
95) Naphthalene	15.635	128	7672167	351.295	ug/l	100

Data Path : Z:\voasrv\HPCHEM1\MSVOA_N\Data\VN060925\
Data File : VN086899.D
Acq On : 09 Jun 2025 12:59
Operator : JC\MD
Sample : Q2236-09RE
Misc : 5.0mL/MSVOA_N/WATER
ALS Vial : 13 Sample Multiplier: 1

Instrument :
MSVOA_N
ClientSampleId :

Quant Time: Jun 10 03:31:09 2025
Quant Method : Z:\voasrv\HPCHEM1\MSVOA_N\methods\82N060625W.M
Quant Title : SW846 8260
QLast Update : Sat Jun 07 02:12:50 2025
Response via : Initial Calibration

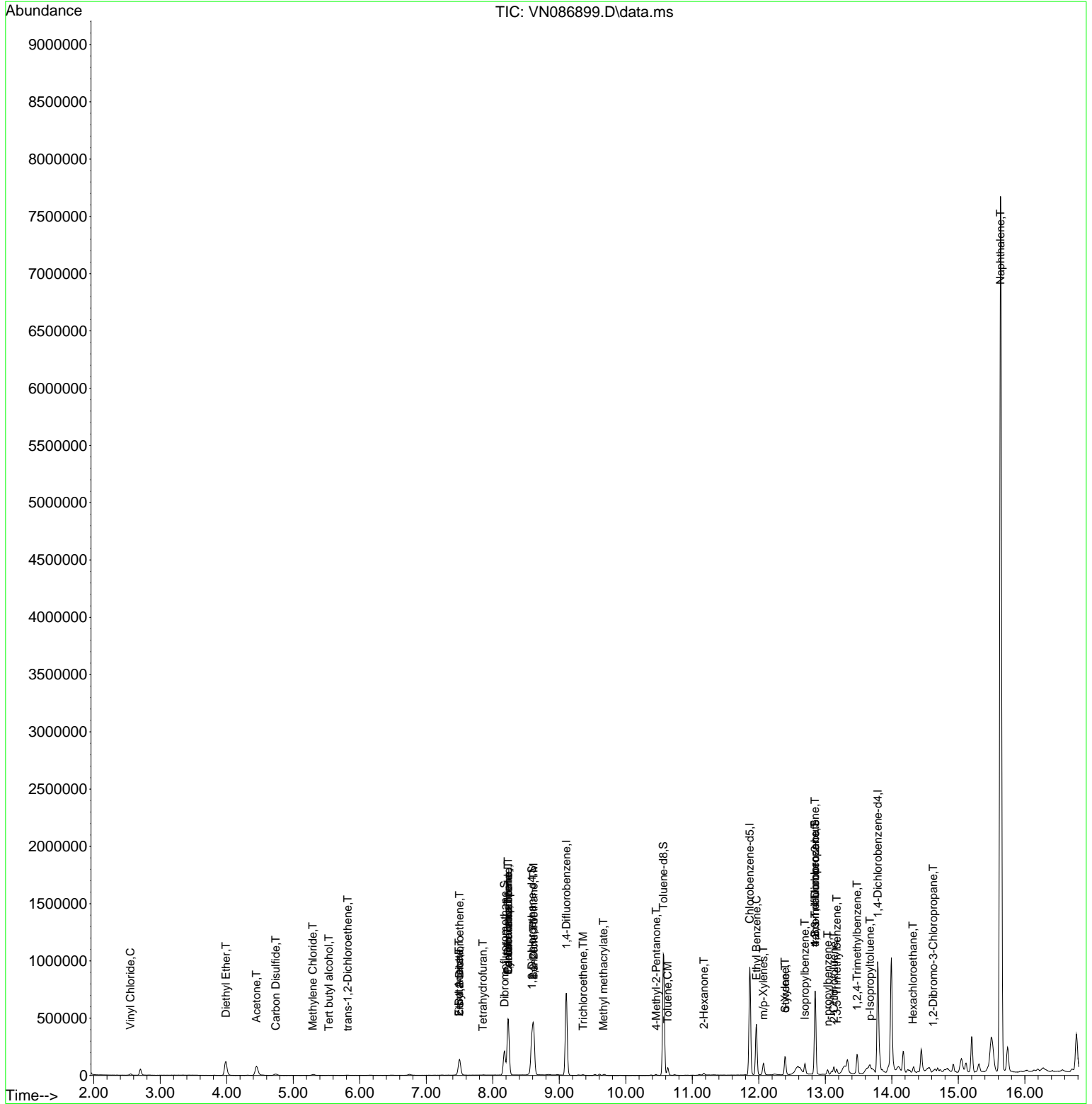
Compound	R.T.	QIon	Response	Conc	Units	Dev(Min)
----------	------	------	----------	------	-------	----------

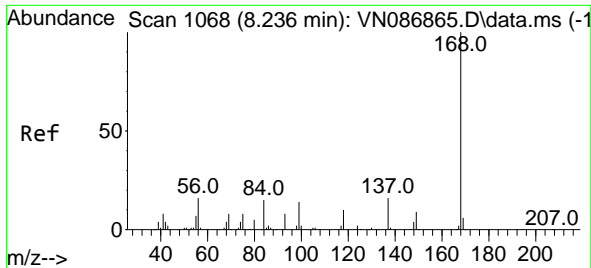
(#) = qualifier out of range (m) = manual integration (+) = signals summed

Data Path : Z:\voasrv\HPCHEM1\MSVOA_N\Data\VN060925\
 Data File : VN086899.D
 Acq On : 09 Jun 2025 12:59
 Operator : JC\MD
 Sample : Q2236-09RE
 Misc : 5.0mL/MSVOA_N/WATER
 ALS Vial : 13 Sample Multiplier: 1

Instrument :
 MSVOA_N
 ClientSampleId :

Quant Time: Jun 10 03:31:09 2025
 Quant Method : Z:\voasrv\HPCHEM1\MSVOA_N\methods\82N060625W.M
 Quant Title : SW846 8260
 QLast Update : Sat Jun 07 02:12:50 2025
 Response via : Initial Calibration

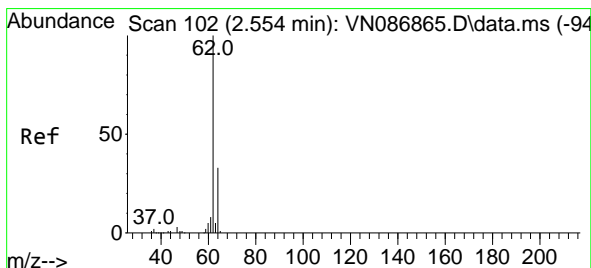
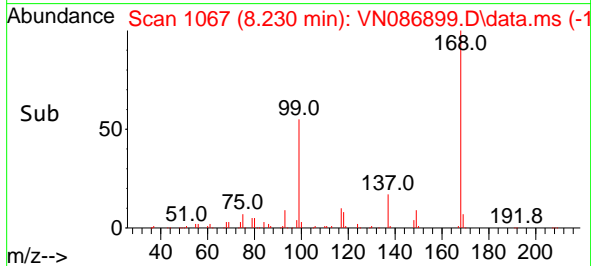
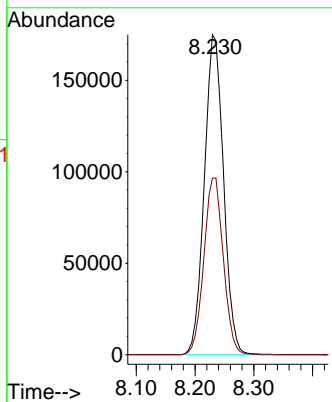
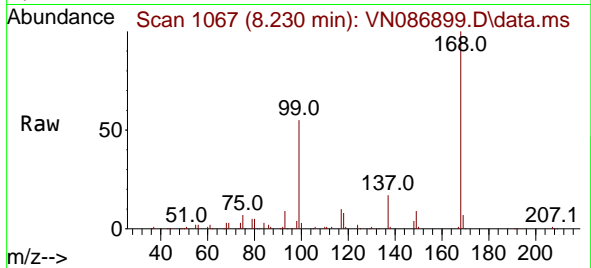




#1
 Pentafluorobenzene
 Concen: 50.000 ug/l
 RT: 8.230 min Scan# 1067
 Delta R.T. -0.006 min
 Lab File: VN086899.D
 Acq: 09 Jun 2025 12:59

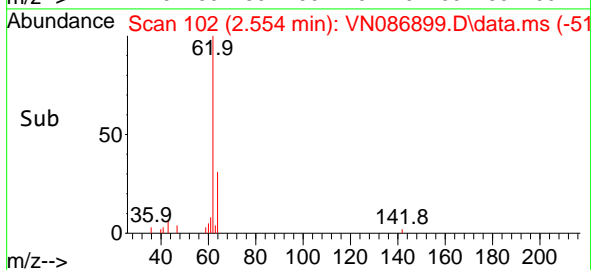
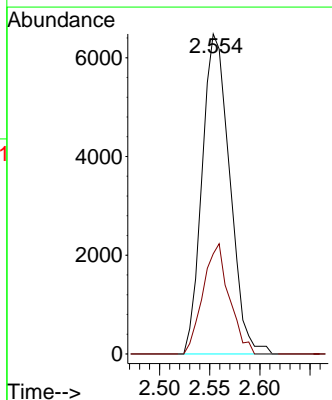
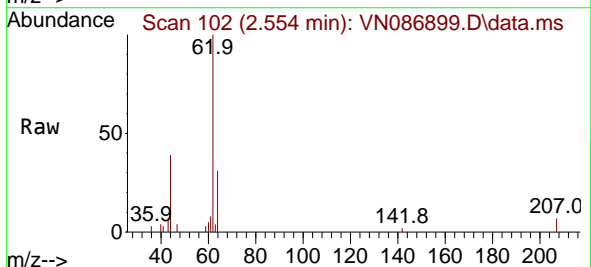
Instrument : MSVOA_N
 ClientSampleId :

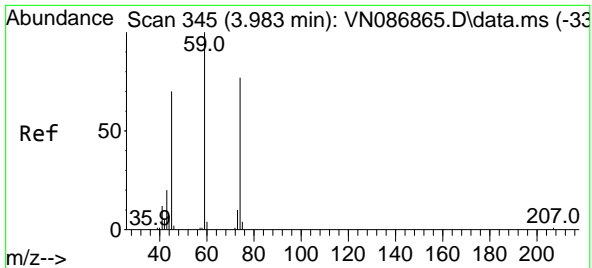
Tgt Ion:168 Resp: 396308
 Ion Ratio Lower Upper
 168 100
 99 55.2 49.1 73.7



#4
 Vinyl Chloride
 Concen: 2.359 ug/l
 RT: 2.554 min Scan# 102
 Delta R.T. -0.000 min
 Lab File: VN086899.D
 Acq: 09 Jun 2025 12:59

Tgt Ion: 62 Resp: 12417
 Ion Ratio Lower Upper
 62 100
 64 31.3 26.0 39.0

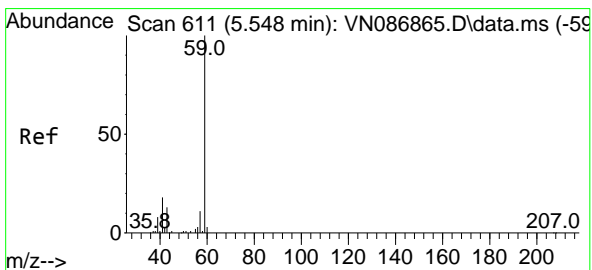
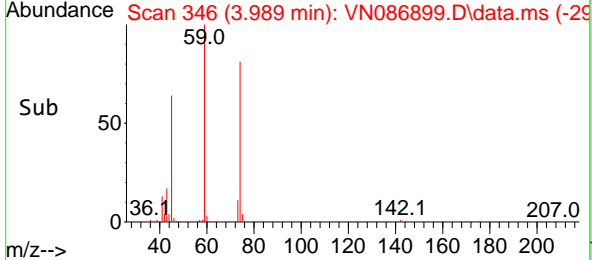
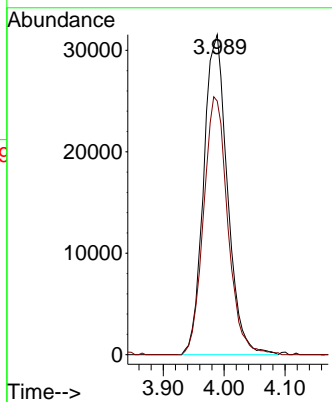
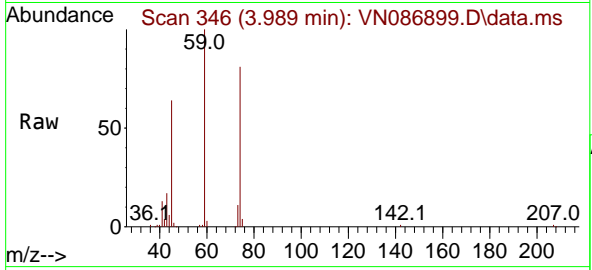




#8
 Diethyl Ether
 Concen: 28.601 ug/l
 RT: 3.989 min Scan# 34
 Delta R.T. 0.006 min
 Lab File: VN086899.D
 Acq: 09 Jun 2025 12:59

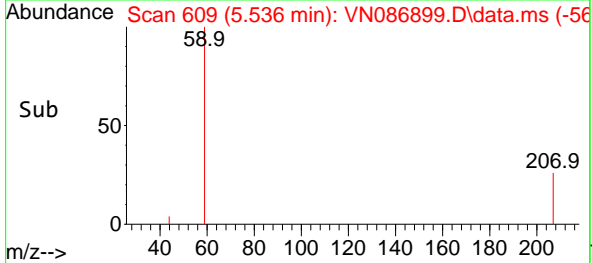
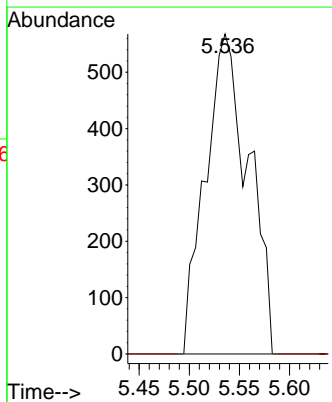
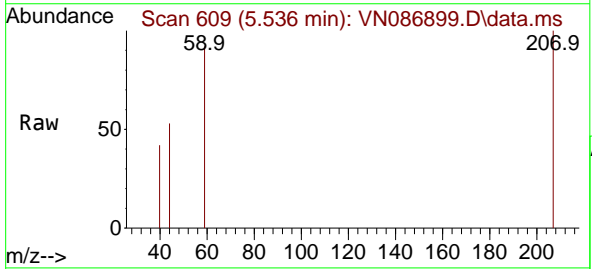
Instrument :
 MSVOA_N
 ClientSampleId :

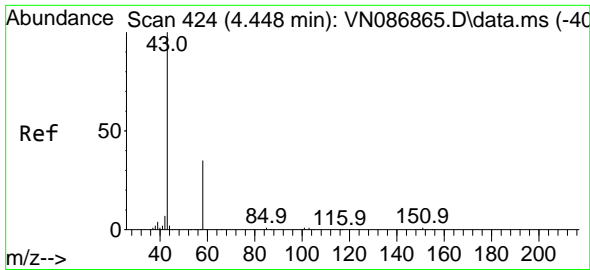
Tgt Ion: 74 Resp: 85698
 Ion Ratio Lower Upper
 74 100
 45 82.0 45.5 136.5



#11
 Tert butyl alcohol
 Concen: 1.183 ug/l
 RT: 5.536 min Scan# 609
 Delta R.T. -0.012 min
 Lab File: VN086899.D
 Acq: 09 Jun 2025 12:59

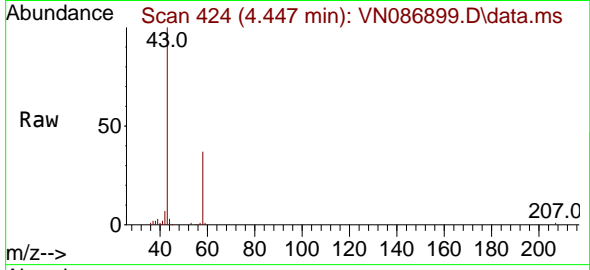
Tgt Ion: 59 Resp: 1703
 Ion Ratio Lower Upper
 59 100
 57 0.0 8.1 12.1#



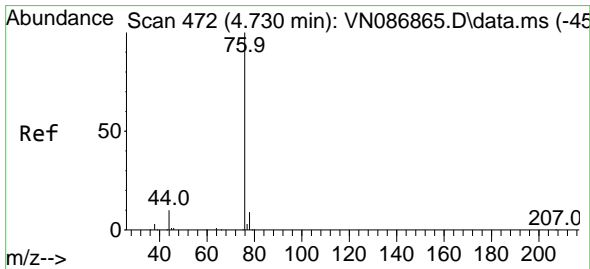
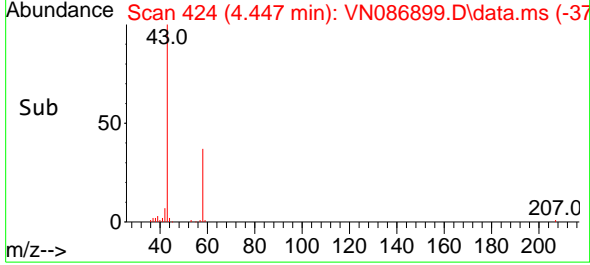
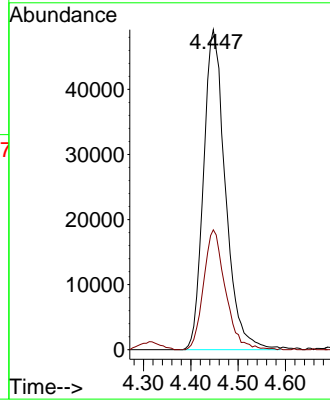


#16
 Acetone
 Concen: 56.119 ug/l
 RT: 4.447 min Scan# 41
 Delta R.T. -0.000 min
 Lab File: VN086899.D
 Acq: 09 Jun 2025 12:59

Instrument :
 MSVOA_N
 ClientSampleId :

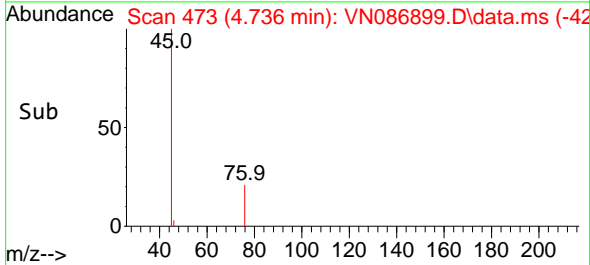
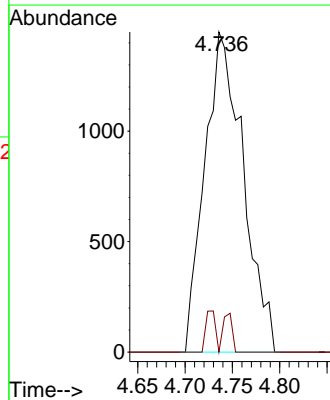
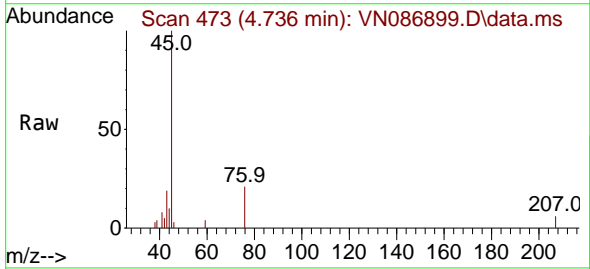


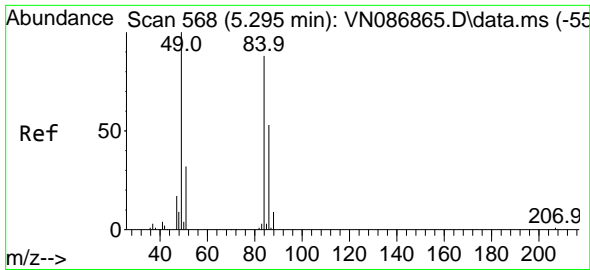
Tgt Ion: 43 Resp: 157911
 Ion Ratio Lower Upper
 43 100
 58 37.4 28.0 42.0



#17
 Carbon Disulfide
 Concen: 0.335 ug/l
 RT: 4.736 min Scan# 473
 Delta R.T. 0.006 min
 Lab File: VN086899.D
 Acq: 09 Jun 2025 12:59

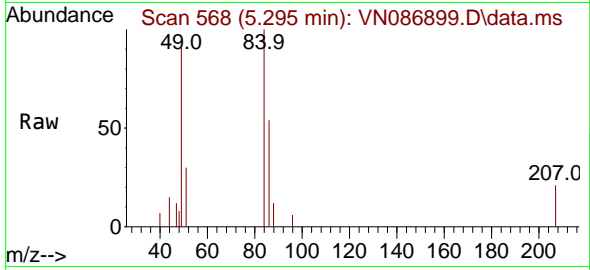
Tgt Ion: 76 Resp: 4089
 Ion Ratio Lower Upper
 76 100
 78 0.0 7.3 10.9#





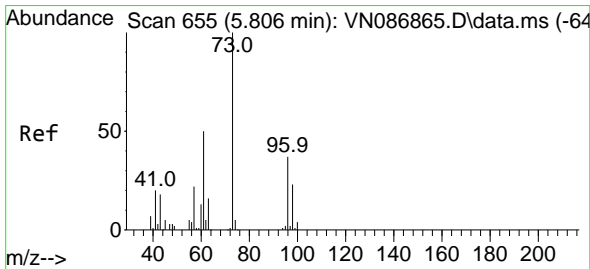
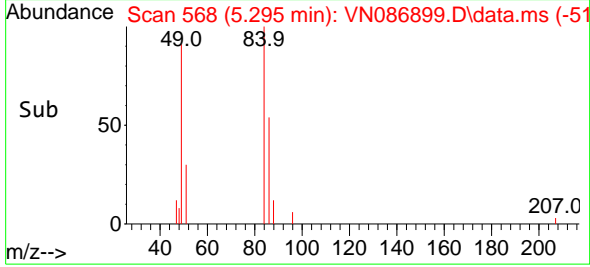
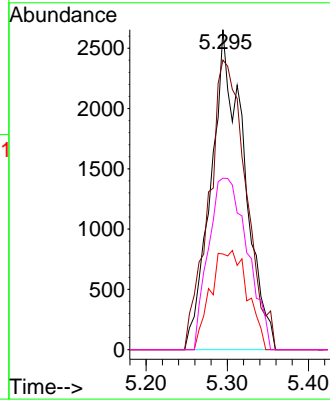
#20
 Methylene Chloride
 Concen: 1.431 ug/l
 RT: 5.295 min Scan# 51
 Delta R.T. -0.000 min
 Lab File: VN086899.D
 Acq: 09 Jun 2025 12:59

Instrument :
 MSVOA_N
 ClientSampleId :



Tgt Ion: 84 Resp: 7539

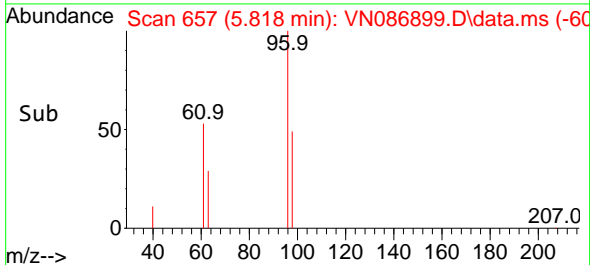
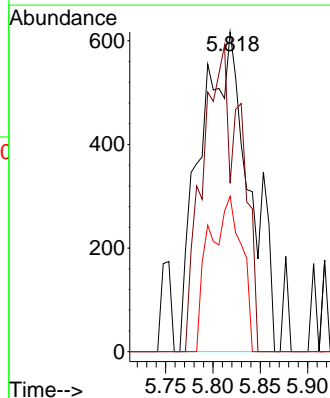
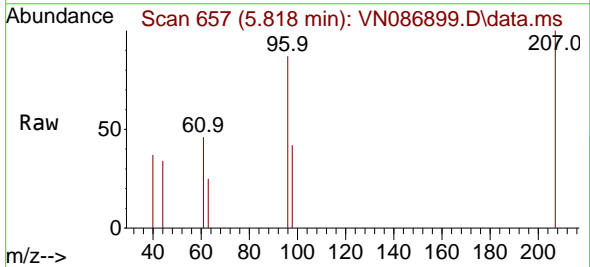
Ion	Ratio	Lower	Upper
84	100		
49	90.5	90.5	135.7
51	29.9	28.5	42.7
86	53.6	48.1	72.1

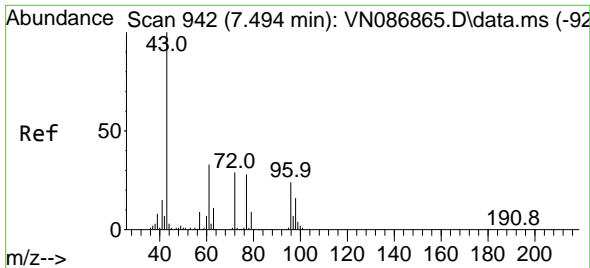


#21
 trans-1,2-Dichloroethene
 Concen: 0.452 ug/l
 RT: 5.818 min Scan# 657
 Delta R.T. 0.012 min
 Lab File: VN086899.D
 Acq: 09 Jun 2025 12:59

Tgt Ion: 96 Resp: 2216

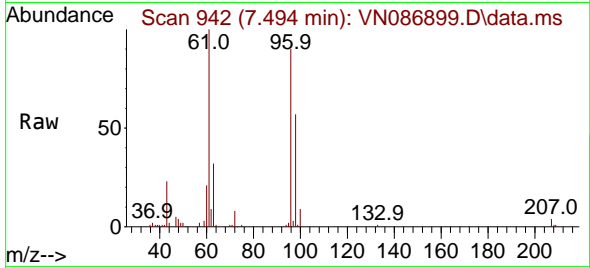
Ion	Ratio	Lower	Upper
96	100		
61	52.7	109.2	163.8#
98	48.6	49.8	74.8#



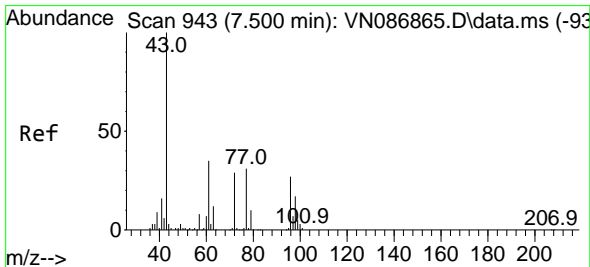
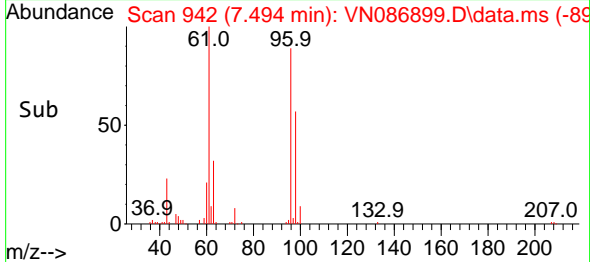
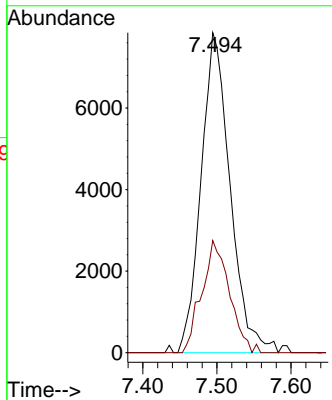


#25
 2-Butanone
 Concen: 4.672 ug/l
 RT: 7.494 min Scan# 942
 Delta R.T. -0.000 min
 Lab File: VN086899.D
 Acq: 09 Jun 2025 12:59

Instrument :
 MSVOA_N
 ClientSampleId :

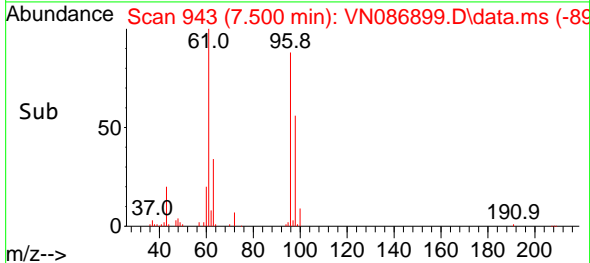
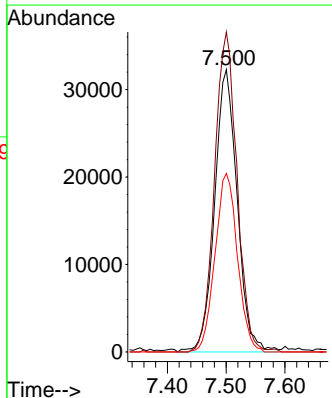
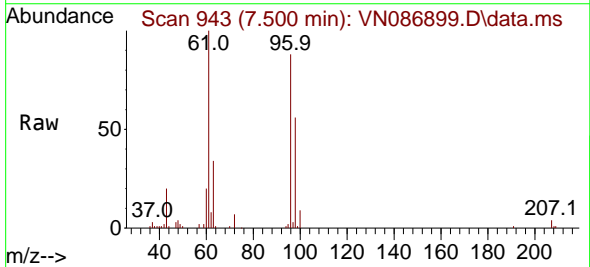


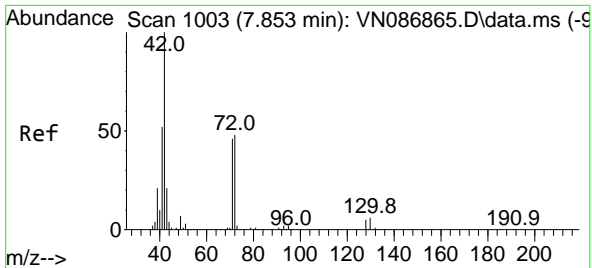
Tgt Ion: 43 Resp: 21371
 Ion Ratio Lower Upper
 43 100
 72 35.1 23.0 34.6#



#27
 cis-1,2-Dichloroethene
 Concen: 14.709 ug/l
 RT: 7.500 min Scan# 943
 Delta R.T. -0.000 min
 Lab File: VN086899.D
 Acq: 09 Jun 2025 12:59

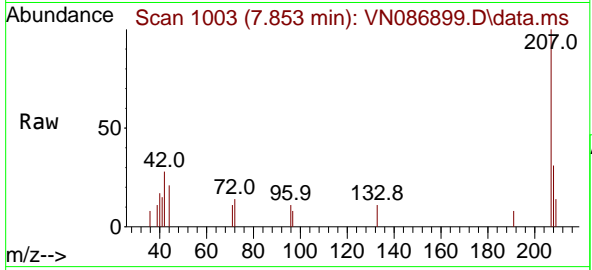
Tgt Ion: 96 Resp: 86333
 Ion Ratio Lower Upper
 96 100
 61 112.5 0.0 278.0
 98 62.7 0.0 128.2



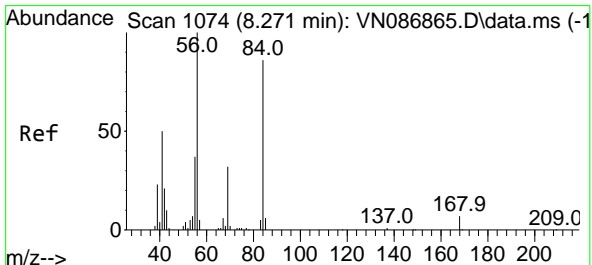
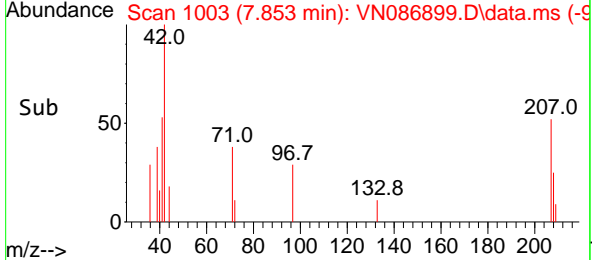
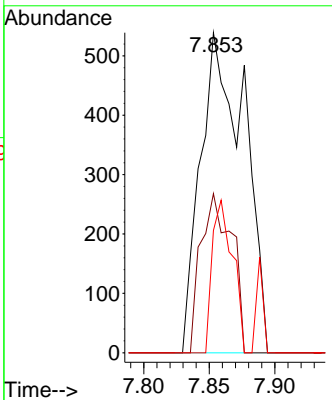


#29
 Tetrahydrofuran
 Concen: 0.421 ug/l
 RT: 7.853 min Scan# 1003
 Delta R.T. -0.000 min
 Lab File: VN086899.D
 Acq: 09 Jun 2025 12:59

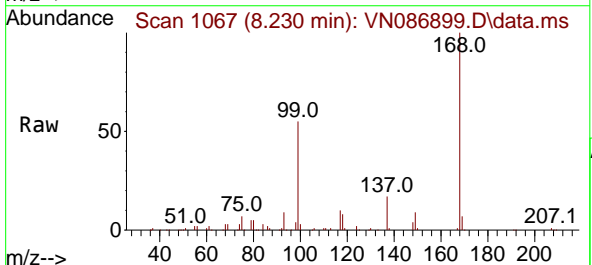
Instrument : MSVOA_N
 ClientSampleId :



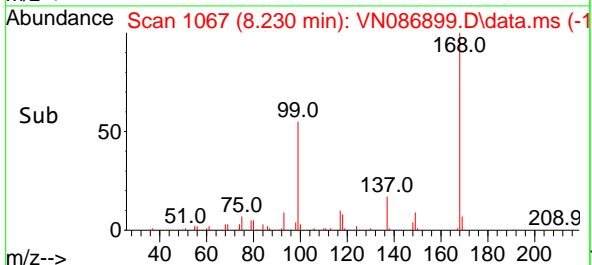
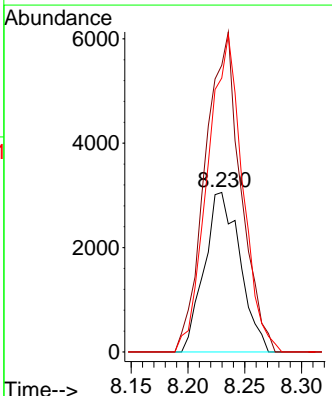
Tgt Ion	Resp	Lower	Upper
42	100		
72	35.2	37.8	56.6#
71	22.2	35.6	53.4#

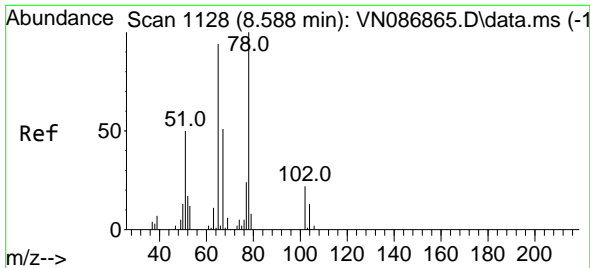


#31
 Cyclohexane
 Concen: 0.776 ug/l
 RT: 8.230 min Scan# 1067
 Delta R.T. -0.041 min
 Lab File: VN086899.D
 Acq: 09 Jun 2025 12:59



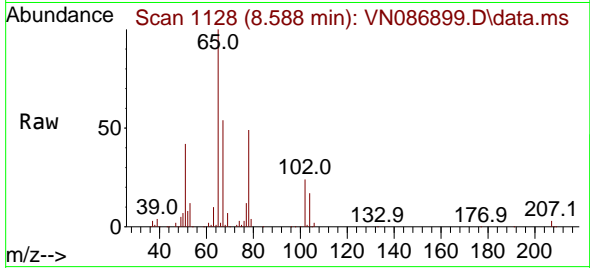
Tgt Ion	Resp	Lower	Upper
56	100		
69	179.7	25.4	38.0#
84	171.6	68.8	103.2#



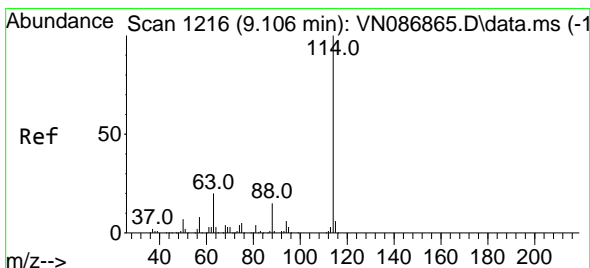
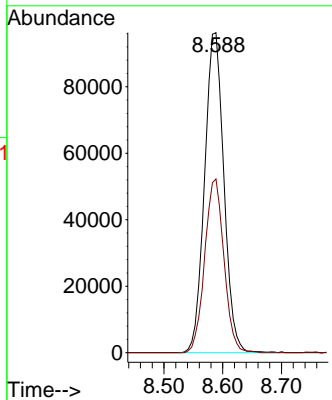
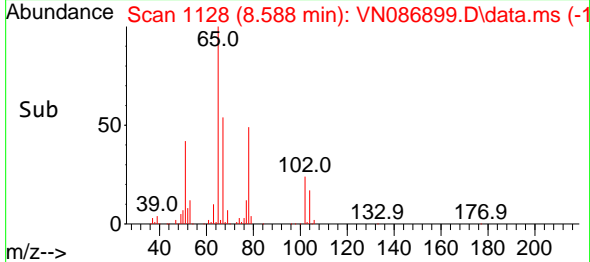


#33
 1,2-Dichloroethane-d4
 Concen: 41.508 ug/l
 RT: 8.588 min Scan# 1128
 Delta R.T. -0.000 min
 Lab File: VN086899.D
 Acq: 09 Jun 2025 12:59

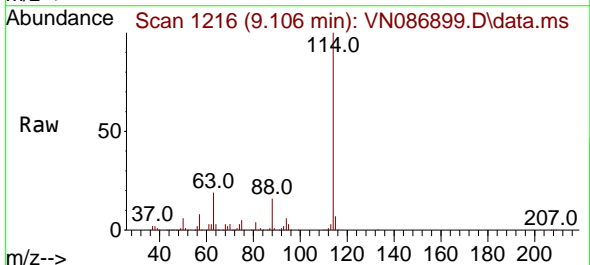
Instrument : MSVOA_N
 ClientSampleId :



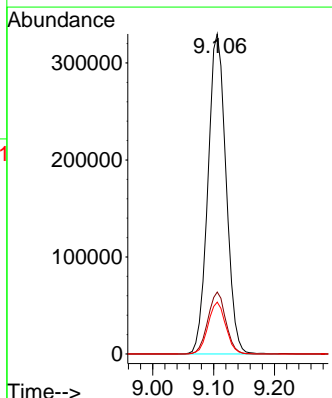
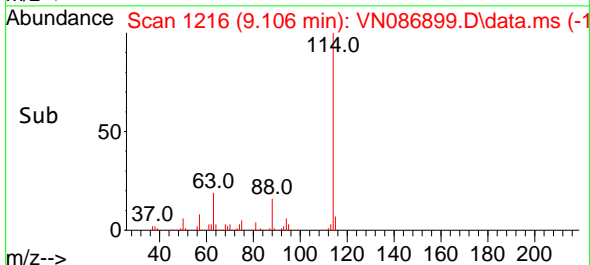
Tgt Ion: 65 Resp: 220244
 Ion Ratio Lower Upper
 65 100
 67 54.0 0.0 105.6

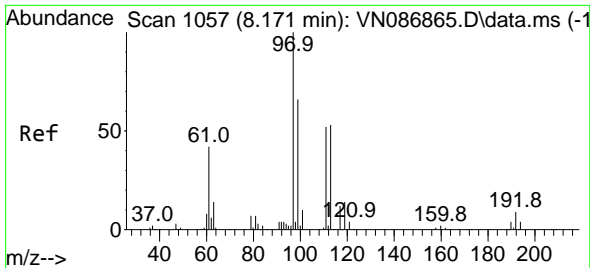


#34
 1,4-Difluorobenzene
 Concen: 50.000 ug/l
 RT: 9.106 min Scan# 1216
 Delta R.T. -0.000 min
 Lab File: VN086899.D
 Acq: 09 Jun 2025 12:59



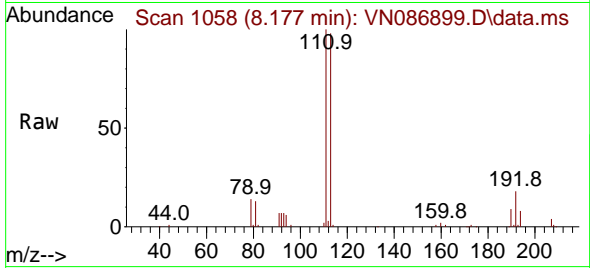
Tgt Ion: 114 Resp: 680731
 Ion Ratio Lower Upper
 114 100
 63 19.4 0.0 39.6
 88 16.2 0.0 30.2



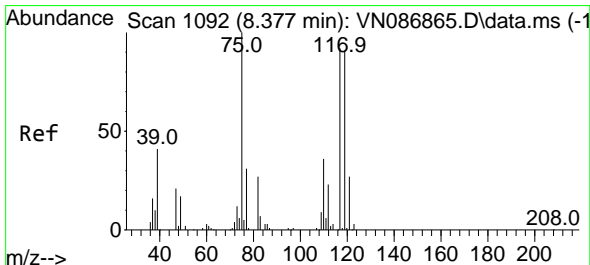
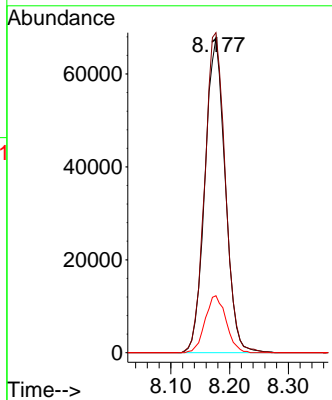
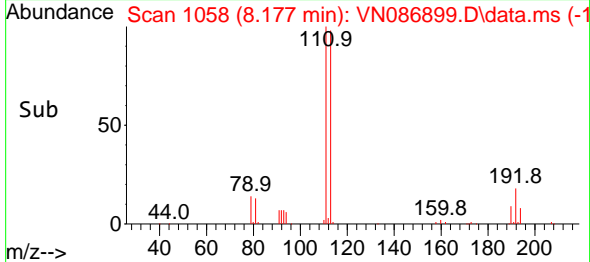


#35
 Dibromofluoromethane
 Concen: 40.224 ug/l
 RT: 8.177 min Scan# 1058
 Delta R.T. 0.006 min
 Lab File: VN086899.D
 Acq: 09 Jun 2025 12:59

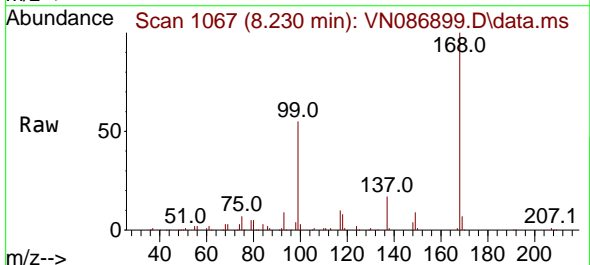
Instrument :
 MSVOA_N
 ClientSampleId :



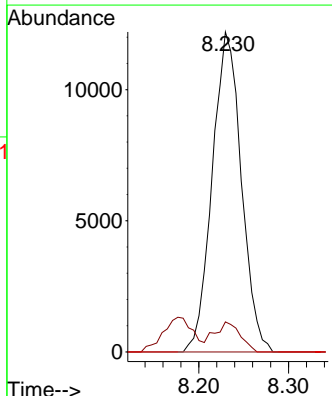
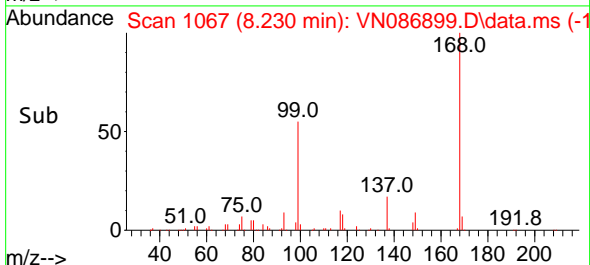
Tgt Ion:113 Resp: 162269
 Ion Ratio Lower Upper
 113 100
 111 103.1 84.2 126.2
 192 18.7 14.2 21.4

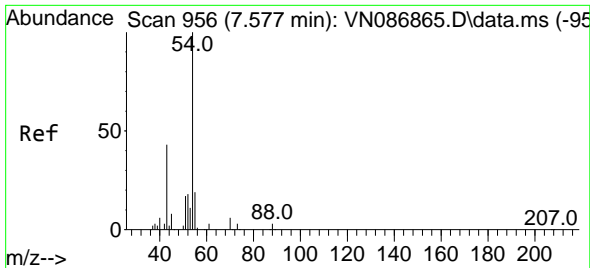


#36
 1,1-Dichloropropene
 Concen: 4.564 ug/l
 RT: 8.230 min Scan# 1067
 Delta R.T. -0.147 min
 Lab File: VN086899.D
 Acq: 09 Jun 2025 12:59



Tgt Ion: 75 Resp: 27436
 Ion Ratio Lower Upper
 75 100
 110 8.3 17.6 52.9#
 77 0.0 25.3 37.9#

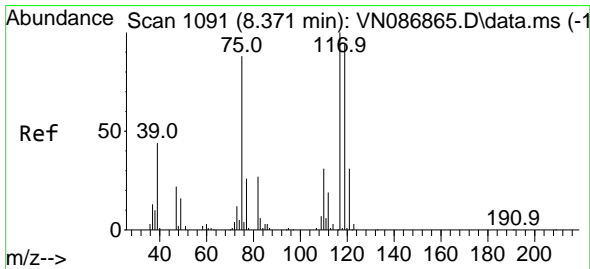
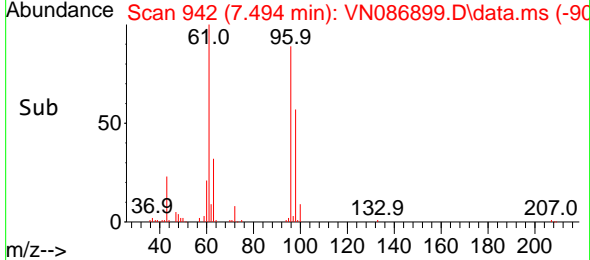
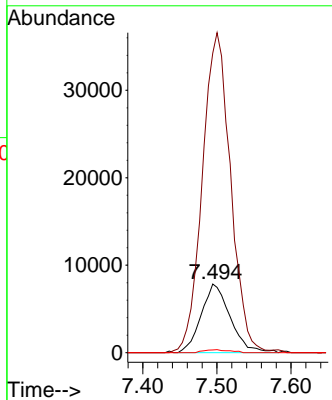
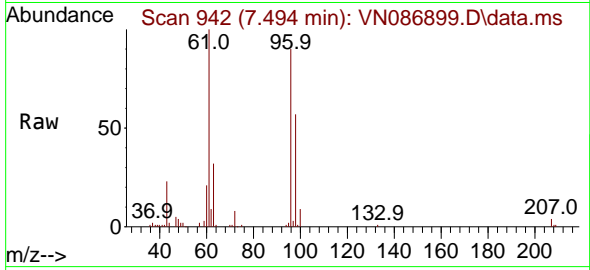




#37
 Ethyl Acetate
 Concen: 2.793 ug/l
 RT: 7.494 min Scan# 94
 Delta R.T. -0.082 min
 Lab File: VN086899.D
 Acq: 09 Jun 2025 12:59

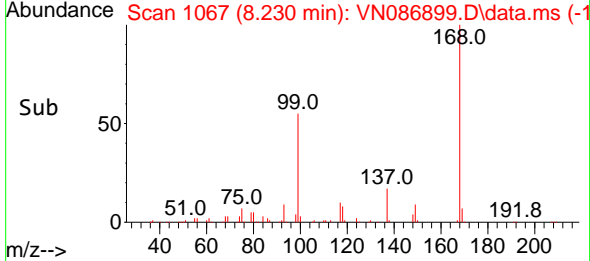
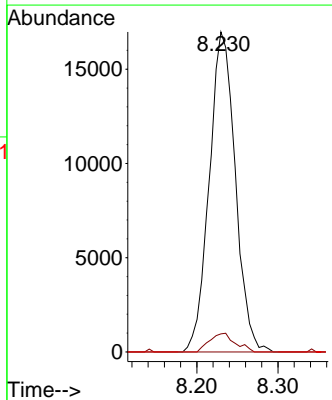
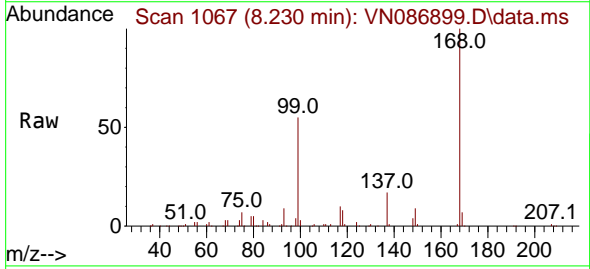
Instrument : MSVOA_N
 ClientSampleId :

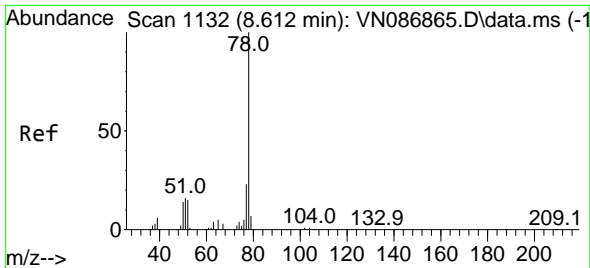
Tgt Ion	Resp	Lower	Upper
43	100		
61	454.3	12.1	18.1#
70	3.9	9.8	14.6#



#38
 Carbon Tetrachloride
 Concen: 6.419 ug/l
 RT: 8.230 min Scan# 1067
 Delta R.T. -0.141 min
 Lab File: VN086899.D
 Acq: 09 Jun 2025 12:59

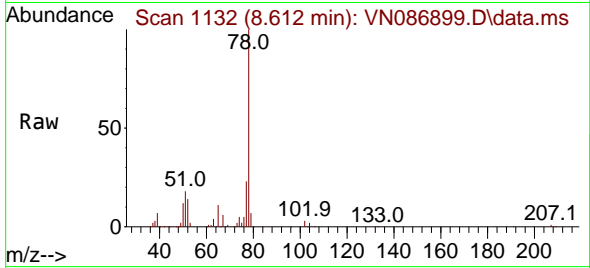
Tgt Ion	Resp	Lower	Upper
117	100		
119	5.7	75.0	112.6#
121	0.0	24.9	37.3#



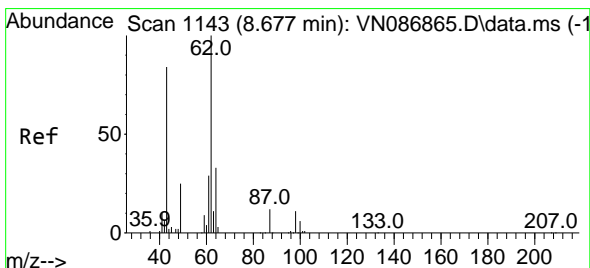
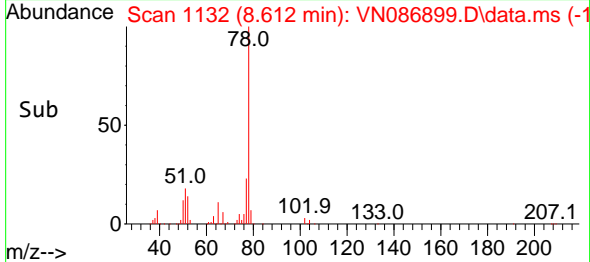
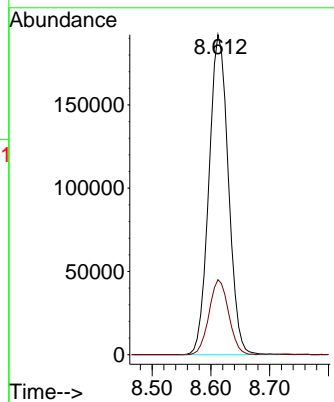


#40
Benzene
Concen: 22.459 ug/l
RT: 8.612 min Scan# 1132
Delta R.T. -0.000 min
Lab File: VN086899.D
Acq: 09 Jun 2025 12:59

Instrument : MSVOA_N
ClientSampleId :

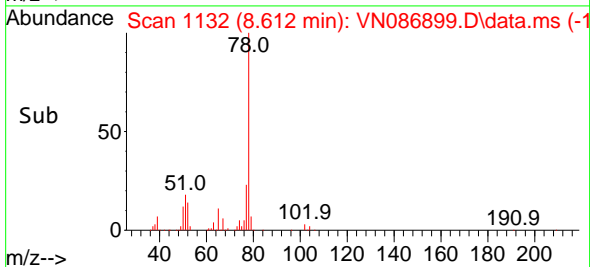
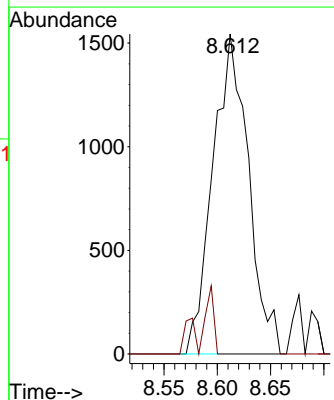
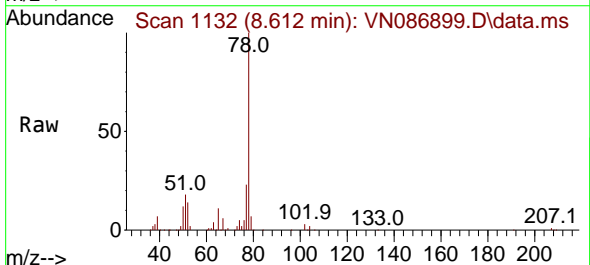


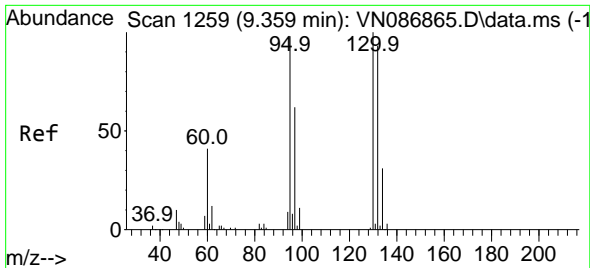
Tgt Ion: 78 Resp: 441489
Ion Ratio Lower Upper
78 100
77 23.5 18.7 28.1



#42
1,2-Dichloroethane
Concen: 0.600 ug/l
RT: 8.612 min Scan# 1132
Delta R.T. -0.065 min
Lab File: VN086899.D
Acq: 09 Jun 2025 12:59

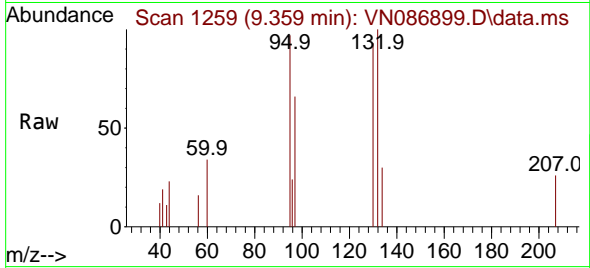
Tgt Ion: 62 Resp: 3580
Ion Ratio Lower Upper
62 100
98 5.0 0.0 21.2



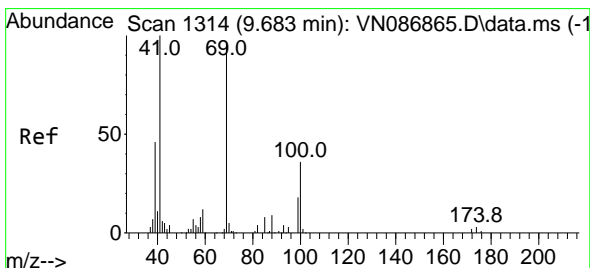
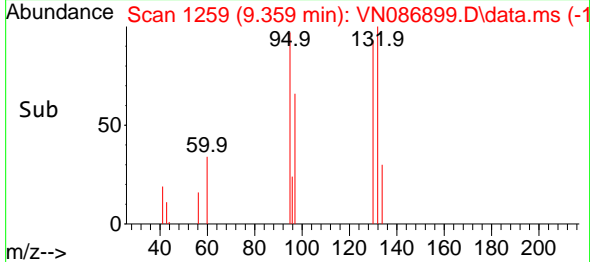
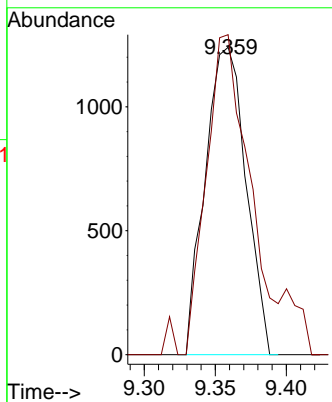


#44
 Trichloroethene
 Concen: 0.532 ug/l
 RT: 9.359 min Scan# 11
 Delta R.T. -0.000 min
 Lab File: VN086899.D
 Acq: 09 Jun 2025 12:59

Instrument :
 MSVOA_N
 ClientSampleId :

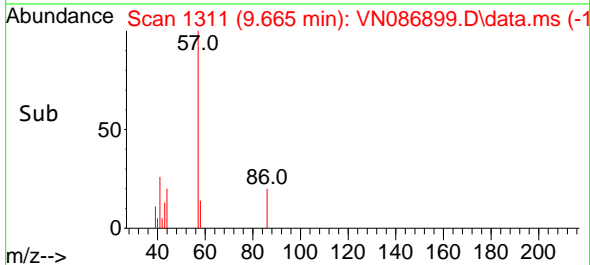
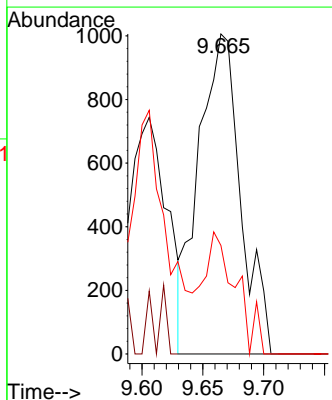
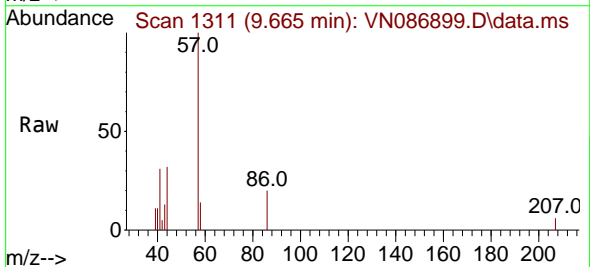


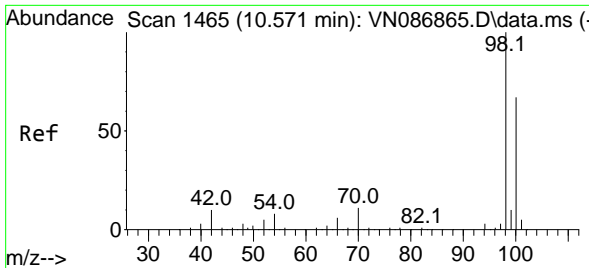
Tgt Ion:130 Resp: 2480
 Ion Ratio Lower Upper
 130 100
 95 104.1 0.0 196.2



#48
 Methyl methacrylate
 Concen: 0.429 ug/l
 RT: 9.665 min Scan# 1311
 Delta R.T. -0.018 min
 Lab File: VN086899.D
 Acq: 09 Jun 2025 12:59

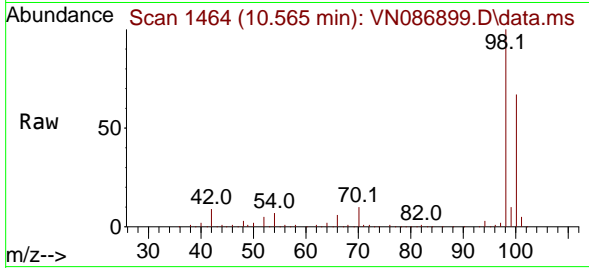
Tgt Ion: 41 Resp: 2423
 Ion Ratio Lower Upper
 41 100
 69 0.0 74.6 112.0#
 39 29.5 40.2 60.4#



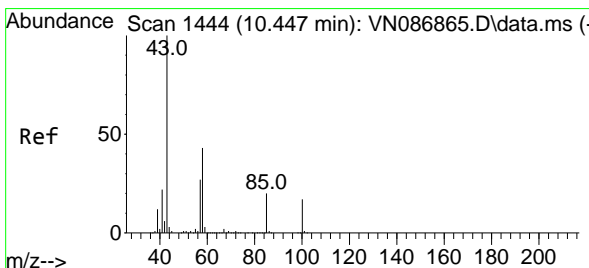
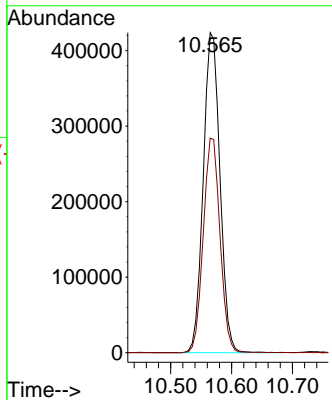
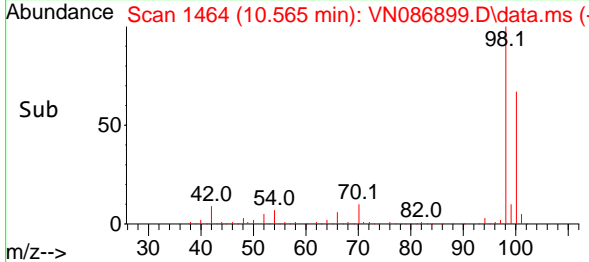


#50
 Toluene-d8
 Concen: 50.611 ug/l
 RT: 10.565 min Scan# 1464
 Delta R.T. -0.006 min
 Lab File: VN086899.D
 Acq: 09 Jun 2025 12:59

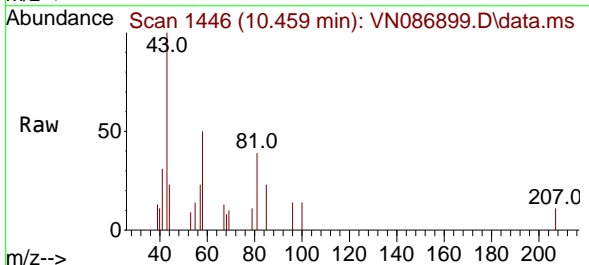
Instrument : MSVOA_N
 ClientSampleId :



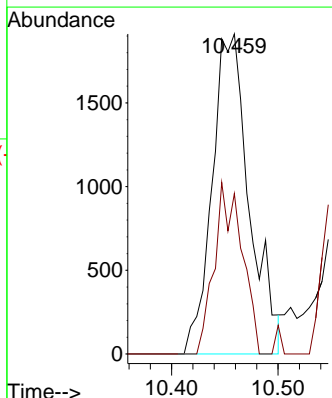
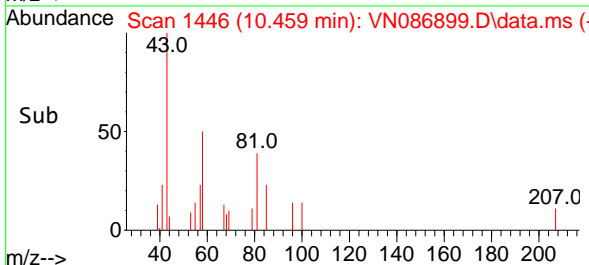
Tgt Ion: 98 Resp: 808270
 Ion Ratio Lower Upper
 98 100
 100 67.0 53.4 80.0

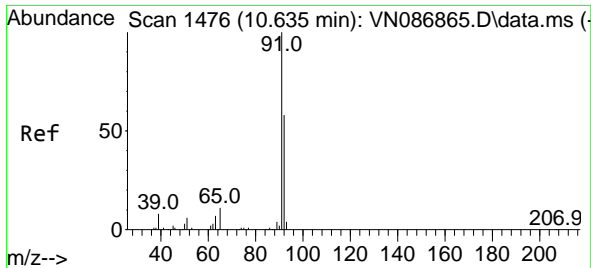


#51
 4-Methyl-2-Pentanone
 Concen: 0.628 ug/l
 RT: 10.459 min Scan# 1446
 Delta R.T. 0.012 min
 Lab File: VN086899.D
 Acq: 09 Jun 2025 12:59



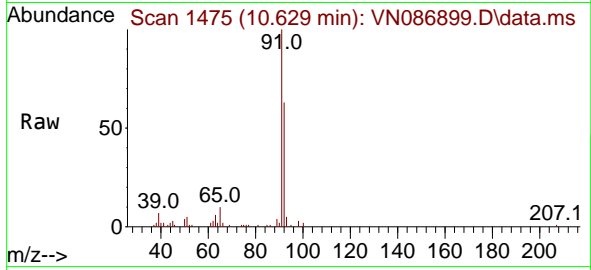
Tgt Ion: 43 Resp: 4647
 Ion Ratio Lower Upper
 43 100
 58 39.7 34.2 51.4



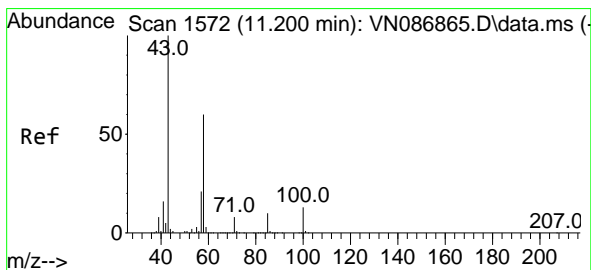
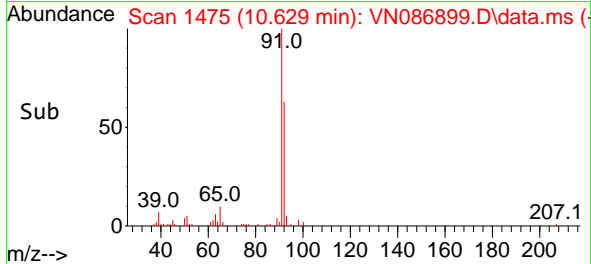
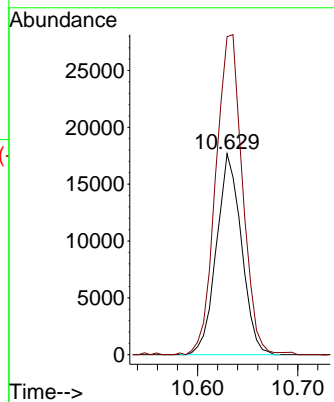


#52
 Toluene
 Concen: 2.542 ug/l
 RT: 10.629 min Scan# 1475
 Delta R.T. -0.006 min
 Lab File: VN086899.D
 Acq: 09 Jun 2025 12:59

Instrument : MSVOA_N
 ClientSampleId :

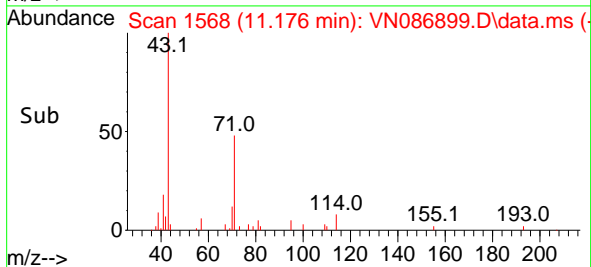
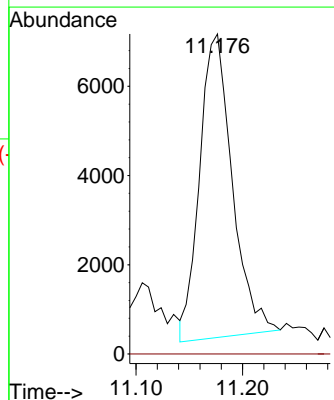
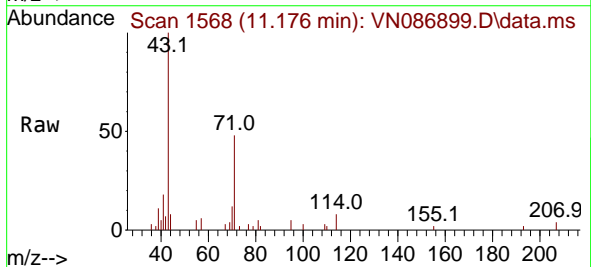


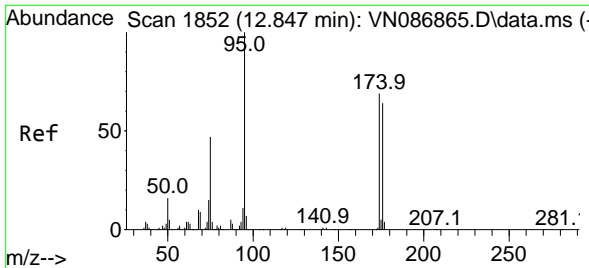
Tgt Ion: 92 Resp: 30536
 Ion Ratio Lower Upper
 92 100
 91 171.1 136.5 204.7



#59
 2-Hexanone
 Concen: 3.043 ug/l
 RT: 11.176 min Scan# 1568
 Delta R.T. -0.024 min
 Lab File: VN086899.D
 Acq: 09 Jun 2025 12:59

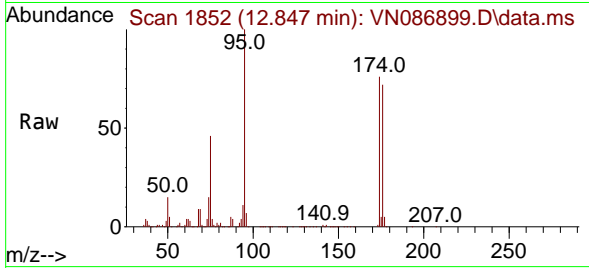
Tgt Ion: 43 Resp: 14493
 Ion Ratio Lower Upper
 43 100
 58 0.0 30.4 91.3#



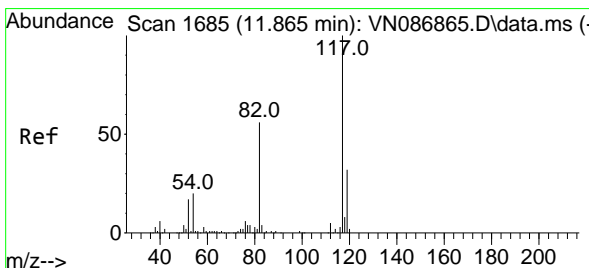
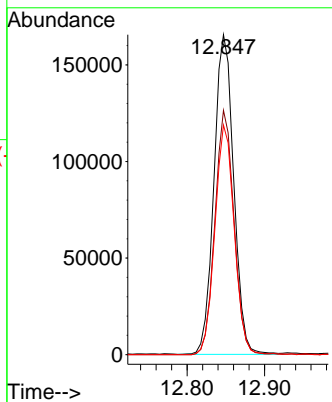
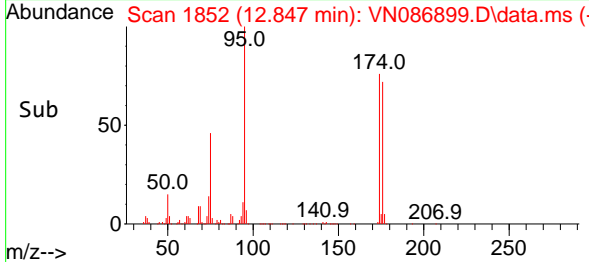


#62
 4-Bromofluorobenzene
 Concen: 49.247 ug/l
 RT: 12.847 min Scan# 1852
 Delta R.T. -0.000 min
 Lab File: VN086899.D
 Acq: 09 Jun 2025 12:59

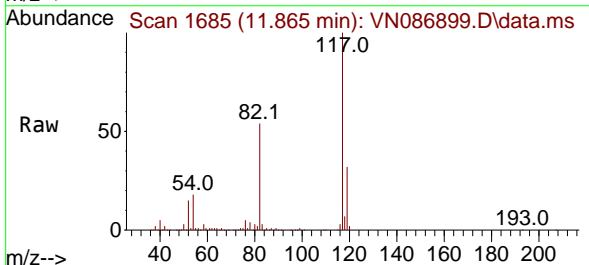
Instrument : MSVOA_N
 ClientSampleId :



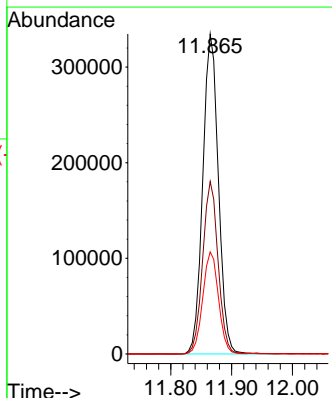
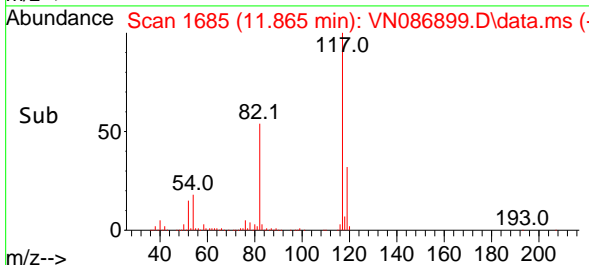
Tgt Ion: 95 Resp: 292203
 Ion Ratio Lower Upper
 95 100
 174 74.2 0.0 141.8
 176 70.7 0.0 132.6

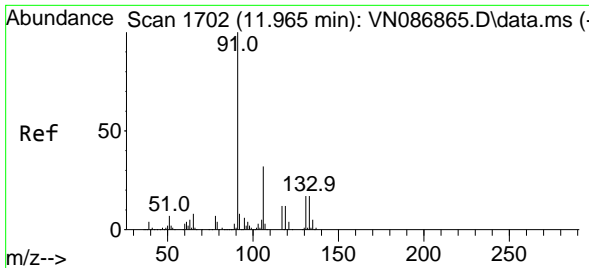


#63
 Chlorobenzene-d5
 Concen: 50.000 ug/l
 RT: 11.865 min Scan# 1685
 Delta R.T. -0.000 min
 Lab File: VN086899.D
 Acq: 09 Jun 2025 12:59



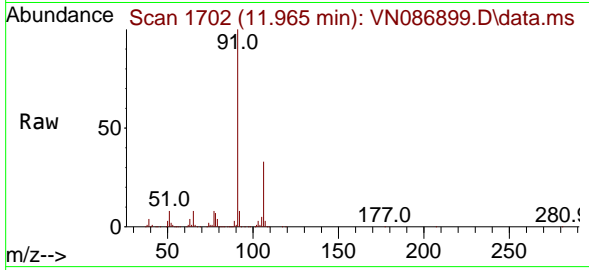
Tgt Ion: 117 Resp: 597431
 Ion Ratio Lower Upper
 117 100
 82 53.9 44.6 67.0
 119 31.9 25.5 38.3



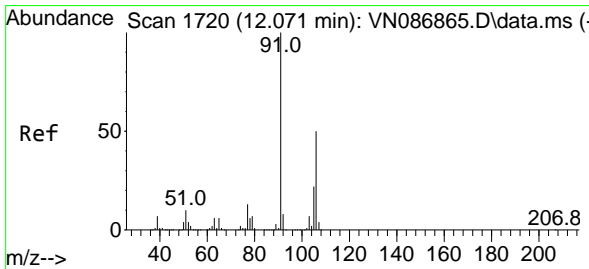
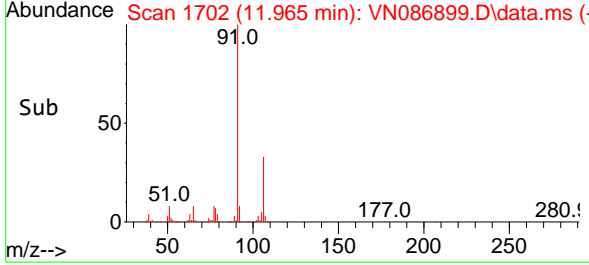
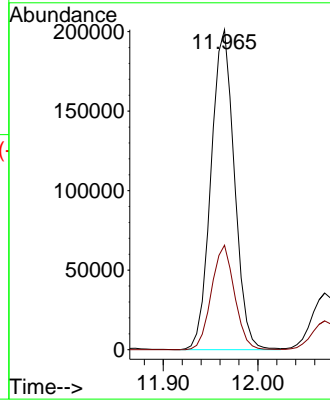


#67
 Ethyl Benzene
 Concen: 15.233 ug/l
 RT: 11.965 min Scan# 1702
 Delta R.T. -0.000 min
 Lab File: VN086899.D
 Acq: 09 Jun 2025 12:59

Instrument : MSVOA_N
 ClientSampleId :

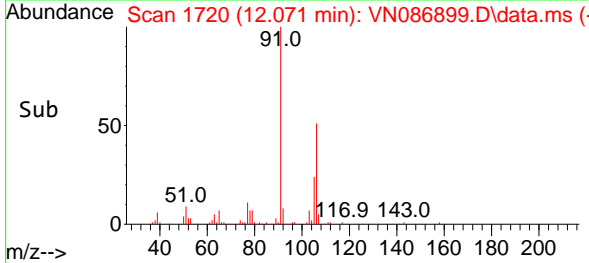
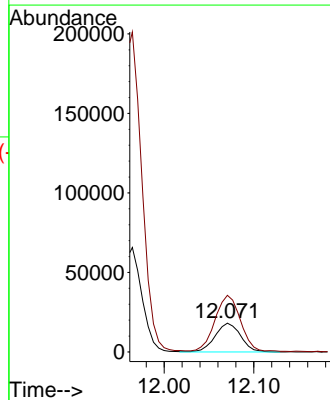
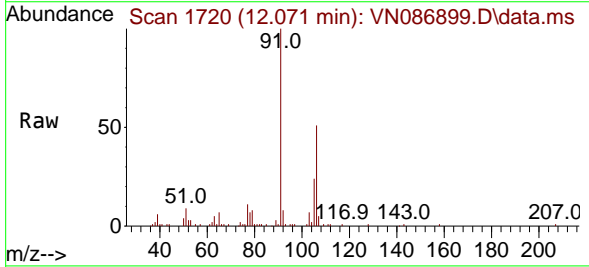


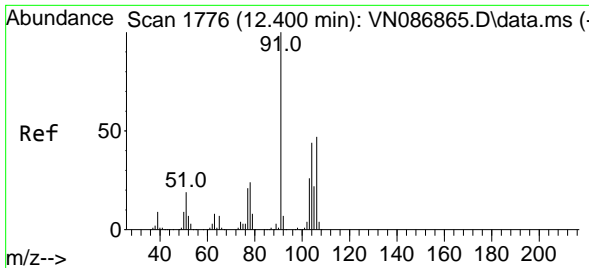
Tgt Ion: 91 Resp: 345726
 Ion Ratio Lower Upper
 91 100
 106 32.7 25.4 38.2



#68
 m/p-Xylenes
 Concen: 4.128 ug/l
 RT: 12.071 min Scan# 1720
 Delta R.T. -0.000 min
 Lab File: VN086899.D
 Acq: 09 Jun 2025 12:59

Tgt Ion: 106 Resp: 35869
 Ion Ratio Lower Upper
 106 100
 91 195.2 159.4 239.0

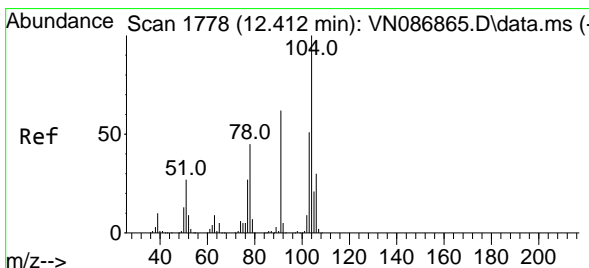
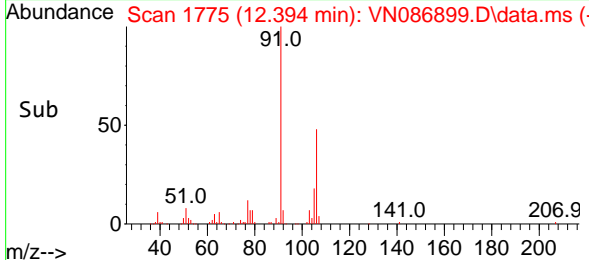
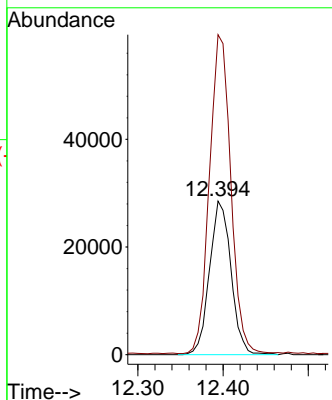
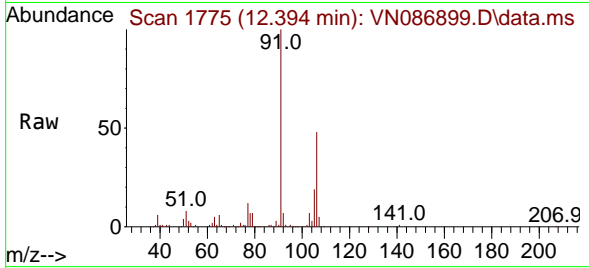




#69
 o-Xylene
 Concen: 6.005 ug/l
 RT: 12.394 min Scan# 1775
 Delta R.T. -0.006 min
 Lab File: VN086899.D
 Acq: 09 Jun 2025 12:59

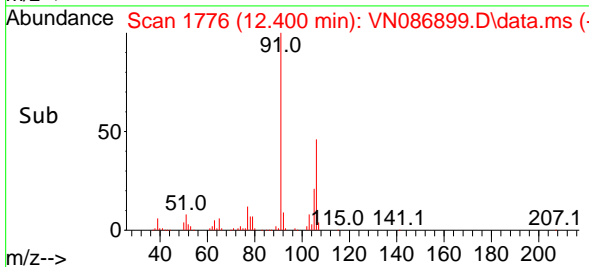
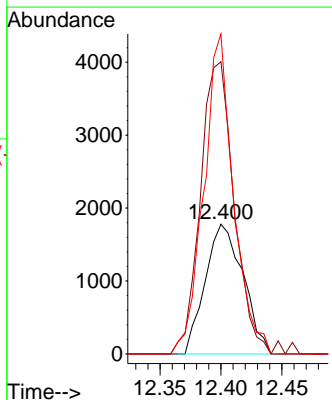
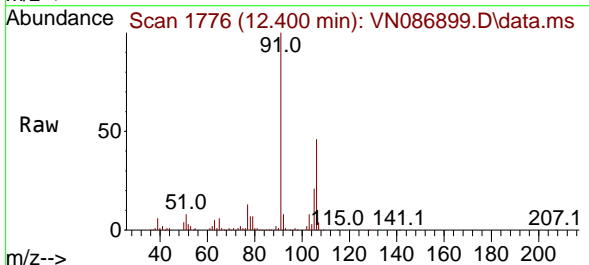
Instrument :
 MSVOA_N
 ClientSampleId :

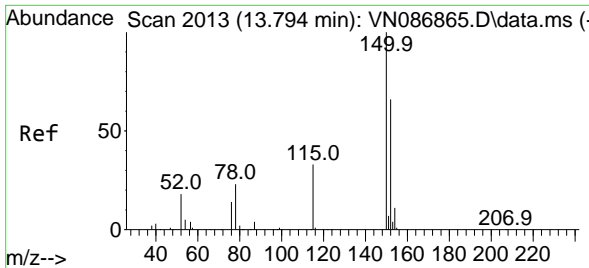
Tgt Ion:106 Resp: 49970
 Ion Ratio Lower Upper
 106 100
 91 206.5 106.1 318.1



#70
 Styrene
 Concen: 0.270 ug/l
 RT: 12.400 min Scan# 1776
 Delta R.T. -0.012 min
 Lab File: VN086899.D
 Acq: 09 Jun 2025 12:59

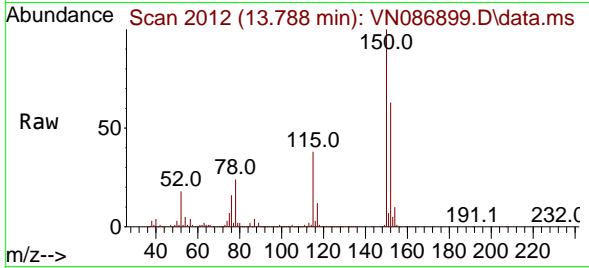
Tgt Ion:104 Resp: 3842
 Ion Ratio Lower Upper
 104 100
 78 199.8 38.5 57.7#
 103 194.4 43.1 64.7#



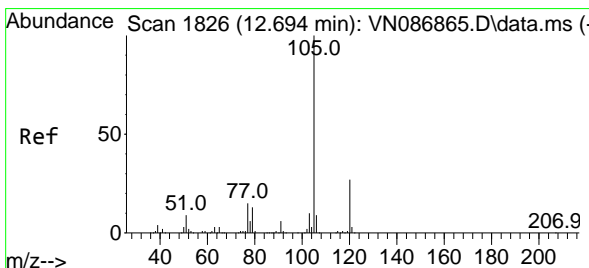
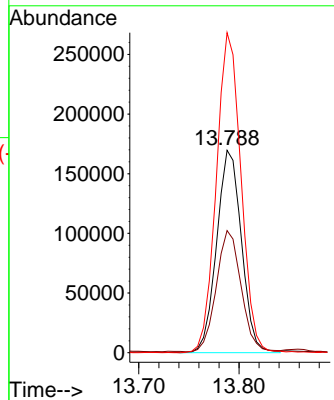
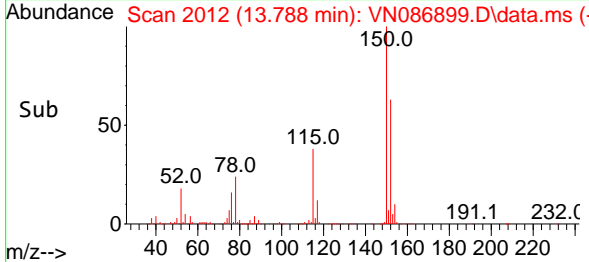


#72
 1,4-Dichlorobenzene-d4
 Concen: 50.000 ug/l
 RT: 13.788 min Scan# 2013
 Delta R.T. -0.006 min
 Lab File: VN086899.D
 Acq: 09 Jun 2025 12:59

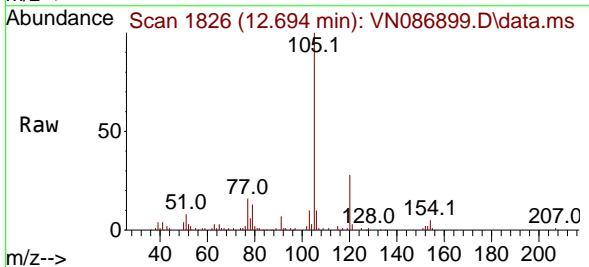
Instrument :
 MSVOA_N
 ClientSampleId :



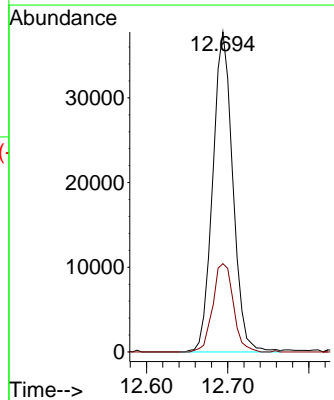
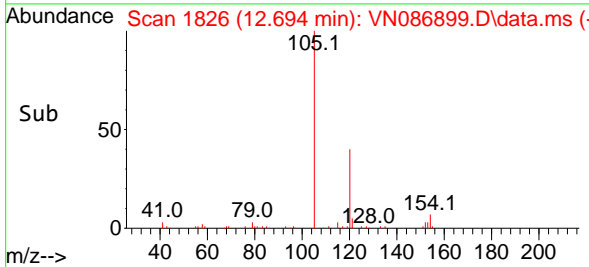
Tgt Ion:152 Resp: 290954
 Ion Ratio Lower Upper
 152 100
 115 59.5 30.1 90.5
 150 157.4 0.0 345.0

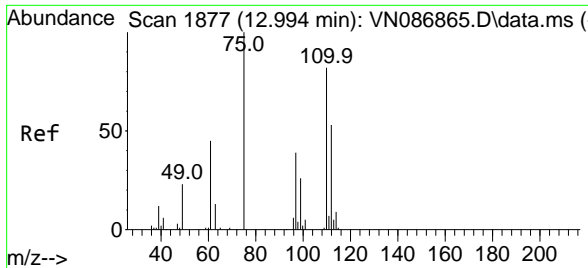


#73
 Isopropylbenzene
 Concen: 3.062 ug/l
 RT: 12.694 min Scan# 1826
 Delta R.T. -0.000 min
 Lab File: VN086899.D
 Acq: 09 Jun 2025 12:59



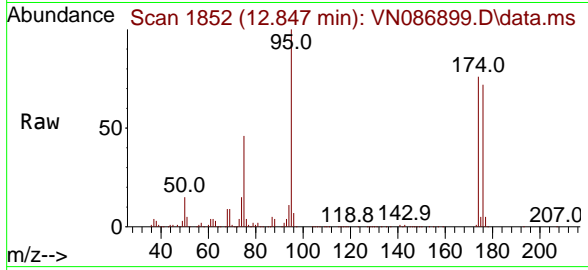
Tgt Ion:105 Resp: 64903
 Ion Ratio Lower Upper
 105 100
 120 28.3 13.5 40.4



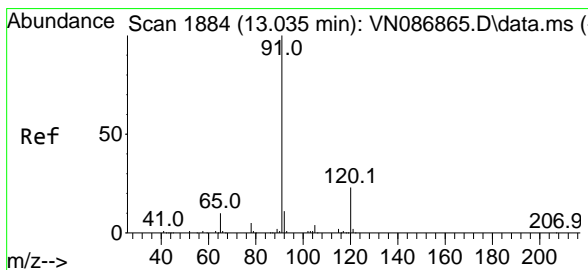
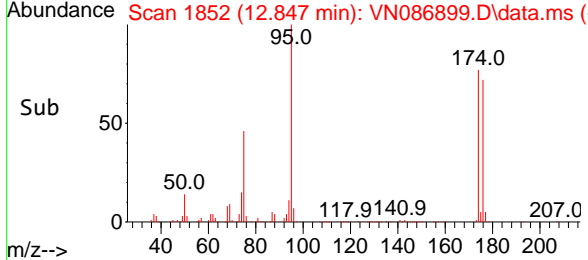
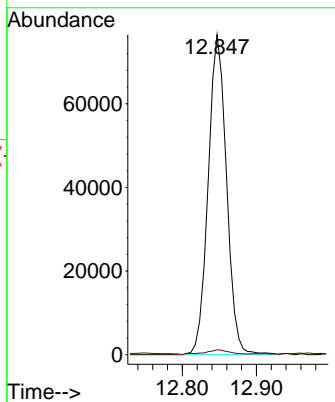


#76
 1,2,3-Trichloropropane
 Concen: 19.017 ug/l
 RT: 12.847 min Scan# 1852
 Delta R.T. -0.147 min
 Lab File: VN086899.D
 Acq: 09 Jun 2025 12:59

Instrument : MSVOA_N
 ClientSampleId :

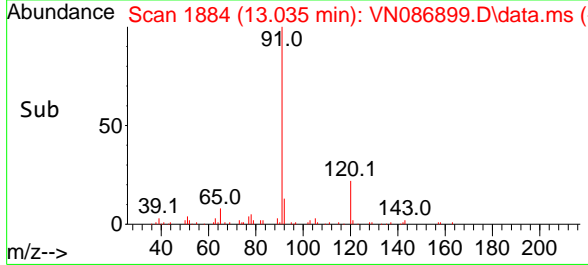
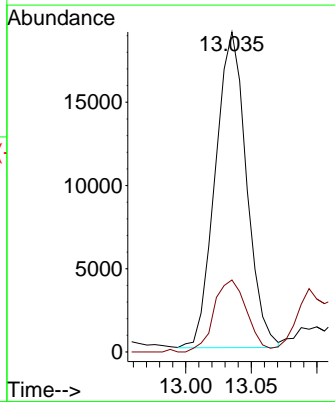
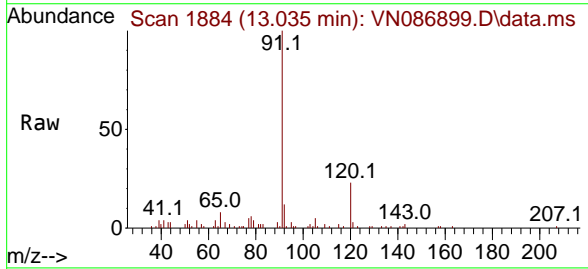


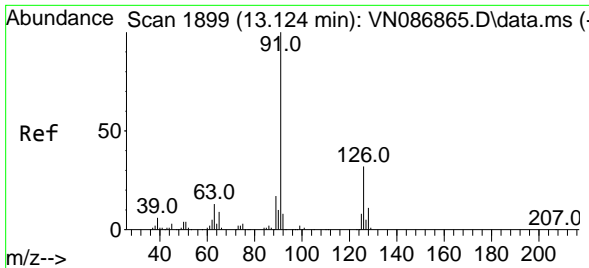
Tgt Ion: 75 Resp: 131525
 Ion Ratio Lower Upper
 75 100
 77 2.1 79.3 237.9#



#78
 n-propylbenzene
 Concen: 1.219 ug/l
 RT: 13.035 min Scan# 1884
 Delta R.T. -0.000 min
 Lab File: VN086899.D
 Acq: 09 Jun 2025 12:59

Tgt Ion: 91 Resp: 31390
 Ion Ratio Lower Upper
 91 100
 120 23.9 11.4 34.2

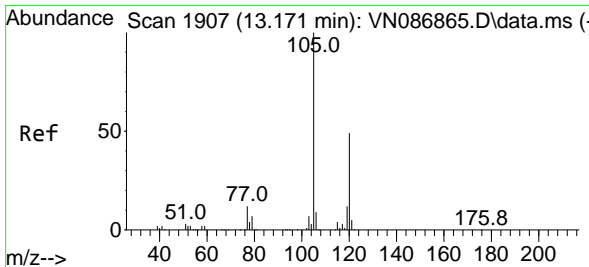
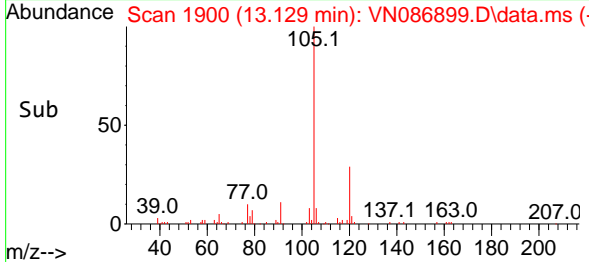
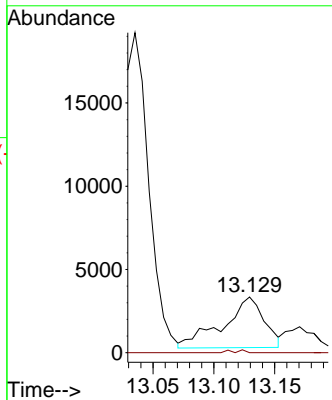
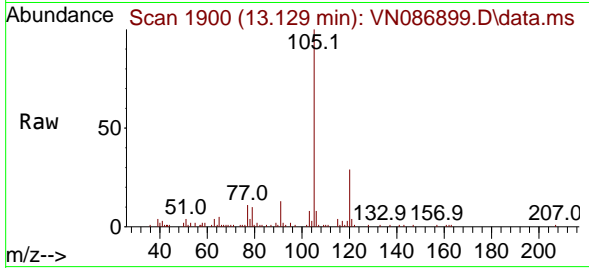




#79
 2-Chlorotoluene
 Concen: 0.462 ug/l
 RT: 13.129 min Scan# 1899
 Delta R.T. 0.006 min
 Lab File: VN086899.D
 Acq: 09 Jun 2025 12:59

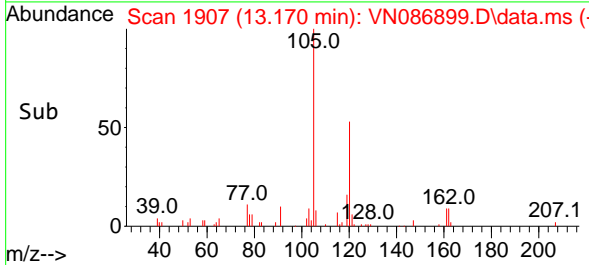
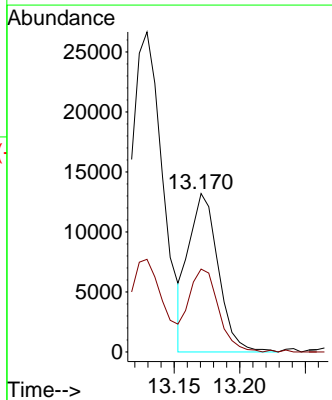
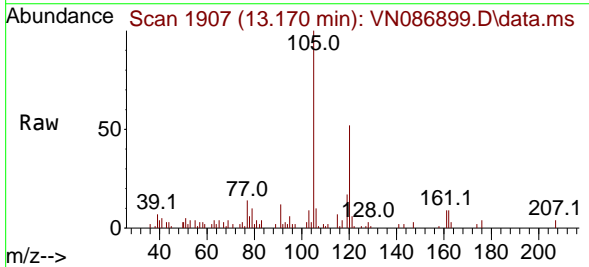
Instrument : MSVOA_N
 ClientSampleId :

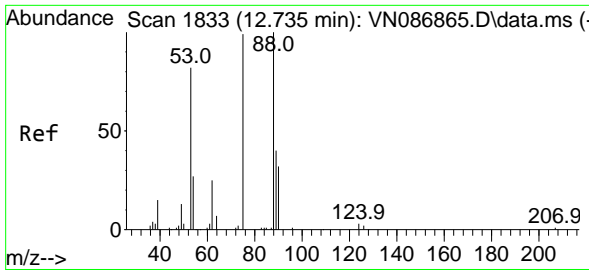
Tgt Ion: 91 Resp: 7133
 Ion Ratio Lower Upper
 91 100
 126 0.0 16.2 48.5#



#80
 1,3,5-Trimethylbenzene
 Concen: 1.192 ug/l
 RT: 13.170 min Scan# 1907
 Delta R.T. -0.000 min
 Lab File: VN086899.D
 Acq: 09 Jun 2025 12:59

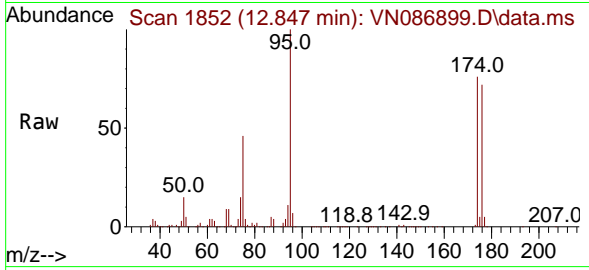
Tgt Ion: 105 Resp: 20865
 Ion Ratio Lower Upper
 105 100
 120 52.0 24.9 74.6



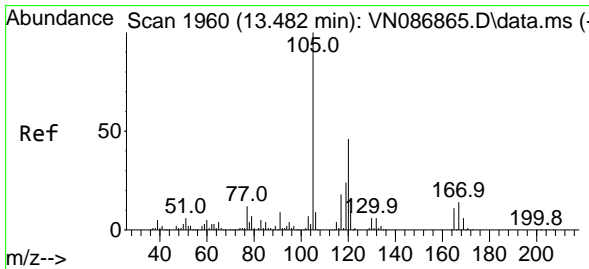
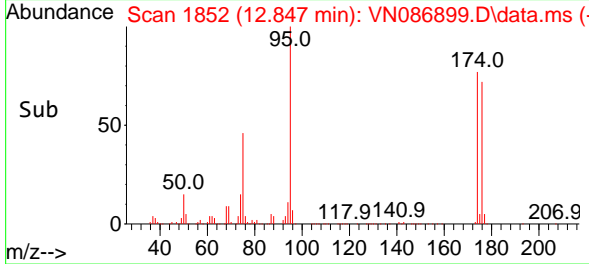
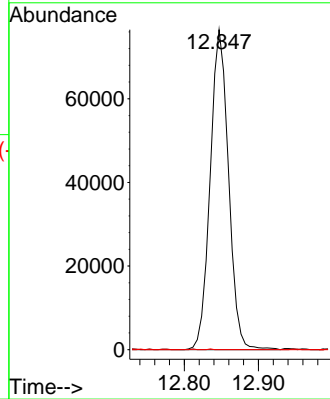


#81
 trans-1,4-Dichloro-2-butene
 Concen: 43.777 ug/l
 RT: 12.847 min Scan# 1833
 Delta R.T. 0.112 min
 Lab File: VN086899.D
 Acq: 09 Jun 2025 12:59

Instrument : MSVOA_N
 ClientSampleId :

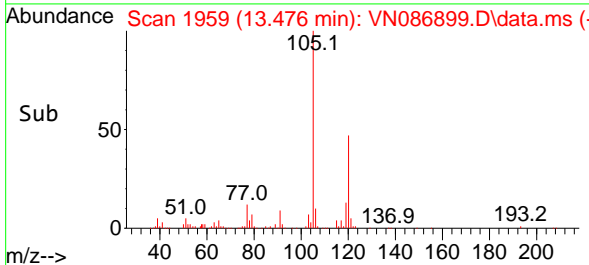
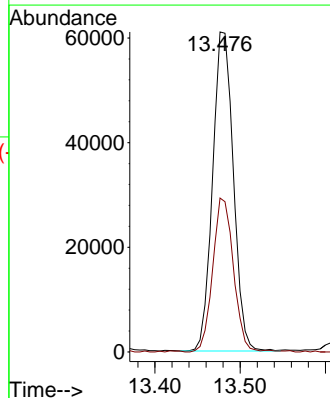
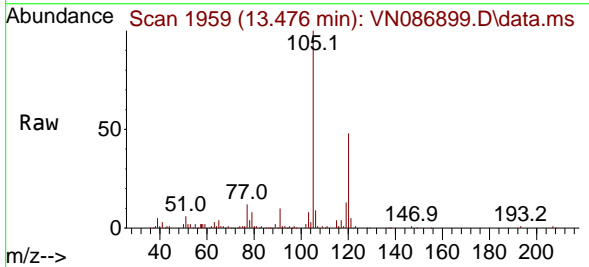


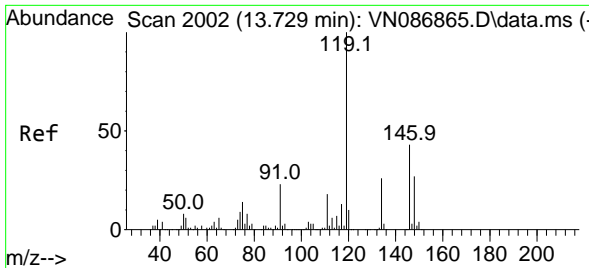
Tgt Ion: 75 Resp: 131525
 Ion Ratio Lower Upper
 75 100
 53 0.0 66.6 99.8#
 89 0.1 36.7 55.1#



#84
 1,2,4-Trimethylbenzene
 Concen: 5.878 ug/l
 RT: 13.476 min Scan# 1959
 Delta R.T. -0.006 min
 Lab File: VN086899.D
 Acq: 09 Jun 2025 12:59

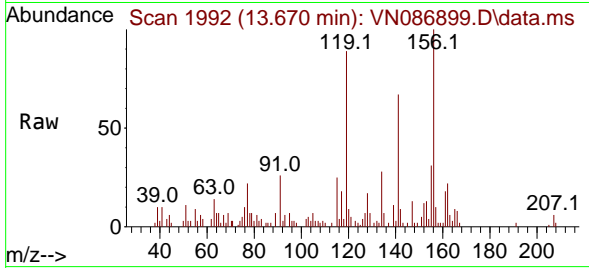
Tgt Ion: 105 Resp: 103145
 Ion Ratio Lower Upper
 105 100
 120 48.5 23.2 69.6





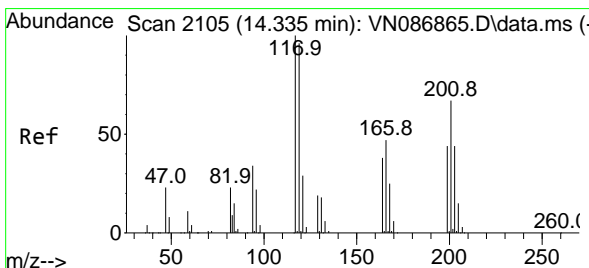
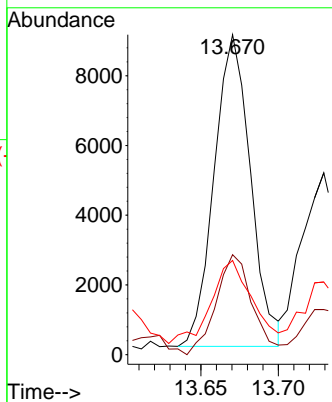
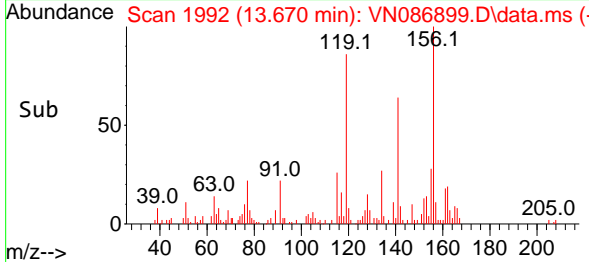
#86
 p-Isopropyltoluene
 Concen: 0.757 ug/l
 RT: 13.670 min Scan# 119
 Delta R.T. -0.059 min
 Lab File: VN086899.D
 Acq: 09 Jun 2025 12:59

Instrument : MSVOA_N
 ClientSampleId :

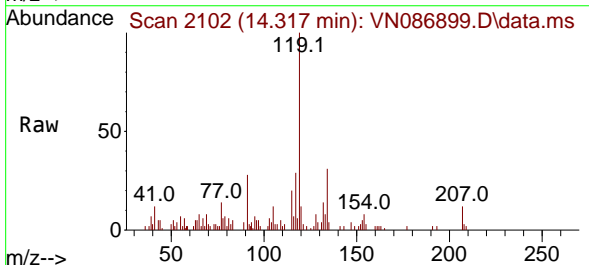


Tgt Ion:119 Resp: 14561

Ion	Ratio	Lower	Upper
119	100		
134	31.8	13.5	40.4
91	29.8	11.5	34.4

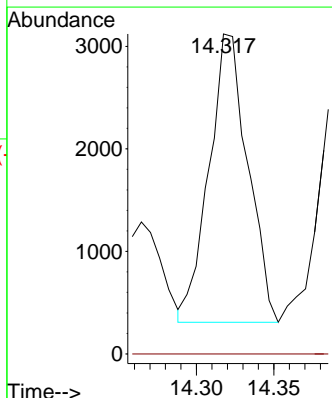
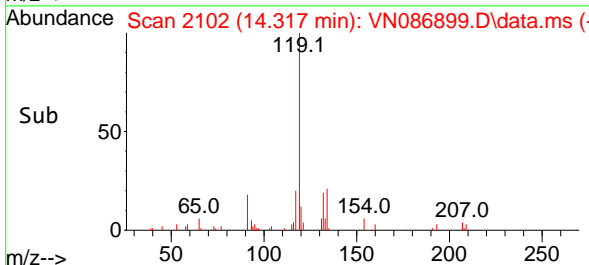


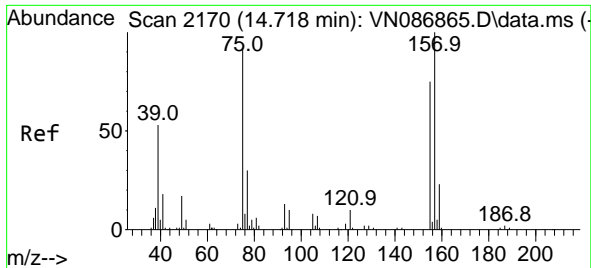
#90
 Hexachloroethane
 Concen: 1.502 ug/l
 RT: 14.317 min Scan# 2102
 Delta R.T. -0.018 min
 Lab File: VN086899.D
 Acq: 09 Jun 2025 12:59



Tgt Ion:117 Resp: 4895

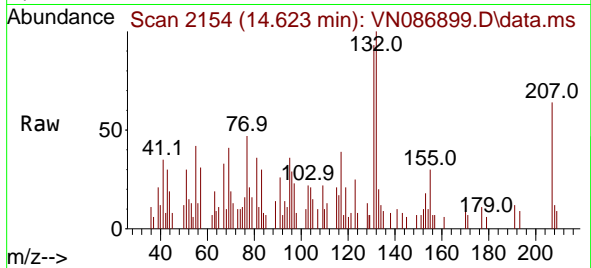
Ion	Ratio	Lower	Upper
117	100		
201	0.0	33.2	99.6



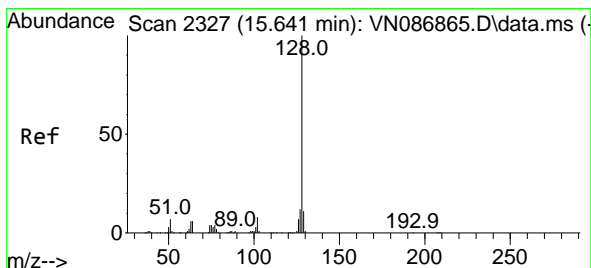
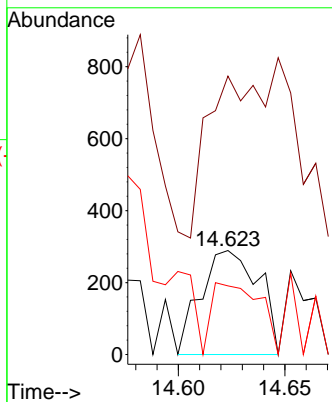
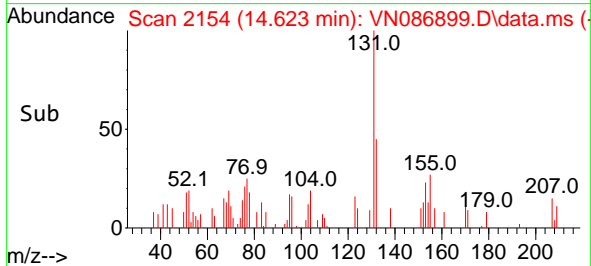


#92
 1,2-Dibromo-3-Chloropropane
 Concen: 0.319 ug/l
 RT: 14.623 min Scan# 2154
 Delta R.T. -0.094 min
 Lab File: VN086899.D
 Acq: 09 Jun 2025 12:59

Instrument :
 MSVOA_N
 ClientSampleId :



Tgt Ion: 75 Resp: 548
 Ion Ratio Lower Upper
 75 100
 155 97.8 41.1 123.4
 157 57.1 52.7 158.1



#95
 Naphthalene
 Concen: 351.295 ug/l
 RT: 15.635 min Scan# 2326
 Delta R.T. -0.006 min
 Lab File: VN086899.D
 Acq: 09 Jun 2025 12:59

Tgt Ion: 128 Resp: 7672167
 Ion Ratio Lower Upper
 128 100
 127 12.8 10.2 15.2
 129 11.1 8.8 13.2

