

Data Path : Z:\VOASRV\HPCHEM1\MSVOA N\DATA\VN061020\  
 Data File : VN061735.D  
 Acq On : 10 Jun 2020 14:15  
 Operator : JC/MD  
 Sample : VN0610WBL01  
 Misc : 5.00mL/MSVOA N/WATER  
 ALS Vial : 9 Sample Multiplier: 1

Instrument :  
 MSVOA\_N  
 ClientSampleId :  
 VN0610WBL01

Quant Time: Jun 11 03:12:59 2020  
 Quant Method : Z:\VOASRV\HPCHEM1\MSVOA N\METHODS\624N061020W.M  
 Quant Title : METHOD 624 VOLATILE ORGANIC ANALYSIS  
 QLast Update : Wed Jun 10 12:28:45 2020  
 Response via : Initial Calibration

Internal Standards	R.T.	QIon	Response	Conc	Units	Dev(Min)
1) Bromochloromethane	7.15	128	62272	30.00	ug/l	0.00
28) 1,4-Difluorobenzene	8.55	114	329396	30.00	ug/l	0.00
57) Chlorobenzene-d5	11.38	117	290858	30.00	ug/l	0.00

## System Monitoring Compounds

27) 1,2-Dichloroethane-d4	7.99	65	118091	30.40	ug/l	0.00
Spiked Amount	30.000	Range	50 - 169	Recovery	=	101.33%
60) 4-Bromofluorobenzene	12.38	95	109831	25.63	ug/l	0.00
Spiked Amount	30.000	Range	56 - 143	Recovery	=	85.43%
63) Toluene-d8	10.06	98	377153	30.53	ug/l	0.00
Spiked Amount	30.000	Range	66 - 137	Recovery	=	101.77%

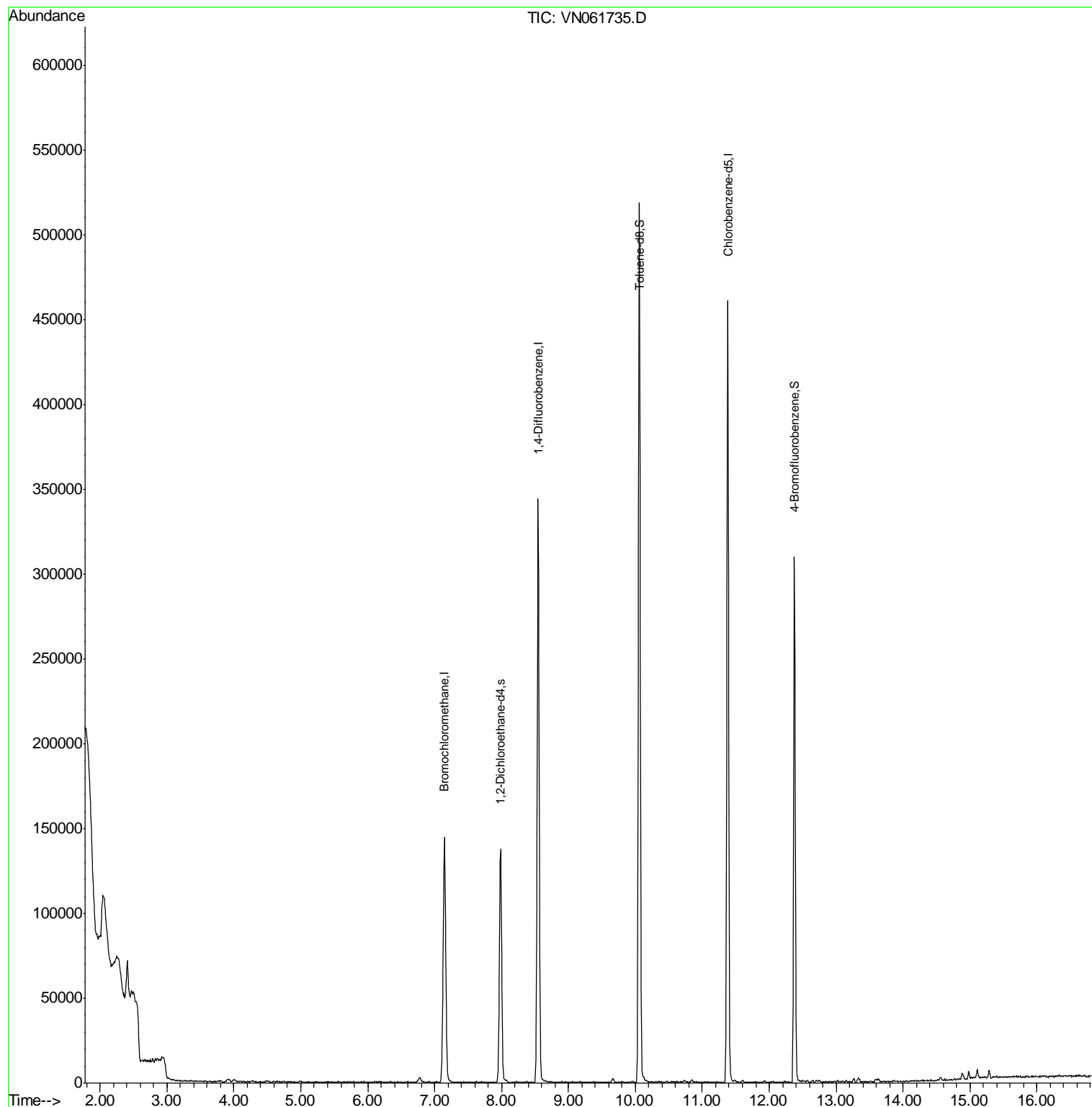
Target Compounds Ovalue

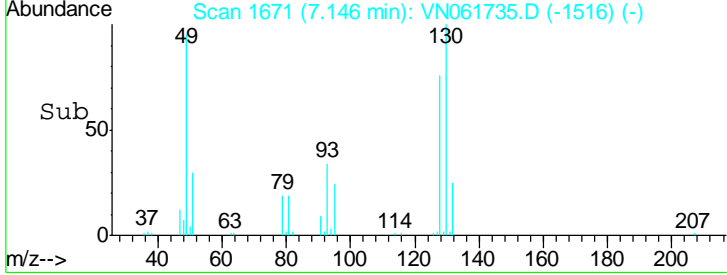
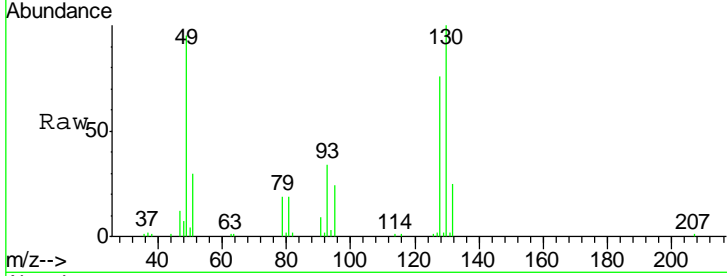
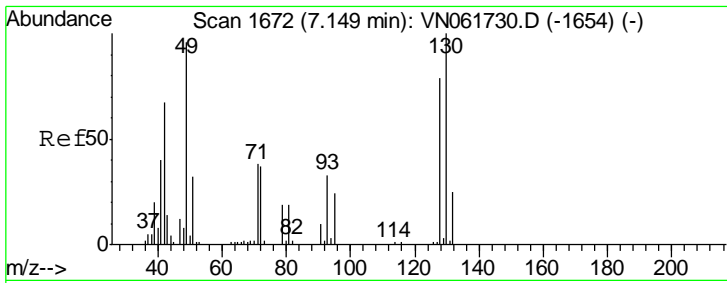
(#) = qualifier out of range (m) = manual integration (+) = signals summed

Data Path : Z:\VOASRV\HPCHEM1\MSVOA N\DATA\VN061020\  
Data File : VN061735.D  
Acq On : 10 Jun 2020 14:15  
Operator : JC/MD  
Sample : VN0610WBL01  
Misc : 5.00mL/MSVOA N/WATER  
ALS Vial : 9 Sample Multiplier: 1

Instrument :  
MSVOA\_N  
ClientSampled :  
VN0610WBL01

Quant Time: Jun 11 03:12:59 2020  
Quant Method : Z:\VOASRV\HPCHEM1\MSVOA N\METHODS\624N061020W.M  
Quant Title : METHOD 624 VOLATILE ORGANIC ANALYSIS  
QLast Update : Wed Jun 10 12:28:45 2020  
Response via : Initial Calibration

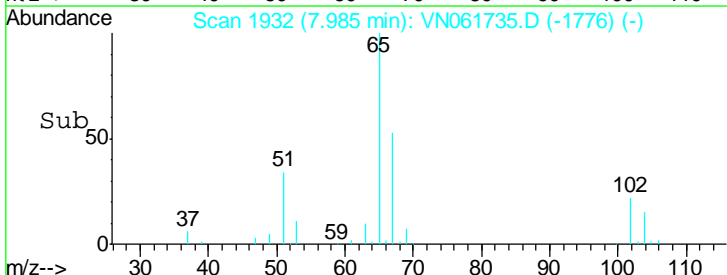
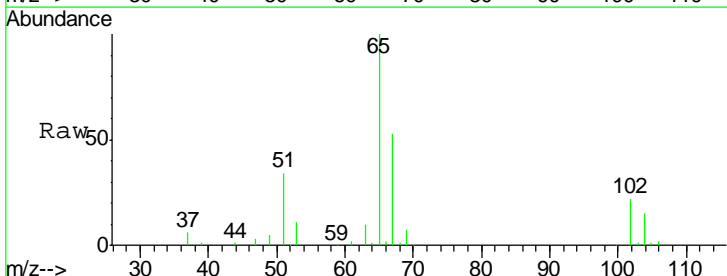
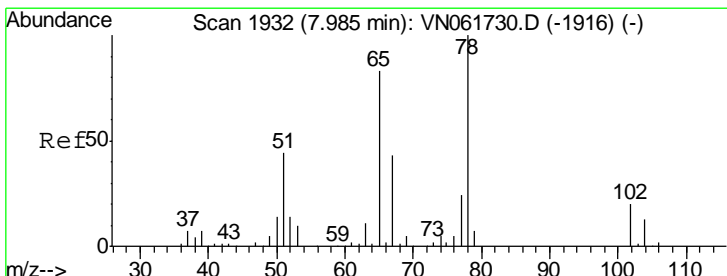
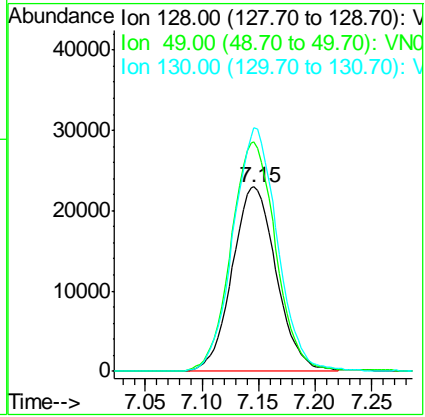




#1  
 Bromochloromethane  
 Concen: 30.000 ug/l  
 RT: 7.15 min Scan# 1671  
 Delta R.T. -0.00 min  
 Lab File: VN061735.D  
 Acq: 10 Jun 2020 14:15

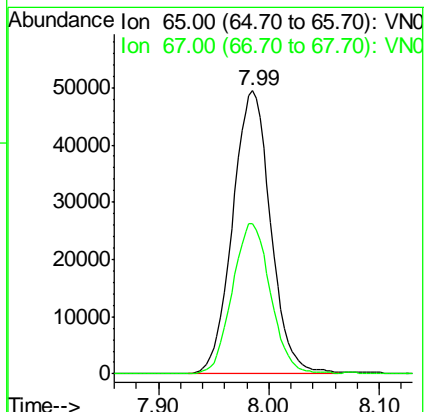
Instrument :  
 MSVOA\_N  
 ClientSampled :  
 VN0610WBL01

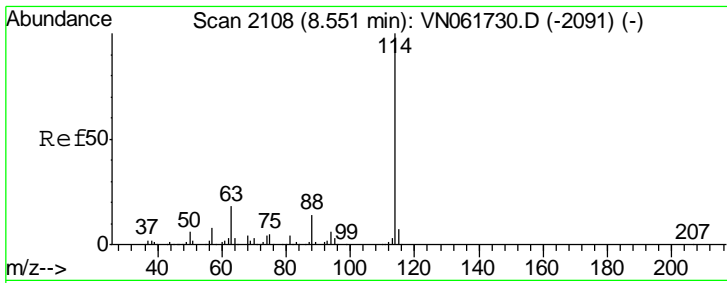
Tgt Ion	Resp	Lower	Upper
128	100		
49	125.9	0.0	312.3
130	132.7	0.0	328.7



#27  
 1,2-Dichloroethane-d4  
 Concen: 30.404 ug/l  
 RT: 7.99 min Scan# 1932  
 Delta R.T. 0.00 min  
 Lab File: VN061735.D  
 Acq: 10 Jun 2020 14:15

Tgt Ion	Resp	Lower	Upper
65	100		
67	53.2	42.2	63.4

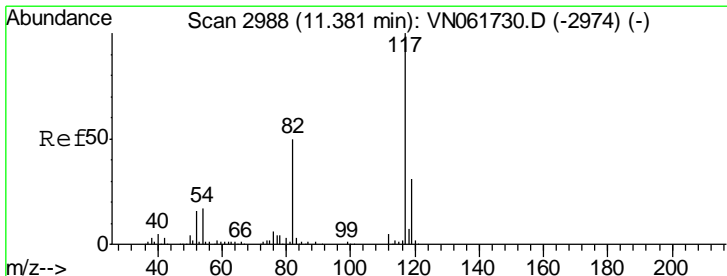
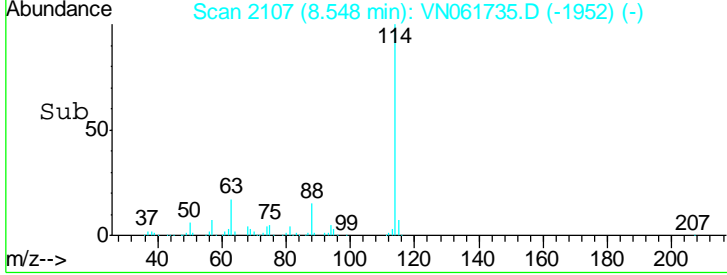
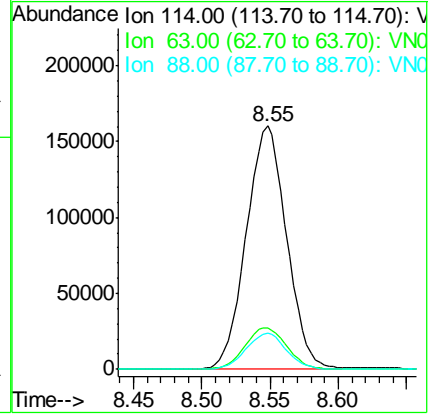
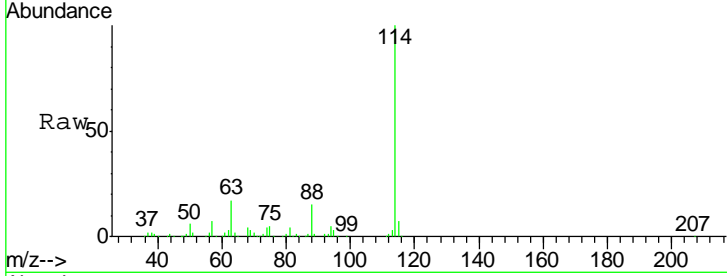




#28  
 1,4-Difluorobenzene  
 Concen: 30.000 ug/l  
 RT: 8.55 min Scan# 2107  
 Delta R.T. -0.00 min  
 Lab File: VN061735.D  
 Acq: 10 Jun 2020 14:15

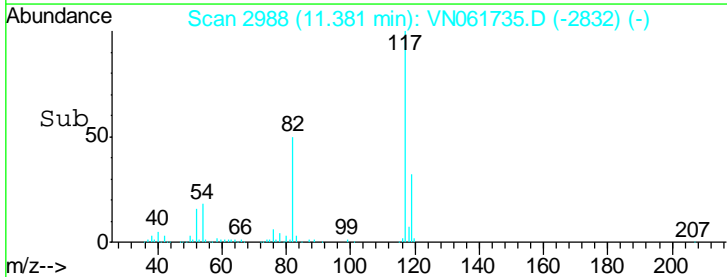
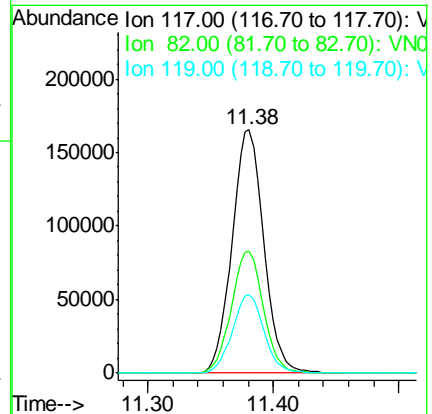
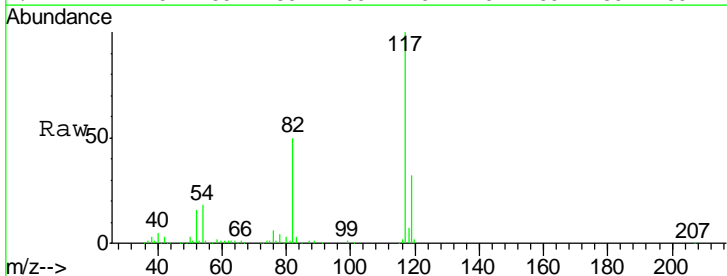
Instrument :  
 MSVOA\_N  
 ClientSampled :  
 VN0610WBLO1

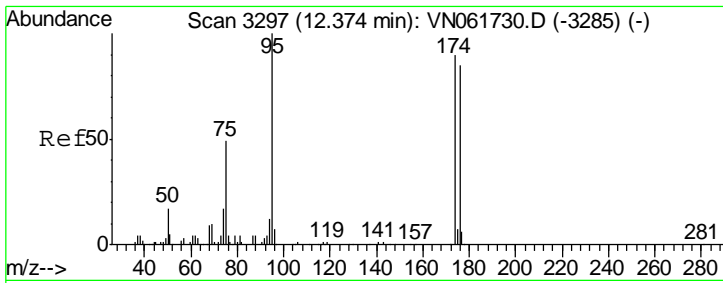
Tgt Ion	Resp	Lower	Upper
114	100		
63	17.7	14.2	21.2
88	14.8	11.4	17.2



#57  
 Chlorobenzene-d5  
 Concen: 30.000 ug/l  
 RT: 11.38 min Scan# 2988  
 Delta R.T. 0.00 min  
 Lab File: VN061735.D  
 Acq: 10 Jun 2020 14:15

Tgt Ion	Resp	Lower	Upper
117	100		
82	50.6	40.6	60.8
119	31.9	25.4	38.2

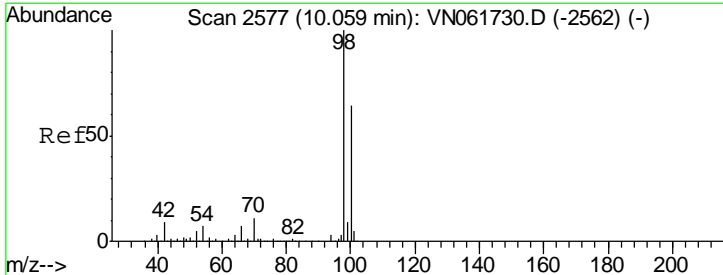
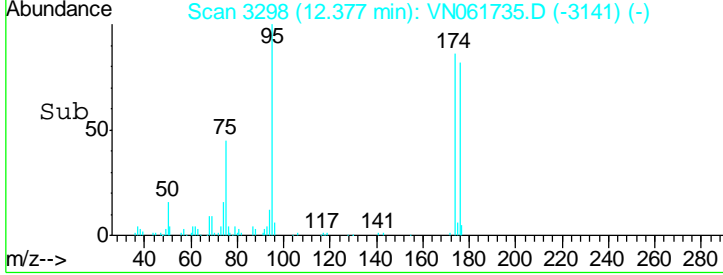
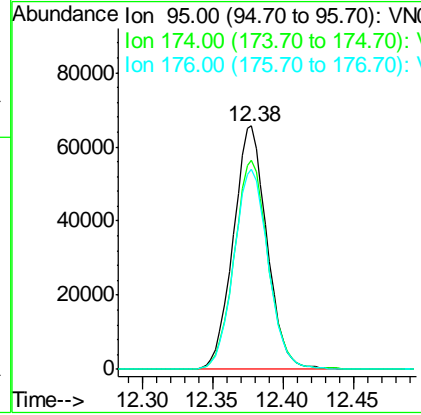
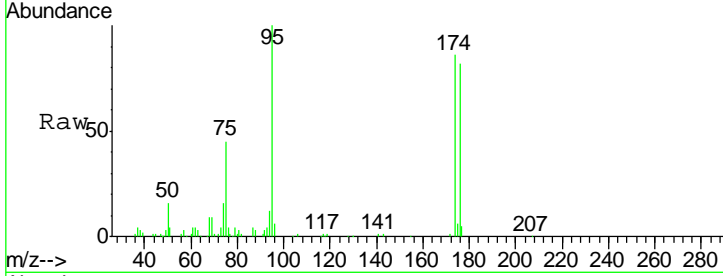




#60  
 4-Bromofluorobenzene  
 Concen: 25.625 ug/l  
 RT: 12.38 min Scan# 3298  
 Delta R.T. 0.00 min  
 Lab File: VN061735.D  
 Acq: 10 Jun 2020 14:15

Instrument : MSVOA\_N  
 ClientSampled : VN0610WBL01

Tgt Ion	Resp	Lower	Upper
95	109831		
174	86.6	72.8	109.2
176	83.8	69.2	103.8



#63  
 Toluene-d8  
 Concen: 30.526 ug/l  
 RT: 10.06 min Scan# 2577  
 Delta R.T. 0.00 min  
 Lab File: VN061735.D  
 Acq: 10 Jun 2020 14:15

Tgt Ion	Resp	Lower	Upper
98	377153		
100	65.9	52.2	78.4

