

Data Path : Z:\voasrv\HPCHEM1\MSVOA\_N\Data\VN061024\  
 Data File : VN082516.D  
 Acq On : 10 Jun 2024 15:55  
 Operator : JC\MD  
 Sample : P2707-01  
 Misc : 5.01g/10mL/100uL/5.00mL/MSVOA\_N/MEOH  
 ALS Vial : 13 Sample Multiplier: 1

Instrument :  
 MSVOA\_N  
 ClientSampleId :  
 B-01

Quant Time: Jun 11 01:09:09 2024  
 Quant Method : Z:\voasrv\HPCHEM1\MSVOA\_N\methods\82N051524W.M  
 Quant Title : SW846 8260  
 QLast Update : Thu May 16 05:21:06 2024  
 Response via : Initial Calibration

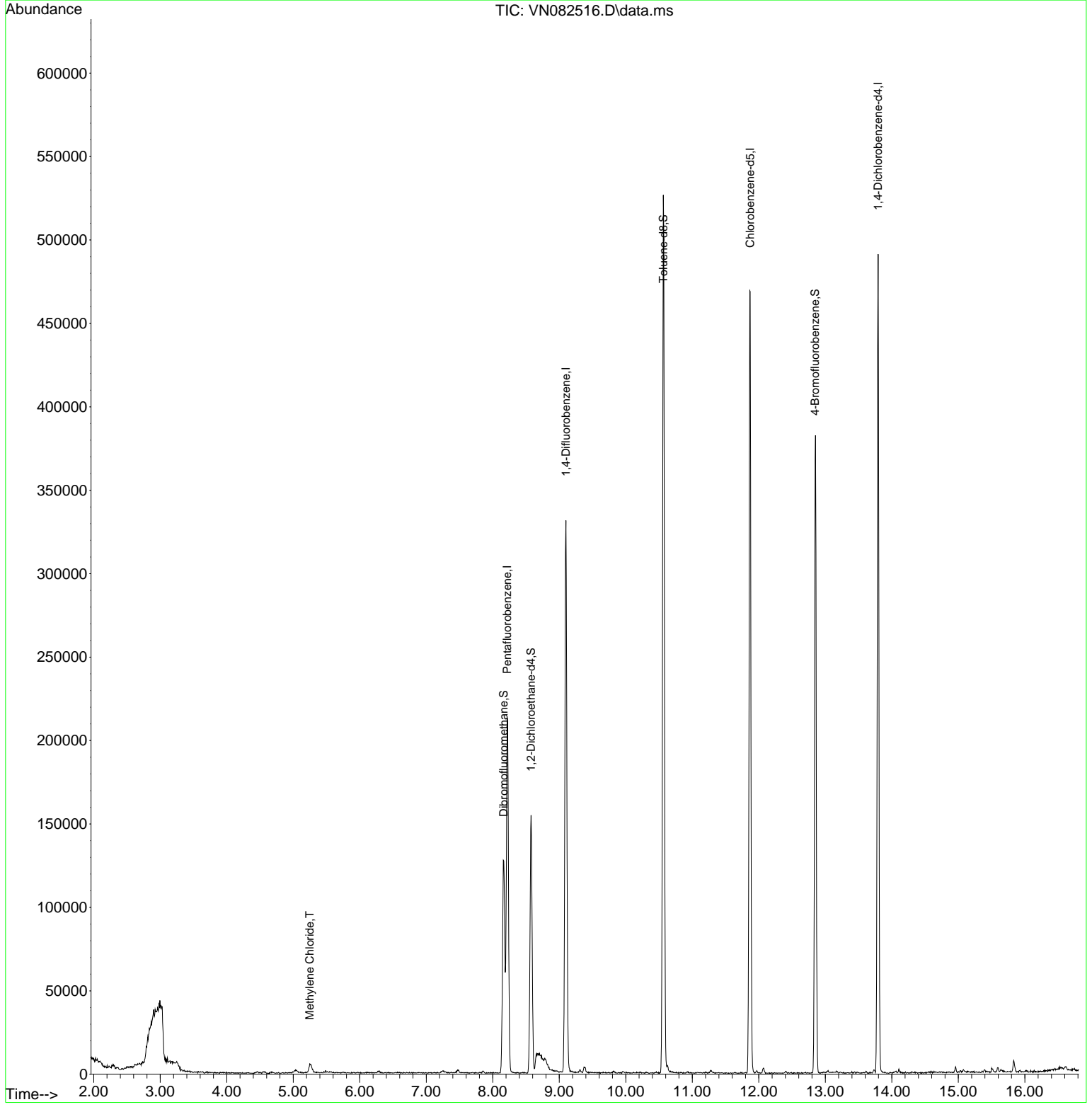
Compound	R.T.	QIon	Response	Conc	Units	Dev(Min)
-----						
Internal Standards						
1) Pentafluorobenzene	8.218	168	148829	50.000	ug/l	0.00
34) 1,4-Difluorobenzene	9.100	114	267849	50.000	ug/l	0.00
63) Chlorobenzene-d5	11.870	117	255517	50.000	ug/l	0.00
72) 1,4-Dichlorobenzene-d4	13.794	152	120544	50.000	ug/l	0.00
System Monitoring Compounds						
33) 1,2-Dichloroethane-d4	8.576	65	126352	53.766	ug/l	0.00
Spiked Amount	50.000	Range	74 - 125	Recovery	=	107.540%
35) Dibromofluoromethane	8.165	113	92136	55.918	ug/l	0.00
Spiked Amount	50.000	Range	75 - 124	Recovery	=	111.840%
50) Toluene-d8	10.565	98	347997	55.088	ug/l	0.00
Spiked Amount	50.000	Range	86 - 113	Recovery	=	110.180%
62) 4-Bromofluorobenzene	12.847	95	121305	53.800	ug/l	0.00
Spiked Amount	50.000	Range	64 - 133	Recovery	=	107.600%
Target Compounds						
20) Methylene Chloride	5.247	84	4187	2.153	ug/l #	82
-----						

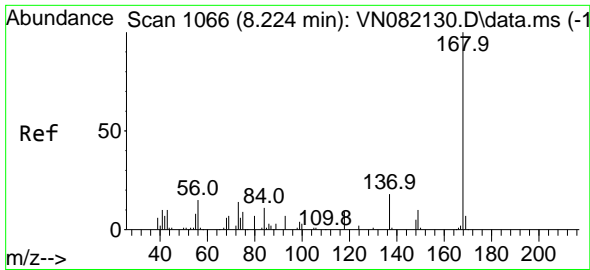
(#) = qualifier out of range (m) = manual integration (+) = signals summed

Data Path : Z:\voasrv\HPCHEM1\MSVOA\_N\Data\VN061024\  
Data File : VN082516.D  
Acq On : 10 Jun 2024 15:55  
Operator : JC\MD  
Sample : P2707-01  
Misc : 5.01g/10mL/100uL/5.00mL/MSVOA\_N/MEOH  
ALS Vial : 13 Sample Multiplier: 1

Instrument :  
MSVOA\_N  
ClientSampleId :  
B-01

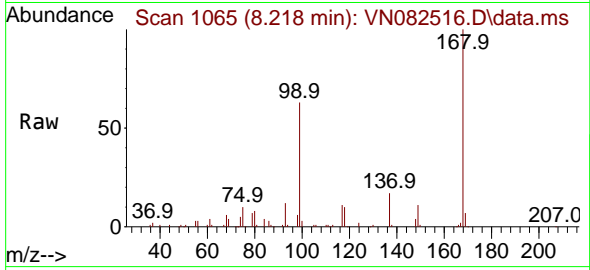
Quant Time: Jun 11 01:09:09 2024  
Quant Method : Z:\voasrv\HPCHEM1\MSVOA\_N\methods\82N051524W.M  
Quant Title : SW846 8260  
QLast Update : Thu May 16 05:21:06 2024  
Response via : Initial Calibration



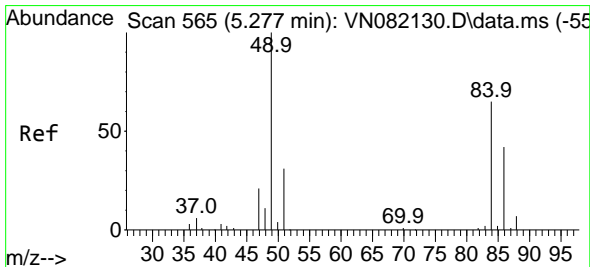
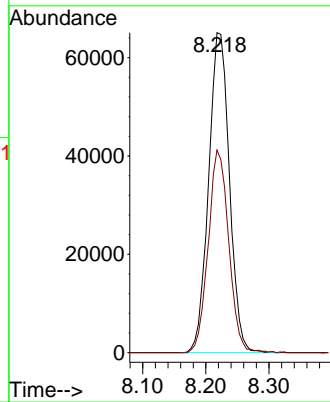
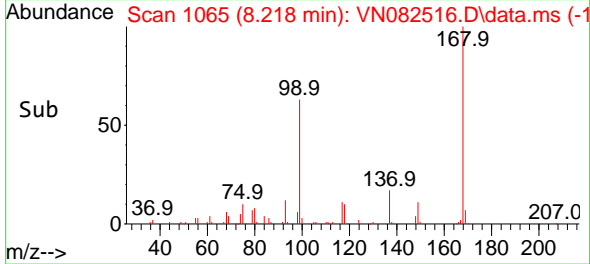


#1  
 Pentafluorobenzene  
 Concen: 50.000 ug/l  
 RT: 8.218 min Scan# 1065  
 Delta R.T. -0.006 min  
 Lab File: VN082516.D  
 Acq: 10 Jun 2024 15:55

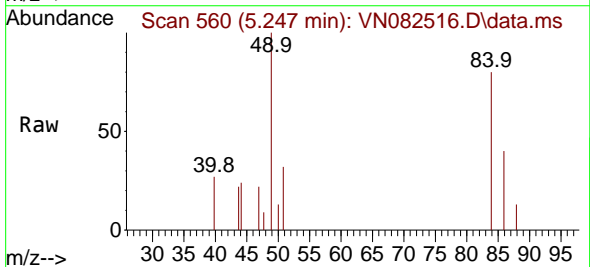
Instrument : MSVOA\_N  
 ClientSampleId : B-01



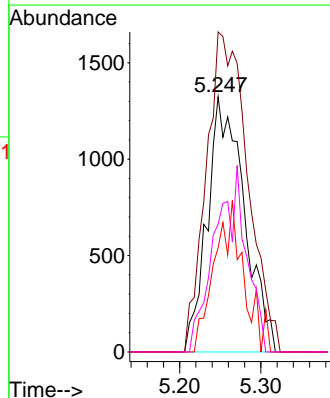
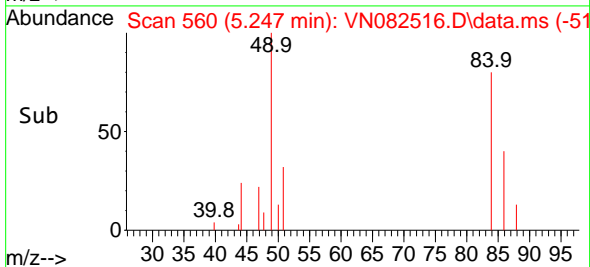
Tgt Ion:168 Resp: 148829  
 Ion Ratio Lower Upper  
 168 100  
 99 63.3 48.2 72.4

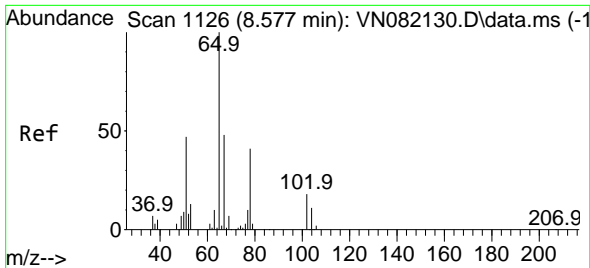


#20  
 Methylene Chloride  
 Concen: 2.153 ug/l  
 RT: 5.247 min Scan# 560  
 Delta R.T. -0.030 min  
 Lab File: VN082516.D  
 Acq: 10 Jun 2024 15:55



Tgt Ion: 84 Resp: 4187  
 Ion Ratio Lower Upper  
 84 100  
 49 125.4 84.9 127.3  
 51 40.7 27.0 40.6#  
 86 50.1 52.3 78.5#

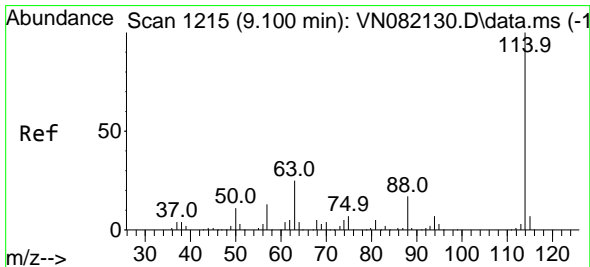
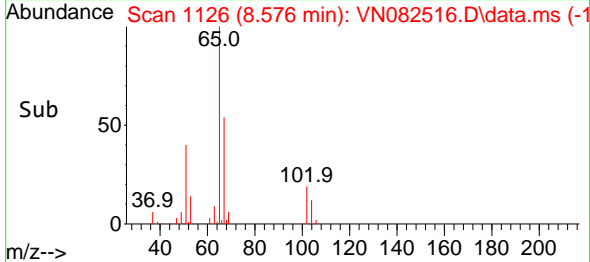
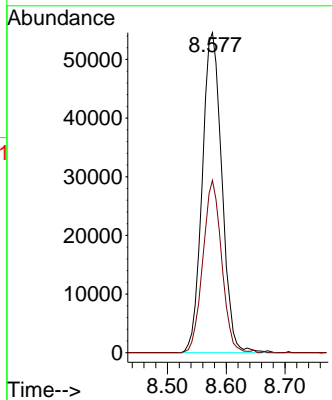
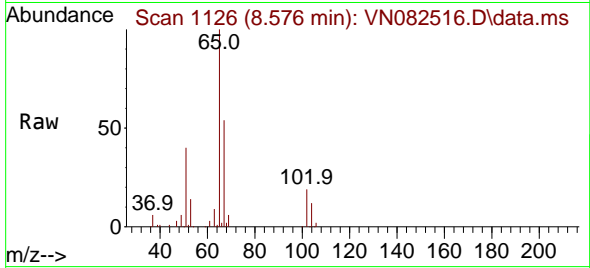




#33  
 1,2-Dichloroethane-d4  
 Concen: 53.766 ug/l  
 RT: 8.576 min Scan# 1126  
 Delta R.T. -0.000 min  
 Lab File: VN082516.D  
 Acq: 10 Jun 2024 15:55

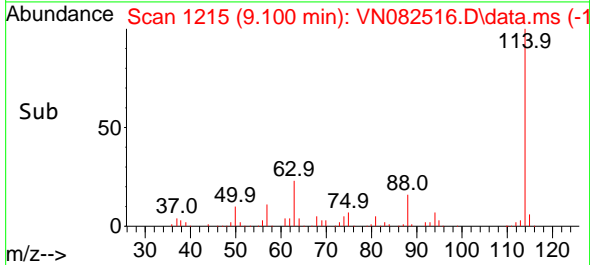
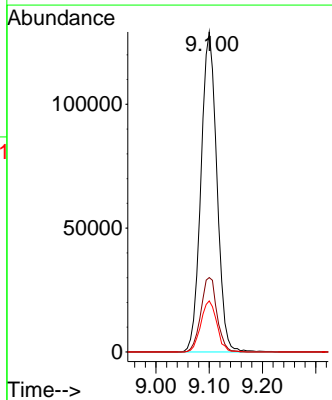
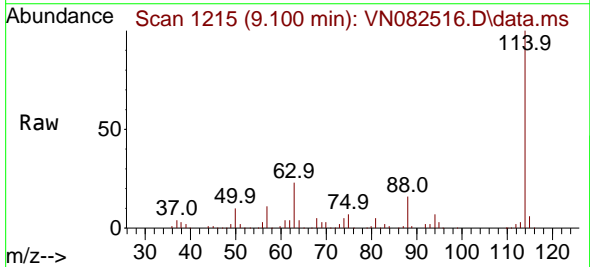
Instrument : MSVOA\_N  
 ClientSampleId : B-01

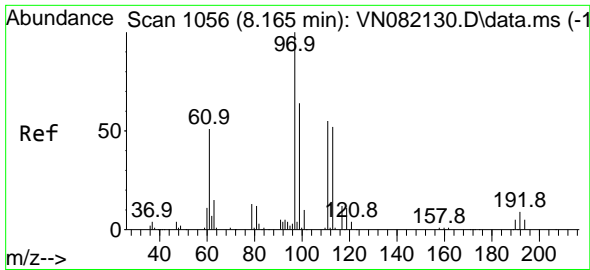
Tgt Ion: 65 Resp: 126352  
 Ion Ratio Lower Upper  
 65 100  
 67 51.5 0.0 103.0



#34  
 1,4-Difluorobenzene  
 Concen: 50.000 ug/l  
 RT: 9.100 min Scan# 1215  
 Delta R.T. -0.000 min  
 Lab File: VN082516.D  
 Acq: 10 Jun 2024 15:55

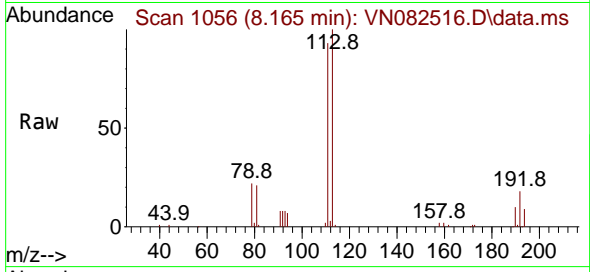
Tgt Ion: 114 Resp: 267849  
 Ion Ratio Lower Upper  
 114 100  
 63 23.3 0.0 41.0  
 88 15.9 0.0 31.4



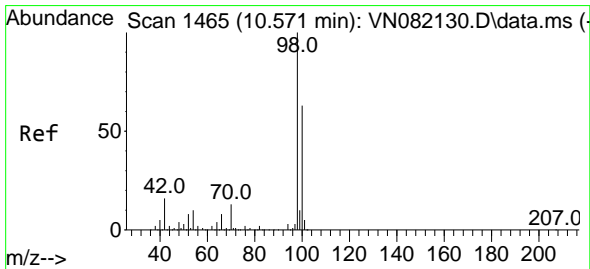
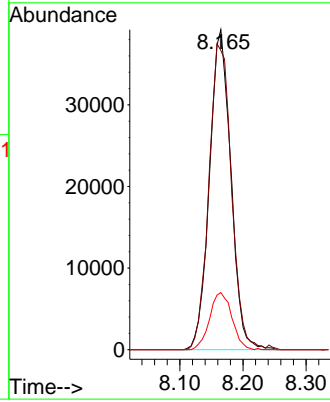
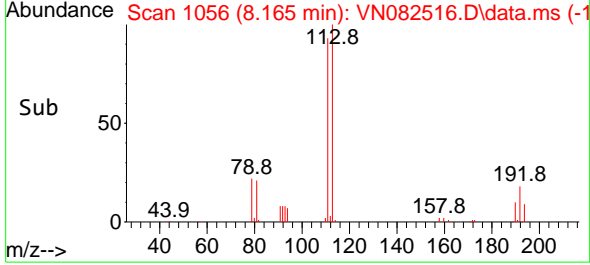


#35  
 Dibromofluoromethane  
 Concen: 55.918 ug/l  
 RT: 8.165 min Scan# 1056  
 Delta R.T. -0.000 min  
 Lab File: VN082516.D  
 Acq: 10 Jun 2024 15:55

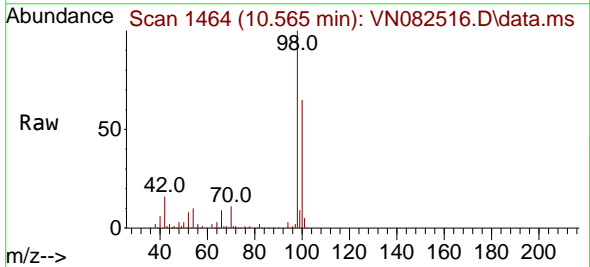
Instrument : MSVOA\_N  
 ClientSampleId : B-01



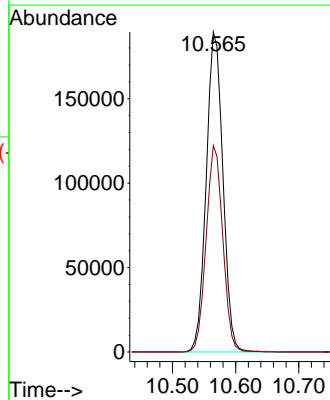
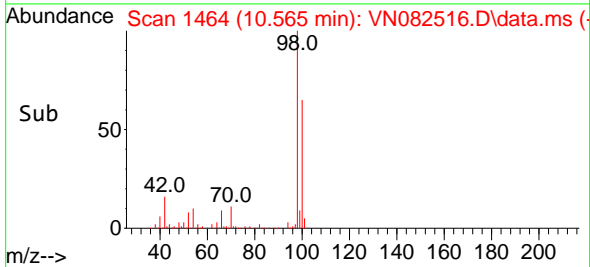
Tgt Ion:113 Resp: 92136  
 Ion Ratio Lower Upper  
 113 100  
 111 100.7 83.4 125.2  
 192 18.7 14.0 21.0

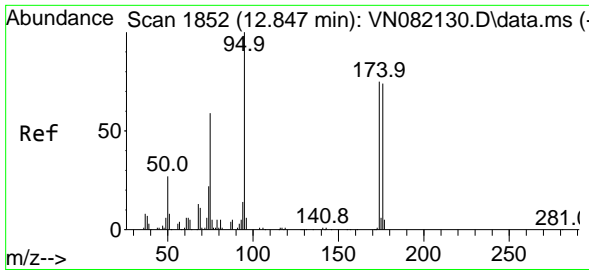


#50  
 Toluene-d8  
 Concen: 55.088 ug/l  
 RT: 10.565 min Scan# 1464  
 Delta R.T. -0.006 min  
 Lab File: VN082516.D  
 Acq: 10 Jun 2024 15:55



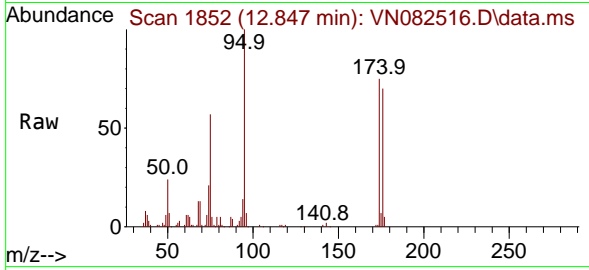
Tgt Ion: 98 Resp: 347997  
 Ion Ratio Lower Upper  
 98 100  
 100 64.4 51.8 77.6





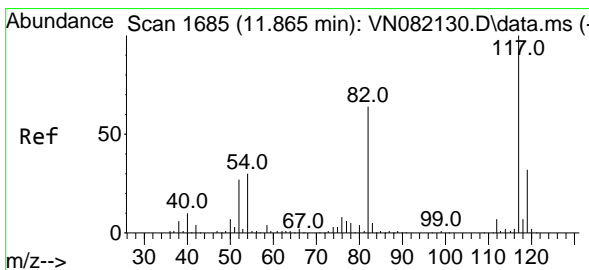
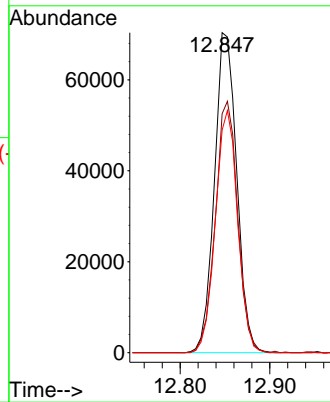
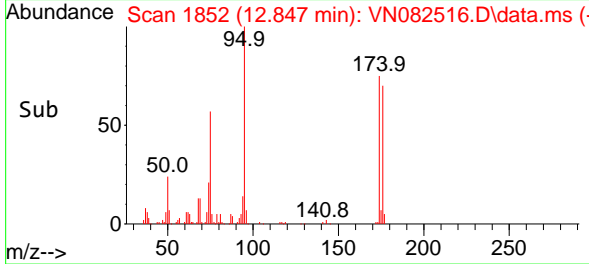
#62  
 4-Bromofluorobenzene  
 Concen: 53.800 ug/l  
 RT: 12.847 min Scan# 1852  
 Delta R.T. -0.000 min  
 Lab File: VN082516.D  
 Acq: 10 Jun 2024 15:55

Instrument : MSVOA\_N  
 ClientSampleId : B-01

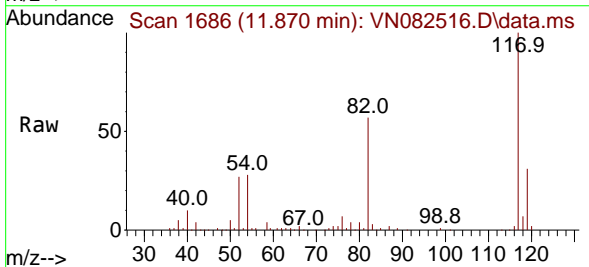


Tgt Ion: 95 Resp: 121305

Ion	Ratio	Lower	Upper
95	100		
174	78.7	0.0	160.6
176	75.6	0.0	152.8

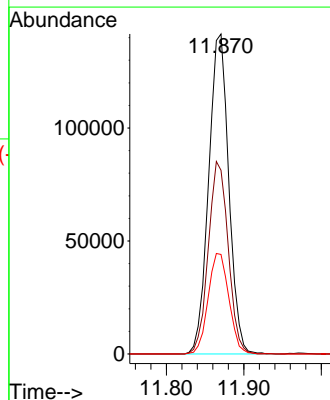
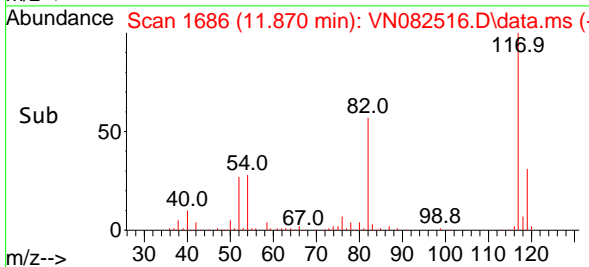


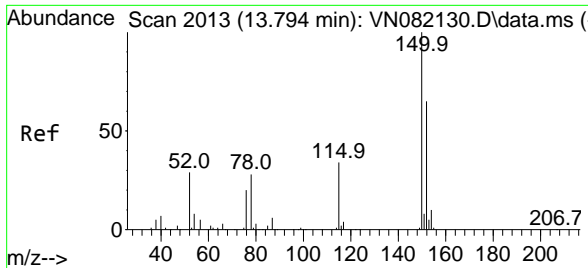
#63  
 Chlorobenzene-d5  
 Concen: 50.000 ug/l  
 RT: 11.870 min Scan# 1686  
 Delta R.T. 0.006 min  
 Lab File: VN082516.D  
 Acq: 10 Jun 2024 15:55



Tgt Ion: 117 Resp: 255517

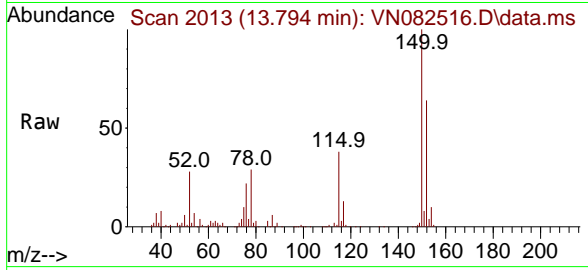
Ion	Ratio	Lower	Upper
117	100		
82	57.4	44.6	66.8
119	31.1	25.9	38.9





#72  
 1,4-Dichlorobenzene-d4  
 Concen: 50.000 ug/l  
 RT: 13.794 min Scan# 20  
 Delta R.T. -0.000 min  
 Lab File: VN082516.D  
 Acq: 10 Jun 2024 15:55

Instrument :  
 MSVOA\_N  
 ClientSampleId :  
 B-01



Tgt Ion:152 Resp: 120544

Ion	Ratio	Lower	Upper
152	100		
115	60.5	30.4	91.3
150	158.7	0.0	353.2

