

Data Path : Z:\voasrv\HPCHEM1\MSVOA_N\Data\VN061025\
 Data File : VN086914.D
 Acq On : 10 Jun 2025 09:47
 Operator : JC\MD
 Sample : VN0610MBL01
 Misc : 5.00g/10mL/100uL/5.00mL/MSVOA_N/MEOH
 ALS Vial : 3 Sample Multiplier: 1

Instrument :
 MSVOA_N
 ClientSampleId :
 VN0610MBL01

Quant Time: Jun 11 01:48:12 2025
 Quant Method : Z:\voasrv\HPCHEM1\MSVOA_N\methods\82N060625W.M
 Quant Title : SW846 8260
 QLast Update : Sat Jun 07 02:12:50 2025
 Response via : Initial Calibration

Compound	R.T.	QIon	Response	Conc	Units	Dev(Min)

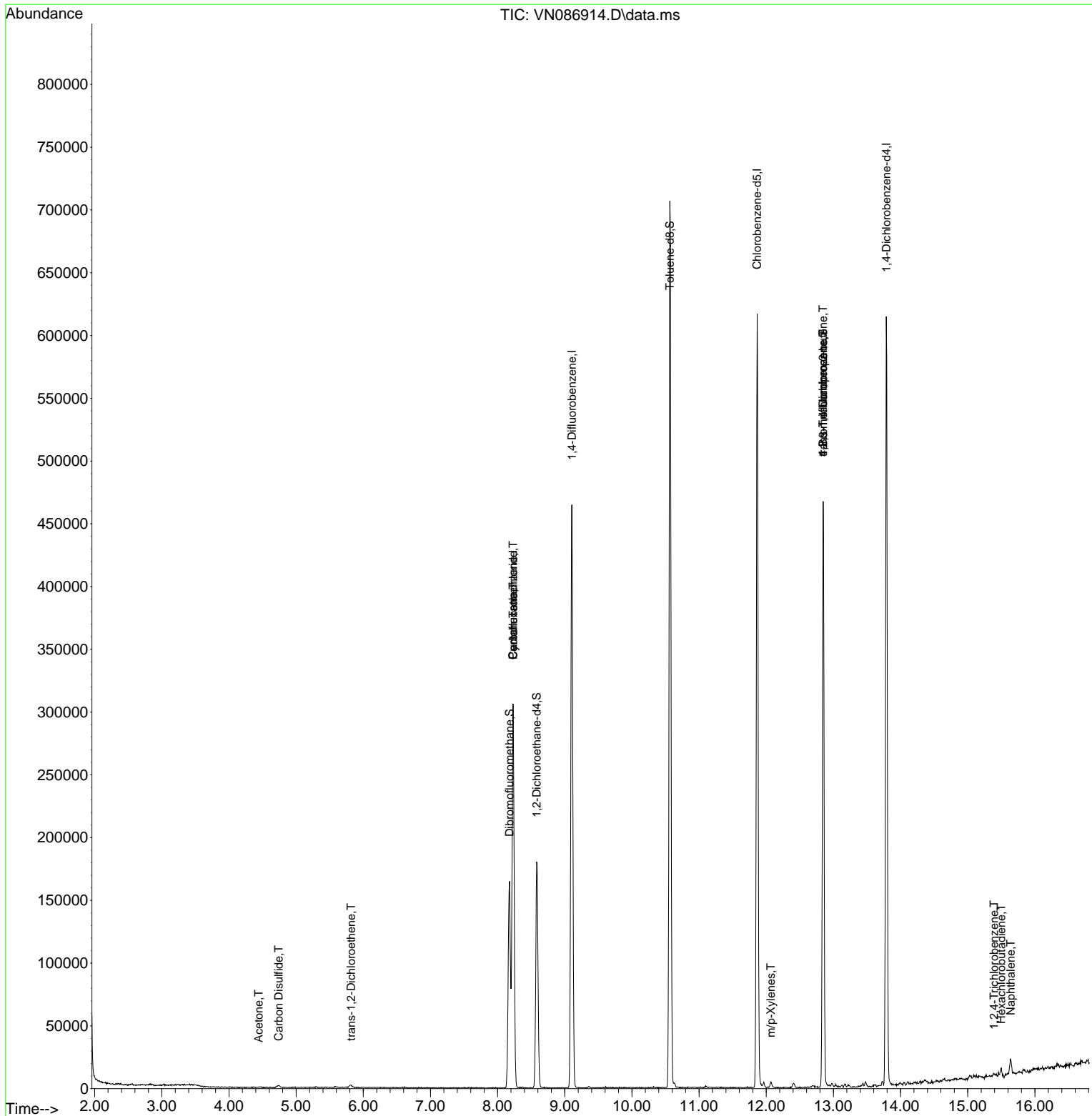
Internal Standards						
1) Pentafluorobenzene	8.230	168	240358	50.000	ug/l	0.00
34) 1,4-Difluorobenzene	9.106	114	436120	50.000	ug/l	0.00
63) Chlorobenzene-d5	11.865	117	383518	50.000	ug/l	0.00
72) 1,4-Dichlorobenzene-d4	13.788	152	180949	50.000	ug/l	0.00
System Monitoring Compounds						
33) 1,2-Dichloroethane-d4	8.582	65	148327	46.091	ug/l	0.00
Spiked Amount	50.000	Range 74 - 125	Recovery	=	92.180%	
35) Dibromofluoromethane	8.177	113	128226	49.613	ug/l	0.00
Spiked Amount	50.000	Range 75 - 124	Recovery	=	99.220%	
50) Toluene-d8	10.565	98	525057	51.317	ug/l	0.00
Spiked Amount	50.000	Range 86 - 113	Recovery	=	102.640%	
62) 4-Bromofluorobenzene	12.847	95	188626	49.621	ug/l	0.00
Spiked Amount	50.000	Range 77 - 121	Recovery	=	99.240%	
Target Compounds						
						Qvalue
16) Acetone	4.442	43	1156	0.677	ug/l #	40
17) Carbon Disulfide	4.742	76	2839	0.384	ug/l #	75
21) trans-1,2-Dichloroethene	5.818	96	1977	0.664	ug/l #	60
31) Cyclohexane	8.230	56	4433	0.849	ug/l #	1
38) Carbon Tetrachloride	8.230	117	22964	6.074	ug/l #	17
68) m/p-Xylenes	12.070	106	1643	0.295	ug/l	89
76) 1,2,3-Trichloropropane	12.847	75	87614	20.370	ug/l #	1
81) trans-1,4-Dichloro-2-b...	12.847	75	87614	46.890	ug/l #	16
93) 1,2,4-Trichlorobenzene	15.394	180	840	0.230	ug/l	87
94) Hexachlorobutadiene	15.500	225	1097	0.807	ug/l	84
95) Naphthalene	15.641	128	13077	0.963	ug/l	99

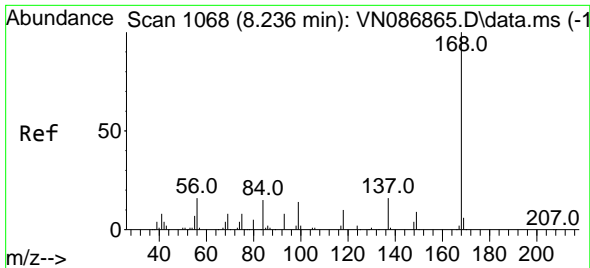
(#) = qualifier out of range (m) = manual integration (+) = signals summed

Data Path : Z:\voasrv\HPCHEM1\MSVOA_N\Data\VN061025\
 Data File : VN086914.D
 Acq On : 10 Jun 2025 09:47
 Operator : JC\MD
 Sample : VN0610MBL01
 Misc : 5.00g/10mL/100uL/5.00mL/MSVOA_N/MEOH
 ALS Vial : 3 Sample Multiplier: 1

Instrument :
 MSVOA_N
 ClientSampleId :
 VN0610MBL01

Quant Time: Jun 11 01:48:12 2025
 Quant Method : Z:\voasrv\HPCHEM1\MSVOA_N\methods\82N060625W.M
 Quant Title : SW846 8260
 QLast Update : Sat Jun 07 02:12:50 2025
 Response via : Initial Calibration





#1
 Pentafluorobenzene
 Concen: 50.000 ug/l
 RT: 8.230 min Scan# 1068
 Delta R.T. -0.006 min
 Lab File: VN086914.D
 Acq: 10 Jun 2025 09:47

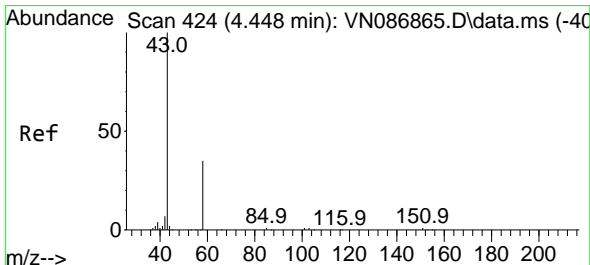
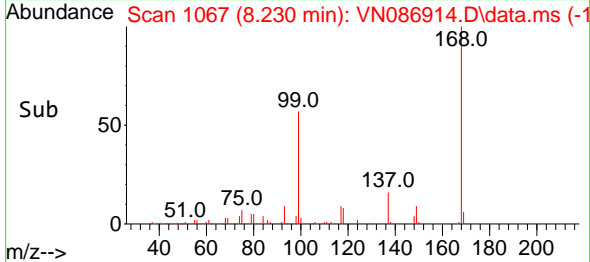
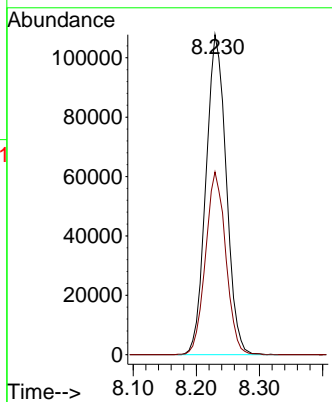
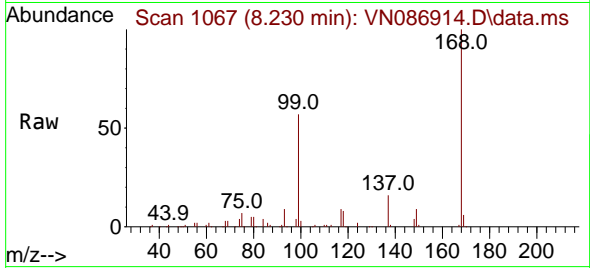
Instrument :

MSVOA_N

ClientSampleId :

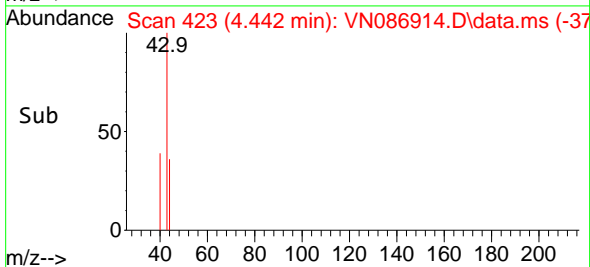
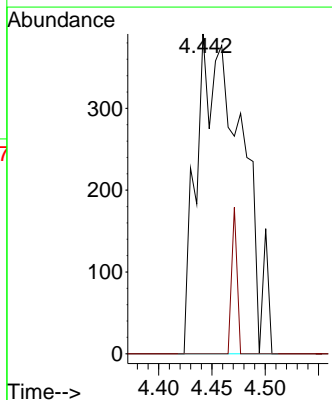
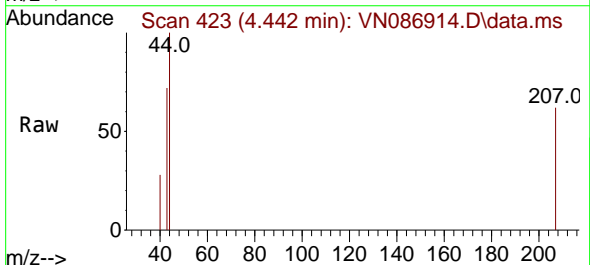
VN0610MBL01

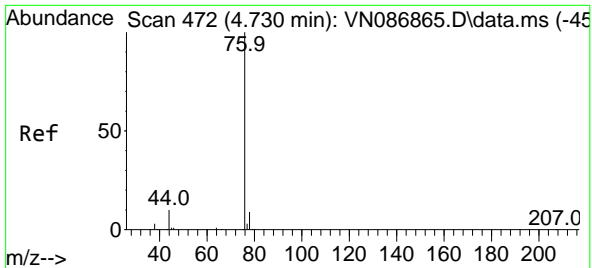
Tgt Ion:168 Resp: 240358
 Ion Ratio Lower Upper
 168 100
 99 57.1 49.1 73.7



#16
 Acetone
 Concen: 0.677 ug/l
 RT: 4.442 min Scan# 423
 Delta R.T. -0.006 min
 Lab File: VN086914.D
 Acq: 10 Jun 2025 09:47

Tgt Ion: 43 Resp: 1156
 Ion Ratio Lower Upper
 43 100
 58 0.0 28.0 42.0#

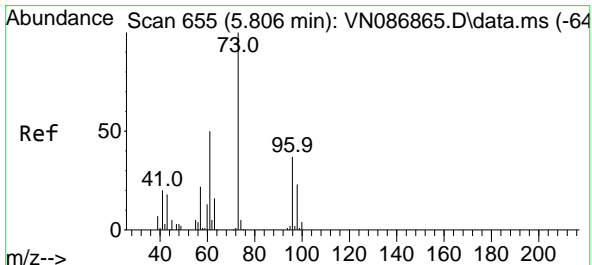
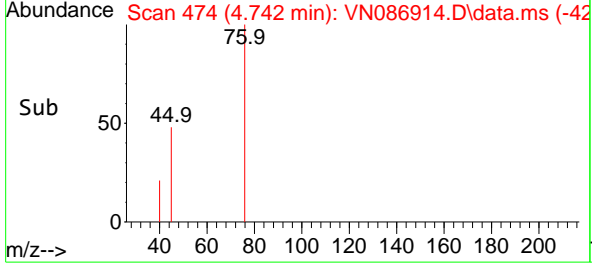
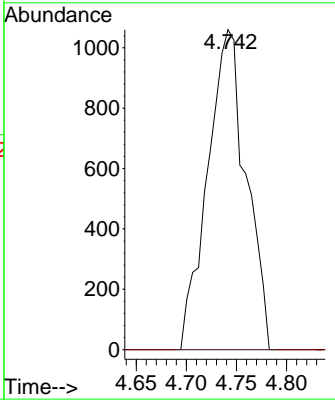
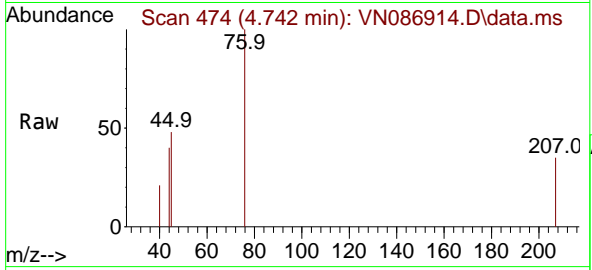




#17
 Carbon Disulfide
 Concen: 0.384 ug/l
 RT: 4.742 min Scan# 41
 Delta R.T. 0.012 min
 Lab File: VN086914.D
 Acq: 10 Jun 2025 09:47

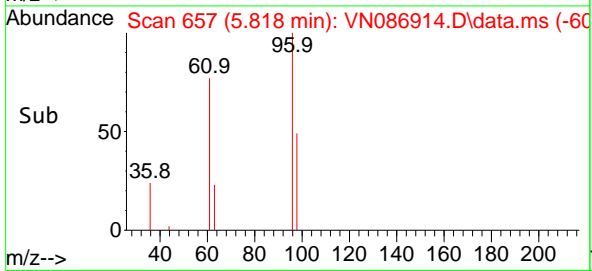
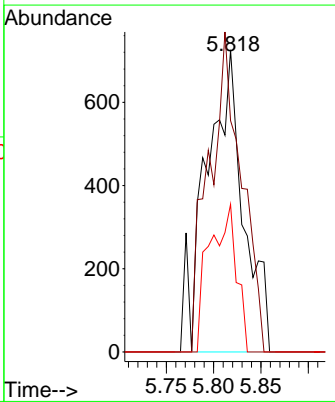
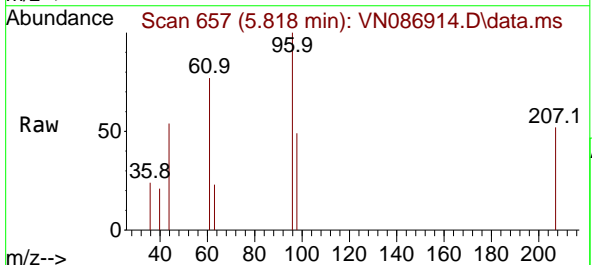
Instrument : MSVOA_N
 ClientSampleId : VN0610MBL01

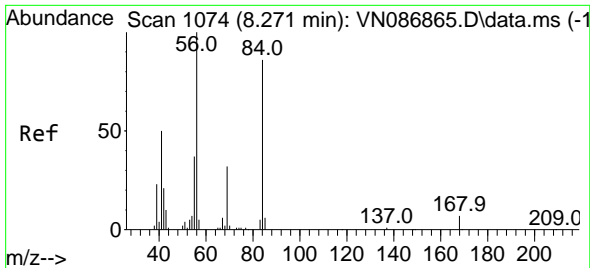
Tgt Ion: 76 Resp: 2839
 Ion Ratio Lower Upper
 76 100
 78 0.0 7.3 10.9#



#21
 trans-1,2-Dichloroethene
 Concen: 0.664 ug/l
 RT: 5.818 min Scan# 657
 Delta R.T. 0.012 min
 Lab File: VN086914.D
 Acq: 10 Jun 2025 09:47

Tgt Ion: 96 Resp: 1977
 Ion Ratio Lower Upper
 96 100
 61 76.6 109.2 163.8#
 98 48.9 49.8 74.8#



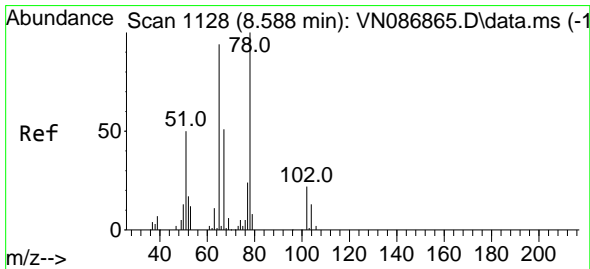
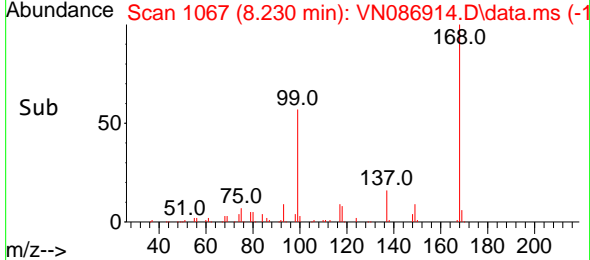
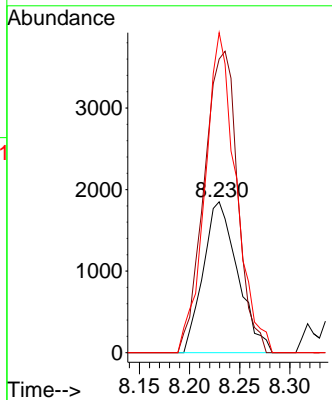
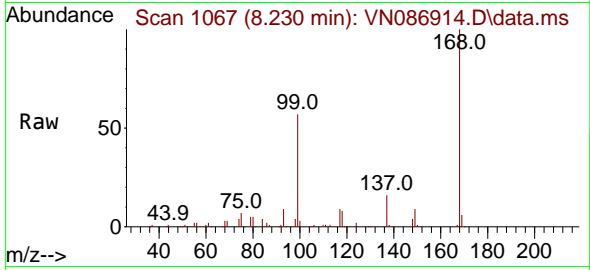


#31
 Cyclohexane
 Concen: 0.849 ug/l
 RT: 8.230 min Scan# 1074
 Delta R.T. -0.041 min
 Lab File: VN086914.D
 Acq: 10 Jun 2025 09:47

Instrument : MSVOA_N
 ClientSampleId : VN0610MBL01

Tgt Ion: 56 Resp: 4433

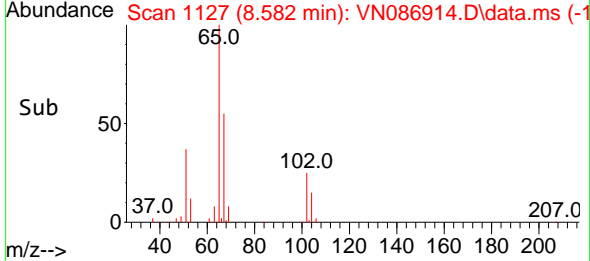
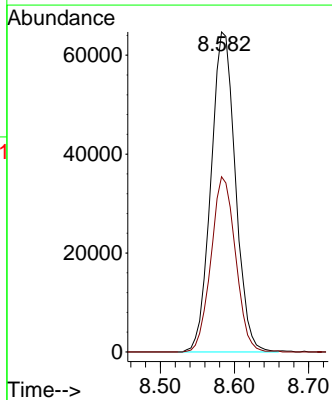
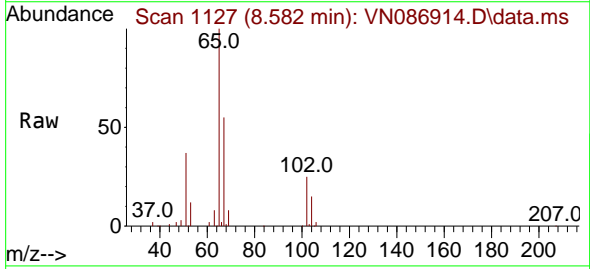
Ion	Ratio	Lower	Upper
56	100		
69	194.6	25.4	38.0#
84	212.1	68.8	103.2#

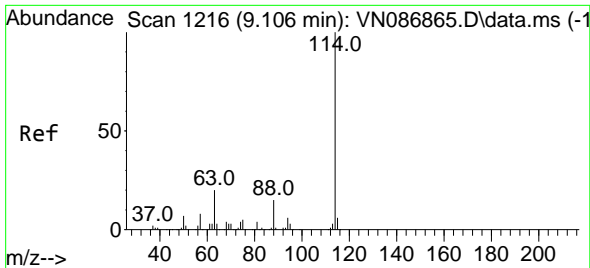


#33
 1,2-Dichloroethane-d4
 Concen: 46.091 ug/l
 RT: 8.582 min Scan# 1127
 Delta R.T. -0.006 min
 Lab File: VN086914.D
 Acq: 10 Jun 2025 09:47

Tgt Ion: 65 Resp: 148327

Ion	Ratio	Lower	Upper
65	100		
67	54.9	0.0	105.6





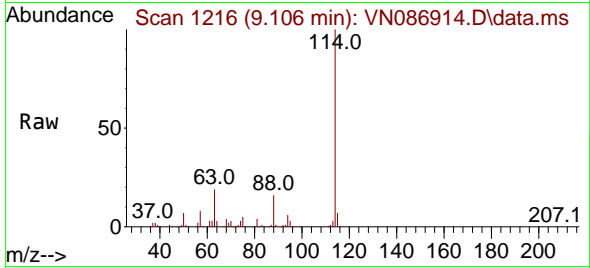
#34
 1,4-Difluorobenzene
 Concen: 50.000 ug/l
 RT: 9.106 min Scan# 11
 Delta R.T. -0.000 min
 Lab File: VN086914.D
 Acq: 10 Jun 2025 09:47

Instrument :

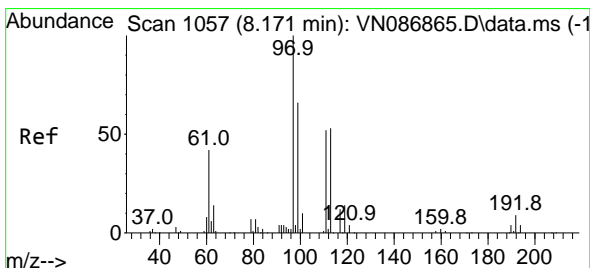
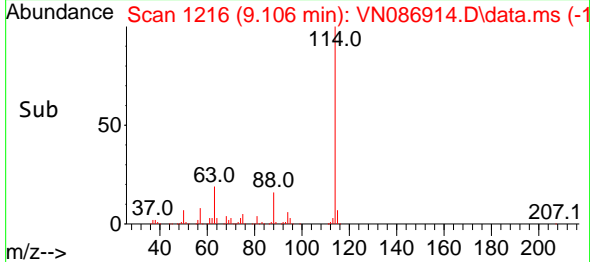
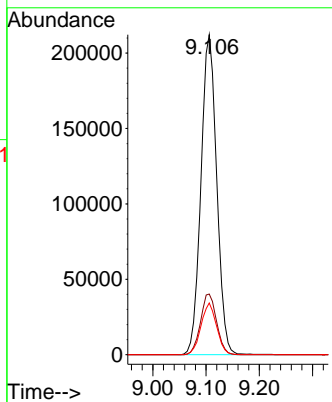
MSVOA_N

ClientSampleId :

VN0610MBL01

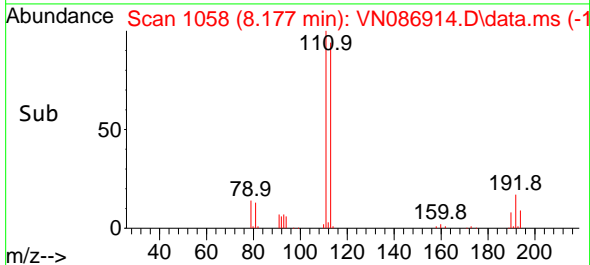
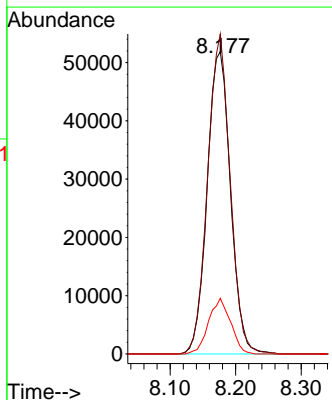
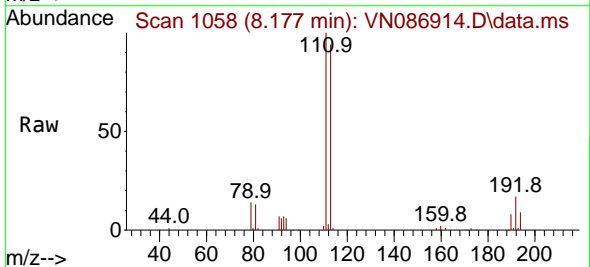


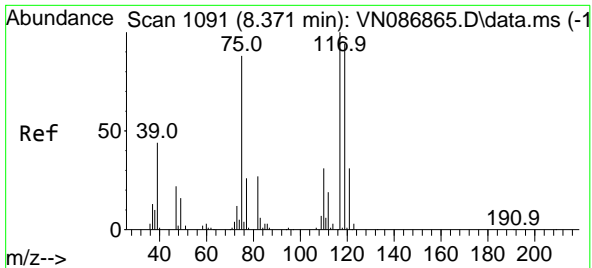
Tgt Ion:114 Resp: 436120
 Ion Ratio Lower Upper
 114 100
 63 18.9 0.0 39.6
 88 16.2 0.0 30.2



#35
 Dibromofluoromethane
 Concen: 49.613 ug/l
 RT: 8.177 min Scan# 1058
 Delta R.T. 0.006 min
 Lab File: VN086914.D
 Acq: 10 Jun 2025 09:47

Tgt Ion:113 Resp: 128226
 Ion Ratio Lower Upper
 113 100
 111 102.3 84.2 126.2
 192 17.4 14.2 21.4



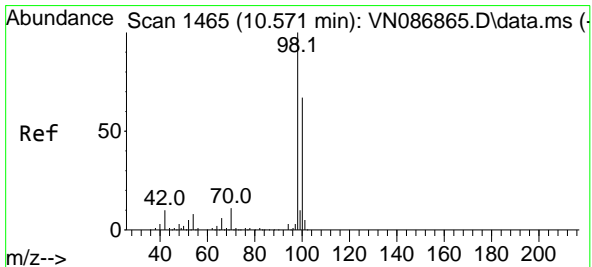
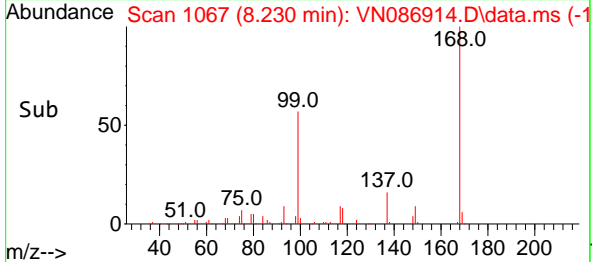
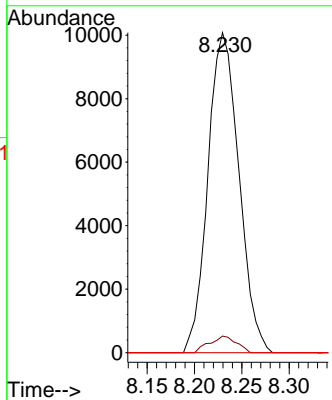
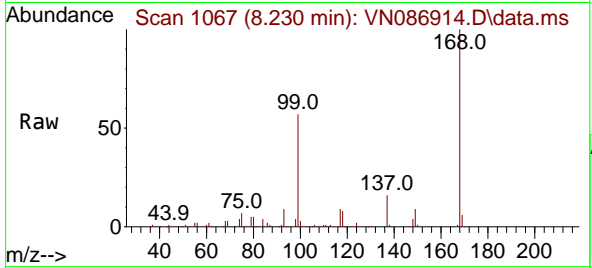


#38
 Carbon Tetrachloride
 Concen: 6.074 ug/l
 RT: 8.230 min Scan# 1091
 Delta R.T. -0.141 min
 Lab File: VN086914.D
 Acq: 10 Jun 2025 09:47

Instrument : MSVOA_N
 ClientSampleId : VN0610MBL01

Tgt Ion:117 Resp: 22964

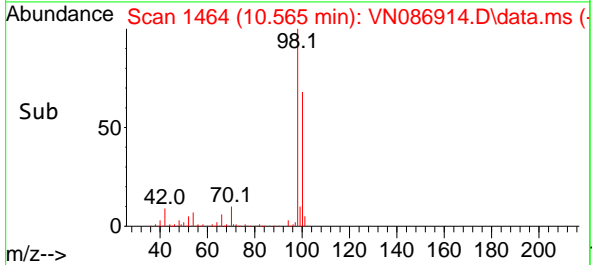
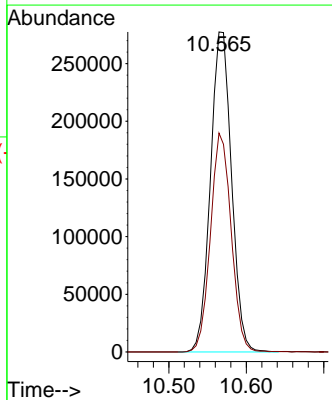
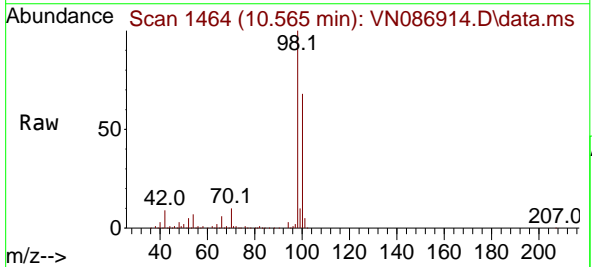
Ion	Ratio	Lower	Upper
117	100		
119	5.2	75.0	112.6#
121	0.0	24.9	37.3#

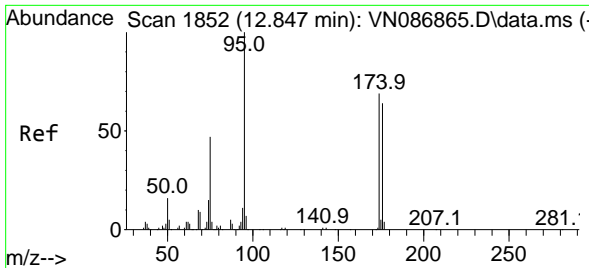


#50
 Toluene-d8
 Concen: 51.317 ug/l
 RT: 10.565 min Scan# 1464
 Delta R.T. -0.006 min
 Lab File: VN086914.D
 Acq: 10 Jun 2025 09:47

Tgt Ion: 98 Resp: 525057

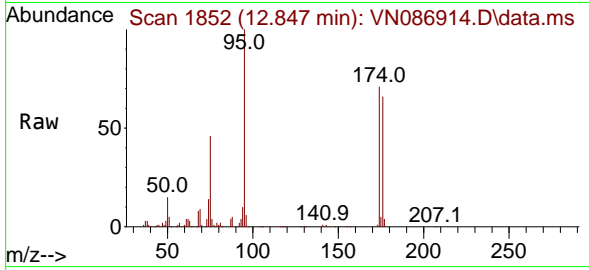
Ion	Ratio	Lower	Upper
98	100		
100	67.1	53.4	80.0





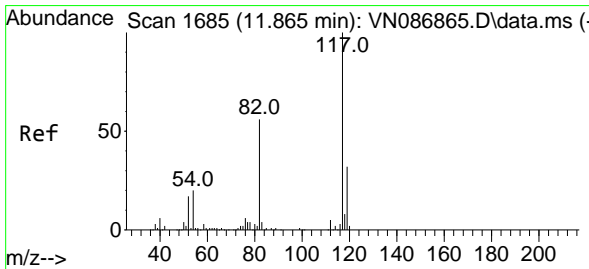
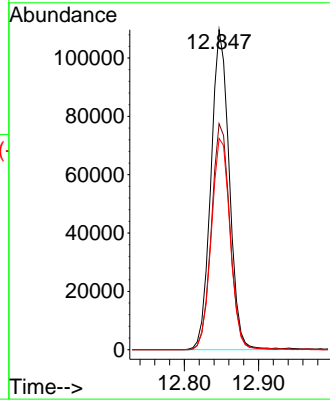
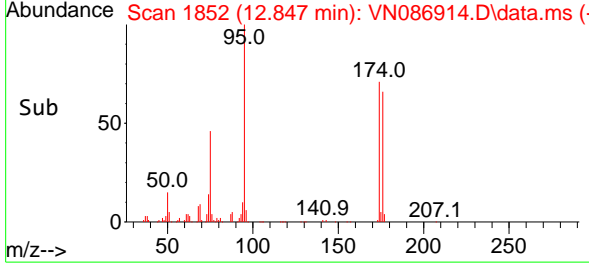
#62
 4-Bromofluorobenzene
 Concen: 49.621 ug/l
 RT: 12.847 min Scan# 1852
 Delta R.T. -0.000 min
 Lab File: VN086914.D
 Acq: 10 Jun 2025 09:47

Instrument : MSVOA_N
 ClientSampleId : VN0610MBL01

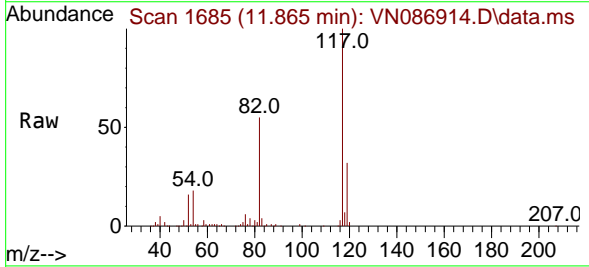


Tgt Ion: 95 Resp: 188626

Ion	Ratio	Lower	Upper
95	100		
174	71.2	0.0	141.8
176	67.9	0.0	132.6

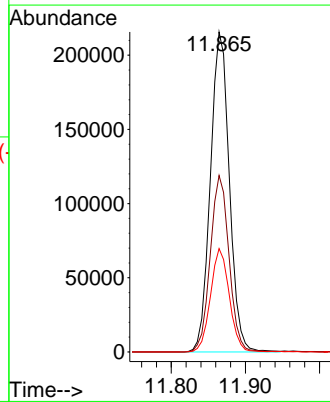
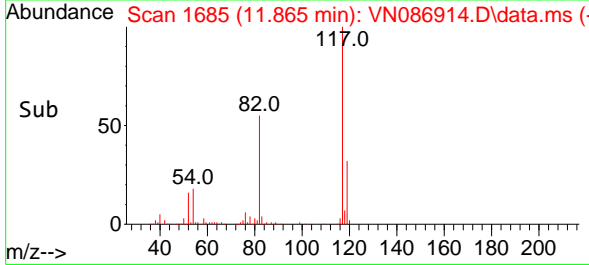


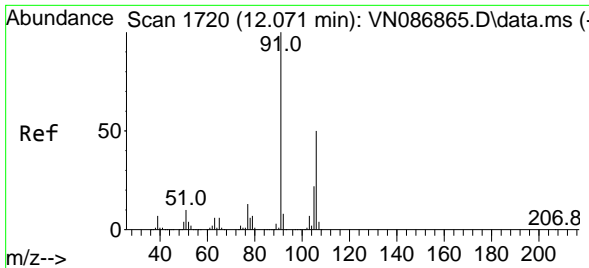
#63
 Chlorobenzene-d5
 Concen: 50.000 ug/l
 RT: 11.865 min Scan# 1685
 Delta R.T. -0.000 min
 Lab File: VN086914.D
 Acq: 10 Jun 2025 09:47



Tgt Ion: 117 Resp: 383518

Ion	Ratio	Lower	Upper
117	100		
82	55.2	44.6	67.0
119	32.3	25.5	38.3

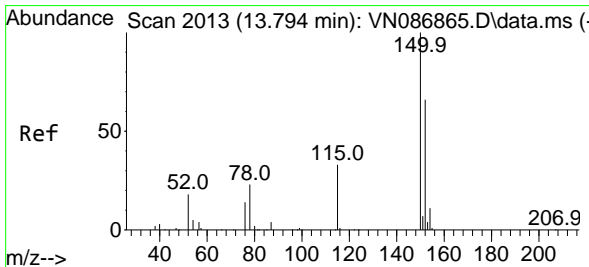
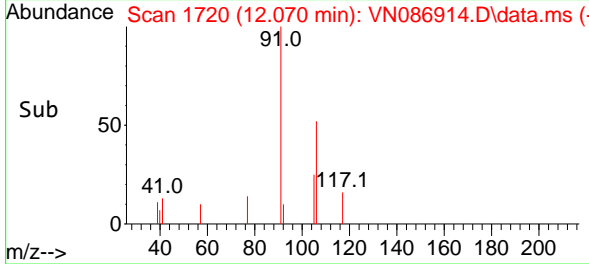
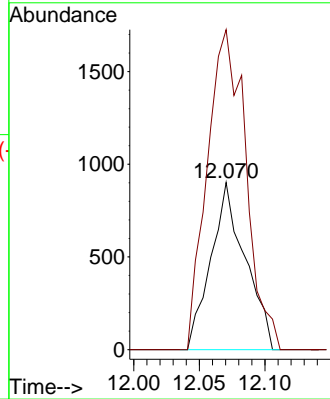
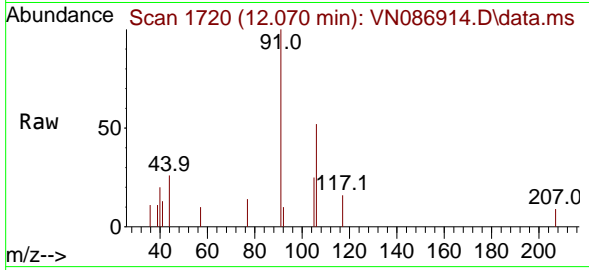




#68
 m/p-Xylenes
 Concen: 0.295 ug/l
 RT: 12.070 min Scan# 11
 Delta R.T. -0.000 min
 Lab File: VN086914.D
 Acq: 10 Jun 2025 09:47

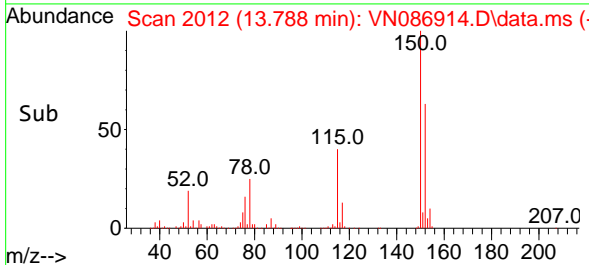
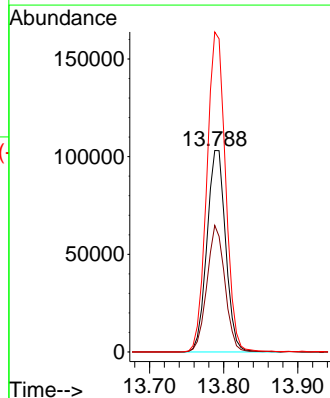
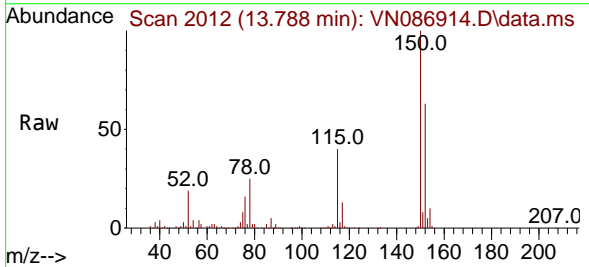
Instrument :
 MSVOA_N
 ClientSampleId :
 VN0610MBL01

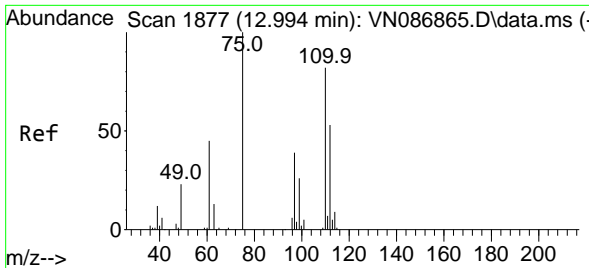
Tgt Ion:106 Resp: 1643
 Ion Ratio Lower Upper
 106 100
 91 215.2 159.4 239.0



#72
 1,4-Dichlorobenzene-d4
 Concen: 50.000 ug/l
 RT: 13.788 min Scan# 2012
 Delta R.T. -0.006 min
 Lab File: VN086914.D
 Acq: 10 Jun 2025 09:47

Tgt Ion:152 Resp: 180949
 Ion Ratio Lower Upper
 152 100
 115 60.5 30.1 90.5
 150 158.9 0.0 345.0

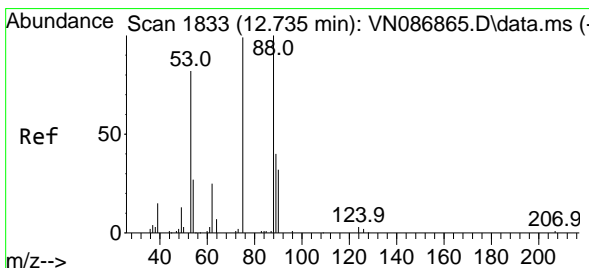
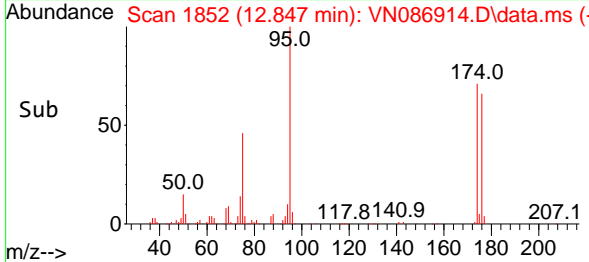
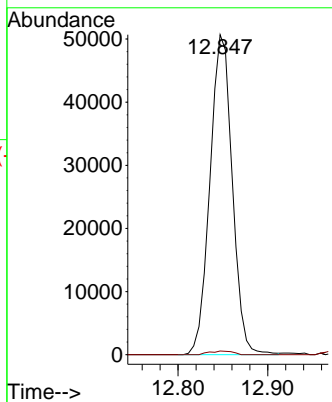
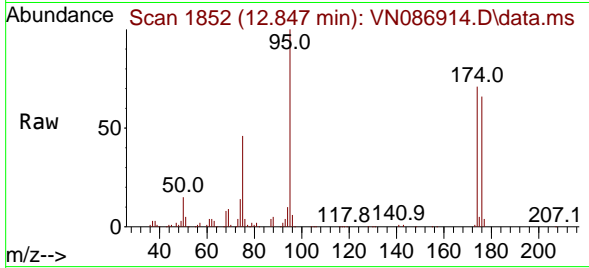




#76
 1,2,3-Trichloropropane
 Concen: 20.370 ug/l
 RT: 12.847 min Scan# 1852
 Delta R.T. -0.147 min
 Lab File: VN086914.D
 Acq: 10 Jun 2025 09:47

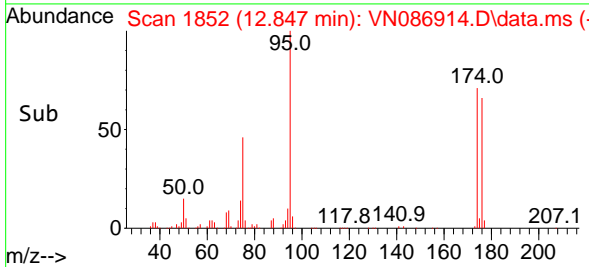
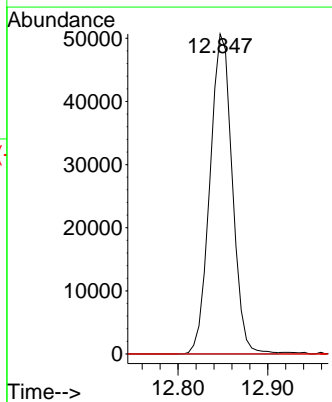
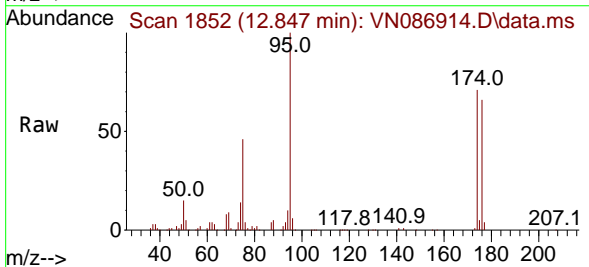
Instrument : MSVOA_N
 ClientSampleId : VN0610MBL01

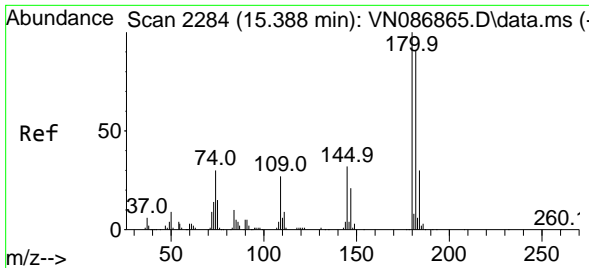
Tgt Ion: 75 Resp: 87614
 Ion Ratio Lower Upper
 75 100
 77 1.2 79.3 237.9#



#81
 trans-1,4-Dichloro-2-butene
 Concen: 46.890 ug/l
 RT: 12.847 min Scan# 1852
 Delta R.T. 0.112 min
 Lab File: VN086914.D
 Acq: 10 Jun 2025 09:47

Tgt Ion: 75 Resp: 87614
 Ion Ratio Lower Upper
 75 100
 53 0.0 66.6 99.8#
 89 0.0 36.7 55.1#

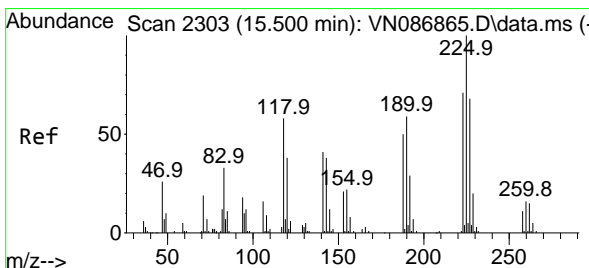
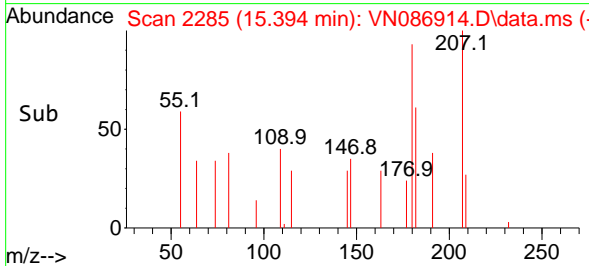
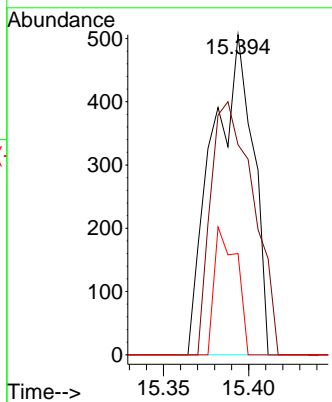
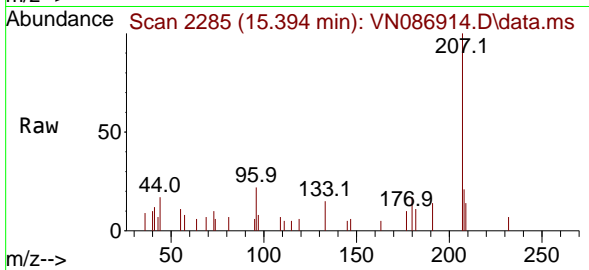




#93
 1,2,4-Trichlorobenzene
 Concen: 0.230 ug/l
 RT: 15.394 min Scan# 21
 Delta R.T. 0.006 min
 Lab File: VN086914.D
 Acq: 10 Jun 2025 09:47

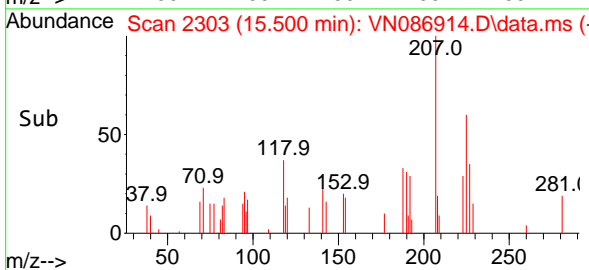
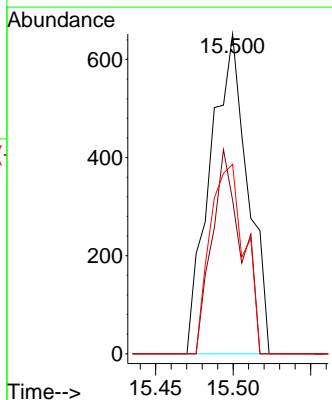
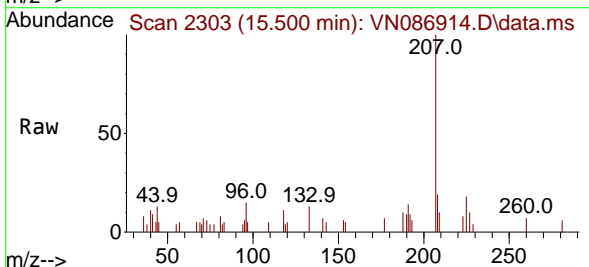
Instrument :
 MSVOA_N
 ClientSampleId :
 VN0610MBL01

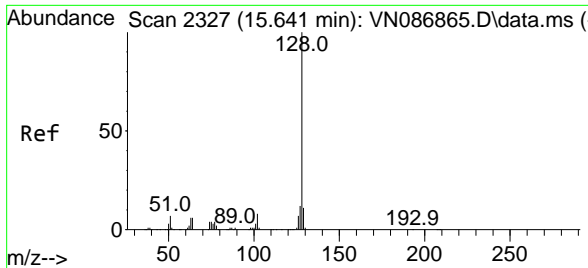
Tgt Ion	Resp	Lower	Upper
180	100		
182	83.1	46.9	140.7
145	21.9	16.0	47.9



#94
 Hexachlorobutadiene
 Concen: 0.807 ug/l
 RT: 15.500 min Scan# 2303
 Delta R.T. -0.000 min
 Lab File: VN086914.D
 Acq: 10 Jun 2025 09:47

Tgt Ion	Resp	Lower	Upper
225	100		
223	50.7	33.5	100.4
227	54.2	31.1	93.5





#95
 Naphthalene
 Concen: 0.963 ug/l
 RT: 15.641 min Scan# 21
 Delta R.T. -0.000 min
 Lab File: VN086914.D
 Acq: 10 Jun 2025 09:47

Instrument : MSVOA_N
 ClientSampleId : VN0610MBL01

Tgt Ion:128 Resp: 13077

Ion	Ratio	Lower	Upper
128	100		
127	13.3	10.2	15.2
129	11.2	8.8	13.2

