

Data Path : Z:\voasrv\HPCHEM1\MSVOA_N\Data\VN061025\
 Data File : VN086930.D
 Acq On : 10 Jun 2025 15:43
 Operator : JC\MD
 Sample : IBLK
 Misc : 5.0mL/MSVOA_N/WATER
 ALS Vial : 19 Sample Multiplier: 1

Instrument :
 MSVOA_N
 ClientSampleId :
 IBLK

Integration Parameters: RTEINT.P
 Integrator: RTE
 Smoothing : ON Filtering: 5
 Sampling : 1 Min Area: 3 % of largest Peak
 Start Thrs: 0.2 Max Peaks: 100
 Stop Thrs : 0 Peak Location: TOP

If leading or trailing edge < 100 prefer < Baseline drop else tangent >
 Peak separation: 5

Method : Z:\voasrv\HPCHEM1\MSVOA_N\methods\82N060625W.M
 Title : SW846 8260

Signal : TIC: VN086930.D\data.ms

peak #	R.T. min	first scan	max scan	last scan	PK TY	peak height	corr. area	corr. % max.	% of total
1	8.177	1047	1058	1062	rBV	163830	387430	29.58%	5.832%
2	8.230	1062	1067	1082	rVB	289711	667798	50.98%	10.053%
3	8.588	1118	1128	1139	rBV	183637	421828	32.20%	6.350%
4	9.106	1207	1216	1226	rVB	458187	940722	71.82%	14.161%
5	10.571	1456	1465	1477	rBV	697458	1309905	100.00%	19.719%
6	11.865	1677	1685	1698	rBV	610527	1084306	82.78%	16.323%
7	12.847	1845	1852	1868	rBV	453988	795223	60.71%	11.971%
8	13.788	2004	2012	2020	rBV	610963	1035741	79.07%	15.592%

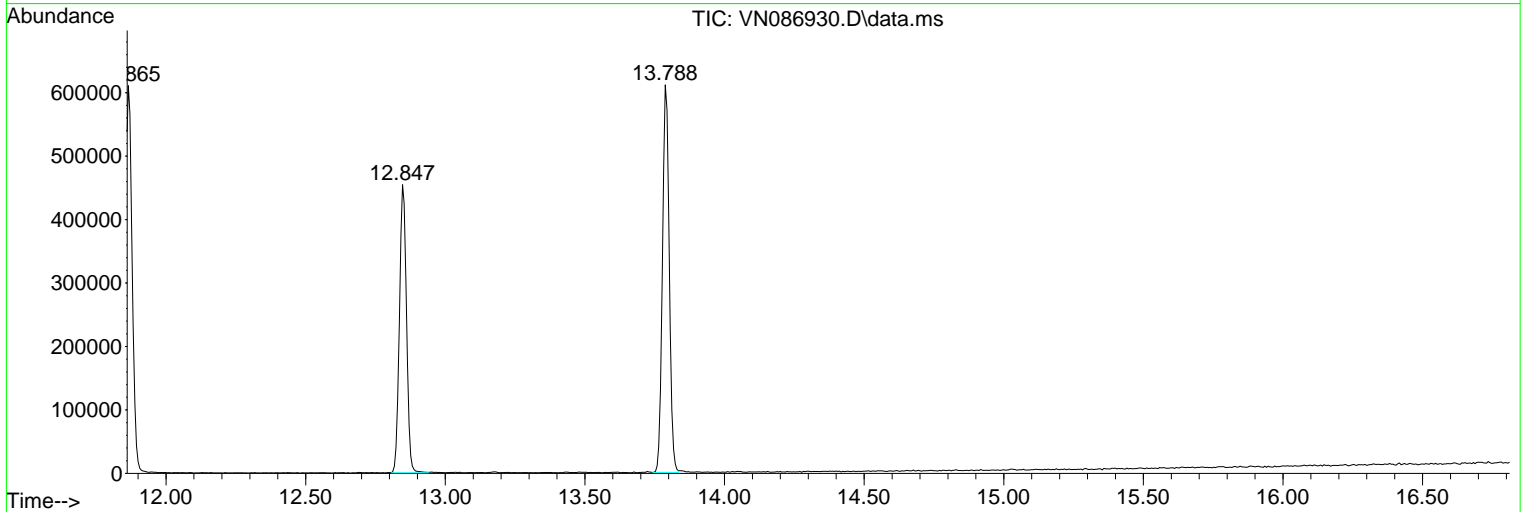
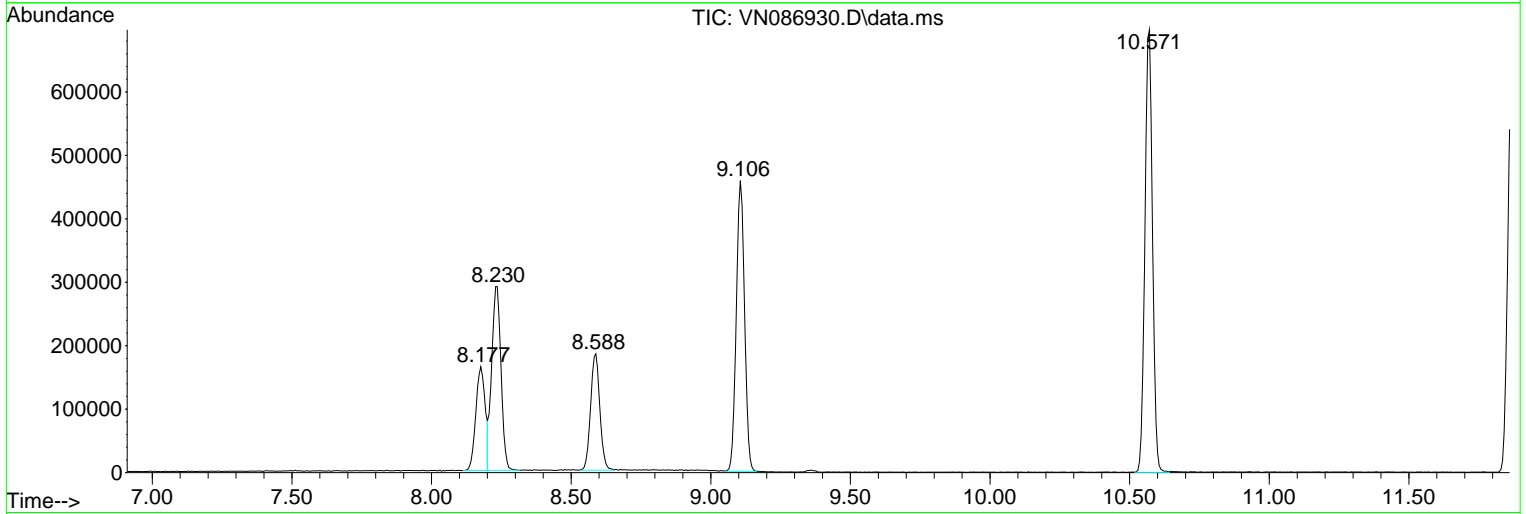
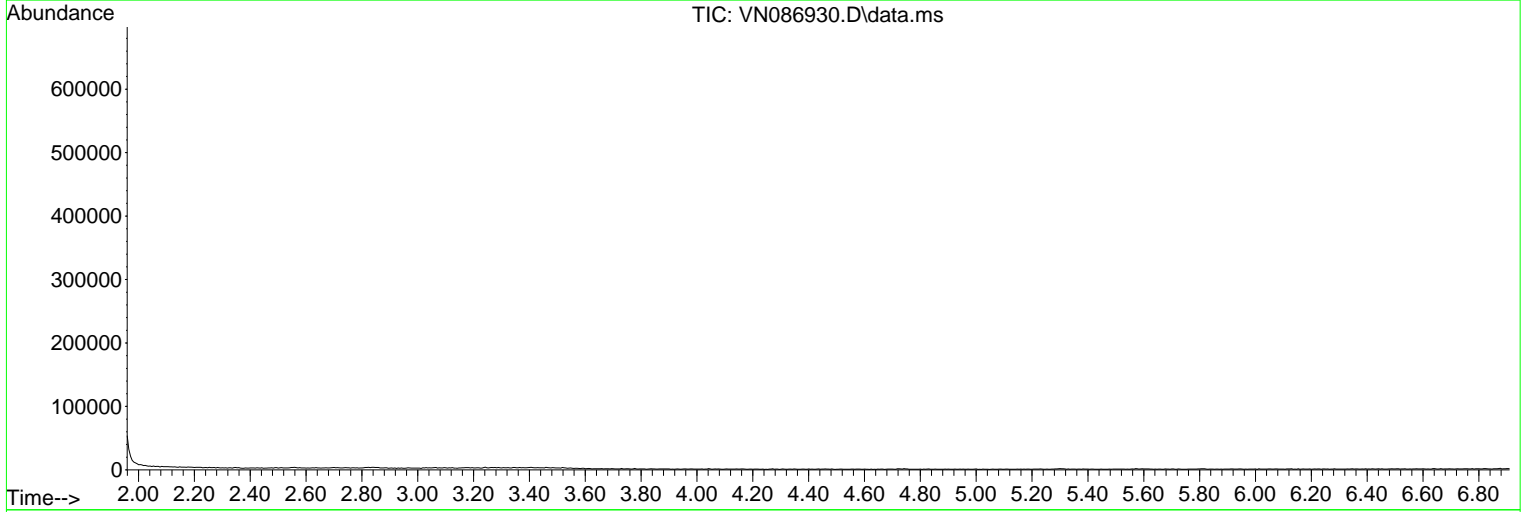
Sum of corrected areas: 6642953

Data Path : Z:\voasrv\HPCHEM1\MSVOA_N\Data\VN061025\
 Data File : VN086930.D
 Acq On : 10 Jun 2025 15:43
 Operator : JC\MD
 Sample : IBLK
 Misc : 5.0mL/MSVOA_N/WATER
 ALS Vial : 19 Sample Multiplier: 1

Instrument :
 MSVOA_N
 ClientSampleId :
 IBLK

Quant Method : Z:\voasrv\HPCHEM1\MSVOA_N\methods\82N060625W.M
 Quant Title : SW846 8260

TIC Library : C:\Database\NIST20.L
 TIC Integration Parameters: LSCINT.P



Library Search Compound Report

Data Path : Z:\voasrv\HPCHEM1\MSVOA_N\Data\VN061025\
Data File : VN086930.D
Acq On : 10 Jun 2025 15:43
Operator : JC\MD
Sample : IBLK
Misc : 5.0mL/MSVOA_N/WATER
ALS Vial : 19 Sample Multiplier: 1

Instrument :
MSVOA_N
ClientSampleId :
IBLK

Quant Method : Z:\voasrv\HPCHEM1\MSVOA_N\methods\82N060625W.M
Quant Title : SW846 8260

TIC Library : C:\Database\NIST20.L
TIC Integration Parameters: LSCINT.P

No Library Search Compounds Detected

Data Path : Z:\voasrv\HPCHEM1\MSVOA_N\Data\VN061025\
Data File : VN086930.D
Acq On : 10 Jun 2025 15:43
Operator : JC\MD
Sample : IBLK
Misc : 5.0mL/MSVOA_N/WATER
ALS Vial : 19 Sample Multiplier: 1

Instrument :
MSVOA_N
ClientSampleId :
IBLK

Quant Method : Z:\voasrv\HPCHEM1\MSVOA_N\methods\82N060625W.M
Quant Title : SW846 8260

TIC Library : C:\Database\NIST20.L
TIC Integration Parameters: LSCINT.P

TIC Top Hit name	RT	EstConc	Units	Response	--Internal Standard--			
					#	RT	Resp	Conc
