

Data Path : Z:\VOASRV\HPCHEM1\MSVOA N\DATA\VN061119\
 Data File : VN056214.D
 Acq On : 11 Jun 2019 11:26
 Operator : JC/SP
 Sample : K3284-17
 Misc : 5.00mL/MSVOA N/WATER
 ALS Vial : 7 Sample Multiplier: 1

Instrument :
 MSVOA_N
 ClientSampleId :
 BP-TT-MW202S-20190610

Quant Time: Jun 12 06:32:05 2019
 Quant Method : Z:\VOASRV\HPCHEM1\MSVOA_N\METHODS\82N060419W.M
 Quant Title : SW846 8260
 QLast Update : Tue Jun 04 11:02:09 2019
 Response via : Initial Calibration

Internal Standards	R.T.	QIon	Response	Conc	Units	Dev(Min)
1) Pentafluorobenzene	7.66	168	307168	50.00	ug/l	0.00
34) 1,4-Difluorobenzene	8.59	114	458141	50.00	ug/l	0.00
63) Chlorobenzene-d5	11.41	117	444189	50.00	ug/l	0.00
72) 1,4-Dichlorobenzene-d4	13.34	152	135074	50.00	ug/l	0.00

System Monitoring Compounds

33) 1,2-Dichloroethane-d4	8.03	65	162109	53.15	ug/l	0.00
Spiked Amount	50.000		Recovery	=	106.30%	
35) Dibromofluoromethane	7.59	113	149872	53.32	ug/l	0.00
Spiked Amount	50.000		Recovery	=	106.64%	
50) Toluene-d8	10.09	98	585074	54.09	ug/l	0.00
Spiked Amount	50.000		Recovery	=	108.18%	
62) 4-Bromofluorobenzene	12.40	95	179579	48.82	ug/l	0.00
Spiked Amount	50.000		Recovery	=	97.64%	

Target Compounds

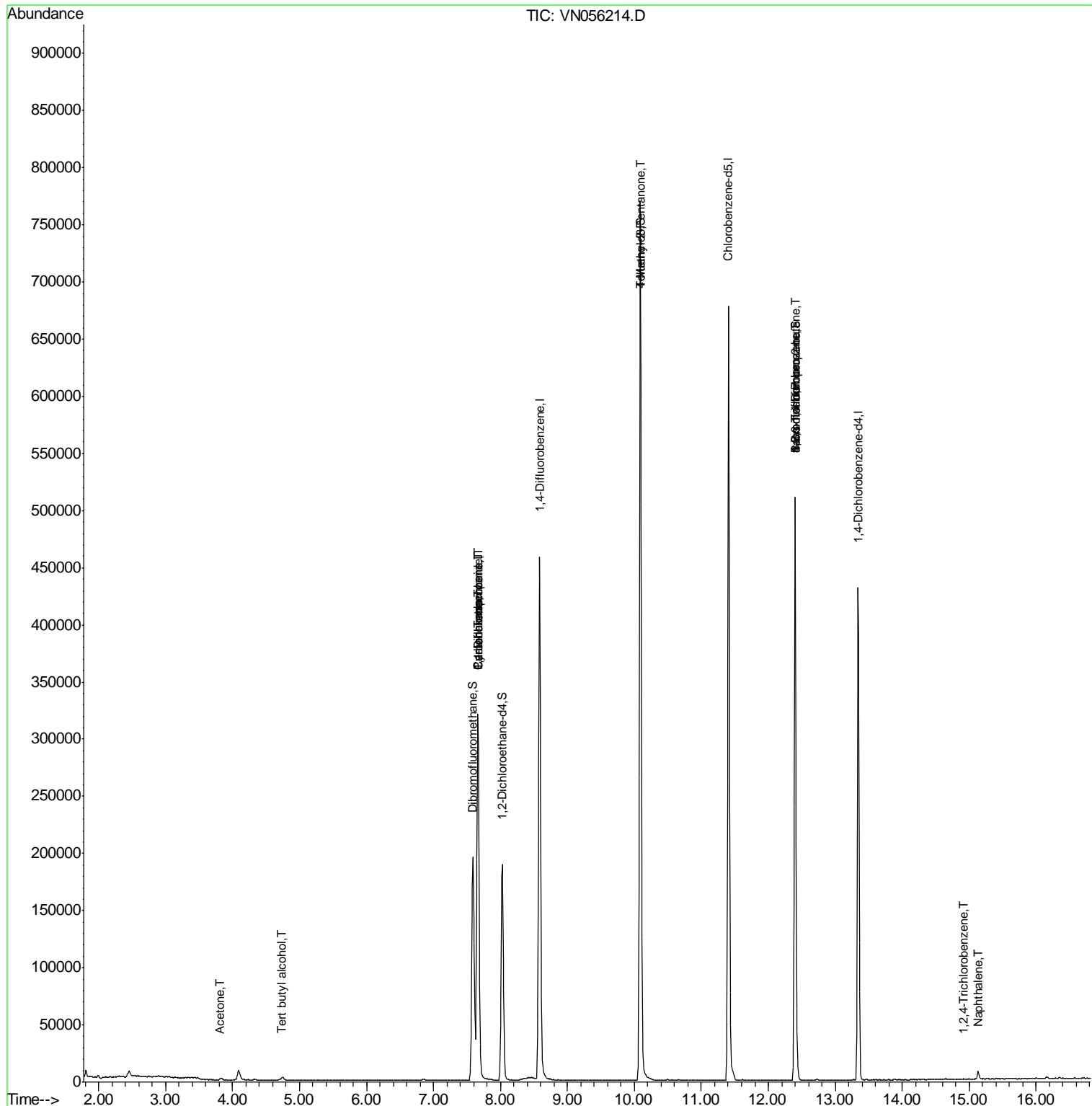
					Qvalue	
11) Tert butyl alcohol	4.74	59	790	1.488	ug/l #	74
16) Acetone	3.82	43	3229	2.214	ug/l	91
18) Methyl Acetate	4.33	43	1475	Below Cal	#	51
31) Cyclohexane	7.66	56	4143	0.856	ug/l #	1
36) 1,1-Dichloropropene	7.66	75	17009	4.318	ug/l #	48
38) Carbon Tetrachloride	7.66	117	24316	6.695	ug/l #	16
51) 4-Methyl-2-Pentanone	10.09	43	2187	0.616	ug/l #	1
71) Bromoform	12.41	173	1382	3.252	ug/l #	1
73) Isopropylbenzene	12.40	105	71	Below Cal	#	48
76) 1,2,3-Trichloropropane	12.40	75	81391	32.747	ug/l #	100
79) 2-Chlorotoluene	12.59	91	89	Below Cal	#	39
81) trans-1,4-Dichloro-2-buten	12.40	75	81391	109.055	ug/l #	15
93) 1,2,4-Trichlorobenzene	14.91	180	179	4.335	ug/l #	70
95) Naphthalene	15.13	128	7728	4.955	ug/l	98

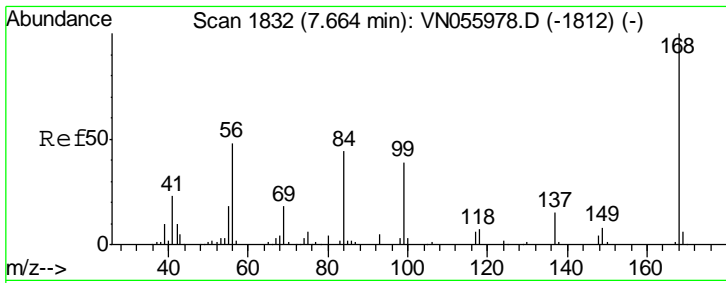
(#) = qualifier out of range (m) = manual integration (+) = signals summed

Data Path : Z:\VOASRV\HPCHEM1\MSVOA N\DATA\VN061119\
 Data File : VN056214.D
 Acq On : 11 Jun 2019 11:26
 Operator : JC/SP
 Sample : K3284-17
 Misc : 5.00mL/MSVOA N/WATER
 ALS Vial : 7 Sample Multiplier: 1

Instrument :
 MSVOA_N
Client Sample Id :
 BP-TT-MW202S-20190610

Quant Time: Jun 12 06:32:05 2019
 Quant Method : Z:\VOASRV\HPCHEM1\MSVOA_N\METHODS\82N060419W.M
 Quant Title : SW846 8260
 QLast Update : Tue Jun 04 11:02:09 2019
 Response via : Initial Calibration

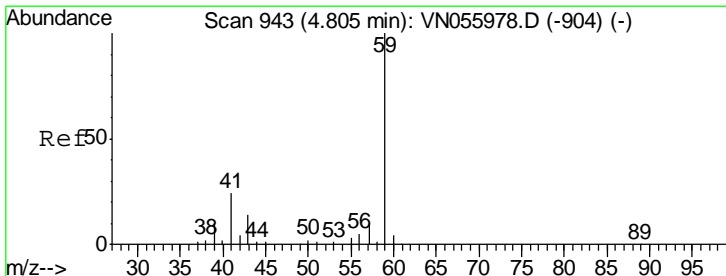
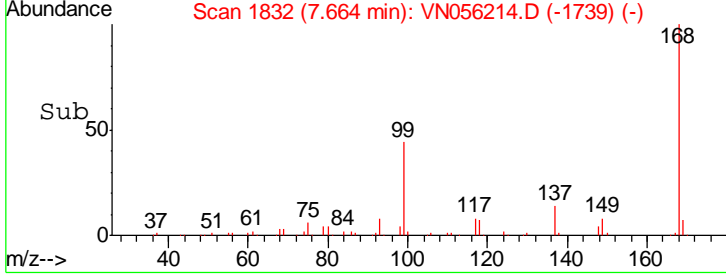
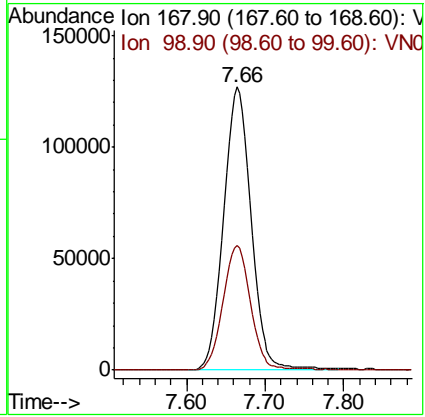
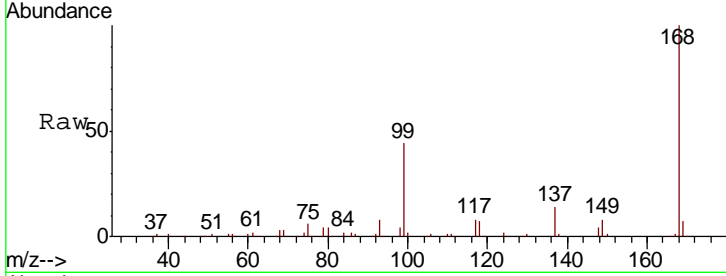




#1
 Pentafluorobenzene
 Concen: 50.000 ug/l
 RT: 7.66 min Scan# 1832
 Delta R.T. 0.00 min
 Lab File: VN056214.D
 Acq: 11 Jun 2019 11:26

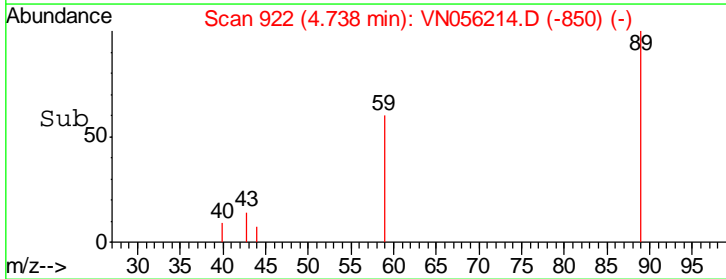
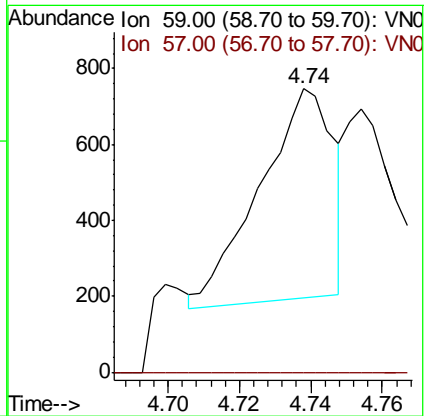
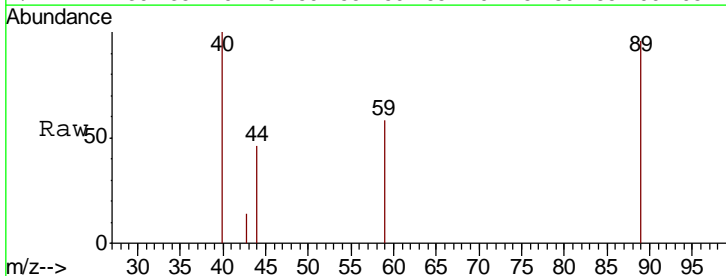
Instrument :
 MSVOA_N
ClientSampled :
 BP-TT-MW202S-20190610

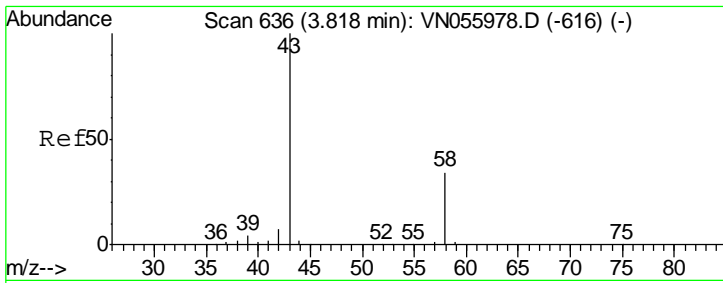
Tgt Ion	Resp	Lower	Upper
168	100		
99	44.2	37.2	55.8



#11
 Tert butyl alcohol
 Concen: 1.488 ug/l
 RT: 4.74 min Scan# 922
 Delta R.T. -0.07 min
 Lab File: VN056214.D
 Acq: 11 Jun 2019 11:26

Tgt Ion	Resp	Lower	Upper
59	100		
57	0.0	7.8	11.6#

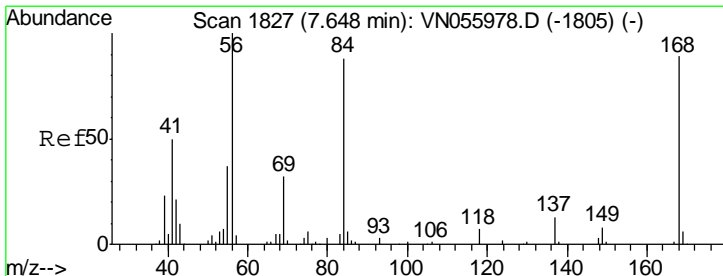
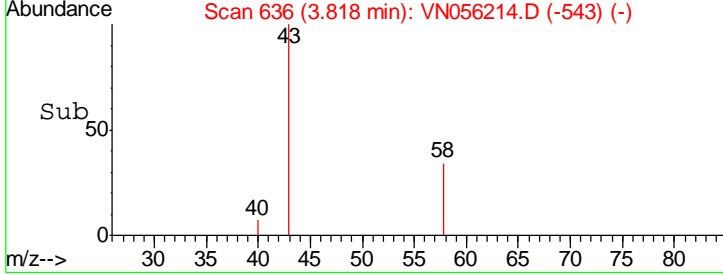
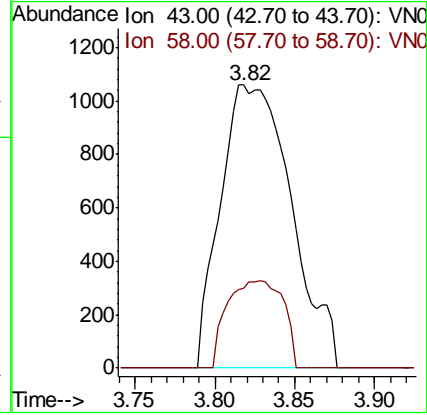
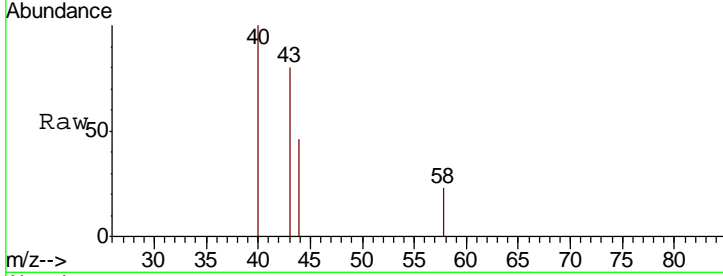




#16
 Acetone
 Concen: 2.214 ug/l
 RT: 3.82 min Scan# 636
 Delta R.T. 0.00 min
 Lab File: VN056214.D
 Acq: 11 Jun 2019 11:26

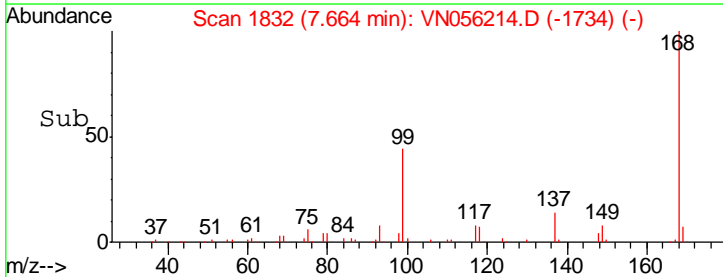
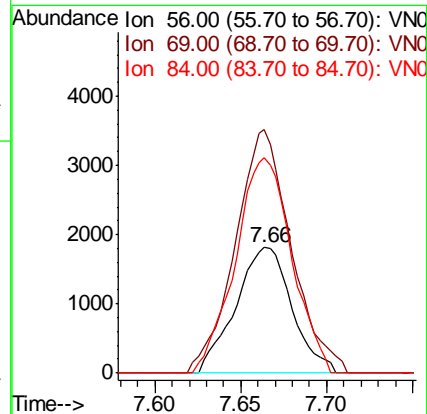
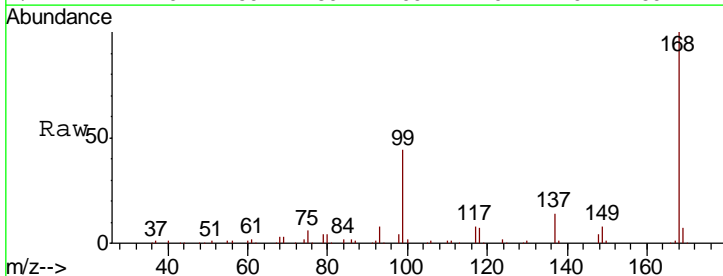
Instrument :
 MSVOA_N
 ClientSampleId :
 BP-TT-MW202S-20190610

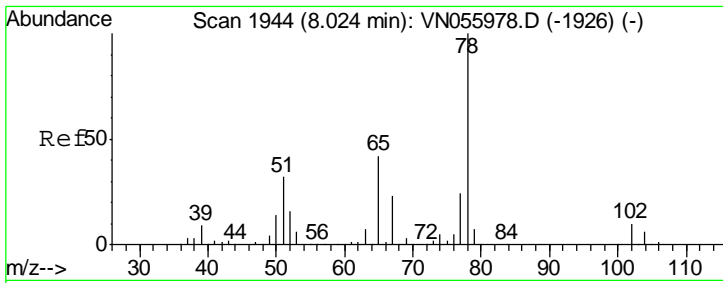
Tgt Ion	Resp	Lower	Upper
43	100		
58	28.3	26.6	39.8



#31
 Cyclohexane
 Concen: 0.856 ug/l
 RT: 7.66 min Scan# 1832
 Delta R.T. 0.02 min
 Lab File: VN056214.D
 Acq: 11 Jun 2019 11:26

Tgt Ion	Resp	Lower	Upper
56	100		
69	185.1	25.6	38.4#
84	171.8	67.4	101.0#

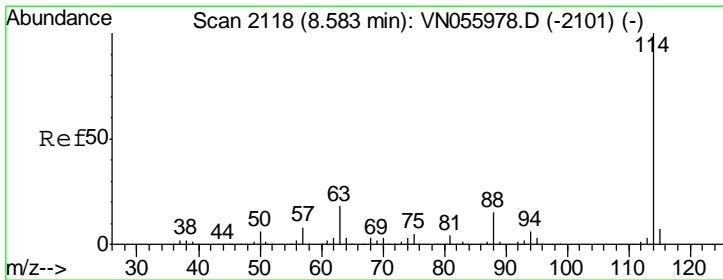
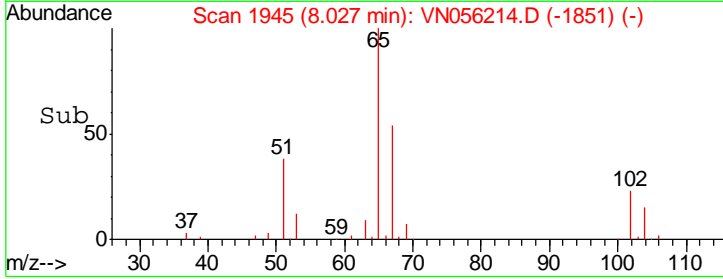
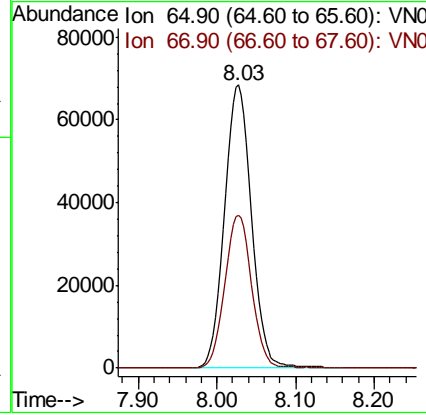
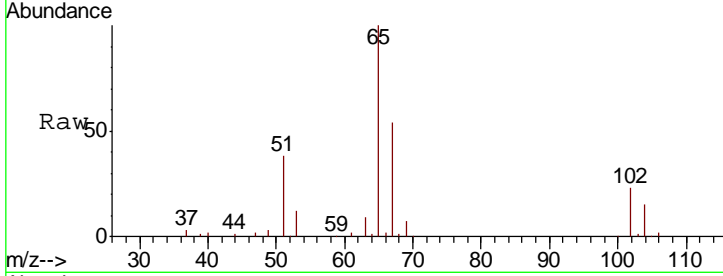




#33
 1,2-Dichloroethane-d4
 Concen: 53.152 ug/l
 RT: 8.03 min Scan# 1945
 Delta R.T. 0.00 min
 Lab File: VN056214.D
 Acq: 11 Jun 2019 11:26

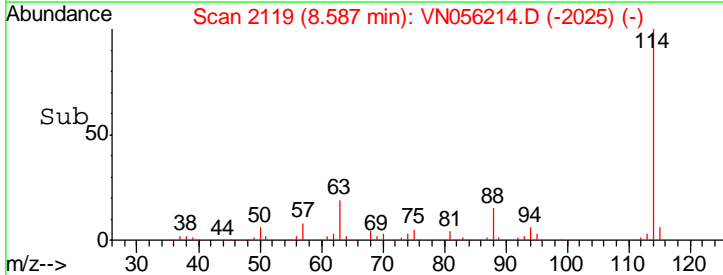
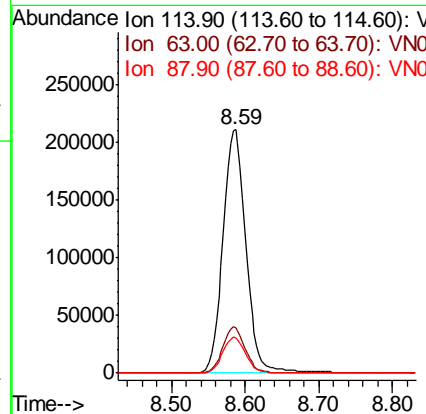
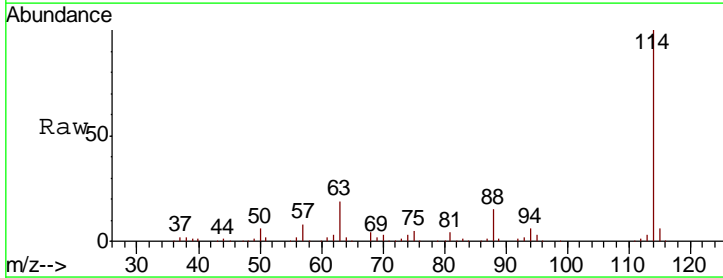
Instrument :
 MSVOA_N
 ClientSampled :
 BP-TT-MW202S-20190610

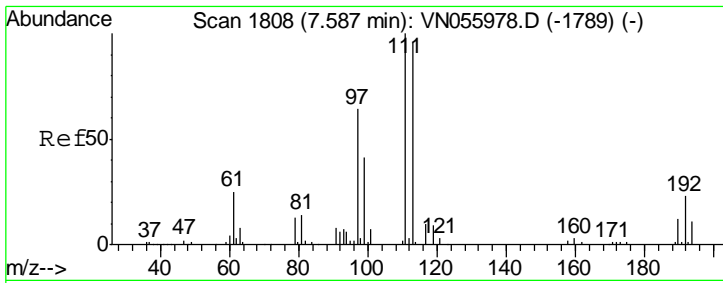
Tgt Ion: 65 Resp: 162109
 Ion Ratio Lower Upper
 65 100
 67 53.6 0.0 109.2



#34
 1,4-Difluorobenzene
 Concen: 50.000 ug/l
 RT: 8.59 min Scan# 2119
 Delta R.T. 0.00 min
 Lab File: VN056214.D
 Acq: 11 Jun 2019 11:26

Tgt Ion: 114 Resp: 458141
 Ion Ratio Lower Upper
 114 100
 63 18.8 0.0 39.2
 88 14.5 0.0 31.0

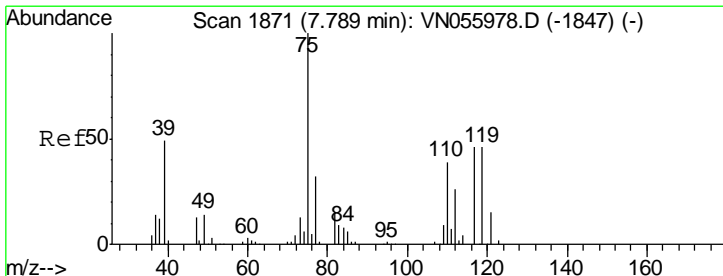
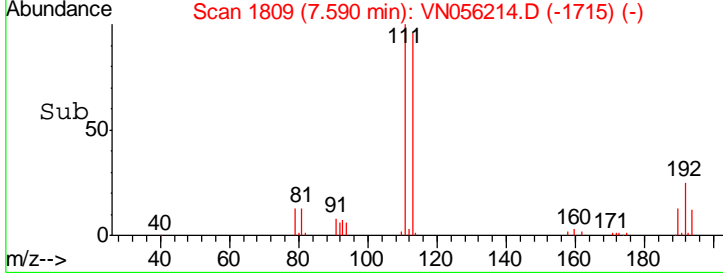
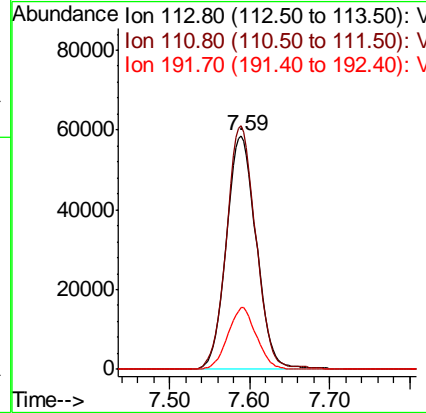
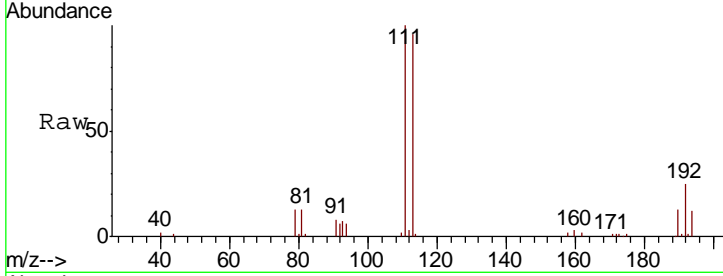




#35
 Dibromofluoromethane
 Concen: 53.319 ug/l
 RT: 7.59 min Scan# 1809
 Delta R.T. 0.00 min
 Lab File: VN056214.D
 Acq: 11 Jun 2019 11:26

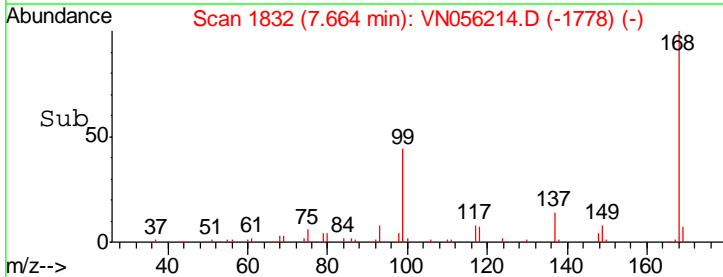
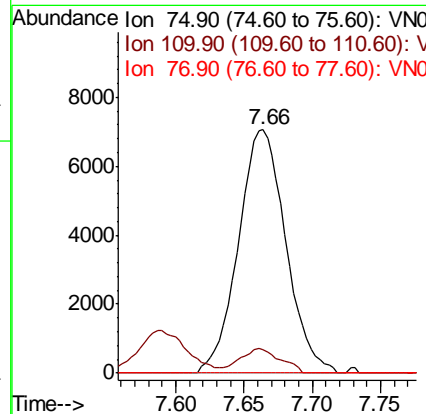
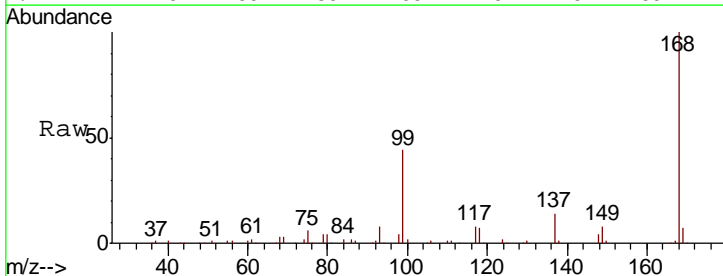
Instrument :
 MSVOA_N
 ClientSampleId :
 BP-TT-MW202S-20190610

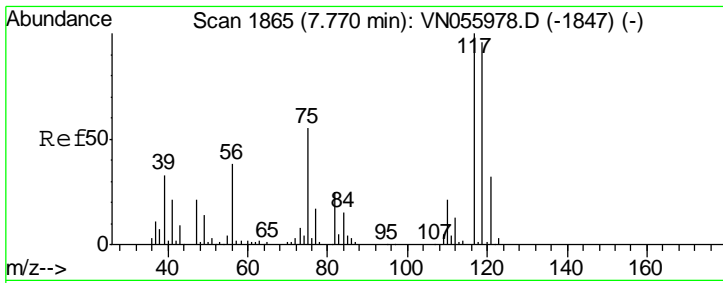
Tgt Ion	Resp	Lower	Upper
113	149872		
111	101.5	81.9	122.9
192	25.2	19.5	29.3



#36
 1,1-Dichloropropene
 Concen: 4.318 ug/l
 RT: 7.66 min Scan# 1832
 Delta R.T. -0.13 min
 Lab File: VN056214.D
 Acq: 11 Jun 2019 11:26

Tgt Ion	Resp	Lower	Upper
75	17009		
110	8.6	19.0	57.0#
77	0.0	25.1	37.7#

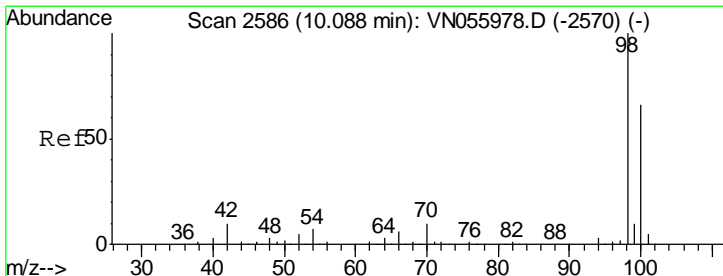
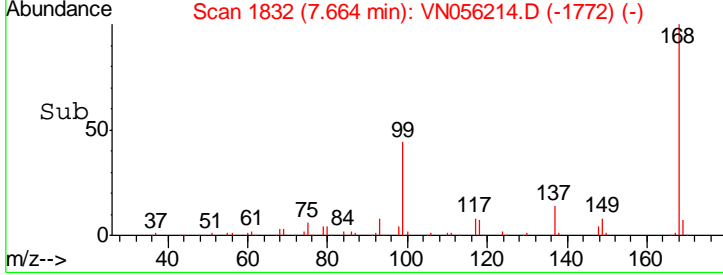
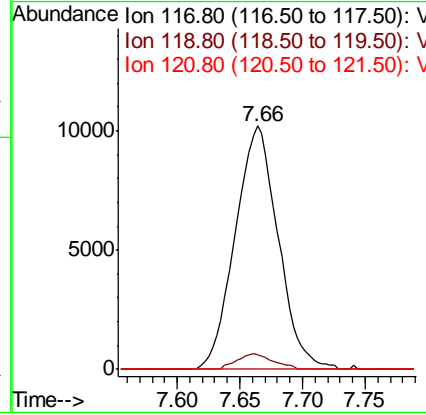
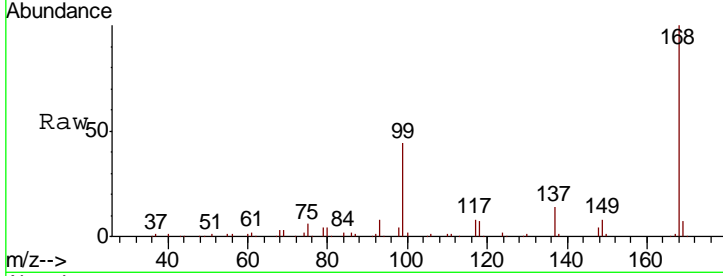




#38
 Carbon Tetrachloride
 Concen: 6.695 ug/l
 RT: 7.66 min Scan# 1832
 Delta R.T. -0.11 min
 Lab File: VN056214.D
 Acq: 11 Jun 2019 11:26

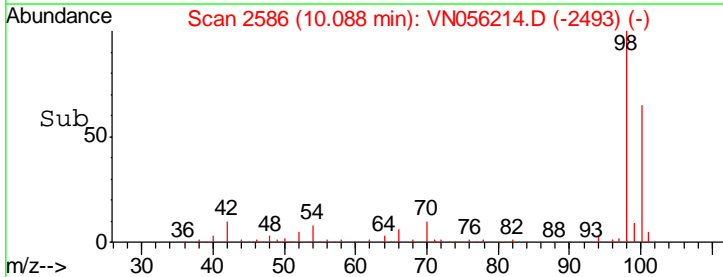
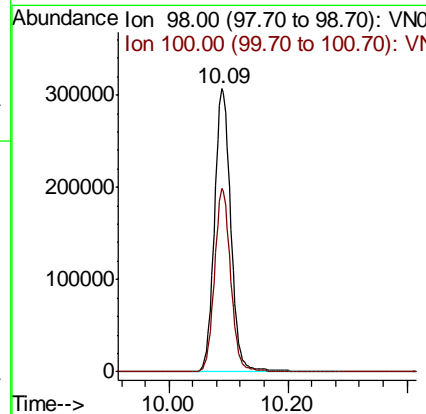
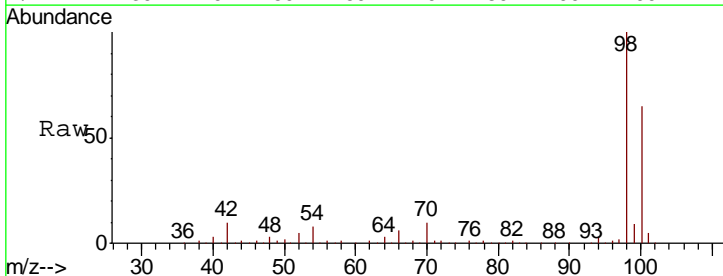
Instrument :
 MSVOA_N
 ClientSampled :
 BP-TT-MW202S-20190610

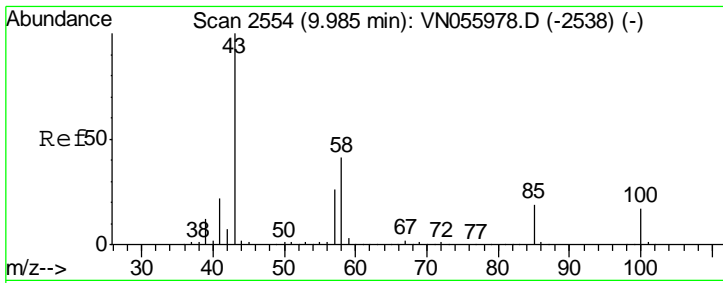
Tgt Ion	Resp	Lower	Upper
117	24316		
119	6.2	79.0	118.6#
121	0.0	24.7	37.1#



#50
 Toluene-d8
 Concen: 54.093 ug/l
 RT: 10.09 min Scan# 2586
 Delta R.T. 0.00 min
 Lab File: VN056214.D
 Acq: 11 Jun 2019 11:26

Tgt Ion	Resp	Lower	Upper
98	585074		
100	63.6	51.9	77.9

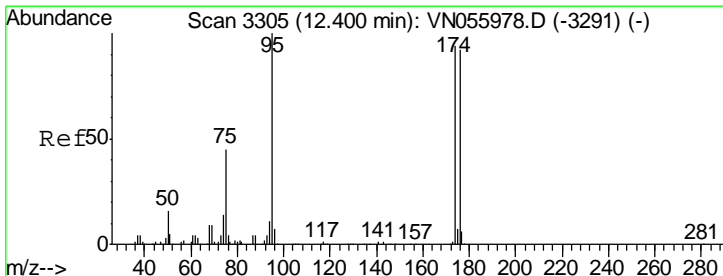
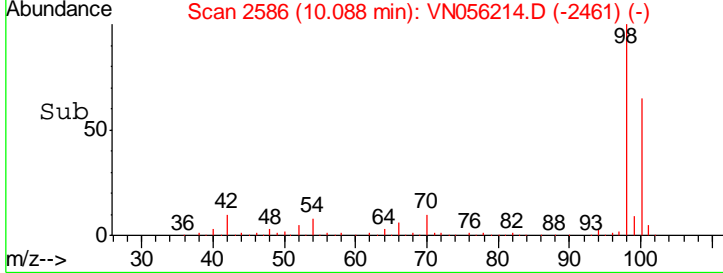
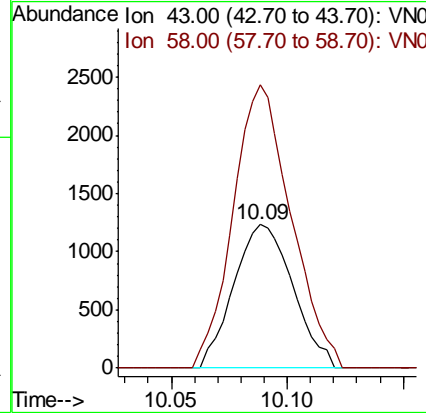
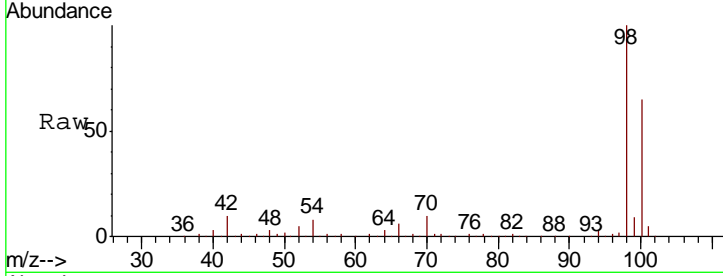




#51
 4-Methyl-2-Pentanone
 Concen: 0.616 ug/l
 RT: 10.09 min Scan# 2586
 Delta R.T. 0.10 min
 Lab File: VN056214.D
 Acq: 11 Jun 2019 11:26

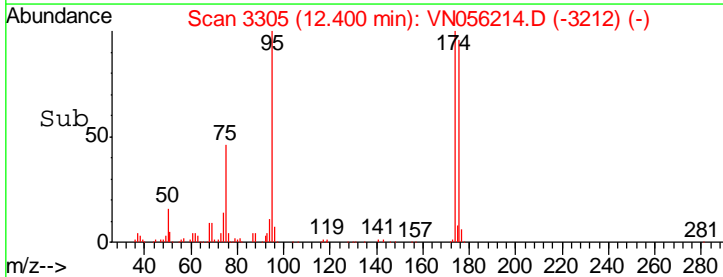
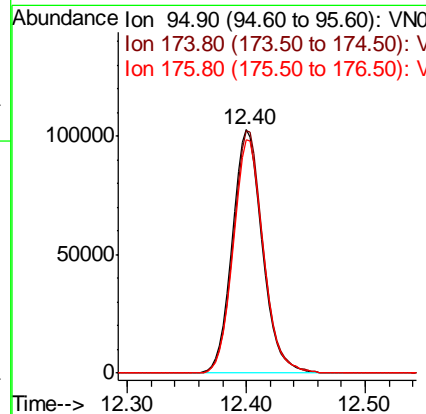
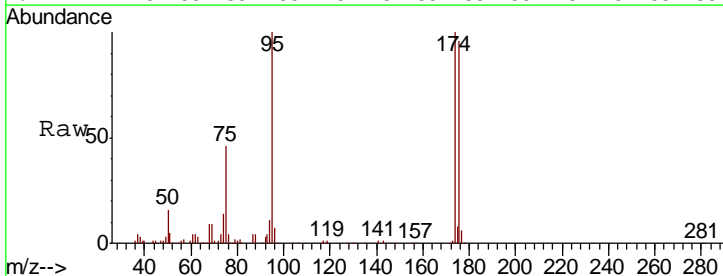
Instrument :
 MSVOA_N
 ClientSampled :
 BP-TT-MW202S-20190610

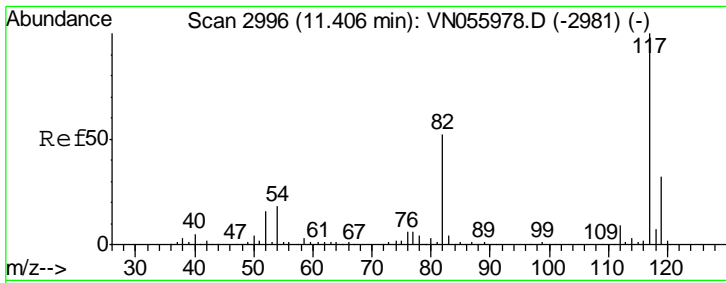
Tgt Ion	Resp	Lower	Upper
43	100		
58	193.1	32.1	48.1#



#62
 4-Bromofluorobenzene
 Concen: 48.821 ug/l
 RT: 12.40 min Scan# 3305
 Delta R.T. 0.00 min
 Lab File: VN056214.D
 Acq: 11 Jun 2019 11:26

Tgt Ion	Resp	Lower	Upper
95	100		
174	99.7	0.0	191.0
176	96.1	0.0	185.2

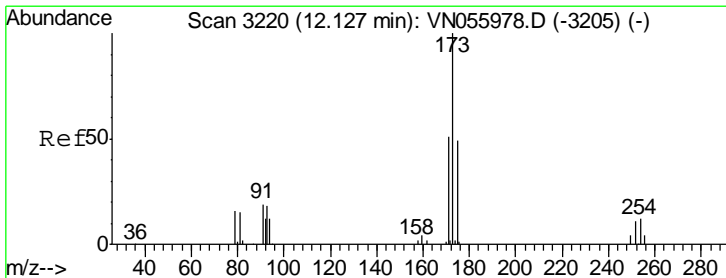
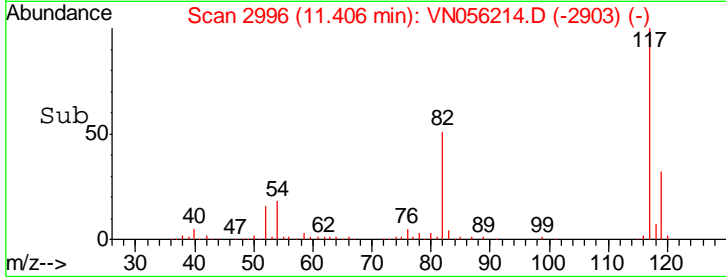
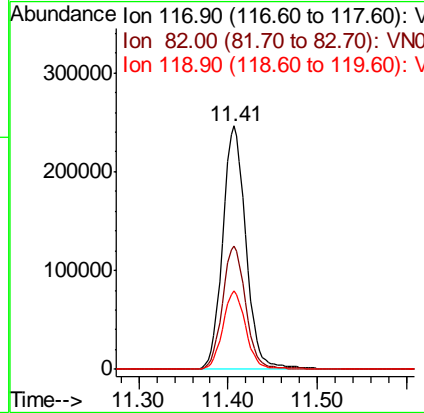
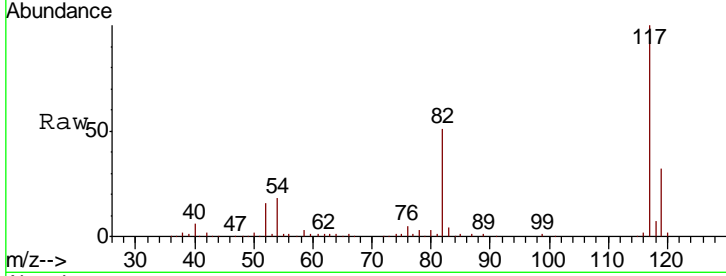




#63
 Chlorobenzene-d5
 Concen: 50.000 ug/l
 RT: 11.41 min Scan# 2996
 Delta R.T. 0.00 min
 Lab File: VN056214.D
 Acq: 11 Jun 2019 11:26

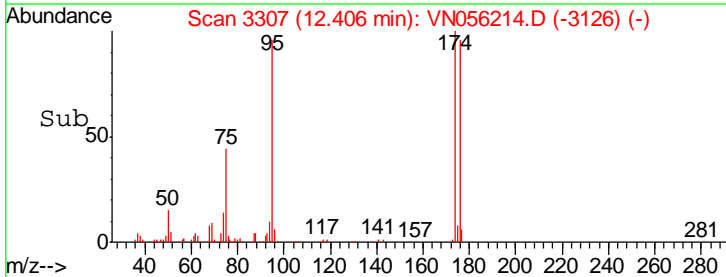
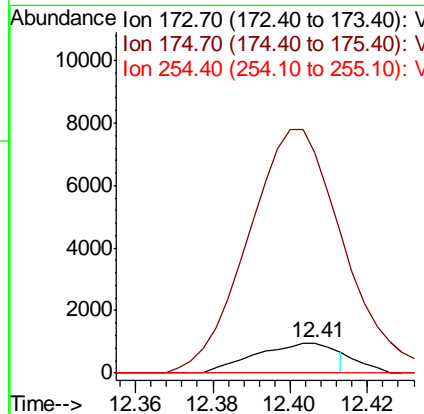
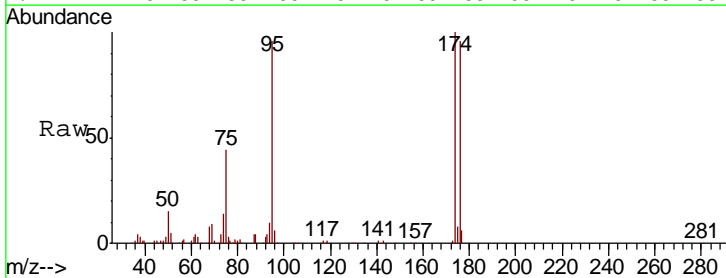
Instrument :
 MSVOA_N
 ClientSampled :
 BP-TT-MW202S-20190610

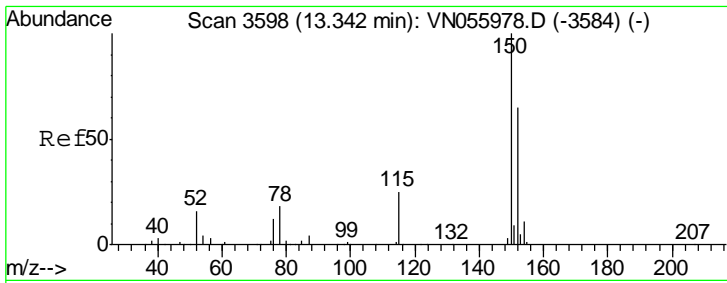
Tgt Ion	Resp	Lower	Upper
117	444189		
82	50.7	41.8	62.8
119	32.2	25.4	38.0



#71
 Bromoform
 Concen: 3.252 ug/l
 RT: 12.41 min Scan# 3307
 Delta R.T. 0.28 min
 Lab File: VN056214.D
 Acq: 11 Jun 2019 11:26

Tgt Ion	Resp	Lower	Upper
173	1382		
175	836.3	24.3	72.8#
254	0.0	0.0	0.0

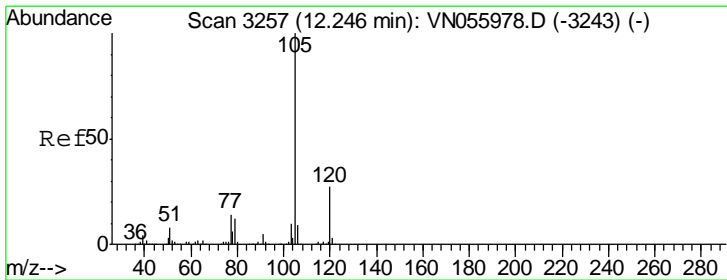
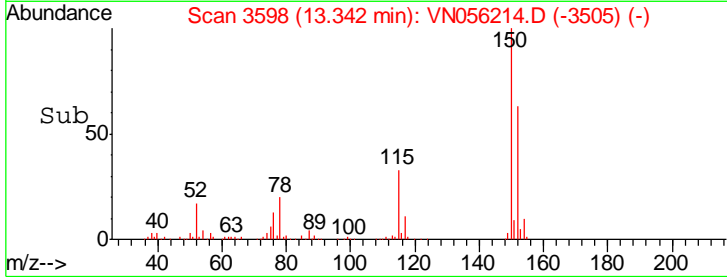
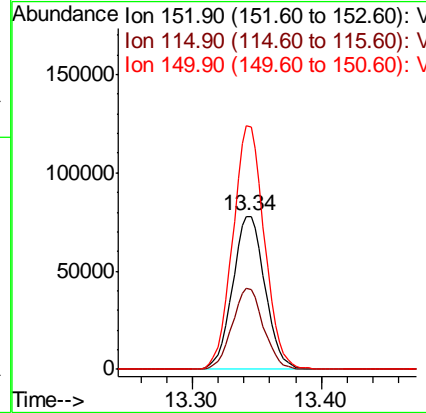
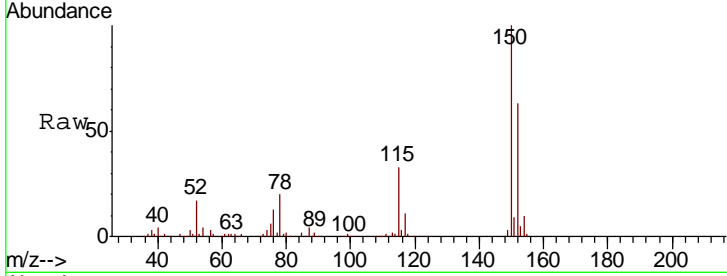




#72
 1,4-Dichlorobenzene-d4
 Concen: 50.000 ug/l
 RT: 13.34 min Scan# 3598
 Delta R.T. 0.00 min
 Lab File: VN056214.D
 Acq: 11 Jun 2019 11:26

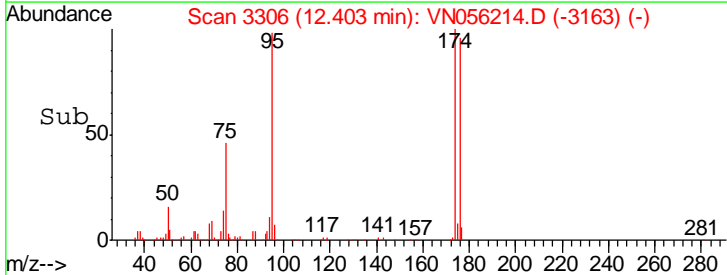
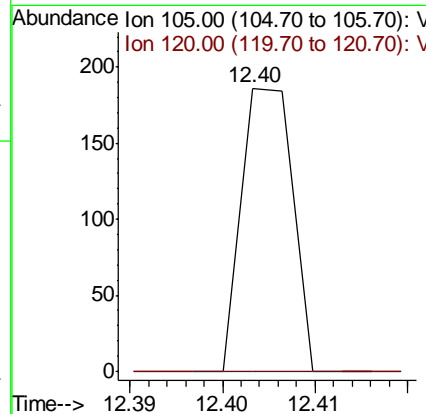
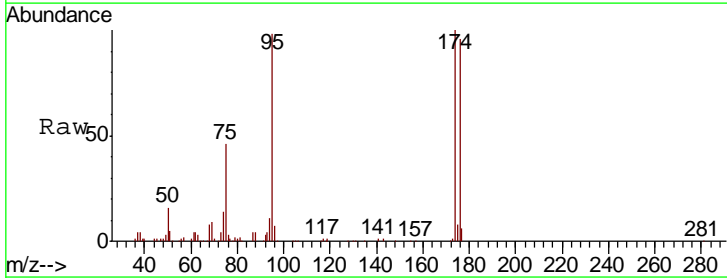
Instrument : MSVOA_N
 ClientSampled : BP-TT-MW202S-20190610

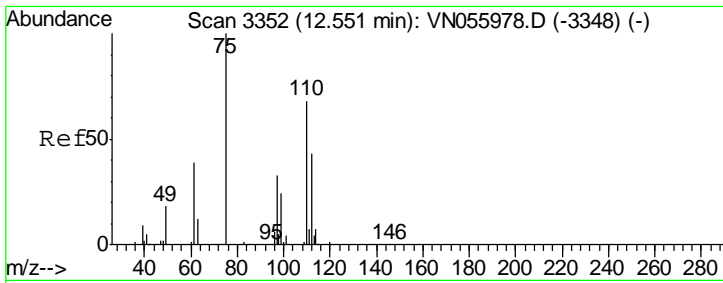
Tgt Ion	Resp	Lower	Upper
152	100		
115	51.3	27.0	81.0
150	155.8	0.0	343.2



#73
 Isopropylbenzene
 Concen: Below Cal
 RT: 12.40 min Scan# 3306
 Delta R.T. 0.16 min
 Lab File: VN056214.D
 Acq: 11 Jun 2019 11:26

Tgt Ion	Resp	Lower	Upper
105	100		
120	0.0	13.6	40.7#

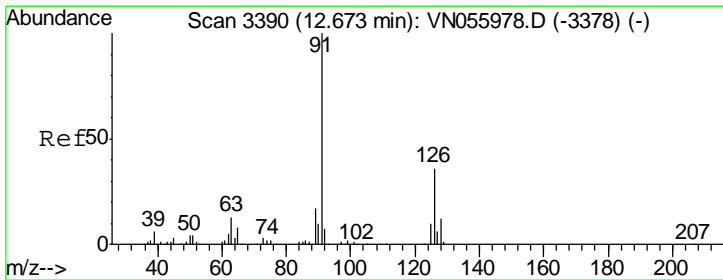
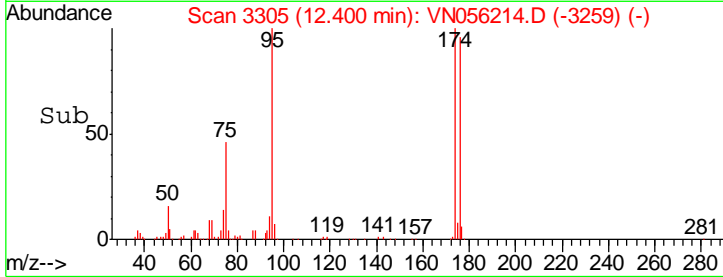
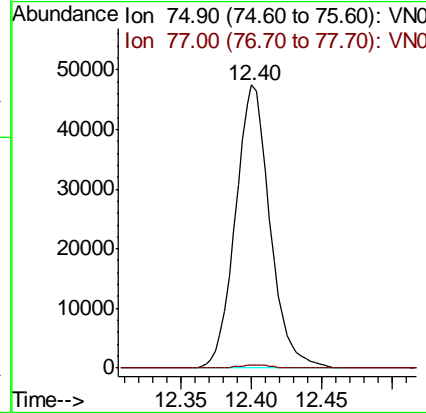
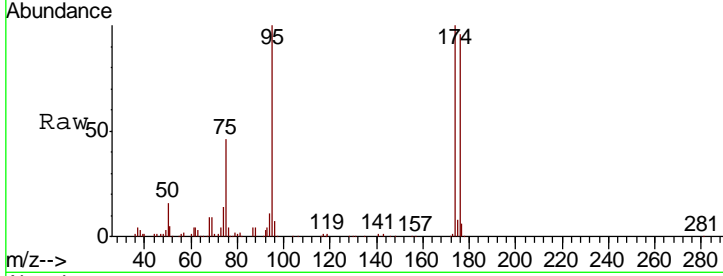




#76
 1,2,3-Trichloropropane
 Concen: 32.747 ug/l
 RT: 12.40 min Scan# 3305
 Delta R.T. -0.15 min
 Lab File: VN056214.D
 Acq: 11 Jun 2019 11:26

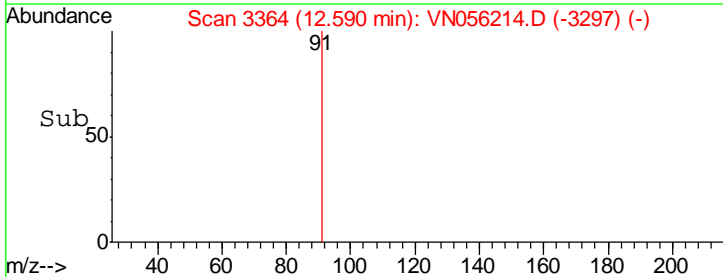
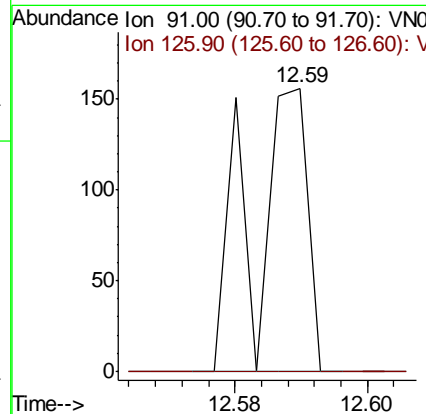
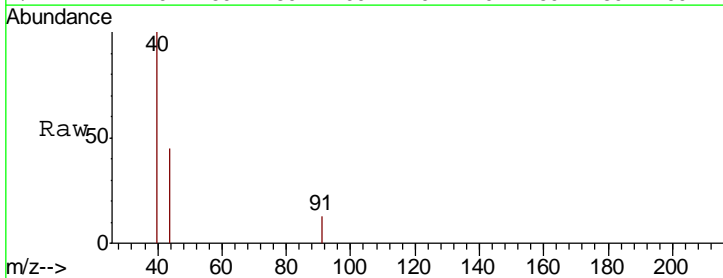
Instrument :
 MSVOA_N
 ClientSampled :
 BP-TT-MW202S-20190610

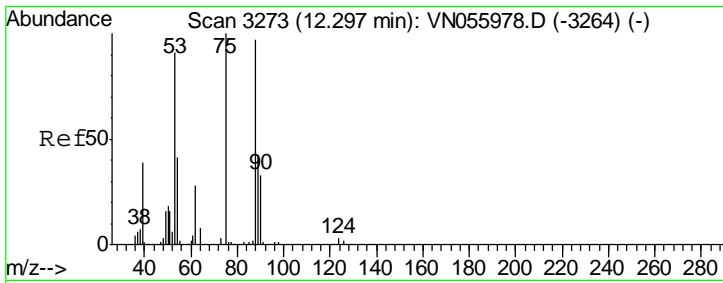
Tgt Ion: 75 Resp: 81391
 Ion Ratio Lower Upper
 75 100
 77 1.1 0.0 0.0#



#79
 2-Chlorotoluene
 Concen: Below Cal
 RT: 12.59 min Scan# 3364
 Delta R.T. -0.08 min
 Lab File: VN056214.D
 Acq: 11 Jun 2019 11:26

Tgt Ion: 91 Resp: 89
 Ion Ratio Lower Upper
 91 100
 126 0.0 18.1 54.4#

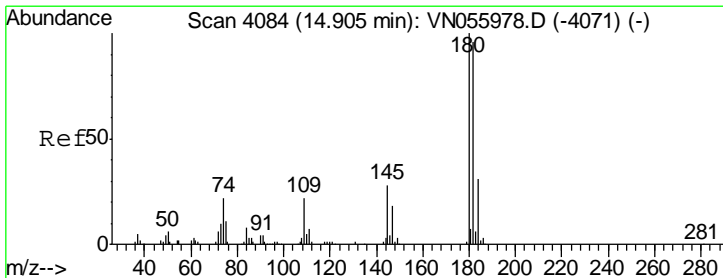
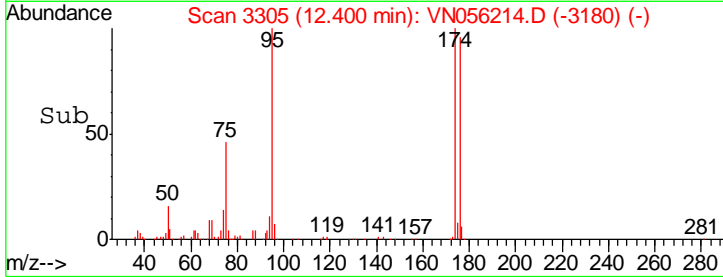
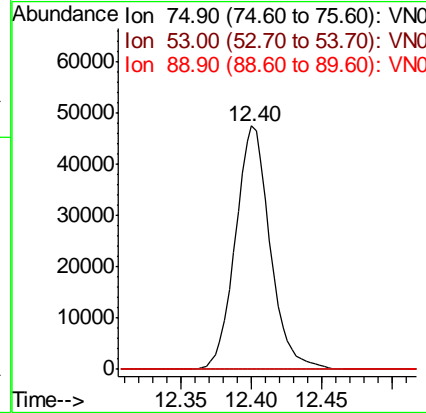
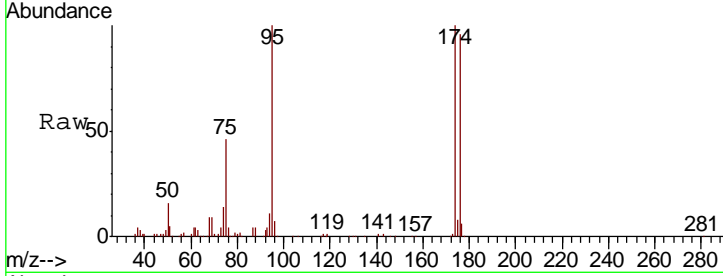




#81
 trans-1,4-Dichloro-2-butene
 Concen: 109.055 ug/l
 RT: 12.40 min Scan# 3305
 Delta R.T. 0.10 min
 Lab File: VN056214.D
 Acq: 11 Jun 2019 11:26

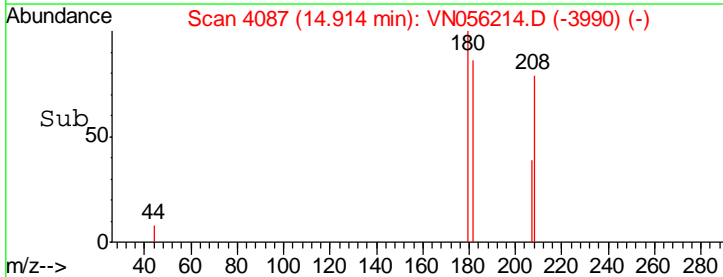
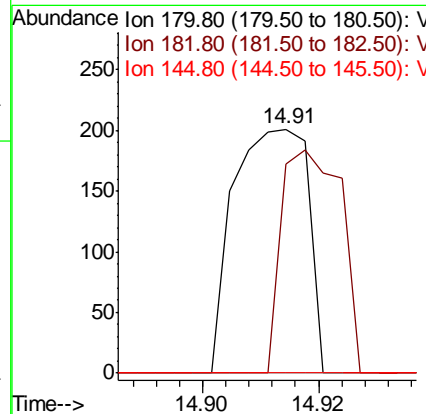
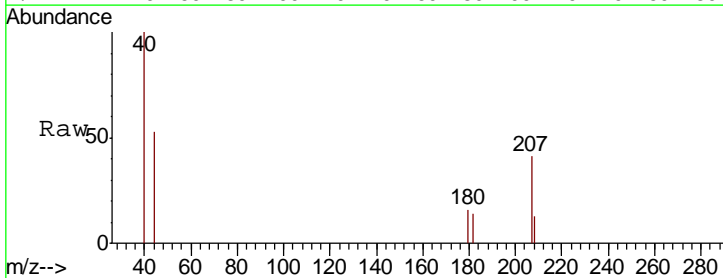
Instrument : MSVOA_N
 ClientSampled : BP-TT-MW202S-20190610

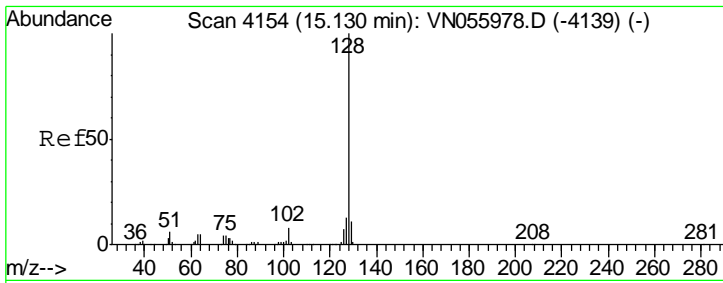
Tgt Ion	Resp	Lower	Upper
75	100		
53	0.0	68.1	102.1#
89	0.0	36.9	55.3#



#93
 1,2,4-Trichlorobenzene
 Concen: 4.335 ug/l
 RT: 14.91 min Scan# 4087
 Delta R.T. 0.01 min
 Lab File: VN056214.D
 Acq: 11 Jun 2019 11:26

Tgt Ion	Resp	Lower	Upper
180	100		
182	73.7	48.3	144.9
145	0.0	14.0	41.9#





#95
 Naphthalene
 Concen: 4.955 ug/l
 RT: 15.13 min Scan# 4155
 Delta R.T. 0.00 min
 Lab File: VN056214.D
 Acq: 11 Jun 2019 11:26

Instrument : MSVOA_N
 ClientSampled : BP-TT-MW202S-20190610

Tot Ion	Ratio	Lower	Upper
128	100		
127	12.9	10.3	15.5
129	9.6	8.7	13.1

