

Data Path : Z:\VOASRV\HPCHEM1\MSVOA N\DATA\VN061119\
 Data File : VN056223.D
 Acq On : 11 Jun 2019 15:12
 Operator : JC/SP
 Sample : K3284-12
 Misc : 5.00mL/MSVOA N/WATER
 ALS Vial : 16 Sample Multiplier: 1

Instrument :
 MSVOA_N
 ClientSampleId :
 BP-DUP06-20190609

Quant Time: Jun 12 06:34:15 2019
 Quant Method : Z:\VOASRV\HPCHEM1\MSVOA_N\METHODS\82N060419W.M
 Quant Title : SW846 8260
 QLast Update : Tue Jun 04 11:02:09 2019
 Response via : Initial Calibration

Internal Standards	R.T.	QIon	Response	Conc	Units	Dev(Min)
1) Pentafluorobenzene	7.66	168	308067	50.00	ug/l	0.00
34) 1,4-Difluorobenzene	8.59	114	452594	50.00	ug/l	0.00
63) Chlorobenzene-d5	11.41	117	440839	50.00	ug/l	0.00
72) 1,4-Dichlorobenzene-d4	13.34	152	129850	50.00	ug/l	0.00

System Monitoring Compounds

33) 1,2-Dichloroethane-d4	8.03	65	160148	52.36	ug/l	0.00
Spiked Amount	50.000		Recovery	=	104.72%	
35) Dibromofluoromethane	7.59	113	148302	53.41	ug/l	0.00
Spiked Amount	50.000		Recovery	=	106.82%	
50) Toluene-d8	10.09	98	581081	54.38	ug/l	0.00
Spiked Amount	50.000		Recovery	=	108.76%	
62) 4-Bromofluorobenzene	12.40	95	176320	48.52	ug/l	0.00
Spiked Amount	50.000		Recovery	=	97.04%	

Target Compounds

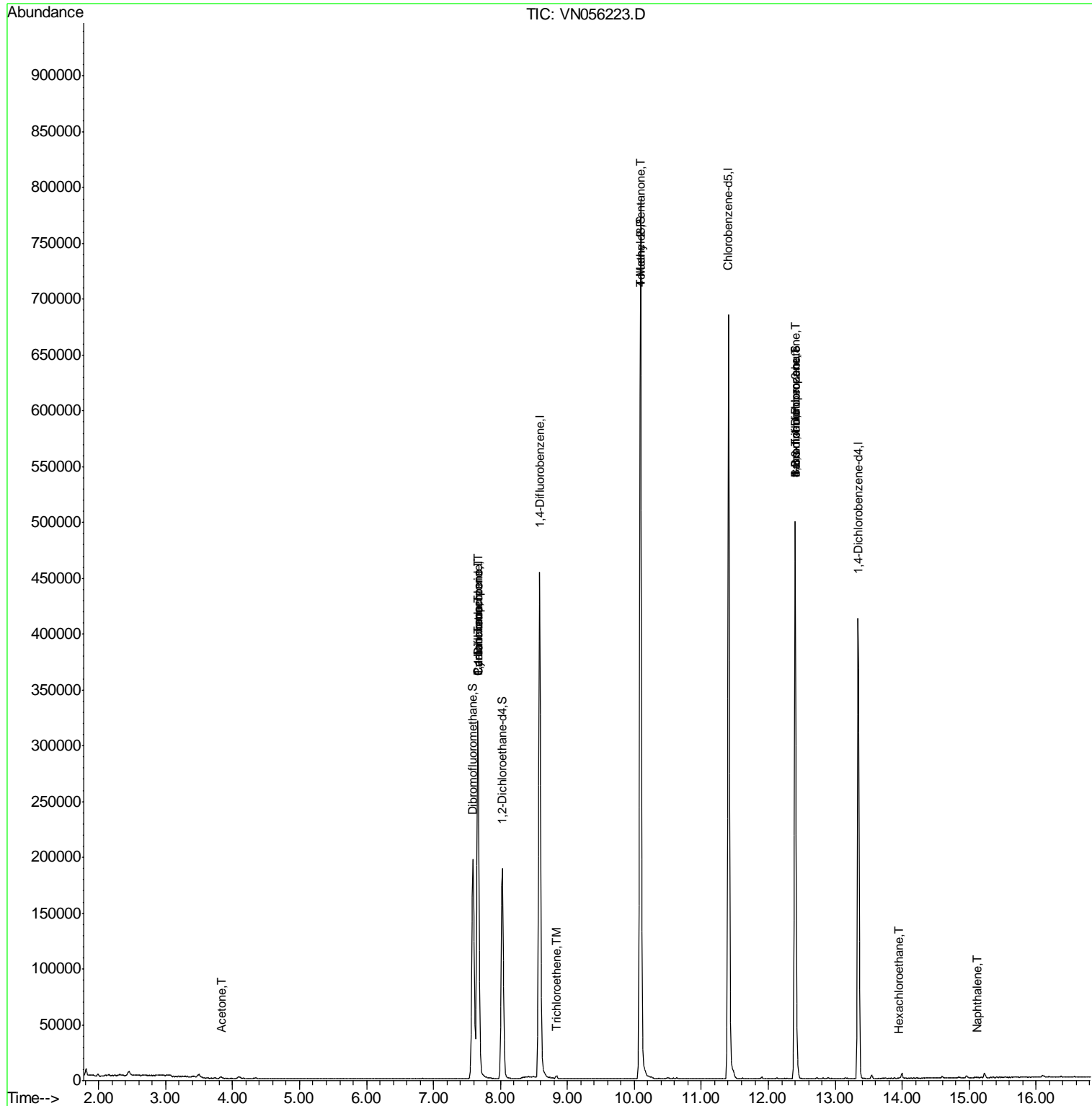
					Qvalue	
16) Acetone	3.82	43	2513	1.718	ug/l	95
18) Methyl Acetate	4.34	43	1171	Below Cal	#	51
31) Cyclohexane	7.66	56	4500	0.927	ug/l #	1
36) 1,1-Dichloropropene	7.66	75	17471	4.489	ug/l #	47
38) Carbon Tetrachloride	7.66	117	24403	6.801	ug/l #	15
44) Trichloroethene	8.84	130	1046	0.308	ug/l	86
51) 4-Methyl-2-Pentanone	10.09	43	2181	0.622	ug/l #	1
71) Bromoform	12.40	173	1351	3.244	ug/l #	1
73) Isopropylbenzene	12.25	105	615	Below Cal	#	48
76) 1,2,3-Trichloropropane	12.40	75	80073	33.513	ug/l #	100
79) 2-Chlorotoluene	12.59	91	113	Below Cal	#	39
81) trans-1,4-Dichloro-2-buten	12.40	75	80073	111.605	ug/l #	15
90) Hexachloroethane	13.95	117	305	0.232	ug/l #	1
95) Naphthalene	15.13	128	204	3.882	ug/l #	69

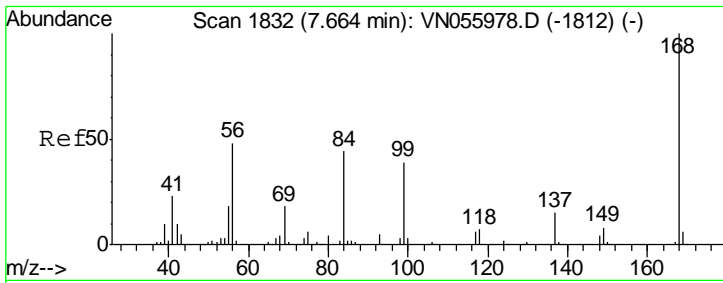
(#) = qualifier out of range (m) = manual integration (+) = signals summed

Data Path : Z:\VOASRV\HPCHEM1\MSVOA N\DATA\VN061119\
 Data File : VN056223.D
 Acq On : 11 Jun 2019 15:12
 Operator : JC/SP
 Sample : K3284-12
 Misc : 5.00mL/MSVOA N/WATER
 ALS Vial : 16 Sample Multiplier: 1

Instrument :
 MSVOA_N
 ClientSampleId :
 BP-DUP06-20190609

Quant Time: Jun 12 06:34:15 2019
 Quant Method : Z:\VOASRV\HPCHEM1\MSVOA_N\METHODS\82N060419W.M
 Quant Title : SW846 8260
 QLast Update : Tue Jun 04 11:02:09 2019
 Response via : Initial Calibration

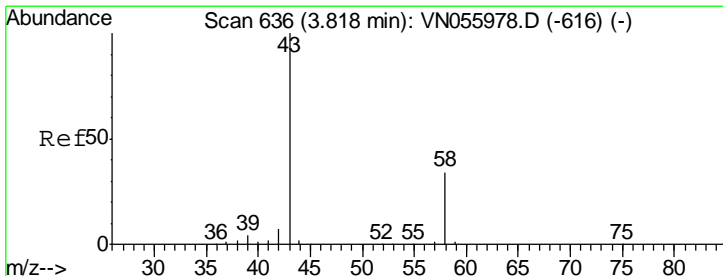
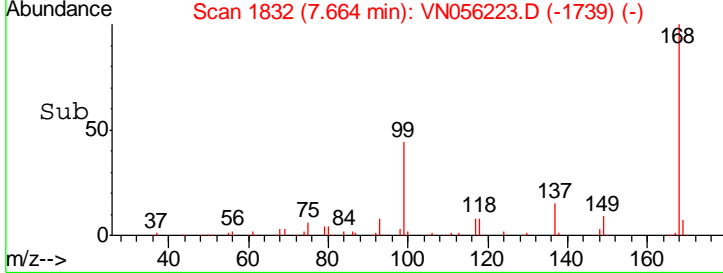
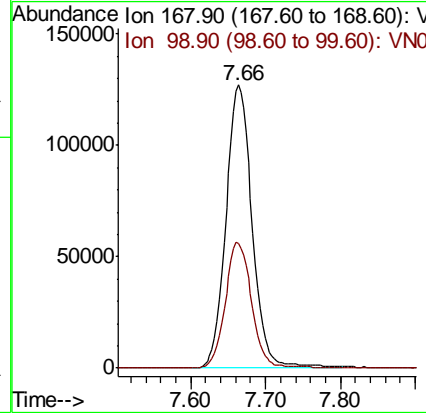
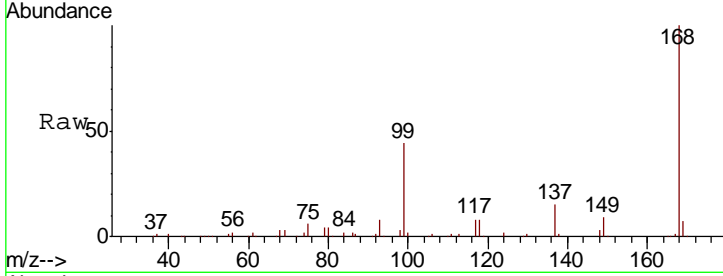




#1
 Pentafluorobenzene
 Concen: 50.000 ug/l
 RT: 7.66 min Scan# 1832
 Delta R.T. 0.00 min
 Lab File: VN056223.D
 Acq: 11 Jun 2019 15:12

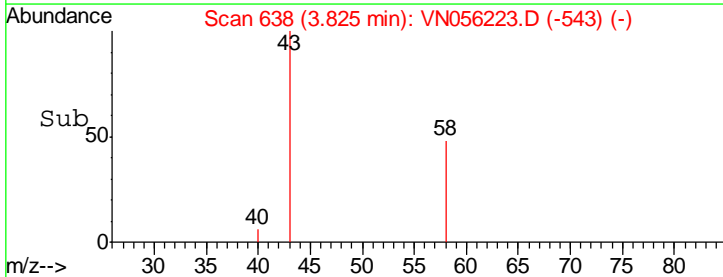
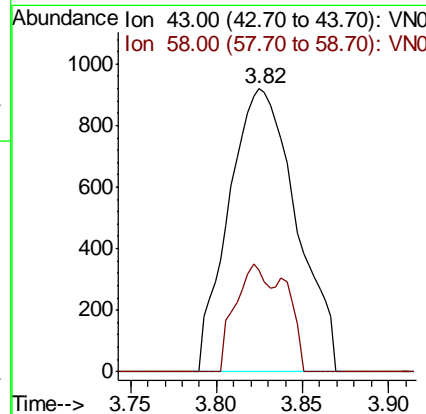
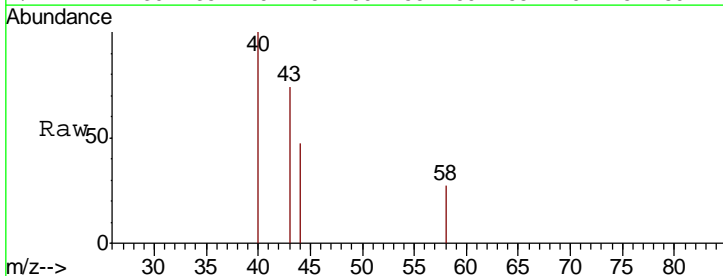
Instrument :
 MSVOA_N
 ClientSampled :
 BP-DUP06-20190609

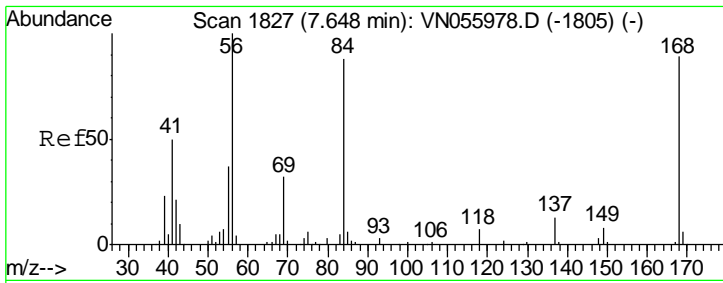
Tgt Ion: 168 Resp: 308067
 Ion Ratio Lower Upper
 168 100
 99 43.9 37.2 55.8



#16
 Acetone
 Concen: 1.718 ug/l
 RT: 3.82 min Scan# 638
 Delta R.T. 0.01 min
 Lab File: VN056223.D
 Acq: 11 Jun 2019 15:12

Tgt Ion: 43 Resp: 2513
 Ion Ratio Lower Upper
 43 100
 58 35.8 26.6 39.8

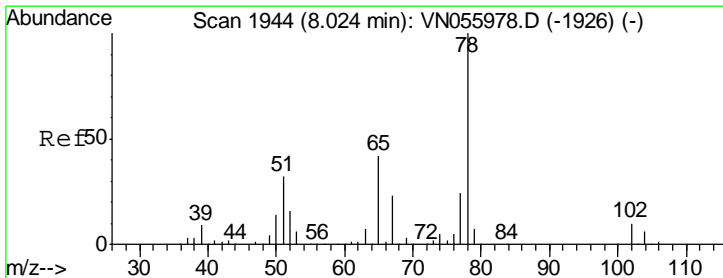
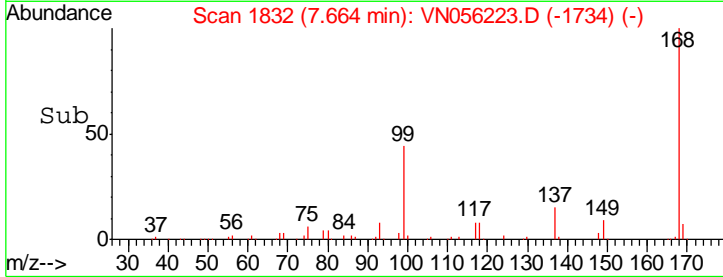
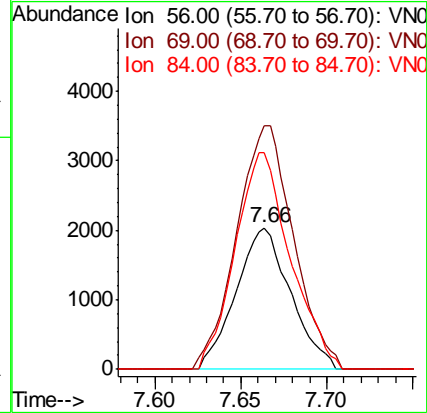
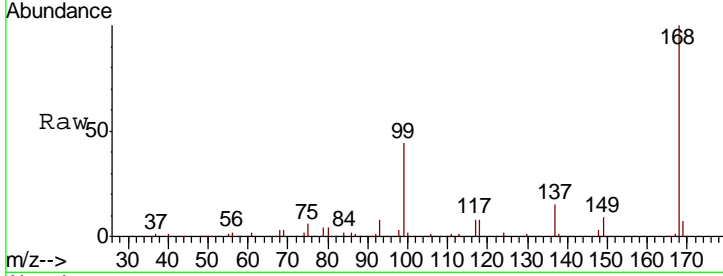




#31
 Cyclohexane
 Concen: 0.927 ug/l
 RT: 7.66 min Scan# 1832
 Delta R.T. 0.02 min
 Lab File: VN056223.D
 Acq: 11 Jun 2019 15:12

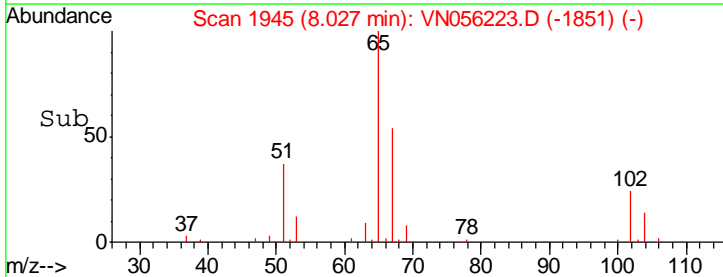
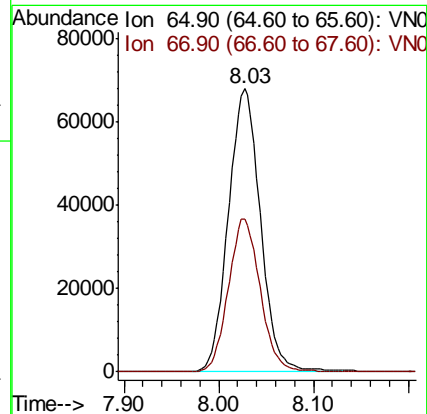
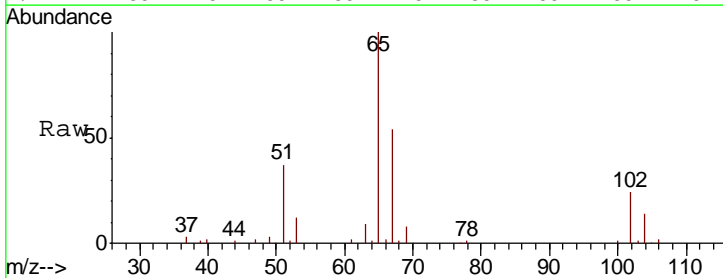
Instrument :
 MSVOA_N
 ClientSampleId :
 BP-DUP06-20190609

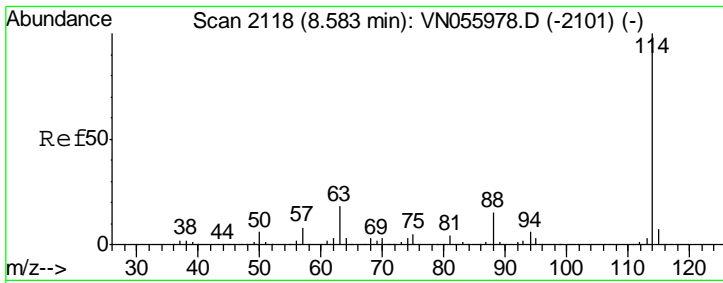
Tgt Ion	Resp	Lower	Upper
56	100		
69	172.2	25.6	38.4#
84	153.5	67.4	101.0#



#33
 1,2-Dichloroethane-d4
 Concen: 52.356 ug/l
 RT: 8.03 min Scan# 1945
 Delta R.T. 0.00 min
 Lab File: VN056223.D
 Acq: 11 Jun 2019 15:12

Tgt Ion	Resp	Lower	Upper
65	100		
67	53.5	0.0	109.2

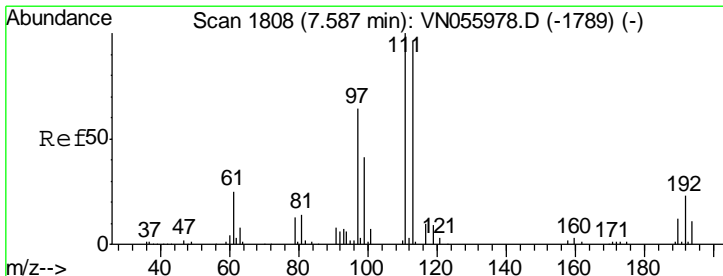
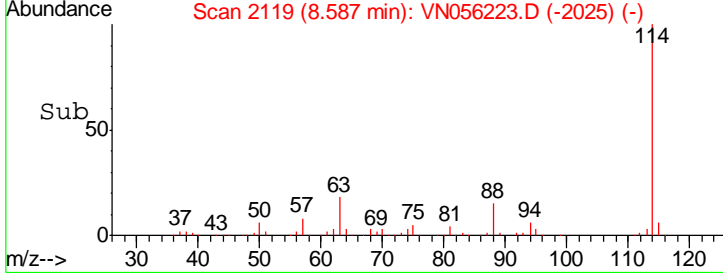
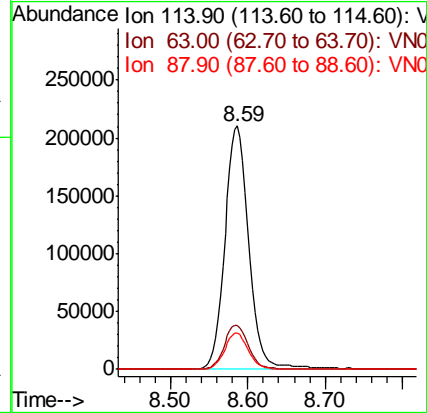
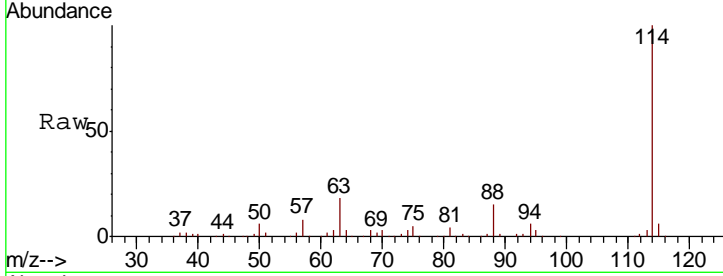




#34
 1,4-Difluorobenzene
 Concen: 50.000 ug/l
 RT: 8.59 min Scan# 2119
 Delta R.T. 0.00 min
 Lab File: VN056223.D
 Acq: 11 Jun 2019 15:12

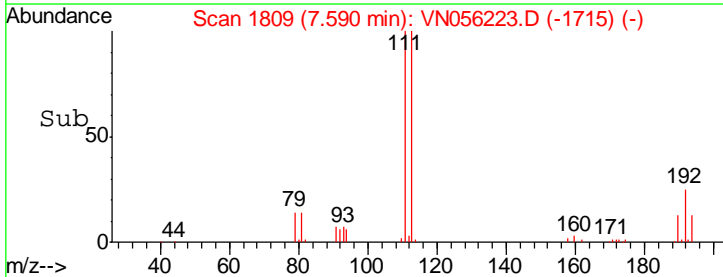
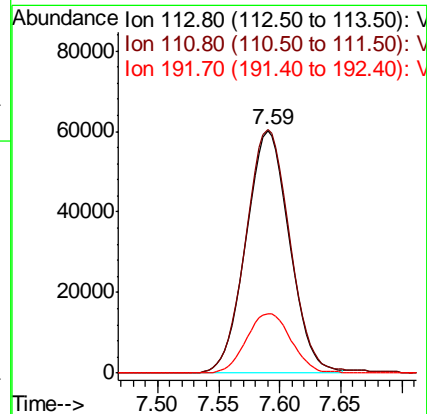
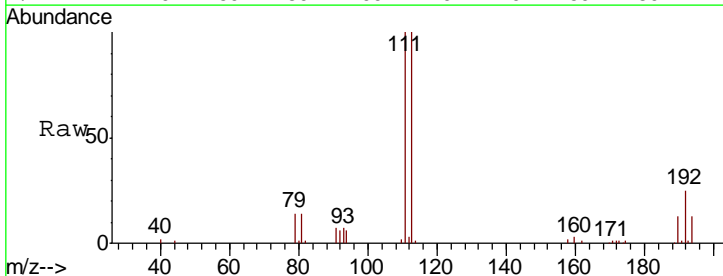
Instrument :
 MSVOA_N
 ClientSampled :
 BP-DUP06-20190609

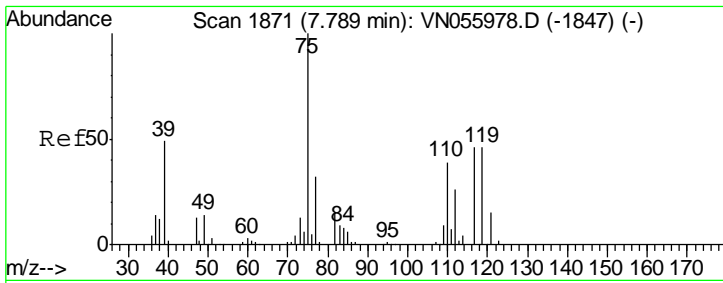
Tgt Ion	Resp	Lower	Upper
114	452594		
63	18.1	0.0	39.2
88	15.1	0.0	31.0



#35
 Dibromofluoromethane
 Concen: 53.407 ug/l
 RT: 7.59 min Scan# 1809
 Delta R.T. 0.00 min
 Lab File: VN056223.D
 Acq: 11 Jun 2019 15:12

Tgt Ion	Resp	Lower	Upper
113	148302		
111	102.7	81.9	122.9
192	25.5	19.5	29.3

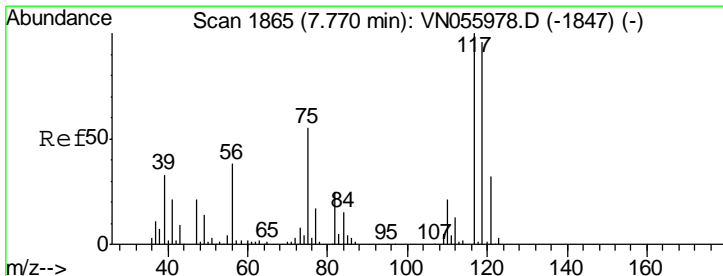
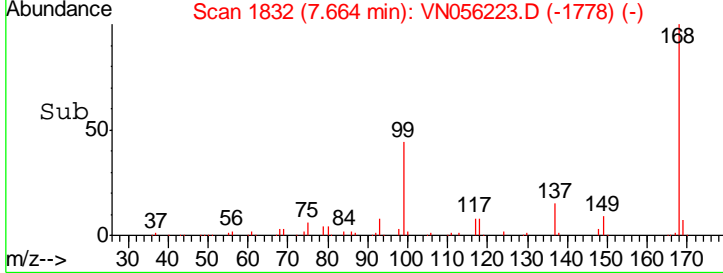
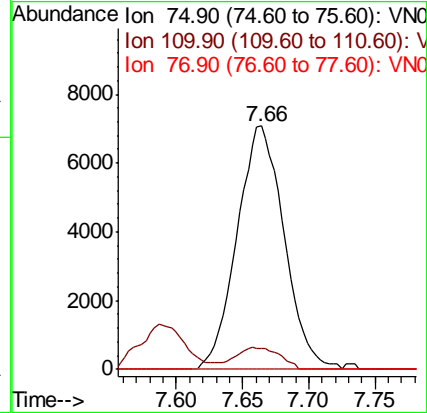
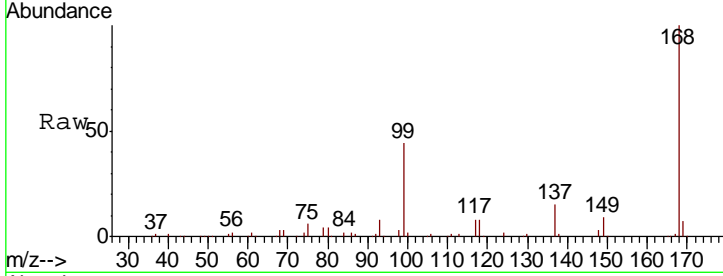




#36
 1,1-Dichloropropene
 Concen: 4.489 ug/l
 RT: 7.66 min Scan# 1832
 Delta R.T. -0.13 min
 Lab File: VN056223.D
 Acq: 11 Jun 2019 15:12

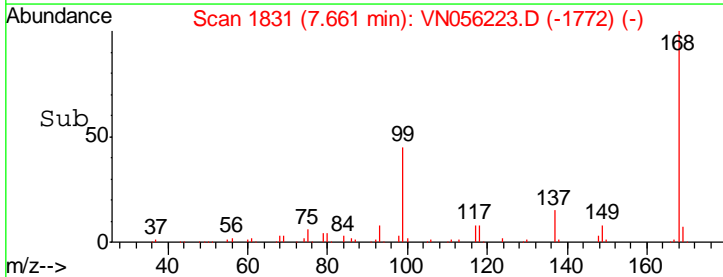
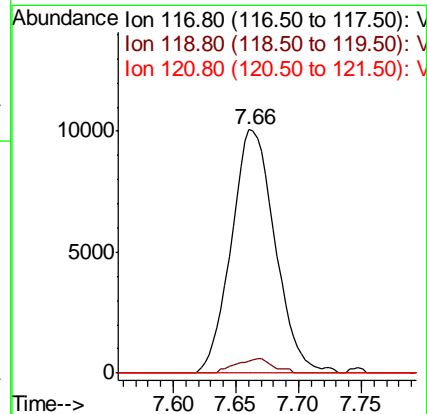
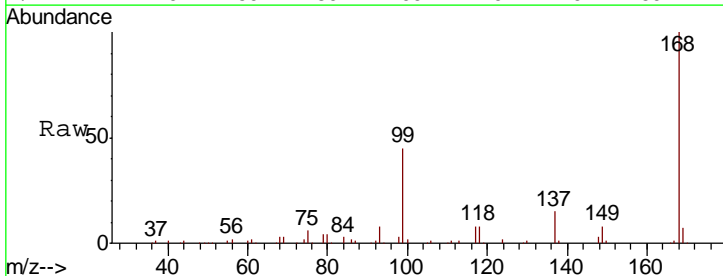
Instrument :
 MSVOA_N
 ClientSampleId :
 BP-DUP06-20190609

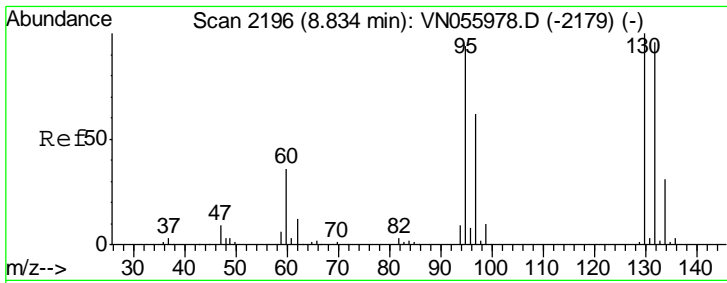
Tgt Ion	Resp	Lower	Upper
75	17471		
110	8.4	19.0	57.0#
77	0.0	25.1	37.7#



#38
 Carbon Tetrachloride
 Concen: 6.801 ug/l
 RT: 7.66 min Scan# 1831
 Delta R.T. -0.11 min
 Lab File: VN056223.D
 Acq: 11 Jun 2019 15:12

Tgt Ion	Resp	Lower	Upper
117	24403		
119	5.0	79.0	118.6#
121	0.0	24.7	37.1#

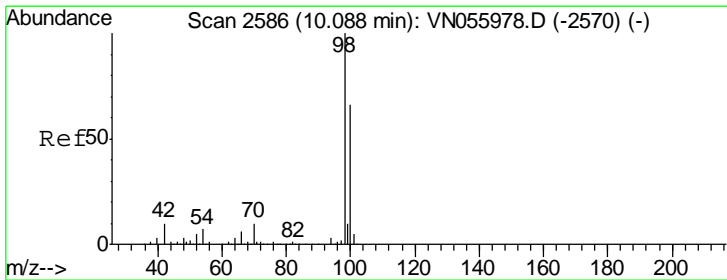
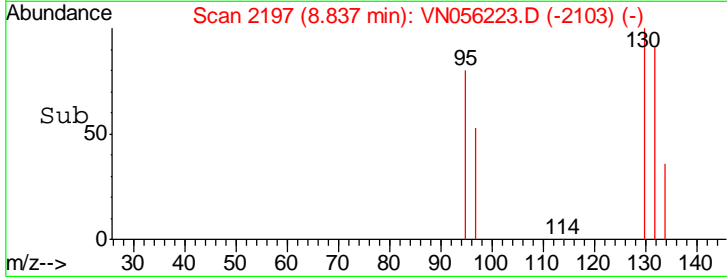
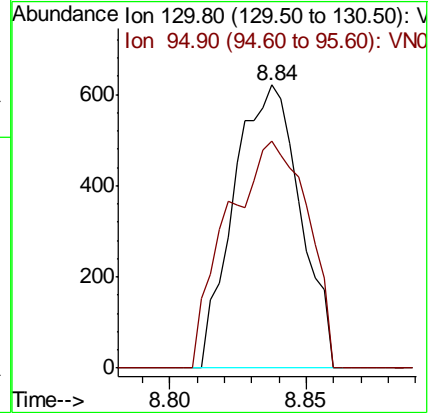
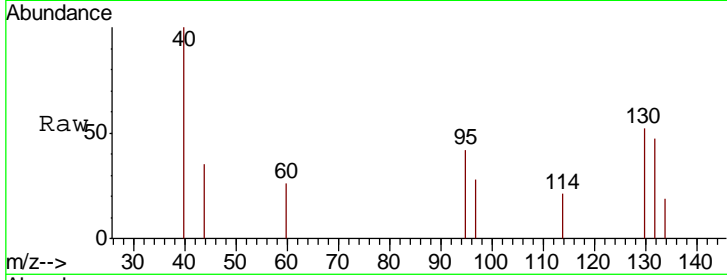




#44
 Trichloroethene
 Concen: 0.308 ug/l
 RT: 8.84 min Scan# 2197
 Delta R.T. 0.00 min
 Lab File: VN056223.D
 Acq: 11 Jun 2019 15:12

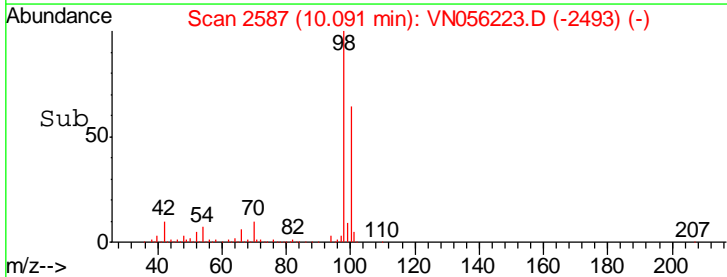
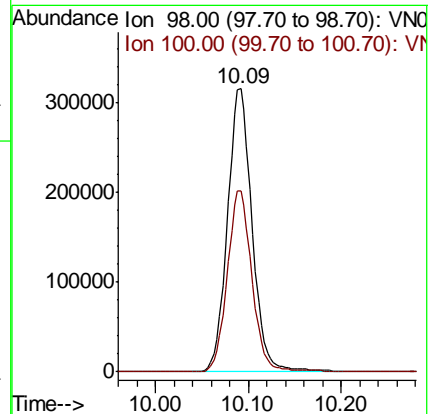
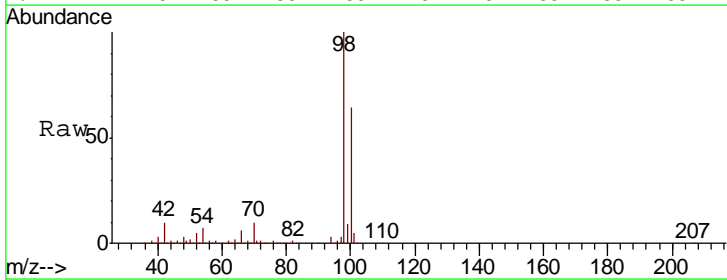
Instrument :
 MSVOA_N
 ClientSampled :
 BP-DUP06-20190609

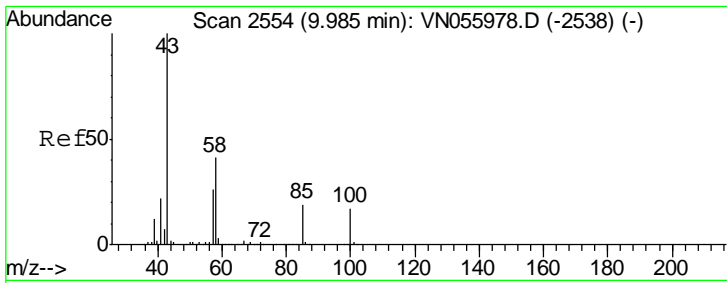
Tgt Ion: 130 Resp: 1046
 Ion Ratio Lower Upper
 130 100
 95 80.2 0.0 188.0



#50
 Toluene-d8
 Concen: 54.382 ug/l
 RT: 10.09 min Scan# 2587
 Delta R.T. 0.00 min
 Lab File: VN056223.D
 Acq: 11 Jun 2019 15:12

Tgt Ion: 98 Resp: 581081
 Ion Ratio Lower Upper
 98 100
 100 64.5 51.9 77.9

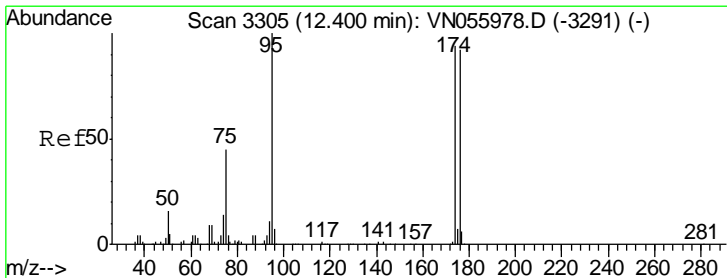
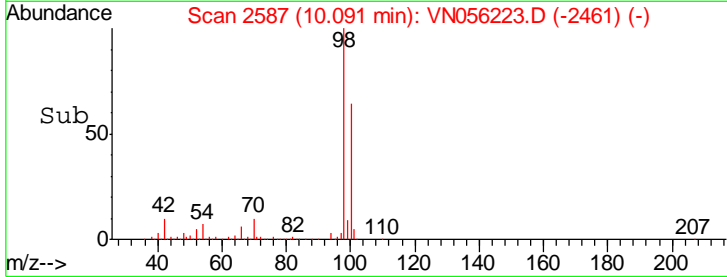
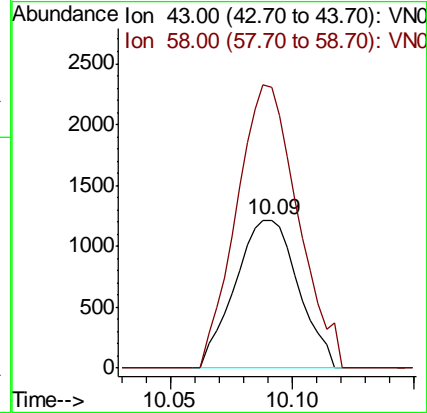
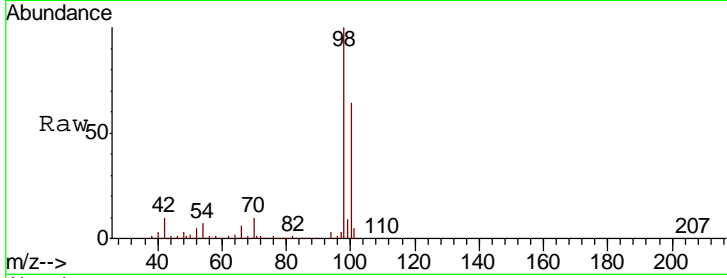




#51
 4-Methyl-2-Pentanone
 Concen: 0.622 ug/l
 RT: 10.09 min Scan# 2587
 Delta R.T. 0.11 min
 Lab File: VN056223.D
 Acq: 11 Jun 2019 15:12

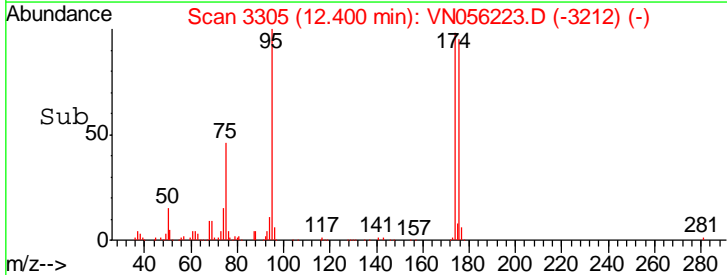
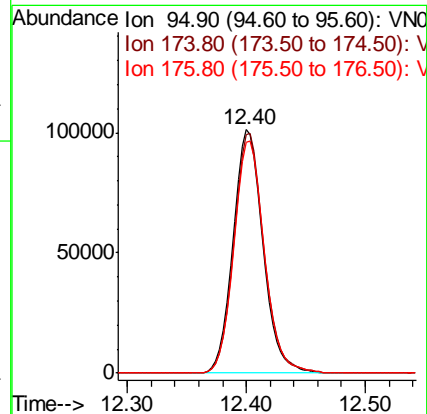
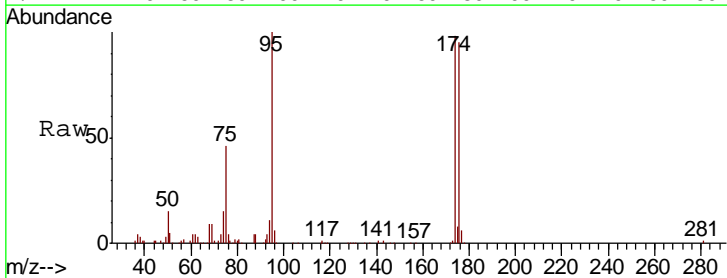
Instrument :
 MSVOA_N
 ClientSampled :
 BP-DUP06-20190609

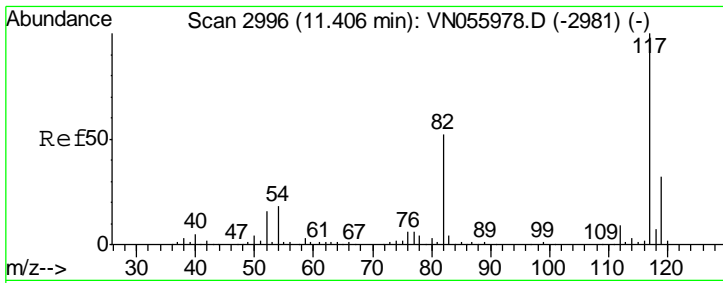
Tgt Ion: 43 Resp: 2181
 Ion Ratio Lower Upper
 43 100
 58 185.7 32.1 48.1#



#62
 4-Bromofluorobenzene
 Concen: 48.523 ug/l
 RT: 12.40 min Scan# 3305
 Delta R.T. 0.00 min
 Lab File: VN056223.D
 Acq: 11 Jun 2019 15:12

Tgt Ion: 95 Resp: 176320
 Ion Ratio Lower Upper
 95 100
 174 99.3 0.0 191.0
 176 96.9 0.0 185.2

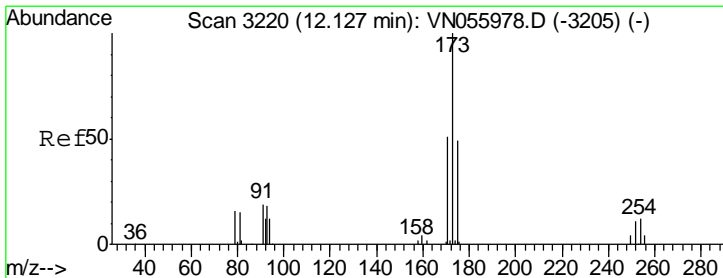
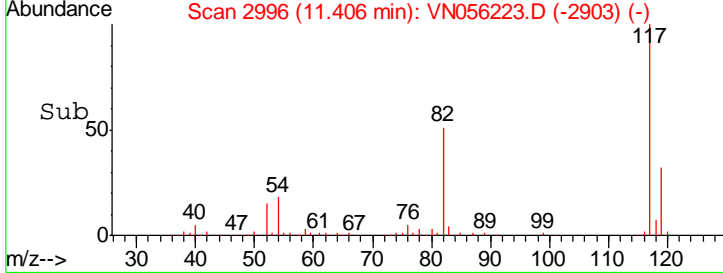
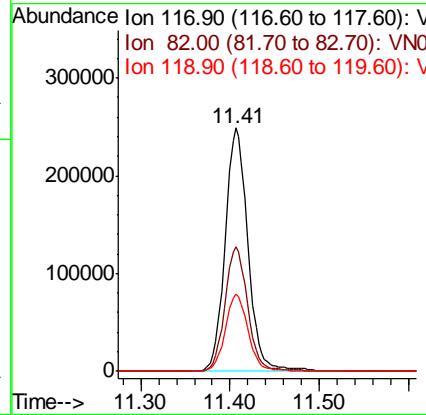
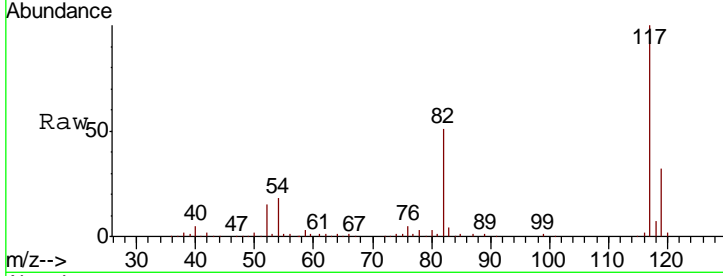




#63
 Chlorobenzene-d5
 Concen: 50.000 ug/l
 RT: 11.41 min Scan# 2996
 Delta R.T. 0.00 min
 Lab File: VN056223.D
 Acq: 11 Jun 2019 15:12

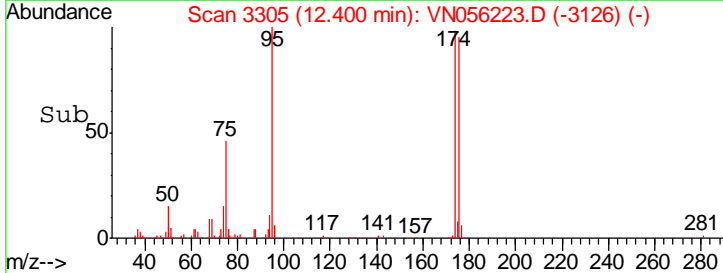
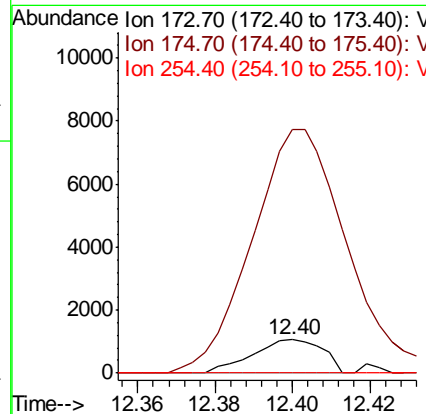
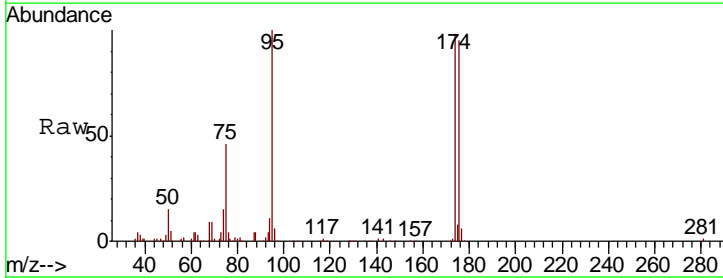
Instrument :
 MSVOA_N
 ClientSampled :
 BP-DUP06-20190609

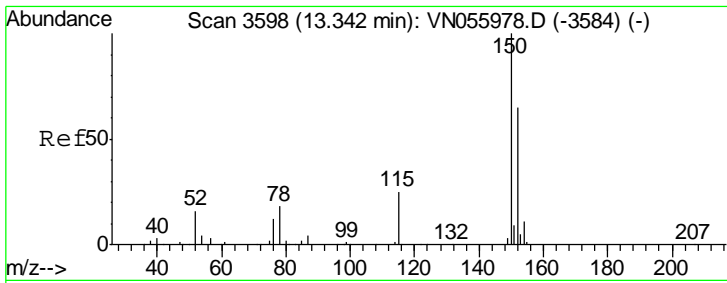
Tgt Ion	Resp	Lower	Upper
117	100		
82	51.0	41.8	62.8
119	31.5	25.4	38.0



#71
 Bromoform
 Concen: 3.244 ug/l
 RT: 12.40 min Scan# 3305
 Delta R.T. 0.27 min
 Lab File: VN056223.D
 Acq: 11 Jun 2019 15:12

Tgt Ion	Resp	Lower	Upper
173	100		
175	832.9	24.3	72.8#
254	0.0	0.0	0.0



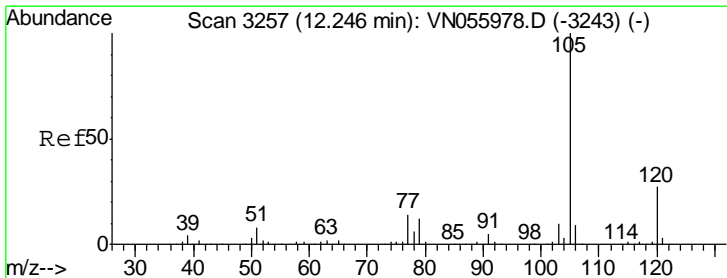
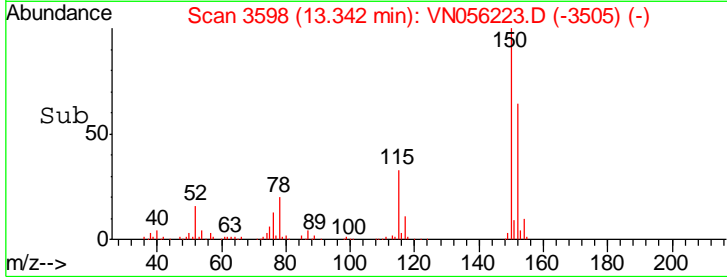
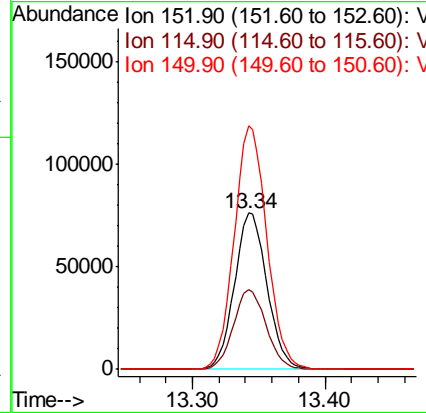
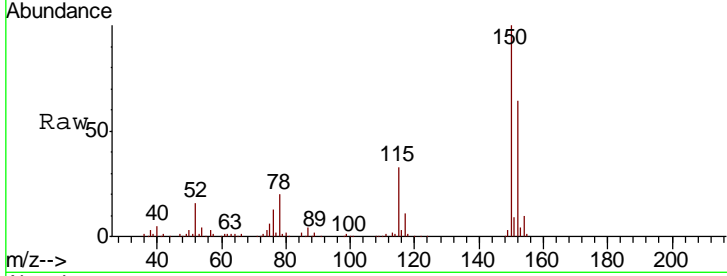


#72
 1,4-Dichlorobenzene-d4
 Concen: 50.000 ug/l
 RT: 13.34 min Scan# 3598
 Delta R.T. 0.00 min
 Lab File: VN056223.D
 Acq: 11 Jun 2019 15:12

Instrument :
 MSVOA_N
 ClientSampled :
 BP-DUP06-20190609

Tgt Ion:152 Resp: 129850

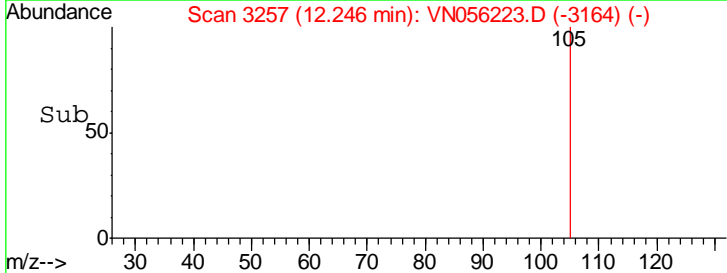
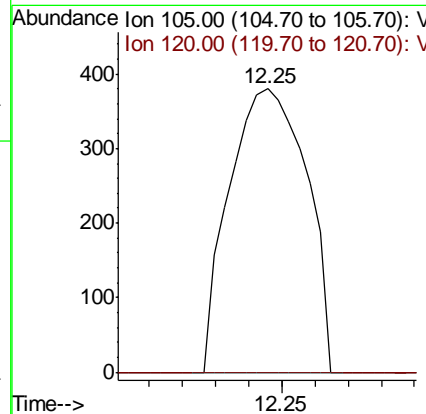
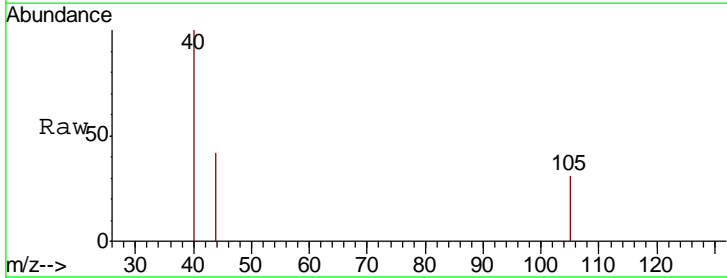
Ion	Ratio	Lower	Upper
152	100		
115	51.3	27.0	81.0
150	156.1	0.0	343.2

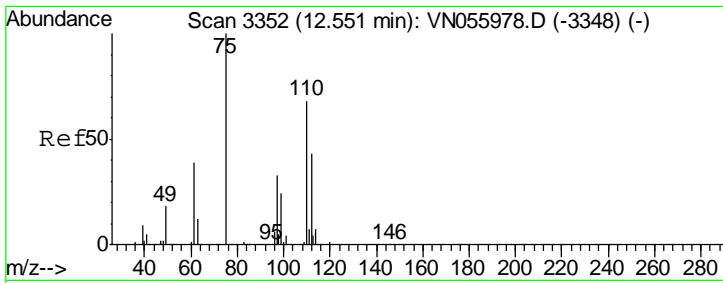


#73
 Isopropylbenzene
 Concen: Below Cal
 RT: 12.25 min Scan# 3257
 Delta R.T. 0.00 min
 Lab File: VN056223.D
 Acq: 11 Jun 2019 15:12

Tgt Ion:105 Resp: 615

Ion	Ratio	Lower	Upper
105	100		
120	0.0	13.6	40.7#

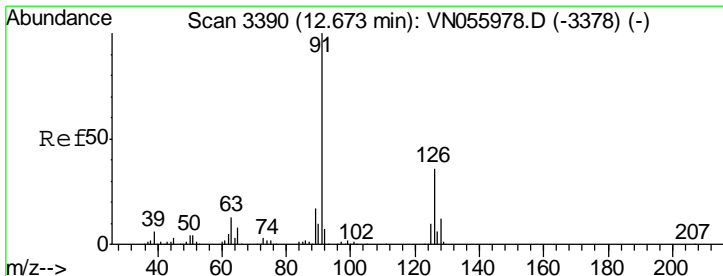
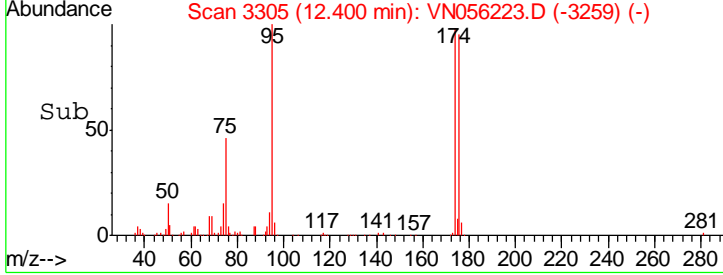
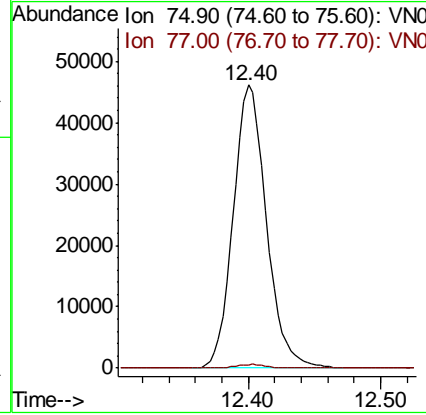
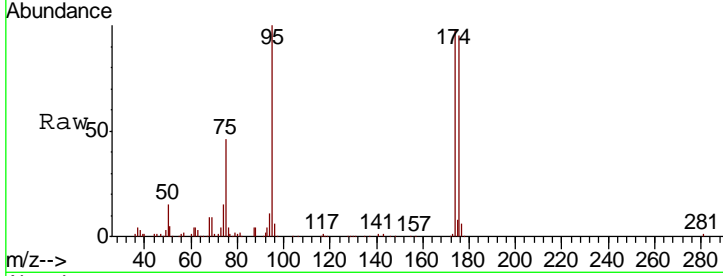




#76
 1,2,3-Trichloropropane
 Concen: 33.513 ug/l
 RT: 12.40 min Scan# 3305
 Delta R.T. -0.15 min
 Lab File: VN056223.D
 Acq: 11 Jun 2019 15:12

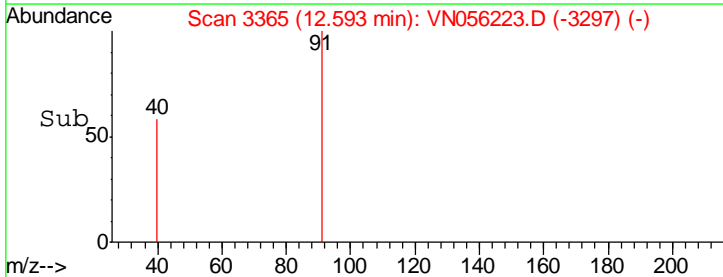
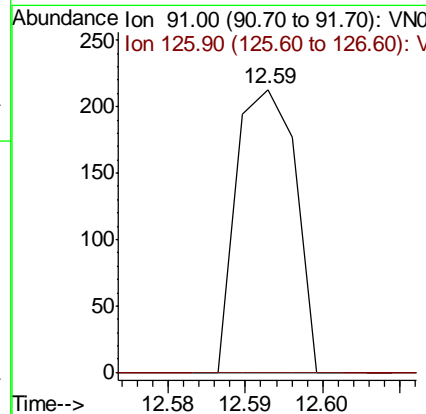
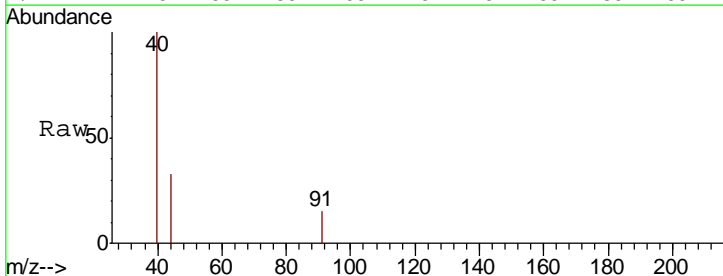
Instrument : MSVOA_N
 ClientSampled : BP-DUP06-20190609

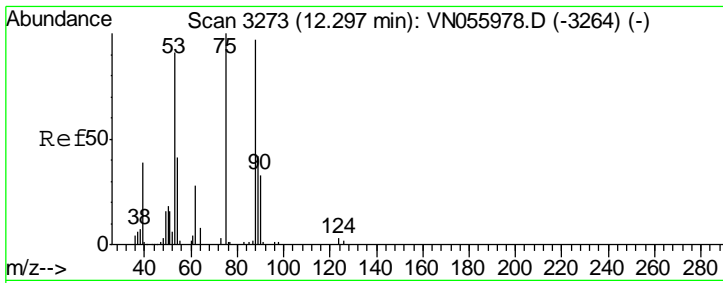
Tgt Ion: 75 Resp: 80073
 Ion Ratio Lower Upper
 75 100
 77 1.1 0.0 0.0#



#79
 2-Chlorotoluene
 Concen: Below Cal
 RT: 12.59 min Scan# 3365
 Delta R.T. -0.08 min
 Lab File: VN056223.D
 Acq: 11 Jun 2019 15:12

Tgt Ion: 91 Resp: 113
 Ion Ratio Lower Upper
 91 100
 126 0.0 18.1 54.4#

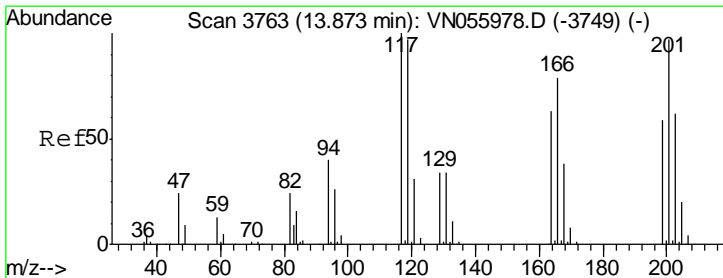
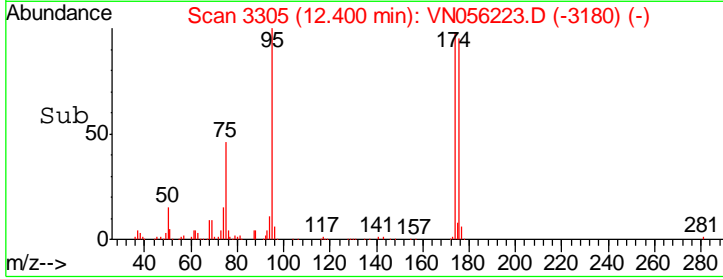
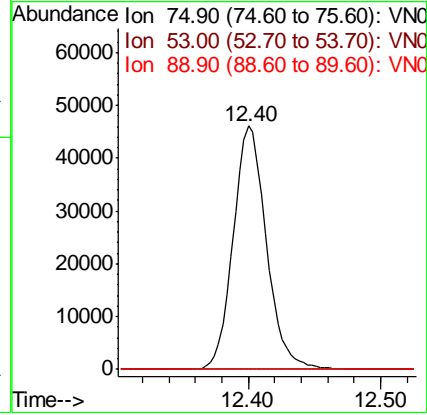
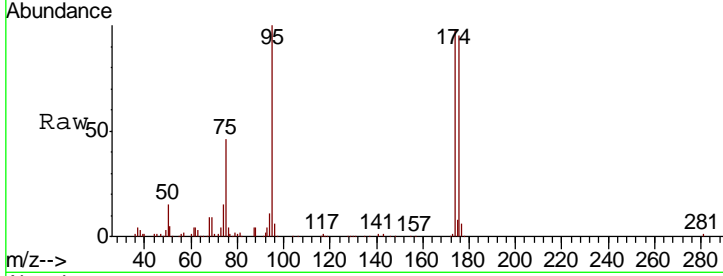




#81
 trans-1,4-Dichloro-2-butene
 Concen: 111.605 ug/l
 RT: 12.40 min Scan# 3305
 Delta R.T. 0.10 min
 Lab File: VN056223.D
 Acq: 11 Jun 2019 15:12

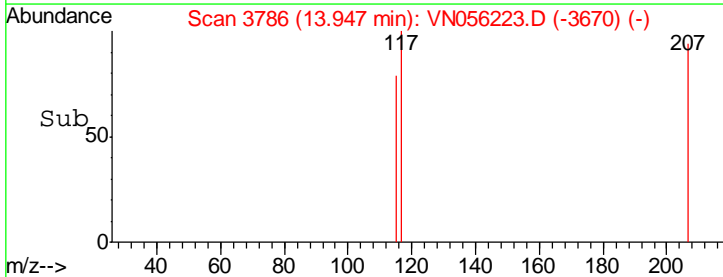
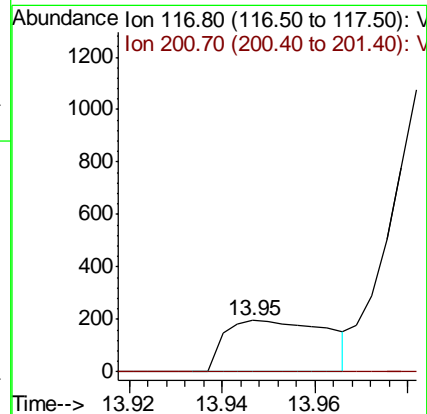
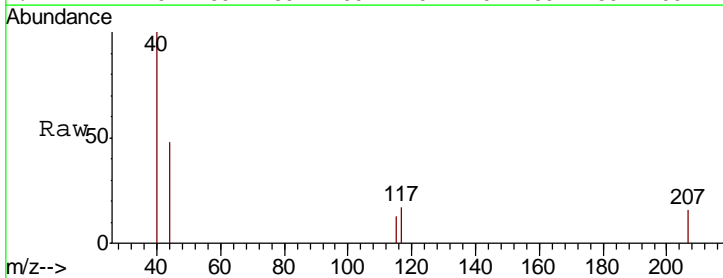
Instrument :
 MSVOA_N
 ClientSampled :
 BP-DUP06-20190609

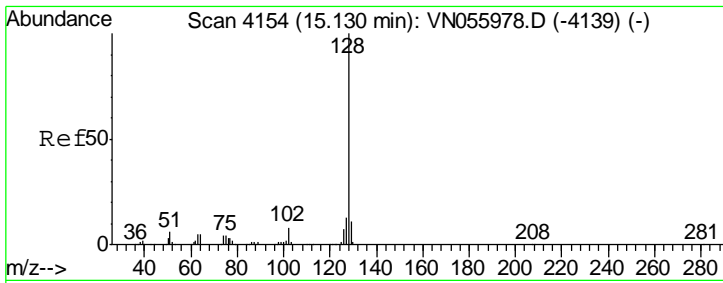
Tgt Ion	Resp	Lower	Upper
75	100		
53	0.0	68.1	102.1#
89	0.0	36.9	55.3#



#90
 Hexachloroethane
 Concen: 0.232 ug/l
 RT: 13.95 min Scan# 3786
 Delta R.T. 0.07 min
 Lab File: VN056223.D
 Acq: 11 Jun 2019 15:12

Tgt Ion	Resp	Lower	Upper
117	100		
201	0.0	50.0	150.0#





#95
 Naphthalene
 Concen: 3.882 ug/l
 RT: 15.13 min Scan# 4154
 Delta R.T. 0.00 min
 Lab File: VN056223.D
 Acq: 11 Jun 2019 15:12

Instrument :
 MSVOA_N
ClientSampled :
 BP-DUP06-20190609

Tot Ion	Ratio	Lower	Upper
128	100		
127	0.0	10.3	15.5#
129	0.0	8.7	13.1#

