

Data Path : Z:\voasrv\HPCHEM1\MSVOA\_N\Data\VN061121\  
 Data File : VN067281.D  
 Acq On : 11 Jun 2021 11:07  
 Operator : JC/MD  
 Sample : VN0611WBL01  
 Misc : 5.00mL/MSVOA\_N/WATER  
 ALS Vial : 4 Sample Multiplier: 1

Instrument :  
 MSVOA\_N  
 ClientSampleId :  
 VN0611WBL01

Quant Time: Jun 12 04:23:46 2021  
 Quant Method : Z:\voasrv\HPCHEM1\MSVOA\_N\methods\82N061021W.M  
 Quant Title : SW846 8260  
 QLast Update : Fri Jun 11 05:27:41 2021  
 Response via : Initial Calibration

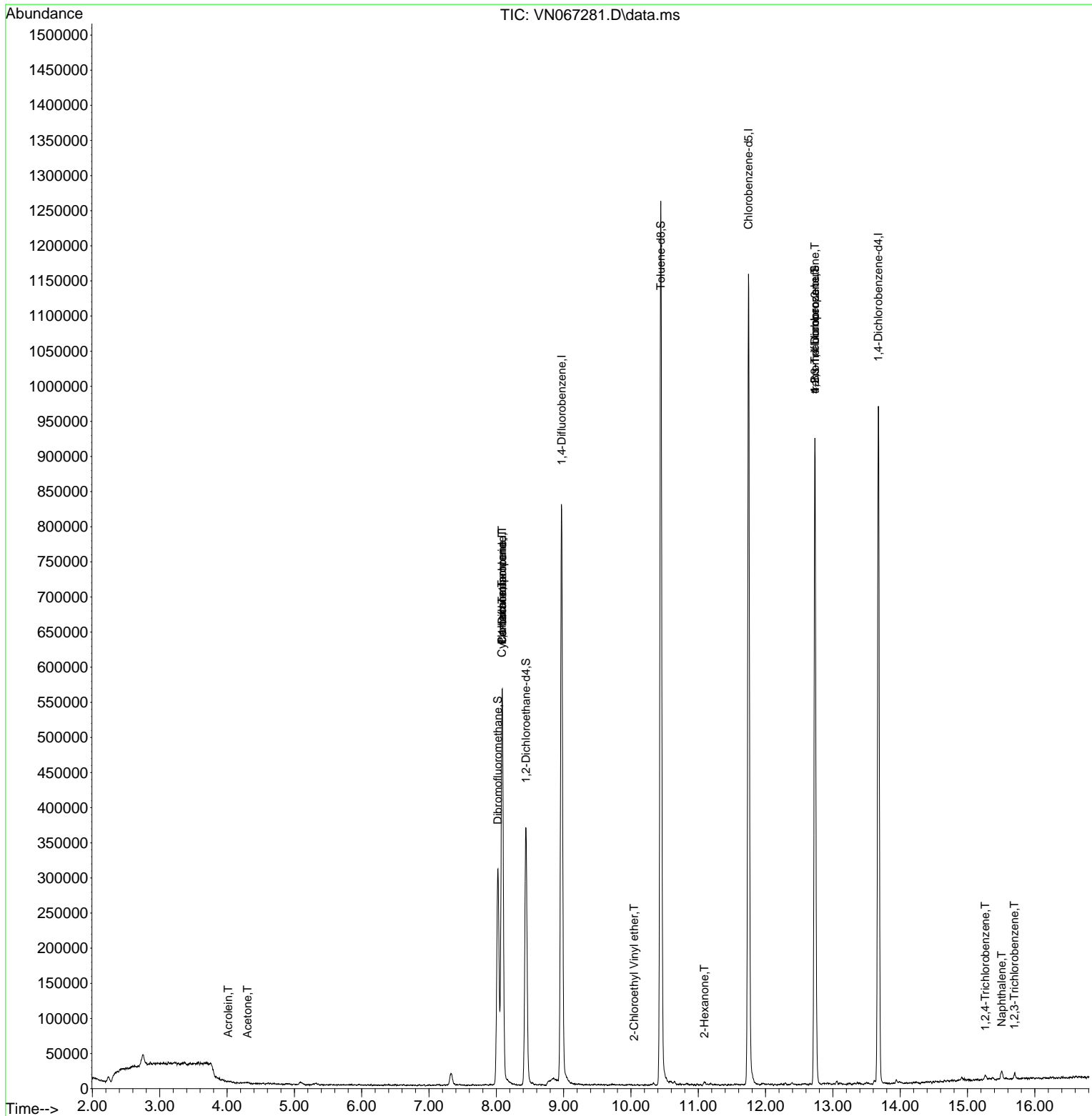
Compound	R.T.	QIon	Response	Conc	Units	Dev(Min)
-----						
Internal Standards						
1) Pentafluorobenzene	8.088	168	379755	50.000	ug/l	# 0.00
34) 1,4-Difluorobenzene	8.971	114	678316	50.000	ug/l	0.00
63) Chlorobenzene-d5	11.747	117	616333	50.000	ug/l	# 0.00
72) 1,4-Dichlorobenzene-d4	13.675	152	233136	50.000	ug/l	0.00
System Monitoring Compounds						
33) 1,2-Dichloroethane-d4	8.440	65	335296	46.713	ug/l	0.00
Spiked Amount	50.000	Range 61 - 141	Recovery	=	93.420%	
35) Dibromofluoromethane	8.024	113	218128	50.464	ug/l	0.00
Spiked Amount	50.000	Range 69 - 133	Recovery	=	100.920%	
50) Toluene-d8	10.443	98	855031	50.336	ug/l	0.00
Spiked Amount	50.000	Range 65 - 126	Recovery	=	100.680%	
62) 4-Bromofluorobenzene	12.734	95	340871	48.222	ug/l	0.00
Spiked Amount	50.000	Range 58 - 135	Recovery	=	96.440%	
Target Compounds						
						Qvalue
13) Acrolein	4.017	56	301	0.614	ug/l	# 76
16) Acetone	4.301	43	1857	0.641	ug/l	89
31) Cyclohexane	8.083	56	11209	1.269	ug/l	# 41
36) 1,1-Dichloropropene	8.088	75	38035	5.294	ug/l	# 49
38) Carbon Tetrachloride	8.088	117	46318	6.183	ug/l	# 14
58) 2-Chloroethyl Vinyl ether	10.046	63	58	28.110	ug/l	# 45
59) 2-Hexanone	11.089	43	3150	0.491	ug/l	83
76) 1,2,3-Trichloropropane	12.734	75	197890	31.952	ug/l	# 100
81) trans-1,4-Dichloro-2-b...	12.734	75	197890	81.737	ug/l	# 15
93) 1,2,4-Trichlorobenzene	15.265	180	1729	0.445	ug/l	86
95) Naphthalene	15.507	128	9524	5.306	ug/l	98
96) 1,2,3-Trichlorobenzene	15.694	180	1361	0.378	ug/l	# 46
-----						

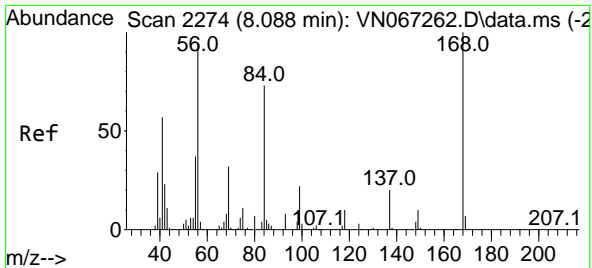
(#) = qualifier out of range (m) = manual integration (+) = signals summed

Data Path : Z:\voasrv\HPCHEM1\MSVOA\_N\Data\VN061121\  
 Data File : VN067281.D  
 Acq On : 11 Jun 2021 11:07  
 Operator : JC/MD  
 Sample : VN0611WBL01  
 Misc : 5.00mL/MSVOA\_N/WATER  
 ALS Vial : 4 Sample Multiplier: 1

Instrument :  
 MSVOA\_N  
 Client Sampled :  
 VN0611WBL01

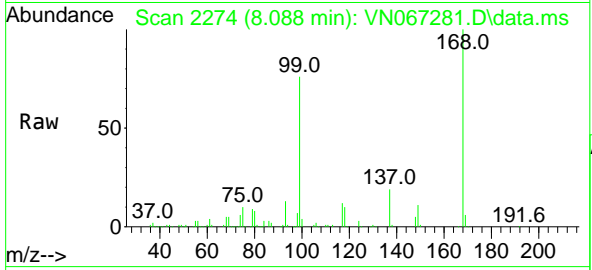
Quant Time: Jun 12 04:23:46 2021  
 Quant Method : Z:\voasrv\HPCHEM1\MSVOA\_N\methods\82N061021W.M  
 Quant Title : SW846 8260  
 QLast Update : Fri Jun 11 05:27:41 2021  
 Response via : Initial Calibration



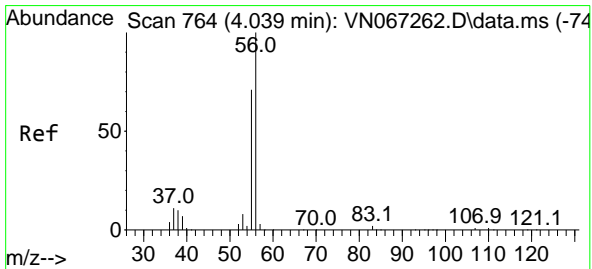
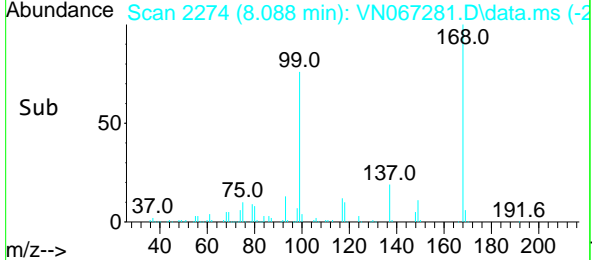
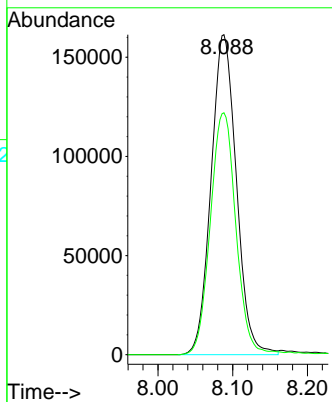


#1  
 Pentafluorobenzene  
 Concen: 50.000 ug/l  
 RT: 8.088 min Scan# 2274  
 Delta R.T. 0.000 min  
 Lab File: VN067281.D  
 Acq: 11 Jun 2021 11:07

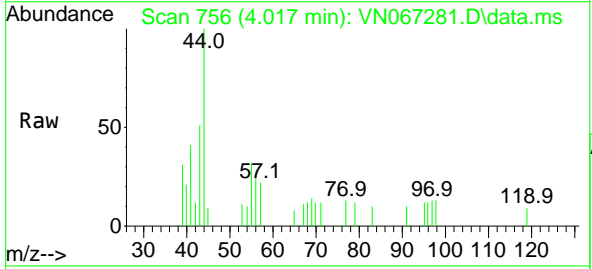
Instrument :  
 MSVOA\_N  
 ClientSampled :  
 VN0611WBL01



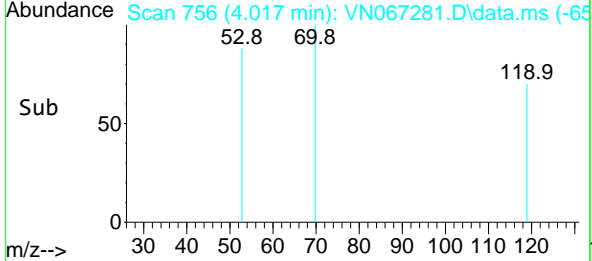
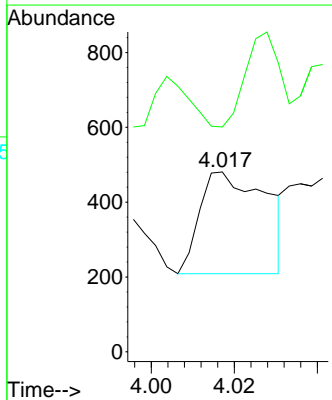
Tgt Ion:168 Resp: 379755  
 Ion Ratio Lower Upper  
 168 100  
 99 75.6 38.5 57.7#

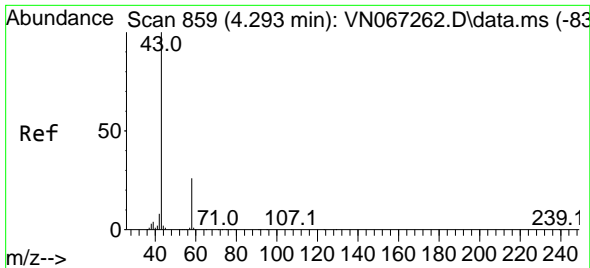


#13  
 Acrolein  
 Concen: 0.614 ug/l  
 RT: 4.017 min Scan# 756  
 Delta R.T. -0.021 min  
 Lab File: VN067281.D  
 Acq: 11 Jun 2021 11:07



Tgt Ion: 56 Resp: 301  
 Ion Ratio Lower Upper  
 56 100  
 55 48.2 53.8 80.6#

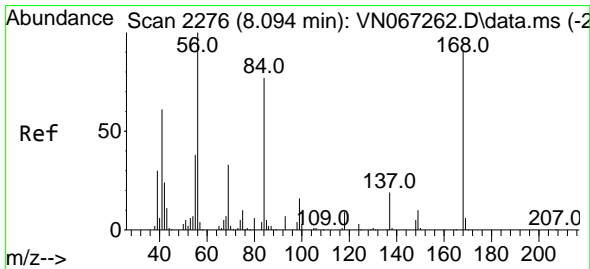
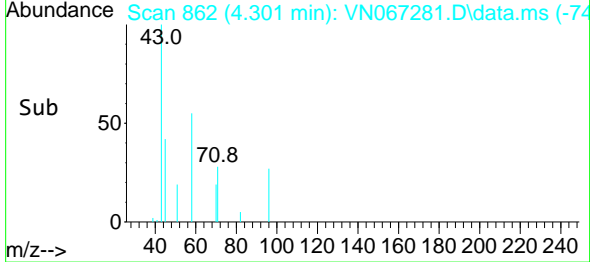
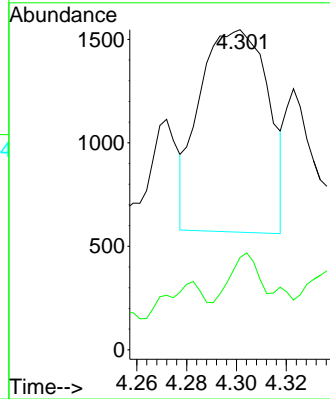
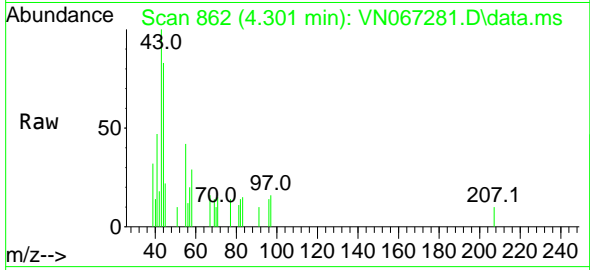




#16  
 Acetone  
 Concen: 0.641 ug/l  
 RT: 4.301 min Scan# 862  
 Delta R.T. 0.008 min  
 Lab File: VN067281.D  
 Acq: 11 Jun 2021 11:07

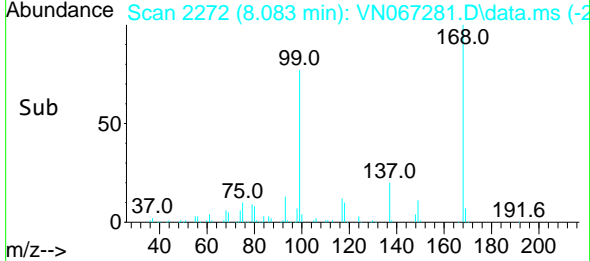
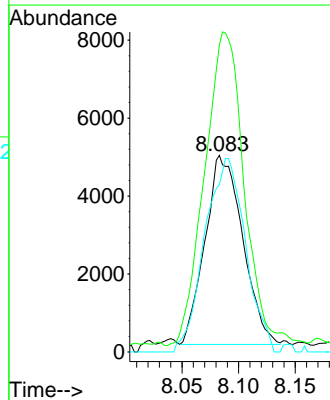
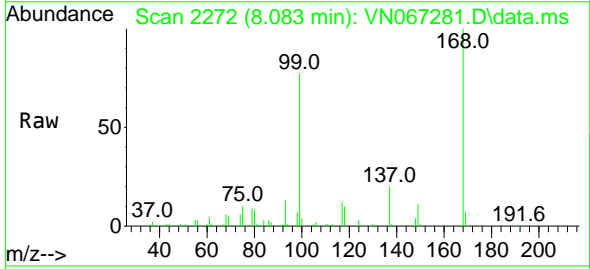
Instrument :  
 MSVOA\_N  
 ClientSampled :  
 VN0611WBL01

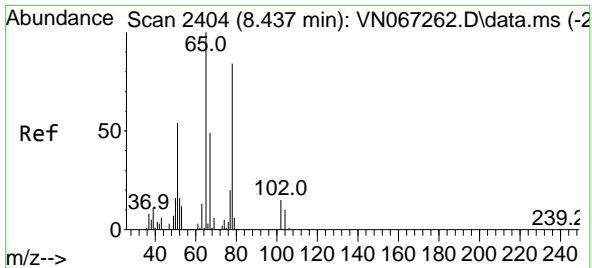
Tgt Ion: 43 Resp: 1857  
 Ion Ratio Lower Upper  
 43 100  
 58 27.9 27.2 40.8



#31  
 Cyclohexane  
 Concen: 1.269 ug/l  
 RT: 8.083 min Scan# 2272  
 Delta R.T. -0.011 min  
 Lab File: VN067281.D  
 Acq: 11 Jun 2021 11:07

Tgt Ion: 56 Resp: 11209  
 Ion Ratio Lower Upper  
 56 100  
 69 152.4 28.0 42.0#  
 84 88.5 74.2 111.2

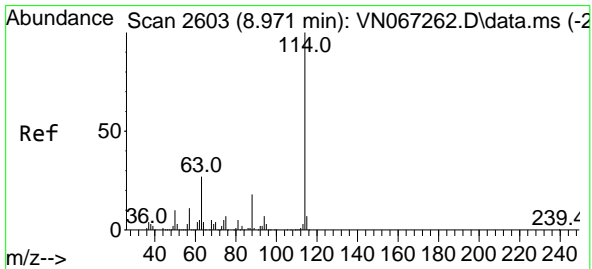
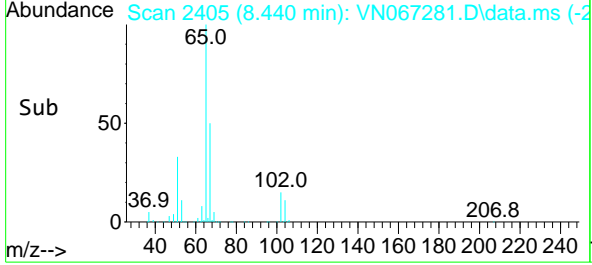
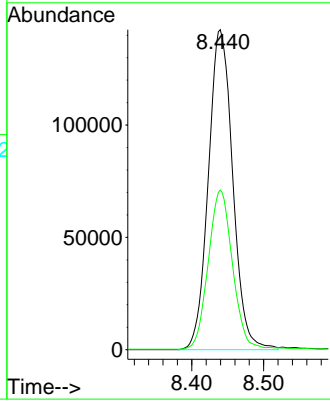
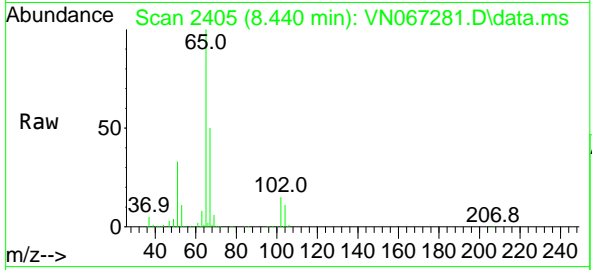




#33  
 1,2-Dichloroethane-d4  
 Concen: 46.713 ug/l  
 RT: 8.440 min Scan# 2405  
 Delta R.T. 0.003 min  
 Lab File: VN067281.D  
 Acq: 11 Jun 2021 11:07

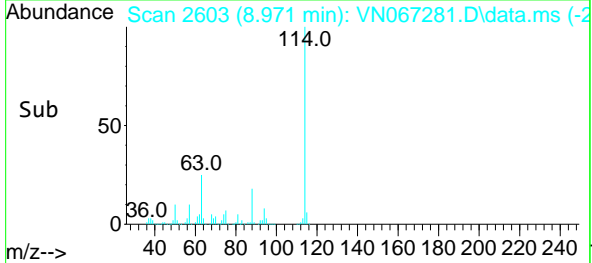
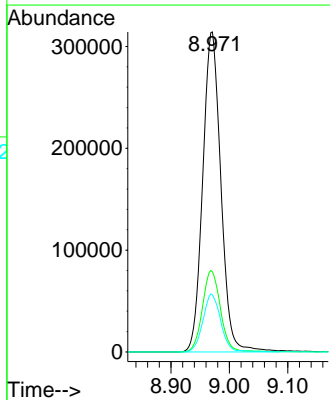
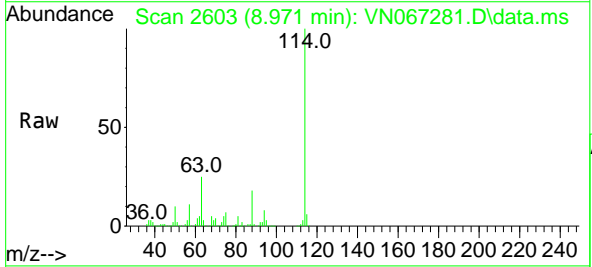
**Instrument :**  
 MSVOA\_N  
**ClientSampled :**  
 VN0611WBL01

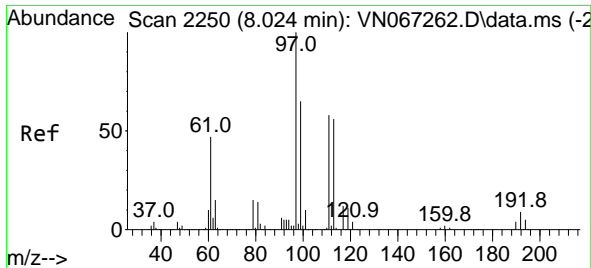
Tgt Ion: 65 Resp: 335296  
 Ion Ratio Lower Upper  
 65 100  
 67 49.1 0.0 110.4



#34  
 1,4-Difluorobenzene  
 Concen: 50.000 ug/l  
 RT: 8.971 min Scan# 2603  
 Delta R.T. -0.000 min  
 Lab File: VN067281.D  
 Acq: 11 Jun 2021 11:07

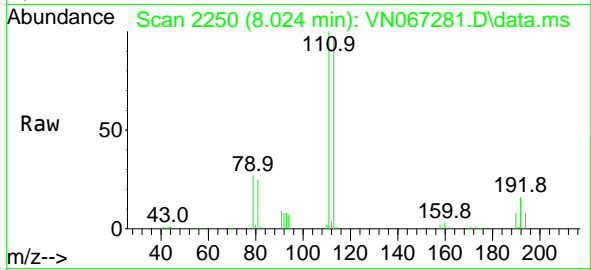
Tgt Ion:114 Resp: 678316  
 Ion Ratio Lower Upper  
 114 100  
 63 25.1 0.0 35.8  
 88 17.8 0.0 30.4



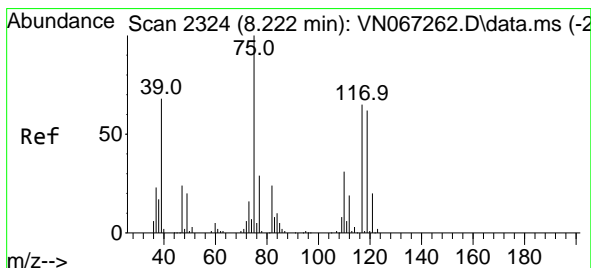
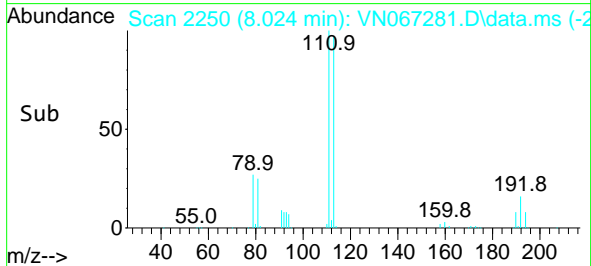
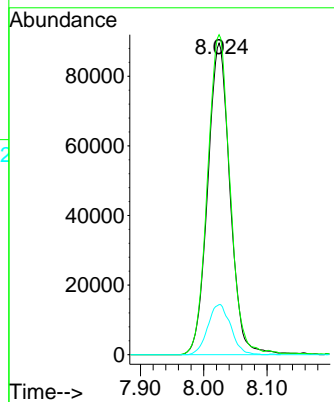


#35  
 Dibromofluoromethane  
 Concen: 50.464 ug/l  
 RT: 8.024 min Scan# 2250  
 Delta R.T. 0.000 min  
 Lab File: VN067281.D  
 Acq: 11 Jun 2021 11:07

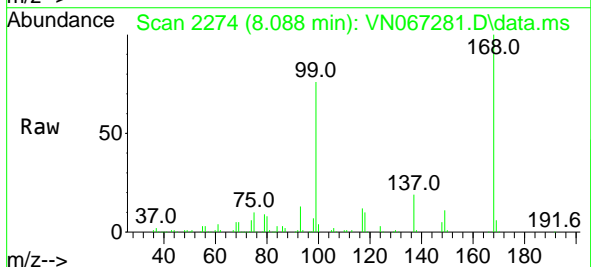
Instrument :  
 MSVOA\_N  
 ClientSampled :  
 VN0611WBL01



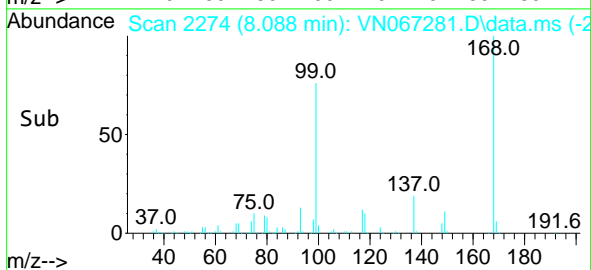
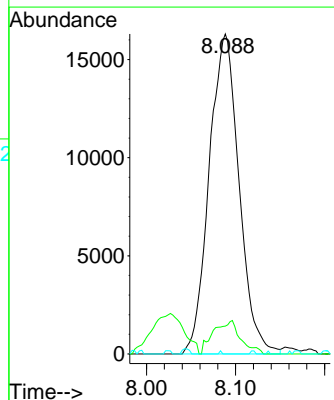
Tgt Ion:113 Resp: 218128  
 Ion Ratio Lower Upper  
 113 100  
 111 103.4 82.6 124.0  
 192 16.6 18.2 27.4#

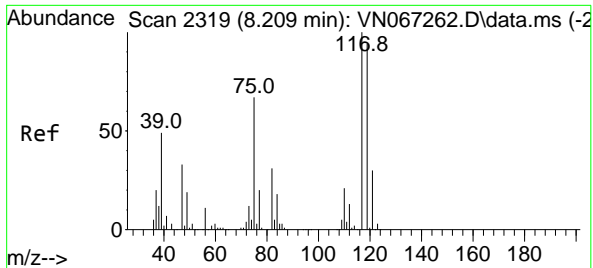


#36  
 1,1-Dichloropropene  
 Concen: 5.294 ug/l  
 RT: 8.088 min Scan# 2274  
 Delta R.T. -0.134 min  
 Lab File: VN067281.D  
 Acq: 11 Jun 2021 11:07



Tgt Ion: 75 Resp: 38035  
 Ion Ratio Lower Upper  
 75 100  
 110 9.5 19.1 57.3#  
 77 0.1 24.8 37.2#



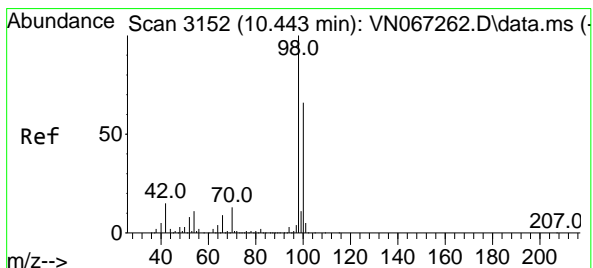
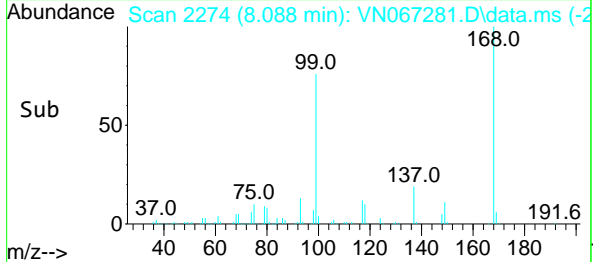
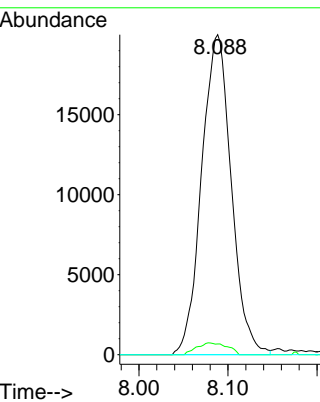
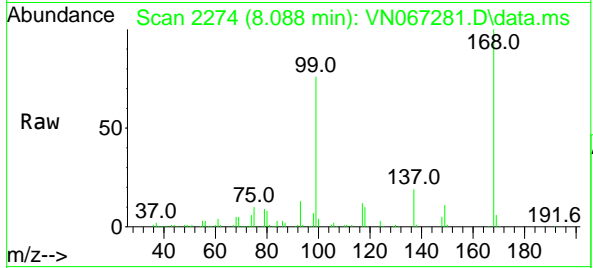


#38  
 Carbon Tetrachloride  
 Concen: 6.183 ug/l  
 RT: 8.088 min Scan# 2274  
 Delta R.T. -0.121 min  
 Lab File: VN067281.D  
 Acq: 11 Jun 2021 11:07

Instrument :  
 MSVOA\_N  
 ClientSampled :  
 VN0611WBL01

Tgt Ion:117 Resp: 46318

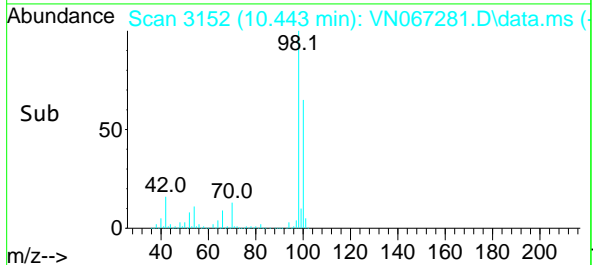
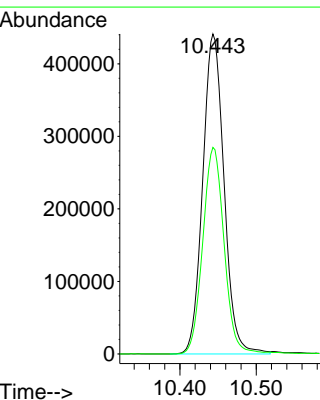
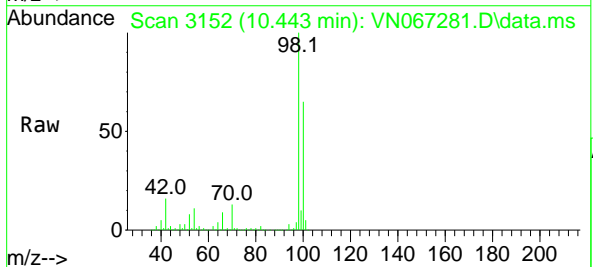
Ion	Ratio	Lower	Upper
117	100		
119	3.3	78.2	117.2#
121	0.0	24.7	37.1#

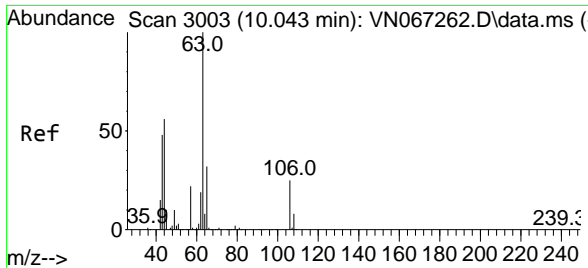


#50  
 Toluene-d8  
 Concen: 50.336 ug/l  
 RT: 10.443 min Scan# 3152  
 Delta R.T. 0.000 min  
 Lab File: VN067281.D  
 Acq: 11 Jun 2021 11:07

Tgt Ion: 98 Resp: 855031

Ion	Ratio	Lower	Upper
98	100		
100	64.4	51.8	77.8

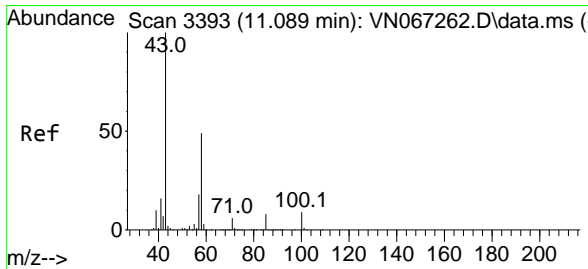
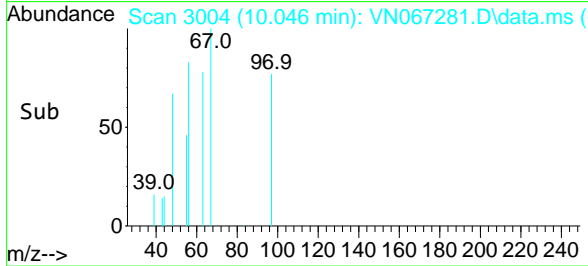
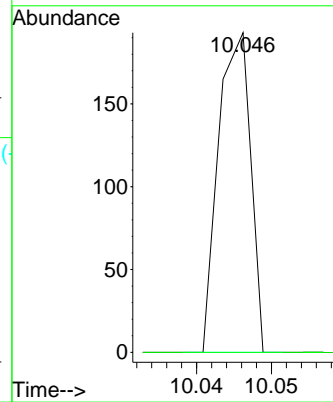
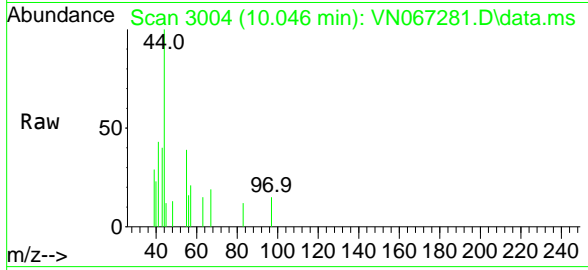




#58  
 2-Chloroethyl Vinyl ether  
 Concen: 28.110 ug/l  
 RT: 10.046 min Scan# 3004  
 Delta R.T. 0.003 min  
 Lab File: VN067281.D  
 Acq: 11 Jun 2021 11:07

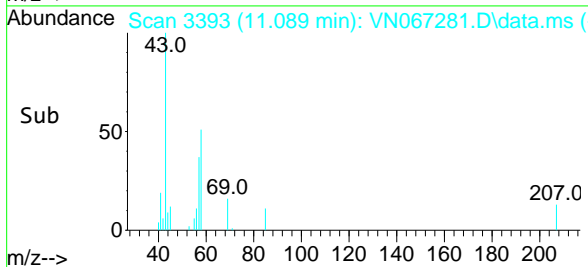
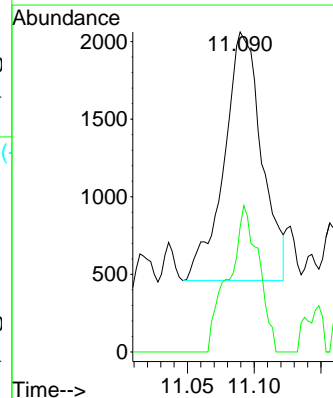
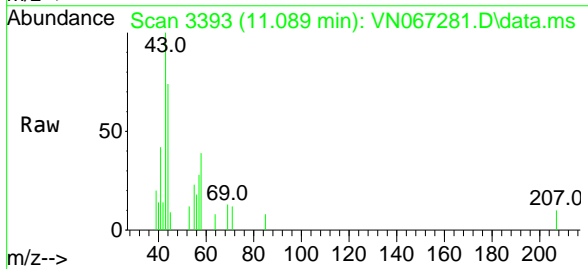
Instrument :  
 MSVOA\_N  
 ClientSampleId :  
 VN0611WBL01

Tgt Ion: 63 Resp: 58  
 Ion Ratio Lower Upper  
 63 100  
 106 0.0 23.9 35.9#

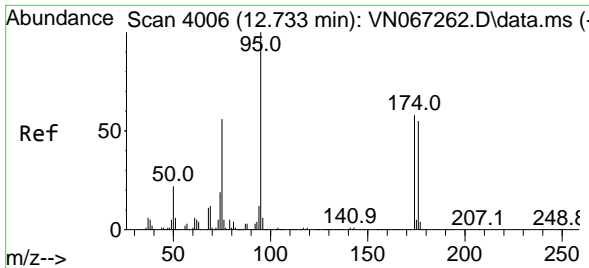


#59  
 2-Hexanone  
 Concen: 0.491 ug/l  
 RT: 11.089 min Scan# 3393  
 Delta R.T. 0.000 min  
 Lab File: VN067281.D  
 Acq: 11 Jun 2021 11:07

Tgt Ion: 43 Resp: 3150  
 Ion Ratio Lower Upper  
 43 100  
 58 47.1 29.8 89.5

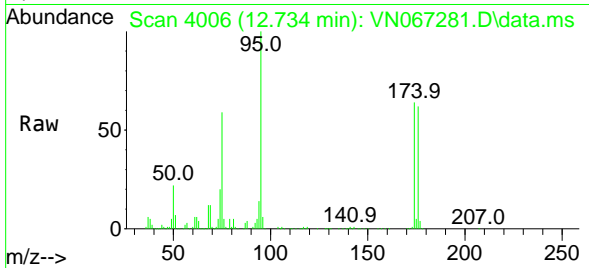






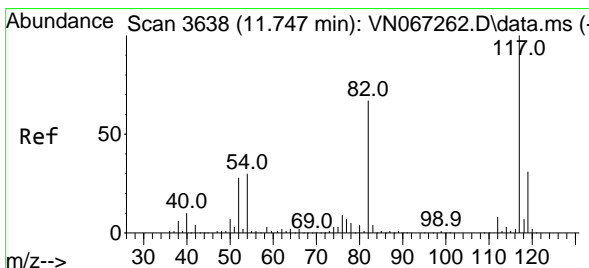
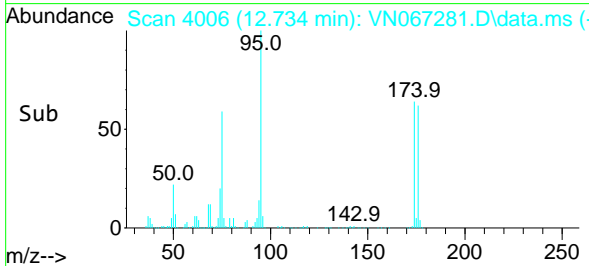
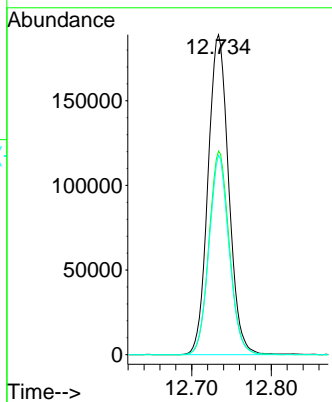
#62  
 4-Bromofluorobenzene  
 Concen: 48.222 ug/l  
 RT: 12.734 min Scan# 4006  
 Delta R.T. 0.000 min  
 Lab File: VN067281.D  
 Acq: 11 Jun 2021 11:07

Instrument :  
 MSVOA\_N  
 ClientSampled :  
 VN0611WBL01

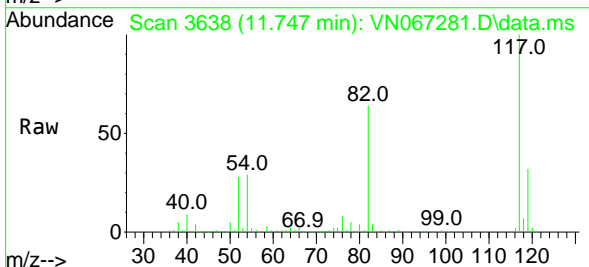


Tgt Ion: 95 Resp: 340871

Ion	Ratio	Lower	Upper
95	100		
174	62.8	0.0	182.8
176	60.7	0.0	176.6

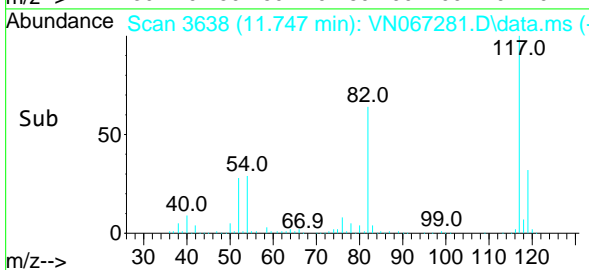
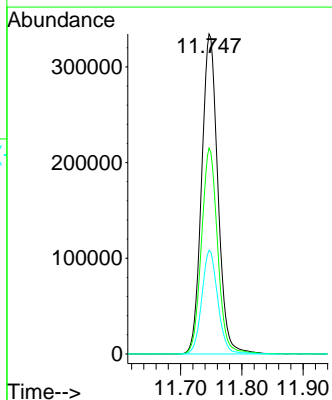


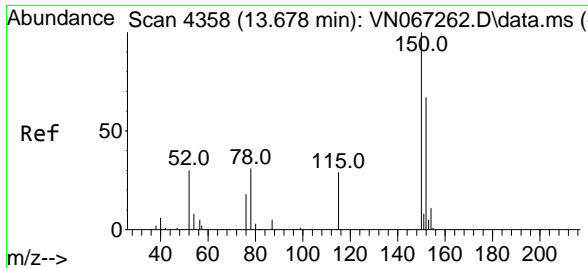
#63  
 Chlorobenzene-d5  
 Concen: 50.000 ug/l  
 RT: 11.747 min Scan# 3638  
 Delta R.T. 0.000 min  
 Lab File: VN067281.D  
 Acq: 11 Jun 2021 11:07



Tgt Ion: 117 Resp: 616333

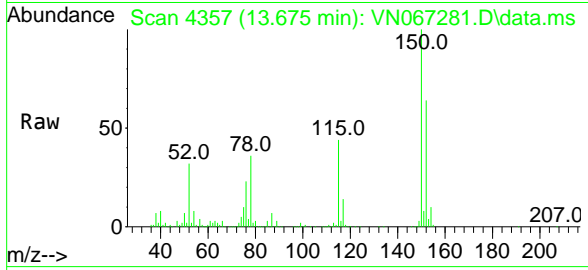
Ion	Ratio	Lower	Upper
117	100		
82	64.3	42.2	63.2#
119	32.3	25.8	38.6





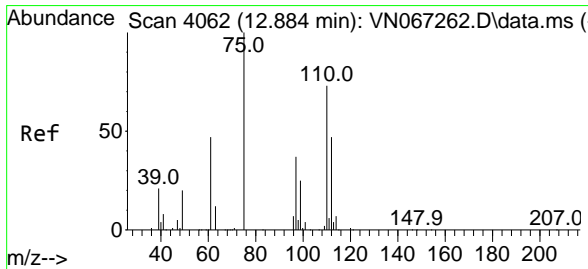
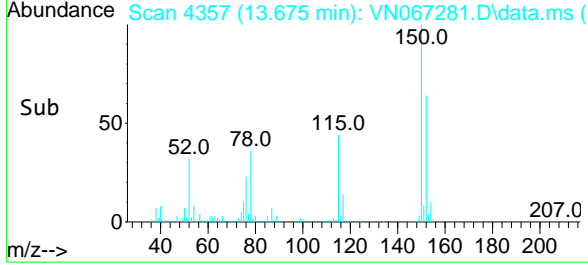
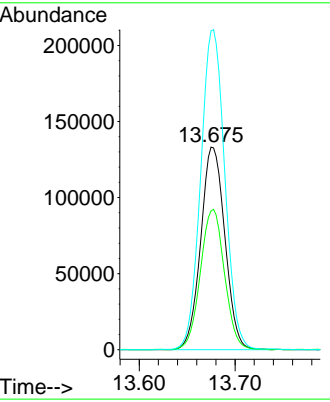
#72  
 1,4-Dichlorobenzene-d4  
 Concen: 50.000 ug/l  
 RT: 13.675 min Scan# 4357  
 Delta R.T. -0.003 min  
 Lab File: VN067281.D  
 Acq: 11 Jun 2021 11:07

**Instrument :**  
 MSVOA\_N  
**ClientSampled :**  
 VN0611WBL01

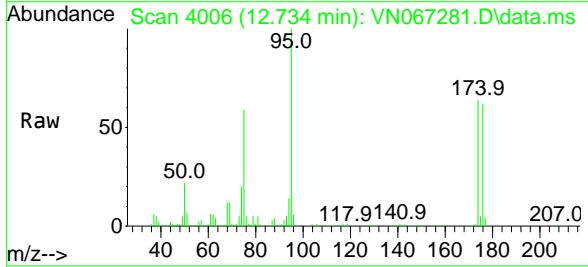


Tgt Ion:152 Resp: 233136

Ion	Ratio	Lower	Upper
152	100		
115	69.2	27.0	80.8
150	157.5	0.0	350.2

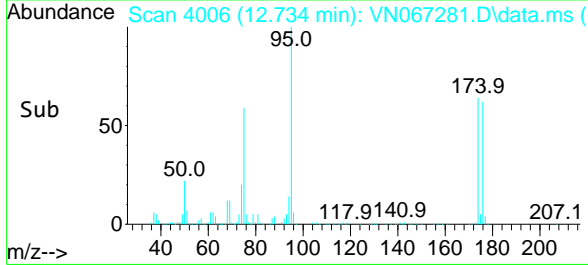
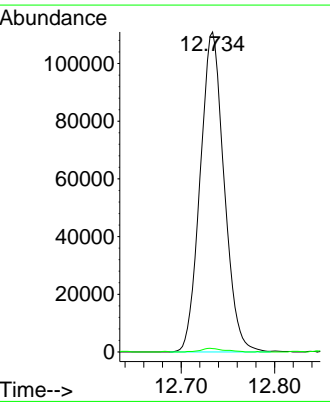


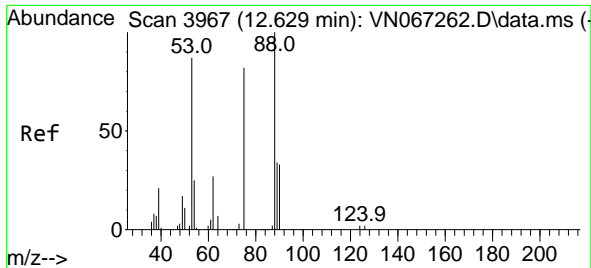
#76  
 1,2,3-Trichloropropane  
 Concen: 31.952 ug/l  
 RT: 12.734 min Scan# 4006  
 Delta R.T. -0.150 min  
 Lab File: VN067281.D  
 Acq: 11 Jun 2021 11:07



Tgt Ion: 75 Resp: 197890

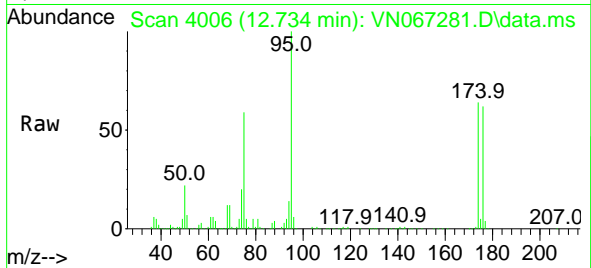
Ion	Ratio	Lower	Upper
75	100		
77	1.1	0.0	0.0#



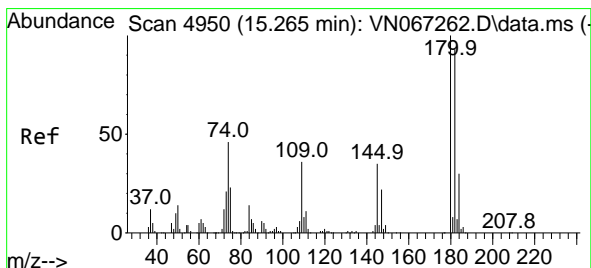
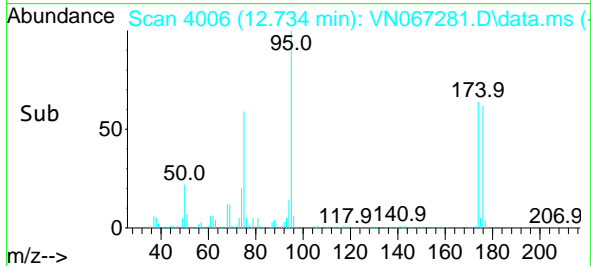
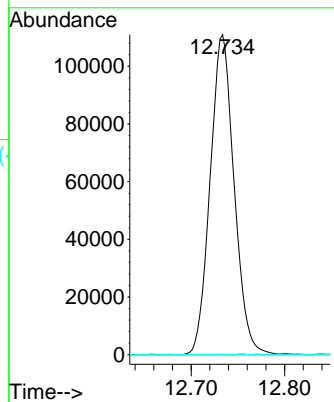


#81  
 trans-1,4-Dichloro-2-butene  
 Concen: 81.737 ug/l  
 RT: 12.734 min Scan# 4006  
 Delta R.T. 0.105 min  
 Lab File: VN067281.D  
 Acq: 11 Jun 2021 11:07

Instrument :  
 MSVOA\_N  
 ClientSampled :  
 VN0611WBL01

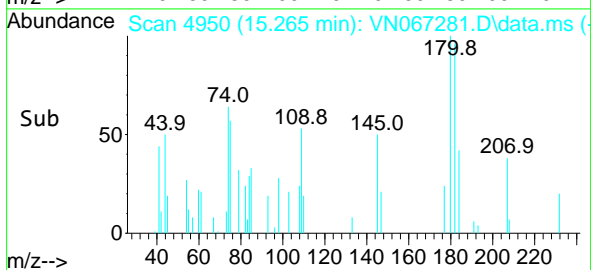
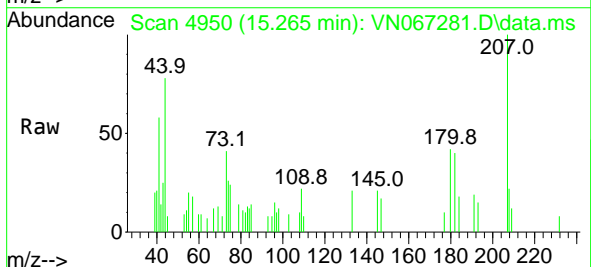
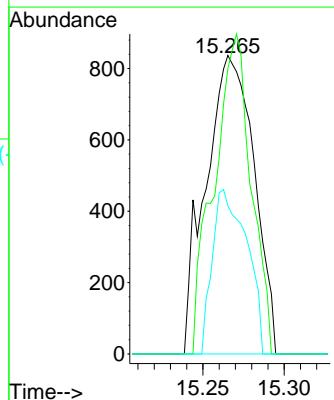


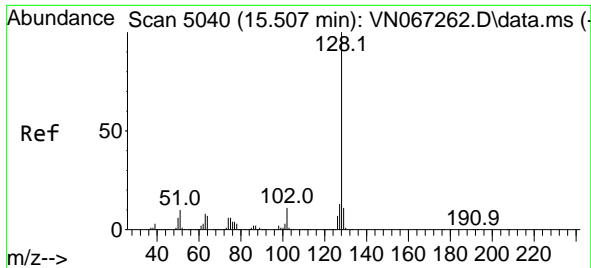
Tgt Ion: 75 Resp: 197890  
 Ion Ratio Lower Upper  
 75 100  
 53 0.0 66.3 99.5#  
 89 0.0 39.5 59.3#



#93  
 1,2,4-Trichlorobenzene  
 Concen: 0.445 ug/l  
 RT: 15.265 min Scan# 4950  
 Delta R.T. 0.000 min  
 Lab File: VN067281.D  
 Acq: 11 Jun 2021 11:07

Tgt Ion: 180 Resp: 1729  
 Ion Ratio Lower Upper  
 180 100  
 182 82.4 47.3 141.8  
 145 39.1 14.0 42.0

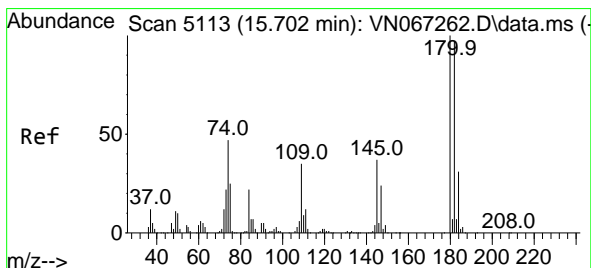
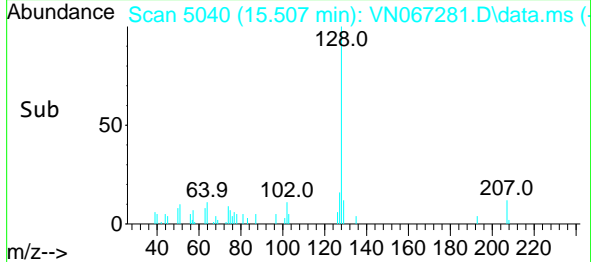
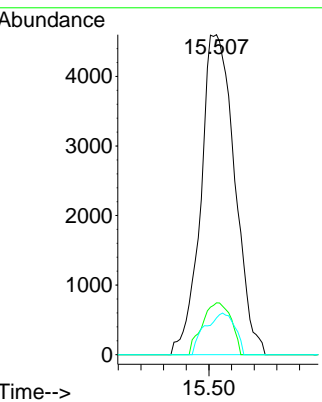
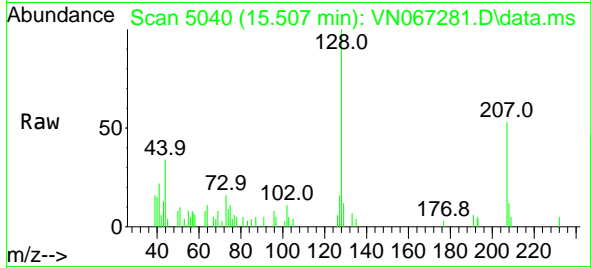




#95  
 Naphthalene  
 Concen: 5.306 ug/l  
 RT: 15.507 min Scan# 5040  
 Delta R.T. -0.000 min  
 Lab File: VN067281.D  
 Acq: 11 Jun 2021 11:07

Instrument :  
 MSVOA\_N  
 ClientSampled :  
 VN0611WBL01

Tgt Ion	Resp	Lower	Upper
128	9524		
127	13.9	10.2	15.2
129	11.5	8.6	13.0



#96  
 1,2,3-Trichlorobenzene  
 Concen: 0.378 ug/l  
 RT: 15.694 min Scan# 5110  
 Delta R.T. -0.008 min  
 Lab File: VN067281.D  
 Acq: 11 Jun 2021 11:07

Tgt Ion	Resp	Lower	Upper
180	1361		
182	153.5	48.5	145.6#
145	54.1	15.4	46.2#

