

Data Path : Z:\voasrv\HPCHEM1\MSVOA_N\Data\VN061125\
 Data File : VN086953.D
 Acq On : 11 Jun 2025 16:57
 Operator : JC\MD
 Sample : Q2231-01
 Misc : 5.0mL/MSVOA_N/WATER
 ALS Vial : 15 Sample Multiplier: 1

Instrument :
 MSVOA_N
 ClientSampleId :
 MW-10D-20250604

Quant Time: Jun 12 01:36:08 2025
 Quant Method : Z:\voasrv\HPCHEM1\MSVOA_N\methods\82N060625W.M
 Quant Title : SW846 8260
 QLast Update : Sat Jun 07 02:12:50 2025
 Response via : Initial Calibration

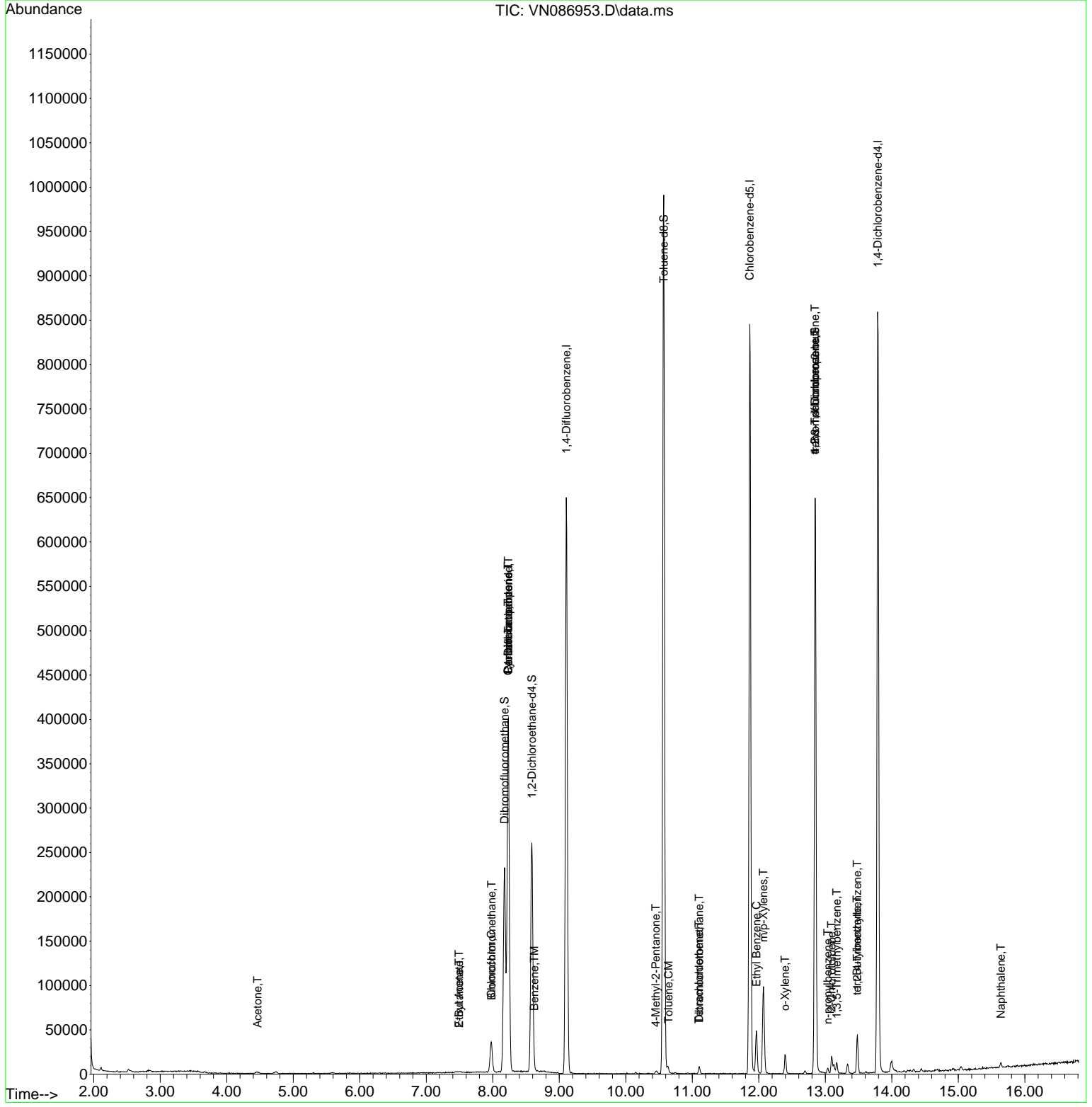
Compound	R.T.	QIon	Response	Conc	Units	Dev(Min)
Internal Standards						
1) Pentafluorobenzene	8.235	168	314124	50.000	ug/l	0.00
34) 1,4-Difluorobenzene	9.106	114	594896	50.000	ug/l	0.00
63) Chlorobenzene-d5	11.865	117	533609	50.000	ug/l	0.00
72) 1,4-Dichlorobenzene-d4	13.788	152	254824	50.000	ug/l	0.00
System Monitoring Compounds						
33) 1,2-Dichloroethane-d4	8.588	65	212002	50.407	ug/l	0.00
Spiked Amount	50.000	Range 74 - 125	Recovery	=	100.820%	
35) Dibromofluoromethane	8.177	113	177756	50.420	ug/l	0.00
Spiked Amount	50.000	Range 75 - 124	Recovery	=	100.840%	
50) Toluene-d8	10.571	98	736237	52.752	ug/l	0.00
Spiked Amount	50.000	Range 86 - 113	Recovery	=	105.500%	
62) 4-Bromofluorobenzene	12.847	95	260994	50.334	ug/l	0.00
Spiked Amount	50.000	Range 77 - 121	Recovery	=	100.660%	
Target Compounds						
						Qvalue
16) Acetone	4.465	43	3728	1.671	ug/l	93
25) 2-Butanone	7.494	43	2302	0.635	ug/l #	86
28) Bromochloromethane	7.983	49	2543	0.735	ug/l #	13
30) Chloroform	7.977	83	35165	5.006	ug/l	97
31) Cyclohexane	8.230	56	5954	0.873	ug/l #	1
36) 1,1-Dichloropropene	8.230	75	23670	4.506	ug/l #	48
37) Ethyl Acetate	7.494	43	2302	0.344	ug/l #	66
38) Carbon Tetrachloride	8.235	117	30597	5.932	ug/l #	17
40) Benzene	8.624	78	3990	0.232	ug/l	93
51) 4-Methyl-2-Pentanone	10.453	43	2559	0.396	ug/l	98
52) Toluene	10.641	92	3302	0.315	ug/l	99
60) Dibromochloromethane	11.106	129	1923	0.457	ug/l #	11
64) Tetrachloroethene	11.100	164	1864	0.552	ug/l #	75
67) Ethyl Benzene	11.965	91	38747	1.911	ug/l	98
68) m/p-Xylenes	12.070	106	35558	4.582	ug/l	99
69) o-Xylene	12.394	106	6869	0.924	ug/l	94
76) 1,2,3-Trichloropropane	12.847	75	122664	20.251	ug/l #	1
78) n-propylbenzene	13.035	91	5595	0.248	ug/l	99
79) 2-Chlorotoluene	13.094	91	3012	0.223	ug/l #	42
80) 1,3,5-Trimethylbenzene	13.170	105	6564	0.428	ug/l	99
81) trans-1,4-Dichloro-2-b...	12.847	75	122664	46.616	ug/l #	16
83) tert-Butylbenzene	13.476	119	3509	0.250	ug/l #	79
84) 1,2,4-Trimethylbenzene	13.482	105	25253	1.643	ug/l	98
95) Naphthalene	15.641	128	6226	0.325	ug/l	100

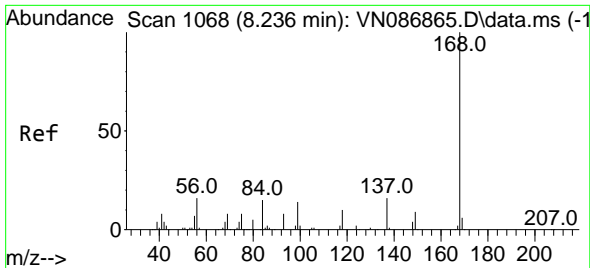
(#) = qualifier out of range (m) = manual integration (+) = signals summed

Data Path : Z:\voasrv\HPCHEM1\MSVOA_N\Data\VN061125\
 Data File : VN086953.D
 Acq On : 11 Jun 2025 16:57
 Operator : JC\MD
 Sample : Q2231-01
 Misc : 5.0mL/MSVOA_N/WATER
 ALS Vial : 15 Sample Multiplier: 1

Instrument :
 MSVOA_N
 ClientSampleId :
 MW-10D-20250604

Quant Time: Jun 12 01:36:08 2025
 Quant Method : Z:\voasrv\HPCHEM1\MSVOA_N\methods\82N060625W.M
 Quant Title : SW846 8260
 QLast Update : Sat Jun 07 02:12:50 2025
 Response via : Initial Calibration

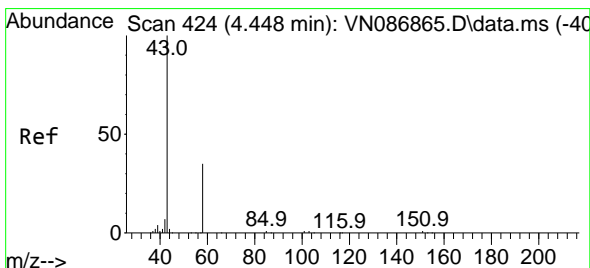
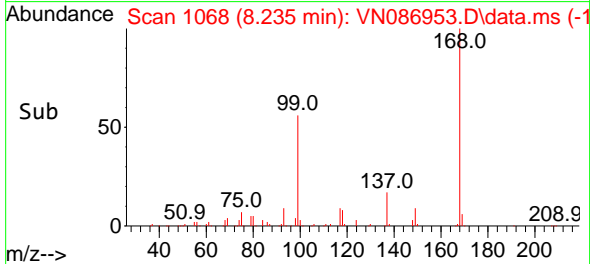
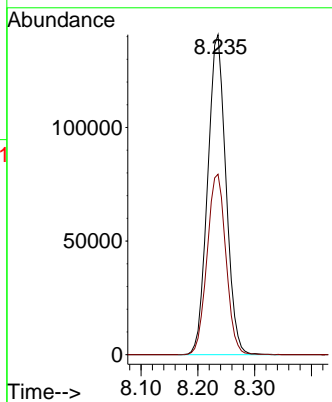
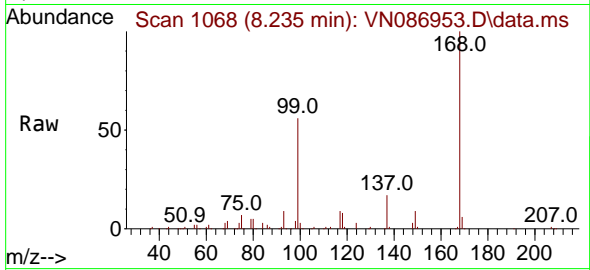




#1
 Pentafluorobenzene
 Concen: 50.000 ug/l
 RT: 8.235 min Scan# 1068
 Delta R.T. -0.001 min
 Lab File: VN086953.D
 Acq: 11 Jun 2025 16:57

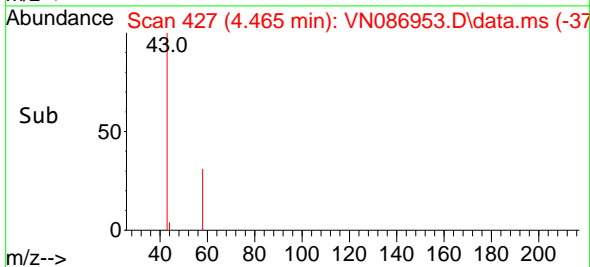
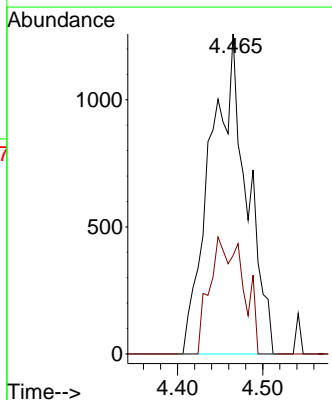
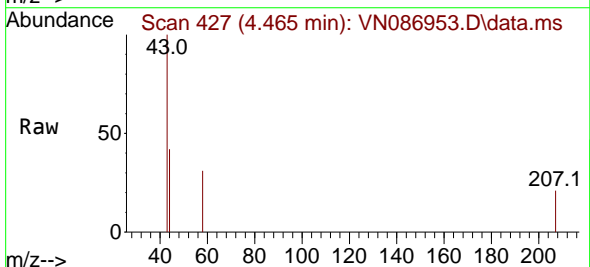
Instrument : MSVOA_N
 ClientSampleId : MW-10D-20250604

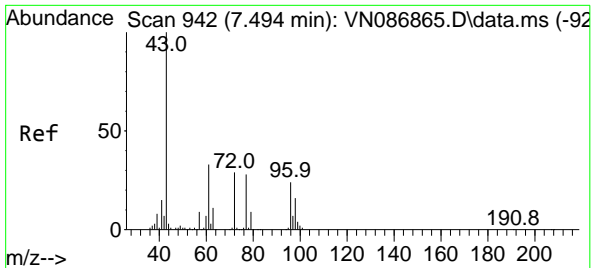
Tgt Ion:168 Resp: 314124
 Ion Ratio Lower Upper
 168 100
 99 56.4 49.1 73.7



#16
 Acetone
 Concen: 1.671 ug/l
 RT: 4.465 min Scan# 427
 Delta R.T. 0.017 min
 Lab File: VN086953.D
 Acq: 11 Jun 2025 16:57

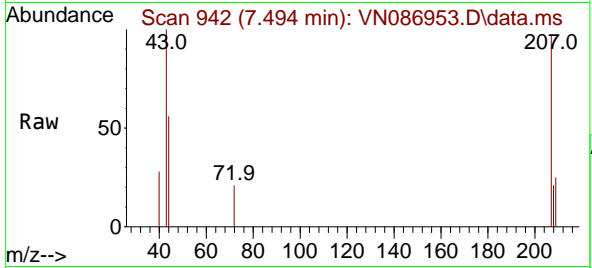
Tgt Ion: 43 Resp: 3728
 Ion Ratio Lower Upper
 43 100
 58 30.7 28.0 42.0



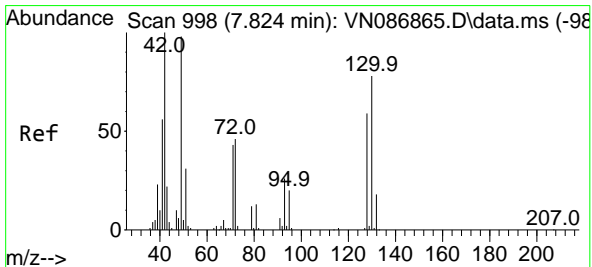
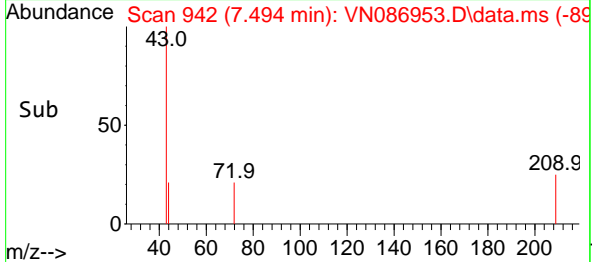
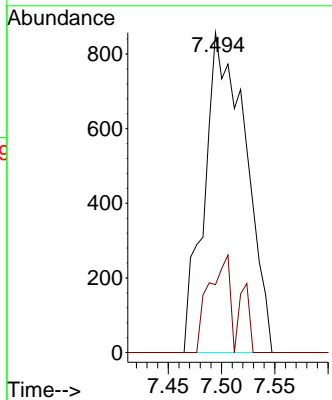


#25
 2-Butanone
 Concen: 0.635 ug/l
 RT: 7.494 min Scan# 94
 Delta R.T. -0.000 min
 Lab File: VN086953.D
 Acq: 11 Jun 2025 16:57

Instrument : MSVOA_N
 ClientSampleId : MW-10D-20250604

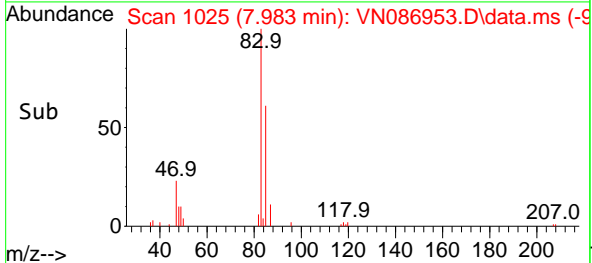
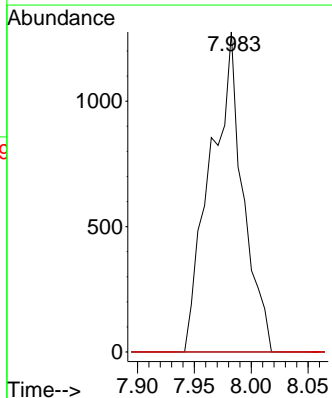
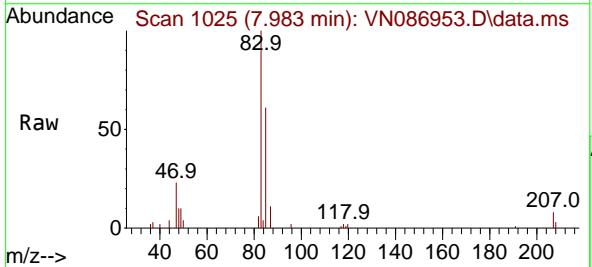


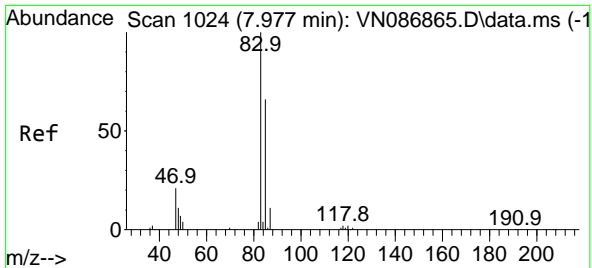
Tgt Ion: 43 Resp: 2302
 Ion Ratio Lower Upper
 43 100
 72 21.2 23.0 34.6#



#28
 Bromochloromethane
 Concen: 0.735 ug/l
 RT: 7.983 min Scan# 1025
 Delta R.T. 0.159 min
 Lab File: VN086953.D
 Acq: 11 Jun 2025 16:57

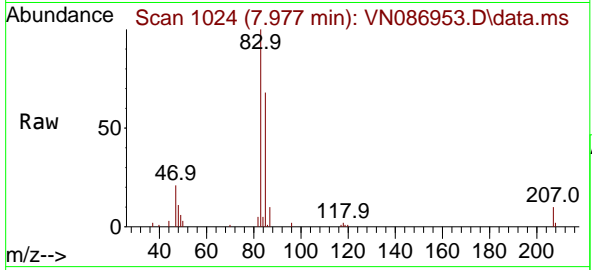
Tgt Ion: 49 Resp: 2543
 Ion Ratio Lower Upper
 49 100
 129 0.0 0.0 3.8
 130 0.0 62.2 93.2#



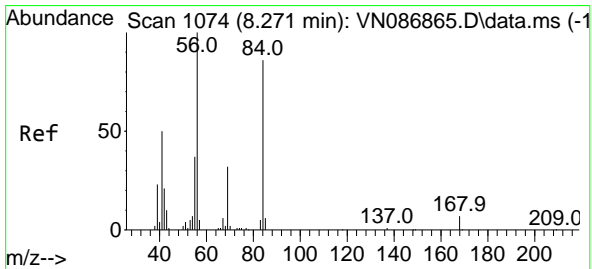
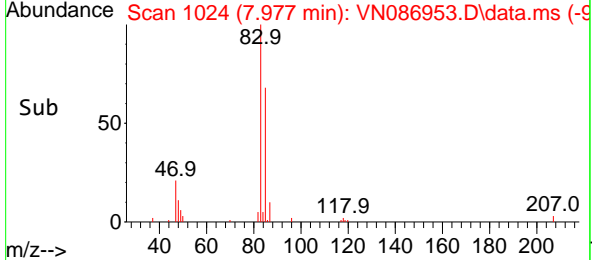
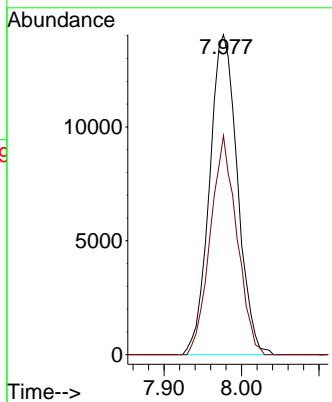


#30
 Chloroform
 Concen: 5.006 ug/l
 RT: 7.977 min Scan# 1024
 Delta R.T. -0.000 min
 Lab File: VN086953.D
 Acq: 11 Jun 2025 16:57

Instrument : MSVOA_N
 ClientSampleId : MW-10D-20250604

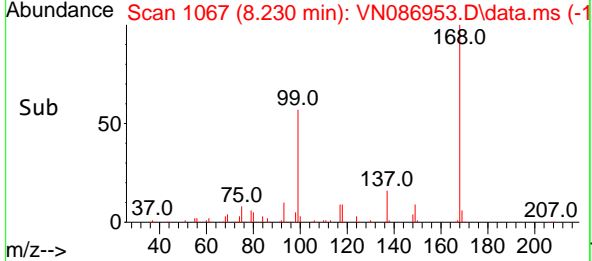
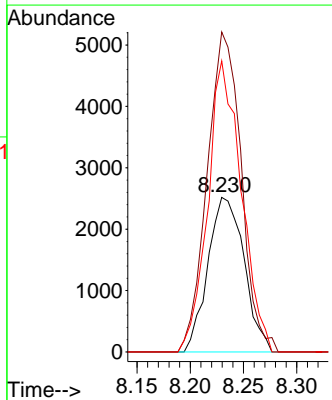
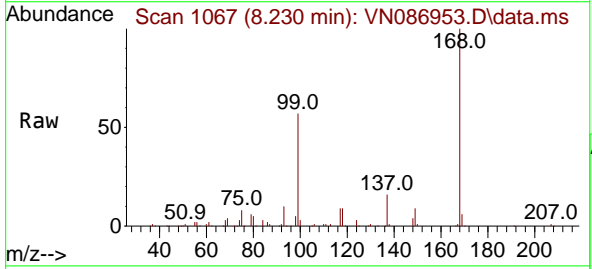


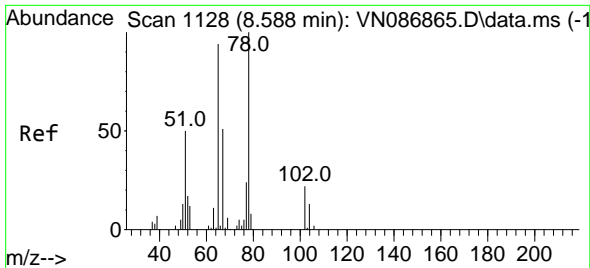
Tgt Ion: 83 Resp: 35165
 Ion Ratio Lower Upper
 83 100
 85 68.5 52.9 79.3



#31
 Cyclohexane
 Concen: 0.873 ug/l
 RT: 8.230 min Scan# 1067
 Delta R.T. -0.041 min
 Lab File: VN086953.D
 Acq: 11 Jun 2025 16:57

Tgt Ion: 56 Resp: 5954
 Ion Ratio Lower Upper
 56 100
 69 206.9 25.4 38.0#
 84 188.2 68.8 103.2#

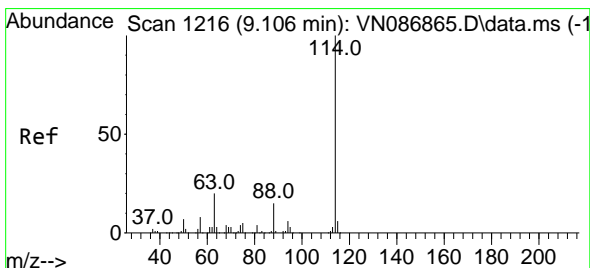
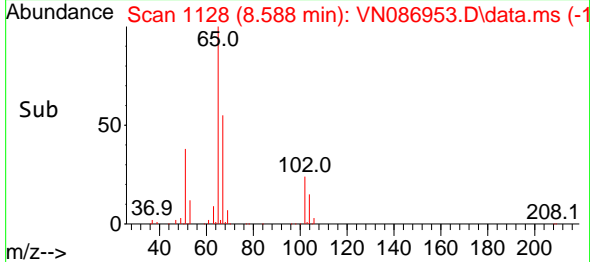
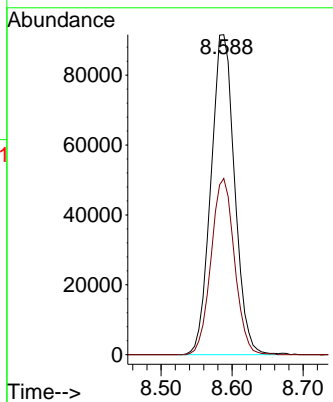
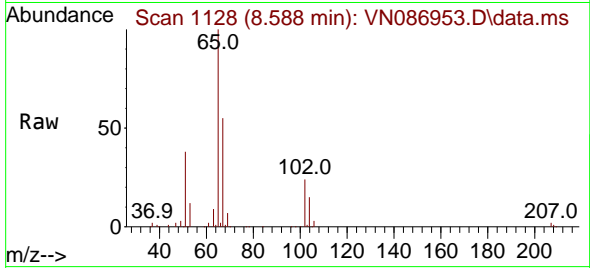




#33
 1,2-Dichloroethane-d4
 Concen: 50.407 ug/l
 RT: 8.588 min Scan# 1128
 Delta R.T. -0.000 min
 Lab File: VN086953.D
 Acq: 11 Jun 2025 16:57

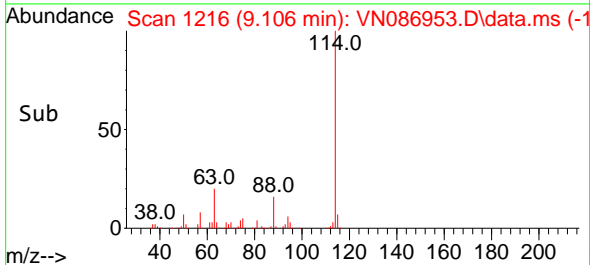
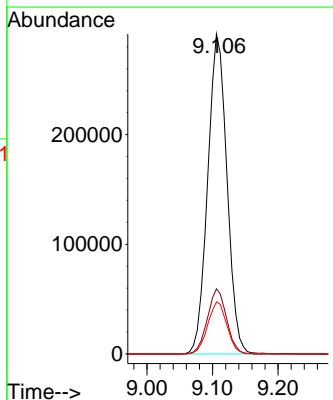
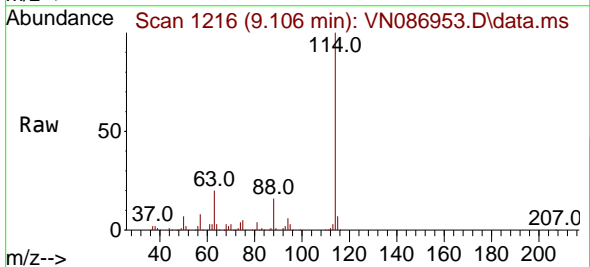
Instrument : MSVOA_N
 ClientSampleId : MW-10D-20250604

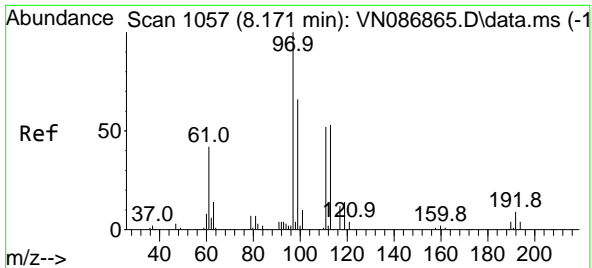
Tgt Ion: 65 Resp: 212002
 Ion Ratio Lower Upper
 65 100
 67 54.4 0.0 105.6



#34
 1,4-Difluorobenzene
 Concen: 50.000 ug/l
 RT: 9.106 min Scan# 1216
 Delta R.T. -0.000 min
 Lab File: VN086953.D
 Acq: 11 Jun 2025 16:57

Tgt Ion:114 Resp: 594896
 Ion Ratio Lower Upper
 114 100
 63 20.3 0.0 39.6
 88 16.3 0.0 30.2

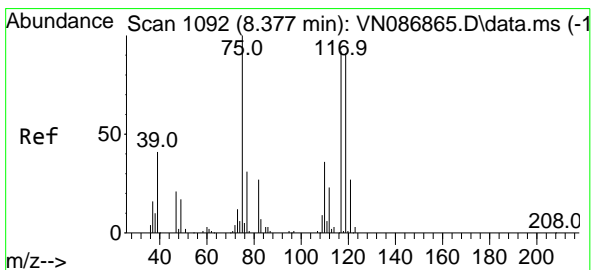
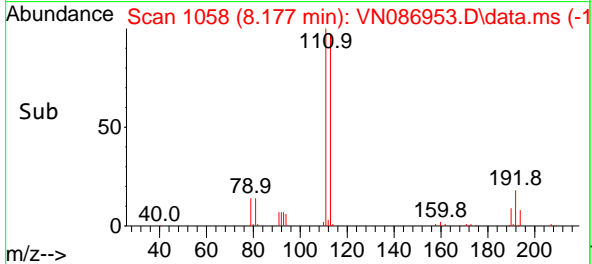
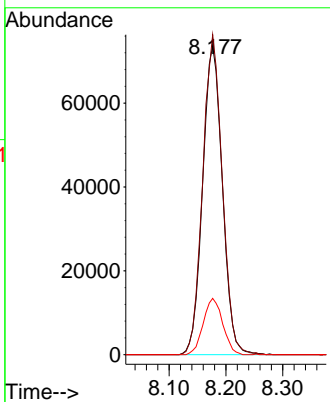
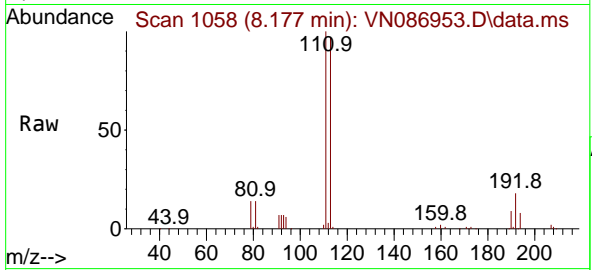




#35
 Dibromofluoromethane
 Concen: 50.420 ug/l
 RT: 8.177 min Scan# 1058
 Delta R.T. 0.006 min
 Lab File: VN086953.D
 Acq: 11 Jun 2025 16:57

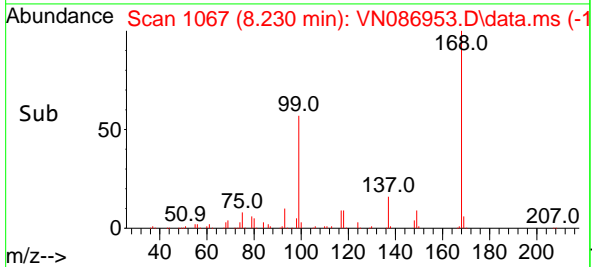
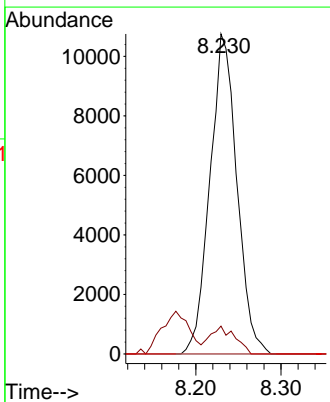
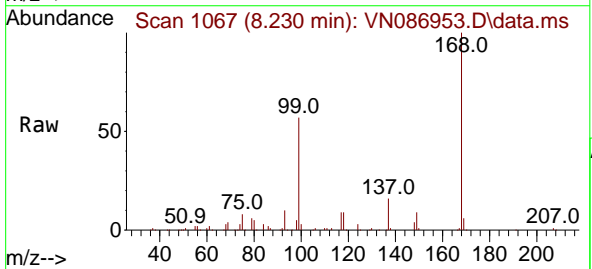
Instrument : MSVOA_N
 ClientSampleId : MW-10D-20250604

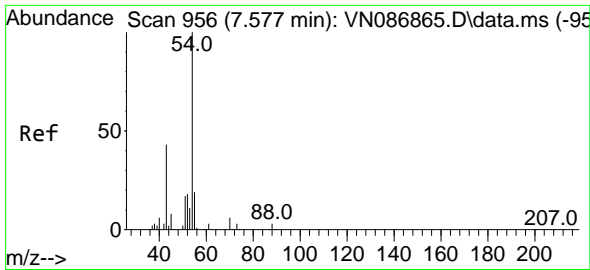
Tgt Ion	Resp	Lower	Upper
113	177756		
113	100		
111	102.4	84.2	126.2
192	18.0	14.2	21.4



#36
 1,1-Dichloropropene
 Concen: 4.506 ug/l
 RT: 8.230 min Scan# 1067
 Delta R.T. -0.147 min
 Lab File: VN086953.D
 Acq: 11 Jun 2025 16:57

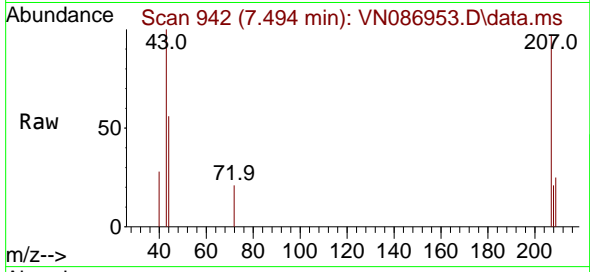
Tgt Ion	Resp	Lower	Upper
75	23670		
75	100		
110	8.0	17.6	52.9#
77	0.0	25.3	37.9#





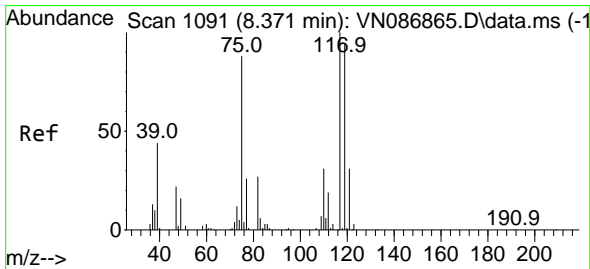
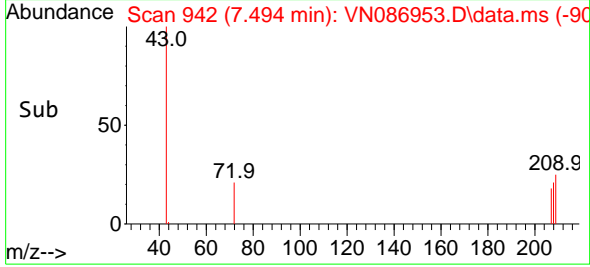
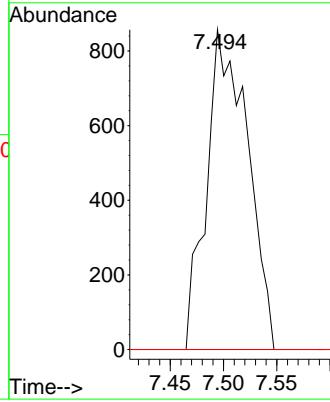
#37
 Ethyl Acetate
 Concen: 0.344 ug/l
 RT: 7.494 min Scan# 942
 Delta R.T. -0.082 min
 Lab File: VN086953.D
 Acq: 11 Jun 2025 16:57

Instrument : MSVOA_N
 ClientSampleId : MW-10D-20250604



Tgt Ion: 43 Resp: 2302

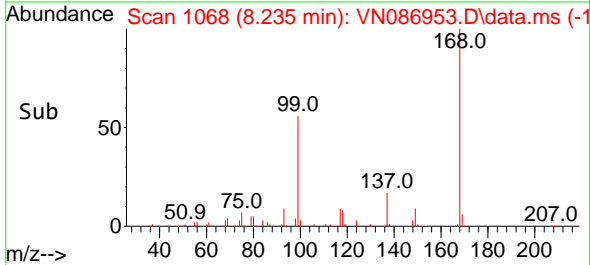
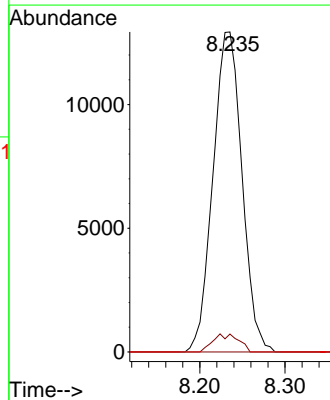
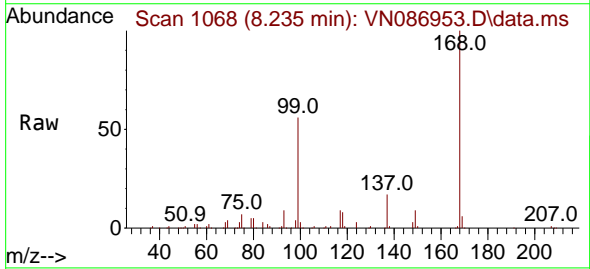
Ion	Ratio	Lower	Upper
43	100		
61	0.0	12.1	18.1#
70	0.0	9.8	14.6#

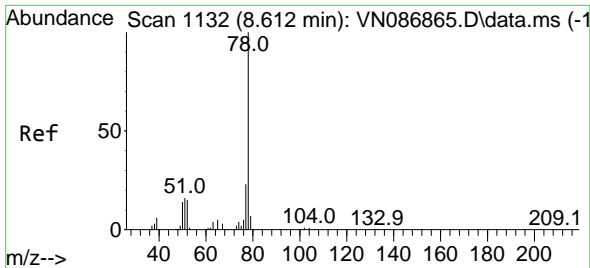


#38
 Carbon Tetrachloride
 Concen: 5.932 ug/l
 RT: 8.235 min Scan# 1068
 Delta R.T. -0.135 min
 Lab File: VN086953.D
 Acq: 11 Jun 2025 16:57

Tgt Ion: 117 Resp: 30597

Ion	Ratio	Lower	Upper
117	100		
119	5.6	75.0	112.6#
121	0.0	24.9	37.3#

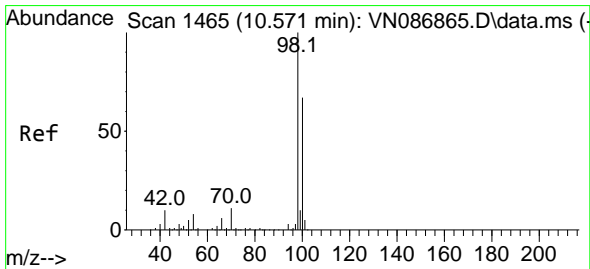
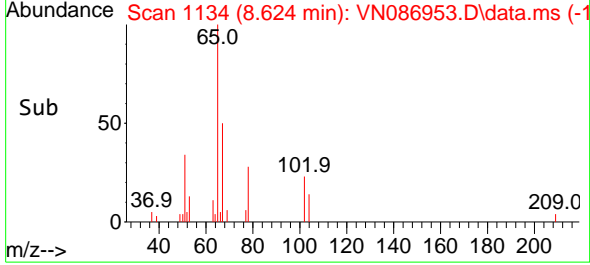
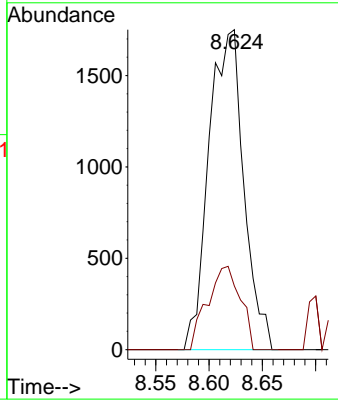
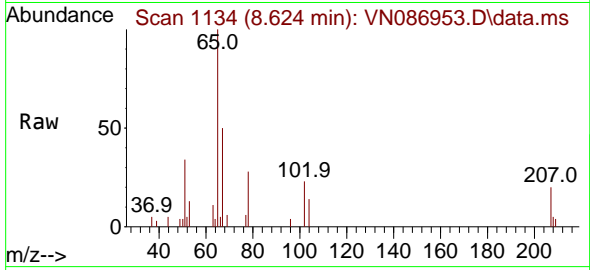




#40
 Benzene
 Concen: 0.232 ug/l
 RT: 8.624 min Scan# 1134
 Delta R.T. 0.012 min
 Lab File: VN086953.D
 Acq: 11 Jun 2025 16:57

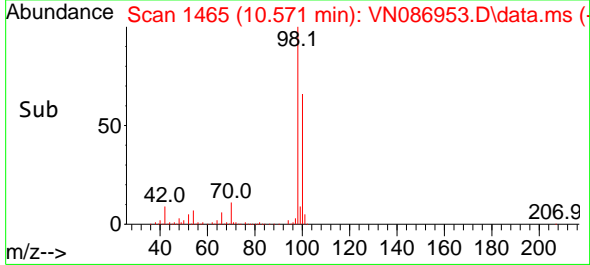
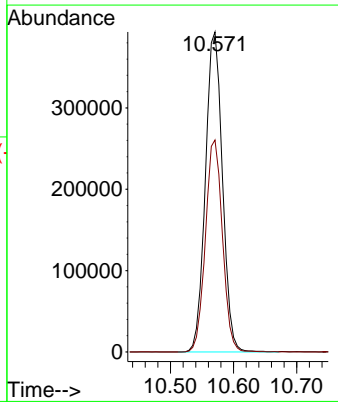
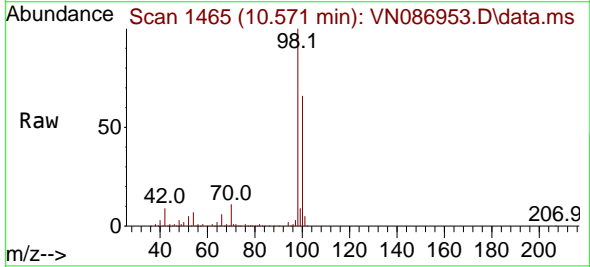
Instrument : MSVOA_N
 ClientSampleId : MW-10D-20250604

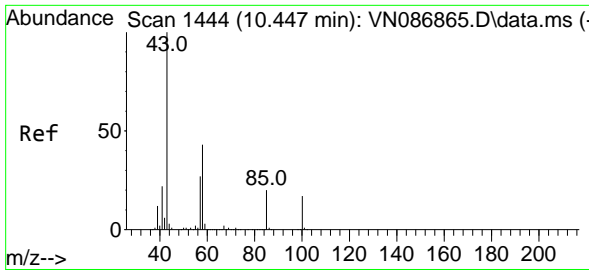
Tgt Ion: 78 Resp: 3990
 Ion Ratio Lower Upper
 78 100
 77 19.9 18.7 28.1



#50
 Toluene-d8
 Concen: 52.752 ug/l
 RT: 10.571 min Scan# 1465
 Delta R.T. -0.000 min
 Lab File: VN086953.D
 Acq: 11 Jun 2025 16:57

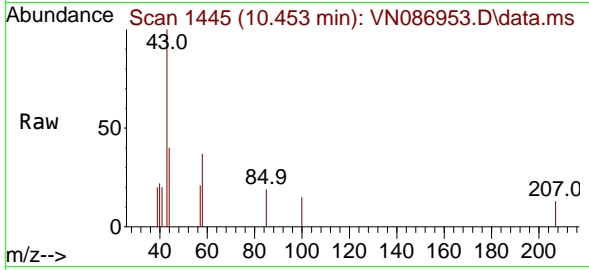
Tgt Ion: 98 Resp: 736237
 Ion Ratio Lower Upper
 98 100
 100 66.2 53.4 80.0



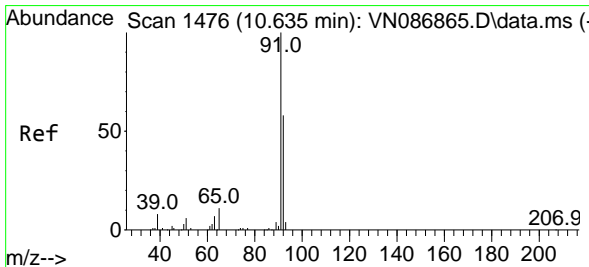
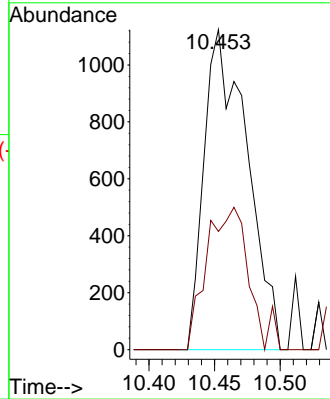
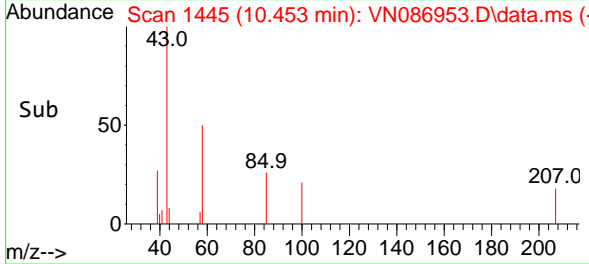


#51
 4-Methyl-2-Pentanone
 Concen: 0.396 ug/l
 RT: 10.453 min Scan# 1445
 Delta R.T. 0.006 min
 Lab File: VN086953.D
 Acq: 11 Jun 2025 16:57

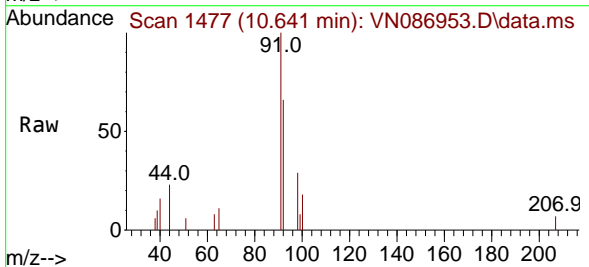
Instrument : MSVOA_N
 ClientSampleId : MW-10D-20250604



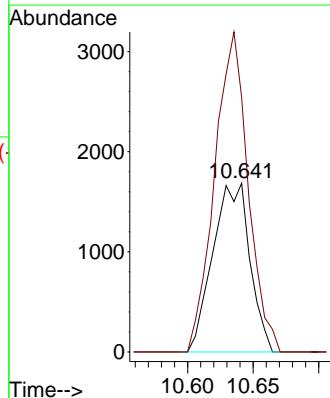
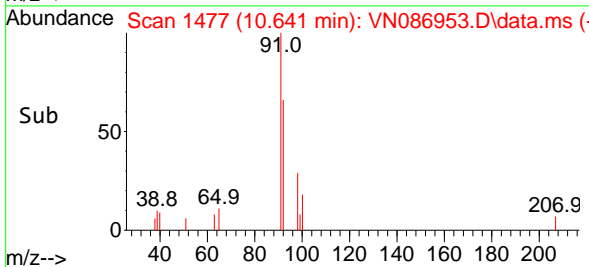
Tgt Ion: 43 Resp: 2559
 Ion Ratio Lower Upper
 43 100
 58 44.0 34.2 51.4

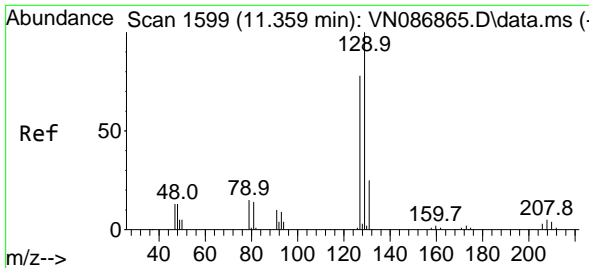


#52
 Toluene
 Concen: 0.315 ug/l
 RT: 10.641 min Scan# 1477
 Delta R.T. 0.006 min
 Lab File: VN086953.D
 Acq: 11 Jun 2025 16:57



Tgt Ion: 92 Resp: 3302
 Ion Ratio Lower Upper
 92 100
 91 171.7 136.5 204.7

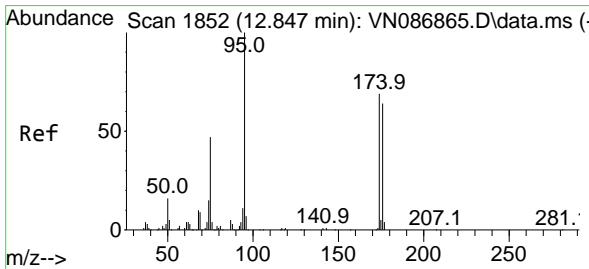
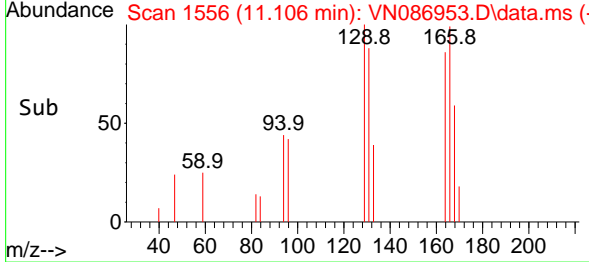
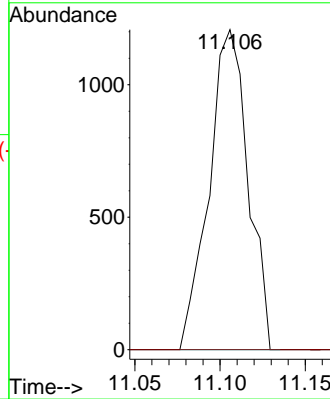
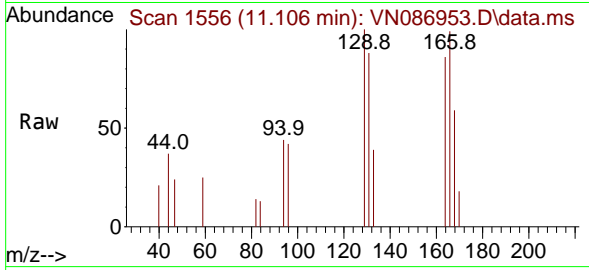




#60
 Dibromochloromethane
 Concen: 0.457 ug/l
 RT: 11.106 min Scan# 11106
 Delta R.T. -0.253 min
 Lab File: VN086953.D
 Acq: 11 Jun 2025 16:57

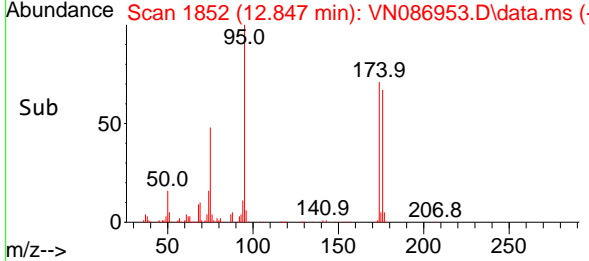
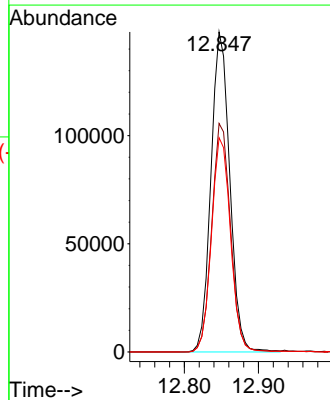
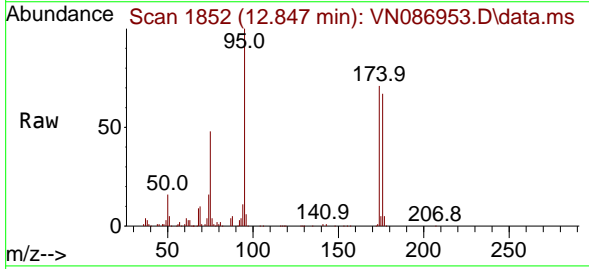
Instrument : MSVOA_N
 ClientSampleId : MW-10D-20250604

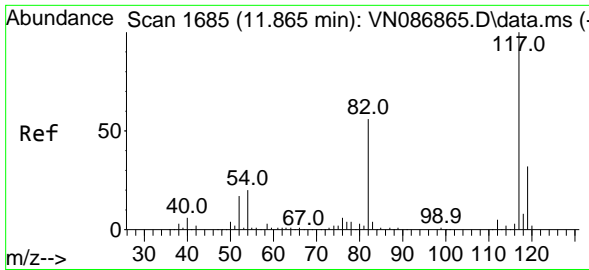
Tgt Ion:129 Resp: 1923
 Ion Ratio Lower Upper
 129 100
 127 0.0 38.6 115.8#



#62
 4-Bromofluorobenzene
 Concen: 50.334 ug/l
 RT: 12.847 min Scan# 1852
 Delta R.T. -0.000 min
 Lab File: VN086953.D
 Acq: 11 Jun 2025 16:57

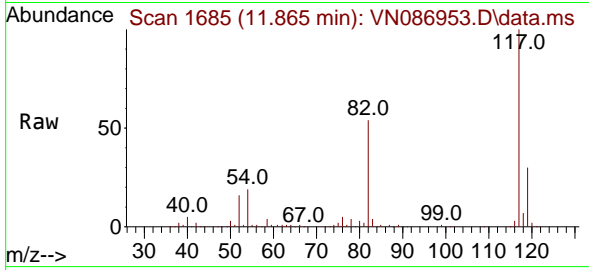
Tgt Ion: 95 Resp: 260994
 Ion Ratio Lower Upper
 95 100
 174 71.5 0.0 141.8
 176 67.9 0.0 132.6





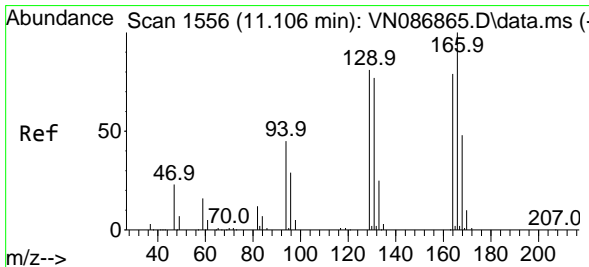
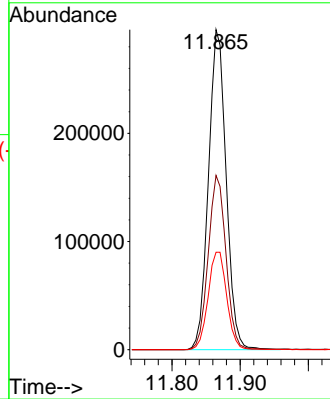
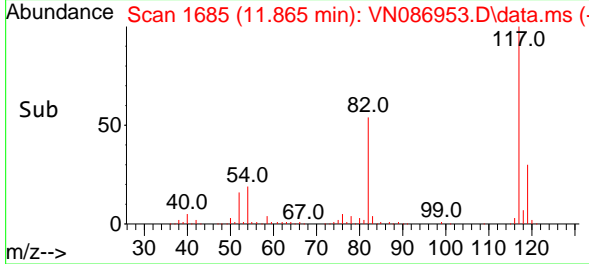
#63
 Chlorobenzene-d5
 Concen: 50.000 ug/l
 RT: 11.865 min Scan# 1685
 Delta R.T. -0.000 min
 Lab File: VN086953.D
 Acq: 11 Jun 2025 16:57

Instrument : MSVOA_N
 ClientSampleId : MW-10D-20250604

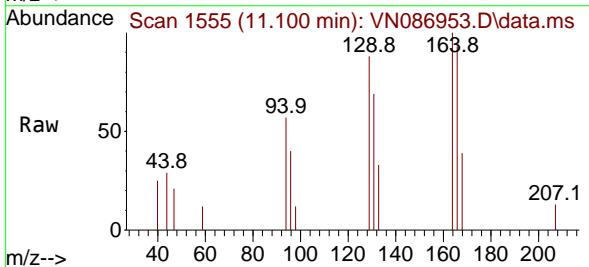


Tgt Ion:117 Resp: 533609

Ion	Ratio	Lower	Upper
117	100		
82	54.4	44.6	67.0
119	30.5	25.5	38.3

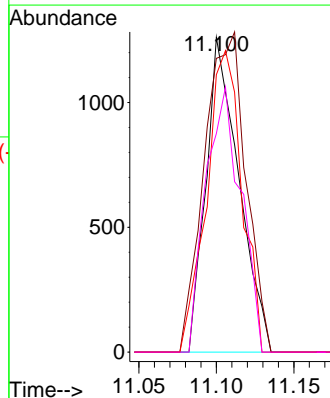
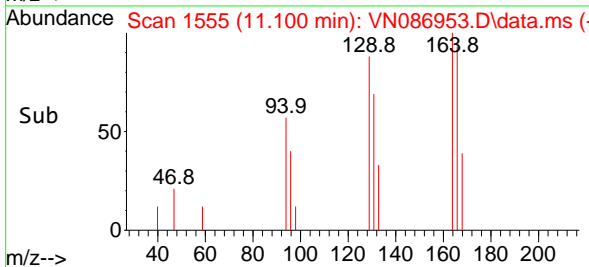


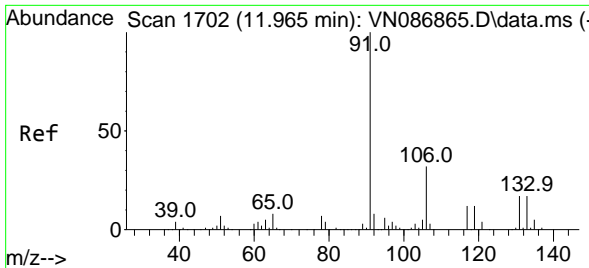
#64
 Tetrachloroethene
 Concen: 0.552 ug/l
 RT: 11.100 min Scan# 1555
 Delta R.T. -0.006 min
 Lab File: VN086953.D
 Acq: 11 Jun 2025 16:57



Tgt Ion:164 Resp: 1864

Ion	Ratio	Lower	Upper
164	100		
166	93.3	101.8	152.8#
129	88.2	83.0	124.4
131	69.5	78.2	117.2#

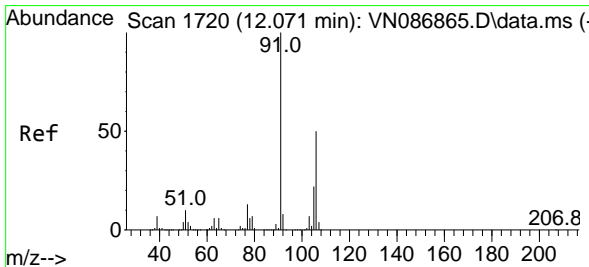
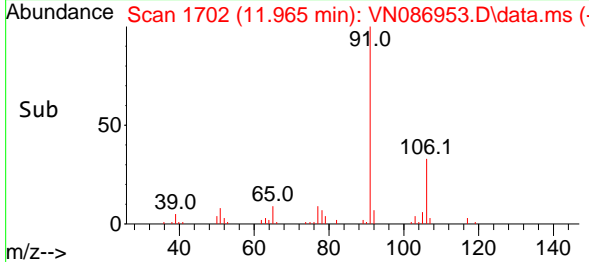
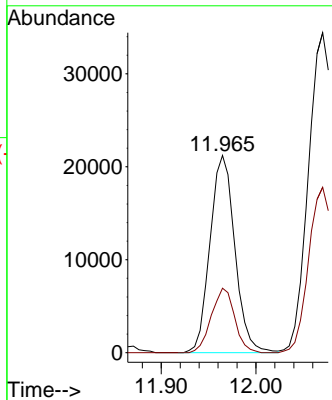
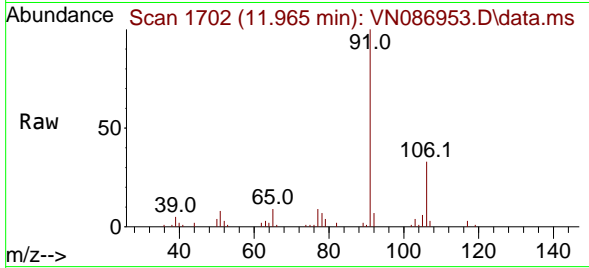




#67
 Ethyl Benzene
 Concen: 1.911 ug/l
 RT: 11.965 min Scan# 1702
 Delta R.T. -0.000 min
 Lab File: VN086953.D
 Acq: 11 Jun 2025 16:57

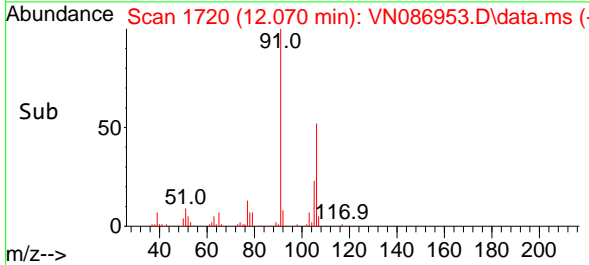
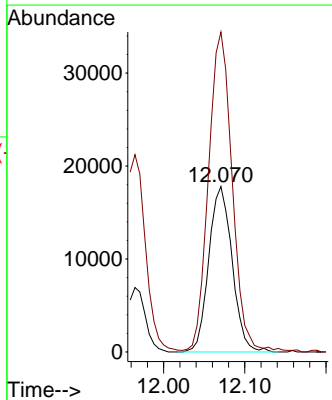
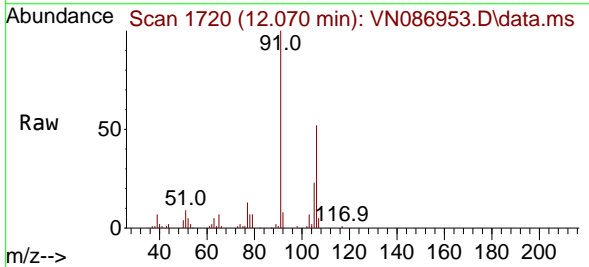
Instrument : MSVOA_N
 ClientSampleId : MW-10D-20250604

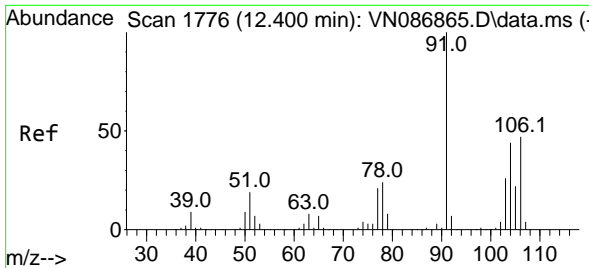
Tgt Ion: 91 Resp: 38747
 Ion Ratio Lower Upper
 91 100
 106 32.7 25.4 38.2



#68
 m/p-Xylenes
 Concen: 4.582 ug/l
 RT: 12.070 min Scan# 1720
 Delta R.T. -0.000 min
 Lab File: VN086953.D
 Acq: 11 Jun 2025 16:57

Tgt Ion: 106 Resp: 35558
 Ion Ratio Lower Upper
 106 100
 91 197.0 159.4 239.0

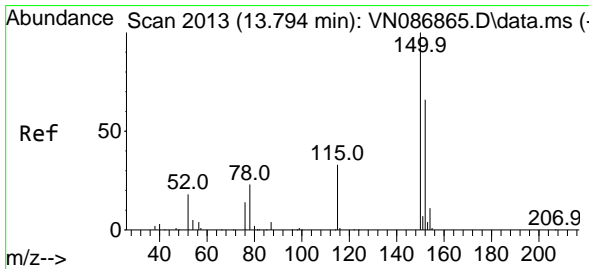
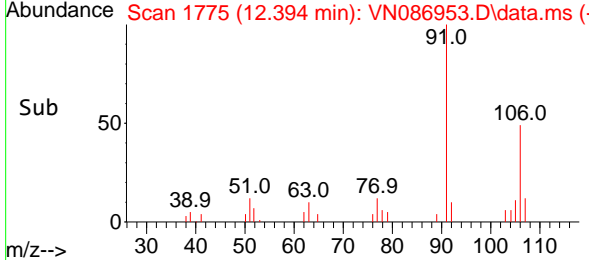
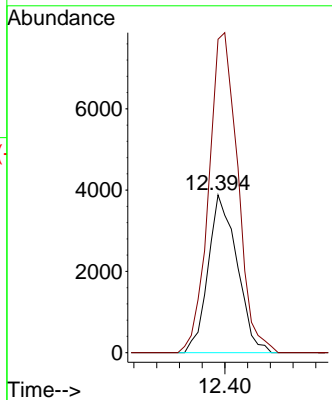
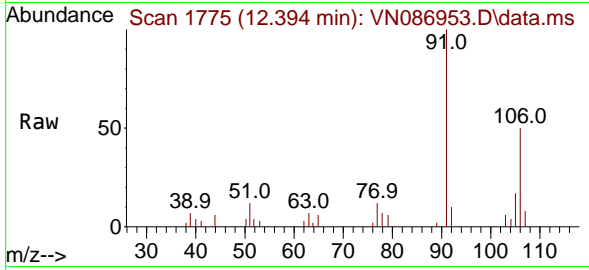




#69
 o-Xylene
 Concen: 0.924 ug/l
 RT: 12.394 min Scan# 11
 Delta R.T. -0.006 min
 Lab File: VN086953.D
 Acq: 11 Jun 2025 16:57

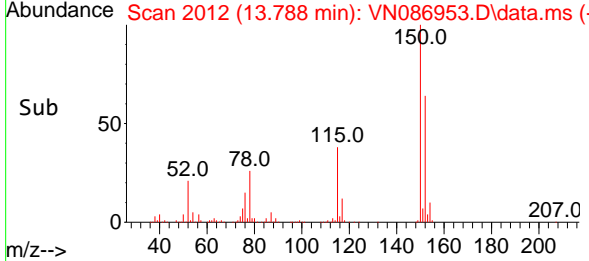
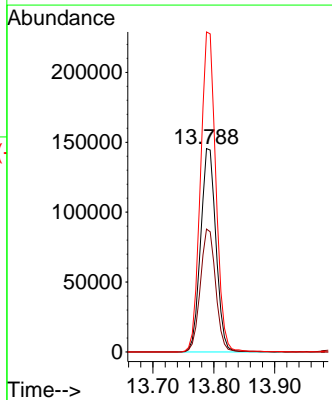
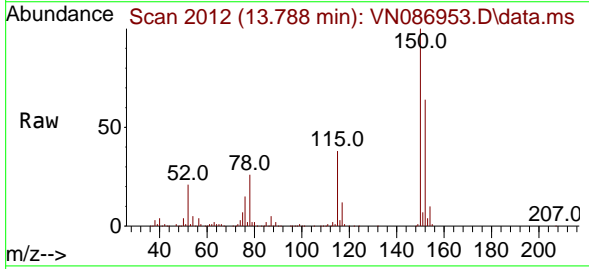
Instrument : MSVOA_N
 ClientSampleId : MW-10D-20250604

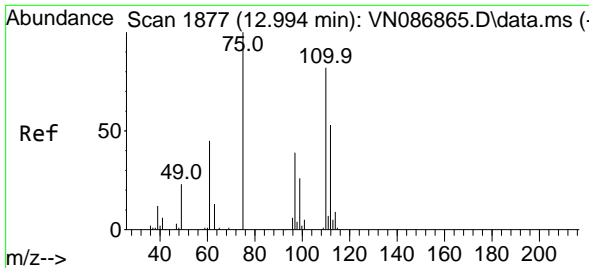
Tgt Ion:106 Resp: 6869
 Ion Ratio Lower Upper
 106 100
 91 203.2 106.1 318.1



#72
 1,4-Dichlorobenzene-d4
 Concen: 50.000 ug/l
 RT: 13.788 min Scan# 2012
 Delta R.T. -0.006 min
 Lab File: VN086953.D
 Acq: 11 Jun 2025 16:57

Tgt Ion:152 Resp: 254824
 Ion Ratio Lower Upper
 152 100
 115 60.4 30.1 90.5
 150 157.5 0.0 345.0

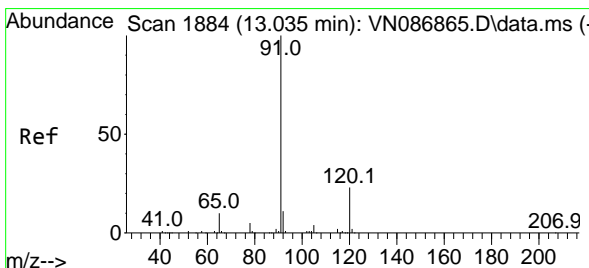
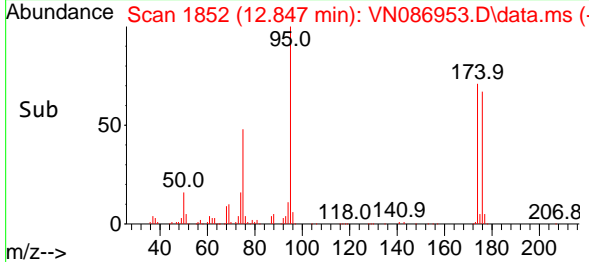
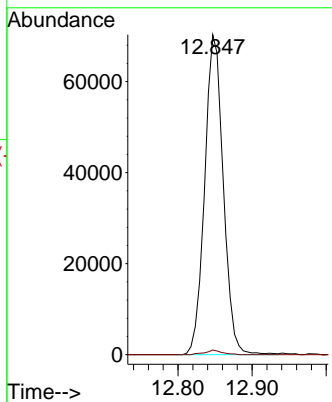
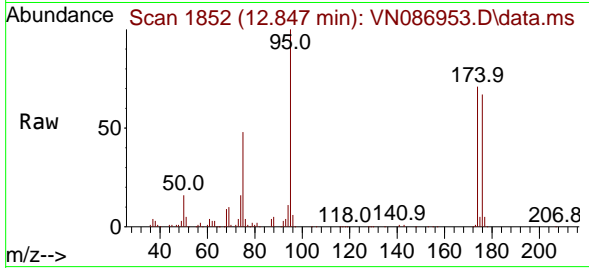




#76
 1,2,3-Trichloropropane
 Concen: 20.251 ug/l
 RT: 12.847 min Scan# 1852
 Delta R.T. -0.147 min
 Lab File: VN086953.D
 Acq: 11 Jun 2025 16:57

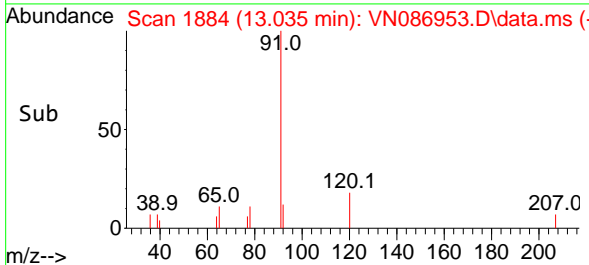
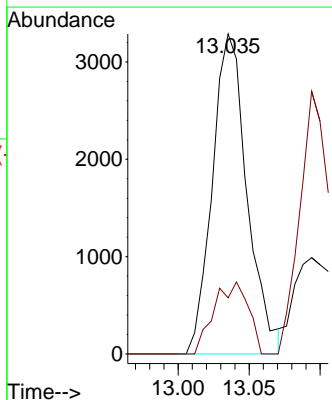
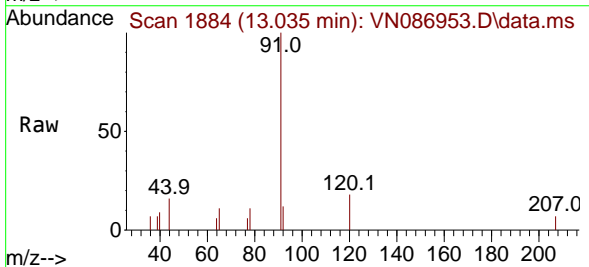
Instrument : MSVOA_N
 ClientSampleId : MW-10D-20250604

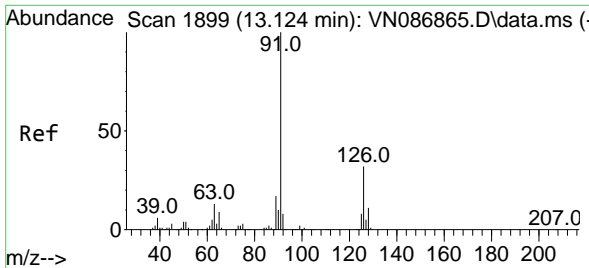
Tgt Ion: 75 Resp: 122664
 Ion Ratio Lower Upper
 75 100
 77 1.3 79.3 237.9#



#78
 n-propylbenzene
 Concen: 0.248 ug/l
 RT: 13.035 min Scan# 1884
 Delta R.T. -0.000 min
 Lab File: VN086953.D
 Acq: 11 Jun 2025 16:57

Tgt Ion: 91 Resp: 5595
 Ion Ratio Lower Upper
 91 100
 120 22.2 11.4 34.2

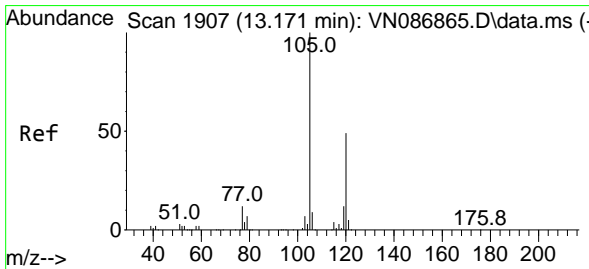
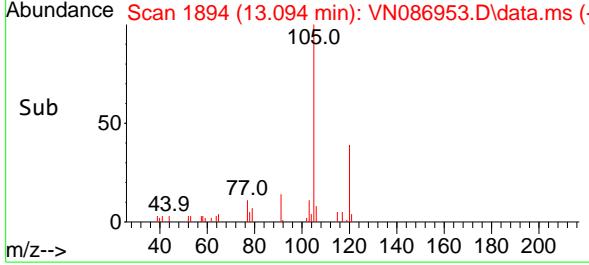
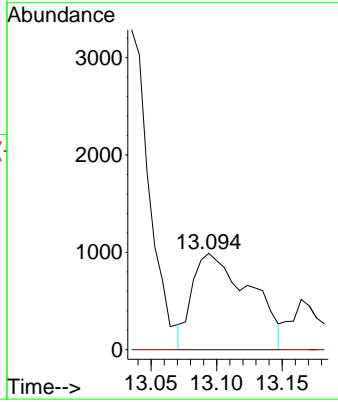
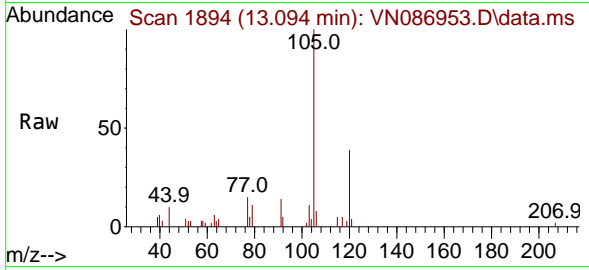




#79
 2-Chlorotoluene
 Concen: 0.223 ug/l
 RT: 13.094 min Scan# 1899
 Delta R.T. -0.030 min
 Lab File: VN086953.D
 Acq: 11 Jun 2025 16:57

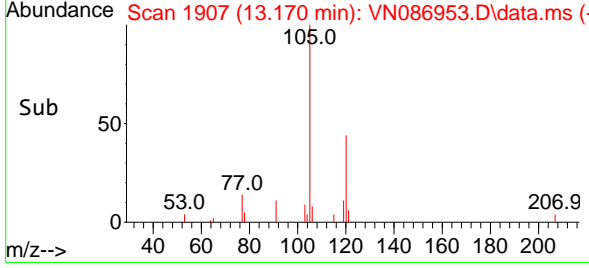
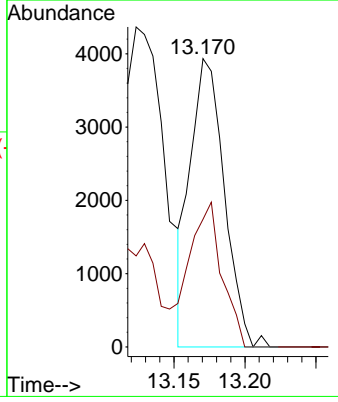
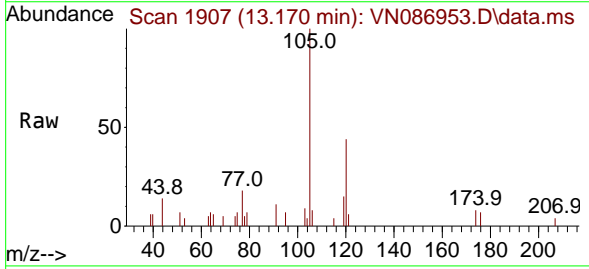
Instrument : MSVOA_N
 ClientSampleId : MW-10D-20250604

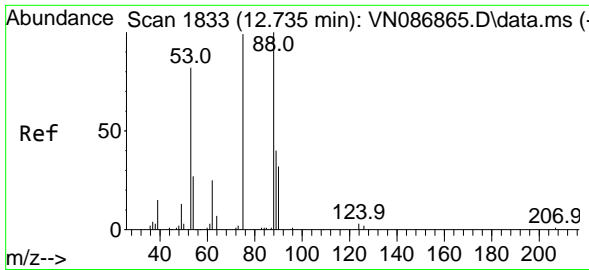
Tgt Ion: 91 Resp: 3012
 Ion Ratio Lower Upper
 91 100
 126 0.0 16.2 48.5#



#80
 1,3,5-Trimethylbenzene
 Concen: 0.428 ug/l
 RT: 13.170 min Scan# 1907
 Delta R.T. -0.000 min
 Lab File: VN086953.D
 Acq: 11 Jun 2025 16:57

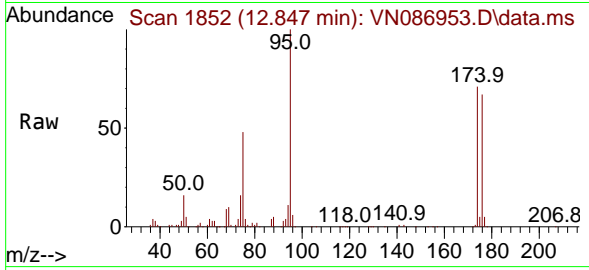
Tgt Ion: 105 Resp: 6564
 Ion Ratio Lower Upper
 105 100
 120 48.8 24.9 74.6



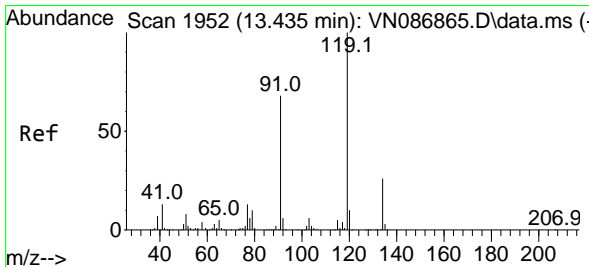
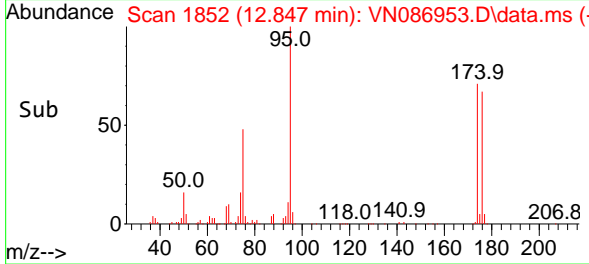
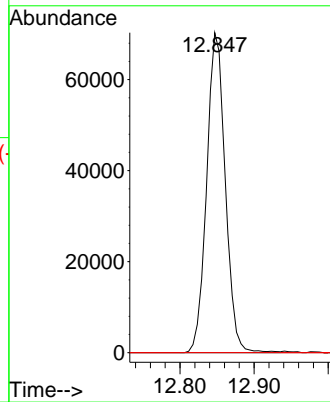


#81
 trans-1,4-Dichloro-2-butene
 Concen: 46.616 ug/l
 RT: 12.847 min Scan# 1852
 Delta R.T. 0.112 min
 Lab File: VN086953.D
 Acq: 11 Jun 2025 16:57

Instrument : MSVOA_N
 ClientSampleId : MW-10D-20250604

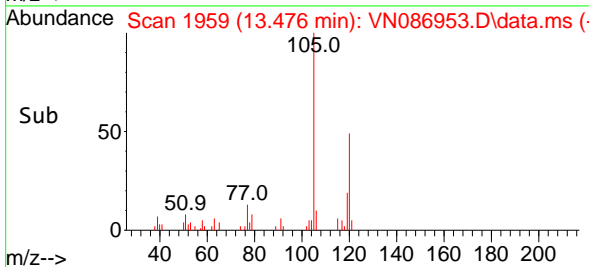
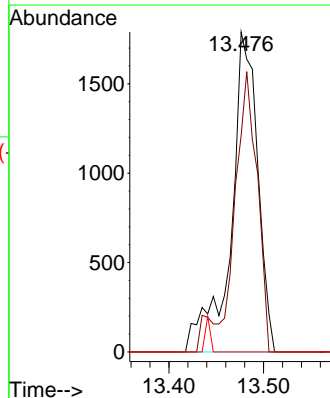
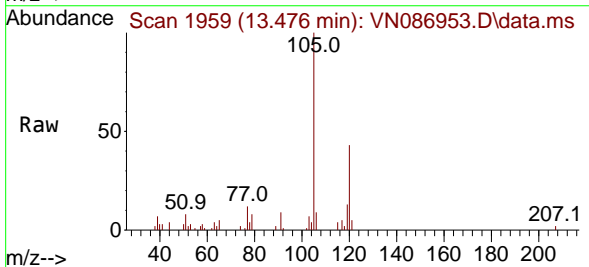


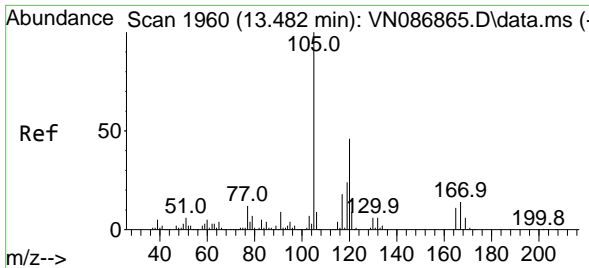
Tgt Ion: 75 Resp: 122664
 Ion Ratio Lower Upper
 75 100
 53 0.0 66.6 99.8#
 89 0.0 36.7 55.1#



#83
 tert-Butylbenzene
 Concen: 0.250 ug/l
 RT: 13.476 min Scan# 1959
 Delta R.T. 0.041 min
 Lab File: VN086953.D
 Acq: 11 Jun 2025 16:57

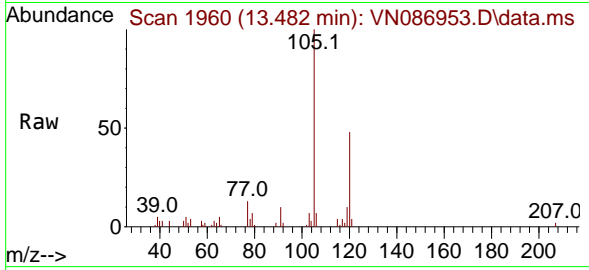
Tgt Ion: 119 Resp: 3509
 Ion Ratio Lower Upper
 119 100
 91 70.6 32.1 96.5
 134 0.0 13.4 40.1#



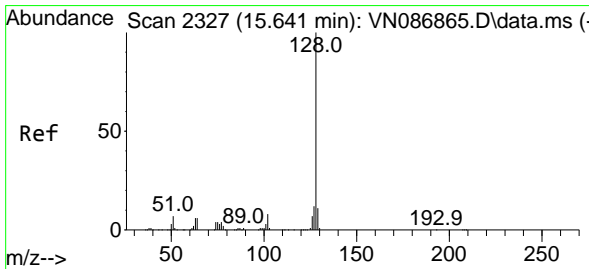
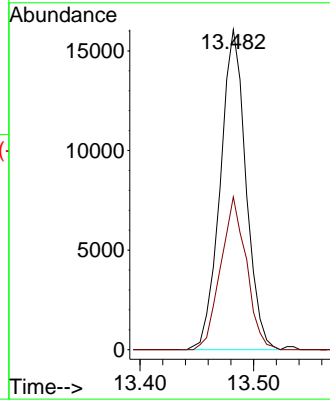
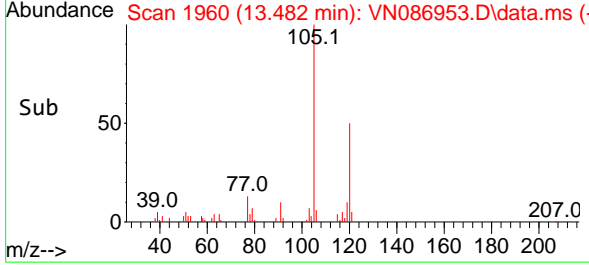


#84
 1,2,4-Trimethylbenzene
 Concen: 1.643 ug/l
 RT: 13.482 min Scan# 1960
 Delta R.T. -0.000 min
 Lab File: VN086953.D
 Acq: 11 Jun 2025 16:57

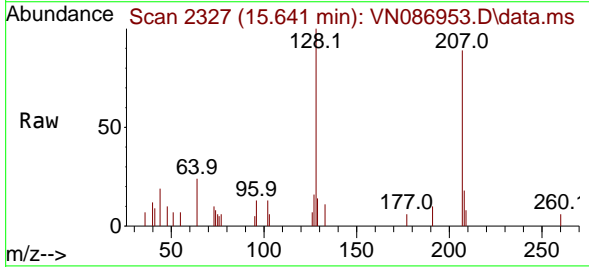
Instrument : MSVOA_N
 ClientSampleId : MW-10D-20250604



Tgt Ion:105 Resp: 25253
 Ion Ratio Lower Upper
 105 100
 120 47.8 23.2 69.6



#95
 Naphthalene
 Concen: 0.325 ug/l
 RT: 15.641 min Scan# 2327
 Delta R.T. -0.000 min
 Lab File: VN086953.D
 Acq: 11 Jun 2025 16:57



Tgt Ion:128 Resp: 6226
 Ion Ratio Lower Upper
 128 100
 127 12.6 10.2 15.2
 129 11.2 8.8 13.2

