

Data Path : Z:\voasrv\HPCHEM1\MSVOA_N\Data\VN061223\
 Data File : VN078170.D
 Acq On : 12 Jun 2023 16:42
 Operator : JC\MD
 Sample : 03136-03
 Misc : 5.0mL/MSVOA_N/WATER
 ALS Vial : 15 Sample Multiplier: 1

Instrument :
 MSVOA_N
 ClientSampleId :
 ELI-SUB-LD-CON

Quant Time: Jun 13 01:34:52 2023
 Quant Method : Z:\voasrv\HPCHEM1\MSVOA_N\methods\82N060623W.M
 Quant Title : SW846 8260
 QLast Update : Wed Jun 07 05:05:00 2023
 Response via : Initial Calibration

Compound	R.T.	QIon	Response	Conc	Units	Dev(Min)

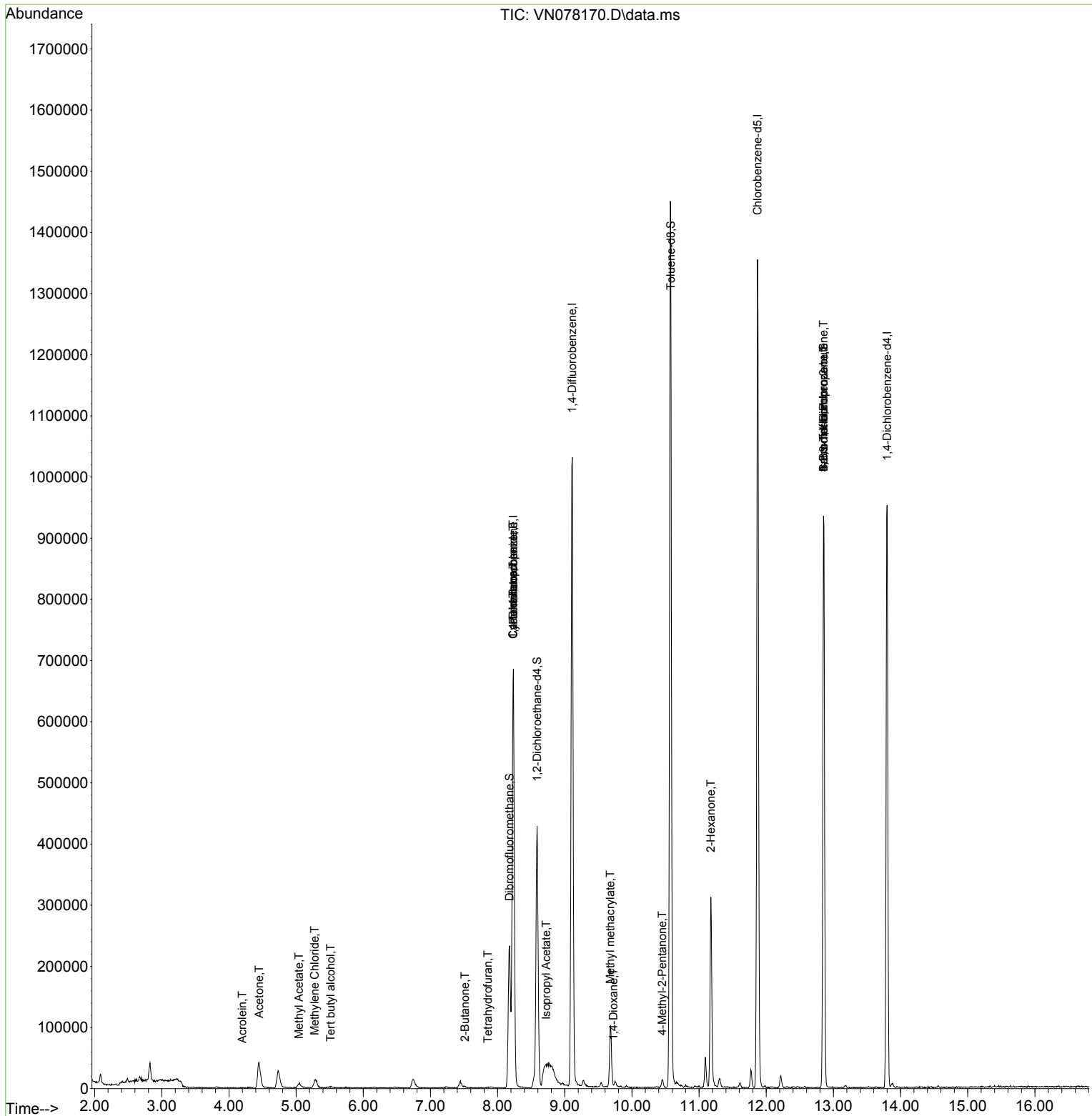
Internal Standards						
1) Pentafluorobenzene	8.235	168	485462	50.000	ug/l	0.00
34) 1,4-Difluorobenzene	9.112	114	918145	50.000	ug/l	0.00
63) Chlorobenzene-d5	11.870	117	804573	50.000	ug/l	0.00
72) 1,4-Dichlorobenzene-d4	13.800	152	261536	50.000	ug/l	0.00
System Monitoring Compounds						
33) 1,2-Dichloroethane-d4	8.588	65	347061	53.619	ug/l	0.00
Spiked Amount	50.000	Range 74 - 125	Recovery =	107.240%		
35) Dibromofluoromethane	8.177	113	166728	28.720	ug/l	0.00
Spiked Amount	50.000	Range 75 - 124	Recovery =	57.440%#		
50) Toluene-d8	10.576	98	1066759	47.666	ug/l	0.00
Spiked Amount	50.000	Range 86 - 113	Recovery =	95.340%		
62) 4-Bromofluorobenzene	12.853	95	338131	48.600	ug/l	0.00
Spiked Amount	50.000	Range 83 - 123	Recovery =	97.200%		
Target Compounds						
					Qvalue	
3) Chloromethane	2.371	50	937	Below Cal	#	77
11) Tert butyl alcohol	5.512	59	1240	1.387	ug/l #	72
13) Acrolein	4.200	56	509	0.517	ug/l #	51
16) Acetone	4.447	43	80547	43.233	ug/l	96
18) Methyl Acetate	5.041	43	14481	1.688	ug/l #	65
20) Methylene Chloride	5.277	84	5393	0.876	ug/l	97
25) 2-Butanone	7.512	43	5504	1.921	ug/l #	67
29) Tetrahydrofuran	7.853	42	557	0.291	ug/l #	28
31) Cyclohexane	8.230	56	12490	1.504	ug/l #	26
36) 1,1-Dichloropropene	8.230	75	41063	4.931	ug/l #	44
38) Carbon Tetrachloride	8.230	117	52241	5.942	ug/l #	14
43) Isopropyl Acetate	8.724	43	41497	3.336	ug/l #	49
48) Methyl methacrylate	9.676	41	7385	1.415	ug/l #	33
49) 1,4-Dioxane	9.724	88	75	0.683	ug/l #	30
51) 4-Methyl-2-Pentanone	10.453	43	8190	1.250	ug/l	98
59) 2-Hexanone	11.176	43	228089	50.003	ug/l #	19
71) Bromoform	12.853	173	2053	0.502	ug/l #	1
75) 1,1,2,2-Tetrachloroethane	12.988	83	58	Below Cal	#	26
76) 1,2,3-Trichloropropane	12.853	75	182603	29.534	ug/l #	1
81) trans-1,4-Dichloro-2-b...	12.853	75	182603	90.738	ug/l #	15
94) Hexachlorobutadiene	15.500	225	54	Below Cal	#	19

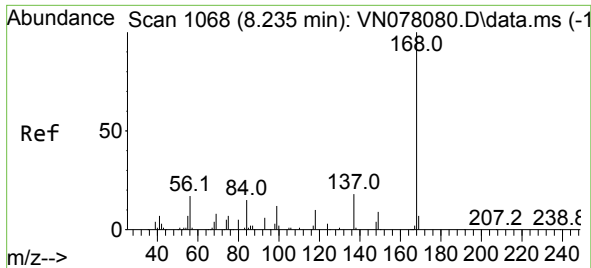
(#) = qualifier out of range (m) = manual integration (+) = signals summed

Data Path : Z:\voasrv\HPCHEM1\MSVOA_N\Data\VN061223\
 Data File : VN078170.D
 Acq On : 12 Jun 2023 16:42
 Operator : JC\MD
 Sample : 03136-03
 Misc : 5.0mL/MSVOA_N/WATER
 ALS Vial : 15 Sample Multiplier: 1

Instrument :
 MSVOA_N
 ClientSampleId :
 ELI-SUB-LD-CON

Quant Time: Jun 13 01:34:52 2023
 Quant Method : Z:\voasrv\HPCHEM1\MSVOA_N\methods\82N060623W.M
 Quant Title : SW846 8260
 QLast Update : Wed Jun 07 05:05:00 2023
 Response via : Initial Calibration

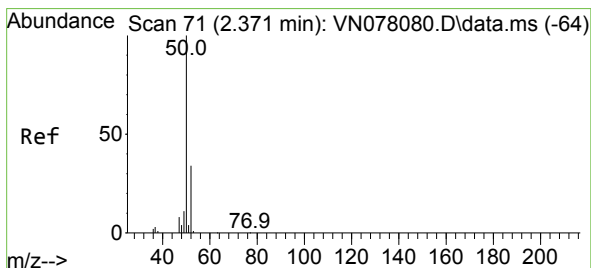
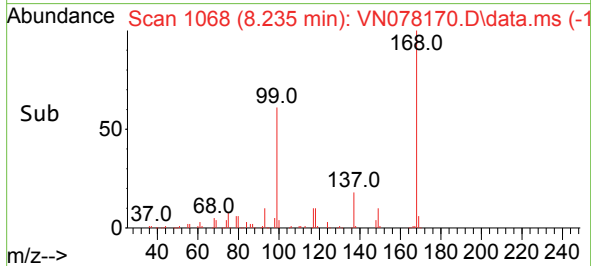
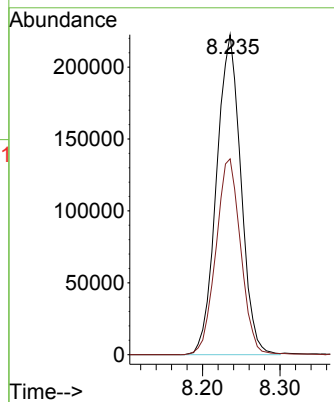
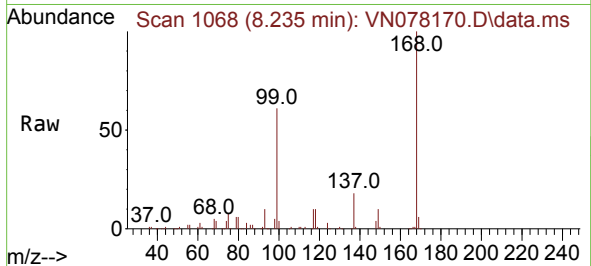




#1
 Pentafluorobenzene
 Concen: 50.000 ug/l
 RT: 8.235 min Scan# 1068
 Delta R.T. 0.000 min
 Lab File: VN078170.D
 Acq: 12 Jun 2023 16:42

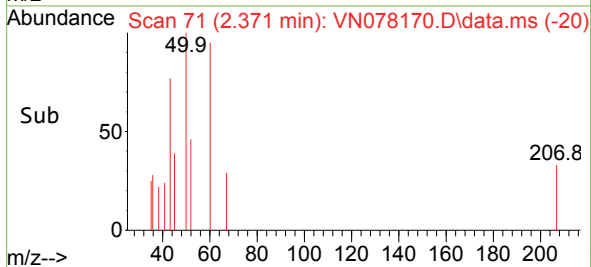
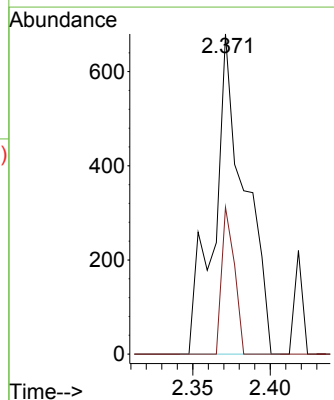
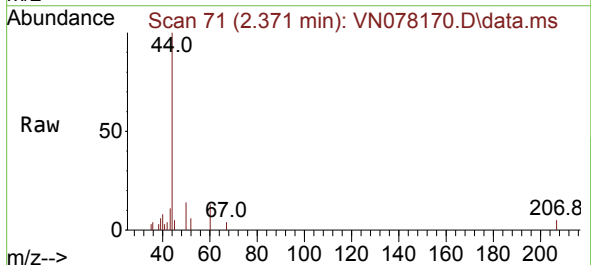
Instrument : MSVOA_N
 ClientSampleId : ELI-SUB-LD-CON

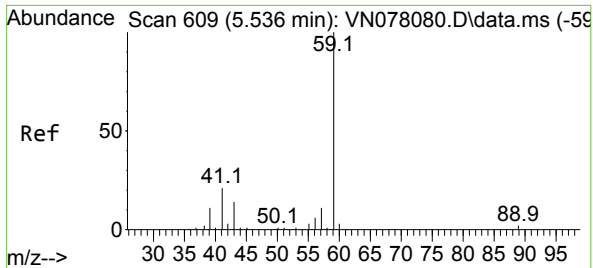
Tgt Ion:168 Resp: 485462
 Ion Ratio Lower Upper
 168 100
 99 61.2 53.0 79.6



#3
 Chloromethane
 Concen: Below Cal
 RT: 2.371 min Scan# 71
 Delta R.T. 0.000 min
 Lab File: VN078170.D
 Acq: 12 Jun 2023 16:42

Tgt Ion: 50 Resp: 937
 Ion Ratio Lower Upper
 50 100
 52 45.9 26.5 39.7#

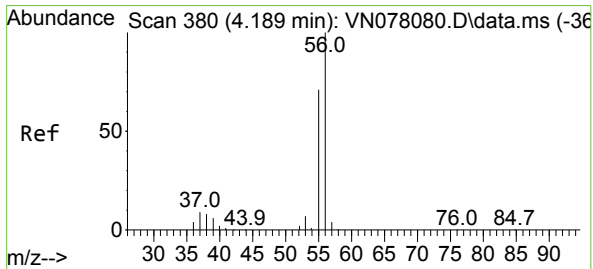
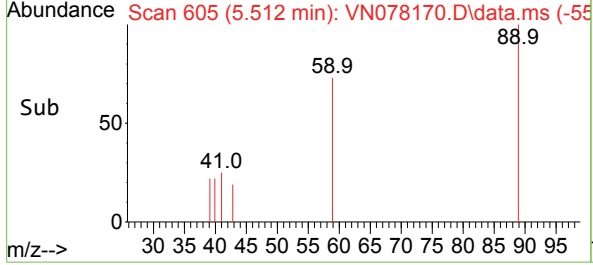
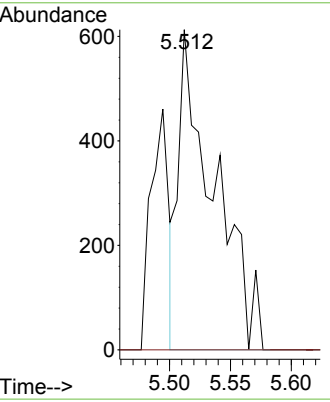
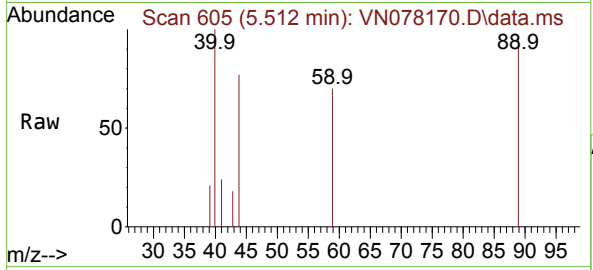




#11
 Tert butyl alcohol
 Concen: 1.387 ug/l
 RT: 5.512 min Scan# 609
 Delta R.T. -0.024 min
 Lab File: VN078170.D
 Acq: 12 Jun 2023 16:42

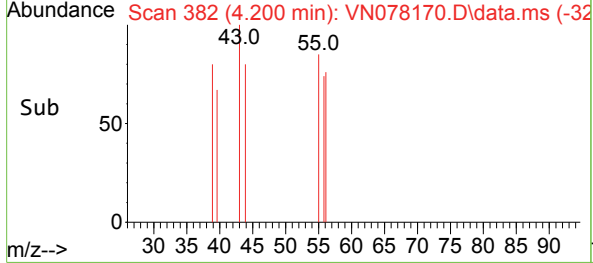
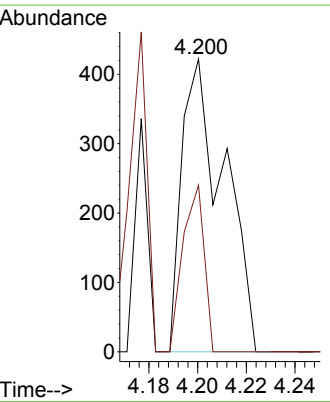
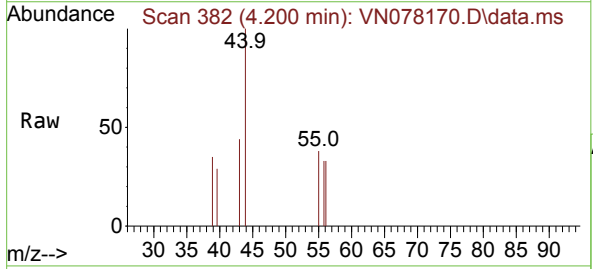
Instrument : MSVOA_N
 ClientSampleId : ELI-SUB-LD-CON

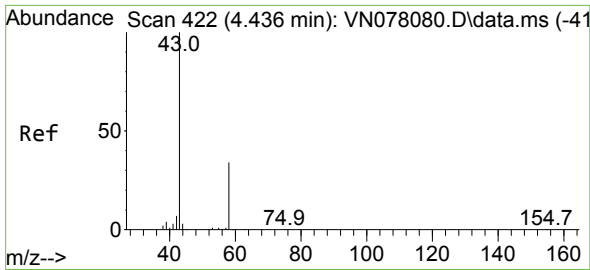
Tgt Ion: 59 Resp: 1240
 Ion Ratio Lower Upper
 59 100
 57 0.0 8.2 12.4#



#13
 Acrolein
 Concen: 0.517 ug/l
 RT: 4.200 min Scan# 382
 Delta R.T. 0.012 min
 Lab File: VN078170.D
 Acq: 12 Jun 2023 16:42

Tgt Ion: 56 Resp: 509
 Ion Ratio Lower Upper
 56 100
 55 28.7 54.5 81.7#

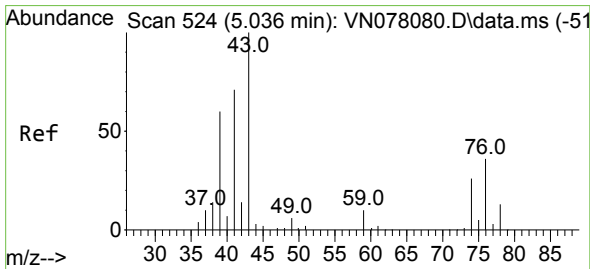
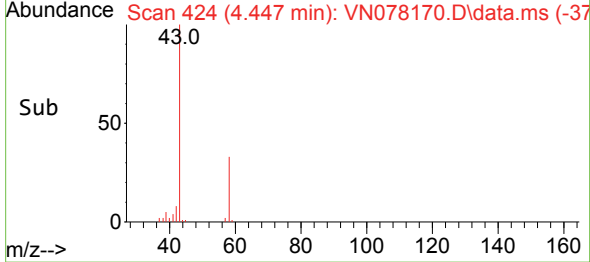
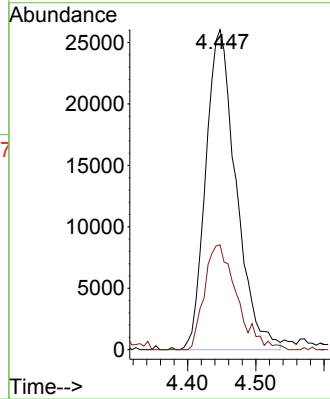
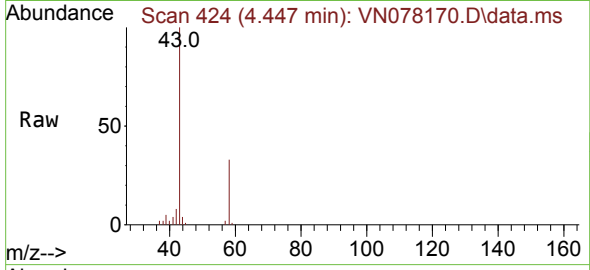




#16
 Acetone
 Concen: 43.233 ug/l
 RT: 4.447 min Scan# 41
 Delta R.T. 0.012 min
 Lab File: VN078170.D
 Acq: 12 Jun 2023 16:42

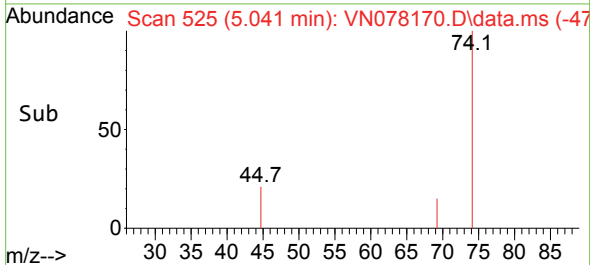
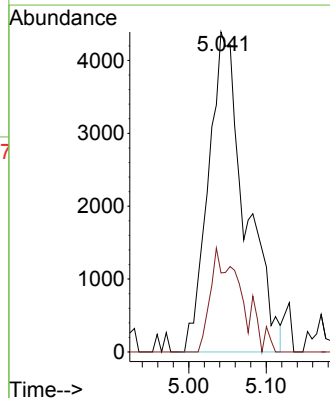
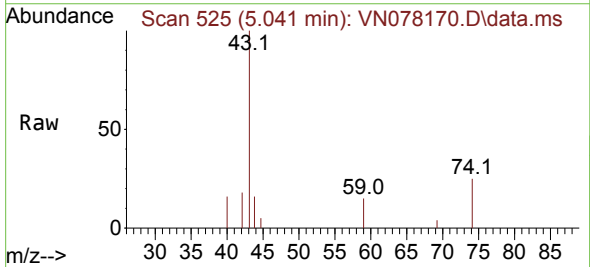
Instrument :
 MSVOA_N
 ClientSampleId :
 ELI-SUB-LD-CON

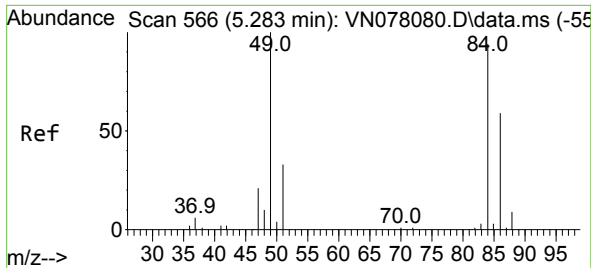
Tgt Ion: 43 Resp: 80547
 Ion Ratio Lower Upper
 43 100
 58 32.8 28.0 42.0



#18
 Methyl Acetate
 Concen: 1.688 ug/l
 RT: 5.041 min Scan# 525
 Delta R.T. 0.006 min
 Lab File: VN078170.D
 Acq: 12 Jun 2023 16:42

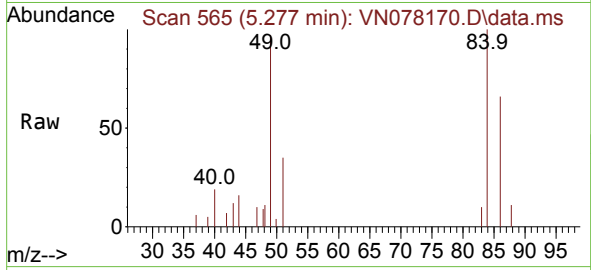
Tgt Ion: 43 Resp: 14481
 Ion Ratio Lower Upper
 43 100
 74 12.9 26.2 39.4#





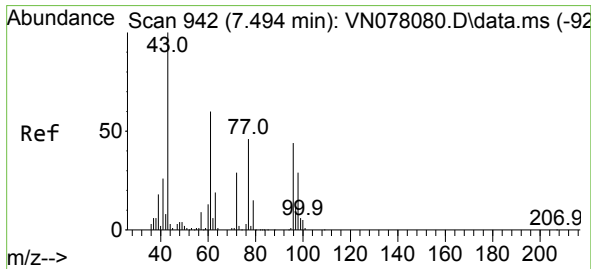
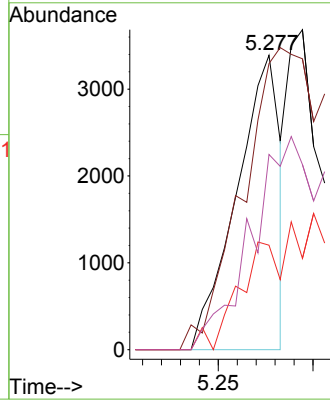
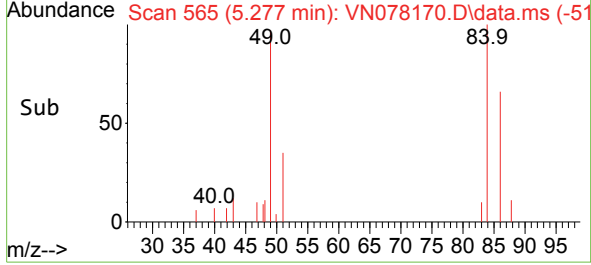
#20
 Methylene Chloride
 Concen: 0.876 ug/l
 RT: 5.277 min Scan# 50
 Delta R.T. -0.006 min
 Lab File: VN078170.D
 Acq: 12 Jun 2023 16:42

Instrument : MSVOA_N
 ClientSampleId : ELI-SUB-LD-CON

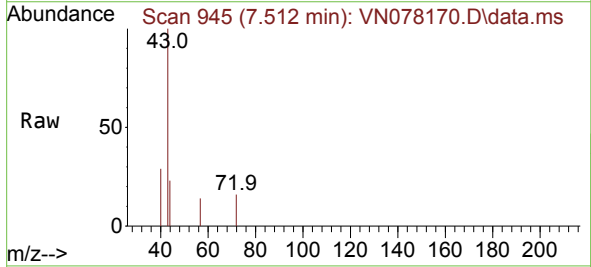


Tgt Ion: 84 Resp: 5393

Ion	Ratio	Lower	Upper
84	100		
49	97.1	79.7	119.5
51	35.4	25.2	37.8
86	66.3	53.3	79.9

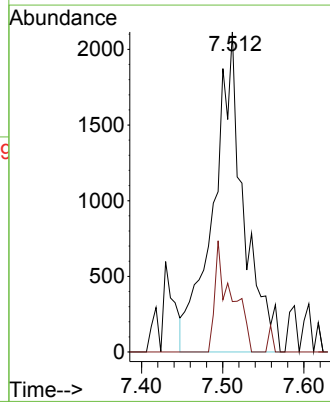
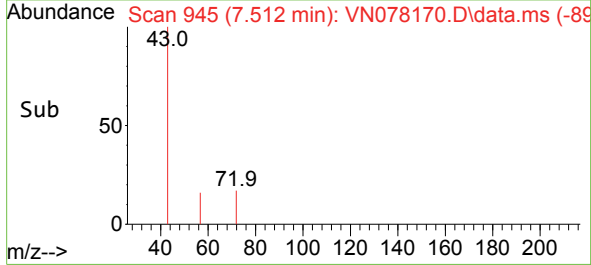


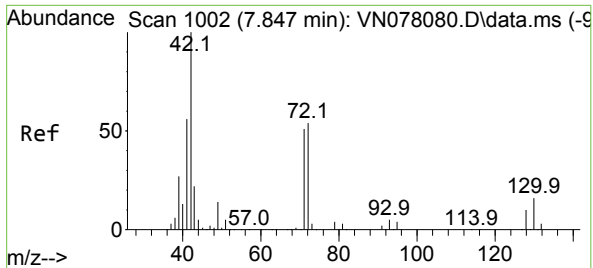
#25
 2-Butanone
 Concen: 1.921 ug/l
 RT: 7.512 min Scan# 945
 Delta R.T. 0.018 min
 Lab File: VN078170.D
 Acq: 12 Jun 2023 16:42



Tgt Ion: 43 Resp: 5504

Ion	Ratio	Lower	Upper
43	100		
72	17.7	30.2	45.2



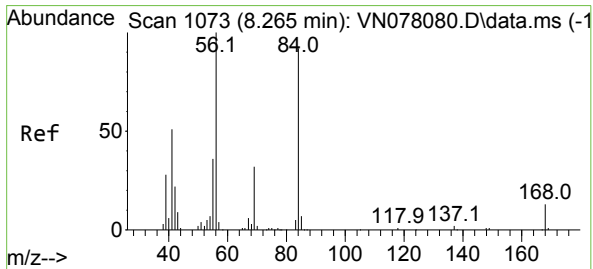
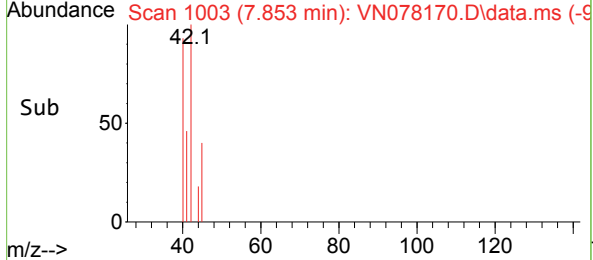
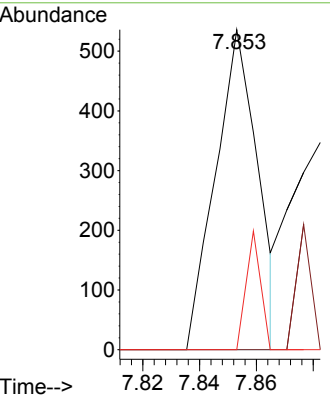
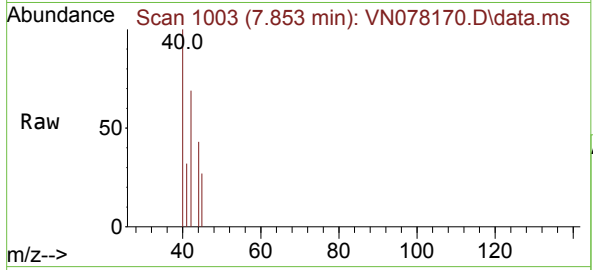


#29
 Tetrahydrofuran
 Concen: 0.291 ug/l
 RT: 7.853 min Scan# 1003
 Delta R.T. 0.006 min
 Lab File: VN078170.D
 Acq: 12 Jun 2023 16:42

Instrument : MSVOA_N
 ClientSampleId : ELI-SUB-LD-CON

Tgt Ion: 42 Resp: 557

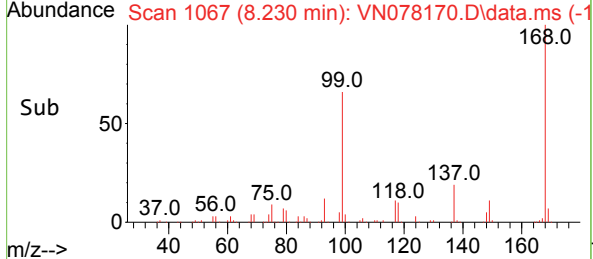
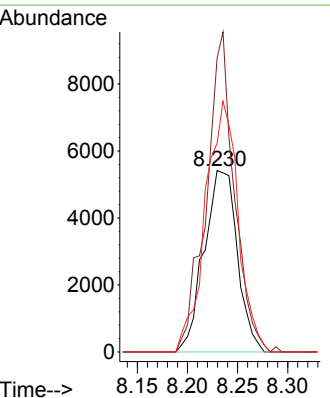
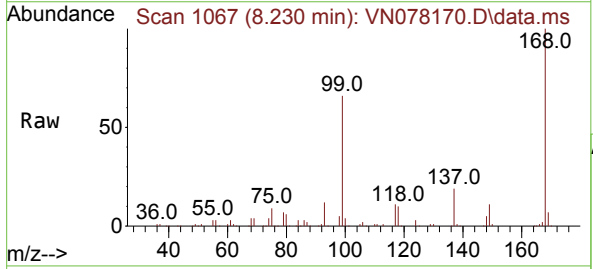
Ion	Ratio	Lower	Upper
42	100		
72	0.0	49.8	74.6#
71	12.6	47.4	71.2#

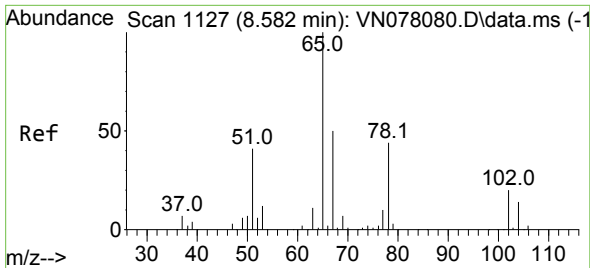


#31
 Cyclohexane
 Concen: 1.504 ug/l
 RT: 8.230 min Scan# 1067
 Delta R.T. -0.035 min
 Lab File: VN078170.D
 Acq: 12 Jun 2023 16:42

Tgt Ion: 56 Resp: 12490

Ion	Ratio	Lower	Upper
56	100		
69	161.7	26.8	40.2#
84	126.3	81.8	122.6#

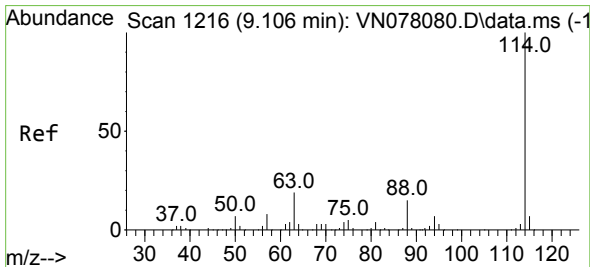
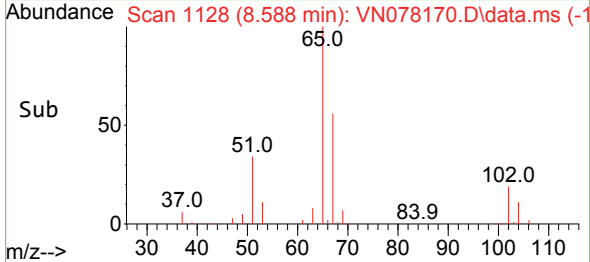
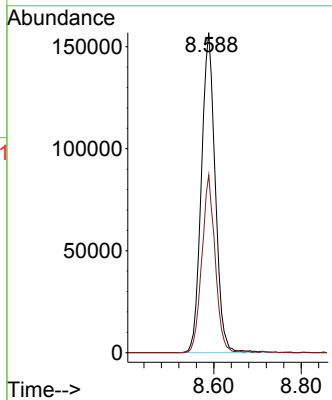
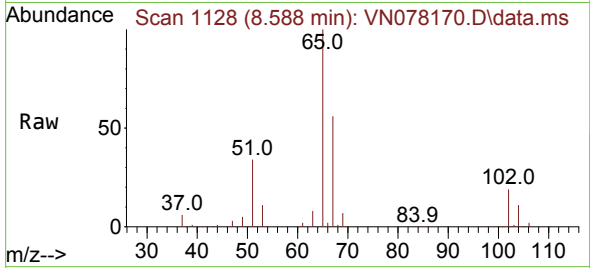




#33
 1,2-Dichloroethane-d4
 Concen: 53.619 ug/l
 RT: 8.588 min Scan# 1127
 Delta R.T. 0.006 min
 Lab File: VN078170.D
 Acq: 12 Jun 2023 16:42

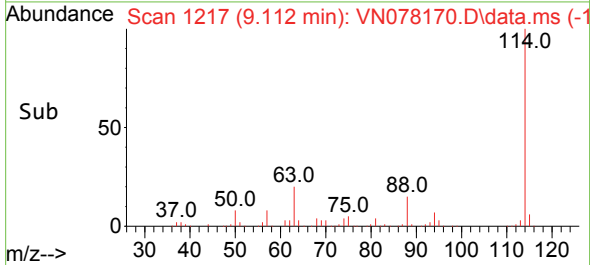
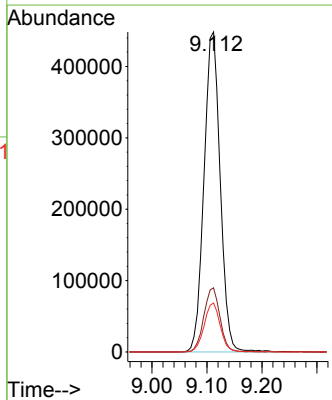
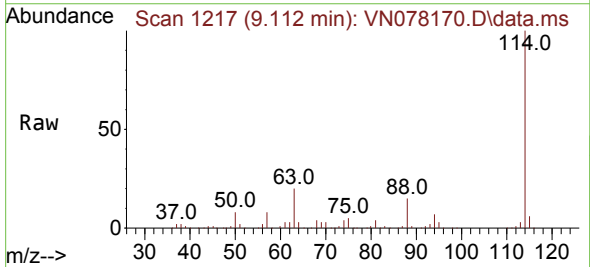
Instrument : MSVOA_N
 ClientSampleId : ELI-SUB-LD-CON

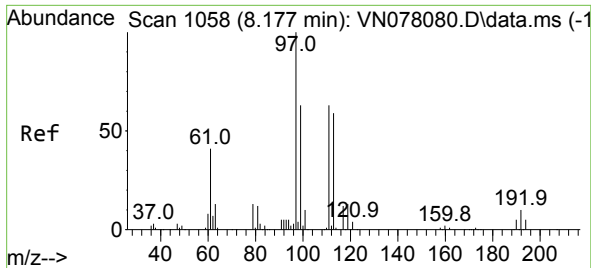
Tgt Ion: 65 Resp: 347061
 Ion Ratio Lower Upper
 65 100
 67 53.1 0.0 106.6



#34
 1,4-Difluorobenzene
 Concen: 50.000 ug/l
 RT: 9.112 min Scan# 1217
 Delta R.T. 0.006 min
 Lab File: VN078170.D
 Acq: 12 Jun 2023 16:42

Tgt Ion: 114 Resp: 918145
 Ion Ratio Lower Upper
 114 100
 63 20.1 0.0 36.4
 88 15.3 0.0 30.6

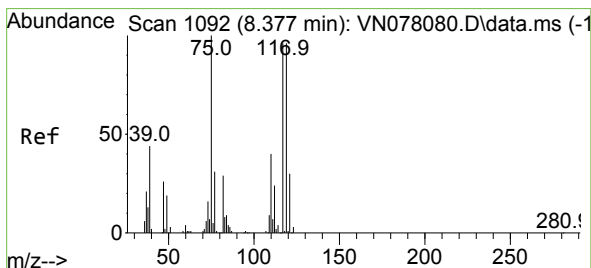
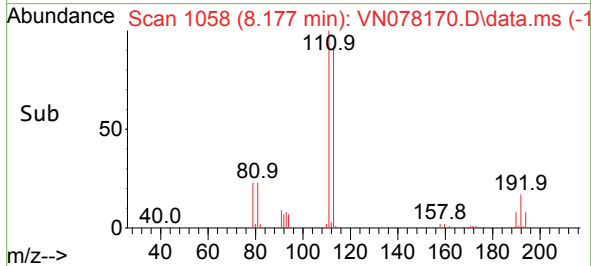
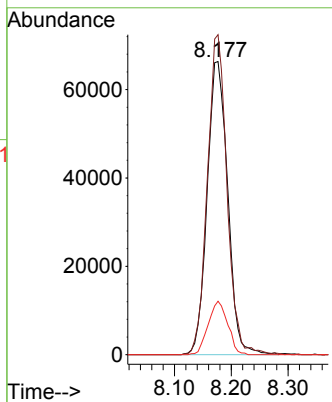
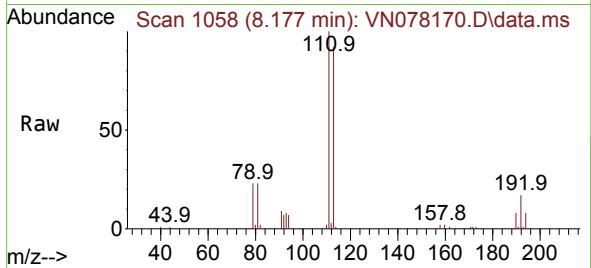




#35
 Dibromofluoromethane
 Concen: 28.720 ug/l
 RT: 8.177 min Scan# 1058
 Delta R.T. -0.000 min
 Lab File: VN078170.D
 Acq: 12 Jun 2023 16:42

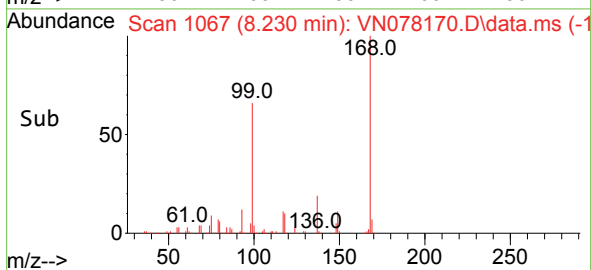
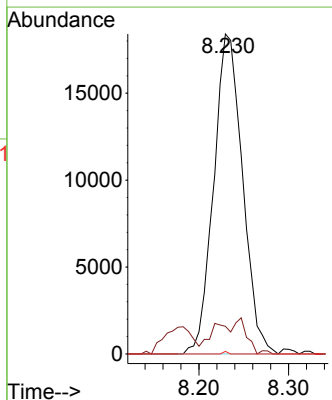
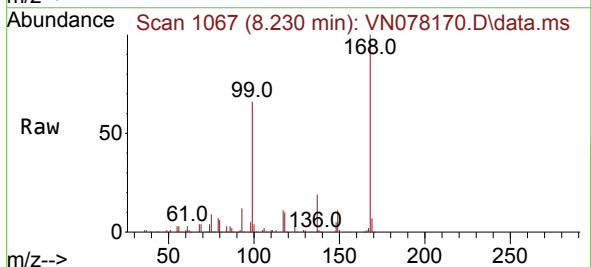
Instrument : MSVOA_N
 ClientSampleId : ELI-SUB-LD-CON

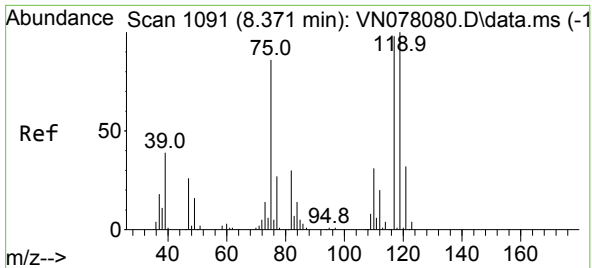
Tgt Ion	Resp	Lower	Upper
113	166728		
113	100		
111	104.4	82.6	123.8
192	17.3	12.7	19.1



#36
 1,1-Dichloropropene
 Concen: 4.931 ug/l
 RT: 8.230 min Scan# 1067
 Delta R.T. -0.147 min
 Lab File: VN078170.D
 Acq: 12 Jun 2023 16:42

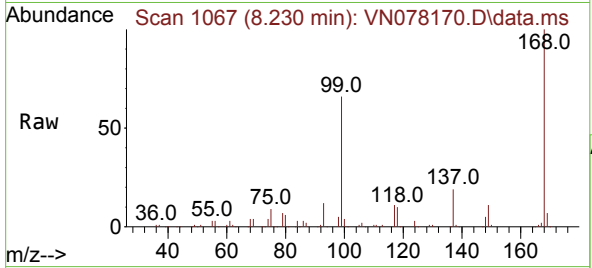
Tgt Ion	Resp	Lower	Upper
75	41063		
75	100		
110	4.6	19.1	57.3#
77	0.1	25.0	37.4#



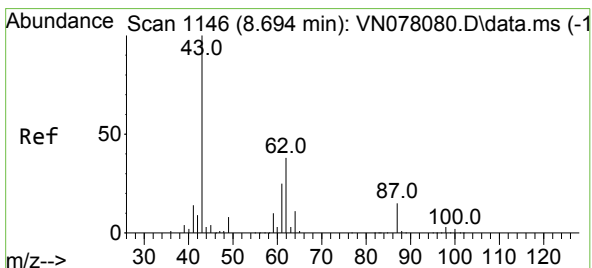
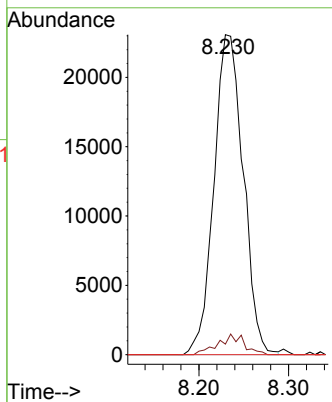
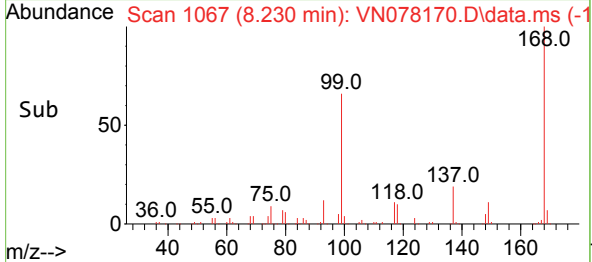


#38
 Carbon Tetrachloride
 Concen: 5.942 ug/l
 RT: 8.230 min Scan# 1091
 Delta R.T. -0.141 min
 Lab File: VN078170.D
 Acq: 12 Jun 2023 16:42

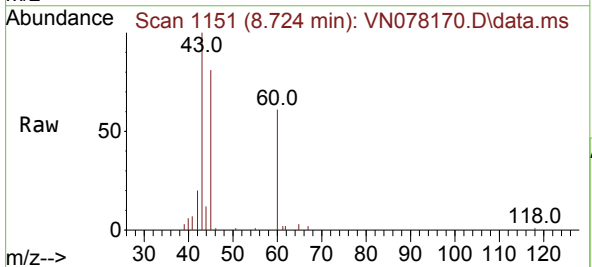
Instrument : MSVOA_N
 ClientSampleId : ELI-SUB-LD-CON



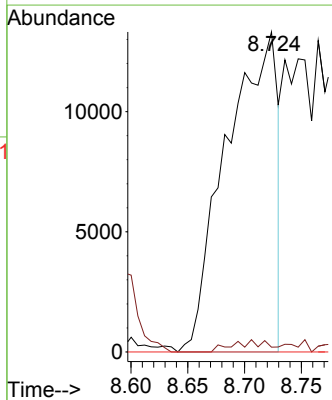
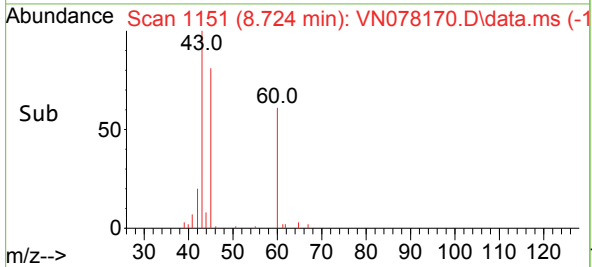
Tgt Ion:117 Resp: 52241
 Ion Ratio Lower Upper
 117 100
 119 3.3 77.3 115.9#
 121 0.0 23.3 34.9#

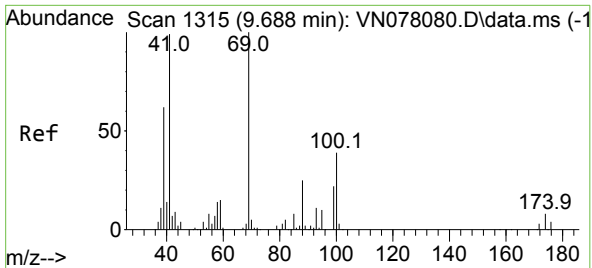


#43
 Isopropyl Acetate
 Concen: 3.336 ug/l
 RT: 8.724 min Scan# 1151
 Delta R.T. 0.029 min
 Lab File: VN078170.D
 Acq: 12 Jun 2023 16:42



Tgt Ion: 43 Resp: 41497
 Ion Ratio Lower Upper
 43 100
 61 0.0 24.7 37.1#
 87 0.0 14.6 21.8#



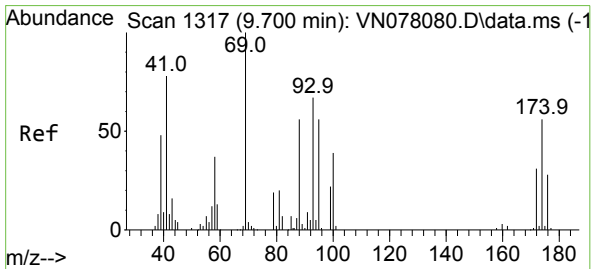
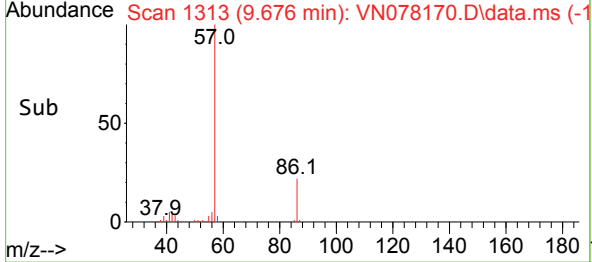
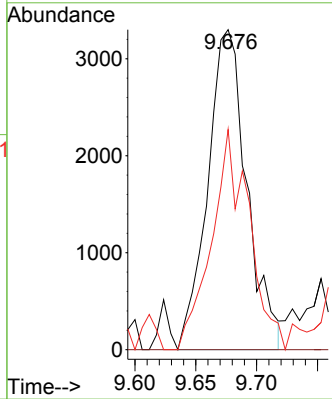
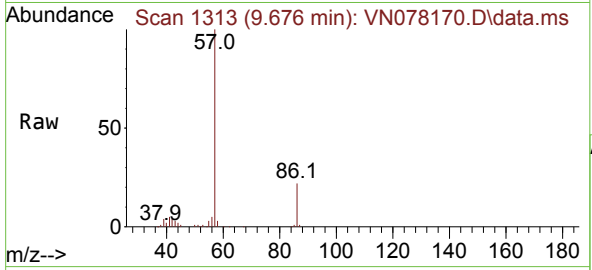


#48
 Methyl methacrylate
 Concen: 1.415 ug/l
 RT: 9.676 min Scan# 1313
 Delta R.T. -0.012 min
 Lab File: VN078170.D
 Acq: 12 Jun 2023 16:42

Instrument : MSVOA_N
 ClientSampleId : ELI-SUB-LD-CON

Tgt Ion: 41 Resp: 7385

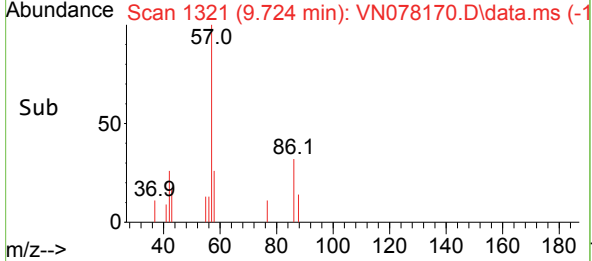
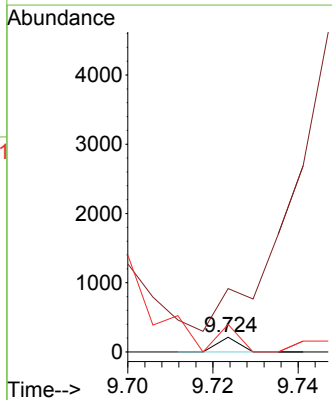
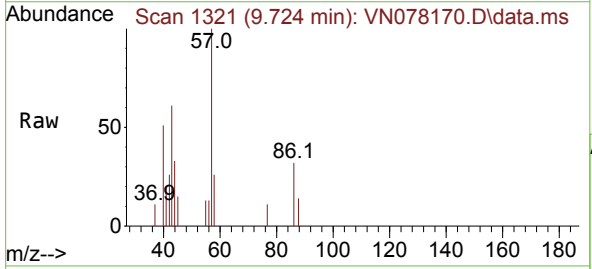
Ion	Ratio	Lower	Upper
41	100		
69	0.0	90.4	135.6#
39	66.1	54.6	81.8

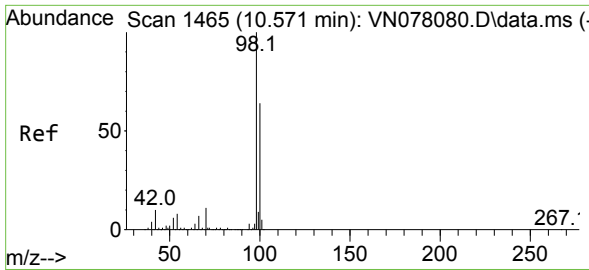


#49
 1,4-Dioxane
 Concen: 0.683 ug/l
 RT: 9.724 min Scan# 1321
 Delta R.T. 0.024 min
 Lab File: VN078170.D
 Acq: 12 Jun 2023 16:42

Tgt Ion: 88 Resp: 75

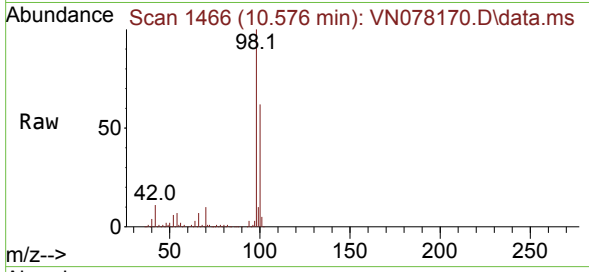
Ion	Ratio	Lower	Upper
88	100		
43	0.0	17.0	25.6#
58	0.0	47.0	70.4#



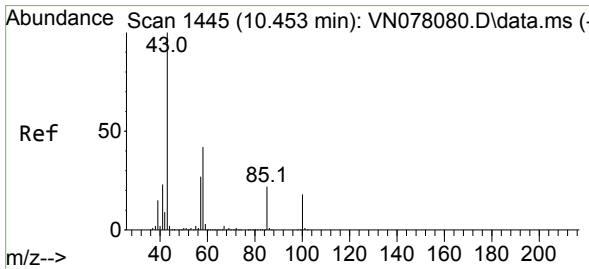
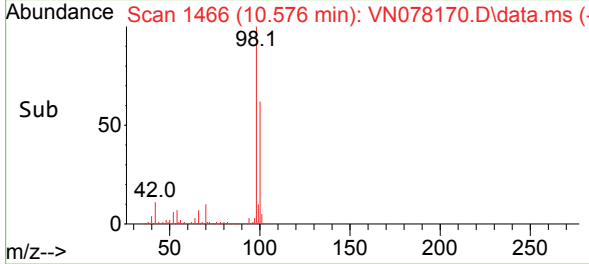
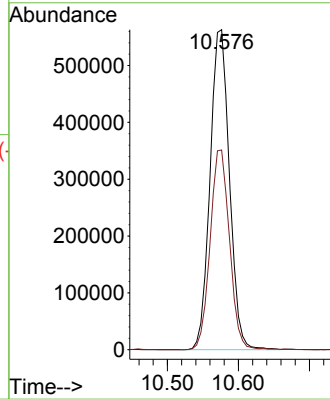


#50
 Toluene-d8
 Concen: 47.666 ug/l
 RT: 10.576 min Scan# 1466
 Delta R.T. 0.006 min
 Lab File: VN078170.D
 Acq: 12 Jun 2023 16:42

Instrument : MSVOA_N
 ClientSampleId : ELI-SUB-LD-CON

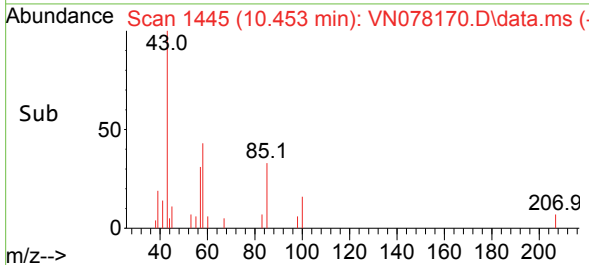
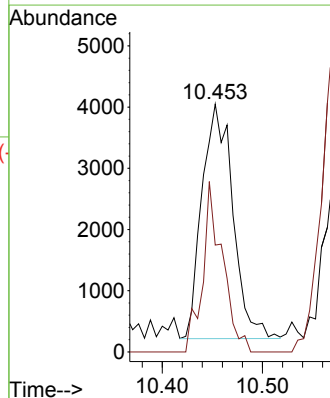
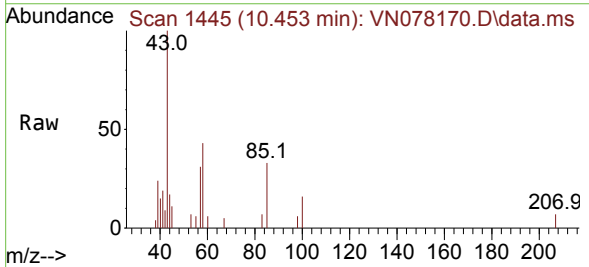


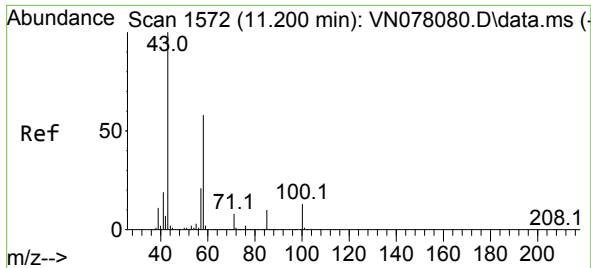
Tgt Ion: 98 Resp: 1066759
 Ion Ratio Lower Upper
 98 100
 100 62.4 52.0 78.0



#51
 4-Methyl-2-Pentanone
 Concen: 1.250 ug/l
 RT: 10.453 min Scan# 1445
 Delta R.T. -0.000 min
 Lab File: VN078170.D
 Acq: 12 Jun 2023 16:42

Tgt Ion: 43 Resp: 8190
 Ion Ratio Lower Upper
 43 100
 58 46.7 36.6 54.8

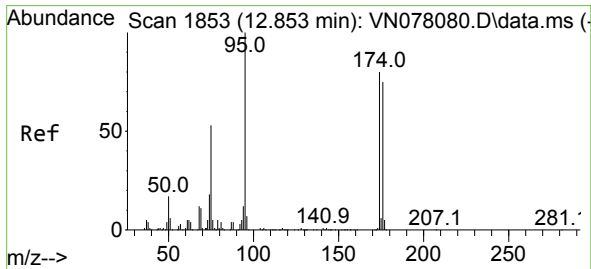
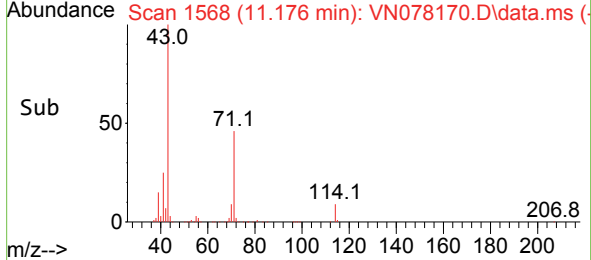
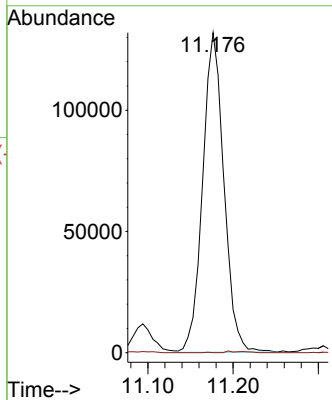
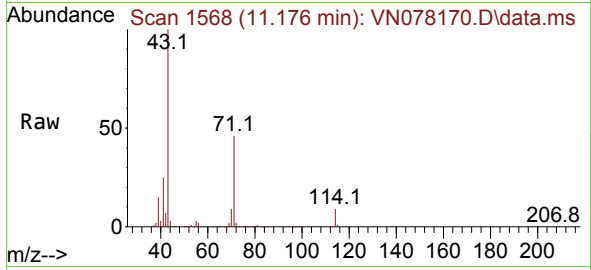




#59
 2-Hexanone
 Concen: 50.003 ug/l
 RT: 11.176 min Scan# 11176
 Delta R.T. -0.024 min
 Lab File: VN078170.D
 Acq: 12 Jun 2023 16:42

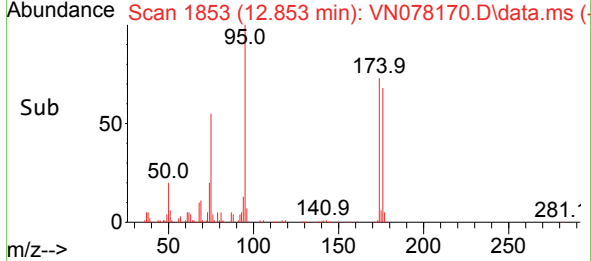
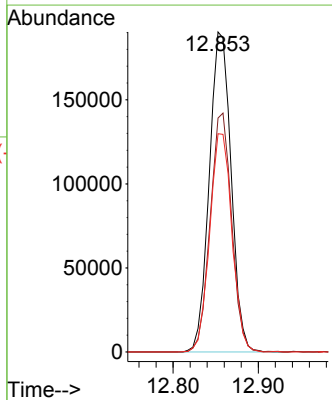
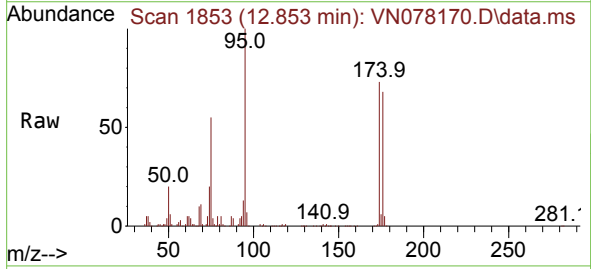
Instrument : MSVOA_N
 ClientSampleId : ELI-SUB-LD-CON

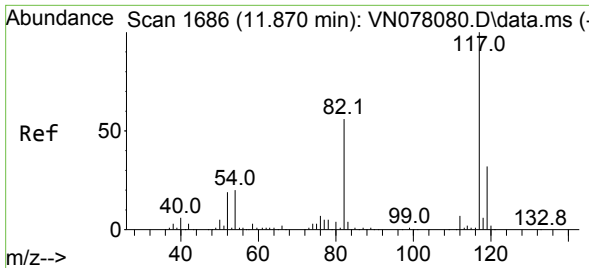
Tgt Ion: 43 Resp: 228089
 Ion Ratio Lower Upper
 43 100
 58 0.0 31.7 95.1#



#62
 4-Bromofluorobenzene
 Concen: 48.600 ug/l
 RT: 12.853 min Scan# 1853
 Delta R.T. -0.000 min
 Lab File: VN078170.D
 Acq: 12 Jun 2023 16:42

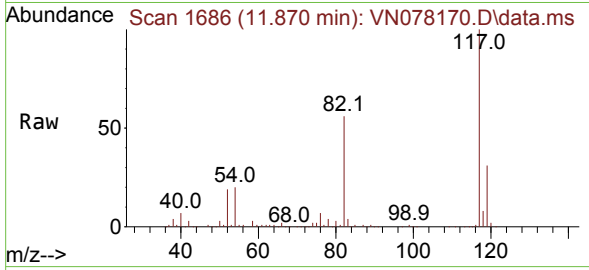
Tgt Ion: 95 Resp: 338131
 Ion Ratio Lower Upper
 95 100
 174 73.8 0.0 143.8
 176 69.6 0.0 135.8





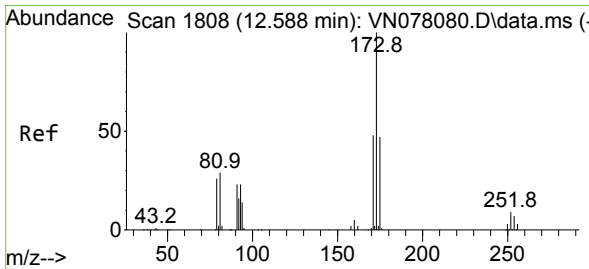
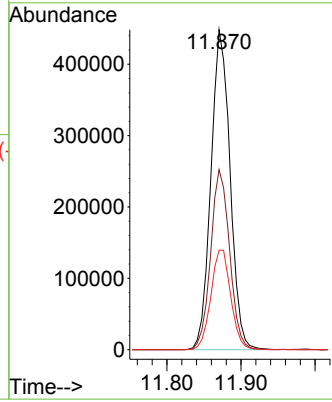
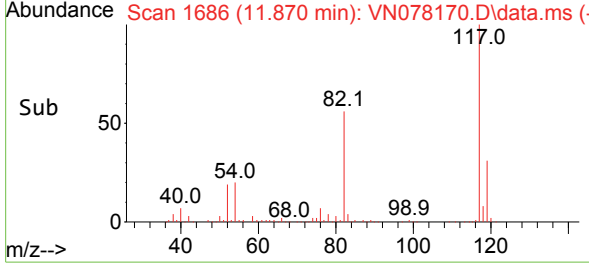
#63
 Chlorobenzene-d5
 Concen: 50.000 ug/l
 RT: 11.870 min Scan# 1170
 Delta R.T. -0.000 min
 Lab File: VN078170.D
 Acq: 12 Jun 2023 16:42

Instrument : MSVOA_N
 ClientSampleId : ELI-SUB-LD-CON

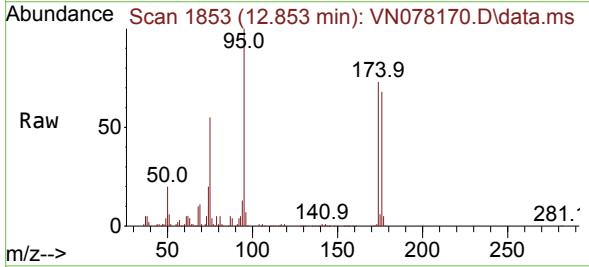


Tgt Ion:117 Resp: 804573

Ion	Ratio	Lower	Upper
117	100		
82	56.2	44.0	66.0
119	31.1	25.6	38.4

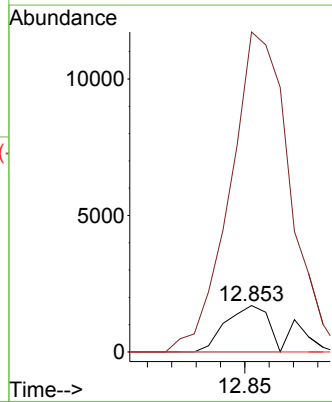
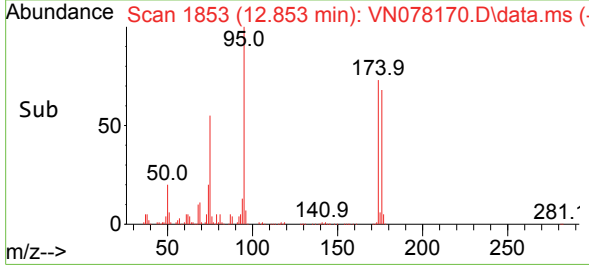


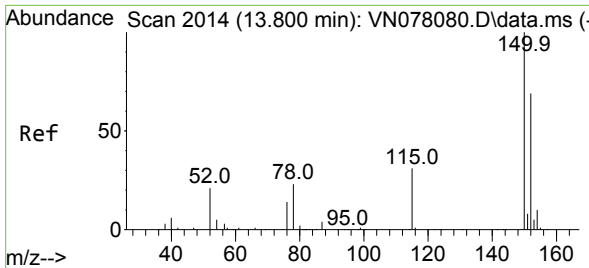
#71
 Bromoform
 Concen: 0.502 ug/l
 RT: 12.853 min Scan# 1853
 Delta R.T. 0.265 min
 Lab File: VN078170.D
 Acq: 12 Jun 2023 16:42



Tgt Ion:173 Resp: 2053

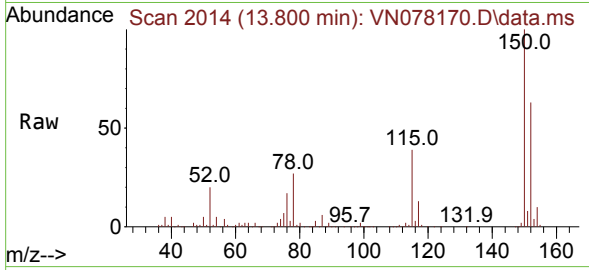
Ion	Ratio	Lower	Upper
173	100		
175	826.2	24.3	73.0#
254	0.0	0.0	0.0



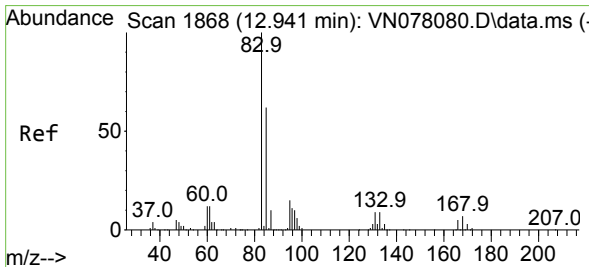
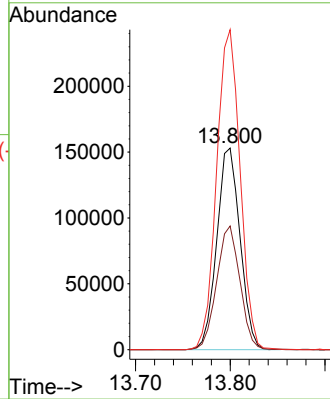
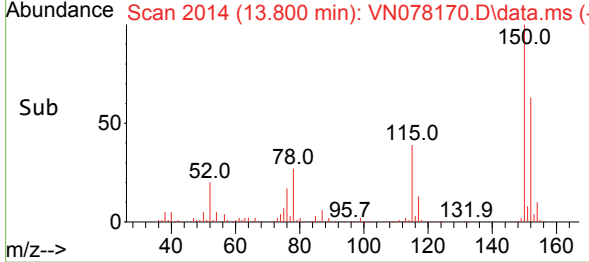


#72
 1,4-Dichlorobenzene-d4
 Concen: 50.000 ug/l
 RT: 13.800 min Scan# 20
 Delta R.T. -0.000 min
 Lab File: VN078170.D
 Acq: 12 Jun 2023 16:42

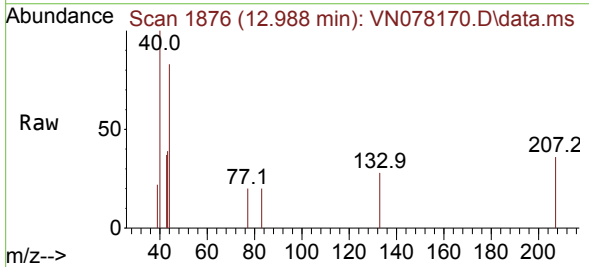
Instrument :
 MSVOA_N
 ClientSampleId :
 ELI-SUB-LD-CON



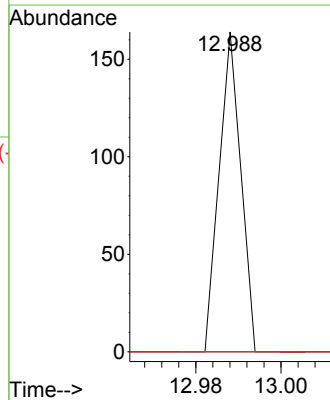
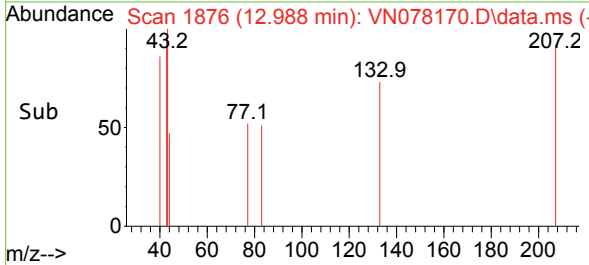
Tgt Ion:152 Resp: 261536
 Ion Ratio Lower Upper
 152 100
 115 61.3 32.3 96.8
 150 160.1 0.0 355.8

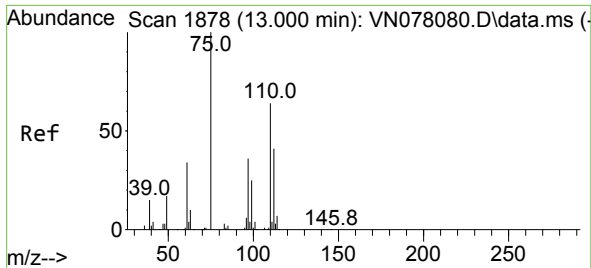


#75
 1,1,2,2-Tetrachloroethane
 Concen: Below Cal
 RT: 12.988 min Scan# 1876
 Delta R.T. 0.047 min
 Lab File: VN078170.D
 Acq: 12 Jun 2023 16:42



Tgt Ion: 83 Resp: 58
 Ion Ratio Lower Upper
 83 100
 131 0.0 5.0 15.0#
 85 0.0 31.9 95.7#

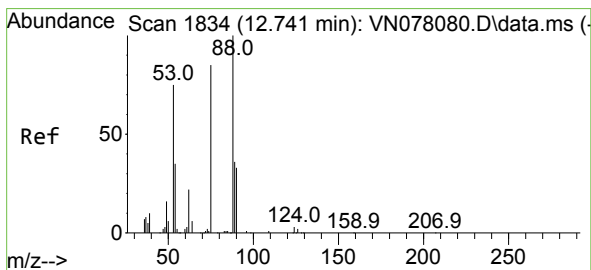
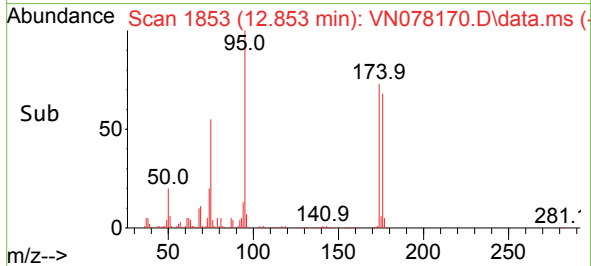
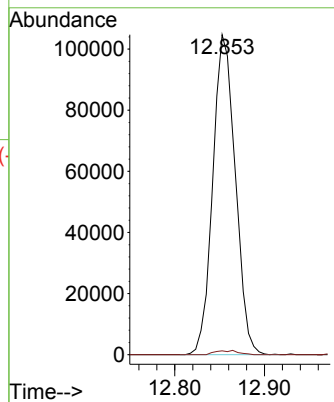
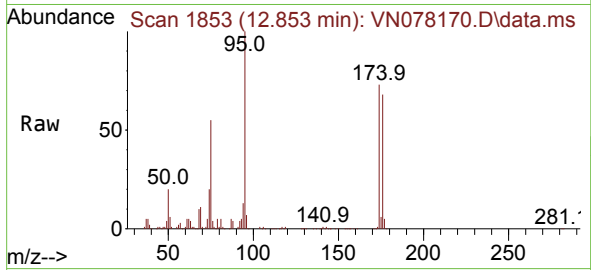




#76
 1,2,3-Trichloropropane
 Concen: 29.534 ug/l
 RT: 12.853 min Scan# 1853
 Delta R.T. -0.147 min
 Lab File: VN078170.D
 Acq: 12 Jun 2023 16:42

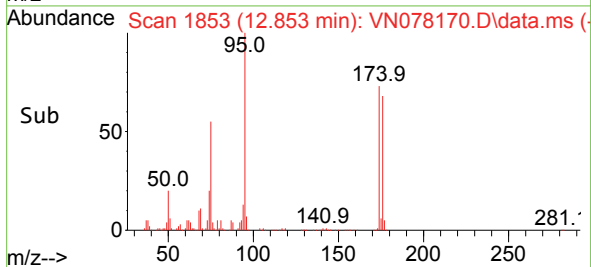
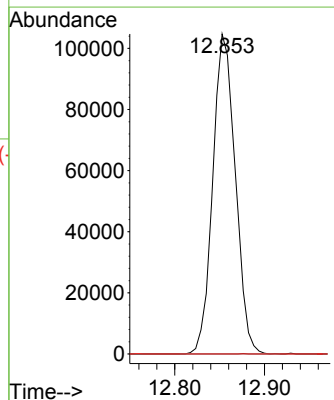
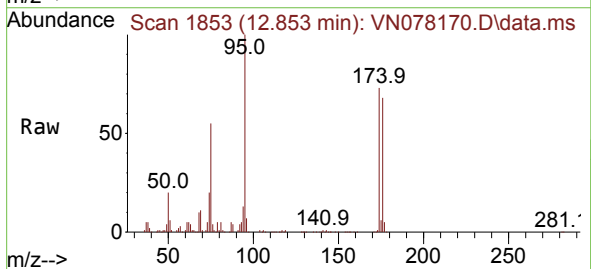
Instrument : MSVOA_N
 ClientSampleId : ELI-SUB-LD-CON

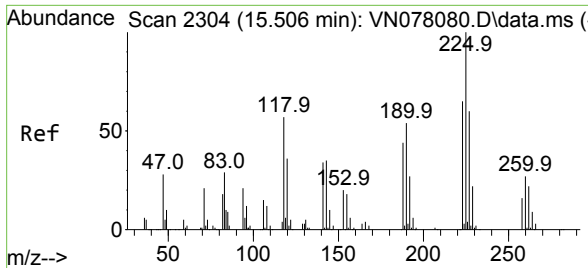
Tgt Ion: 75 Resp: 182603
 Ion Ratio Lower Upper
 75 100
 77 1.3 84.5 253.5#



#81
 trans-1,4-Dichloro-2-butene
 Concen: 90.738 ug/l
 RT: 12.853 min Scan# 1853
 Delta R.T. 0.112 min
 Lab File: VN078170.D
 Acq: 12 Jun 2023 16:42

Tgt Ion: 75 Resp: 182603
 Ion Ratio Lower Upper
 75 100
 53 0.0 67.4 101.2#
 89 0.0 38.8 58.2#





#94
 Hexachlorobutadiene
 Concen: Below Cal
 RT: 15.500 min Scan# 21
 Delta R.T. -0.006 min
 Lab File: VN078170.D
 Acq: 12 Jun 2023 16:42

Instrument : MSVOA_N
 ClientSampleId : ELI-SUB-LD-CON

Tgt Ion	Resp	Lower	Upper
225	100		
223	0.0	31.3	93.8#
227	0.0	31.9	95.9#

