

Data Path : Z:\voasrv\HPCHEM1\MSVOA_N\Data\VN061224\
 Data File : VN082526.D
 Acq On : 12 Jun 2024 13:58
 Operator : JC\MD
 Sample : P2838-01
 Misc : 5.0mL/MSVOA_N/WATER
 ALS Vial : 7 Sample Multiplier: 1

Instrument :
 MSVOA_N
 ClientSampleId :

Quant Time: Jun 12 16:02:40 2024
 Quant Method : Z:\voasrv\HPCHEM1\MSVOA_N\methods\82N051524W.M
 Quant Title : SW846 8260
 QLast Update : Thu May 16 05:21:06 2024
 Response via : Initial Calibration

Compound	R.T.	QIon	Response	Conc	Units	Dev(Min)

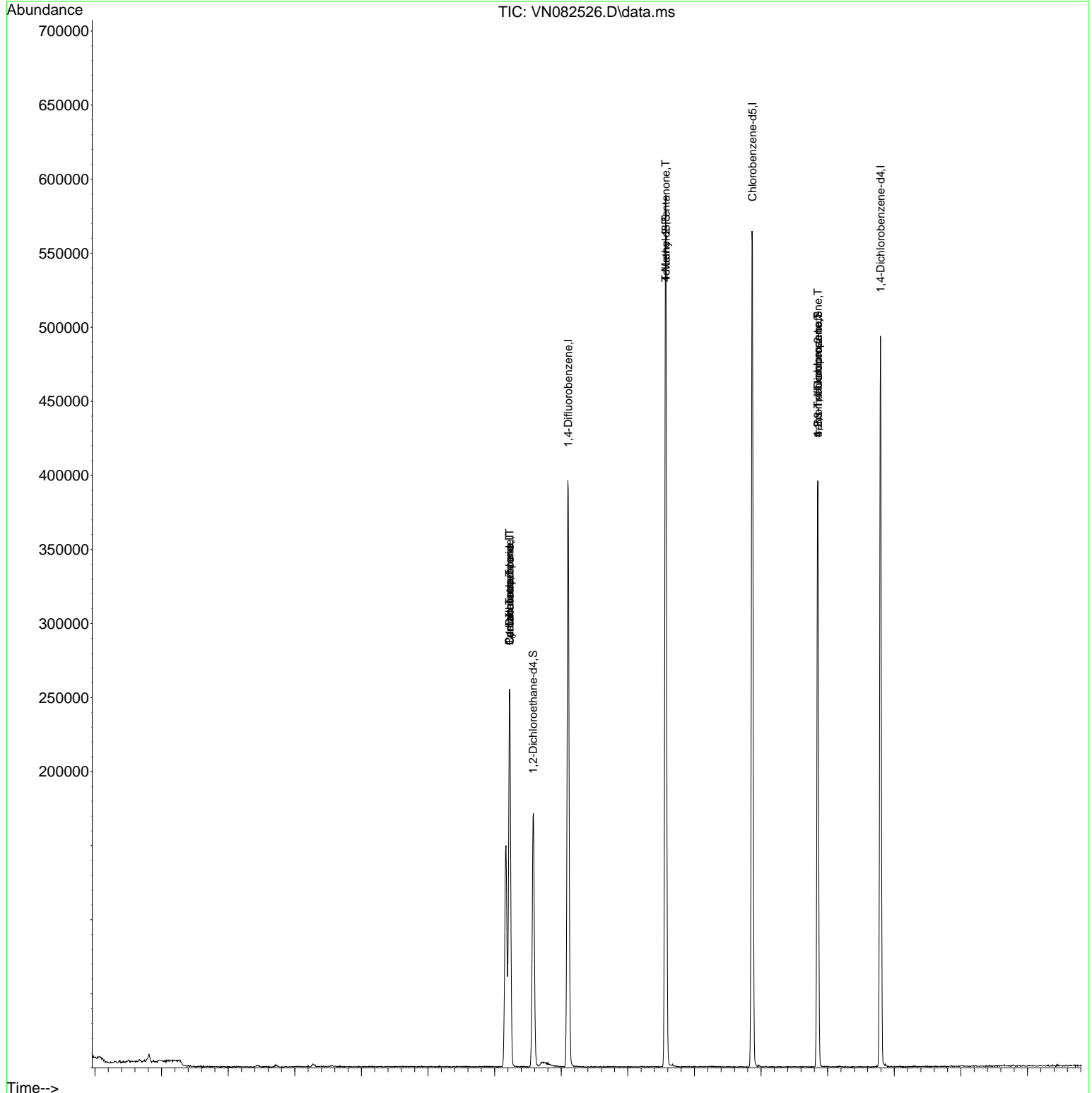
Internal Standards						
1) Pentafluorobenzene	8.224	168	174237	50.000	ug/l	0.00
34) 1,4-Difluorobenzene	9.106	114	318560	50.000	ug/l	0.00
63) Chlorobenzene-d5	11.871	117	304174	50.000	ug/l	0.00
72) 1,4-Dichlorobenzene-d4	13.794	152	124919	50.000	ug/l	0.00
System Monitoring Compounds						
33) 1,2-Dichloroethane-d4	8.577	65	139710	50.781	ug/l	0.00
Spiked Amount	50.000	Range 74 - 125	Recovery	=	101.560%	
35) Dibromofluoromethane	8.171	113	103786	52.962	ug/l	0.00
Spiked Amount	50.000	Range 75 - 124	Recovery	=	105.920%	
50) Toluene-d8	10.571	98	388250	51.676	ug/l	0.00
Spiked Amount	50.000	Range 86 - 113	Recovery	=	103.360%	
62) 4-Bromofluorobenzene	12.853	95	127556	47.567	ug/l	0.00
Spiked Amount	50.000	Range 64 - 133	Recovery	=	95.140%	
Target Compounds						
						Qvalue
3) Chloromethane	2.359	50	880	0.309	ug/l	95
5) Bromomethane	2.977	94	920	0.598	ug/l	88
16) Acetone	4.447	43	1976	1.751	ug/l #	43
20) Methylene Chloride	5.265	84	764	0.336	ug/l #	89
31) Cyclohexane	8.224	56	4859	1.106	ug/l #	34
36) 1,1-Dichloropropene	8.224	75	15418	4.691	ug/l #	49
38) Carbon Tetrachloride	8.224	117	18509	5.555	ug/l #	15
43) Isopropyl Acetate	8.700	43	2030	0.311	ug/l #	52
51) 4-Methyl-2-Pentanone	10.571	43	2128	0.575	ug/l #	1
76) 1,2,3-Trichloropropane	12.853	75	73424	27.926	ug/l #	1
81) trans-1,4-Dichloro-2-b...	12.853	75	73424	65.317	ug/l #	12

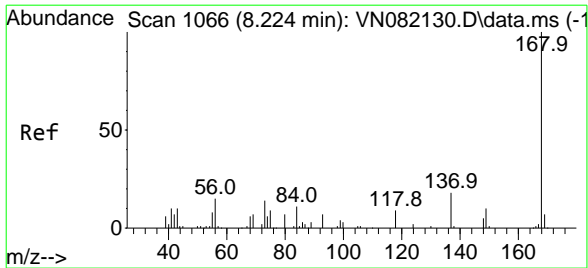
(#) = qualifier out of range (m) = manual integration (+) = signals summed

Data Path : Z:\voasrv\HPCHEM1\MSVOA_N\Data\VN061224\
 Data File : VN082526.D
 Acq On : 12 Jun 2024 13:58
 Operator : JC\MD
 Sample : P2838-01
 Misc : 5.0mL/MSVOA_N/WATER
 ALS Vial : 7 Sample Multiplier: 1

Instrument :
 MSVOA_N
 ClientSampleId :

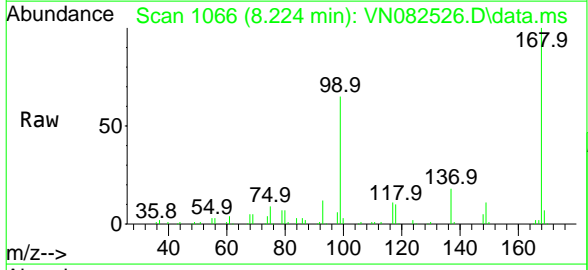
Quant Time: Jun 12 16:02:40 2024
 Quant Method : Z:\voasrv\HPCHEM1\MSVOA_N\methods\82N051524W.M
 Quant Title : SW846 8260
 QLast Update : Thu May 16 05:21:06 2024
 Response via : Initial Calibration



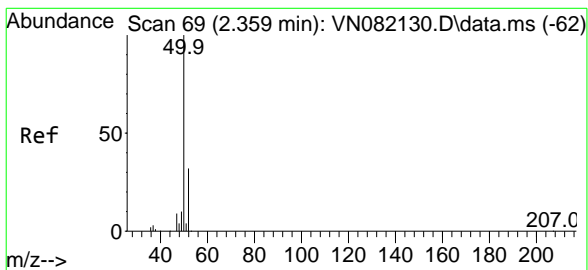
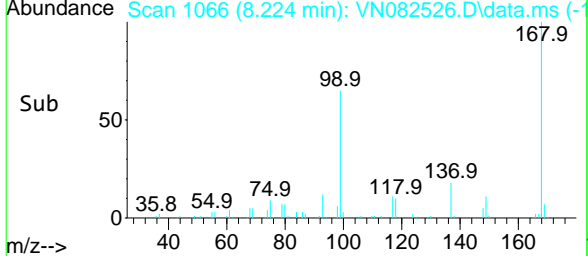
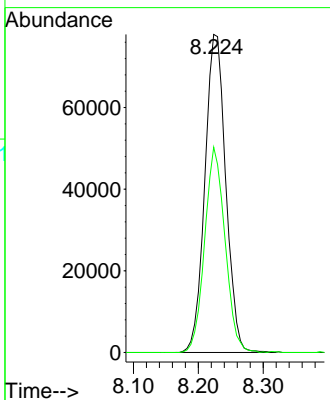


#1
 Pentafluorobenzene
 Concen: 50.000 ug/l
 RT: 8.224 min Scan# 10
 Delta R.T. -0.000 min
 Lab File: VN082526.D
 Acq: 12 Jun 2024 13:58

Instrument :
 MSVOA_N
 ClientSampleId :

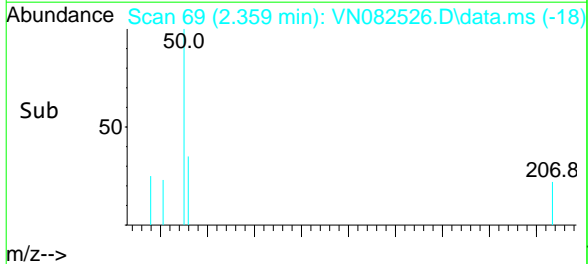
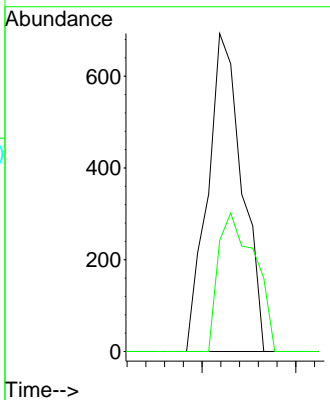
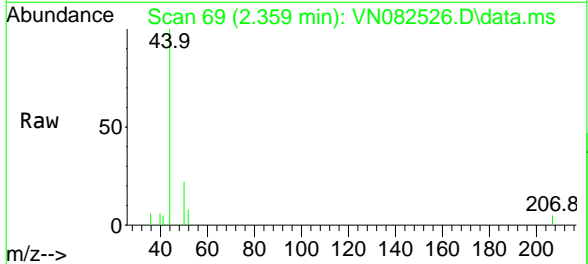


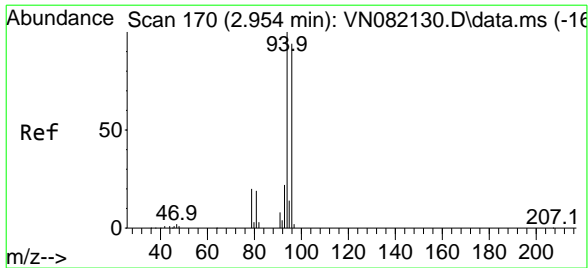
Tgt Ion:168 Resp: 174237
 Ion Ratio Lower Upper
 168 100
 99 64.6 48.2 72.4



#3
 Chloromethane
 Concen: 0.309 ug/l
 RT: 2.359 min Scan# 69
 Delta R.T. -0.000 min
 Lab File: VN082526.D
 Acq: 12 Jun 2024 13:58

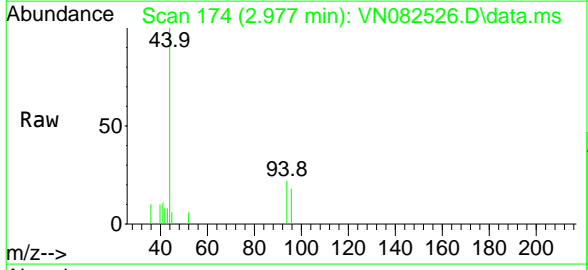
Tgt Ion: 50 Resp: 880
 Ion Ratio Lower Upper
 50 100
 52 34.9 25.5 38.3



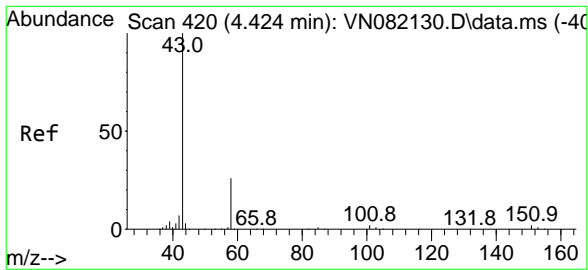
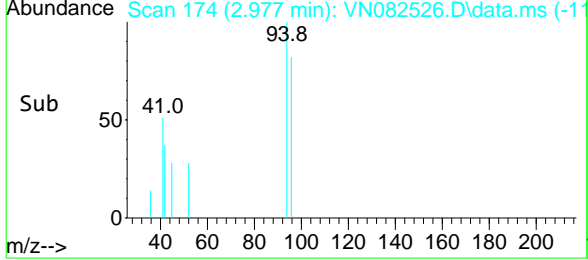
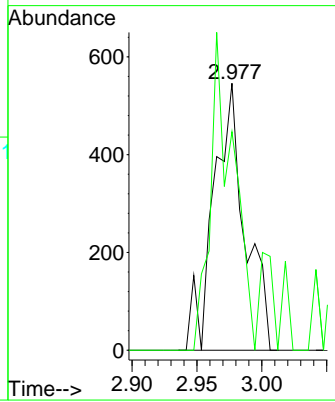


#5
 Bromomethane
 Concen: 0.598 ug/l
 RT: 2.977 min Scan# 171
 Delta R.T. 0.023 min
 Lab File: VN082526.D
 Acq: 12 Jun 2024 13:58

Instrument : MSVOA_N
 ClientSampleId :

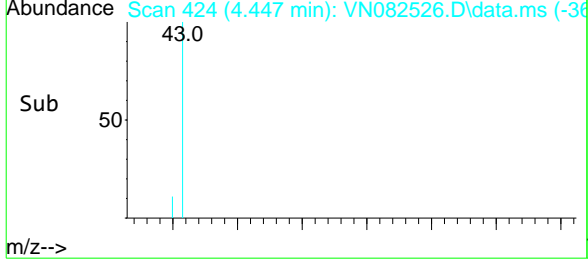
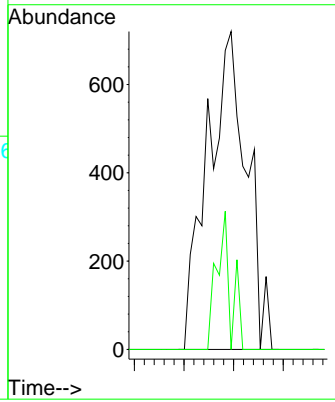
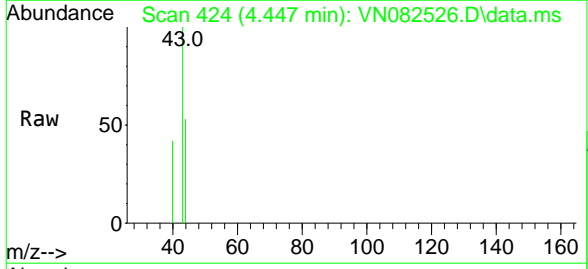


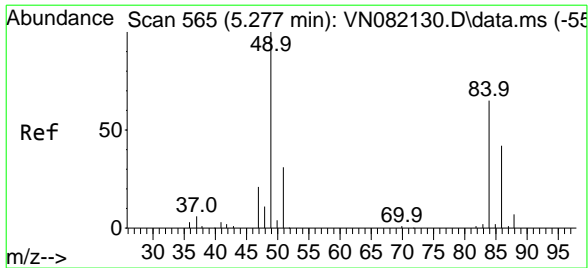
Tgt Ion: 94 Resp: 920
 Ion Ratio Lower Upper
 94 100
 96 81.9 74.8 112.2



#16
 Acetone
 Concen: 1.751 ug/l
 RT: 4.447 min Scan# 424
 Delta R.T. 0.024 min
 Lab File: VN082526.D
 Acq: 12 Jun 2024 13:58

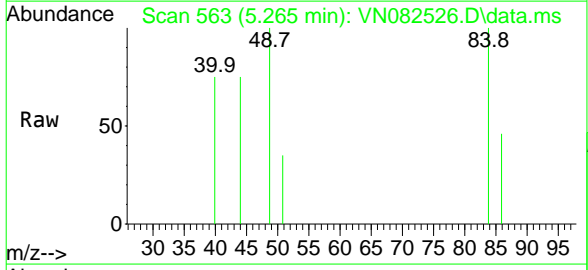
Tgt Ion: 43 Resp: 1976
 Ion Ratio Lower Upper
 43 100
 58 0.0 25.2 37.8#



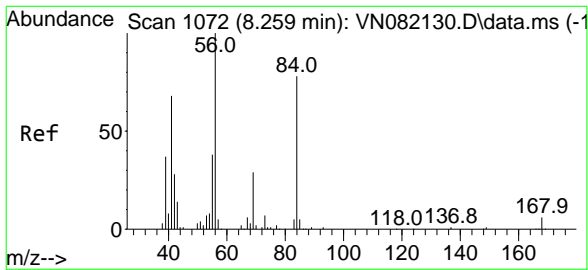
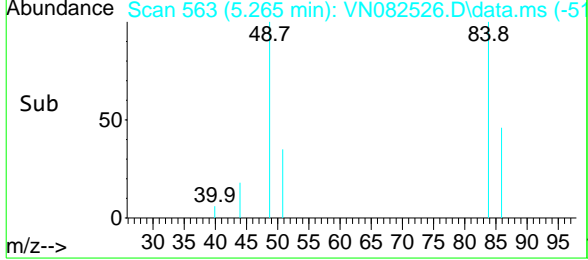
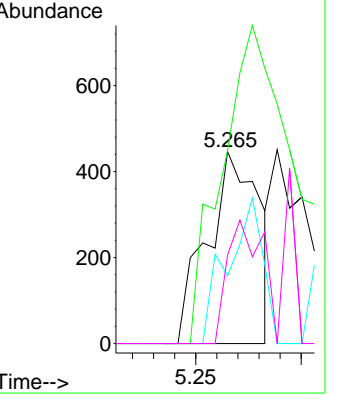


#20
 Methylene Chloride
 Concen: 0.336 ug/l
 RT: 5.265 min Scan# 56
 Delta R.T. -0.012 min
 Lab File: VN082526.D
 Acq: 12 Jun 2024 13:58

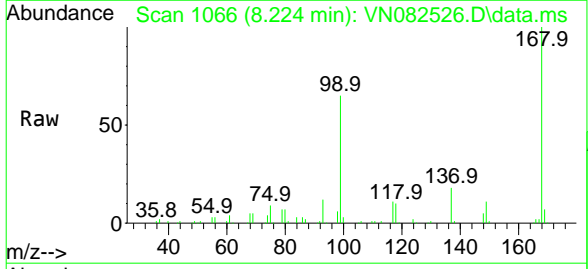
Instrument : MSVOA_N
 ClientSampleId :



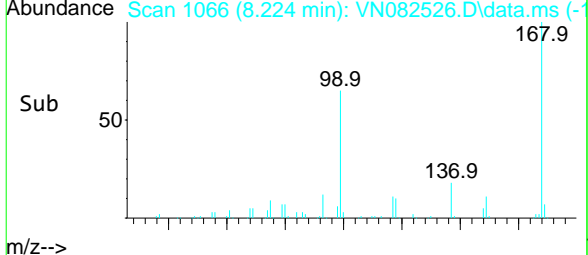
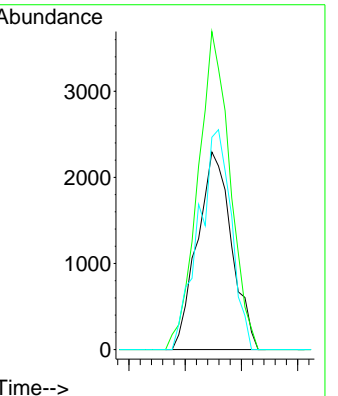
Tgt Ion	Ratio	Lower	Upper
84	100		
49	100.4	84.9	127.3
51	35.3	27.0	40.6
86	46.1	52.3	78.5

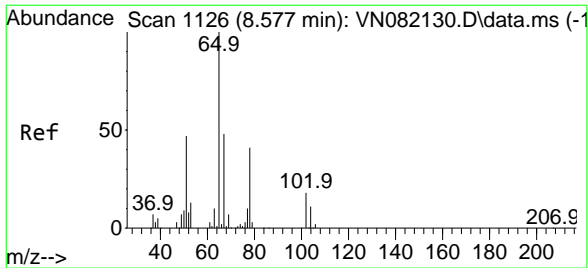


#31
 Cyclohexane
 Concen: 1.106 ug/l
 RT: 8.224 min Scan# 1066
 Delta R.T. -0.035 min
 Lab File: VN082526.D
 Acq: 12 Jun 2024 13:58



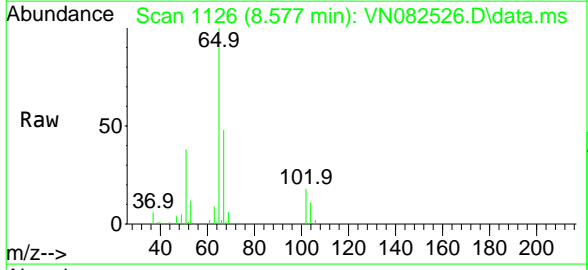
Tgt Ion	Ratio	Lower	Upper
56	100		
69	161.0	24.4	36.6
84	107.5	77.0	115.4



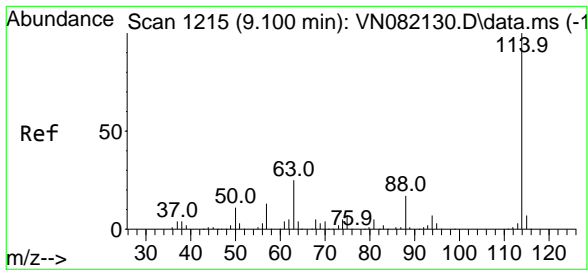
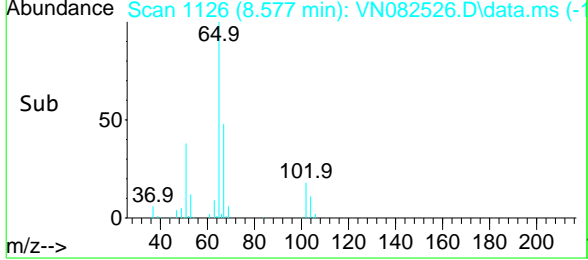
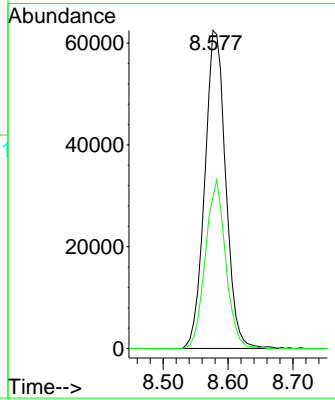


#33
 1,2-Dichloroethane-d4
 Concen: 50.781 ug/l
 RT: 8.577 min Scan# 1126
 Delta R.T. -0.000 min
 Lab File: VN082526.D
 Acq: 12 Jun 2024 13:58

Instrument : MSVOA_N
 ClientSampleId :

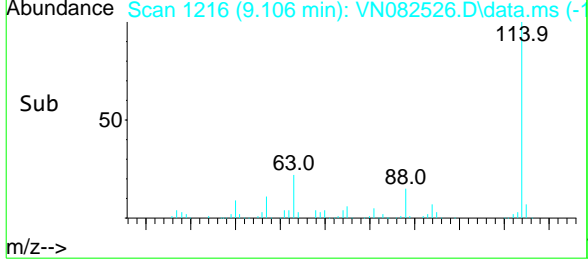
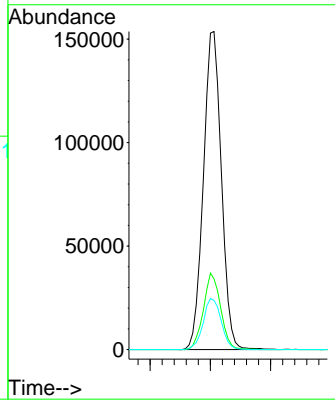
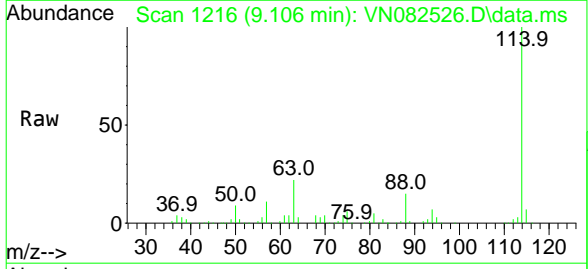


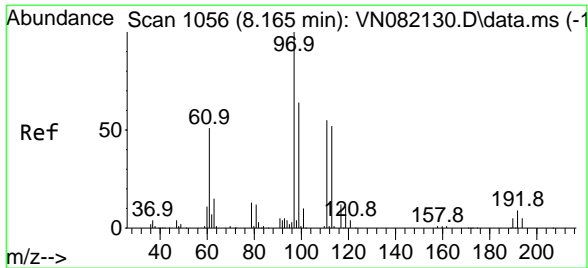
Tgt Ion: 65 Resp: 139710
 Ion Ratio Lower Upper
 65 100
 67 51.2 0.0 103.0



#34
 1,4-Difluorobenzene
 Concen: 50.000 ug/l
 RT: 9.106 min Scan# 1216
 Delta R.T. 0.006 min
 Lab File: VN082526.D
 Acq: 12 Jun 2024 13:58

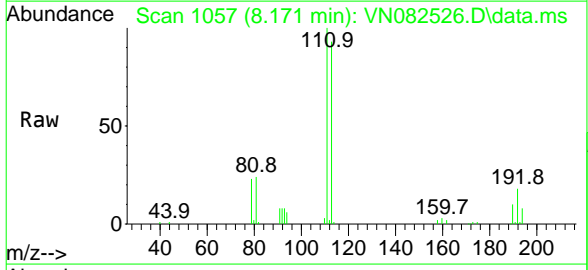
Tgt Ion: 114 Resp: 318560
 Ion Ratio Lower Upper
 114 100
 63 22.2 0.0 41.0
 88 15.5 0.0 31.4



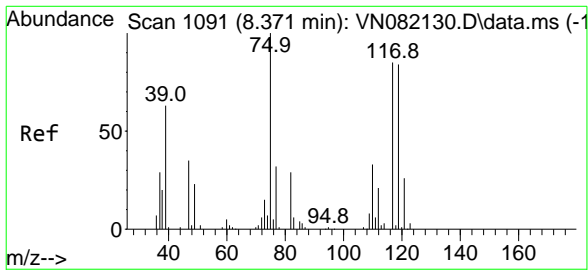
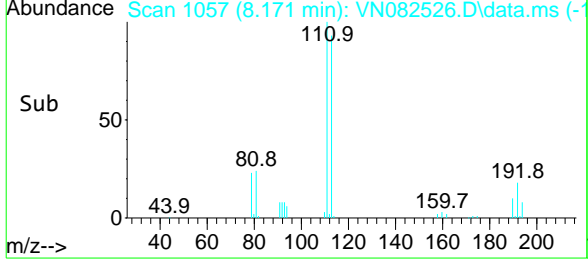
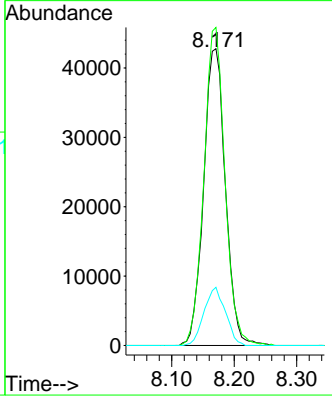


#35
 Dibromofluoromethane
 Concen: 52.962 ug/l
 RT: 8.171 min Scan# 1066
 Delta R.T. 0.006 min
 Lab File: VN082526.D
 Acq: 12 Jun 2024 13:58

Instrument : MSVOA_N
 ClientSampleId :

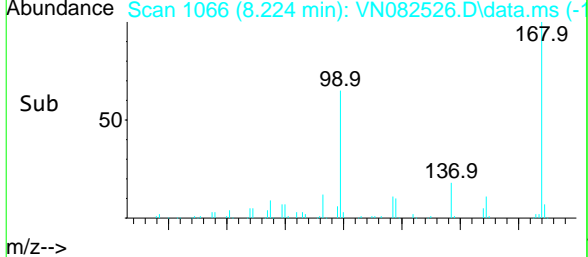
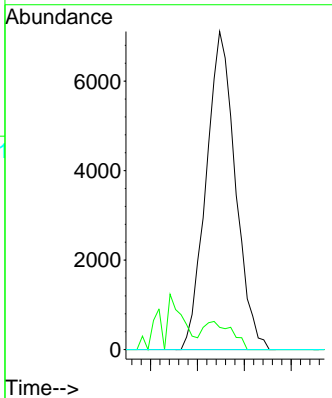
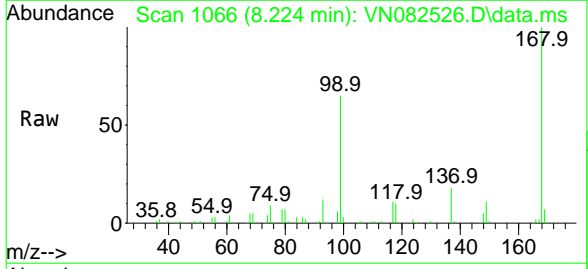


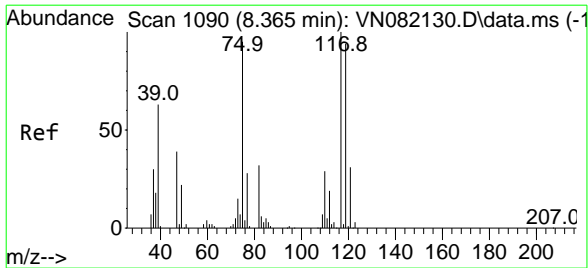
Tgt Ion	Resp	Lower	Upper
113	103786		
113	100		
111	103.6	83.4	125.2
192	19.3	14.0	21.0



#36
 1,1-Dichloropropene
 Concen: 4.691 ug/l
 RT: 8.224 min Scan# 1066
 Delta R.T. -0.147 min
 Lab File: VN082526.D
 Acq: 12 Jun 2024 13:58

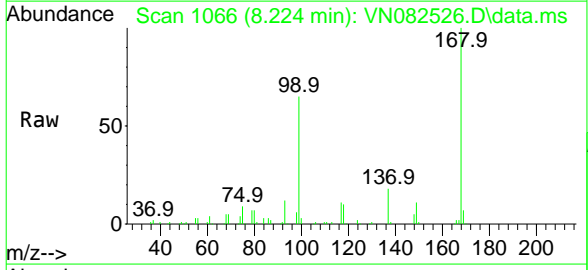
Tgt Ion	Resp	Lower	Upper
75	15418		
75	100		
110	8.5	17.8	53.5#
77	0.0	25.0	37.4#





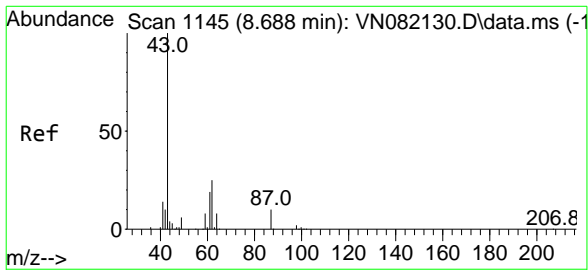
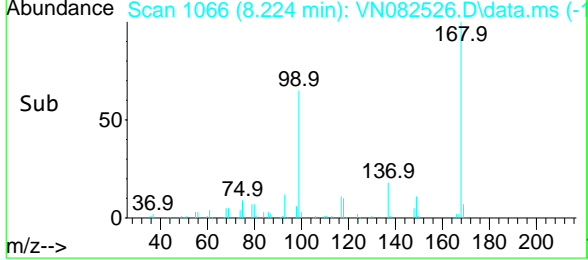
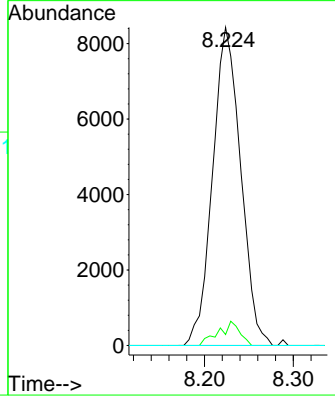
#38
 Carbon Tetrachloride
 Concen: 5.555 ug/l
 RT: 8.224 min Scan# 1066
 Delta R.T. -0.141 min
 Lab File: VN082526.D
 Acq: 12 Jun 2024 13:58

Instrument : MSVOA_N
 ClientSampleId :



Tgt Ion: 117 Resp: 18509

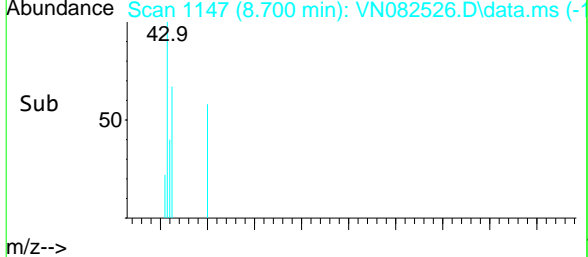
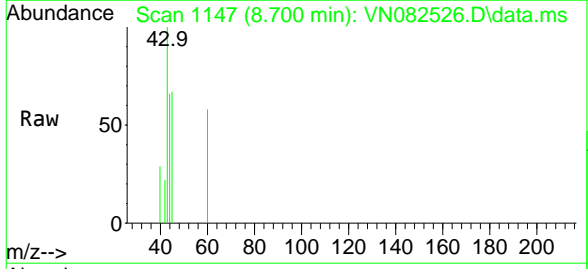
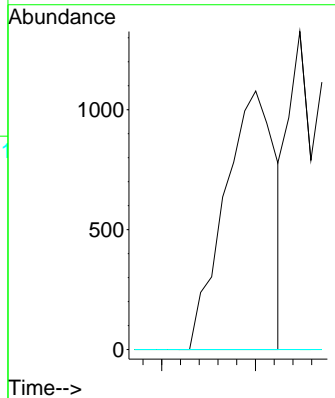
Ion	Ratio	Lower	Upper
117	100		
119	3.4	76.5	114.7#
121	0.0	23.9	35.9#

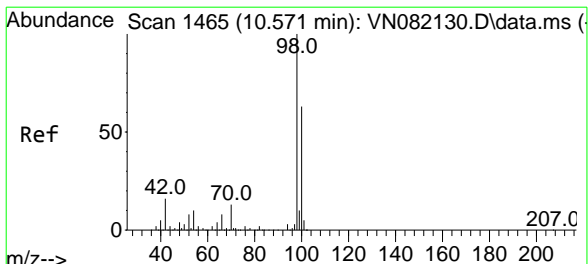


#43
 Isopropyl Acetate
 Concen: 0.311 ug/l
 RT: 8.700 min Scan# 1147
 Delta R.T. 0.012 min
 Lab File: VN082526.D
 Acq: 12 Jun 2024 13:58

Tgt Ion: 43 Resp: 2030

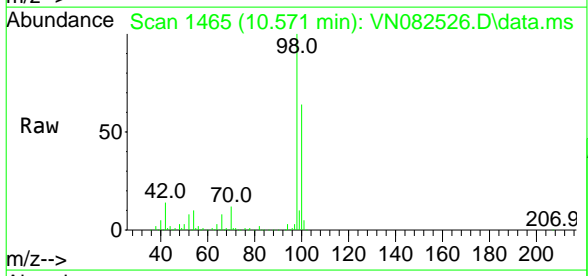
Ion	Ratio	Lower	Upper
43	100		
61	0.0	22.8	34.2#
87	0.0	12.0	18.0#



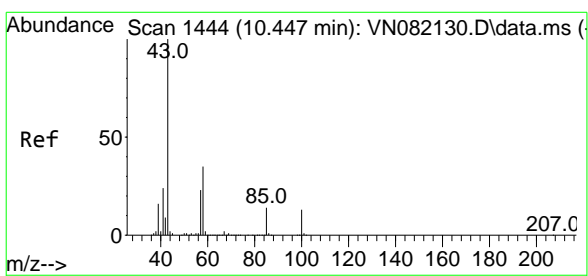
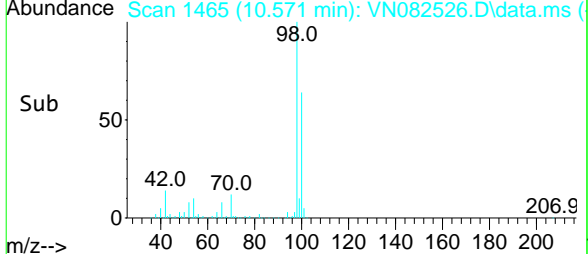
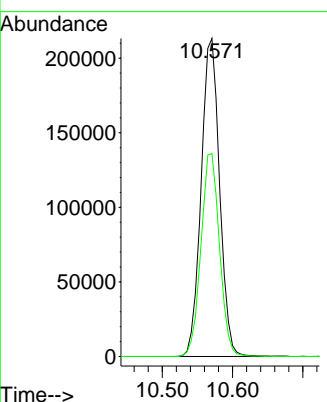


#50
 Toluene-d8
 Concen: 51.676 ug/l
 RT: 10.571 min Scan# 1465
 Delta R.T. -0.000 min
 Lab File: VN082526.D
 Acq: 12 Jun 2024 13:58

Instrument : MSVOA_N
 ClientSampleId :

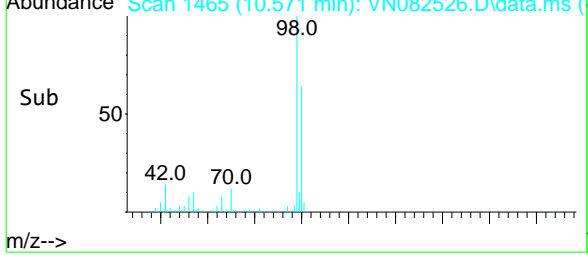
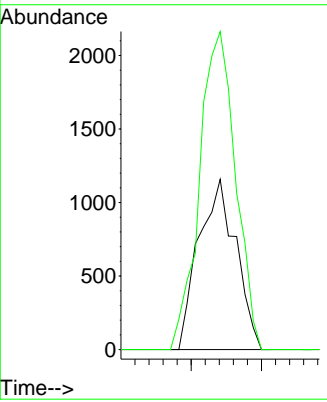
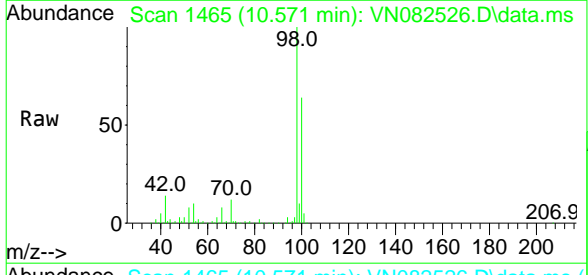


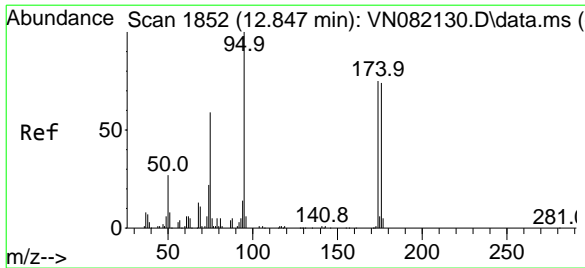
Tgt Ion: 98 Resp: 388250
 Ion Ratio Lower Upper
 98 100
 100 64.3 51.8 77.6



#51
 4-Methyl-2-Pentanone
 Concen: 0.575 ug/l
 RT: 10.571 min Scan# 1465
 Delta R.T. 0.123 min
 Lab File: VN082526.D
 Acq: 12 Jun 2024 13:58

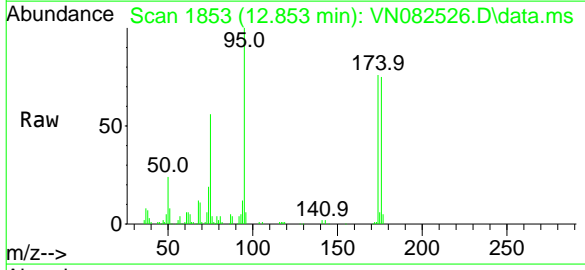
Tgt Ion: 43 Resp: 2128
 Ion Ratio Lower Upper
 43 100
 58 181.4 33.2 49.8#



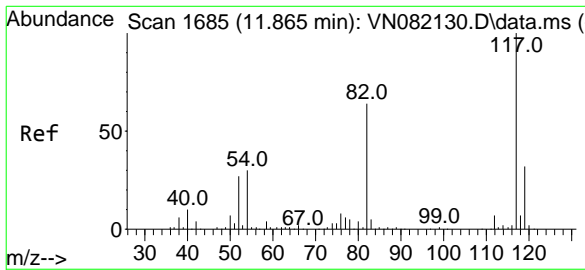
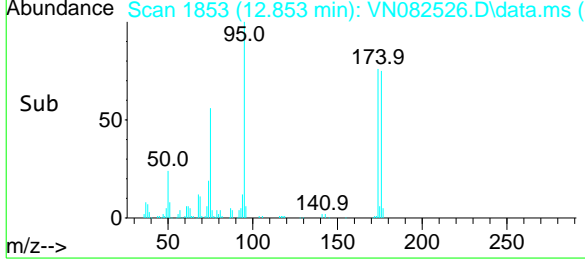
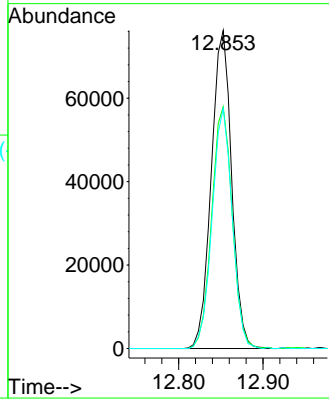


#62
 4-Bromofluorobenzene
 Concen: 47.567 ug/l
 RT: 12.853 min Scan# 1853
 Delta R.T. 0.006 min
 Lab File: VN082526.D
 Acq: 12 Jun 2024 13:58

Instrument :
 MSVOA_N
 ClientSampleId :

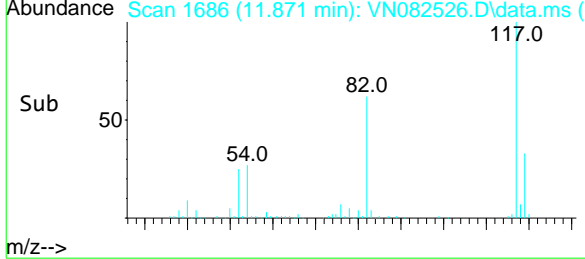
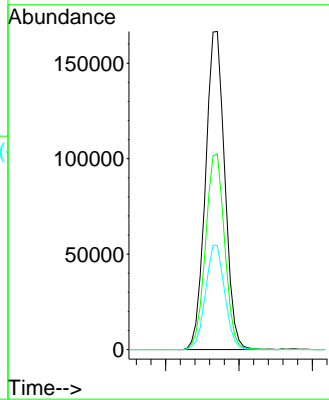
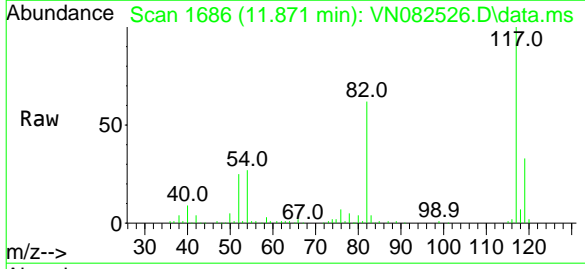


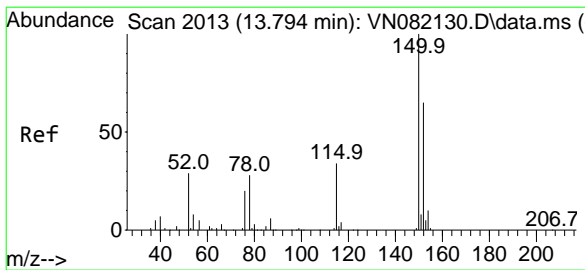
Tgt Ion: 95 Resp: 127556
 Ion Ratio Lower Upper
 95 100
 174 76.8 0.0 160.6
 176 74.5 0.0 152.8



#63
 Chlorobenzene-d5
 Concen: 50.000 ug/l
 RT: 11.871 min Scan# 1686
 Delta R.T. 0.006 min
 Lab File: VN082526.D
 Acq: 12 Jun 2024 13:58

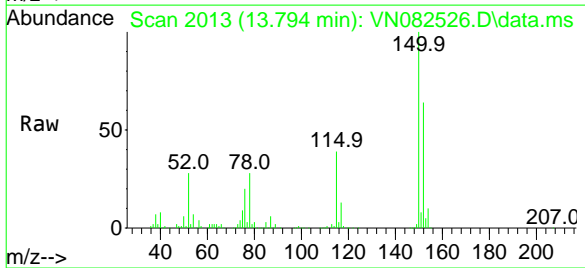
Tgt Ion: 117 Resp: 304174
 Ion Ratio Lower Upper
 117 100
 82 61.5 44.6 66.8
 119 32.8 25.9 38.9



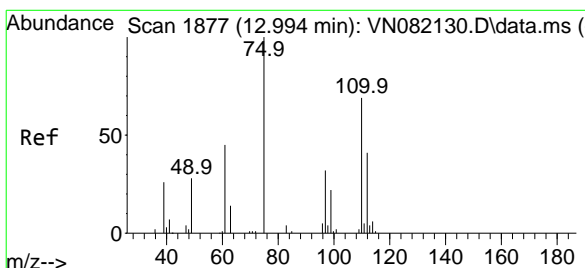
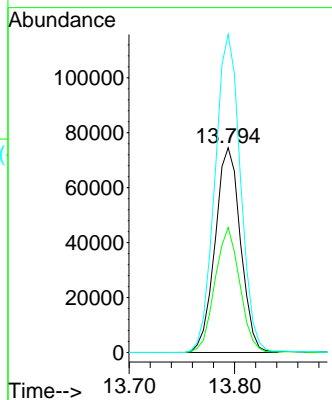
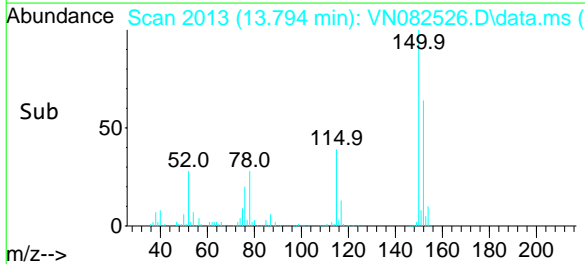


#72
 1,4-Dichlorobenzene-d4
 Concen: 50.000 ug/l
 RT: 13.794 min Scan# 20
 Delta R.T. -0.000 min
 Lab File: VN082526.D
 Acq: 12 Jun 2024 13:58

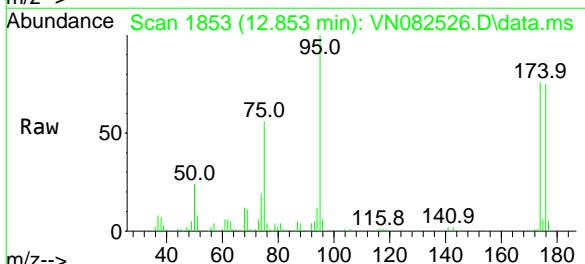
Instrument :
 MSVOA_N
 ClientSampleId :



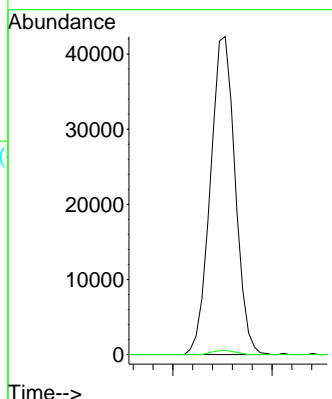
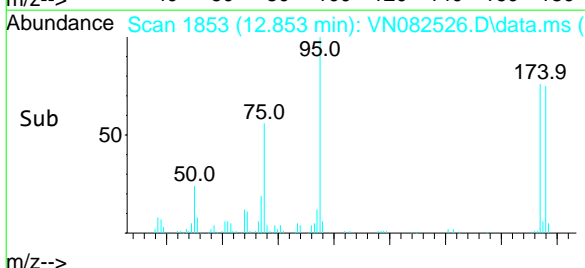
Tgt Ion:152 Resp: 124919
 Ion Ratio Lower Upper
 152 100
 115 59.6 30.4 91.3
 150 156.6 0.0 353.2

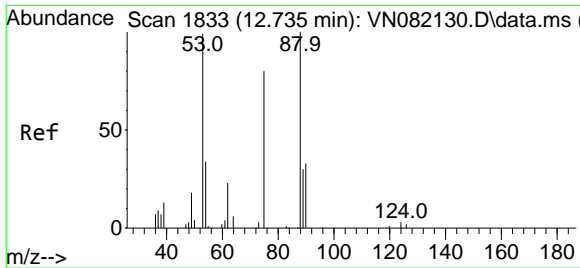


#76
 1,2,3-Trichloropropane
 Concen: 27.926 ug/l
 RT: 12.853 min Scan# 1853
 Delta R.T. -0.141 min
 Lab File: VN082526.D
 Acq: 12 Jun 2024 13:58



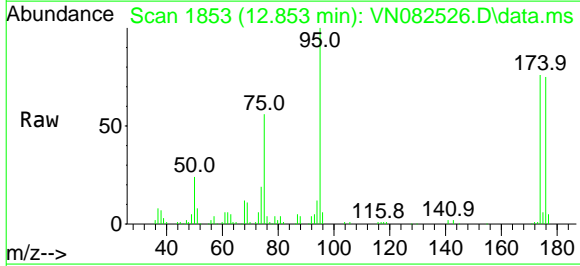
Tgt Ion: 75 Resp: 73424
 Ion Ratio Lower Upper
 75 100
 77 1.2 90.5 271.3#





#81
 trans-1,4-Dichloro-2-butene
 Concen: 65.317 ug/l
 RT: 12.853 min Scan# 18
 Delta R.T. 0.118 min
 Lab File: VN082526.D
 Acq: 12 Jun 2024 13:58

Instrument :
 MSVOA_N
 ClientSampleId :



Tgt Ion	Ratio	Lower	Upper
75	100		
53	0.0	72.9	109.3#
89	0.0	39.1	58.7#

