

Data Path : Z:\voasrv\HPCHEM1\MSVOA_N\Data\VN061225\
 Data File : VN086980.D
 Acq On : 12 Jun 2025 16:17
 Operator : JC\MD
 Sample : Q2302-01
 Misc : 5.0mL/MSVOA_N/WATER
 ALS Vial : 15 Sample Multiplier: 1

Instrument :
 MSVOA_N
 ClientSampleId :
 250611078-02-VOA

Quant Time: Jun 13 01:30:03 2025
 Quant Method : Z:\voasrv\HPCHEM1\MSVOA_N\methods\82N060625W.M
 Quant Title : SW846 8260
 QLast Update : Sat Jun 07 02:12:50 2025
 Response via : Initial Calibration

Compound	R.T.	QIon	Response	Conc	Units	Dev(Min)
Internal Standards						
1) Pentafluorobenzene	8.235	168	214885	50.000	ug/l	0.00
34) 1,4-Difluorobenzene	9.106	114	415965	50.000	ug/l	0.00
63) Chlorobenzene-d5	11.865	117	381430	50.000	ug/l	0.00
72) 1,4-Dichlorobenzene-d4	13.794	152	185553	50.000	ug/l	0.00
System Monitoring Compounds						
33) 1,2-Dichloroethane-d4	8.582	65	151583	52.687	ug/l	0.00
Spiked Amount	50.000	Range 74 - 125	Recovery	=	105.380%	
35) Dibromofluoromethane	8.177	113	127566	51.749	ug/l	0.00
Spiked Amount	50.000	Range 75 - 124	Recovery	=	103.500%	
50) Toluene-d8	10.570	98	515850	52.860	ug/l	0.00
Spiked Amount	50.000	Range 86 - 113	Recovery	=	105.720%	
62) 4-Bromofluorobenzene	12.847	95	190491	52.540	ug/l	0.00
Spiked Amount	50.000	Range 77 - 121	Recovery	=	105.080%	
Target Compounds						
						Qvalue
4) Vinyl Chloride	2.542	62	1501	0.526	ug/l	92
8) Diethyl Ether	3.971	74	6087	3.747	ug/l	90
11) Tert butyl alcohol	5.541	59	5767759	7388.260	ug/l	99
14) Allyl chloride	4.959	41	41487	10.459	ug/l #	40
15) Acrylonitrile	5.541	53	38516	21.108	ug/l #	22
16) Acetone	4.441	43	466692	305.880	ug/l	99
17) Carbon Disulfide	4.736	76	28025	4.236	ug/l	96
18) Methyl Acetate	5.041	43	997	0.224	ug/l #	49
19) Methyl tert-butyl Ether	5.824	73	23354	2.697	ug/l #	84
21) trans-1,2-Dichloroethene	5.818	96	698	0.262	ug/l #	42
25) 2-Butanone	7.494	43	735062	296.392	ug/l	99
26) 2,2-Dichloropropane	7.441	77	226147	60.420	ug/l #	52
27) cis-1,2-Dichloroethene	7.500	96	4699	1.477	ug/l #	14
28) Bromochloromethane	7.859	49	1693	0.716	ug/l #	13
29) Tetrahydrofuran	7.847	42	1125385	696.589	ug/l	96
31) Cyclohexane	8.235	56	4172	0.894	ug/l #	1
37) Ethyl Acetate	7.494	43	735062	157.197	ug/l #	66
38) Carbon Tetrachloride	8.229	117	21222	5.885	ug/l #	16
40) Benzene	8.618	78	65221	5.430	ug/l	99
41) Methacrylonitrile	7.847	41	598012	227.718	ug/l #	40
42) 1,2-Dichloroethane	8.618	62	766	0.210	ug/l	91
43) Isopropyl Acetate	8.659	43	18458	2.459	ug/l #	1
45) 1,2-Dichloropropane	9.629	63	1082	0.370	ug/l #	43
48) Methyl methacrylate	9.676	41	1905	0.551	ug/l #	33
49) 1,4-Dioxane	9.706	88	5273	83.909	ug/l #	84
51) 4-Methyl-2-Pentanone	10.570	43	11985	2.653	ug/l	100
52) Toluene	10.635	92	115821	15.778	ug/l	100
55) 1,1,2-Trichloroethane	10.929	97	1332	0.472	ug/l #	27
59) 2-Hexanone	11.070	43	17783	6.110	ug/l	65
65) Chlorobenzene	11.894	112	25847	3.072	ug/l	97
67) Ethyl Benzene	11.965	91	233632	16.123	ug/l	99
68) m/p-Xylenes	12.070	106	81139	14.628	ug/l	98
69) o-Xylene	12.400	106	45066	8.483	ug/l	100
70) Styrene	12.406	104	6838	0.752	ug/l #	1
73) Isopropylbenzene	12.694	105	27092	2.004	ug/l	97
74) N-amyl acetate	12.482	43	1980	0.419	ug/l #	56

Data Path : Z:\voasrv\HPCHEM1\MSVOA_N\Data\VN061225\
 Data File : VN086980.D
 Acq On : 12 Jun 2025 16:17
 Operator : JC\MD
 Sample : Q2302-01
 Misc : 5.0mL/MSVOA_N/WATER
 ALS Vial : 15 Sample Multiplier: 1

Instrument :
 MSVOA_N
 ClientSampleId :
 250611078-02-VOA

Quant Time: Jun 13 01:30:03 2025
 Quant Method : Z:\voasrv\HPCHEM1\MSVOA_N\methods\82N060625W.M
 Quant Title : SW846 8260
 QLast Update : Sat Jun 07 02:12:50 2025
 Response via : Initial Calibration

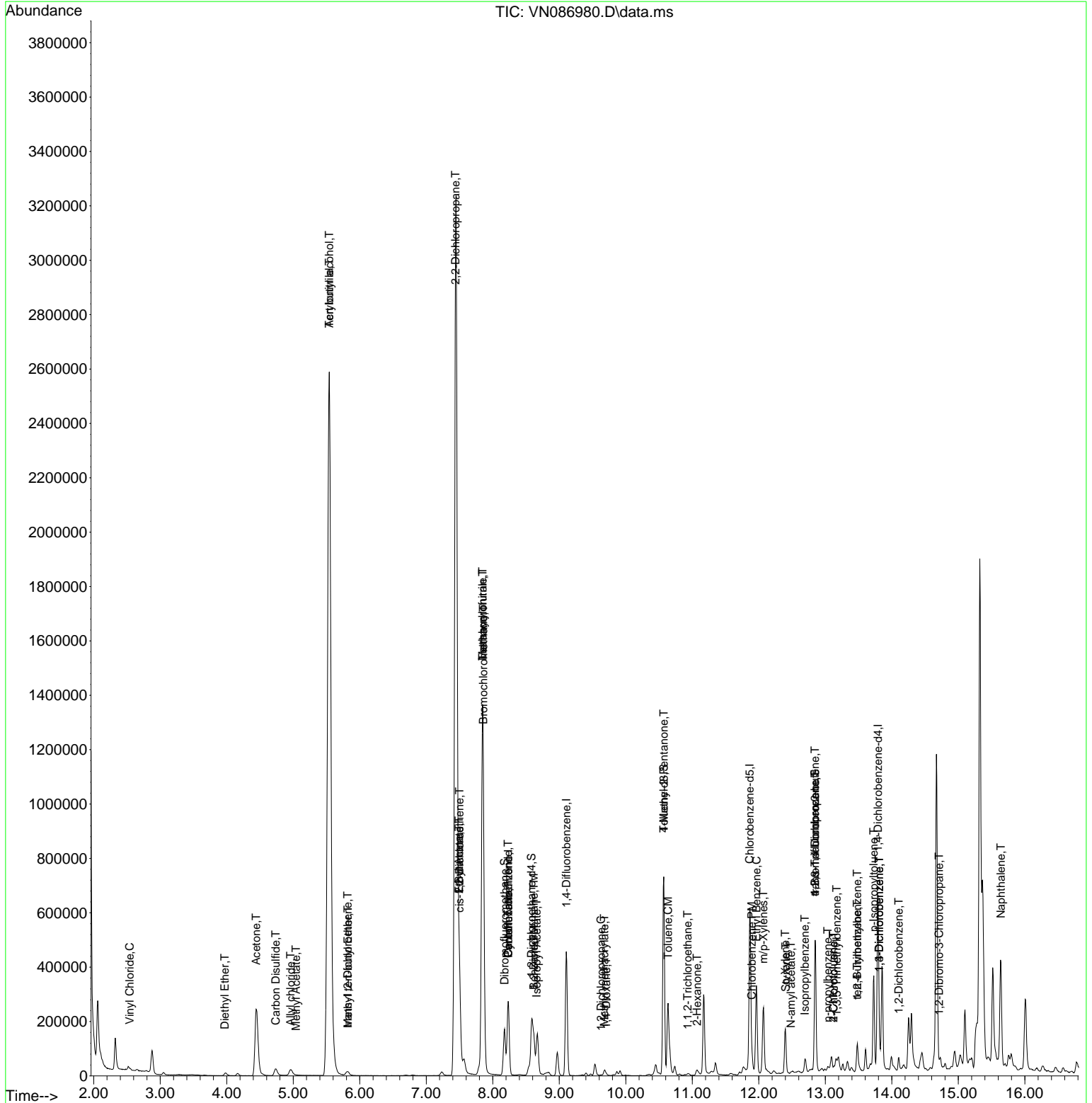
Compound	R.T.	QIon	Response	Conc	Units	Dev(Min)
76) 1,2,3-Trichloropropane	12.847	75	89522	20.297	ug/l #	1
78) n-propylbenzene	13.035	91	13756	0.837	ug/l	98
79) 2-Chlorotoluene	13.123	91	4382	0.445	ug/l	98
80) 1,3,5-Trimethylbenzene	13.170	105	14512	1.300	ug/l	98
81) trans-1,4-Dichloro-2-b...	12.847	75	89522	46.722	ug/l #	16
82) 4-Chlorotoluene	13.123	91	3161	0.317	ug/l	77
83) tert-Butylbenzene	13.482	119	6721	0.658	ug/l #	55
84) 1,2,4-Trimethylbenzene	13.482	105	51433	4.596	ug/l	99
86) p-Isopropyltoluene	13.729	119	203065	16.558	ug/l	99
87) 1,3-Dichlorobenzene	13.811	146	23143	3.794	ug/l	89
88) 1,4-Dichlorobenzene	13.811	146	23143	3.722	ug/l	87
91) 1,2-Dichlorobenzene	14.106	146	1553	0.265	ug/l #	56
92) 1,2-Dibromo-3-Chloropr...	14.711	75	773	0.706	ug/l #	2
95) Naphthalene	15.641	128	390628	28.046	ug/l	99

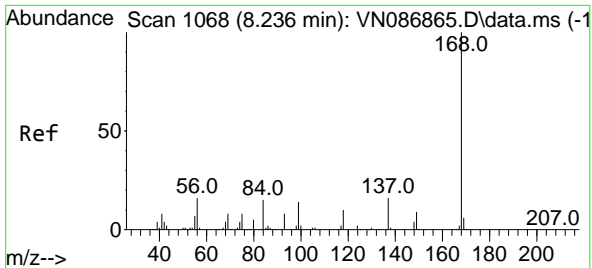
(#) = qualifier out of range (m) = manual integration (+) = signals summed

Data Path : Z:\voasrv\HPCHEM1\MSVOA_N\Data\VN061225\
 Data File : VN086980.D
 Acq On : 12 Jun 2025 16:17
 Operator : JC\MD
 Sample : Q2302-01
 Misc : 5.0mL/MSVOA_N/WATER
 ALS Vial : 15 Sample Multiplier: 1

Instrument :
 MSVOA_N
 ClientSampleId :
 250611078-02-VOA

Quant Time: Jun 13 01:30:03 2025
 Quant Method : Z:\voasrv\HPCHEM1\MSVOA_N\methods\82N060625W.M
 Quant Title : SW846 8260
 QLast Update : Sat Jun 07 02:12:50 2025
 Response via : Initial Calibration

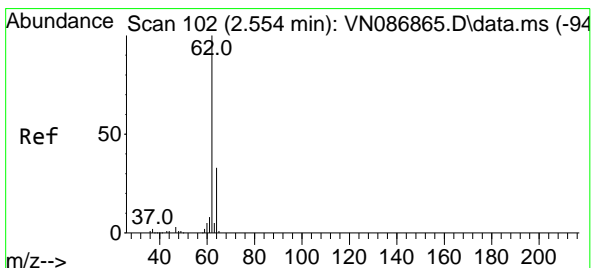
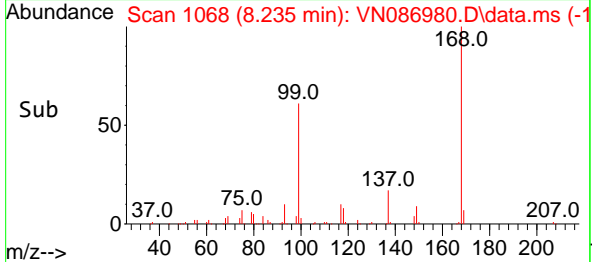
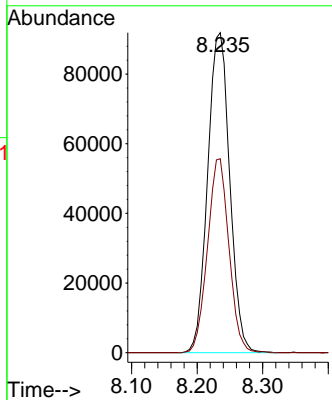
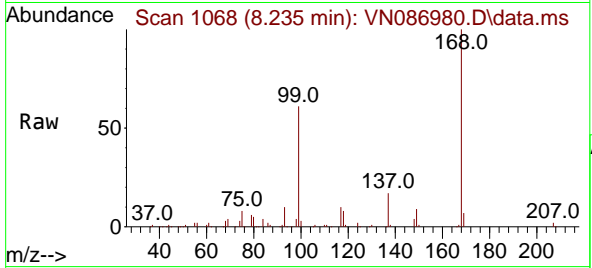




#1
 Pentafluorobenzene
 Concen: 50.000 ug/l
 RT: 8.235 min Scan# 10
 Delta R.T. -0.001 min
 Lab File: VN086980.D
 Acq: 12 Jun 2025 16:17

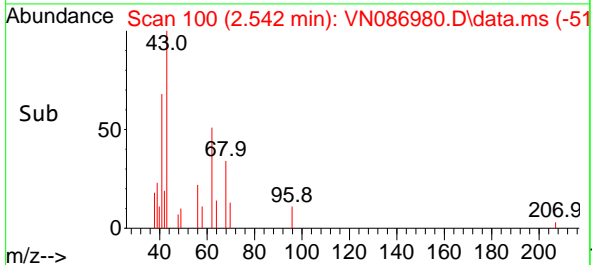
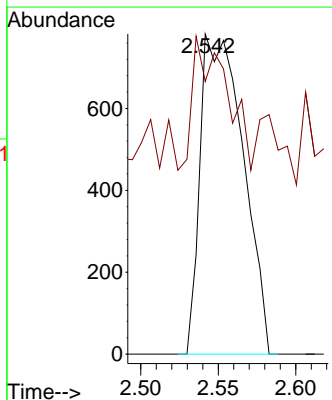
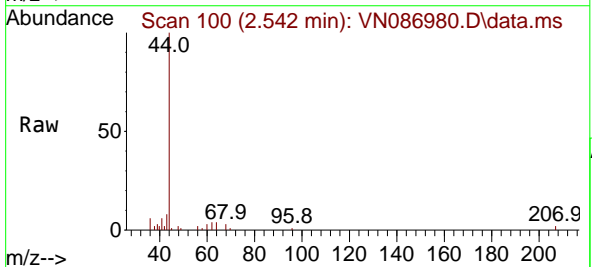
Instrument :
 MSVOA_N
 ClientSampleId :
 250611078-02-VOA

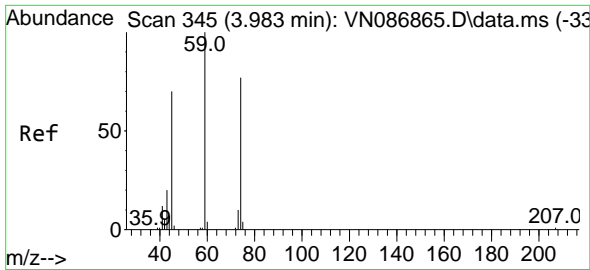
Tgt Ion:168 Resp: 214885
 Ion Ratio Lower Upper
 168 100
 99 60.6 49.1 73.7



#4
 Vinyl Chloride
 Concen: 0.526 ug/l
 RT: 2.542 min Scan# 100
 Delta R.T. -0.012 min
 Lab File: VN086980.D
 Acq: 12 Jun 2025 16:17

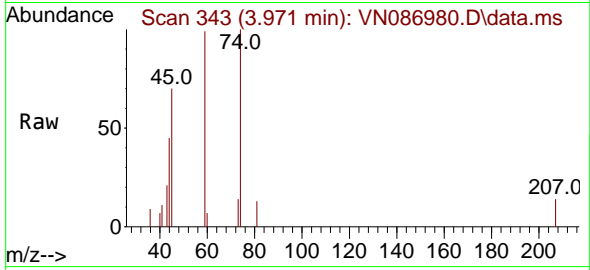
Tgt Ion: 62 Resp: 1501
 Ion Ratio Lower Upper
 62 100
 64 27.7 26.0 39.0



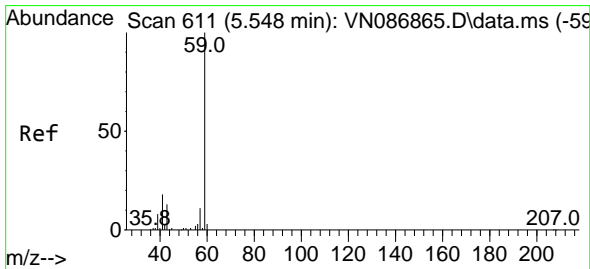
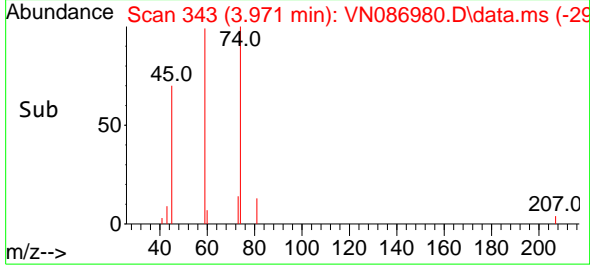
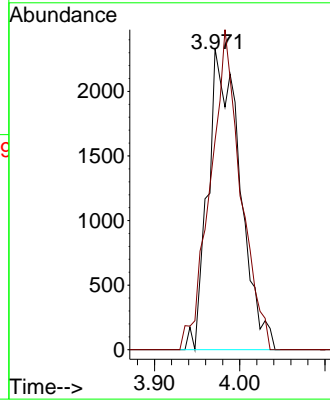


#8
 Diethyl Ether
 Concen: 3.747 ug/l
 RT: 3.971 min Scan# 343
 Delta R.T. -0.012 min
 Lab File: VN086980.D
 Acq: 12 Jun 2025 16:17

Instrument : MSVOA_N
 ClientSampleId : 250611078-02-VOA

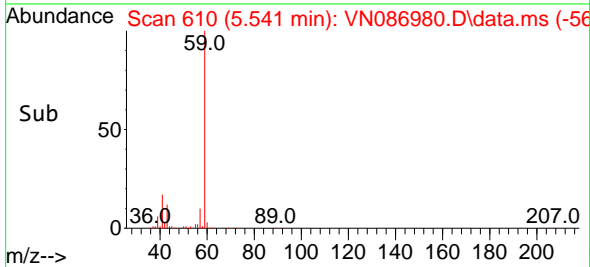
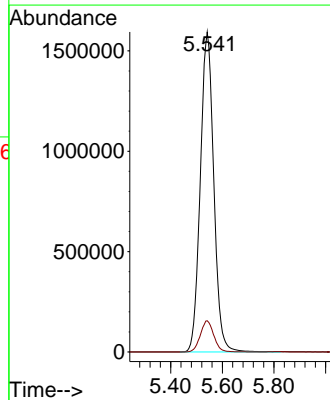
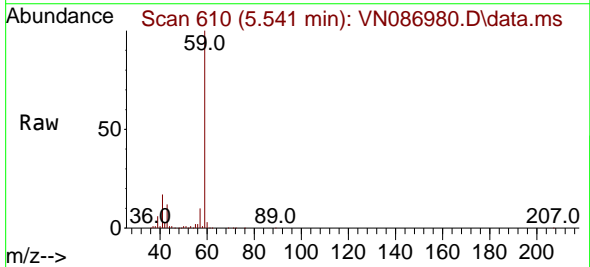


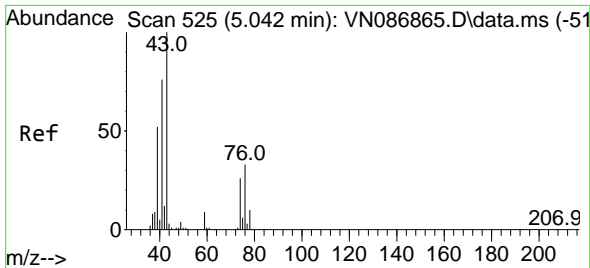
Tgt Ion: 74 Resp: 6087
 Ion Ratio Lower Upper
 74 100
 45 100.9 45.5 136.5



#11
 Tert butyl alcohol
 Concen: 7388.260 ug/l
 RT: 5.541 min Scan# 610
 Delta R.T. -0.006 min
 Lab File: VN086980.D
 Acq: 12 Jun 2025 16:17

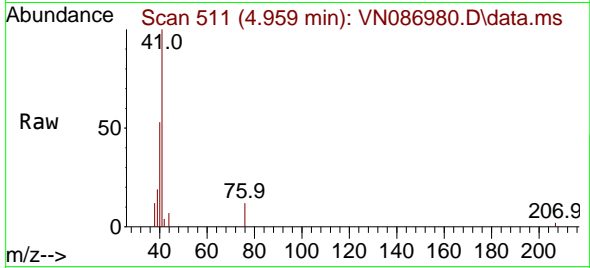
Tgt Ion: 59 Resp: 5767759
 Ion Ratio Lower Upper
 59 100
 57 9.8 8.1 12.1



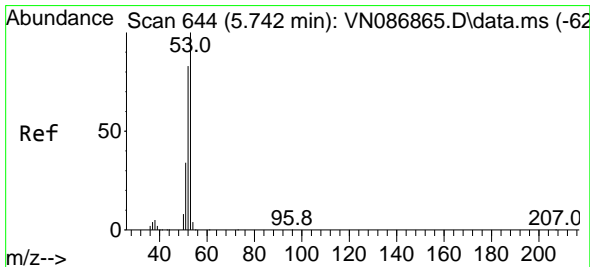
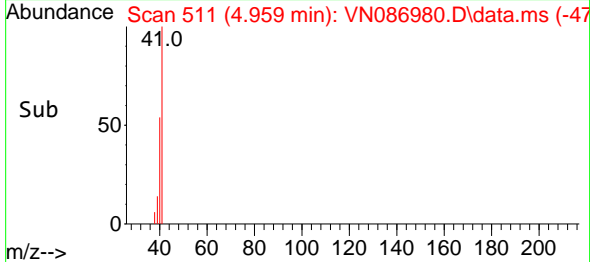
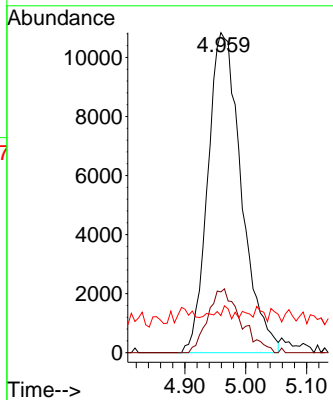


#14
 Allyl chloride
 Concen: 10.459 ug/l
 RT: 4.959 min Scan# 511
 Delta R.T. -0.083 min
 Lab File: VN086980.D
 Acq: 12 Jun 2025 16:17

Instrument : MSVOA_N
 ClientSampleId : 250611078-02-VOA

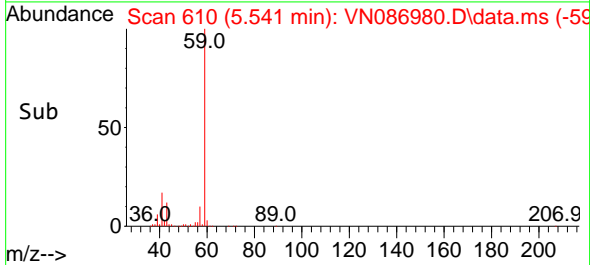
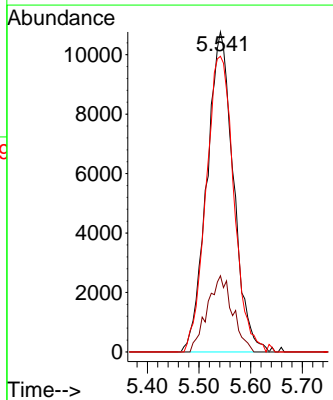
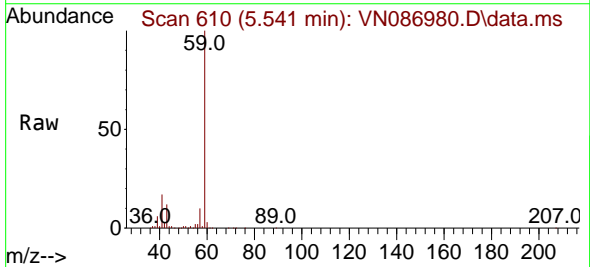


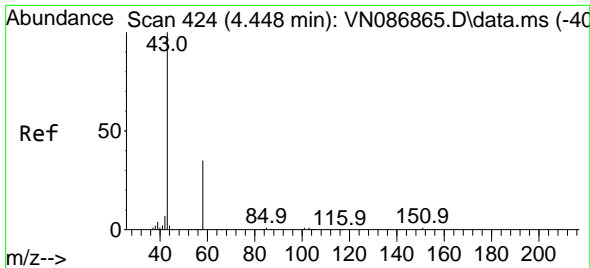
Tgt Ion	Resp	Ion Ratio	Lower	Upper
41	41487	100		
39		19.6	51.3	76.9#
76		0.0	31.4	47.0#



#15
 Acrylonitrile
 Concen: 21.108 ug/l
 RT: 5.541 min Scan# 610
 Delta R.T. -0.200 min
 Lab File: VN086980.D
 Acq: 12 Jun 2025 16:17

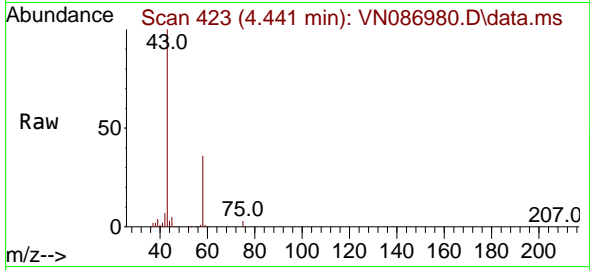
Tgt Ion	Resp	Ion Ratio	Lower	Upper
53	38516	100		
52		22.7	65.0	97.6#
51		96.1	27.2	40.8#



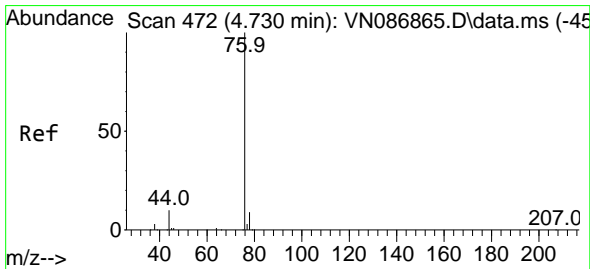
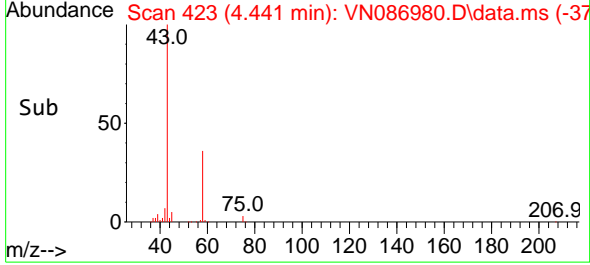
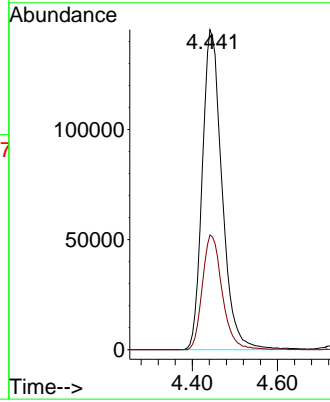


#16
 Acetone
 Concen: 305.880 ug/l
 RT: 4.441 min Scan# 41
 Delta R.T. -0.006 min
 Lab File: VN086980.D
 Acq: 12 Jun 2025 16:17

Instrument :
 MSVOA_N
 ClientSampleId :
 250611078-02-VOA

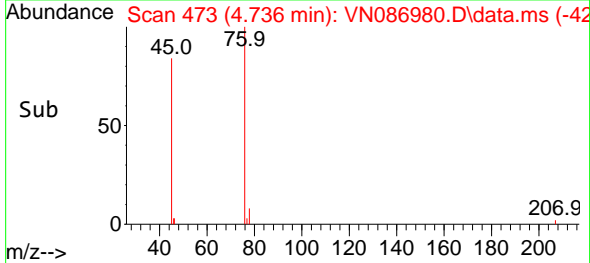
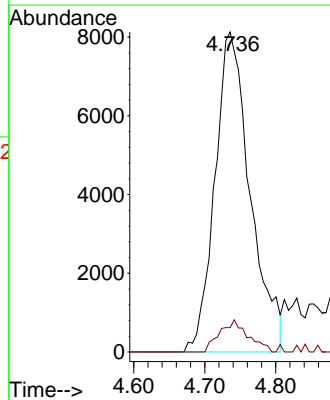
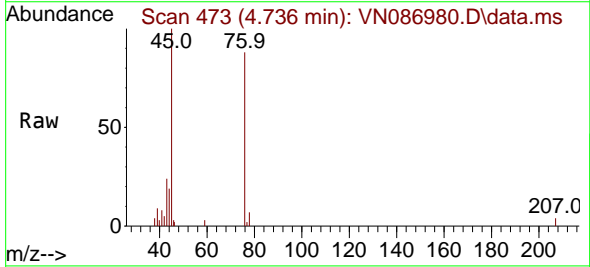


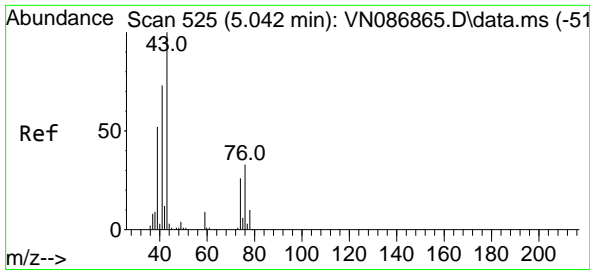
Tgt Ion: 43 Resp: 466692
 Ion Ratio Lower Upper
 43 100
 58 35.9 28.0 42.0



#17
 Carbon Disulfide
 Concen: 4.236 ug/l
 RT: 4.736 min Scan# 473
 Delta R.T. 0.006 min
 Lab File: VN086980.D
 Acq: 12 Jun 2025 16:17

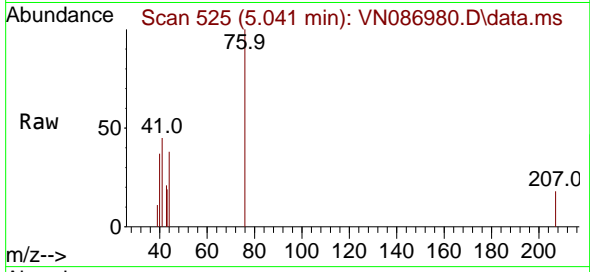
Tgt Ion: 76 Resp: 28025
 Ion Ratio Lower Upper
 76 100
 78 7.6 7.3 10.9



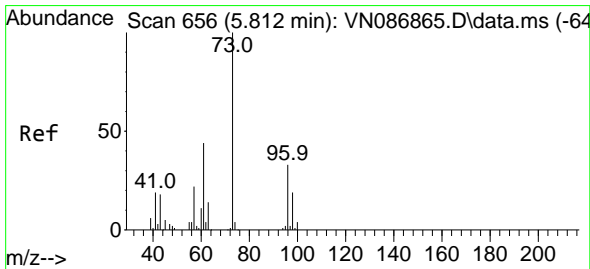
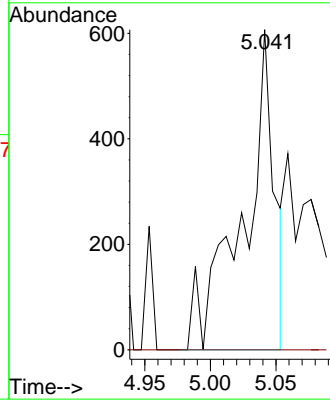
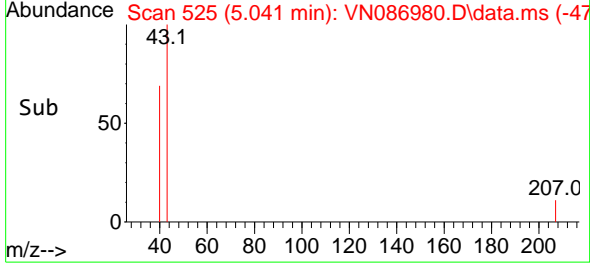


#18
 Methyl Acetate
 Concen: 0.224 ug/l
 RT: 5.041 min Scan# 51
 Delta R.T. -0.000 min
 Lab File: VN086980.D
 Acq: 12 Jun 2025 16:17

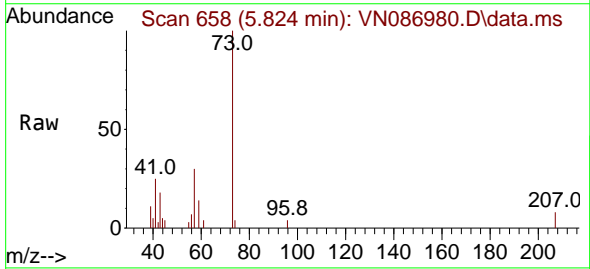
Instrument :
 MSVOA_N
 ClientSampleId :
 250611078-02-VOA



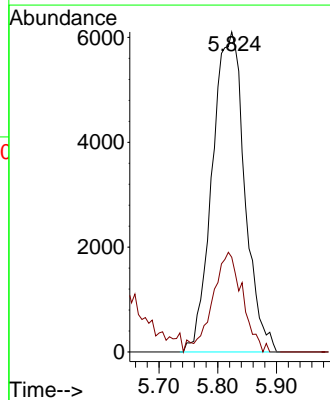
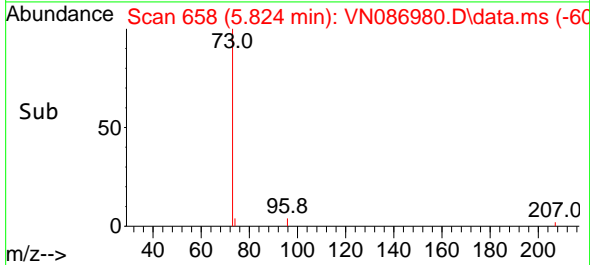
Tgt Ion: 43 Resp: 997
 Ion Ratio Lower Upper
 43 100
 74 0.0 20.7 31.1#

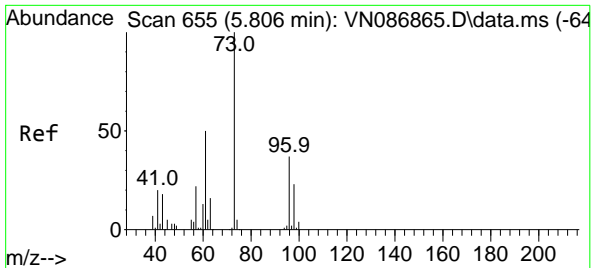


#19
 Methyl tert-butyl Ether
 Concen: 2.697 ug/l
 RT: 5.824 min Scan# 658
 Delta R.T. 0.012 min
 Lab File: VN086980.D
 Acq: 12 Jun 2025 16:17



Tgt Ion: 73 Resp: 23354
 Ion Ratio Lower Upper
 73 100
 57 29.6 17.4 26.2#

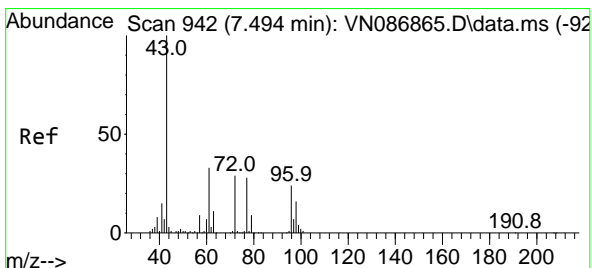
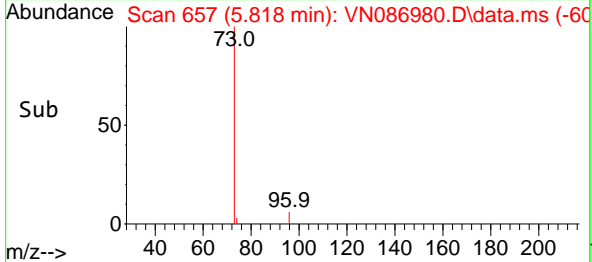
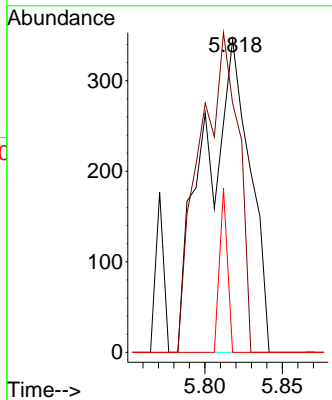
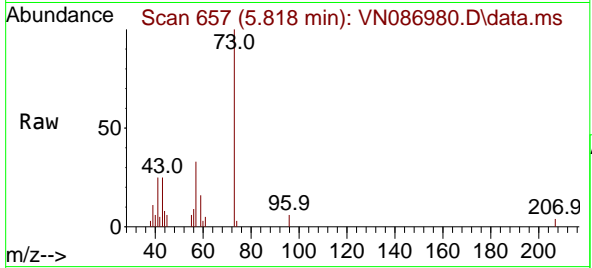




#21
 trans-1,2-Dichloroethene
 Concen: 0.262 ug/l
 RT: 5.818 min Scan# 61
 Delta R.T. 0.012 min
 Lab File: VN086980.D
 Acq: 12 Jun 2025 16:17

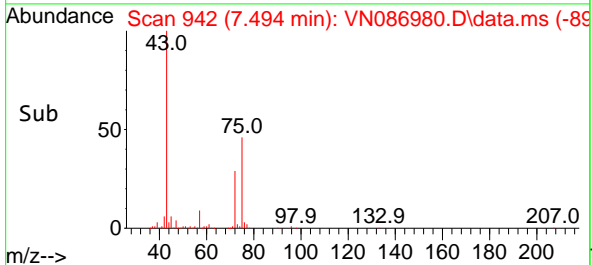
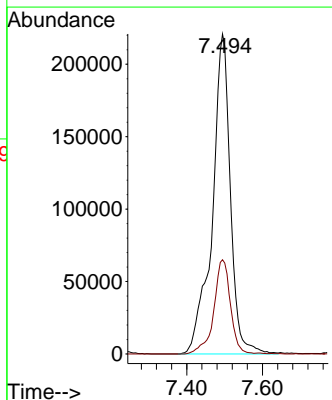
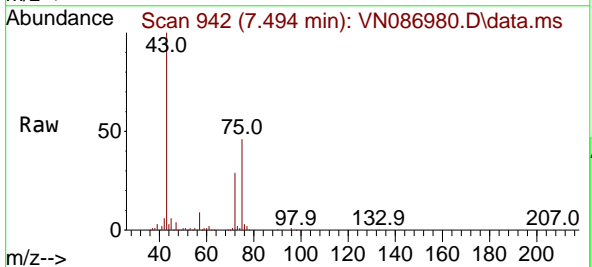
Instrument : MSVOA_N
 ClientSampleId : 250611078-02-VOA

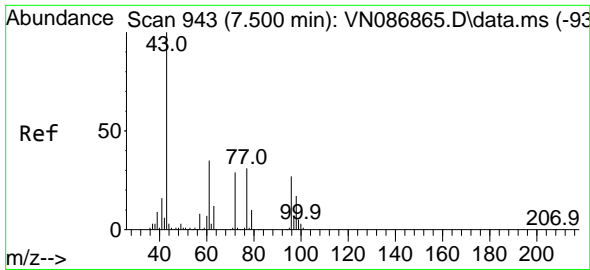
Tgt Ion	Resp	Lower	Upper
96	100		
61	79.7	109.2	163.8#
98	0.0	49.8	74.8#



#25
 2-Butanone
 Concen: 296.392 ug/l
 RT: 7.494 min Scan# 942
 Delta R.T. -0.000 min
 Lab File: VN086980.D
 Acq: 12 Jun 2025 16:17

Tgt Ion	Resp	Lower	Upper
43	100		
72	29.5	23.0	34.6

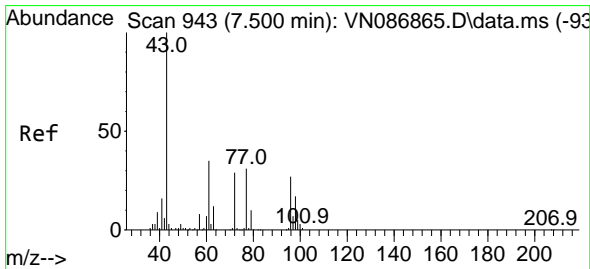
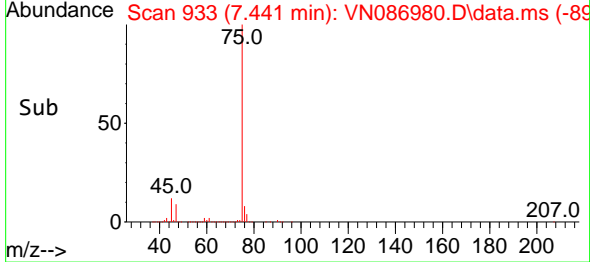
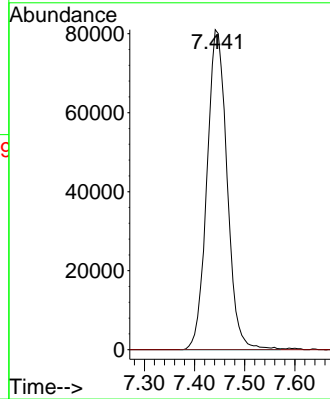
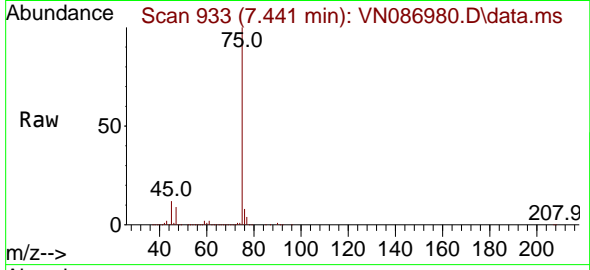




#26
 2,2-Dichloropropane
 Concen: 60.420 ug/l
 RT: 7.441 min Scan# 91
 Delta R.T. -0.059 min
 Lab File: VN086980.D
 Acq: 12 Jun 2025 16:17

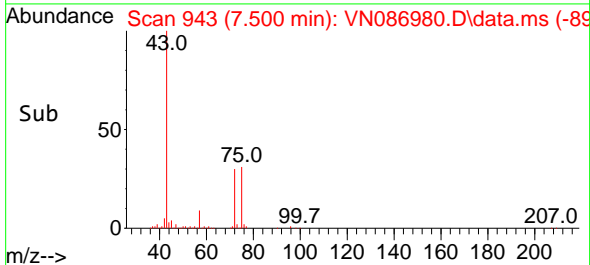
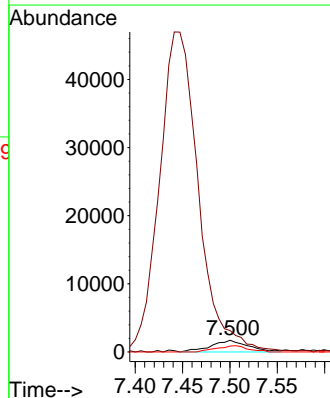
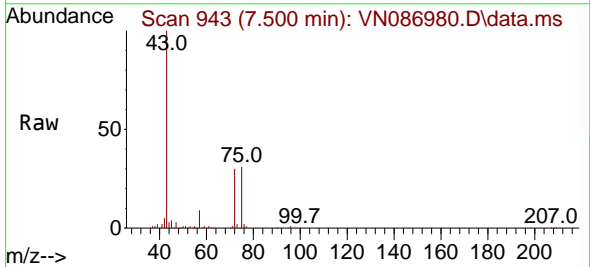
Instrument :
 MSVOA_N
 ClientSampleId :
 250611078-02-VOA

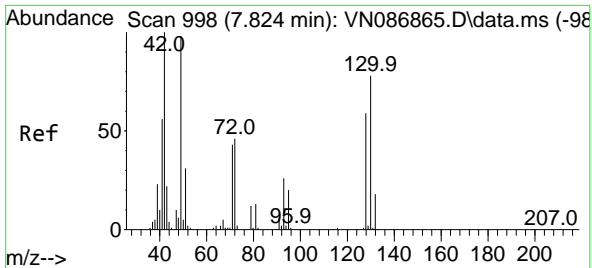
Tgt Ion: 77 Resp: 226147
 Ion Ratio Lower Upper
 77 100
 97 0.0 11.6 34.7#



#27
 cis-1,2-Dichloroethene
 Concen: 1.477 ug/l
 RT: 7.500 min Scan# 943
 Delta R.T. -0.000 min
 Lab File: VN086980.D
 Acq: 12 Jun 2025 16:17

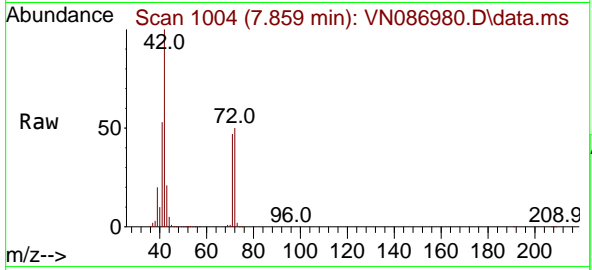
Tgt Ion: 96 Resp: 4699
 Ion Ratio Lower Upper
 96 100
 61 0.0 0.0 278.0
 98 45.5 0.0 128.2



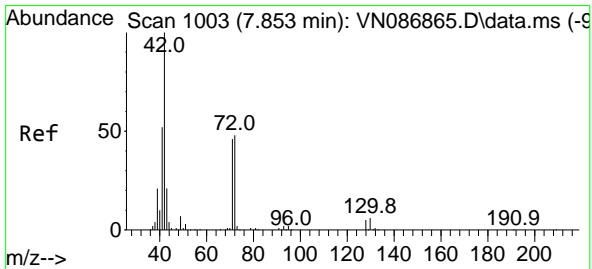
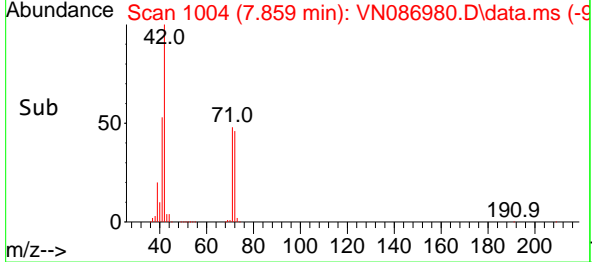
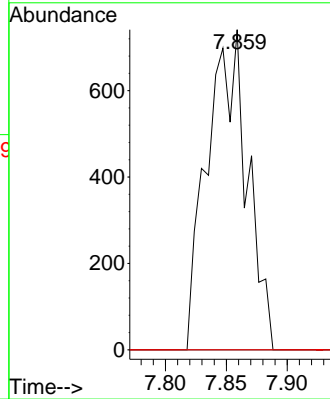


#28
 Bromochloromethane
 Concen: 0.716 ug/l
 RT: 7.859 min Scan# 1004
 Delta R.T. 0.035 min
 Lab File: VN086980.D
 Acq: 12 Jun 2025 16:17

Instrument :
 MSVOA_N
 ClientSampleId :
 250611078-02-VOA

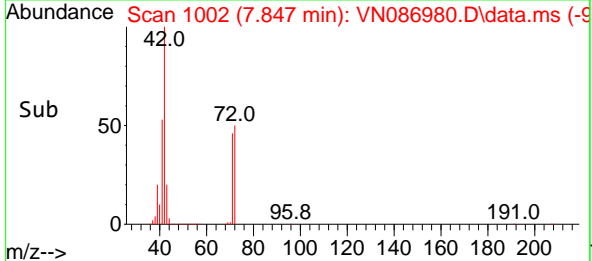
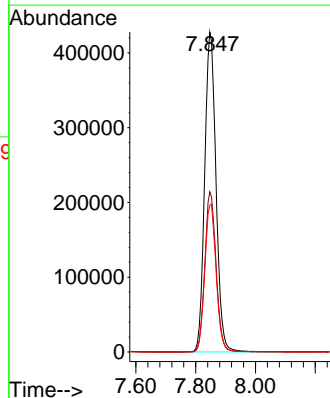
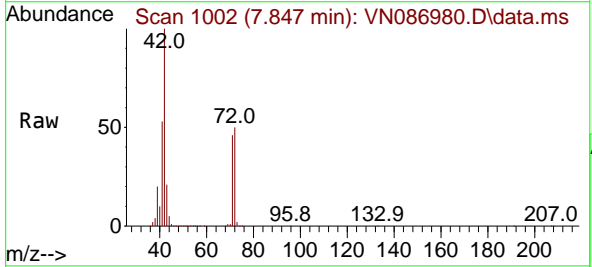


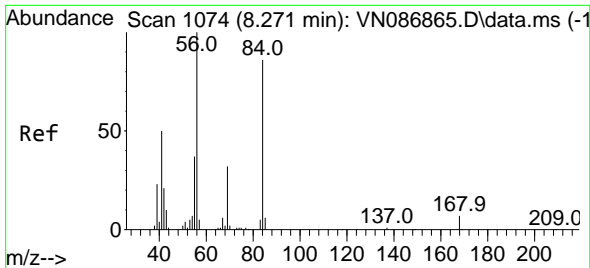
Tgt Ion: 49 Resp: 1693
 Ion Ratio Lower Upper
 49 100
 129 0.0 0.0 3.8
 130 0.0 62.2 93.2#



#29
 Tetrahydrofuran
 Concen: 696.589 ug/l
 RT: 7.847 min Scan# 1002
 Delta R.T. -0.006 min
 Lab File: VN086980.D
 Acq: 12 Jun 2025 16:17

Tgt Ion: 42 Resp: 1125385
 Ion Ratio Lower Upper
 42 100
 72 49.9 37.8 56.6
 71 46.4 35.6 53.4

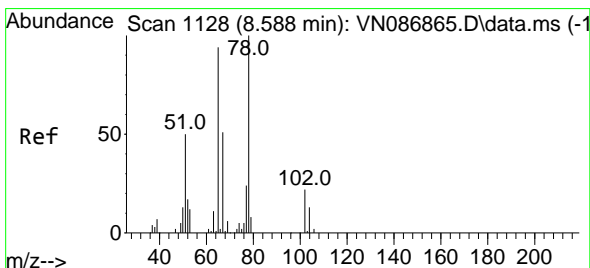
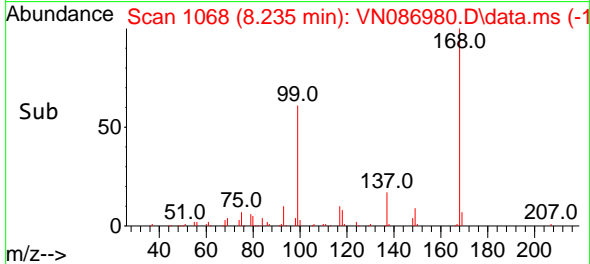
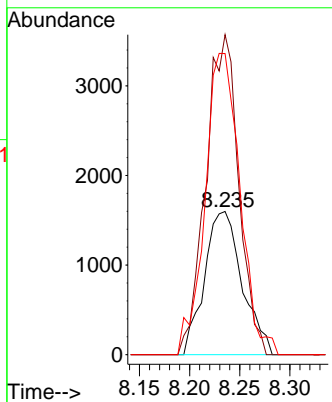
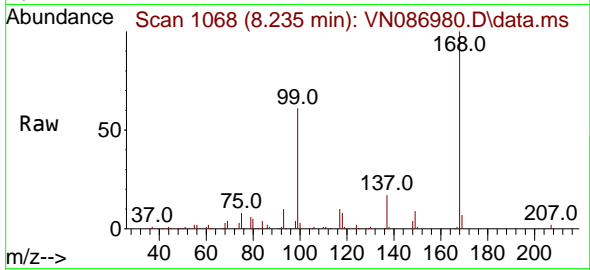




#31
 Cyclohexane
 Concen: 0.894 ug/l
 RT: 8.235 min Scan# 1074
 Delta R.T. -0.036 min
 Lab File: VN086980.D
 Acq: 12 Jun 2025 16:17

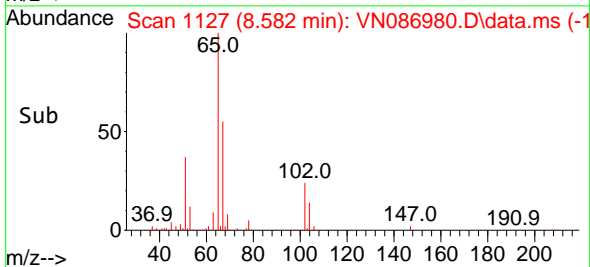
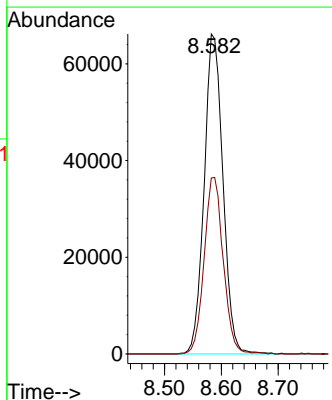
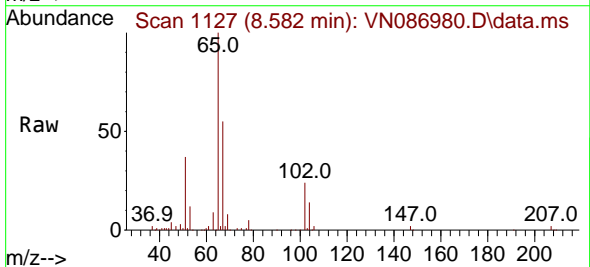
Instrument : MSVOA_N
 ClientSampleId : 250611078-02-VOA

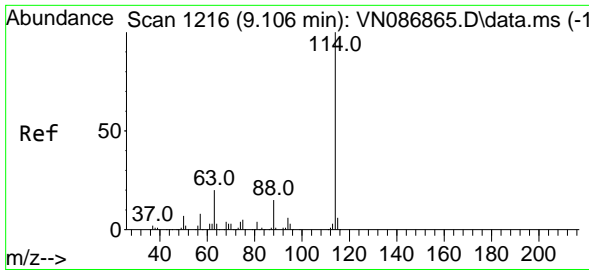
Tgt Ion	Resp	Lower	Upper
56	4172		
69	223.5	25.4	38.0#
84	210.3	68.8	103.2#



#33
 1,2-Dichloroethane-d4
 Concen: 52.687 ug/l
 RT: 8.582 min Scan# 1127
 Delta R.T. -0.006 min
 Lab File: VN086980.D
 Acq: 12 Jun 2025 16:17

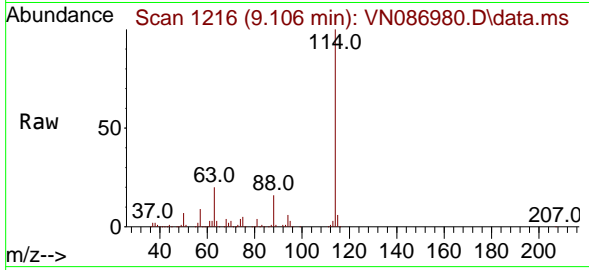
Tgt Ion	Resp	Lower	Upper
65	151583		
67	56.2	0.0	105.6



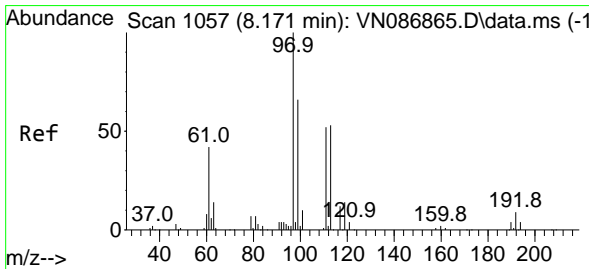
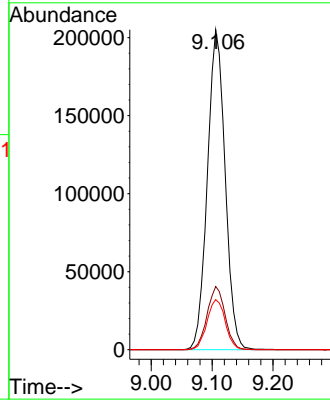
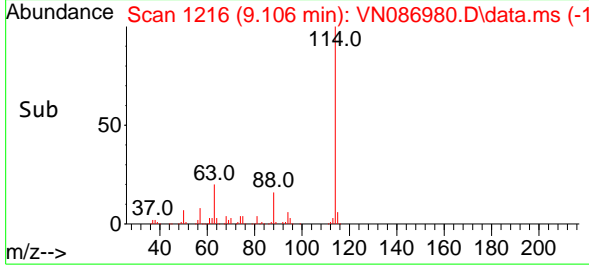


#34
 1,4-Difluorobenzene
 Concen: 50.000 ug/l
 RT: 9.106 min Scan# 11
 Delta R.T. -0.000 min
 Lab File: VN086980.D
 Acq: 12 Jun 2025 16:17

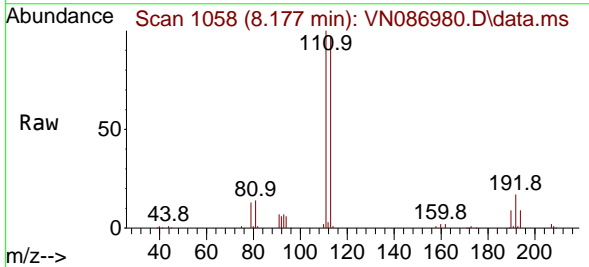
Instrument : MSVOA_N
 ClientSampleId : 250611078-02-VOA



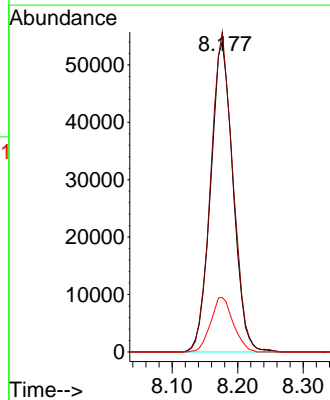
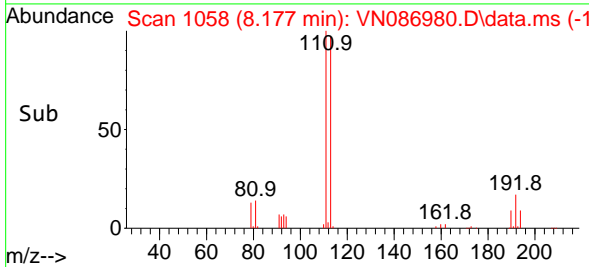
Tgt Ion:114 Resp: 415965
 Ion Ratio Lower Upper
 114 100
 63 19.8 0.0 39.6
 88 15.6 0.0 30.2

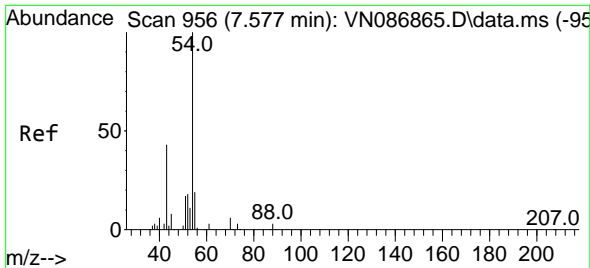


#35
 Dibromofluoromethane
 Concen: 51.749 ug/l
 RT: 8.177 min Scan# 1058
 Delta R.T. 0.006 min
 Lab File: VN086980.D
 Acq: 12 Jun 2025 16:17



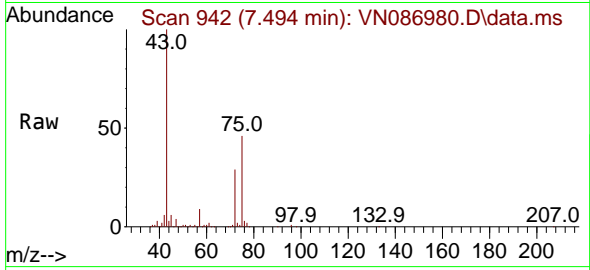
Tgt Ion:113 Resp: 127566
 Ion Ratio Lower Upper
 113 100
 111 102.9 84.2 126.2
 192 17.8 14.2 21.4



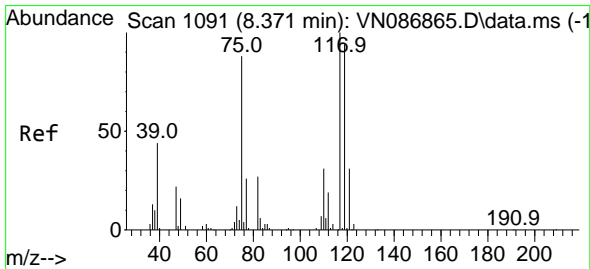
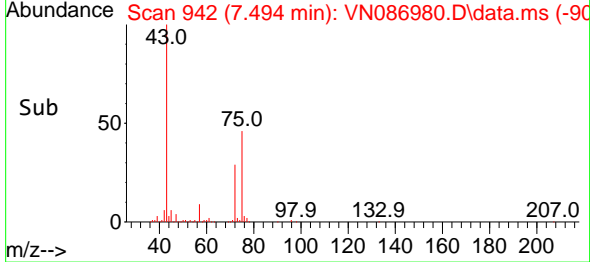
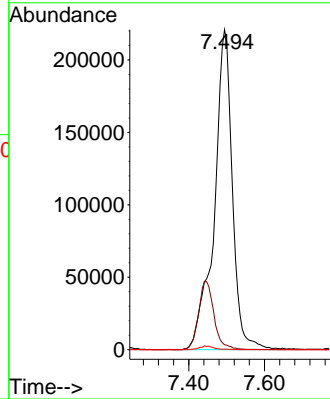


#37
 Ethyl Acetate
 Concen: 157.197 ug/l
 RT: 7.494 min Scan# 94
 Delta R.T. -0.083 min
 Lab File: VN086980.D
 Acq: 12 Jun 2025 16:17

Instrument : MSVOA_N
 ClientSampleId : 250611078-02-VOA

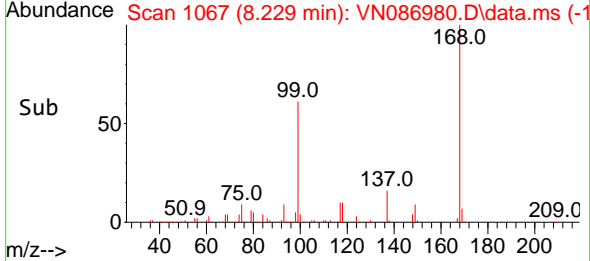
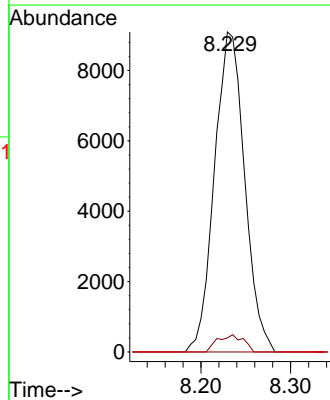
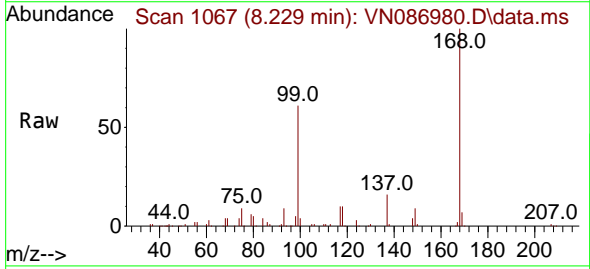


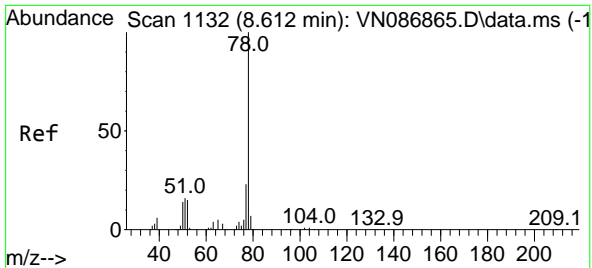
Tgt Ion: 43 Resp: 735062
 Ion Ratio Lower Upper
 43 100
 61 0.0 12.1 18.1#
 70 0.0 9.8 14.6#



#38
 Carbon Tetrachloride
 Concen: 5.885 ug/l
 RT: 8.229 min Scan# 1067
 Delta R.T. -0.141 min
 Lab File: VN086980.D
 Acq: 12 Jun 2025 16:17

Tgt Ion: 117 Resp: 21222
 Ion Ratio Lower Upper
 117 100
 119 4.4 75.0 112.6#
 121 0.0 24.9 37.3#

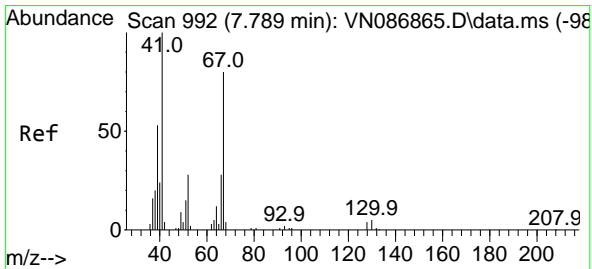
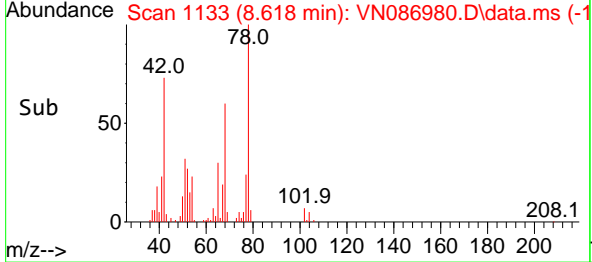
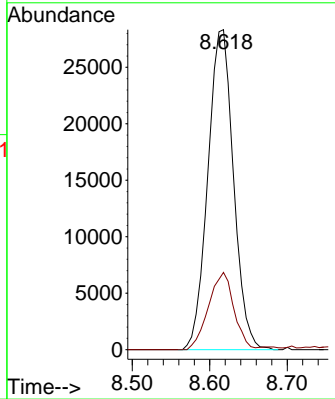
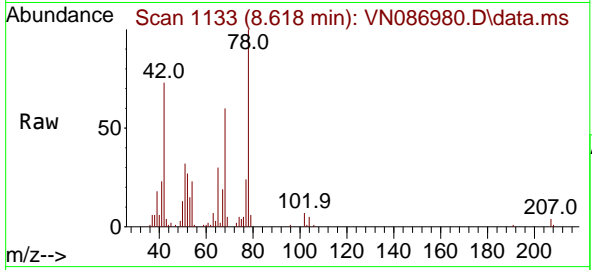




#40
Benzene
Concen: 5.430 ug/l
RT: 8.618 min Scan# 1132
Delta R.T. 0.006 min
Lab File: VN086980.D
Acq: 12 Jun 2025 16:17

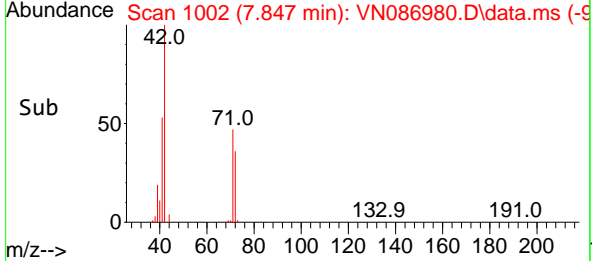
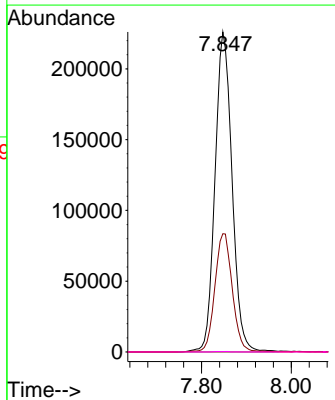
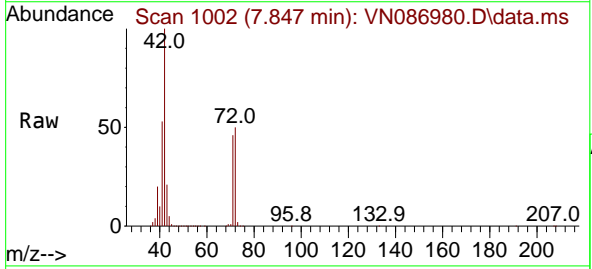
Instrument : MSVOA_N
ClientSampleId : 250611078-02-VOA

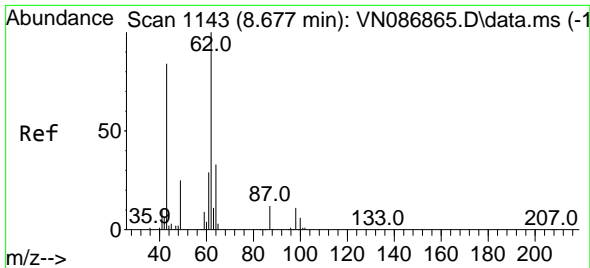
Tgt Ion: 78 Resp: 65221
Ion Ratio Lower Upper
78 100
77 24.1 18.7 28.1



#41
Methacrylonitrile
Concen: 227.718 ug/l
RT: 7.847 min Scan# 1002
Delta R.T. 0.059 min
Lab File: VN086980.D
Acq: 12 Jun 2025 16:17

Tgt Ion: 41 Resp: 598012
Ion Ratio Lower Upper
41 100
39 37.9 41.2 61.8#
67 0.0 61.4 92.2#
52 0.1 22.7 34.1#

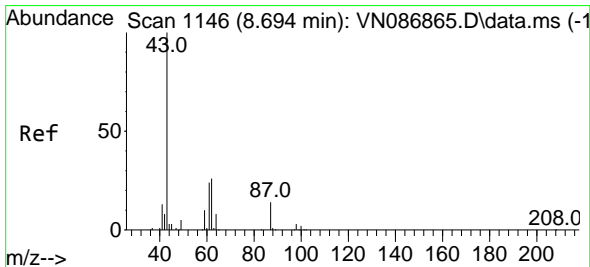
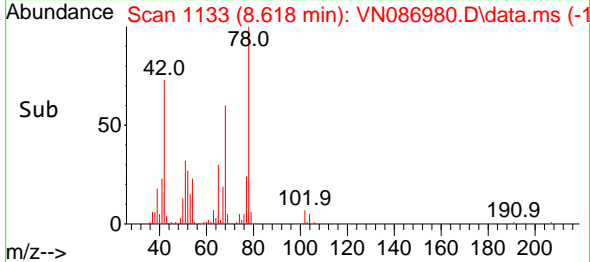
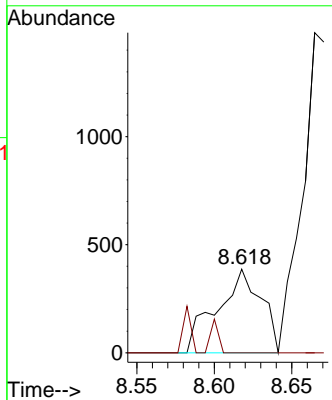
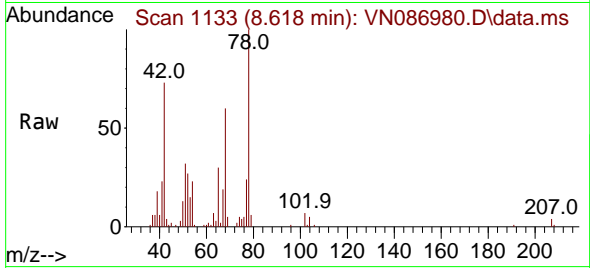




#42
 1,2-Dichloroethane
 Concen: 0.210 ug/l
 RT: 8.618 min Scan# 1133
 Delta R.T. -0.059 min
 Lab File: VN086980.D
 Acq: 12 Jun 2025 16:17

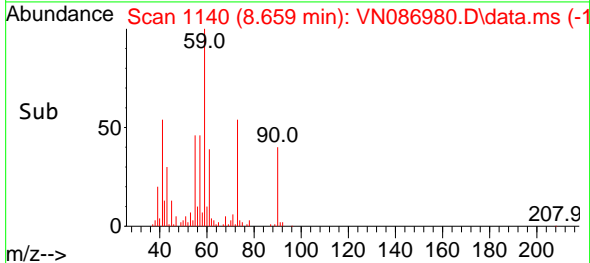
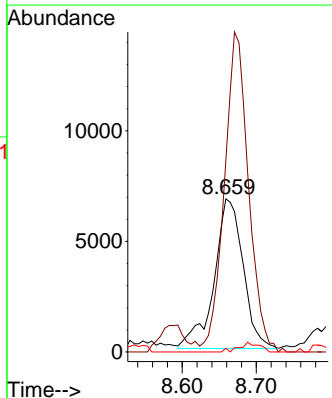
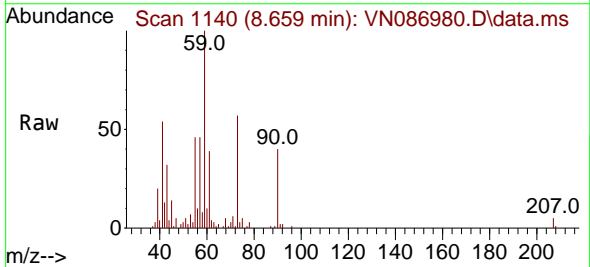
Instrument : MSVOA_N
 ClientSampleId : 250611078-02-VOA

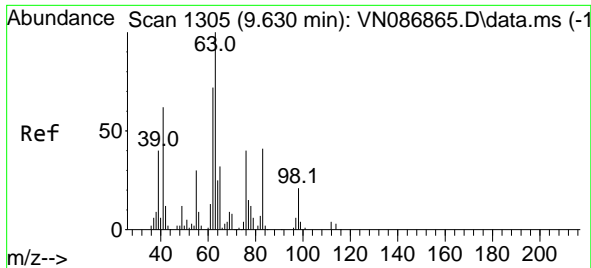
Tgt Ion: 62 Resp: 766
 Ion Ratio Lower Upper
 62 100
 98 7.2 0.0 21.2



#43
 Isopropyl Acetate
 Concen: 2.459 ug/l
 RT: 8.659 min Scan# 1140
 Delta R.T. -0.036 min
 Lab File: VN086980.D
 Acq: 12 Jun 2025 16:17

Tgt Ion: 43 Resp: 18458
 Ion Ratio Lower Upper
 43 100
 61 177.4 22.1 33.1#
 87 0.0 11.8 17.6#

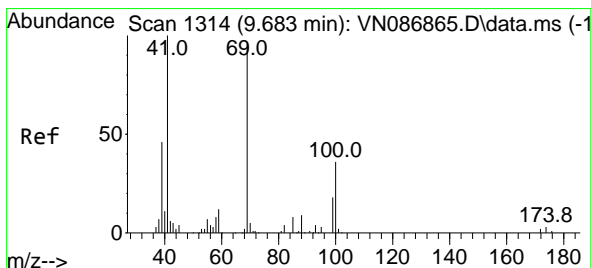
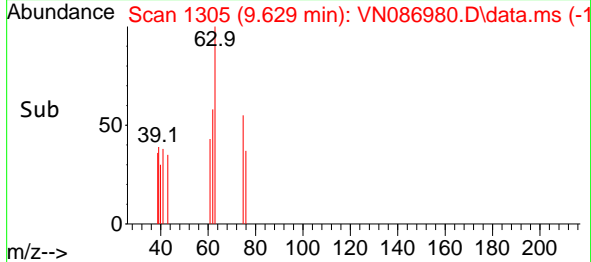
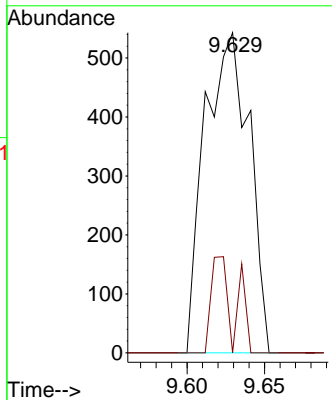
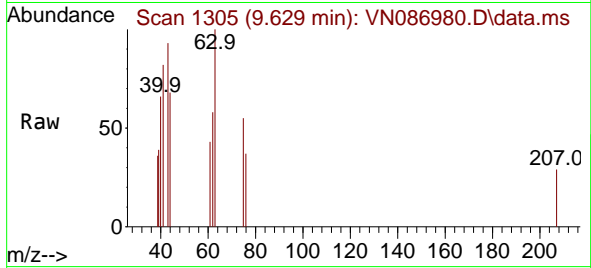




#45
 1,2-Dichloropropane
 Concen: 0.370 ug/l
 RT: 9.629 min Scan# 11
 Delta R.T. -0.000 min
 Lab File: VN086980.D
 Acq: 12 Jun 2025 16:17

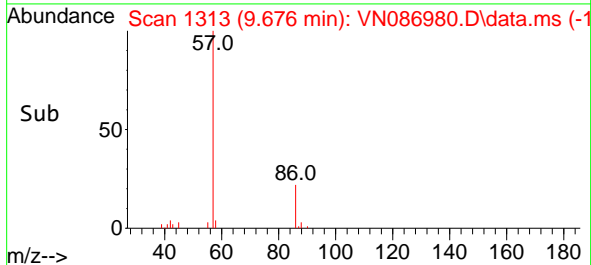
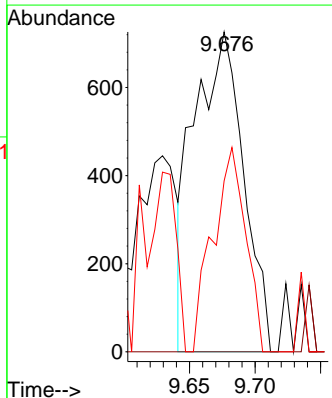
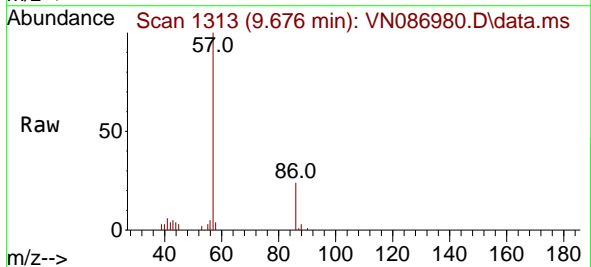
Instrument : MSVOA_N
 ClientSampleId : 250611078-02-VOA

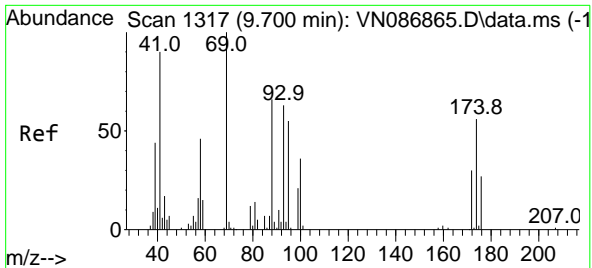
Tgt Ion: 63 Resp: 1082
 Ion Ratio Lower Upper
 63 100
 65 0.0 25.5 38.3#



#48
 Methyl methacrylate
 Concen: 0.551 ug/l
 RT: 9.676 min Scan# 1313
 Delta R.T. -0.006 min
 Lab File: VN086980.D
 Acq: 12 Jun 2025 16:17

Tgt Ion: 41 Resp: 1905
 Ion Ratio Lower Upper
 41 100
 69 0.0 74.6 112.0#
 39 42.6 40.2 60.4

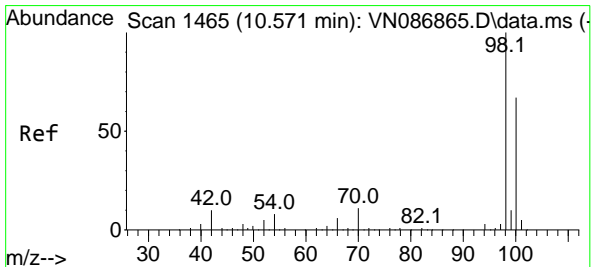
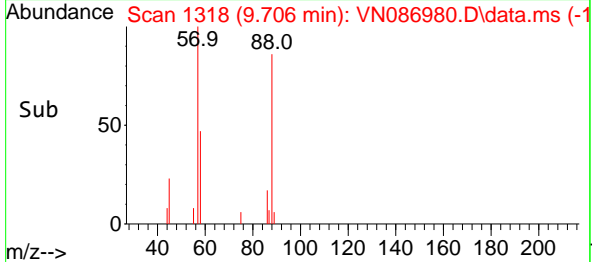
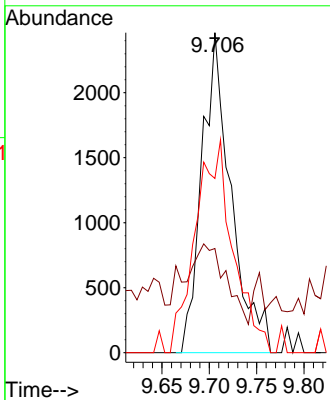
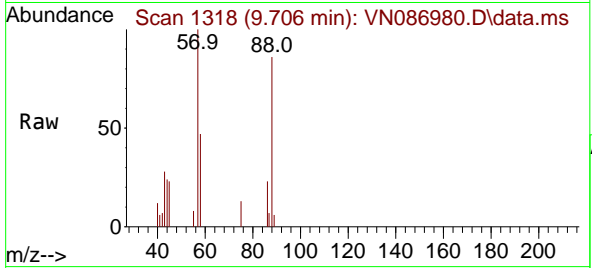




#49
 1,4-Dioxane
 Concen: 83.909 ug/l
 RT: 9.706 min Scan# 1317
 Delta R.T. 0.006 min
 Lab File: VN086980.D
 Acq: 12 Jun 2025 16:17

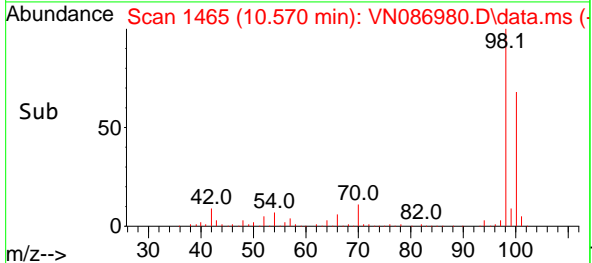
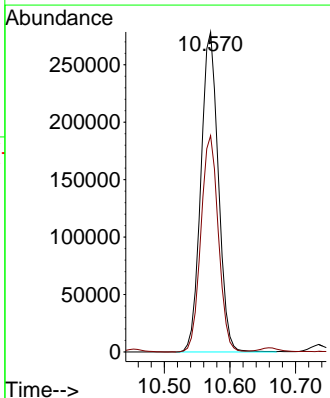
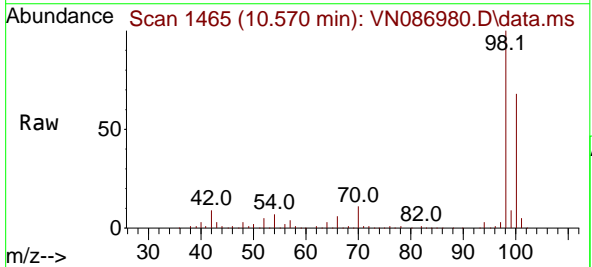
Instrument : MSVOA_N
 ClientSampleId : 250611078-02-VOA

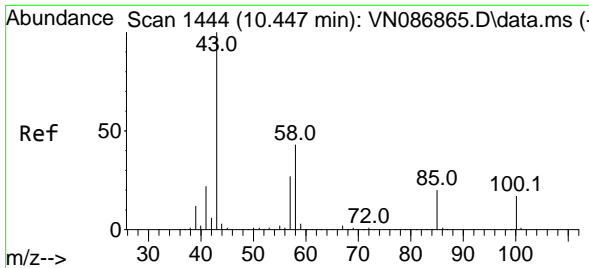
Tgt Ion: 88 Resp: 5273
 Ion Ratio Lower Upper
 88 100
 43 35.6 0.0 0.0#
 58 85.4 57.7 86.5



#50
 Toluene-d8
 Concen: 52.860 ug/l
 RT: 10.570 min Scan# 1465
 Delta R.T. -0.000 min
 Lab File: VN086980.D
 Acq: 12 Jun 2025 16:17

Tgt Ion: 98 Resp: 515850
 Ion Ratio Lower Upper
 98 100
 100 67.7 53.4 80.0

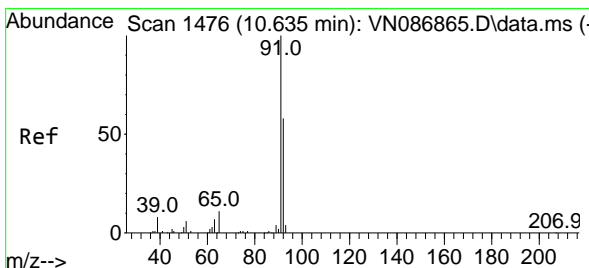
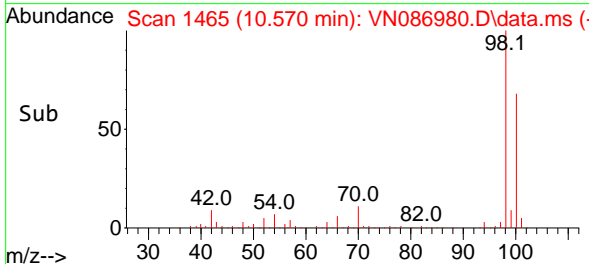
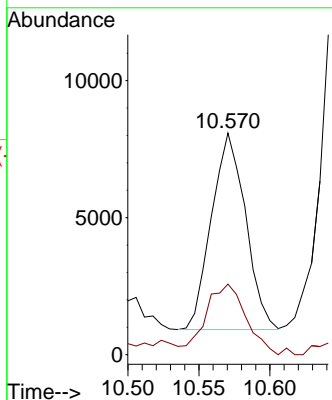
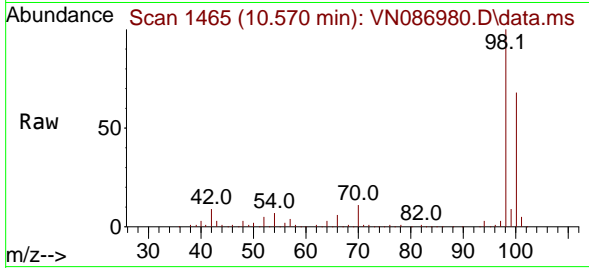




#51
 4-Methyl-2-Pentanone
 Concen: 2.653 ug/l
 RT: 10.570 min Scan# 1444
 Delta R.T. 0.123 min
 Lab File: VN086980.D
 Acq: 12 Jun 2025 16:17

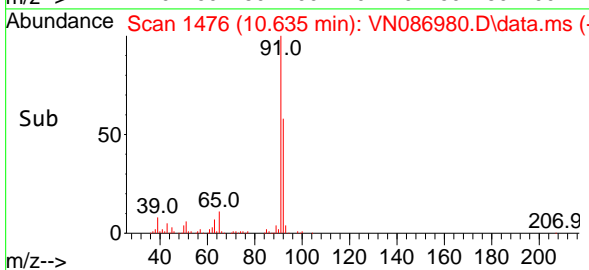
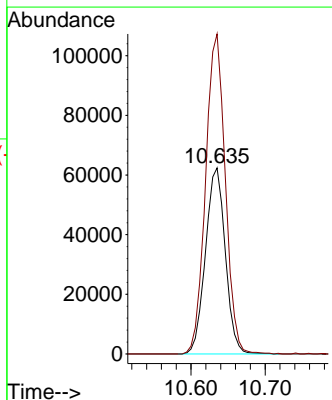
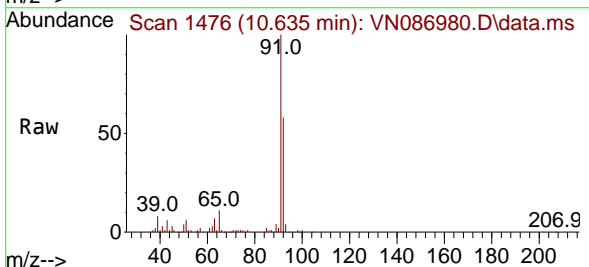
Instrument : MSVOA_N
 ClientSampleId : 250611078-02-VOA

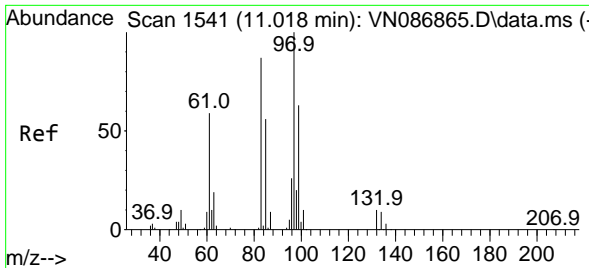
Tgt Ion: 43 Resp: 11985
 Ion Ratio Lower Upper
 43 100
 58 42.9 34.2 51.4



#52
 Toluene
 Concen: 15.778 ug/l
 RT: 10.635 min Scan# 1476
 Delta R.T. -0.000 min
 Lab File: VN086980.D
 Acq: 12 Jun 2025 16:17

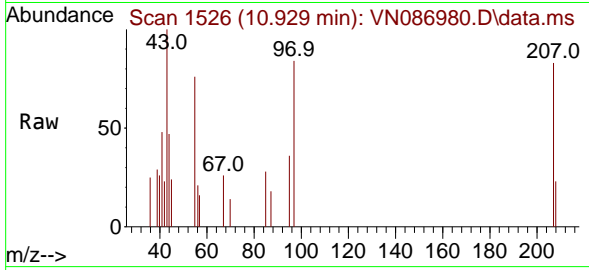
Tgt Ion: 92 Resp: 115821
 Ion Ratio Lower Upper
 92 100
 91 171.1 136.5 204.7





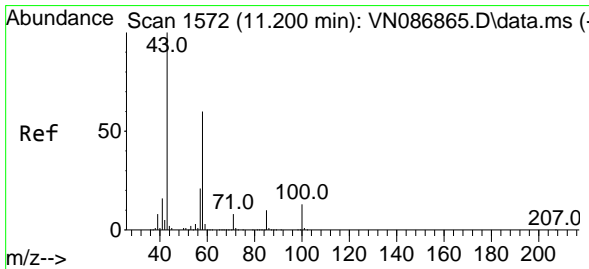
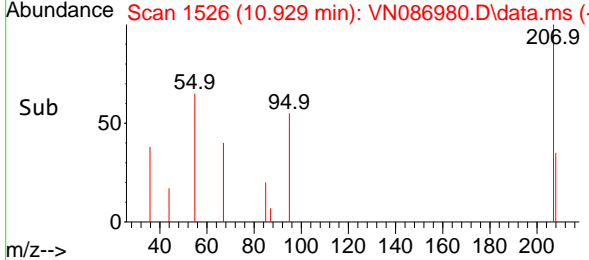
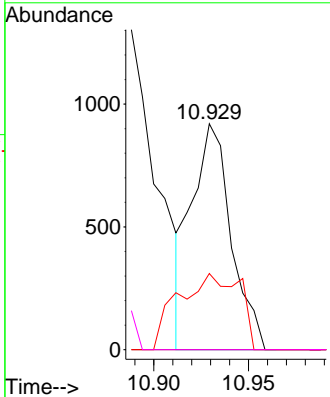
#55
 1,1,2-Trichloroethane
 Concen: 0.472 ug/l
 RT: 10.929 min Scan# 1111
 Delta R.T. -0.088 min
 Lab File: VN086980.D
 Acq: 12 Jun 2025 16:17

Instrument : MSVOA_N
 ClientSampleId : 250611078-02-VOA



Tgt Ion: 97 Resp: 1332

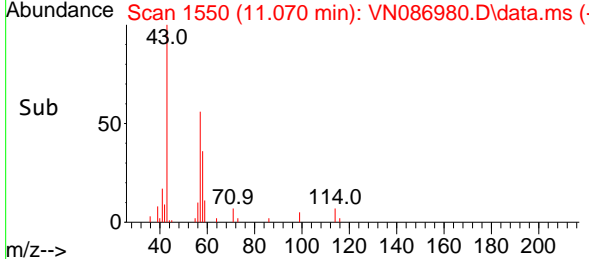
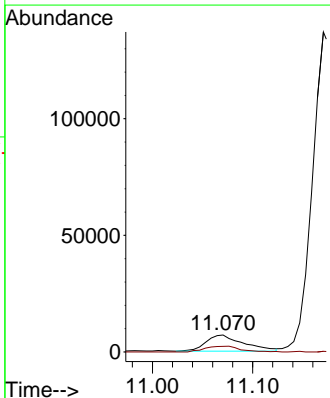
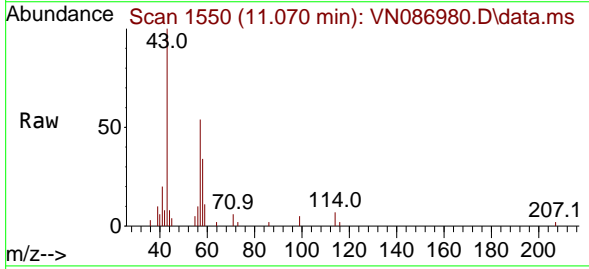
Ion	Ratio	Lower	Upper
97	100		
83	0.0	69.7	104.5#
85	33.7	45.1	67.7#
99	0.0	50.6	75.8#

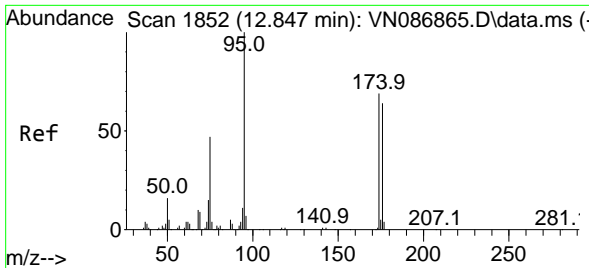


#59
 2-Hexanone
 Concen: 6.110 ug/l
 RT: 11.070 min Scan# 1550
 Delta R.T. -0.130 min
 Lab File: VN086980.D
 Acq: 12 Jun 2025 16:17

Tgt Ion: 43 Resp: 17783

Ion	Ratio	Lower	Upper
43	100		
58	34.4	30.4	91.3

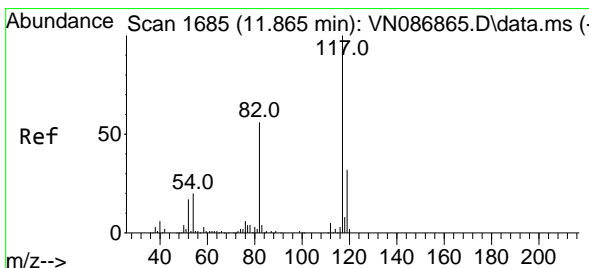
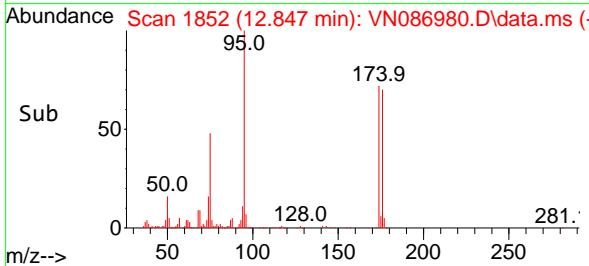
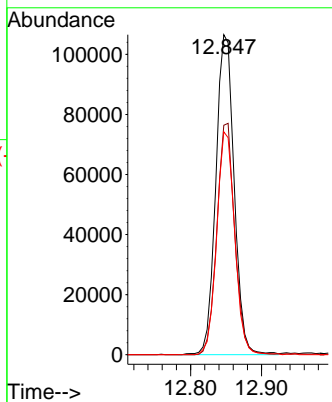
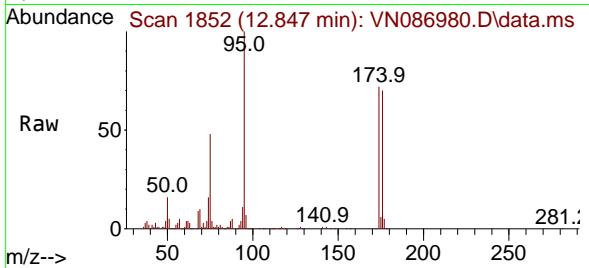




#62
 4-Bromofluorobenzene
 Concen: 52.540 ug/l
 RT: 12.847 min Scan# 1852
 Delta R.T. -0.000 min
 Lab File: VN086980.D
 Acq: 12 Jun 2025 16:17

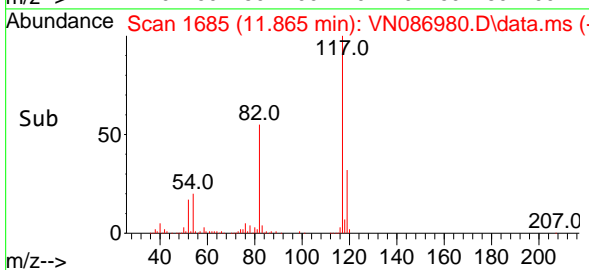
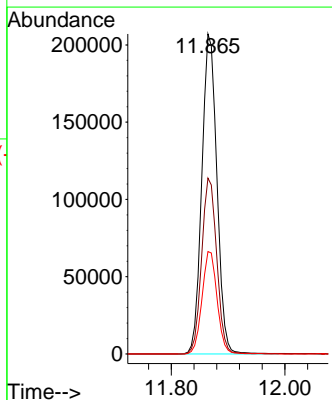
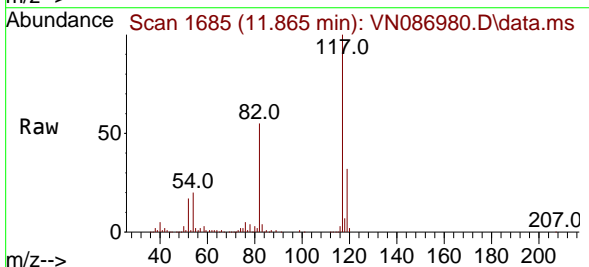
Instrument : MSVOA_N
 ClientSampleId : 250611078-02-VOA

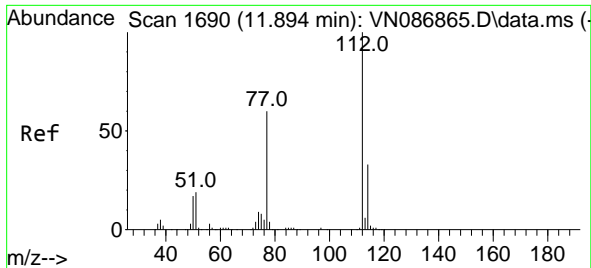
Tgt Ion	Resp	Lower	Upper
95	190491	100	
174	70.5	0.0	141.8
176	68.3	0.0	132.6



#63
 Chlorobenzene-d5
 Concen: 50.000 ug/l
 RT: 11.865 min Scan# 1685
 Delta R.T. -0.000 min
 Lab File: VN086980.D
 Acq: 12 Jun 2025 16:17

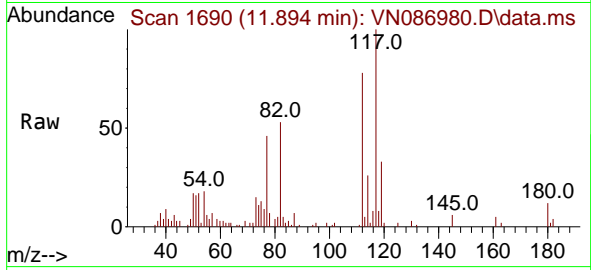
Tgt Ion	Resp	Lower	Upper
117	381430	100	
82	55.0	44.6	67.0
119	32.0	25.5	38.3



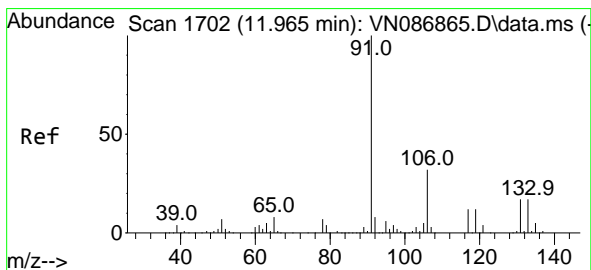
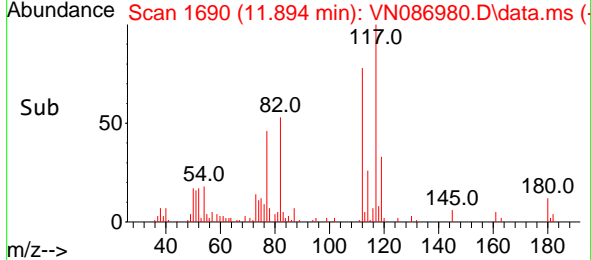
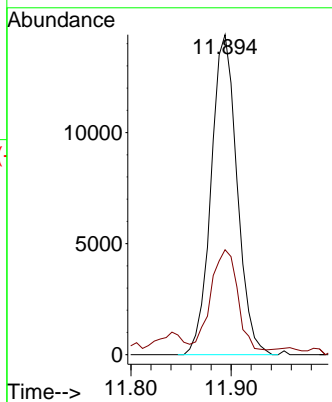


#65
 Chlorobenzene
 Concen: 3.072 ug/l
 RT: 11.894 min Scan# 1110
 Delta R.T. -0.000 min
 Lab File: VN086980.D
 Acq: 12 Jun 2025 16:17

Instrument : MSVOA_N
 ClientSampleId : 250611078-02-VOA

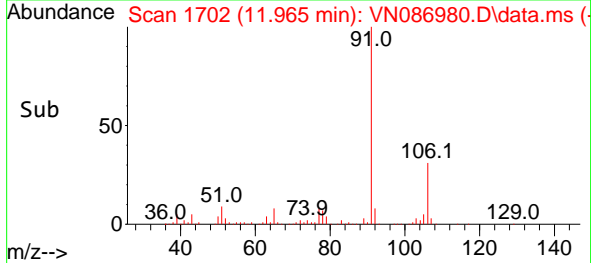
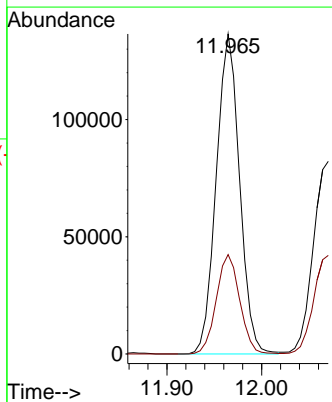
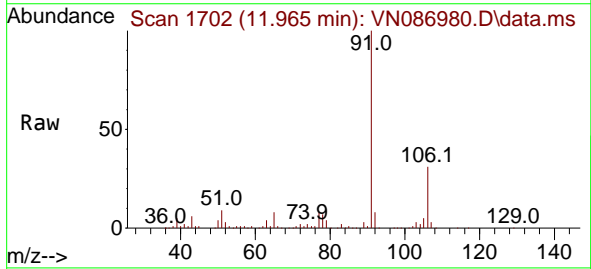


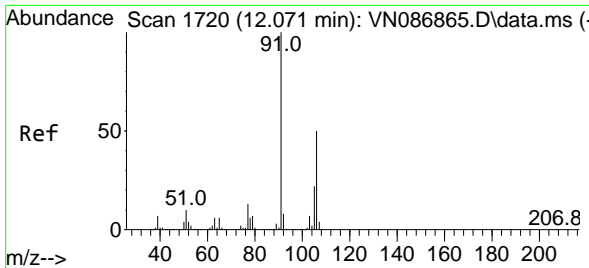
Tgt Ion:112 Resp: 25847
 Ion Ratio Lower Upper
 112 100
 114 31.0 26.2 39.2



#67
 Ethyl Benzene
 Concen: 16.123 ug/l
 RT: 11.965 min Scan# 1702
 Delta R.T. -0.000 min
 Lab File: VN086980.D
 Acq: 12 Jun 2025 16:17

Tgt Ion: 91 Resp: 233632
 Ion Ratio Lower Upper
 91 100
 106 31.1 25.4 38.2

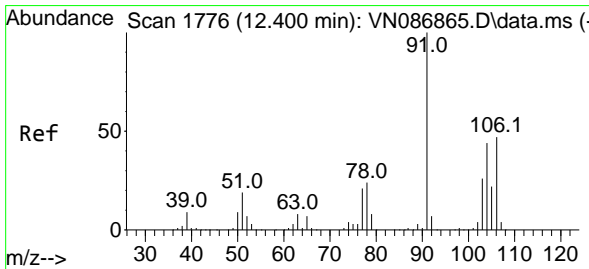
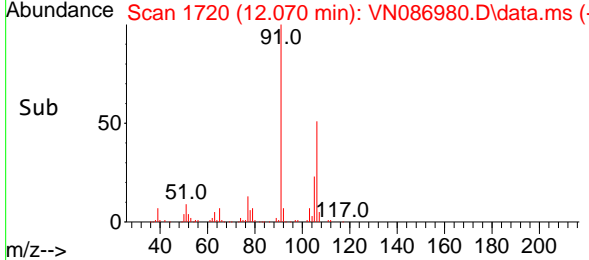
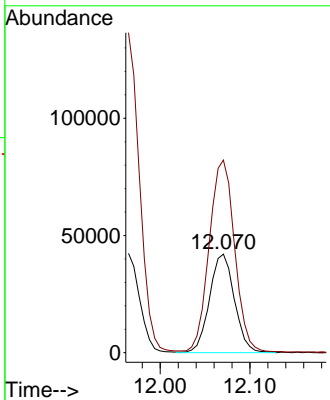
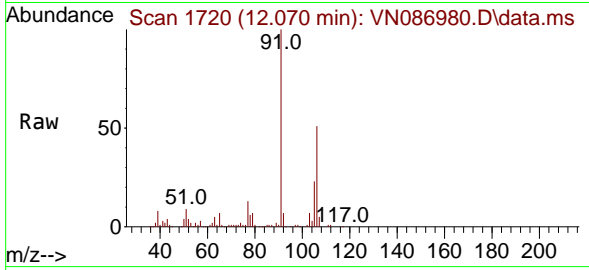




#68
 m/p-Xylenes
 Concen: 14.628 ug/l
 RT: 12.070 min Scan# 1720
 Delta R.T. -0.000 min
 Lab File: VN086980.D
 Acq: 12 Jun 2025 16:17

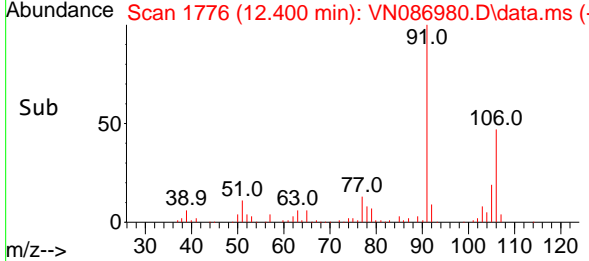
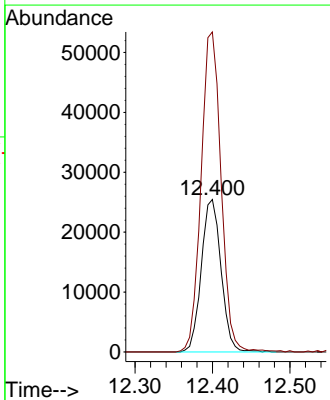
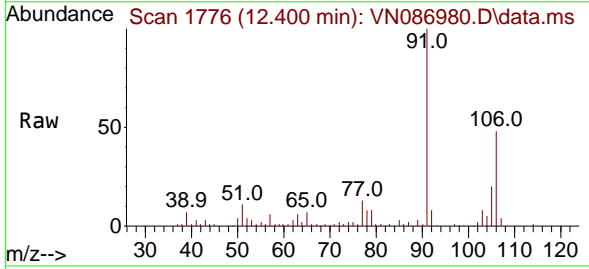
Instrument : MSVOA_N
 ClientSampleId : 250611078-02-VOA

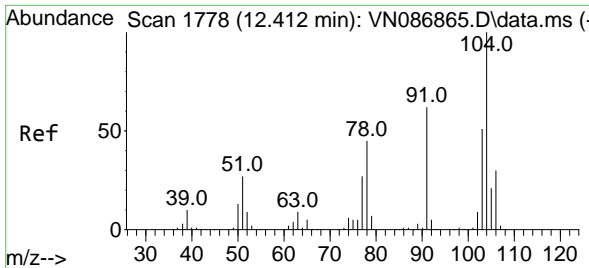
Tgt Ion:106 Resp: 81139
 Ion Ratio Lower Upper
 106 100
 91 202.1 159.4 239.0



#69
 o-Xylene
 Concen: 8.483 ug/l
 RT: 12.400 min Scan# 1776
 Delta R.T. -0.000 min
 Lab File: VN086980.D
 Acq: 12 Jun 2025 16:17

Tgt Ion:106 Resp: 45066
 Ion Ratio Lower Upper
 106 100
 91 212.7 106.1 318.1

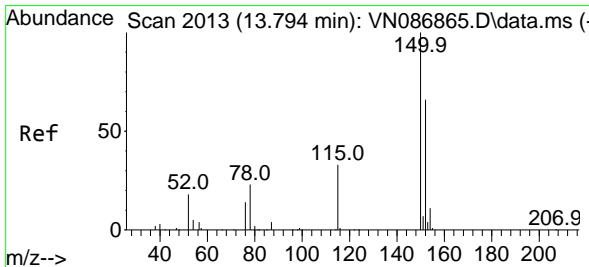
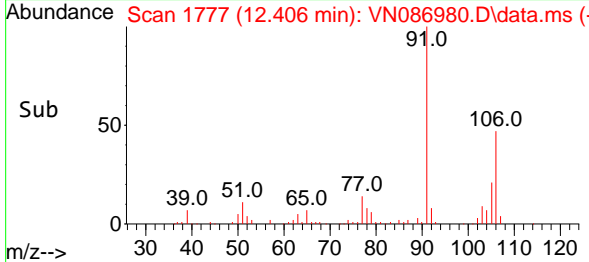
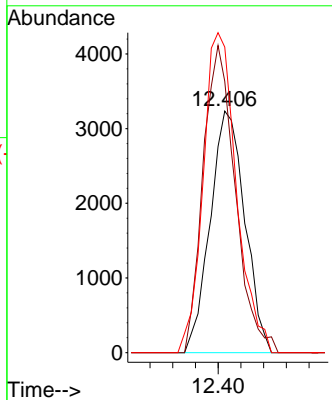
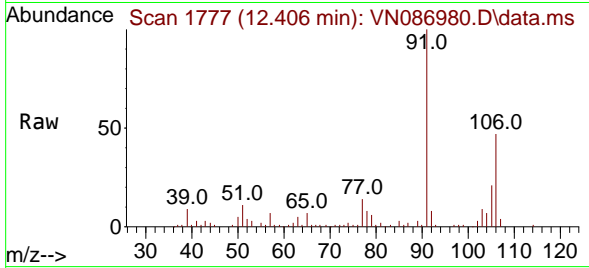




#70
 Styrene
 Concen: 0.752 ug/l
 RT: 12.406 min Scan# 11
 Delta R.T. -0.006 min
 Lab File: VN086980.D
 Acq: 12 Jun 2025 16:17

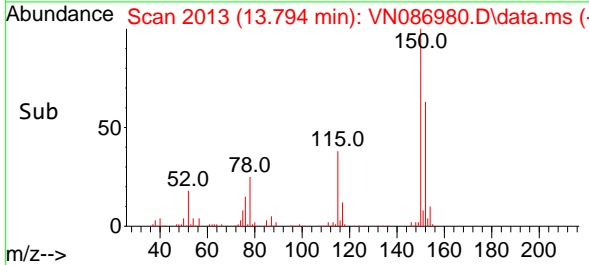
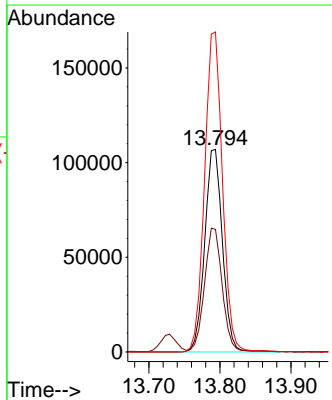
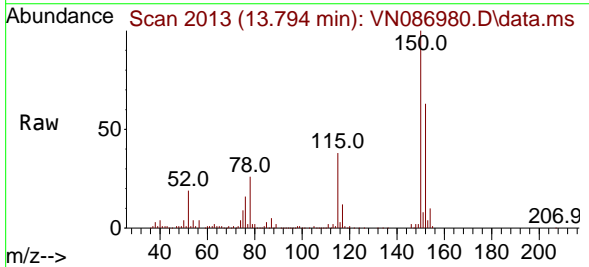
Instrument :
 MSVOA_N
 ClientSampleId :
 250611078-02-VOA

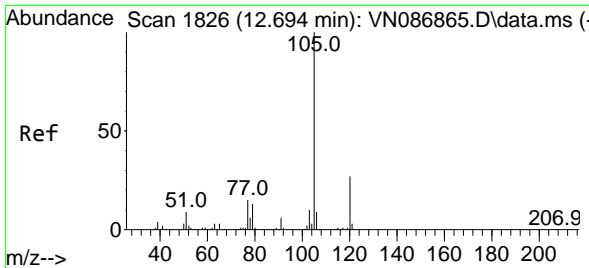
Tgt Ion	Resp	Ion Ratio	Lower	Upper
104	6838	100		
78	118.4	38.5		57.7#
103	127.5	43.1		64.7#



#72
 1,4-Dichlorobenzene-d4
 Concen: 50.000 ug/l
 RT: 13.794 min Scan# 2013
 Delta R.T. -0.000 min
 Lab File: VN086980.D
 Acq: 12 Jun 2025 16:17

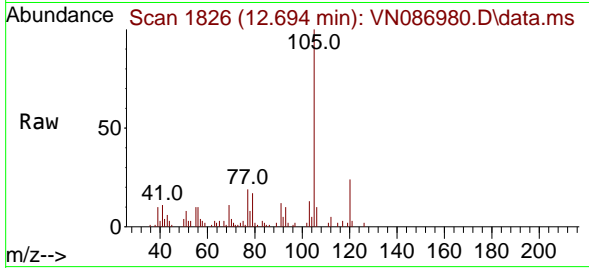
Tgt Ion	Resp	Ion Ratio	Lower	Upper
152	185553	100		
115	60.0	30.1		90.5
150	159.7	0.0		345.0



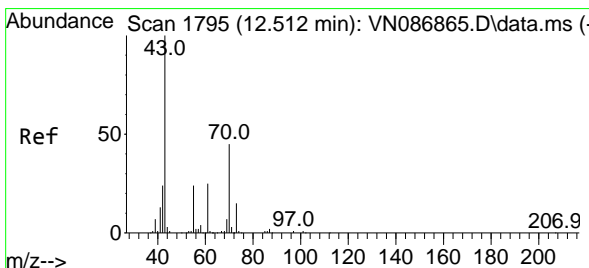
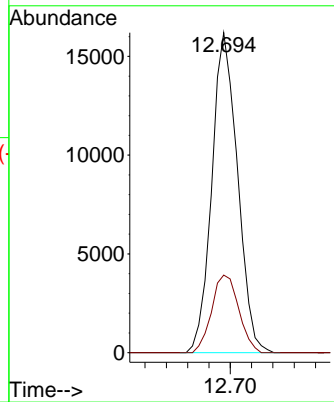
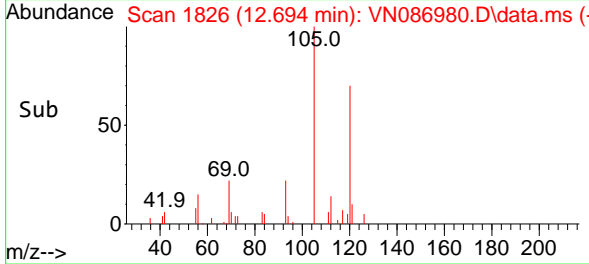


#73
 Isopropylbenzene
 Concen: 2.004 ug/l
 RT: 12.694 min Scan# 1826
 Delta R.T. -0.000 min
 Lab File: VN086980.D
 Acq: 12 Jun 2025 16:17

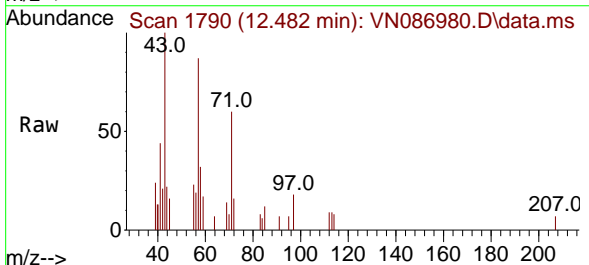
Instrument : MSVOA_N
 ClientSampleId : 250611078-02-VOA



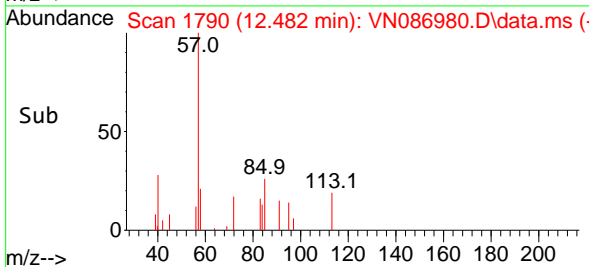
Tgt Ion: 105 Resp: 27092
 Ion Ratio Lower Upper
 105 100
 120 25.5 13.5 40.4

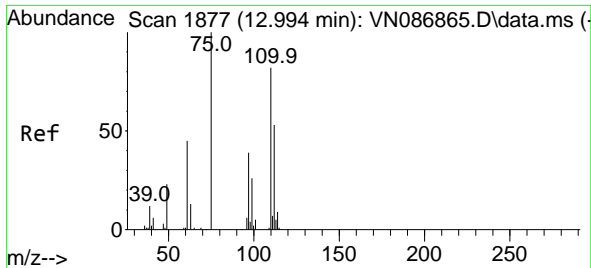


#74
 N-ethyl acetate
 Concen: 0.419 ug/l
 RT: 12.482 min Scan# 1790
 Delta R.T. -0.030 min
 Lab File: VN086980.D
 Acq: 12 Jun 2025 16:17



Tgt Ion: 43 Resp: 1980
 Ion Ratio Lower Upper
 43 100
 70 16.4 37.6 56.4#
 55 7.2 19.0 28.6#
 61 0.0 20.8 31.2#

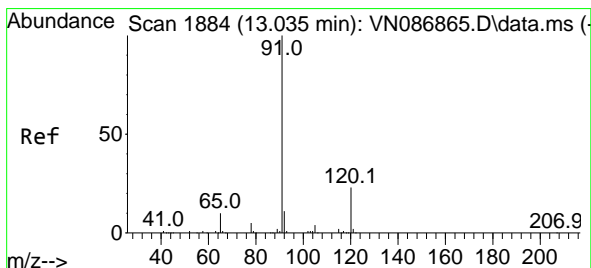
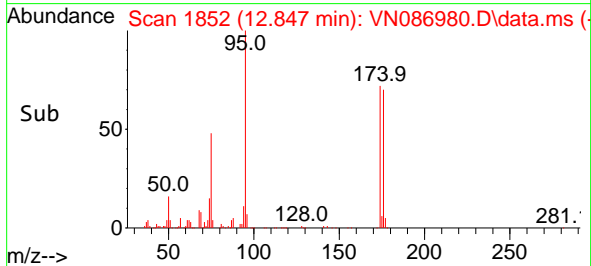
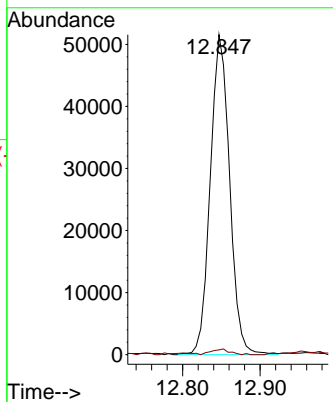
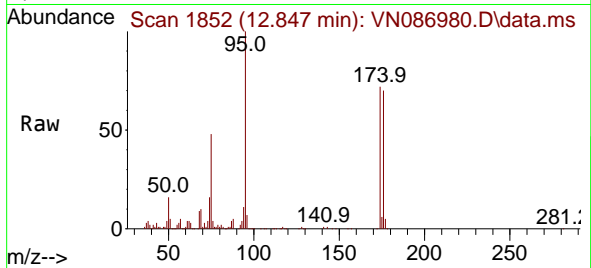




#76
 1,2,3-Trichloropropane
 Concen: 20.297 ug/l
 RT: 12.847 min Scan# 1852
 Delta R.T. -0.147 min
 Lab File: VN086980.D
 Acq: 12 Jun 2025 16:17

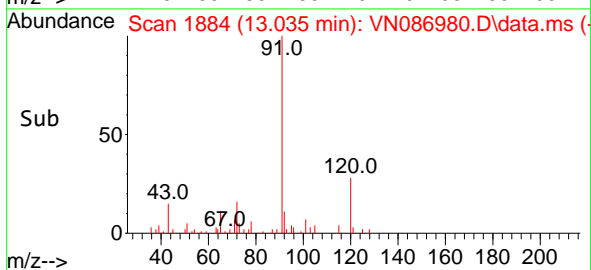
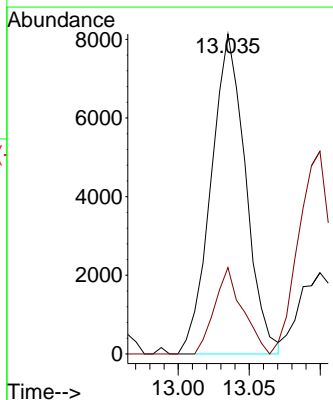
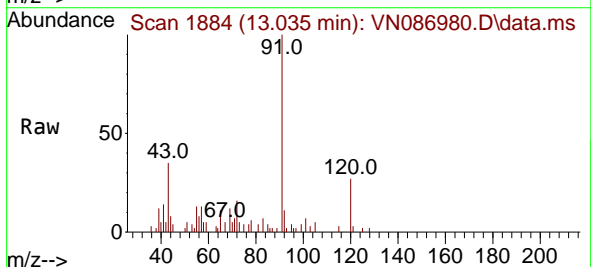
Instrument : MSVOA_N
 ClientSampleId : 250611078-02-VOA

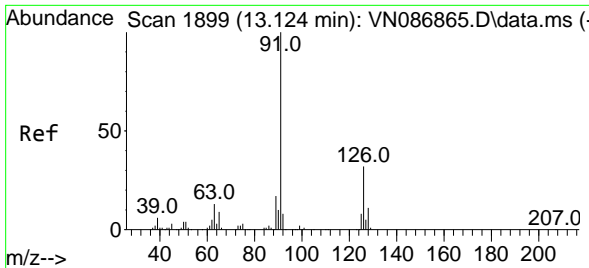
Tgt Ion: 75 Resp: 89522
 Ion Ratio Lower Upper
 75 100
 77 1.7 79.3 237.9#



#78
 n-propylbenzene
 Concen: 0.837 ug/l
 RT: 13.035 min Scan# 1884
 Delta R.T. -0.000 min
 Lab File: VN086980.D
 Acq: 12 Jun 2025 16:17

Tgt Ion: 91 Resp: 13756
 Ion Ratio Lower Upper
 91 100
 120 21.8 11.4 34.2

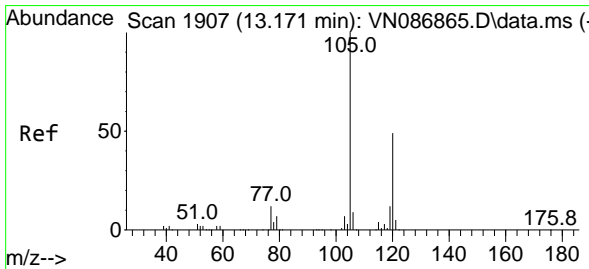
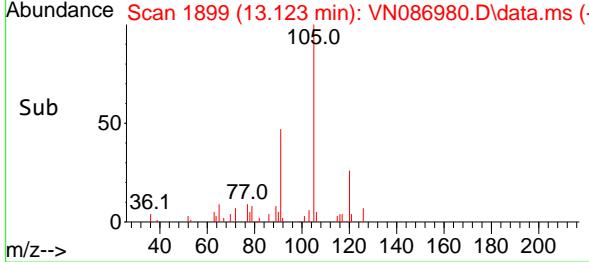
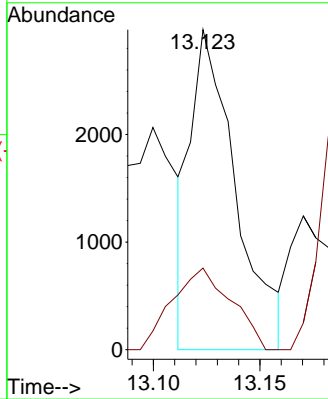
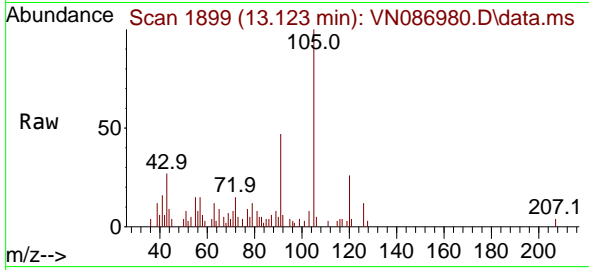




#79
 2-Chlorotoluene
 Concen: 0.445 ug/l
 RT: 13.123 min Scan# 1899
 Delta R.T. -0.000 min
 Lab File: VN086980.D
 Acq: 12 Jun 2025 16:17

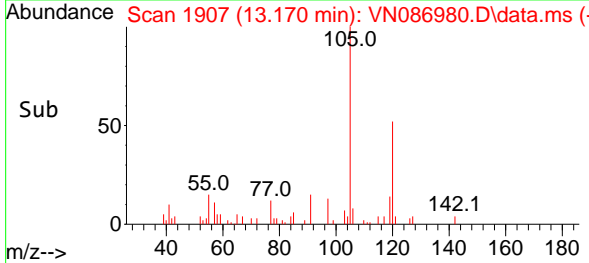
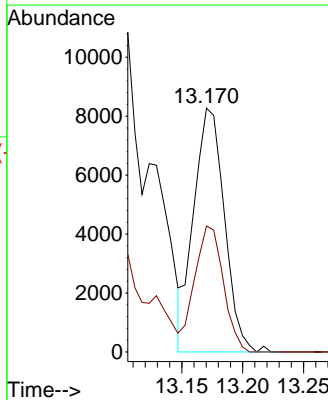
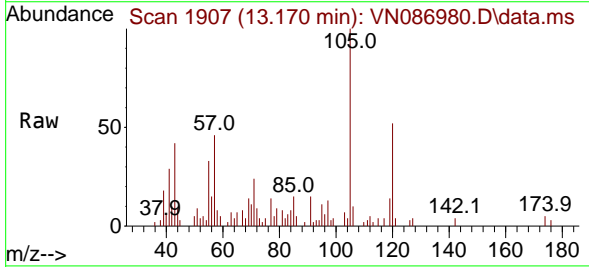
Instrument : MSVOA_N
 ClientSampleId : 250611078-02-VOA

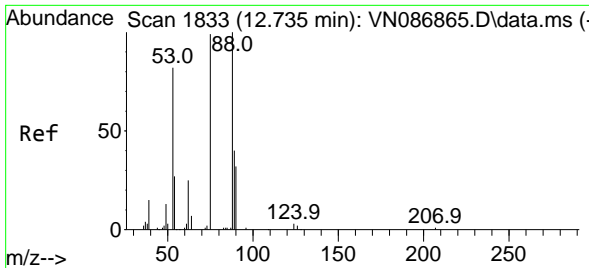
Tgt Ion: 91 Resp: 4382
 Ion Ratio Lower Upper
 91 100
 126 33.5 16.2 48.5



#80
 1,3,5-Trimethylbenzene
 Concen: 1.300 ug/l
 RT: 13.170 min Scan# 1907
 Delta R.T. -0.000 min
 Lab File: VN086980.D
 Acq: 12 Jun 2025 16:17

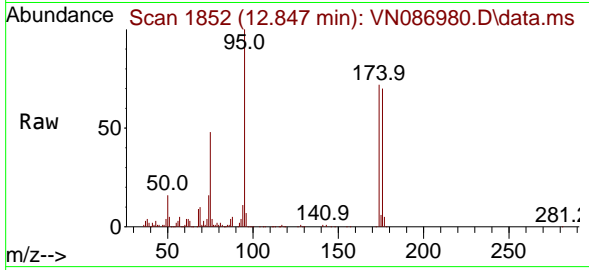
Tgt Ion: 105 Resp: 14512
 Ion Ratio Lower Upper
 105 100
 120 48.3 24.9 74.6



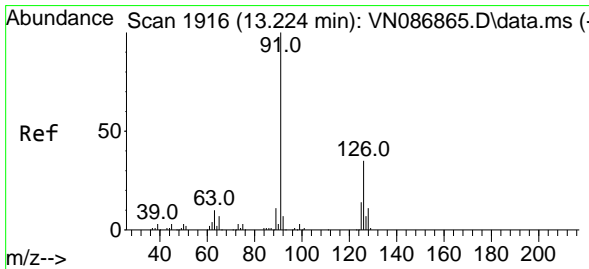
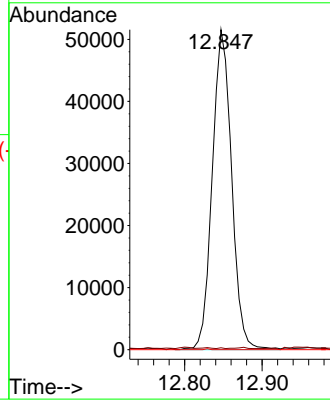
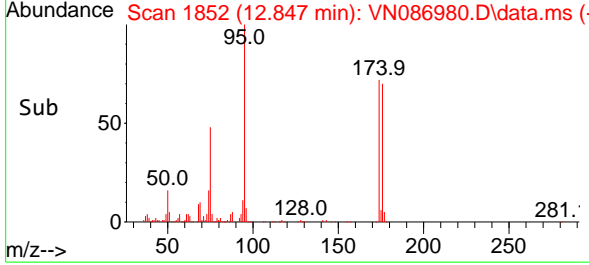


#81
 trans-1,4-Dichloro-2-butene
 Concen: 46.722 ug/l
 RT: 12.847 min Scan# 1852
 Delta R.T. 0.112 min
 Lab File: VN086980.D
 Acq: 12 Jun 2025 16:17

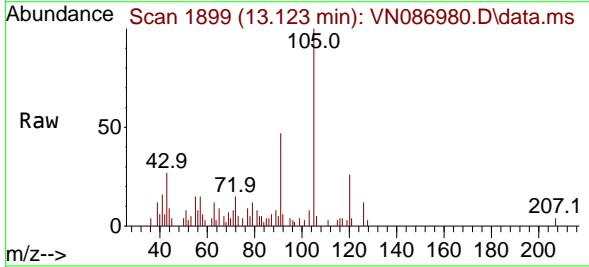
Instrument : MSVOA_N
 ClientSampleId : 250611078-02-VOA



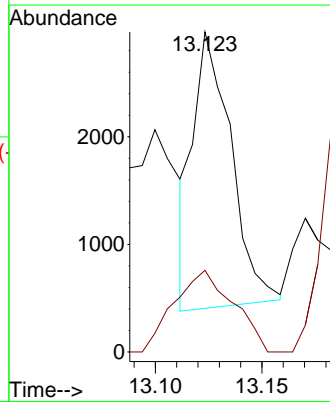
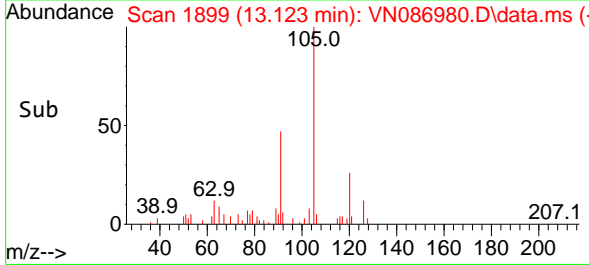
Tgt Ion: 75 Resp: 89522
 Ion Ratio Lower Upper
 75 100
 53 0.1 66.6 99.8#
 89 0.1 36.7 55.1#

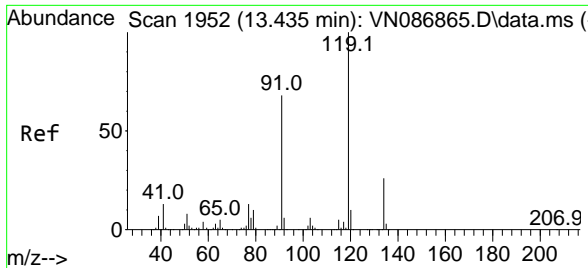


#82
 4-Chlorotoluene
 Concen: 0.317 ug/l
 RT: 13.123 min Scan# 1899
 Delta R.T. -0.100 min
 Lab File: VN086980.D
 Acq: 12 Jun 2025 16:17



Tgt Ion: 91 Resp: 3161
 Ion Ratio Lower Upper
 91 100
 126 46.4 16.7 50.1



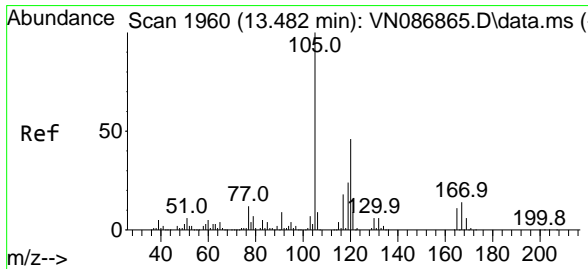
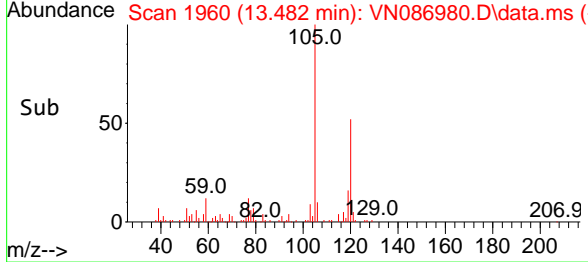
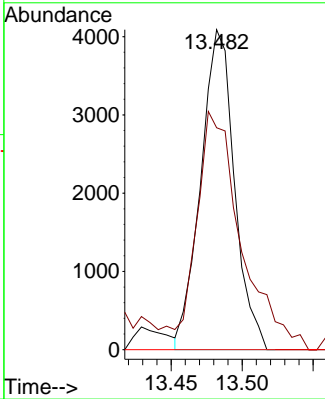
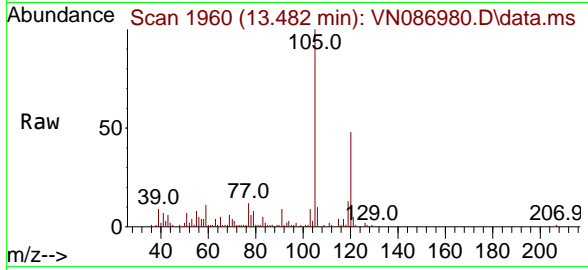


#83
 tert-Butylbenzene
 Concen: 0.658 ug/l
 RT: 13.482 min Scan# 1960
 Delta R.T. 0.047 min
 Lab File: VN086980.D
 Acq: 12 Jun 2025 16:17

Instrument : MSVOA_N
 ClientSampleId : 250611078-02-VOA

Tgt Ion:119 Resp: 6721

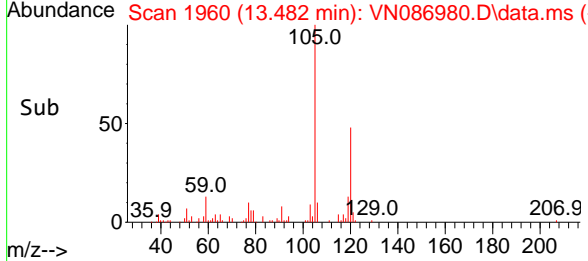
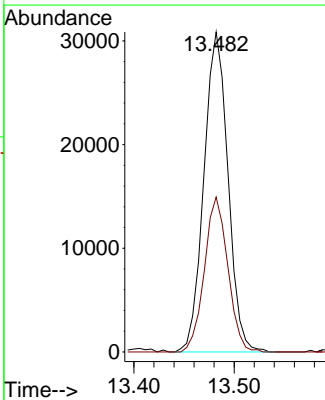
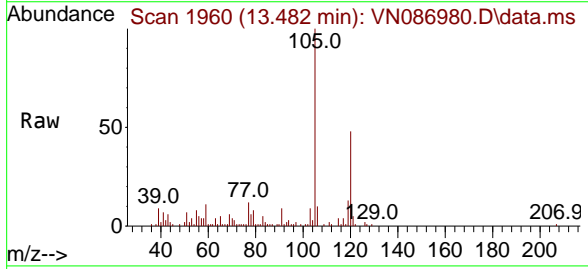
Ion	Ratio	Lower	Upper
119	100		
91	97.7	32.1	96.5#
134	0.0	13.4	40.1#

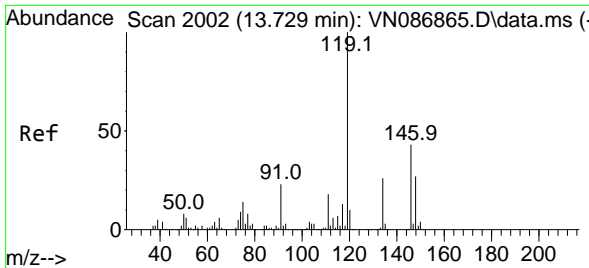


#84
 1,2,4-Trimethylbenzene
 Concen: 4.596 ug/l
 RT: 13.482 min Scan# 1960
 Delta R.T. -0.000 min
 Lab File: VN086980.D
 Acq: 12 Jun 2025 16:17

Tgt Ion:105 Resp: 51433

Ion	Ratio	Lower	Upper
105	100		
120	47.1	23.2	69.6



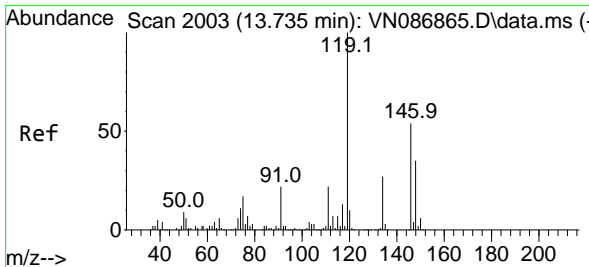
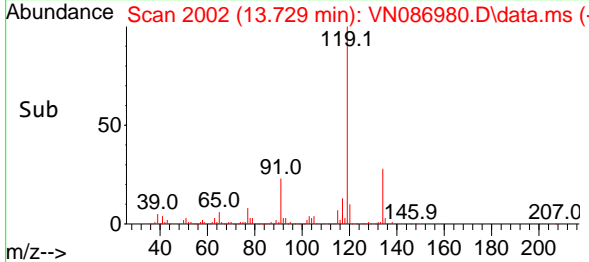
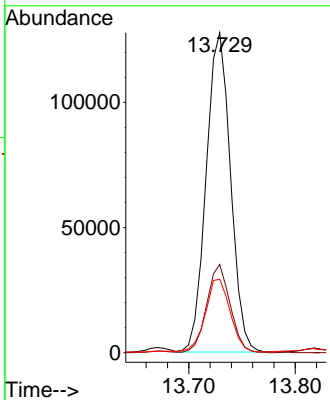
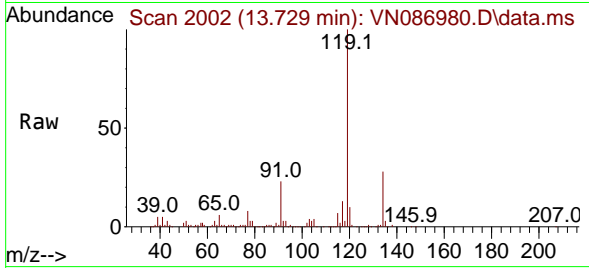


#86
 p-Isopropyltoluene
 Concen: 16.558 ug/l
 RT: 13.729 min Scan# 2002
 Delta R.T. -0.000 min
 Lab File: VN086980.D
 Acq: 12 Jun 2025 16:17

Instrument : MSVOA_N
 ClientSampleId : 250611078-02-VOA

Tgt Ion:119 Resp: 203065

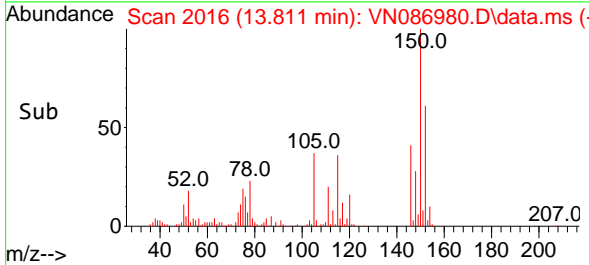
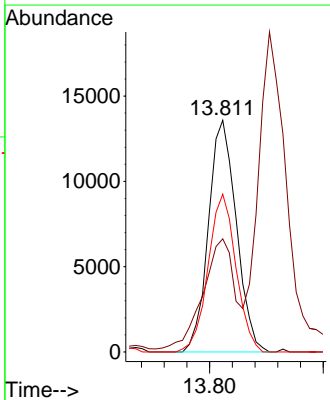
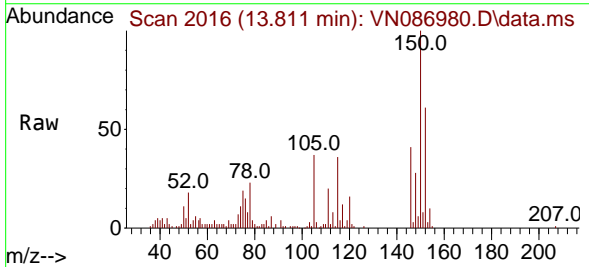
Ion	Ratio	Lower	Upper
119	100		
134	26.5	13.5	40.4
91	23.4	11.5	34.4

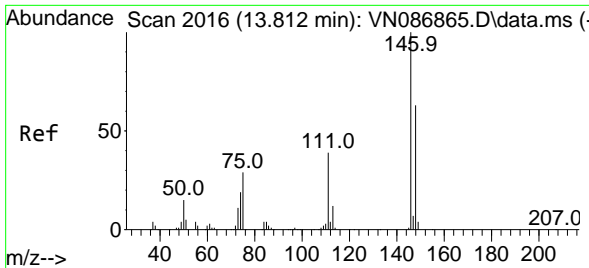


#87
 1,3-Dichlorobenzene
 Concen: 3.794 ug/l
 RT: 13.811 min Scan# 2016
 Delta R.T. 0.076 min
 Lab File: VN086980.D
 Acq: 12 Jun 2025 16:17

Tgt Ion:146 Resp: 23143

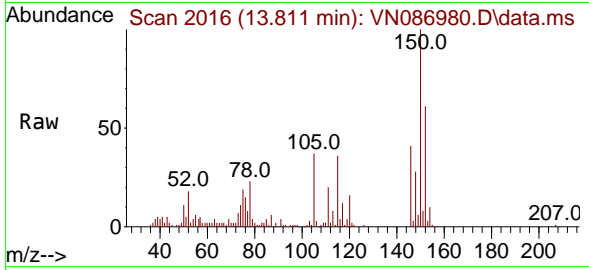
Ion	Ratio	Lower	Upper
146	100		
111	54.3	20.9	62.8
148	68.0	32.0	96.2



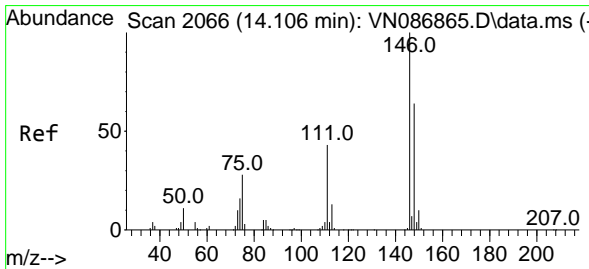
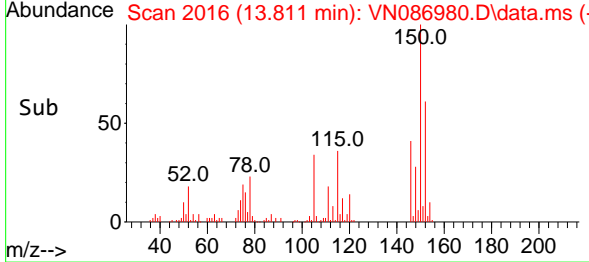
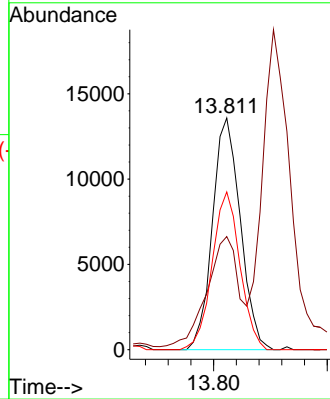


#88
 1,4-Dichlorobenzene
 Concen: 3.722 ug/l
 RT: 13.811 min Scan# 2016
 Delta R.T. -0.000 min
 Lab File: VN086980.D
 Acq: 12 Jun 2025 16:17

Instrument : MSVOA_N
 ClientSampleId : 250611078-02-VOA

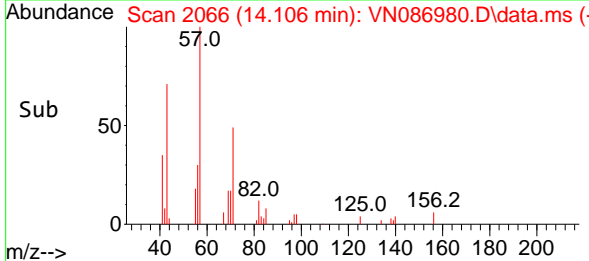
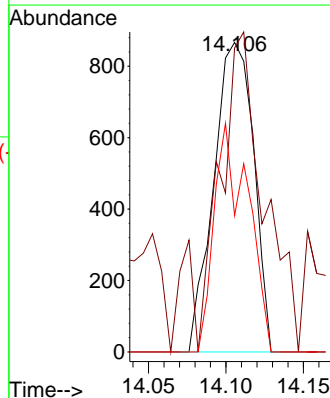
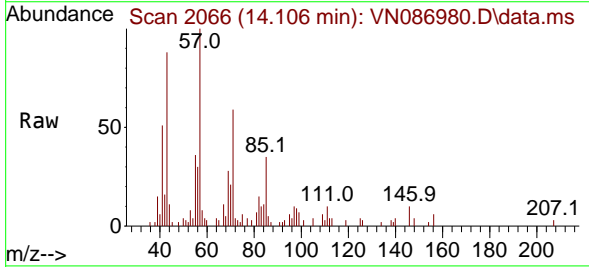


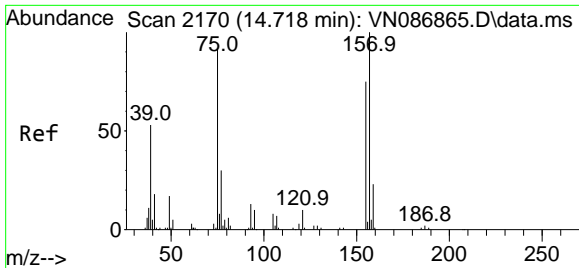
Tgt Ion:146 Resp: 23143
 Ion Ratio Lower Upper
 146 100
 111 54.3 19.9 59.7
 148 68.0 31.8 95.4



#91
 1,2-Dichlorobenzene
 Concen: 0.265 ug/l
 RT: 14.106 min Scan# 2066
 Delta R.T. -0.000 min
 Lab File: VN086980.D
 Acq: 12 Jun 2025 16:17

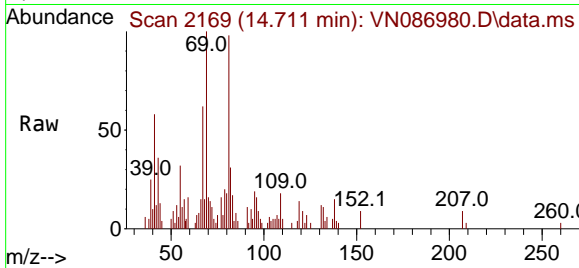
Tgt Ion:146 Resp: 1553
 Ion Ratio Lower Upper
 146 100
 111 111.5 21.6 64.6#
 148 62.4 31.7 95.1



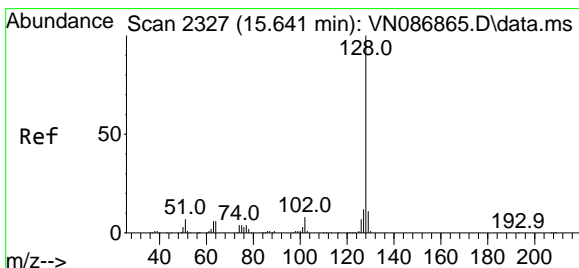
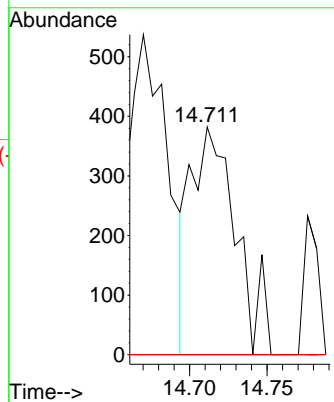
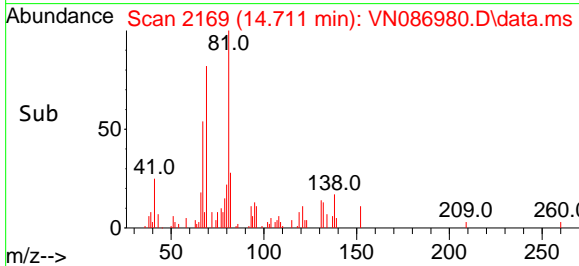


#92
 1,2-Dibromo-3-Chloropropane
 Concen: 0.706 ug/l
 RT: 14.711 min Scan# 2170
 Delta R.T. -0.006 min
 Lab File: VN086980.D
 Acq: 12 Jun 2025 16:17

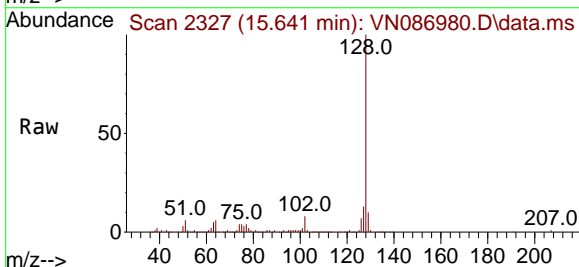
Instrument : MSVOA_N
 ClientSampleId : 250611078-02-VOA



Tgt Ion	Resp	Lower	Upper
75	100		
155	0.0	41.1	123.4#
157	0.0	52.7	158.1#



#95
 Naphthalene
 Concen: 28.046 ug/l
 RT: 15.641 min Scan# 2327
 Delta R.T. -0.000 min
 Lab File: VN086980.D
 Acq: 12 Jun 2025 16:17



Tgt Ion	Resp	Lower	Upper
128	100		
127	12.4	10.2	15.2
129	10.8	8.8	13.2

