

Data Path : Z:\voasrv\HPCHEM1\MSVOA_N\Data\VN061324\
 Data File : VN082558.D
 Acq On : 13 Jun 2024 14:43
 Operator : JC\MD
 Sample : P2853-06
 Misc : 5.0mL/MSVOA_N/WATER
 ALS Vial : 14 Sample Multiplier: 1

Instrument :
 MSVOA_N
 ClientSampleId :
 6

Quant Time: Jun 14 02:29:20 2024
 Quant Method : Z:\voasrv\HPCHEM1\MSVOA_N\methods\82N051524W.M
 Quant Title : SW846 8260
 QLast Update : Thu May 16 05:21:06 2024
 Response via : Initial Calibration

Compound	R.T.	QIon	Response	Conc	Units	Dev(Min)

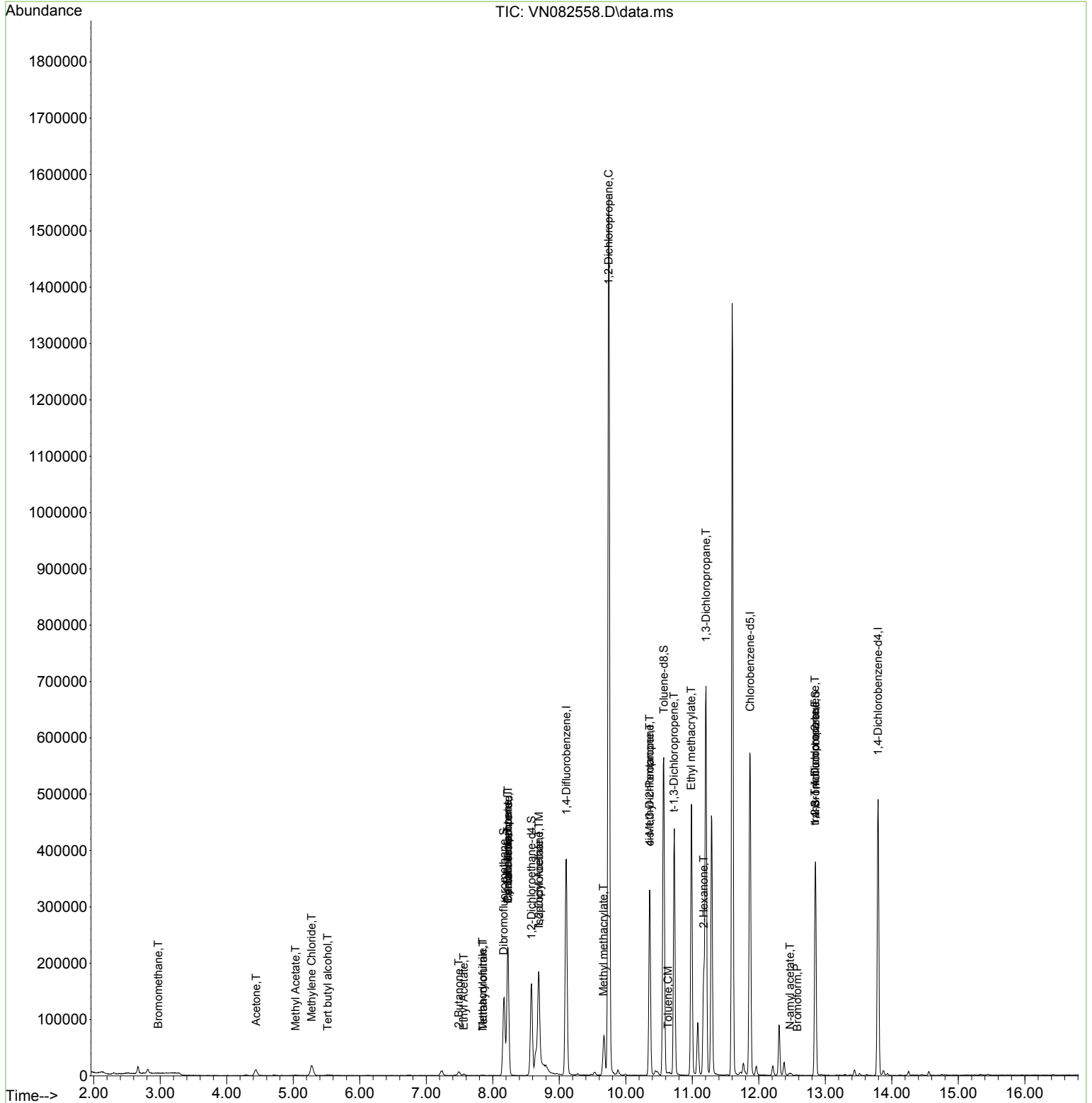
Internal Standards						
1) Pentafluorobenzene	8.230	168	158072	50.000	ug/l	0.00
34) 1,4-Difluorobenzene	9.106	114	306823	50.000	ug/l	0.00
63) Chlorobenzene-d5	11.871	117	310011	50.000	ug/l	0.00
72) 1,4-Dichlorobenzene-d4	13.794	152	126587	50.000	ug/l	0.00
System Monitoring Compounds						
33) 1,2-Dichloroethane-d4	8.583	65	132925	53.255	ug/l	0.00
Spiked Amount	50.000	Range 74 - 125	Recovery	=	106.520%	
35) Dibromofluoromethane	8.165	113	96234	50.987	ug/l	0.00
Spiked Amount	50.000	Range 75 - 124	Recovery	=	101.980%	
50) Toluene-d8	10.571	98	375283	51.861	ug/l	0.00
Spiked Amount	50.000	Range 86 - 113	Recovery	=	103.720%	
62) 4-Bromofluorobenzene	12.853	95	122578	47.459	ug/l	0.00
Spiked Amount	50.000	Range 64 - 133	Recovery	=	94.920%	
Target Compounds						
						Qvalue
5) Bromomethane	2.971	94	455	0.326	ug/l #	78
11) Tert butyl alcohol	5.518	59	622	1.552	ug/l #	71
16) Acetone	4.442	43	20794	20.309	ug/l	93
18) Methyl Acetate	5.036	43	2362	0.926	ug/l #	60
20) Methylene Chloride	5.277	84	12809	6.200	ug/l #	74
25) 2-Butanone	7.489	43	11479	7.394	ug/l #	85
29) Tetrahydrofuran	7.853	42	889	0.892	ug/l #	29
31) Cyclohexane	8.224	56	4624	1.160	ug/l #	64
36) 1,1-Dichloropropene	8.224	75	15206	4.804	ug/l #	49
37) Ethyl Acetate	7.565	43	4523	1.277	ug/l #	75
38) Carbon Tetrachloride	8.230	117	17669	5.506	ug/l #	16
41) Methacrylonitrile	7.847	41	438	0.210	ug/l #	38
42) 1,2-Dichloroethane	8.694	62	1133	0.312	ug/l #	73
43) Isopropyl Acetate	8.694	43	261310	41.628	ug/l #	73
45) 1,2-Dichloropropane	9.741	63	1740	0.714	ug/l #	45
48) Methyl methacrylate	9.665	41	5977	1.998	ug/l #	39
51) 4-Methyl-2-Pentanone	10.359	43	130715	36.650	ug/l #	43
52) Toluene	10.635	92	1473	0.260	ug/l	95
53) t-1,3-Dichloropropene	10.724	75	886	0.254	ug/l #	64
54) cis-1,3-Dichloropropene	10.359	75	50249	13.597	ug/l #	75
56) Ethyl methacrylate	10.982	69	1798	0.514	ug/l #	1
57) 1,3-Dichloropropane	11.206	76	7142	1.856	ug/l #	42
59) 2-Hexanone	11.171	43	149860	57.386	ug/l #	23
71) Bromoform	12.582	173	130	0.772	ug/l #	28
74) N-amyl acetate	12.471	43	4429	0.801	ug/l #	40
76) 1,2,3-Trichloropropane	12.847	75	71339	26.775	ug/l #	1
81) trans-1,4-Dichloro-2-b...	12.847	75	71339	62.626	ug/l #	12

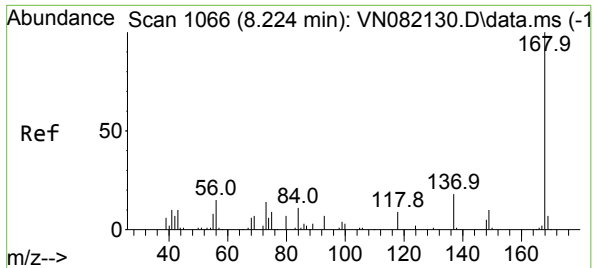
(#) = qualifier out of range (m) = manual integration (+) = signals summed

Data Path : Z:\voasrv\HPCHEM1\MSVOA_N\Data\VN061324\
 Data File : VN082558.D
 Acq On : 13 Jun 2024 14:43
 Operator : JC\MD
 Sample : P2853-06
 Misc : 5.0mL/MSVOA_N/WATER
 ALS Vial : 14 Sample Multiplier: 1

Instrument :
 MSVOA_N
 ClientSampleId :
 6

Quant Time: Jun 14 02:29:20 2024
 Quant Method : Z:\voasrv\HPCHEM1\MSVOA_N\methods\82N051524W.M
 Quant Title : SW846 8260
 QLast Update : Thu May 16 05:21:06 2024
 Response via : Initial Calibration

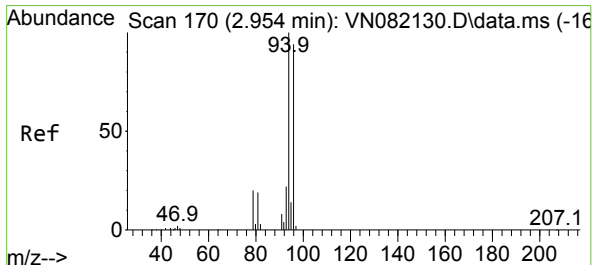
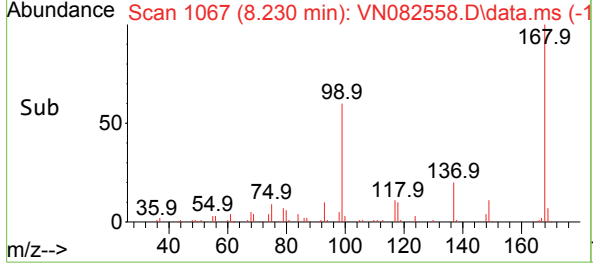
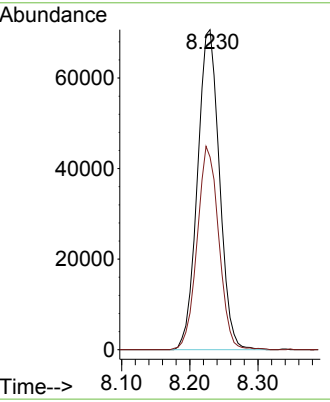
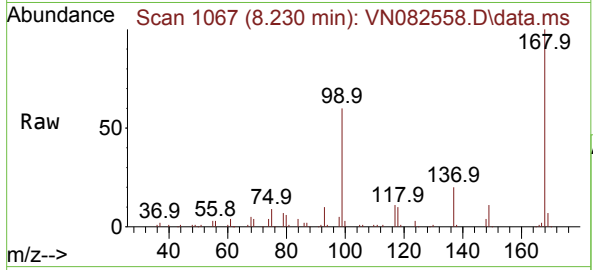




#1
 Pentafluorobenzene
 Concen: 50.000 ug/l
 RT: 8.230 min Scan# 10
 Delta R.T. 0.006 min
 Lab File: VN082558.D
 Acq: 13 Jun 2024 14:43

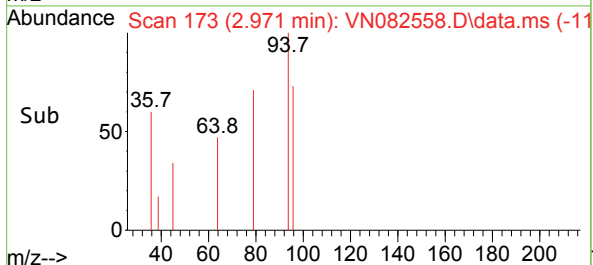
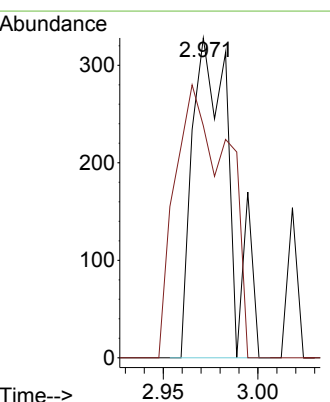
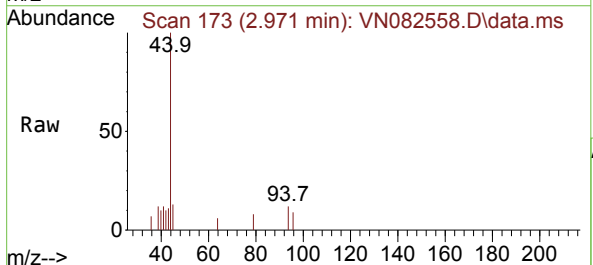
Instrument : MSVOA_N
 ClientSampleId : 6

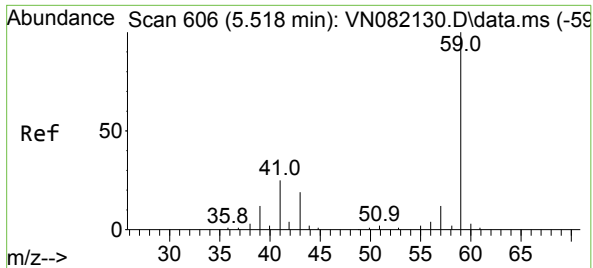
Tgt Ion:168 Resp: 158072
 Ion Ratio Lower Upper
 168 100
 99 60.2 48.2 72.4



#5
 Bromomethane
 Concen: 0.326 ug/l
 RT: 2.971 min Scan# 173
 Delta R.T. 0.018 min
 Lab File: VN082558.D
 Acq: 13 Jun 2024 14:43

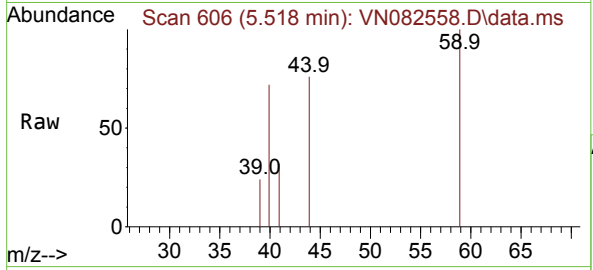
Tgt Ion: 94 Resp: 455
 Ion Ratio Lower Upper
 94 100
 96 72.6 74.8 112.2#



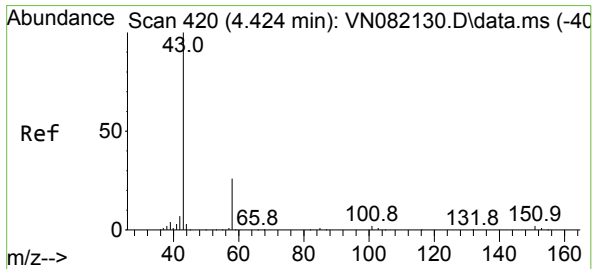
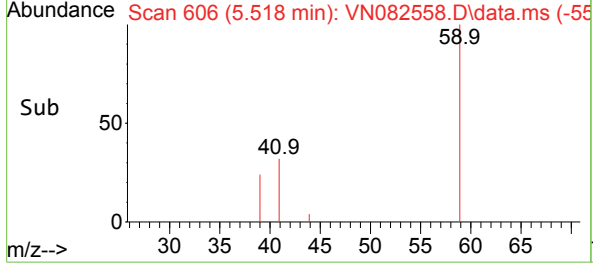
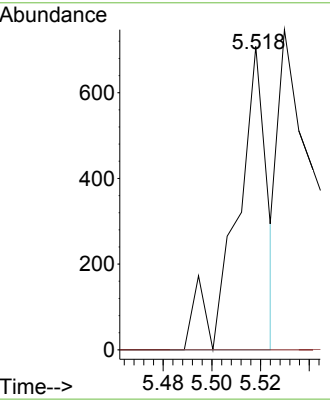


#11
 Tert butyl alcohol
 Concen: 1.552 ug/l
 RT: 5.518 min Scan# 606
 Delta R.T. 0.000 min
 Lab File: VN082558.D
 Acq: 13 Jun 2024 14:43

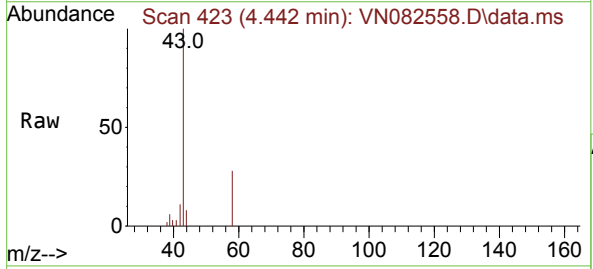
Instrument : MSVOA_N
 ClientSampleId : 6



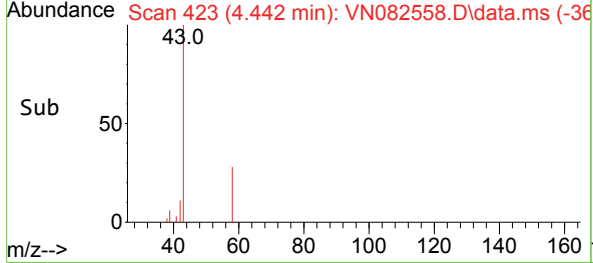
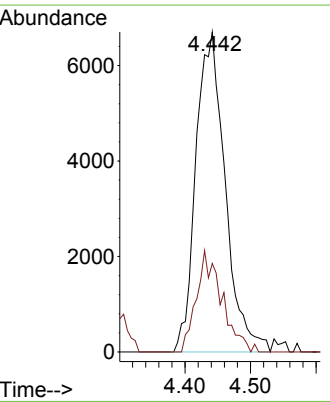
Tgt Ion: 59 Resp: 622
 Ion Ratio Lower Upper
 59 100
 57 0.0 8.9 13.3#

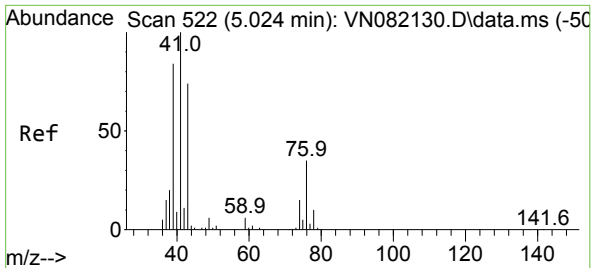


#16
 Acetone
 Concen: 20.309 ug/l
 RT: 4.442 min Scan# 423
 Delta R.T. 0.018 min
 Lab File: VN082558.D
 Acq: 13 Jun 2024 14:43



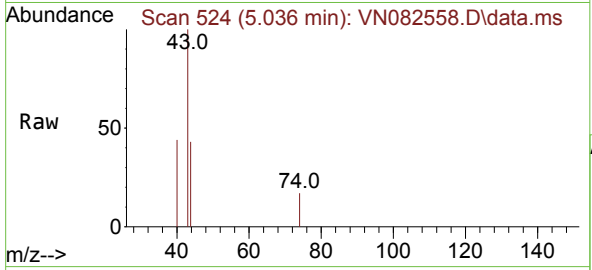
Tgt Ion: 43 Resp: 20794
 Ion Ratio Lower Upper
 43 100
 58 27.7 25.2 37.8



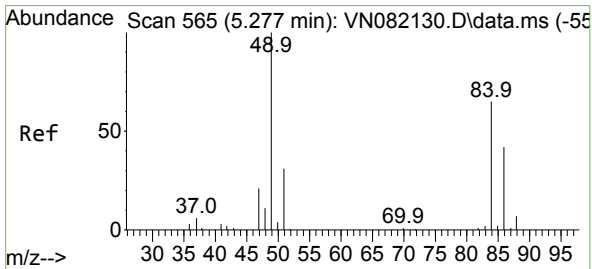
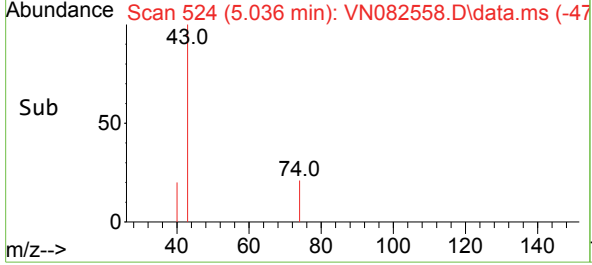
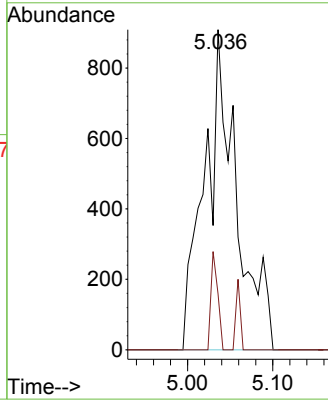


#18
 Methyl Acetate
 Concen: 0.926 ug/l
 RT: 5.036 min Scan# 51
 Delta R.T. 0.012 min
 Lab File: VN082558.D
 Acq: 13 Jun 2024 14:43

Instrument :
 MSVOA_N
 ClientSampleId :
 6

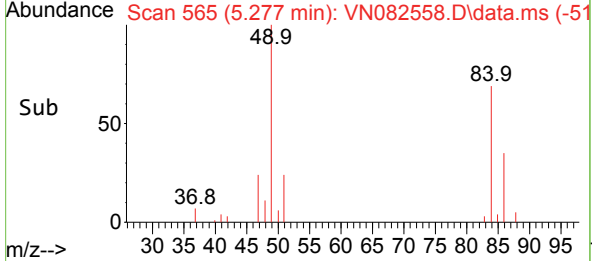
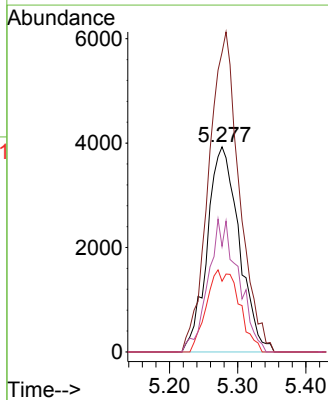
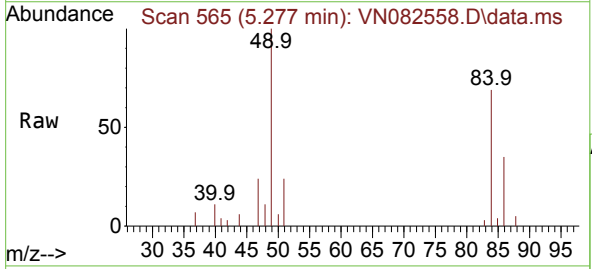


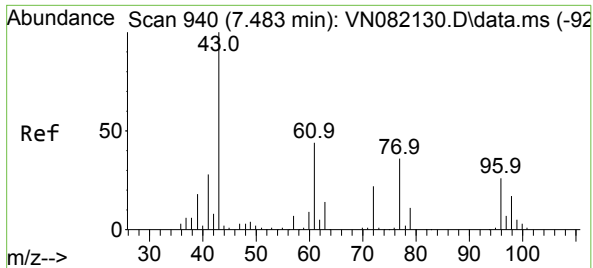
Tgt Ion: 43 Resp: 2362
 Ion Ratio Lower Upper
 43 100
 74 6.6 22.2 33.2#



#20
 Methylene Chloride
 Concen: 6.200 ug/l
 RT: 5.277 min Scan# 565
 Delta R.T. 0.000 min
 Lab File: VN082558.D
 Acq: 13 Jun 2024 14:43

Tgt Ion: 84 Resp: 12809
 Ion Ratio Lower Upper
 84 100
 49 146.0 84.9 127.3#
 51 34.5 27.0 40.6
 86 51.5 52.3 78.5#

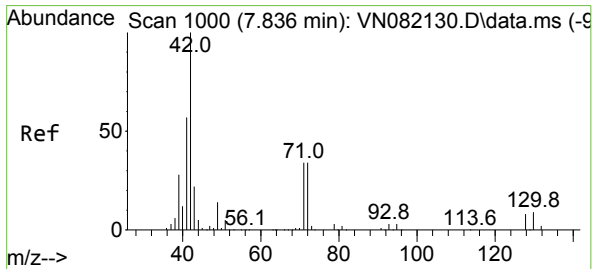
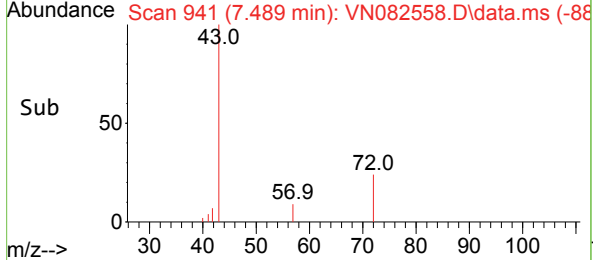
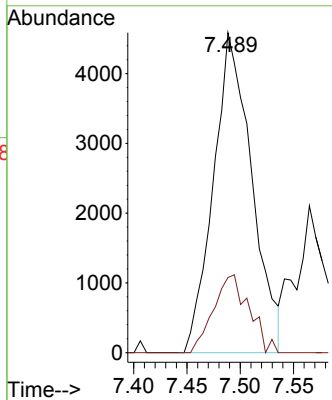
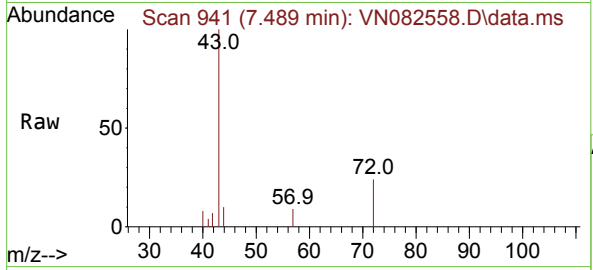




#25
 2-Butanone
 Concen: 7.394 ug/l
 RT: 7.489 min Scan# 941
 Delta R.T. 0.006 min
 Lab File: VN082558.D
 Acq: 13 Jun 2024 14:43

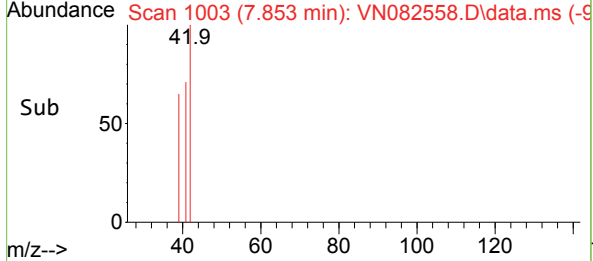
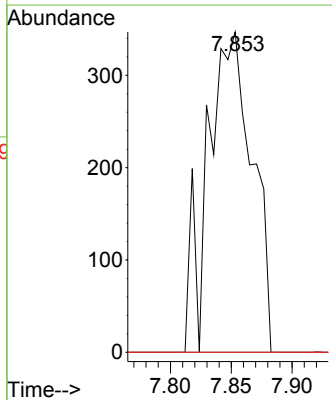
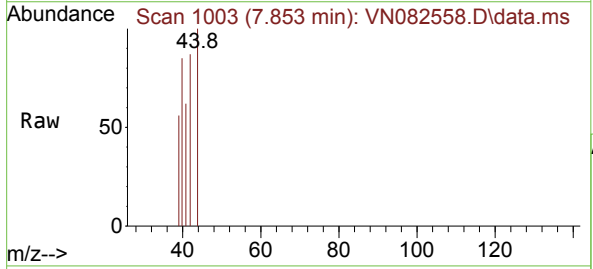
Instrument : MSVOA_N
 ClientSampleId : 6

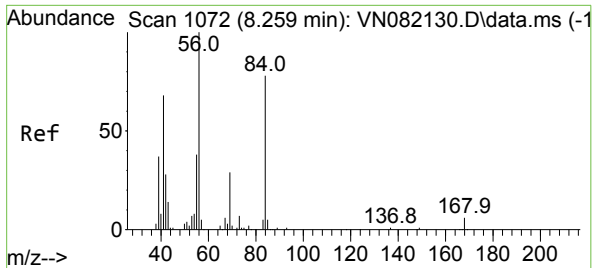
Tgt Ion: 43 Resp: 11479
 Ion Ratio Lower Upper
 43 100
 72 23.5 25.3 37.9#



#29
 Tetrahydrofuran
 Concen: 0.892 ug/l
 RT: 7.853 min Scan# 1003
 Delta R.T. 0.017 min
 Lab File: VN082558.D
 Acq: 13 Jun 2024 14:43

Tgt Ion: 42 Resp: 889
 Ion Ratio Lower Upper
 42 100
 72 0.0 39.3 58.9#
 71 0.0 37.4 56.0#



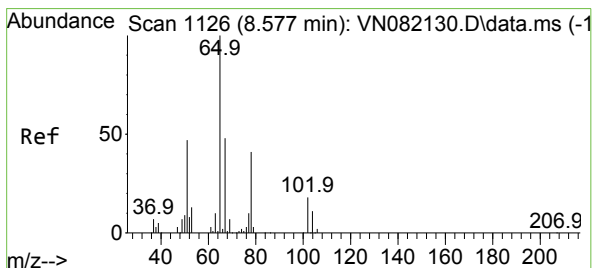
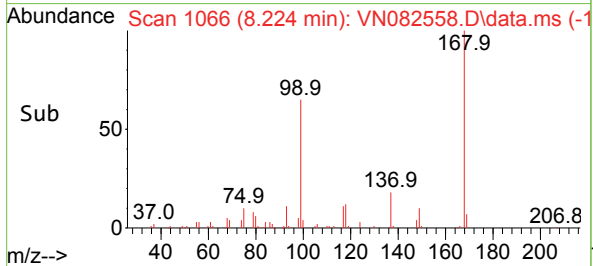
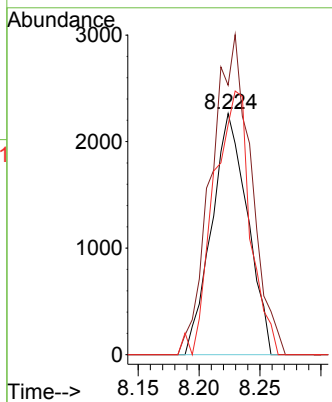
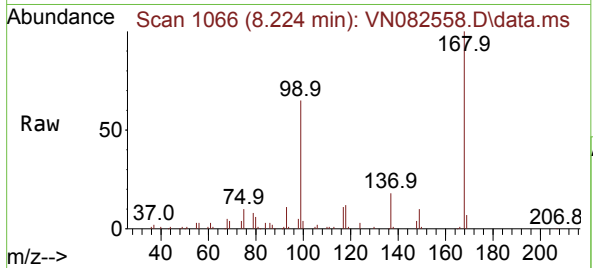


#31
 Cyclohexane
 Concen: 1.160 ug/l
 RT: 8.224 min Scan# 1066
 Delta R.T. -0.035 min
 Lab File: VN082558.D
 Acq: 13 Jun 2024 14:43

Instrument :
 MSVOA_N
 ClientSampleId :
 6

Tgt Ion: 56 Resp: 4624

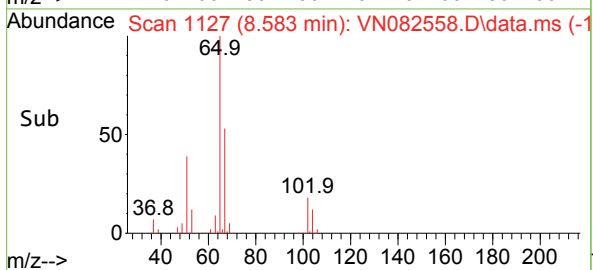
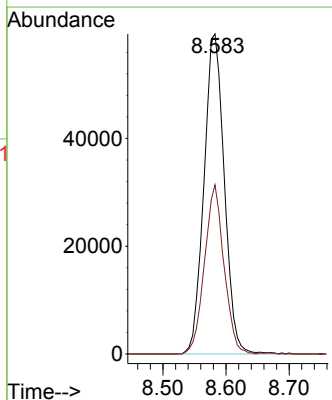
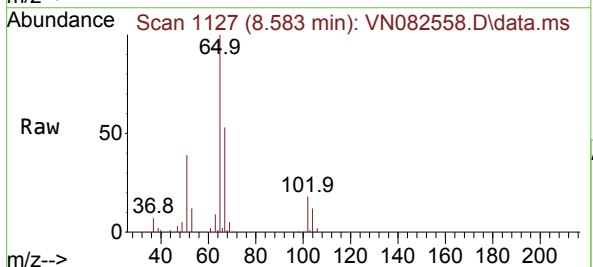
Ion	Ratio	Lower	Upper
56	100		
69	111.8	24.4	36.6#
84	95.4	77.0	115.4

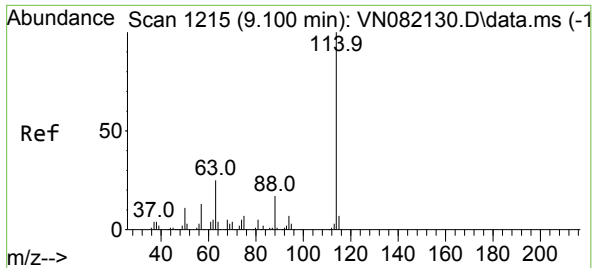


#33
 1,2-Dichloroethane-d4
 Concen: 53.255 ug/l
 RT: 8.583 min Scan# 1127
 Delta R.T. 0.006 min
 Lab File: VN082558.D
 Acq: 13 Jun 2024 14:43

Tgt Ion: 65 Resp: 132925

Ion	Ratio	Lower	Upper
65	100		
67	50.5	0.0	103.0

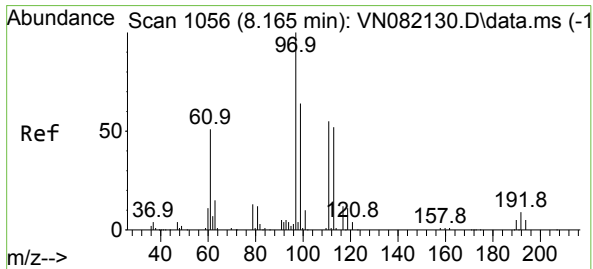
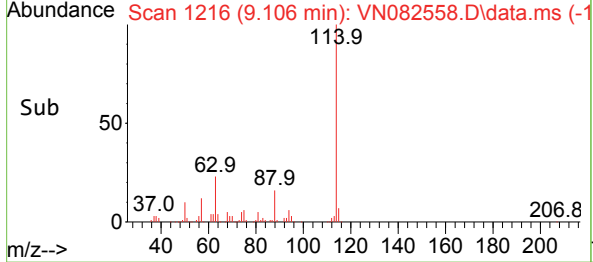
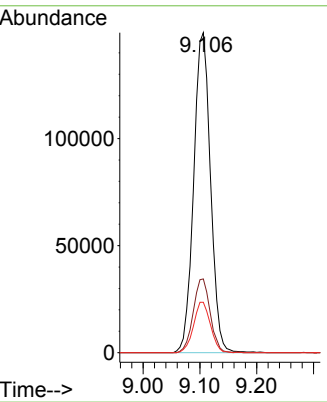
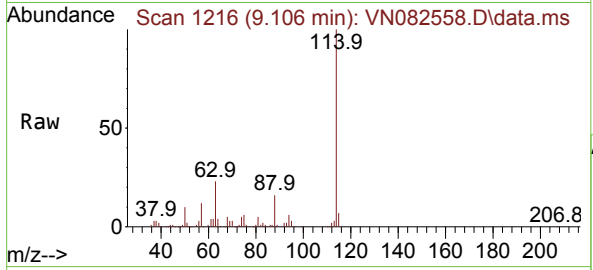




#34
 1,4-Difluorobenzene
 Concen: 50.000 ug/l
 RT: 9.106 min Scan# 111
 Delta R.T. 0.006 min
 Lab File: VN082558.D
 Acq: 13 Jun 2024 14:43

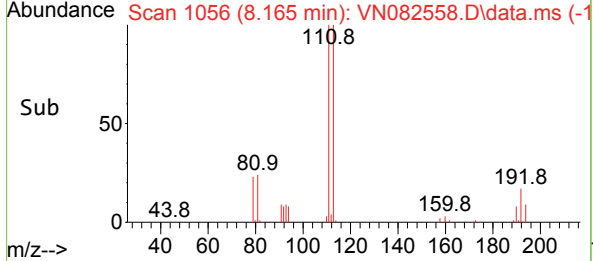
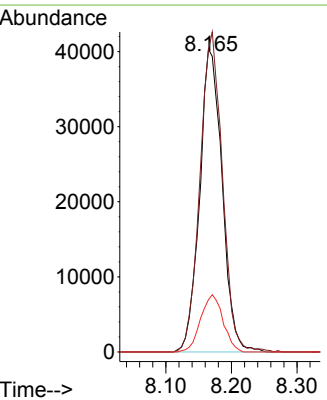
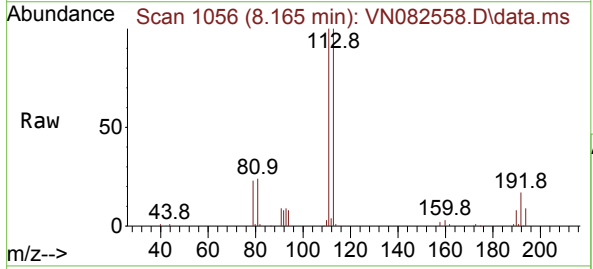
Instrument : MSVOA_N
 ClientSampleId : 6

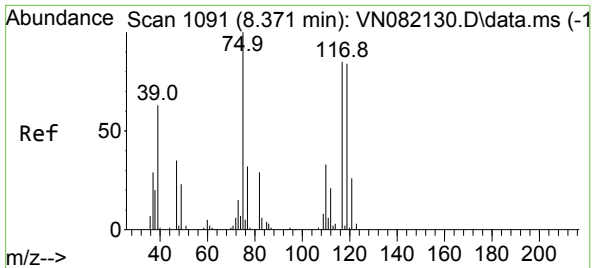
Tgt Ion	Resp	Lower	Upper
114	306823		
114	100		
63	23.0	0.0	41.0
88	15.8	0.0	31.4



#35
 Dibromofluoromethane
 Concen: 50.987 ug/l
 RT: 8.165 min Scan# 1056
 Delta R.T. 0.000 min
 Lab File: VN082558.D
 Acq: 13 Jun 2024 14:43

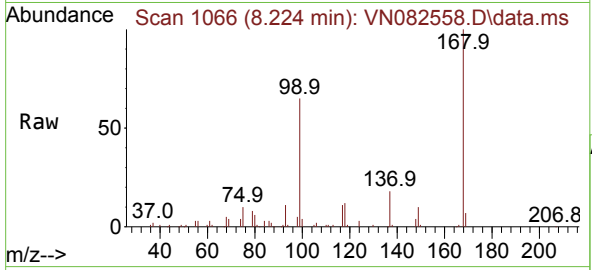
Tgt Ion	Resp	Lower	Upper
113	96234		
113	100		
111	105.2	83.4	125.2
192	18.8	14.0	21.0





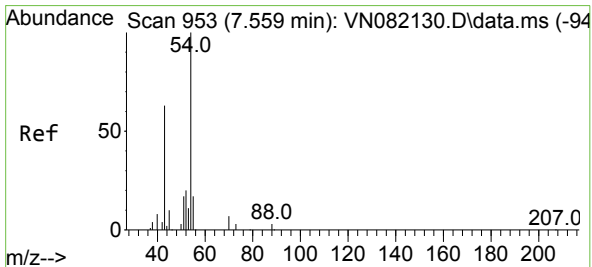
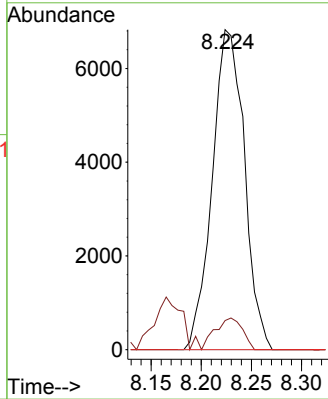
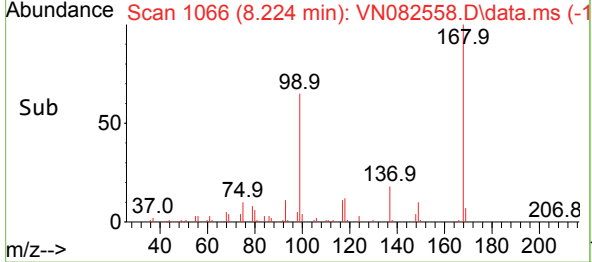
#36
 1,1-Dichloropropene
 Concen: 4.804 ug/l
 RT: 8.224 min Scan# 1091
 Delta R.T. -0.147 min
 Lab File: VN082558.D
 Acq: 13 Jun 2024 14:43

Instrument : MSVOA_N
 ClientSampleId : 6

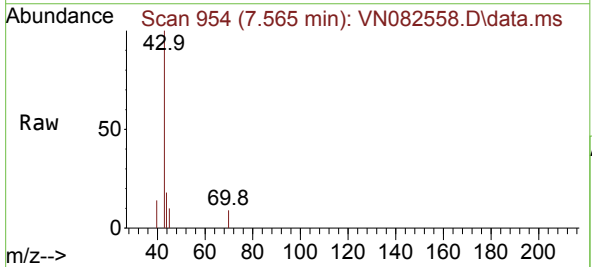


Tgt Ion: 75 Resp: 15206

Ion	Ratio	Lower	Upper
75	100		
110	8.4	17.8	53.5#
77	0.0	25.0	37.4#

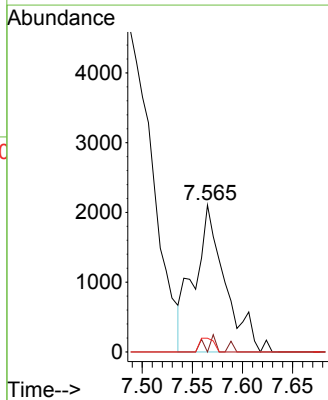
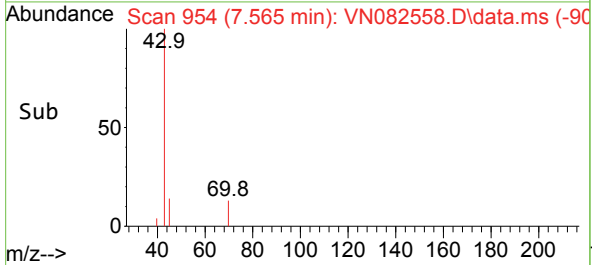


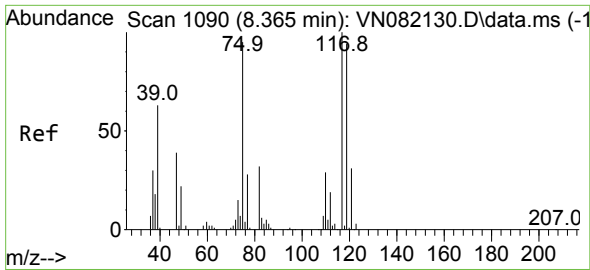
#37
 Ethyl Acetate
 Concen: 1.277 ug/l
 RT: 7.565 min Scan# 954
 Delta R.T. 0.006 min
 Lab File: VN082558.D
 Acq: 13 Jun 2024 14:43



Tgt Ion: 43 Resp: 4523

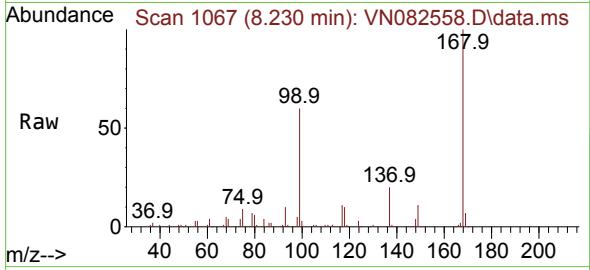
Ion	Ratio	Lower	Upper
43	100		
61	1.4	11.3	16.9#
70	4.3	8.7	13.1#



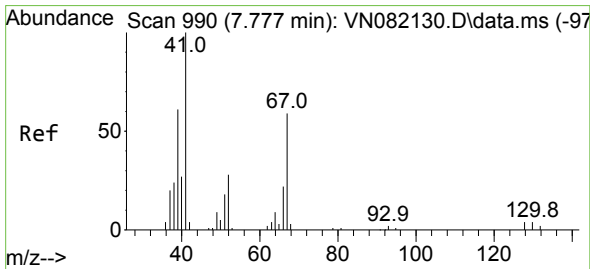
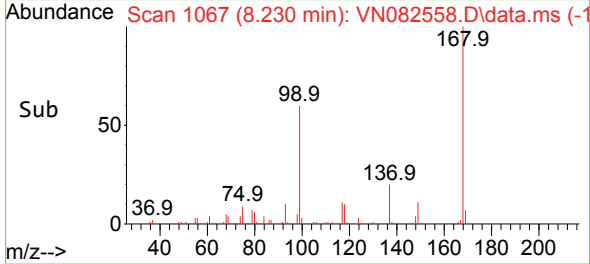
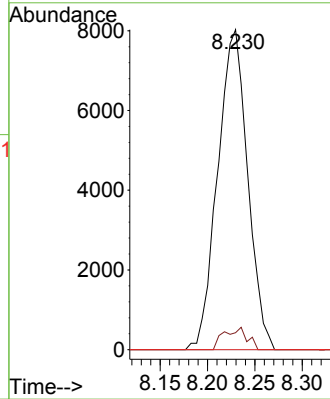


#38
 Carbon Tetrachloride
 Concen: 5.506 ug/l
 RT: 8.230 min Scan# 1000
 Delta R.T. -0.135 min
 Lab File: VN082558.D
 Acq: 13 Jun 2024 14:43

Instrument : MSVOA_N
 ClientSampleId : 6

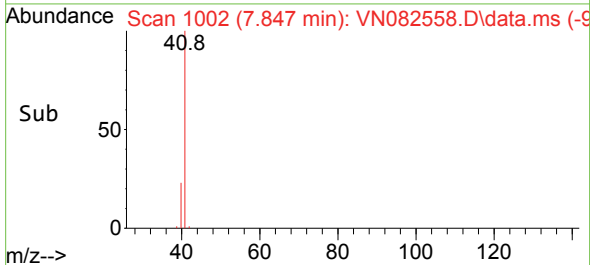
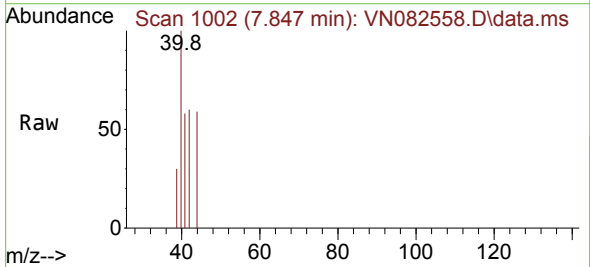
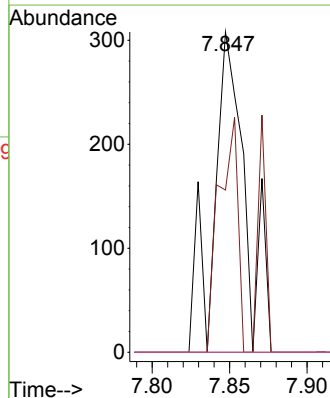


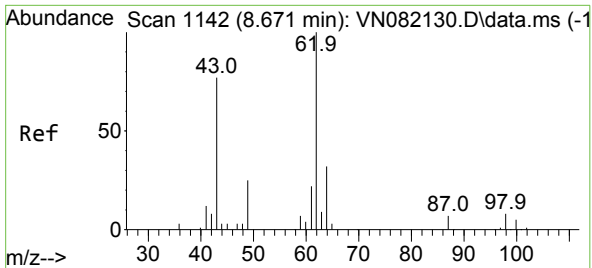
Tgt Ion:117 Resp: 17669
 Ion Ratio Lower Upper
 117 100
 119 5.3 76.5 114.7#
 121 0.0 23.9 35.9#



#41
 Methacrylonitrile
 Concen: 0.210 ug/l
 RT: 7.847 min Scan# 1002
 Delta R.T. 0.071 min
 Lab File: VN082558.D
 Acq: 13 Jun 2024 14:43

Tgt Ion: 41 Resp: 438
 Ion Ratio Lower Upper
 41 100
 39 43.8 46.6 69.8#
 67 0.0 67.3 100.9#
 52 0.0 27.3 40.9#

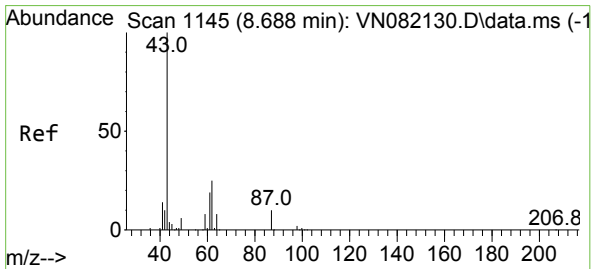
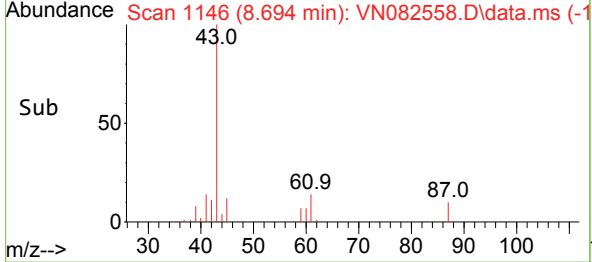
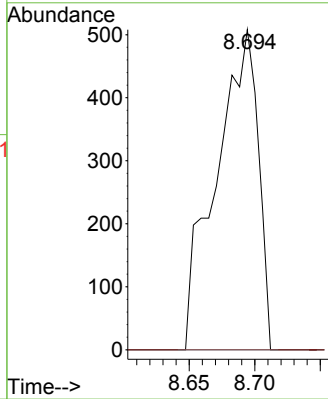
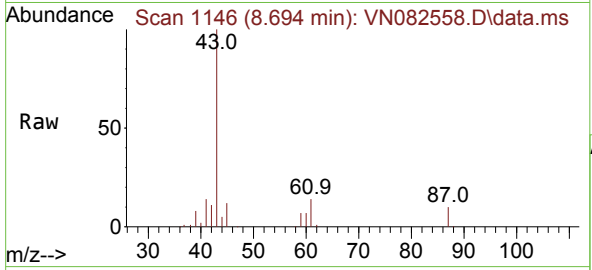




#42
 1,2-Dichloroethane
 Concen: 0.312 ug/l
 RT: 8.694 min Scan# 1146
 Delta R.T. 0.024 min
 Lab File: VN082558.D
 Acq: 13 Jun 2024 14:43

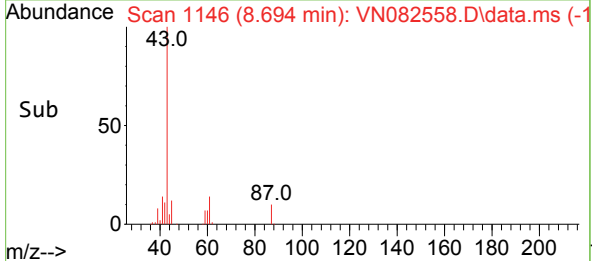
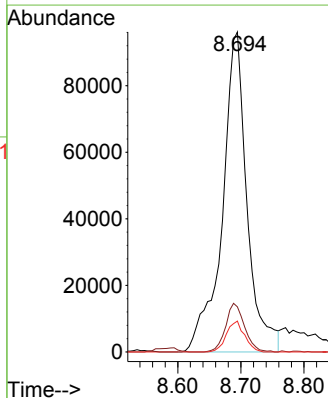
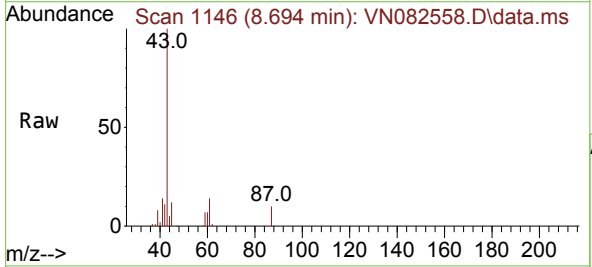
Instrument : MSVOA_N
 ClientSampleId : 6

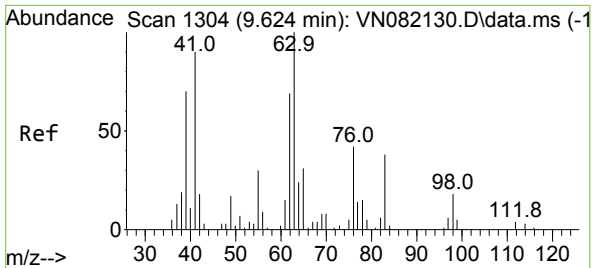
Tgt Ion: 62 Resp: 1133
 Ion Ratio Lower Upper
 62 100
 98 0.0 0.0 19.6



#43
 Isopropyl Acetate
 Concen: 41.628 ug/l
 RT: 8.694 min Scan# 1146
 Delta R.T. 0.006 min
 Lab File: VN082558.D
 Acq: 13 Jun 2024 14:43

Tgt Ion: 43 Resp: 261310
 Ion Ratio Lower Upper
 43 100
 61 11.7 22.8 34.2#
 87 7.1 12.0 18.0#

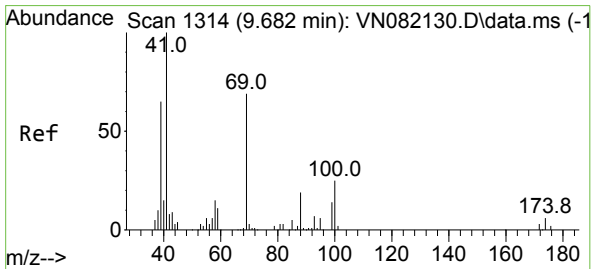
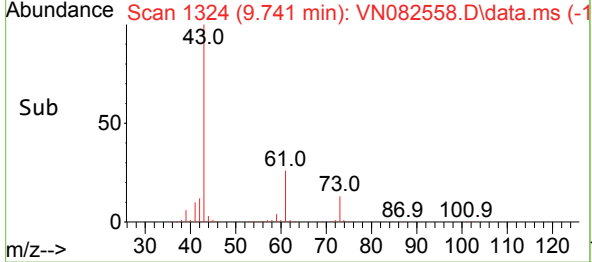
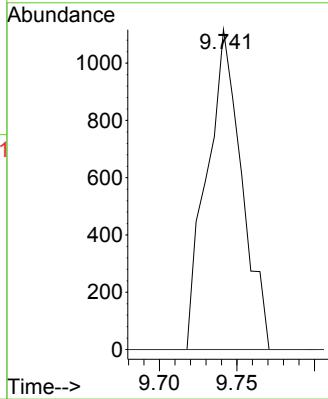
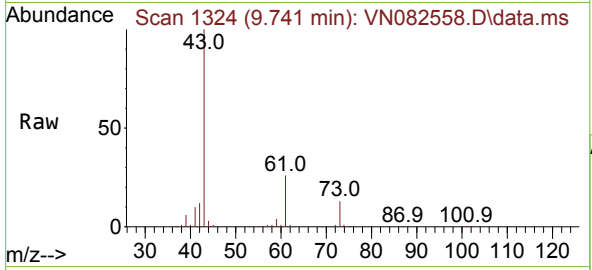




#45
 1,2-Dichloropropane
 Concen: 0.714 ug/l
 RT: 9.741 min Scan# 111
 Delta R.T. 0.118 min
 Lab File: VN082558.D
 Acq: 13 Jun 2024 14:43

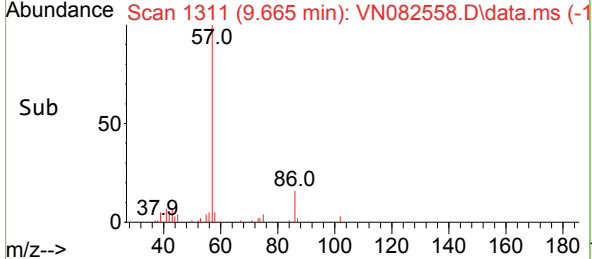
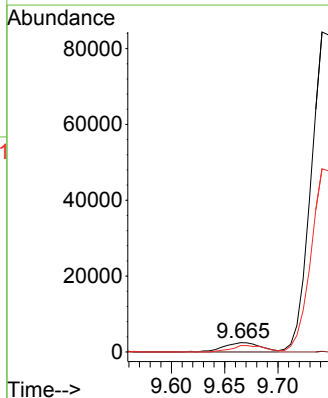
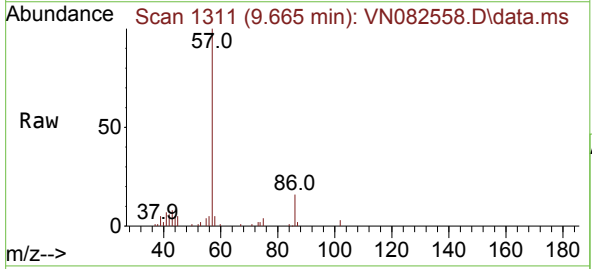
Instrument :
 MSVOA_N
 ClientSampleId :
 6

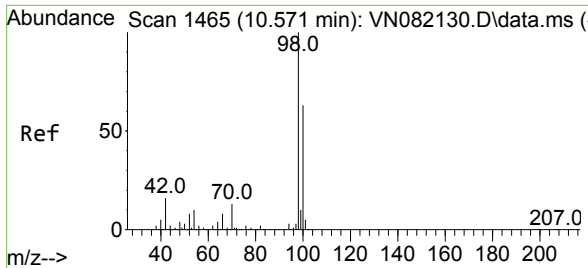
Tgt Ion: 63 Resp: 1740
 Ion Ratio Lower Upper
 63 100
 65 0.0 24.1 36.1#



#48
 Methyl methacrylate
 Concen: 1.998 ug/l
 RT: 9.665 min Scan# 1311
 Delta R.T. -0.018 min
 Lab File: VN082558.D
 Acq: 13 Jun 2024 14:43

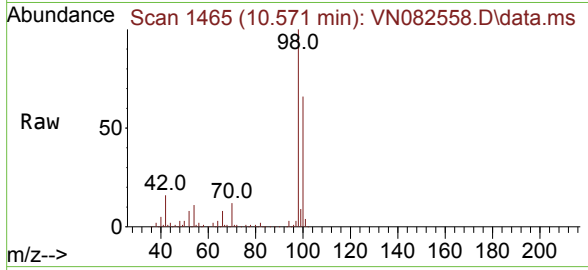
Tgt Ion: 41 Resp: 5977
 Ion Ratio Lower Upper
 41 100
 69 0.0 77.9 116.9#
 39 62.0 50.9 76.3



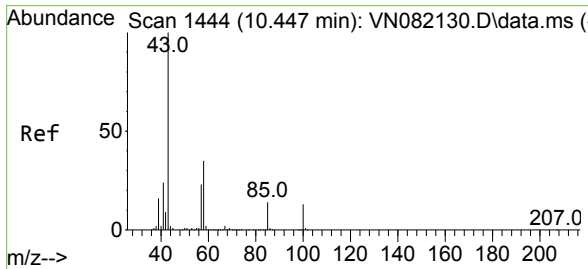
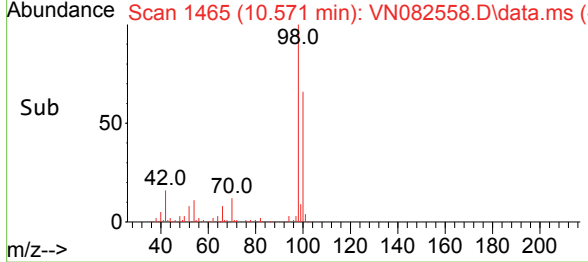
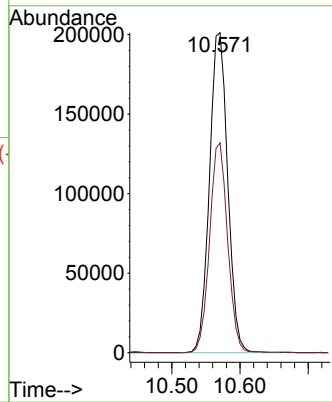


#50
 Toluene-d8
 Concen: 51.861 ug/l
 RT: 10.571 min Scan# 1465
 Delta R.T. 0.000 min
 Lab File: VN082558.D
 Acq: 13 Jun 2024 14:43

Instrument : MSVOA_N
 ClientSampleId : 6

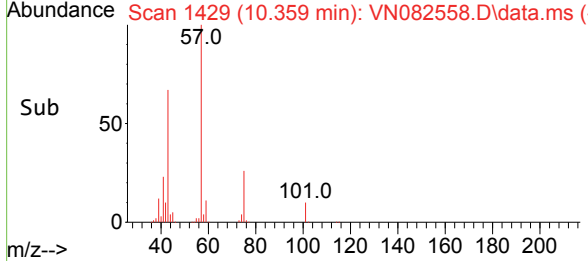
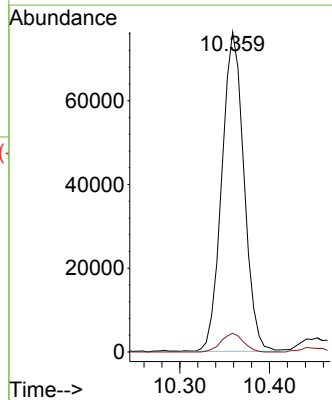
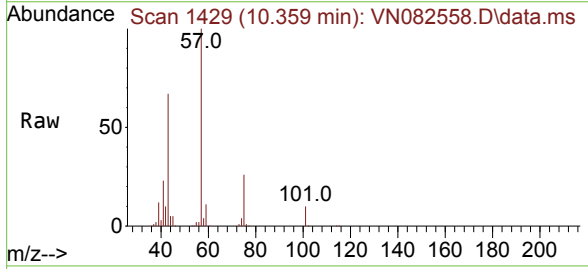


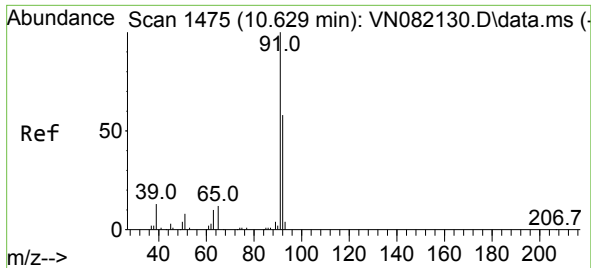
Tgt Ion: 98 Resp: 375283
 Ion Ratio Lower Upper
 98 100
 100 64.7 51.8 77.6



#51
 4-Methyl-2-Pentanone
 Concen: 36.650 ug/l
 RT: 10.359 min Scan# 1429
 Delta R.T. -0.088 min
 Lab File: VN082558.D
 Acq: 13 Jun 2024 14:43

Tgt Ion: 43 Resp: 130715
 Ion Ratio Lower Upper
 43 100
 58 5.9 33.2 49.8#

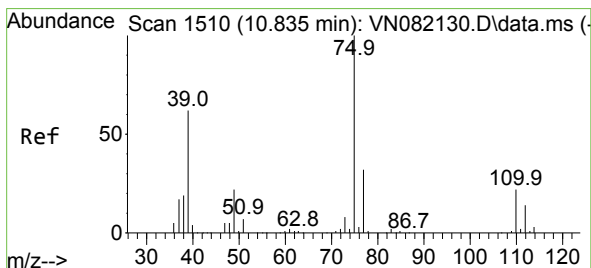
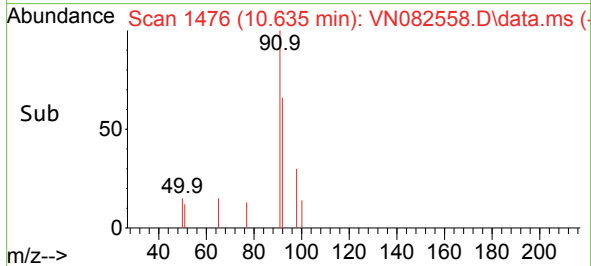
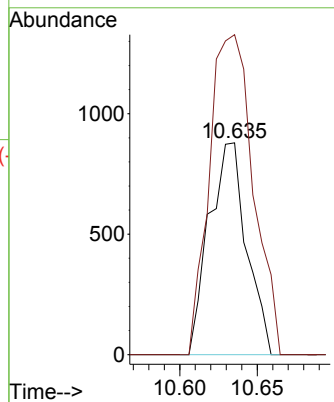
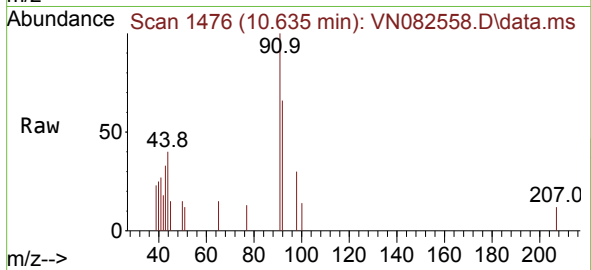




#52
 Toluene
 Concen: 0.260 ug/l
 RT: 10.635 min Scan# 1473
 Delta R.T. 0.006 min
 Lab File: VN082558.D
 Acq: 13 Jun 2024 14:43

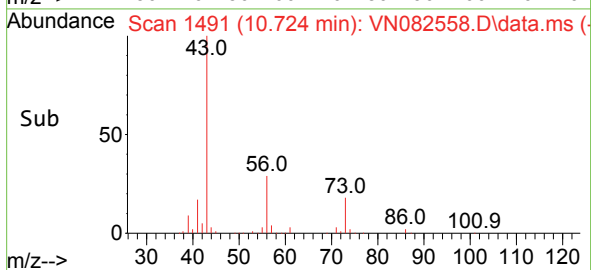
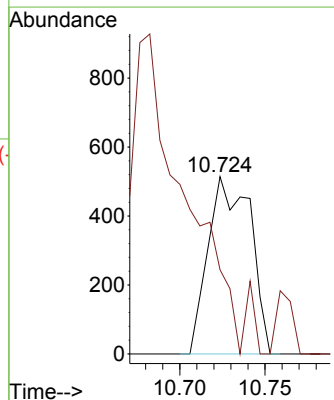
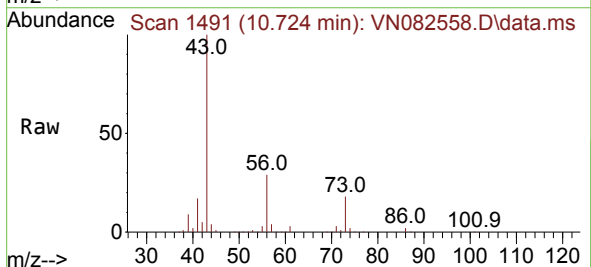
Instrument : MSVOA_N
 ClientSampleId : 6

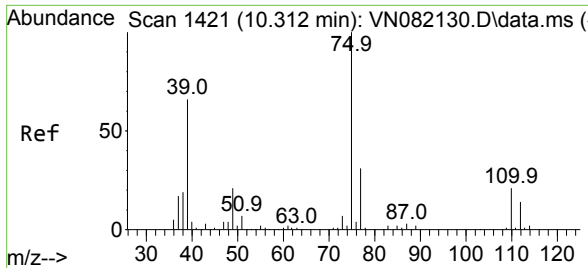
Tgt Ion: 92 Resp: 1473
 Ion Ratio Lower Upper
 92 100
 91 178.2 136.7 205.1



#53
 t-1,3-Dichloropropene
 Concen: 0.254 ug/l
 RT: 10.724 min Scan# 1491
 Delta R.T. -0.112 min
 Lab File: VN082558.D
 Acq: 13 Jun 2024 14:43

Tgt Ion: 75 Resp: 886
 Ion Ratio Lower Upper
 75 100
 77 11.9 25.4 38.0#



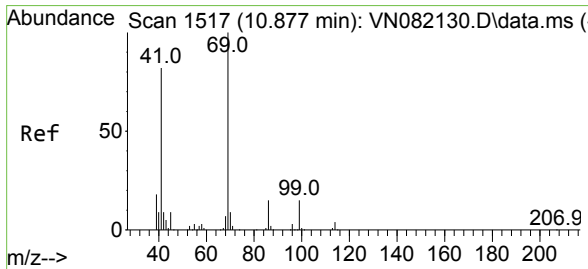
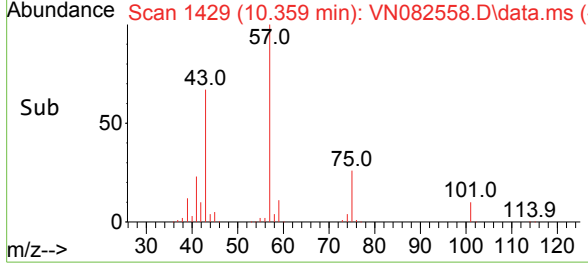
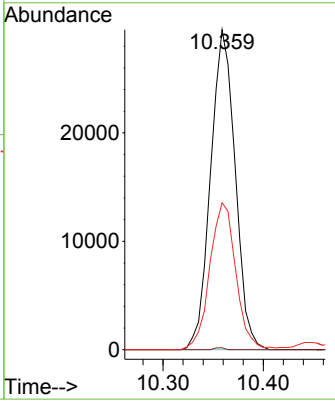
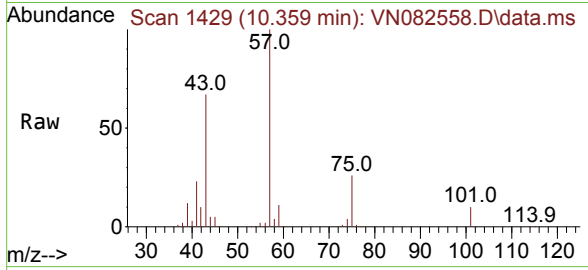


#54
 cis-1,3-Dichloropropene
 Concen: 13.597 ug/l
 RT: 10.359 min Scan# 1429
 Delta R.T. 0.047 min
 Lab File: VN082558.D
 Acq: 13 Jun 2024 14:43

Instrument : MSVOA_N
 ClientSampleId : 6

Tgt Ion: 75 Resp: 50249

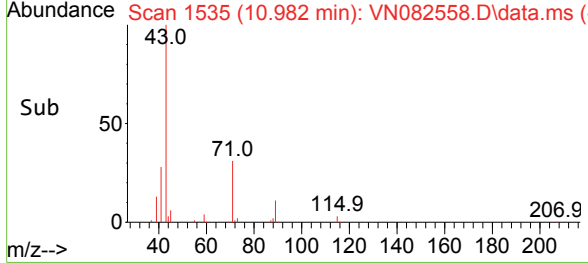
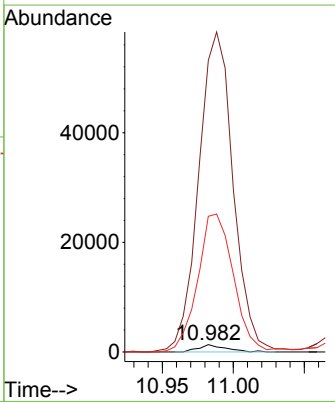
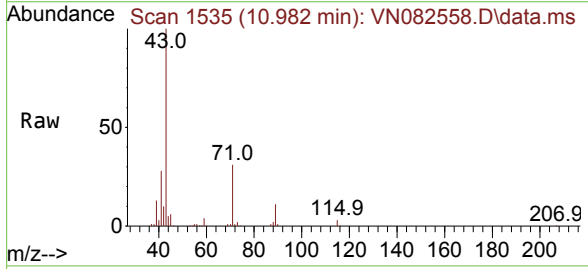
Ion	Ratio	Lower	Upper
75	100		
77	0.6	25.0	37.4#
39	45.9	34.8	52.2

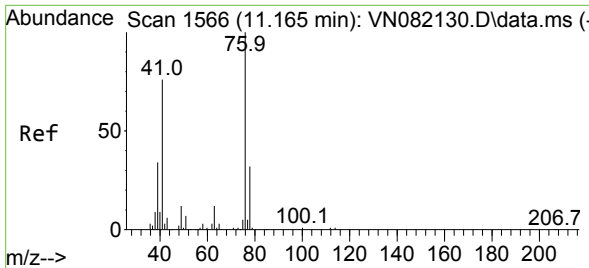


#56
 Ethyl methacrylate
 Concen: 0.514 ug/l
 RT: 10.982 min Scan# 1535
 Delta R.T. 0.106 min
 Lab File: VN082558.D
 Acq: 13 Jun 2024 14:43

Tgt Ion: 69 Resp: 1798

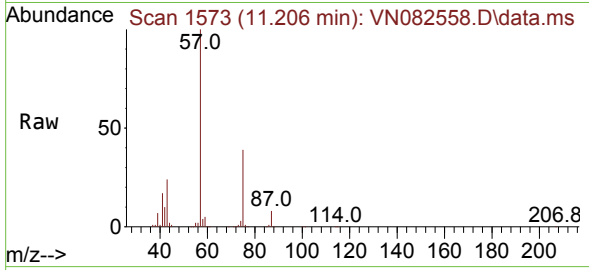
Ion	Ratio	Lower	Upper
69	100		
41	5498.3	46.6	70.0#
39	2466.5	26.5	39.7#



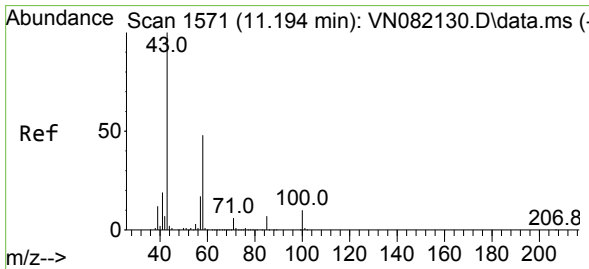
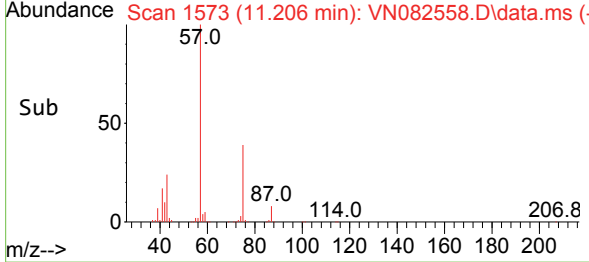
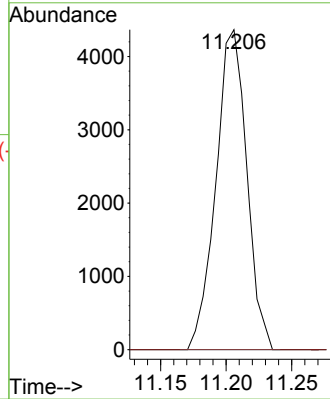


#57
 1,3-Dichloropropane
 Concen: 1.856 ug/l
 RT: 11.206 min Scan# 11
 Delta R.T. 0.041 min
 Lab File: VN082558.D
 Acq: 13 Jun 2024 14:43

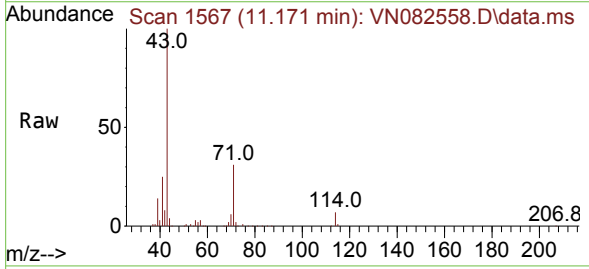
Instrument : MSVOA_N
 ClientSampleId : 6



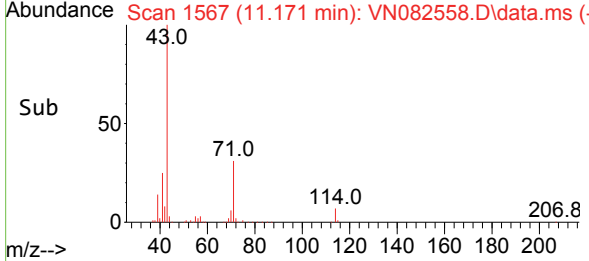
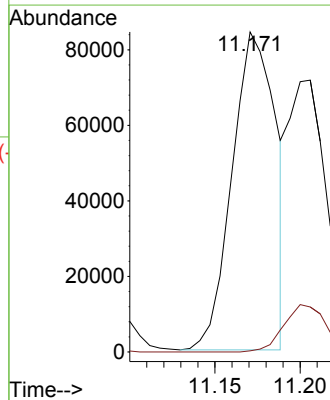
Tgt Ion: 76 Resp: 7142
 Ion Ratio Lower Upper
 76 100
 78 0.0 25.8 38.6#

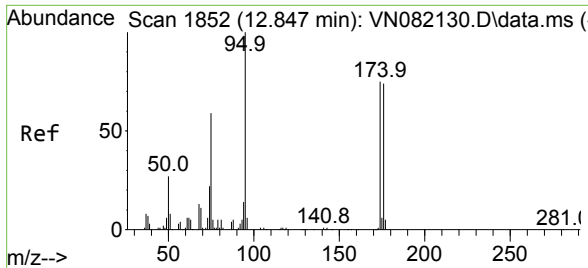


#59
 2-Hexanone
 Concen: 57.386 ug/l
 RT: 11.171 min Scan# 1567
 Delta R.T. -0.024 min
 Lab File: VN082558.D
 Acq: 13 Jun 2024 14:43



Tgt Ion: 43 Resp: 149860
 Ion Ratio Lower Upper
 43 100
 58 0.0 28.3 84.9#



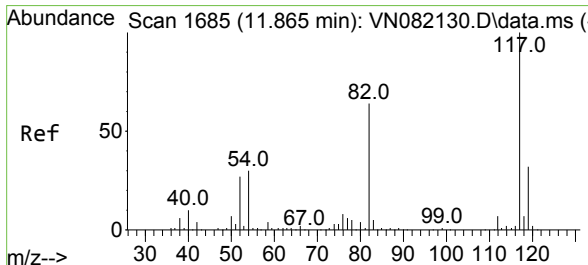
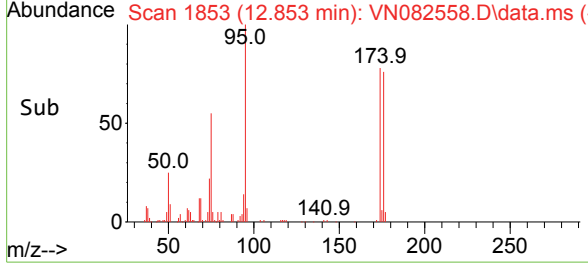
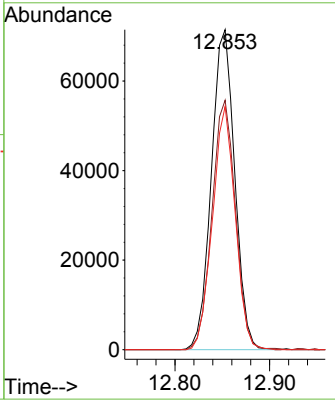
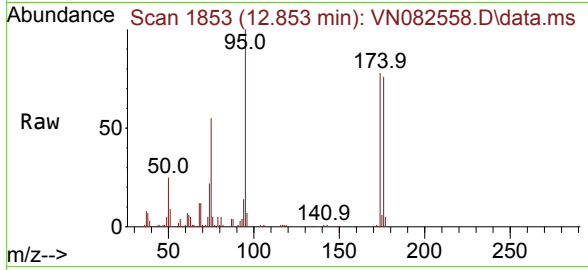


#62
 4-Bromofluorobenzene
 Concen: 47.459 ug/l
 RT: 12.853 min Scan# 1853
 Delta R.T. 0.006 min
 Lab File: VN082558.D
 Acq: 13 Jun 2024 14:43

Instrument :
 MSVOA_N
 ClientSampleId :
 6

Tgt Ion: 95 Resp: 122578

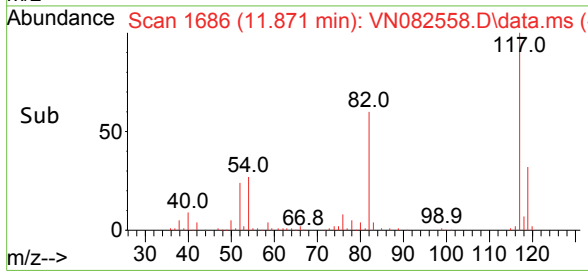
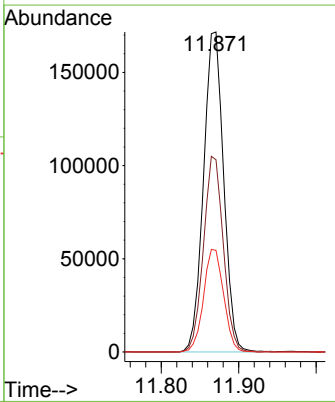
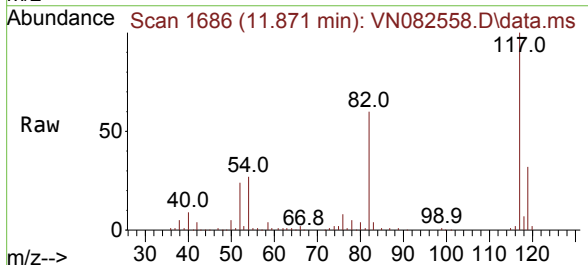
Ion	Ratio	Lower	Upper
95	100		
174	78.5	0.0	160.6
176	74.0	0.0	152.8

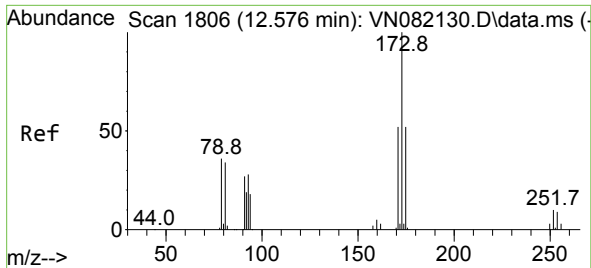


#63
 Chlorobenzene-d5
 Concen: 50.000 ug/l
 RT: 11.871 min Scan# 1686
 Delta R.T. 0.006 min
 Lab File: VN082558.D
 Acq: 13 Jun 2024 14:43

Tgt Ion: 117 Resp: 310011

Ion	Ratio	Lower	Upper
117	100		
82	60.1	44.6	66.8
119	31.8	25.9	38.9

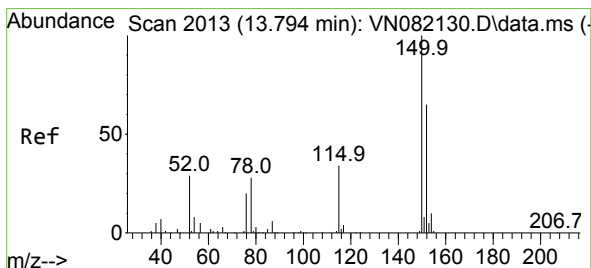
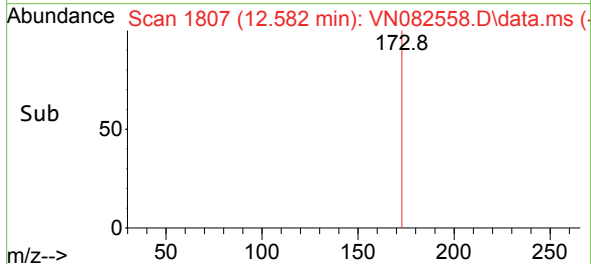
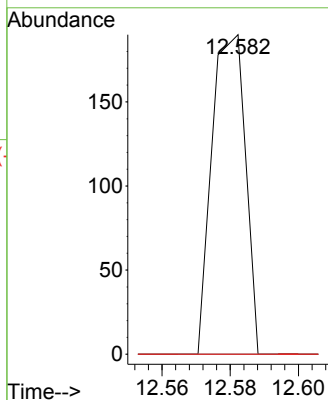
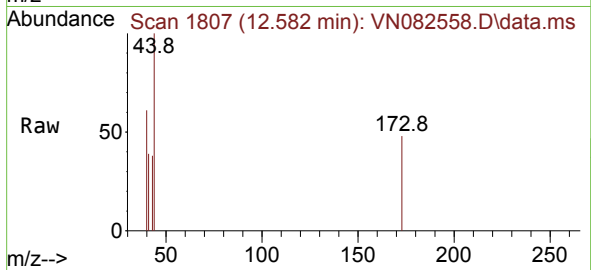




#71
 Bromoform
 Concen: 0.772 ug/l
 RT: 12.582 min Scan# 11
 Delta R.T. 0.006 min
 Lab File: VN082558.D
 Acq: 13 Jun 2024 14:43

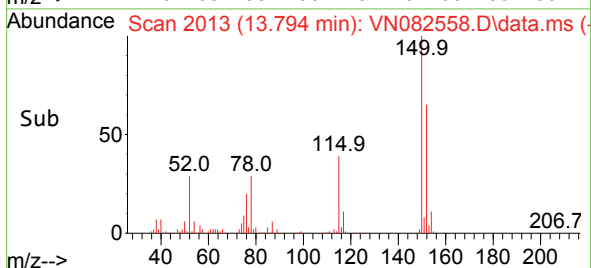
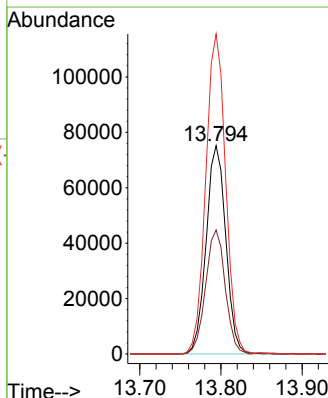
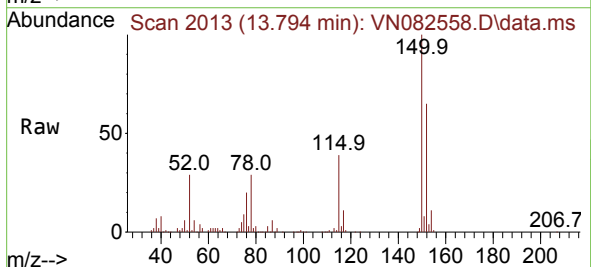
Instrument :
 MSVOA_N
 ClientSampleId :
 6

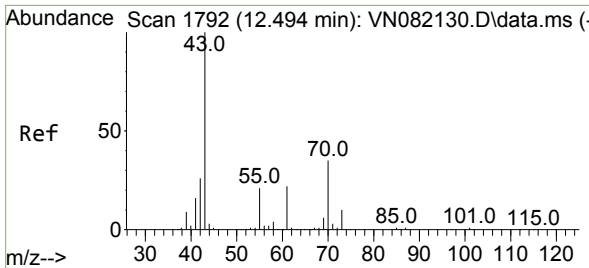
Tgt Ion	Resp	Lower	Upper
173	100		
175	0.0	24.6	74.0#
254	0.0	0.0	0.0



#72
 1,4-Dichlorobenzene-d4
 Concen: 50.000 ug/l
 RT: 13.794 min Scan# 2013
 Delta R.T. 0.000 min
 Lab File: VN082558.D
 Acq: 13 Jun 2024 14:43

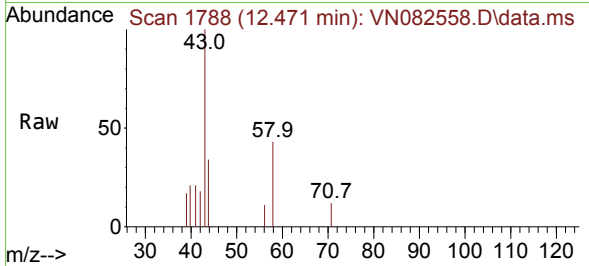
Tgt Ion	Resp	Lower	Upper
152	100		
115	59.4	30.4	91.3
150	154.9	0.0	353.2





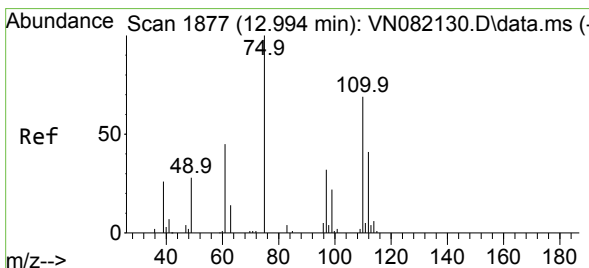
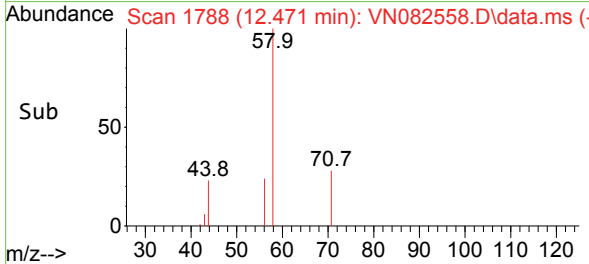
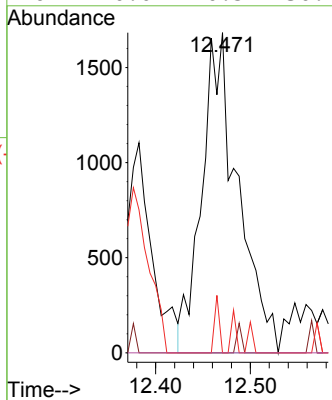
#74
 N-amy1 acetate
 Concen: 0.801 ug/l
 RT: 12.471 min Scan# 11
 Delta R.T. -0.024 min
 Lab File: VN082558.D
 Acq: 13 Jun 2024 14:43

Instrument : MSVOA_N
 ClientSampleId : 6



Tgt Ion: 43 Resp: 4429

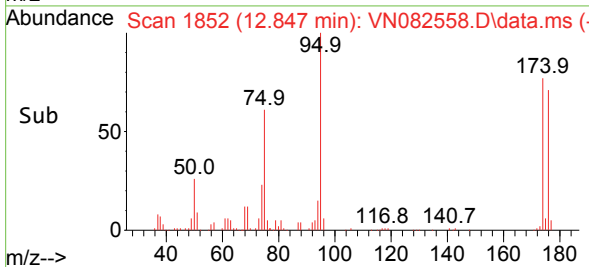
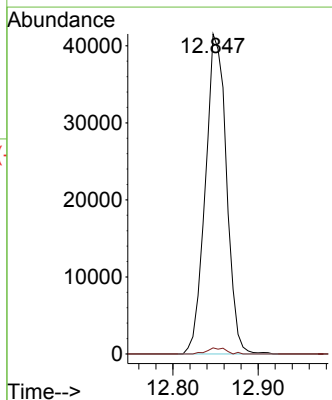
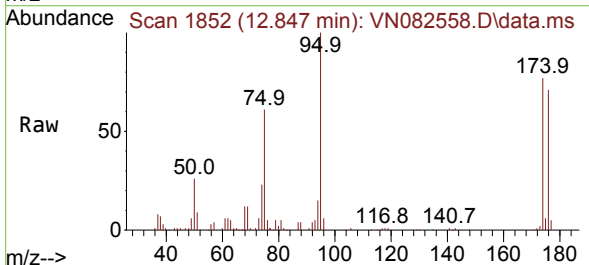
Ion	Ratio	Lower	Upper
43	100		
70	0.0	39.0	58.4#
55	2.4	21.3	31.9#
61	0.0	20.5	30.7#

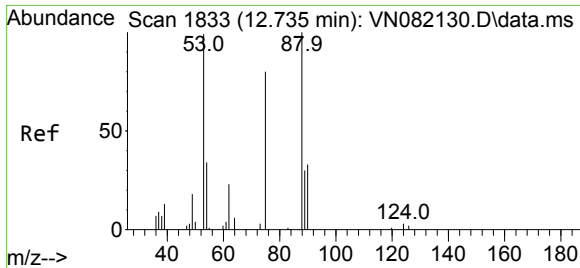


#76
 1,2,3-Trichloropropane
 Concen: 26.775 ug/l
 RT: 12.847 min Scan# 1852
 Delta R.T. -0.147 min
 Lab File: VN082558.D
 Acq: 13 Jun 2024 14:43

Tgt Ion: 75 Resp: 71339

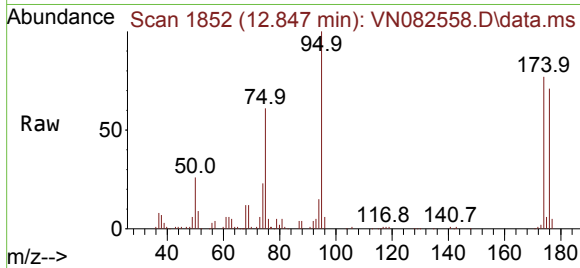
Ion	Ratio	Lower	Upper
75	100		
77	1.7	90.5	271.3#





#81
 trans-1,4-Dichloro-2-butene
 Concen: 62.626 ug/l
 RT: 12.847 min Scan# 11
 Delta R.T. 0.112 min
 Lab File: VN082558.D
 Acq: 13 Jun 2024 14:43

Instrument :
 MSVOA_N
 ClientSampleId :
 6



Tgt Ion: 75 Resp: 71339
 Ion Ratio Lower Upper
 75 100
 53 0.0 72.9 109.3#
 89 0.0 39.1 58.7#

