

Data Path : Z:\voasrv\HPCHEM1\MSVOA\_N\Data\VN061324\  
 Data File : VN082559.D  
 Acq On : 13 Jun 2024 15:07  
 Operator : JC\MD  
 Sample : P2853-07  
 Misc : 5.0mL/MSVOA\_N/WATER  
 ALS Vial : 15 Sample Multiplier: 1

Instrument :  
 MSVOA\_N  
 ClientSampleId :  
 7

Quant Time: Jun 14 02:29:48 2024  
 Quant Method : Z:\voasrv\HPCHEM1\MSVOA\_N\methods\82N051524W.M  
 Quant Title : SW846 8260  
 QLast Update : Thu May 16 05:21:06 2024  
 Response via : Initial Calibration

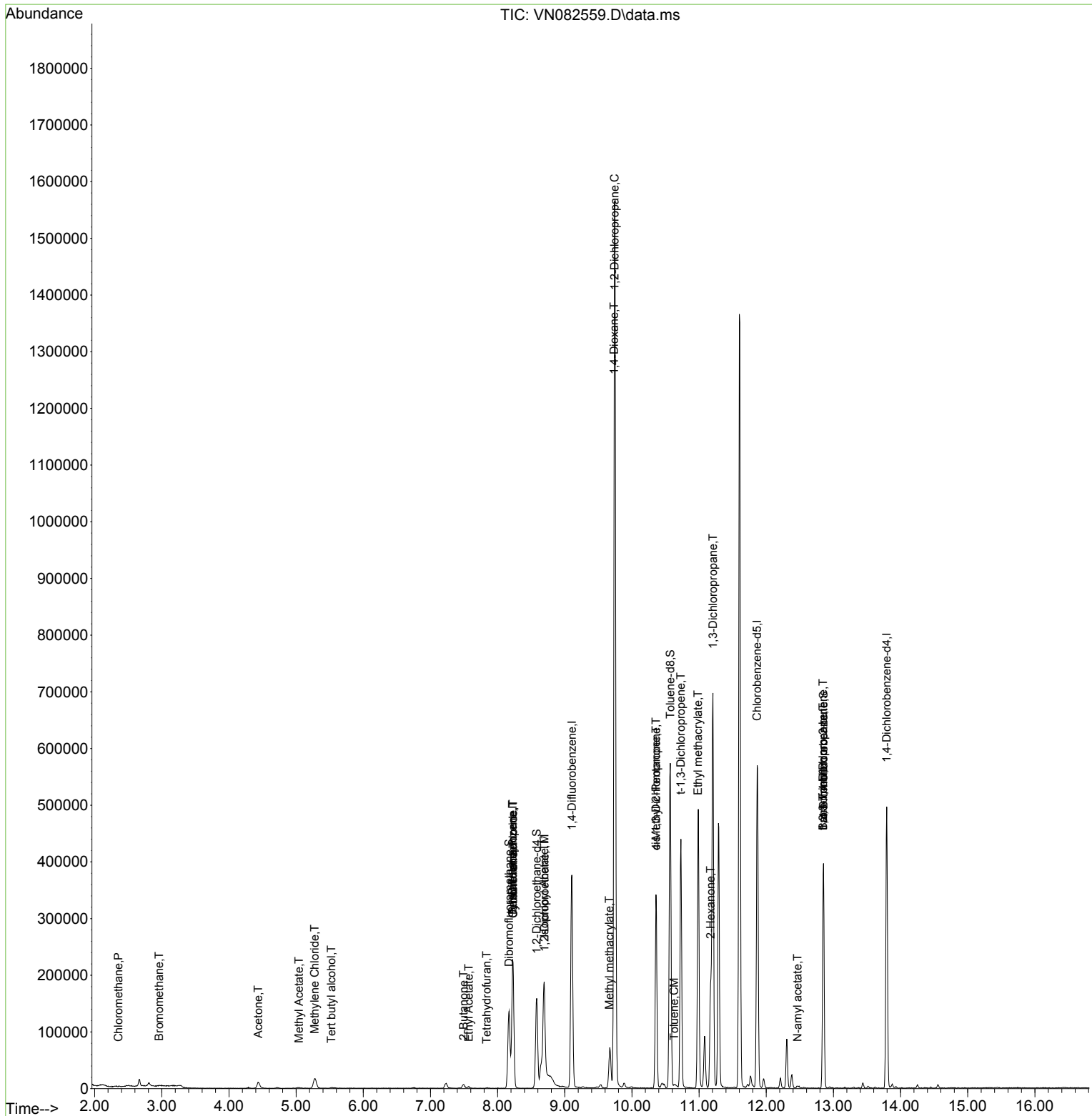
Compound	R.T.	QI	Ion Response	Conc	Units	Dev(Min)
-----						
Internal Standards						
1) Pentafluorobenzene	8.224	168	158354	50.000	ug/l	0.00
34) 1,4-Difluorobenzene	9.106	114	302533	50.000	ug/l	0.00
63) Chlorobenzene-d5	11.865	117	304227	50.000	ug/l	0.00
72) 1,4-Dichlorobenzene-d4	13.794	152	125262	50.000	ug/l	0.00
System Monitoring Compounds						
33) 1,2-Dichloroethane-d4	8.582	65	132593	53.028	ug/l	0.00
Spiked Amount	50.000	Range 74 - 125	Recovery	=	106.060%	
35) Dibromofluoromethane	8.171	113	95827	51.491	ug/l	0.00
Spiked Amount	50.000	Range 75 - 124	Recovery	=	102.980%	
50) Toluene-d8	10.571	98	374867	52.538	ug/l	0.00
Spiked Amount	50.000	Range 86 - 113	Recovery	=	105.080%	
62) 4-Bromofluorobenzene	12.853	95	123582	48.527	ug/l	0.00
Spiked Amount	50.000	Range 64 - 133	Recovery	=	97.060%	
Target Compounds						
						Qvalue
3) Chloromethane	2.353	50	524	0.203	ug/l #	43
5) Bromomethane	2.959	94	513	0.367	ug/l #	72
11) Tert butyl alcohol	5.524	59	1842	4.589	ug/l #	71
16) Acetone	4.436	43	21550	21.009	ug/l	95
18) Methyl Acetate	5.042	43	2836	1.110	ug/l #	51
20) Methylene Chloride	5.277	84	12348	5.967	ug/l #	73
25) 2-Butanone	7.494	43	11162	7.177	ug/l #	85
29) Tetrahydrofuran	7.835	42	351	0.352	ug/l #	29
31) Cyclohexane	8.230	56	4526	1.133	ug/l #	49
36) 1,1-Dichloropropene	8.224	75	14326	4.590	ug/l #	48
37) Ethyl Acetate	7.571	43	4628	1.325	ug/l #	83
38) Carbon Tetrachloride	8.230	117	16898	5.341	ug/l #	16
42) 1,2-Dichloroethane	8.700	62	1103	0.308	ug/l #	73
43) Isopropyl Acetate	8.694	43	279418	45.144	ug/l #	72
45) 1,2-Dichloropropane	9.741	63	1727	0.719	ug/l #	45
48) Methyl methacrylate	9.665	41	6212	2.106	ug/l #	37
49) 1,4-Dioxane	9.735	88	64	1.549	ug/l #	1
51) 4-Methyl-2-Pentanone	10.359	43	132465	37.668	ug/l #	44
52) Toluene	10.629	92	1956	0.350	ug/l	89
53) t-1,3-Dichloropropene	10.729	75	753	0.219	ug/l #	21
54) cis-1,3-Dichloropropene	10.359	75	50752	13.928	ug/l #	76
56) Ethyl methacrylate	10.982	69	1977	0.574	ug/l #	1
57) 1,3-Dichloropropane	11.206	76	6317	1.664	ug/l #	42
59) 2-Hexanone	11.171	43	151242	58.736	ug/l #	23
71) Bromoform	12.847	173	771	1.133	ug/l #	28
74) N-amyl acetate	12.465	43	3603	0.658	ug/l #	39
76) 1,2,3-Trichloropropane	12.847	75	71683	27.189	ug/l #	1
81) trans-1,4-Dichloro-2-b...	12.847	75	71683	63.594	ug/l #	12

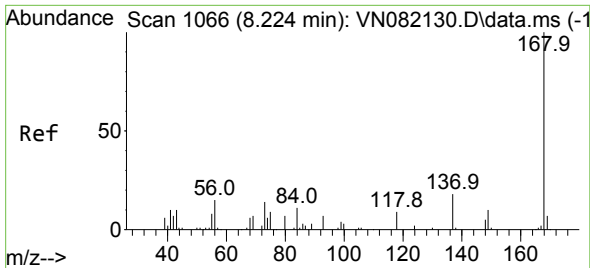
(#) = qualifier out of range (m) = manual integration (+) = signals summed

Data Path : Z:\voasrv\HPCHEM1\MSVOA\_N\Data\VN061324\  
 Data File : VN082559.D  
 Acq On : 13 Jun 2024 15:07  
 Operator : JC\MD  
 Sample : P2853-07  
 Misc : 5.0mL/MSVOA\_N/WATER  
 ALS Vial : 15 Sample Multiplier: 1

Instrument :  
 MSVOA\_N  
 ClientSampleId :  
 7

Quant Time: Jun 14 02:29:48 2024  
 Quant Method : Z:\voasrv\HPCHEM1\MSVOA\_N\methods\82N051524W.M  
 Quant Title : SW846 8260  
 QLast Update : Thu May 16 05:21:06 2024  
 Response via : Initial Calibration

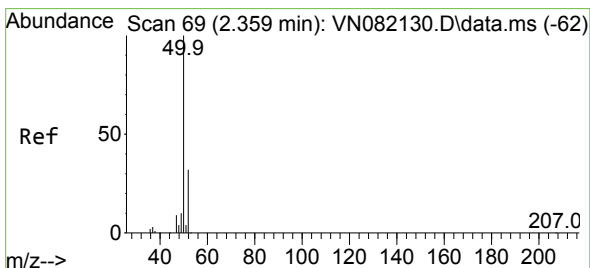
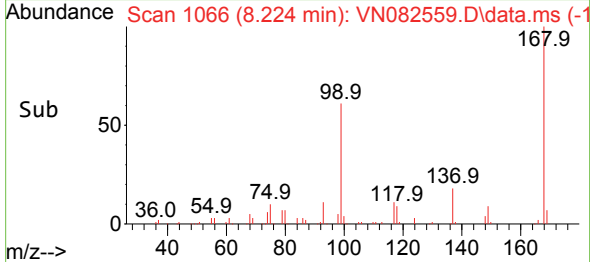
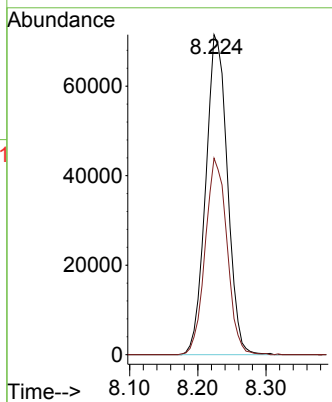
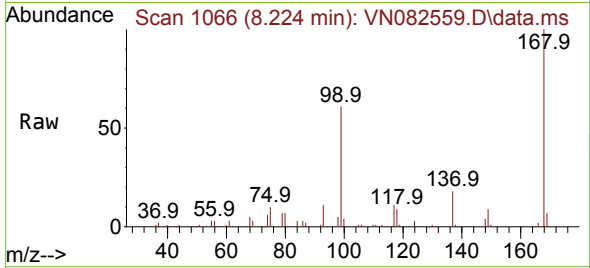




#1  
 Pentafluorobenzene  
 Concen: 50.000 ug/l  
 RT: 8.224 min Scan# 1066  
 Delta R.T. -0.000 min  
 Lab File: VN082559.D  
 Acq: 13 Jun 2024 15:07

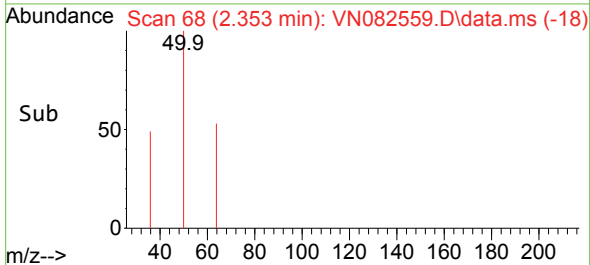
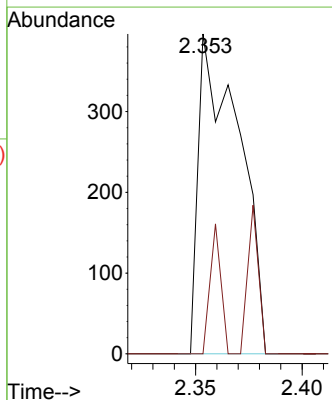
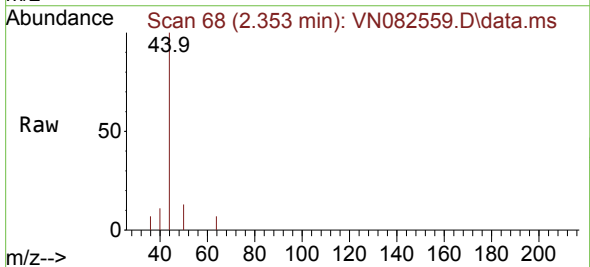
Instrument : MSVOA\_N  
 ClientSampleId : 7

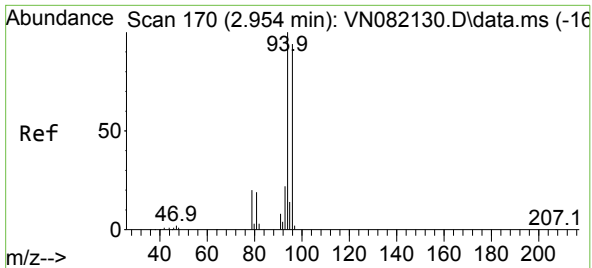
Tgt Ion:168 Resp: 158354  
 Ion Ratio Lower Upper  
 168 100  
 99 61.4 48.2 72.4



#3  
 Chloromethane  
 Concen: 0.203 ug/l  
 RT: 2.353 min Scan# 68  
 Delta R.T. -0.006 min  
 Lab File: VN082559.D  
 Acq: 13 Jun 2024 15:07

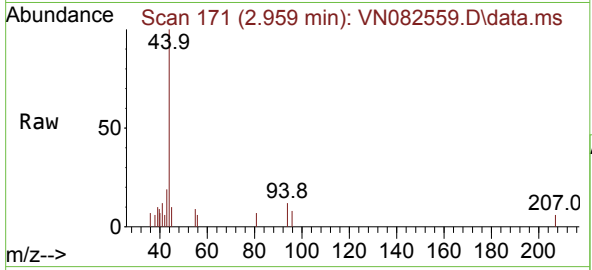
Tgt Ion: 50 Resp: 524  
 Ion Ratio Lower Upper  
 50 100  
 52 0.0 25.5 38.3#



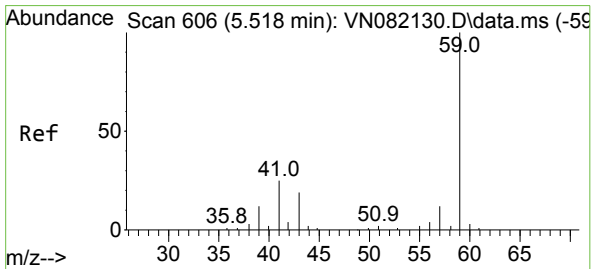
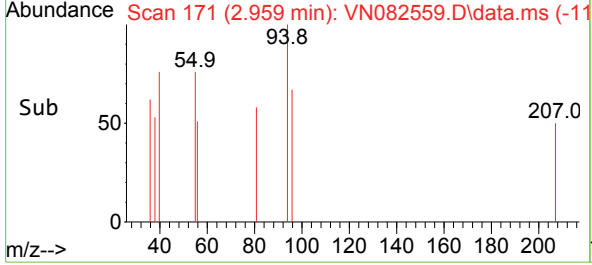
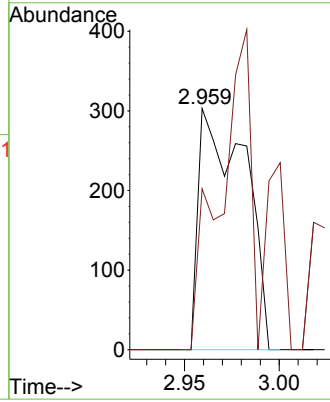


#5  
 Bromomethane  
 Concen: 0.367 ug/l  
 RT: 2.959 min Scan# 11  
 Delta R.T. 0.006 min  
 Lab File: VN082559.D  
 Acq: 13 Jun 2024 15:07

Instrument :  
 MSVOA\_N  
 ClientSampleId :  
 7

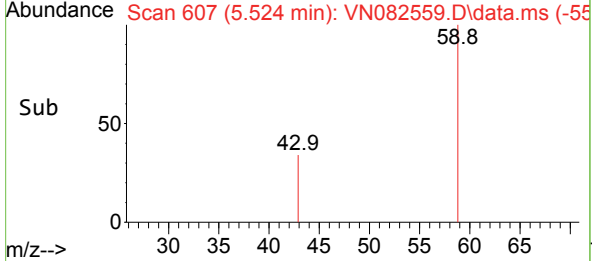
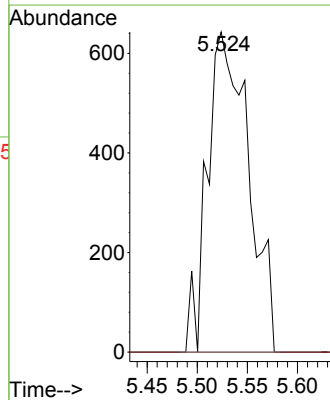
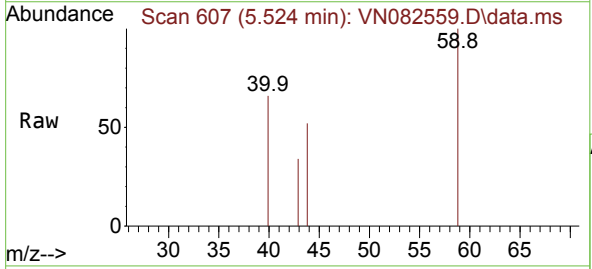


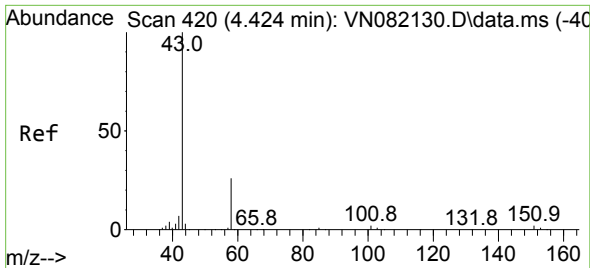
Tgt Ion: 94 Resp: 513  
 Ion Ratio Lower Upper  
 94 100  
 96 66.7 74.8 112.2#



#11  
 Tert butyl alcohol  
 Concen: 4.589 ug/l  
 RT: 5.524 min Scan# 607  
 Delta R.T. 0.006 min  
 Lab File: VN082559.D  
 Acq: 13 Jun 2024 15:07

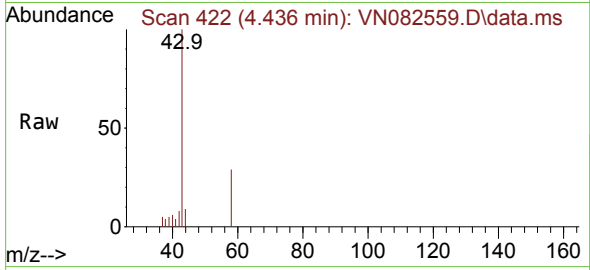
Tgt Ion: 59 Resp: 1842  
 Ion Ratio Lower Upper  
 59 100  
 57 0.0 8.9 13.3#



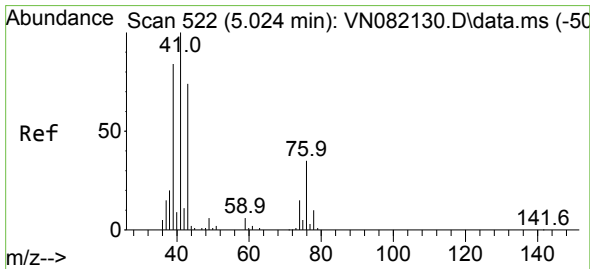
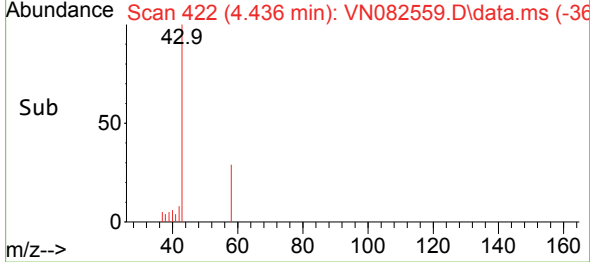
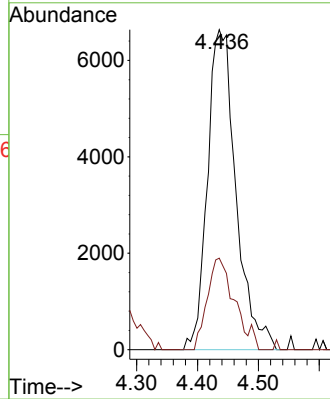


#16  
 Acetone  
 Concen: 21.009 ug/l  
 RT: 4.436 min Scan# 41  
 Delta R.T. 0.012 min  
 Lab File: VN082559.D  
 Acq: 13 Jun 2024 15:07

Instrument :  
 MSVOA\_N  
 ClientSampleId :  
 7

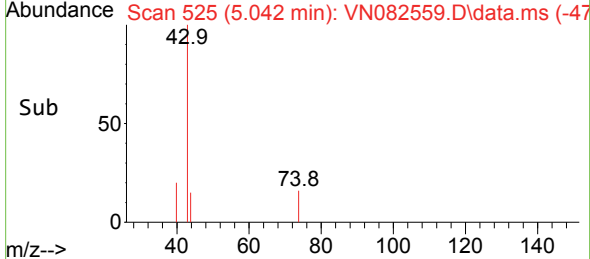
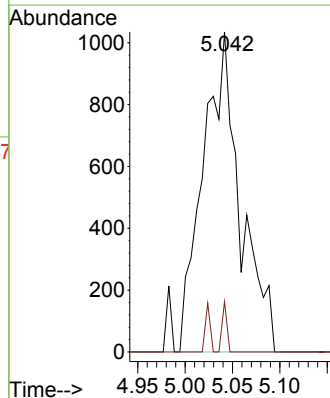
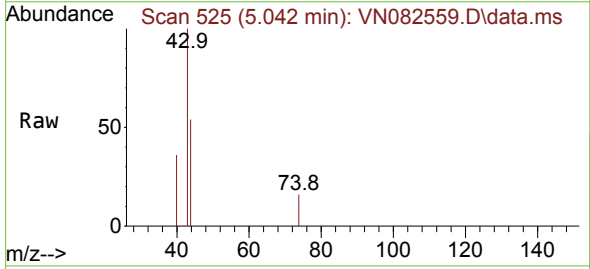


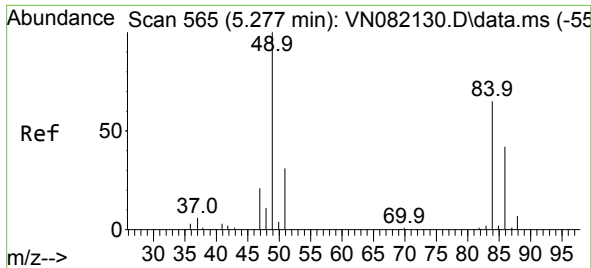
Tgt Ion: 43 Resp: 21550  
 Ion Ratio Lower Upper  
 43 100  
 58 28.6 25.2 37.8



#18  
 Methyl Acetate  
 Concen: 1.110 ug/l  
 RT: 5.042 min Scan# 525  
 Delta R.T. 0.018 min  
 Lab File: VN082559.D  
 Acq: 13 Jun 2024 15:07

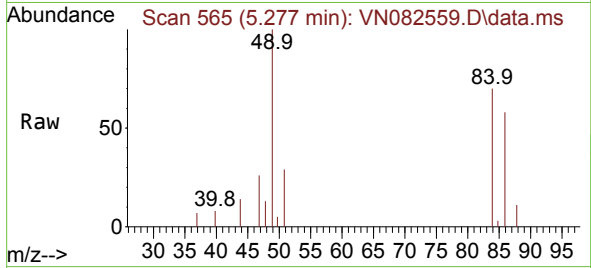
Tgt Ion: 43 Resp: 2836  
 Ion Ratio Lower Upper  
 43 100  
 74 2.0 22.2 33.2#



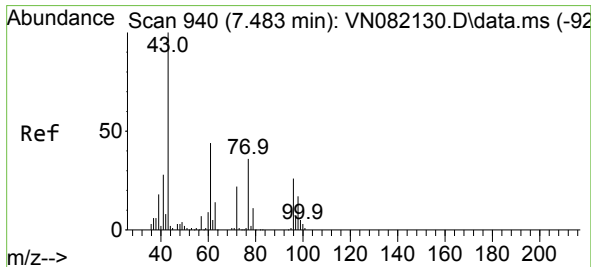
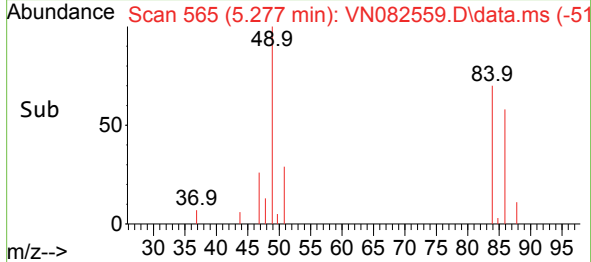
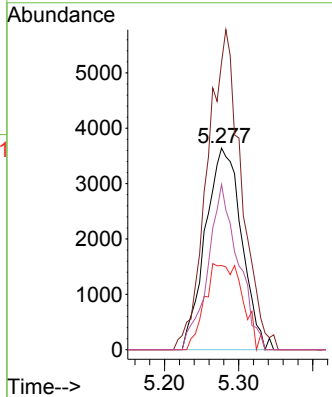


#20  
 Methylene Chloride  
 Concen: 5.967 ug/l  
 RT: 5.277 min Scan# 50  
 Delta R.T. -0.000 min  
 Lab File: VN082559.D  
 Acq: 13 Jun 2024 15:07

Instrument :  
 MSVOA\_N  
 ClientSampleId :  
 7

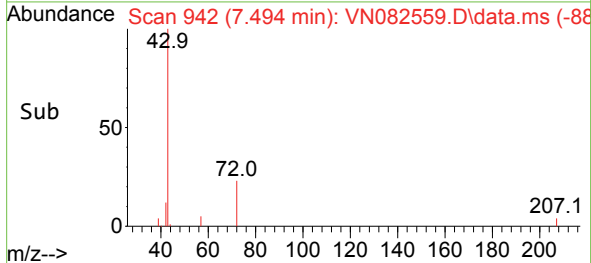
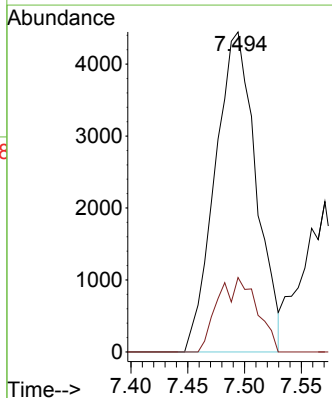
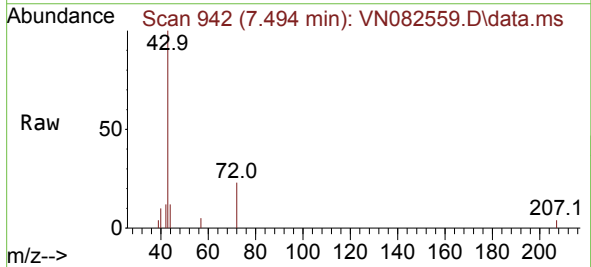


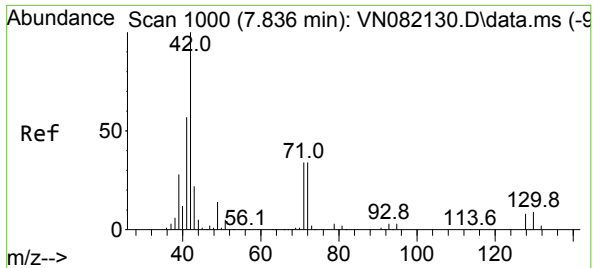
Tgt Ion	Resp	Lower	Upper
84	12348		
84	100		
49	142.5	84.9	127.3#
51	41.8	27.0	40.6#
86	82.0	52.3	78.5#



#25  
 2-Butanone  
 Concen: 7.177 ug/l  
 RT: 7.494 min Scan# 942  
 Delta R.T. 0.012 min  
 Lab File: VN082559.D  
 Acq: 13 Jun 2024 15:07

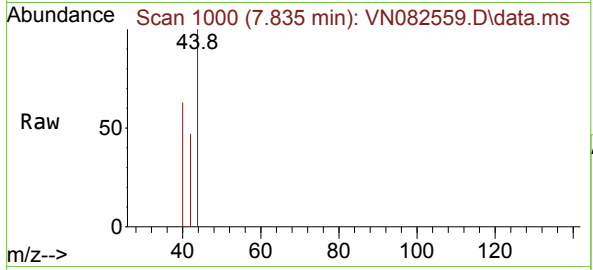
Tgt Ion	Resp	Lower	Upper
43	11162		
43	100		
72	23.3	25.3	37.9#



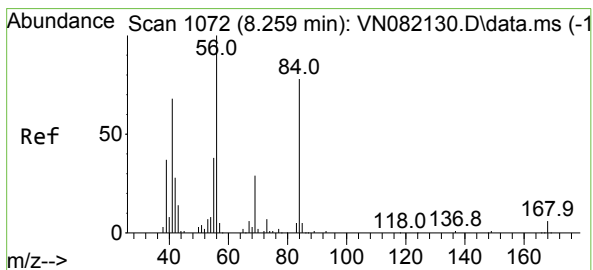
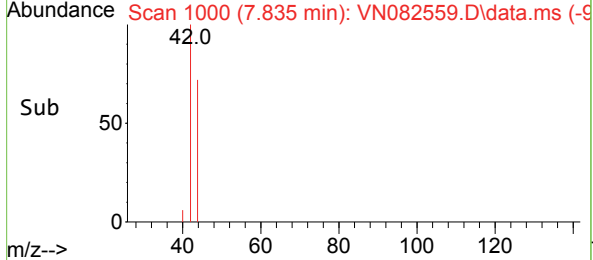
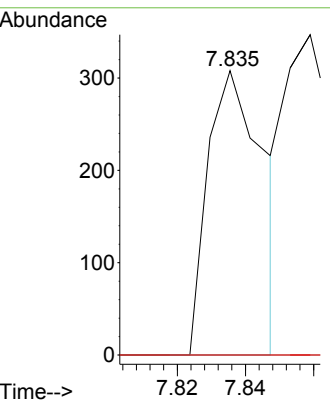


#29  
 Tetrahydrofuran  
 Concen: 0.352 ug/l  
 RT: 7.835 min Scan# 1067  
 Delta R.T. -0.001 min  
 Lab File: VN082559.D  
 Acq: 13 Jun 2024 15:07

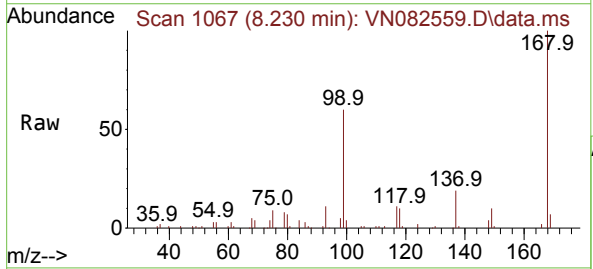
Instrument : MSVOA\_N  
 ClientSampleId : 7



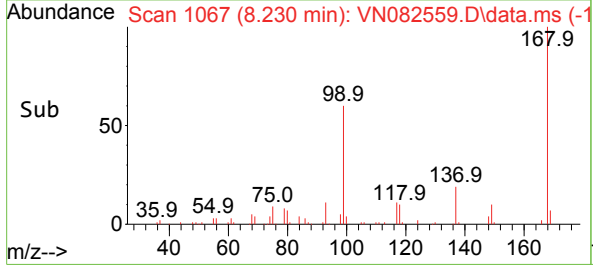
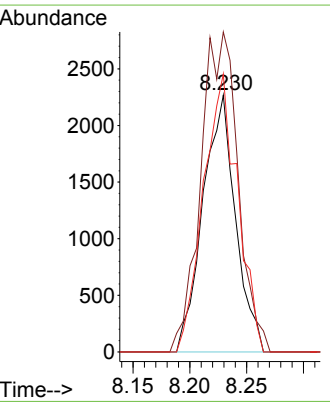
Tgt Ion	Resp	Ion Ratio	Lower	Upper
42	351	100		
72		0.0	39.3	58.9#
71		0.0	37.4	56.0#

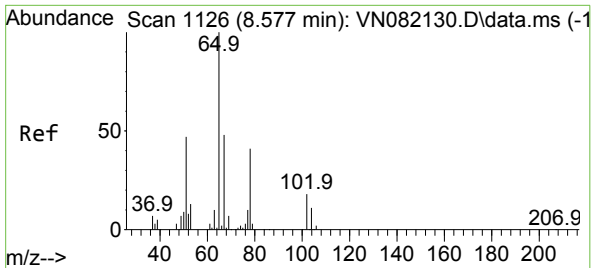


#31  
 Cyclohexane  
 Concen: 1.133 ug/l  
 RT: 8.230 min Scan# 1067  
 Delta R.T. -0.029 min  
 Lab File: VN082559.D  
 Acq: 13 Jun 2024 15:07



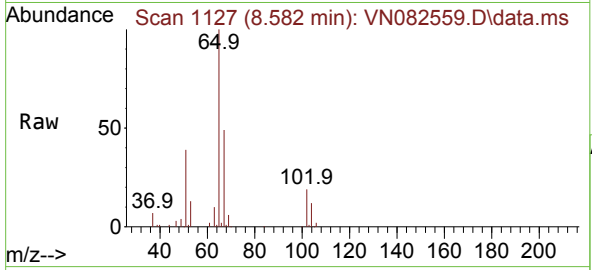
Tgt Ion	Resp	Ion Ratio	Lower	Upper
56	4526	100		
69		124.6	24.4	36.6#
84		108.2	77.0	115.4



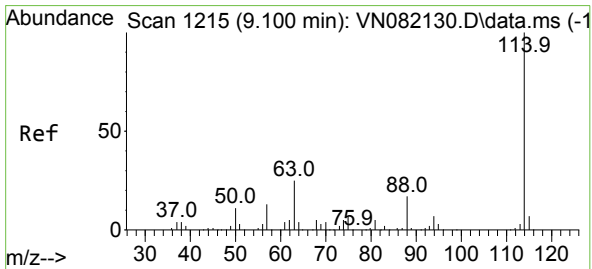
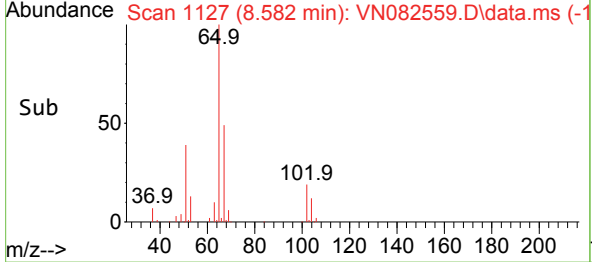
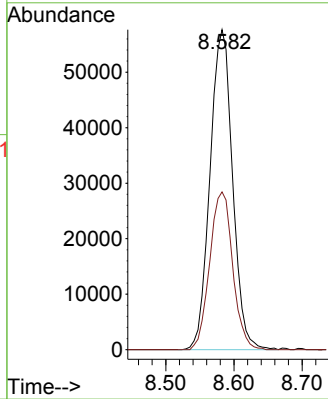


#33  
 1,2-Dichloroethane-d4  
 Concen: 53.028 ug/l  
 RT: 8.582 min Scan# 1127  
 Delta R.T. 0.006 min  
 Lab File: VN082559.D  
 Acq: 13 Jun 2024 15:07

Instrument :  
 MSVOA\_N  
 ClientSampleId :  
 7

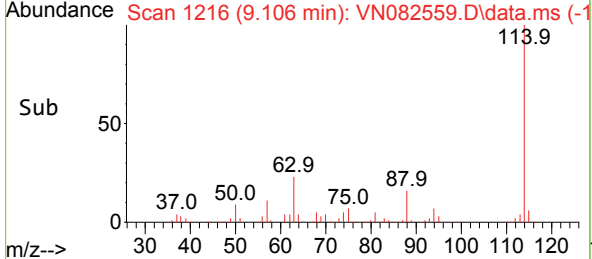
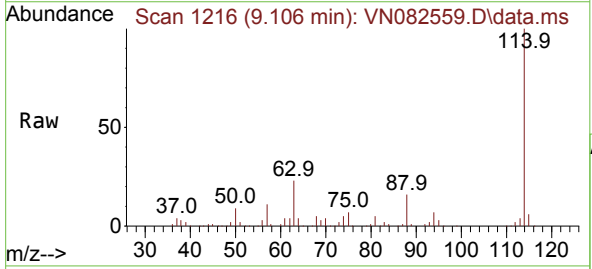
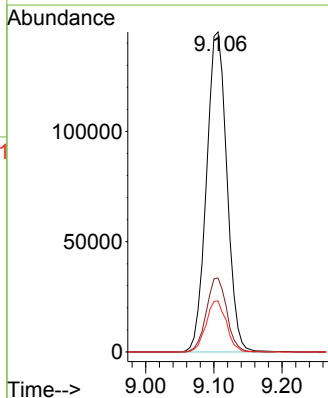


Tgt Ion: 65 Resp: 132593  
 Ion Ratio Lower Upper  
 65 100  
 67 50.3 0.0 103.0

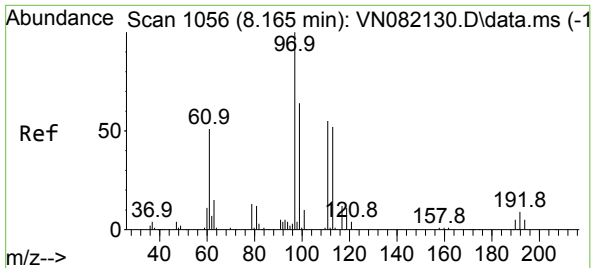


#34  
 1,4-Difluorobenzene  
 Concen: 50.000 ug/l  
 RT: 9.106 min Scan# 1216  
 Delta R.T. 0.006 min  
 Lab File: VN082559.D  
 Acq: 13 Jun 2024 15:07

Tgt Ion: 114 Resp: 302533  
 Ion Ratio Lower Upper  
 114 100  
 63 23.1 0.0 41.0  
 88 16.0 0.0 31.4

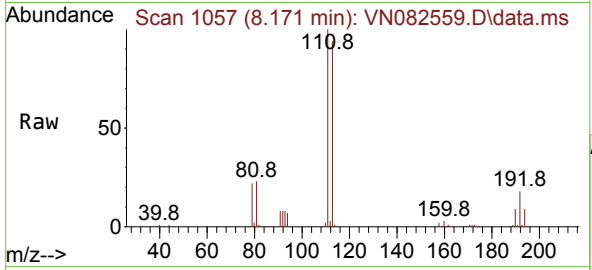




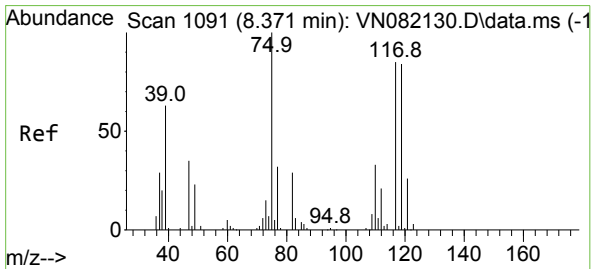
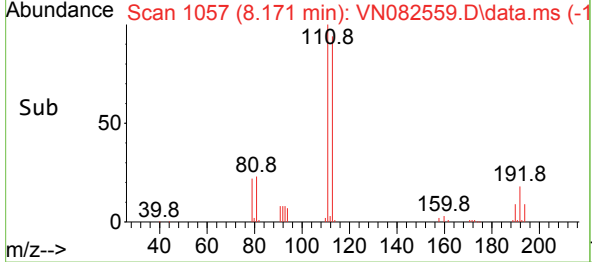
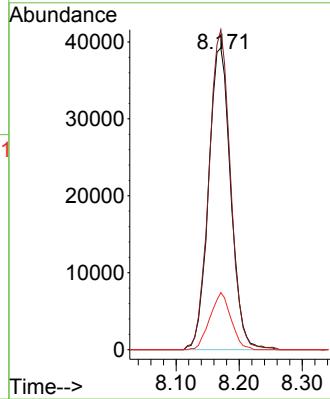


#35  
 Dibromofluoromethane  
 Concen: 51.491 ug/l  
 RT: 8.171 min Scan# 1066  
 Delta R.T. 0.006 min  
 Lab File: VN082559.D  
 Acq: 13 Jun 2024 15:07

Instrument : MSVOA\_N  
 ClientSampleId : 7

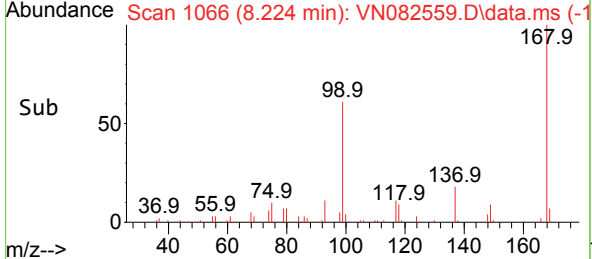
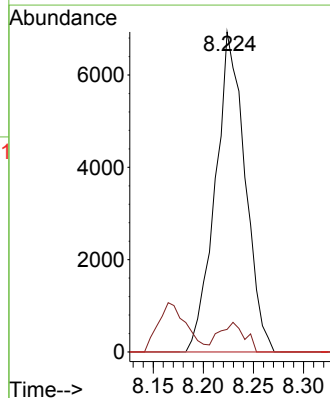
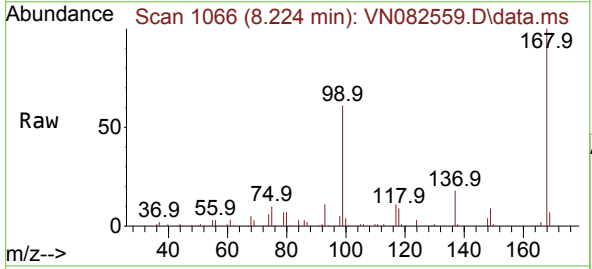


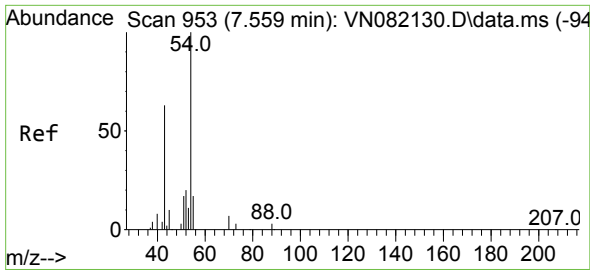
Tgt Ion:113 Resp: 95827  
 Ion Ratio Lower Upper  
 113 100  
 111 103.3 83.4 125.2  
 192 18.0 14.0 21.0



#36  
 1,1-Dichloropropene  
 Concen: 4.590 ug/l  
 RT: 8.224 min Scan# 1066  
 Delta R.T. -0.147 min  
 Lab File: VN082559.D  
 Acq: 13 Jun 2024 15:07

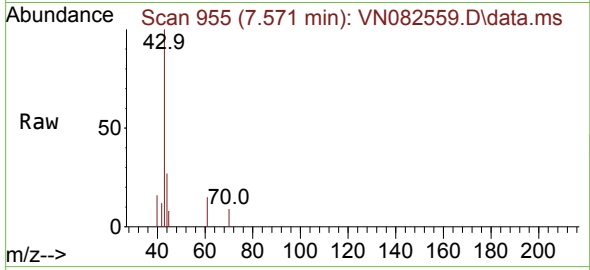
Tgt Ion: 75 Resp: 14326  
 Ion Ratio Lower Upper  
 75 100  
 110 7.8 17.8 53.5#  
 77 0.0 25.0 37.4#



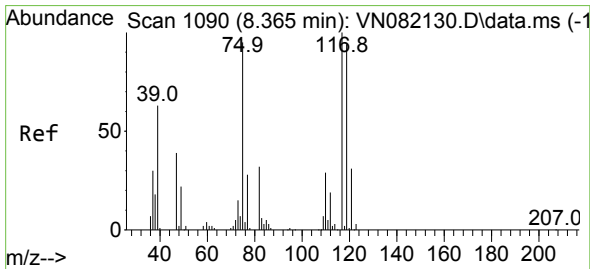
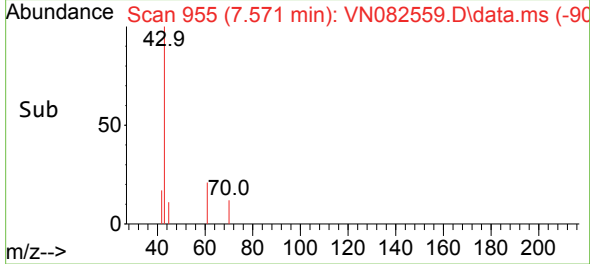
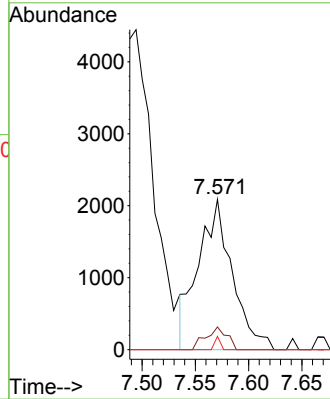


#37  
 Ethyl Acetate  
 Concen: 1.325 ug/l  
 RT: 7.571 min Scan# 91  
 Delta R.T. 0.012 min  
 Lab File: VN082559.D  
 Acq: 13 Jun 2024 15:07

Instrument :  
 MSVOA\_N  
 ClientSampleId :  
 7

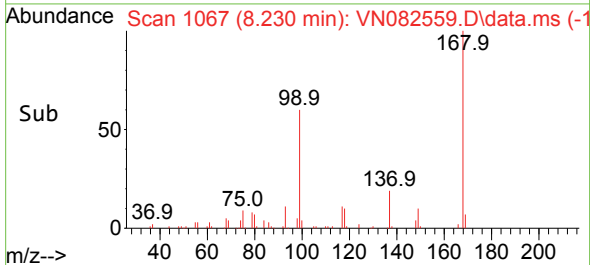
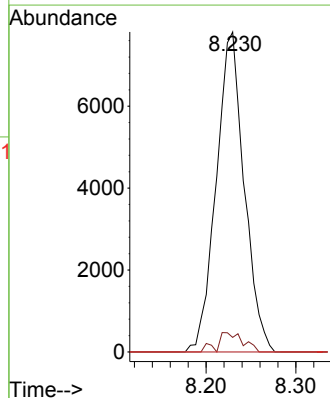
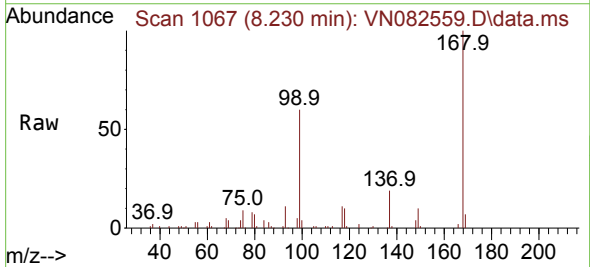


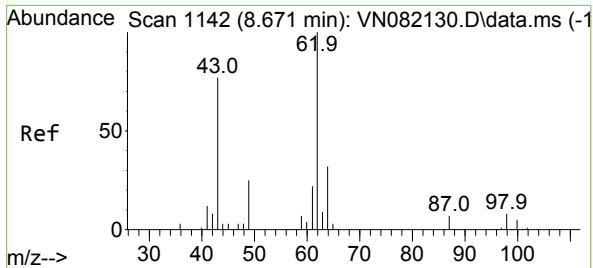
Tgt Ion	Resp	Lower	Upper
43	4628		
43	100		
61	9.5	11.3	16.9#
70	1.4	8.7	13.1#



#38  
 Carbon Tetrachloride  
 Concen: 5.341 ug/l  
 RT: 8.230 min Scan# 1067  
 Delta R.T. -0.135 min  
 Lab File: VN082559.D  
 Acq: 13 Jun 2024 15:07

Tgt Ion	Resp	Lower	Upper
117	16898		
117	100		
119	4.5	76.5	114.7#
121	0.0	23.9	35.9#

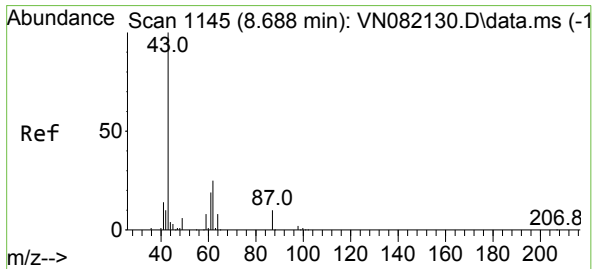
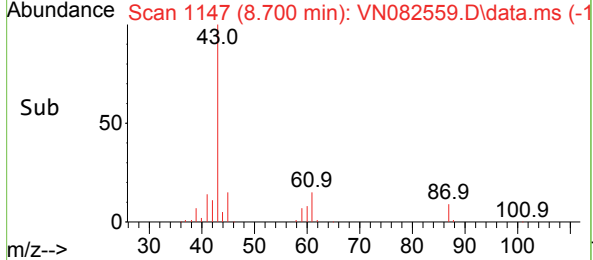
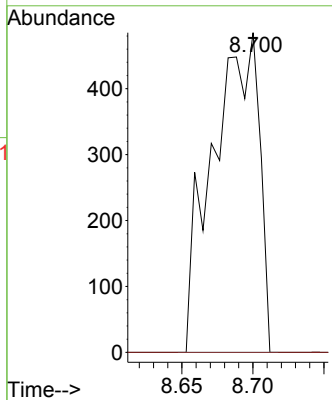
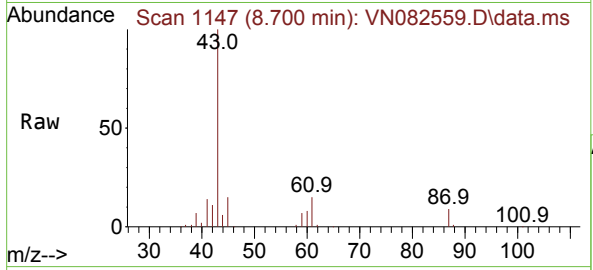




#42  
 1,2-Dichloroethane  
 Concen: 0.308 ug/l  
 RT: 8.700 min Scan# 1147  
 Delta R.T. 0.029 min  
 Lab File: VN082559.D  
 Acq: 13 Jun 2024 15:07

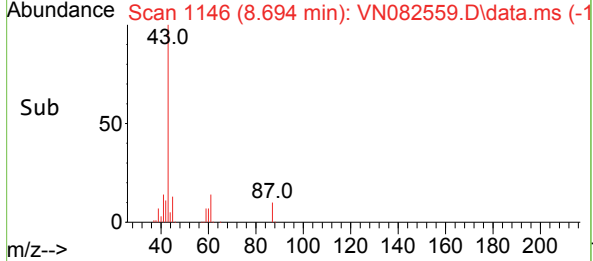
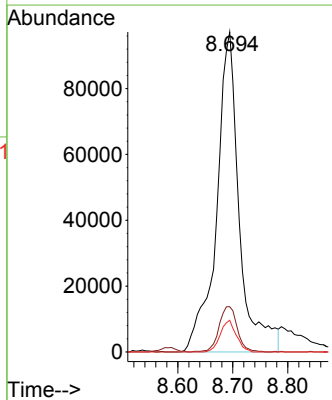
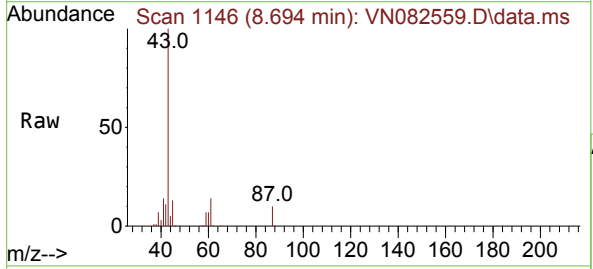
Instrument : MSVOA\_N  
 ClientSampleId : 7

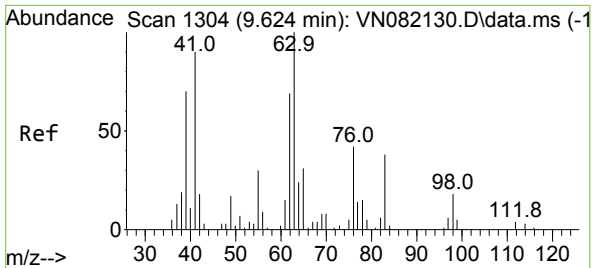
Tgt Ion	Resp	Ion Ratio	Lower	Upper
62	1103	100		
98		0.0	0.0	19.6



#43  
 Isopropyl Acetate  
 Concen: 45.144 ug/l  
 RT: 8.694 min Scan# 1146  
 Delta R.T. 0.006 min  
 Lab File: VN082559.D  
 Acq: 13 Jun 2024 15:07

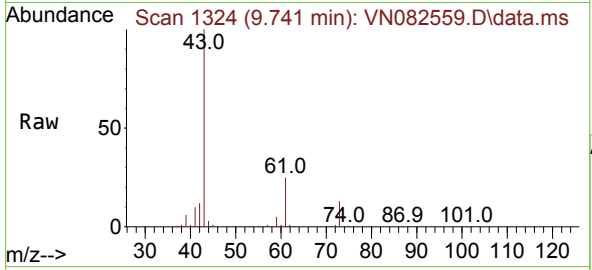
Tgt Ion	Resp	Ion Ratio	Lower	Upper
43	279418	100		
61		11.4	22.8	34.2#
87		6.9	12.0	18.0#



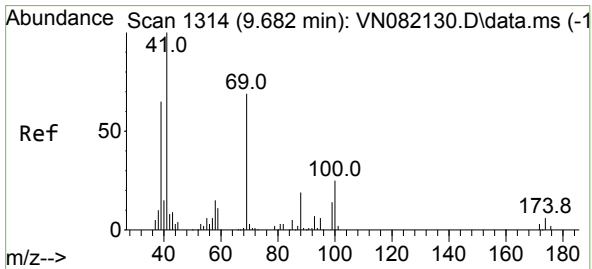
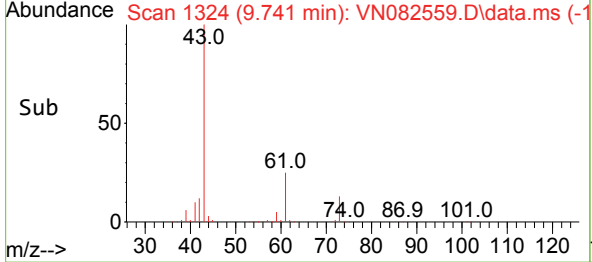
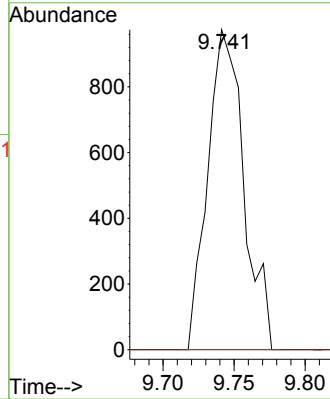


#45  
 1,2-Dichloropropane  
 Concen: 0.719 ug/l  
 RT: 9.741 min Scan# 1117  
 Delta R.T. 0.118 min  
 Lab File: VN082559.D  
 Acq: 13 Jun 2024 15:07

Instrument : MSVOA\_N  
 ClientSampleId : 7

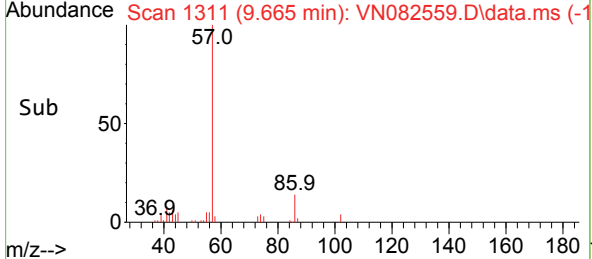
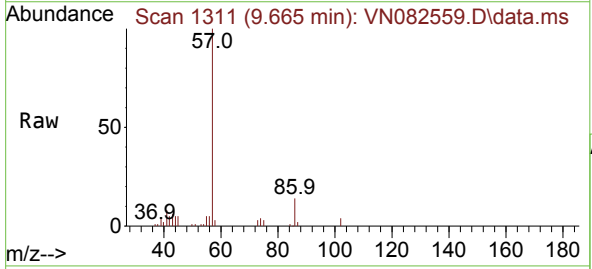
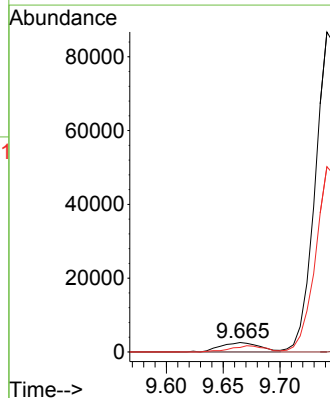


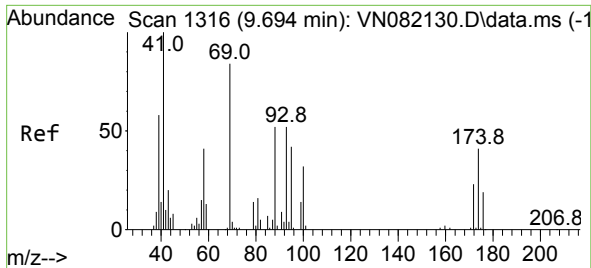
Tgt Ion: 63 Resp: 1727  
 Ion Ratio Lower Upper  
 63 100  
 65 0.0 24.1 36.1#



#48  
 Methyl methacrylate  
 Concen: 2.106 ug/l  
 RT: 9.665 min Scan# 1311  
 Delta R.T. -0.018 min  
 Lab File: VN082559.D  
 Acq: 13 Jun 2024 15:07

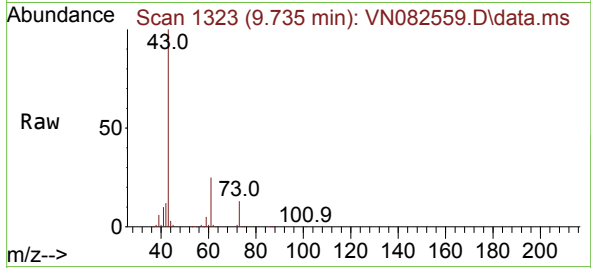
Tgt Ion: 41 Resp: 6212  
 Ion Ratio Lower Upper  
 41 100  
 69 0.0 77.9 116.9#  
 39 56.8 50.9 76.3



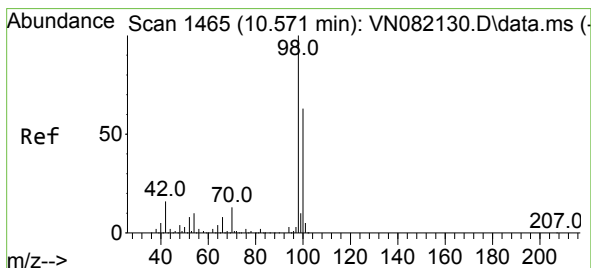
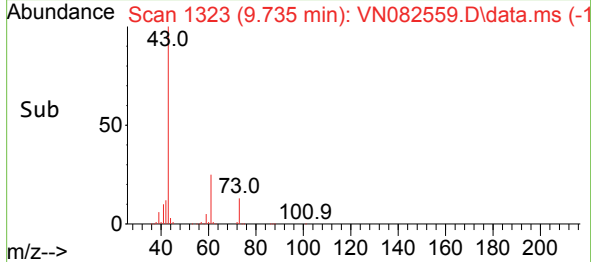
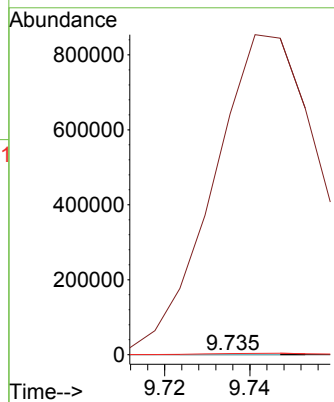


#49  
 1,4-Dioxane  
 Concen: 1.549 ug/l  
 RT: 9.735 min Scan# 11  
 Delta R.T. 0.041 min  
 Lab File: VN082559.D  
 Acq: 13 Jun 2024 15:07

Instrument :  
 MSVOA\_N  
 ClientSampleId :  
 7

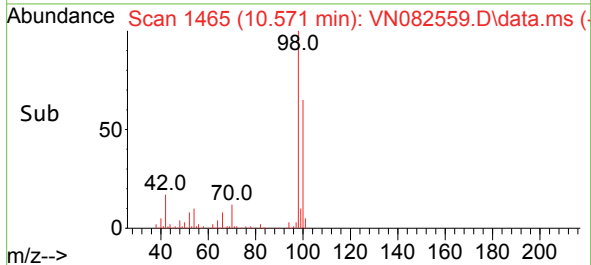
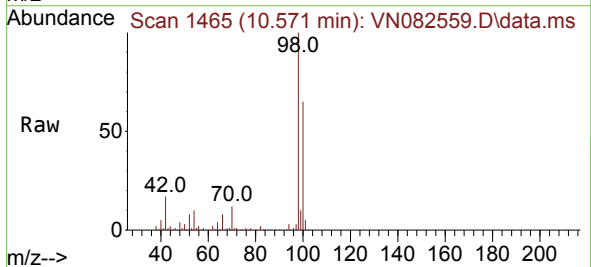
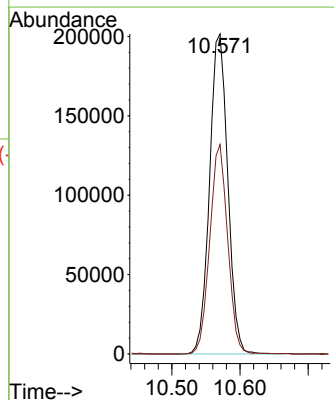


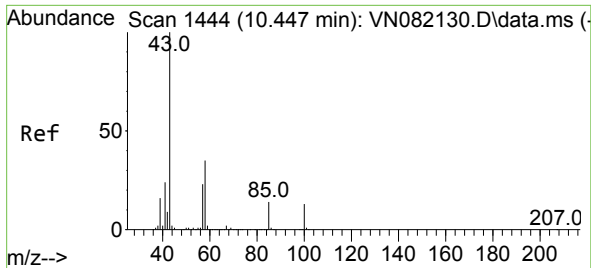
Tgt Ion: 88 Resp: 64  
 Ion Ratio Lower Upper  
 88 100  
 43 2416654.7 19.0 28.6#  
 58 11446.9 50.6 76.0#



#50  
 Toluene-d8  
 Concen: 52.538 ug/l  
 RT: 10.571 min Scan# 1465  
 Delta R.T. -0.000 min  
 Lab File: VN082559.D  
 Acq: 13 Jun 2024 15:07

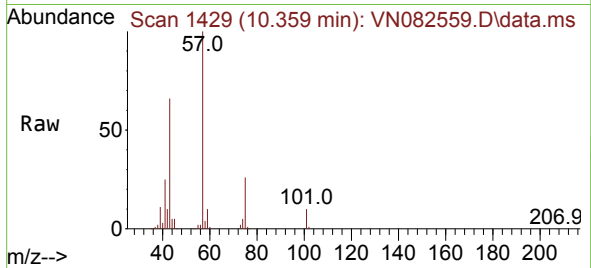
Tgt Ion: 98 Resp: 374867  
 Ion Ratio Lower Upper  
 98 100  
 100 64.5 51.8 77.6



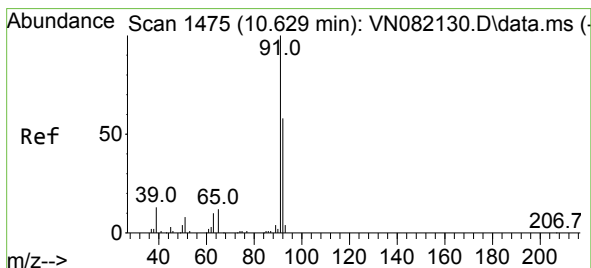
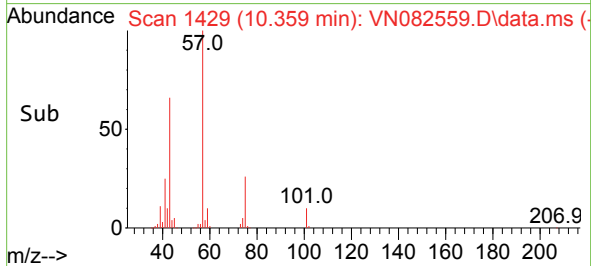
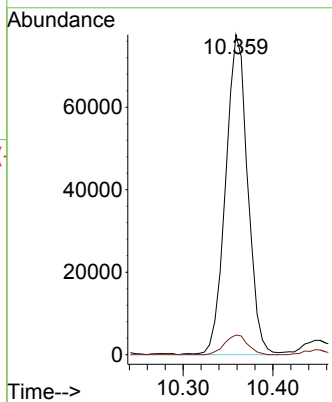


#51  
 4-Methyl-2-Pentanone  
 Concen: 37.668 ug/l  
 RT: 10.359 min Scan# 1444  
 Delta R.T. -0.088 min  
 Lab File: VN082559.D  
 Acq: 13 Jun 2024 15:07

Instrument : MSVOA\_N  
 ClientSampleId : 7

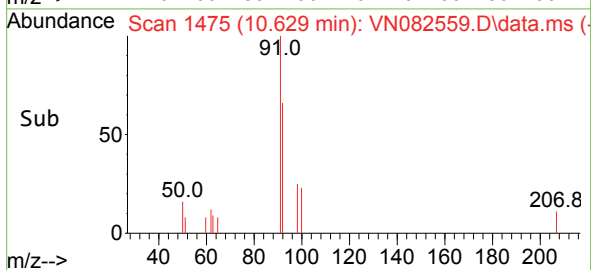
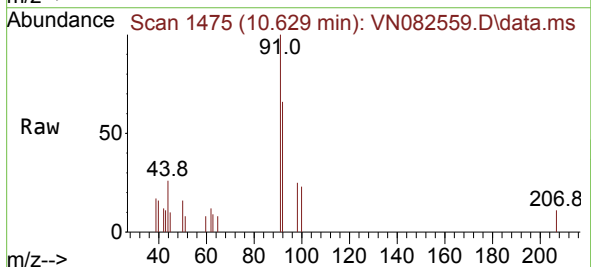
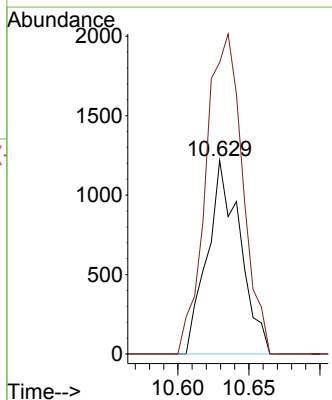


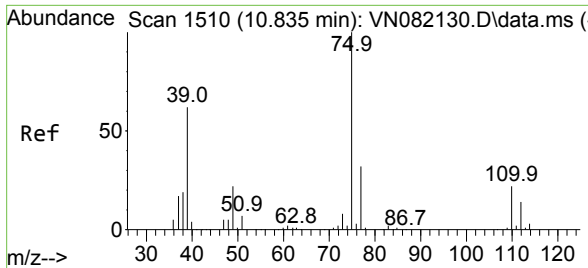
Tgt Ion: 43 Resp: 132465  
 Ion Ratio Lower Upper  
 43 100  
 58 6.4 33.2 49.8#



#52  
 Toluene  
 Concen: 0.350 ug/l  
 RT: 10.629 min Scan# 1475  
 Delta R.T. -0.000 min  
 Lab File: VN082559.D  
 Acq: 13 Jun 2024 15:07

Tgt Ion: 92 Resp: 1956  
 Ion Ratio Lower Upper  
 92 100  
 91 185.8 136.7 205.1

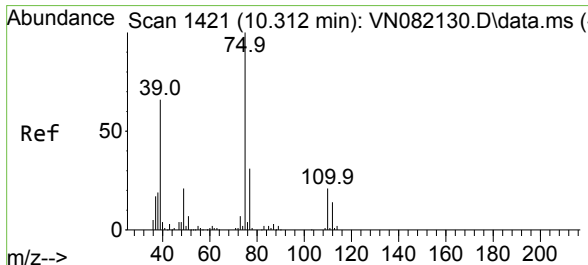
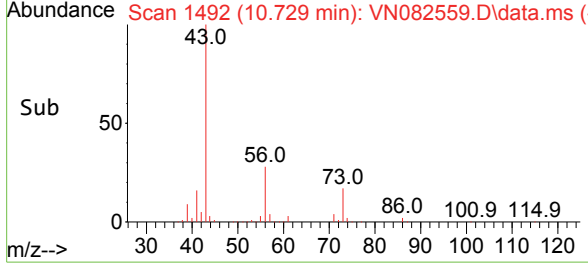
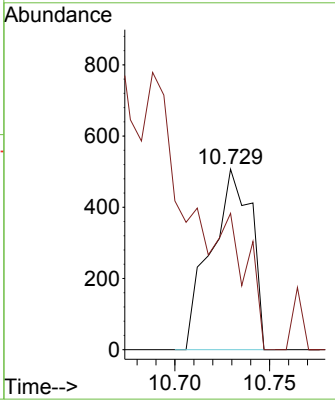
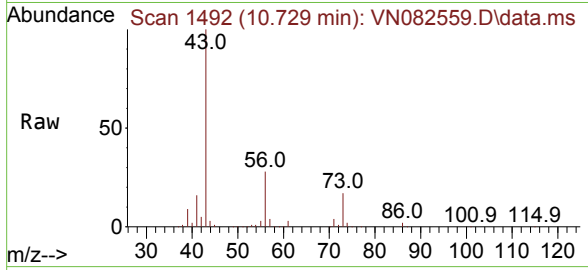




#53  
 t-1,3-Dichloropropene  
 Concen: 0.219 ug/l  
 RT: 10.729 min Scan# 1492  
 Delta R.T. -0.106 min  
 Lab File: VN082559.D  
 Acq: 13 Jun 2024 15:07

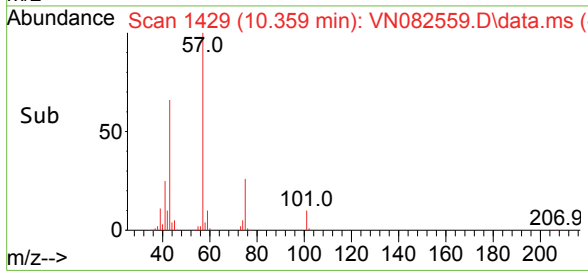
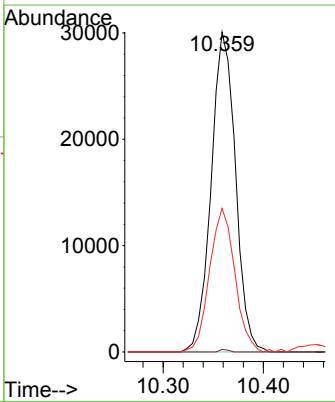
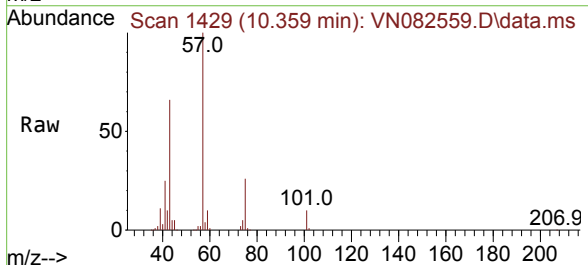
Instrument : MSVOA\_N  
 ClientSampleId : 7

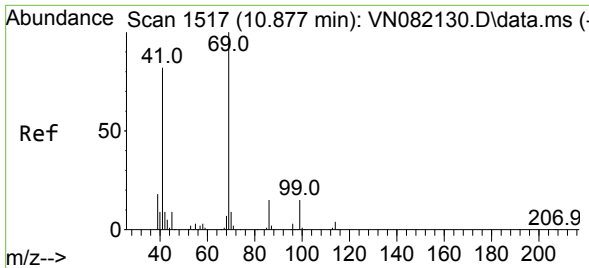
Tgt Ion: 75 Resp: 753  
 Ion Ratio Lower Upper  
 75 100  
 77 75.5 25.4 38.0#



#54  
 cis-1,3-Dichloropropene  
 Concen: 13.928 ug/l  
 RT: 10.359 min Scan# 1429  
 Delta R.T. 0.047 min  
 Lab File: VN082559.D  
 Acq: 13 Jun 2024 15:07

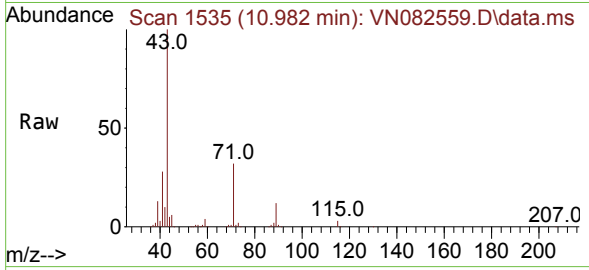
Tgt Ion: 75 Resp: 50752  
 Ion Ratio Lower Upper  
 75 100  
 77 0.8 25.0 37.4#  
 39 44.9 34.8 52.2



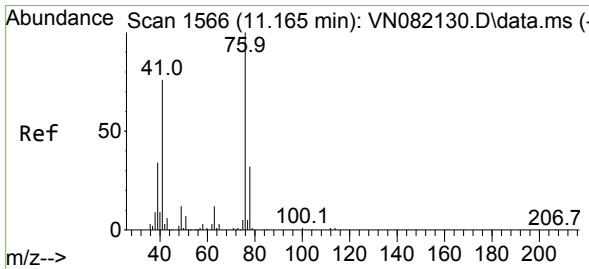
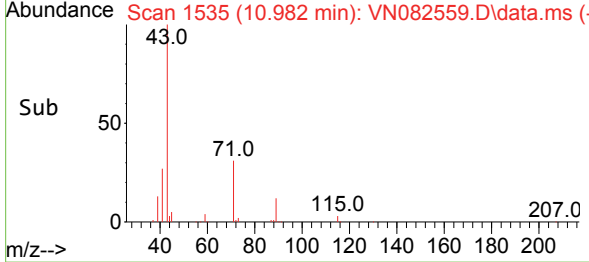
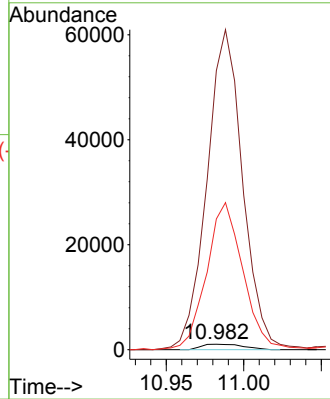


#56  
 Ethyl methacrylate  
 Concen: 0.574 ug/l  
 RT: 10.982 min Scan# 117  
 Delta R.T. 0.106 min  
 Lab File: VN082559.D  
 Acq: 13 Jun 2024 15:07

Instrument :  
 MSVOA\_N  
 ClientSampleId :

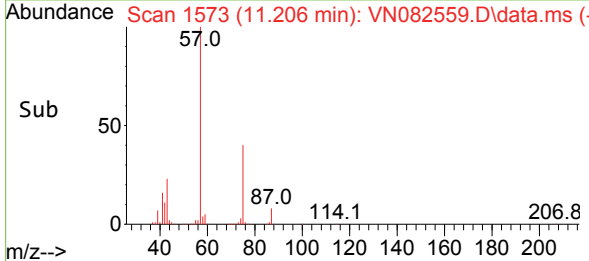
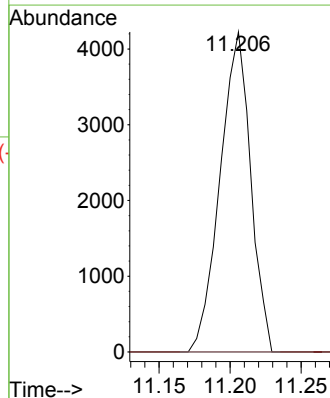
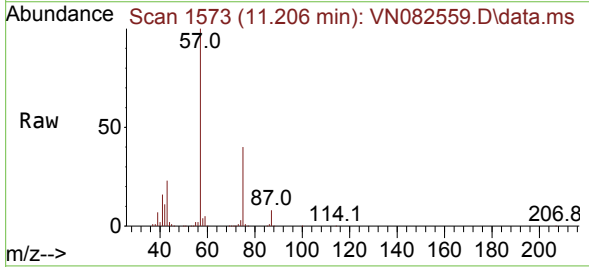


Tgt Ion: 69 Resp: 1977  
 Ion Ratio Lower Upper  
 69 100  
 41 4962.4 46.6 70.0#  
 39 2326.0 26.5 39.7#

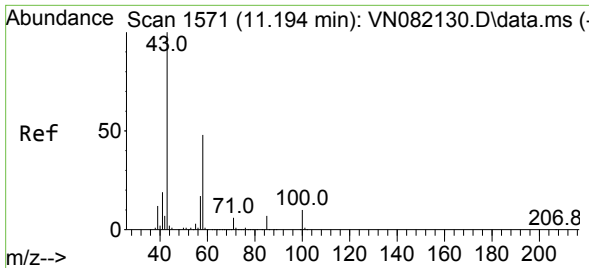


#57  
 1,3-Dichloropropane  
 Concen: 1.664 ug/l  
 RT: 11.206 min Scan# 1573  
 Delta R.T. 0.041 min  
 Lab File: VN082559.D  
 Acq: 13 Jun 2024 15:07

Tgt Ion: 76 Resp: 6317  
 Ion Ratio Lower Upper  
 76 100  
 78 0.0 25.8 38.6#

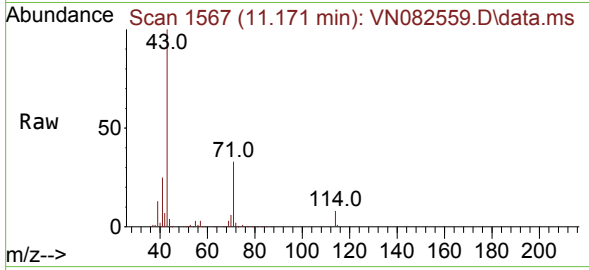




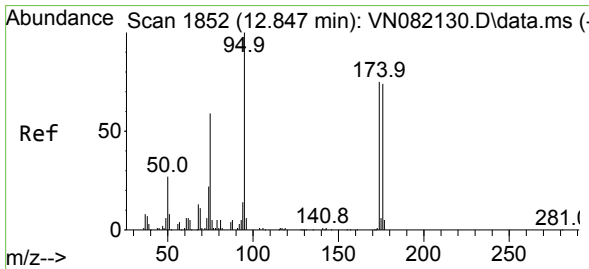
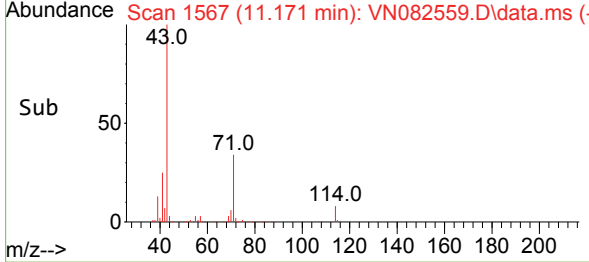
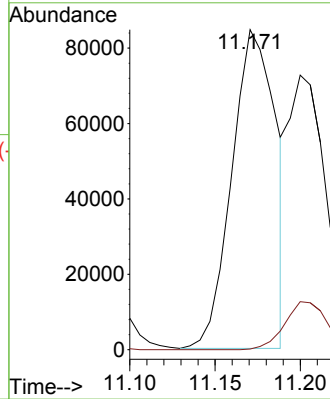


#59  
 2-Hexanone  
 Concen: 58.736 ug/l  
 RT: 11.171 min Scan# 1117  
 Delta R.T. -0.024 min  
 Lab File: VN082559.D  
 Acq: 13 Jun 2024 15:07

Instrument : MSVOA\_N  
 ClientSampleId : 7

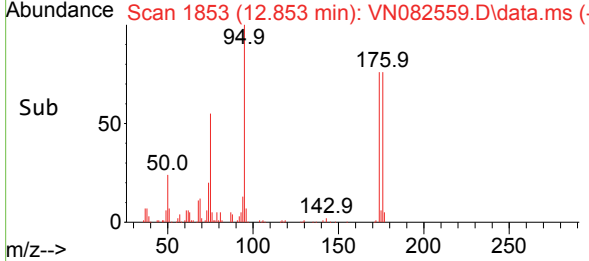
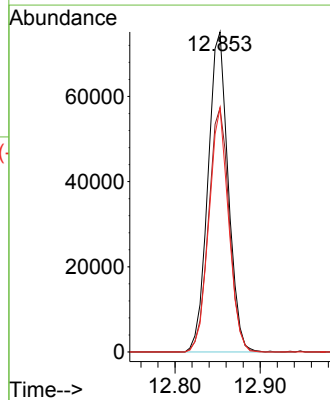
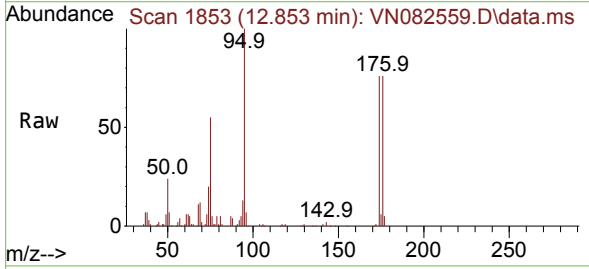


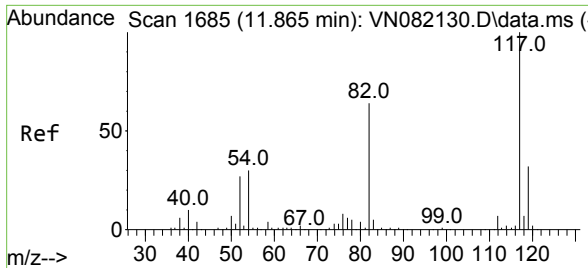
Tgt Ion: 43 Resp: 151242  
 Ion Ratio Lower Upper  
 43 100  
 58 0.0 28.3 84.9#



#62  
 4-Bromofluorobenzene  
 Concen: 48.527 ug/l  
 RT: 12.853 min Scan# 1853  
 Delta R.T. 0.006 min  
 Lab File: VN082559.D  
 Acq: 13 Jun 2024 15:07

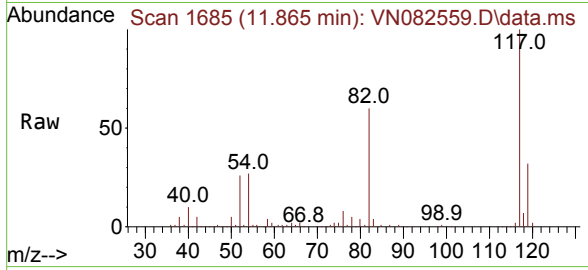
Tgt Ion: 95 Resp: 123582  
 Ion Ratio Lower Upper  
 95 100  
 174 78.0 0.0 160.6  
 176 74.2 0.0 152.8





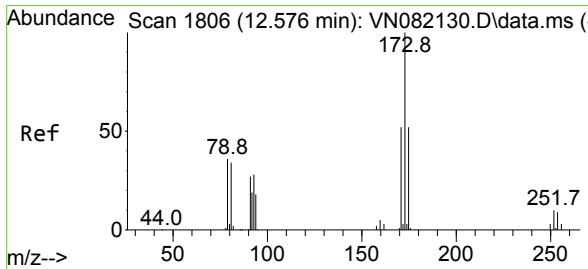
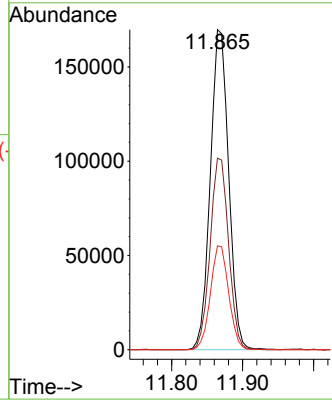
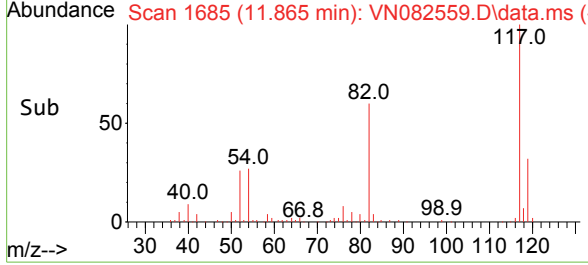
#63  
 Chlorobenzene-d5  
 Concen: 50.000 ug/l  
 RT: 11.865 min Scan# 117  
 Delta R.T. -0.000 min  
 Lab File: VN082559.D  
 Acq: 13 Jun 2024 15:07

Instrument : MSVOA\_N  
 ClientSampleId : 7

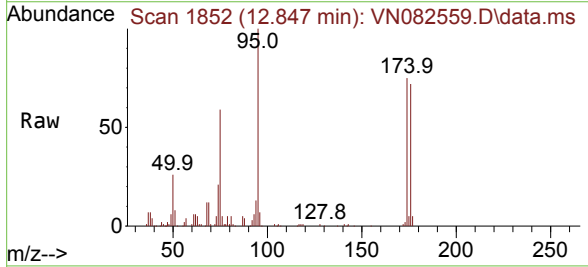


Tgt Ion:117 Resp: 304227

Ion	Ratio	Lower	Upper
117	100		
82	59.8	44.6	66.8
119	32.4	25.9	38.9

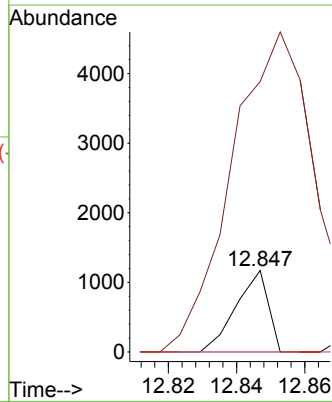
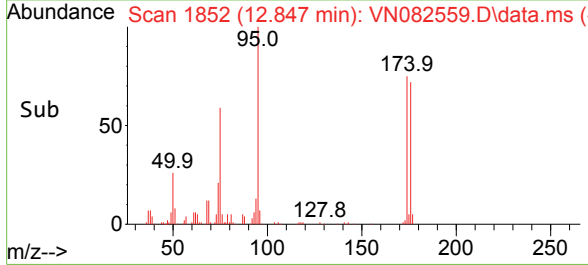


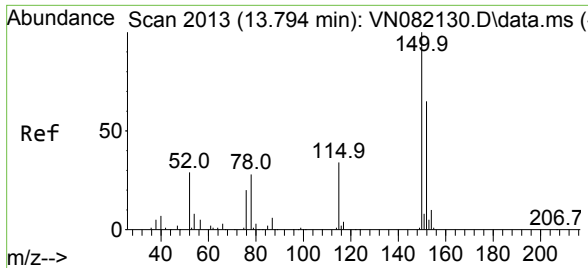
#71  
 Bromoform  
 Concen: 1.133 ug/l  
 RT: 12.847 min Scan# 1852  
 Delta R.T. 0.271 min  
 Lab File: VN082559.D  
 Acq: 13 Jun 2024 15:07



Tgt Ion:173 Resp: 771

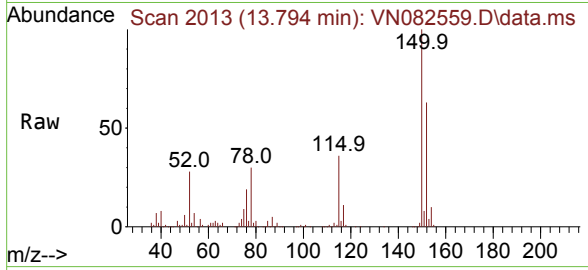
Ion	Ratio	Lower	Upper
173	100		
175	0.0	24.6	74.0#
254	0.0	0.0	0.0



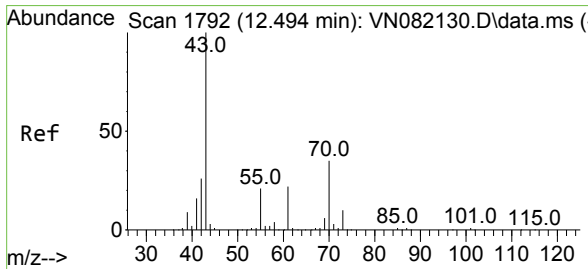
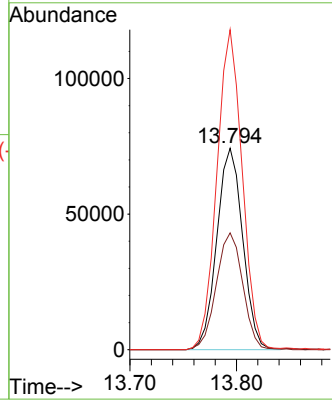
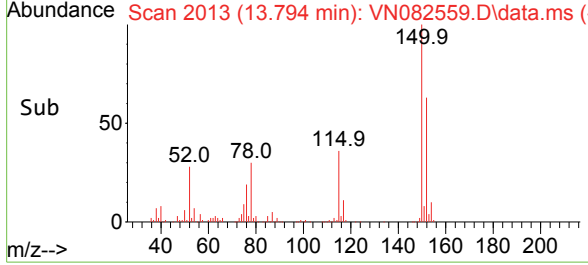


#72  
 1,4-Dichlorobenzene-d4  
 Concen: 50.000 ug/l  
 RT: 13.794 min Scan# 2013  
 Delta R.T. -0.000 min  
 Lab File: VN082559.D  
 Acq: 13 Jun 2024 15:07

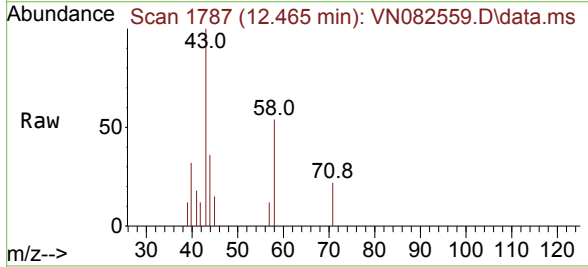
Instrument : MSVOA\_N  
 ClientSampleId : 7



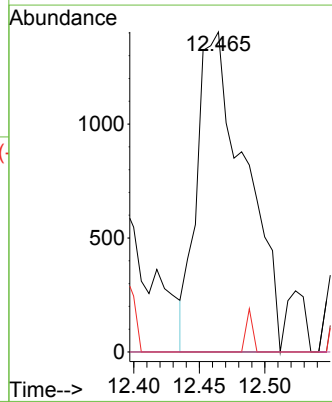
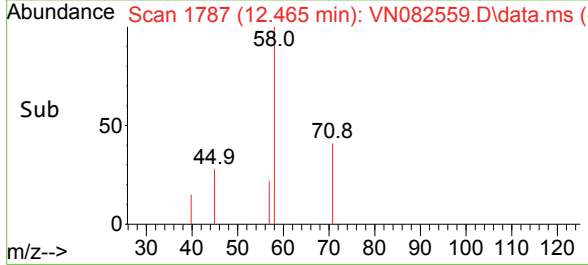
Tgt Ion:152 Resp: 125262  
 Ion Ratio Lower Upper  
 152 100  
 115 59.5 30.4 91.3  
 150 156.0 0.0 353.2

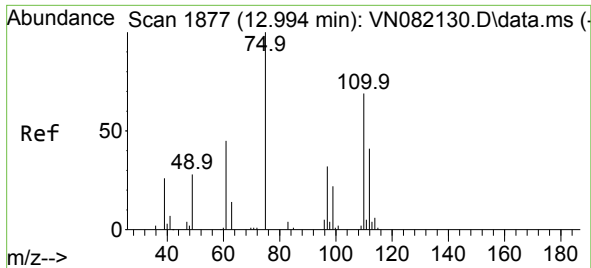


#74  
 N-amy1 acetate  
 Concen: 0.658 ug/l  
 RT: 12.465 min Scan# 1787  
 Delta R.T. -0.029 min  
 Lab File: VN082559.D  
 Acq: 13 Jun 2024 15:07



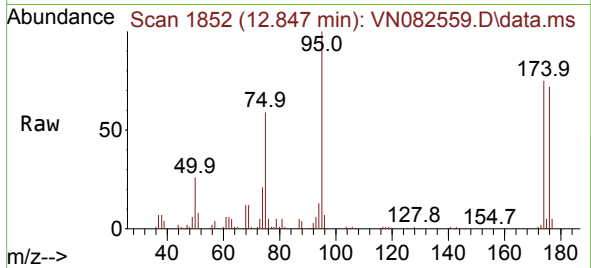
Tgt Ion: 43 Resp: 3603  
 Ion Ratio Lower Upper  
 43 100  
 70 0.0 39.0 58.4#  
 55 0.0 21.3 31.9#  
 61 0.0 20.5 30.7#



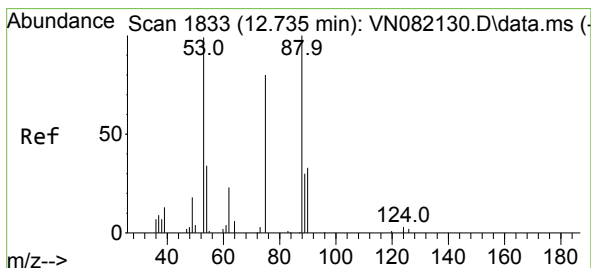
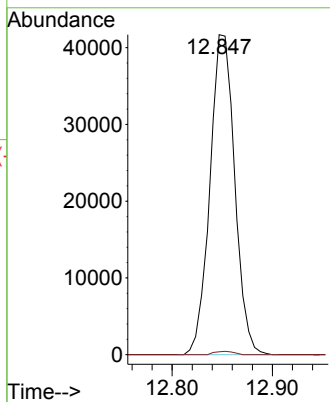
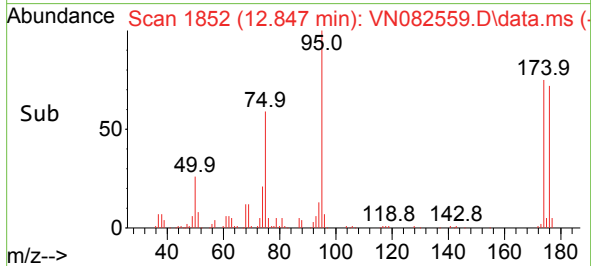


#76  
 1,2,3-Trichloropropane  
 Concen: 27.189 ug/l  
 RT: 12.847 min Scan# 1852  
 Delta R.T. -0.147 min  
 Lab File: VN082559.D  
 Acq: 13 Jun 2024 15:07

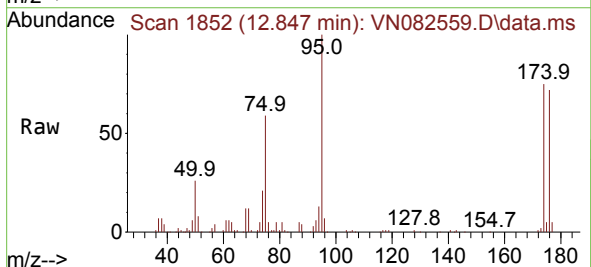
Instrument : MSVOA\_N  
 ClientSampleId : 7



Tgt Ion: 75 Resp: 71683  
 Ion Ratio Lower Upper  
 75 100  
 77 0.8 90.5 271.3#



#81  
 trans-1,4-Dichloro-2-butene  
 Concen: 63.594 ug/l  
 RT: 12.847 min Scan# 1852  
 Delta R.T. 0.112 min  
 Lab File: VN082559.D  
 Acq: 13 Jun 2024 15:07



Tgt Ion: 75 Resp: 71683  
 Ion Ratio Lower Upper  
 75 100  
 53 0.1 72.9 109.3#  
 89 0.0 39.1 58.7#

