

Data Path : Z:\voasrv\HPCHEM1\MSVOA_N\Data\VN061523\
 Data File : VN078229.D
 Acq On : 15 Jun 2023 15:32
 Operator : JC\MD
 Sample : 03259-01
 Misc : 5.0mL/MSVOA_N/WATER
 ALS Vial : 11 Sample Multiplier: 1

Instrument :
 MSVOA_N
 ClientSampleId :

Quant Time: Jun 16 06:08:05 2023
 Quant Method : Z:\voasrv\HPCHEM1\MSVOA_N\methods\82N060623W.M
 Quant Title : SW846 8260
 QLast Update : Wed Jun 07 05:05:00 2023
 Response via : Initial Calibration

Compound	R.T.	QIon	Response	Conc	Units	Dev(Min)

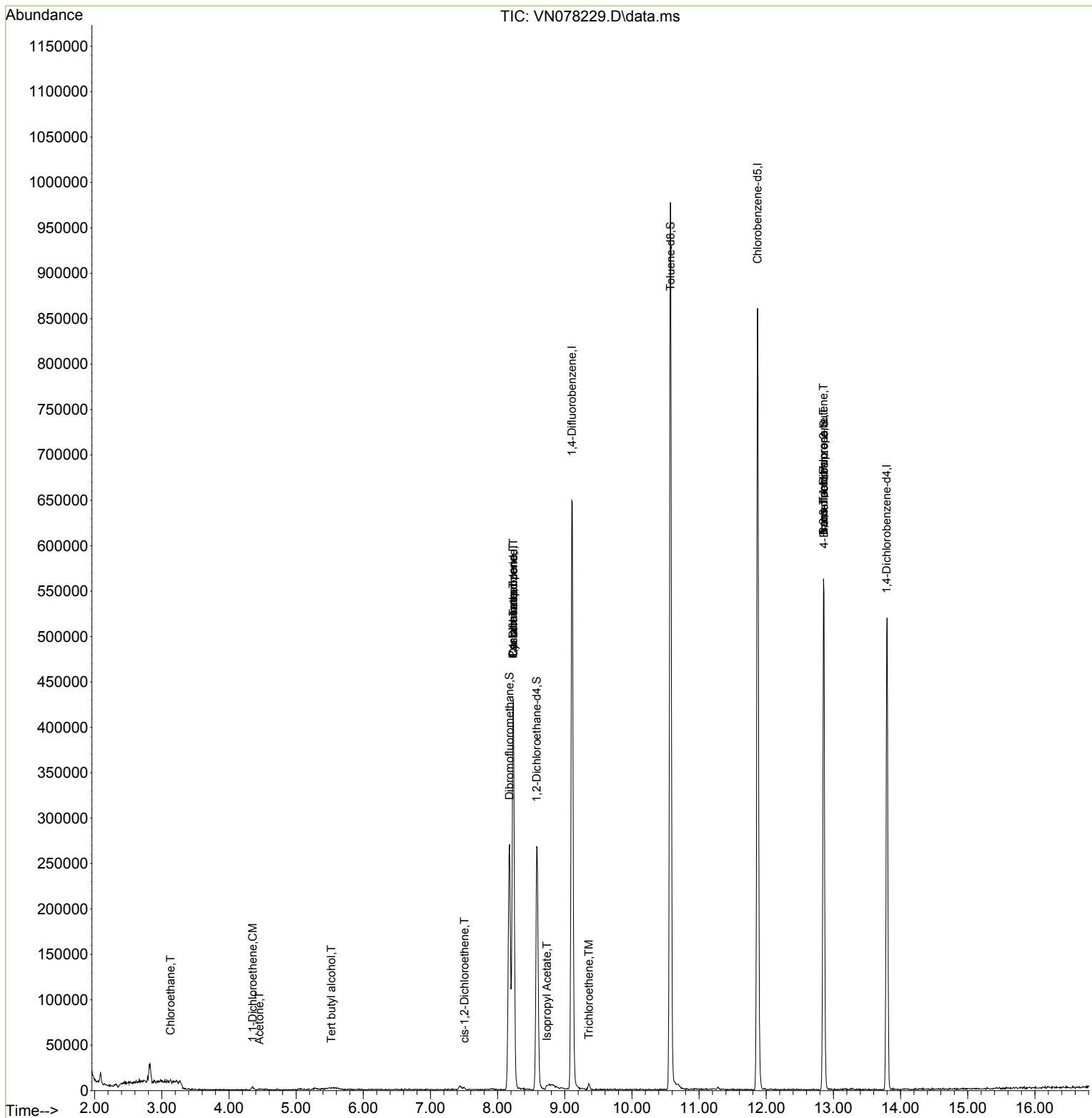
Internal Standards						
1) Pentafluorobenzene	8.229	168	311396	50.000	ug/l	0.00
34) 1,4-Difluorobenzene	9.106	114	579394	50.000	ug/l	0.00
63) Chlorobenzene-d5	11.870	117	513925	50.000	ug/l	0.00
72) 1,4-Dichlorobenzene-d4	13.794	152	141894	50.000	ug/l	0.00
System Monitoring Compounds						
33) 1,2-Dichloroethane-d4	8.582	65	226843	54.636	ug/l	0.00
Spiked Amount	50.000	Range 74 - 125	Recovery	=	109.280%	
35) Dibromofluoromethane	8.177	113	192303	52.493	ug/l	0.00
Spiked Amount	50.000	Range 75 - 124	Recovery	=	104.980%	
50) Toluene-d8	10.576	98	709301	50.223	ug/l	0.00
Spiked Amount	50.000	Range 86 - 113	Recovery	=	100.440%	
62) 4-Bromofluorobenzene	12.859	95	202782	46.187	ug/l	0.00
Spiked Amount	50.000	Range 83 - 123	Recovery	=	92.380%	
Target Compounds						
						Qvalue
3) Chloromethane	2.377	50	705	Below Cal		97
6) Chloroethane	3.130	64	727	0.231	ug/l	92
11) Tert butyl alcohol	5.524	59	170	0.297	ug/l #	72
12) 1,1-Dichloroethene	4.353	96	1316	0.387	ug/l #	66
16) Acetone	4.453	43	445	0.372	ug/l #	75
27) cis-1,2-Dichloroethene	7.506	96	1343	0.307	ug/l	66
31) Cyclohexane	8.229	56	7423	1.394	ug/l #	36
36) 1,1-Dichloropropene	8.229	75	26659	5.073	ug/l #	48
38) Carbon Tetrachloride	8.235	117	36691	6.613	ug/l #	14
43) Isopropyl Acetate	8.735	43	3145	0.401	ug/l #	49
44) Trichloroethene	9.359	130	2034	0.491	ug/l	70
71) Bromoform	12.853	173	883	0.338	ug/l #	1
75) 1,1,2,2-Tetrachloroethane	12.859	83	162	Below Cal	#	1
76) 1,2,3-Trichloropropane	12.853	75	105492	31.449	ug/l #	1
81) trans-1,4-Dichloro-2-b...	12.853	75	105492	96.620	ug/l #	15

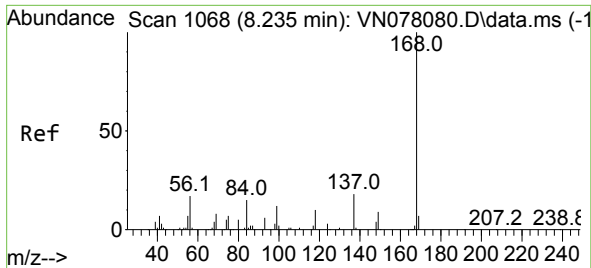
(#) = qualifier out of range (m) = manual integration (+) = signals summed

Data Path : Z:\voasrv\HPCHEM1\MSVOA_N\Data\VN061523\
 Data File : VN078229.D
 Acq On : 15 Jun 2023 15:32
 Operator : JC\MD
 Sample : 03259-01
 Misc : 5.0mL/MSVOA_N/WATER
 ALS Vial : 11 Sample Multiplier: 1

Instrument :
 MSVOA_N
 ClientSampleId :

Quant Time: Jun 16 06:08:05 2023
 Quant Method : Z:\voasrv\HPCHEM1\MSVOA_N\methods\82N060623W.M
 Quant Title : SW846 8260
 QLast Update : Wed Jun 07 05:05:00 2023
 Response via : Initial Calibration

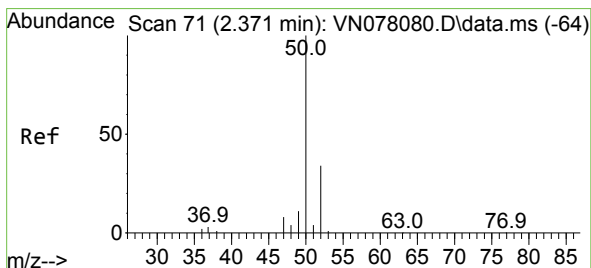
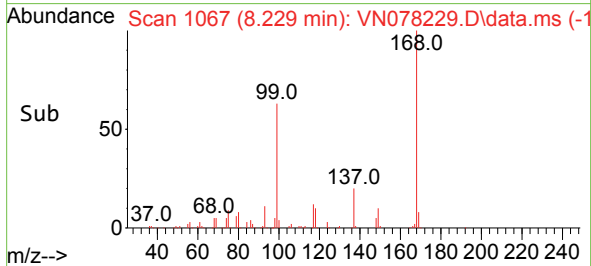
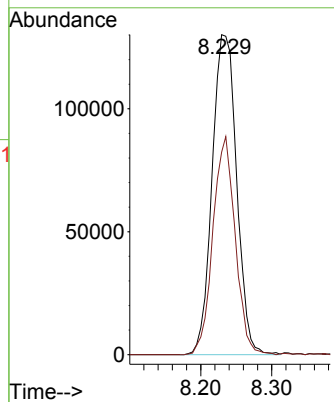
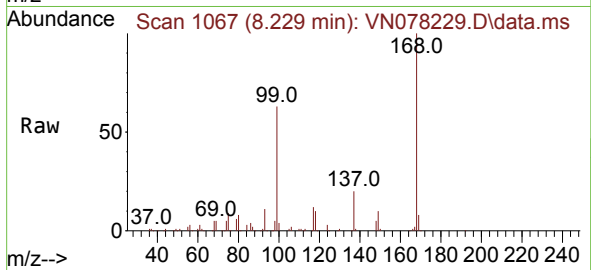




#1
 Pentafluorobenzene
 Concen: 50.000 ug/l
 RT: 8.229 min Scan# 1067
 Delta R.T. -0.006 min
 Lab File: VN078229.D
 Acq: 15 Jun 2023 15:32

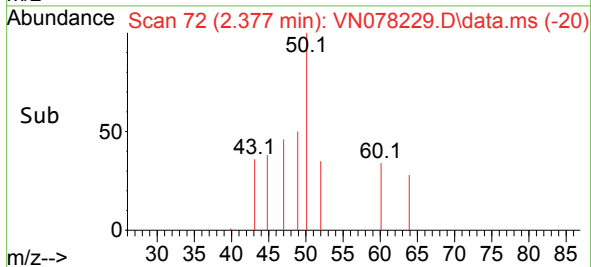
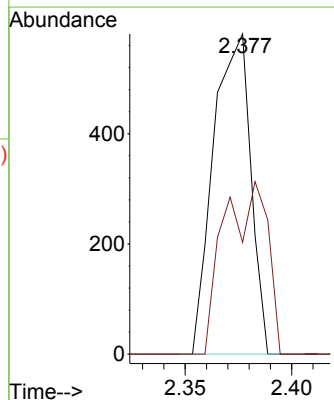
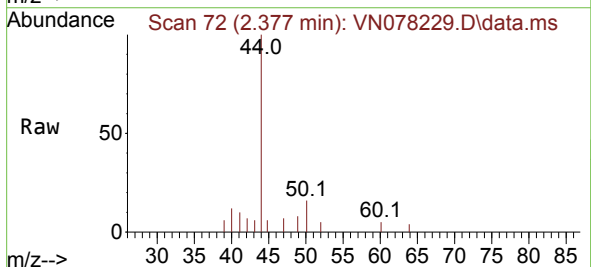
Instrument :
 MSVOA_N
 ClientSampleId :

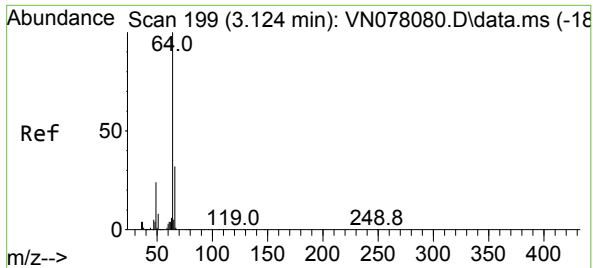
Tgt Ion:168 Resp: 311396
 Ion Ratio Lower Upper
 168 100
 99 63.3 53.0 79.6



#3
 Chloromethane
 Concen: Below Cal
 RT: 2.377 min Scan# 72
 Delta R.T. 0.006 min
 Lab File: VN078229.D
 Acq: 15 Jun 2023 15:32

Tgt Ion: 50 Resp: 705
 Ion Ratio Lower Upper
 50 100
 52 34.9 26.5 39.7

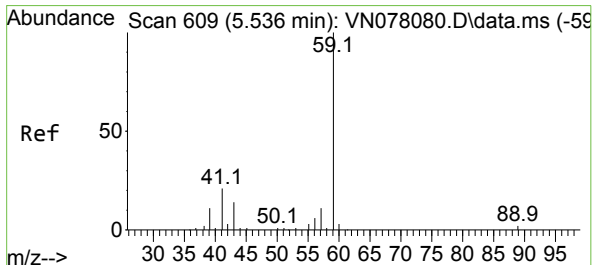
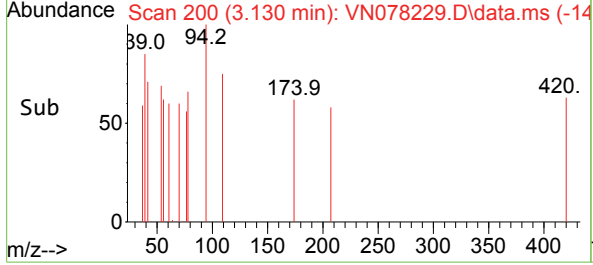
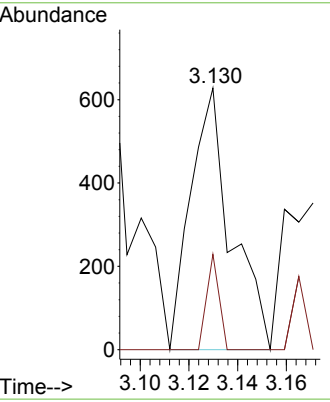
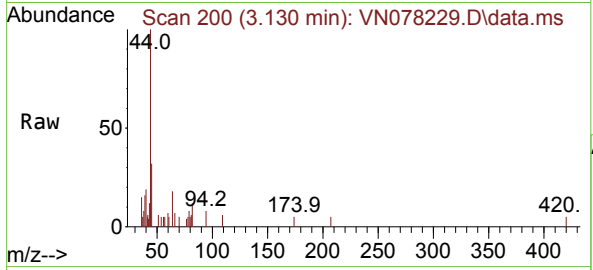




#6
 Chloroethane
 Concen: 0.231 ug/l
 RT: 3.130 min Scan# 20
 Delta R.T. 0.006 min
 Lab File: VN078229.D
 Acq: 15 Jun 2023 15:32

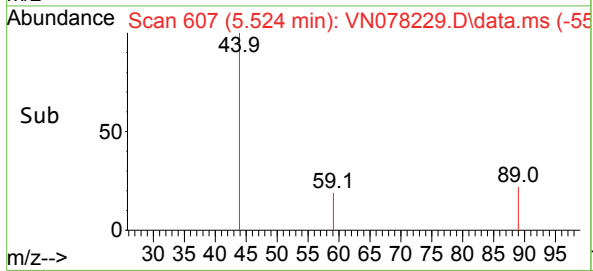
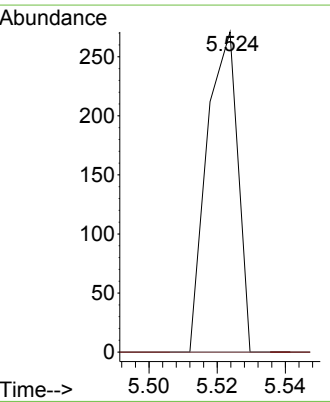
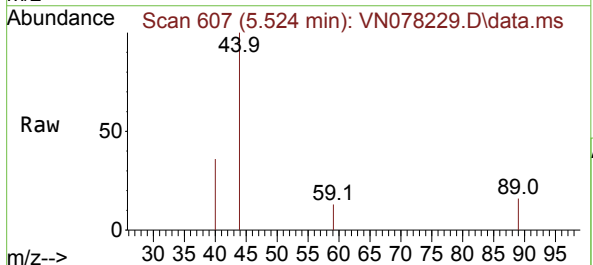
Instrument : MSVOA_N
 ClientSampleId :

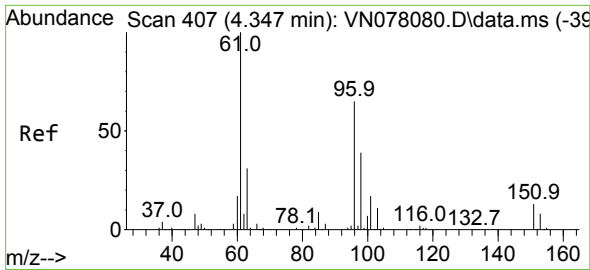
Tgt Ion	Resp	Lower	Upper
64	100		
66	36.5	25.4	38.2



#11
 Tert butyl alcohol
 Concen: 0.297 ug/l
 RT: 5.524 min Scan# 607
 Delta R.T. -0.012 min
 Lab File: VN078229.D
 Acq: 15 Jun 2023 15:32

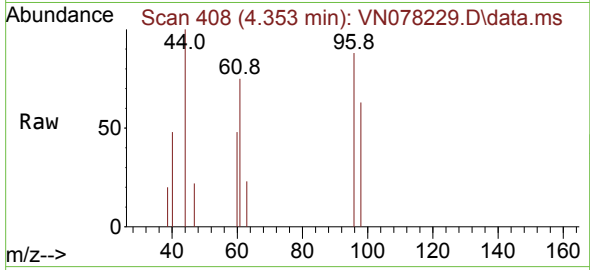
Tgt Ion	Resp	Lower	Upper
59	100		
57	0.0	8.2	12.4



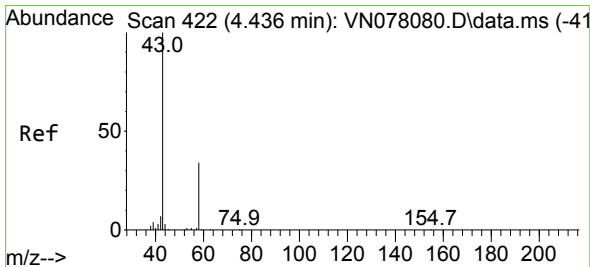
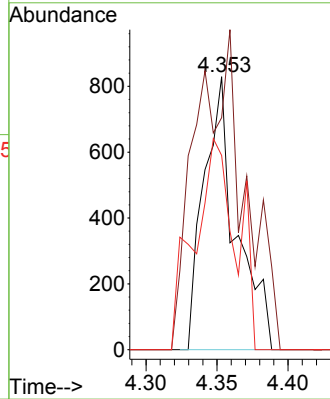
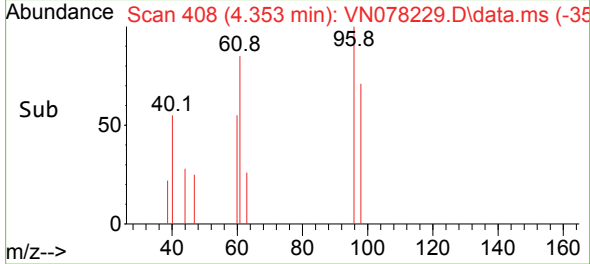


#12
 1,1-Dichloroethene
 Concen: 0.387 ug/l
 RT: 4.353 min Scan# 408
 Delta R.T. 0.006 min
 Lab File: VN078229.D
 Acq: 15 Jun 2023 15:32

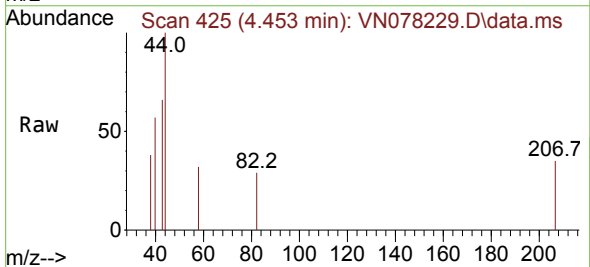
Instrument : MSVOA_N
 ClientSampleId :



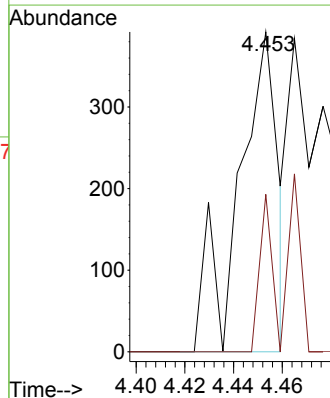
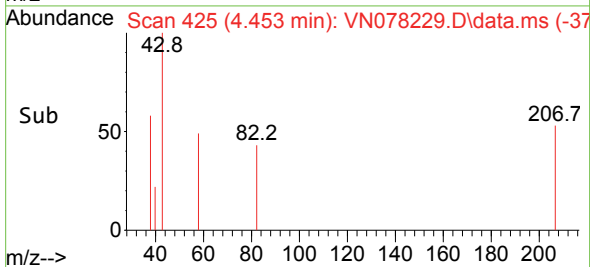
Tgt Ion: 96 Resp: 1316
 Ion Ratio Lower Upper
 96 100
 61 85.0 112.7 169.1#
 98 71.2 51.2 76.8

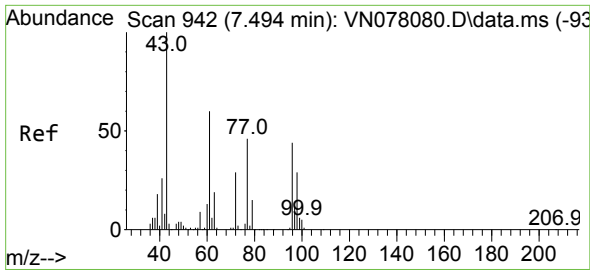


#16
 Acetone
 Concen: 0.372 ug/l
 RT: 4.453 min Scan# 425
 Delta R.T. 0.018 min
 Lab File: VN078229.D
 Acq: 15 Jun 2023 15:32



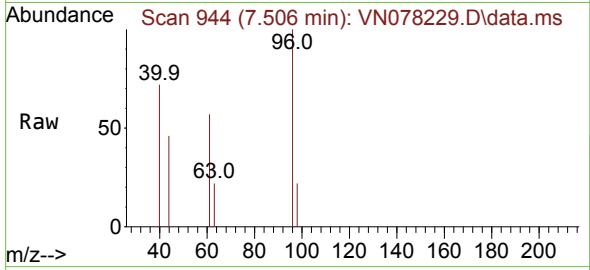
Tgt Ion: 43 Resp: 445
 Ion Ratio Lower Upper
 43 100
 58 49.2 28.0 42.0#



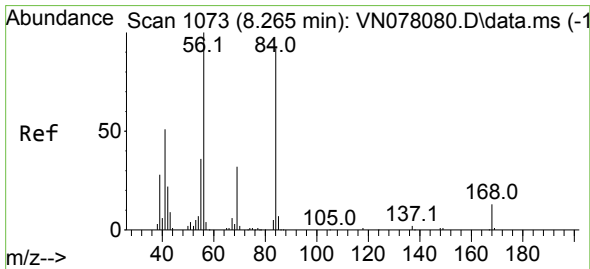
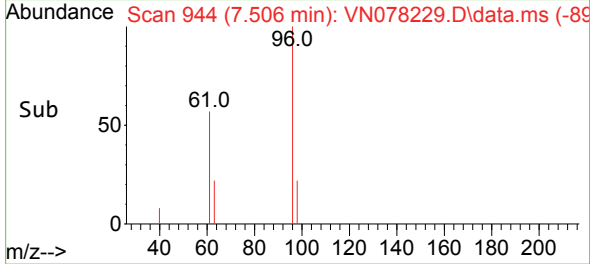
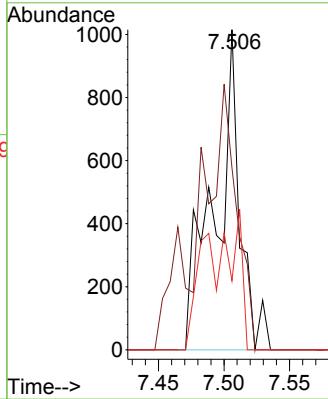


#27
 cis-1,2-Dichloroethene
 Concen: 0.307 ug/l
 RT: 7.506 min Scan# 94
 Delta R.T. 0.012 min
 Lab File: VN078229.D
 Acq: 15 Jun 2023 15:32

Instrument :
 MSVOA_N
 ClientSampleId :

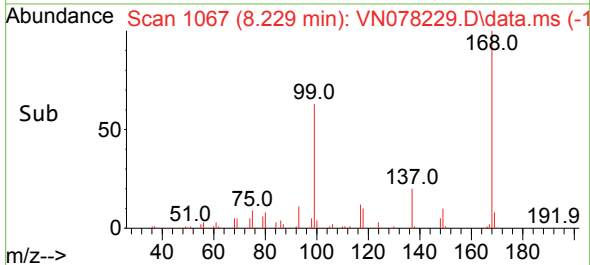
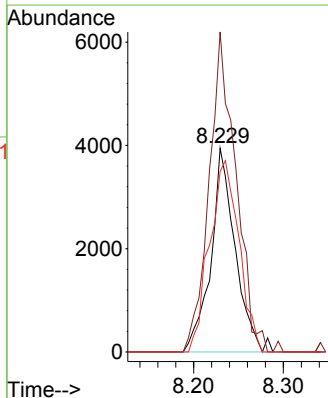
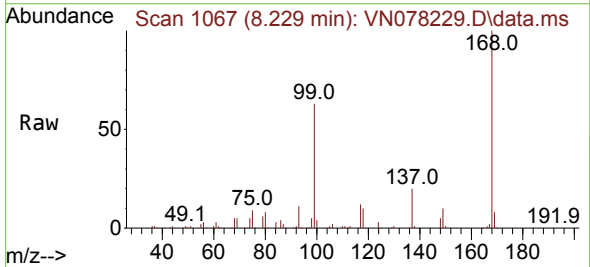


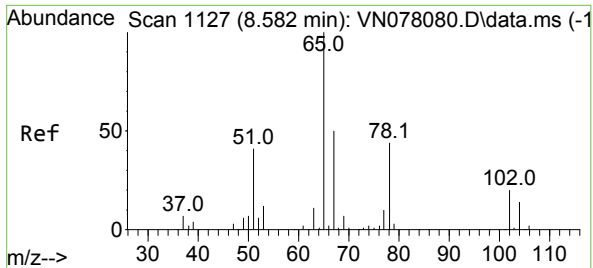
Tgt Ion: 96 Resp: 1343
 Ion Ratio Lower Upper
 96 100
 61 95.7 0.0 255.2
 98 27.3 0.0 128.8



#31
 Cyclohexane
 Concen: 1.394 ug/l
 RT: 8.229 min Scan# 1067
 Delta R.T. -0.035 min
 Lab File: VN078229.D
 Acq: 15 Jun 2023 15:32

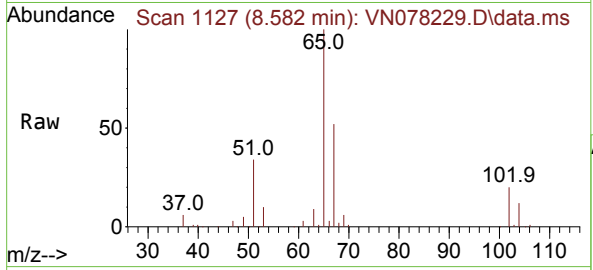
Tgt Ion: 56 Resp: 7423
 Ion Ratio Lower Upper
 56 100
 69 157.2 26.8 40.2#
 84 88.6 81.8 122.6



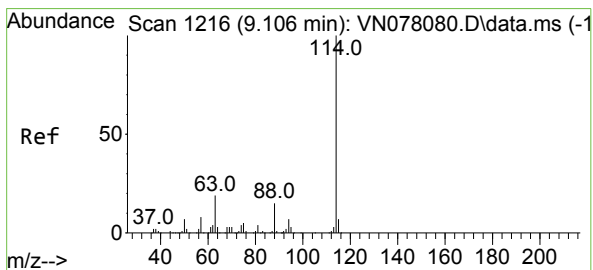
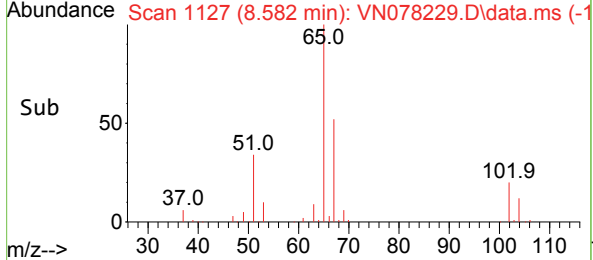
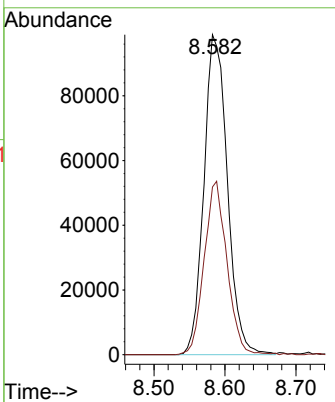


#33
 1,2-Dichloroethane-d4
 Concen: 54.636 ug/l
 RT: 8.582 min Scan# 1127
 Delta R.T. -0.000 min
 Lab File: VN078229.D
 Acq: 15 Jun 2023 15:32

Instrument : MSVOA_N
 ClientSampleId :

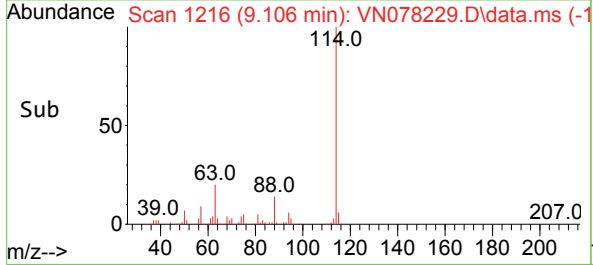
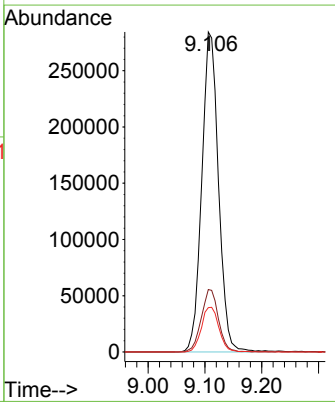
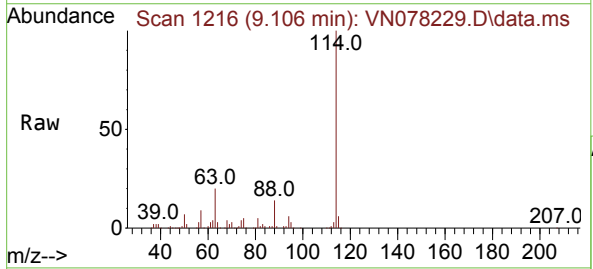


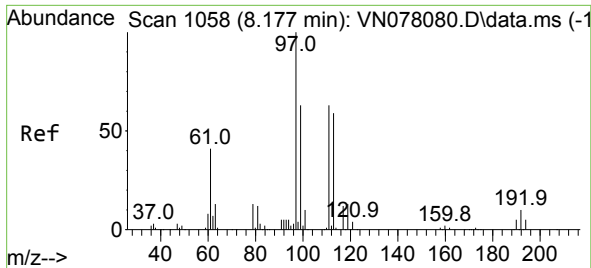
Tgt Ion: 65 Resp: 226843
 Ion Ratio Lower Upper
 65 100
 67 52.6 0.0 106.6



#34
 1,4-Difluorobenzene
 Concen: 50.000 ug/l
 RT: 9.106 min Scan# 1216
 Delta R.T. -0.000 min
 Lab File: VN078229.D
 Acq: 15 Jun 2023 15:32

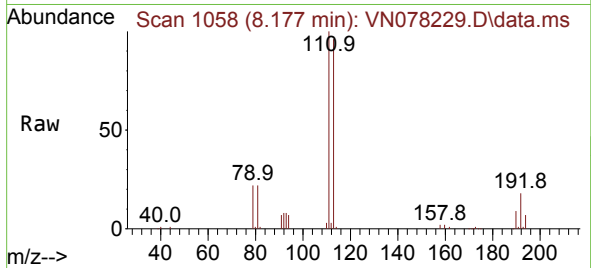
Tgt Ion: 114 Resp: 579394
 Ion Ratio Lower Upper
 114 100
 63 19.5 0.0 36.4
 88 13.8 0.0 30.6



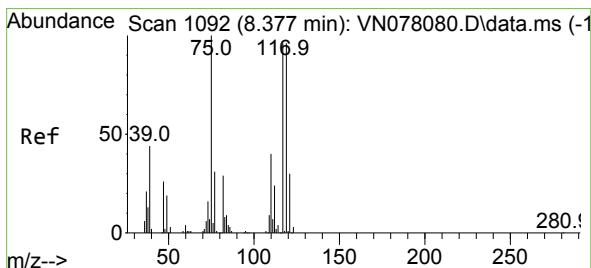
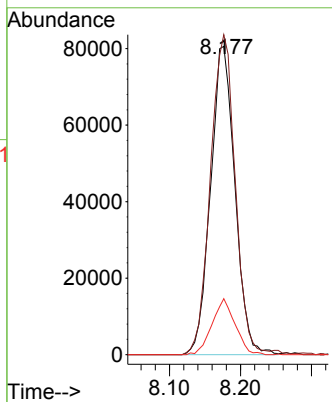
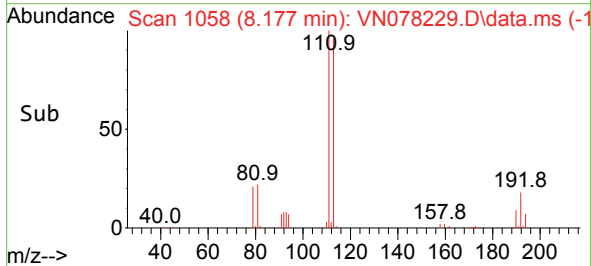


#35
 Dibromofluoromethane
 Concen: 52.493 ug/l
 RT: 8.177 min Scan# 1067
 Delta R.T. -0.000 min
 Lab File: VN078229.D
 Acq: 15 Jun 2023 15:32

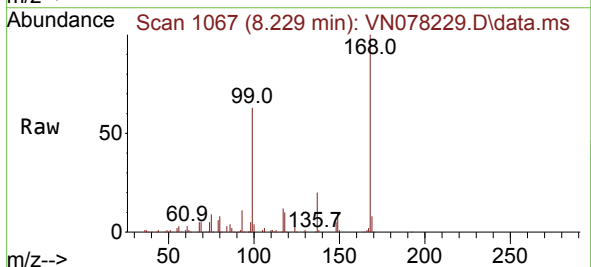
Instrument : MSVOA_N
 ClientSampleId :



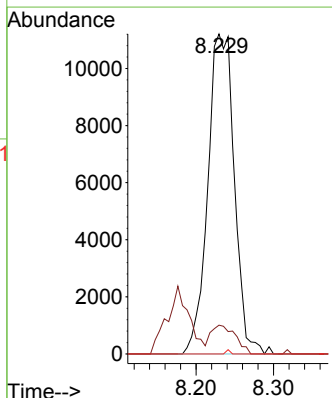
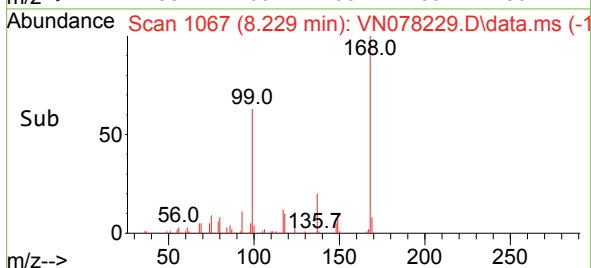
Tgt Ion:113 Resp: 192303
 Ion Ratio Lower Upper
 113 100
 111 104.8 82.6 123.8
 192 17.2 12.7 19.1

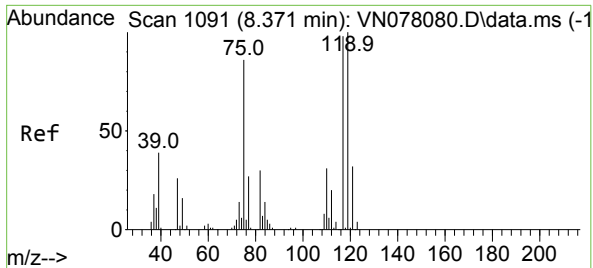


#36
 1,1-Dichloropropene
 Concen: 5.073 ug/l
 RT: 8.229 min Scan# 1067
 Delta R.T. -0.147 min
 Lab File: VN078229.D
 Acq: 15 Jun 2023 15:32



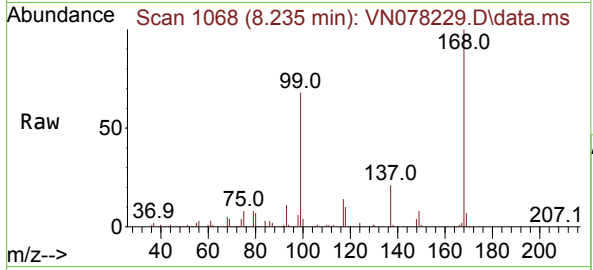
Tgt Ion: 75 Resp: 26659
 Ion Ratio Lower Upper
 75 100
 110 8.3 19.1 57.3#
 77 0.2 25.0 37.4#





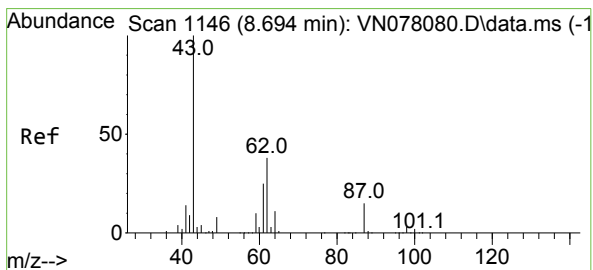
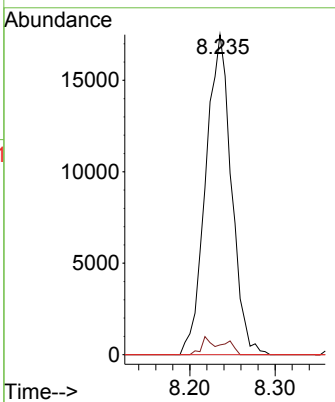
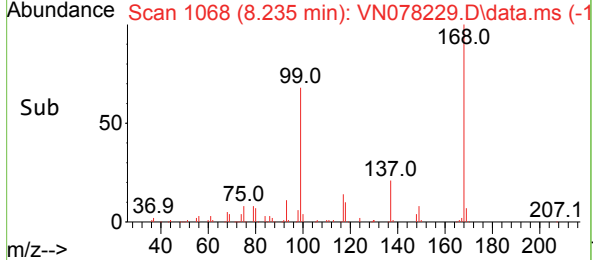
#38
 Carbon Tetrachloride
 Concen: 6.613 ug/l
 RT: 8.235 min Scan# 1153
 Delta R.T. -0.135 min
 Lab File: VN078229.D
 Acq: 15 Jun 2023 15:32

Instrument : MSVOA_N
 ClientSampleId :

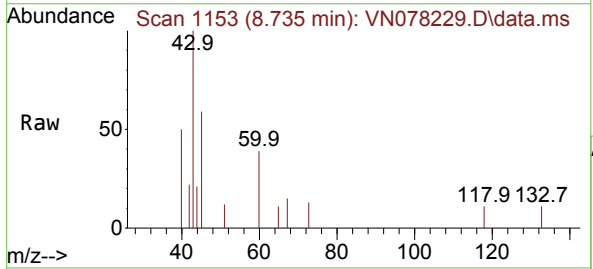


Tgt Ion: 117 Resp: 36691

Ion	Ratio	Lower	Upper
117	100		
119	3.1	77.3	115.9#
121	0.0	23.3	34.9#

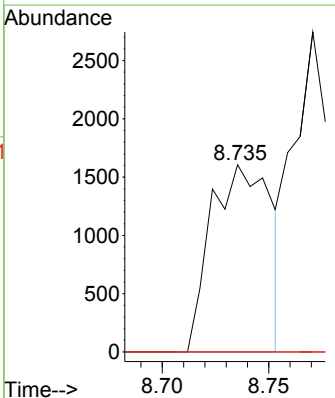
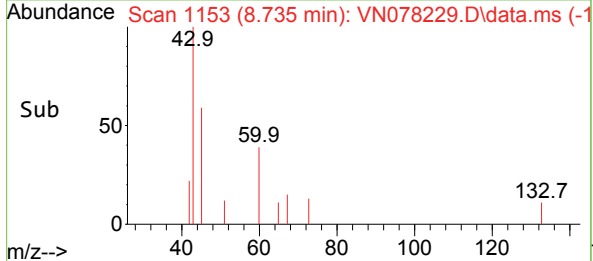


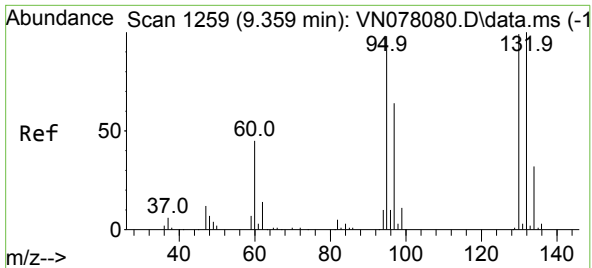
#43
 Isopropyl Acetate
 Concen: 0.401 ug/l
 RT: 8.735 min Scan# 1153
 Delta R.T. 0.041 min
 Lab File: VN078229.D
 Acq: 15 Jun 2023 15:32



Tgt Ion: 43 Resp: 3145

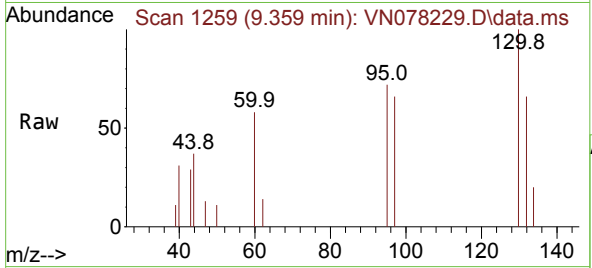
Ion	Ratio	Lower	Upper
43	100		
61	0.0	24.7	37.1#
87	0.0	14.6	21.8#



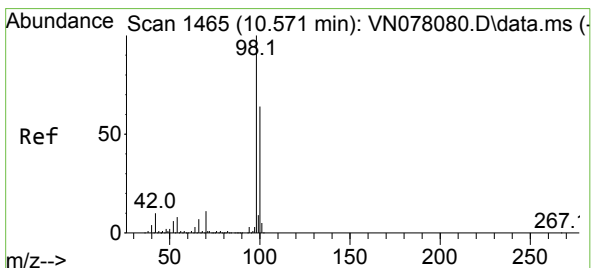
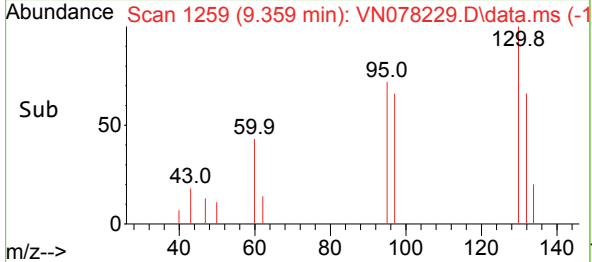
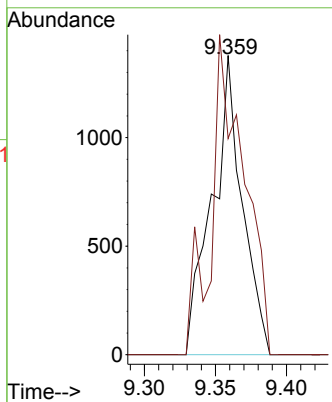


#44
 Trichloroethene
 Concen: 0.491 ug/l
 RT: 9.359 min Scan# 11
 Delta R.T. -0.000 min
 Lab File: VN078229.D
 Acq: 15 Jun 2023 15:32

Instrument :
 MSVOA_N
 ClientSampled :

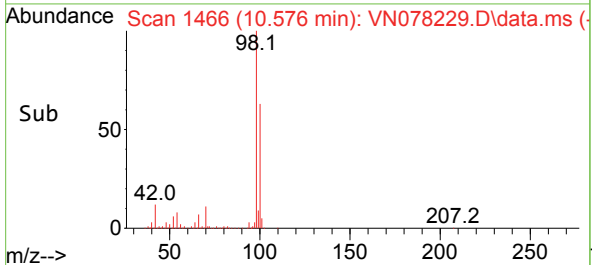
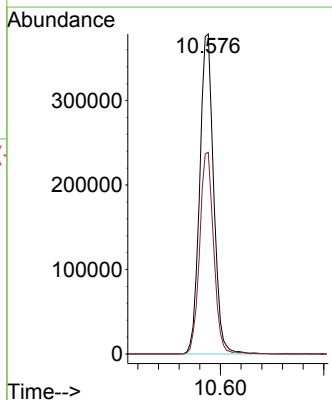
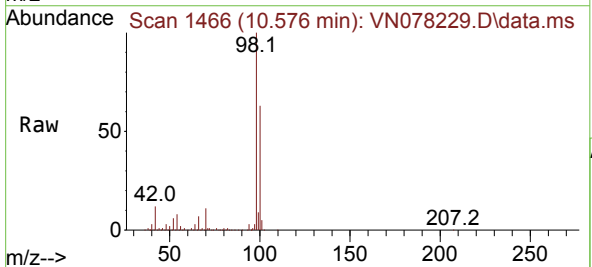


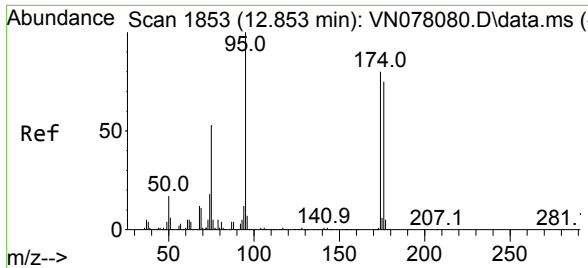
Tgt Ion:130 Resp: 2034
 Ion Ratio Lower Upper
 130 100
 95 72.3 0.0 204.6



#50
 Toluene-d8
 Concen: 50.223 ug/l
 RT: 10.576 min Scan# 1466
 Delta R.T. 0.006 min
 Lab File: VN078229.D
 Acq: 15 Jun 2023 15:32

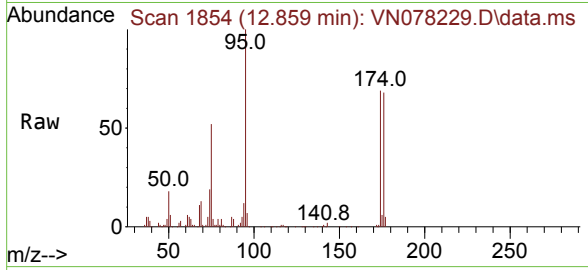
Tgt Ion: 98 Resp: 709301
 Ion Ratio Lower Upper
 98 100
 100 63.4 52.0 78.0



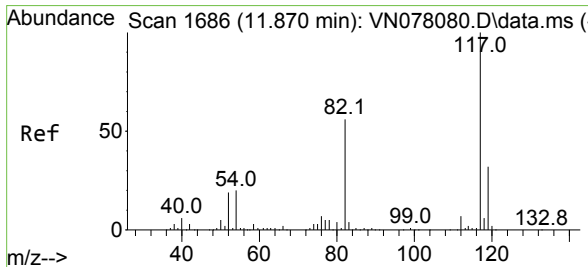
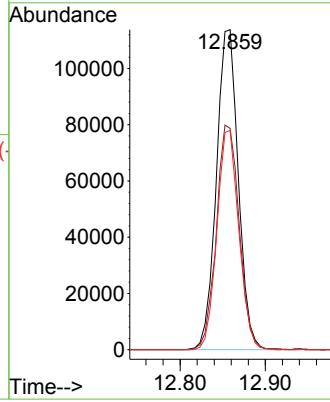
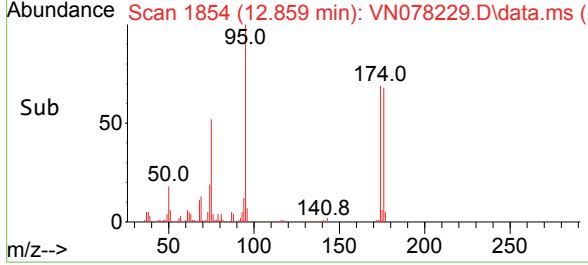


#62
 4-Bromofluorobenzene
 Concen: 46.187 ug/l
 RT: 12.859 min Scan# 1854
 Delta R.T. 0.006 min
 Lab File: VN078229.D
 Acq: 15 Jun 2023 15:32

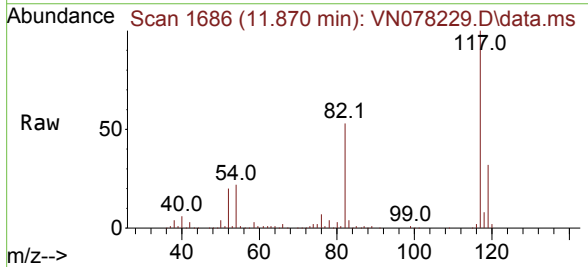
Instrument :
 MSVOA_N
 ClientSampleId :



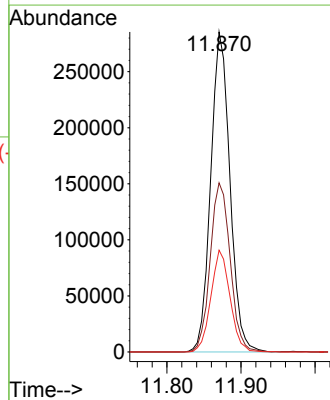
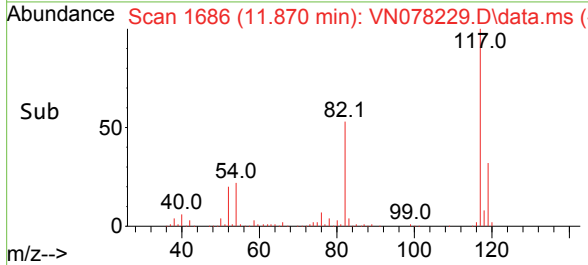
Tgt Ion: 95 Resp: 202782
 Ion Ratio Lower Upper
 95 100
 174 73.3 0.0 143.8
 176 68.5 0.0 135.8

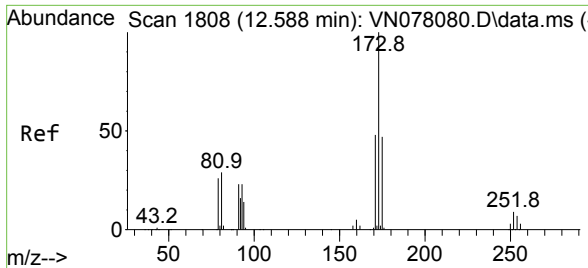


#63
 Chlorobenzene-d5
 Concen: 50.000 ug/l
 RT: 11.870 min Scan# 1686
 Delta R.T. -0.000 min
 Lab File: VN078229.D
 Acq: 15 Jun 2023 15:32



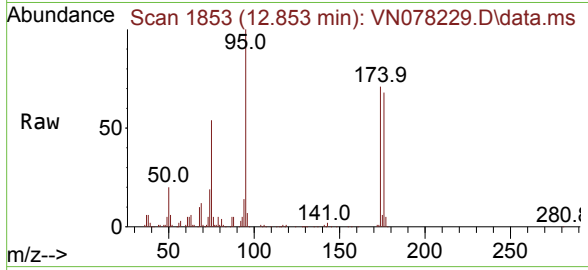
Tgt Ion: 117 Resp: 513925
 Ion Ratio Lower Upper
 117 100
 82 52.9 44.0 66.0
 119 31.8 25.6 38.4



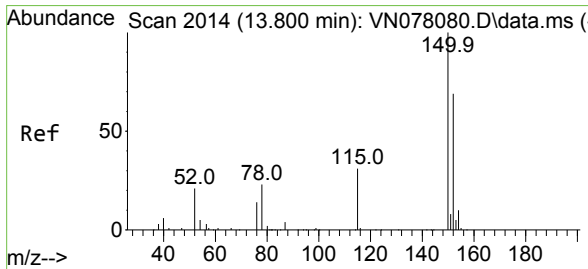
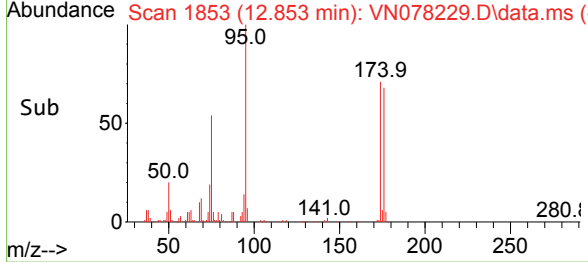
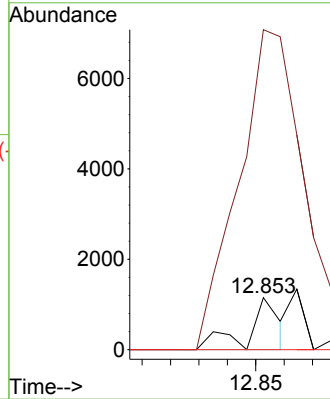


#71
 Bromoform
 Concen: 0.338 ug/l
 RT: 12.853 min Scan# 11
 Delta R.T. 0.265 min
 Lab File: VN078229.D
 Acq: 15 Jun 2023 15:32

Instrument :
 MSVOA_N
 ClientSampleId :

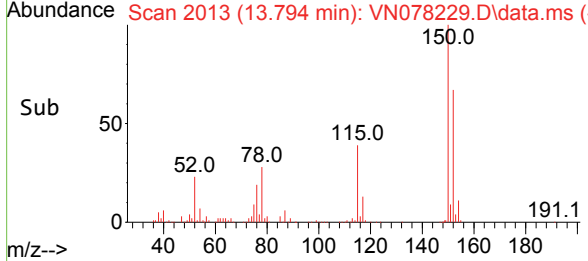
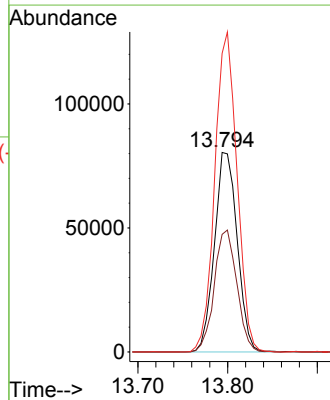
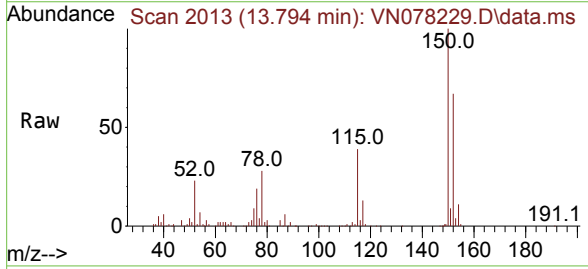


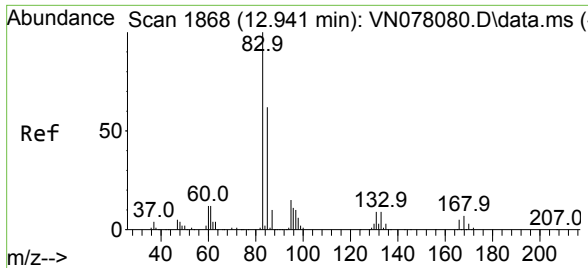
Tgt Ion:173 Resp: 883
 Ion Ratio Lower Upper
 173 100
 175 1107.2 24.3 73.0#
 254 0.0 0.0 0.0



#72
 1,4-Dichlorobenzene-d4
 Concen: 50.000 ug/l
 RT: 13.794 min Scan# 2013
 Delta R.T. -0.006 min
 Lab File: VN078229.D
 Acq: 15 Jun 2023 15:32

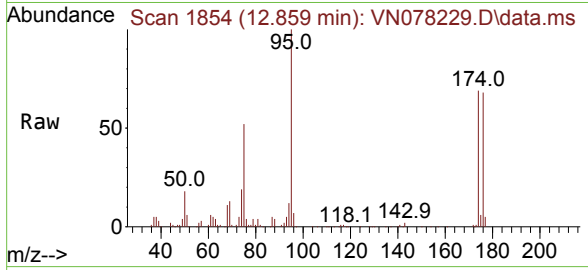
Tgt Ion:152 Resp: 141894
 Ion Ratio Lower Upper
 152 100
 115 60.5 32.3 96.8
 150 156.2 0.0 355.8



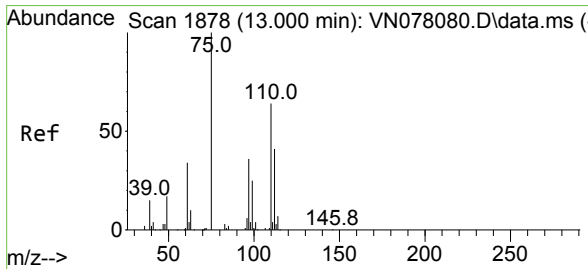
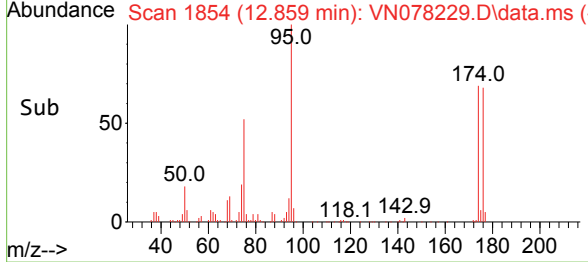
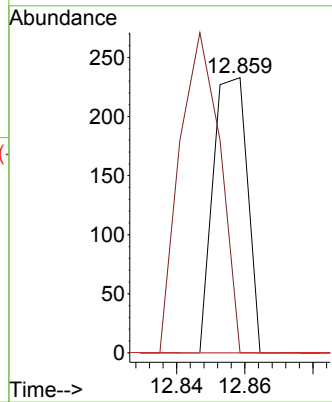


#75
 1,1,2-Tetrachloroethane
 Concen: Below Cal
 RT: 12.859 min Scan# 1854
 Delta R.T. -0.082 min
 Lab File: VN078229.D
 Acq: 15 Jun 2023 15:32

Instrument : MSVOA_N
 ClientSampleId :

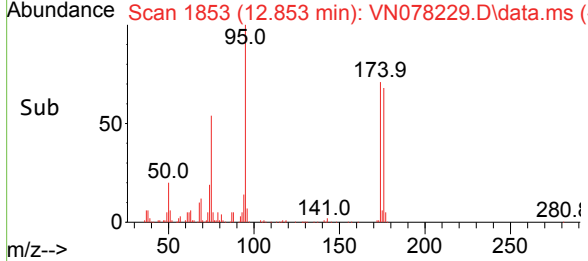
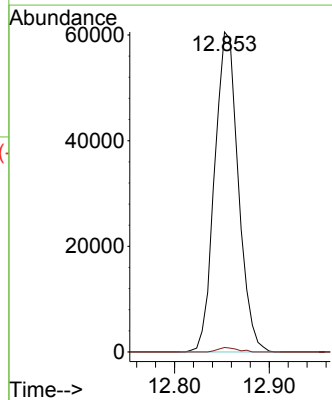
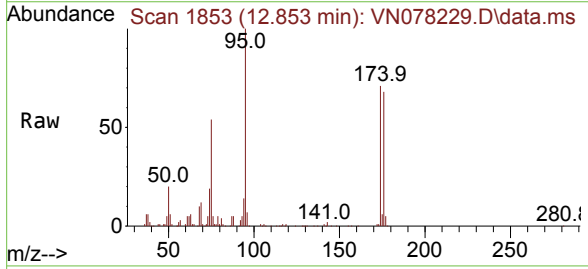


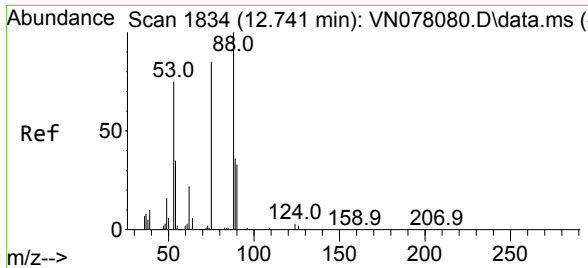
Tgt Ion: 83 Resp: 162
 Ion Ratio Lower Upper
 83 100
 131 137.7 5.0 15.0#
 85 0.0 31.9 95.7#



#76
 1,2,3-Trichloropropane
 Concen: 31.449 ug/l
 RT: 12.853 min Scan# 1853
 Delta R.T. -0.147 min
 Lab File: VN078229.D
 Acq: 15 Jun 2023 15:32

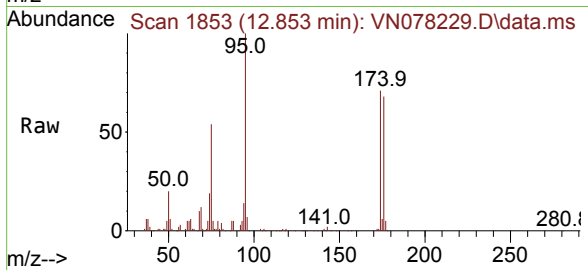
Tgt Ion: 75 Resp: 105492
 Ion Ratio Lower Upper
 75 100
 77 1.1 84.5 253.5#





#81
 trans-1,4-Dichloro-2-butene
 Concen: 96.620 ug/l
 RT: 12.853 min Scan# 11
 Delta R.T. 0.112 min
 Lab File: VN078229.D
 Acq: 15 Jun 2023 15:32

Instrument :
 MSVOA_N
 ClientSampleId :



Tgt Ion: 75 Resp: 105492
 Ion Ratio Lower Upper
 75 100
 53 0.0 67.4 101.2#
 89 0.0 38.8 58.2#

