

Data Path : Z:\voasrv\HPCHEM1\MSVOA_N\Data\VN061625\
 Data File : VN087035.D
 Acq On : 16 Jun 2025 16:37
 Operator : JC\MD
 Sample : Q2299-17
 Misc : 5.0mL/MSVOA_N/WATER
 ALS Vial : 20 Sample Multiplier: 1

Instrument :
 MSVOA_N
 ClientSampleId :
 RE134D3-20250610

Integration Parameters: RTEINT.P

Integrator: RTE
 Smoothing : ON Filtering: 5
 Sampling : 1 Min Area: 3 % of largest Peak
 Start Thrs: 0.2 Max Peaks: 100
 Stop Thrs : 0 Peak Location: TOP

If leading or trailing edge < 100 prefer < Baseline drop else tangent >
 Peak separation: 5

Method : Z:\voasrv\HPCHEM1\MSVOA_N\methods\82N060625W.M
 Title : SW846 8260

Signal : TIC: VN087035.D\data.ms

peak #	R.T. min	first scan	max scan	last scan	PK TY	peak height	corr. area	corr. % max.	% of total
1	4.400	400	416	451	rBV	2240525	7952307	100.00%	37.894%
2	8.177	1048	1058	1062	rBV	150376	359842	4.53%	1.715%
3	8.230	1062	1067	1078	rVB	243443	555972	6.99%	2.649%
4	8.588	1118	1128	1138	rBV	169394	385739	4.85%	1.838%
5	9.106	1207	1216	1231	rVB	409845	842087	10.59%	4.013%
6	9.359	1248	1259	1276	rBV	1236325	2562859	32.23%	12.212%
7	10.571	1456	1465	1475	rBV	628972	1183969	14.89%	5.642%
8	11.106	1547	1556	1572	rBV	2487528	4527097	56.93%	21.572%
9	11.865	1676	1685	1704	rBV	547219	982529	12.36%	4.682%
10	12.847	1845	1852	1869	rBV	411378	708001	8.90%	3.374%
11	13.788	2004	2012	2025	rBV	546214	925227	11.63%	4.409%

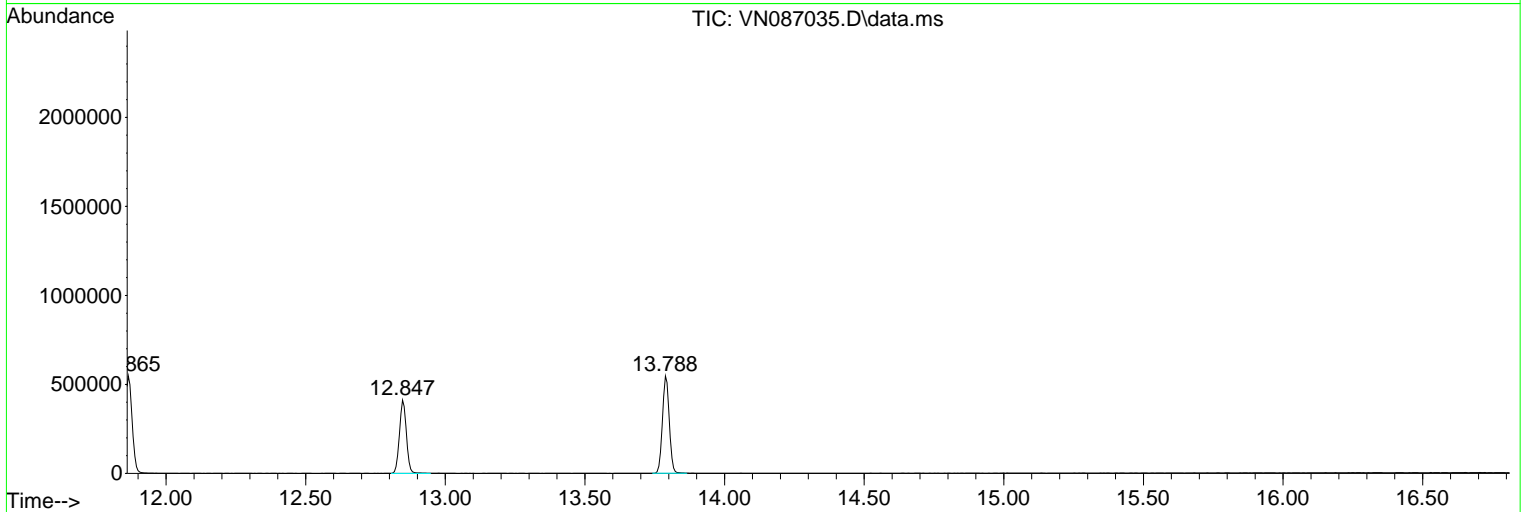
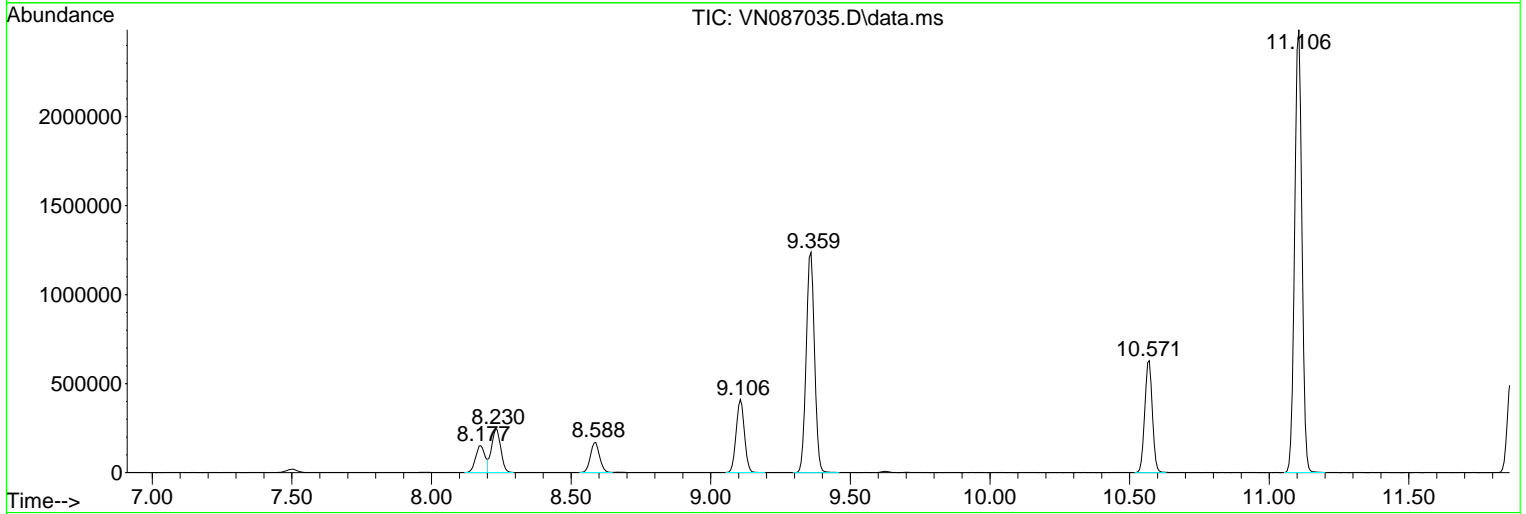
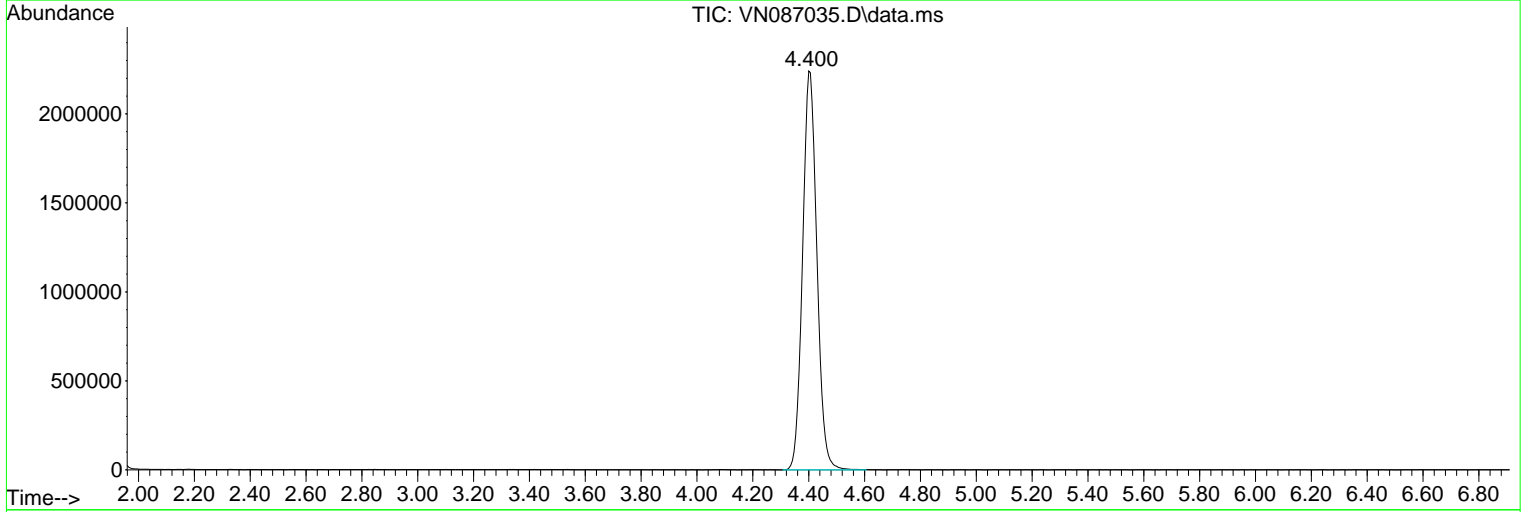
Sum of corrected areas: 20985629

Data Path : Z:\voasrv\HPCHEM1\MSVOA_N\Data\VN061625\
 Data File : VN087035.D
 Acq On : 16 Jun 2025 16:37
 Operator : JC\MD
 Sample : Q2299-17
 Misc : 5.0mL/MSVOA_N/WATER
 ALS Vial : 20 Sample Multiplier: 1

Instrument :
 MSVOA_N
ClientSampleId :
 RE134D3-20250610

Quant Method : Z:\voasrv\HPCHEM1\MSVOA_N\methods\82N060625W.M
 Quant Title : SW846 8260

TIC Library : C:\Database\NIST20.L
 TIC Integration Parameters: LSCINT.P



Library Search Compound Report

Data Path : Z:\voasrv\HPCHEM1\MSVOA_N\Data\VN061625\
Data File : VN087035.D
Acq On : 16 Jun 2025 16:37
Operator : JC\MD
Sample : Q2299-17
Misc : 5.0mL/MSVOA_N/WATER
ALS Vial : 20 Sample Multiplier: 1

Instrument :
MSVOA_N
ClientSampleId :
RE134D3-20250610

Quant Method : Z:\voasrv\HPCHEM1\MSVOA_N\methods\82N060625W.M
Quant Title : SW846 8260

TIC Library : C:\Database\NIST20.L
TIC Integration Parameters: LSCINT.P

No Library Search Compounds Detected

Data Path : Z:\voasrv\HPCHEM1\MSVOA_N\Data\VN061625\
Data File : VN087035.D
Acq On : 16 Jun 2025 16:37
Operator : JC\MD
Sample : Q2299-17
Misc : 5.0mL/MSVOA_N/WATER
ALS Vial : 20 Sample Multiplier: 1

Instrument :
MSVOA_N
ClientSampleId :
RE134D3-20250610

Quant Method : Z:\voasrv\HPCHEM1\MSVOA_N\methods\82N060625W.M
Quant Title : SW846 8260

TIC Library : C:\Database\NIST20.L
TIC Integration Parameters: LSCINT.P

TIC Top Hit name	RT	EstConc	Units	Response	#	RT	Resp	Conc
------------------	----	---------	-------	----------	---	----	------	------
