

Data Path : Z:\voasrv\HPCHEM1\MSVOA\_N\Data\VN061724\  
 Data File : VN082603.D  
 Acq On : 17 Jun 2024 12:05  
 Operator : JC\MD  
 Sample : IBLK  
 Misc : 5.0mL/MSVOA\_N/WATER  
 ALS Vial : 9 Sample Multiplier: 1

Instrument :  
 MSVOA\_N  
 ClientSampleId :  
 IBLK

Quant Time: Jun 18 18:35:13 2024  
 Quant Method : Z:\voasrv\HPCHEM1\MSVOA\_N\methods\82N061724W.M  
 Quant Title : SW846 8260  
 QLast Update : Tue Jun 18 04:52:44 2024  
 Response via : Initial Calibration

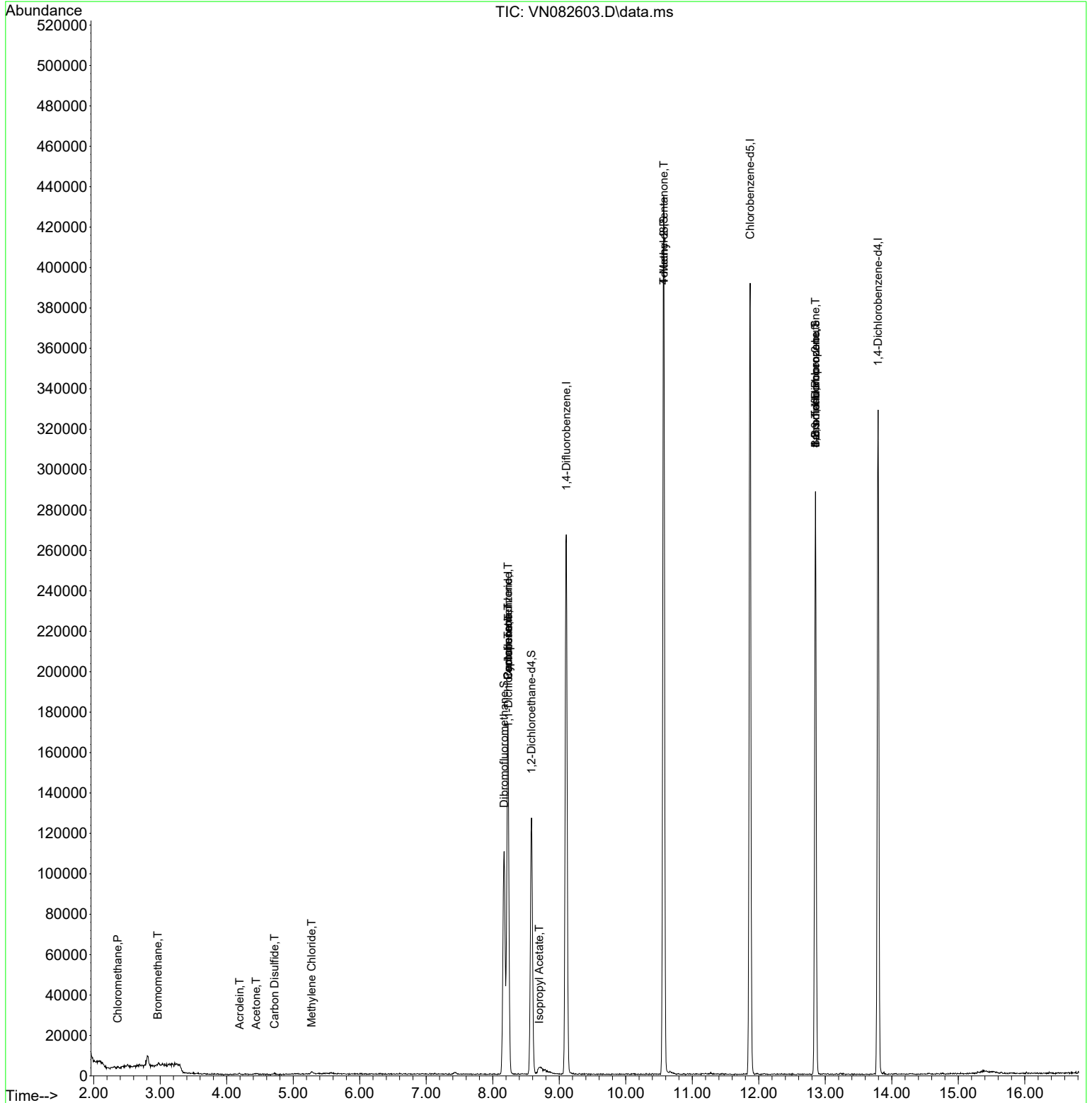
Compound	R.T.	QIon	Response	Conc	Units	Dev(Min)
-----						
Internal Standards						
1) Pentafluorobenzene	8.230	168	121513	50.000	ug/l	0.00
34) 1,4-Difluorobenzene	9.106	114	216402	50.000	ug/l	0.00
63) Chlorobenzene-d5	11.871	117	208918	50.000	ug/l	0.00
72) 1,4-Dichlorobenzene-d4	13.794	152	84395	50.000	ug/l	0.00
System Monitoring Compounds						
33) 1,2-Dichloroethane-d4	8.583	65	106418	54.612	ug/l	0.00
Spiked Amount	50.000	Range 74 - 125	Recovery	=	109.220%	
35) Dibromofluoromethane	8.171	113	77652	52.895	ug/l	0.00
Spiked Amount	50.000	Range 75 - 124	Recovery	=	105.780%	
50) Toluene-d8	10.571	98	280389	50.506	ug/l	0.00
Spiked Amount	50.000	Range 86 - 113	Recovery	=	101.020%	
62) 4-Bromofluorobenzene	12.853	95	88270	46.118	ug/l	0.00
Spiked Amount	50.000	Range 64 - 133	Recovery	=	92.240%	
Target Compounds						
						Qvalue
3) Chloromethane	2.359	50	583	0.287	ug/l #	43
5) Bromomethane	2.965	94	971	0.779	ug/l #	56
13) Acrolein	4.195	56	199	0.613	ug/l	92
16) Acetone	4.442	43	1135	1.281	ug/l #	48
17) Carbon Disulfide	4.718	76	1235	0.287	ug/l #	75
20) Methylene Chloride	5.277	84	575	0.369	ug/l #	84
31) Cyclohexane	8.230	56	3436	1.222	ug/l #	18
36) 1,1-Dichloropropene	8.236	75	10928	4.980	ug/l #	50
38) Carbon Tetrachloride	8.230	117	13182	5.330	ug/l #	18
43) Isopropyl Acetate	8.700	43	4502	0.862	ug/l #	60
51) 4-Methyl-2-Pentanone	10.571	43	1623	0.606	ug/l #	1
71) Bromoform	12.853	173	772	0.572	ug/l #	1
76) 1,2,3-Trichloropropane	12.853	75	52457	25.413	ug/l #	1
81) trans-1,4-Dichloro-2-b...	12.853	75	52457	60.799	ug/l #	6

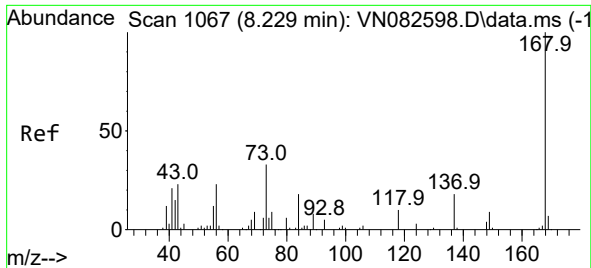
(#) = qualifier out of range (m) = manual integration (+) = signals summed

Data Path : Z:\voasrv\HPCHEM1\MSVOA\_N\Data\VN061724\  
 Data File : VN082603.D  
 Acq On : 17 Jun 2024 12:05  
 Operator : JC\MD  
 Sample : IBLK  
 Misc : 5.0mL/MSVOA\_N/WATER  
 ALS Vial : 9 Sample Multiplier: 1

**Instrument :**  
 MSVOA\_N  
**ClientSampleId :**  
 IBLK

Quant Time: Jun 18 18:35:13 2024  
 Quant Method : Z:\voasrv\HPCHEM1\MSVOA\_N\methods\82N061724W.M  
 Quant Title : SW846 8260  
 QLast Update : Tue Jun 18 04:52:44 2024  
 Response via : Initial Calibration

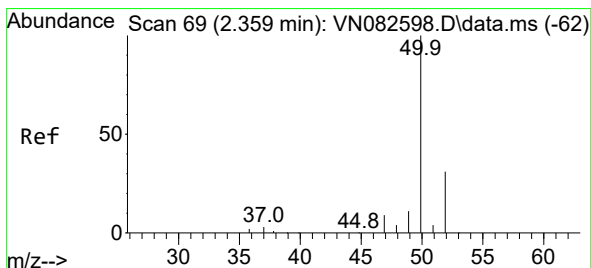
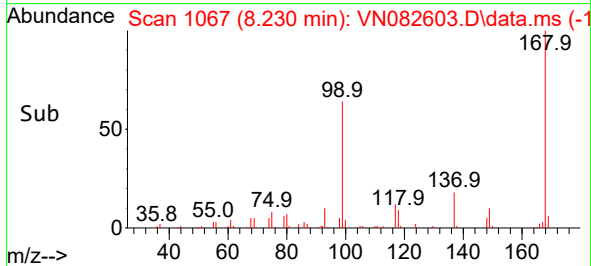
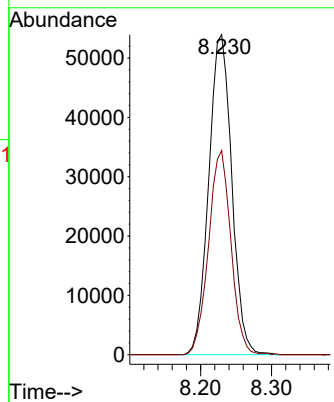
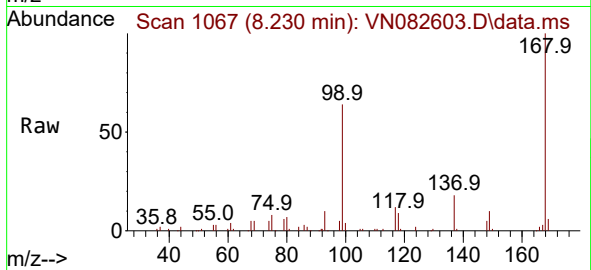




#1  
 Pentafluorobenzene  
 Concen: 50.000 ug/l  
 RT: 8.230 min Scan# 10  
 Delta R.T. 0.001 min  
 Lab File: VN082603.D  
 Acq: 17 Jun 2024 12:05

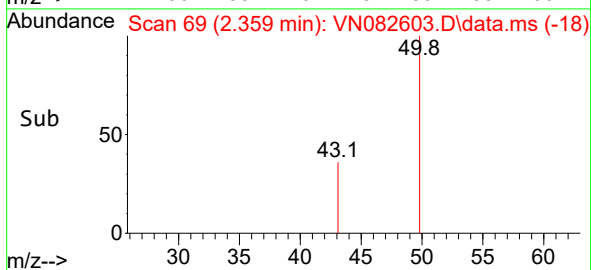
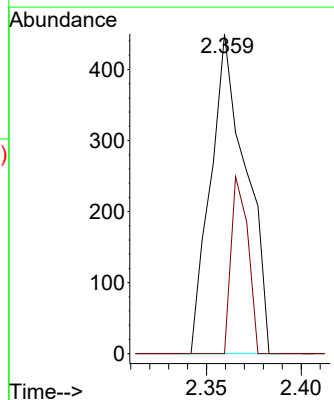
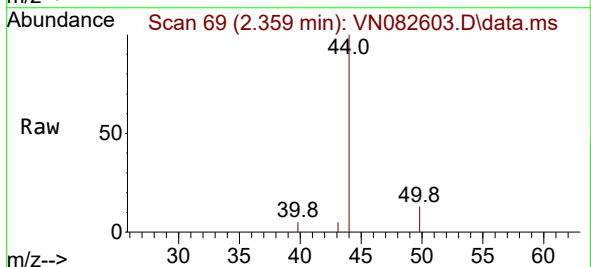
Instrument :  
 MSVOA\_N  
 ClientSampleId :  
 IBLK

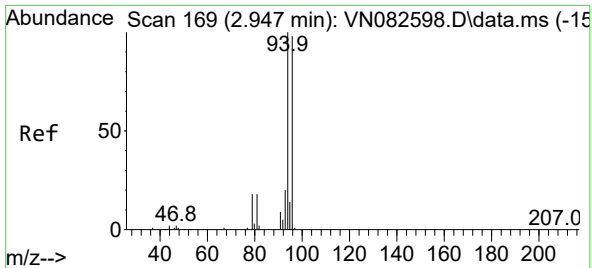
Tgt Ion:168 Resp: 121513  
 Ion Ratio Lower Upper  
 168 100  
 99 63.8 48.2 72.4



#3  
 Chloromethane  
 Concen: 0.287 ug/l  
 RT: 2.359 min Scan# 69  
 Delta R.T. 0.000 min  
 Lab File: VN082603.D  
 Acq: 17 Jun 2024 12:05

Tgt Ion: 50 Resp: 583  
 Ion Ratio Lower Upper  
 50 100  
 52 0.0 25.0 37.4#

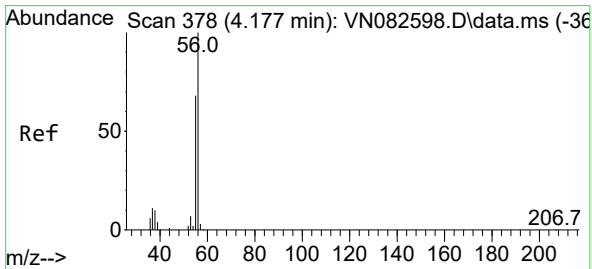
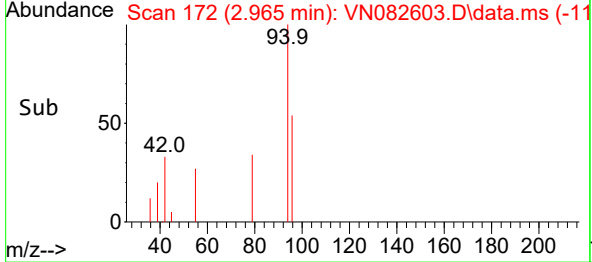
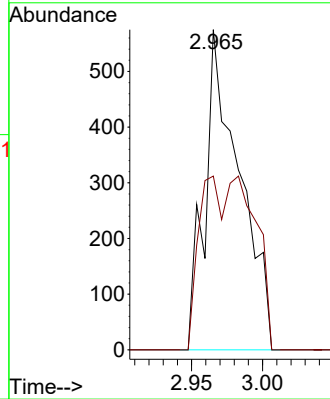
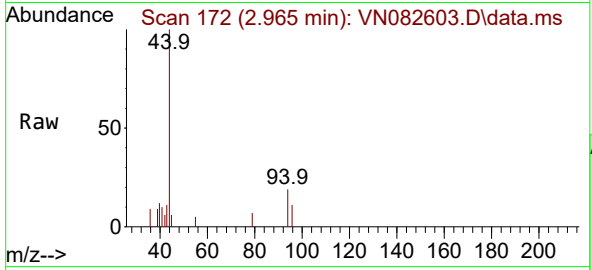




#5  
 Bromomethane  
 Concen: 0.779 ug/l  
 RT: 2.965 min Scan# 11  
 Delta R.T. 0.018 min  
 Lab File: VN082603.D  
 Acq: 17 Jun 2024 12:05

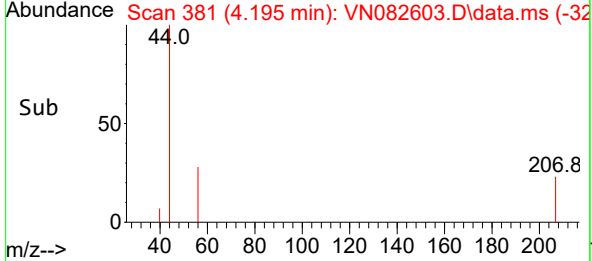
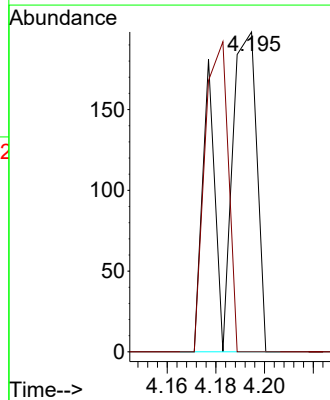
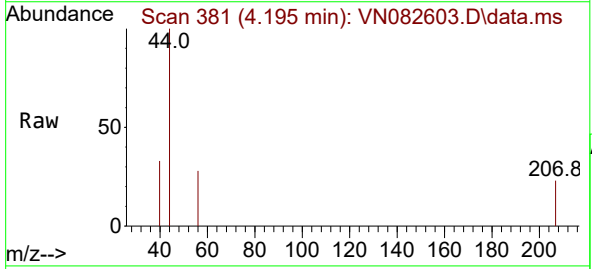
Instrument :  
 MSVOA\_N  
 ClientSampleId :  
 IBLK

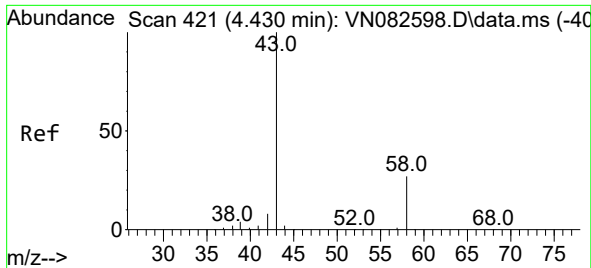
Tgt Ion: 94 Resp: 971  
 Ion Ratio Lower Upper  
 94 100  
 96 54.3 78.0 117.0#



#13  
 Acrolein  
 Concen: 0.613 ug/l  
 RT: 4.195 min Scan# 381  
 Delta R.T. 0.018 min  
 Lab File: VN082603.D  
 Acq: 17 Jun 2024 12:05

Tgt Ion: 56 Resp: 199  
 Ion Ratio Lower Upper  
 56 100  
 55 63.8 56.4 84.6

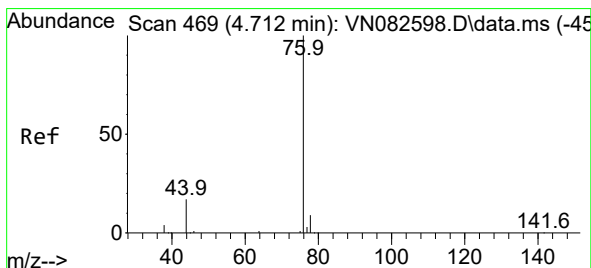
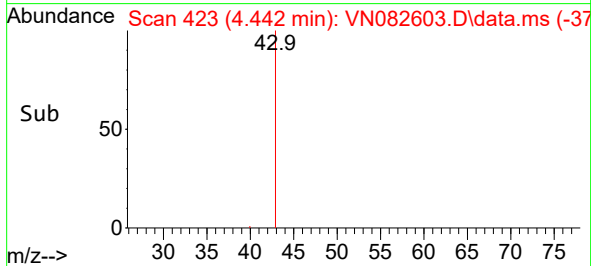
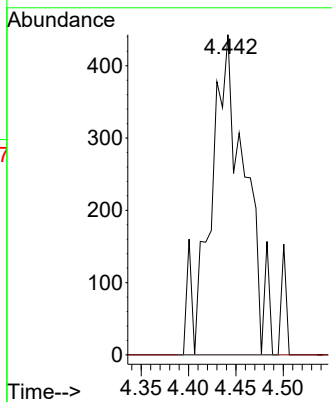
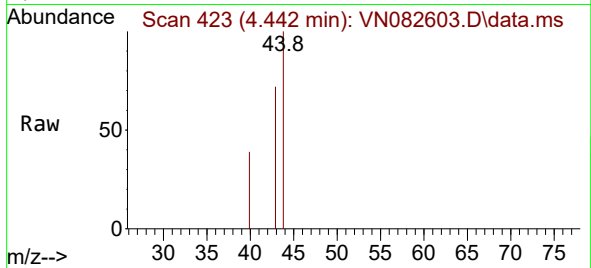




#16  
 Acetone  
 Concen: 1.281 ug/l  
 RT: 4.442 min Scan# 41  
 Delta R.T. 0.012 min  
 Lab File: VN082603.D  
 Acq: 17 Jun 2024 12:05

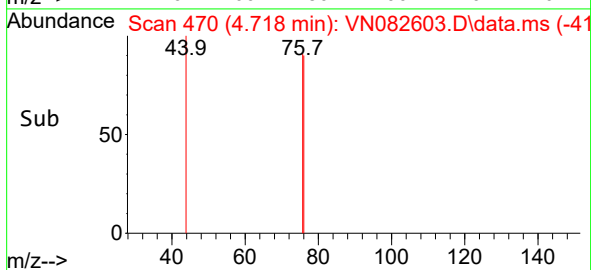
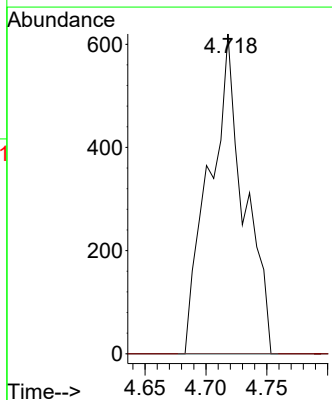
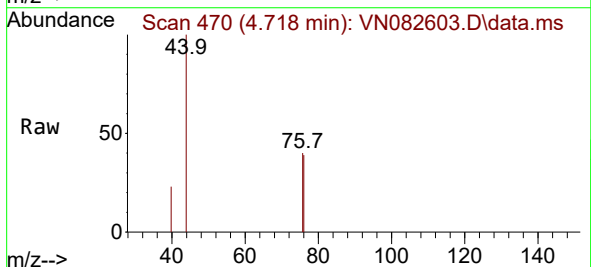
Instrument :  
 MSVOA\_N  
 ClientSampleId :  
 IBLK

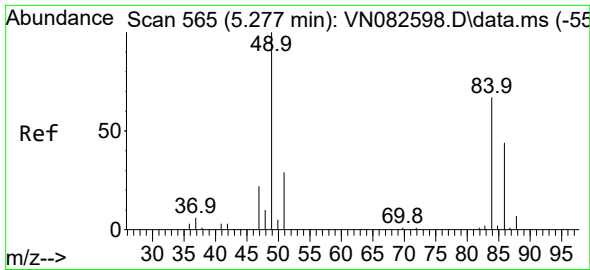
Tgt Ion: 43 Resp: 1135  
 Ion Ratio Lower Upper  
 43 100  
 58 0.0 21.8 32.6#



#17  
 Carbon Disulfide  
 Concen: 0.287 ug/l  
 RT: 4.718 min Scan# 470  
 Delta R.T. 0.006 min  
 Lab File: VN082603.D  
 Acq: 17 Jun 2024 12:05

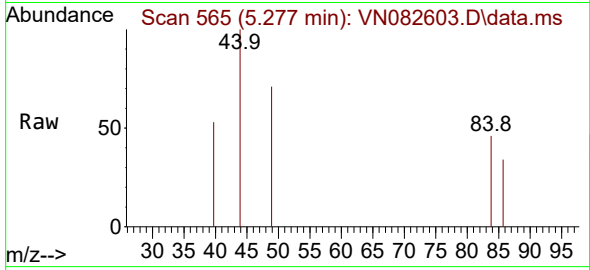
Tgt Ion: 76 Resp: 1235  
 Ion Ratio Lower Upper  
 76 100  
 78 0.0 7.2 10.8#





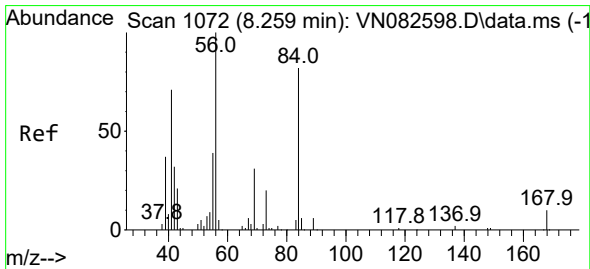
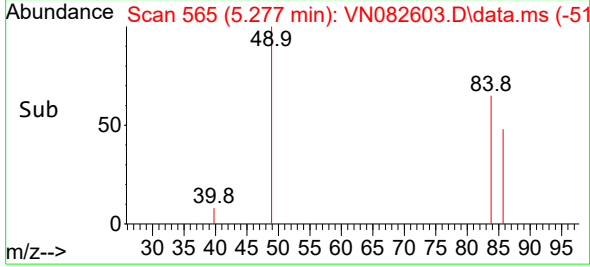
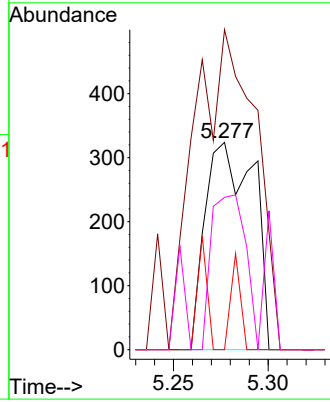
#20  
 Methylene Chloride  
 Concen: 0.369 ug/l  
 RT: 5.277 min Scan# 50  
 Delta R.T. 0.000 min  
 Lab File: VN082603.D  
 Acq: 17 Jun 2024 12:05

Instrument :  
 MSVOA\_N  
 ClientSampleId :  
 IBLK



Tgt Ion: 84 Resp: 575

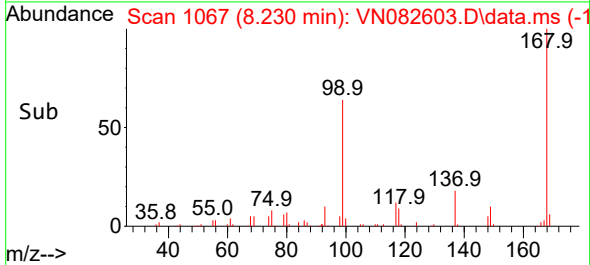
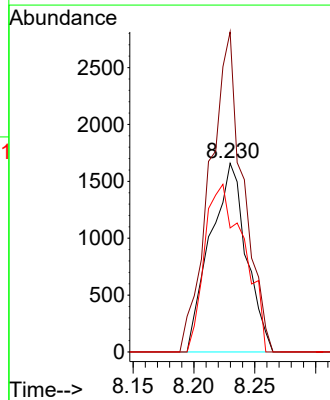
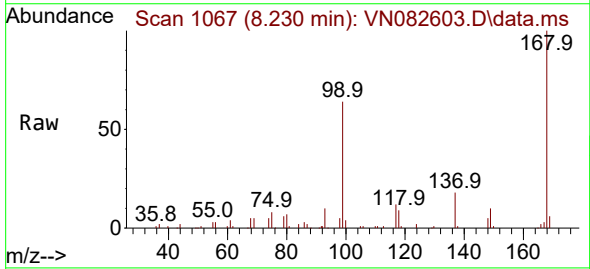
Ion	Ratio	Lower	Upper
84	100		
49	154.3	119.6	179.4
51	0.0	34.8	52.2#
86	73.5	52.9	79.3

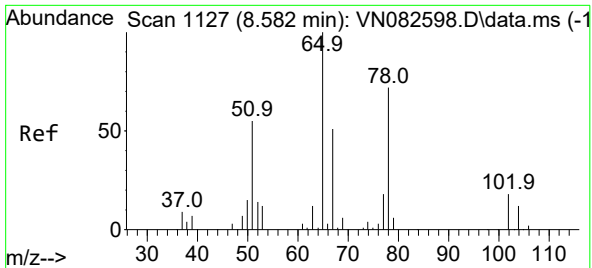


#31  
 Cyclohexane  
 Concen: 1.222 ug/l  
 RT: 8.230 min Scan# 1067  
 Delta R.T. -0.029 min  
 Lab File: VN082603.D  
 Acq: 17 Jun 2024 12:05

Tgt Ion: 56 Resp: 3436

Ion	Ratio	Lower	Upper
56	100		
69	169.6	24.5	36.7#
84	65.7	66.0	99.0#

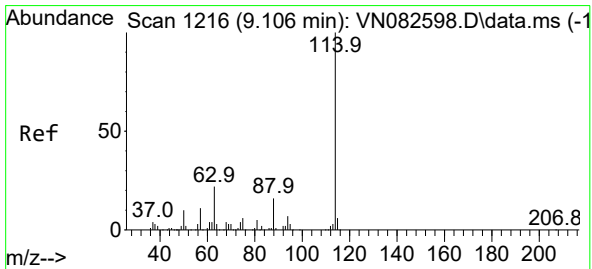
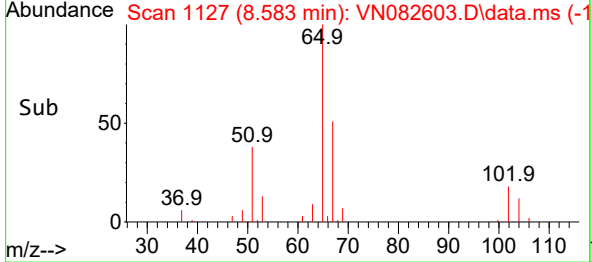
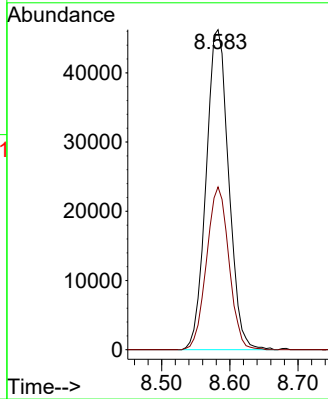
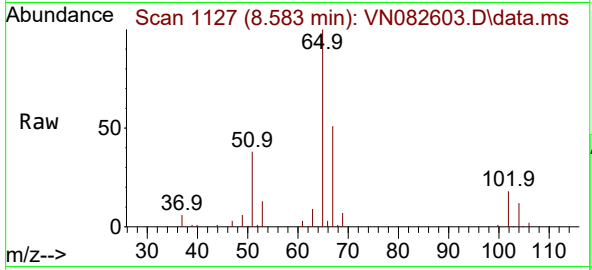




#33  
 1,2-Dichloroethane-d4  
 Concen: 54.612 ug/l  
 RT: 8.583 min Scan# 1127  
 Delta R.T. 0.000 min  
 Lab File: VN082603.D  
 Acq: 17 Jun 2024 12:05

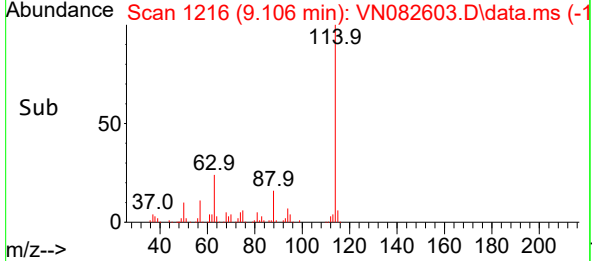
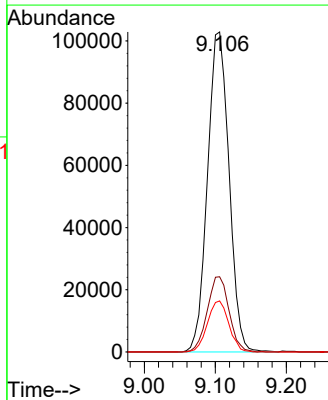
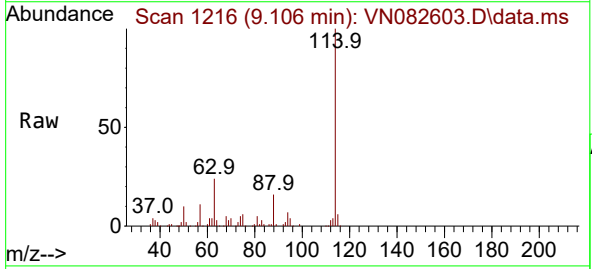
Instrument :  
 MSVOA\_N  
 ClientSampleId :  
 IBLK

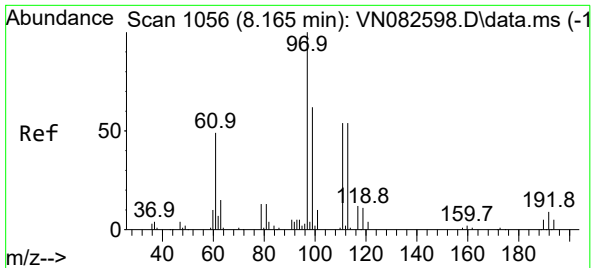
Tgt Ion: 65 Resp: 106418  
 Ion Ratio Lower Upper  
 65 100  
 67 50.4 0.0 104.4



#34  
 1,4-Difluorobenzene  
 Concen: 50.000 ug/l  
 RT: 9.106 min Scan# 1216  
 Delta R.T. 0.000 min  
 Lab File: VN082603.D  
 Acq: 17 Jun 2024 12:05

Tgt Ion: 114 Resp: 216402  
 Ion Ratio Lower Upper  
 114 100  
 63 23.5 0.0 44.6  
 88 15.9 0.0 31.4



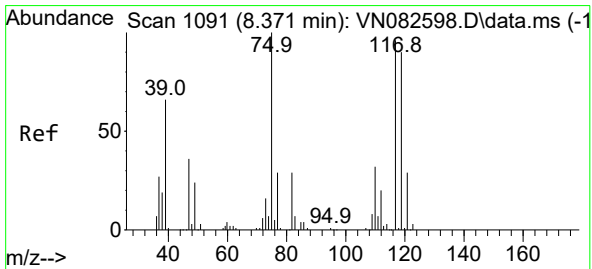
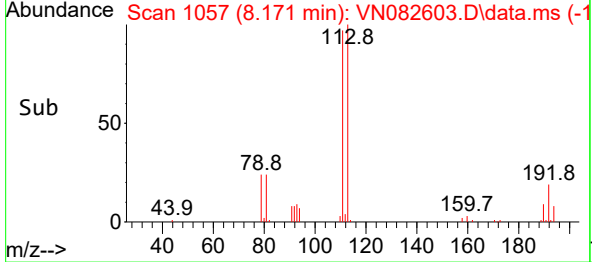
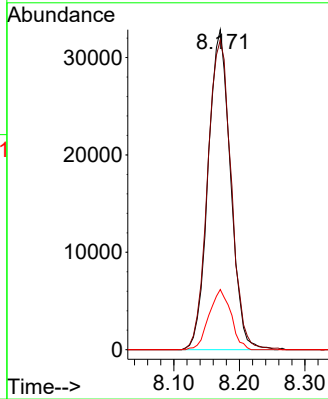
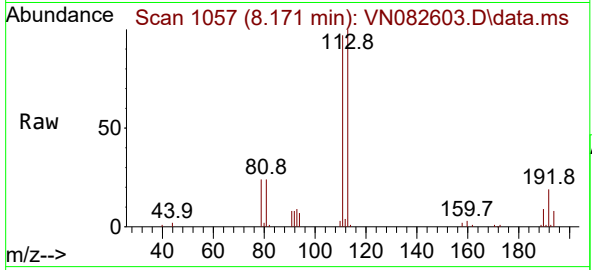


#35  
 Dibromofluoromethane  
 Concen: 52.895 ug/l  
 RT: 8.171 min Scan# 1067  
 Delta R.T. 0.006 min  
 Lab File: VN082603.D  
 Acq: 17 Jun 2024 12:05

Instrument : MSVOA\_N  
 ClientSampleId : IBLK

Tgt Ion:113 Resp: 77652

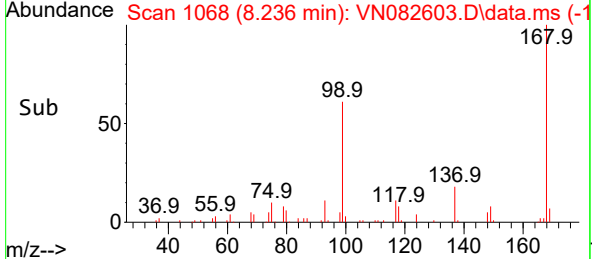
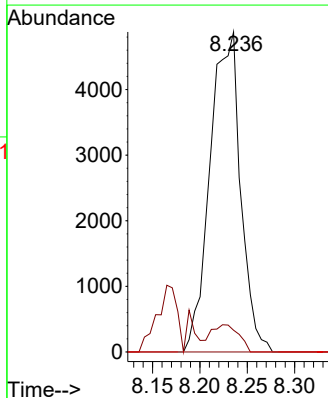
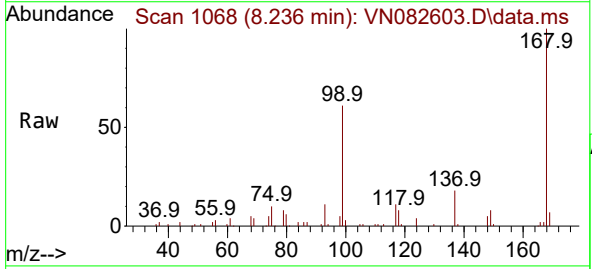
Ion	Ratio	Lower	Upper
113	100		
111	101.8	82.4	123.6
192	18.5	14.9	22.3



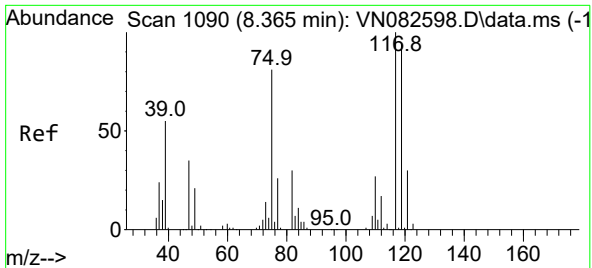
#36  
 1,1-Dichloropropene  
 Concen: 4.980 ug/l  
 RT: 8.236 min Scan# 1068  
 Delta R.T. -0.135 min  
 Lab File: VN082603.D  
 Acq: 17 Jun 2024 12:05

Tgt Ion: 75 Resp: 10928

Ion	Ratio	Lower	Upper
75	100		
110	8.0	16.3	48.9#
77	0.0	24.6	37.0#





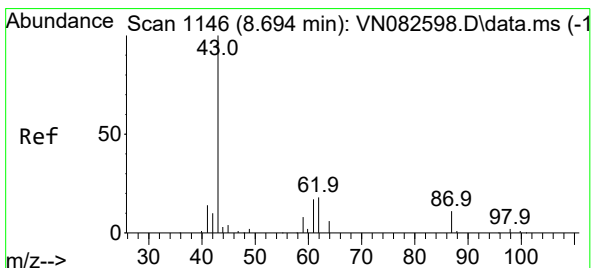
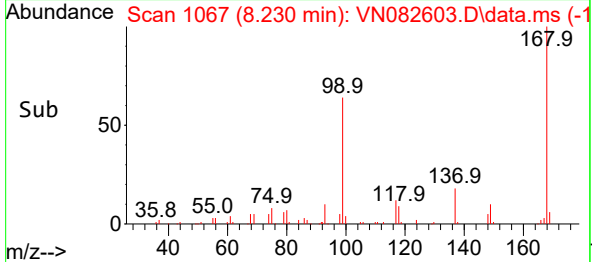
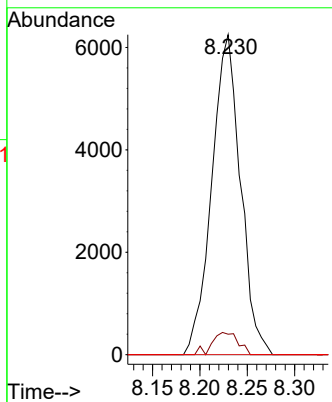
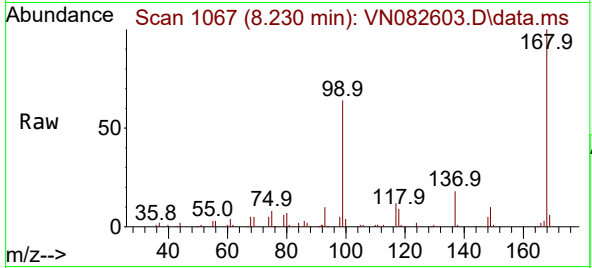


#38  
 Carbon Tetrachloride  
 Concen: 5.330 ug/l  
 RT: 8.230 min Scan# 1067  
 Delta R.T. -0.135 min  
 Lab File: VN082603.D  
 Acq: 17 Jun 2024 12:05

Instrument : MSVOA\_N  
 ClientSampleId : IBLK

Tgt Ion:117 Resp: 13182

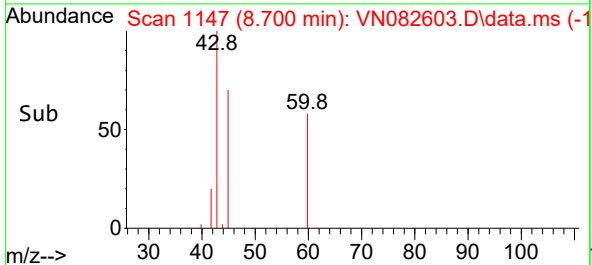
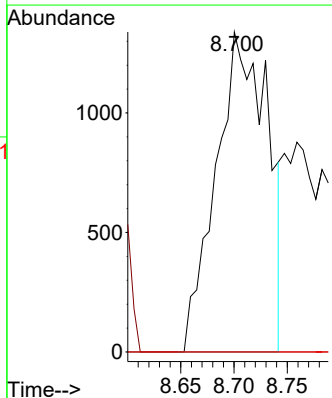
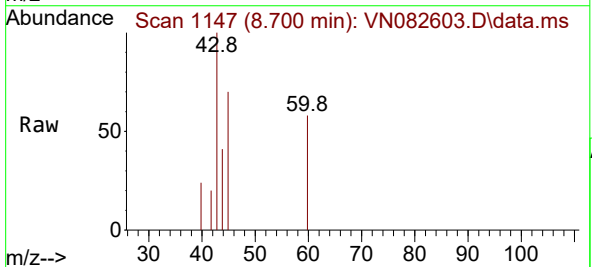
Ion	Ratio	Lower	Upper
117	100		
119	6.4	74.9	112.3#
121	0.0	24.3	36.5#

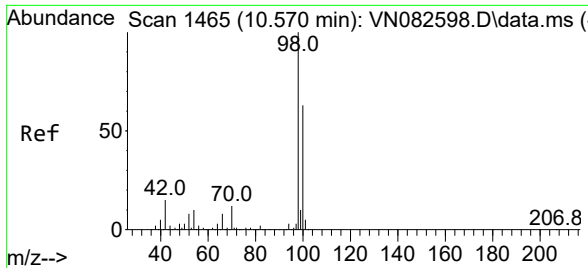


#43  
 Isopropyl Acetate  
 Concen: 0.862 ug/l  
 RT: 8.700 min Scan# 1147  
 Delta R.T. 0.006 min  
 Lab File: VN082603.D  
 Acq: 17 Jun 2024 12:05

Tgt Ion: 43 Resp: 4502

Ion	Ratio	Lower	Upper
43	100		
61	0.0	17.8	26.6#
87	0.0	8.2	12.2#

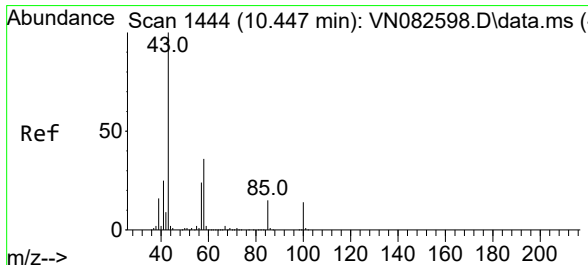
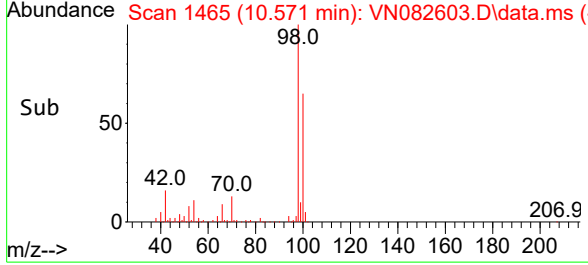
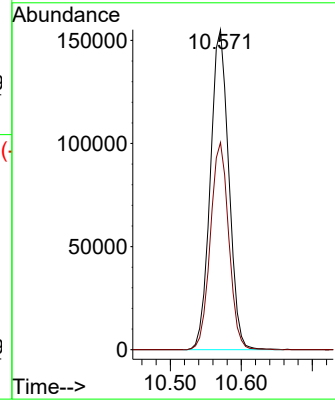
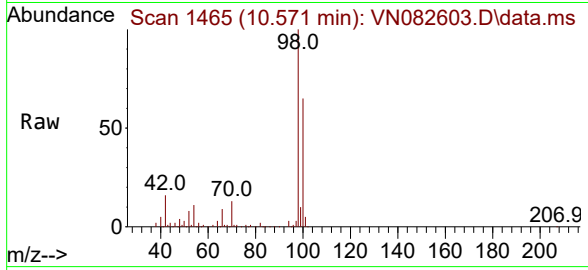




#50  
 Toluene-d8  
 Concen: 50.506 ug/l  
 RT: 10.571 min Scan# 1465  
 Delta R.T. 0.000 min  
 Lab File: VN082603.D  
 Acq: 17 Jun 2024 12:05

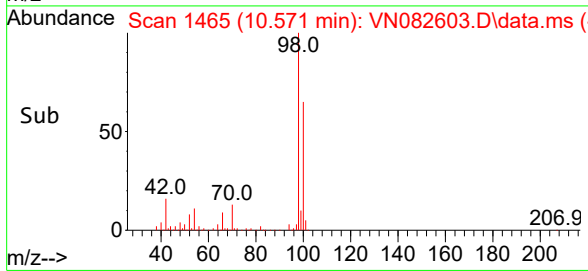
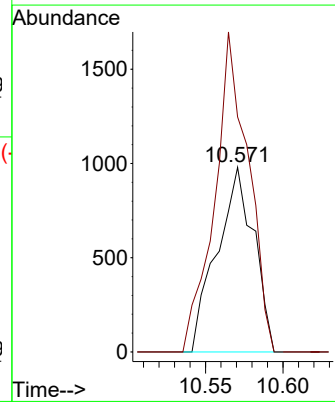
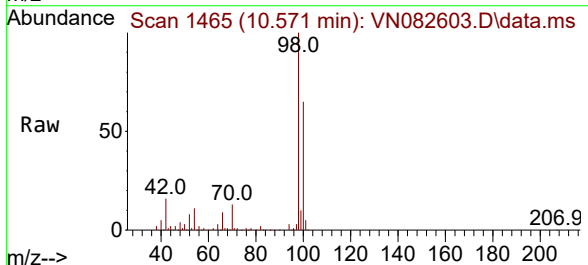
Instrument : MSVOA\_N  
 ClientSampleId : IBLK

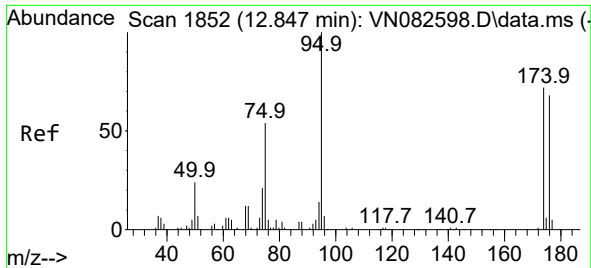
Tgt Ion: 98 Resp: 280389  
 Ion Ratio Lower Upper  
 98 100  
 100 64.3 51.5 77.3



#51  
 4-Methyl-2-Pentanone  
 Concen: 0.606 ug/l  
 RT: 10.571 min Scan# 1465  
 Delta R.T. 0.124 min  
 Lab File: VN082603.D  
 Acq: 17 Jun 2024 12:05

Tgt Ion: 43 Resp: 1623  
 Ion Ratio Lower Upper  
 43 100  
 58 158.1 28.2 42.4#

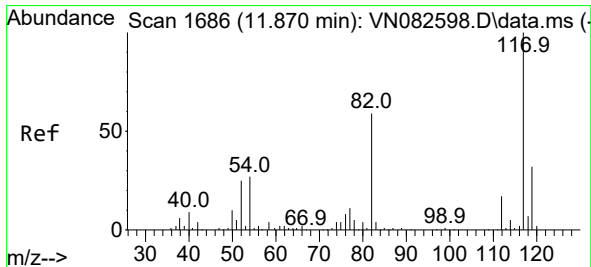
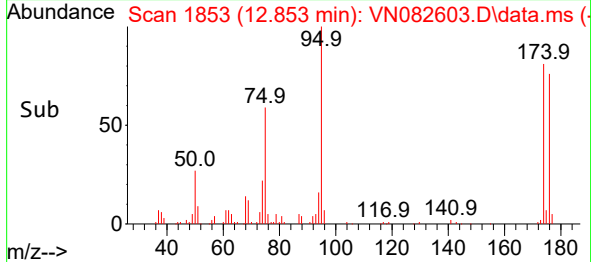
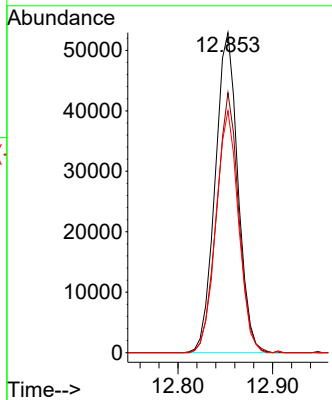
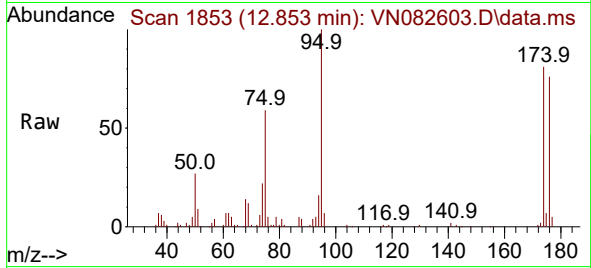




#62  
 4-Bromofluorobenzene  
 Concen: 46.118 ug/l  
 RT: 12.853 min Scan# 11  
 Delta R.T. 0.006 min  
 Lab File: VN082603.D  
 Acq: 17 Jun 2024 12:05

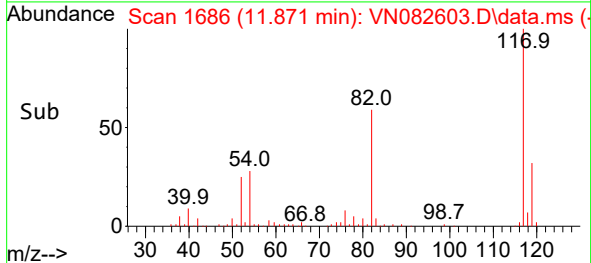
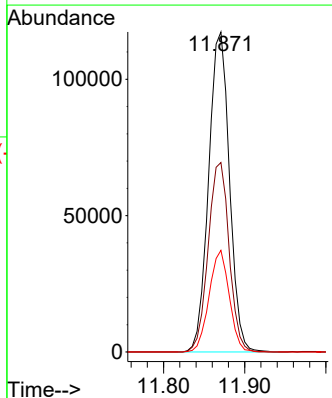
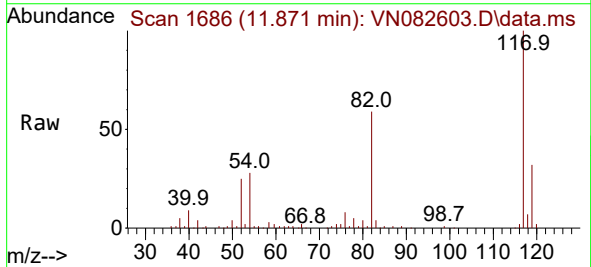
Instrument :  
 MSVOA\_N  
 ClientSampleId :  
 IBLK

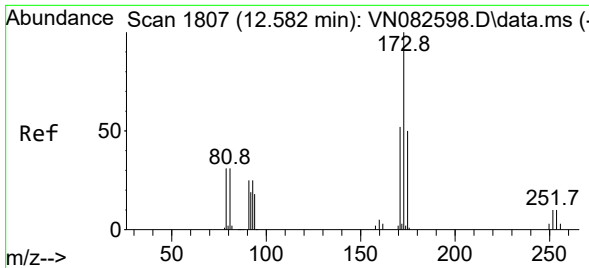
Tgt Ion: 95 Resp: 88270  
 Ion Ratio Lower Upper  
 95 100  
 174 79.4 0.0 159.2  
 176 75.0 0.0 147.6



#63  
 Chlorobenzene-d5  
 Concen: 50.000 ug/l  
 RT: 11.871 min Scan# 1686  
 Delta R.T. 0.000 min  
 Lab File: VN082603.D  
 Acq: 17 Jun 2024 12:05

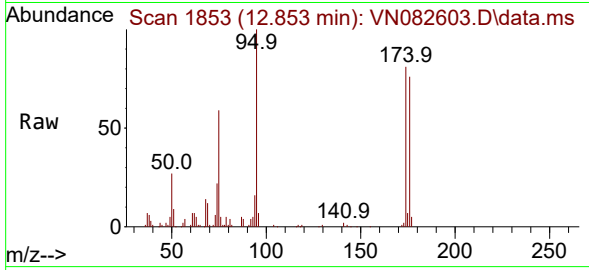
Tgt Ion: 117 Resp: 208918  
 Ion Ratio Lower Upper  
 117 100  
 82 59.2 47.5 71.3  
 119 31.7 25.6 38.4



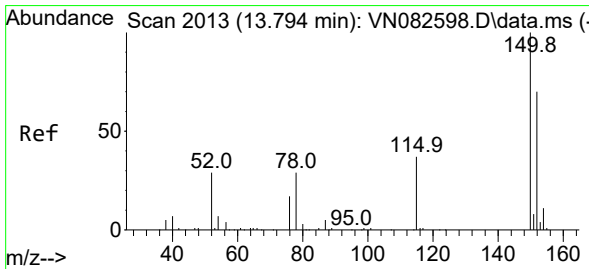
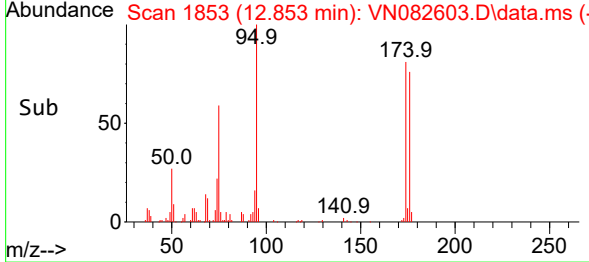
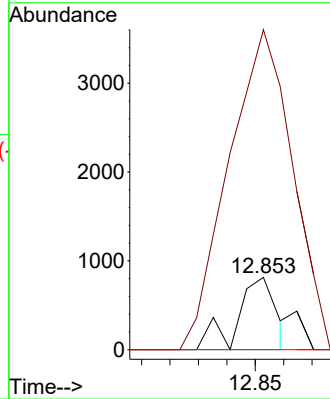


#71  
 Bromoform  
 Concen: 0.572 ug/l  
 RT: 12.853 min Scan# 1807  
 Delta R.T. 0.271 min  
 Lab File: VN082603.D  
 Acq: 17 Jun 2024 12:05

Instrument :  
 MSVOA\_N  
 ClientSampleId :  
 BLK

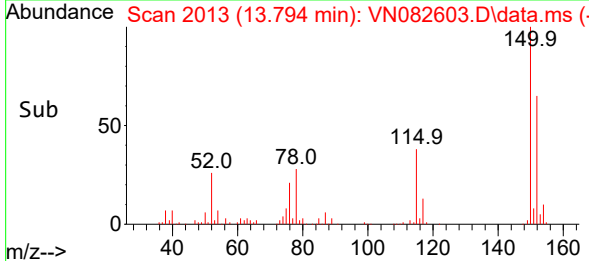
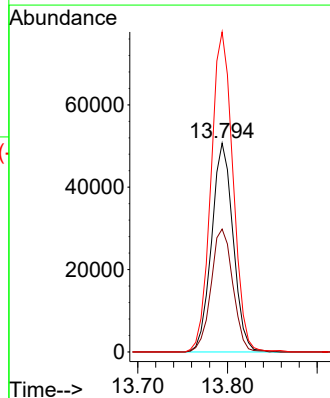
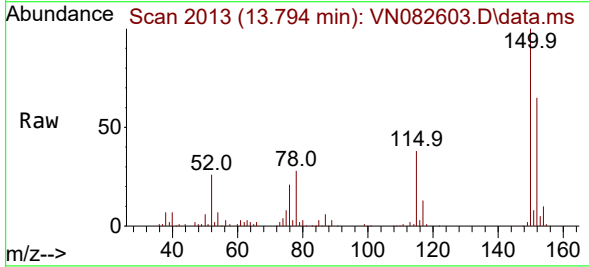


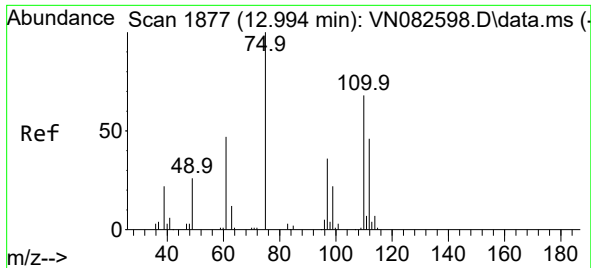
Tgt Ion:173 Resp: 772  
 Ion Ratio Lower Upper  
 173 100  
 175 610.0 24.0 72.0#  
 254 0.0 0.0 0.0



#72  
 1,4-Dichlorobenzene-d4  
 Concen: 50.000 ug/l  
 RT: 13.794 min Scan# 2013  
 Delta R.T. 0.000 min  
 Lab File: VN082603.D  
 Acq: 17 Jun 2024 12:05

Tgt Ion:152 Resp: 84395  
 Ion Ratio Lower Upper  
 152 100  
 115 59.8 30.6 91.6  
 150 156.9 0.0 348.6

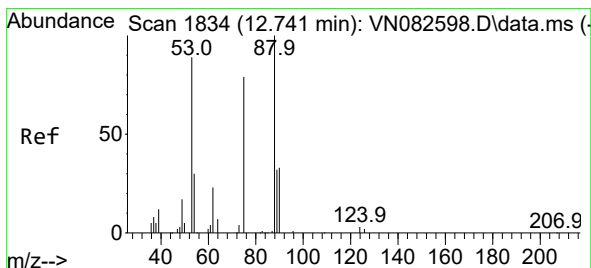
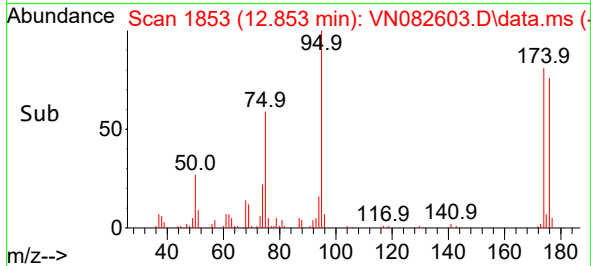
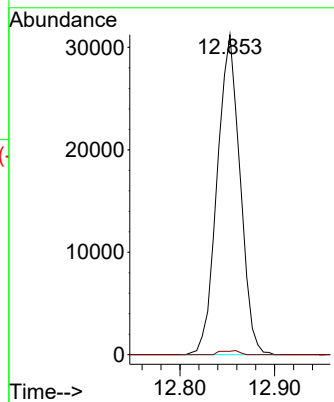
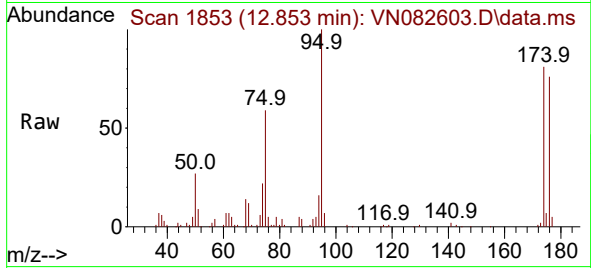




#76  
 1,2,3-Trichloropropane  
 Concen: 25.413 ug/l  
 RT: 12.853 min Scan# 1853  
 Delta R.T. -0.141 min  
 Lab File: VN082603.D  
 Acq: 17 Jun 2024 12:05

Instrument : MSVOA\_N  
 ClientSampleId : IBLK

Tgt Ion: 75 Resp: 52457  
 Ion Ratio Lower Upper  
 75 100  
 77 1.1 110.9 332.6#



#81  
 trans-1,4-Dichloro-2-butene  
 Concen: 60.799 ug/l  
 RT: 12.853 min Scan# 1853  
 Delta R.T. 0.112 min  
 Lab File: VN082603.D  
 Acq: 17 Jun 2024 12:05

Tgt Ion: 75 Resp: 52457  
 Ion Ratio Lower Upper  
 75 100  
 53 0.1 88.4 132.6#  
 89 0.0 36.3 54.5#

