

Data Path : Z:\voasrv\HPCHEM1\MSVOA_N\Data\VN061725\
 Data File : VN087062.D
 Acq On : 17 Jun 2025 16:08
 Operator : JC\MD
 Sample : Q2325-04
 Misc : 5.0mL/MSVOA_N/WATER
 ALS Vial : 19 Sample Multiplier: 1

Instrument :
 MSVOA_N
 ClientSampleId :
 TP-8

Quant Time: Jun 18 01:50:24 2025
 Quant Method : Z:\voasrv\HPCHEM1\MSVOA_N\methods\82N060625W.M
 Quant Title : SW846 8260
 QLast Update : Sat Jun 07 02:12:50 2025
 Response via : Initial Calibration

Compound	R.T.	QIon	Response	Conc	Units	Dev(Min)

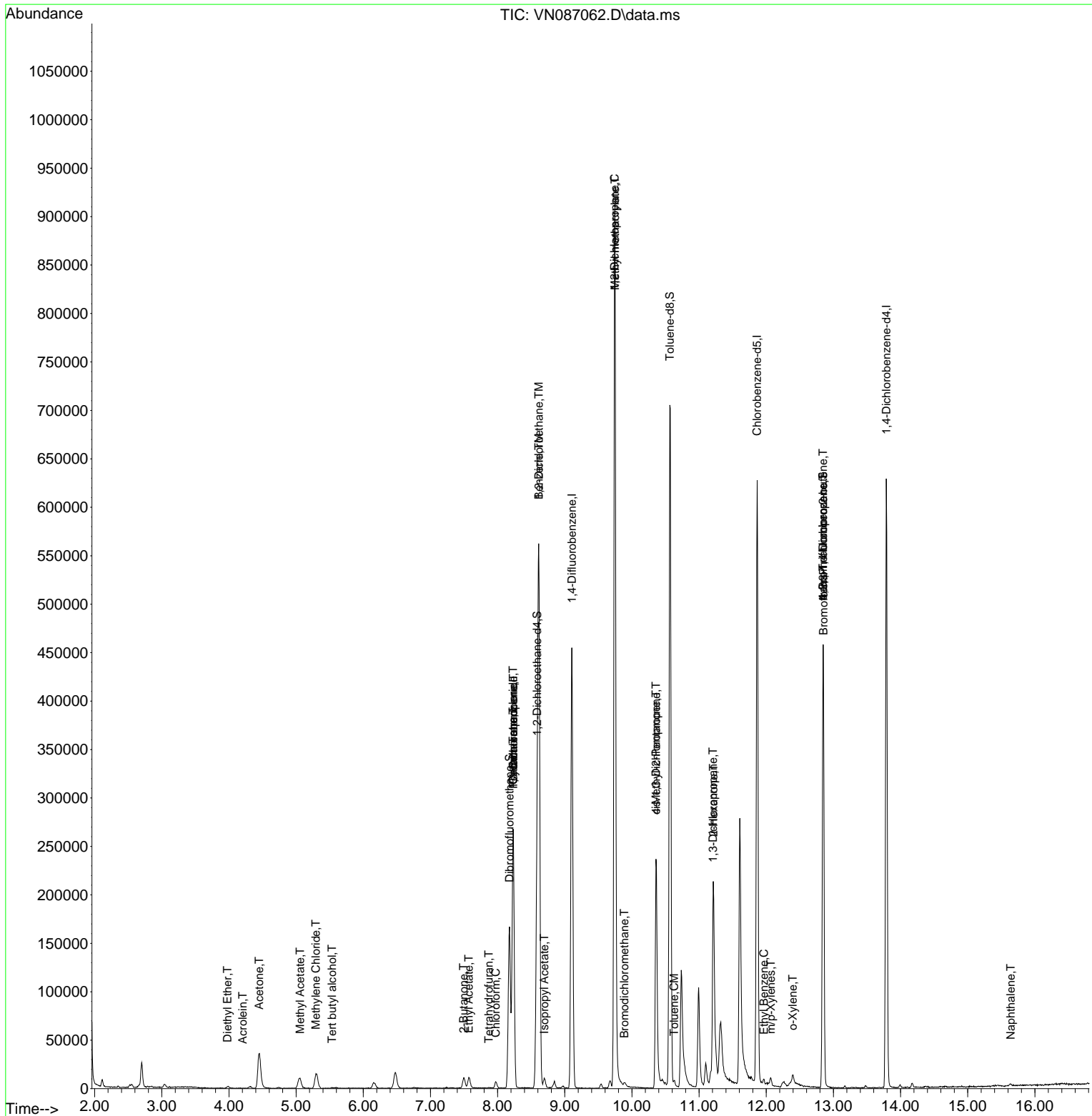
Internal Standards						
1) Pentafluorobenzene	8.235	168	213204	50.000	ug/l	0.00
34) 1,4-Difluorobenzene	9.106	114	426288	50.000	ug/l	0.00
63) Chlorobenzene-d5	11.865	117	386654	50.000	ug/l	0.00
72) 1,4-Dichlorobenzene-d4	13.788	152	182982	50.000	ug/l	0.00
System Monitoring Compounds						
33) 1,2-Dichloroethane-d4	8.588	65	149560	52.393	ug/l	0.00
Spiked Amount	50.000	Range 74 - 125	Recovery	=	104.780%	
35) Dibromofluoromethane	8.177	113	129005	51.065	ug/l	0.00
Spiked Amount	50.000	Range 75 - 124	Recovery	=	102.140%	
50) Toluene-d8	10.565	98	525453	52.541	ug/l	0.00
Spiked Amount	50.000	Range 86 - 113	Recovery	=	105.080%	
62) 4-Bromofluorobenzene	12.847	95	186473	50.186	ug/l	0.00
Spiked Amount	50.000	Range 77 - 121	Recovery	=	100.380%	
Target Compounds						
						Qvalue
8) Diethyl Ether	3.977	74	1372	0.851	ug/l	85
11) Tert butyl alcohol	5.536	59	1837	2.372	ug/l #	73
13) Acrolein	4.206	56	153	0.624	ug/l #	61
16) Acetone	4.447	43	73852	48.786	ug/l	99
18) Methyl Acetate	5.059	43	25318	5.739	ug/l	98
20) Methylene Chloride	5.294	84	13828	4.879	ug/l	92
25) 2-Butanone	7.494	43	18387	7.472	ug/l	89
29) Tetrahydrofuran	7.871	42	377	0.235	ug/l #	31
30) Chloroform	7.971	83	6999	1.468	ug/l	96
31) Cyclohexane	8.230	56	3667	0.792	ug/l #	1
36) 1,1-Dichloropropene	8.235	75	15712	4.174	ug/l #	48
37) Ethyl Acetate	7.571	43	17045	3.557	ug/l	98
38) Carbon Tetrachloride	8.230	117	20312	5.496	ug/l #	16
40) Benzene	8.612	78	579781	47.099	ug/l	99
42) 1,2-Dichloroethane	8.612	62	4118	1.103	ug/l	75
43) Isopropyl Acetate	8.694	43	11072	1.440	ug/l	94
45) 1,2-Dichloropropane	9.741	63	1333	0.445	ug/l #	43
47) Bromodichloromethane	9.888	83	1552	0.379	ug/l #	88
48) Methyl methacrylate	9.747	41	76108	21.499	ug/l #	35
51) 4-Methyl-2-Pentanone	10.359	43	92271	19.928	ug/l #	44
52) Toluene	10.629	92	3103	0.412	ug/l	98
54) cis-1,3-Dichloropropene	10.359	75	57933	11.831	ug/l #	54
57) 1,3-Dichloropropane	11.206	76	2780	0.554	ug/l #	43
59) 2-Hexanone	11.212	43	32207	10.799	ug/l #	56
67) Ethyl Benzene	11.965	91	5164	0.352	ug/l	99
68) m/p-Xylenes	12.070	106	2702	0.481	ug/l	95
69) o-Xylene	12.394	106	2238	0.416	ug/l	93
71) Bromoform	12.853	173	1121	0.552	ug/l #	1
76) 1,2,3-Trichloropropane	12.847	75	85051	19.554	ug/l #	1
81) trans-1,4-Dichloro-2-b...	12.847	75	85051	45.012	ug/l #	16
95) Naphthalene	15.641	128	2912	0.212	ug/l #	86

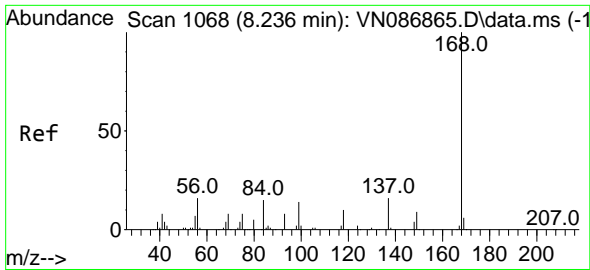
(#) = qualifier out of range (m) = manual integration (+) = signals summed

Data Path : Z:\voasrv\HPCHEM1\MSVOA_N\Data\VN061725\
 Data File : VN087062.D
 Acq On : 17 Jun 2025 16:08
 Operator : JC\MD
 Sample : Q2325-04
 Misc : 5.0mL/MSVOA_N/WATER
 ALS Vial : 19 Sample Multiplier: 1

Instrument :
 MSVOA_N
 ClientSampleId :
 TP-8

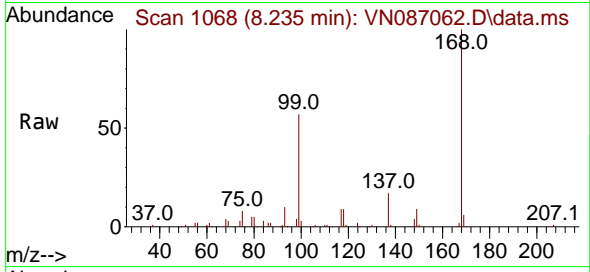
Quant Time: Jun 18 01:50:24 2025
 Quant Method : Z:\voasrv\HPCHEM1\MSVOA_N\methods\82N060625W.M
 Quant Title : SW846 8260
 QLast Update : Sat Jun 07 02:12:50 2025
 Response via : Initial Calibration



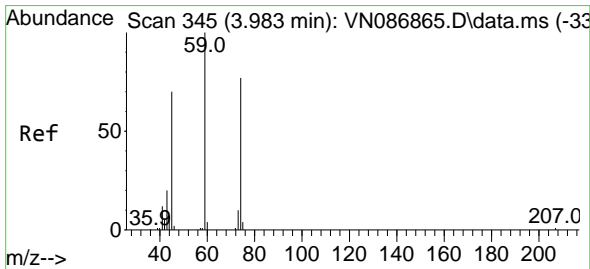
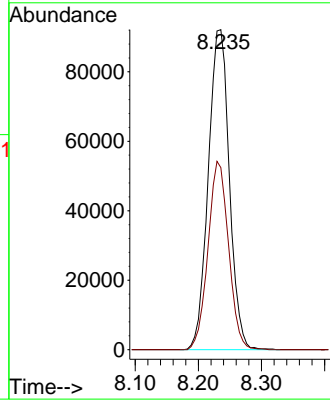
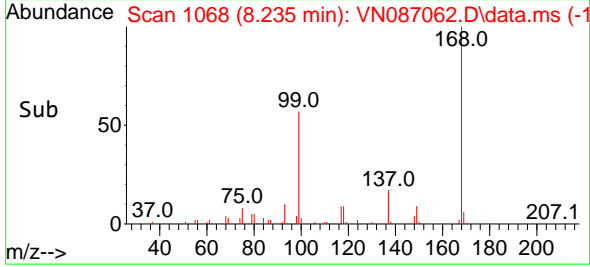


#1
 Pentafluorobenzene
 Concen: 50.000 ug/l
 RT: 8.235 min Scan# 1068
 Delta R.T. -0.001 min
 Lab File: VN087062.D
 Acq: 17 Jun 2025 16:08

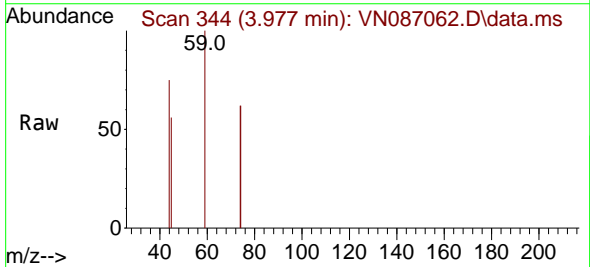
Instrument : MSVOA_N
 ClientSampleId : TP-8



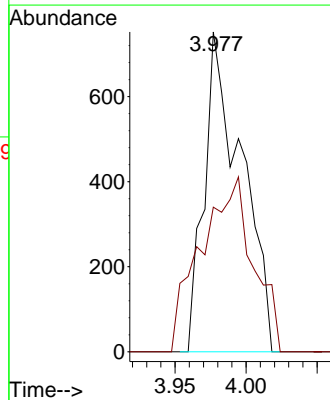
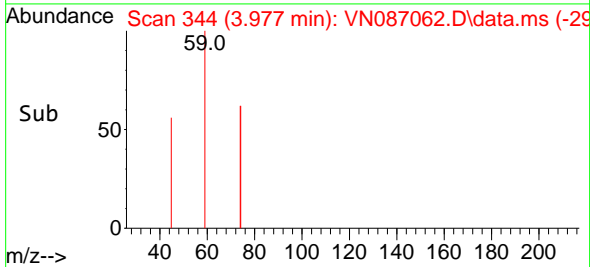
Tgt Ion:168 Resp: 213204
 Ion Ratio Lower Upper
 168 100
 99 56.9 49.1 73.7

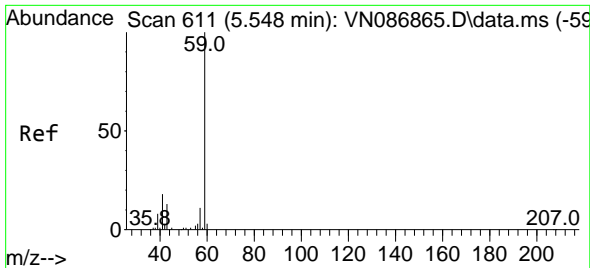


#8
 Diethyl Ether
 Concen: 0.851 ug/l
 RT: 3.977 min Scan# 344
 Delta R.T. -0.006 min
 Lab File: VN087062.D
 Acq: 17 Jun 2025 16:08



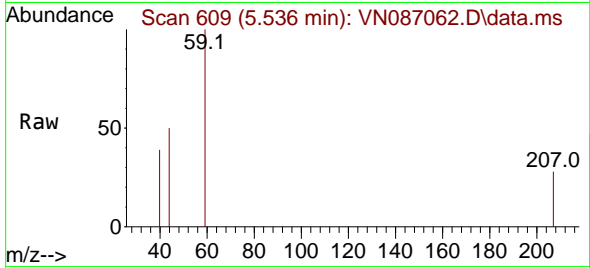
Tgt Ion: 74 Resp: 1372
 Ion Ratio Lower Upper
 74 100
 45 76.7 45.5 136.5



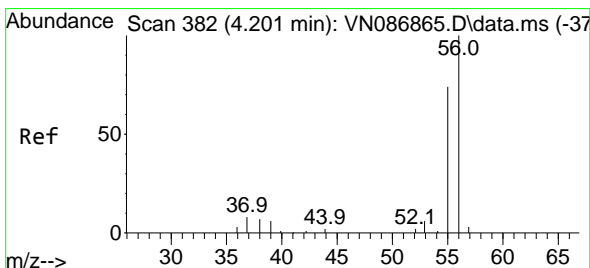
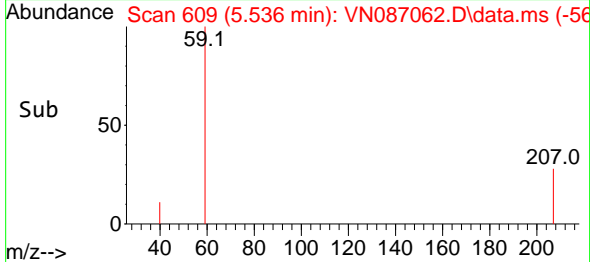
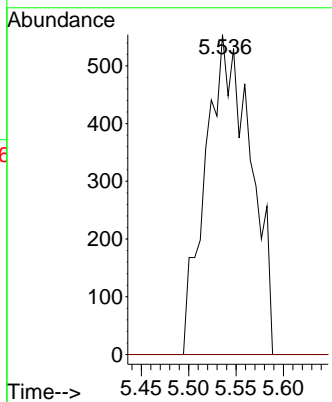


#11
 Tert butyl alcohol
 Concen: 2.372 ug/l
 RT: 5.536 min Scan# 609
 Delta R.T. -0.012 min
 Lab File: VN087062.D
 Acq: 17 Jun 2025 16:08

Instrument : MSVOA_N
 ClientSampleId : TP-8

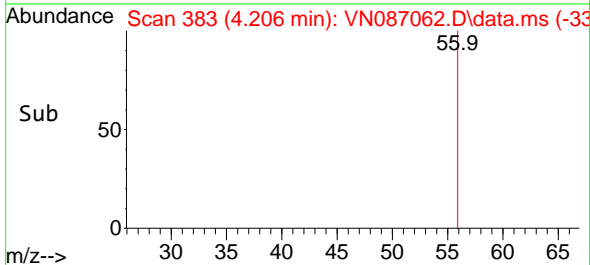
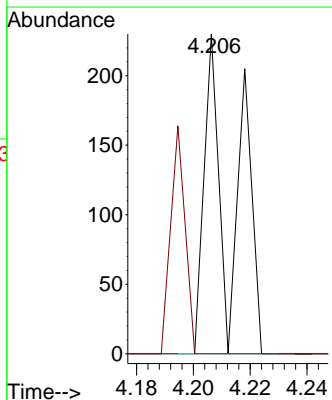
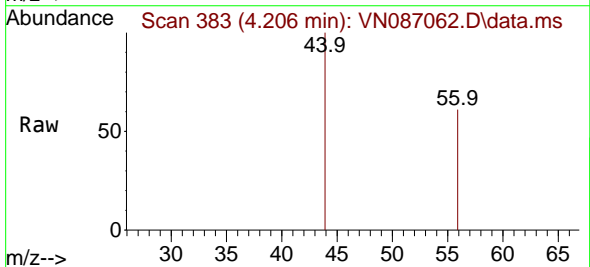


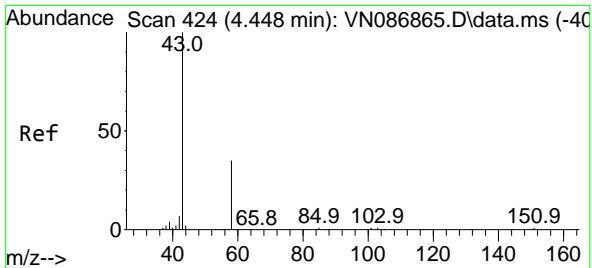
Tgt Ion: 59 Resp: 1837
 Ion Ratio Lower Upper
 59 100
 57 0.0 8.1 12.1#



#13
 Acrolein
 Concen: 0.624 ug/l
 RT: 4.206 min Scan# 383
 Delta R.T. 0.006 min
 Lab File: VN087062.D
 Acq: 17 Jun 2025 16:08

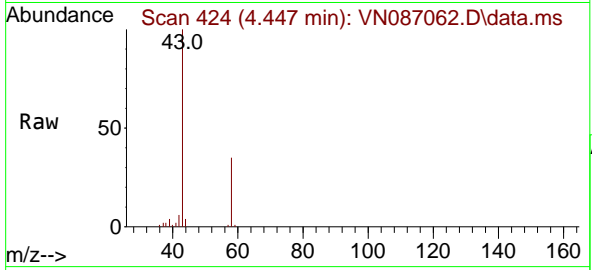
Tgt Ion: 56 Resp: 153
 Ion Ratio Lower Upper
 56 100
 55 37.9 55.6 83.4#



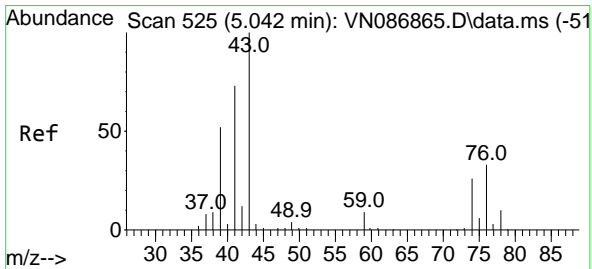
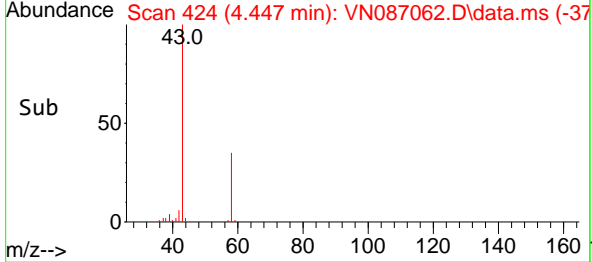
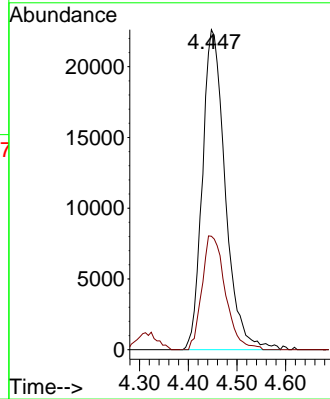


#16
 Acetone
 Concen: 48.786 ug/l
 RT: 4.447 min Scan# 41
 Delta R.T. -0.000 min
 Lab File: VN087062.D
 Acq: 17 Jun 2025 16:08

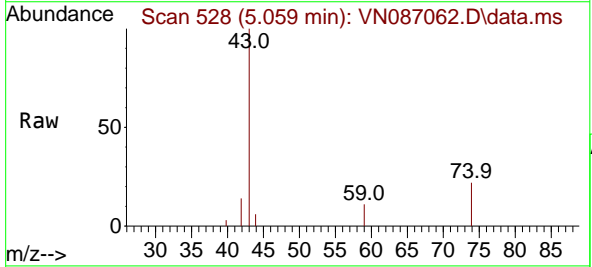
Instrument :
 MSVOA_N
 ClientSampleId :
 TP-8



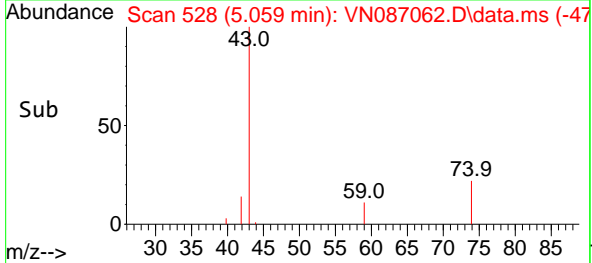
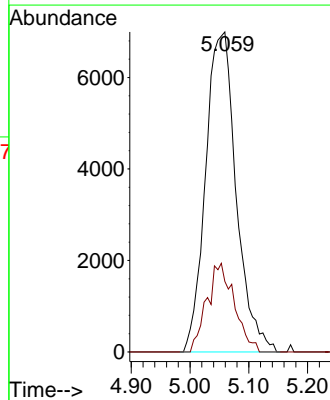
Tgt Ion: 43 Resp: 73852
 Ion Ratio Lower Upper
 43 100
 58 35.4 28.0 42.0

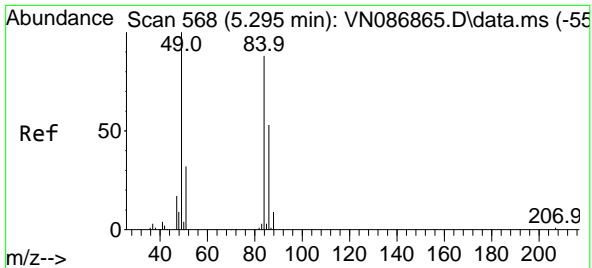


#18
 Methyl Acetate
 Concen: 5.739 ug/l
 RT: 5.059 min Scan# 528
 Delta R.T. 0.018 min
 Lab File: VN087062.D
 Acq: 17 Jun 2025 16:08



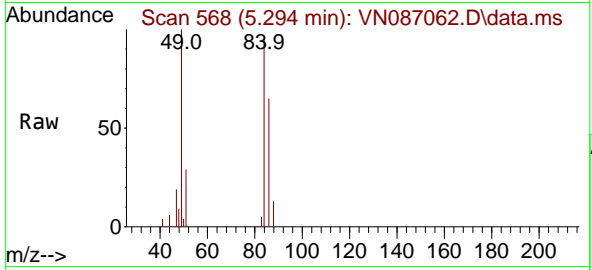
Tgt Ion: 43 Resp: 25318
 Ion Ratio Lower Upper
 43 100
 74 24.8 20.7 31.1





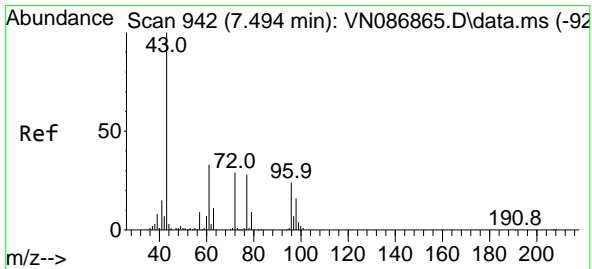
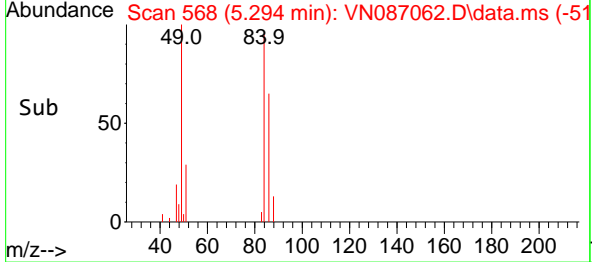
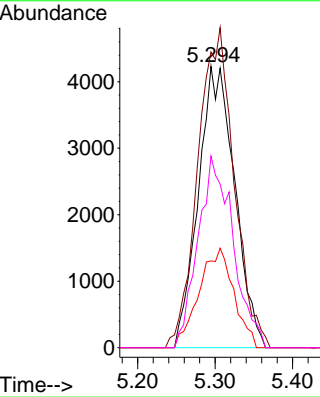
#20
 Methylene Chloride
 Concen: 4.879 ug/l
 RT: 5.294 min Scan# 501
 Delta R.T. -0.000 min
 Lab File: VN087062.D
 Acq: 17 Jun 2025 16:08

Instrument : MSVOA_N
 ClientSampleId : TP-8



Tgt Ion: 84 Resp: 13828

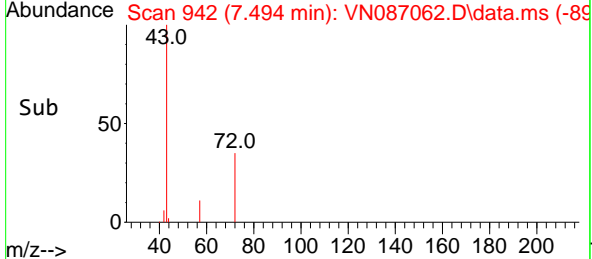
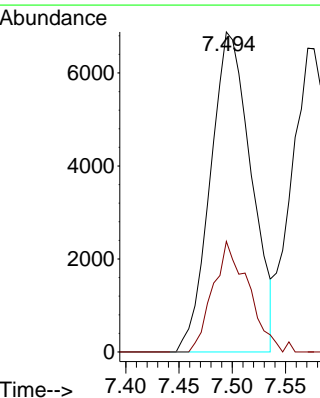
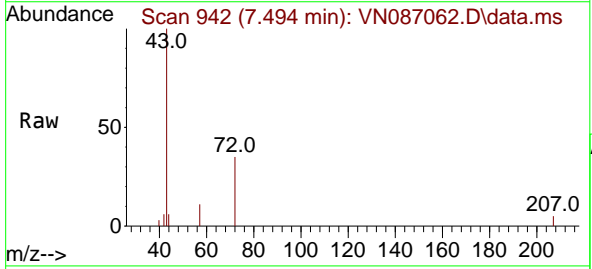
Ion	Ratio	Lower	Upper
84	100		
49	105.2	90.5	135.7
51	30.8	28.5	42.7
86	68.1	48.1	72.1

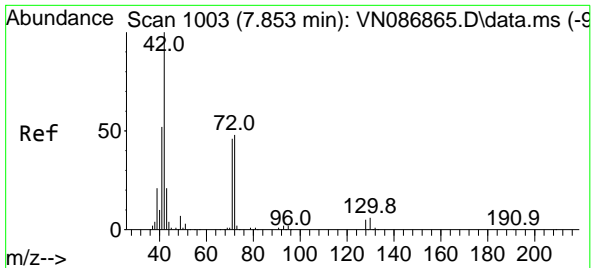


#25
 2-Butanone
 Concen: 7.472 ug/l
 RT: 7.494 min Scan# 942
 Delta R.T. -0.000 min
 Lab File: VN087062.D
 Acq: 17 Jun 2025 16:08

Tgt Ion: 43 Resp: 18387

Ion	Ratio	Lower	Upper
43	100		
72	34.5	23.0	34.6



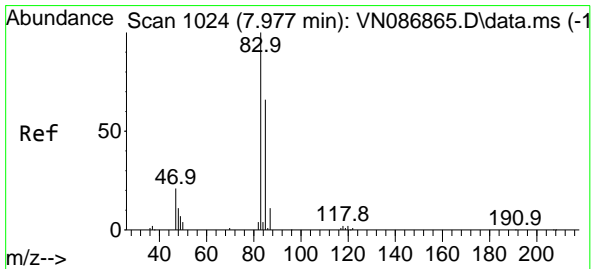
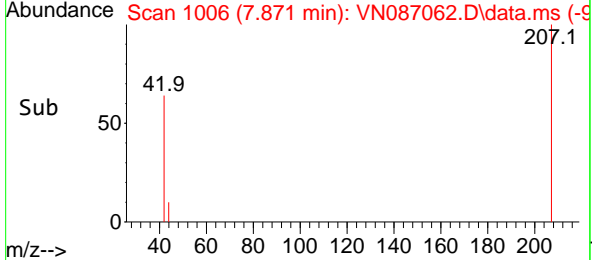
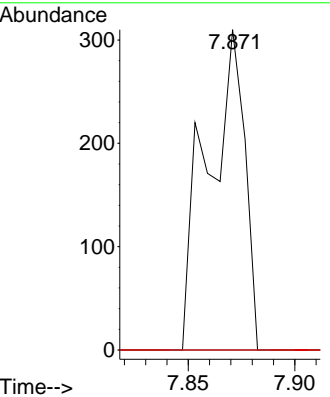
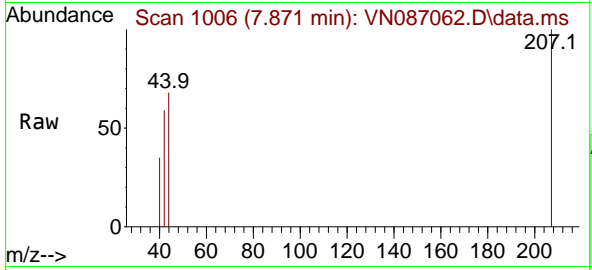


#29
 Tetrahydrofuran
 Concen: 0.235 ug/l
 RT: 7.871 min Scan# 1006
 Delta R.T. 0.018 min
 Lab File: VN087062.D
 Acq: 17 Jun 2025 16:08

Instrument : MSVOA_N
 ClientSampleId : TP-8

Tgt Ion: 42 Resp: 377

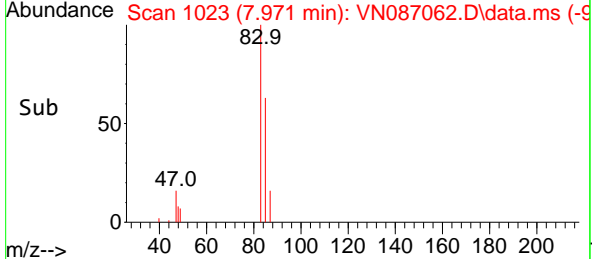
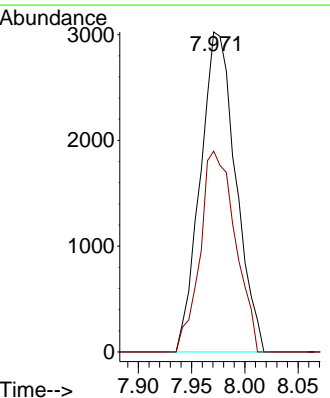
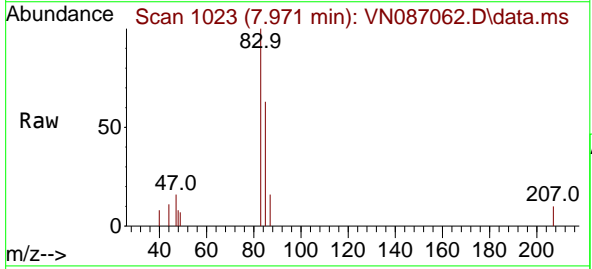
Ion	Ratio	Lower	Upper
42	100		
72	0.0	37.8	56.6#
71	0.0	35.6	53.4#

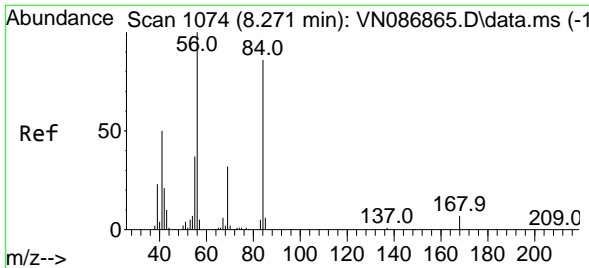


#30
 Chloroform
 Concen: 1.468 ug/l
 RT: 7.971 min Scan# 1023
 Delta R.T. -0.006 min
 Lab File: VN087062.D
 Acq: 17 Jun 2025 16:08

Tgt Ion: 83 Resp: 6999

Ion	Ratio	Lower	Upper
83	100		
85	62.7	52.9	79.3



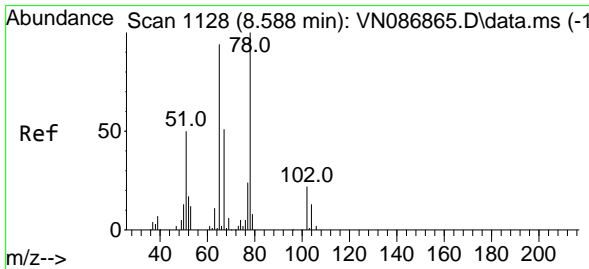
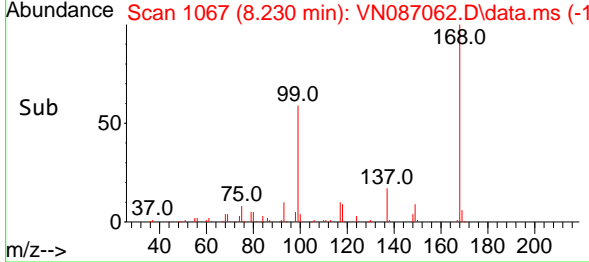
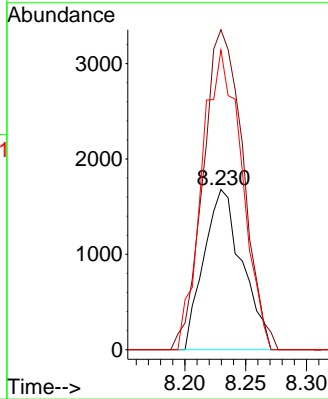
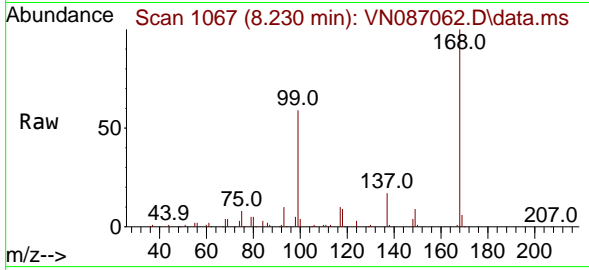


#31
 Cyclohexane
 Concen: 0.792 ug/l
 RT: 8.230 min Scan# 1074
 Delta R.T. -0.041 min
 Lab File: VN087062.D
 Acq: 17 Jun 2025 16:08

Instrument : MSVOA_N
 ClientSampleId : TP-8

Tgt Ion: 56 Resp: 3667

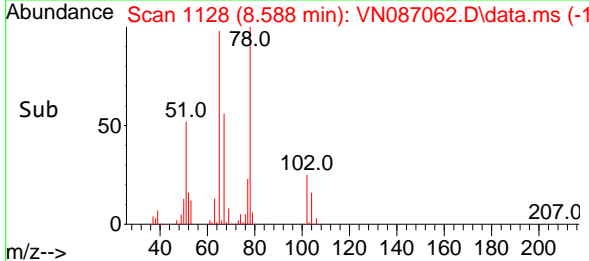
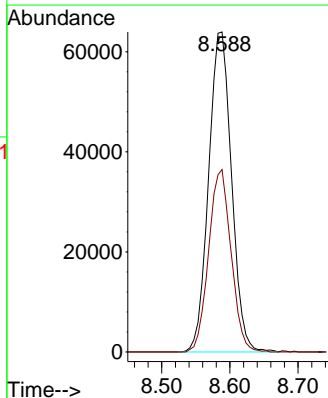
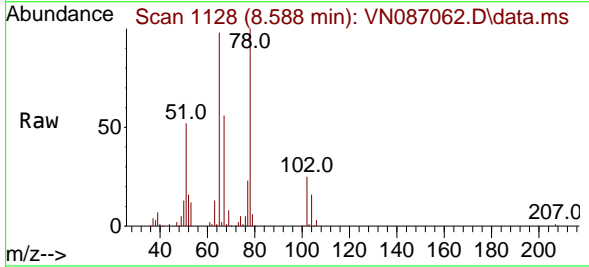
Ion	Ratio	Lower	Upper
56	100		
69	199.9	25.4	38.0#
84	187.2	68.8	103.2#

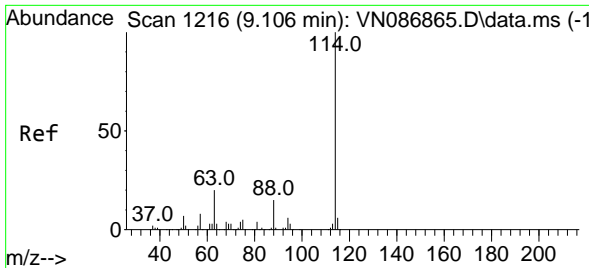


#33
 1,2-Dichloroethane-d4
 Concen: 52.393 ug/l
 RT: 8.588 min Scan# 1128
 Delta R.T. -0.000 min
 Lab File: VN087062.D
 Acq: 17 Jun 2025 16:08

Tgt Ion: 65 Resp: 149560

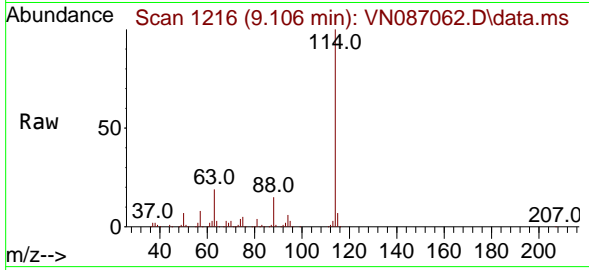
Ion	Ratio	Lower	Upper
65	100		
67	55.8	0.0	105.6





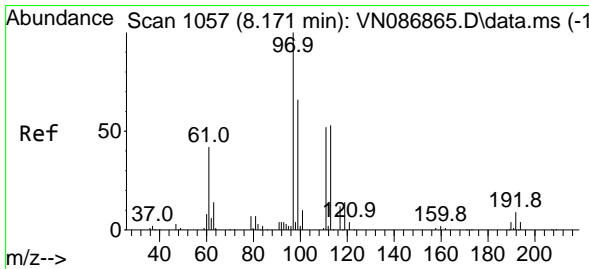
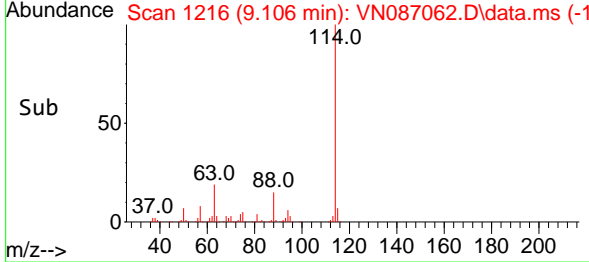
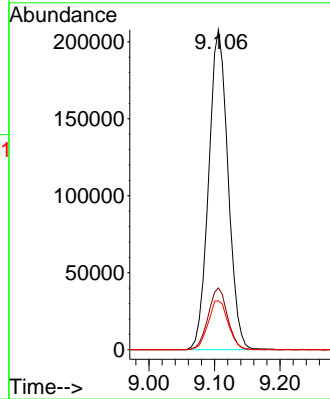
#34
 1,4-Difluorobenzene
 Concen: 50.000 ug/l
 RT: 9.106 min Scan# 11
 Delta R.T. -0.000 min
 Lab File: VN087062.D
 Acq: 17 Jun 2025 16:08

Instrument : MSVOA_N
 ClientSampleId : TP-8



Tgt Ion:114 Resp: 426288

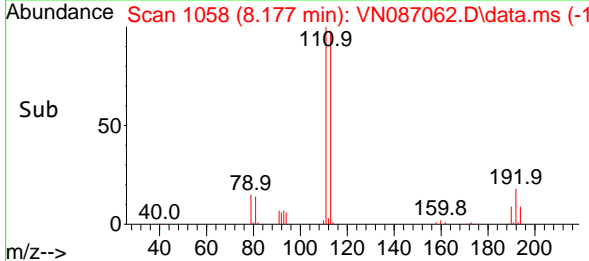
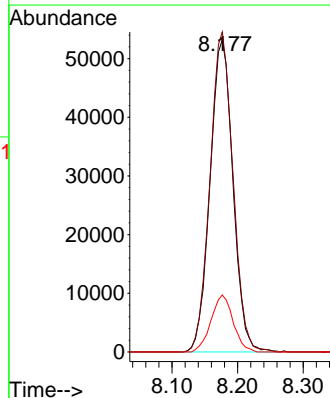
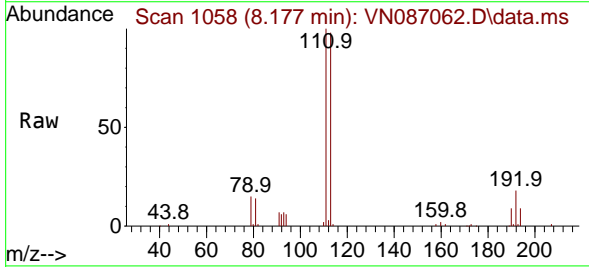
Ion	Ratio	Lower	Upper
114	100		
63	19.3	0.0	39.6
88	15.3	0.0	30.2

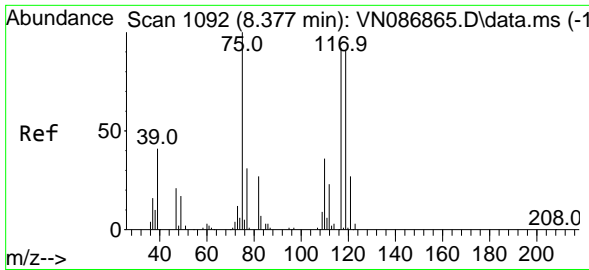


#35
 Dibromofluoromethane
 Concen: 51.065 ug/l
 RT: 8.177 min Scan# 1058
 Delta R.T. 0.006 min
 Lab File: VN087062.D
 Acq: 17 Jun 2025 16:08

Tgt Ion:113 Resp: 129005

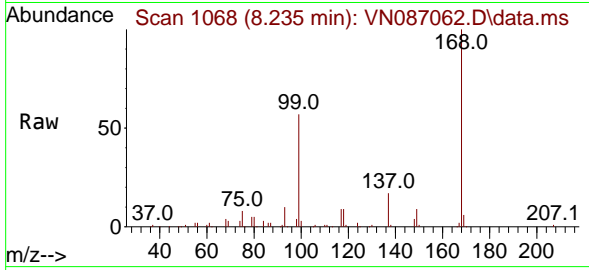
Ion	Ratio	Lower	Upper
113	100		
111	102.8	84.2	126.2
192	17.7	14.2	21.4



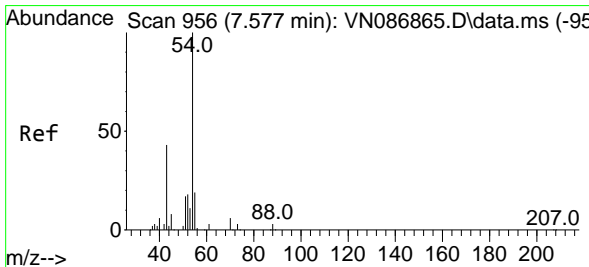
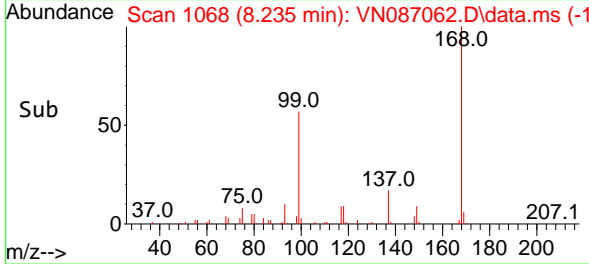
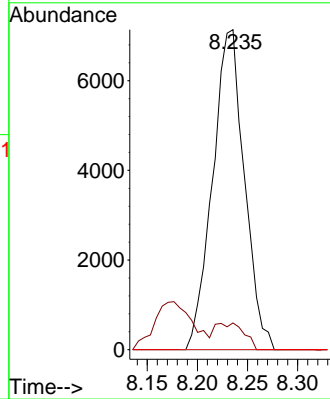


#36
 1,1-Dichloropropene
 Concen: 4.174 ug/l
 RT: 8.235 min Scan# 1092
 Delta R.T. -0.141 min
 Lab File: VN087062.D
 Acq: 17 Jun 2025 16:08

Instrument : MSVOA_N
 ClientSampleId : TP-8

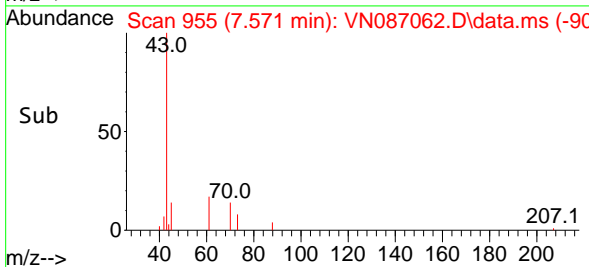
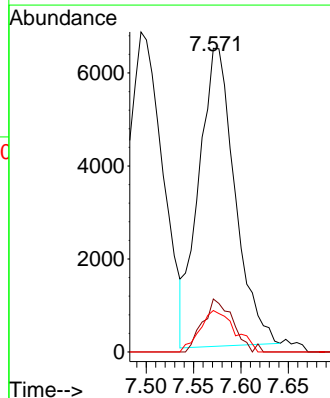
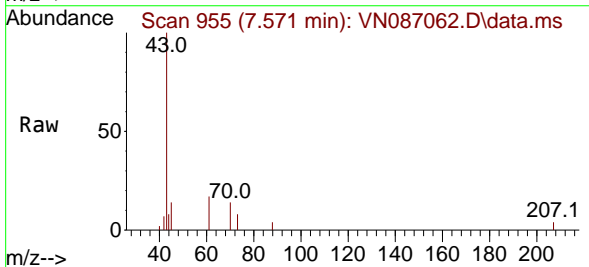


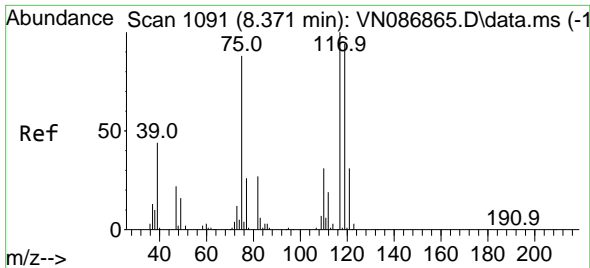
Tgt Ion: 75 Resp: 15712
 Ion Ratio Lower Upper
 75 100
 110 7.6 17.6 52.9#
 77 0.0 25.3 37.9#



#37
 Ethyl Acetate
 Concen: 3.557 ug/l
 RT: 7.571 min Scan# 955
 Delta R.T. -0.006 min
 Lab File: VN087062.D
 Acq: 17 Jun 2025 16:08

Tgt Ion: 43 Resp: 17045
 Ion Ratio Lower Upper
 43 100
 61 14.7 12.1 18.1
 70 13.4 9.8 14.6

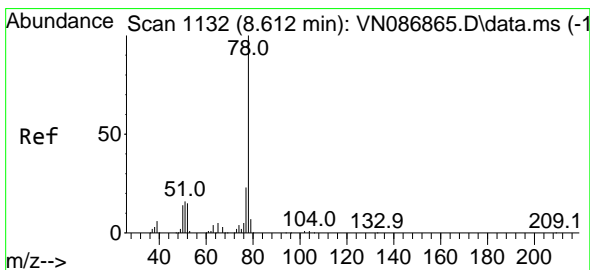
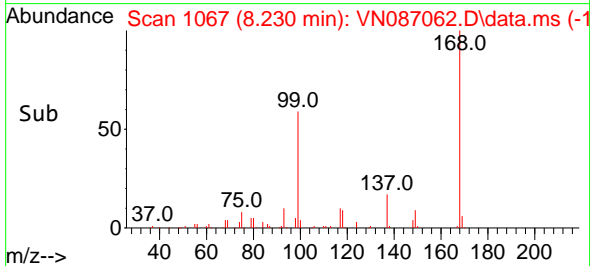
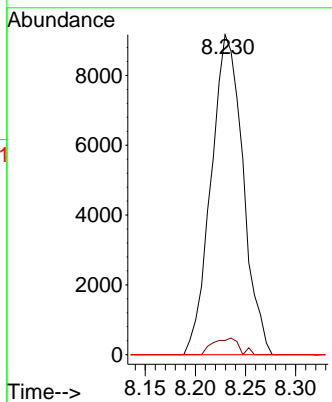
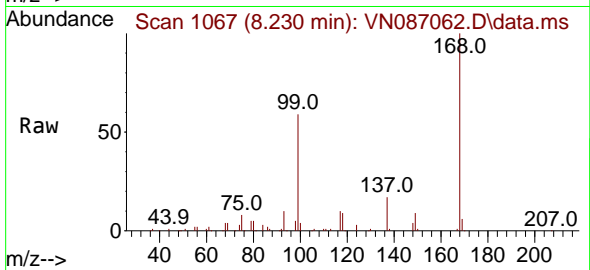




#38
 Carbon Tetrachloride
 Concen: 5.496 ug/l
 RT: 8.230 min Scan# 1091
 Delta R.T. -0.141 min
 Lab File: VN087062.D
 Acq: 17 Jun 2025 16:08

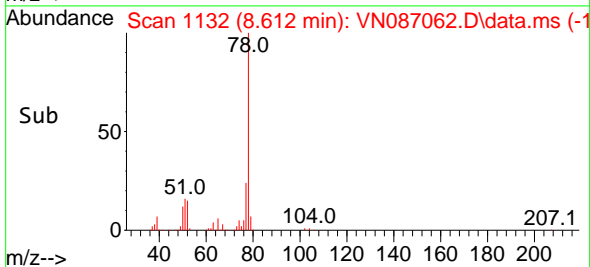
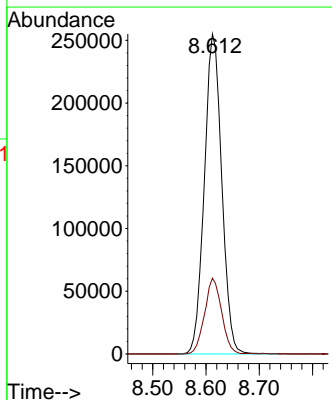
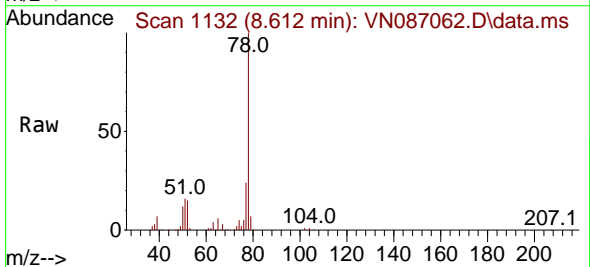
Instrument : MSVOA_N
 ClientSampleId : TP-8

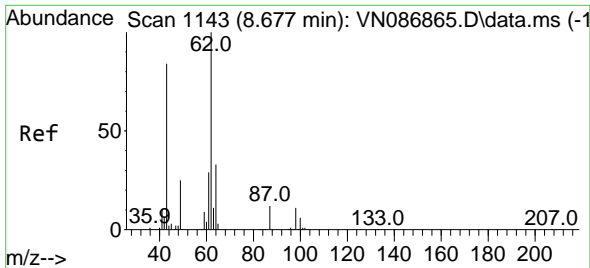
Tgt Ion:117 Resp: 20312
 Ion Ratio Lower Upper
 117 100
 119 4.4 75.0 112.6#
 121 0.0 24.9 37.3#



#40
 Benzene
 Concen: 47.099 ug/l
 RT: 8.612 min Scan# 1132
 Delta R.T. -0.000 min
 Lab File: VN087062.D
 Acq: 17 Jun 2025 16:08

Tgt Ion: 78 Resp: 579781
 Ion Ratio Lower Upper
 78 100
 77 23.7 18.7 28.1

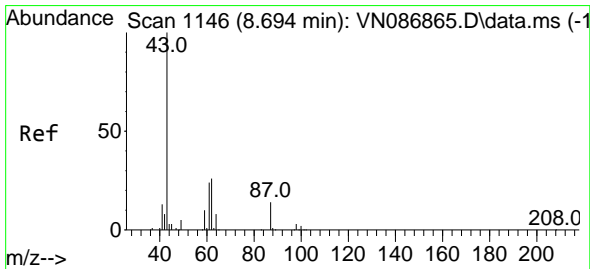
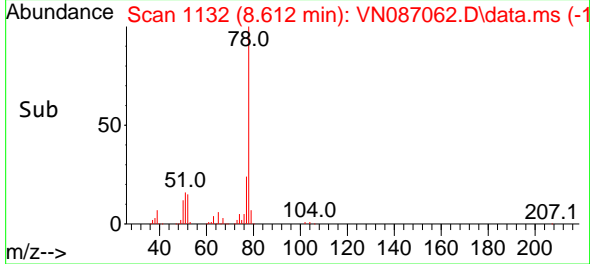
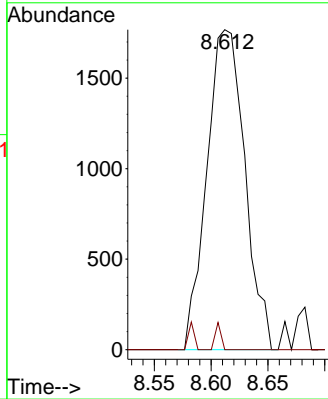
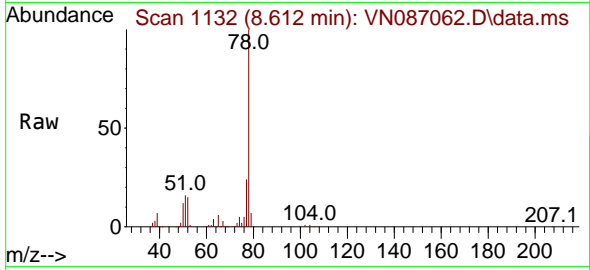




#42
 1,2-Dichloroethane
 Concen: 1.103 ug/l
 RT: 8.612 min Scan# 1132
 Delta R.T. -0.065 min
 Lab File: VN087062.D
 Acq: 17 Jun 2025 16:08

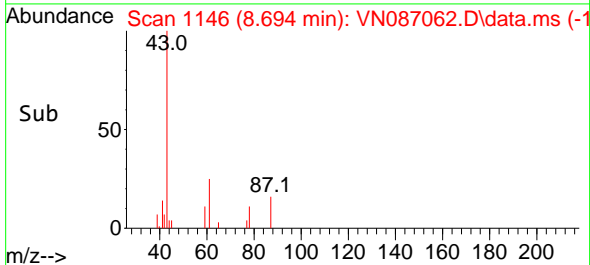
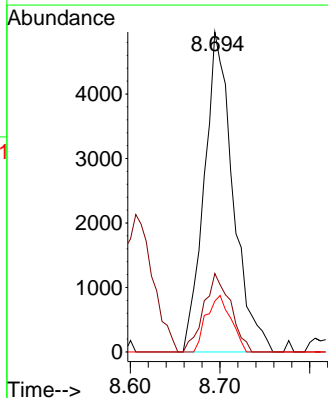
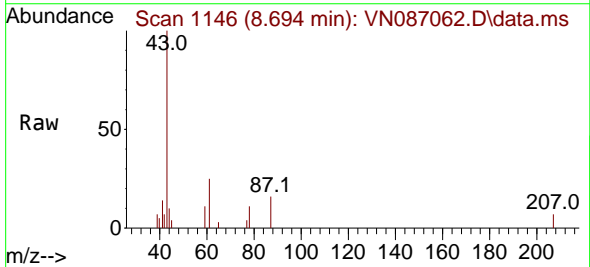
Instrument : MSVOA_N
 ClientSampleId : TP-8

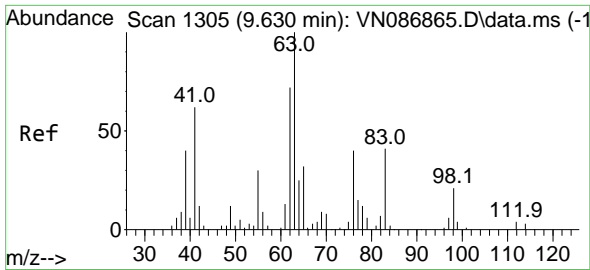
Tgt Ion: 62 Resp: 4118
 Ion Ratio Lower Upper
 62 100
 98 1.3 0.0 21.2



#43
 Isopropyl Acetate
 Concen: 1.440 ug/l
 RT: 8.694 min Scan# 1146
 Delta R.T. -0.000 min
 Lab File: VN087062.D
 Acq: 17 Jun 2025 16:08

Tgt Ion: 43 Resp: 11072
 Ion Ratio Lower Upper
 43 100
 61 22.9 22.1 33.1
 87 15.0 11.8 17.6

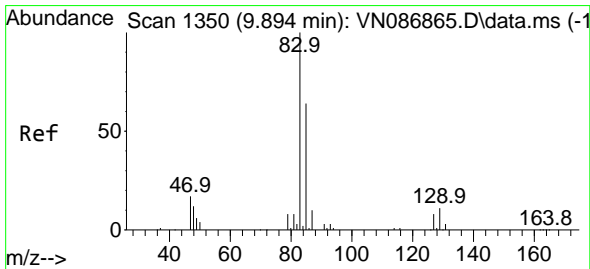
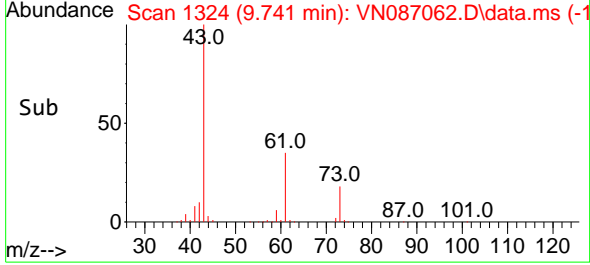
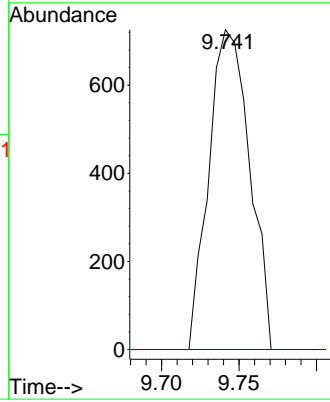
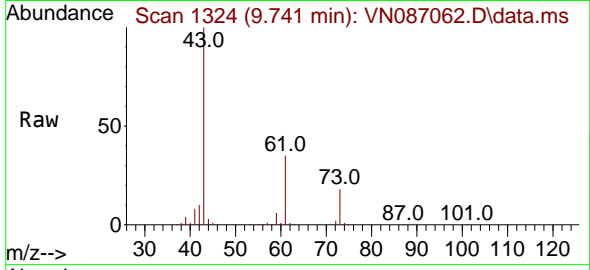




#45
 1,2-Dichloropropane
 Concen: 0.445 ug/l
 RT: 9.741 min Scan# 11
 Delta R.T. 0.112 min
 Lab File: VN087062.D
 Acq: 17 Jun 2025 16:08

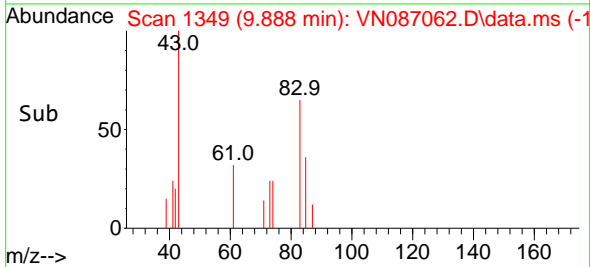
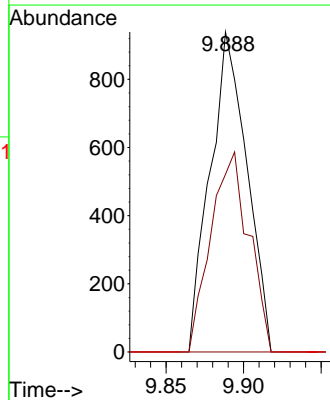
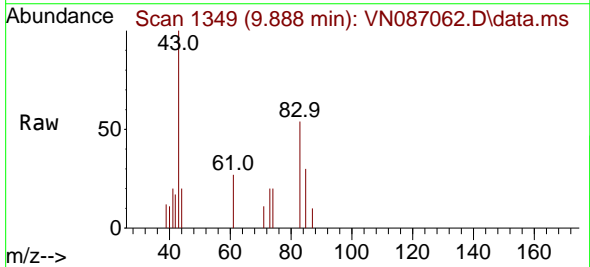
Instrument :
 MSVOA_N
 ClientSampleId :
 TP-8

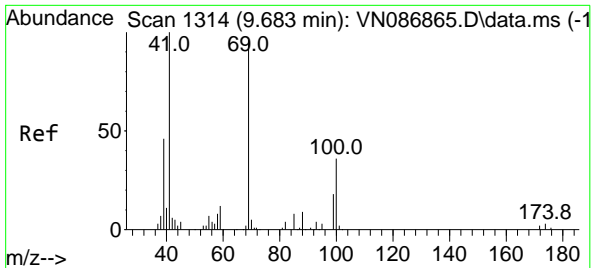
Tgt Ion: 63 Resp: 1333
 Ion Ratio Lower Upper
 63 100
 65 0.0 25.5 38.3#



#47
 Bromodichloromethane
 Concen: 0.379 ug/l
 RT: 9.888 min Scan# 1349
 Delta R.T. -0.006 min
 Lab File: VN087062.D
 Acq: 17 Jun 2025 16:08

Tgt Ion: 83 Resp: 1552
 Ion Ratio Lower Upper
 83 100
 85 55.5 50.9 76.3
 127 0.0 6.6 10.0#

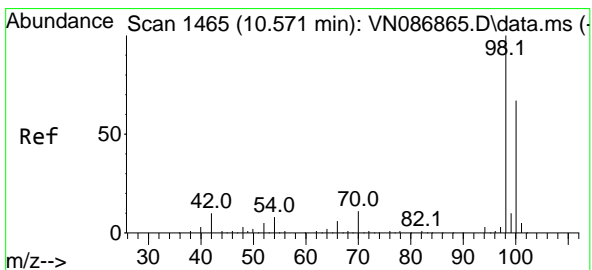
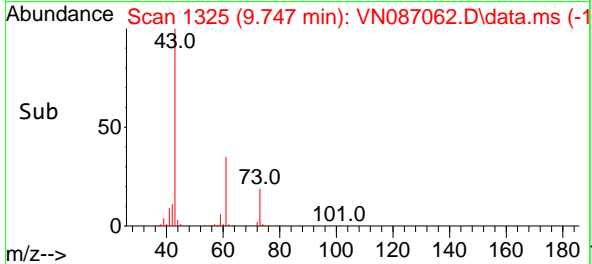
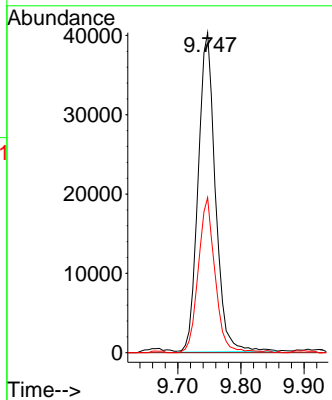
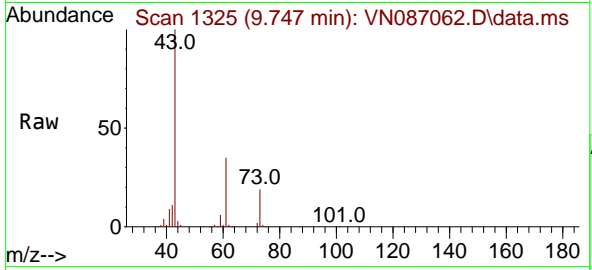




#48
 Methyl methacrylate
 Concen: 21.499 ug/l
 RT: 9.747 min Scan# 11
 Delta R.T. 0.065 min
 Lab File: VN087062.D
 Acq: 17 Jun 2025 16:08

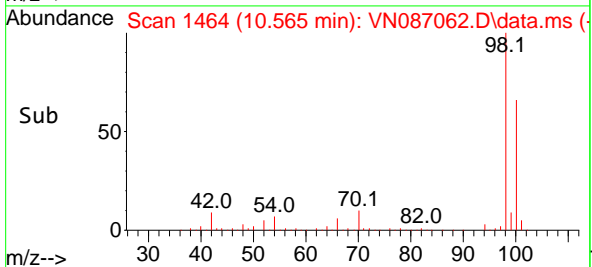
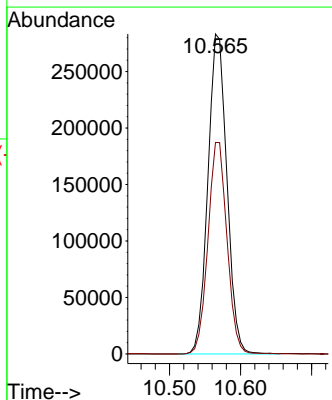
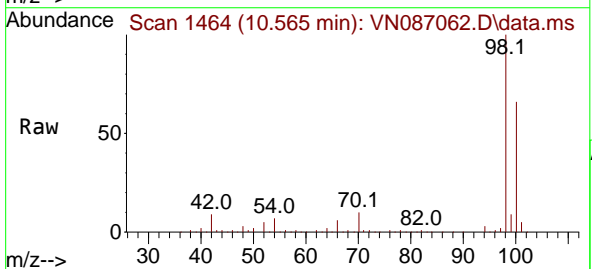
Instrument : MSVOA_N
 ClientSampleId : TP-8

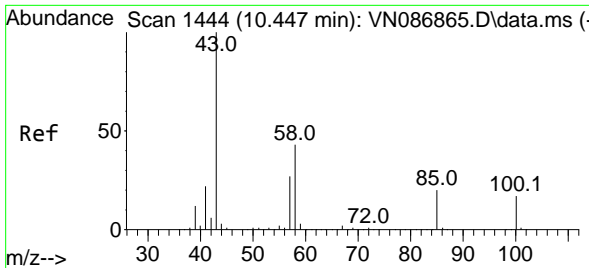
Tgt Ion: 41 Resp: 76108
 Ion Ratio Lower Upper
 41 100
 69 0.0 74.6 112.0#
 39 47.3 40.2 60.4



#50
 Toluene-d8
 Concen: 52.541 ug/l
 RT: 10.565 min Scan# 1464
 Delta R.T. -0.006 min
 Lab File: VN087062.D
 Acq: 17 Jun 2025 16:08

Tgt Ion: 98 Resp: 525453
 Ion Ratio Lower Upper
 98 100
 100 66.4 53.4 80.0

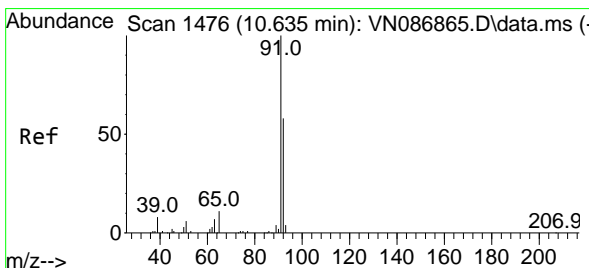
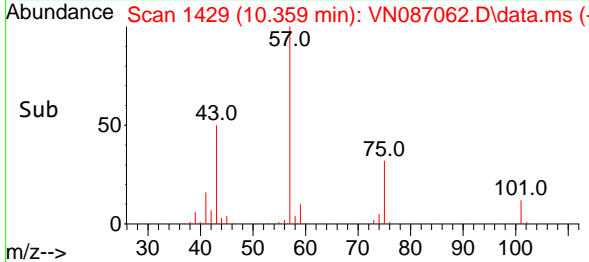
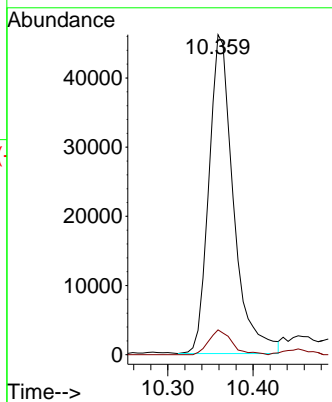
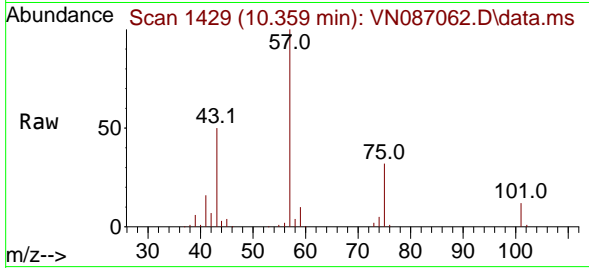




#51
 4-Methyl-2-Pentanone
 Concen: 19.928 ug/l
 RT: 10.359 min Scan# 14
 Delta R.T. -0.088 min
 Lab File: VN087062.D
 Acq: 17 Jun 2025 16:08

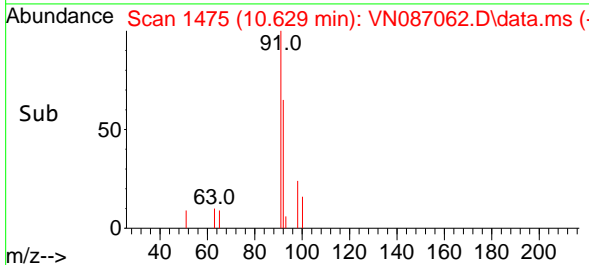
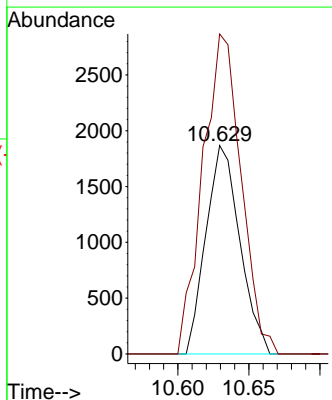
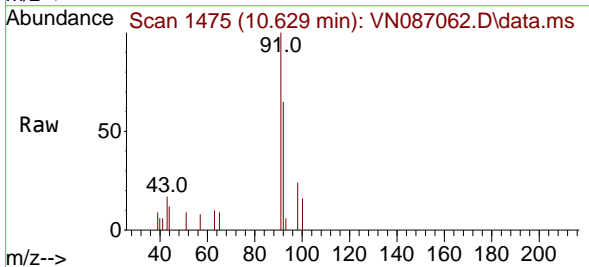
Instrument :
 MSVOA_N
 ClientSampleId :
 TP-8

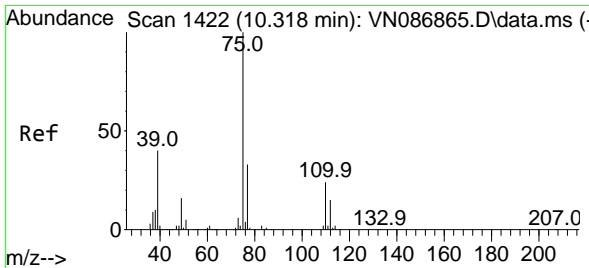
Tgt Ion: 43 Resp: 92271
 Ion Ratio Lower Upper
 43 100
 58 7.3 34.2 51.4#



#52
 Toluene
 Concen: 0.412 ug/l
 RT: 10.629 min Scan# 1475
 Delta R.T. -0.006 min
 Lab File: VN087062.D
 Acq: 17 Jun 2025 16:08

Tgt Ion: 92 Resp: 3103
 Ion Ratio Lower Upper
 92 100
 91 173.2 136.5 204.7



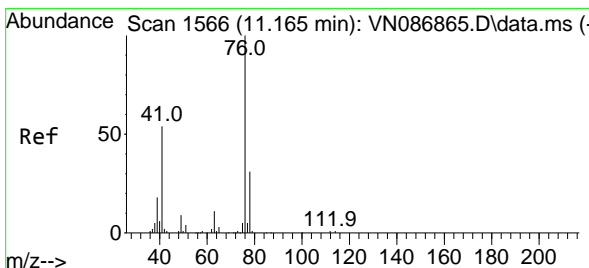
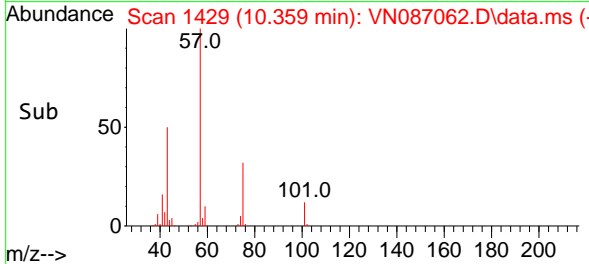
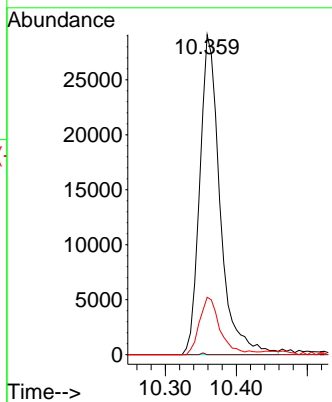
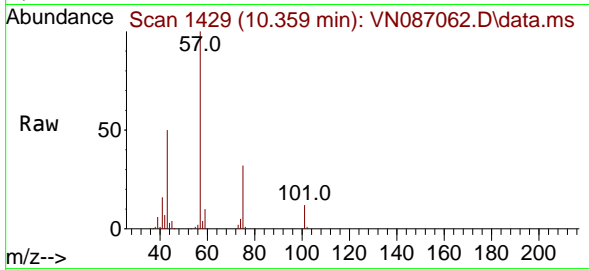


#54
 cis-1,3-Dichloropropene
 Concen: 11.831 ug/l
 RT: 10.359 min Scan# 1429
 Delta R.T. 0.041 min
 Lab File: VN087062.D
 Acq: 17 Jun 2025 16:08

Instrument : MSVOA_N
 ClientSampleId : TP-8

Tgt Ion: 75 Resp: 57933

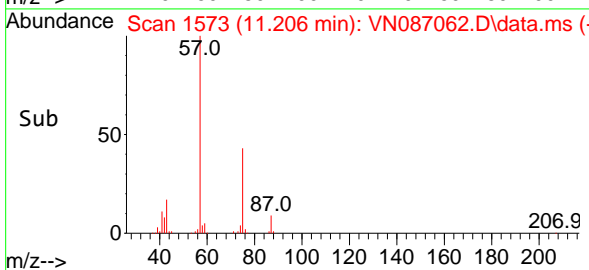
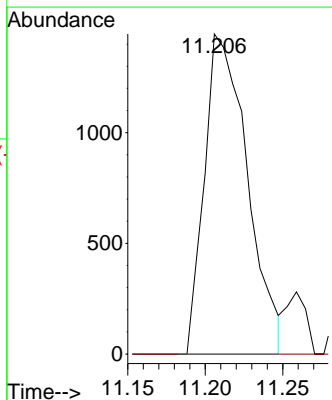
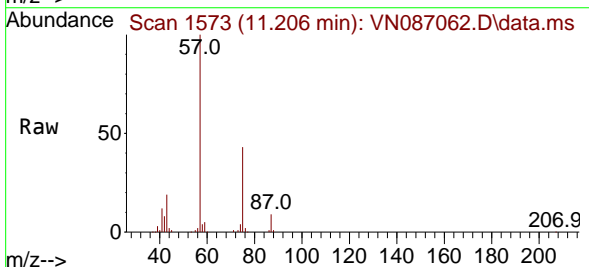
Ion	Ratio	Lower	Upper
75	100		
77	0.0	26.2	39.4#
39	17.9	32.3	48.5#

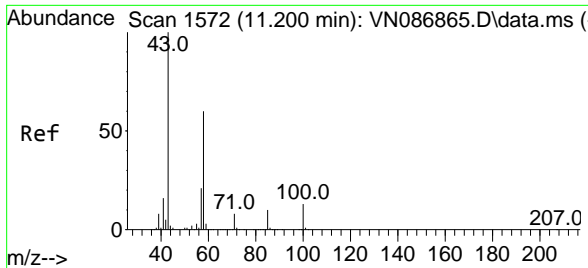


#57
 1,3-Dichloropropane
 Concen: 0.554 ug/l
 RT: 11.206 min Scan# 1573
 Delta R.T. 0.041 min
 Lab File: VN087062.D
 Acq: 17 Jun 2025 16:08

Tgt Ion: 76 Resp: 2780

Ion	Ratio	Lower	Upper
76	100		
78	0.0	25.3	37.9#

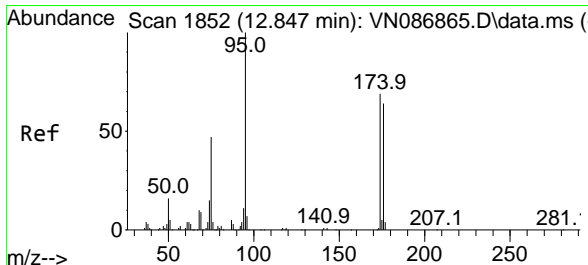
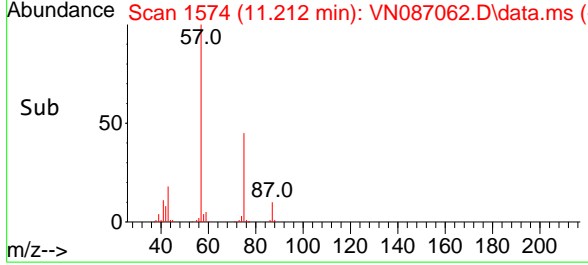
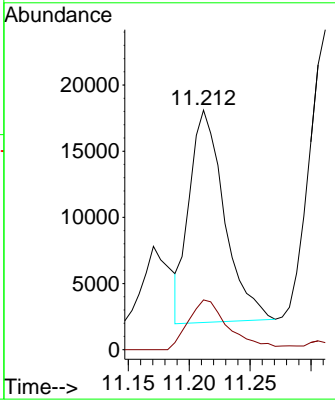
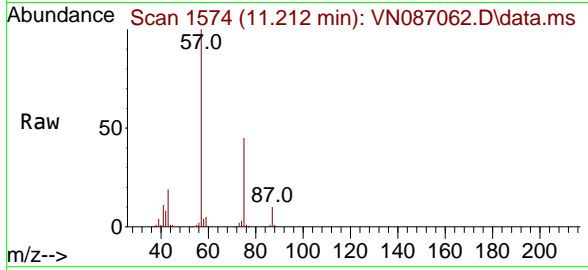




#59
 2-Hexanone
 Concen: 10.799 ug/l
 RT: 11.212 min Scan# 111
 Delta R.T. 0.012 min
 Lab File: VN087062.D
 Acq: 17 Jun 2025 16:08

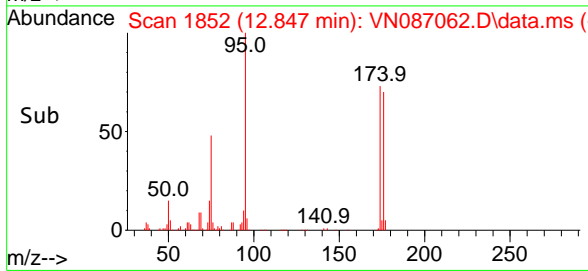
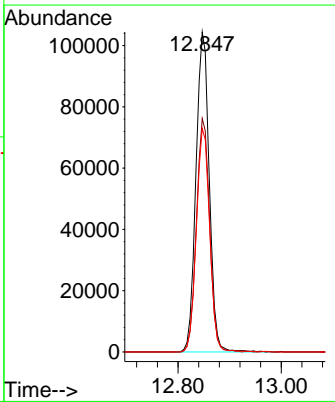
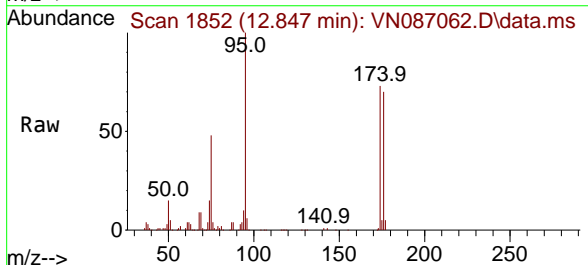
Instrument : MSVOA_N
 ClientSampleId : TP-8

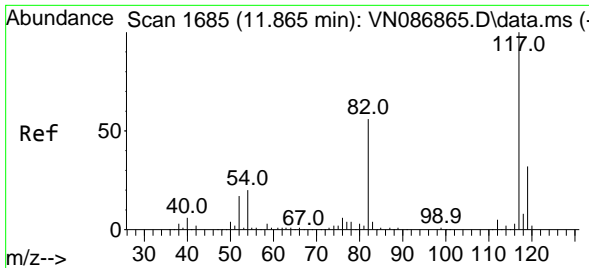
Tgt Ion: 43 Resp: 32207
 Ion Ratio Lower Upper
 43 100
 58 27.2 30.4 91.3#



#62
 4-Bromofluorobenzene
 Concen: 50.186 ug/l
 RT: 12.847 min Scan# 1852
 Delta R.T. -0.000 min
 Lab File: VN087062.D
 Acq: 17 Jun 2025 16:08

Tgt Ion: 95 Resp: 186473
 Ion Ratio Lower Upper
 95 100
 174 72.5 0.0 141.8
 176 69.8 0.0 132.6



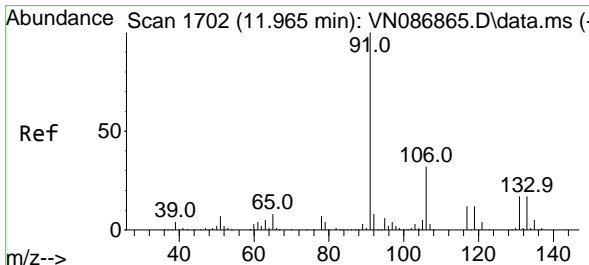
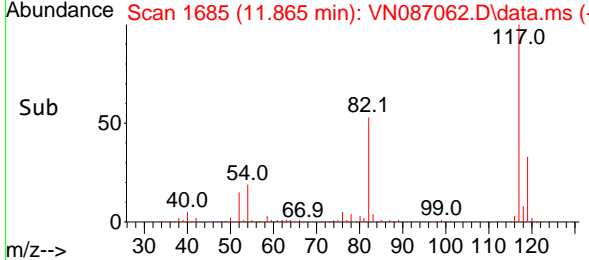
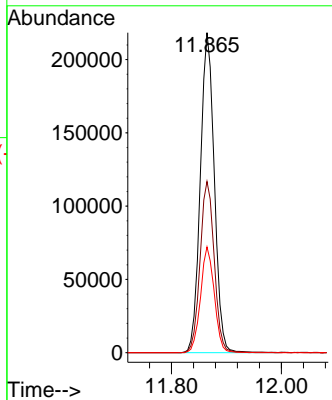
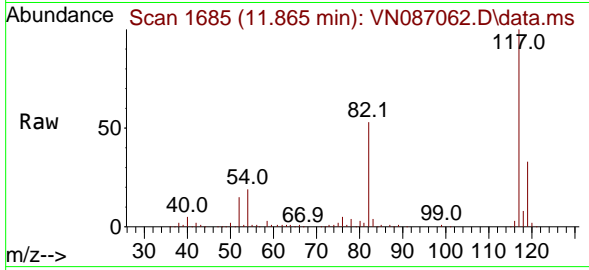


#63
 Chlorobenzene-d5
 Concen: 50.000 ug/l
 RT: 11.865 min Scan# 1
 Delta R.T. -0.000 min
 Lab File: VN087062.D
 Acq: 17 Jun 2025 16:08

Instrument : MSVOA_N
 ClientSampleId : TP-8

Tgt Ion:117 Resp: 386654

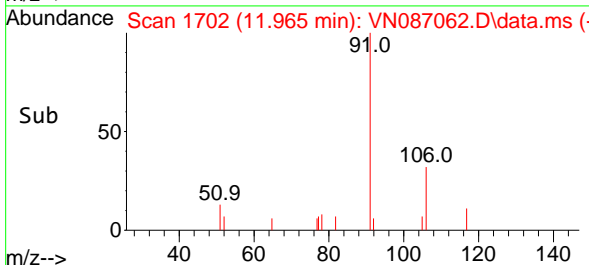
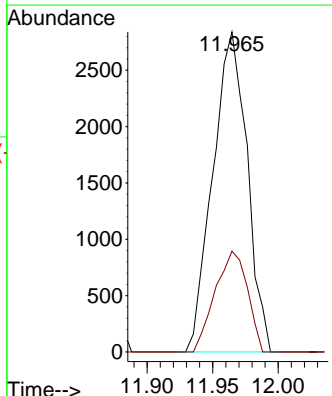
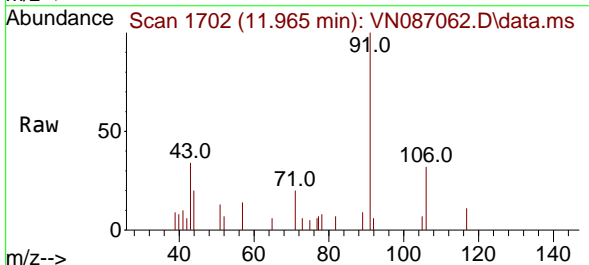
Ion	Ratio	Lower	Upper
117	100		
82	53.5	44.6	67.0
119	33.0	25.5	38.3

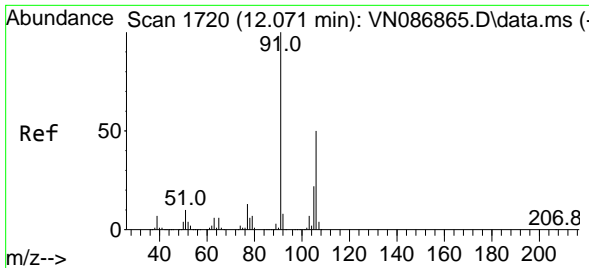


#67
 Ethyl Benzene
 Concen: 0.352 ug/l
 RT: 11.965 min Scan# 1702
 Delta R.T. -0.000 min
 Lab File: VN087062.D
 Acq: 17 Jun 2025 16:08

Tgt Ion: 91 Resp: 5164

Ion	Ratio	Lower	Upper
91	100		
106	31.5	25.4	38.2

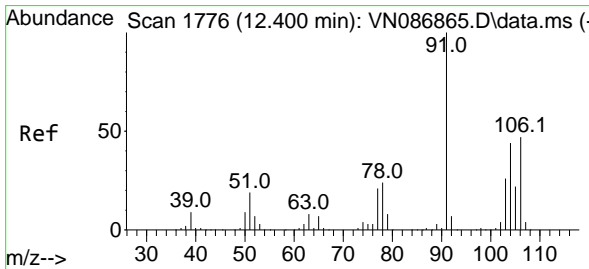
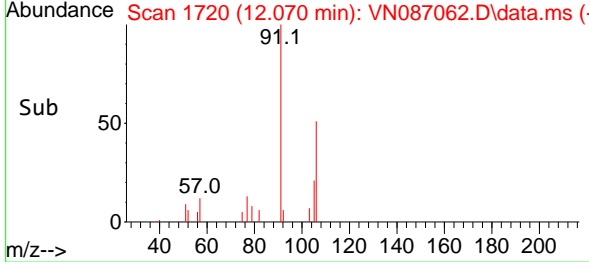
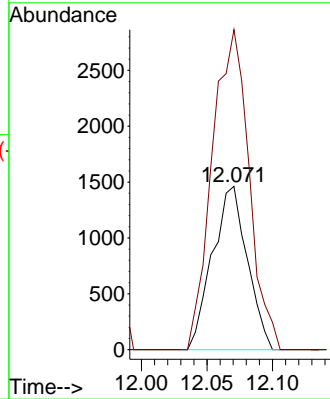
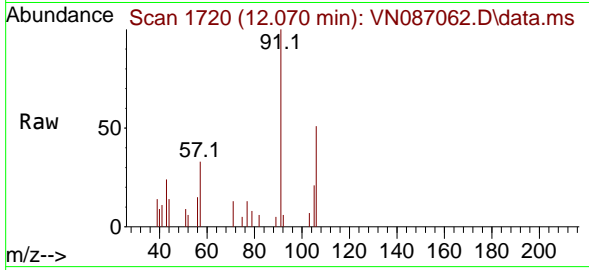




#68
 m/p-Xylenes
 Concen: 0.481 ug/l
 RT: 12.070 min Scan# 1720
 Delta R.T. -0.000 min
 Lab File: VN087062.D
 Acq: 17 Jun 2025 16:08

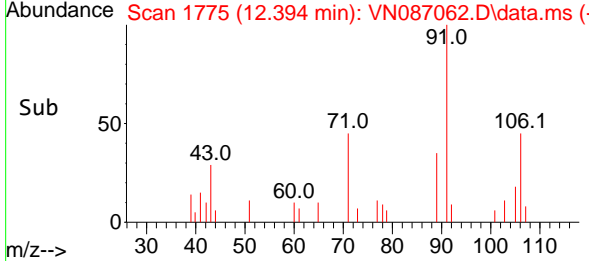
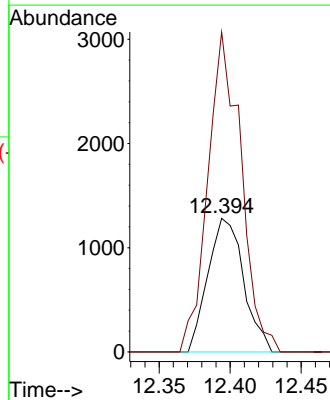
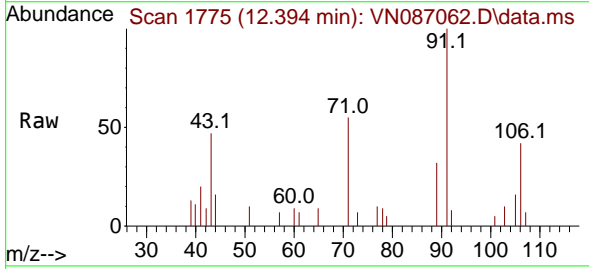
Instrument : MSVOA_N
 ClientSampleId : TP-8

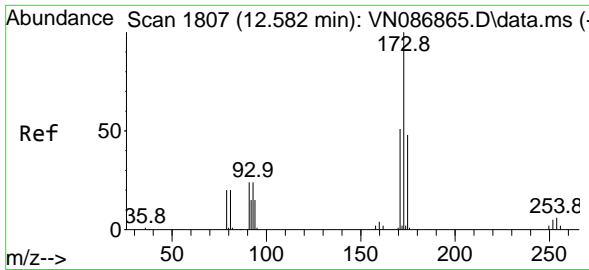
Tgt Ion:106 Resp: 2702
 Ion Ratio Lower Upper
 106 100
 91 206.8 159.4 239.0



#69
 o-Xylene
 Concen: 0.416 ug/l
 RT: 12.394 min Scan# 1775
 Delta R.T. -0.006 min
 Lab File: VN087062.D
 Acq: 17 Jun 2025 16:08

Tgt Ion:106 Resp: 2238
 Ion Ratio Lower Upper
 106 100
 91 222.6 106.1 318.1



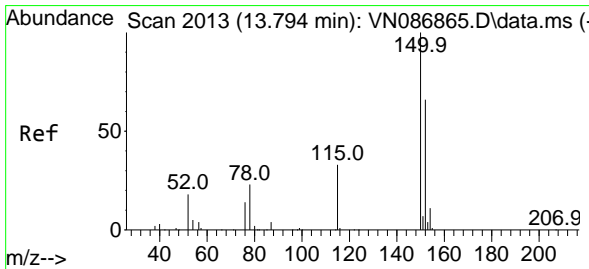
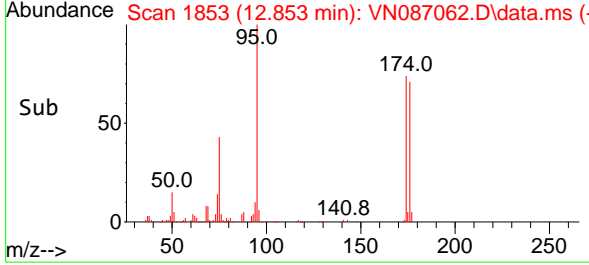
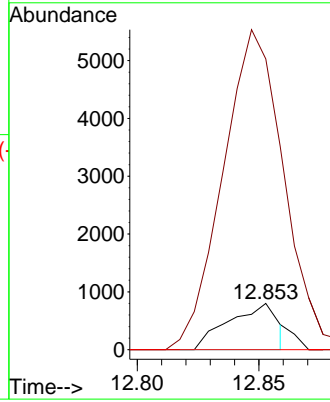
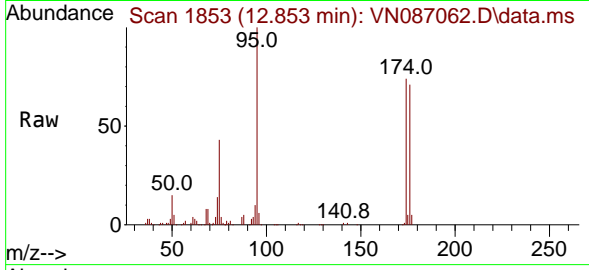


#71
 Bromoform
 Concen: 0.552 ug/l
 RT: 12.853 min Scan# 11
 Delta R.T. 0.270 min
 Lab File: VN087062.D
 Acq: 17 Jun 2025 16:08

Instrument :
 MSVOA_N
 ClientSampleId :
 TP-8

Tgt Ion:173 Resp: 1121

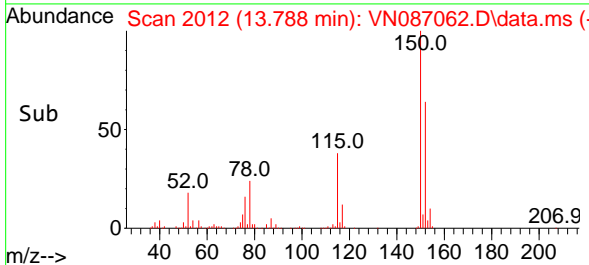
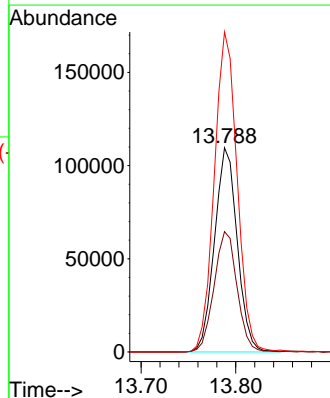
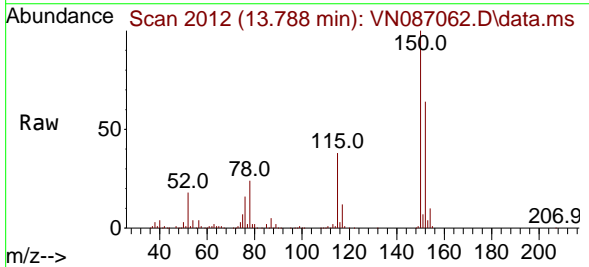
Ion	Ratio	Lower	Upper
173	100		
175	761.7	24.1	72.4#
254	0.0	0.0	0.0

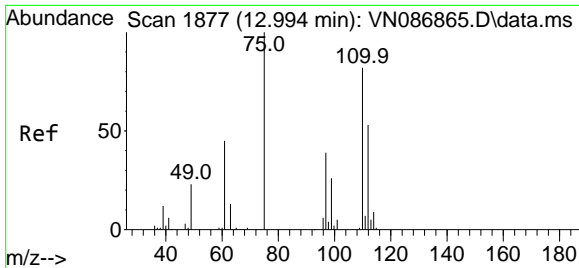


#72
 1,4-Dichlorobenzene-d4
 Concen: 50.000 ug/l
 RT: 13.788 min Scan# 2012
 Delta R.T. -0.006 min
 Lab File: VN087062.D
 Acq: 17 Jun 2025 16:08

Tgt Ion:152 Resp: 182982

Ion	Ratio	Lower	Upper
152	100		
115	59.7	30.1	90.5
150	157.6	0.0	345.0

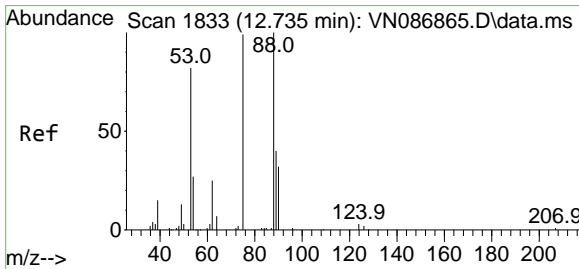
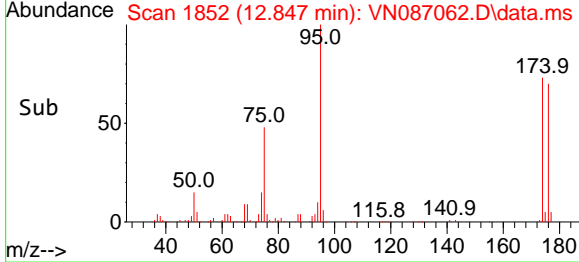
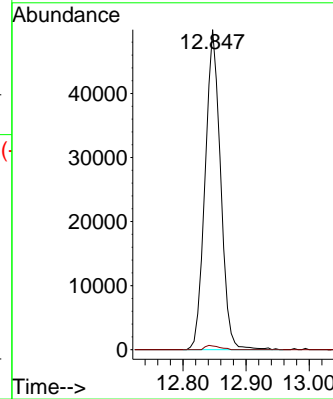
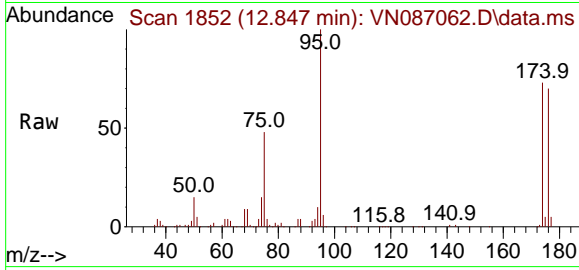




#76
 1,2,3-Trichloropropane
 Concen: 19.554 ug/l
 RT: 12.847 min Scan# 1852
 Delta R.T. -0.147 min
 Lab File: VN087062.D
 Acq: 17 Jun 2025 16:08

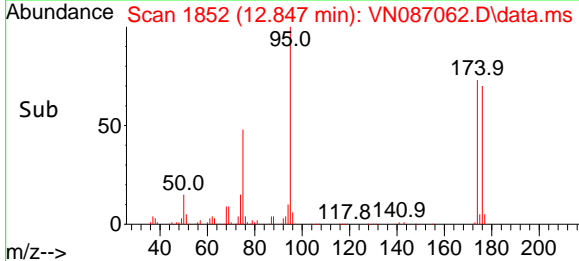
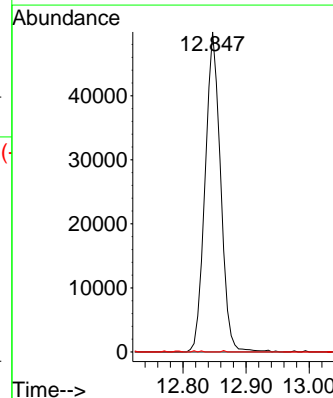
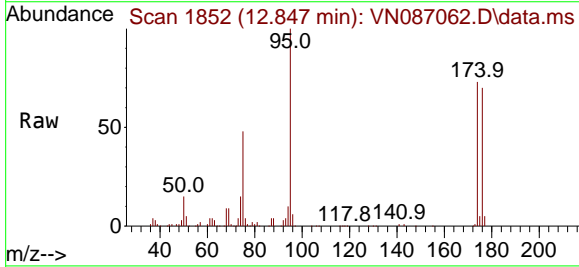
Instrument : MSVOA_N
 ClientSampleId : TP-8

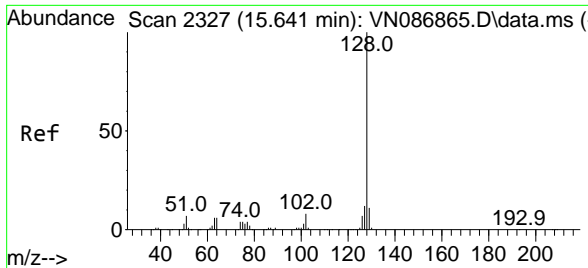
Tgt Ion: 75 Resp: 85051
 Ion Ratio Lower Upper
 75 100
 77 1.2 79.3 237.9#



#81
 trans-1,4-Dichloro-2-butene
 Concen: 45.012 ug/l
 RT: 12.847 min Scan# 1852
 Delta R.T. 0.112 min
 Lab File: VN087062.D
 Acq: 17 Jun 2025 16:08

Tgt Ion: 75 Resp: 85051
 Ion Ratio Lower Upper
 75 100
 53 0.0 66.6 99.8#
 89 0.1 36.7 55.1#





#95
 Naphthalene
 Concen: 0.212 ug/l
 RT: 15.641 min Scan# 21
 Delta R.T. -0.000 min
 Lab File: VN087062.D
 Acq: 17 Jun 2025 16:08

Instrument : MSVOA_N
 ClientSampleId : TP-8

Tgt Ion:128 Resp: 2912

Ion	Ratio	Lower	Upper
128	100		
127	10.3	10.2	15.2
129	2.2	8.8	13.2#

