

Data Path : Z:\VOASRV\HPCHEM1\MSVOA N\DATA\VN061818\  
 Data File : VN049376.D  
 Acq On : 19 Jun 2018 6:15  
 Operator : MD\SY  
 Sample : J3566-20  
 Misc : 5.00mL/MSVOA N/WATER  
 ALS Vial : 47 Sample Multiplier: 1

Instrument :  
 MSVOA\_N  
 ClientSampleId :  
 TP-6-D

Quant Time: Jun 19 08:36:00 2018  
 Quant Method : Z:\VOASRV\HPCHEM1\MSVOA\_N\METHODS\82N061618W.M  
 Quant Title : SW846 8260  
 QLast Update : Sat Jun 16 01:02:01 2018  
 Response via : Initial Calibration

Internal Standards	R.T.	QIon	Response	Conc	Units	Dev(Min)
1) Pentafluorobenzene	7.67	168	1305041	50.00	ug/l	0.00
34) 1,4-Difluorobenzene	8.59	114	2086471	50.00	ug/l	0.00
63) Chlorobenzene-d5	11.41	117	1740101	50.00	ug/l	0.00
72) 1,4-Dichlorobenzene-d4	13.35	152	609628	50.00	ug/l	0.00

## System Monitoring Compounds

33) 1,2-Dichloroethane-d4	8.03	65	862339	49.82	ug/l	0.00
Spiked Amount				50.000		
			Recovery	=	99.64%	
35) Dibromofluoromethane	7.59	113	767106	45.44	ug/l	0.00
Spiked Amount				50.000		
			Recovery	=	90.88%	
50) Toluene-d8	10.09	98	2824682	43.95	ug/l	0.00
Spiked Amount				50.000		
			Recovery	=	87.90%	
62) 4-Bromofluorobenzene	12.40	95	801462	37.71	ug/l	0.00
Spiked Amount				50.000		
			Recovery	=	75.42%	

## Target Compounds

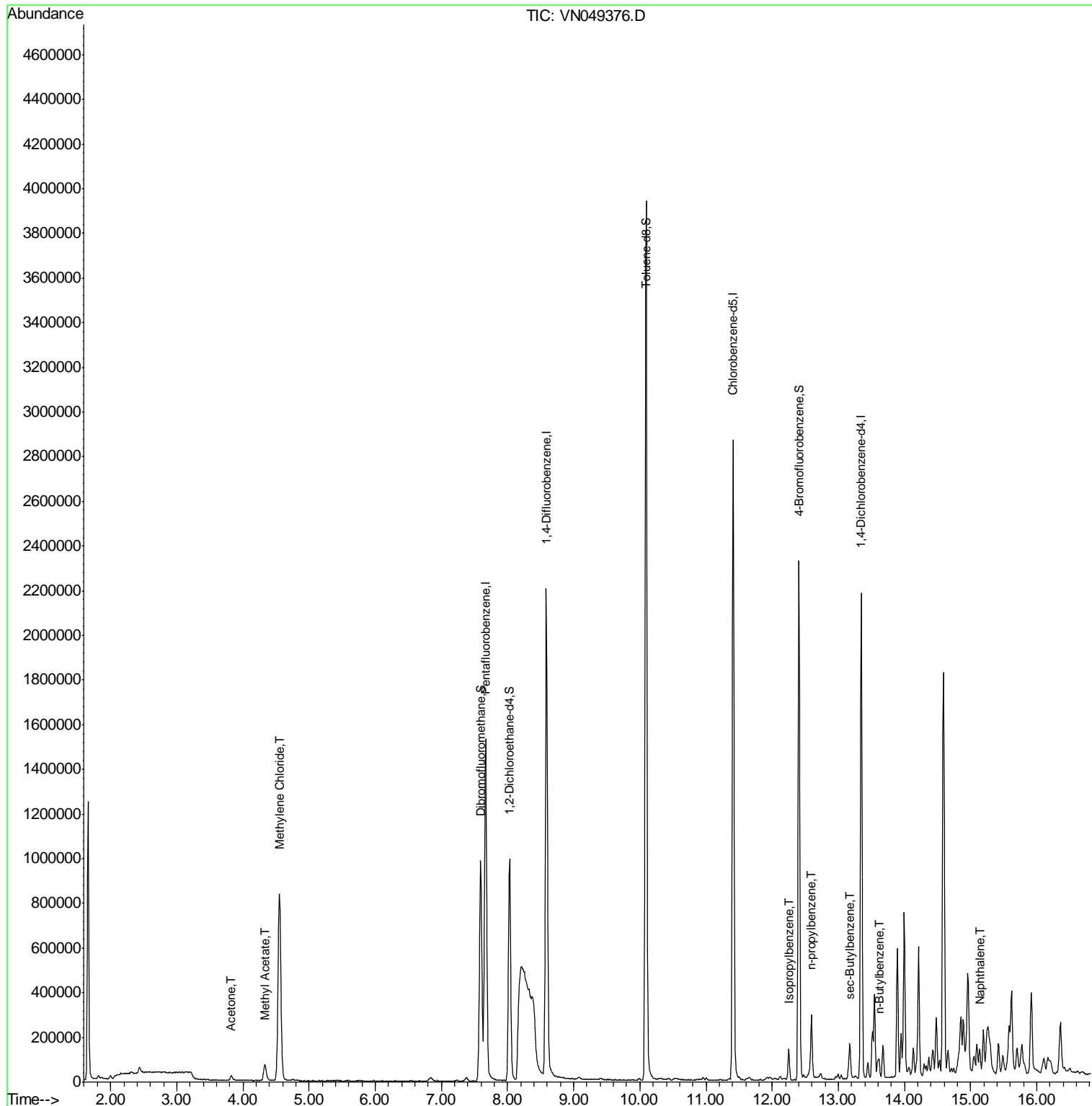
						Qvalue
16) Acetone	3.82	43	32095	7.637	ug/l	96
18) Methyl Acetate	4.33	43	140403	10.956	ug/l	94
20) Methylene Chloride	4.55	84	641663	36.556	ug/l	91
73) Isopropylbenzene	12.25	105	89227	1.667	ug/l	98
78) n-propylbenzene	12.59	91	215128	3.660	ug/l	100
85) sec-Butylbenzene	13.17	105	99333	2.002	ug/l	84
89) n-Butylbenzene	13.62	91	50095	1.547	ug/l #	83
95) Naphthalene	15.14	128	92442	7.469	ug/l	98

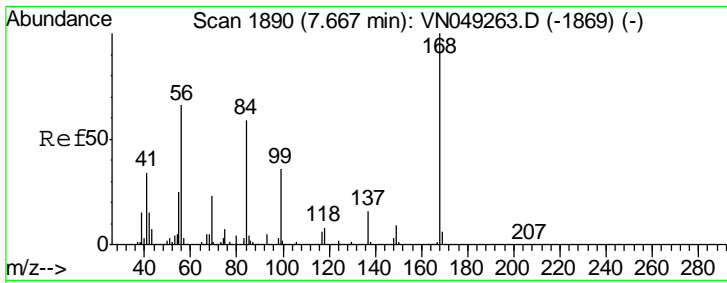
(#) = qualifier out of range (m) = manual integration (+) = signals summed

Data Path : Z:\VOASRV\HPCHEM1\MSVOA N\DATA\VN061818\  
 Data File : VN049376.D  
 Acq On : 19 Jun 2018 6:15  
 Operator : MD\SY  
 Sample : J3566-20  
 Misc : 5.00mL/MSVOA N/WATER  
 ALS Vial : 47 Sample Multiplier: 1

Instrument :  
 MSVOA\_N  
 ClientSampleId :  
 TP-6-D

Quant Time: Jun 19 08:36:00 2018  
 Quant Method : Z:\VOASRV\HPCHEM1\MSVOA\_N\METHODS\82N061618W.M  
 Quant Title : SW846 8260  
 QLast Update : Sat Jun 16 01:02:01 2018  
 Response via : Initial Calibration

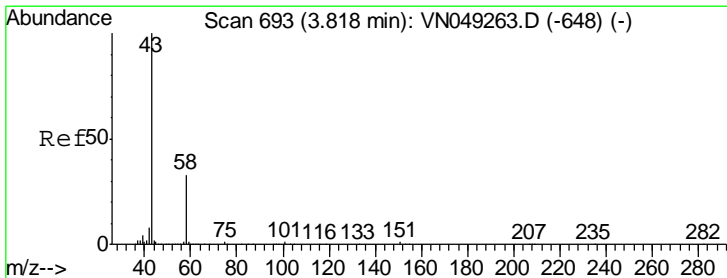
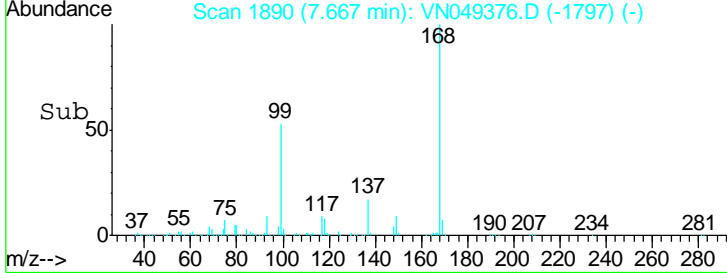
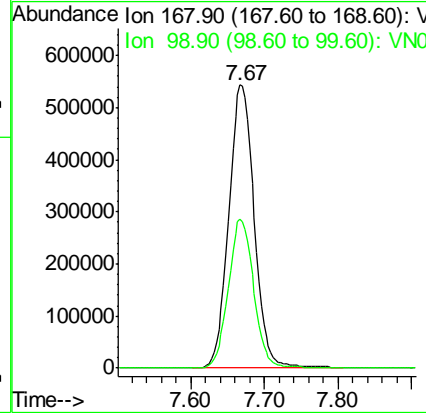
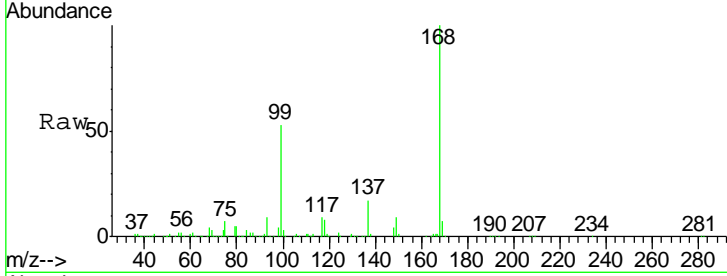




#1  
 Pentafluorobenzene  
 Concen: 50.000 ug/l  
 RT: 7.67 min Scan# 1890  
 Delta R.T. 0.00 min  
 Lab File: VN049376.D  
 Acq: 19 Jun 2018 6:15

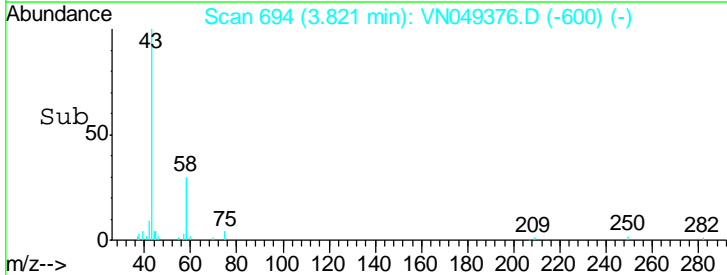
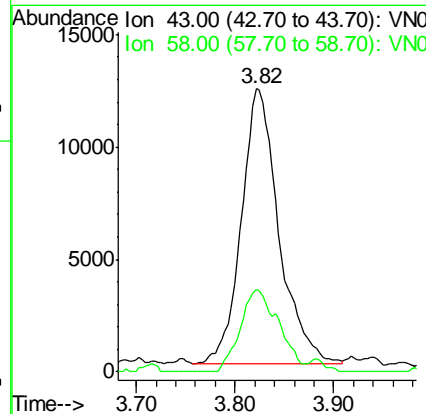
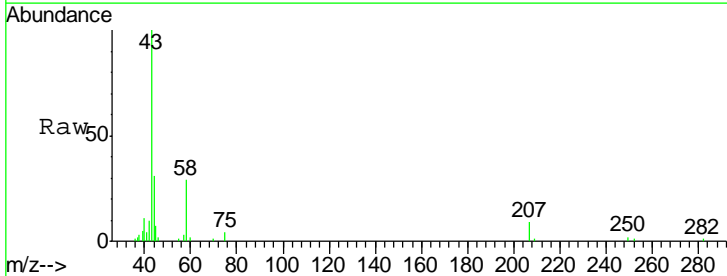
Instrument : MSVOA\_N  
 ClientSampled : TP-6-D

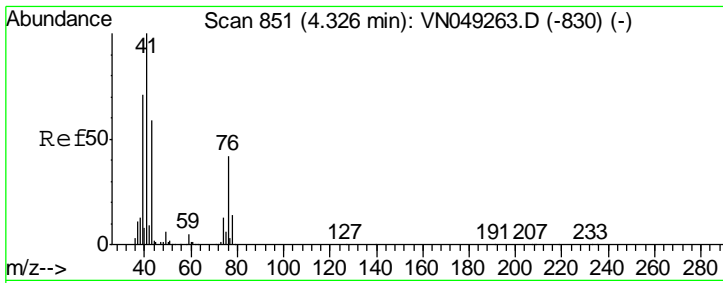
Tgt Ion	Resp	Lower	Upper
168	100		
99	52.7	45.8	68.6



#16  
 Acetone  
 Concen: 7.637 ug/l  
 RT: 3.82 min Scan# 694  
 Delta R.T. 0.00 min  
 Lab File: VN049376.D  
 Acq: 19 Jun 2018 6:15

Tgt Ion	Resp	Lower	Upper
43	100		
58	30.0	22.4	33.6

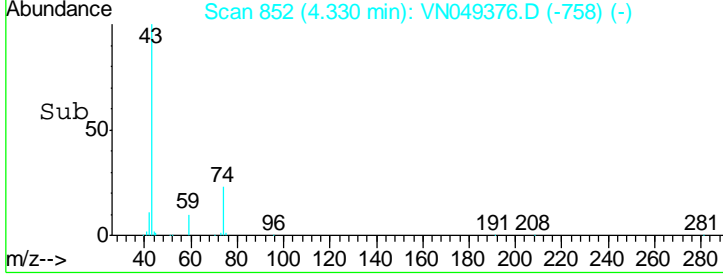
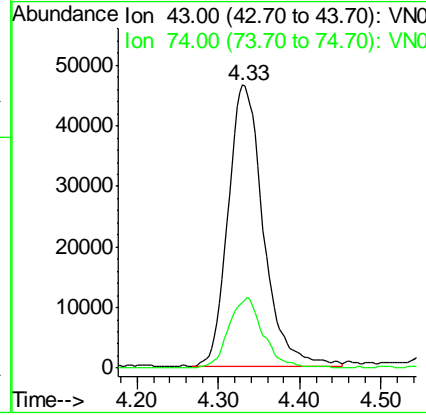
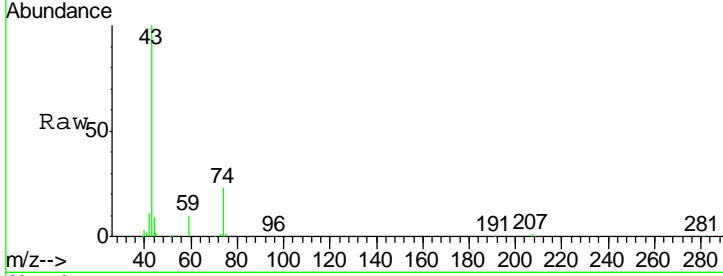




#18  
 Methyl Acetate  
 Concen: 10.956 ug/l  
 RT: 4.33 min Scan# 852  
 Delta R.T. 0.00 min  
 Lab File: VN049376.D  
 Acq: 19 Jun 2018 6:15

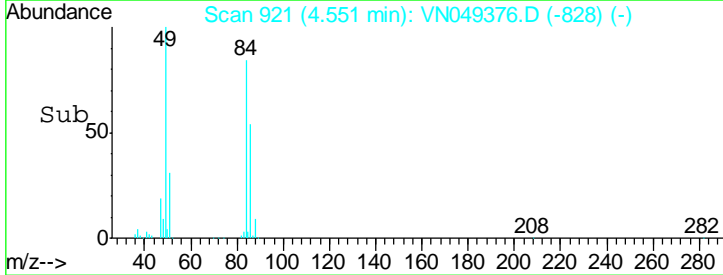
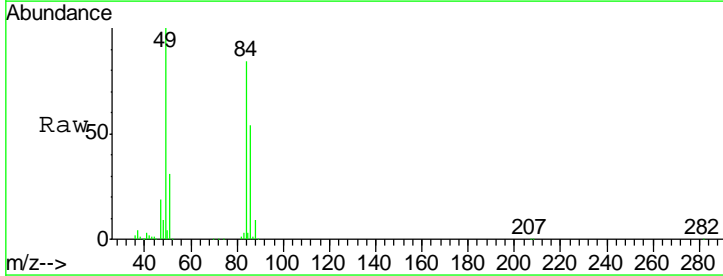
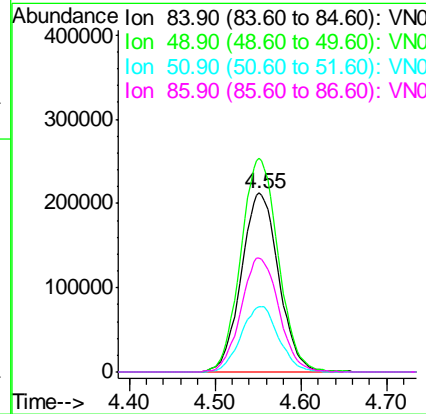
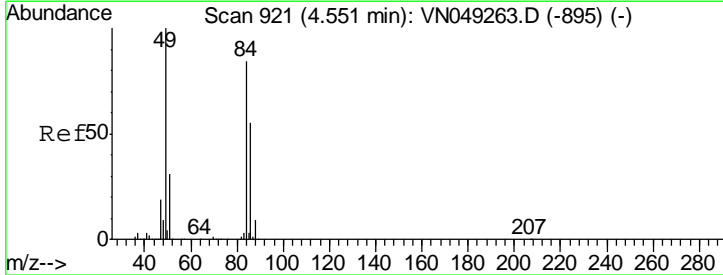
**Instrument :**  
 MSVOA\_N  
**ClientSampled :**  
 TP-6-D

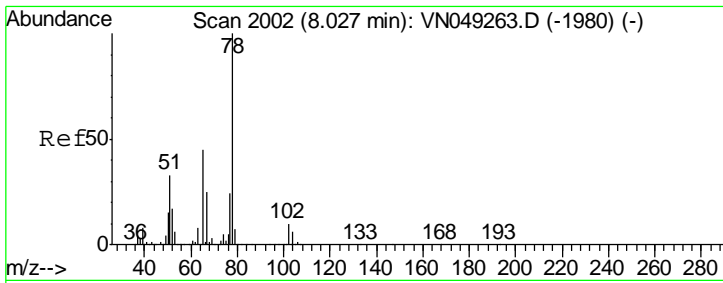
Tgt Ion: 43 Resp: 140403  
 Ion Ratio Lower Upper  
 43 100  
 74 24.6 17.4 26.0



#20  
 Methylene Chloride  
 Concen: 36.556 ug/l  
 RT: 4.55 min Scan# 921  
 Delta R.T. 0.00 min  
 Lab File: VN049376.D  
 Acq: 19 Jun 2018 6:15

Tgt Ion: 84 Resp: 641663  
 Ion Ratio Lower Upper  
 84 100  
 49 119.2 106.9 160.3  
 51 36.5 32.7 49.1  
 86 64.0 49.8 74.8

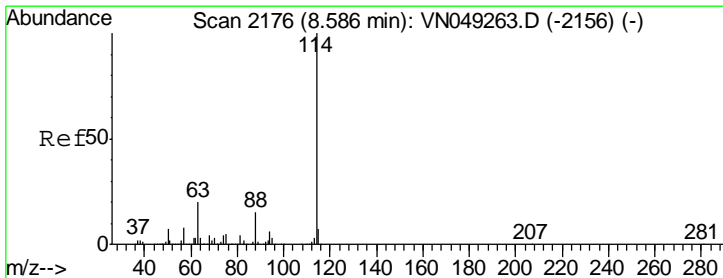
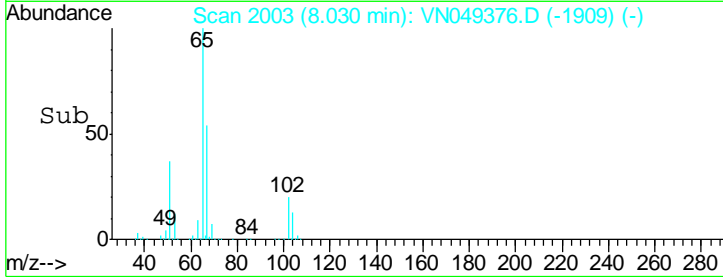
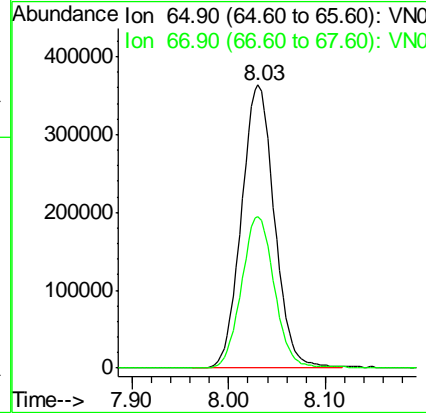
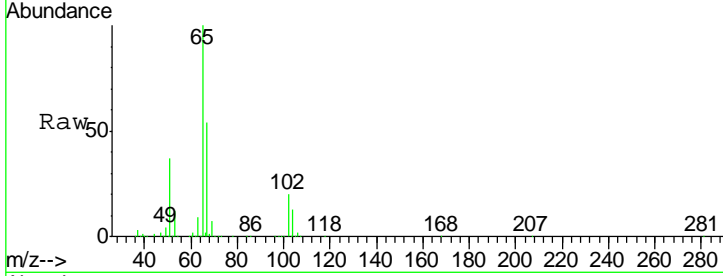




#33  
 1,2-Dichloroethane-d4  
 Concen: 49.820 ug/l  
 RT: 8.03 min Scan# 2003  
 Delta R.T. 0.00 min  
 Lab File: VN049376.D  
 Acq: 19 Jun 2018 6:15

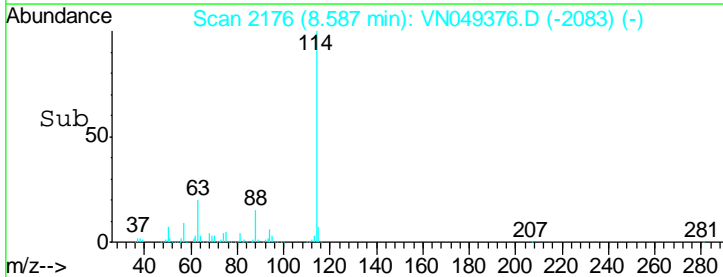
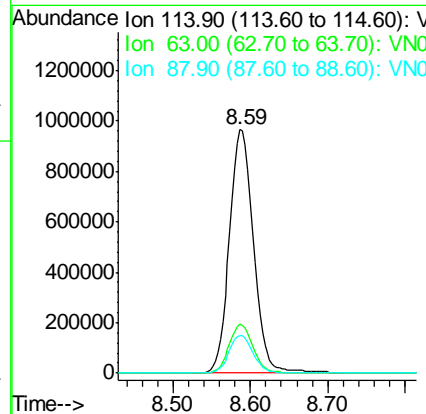
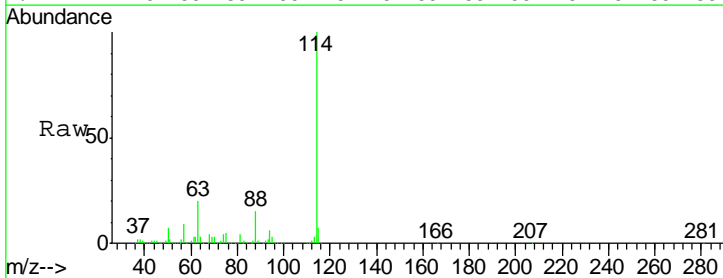
Instrument :  
 MSVOA\_N  
 ClientSampled :  
 TP-6-D

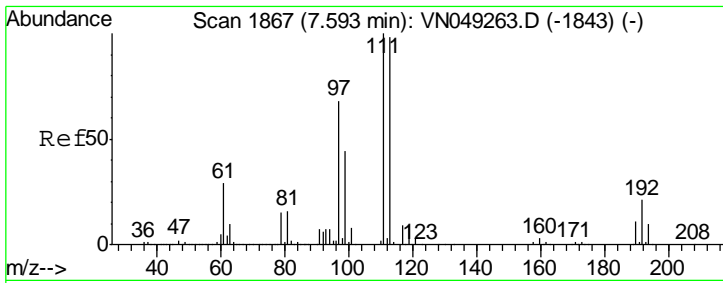
Tgt Ion	Resp	Lower	Upper
65	100		
67	53.7	0.0	103.8



#34  
 1,4-Difluorobenzene  
 Concen: 50.000 ug/l  
 RT: 8.59 min Scan# 2176  
 Delta R.T. 0.00 min  
 Lab File: VN049376.D  
 Acq: 19 Jun 2018 6:15

Tgt Ion	Resp	Lower	Upper
114	100		
63	20.2	0.0	44.4
88	15.5	0.0	31.4

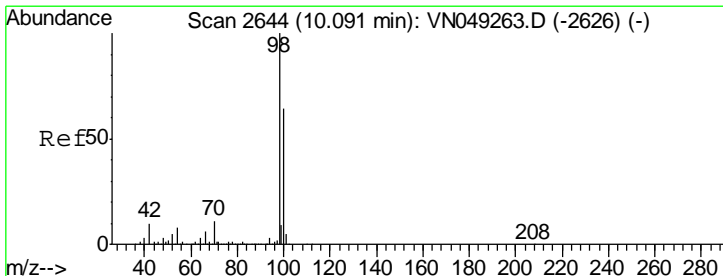
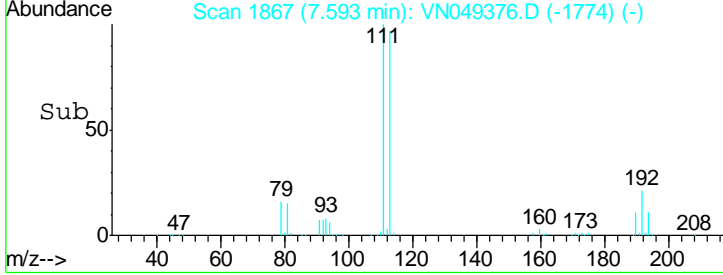
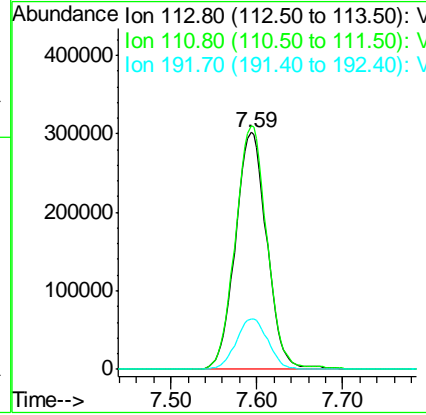
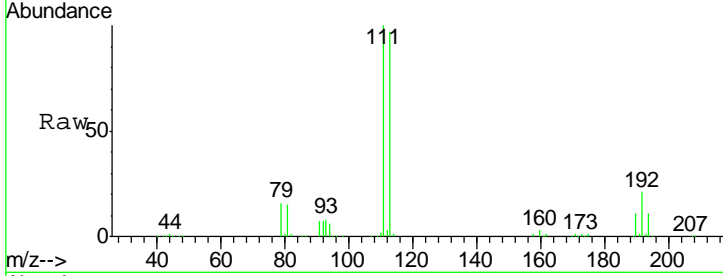




#35  
 Dibromofluoromethane  
 Concen: 45.443 ug/l  
 RT: 7.59 min Scan# 1867  
 Delta R.T. 0.00 min  
 Lab File: VN049376.D  
 Acq: 19 Jun 2018 6:15

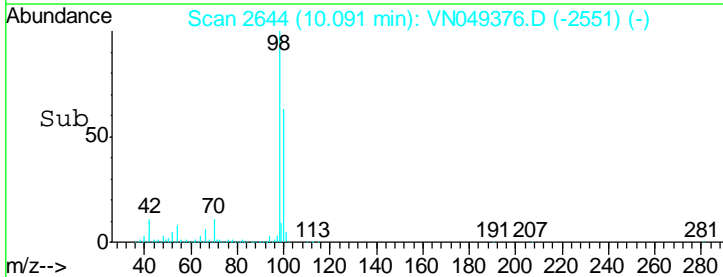
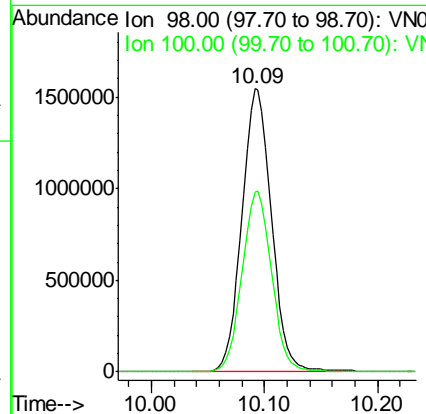
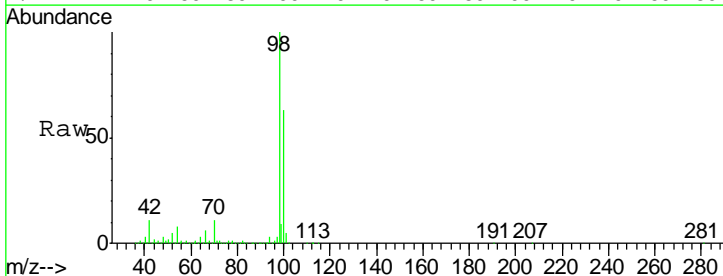
Instrument : MSVOA\_N  
 ClientSampled : TP-6-D

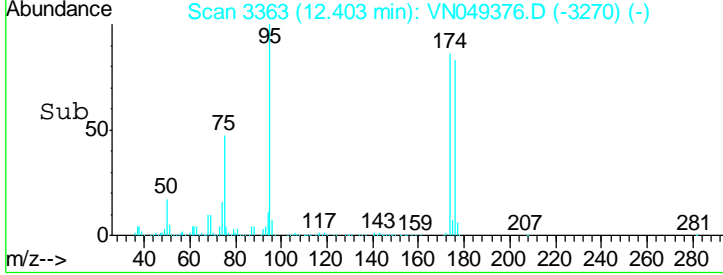
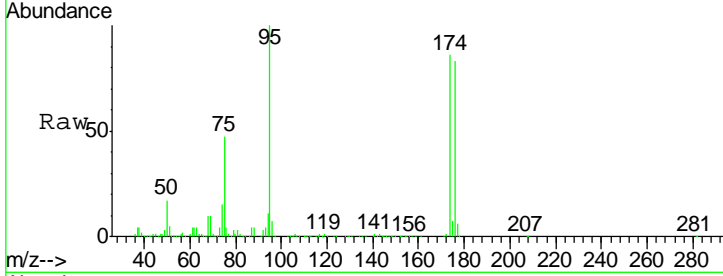
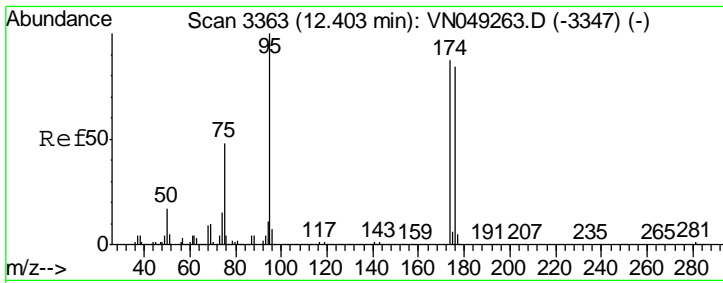
Tgt Ion	Resp	Lower	Upper
113	100		
111	103.1	82.4	123.6
192	21.6	15.0	22.6



#50  
 Toluene-d8  
 Concen: 43.947 ug/l  
 RT: 10.09 min Scan# 2644  
 Delta R.T. 0.00 min  
 Lab File: VN049376.D  
 Acq: 19 Jun 2018 6:15

Tgt Ion	Resp	Lower	Upper
98	100		
100	63.8	49.8	74.8

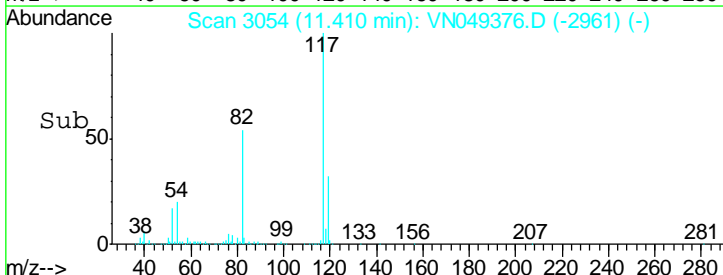
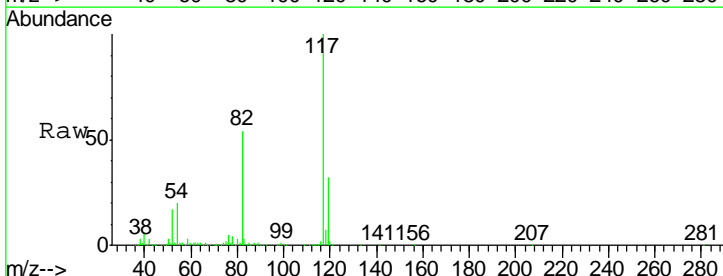
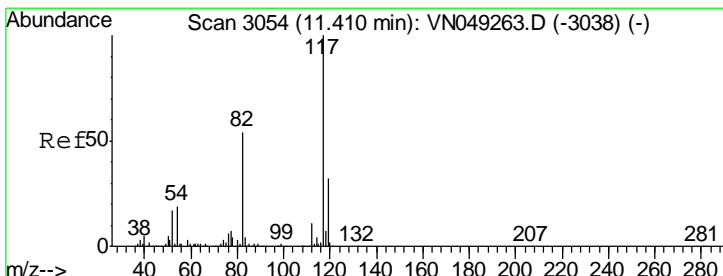
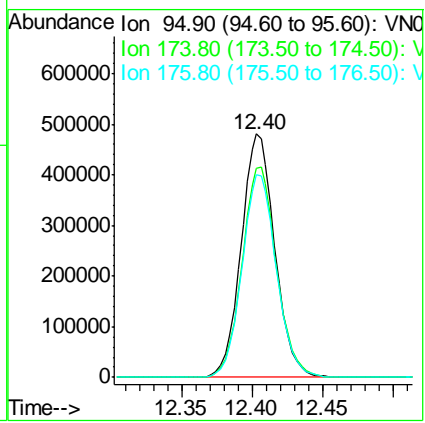




#62  
 4-Bromofluorobenzene  
 Concen: 37.711 ug/l  
 RT: 12.40 min Scan# 3363  
 Delta R.T. 0.00 min  
 Lab File: VN049376.D  
 Acq: 19 Jun 2018 6:15

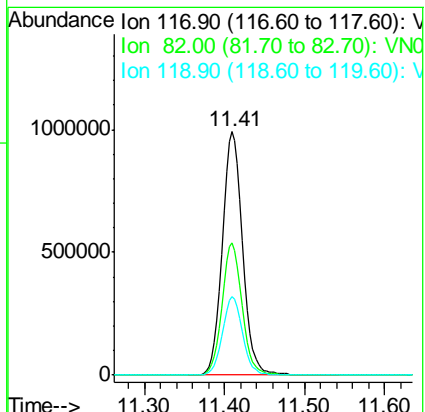
Instrument : MSVOA\_N  
 ClientSampled : TP-6-D

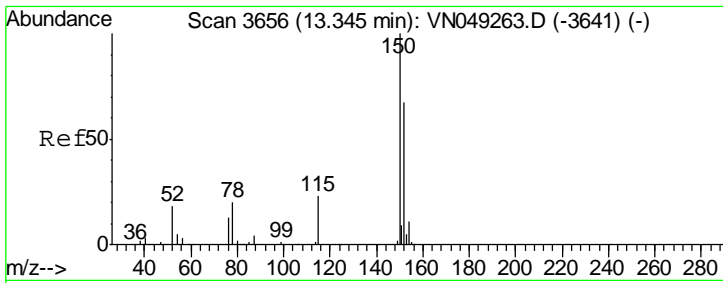
Tgt Ion	Resp	Lower	Upper
95	801462		
174	88.3	0.0	165.6
176	85.2	0.0	157.4



#63  
 Chlorobenzene-d5  
 Concen: 50.000 ug/l  
 RT: 11.41 min Scan# 3054  
 Delta R.T. 0.00 min  
 Lab File: VN049376.D  
 Acq: 19 Jun 2018 6:15

Tgt Ion	Resp	Lower	Upper
117	1740101		
82	54.3	45.9	68.9
119	32.4	25.5	38.3

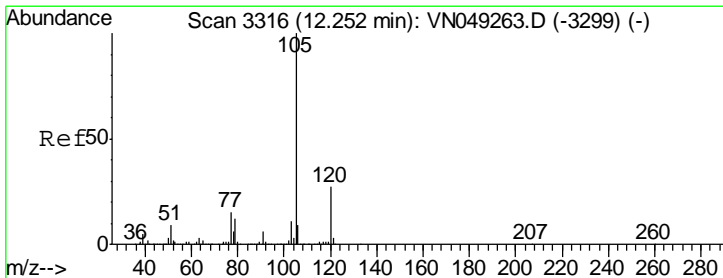
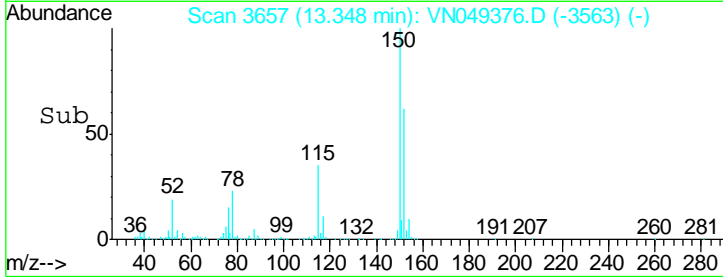
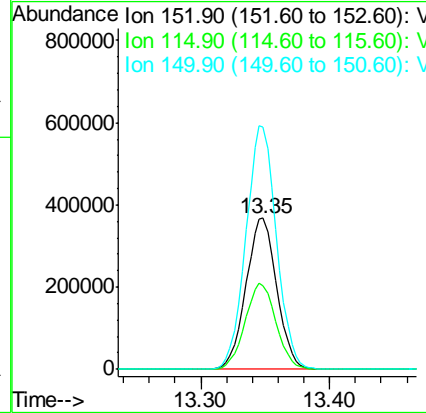
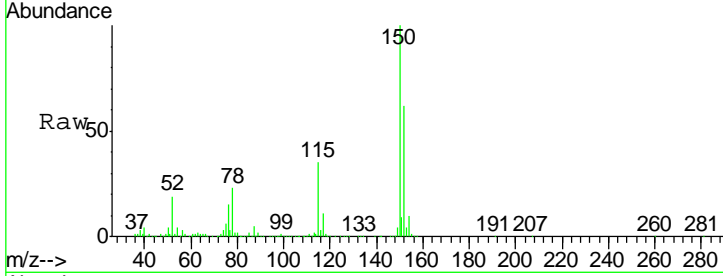




#72  
 1,4-Dichlorobenzene-d4  
 Concen: 50.000 ug/l  
 RT: 13.35 min Scan# 3657  
 Delta R.T. 0.00 min  
 Lab File: VN049376.D  
 Acq: 19 Jun 2018 6:15

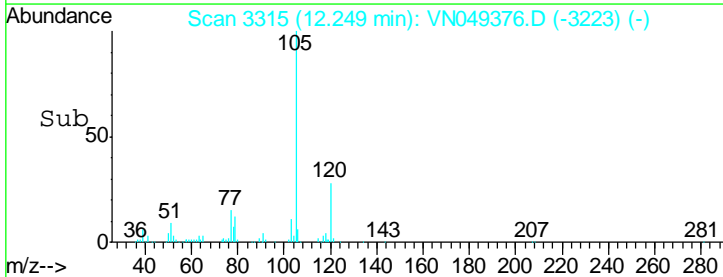
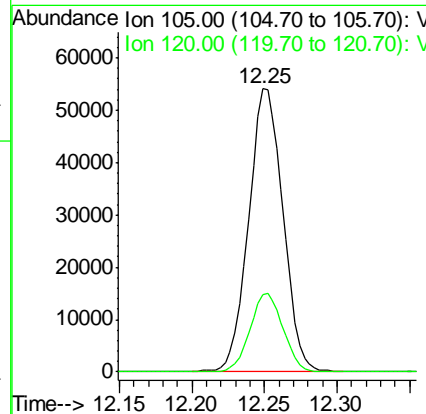
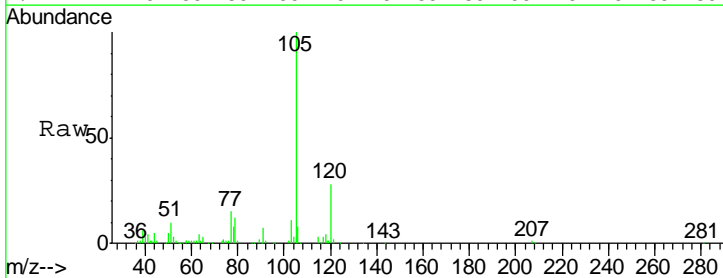
Instrument :  
 MSVOA\_N  
 ClientSampled :  
 TP-6-D

Tgt Ion	Resp	Lower	Upper
152	100		
115	57.2	28.7	86.1
150	159.8	0.0	351.0

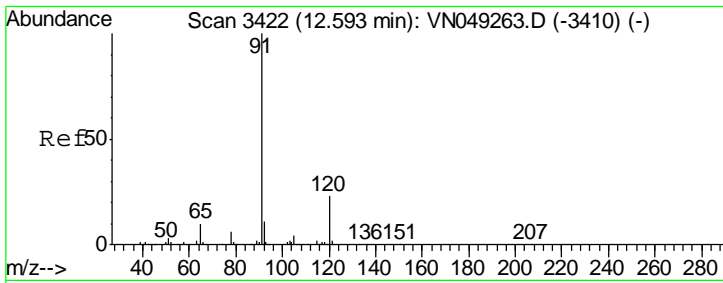


#73  
 Isopropylbenzene  
 Concen: 1.667 ug/l  
 RT: 12.25 min Scan# 3315  
 Delta R.T. -0.00 min  
 Lab File: VN049376.D  
 Acq: 19 Jun 2018 6:15

Tgt Ion	Resp	Lower	Upper
105	100		
120	26.7	12.8	38.3



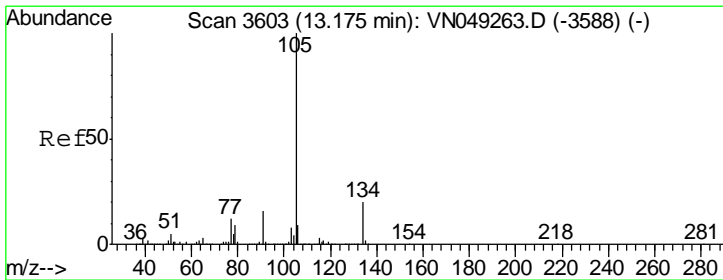
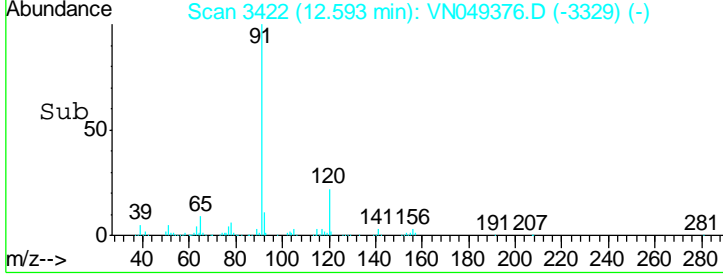
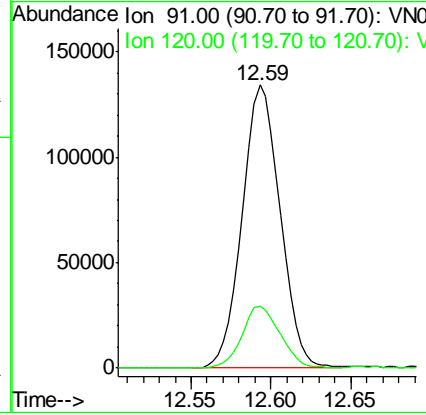
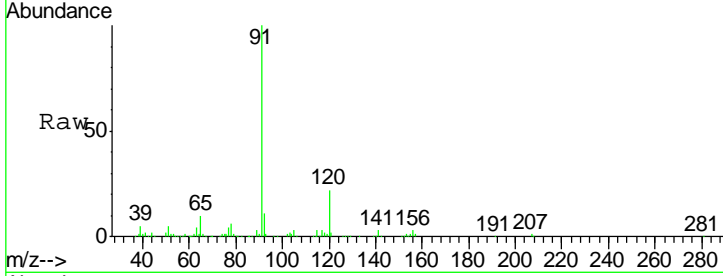




#78  
 n-propylbenzene  
 Concen: 3.660 ug/l  
 RT: 12.59 min Scan# 3422  
 Delta R.T. 0.00 min  
 Lab File: VN049376.D  
 Acq: 19 Jun 2018 6:15

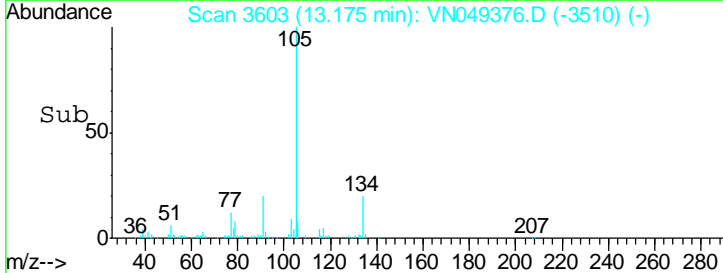
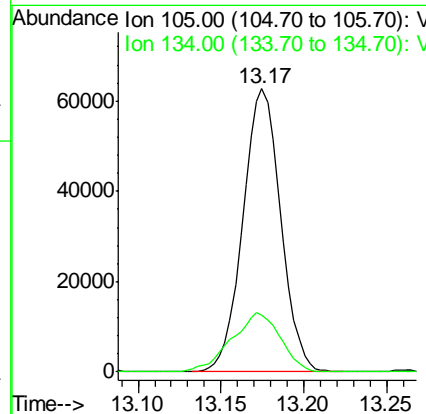
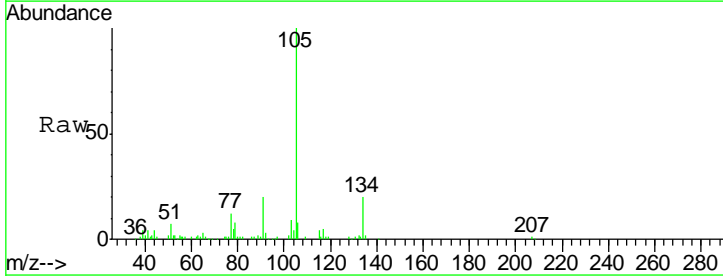
Instrument : MSVOA\_N  
 ClientSampled : TP-6-D

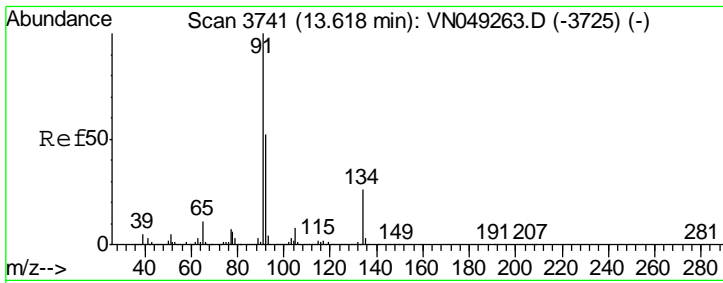
Tgt Ion	Resp	Lower	Upper
91	215128	100	
120	22.2	11.2	33.5



#85  
 sec-Butylbenzene  
 Concen: 2.002 ug/l  
 RT: 13.17 min Scan# 3603  
 Delta R.T. 0.00 min  
 Lab File: VN049376.D  
 Acq: 19 Jun 2018 6:15

Tgt Ion	Resp	Lower	Upper
105	99333	100	
134	26.9	9.8	29.3

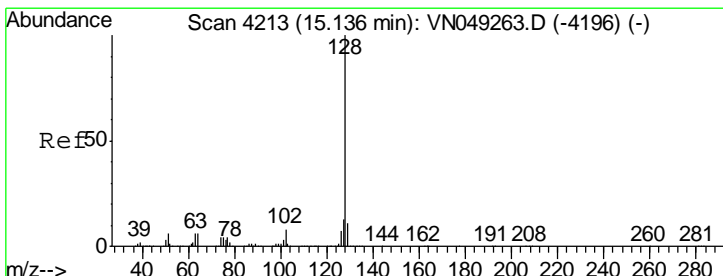
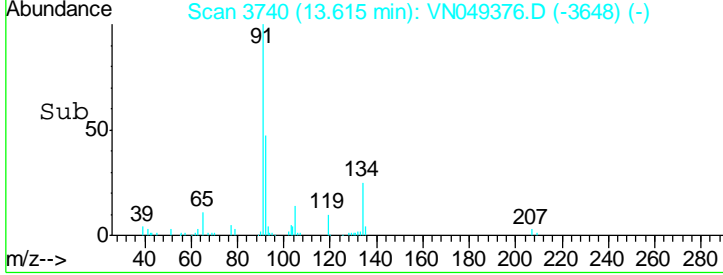
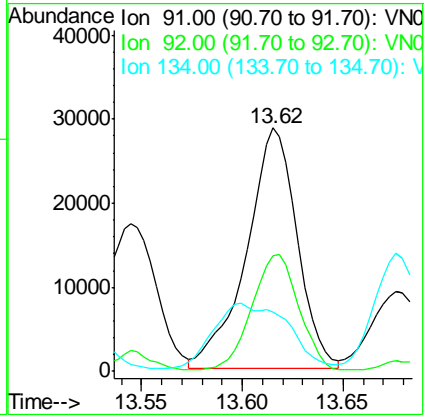
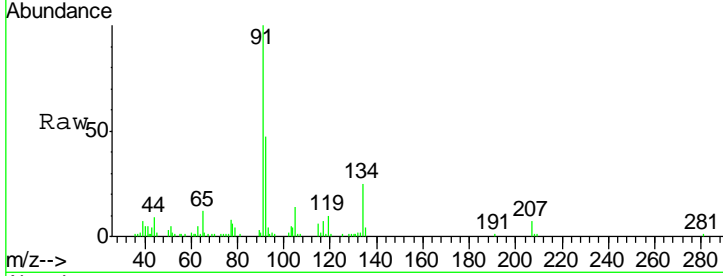




#89  
 n-Butylbenzene  
 Concen: 1.547 ug/l  
 RT: 13.62 min Scan# 3740  
 Delta R.T. -0.00 min  
 Lab File: VN049376.D  
 Acq: 19 Jun 2018 6:15

Instrument : MSVOA\_N  
 ClientSampled : TP-6-D

Tgt Ion	Resp	Lower	Upper
91	100		
92	45.7	25.1	75.4
134	43.2	12.0	36.0



#95  
 Naphthalene  
 Concen: 7.469 ug/l  
 RT: 15.14 min Scan# 4213  
 Delta R.T. 0.00 min  
 Lab File: VN049376.D  
 Acq: 19 Jun 2018 6:15

Tgt Ion	Resp	Lower	Upper
128	100		
127	13.6	10.6	16.0
129	9.3	8.5	12.7

