

Data Path : Z:\VOASRV\HPCHEM1\MSVOA N\DATA\VN061920\
 Data File : VN061950.D
 Acq On : 19 Jun 2020 14:25
 Operator : JC/MD
 Sample : L2984-04
 Misc : 5.00mL/MSVOA N/WATER
 ALS Vial : 9 Sample Multiplier: 1

Instrument :
 MSVOA_N
 Client Sampled :
 S49-0564

Quant Time: Jun 20 07:33:51 2020
 Quant Method : Z:\VOASRV\HPCHEM1\MSVOA_N\METHODS\82N061620W.M
 Quant Title : SW846 8260
 QLast Update : Wed Jun 17 01:19:44 2020
 Response via : Initial Calibration

Internal Standards	R.T.	QIon	Response	Conc	Units	Dev(Min)
1) Pentafluorobenzene	7.63	168	152082	50.00	ug/l	0.00
34) 1,4-Difluorobenzene	8.55	114	276099	50.00	ug/l	0.00
63) Chlorobenzene-d5	11.38	117	266200	50.00	ug/l	0.00
72) 1,4-Dichlorobenzene-d4	13.32	152	105007	50.00	ug/l	0.00

System Monitoring Compounds	R.T.	QIon	Response	Conc	Units	Dev(Min)
33) 1,2-Dichloroethane-d4	7.99	65	100955	49.50	ug/l	0.00
Spiked Amount				50.000		
Recovery						= 99.00%
35) Dibromofluoromethane	7.55	113	87881	49.75	ug/l	0.00
Spiked Amount				50.000		
Recovery						= 99.50%
50) Toluene-d8	10.06	98	344283	49.58	ug/l	0.00
Spiked Amount				50.000		
Recovery						= 99.16%
62) 4-Bromofluorobenzene	12.38	95	114230	47.96	ug/l	0.00
Spiked Amount				50.000		
Recovery						= 95.92%

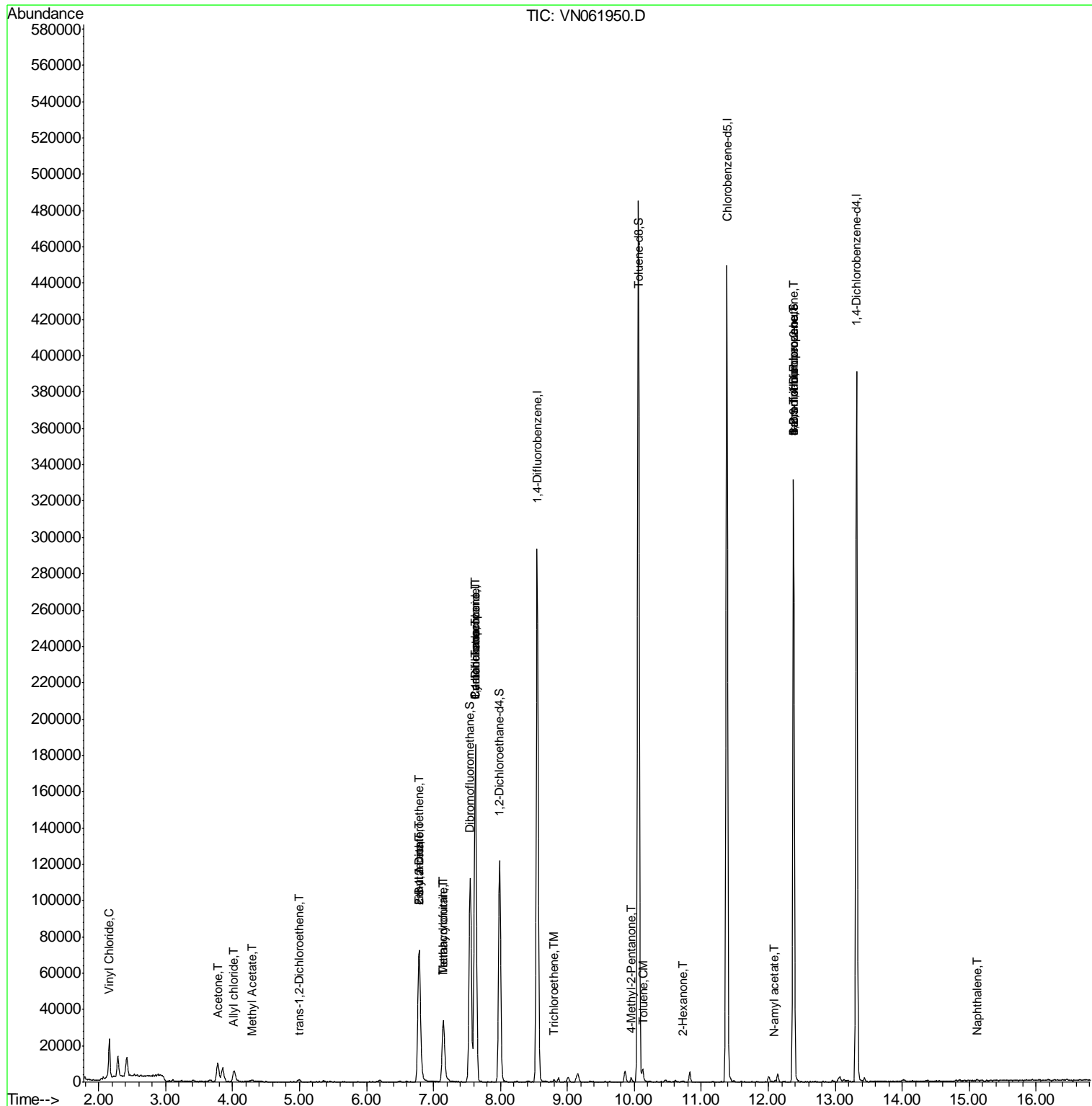
Target Compounds	R.T.	QIon	Response	Conc	Units	Qvalue
4) Vinyl Chloride	2.16	62	18806	7.473	ug/l	95
14) Allyl chloride	4.03	41	1093	0.533	ug/l #	84
16) Acetone	3.78	43	17365	28.823	ug/l	95
18) Methyl Acetate	4.29	43	1599	0.922	ug/l #	59
21) trans-1,2-Dichloroethene	4.99	96	866	0.488	ug/l #	52
25) 2-Butanone	6.79	43	112529	128.018	ug/l	96
27) cis-1,2-Dichloroethene	6.78	96	6589	3.217	ug/l	92
29) Tetrahydrofuran	7.15	42	1660	2.870	ug/l #	62
31) Cyclohexane	7.63	56	3156	1.174	ug/l #	10
36) 1,1-Dichloropropene	7.63	75	11625	4.616	ug/l #	49
37) Ethyl Acetate	6.79	43	112529	57.221	ug/l #	65
38) Carbon Tetrachloride	7.63	117	15281	6.127	ug/l #	16
41) Methacrylonitrile	7.15	41	7146	8.498	ug/l #	100
44) Trichloroethene	8.80	130	540	0.269	ug/l	55
51) 4-Methyl-2-Pentanone	9.96	43	1631	0.833	ug/l #	82
52) Toluene	10.12	92	3124	0.652	ug/l	90
59) 2-Hexanone	10.72	43	689	13.823	ug/l	65
71) Bromoform	12.37	173	520	0.364	ug/l #	29
74) N-amyl acetate	12.08	43	140	3.113	ug/l #	38
76) 1,2,3-Trichloropropane	12.38	75	57254	27.772	ug/l #	100
81) trans-1,4-Dichloro-2-buten	12.38	75	57254	75.747	ug/l #	14
95) Naphthalene	15.11	128	756	3.618	ug/l #	69

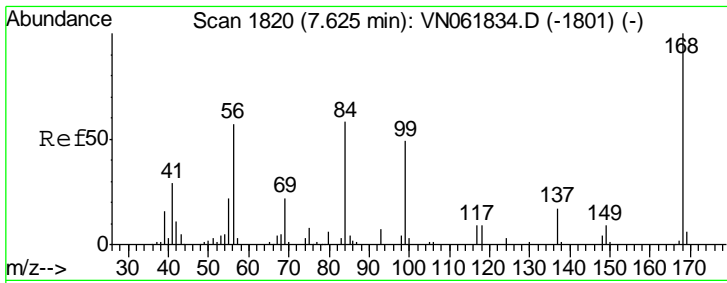
(#) = qualifier out of range (m) = manual integration (+) = signals summed

Data Path : Z:\VOASRV\HPCHEM1\MSVOA N\DATA\VN061920\
 Data File : VN061950.D
 Acq On : 19 Jun 2020 14:25
 Operator : JC/MD
 Sample : L2984-04
 Misc : 5.00mL/MSVOA N/WATER
 ALS Vial : 9 Sample Multiplier: 1

Instrument :
 MSVOA_N
 Client Sampled :
 S49-0564

Quant Time: Jun 20 07:33:51 2020
 Quant Method : Z:\VOASRV\HPCHEM1\MSVOA_N\METHODS\82N061620W.M
 Quant Title : SW846 8260
 QLast Update : Wed Jun 17 01:19:44 2020
 Response via : Initial Calibration

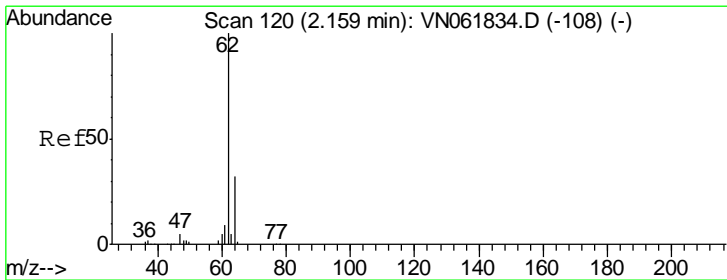
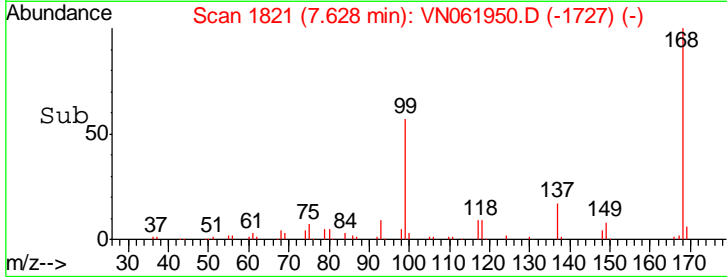
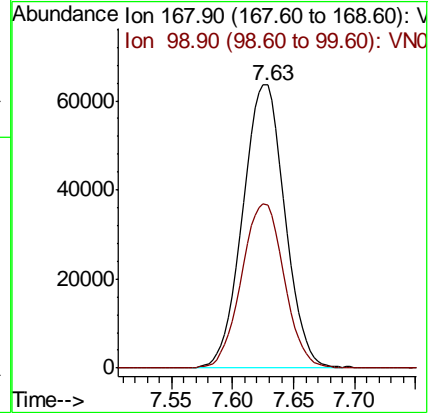
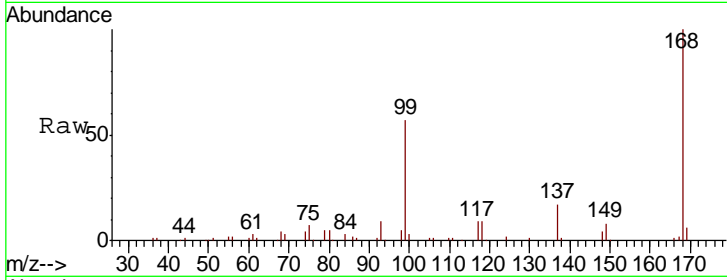




#1
 Pentafluorobenzene
 Concen: 50.000 ug/l
 RT: 7.63 min Scan# 1821
 Delta R.T. 0.00 min
 Lab File: VN061950.D
 Acq: 19 Jun 2020 14:25

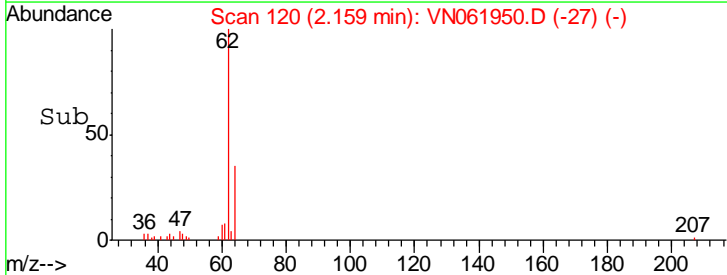
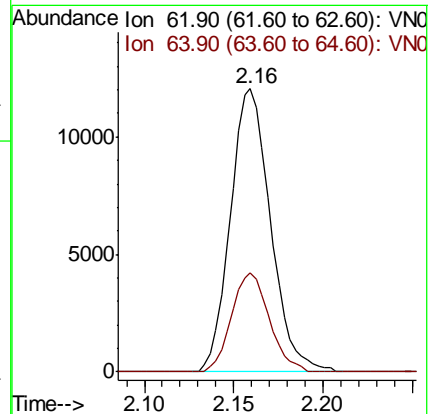
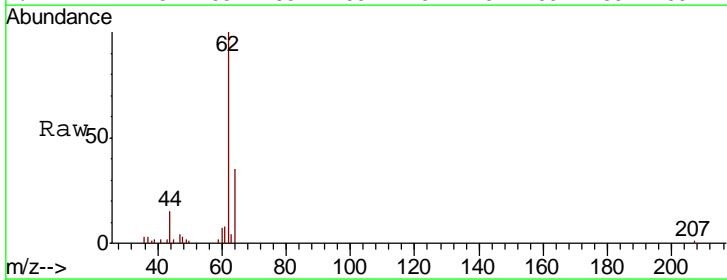
Instrument :
 MSVOA_N
 ClientSampled :
 S49-0564

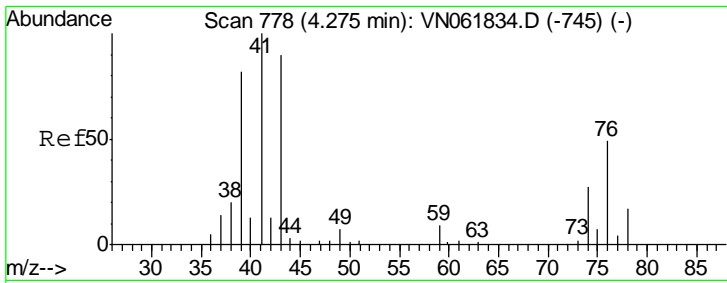
Tgt Ion: 168 Resp: 152082
 Ion Ratio Lower Upper
 168 100
 99 57.4 44.6 67.0



#4
 Vinyl Chloride
 Concen: 7.473 ug/l
 RT: 2.16 min Scan# 120
 Delta R.T. -0.00 min
 Lab File: VN061950.D
 Acq: 19 Jun 2020 14:25

Tgt Ion: 62 Resp: 18806
 Ion Ratio Lower Upper
 62 100
 64 34.9 25.5 38.3

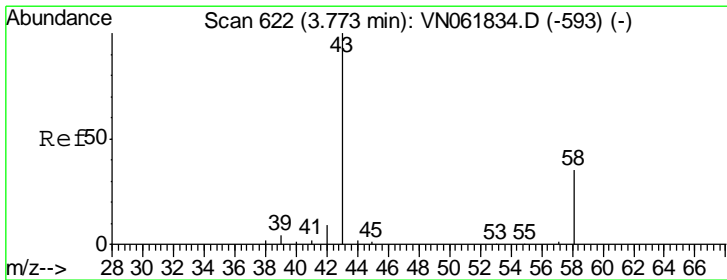
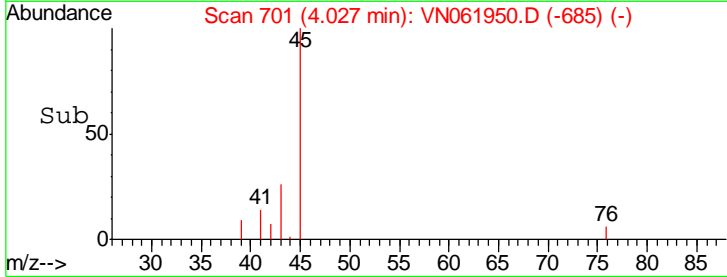
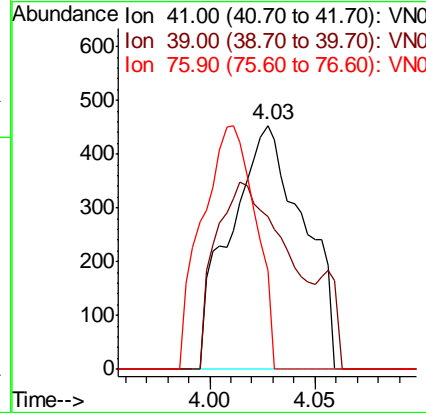
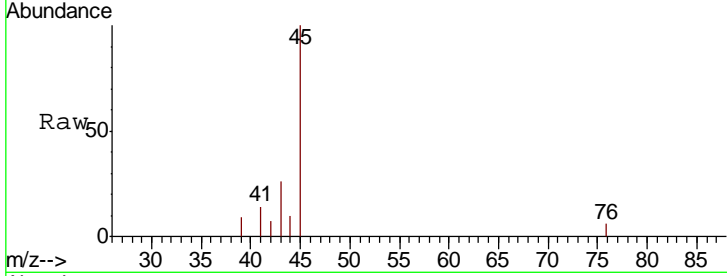




#14
 Allyl chloride
 Concen: 0.533 ug/l
 RT: 4.03 min Scan# 701
 Delta R.T. -0.25 min
 Lab File: VN061950.D
 Acq: 19 Jun 2020 14:25

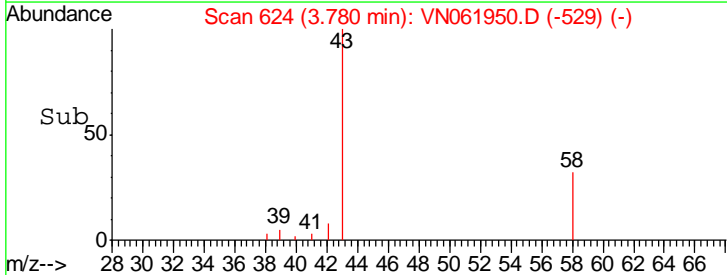
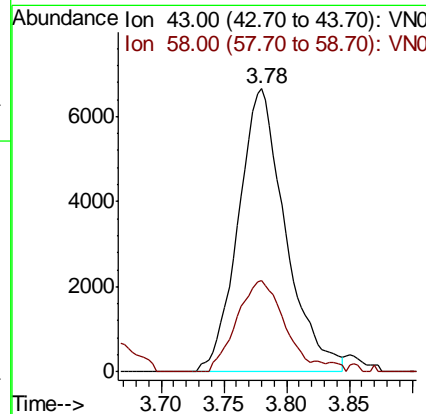
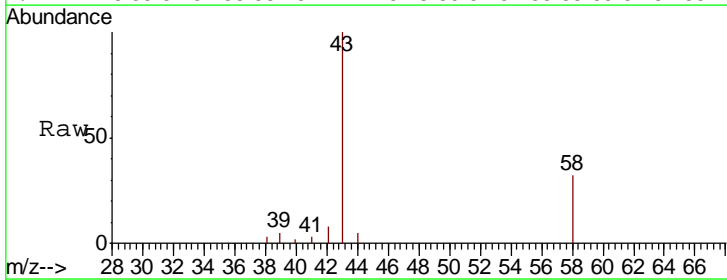
Instrument :
 MSVOA_N
 ClientSampled :
 S49-0564

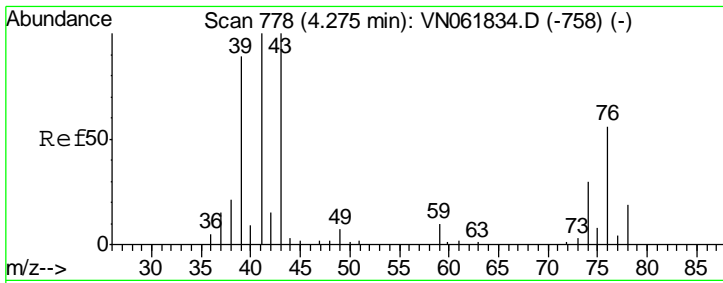
Tgt Ion	Resp	Lower	Upper
41	1093		
39	75.5	60.2	90.2
76	72.5	36.3	54.5#



#16
 Acetone
 Concen: 28.823 ug/l
 RT: 3.78 min Scan# 624
 Delta R.T. 0.01 min
 Lab File: VN061950.D
 Acq: 19 Jun 2020 14:25

Tgt Ion	Resp	Lower	Upper
43	17365		
58	32.2	27.8	41.8

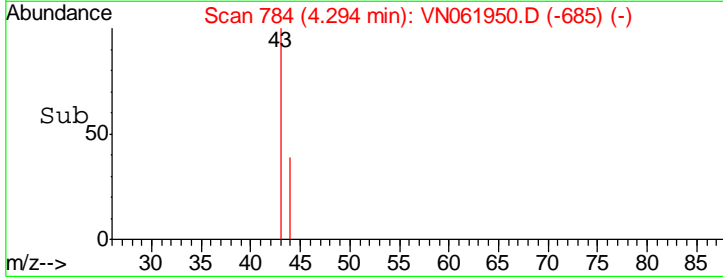
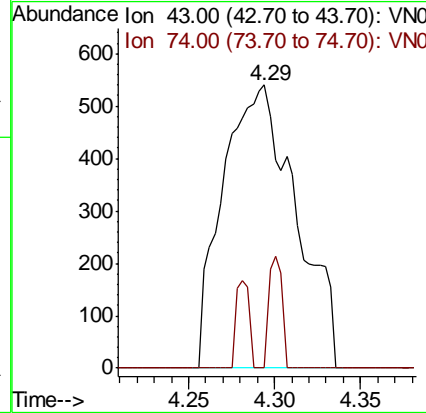
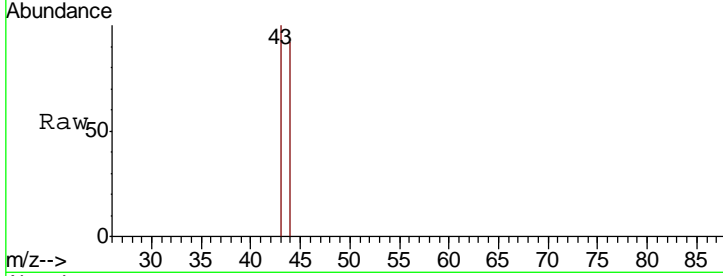




#18
 Methyl Acetate
 Concen: 0.922 ug/l
 RT: 4.29 min Scan# 784
 Delta R.T. 0.02 min
 Lab File: VN061950.D
 Acq: 19 Jun 2020 14:25

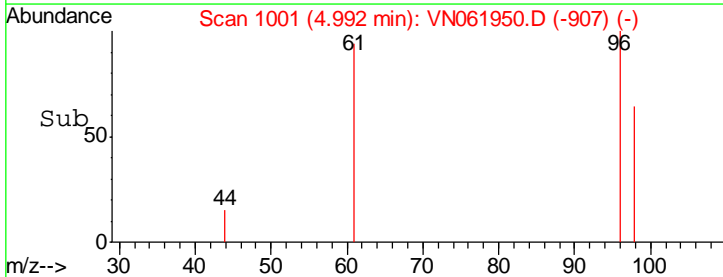
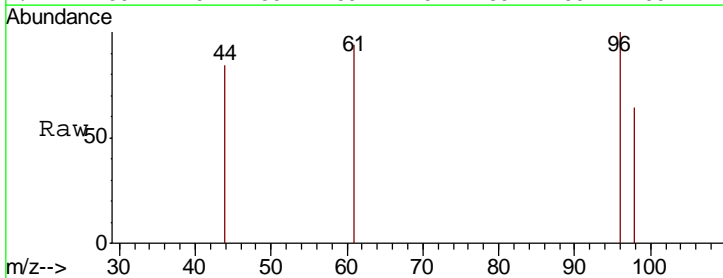
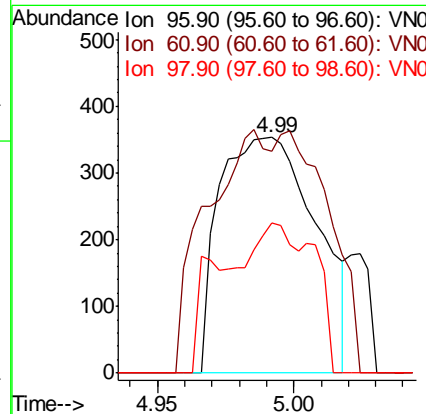
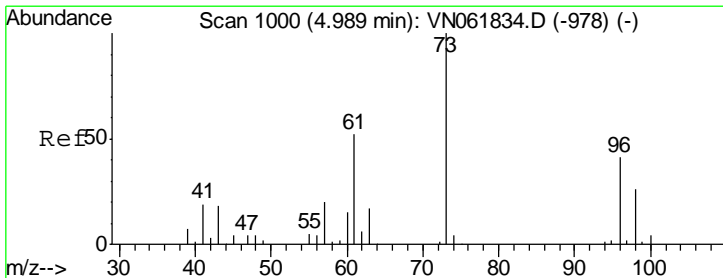
Instrument :
 MSVOA_N
 ClientSampled :
 S49-0564

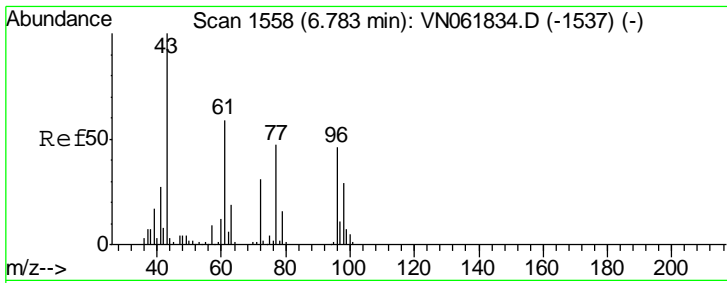
Tgt Ion	Resp	Lower	Upper
43	1599		
74	7.1	23.0	34.4#



#21
 trans-1,2-Dichloroethene
 Concen: 0.488 ug/l
 RT: 4.99 min Scan# 1001
 Delta R.T. 0.00 min
 Lab File: VN061950.D
 Acq: 19 Jun 2020 14:25

Tgt Ion	Resp	Lower	Upper
96	866		
61	43.9	102.2	153.4#
98	64.0	51.2	76.8



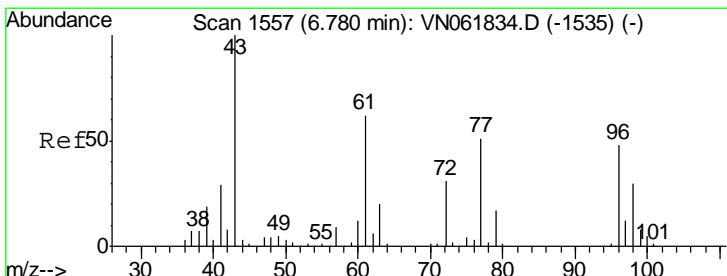
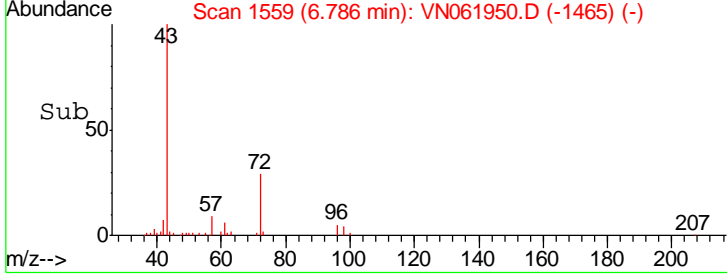
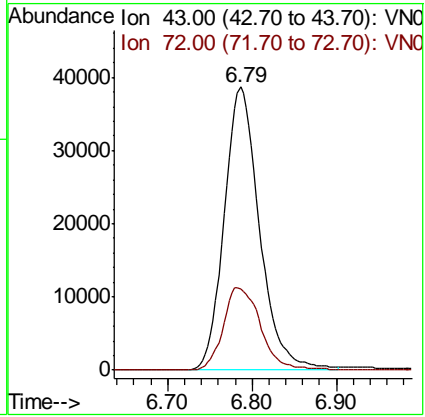
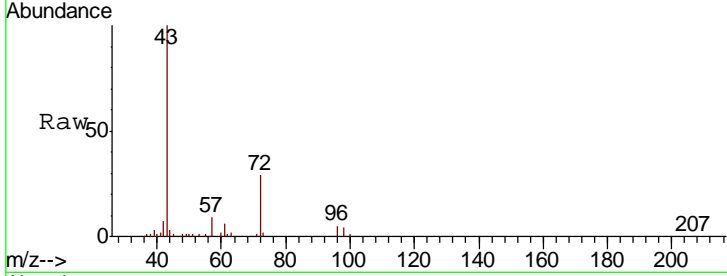


#25
 2-Butanone
 Concen: 128.018 ug/l
 RT: 6.79 min Scan# 1559
 Delta R.T. 0.00 min
 Lab File: VN061950.D
 Acq: 19 Jun 2020 14:25

Instrument :
 MSVOA_N
ClientSampled :
 S49-0564

Tgt Ion: 43 Resp: 112529

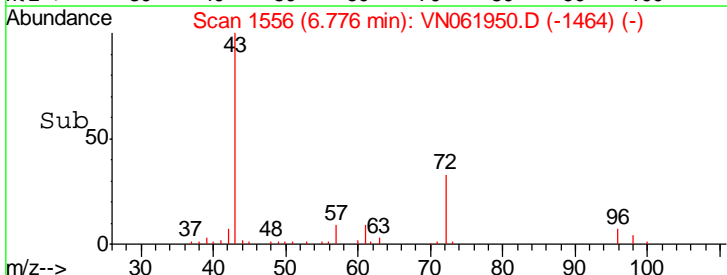
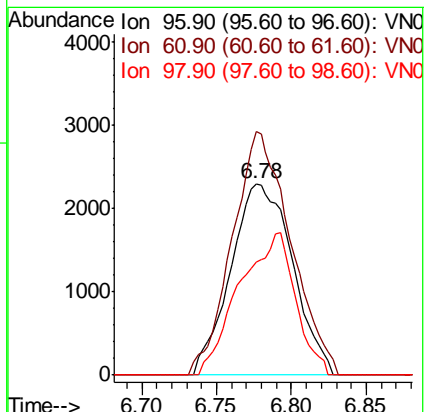
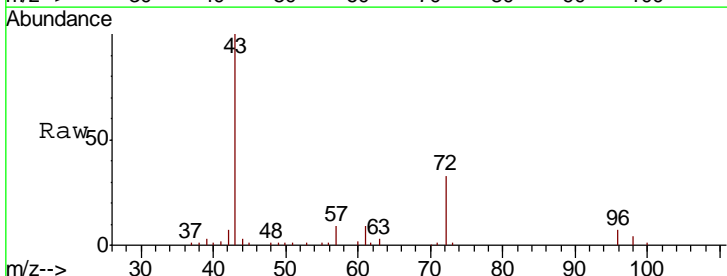
Ion	Ratio	Lower	Upper
43	100		
72	28.6	24.6	37.0

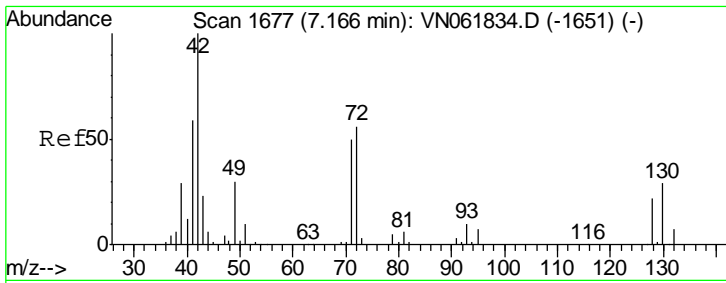


#27
 cis-1,2-Dichloroethene
 Concen: 3.217 ug/l
 RT: 6.78 min Scan# 1556
 Delta R.T. -0.00 min
 Lab File: VN061950.D
 Acq: 19 Jun 2020 14:25

Tgt Ion: 96 Resp: 6589

Ion	Ratio	Lower	Upper
96	100		
61	120.6	0.0	265.6
98	67.4	0.0	128.2

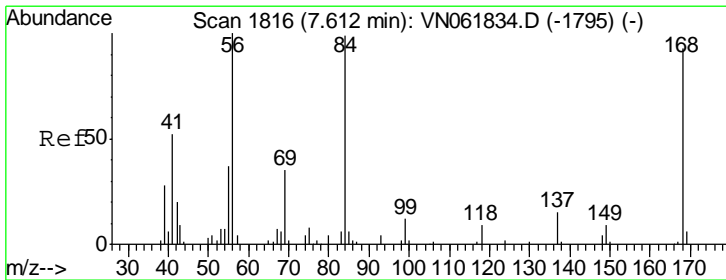
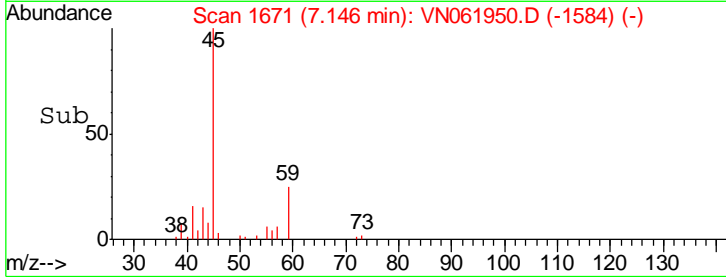
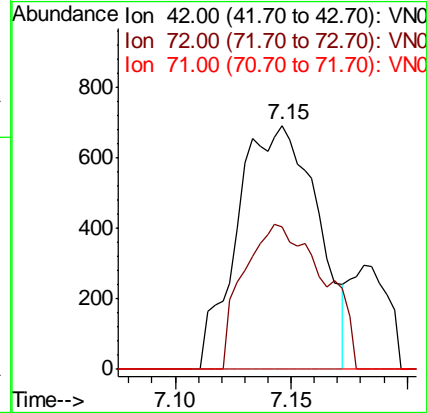
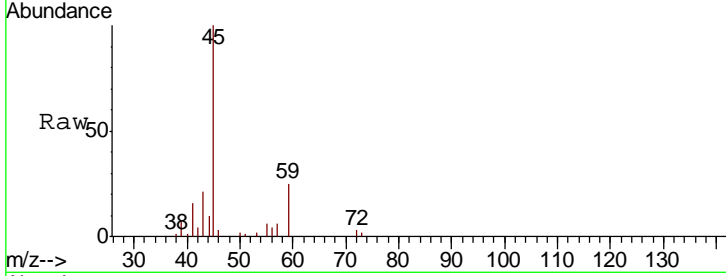




#29
 Tetrahydrofuran
 Concen: 2.870 ug/l
 RT: 7.15 min Scan# 1671
 Delta R.T. -0.02 min
 Lab File: VN061950.D
 Acq: 19 Jun 2020 14:25

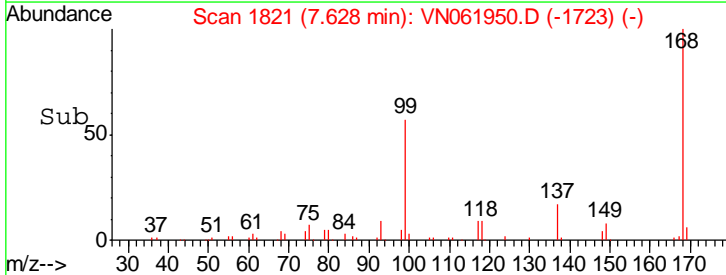
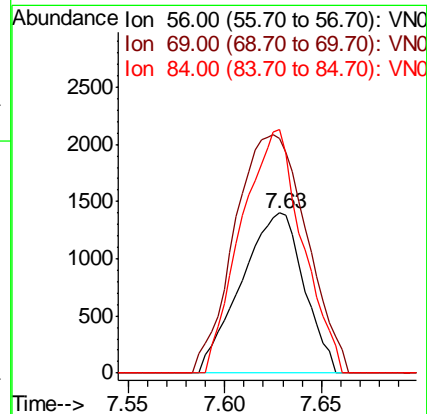
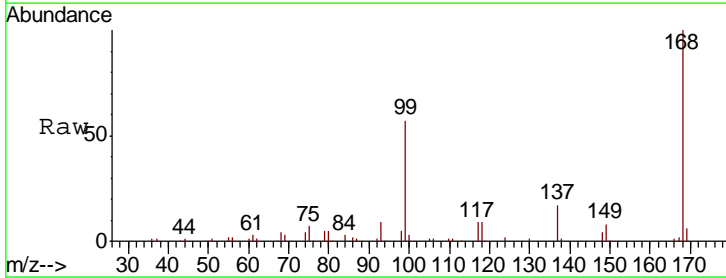
Instrument :
 MSVOA_N
 ClientSampled :
 S49-0564

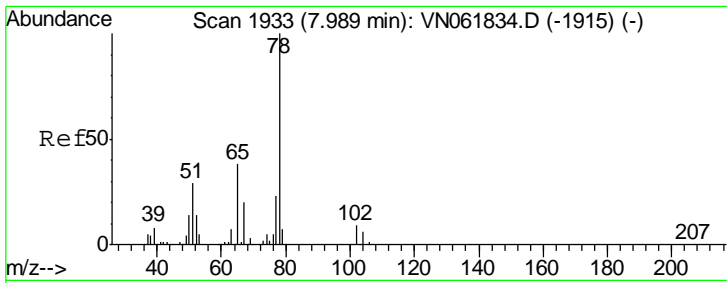
Tgt Ion	Resp	Lower	Upper
42	1660		
72	59.5	44.0	66.0
71	0.0	40.0	60.0#



#31
 Cyclohexane
 Concen: 1.174 ug/l
 RT: 7.63 min Scan# 1821
 Delta R.T. 0.02 min
 Lab File: VN061950.D
 Acq: 19 Jun 2020 14:25

Tgt Ion	Resp	Lower	Upper
56	3156		
69	146.5	27.7	41.5#
84	152.1	79.1	118.7#

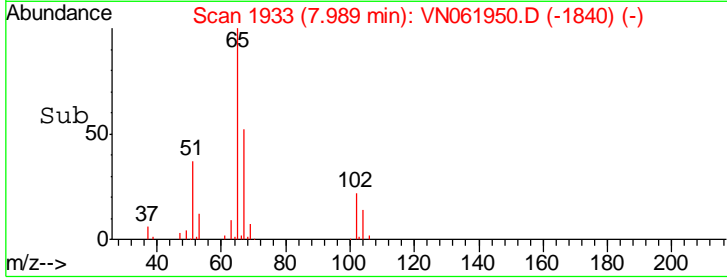
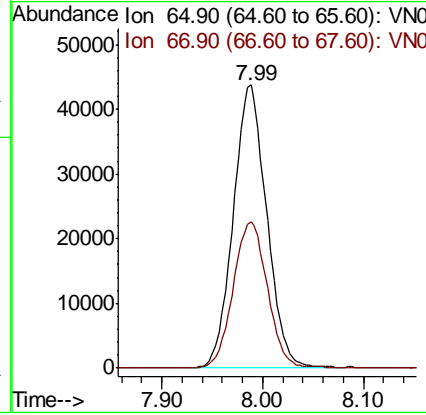
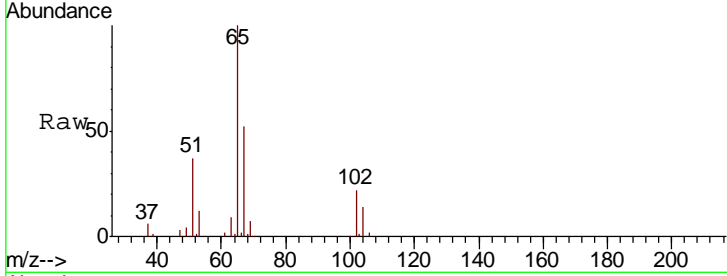




#33
 1,2-Dichloroethane-d4
 Concen: 49.496 ug/l
 RT: 7.99 min Scan# 1933
 Delta R.T. -0.00 min
 Lab File: VN061950.D
 Acq: 19 Jun 2020 14:25

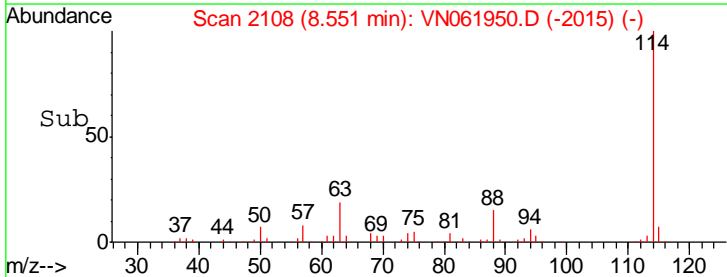
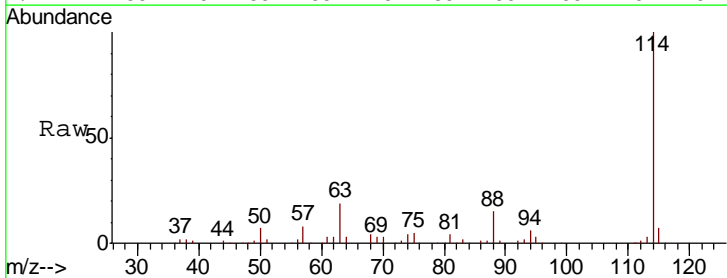
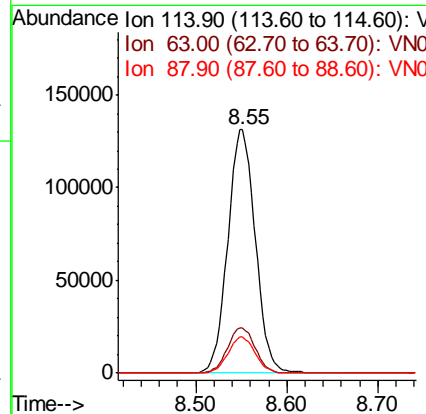
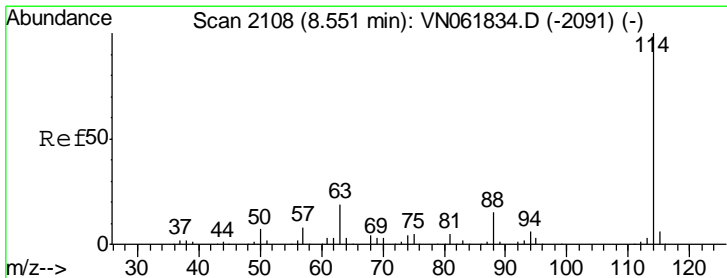
Instrument :
 MSVOA_N
 ClientSampled :
 S49-0564

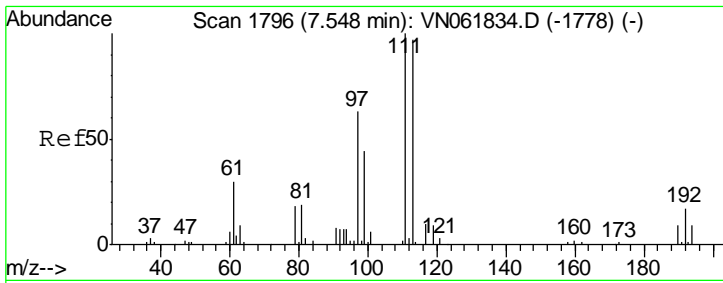
Tgt Ion: 65 Resp: 100955
 Ion Ratio Lower Upper
 65 100
 67 52.7 0.0 106.2



#34
 1,4-Difluorobenzene
 Concen: 50.000 ug/l
 RT: 8.55 min Scan# 2108
 Delta R.T. -0.00 min
 Lab File: VN061950.D
 Acq: 19 Jun 2020 14:25

Tgt Ion: 114 Resp: 276099
 Ion Ratio Lower Upper
 114 100
 63 18.5 0.0 37.6
 88 14.9 0.0 31.0

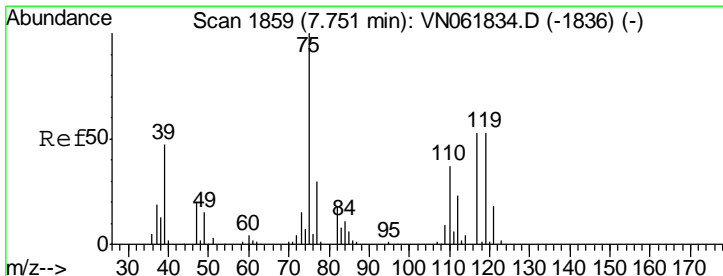
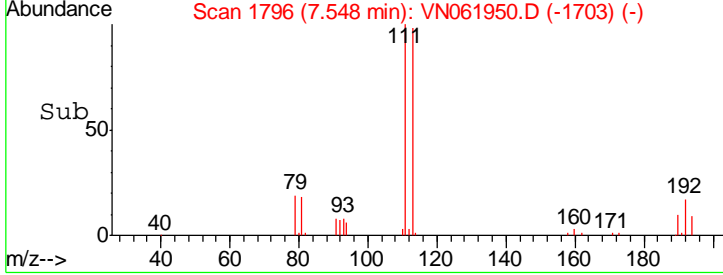
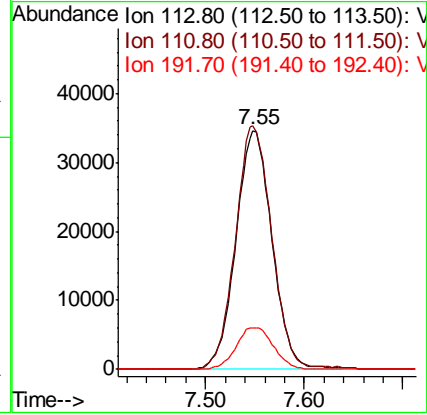
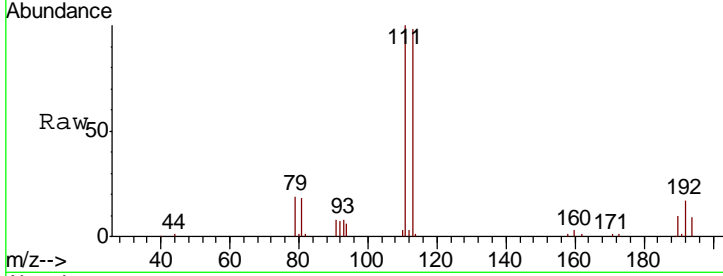




#35
 Dibromofluoromethane
 Concen: 49.753 ug/l
 RT: 7.55 min Scan# 1796
 Delta R.T. -0.00 min
 Lab File: VN061950.D
 Acq: 19 Jun 2020 14:25

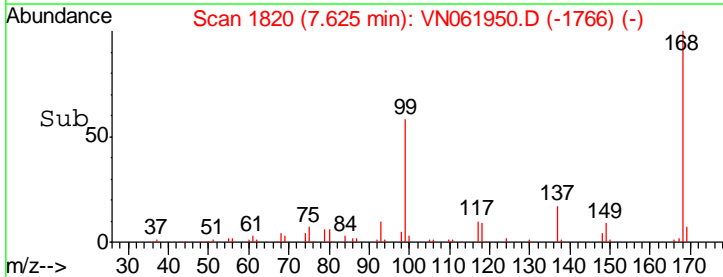
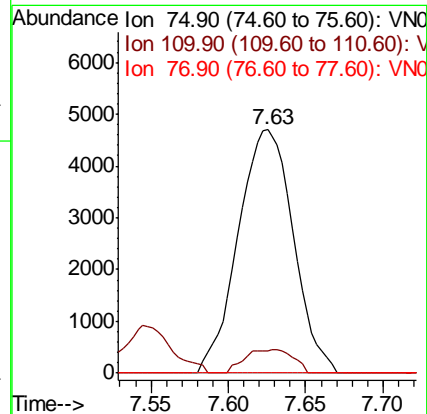
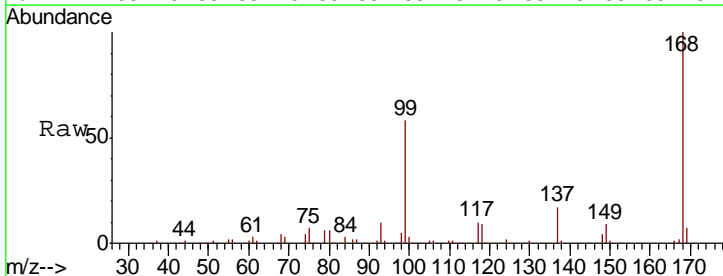
Instrument :
 MSVOA_N
 ClientSampled :
 S49-0564

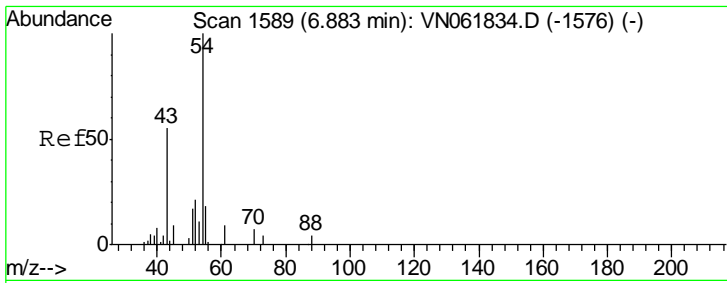
Tgt Ion	Resp	Lower	Upper
113	87881		
113	100		
111	102.1	83.7	125.5
192	18.0	13.9	20.9



#36
 1,1-Dichloropropene
 Concen: 4.616 ug/l
 RT: 7.63 min Scan# 1820
 Delta R.T. -0.13 min
 Lab File: VN061950.D
 Acq: 19 Jun 2020 14:25

Tgt Ion	Resp	Lower	Upper
75	11625		
75	100		
110	8.4	18.2	54.6#
77	0.0	24.2	36.4#

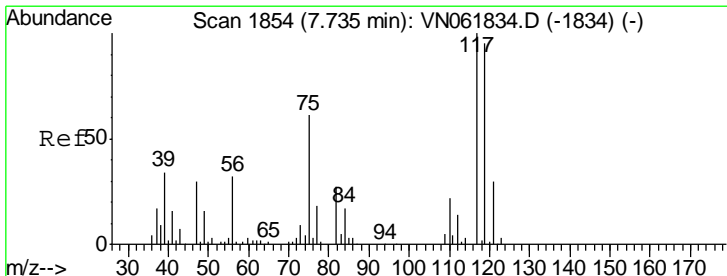
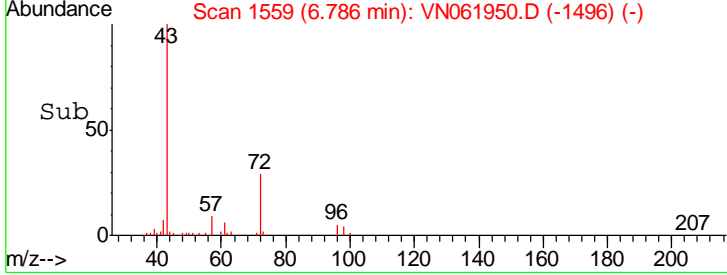
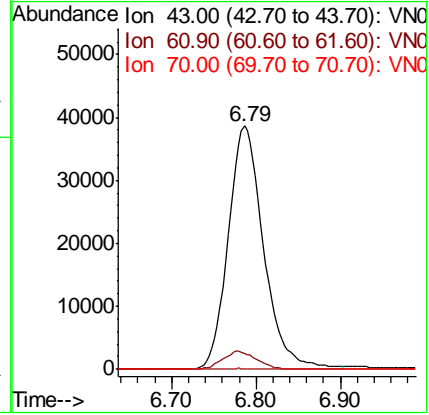
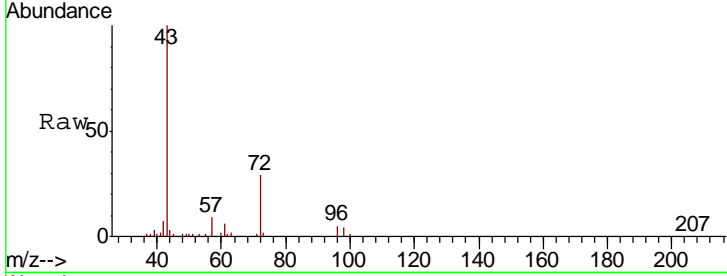




#37
 Ethyl Acetate
 Concen: 57.221 ug/l
 RT: 6.79 min Scan# 1559
 Delta R.T. -0.10 min
 Lab File: VN061950.D
 Acq: 19 Jun 2020 14:25

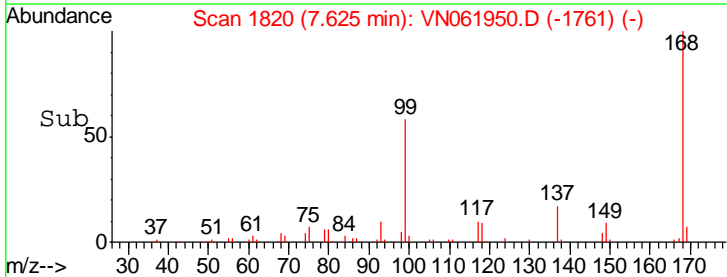
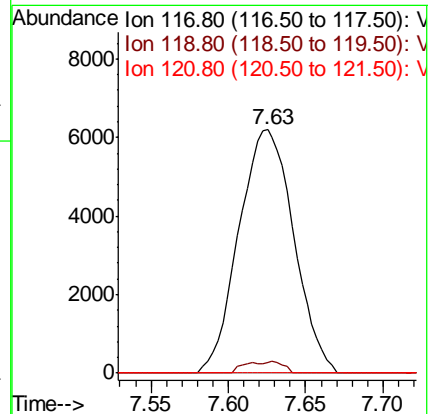
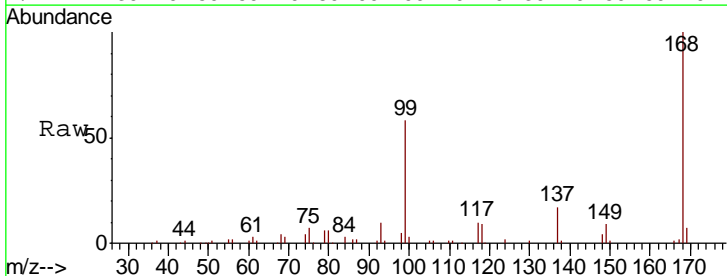
Instrument :
 MSVOA_N
ClientSampled :
 S49-0564

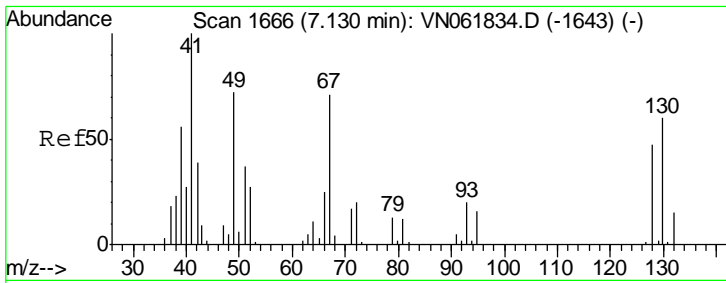
Tgt Ion	Resp	Lower	Upper
43	112529		
61	0.0	13.0	19.4#
70	0.1	9.4	14.2#



#38
 Carbon Tetrachloride
 Concen: 6.127 ug/l
 RT: 7.63 min Scan# 1820
 Delta R.T. -0.11 min
 Lab File: VN061950.D
 Acq: 19 Jun 2020 14:25

Tgt Ion	Resp	Lower	Upper
117	15281		
119	4.3	75.8	113.6#
121	0.0	23.8	35.6#

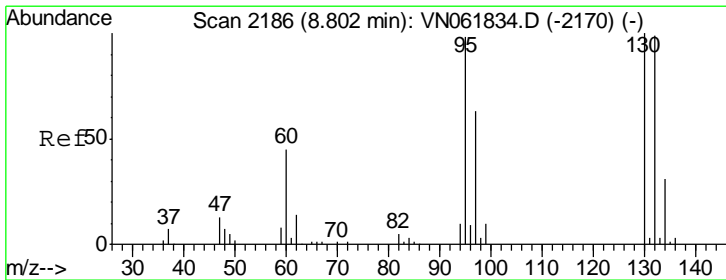
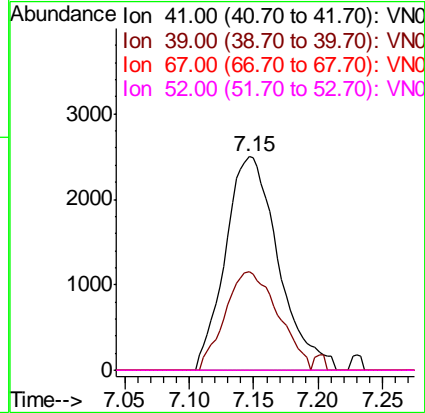
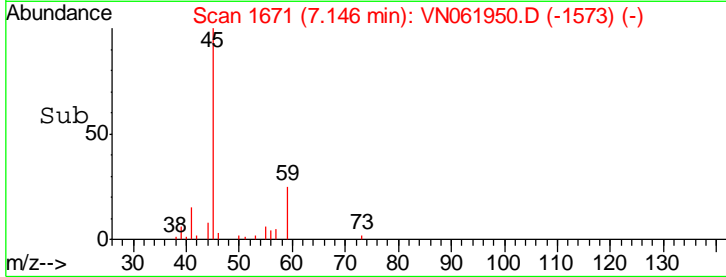
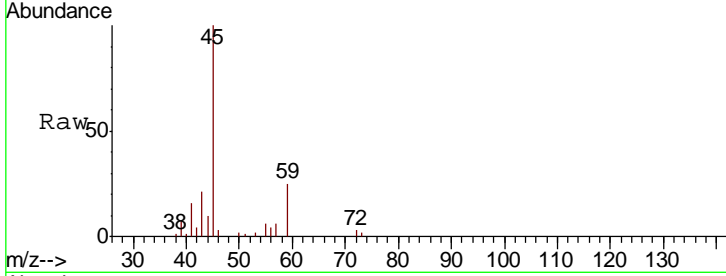




#41
 Methacrylonitrile
 Concen: 8.498 ug/l
 RT: 7.15 min Scan# 1671
 Delta R.T. 0.02 min
 Lab File: VN061950.D
 Acq: 19 Jun 2020 14:25

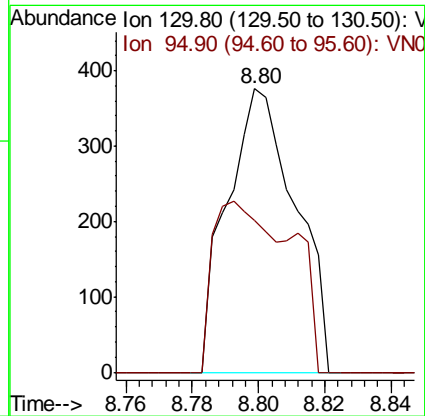
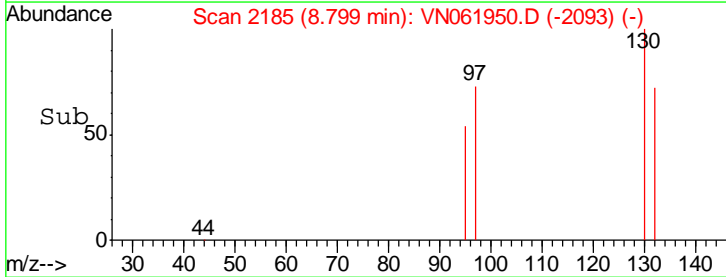
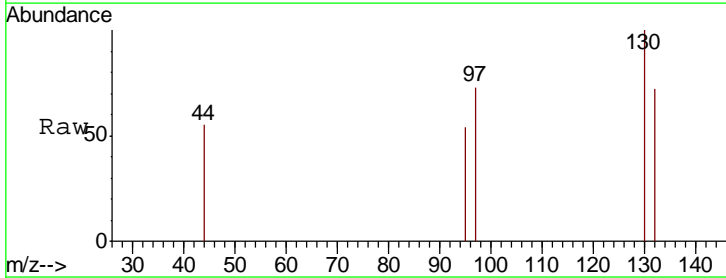
Instrument :
 MSVOA_N
 ClientSampled :
 S49-0564

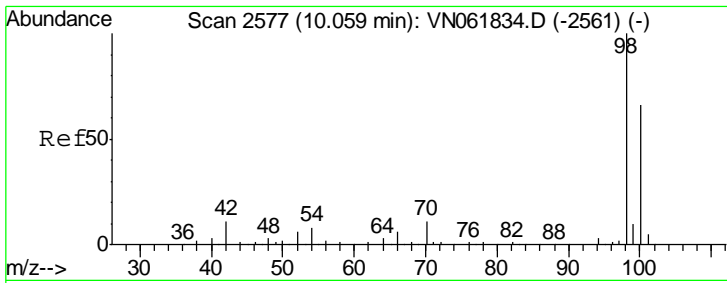
Tgt Ion	Resp	Lower	Upper
41	100		
39	46.2	0.0	0.0#
67	0.0	0.0	0.0
52	0.0	0.0	0.0



#44
 Trichloroethene
 Concen: 0.269 ug/l
 RT: 8.80 min Scan# 2185
 Delta R.T. -0.00 min
 Lab File: VN061950.D
 Acq: 19 Jun 2020 14:25

Tgt Ion	Resp	Lower	Upper
130	100		
95	53.7	0.0	195.6

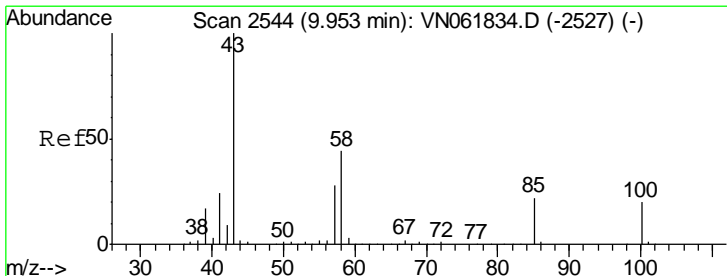
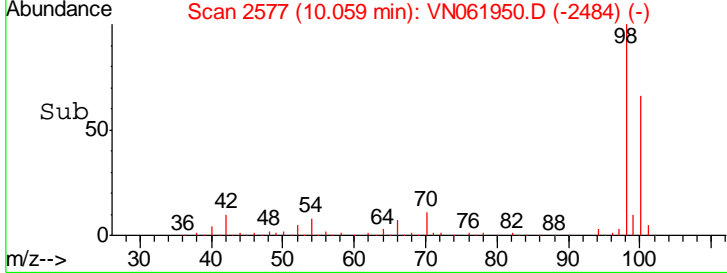
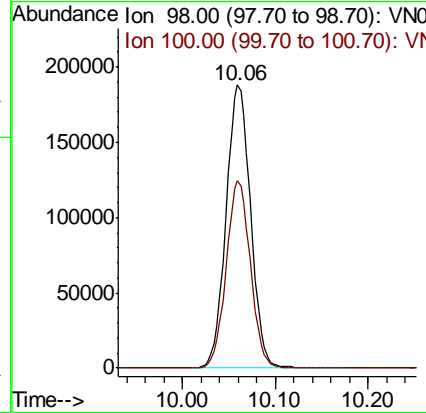
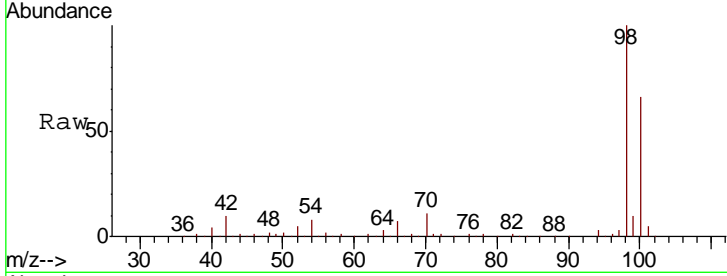




#50
 Toluene-d8
 Concen: 49.579 ug/l
 RT: 10.06 min Scan# 2577
 Delta R.T. -0.00 min
 Lab File: VN061950.D
 Acq: 19 Jun 2020 14:25

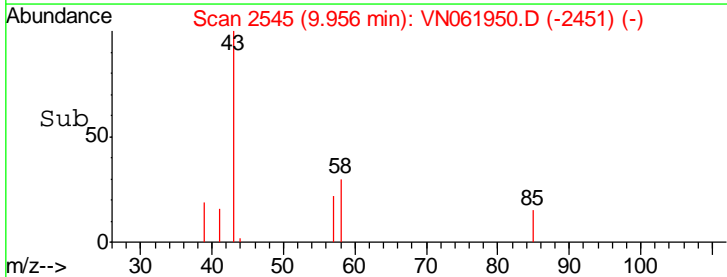
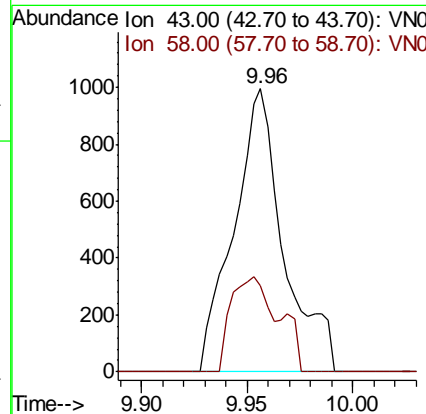
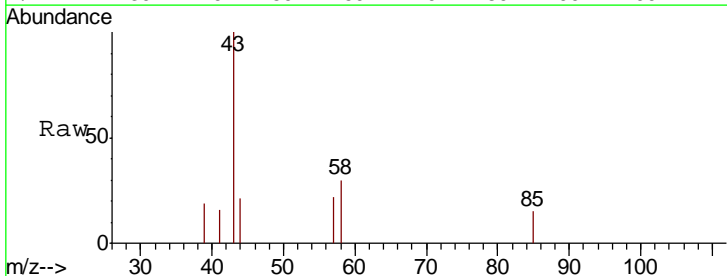
Instrument :
 MSVOA_N
 ClientSampled :
 S49-0564

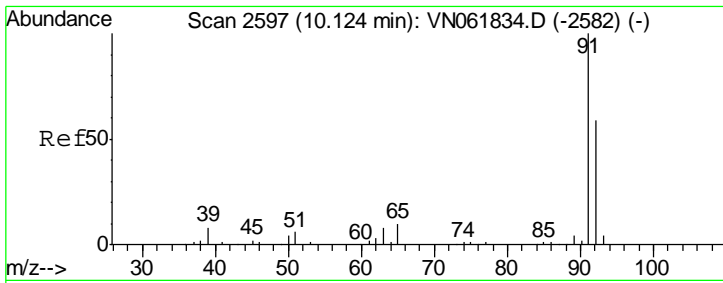
Tgt Ion: 98 Resp: 344283
 Ion Ratio Lower Upper
 98 100
 100 65.4 52.7 79.1



#51
 4-Methyl-2-Pentanone
 Concen: 0.833 ug/l
 RT: 9.96 min Scan# 2545
 Delta R.T. 0.00 min
 Lab File: VN061950.D
 Acq: 19 Jun 2020 14:25

Tgt Ion: 43 Resp: 1631
 Ion Ratio Lower Upper
 43 100
 58 32.0 34.6 52.0#

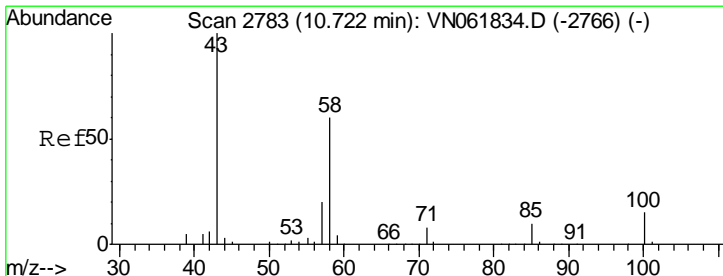
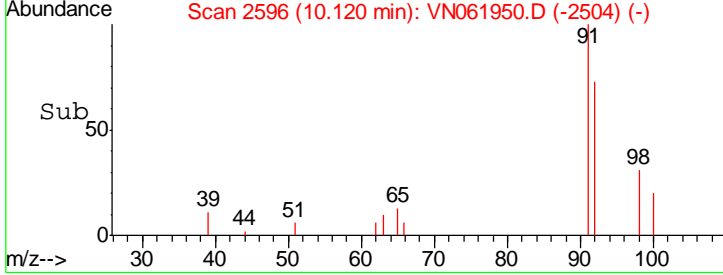
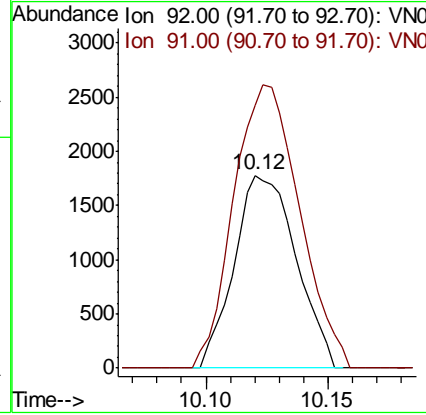
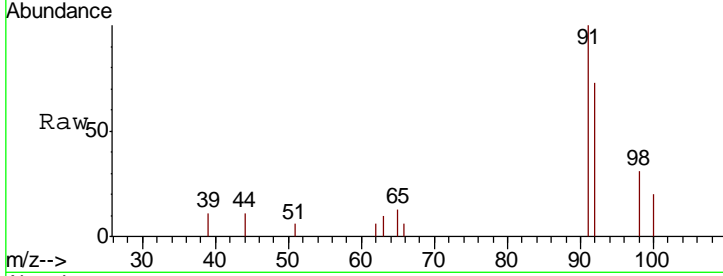




#52
 Toluene
 Concen: 0.652 ug/l
 RT: 10.12 min Scan# 2596
 Delta R.T. -0.00 min
 Lab File: VN061950.D
 Acq: 19 Jun 2020 14:25

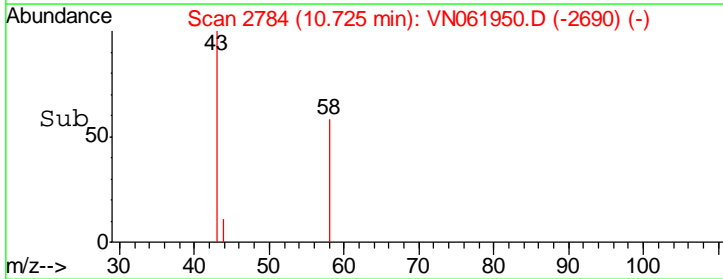
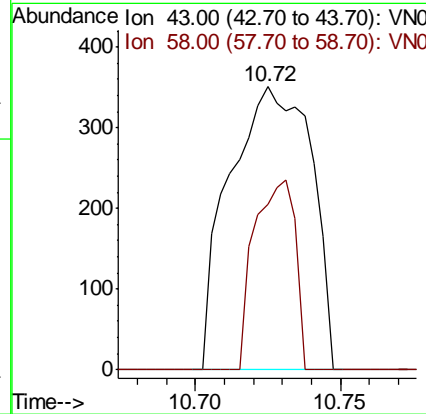
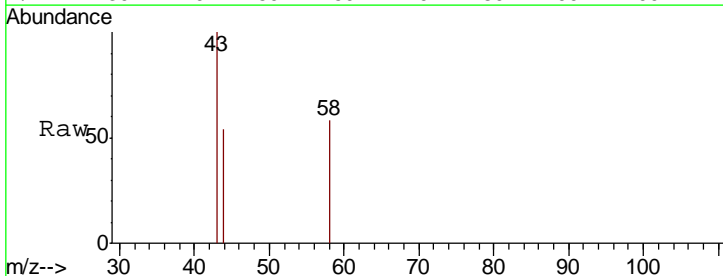
Instrument : MSVOA_N
 ClientSampled : S49-0564

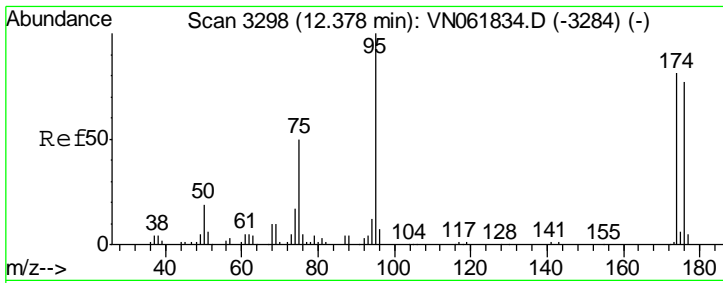
Tgt Ion	Resp	Lower	Upper
92	3124		
92	100		
91	157.0	137.1	205.7



#59
 2-Hexanone
 Concen: 13.823 ug/l
 RT: 10.72 min Scan# 2784
 Delta R.T. 0.00 min
 Lab File: VN061950.D
 Acq: 19 Jun 2020 14:25

Tgt Ion	Resp	Lower	Upper
43	689		
43	100		
58	33.5	30.1	90.5

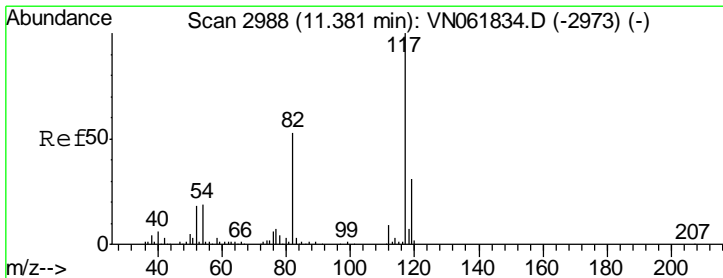
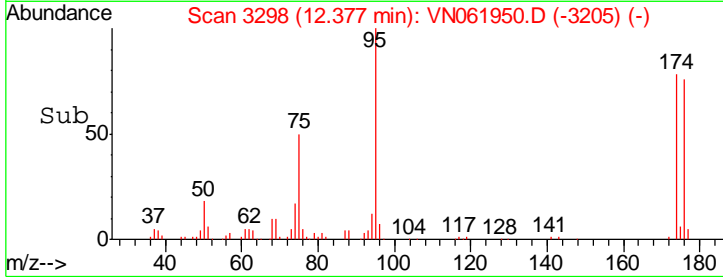
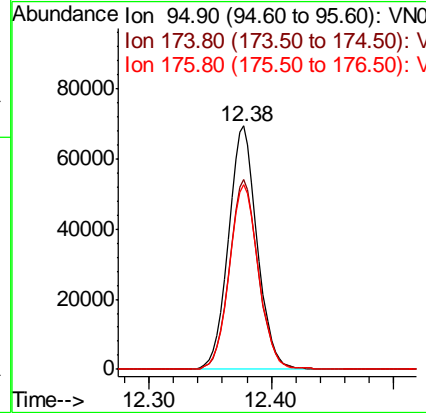
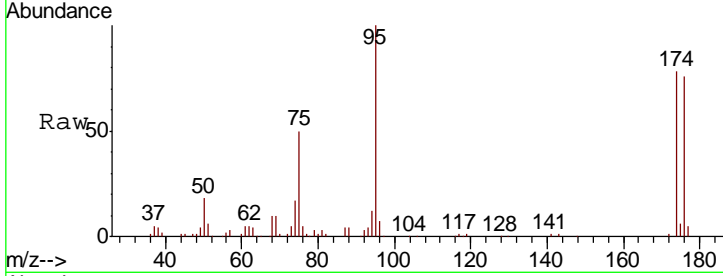




#62
 4-Bromofluorobenzene
 Concen: 47.956 ug/l
 RT: 12.38 min Scan# 3298
 Delta R.T. -0.00 min
 Lab File: VN061950.D
 Acq: 19 Jun 2020 14:25

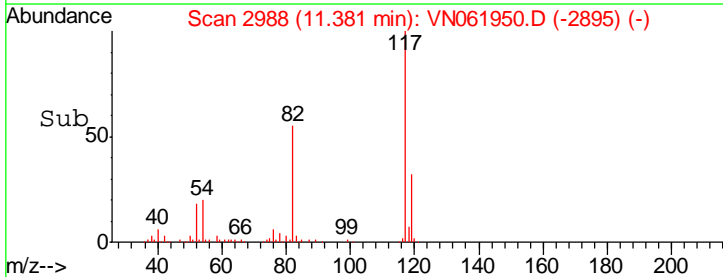
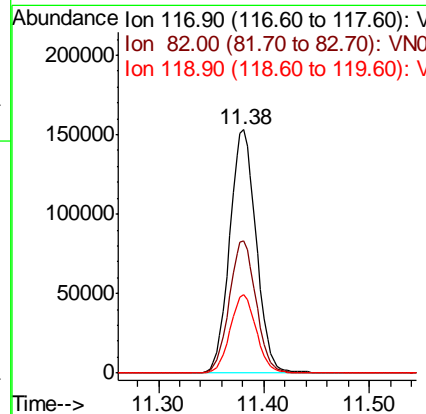
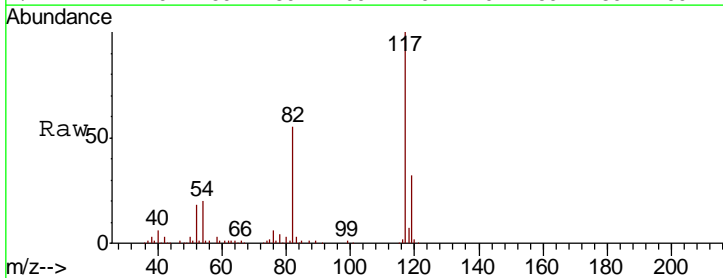
Instrument :
 MSVOA_N
 ClientSampled :
 S49-0564

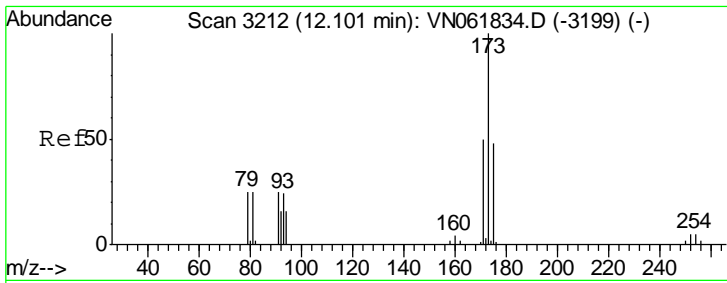
Tgt Ion	Resp	Lower	Upper
95	114230		
174	78.3	0.0	158.6
176	77.3	0.0	152.0



#63
 Chlorobenzene-d5
 Concen: 50.000 ug/l
 RT: 11.38 min Scan# 2988
 Delta R.T. -0.00 min
 Lab File: VN061950.D
 Acq: 19 Jun 2020 14:25

Tgt Ion	Resp	Lower	Upper
117	266200		
82	54.5	42.6	64.0
119	32.0	24.7	37.1

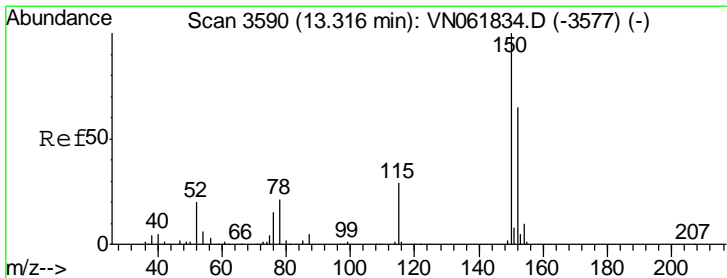
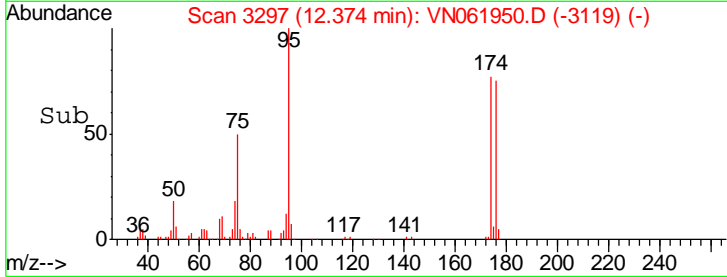
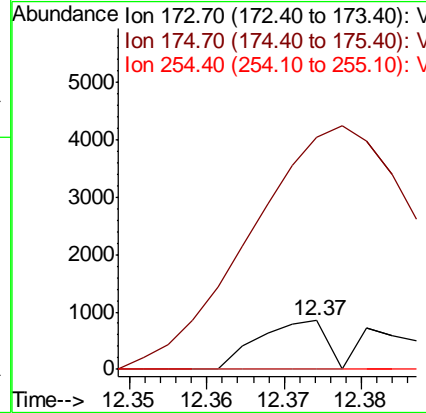
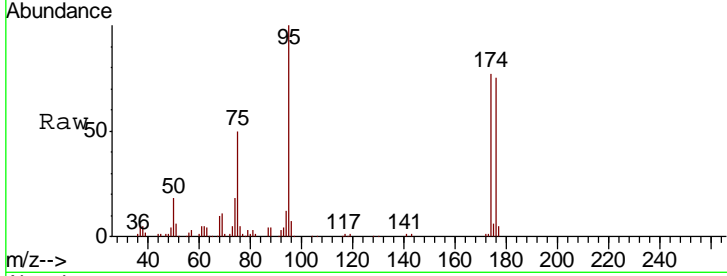




#71
 Bromoform
 Concen: 0.364 ug/l
 RT: 12.37 min Scan# 3297
 Delta R.T. 0.27 min
 Lab File: VN061950.D
 Acq: 19 Jun 2020 14:25

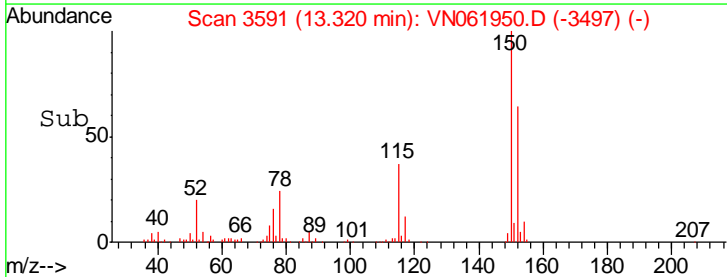
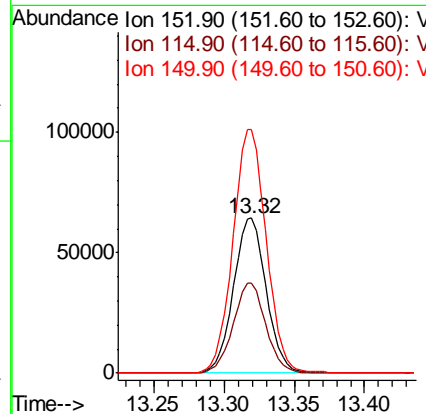
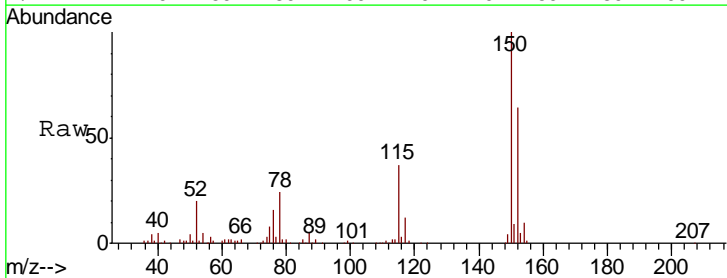
Instrument :
 MSVOA_N
 ClientSampled :
 S49-0564

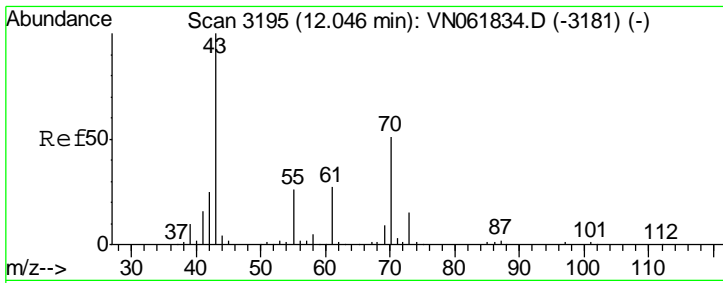
Tgt Ion	Resp	Lower	Upper
173	100		
175	0.0	23.9	71.7#
254	0.0	0.0	0.0



#72
 1,4-Dichlorobenzene-d4
 Concen: 50.000 ug/l
 RT: 13.32 min Scan# 3591
 Delta R.T. 0.00 min
 Lab File: VN061950.D
 Acq: 19 Jun 2020 14:25

Tgt Ion	Resp	Lower	Upper
152	100		
115	57.7	29.1	87.3
150	159.5	0.0	347.6

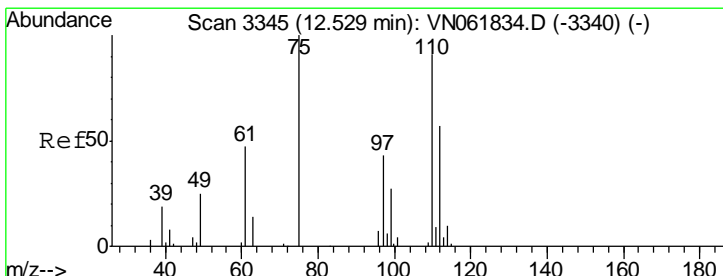
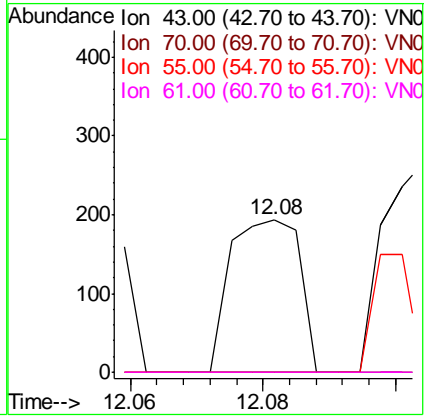
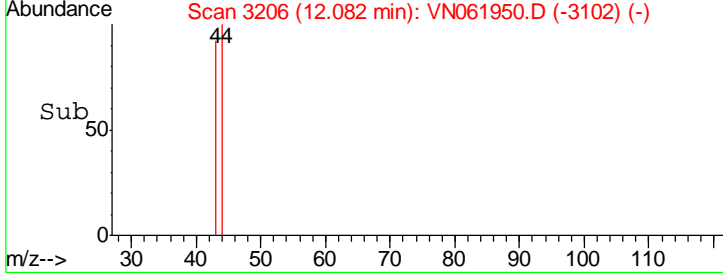
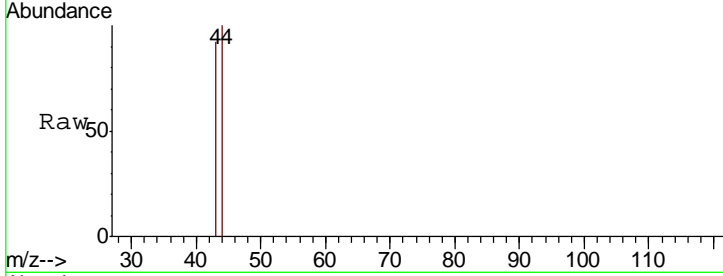




#74
 N-amyl acetate
 Concen: 3.113 ug/l
 RT: 12.08 min Scan# 3206
 Delta R.T. 0.04 min
 Lab File: VN061950.D
 Acq: 19 Jun 2020 14:25

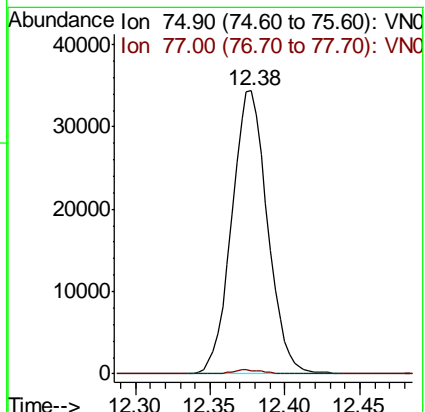
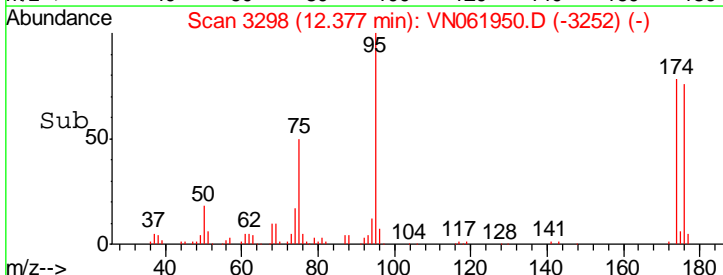
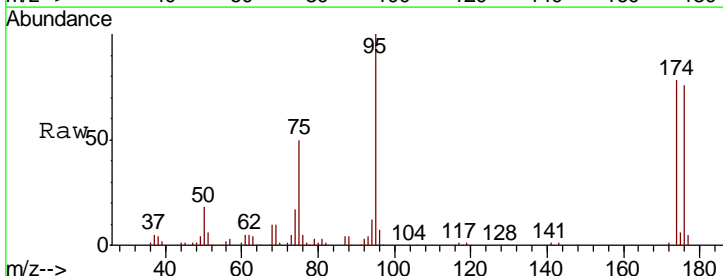
Instrument : MSVOA_N
 ClientSampled : S49-0564

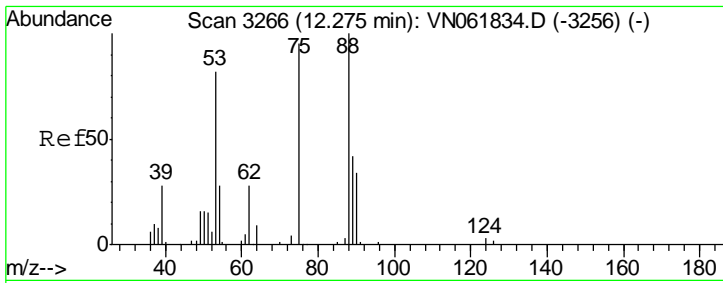
Tgt Ion	Resp	Lower	Upper
43	140		
70	0.0	40.6	60.8#
55	0.0	21.5	32.3#
61	0.0	21.6	32.4#



#76
 1,2,3-Trichloropropane
 Concen: 27.772 ug/l
 RT: 12.38 min Scan# 3298
 Delta R.T. -0.15 min
 Lab File: VN061950.D
 Acq: 19 Jun 2020 14:25

Tgt Ion	Resp	Lower	Upper
75	57254		
77	1.1	0.0	0.0#

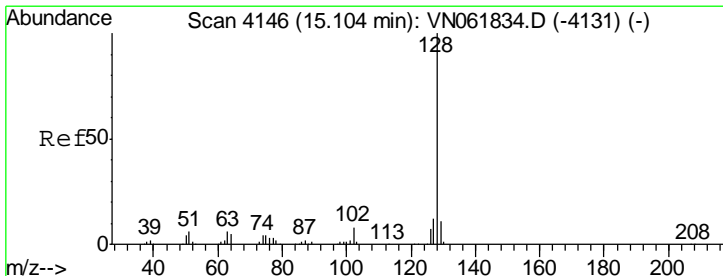
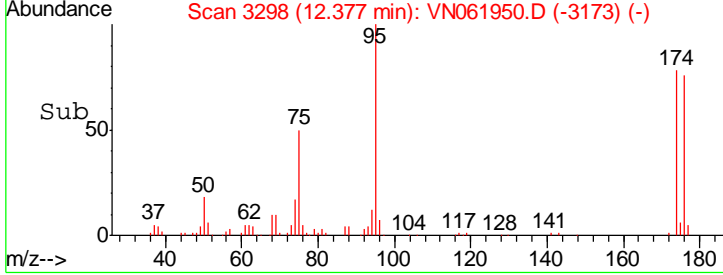
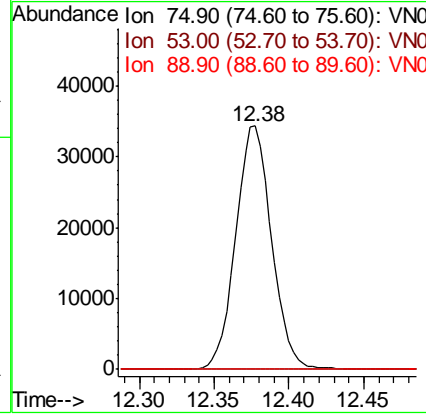
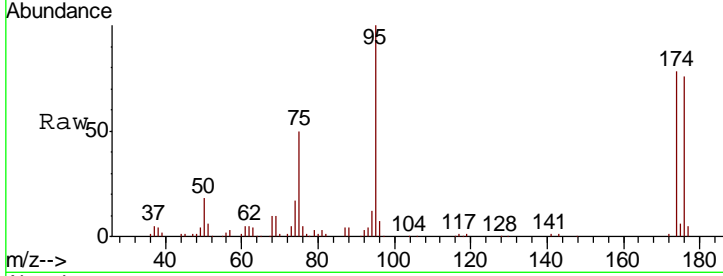




#81
 trans-1,4-Dichloro-2-butene
 Concen: 75.747 ug/l
 RT: 12.38 min Scan# 3298
 Delta R.T. 0.10 min
 Lab File: VN061950.D
 Acq: 19 Jun 2020 14:25

Instrument :
 MSVOA_N
 ClientSampled :
 S49-0564

Tgt Ion	Resp	Lower	Upper
75	100		
53	0.0	70.4	105.6#
89	0.0	36.0	54.0#



#95
 Naphthalene
 Concen: 3.618 ug/l
 RT: 15.11 min Scan# 4148
 Delta R.T. 0.01 min
 Lab File: VN061950.D
 Acq: 19 Jun 2020 14:25

Tgt Ion	Resp	Lower	Upper
128	100		
127	0.0	10.3	15.5#
129	0.0	8.6	13.0#

