

Data Path : Z:\voasrv\HPCHEM1\MSVOA_N\Data\VN062023\
 Data File : VN078305.D
 Acq On : 20 Jun 2023 13:24
 Operator : JC\MD
 Sample : 03321-05
 Misc : 5.0mL/MSVOA_N/WATER
 ALS Vial : 10 Sample Multiplier: 1

Instrument :
 MSVOA_N
 ClientSampleId :
 WC-24

Quant Time: Jun 21 05:45:50 2023
 Quant Method : Z:\voasrv\HPCHEM1\MSVOA_N\methods\82N060623W.M
 Quant Title : SW846 8260
 QLast Update : Wed Jun 07 05:05:00 2023
 Response via : Initial Calibration

Compound	R.T.	QIon	Response	Conc	Units	Dev(Min)

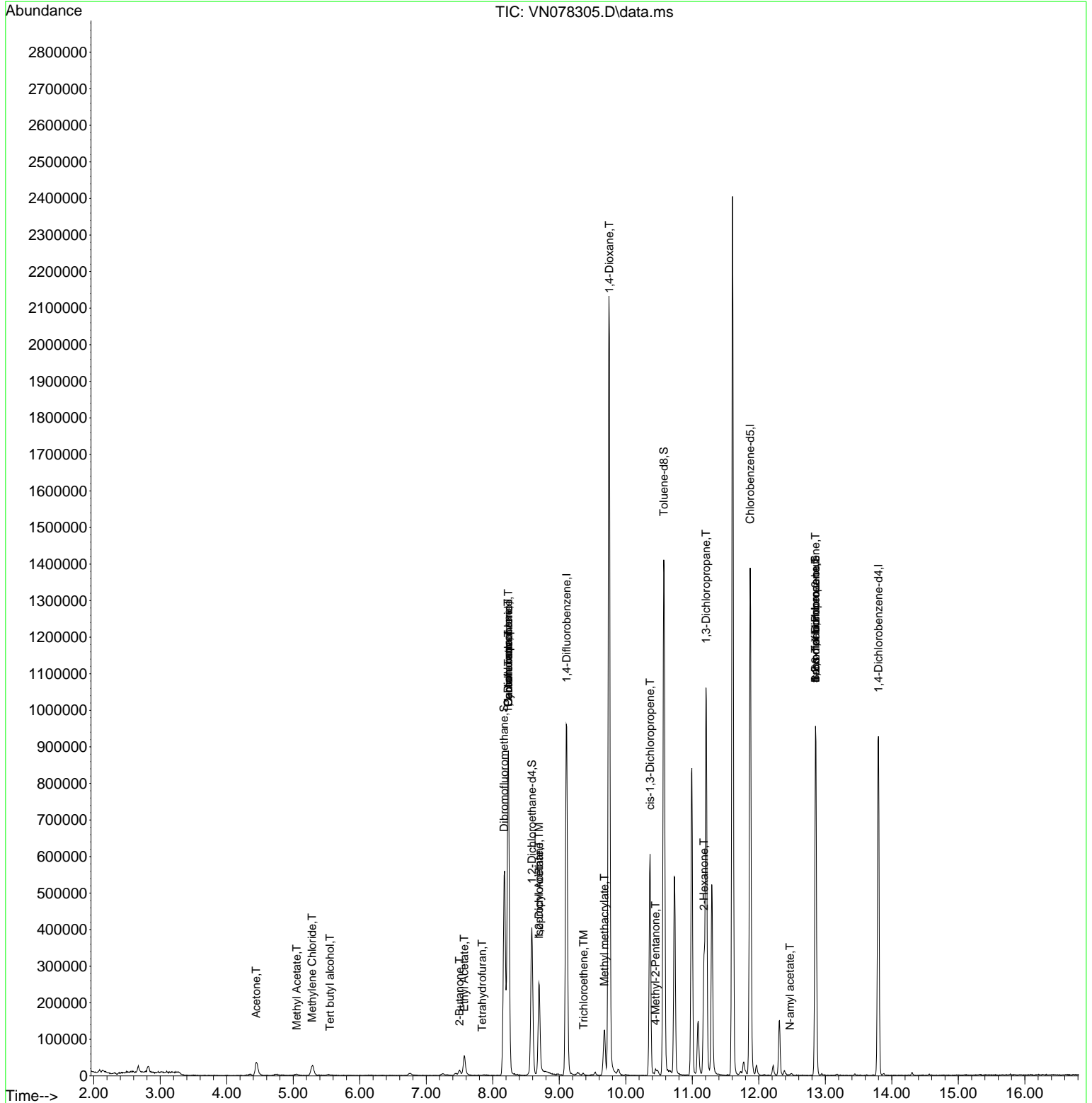
Internal Standards						
1) Pentafluorobenzene	8.235	168	668030	50.000	ug/l	0.00
34) 1,4-Difluorobenzene	9.112	114	867235	50.000	ug/l	0.00
63) Chlorobenzene-d5	11.871	117	805653	50.000	ug/l	0.00
72) 1,4-Dichlorobenzene-d4	13.800	152	258381	50.000	ug/l	0.00
System Monitoring Compounds						
33) 1,2-Dichloroethane-d4	8.588	65	330040	37.054	ug/l	0.00
Spiked Amount	50.000	Range 74 - 125	Recovery	=	74.100%	
35) Dibromofluoromethane	8.171	113	404507	73.769	ug/l	0.00
Spiked Amount	50.000	Range 75 - 124	Recovery	=	147.540%#	
50) Toluene-d8	10.571	98	1043093	49.344	ug/l	0.00
Spiked Amount	50.000	Range 86 - 113	Recovery	=	98.680%	
62) 4-Bromofluorobenzene	12.853	95	335579	51.065	ug/l	0.00
Spiked Amount	50.000	Range 83 - 123	Recovery	=	102.120%	
Target Compounds						
						Qvalue
3) Chloromethane	2.371	50	1010	Below Cal	#	24
11) Tert butyl alcohol	5.553	59	1412	1.148	ug/l #	72
16) Acetone	4.442	43	69122	26.962	ug/l	91
18) Methyl Acetate	5.053	43	6786	0.575	ug/l #	70
20) Methylene Chloride	5.283	84	22418	2.646	ug/l #	87
25) 2-Butanone	7.500	43	16883	4.282	ug/l	93
29) Tetrahydrofuran	7.841	42	668	0.253	ug/l #	32
31) Cyclohexane	8.235	56	14366	1.257	ug/l #	6
36) 1,1-Dichloropropene	8.230	75	50791	6.458	ug/l #	49
37) Ethyl Acetate	7.571	43	74271	12.088	ug/l	96
38) Carbon Tetrachloride	8.235	117	70451	8.483	ug/l #	17
42) 1,2-Dichloroethane	8.694	62	2376	0.295	ug/l #	73
43) Isopropyl Acetate	8.694	43	282653	24.054	ug/l #	84
44) Trichloroethene	9.365	130	1702	0.274	ug/l	68
48) Methyl methacrylate	9.677	41	8027	1.628	ug/l #	33
49) 1,4-Dioxane	9.753	88	196	1.891	ug/l #	1
51) 4-Methyl-2-Pentanone	10.447	43	19548	3.159	ug/l #	64
54) cis-1,3-Dichloropropene	10.365	75	114026	12.391	ug/l #	66
57) 1,3-Dichloropropane	11.206	76	11607	1.226	ug/l #	42
59) 2-Hexanone	11.176	43	247609	57.469	ug/l #	19
71) Bromoform	12.853	173	1700	0.415	ug/l #	1
74) N-amyl acetate	12.470	43	1898	0.236	ug/l #	39
75) 1,1,2,2-Tetrachloroethane	12.953	83	175	Below Cal	#	26
76) 1,2,3-Trichloropropane	12.853	75	183947	30.115	ug/l #	1
81) trans-1,4-Dichloro-2-b...	12.853	75	183947	92.522	ug/l #	15
94) Hexachlorobutadiene	15.506	225	69	Below Cal	#	19

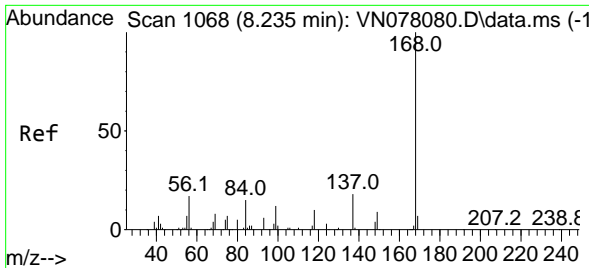
(#) = qualifier out of range (m) = manual integration (+) = signals summed

Data Path : Z:\voasrv\HPCHEM1\MSVOA_N\Data\VN062023\
 Data File : VN078305.D
 Acq On : 20 Jun 2023 13:24
 Operator : JC\MD
 Sample : 03321-05
 Misc : 5.0mL/MSVOA_N/WATER
 ALS Vial : 10 Sample Multiplier: 1

Instrument :
 MSVOA_N
 ClientSampleId :
 WC-24

Quant Time: Jun 21 05:45:50 2023
 Quant Method : Z:\voasrv\HPCHEM1\MSVOA_N\methods\82N060623W.M
 Quant Title : SW846 8260
 QLast Update : Wed Jun 07 05:05:00 2023
 Response via : Initial Calibration

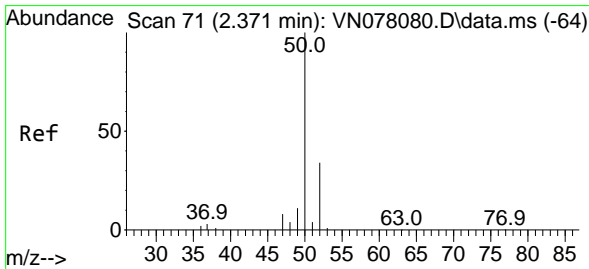
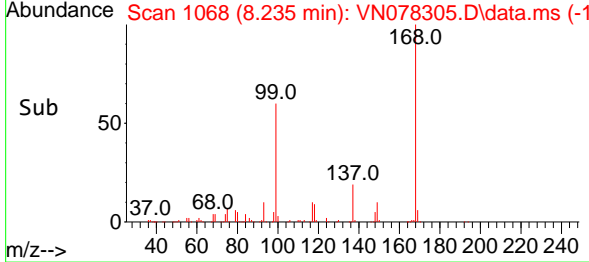
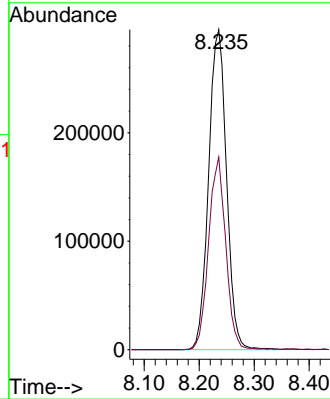
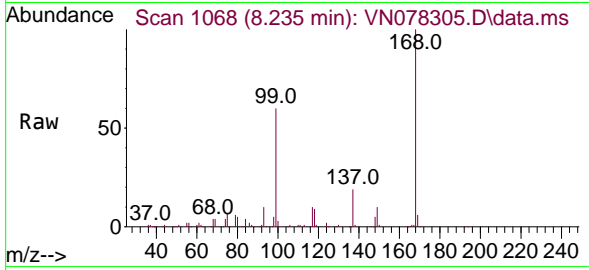




#1
 Pentafluorobenzene
 Concen: 50.000 ug/l
 RT: 8.235 min Scan# 10
 Delta R.T. 0.000 min
 Lab File: VN078305.D
 Acq: 20 Jun 2023 13:24

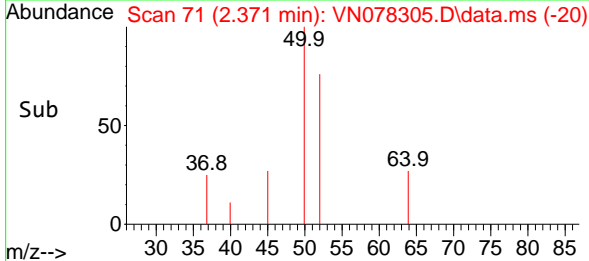
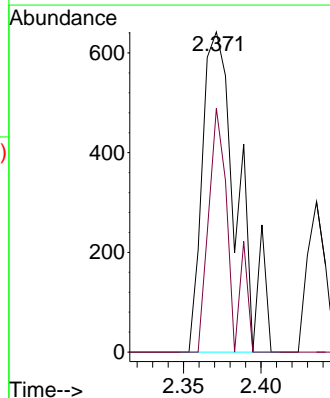
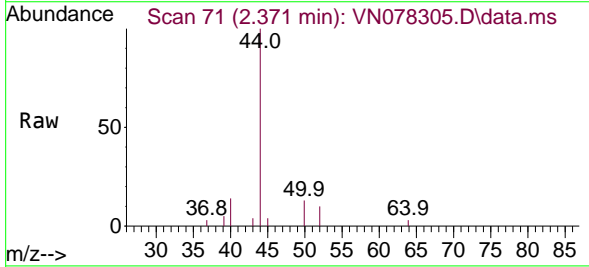
Instrument :
 MSVOA_N
 ClientSampleId :
 WC-24

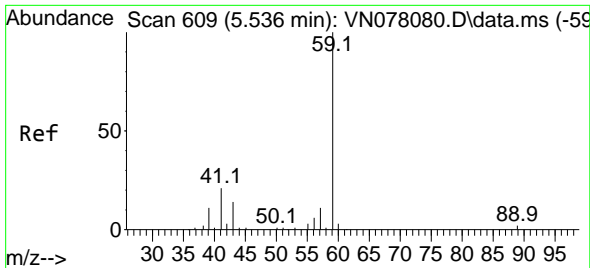
Tgt Ion:168 Resp: 668030
 Ion Ratio Lower Upper
 168 100
 99 60.2 53.0 79.6



#3
 Chloromethane
 Concen: Below Cal
 RT: 2.371 min Scan# 71
 Delta R.T. 0.000 min
 Lab File: VN078305.D
 Acq: 20 Jun 2023 13:24

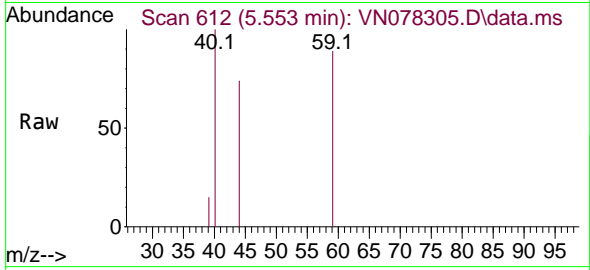
Tgt Ion: 50 Resp: 1010
 Ion Ratio Lower Upper
 50 100
 52 76.2 26.5 39.7#



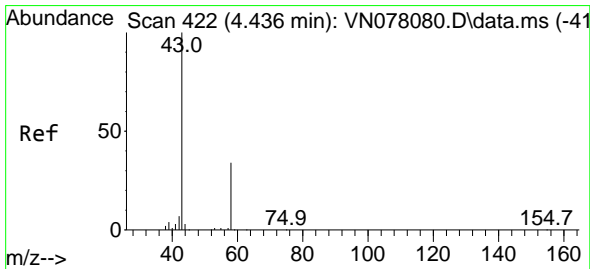
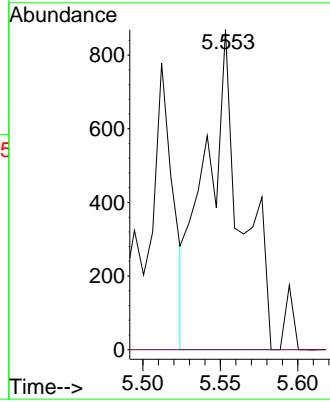
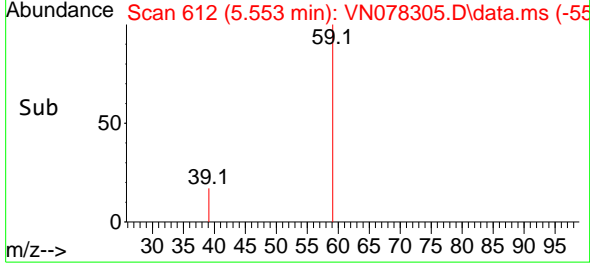


#11
 Tert butyl alcohol
 Concen: 1.148 ug/l
 RT: 5.553 min Scan# 612
 Delta R.T. 0.018 min
 Lab File: VN078305.D
 Acq: 20 Jun 2023 13:24

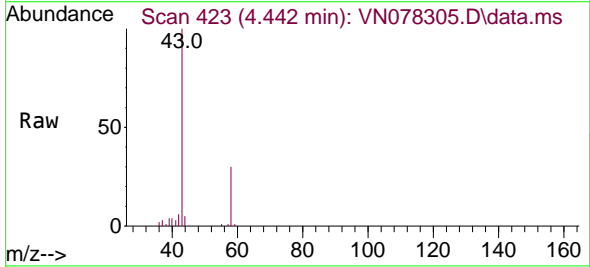
Instrument : MSVOA_N
 ClientSampleId : WC-24



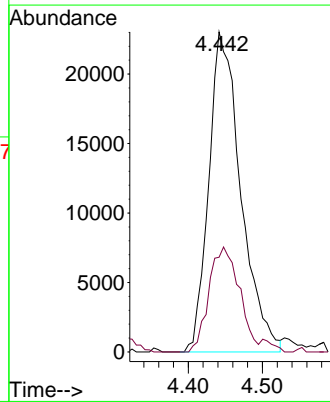
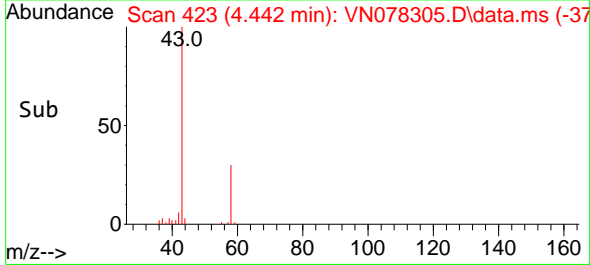
Tgt Ion: 59 Resp: 1412
 Ion Ratio Lower Upper
 59 100
 57 0.0 8.2 12.4#

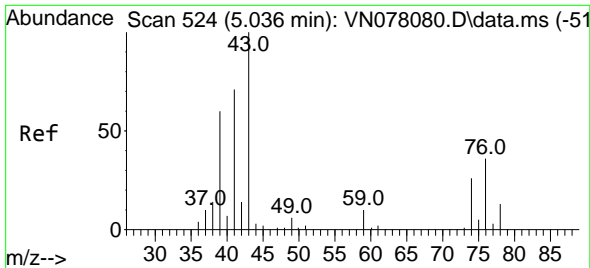


#16
 Acetone
 Concen: 26.962 ug/l
 RT: 4.442 min Scan# 423
 Delta R.T. 0.006 min
 Lab File: VN078305.D
 Acq: 20 Jun 2023 13:24



Tgt Ion: 43 Resp: 69122
 Ion Ratio Lower Upper
 43 100
 58 29.6 28.0 42.0

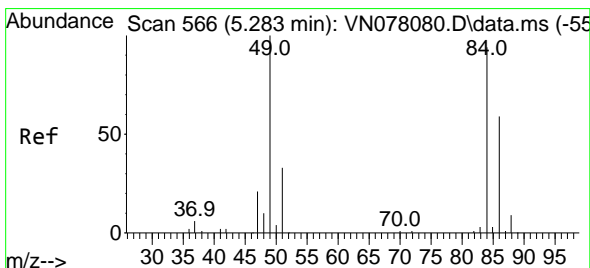
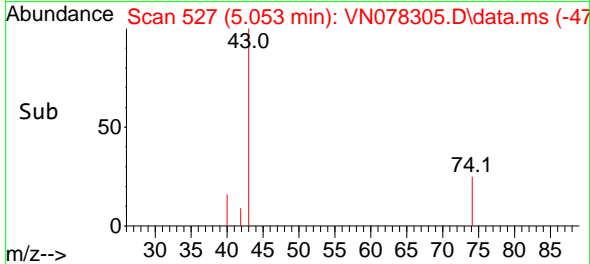
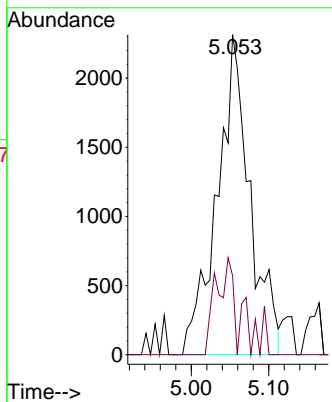
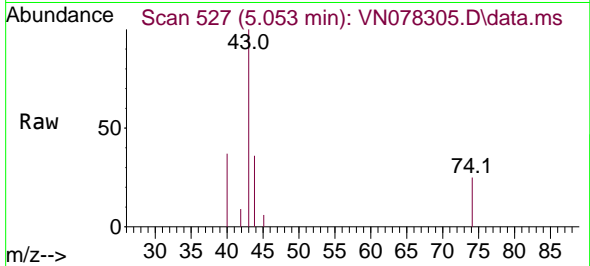




#18
 Methyl Acetate
 Concen: 0.575 ug/l
 RT: 5.053 min Scan# 51
 Delta R.T. 0.018 min
 Lab File: VN078305.D
 Acq: 20 Jun 2023 13:24

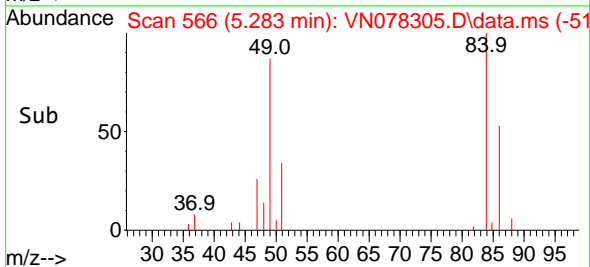
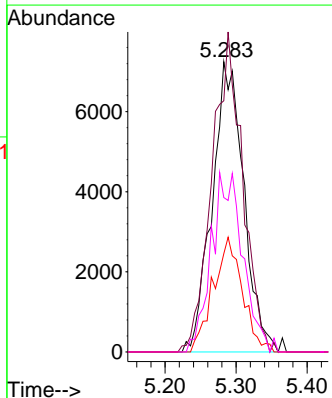
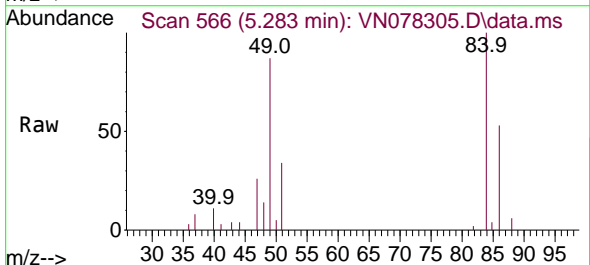
Instrument :
 MSVOA_N
 ClientSampleId :
 WC-24

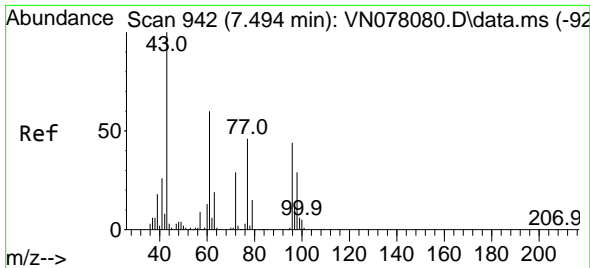
Tgt Ion: 43 Resp: 6786
 Ion Ratio Lower Upper
 43 100
 74 15.7 26.2 39.4#



#20
 Methylene Chloride
 Concen: 2.646 ug/l
 RT: 5.283 min Scan# 566
 Delta R.T. 0.000 min
 Lab File: VN078305.D
 Acq: 20 Jun 2023 13:24

Tgt Ion: 84 Resp: 22418
 Ion Ratio Lower Upper
 84 100
 49 86.6 79.7 119.5
 51 33.8 25.2 37.8
 86 53.2 53.3 79.9#

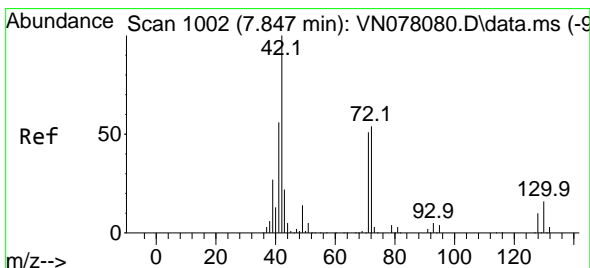
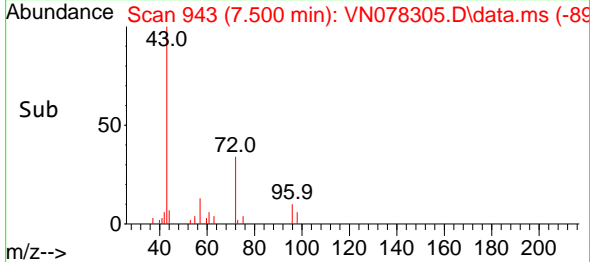
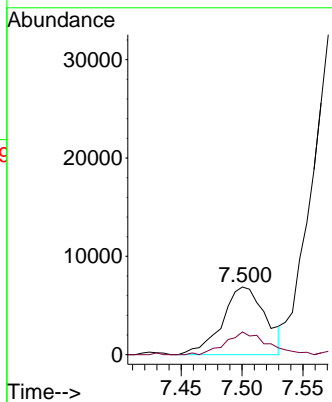
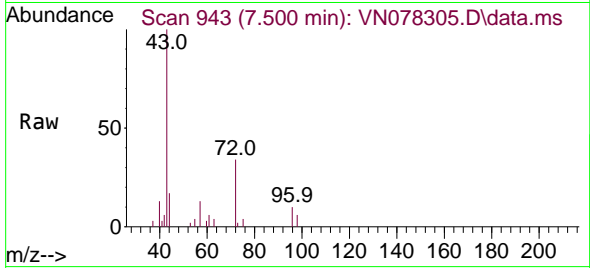




#25
 2-Butanone
 Concen: 4.282 ug/l
 RT: 7.500 min Scan# 94
 Delta R.T. 0.006 min
 Lab File: VN078305.D
 Acq: 20 Jun 2023 13:24

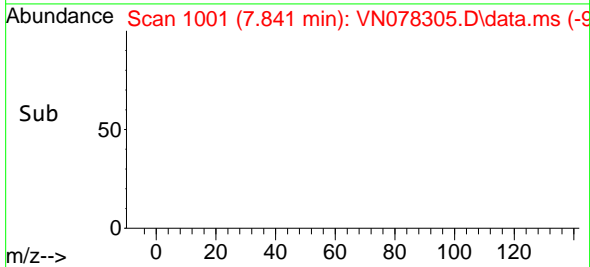
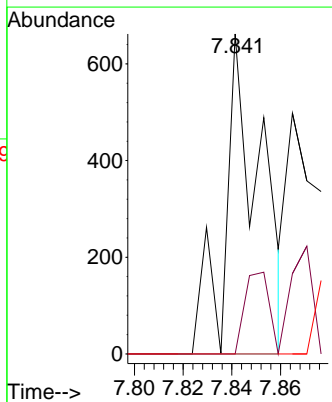
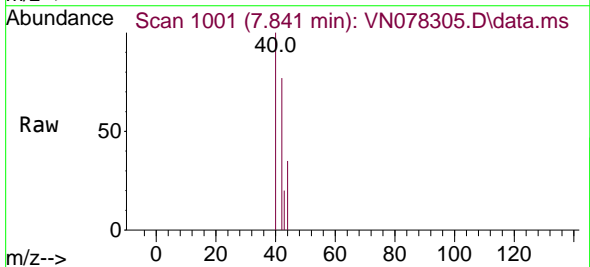
Instrument :
 MSVOA_N
 ClientSampleId :
 WC-24

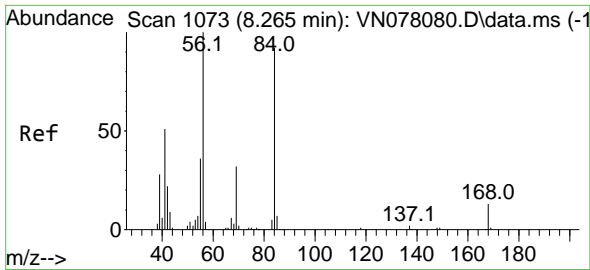
Tgt Ion: 43 Resp: 16883
 Ion Ratio Lower Upper
 43 100
 72 33.5 30.2 45.2



#29
 Tetrahydrofuran
 Concen: 0.253 ug/l
 RT: 7.841 min Scan# 1001
 Delta R.T. -0.006 min
 Lab File: VN078305.D
 Acq: 20 Jun 2023 13:24

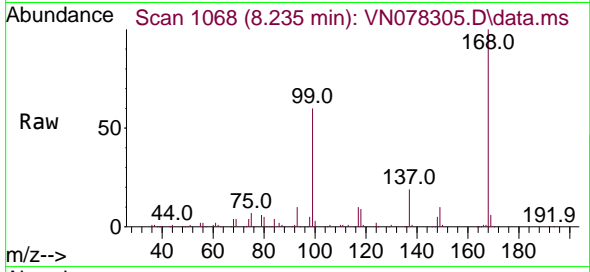
Tgt Ion: 42 Resp: 668
 Ion Ratio Lower Upper
 42 100
 72 17.5 49.8 74.6#
 71 0.0 47.4 71.2#



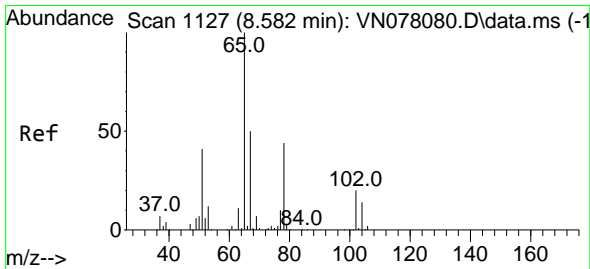
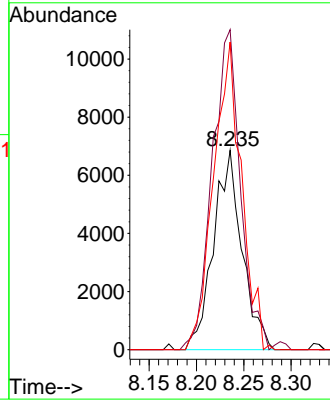
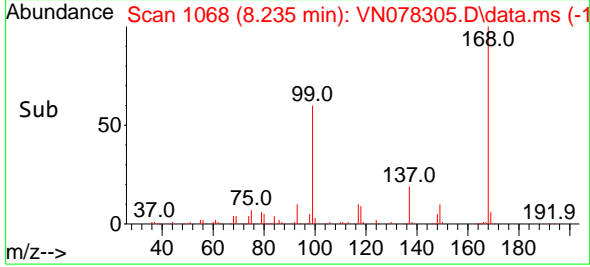


#31
 Cyclohexane
 Concen: 1.257 ug/l
 RT: 8.235 min Scan# 1068
 Delta R.T. -0.029 min
 Lab File: VN078305.D
 Acq: 20 Jun 2023 13:24

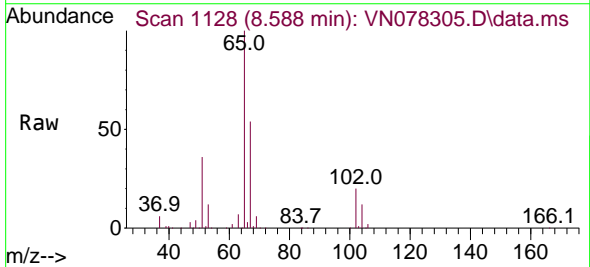
Instrument : MSVOA_N
 ClientSampleId : WC-24



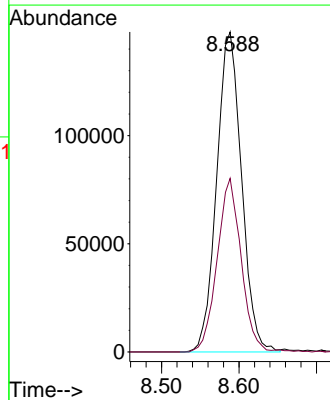
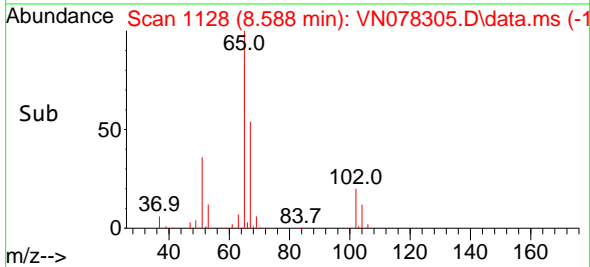
Tgt Ion: 56 Resp: 14366
 Ion Ratio Lower Upper
 56 100
 69 160.5 26.8 40.2#
 84 154.4 81.8 122.6#

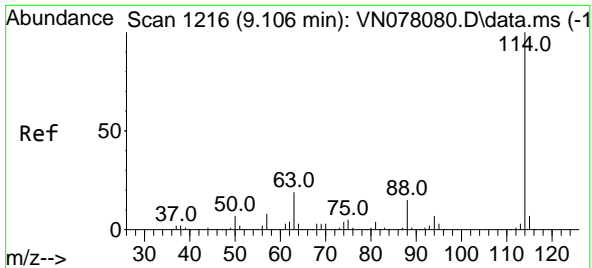


#33
 1,2-Dichloroethane-d4
 Concen: 37.054 ug/l
 RT: 8.588 min Scan# 1128
 Delta R.T. 0.006 min
 Lab File: VN078305.D
 Acq: 20 Jun 2023 13:24



Tgt Ion: 65 Resp: 330040
 Ion Ratio Lower Upper
 65 100
 67 52.5 0.0 106.6



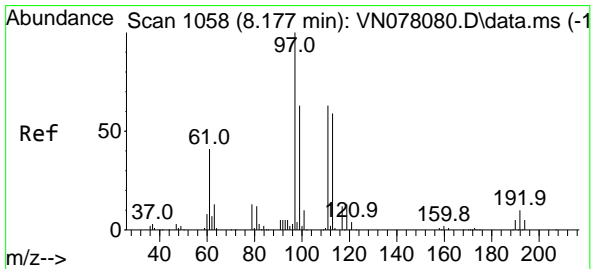
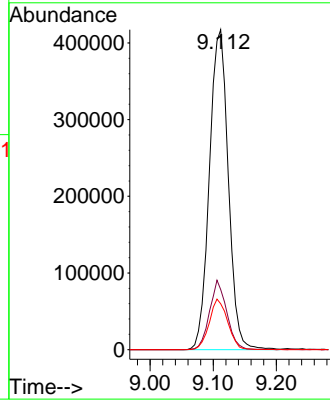
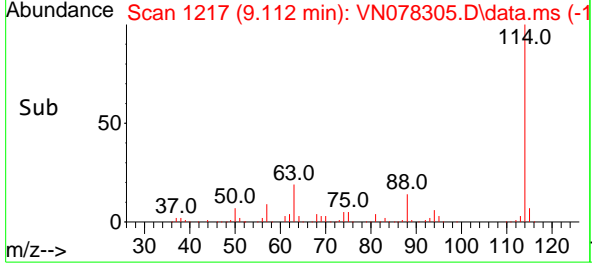
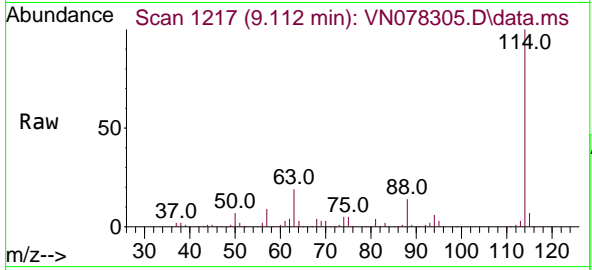


#34
 1,4-Difluorobenzene
 Concen: 50.000 ug/l
 RT: 9.112 min Scan# 11
 Delta R.T. 0.006 min
 Lab File: VN078305.D
 Acq: 20 Jun 2023 13:24

Instrument :
 MSVOA_N
 ClientSampleId :
 WC-24

Tgt Ion:114 Resp: 867235

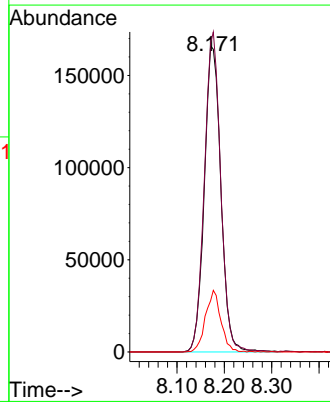
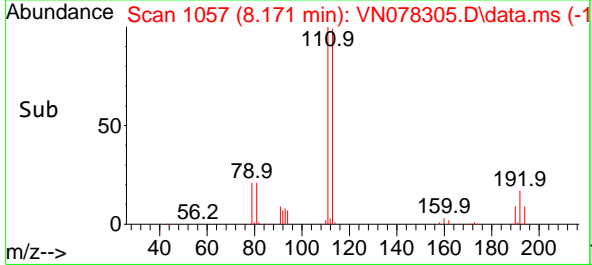
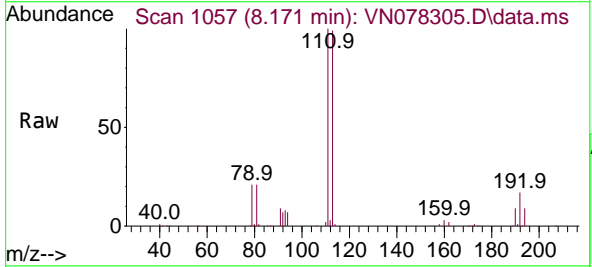
Ion	Ratio	Lower	Upper
114	100		
63	18.8	0.0	36.4
88	14.3	0.0	30.6

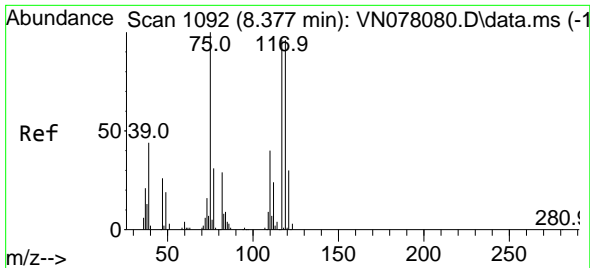


#35
 Dibromofluoromethane
 Concen: 73.769 ug/l
 RT: 8.171 min Scan# 1057
 Delta R.T. -0.006 min
 Lab File: VN078305.D
 Acq: 20 Jun 2023 13:24

Tgt Ion:113 Resp: 404507

Ion	Ratio	Lower	Upper
113	100		
111	102.8	82.6	123.8
192	18.6	12.7	19.1



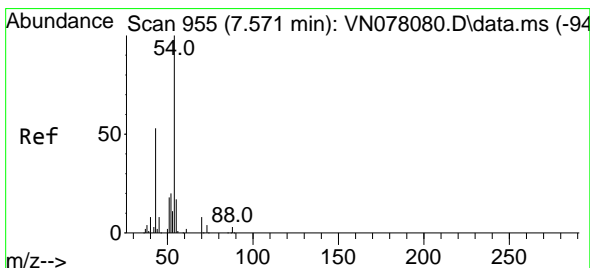
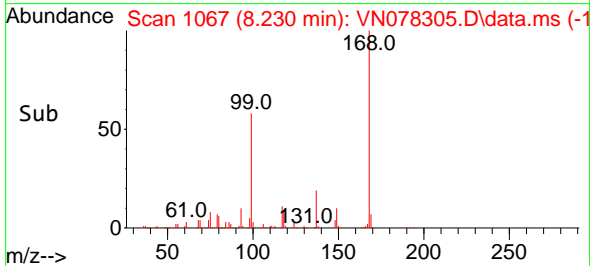
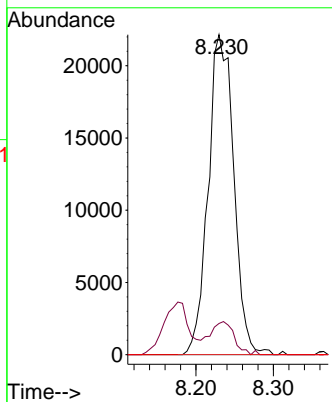
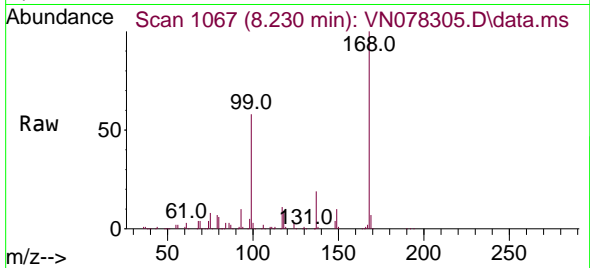


#36
 1,1-Dichloropropene
 Concen: 6.458 ug/l
 RT: 8.230 min Scan# 1092
 Delta R.T. -0.147 min
 Lab File: VN078305.D
 Acq: 20 Jun 2023 13:24

Instrument : MSVOA_N
 ClientSampleId : WC-24

Tgt Ion: 75 Resp: 50791

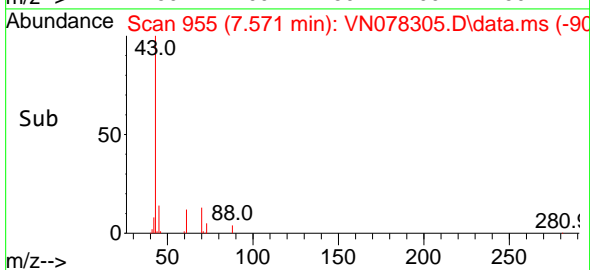
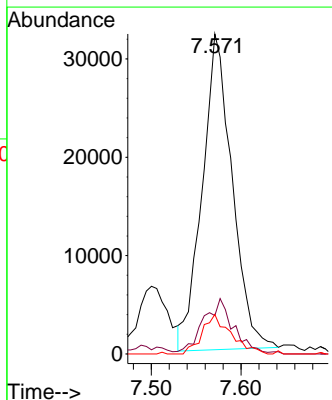
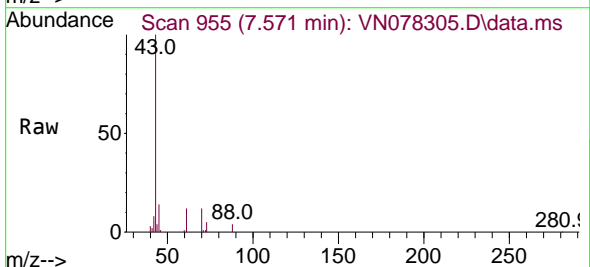
Ion	Ratio	Lower	Upper
75	100		
110	9.9	19.1	57.3#
77	0.0	25.0	37.4#

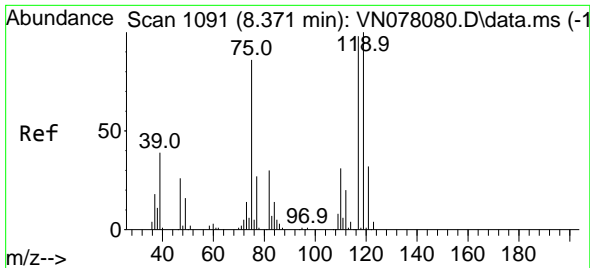


#37
 Ethyl Acetate
 Concen: 12.088 ug/l
 RT: 7.571 min Scan# 955
 Delta R.T. 0.000 min
 Lab File: VN078305.D
 Acq: 20 Jun 2023 13:24

Tgt Ion: 43 Resp: 74271

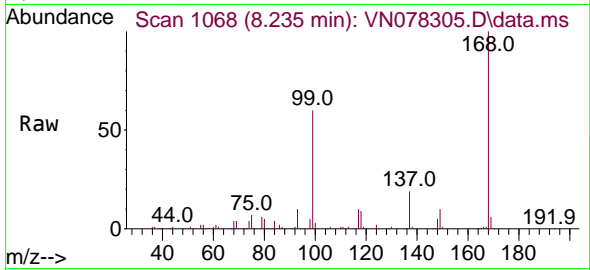
Ion	Ratio	Lower	Upper
43	100		
61	18.0	13.2	19.8
70	12.0	11.3	16.9



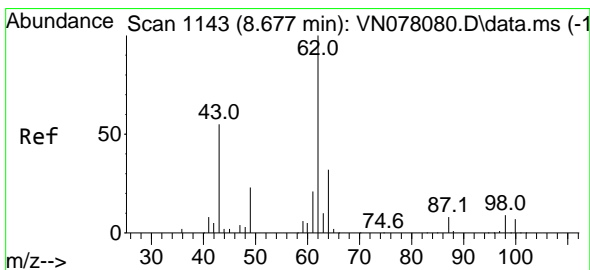
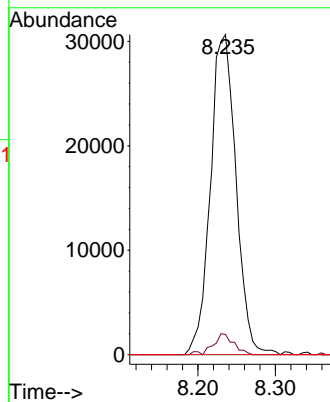
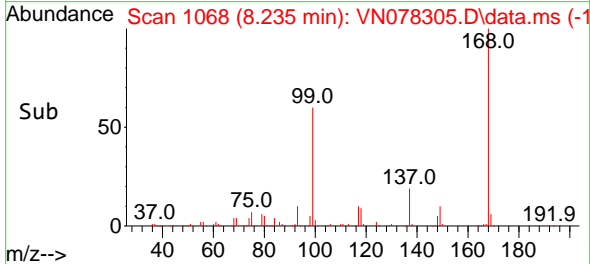


#38
 Carbon Tetrachloride
 Concen: 8.483 ug/l
 RT: 8.235 min Scan# 1068
 Delta R.T. -0.135 min
 Lab File: VN078305.D
 Acq: 20 Jun 2023 13:24

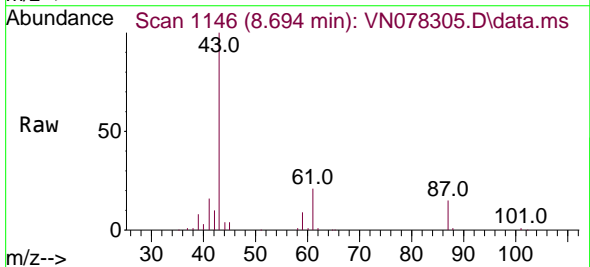
Instrument : MSVOA_N
 ClientSampleId : WC-24



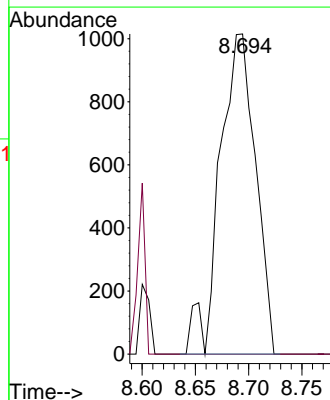
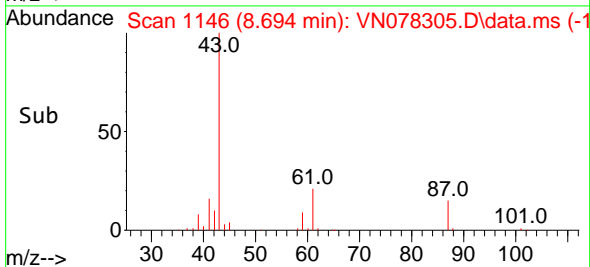
Tgt Ion:117 Resp: 70451
 Ion Ratio Lower Upper
 117 100
 119 6.4 77.3 115.9#
 121 0.0 23.3 34.9#

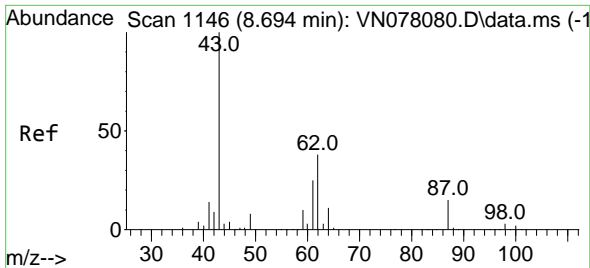


#42
 1,2-Dichloroethane
 Concen: 0.295 ug/l
 RT: 8.694 min Scan# 1146
 Delta R.T. 0.018 min
 Lab File: VN078305.D
 Acq: 20 Jun 2023 13:24



Tgt Ion: 62 Resp: 2376
 Ion Ratio Lower Upper
 62 100
 98 0.0 0.0 19.8



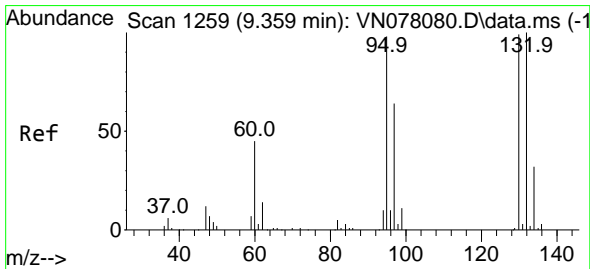
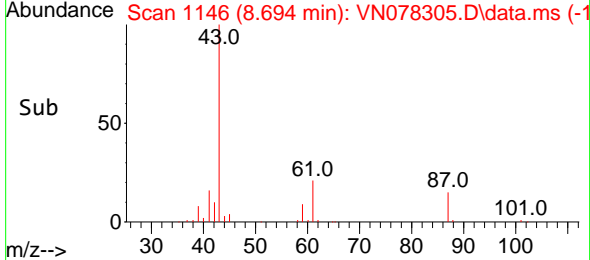
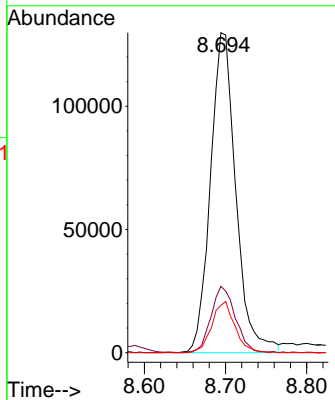
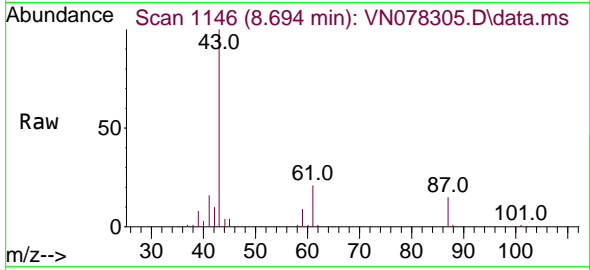


#43
 Isopropyl Acetate
 Concen: 24.054 ug/l
 RT: 8.694 min Scan# 1146
 Delta R.T. 0.000 min
 Lab File: VN078305.D
 Acq: 20 Jun 2023 13:24

Instrument : MSVOA_N
 ClientSampleId : WC-24

Tgt Ion: 43 Resp: 282653

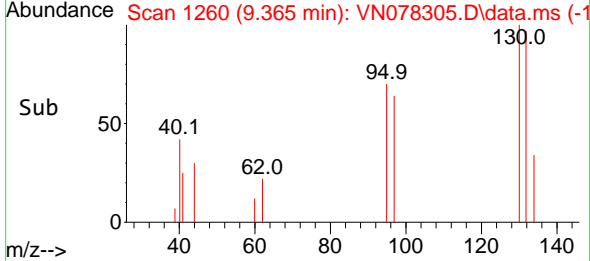
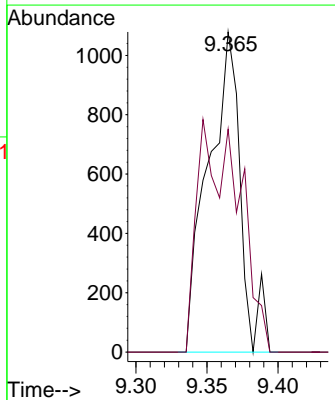
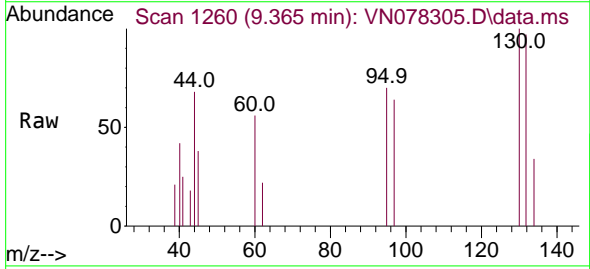
Ion	Ratio	Lower	Upper
43	100		
61	19.9	24.7	37.1#
87	14.5	14.6	21.8#

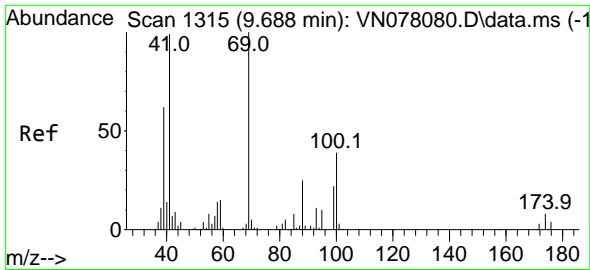


#44
 Trichloroethene
 Concen: 0.274 ug/l
 RT: 9.365 min Scan# 1260
 Delta R.T. 0.006 min
 Lab File: VN078305.D
 Acq: 20 Jun 2023 13:24

Tgt Ion: 130 Resp: 1702

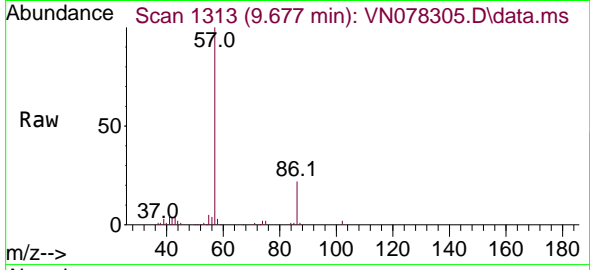
Ion	Ratio	Lower	Upper
130	100		
95	69.6	0.0	204.6



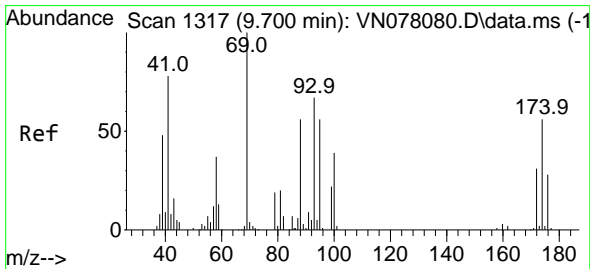
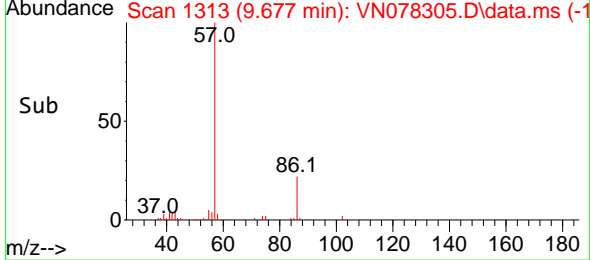
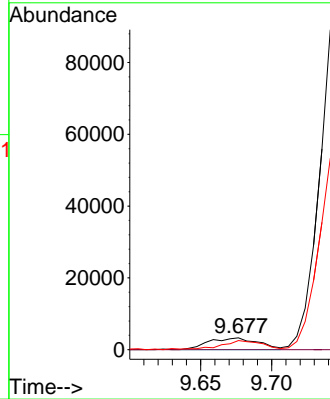


#48
 Methyl methacrylate
 Concen: 1.628 ug/l
 RT: 9.677 min Scan# 1313
 Delta R.T. -0.012 min
 Lab File: VN078305.D
 Acq: 20 Jun 2023 13:24

Instrument : MSVOA_N
 ClientSampleId : WC-24

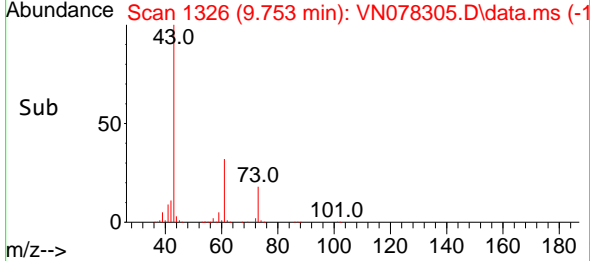
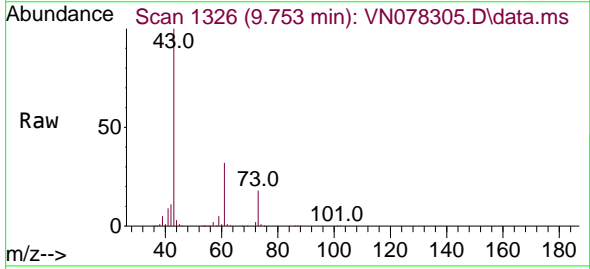
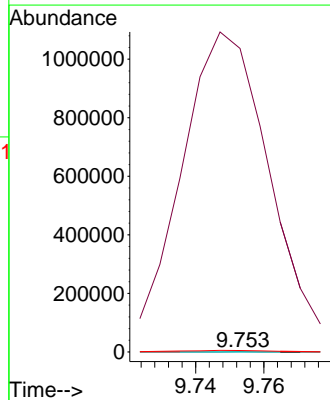


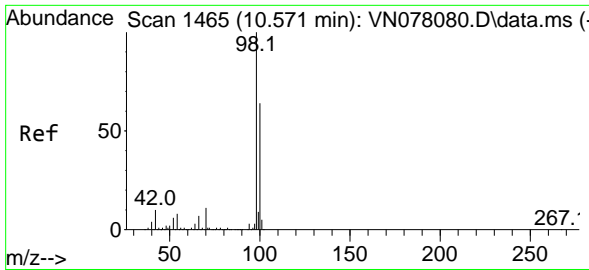
Tgt Ion: 41 Resp: 8027
 Ion Ratio Lower Upper
 41 100
 69 0.0 90.4 135.6#
 39 65.3 54.6 81.8



#49
 1,4-Dioxane
 Concen: 1.891 ug/l
 RT: 9.753 min Scan# 1326
 Delta R.T. 0.053 min
 Lab File: VN078305.D
 Acq: 20 Jun 2023 13:24

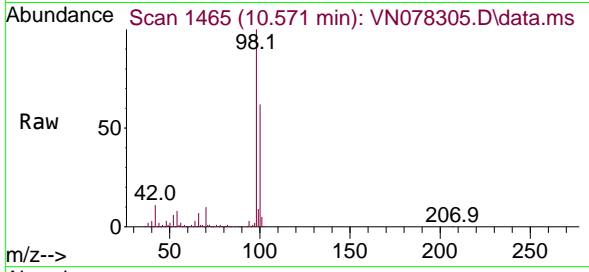
Tgt Ion: 88 Resp: 196
 Ion Ratio Lower Upper
 88 100
 43 1038468.9 17.0 25.6#
 58 5618.9 47.0 70.4#



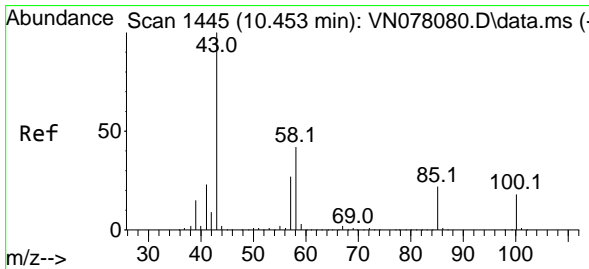
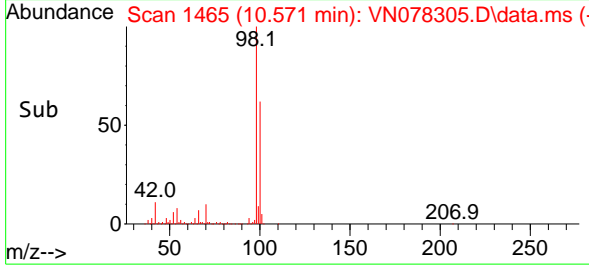
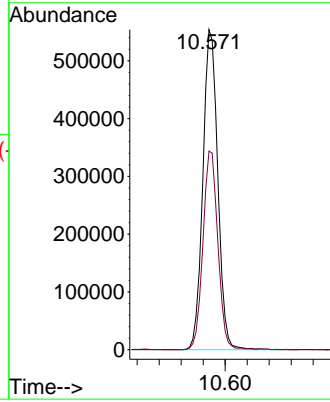


#50
 Toluene-d8
 Concen: 49.344 ug/l
 RT: 10.571 min Scan# 1465
 Delta R.T. 0.000 min
 Lab File: VN078305.D
 Acq: 20 Jun 2023 13:24

Instrument : MSVOA_N
 ClientSampleId : WC-24

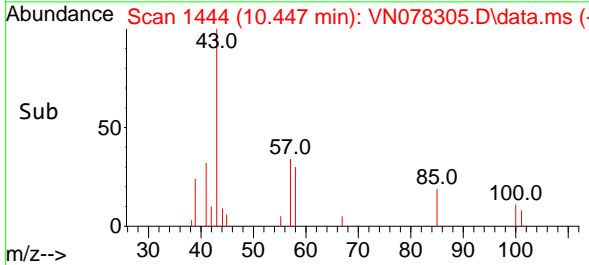
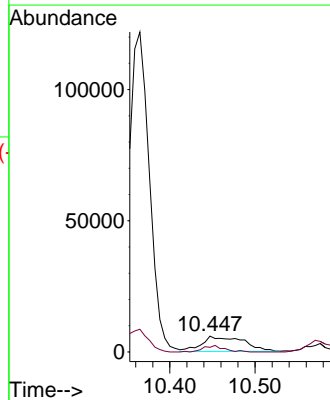
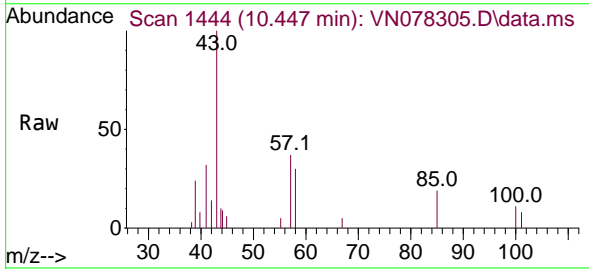


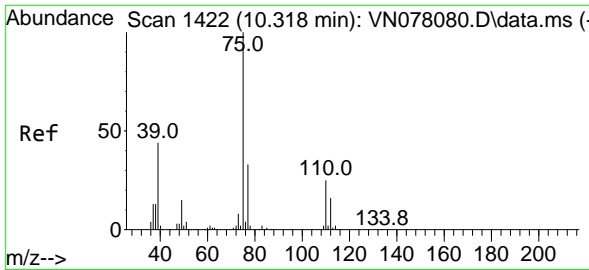
Tgt Ion: 98 Resp: 1043093
 Ion Ratio Lower Upper
 98 100
 100 62.0 52.0 78.0



#51
 4-Methyl-2-Pentanone
 Concen: 3.159 ug/l
 RT: 10.447 min Scan# 1444
 Delta R.T. -0.006 min
 Lab File: VN078305.D
 Acq: 20 Jun 2023 13:24

Tgt Ion: 43 Resp: 19548
 Ion Ratio Lower Upper
 43 100
 58 21.7 36.6 54.8#

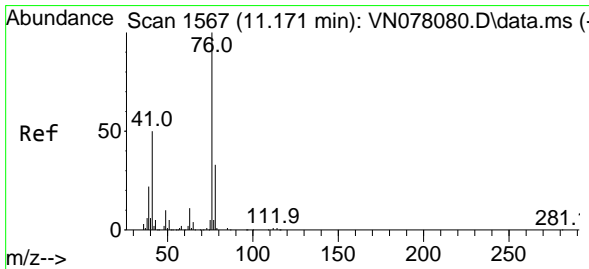
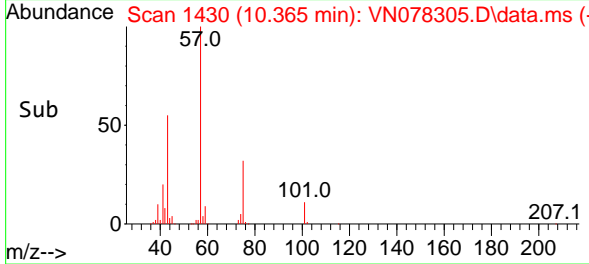
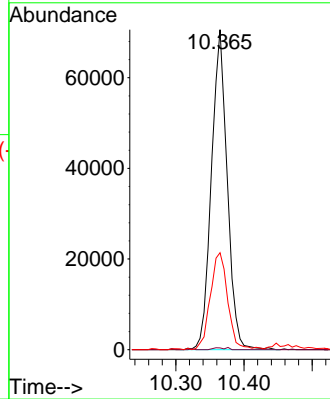
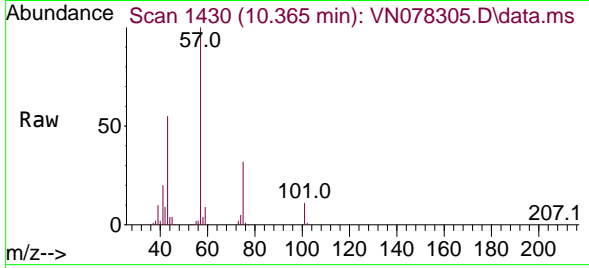




#54
 cis-1,3-Dichloropropene
 Concen: 12.391 ug/l
 RT: 10.365 min Scan# 1422
 Delta R.T. 0.047 min
 Lab File: VN078305.D
 Acq: 20 Jun 2023 13:24

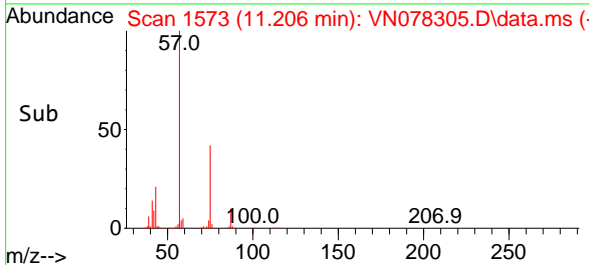
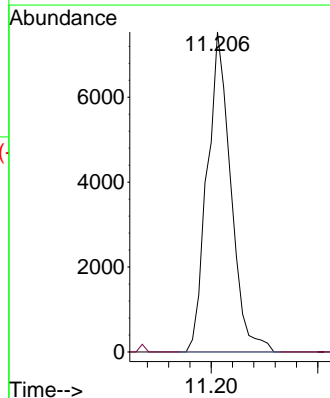
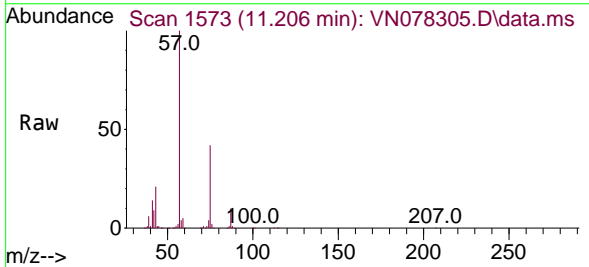
Instrument :
 MSVOA_N
 ClientSampleId :
 WC-24

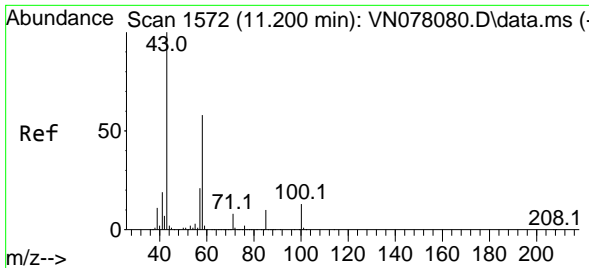
Tgt Ion: 75 Resp: 114026
 Ion Ratio Lower Upper
 75 100
 77 0.6 26.1 39.1#
 39 30.1 31.6 47.4#



#57
 1,3-Dichloropropane
 Concen: 1.226 ug/l
 RT: 11.206 min Scan# 1573
 Delta R.T. 0.035 min
 Lab File: VN078305.D
 Acq: 20 Jun 2023 13:24

Tgt Ion: 76 Resp: 11607
 Ion Ratio Lower Upper
 76 100
 78 0.0 26.1 39.1#

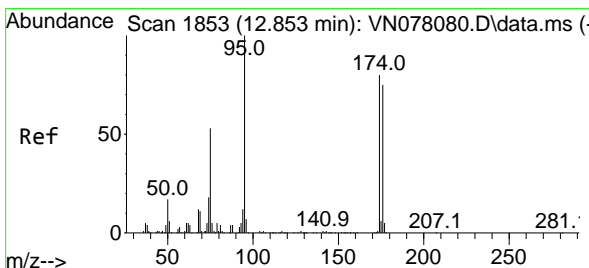
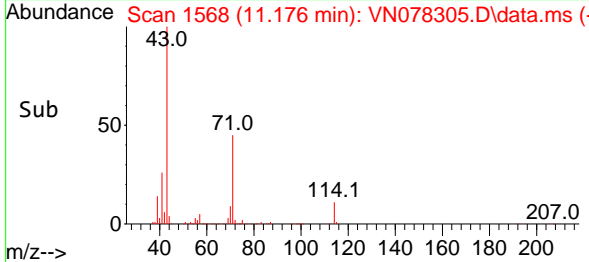
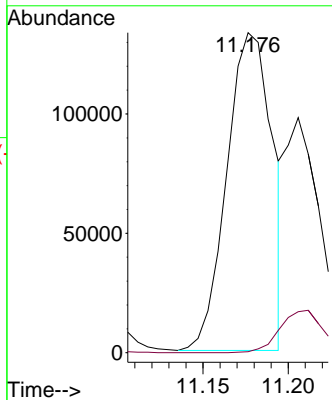
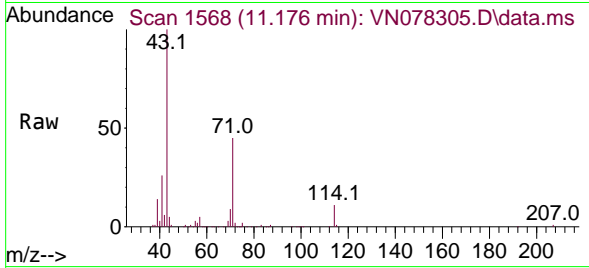




#59
 2-Hexanone
 Concen: 57.469 ug/l
 RT: 11.176 min Scan# 11176
 Delta R.T. -0.023 min
 Lab File: VN078305.D
 Acq: 20 Jun 2023 13:24

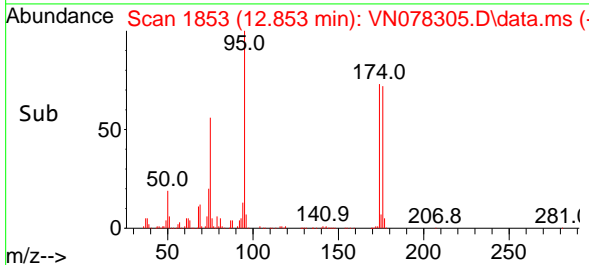
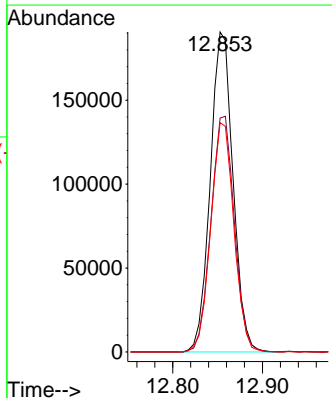
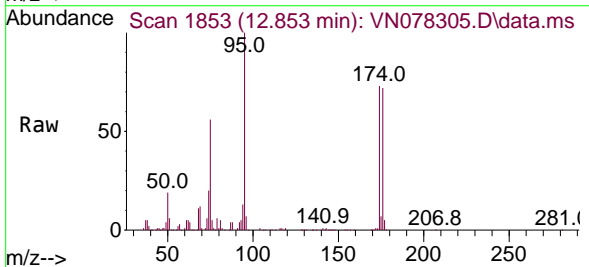
Instrument : MSVOA_N
 ClientSampleId : WC-24

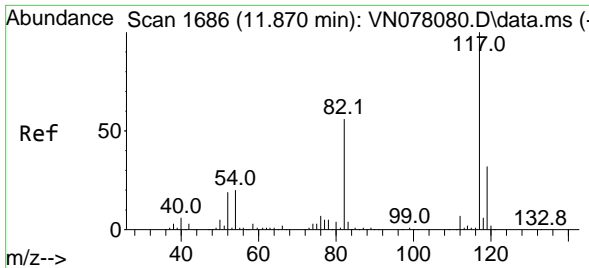
Tgt Ion: 43 Resp: 247609
 Ion Ratio Lower Upper
 43 100
 58 0.0 31.7 95.1#



#62
 4-Bromofluorobenzene
 Concen: 51.065 ug/l
 RT: 12.853 min Scan# 1853
 Delta R.T. 0.000 min
 Lab File: VN078305.D
 Acq: 20 Jun 2023 13:24

Tgt Ion: 95 Resp: 335579
 Ion Ratio Lower Upper
 95 100
 174 76.0 0.0 143.8
 176 72.7 0.0 135.8



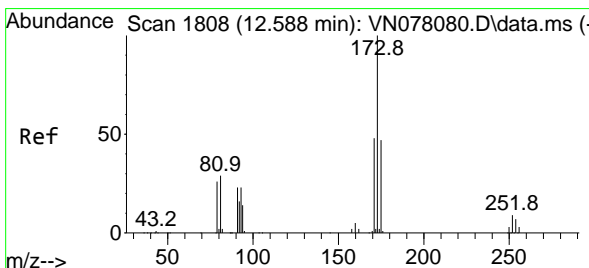
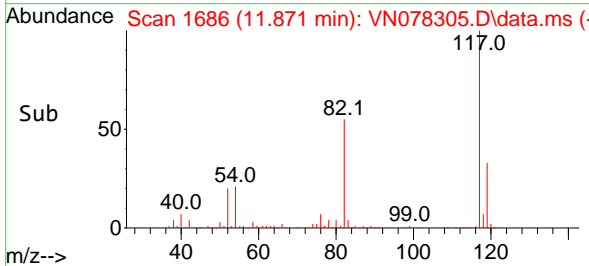
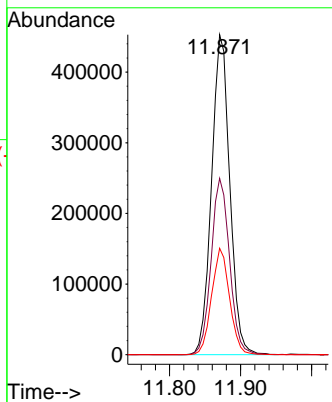
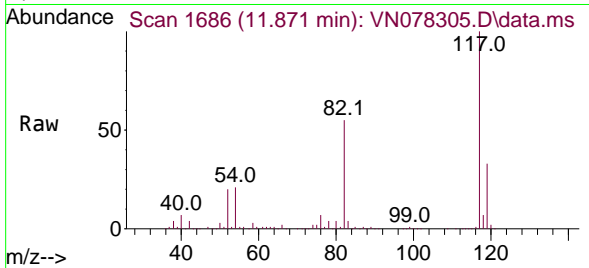


#63
 Chlorobenzene-d5
 Concen: 50.000 ug/l
 RT: 11.871 min Scan# 111
 Delta R.T. 0.000 min
 Lab File: VN078305.D
 Acq: 20 Jun 2023 13:24

Instrument :
 MSVOA_N
 ClientSampleId :
 WC-24

Tgt Ion:117 Resp: 805653

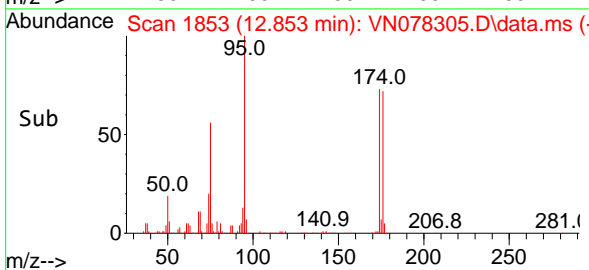
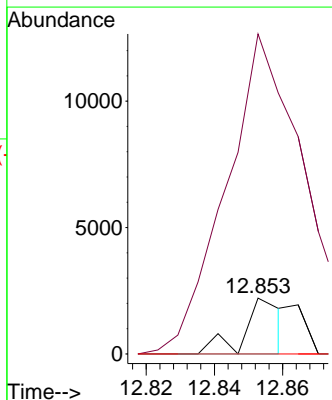
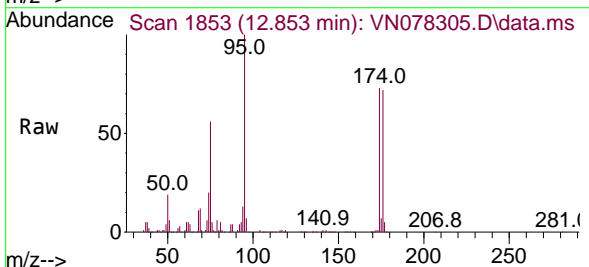
Ion	Ratio	Lower	Upper
117	100		
82	55.1	44.0	66.0
119	33.3	25.6	38.4

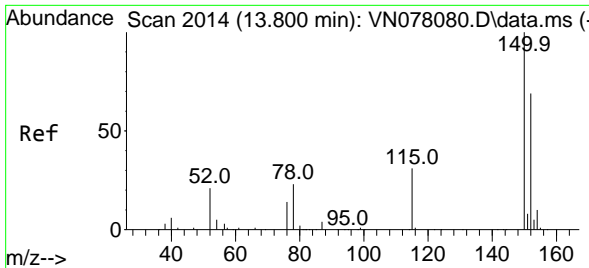


#71
 Bromoform
 Concen: 0.415 ug/l
 RT: 12.853 min Scan# 1853
 Delta R.T. 0.265 min
 Lab File: VN078305.D
 Acq: 20 Jun 2023 13:24

Tgt Ion:173 Resp: 1700

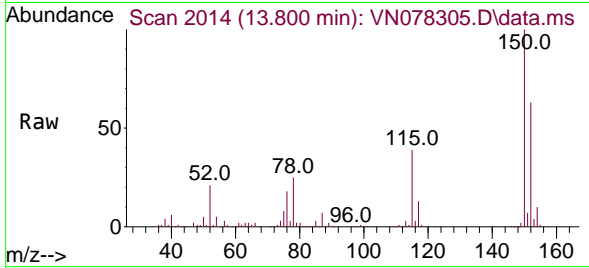
Ion	Ratio	Lower	Upper
173	100		
175	1017.8	24.3	73.0#
254	0.0	0.0	0.0



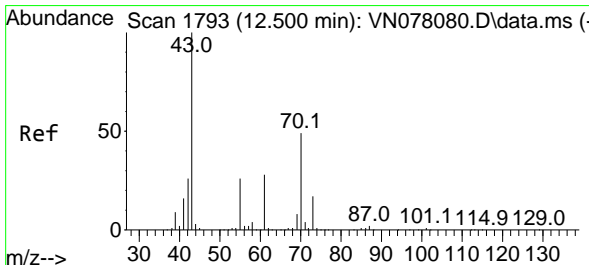
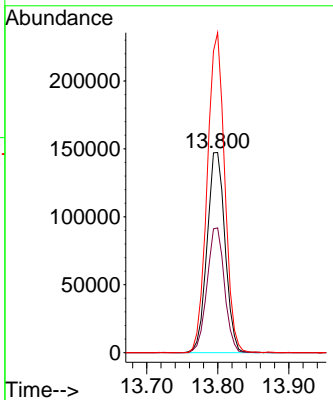
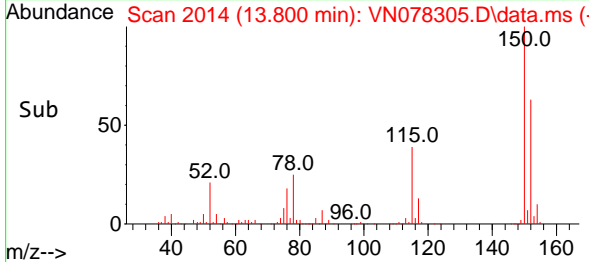


#72
 1,4-Dichlorobenzene-d4
 Concen: 50.000 ug/l
 RT: 13.800 min Scan# 20
 Delta R.T. 0.000 min
 Lab File: VN078305.D
 Acq: 20 Jun 2023 13:24

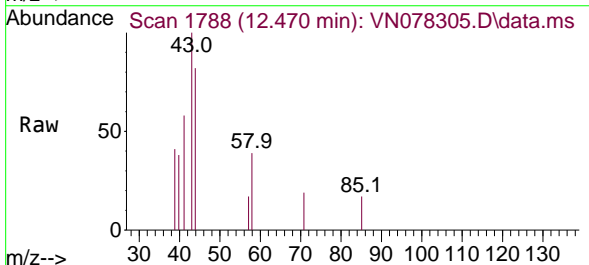
Instrument :
 MSVOA_N
 ClientSampleId :
 WC-24



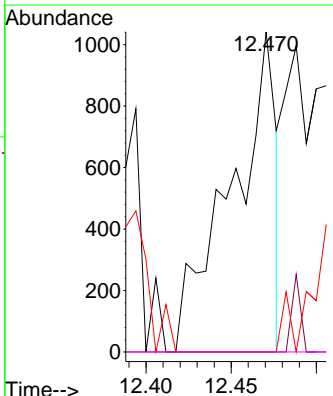
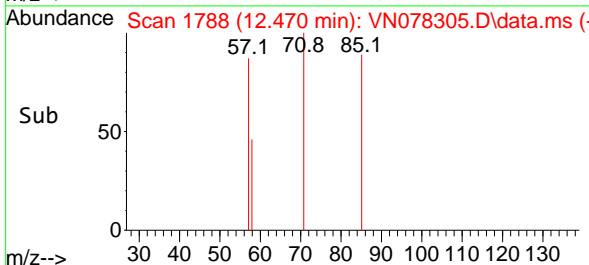
Tgt Ion:152 Resp: 258381
 Ion Ratio Lower Upper
 152 100
 115 60.6 32.3 96.8
 150 155.5 0.0 355.8

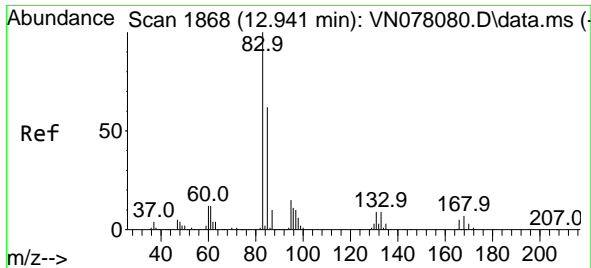


#74
 N-amy1 acetate
 Concen: 0.236 ug/l
 RT: 12.470 min Scan# 1788
 Delta R.T. -0.029 min
 Lab File: VN078305.D
 Acq: 20 Jun 2023 13:24



Tgt Ion: 43 Resp: 1898
 Ion Ratio Lower Upper
 43 100
 70 4.7 43.4 65.2#
 55 0.0 21.4 32.0#
 61 0.0 22.8 34.2#

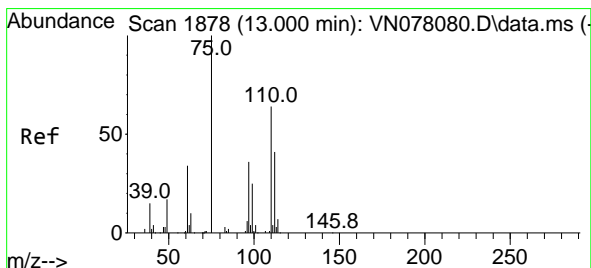
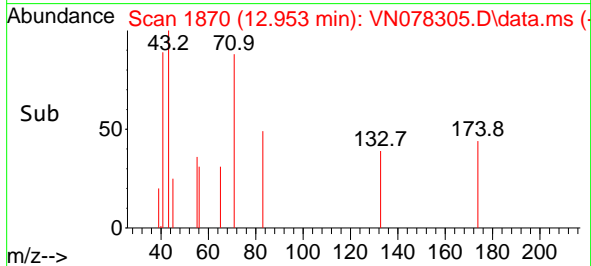
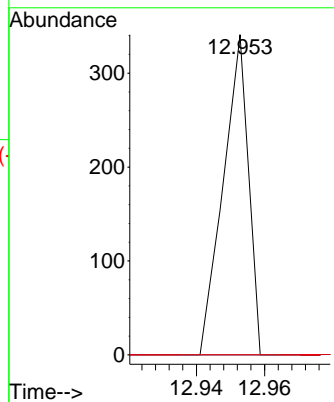
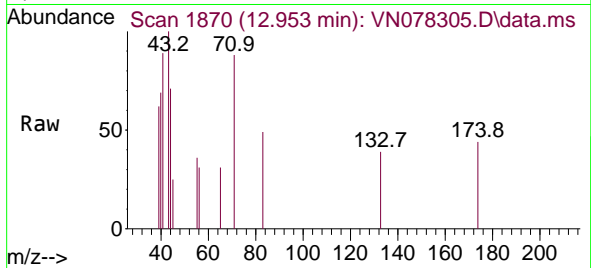




#75
 1,1,2,2-Tetrachloroethane
 Concen: Below Cal
 RT: 12.953 min Scan# 1853
 Delta R.T. 0.012 min
 Lab File: VN078305.D
 Acq: 20 Jun 2023 13:24

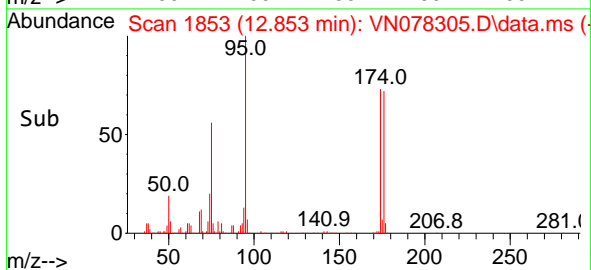
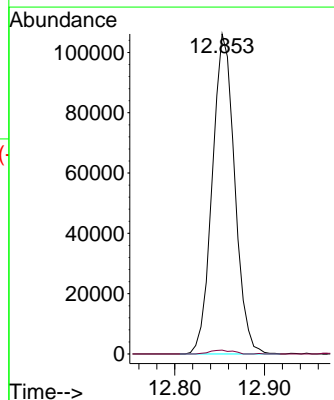
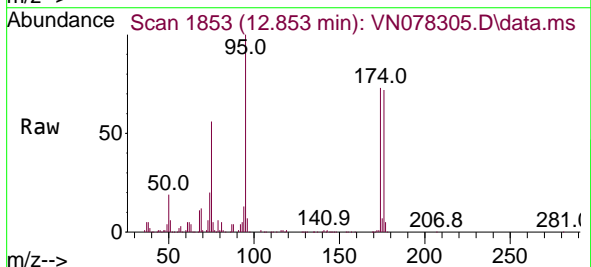
Instrument : MSVOA_N
 ClientSampleId : WC-24

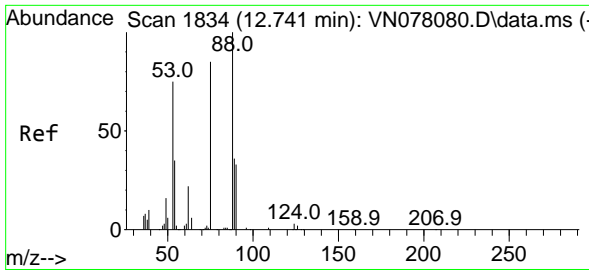
Tgt Ion: 83 Resp: 175
 Ion Ratio Lower Upper
 83 100
 131 0.0 5.0 15.0#
 85 0.0 31.9 95.7#



#76
 1,2,3-Trichloropropane
 Concen: 30.115 ug/l
 RT: 12.853 min Scan# 1853
 Delta R.T. -0.147 min
 Lab File: VN078305.D
 Acq: 20 Jun 2023 13:24

Tgt Ion: 75 Resp: 183947
 Ion Ratio Lower Upper
 75 100
 77 1.2 84.5 253.5#

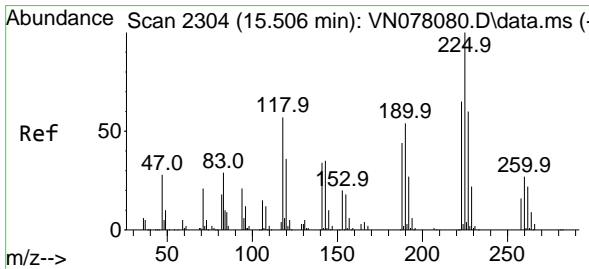
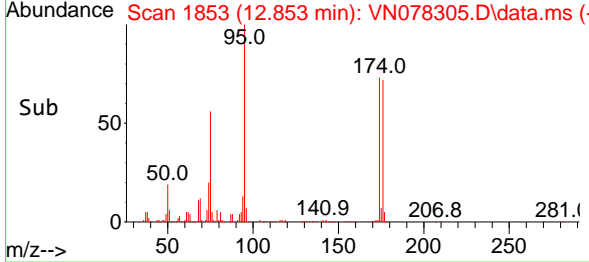
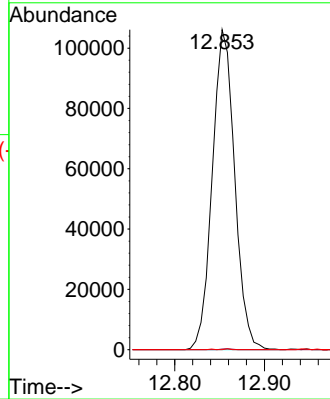
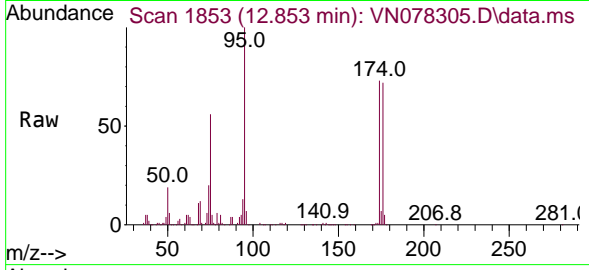




#81
 trans-1,4-Dichloro-2-butene
 Concen: 92.522 ug/l
 RT: 12.853 min Scan# 1834
 Delta R.T. 0.112 min
 Lab File: VN078305.D
 Acq: 20 Jun 2023 13:24

Instrument : MSVOA_N
 ClientSampleId : WC-24

Tgt Ion	Resp	Lower	Upper
75	183947		
75	100		
53	0.1	67.4	101.2#
89	0.0	38.8	58.2#



#94
 Hexachlorobutadiene
 Concen: Below Cal
 RT: 15.506 min Scan# 2304
 Delta R.T. -0.000 min
 Lab File: VN078305.D
 Acq: 20 Jun 2023 13:24

Tgt Ion	Resp	Lower	Upper
225	69		
225	100		
223	0.0	31.3	93.8#
227	0.0	31.9	95.9#

