

Data Path : Z:\voasrv\HPCHEM1\MSVOA_N\Data\VN062023\
 Data File : VN078306.D
 Acq On : 20 Jun 2023 13:48
 Operator : JC\MD
 Sample : IBLK
 Misc : 5.0mL/MSVOA_N/WATER
 ALS Vial : 11 Sample Multiplier: 1

Instrument :
 MSVOA_N
 ClientSampleId :
 IBLK

Quant Time: Jun 21 05:46:13 2023
 Quant Method : Z:\voasrv\HPCHEM1\MSVOA_N\methods\82N060623W.M
 Quant Title : SW846 8260
 QLast Update : Wed Jun 07 05:05:00 2023
 Response via : Initial Calibration

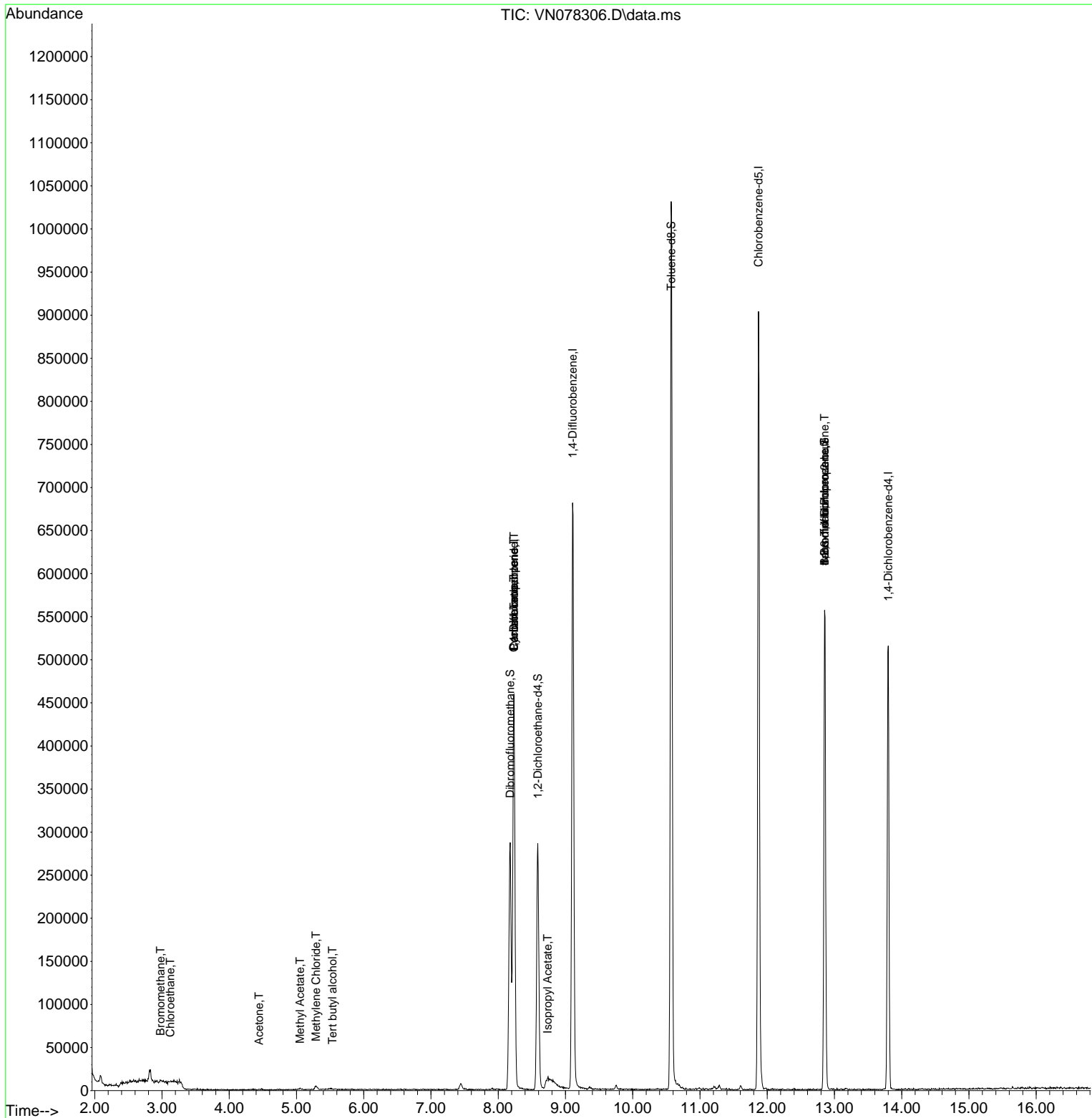
| Compound | R.T. | QIon | Response | Conc | Units | Dev(Min) |
|-------------------------------|--------|----------------|----------|-----------|----------|----------|
| ----- | | | | | | |
| Internal Standards | | | | | | |
| 1) Pentafluorobenzene | 8.236 | 168 | 330049 | 50.000 | ug/l | 0.00 |
| 34) 1,4-Difluorobenzene | 9.106 | 114 | 612335 | 50.000 | ug/l | 0.00 |
| 63) Chlorobenzene-d5 | 11.871 | 117 | 537324 | 50.000 | ug/l | 0.00 |
| 72) 1,4-Dichlorobenzene-d4 | 13.800 | 152 | 146350 | 50.000 | ug/l | 0.00 |
| System Monitoring Compounds | | | | | | |
| 33) 1,2-Dichloroethane-d4 | 8.588 | 65 | 235711 | 53.564 | ug/l | 0.00 |
| Spiked Amount | 50.000 | Range 74 - 125 | Recovery | = | 107.120% | |
| 35) Dibromofluoromethane | 8.177 | 113 | 209842 | 54.199 | ug/l | 0.00 |
| Spiked Amount | 50.000 | Range 75 - 124 | Recovery | = | 108.400% | |
| 50) Toluene-d8 | 10.571 | 98 | 752781 | 50.435 | ug/l | 0.00 |
| Spiked Amount | 50.000 | Range 86 - 113 | Recovery | = | 100.860% | |
| 62) 4-Bromofluorobenzene | 12.853 | 95 | 204369 | 44.044 | ug/l | 0.00 |
| Spiked Amount | 50.000 | Range 83 - 123 | Recovery | = | 88.080% | |
| Target Compounds | | | | | | |
| | | | | | | Qvalue |
| 3) Chloromethane | 2.377 | 50 | 961 | Below Cal | # | 83 |
| 5) Bromomethane | 2.977 | 94 | 1571 | 0.426 | ug/l | 94 |
| 6) Chloroethane | 3.124 | 64 | 1093 | 0.328 | ug/l # | 43 |
| 11) Tert butyl alcohol | 5.536 | 59 | 286 | 0.471 | ug/l # | 72 |
| 16) Acetone | 4.442 | 43 | 851 | 0.672 | ug/l # | 40 |
| 18) Methyl Acetate | 5.053 | 43 | 1981 | 0.340 | ug/l # | 71 |
| 20) Methylene Chloride | 5.289 | 84 | 3211 | 0.767 | ug/l # | 84 |
| 31) Cyclohexane | 8.230 | 56 | 8235 | 1.459 | ug/l # | 34 |
| 36) 1,1-Dichloropropene | 8.230 | 75 | 29995 | 5.401 | ug/l # | 50 |
| 38) Carbon Tetrachloride | 8.236 | 117 | 35166 | 5.997 | ug/l # | 15 |
| 43) Isopropyl Acetate | 8.736 | 43 | 11140 | 1.343 | ug/l # | 49 |
| 71) Bromoform | 12.853 | 173 | 1746 | 0.639 | ug/l # | 1 |
| 75) 1,1,2,2-Tetrachloroethane | 12.859 | 83 | 247 | Below Cal | # | 25 |
| 76) 1,2,3-Trichloropropane | 12.853 | 75 | 112246 | 32.443 | ug/l # | 1 |
| 81) trans-1,4-Dichloro-2-b... | 12.853 | 75 | 112246 | 99.676 | ug/l # | 15 |
| ----- | | | | | | |

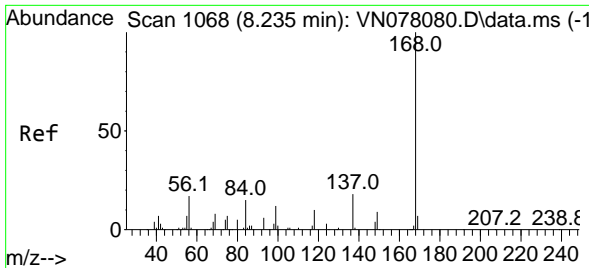
(#) = qualifier out of range (m) = manual integration (+) = signals summed

Data Path : Z:\voasrv\HPCHEM1\MSVOA_N\Data\VN062023\
 Data File : VN078306.D
 Acq On : 20 Jun 2023 13:48
 Operator : JC\MD
 Sample : IBLK
 Misc : 5.0mL/MSVOA_N/WATER
 ALS Vial : 11 Sample Multiplier: 1

Instrument :
 MSVOA_N
ClientSampleId :
 IBLK

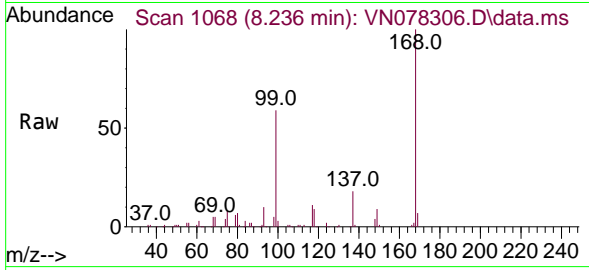
Quant Time: Jun 21 05:46:13 2023
 Quant Method : Z:\voasrv\HPCHEM1\MSVOA_N\methods\82N060623W.M
 Quant Title : SW846 8260
 QLast Update : Wed Jun 07 05:05:00 2023
 Response via : Initial Calibration



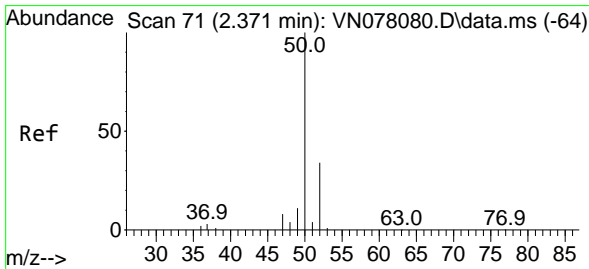
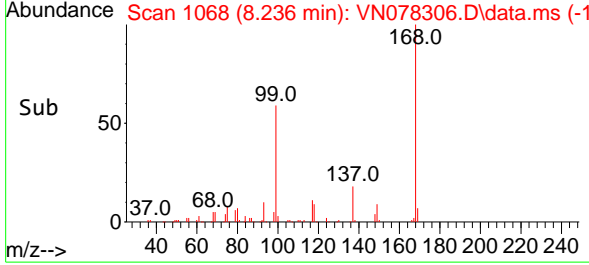
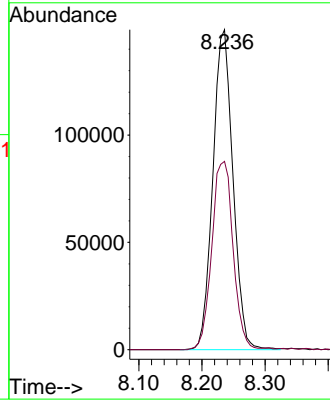


#1
 Pentafluorobenzene
 Concen: 50.000 ug/l
 RT: 8.236 min Scan# 10
 Delta R.T. 0.001 min
 Lab File: VN078306.D
 Acq: 20 Jun 2023 13:48

Instrument :
 MSVOA_N
 ClientSampleId :
 IBLK

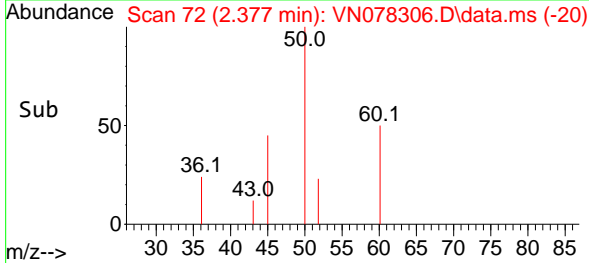
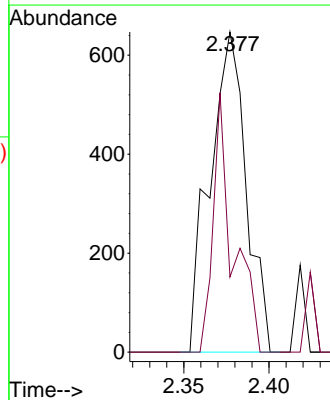
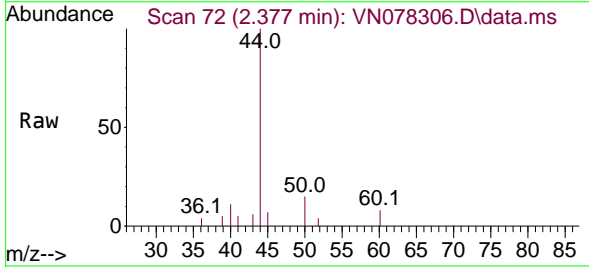


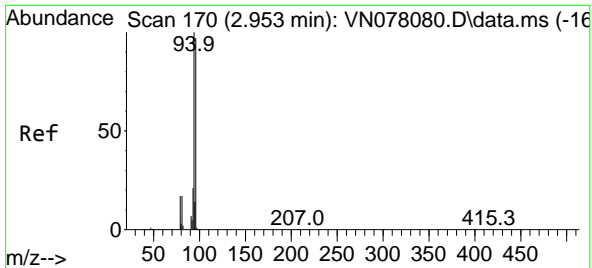
Tgt Ion:168 Resp: 330049
 Ion Ratio Lower Upper
 168 100
 99 58.8 53.0 79.6



#3
 Chloromethane
 Concen: Below Cal
 RT: 2.377 min Scan# 72
 Delta R.T. 0.006 min
 Lab File: VN078306.D
 Acq: 20 Jun 2023 13:48

Tgt Ion: 50 Resp: 961
 Ion Ratio Lower Upper
 50 100
 52 23.5 26.5 39.7#

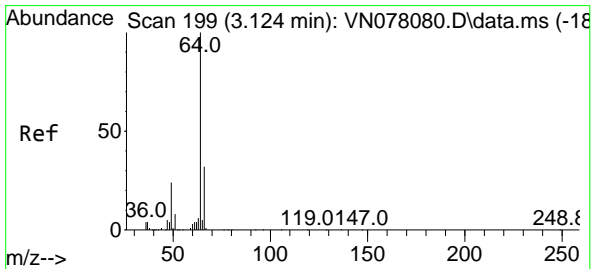
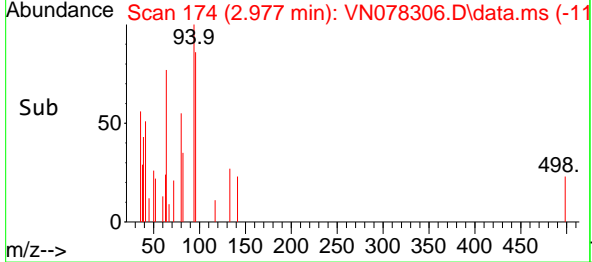
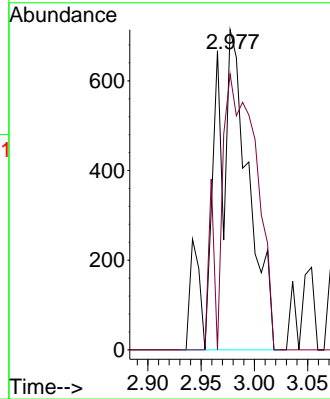
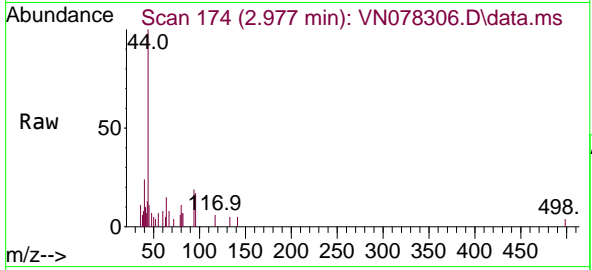




#5
 Bromomethane
 Concen: 0.426 ug/l
 RT: 2.977 min Scan# 174
 Delta R.T. 0.024 min
 Lab File: VN078306.D
 Acq: 20 Jun 2023 13:48

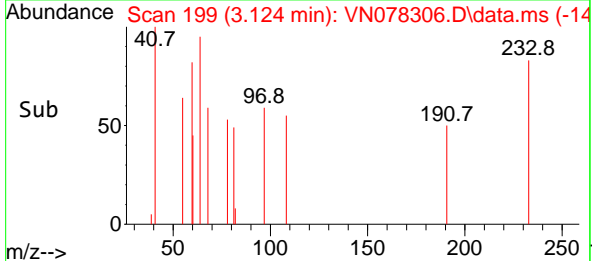
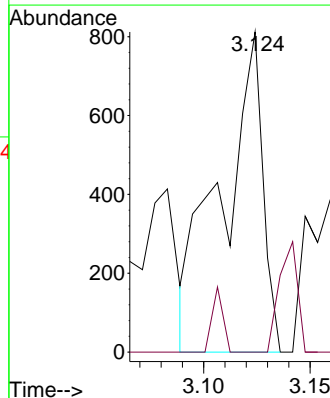
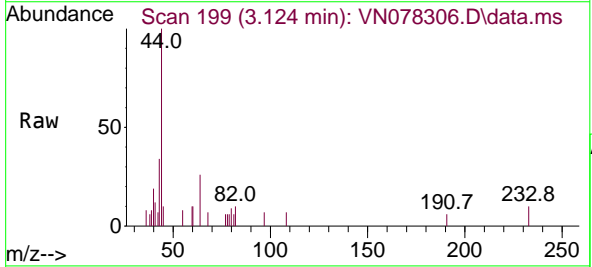
Instrument :
 MSVOA_N
 ClientSampleId :
 IBLK

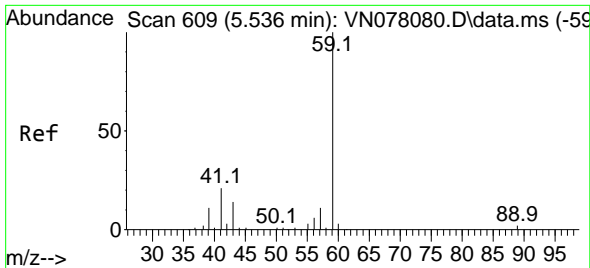
Tgt Ion: 94 Resp: 1571
 Ion Ratio Lower Upper
 94 100
 96 86.1 73.1 109.7



#6
 Chloroethane
 Concen: 0.328 ug/l
 RT: 3.124 min Scan# 199
 Delta R.T. 0.000 min
 Lab File: VN078306.D
 Acq: 20 Jun 2023 13:48

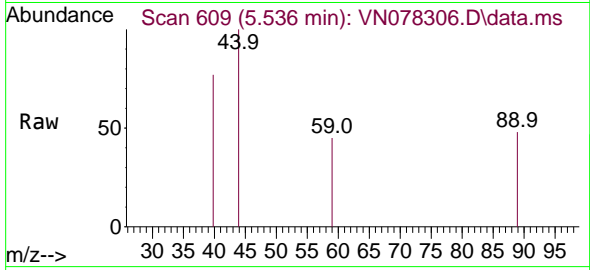
Tgt Ion: 64 Resp: 1093
 Ion Ratio Lower Upper
 64 100
 66 0.0 25.4 38.2#



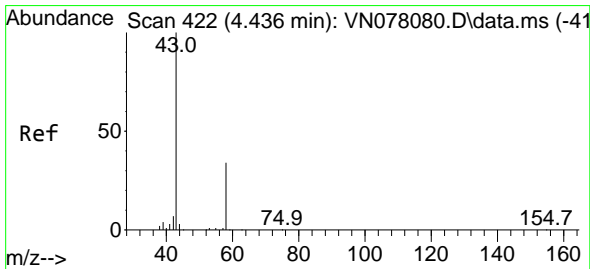
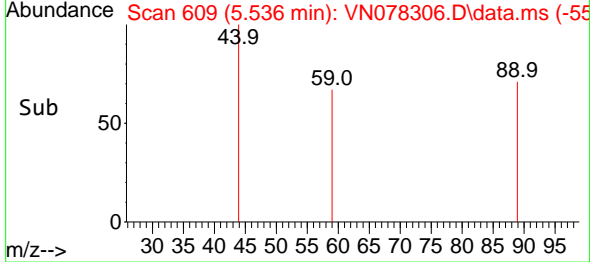
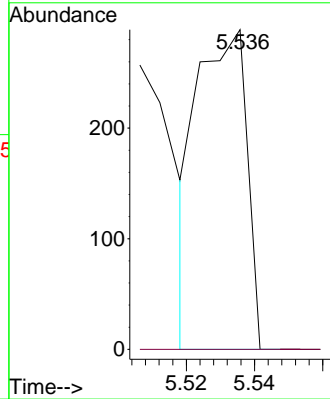


#11
 Tert butyl alcohol
 Concen: 0.471 ug/l
 RT: 5.536 min Scan# 609
 Delta R.T. 0.000 min
 Lab File: VN078306.D
 Acq: 20 Jun 2023 13:48

Instrument : MSVOA_N
 ClientSampleId : IBLK

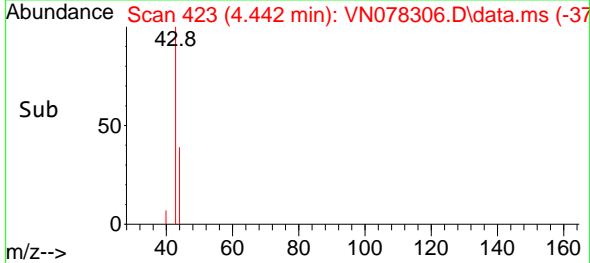
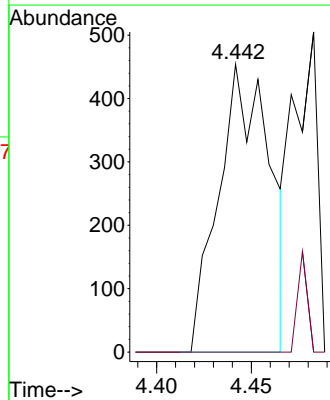
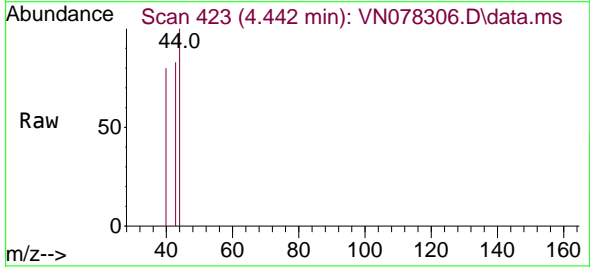


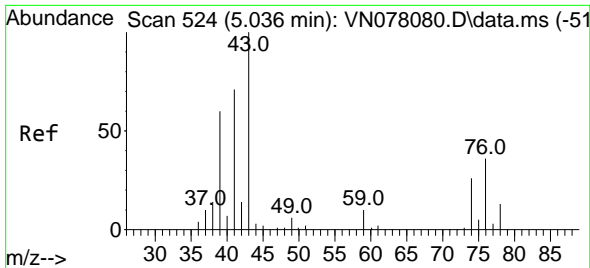
Tgt Ion: 59 Resp: 286
 Ion Ratio Lower Upper
 59 100
 57 0.0 8.2 12.4#



#16
 Acetone
 Concen: 0.672 ug/l
 RT: 4.442 min Scan# 423
 Delta R.T. 0.006 min
 Lab File: VN078306.D
 Acq: 20 Jun 2023 13:48

Tgt Ion: 43 Resp: 851
 Ion Ratio Lower Upper
 43 100
 58 0.0 28.0 42.0#

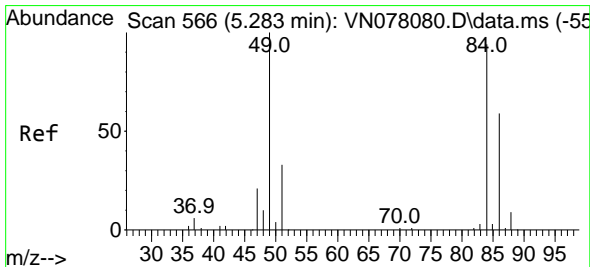
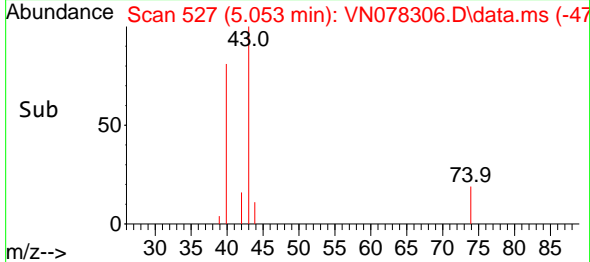
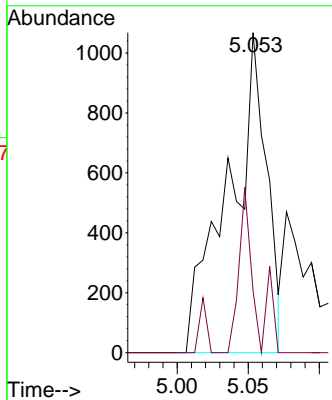
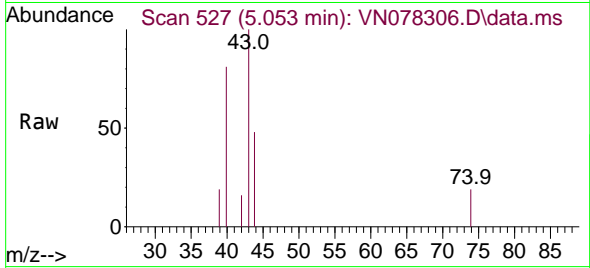




#18
 Methyl Acetate
 Concen: 0.340 ug/l
 RT: 5.053 min Scan# 51
 Delta R.T. 0.018 min
 Lab File: VN078306.D
 Acq: 20 Jun 2023 13:48

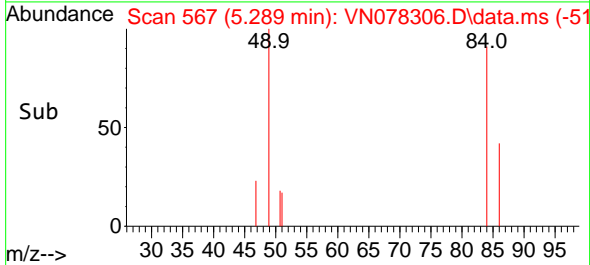
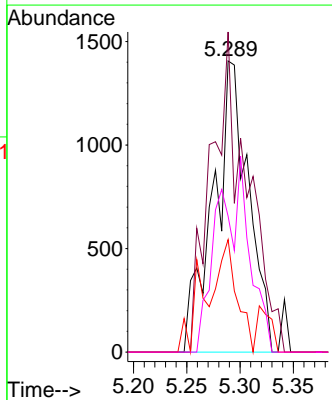
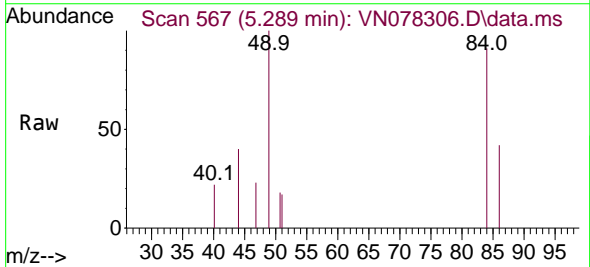
Instrument :
 MSVOA_N
 ClientSampleId :
 IBLK

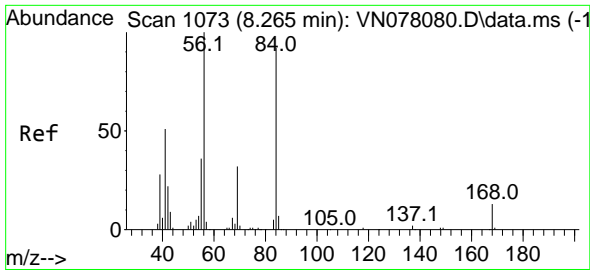
Tgt Ion: 43 Resp: 1981
 Ion Ratio Lower Upper
 43 100
 74 16.6 26.2 39.4#



#20
 Methylene Chloride
 Concen: 0.767 ug/l
 RT: 5.289 min Scan# 567
 Delta R.T. 0.006 min
 Lab File: VN078306.D
 Acq: 20 Jun 2023 13:48

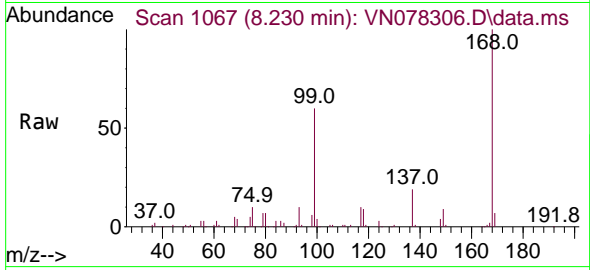
Tgt Ion: 84 Resp: 3211
 Ion Ratio Lower Upper
 84 100
 49 110.0 79.7 119.5
 51 38.6 25.2 37.8#
 86 46.7 53.3 79.9#



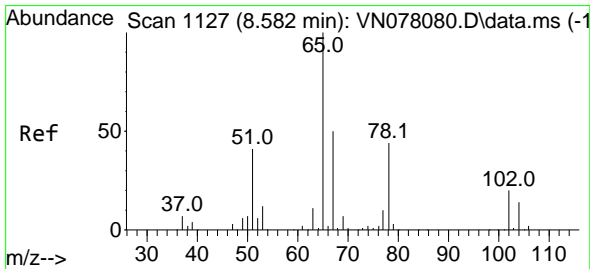
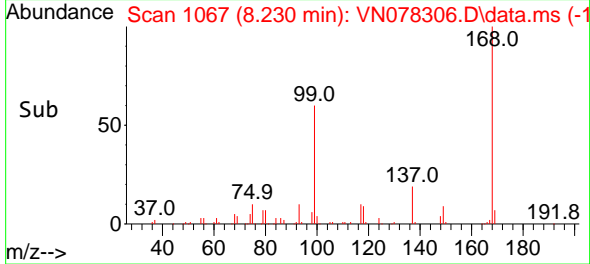
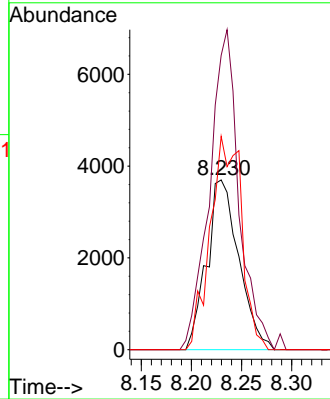


#31
 Cyclohexane
 Concen: 1.459 ug/l
 RT: 8.230 min Scan# 1067
 Delta R.T. -0.035 min
 Lab File: VN078306.D
 Acq: 20 Jun 2023 13:48

Instrument : MSVOA_N
 ClientSampleId : IBLK

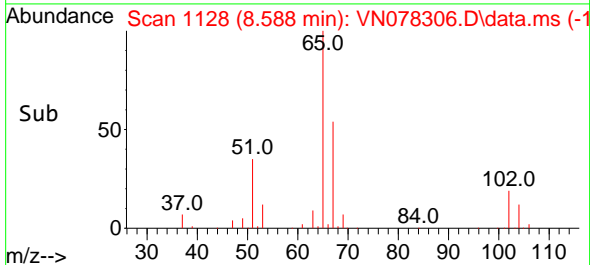
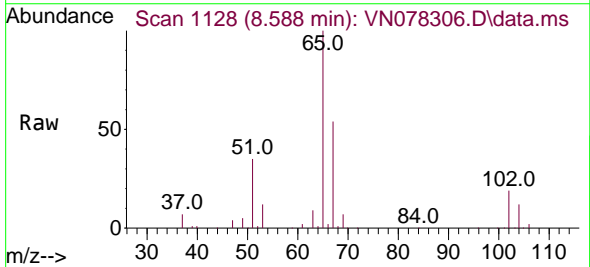
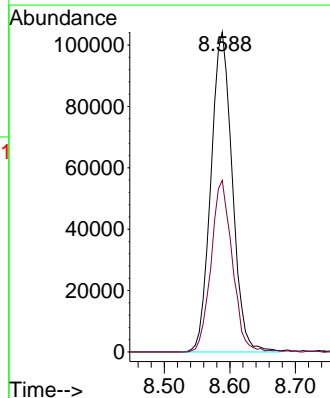


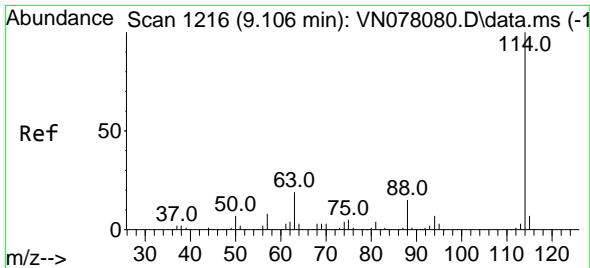
Tgt Ion: 56 Resp: 8235
 Ion Ratio Lower Upper
 56 100
 69 161.0 26.8 40.2#
 84 116.7 81.8 122.6



#33
 1,2-Dichloroethane-d4
 Concen: 53.564 ug/l
 RT: 8.588 min Scan# 1128
 Delta R.T. 0.006 min
 Lab File: VN078306.D
 Acq: 20 Jun 2023 13:48

Tgt Ion: 65 Resp: 235711
 Ion Ratio Lower Upper
 65 100
 67 53.2 0.0 106.6

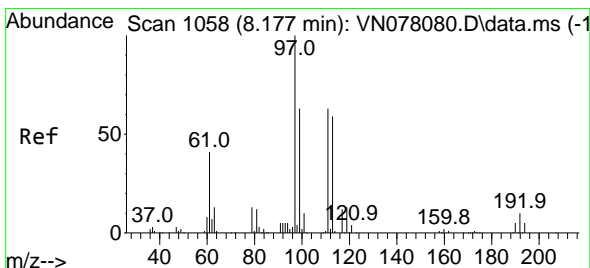
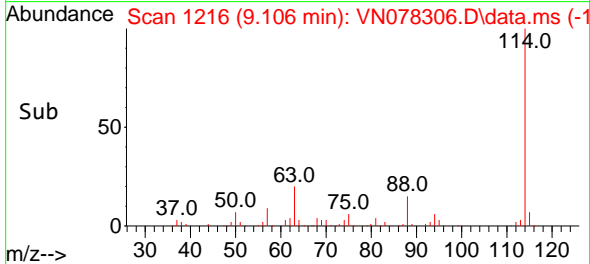
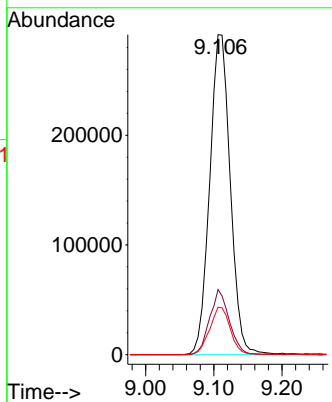
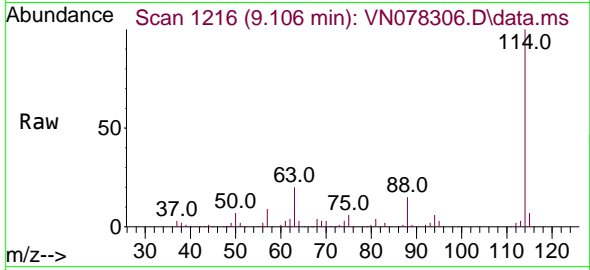




#34
 1,4-Difluorobenzene
 Concen: 50.000 ug/l
 RT: 9.106 min Scan# 11
 Delta R.T. 0.000 min
 Lab File: VN078306.D
 Acq: 20 Jun 2023 13:48

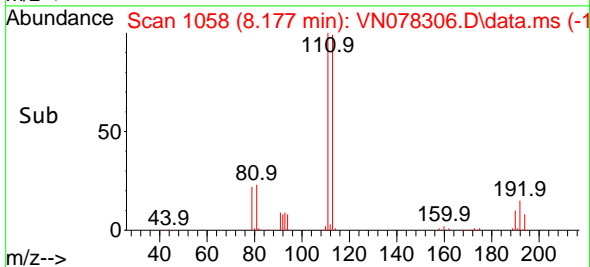
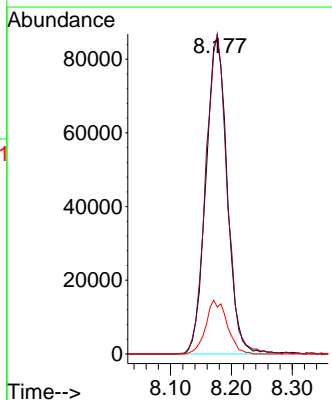
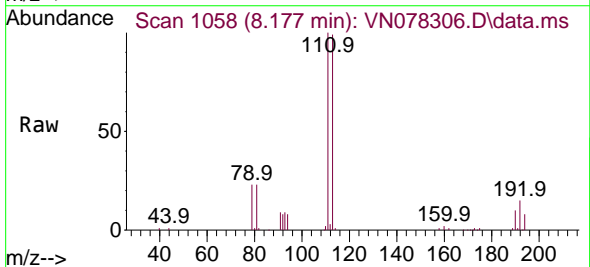
Instrument :
 MSVOA_N
 ClientSampleId :
 IBLK

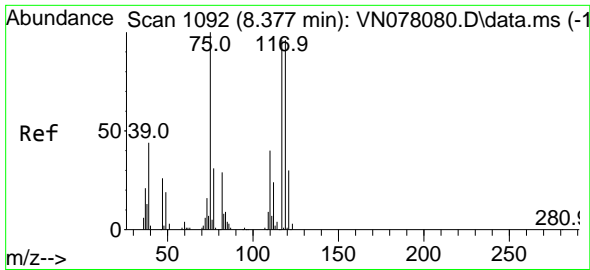
| Tgt Ion | Resp | Lower | Upper |
|---------|--------|-------|-------|
| 114 | 612335 | | |
| 63 | 20.3 | 0.0 | 36.4 |
| 88 | 14.8 | 0.0 | 30.6 |



#35
 Dibromofluoromethane
 Concen: 54.199 ug/l
 RT: 8.177 min Scan# 1058
 Delta R.T. 0.000 min
 Lab File: VN078306.D
 Acq: 20 Jun 2023 13:48

| Tgt Ion | Resp | Lower | Upper |
|---------|--------|-------|-------|
| 113 | 209842 | | |
| 111 | 100.9 | 82.6 | 123.8 |
| 192 | 17.0 | 12.7 | 19.1 |



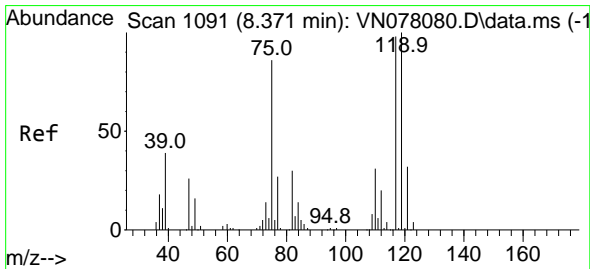
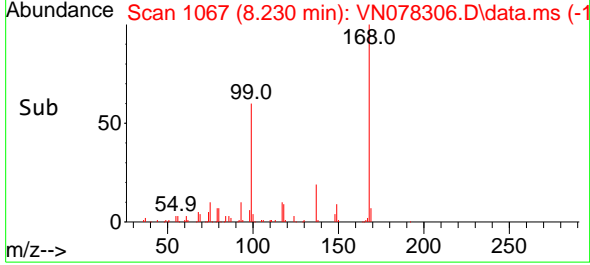
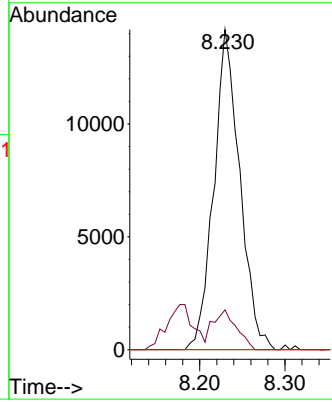
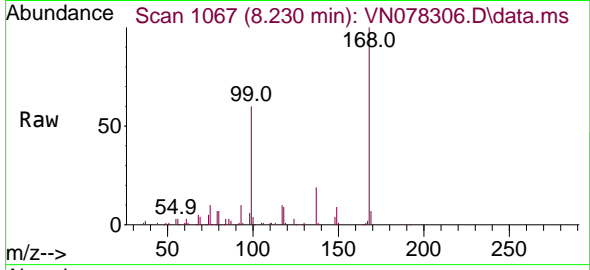


#36
 1,1-Dichloropropene
 Concen: 5.401 ug/l
 RT: 8.230 min Scan# 1067
 Delta R.T. -0.147 min
 Lab File: VN078306.D
 Acq: 20 Jun 2023 13:48

Instrument : MSVOA_N
 ClientSampleId : IBLK

Tgt Ion: 75 Resp: 29995

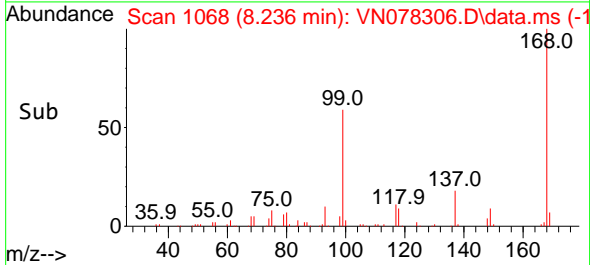
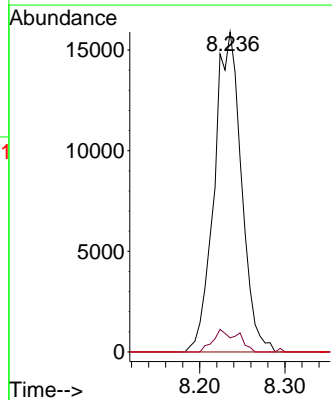
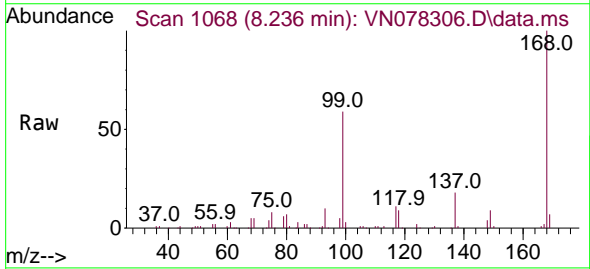
| Ion | Ratio | Lower | Upper |
|-----|-------|-------|-------|
| 75 | 100 | | |
| 110 | 11.4 | 19.1 | 57.3# |
| 77 | 0.0 | 25.0 | 37.4# |

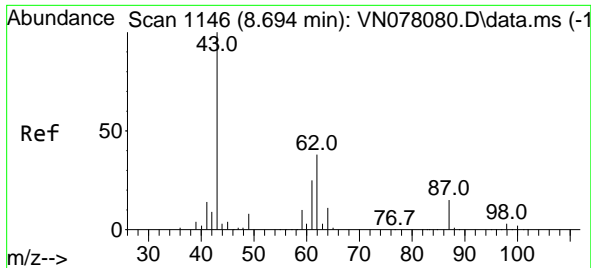


#38
 Carbon Tetrachloride
 Concen: 5.997 ug/l
 RT: 8.236 min Scan# 1068
 Delta R.T. -0.135 min
 Lab File: VN078306.D
 Acq: 20 Jun 2023 13:48

Tgt Ion: 117 Resp: 35166

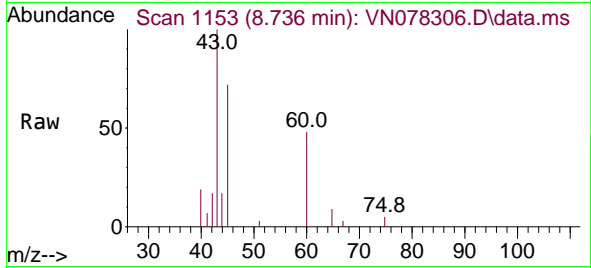
| Ion | Ratio | Lower | Upper |
|-----|-------|-------|--------|
| 117 | 100 | | |
| 119 | 4.4 | 77.3 | 115.9# |
| 121 | 0.0 | 23.3 | 34.9# |





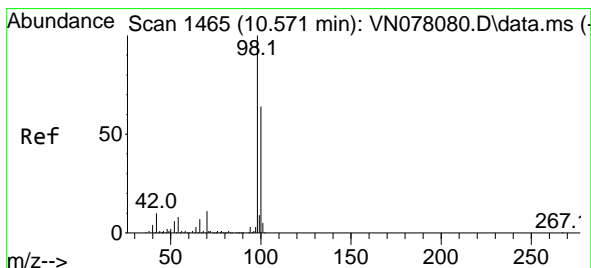
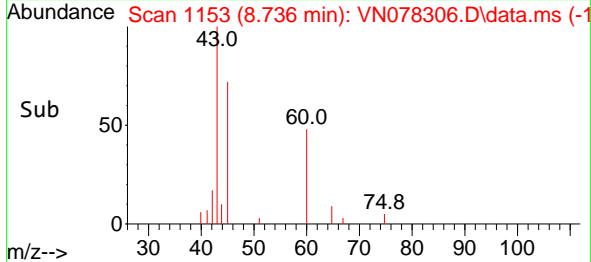
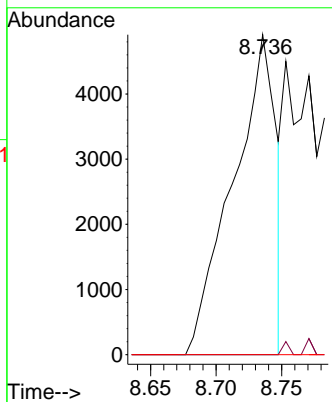
#43
 Isopropyl Acetate
 Concen: 1.343 ug/l
 RT: 8.736 min Scan# 1146
 Delta R.T. 0.041 min
 Lab File: VN078306.D
 Acq: 20 Jun 2023 13:48

Instrument : MSVOA_N
 ClientSampled : IBLK



Tgt Ion: 43 Resp: 11140

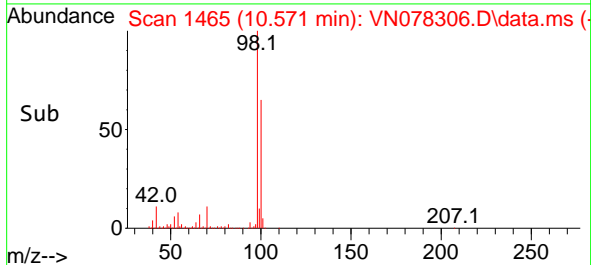
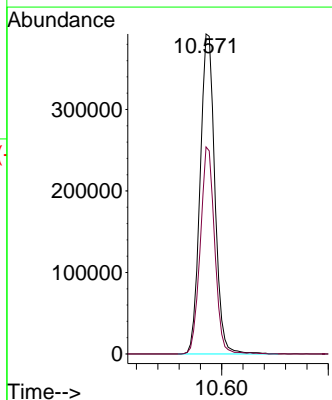
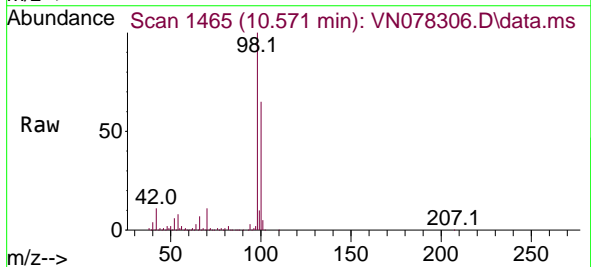
| Ion | Ratio | Lower | Upper |
|-----|-------|-------|-------|
| 43 | 100 | | |
| 61 | 0.0 | 24.7 | 37.1# |
| 87 | 0.0 | 14.6 | 21.8# |

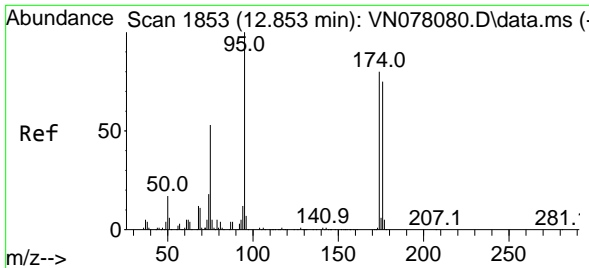


#50
 Toluene-d8
 Concen: 50.435 ug/l
 RT: 10.571 min Scan# 1465
 Delta R.T. 0.000 min
 Lab File: VN078306.D
 Acq: 20 Jun 2023 13:48

Tgt Ion: 98 Resp: 752781

| Ion | Ratio | Lower | Upper |
|-----|-------|-------|-------|
| 98 | 100 | | |
| 100 | 63.2 | 52.0 | 78.0 |

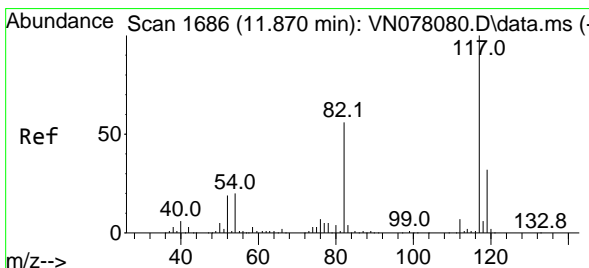
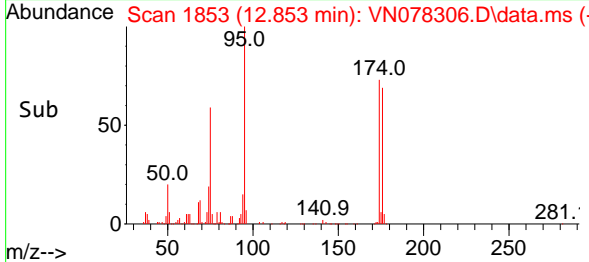
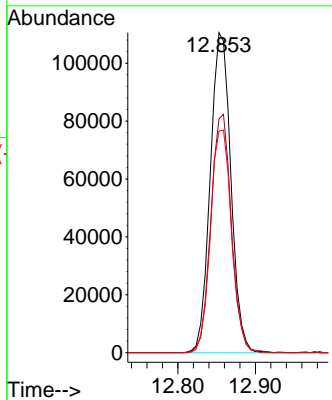
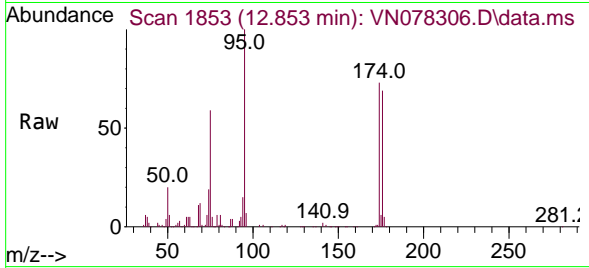




#62
 4-Bromofluorobenzene
 Concen: 44.044 ug/l
 RT: 12.853 min Scan# 1853
 Delta R.T. 0.000 min
 Lab File: VN078306.D
 Acq: 20 Jun 2023 13:48

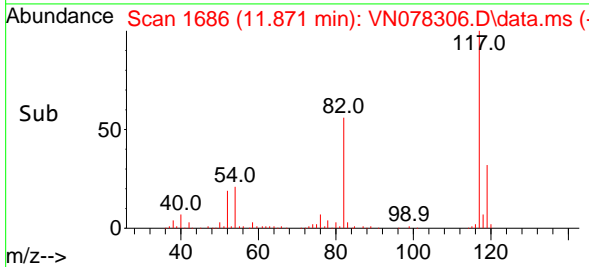
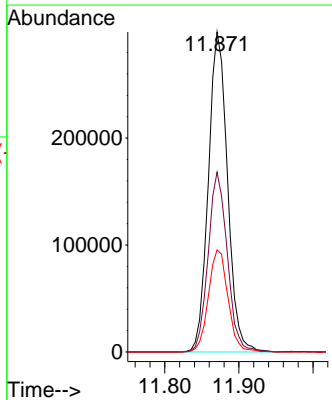
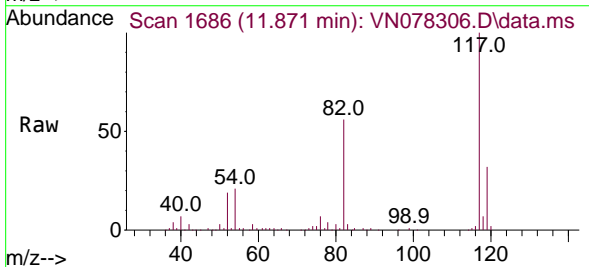
Instrument : MSVOA_N
 ClientSampleId : IBLK

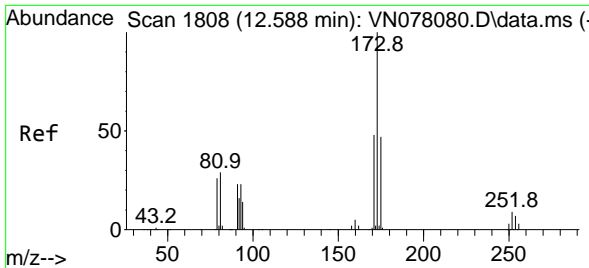
| Tgt Ion | Resp | Lower | Upper |
|---------|--------|-------|-------|
| 95 | 204369 | 100 | |
| 174 | 74.3 | 0.0 | 143.8 |
| 176 | 70.9 | 0.0 | 135.8 |



#63
 Chlorobenzene-d5
 Concen: 50.000 ug/l
 RT: 11.871 min Scan# 1686
 Delta R.T. 0.000 min
 Lab File: VN078306.D
 Acq: 20 Jun 2023 13:48

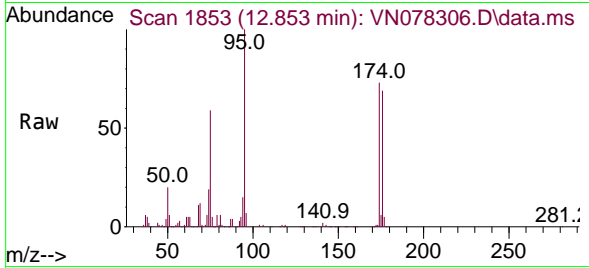
| Tgt Ion | Resp | Lower | Upper |
|---------|--------|-------|-------|
| 117 | 537324 | 100 | |
| 82 | 56.2 | 44.0 | 66.0 |
| 119 | 31.9 | 25.6 | 38.4 |



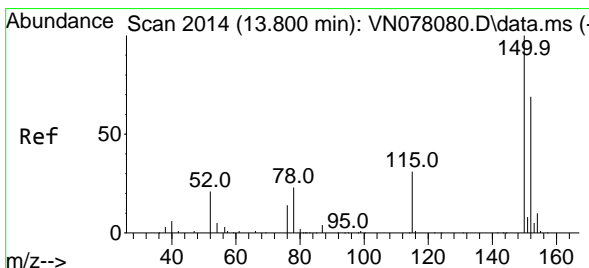
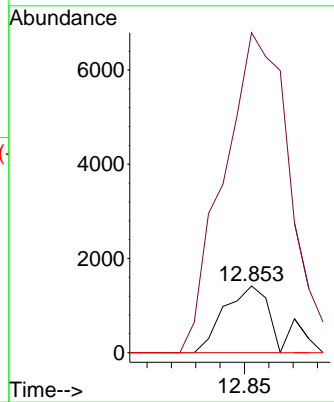
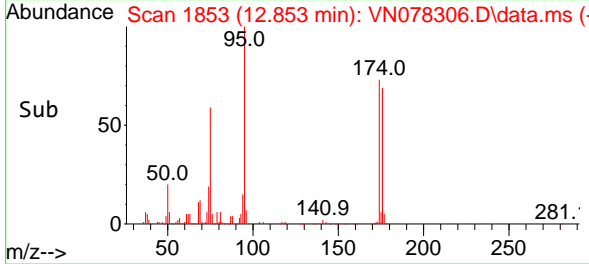


#71
 Bromoform
 Concen: 0.639 ug/l
 RT: 12.853 min Scan# 1808
 Delta R.T. 0.265 min
 Lab File: VN078306.D
 Acq: 20 Jun 2023 13:48

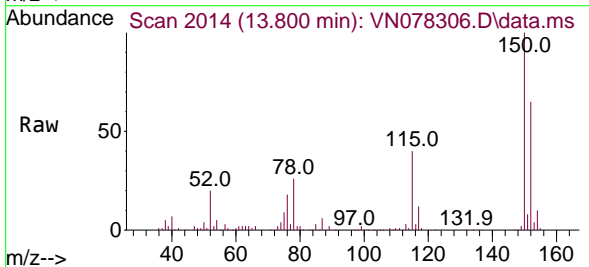
Instrument : MSVOA_N
 ClientSampleId : IBLK



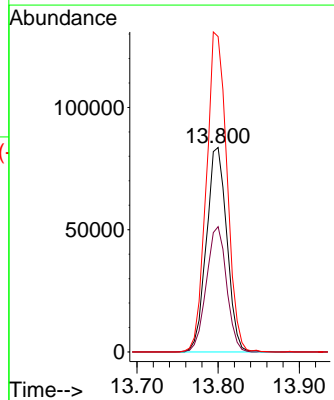
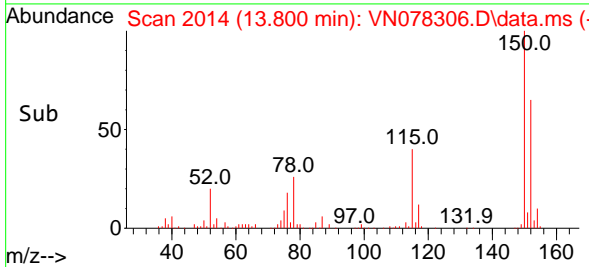
Tgt Ion:173 Resp: 1746
 Ion Ratio Lower Upper
 173 100
 175 632.4 24.3 73.0#
 254 0.0 0.0 0.0

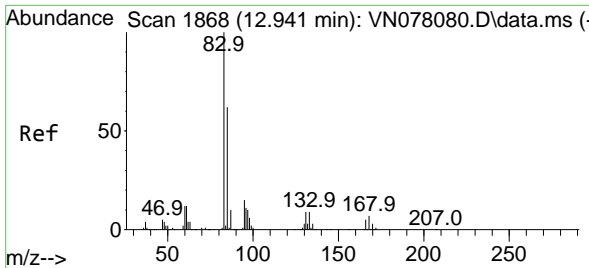


#72
 1,4-Dichlorobenzene-d4
 Concen: 50.000 ug/l
 RT: 13.800 min Scan# 2014
 Delta R.T. 0.000 min
 Lab File: VN078306.D
 Acq: 20 Jun 2023 13:48



Tgt Ion:152 Resp: 146350
 Ion Ratio Lower Upper
 152 100
 115 60.5 32.3 96.8
 150 157.1 0.0 355.8



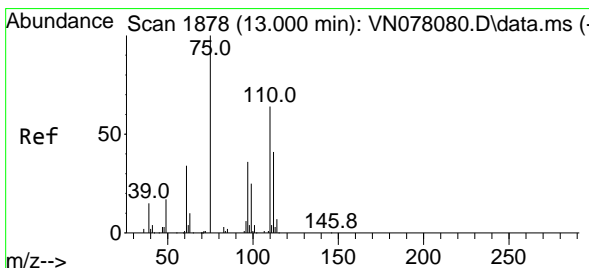
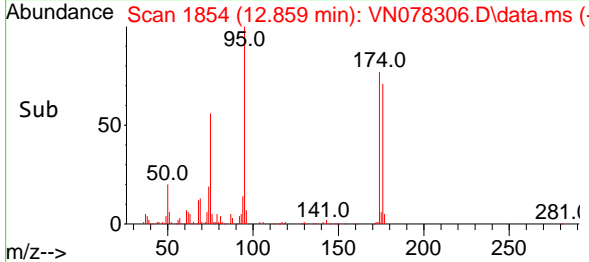
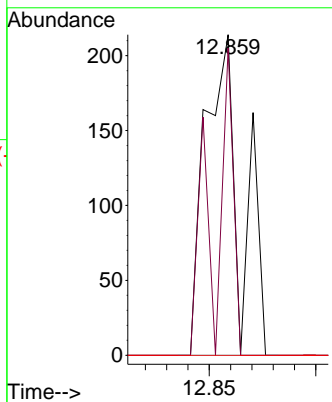
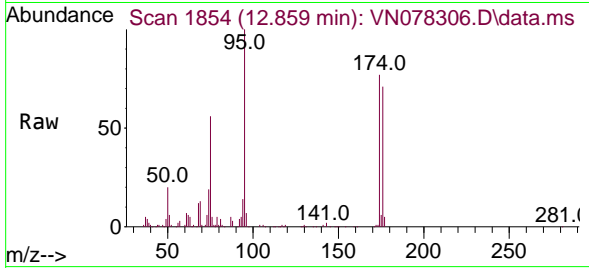


#75
 1,1,2,2-Tetrachloroethane
 Concen: Below Cal
 RT: 12.859 min Scan# 1854
 Delta R.T. -0.082 min
 Lab File: VN078306.D
 Acq: 20 Jun 2023 13:48

Instrument : MSVOA_N
 ClientSampleId : IBLK

Tgt Ion: 83 Resp: 247

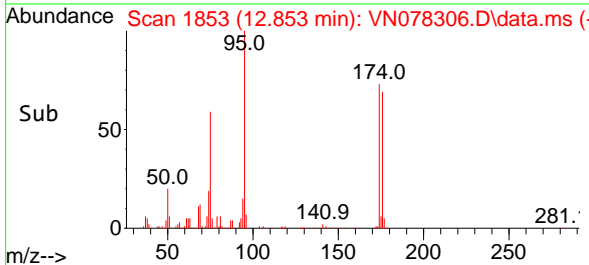
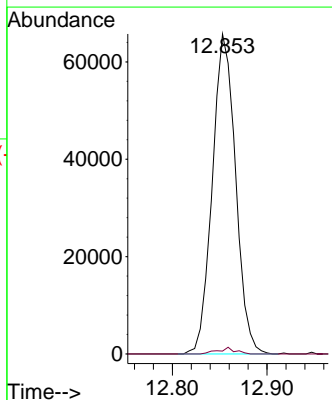
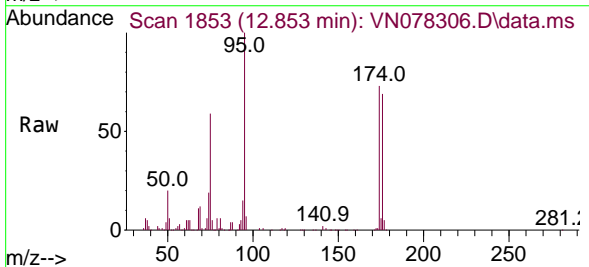
| Ion | Ratio | Lower | Upper |
|-----|-------|-------|-------|
| 83 | 100 | | |
| 131 | 22.7 | 5.0 | 15.0# |
| 85 | 0.0 | 31.9 | 95.7# |

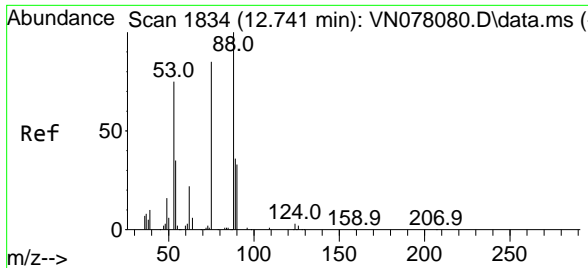


#76
 1,2,3-Trichloropropane
 Concen: 32.443 ug/l
 RT: 12.853 min Scan# 1853
 Delta R.T. -0.147 min
 Lab File: VN078306.D
 Acq: 20 Jun 2023 13:48

Tgt Ion: 75 Resp: 112246

| Ion | Ratio | Lower | Upper |
|-----|-------|-------|--------|
| 75 | 100 | | |
| 77 | 1.5 | 84.5 | 253.5# |





#81
 trans-1,4-Dichloro-2-butene
 Concen: 99.676 ug/l
 RT: 12.853 min Scan# 11
 Delta R.T. 0.112 min
 Lab File: VN078306.D
 Acq: 20 Jun 2023 13:48

Instrument :
 MSVOA_N
 ClientSampleId :
 IBLK

Tgt Ion: 75 Resp: 112246

| Ion | Ratio | Lower | Upper |
|-----|-------|-------|--------|
| 75 | 100 | | |
| 53 | 0.0 | 67.4 | 101.2# |
| 89 | 0.0 | 38.8 | 58.2# |

