

Data Path : Z:\voasrv\HPCHEM1\MSVOA_N\Data\VN062025\
 Data File : VN087143.D
 Acq On : 20 Jun 2025 16:31
 Operator : JC\MD
 Sample : Q2355-03 20X
 Misc : 3.60g/10mL/100uL/5.00mL/MSVOA_N/MEOH
 ALS Vial : 23 Sample Multiplier: 1

Instrument :
 MSVOA_N
 ClientSampleId :
 20071

Quant Time: Jun 20 23:09:32 2025
 Quant Method : Z:\voasrv\HPCHEM1\MSVOA_N\methods\82N060625W.M
 Quant Title : SW846 8260
 QLast Update : Sat Jun 07 02:12:50 2025
 Response via : Initial Calibration

Compound	R.T.	QIon	Response	Conc	Units	Dev(Min)
Internal Standards						
1) Pentafluorobenzene	8.230	168	166343	50.000	ug/l	0.00
34) 1,4-Difluorobenzene	9.106	114	323705	50.000	ug/l	0.00
63) Chlorobenzene-d5	11.865	117	313670	50.000	ug/l	0.00
72) 1,4-Dichlorobenzene-d4	13.788	152	162181	50.000	ug/l	0.00
System Monitoring Compounds						
33) 1,2-Dichloroethane-d4	8.577	65	111981	50.280	ug/l	-0.01
Spiked Amount	50.000	Range	74 - 125	Recovery	=	100.560%
35) Dibromofluoromethane	8.171	113	98018	51.095	ug/l	0.00
Spiked Amount	50.000	Range	75 - 124	Recovery	=	102.180%
50) Toluene-d8	10.565	98	353595	46.561	ug/l	0.00
Spiked Amount	50.000	Range	86 - 113	Recovery	=	93.120%
62) 4-Bromofluorobenzene	12.847	95	156671	55.528	ug/l	0.00
Spiked Amount	50.000	Range	77 - 121	Recovery	=	111.060%

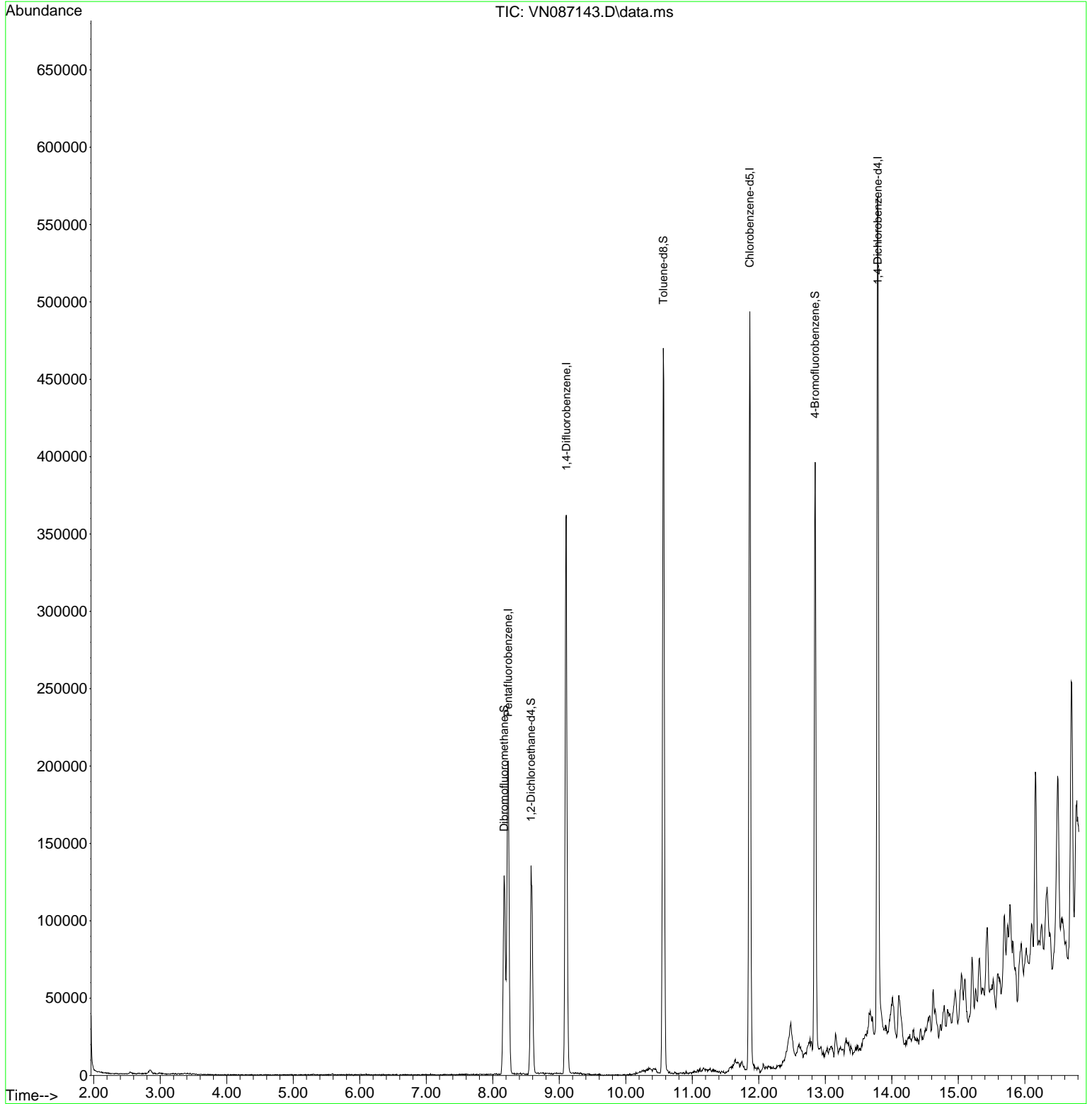
Target Compounds Qvalue

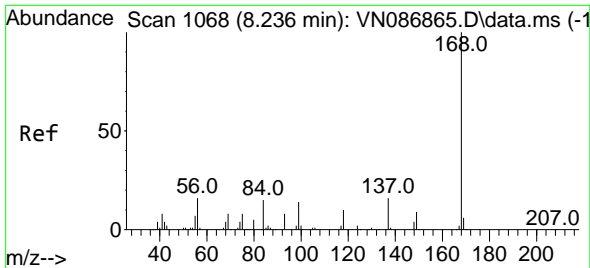
(#) = qualifier out of range (m) = manual integration (+) = signals summed

Data Path : Z:\voasrv\HPCHEM1\MSVOA_N\Data\VN062025\
Data File : VN087143.D
Acq On : 20 Jun 2025 16:31
Operator : JC\MD
Sample : Q2355-03 20X
Misc : 3.60g/10mL/100uL/5.00mL/MSVOA_N/MEOH
ALS Vial : 23 Sample Multiplier: 1

Instrument :
MSVOA_N
ClientSampleId :
20071

Quant Time: Jun 20 23:09:32 2025
Quant Method : Z:\voasrv\HPCHEM1\MSVOA_N\methods\82N060625W.M
Quant Title : SW846 8260
QLast Update : Sat Jun 07 02:12:50 2025
Response via : Initial Calibration

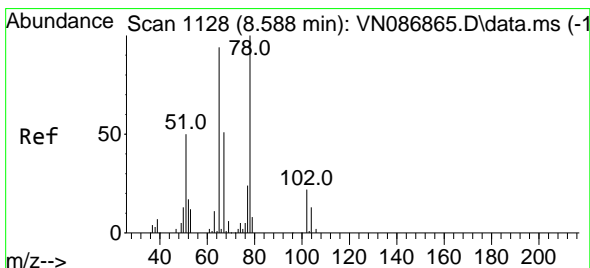
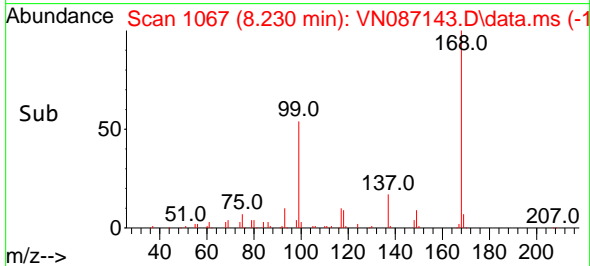
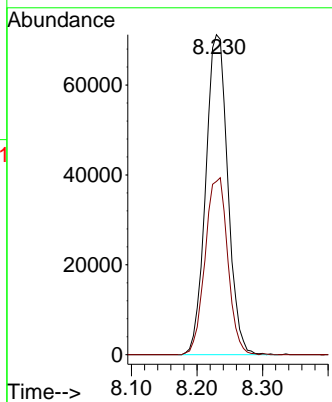
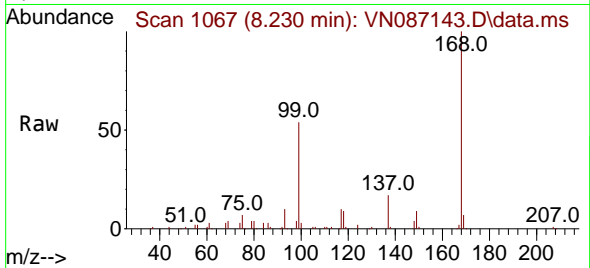




#1
 Pentafluorobenzene
 Concen: 50.000 ug/l
 RT: 8.230 min Scan# 1067
 Delta R.T. -0.006 min
 Lab File: VN087143.D
 Acq: 20 Jun 2025 16:31

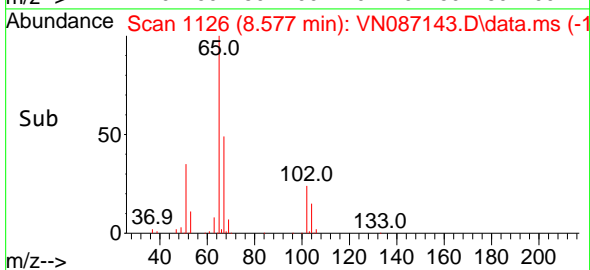
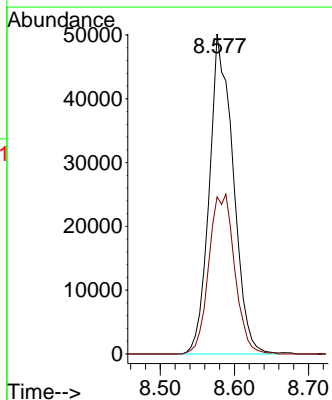
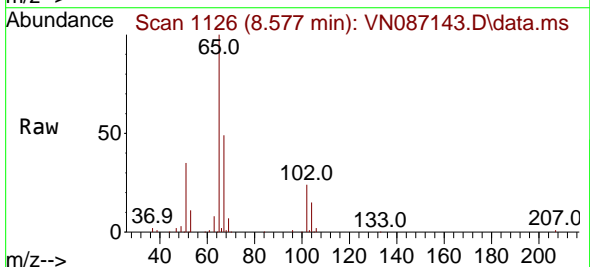
Instrument : MSVOA_N
 ClientSampleId : 20071

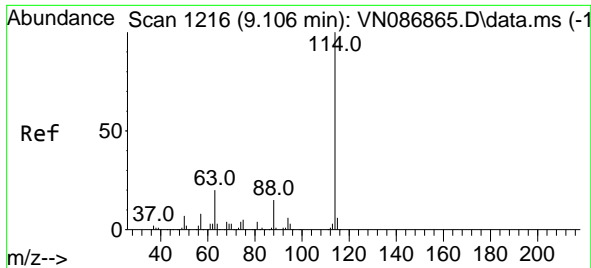
Tgt Ion:168 Resp: 166343
 Ion Ratio Lower Upper
 168 100
 99 54.2 49.1 73.7



#33
 1,2-Dichloroethane-d4
 Concen: 50.280 ug/l
 RT: 8.577 min Scan# 1126
 Delta R.T. -0.012 min
 Lab File: VN087143.D
 Acq: 20 Jun 2025 16:31

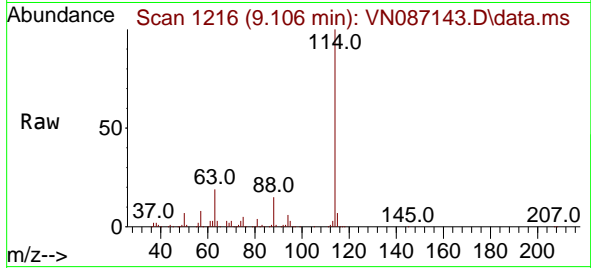
Tgt Ion: 65 Resp: 111981
 Ion Ratio Lower Upper
 65 100
 67 54.1 0.0 105.6



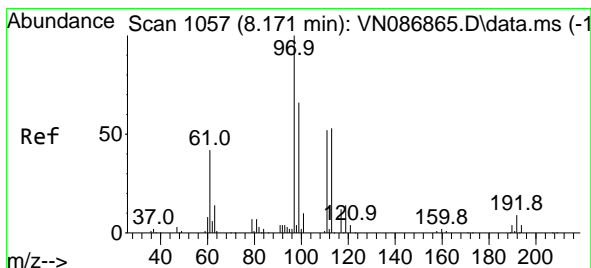
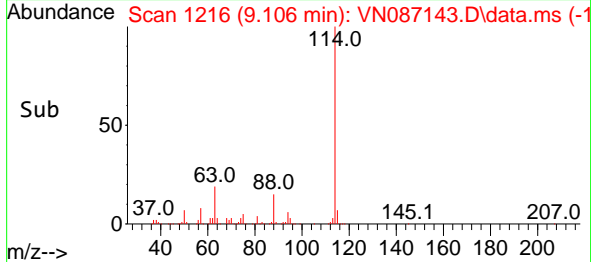
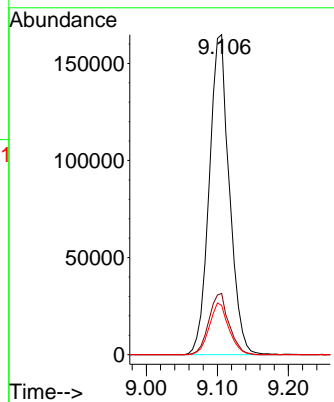


#34
 1,4-Difluorobenzene
 Concen: 50.000 ug/l
 RT: 9.106 min Scan# 11
 Delta R.T. -0.000 min
 Lab File: VN087143.D
 Acq: 20 Jun 2025 16:31

Instrument :
 MSVOA_N
 ClientSampleId :
 20071

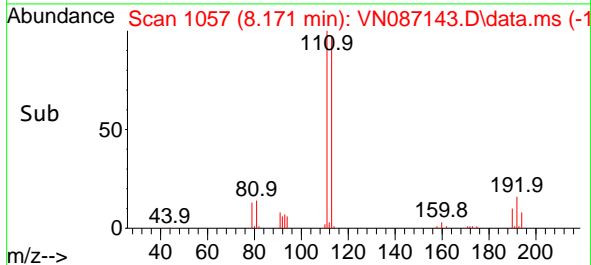
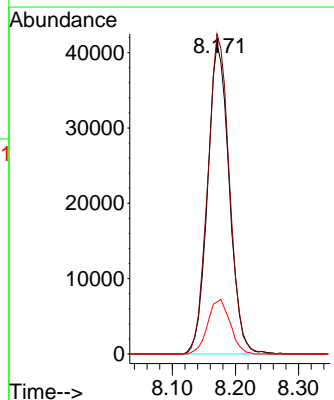
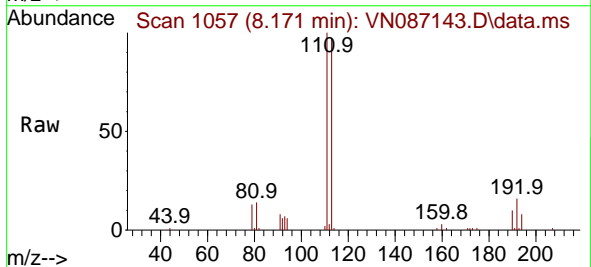


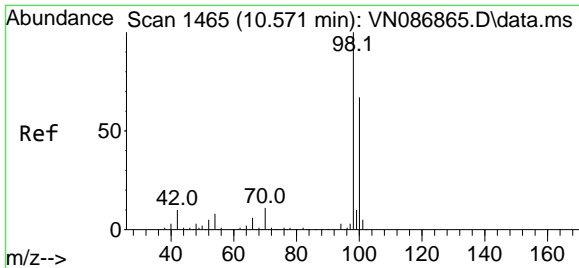
Tgt Ion:114 Resp: 323705
 Ion Ratio Lower Upper
 114 100
 63 19.2 0.0 39.6
 88 15.4 0.0 30.2



#35
 Dibromofluoromethane
 Concen: 51.095 ug/l
 RT: 8.171 min Scan# 1057
 Delta R.T. -0.000 min
 Lab File: VN087143.D
 Acq: 20 Jun 2025 16:31

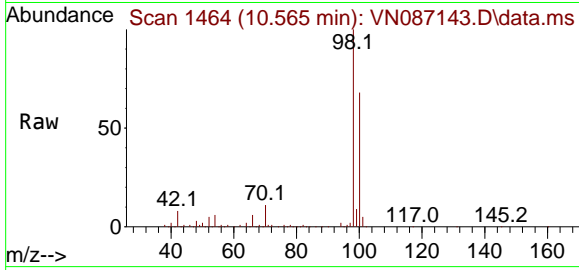
Tgt Ion:113 Resp: 98018
 Ion Ratio Lower Upper
 113 100
 111 103.1 84.2 126.2
 192 18.2 14.2 21.4



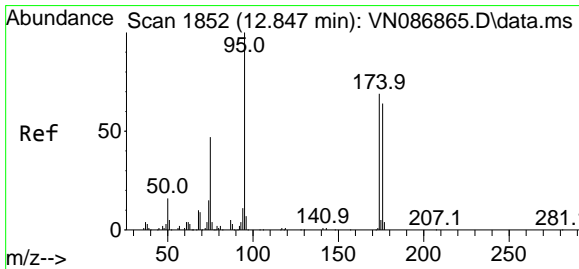
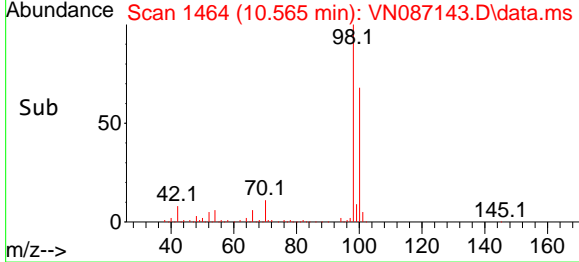
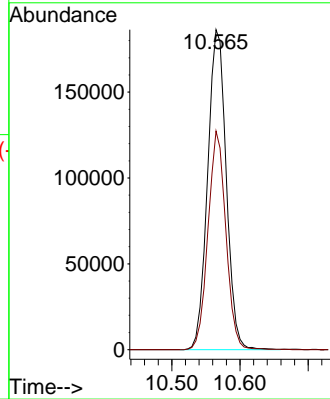


#50
 Toluene-d8
 Concen: 46.561 ug/l
 RT: 10.565 min Scan# 1464
 Delta R.T. -0.006 min
 Lab File: VN087143.D
 Acq: 20 Jun 2025 16:31

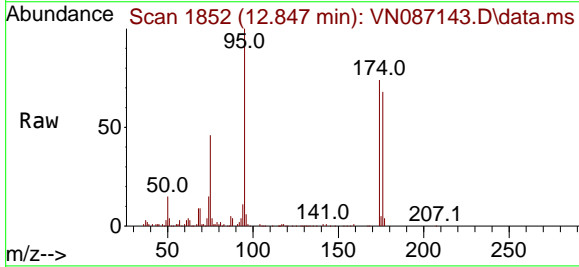
Instrument : MSVOA_N
 ClientSampleId : 20071



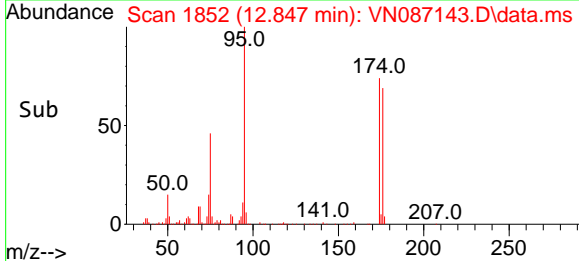
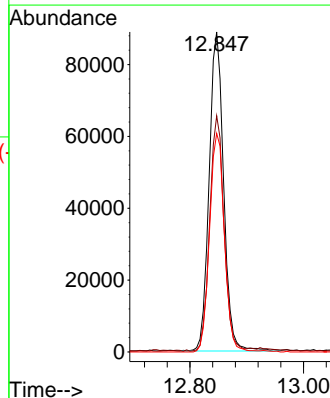
Tgt Ion: 98 Resp: 353595
 Ion Ratio Lower Upper
 98 100
 100 65.6 53.4 80.0

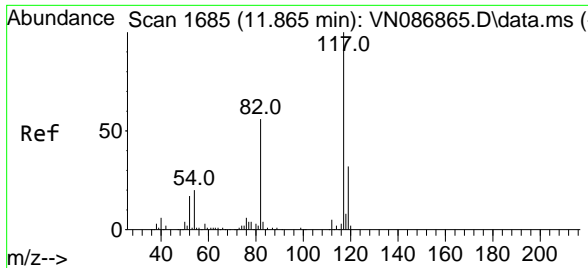


#62
 4-Bromofluorobenzene
 Concen: 55.528 ug/l
 RT: 12.847 min Scan# 1852
 Delta R.T. -0.000 min
 Lab File: VN087143.D
 Acq: 20 Jun 2025 16:31



Tgt Ion: 95 Resp: 156671
 Ion Ratio Lower Upper
 95 100
 174 72.9 0.0 141.8
 176 70.1 0.0 132.6



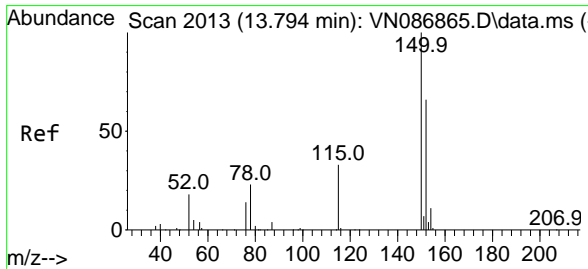
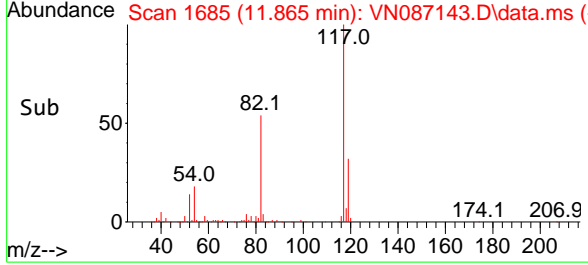
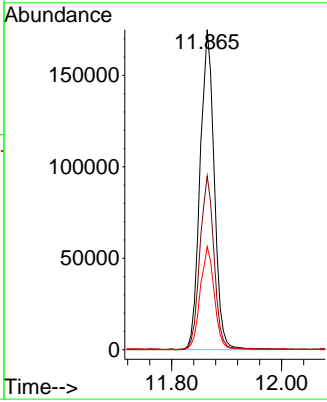
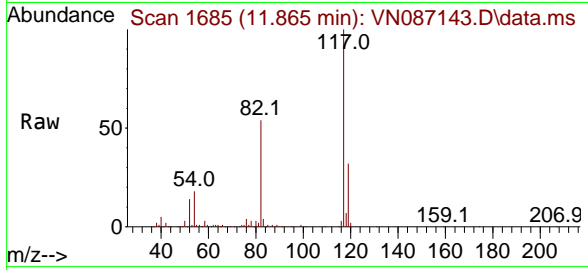


#63
 Chlorobenzene-d5
 Concen: 50.000 ug/l
 RT: 11.865 min Scan# 1
 Delta R.T. -0.000 min
 Lab File: VN087143.D
 Acq: 20 Jun 2025 16:31

Instrument : MSVOA_N
 ClientSampleId : 20071

Tgt Ion:117 Resp: 313670

Ion	Ratio	Lower	Upper
117	100		
82	54.3	44.6	67.0
119	32.1	25.5	38.3



#72
 1,4-Dichlorobenzene-d4
 Concen: 50.000 ug/l
 RT: 13.788 min Scan# 2012
 Delta R.T. -0.006 min
 Lab File: VN087143.D
 Acq: 20 Jun 2025 16:31

Tgt Ion:152 Resp: 162181

Ion	Ratio	Lower	Upper
152	100		
115	59.8	30.1	90.5
150	156.3	0.0	345.0

