

Data Path : Z:\voasrv\HPCHEM1\MSVOA_N\Data\VN062122\
 Data File : VN073006.D
 Acq On : 22 Jun 2022 06:06
 Operator : JC\MD
 Sample : N3381-17
 Misc : 5.0mL/MSVOA_N/WATER
 ALS Vial : 42 Sample Multiplier: 1

Instrument :
 MSVOA_N
 ClientSampleId :
 PZ-9

Quant Time: Jun 22 07:05:08 2022
 Quant Method : Z:\voasrv\HPCHEM1\MSVOA_N\methods\82N061722W.M
 Quant Title : SW846 8260
 QLast Update : Sat Jun 18 06:22:45 2022
 Response via : Initial Calibration

Compound	R.T.	QIon	Response	Conc	Units	Dev(Min)
Internal Standards						
1) Pentafluorobenzene	8.016	168	303370	50.000	ug/l	0.00
34) 1,4-Difluorobenzene	8.904	114	479702	50.000	ug/l	0.00
63) Chlorobenzene-d5	11.680	117	450130	50.000	ug/l	0.00
72) 1,4-Dichlorobenzene-d4	13.610	152	223279	50.000	ug/l	0.00

System Monitoring Compounds						
33) 1,2-Dichloroethane-d4	8.369	65	179853	43.851	ug/l	0.00
Spiked Amount	50.000	Range	74 - 125	Recovery	=	87.700%
35) Dibromofluoromethane	7.951	113	155039	52.290	ug/l	0.00
Spiked Amount	50.000	Range	75 - 124	Recovery	=	104.580%
50) Toluene-d8	10.374	98	502061	45.506	ug/l	0.00
Spiked Amount	50.000	Range	86 - 113	Recovery	=	91.020%
62) 4-Bromofluorobenzene	12.668	95	224221	56.518	ug/l	0.00
Spiked Amount	50.000	Range	83 - 123	Recovery	=	113.040%

Target Compounds						Qvalue
3) Chloromethane	2.228	50	4139	1.887	ug/l #	76
5) Bromomethane	2.822	94	325	0.319	ug/l #	78
6) Chloroethane	3.046	64	540	0.333	ug/l #	77
11) Tert butyl alcohol	5.292	59	1190	1.123	ug/l #	72
13) Acrolein	3.928	56	16450	39.424	ug/l #	1
15) Acrylonitrile	5.534	53	1122	0.459	ug/l #	35
16) Acetone	4.234	43	38918	17.262	ug/l	93
18) Methyl Acetate	4.804	43	3174	0.529	ug/l #	52
20) Methylene Chloride	5.169	84	10434	2.755	ug/l #	16
25) 2-Butanone	7.269	43	7725	2.159	ug/l	97
26) 2,2-Dichloropropane	7.169	77	69	Below Cal	#	53
29) Tetrahydrofuran	7.616	42	555	0.235	ug/l #	49
30) Chloroform	7.769	83	1543	0.251	ug/l #	18
31) Cyclohexane	8.022	56	60785	10.956	ug/l #	93
36) 1,1-Dichloropropene	8.016	75	23386	5.829	ug/l #	50
38) Carbon Tetrachloride	8.016	117	30344	7.190	ug/l #	17
39) Methylcyclohexane	9.392	83	2921	0.604	ug/l #	91
40) Benzene	8.392	78	796840	63.198	ug/l	99
42) 1,2-Dichloroethane	8.386	62	6912	1.543	ug/l	76
43) Isopropyl Acetate	8.463	43	22353	2.437	ug/l #	53
48) Methyl methacrylate	9.463	41	2322	0.554	ug/l #	25
51) 4-Methyl-2-Pentanone	10.263	43	5722	0.957	ug/l	95
52) Toluene	10.439	92	160558	20.741	ug/l	100
53) t-1,3-Dichloropropene	10.763	75	1287	0.276	ug/l #	43
58) 2-Chloroethyl Vinyl ether	9.910	63	726	0.302	ug/l #	44
59) 2-Hexanone	11.151	43	9260	2.001	ug/l	87
67) Ethyl Benzene	11.780	91	2928806	189.261	ug/l	100
68) m/p-Xylenes	11.886	106	3304797	544.489	ug/l	94
69) o-Xylene	12.216	106	26081	4.300	ug/l	99
71) Bromoform	12.663	173	1418	0.562	ug/l #	28
73) Isopropylbenzene	12.516	105	137776	7.976	ug/l	99
75) 1,1,2,2-Tetrachloroethane	12.898	83	2161	0.347	ug/l #	29
76) 1,2,3-Trichloropropane	12.668	75	116536	21.527	ug/l #	1
78) n-propylbenzene	12.857	91	172899	9.100	ug/l	99
79) 2-Chlorotoluene	12.998	91	5675	0.461	ug/l #	40
80) 1,3,5-Trimethylbenzene	12.998	105	54941	3.872	ug/l	97

Data Path : Z:\voasrv\HPCHEM1\MSVOA_N\Data\VN062122\
 Data File : VN073006.D
 Acq On : 22 Jun 2022 06:06
 Operator : JC\MD
 Sample : N3381-17
 Misc : 5.0mL/MSVOA_N/WATER
 ALS Vial : 42 Sample Multiplier: 1

Instrument :
 MSVOA_N
 ClientSampleId :
 PZ-9

Quant Time: Jun 22 07:05:08 2022
 Quant Method : Z:\voasrv\HPCHEM1\MSVOA_N\methods\82N061722W.M
 Quant Title : SW846 8260
 QLast Update : Sat Jun 18 06:22:45 2022
 Response via : Initial Calibration

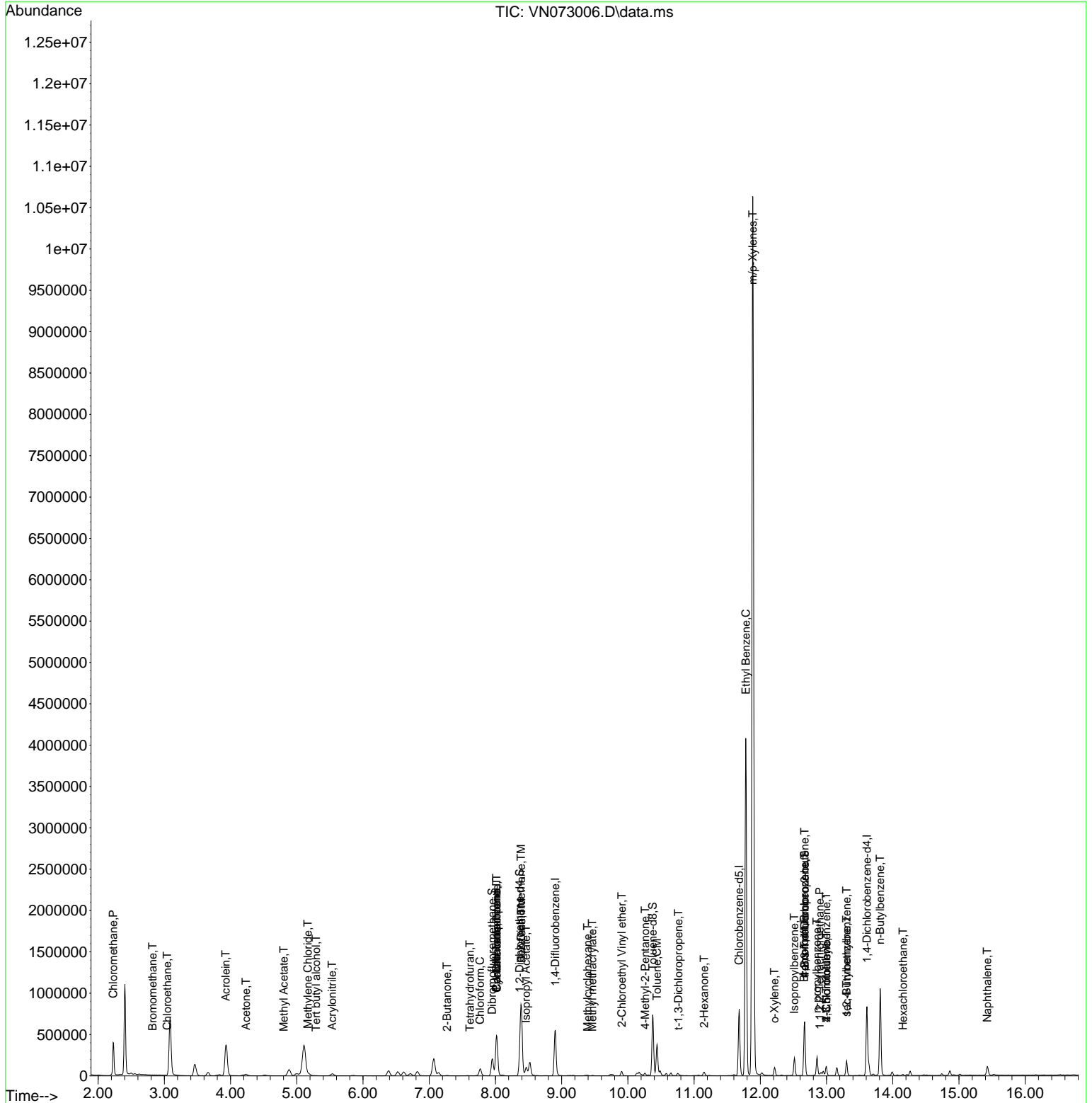
Compound	R.T.	QIon	Response	Conc	Units	Dev(Min)
81) trans-1,4-Dichloro-2-b...	12.668	75	116536	58.138	ug/l #	10
82) 4-Chlorotoluene	12.998	91	5675	0.488	ug/l #	40
84) 1,2,4-Trimethylbenzene	13.304	105	95696	6.772	ug/l	100
85) sec-Butylbenzene	13.304	105	95696	5.520	ug/l #	56
89) n-Butylbenzene	13.810	91	89298	7.792	ug/l #	42
90) Hexachloroethane	14.157	117	1052	0.398	ug/l #	9
95) Naphthalene	15.427	128	104063	6.033	ug/l	99

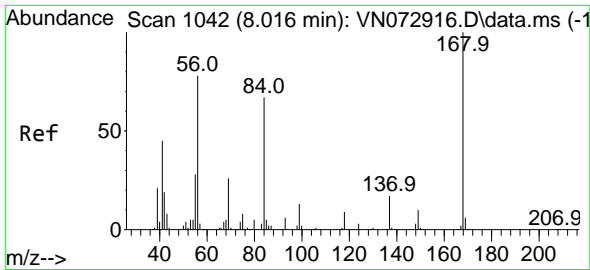
(#) = qualifier out of range (m) = manual integration (+) = signals summed

Data Path : Z:\voasrv\HPCHEM1\MSVOA_N\Data\VN062122\
 Data File : VN073006.D
 Acq On : 22 Jun 2022 06:06
 Operator : JC\MD
 Sample : N3381-17
 Misc : 5.0mL/MSVOA_N/WATER
 ALS Vial : 42 Sample Multiplier: 1

Instrument :
 MSVOA_N
 ClientSampleId :
 PZ-9

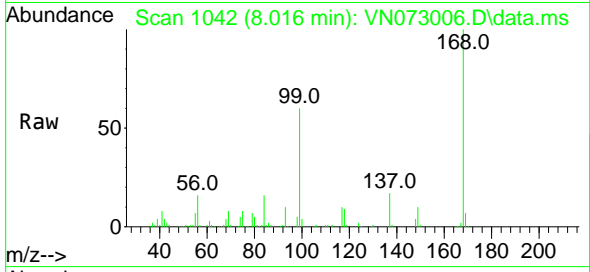
Quant Time: Jun 22 07:05:08 2022
 Quant Method : Z:\voasrv\HPCHEM1\MSVOA_N\methods\82N061722W.M
 Quant Title : SW846 8260
 QLast Update : Sat Jun 18 06:22:45 2022
 Response via : Initial Calibration



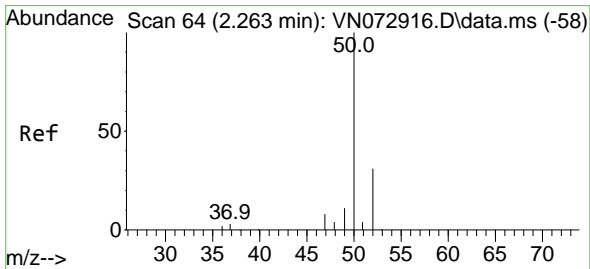
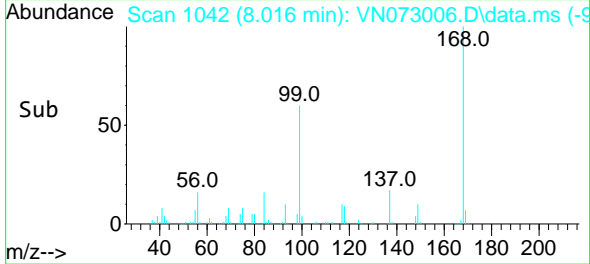
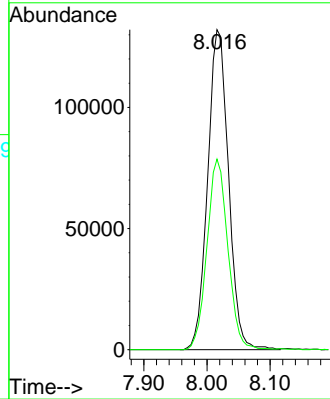


#1
 Pentafluorobenzene
 Concen: 50.000 ug/l
 RT: 8.016 min Scan# 10
 Delta R.T. -0.000 min
 Lab File: VN073006.D
 Acq: 22 Jun 2022 06:06

Instrument :
 MSVOA_N
 ClientSampleId :
 PZ-9

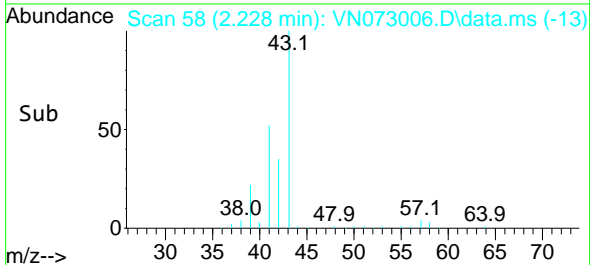
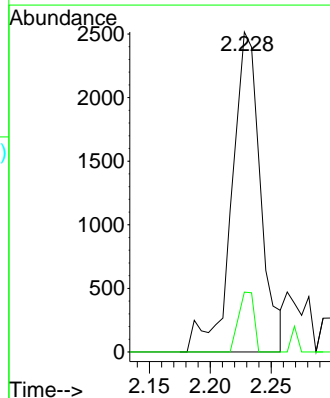
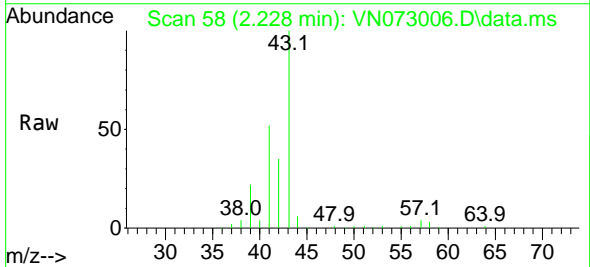


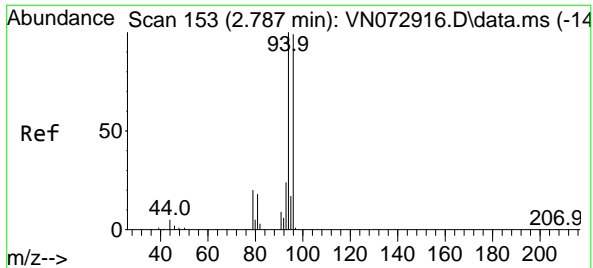
Tgt Ion:168 Resp: 303370
 Ion Ratio Lower Upper
 168 100
 99 59.6 42.3 63.5



#3
 Chloromethane
 Concen: 1.887 ug/l
 RT: 2.228 min Scan# 58
 Delta R.T. -0.035 min
 Lab File: VN073006.D
 Acq: 22 Jun 2022 06:06

Tgt Ion: 50 Resp: 4139
 Ion Ratio Lower Upper
 50 100
 52 18.7 25.7 38.5#

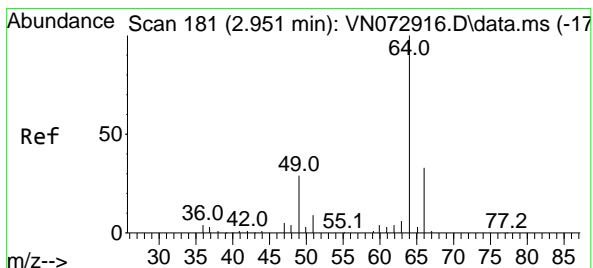
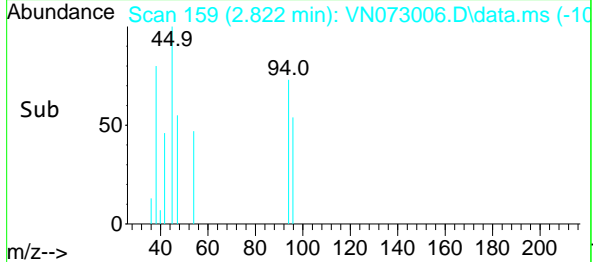
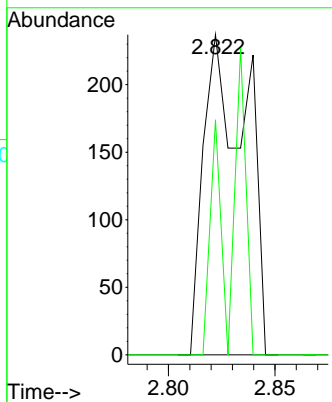
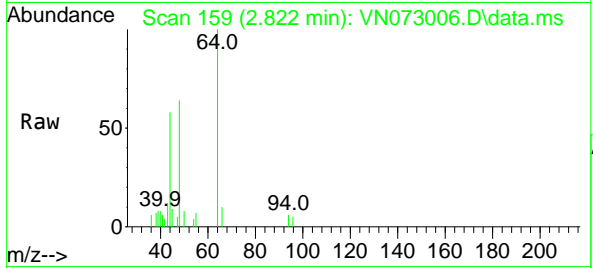




#5
 Bromomethane
 Concen: 0.319 ug/l
 RT: 2.822 min Scan# 111
 Delta R.T. 0.035 min
 Lab File: VN073006.D
 Acq: 22 Jun 2022 06:06

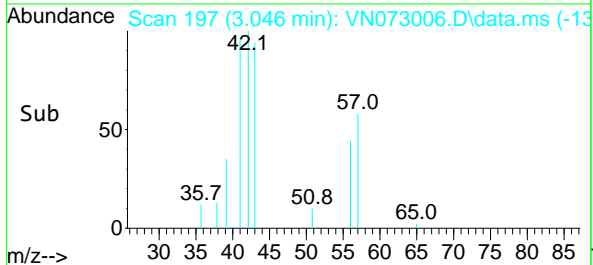
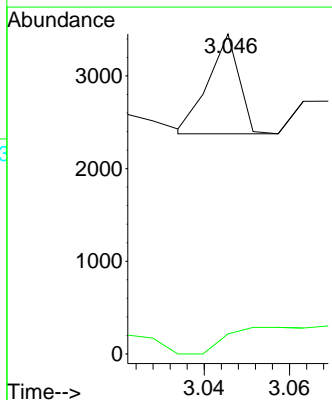
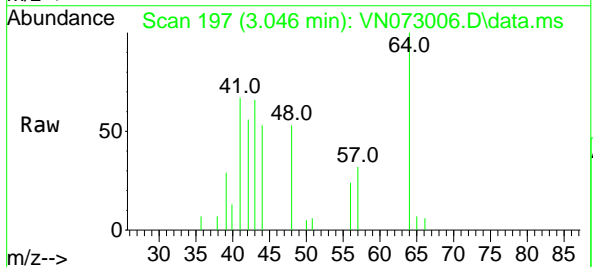
Instrument : MSVOA_N
 ClientSampleId : PZ-9

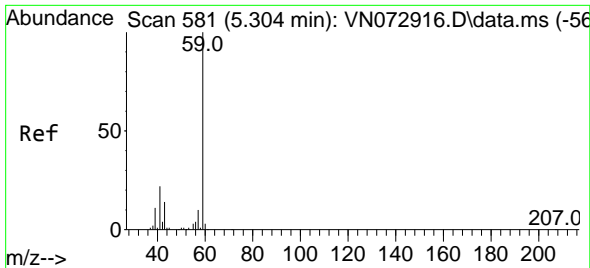
Tgt Ion: 94 Resp: 325
 Ion Ratio Lower Upper
 94 100
 96 73.4 76.0 114.0#



#6
 Chloroethane
 Concen: 0.333 ug/l
 RT: 3.046 min Scan# 197
 Delta R.T. 0.094 min
 Lab File: VN073006.D
 Acq: 22 Jun 2022 06:06

Tgt Ion: 64 Resp: 540
 Ion Ratio Lower Upper
 64 100
 66 20.0 26.2 39.4#

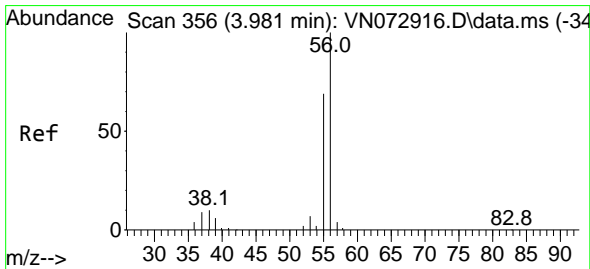
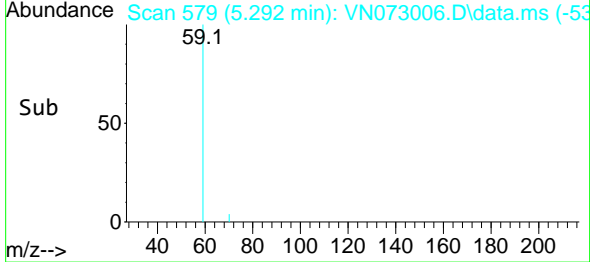
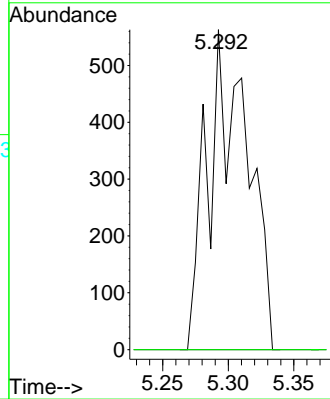
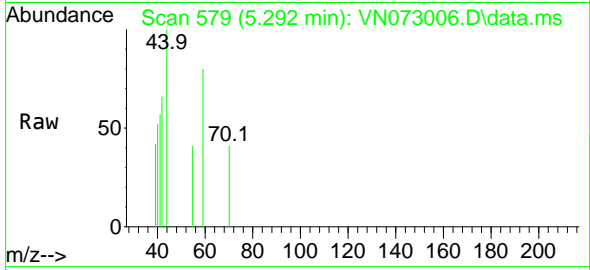




#11
 Tert butyl alcohol
 Concen: 1.123 ug/l
 RT: 5.292 min Scan# 51
 Delta R.T. -0.012 min
 Lab File: VN073006.D
 Acq: 22 Jun 2022 06:06

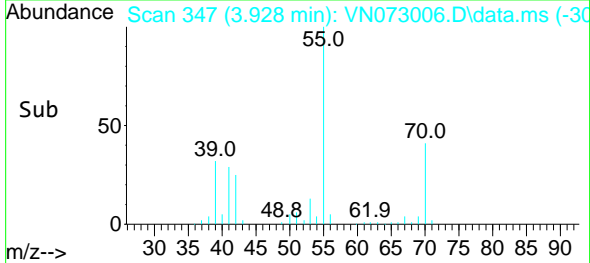
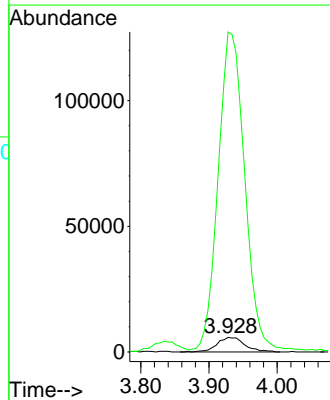
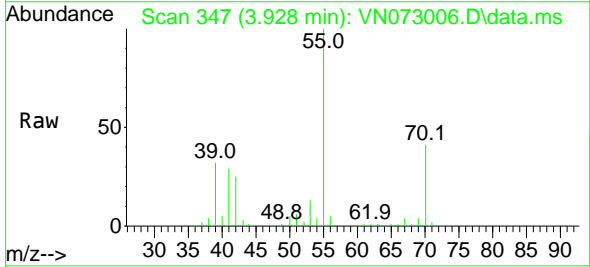
Instrument :
 MSVOA_N
 ClientSampleId :
 PZ-9

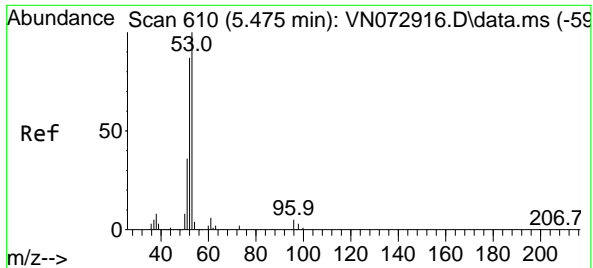
Tgt Ion: 59 Resp: 1190
 Ion Ratio Lower Upper
 59 100
 57 0.0 8.3 12.5#



#13
 Acrolein
 Concen: 39.424 ug/l
 RT: 3.928 min Scan# 347
 Delta R.T. -0.053 min
 Lab File: VN073006.D
 Acq: 22 Jun 2022 06:06

Tgt Ion: 56 Resp: 16450
 Ion Ratio Lower Upper
 56 100
 55 2081.8 54.8 82.2#



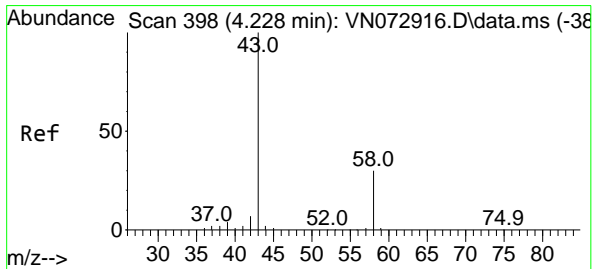
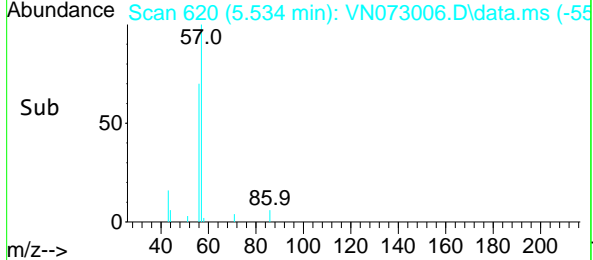
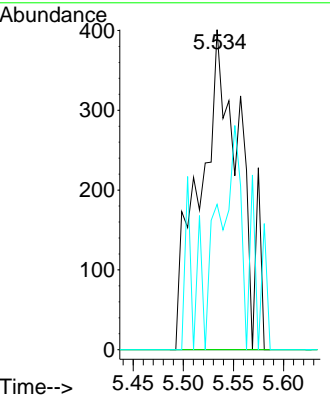
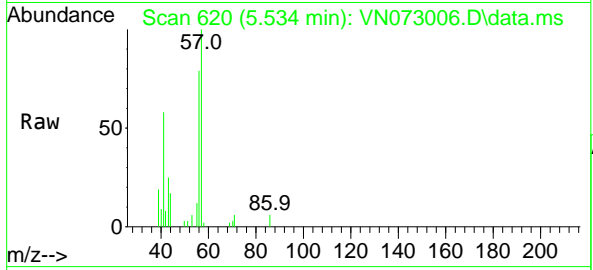


#15
 Acrylonitrile
 Concen: 0.459 ug/l
 RT: 5.534 min Scan# 610
 Delta R.T. 0.059 min
 Lab File: VN073006.D
 Acq: 22 Jun 2022 06:06

Instrument : MSVOA_N
 ClientSampleId : PZ-9

Tgt Ion: 53 Resp: 1122

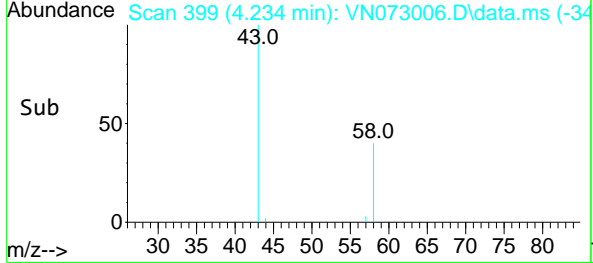
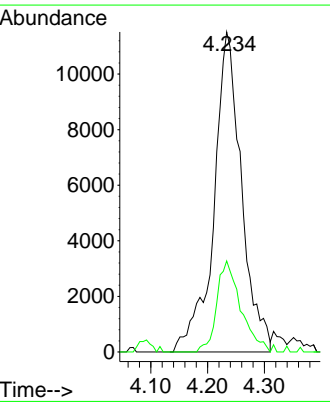
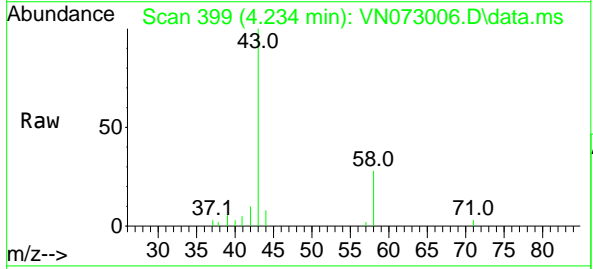
Ion	Ratio	Lower	Upper
53	100		
52	0.0	66.4	99.6#
51	36.4	28.5	42.7

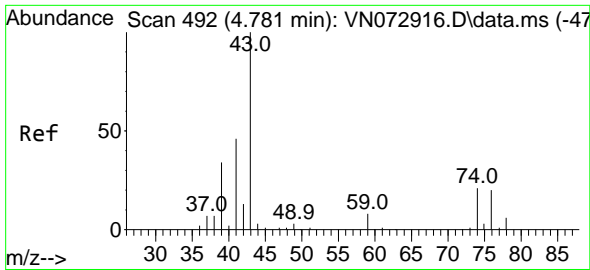


#16
 Acetone
 Concen: 17.262 ug/l
 RT: 4.234 min Scan# 399
 Delta R.T. 0.006 min
 Lab File: VN073006.D
 Acq: 22 Jun 2022 06:06

Tgt Ion: 43 Resp: 38918

Ion	Ratio	Lower	Upper
43	100		
58	28.5	26.0	39.0

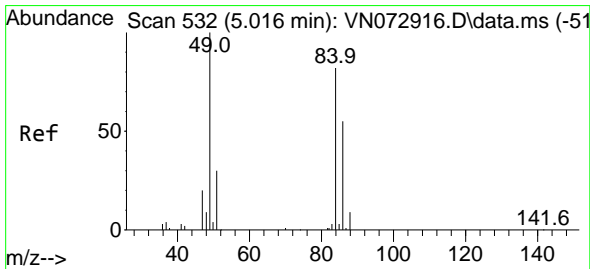
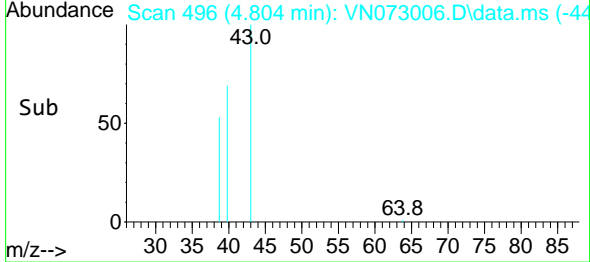
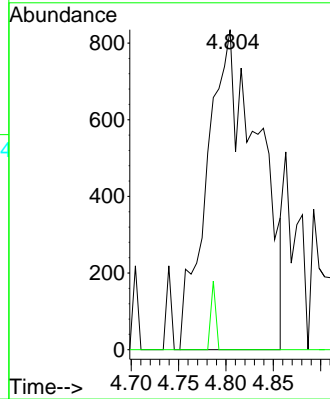
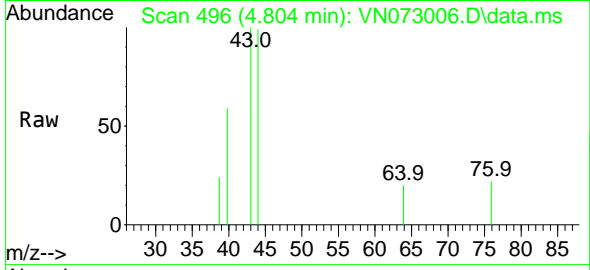




#18
 Methyl Acetate
 Concen: 0.529 ug/l
 RT: 4.804 min Scan# 496
 Delta R.T. 0.024 min
 Lab File: VN073006.D
 Acq: 22 Jun 2022 06:06

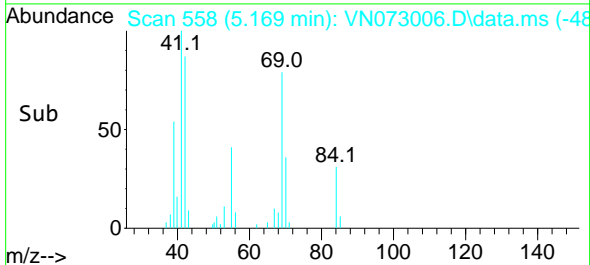
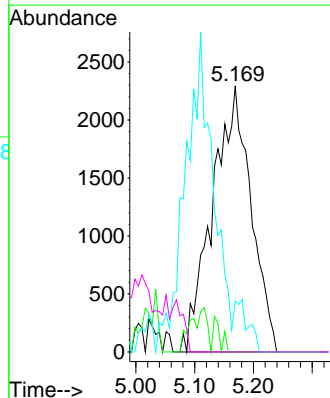
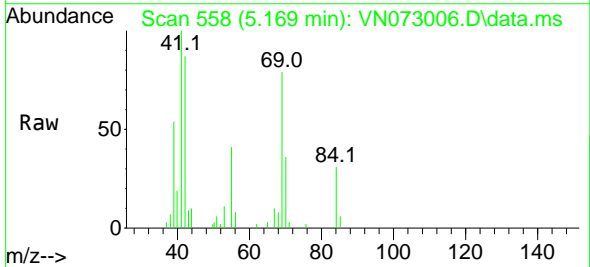
Instrument : MSVOA_N
 ClientSampleId : PZ-9

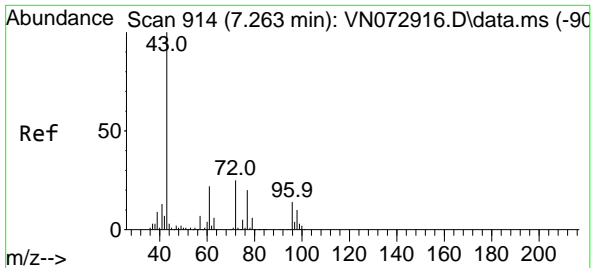
Tgt Ion: 43 Resp: 3174
 Ion Ratio Lower Upper
 43 100
 74 2.0 21.6 32.4#



#20
 Methylene Chloride
 Concen: 2.755 ug/l
 RT: 5.169 min Scan# 558
 Delta R.T. 0.153 min
 Lab File: VN073006.D
 Acq: 22 Jun 2022 06:06

Tgt Ion: 84 Resp: 10434
 Ion Ratio Lower Upper
 84 100
 49 0.0 88.3 132.5#
 51 19.2 28.2 42.2#
 86 0.0 50.6 76.0#

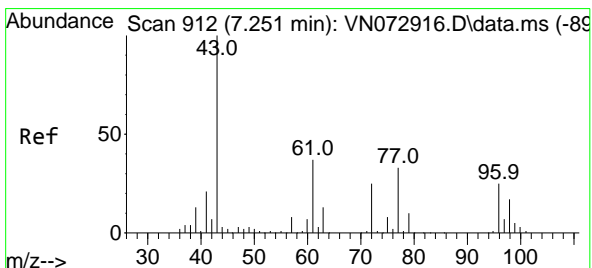
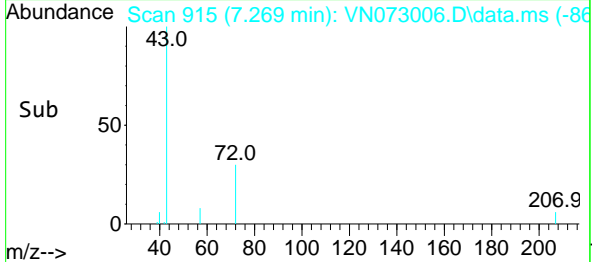
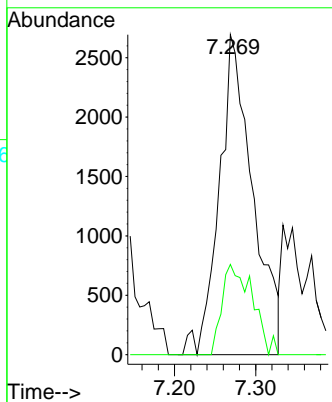
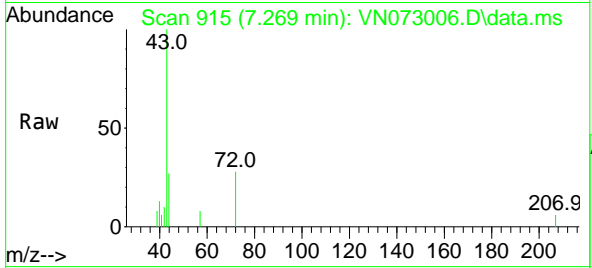




#25
 2-Butanone
 Concen: 2.159 ug/l
 RT: 7.269 min Scan# 915
 Delta R.T. 0.006 min
 Lab File: VN073006.D
 Acq: 22 Jun 2022 06:06

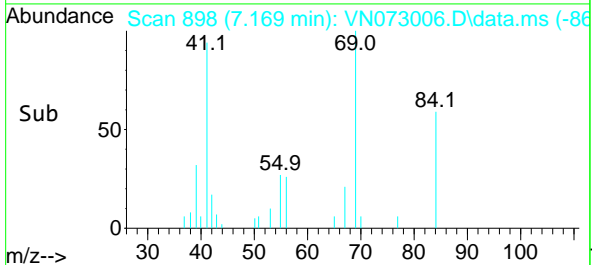
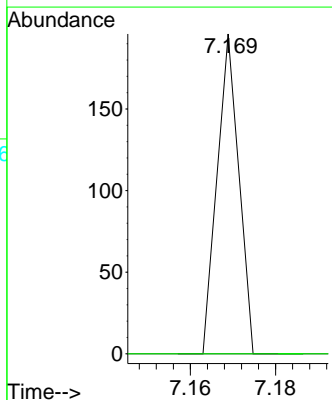
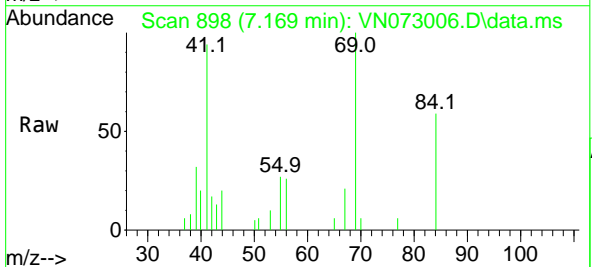
Instrument : MSVOA_N
 ClientSampleId : PZ-9

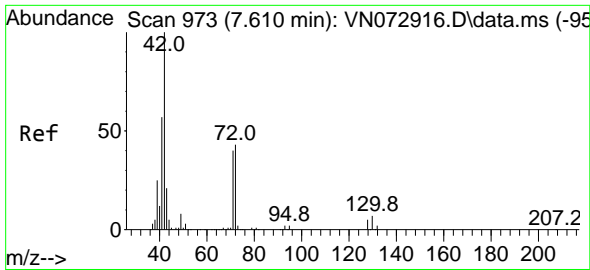
Tgt Ion: 43 Resp: 7725
 Ion Ratio Lower Upper
 43 100
 72 28.2 23.7 35.5



#26
 2,2-Dichloropropane
 Concen: Below Cal
 RT: 7.169 min Scan# 898
 Delta R.T. -0.082 min
 Lab File: VN073006.D
 Acq: 22 Jun 2022 06:06

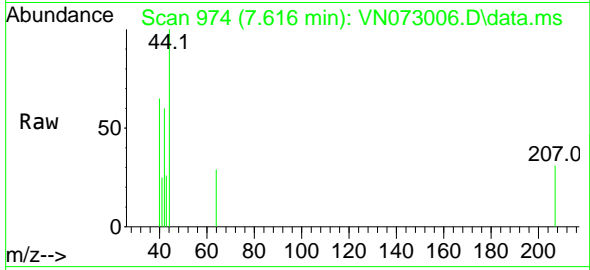
Tgt Ion: 77 Resp: 69
 Ion Ratio Lower Upper
 77 100
 97 0.0 11.4 34.2#



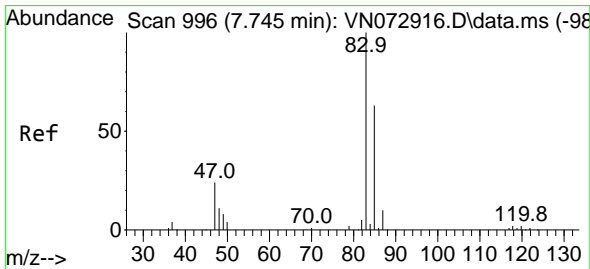
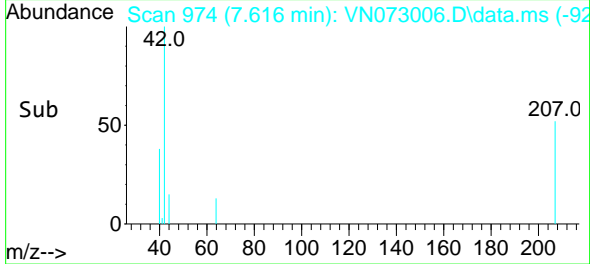
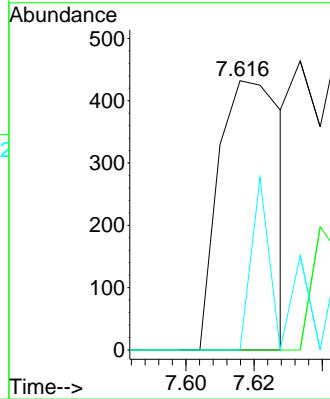


#29
 Tetrahydrofuran
 Concen: 0.235 ug/l
 RT: 7.616 min Scan# 91
 Delta R.T. 0.006 min
 Lab File: VN073006.D
 Acq: 22 Jun 2022 06:06

Instrument :
 MSVOA_N
 ClientSampleId :
 PZ-9

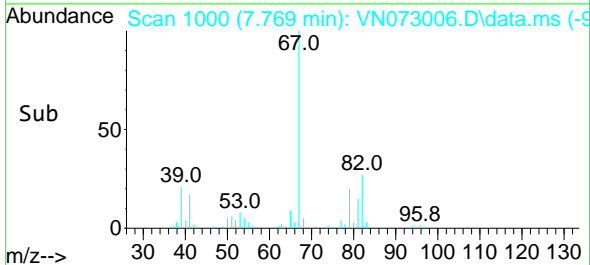
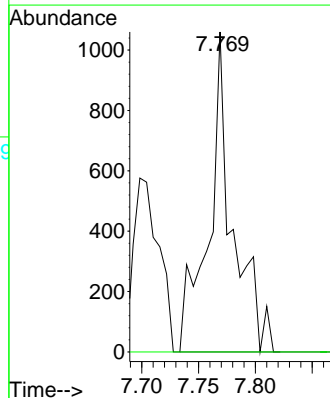
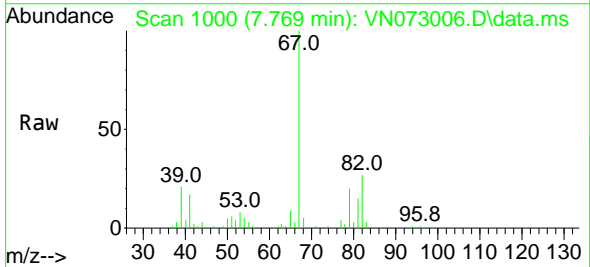


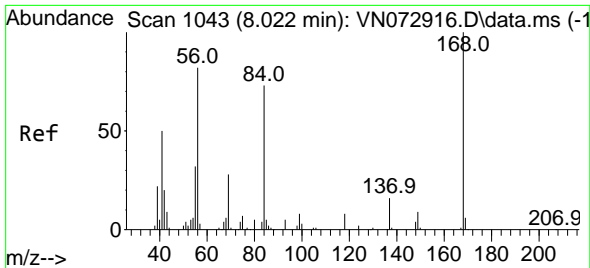
Tgt Ion: 42 Resp: 555
 Ion Ratio Lower Upper
 42 100
 72 0.0 39.7 59.5#
 71 27.2 36.6 55.0#



#30
 Chloroform
 Concen: 0.251 ug/l
 RT: 7.769 min Scan# 1000
 Delta R.T. 0.024 min
 Lab File: VN073006.D
 Acq: 22 Jun 2022 06:06

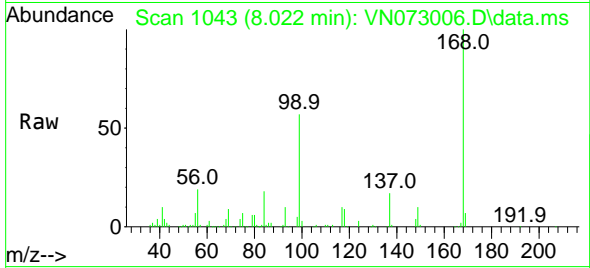
Tgt Ion: 83 Resp: 1543
 Ion Ratio Lower Upper
 83 100
 85 0.0 51.8 77.8#



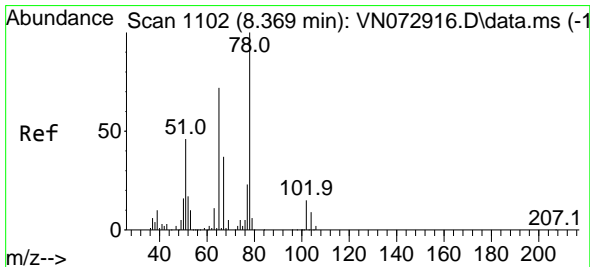
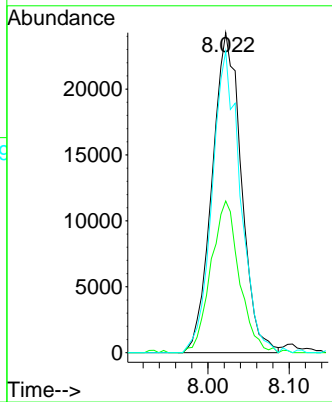
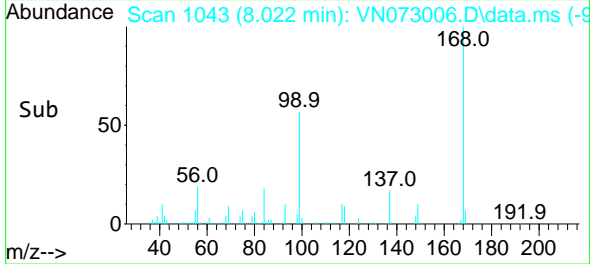


#31
 Cyclohexane
 Concen: 10.956 ug/l
 RT: 8.022 min Scan# 1043
 Delta R.T. 0.000 min
 Lab File: VN073006.D
 Acq: 22 Jun 2022 06:06

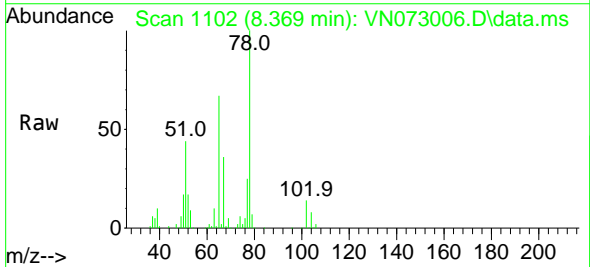
Instrument :
 MSVOA_N
 ClientSampleId :
 PZ-9



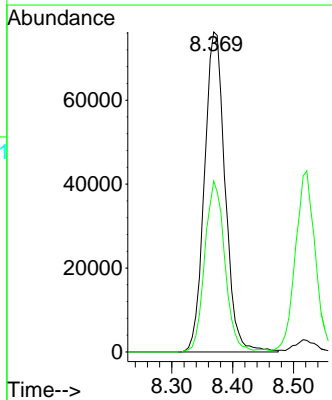
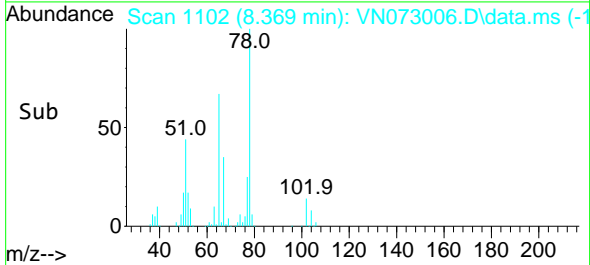
Tgt Ion: 56 Resp: 60785
 Ion Ratio Lower Upper
 56 100
 69 47.4 27.8 41.8#
 84 94.2 76.9 115.3

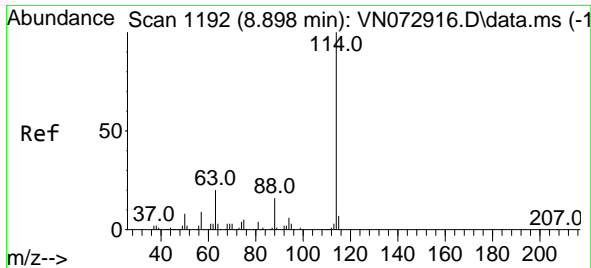


#33
 1,2-Dichloroethane-d4
 Concen: 43.851 ug/l
 RT: 8.369 min Scan# 1102
 Delta R.T. 0.000 min
 Lab File: VN073006.D
 Acq: 22 Jun 2022 06:06



Tgt Ion: 65 Resp: 179853
 Ion Ratio Lower Upper
 65 100
 67 51.6 0.0 104.8

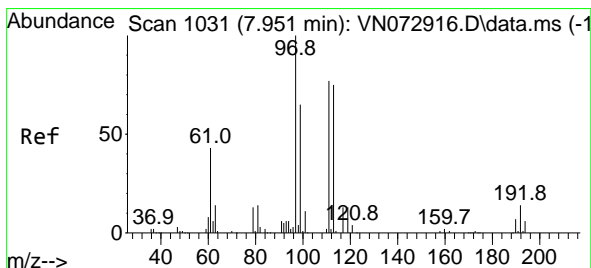
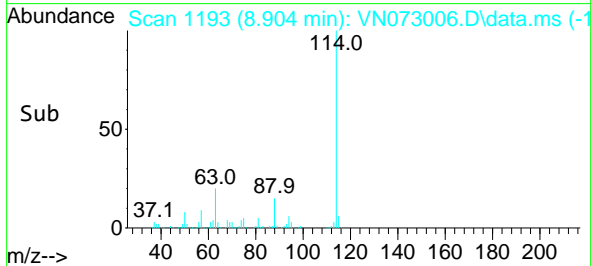
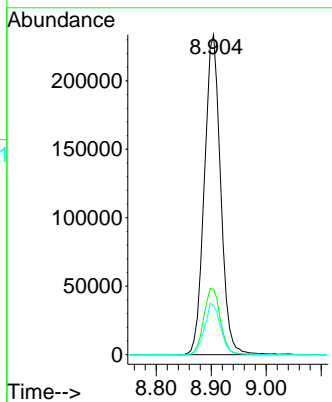
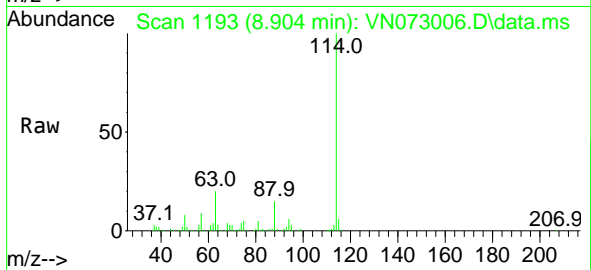




#34
 1,4-Difluorobenzene
 Concen: 50.000 ug/l
 RT: 8.904 min Scan# 1193
 Delta R.T. 0.006 min
 Lab File: VN073006.D
 Acq: 22 Jun 2022 06:06

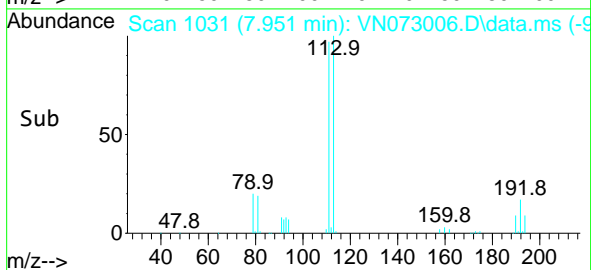
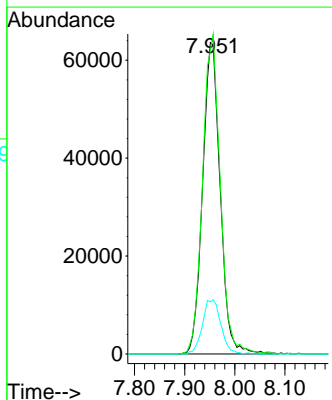
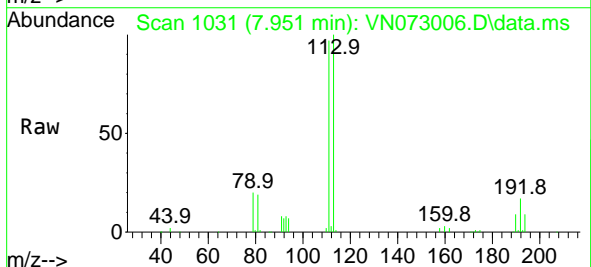
Instrument : MSVOA_N
 ClientSampleId : PZ-9

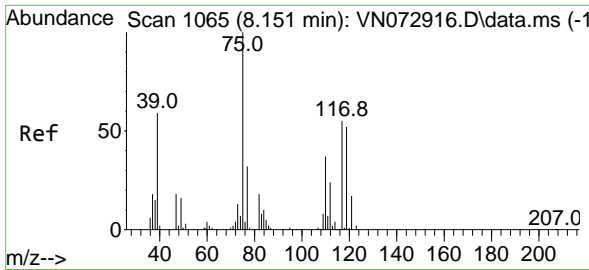
Tgt Ion	Resp	Lower	Upper
114	100		
63	20.4	0.0	40.0
88	15.2	0.0	32.6



#35
 Dibromofluoromethane
 Concen: 52.290 ug/l
 RT: 7.951 min Scan# 1031
 Delta R.T. 0.000 min
 Lab File: VN073006.D
 Acq: 22 Jun 2022 06:06

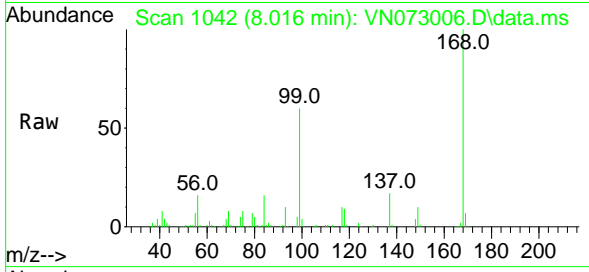
Tgt Ion	Resp	Lower	Upper
113	100		
111	103.4	81.4	122.0
192	18.2	17.0	25.6



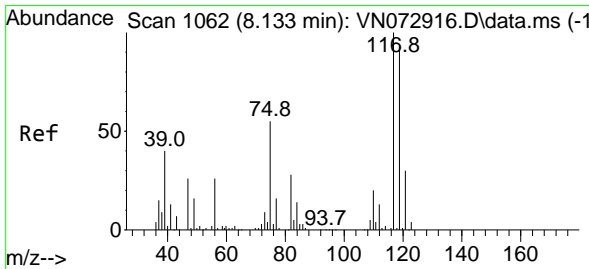
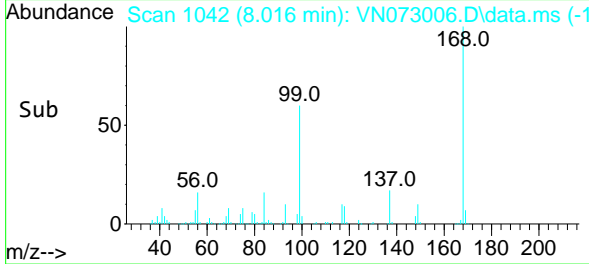
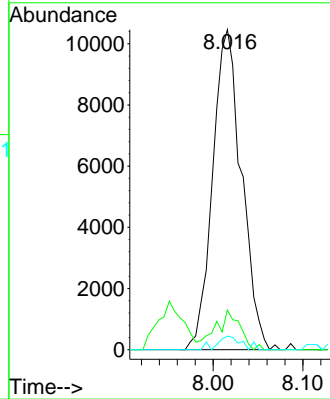


#36
 1,1-Dichloropropene
 Concen: 5.829 ug/l
 RT: 8.016 min Scan# 1042
 Delta R.T. -0.135 min
 Lab File: VN073006.D
 Acq: 22 Jun 2022 06:06

Instrument : MSVOA_N
 ClientSampleId : PZ-9

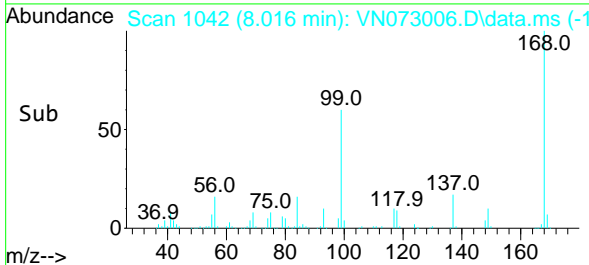
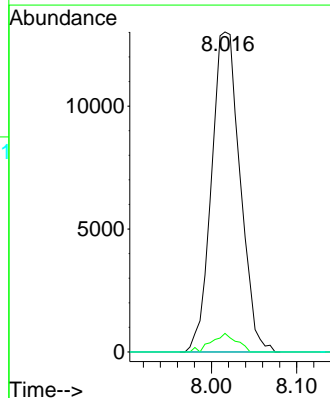
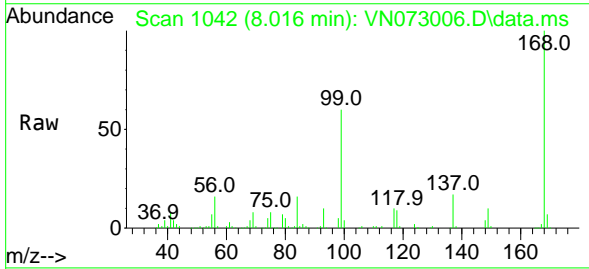


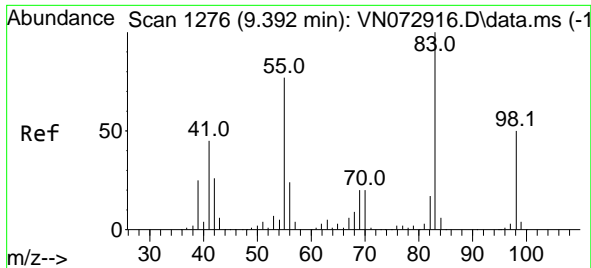
Tgt Ion: 75 Resp: 23386
 Ion Ratio Lower Upper
 75 100
 110 10.0 18.3 54.8#
 77 0.0 25.1 37.7#



#38
 Carbon Tetrachloride
 Concen: 7.190 ug/l
 RT: 8.016 min Scan# 1042
 Delta R.T. -0.118 min
 Lab File: VN073006.D
 Acq: 22 Jun 2022 06:06

Tgt Ion: 117 Resp: 30344
 Ion Ratio Lower Upper
 117 100
 119 5.8 75.8 113.8#
 121 0.0 24.6 37.0#

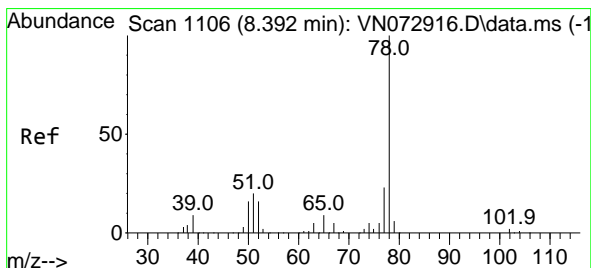
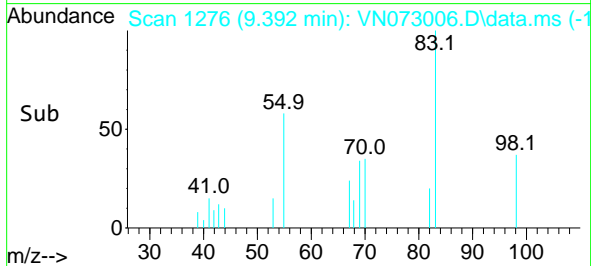
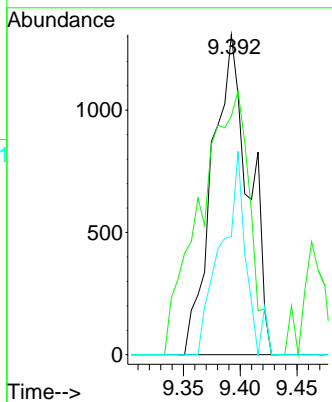
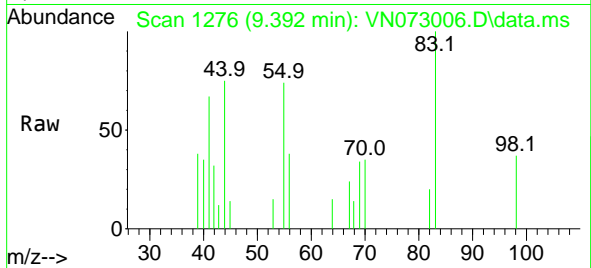




#39
 Methylcyclohexane
 Concen: 0.604 ug/l
 RT: 9.392 min Scan# 1106
 Delta R.T. 0.000 min
 Lab File: VN073006.D
 Acq: 22 Jun 2022 06:06

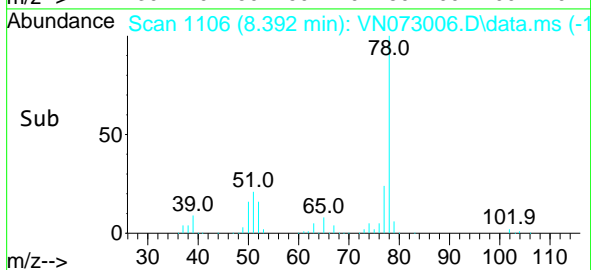
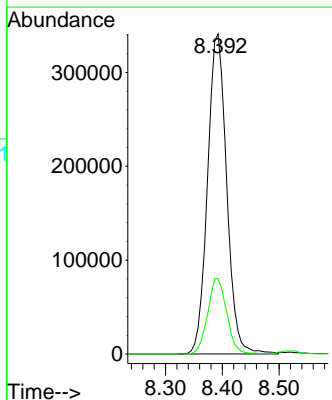
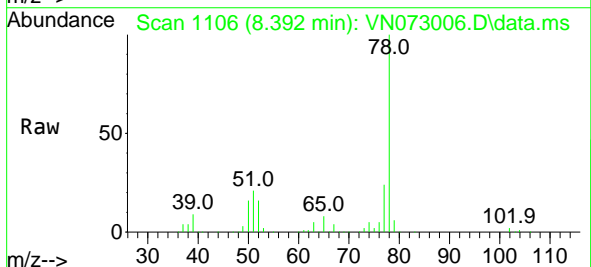
Instrument :
 MSVOA_N
 ClientSampleId :
 PZ-9

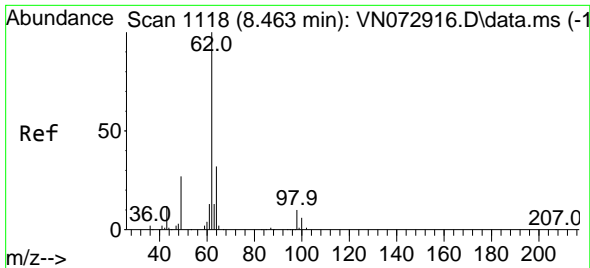
Tgt Ion	Resp	Lower	Upper
83	100		
55	74.5	57.8	86.8
98	36.9	39.4	59.2



#40
 Benzene
 Concen: 63.198 ug/l
 RT: 8.392 min Scan# 1106
 Delta R.T. 0.000 min
 Lab File: VN073006.D
 Acq: 22 Jun 2022 06:06

Tgt Ion	Resp	Lower	Upper
78	100		
77	23.6	19.4	29.0

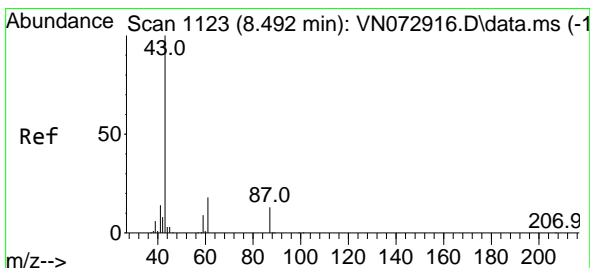
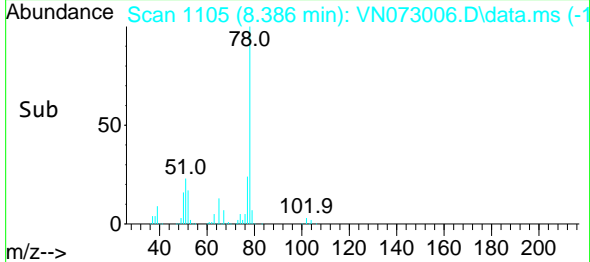
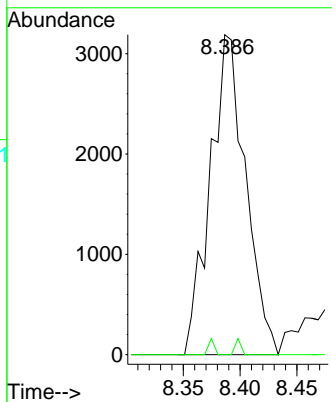
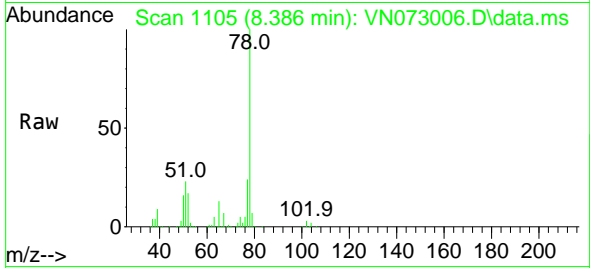




#42
 1,2-Dichloroethane
 Concen: 1.543 ug/l
 RT: 8.386 min Scan# 1118
 Delta R.T. -0.076 min
 Lab File: VN073006.D
 Acq: 22 Jun 2022 06:06

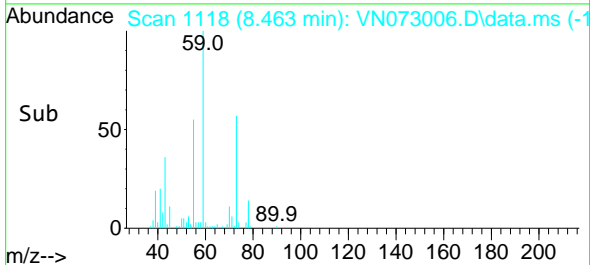
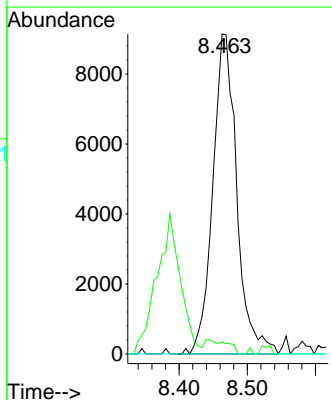
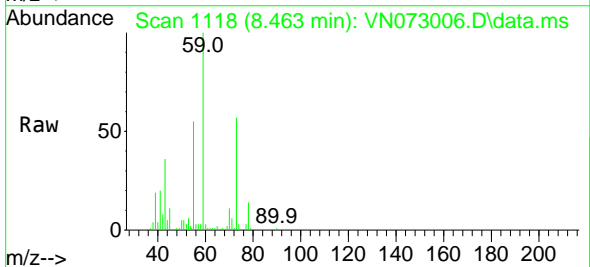
Instrument : MSVOA_N
 ClientSampleId : PZ-9

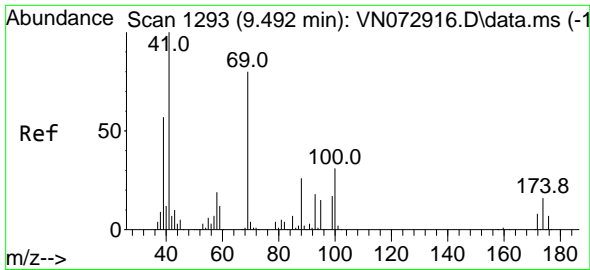
Tgt Ion: 62 Resp: 6912
 Ion Ratio Lower Upper
 62 100
 98 0.8 0.0 19.4



#43
 Isopropyl Acetate
 Concen: 2.437 ug/l
 RT: 8.463 min Scan# 1118
 Delta R.T. -0.029 min
 Lab File: VN073006.D
 Acq: 22 Jun 2022 06:06

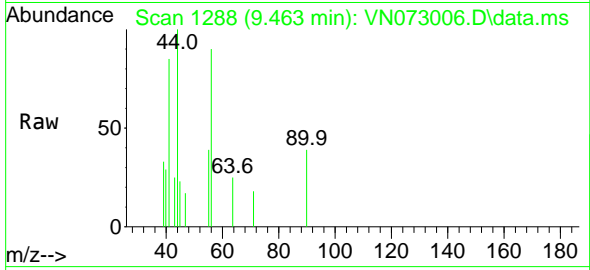
Tgt Ion: 43 Resp: 22353
 Ion Ratio Lower Upper
 43 100
 61 0.0 21.9 32.9#
 87 0.0 12.0 18.0#



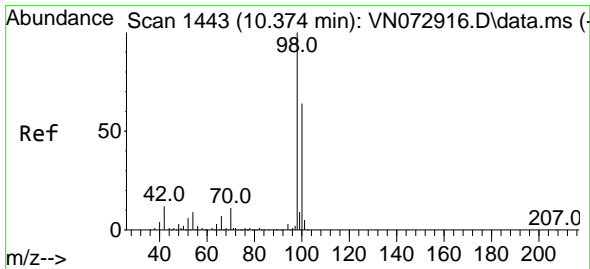
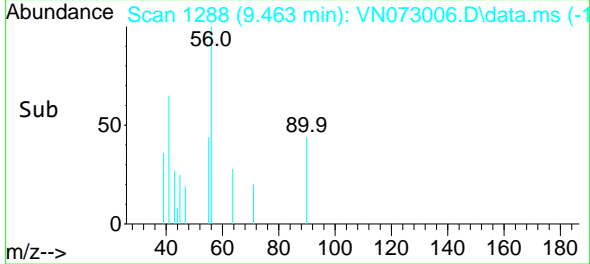
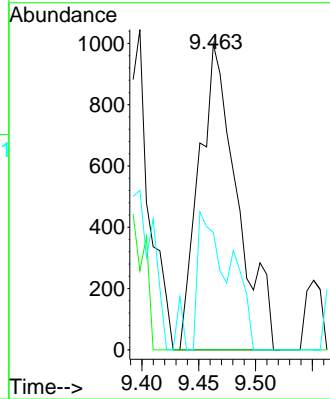


#48
 Methyl methacrylate
 Concen: 0.554 ug/l
 RT: 9.463 min Scan# 11
 Delta R.T. -0.029 min
 Lab File: VN073006.D
 Acq: 22 Jun 2022 06:06

Instrument :
 MSVOA_N
 ClientSampleId :
 PZ-9

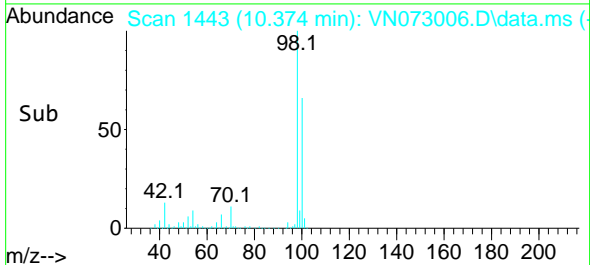
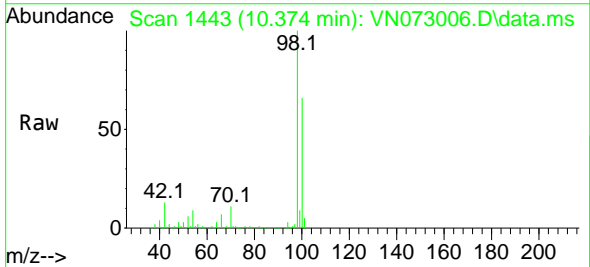
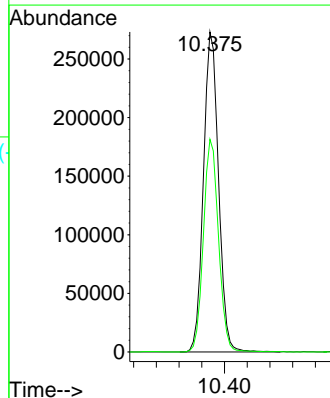


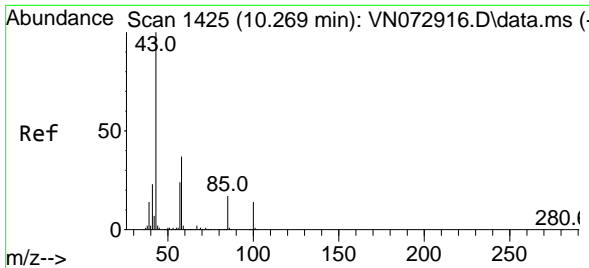
Tgt Ion: 41 Resp: 2322
 Ion Ratio Lower Upper
 41 100
 69 0.0 74.7 112.1#
 39 28.6 45.6 68.4#



#50
 Toluene-d8
 Concen: 45.506 ug/l
 RT: 10.374 min Scan# 1443
 Delta R.T. 0.000 min
 Lab File: VN073006.D
 Acq: 22 Jun 2022 06:06

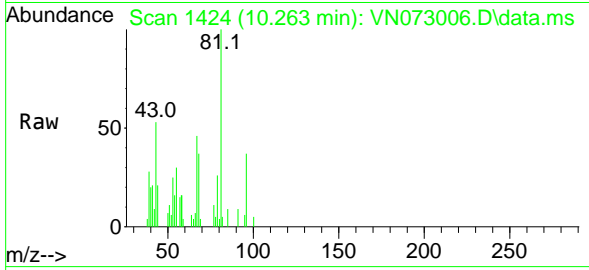
Tgt Ion: 98 Resp: 502061
 Ion Ratio Lower Upper
 98 100
 100 66.6 52.6 78.8



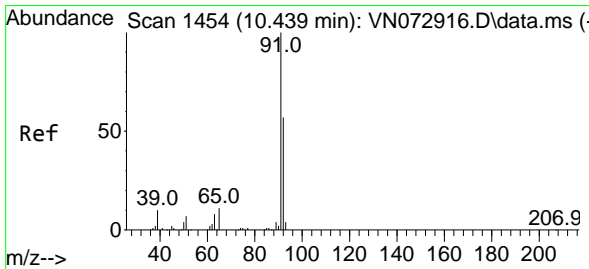
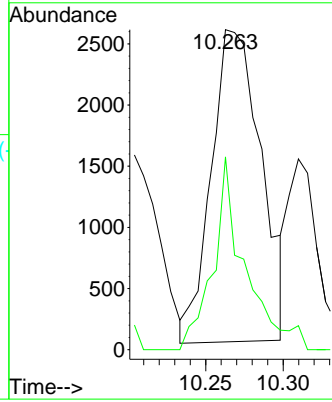
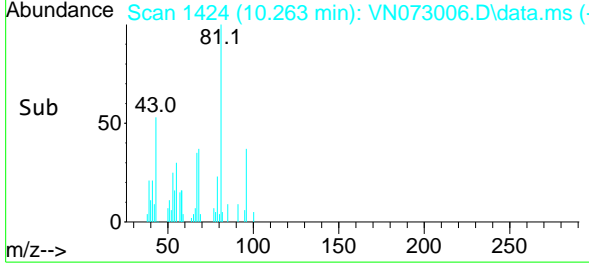


#51
 4-Methyl-2-Pentanone
 Concen: 0.957 ug/l
 RT: 10.263 min Scan# 1424
 Delta R.T. -0.006 min
 Lab File: VN073006.D
 Acq: 22 Jun 2022 06:06

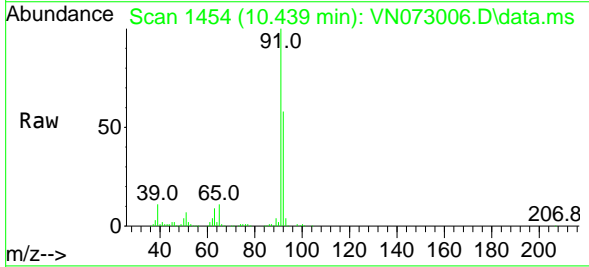
Instrument :
 MSVOA_N
 ClientSampleId :
 PZ-9



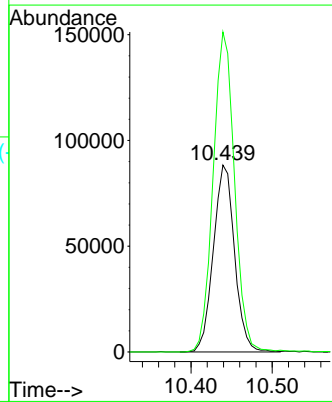
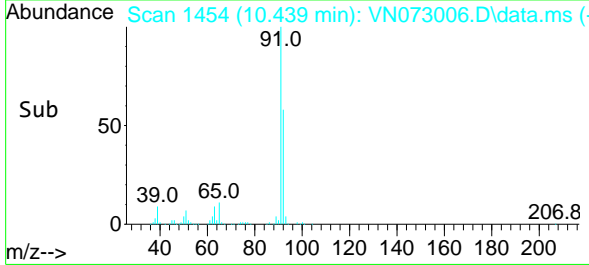
Tgt Ion: 43 Resp: 5722
 Ion Ratio Lower Upper
 43 100
 58 39.3 34.1 51.1

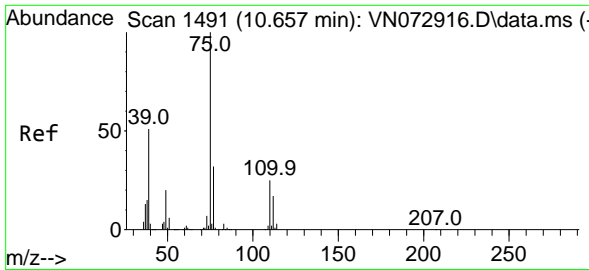


#52
 Toluene
 Concen: 20.741 ug/l
 RT: 10.439 min Scan# 1454
 Delta R.T. 0.000 min
 Lab File: VN073006.D
 Acq: 22 Jun 2022 06:06



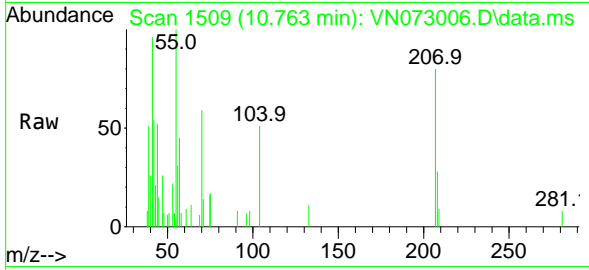
Tgt Ion: 92 Resp: 160558
 Ion Ratio Lower Upper
 92 100
 91 173.0 138.6 207.8



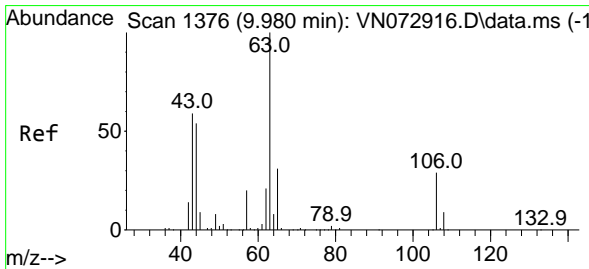
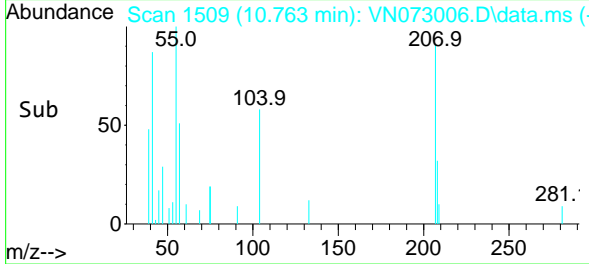
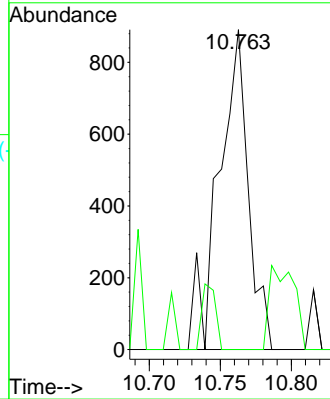


#53
 t-1,3-Dichloropropene
 Concen: 0.276 ug/l
 RT: 10.763 min Scan# 11
 Delta R.T. 0.106 min
 Lab File: VN073006.D
 Acq: 22 Jun 2022 06:06

Instrument :
 MSVOA_N
 ClientSampleId :
 PZ-9

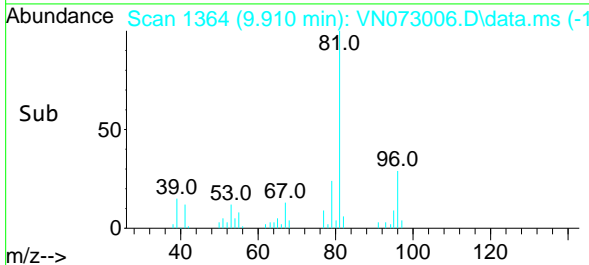
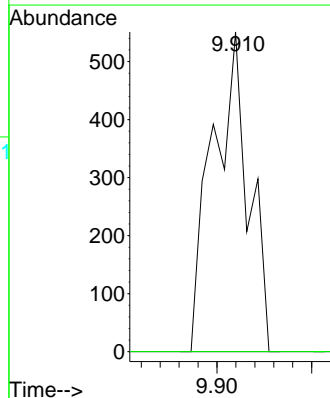
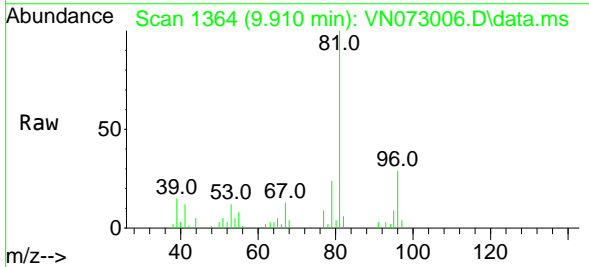


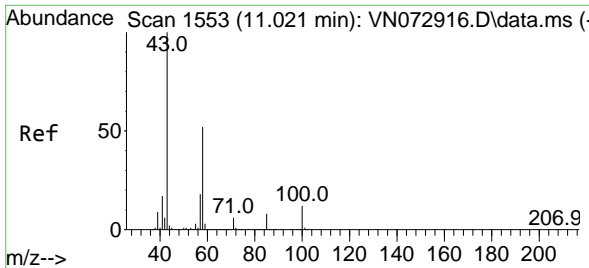
Tgt Ion: 75 Resp: 1287
 Ion Ratio Lower Upper
 75 100
 77 0.0 25.6 38.4#



#58
 2-Chloroethyl Vinyl ether
 Concen: 0.302 ug/l
 RT: 9.910 min Scan# 1364
 Delta R.T. -0.071 min
 Lab File: VN073006.D
 Acq: 22 Jun 2022 06:06

Tgt Ion: 63 Resp: 726
 Ion Ratio Lower Upper
 63 100
 106 0.0 24.6 36.8#

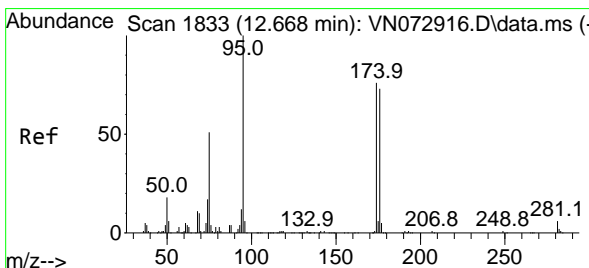
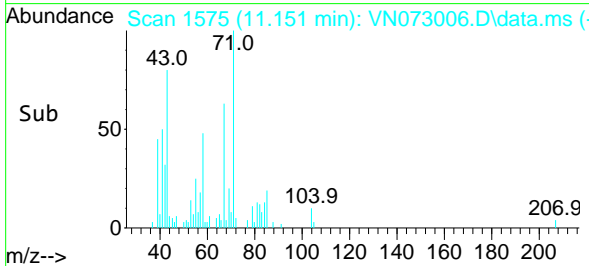
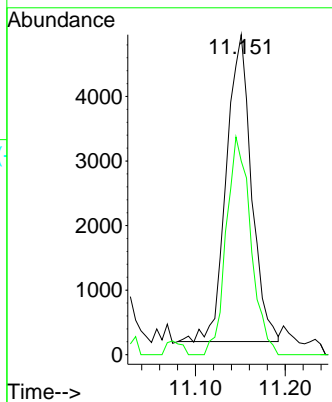
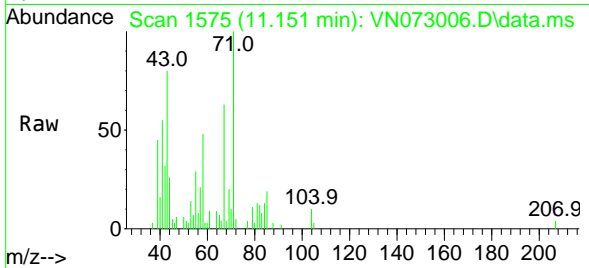




#59
 2-Hexanone
 Concen: 2.001 ug/l
 RT: 11.151 min Scan# 1155
 Delta R.T. 0.129 min
 Lab File: VN073006.D
 Acq: 22 Jun 2022 06:06

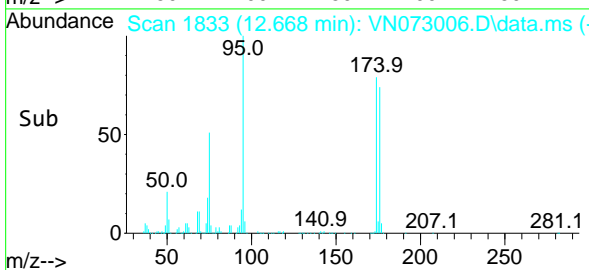
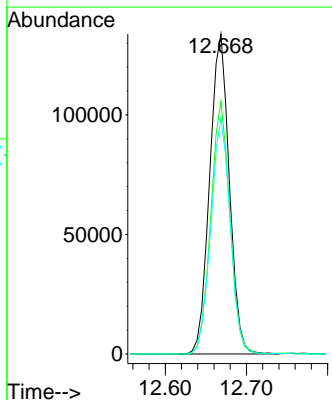
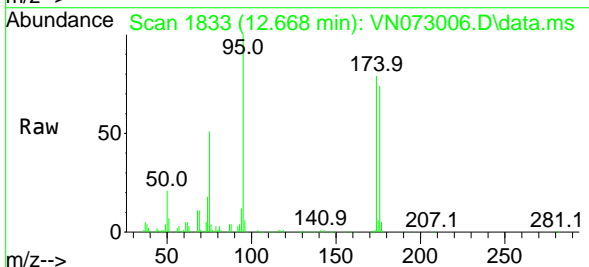
Instrument : MSVOA_N
 ClientSampleId : PZ-9

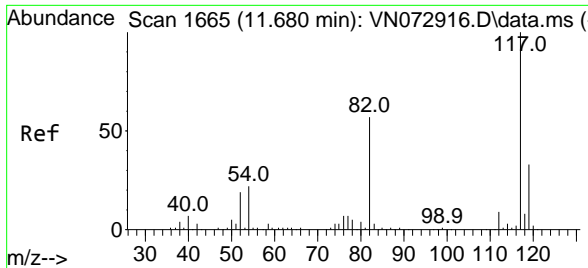
Tgt Ion: 43 Resp: 9260
 Ion Ratio Lower Upper
 43 100
 58 69.2 29.7 89.1



#62
 4-Bromofluorobenzene
 Concen: 56.518 ug/l
 RT: 12.668 min Scan# 1833
 Delta R.T. 0.000 min
 Lab File: VN073006.D
 Acq: 22 Jun 2022 06:06

Tgt Ion: 95 Resp: 224221
 Ion Ratio Lower Upper
 95 100
 174 77.0 0.0 167.6
 176 72.9 0.0 163.4



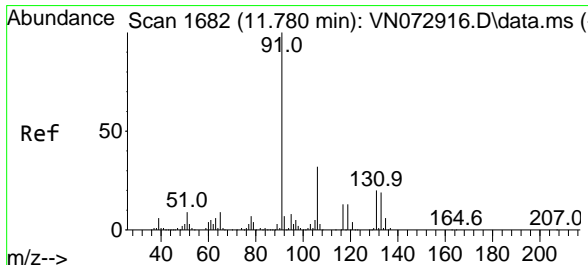
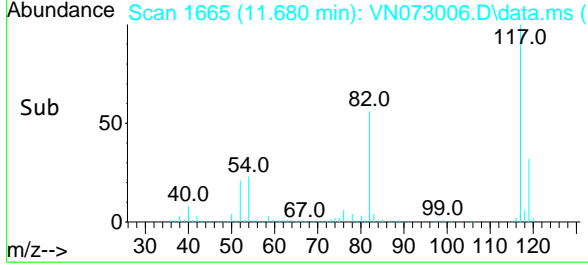
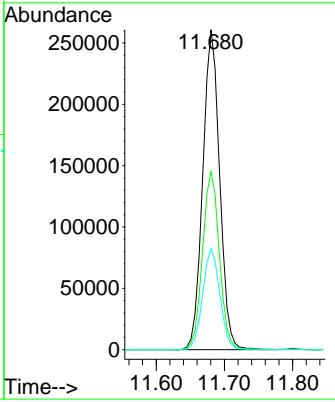
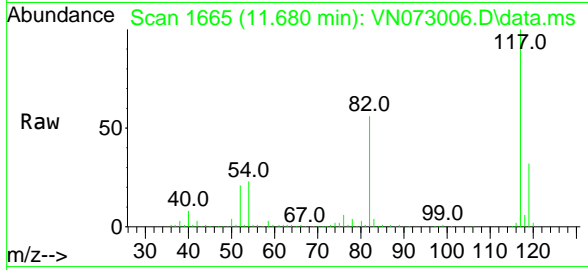


#63
 Chlorobenzene-d5
 Concen: 50.000 ug/l
 RT: 11.680 min Scan# 1170
 Delta R.T. 0.000 min
 Lab File: VN073006.D
 Acq: 22 Jun 2022 06:06

Instrument : MSVOA_N
 ClientSampleId : PZ-9

Tgt Ion:117 Resp: 450130

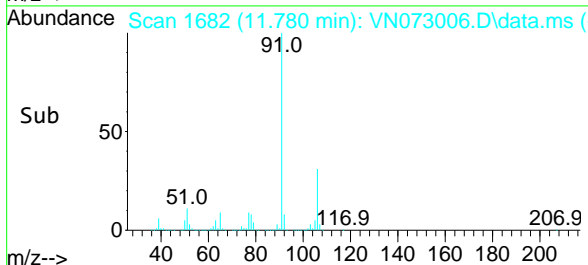
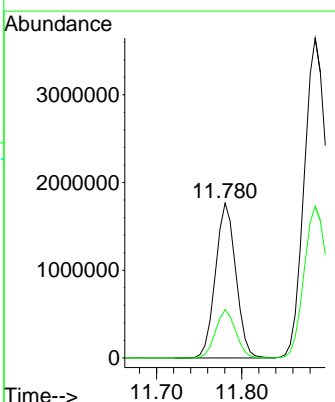
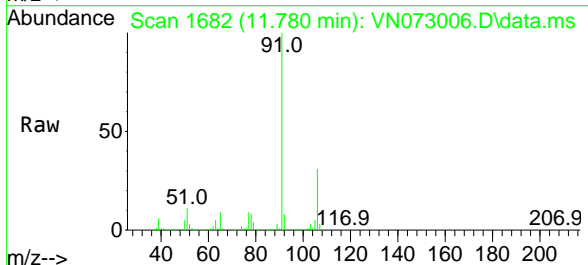
Ion	Ratio	Lower	Upper
117	100		
82	55.6	44.2	66.2
119	31.6	25.4	38.0

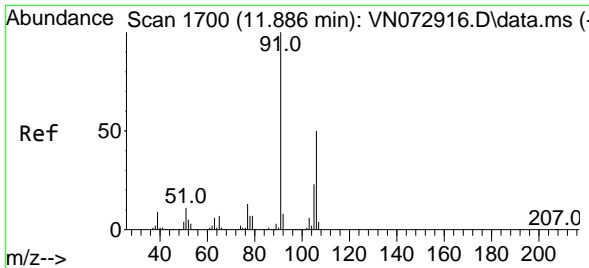


#67
 Ethyl Benzene
 Concen: 189.261 ug/l
 RT: 11.780 min Scan# 1682
 Delta R.T. 0.000 min
 Lab File: VN073006.D
 Acq: 22 Jun 2022 06:06

Tgt Ion: 91 Resp: 2928806

Ion	Ratio	Lower	Upper
91	100		
106	31.2	24.9	37.3

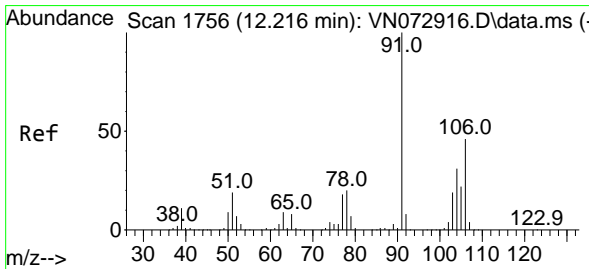
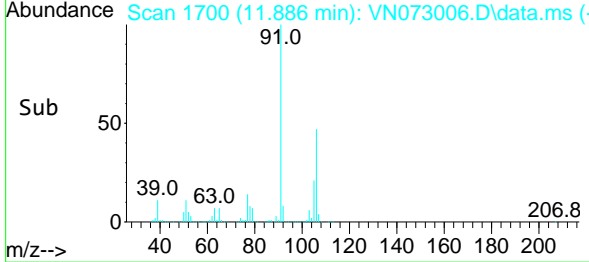
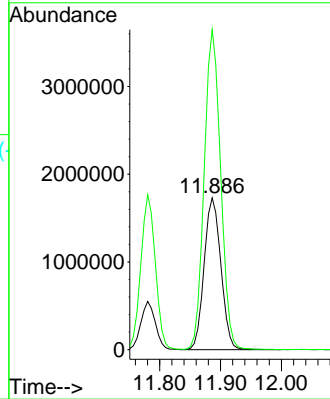
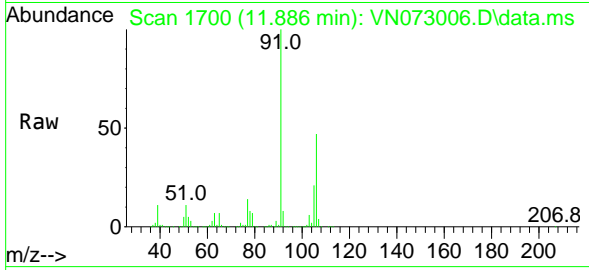




#68
 m/p-Xylenes
 Concen: 544.489 ug/l
 RT: 11.886 min Scan# 11
 Delta R.T. 0.000 min
 Lab File: VN073006.D
 Acq: 22 Jun 2022 06:06

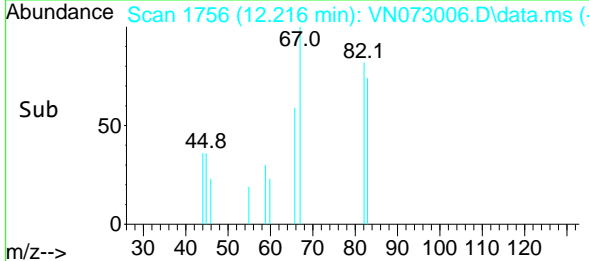
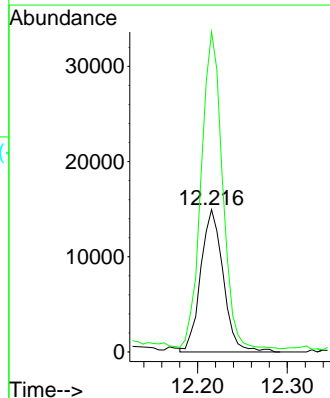
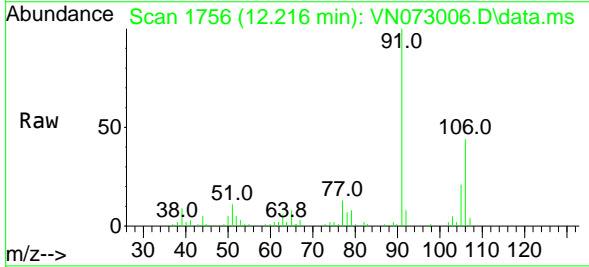
Instrument :
 MSVOA_N
 ClientSampleId :
 PZ-9

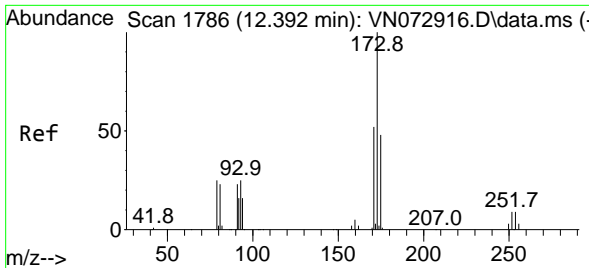
Tgt Ion:106 Resp: 3304797
 Ion Ratio Lower Upper
 106 100
 91 207.3 158.9 238.3



#69
 o-Xylene
 Concen: 4.300 ug/l
 RT: 12.216 min Scan# 1756
 Delta R.T. 0.000 min
 Lab File: VN073006.D
 Acq: 22 Jun 2022 06:06

Tgt Ion:106 Resp: 26081
 Ion Ratio Lower Upper
 106 100
 91 210.3 106.0 318.0

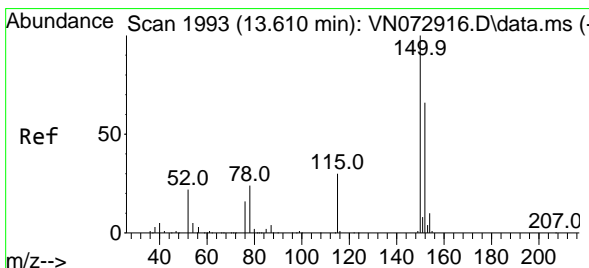
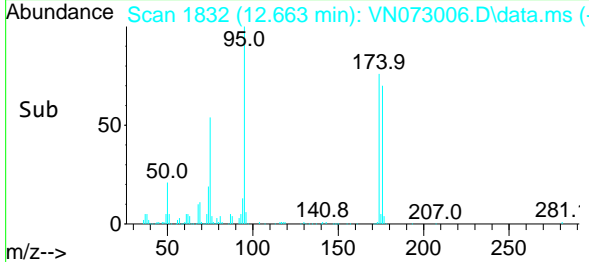
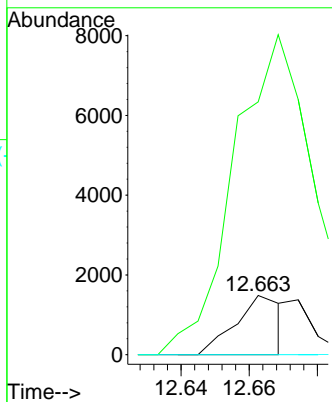
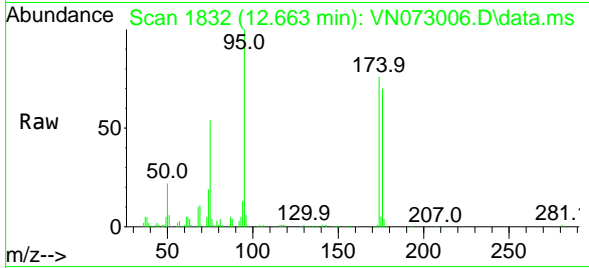




#71
 Bromoform
 Concen: 0.562 ug/l
 RT: 12.663 min Scan# 1832
 Delta R.T. 0.271 min
 Lab File: VN073006.D
 Acq: 22 Jun 2022 06:06

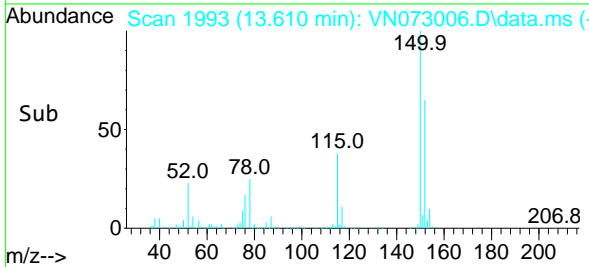
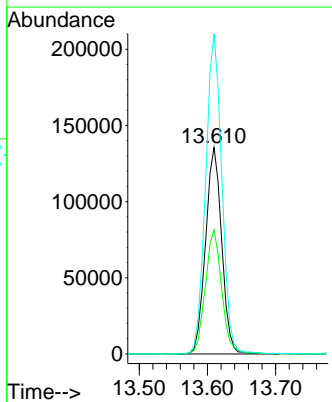
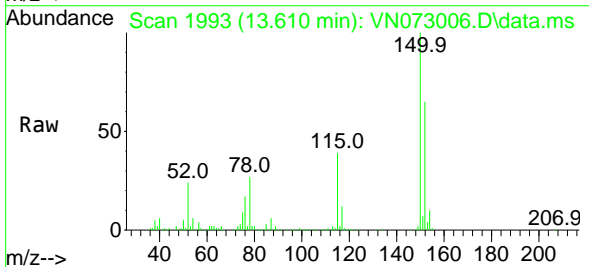
Instrument : MSVOA_N
 ClientSampleId : PZ-9

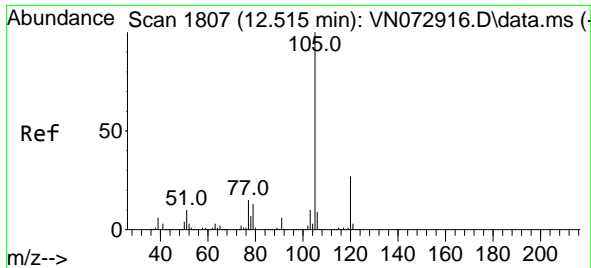
Tgt Ion:173 Resp: 1418
 Ion Ratio Lower Upper
 173 100
 175 0.0 24.6 73.6#
 254 0.0 0.1 0.1#



#72
 1,4-Dichlorobenzene-d4
 Concen: 50.000 ug/l
 RT: 13.610 min Scan# 1993
 Delta R.T. 0.000 min
 Lab File: VN073006.D
 Acq: 22 Jun 2022 06:06

Tgt Ion:152 Resp: 223279
 Ion Ratio Lower Upper
 152 100
 115 61.4 28.9 86.7
 150 155.6 0.0 356.2

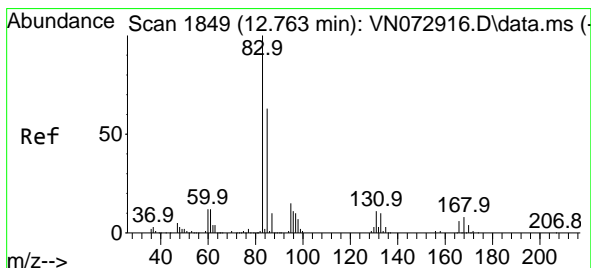
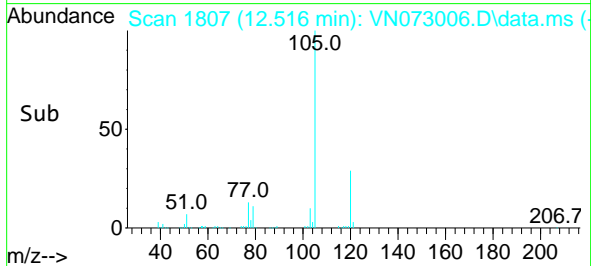
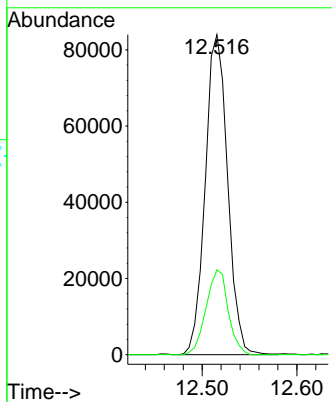
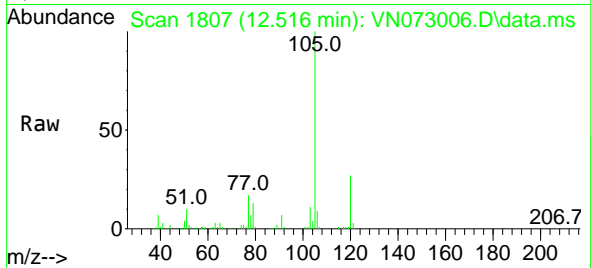




#73
 Isopropylbenzene
 Concen: 7.976 ug/l
 RT: 12.516 min Scan# 1807
 Delta R.T. 0.000 min
 Lab File: VN073006.D
 Acq: 22 Jun 2022 06:06

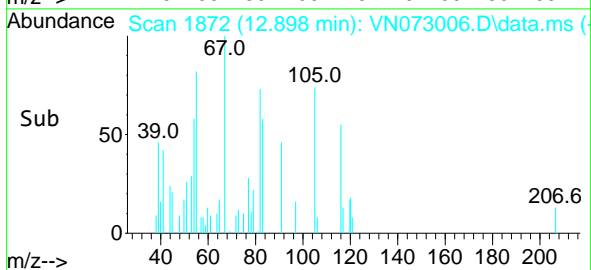
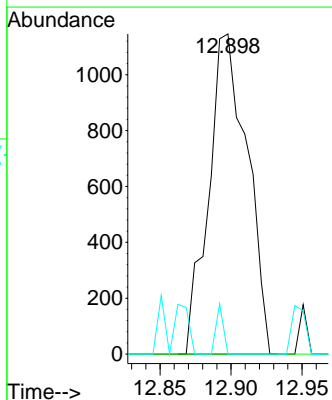
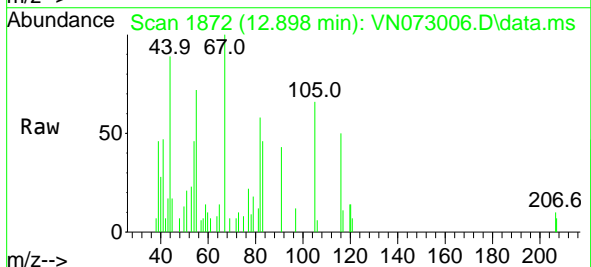
Instrument : MSVOA_N
 ClientSampled : PZ-9

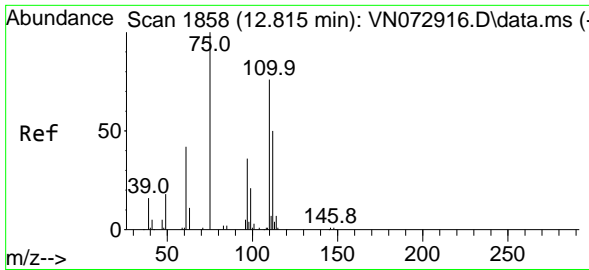
Tgt Ion:105 Resp: 137776
 Ion Ratio Lower Upper
 105 100
 120 26.1 13.5 40.4



#75
 1,1,2,2-Tetrachloroethane
 Concen: 0.347 ug/l
 RT: 12.898 min Scan# 1872
 Delta R.T. 0.135 min
 Lab File: VN073006.D
 Acq: 22 Jun 2022 06:06

Tgt Ion: 83 Resp: 2161
 Ion Ratio Lower Upper
 83 100
 131 0.0 5.3 15.9#
 85 2.9 32.3 96.9#

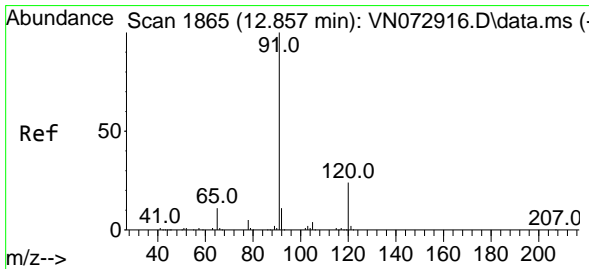
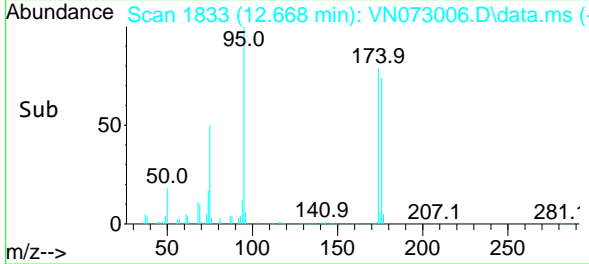
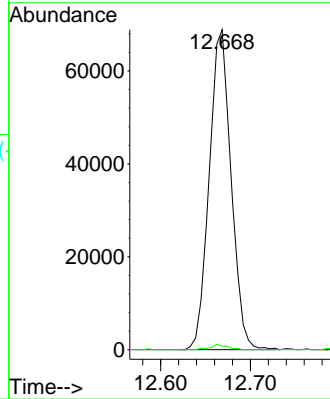
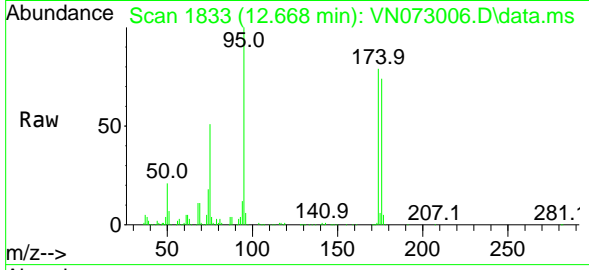




#76
 1,2,3-Trichloropropane
 Concen: 21.527 ug/l
 RT: 12.668 min Scan# 1833
 Delta R.T. -0.147 min
 Lab File: VN073006.D
 Acq: 22 Jun 2022 06:06

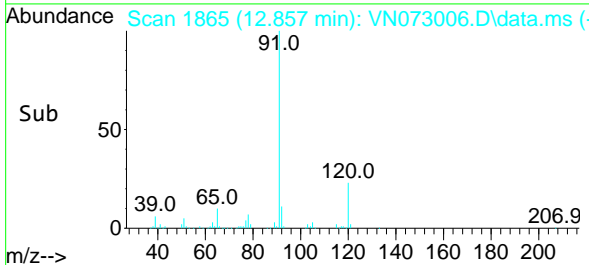
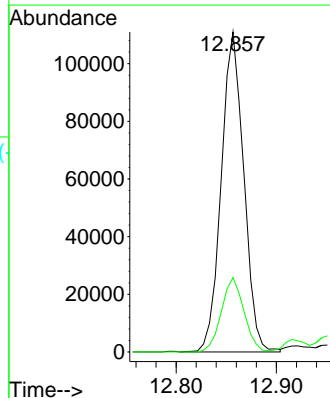
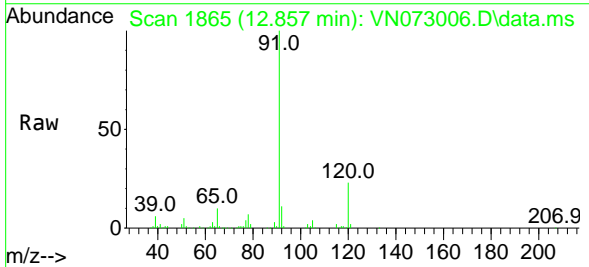
Instrument :
 MSVOA_N
 ClientSampleId :
 PZ-9

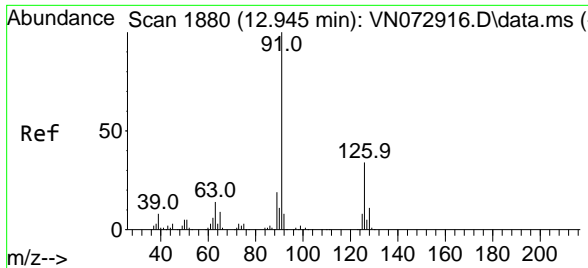
Tgt Ion: 75 Resp: 116536
 Ion Ratio Lower Upper
 75 100
 77 1.3 98.5 295.5#



#78
 n-propylbenzene
 Concen: 9.100 ug/l
 RT: 12.857 min Scan# 1865
 Delta R.T. 0.000 min
 Lab File: VN073006.D
 Acq: 22 Jun 2022 06:06

Tgt Ion: 91 Resp: 172899
 Ion Ratio Lower Upper
 91 100
 120 23.3 11.9 35.5

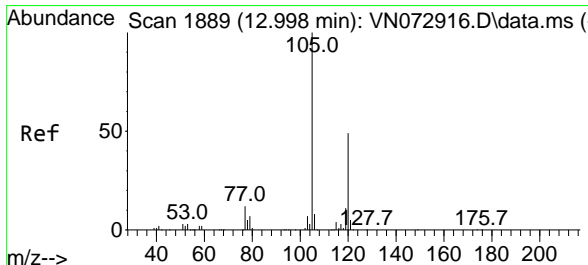
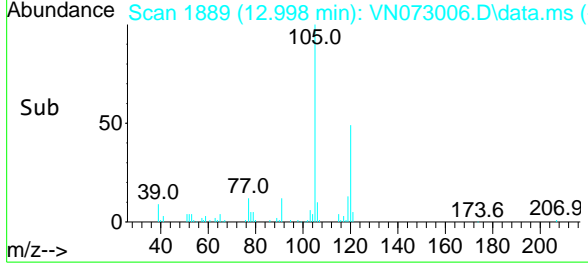
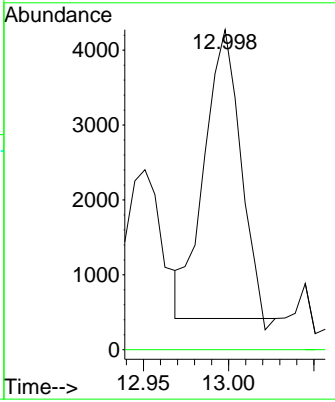
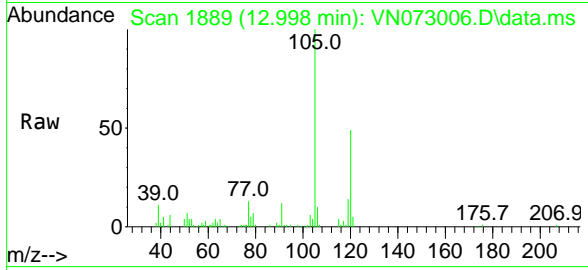




#79
 2-Chlorotoluene
 Concen: 0.461 ug/l
 RT: 12.998 min Scan# 1889
 Delta R.T. 0.053 min
 Lab File: VN073006.D
 Acq: 22 Jun 2022 06:06

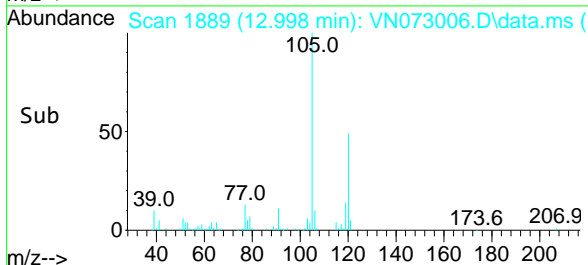
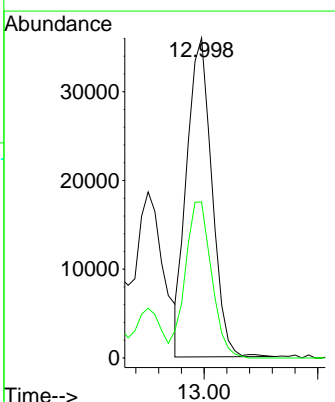
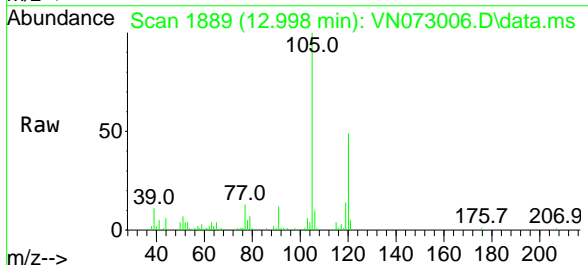
Instrument : MSVOA_N
 ClientSampleId : PZ-9

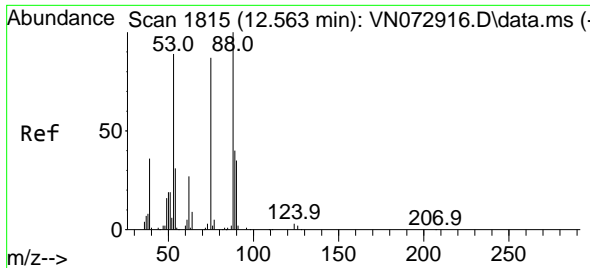
Tgt Ion: 91 Resp: 5675
 Ion Ratio Lower Upper
 91 100
 126 0.0 17.3 51.9#



#80
 1,3,5-Trimethylbenzene
 Concen: 3.872 ug/l
 RT: 12.998 min Scan# 1889
 Delta R.T. 0.000 min
 Lab File: VN073006.D
 Acq: 22 Jun 2022 06:06

Tgt Ion:105 Resp: 54941
 Ion Ratio Lower Upper
 105 100
 120 51.8 24.9 74.7

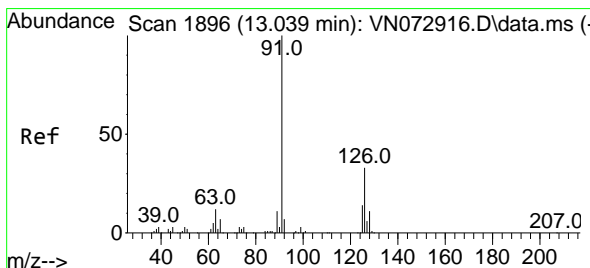
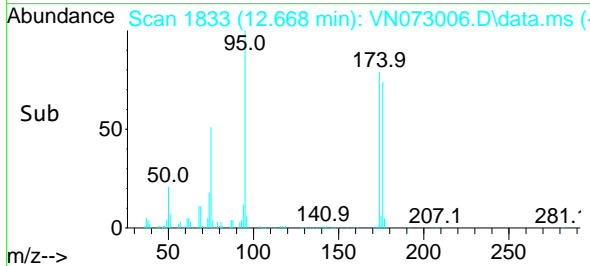
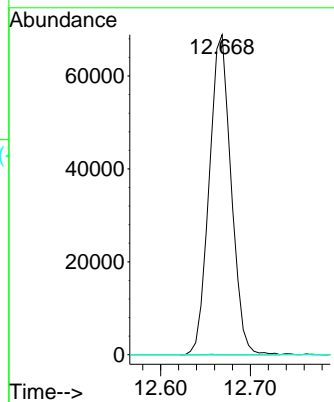
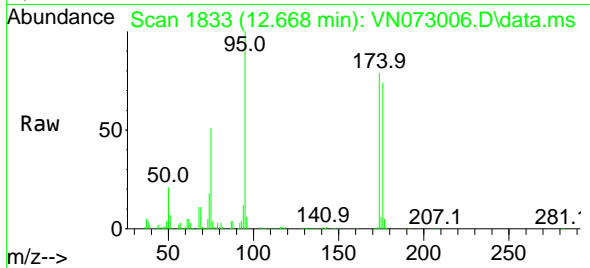




#81
 trans-1,4-Dichloro-2-butene
 Concen: 58.138 ug/l
 RT: 12.668 min Scan# 1833
 Delta R.T. 0.106 min
 Lab File: VN073006.D
 Acq: 22 Jun 2022 06:06

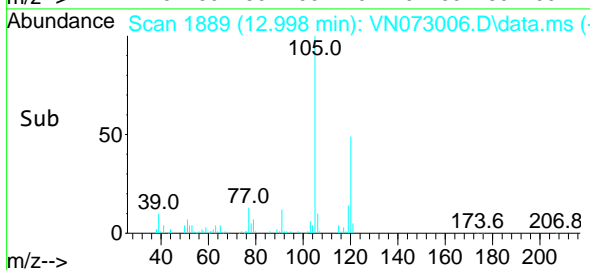
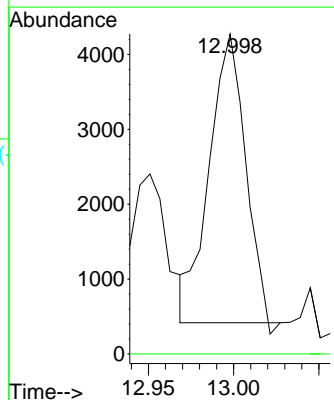
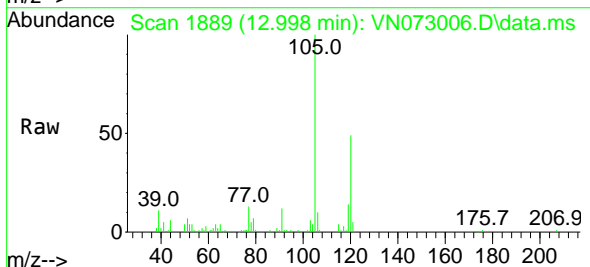
Instrument : MSVOA_N
 ClientSampleId : PZ-9

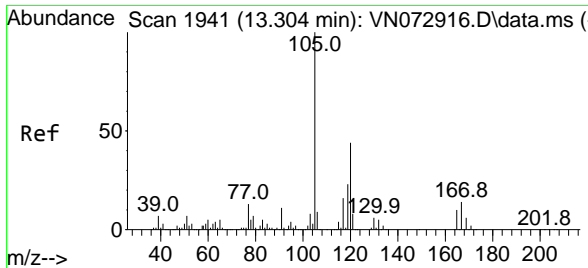
Tgt Ion: 75 Resp: 116536
 Ion Ratio Lower Upper
 75 100
 53 0.0 78.0 117.0#
 89 0.0 37.2 55.8#



#82
 4-Chlorotoluene
 Concen: 0.488 ug/l
 RT: 12.998 min Scan# 1889
 Delta R.T. -0.041 min
 Lab File: VN073006.D
 Acq: 22 Jun 2022 06:06

Tgt Ion: 91 Resp: 5675
 Ion Ratio Lower Upper
 91 100
 126 0.0 17.2 51.6#

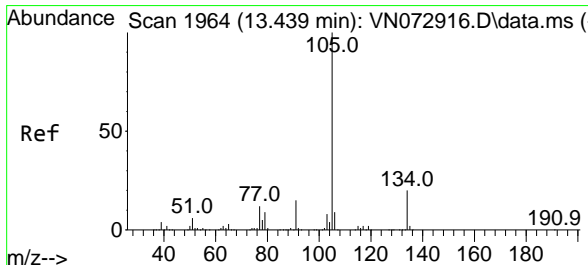
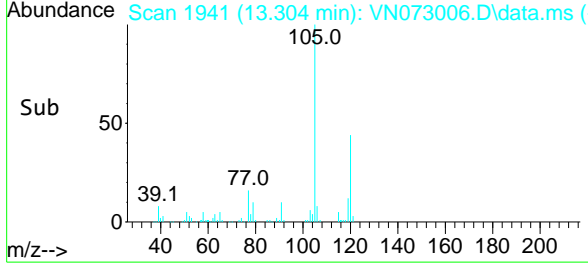
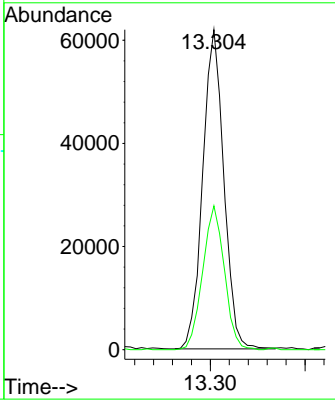
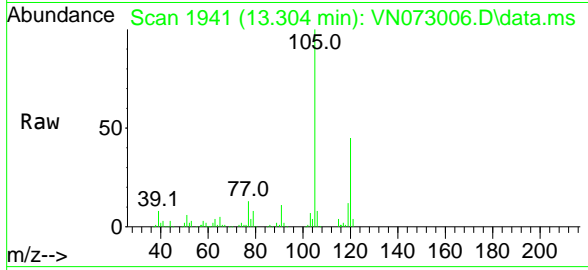




#84
 1,2,4-Trimethylbenzene
 Concen: 6.772 ug/l
 RT: 13.304 min Scan# 1941
 Delta R.T. 0.000 min
 Lab File: VN073006.D
 Acq: 22 Jun 2022 06:06

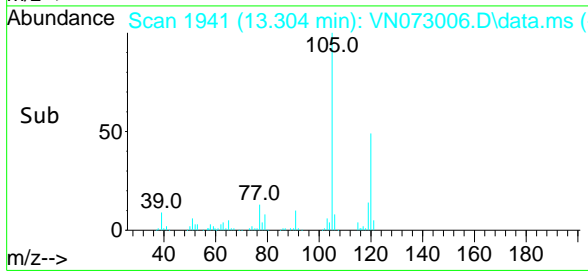
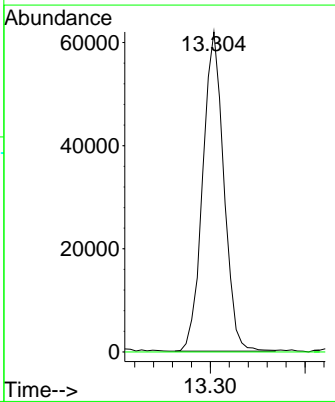
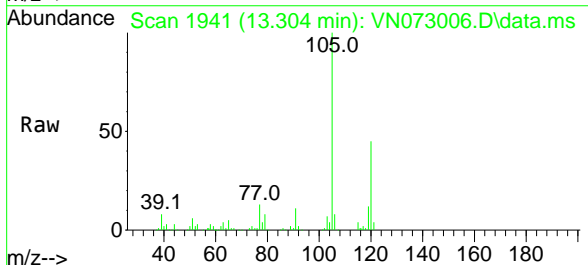
Instrument : MSVOA_N
 ClientSampleId : PZ-9

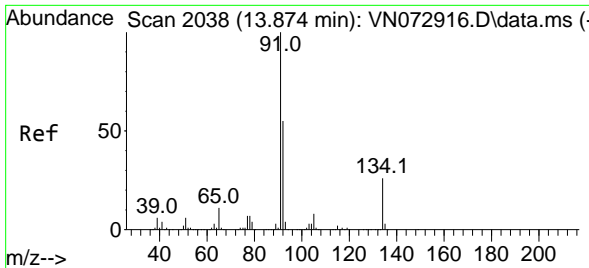
Tgt Ion:105 Resp: 95696
 Ion Ratio Lower Upper
 105 100
 120 46.3 23.3 69.8



#85
 sec-Butylbenzene
 Concen: 5.520 ug/l
 RT: 13.304 min Scan# 1941
 Delta R.T. -0.135 min
 Lab File: VN073006.D
 Acq: 22 Jun 2022 06:06

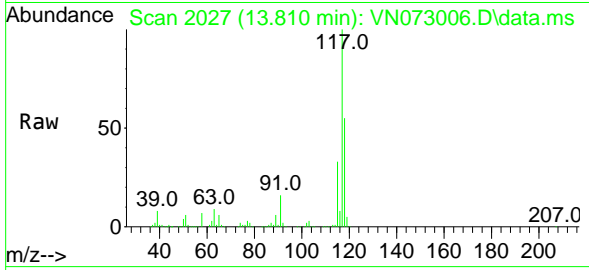
Tgt Ion:105 Resp: 95696
 Ion Ratio Lower Upper
 105 100
 134 0.0 10.4 31.1#



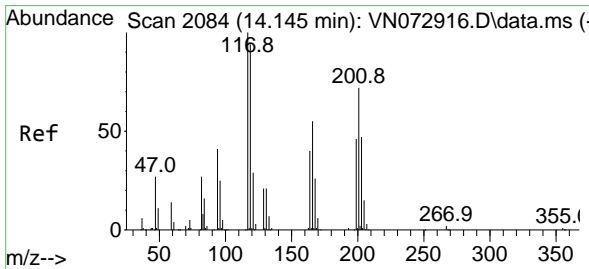
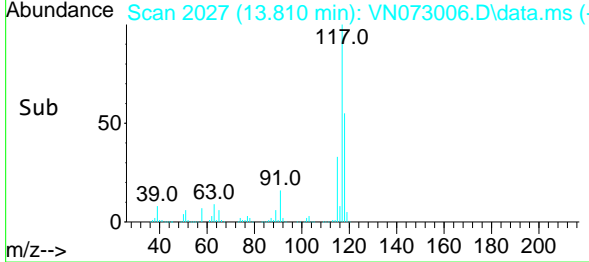
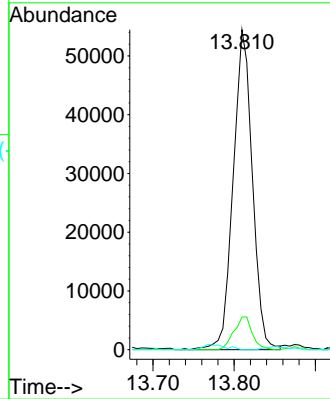


#89
 n-Butylbenzene
 Concen: 7.792 ug/l
 RT: 13.810 min Scan# 2038
 Delta R.T. -0.065 min
 Lab File: VN073006.D
 Acq: 22 Jun 2022 06:06

Instrument : MSVOA_N
 ClientSampleId : PZ-9

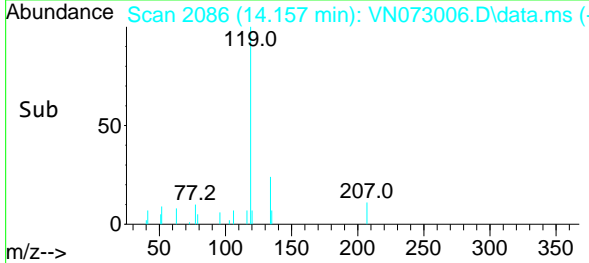
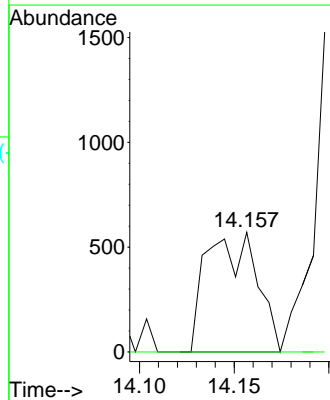
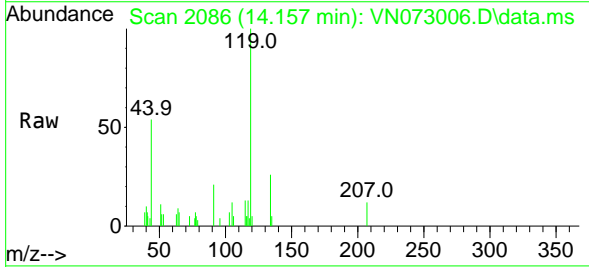


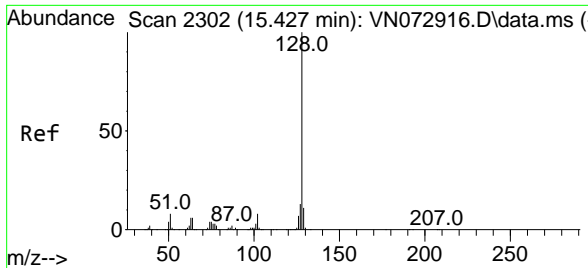
Tgt Ion: 91 Resp: 89298
 Ion Ratio Lower Upper
 91 100
 92 9.8 26.9 80.7#
 134 0.0 13.6 40.8#



#90
 Hexachloroethane
 Concen: 0.398 ug/l
 RT: 14.157 min Scan# 2086
 Delta R.T. 0.012 min
 Lab File: VN073006.D
 Acq: 22 Jun 2022 06:06

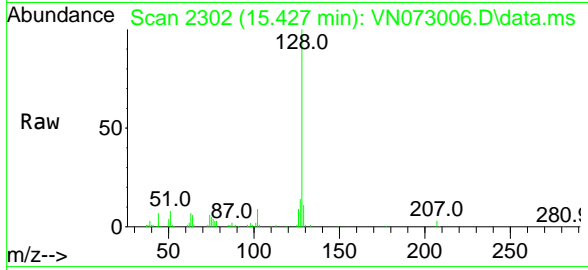
Tgt Ion: 117 Resp: 1052
 Ion Ratio Lower Upper
 117 100
 201 0.0 40.6 122.0#





#95
 Naphthalene
 Concen: 6.033 ug/l
 RT: 15.427 min Scan# 21
 Delta R.T. 0.000 min
 Lab File: VN073006.D
 Acq: 22 Jun 2022 06:06

Instrument :
 MSVOA_N
 ClientSampleId :
 PZ-9



Tgt Ion:128 Resp: 104063

Ion	Ratio	Lower	Upper
128	100		
127	12.4	10.3	15.5
129	10.5	8.6	13.0

