

Data Path : Z:\voasrv\HPCHEM1\MSVOA_N\Data\VN062122\
 Data File : VN073015.D
 Acq On : 22 Jun 2022 09:44
 Operator : JC\MD
 Sample : N3334-14
 Misc : 5.0mL/MSVOA_N/WATER
 ALS Vial : 51 Sample Multiplier: 1

Instrument :
 MSVOA_N
 ClientSampleId :
 WC-14A-1A-11

Quant Time: Jun 23 16:57:17 2022
 Quant Method : Z:\voasrv\HPCHEM1\MSVOA_N\methods\82N061722W.M
 Quant Title : SW846 8260
 QLast Update : Sat Jun 18 06:22:45 2022
 Response via : Initial Calibration

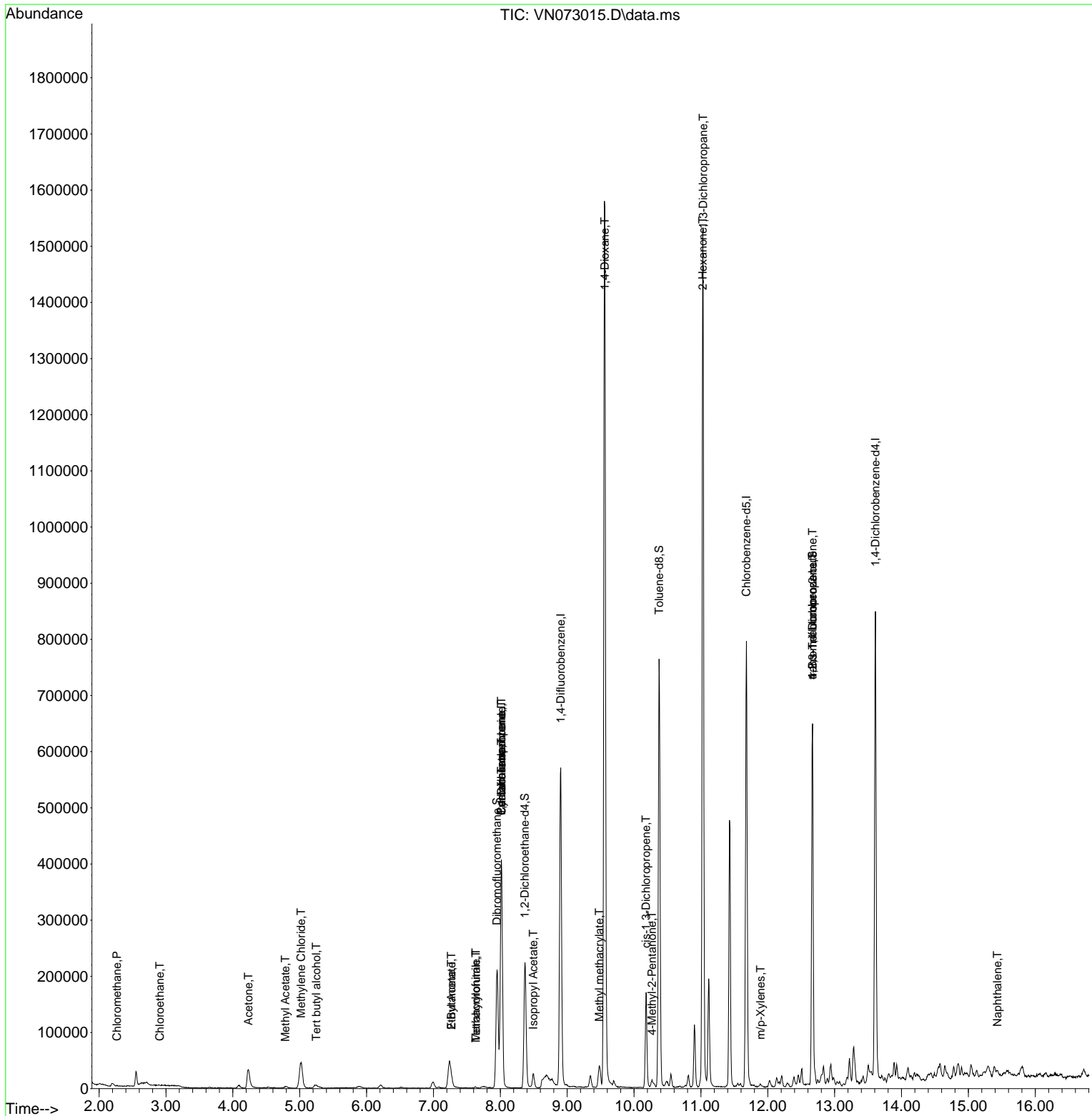
| Compound | R.T. | QIon | Response | Conc | Units | Dev(Min) |
|-------------------------------|--------|----------------|----------|-----------|----------|----------|
| ----- | | | | | | |
| Internal Standards | | | | | | |
| 1) Pentafluorobenzene | 8.016 | 168 | 306837 | 50.000 | ug/l | 0.00 |
| 34) 1,4-Difluorobenzene | 8.904 | 114 | 500502 | 50.000 | ug/l | 0.00 |
| 63) Chlorobenzene-d5 | 11.680 | 117 | 448486 | 50.000 | ug/l | 0.00 |
| 72) 1,4-Dichlorobenzene-d4 | 13.610 | 152 | 215714 | 50.000 | ug/l | 0.00 |
| System Monitoring Compounds | | | | | | |
| 33) 1,2-Dichloroethane-d4 | 8.369 | 65 | 186835 | 45.038 | ug/l | 0.00 |
| Spiked Amount | 50.000 | Range 74 - 125 | Recovery | = | 90.080% | |
| 35) Dibromofluoromethane | 7.951 | 113 | 161221 | 52.115 | ug/l | 0.00 |
| Spiked Amount | 50.000 | Range 75 - 124 | Recovery | = | 104.240% | |
| 50) Toluene-d8 | 10.374 | 98 | 520983 | 45.259 | ug/l | 0.00 |
| Spiked Amount | 50.000 | Range 86 - 113 | Recovery | = | 90.520% | |
| 62) 4-Bromofluorobenzene | 12.668 | 95 | 219569 | 53.045 | ug/l | 0.00 |
| Spiked Amount | 50.000 | Range 83 - 123 | Recovery | = | 106.100% | |
| Target Compounds | | | | | | |
| | | | | | | Qvalue |
| 3) Chloromethane | 2.269 | 50 | 341 | 0.677 | ug/l # | 43 |
| 6) Chloroethane | 2.910 | 64 | 353 | 0.215 | ug/l # | 42 |
| 11) Tert butyl alcohol | 5.251 | 59 | 5354 | 4.996 | ug/l # | 72 |
| 16) Acetone | 4.234 | 43 | 65014 | 28.511 | ug/l | 95 |
| 18) Methyl Acetate | 4.787 | 43 | 6644 | 1.094 | ug/l # | 78 |
| 20) Methylene Chloride | 5.022 | 84 | 37105 | 10.299 | ug/l | 92 |
| 25) 2-Butanone | 7.269 | 43 | 27081 | 7.484 | ug/l # | 83 |
| 29) Tetrahydrofuran | 7.633 | 42 | 1208 | 0.506 | ug/l # | 47 |
| 31) Cyclohexane | 8.016 | 56 | 6740 | 1.201 | ug/l # | 11 |
| 36) 1,1-Dichloropropene | 8.016 | 75 | 25495 | 6.091 | ug/l # | 48 |
| 37) Ethyl Acetate | 7.269 | 43 | 27081 | 4.045 | ug/l # | 67 |
| 38) Carbon Tetrachloride | 8.016 | 117 | 31661 | 7.191 | ug/l # | 17 |
| 41) Methacrylonitrile | 7.633 | 41 | 795 | 0.250 | ug/l # | 33 |
| 43) Isopropyl Acetate | 8.492 | 43 | 29288 | 3.060 | ug/l # | 85 |
| 48) Methyl methacrylate | 9.480 | 41 | 12858 | 2.943 | ug/l # | 25 |
| 49) 1,4-Dioxane | 9.563 | 88 | 235 | 2.390 | ug/l # | 1 |
| 51) 4-Methyl-2-Pentanone | 10.269 | 43 | 10236 | 1.640 | ug/l # | 83 |
| 54) cis-1,3-Dichloropropene | 10.180 | 75 | 28871 | 5.439 | ug/l # | 68 |
| 57) 1,3-Dichloropropane | 11.033 | 76 | 16076 | 2.732 | ug/l # | 42 |
| 59) 2-Hexanone | 11.027 | 43 | 246686 | 51.103 | ug/l # | 45 |
| 68) m/p-Xylenes | 11.892 | 106 | 1285 | 0.212 | ug/l | 86 |
| 76) 1,2,3-Trichloropropane | 12.668 | 75 | 115920 | 22.165 | ug/l # | 1 |
| 81) trans-1,4-Dichloro-2-b... | 12.668 | 75 | 115920 | 59.858 | ug/l # | 10 |
| 92) 1,2-Dibromo-3-Chloropr... | 14.533 | 75 | 54 | Below Cal | # | 1 |
| 95) Naphthalene | 15.433 | 128 | 7819 | 0.469 | ug/l # | 96 |

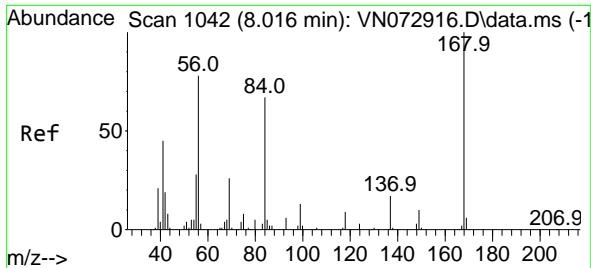
(#) = qualifier out of range (m) = manual integration (+) = signals summed

Data Path : Z:\voasrv\HPCHEM1\MSVOA_N\Data\VN062122\
 Data File : VN073015.D
 Acq On : 22 Jun 2022 09:44
 Operator : JC\MD
 Sample : N3334-14
 Misc : 5.0mL/MSVOA_N/WATER
 ALS Vial : 51 Sample Multiplier: 1

Instrument :
 MSVOA_N
 ClientSampleId :
 WC-14A-1A-11

Quant Time: Jun 23 16:57:17 2022
 Quant Method : Z:\voasrv\HPCHEM1\MSVOA_N\methods\82N061722W.M
 Quant Title : SW846 8260
 QLast Update : Sat Jun 18 06:22:45 2022
 Response via : Initial Calibration

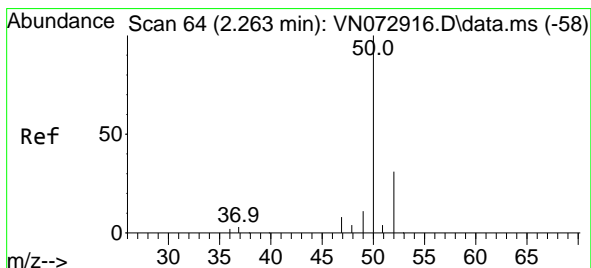
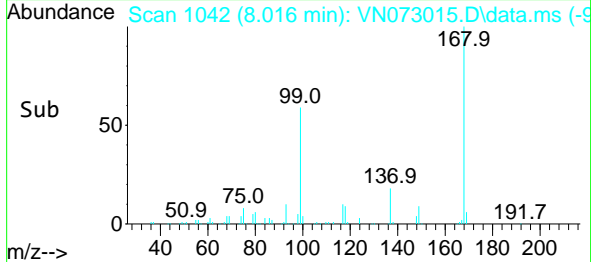
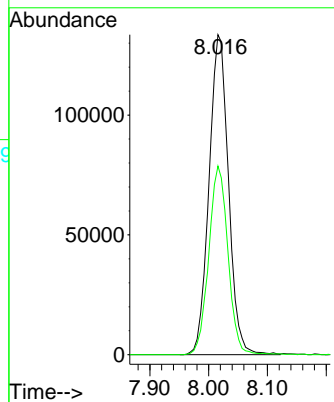
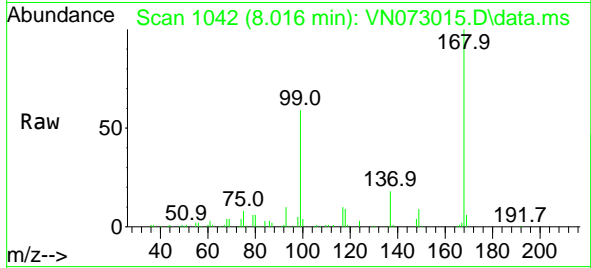




#1
 Pentafluorobenzene
 Concen: 50.000 ug/l
 RT: 8.016 min Scan# 10
 Delta R.T. -0.000 min
 Lab File: VN073015.D
 Acq: 22 Jun 2022 09:44

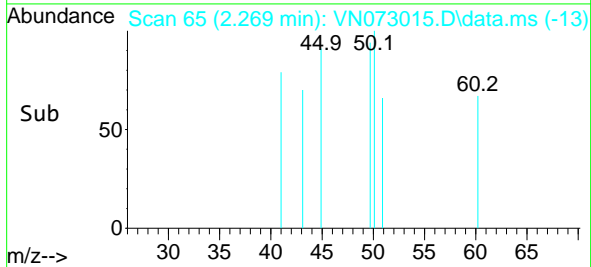
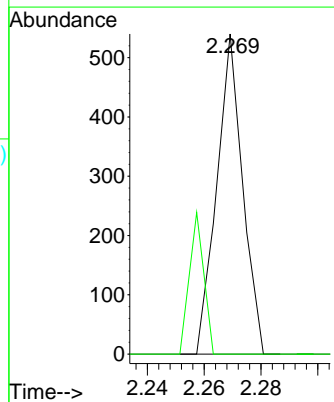
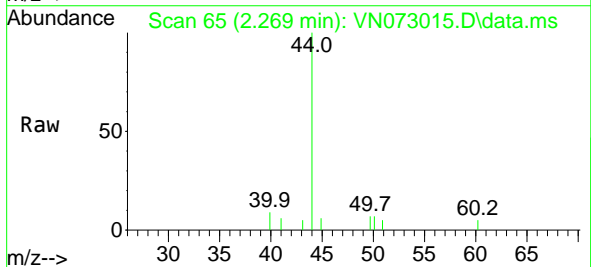
Instrument :
 MSVOA_N
 ClientSampleId :
 WC-14A-1A-11

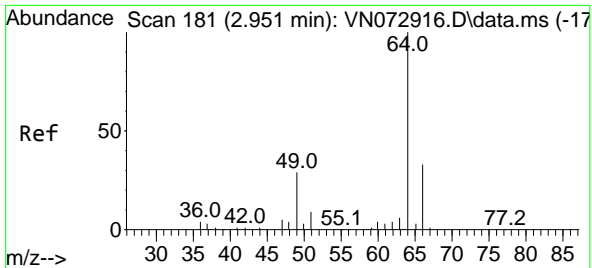
Tgt Ion:168 Resp: 306837
 Ion Ratio Lower Upper
 168 100
 99 59.0 42.3 63.5



#3
 Chloromethane
 Concen: 0.677 ug/l
 RT: 2.269 min Scan# 65
 Delta R.T. 0.006 min
 Lab File: VN073015.D
 Acq: 22 Jun 2022 09:44

Tgt Ion: 50 Resp: 341
 Ion Ratio Lower Upper
 50 100
 52 0.0 25.7 38.5#

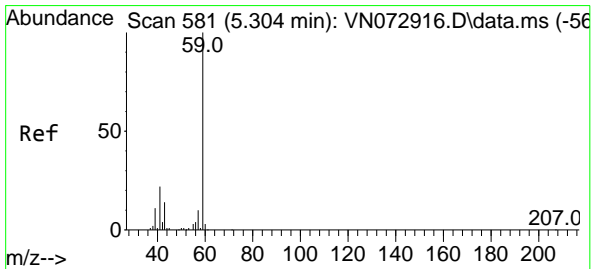
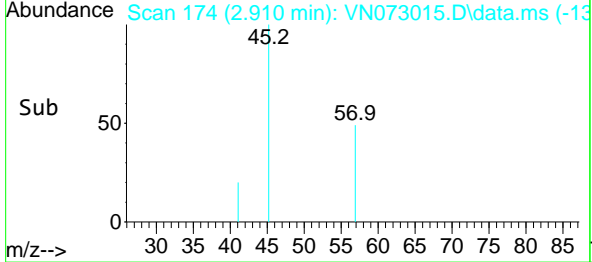
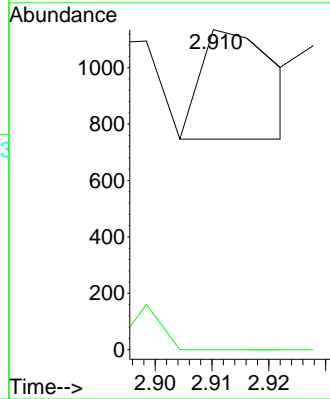
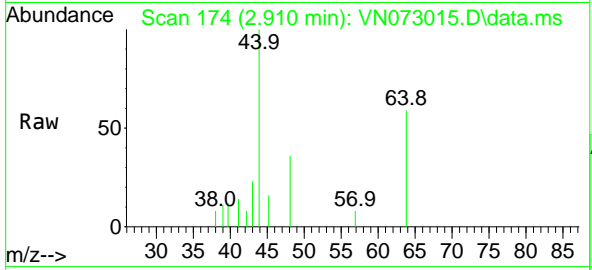




#6
 Chloroethane
 Concen: 0.215 ug/l
 RT: 2.910 min Scan# 11
 Delta R.T. -0.041 min
 Lab File: VN073015.D
 Acq: 22 Jun 2022 09:44

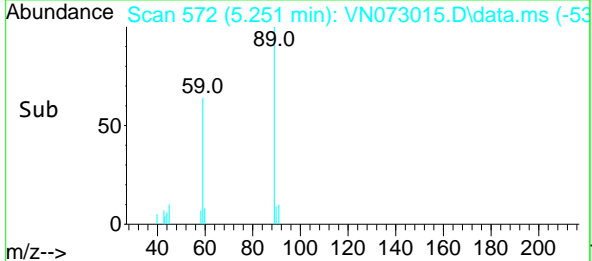
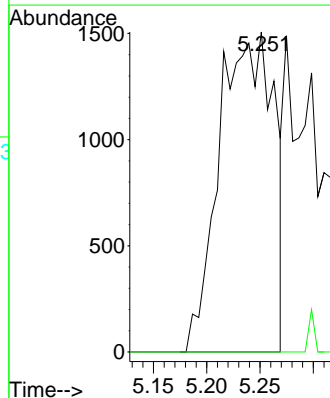
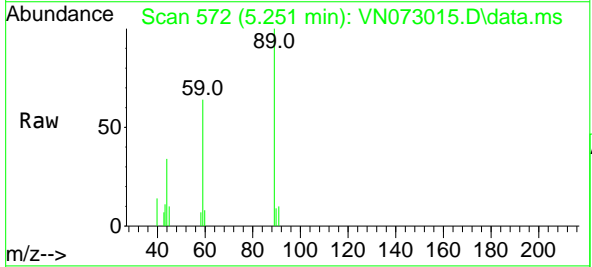
Instrument :
 MSVOA_N
 ClientSampleId :
 WC-14A-1A-11

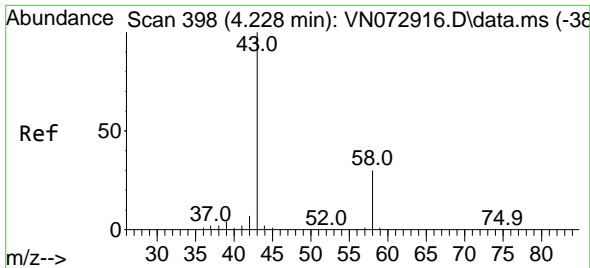
Tgt Ion: 64 Resp: 353
 Ion Ratio Lower Upper
 64 100
 66 0.0 26.2 39.4#



#11
 Tert butyl alcohol
 Concen: 4.996 ug/l
 RT: 5.251 min Scan# 572
 Delta R.T. -0.053 min
 Lab File: VN073015.D
 Acq: 22 Jun 2022 09:44

Tgt Ion: 59 Resp: 5354
 Ion Ratio Lower Upper
 59 100
 57 0.0 8.3 12.5#

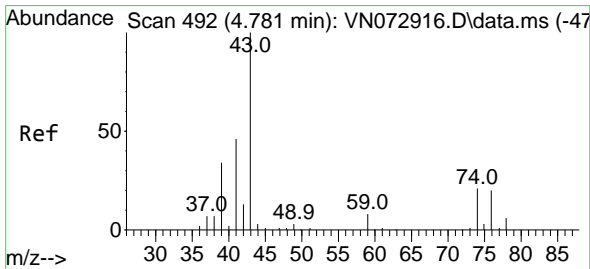
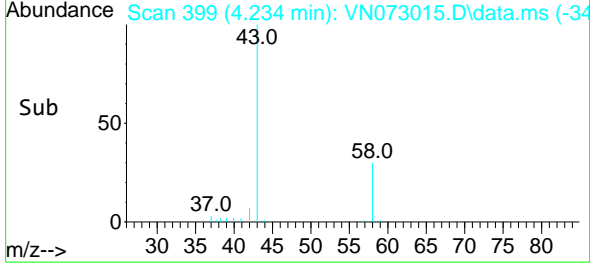
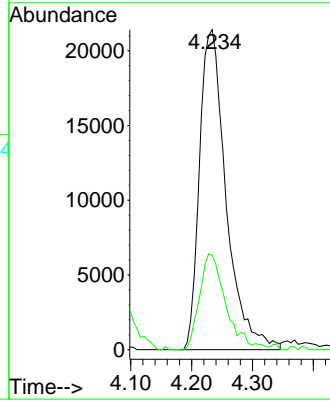
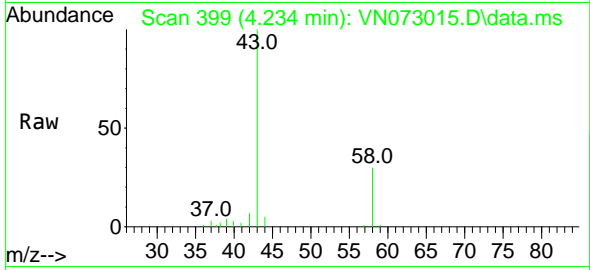




#16
 Acetone
 Concen: 28.511 ug/l
 RT: 4.234 min Scan# 399
 Delta R.T. 0.006 min
 Lab File: VN073015.D
 Acq: 22 Jun 2022 09:44

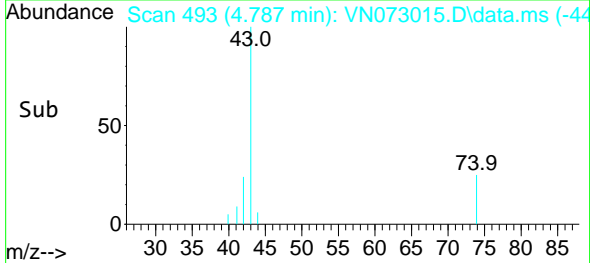
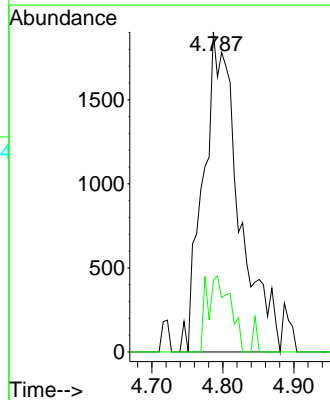
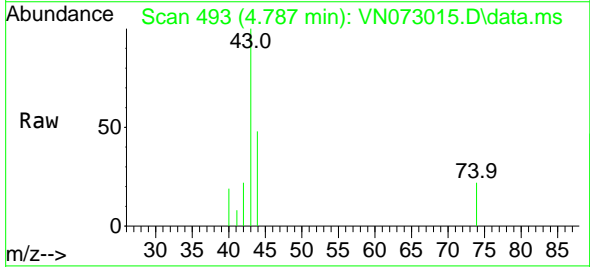
Instrument :
 MSVOA_N
 ClientSampleId :
 WC-14A-1A-11

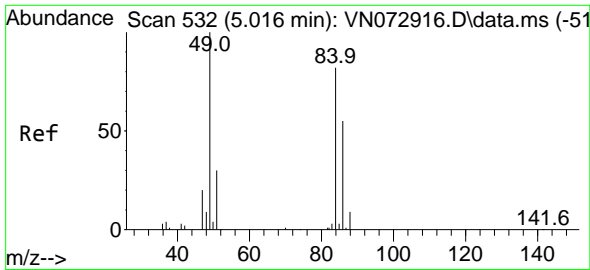
Tgt Ion: 43 Resp: 65014
 Ion Ratio Lower Upper
 43 100
 58 29.6 26.0 39.0



#18
 Methyl Acetate
 Concen: 1.094 ug/l
 RT: 4.787 min Scan# 493
 Delta R.T. 0.006 min
 Lab File: VN073015.D
 Acq: 22 Jun 2022 09:44

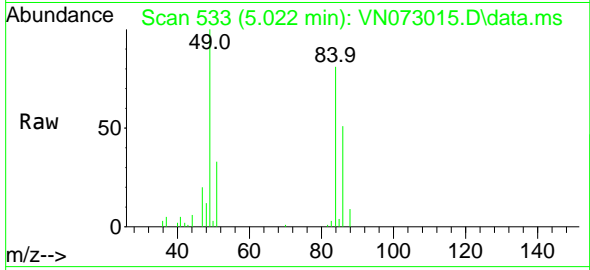
Tgt Ion: 43 Resp: 6644
 Ion Ratio Lower Upper
 43 100
 74 15.4 21.6 32.4#



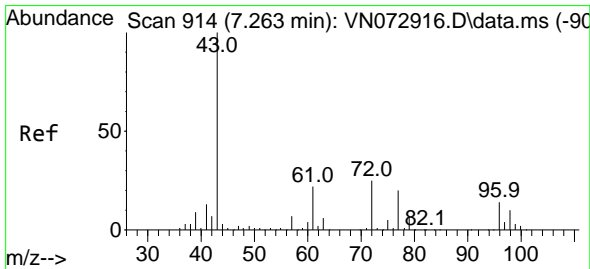
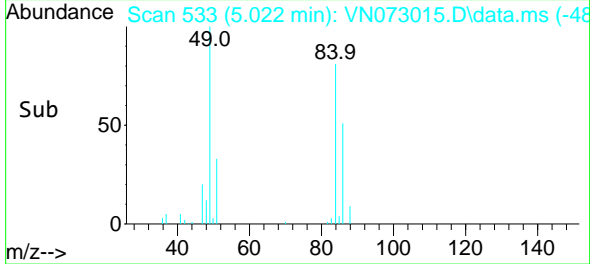
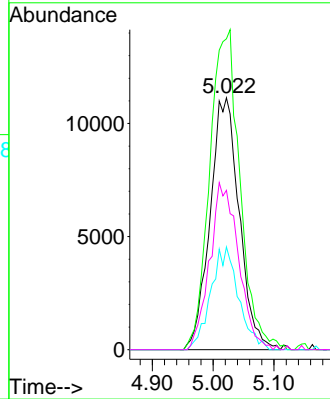


#20
 Methylene Chloride
 Concen: 10.299 ug/l
 RT: 5.022 min Scan# 51
 Delta R.T. 0.006 min
 Lab File: VN073015.D
 Acq: 22 Jun 2022 09:44

Instrument :
 MSVOA_N
 ClientSampleId :
 WC-14A-1A-11

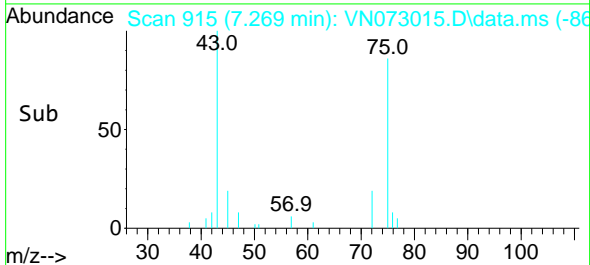
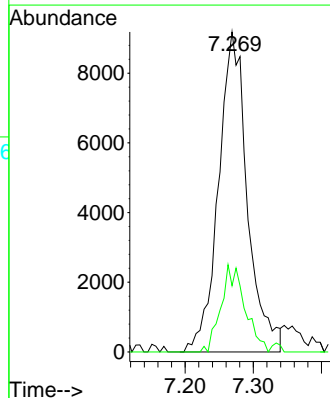
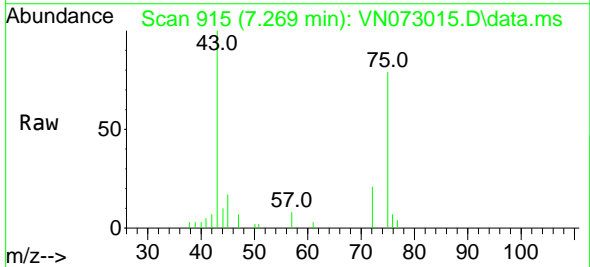


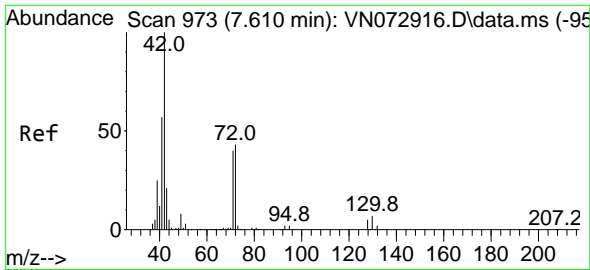
Tgt Ion: 84 Resp: 37105
 Ion Ratio Lower Upper
 84 100
 49 123.4 88.3 132.5
 51 40.8 28.2 42.2
 86 63.3 50.6 76.0



#25
 2-Butanone
 Concen: 7.484 ug/l
 RT: 7.269 min Scan# 915
 Delta R.T. 0.006 min
 Lab File: VN073015.D
 Acq: 22 Jun 2022 09:44

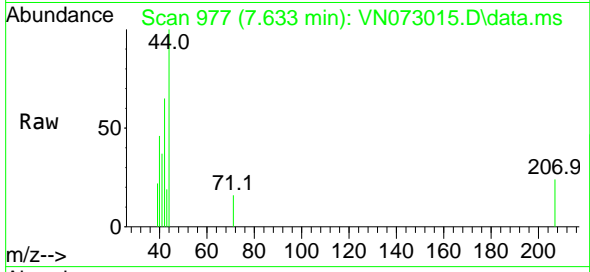
Tgt Ion: 43 Resp: 27081
 Ion Ratio Lower Upper
 43 100
 72 20.7 23.7 35.5#





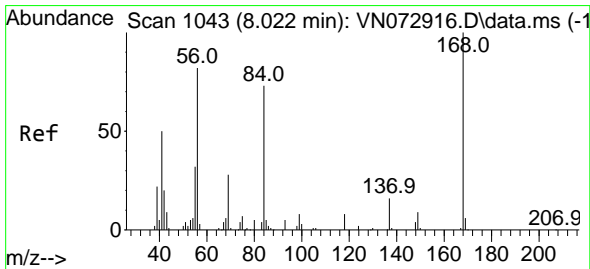
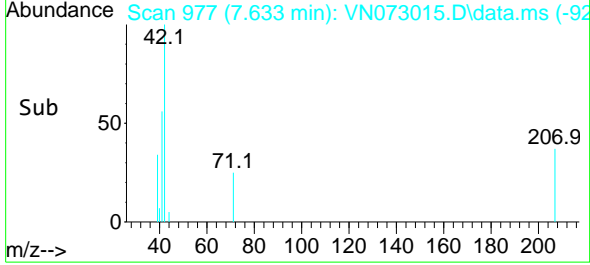
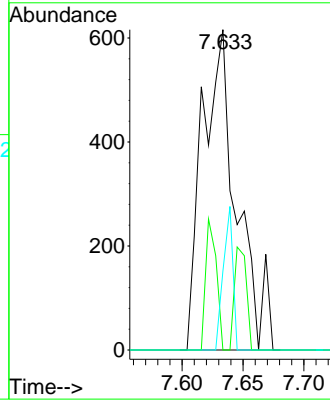
#29
 Tetrahydrofuran
 Concen: 0.506 ug/l
 RT: 7.633 min Scan# 91
 Delta R.T. 0.024 min
 Lab File: VN073015.D
 Acq: 22 Jun 2022 09:44

Instrument : MSVOA_N
 ClientSampleId : WC-14A-1A-11



Tgt Ion: 42 Resp: 1208

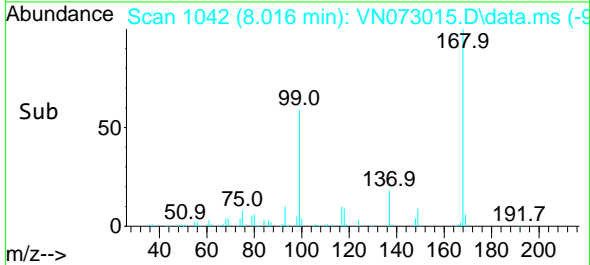
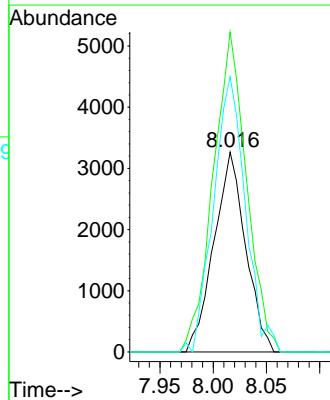
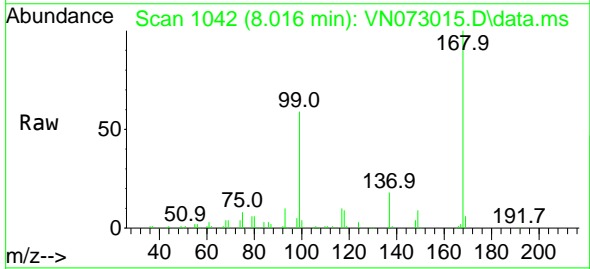
| Ion | Ratio | Lower | Upper |
|-----|-------|-------|-------|
| 42 | 100 | | |
| 72 | 11.1 | 39.7 | 59.5# |
| 71 | 12.5 | 36.6 | 55.0# |

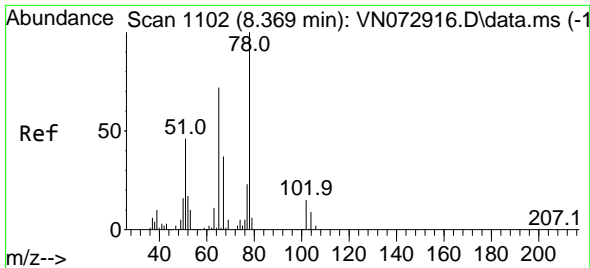


#31
 Cyclohexane
 Concen: 1.201 ug/l
 RT: 8.016 min Scan# 1042
 Delta R.T. -0.006 min
 Lab File: VN073015.D
 Acq: 22 Jun 2022 09:44

Tgt Ion: 56 Resp: 6740

| Ion | Ratio | Lower | Upper |
|-----|-------|-------|--------|
| 56 | 100 | | |
| 69 | 160.2 | 27.8 | 41.8# |
| 84 | 137.7 | 76.9 | 115.3# |

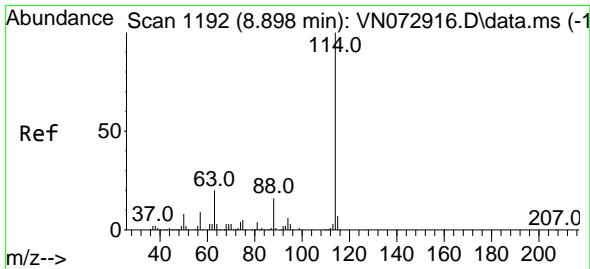
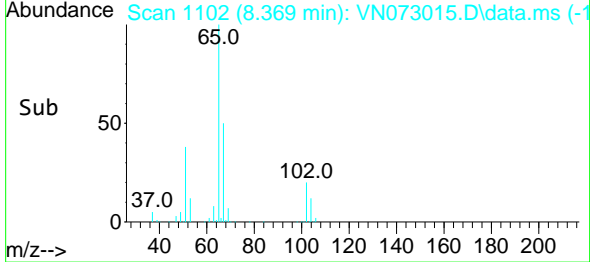
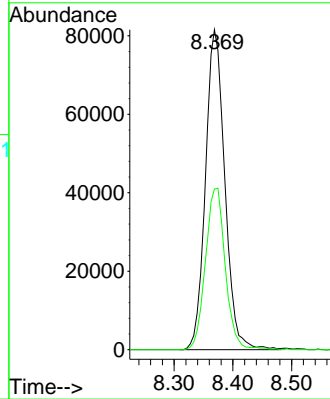
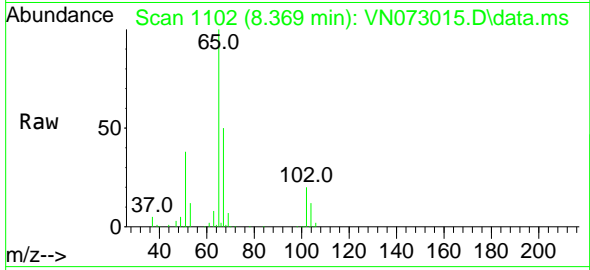




#33
 1,2-Dichloroethane-d4
 Concen: 45.038 ug/l
 RT: 8.369 min Scan# 1102
 Delta R.T. -0.000 min
 Lab File: VN073015.D
 Acq: 22 Jun 2022 09:44

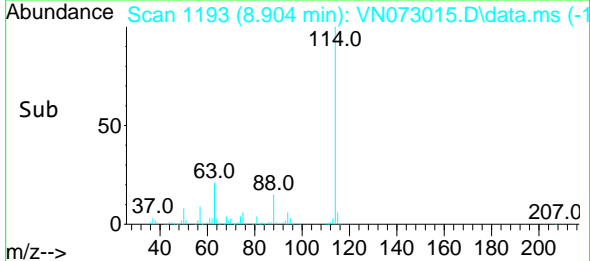
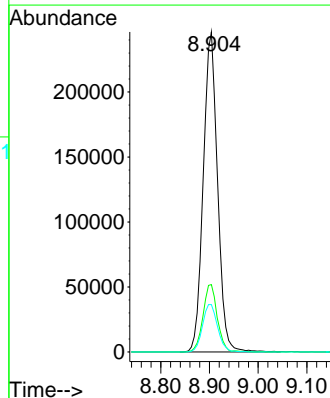
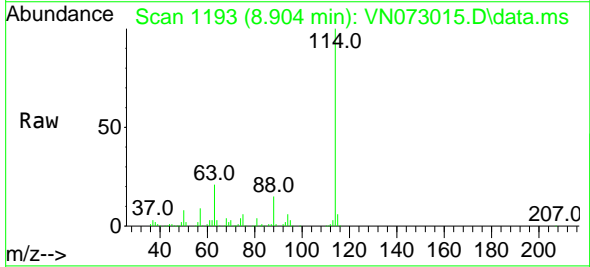
Instrument : MSVOA_N
 ClientSampleId : WC-14A-1A-11

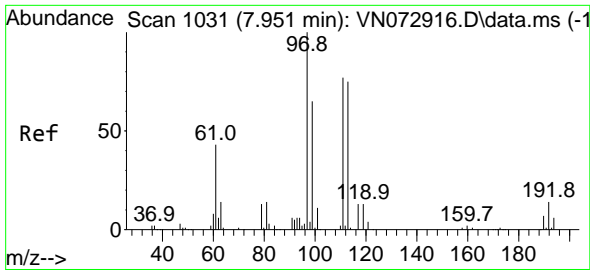
Tgt Ion: 65 Resp: 186835
 Ion Ratio Lower Upper
 65 100
 67 51.8 0.0 104.8



#34
 1,4-Difluorobenzene
 Concen: 50.000 ug/l
 RT: 8.904 min Scan# 1193
 Delta R.T. 0.006 min
 Lab File: VN073015.D
 Acq: 22 Jun 2022 09:44

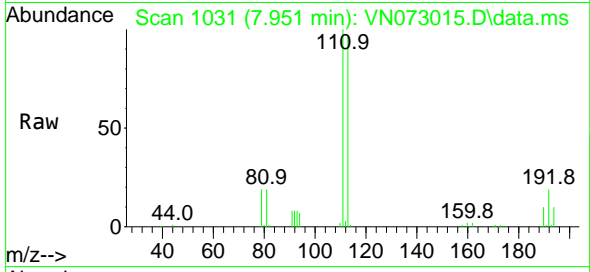
Tgt Ion:114 Resp: 500502
 Ion Ratio Lower Upper
 114 100
 63 21.0 0.0 40.0
 88 14.8 0.0 32.6



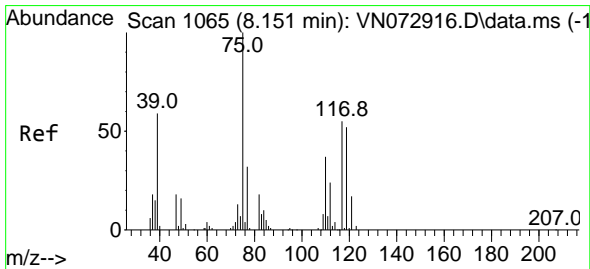
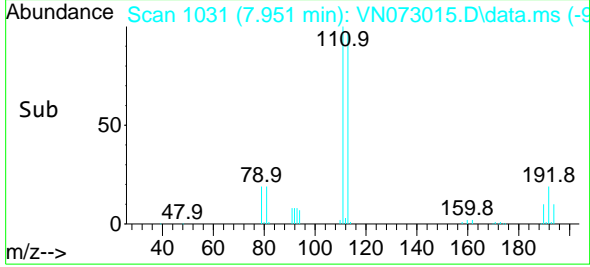
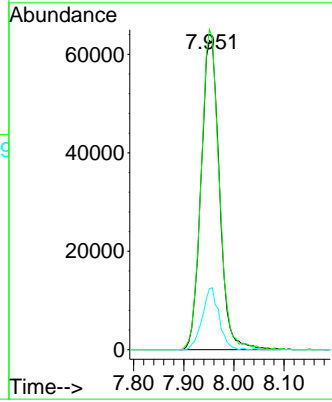


#35
 Dibromofluoromethane
 Concen: 52.115 ug/l
 RT: 7.951 min Scan# 1042
 Delta R.T. -0.000 min
 Lab File: VN073015.D
 Acq: 22 Jun 2022 09:44

Instrument :
 MSVOA_N
 ClientSampleId :
 WC-14A-1A-11

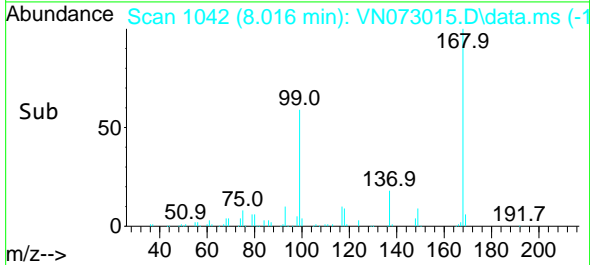
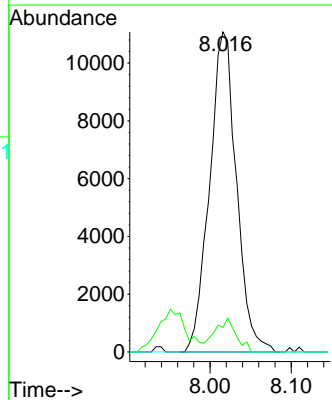
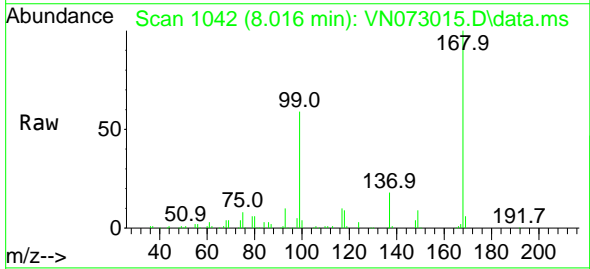


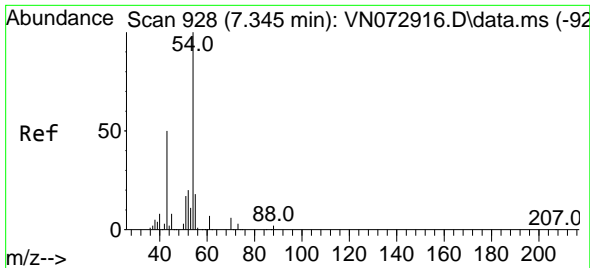
Tgt Ion:113 Resp: 161221
 Ion Ratio Lower Upper
 113 100
 111 101.6 81.4 122.0
 192 18.1 17.0 25.6



#36
 1,1-Dichloropropene
 Concen: 6.091 ug/l
 RT: 8.016 min Scan# 1042
 Delta R.T. -0.135 min
 Lab File: VN073015.D
 Acq: 22 Jun 2022 09:44

Tgt Ion: 75 Resp: 25495
 Ion Ratio Lower Upper
 75 100
 110 8.3 18.3 54.8#
 77 0.0 25.1 37.7#

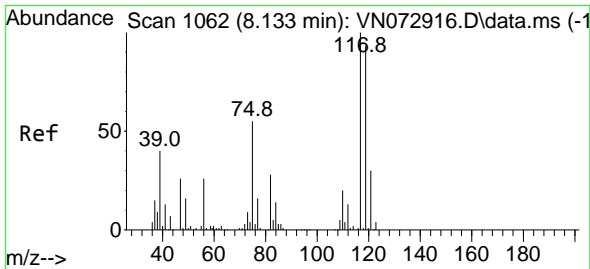
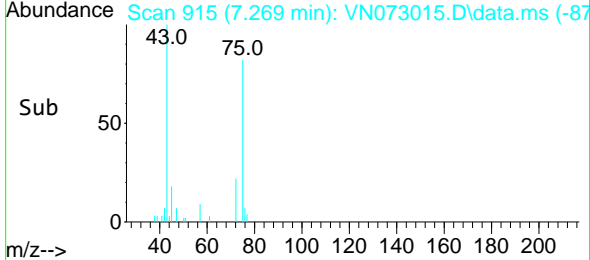
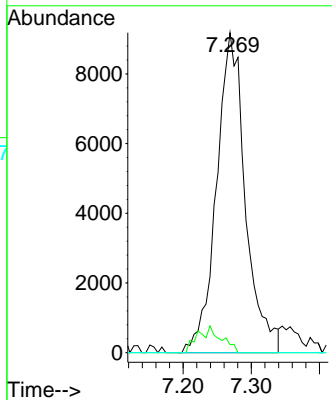
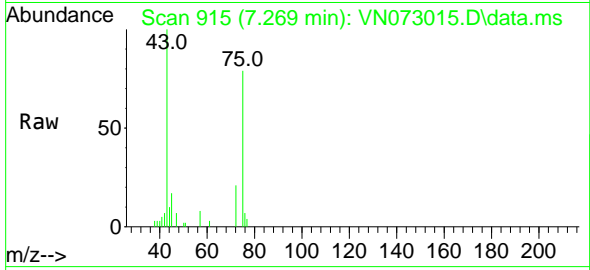




#37
 Ethyl Acetate
 Concen: 4.045 ug/l
 RT: 7.269 min Scan# 915
 Delta R.T. -0.076 min
 Lab File: VN073015.D
 Acq: 22 Jun 2022 09:44

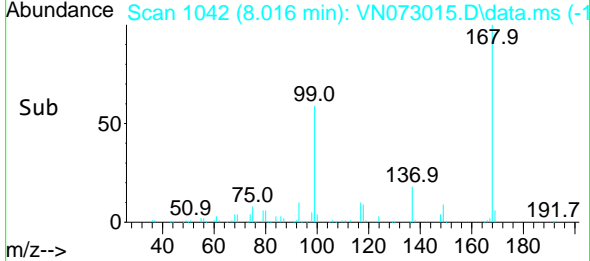
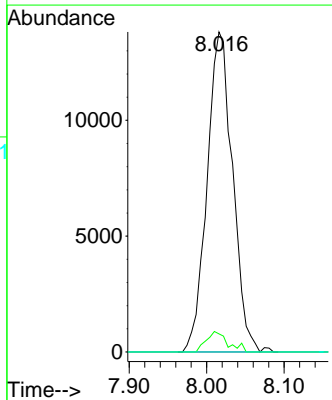
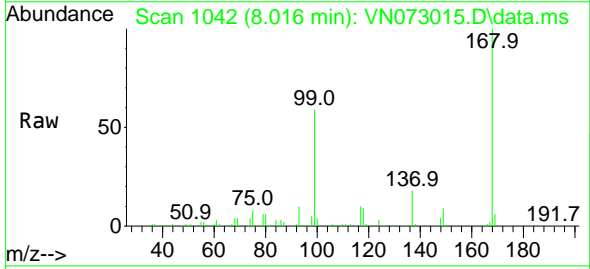
Instrument : MSVOA_N
 Client Sample Id : WC-14A-1A-11

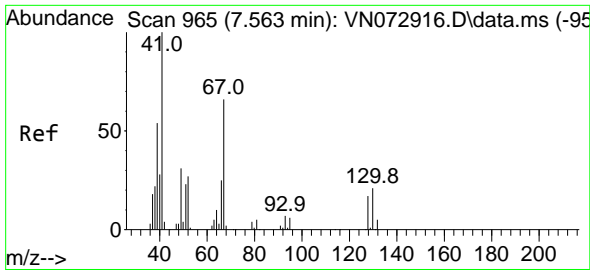
| Tgt Ion | Resp | Lower | Upper |
|---------|------|-------|-------|
| 43 | 100 | | |
| 61 | 0.0 | 11.8 | 17.6# |
| 70 | 0.0 | 9.3 | 13.9# |



#38
 Carbon Tetrachloride
 Concen: 7.191 ug/l
 RT: 8.016 min Scan# 1042
 Delta R.T. -0.118 min
 Lab File: VN073015.D
 Acq: 22 Jun 2022 09:44

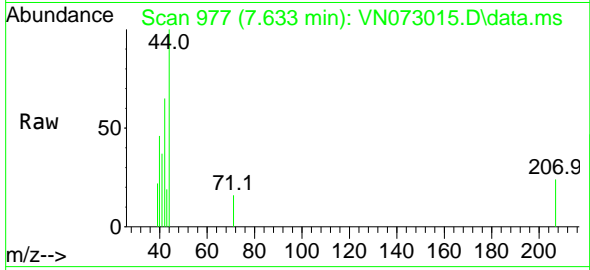
| Tgt Ion | Resp | Lower | Upper |
|---------|------|-------|--------|
| 117 | 100 | | |
| 119 | 5.7 | 75.8 | 113.8# |
| 121 | 0.0 | 24.6 | 37.0# |





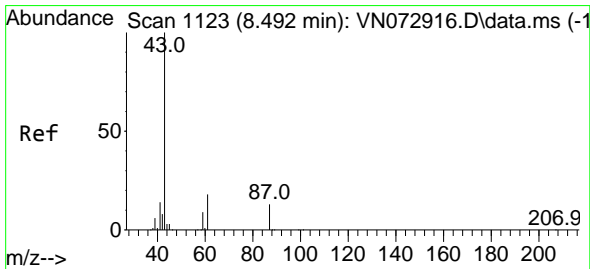
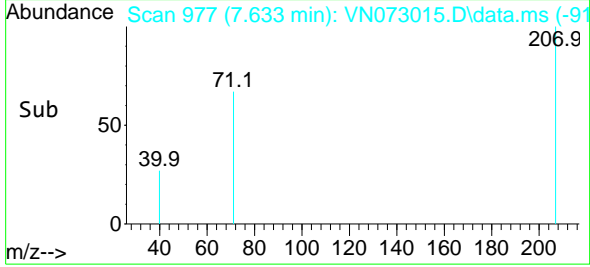
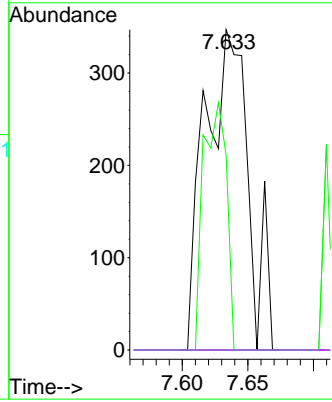
#41
 Methacrylonitrile
 Concen: 0.250 ug/l
 RT: 7.633 min Scan# 91
 Delta R.T. 0.071 min
 Lab File: VN073015.D
 Acq: 22 Jun 2022 09:44

Instrument :
 MSVOA_N
 ClientSampleId :
 WC-14A-1A-11

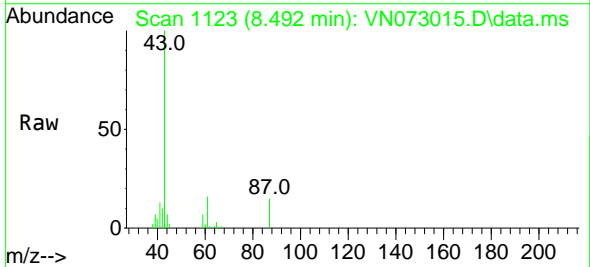


Tgt Ion: 41 Resp: 795

| Ion | Ratio | Lower | Upper |
|-----|-------|-------|--------|
| 41 | 100 | | |
| 39 | 41.4 | 48.6 | 73.0# |
| 67 | 0.0 | 73.4 | 110.2# |
| 52 | 0.0 | 27.7 | 41.5# |

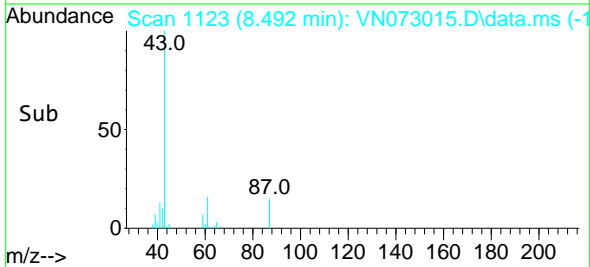
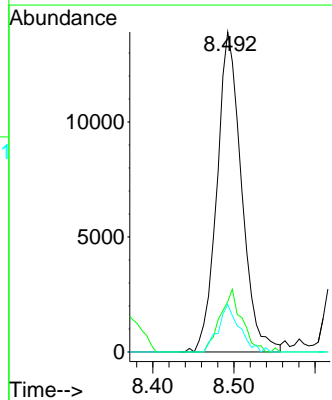


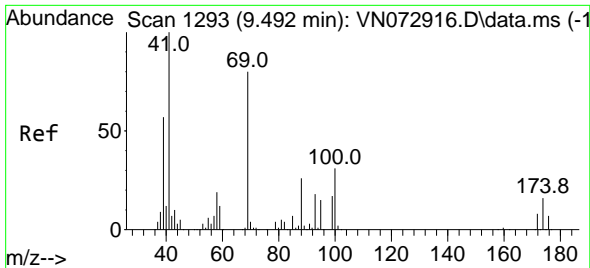
#43
 Isopropyl Acetate
 Concen: 3.060 ug/l
 RT: 8.492 min Scan# 1123
 Delta R.T. -0.000 min
 Lab File: VN073015.D
 Acq: 22 Jun 2022 09:44



Tgt Ion: 43 Resp: 29288

| Ion | Ratio | Lower | Upper |
|-----|-------|-------|-------|
| 43 | 100 | | |
| 61 | 17.2 | 21.9 | 32.9# |
| 87 | 12.7 | 12.0 | 18.0 |

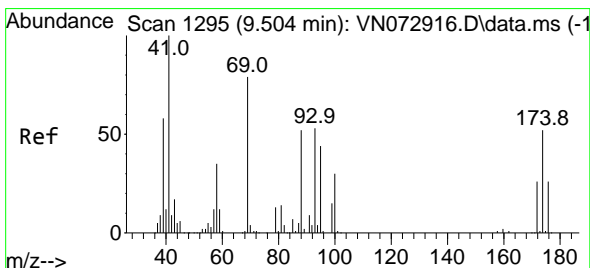
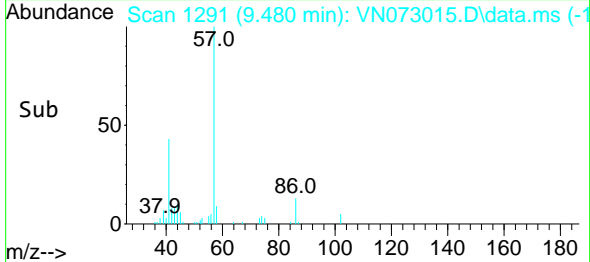
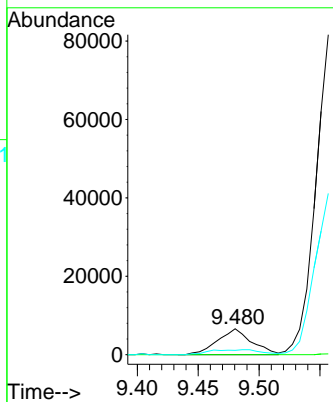
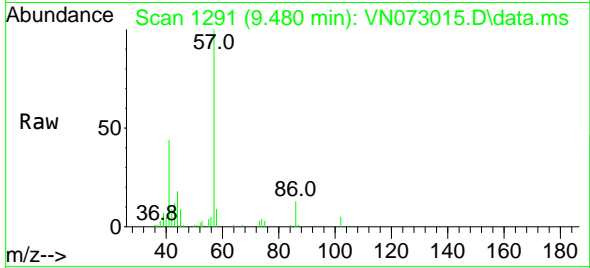




#48
 Methyl methacrylate
 Concen: 2.943 ug/l
 RT: 9.480 min Scan# 1105
 Delta R.T. -0.012 min
 Lab File: VN073015.D
 Acq: 22 Jun 2022 09:44

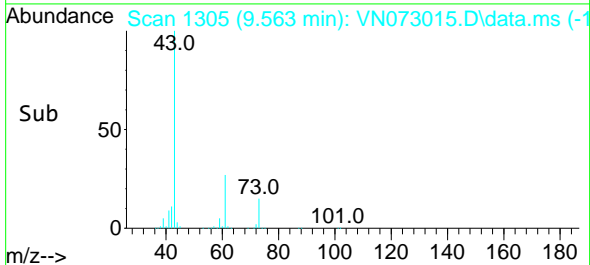
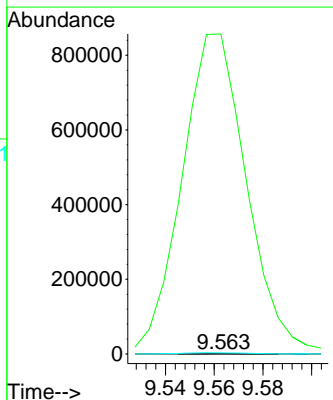
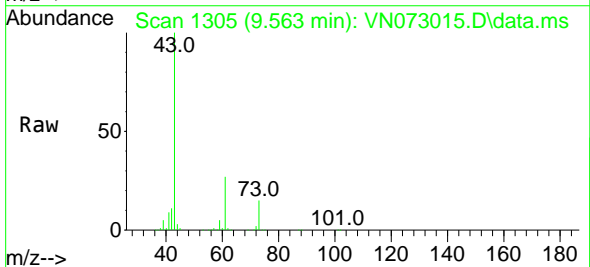
Instrument : MSVOA_N
 ClientSampleId : WC-14A-1A-11

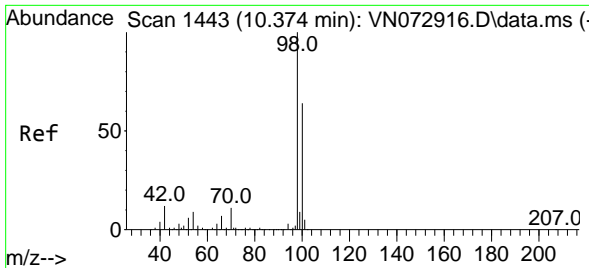
| Tgt Ion | Resp | Lower | Upper |
|---------|-------|-------|--------|
| 41 | 12858 | | |
| 69 | 0.0 | 74.7 | 112.1# |
| 39 | 28.9 | 45.6 | 68.4# |



#49
 1,4-Dioxane
 Concen: 2.390 ug/l
 RT: 9.563 min Scan# 1305
 Delta R.T. 0.059 min
 Lab File: VN073015.D
 Acq: 22 Jun 2022 09:44

| Tgt Ion | Resp | Lower | Upper |
|---------|----------|-------|-------|
| 88 | 235 | | |
| 43 | 684715.3 | 20.2 | 30.4# |
| 58 | 2683.0 | 54.2 | 81.4# |

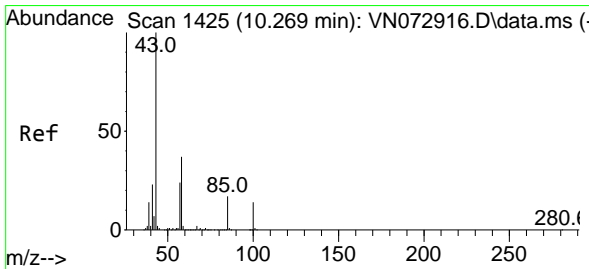
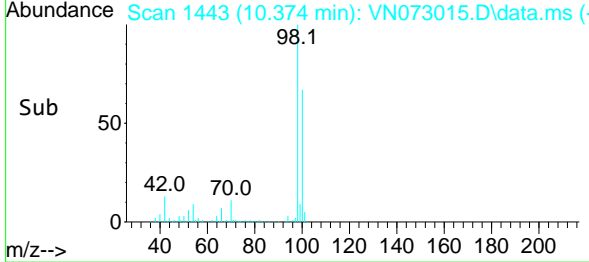
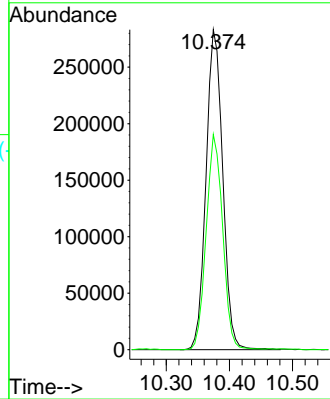
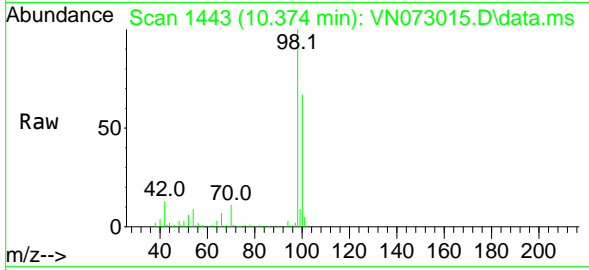




#50
 Toluene-d8
 Concen: 45.259 ug/l
 RT: 10.374 min Scan# 1443
 Delta R.T. -0.000 min
 Lab File: VN073015.D
 Acq: 22 Jun 2022 09:44

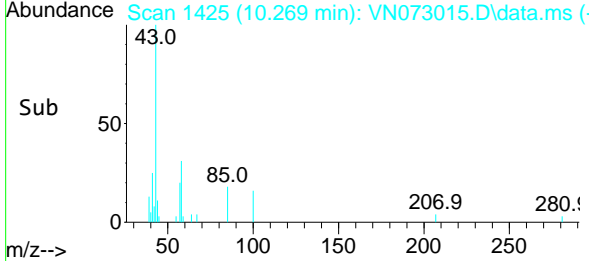
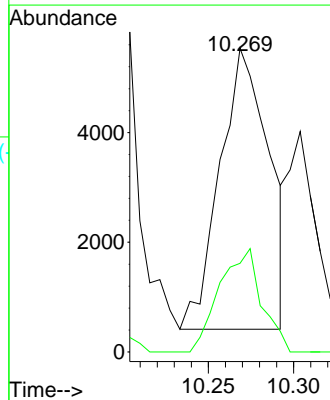
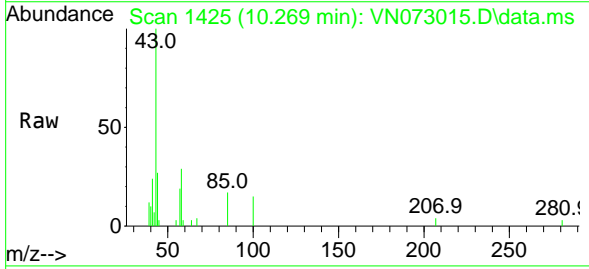
Instrument : MSVOA_N
 ClientSampleId : WC-14A-1A-11

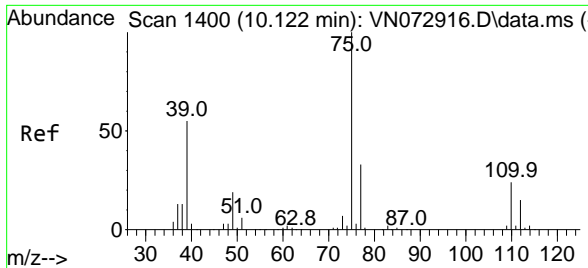
Tgt Ion: 98 Resp: 520983
 Ion Ratio Lower Upper
 98 100
 100 66.5 52.6 78.8



#51
 4-Methyl-2-Pentanone
 Concen: 1.640 ug/l
 RT: 10.269 min Scan# 1425
 Delta R.T. -0.000 min
 Lab File: VN073015.D
 Acq: 22 Jun 2022 09:44

Tgt Ion: 43 Resp: 10236
 Ion Ratio Lower Upper
 43 100
 58 31.6 34.1 51.1#

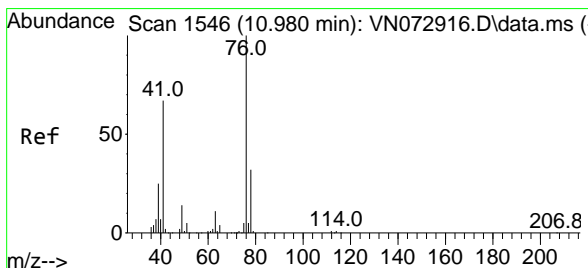
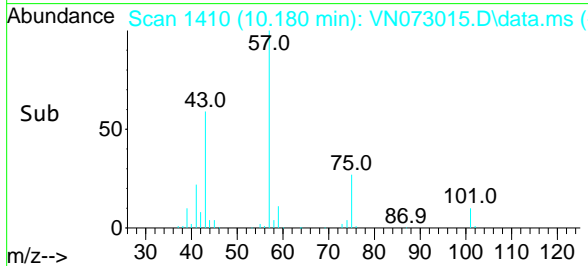
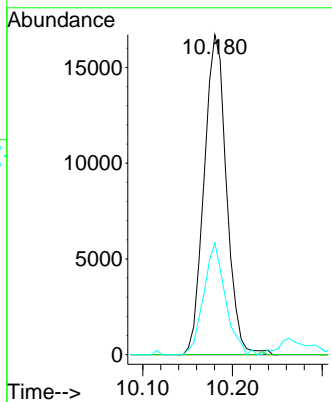
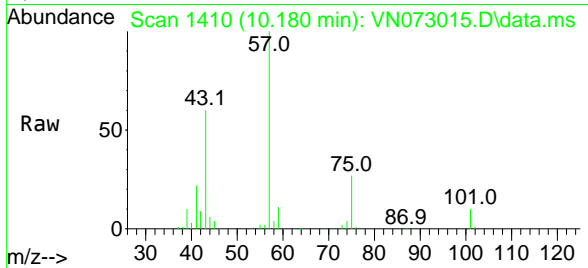




#54
 cis-1,3-Dichloropropene
 Concen: 5.439 ug/l
 RT: 10.180 min Scan# 1400
 Delta R.T. 0.059 min
 Lab File: VN073015.D
 Acq: 22 Jun 2022 09:44

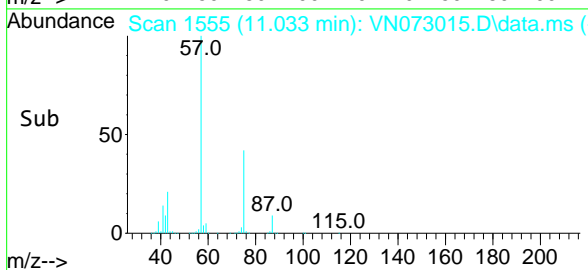
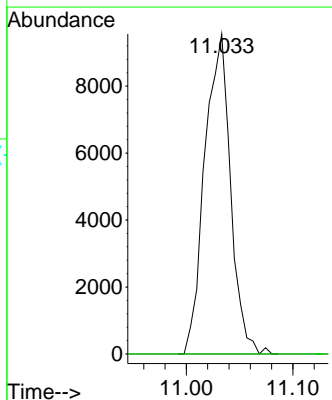
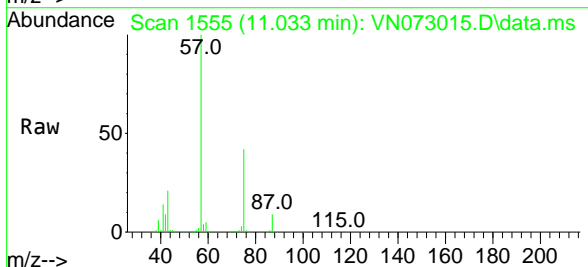
Instrument :
 MSVOA_N
 ClientSampleId :
 WC-14A-1A-11

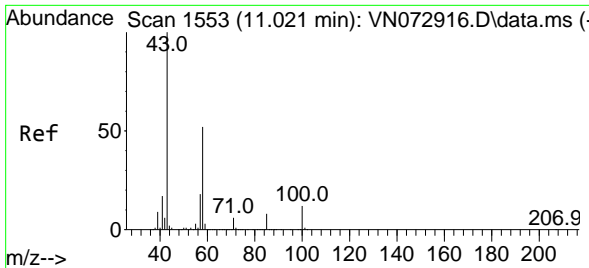
Tgt Ion: 75 Resp: 28871
 Ion Ratio Lower Upper
 75 100
 77 0.0 25.2 37.8#
 39 34.9 35.7 53.5#



#57
 1,3-Dichloropropane
 Concen: 2.732 ug/l
 RT: 11.033 min Scan# 1555
 Delta R.T. 0.053 min
 Lab File: VN073015.D
 Acq: 22 Jun 2022 09:44

Tgt Ion: 76 Resp: 16076
 Ion Ratio Lower Upper
 76 100
 78 0.0 26.2 39.2#

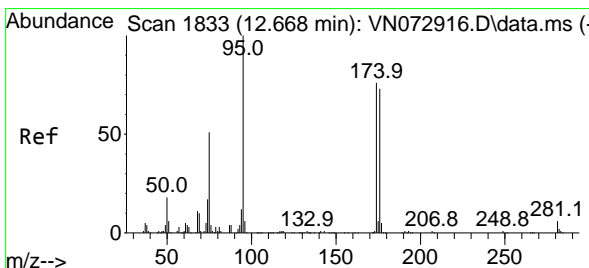
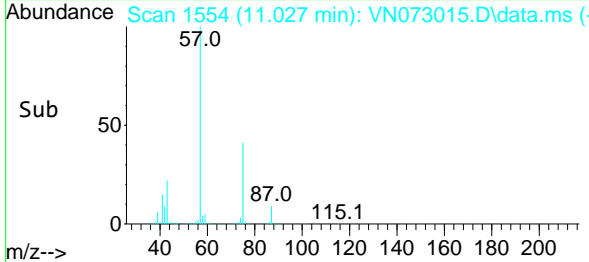
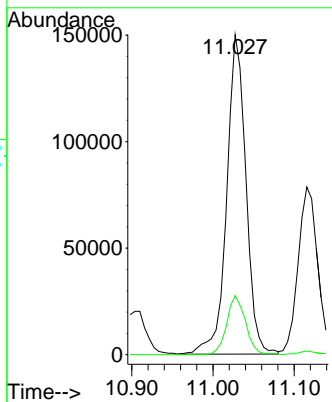
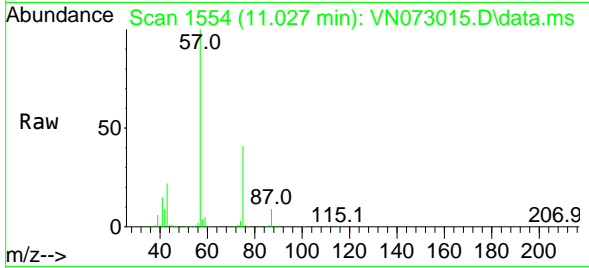




#59
 2-Hexanone
 Concen: 51.103 ug/l
 RT: 11.027 min Scan# 11
 Delta R.T. 0.006 min
 Lab File: VN073015.D
 Acq: 22 Jun 2022 09:44

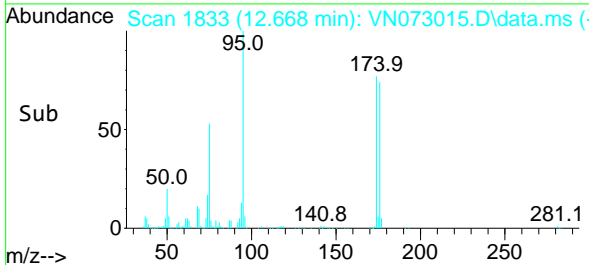
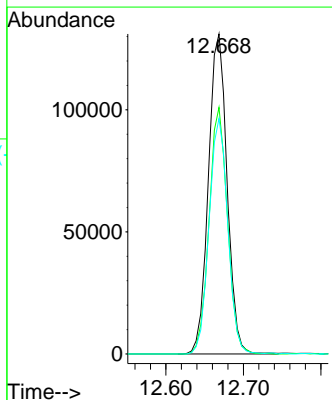
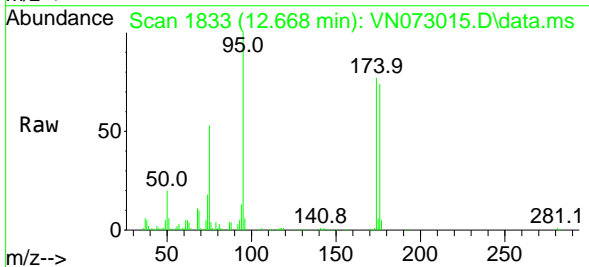
Instrument :
 MSVOA_N
 ClientSampleId :
 WC-14A-1A-11

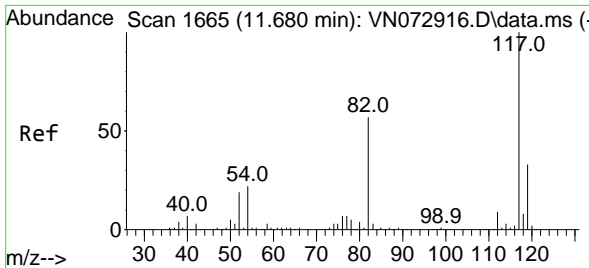
Tgt Ion: 43 Resp: 246686
 Ion Ratio Lower Upper
 43 100
 58 18.1 29.7 89.1#



#62
 4-Bromofluorobenzene
 Concen: 53.045 ug/l
 RT: 12.668 min Scan# 1833
 Delta R.T. -0.000 min
 Lab File: VN073015.D
 Acq: 22 Jun 2022 09:44

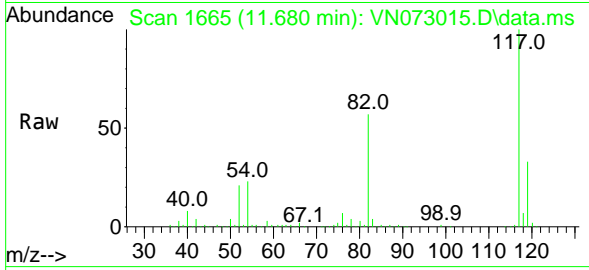
Tgt Ion: 95 Resp: 219569
 Ion Ratio Lower Upper
 95 100
 174 75.8 0.0 167.6
 176 73.4 0.0 163.4



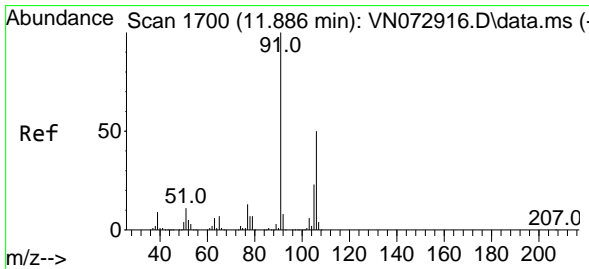
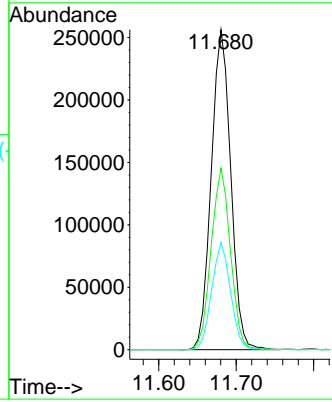
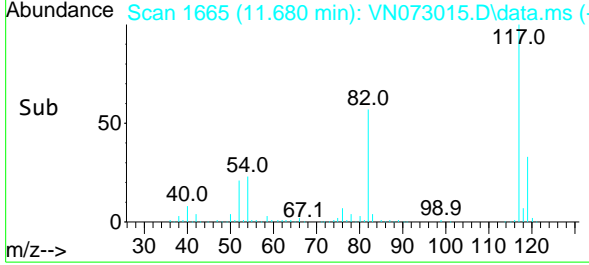


#63
 Chlorobenzene-d5
 Concen: 50.000 ug/l
 RT: 11.680 min Scan# 117
 Delta R.T. -0.000 min
 Lab File: VN073015.D
 Acq: 22 Jun 2022 09:44

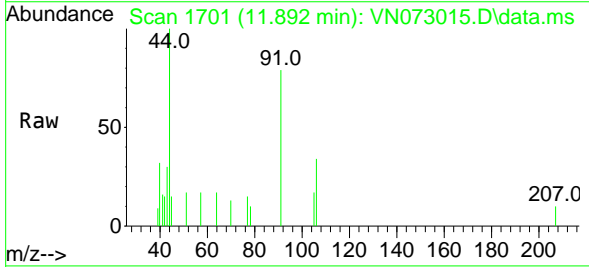
Instrument : MSVOA_N
 ClientSampleId : WC-14A-1A-11



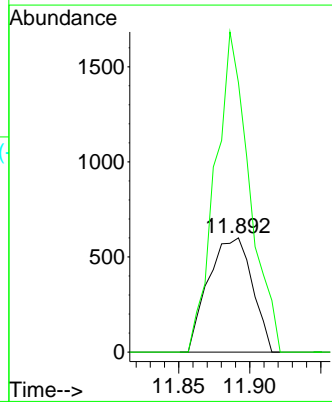
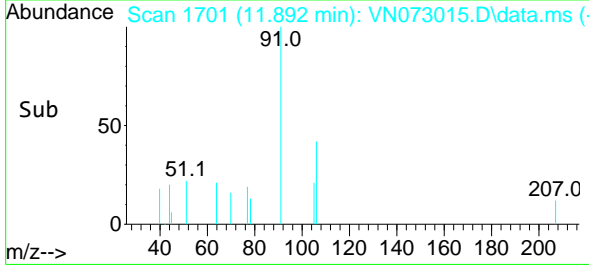
Tgt Ion:117 Resp: 448486
 Ion Ratio Lower Upper
 117 100
 82 56.7 44.2 66.2
 119 33.5 25.4 38.0

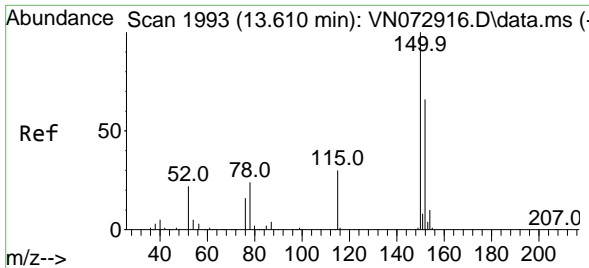


#68
 m/p-Xylenes
 Concen: 0.212 ug/l
 RT: 11.892 min Scan# 1701
 Delta R.T. 0.006 min
 Lab File: VN073015.D
 Acq: 22 Jun 2022 09:44



Tgt Ion:106 Resp: 1285
 Ion Ratio Lower Upper
 106 100
 91 220.1 158.9 238.3

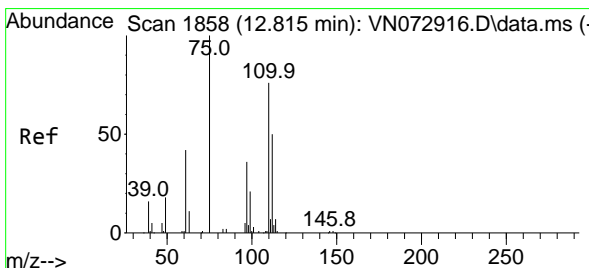
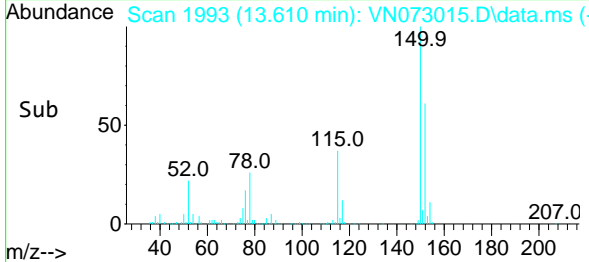
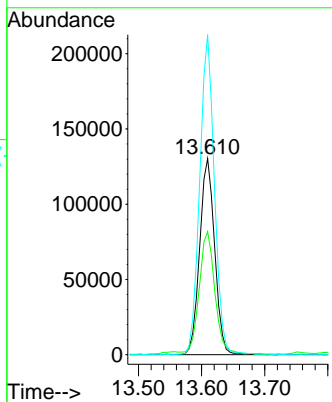
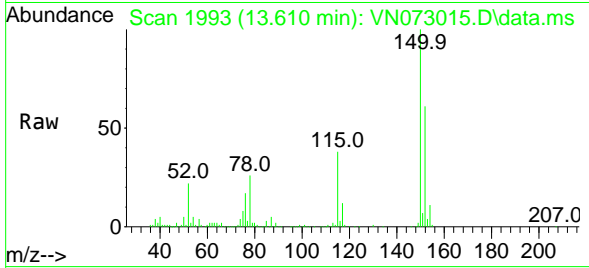




#72
 1,4-Dichlorobenzene-d4
 Concen: 50.000 ug/l
 RT: 13.610 min Scan# 1993
 Delta R.T. -0.000 min
 Lab File: VN073015.D
 Acq: 22 Jun 2022 09:44

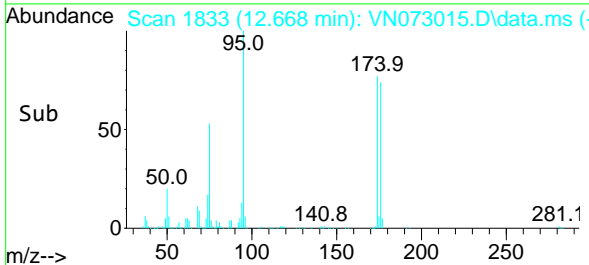
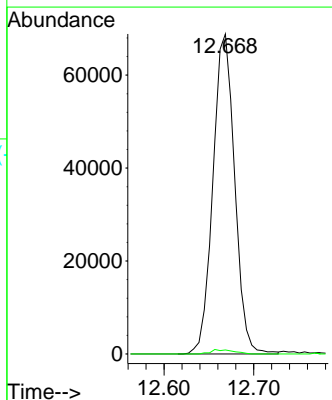
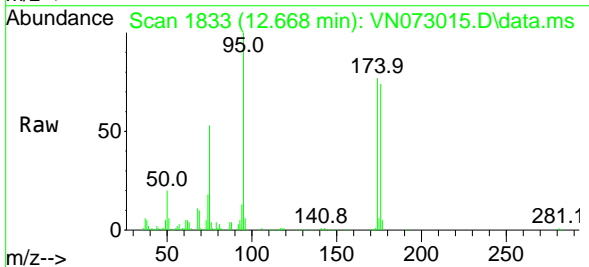
Instrument : MSVOA_N
 ClientSampleId : WC-14A-1A-11

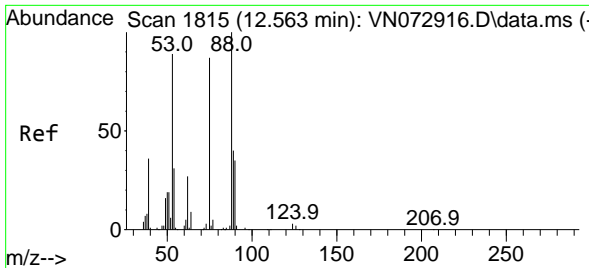
Tgt Ion:152 Resp: 215714
 Ion Ratio Lower Upper
 152 100
 115 65.8 28.9 86.7
 150 159.2 0.0 356.2



#76
 1,2,3-Trichloropropane
 Concen: 22.165 ug/l
 RT: 12.668 min Scan# 1833
 Delta R.T. -0.147 min
 Lab File: VN073015.D
 Acq: 22 Jun 2022 09:44

Tgt Ion: 75 Resp: 115920
 Ion Ratio Lower Upper
 75 100
 77 1.4 98.5 295.5#

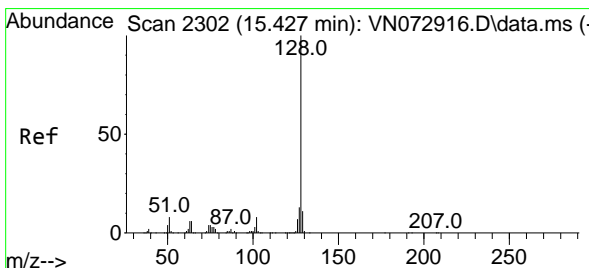
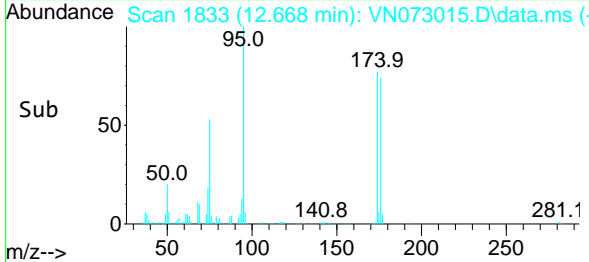
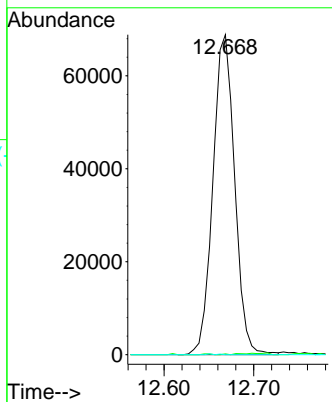
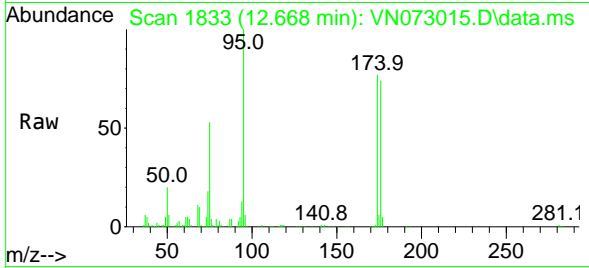




#81
 trans-1,4-Dichloro-2-butene
 Concen: 59.858 ug/l
 RT: 12.668 min Scan# 1815
 Delta R.T. 0.106 min
 Lab File: VN073015.D
 Acq: 22 Jun 2022 09:44

Instrument : MSVOA_N
 ClientSampleId : WC-14A-1A-11

Tgt Ion: 75 Resp: 115920
 Ion Ratio Lower Upper
 75 100
 53 0.0 78.0 117.0#
 89 0.0 37.2 55.8#



#95
 Naphthalene
 Concen: 0.469 ug/l
 RT: 15.433 min Scan# 2303
 Delta R.T. 0.006 min
 Lab File: VN073015.D
 Acq: 22 Jun 2022 09:44

Tgt Ion:128 Resp: 7819
 Ion Ratio Lower Upper
 128 100
 127 14.1 10.3 15.5
 129 13.1 8.6 13.0#

