

Data Path : Z:\VOASRV\HPCHEM1\MSVOA N\DATA\VN062220\
 Data File : VN062005.D
 Acq On : 22 Jun 2020 17:30
 Operator : JC/MD
 Sample : L3033-01DL 4X
 Misc : 5.00mL/MSVOA N/WATER
 ALS Vial : 17 Sample Multiplier: 1

Instrument :
 MSVOA_N
 ClientSampleId :
 SS043MW100-200615DL

Quant Time: Jun 23 05:18:21 2020
 Quant Method : Z:\VOASRV\HPCHEM1\MSVOA_N\METHODS\82N061620W.M
 Quant Title : SW846 8260
 QLast Update : Wed Jun 17 01:19:44 2020
 Response via : Initial Calibration

Internal Standards	R.T.	QIon	Response	Conc	Units	Dev(Min)
1) Pentafluorobenzene	7.62	168	141767	50.00	ug/l	0.00
34) 1,4-Difluorobenzene	8.55	114	263244	50.00	ug/l	0.00
63) Chlorobenzene-d5	11.38	117	258224	50.00	ug/l	0.00
72) 1,4-Dichlorobenzene-d4	13.32	152	106348	50.00	ug/l	0.00

System Monitoring Compounds	R.T.	QIon	Response	Conc	Units	Dev(Min)
33) 1,2-Dichloroethane-d4	7.99	65	98790	51.96	ug/l	0.00
Spiked Amount				50.000		
			Recovery	=	103.92%	
35) Dibromofluoromethane	7.54	113	83781	49.75	ug/l	0.00
Spiked Amount				50.000		
			Recovery	=	99.50%	
50) Toluene-d8	10.06	98	330213	49.87	ug/l	0.00
Spiked Amount				50.000		
			Recovery	=	99.74%	
62) 4-Bromofluorobenzene	12.38	95	116104	51.12	ug/l	0.00
Spiked Amount				50.000		
			Recovery	=	102.24%	

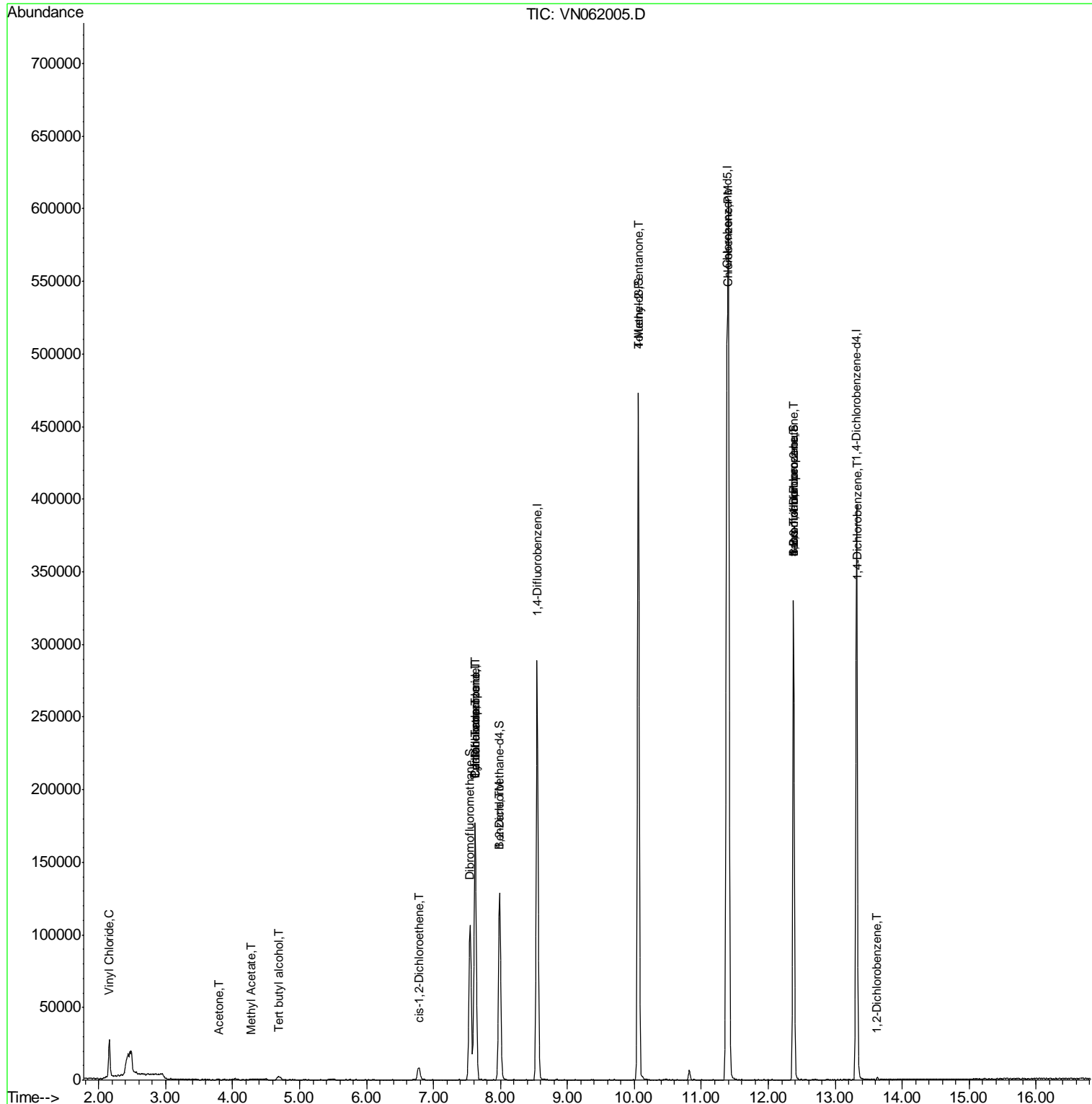
Target Compounds	R.T.	QIon	Response	Conc	Units	Qvalue
4) Vinyl Chloride	2.16	62	24151	10.295	ug/l	98
11) Tert butyl alcohol	4.69	59	1615	6.138	ug/l #	74
16) Acetone	3.79	43	846	1.506	ug/l #	40
18) Methyl Acetate	4.28	43	520	0.322	ug/l #	46
27) cis-1,2-Dichloroethene	6.77	96	3637	1.905	ug/l	86
31) Cyclohexane	7.62	56	3260	1.301	ug/l #	29
36) 1,1-Dichloropropene	7.62	75	11552	4.811	ug/l #	48
38) Carbon Tetrachloride	7.62	117	14412	6.061	ug/l #	18
40) Benzene	8.00	78	16039	2.205	ug/l	97
51) 4-Methyl-2-Pentanone	10.06	43	1341	0.718	ug/l #	1
65) Chlorobenzene	11.41	112	321828	59.065	ug/l	99
71) Bromoform	12.38	173	955	0.689	ug/l #	1
76) 1,2,3-Trichloropropane	12.37	75	57438	27.510	ug/l #	100
81) trans-1,4-Dichloro-2-buten	12.37	75	57438	75.032	ug/l #	14
88) 1,4-Dichlorobenzene	13.34	146	1811	0.509	ug/l #	44
91) 1,2-Dichlorobenzene	13.63	146	936	0.280	ug/l	94

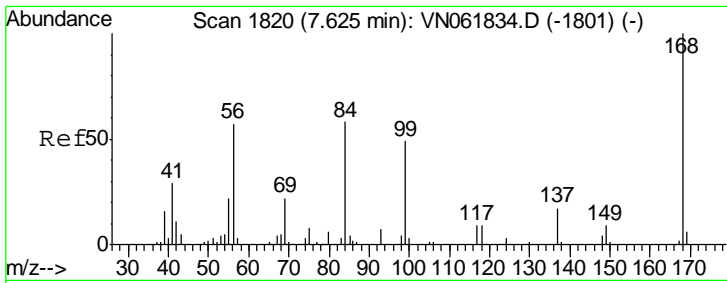
(#) = qualifier out of range (m) = manual integration (+) = signals summed

Data Path : Z:\VOASRV\HPCHEM1\MSVOA N\DATA\VN062220\
Data File : VN062005.D
Acq On : 22 Jun 2020 17:30
Operator : JC/MD
Sample : L3033-01DL 4X
Misc : 5.00mL/MSVOA N/WATER
ALS Vial : 17 Sample Multiplier: 1

Instrument :
MSVOA_N
ClientSampleId :
SS043MW100-200615DL

Quant Time: Jun 23 05:18:21 2020
Quant Method : Z:\VOASRV\HPCHEM1\MSVOA_N\METHODS\82N061620W.M
Quant Title : SW846 8260
QLast Update : Wed Jun 17 01:19:44 2020
Response via : Initial Calibration

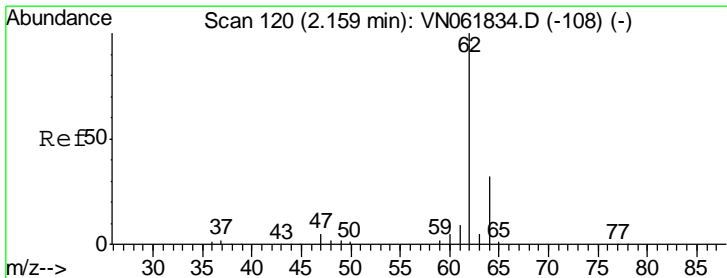
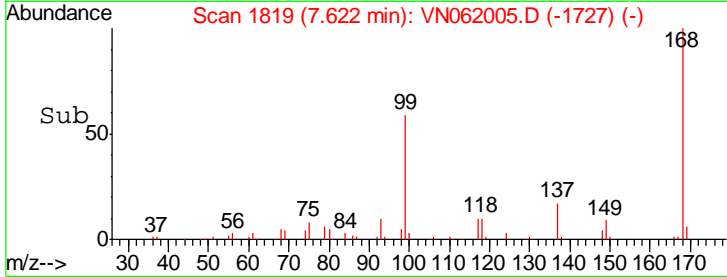
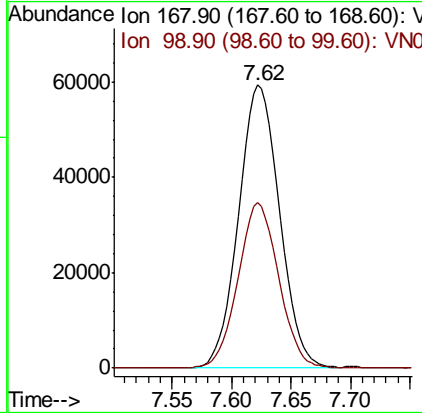
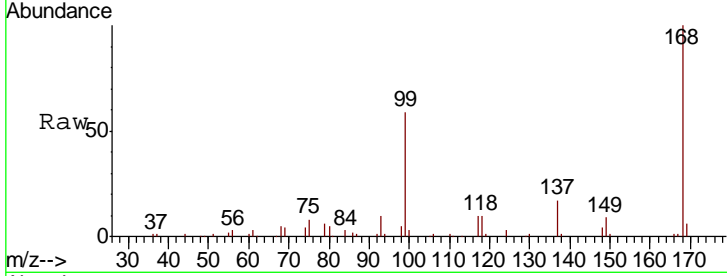




#1
 Pentafluorobenzene
 Concen: 50.000 ug/l
 RT: 7.62 min Scan# 1819
 Delta R.T. -0.00 min
 Lab File: VN062005.D
 Acq: 22 Jun 2020 17:30

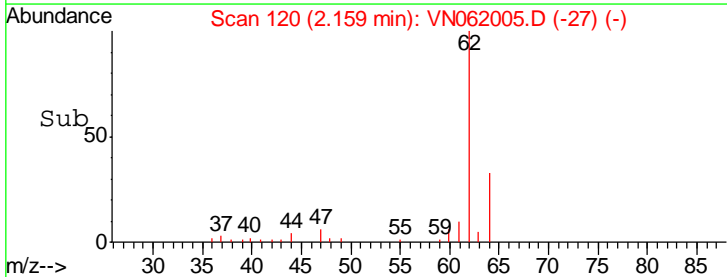
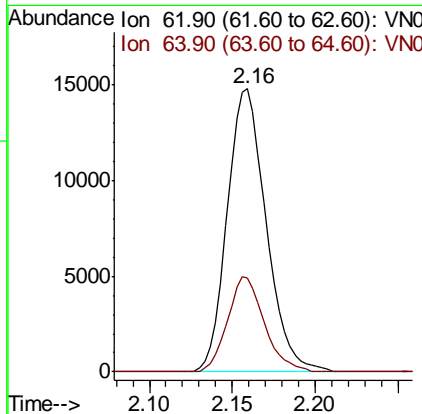
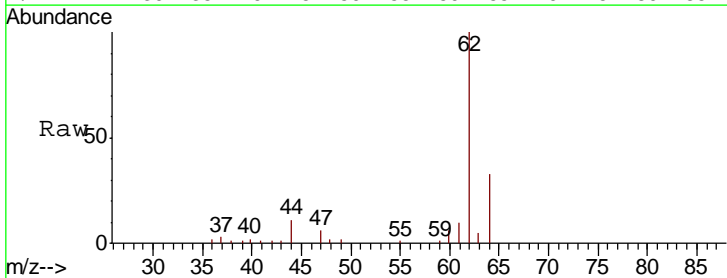
Instrument : MSVOA_N
 ClientSampled : SS043MW100-200615DL

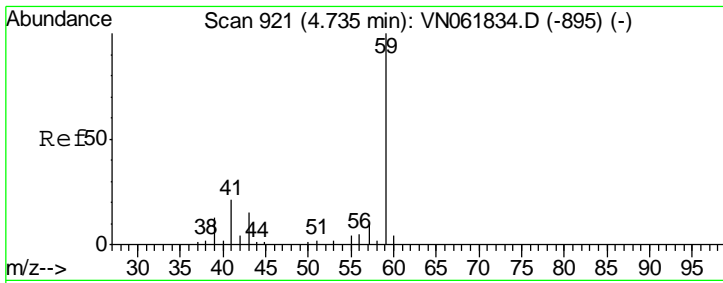
Tgt Ion: 168 Resp: 141767
 Ion Ratio Lower Upper
 168 100
 99 58.6 44.6 67.0



#4
 Vinyl Chloride
 Concen: 10.295 ug/l
 RT: 2.16 min Scan# 120
 Delta R.T. -0.00 min
 Lab File: VN062005.D
 Acq: 22 Jun 2020 17:30

Tgt Ion: 62 Resp: 24151
 Ion Ratio Lower Upper
 62 100
 64 33.0 25.5 38.3

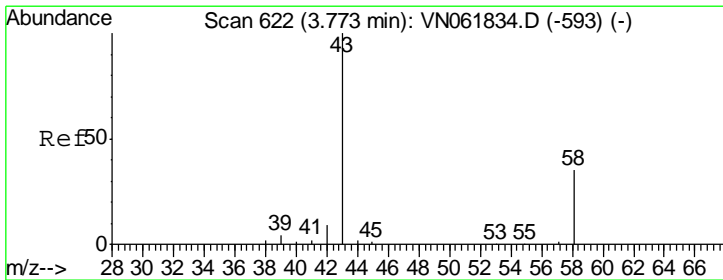
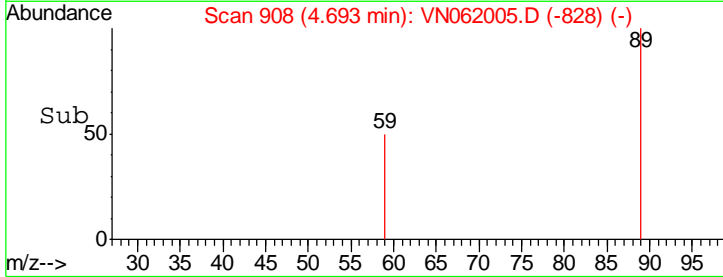
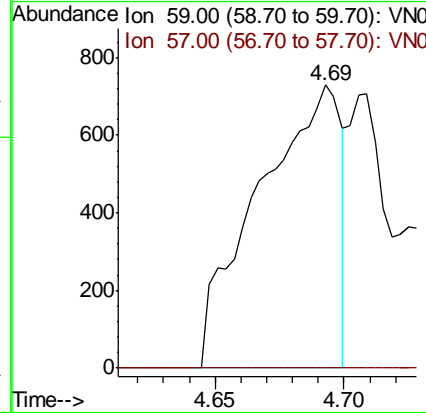
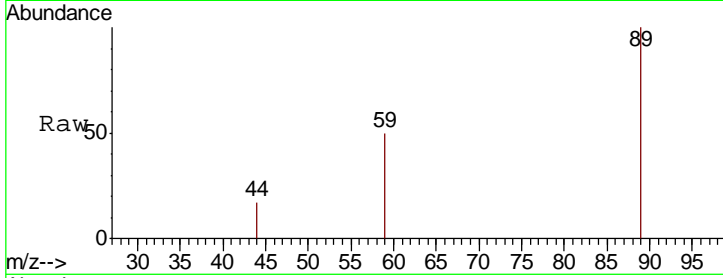




#11
 Tert butyl alcohol
 Concen: 6.138 ug/l
 RT: 4.69 min Scan# 908
 Delta R.T. -0.04 min
 Lab File: VN062005.D
 Acq: 22 Jun 2020 17:30

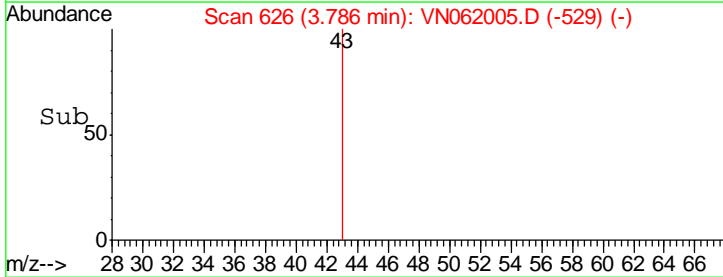
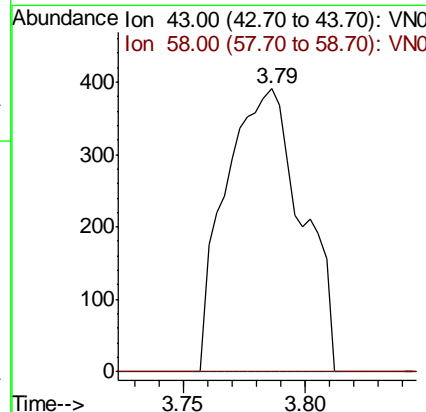
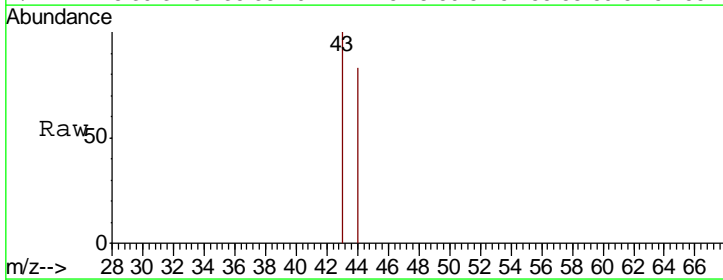
Instrument :
 MSVOA_N
 ClientSampled :
 SS043MW100-200615DL

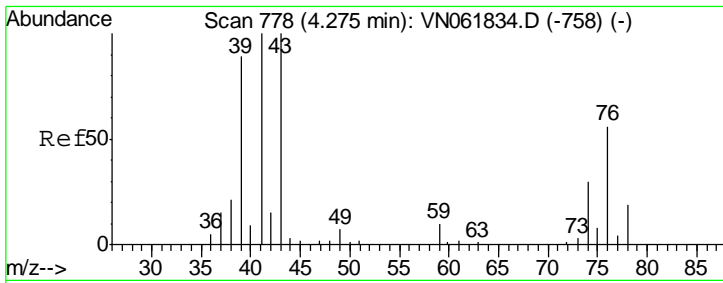
Tgt Ion: 59 Resp: 1615
 Ion Ratio Lower Upper
 59 100
 57 0.0 7.7 11.5#



#16
 Acetone
 Concen: 1.506 ug/l
 RT: 3.79 min Scan# 626
 Delta R.T. 0.01 min
 Lab File: VN062005.D
 Acq: 22 Jun 2020 17:30

Tgt Ion: 43 Resp: 846
 Ion Ratio Lower Upper
 43 100
 58 0.0 27.8 41.8#

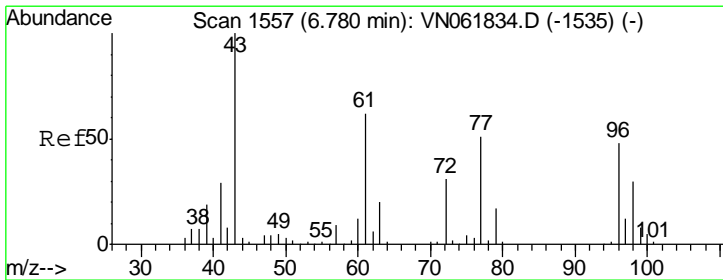
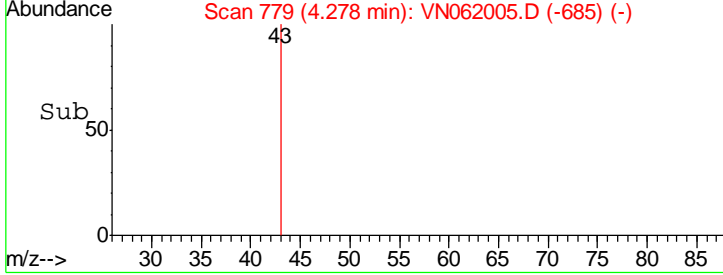
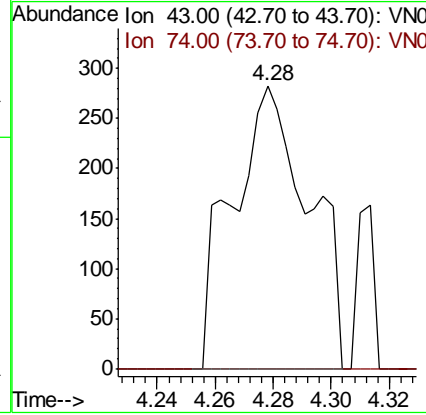
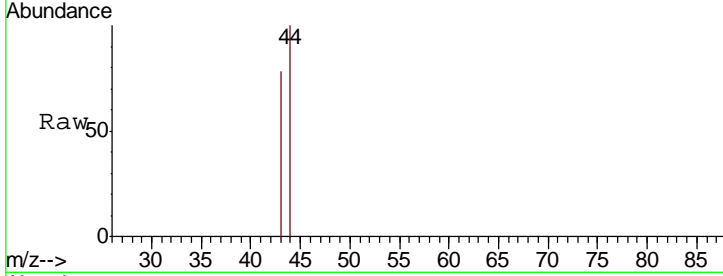




#18
 Methyl Acetate
 Concen: 0.322 ug/l
 RT: 4.28 min Scan# 779
 Delta R.T. 0.00 min
 Lab File: VN062005.D
 Acq: 22 Jun 2020 17:30

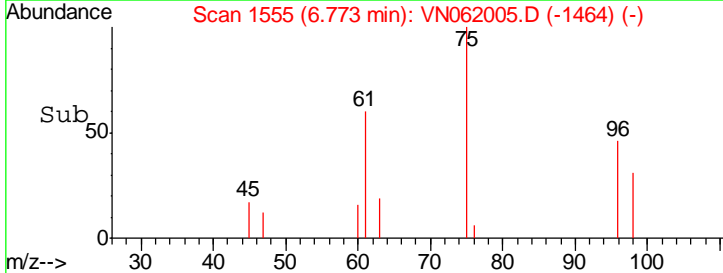
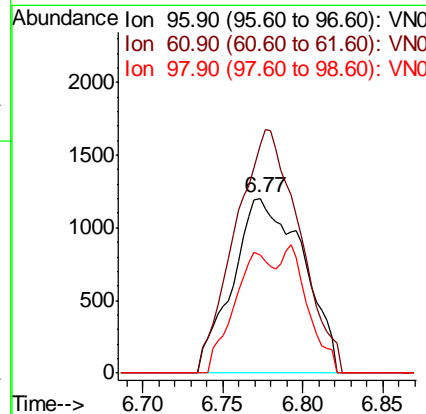
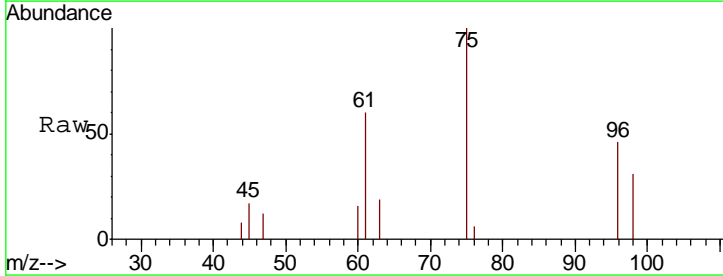
Instrument :
 MSVOA_N
ClientSampled :
 SS043MW100-200615DL

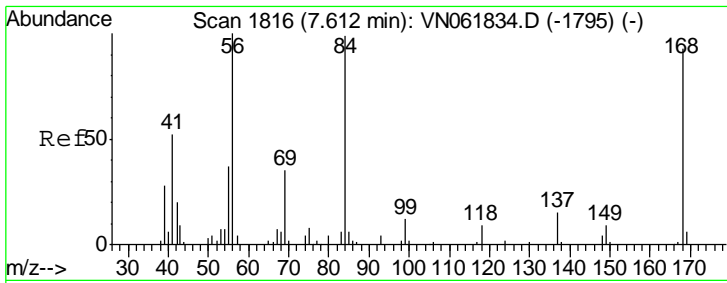
Tgt Ion	Resp	Lower	Upper
43	100		
74	0.0	23.0	34.4#



#27
 cis-1,2-Dichloroethene
 Concen: 1.905 ug/l
 RT: 6.77 min Scan# 1555
 Delta R.T. -0.01 min
 Lab File: VN062005.D
 Acq: 22 Jun 2020 17:30

Tgt Ion	Resp	Lower	Upper
96	100		
61	127.3	0.0	265.6
98	38.7	0.0	128.2

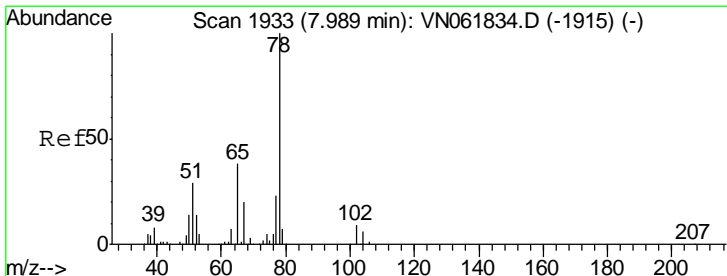
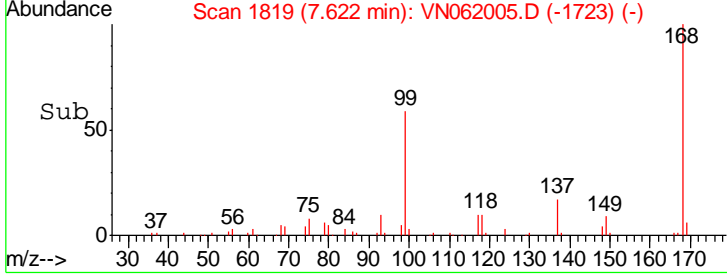
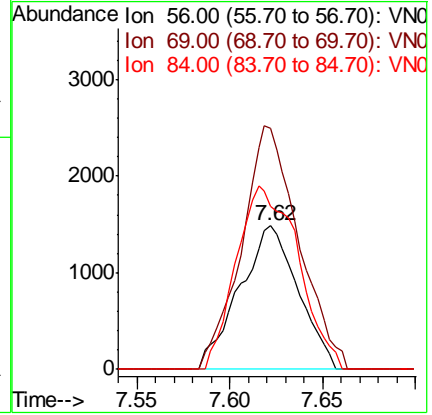
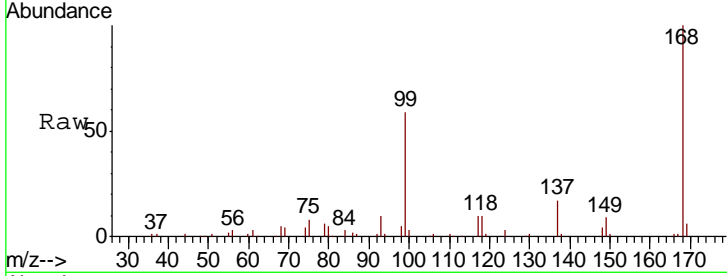




#31
 Cyclohexane
 Concen: 1.301 ug/l
 RT: 7.62 min Scan# 1819
 Delta R.T. 0.01 min
 Lab File: VN062005.D
 Acq: 22 Jun 2020 17:30

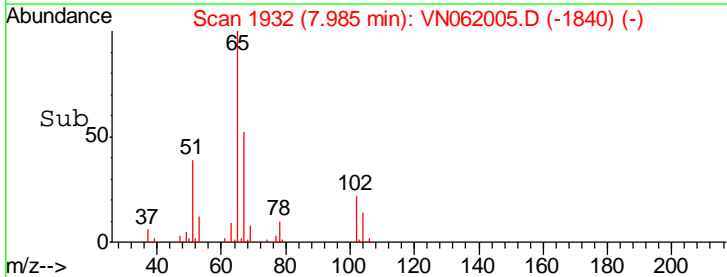
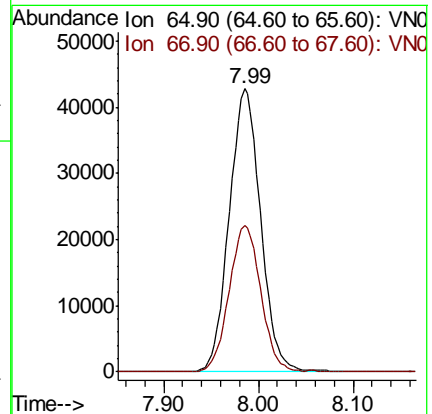
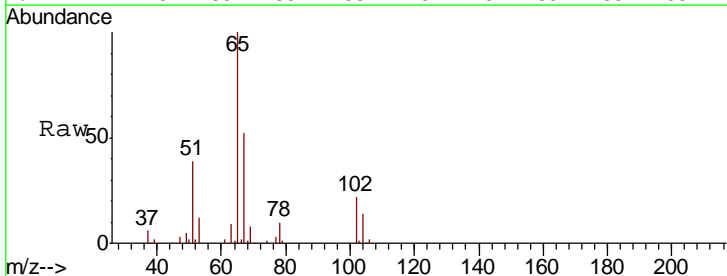
Instrument : MSVOA_N
 ClientSampleID : SS043MW100-200615DL

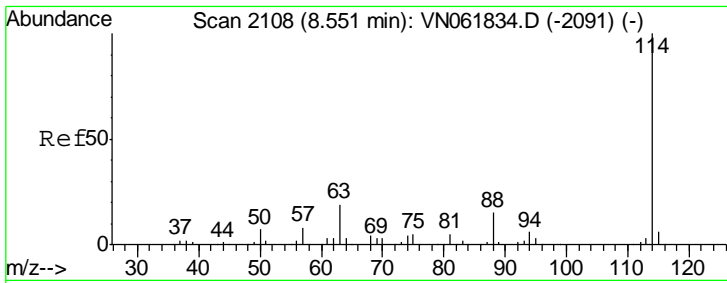
Tgt Ion	Resp	Lower	Upper
56	100		
69	167.7	27.7	41.5#
84	113.6	79.1	118.7



#33
 1,2-Dichloroethane-d4
 Concen: 51.959 ug/l
 RT: 7.99 min Scan# 1932
 Delta R.T. -0.00 min
 Lab File: VN062005.D
 Acq: 22 Jun 2020 17:30

Tgt Ion	Resp	Lower	Upper
65	100		
67	52.2	0.0	106.2

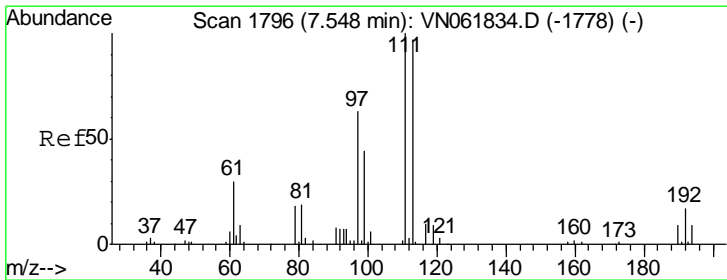
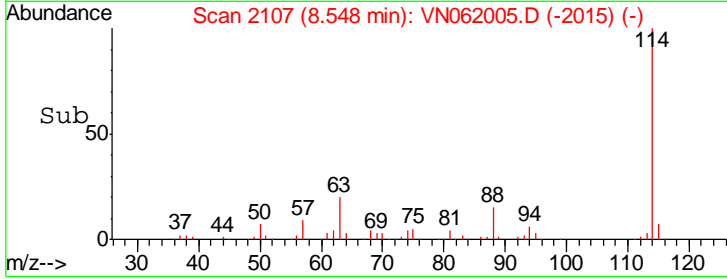
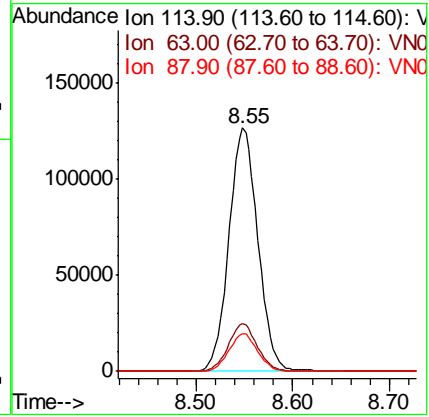
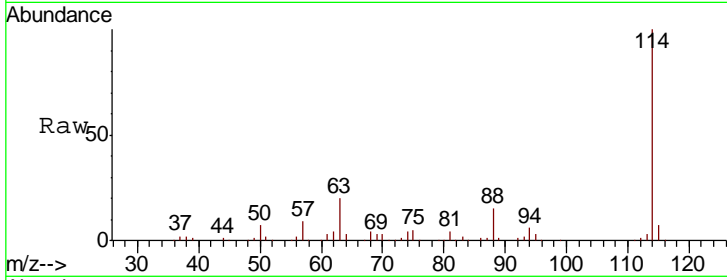




#34
 1,4-Difluorobenzene
 Concen: 50.000 ug/l
 RT: 8.55 min Scan# 2107
 Delta R.T. -0.00 min
 Lab File: VN062005.D
 Acq: 22 Jun 2020 17:30

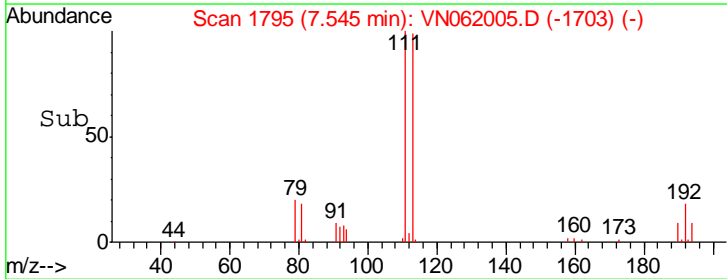
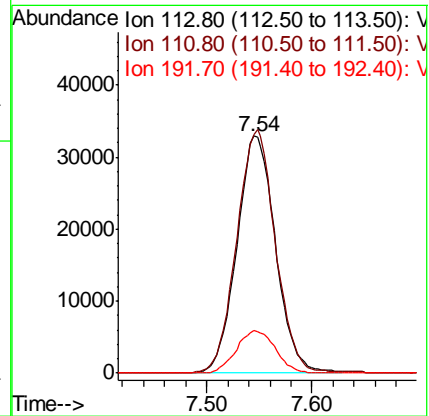
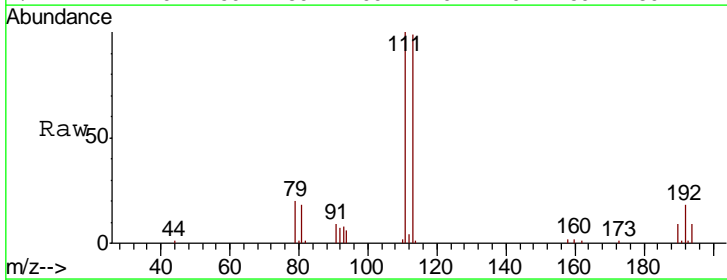
Instrument : MSVOA_N
 ClientSampleId : SS043MW100-200615DL

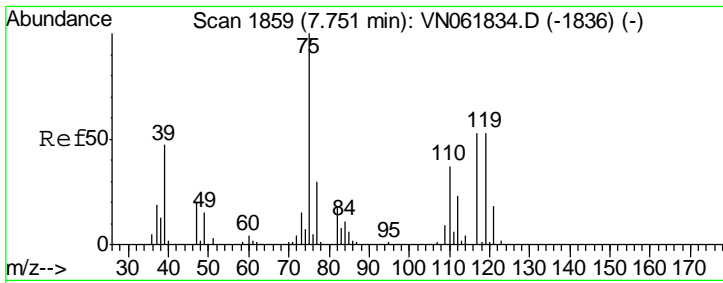
Tgt Ion	Resp	Lower	Upper
114	100		
63	19.7	0.0	37.6
88	15.4	0.0	31.0



#35
 Dibromofluoromethane
 Concen: 49.748 ug/l
 RT: 7.54 min Scan# 1795
 Delta R.T. -0.00 min
 Lab File: VN062005.D
 Acq: 22 Jun 2020 17:30

Tgt Ion	Resp	Lower	Upper
113	100		
111	102.6	83.7	125.5
192	18.0	13.9	20.9

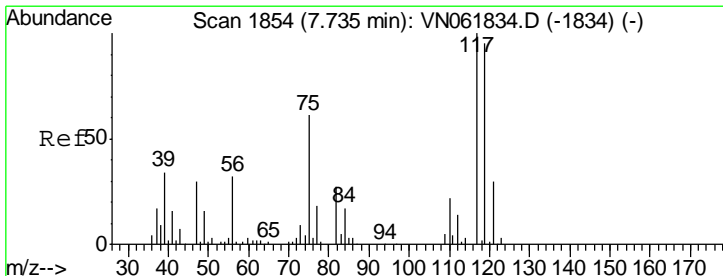
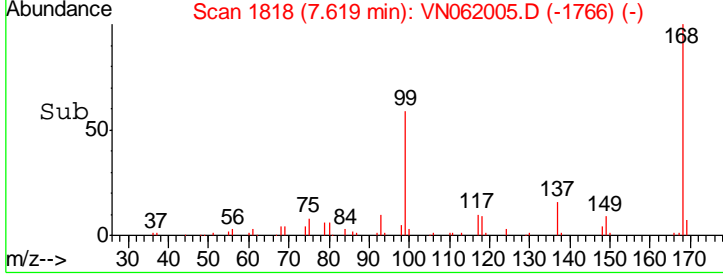
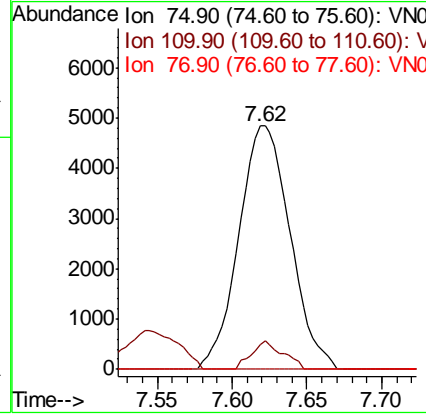
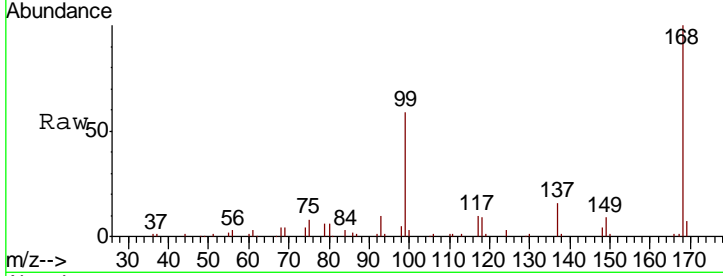




#36
 1,1-Dichloropropene
 Concen: 4.811 ug/l
 RT: 7.62 min Scan# 1818
 Delta R.T. -0.13 min
 Lab File: VN062005.D
 Acq: 22 Jun 2020 17:30

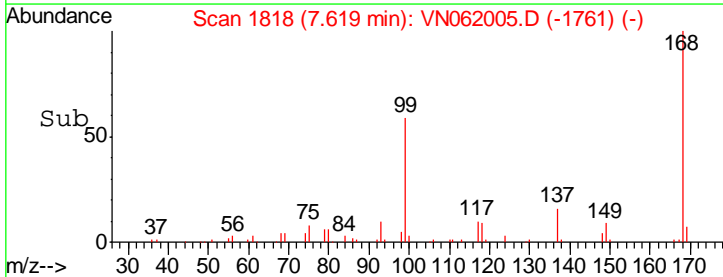
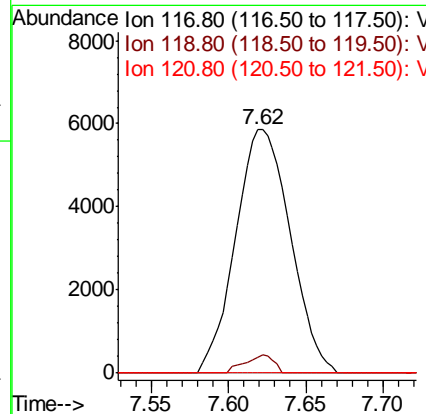
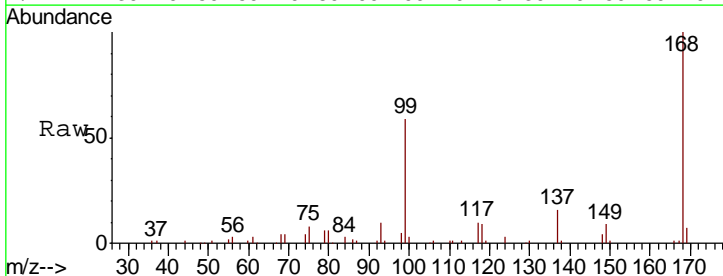
Instrument : MSVOA_N
 ClientSampleID : SS043MW100-200615DL

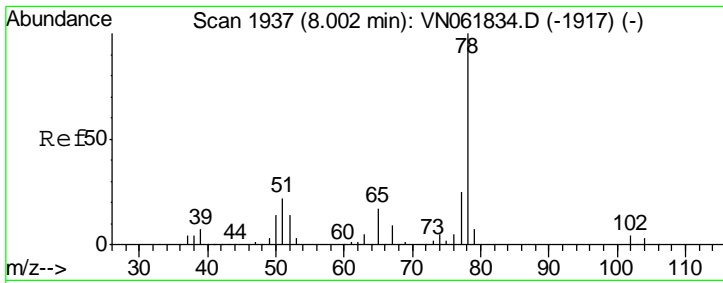
Tgt Ion	Resp	Lower	Upper
75	11552		
110	7.1	18.2	54.6#
77	0.0	24.2	36.4#



#38
 Carbon Tetrachloride
 Concen: 6.061 ug/l
 RT: 7.62 min Scan# 1818
 Delta R.T. -0.12 min
 Lab File: VN062005.D
 Acq: 22 Jun 2020 17:30

Tgt Ion	Resp	Lower	Upper
117	14412		
119	6.4	75.8	113.6#
121	0.0	23.8	35.6#

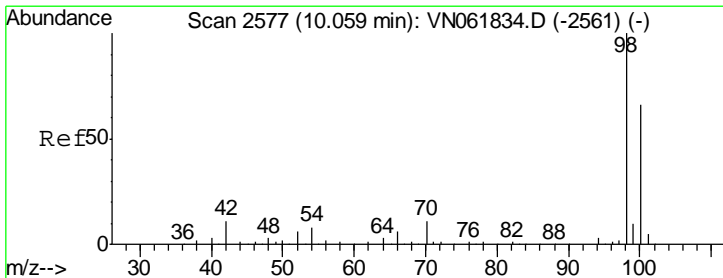
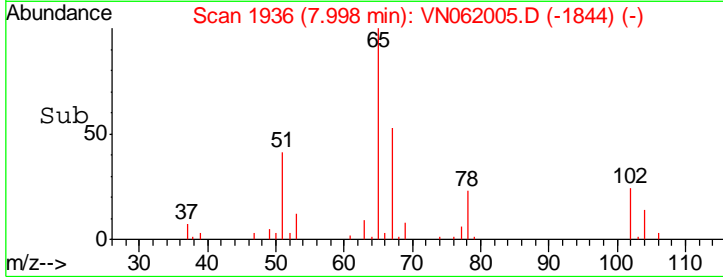
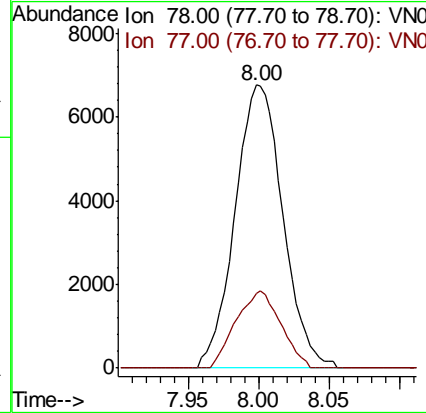
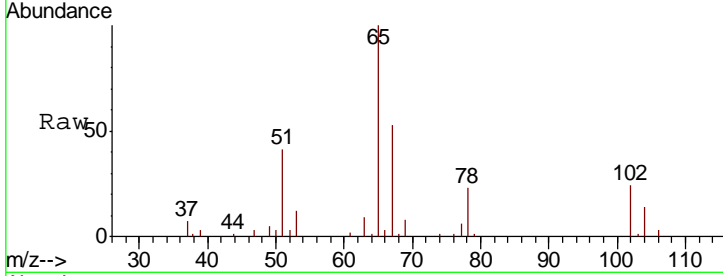




#40
Benzene
Concen: 2.205 ug/l
RT: 8.00 min Scan# 1936
Delta R.T. -0.00 min
Lab File: VN062005.D
Acq: 22 Jun 2020 17:30

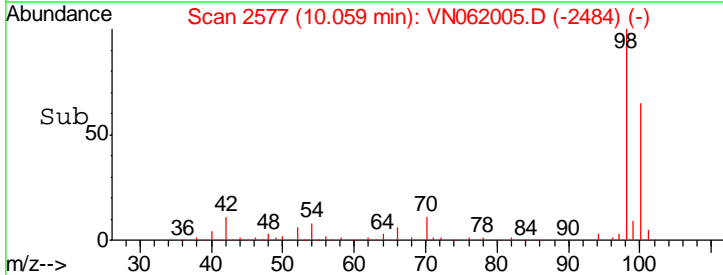
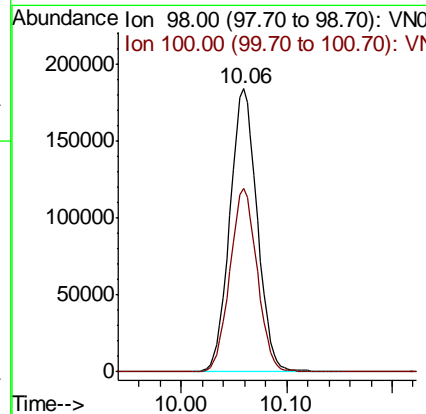
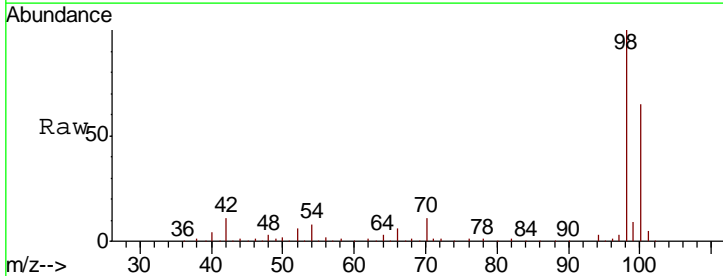
Instrument :
MSVOA_N
ClientSampled :
SS043MW100-200615DL

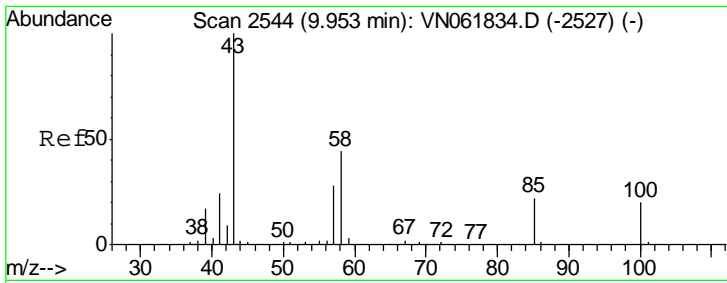
Tgt Ion	Resp	Lower	Upper
78	16039		
77	26.3	19.7	29.5



#50
Toluene-d8
Concen: 49.875 ug/l
RT: 10.06 min Scan# 2577
Delta R.T. -0.00 min
Lab File: VN062005.D
Acq: 22 Jun 2020 17:30

Tgt Ion	Resp	Lower	Upper
98	330213		
100	64.7	52.7	79.1

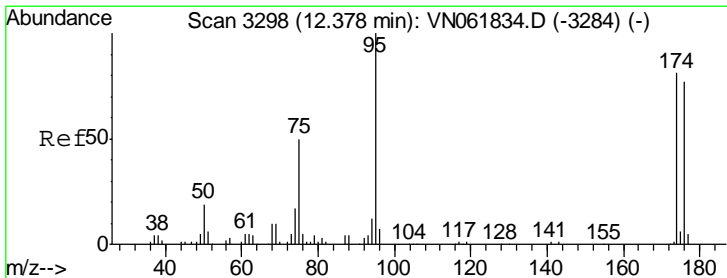
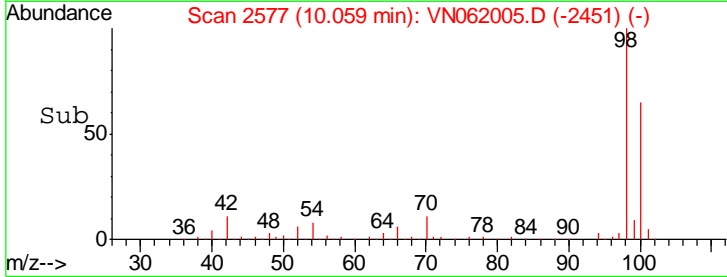
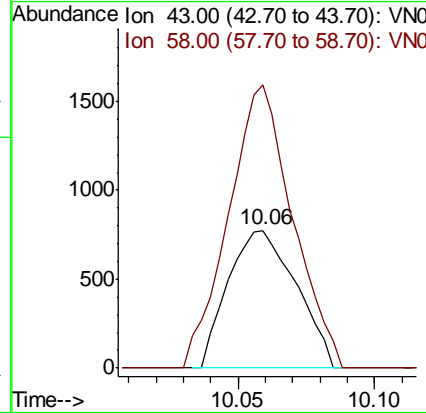
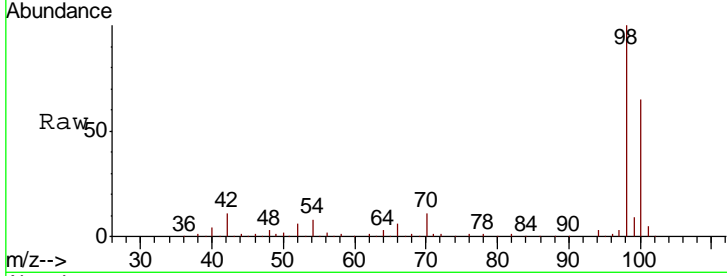




#51
 4-Methyl-2-Pentanone
 Concen: 0.718 ug/l
 RT: 10.06 min Scan# 2577
 Delta R.T. 0.11 min
 Lab File: VN062005.D
 Acq: 22 Jun 2020 17:30

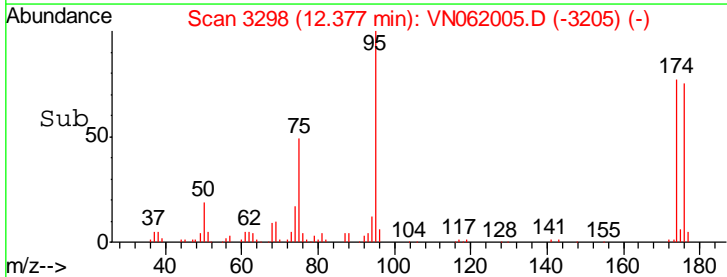
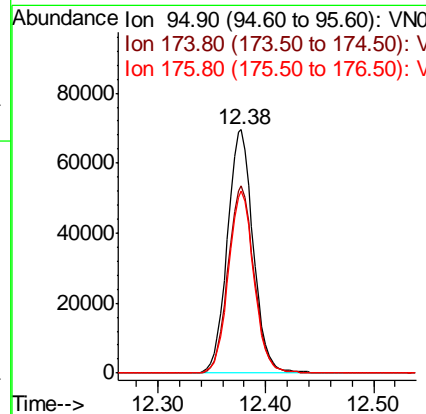
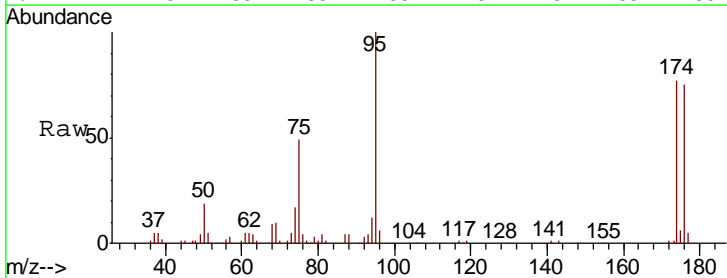
Instrument :
 MSVOA_N
 ClientSampled :
 SS043MW100-200615DL

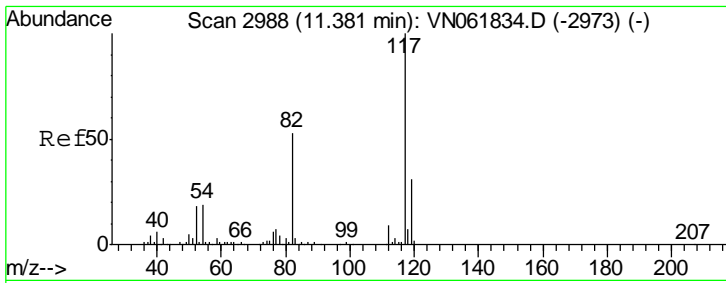
Tot Ion: 43 Resp: 1341
 Ion Ratio Lower Upper
 43 100
 58 193.3 34.6 52.0#



#62
 4-Bromofluorobenzene
 Concen: 51.123 ug/l
 RT: 12.38 min Scan# 3298
 Delta R.T. -0.00 min
 Lab File: VN062005.D
 Acq: 22 Jun 2020 17:30

Tgt Ion: 95 Resp: 116104
 Ion Ratio Lower Upper
 95 100
 174 77.3 0.0 158.6
 176 73.7 0.0 152.0

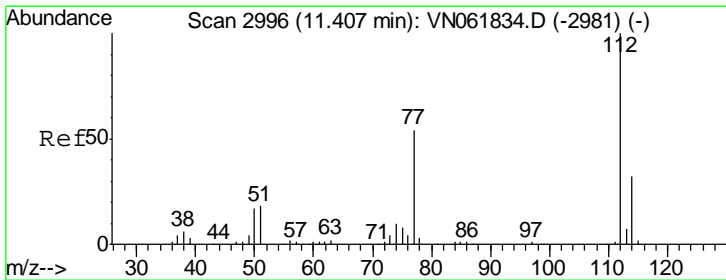
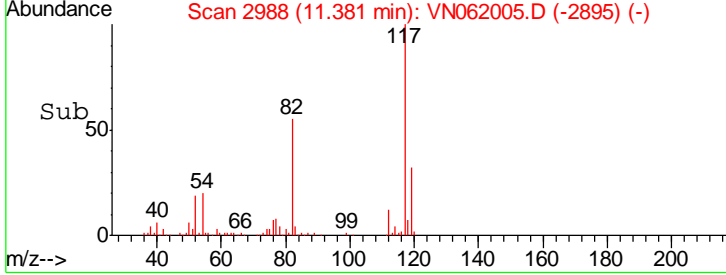
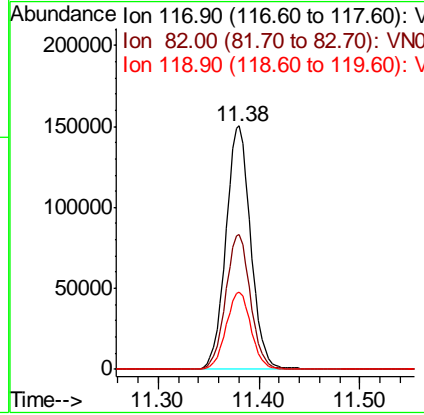
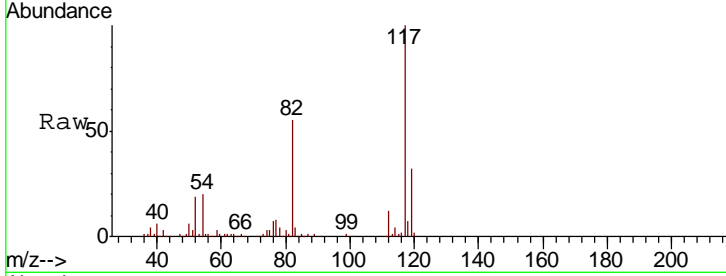




#63
 Chlorobenzene-d5
 Concen: 50.000 ug/l
 RT: 11.38 min Scan# 2988
 Delta R.T. -0.00 min
 Lab File: VN062005.D
 Acq: 22 Jun 2020 17:30

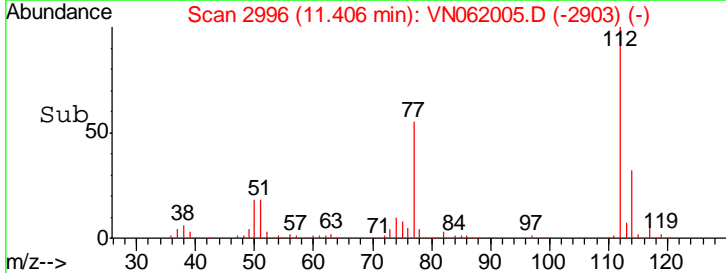
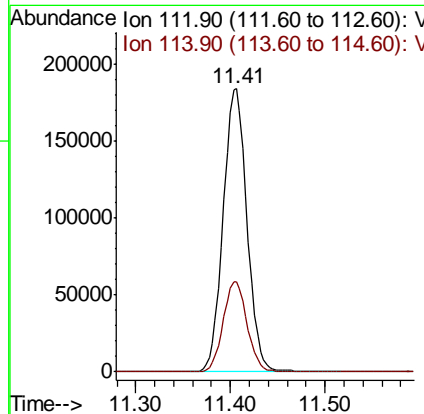
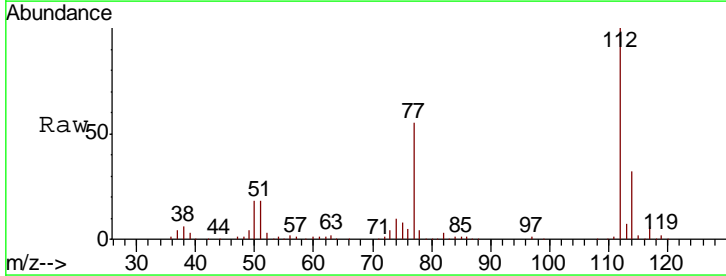
Instrument : MSVOA_N
 ClientSampled : SS043MW100-200615DL

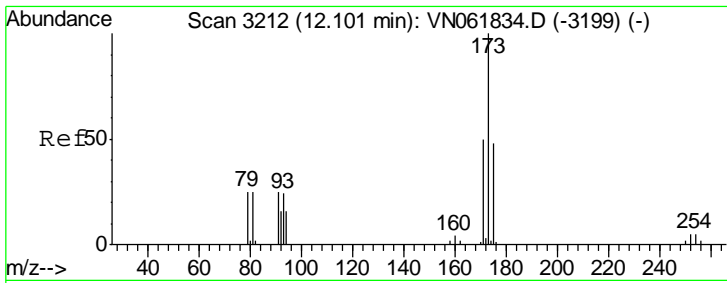
Tgt Ion	Resp	Lower	Upper
117	258224		
82	55.4	42.6	64.0
119	32.0	24.7	37.1



#65
 Chlorobenzene
 Concen: 59.065 ug/l
 RT: 11.41 min Scan# 2996
 Delta R.T. -0.00 min
 Lab File: VN062005.D
 Acq: 22 Jun 2020 17:30

Tgt Ion	Resp	Lower	Upper
112	321828		
114	31.9	25.8	38.6

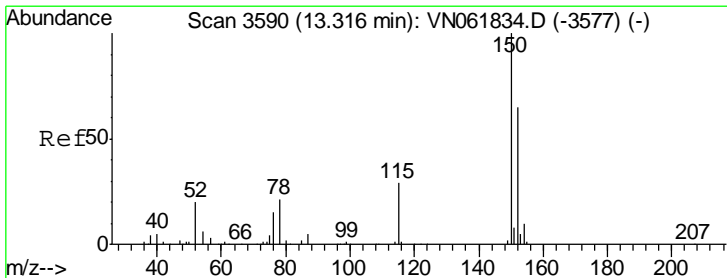
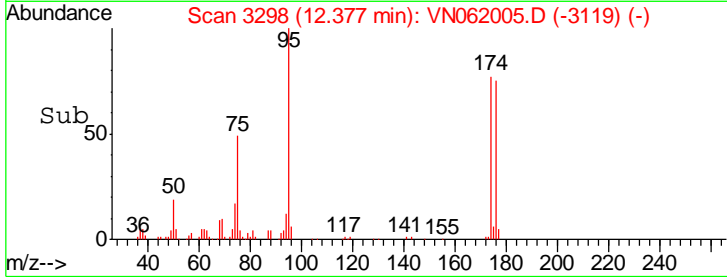
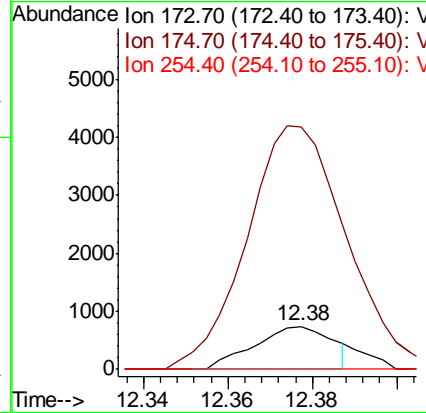
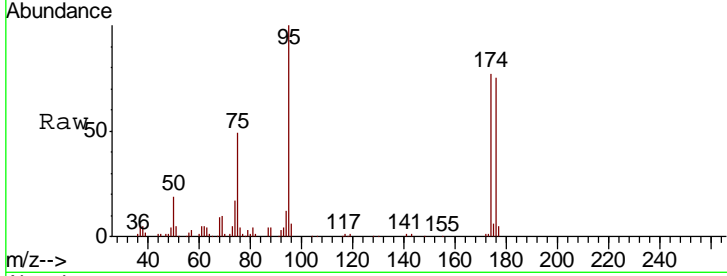




#71
 Bromoform
 Concen: 0.689 ug/l
 RT: 12.38 min Scan# 3298
 Delta R.T. 0.28 min
 Lab File: VN062005.D
 Acq: 22 Jun 2020 17:30

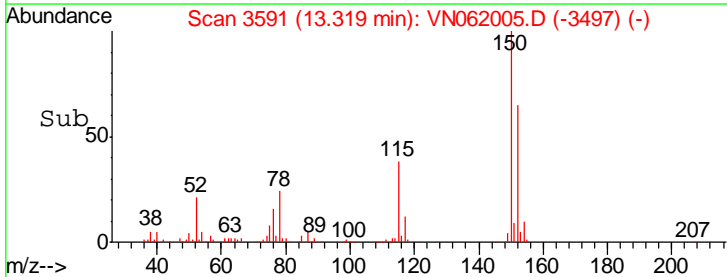
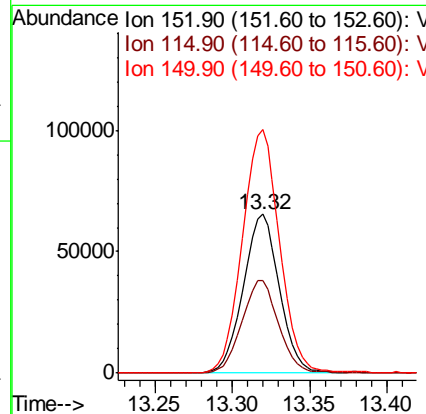
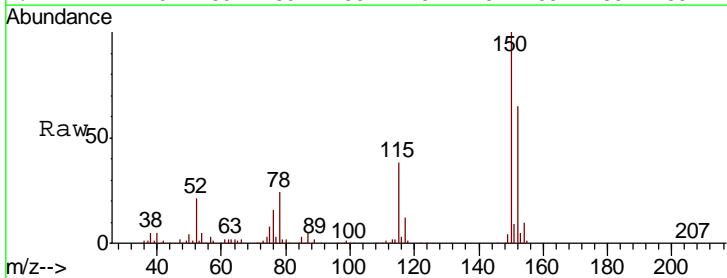
Instrument :
 MSVOA_N
 ClientSampleId :
 SS043MW100-200615DL

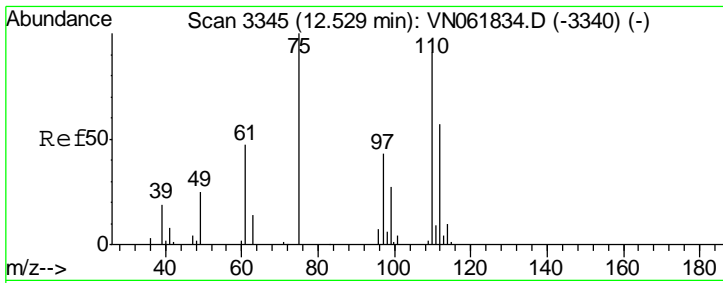
Tgt Ion	Resp	Lower	Upper
173	100		
175	620.5	23.9	71.7#
254	0.0	0.0	0.0



#72
 1,4-Dichlorobenzene-d4
 Concen: 50.000 ug/l
 RT: 13.32 min Scan# 3591
 Delta R.T. 0.00 min
 Lab File: VN062005.D
 Acq: 22 Jun 2020 17:30

Tgt Ion	Resp	Lower	Upper
152	100		
115	59.2	29.1	87.3
150	157.7	0.0	347.6

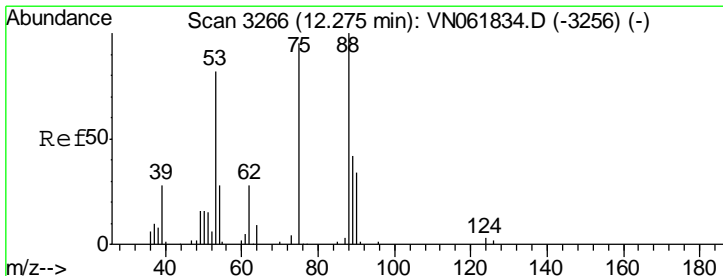
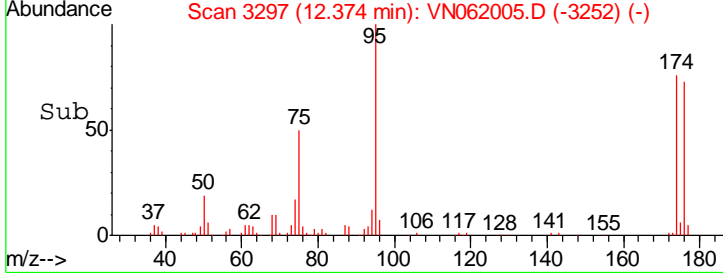
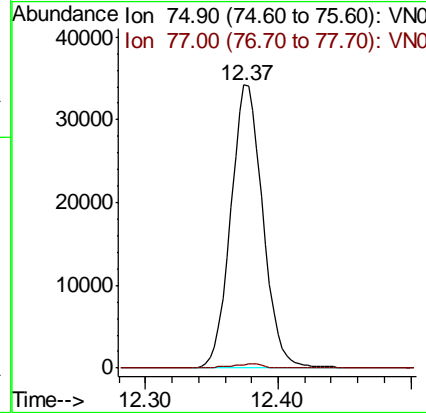
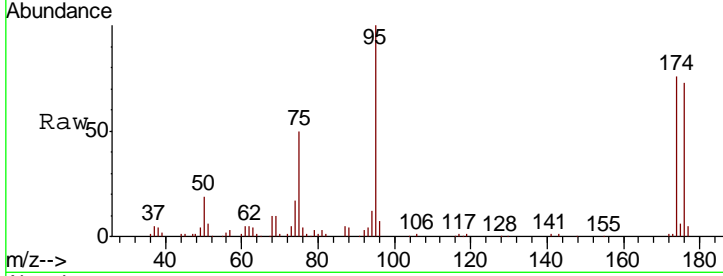




#76
 1,2,3-Trichloropropane
 Concen: 27.510 ug/l
 RT: 12.37 min Scan# 3297
 Delta R.T. -0.15 min
 Lab File: VN062005.D
 Acq: 22 Jun 2020 17:30

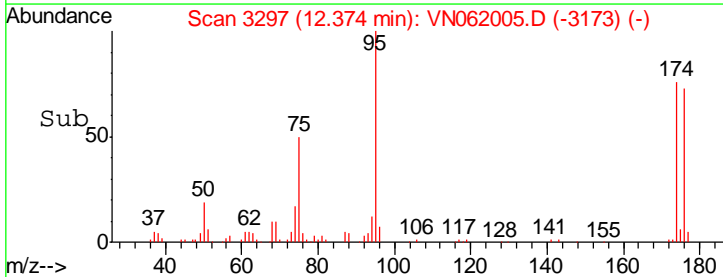
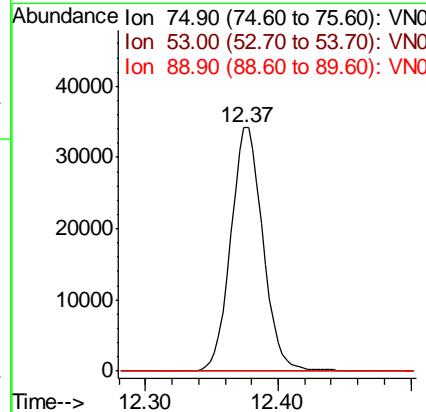
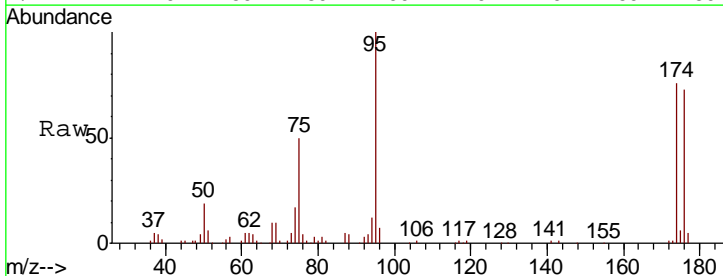
Instrument : MSVOA_N
 ClientSampled : SS043MW100-200615DL

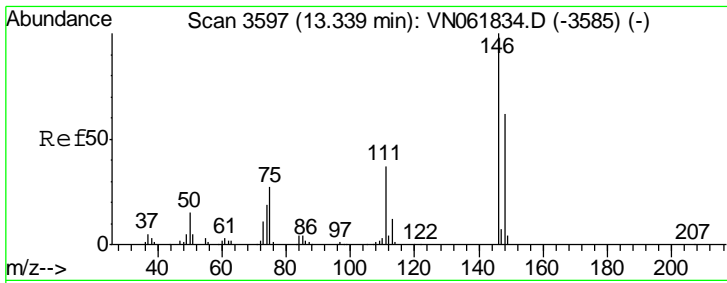
Tgt Ion	Resp	Lower	Upper
75	100		
77	1.4	0.0	0.0#



#81
 trans-1,4-Dichloro-2-butene
 Concen: 75.032 ug/l
 RT: 12.37 min Scan# 3297
 Delta R.T. 0.10 min
 Lab File: VN062005.D
 Acq: 22 Jun 2020 17:30

Tgt Ion	Resp	Lower	Upper
75	100		
53	0.0	70.4	105.6#
89	0.0	36.0	54.0#

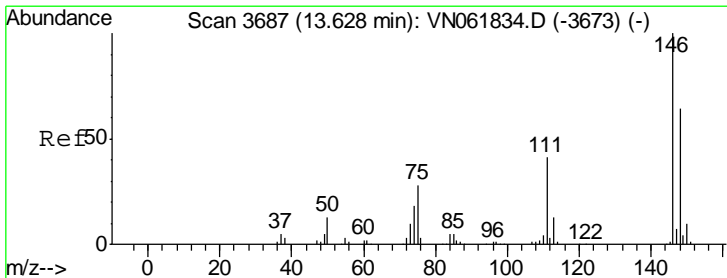
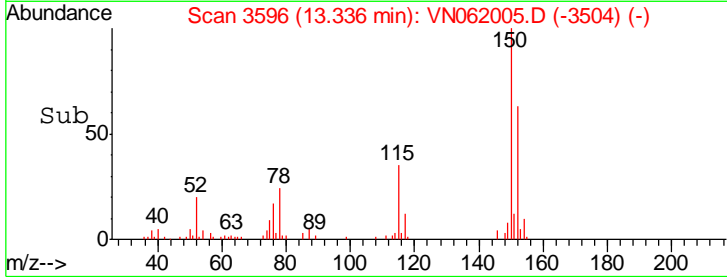
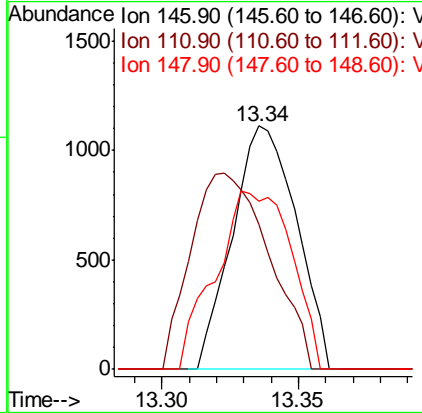
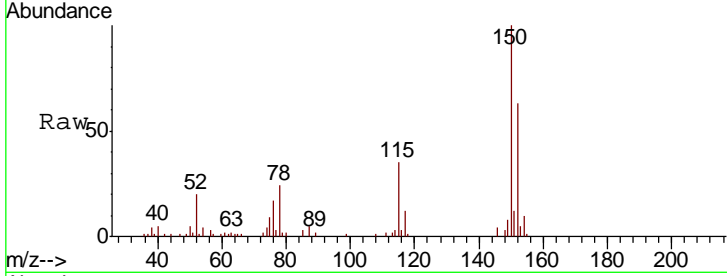




#88
 1,4-Dichlorobenzene
 Concen: 0.509 ug/l
 RT: 13.34 min Scan# 3596
 Delta R.T. -0.00 min
 Lab File: VN062005.D
 Acq: 22 Jun 2020 17:30

Instrument : MSVOA_N
 ClientSampled : SS043MW100-200615DL

Tgt Ion	Resp	Lower	Upper
146	1811		
111	98.2	19.3	57.8#
148	86.7	31.6	94.7



#91
 1,2-Dichlorobenzene
 Concen: 0.280 ug/l
 RT: 13.63 min Scan# 3688
 Delta R.T. 0.00 min
 Lab File: VN062005.D
 Acq: 22 Jun 2020 17:30

Tgt Ion	Resp	Lower	Upper
146	936		
111	39.1	20.4	61.2
148	69.3	31.8	95.4

