

Data Path : Z:\voasrv\HPCHEM1\MSVOA_N\Data\VN062421\
 Data File : VN067487.D
 Acq On : 24 Jun 2021 16:55
 Operator : JC/MD
 Sample : M2804-02
 Misc : 5.00mL/MSVOA_N/WATER
 ALS Vial : 18 Sample Multiplier: 1

Instrument :
 MSVOA_N
 ClientSampleId :
 MW181S-20210621

Quant Time: Jun 25 02:15:09 2021
 Quant Method : Z:\voasrv\HPCHEM1\MSVOA_N\methods\82N062421W.M
 Quant Title : SW846 8260
 QLast Update : Thu Jun 24 12:18:45 2021
 Response via : Initial Calibration

Compound	R.T.	QIon	Response	Conc	Units	Dev(Min)

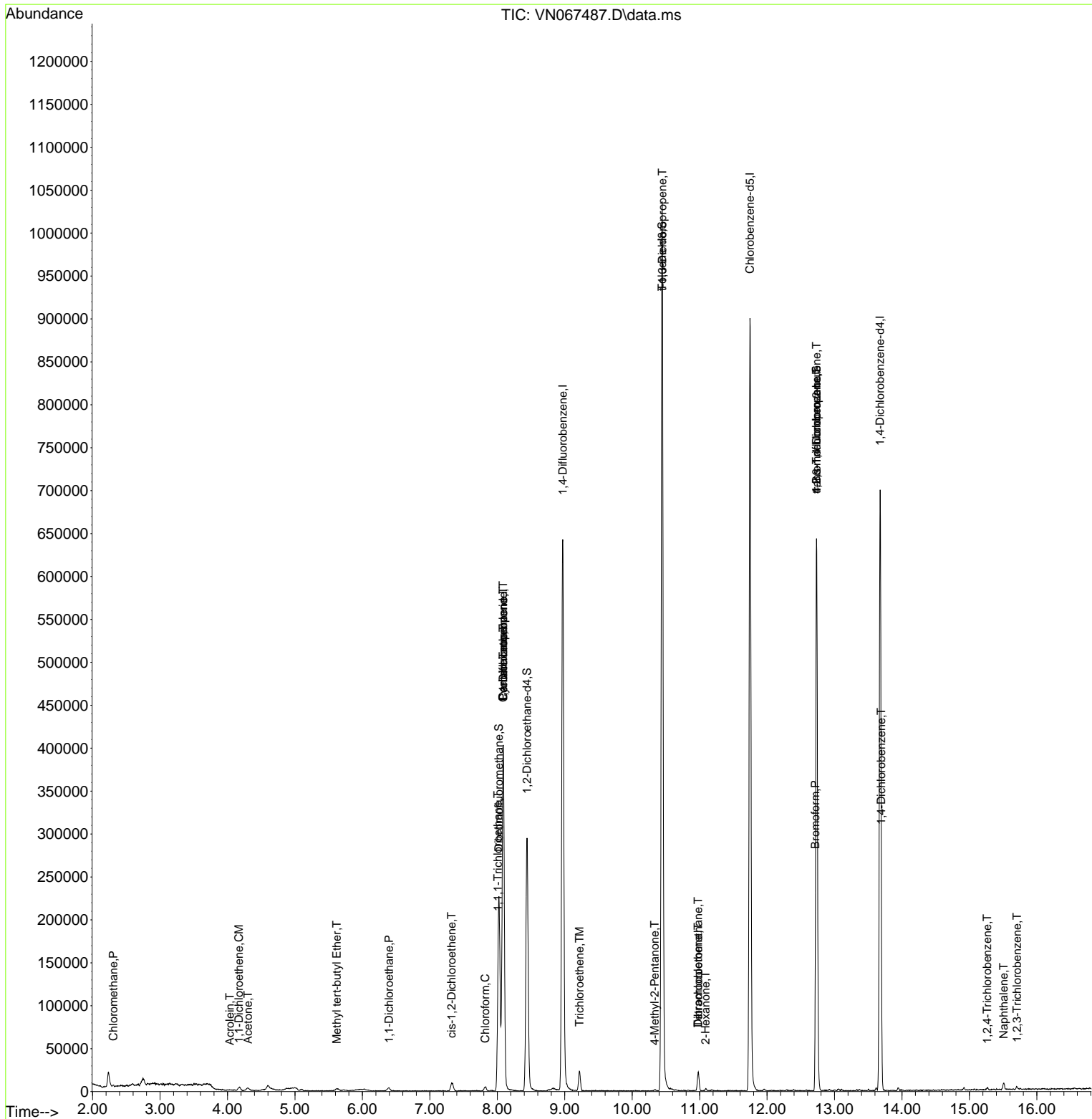
Internal Standards						
1) Pentafluorobenzene	8.088	168	247551	50.00	ug/l	0.00
34) 1,4-Difluorobenzene	8.971	114	526038	50.00	ug/l	0.00
63) Chlorobenzene-d5	11.747	117	468945	50.00	ug/l	0.00
72) 1,4-Dichlorobenzene-d4	13.675	152	157793	50.00	ug/l	0.00
System Monitoring Compounds						
33) 1,2-Dichloroethane-d4	8.440	65	248349	49.02	ug/l	0.00
Spiked Amount	50.000	Range 61 - 141	Recovery	=	98.04%	
35) Dibromofluoromethane	8.024	113	162114	50.02	ug/l	0.00
Spiked Amount	50.000	Range 69 - 133	Recovery	=	100.04%	
50) Toluene-d8	10.443	98	707140	51.16	ug/l	0.00
Spiked Amount	50.000	Range 65 - 126	Recovery	=	102.32%	
62) 4-Bromofluorobenzene	12.734	95	235389	47.80	ug/l	0.00
Spiked Amount	50.000	Range 58 - 135	Recovery	=	95.60%	
Target Compounds						
						Qvalue
3) Chloromethane	2.306	50	1125	0.24	ug/l	95
12) 1,1-Dichloroethene	4.167	96	917	0.27	ug/l #	84
13) Acrolein	4.033	56	333	0.47	ug/l #	73
16) Acetone	4.304	43	3824	1.97	ug/l #	89
19) Methyl tert-butyl Ether	5.621	73	3378	0.25	ug/l #	74
24) 1,1-Dichloroethane	6.396	63	6595	0.83	ug/l #	86
27) cis-1,2-Dichloroethene	7.324	96	3402	0.79	ug/l	59
30) Chloroform	7.820	83	5347	0.70	ug/l	88
31) Cyclohexane	8.086	56	9303	1.15	ug/l #	1
32) 1,1,1-Trichloroethane	8.011	97	1324	0.21	ug/l #	19
36) 1,1-Dichloropropene	8.086	75	31672	5.34	ug/l #	50
38) Carbon Tetrachloride	8.088	117	32661	6.47	ug/l #	17
44) Trichloroethene	9.220	130	7480	2.18	ug/l	91
51) 4-Methyl-2-Pentanone	10.333	43	1296	0.21	ug/l #	68
53) t-1,3-Dichloropropene	10.446	75	168	2.02	ug/l #	1
59) 2-Hexanone	11.087	43	2097	0.47	ug/l	98
60) Dibromochloromethane	10.980	129	4787	3.18	ug/l #	11
64) Tetrachloroethene	10.980	164	4520	1.48	ug/l	95
71) Bromoform	12.717	173	160	2.72	ug/l #	29
76) 1,2,3-Trichloropropane	12.734	75	141746	30.52	ug/l #	100
81) trans-1,4-Dichloro-2-b...	12.734	75	141746	83.52	ug/l #	6
88) 1,4-Dichlorobenzene	13.694	146	1095	0.20	ug/l #	1
93) 1,2,4-Trichlorobenzene	15.263	180	1100	2.72	ug/l	79
95) Naphthalene	15.507	128	6543	4.03	ug/l	97
96) 1,2,3-Trichlorobenzene	15.705	180	1151	2.96	ug/l	92

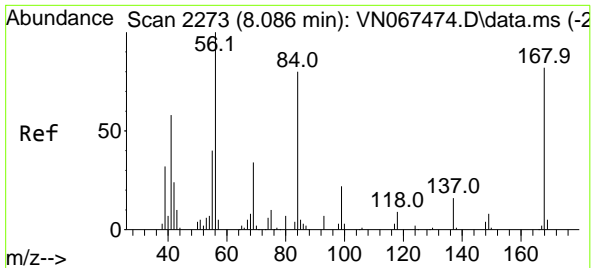
(#) = qualifier out of range (m) = manual integration (+) = signals summed

Data Path : Z:\voasrv\HPCHEM1\MSVOA_N\Data\VN062421\
 Data File : VN067487.D
 Acq On : 24 Jun 2021 16:55
 Operator : JC/MD
 Sample : M2804-02
 Misc : 5.00mL/MSVOA_N/WATER
 ALS Vial : 18 Sample Multiplier: 1

Instrument :
 MSVOA_N
 Client Sampled :
 MW181S-20210621

Quant Time: Jun 25 02:15:09 2021
 Quant Method : Z:\voasrv\HPCHEM1\MSVOA_N\methods\82N062421W.M
 Quant Title : SW846 8260
 QLast Update : Thu Jun 24 12:18:45 2021
 Response via : Initial Calibration

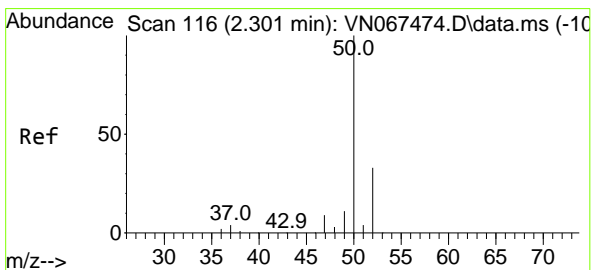
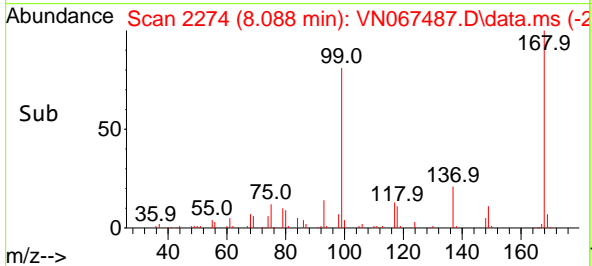
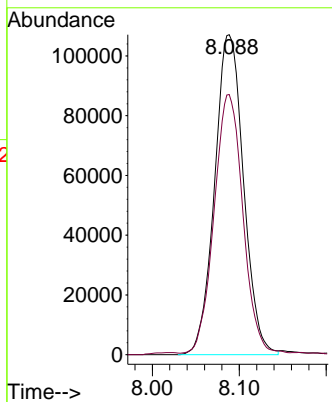
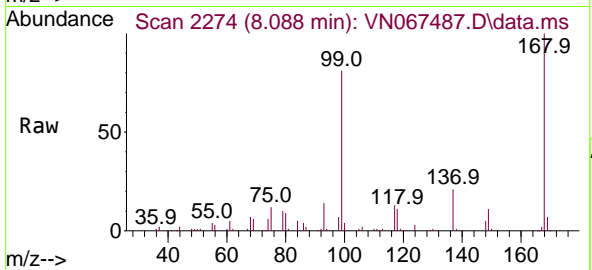




#1
 Pentafluorobenzene
 Concen: 50.00 ug/l
 RT: 8.088 min Scan# 2274
 Delta R.T. 0.002 min
 Lab File: VN067487.D
 Acq: 24 Jun 2021 16:55

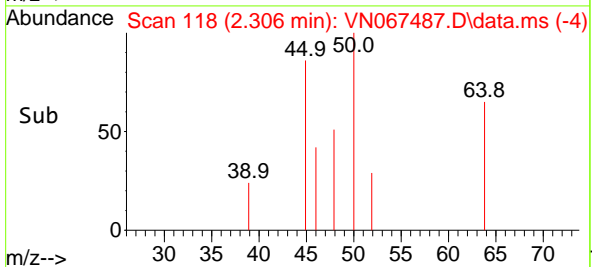
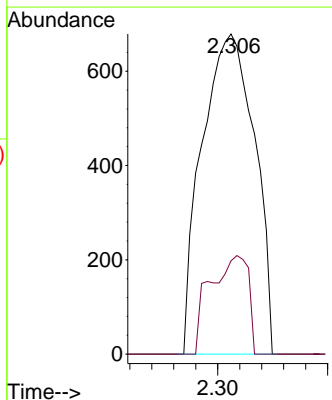
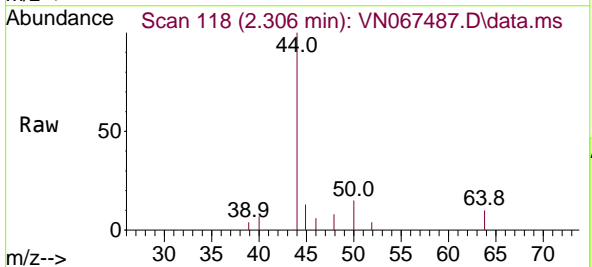
Instrument :
 MSVOA_N
ClientSampled :
 MW181S-20210621

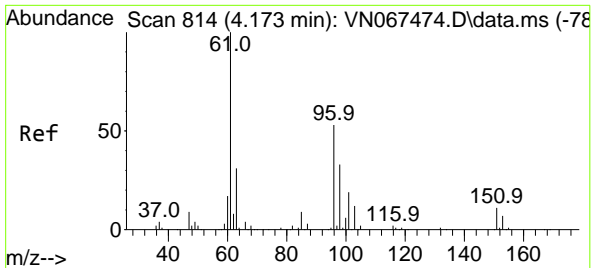
Tgt Ion:168 Resp: 247551
 Ion Ratio Lower Upper
 168 100
 99 80.8 62.9 94.3



#3
 Chloromethane
 Concen: 0.24 ug/l
 RT: 2.306 min Scan# 118
 Delta R.T. 0.005 min
 Lab File: VN067487.D
 Acq: 24 Jun 2021 16:55

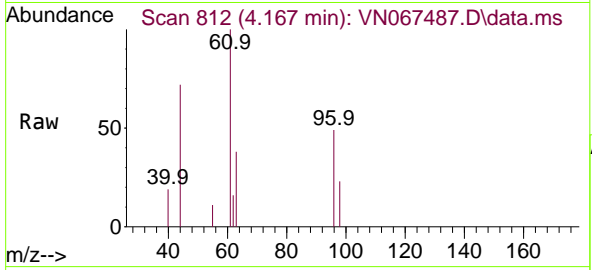
Tgt Ion: 50 Resp: 1125
 Ion Ratio Lower Upper
 50 100
 52 29.2 25.6 38.4





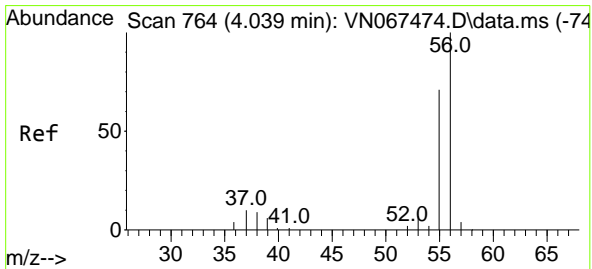
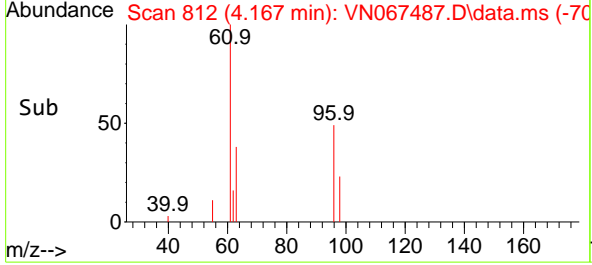
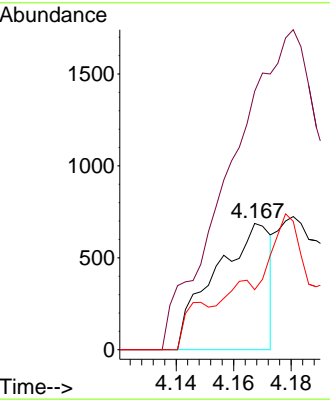
#12
 1,1-Dichloroethene
 Concen: 0.27 ug/l
 RT: 4.167 min Scan# 812
 Delta R.T. -0.006 min
 Lab File: VN067487.D
 Acq: 24 Jun 2021 16:55

Instrument :
 MSVOA_N
 ClientSampleId :
 MW181S-20210621

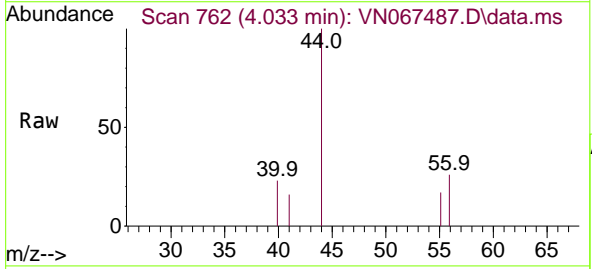


Tgt Ion: 96 Resp: 917

Ion	Ratio	Lower	Upper
96	100		
61	169.6	152.6	229.0
98	47.6	50.9	76.3#

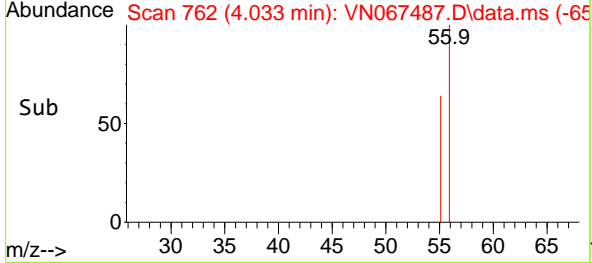
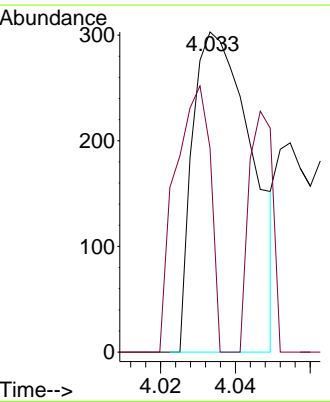


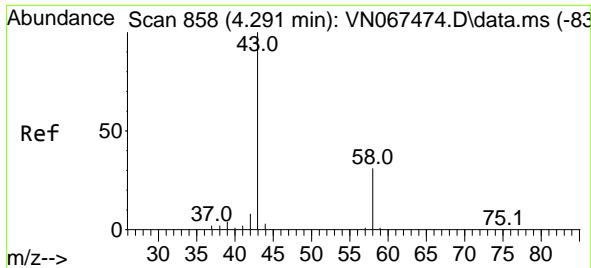
#13
 Acrolein
 Concen: 0.47 ug/l
 RT: 4.033 min Scan# 762
 Delta R.T. -0.006 min
 Lab File: VN067487.D
 Acq: 24 Jun 2021 16:55



Tgt Ion: 56 Resp: 333

Ion	Ratio	Lower	Upper
56	100		
55	49.2	57.4	86.0#

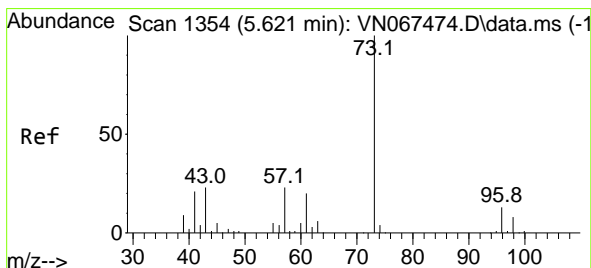
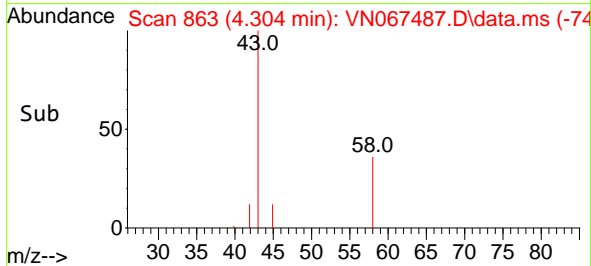
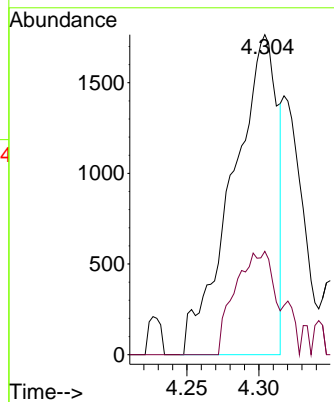
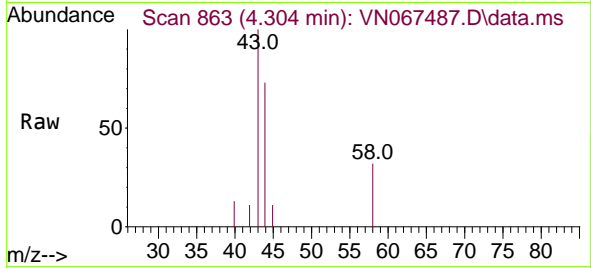




#16
 Acetone
 Concen: 1.97 ug/l
 RT: 4.304 min Scan# 863
 Delta R.T. 0.013 min
 Lab File: VN067487.D
 Acq: 24 Jun 2021 16:55

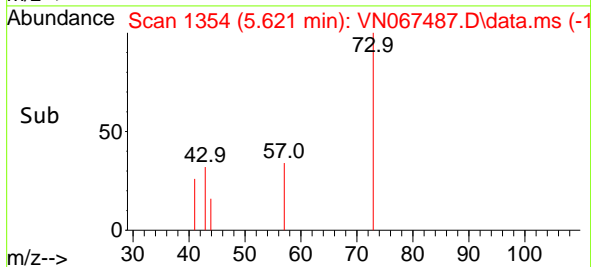
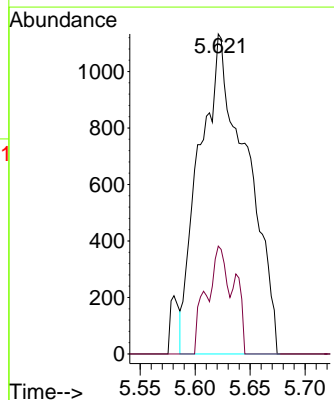
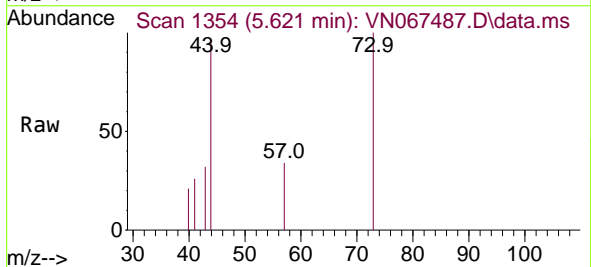
Instrument :
 MSVOA_N
 ClientSampled :
 MW181S-20210621

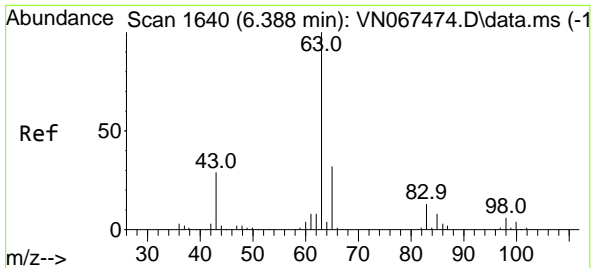
Tgt Ion: 43 Resp: 3824
 Ion Ratio Lower Upper
 43 100
 58 32.3 21.2 31.8#



#19
 Methyl tert-butyl Ether
 Concen: 0.25 ug/l
 RT: 5.621 min Scan# 1354
 Delta R.T. -0.000 min
 Lab File: VN067487.D
 Acq: 24 Jun 2021 16:55

Tgt Ion: 73 Resp: 3378
 Ion Ratio Lower Upper
 73 100
 57 33.7 17.0 25.6#

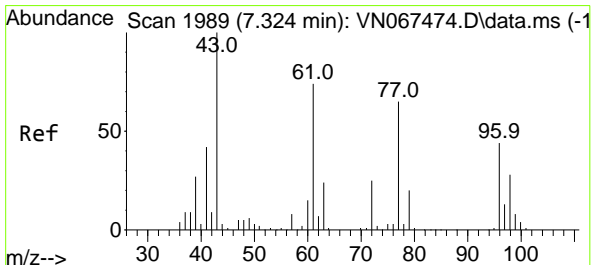
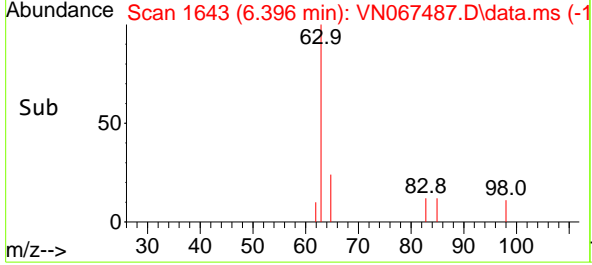
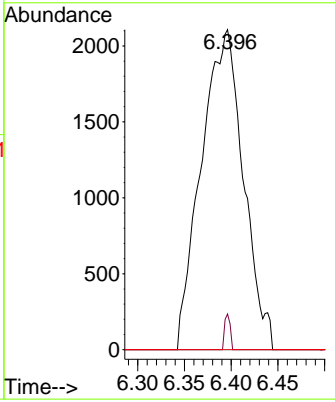
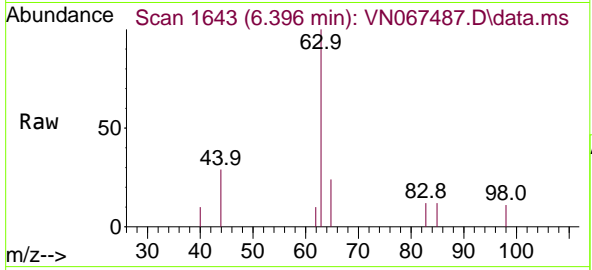




#24
 1,1-Dichloroethane
 Concen: 0.83 ug/l
 RT: 6.396 min Scan# 1643
 Delta R.T. 0.008 min
 Lab File: VN067487.D
 Acq: 24 Jun 2021 16:55

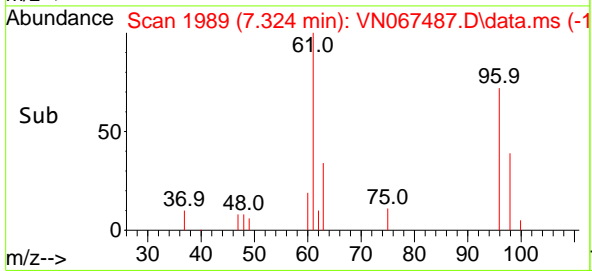
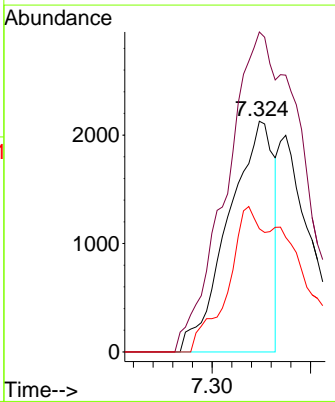
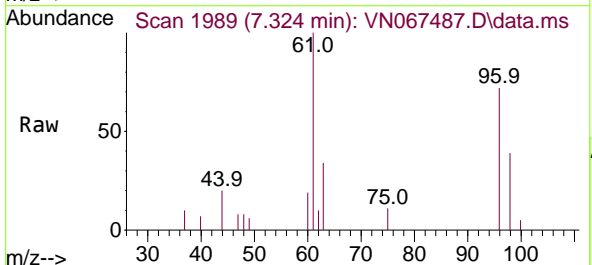
Instrument :
 MSVOA_N
ClientSampled :
 MW181S-20210621

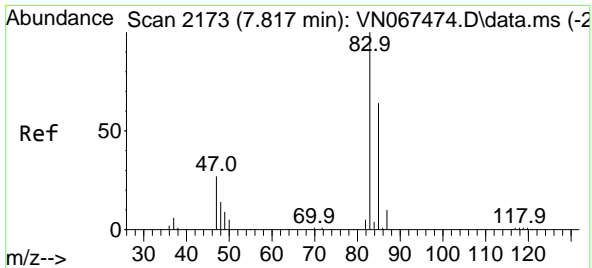
Tgt Ion	Resp	Lower	Upper
63	100		
98	11.2	3.0	9.0#
100	0.0	1.9	5.7#



#27
 cis-1,2-Dichloroethene
 Concen: 0.79 ug/l
 RT: 7.324 min Scan# 1989
 Delta R.T. 0.000 min
 Lab File: VN067487.D
 Acq: 24 Jun 2021 16:55

Tgt Ion	Resp	Lower	Upper
96	100		
61	236.9	0.0	338.8
98	48.4	0.0	129.8

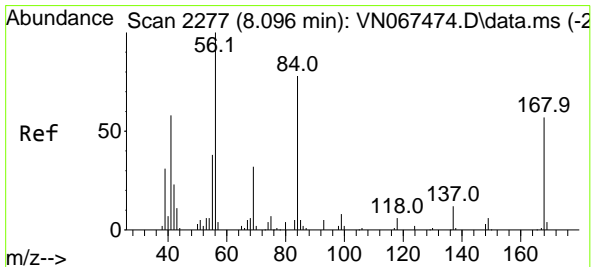
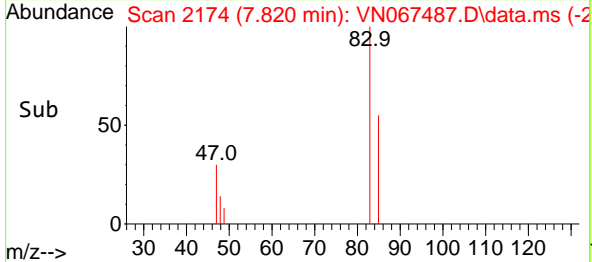
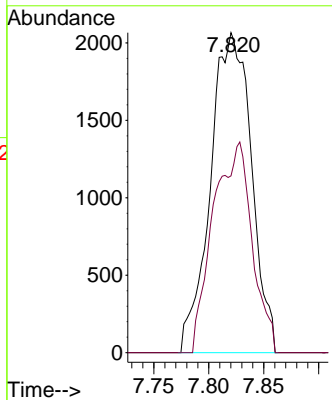
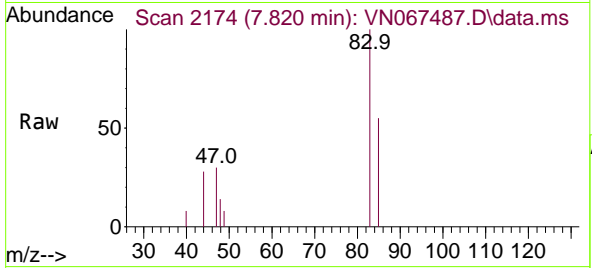




#30
 Chloroform
 Concen: 0.70 ug/l
 RT: 7.820 min Scan# 2174
 Delta R.T. 0.003 min
 Lab File: VN067487.D
 Acq: 24 Jun 2021 16:55

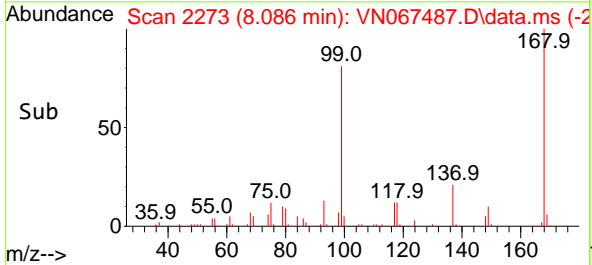
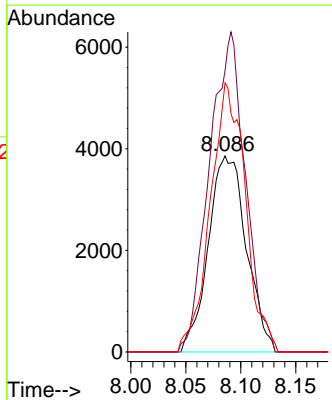
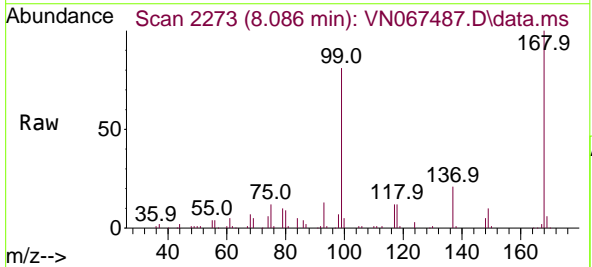
Instrument :
 MSVOA_N
ClientSampled :
 MW181S-20210621

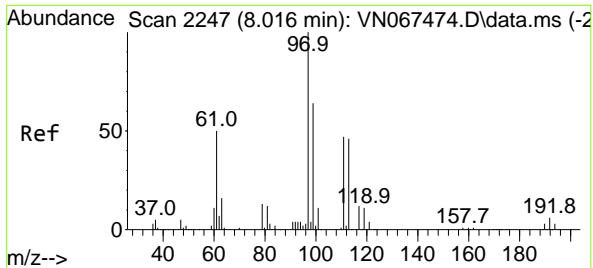
Tgt Ion	Resp	Lower	Upper
83	5347		
83	100		
85	55.3	51.5	77.3



#31
 Cyclohexane
 Concen: 1.15 ug/l
 RT: 8.086 min Scan# 2273
 Delta R.T. -0.010 min
 Lab File: VN067487.D
 Acq: 24 Jun 2021 16:55

Tgt Ion	Resp	Lower	Upper
56	9303		
56	100		
69	143.7	27.3	40.9#
84	137.4	64.9	97.3#

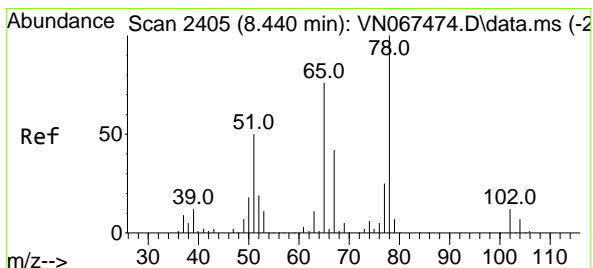
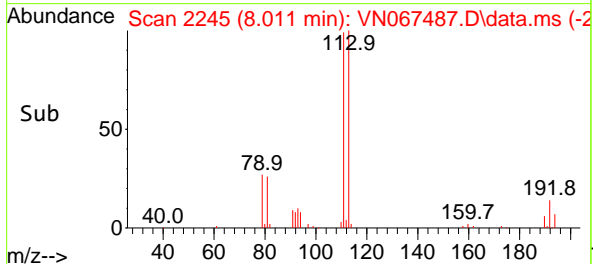
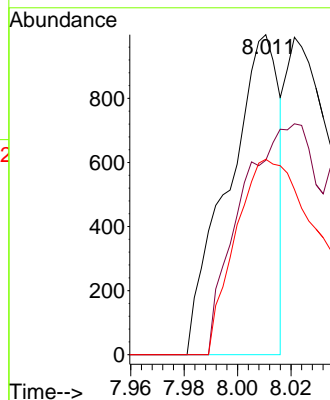
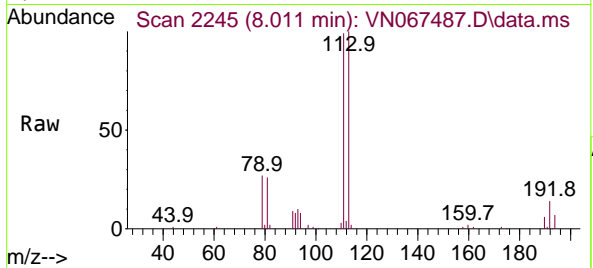




#32
 1,1,1-Trichloroethane
 Concen: 0.21 ug/l
 RT: 8.011 min Scan# 2245
 Delta R.T. -0.005 min
 Lab File: VN067487.D
 Acq: 24 Jun 2021 16:55

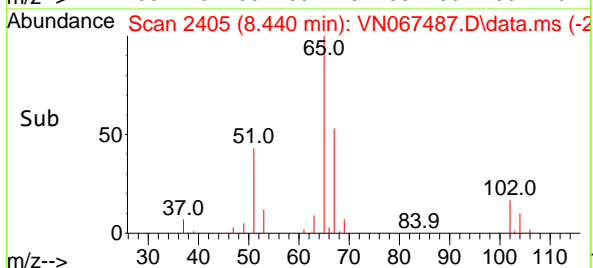
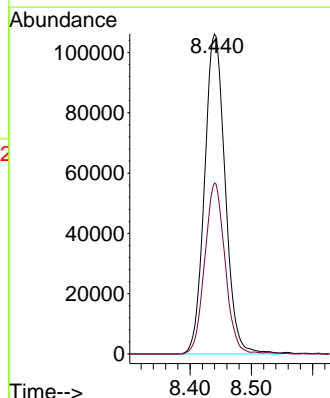
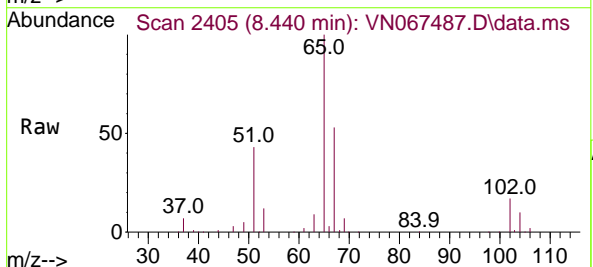
Instrument :
 MSVOA_N
 ClientSampled :
 MW181S-20210621

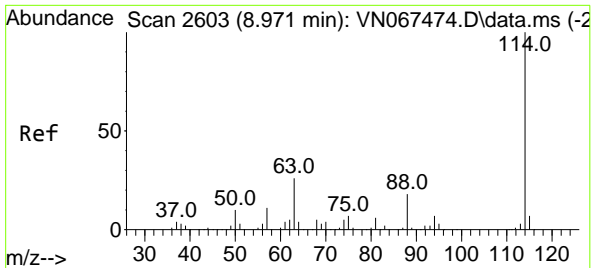
Tgt Ion: 97 Resp: 1324
 Ion Ratio Lower Upper
 97 100
 99 0.0 50.2 75.2#
 61 102.6 38.2 57.2#



#33
 1,2-Dichloroethane-d4
 Concen: 49.02 ug/l
 RT: 8.440 min Scan# 2405
 Delta R.T. -0.000 min
 Lab File: VN067487.D
 Acq: 24 Jun 2021 16:55

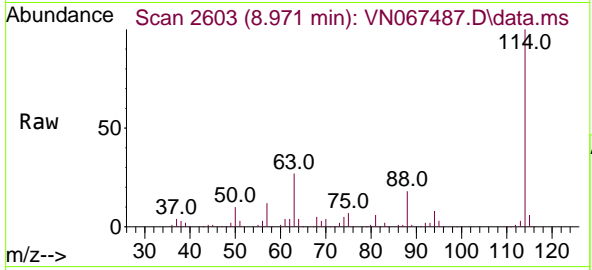
Tgt Ion: 65 Resp: 248349
 Ion Ratio Lower Upper
 65 100
 67 52.4 0.0 98.6





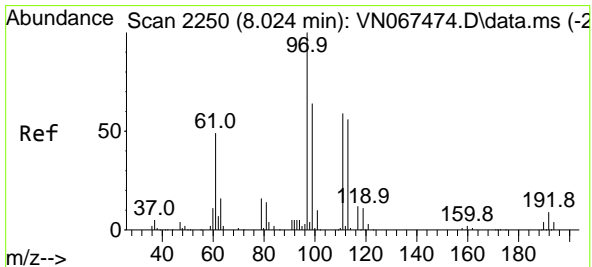
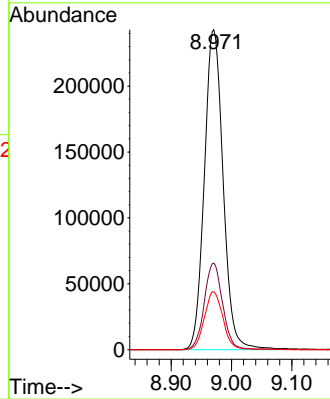
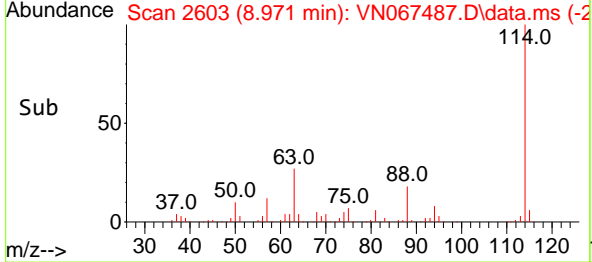
#34
 1,4-Difluorobenzene
 Concen: 50.00 ug/l
 RT: 8.971 min Scan# 2603
 Delta R.T. -0.000 min
 Lab File: VN067487.D
 Acq: 24 Jun 2021 16:55

Instrument :
 MSVOA_N
 ClientSampleId :
 MW181S-20210621

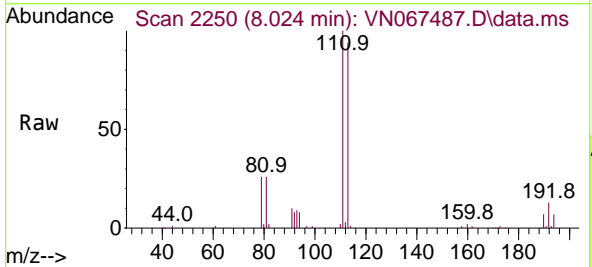


Tgt Ion:114 Resp: 526038

Ion	Ratio	Lower	Upper
114	100		
63	27.1	0.0	49.0
88	18.1	0.0	36.6

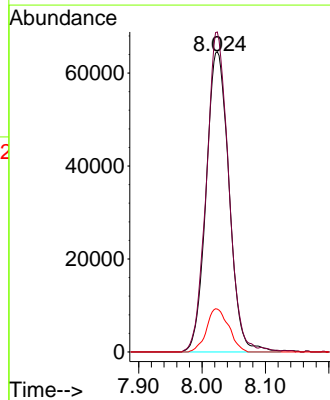
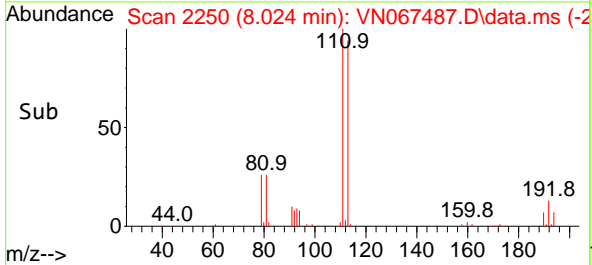


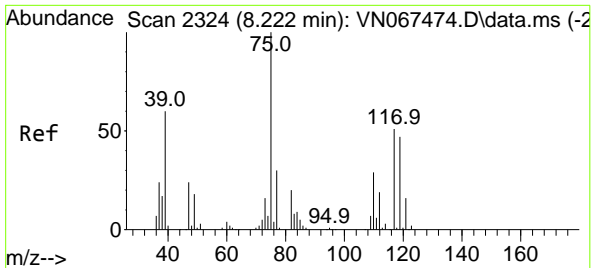
#35
 Dibromofluoromethane
 Concen: 50.02 ug/l
 RT: 8.024 min Scan# 2250
 Delta R.T. -0.000 min
 Lab File: VN067487.D
 Acq: 24 Jun 2021 16:55



Tgt Ion:113 Resp: 162114

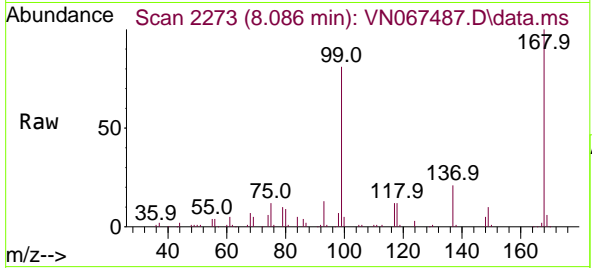
Ion	Ratio	Lower	Upper
113	100		
111	103.0	83.8	125.8
192	14.0	13.4	20.0



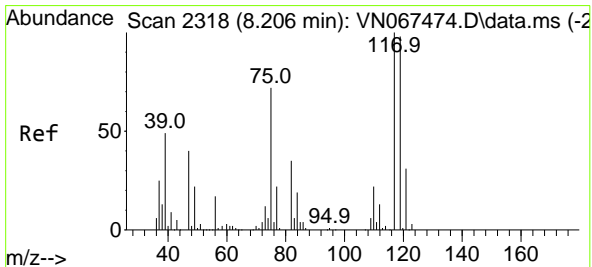
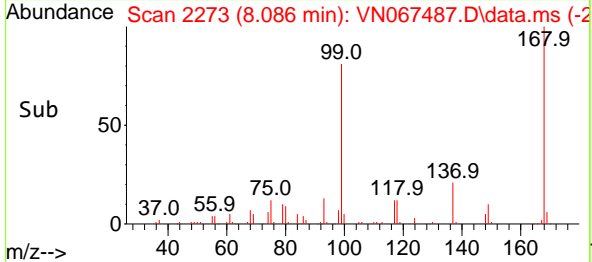
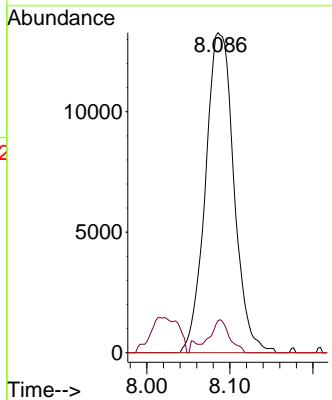


#36
 1,1-Dichloropropene
 Concen: 5.34 ug/l
 RT: 8.086 min Scan# 2273
 Delta R.T. -0.136 min
 Lab File: VN067487.D
 Acq: 24 Jun 2021 16:55

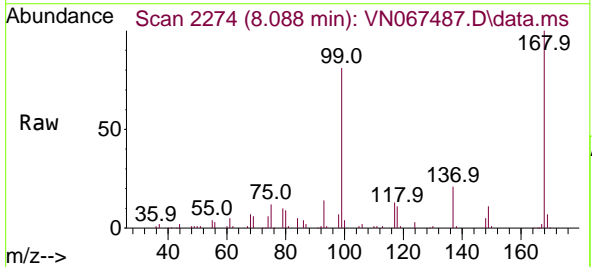
Instrument :
 MSVOA_N
 ClientSampled :
 MW181S-20210621



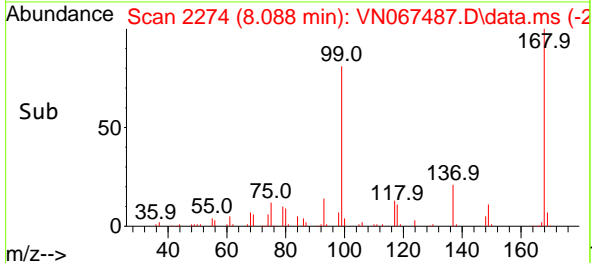
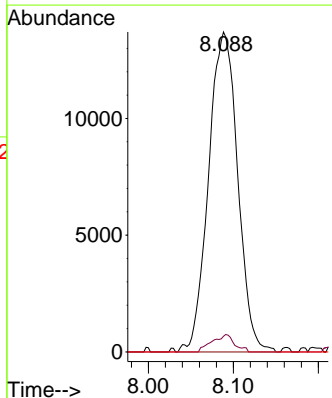
Tgt Ion: 75 Resp: 31672
 Ion Ratio Lower Upper
 75 100
 110 6.6 15.7 47.0#
 77 0.0 24.6 37.0#

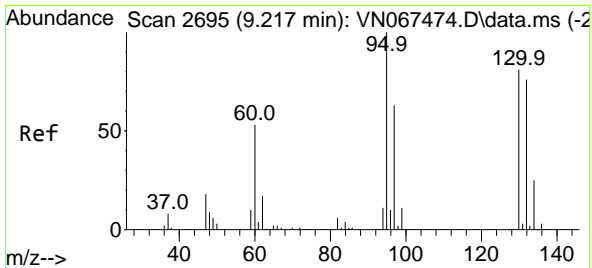


#38
 Carbon Tetrachloride
 Concen: 6.47 ug/l
 RT: 8.088 min Scan# 2274
 Delta R.T. -0.118 min
 Lab File: VN067487.D
 Acq: 24 Jun 2021 16:55



Tgt Ion: 117 Resp: 32661
 Ion Ratio Lower Upper
 117 100
 119 4.9 75.4 113.2#
 121 0.0 23.5 35.3#

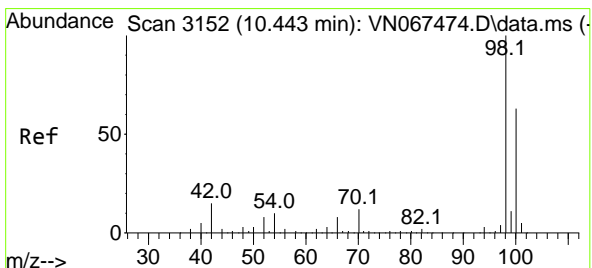
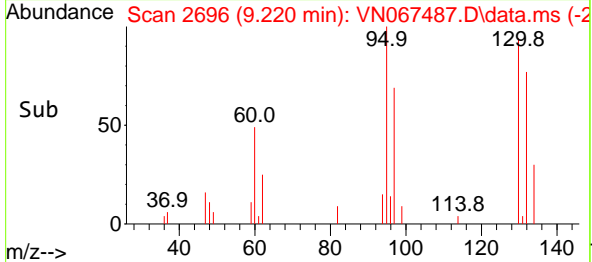
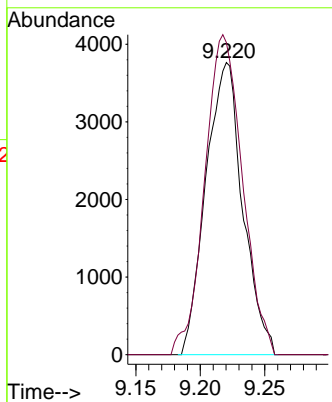
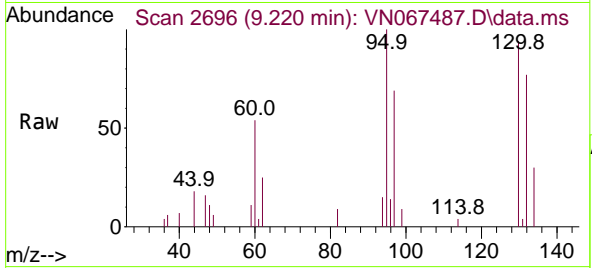




#44
 Trichloroethene
 Concen: 2.18 ug/l
 RT: 9.220 min Scan# 2696
 Delta R.T. 0.003 min
 Lab File: VN067487.D
 Acq: 24 Jun 2021 16:55

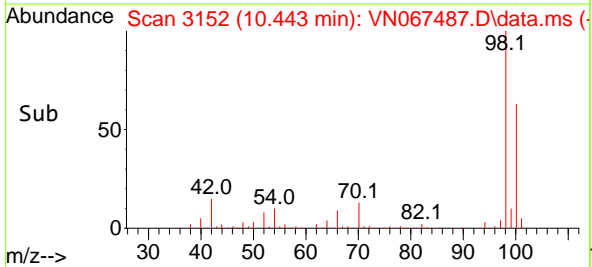
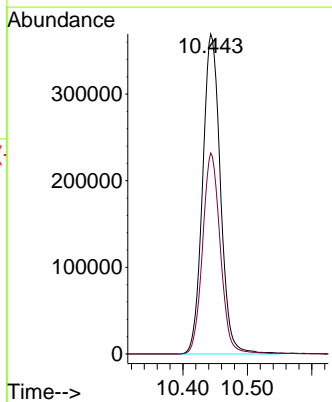
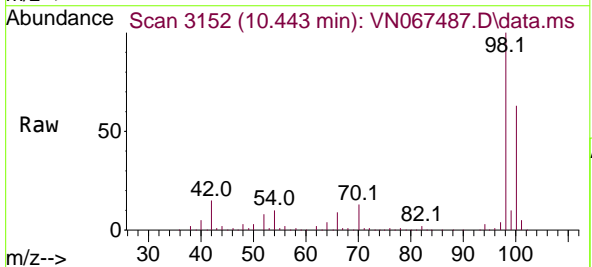
Instrument :
 MSVOA_N
 ClientSampleId :
 MW181S-20210621

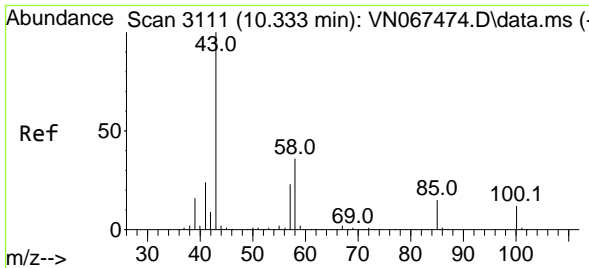
Tgt Ion:130 Resp: 7480
 Ion Ratio Lower Upper
 130 100
 95 106.9 0.0 234.4



#50
 Toluene-d8
 Concen: 51.16 ug/l
 RT: 10.443 min Scan# 3152
 Delta R.T. 0.000 min
 Lab File: VN067487.D
 Acq: 24 Jun 2021 16:55

Tgt Ion: 98 Resp: 707140
 Ion Ratio Lower Upper
 98 100
 100 62.5 51.7 77.5

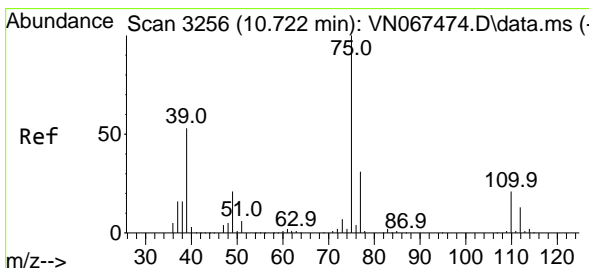
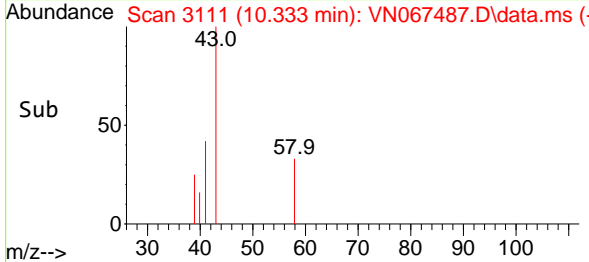
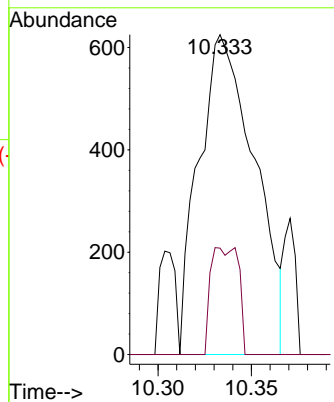
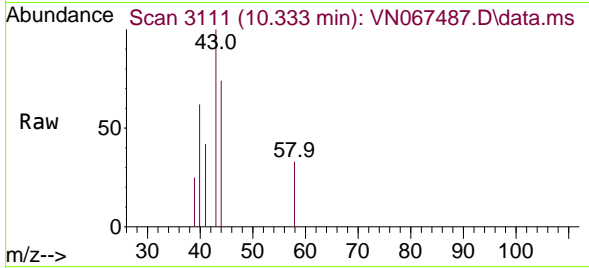




#51
 4-Methyl-2-Pentanone
 Concen: 0.21 ug/l
 RT: 10.333 min Scan# 3111
 Delta R.T. 0.000 min
 Lab File: VN067487.D
 Acq: 24 Jun 2021 16:55

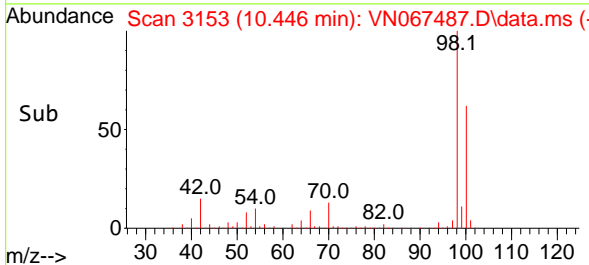
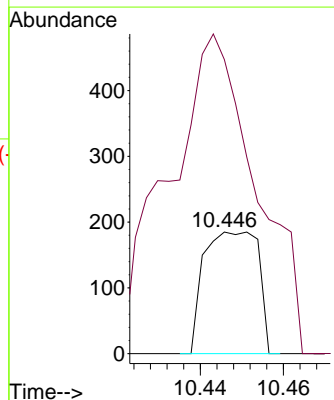
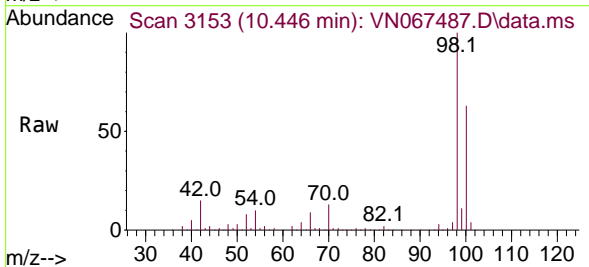
Instrument :
 MSVOA_N
 ClientSampled :
 MW181S-20210621

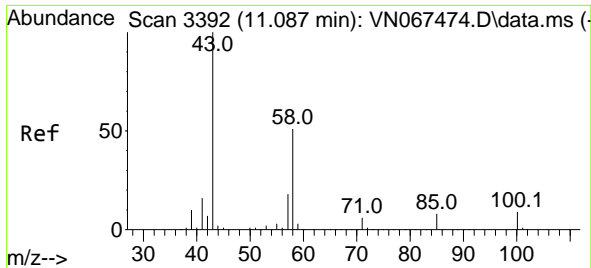
Tgt Ion: 43 Resp: 1296
 Ion Ratio Lower Upper
 43 100
 58 16.7 28.6 43.0#



#53
 t-1,3-Dichloropropene
 Concen: 2.02 ug/l
 RT: 10.446 min Scan# 3153
 Delta R.T. -0.276 min
 Lab File: VN067487.D
 Acq: 24 Jun 2021 16:55

Tgt Ion: 75 Resp: 168
 Ion Ratio Lower Upper
 75 100
 77 135.7 25.1 37.7#

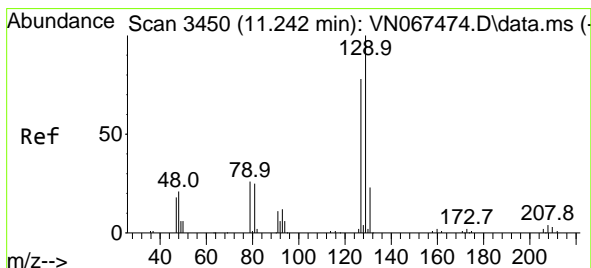
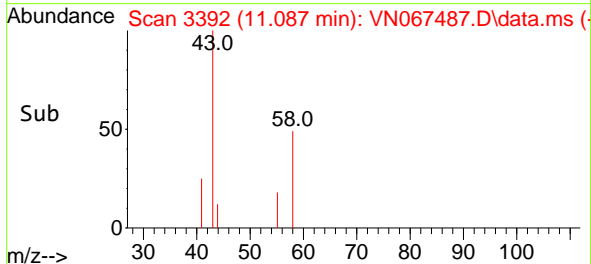
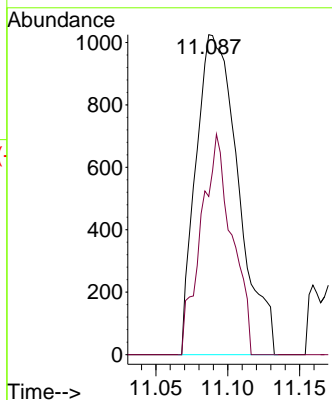
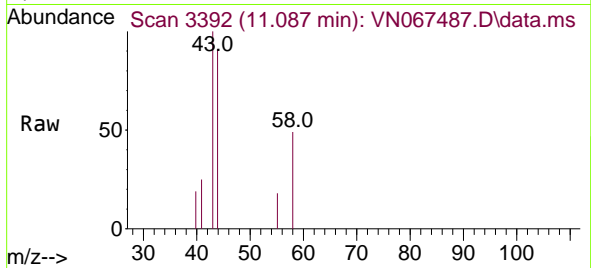




#59
 2-Hexanone
 Concen: 0.47 ug/l
 RT: 11.087 min Scan# 3392
 Delta R.T. -0.000 min
 Lab File: VN067487.D
 Acq: 24 Jun 2021 16:55

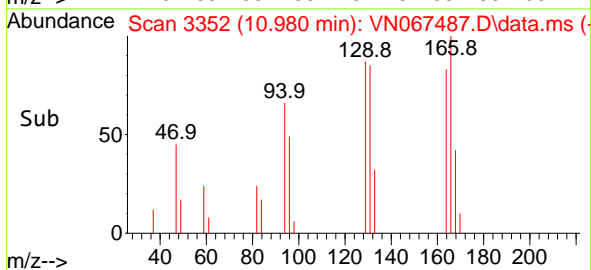
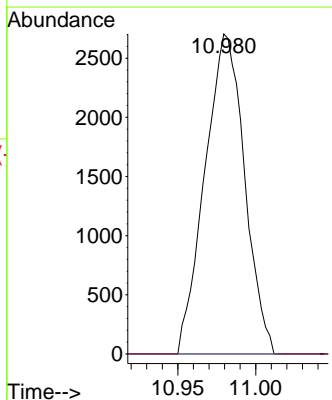
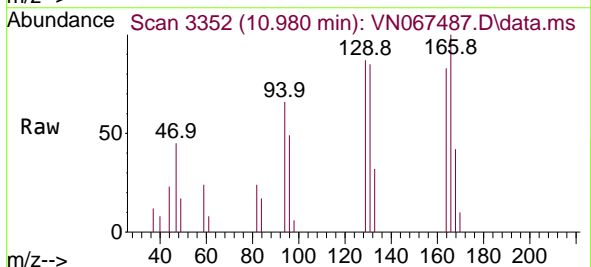
Instrument :
 MSVOA_N
 ClientSampled :
 MW181S-20210621

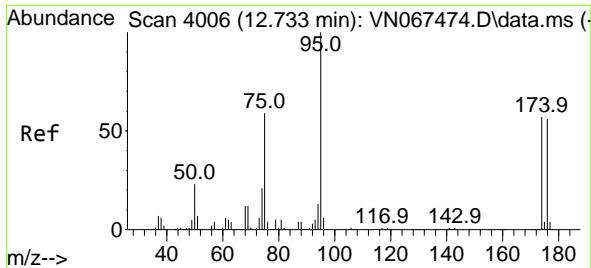
Tgt Ion: 43 Resp: 2097
 Ion Ratio Lower Upper
 43 100
 58 50.5 24.7 74.1



#60
 Dibromochloromethane
 Concen: 3.18 ug/l
 RT: 10.980 min Scan# 3352
 Delta R.T. -0.262 min
 Lab File: VN067487.D
 Acq: 24 Jun 2021 16:55

Tgt Ion: 129 Resp: 4787
 Ion Ratio Lower Upper
 129 100
 127 0.0 38.6 115.8#

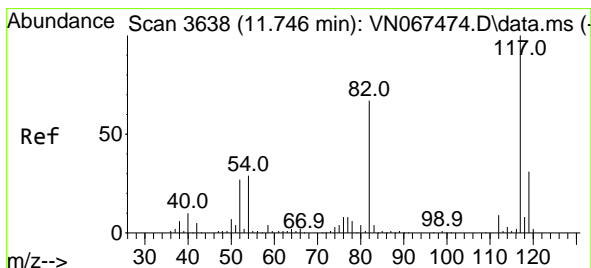
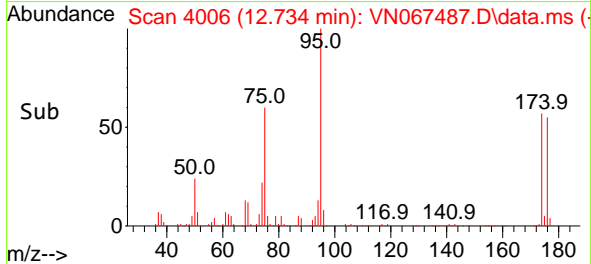
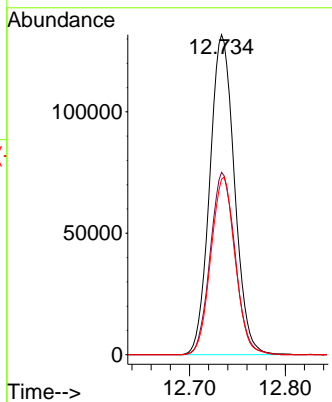
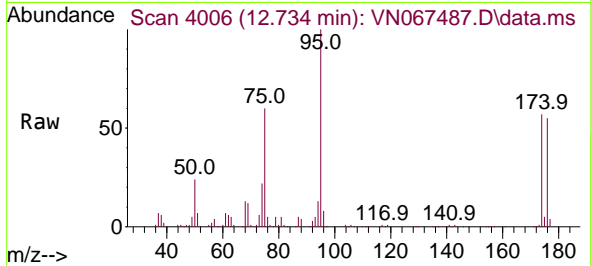




#62
 4-Bromofluorobenzene
 Concen: 47.80 ug/l
 RT: 12.734 min Scan# 4006
 Delta R.T. 0.001 min
 Lab File: VN067487.D
 Acq: 24 Jun 2021 16:55

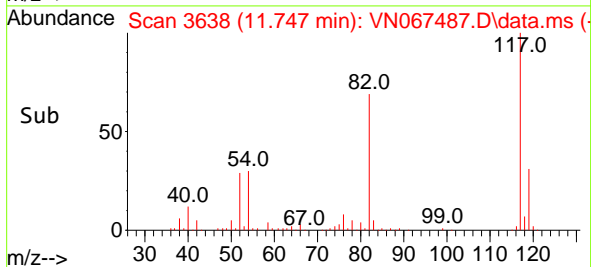
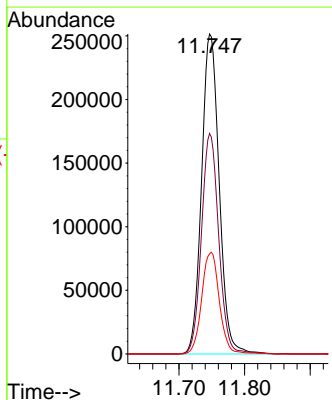
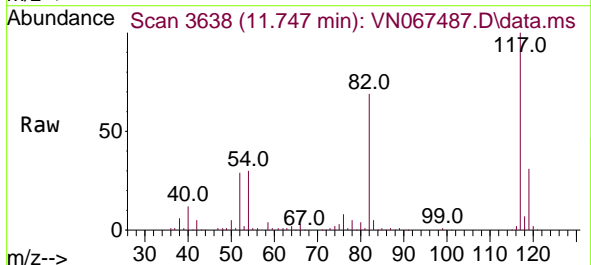
Instrument :
 MSVOA_N
 ClientSampleId :
 MW181S-20210621

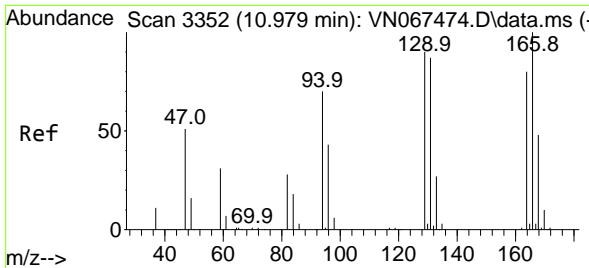
Tgt Ion	Resp	Lower	Upper
95	235389	100	
174	57.4	0.0	122.0
176	54.8	0.0	117.6



#63
 Chlorobenzene-d5
 Concen: 50.00 ug/l
 RT: 11.747 min Scan# 3638
 Delta R.T. 0.001 min
 Lab File: VN067487.D
 Acq: 24 Jun 2021 16:55

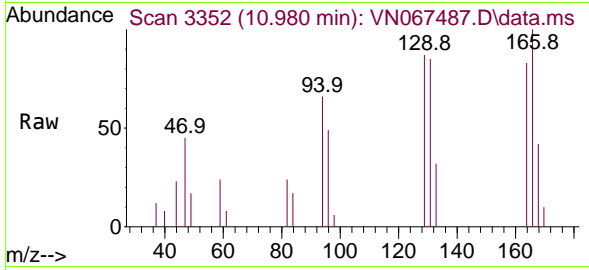
Tgt Ion	Resp	Lower	Upper
117	468945	100	
82	68.9	53.1	79.7
119	31.3	25.5	38.3



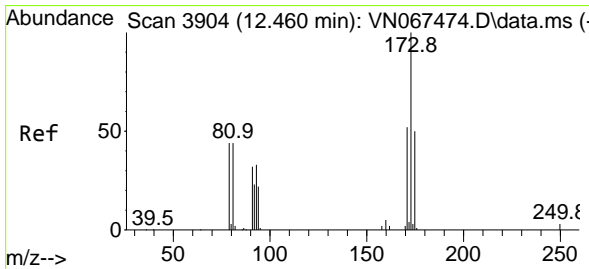
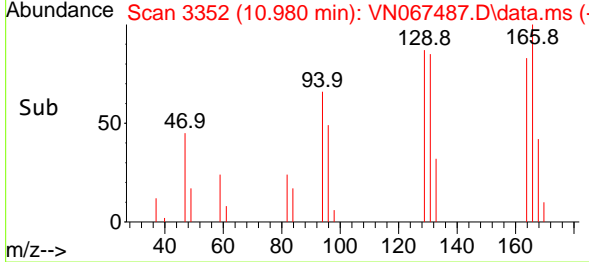
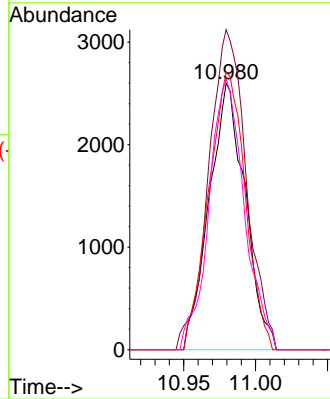


#64
 Tetrachloroethene
 Concen: 1.48 ug/l
 RT: 10.980 min Scan# 3352
 Delta R.T. 0.001 min
 Lab File: VN067487.D
 Acq: 24 Jun 2021 16:55

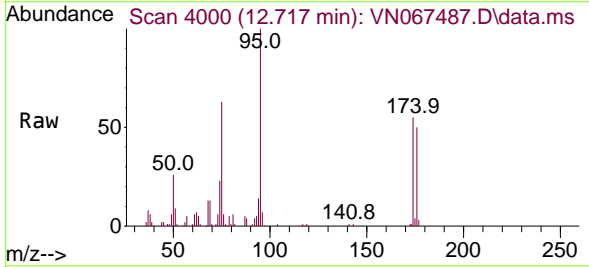
Instrument :
 MSVOA_N
 ClientSampleId :
 MW181S-20210621



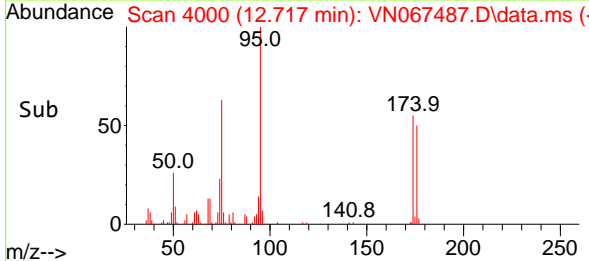
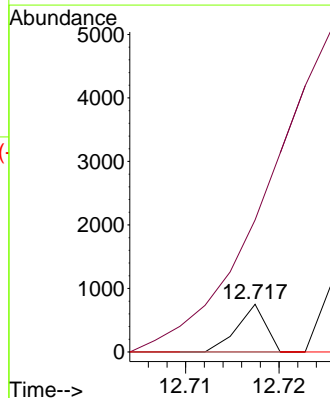
Tgt Ion:164 Resp: 4520
 Ion Ratio Lower Upper
 164 100
 166 120.2 102.1 153.1
 129 104.2 86.9 130.3
 131 101.7 83.6 125.4

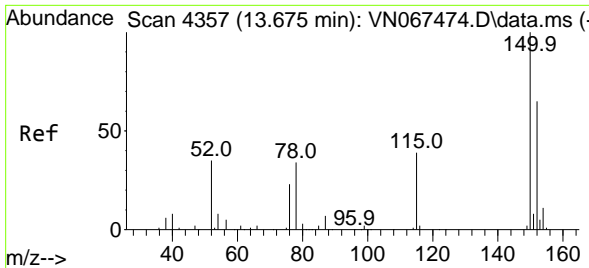


#71
 Bromoform
 Concen: 2.72 ug/l
 RT: 12.717 min Scan# 4000
 Delta R.T. 0.257 min
 Lab File: VN067487.D
 Acq: 24 Jun 2021 16:55



Tgt Ion:173 Resp: 160
 Ion Ratio Lower Upper
 173 100
 175 0.0 23.9 71.8#
 254 0.0 0.0 0.0

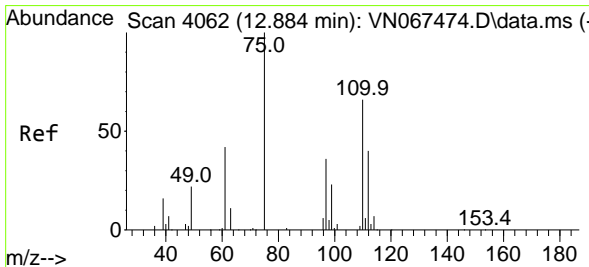
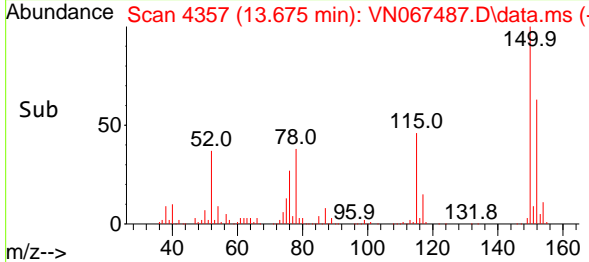
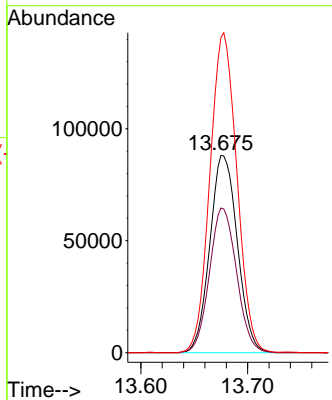
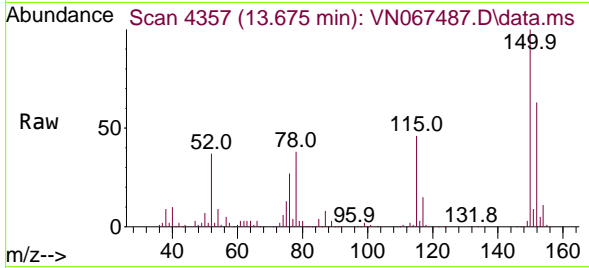




#72
 1,4-Dichlorobenzene-d4
 Concen: 50.00 ug/l
 RT: 13.675 min Scan# 4357
 Delta R.T. -0.000 min
 Lab File: VN067487.D
 Acq: 24 Jun 2021 16:55

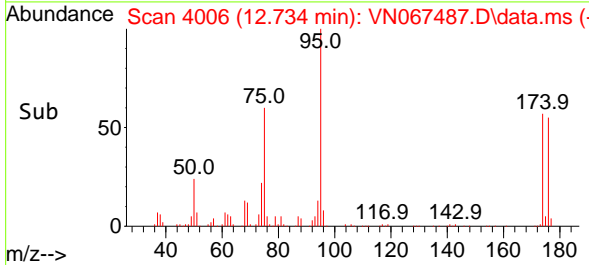
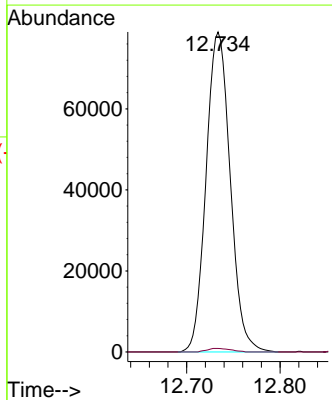
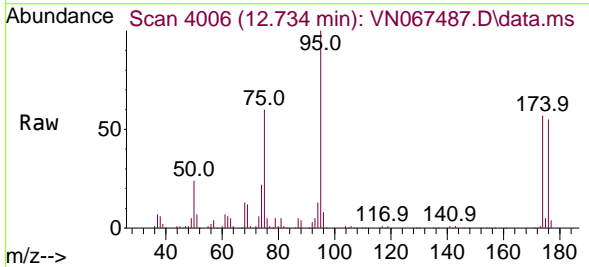
Instrument :
 MSVOA_N
 ClientSampleId :
 MW181S-20210621

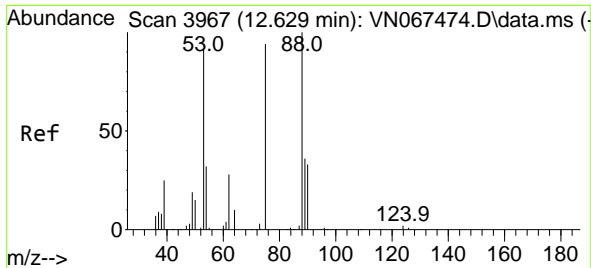
Tgt Ion	Resp	Lower	Upper
152	157793		
100	100		
115	72.3	36.1	108.5
150	158.7	0.0	351.8



#76
 1,2,3-Trichloropropane
 Concen: 30.52 ug/l
 RT: 12.734 min Scan# 4006
 Delta R.T. -0.150 min
 Lab File: VN067487.D
 Acq: 24 Jun 2021 16:55

Tgt Ion	Resp	Lower	Upper
75	141746		
100	100		
77	1.1	0.0	0.0#

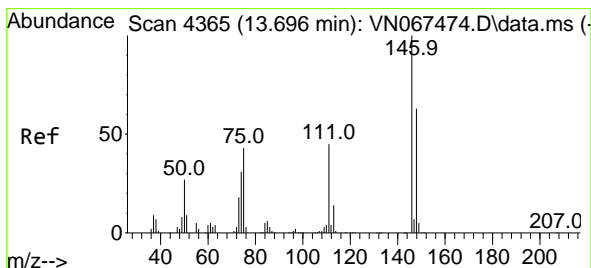
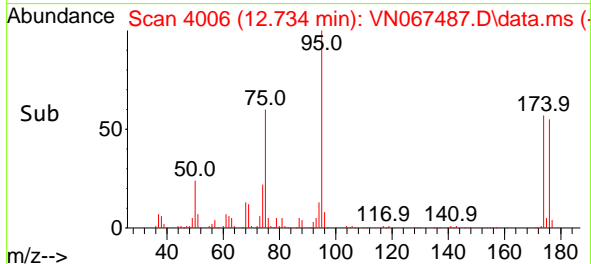
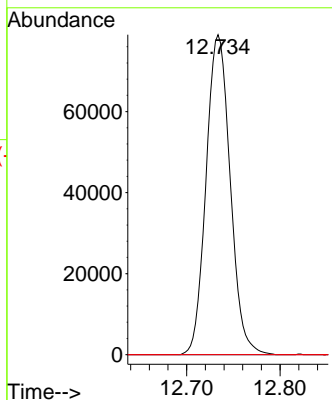
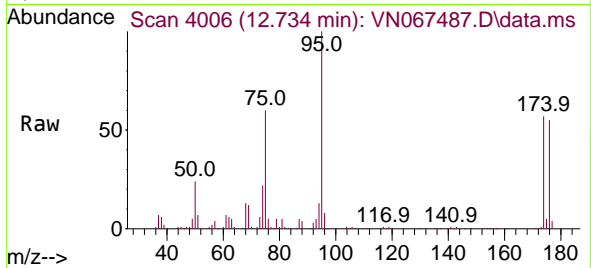




#81
 trans-1,4-Dichloro-2-butene
 Concen: 83.52 ug/l
 RT: 12.734 min Scan# 4006
 Delta R.T. 0.105 min
 Lab File: VN067487.D
 Acq: 24 Jun 2021 16:55

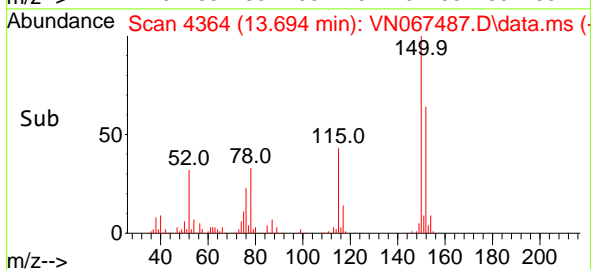
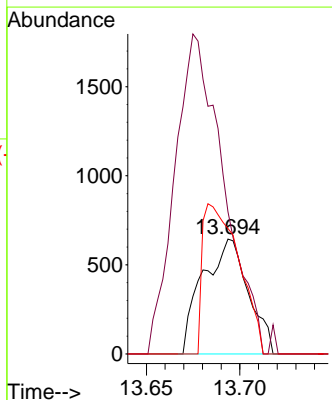
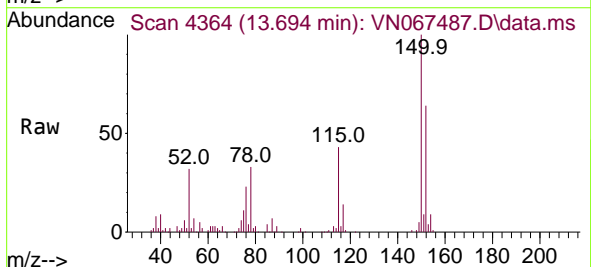
Instrument :
 MSVOA_N
 ClientSampleId :
 MW181S-20210621

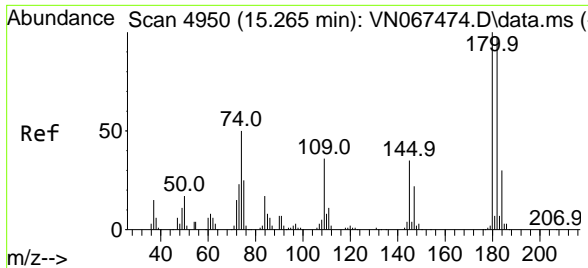
Tgt Ion	Resp	Lower	Upper
75	100		
53	0.0	87.6	131.4#
89	0.0	37.8	56.8#



#88
 1,4-Dichlorobenzene
 Concen: 0.20 ug/l
 RT: 13.694 min Scan# 4364
 Delta R.T. -0.002 min
 Lab File: VN067487.D
 Acq: 24 Jun 2021 16:55

Tgt Ion	Resp	Lower	Upper
146	100		
111	297.1	23.4	70.2#
148	104.4	31.8	95.3#



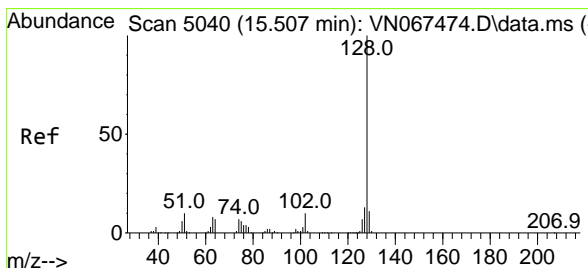
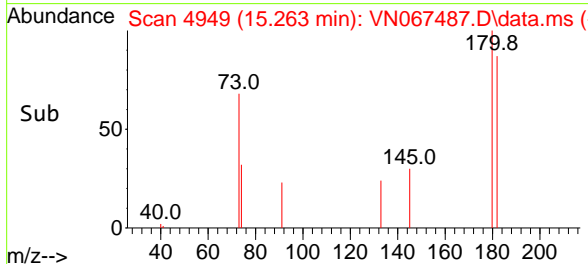
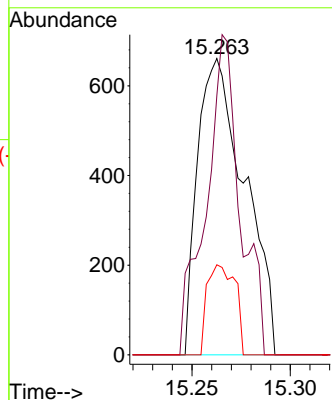
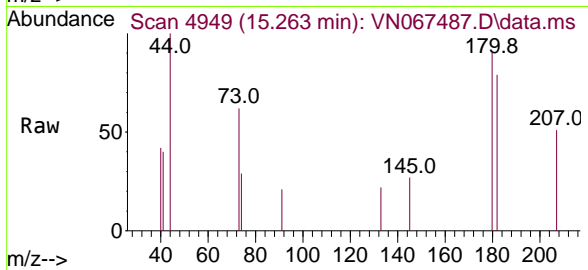


#93
 1,2,4-Trichlorobenzene
 Concen: 2.72 ug/l
 RT: 15.263 min Scan# 4949
 Delta R.T. -0.002 min
 Lab File: VN067487.D
 Acq: 24 Jun 2021 16:55

Instrument :
 MSVOA_N
 ClientSampleId :
 MW181S-20210621

Tgt Ion:180 Resp: 1100

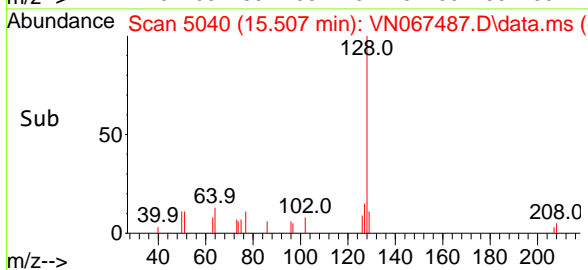
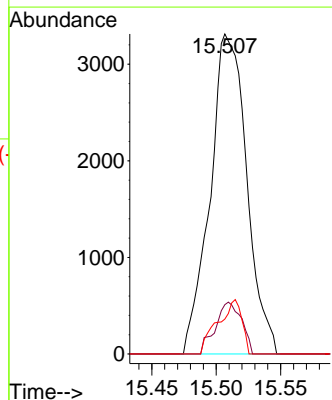
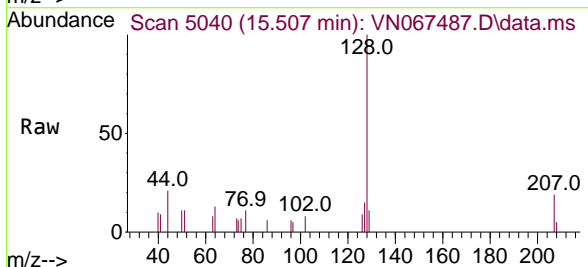
Ion	Ratio	Lower	Upper
180	100		
182	77.8	47.5	142.5
145	18.0	17.2	51.6

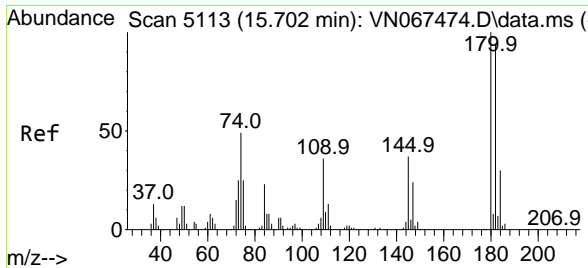


#95
 Naphthalene
 Concen: 4.03 ug/l
 RT: 15.507 min Scan# 5040
 Delta R.T. -0.000 min
 Lab File: VN067487.D
 Acq: 24 Jun 2021 16:55

Tgt Ion:128 Resp: 6543

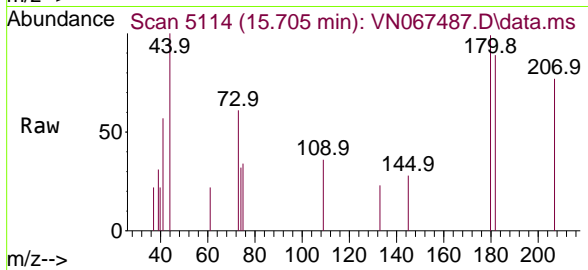
Ion	Ratio	Lower	Upper
128	100		
127	11.6	10.6	15.8
129	11.2	8.6	12.8





#96
 1,2,3-Trichlorobenzene
 Concen: 2.96 ug/l
 RT: 15.705 min Scan# 5114
 Delta R.T. 0.003 min
 Lab File: VN067487.D
 Acq: 24 Jun 2021 16:55

Instrument :
 MSVOA_N
 ClientSampled :
 MW181S-20210621



Tgt Ion:180 Resp: 1151

Ion	Ratio	Lower	Upper
180	100		
182	96.2	47.8	143.3
145	20.2	18.2	54.6

