

Data Path : Z:\voasrv\HPCHEM1\MSVOA_N\Data\VN062422\
 Data File : VN073096.D
 Acq On : 24 Jun 2022 20:38
 Operator : JC/MD
 Sample : VSTDCCC020
 Misc : 5.0mL/MSVOA_N/WATER
 ALS Vial : 25 Sample Multiplier: 1

Instrument :
 MSVOA_N
 ClientSampleId :
 VSTDCCC020EC

Quant Time: Jun 24 23:34:37 2022
 Quant Method : Z:\voasrv\HPCHEM1\MSVOA_N\methods\624N062322W.M
 Quant Title : METHOD 624 VOLATILE ORGANIC ANALYSIS
 QLast Update : Fri Jun 24 04:54:59 2022
 Response via : Initial Calibration

Compound	R.T.	QIon	Response	Conc	Units	Dev(Min)
Internal Standards						
1) Bromochloromethane	7.587	128	38676	30.000	ug/l	0.00
28) 1,4-Difluorobenzene	8.904	114	217698	30.000	ug/l	0.00
57) Chlorobenzene-d5	11.680	117	192883	30.000	ug/l	0.00
System Monitoring Compounds						
27) 1,2-Dichloroethane-d4	8.369	65	110593	29.662	ug/l	0.00
Spiked Amount	30.000	Range 91 - 110	Recovery	=	98.867%	
60) 4-Bromofluorobenzene	12.669	95	107925	29.246	ug/l	0.00
Spiked Amount	30.000	Range 63 - 112	Recovery	=	97.500%	
63) Toluene-d8	10.375	98	322718	30.897	ug/l	0.00
Spiked Amount	30.000	Range 91 - 112	Recovery	=	103.000%	
Target Compounds						
						Qvalue
2) Dichlorodifluoromethane	2.046	85	61924	20.295	ug/l	99
3) Chloromethane	2.263	50	54666	18.855	ug/l	94
4) Vinyl Chloride	2.405	62	50559	19.484	ug/l	99
5) Bromomethane	2.810	94	20576	24.080	ug/l	99
6) Chloroethane	2.969	64	30033	18.757	ug/l	93
7) Trichlorofluoromethane	3.322	101	80120	17.009	ug/l	97
8) Diethyl Ether	3.775	74	37528	19.467	ug/l	83
9) 1,1,2-Trichlorotrifluo...	4.152	101	51347	19.731	ug/l	70
10) 1,1-Dichloroethene	4.116	96	50744	19.053	ug/l	94
11) Methyl Iodide	4.352	142	47072	18.528	ug/l	91
12) Methyl Acetate	4.875	43	1326	0.239	ug/l	96
13) Acrolein	3.987	56	63957	114.409	ug/l	97
14) Acrylonitrile	5.481	53	216323	102.379	ug/l	98
15) Acetone	4.228	58	58442	100.272	ug/l	97
16) Carbon Disulfide	4.457	76	130269	18.549	ug/l	100
17) Allyl chloride	4.763	41	103113	20.398	ug/l	81
18) Methylene Chloride	5.016	84	61762	19.445	ug/l	95
19) trans-1,2-Dichloroethene	5.516	96	53884	19.173	ug/l	95
20) Diisopropyl ether	6.416	45	206996	19.462	ug/l #	91
21) 1,1-Dichloroethane	6.304	63	106611	19.104	ug/l	97
22) cis-1,2-Dichloroethene	7.251	96	63969	19.142	ug/l	98
23) tert-Butyl Alcohol	5.293	59	83006	96.208	ug/l #	100
24) Methyl tert-Butyl Ether	5.534	73	187651	18.888	ug/l #	85
25) Chloroform	7.751	83	106521	19.181	ug/l	100
26) Cyclohexane	8.022	56	92105	18.851	ug/l #	93
29) 1,1-Dichloropropene	8.151	75	74468	18.920	ug/l	98
30) 2-Butanone	7.263	43	316519	104.418	ug/l	93
31) 2,2-Dichloropropane	7.245	77	65900	34.205	ug/l	98
32) 1,1,1-Trichloroethane	7.945	97	93337	19.299	ug/l	97
33) Carbon Tetrachloride	8.134	117	77750	19.013	ug/l	97
34) Benzene	8.392	78	246742	20.140	ug/l	98
35) Methacrylonitrile	7.563	41	54857	20.342	ug/l	89
36) 1,2-Dichloroethane	8.463	62	87290	19.225	ug/l	97
37) Trichloroethene	9.151	130	58607	19.223	ug/l	93
38) Methylcyclohexane	9.392	83	88740	19.036	ug/l	91
39) 1,2-Dichloropropane	9.422	63	62121	19.610	ug/l	96
40) Dibromomethane	9.516	93	42234	19.702	ug/l	95
41) Bromodichloromethane	9.698	83	82893	19.220	ug/l #	94
42) Vinyl Acetate	6.357	43	942598	100.572	ug/l	99

Data Path : Z:\voasrv\HPCHEM1\MSVOA_N\Data\VN062422\
 Data File : VN073096.D
 Acq On : 24 Jun 2022 20:38
 Operator : JC\MD
 Sample : VSTDCCC020
 Misc : 5.0mL/MSVOA_N/WATER
 ALS Vial : 25 Sample Multiplier: 1

Instrument :
 MSVOA_N
 ClientSampleId :
 VSTDCCC020EC

Quant Time: Jun 24 23:34:37 2022
 Quant Method : Z:\voasrv\HPCHEM1\MSVOA_N\methods\624N062322W.M
 Quant Title : METHOD 624 VOLATILE ORGANIC ANALYSIS
 QLast Update : Fri Jun 24 04:54:59 2022
 Response via : Initial Calibration

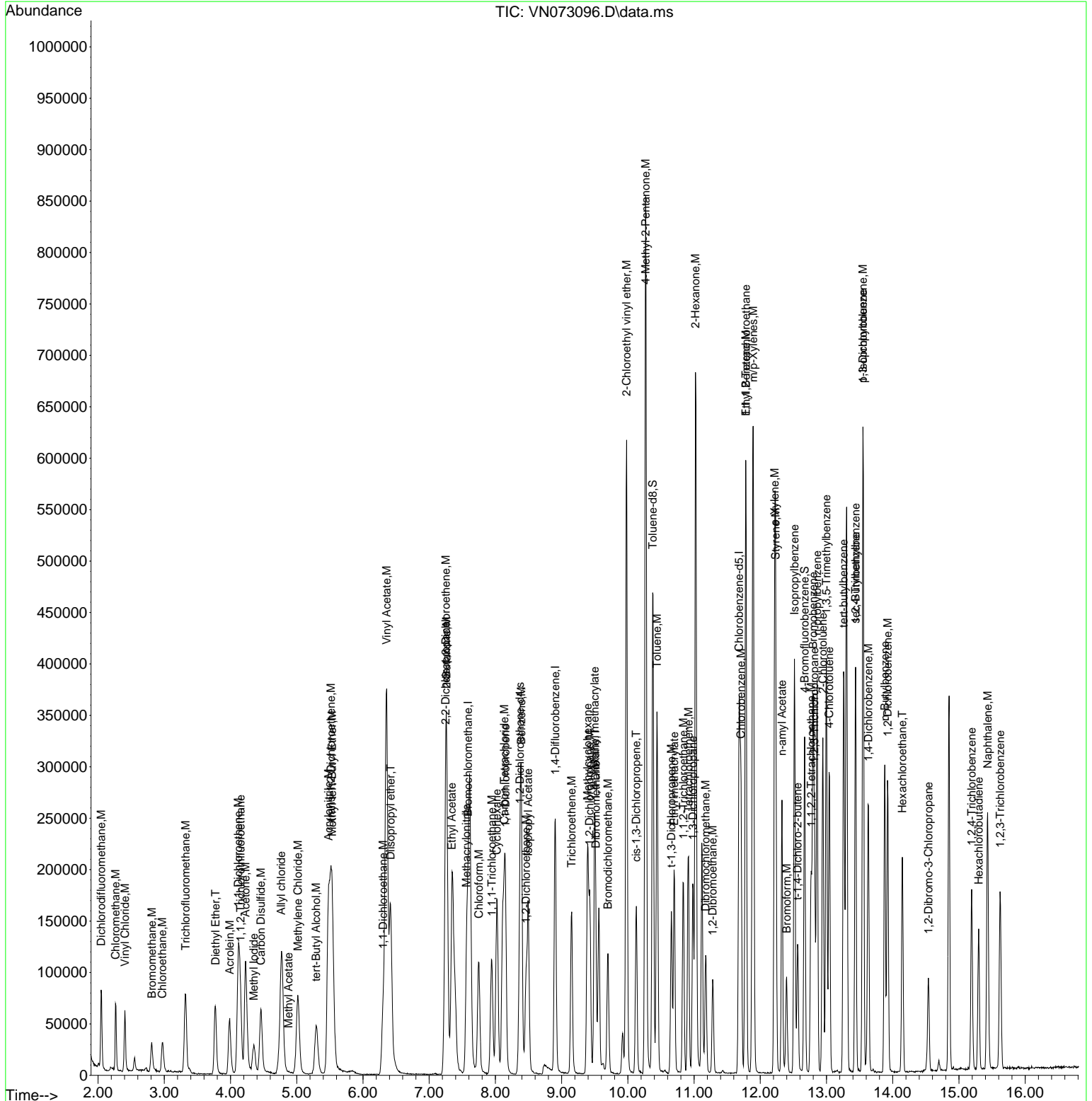
Compound	R.T.	QIon	Response	Conc	Units	Dev(Min)
43) Ethyl Acetate	7.340	43	113241	19.836	ug/l	99
44) Isopropyl Acetate	8.492	43	178973	20.302	ug/l	98
45) 1,4-Dioxane	9.510	88	33457	425.998	ug/l	89
46) Methyl methacrylate	9.498	41	77523	19.326	ug/l	79
47) n-amyl Acetate	12.327	43	137629	19.481	ug/l	98
48) t-1,3-Dichloropropene	10.657	75	81795	20.278	ug/l	95
49) cis-1,3-Dichloropropene	10.128	75	91547	20.958	ug/l	98
50) 1,1,2-Trichloroethane	10.839	97	59742	19.238	ug/l	98
51) Ethyl methacrylate	10.698	69	98464	18.723	ug/l	86
52) 1,3-Dichloropropane	10.980	76	104720	19.605	ug/l	98
53) Dibromochloromethane	11.175	129	60370	18.698	ug/l	97
54) 1,2-Dibromoethane	11.280	107	61437	18.835	ug/l	93
55) 2-Chloroethyl vinyl ether	9.981	63	260838	116.113	ug/l	99
56) Bromoform	12.398	173	41114	17.383	ug/l #	98
58) 4-Methyl-2-Pentanone	10.269	43	592698	105.648	ug/l	97
59) 2-Hexanone	11.022	43	461082	107.601	ug/l	98
61) Tetrachloroethene	10.916	164	51094	20.488	ug/l #	87
62) Toluene	10.439	91	255192	19.903	ug/l	97
64) Chlorobenzene	11.710	112	148436	19.240	ug/l	96
65) 1,1,1,2-Tetrachloroethane	11.780	131	56781	19.375	ug/l	99
66) Ethyl Benzene	11.780	91	273300	19.347	ug/l	97
67) m/p-Xylenes	11.892	106	206909	39.074	ug/l	99
68) o-Xylene	12.216	106	103672	19.387	ug/l	97
69) Styrene	12.233	104	164576	19.227	ug/l	99
70) Isopropylbenzene	12.516	105	263842	19.281	ug/l	99
71) 1,1,2,2-Tetrachloroethane	12.769	83	93484	19.787	ug/l	99
72) 1,2,3-Trichloropropane	12.816	75	119256	32.919	ug/l	49
73) Bromobenzene	12.798	156	61160	19.164	ug/l	93
74) n-propylbenzene	12.857	91	297155	19.165	ug/l	100
75) 2-Chlorotoluene	12.945	91	186272	19.210	ug/l	96
76) 1,3,5-Trimethylbenzene	12.998	105	215202	18.921	ug/l	96
77) t-1,4-Dichloro-2-butene	12.563	75	25695	22.487	ug/l	95
78) 4-Chlorotoluene	13.039	91	175464	18.810	ug/l	95
79) tert-butylbenzene	13.257	119	194938	19.386	ug/l	96
80) 1,2,4-Trimethylbenzene	13.439	105	260050	23.305	ug/l	100
81) sec-Butylbenzene	13.439	105	260050	19.186	ug/l	100
82) p-Isopropyltoluene	13.551	119	211057	19.172	ug/l	98
83) 1,3-Dichlorobenzene	13.551	146	105479	18.777	ug/l	99
84) 1,4-Dichlorobenzene	13.633	146	106139	18.907	ug/l	99
85) n-Butylbenzene	13.880	91	163302	18.230	ug/l	96
86) Hexachloroethane	14.145	117	39778	18.456	ug/l	97
87) 1,2-Dichlorobenzene	13.921	146	113328	19.281	ug/l	99
88) 1,2-Dibromo-3-Chloropr...	14.539	75	22851	18.983	ug/l	94
89) 1,2,4-Trichlorobenzene	15.192	180	54685	17.708	ug/l	96
90) Hexachlorobutadiene	15.298	225	23760	19.084	ug/l	97
91) Naphthalene	15.433	128	227447	18.874	ug/l	98
92) 1,2,3-Trichlorobenzene	15.621	180	58991	18.775	ug/l	99

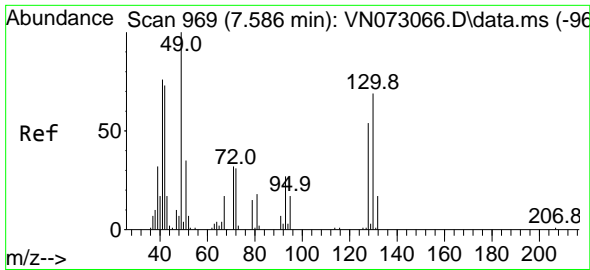
(#) = qualifier out of range (m) = manual integration (+) = signals summed

Data Path : Z:\voasrv\HPCHEM1\MSVOA_N\Data\VN062422\
 Data File : VN073096.D
 Acq On : 24 Jun 2022 20:38
 Operator : JC\MD
 Sample : VSTDCCC020
 Misc : 5.0mL/MSVOA_N/WATER
 ALS Vial : 25 Sample Multiplier: 1

Instrument :
 MSVOA_N
 Client Sample Id :
 VSTDCCC020EC

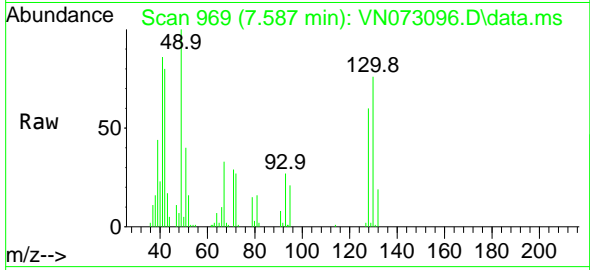
Quant Time: Jun 24 23:34:37 2022
 Quant Method : Z:\voasrv\HPCHEM1\MSVOA_N\methods\624N062322W.M
 Quant Title : METHOD 624 VOLATILE ORGANIC ANALYSIS
 QLast Update : Fri Jun 24 04:54:59 2022
 Response via : Initial Calibration



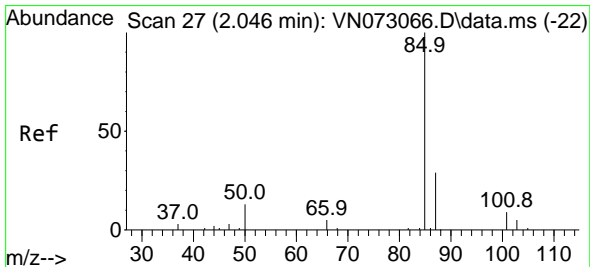
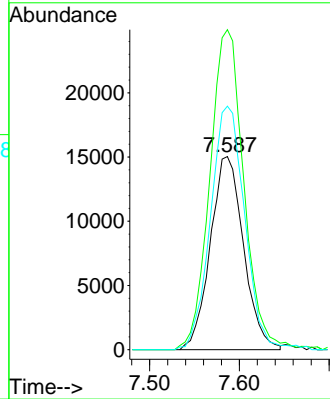
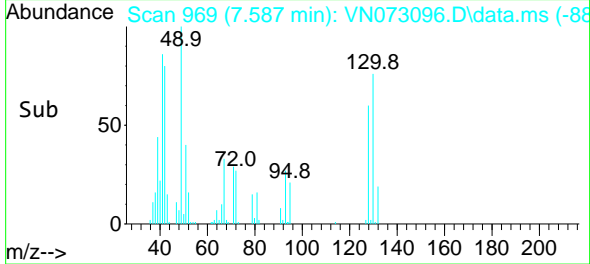


#1
 Bromochloromethane
 Concen: 30.000 ug/l
 RT: 7.587 min Scan# 90
 Delta R.T. 0.001 min
 Lab File: VN073096.D
 Acq: 24 Jun 2022 20:38

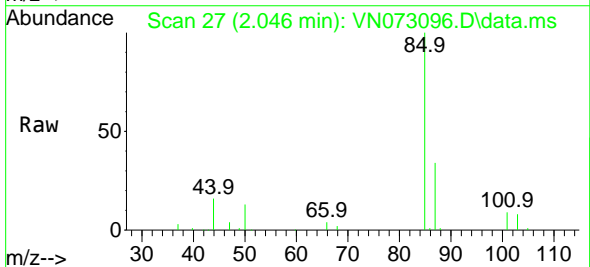
Instrument :
 MSVOA_N
 ClientSampleId :
 VSTDCCC020EC



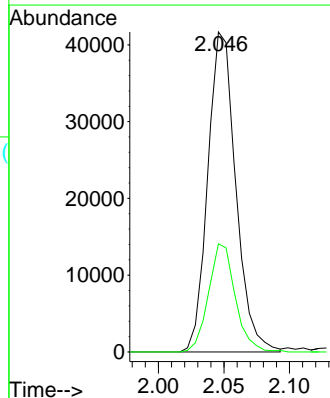
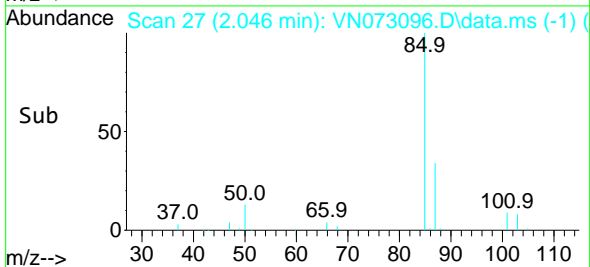
Tgt Ion:128 Resp: 38676
 Ion Ratio Lower Upper
 128 100
 49 168.4 0.0 392.3
 130 129.6 0.0 320.2

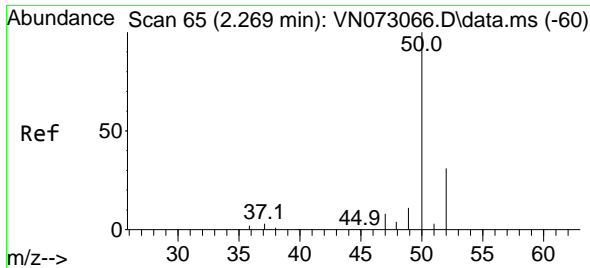


#2
 Dichlorodifluoromethane
 Concen: 20.295 ug/l
 RT: 2.046 min Scan# 27
 Delta R.T. 0.000 min
 Lab File: VN073096.D
 Acq: 24 Jun 2022 20:38



Tgt Ion: 85 Resp: 61924
 Ion Ratio Lower Upper
 85 100
 87 33.8 16.6 49.7

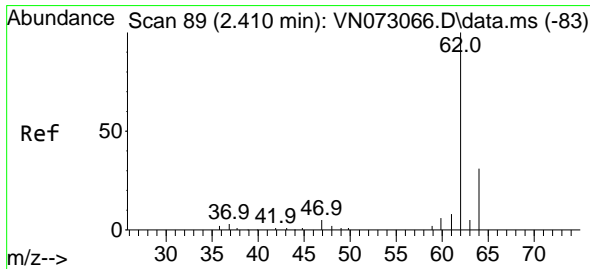
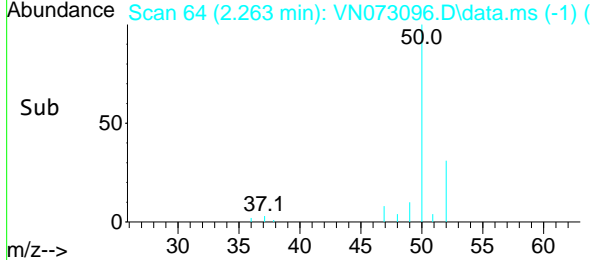
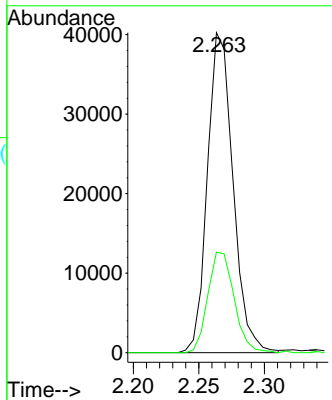
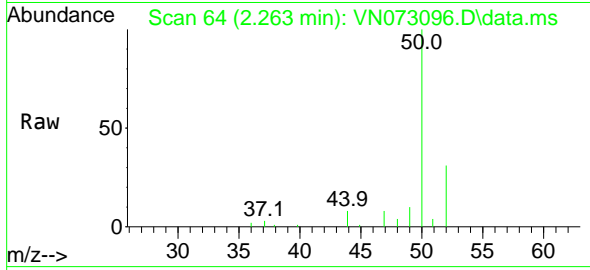




#3
 Chloromethane
 Concen: 18.855 ug/l
 RT: 2.263 min Scan# 64
 Delta R.T. -0.006 min
 Lab File: VN073096.D
 Acq: 24 Jun 2022 20:38

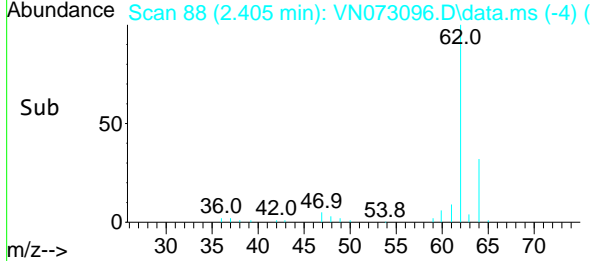
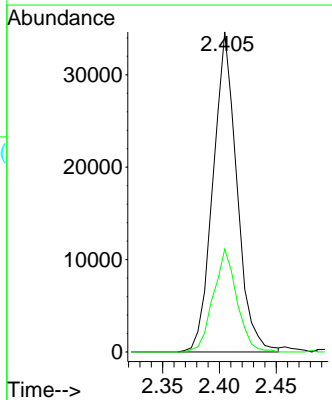
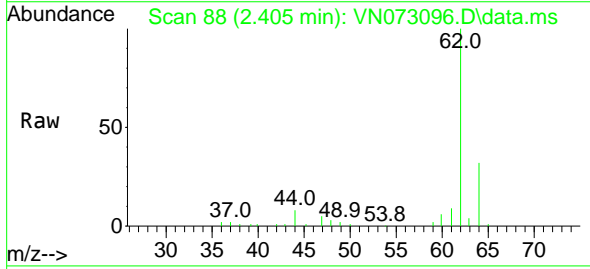
Instrument : MSVOA_N
 ClientSampleId : VSTDCCC020EC

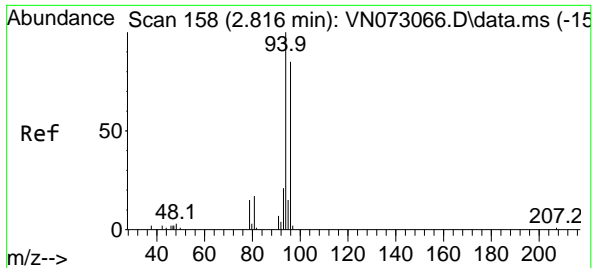
Tgt Ion: 50 Resp: 54666
 Ion Ratio Lower Upper
 50 100
 52 31.4 27.8 41.6



#4
 Vinyl Chloride
 Concen: 19.484 ug/l
 RT: 2.405 min Scan# 88
 Delta R.T. -0.006 min
 Lab File: VN073096.D
 Acq: 24 Jun 2022 20:38

Tgt Ion: 62 Resp: 50559
 Ion Ratio Lower Upper
 62 100
 64 32.1 25.1 37.7

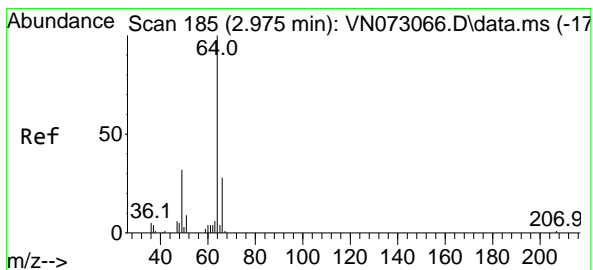
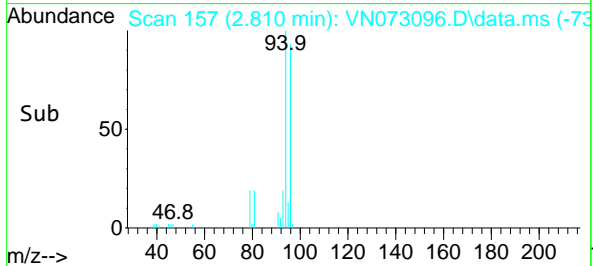
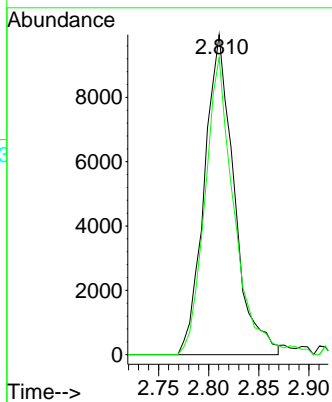
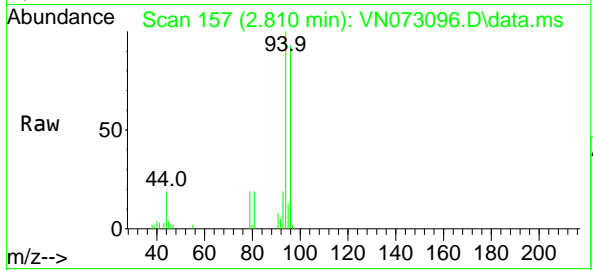




#5
 Bromomethane
 Concen: 24.080 ug/l
 RT: 2.810 min Scan# 11
 Delta R.T. -0.006 min
 Lab File: VN073096.D
 Acq: 24 Jun 2022 20:38

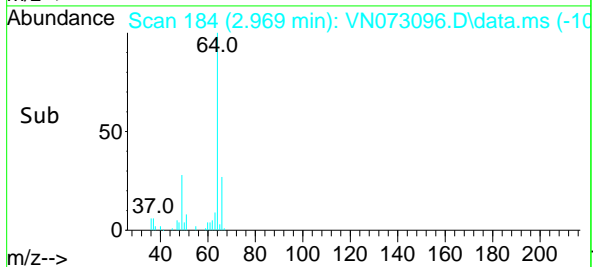
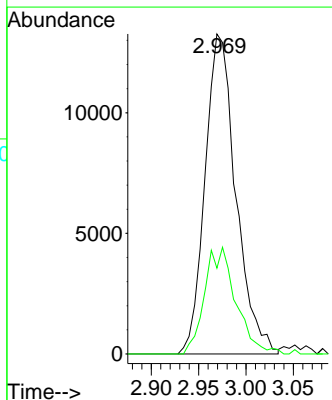
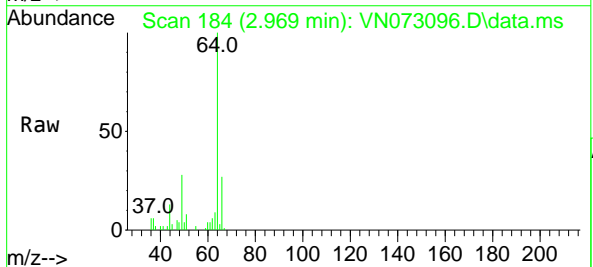
Instrument : MSVOA_N
 ClientSampleId : VSTDCCC020EC

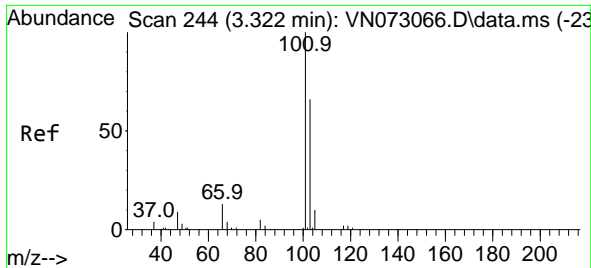
Tgt Ion: 94 Resp: 20576
 Ion Ratio Lower Upper
 94 100
 96 92.9 75.2 112.8



#6
 Chloroethane
 Concen: 18.757 ug/l
 RT: 2.969 min Scan# 184
 Delta R.T. -0.006 min
 Lab File: VN073096.D
 Acq: 24 Jun 2022 20:38

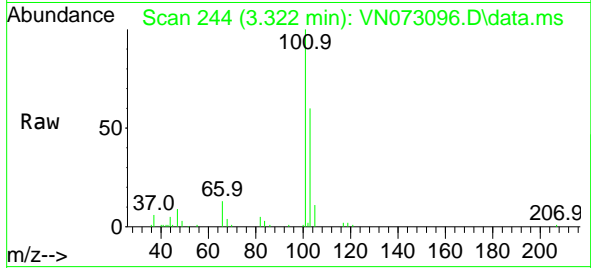
Tgt Ion: 64 Resp: 30033
 Ion Ratio Lower Upper
 64 100
 66 26.8 24.6 36.8



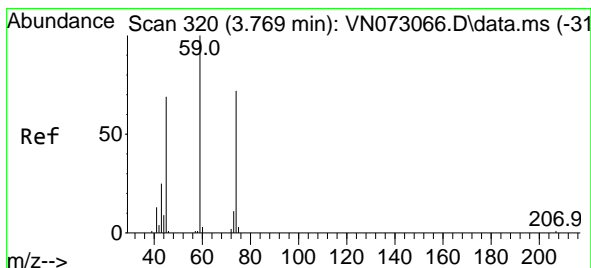
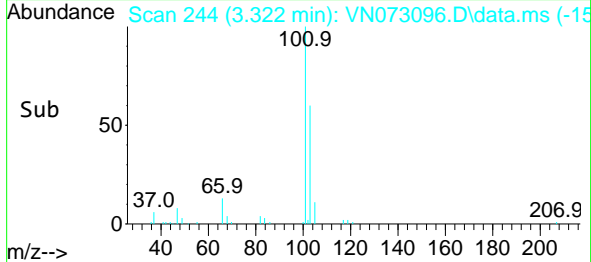
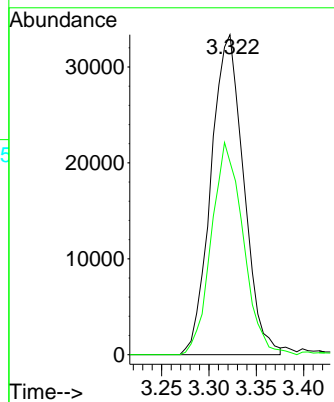


#7
 Trichlorofluoromethane
 Concen: 17.009 ug/l
 RT: 3.322 min Scan# 244
 Delta R.T. 0.000 min
 Lab File: VN073096.D
 Acq: 24 Jun 2022 20:38

Instrument :
 MSVOA_N
 ClientSampleId :
 VSTDCCC020EC

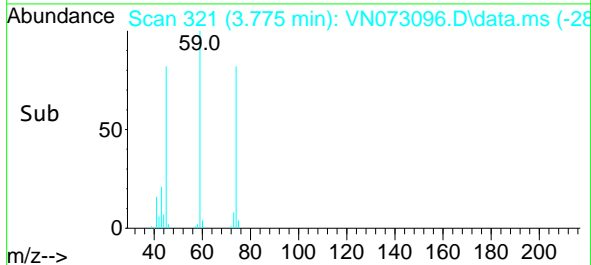
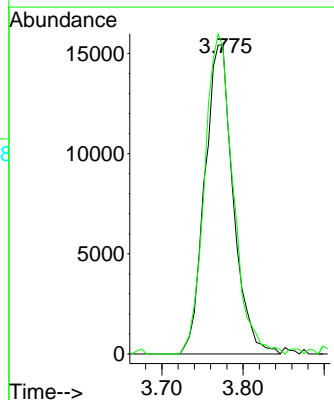
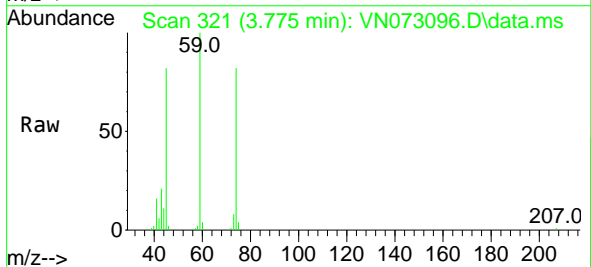


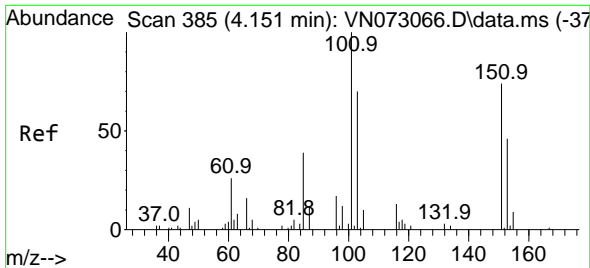
Tgt Ion: 101 Resp: 80120
 Ion Ratio Lower Upper
 101 100
 103 60.2 50.1 75.1



#8
 Diethyl Ether
 Concen: 19.467 ug/l
 RT: 3.775 min Scan# 321
 Delta R.T. 0.006 min
 Lab File: VN073096.D
 Acq: 24 Jun 2022 20:38

Tgt Ion: 74 Resp: 37528
 Ion Ratio Lower Upper
 74 100
 45 104.0 17.6 158.8

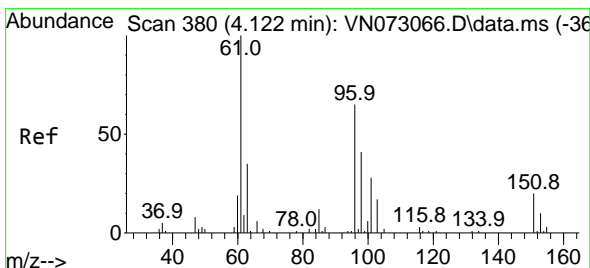
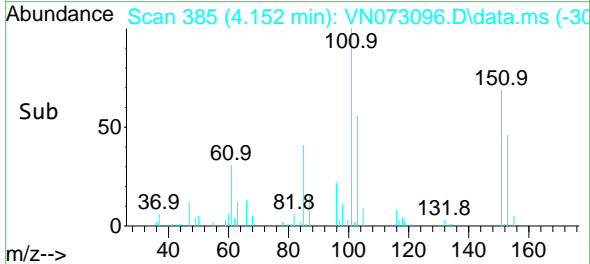
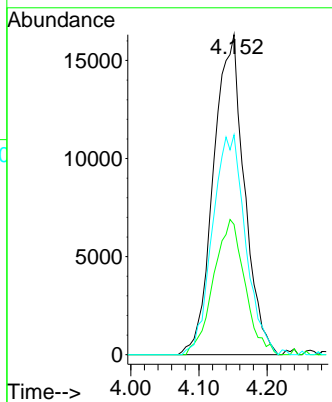
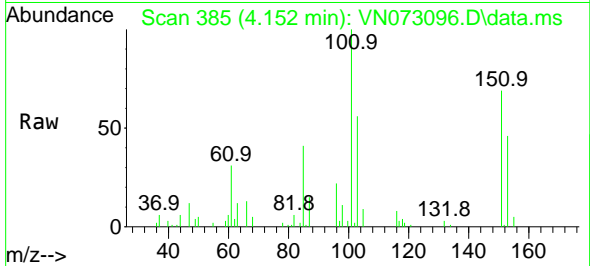




#9
 1,1,2-Trichlorotrifluoroethane
 Concen: 19.731 ug/l
 RT: 4.152 min Scan# 385
 Delta R.T. 0.000 min
 Lab File: VN073096.D
 Acq: 24 Jun 2022 20:38

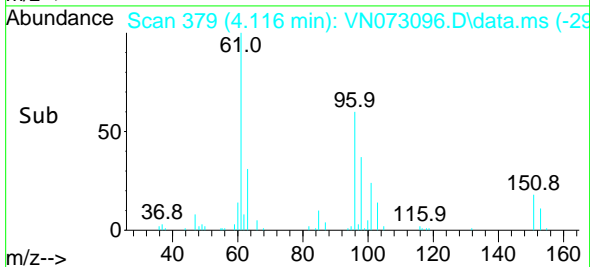
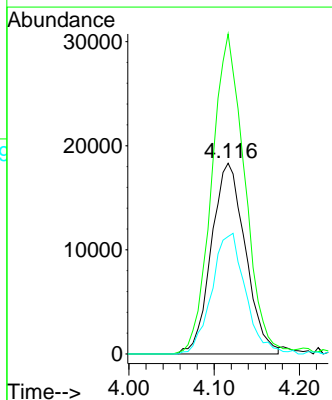
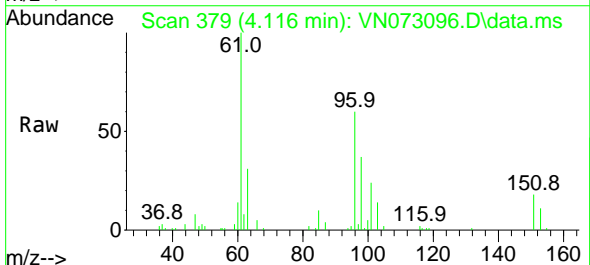
Instrument : MSVOA_N
 ClientSampleId : VSTDCCC020EC

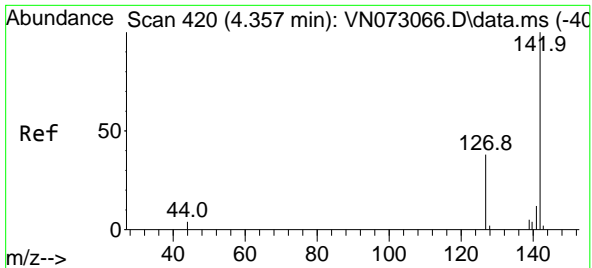
Tgt Ion	Resp	Lower	Upper
101	51347		
101	100		
85	42.8	0.0	94.0
151	73.5	0.0	74.6



#10
 1,1-Dichloroethene
 Concen: 19.053 ug/l
 RT: 4.116 min Scan# 379
 Delta R.T. -0.006 min
 Lab File: VN073096.D
 Acq: 24 Jun 2022 20:38

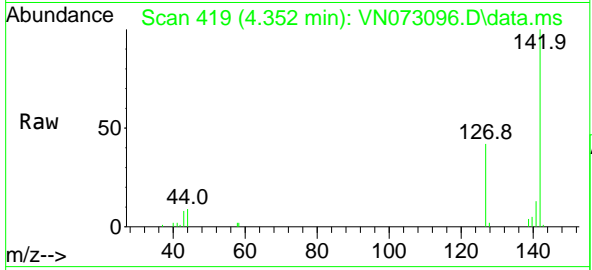
Tgt Ion	Resp	Lower	Upper
96	50744		
96	100		
61	167.0	126.2	189.4
98	61.6	50.9	76.3





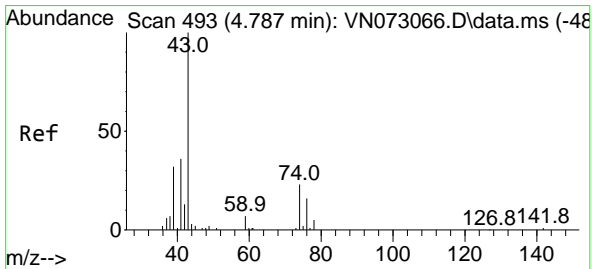
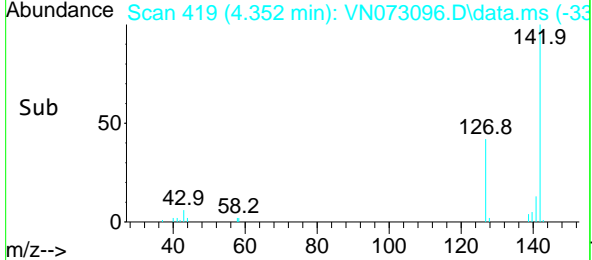
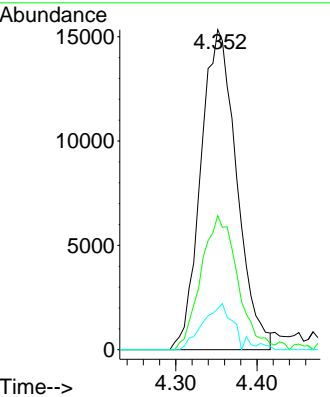
#11
 Methyl Iodide
 Concen: 18.528 ug/l
 RT: 4.352 min Scan# 41
 Delta R.T. -0.006 min
 Lab File: VN073096.D
 Acq: 24 Jun 2022 20:38

Instrument : MSVOA_N
 ClientSampleId : VSTDCCC020EC



Tgt Ion:142 Resp: 47072

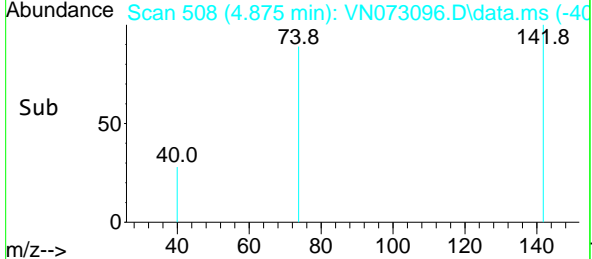
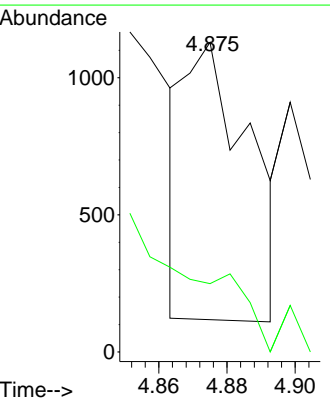
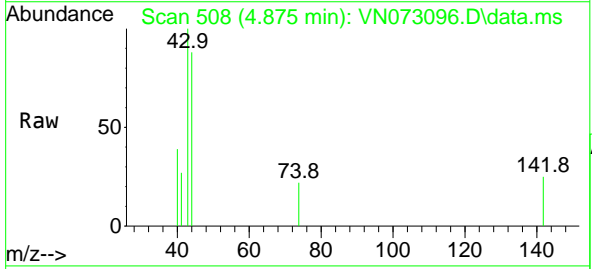
Ion	Ratio	Lower	Upper
142	100		
127	42.0	24.0	72.0
141	12.5	8.4	25.2

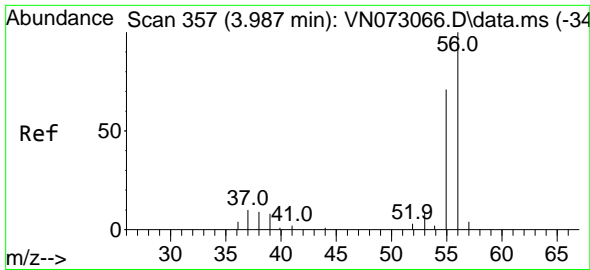


#12
 Methyl Acetate
 Concen: 0.239 ug/l
 RT: 4.875 min Scan# 508
 Delta R.T. 0.088 min
 Lab File: VN073096.D
 Acq: 24 Jun 2022 20:38

Tgt Ion: 43 Resp: 1326

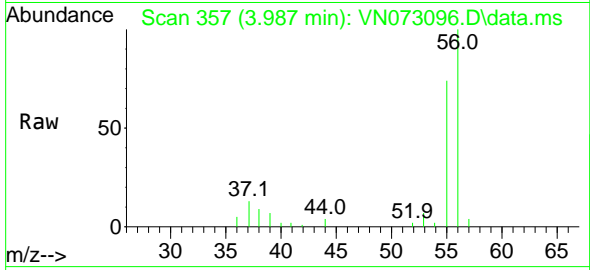
Ion	Ratio	Lower	Upper
43	100		
74	28.2	20.8	31.2



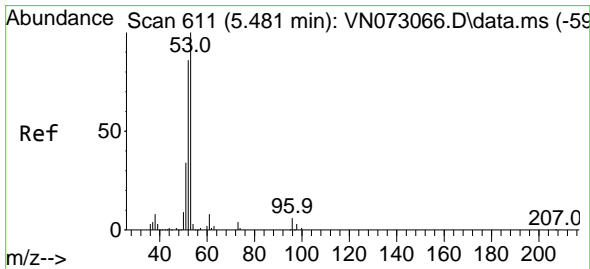
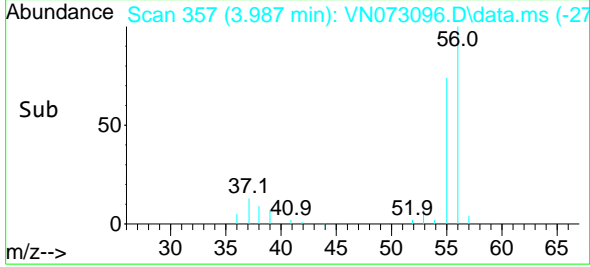
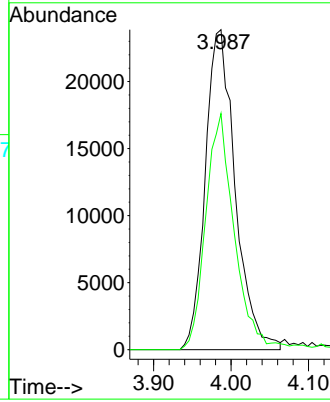


#13
 Acrolein
 Concen: 114.409 ug/l
 RT: 3.987 min Scan# 311
 Delta R.T. 0.000 min
 Lab File: VN073096.D
 Acq: 24 Jun 2022 20:38

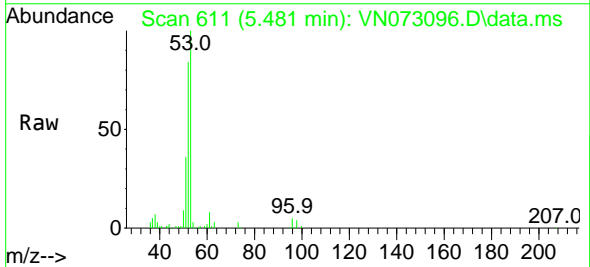
Instrument :
 MSVOA_N
 ClientSampleId :
 VSTDCCC020EC



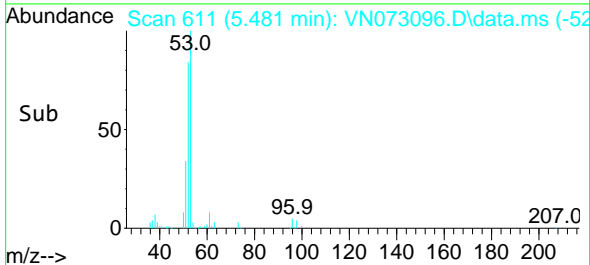
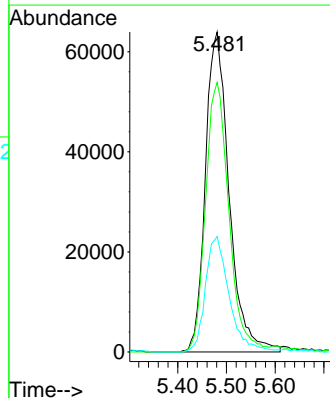
Tgt Ion: 56 Resp: 63957
 Ion Ratio Lower Upper
 56 100
 55 69.3 57.6 86.4

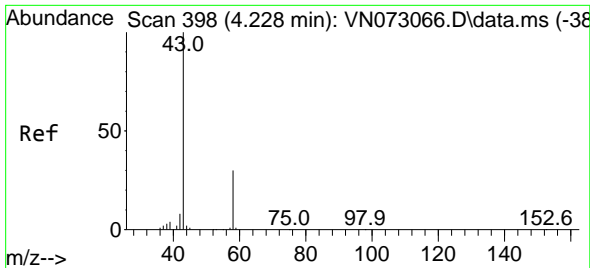


#14
 Acrylonitrile
 Concen: 102.379 ug/l
 RT: 5.481 min Scan# 611
 Delta R.T. 0.000 min
 Lab File: VN073096.D
 Acq: 24 Jun 2022 20:38



Tgt Ion: 53 Resp: 216323
 Ion Ratio Lower Upper
 53 100
 52 82.9 41.8 125.4
 51 34.8 19.0 57.0

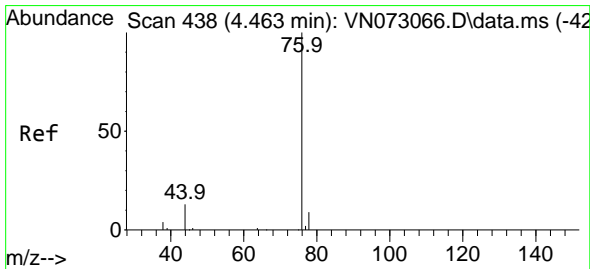
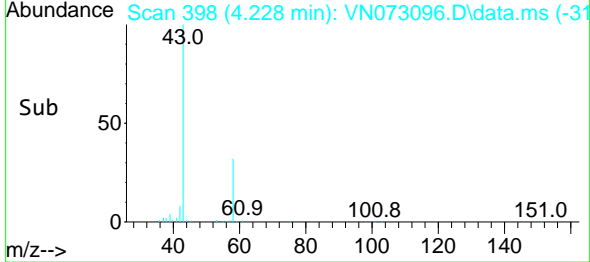
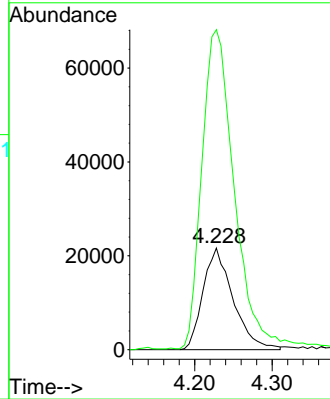
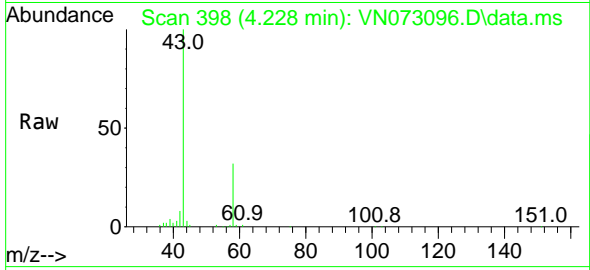




#15
 Acetone
 Concen: 100.272 ug/l
 RT: 4.228 min Scan# 398
 Delta R.T. 0.000 min
 Lab File: VN073096.D
 Acq: 24 Jun 2022 20:38

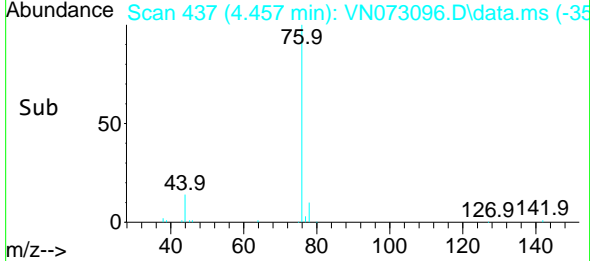
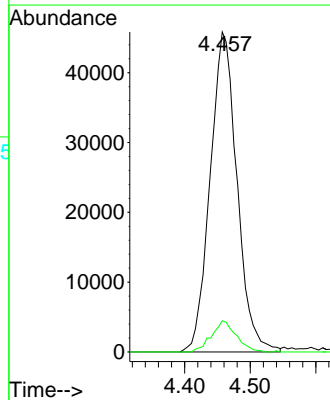
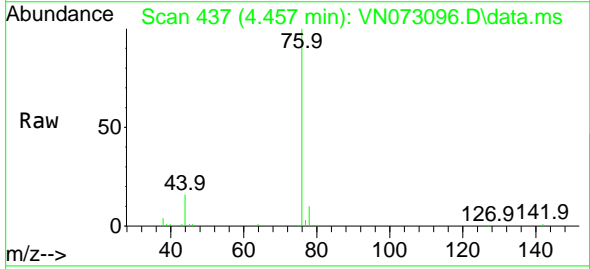
Instrument : MSVOA_N
 ClientSampleId : VSTDCCC020EC

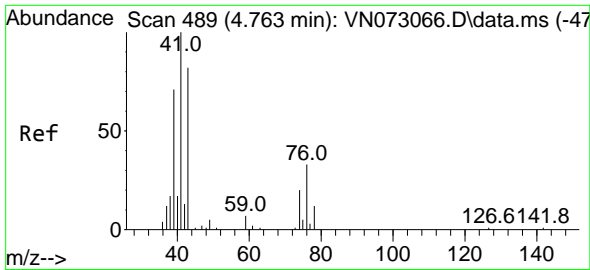
Tgt Ion: 58 Resp: 58442
 Ion Ratio Lower Upper
 58 100
 43 314.1 256.6 384.8



#16
 Carbon Disulfide
 Concen: 18.549 ug/l
 RT: 4.457 min Scan# 437
 Delta R.T. -0.006 min
 Lab File: VN073096.D
 Acq: 24 Jun 2022 20:38

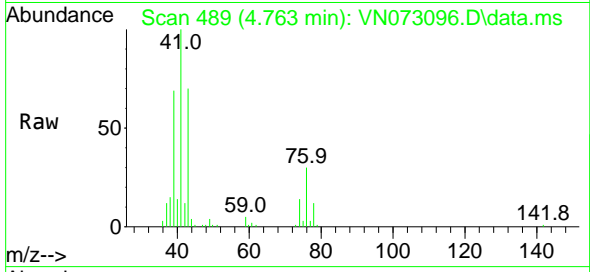
Tgt Ion: 76 Resp: 130269
 Ion Ratio Lower Upper
 76 100
 78 9.7 7.8 11.8





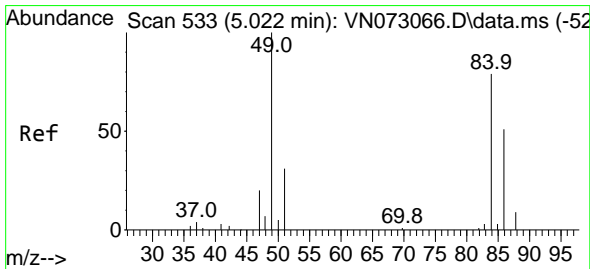
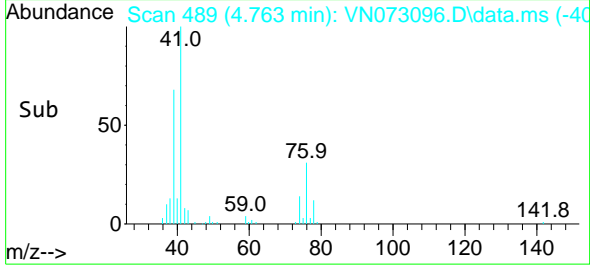
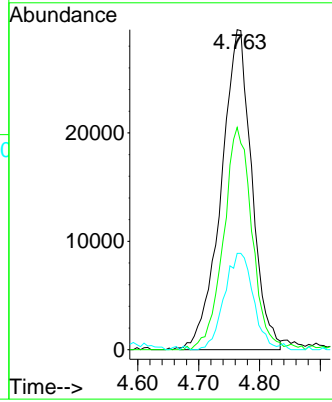
#17
 Allyl chloride
 Concen: 20.398 ug/l
 RT: 4.763 min Scan# 41
 Delta R.T. 0.000 min
 Lab File: VN073096.D
 Acq: 24 Jun 2022 20:38

Instrument :
 MSVOA_N
 ClientSampleId :
 VSTDCCC020EC



Tgt Ion: 41 Resp: 103113

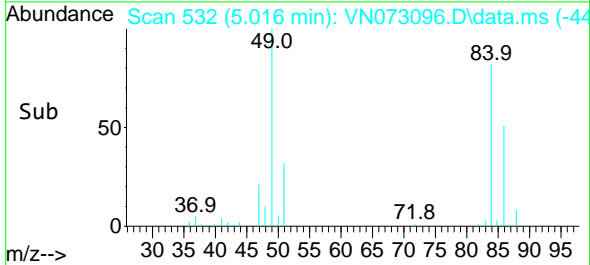
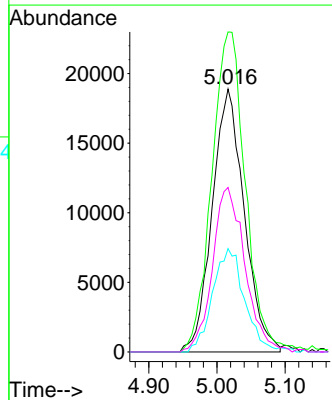
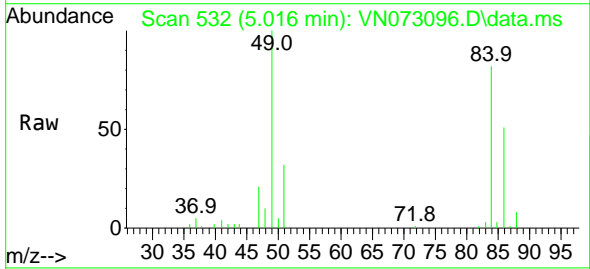
Ion	Ratio	Lower	Upper
41	100		
39	69.8	44.6	134.0
76	30.3	19.6	58.7

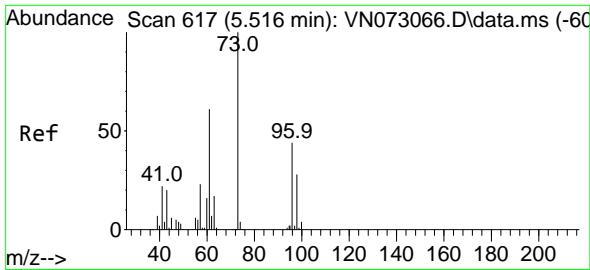


#18
 Methylene Chloride
 Concen: 19.445 ug/l
 RT: 5.016 min Scan# 532
 Delta R.T. -0.006 min
 Lab File: VN073096.D
 Acq: 24 Jun 2022 20:38

Tgt Ion: 84 Resp: 61762

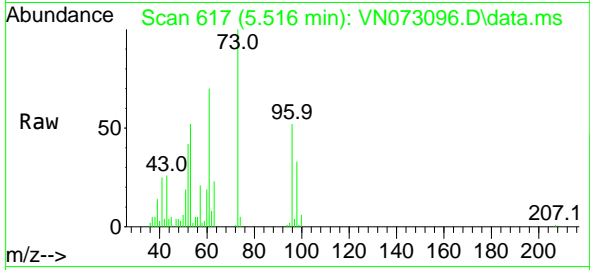
Ion	Ratio	Lower	Upper
84	100		
49	121.7	91.4	137.0
51	39.3	29.4	44.0
86	62.6	51.1	76.7



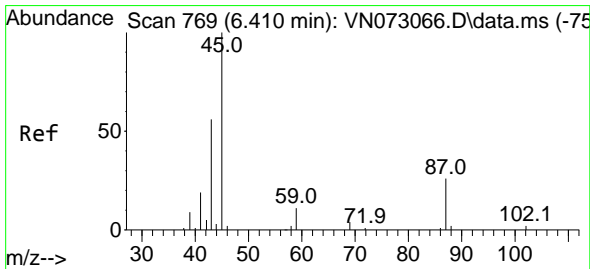
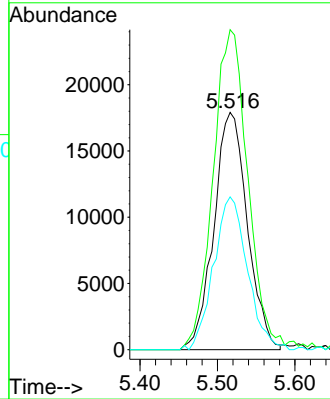
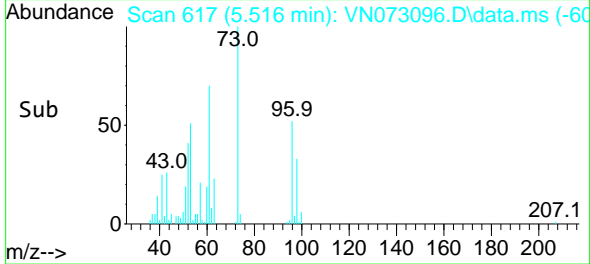


#19
 trans-1,2-Dichloroethene
 Concen: 19.173 ug/l
 RT: 5.516 min Scan# 61
 Delta R.T. 0.000 min
 Lab File: VN073096.D
 Acq: 24 Jun 2022 20:38

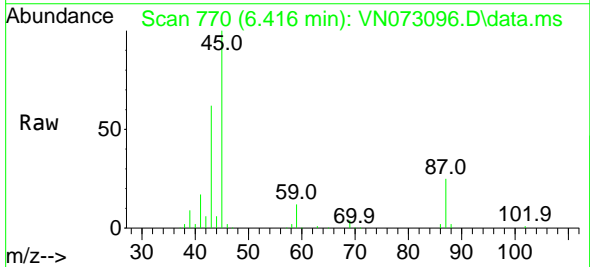
Instrument :
 MSVOA_N
 ClientSampleId :
 VSTDCCC020EC



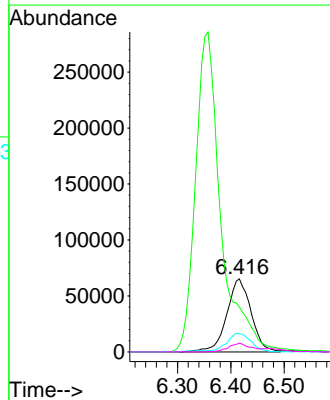
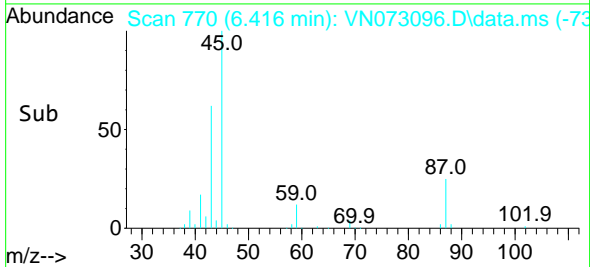
Tgt Ion: 96 Resp: 53884
 Ion Ratio Lower Upper
 96 100
 61 134.9 102.8 154.2
 98 64.4 49.3 73.9

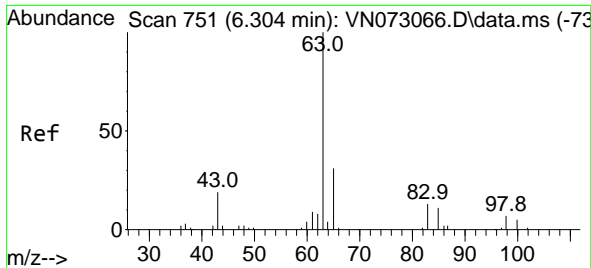


#20
 Diisopropyl ether
 Concen: 19.462 ug/l
 RT: 6.416 min Scan# 770
 Delta R.T. 0.006 min
 Lab File: VN073096.D
 Acq: 24 Jun 2022 20:38



Tgt Ion: 45 Resp: 206996
 Ion Ratio Lower Upper
 45 100
 43 56.9 51.0 76.4
 87 24.4 25.0 37.4#
 59 12.0 8.7 13.1

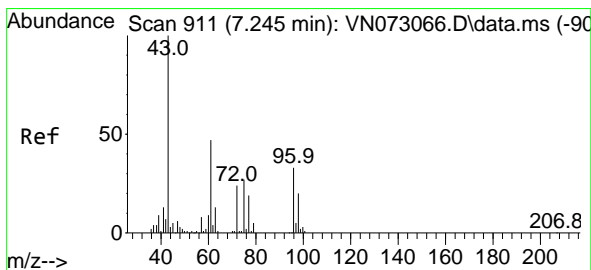
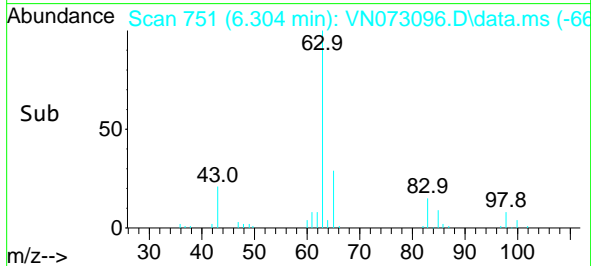
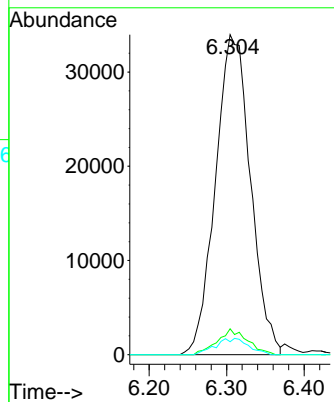
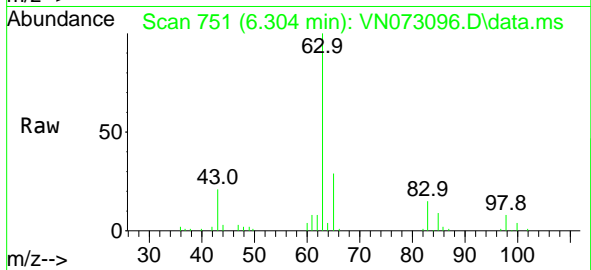




#21
 1,1-Dichloroethane
 Concen: 19.104 ug/l
 RT: 6.304 min Scan# 751
 Delta R.T. 0.000 min
 Lab File: VN073096.D
 Acq: 24 Jun 2022 20:38

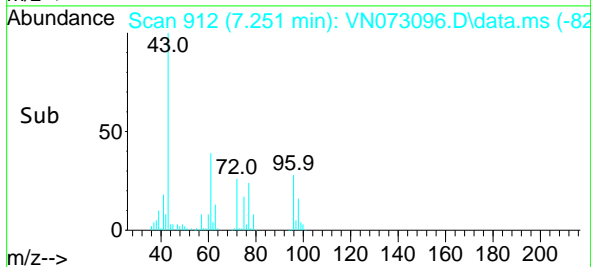
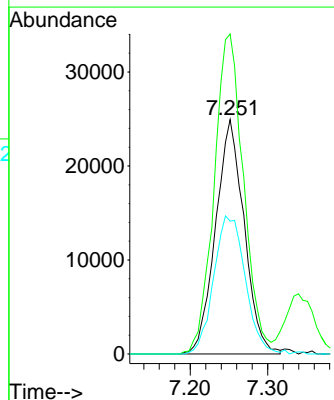
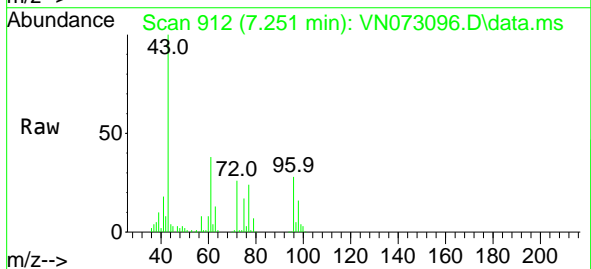
Instrument : MSVOA_N
 ClientSampleId : VSTDCCC020EC

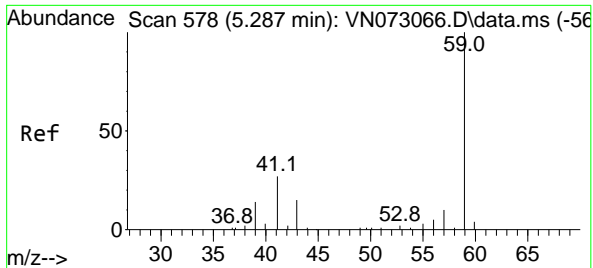
Tgt Ion	Resp	Lower	Upper
63	106611		
98	8.1	3.2	9.6
100	4.0	2.1	6.2



#22
 cis-1,2-Dichloroethene
 Concen: 19.142 ug/l
 RT: 7.251 min Scan# 912
 Delta R.T. 0.006 min
 Lab File: VN073096.D
 Acq: 24 Jun 2022 20:38

Tgt Ion	Resp	Lower	Upper
96	63969		
61	140.4	115.7	173.5
98	64.8	51.6	77.4

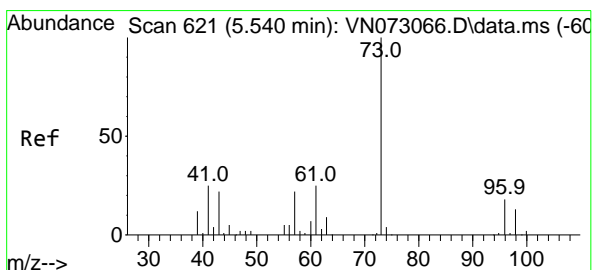
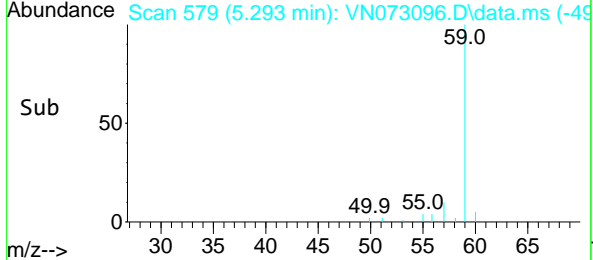
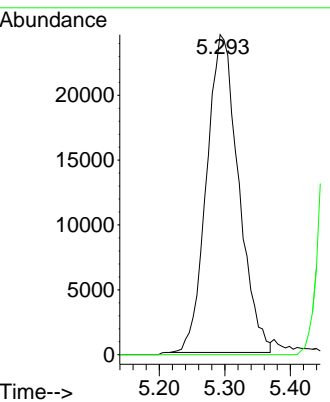
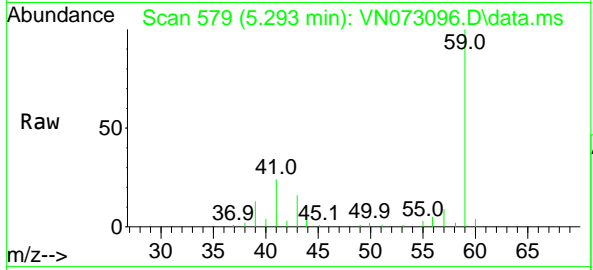




#23
 tert-Butyl Alcohol
 Concen: 96.208 ug/l
 RT: 5.293 min Scan# 51
 Delta R.T. 0.006 min
 Lab File: VN073096.D
 Acq: 24 Jun 2022 20:38

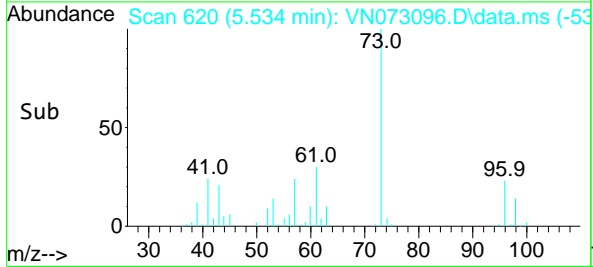
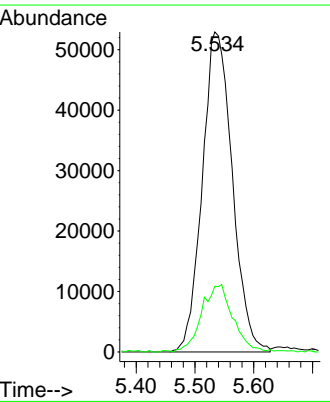
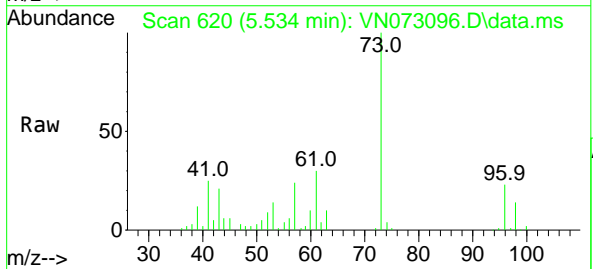
Instrument : MSVOA_N
 ClientSampleId : VSTDCCC020EC

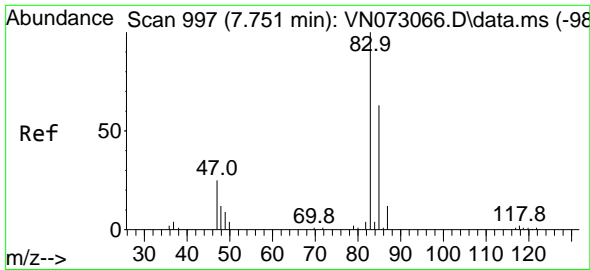
Tgt Ion: 59 Resp: 83006
 Ion Ratio Lower Upper
 59 100
 52 0.0 0.0 0.0



#24
 Methyl tert-Butyl Ether
 Concen: 18.888 ug/l
 RT: 5.534 min Scan# 620
 Delta R.T. -0.006 min
 Lab File: VN073096.D
 Acq: 24 Jun 2022 20:38

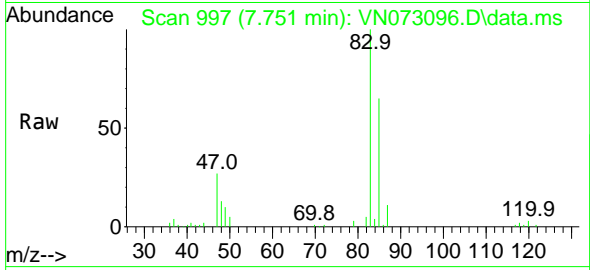
Tgt Ion: 73 Resp: 187651
 Ion Ratio Lower Upper
 73 100
 43 15.2 18.1 27.1#



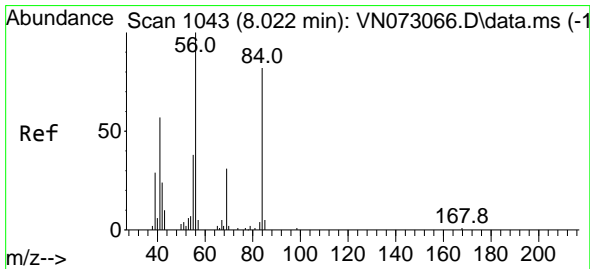
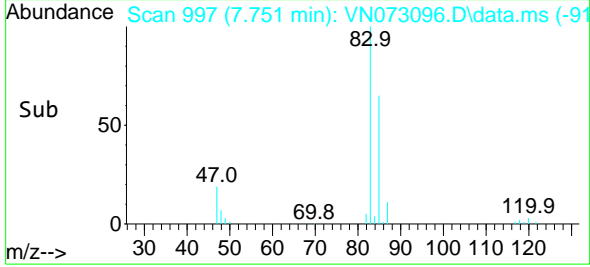
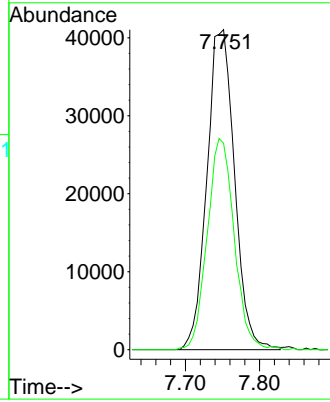


#25
 Chloroform
 Concen: 19.181 ug/l
 RT: 7.751 min Scan# 997
 Delta R.T. 0.000 min
 Lab File: VN073096.D
 Acq: 24 Jun 2022 20:38

Instrument : MSVOA_N
 ClientSampleId : VSTDCCC020EC

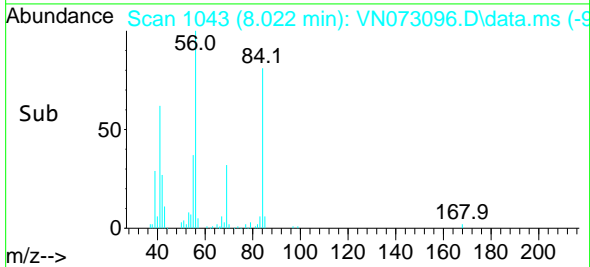
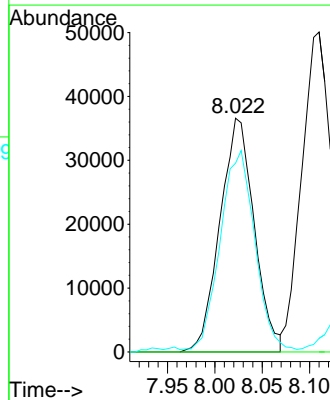
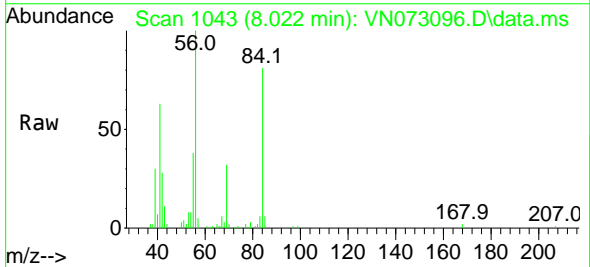


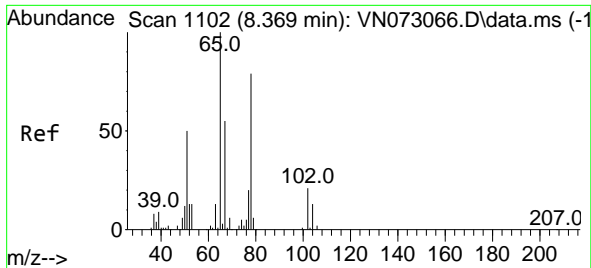
Tgt Ion: 83 Resp: 106521
 Ion Ratio Lower Upper
 83 100
 85 64.0 51.3 76.9



#26
 Cyclohexane
 Concen: 18.851 ug/l
 RT: 8.022 min Scan# 1043
 Delta R.T. 0.000 min
 Lab File: VN073096.D
 Acq: 24 Jun 2022 20:38

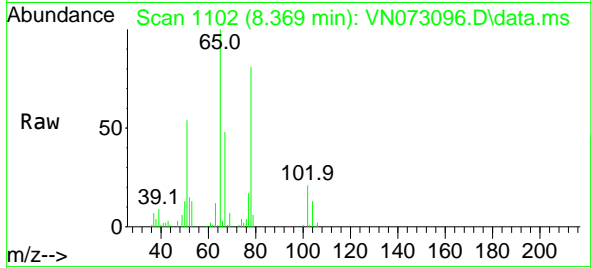
Tgt Ion: 56 Resp: 92105
 Ion Ratio Lower Upper
 56 100
 89 0.0 0.1 0.1#
 84 86.5 74.6 111.8



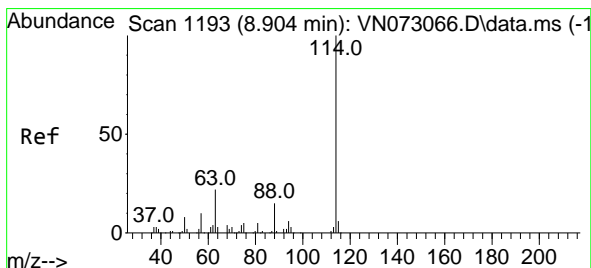
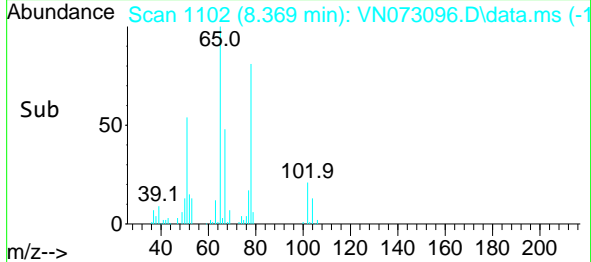
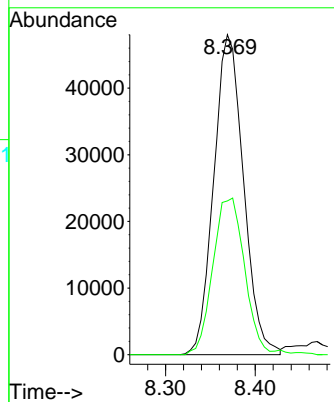


#27
 1,2-Dichloroethane-d4
 Concen: 29.662 ug/l
 RT: 8.369 min Scan# 1102
 Delta R.T. 0.000 min
 Lab File: VN073096.D
 Acq: 24 Jun 2022 20:38

Instrument : MSVOA_N
 ClientSampleId : VSTDCCC020EC

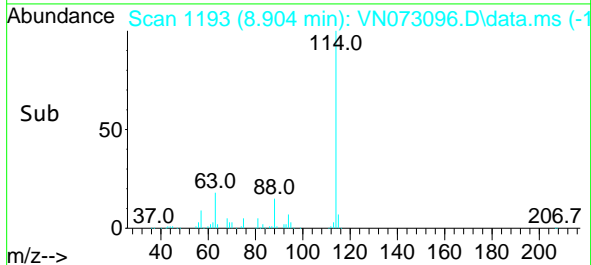
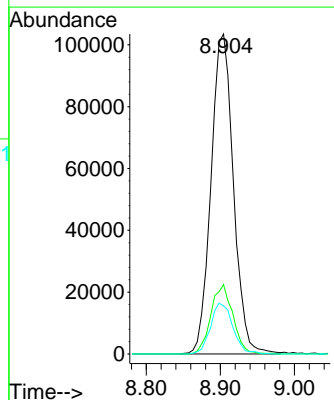
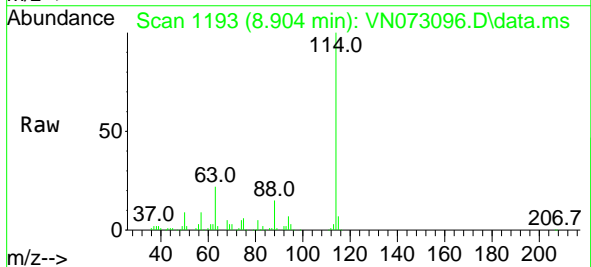


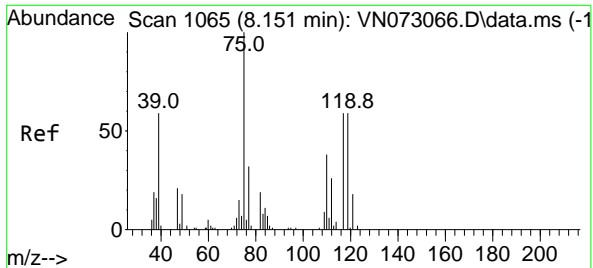
Tgt Ion: 65 Resp: 110593
 Ion Ratio Lower Upper
 65 100
 67 51.8 40.2 60.2



#28
 1,4-Difluorobenzene
 Concen: 30.000 ug/l
 RT: 8.904 min Scan# 1193
 Delta R.T. 0.000 min
 Lab File: VN073096.D
 Acq: 24 Jun 2022 20:38

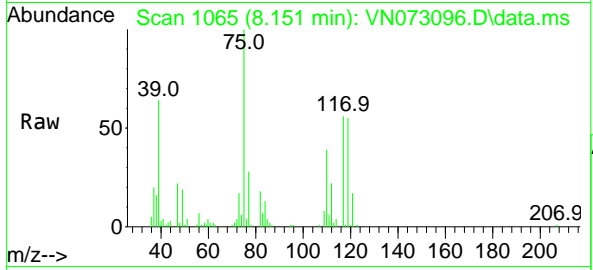
Tgt Ion: 114 Resp: 217698
 Ion Ratio Lower Upper
 114 100
 63 21.2 15.8 23.6
 88 15.5 11.6 17.4



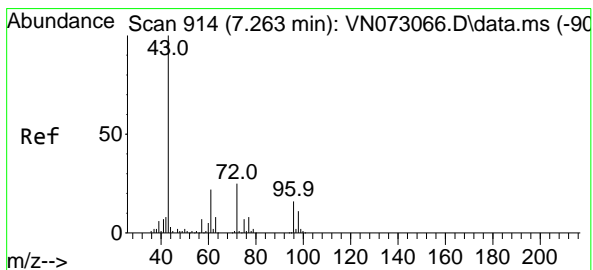
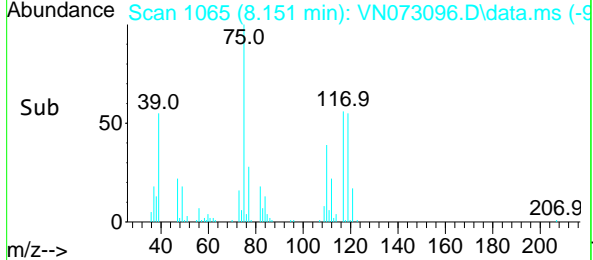
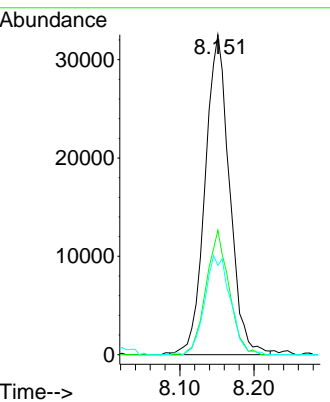


#29
 1,1-Dichloropropene
 Concen: 18.920 ug/l
 RT: 8.151 min Scan# 1065
 Delta R.T. 0.000 min
 Lab File: VN073096.D
 Acq: 24 Jun 2022 20:38

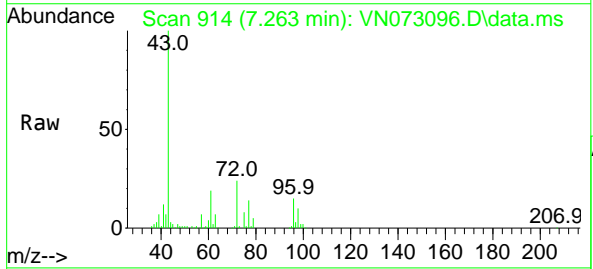
Instrument : MSVOA_N
 ClientSampleId : VSTDCCC020EC



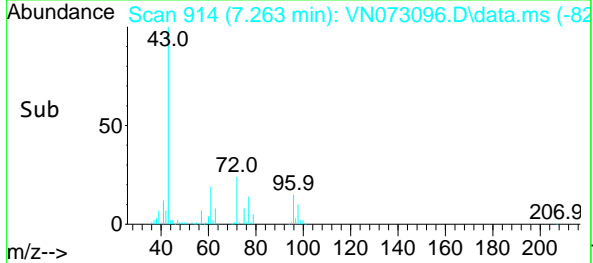
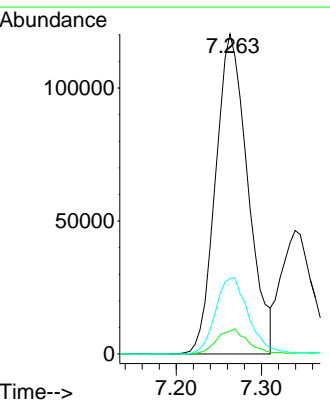
Tgt Ion: 75 Resp: 74468
 Ion Ratio Lower Upper
 75 100
 110 36.0 0.0 74.2
 77 32.5 0.0 63.2

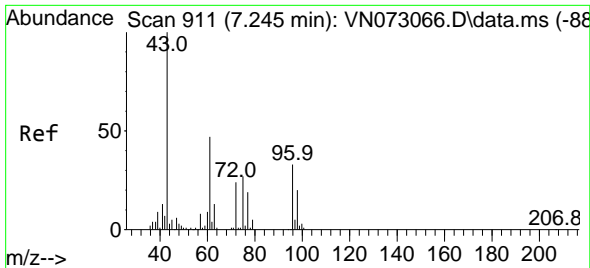


#30
 2-Butanone
 Concen: 104.418 ug/l
 RT: 7.263 min Scan# 914
 Delta R.T. 0.000 min
 Lab File: VN073096.D
 Acq: 24 Jun 2022 20:38



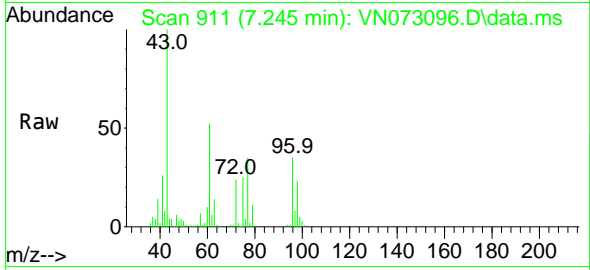
Tgt Ion: 43 Resp: 316519
 Ion Ratio Lower Upper
 43 100
 57 7.4 6.7 10.1
 72 24.5 23.2 34.8



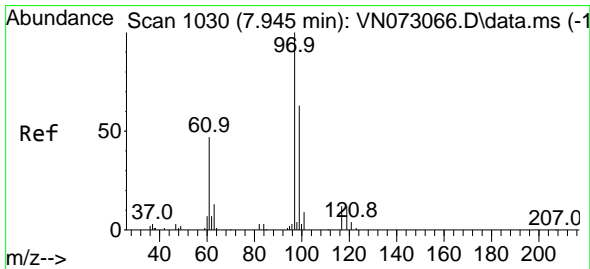
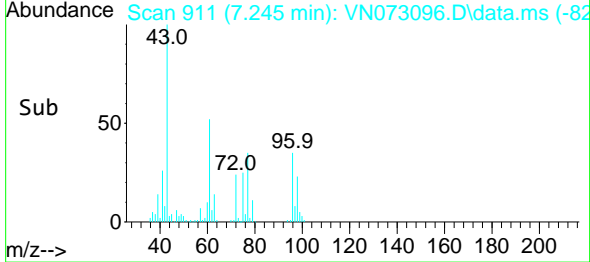
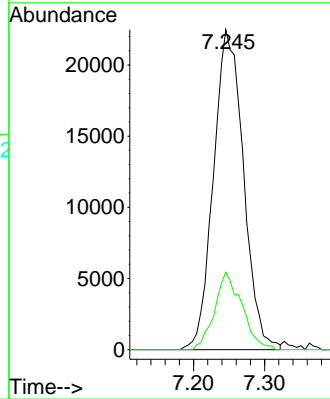


#31
 2,2-Dichloropropane
 Concen: 34.205 ug/l
 RT: 7.245 min Scan# 911
 Delta R.T. 0.000 min
 Lab File: VN073096.D
 Acq: 24 Jun 2022 20:38

Instrument : MSVOA_N
 ClientSampleId : VSTDCCC020EC

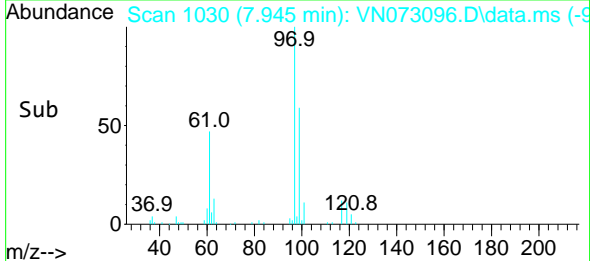
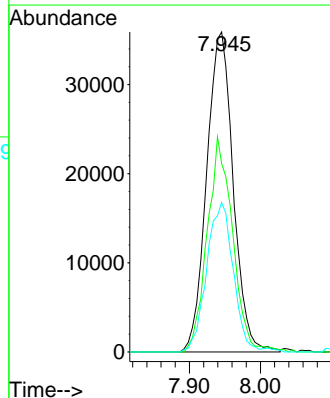
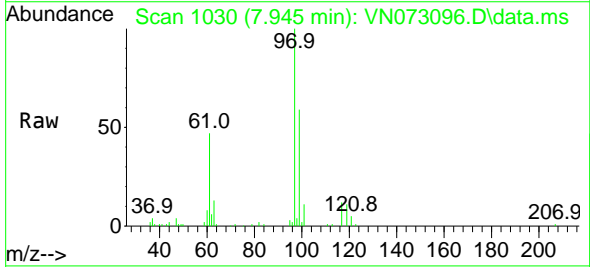


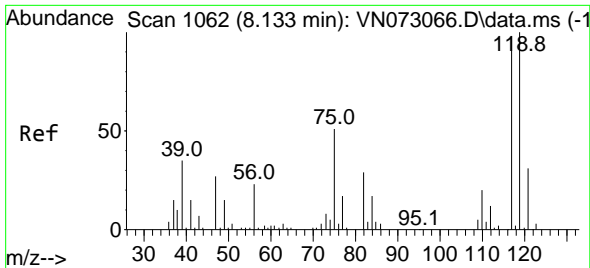
Tgt Ion: 77 Resp: 65900
 Ion Ratio Lower Upper
 77 100
 97 22.1 18.3 27.5



#32
 1,1,1-Trichloroethane
 Concen: 19.299 ug/l
 RT: 7.945 min Scan# 1030
 Delta R.T. 0.000 min
 Lab File: VN073096.D
 Acq: 24 Jun 2022 20:38

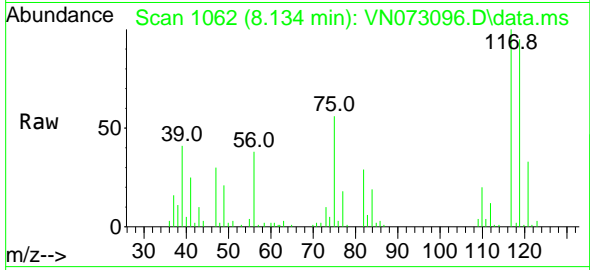
Tgt Ion: 97 Resp: 93337
 Ion Ratio Lower Upper
 97 100
 99 64.1 50.4 75.6
 61 46.4 34.6 51.8



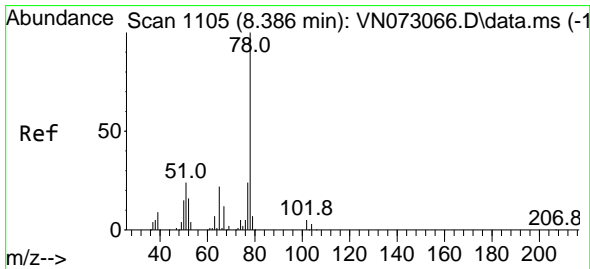
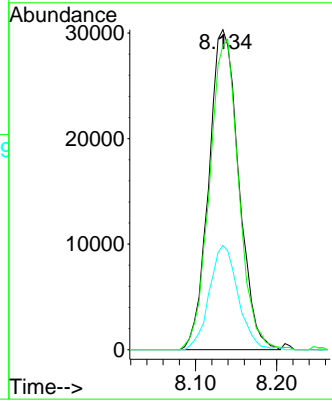
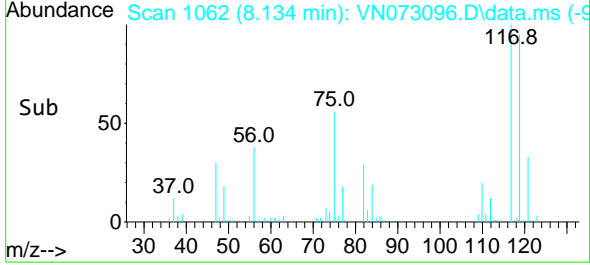


#33
 Carbon Tetrachloride
 Concen: 19.013 ug/l
 RT: 8.134 min Scan# 1106
 Delta R.T. 0.000 min
 Lab File: VN073096.D
 Acq: 24 Jun 2022 20:38

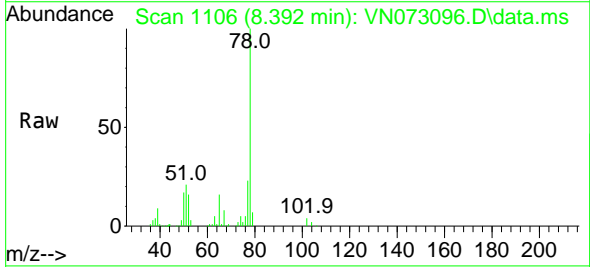
Instrument :
 MSVOA_N
 ClientSampleId :
 VSTDCCC020EC



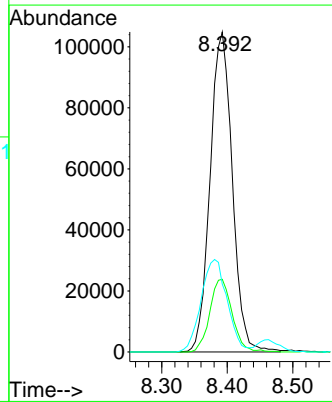
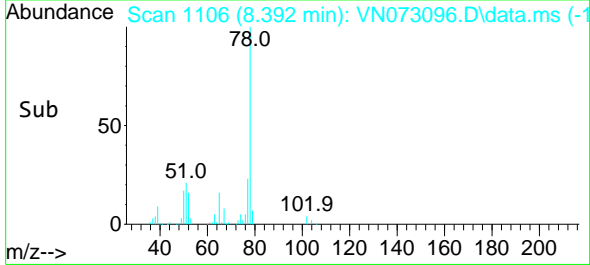
Tgt Ion:117 Resp: 77750
 Ion Ratio Lower Upper
 117 100
 119 95.0 77.5 116.3
 121 33.2 23.5 35.3

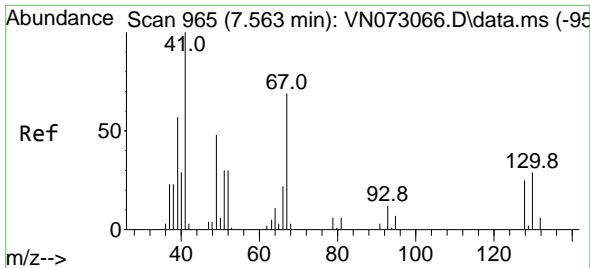


#34
 Benzene
 Concen: 20.140 ug/l
 RT: 8.392 min Scan# 1106
 Delta R.T. 0.006 min
 Lab File: VN073096.D
 Acq: 24 Jun 2022 20:38



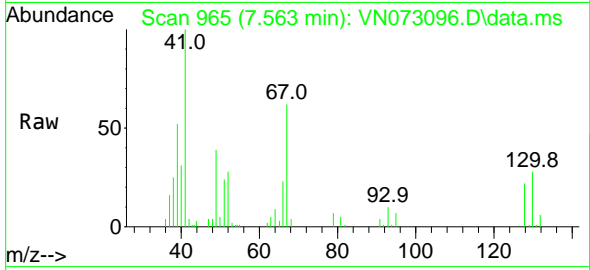
Tgt Ion: 78 Resp: 246742
 Ion Ratio Lower Upper
 78 100
 77 22.7 19.1 28.7
 51 20.9 16.0 24.0





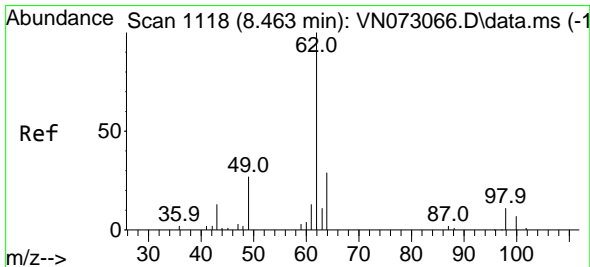
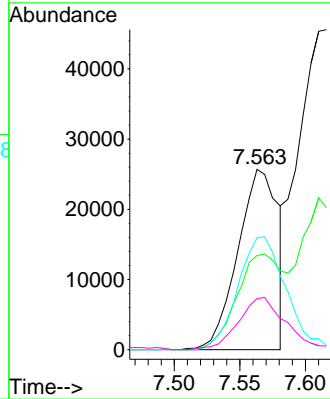
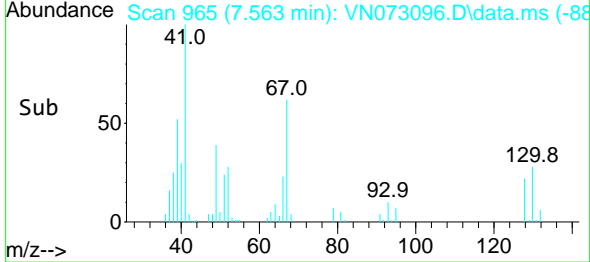
#35
 Methacrylonitrile
 Concen: 20.342 ug/l
 RT: 7.563 min Scan# 90
 Delta R.T. 0.000 min
 Lab File: VN073096.D
 Acq: 24 Jun 2022 20:38

Instrument :
 MSVOA_N
 ClientSampleId :
 VSTDCCC020EC

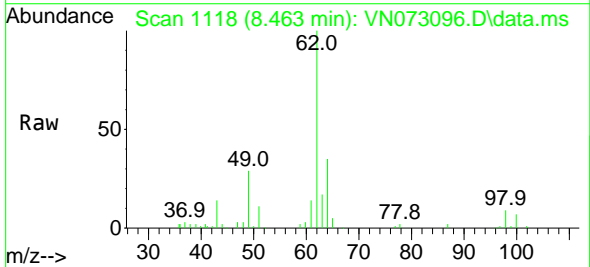


Tgt Ion: 41 Resp: 54857

Ion	Ratio	Lower	Upper
41	100		
39	52.2	28.0	83.9
67	62.1	37.7	113.1
52	28.3	17.1	51.2

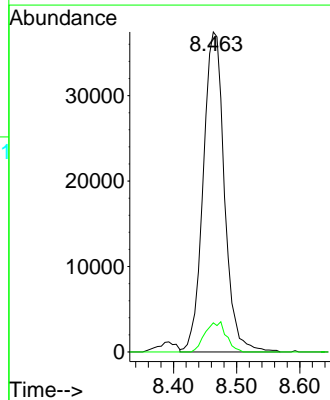
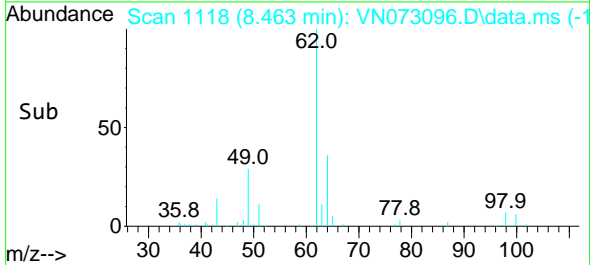


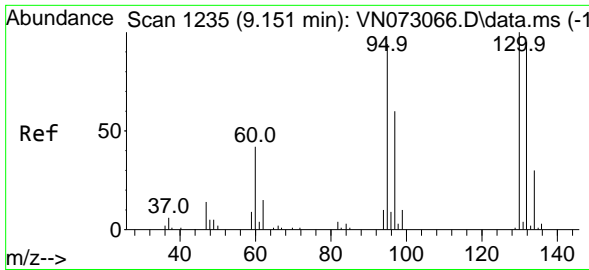
#36
 1,2-Dichloroethane
 Concen: 19.225 ug/l
 RT: 8.463 min Scan# 1118
 Delta R.T. 0.000 min
 Lab File: VN073096.D
 Acq: 24 Jun 2022 20:38



Tgt Ion: 62 Resp: 87290

Ion	Ratio	Lower	Upper
62	100		
98	9.3	6.6	10.0

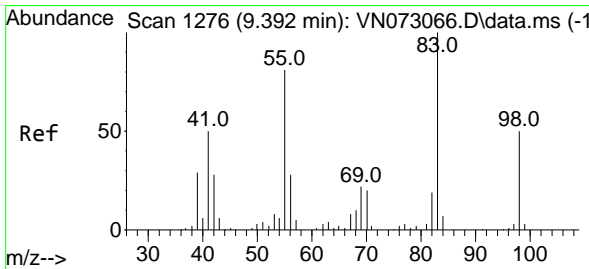
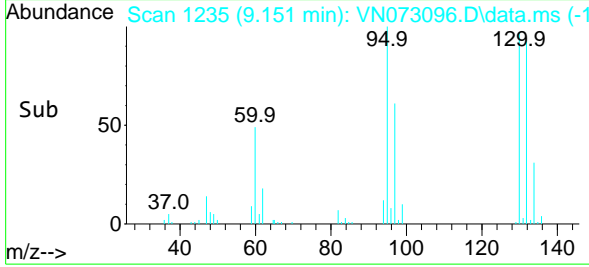
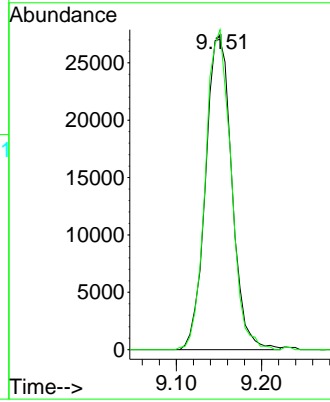
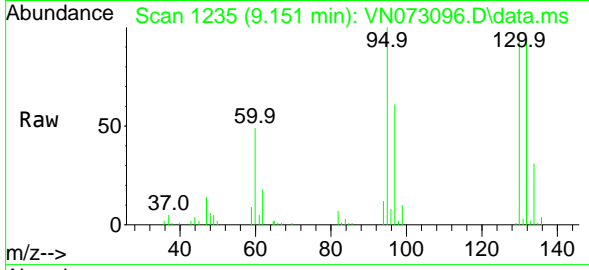




#37
 Trichloroethene
 Concen: 19.223 ug/l
 RT: 9.151 min Scan# 11
 Delta R.T. 0.000 min
 Lab File: VN073096.D
 Acq: 24 Jun 2022 20:38

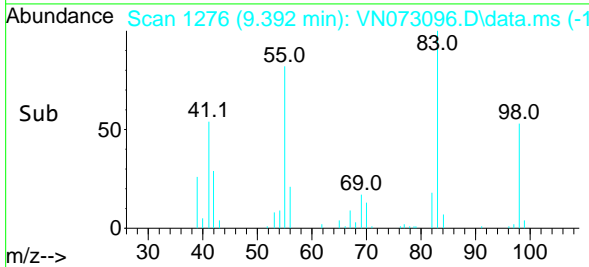
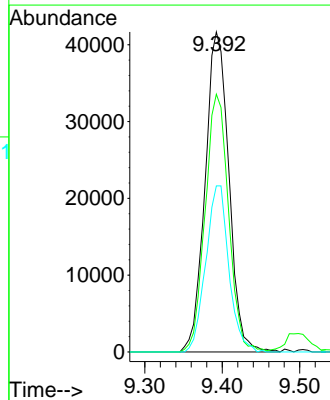
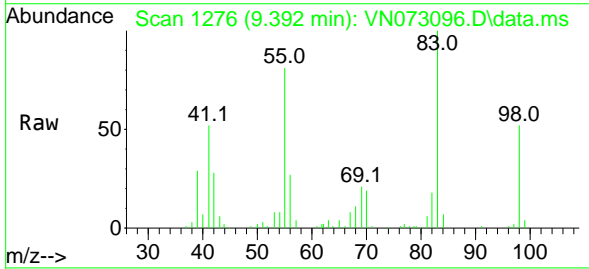
Instrument :
 MSVOA_N
 ClientSampleId :
 VSTDCCC020EC

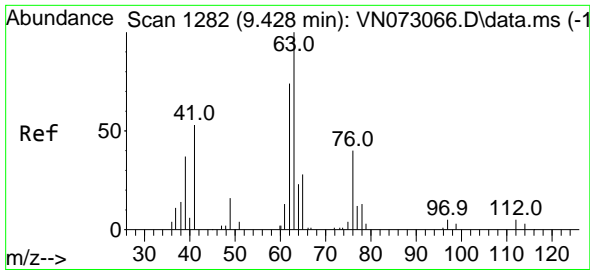
Tgt Ion:130 Resp: 58607
 Ion Ratio Lower Upper
 130 100
 95 103.1 76.6 115.0



#38
 Methylcyclohexane
 Concen: 19.036 ug/l
 RT: 9.392 min Scan# 1276
 Delta R.T. 0.000 min
 Lab File: VN073096.D
 Acq: 24 Jun 2022 20:38

Tgt Ion: 83 Resp: 88740
 Ion Ratio Lower Upper
 83 100
 55 79.3 35.1 105.3
 98 50.4 23.4 70.2

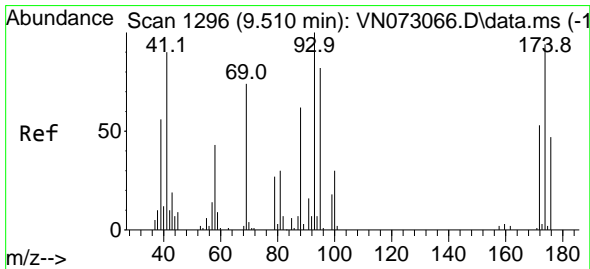
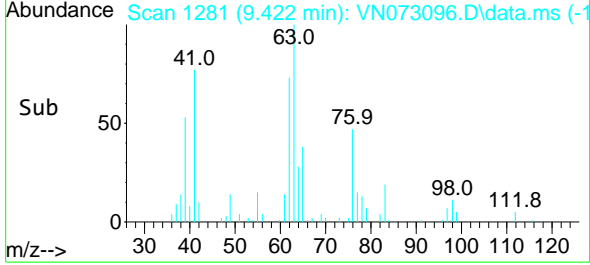
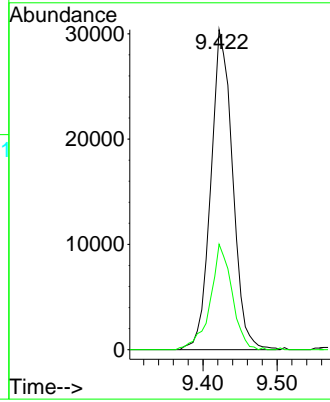
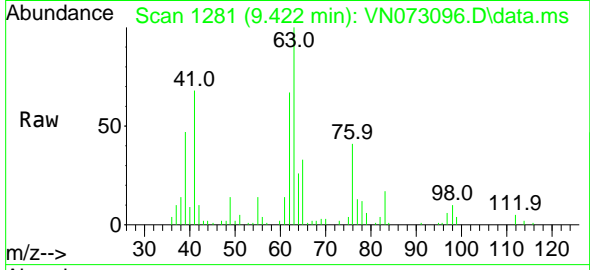




#39
 1,2-Dichloropropane
 Concen: 19.610 ug/l
 RT: 9.422 min Scan# 1281
 Delta R.T. -0.006 min
 Lab File: VN073096.D
 Acq: 24 Jun 2022 20:38

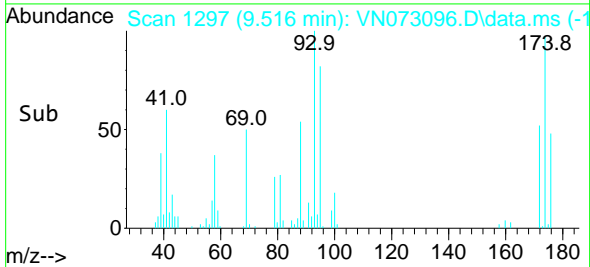
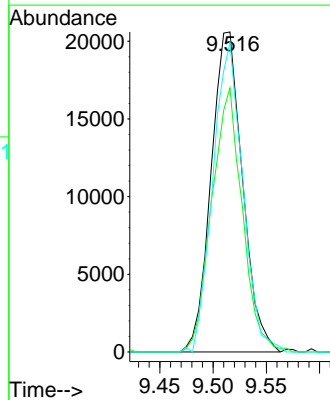
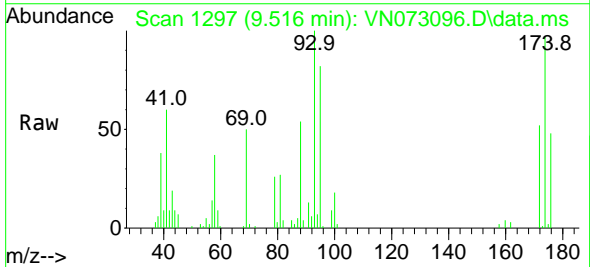
Instrument :
 MSVOA_N
 ClientSampleId :
 VSTDCCC020EC

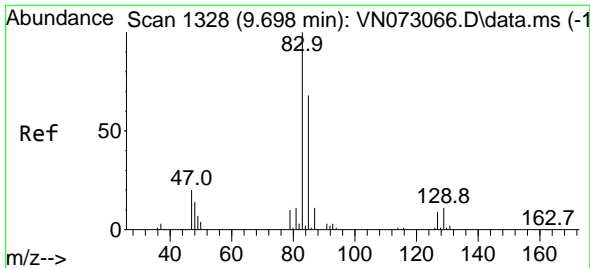
Tgt Ion: 63 Resp: 62121
 Ion Ratio Lower Upper
 63 100
 65 32.3 24.2 36.4



#40
 Dibromomethane
 Concen: 19.702 ug/l
 RT: 9.516 min Scan# 1297
 Delta R.T. 0.006 min
 Lab File: VN073096.D
 Acq: 24 Jun 2022 20:38

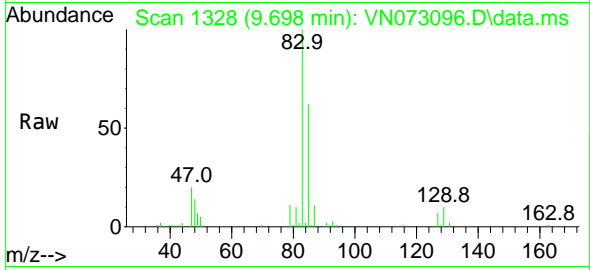
Tgt Ion: 93 Resp: 42234
 Ion Ratio Lower Upper
 93 100
 95 80.2 0.0 168.8
 174 91.6 0.0 173.6



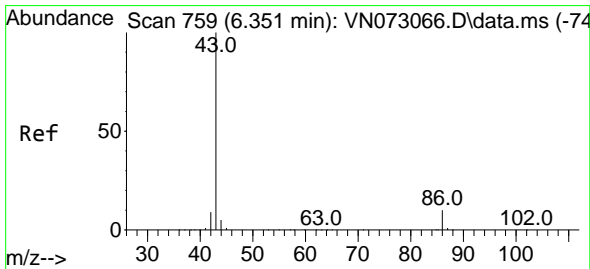
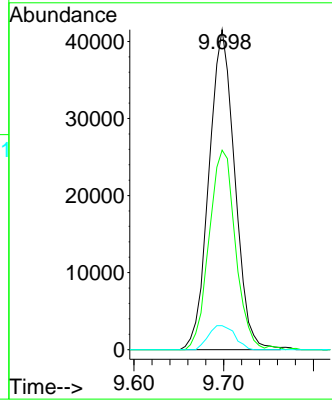
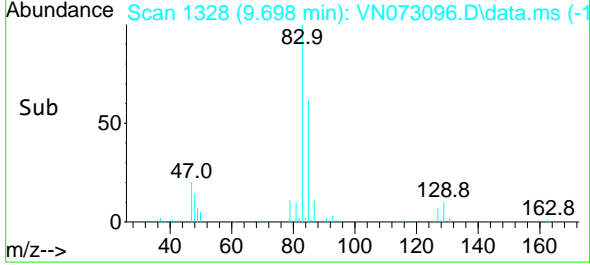


#41
 Bromodichloromethane
 Concen: 19.220 ug/l
 RT: 9.698 min Scan# 11
 Delta R.T. 0.000 min
 Lab File: VN073096.D
 Acq: 24 Jun 2022 20:38

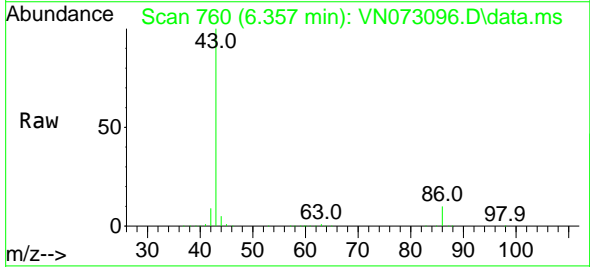
Instrument :
 MSVOA_N
 ClientSampleId :
 VSTDCCC020EC



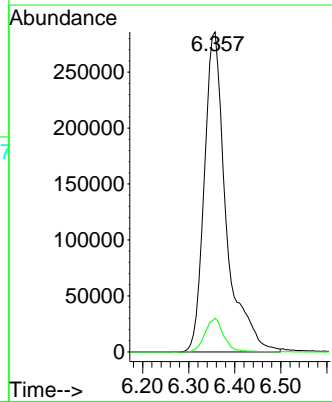
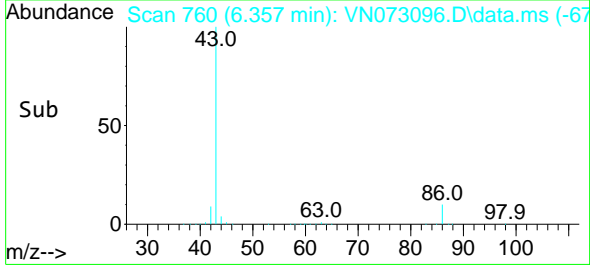
Tgt Ion: 83 Resp: 82893
 Ion Ratio Lower Upper
 83 100
 85 62.4 54.1 81.1
 127 7.5 7.6 11.4#

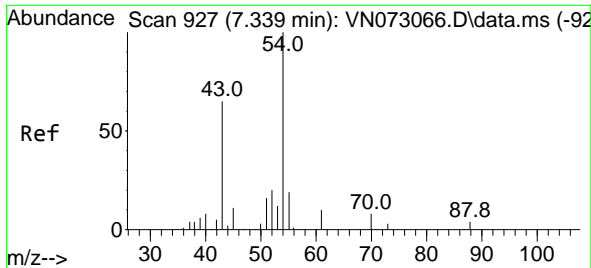


#42
 Vinyl Acetate
 Concen: 100.572 ug/l
 RT: 6.357 min Scan# 760
 Delta R.T. 0.006 min
 Lab File: VN073096.D
 Acq: 24 Jun 2022 20:38



Tgt Ion: 43 Resp: 942598
 Ion Ratio Lower Upper
 43 100
 86 8.9 7.5 11.3

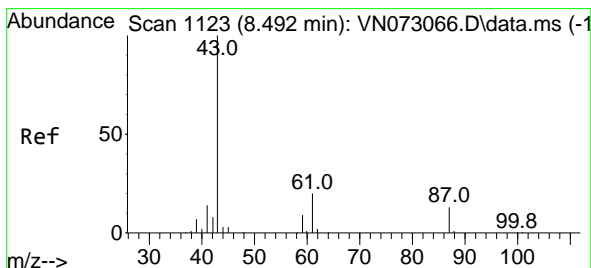
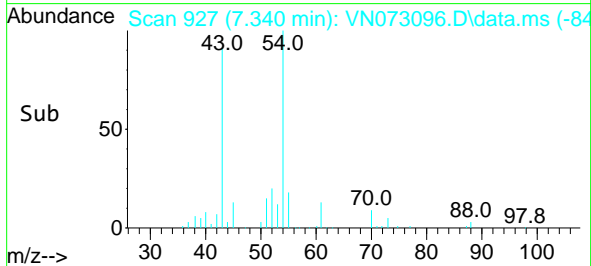
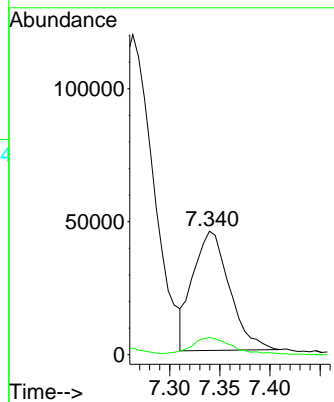
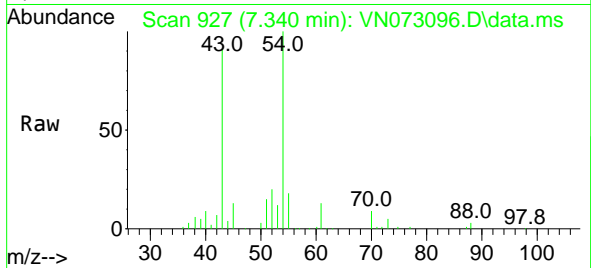




#43
 Ethyl Acetate
 Concen: 19.836 ug/l
 RT: 7.340 min Scan# 91
 Delta R.T. 0.000 min
 Lab File: VN073096.D
 Acq: 24 Jun 2022 20:38

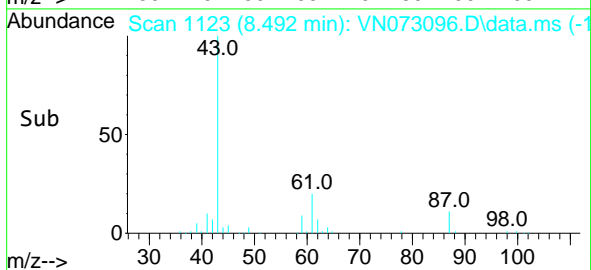
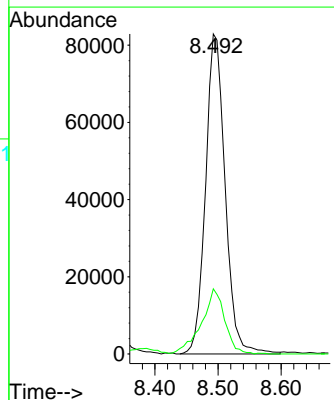
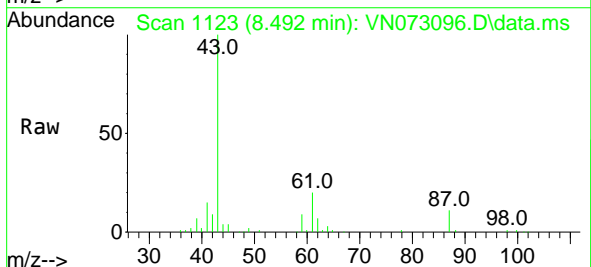
Instrument :
 MSVOA_N
 ClientSampleId :
 VSTDCCC020EC

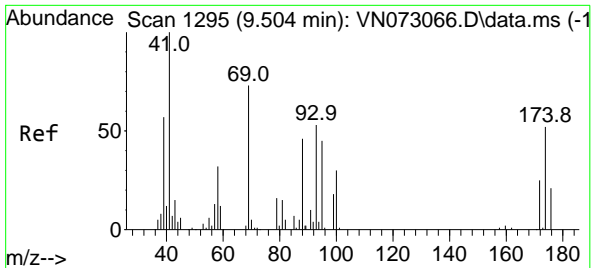
Tgt Ion: 43 Resp: 113241
 Ion Ratio Lower Upper
 43 100
 45 13.8 10.6 16.0



#44
 Isopropyl Acetate
 Concen: 20.302 ug/l
 RT: 8.492 min Scan# 1123
 Delta R.T. 0.000 min
 Lab File: VN073096.D
 Acq: 24 Jun 2022 20:38

Tgt Ion: 43 Resp: 178973
 Ion Ratio Lower Upper
 43 100
 61 24.1 20.1 30.1

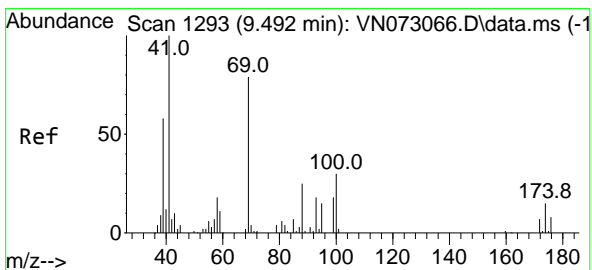
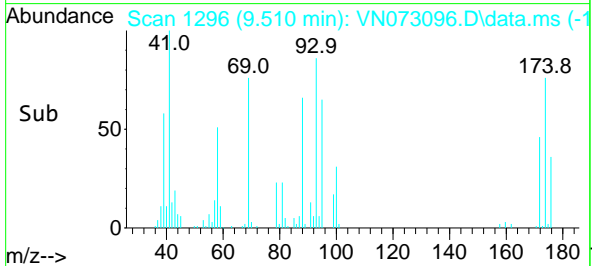
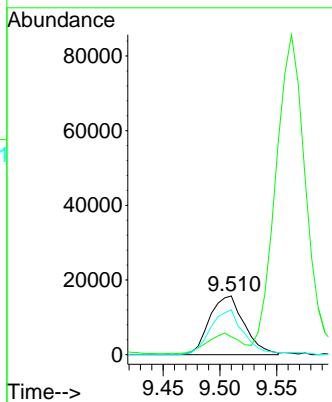
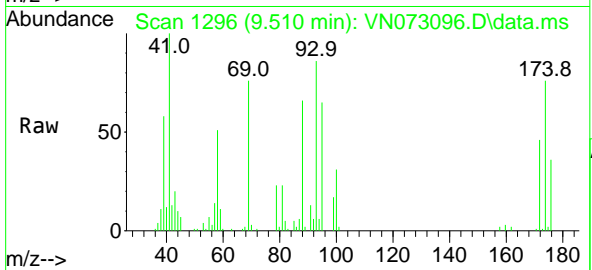




#45
 1,4-Dioxane
 Concen: 425.998 ug/l
 RT: 9.510 min Scan# 1296
 Delta R.T. 0.006 min
 Lab File: VN073096.D
 Acq: 24 Jun 2022 20:38

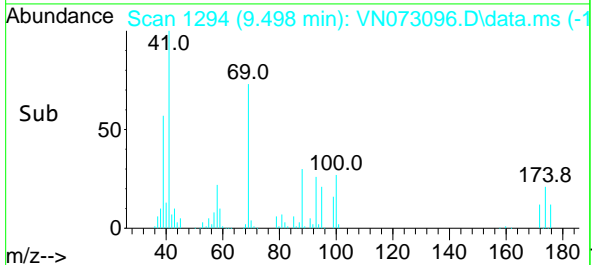
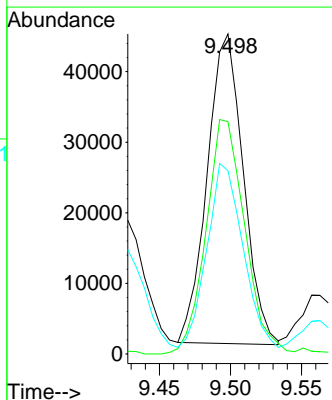
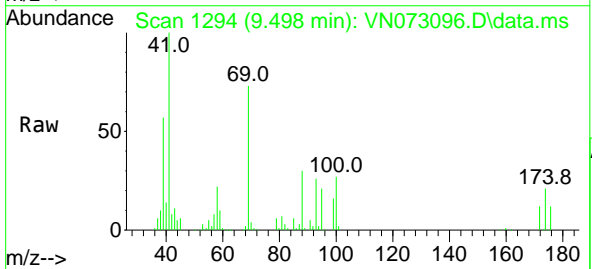
Instrument : MSVOA_N
 ClientSampleId : VSTDCCC020EC

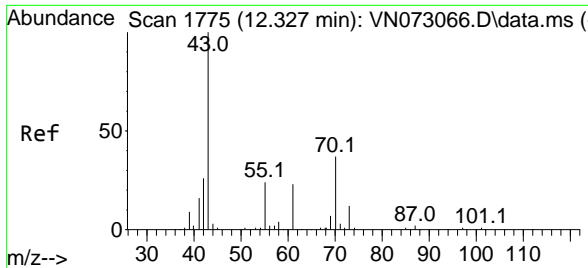
Tgt Ion: 88 Resp: 33457
 Ion Ratio Lower Upper
 88 100
 43 33.0 25.0 37.6
 58 73.6 49.4 74.2



#46
 Methyl methacrylate
 Concen: 19.326 ug/l
 RT: 9.498 min Scan# 1294
 Delta R.T. 0.006 min
 Lab File: VN073096.D
 Acq: 24 Jun 2022 20:38

Tgt Ion: 41 Resp: 77523
 Ion Ratio Lower Upper
 41 100
 69 73.6 44.4 133.2
 39 57.3 39.9 119.6

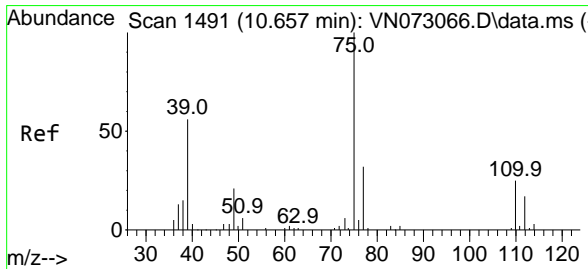
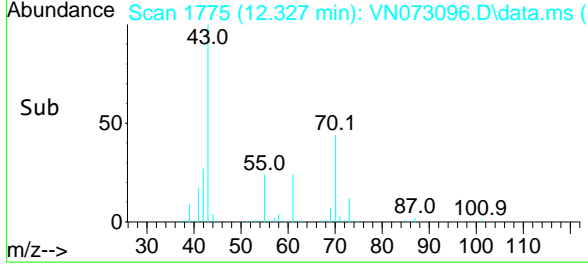
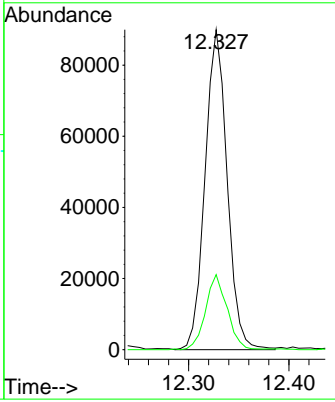
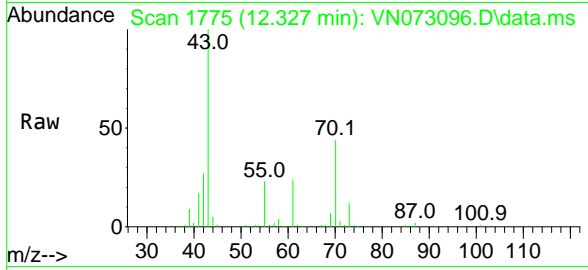




#47
 n-amy1 Acetate
 Concen: 19.481 ug/l
 RT: 12.327 min Scan# 1775
 Delta R.T. 0.000 min
 Lab File: VN073096.D
 Acq: 24 Jun 2022 20:38

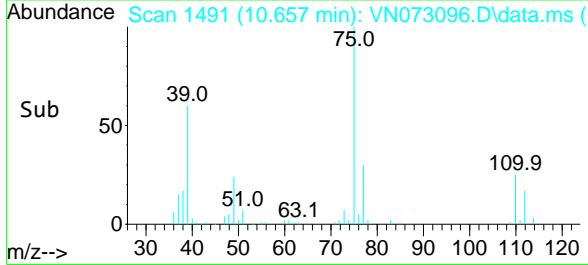
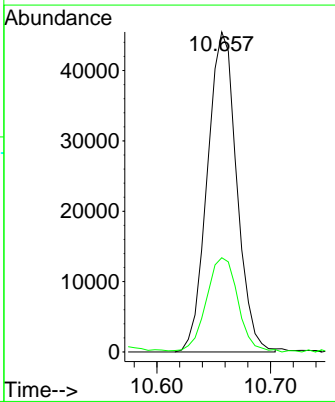
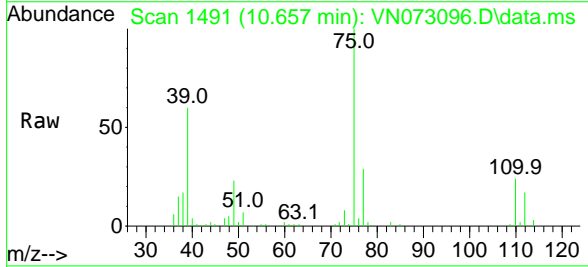
Instrument : MSVOA_N
 ClientSampleId : VSTDCCC020EC

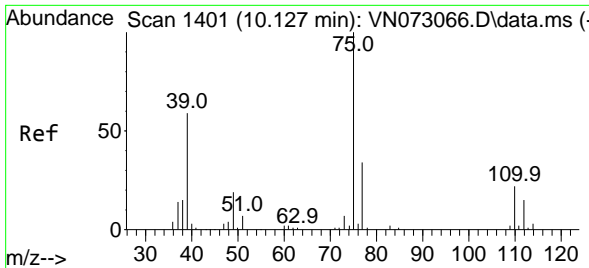
Tgt Ion: 43 Resp: 137629
 Ion Ratio Lower Upper
 43 100
 55 22.9 19.0 28.6



#48
 t-1,3-Dichloropropene
 Concen: 20.278 ug/l
 RT: 10.657 min Scan# 1491
 Delta R.T. 0.000 min
 Lab File: VN073096.D
 Acq: 24 Jun 2022 20:38

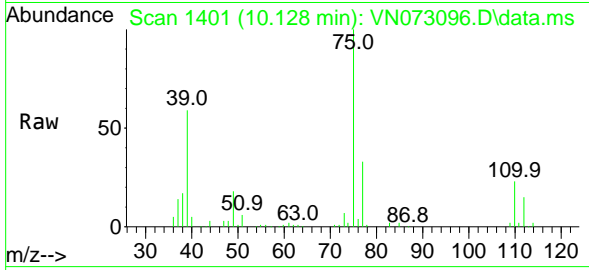
Tgt Ion: 75 Resp: 81795
 Ion Ratio Lower Upper
 75 100
 77 29.0 25.3 37.9



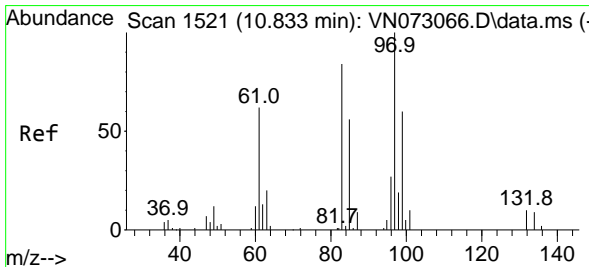
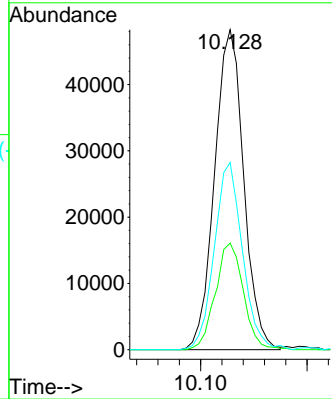
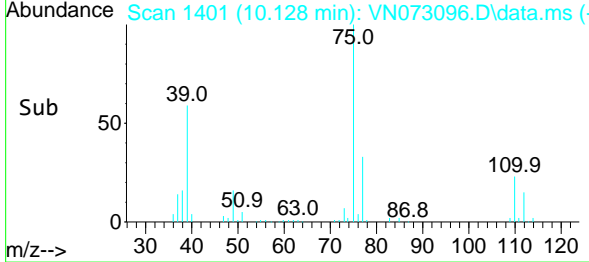


#49
 cis-1,3-Dichloropropene
 Concen: 20.958 ug/l
 RT: 10.128 min Scan# 1401
 Delta R.T. 0.000 min
 Lab File: VN073096.D
 Acq: 24 Jun 2022 20:38

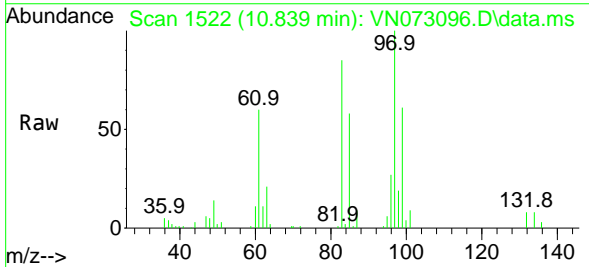
Instrument :
 MSVOA_N
 ClientSampleId :
 VSTDCCC020EC



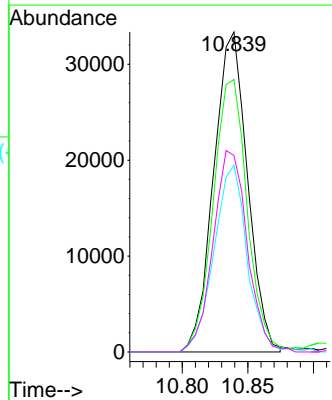
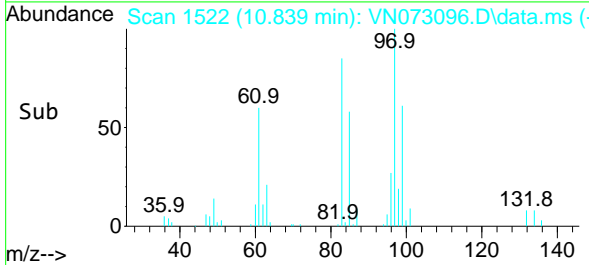
Tgt Ion: 75 Resp: 91547
 Ion Ratio Lower Upper
 75 100
 77 33.3 25.3 37.9
 39 58.5 46.2 69.4

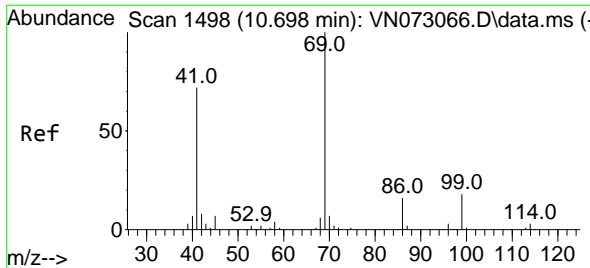


#50
 1,1,2-Trichloroethane
 Concen: 19.238 ug/l
 RT: 10.839 min Scan# 1522
 Delta R.T. 0.006 min
 Lab File: VN073096.D
 Acq: 24 Jun 2022 20:38



Tgt Ion: 97 Resp: 59742
 Ion Ratio Lower Upper
 97 100
 83 85.2 67.2 100.8
 85 58.3 43.0 64.4
 99 61.4 49.0 73.4

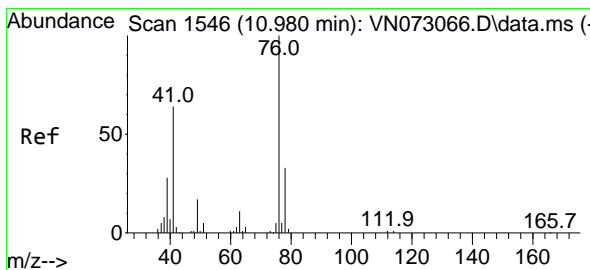
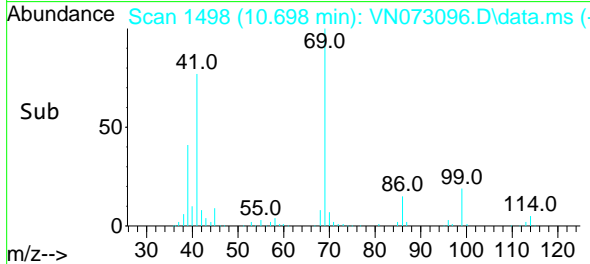
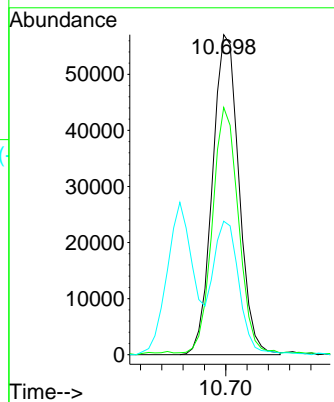
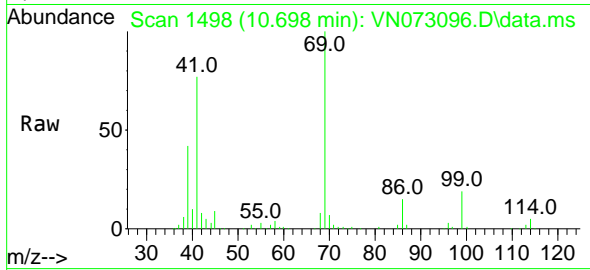




#51
 Ethyl methacrylate
 Concen: 18.723 ug/l
 RT: 10.698 min Scan# 1498
 Delta R.T. 0.000 min
 Lab File: VN073096.D
 Acq: 24 Jun 2022 20:38

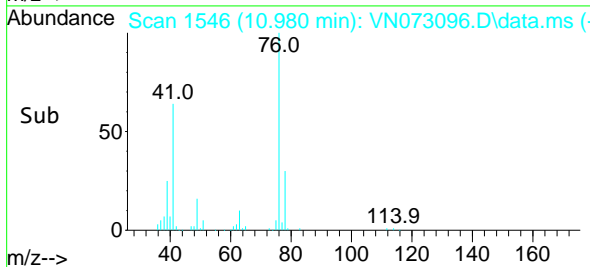
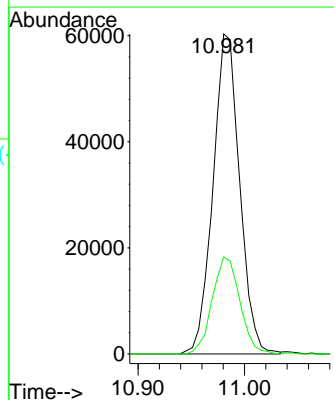
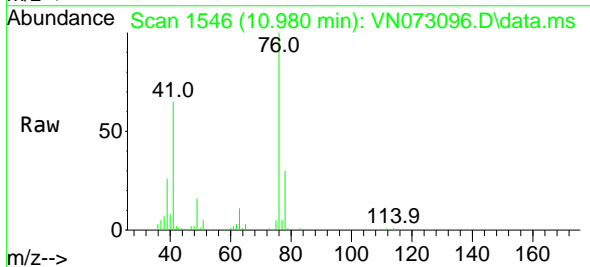
Instrument :
 MSVOA_N
 ClientSampleId :
 VSTDCCC020EC

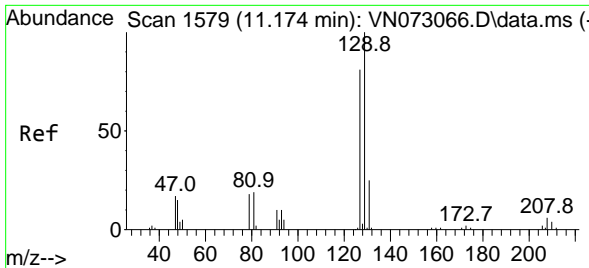
Tgt Ion: 69 Resp: 98464
 Ion Ratio Lower Upper
 69 100
 41 76.8 33.0 98.9
 39 41.2 25.4 76.4



#52
 1,3-Dichloropropane
 Concen: 19.605 ug/l
 RT: 10.980 min Scan# 1546
 Delta R.T. 0.000 min
 Lab File: VN073096.D
 Acq: 24 Jun 2022 20:38

Tgt Ion: 76 Resp: 104720
 Ion Ratio Lower Upper
 76 100
 78 31.4 0.0 65.4

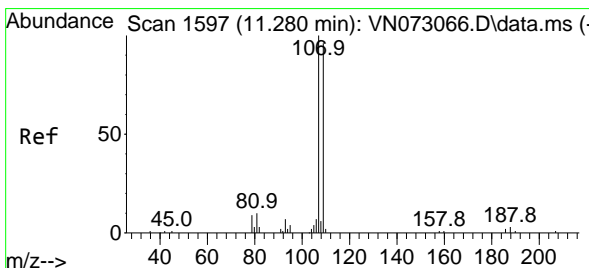
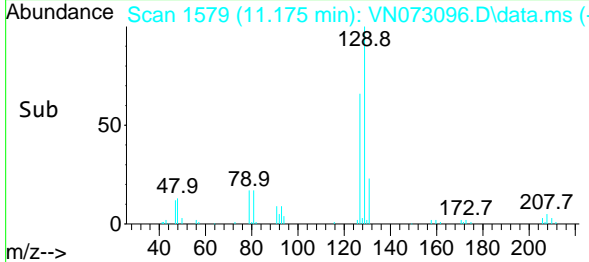
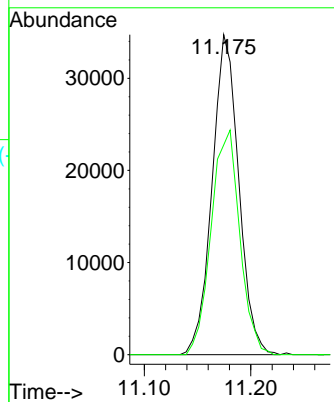
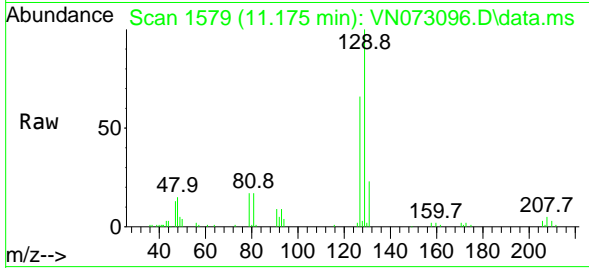




#53
 Dibromochloromethane
 Concen: 18.698 ug/l
 RT: 11.175 min Scan# 1579
 Delta R.T. 0.000 min
 Lab File: VN073096.D
 Acq: 24 Jun 2022 20:38

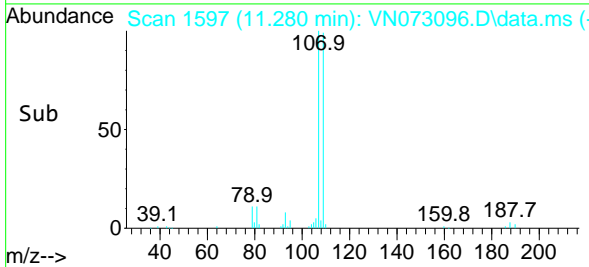
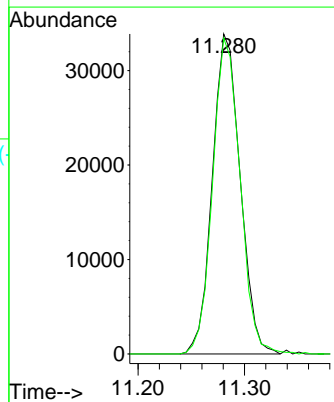
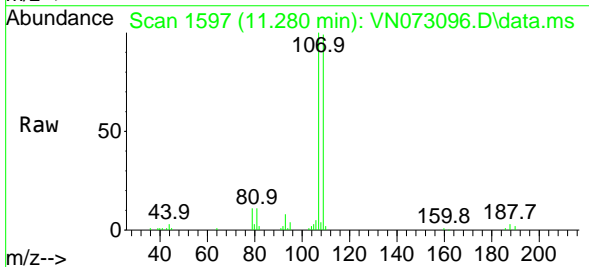
Instrument :
 MSVOA_N
 ClientSampleId :
 VSTDCCC020EC

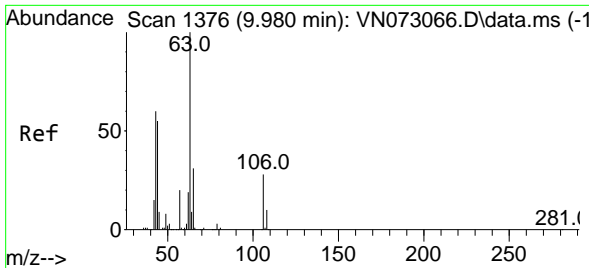
Tgt Ion:129 Resp: 60370
 Ion Ratio Lower Upper
 129 100
 127 75.3 39.0 117.0



#54
 1,2-Dibromoethane
 Concen: 18.835 ug/l
 RT: 11.280 min Scan# 1597
 Delta R.T. 0.000 min
 Lab File: VN073096.D
 Acq: 24 Jun 2022 20:38

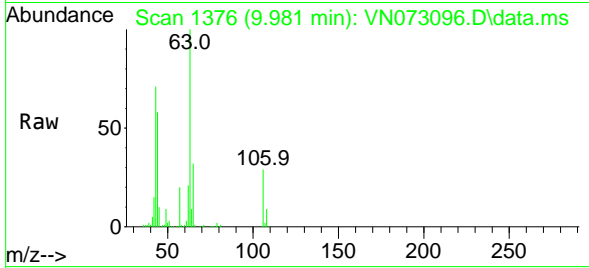
Tgt Ion:107 Resp: 61437
 Ion Ratio Lower Upper
 107 100
 109 97.5 72.8 109.2



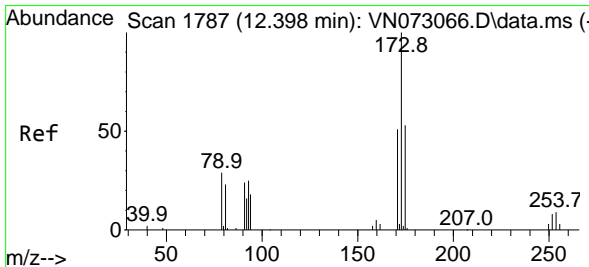
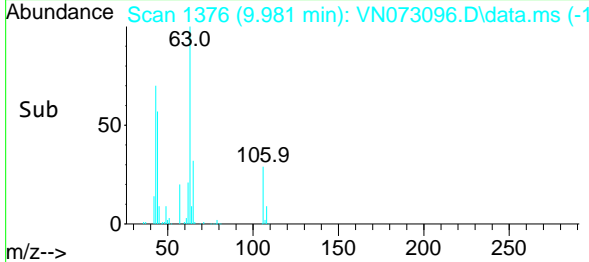
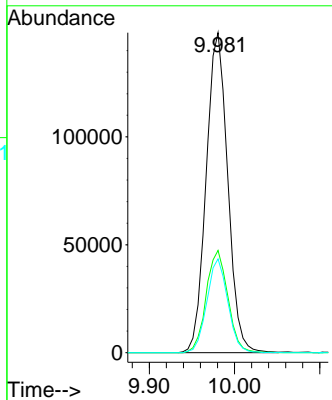


#55
 2-Chloroethyl vinyl ether
 Concen: 116.113 ug/l
 RT: 9.981 min Scan# 11
 Delta R.T. 0.000 min
 Lab File: VN073096.D
 Acq: 24 Jun 2022 20:38

Instrument : MSVOA_N
 ClientSampleId : VSTDC020EC

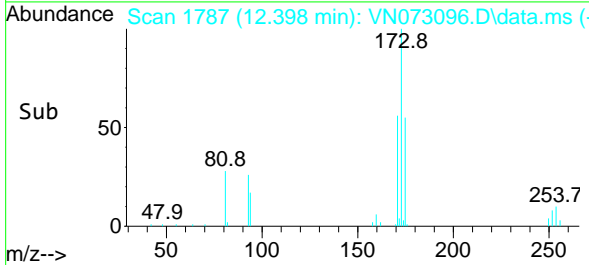
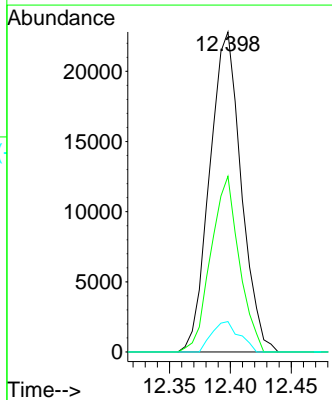
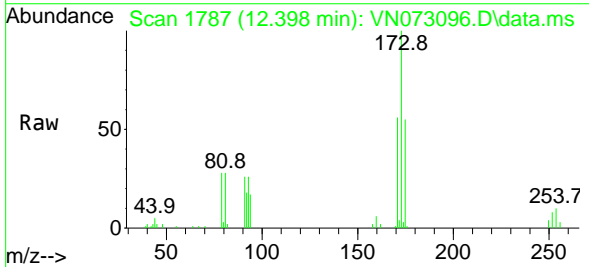


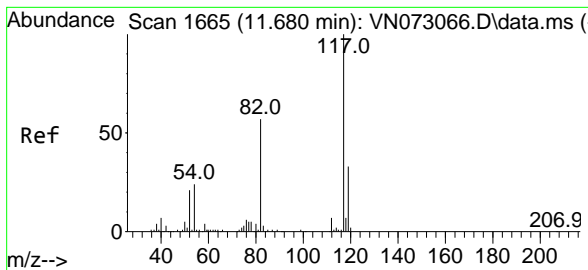
Tgt Ion: 63 Resp: 260838
 Ion Ratio Lower Upper
 63 100
 65 32.1 25.4 38.0
 106 28.4 23.2 34.8



#56
 Bromoform
 Concen: 17.383 ug/l
 RT: 12.398 min Scan# 1787
 Delta R.T. 0.000 min
 Lab File: VN073096.D
 Acq: 24 Jun 2022 20:38

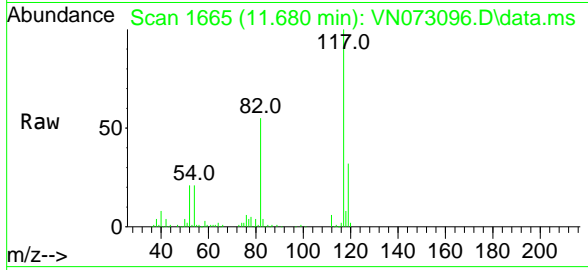
Tgt Ion: 173 Resp: 41114
 Ion Ratio Lower Upper
 173 100
 175 49.4 38.6 58.0
 254 8.2 0.0 0.0#





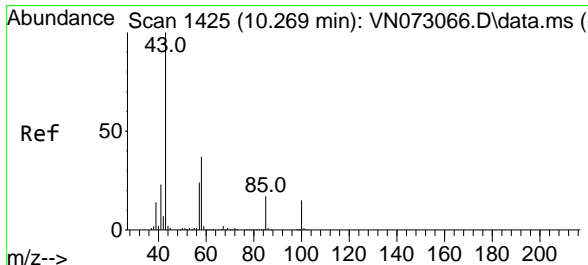
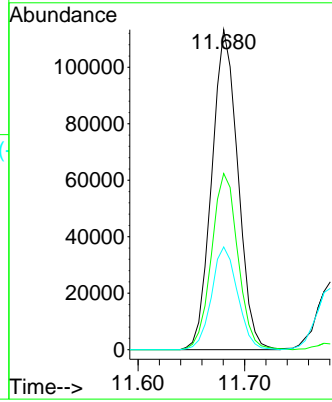
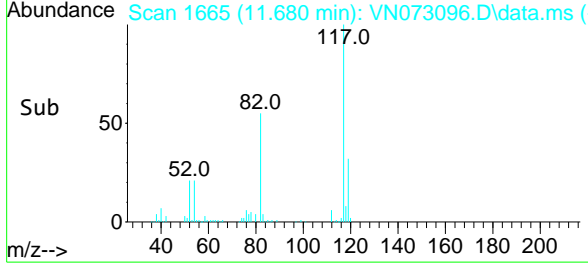
#57
 Chlorobenzene-d5
 Concen: 30.000 ug/l
 RT: 11.680 min Scan# 117
 Delta R.T. 0.000 min
 Lab File: VN073096.D
 Acq: 24 Jun 2022 20:38

Instrument : MSVOA_N
 ClientSampleId : VSTDCCC020EC

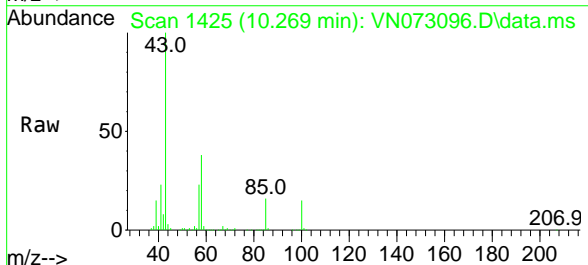


Tgt Ion:117 Resp: 192883

Ion	Ratio	Lower	Upper
117	100		
82	55.6	43.6	65.4
119	32.0	25.8	38.6

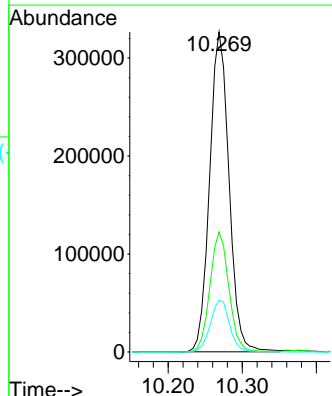
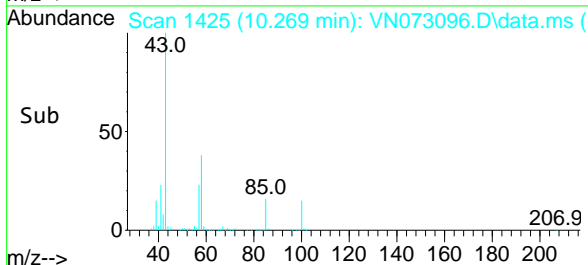


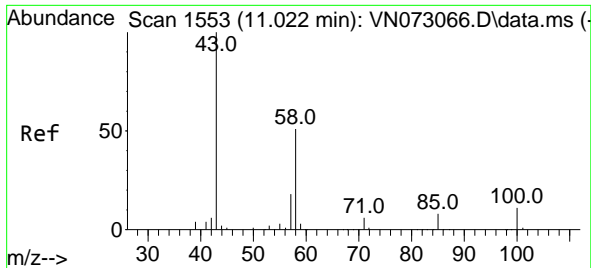
#58
 4-Methyl-2-Pentanone
 Concen: 105.648 ug/l
 RT: 10.269 min Scan# 1425
 Delta R.T. 0.000 min
 Lab File: VN073096.D
 Acq: 24 Jun 2022 20:38



Tgt Ion: 43 Resp: 592698

Ion	Ratio	Lower	Upper
43	100		
58	36.7	30.0	45.0
85	16.1	15.0	22.6



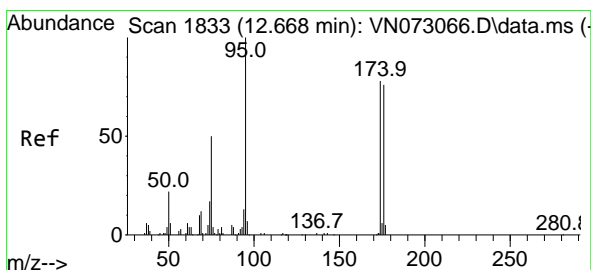
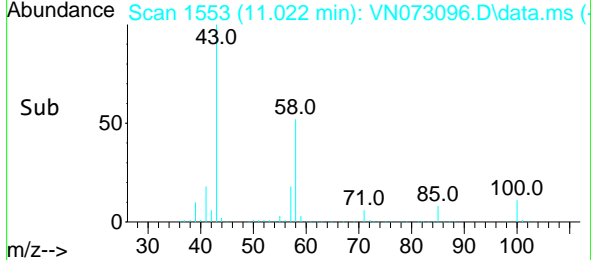
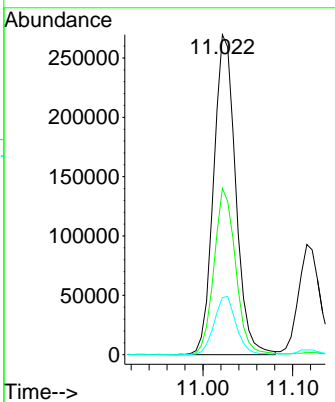
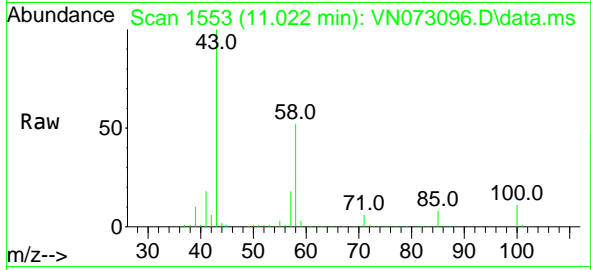


#59
 2-Hexanone
 Concen: 107.601 ug/l
 RT: 11.022 min Scan# 1111
 Delta R.T. 0.000 min
 Lab File: VN073096.D
 Acq: 24 Jun 2022 20:38

Instrument : MSVOA_N
 ClientSampleId : VSTDCCC020EC

Tgt Ion: 43 Resp: 461082

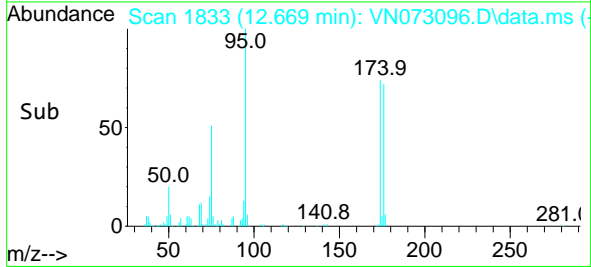
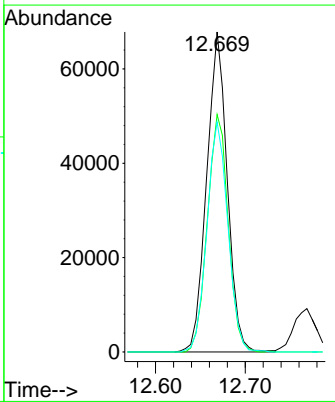
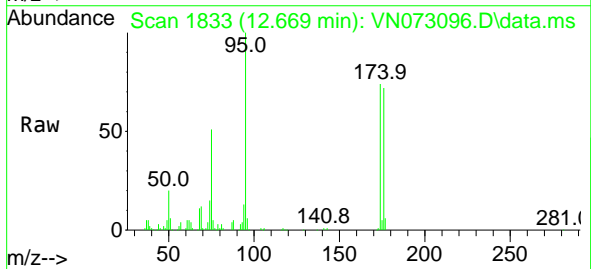
Ion	Ratio	Lower	Upper
43	100		
58	50.9	42.2	63.2
57	18.3	15.0	22.4

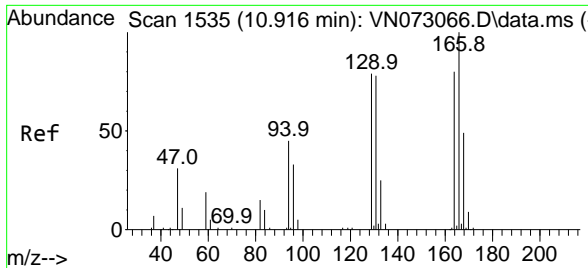


#60
 4-Bromofluorobenzene
 Concen: 29.246 ug/l
 RT: 12.669 min Scan# 1833
 Delta R.T. 0.000 min
 Lab File: VN073096.D
 Acq: 24 Jun 2022 20:38

Tgt Ion: 95 Resp: 107925

Ion	Ratio	Lower	Upper
95	100		
174	75.1	62.9	94.3
176	73.0	61.0	91.4



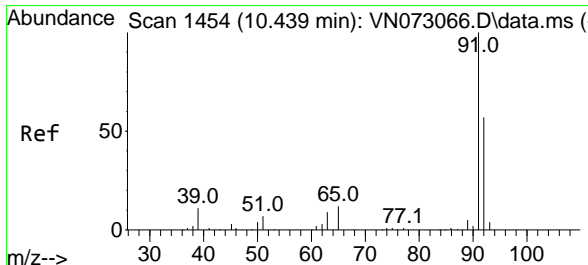
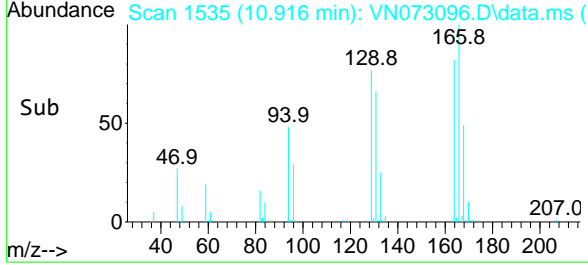
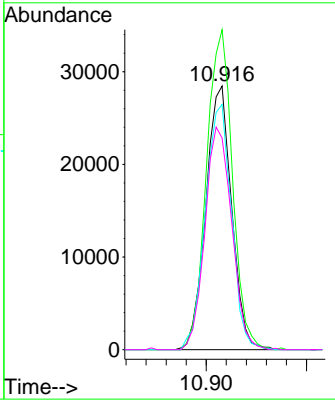
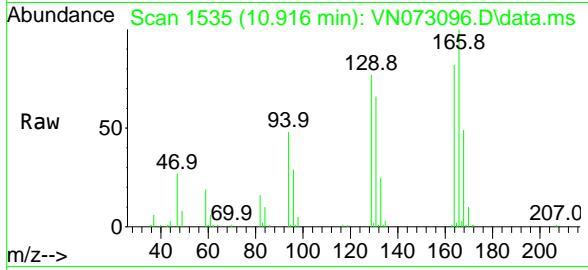


#61
 Tetrachloroethene
 Concen: 20.488 ug/l
 RT: 10.916 min Scan# 11
 Delta R.T. 0.000 min
 Lab File: VN073096.D
 Acq: 24 Jun 2022 20:38

Instrument : MSVOA_N
 ClientSampleId : VSTDCCC020EC

Tgt Ion:164 Resp: 51094

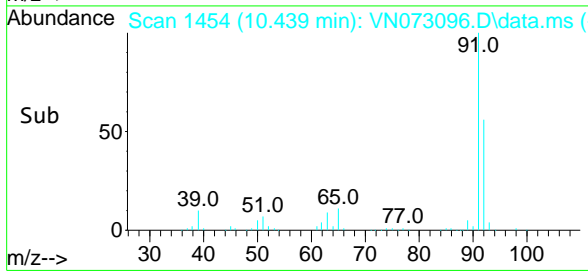
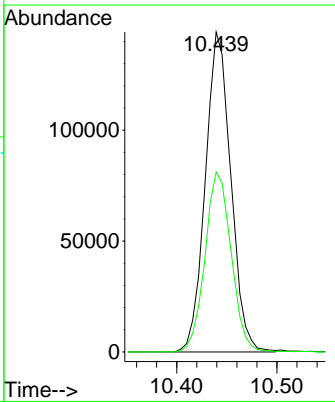
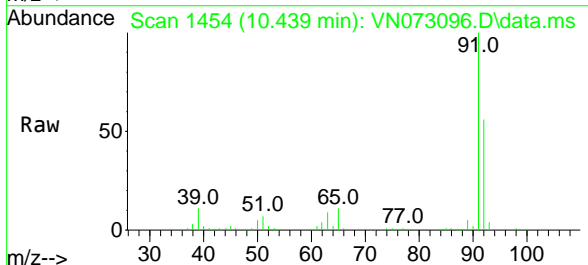
Ion	Ratio	Lower	Upper
164	100		
166	121.3	105.8	158.8
129	93.0	82.5	123.7
131	80.3	81.2	121.8#

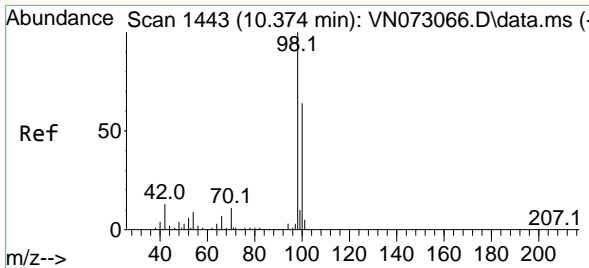


#62
 Toluene
 Concen: 19.903 ug/l
 RT: 10.439 min Scan# 1454
 Delta R.T. 0.000 min
 Lab File: VN073096.D
 Acq: 24 Jun 2022 20:38

Tgt Ion: 91 Resp: 255192

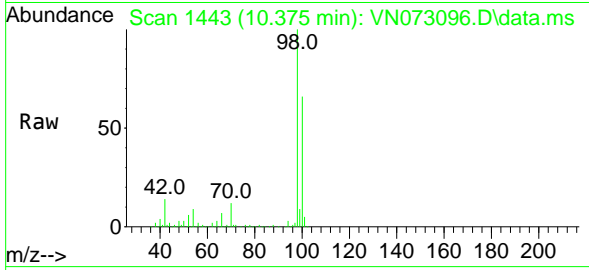
Ion	Ratio	Lower	Upper
91	100		
92	57.7	44.6	67.0



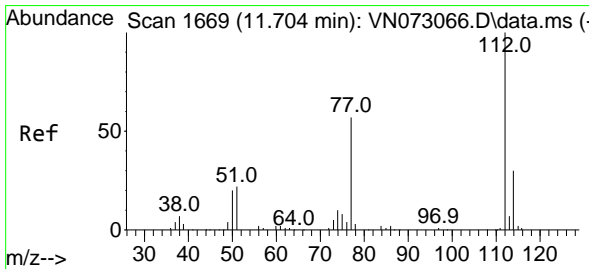
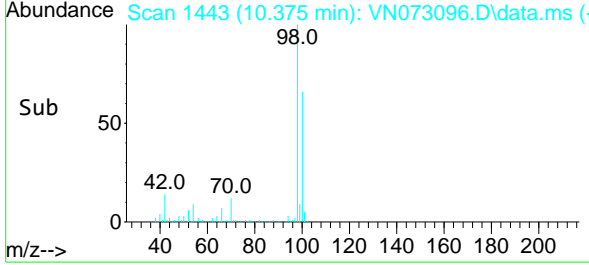
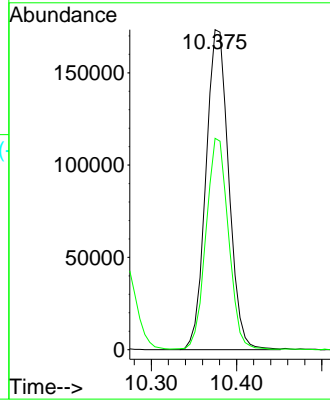


#63
 Toluene-d8
 Concen: 30.897 ug/l
 RT: 10.375 min Scan# 14
 Delta R.T. 0.000 min
 Lab File: VN073096.D
 Acq: 24 Jun 2022 20:38

Instrument :
 MSVOA_N
 ClientSampleId :
 VSTDCCC020EC

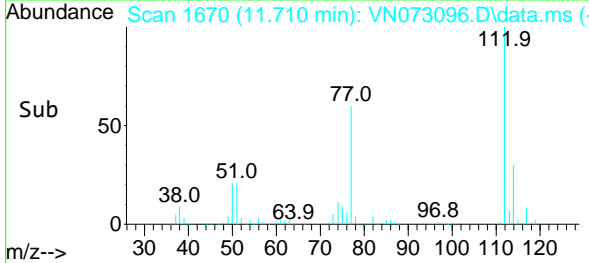
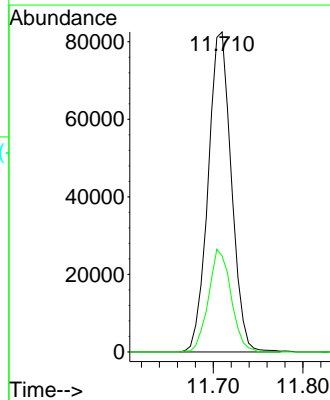
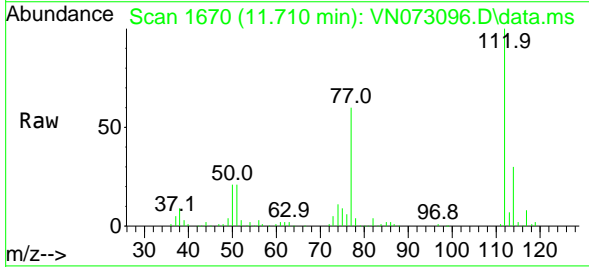


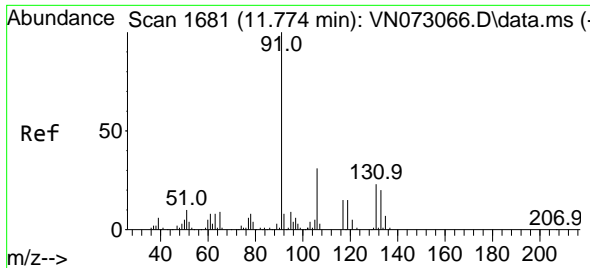
Tgt Ion: 98 Resp: 322718
 Ion Ratio Lower Upper
 98 100
 100 65.3 50.6 76.0



#64
 Chlorobenzene
 Concen: 19.240 ug/l
 RT: 11.710 min Scan# 1670
 Delta R.T. 0.006 min
 Lab File: VN073096.D
 Acq: 24 Jun 2022 20:38

Tgt Ion: 112 Resp: 148436
 Ion Ratio Lower Upper
 112 100
 114 30.0 25.8 38.6

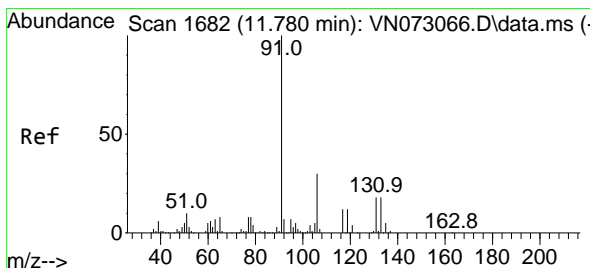
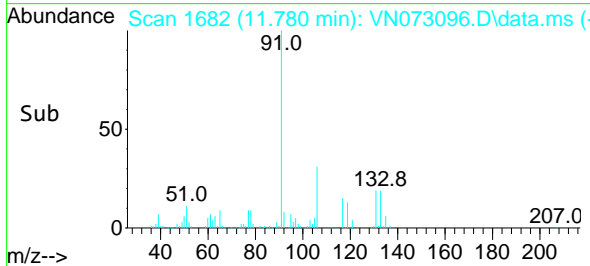
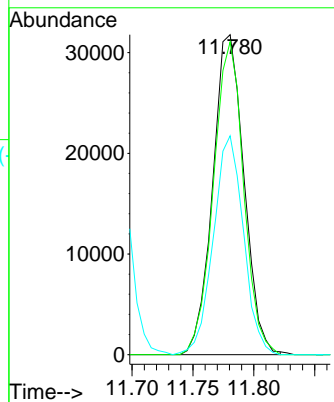
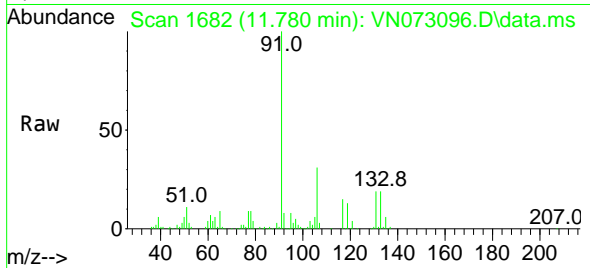




#65
 1,1,1,2-Tetrachloroethane
 Concen: 19.375 ug/l
 RT: 11.780 min Scan# 1681
 Delta R.T. 0.006 min
 Lab File: VN073096.D
 Acq: 24 Jun 2022 20:38

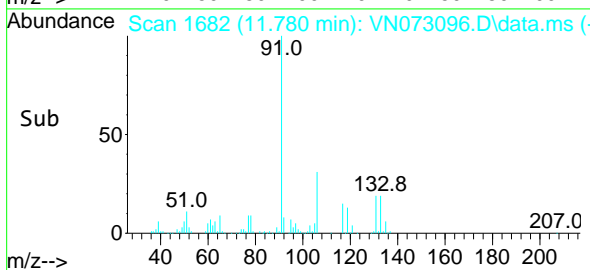
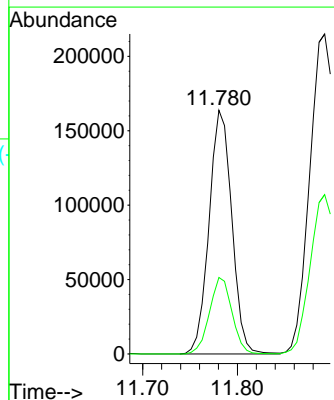
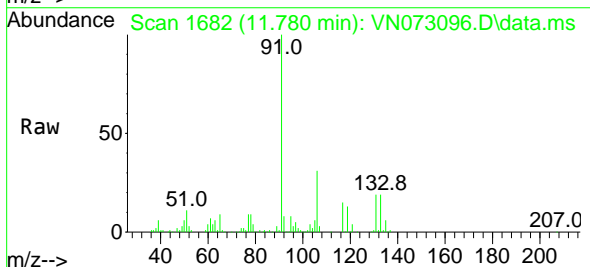
Instrument : MSVOA_N
 ClientSampleId : VSTDCCC020EC

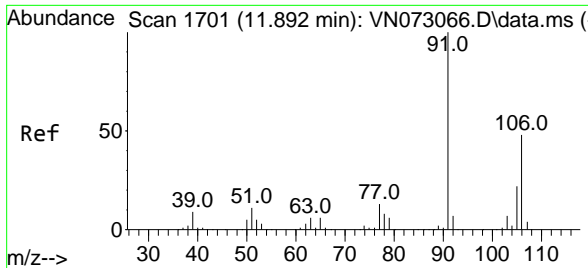
Tgt Ion:131 Resp: 56781
 Ion Ratio Lower Upper
 131 100
 133 94.4 0.0 191.2
 119 65.8 0.0 128.8



#66
 Ethyl Benzene
 Concen: 19.347 ug/l
 RT: 11.780 min Scan# 1682
 Delta R.T. 0.000 min
 Lab File: VN073096.D
 Acq: 24 Jun 2022 20:38

Tgt Ion: 91 Resp: 273300
 Ion Ratio Lower Upper
 91 100
 106 31.4 24.0 36.0

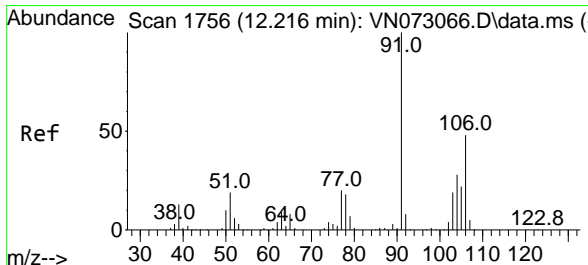
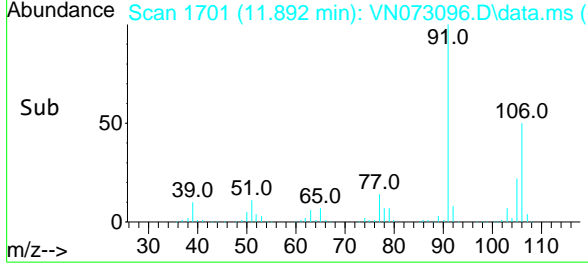
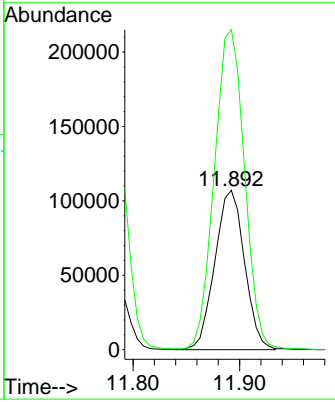
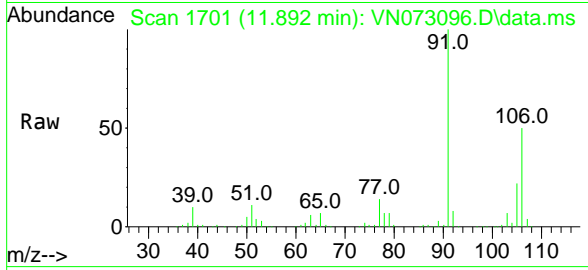




#67
 m/p-Xylenes
 Concen: 39.074 ug/l
 RT: 11.892 min Scan# 1701
 Delta R.T. 0.000 min
 Lab File: VN073096.D
 Acq: 24 Jun 2022 20:38

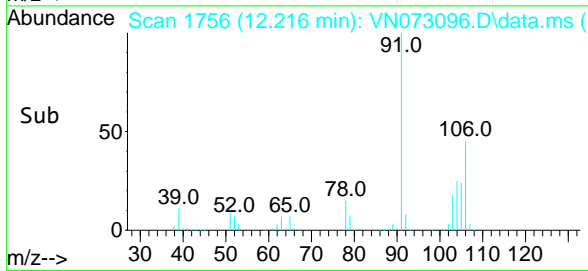
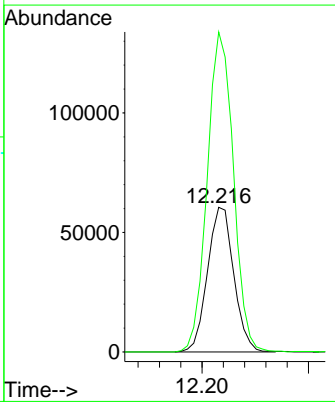
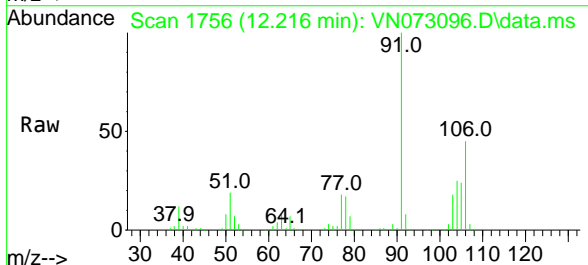
Instrument : MSVOA_N
 ClientSampleId : VSTDCCC020EC

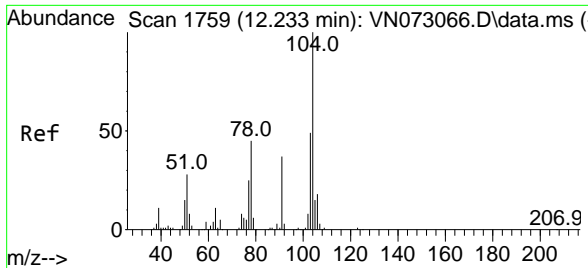
Tgt Ion:106 Resp: 206909
 Ion Ratio Lower Upper
 106 100
 91 204.6 162.9 244.3



#68
 o-Xylene
 Concen: 19.387 ug/l
 RT: 12.216 min Scan# 1756
 Delta R.T. 0.000 min
 Lab File: VN073096.D
 Acq: 24 Jun 2022 20:38

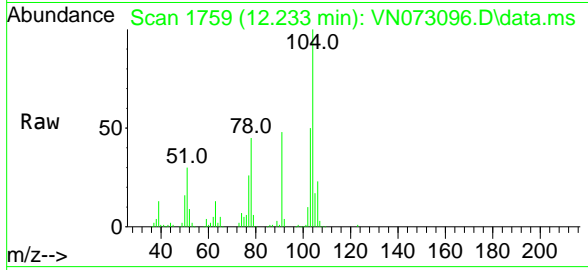
Tgt Ion:106 Resp: 103672
 Ion Ratio Lower Upper
 106 100
 91 220.0 107.7 323.1





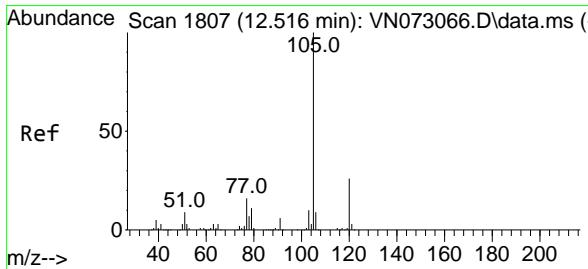
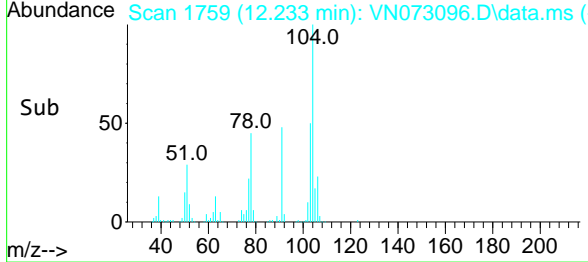
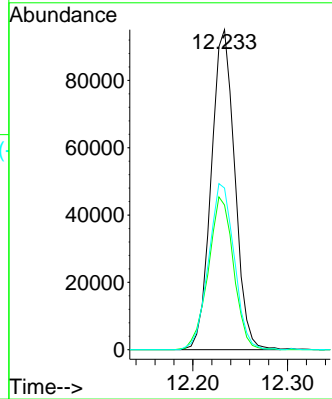
#69
 Styrene
 Concen: 19.227 ug/l
 RT: 12.233 min Scan# 11
 Delta R.T. 0.000 min
 Lab File: VN073096.D
 Acq: 24 Jun 2022 20:38

Instrument : MSVOA_N
 ClientSampleId : VSTDC0020EC



Tgt Ion:104 Resp: 164576

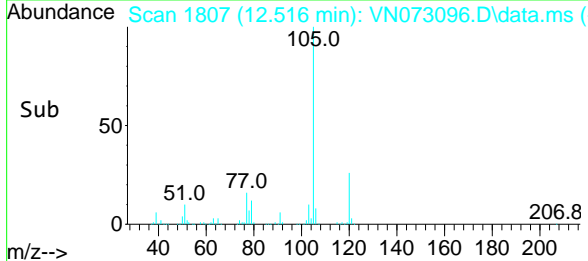
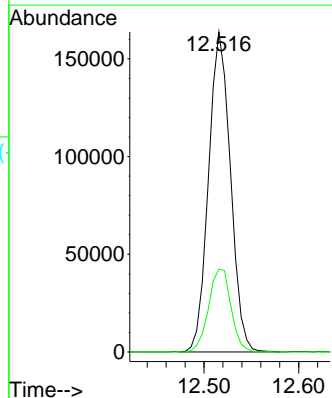
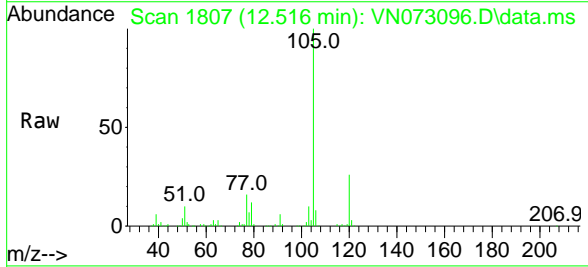
Ion	Ratio	Lower	Upper
104	100		
78	51.2	40.7	61.1
103	56.4	45.8	68.8

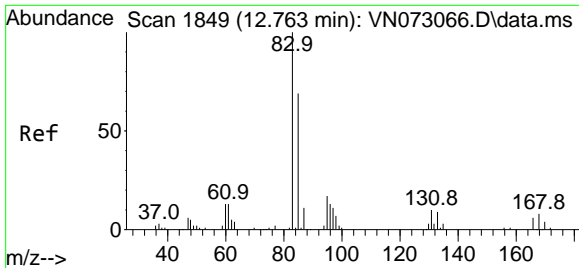


#70
 Isopropylbenzene
 Concen: 19.281 ug/l
 RT: 12.516 min Scan# 1807
 Delta R.T. 0.000 min
 Lab File: VN073096.D
 Acq: 24 Jun 2022 20:38

Tgt Ion:105 Resp: 263842

Ion	Ratio	Lower	Upper
105	100		
120	26.5	18.3	34.1



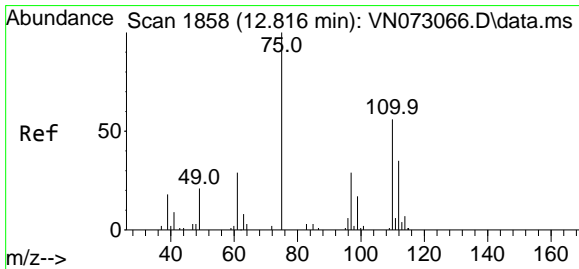
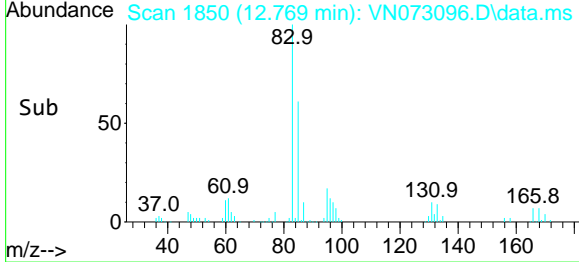
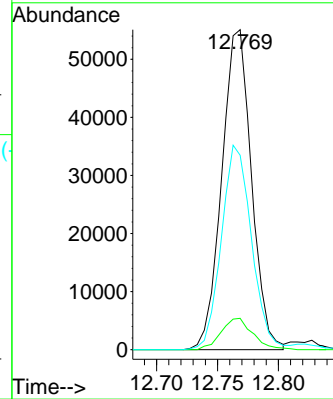
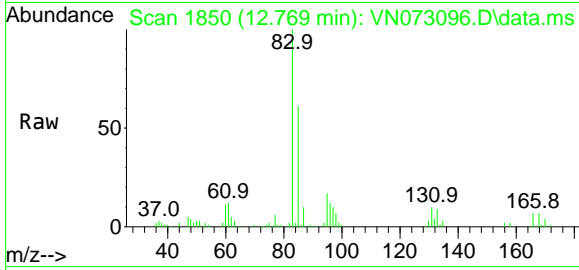


#71
 1,1,2,2-Tetrachloroethane
 Concen: 19.787 ug/l
 RT: 12.769 min Scan# 1850
 Delta R.T. 0.006 min
 Lab File: VN073096.D
 Acq: 24 Jun 2022 20:38

Instrument : MSVOA_N
 ClientSampleId : VSTDCCC020EC

Tgt Ion: 83 Resp: 93484

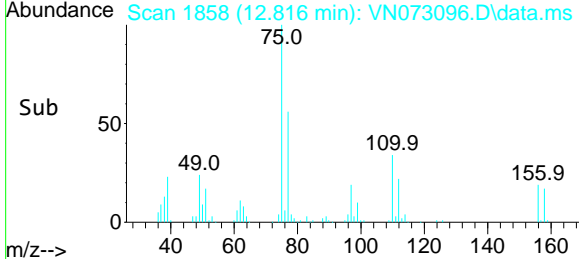
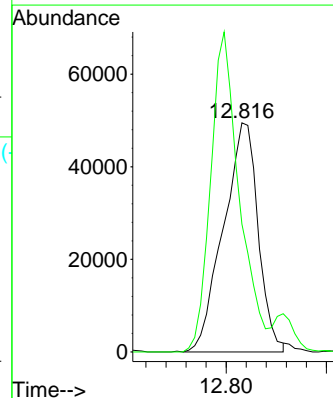
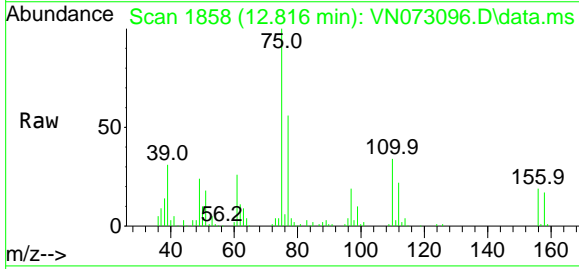
Ion	Ratio	Lower	Upper
83	100		
131	10.5	5.1	15.3
85	64.9	33.1	99.2

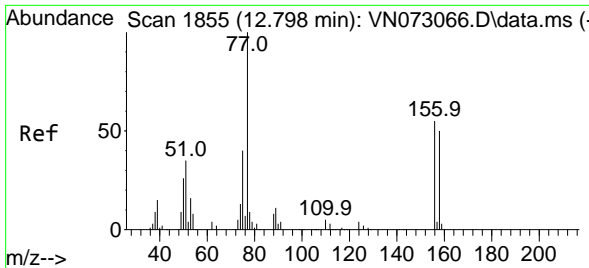


#72
 1,2,3-Trichloropropane
 Concen: 32.919 ug/l
 RT: 12.816 min Scan# 1858
 Delta R.T. 0.000 min
 Lab File: VN073096.D
 Acq: 24 Jun 2022 20:38

Tgt Ion: 75 Resp: 119256

Ion	Ratio	Lower	Upper
75	100		
77	114.8	0.0	378.0

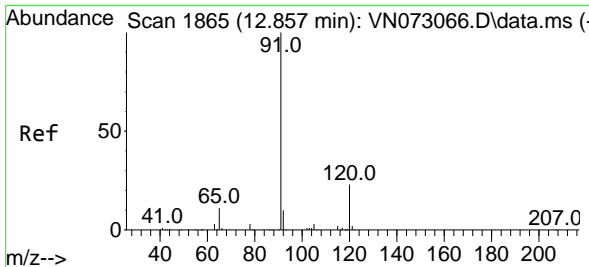
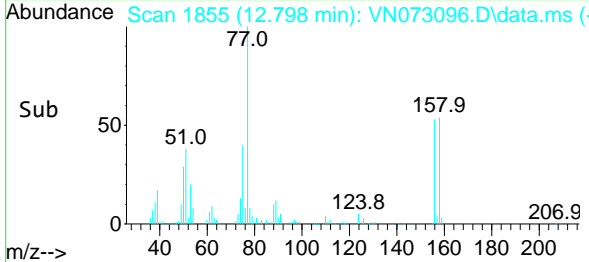
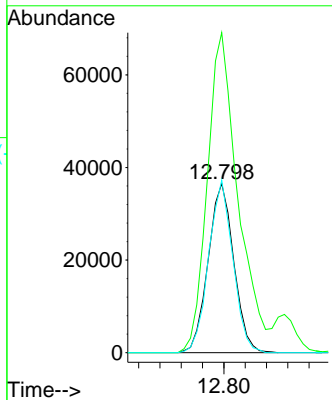
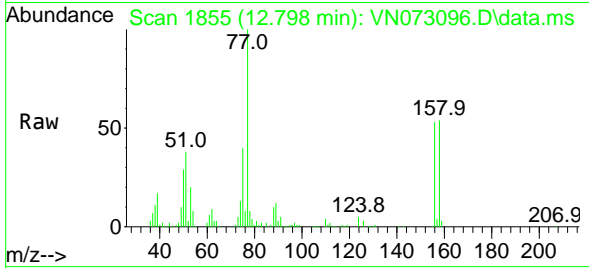




#73
 Bromobenzene
 Concen: 19.164 ug/l
 RT: 12.798 min Scan# 1855
 Delta R.T. 0.000 min
 Lab File: VN073096.D
 Acq: 24 Jun 2022 20:38

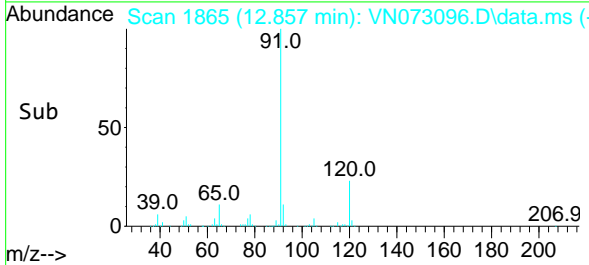
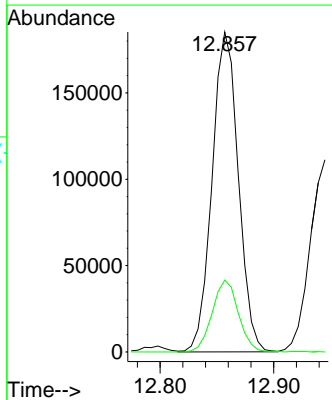
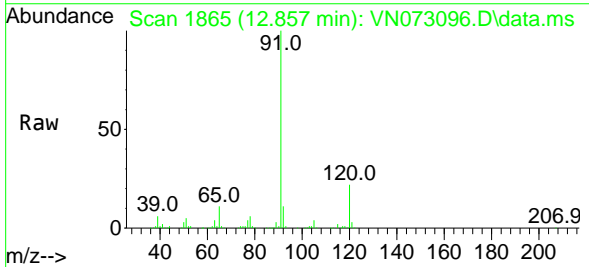
Instrument : MSVOA_N
 ClientSampleId : VSTDCCC020EC

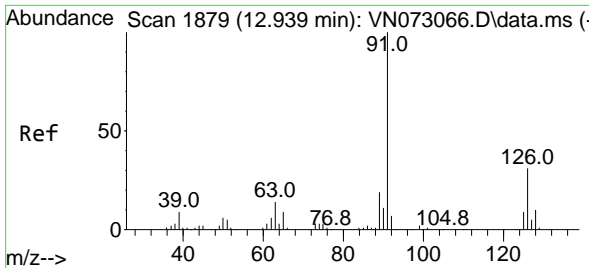
Tgt Ion	Resp	Lower	Upper
156	100		
77	223.9	0.0	416.0
158	96.1	0.0	195.4



#74
 n-propylbenzene
 Concen: 19.165 ug/l
 RT: 12.857 min Scan# 1865
 Delta R.T. 0.000 min
 Lab File: VN073096.D
 Acq: 24 Jun 2022 20:38

Tgt Ion	Resp	Lower	Upper
91	100		
120	22.4	0.0	45.0

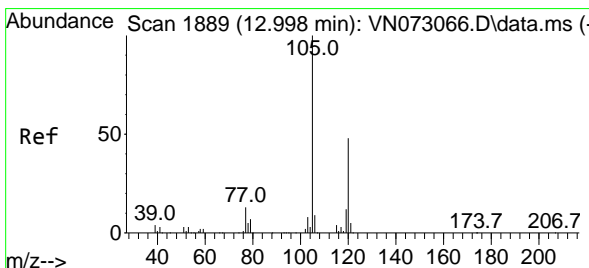
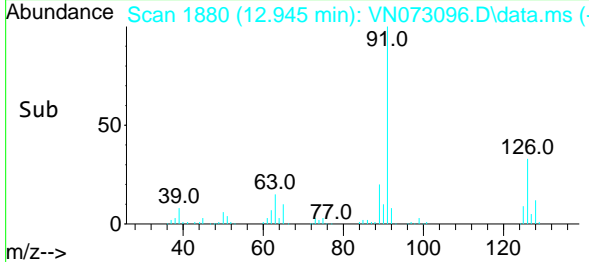
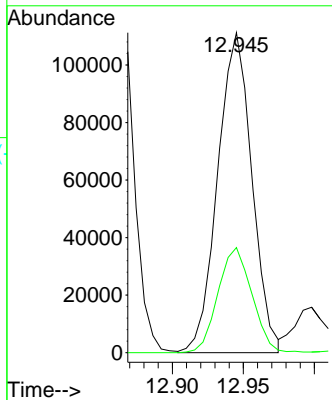
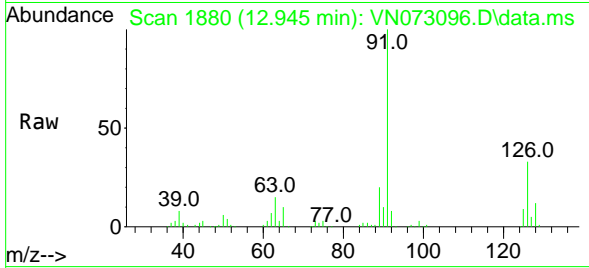




#75
 2-Chlorotoluene
 Concen: 19.210 ug/l
 RT: 12.945 min Scan# 1880
 Delta R.T. 0.006 min
 Lab File: VN073096.D
 Acq: 24 Jun 2022 20:38

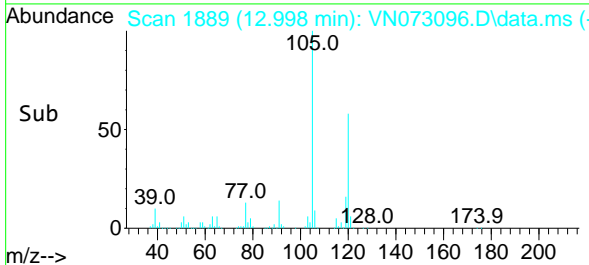
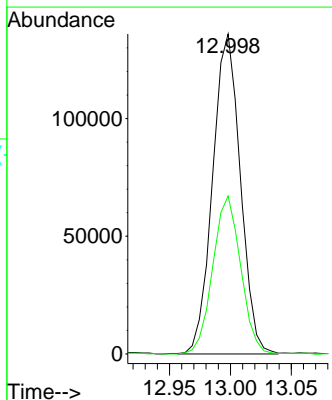
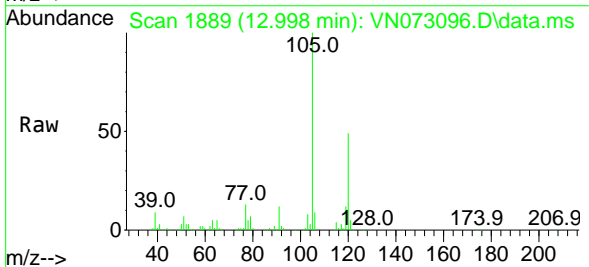
Instrument : MSVOA_N
 ClientSampleId : VSTDCCC020EC

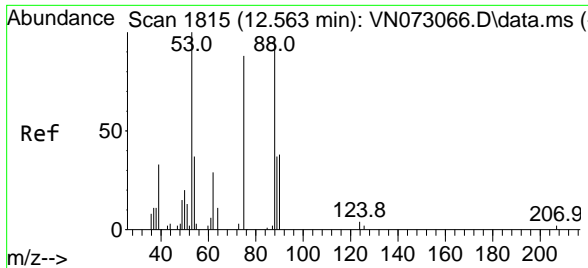
Tgt Ion: 91 Resp: 186272
 Ion Ratio Lower Upper
 91 100
 126 32.6 0.0 69.8



#76
 1,3,5-Trimethylbenzene
 Concen: 18.921 ug/l
 RT: 12.998 min Scan# 1889
 Delta R.T. 0.000 min
 Lab File: VN073096.D
 Acq: 24 Jun 2022 20:38

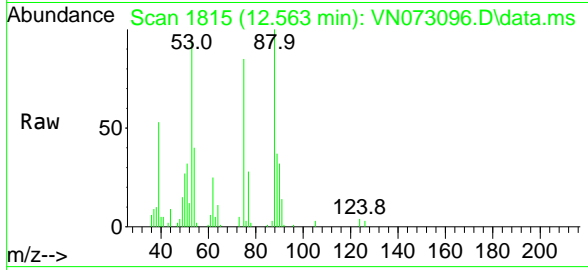
Tgt Ion: 105 Resp: 215202
 Ion Ratio Lower Upper
 105 100
 120 49.6 0.0 93.8



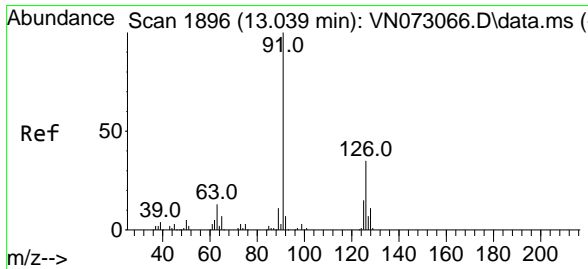
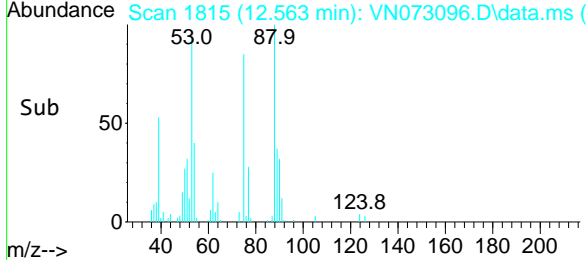
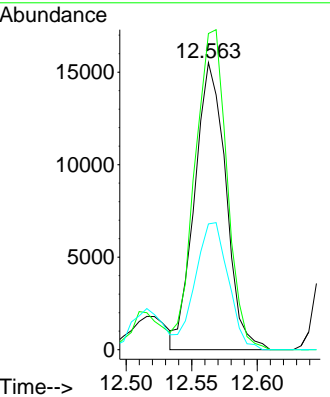


#77
 t-1,4-Dichloro-2-butene
 Concen: 22.487 ug/l
 RT: 12.563 min Scan# 1815
 Delta R.T. 0.000 min
 Lab File: VN073096.D
 Acq: 24 Jun 2022 20:38

Instrument : MSVOA_N
 ClientSampleId : VSTDCCC020EC

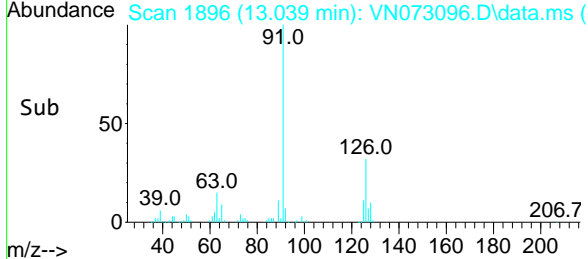
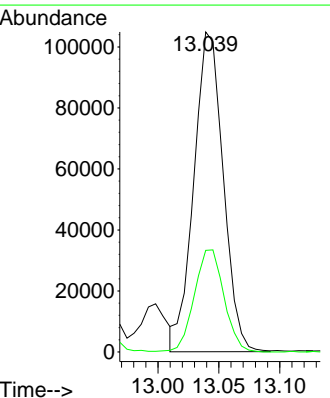
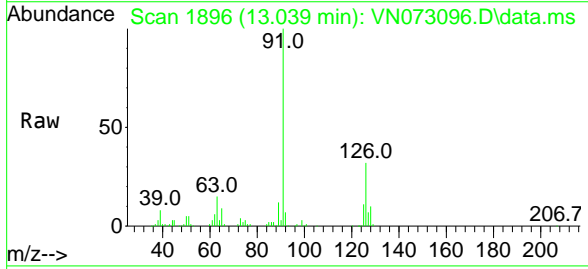


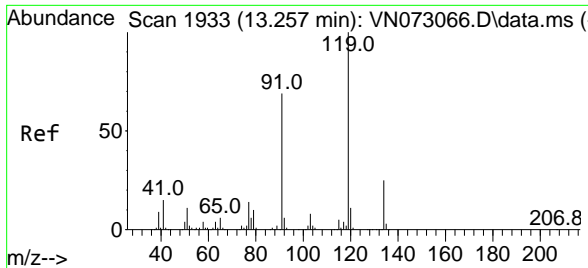
Tgt Ion	Resp	Lower	Upper
75	25695		
75	100		
53	110.1	51.8	155.5
89	43.8	22.9	68.7



#78
 4-Chlorotoluene
 Concen: 18.810 ug/l
 RT: 13.039 min Scan# 1896
 Delta R.T. 0.000 min
 Lab File: VN073096.D
 Acq: 24 Jun 2022 20:38

Tgt Ion	Resp	Lower	Upper
91	175464		
91	100		
126	32.4	0.0	70.6



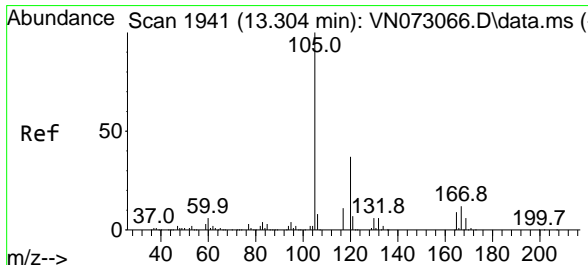
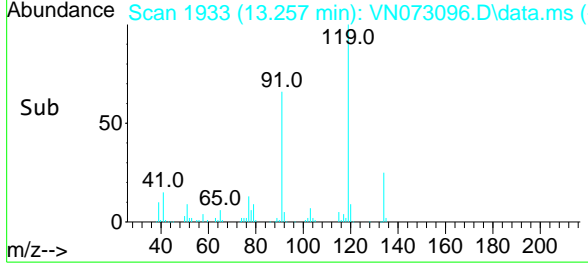
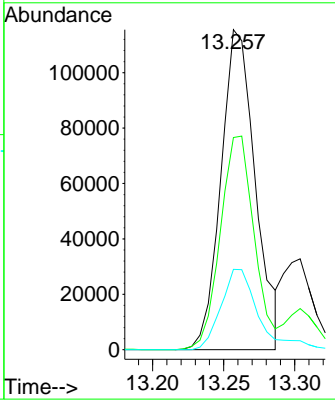
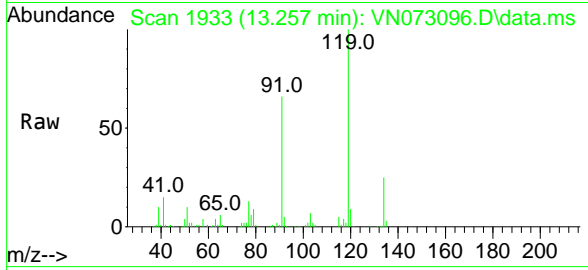


#79
 tert-butylbenzene
 Concen: 19.386 ug/l
 RT: 13.257 min Scan# 1933
 Delta R.T. 0.000 min
 Lab File: VN073096.D
 Acq: 24 Jun 2022 20:38

Instrument : MSVOA_N
 ClientSampleId : VSTDCCC020EC

Tgt Ion:119 Resp: 194938

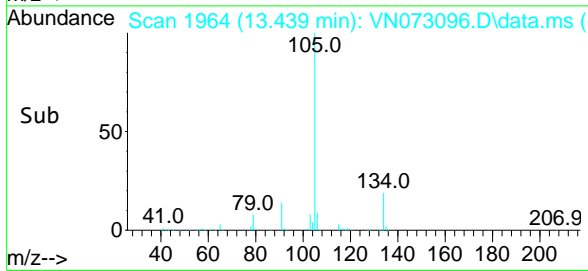
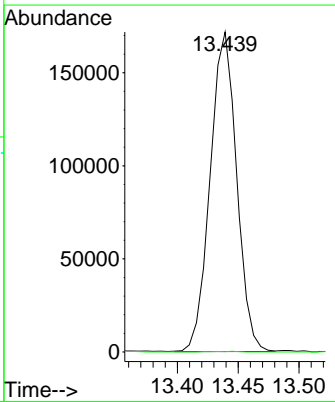
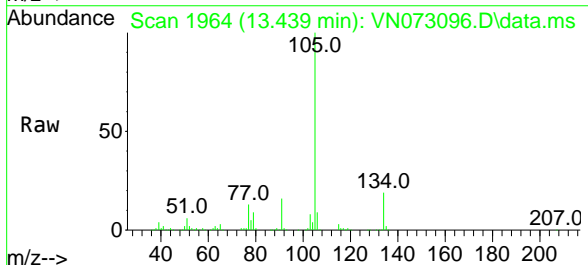
Ion	Ratio	Lower	Upper
119	100		
91	65.7	0.0	137.0
134	25.6	0.0	47.6

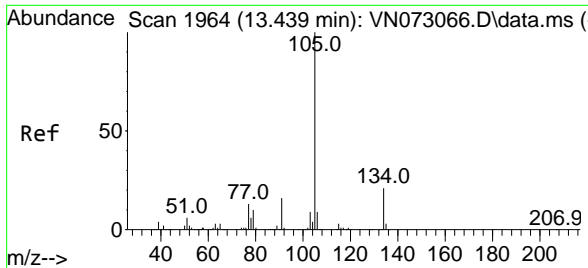


#80
 1,2,4-Trimethylbenzene
 Concen: 23.305 ug/l
 RT: 13.439 min Scan# 1964
 Delta R.T. 0.135 min
 Lab File: VN073096.D
 Acq: 24 Jun 2022 20:38

Tgt Ion:105 Resp: 260050

Ion	Ratio	Lower	Upper
105	100		
120	0.1	0.0	0.2

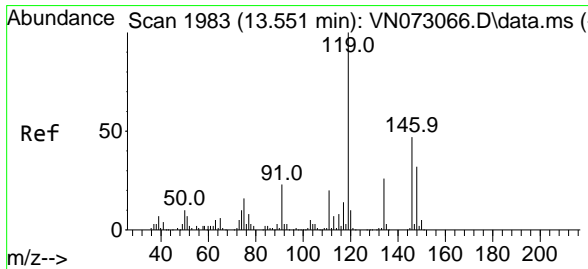
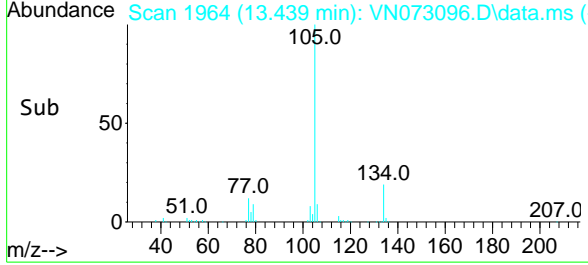
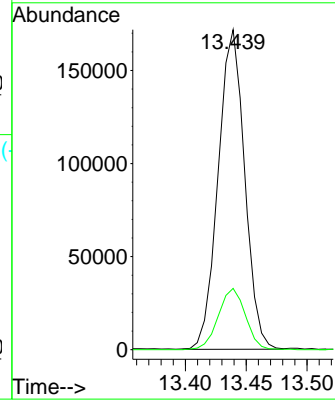
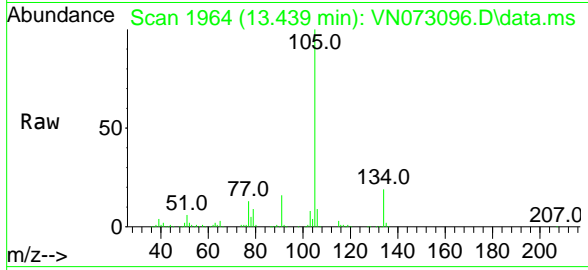




#81
 sec-Butylbenzene
 Concen: 19.186 ug/l
 RT: 13.439 min Scan# 1964
 Delta R.T. 0.000 min
 Lab File: VN073096.D
 Acq: 24 Jun 2022 20:38

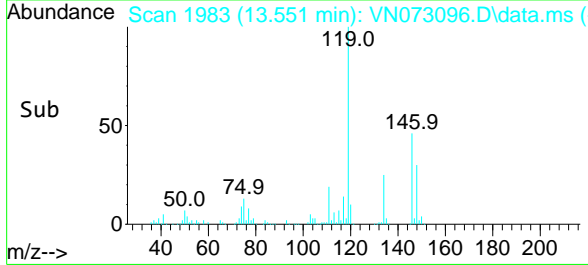
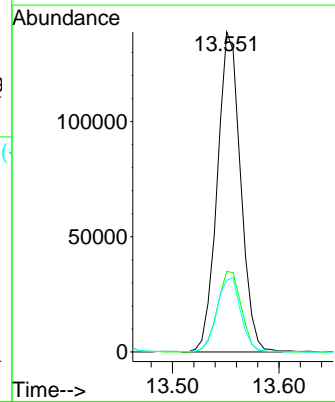
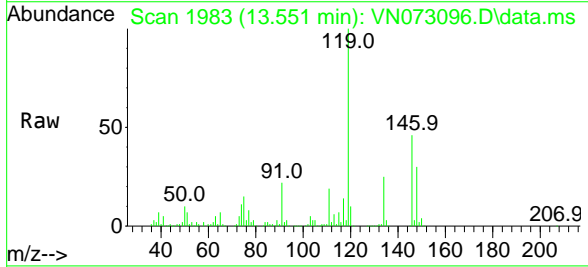
Instrument : MSVOA_N
 ClientSampleId : VSTDCCC020EC

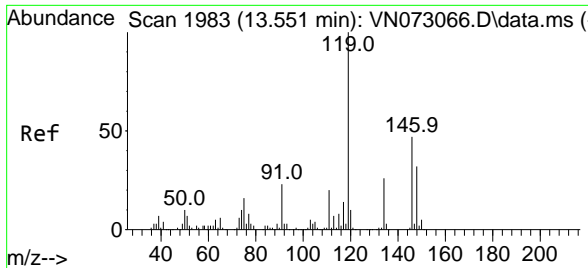
Tgt Ion:105 Resp: 260050
 Ion Ratio Lower Upper
 105 100
 134 19.6 0.0 39.4



#82
 p-Isopropyltoluene
 Concen: 19.172 ug/l
 RT: 13.551 min Scan# 1983
 Delta R.T. 0.000 min
 Lab File: VN073096.D
 Acq: 24 Jun 2022 20:38

Tgt Ion:119 Resp: 211057
 Ion Ratio Lower Upper
 119 100
 134 25.8 0.0 51.8
 91 23.4 0.0 50.4



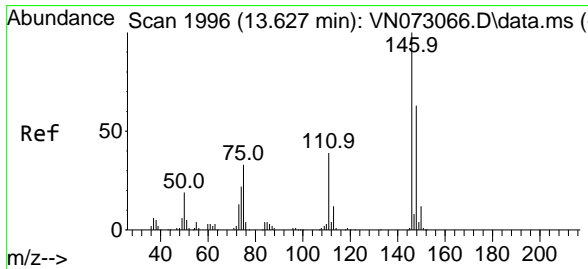
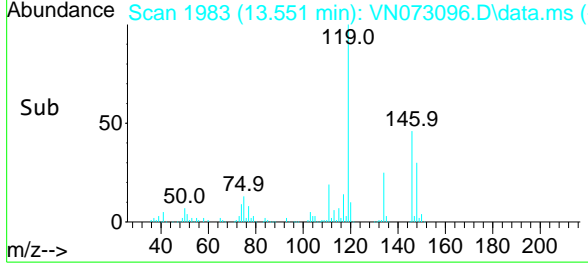
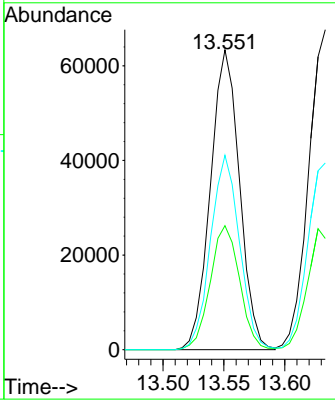
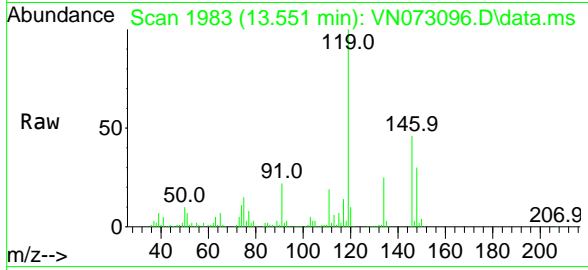


#83
 1,3-Dichlorobenzene
 Concen: 18.777 ug/l
 RT: 13.551 min Scan# 1983
 Delta R.T. 0.000 min
 Lab File: VN073096.D
 Acq: 24 Jun 2022 20:38

Instrument : MSVOA_N
 ClientSampleId : VSTDCCC020EC

Tgt Ion:146 Resp: 105479

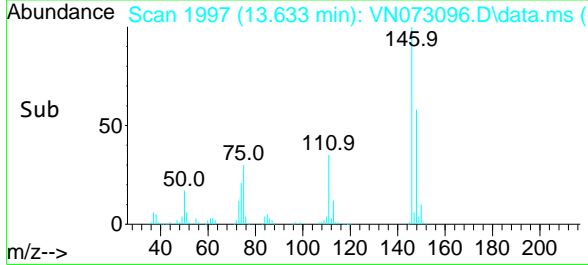
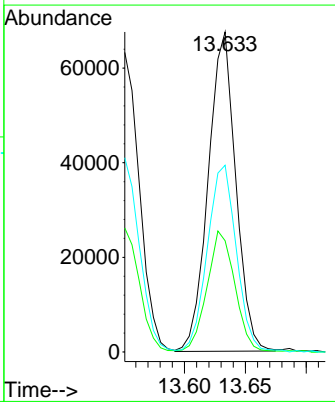
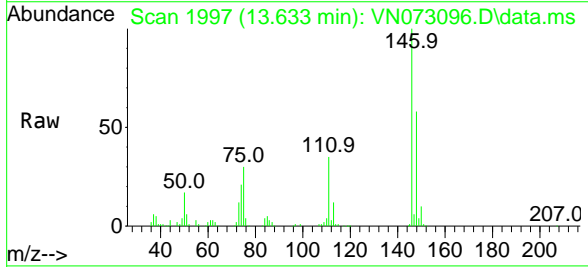
Ion	Ratio	Lower	Upper
146	100		
111	41.8	20.8	62.2
148	64.6	31.4	94.3

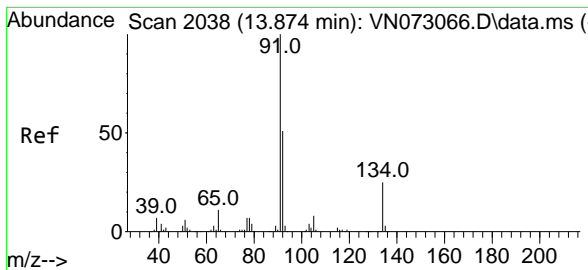


#84
 1,4-Dichlorobenzene
 Concen: 18.907 ug/l
 RT: 13.633 min Scan# 1997
 Delta R.T. 0.006 min
 Lab File: VN073096.D
 Acq: 24 Jun 2022 20:38

Tgt Ion:146 Resp: 106139

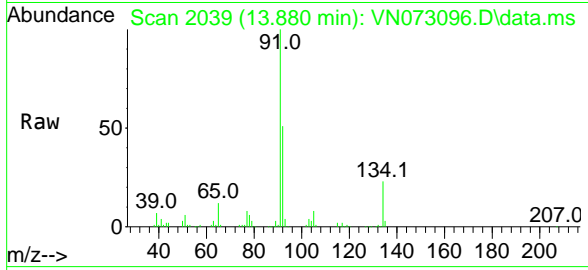
Ion	Ratio	Lower	Upper
146	100		
111	38.4	19.5	58.5
148	61.9	31.1	93.5





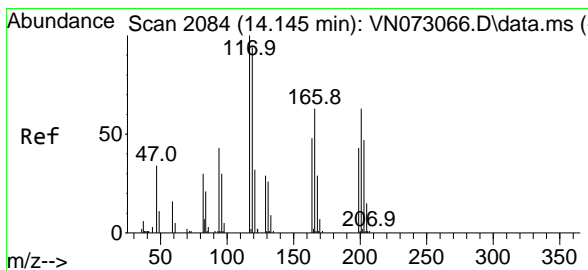
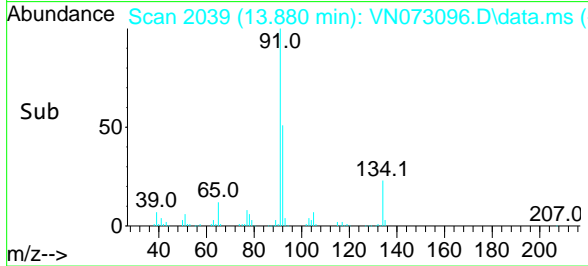
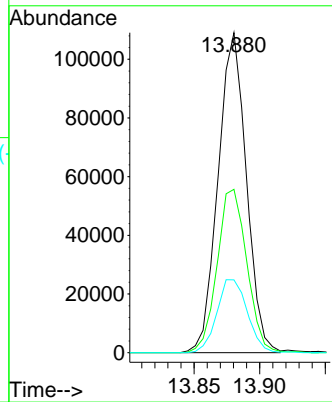
#85
 n-Butylbenzene
 Concen: 18.230 ug/l
 RT: 13.880 min Scan# 2039
 Delta R.T. 0.006 min
 Lab File: VN073096.D
 Acq: 24 Jun 2022 20:38

Instrument : MSVOA_N
 ClientSampleId : VSTDCCC020EC



Tgt Ion: 91 Resp: 163302

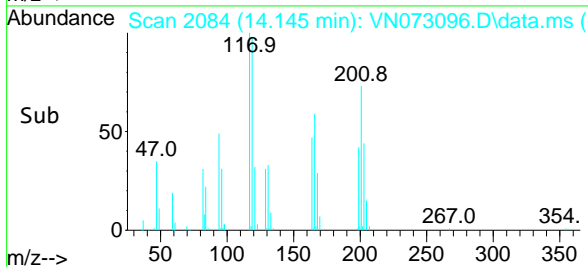
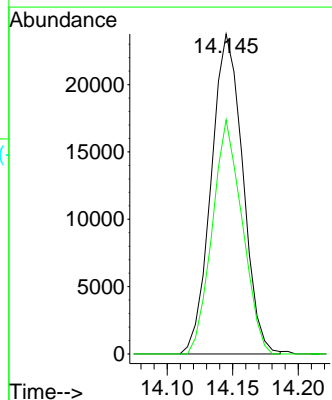
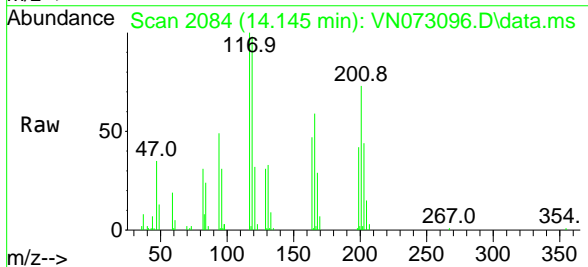
Ion	Ratio	Lower	Upper
91	100		
92	53.8	0.0	100.6
134	24.6	0.0	50.2

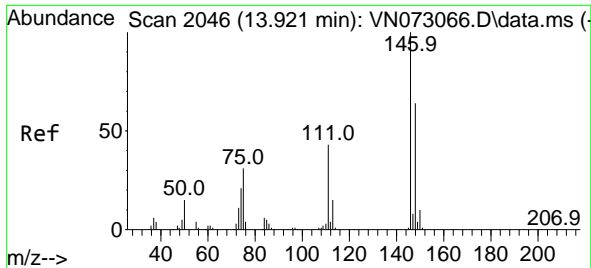


#86
 Hexachloroethane
 Concen: 18.456 ug/l
 RT: 14.145 min Scan# 2084
 Delta R.T. 0.000 min
 Lab File: VN073096.D
 Acq: 24 Jun 2022 20:38

Tgt Ion: 117 Resp: 39778

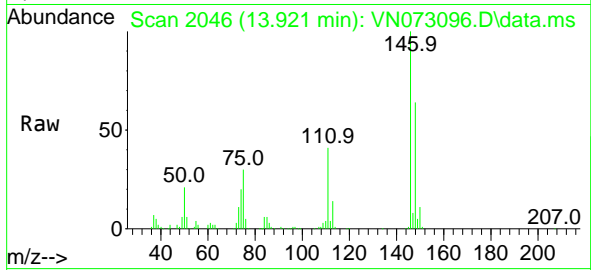
Ion	Ratio	Lower	Upper
117	100		
201	69.3	33.3	99.8



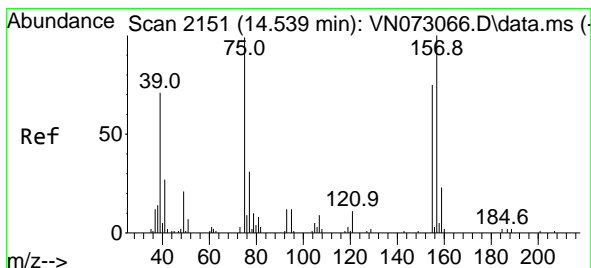
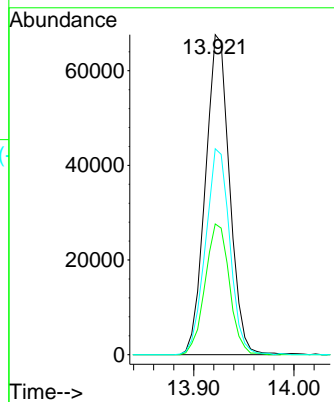
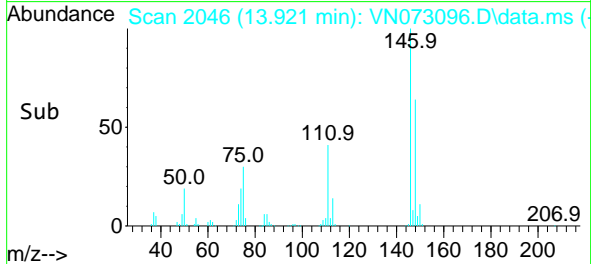


#87
 1,2-Dichlorobenzene
 Concen: 19.281 ug/l
 RT: 13.921 min Scan# 2046
 Delta R.T. 0.000 min
 Lab File: VN073096.D
 Acq: 24 Jun 2022 20:38

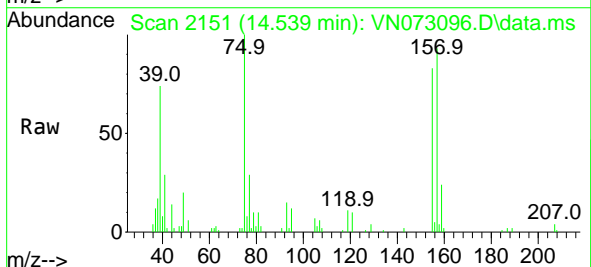
Instrument : MSVOA_N
 ClientSampleId : VSTDCCC020EC



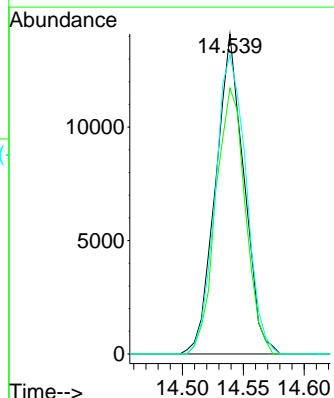
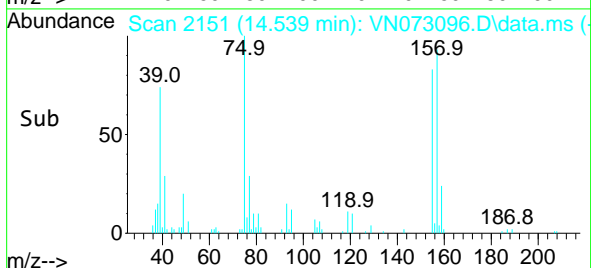
Tgt Ion:146 Resp: 113328
 Ion Ratio Lower Upper
 146 100
 111 41.0 21.4 64.2
 148 64.7 32.5 97.4

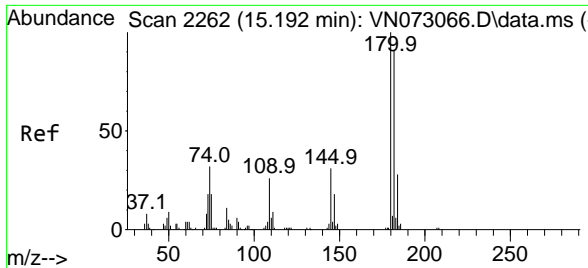


#88
 1,2-Dibromo-3-Chloropropane
 Concen: 18.983 ug/l
 RT: 14.539 min Scan# 2151
 Delta R.T. 0.000 min
 Lab File: VN073096.D
 Acq: 24 Jun 2022 20:38



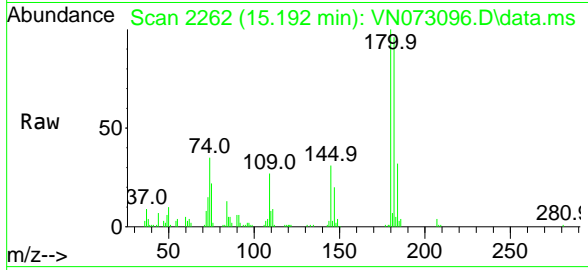
Tgt Ion: 75 Resp: 22851
 Ion Ratio Lower Upper
 75 100
 155 86.7 63.8 95.8
 157 101.5 77.9 116.9





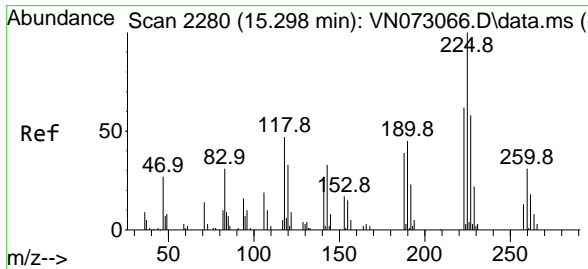
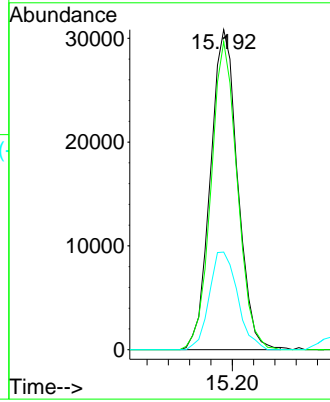
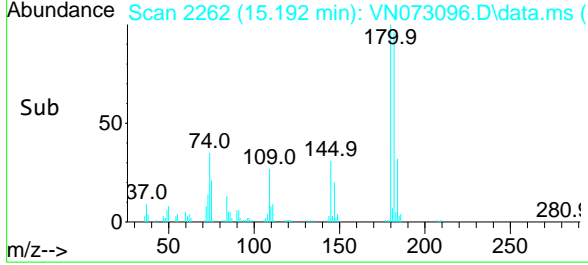
#89
 1,2,4-Trichlorobenzene
 Concen: 17.708 ug/l
 RT: 15.192 min Scan# 21
 Delta R.T. 0.000 min
 Lab File: VN073096.D
 Acq: 24 Jun 2022 20:38

Instrument :
 MSVOA_N
 ClientSampleId :
 VSTDCCC020EC

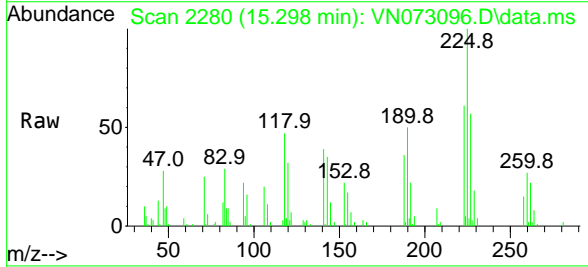


Tgt Ion:180 Resp: 54685

Ion	Ratio	Lower	Upper
180	100		
182	93.0	77.7	116.5
145	31.7	26.6	39.8

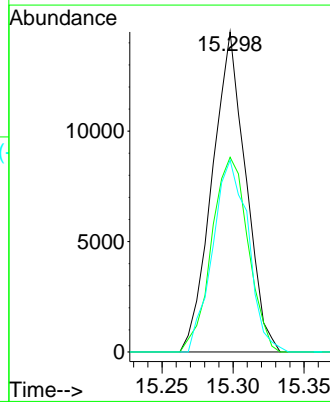
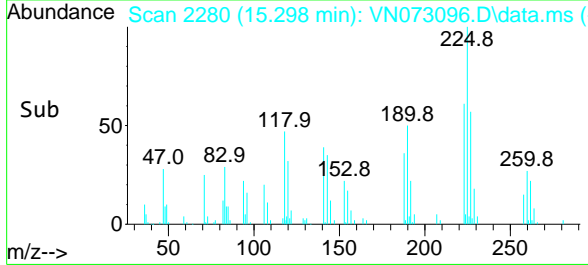


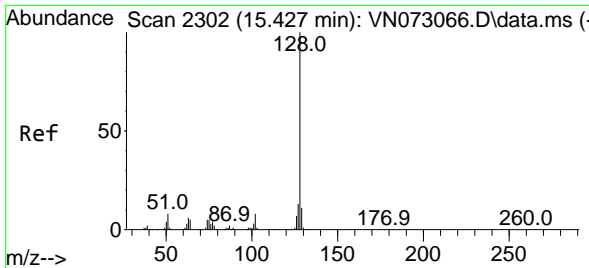
#90
 Hexachlorobutadiene
 Concen: 19.084 ug/l
 RT: 15.298 min Scan# 2280
 Delta R.T. 0.000 min
 Lab File: VN073096.D
 Acq: 24 Jun 2022 20:38



Tgt Ion:225 Resp: 23760

Ion	Ratio	Lower	Upper
225	100		
223	66.2	0.0	126.8
227	63.6	0.0	123.0



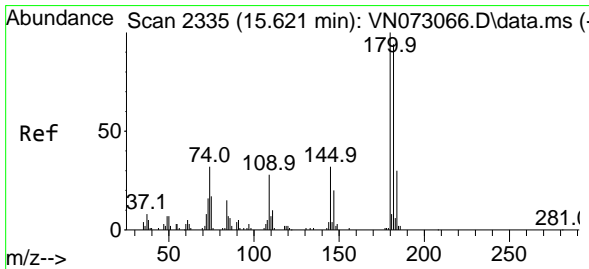
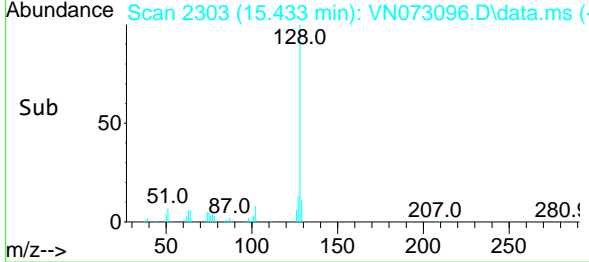
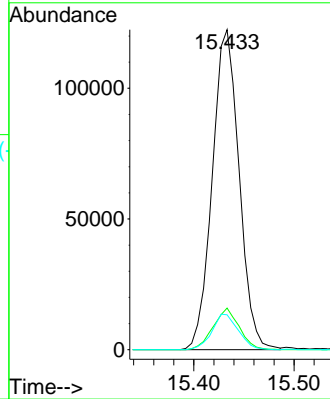
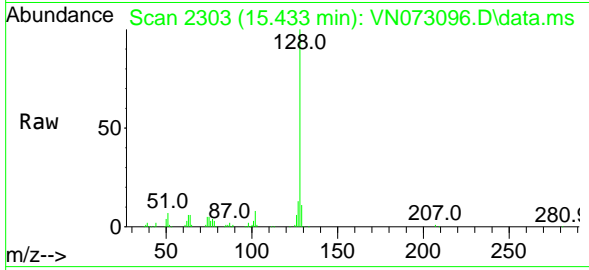


#91
 Naphthalene
 Concen: 18.874 ug/l
 RT: 15.433 min Scan# 21
 Delta R.T. 0.006 min
 Lab File: VN073096.D
 Acq: 24 Jun 2022 20:38

Instrument : MSVOA_N
 ClientSampleId : VSTDCCC020EC

Tgt Ion:128 Resp: 227447

Ion	Ratio	Lower	Upper
128	100		
127	12.6	10.7	16.1
129	10.9	9.0	13.6



#92
 1,2,3-Trichlorobenzene
 Concen: 18.775 ug/l
 RT: 15.621 min Scan# 2335
 Delta R.T. 0.000 min
 Lab File: VN073096.D
 Acq: 24 Jun 2022 20:38

Tgt Ion:180 Resp: 58991

Ion	Ratio	Lower	Upper
180	100		
182	94.2	0.0	190.0
145	33.4	0.0	67.8

