

Data Path : Z:\voasrv\HPCHEM1\MSVOA_N\Data\VN062422\
 Data File : VN073092.D
 Acq On : 24 Jun 2022 19:00
 Operator : JC\MD
 Sample : N3455-14
 Misc : 5.0mL/MSVOA_N/WATER
 ALS Vial : 21 Sample Multiplier: 1

Instrument :
 MSVOA_N
 ClientSampleId :
 SP-EXC-2-3-GR

Quant Time: Jun 24 23:40:51 2022
 Quant Method : Z:\voasrv\HPCHEM1\MSVOA_N\methods\82N061722W.M
 Quant Title : SW846 8260
 QLast Update : Sat Jun 18 06:22:45 2022
 Response via : Initial Calibration

Compound	R.T.	QIon	Response	Conc	Units	Dev(Min)

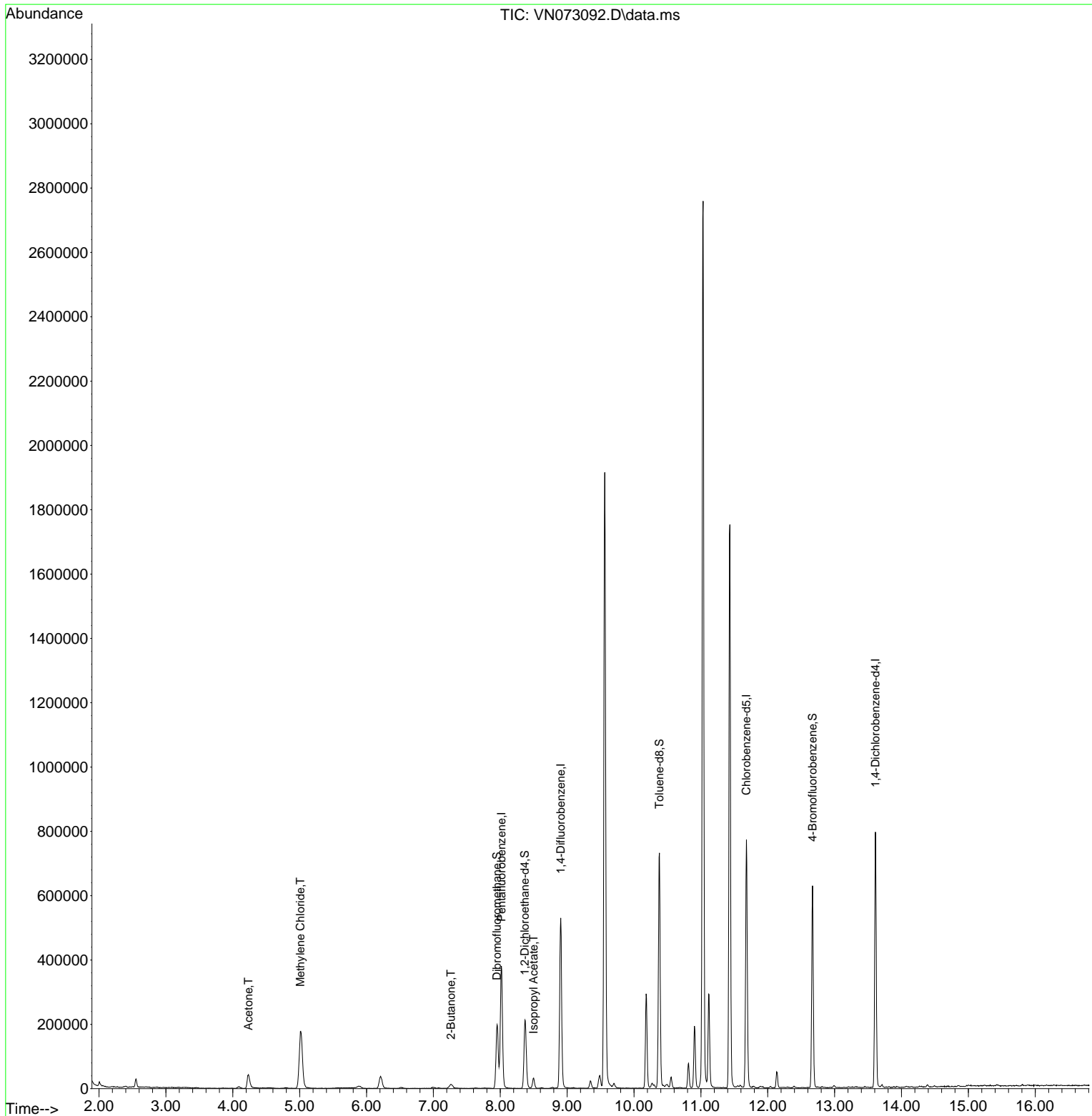
Internal Standards						
1) Pentafluorobenzene	8.016	168	290276	50.000	ug/l	0.00
34) 1,4-Difluorobenzene	8.904	114	468433	50.000	ug/l	0.00
63) Chlorobenzene-d5	11.680	117	433063	50.000	ug/l	0.00
72) 1,4-Dichlorobenzene-d4	13.610	152	211587	50.000	ug/l	0.00
System Monitoring Compounds						
33) 1,2-Dichloroethane-d4	8.369	65	179557	45.753	ug/l	0.00
Spiked Amount	50.000	Range	74 - 125	Recovery	=	91.500%
35) Dibromofluoromethane	7.951	113	149013	51.466	ug/l	0.00
Spiked Amount	50.000	Range	75 - 124	Recovery	=	102.940%
50) Toluene-d8	10.381	98	498695	46.289	ug/l	0.00
Spiked Amount	50.000	Range	86 - 113	Recovery	=	92.580%
62) 4-Bromofluorobenzene	12.669	95	213254	55.047	ug/l	0.00
Spiked Amount	50.000	Range	83 - 123	Recovery	=	110.100%
Target Compounds						
						Qvalue
16) Acetone	4.234	43	82124	38.069	ug/l	95
20) Methylene Chloride	5.010	84	147026	43.910	ug/l	89
25) 2-Butanone	7.263	43	19147	5.593	ug/l #	87
43) Isopropyl Acetate	8.498	43	37041	4.135	ug/l #	86

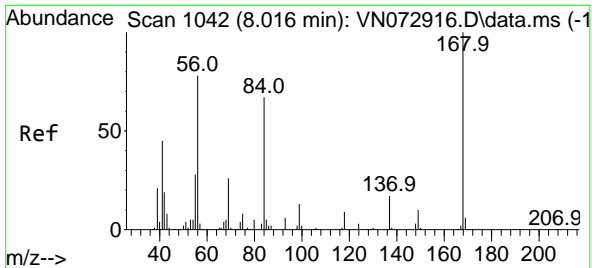
(#) = qualifier out of range (m) = manual integration (+) = signals summed

Data Path : Z:\voasrv\HPCHEM1\MSVOA_N\Data\VN062422\
 Data File : VN073092.D
 Acq On : 24 Jun 2022 19:00
 Operator : JC\MD
 Sample : N3455-14
 Misc : 5.0mL/MSVOA_N/WATER
 ALS Vial : 21 Sample Multiplier: 1

Instrument :
 MSVOA_N
 ClientSampleId :
 SP-EXC-2-3-GR

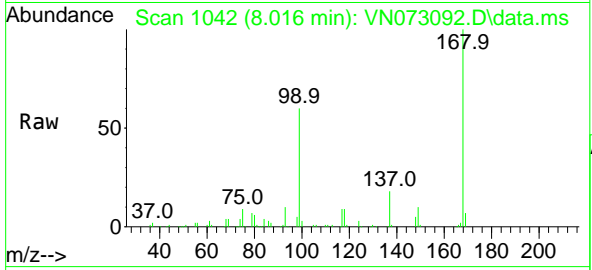
Quant Time: Jun 24 23:40:51 2022
 Quant Method : Z:\voasrv\HPCHEM1\MSVOA_N\methods\82N061722W.M
 Quant Title : SW846 8260
 QLast Update : Sat Jun 18 06:22:45 2022
 Response via : Initial Calibration



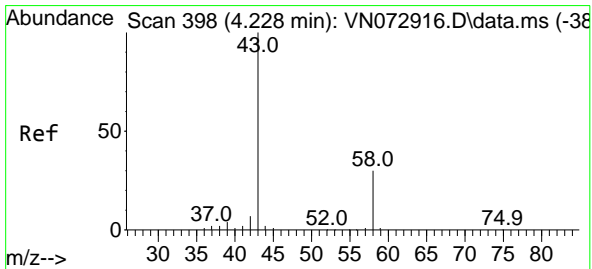
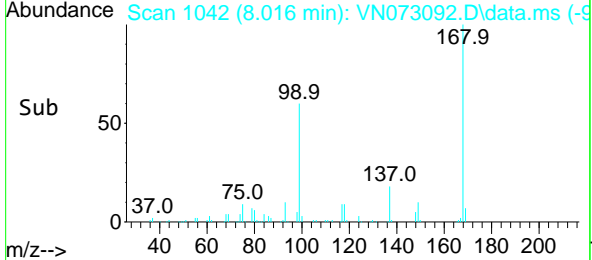
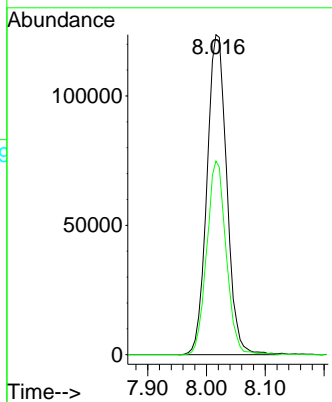


#1
 Pentafluorobenzene
 Concen: 50.000 ug/l
 RT: 8.016 min Scan# 10
 Delta R.T. 0.000 min
 Lab File: VN073092.D
 Acq: 24 Jun 2022 19:00

Instrument : MSVOA_N
 ClientSampleId : SP-EXC-2-3-GR

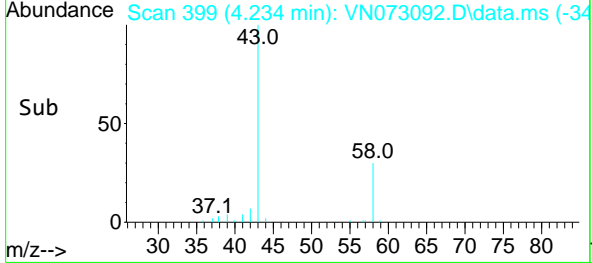
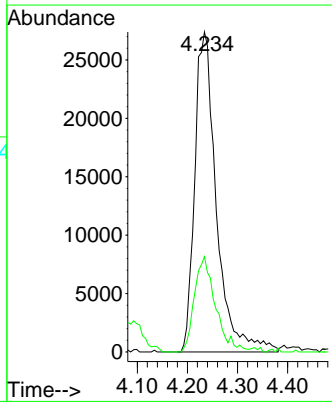
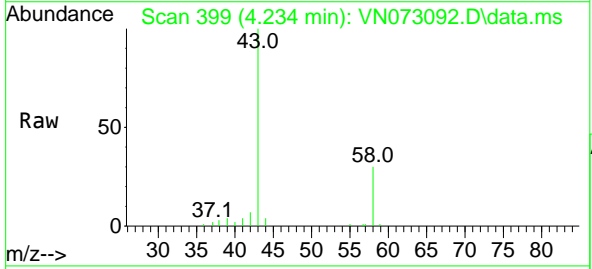


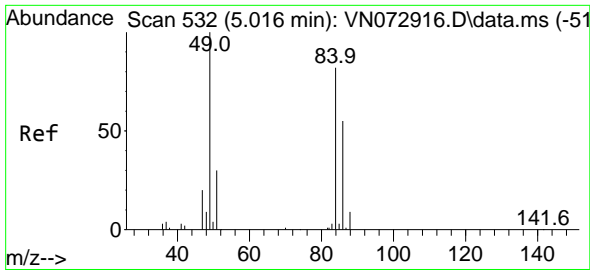
Tgt Ion:168 Resp: 290276
 Ion Ratio Lower Upper
 168 100
 99 60.5 42.3 63.5



#16
 Acetone
 Concen: 38.069 ug/l
 RT: 4.234 min Scan# 399
 Delta R.T. 0.006 min
 Lab File: VN073092.D
 Acq: 24 Jun 2022 19:00

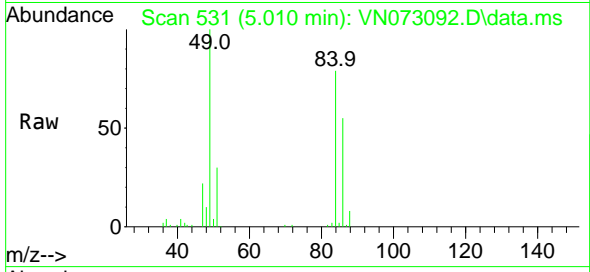
Tgt Ion: 43 Resp: 82124
 Ion Ratio Lower Upper
 43 100
 58 29.8 26.0 39.0





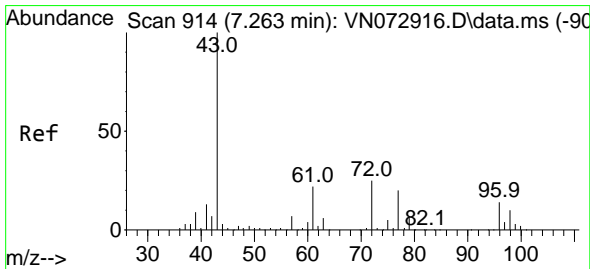
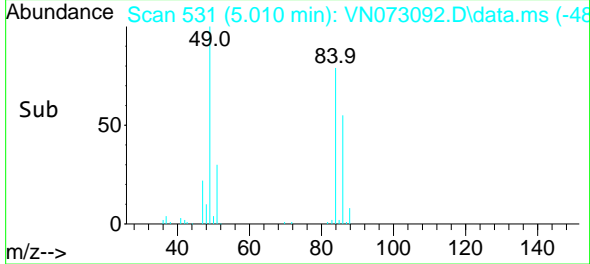
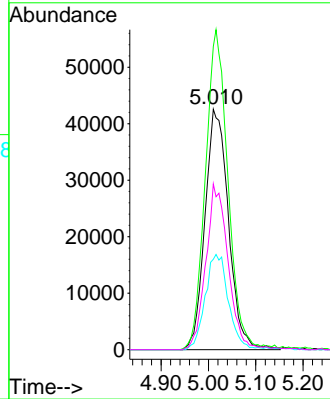
#20
 Methylene Chloride
 Concen: 43.910 ug/l
 RT: 5.010 min Scan# 51
 Delta R.T. -0.006 min
 Lab File: VN073092.D
 Acq: 24 Jun 2022 19:00

Instrument :
 MSVOA_N
 ClientSampleId :
 SP-EXC-2-3-GR



Tgt Ion: 84 Resp: 147026

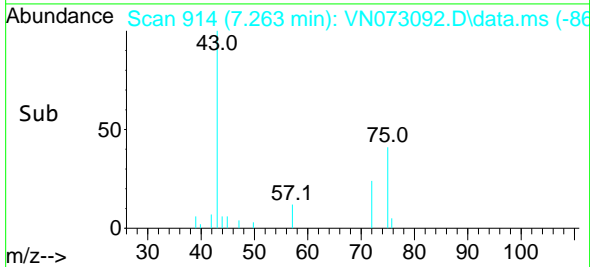
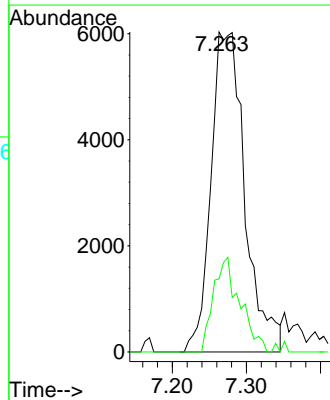
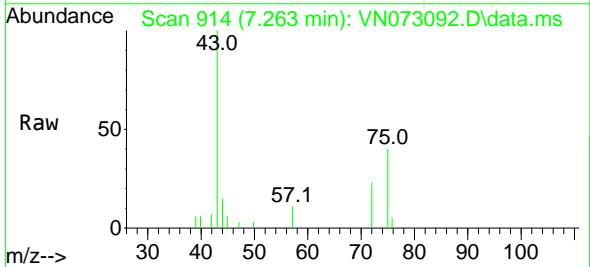
Ion	Ratio	Lower	Upper
84	100		
49	126.1	88.3	132.5
51	37.6	28.2	42.2
86	68.9	50.6	76.0

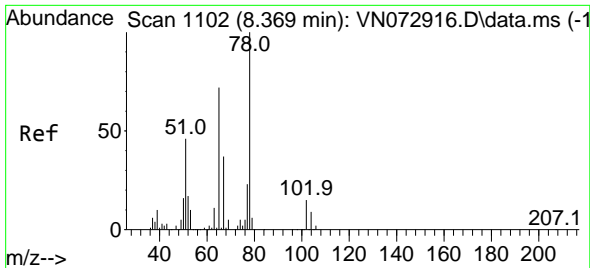


#25
 2-Butanone
 Concen: 5.593 ug/l
 RT: 7.263 min Scan# 914
 Delta R.T. 0.000 min
 Lab File: VN073092.D
 Acq: 24 Jun 2022 19:00

Tgt Ion: 43 Resp: 19147

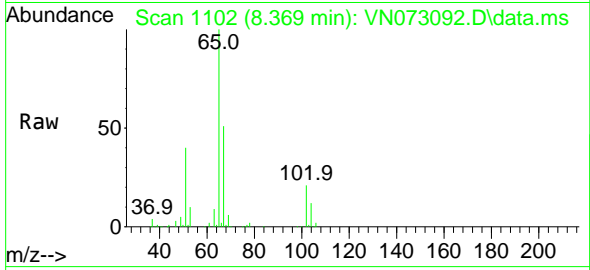
Ion	Ratio	Lower	Upper
43	100		
72	22.9	23.7	35.5#



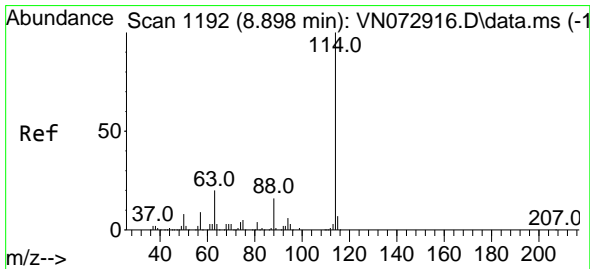
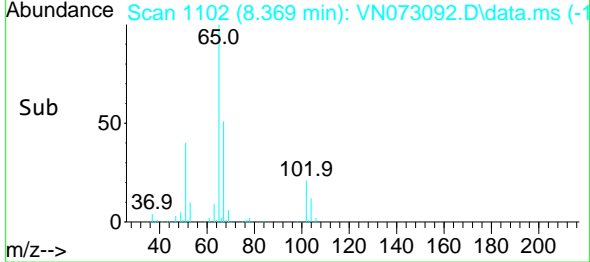
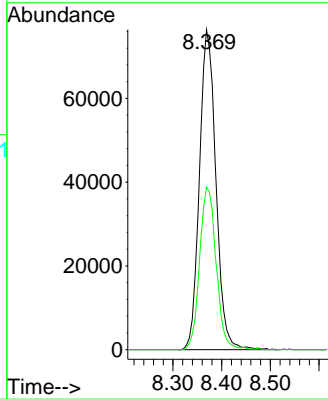


#33
 1,2-Dichloroethane-d4
 Concen: 45.753 ug/l
 RT: 8.369 min Scan# 1102
 Delta R.T. 0.000 min
 Lab File: VN073092.D
 Acq: 24 Jun 2022 19:00

Instrument : MSVOA_N
 ClientSampleId : SP-EXC-2-3-GR

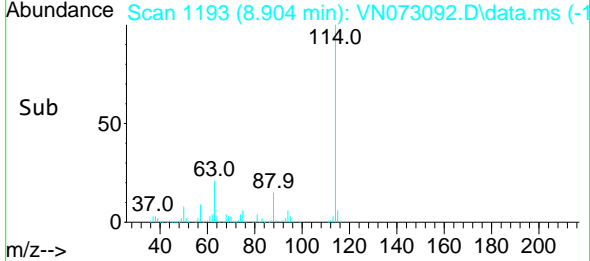
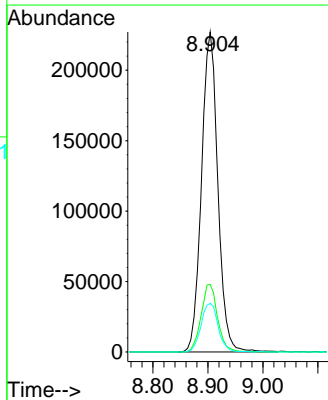
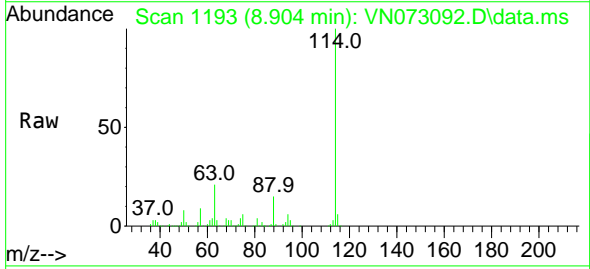


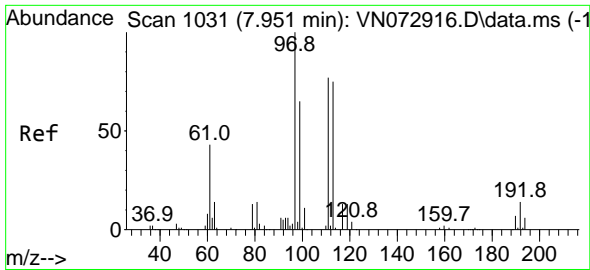
Tgt Ion: 65 Resp: 179557
 Ion Ratio Lower Upper
 65 100
 67 51.0 0.0 104.8



#34
 1,4-Difluorobenzene
 Concen: 50.000 ug/l
 RT: 8.904 min Scan# 1193
 Delta R.T. 0.006 min
 Lab File: VN073092.D
 Acq: 24 Jun 2022 19:00

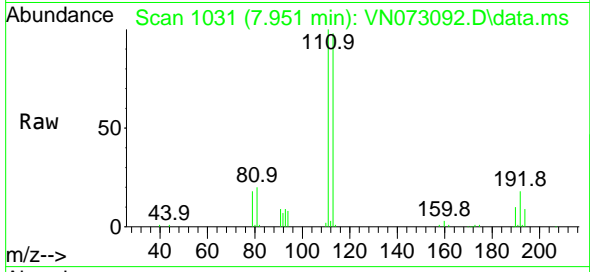
Tgt Ion: 114 Resp: 468433
 Ion Ratio Lower Upper
 114 100
 63 21.1 0.0 40.0
 88 15.2 0.0 32.6





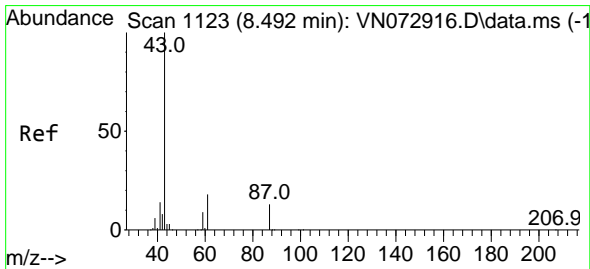
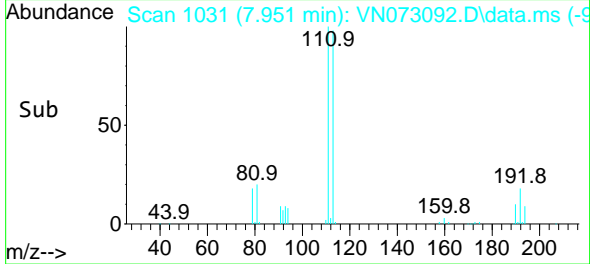
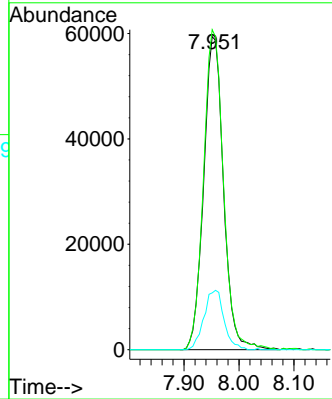
#35
 Dibromofluoromethane
 Concen: 51.466 ug/l
 RT: 7.951 min Scan# 1031
 Delta R.T. 0.000 min
 Lab File: VN073092.D
 Acq: 24 Jun 2022 19:00

Instrument : MSVOA_N
 Client Sample Id : SP-EXC-2-3-GR



Tgt Ion: 113 Resp: 149013

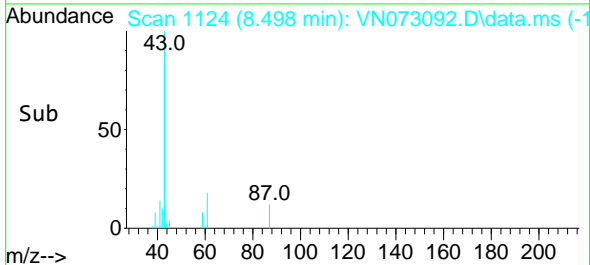
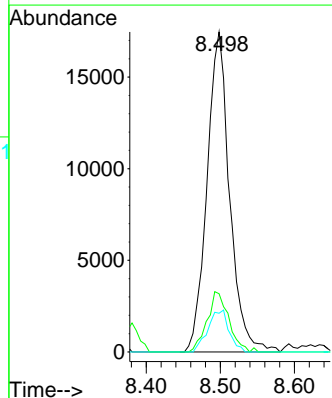
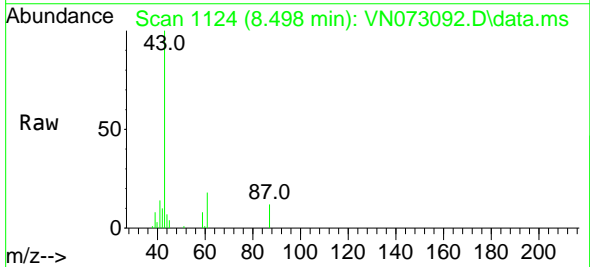
Ion	Ratio	Lower	Upper
113	100		
111	102.6	81.4	122.0
192	19.2	17.0	25.6

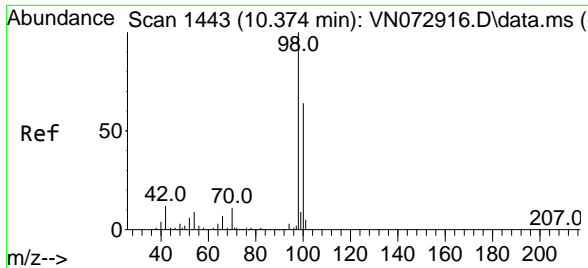


#43
 Isopropyl Acetate
 Concen: 4.135 ug/l
 RT: 8.498 min Scan# 1124
 Delta R.T. 0.006 min
 Lab File: VN073092.D
 Acq: 24 Jun 2022 19:00

Tgt Ion: 43 Resp: 37041

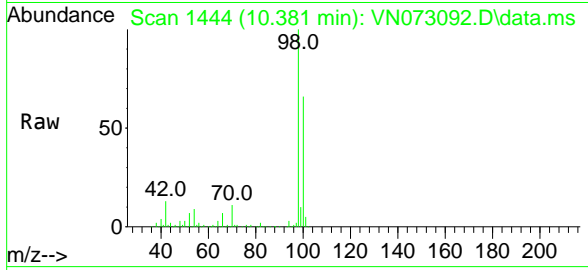
Ion	Ratio	Lower	Upper
43	100		
61	18.1	21.9	32.9#
87	12.2	12.0	18.0



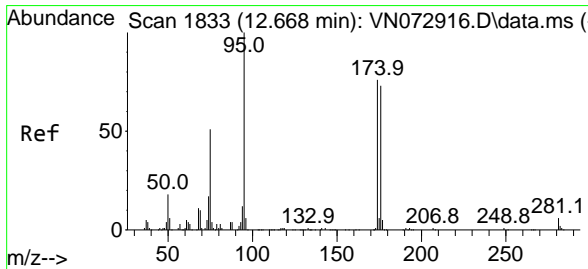
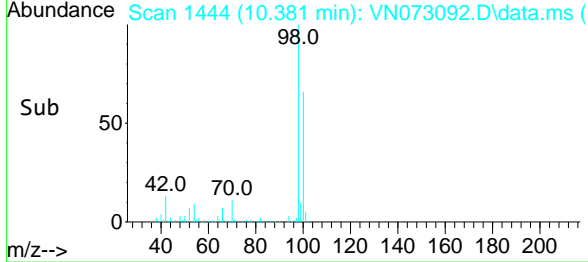
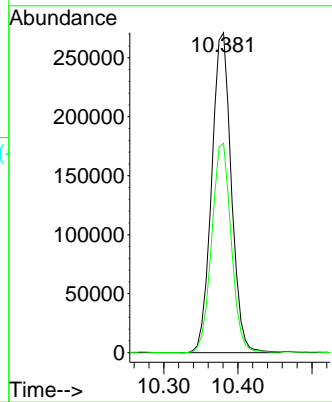


#50
 Toluene-d8
 Concen: 46.289 ug/l
 RT: 10.381 min Scan# 1444
 Delta R.T. 0.006 min
 Lab File: VN073092.D
 Acq: 24 Jun 2022 19:00

Instrument : MSVOA_N
 ClientSampleId : SP-EXC-2-3-GR

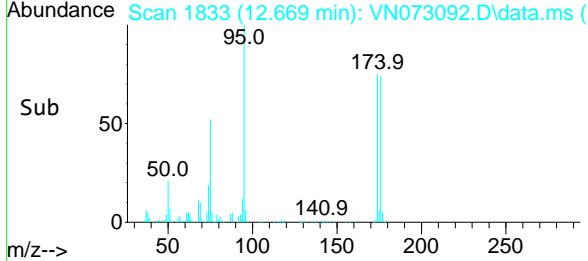
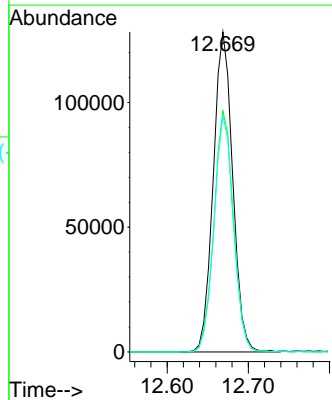
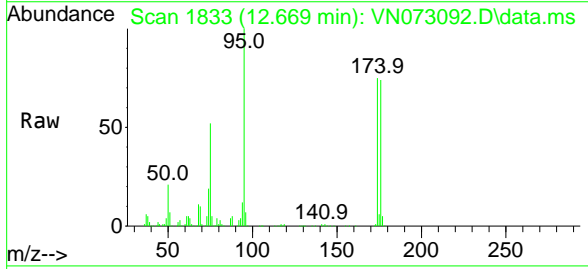


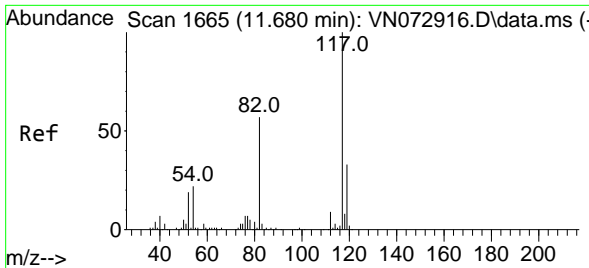
Tgt Ion: 98 Resp: 498695
 Ion Ratio Lower Upper
 98 100
 100 65.3 52.6 78.8



#62
 4-Bromofluorobenzene
 Concen: 55.047 ug/l
 RT: 12.669 min Scan# 1833
 Delta R.T. 0.000 min
 Lab File: VN073092.D
 Acq: 24 Jun 2022 19:00

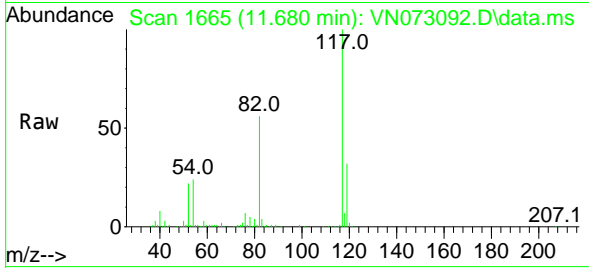
Tgt Ion: 95 Resp: 213254
 Ion Ratio Lower Upper
 95 100
 174 75.3 0.0 167.6
 176 74.5 0.0 163.4





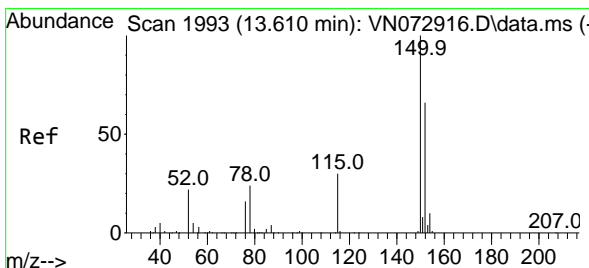
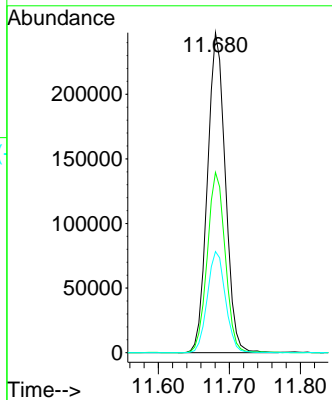
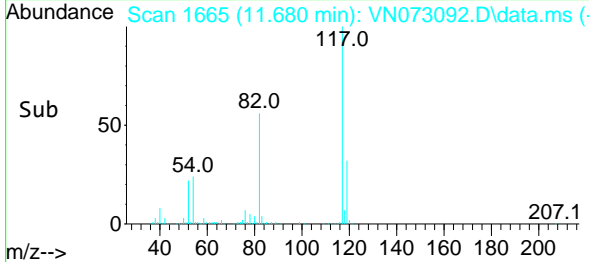
#63
 Chlorobenzene-d5
 Concen: 50.000 ug/l
 RT: 11.680 min Scan# 1665
 Delta R.T. 0.000 min
 Lab File: VN073092.D
 Acq: 24 Jun 2022 19:00

Instrument : MSVOA_N
 ClientSampleId : SP-EXC-2-3-GR

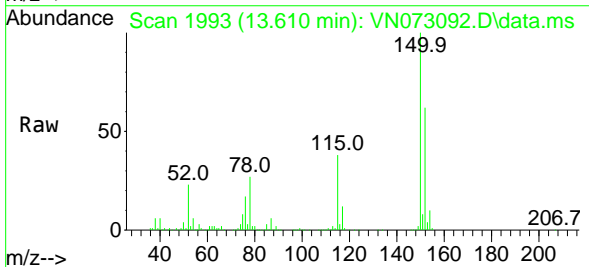


Tgt Ion:117 Resp: 433063

Ion	Ratio	Lower	Upper
117	100		
82	56.3	44.2	66.2
119	31.6	25.4	38.0



#72
 1,4-Dichlorobenzene-d4
 Concen: 50.000 ug/l
 RT: 13.610 min Scan# 1993
 Delta R.T. 0.000 min
 Lab File: VN073092.D
 Acq: 24 Jun 2022 19:00



Tgt Ion:152 Resp: 211587

Ion	Ratio	Lower	Upper
152	100		
115	58.9	28.9	86.7
150	157.4	0.0	356.2

