

Data Path : Z:\voasrv\HPCHEM1\MSVOA_N\Data\VN062424\
 Data File : VN082696.D
 Acq On : 24 Jun 2024 12:55
 Operator : JC\MD
 Sample : P3034-01
 Misc : 5.0mL/MSVOA_N/WATER
 ALS Vial : 8 Sample Multiplier: 1

Instrument :
 MSVOA_N
ClientSampleId :
 GWBR-05-187-208-062124

Quant Time: Jun 25 02:26:50 2024
 Quant Method : Z:\voasrv\HPCHEM1\MSVOA_N\methods\82N061724W.M
 Quant Title : SW846 8260
 QLast Update : Tue Jun 18 04:52:44 2024
 Response via : Initial Calibration

| Compound | R.T. | QIon | Response | Conc | Units | Dev(Min) |
|-----------------------------|--------|-------|----------|----------|-------|----------|
| Internal Standards | | | | | | |
| 1) Pentafluorobenzene | 8.224 | 168 | 147862 | 50.000 | ug/l | 0.00 |
| 34) 1,4-Difluorobenzene | 9.106 | 114 | 276551 | 50.000 | ug/l | 0.00 |
| 63) Chlorobenzene-d5 | 11.871 | 117 | 274957 | 50.000 | ug/l | 0.00 |
| 72) 1,4-Dichlorobenzene-d4 | 13.794 | 152 | 113199 | 50.000 | ug/l | 0.00 |
| System Monitoring Compounds | | | | | | |
| 33) 1,2-Dichloroethane-d4 | 8.577 | 65 | 125660 | 52.995 | ug/l | 0.00 |
| Spiked Amount | 50.000 | Range | 74 - 125 | Recovery | = | 105.980% |
| 35) Dibromofluoromethane | 8.165 | 113 | 96096 | 51.221 | ug/l | 0.00 |
| Spiked Amount | 50.000 | Range | 75 - 124 | Recovery | = | 102.440% |
| 50) Toluene-d8 | 10.571 | 98 | 343604 | 48.431 | ug/l | 0.00 |
| Spiked Amount | 50.000 | Range | 86 - 113 | Recovery | = | 96.860% |
| 62) 4-Bromofluorobenzene | 12.853 | 95 | 113498 | 46.401 | ug/l | 0.00 |
| Spiked Amount | 50.000 | Range | 64 - 133 | Recovery | = | 92.800% |

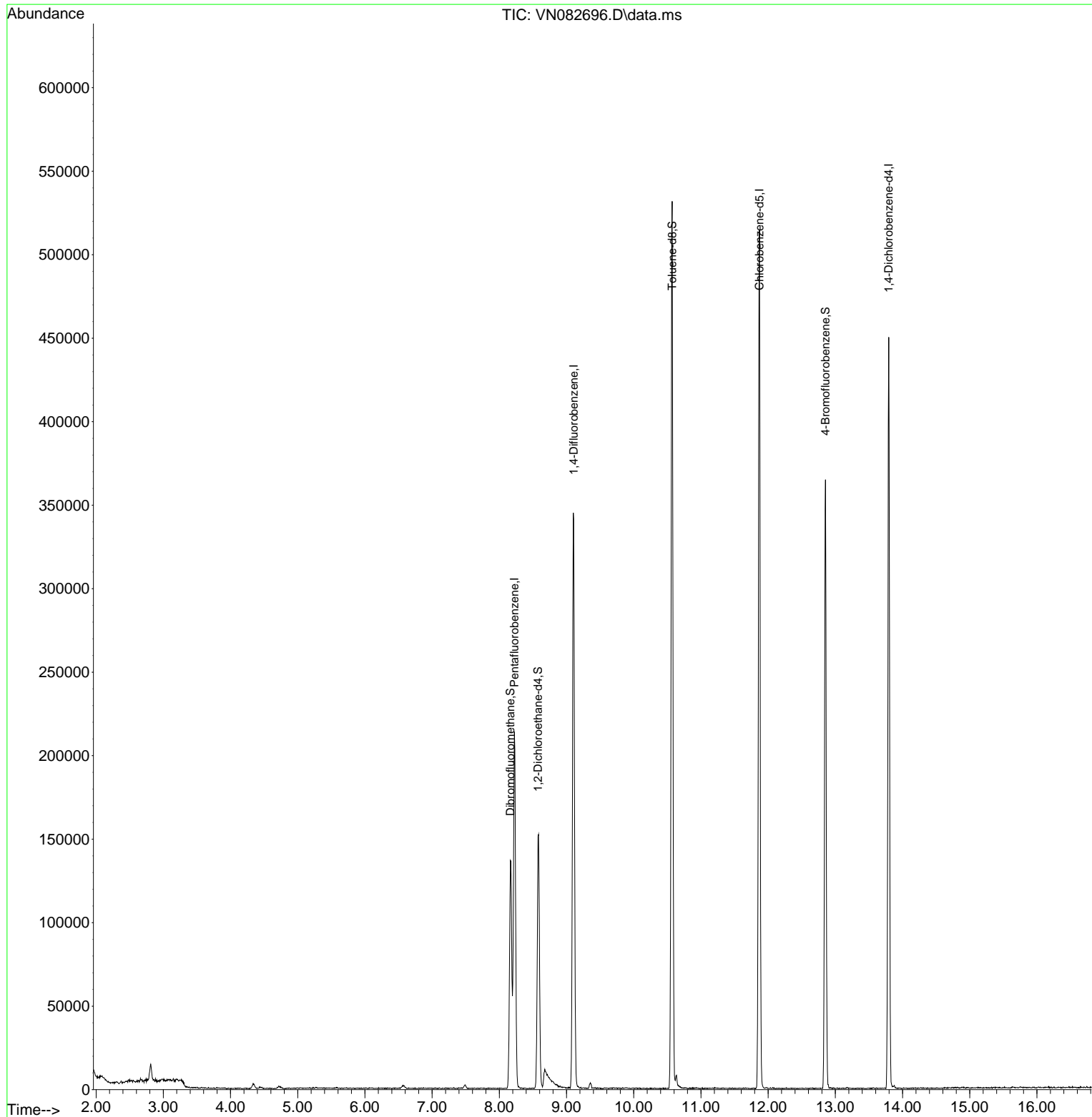
Target Compounds Qvalue

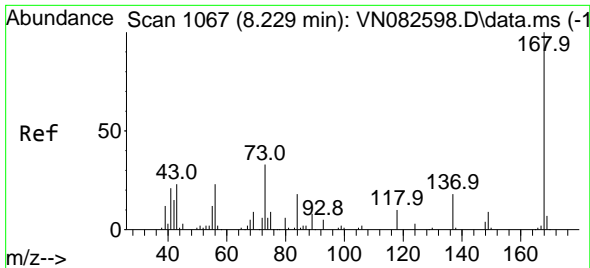
(#) = qualifier out of range (m) = manual integration (+) = signals summed

Data Path : Z:\voasrv\HPCHEM1\MSVOA_N\Data\VN062424\
 Data File : VN082696.D
 Acq On : 24 Jun 2024 12:55
 Operator : JC\MD
 Sample : P3034-01
 Misc : 5.0mL/MSVOA_N/WATER
 ALS Vial : 8 Sample Multiplier: 1

Instrument :
 MSVOA_N
 ClientSampleId :
 GWBR-05-187-208-062124

Quant Time: Jun 25 02:26:50 2024
 Quant Method : Z:\voasrv\HPCHEM1\MSVOA_N\methods\82N061724W.M
 Quant Title : SW846 8260
 QLast Update : Tue Jun 18 04:52:44 2024
 Response via : Initial Calibration

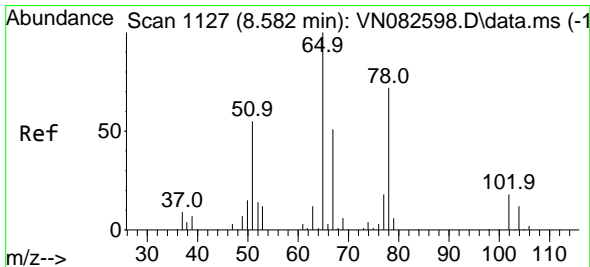
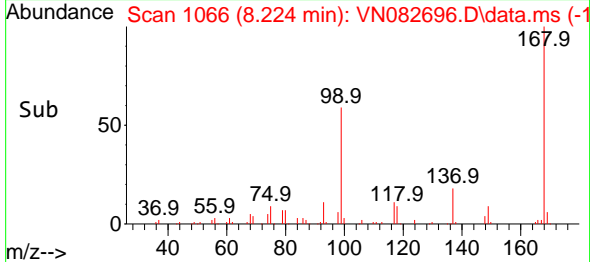
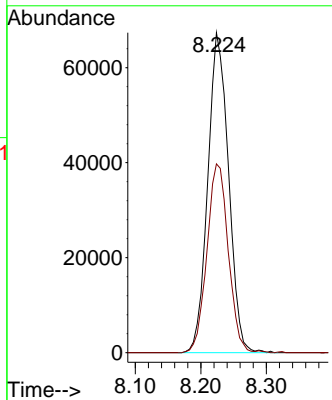
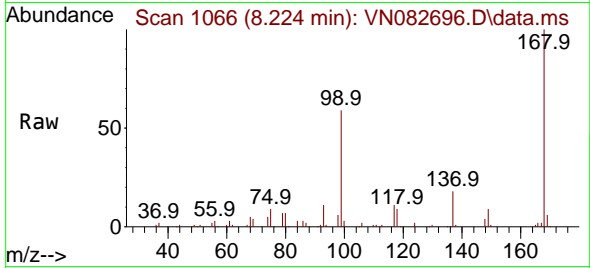




#1
 Pentafluorobenzene
 Concen: 50.000 ug/l
 RT: 8.224 min Scan# 1066
 Delta R.T. -0.005 min
 Lab File: VN082696.D
 Acq: 24 Jun 2024 12:55

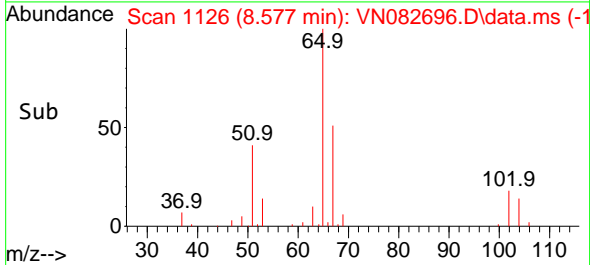
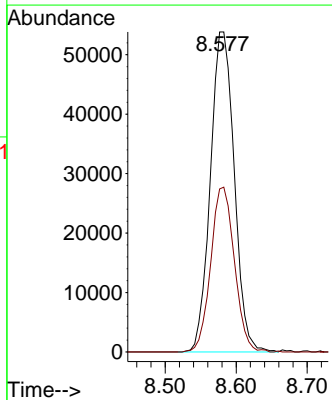
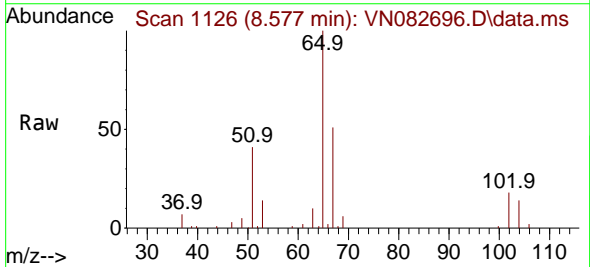
Instrument : MSVOA_N
 ClientSampleId : GWBR-05-187-208-062124

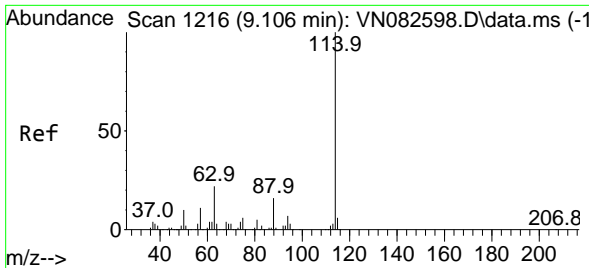
Tgt Ion:168 Resp: 147862
 Ion Ratio Lower Upper
 168 100
 99 59.0 48.2 72.4



#33
 1,2-Dichloroethane-d4
 Concen: 52.995 ug/l
 RT: 8.577 min Scan# 1126
 Delta R.T. -0.006 min
 Lab File: VN082696.D
 Acq: 24 Jun 2024 12:55

Tgt Ion: 65 Resp: 125660
 Ion Ratio Lower Upper
 65 100
 67 51.0 0.0 104.4



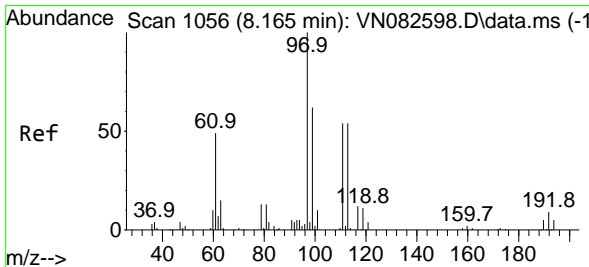
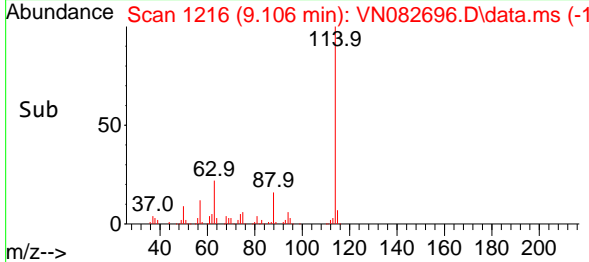
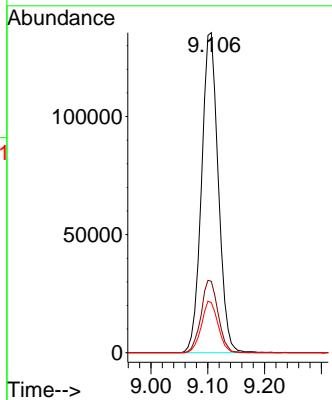
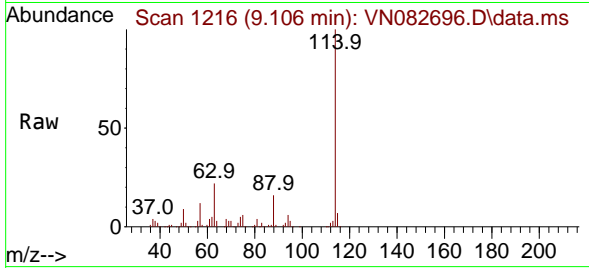


#34
 1,4-Difluorobenzene
 Concen: 50.000 ug/l
 RT: 9.106 min Scan# 11
 Delta R.T. 0.000 min
 Lab File: VN082696.D
 Acq: 24 Jun 2024 12:55

Instrument : MSVOA_N
 ClientSampleId : GWBR-05-187-208-062124

Tgt Ion:114 Resp: 276551

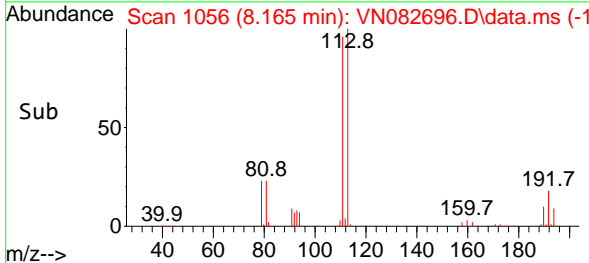
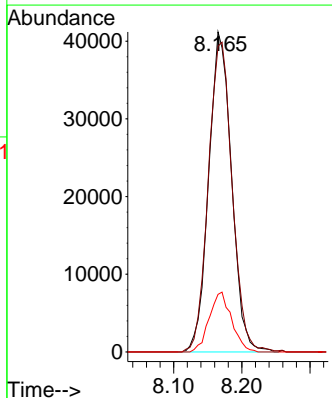
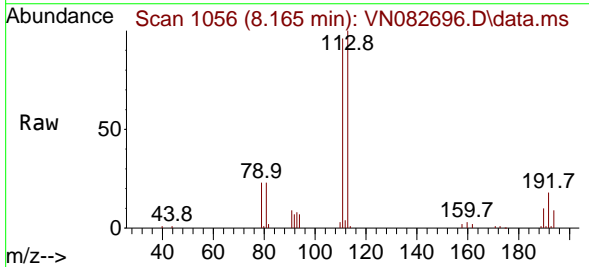
| Ion | Ratio | Lower | Upper |
|-----|-------|-------|-------|
| 114 | 100 | | |
| 63 | 22.3 | 0.0 | 44.6 |
| 88 | 15.7 | 0.0 | 31.4 |

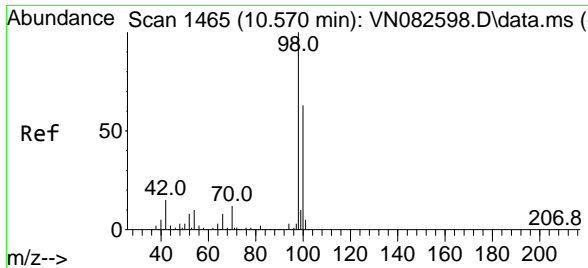


#35
 Dibromofluoromethane
 Concen: 51.221 ug/l
 RT: 8.165 min Scan# 1056
 Delta R.T. 0.000 min
 Lab File: VN082696.D
 Acq: 24 Jun 2024 12:55

Tgt Ion:113 Resp: 96096

| Ion | Ratio | Lower | Upper |
|-----|-------|-------|-------|
| 113 | 100 | | |
| 111 | 101.3 | 82.4 | 123.6 |
| 192 | 18.3 | 14.9 | 22.3 |

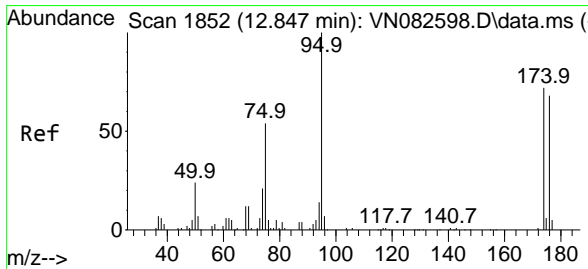
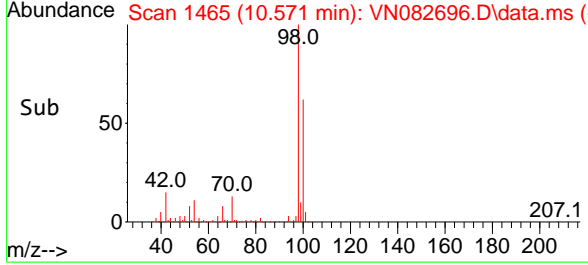
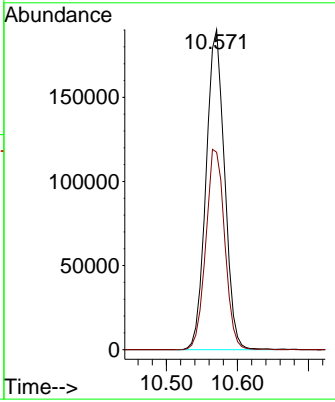
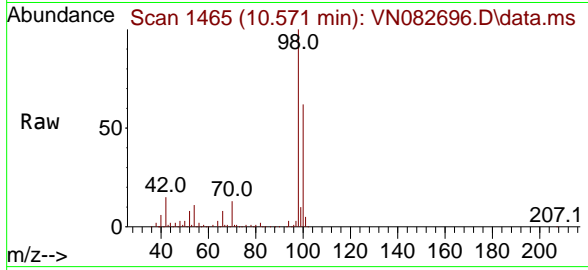




#50
 Toluene-d8
 Concen: 48.431 ug/l
 RT: 10.571 min Scan# 14
 Delta R.T. 0.000 min
 Lab File: VN082696.D
 Acq: 24 Jun 2024 12:55

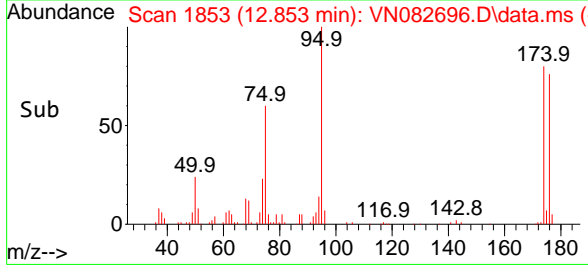
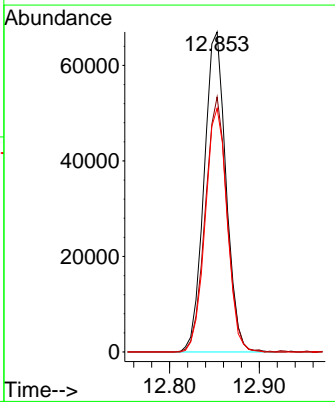
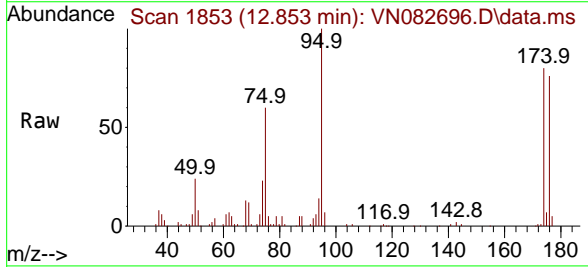
Instrument :
 MSVOA_N
ClientSampleId :
 GWBR-05-187-208-062124

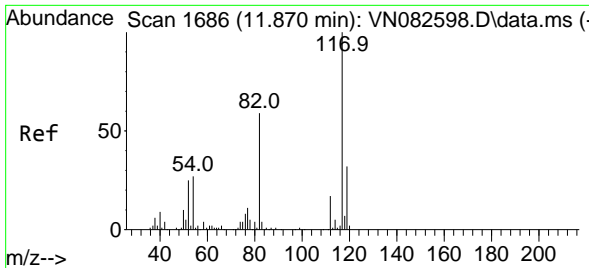
Tgt Ion: 98 Resp: 343604
 Ion Ratio Lower Upper
 98 100
 100 63.9 51.5 77.3



#62
 4-Bromofluorobenzene
 Concen: 46.401 ug/l
 RT: 12.853 min Scan# 1853
 Delta R.T. 0.006 min
 Lab File: VN082696.D
 Acq: 24 Jun 2024 12:55

Tgt Ion: 95 Resp: 113498
 Ion Ratio Lower Upper
 95 100
 174 79.8 0.0 159.2
 176 76.1 0.0 147.6



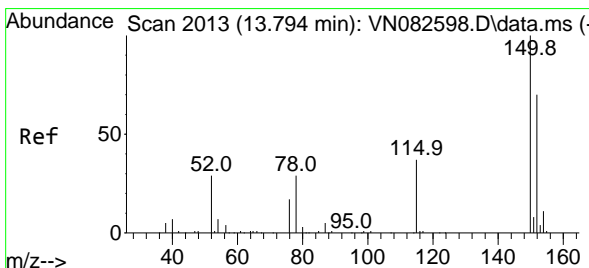
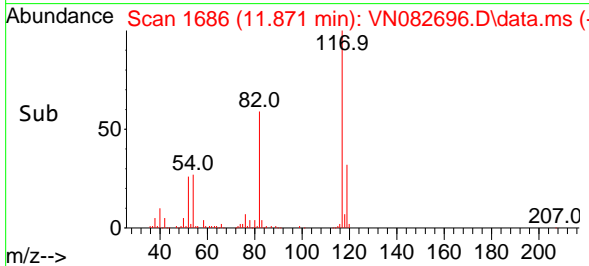
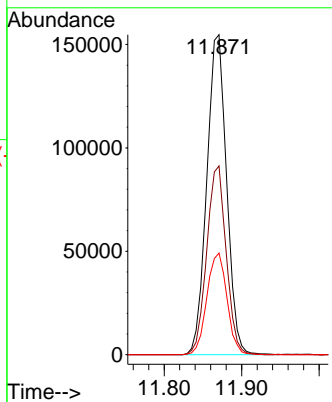
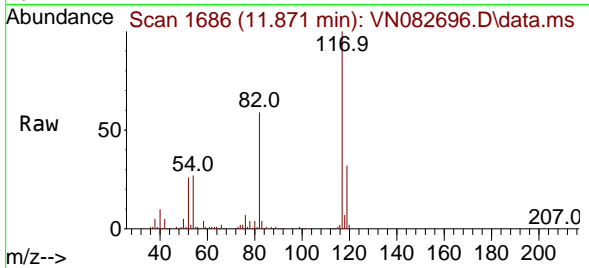


#63
 Chlorobenzene-d5
 Concen: 50.000 ug/l
 RT: 11.871 min Scan# 11
 Delta R.T. 0.000 min
 Lab File: VN082696.D
 Acq: 24 Jun 2024 12:55

Instrument : MSVOA_N
 ClientSampleId : GWBR-05-187-208-062124

Tgt Ion:117 Resp: 274957

| Ion | Ratio | Lower | Upper |
|-----|-------|-------|-------|
| 117 | 100 | | |
| 82 | 59.0 | 47.5 | 71.3 |
| 119 | 31.7 | 25.6 | 38.4 |



#72
 1,4-Dichlorobenzene-d4
 Concen: 50.000 ug/l
 RT: 13.794 min Scan# 2013
 Delta R.T. 0.000 min
 Lab File: VN082696.D
 Acq: 24 Jun 2024 12:55

Tgt Ion:152 Resp: 113199

| Ion | Ratio | Lower | Upper |
|-----|-------|-------|-------|
| 152 | 100 | | |
| 115 | 60.6 | 30.6 | 91.6 |
| 150 | 159.9 | 0.0 | 348.6 |

