

Data Path : Z:\voasrv\HPCHEM1\MSVOA\_N\Data\VN062424\  
 Data File : VN082692.D  
 Acq On : 24 Jun 2024 10:33  
 Operator : JC\MD  
 Sample : VN0624MBL01  
 Misc : 5.00g/10mL/100uL/5.00mL/MSVOA\_N/MEOH  
 ALS Vial : 4 Sample Multiplier: 1

Instrument :  
 MSVOA\_N  
 ClientSampleId :  
 VN0624MBL01

Integration Parameters: RTEINT.P

Integrator: RTE  
 Smoothing : ON Filtering: 5  
 Sampling : 1 Min Area: 3 % of largest Peak  
 Start Thrs: 0.2 Max Peaks: 100  
 Stop Thrs : 0 Peak Location: TOP

If leading or trailing edge < 100 prefer < Baseline drop else tangent >  
 Peak separation: 5

Method : Z:\voasrv\HPCHEM1\MSVOA\_N\methods\82N061724W.M  
 Title : SW846 8260

Signal : TIC: VN082692.D\data.ms

peak #	R.T. min	first scan	max scan	last scan	PK TY	peak height	corr. area	corr. % max.	% of total
1	2.806	139	145	152	rVB3	8861	18958	2.14%	0.404%
2	8.171	1047	1057	1061	rBV	128186	301729	33.98%	6.424%
3	8.230	1061	1067	1080	rVB	192495	434830	48.98%	9.257%
4	8.582	1118	1127	1136	rBV	145687	325025	36.61%	6.919%
5	8.682	1136	1144	1156	rBV2	16058	73667	8.30%	1.568%
6	9.106	1206	1216	1227	rBV	305245	627089	70.63%	13.350%
7	10.571	1457	1465	1478	rBV	486419	887858	100.00%	18.902%
8	11.865	1678	1685	1695	rBV	444000	793262	89.35%	16.888%
9	12.853	1846	1853	1866	rVB	322633	556457	62.67%	11.846%
10	13.794	2006	2013	2023	rBV	407930	678362	76.40%	14.442%

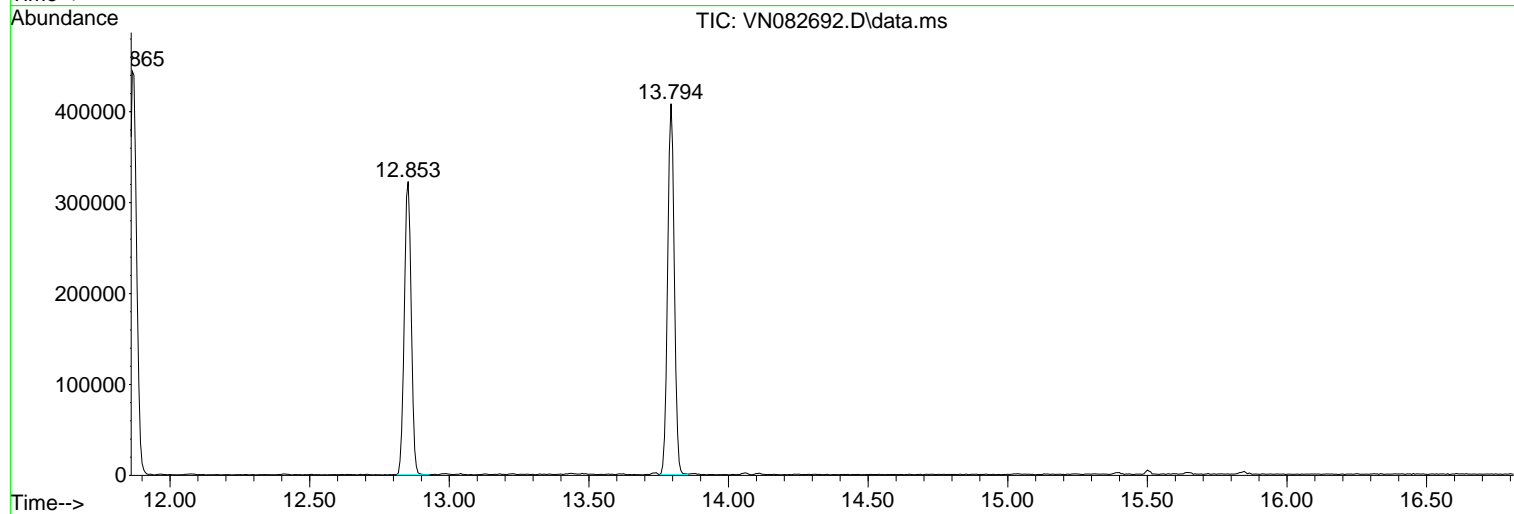
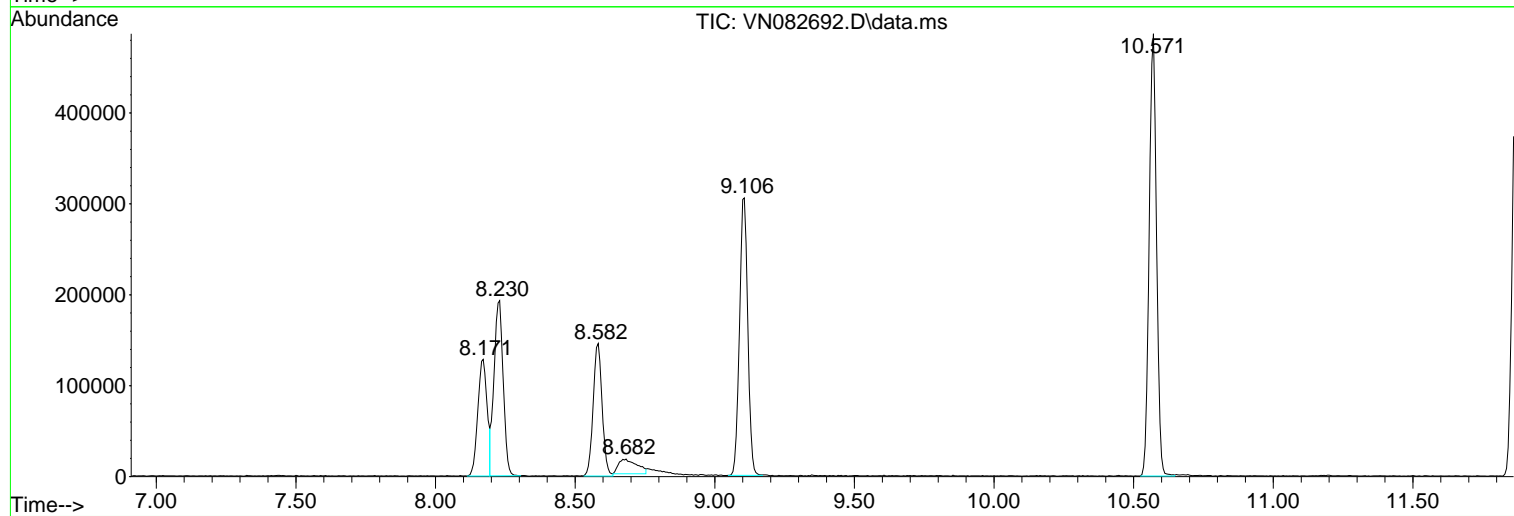
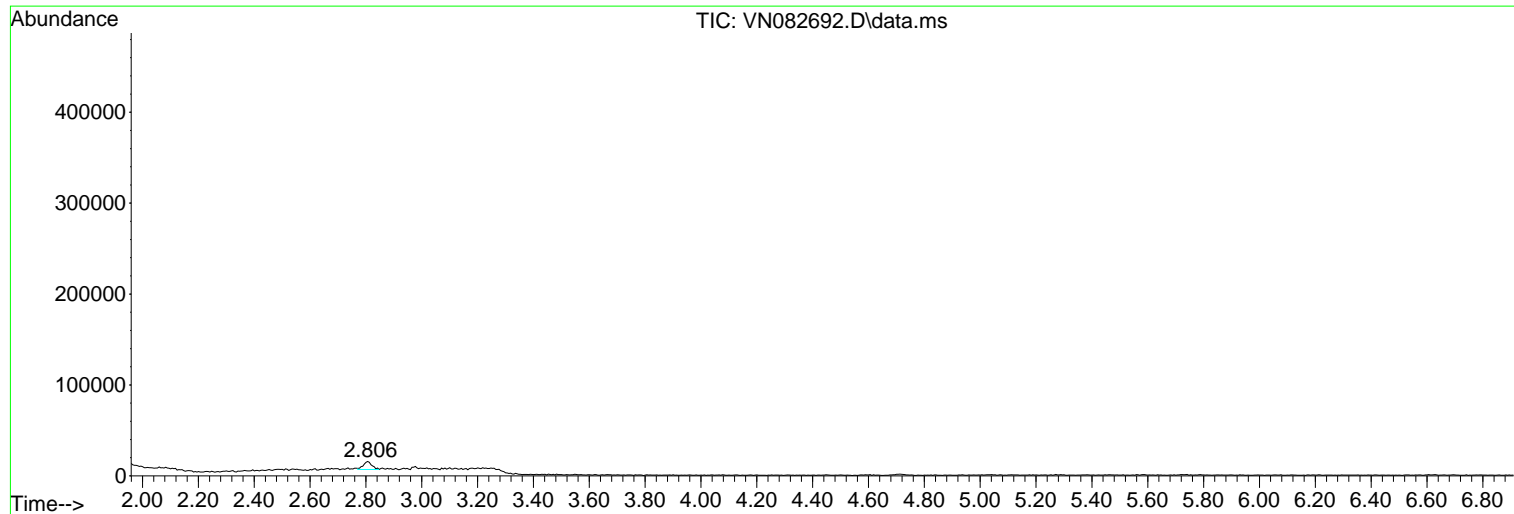
Sum of corrected areas: 4697237

Data Path : Z:\voasrv\HPCHEM1\MSVOA\_N\Data\VN062424\  
Data File : VN082692.D  
Acq On : 24 Jun 2024 10:33  
Operator : JC\MD  
Sample : VN0624MBL01  
Misc : 5.00g/10mL/100uL/5.00mL/MSVOA\_N/MEOH  
ALS Vial : 4 Sample Multiplier: 1

Instrument :  
MSVOA\_N  
ClientSampleId :  
VN0624MBL01

Quant Method : Z:\voasrv\HPCHEM1\MSVOA\_N\methods\82N061724W.M  
Quant Title : SW846 8260

TIC Library : C:\Database\NIST20.L  
TIC Integration Parameters: LSCINT.P



Library Search Compound Report

Data Path : Z:\voasrv\HPCHEM1\MSVOA\_N\Data\VN062424\  
Data File : VN082692.D  
Acq On : 24 Jun 2024 10:33  
Operator : JC\MD  
Sample : VN0624MBL01  
Misc : 5.00g/10mL/100uL/5.00mL/MSVOA\_N/MEOH  
ALS Vial : 4 Sample Multiplier: 1

Instrument :  
MSVOA\_N  
ClientSampleId :  
VN0624MBL01

Quant Method : Z:\voasrv\HPCHEM1\MSVOA\_N\methods\82N061724W.M  
Quant Title : SW846 8260

TIC Library : C:\Database\NIST20.L  
TIC Integration Parameters: LSCINT.P

No Library Search Compounds Detected

\*\*\*\*\*

Data Path : Z:\voasrv\HPCHEM1\MSVOA\_N\Data\VN062424\  
Data File : VN082692.D  
Acq On : 24 Jun 2024 10:33  
Operator : JC\MD  
Sample : VN0624MBL01  
Misc : 5.00g/10mL/100uL/5.00mL/MSVOA\_N/MEOH  
ALS Vial : 4 Sample Multiplier: 1

Instrument :  
MSVOA\_N  
ClientSampleId :  
VN0624MBL01

Quant Method : Z:\voasrv\HPCHEM1\MSVOA\_N\methods\82N061724W.M  
Quant Title : SW846 8260

TIC Library : C:\Database\NIST20.L  
TIC Integration Parameters: LSCINT.P

TIC Top Hit name	RT	EstConc	Units	Response	--Internal Standard--			
					#	RT	Resp	Conc

---