

Data Path : Z:\voasrv\HPCHEM1\MSVOA N\Data\VN062520\
 Data File : VN062125.D
 Acq On : 25 Jun 2020 20:54
 Operator : JC/MD
 Sample : L3043-19
 Misc : 5.00mL/MSVOA N/WATER
 ALS Vial : 27 Sample Multiplier: 1

Instrument :
 MSVOA_N
 ClientSampleId :
 RE120D2-20200615

Quant Time: Jun 30 14:42:17 2020
 Quant Method : Z:\VOASRV\HPCHEM1\MSVOA_N\METHODS\82N062420W.M
 Quant Title : SW846 8260
 QLast Update : Wed Jun 24 15:33:00 2020
 Response via : Initial Calibration

Internal Standards	R.T.	QIon	Response	Conc	Units	Dev(Min)
1) Pentafluorobenzene	7.63	168	244585	50.00	ug/l	0.00
34) 1,4-Difluorobenzene	8.55	114	447420	50.00	ug/l	0.00
63) Chlorobenzene-d5	11.38	117	431989	50.00	ug/l	0.00
72) 1,4-Dichlorobenzene-d4	13.32	152	161005	50.00	ug/l	0.00

System Monitoring Compounds

33) 1,2-Dichloroethane-d4	7.99	65	158029	46.04	ug/l	0.00
Spiked Amount				50.000		
			Recovery	=	92.08%	
35) Dibromofluoromethane	7.55	113	138716	48.33	ug/l	0.00
Spiked Amount				50.000		
			Recovery	=	96.66%	
50) Toluene-d8	10.06	98	559466	48.76	ug/l	0.00
Spiked Amount				50.000		
			Recovery	=	97.52%	
62) 4-Bromofluorobenzene	12.38	95	184191	47.51	ug/l	0.00
Spiked Amount				50.000		
			Recovery	=	95.02%	

Target Compounds

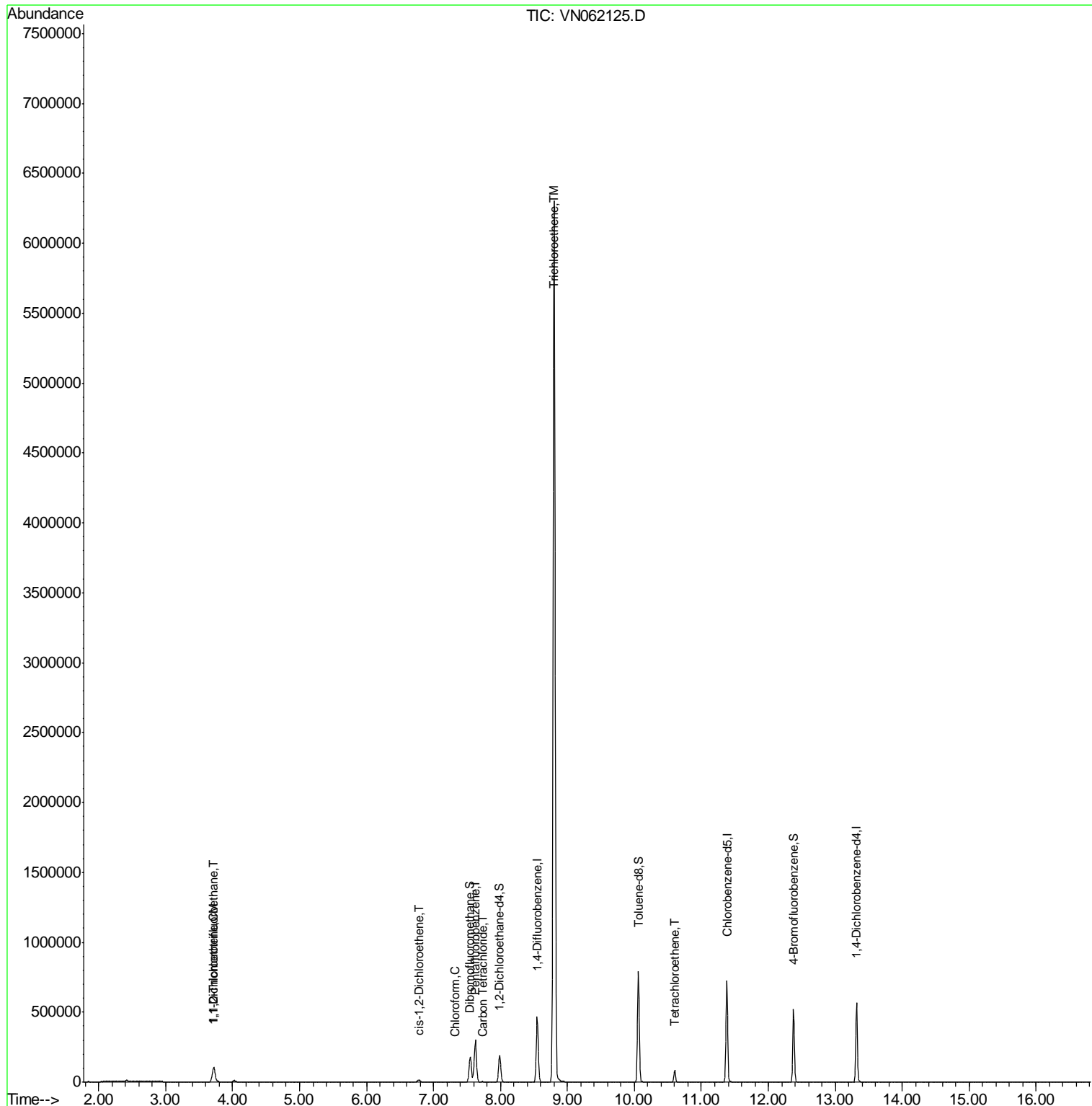
						Qvalue
9) 1,1,2-Trichlorotrifluoroet	3.72	101	65766	23.410	ug/l	100
12) 1,1-Dichloroethene	3.70	96	4995	1.779	ug/l	91
27) cis-1,2-Dichloroethene	6.79	96	10884	3.023	ug/l	87
30) Chloroform	7.33	83	3098	0.543	ug/l	86
38) Carbon Tetrachloride	7.73	117	2911	0.687	ug/l	97
44) Trichloroethene	8.80	130	2335617	675.476	ug/l	99
64) Tetrachloroethene	10.60	164	19691	6.673	ug/l	95

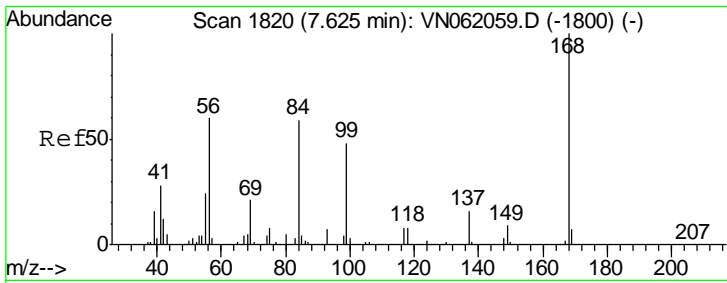
(#) = qualifier out of range (m) = manual integration (+) = signals summed

Data Path : Z:\voasrv\HPCHEM1\MSVOA N\Data\VN062520\
 Data File : VN062125.D
 Acq On : 25 Jun 2020 20:54
 Operator : JC/MD
 Sample : L3043-19
 Misc : 5.00mL/MSVOA N/WATER
 ALS Vial : 27 Sample Multiplier: 1

Instrument :
 MSVOA_N
 ClientSampleId :
 RE120D2-20200615

Quant Time: Jun 30 14:42:17 2020
 Quant Method : Z:\VOASRV\HPCHEM1\MSVOA_N\METHODS\82N062420W.M
 Quant Title : SW846 8260
 QLast Update : Wed Jun 24 15:33:00 2020
 Response via : Initial Calibration

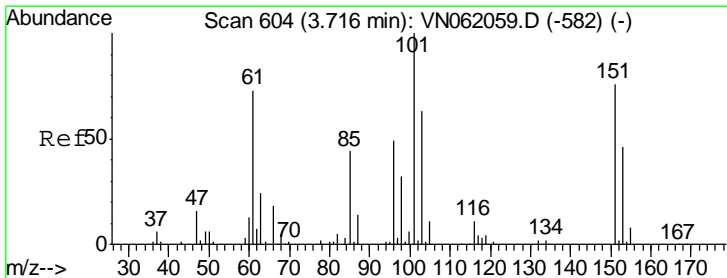
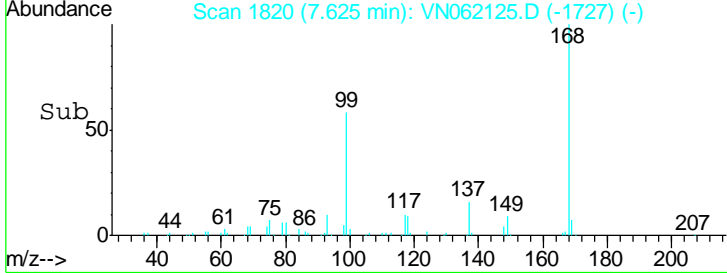
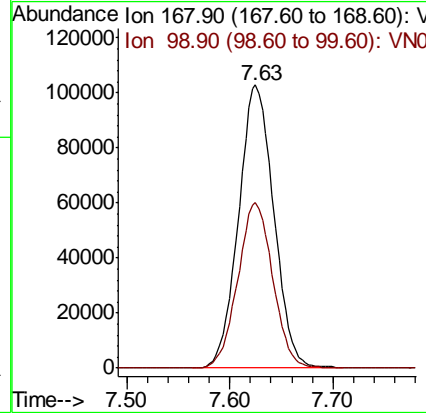
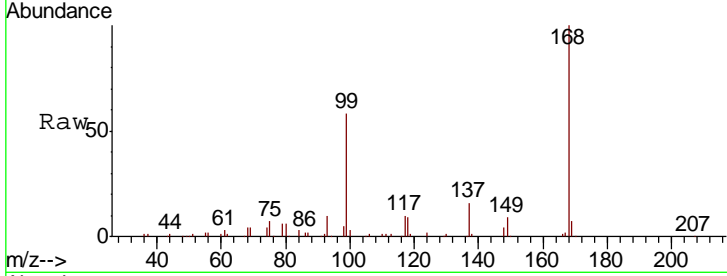




#1
 Pentafluorobenzene
 Concen: 50.000 ug/l
 RT: 7.63 min Scan# 1820
 Delta R.T. -0.00 min
 Lab File: VN062125.D
 Acq: 25 Jun 2020 20:54

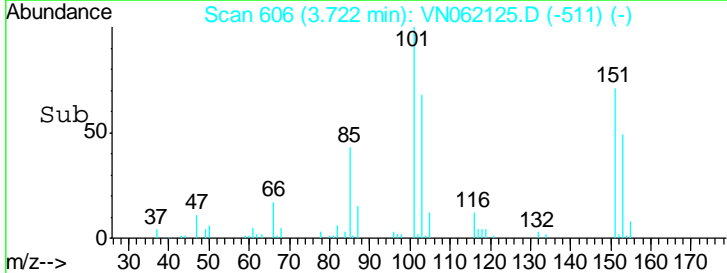
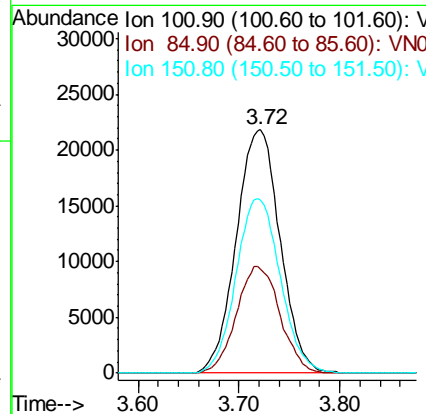
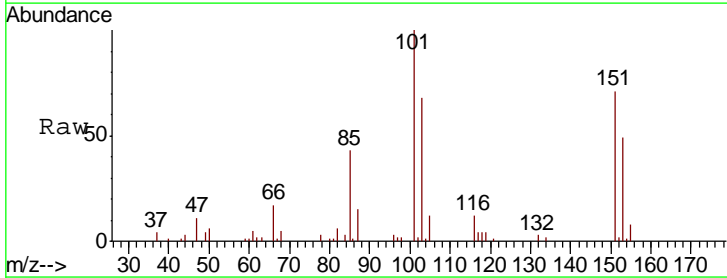
Instrument : MSVOA_N
 ClientSampleID : RE120D2-20200615

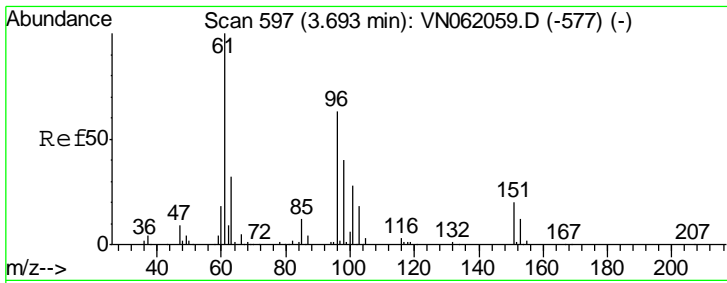
Tgt Ion	Resp	Lower	Upper
168	100		
99	58.4	45.8	68.8



#9
 1,1,2-Trichlorotrifluoroethane
 Concen: 23.410 ug/l
 RT: 3.72 min Scan# 606
 Delta R.T. 0.01 min
 Lab File: VN062125.D
 Acq: 25 Jun 2020 20:54

Tgt Ion	Resp	Lower	Upper
101	100		
85	43.5	34.5	51.7
151	72.4	57.8	86.8

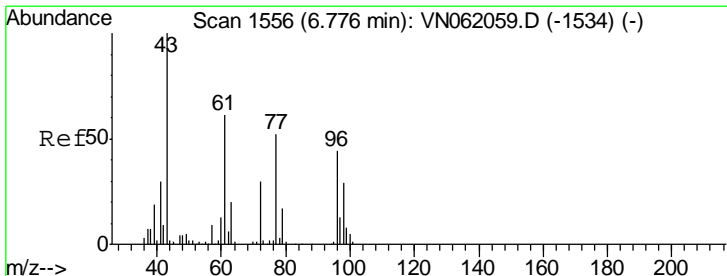
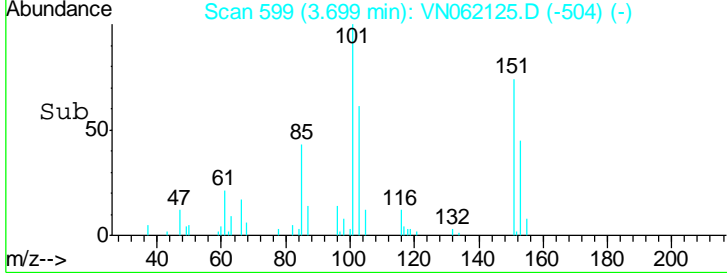
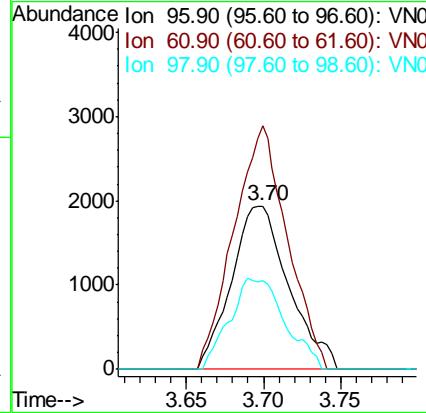
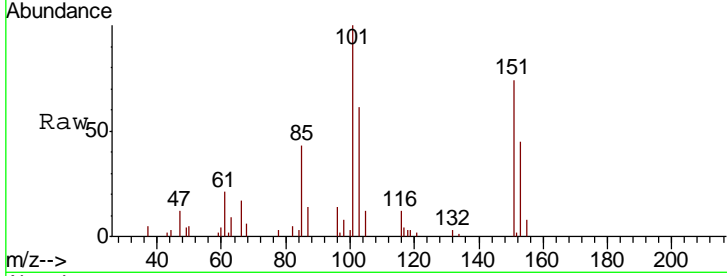




#12
 1,1-Dichloroethene
 Concen: 1.779 ug/l
 RT: 3.70 min Scan# 599
 Delta R.T. 0.01 min
 Lab File: VN062125.D
 Acq: 25 Jun 2020 20:54

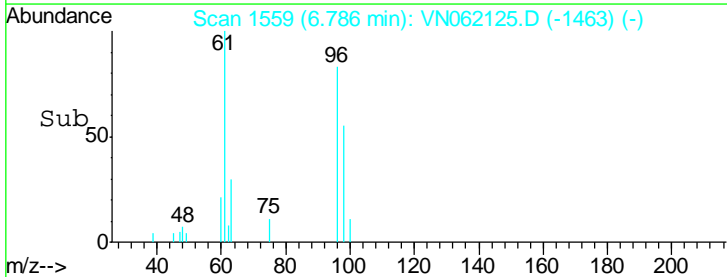
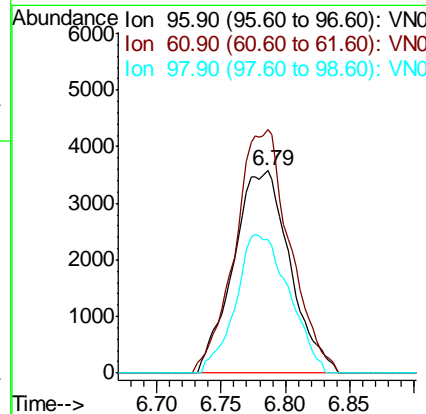
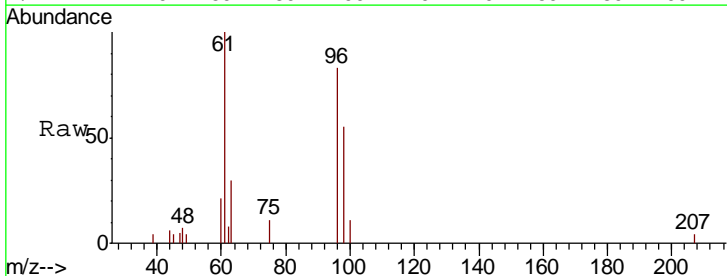
Instrument : MSVOA_N
 ClientSampled : RE120D2-20200615

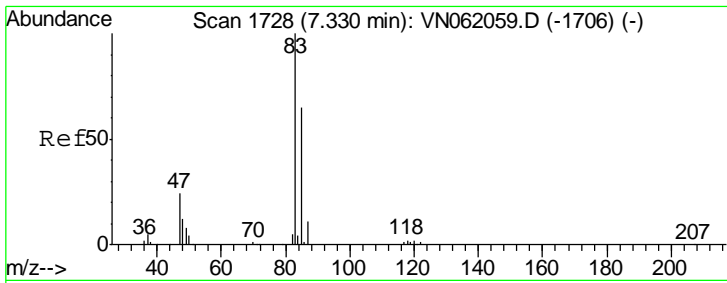
Tgt Ion	Resp	Lower	Upper
96	4995		
101			
96	100		
61	148.9	126.7	190.1
98	54.3	51.0	76.4



#27
 cis-1,2-Dichloroethene
 Concen: 3.023 ug/l
 RT: 6.79 min Scan# 1559
 Delta R.T. 0.01 min
 Lab File: VN062125.D
 Acq: 25 Jun 2020 20:54

Tgt Ion	Resp	Lower	Upper
96	10884		
101			
96	100		
61	116.5	0.0	280.4
98	64.6	0.0	129.4

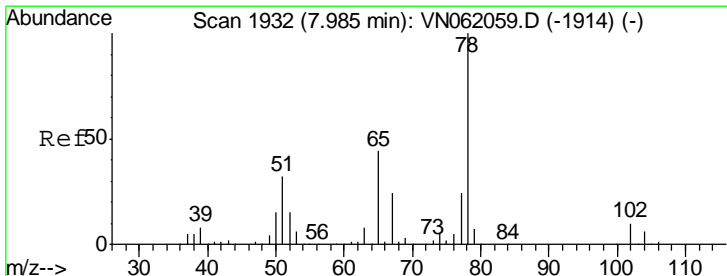
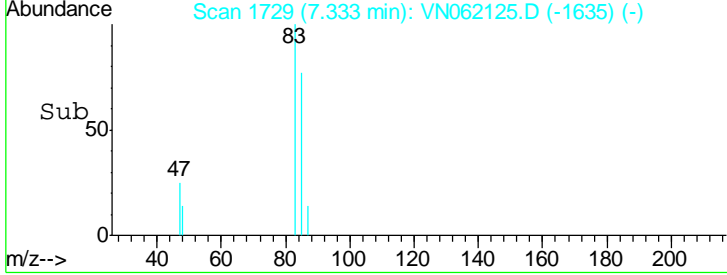
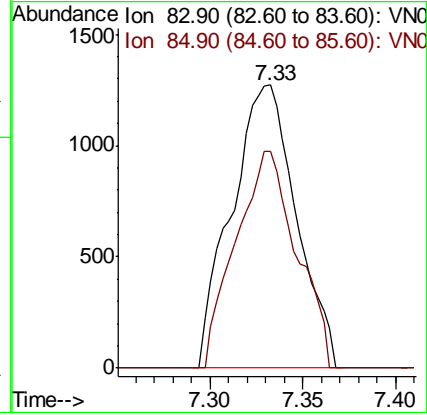
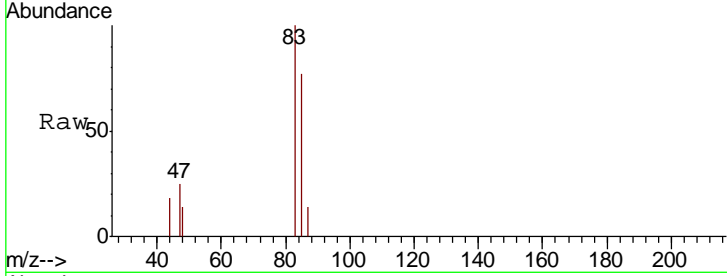




#30
 Chloroform
 Concen: 0.543 ug/l
 RT: 7.33 min Scan# 1729
 Delta R.T. 0.00 min
 Lab File: VN062125.D
 Acq: 25 Jun 2020 20:54

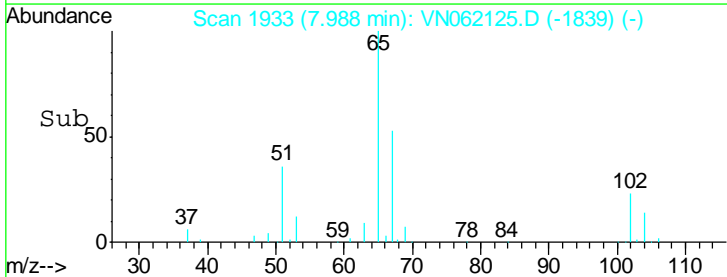
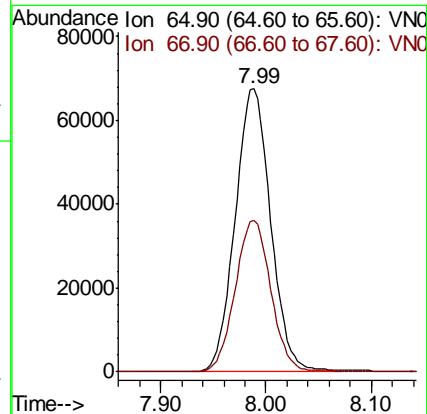
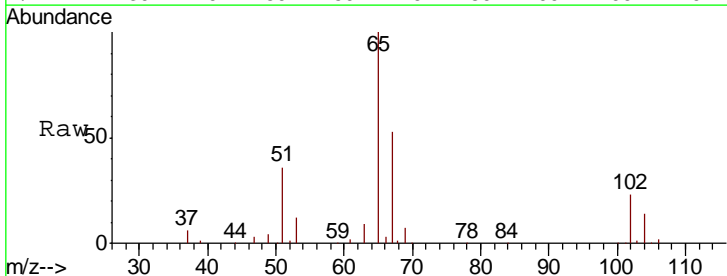
Instrument :
 MSVOA_N
 ClientSampled :
 RE120D2-20200615

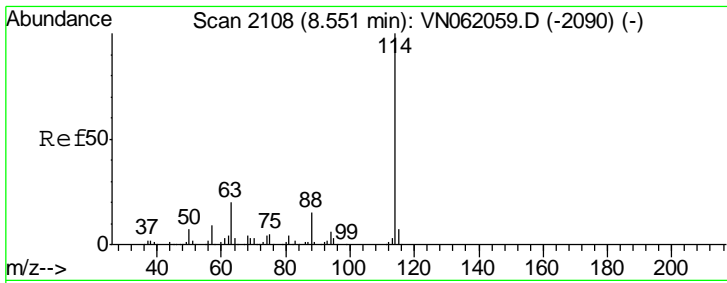
Tgt Ion	Resp	Lower	Upper
83	100		
85	76.6	52.3	78.5



#33
 1,2-Dichloroethane-d4
 Concen: 46.041 ug/l
 RT: 7.99 min Scan# 1933
 Delta R.T. 0.00 min
 Lab File: VN062125.D
 Acq: 25 Jun 2020 20:54

Tgt Ion	Resp	Lower	Upper
65	100		
67	53.7	0.0	106.2

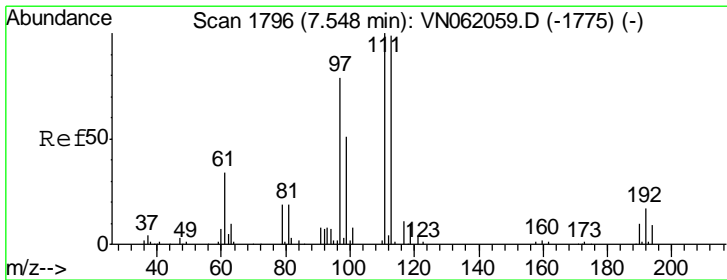
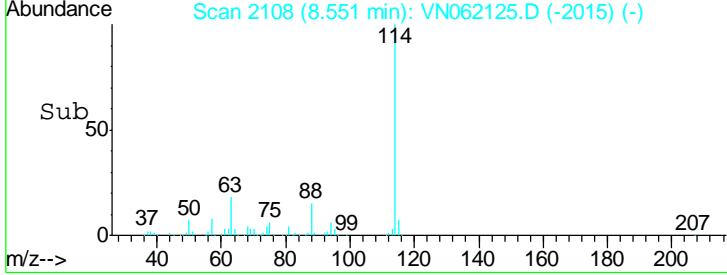
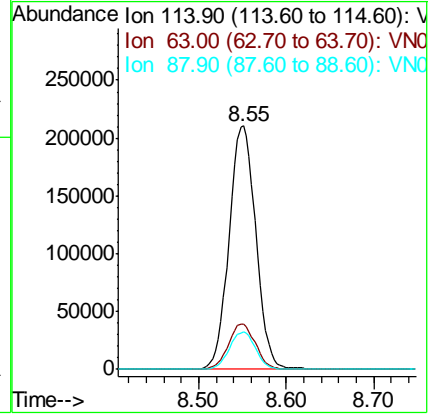
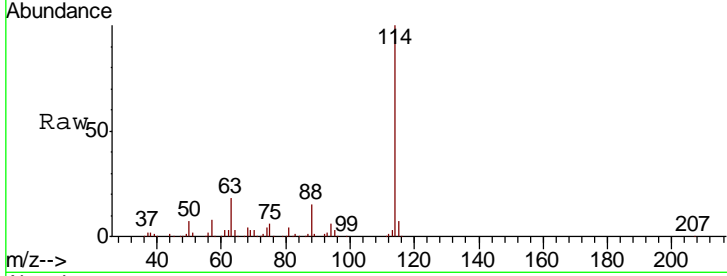




#34
 1,4-Difluorobenzene
 Concen: 50.000 ug/l
 RT: 8.55 min Scan# 2108
 Delta R.T. -0.00 min
 Lab File: VN062125.D
 Acq: 25 Jun 2020 20:54

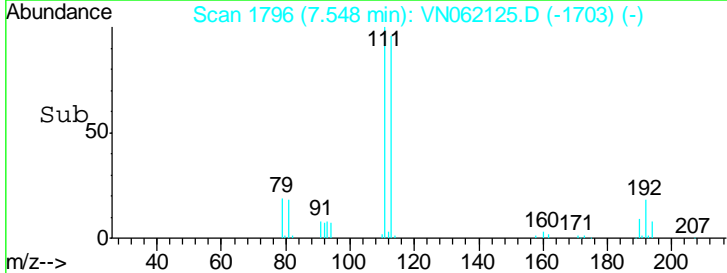
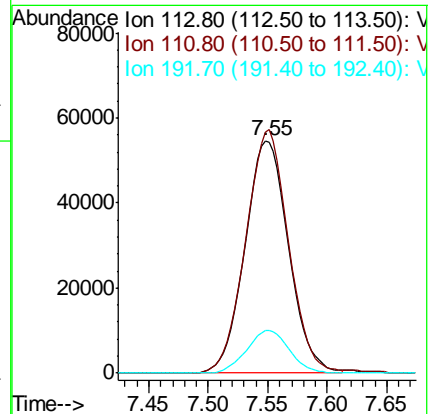
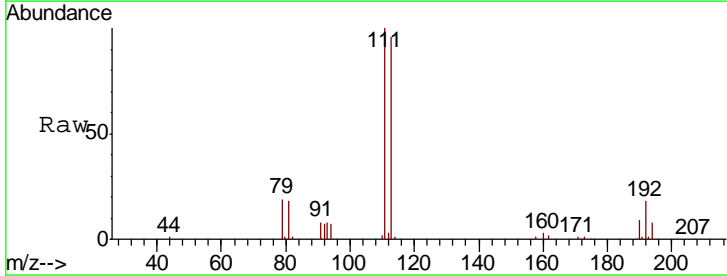
Instrument :
 MSVOA_N
 ClientSampled :
 RE120D2-20200615

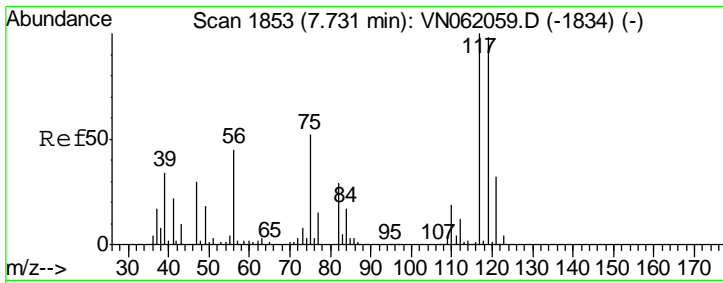
Tgt Ion	Resp	Lower	Upper
114	447420		
63	18.4	0.0	39.2
88	15.2	0.0	30.8



#35
 Dibromofluoromethane
 Concen: 48.326 ug/l
 RT: 7.55 min Scan# 1796
 Delta R.T. -0.00 min
 Lab File: VN062125.D
 Acq: 25 Jun 2020 20:54

Tgt Ion	Resp	Lower	Upper
113	138716		
111	103.3	82.2	123.4
192	18.0	14.0	21.0

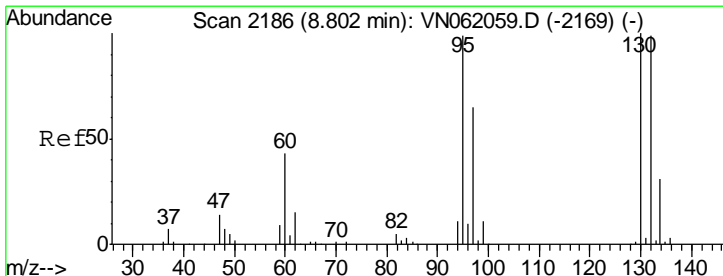
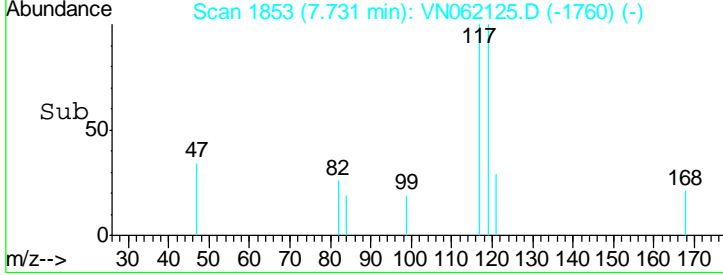
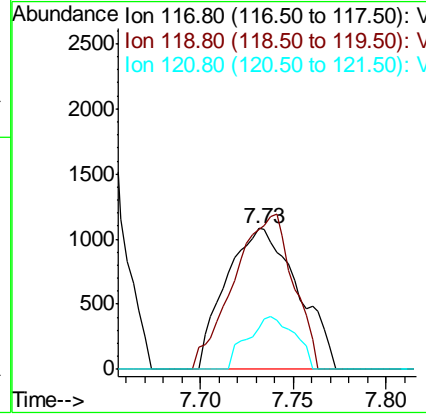
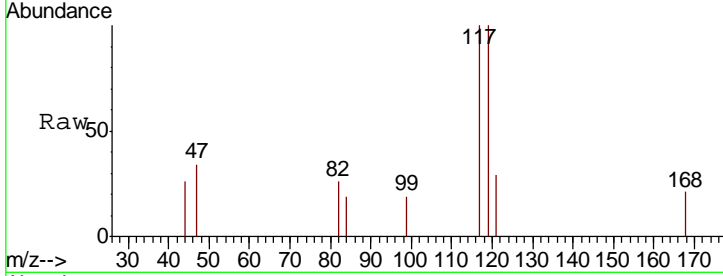




#38
 Carbon Tetrachloride
 Concen: 0.687 ug/l
 RT: 7.73 min Scan# 1853
 Delta R.T. -0.00 min
 Lab File: VN062125.D
 Acq: 25 Jun 2020 20:54

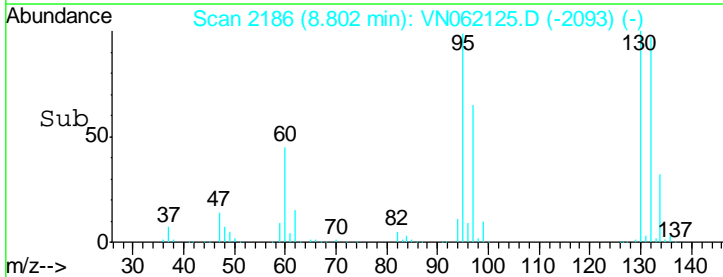
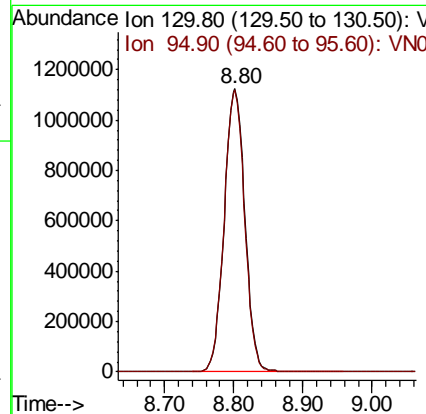
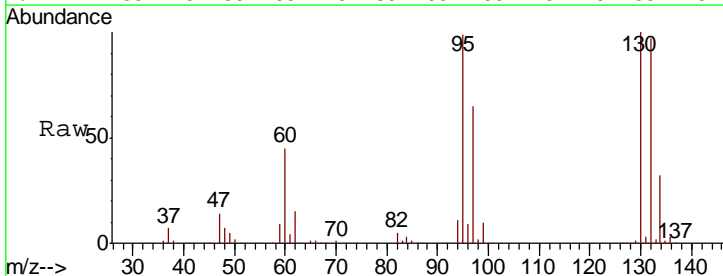
Instrument :
 MSVOA_N
ClientSampled :
 RE120D2-20200615

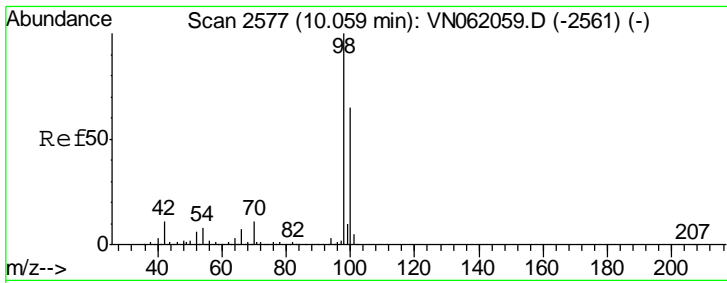
Tgt Ion	Resp	Lower	Upper
117	2911		
119	99.7	78.2	117.2
121	29.0	25.8	38.6



#44
 Trichloroethene
 Concen: 675.476 ug/l
 RT: 8.80 min Scan# 2186
 Delta R.T. -0.00 min
 Lab File: VN062125.D
 Acq: 25 Jun 2020 20:54

Tgt Ion	Resp	Lower	Upper
130	2335617		
95	99.5	0.0	197.8

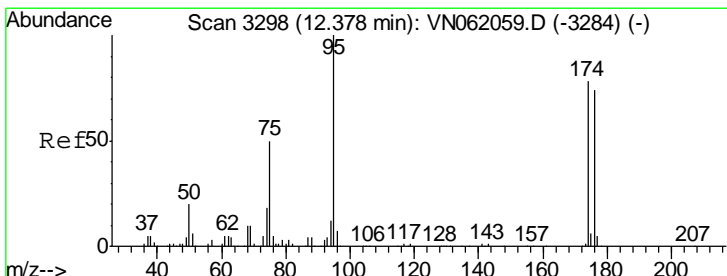
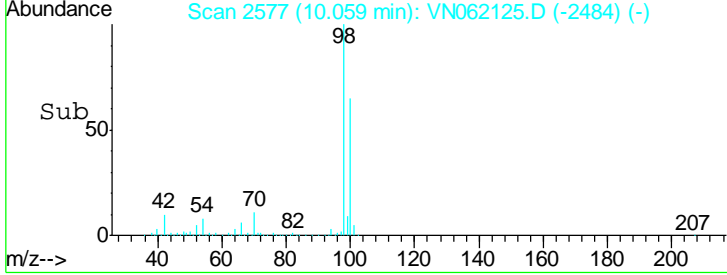
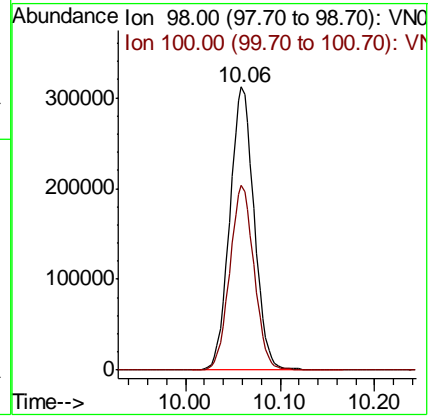
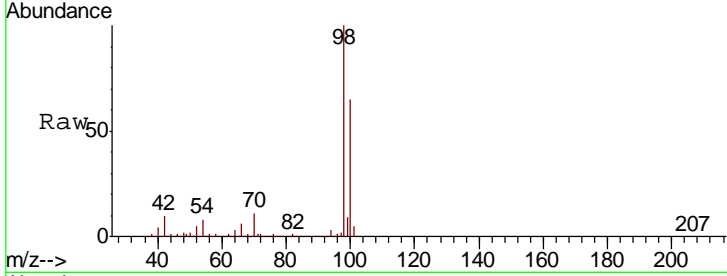




#50
 Toluene-d8
 Concen: 48.759 ug/l
 RT: 10.06 min Scan# 2577
 Delta R.T. -0.00 min
 Lab File: VN062125.D
 Acq: 25 Jun 2020 20:54

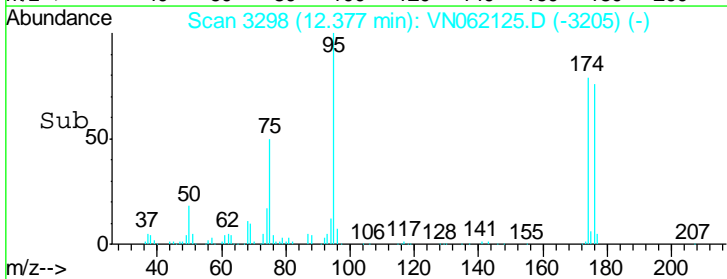
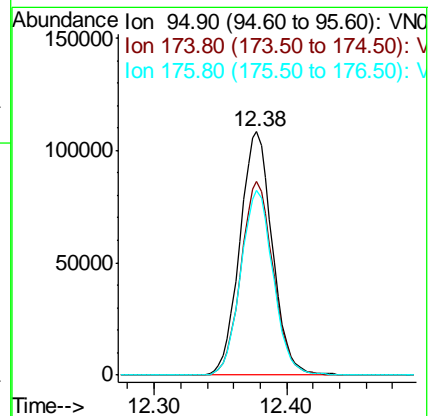
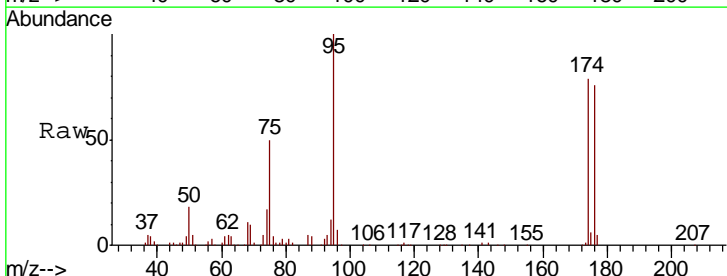
Instrument : MSVOA_N
 ClientSampled : RE120D2-20200615

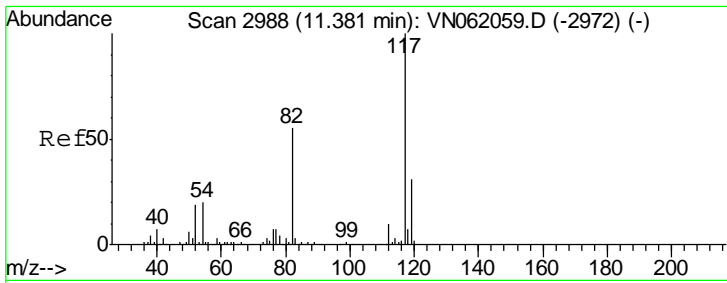
Tgt Ion	Resp	Lower	Upper
98	559466		
100	65.3	51.2	76.8



#62
 4-Bromofluorobenzene
 Concen: 47.514 ug/l
 RT: 12.38 min Scan# 3298
 Delta R.T. -0.00 min
 Lab File: VN062125.D
 Acq: 25 Jun 2020 20:54

Tgt Ion	Resp	Lower	Upper
95	184191		
174	79.0	0.0	154.8
176	76.0	0.0	147.4

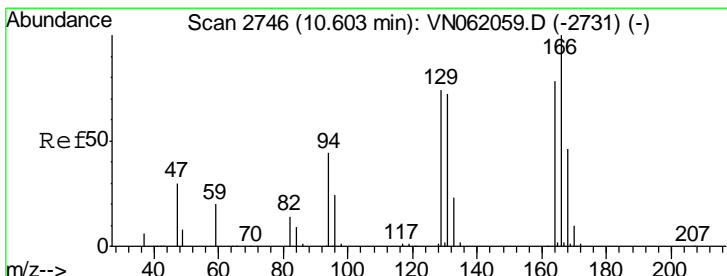
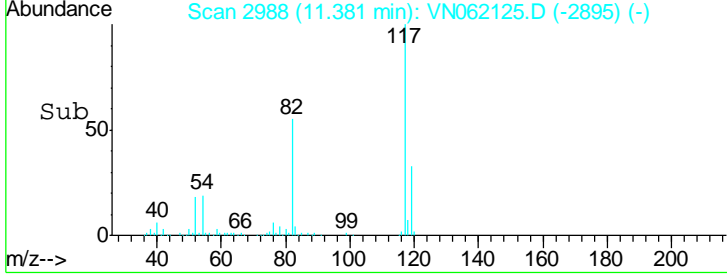
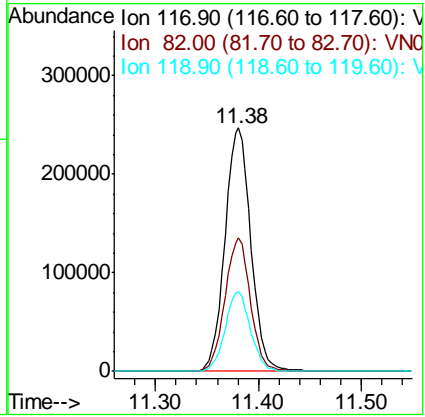
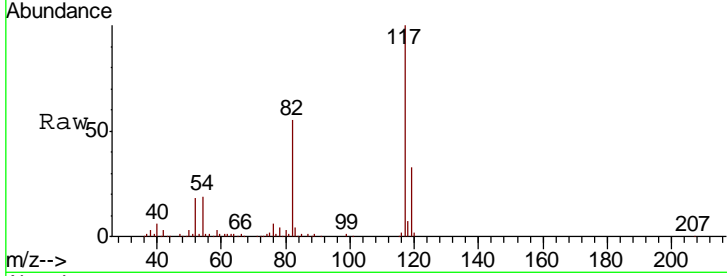




#63
 Chlorobenzene-d5
 Concen: 50.000 ug/l
 RT: 11.38 min Scan# 2988
 Delta R.T. -0.00 min
 Lab File: VN062125.D
 Acq: 25 Jun 2020 20:54

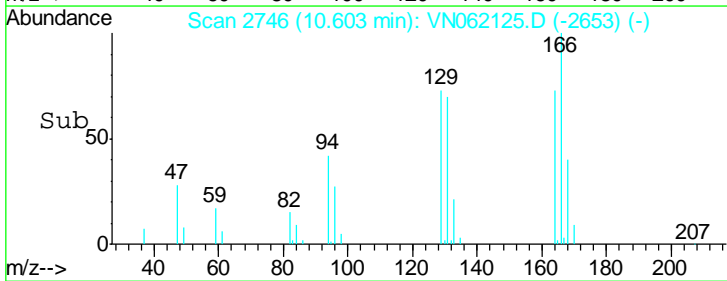
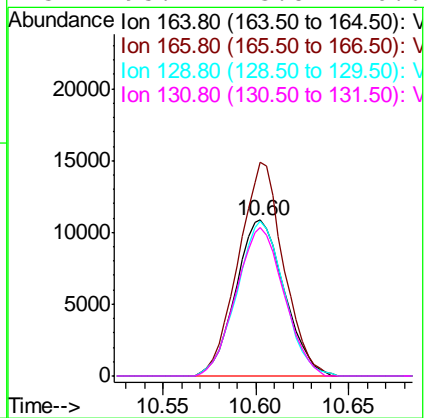
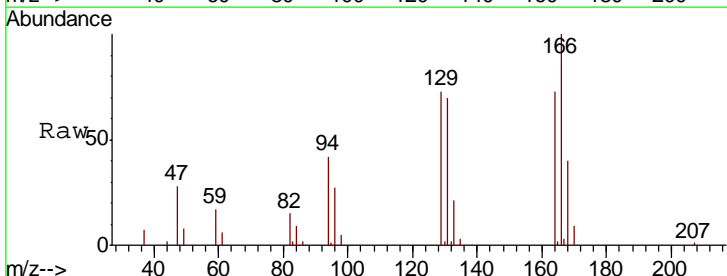
Instrument : MSVOA_N
 ClientSampled : RE120D2-20200615

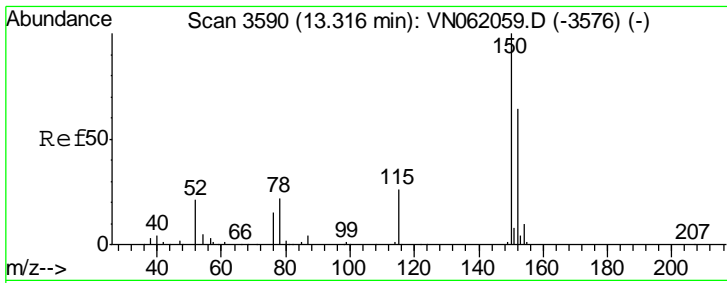
Tgt Ion	Resp	Lower	Upper
117	431989		
82	54.8	43.8	65.8
119	32.8	25.2	37.8



#64
 Tetrachloroethene
 Concen: 6.673 ug/l
 RT: 10.60 min Scan# 2746
 Delta R.T. -0.00 min
 Lab File: VN062125.D
 Acq: 25 Jun 2020 20:54

Tgt Ion	Resp	Lower	Upper
164	19691		
166	136.8	102.9	154.3
129	99.2	75.8	113.8
131	95.2	73.8	110.6





#72
 1,4-Dichlorobenzene-d4
 Concen: 50.000 ug/l
 RT: 13.32 min Scan# 3591
 Delta R.T. 0.00 min
 Lab File: VN062125.D
 Acq: 25 Jun 2020 20:54

Instrument : MSVOA_N
 ClientSampleId : RE120D2-20200615

Tot Ion:152 Resp: 161005

Ion	Ratio	Lower	Upper
152	100		
115	58.4	29.5	88.5
150	154.8	0.0	351.4

