

Data Path : Z:\VOASRV\HPCHEM1\MSVOA N\DATA\VN062520\
 Data File : VN062117.D
 Acq On : 25 Jun 2020 17:41
 Operator : JC/MD
 Sample : L3071-02 20X
 Misc : 8.97µ/5.0mL/100uL/5.00mL/MSVOA_N/MEOH
 ALS Vial : 19 Sample Multiplier: 1

Instrument :
 MSVOA_N
 ClientSampleId :
 TW-7A

Integration Parameters: RTEINT.P

Integrator: RTE
 Smoothing : ON Filtering: 5
 Sampling : 1 Min Area: 3 % of largest Peak
 Start Thrs: 0.2 Max Peaks: 100
 Stop Thrs : 0 Peak Location: TOP

If leading or trailing edge < 100 prefer < Baseline drop else tangent >
 Peak separation: 5

Method : Z:\VOASRV\HPCHEM1\MSVOA_N\METHODS\82N062420W.M
 Title : SW846 8260

Signal : TIC

peak #	R.T. min	first scan	max scan	last scan	PK TY	peak height	corr. area	corr. % max.	% of total
1	2.767	294	309	323	rBV2	71833	150697	1.81%	0.225%
2	3.754	596	616	641	rBV2	79907	247542	2.97%	0.369%
3	4.481	820	842	849	rBV4	116997	352609	4.23%	0.525%
4	4.998	978	1003	1028	rBV3	127527	459518	5.51%	0.685%
5	5.519	1143	1165	1192	rBV2	108241	339483	4.07%	0.506%
6	5.876	1262	1276	1300	rVB3	33061	103118	1.24%	0.154%
7	6.320	1391	1414	1438	rBV5	44291	158633	1.90%	0.236%
8	6.471	1442	1461	1478	rVV2	119717	376444	4.52%	0.561%
9	6.577	1478	1494	1514	rVB3	123996	371624	4.46%	0.554%
10	7.281	1695	1713	1722	rBV3	29364	84193	1.01%	0.125%
11	7.345	1723	1733	1752	rVB4	53762	149948	1.80%	0.223%
12	7.609	1775	1815	1832	rBV5	462213	2262506	27.14%	3.372%
13	7.702	1833	1844	1866	rVB2	259515	704570	8.45%	1.050%
14	7.837	1866	1886	1917	rBV2	466777	1157316	13.88%	1.725%
15	7.985	1917	1932	1951	rBV	190880	465281	5.58%	0.693%
16	8.169	1959	1989	2011	rBV	1108144	3228913	38.73%	4.812%
17	8.400	2041	2061	2085	rVB3	352852	821062	9.85%	1.224%
18	8.548	2088	2107	2130	rBV3	674578	1618209	19.41%	2.411%
19	8.712	2147	2158	2169	rVB2	48626	92109	1.10%	0.137%
20	8.786	2169	2181	2189	rBV2	84764	187265	2.25%	0.279%
21	9.053	2237	2264	2273	rBV3	493343	1240069	14.87%	1.848%
22	9.111	2273	2282	2294	rVB2	250939	503831	6.04%	0.751%
23	9.188	2294	2306	2314	rBV	87200	176239	2.11%	0.263%
24	9.239	2315	2322	2335	rVB4	80906	159747	1.92%	0.238%
25	9.487	2386	2399	2419	rBV	780749	1561281	18.73%	2.327%
26	9.622	2420	2441	2455	rBV3	1035568	2458184	29.49%	3.663%
27	9.699	2455	2465	2472	rBV	241768	454476	5.45%	0.677%
28	9.837	2488	2508	2530	rBV3	285770	779524	9.35%	1.162%
29	9.992	2545	2556	2566	rVV	534733	968655	11.62%	1.443%
30	10.059	2566	2577	2600	rVB	875133	1696013	20.34%	2.527%
31	10.181	2600	2615	2621	rBV7	36399	88767	1.06%	0.132%
32	10.255	2622	2638	2650	rVB2	256922	531524	6.38%	0.792%
33	10.493	2702	2712	2716	rBV5	78209	139125	1.67%	0.207%
34	10.599	2736	2745	2756	rVB6	48334	91750	1.10%	0.137%

Data Path : Z:\VOASRV\HPCHEM1\MSVOA N\DATA\VN062520\
 Data File : VN062117.D
 Acq On : 25 Jun 2020 17:41
 Operator : JC/MD
 Sample : L3071-02 20X
 Misc : 8.97µ/5.0mL/100µL/5.00mL/MSVOA_N/MEOH
 ALS Vial : 19 Sample Multiplier: 1

Instrument :
 MSVOA_N
 ClientSampleId :
 TW-7A

Integration Parameters: RTEINT.P

Integrator: RTE
 Smoothing : ON
 Sampling : 1
 Start Thrs: 0.2
 Stop Thrs : 0

Filtering: 5
 Min Area: 3 % of largest Peak
 Max Peaks: 100
 Peak Location: TOP

If leading or trailing edge < 100 prefer < Baseline drop else tangent >
 Peak separation: 5

Method : Z:\VOASRV\HPCHEM1\MSVOA_N\METHODS\82N062420W.M
 Title : SW846 8260

35	10.693	2756	2774	2783	rBV4	50252	108997	1.31%	0.162%
36	10.795	2784	2806	2817	rBV	76254	175215	2.10%	0.261%
37	11.172	2907	2923	2943	rVB5	191668	492805	5.91%	0.734%
38	11.275	2944	2955	2973	rBV	148825	278703	3.34%	0.415%
39	11.381	2973	2988	3000	rBV	817850	1502322	18.02%	2.239%
40	11.483	3007	3020	3036	rVB	793557	1414167	16.96%	2.107%
41	11.599	3039	3056	3076	rBV	1431166	2869673	34.42%	4.276%
42	12.223	3239	3250	3261	rBV	811923	1289050	15.46%	1.921%
43	12.374	3281	3297	3308	rBV2	630772	1251178	15.01%	1.864%
44	12.564	3346	3356	3367	rVV	1513621	2418873	29.01%	3.605%
45	12.631	3367	3377	3381	rVV	1210035	1921562	23.05%	2.864%
46	12.664	3381	3387	3393	rVV	1696872	2649464	31.78%	3.948%
47	12.709	3393	3401	3423	rVB	1996845	3248616	38.97%	4.841%
48	12.866	3437	3450	3465	rBV	1171102	1961010	23.52%	2.922%
49	12.966	3467	3481	3485	rBV	104472	181510	2.18%	0.270%
50	13.014	3485	3496	3508	rVB	5274442	8337038	100.00%	12.424%
51	13.069	3509	3513	3522	rVB	66670	96395	1.16%	0.144%
52	13.146	3523	3537	3541	rBV3	124064	294760	3.54%	0.439%
53	13.319	3579	3591	3595	rVV	793076	1356065	16.27%	2.021%
54	13.348	3596	3600	3627	rVB2	959365	1778553	21.33%	2.650%
55	13.516	3634	3652	3659	rBV	849743	1709185	20.50%	2.547%
56	13.561	3659	3666	3685	rVV4	758959	1565205	18.77%	2.332%
57	13.647	3686	3693	3704	rVV	86144	138679	1.66%	0.207%
58	13.715	3705	3714	3724	rVB	200673	324593	3.89%	0.484%
59	13.776	3724	3733	3738	rBV	327375	521946	6.26%	0.778%
60	13.808	3739	3743	3751	rVV	317236	405144	4.86%	0.604%
61	13.863	3751	3760	3771	rVB	546401	825375	9.90%	1.230%
62	13.969	3784	3793	3804	rVB	187496	304059	3.65%	0.453%
63	14.104	3825	3835	3843	rBV	113148	182164	2.18%	0.271%
64	14.184	3850	3860	3865	rBV	311747	471201	5.65%	0.702%
65	14.223	3866	3872	3881	rVV	448948	655979	7.87%	0.978%
66	14.271	3881	3887	3894	rVB3	82951	107844	1.29%	0.161%
67	14.451	3935	3943	3951	rBV	159619	243594	2.92%	0.363%
68	14.499	3952	3958	3965	rVB	79144	108296	1.30%	0.161%
69	14.564	3965	3978	3990	rBV5	336591	769293	9.23%	1.146%
70	14.622	3990	3996	4009	rVB3	60101	108628	1.30%	0.162%
71	14.827	4051	4060	4079	rVB2	76925	186157	2.23%	0.277%

Data Path : Z:\VOASRV\HPCHEM1\MSVOA N\DATA\VN062520\
Data File : VN062117.D
Acq On : 25 Jun 2020 17:41
Operator : JC/MD
Sample : L3071-02 20X
Misc : 8.97g/5.0mL/100uL/5.00mL/MSVOA_N/MEOH
ALS Vial : 19 Sample Multiplier: 1

Instrument :
MSVOA_N
ClientSampleId :
TW-7A

Integration Parameters: RTEINT.P
Integrator: RTE
Smoothing : ON Filtering: 5
Sampling : 1 Min Area: 3 % of largest Peak
Start Thrs: 0.2 Max Peaks: 100
Stop Thrs : 0 Peak Location: TOP

If leading or trailing edge < 100 prefer < Baseline drop else tangent >
Peak separation: 5

Method : Z:\VOASRV\HPCHEM1\MSVOA_N\METHODS\82N062420W.M
Title : SW846 8260

72	14.930	4082	4092	4112	rVB4	57346	120289	1.44%	0.179%
73	15.104	4134	4146	4158	rVB	149250	273045	3.28%	0.407%
74	16.126	4453	4464	4479	rVB	84686	171633	2.06%	0.256%
75	16.313	4510	4522	4537	rBV2	48232	106807	1.28%	0.159%

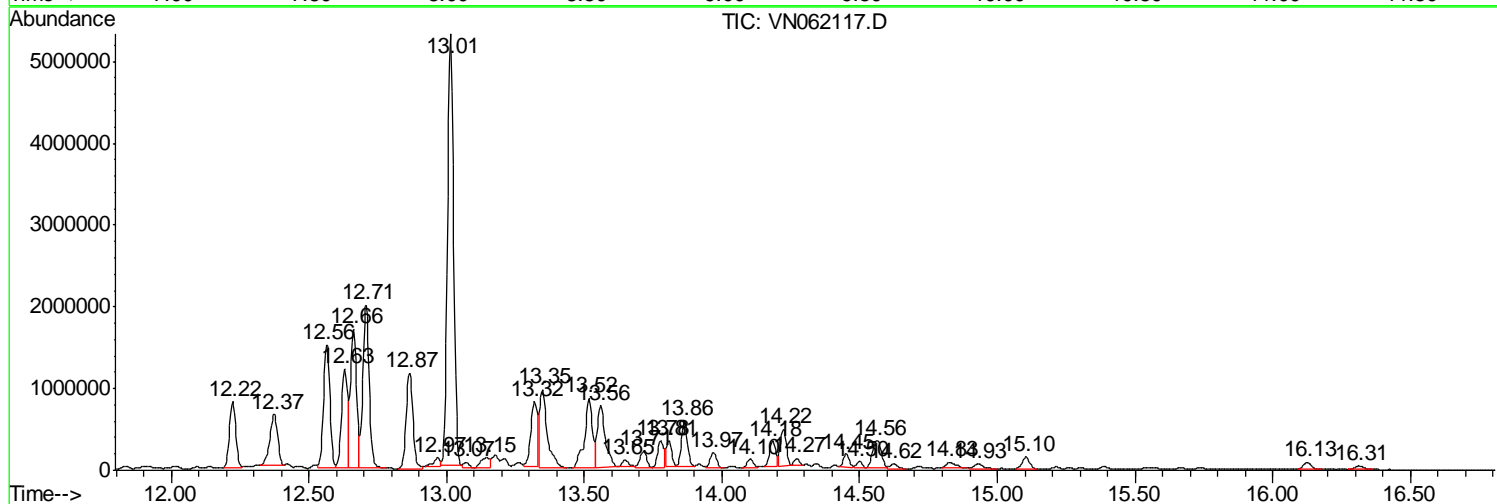
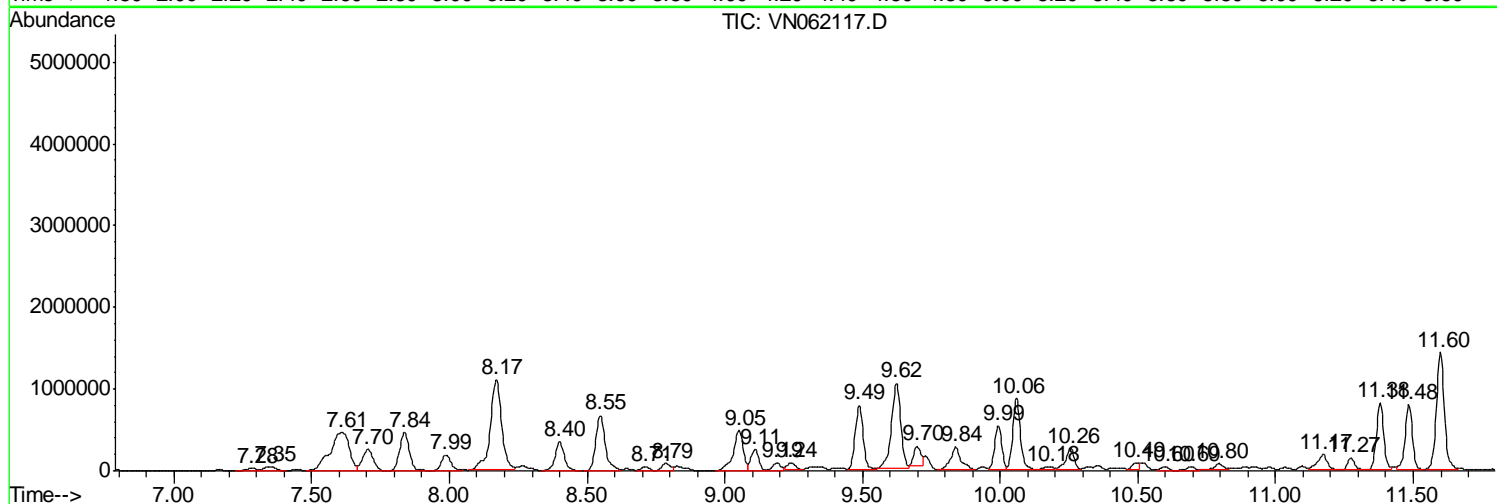
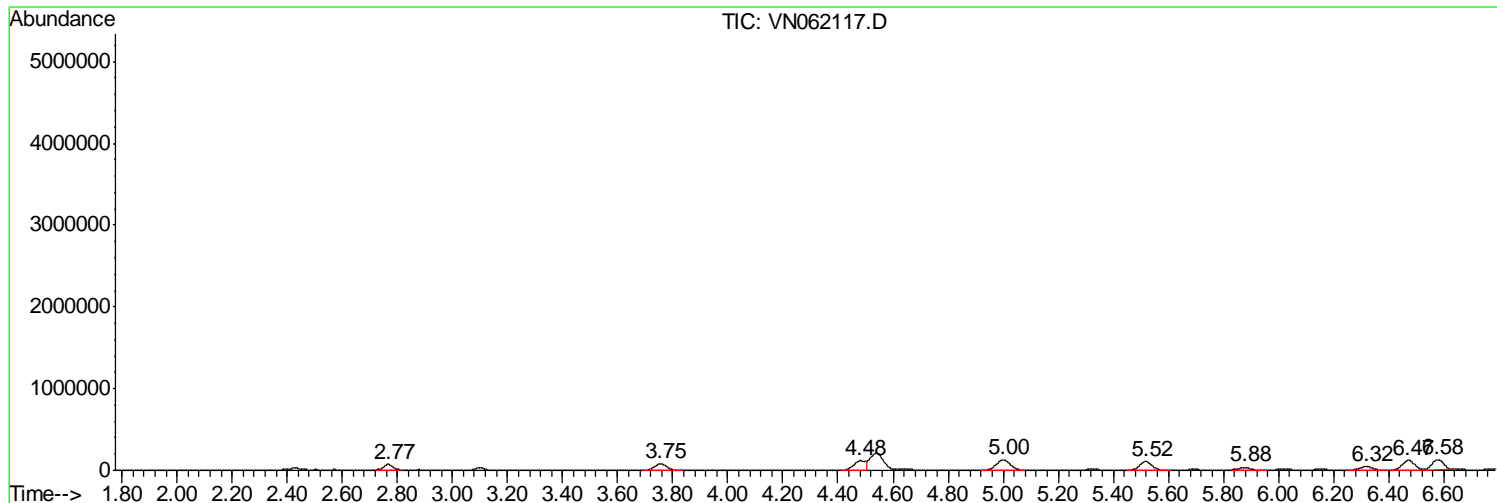
Sum of corrected areas: 67105297

Data Path : Z:\VOASRV\HPCHEM1\MSVOA N\DATA\VN062520\
 Data File : VN062117.D
 Acq On : 25 Jun 2020 17:41
 Operator : JC/MD
 Sample : L3071-02 20X
 Misc : 8.97µ/5.0mL/100uL/5.00mL/MSVOA_N/MEOH
 ALS Vial : 19 Sample Multiplier: 1

Instrument :
 MSVOA_N
 ClientSampleId :
 TW-7A

Quant Method : Z:\VOASRV\HPCHEM1\MSVOA_N\METHODS\82N062420W.M
 Quant Title : SW846 8260

TIC Library : C:\DATABASE\NIST11.L
 TIC Integration Parameters: LSCINT.P



Data Path : Z:\VOASRV\HPCHEM1\MSVOA N\DATA\VN062520\
 Data File : VN062117.D
 Acq On : 25 Jun 2020 17:41
 Operator : JC/MD
 Sample : L3071-02 20X
 Misc : 8.97µ/5.0mL/100uL/5.00mL/MSVOA_N/MEOH
 ALS Vial : 19 Sample Multiplier: 1

Instrument :
 MSVOA_N
 ClientSampled :
 TW-7A

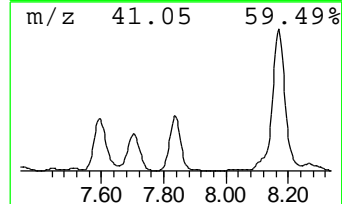
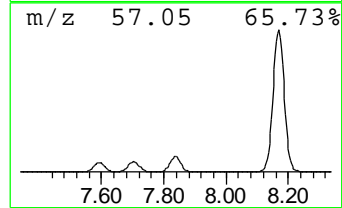
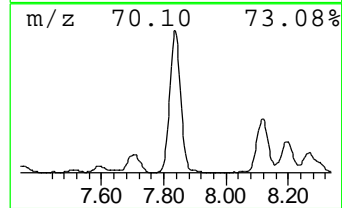
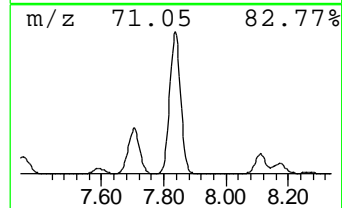
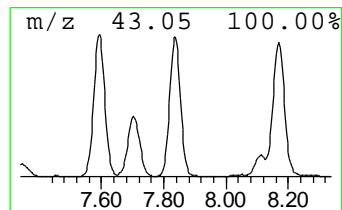
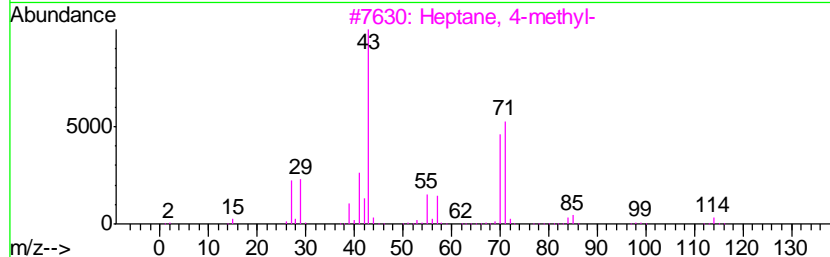
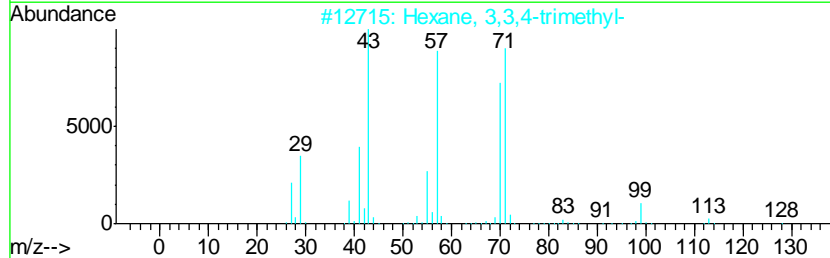
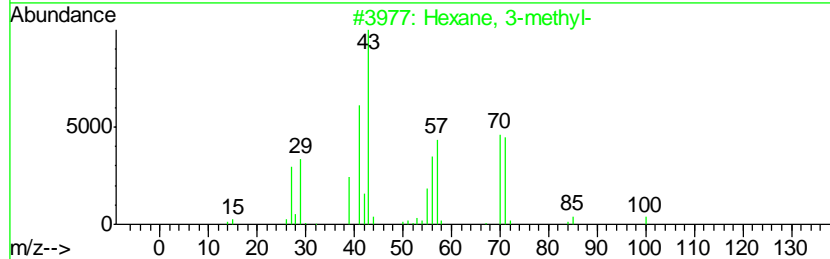
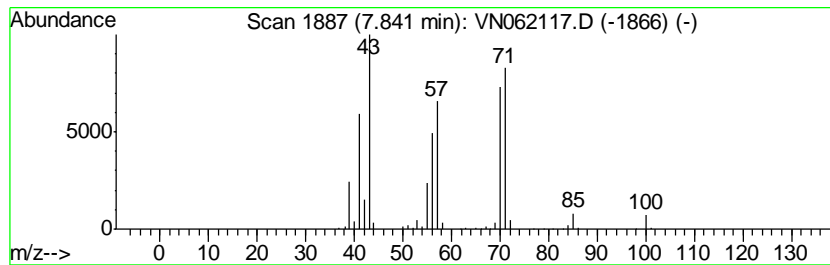
Quant Method : Z:\VOASRV\HPCHEM1\MSVOA_N\METHODS\82N062420W.M
 Quant Title : SW846 8260

TIC Library : C:\DATABASE\NIST11.L
 TIC Integration Parameters: LSCINT.P

 Peak Number 1 Hexane, 3-methyl- Concentration Rank 10

R.T.	EstConc	Area	Relative to ISTD	R.T.
7.84	25.58 ug/l	1157320	Pentafluorobenzene	7.63

Hit#	of	Tentative ID	MW	MolForm	CAS#	Qual
1	5	Hexane, 3-methyl-	100	C7H16	000589-34-4	95
2		Hexane, 3,3,4-trimethyl-	128	C9H20	016747-31-2	64
3		Heptane, 4-methyl-	114	C8H18	000589-53-7	64
4		Heptane	100	C7H16	000142-82-5	62
5		Decane, 3,3,4-trimethyl-	184	C13H28	049622-18-6	59



Data Path : Z:\VOASRV\HPCHEM1\MSVOA N\DATA\VN062520\
 Data File : VN062117.D
 Acq On : 25 Jun 2020 17:41
 Operator : JC/MD
 Sample : L3071-02 20X
 Misc : 8.97µ/5.0mL/100uL/5.00mL/MSVOA_N/MEOH
 ALS Vial : 19 Sample Multiplier: 1

Instrument :
 MSVOA_N
 ClientSampled :
 TW-7A

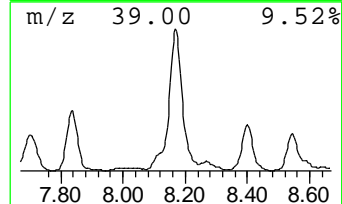
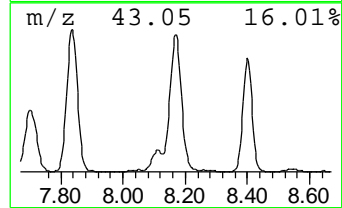
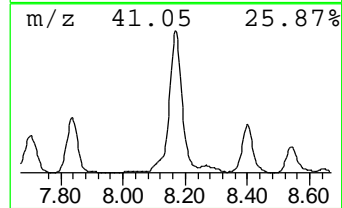
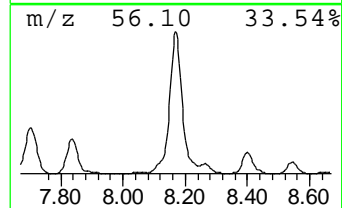
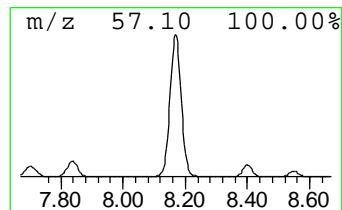
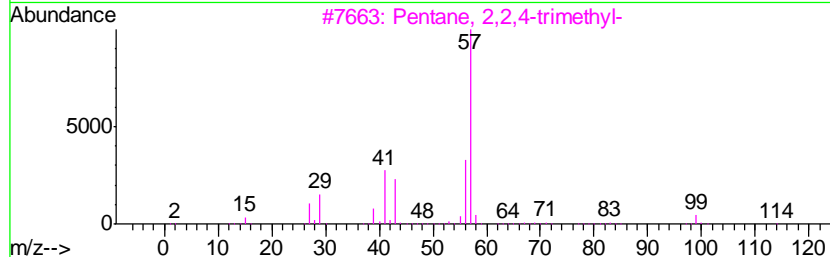
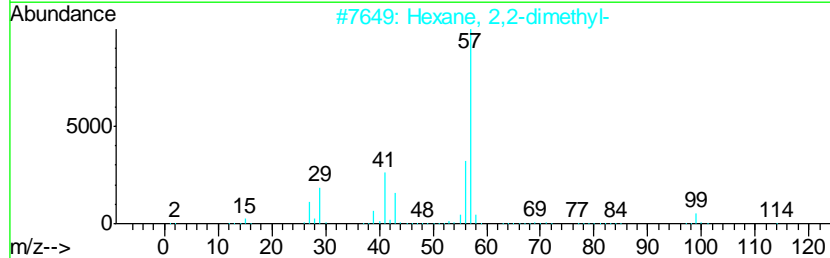
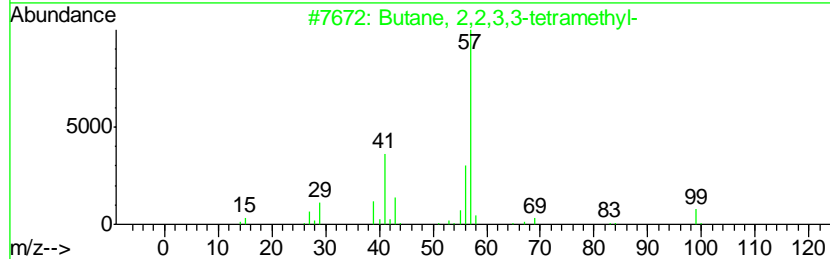
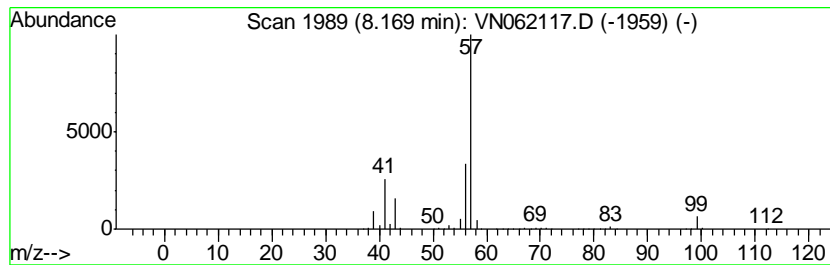
Quant Method : Z:\VOASRV\HPCHEM1\MSVOA_N\METHODS\82N062420W.M
 Quant Title : SW846 8260

TIC Library : C:\DATABASE\NIST11.L
 TIC Integration Parameters: LSCINT.P

 Peak Number 2 Butane, 2,2,3,3-tetramethyl- Concentration Rank 1

R.T.	EstConc	Area	Relative to ISTD	R.T.
8.17	99.77 ug/l	3228910	1,4-Difluorobenzene	8.55

Hit#	of	Tentative ID	MW	MolForm	CAS#	Qual
1	5	Butane, 2,2,3,3-tetramethyl-	114	C8H18	000594-82-1	83
2		Hexane, 2,2-dimethyl-	114	C8H18	000590-73-8	83
3		Pentane, 2,2,4-trimethyl-	114	C8H18	000540-84-1	83
4		Pentane, 2,2,4,4-tetramethyl-	128	C9H20	001070-87-7	72
5		Hexane, 2,2,4-trimethyl-	128	C9H20	016747-26-5	56



Data Path : Z:\VOASRV\HPCHEM1\MSVOA N\DATA\VN062520\
 Data File : VN062117.D
 Acq On : 25 Jun 2020 17:41
 Operator : JC/MD
 Sample : L3071-02 20X
 Misc : 8.97µ/5.0mL/100uL/5.00mL/MSVOA_N/MEOH
 ALS Vial : 19 Sample Multiplier: 1

Instrument :
 MSVOA_N
 ClientSampleID :
 TW-7A

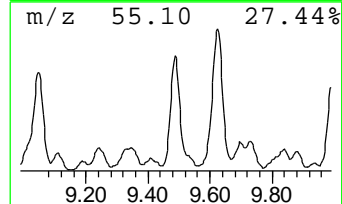
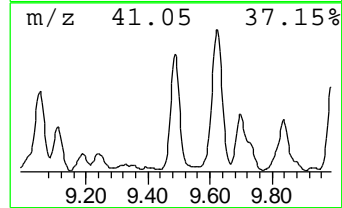
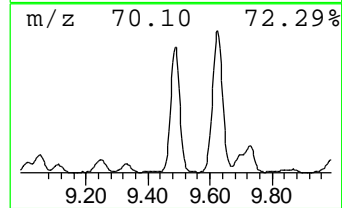
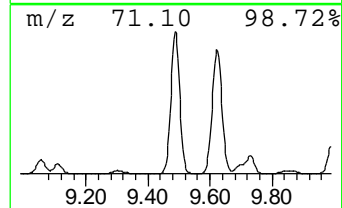
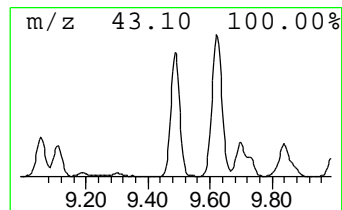
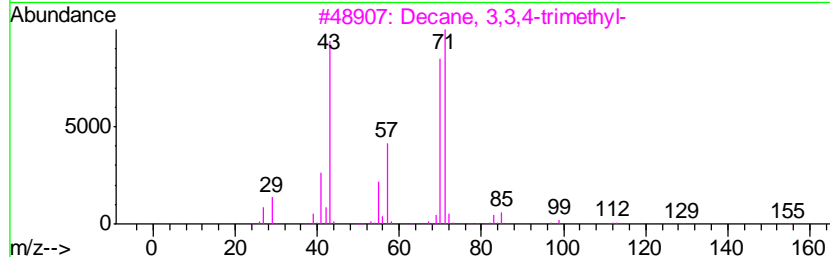
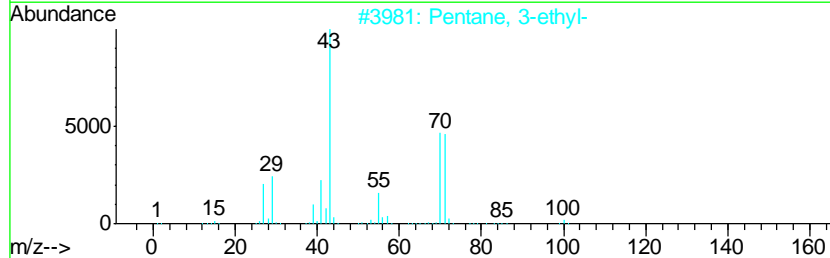
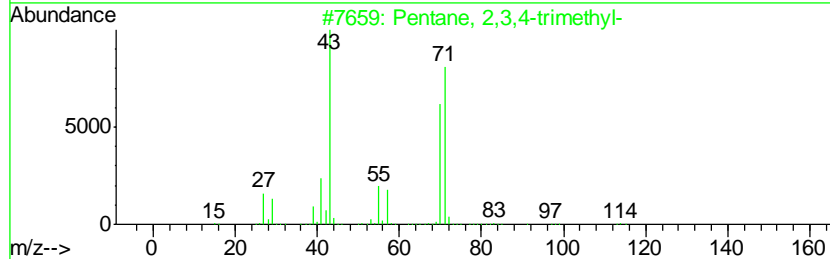
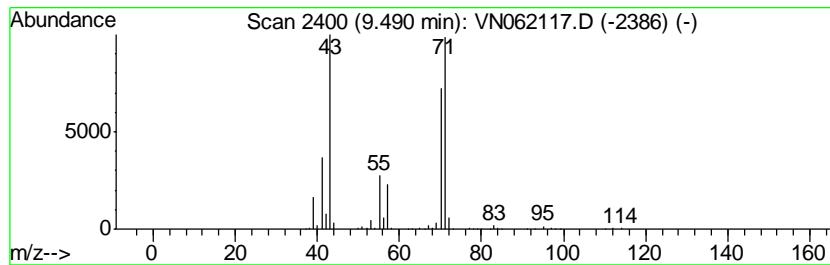
Quant Method : Z:\VOASRV\HPCHEM1\MSVOA_N\METHODS\82N062420W.M
 Quant Title : SW846 8260

TIC Library : C:\DATABASE\NIST11.L
 TIC Integration Parameters: LSCINT.P

 Peak Number 3 Pentane, 2,3,4-trimethyl- Concentration Rank 6

R.T.	EstConc	Area	Relative to ISTD	R.T.
9.49	48.24 ug/l	1561280	1,4-Difluorobenzene	8.55

Hit#	of	Tentative ID	MW	MolForm	CAS#	Qual
1	5	Pentane, 2,3,4-trimethyl-	114	C8H18	000565-75-3	91
2		Pentane, 3-ethyl-	100	C7H16	000617-78-7	83
3		Decane, 3,3,4-trimethyl-	184	C13H28	049622-18-6	78
4		Hexane, 3-methyl-	100	C7H16	000589-34-4	78
5		Hexane, 3,3,4-trimethyl-	128	C9H20	016747-31-2	74



Data Path : Z:\VOASRV\HPCHEM1\MSVOA N\DATA\VN062520\
 Data File : VN062117.D
 Acq On : 25 Jun 2020 17:41
 Operator : JC/MD
 Sample : L3071-02 20X
 Misc : 8.97µ/5.0mL/100uL/5.00mL/MSVOA_N/MEOH
 ALS Vial : 19 Sample Multiplier: 1

Instrument :
 MSVOA_N
 ClientSampled :
 TW-7A

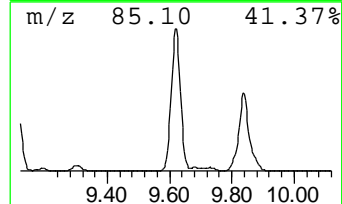
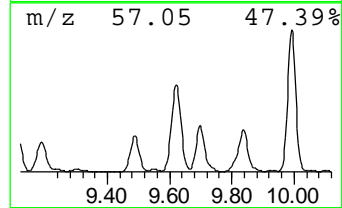
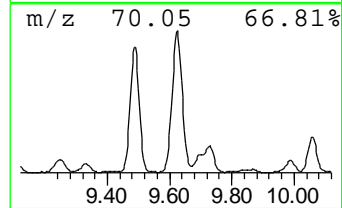
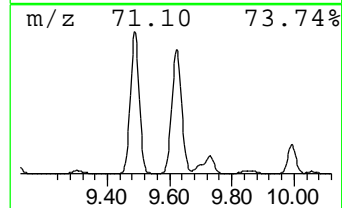
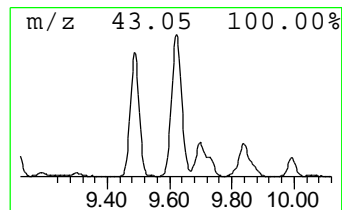
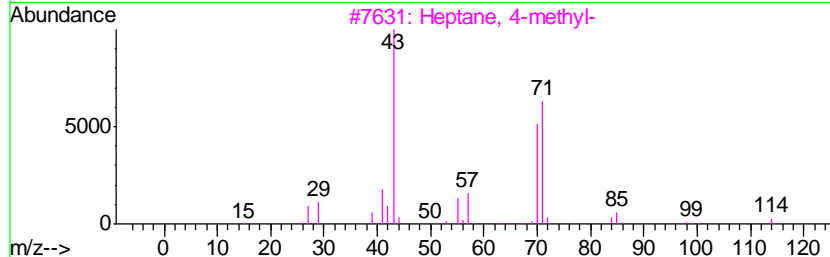
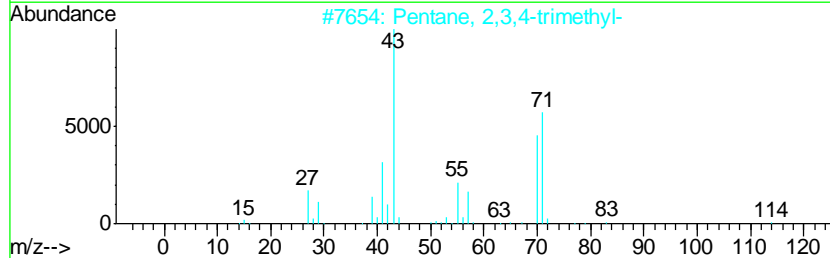
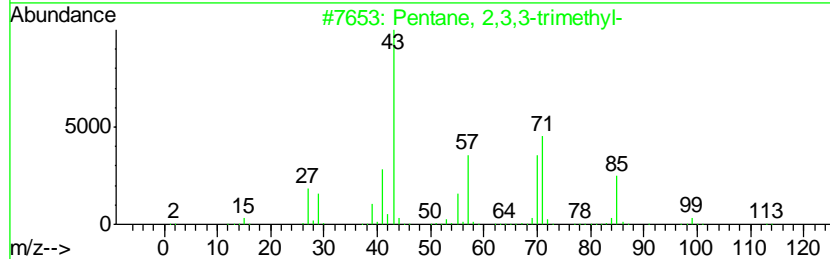
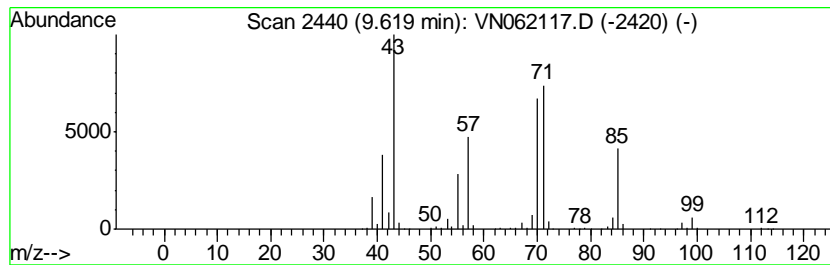
Quant Method : Z:\VOASRV\HPCHEM1\MSVOA_N\METHODS\82N062420W.M
 Quant Title : SW846 8260

TIC Library : C:\DATABASE\NIST11.L
 TIC Integration Parameters: LSCINT.P

 Peak Number 4 Pentane, 2,3,3-trimethyl- Concentration Rank 2

R.T.	EstConc	Area	Relative to ISTD	R.T.
9.62	75.95 ug/l	2458180	1,4-Difluorobenzene	8.55

Hit#	of	Tentative ID	MW	MolForm	CAS#	Qual
1	5	Pentane, 2,3,3-trimethyl-	114	C8H18	000560-21-4	83
2		Pentane, 2,3,4-trimethyl-	114	C8H18	000565-75-3	64
3		Heptane, 4-methyl-	114	C8H18	000589-53-7	64
4		3,3-Dimethyl-2-pentanol	116	C7H16O	019781-24-9	59
5		Hexane, 3,3-dimethyl-	114	C8H18	000563-16-6	59



Data Path : Z:\VOASRV\HPCHEM1\MSVOA N\DATA\VN062520\
 Data File : VN062117.D
 Acq On : 25 Jun 2020 17:41
 Operator : JC/MD
 Sample : L3071-02 20X
 Misc : 8.97µ/5.0mL/100uL/5.00mL/MSVOA_N/MEOH
 ALS Vial : 19 Sample Multiplier: 1

Instrument :
 MSVOA_N
 ClientSampleID :
 TW-7A

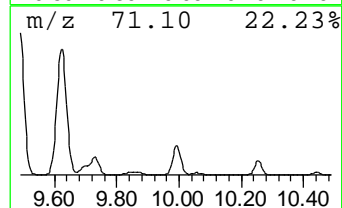
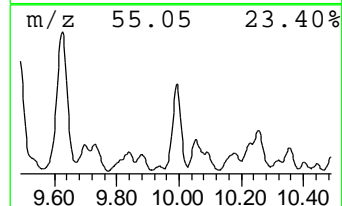
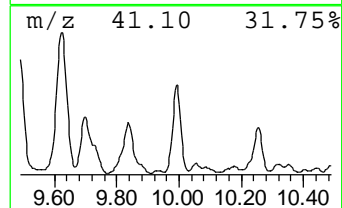
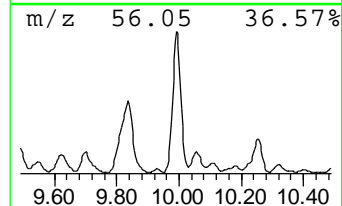
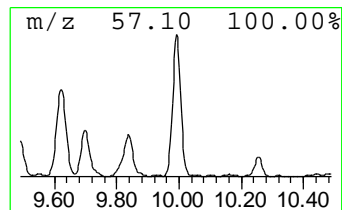
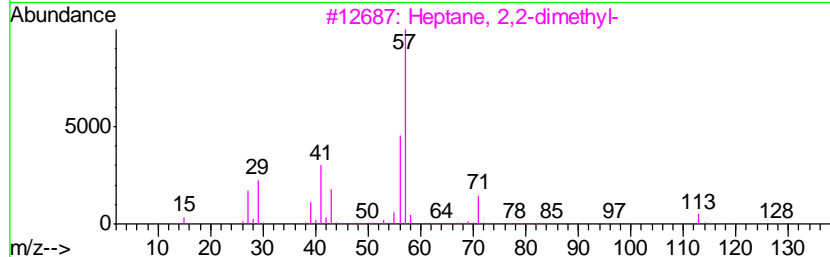
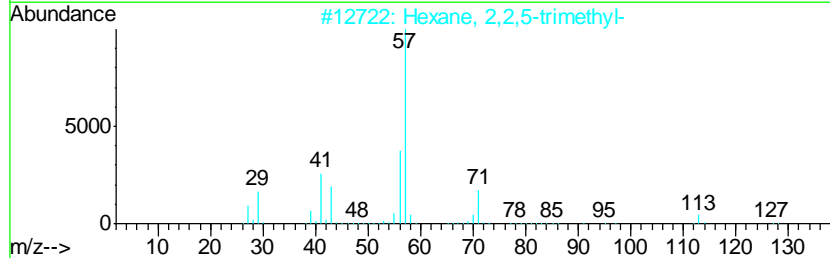
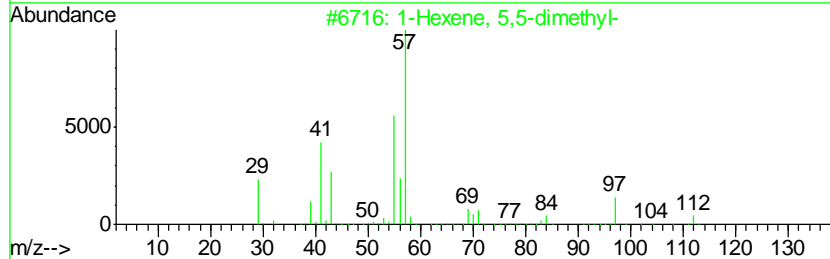
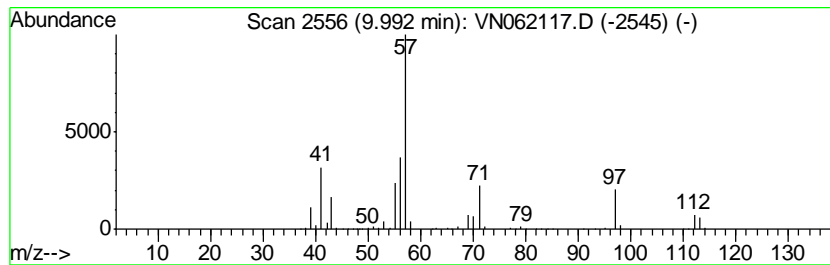
Quant Method : Z:\VOASRV\HPCHEM1\MSVOA_N\METHODS\82N062420W.M
 Quant Title : SW846 8260

TIC Library : C:\DATABASE\NIST11.L
 TIC Integration Parameters: LSCINT.P

 Peak Number 5 1-Hexene, 5,5-dimethyl- Concentration Rank 7

R.T.	EstConc	Area	Relative to ISTD	R.T.
9.99	32.24 ug/l	968655	Chlorobenzene-d5	11.38

Hit#	of	Tentative ID	MW	MolForm	CAS#	Qual
1	5	1-Hexene, 5,5-dimethyl-	112	C8H16	007116-86-1	53
2		Hexane, 2,2,5-trimethyl-	128	C9H20	003522-94-9	53
3		Heptane, 2,2-dimethyl-	128	C9H20	001071-26-7	47
4		Hexane, 2,2,5,5-tetramethyl-	142	C10H22	001071-81-4	47
5		2,4,4-Trimethyl-1-pentanol	130	C8H18O	016325-63-6	47



Data Path : Z:\VOASRV\HPCHEM1\MSVOA N\DATA\VN062520\
 Data File : VN062117.D
 Acq On : 25 Jun 2020 17:41
 Operator : JC/MD
 Sample : L3071-02 20X
 Misc : 8.97µ/5.0mL/100uL/5.00mL/MSVOA_N/MEOH
 ALS Vial : 19 Sample Multiplier: 1

Instrument :
 MSVOA_N
 ClientSampleID :
 TW-7A

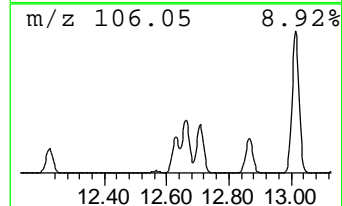
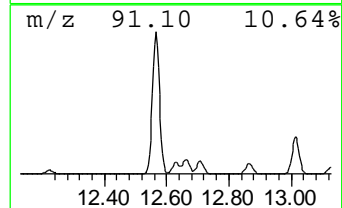
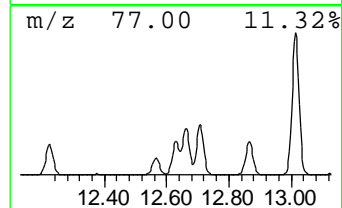
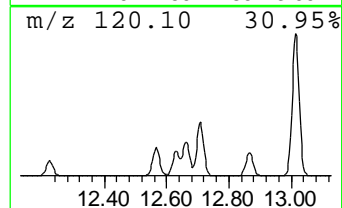
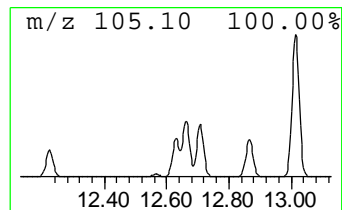
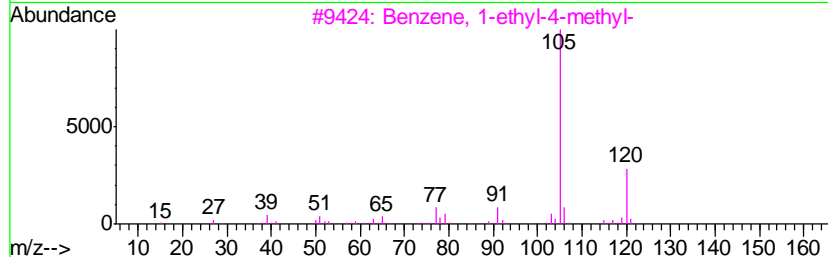
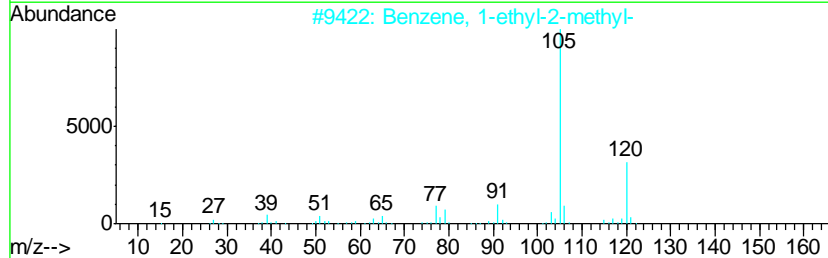
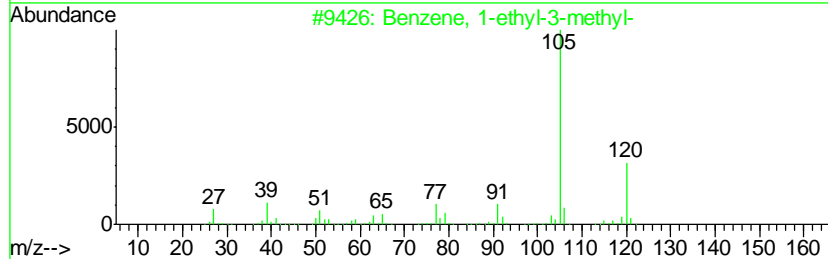
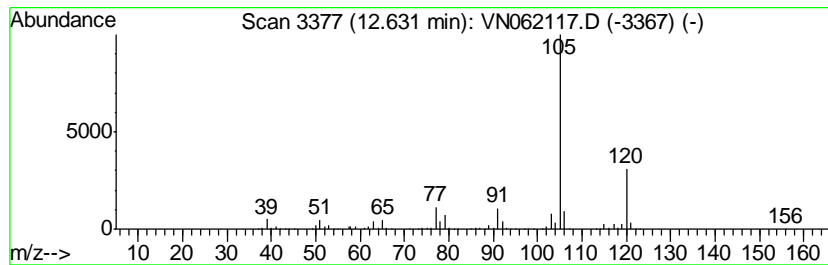
Quant Method : Z:\VOASRV\HPCHEM1\MSVOA_N\METHODS\82N062420W.M
 Quant Title : SW846 8260

TIC Library : C:\DATABASE\NIST11.L
 TIC Integration Parameters: LSCINT.P

 Peak Number 6 Benzene, 1-ethyl-3-methyl- Concentration Rank 4

R.T.	EstConc	Area	Relative to ISTD	R.T.
12.63	70.85 ug/l	1921560	1,4-Dichlorobenzene-d4	13.32

Hit#	of	Tentative ID	MW	MolForm	CAS#	Qual
1	5	Benzene, 1-ethyl-3-methyl-	120	C9H12	000620-14-4	95
2		Benzene, 1-ethyl-2-methyl-	120	C9H12	000611-14-3	95
3		Benzene, 1-ethyl-4-methyl-	120	C9H12	000622-96-8	91
4		Mesitylene	120	C9H12	000108-67-8	91
5		Benzene, 1,2,4-trimethyl-	120	C9H12	000095-63-6	91



Data Path : Z:\VOASRV\HPCHEM1\MSVOA N\DATA\VN062520\
 Data File : VN062117.D
 Acq On : 25 Jun 2020 17:41
 Operator : JC/MD
 Sample : L3071-02 20X
 Misc : 8.97µ/5.0mL/100uL/5.00mL/MSVOA_N/MEOH
 ALS Vial : 19 Sample Multiplier: 1

Instrument :
 MSVOA_N
 ClientSampleID :
 TW-7A

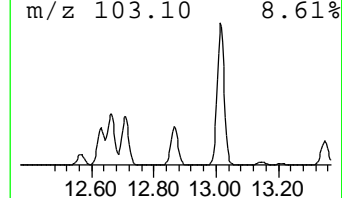
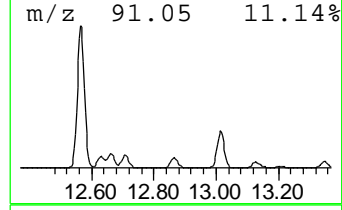
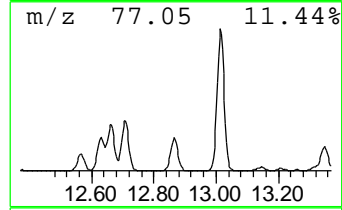
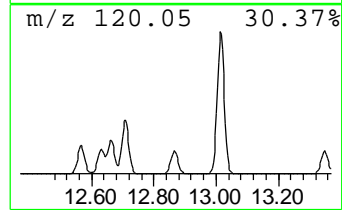
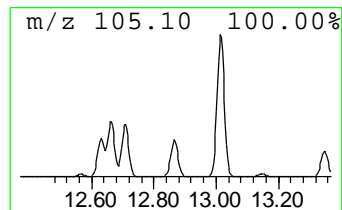
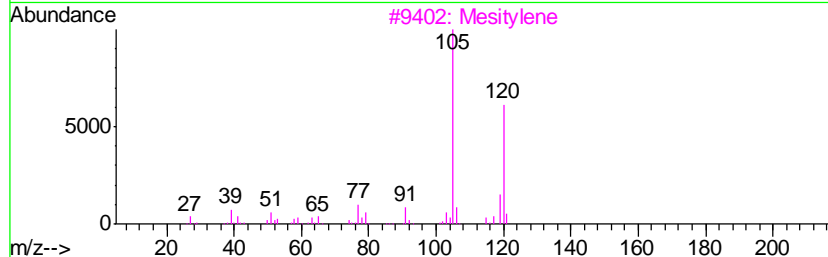
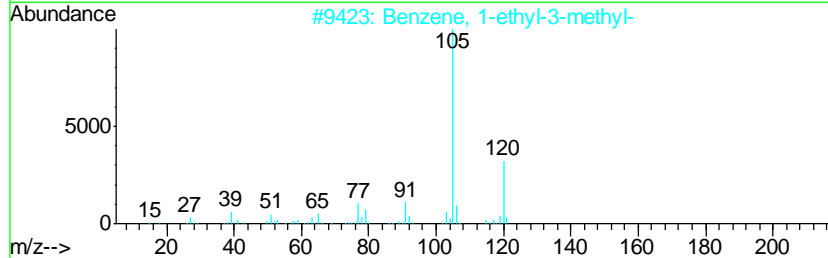
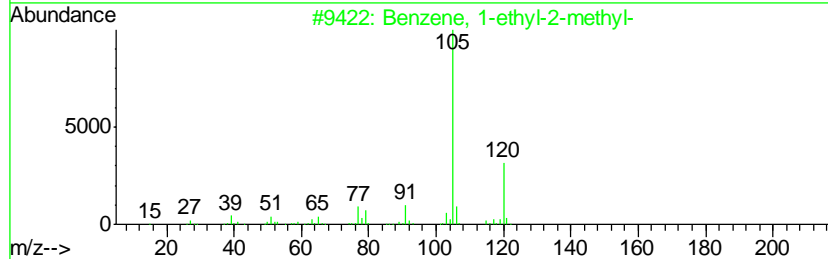
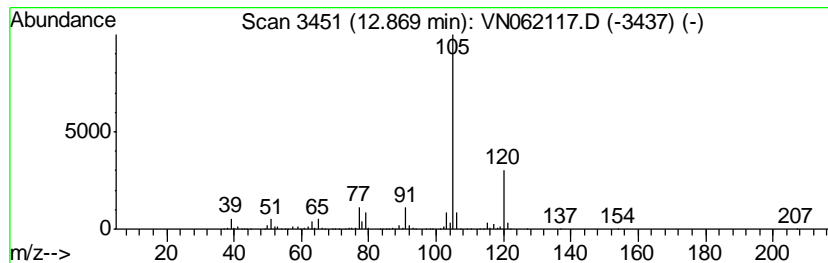
Quant Method : Z:\VOASRV\HPCHEM1\MSVOA_N\METHODS\82N062420W.M
 Quant Title : SW846 8260

TIC Library : C:\DATABASE\NIST11.L
 TIC Integration Parameters: LSCINT.P

 Peak Number 7 Benzene, 1-ethyl-2-methyl- Concentration Rank 3

R.T.	EstConc	Area	Relative to ISTD	R.T.
12.87	72.31 ug/l	1961010	1,4-Dichlorobenzene-d4	13.32

Hit#	of	Tentative ID	MW	MolForm	CAS#	Qual
1	5	Benzene, 1-ethyl-2-methyl-	120	C9H12	000611-14-3	94
2		Benzene, 1-ethyl-3-methyl-	120	C9H12	000620-14-4	91
3		Mesitylene	120	C9H12	000108-67-8	91
4		Benzene, 1-ethyl-4-methyl-	120	C9H12	000622-96-8	91
5		Benzene, 1,2,4-trimethyl-	120	C9H12	000095-63-6	91



Data Path : Z:\VOASRV\HPCHEM1\MSVOA N\DATA\VN062520\
 Data File : VN062117.D
 Acq On : 25 Jun 2020 17:41
 Operator : JC/MD
 Sample : L3071-02 20X
 Misc : 8.97µ/5.0mL/100uL/5.00mL/MSVOA_N/MEOH
 ALS Vial : 19 Sample Multiplier: 1

Instrument :
 MSVOA_N
 ClientSampled :
 TW-7A

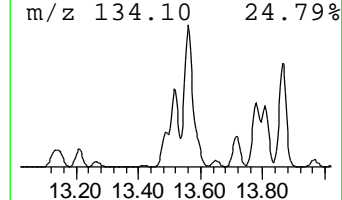
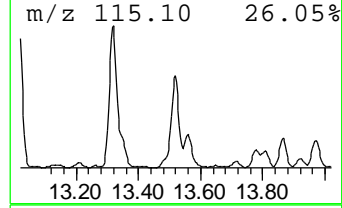
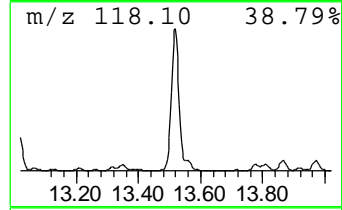
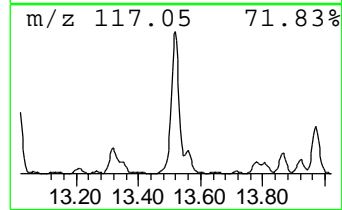
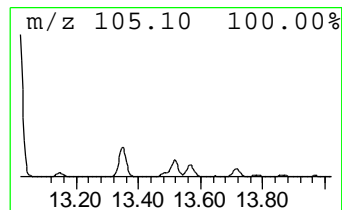
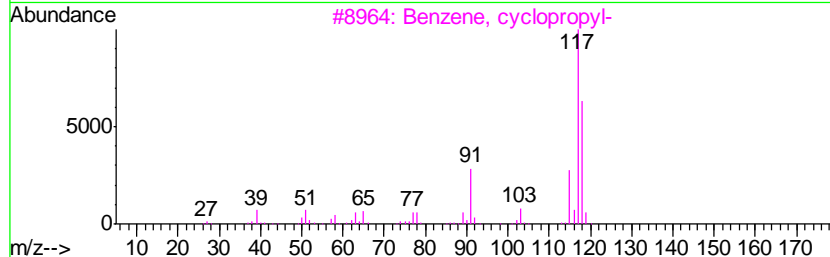
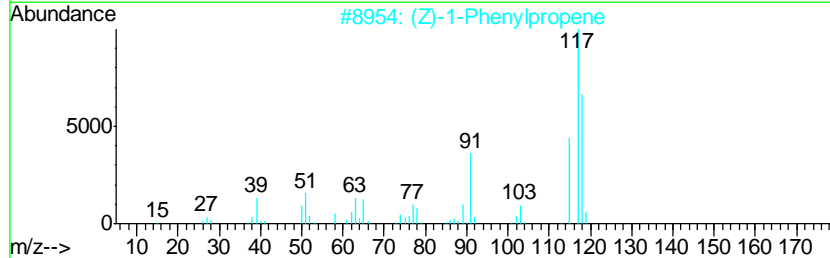
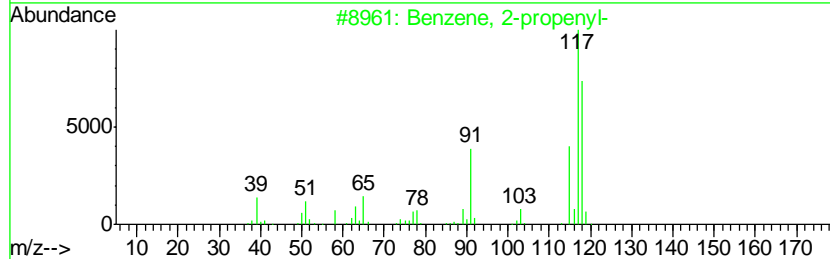
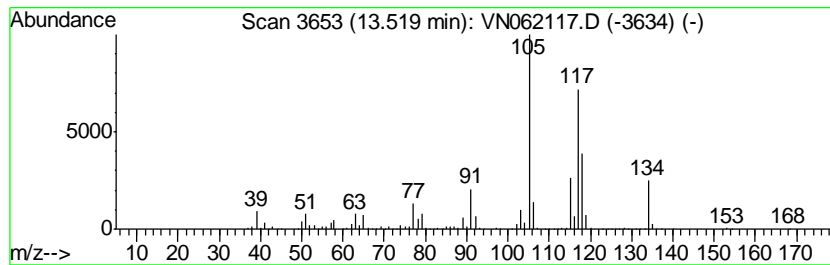
Quant Method : Z:\VOASRV\HPCHEM1\MSVOA_N\METHODS\82N062420W.M
 Quant Title : SW846 8260

TIC Library : C:\DATABASE\NIST11.L
 TIC Integration Parameters: LSCINT.P

 Peak Number 8 Benzene, 2-propenyl- Concentration Rank 5

R.T.	EstConc	Area	Relative to ISTD	R.T.
13.52	63.02 ug/l	1709190	1,4-Dichlorobenzene-d4	13.32

Hit#	of	Tentative ID	MW	MolForm	CAS#	Qual
1	5	Benzene, 2-propenyl-	118	C9H10	000300-57-2	86
2		(Z)-1-Phenylpropene	118	C9H10	000766-90-5	50
3		Benzene, cyclopropyl-	118	C9H10	000873-49-4	50
4		Benzene, 1-ethenyl-4-methyl-	118	C9H10	000622-97-9	50
5		Benzene, 1-ethenyl-3-methyl-	118	C9H10	000100-80-1	45



Data Path : Z:\VOASRV\HPCHEM1\MSVOA N\DATA\VN062520\
 Data File : VN062117.D
 Acq On : 25 Jun 2020 17:41
 Operator : JC/MD
 Sample : L3071-02 20X
 Misc : 8.97µ/5.0mL/100uL/5.00mL/MSVOA_N/MEOH
 ALS Vial : 19 Sample Multiplier: 1

Instrument :
 MSVOA_N
 ClientSampled :
 TW-7A

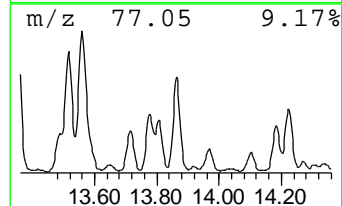
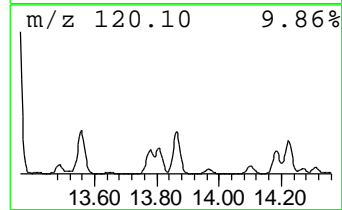
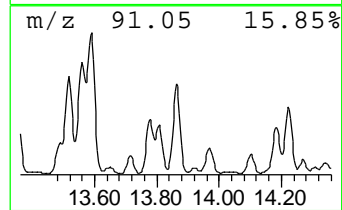
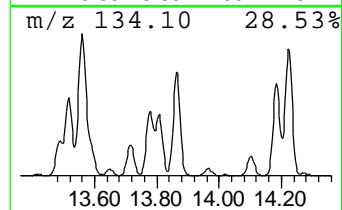
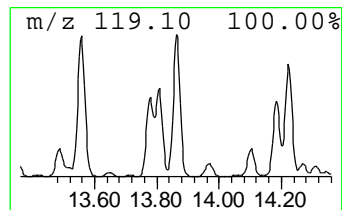
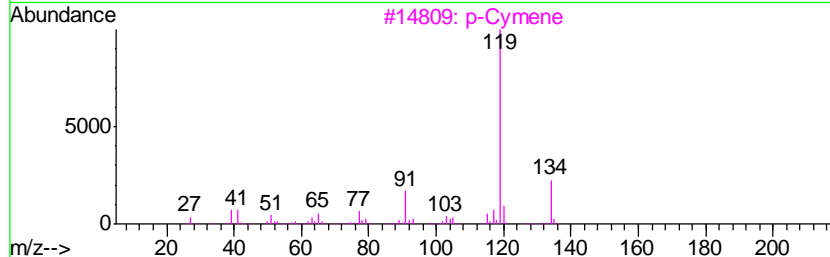
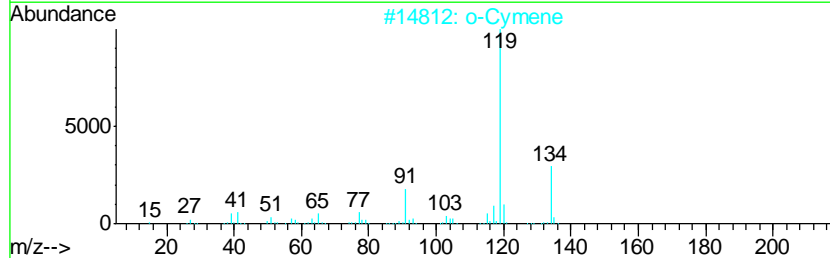
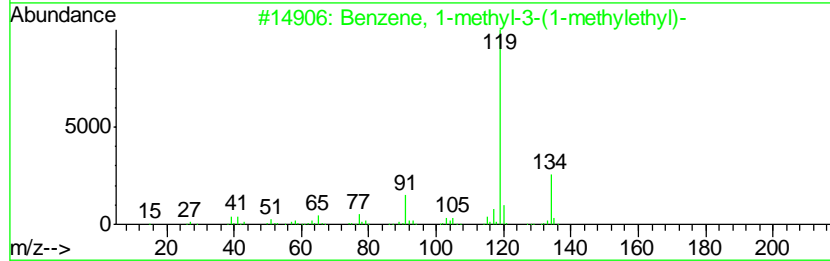
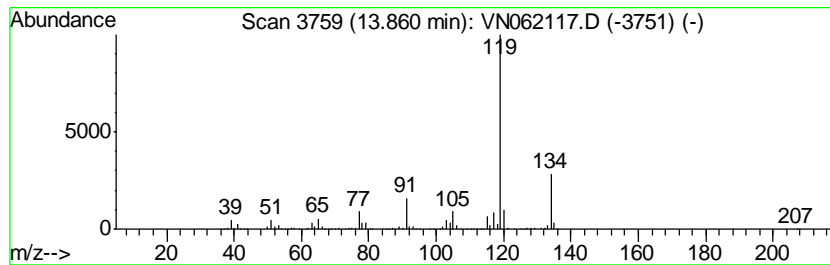
Quant Method : Z:\VOASRV\HPCHEM1\MSVOA_N\METHODS\82N062420W.M
 Quant Title : SW846 8260

TIC Library : C:\DATABASE\NIST11.L
 TIC Integration Parameters: LSCINT.P

 Peak Number 9 Benzene, 1-methyl-3-(1-meth... Concentration Rank 8

R.T.	EstConc	Area	Relative to ISTD	R.T.
13.86	30.43 ug/l	825375	1,4-Dichlorobenzene-d4	13.32

Hit#	of	Tentative ID	MW	MolForm	CAS#	Qual
1	5	Benzene, 1-methyl-3-(1-methyleth...	134	C10H14	000535-77-3	95
2		o-Cymene	134	C10H14	000527-84-4	95
3		p-Cymene	134	C10H14	000099-87-6	95
4		Benzene, 4-ethyl-1,2-dimethyl-	134	C10H14	000934-80-5	95
5		Benzene, 1-ethyl-2,3-dimethyl-	134	C10H14	000933-98-2	95



Data Path : Z:\VOASRV\HPCHEM1\MSVOA N\DATA\VN062520\
 Data File : VN062117.D
 Acq On : 25 Jun 2020 17:41
 Operator : JC/MD
 Sample : L3071-02 20X
 Misc : 8.97µ/5.0mL/100uL/5.00mL/MSVOA_N/MEOH
 ALS Vial : 19 Sample Multiplier: 1

Instrument :
 MSVOA_N
 ClientSampleID :
 TW-7A

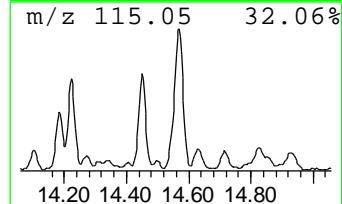
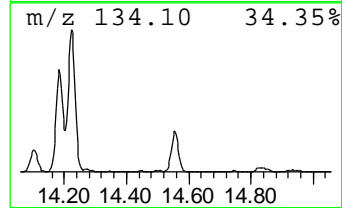
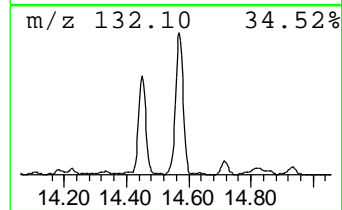
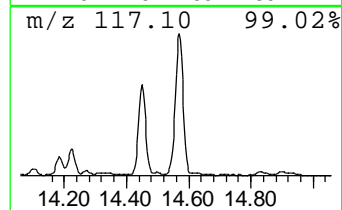
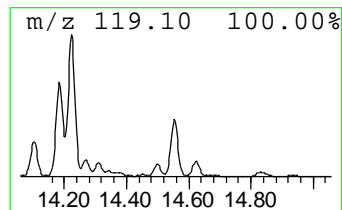
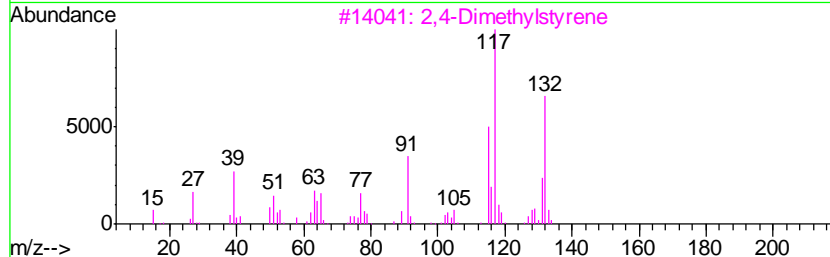
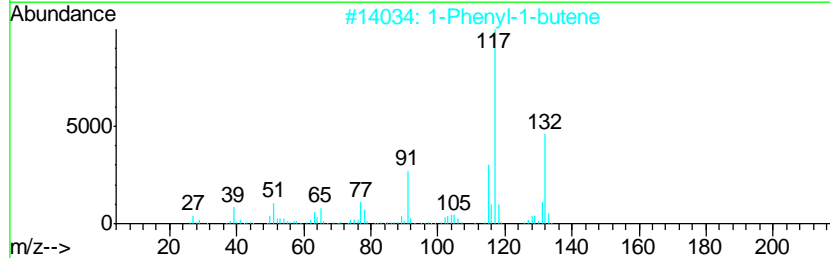
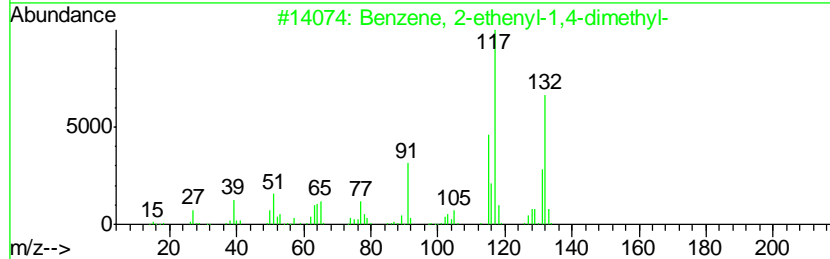
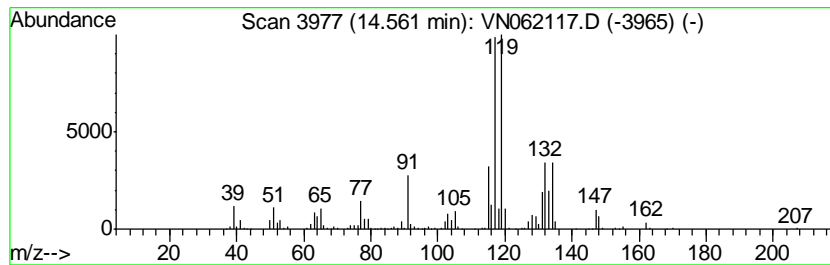
Quant Method : Z:\VOASRV\HPCHEM1\MSVOA_N\METHODS\82N062420W.M
 Quant Title : SW846 8260

TIC Library : C:\DATABASE\NIST11.L
 TIC Integration Parameters: LSCINT.P

 Peak Number 10 Benzene, 2-ethenyl-1,4-dime... Concentration Rank 9

R.T.	EstConc	Area	Relative to ISTD	R.T.
14.56	28.36 ug/l	769293	1,4-Dichlorobenzene-d4	13.32

Hit#	of	Tentative ID	MW	MolForm	CAS#	Qual
1	5	Benzene, 2-ethenyl-1,4-dimethyl-	132	C10H12	002039-89-6	90
2		1-Phenyl-1-butene	132	C10H12	000824-90-8	90
3		2,4-Dimethylstyrene	132	C10H12	002234-20-0	83
4		3-Phenylbut-1-ene	132	C10H12	000934-10-1	70
5		Benzene, (1-methyl-1-propenyl)-,...	132	C10H12	000768-00-3	70



Data Path : Z:\VOASRV\HPCHEM1\MSVOA_N\DATA\VN062520\
Data File : VN062117.D
Acq On : 25 Jun 2020 17:41
Operator : JC/MD
Sample : L3071-02 20X
Misc : 8.97g/5.0mL/100uL/5.00mL/MSVOA_N/MEOH
ALS Vial : 19 Sample Multiplier: 1

Instrument :
MSVOA_N
ClientSampleId :
TW-7A

Quant Method : Z:\VOASRV\HPCHEM1\MSVOA_N\METHODS\82N062420W.M
Quant Title : SW846 8260

TIC Library : C:\DATABASE\NIST11.L
TIC Integration Parameters: LSCINT.P

TIC Top Hit name	RT	EstConc	Units	Response	--Internal Standard--			
					#	RT	Resp	Conc
Hexane, 3-methyl-	7.84	25.6	ug/l	1157320	1	7.63	2262510	50.0
Butane, 2,2,3,3-t...	8.17	99.8	ug/l	3228910	2	8.55	1618210	50.0
Pentane, 2,3,4-tr...	9.49	48.2	ug/l	1561280	2	8.55	1618210	50.0
Pentane, 2,3,3-tr...	9.62	76.0	ug/l	2458180	2	8.55	1618210	50.0
1-Hexene, 5,5-dim...	9.99	32.2	ug/l	968655	3	11.38	1502320	50.0
Benzene, 1-ethyl-...	12.63	70.8	ug/l	1921560	4	13.32	1356070	50.0
Benzene, 1-ethyl-...	12.87	72.3	ug/l	1961010	4	13.32	1356070	50.0
Benzene, 2-propenyl-	13.52	63.0	ug/l	1709190	4	13.32	1356070	50.0
Benzene, 1-methyl...	13.86	30.4	ug/l	825375	4	13.32	1356070	50.0
Benzene, 2-ethenyl...	14.56	28.4	ug/l	769293	4	13.32	1356070	50.0