

Data Path : Z:\VOASRV\HPCHEM1\MSVOA N\DATA\VN062620\
 Data File : VN062137.D
 Acq On : 26 Jun 2020 14:12
 Operator : JC/MD
 Sample : IBLK
 Misc : 5.00mL/MSVOA N/WATER
 ALS Vial : 11 Sample Multiplier: 1

Instrument :
 MSVOA_N
 ClientSampled :
 IBLK

Quant Time: Jun 27 03:41:46 2020
 Quant Method : Z:\VOASRV\HPCHEM1\MSVOA_N\METHODS\82N062420W.M
 Quant Title : SW846 8260
 QLast Update : Wed Jun 24 15:33:00 2020
 Response via : Initial Calibration

Internal Standards	R.T.	QIon	Response	Conc	Units	Dev(Min)
1) Pentafluorobenzene	7.63	168	228221	50.00	ug/l	0.00
34) 1,4-Difluorobenzene	8.55	114	418818	50.00	ug/l	0.00
63) Chlorobenzene-d5	11.38	117	404405	50.00	ug/l	0.00
72) 1,4-Dichlorobenzene-d4	13.32	152	151676	50.00	ug/l	0.00

System Monitoring Compounds

33) 1,2-Dichloroethane-d4	7.99	65	153136	47.81	ug/l	0.00
Spiked Amount	50.000		Recovery	=	95.62%	
35) Dibromofluoromethane	7.55	113	131793	49.05	ug/l	0.00
Spiked Amount	50.000		Recovery	=	98.10%	
50) Toluene-d8	10.06	98	522038	48.60	ug/l	0.00
Spiked Amount	50.000		Recovery	=	97.20%	
62) 4-Bromofluorobenzene	12.38	95	170826	47.08	ug/l	0.00
Spiked Amount	50.000		Recovery	=	94.16%	

Target Compounds

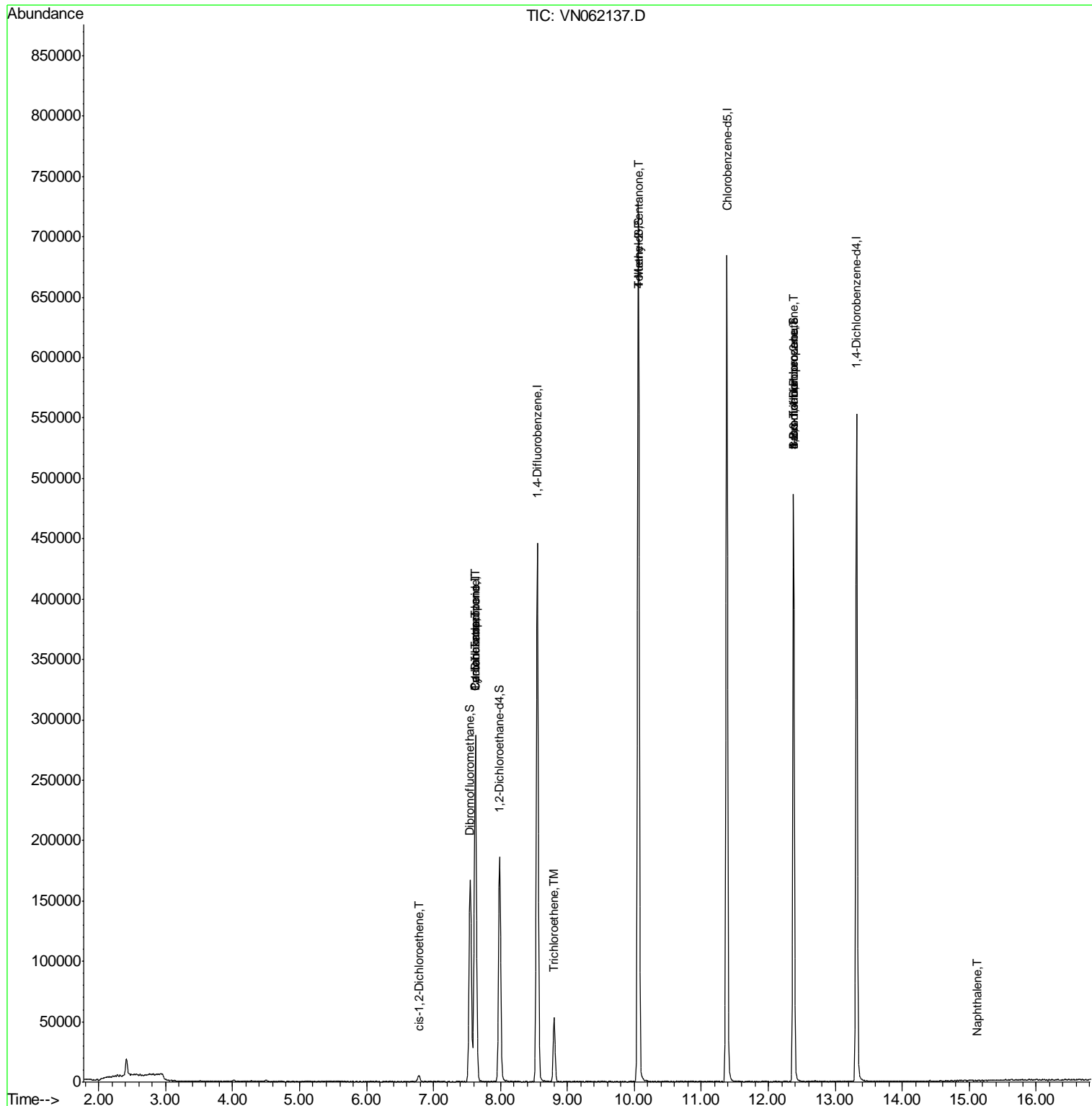
					Qvalue	
3) Chloromethane	2.03	50	375	Below Cal	#	41
16) Acetone	3.78	43	514	Below Cal	#	40
20) Methylene Chloride	4.51	84	400	Below Cal	#	55
27) cis-1,2-Dichloroethene	6.78	96	1216	0.362	ug/l	61
31) Cyclohexane	7.63	56	5332	1.205	ug/l #	12
36) 1,1-Dichloropropene	7.63	75	18528	4.401	ug/l #	50
38) Carbon Tetrachloride	7.63	117	23400	5.896	ug/l #	16
44) Trichloroethene	8.80	130	20370	6.293	ug/l	94
51) 4-Methyl-2-Pentanone	10.06	43	2061	0.621	ug/l #	1
71) Bromoform	12.38	173	1421	0.651	ug/l #	1
76) 1,2,3-Trichloropropane	12.38	75	85113	23.837	ug/l #	100
81) trans-1,4-Dichloro-2-buten	12.38	75	85113	69.614	ug/l #	13
95) Naphthalene	15.12	128	64	4.003	ug/l #	69

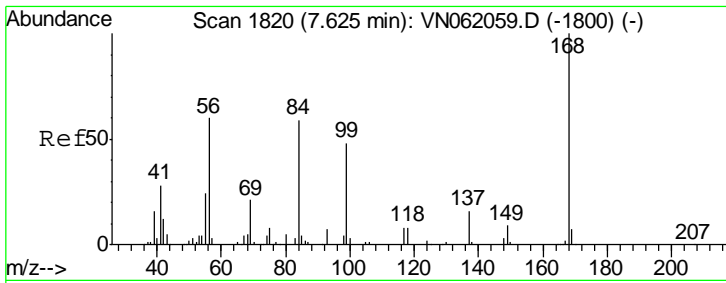
(#) = qualifier out of range (m) = manual integration (+) = signals summed

Data Path : Z:\VOASRV\HPCHEM1\MSVOA N\DATA\VN062620\
 Data File : VN062137.D
 Acq On : 26 Jun 2020 14:12
 Operator : JC/MD
 Sample : IBLK
 Misc : 5.00mL/MSVOA N/WATER
 ALS Vial : 11 Sample Multiplier: 1

Instrument :
 MSVOA_N
 Client Sampled :
 IBLK

Quant Time: Jun 27 03:41:46 2020
 Quant Method : Z:\VOASRV\HPCHEM1\MSVOA_N\METHODS\82N062420W.M
 Quant Title : SW846 8260
 QLast Update : Wed Jun 24 15:33:00 2020
 Response via : Initial Calibration

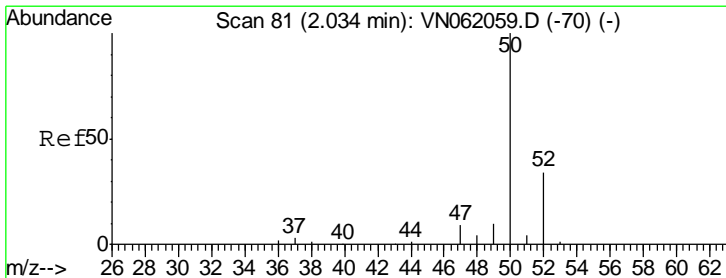
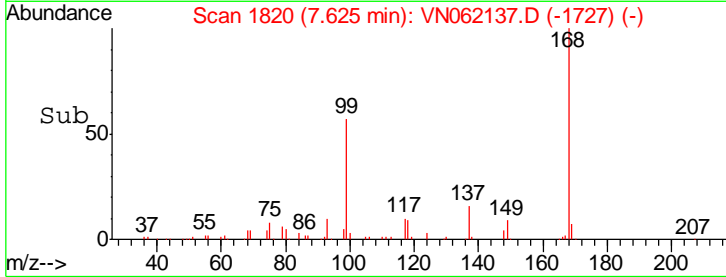
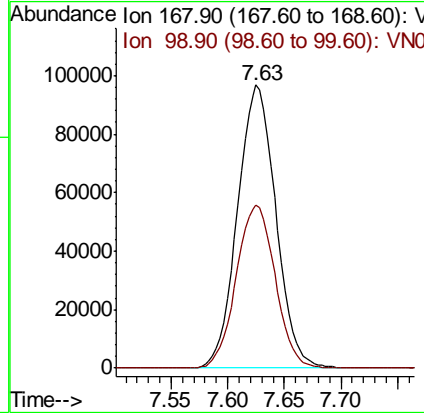
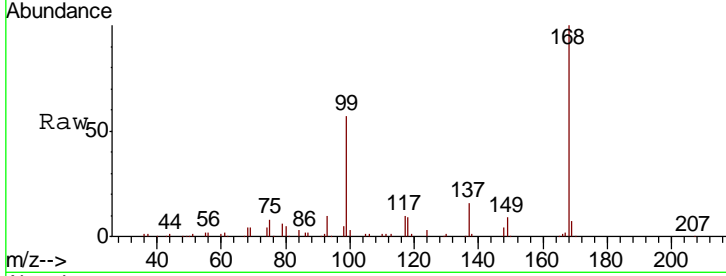




#1
 Pentafluorobenzene
 Concen: 50.000 ug/l
 RT: 7.63 min Scan# 1820
 Delta R.T. -0.00 min
 Lab File: VN062137.D
 Acq: 26 Jun 2020 14:12

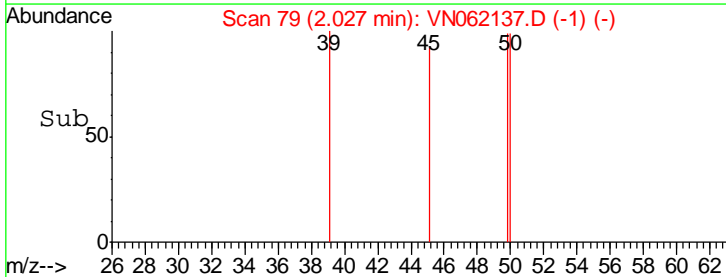
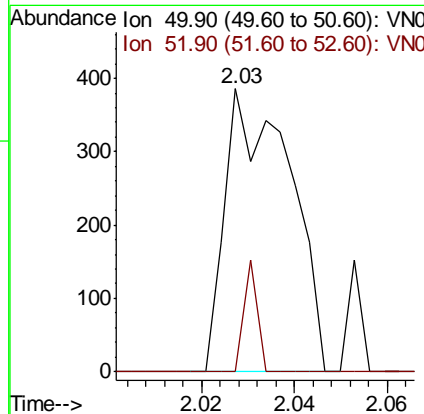
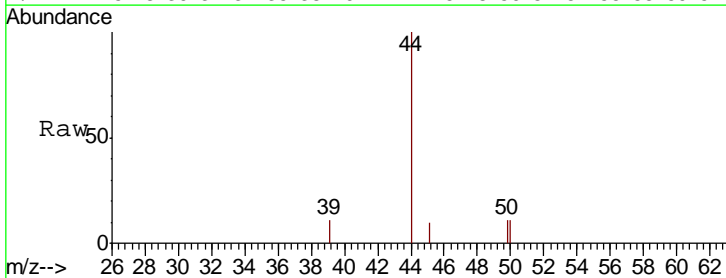
Instrument :
 MSVOA_N
 ClientSampled :
 IBLK

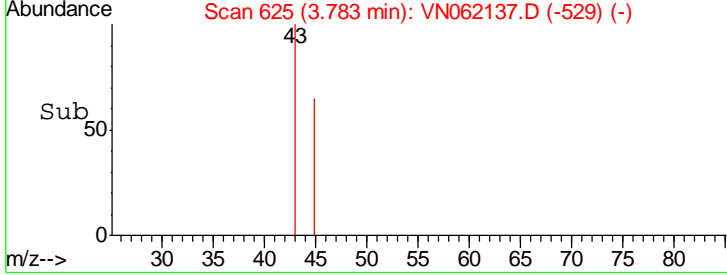
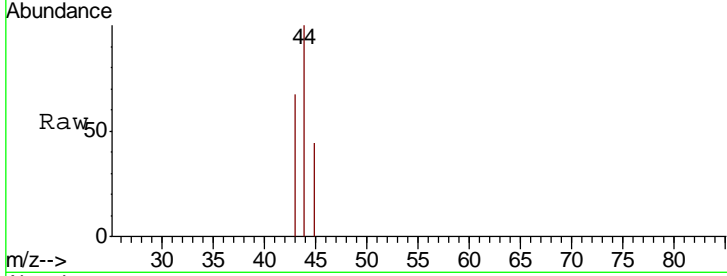
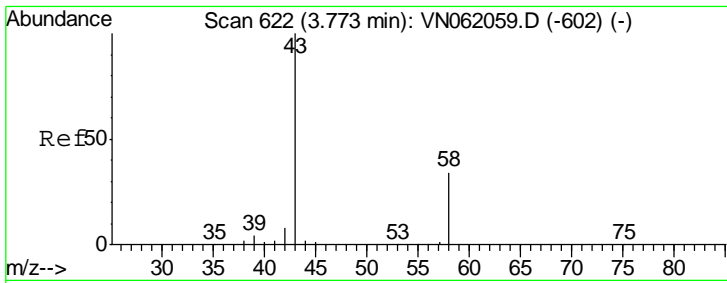
Tgt Ion: 168 Resp: 228221
 Ion Ratio Lower Upper
 168 100
 99 57.4 45.8 68.8



#3
 Chloromethane
 Concen: Below Cal
 RT: 2.03 min Scan# 79
 Delta R.T. -0.01 min
 Lab File: VN062137.D
 Acq: 26 Jun 2020 14:12

Tgt Ion: 50 Resp: 375
 Ion Ratio Lower Upper
 50 100
 52 0.0 27.0 40.6#

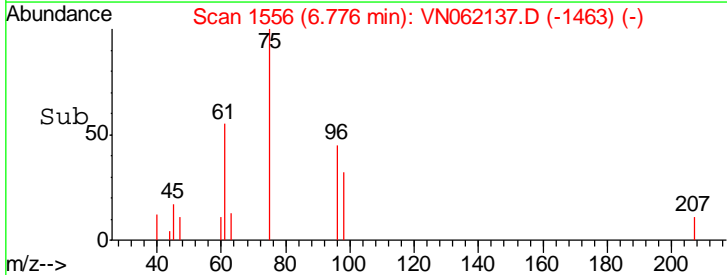
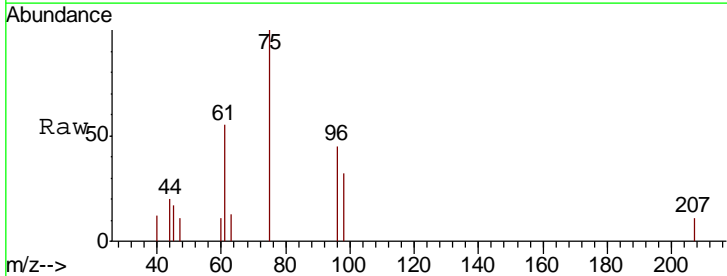
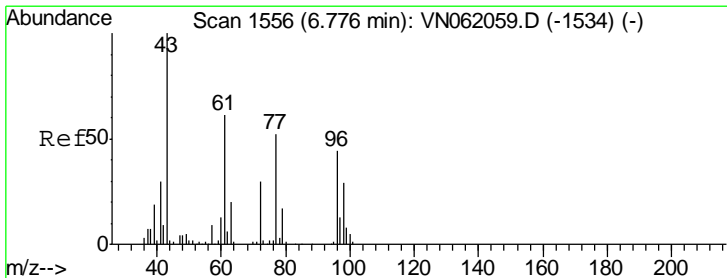
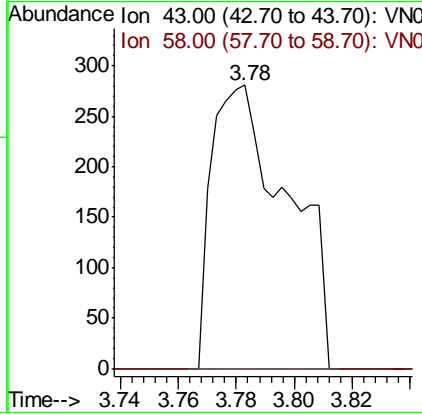




#16
 Acetone
 Concen: Below Cal
 RT: 3.78 min Scan# 625
 Delta R.T. 0.01 min
 Lab File: VN062137.D
 Acq: 26 Jun 2020 14:12

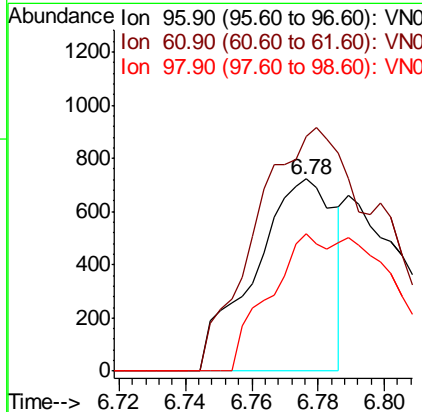
Instrument :
 MSVOA_N
 ClientSampled :
 IBLK

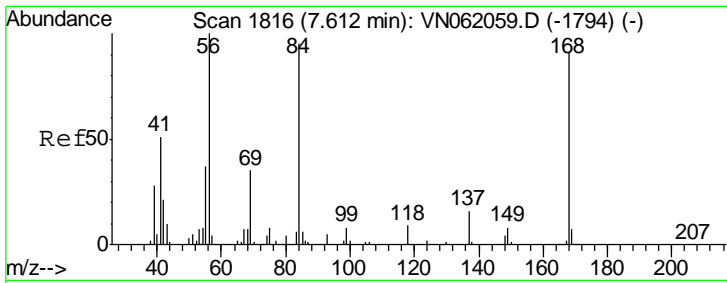
Tgt Ion	Resp	Lower	Upper
43	100		
58	0.0	27.5	41.3#



#27
 cis-1,2-Dichloroethene
 Concen: 0.362 ug/l
 RT: 6.78 min Scan# 1556
 Delta R.T. -0.00 min
 Lab File: VN062137.D
 Acq: 26 Jun 2020 14:12

Tgt Ion	Resp	Lower	Upper
96	100		
61	199.9	0.0	280.4
98	51.6	0.0	129.4

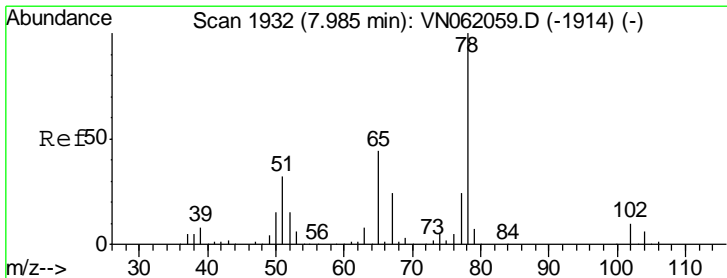
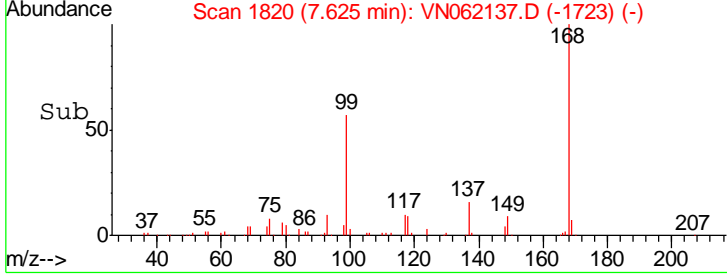
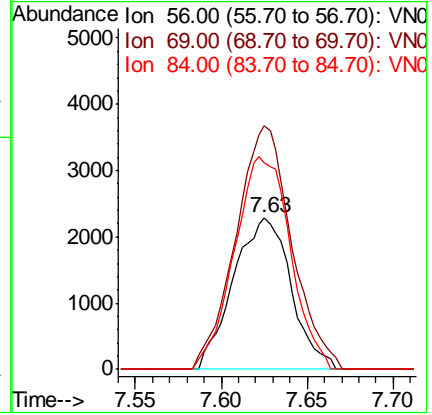
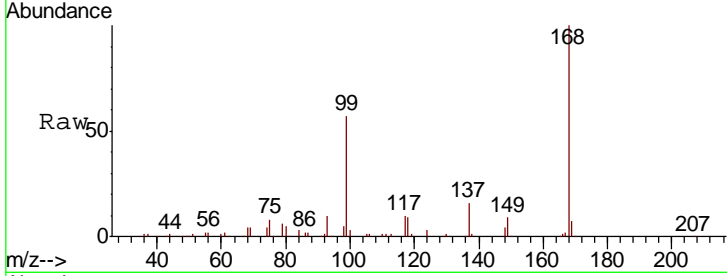




#31
 Cyclohexane
 Concen: 1.205 ug/l
 RT: 7.63 min Scan# 1820
 Delta R.T. 0.01 min
 Lab File: VN062137.D
 Acq: 26 Jun 2020 14:12

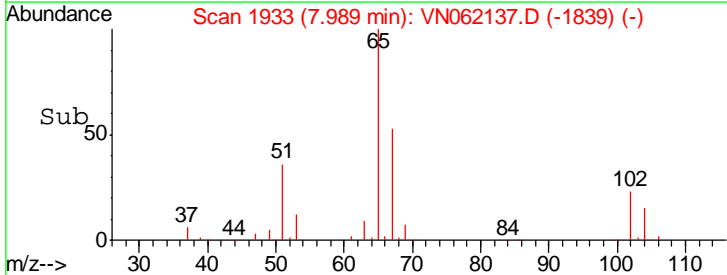
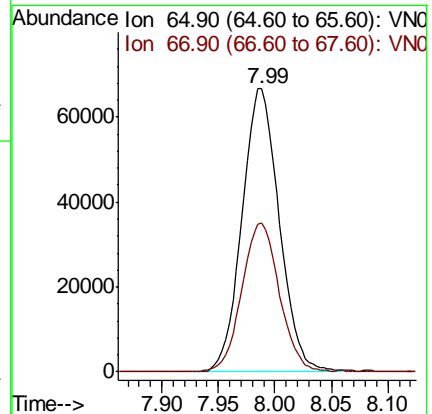
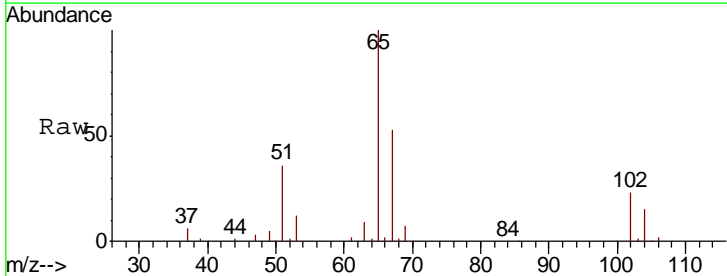
Instrument :
 MSVOA_N
 ClientSampled :
 IBLK

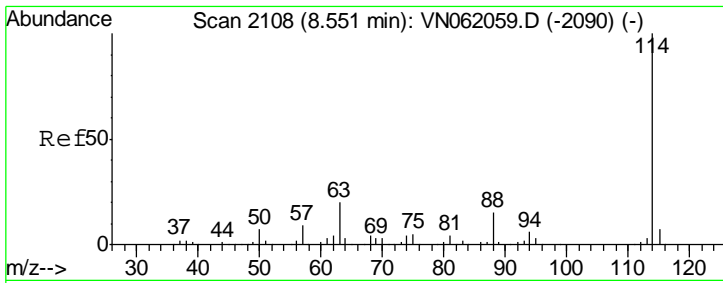
Tgt Ion	Resp	Lower	Upper
56	100		
69	160.1	28.0	42.0#
84	135.5	76.1	114.1#



#33
 1,2-Dichloroethane-d4
 Concen: 47.815 ug/l
 RT: 7.99 min Scan# 1933
 Delta R.T. 0.00 min
 Lab File: VN062137.D
 Acq: 26 Jun 2020 14:12

Tgt Ion	Resp	Lower	Upper
65	100		
67	52.9	0.0	106.2

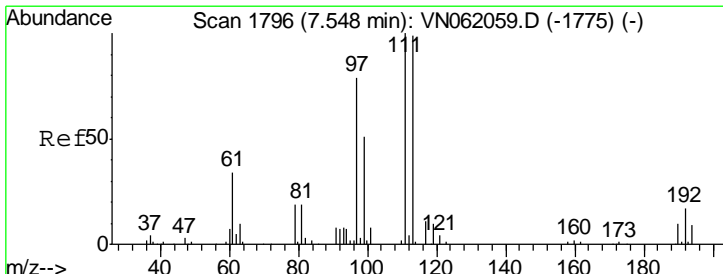
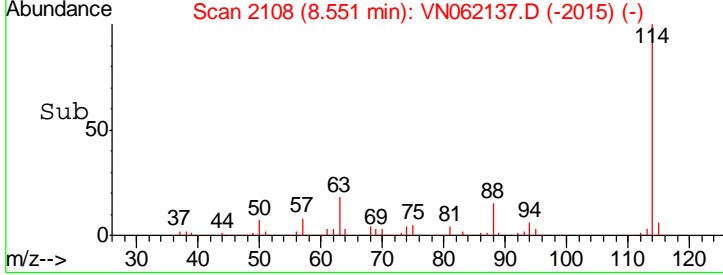
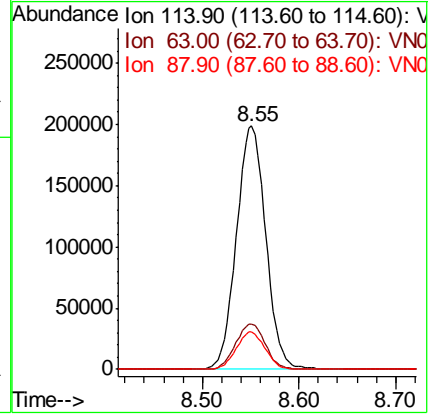
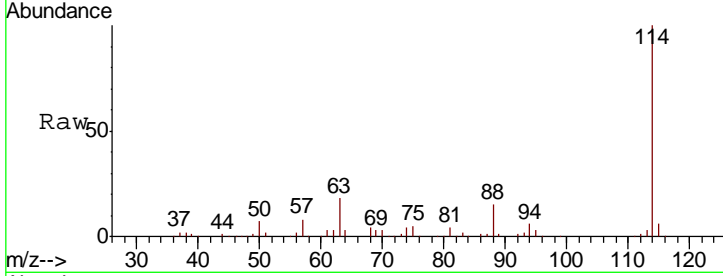




#34
 1,4-Difluorobenzene
 Concen: 50.000 ug/l
 RT: 8.55 min Scan# 2108
 Delta R.T. -0.00 min
 Lab File: VN062137.D
 Acq: 26 Jun 2020 14:12

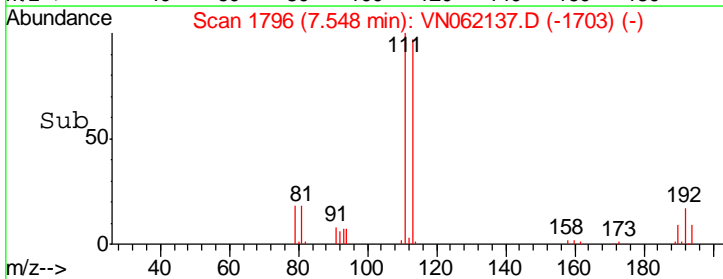
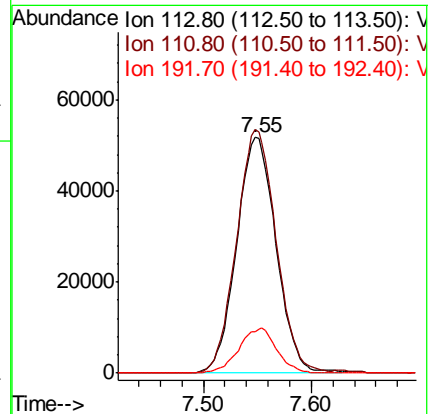
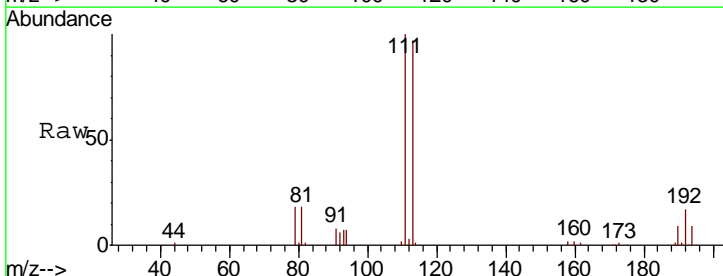
Instrument :
 MSVOA_N
 ClientSampled :
 IBLK

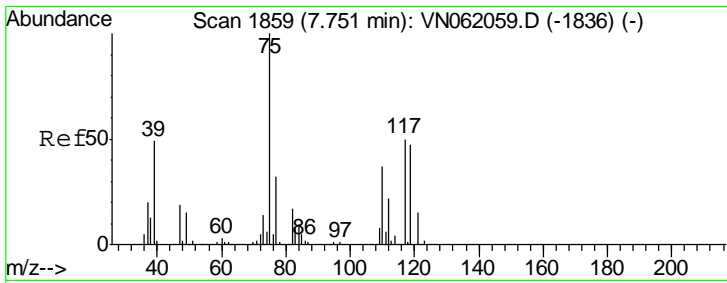
Tgt Ion	Resp	Lower	Upper
114	418818		
63	18.5	0.0	39.2
88	15.4	0.0	30.8



#35
 Dibromofluoromethane
 Concen: 49.050 ug/l
 RT: 7.55 min Scan# 1796
 Delta R.T. -0.00 min
 Lab File: VN062137.D
 Acq: 26 Jun 2020 14:12

Tgt Ion	Resp	Lower	Upper
113	131793		
111	103.6	82.2	123.4
192	18.3	14.0	21.0

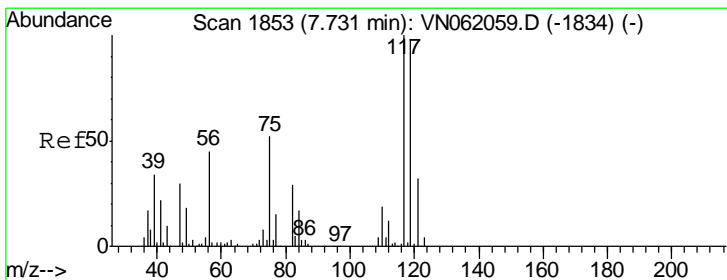
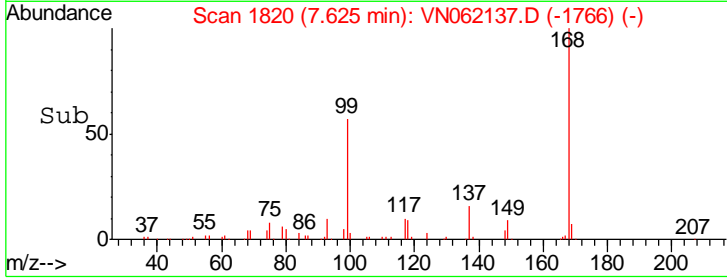
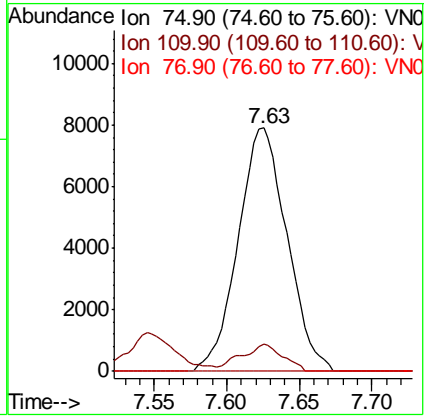
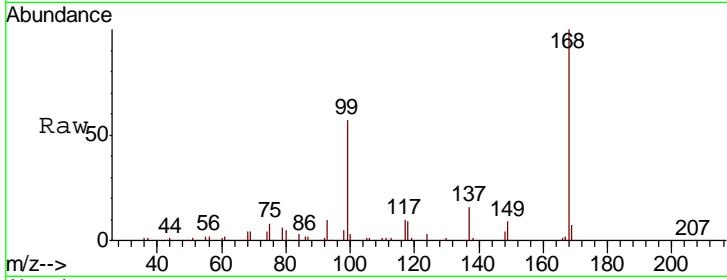




#36
 1,1-Dichloropropene
 Concen: 4.401 ug/l
 RT: 7.63 min Scan# 1820
 Delta R.T. -0.13 min
 Lab File: VN062137.D
 Acq: 26 Jun 2020 14:12

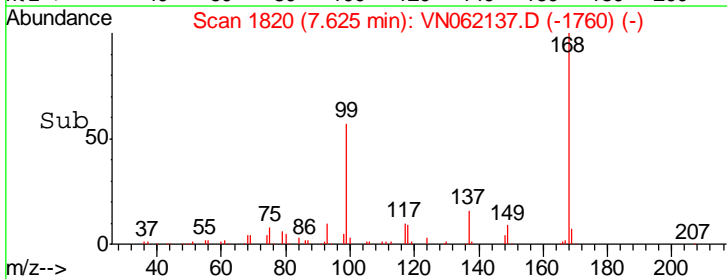
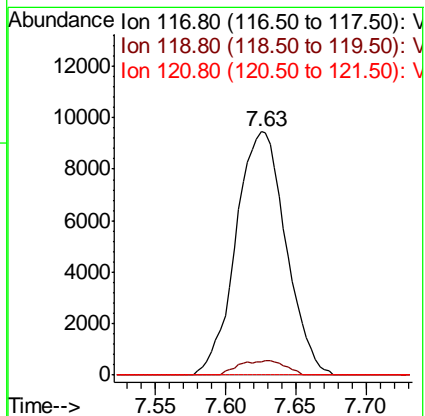
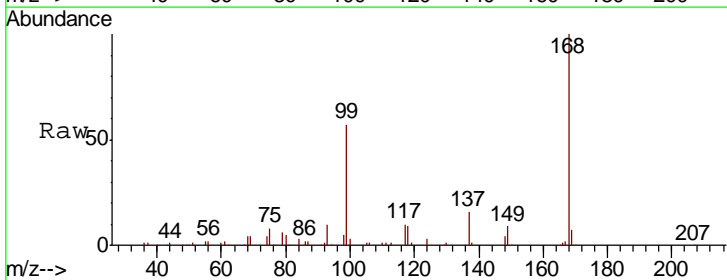
Instrument :
 MSVOA_N
 ClientSampled :
 IBLK

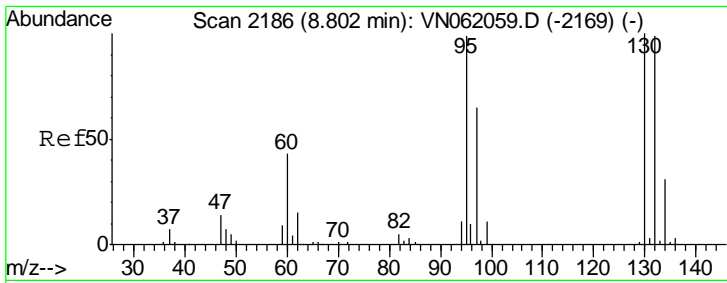
Tgt Ion	Resp	Lower	Upper
75	18528		
110	9.5	17.9	53.8#
77	0.0	24.9	37.3#



#38
 Carbon Tetrachloride
 Concen: 5.896 ug/l
 RT: 7.63 min Scan# 1820
 Delta R.T. -0.11 min
 Lab File: VN062137.D
 Acq: 26 Jun 2020 14:12

Tgt Ion	Resp	Lower	Upper
117	23400		
119	5.6	78.2	117.2#
121	0.0	25.8	38.6#

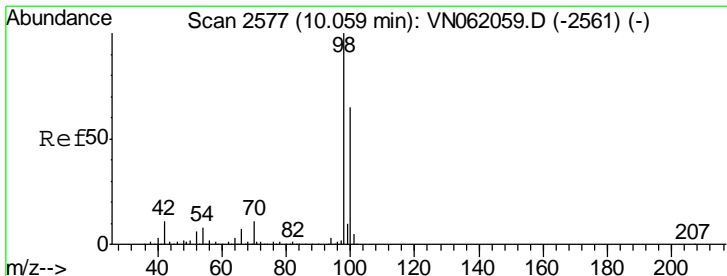
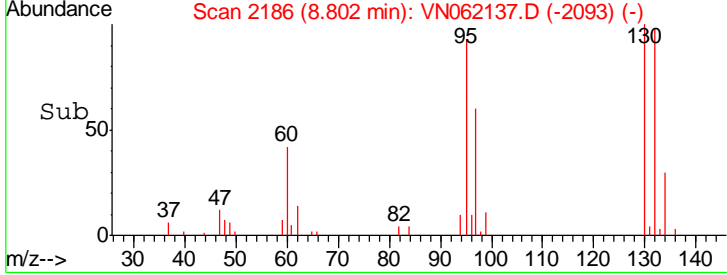
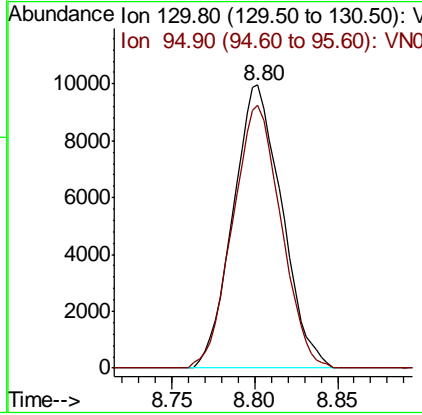
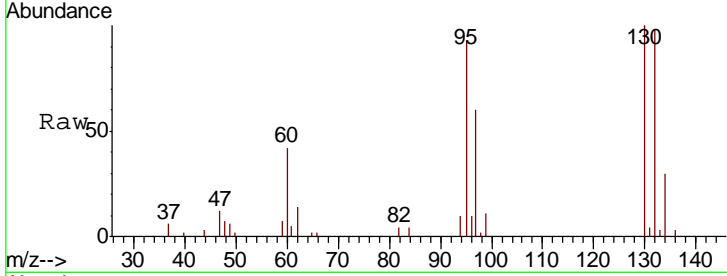




#44
 Trichloroethene
 Concen: 6.293 ug/l
 RT: 8.80 min Scan# 2186
 Delta R.T. -0.00 min
 Lab File: VN062137.D
 Acq: 26 Jun 2020 14:12

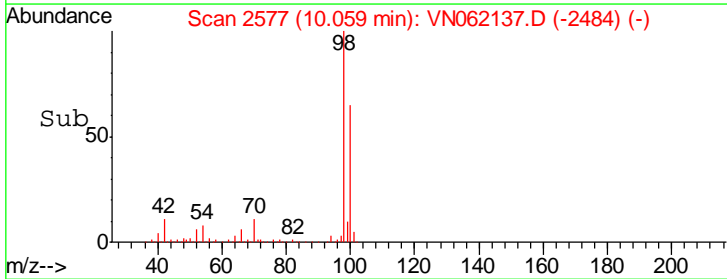
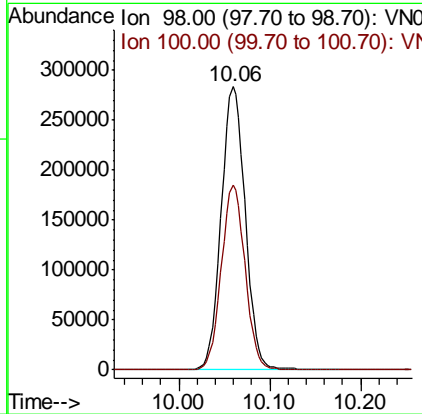
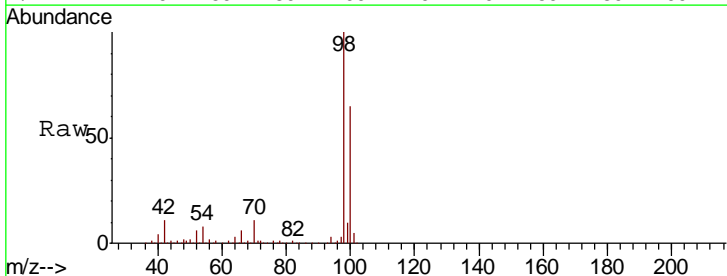
Instrument :
 MSVOA_N
 ClientSampled :
 IBLK

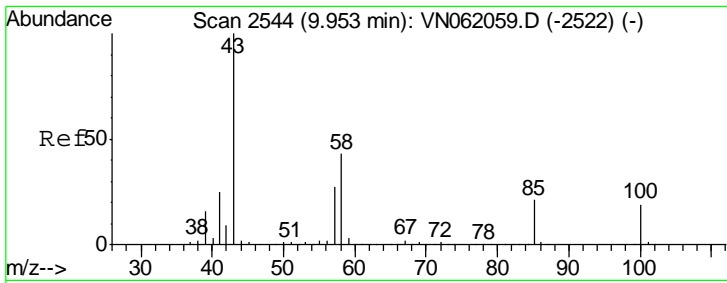
Tgt Ion	Resp	Lower	Upper
130	100		
95	92.9	0.0	197.8



#50
 Toluene-d8
 Concen: 48.605 ug/l
 RT: 10.06 min Scan# 2577
 Delta R.T. -0.00 min
 Lab File: VN062137.D
 Acq: 26 Jun 2020 14:12

Tgt Ion	Resp	Lower	Upper
98	100		
100	64.5	51.2	76.8

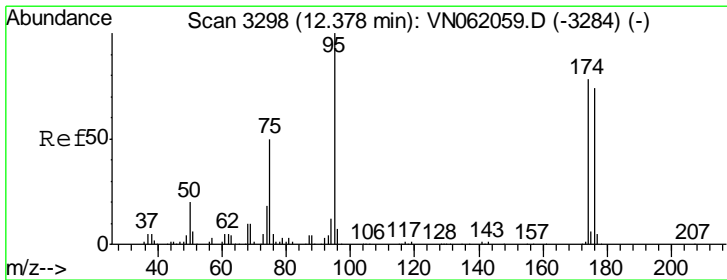
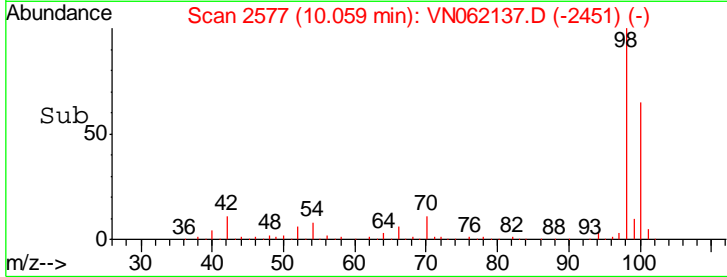
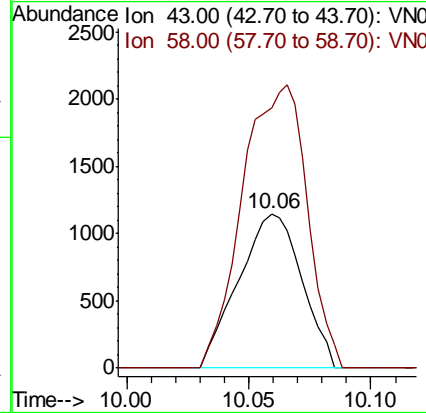
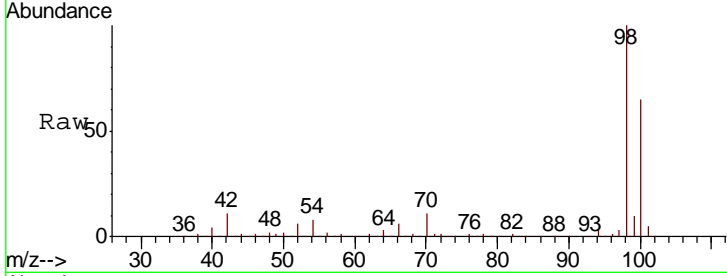




#51
 4-Methyl-2-Pentanone
 Concen: 0.621 ug/l
 RT: 10.06 min Scan# 2577
 Delta R.T. 0.11 min
 Lab File: VN062137.D
 Acq: 26 Jun 2020 14:12

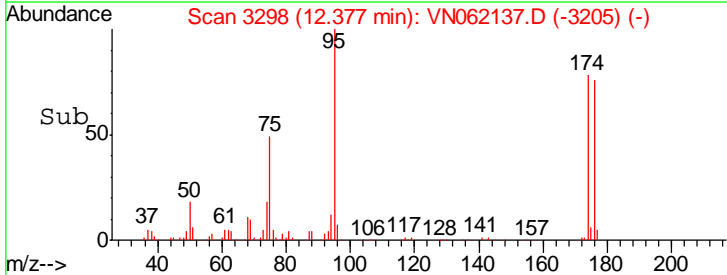
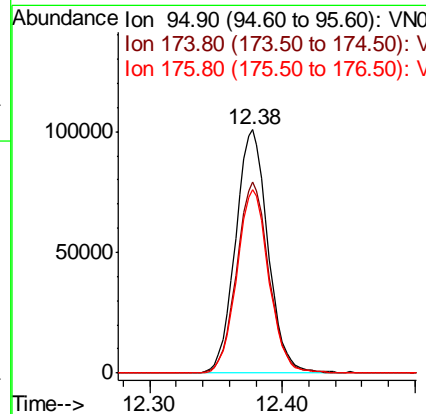
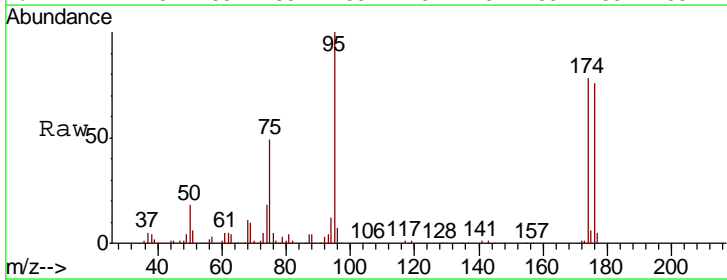
Instrument :
 MSVOA_N
 ClientSampled :
 IBLK

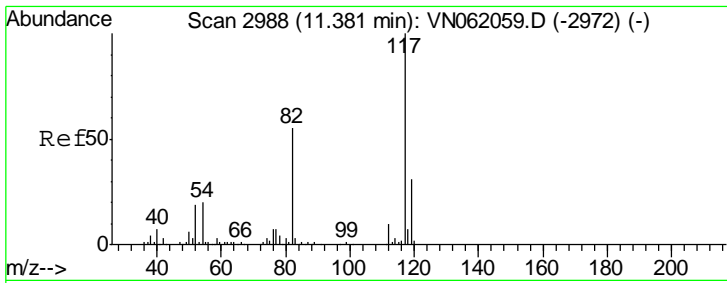
Tgt Ion: 43 Resp: 2061
 Ion Ratio Lower Upper
 43 100
 58 187.9 34.2 51.2#



#62
 4-Bromofluorobenzene
 Concen: 47.076 ug/l
 RT: 12.38 min Scan# 3298
 Delta R.T. -0.00 min
 Lab File: VN062137.D
 Acq: 26 Jun 2020 14:12

Tgt Ion: 95 Resp: 170826
 Ion Ratio Lower Upper
 95 100
 174 78.1 0.0 154.8
 176 74.7 0.0 147.4

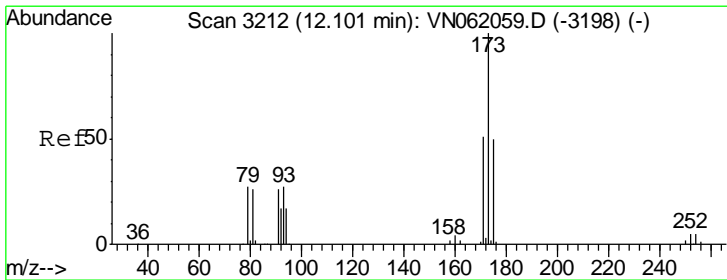
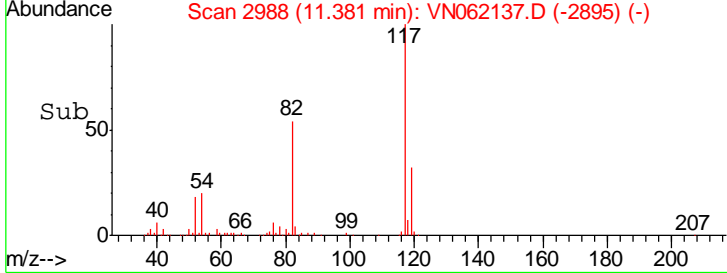
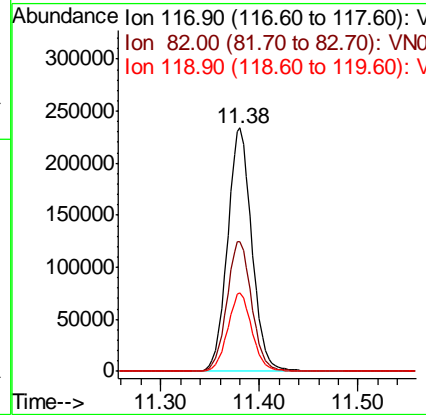
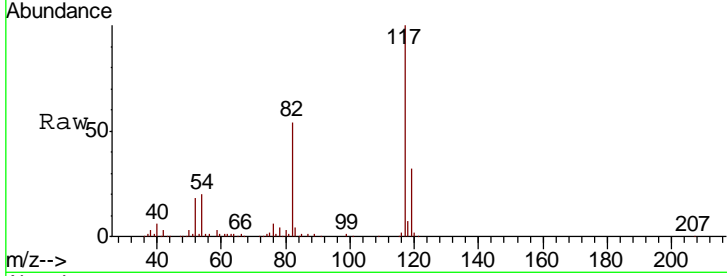




#63
 Chlorobenzene-d5
 Concen: 50.000 ug/l
 RT: 11.38 min Scan# 2988
 Delta R.T. -0.00 min
 Lab File: VN062137.D
 Acq: 26 Jun 2020 14:12

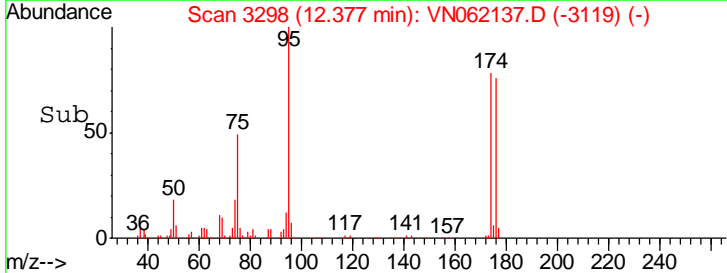
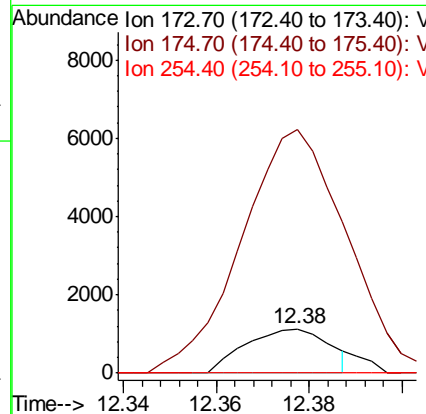
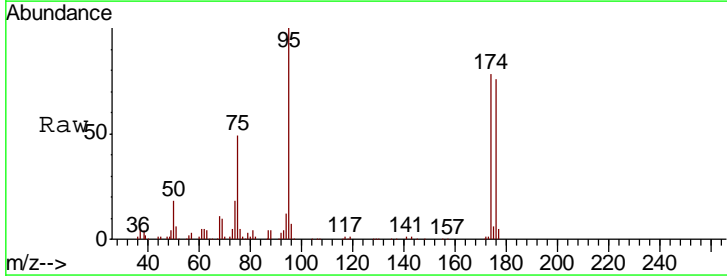
Instrument :
 MSVOA_N
 ClientSampled :
 IBLK

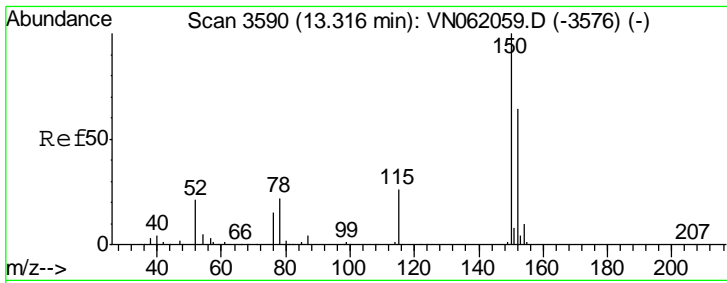
Tgt Ion	Resp	Lower	Upper
117	404405		
82	53.5	43.8	65.8
119	32.2	25.2	37.8



#71
 Bromoform
 Concen: 0.651 ug/l
 RT: 12.38 min Scan# 3298
 Delta R.T. 0.28 min
 Lab File: VN062137.D
 Acq: 26 Jun 2020 14:12

Tgt Ion	Resp	Lower	Upper
173	1421		
175	597.8	24.7	74.1#
254	0.0	0.0	0.0

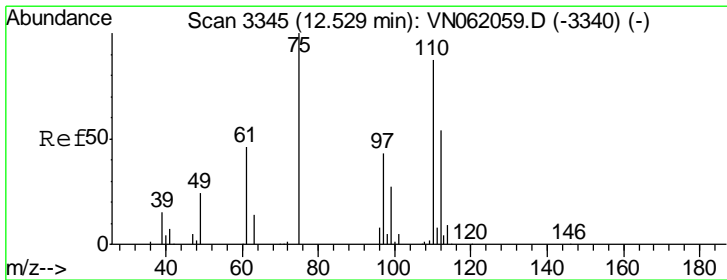
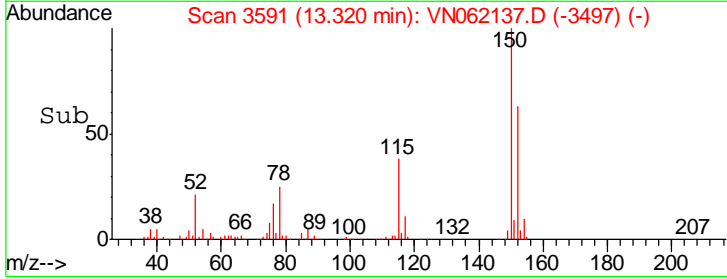
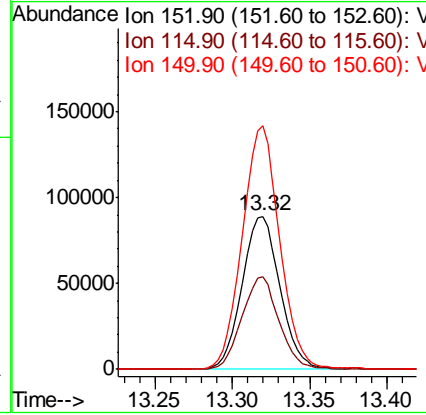
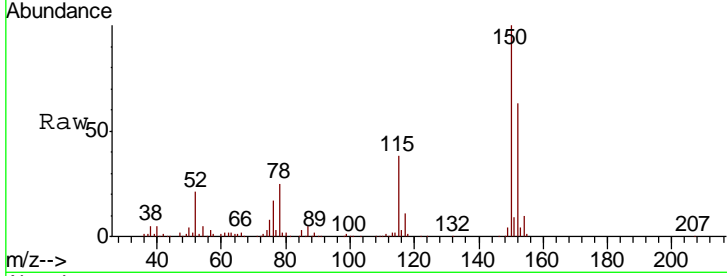




#72
 1,4-Dichlorobenzene-d4
 Concen: 50.000 ug/l
 RT: 13.32 min Scan# 3591
 Delta R.T. 0.00 min
 Lab File: VN062137.D
 Acq: 26 Jun 2020 14:12

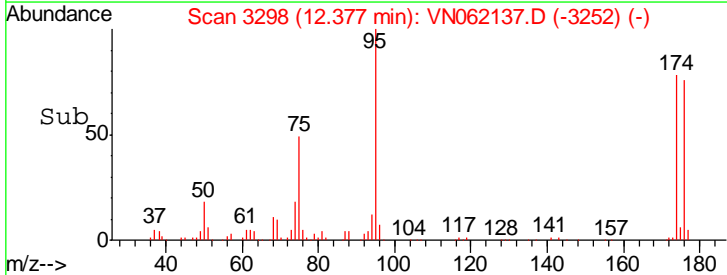
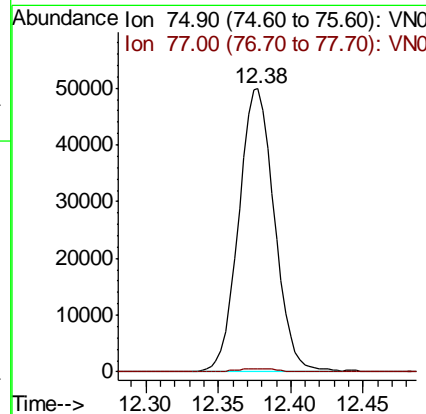
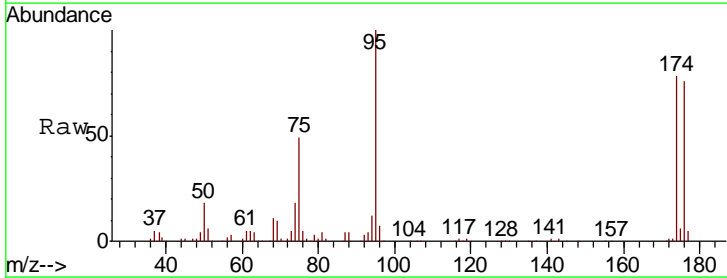
Instrument :
 MSVOA_N
 ClientSampled :
 BLK

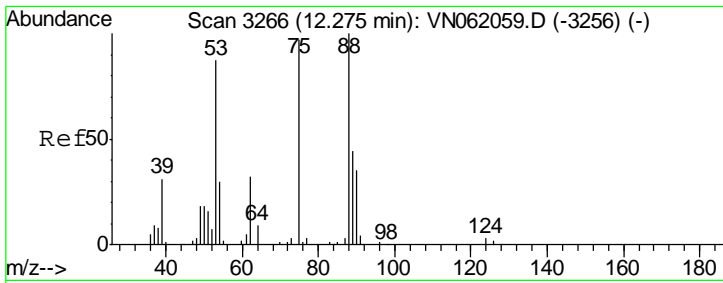
Tgt Ion	Resp	Lower	Upper
152	100		
115	59.4	29.5	88.5
150	157.6	0.0	351.4



#76
 1,2,3-Trichloropropane
 Concen: 23.837 ug/l
 RT: 12.38 min Scan# 3298
 Delta R.T. -0.15 min
 Lab File: VN062137.D
 Acq: 26 Jun 2020 14:12

Tgt Ion	Resp	Lower	Upper
75	100		
77	1.2	0.0	0.0#

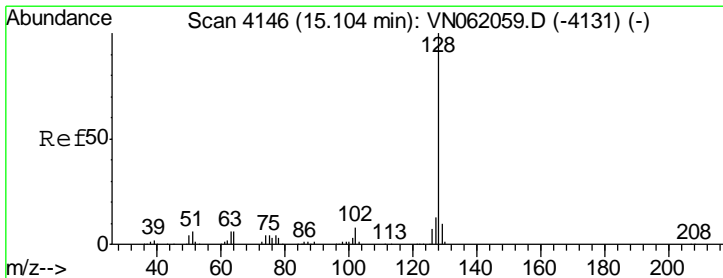
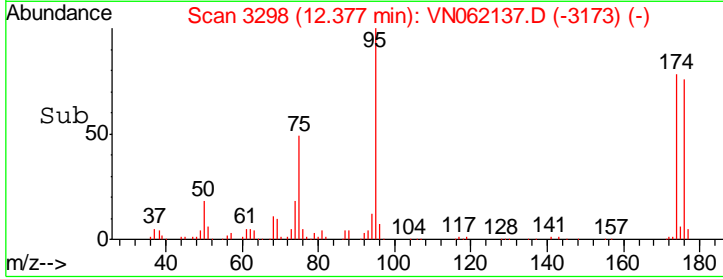
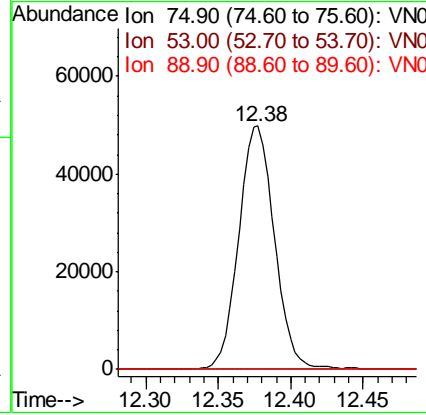
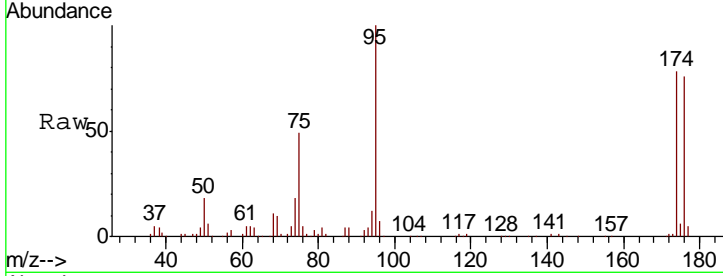




#81
 trans-1,4-Dichloro-2-butene
 Concen: 69.614 ug/l
 RT: 12.38 min Scan# 3298
 Delta R.T. 0.10 min
 Lab File: VN062137.D
 Acq: 26 Jun 2020 14:12

Instrument :
 MSVOA_N
 ClientSampled :
 IBLK

Tgt Ion	Resp	Lower	Upper
75	100		
53	0.0	72.0	108.0#
89	0.0	36.9	55.3#



#95
 Naphthalene
 Concen: 4.003 ug/l
 RT: 15.12 min Scan# 4152
 Delta R.T. 0.02 min
 Lab File: VN062137.D
 Acq: 26 Jun 2020 14:12

Tgt Ion	Resp	Lower	Upper
128	100		
127	0.0	10.5	15.7#
129	0.0	8.6	13.0#

