

Data Path : Z:\VOASRV\HPCHEM1\MSVOA N\DATA\VN062620\
 Data File : VN062142.D
 Acq On : 26 Jun 2020 16:13
 Operator : JC/MD
 Sample : L3088-11
 Misc : 5.00mL/MSVOA N/WATER
 ALS Vial : 16 Sample Multiplier: 1

Instrument :
 MSVOA_N
 ClientSampleId :
 BRP2-20200622

Integration Parameters: RTEINT.P
 Integrator: RTE
 Smoothing : ON Filtering: 5
 Sampling : 1 Min Area: 3 % of largest Peak
 Start Thrs: 0.2 Max Peaks: 100
 Stop Thrs : 0 Peak Location: TOP

If leading or trailing edge < 100 prefer < Baseline drop else tangent >
 Peak separation: 5

Method : Z:\VOASRV\HPCHEM1\MSVOA_N\METHODS\82N062420W.M
 Title : SW846 8260

Signal : TIC

peak #	R.T. min	first scan	max scan	last scan	PK TY	peak height	corr. area	corr. % max.	% of total
1	2.156	105	119	154	rBV	5914538	9686767	11.98%	7.680%
2	6.780	1526	1557	1651	rBV	23884849	80845170	100.00%	64.101%
3	8.551	2091	2108	2132	rBV	457309	964590	1.19%	0.765%
4	8.802	2163	2186	2237	rBV	14357658	30272609	37.45%	24.003%
5	10.059	2562	2577	2598	rBV	761029	1378931	1.71%	1.093%
6	11.381	2974	2988	3012	rBV	693285	1212586	1.50%	0.961%
7	12.378	3285	3298	3321	rBV	498234	834145	1.03%	0.661%
8	13.320	3576	3591	3607	rBV	553670	927390	1.15%	0.735%

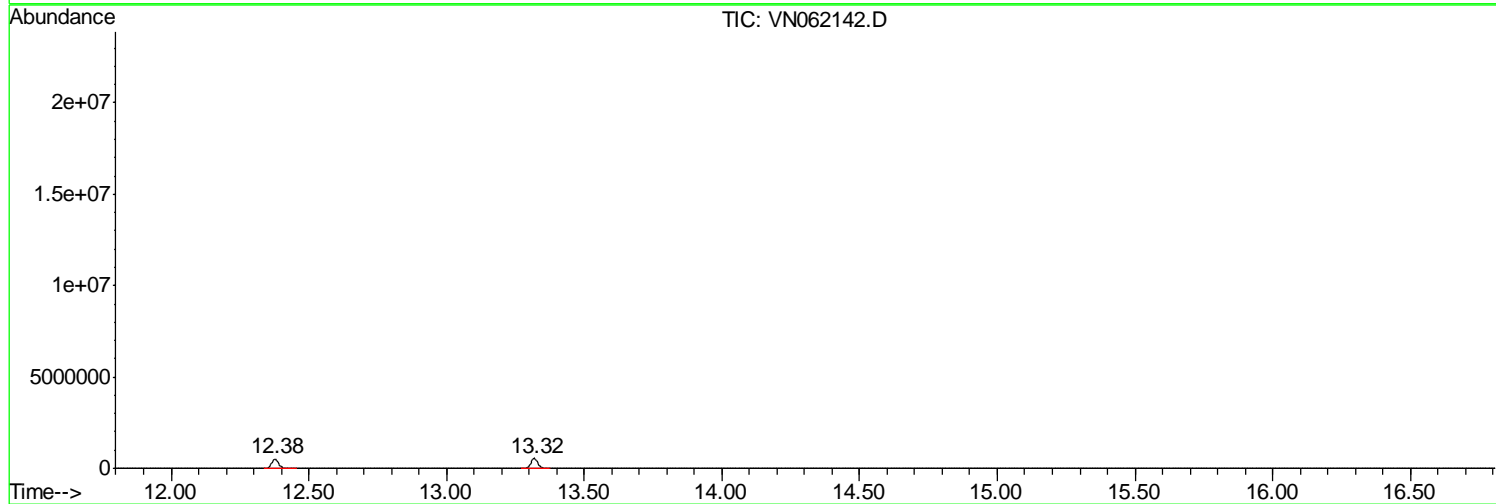
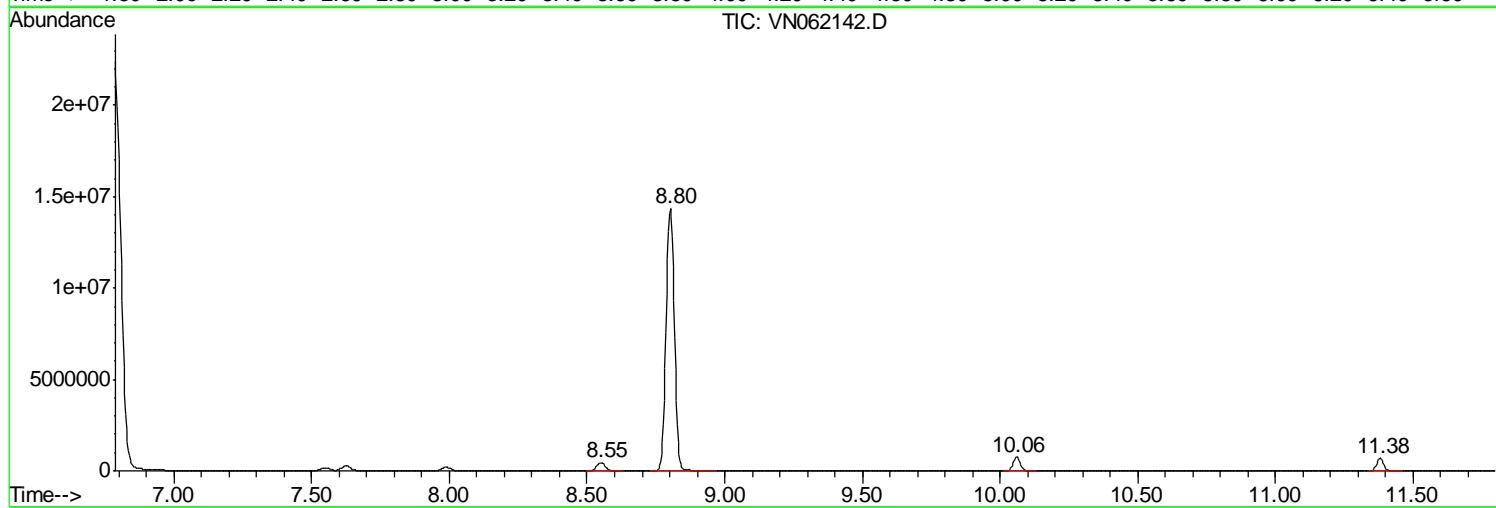
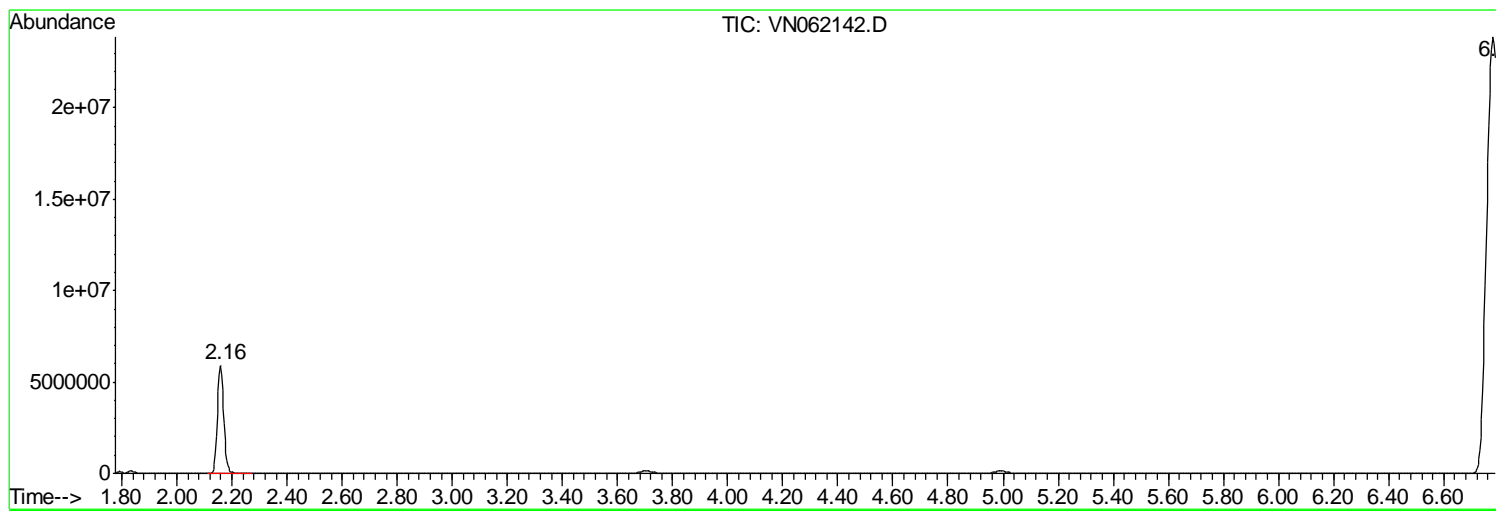
Sum of corrected areas: 126122188

Data Path : Z:\VOASRV\HPCHEM1\MSVOA N\DATA\VN062620\
Data File : VN062142.D
Acq On : 26 Jun 2020 16:13
Operator : JC/MD
Sample : L3088-11
Misc : 5.00mL/MSVOA N/WATER
ALS Vial : 16 Sample Multiplier: 1

Instrument :
MSVOA_N
ClientSampleId :
BRP2-20200622

Quant Method : Z:\VOASRV\HPCHEM1\MSVOA_N\METHODS\82N062420W.M
Quant Title : SW846 8260

TIC Library : C:\DATABASE\NIST11.L
TIC Integration Parameters: LSCINT.P



Data Path : Z:\VOASRV\HPCHEM1\MSVOA_N\DATA\VN062620\
Data File : VN062142.D
Acq On : 26 Jun 2020 16:13
Operator : JC/MD
Sample : L3088-11
Misc : 5.00mL/MSVOA_N/WATER
ALS Vial : 16 Sample Multiplier: 1

Instrument :
MSVOA_N
ClientSampleId :
BRP2-20200622

Quant Method : Z:\VOASRV\HPCHEM1\MSVOA_N\METHODS\82N062420W.M
Quant Title : SW846 8260

TIC Library : C:\DATABASE\NIST11.L
TIC Integration Parameters: LSCINT.P

No Library Search Compounds Detected

Data Path : Z:\VOASRV\HPCHEM1\MSVOA_N\DATA\VN062620\
Data File : VN062142.D
Acq On : 26 Jun 2020 16:13
Operator : JC/MD
Sample : L3088-11
Misc : 5.00mL/MSVOA_N/WATER
ALS Vial : 16 Sample Multiplier: 1

Instrument :
MSVOA_N
ClientSampleId :
BRP2-20200622

Quant Method : Z:\VOASRV\HPCHEM1\MSVOA_N\METHODS\82N062420W.M
Quant Title : SW846 8260

TIC Library : C:\DATABASE\NIST11.L
TIC Integration Parameters: LSCINT.P

TIC Top Hit name	RT	EstConc	Units	Response	--Internal Standard--			
					#	RT	Resp	Conc
