

Data Path : Z:\VOASRV\HPCHEM1\MSVOA N\DATA\VN062719\  
 Data File : VN056531.D  
 Acq On : 28 Jun 2019 00:20  
 Operator : JC/SP  
 Sample : K3519-09  
 Misc : 5.00mL/MSVOA N/WATER  
 ALS Vial : 23 Sample Multiplier: 1

**Instrument :**  
 MSVOA\_N  
**ClientSampled :**  
 SP-19-LF2MW3

Quant Time: Jun 28 03:31:05 2019  
 Quant Method : Z:\VOASRV\HPCHEM1\MSVOA\_N\METHODS\82N062719SIM-VINYLM  
 Quant Title : SW846 8260  
 QLast Update : Fri Jun 28 03:22:32 2019  
 Response via : Initial Calibration

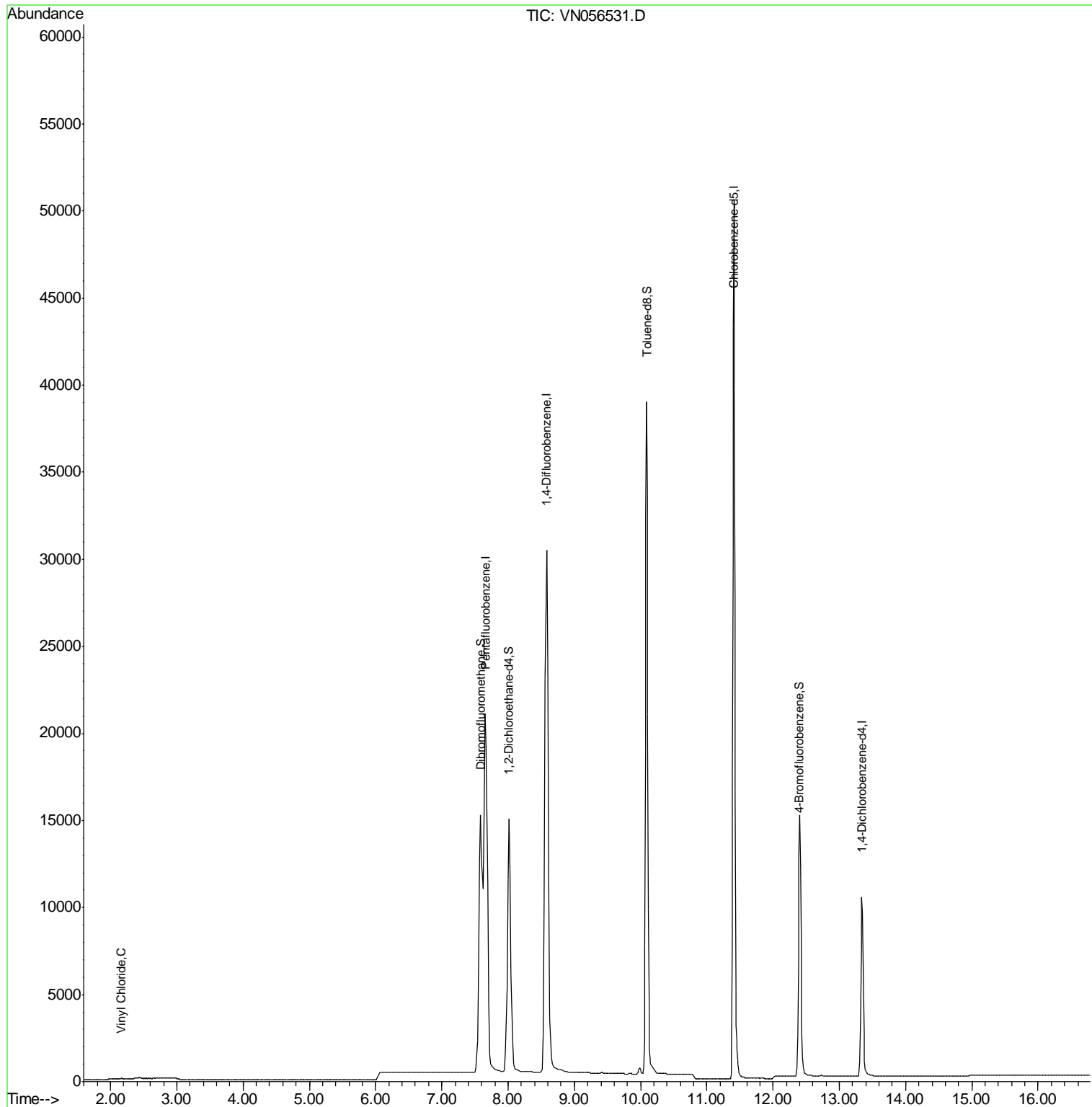
Internal Standards	R.T.	QIon	Response	Conc	Units	Dev(Min)
1) Pentafluorobenzene	7.65	168	51821	5.00	ug/l	0.00
4) 1,4-Difluorobenzene	8.58	114	90408	5.00	ug/l	0.00
8) Chlorobenzene-d5	11.41	117	54695	5.00	ug/l	0.00
9) 1,4-Dichlorobenzene-d4	13.34	152	8436	5.00	ug/l	0.00
<b>System Monitoring Compounds</b>						
3) 1,2-Dichloroethane-d4	8.01	65	32728	5.16	ug/l	0.00
Spiked Amount	5.000	Range	81 - 118	Recovery	=	103.20%
5) Dibromofluoromethane	7.59	113	24588	4.93	ug/l	0.00
Spiked Amount	5.000	Range	80 - 119	Recovery	=	98.60%
6) Toluene-d8	10.09	98	54841	4.86	ug/l	0.00
Spiked Amount	5.000	Range	89 - 112	Recovery	=	97.20%
7) 4-Bromofluorobenzene	12.39	95	13976	4.84	ug/l	0.00
Spiked Amount	5.000	Range	85 - 114	Recovery	=	96.80%
<b>Target Compounds</b>						
2) Vinyl Chloride	2.16	62	31	0.006	ug/l #	1

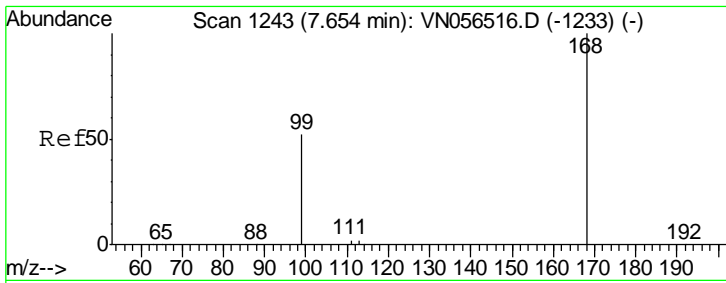
(#) = qualifier out of range (m) = manual integration (+) = signals summed

Data Path : Z:\VOASRV\HPCHEM1\MSVOA N\DATA\VN062719\  
 Data File : VN056531.D  
 Acq On : 28 Jun 2019 00:20  
 Operator : JC/SP  
 Sample : K3519-09  
 Misc : 5.00mL/MSVOA N/WATER  
 ALS Vial : 23 Sample Multiplier: 1

Instrument :  
 MSVOA\_N  
 ClientSampleId :  
 SP-19-LF2MW3

Quant Time: Jun 28 03:31:05 2019  
 Quant Method : Z:\VOASRV\HPCHEM1\MSVOA\_N\METHODS\82N062719SIM-VINYL.M  
 Quant Title : SW846 8260  
 QLast Update : Fri Jun 28 03:22:32 2019  
 Response via : Initial Calibration

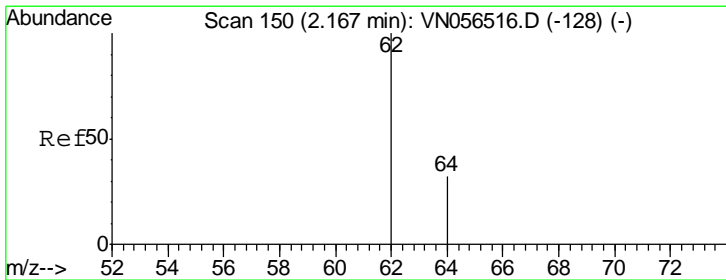
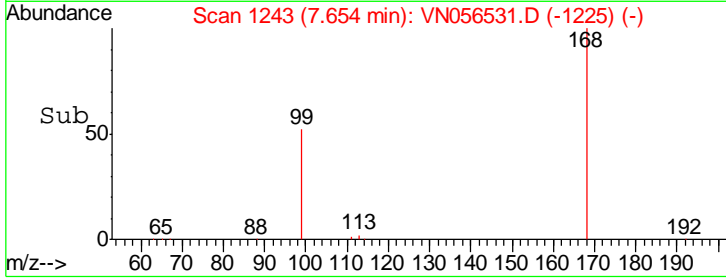
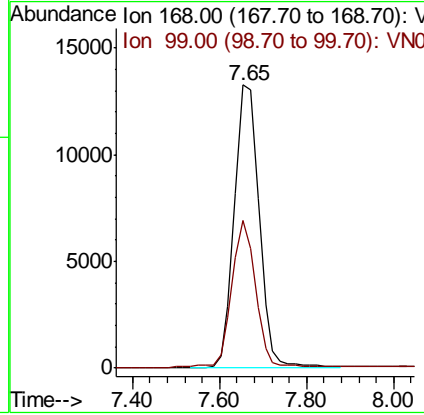
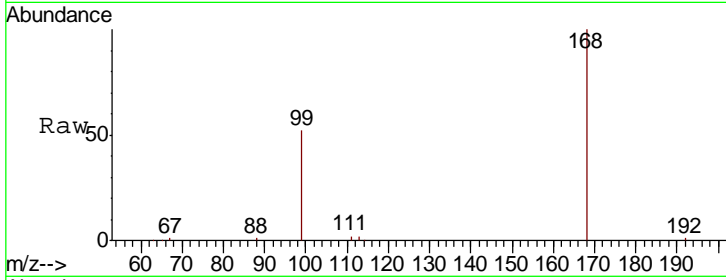




#1  
 Pentafluorobenzene  
 Concen: 5.000 ug/l  
 RT: 7.65 min Scan# 1243  
 Delta R.T. 0.00 min  
 Lab File: VN056531.D  
 Acq: 28 Jun 2019 00:20

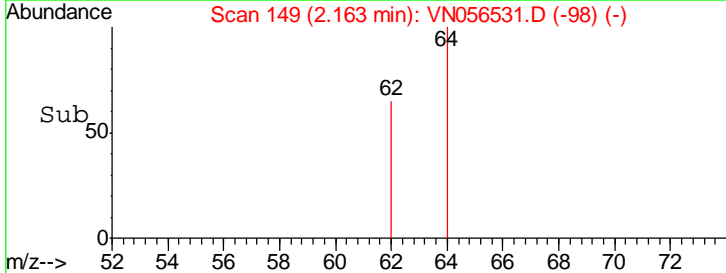
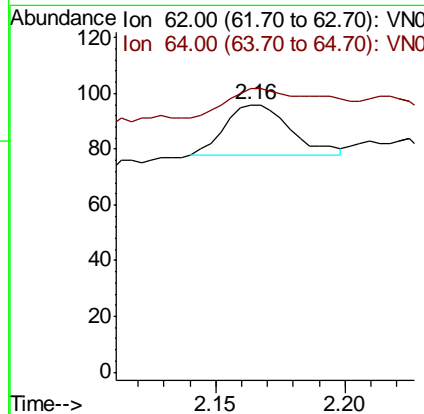
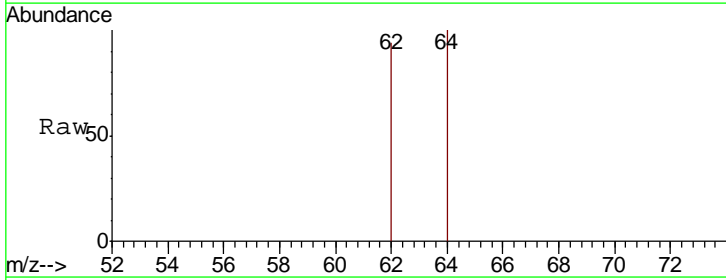
Instrument :  
 MSVOA\_N  
 ClientSampled :  
 SP-19-LF2MW3

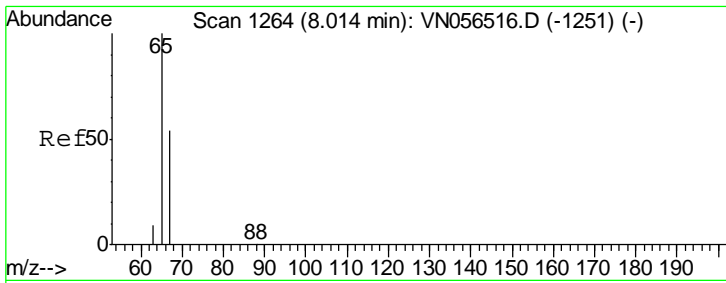
Tgt Ion: 168 Resp: 51821  
 Ion Ratio Lower Upper  
 168 100  
 99 52.0 41.9 62.9



#2  
 Vinyl Chloride  
 Concen: 0.006 ug/l  
 RT: 2.16 min Scan# 149  
 Delta R.T. -0.00 min  
 Lab File: VN056531.D  
 Acq: 28 Jun 2019 00:20

Tgt Ion: 62 Resp: 31  
 Ion Ratio Lower Upper  
 62 100  
 64 106.3 26.1 39.1#

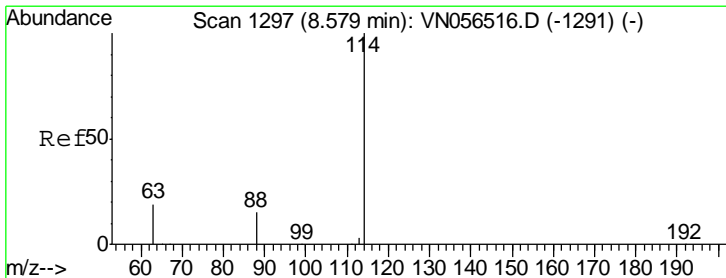
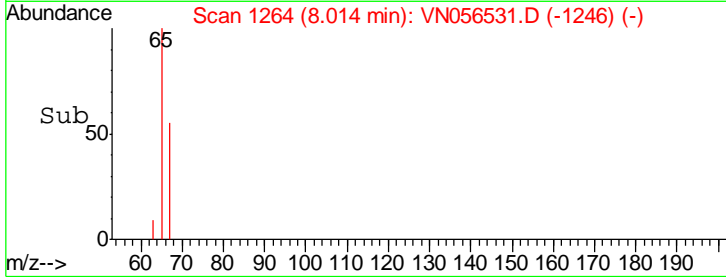
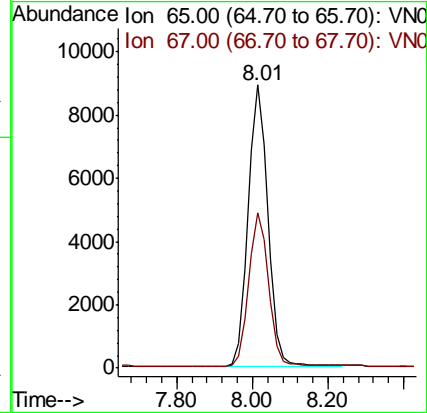
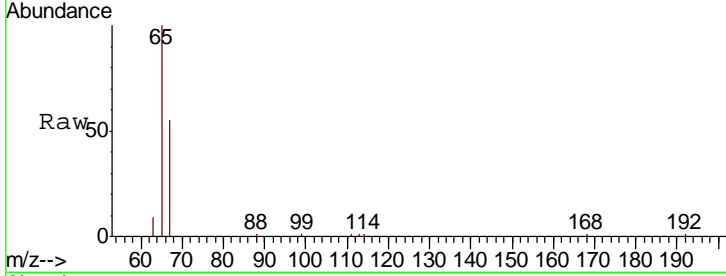




#3  
 1,2-Dichloroethane-d4  
 Concen: 5.156 ug/l  
 RT: 8.01 min Scan# 1264  
 Delta R.T. 0.00 min  
 Lab File: VN056531.D  
 Acq: 28 Jun 2019 00:20

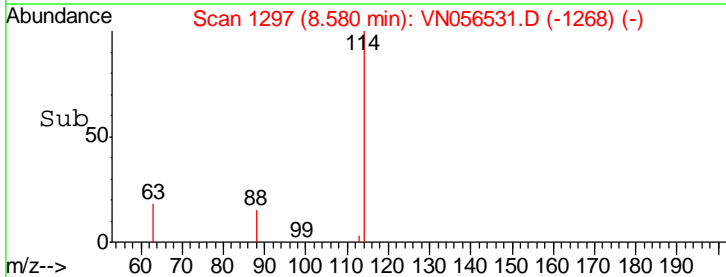
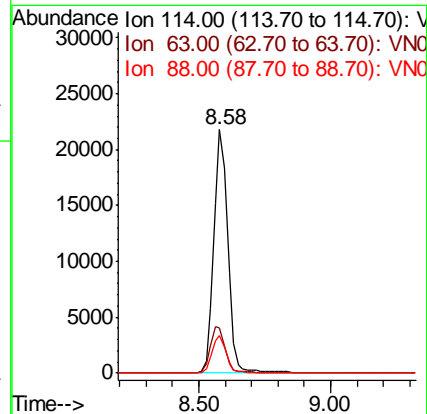
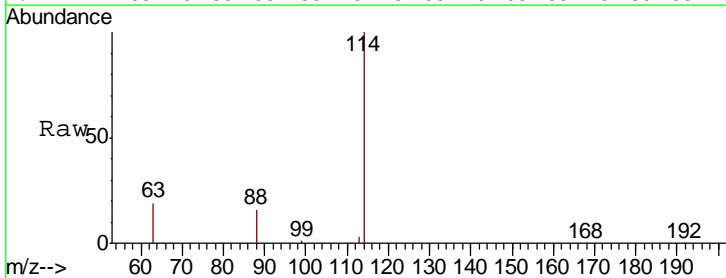
Instrument :  
 MSVOA\_N  
 ClientSampleId :  
 SP-19-LF2MW3

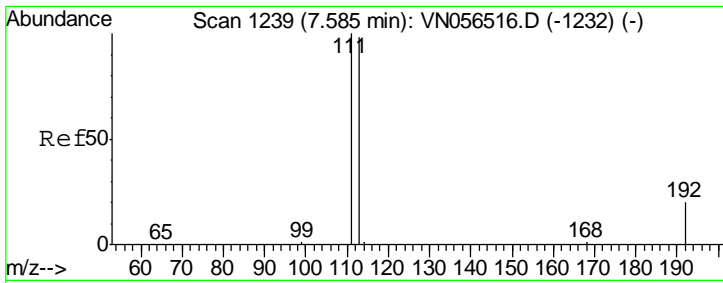
Tgt Ion	Resp	Lower	Upper
65	32728		
67	55.0	0.0	108.8



#4  
 1,4-Difluorobenzene  
 Concen: 5.000 ug/l  
 RT: 8.58 min Scan# 1297  
 Delta R.T. 0.00 min  
 Lab File: VN056531.D  
 Acq: 28 Jun 2019 00:20

Tgt Ion	Resp	Lower	Upper
114	90408		
63	18.8	0.0	37.6
88	15.7	0.0	31.2

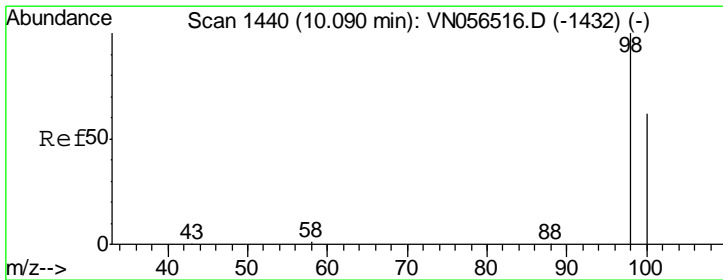
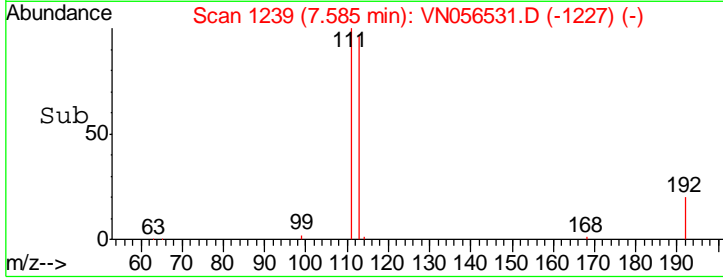
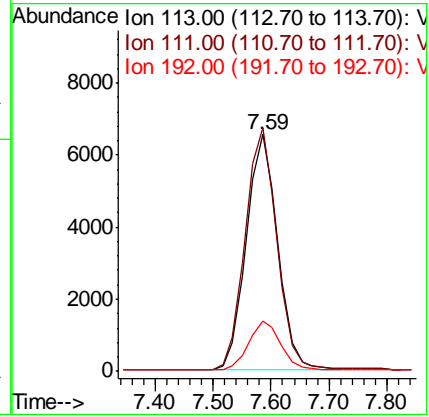
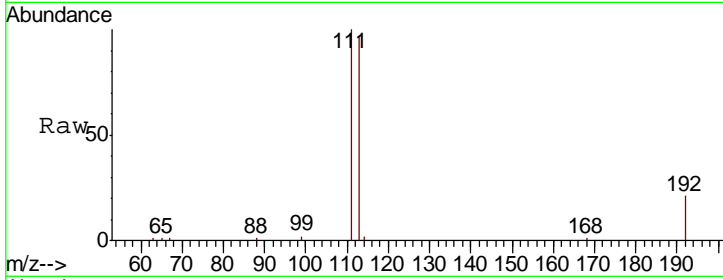




#5  
 Dibromofluoromethane  
 Concen: 4.933 ug/l  
 RT: 7.59 min Scan# 1239  
 Delta R.T. 0.00 min  
 Lab File: VN056531.D  
 Acq: 28 Jun 2019 00:20

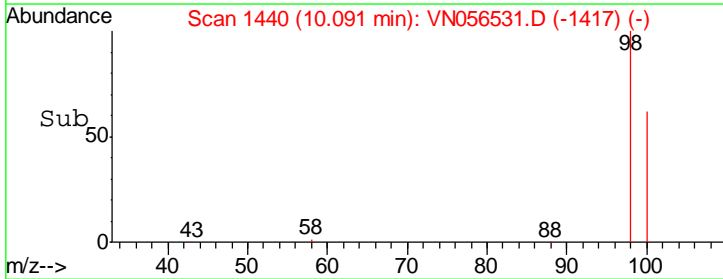
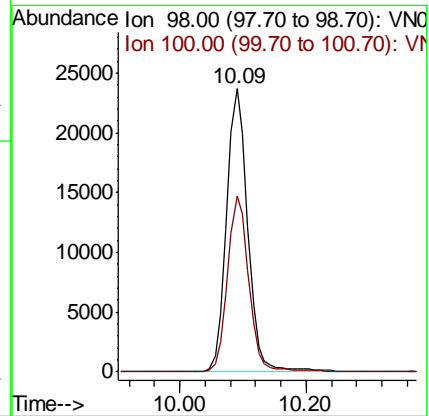
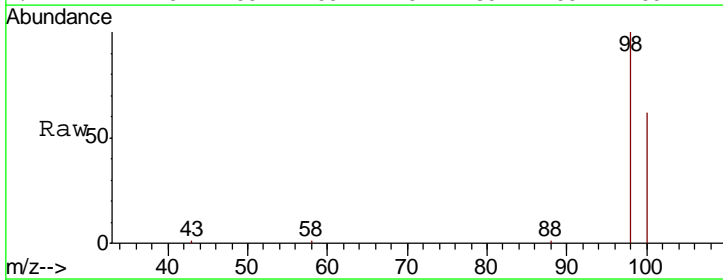
**Instrument :**  
 MSVOA\_N  
**ClientSampled :**  
 SP-19-LF2MW3

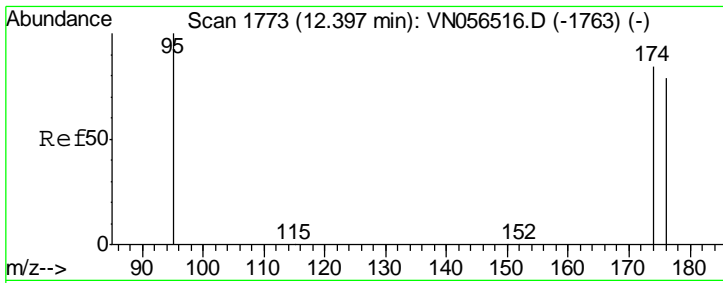
Tgt Ion	Resp	Lower	Upper
113	24588		
111	102.7	81.7	122.5
192	21.1	16.9	25.3



#6  
 Toluene-d8  
 Concen: 4.863 ug/l  
 RT: 10.09 min Scan# 1440  
 Delta R.T. 0.00 min  
 Lab File: VN056531.D  
 Acq: 28 Jun 2019 00:20

Tgt Ion	Resp	Lower	Upper
98	54841		
100	62.0	49.7	74.5



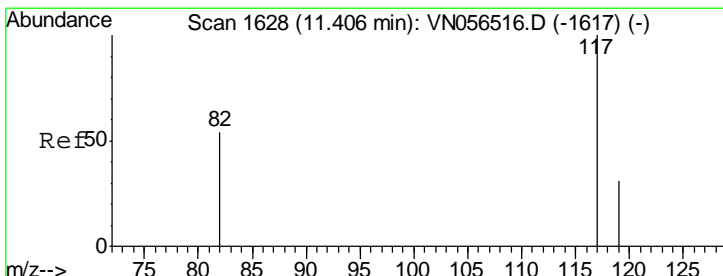
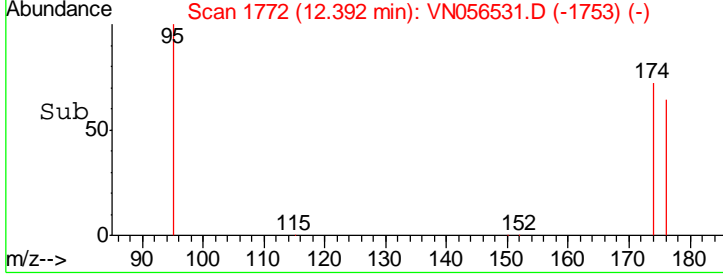
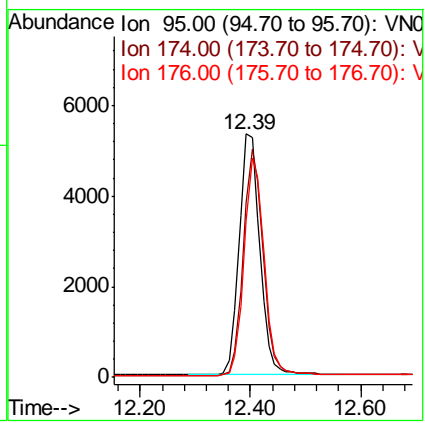
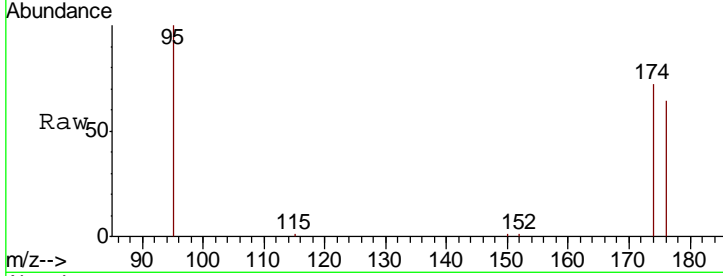


#7  
 4-Bromofluorobenzene  
 Concen: 4.845 ug/l  
 RT: 12.39 min Scan# 1772  
 Delta R.T. -0.01 min  
 Lab File: VN056531.D  
 Acq: 28 Jun 2019 00:20

Instrument : MSVOA\_N  
 ClientSampled : SP-19-LF2MW3

Tgt Ion: 95 Resp: 13976

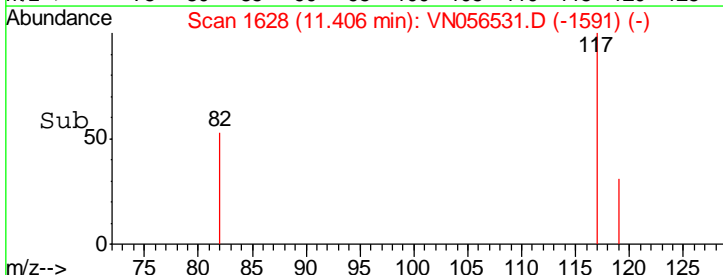
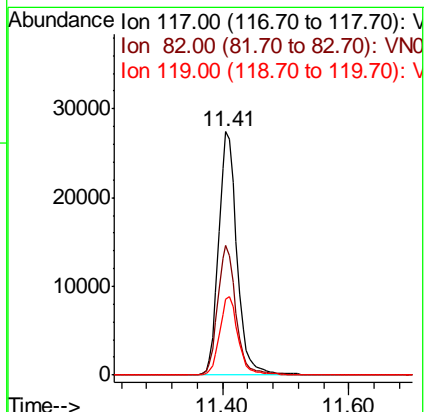
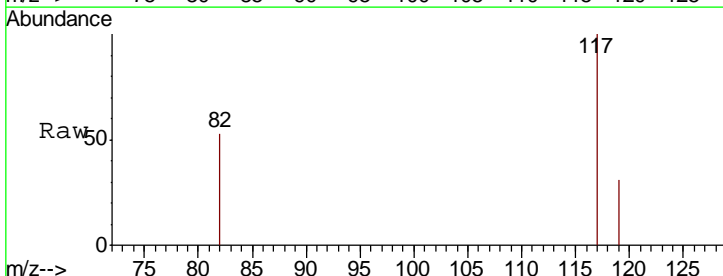
Ion	Ratio	Lower	Upper
95	100		
174	71.9	0.0	167.8
176	64.5	0.0	158.0

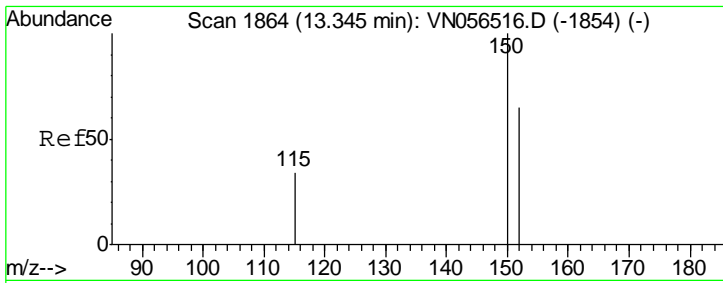


#8  
 Chlorobenzene-d5  
 Concen: 5.000 ug/l  
 RT: 11.41 min Scan# 1628  
 Delta R.T. 0.00 min  
 Lab File: VN056531.D  
 Acq: 28 Jun 2019 00:20

Tgt Ion: 117 Resp: 54695

Ion	Ratio	Lower	Upper
117	100		
82	53.2	43.0	64.4
119	31.2	24.7	37.1





#9  
 1,4-Dichlorobenzene-d4  
 Concen: 5.000 ug/l  
 RT: 13.34 min Scan# 1863  
 Delta R.T. -0.01 min  
 Lab File: VN056531.D  
 Acq: 28 Jun 2019 00:20

Instrument : MSVOA\_N  
 ClientSampled : SP-19-LF2MW3

Tot Ion: 152 Resp: 8436

Ion	Ratio	Lower	Upper
152	100		
115	57.7	27.0	80.8
150	158.5	0.0	306.6

